

**Contract No. : DE/99/12**  
**Outlying Islands Sewerage – Stage 1 Phase 1**  
**Upgrading of Siu Ho Wan Sewage Treatment Plant**  
**– E&M Works**

**ENVIRONMENTAL MONITORING AND AUDIT**

**MONTHLY EM&A REPORT No. 14**

**BioEnviroLink Technologies Limited**  
**July 2004**

## **APPROVAL & DISTRIBUTION SHEET**

DOCUMENT DATE: 31 July 2004

### **APPROVAL**

Prepared by: ET Leader (BioEnviroLink Technologies Limited)

Signature: \_\_\_\_\_

Miss Patricia Chung

Date: \_\_\_\_\_

Audited by: \_\_\_\_\_

Mr. Ivan Ng

Date: \_\_\_\_\_

## **TABLE OF CONTENTS (PROPOSED)**

### **EXECUTIVE SUMMARY**

#### **1. BACKGROUND INFORMATION**

- 1.1 Introduction
- 1.2 Project Organization and Management

#### **2. SUMMARY OF WORK ACTIVITIES**

#### **3. IMPLEMENTATION OF WASTE MANAGEMENT PLAN**

#### **4. STATUS OF ENVIRONMENTAL PROTECTION AND SITE INSPECTIONS**

- 4.1 Site Inspections
- 4.2 Status of Environmental Protection

#### **5. SUMMARY OF DEFICIENCY, NON-COMPLIANCE AND REMEDIAL ACTIONS**

#### **6. CUMULATIVE LOG OF COMPLAINTS AND REMEDIAL ACTIONS**

#### **7. CUMULATIVE LOG OF NOTIFICATION OF SUMMONS AND PROSECUTIONS**

#### **8. FUTURE KEY ISSUES**

#### **9. CONCLUSION**

### **APPENDIX**

Appendix 1 - The contact persons, telephone numbers of key personnel for upgrade of Siu Ho Wan sewage treatment works

Appendix 2 – Site Layout Plan

Appendix 3 – Cumulative log of complaints, details of complaints and remedial actions

## **EXECUTIVE SUMMARY**

This is the fourteenth monthly Environmental Monitoring and Audit (EM&A) Report for the Drainage Services Department Contract No. DE/99/12 entitled “Upgrading of Siu Ho Wan STP – E&M Works Outlying Islands Sewerage – Stage 1 Phase 1C”. (Environmental Permit No. EP-076/2000)

This report contains the results and findings of site inspection activities and EM&A works carried out by the Environmental Team (ET) of the E&M Contractor as required in the contract during July 2004.

The site activities in the reporting period mainly consisted of preparation of the Function Test for the major equipment, calibration of the level instrument and testing of the SCADA program at Primary Tank, Ferric Chloride Storage Area, Potable Washing Pumping Station and other areas.

There were no complaints received or notifications of summons or successful prosecutions during July 2004.

The main planned activities for August 2004 with regard to E&M equipment installation consist of

1. Preparation of the Function Test for the major equipment
2. Calibration of the level instrument
3. Testing of the SCADA program

## **1. BACKGROUND INFORMATION**

### 1.1 Introduction

This is the fourteenth monthly Environmental Monitoring and Audit (EM&A) Report for the Drainage Services Department Contract No. DE/99/12 entitled “Upgrading of Siu Ho Wan STP – E&M Works Outlying Islands Sewerage – Stage 1 Phase 1C”. The site layout plan, with the indication of a temporary storage of installation items as well as the designated waste storage area, is shown in Appendix 1. The report was prepared by the Environmental Team, BioEnviroLink Technologies Limited, of the E&M Contractor, Mitsubishi Corporation (Hong Kong) Limited. The report is to be submitted to the Contractor, the Engineer and the Environmental Protection Department.

This report presents the results of the environmental monitoring of the project activities conducted during the month of July 2004. This included regular site inspections once per week for verification of implementation of the mitigation measures as recommended in the EM&A Manual.

The E&M installation works has already commenced in June 2003 and is anticipated to be completed on 11 October 2004 .

The Contractor’s site activities are limited in July 2004 as all site areas excluding Portion G were handed / taken over by Civil Works Contractor, China State Construction Engineering Company on 29 June 2004.

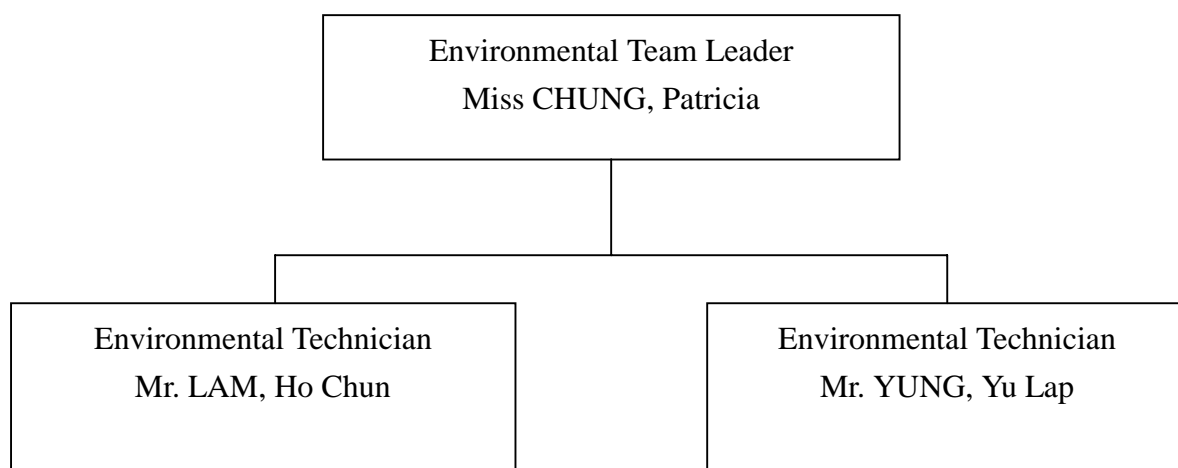
The contact persons and telephone number of key personnel for the captioned project are shown in Appendix 2.

### 1.2 Project Organization and Management

The Environmental Team, which comprises the environmental team leader and the environmental technicians to undertake the environmental monitoring and audit work for this project, has commissioned BioEnviroLink Technologies Limited. The project Organization Chart of Environmental Team is shown in Figure 1.2.

Figure 1.2 Organization Chart of Environmental Team

Environmental Team Organization Chart



## 2. SUMMARY OF WORK ACTIVITIES

A summary of the site works in this month, with the information of locations, details of each activity, equipment/materials and dates of occurrence, is listed in Table 1.

Table 1: Work Activities for July 2004

<b>Item</b>	<b>Location</b>	<b>Work Activities</b>	<b>Date of Occurrence</b>
1	Primary Tank	- Preparation of the Function Test for the major equipment - Calibration of the level instrument - Testing of the SCADA program	1 – 31 July 1 – 31 July 1 – 31 July
2	Ferric Chloride Storage Area	- Preparation of the Function Test for the major equipment - Calibration of the level instrument - Testing of the SCADA program	1 – 31 July 1 – 31 July 1 – 31 July
3	Potable Washwater Pumping Station	- Preparation of the Function Test for the major equipment - Calibration of the level instrument - Testing of the SCADA program	1 – 31 July 1 – 31 July 1 – 31 July
4	Other Area	- Preparation of the Function Test for the major equipment - Calibration of the level instrument - Testing of the SCADA program	1 – 31 July 1 – 31 July 1 – 31 July

### **3 IMPLEMENTATION OF WASTE MANAGEMENT PLAN**

A Waste Management Plan has been prepared for governing a good waste management, which is essential to avoid, minimize, salvage for reuse, recycle, dispose of waste and reduce the load on landfills to improve the standards of environmental protection.

The information and the implementation status of waste management are summarized in Table 2.



Table 2: Information and the implementation status of  
 Waste Management in July 2004

<b>Information of Waste Management Plan</b>	<b>Implementation Status</b>	<b>Remarks</b>
<p><u>Municipal Solid Waste Management</u>                      Sorting and classification of aluminum cans, plastics are required at site. Paper and cardboard generated from site office should be reused or recycled.</p>	<p>Sorting and classification of municipal solid waste are available at work site. Waste sorting facilities (bins) are provided.</p>	<p>Collection of municipal solid waste has been carried out since September 2003.</p>
<p><u>Construction &amp; Demolition (C&amp;D) Waste Management</u>                      Waste sorting and classification by using a 100 m<sup>2</sup> sorting shed at site are required.</p>	<p>No inert C&amp;D Wastes were produced at site up to July 2004. Waste dumper for temporary storage of C&amp;D Waste are provided.</p>	<p>The non-inert portion of C&amp;D Wastes has been appropriately handled since 14 October 2003.</p>
<p><u>Chemical Waste Management</u>                      A licensed chemical waste collector is engaged for collecting the chemical wastes generated from this project. Storage facilities must follow the Code of Practice.</p>	<p>No chemical wastes were generated in July 2004. The E&amp;M Contractor has registered with EPD as chemical waste producer. Chemical waste storage enclosure was provided in September 2003 located near the site office.</p>	<p>The permit has been issued in September 2003.                       Proper label and signage for Chemical waste storage enclosure and container(s) are provided.</p>
<p><u>Disposal and Recording</u>                      A complete record, in the format of compiled logbook is maintained for every vehicle trip transporting C&amp;D materials. Adequate record of recycled and reused waste materials must be well kept.</p>	<p>Adequate record forms for recycled &amp; reused waste materials for municipal waste are available and are in proper use.                       C&amp;D wastes generated at site have been recorded and filed adequately.</p>	<p>Due to limited site activity, there is no disposal of C&amp;D waste at landfill in July 2004                       C&amp;D wastes such as timbers are reused at site.</p>

## 4 STATUS OF ENVIRONMENTAL PROTECTION AND SITE INSPECTIONS

### 4.1 Site Inspections

The Environmental Team conducted five site inspections on 3, 8, 15, 22 and 29 July 2004.

All environmental aspects in the work areas were inspected during the weekly site walk, including air dust, surface water quality, waste management, site tidiness and hygiene.

A detailed checklist of each site inspection together with comments, relevant photos and maps have been filed and kept in site office.

The findings and results of site inspections in July 2004 are provided in Section 4.2.

### 4.2 Status of Environmental Protection

#### Details of Permits / Licences

<b>Types of Permit / Licence</b>	<b>Status</b>
Wastewater Discharge Permit	Valid
Construction Noise Permit	Valid
Licence of Chemical Waste Producer	Valid

#### Air Dust

Stockpile of excavated material were accumulated at storage area in Portion G. The Contractor is required to cover the material with plastic sheets or spray water for dust suppression.

#### Surface Water Quality

In general, the E&M installation work does not cause significant environmental impact on surface water.

The Contractor has implemented the Weekly Mosquito Inspection Programme and has taken necessary action for mosquito suppression.

Ponding water around site office in Portion G and at cable and chemical dosing trenches causes mosquito hazard. The contractor has pumped away the ponding water and has regularly sprayed pesticides and applied mosquito drugs for suppression of mosquito breeding in any wet areas.

Two chemical toilets have been provided by a licensed contractor, of which sewage generated is collected weekly without causing contamination on surface water. Weekly records are kept properly for each sewage collection.

A wastewater discharge permit has been issued effective since 29 November 2003.

#### Noise

All installation activities were being carried out within normal working hours during July 2004. There are no existing sensitive receivers identified in the vicinity of Siu Ho Wan works. The new construction noise permit has been issued effective 16 July 2004 through 29 December 2004

#### Waste / Chemical Waste

Site activity has started in June 2003. A designated waste storage area is provided for the storage of general wastes and C&D wastes, as specified in the waste management plan.

No chemical waste was produced at site up to July 2004. An adequate chemical waste storage enclosure and containers for storage of chemical wastes in accordance with WMP have already been provided on-site (See Appendix 1).

The follow-up work for proper handling of C&D Wastes has been carried out in July. No *inert C&D Wastes* were produced at site up to July 2004. A C&D waste dumper has been provided since October 2003 for the disposal of the non-inert portion of C&D waste. ET has taken measures to ensure the waste collector has properly dumped the waste in public landfill; photos are taken for reference and record.

Sorting and classification of municipal solid wastes have been carried out at work site during July 2004. Properly labeled waste collection bins are available for sorting and

collecting aluminum cans, waste paper and plastic bottles.

Information of recycled and collected wastes (for the month of July 2004) are summarized as follows:

<b>Types of Waste Recycled</b>		<b>Estimated quantity</b>
Municipal	Paper	55 kg
Municipal	Aluminum Cans	180 pcs
Municipal	Plastic Bottles	140 pcs
C&D Waste	Cable Armour	0 kg
C&D Waste	Wooden Cable Drum	0 pc
	Size of Cable Drum	-
C&D Waste	Timber	4 kg

<b>Types of Waste Disposed</b>	<b>Estimated quantity</b>
Total waste disposal	-
% of non-inert C&D waste (Timber)	-

The Municipal wastes are temporarily stored in the sorting bins at site whereas C&D wastes, such as timber, are reused on-site. Records of recycled and collected wastes are properly kept and filed at site.

Registered waste collectors, as listed in the following table, have been arranged to collect and transport the wastes whenever necessary.

<b>Type of Wastes</b>	<b>Collector Company Name</b>	<b>Tel No.</b>
Municipal Waste Recycler	Luen Hop Environment Dev. Ltd.	6083 3208
C&D wastes	Strong Base Environmental Services & Engineering Co. Ltd.	2797 9812
Chemical waste	Enviropace Ltd.	2435 7700
	Strong Base Environmental Services & Engineering Co. Ltd.	2797 9812

## 5 SUMMARY OF DEFICIENCY, NON-COMPLIANCES AND REMEDIAL ACTIONS

<b>Deficiency</b>	<b>Action taken</b>
<ul style="list-style-type: none"><li>• It was noted that ponding water and accumulated rainwater have been found around site office Portion G and Cable Trenches around site.</li></ul>	<ul style="list-style-type: none"><li>• The Contractor has to continue to pump away ponding water immediately</li><li>• Mosquito drug was applied in the accumulated water to prevent mosquito breeding.</li><li>• Regular Pesticide spray has been applied for mosquito suppression</li></ul>
<ul style="list-style-type: none"><li>• It was noted that scattered wastes, such as plastic bottles, packaging material and timber were found at area around site office in Portion G</li></ul>	<ul style="list-style-type: none"><li>• The Contractor has to dispose the packaging materials accordingly and properly. The Contractor was reminded to always keep the site tidy and clean.</li></ul>

## 6. CUMULATIVE LOG OF COMPLAINTS AND REMEDIAL ACTION

There is no complaint received in association with installation activities during July 2004. The cumulative of complaints is referred in Appendix 3.

## 7. CUMULATIVE LOG OF NOTIFICATION OF SUMMONS AND PROSECUTIONS

No notification of summons and no prosecutions occurred during July 2004.

## 8. FUTURE KEY ISSUES

The planned activities for the coming three months (August 2004 – October 2004) and anticipated environmental issues with regard to E&M equipment are summarized as follows:

Item	Location	Works	Anticipated Environmental Issues
1	Administration Building	- Testing and commissioning the Building services installation	- No environmental issue is anticipated
2	Primary Tank	- Testing and commissioning the sludge scraper and scum collector	- Pesticide should be added for mosquito suppression if necessary
3	Chemical Building	- Testing and commissioning the Building services, chemical preparation unit and Alum system	- Chemical waste will be generated and should be disposed at containers in chemical waste storage enclosure
4	Centrifuge Building	- Testing and commissioning the Building services, sludge trains, chemical preparation unit and centrifuge system	- Chemical waste will be generated and should be disposed at containers in chemical waste storage enclosure
5	Sludge Transfer Chamber	- Testing and commissioning the Building services, sludge pumps and valves	- Pesticide should be added for mosquito suppression if necessary
6	Detritor	- Testing and commissioning the detritor and associate penstocks	- Pesticide should be added for mosquito suppression if necessary
7	Scum Pumping Station	- Testing and commissioning the scum pumps	- No environmental issue is anticipated

The site inspection schedule for the next month (August 2004) is designated on 5, 12, 19 and 26 August 2004.

## **9. CONCLUSION**

No non-compliances were found during the weekly site inspections being conducted. Also there is no summon nor prosecutions reported during July 2004.

The contractor has taken actions to meet environmental requirements such as applying pumping facilities to pump out stagnant water, proper sorting out and disposal of municipal wastes, reusing C&D wastes (timbers) at site, provision of chemical waste storage facility, C&D waste dumper, and application of relevant environmental permits.

The contractor was reminded to pay more efforts on environmental concerns and awareness such as maintaining site area cleanliness around site office in Portion G, removal of ponding water and suppression of mosquito breeding and proper management of site activities which may lead to any possible environmental impacts.

ET has taken proper action, including vehicle escort, to ensure that the registered waste collector properly dispose the waste at public landfill.

The Contractor's site activities are limited in July 2004 as all site areas excluding Portion G were handed / taken over by Civil Works Contractor, China State Construction Engineering Company on 29 June 2004.

The environmental condition at site was satisfactory in July 2004, though the contractor should make more effort to promptly rectify the deficiencies in future, especially regarding mosquito suppression measures.





Appendix 2

**THE CONTACT PERSONS, TELEPHONE NUMBERS OF KEY PERSONNEL  
FOR UPGRADE OF SIU HO WAN SEWAGE TREATMENT WORKS**

<b>Company/Department</b>	<b>Name</b>	<b>Position</b>	<b>Telephone</b>
Maunsell Environmental Management Consultants Limited	Mr. Ivan Ng	Independent Environmental Checker	61917256
Maunsell Environmental Management Consultants Limited	Mr. Titus Yeung	Resident Site Engineer	90209585
Mitsubishi Corporation (Hong Kong) Limited	Mr. W B Chu	Site Agent	29840779
Mitsubishi Corporation (Hong Kong) Limited	Mr. Stephen Gu	Site Engineer	29840779
BioEnviroLink Technologies Limited	Miss. Patricia Chung	Environmental Team Leader	2185 0123
BioEnviroLink Technologies Limited	Mr. Ho-Chun Lam	Environmental Technician	2185 0154

Appendix 3

**CUMULATIVE LOG OF COMPLAINTS**

<b>Environmental Parameters</b>	<b>Cumulative no. Brought forward</b>	<b>No. of complaint July 2004</b>	<b>Overall Total</b>
<b>Air</b>	<b>0</b>	<b>0</b>	<b>0</b>
<b>Noise</b>	<b>0</b>	<b>0</b>	<b>0</b>
<b>Water</b>	<b>0</b>	<b>0</b>	<b>0</b>
<b>Waste</b>	<b>0</b>	<b>0</b>	<b>0</b>
<b>Total</b>	<b>0</b>	<b>0</b>	<b>0</b>

**DETAILS OF COMPLAINTS AND REMEDIAL ACTIONS**

<b>Log Ref.</b>	<b>Date of Complaint received</b>	<b>Location</b>	<b>Complainant /Date</b>	<b>Details of Complaint</b>	<b>Investigation /Mitigation Action</b>	<b>Investigated by/ Date</b>
--	---	---	---	---	---	---