

Contract No. : DE/99/12
Outlying Islands Sewerage – Stage 1 Phase 1C
Upgrading of Siu Ho Wan Sewage Treatment Plant
– E&M Works

ENVIRONMENTAL MONITORING AND AUDIT

MONTHLY EM&A REPORT No. 16

BioEnviroLink Technologies Limited
September 2004

APPROVAL & DISTRIBUTION SHEET

DOCUMENT DATE: 30 September 2004

APPROVAL

Prepared by: ET Leader (BioEnviroLink Technologies Limited)

Signature: _____
Miss Patricia Chung

Date: _____

Audited by: _____
Miss Christie Yuen

Date: _____

TABLE OF CONTENTS (PROPOSED)

EXECUTIVE SUMMARY

1. BACKGROUND INFORMATION

- 1.1 Introduction
- 1.2 Project Organization and Management

2. SUMMARY OF WORK ACTIVITIES

3. IMPLEMENTATION OF WASTE MANAGEMENT PLAN

4. STATUS OF ENVIRONMENTAL PROTECTION AND SITE INSPECTIONS

- 4.1 Site Inspections
- 4.2 Status of Environmental Protection

5. SUMMARY OF DEFICIENCY, NON-COMPLIANCE AND REMEDIAL ACTIONS

6. CUMULATIVE LOG OF COMPLAINTS AND REMEDIAL ACTIONS

7. CUMULATIVE LOG OF NOTIFICATION OF SUMMONS AND PROSECUTIONS

8. FUTURE KEY ISSUES

9. CONCLUSION

APPENDIX

Appendix 1 - The contact persons, telephone numbers of key personnel for upgrade of Siu Ho Wan sewage treatment works

Appendix 2 – Site Layout Plan

Appendix 3 – Cumulative log of complaints, details of complaints and remedial actions

EXECUTIVE SUMMARY

This is the sixteenth monthly Environmental Monitoring and Audit (EM&A) Report for the Drainage Services Department Contract No. DE/99/12 entitled “Upgrading of Siu Ho Wan STP – E&M Works Outlying Islands Sewerage – Stage 1 Phase 1C”. (Environmental Permit No. EP-076/2000)

This report contains the results and findings of site inspection activities and EM&A works carried out by the Environmental Team (ET) of the E&M Contractor as required in the contract during September 2004.

The site activities in the reporting period mainly consisted of preparation of the Function Test for the major equipment, calibration of the level instrument and testing of the SCADA program at Primary Tank, Ferric Chloride Storage Area, Potable Water Pumping Station and other areas.

There were no complaints received or notifications of summons or successful prosecutions during September 2004.

The main planned activities for October 2004 with regard to E&M equipment installation consist of

1. Testing and Commissioning for the major equipment
2. Calibration of the level instrument
3. Testing of the SCADA program
4. Reliability testing of equipment

1. BACKGROUND INFORMATION

1.1 Introduction

This is the sixteenth monthly Environmental Monitoring and Audit (EM&A) Report for the Drainage Services Department Contract No. DE/99/12 entitled “Upgrading of Siu Ho Wan STP – E&M Works Outlying Islands Sewerage – Stage 1 Phase 1C”. The site layout plan, with the indication of a temporary storage of installation items as well as the designated waste storage area, is shown in Appendix 1. The report was prepared by the Environmental Team, BioEnviroLink Technologies Limited, of the E&M Contractor, Mitsubishi Corporation (Hong Kong) Limited. The report is to be submitted to the Contractor, the Engineer and the Environmental Protection Department.

This report presents the results of the environmental monitoring of the project activities conducted during the month of September 2004. This included regular site inspections once per week for verification of implementation of the mitigation measures as recommended in the EM&A Manual.

The E&M installation works has commenced in June 2003 and is anticipated to be completed in December 2004.

All site areas were re-possessed by the E&M Contractor on 14 September 2004 for testing and commissioning of the plant.

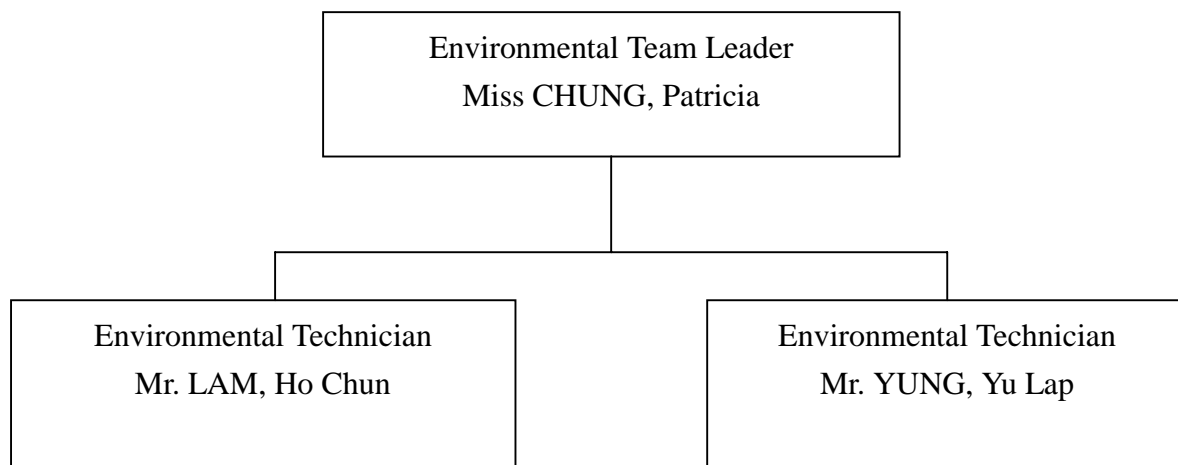
The contact persons and telephone number of key personnel for the captioned project are shown in Appendix 2.

1.2 Project Organization and Management

The Environmental Team, which comprises the environmental team leader and the environmental technicians to undertake the environmental monitoring and audit work for this project, has commissioned BioEnviroLink Technologies Limited. The project Organization Chart of Environmental Team is shown in Figure 1.2.

Figure 1.2 Organization Chart of Environmental Team

Environmental Team Organization Chart



2. SUMMARY OF WORK ACTIVITIES

A summary of the site works in this month, with the information of locations, details of each activity, equipment/materials and dates of occurrence, is listed in Table 1.

Table 1: Work Activities for September 2004

Item	Location	Work Activities	Date of Occurrence
1	Primary Tank	- Testing and Commissioning for the major equipment - Calibration of the level instrument - Testing of the SCADA program	14 – 30 September 14 – 30 September 14 – 30 September
2	Ferric Chloride Storage Area	- Preparation of the Function Test for the major equipment - Calibration of the level instrument - Testing of the SCADA program	14 – 30 September 14 – 30 September 14 – 30 September
3	Potable Water Pumping Station	- Testing and commissioning for the major equipment - Calibration of the level instrument - Testing of the SCADA program	14 – 30 September 14 – 30 September 14 – 30 September
4	Administration Building	- Testing and commissioning the Building services installation - Testing and commissioning the ICA system	14 – 30 September
5	Centrifuge Building	- Testing and commissioning the Building services, sludge trains, chemical preparation unit, centrifuge system and ICA system	14 – 30 September
6	Chemical Building	- Testing and commissioning the Building services, chemical preparation unit and Alum system	14 – 30 September
7	Other Area	- Preparation of the Function Test for the major equipment - Calibration of the level instrument - Testing of the SCADA program	14 – 30 September 14 – 30 September 14 – 30 September

3 IMPLEMENTATION OF WASTE MANAGEMENT PLAN

A Waste Management Plan has been prepared for governing a good waste management, which is essential to avoid, minimize, salvage for reuse, recycle, dispose of waste and reduce the load on landfills to improve the standards of environmental protection.

The information and the implementation status of waste management are summarized in Table 2.

Table 2: Information and the implementation status of
Waste Management in September 2004

Information of Waste Management Plan	Implementation Status	Remarks
<p><u>Municipal Solid Waste Management</u> Sorting and classification of aluminum cans, plastics are required at site. Paper and cardboard generated from site office should be reused or recycled.</p>	<p>Sorting and classification of municipal solid waste are available at work site. Waste sorting facilities (bins) are provided.</p>	<p>Collection of municipal solid waste has been carried out since September 2003.</p>
<p><u>Construction & Demolition (C&D) Waste Management</u> Waste sorting and classification by using a 100 m² sorting shed at site are required.</p>	<p>No inert C&D Wastes were produced at site up to September 2004. Waste dumper for temporary storage of C&D Waste are provided.</p>	<p>The non-inert portion of C&D Wastes has been appropriately handled since 14 October 2003.</p>
<p><u>Chemical Waste Management</u> A licensed chemical waste collector is engaged for collecting the chemical wastes generated from this project. Storage facilities must follow the Code of Practice.</p>	<p>No chemical wastes were generated in September 2004. The E&M Contractor has registered with EPD as chemical waste producer. Chemical waste storage enclosure was provided in September 2003 located near the site office.</p>	<p>The permit has been issued in September 2003. Proper label and signage for Chemical waste storage enclosure and container(s) are provided.</p>
<p><u>Disposal and Recording</u> A complete record, in the format of compiled logbook is maintained for every vehicle trip transporting C&D materials. Adequate record of recycled and reused waste materials must be well kept.</p>	<p>Adequate record forms for recycled & reused waste materials for municipal waste are available and are in proper use. C&D wastes generated at site have been recorded and filed adequately.</p>	<p>C&D waste collector was arranged to collect the wastes on 15 September 2004 and ET has escorted the waste collector to public landfill to ensure proper waste disposal C&D wastes such as timbers are reused at site.</p>

4 STATUS OF ENVIRONMENTAL PROTECTION AND SITE INSPECTIONS

4.1 Site Inspections

The Environmental Team conducted five site inspections on 2, 9, 15, 24 and 30 September 2004.

All environmental aspects in the work areas were inspected during the weekly site walk, including air dust, surface water quality, waste management, site tidiness and hygiene.

A detailed checklist of each site inspection together with comments, relevant photos and maps have been filed and kept in site office.

The findings and results of site inspections in September 2004 are provided in Section 4.2.

4.2 Status of Environmental Protection

Details of Permits / Licences

Types of Permit / Licence	Status
Wastewater Discharge Permit	Valid
Construction Noise Permit	Valid
Licence of Chemical Waste Producer	Valid

Air Dust

Stockpile of excavated material were accumulated at storage area in Portion G. The Contractor is required to cover the material with plastic sheets or spray water for dust suppression.

Surface Water Quality

In general, the E&M installation work does not cause significant environmental impact on surface water.

The Contractor has implemented the Weekly Mosquito Inspection Programme and has taken necessary action for mosquito suppression.

Ponding water around site office in Portion G and at cable and chemical dosing trenches which may be mosquito hazards. The Contractor has pumped away the ponding water and has regularly sprayed pesticides and applied mosquito drugs for suppression of mosquito breeding in any wet areas.

The Contractor has begun filling the Primary Tanks with water for equipment testing. The contractor should carry out appropriate actions for mosquito suppression.

Two chemical toilets have been provided by a licensed contractor, of which sewage generated is collected weekly without causing contamination on surface water. Weekly records are kept properly for each sewage collection.

A wastewater discharge permit has been issued effective since 29 November 2003.

Noise

All installation activities were being carried out within normal working hours during September 2004. There are no existing sensitive receivers identified in the vicinity of Siu Ho Wan works. The new construction noise permit has been issued effective 16 July 2004 through 29 December 2004.

Waste / Chemical Waste

Site activity has started in June 2003. A designated waste storage area is provided for the storage of general wastes and C&D wastes, as specified in the waste management plan.

No chemical waste was produced at site up to September 2004. An adequate chemical waste storage enclosure and containers for storage of chemical wastes in accordance with WMP have already been provided on-site (See Appendix 1).

The follow-up work for proper handling of C&D Wastes has been carried out in September. No *inert C&D Wastes* were produced at site up to September 2004. A C&D waste dumper has been provided since October 2003 for the disposal of the non-inert portion of C&D waste. ET has taken measures to ensure the waste collector

has properly dumped the waste in public landfill; photos are taken for reference and record.

Sorting and classification of municipal solid wastes have been carried out at work site during September 2004. Properly labeled waste collection bins are available for sorting and collecting aluminum cans, waste paper and plastic bottles.

Information of recycled and collected wastes (for the month of September 2004) are summarized as follows:

Types of Waste Recycled		Estimated quantity
Municipal	Paper	68 kg
Municipal	Aluminum Cans	5 kg
Municipal	Plastic Bottles	220 pcs

Types of Waste Disposed	Estimated quantity
Total waste disposal	1.84 tonnes

The Municipal wastes are temporarily stored in the sorting bins at site whereas C&D wastes, such as timber, are reused on-site. Records of recycled and collected wastes are properly kept and filed at site.

Registered waste collectors, as listed in the following table, have been arranged to collect and transport the wastes whenever necessary.

Type of Wastes	Collector Company Name	Tel No.
Municipal Waste Recycler	Luen Hop Environment Dev. Ltd.	6083 3208
C&D wastes	Strong Base Environmental Services & Engineering Co. Ltd.	2797 9812
Chemical waste	Enviropace Ltd.	2435 7700
	Strong Base Environmental Services & Engineering Co. Ltd.	2797 9812

5 SUMMARY OF DEFICIENCY, NON-COMPLIANCES AND REMEDIAL ACTIONS

Deficiency	Action taken
• Ponding water was found at such areas as Ferric Chloride Storage Area and Return Liquor Pumping Station	• The contractor should add mosquito drugs to wet areas and pump away the water

6. CUMULATIVE LOG OF COMPLAINTS AND REMEDIAL ACTION

There is no complaint received in association with installation activities during September 2004. The cumulative of complaints is referred in Appendix 3.

7. CUMULATIVE LOG OF NOTIFICATION OF SUMMONS AND PROSECUTIONS

No notification of summons and no prosecutions occurred during September 2004.

8. FUTURE KEY ISSUES

The planned activities for the coming three months (October 2004 – December 2004) and anticipated environmental issues with regard to E&M equipment are summarized as follows:

Item	Location	Works	Anticipated Environmental Issues
1	Administration Building	- Testing and commissioning the Building services installation - Testing and commissioning the ICA system	- No environmental issue is anticipated
2	Primary Tank	- Testing and commissioning the sludge scraper and scum collector	- Pesticide should be added for mosquito suppression if necessary
3	Chemical Building	- Testing and commissioning the Building services, chemical preparation unit and Alum system	- Chemical waste will be generated and should be disposed at containers in chemical waste storage enclosure
4	Centrifuge Building	- Testing and commissioning the Building services, sludge trains, chemical preparation unit, centrifuge system and ICA system	- Chemical waste will be generated and should be disposed at containers in chemical waste storage enclosure
5	Sludge Transfer Chamber	- Testing and commissioning the Building services, sludge pumps and valves	- Pesticide should be added for mosquito suppression if necessary
6	Detritor	- Testing and commissioning the detritor and associate penstocks	- Pesticide should be added for mosquito suppression if necessary
7	Scum Pumping Station	- Testing and commissioning the scum pumps	- No environmental issue is anticipated

The site inspection schedule for the next month (October 2004) is designated on 7, 14, 21, and 28 October 2004.

9. CONCLUSION

No non-compliances were found during the weekly site inspections being conducted. Also there is no summon nor prosecutions reported during September 2004.

The contractor has taken actions to meet environmental requirements such as applying pumping facilities to pump out stagnant water, proper sorting out and disposal of municipal wastes, reusing C&D wastes (timbers) at site, provision of chemical waste storage facility, C&D waste dumper, and application of relevant environmental permits.

The contractor was reminded to pay more efforts on environmental concerns and awareness such as maintaining site area cleanliness around site office in Portion G, removal of ponding water and suppression of mosquito breeding and proper management of site activities which may lead to any possible environmental impacts.

ET has taken proper action, including vehicle escort, to ensure that the registered waste collector properly dispose the waste at public landfill.

All site areas have been re-possessed by the E&M Contractor on 14 September 2004.

The environmental condition at site was satisfactory in September 2004, though the contractor should make more effort to promptly rectify the deficiencies in future, especially regarding mosquito suppression measures.

Appendix 2

**THE CONTACT PERSONS, TELEPHONE NUMBERS OF KEY PERSONNEL
FOR UPGRADE OF SIU HO WAN SEWAGE TREATMENT WORKS**

Company/Department	Name	Position	Telephone
Maunsell Environmental Management Consultants Limited	Mr. Ivan Ng	Independent Environmental Checker	61917256
Maunsell Environmental Management Consultants Limited	Mr. Titus Yeung	Resident Site Engineer	90209585
Mitsubishi Corporation (Hong Kong) Limited	Mr. W B Chu	Site Agent	29840779
Mitsubishi Corporation (Hong Kong) Limited	Mr. Stephen Gu	Site Engineer	29840779
BioEnviroLink Technologies Limited	Miss. Patricia Chung	Environmental Team Leader	2185 0123
BioEnviroLink Technologies Limited	Mr. Ho-Chun Lam	Environmental Technician	2185 0154

Appendix 3

CUMULATIVE LOG OF COMPLAINTS

Environmental Parameters	Cumulative no. Brought forward	No. of complaint September 2004	Overall Total
Air	0	0	0
Noise	0	0	0
Water	0	0	0
Waste	0	0	0
Total	0	0	0

DETAILS OF COMPLAINTS AND REMEDIAL ACTIONS

Log Ref.	Date of Complaint received	Location	Complainant /Date	Details of Complaint	Investigation /Mitigation Action	Investigated by/ Date
--	---	---	---	---	---	---