

MASS TRANSIT RAILWAY CORPORATION LIMITED

PENNY'S BAY RAIL LINK

BI-ANNUAL ENVIRONMENTAL MONITORING AND  
AUDIT REPORT

9 August 2003 – 8 February 2004

Verified by: Dr. Glenn Frommer

Signed: *Glenn Frommer*

Position: Independent Environmental Checker

Date: 20 FEB 2004

## ***EXECUTIVE SUMMARY***

Following agreement between Walt Disney and the HKSAR Government, MTR Corporation Limited has been invited by the HKSAR Government to build and operate a new rail link from Yam O to the Disney Theme Park.

This is the third Bi-annual EM&A Report prepared to document the environmental monitoring and audit works conducted and the review on the environmental performance of the PBL Contractors for the construction of the Penny's Bay Rail Link carried out during the reporting period from 9th August 2003 to 8th February 2004.

During this reporting period, the major civil construction activities carried out within the Yam O work sites concerned in the Environmental Permit No. EP-120/2002 involved finishing work for Yam O Station, construction of High Bay Roof adjacent to southern platform, track slab and drainage construction, utilities installation, EVA construction, backfilling of cut and cover tunnel and road reinstatement, tunnel excavation from the northern tunnel portal and rock disposal, construction of south portal, tunnel lining and slab construction. The major civil construction activities carried out within the Penny's Bay work sites involved drainage construction adjacent to railway track, track foundation and overhead line masts construction, construction of structures for Disneyland Station together with site preparation for landscaping work at slopes adjacent to railway track at Penny's Bay.

### ***Environmental Monitoring and Audit Progress***

The EM&A programme was undertaken based on the EM&A Manual. In this reporting period, 26 nos. site inspections and audits and 6 nos. waste management audits were carried out.

### ***Environmental Complaints***

Two environmental complaints on noise and dust respectively in the Penny's Bay area and an environmental concern were referred by ENPO in this reporting period. The first complaint was on public holiday construction noise from a construction site at Penny's Bay on 1 October 2003. The second complaint was on dust problem from Penny's Bay construction site on 15 October 2003. The environmental concern was regarding dark smoke from construction site at Sunny Bay on 9 December 2003. The complaints/concern were investigated and were not due to the PBL construction work. Investigation reports for the complaints/concern had been forwarded to ENPO.

### ***Environmental Summons or Prosecutions***

No summons or prosecution was received in this reporting period.

### ***Site Inspections and Audits***

In this reporting period, 26 nos. site inspections and audits were carried out. Details of the findings for the site inspections and audits are presented in Section 8.

### ***Conclusions***

In general, the PBL Contractors have followed the recommended environmental mitigation measures and complied with the relevant environmental regulations, permits and licenses. With reference to the regular site inspections and audits, the environmental conditions of the work sites were satisfactory. In addition, no environmental summon or prosecution was received and two environmental complaints and one concern on noise, dust and dark smoke problem respectively were received in this reporting period and settled satisfactorily.

**EXECUTIVE SUMMARY**

**1 INTRODUCTION**

- 1.1 Scope of the Bi-annual EM&A Report**
- 1.2 Structure of the Bi-annual EM&A Report**

**2 PROJECT INFORMATION**

- 2.1 Project Background**
- 2.2 Project Organization and Management Structure**
- 2.3 Construction Programme**
- 2.4 Construction Activities**

**3 CONSTRUCTION NOISE MONITORING**

**4 AIR QUALITY MONITORING**

**5 WATER QUALITY MONITORING**

**6 WASTE MANAGEMENT**

**7 LANDSCAPE AND VISUAL**

**8 SITE INSPECTIONS AND AUDITS**

**9 IMPLEMENTATION STATUS OF ENVIRONMENTAL PROTECTION & POLLUTION CONTROL**

- 9.1 Mitigation Measures Implemented**
- 9.2 Review on Solid and Liquid Waste Management**

**10 ENVIRONMENTAL NON-COMPLIANCE**

- 10.1 Environmental Complaints**
- 10.2 Environmental Summons or Prosecutions**

**11 STATUS OF LICENSES OBTAINED BY CONTRACTORS**

**12 ENVIRONMENTAL PERFORMANCE OF CONTRACTORS**

**13 CONCLUSIONS AND RECOMMENDATIONS**

- 13.1 Conclusions**
- 13.2 Recommendations**

**List of Appendices**

Appendix A	<i>Project Site Layout</i>
Appendix B	<i>MTRCL Environmental Management Team Structure</i>
Appendix C	<i>Construction Programme</i>

## **1 INTRODUCTION**

### **1.1 Scope of the Bi-annual EM&A Report**

The MTRCL Environmental Team lead by the ET leader Dr. Kam Chan is responsible to carry out environmental monitoring and audit works for the construction of Penny's Bay Rail Link and review the performance of the Contractors on site environmental matters in order to comply with the requirements of the EIA, EM&A Manual and Environmental Permit approved by the Environmental Protection Department of HKSAR Government. A map showing the Project site layout is shown in Appendix A.

This is the third Bi-annual EM&A Report prepared to document the environmental monitoring and audit works conducted and the review on the environmental performance of the PBL Contractors for the construction of the Penny's Bay Rail Link carried out during the reporting period from 9th August 2003 to 8th February 2004.

### **1.2 Structure of the Bi-annual EM&A Report**

The structure of this Bi-annual EM&A Report is organized as follows:

- Section 1: Introduction – details the scope and structure of the report;
- Section 2: Project Information – summarizes the project background and construction programme together with the scope of the construction activities during the reporting period;
- Section 3: Construction Noise Monitoring;
- Section 4: Air Quality Monitoring;
- Section 5: Water Quality Monitoring;
- Section 6: Waste Management;
- Section 7: Landscape and Visual;
- Section 8: Site Inspections and Audits;
- Section 9: Implementation Status of Environmental Protection & Pollution Control;
- Section 10: Environmental Non-Compliance;
- Section 11: Status of Licences obtained by Contractors;
- Section 12: Environmental Performance of Contractors;

Section 13: Conclusions and Recommendations.

## **2 PROJECT INFORMATION**

### **2.1 Project Background**

Following agreement between Walt Disney and the HKSAR Government, MTR Corporation Limited has been invited by the HKSAR Government to build and operate a new rail link from Yam O to the Disney Theme Park.

The new rail link, the "Penny's Bay Rail Link (PBRL)", will be integrated with the existing MTR Tung Chung Line at a new station to be constructed at Yam O. From Yam O, the train will travel to Disneyland Station in Penny's Bay as the basis of the direct rail service to the Disney Theme Park.

The PBRL will be a shuttle service between the Tung Chung Line at the new Yam O Station and the new Disneyland Station at Penny's Bay. The link will be operated by MTRCL and will form an integral part of the MTR network.

An Environmental Impact Assessment for the PBRL Project was conducted in accordance with the requirements of the Environmental Impact Assessment Study Brief No. ESB-043/1999 for the Construction of An International Theme Park in Penny's Bay of North Lantau and Its Essential Associated Infrastructures. An EM&A Manual provided guidelines for the preparation of this Bi-annual EM&A Report.

The organization chart and lines of communication with respect to the on-site environmental management and monitoring and audit programme are shown in Appendix B.

### **2.2 Project Organization and Management Structure**

The key parties in the EM&A programme include the PBL Contractors, the Project Engineer and the Engineer's Representative (ER), the Independent Environmental Checker (IEC), the Environmental Team Leader and the Environmental Team together with the Environmental Protection Department (EPD). The organization structure is such that the contractors are encouraged to perform with respect to the implementation of the required environmental protection and mitigation measures in order to comply with the requirements specified in the Environmental Permit. In addition, the IEC is responsible to check, review, verify and validate the overall environmental performance of the PBRL Project.

The organization chart and lines of communication with respect to the on-site environmental management and monitoring and audit programme are shown in Appendix B.

### 2.3 *Construction Programme*

The construction of the Penny's Bay Rail Link is scheduled to commence in August 2002 and to be completed by July 2005. MTRCL is responsible for the overall contract administration of the construction works. It is recommended that the programming is such that environmental impacts are reduced as far as possible.

### 2.4 *Construction Activities*

The Penny's Bay Rail Link consists of the following civil construction contracts:-

Contract 580 - The construction of Yam O Station, construction contract was awarded in July 2002.

Contract 581 - The construction of Tai Yam Teng Tunnel connecting Yam O and Penny's Bay, construction contract was awarded in July 2002.

Contract 582 - The construction of trackwork and overhead line system, construction contract was awarded in October 2002.

Contract 583 - The construction of Disneyland Station, construction contract was awarded in December 2002.

Contract 584 - Landscaping work for PBL, construction contract was awarded in January 2003.

Major site activities carried out under the PBL civil construction contracts during this reporting period were as follows:-

#### C580 - Yam O Station

- Finishing work for Yam O Station;
- Construction of High Bay Roof adjacent to southern platform;
- Drainage construction;
- Utilities installation;
- Track slab construction.

#### C581 - Tai Yam Teng Tunnel

- Backfilling over cut and cover tunnel;
- Road reinstatement;
- EVA construction;
- Tunnel excavation from north portal and rock disposal;
- South portal construction;
- Tunnel lining and slab construction.

#### C582 - Trackwork and Overhead Line System



- Drainage construction adjacent to railway track;
- Track foundation and overhead line masts construction.

#### C583 - Disneyland Station

- Construction of station structures.

#### C584 - Landscaping

- Site preparation for landscaping work at slopes adjacent to railway track at Penny's Bay.

### **3 CONSTRUCTION NOISE MONITORING**

The Penny's Bay Rail Link EIA concluded that it was not necessary to conduct construction noise monitoring during the construction of the Project. However in order to ensure that the effective management and implementation of noise control mitigation measures developed and defined in the EIA, the ET conducted regular site inspections of the construction work sites.

### **4 AIR QUALITY MONITORING**

The Penny's Bay Rail Link EIA concluded that it was not necessary to conduct air quality monitoring during the construction of the Project. However in order to ensure that the effective management and implementation of air quality mitigation measures developed and defined in the EIA, the ET conducted regular site inspections of the construction work sites.

### **5 WATER QUALITY MONITORING**

The Penny's Bay Rail Link EIA concluded that it was not necessary to conduct water quality monitoring during the construction of the Project. However in order to ensure that the effective management and implementation of water pollution control mitigation measures developed and defined in the EIA, the ET conducted regular site inspections of the construction work sites.

### **6 WASTE MANAGEMENT**

In order to ensure that the effective management and implementation of waste mitigation measures developed and defined in the EIA, waste management audit was carried out by the ET on a monthly basis. In addition, the weekly site inspections covered the waste management issues on site. The audit findings were summarized as follows:

Findings for Waste Management Audits:

1. Some of the oil drums were not put in drip trays and might lead to spillage of diesel oil during handling;
2. Drip trays were filled with rain water after rainy period and need to be cleared and kept dry;
3. Licensed waste collectors were used for chemical waste collection;
4. General refuse was disposed of at designated landfills;
5. Recycling of C&D materials was implemented;
6. Trip tickets for disposal of excavated material to the approved disposal sites were verified.

Findings for Site Inspections:

1. Some of the oil drums were not put in drip trays and might lead to spillage of diesel oil during handling;
2. Storage area for general refuse should be covered properly to avoid hygiene problem and should be disposed off site regularly;
3. Storage bucket for construction wastes was not sufficient to hold the wastes and frequency of waste disposal should be increased.

Records for Quantities of Wastes

Wastes arising from the construction work were classified into the following types:

- Excavated material;
- Construction & Demolition material;
- Chemical waste;
- General refuse.

The quantities of wastes for disposal during this reporting period were summarized in the following table:

<u>Type of Waste</u>	<u>Cumulative Quantity</u>	<u>Location of Disposal</u>
<b>C580 - Yam O Station</b>		
1. Excavated Material (m <sup>3</sup> )	4118	Public fill at Tuen Mun Area 38
2. Excavated Material (m <sup>3</sup> )	31242	Approved Contractor's disposal site
2. Excavated Material - unsuitable (m <sup>3</sup> )	793	WENT/NENT Landfills
2. Construction & Demolition Material (m <sup>3</sup> )	Nil	N/A
3. Chemical Waste (Litres)	600	Chemical Waste Treatment Facility
4. General Refuse (m <sup>3</sup> )	2500	WENT/NENT Landfills
<b>C581 - Tai Yam Teng Tunnel</b>		
1. Excavated Material (m <sup>3</sup> )	25236	CED's North Tsing Yi Reclamation
2. Construction & Demolition Material (m <sup>3</sup> )	Nil	N/A
3. Chemical Waste (Litres)	1600	Chemical Waste Treatment Facility
4. General Refuse (m <sup>3</sup> )	336	WENT/NENT Landfills
<b>C582 - Trackwork</b>		
1. Excavated Material (m <sup>3</sup> )	63360	CED's North Tsing Yi Reclamation
2. Construction & Demolition Material (m <sup>3</sup> )	Nil	N/A

3. Chemical Waste (Litres)	Nil	N/A
4. General Refuse (m <sup>3</sup> )	230	WENT/NENT Landfills
<b>C583 - Disneyland Station</b>		
1. Excavated Material (m <sup>3</sup> )	104599	CED's North Tsing Yi Reclamation
2. Construction & Demolition Material (m <sup>3</sup> )	Nil	N/A
3. Chemical Waste (Litres)	Nil	N/A
4. General Refuse (m <sup>3</sup> )	741	WENT/NENT Landfills
<b>C584 - Landscaping Works</b>		
1. Excavated Material (m <sup>3</sup> )	Nil	Approved Contractor's disposal site
2. General Refuse (m <sup>3</sup> )	20	WENT/NENT Landfills

## 7 **LANDSCAPE AND VISUAL**

The Penny's Bay Rail Link EIA concluded that the landscape and visual impacts associated with the construction of the rail link are anticipated to be acceptable with mitigation. However in order to ensure that the effective management and implementation of landscape mitigation measures developed and defined in the EIA, the ET conducted regular site inspections of the construction work sites.

No deficiency was identified during this reporting period.

## 8 **SITE INSPECTIONS AND AUDITS**

Weekly site inspections and audits were carried out by the ET, 26 nos. site inspections and audits were undertaken in this reporting period.

Based on the findings from the site inspections and audits, the following recommendations are pertinent:

1. Regular check to ensure effectiveness of the wheel washing facility with regular water refill to the bay and carry out desilting at the settlement tank;
2. Provide sufficient drip trays and remove used oil drums and other chemical containers to minimize potential land contamination and drip trays filled with rain water after rainy period should be cleared and kept dry;
3. Used engine/lubricating oil should be stored properly and collected by a licensed chemical waste collector. All the disposal record should be kept properly;
4. Labels on the storage containers at the chemical waste storage area should comply with the requirements specified in the regulation;
5. No discharge of muddy site water directly into the drainage channels is allowed and preventive measures should be adopted;
6. Apply water spray frequently on haul roads to avoid fugitive dust emission by site vehicles during dry weather and proper record of water spray should be maintained;
7. The travelling speed of site vehicles should be limited;
8. Provide sufficient dust suppression measures to reduce dust emission during dry season and proper record should be maintained;
9. Stockpile of excavated materials at the temporary storage area should have sand bags at the toe to avoid soil from being washed into drainage channel during wet

weather and should be covered properly;

10. Relevant CNP should be displayed at the prominent location of the works areas where the specified construction works were carried out;

11. Storage area for general refuse should be covered to avoid hygiene problem and the construction wastes should be disposed off site regularly;

12. Rubbish bins/ buckets should be provided at works areas for storage of general refuse/construction wastes;

13. Loaded trucks should be covered with tarpaulin sheets before leaving the work sites and use the wheel washing bay to avoid soil deposited on public roads;

14. Dump trucks should not be overloaded even during internal transportation to avoid materials spreaded on the road;

15. Water ponding should be cleared to avoid mosquitoes breeding;

16. All drainage within work sites should be checked regularly to ensure they are in good condition during wet season;

17. The side panels of the air compressors should be closed during operation;

18. Proper plant maintenance should be carried out regularly with replacement of air filters to minimize dark smoke emission.

## **9 IMPLEMENTATION STATUS OF ENVIRONMENTAL PROTECTION & POLLUTION CONTROL**

### **9.1 Mitigation Measures Implemented**

The mitigation measures implemented during the reporting period were summarized as follows:

- Regular site inspections were conducted by the Contractors to control the site environmental matters including the required mitigation measures specified in the Environmental Permit;
- Employed quiet powered mechanical equipment and processes wherever possible;
- Turned off idle equipment and operated powered mechanical equipment properly and only when necessary;
- Provided regular maintenance to ensure that powered mechanical equipment are in good condition;
- C&D wastes and general refuse were properly stored and disposed off site regularly to avoid accumulation;
- Trucks for excavated materials transportation were covered with tarpaulin sheets and without overloading;
- Water spray was carried out during excavation work to limit the dust problem;

- Controlled drop height of excavated materials to be not greater than 2m;
- Waste management was implemented in accordance with the Waste Management Plan with proper control measures;
- Drip trays were provided to collect any possible oil drips from oil drums to minimize potential land contamination and drip trays filled with rain water after rainy period should be cleared and kept dry;
- Chemicals and chemical wastes were stored at designated area and chemical wastes were collected by licensed collector and disposed of at the Chemical Waste Treatment Facility;
- Water ponding should be cleared to avoid mosquitoes breeding;
- All drainage channels within work sites should be checked regularly to ensure they are in good condition during wet season and clear any rubbish deposited in the drainage channel.

## **9.2 *Review on Solid and Liquid Waste Management***

In the Waste Management Audits and by field observations, it was found that the Contractors had reasonably undertaken the preventative measures to minimize the solid and liquid wastes generated from the construction work. The Contractors had implemented the 3-R (Reduce, Reuse and Recycle) principles in handling the solid and liquid wastes generated from the construction work.

Excavated materials were handled with care, they were either delivered offsite to the approved reclamation sites or the approved contractor's disposal sites for reuse under a trip ticket delivery system or temporarily stored at the storage area for reuse in the contract work. The trip tickets for disposal of excavated materials were verified.

## **10 *ENVIRONMENTAL NON-COMPLIANCE***

### **10.1 *Environmental Complaints***

Two environmental complaints on noise and dust respectively in the Penny's Bay area and an environmental concern were referred by ENPO in this reporting period. The first complaint was on public holiday construction noise from a construction site at Penny's Bay on 1 October 2003. The second complaint was on dust problem from Penny's Bay construction site on 15 October 2003. The environmental concern was regarding dark smoke from construction site at Sunny Bay on 9 December 2003. The complaints/concern were investigated and were not due to the PBL construction work. Investigation reports for the complaints/concern had been forwarded to ENPO. The PBL Contractors were reminded to pay more attention on the dust suppression measures in the dry season, compliance with the CNP conditions for construction work in restricted hours and proper plant maintenance to avoid emission of dark

smoke.

A summary of environmental complaints since commencement of construction of the PBL Project is shown below:

<u>Reporting Period</u>	<u>Frequency</u>	<u>Cumulative</u>	<u>Nature of Complaint</u>
Aug 2002 - Oct 2002	0	0	N/A
Nov 2002 - Jan 2003	2	2	Dust
Feb 2003 - Apr 2003	0	2	N/A
May 2003 - Jul 2003	2	4	Dust
Aug 2003 - Oct 2003	2	6	Noise+Dust
Nov 2003 - Jan 2004	0	6	N/A

#### **10.2 Environmental Summons or Prosecutions**

No environmental summon or prosecution was received during this reporting period. A summary of environmental summon or prosecution since commencement of construction of the PBL Project is shown below:

Reporting Period	Frequency	Cumulative	Nature of Prosecution
Aug 2002 - Oct 2002	0	0	N/A
Nov 2002 - Jan 2003	0	0	N/A
Feb 2003 - Apr 2003	0	0	N/A
May 2003 - Jul 2003	0	0	N/A
Aug 2003 - Oct 2003	0	0	N/A
Nov 2003 - Jan 2004	0	0	N/A

## 11 STATUS OF LICENSES OBTAINED BY CONTRACTORS

A summary of all the relevant environmental permits, licenses for the PBL Project as of 8th February 2004 is shown below:

Item	Item Description	Permit Status
<b>PBL Project</b>		
1.	Environmental Permit No. EP-120/2002	Issued to MTRCL on 28/02/02
<b>C5503 - Yam O Station</b>		
1.	CNP for construction works, GW-UW0292-03	Valid (18/09/03 - 07/02/04) - Expired
2.	CNP for construction works, GW-UW0027-04	Valid (09/02/04 - 09/07/04)
<b>C580 - Yam O Station</b>		
1.	Registration as a Chemical Waste Producer No. WPN5213-974-M1039-03	Issued on 09/09/02
2.	Discharge License No. EP760/974/0043 I	Valid (18/11/02 - 30/11/07)
3.	CNP for construction works, GW-UW0254-02	Valid (13/09/02 - 08/03/03) - Expired
4.	CNP for construction works, GW-UW0294-02	Valid (21/10/02 - 31/03/03) - Expired
5.	CNP for piling works, PP-UW0028-02	Valid (02/10/02 - 30/06/03) - Expired
6.	CNP for construction works, GW-UW0044-03	Valid (09/03/03 - 08/09/03) - Expired
7.	CNP for construction works, GW-UW0045-03	Valid (01/04/03 - 30/09/03) - Expired
8.	CNP for construction works, GW-UW0178-03	Valid (16/06/03 - 05/07/03) - Expired
9.	CNP for construction works, GW-UW0199-03	Valid (02/07/03 - 08/07/03) - Expired
10.	CNP for construction works, GW-UW0229-03	Valid (05/08/03 - 30/09/03) - Expired
11.	CNP for construction works, GW-UW0257-03	Valid (01/10/03 - 31/03/04)
12.	CNP for construction works, GW-UW0258-03	Valid (09/09/03 - 08/03/04)
13.	CNP for construction works, GW-UW0291-03	Valid (11/09/03 - 15/10/03) - Expired
14.	CNP for construction works, GW-UW0315-03	Valid (02/10/03 - 29/11/03) - Expired
<b>C581 - Tai Yam Teng Tunnel</b>		
1.	Registration as a Chemical Waste Producer No. WPN5213-974-G2040-69	Issued on 03/09/02
2.	Discharge License No. EP742/974/0042 I	Valid (17/09/02 - 30/09/07)
3.	CNP for construction works, GW-UW0244-02	Valid (01/09/02 - 28/02/03) - Expired
4.	CNP for construction works, GW-UW0310-02	Valid (22/10/02 - 14/04/03) - Expired
5.	CNP for piling works, PP-UW0023-02	Valid (01/09/02 - 28/02/03) - Expired
6.	CNP for construction works, GW-UW0100-03	Valid (15/04/03 - 14/10/03) - Cancelled
7.	CNP for construction works, GW-UW0118-03	Valid (09/06/03 - 03/12/03) - Cancelled
8.	CNP for construction works, GW-UW0126-03	Valid (18/04/03 - 17/10/03) - Cancelled
9.	CNP for construction works, GW-UW0134-03	Valid (13/05/03 - 04/11/03) - Expired
10.	CNP for construction works, GW-UW0135-03	Valid (05/05/03 - 04/11/03) - Expired
11.	CNP for construction works, GW-UW0171-03	Valid (09/06/03 - 03/12/03) - Expired
12.	CNP for construction works, GW-UW0175-03	Valid (18/06/03 - 05/12/03) - Expired
13.	CNP for construction works, GW-UW0218-03	Valid (01/08/03 - 31/01/04) - Expired
14.	CNP for construction works, GW-UW0362-03	Valid (05/11/03 - 04/05/04)
15.	CNP for construction works, GW-UW0423-03	Valid (05/12/03 - 04/06/04)
16.	CNP for piling works, PP-UW0001-03	Valid (01/03/03 - 31/08/03) - Expired

<b>C582 - Trackwork</b>		
1.	Registration as a Chemical Waste Producer No. WPN5112-973-C3258-01	Issued on 17/03/03
2.	CNP for construction works, GW-UW0074-03	Valid (20/03/03 - 31/08/03) - Expired
3.	CNP for construction works, GW-UW0328-03	Valid (07/10/03 - 31/03/04)
4.	CNP for construction works, GW-UW0431-03	Valid (02/12/03 - 14/04/04)
<b>C583 - Disneyland Station</b>		
1.	Registration as a Chemical Waste Producer No. WPN5213-973-G2381-10	Issued on 13/02/03
2.	Discharge License No. EP760/973/008096 I	Valid (13/05/03 - 31/05/08)
3.	CNP for construction works, GW-UW0011-03	Valid (05/02/03 - 04/08/03) - Expired
4.	CNP for construction works, GW-UW0118-03	Valid (17/04/03 - 14/10/03) - Expired
5.	CNP for construction works, GW-UW0220-03	Valid (05/08/03 - 04/02/04) - Expired
6.	CNP for construction works, GW-UW0494-03	Valid (09/01/04 - 04/07/04)
7.	CNP for piling works, PP-UW0018-03	Valid (18/08/03 - 17/02/04)
8.	CNP for construction works, GW-UW0023-04	Valid (01/02/04 - 31/07/04)
<b>C584 - Landscaping Works</b>		
1.	CNP for construction works, GW-UW0448-03	Valid (21/12/03 - 30/05/04)

## 12 ENVIRONMENTAL PERFORMANCE OF CONTRACTORS

This section provides an overview of the environmental performance of each construction contract encompassed in the PBRL Project, which are based on the various factors including:

- the number of non-compliance/irregularities identified during the reporting period, taking into account their potential seriousness and the attempts made to rectify the problems;
- time taken and usefulness of responses on the proposed mitigation measures to be taken;
- demonstrated proactivity and perceived enthusiasm of the contractor and the site staff;
- ease of uptake and implementation of advice provided;
- overall perceived environmental awareness of the contractor and the site staff.

### C580 - Yam O Station

No significant environmental problem was recorded for the construction of Yam O Station. Site staff showed responsibility in environmental matters and were generally respectful of the EM&A procedures. They were responsive in the response to the environmental issues raised in the regular site inspections and audits. The environmental performance is considered to be acceptable.



#### **C581 - Tai Yam Teng Tunnel**

No significant environmental problem was recorded for the construction of Tai Yam Teng tunnel. The Contractor was responsive in the response to the environmental issues raised in the regular site inspections and audits. Site staff were generally respectful of the EM&A procedures. The environmental performance is considered to be acceptable.

#### **C582 - Trackwork and Overhead Line System**

No significant environmental problem was recorded for the construction of trackwork. The Contractor was responsive in the response to the environmental issues raised in the regular site inspections and audits. Site staff were generally respectful of the EM&A procedures. The environmental performance is considered to be acceptable.

#### **C583 - Disneyland Station**

No significant environmental problem was recorded for the construction of Disneyland Station. The Contractor had allocated sufficient resources on the environmental protection issues. In addition, proactivity and responsibility have been adopted by both parties towards the environmental issues raised in the regular site inspections and audits. In addition, site staff were generally respectful of the EM&A procedures. The environmental performance is considered to be acceptable.

#### **C584 - Landscaping**

No significant environmental problem was recorded for the landscaping work. Site staff showed responsibility in environmental matters and were generally respectful of the EM&A procedures. The environmental performance is considered to be acceptable.

### **13 CONCLUSIONS AND RECOMMENDATIONS**

#### **13.1 Conclusions**

The Bi-annual Environmental Monitoring and Audit (EM&A) Report presents the environmental monitoring and audit works for the construction of the Penny's Bay Rail Link carried out during the reporting period from 9th August 2003 to 8th February 2004 which was undertaken based on the EM&A Manual and the Environmental Permit requirements. In addition, it provides an overview of the environmental performance of each construction contract encompassed in the PBRL Project.

During the site inspections and audits on the PBRL Project work sites, it was found that the environmental pollution control measures provided by the Contractors were

generally acceptable apart from some minor irregularities which had been rectified by the respective Contractors. Two environmental complaints and one concern on noise, dust and dark smoke problem respectively were received in this reporting period and settled satisfactorily. No environmental summon or prosecution was received in this reporting period.

Based on the EM&A works conducted in the reporting period, the following can be concluded:

1. The overall objectives and aims of the EM&A programme were achieved, and in general a high level of environmental proficiency was demonstrated;
2. EM&A works for the PBRL Project complied with the conditions of the Environmental Permit;
3. Environmental management of the PBRL Project appeared generally adequate;
4. The incorporation of environmental guidelines into the Contract Specifications was successful with clauses being applicable to the majority of problems. The principal area of concern was to maintain the current standard at site level in the awareness, interpretation, application and particularly serious enforcement of these conditions by the contractors;
5. Training for site supervisory and working level staff focussed on the efficient management and resolution of environmental issues, particularly to statutory regulations and government procedures. Responsibilities of staff is being reviewed with regard to enhancement;
6. The steps currently taken to place the onus of environmental management onto the PBL Contractors is relieving the burden of work for the construction staff. The construction staff have understood the process and have taken ownership and responsibility for enforcing the procedures to an acceptable extent.

The ET will continue to conduct the EM&A programme in accordance with the EM&A Manual and to carry out site inspections and audits on the implementation of the environmental mitigation measures as specified in the Implementaion Schedule of the PBRL EIA.

### **13.2 Recommendations**

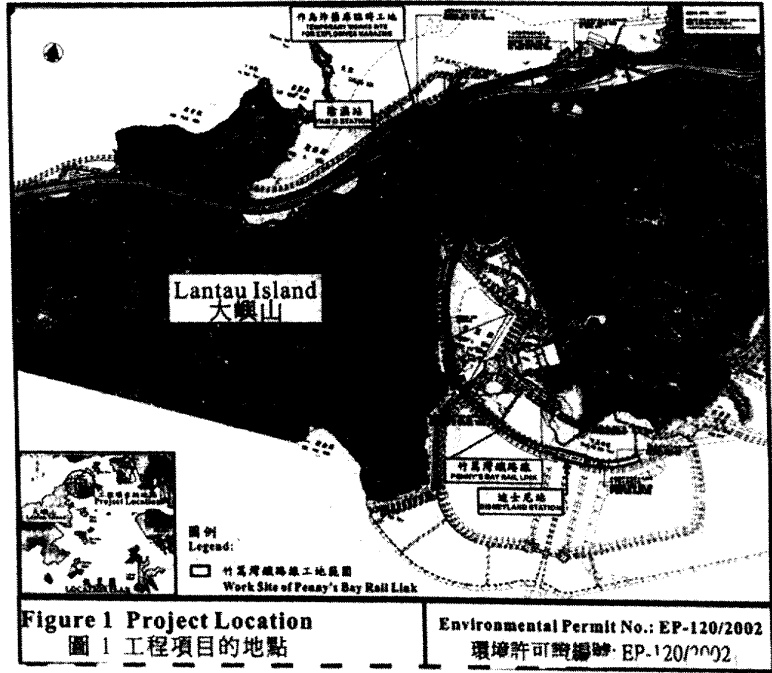
In accordance with the environmental site inspections and audits undertaken during the reporting period, the following recommendations are made:

- Water spray should be carried out frequently at the main haul roads including the section in front of the site entrances and exposed area for dust suppression;
- Stockpile of excavated materials stored at the storage area should be covered with tarpaulin sheets as much as possible and avoid soil from being washed into drainage channel during wet weather;

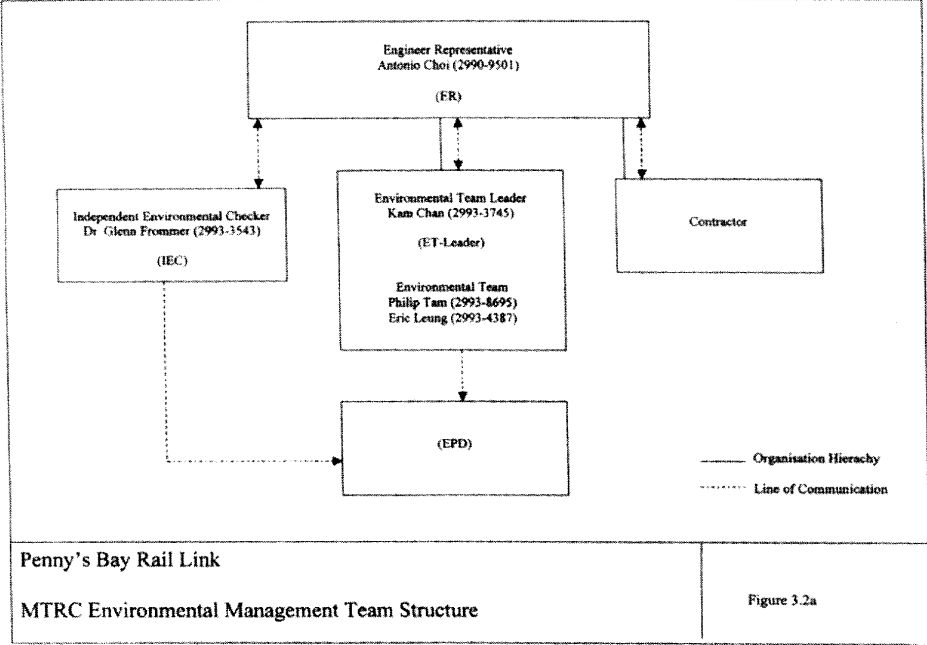
- The frequency of water spray should be increased during period of dust generating site activities for efficient dust suppression;
- Trucks loaded with excavated materials should be fully covered with tarpaulin sheets and should not be overloaded;
- Sufficient skips should be provided for temporary storage of general refuse and construction wastes and the wastes should be disposed off site regularly to avoid accumulation;
- All types of wastes generated from the construction work should be collected by licensed waste collectors and good housekeeping should be maintained;
- Fuel drums and engine oil containers should be stored in a designated area with clear labelling complying with the requirements specified in the regulation;
- Sufficient drip trays should be provided for storing fuel drums and chemical containers and should be cleaned up regularly to prevent overflow during wet weather;
- Proper plant maintenance should be carried out regularly with replacement of air filters to minimize dark smoke emission;
- All equipment maintenance should be carried out on a plastic sheet or paved area in order to avoid ground contamination;
- The side panels of the air compressors should be closed during operation;
- All drainage channels within work sites should be checked regularly to ensure they are in good condition during wet season and clear any rubbish deposited in the drainage channel;

The ET will carry out the EM&A works to ensure compliance with the environmental requirements and the proper implementation of all necessary mitigation measures.

Appendix A  
Project Site Layout



Appendix B  
MTRCL Environmental Management Team  
Structure



Appendix C  
Construction Programme



Appendix C  
Construction Programme

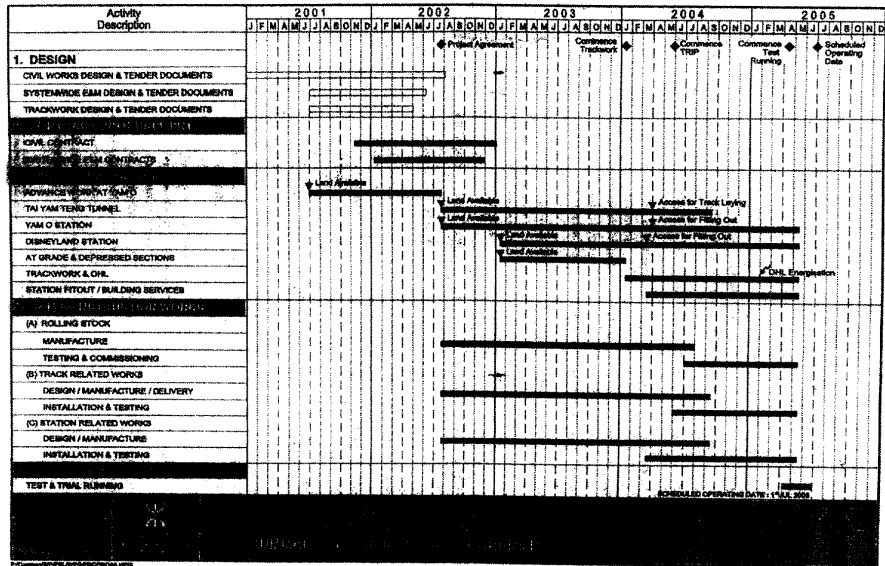


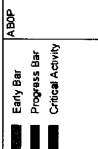
Figure 1.2b

Activity ID	Activity Description	Orig Dur	Early Start	Early Finish	2024	2025	2026											
					Week 1	Week 2	Week 3	Week 4	Week 5	Week 6	Week 7	Week 8	Week 9	Week 10	Week 11	Week 12	Week 13	
<b>Yam O Station</b>																		
<b>Important Dates</b>																		
Deg of Completion of Specified Weeks (PS App C)																		
0-CD4	ODA Station Deg 1 Completion	0																
0-CD6	ODS, Trac & Terrace Area Deg 1 Completion	0																
Access Dates for DC (PS App J)																		
0-DC05814	504 Access VOT Elev Entrn & Service Corridor	0	12MAR24	21MAR24														
<b>Cost Ctr A - Preliminaries</b>																		
<b>General Requirements</b>																		
PS Milestone (PS App D)																		
A-MSA074	MSA/Lists of SIFans, Tools Test Equip Approved	0		14FEB24														
A-MSA078	MSA/ Detailed interfacing Documents Approved	0		14FEB24														
<b>Cost Ctr B - Yam O Station</b>																		
<b>+ Procurement &amp; Design</b>																		
148	13OCT23A	14APR24																
<b>South Platform</b>																		
South Platform Structure Works																		
<b>General Submissions &amp; Approvals</b>																		
95-S1395	South Platform: Bagging of SEM/Tamp openings	100	13OCT23A	02APR24														
95-S1396	TCL UP Realign Sliding Closure (2nd)	60	21OCT23A	19DEC23A														
95-S1398	TCL UP Realign Sliding Closure	0	21DEC23A	19DEC23A														
95-S1394	Prepare & Submit EDOC No. 5 for Sliding Closure	28	02JAN24	06FEB24														
95-S1395	MTRC Approval of EDOC No. 5	28	07FEB24	10MAR24														
<b>Architectural Builders Work and Finishes (ABWF)</b>																		
<b>Platform Level Rooms - GL 5.9</b>																		
<b>Figure 1 - Platform and Upper Levels</b>																		
<b>Floor Finishes 1st Flng</b>																		
BW-05540	Rooms GL 5.9 - Floor finishes 1st fln	15	17NOV23A	03DEC23A														
<b>Ceiling Finishes 1st Flng</b>																		
BW-05550	Rooms GL 5.9 - Ceiling finishes 1st fln	10	28NOV23A	09DEC23A														
<b>Walls Finishes 1st Flng</b>																		
BW-05555	Achieve Deg 1 to DC rms - GP 16, 17, 18, 19, 20, 21	0		09DEC23A														
<b>Figure 3 - Platform and Upper Levels</b>																		
<b>Ceiling Finishes 2nd Flng</b>																		
BW-05560	Rooms GL 5.9 - Ceiling finishes 2nd fln	10	31DEC23	12JAN24														
<b>Wall Finishes 2nd Flng</b>																		
BW-05570	Rooms GL 5.9 - Wall finishes 2nd fln	15	07JAN24	27JAN24														
<b>Floor Finishes 2nd Flng</b>																		
BW-05580	Rooms GL 5.9 - Floor finishes 2nd fln	10	19JAN24	02FEB24														
<b>Permanent Door Installation</b>																		
BW-05590	Rooms GL 5.9 - Permanent door installation	10	09FEB24	19FEB24														
<b>Meshwork 2nd Flng</b>																		
BW-05600	Rooms GL 5.9 - Meshwork 2nd fln	10	14FEB24	25FEB24														
<b>Final Finishes and Cleaning</b>																		
BW-05610	Rooms GL 5.9 - Final finishes and cleaning	14	20FEB24	06MAR24														

Clear Date	26/1/23
Print Date	17/01/25
Draw Date	31/01/23
Run Date	10/01/24 09:44

ABDP	Early Bar
	Progress Bar
	Critical Activity

Maeda Corporation  
MTRC Contract 890 - Yam O Station  
ABWF & SS Progress 3MRP  
Early Completion



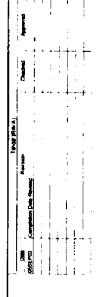
Activity ID	Activity Description	Orig Dur	Early Start	Early Finish	2003						
					Week 68	Week 69	Week 70	Week 71	Week 72	Week 73	Week 74
Platform Level Rooms - GL 23-19											
Degree 1 - Platform and Upper Levels											
BV-BS910	Ceiling Finishes 1st Fixing	10	20NOV03A	01DEC03A							
BV-BS910	Rooms GL 23-19 - Ceiling finishes 1st fix										
BV-BS915	Achieve Dwg 1 to DC Rms - GP01.03	0		01DEC03A							
Degree 3 - Platform and Upper Levels											
BV-BS920	Ceiling Finishes 2nd Fixing	10	31DEC03	12JAN04							
BV-BS920	Rooms GL 23-19 - Ceiling finishes 2nd fix										
BV-BS940	Wall Finishes 2nd Fixing	15	13JAN04	02FEB04							
BV-BS940	Rooms GL 23-19 - Wall finishes 2nd fix										
BV-BS900	Floor Finishes 2nd Fixing	10	03FEB04	13FEB04							
BV-BS900	Rooms GL 23-19 - Floor finishes 2nd fix										
BV-BS710	Permanent Door Installation	10	03FEB04	13FEB04							
BV-BS710	Rooms GL 23-19 - Permanent door installation										
BV-BS720	Meshwork 2nd Fixing	10	14FEB04	25FEB04							
BV-BS720	Rooms GL 23-19 - Meshwork 2nd fix										
BV-BS730	Final Finishes and Cleaning	14	26FEB04	12MAR04							
BV-BS730	Rooms GL 23-19 - Final finishes and cleaning										
Platform Level Rooms - GL 15-19											
Degree 1 - Platform and Upper Levels											
BV-BS780	Floor Finishes 1st Fixing	20	08NOV03A	01DEC03A							
BV-BS780	Rooms GL 15-19 - Floor finishes 1st fix										
BV-BS790	Ceiling Finishes 1st Fixing	10	26NOV03A	09DEC03A							
BV-BS790	Rooms GL 15-19 - Ceiling finishes 1st fix										
BV-BS795	Achieve Dwg 1 to DC Rms - GP10.11.13 & GA.5.6	0		09DEC03A							
Degree 3 - Platform and Upper Levels											
BV-BS800	Ceiling Finishes 2nd Fixing	10	31DEC03	12JAN04							
BV-BS800	Rooms GL 15-19 - Ceiling finishes 2nd fix										
BV-BS810	Wall Finishes 2nd Fixing	15	13JAN04	02FEB04							
BV-BS810	Rooms GL 15-19 - Wall finishes 2nd fix										
BV-BS820	Floor Finishes 2nd Fixing	10	02FEB04	13FEB04							
BV-BS820	Rooms GL 15-19 - Floor finishes 2nd fix										
BV-BS830	Permanent Door Installation	10	03MAR04	13MAR04							
BV-BS830	Rooms GL 15-19 - Permanent door installation										
BV-BS840	Meshwork 2nd Fixing	10	03MAR04	13MAR04							
BV-BS840	Rooms GL 15-19 - Meshwork 2nd fix										
BV-BS850	Final Finishes and Cleaning	14	15MAR04	30MAR04							
BV-BS850	Rooms GL 15-19 - Final finishes and cleaning										
Upper Level Rooms GL 16-19.5											
Degree 1 - Platform and Upper Levels											
BV-BS900	Floor Finishes 1st Fixing	20	18NOV03A	01DEC03A							
BV-BS900	Rooms GL 16-19.5 - Floor finishes 1st fix										
BV-BS910	Ceiling Finishes 1st Fixing	10	08DEC03A	18DEC03A							
BV-BS910	Rooms GL 16-19.5 - Ceiling finishes 1st fix										
Degree 3 - Platform and Upper Levels											
BV-BS920	Ceiling Finishes 2nd Fixing	10	31DEC03	12JAN04							
BV-BS920	Rooms GL 16-19.5 - Ceiling finishes 2nd fix										
BV-BS930	Wall Finishes 2nd Fixing	15	07JAN04	27JAN04							
BV-BS930	Rooms GL 16-19.5 - Wall finishes 2nd fix										
BV-BS940	Floor Finishes 2nd Fixing	10	19JAN04	02FEB04							
BV-BS940	Rooms GL 16-19.5 - Floor finishes 2nd fix										
BV-BS950	Permanent Door Installation	10	14FEB04	25FEB04							
BV-BS950	Rooms GL 16-19.5 - Permanent door installation										
BV-BS960	Meshwork 2nd Fixing	10	20FEB04	02MAR04							
BV-BS960	Rooms GL 16-19.5 - Meshwork 2nd fix										

Start Date: 25AUG03  
 Finish Date: 17AUG05  
 Date Due: 31DEC03  
 Run Date: 16AUG03 10:44

MAEDA  
 MTRC Contract 1960 - Yam O Station  
 ABWF & BS Programme SMRP  
 Early Completion

Sheet 2 of 8  
 ABOP  
 Maeda Corporation  
 © Primavera Systems, Inc.

Activity ID	Activity Description	Orig. Dur.	Early Start	Early Finish	2003 DEC Week 50   Week 01	2004 JAN Week 02   Week 03	2004 FEB Week 04   Week 05	2004 MAR Week 06   Week 07	2004 APR Week 08   Week 09	2004 MAY Week 10   Week 11	2004 JUN Week 12   Week 13
BW-BS970	Final Finishes and Cleaning Rooms GL 16-18.5 - Final finishes and cleaning	14	28FEB04	13MAR04							
External and Public Areas											
Degree 1 - Platform and Upper Levels											
BW-BS971	Staircase PBL Track - Erect Low Level Canopy GL 3-19	20	01DEC03	20DEC03							
BW-BS980	Public Areas - Metalwork (stairs etc) 1st fl.	30	01NOV03	31JAN04							
BW-BS990	Public Areas - floor finishes - 1st fl.	35	18JAN04	02MAR04							
BW-BS995	Install translucent advertising panels	25	15JAN04	09FEB04							
Degree 2 - Platform and Upper Levels											
BW-BS996	Final Finishes - Metalwork Fitted Fabric Skirting Membrane	30	27OCT03	16DEC03							
BW-BS997	Final Finishes - Metalwork Signage brackets - 1st fling	20	31JAN04	23FEB04							
BW-BS998	Final Finishes - Metalwork TCL Up Track - suspended ceiling 1st fl.	20	02JAN04	30JAN04							
BW-BS999	Final Finishes - Metalwork PBL track canopy - suspended ceiling 1st fl.	20	09MAR04	31MAR04							
Degree 3 - Platform and Upper Levels											
BW-BS1000	Final Finishes - Metalwork Suspended ceiling 1st fl.	25	20MAR04	22APR04							
BW-BS1001	Final Finishes - Metalwork Cladding to low canopy	30	11OCT03	10DEC03							
BW-BS1002	Final Finishes - Metalwork TCL Up Track - Glazing to canopy	30	11OCT03	10DEC03							
BW-BS1003	Final Finishes - Metalwork TCL Up Track - Glazing to slope glass wall	10	19NOV03	09DEC03							
BW-BS1004	Final Finishes - Metalwork Spikelets to High Bay Roof	30	20DEC03	09JAN04							
BW-BS1005	Final Finishes - Metalwork PBL Track - Cladding to low canopy	15	03MAR04	18MAR04							
BW-BS1006	Final Finishes - Metalwork PBL Track - Glazing to low canopy	15	03MAR04	18MAR04							
BW-BS1007	Final Finishes - Metalwork Public Areas - stonework flooring and isolation	30	08FEB04	13MAR04							
BW-BS1008	Final Finishes - Metalwork Platform and Upper Levels	30	14FEB04	19MAR04							
BW-BS1009	Final Finishes - Metalwork Insulation of manlift system to roof area	20	19MAR04	18APR04							
BW-BS1010	Final Finishes - Metalwork TCL Up Track canopy - suspended ceiling 2nd fl.	20	22DEC03	15JAN04							
BW-BS1011	Final Finishes - Metalwork PBL Track - stone cladding installation	25	12NOV03	15JAN04							
Footbridges & Upper Level Public Areas											
Degree 3 - Footbridges											
BW-BS1012	Final Finishes - Metalwork Suspended ceiling 1st fl.	20	31JAN04	31FEB04							
BW-BS1013	Final Finishes - Metalwork Footbridges - Roofing	20	31DEC03	27JAN04							
BW-BS1014	Final Finishes - Metalwork Footbridges - Glazing and cladding	20	31JAN04	23FEB04							
BW-BS1015	Final Finishes - Metalwork Stonework flooring	20	24FEB04	17MAR04							
BW-BS1016	Final Finishes - Metalwork Stonework 2nd fling	20	18MAR04	14APR04							
BW-BS1017	Final Finishes - Metalwork Roller shutter installation										
Degree 2 - Escalators and Lifts											
BW-BS1018	Structural Steelwork	14	05JAN04	20JAN04							
BW-BS1019	South Platform - Steelwork to lifts/ramps	36	21JAN04	25FEB04							
BW-BS1020	Lift Shaft Stop Work Period										



**M A E D A**

Sheet 3 of 8

MTRC Contract S80 - Yam O Station  
ABWF & BS Programme 3MRP  
Early Completion

JARP

Meeda Corporation  
MTRC Contract S80 - Yam O Station  
ABWF & BS Programme 3MRP  
Early Completion

Early Bar  
Progress Bar  
Critical Activity

Start Date: 25/JUL/02  
Finish Date: 17/AUG/05  
Run Date: 10/JUN/04

© Primavera Systems, Inc.

Activity ID	Activity Description	Orig. Est. Start	Early Start	Early Finish	2004					
					Week 27	Week 28	Week 29	Week 30	Week 31	
Degree 3 - Electrical and Life Support and Legal Cabling					2004	2004	2004	2004	2004	2004
19E08420 - Sound Platform - Glaring to 16hrs					30	08MARD4	14APR04			
Building Services:										
Platform Level Rooms - GL 5-9										
Degree 2 - Platform and Upper Levels										
BS-B1000	Rooms GL 5-9 - ECS high level 1st flx	15	15SEP03A	03DEC03A						
BS-B1010	Rooms GL 5-9 - FS pipework 1st flx	15	15SEP03A	03DEC03A						
BS-B1020	Rooms GL 5-9 - Electrical 1st flx	10	15SEP03A	03DEC03A						
BS-B1030	Rooms GL 5-9 - P & D 1st flx	10	15SEP03A	03DEC03A						
BS-B1030	Achieve Dig 2 to DC Rms - GP1,15,17,18,19,20,21	0		08DEC03A						
Degree 3 - Platform and Upper Levels										
BS-B1040	Rooms GL 5-9 - FS 2nd flx	10	08DEC03A	18DEC03A						
BS-B1050	Rooms GL 5-9 - Electrical 2nd flx	10	08DEC03A	02JAN04						
BS-B1060	Rooms GL 5-9 - P & D 2nd flx	10	02JAN04	14JAN04						
Platform Level Rooms - GL 23-19										
Degree 2 - Platform and Upper Levels										
BS-B1070	Rooms GL 23-19 - ECS high level 1st flx	15	15SEP03A	03DEC03A						
BS-B1080	Rooms GL 23-19 - FS pipework 1st flx	15	15SEP03A	03DEC03A						
BS-B1090	Rooms GL 23-19 - Electrical 1st flx	10	15SEP03A	09DEC03A						
BS-B1100	Rooms GL 23-19 - P & D 1st flx	10	15SEP03A	12DEC03A						
BS-B1105	Achieve Dig 2 to DC Rms - GP01,03	0		12DEC03A						
Degree 3 - Platform and Upper Levels										
BS-B1110	Rooms GL 23-19 - FS 2nd flx	10	14FEB04	25FEB04						
BS-B1120	Rooms GL 23-19 - Electrical 2nd flx	10	20FEB04	09MAR04						
BS-B1130	Rooms GL 23-19 - P & D 2nd flx	10	09MAR04	19MAR04						
Platform Level Rooms - GL 15-19										
Degree 2 - Platform and Upper Levels										
BS-B1140	Rooms GL 15-19 - ECS high level 1st flx	15	15SEP03A	09DEC03A						
BS-B1150	Rooms GL 15-19 - FS pipework 1st flx	15	15SEP03A	11DEC03A						
BS-B1160	Rooms GL 15-19 - Electrical 1st flx	10	15SEP03A	15DEC03A						
BS-B1170	Rooms GL 15-19 - P & D 1st flx	10	15SEP03A	18DEC03A						
BS-B1175	Achieve Dig 2 to DC Rms - GP1,01,11,13 & 04,5,6	0		18DEC03A						
Degree 3 - Platform and Upper Levels										
BS-B1180	Rooms GL 15-19 - FS 2nd flx	10	14FEB04	25FEB04						



Sheet 4 of 8

Maeda Corporation  
MTRC Contract 580 - Yam O Station  
ABWF & BS Programme MRP  
Early Completion

ASOP

ASOP

Early Bar  
Progress Bar  
Critical Activity

Start Date: 28JUN03  
Finish Date: 17AUG03  
Data Date: 10AUG03 04:44

© Primavera Systems, Inc.

Activity ID	Activity Description	Orig Dur	Early Start	Early Finish	2014				
					Week 1	Week 2	Week 3	Week 4	Week 5
BS-B1190	Electrical 2nd Flng Rooms GL 15:19 - Electrical 2nd flx	10/20/FEB/04	02/MAR/04						
BS-B1200	Plumbing & Drainage 2nd Flng Rooms GL 15:19 - P & D 2nd flx	10/26/FEB/04	08/MAR/04						
<b>Upper Level Rooms GL 15:19</b>									
<b>Degree 2 - Platform and Upper Levels</b>									
BS-B1210	ECS 1st Flng Rooms GL 15:19 - ECS high level 1st flx	15/15/SEP/04	30/DEC/04						
BS-B1220	Fire Services 1st Flng Rooms GL 15:19 - FS pipework 1st flx	15/15/SEP/04	30/DEC/04						
BS-B1230	Electrical 1st Flng Rooms GL 15:19 - Electrical 1st flx	10/15/SEP/04	30/DEC/04						
BS-B1240	Plumbing & Drainage 1st Flng Rooms GL 15:19 - P & D 1st flx	10/15/SEP/04	02/JAN/04						
<b>Degree 3 - Platform and Upper Levels</b>									
<b>Fire Services 2nd Flng</b>									
BS-B1250	Rooms GL 15:19 - FS 2nd flx	10/26/JAN/04	07/FEB/04						
<b>Electrical 2nd Flng</b>									
BS-B1260	Rooms GL 15:19 - Electrical 2nd flx	10/03/FEB/04	13/FEB/04						
<b>Plumbing &amp; Drainage 2nd Flng</b>									
BS-B1270	Rooms GL 15:19 - P & D 2nd flx	10/09/FEB/04	19/FEB/04						
<b>External and Public Areas</b>									
<b>Degree 2 - Platform and Upper Levels</b>									
<b>Electrical 1st Flng</b>									
BS-B1320	Cable containment at high bay roof	30/12/SEP/04	28/JAN/04						
BS-B1340	TCL Up track canopy - electrical 1st flx	25/23/DEC/04	30/JAN/04						
BS-B1350	PBL track canopy - electrical 1st flx	25/09/MAR/04	07/APR/04						
<b>Degree 3 - Platform and Upper Levels</b>									
<b>Electrical 2nd Flng</b>									
BS-B1370	Lighting fixtures at high bay roof	25/27/JAN/04	24/FEB/04						
BS-B1380	Lighting fixtures at platform void	30/09/FEB/04	13/MAR/04						
BS-B1380	TCL Up track canopy - electrical 2nd flx	20/25/FEB/04	18/MAR/04						
<b>Footbridges &amp; Upper Level Public Areas</b>									
<b>Degree 2 - Footbridges</b>									
<b>ECS 1st Flng</b>									
BS-B1410	Footbridges - ECS high level 1st flx	15/29/DEC/04	30/JAN/04						
<b>Fire Services 1st Flng</b>									
BS-B1420	Footbridges - FS pipework 1st flx	15/29/DEC/04	30/JAN/04						
<b>Electrical 1st Flng</b>									
BS-B1430	Footbridges - Electrical 1st flx	15/29/DEC/04	30/JAN/04						
<b>Plumbing &amp; Drainage 1st Flng</b>									
BS-B1440	Footbridges - P & D 1st flx	15/29/DEC/04	30/JAN/04						
<b>Degree 3 - Footbridges</b>									
<b>Fire Services 2nd Flng</b>									
BS-B1450	Footbridges - FS 2nd flx	10/18/MAR/04	29/MAR/04						
<b>Electrical 2nd Flng</b>									
BS-B1460	Footbridges - Electrical 2nd flx	10/30/MAR/04	14/APR/04						
<b>North Platform</b>									
<b>North Platform Structure Works</b>									
<b>General Submissions &amp; Approvals</b>									
BS-B12504	Prepare & Submit EDOC No 6 for Siding Enclosure	14/02/JAN/04	17/JAN/04						
BS-B12505	MTRC Approval of EDOC No 6	14/19/JAN/04	08/FEB/04						
BS-B12513	North Platform-Backfilling of SEM/Tmp openings	125/21/JAN/04	23/JUN/04						

2014  
New Date  
Finish Date  
Start Date  
New Date

24/JUL/03  
17/AUG/03  
31/DEC/03  
10/AUG/10/04

© Primavera Systems, Inc

Sheet 5 of 6


Maeda Corporation  
MTRC Contract 560 - Yam O Station  
ABWF & BS Programme SMRP  
Early Completion

ABDP

Early Bar  
Progress Bar  
Critical Activity

**MAEDA**

Activity ID	Activity Description	Orig Dur	Early Start	Early Finish	2004											
					Week 1	Week 2	Week 3	Week 4	Week 5	Week 6	Week 7	Week 8	Week 9	Week 10	Week 11	Week 12
<b>Architectural Builder's Work and Finishes (ABWF)</b>																
<b>Platform Level Rooms - GL 3.14</b>																
<b>Degree 1 - Platform and Upper Levels</b>																
BW-9653D	Waterproofing Rooms GL 3.6.5 - Waterproofing	19	10/15/03A	17	DEC03A											
BW-9654D	Floor Finishes 1st Fixing Rooms GL 3.6.5 - Floor finishes 1st fix	29	17NOV03A	17	DEC03A											
BW-9655D	Ceiling Finishes 1st Fixing Rooms GL 3.6.5 - Ceiling finishes 1st fix	10	12DEC03A	23	DEC03A											
<b>Degree 2 - Platform and Upper Levels</b>																
BW-9656D	Ceiling Finishes 2nd Fixing Rooms GL 3.6.5 - Ceiling finishes 2nd fix	16	10JAN04	21	JAN04											
BW-9657D	Wall Finishes 2nd Fixing Rooms GL 3.6.5 - Wall finishes 2nd fix	19	25JAN04	11	FEB04											
BW-9658D	Floor Finishes 2nd Fixing Rooms GL 3.6.5 - Floor finishes 2nd fix	10	12FEB04	23	FEB04											
BW-9659D	Permanent Door Installation Rooms GL 3.6.5 - Permanent door installation	10	06MARM	17	MAR04											
BW-9660D	Meshwork 2nd Fixing Rooms GL 3.6.5 - Meshwork 2nd fix	10	18MARM	29	MAR04											
BW-9681D	Final Finishes and Cleaning Rooms GL 3.6.5 - Final finishes and cleaning	14	30MARM	19	APR04											
<b>Platform Level Rooms - GL 14.17</b>																
<b>Degree 1 - Platform and Upper Levels</b>																
BW-9665D	Waterproofing Rooms GL 14.17 - Waterproofing	19	01DEC03A	17	DEC03A											
BW-9666D	Floor Finishes 1st Fixing Rooms GL 14.17 - Floor finishes 1st fix	20	14NOV03A	12	DEC03A											
BW-9670D	Ceiling Finishes 1st Fixing Rooms GL 14.17 - Ceiling finishes 1st fix	10	08DEC03A	18	DEC03A											
<b>Degree 2 - Platform and Upper Levels</b>																
BW-9680D	Ceiling Finishes 2nd Fixing Rooms GL 14.17 - Ceiling finishes 2nd fix	10	21JAN04	04	FEB04											
BW-9690D	Wall Finishes 2nd Fixing Rooms GL 14.17 - Wall finishes 2nd fix	15	05FEB04	21	FEB04											
BW-9670D	Floor Finishes 2nd Fixing Rooms GL 14.17 - Floor finishes 2nd fix	10	23FEB04	04	MAR04											
BW-9671D	Permanent Door Installation Rooms GL 14.17 - Permanent door installation	10	11MARM	22	MAR04											
BW-9672D	Meshwork 2nd Fixing Rooms GL 14.17 - Meshwork 2nd fix	10	23MARM	02	APR04											
<b>Platform Level Public Areas</b>																
<b>Degree 1 - Platform and Upper Levels</b>																
BW-9676D	Meshwork 1st Fixing Public Areas - Meshwork (garners etc) 1st fix	30	31DEC03A	17	JAN04											
BW-9677D	Floor Finishes - Stone/Work 1st Fixing Public Areas - floor finishes - 1st fix	35	31DEC03	13	FEB04											
<b>Degree 2 - Platform and Upper Levels</b>																
BW-9678D	Meshwork 1st Fixing Public Areas - HW/TW/JW 1st fix	20	19JAN04	13	FEB04											
BW-9679D	Public Areas - TMS machines 1st fix Public Areas - CSC 1st fix	25	14FEB04	13	MAR04											
BW-9680D	Public Areas - CSC 1st fix	25	14FEB04	13	MAR04											
<b>Ceiling Finishes 1st Fixing</b>																
BW-9681D	TCL ON track canopy - suspended ceiling 1st fix	20	19JAN04	13	FEB04											
BW-96815	Signage brackets - 1st fix	40	19JAN04	08	MAR04											
BW-9682D	Entrance canopy - suspended ceiling 1st fix	20	14FEB04	08	MAR04											



MAEDA

Sheet 5 of 8

MTRC Contract 580 - Yam O Station  
ABWF & BS Programme 3MPP  
Early Completion

ABDP

Early Bar  
Progress Bar  
Critical Activity

© Primavera Systems Inc



Activity ID	Activity Description	Early Start	Early Finish	2004											
				Jan	Feb	Mar	Apr	May	Jun	Jul	Aug	Sep	Oct	Nov	Dec
<b>Platform Level Rooms - GL 3-14</b>															
<b>Days 1 - Platform and Upper Levels</b>															
BW-B840	Entrance side - Subframe for subnetwork cladding	25/12/03	10/DEC/03												
BW-B870	External Entrance Area - Cladding to low canopy	30/06/03	17/DEC/03												
BW-B880	External Entrance Area - Glazing to low canopy	30/06/03	17/DEC/03												
BW-B890	Public Areas - stonework, flooring and isolation	40/01/04	08/MAR/04												
BW-B940	Installation of waste system to roof areas	40/01/04	19/FEB/04												
BW-B920	Entrance side - stone cladding installation	25/12/03	21/JAN/04												
BW-B930	Entrance side - stone cladding installation	25/12/03	04/FEB/04												
BW-B950	Public Areas - HWYUWU final fix	15/09/04	25/MAR/04												
BW-B960	Public Areas - TMS machines final fix	20/26/MAR/04	22/APR/04												
<b>Days 2 - Escalators and Lifts</b>															
BW-B700	North Platform - Escalator roof stonework	30/11/FEB/04	07/JAN/04												
BW-B710	North Platform - Stonework to lift shaft	14/03/04	05/JAN/04												
BW-B705	Lift Shaft Stop Work Permit	36/06/JAN/04	10/FEB/04												
<b>Days 3 - Escalators and Lifts</b>															
BW-B700	North Platform - Escalator roof cladding	40/01/JAN/04	09/FEB/04												
BW-B710	North Platform - Glazing to lift shaft	30/11/FEB/04	08/MAR/04												
<b>Building Services</b>															
<b>Days 4 - Platform and Upper Levels</b>															
ES-B150	Rooms GL 3-4-5 - ECS high level 1st flx	15/12/03	27/DEC/03												
ES-B150	Rooms GL 3-4-5 - FS pipework 1st flx	15/12/03	08/JAN/04												
ES-B150	Rooms GL 3-4-5 - Electrical 1st flx	10/27/NOV/03	09/JAN/04												
ES-B150	Rooms GL 3-4-5 - P & D 1st flx	10/24/NOV/03	09/JAN/04												
ES-B150	Rooms GL 3-4-5 - FS 2nd flx	10/12/FEB/04	03/FEB/04												
ES-B150	Rooms GL 3-4-5 - Electrical 2nd flx	10/18/FEB/04	08/FEB/04												
ES-B150	Rooms GL 3-4-5 - P & D 2nd flx	10/24/FEB/04	03/MAR/04												
<b>Days 5 - Platform and Upper Levels</b>															
ES-B150	Rooms GL 14-17 - ECS high level 1st flx	15/08/DEC/03	24/DEC/03												
ES-B150	Rooms GL 14-17 - FS pipework 1st flx	15/19/DEC/03	09/JAN/04												
ES-B150	Rooms GL 14-17 - Electrical 1st flx	10/03/JAN/04	14/JAN/04												
ES-B150	Rooms GL 14-17 - P & D 1st flx	10/09/JAN/04	20/JAN/04												



Maeda Corporation  
 MTRC Contract 580 - Yam O Station  
 ABWF & BS Programme 3MRP  
 Early Completion

Sheet 7 of 8


Start Date	26/JUL/03
Finish Date	17/MAR/04
Issue Date	10/MAR/04
Rev Date	10/MAR/04

© Primavera Systems, Inc.

Activity ID	Activity Description	Orig Dur	Early Start	Early Finish	2023											
					Week 1	Week 2	Week 3	Week 4	Week 5	Week 6	Week 7	Week 8	Week 9	Week 10	Week 11	Week 12
<b>Degrees 3 - Platform and Upper Levels</b>																
BS-8100	Room G1, 14-17, FS 2nd flx	10	17FEB04	27FEB04												
BS-8100	Room G1, 14-17, Electrical 2nd flx	10	23FEB04	04MAR04												
BS-8100	Room G1, 14-17, Electrical 2nd flx	10	23FEB04	04MAR04												
BS-8100	Room G1, 14-17, P & D 2nd flx	10	24FEB04	10MAR04												
<b>Platform Level Public Areas</b>																
<b>Degrees 2 - Platform and Upper Levels</b>																
BS-8150	Conduits to under platform void	50	24SEP03A	30DEC03A												
BS-8160	FS pipes & cable containment under platform	50	24SEP03A	30DEC03A												
BS-8160	Electrical 1st Flring	100	27MAY03A	11DEC03A												
BS-8160	1st Flr track canopy - electrical 1st flx	25	01NOV03A	30JAN04												
BS-8160	Entrance canopy - electrical 1st flx	25	09MAR04	07APR04												
BS-8170	P & D pipes in under platform void	50	24SEP03A	30DEC03A												
<b>Degrees 1 - Platform and Upper Levels</b>																
BS-8170	Lighting fixtures in platform void	30	27DEC03A	27FEB04												
BS-8170	1st Flr track canopy - electrical 2nd flx	20	21JAN04	19FEB04												
<b>Financial Milestones</b>																
<b>IPS Milestone (PS App D)</b>																
S-MSB07B	MSB7 All Steel Rook Compl (Excl. Fabric Only)	0		18DEC03A												
S-MSB07C	MSB7 Shop Drgs for Wall & Ceiling Panel Approved	0		18DEC03A												
S-MSB08C	MSB8 - Wall & Ceiling Finishes Compl	0		12JAN04												
S-MSB09A	MSB9 - Compl Testing before Delivery of BS Equipment	0		04FEB04												
S-MSB08B	MSB8 - All Course Framework Compl	0		04FEB04												
S-MSB08B	MSB8 - Wall & Ceiling Panel Support Systems Compl	0		31MAR04												

Sheet 8 of 8

Maeda Corporation  
MTRC Contract 980 - Yam D Station  
ABWF & BS Programme 3MRP  
Early Completion



MAEDA

2023

DEC

Week 49

2024

JAN

Week 1

2024

FEB

Week 5

2024

DEC

Week 49

2024

JAN

Week 1

2024

FEB

Week 5

2024

DEC

Week 49

2024

JAN

Week 1

2024

FEB

Week 5

2024

DEC

Week 49

2024

JAN

Week 1

2024

FEB

Week 5

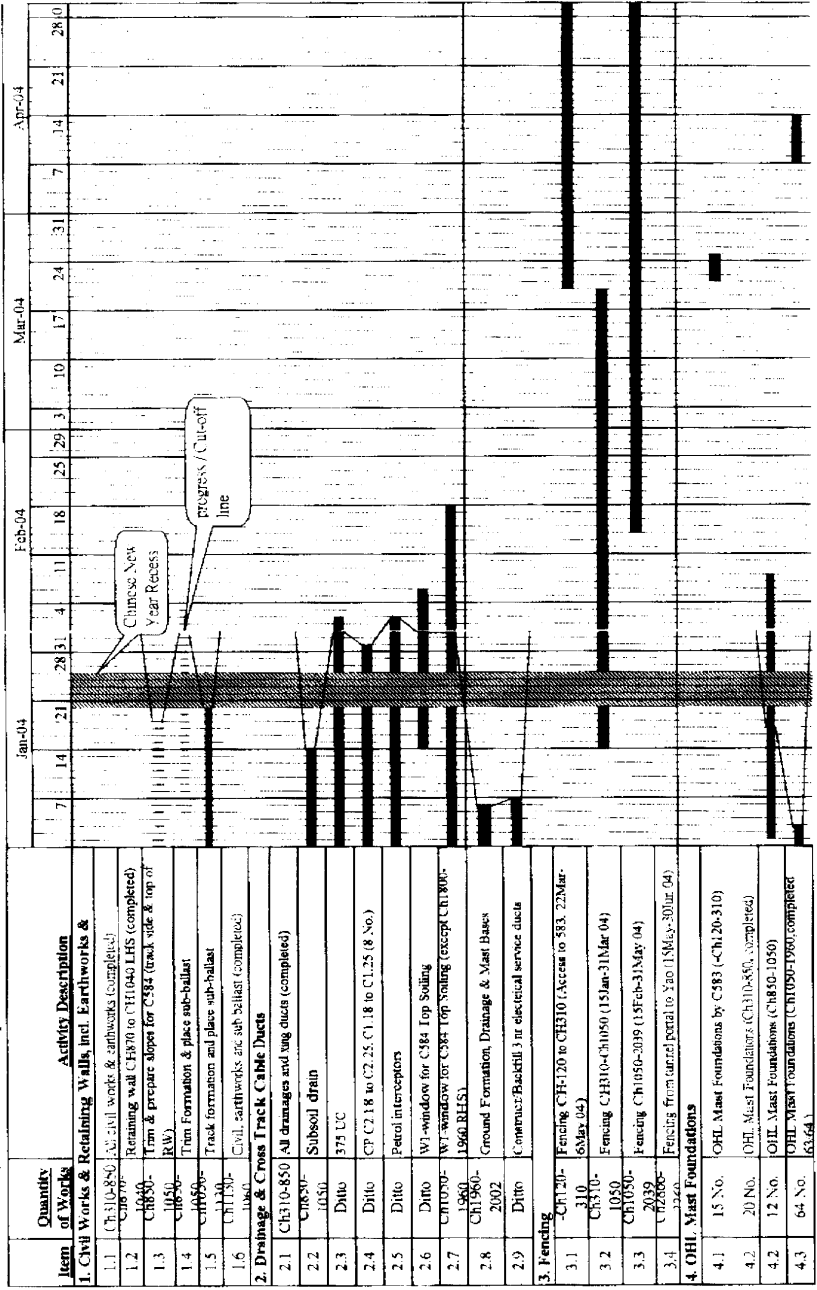
Activity ID	Activity Description	Orig Dur	Start	Finish	2004 DEC 31	2005 JAN 31	2005 FEB 28	2005 MAR 31	2005 APR 30
100	Monitoring of settlement points	68	28DEC03	31MAR04					
140	Tunnel lining including back grouting	78	28DEC03	14MAR04					
150	Repair of lining necks	51	28JAN04	17MAR04					
160	RAM tunnel installation	41	08FEB04	20MAR04					
<b>LANDSCAPING</b>									
1200	South Portal landscaping	45	10FEB04	31MAR04					
1300	North Portal landscaping	10	01APR04	10APR04					
<b>MATERIAL HANDLING</b>									
3010	Material delivery on site	0	10FEB04						
3020	Shop drawing/material submission & approval	42	28DEC03	07FEB04					
3030	Construction of mock up	8	10FEB04	17FEB04					
3040	Erect Scaffolding, setting up & site testing	6	10FEB04	17FEB04					
3050	South Portal stone cladding installation	23	18FEB04	13MAR04					
3060	North Portal stone cladding installation	25	14MAR04	07APR04					

Sheet 1 of 1  
 31 JAN 04  
 31 MAR 04  
 31 APR 04

Gannett Shastis Limited  
 3 Months Rolling Program, JAN '04

05DEC03 100A  
 06DEC03 100B  
 07DEC03 100C  
 08DEC03 100D

3 + 1-Month Rolling Programme  
(1 Feb. 2004 to 31 April 2004)



3 - 1-Month Rolling Programme  
(1 Feb. 2004 to 31 April, 2004)

Item	Quantities of Works	Activity Description	Jan-04			Feb-04			Mar-04			Apr-04											
			7	14	21	28	31	4	11	18	25	29	3	10	17	24	31	7	14	21	28		
<b>S. Trackwork</b>																							
<b>Main Line - Ch1050 to 1960</b>																							
5.1		Install Turnout 401																					
5.2		Cable Troughs																					
5.3		Top Ballast																					
5.4		Regulate Tamp																					
5.5		Final Top Lamp																					
<b>Main Line - Ch1050 to 1960</b>																							
5.6		BTM																					
5.7		String & Lay																					
5.8		Cable Trough																					
5.9		Top Ballast Regulate. Tamp																					
5.10		Final Top Lamp																					
<b>Main Line - Ch310 to 1050</b>																							
5.11		BTM																					
5.12		String & Lay																					
5.13		Cable Trough (HV & OHT, only)																					
5.14		Top Ballast, Regulate, Tamp and Lane																					
5.15		Final Topping, Lighting & De-stressing																					
5.16		Turn Out 403																					
5.18		Turn Out 402																					
<b>NR Tunnel - Ch2040 to 2866</b>																							
5.19		Construct Tunnel Walkway																					
<b>NR Trackwork - Ch2866 to 3253</b>																							
5.20		Distribute f WR to Area W4-W3 & Tunnel																					
5.21		Track Assembly																					
5.22		Concrete Works																					
5.23		Derailment Upstands																					

3 + 1-Month Rolling Programme  
(1 Feb. 2004 to 31 April, 2004)

Item	Quantity of Works	Activity Description	Jan-04			Feb-04			Mar-04			Apr-04											
			7	14	21	28	31	4	11	18	25	29	3	10	17	24	31	7	14	21	28		
<b>NB Trackwork - CH120 to CH310</b>																							
5.24		Distribute LWR to Area 583W1																					
5.25		Track Assembly																					
5.26		Concrete Works																					
5.27		Derailment Upstand CH138 to CH310																					
5.28		Cable Troughs																					
<b>Balloon Trackworks - CH323 to CH360</b>																							
5.29		String LWRs																					
<b>NB Trackwork CH2040 to CH2866</b>																							
5.30		Distribute LWR CH2466 to CH3463																					
5.31		Walkway Construction																					
5.31.1		A) CH2866 to CH2766																					
5.31.2		Shuttering Formwork																					
5.31.3		Concrete Works																					
5.31.4		B) CH2766 to CH2666																					
5.31.5		Shuttering Formwork																					
5.31.6		Concrete Works																					
5.31.7		C) CH2666 to CH2566																					
5.31.8		Shuttering Formwork																					
5.31.9		Concrete Works																					
5.31.10		D) CH2566 to CH2466																					
5.31.11		Shuttering Formwork																					
5.31.12		Concrete Works																					
5.31.13		E) CH2466 to CH2366																					
5.31.14		Shuttering Formwork																					
5.31.15		Concrete Works																					
5.32		Distribute LWR CH2040 to CH2466																					
<b>Sleeper Pre-assembly</b>																							
5.33		Sleeper Pre-assembly																					
<b>6.OHL-1st Fix</b>																							
6.1		Maintenance - Install OHL Mast at CH1050 to CH1960																					

3 + 1-Month Rolling Programme  
(1 Feb. 2004 to 31 April 2004)

Item	Quantity of Works	Activity Description	Jan-04			Feb-04			Mar-04			Apr-04												
			7	14	21	28	31	4	11	18	25	29	3	10	17	24	31	7	14	21	28			
7		Panel Cladding for Retaining Wall																						
7.1		Design & pattern details																						
7.2		Formliner Supply																						
7.3		Precast Panel Moulding & Casting																						
7.4		Installation of Panels																						

Notes:

- Drainage works
- Earthworks
- Civil works (others)
- Retaining wall
- Track Work
- O&M, 1st Fix
- Panel Cladding for Retaining Wall







Item No.	Description	Start	Finish
D02500	Approach & Support FR Cases	26APR04	27JUL04
D02510	Support & NIP Design Steel Deck	27NOV03 A	28FEB04
D02520	Support & Support FR Design Steel Deck	27FEB04	01MAY04
D02530	FR Cases & Support FR Design	01MAY04	01MAY04
D02540	FR Cases & Support FR Design	01MAY04	01MAY04
D02550	FR Cases & Support FR Design	01MAY04	01MAY04
D02560	FR Cases & Support FR Design	01MAY04	01MAY04
D02570	FR Cases & Support FR Design	01MAY04	01MAY04
D02580	FR Cases & Support FR Design	01MAY04	01MAY04
D02590	FR Cases & Support FR Design	01MAY04	01MAY04
D02600	FR Cases & Support FR Design	01MAY04	01MAY04
D02610	FR Cases & Support FR Design	01MAY04	01MAY04
D02620	FR Cases & Support FR Design	01MAY04	01MAY04
D02630	FR Cases & Support FR Design	01MAY04	01MAY04
D02640	FR Cases & Support FR Design	01MAY04	01MAY04
D02650	FR Cases & Support FR Design	01MAY04	01MAY04
D02660	FR Cases & Support FR Design	01MAY04	01MAY04
D02670	FR Cases & Support FR Design	01MAY04	01MAY04
D02680	FR Cases & Support FR Design	01MAY04	01MAY04
D02690	FR Cases & Support FR Design	01MAY04	01MAY04
D02700	FR Cases & Support FR Design	01MAY04	01MAY04
D02710	FR Cases & Support FR Design	01MAY04	01MAY04
D02720	FR Cases & Support FR Design	01MAY04	01MAY04
D02730	FR Cases & Support FR Design	01MAY04	01MAY04
D02740	FR Cases & Support FR Design	01MAY04	01MAY04
D02750	FR Cases & Support FR Design	01MAY04	01MAY04
D02760	FR Cases & Support FR Design	01MAY04	01MAY04
D02770	FR Cases & Support FR Design	01MAY04	01MAY04
D02780	FR Cases & Support FR Design	01MAY04	01MAY04
D02790	FR Cases & Support FR Design	01MAY04	01MAY04
D02800	FR Cases & Support FR Design	01MAY04	01MAY04
D02810	FR Cases & Support FR Design	01MAY04	01MAY04
D02820	FR Cases & Support FR Design	01MAY04	01MAY04
D02830	FR Cases & Support FR Design	01MAY04	01MAY04
D02840	FR Cases & Support FR Design	01MAY04	01MAY04
D02850	FR Cases & Support FR Design	01MAY04	01MAY04
D02860	FR Cases & Support FR Design	01MAY04	01MAY04
D02870	FR Cases & Support FR Design	01MAY04	01MAY04
D02880	FR Cases & Support FR Design	01MAY04	01MAY04
D02890	FR Cases & Support FR Design	01MAY04	01MAY04
D02900	FR Cases & Support FR Design	01MAY04	01MAY04
D02910	FR Cases & Support FR Design	01MAY04	01MAY04
D02920	FR Cases & Support FR Design	01MAY04	01MAY04
D02930	FR Cases & Support FR Design	01MAY04	01MAY04
D02940	FR Cases & Support FR Design	01MAY04	01MAY04
D02950	FR Cases & Support FR Design	01MAY04	01MAY04
D02960	FR Cases & Support FR Design	01MAY04	01MAY04
D02970	FR Cases & Support FR Design	01MAY04	01MAY04
D02980	FR Cases & Support FR Design	01MAY04	01MAY04
D02990	FR Cases & Support FR Design	01MAY04	01MAY04
D03000	FR Cases & Support FR Design	01MAY04	01MAY04

Ready for  
 Critical bar  
 Critical joint  
 Steel fabrication joint  
 Fabrication joint

WFL CORPORATION LIMITED  
 PENNY'S BAY LINE, CONTRACT No. 563 DISNEYLAND STATION  
 3-month Rolling Programme (Feb-04)

Programme No. CAU2248/04-04  
 Sheet No. of 4  
 Drawing No. 563-01-01  
 Drawing Title: PENNY'S BAY LINE, CONTRACT No. 563 DISNEYLAND STATION  
 3-month Rolling Programme (Feb-04)

Date: 28/02/04  
 Drawn: [Signature]  
 Checked: [Signature]  
 Approved: [Signature]

Item ID	Description	Start	Finish
VE0400	Shrinkage and fire protection	20MAR04	14APR04
VE0400	Access to VEPs deck for G-7	14APR04	
<b>3. Month Rolling Programme</b>			
<b>Pre-Installation &amp; Demolition Requirements</b>			
PR0100	2500 Approval of interface detail with DC-4		20MAR04
PR1000	Removal of spare parts, knock out (RO)	08FEB04	10APR04
PR1000	Removal of spare parts, knock out (RO)	08APR04	10APR04
PR1000	Removal of spare parts, knock out (RO)	08APR04	10APR04
PR1000	Removal of spare parts, knock out (RO)	08APR04	10APR04
PR1400	Approval of DC 462, 462, 464, 467	02JAN04	26FEB04
PR1400	Approval of DC 462, 462, 464, 467	26FEB04	26FEB04
PR1400	Approval of DC 462, 462, 464, 467	08FEB04	08JUN04
<b>Major Procurement &amp; Submission</b>			
DS0200	Factory test for all major DS equipment	26APR04	24JUN04
DS0300	ECG test for below ceiling of rooms under	04FEB04	20MAR04
DS0300	ECG test for below ceiling of rooms under	20DEC03	07JAN04
DS0300	ECG test for below ceiling of rooms under	12APR04	
DS0300	ECG test for below ceiling of rooms under	20APR04	
DS0300	ECG test for below ceiling of rooms under	04FEB04	04MAY04
DS0300	ECG test for below ceiling of rooms under	09DEC03	14APR04
<b>Painting Works</b>			
DS0200	Plumbing pipes inside ceiling void under	14FEB04	12MAR04
DS0200	H/O water pump on under VEPs	26APR04	
DS0210	Water pumps & Frangibile tanks mount-in	26APR04	08MAY04
DS0220	Water pump room installation	07MAY04	08JUN04
DS0220	Painting in the below ceiling of rms under VEPs	08FEB04	08MAY04
DS0220	Painting in the below ceiling of rms under VEPs	08DEC03	08MAY04
DS0300	Painting in the below ceiling of rms under VEPs	08JAN04	08JAN04
DS0300	Painting in the below ceiling of rms under VEPs	14FEB04	08MAY04
DS0300	Painting in the below ceiling of rms under VEPs	06APR04	21MAY04
DS0300	Painting in the below ceiling of rms under VEPs	06APR04	26APR04
<b>Structural Works</b>			
DS0100	Cable containment under trachery	08APR04	02JUN04
DS0100	Effect test for below ceiling of rms under VEPs	04FEB04	20MAR04
DS0100	Effect test for below ceiling of rms under VEPs	04DEC03	27APR04
DS0100	Effect test for below ceiling of rms under VEPs	20MAR04	08JUN04
DS0100	Effect test for below ceiling of rms under VEPs	08APR04	08JUN04
DS0100	Effect test for below ceiling of rms under VEPs	20MAR04	08MAY04
DS0100	Effect test for below ceiling of rms under VEPs	20APR04	08JUN04
DS0100	Effect test for below ceiling of rms under VEPs	08FEB04	27MAR04
DS0100	Effect test for below ceiling of rms under VEPs	11MAR04	08JUN04
<b>Utility Works</b>			
EV0400	Install temporary pumps	26FEB04	08MAY04
EV0400	T&C for drainage discharge	10MAR04	20MAR04
EV0400	CS-3A, drainage discharge & temp pumps	08MAY04	
<b>Utilities Commissioning</b>			
EV0400	Drainage connection 1 AMP-1, 1 @ Overrun	08FEB04	08MAY04
EV0400	Drainage connection 2 AMP-1, 1 @ Overrun	08FEB04	08MAY04
EV0400	Drainage connection 3 AMP-1, 1 @ Overrun	08FEB04	08MAY04
EV0400	Drainage connection 4 AMP-1, 1 @ Overrun	08FEB04	08MAY04
EV0400	Drainage connection 5 AMP-1, 1 @ Overrun	08FEB04	08MAY04
EV0400	Drainage connection 6 AMP-1, 1 @ Overrun	08FEB04	08MAY04
EV0400	Drainage connection 7 AMP-1, 1 @ Overrun	08FEB04	08MAY04
EV0400	Drainage connection 8 AMP-1, 1 @ Overrun	08FEB04	08MAY04
EV0400	Drainage connection 9 AMP-1, 1 @ Overrun	08FEB04	08MAY04
EV0400	Drainage connection 10 AMP-1, 1 @ Overrun	08FEB04	08MAY04
EV0400	Drainage connection 11 AMP-1, 1 @ Overrun	08FEB04	08MAY04
EV0400	Drainage connection 12 AMP-1, 1 @ Overrun	08FEB04	08MAY04
EV0400	Drainage connection 13 AMP-1, 1 @ Overrun	08FEB04	08MAY04
EV0400	Drainage connection 14 AMP-1, 1 @ Overrun	08FEB04	08MAY04
EV0400	Drainage connection 15 AMP-1, 1 @ Overrun	08FEB04	08MAY04
EV0400	Drainage connection 16 AMP-1, 1 @ Overrun	08FEB04	08MAY04
EV0400	Drainage connection 17 AMP-1, 1 @ Overrun	08FEB04	08MAY04
EV0400	Drainage connection 18 AMP-1, 1 @ Overrun	08FEB04	08MAY04
EV0400	Drainage connection 19 AMP-1, 1 @ Overrun	08FEB04	08MAY04
EV0400	Drainage connection 20 AMP-1, 1 @ Overrun	08FEB04	08MAY04
EV0400	Drainage connection 21 AMP-1, 1 @ Overrun	08FEB04	08MAY04
EV0400	Drainage connection 22 AMP-1, 1 @ Overrun	08FEB04	08MAY04
EV0400	Drainage connection 23 AMP-1, 1 @ Overrun	08FEB04	08MAY04
EV0400	Drainage connection 24 AMP-1, 1 @ Overrun	08FEB04	08MAY04
EV0400	Drainage connection 25 AMP-1, 1 @ Overrun	08FEB04	08MAY04
EV0400	Drainage connection 26 AMP-1, 1 @ Overrun	08FEB04	08MAY04
EV0400	Drainage connection 27 AMP-1, 1 @ Overrun	08FEB04	08MAY04
EV0400	Drainage connection 28 AMP-1, 1 @ Overrun	08FEB04	08MAY04
EV0400	Drainage connection 29 AMP-1, 1 @ Overrun	08FEB04	08MAY04
EV0400	Drainage connection 30 AMP-1, 1 @ Overrun	08FEB04	08MAY04
EV0400	Drainage connection 31 AMP-1, 1 @ Overrun	08FEB04	08MAY04
EV0400	Drainage connection 32 AMP-1, 1 @ Overrun	08FEB04	08MAY04
EV0400	Drainage connection 33 AMP-1, 1 @ Overrun	08FEB04	08MAY04
EV0400	Drainage connection 34 AMP-1, 1 @ Overrun	08FEB04	08MAY04
EV0400	Drainage connection 35 AMP-1, 1 @ Overrun	08FEB04	08MAY04
EV0400	Drainage connection 36 AMP-1, 1 @ Overrun	08FEB04	08MAY04
EV0400	Drainage connection 37 AMP-1, 1 @ Overrun	08FEB04	08MAY04
EV0400	Drainage connection 38 AMP-1, 1 @ Overrun	08FEB04	08MAY04
EV0400	Drainage connection 39 AMP-1, 1 @ Overrun	08FEB04	08MAY04
EV0400	Drainage connection 40 AMP-1, 1 @ Overrun	08FEB04	08MAY04
EV0400	Drainage connection 41 AMP-1, 1 @ Overrun	08FEB04	08MAY04
EV0400	Drainage connection 42 AMP-1, 1 @ Overrun	08FEB04	08MAY04
EV0400	Drainage connection 43 AMP-1, 1 @ Overrun	08FEB04	08MAY04
EV0400	Drainage connection 44 AMP-1, 1 @ Overrun	08FEB04	08MAY04
EV0400	Drainage connection 45 AMP-1, 1 @ Overrun	08FEB04	08MAY04
EV0400	Drainage connection 46 AMP-1, 1 @ Overrun	08FEB04	08MAY04
EV0400	Drainage connection 47 AMP-1, 1 @ Overrun	08FEB04	08MAY04
EV0400	Drainage connection 48 AMP-1, 1 @ Overrun	08FEB04	08MAY04
EV0400	Drainage connection 49 AMP-1, 1 @ Overrun	08FEB04	08MAY04
EV0400	Drainage connection 50 AMP-1, 1 @ Overrun	08FEB04	08MAY04
EV0400	Drainage connection 51 AMP-1, 1 @ Overrun	08FEB04	08MAY04
EV0400	Drainage connection 52 AMP-1, 1 @ Overrun	08FEB04	08MAY04
EV0400	Drainage connection 53 AMP-1, 1 @ Overrun	08FEB04	08MAY04
EV0400	Drainage connection 54 AMP-1, 1 @ Overrun	08FEB04	08MAY04
EV0400	Drainage connection 55 AMP-1, 1 @ Overrun	08FEB04	08MAY04
EV0400	Drainage connection 56 AMP-1, 1 @ Overrun	08FEB04	08MAY04
EV0400	Drainage connection 57 AMP-1, 1 @ Overrun	08FEB04	08MAY04
EV0400	Drainage connection 58 AMP-1, 1 @ Overrun	08FEB04	08MAY04
EV0400	Drainage connection 59 AMP-1, 1 @ Overrun	08FEB04	08MAY04
EV0400	Drainage connection 60 AMP-1, 1 @ Overrun	08FEB04	08MAY04
EV0400	Drainage connection 61 AMP-1, 1 @ Overrun	08FEB04	08MAY04
EV0400	Drainage connection 62 AMP-1, 1 @ Overrun	08FEB04	08MAY04
EV0400	Drainage connection 63 AMP-1, 1 @ Overrun	08FEB04	08MAY04
EV0400	Drainage connection 64 AMP-1, 1 @ Overrun	08FEB04	08MAY04
EV0400	Drainage connection 65 AMP-1, 1 @ Overrun	08FEB04	08MAY04
EV0400	Drainage connection 66 AMP-1, 1 @ Overrun	08FEB04	08MAY04
EV0400	Drainage connection 67 AMP-1, 1 @ Overrun	08FEB04	08MAY04
EV0400	Drainage connection 68 AMP-1, 1 @ Overrun	08FEB04	08MAY04
EV0400	Drainage connection 69 AMP-1, 1 @ Overrun	08FEB04	08MAY04
EV0400	Drainage connection 70 AMP-1, 1 @ Overrun	08FEB04	08MAY04
EV0400	Drainage connection 71 AMP-1, 1 @ Overrun	08FEB04	08MAY04
EV0400	Drainage connection 72 AMP-1, 1 @ Overrun	08FEB04	08MAY04
EV0400	Drainage connection 73 AMP-1, 1 @ Overrun	08FEB04	08MAY04
EV0400	Drainage connection 74 AMP-1, 1 @ Overrun	08FEB04	08MAY04
EV0400	Drainage connection 75 AMP-1, 1 @ Overrun	08FEB04	08MAY04
EV0400	Drainage connection 76 AMP-1, 1 @ Overrun	08FEB04	08MAY04
EV0400	Drainage connection 77 AMP-1, 1 @ Overrun	08FEB04	08MAY04
EV0400	Drainage connection 78 AMP-1, 1 @ Overrun	08FEB04	08MAY04
EV0400	Drainage connection 79 AMP-1, 1 @ Overrun	08FEB04	08MAY04
EV0400	Drainage connection 80 AMP-1, 1 @ Overrun	08FEB04	08MAY04
EV0400	Drainage connection 81 AMP-1, 1 @ Overrun	08FEB04	08MAY04
EV0400	Drainage connection 82 AMP-1, 1 @ Overrun	08FEB04	08MAY04
EV0400	Drainage connection 83 AMP-1, 1 @ Overrun	08FEB04	08MAY04
EV0400	Drainage connection 84 AMP-1, 1 @ Overrun	08FEB04	08MAY04
EV0400	Drainage connection 85 AMP-1, 1 @ Overrun	08FEB04	08MAY04
EV0400	Drainage connection 86 AMP-1, 1 @ Overrun	08FEB04	08MAY04
EV0400	Drainage connection 87 AMP-1, 1 @ Overrun	08FEB04	08MAY04
EV0400	Drainage connection 88 AMP-1, 1 @ Overrun	08FEB04	08MAY04
EV0400	Drainage connection 89 AMP-1, 1 @ Overrun	08FEB04	08MAY04
EV0400	Drainage connection 90 AMP-1, 1 @ Overrun	08FEB04	08MAY04
EV0400	Drainage connection 91 AMP-1, 1 @ Overrun	08FEB04	08MAY04
EV0400	Drainage connection 92 AMP-1, 1 @ Overrun	08FEB04	08MAY04
EV0400	Drainage connection 93 AMP-1, 1 @ Overrun	08FEB04	08MAY04
EV0400	Drainage connection 94 AMP-1, 1 @ Overrun	08FEB04	08MAY04
EV0400	Drainage connection 95 AMP-1, 1 @ Overrun	08FEB04	08MAY04
EV0400	Drainage connection 96 AMP-1, 1 @ Overrun	08FEB04	08MAY04
EV0400	Drainage connection 97 AMP-1, 1 @ Overrun	08FEB04	08MAY04
EV0400	Drainage connection 98 AMP-1, 1 @ Overrun	08FEB04	08MAY04
EV0400	Drainage connection 99 AMP-1, 1 @ Overrun	08FEB04	08MAY04
EV0400	Drainage connection 100 AMP-1, 1 @ Overrun	08FEB04	08MAY04

MTR CORPORATION LIMITED  
 PENNY'S BAY LINE, CONTRACT NO. 563 DIBNEYLAND STATION  
 3-Month Rolling Programme (Feb-04)

Programme No. 04M-00000000-04  
 Issue No. 04  
 Date 04/02/04