

香港電燈有限公司
The Hongkong Electric Co., Ltd.



**Lamma Power Station
Units L2, L4 & L5 Flue Gas Desulphurization
Plants Retrofit**

Operational Phase

Quarterly Environmental Monitoring & Audit Report

July– September 2022

香港電燈有限公司
The Hongkong Electric Co., Ltd.



ENVIRONMENTAL IMPACT ASSESSMENT (EIA) ORDINANCE, CAP. 499

ENVIRONMENTAL PERMITS NO. EP-248/2006 & EP-287/2007

**LAMMA POWER STATION
UNITS L2, L4 & L5 FLUE GAS DESULPHURIZATION PLANTS RETROFIT**

**ENVIRONMENTAL MONITORING & AUDIT PROGRAMME
AT OPERATIONAL PHASE**


Report Title	Quarterly EM&A Report (July to September 2022)
Date	21 December 2022
Certified by	 (Mr. CHAN Hon Yeung, Environmental Team Leader)

TABLE OF CONTENT

EXECUTIVE SUMMARY

1.	INTRODUCTION.....	1
1.1	Background	1
1.2	Project Organisation	1
1.3	Plant Availability during the Reporting Period	2
1.4	Malfunction/Outage Records of Pollution Control Equipment	2
1.5	Summary of EM&A Requirements	2
2.	AIR QUALITY.....	11
2.1	Monitoring Requirements	11
2.2	Summary of Results and Observations	11
3.	WATER QUALITY.....	12
3.1	Monitoring Requirements	12
3.2	Summary of Results and Observations	12
4.	ENVIRONMENTAL AUDIT.....	13
4.1	Review of Environmental Monitoring Procedures	13
4.2	Assessment of Environmental Monitoring Results	13
4.3	Status of Environmental Licensing and Permitting	14
4.4	Implementation Status of Environmental Mitigation Measures	15
4.5	Implementation Status of Event/Action Plan	15
4.6	Implementation Status of Environmental Complaint Handling Procedures	15
5.	FUTURE KEY ISSUES.....	17
5.1	Outage Plan for the coming 3 months	17
5.2	Key issues for the coming 3 months	17
6.	CONCLUSION.....	18

LIST OF TABLES

Table 2.1	Air Quality Monitoring Parameters and Frequency
Table 3.1	Water Quality Monitoring Parameters and Frequencies
Table 4.1	Summary of Action/Limit Level Exceedances on Monitoring Parameters
Table 4.2	Amount of Gypsum and Sludge Collected for Reuse by Contractor
Table 4.3	Summary of Environmental Licensing and Permit Status
Table 4.4	Environmental Complaints Received
Table 4.5	Outstanding Environmental Complaints Carried Over

LIST OF FIGURES

Figure 1.1a	Location of New Facilities for L4 & L5 FGD Plant
Figure 1.1b	Location of New Facilities for L2 FGD Plant
Figure 1.2a	General Arrangement of L4 & L5 FGD Plant
Figure 1.2b	General Arrangement of L2 FGD Plant
Figure 1.3	Schematic Diagram of L2, L4 & L5 FGD Plant
Figure 1.4	Simplified Schematic Diagram of FGD Wastewater Treatment Plant
Figure 1.5	Organization Chart at Operational Phase

APPENDIX

Appendix A	Event/Action Plans in Response to Exceedance of AL Levels
Appendix B	Air Quality Monitoring Results
Appendix C	Summary Results on Water Quality Monitoring
Appendix D	Summary of EMIS

EXECUTIVE SUMMARY

This is the quarterly Environmental Monitoring and Audit (EM&A) report for the Projects “Lamma Power Station Units L4 & L5 Flue Gas Desulphurization Plant Retrofit” and “Lamma Power Station Unit L2 Flue Gas Desulphurization Plant Retrofit” prepared by the Environmental Team (ET). This report presents the results of impact monitoring on air and water quality and environmental audit for the operation of the said projects in the period from July to September 2022.

Environmental monitoring for air quality and water quality were carried out for the purpose of this EM&A program as well as for fulfilling the requirements stipulated in the relevant licences. The results were checked against the established Action/Limit (AL) levels. The implementation status of the environmental mitigation measures, Event/Action Plan and environmental complaint handling procedures were also checked.

Plant Availability

L2, L4 and L5 were out of service during the following period:

Unit	Period	Remark
L2	1/9/2022 00:15 to 7/9/2022 23:01	Boiler survey
L4	18/08/2022 05:01 to 25/08/2022 04:48	Turbine valve overhaul
L4	18/9/2022 00:09 to 19/9/2022 05:53	Boiler submerged scraper conveyor inspection
L5	19/9/2022 04:13 to 30/9/2022 23:59	Unit overhaul

Malfunction/Outage Records of Pollution Control Equipment

There were no major outages of the Pollution Control Equipment during the reporting period.

For other minor outages, please refer to section 1.4 of the report.

Environmental Monitoring Works

Environmental monitoring works were performed during the operation of Units L2, L4 and L5 FGD Plants in the reporting period.

Air Quality

No exceedance of Action and Limit levels for air quality were recorded in the reporting period.

Water Quality

No exceedance of Action and Limit levels for water quality were recorded in the reporting period.

Environmental Licensing and Permitting

Description	Permit / Licence No.	Valid Period		Issued To	Date of Issuance
		From	To		

Description	Permit / Licence No.	Valid Period		Issued To	Date of Issuance
		From	To		
Environmental Permit for L4/5 FGD plants retrofit project	EP-248/2006	25/04/2006	-	HK Electric	25/04/2006
Environmental Permit for Unit L2 FGD plant retrofit project	EP-287/2007	02/10/2007	-	HK Electric	02/10/2007
Specified Process Licence issued under APCO	L-7-002(13)	01/01/2021	31/12/2022	HK Electric	01/12/2020
WPCO discharge licence for Ash Lagoon	WT00039618-2021	11/02/2022	31/12/2026	HK Electric	11/02/2022

Implementation Status of Environmental Mitigation Measures

Environmental mitigation measures were implemented in the reporting period.

Environmental Complaints / Feedback Cases

During the reporting period, there was one environmental feedback case regarding the operation of Lamma Power Station as summarized in Section 4.6. The reported issue was satisfactorily addressed.

Future key issues

Key issues to be considered in the coming months include:

Air Impact

- To continuously carry out the air quality monitoring for Units L2, L4 and L5.

Water Impact

- To continuously carry out the water quality monitoring for FGD WWT plant.

Concluding Remarks

The environmental performance of the projects was generally satisfactory.

1. INTRODUCTION

The Environmental Team (hereinafter called the “ET”) was formed within The Hongkong Electric Co. Ltd (HK Electric) to undertake Environmental Monitoring and Audit for the “Operation of Lamma Power Station Units L4 & L5 Flue Gas Desulphurization Plant Retrofit Project” under the requirements of Clause 2.18 of Environmental Permit (EP) No. EP-248/2006 and “Operation of Lamma Power Station Unit L2 Flue Gas Desulphurization Plant Retrofit Project” under the requirements of Clause 2.10 of Environmental Permit (EP) No. EP-287/2007.

This report summarizes the environmental monitoring and audit work for the said Projects for the period from July to September 2022.

1.1 Background

The Projects involves retrofitting the three existing coal-fired generating Units L2, L4 and L5 of Lamma Power Station with Flue Gas Desulphurisation (FGD) plants for reducing sulphur dioxide emissions in support of Government policy to improve the air quality of the Pearl River Delta.

The Projects include the installation and operation of FGD plants with flue gas desulphurization efficiency of 90% for the three coal-fired Units L2, L4 & L5 to reduce the overall SO₂ emissions from Lamma Power Station. The process adopted for the FGD plants is “Wet Limestone-Gypsum”, a technology which has already been used in, and proved effective and reliable for the existing coal-fired units L6, L7 & L8. The flue gas from the boiler is directed to the FGD absorber inside which removal of SO₂ is take place by reaction with limestone slurry. After passing through the absorber, the treated flue gas is heated up by a gas-gas heater to over 80°C at boiler rated capacity and directed back to the existing chimney for discharge to the atmosphere. [Figure 1.1a](#), [Figure 1.1b](#), [Figure 1.2a](#), [Figure 1.2b](#) and [Figure 1.3](#) show the location and schematic of the FGD plants.

Wastewater filtrated from the reacted limestone slurry, i.e. gypsum slurry, is produced and it is directed to the existing FGD wastewater treatment plant (WWTP). The FGD WWTP is designed to treat the effluent from FGD plants by alkalization, precipitation and neutralization processes. The schematic diagram of the FGD WWTP is illustrated in [Figure 1.4](#).

The additional equipment for the FGD Plants retrofit projects for Units L2, L4 and L5 includes:

- Three sets of FGD absorbers and associated ductworks
- Three sets of booster fans
- Three sets of gas-gas heaters
- Two FGD Switchgear and Equipment Buildings
- Gypsum dewatering system comprising two sets of hydrocyclones and belt filters

1.2 Project Organisation

The management structure to oversee the Projects includes the following:

- Environmental Protection Department (The Authority);

- General Manager (Corporate Development) (The official contact person between HK Electric and EPD);
- Environmental Team Leader (ET Leader);
- Environmental Team (ET).

The organization chart for the Operation EM&A programme is shown in [Figure 1.5](#).

1.3 Plant Availability during the Reporting Period

L2, L4 and L5 were out of service during the following period:

Unit	Period	Remark
L2	1/9/2022 00:15 to 7/9/2022 23:01	Boiler survey
L4	18/08/2022 05:01 to 25/08/2022 04:48	Turbine valve overhaul
L4	18/9/2022 00:09 to 19/9/2022 05:53	Boiler submerged scraper conveyor inspection
L5	19/9/2022 04:13 to 30/9/2022 23:59	Unit overhaul

1.4 Malfunction/Outage Records of Pollution Control Equipment

Equipment	Period	Cause	Actions Taken
L4 FGD	04:48 on 26/08/2022 to 21:24 on 26/08/2022	FGD plant bypassed for defect rectification	EPD was informed on 05/09/2022
L4 FGD	07:01 on 29/09/2022 to 14:20 on 30/09/2022	FGD plant bypassed for Gas-Gas heater maintenance	EPD was informed on 05/10/2022
L5 FGD	03:35 on 30/07/2022 to 03:42 on 30/07/2022	Routine damper exercise	EPD was informed on 02/08/2022
L5 FGD	03:02 on 10/09/2022 to 03:05 on 10/09/2022	Routine damper exercise	EPD was informed on 05/10/2022

1.5 Summary of EM&A Requirements

Environmental Monitoring and Audit (EM&A) requirements have been discussed in the Environmental Impact Assessment (EIA) Report/ Project Profile for the Projects. The assessment results indicate that environmental monitoring works required for the EM&A programmes of these Projects are already in place or would be implemented under Lamma Power Station Extension Environmental Permit or environmental licenses for the operation of the existing Lamma Power Station. Such monitoring works are considered adequate for the Projects and no additional EM&A activities are required. Hence, environmental monitoring for air quality and water quality are carried out for the purpose of this EM&A program as well as for fulfilling the requirements stipulated in the relevant licences.

The EM&A monitoring work for air and water quality are described in [Section 2](#) and [Section 3](#) respectively.

The following environmental audits are summarized in [Section 4](#) of the report:

- Environmental monitoring results;
- The status of environmental licensing and permits for the Projects;
- The implementation status of environmental protection and pollution control / mitigation measures.

The future key issues for the Projects will be reported in [Section 5](#) of this report.

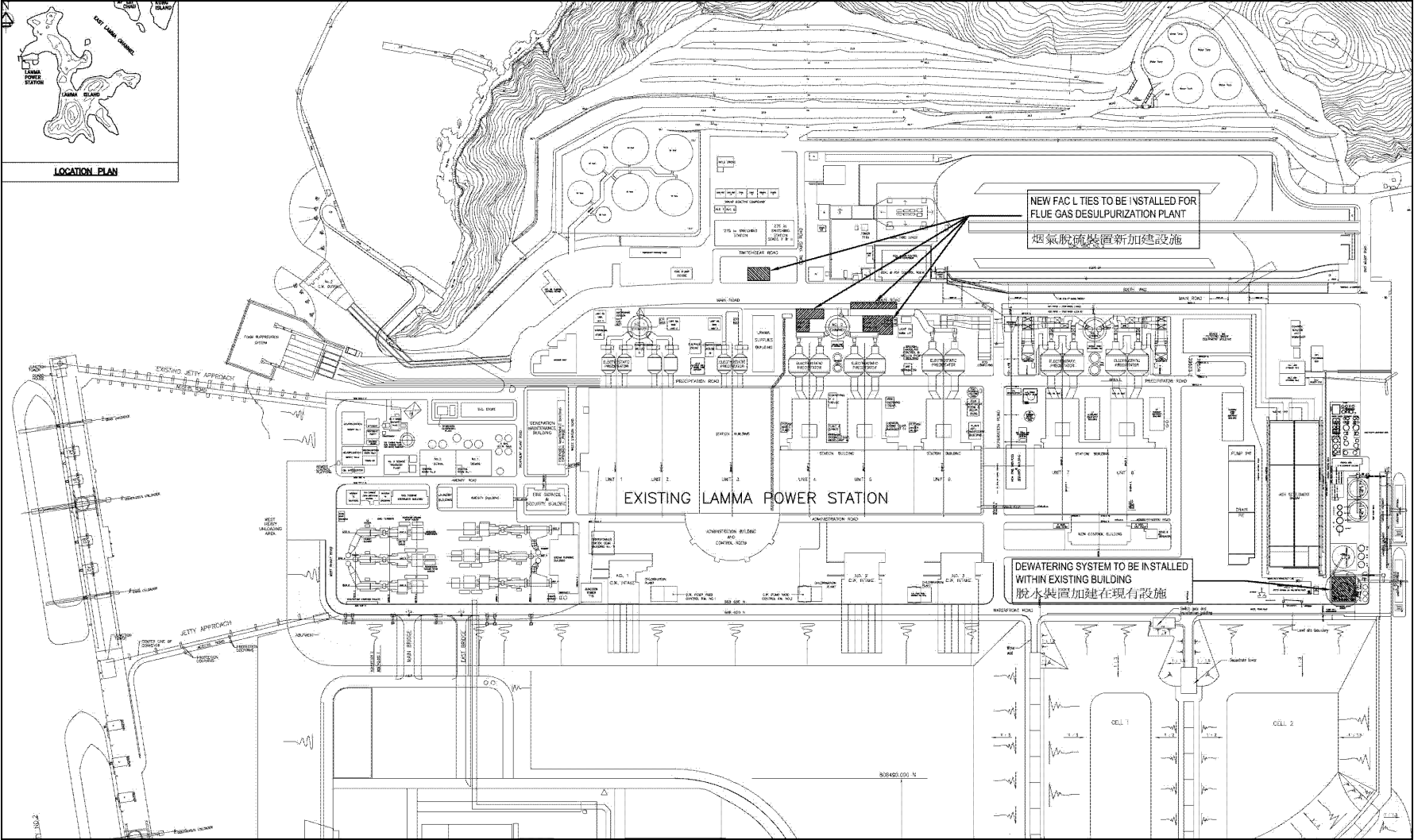


Figure 1.1a Location of New Facilities for L4 & L5 FGD Plants

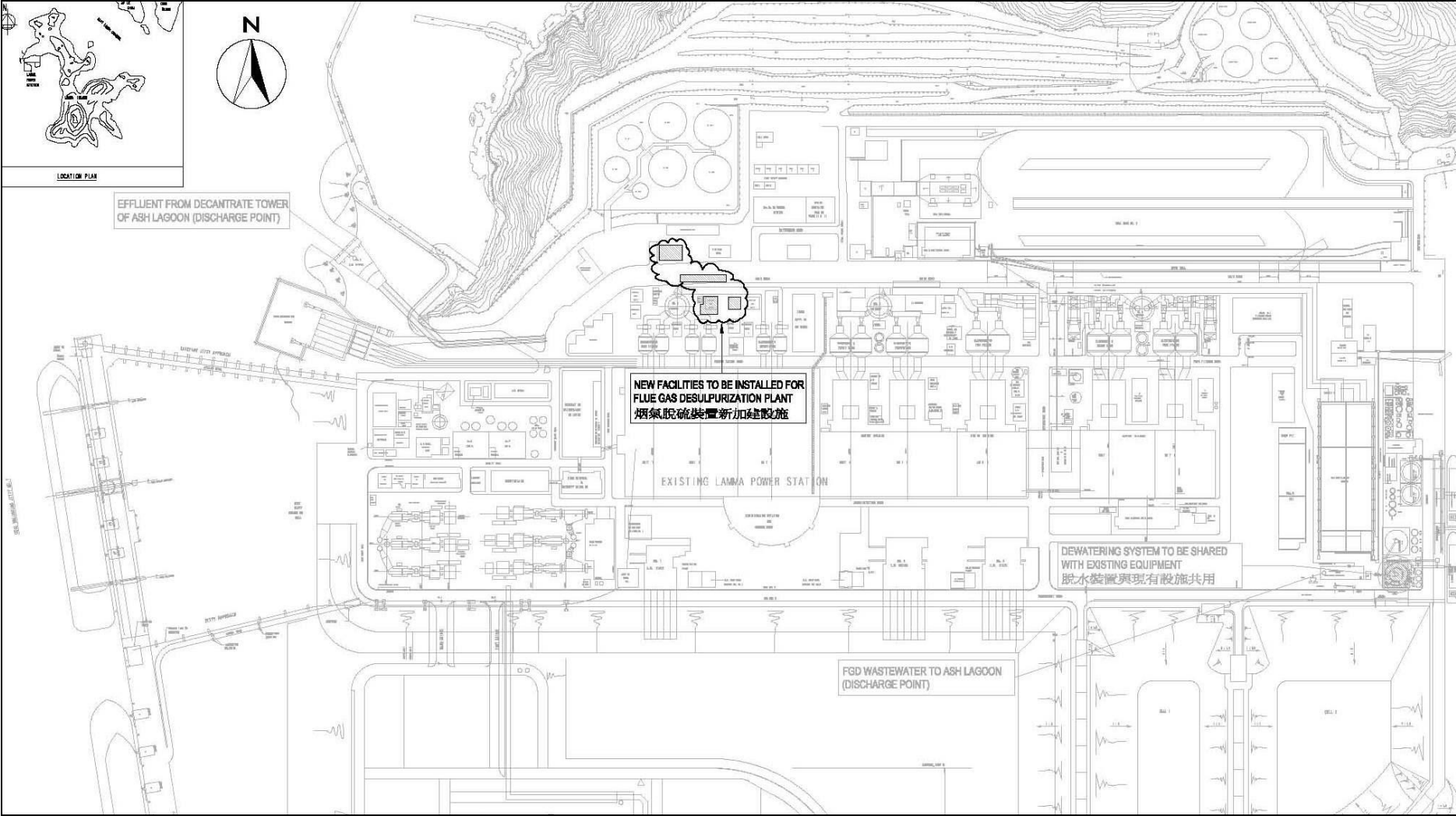


Figure 1.1b Location of New Facilities for L2 FGD Plant

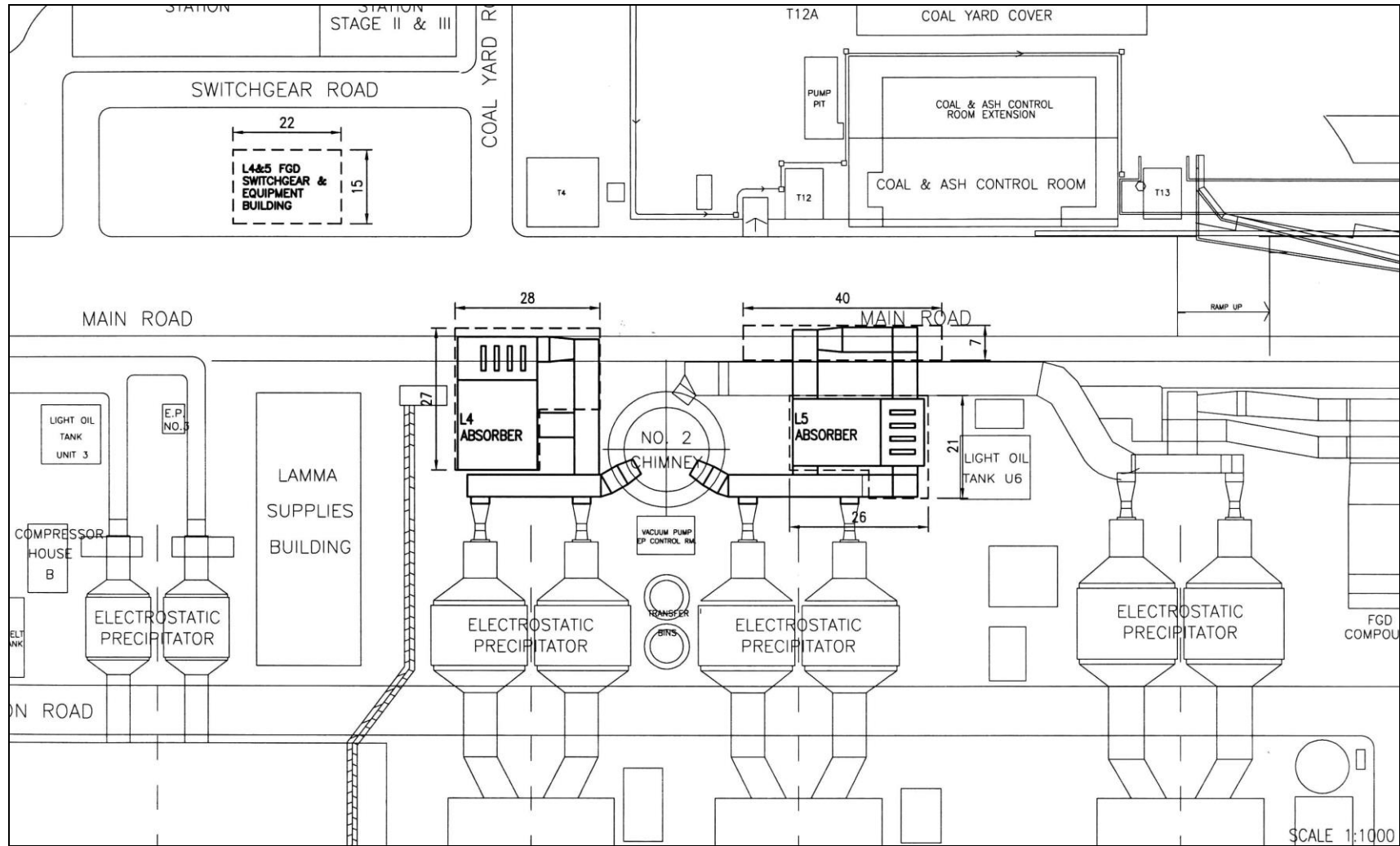


Figure 1.2a General Arrangement of L4 & L5 FGD Plants

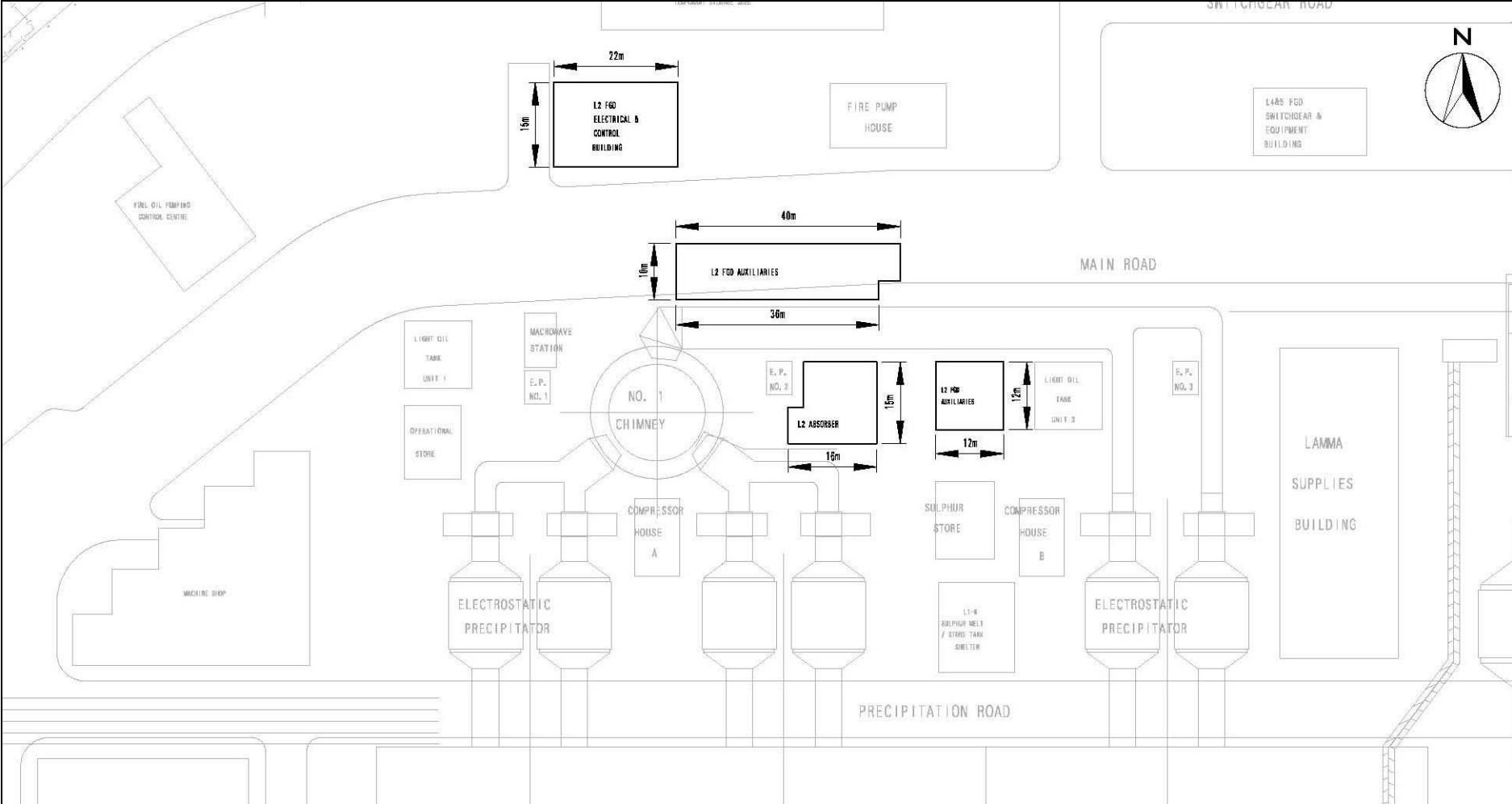


Figure 1.2b General Arrangement of L2 FGD Plant

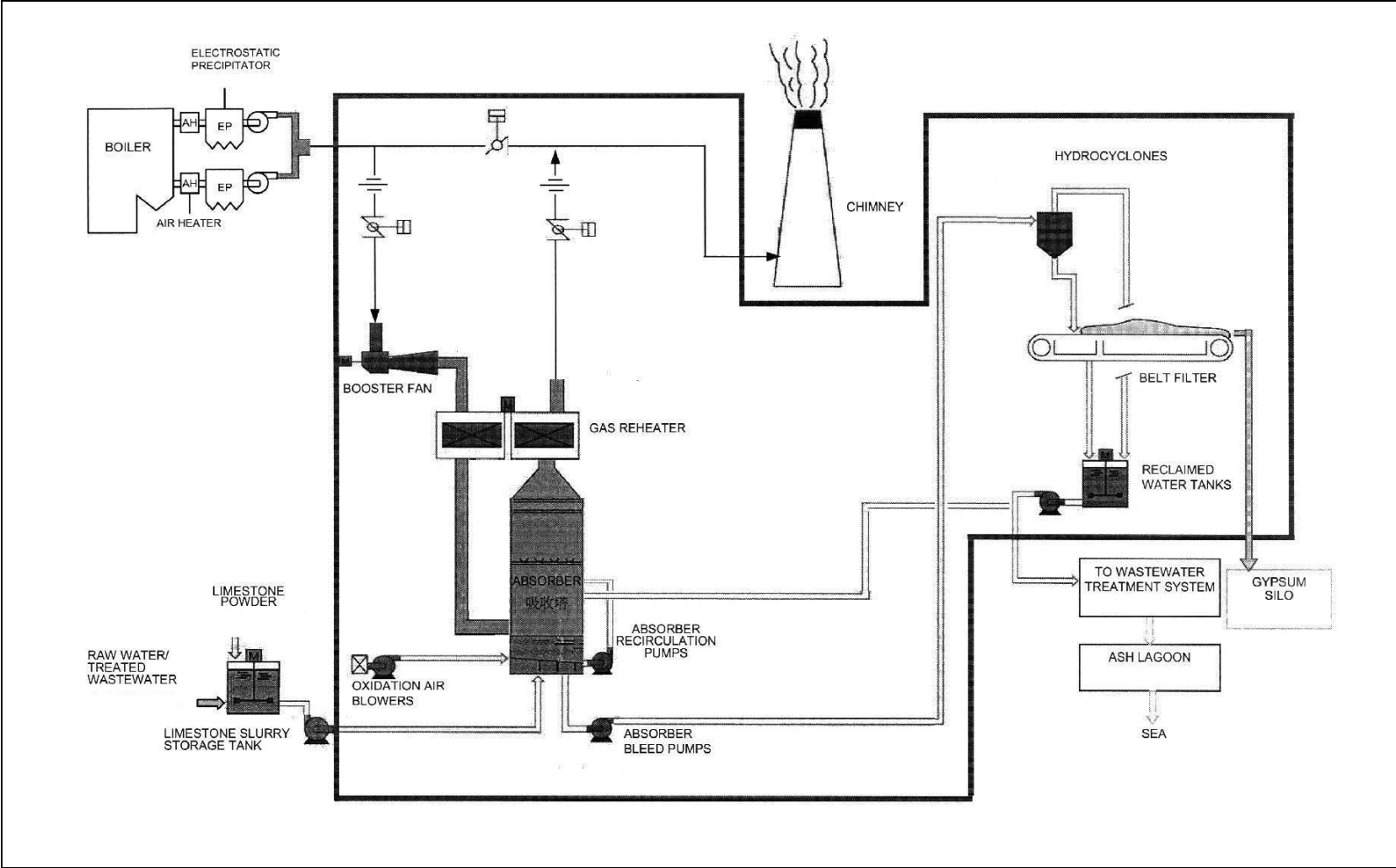


Figure 1.3 Schematic Diagram of the L2, L4 & L5 FGD Plant

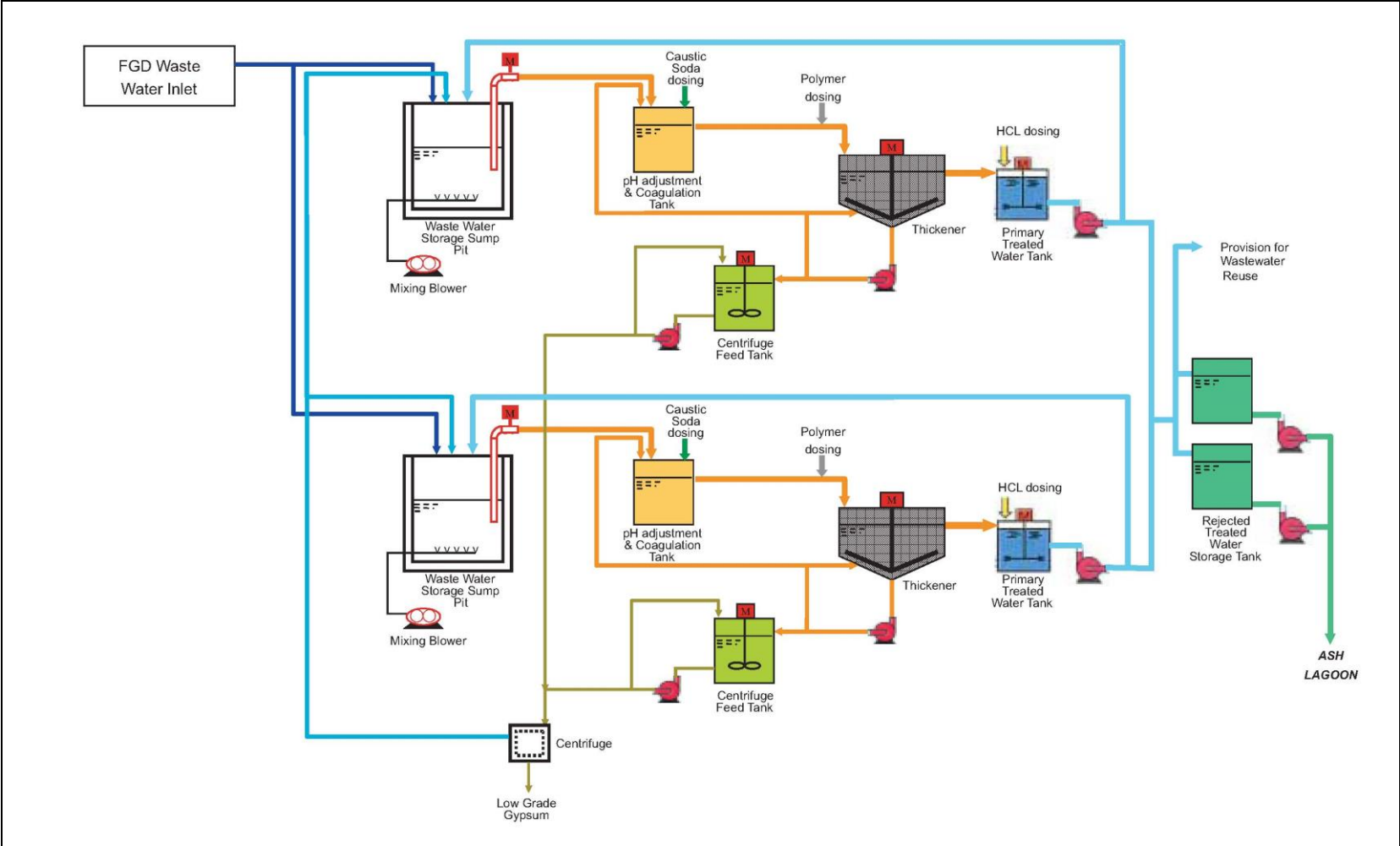


Figure 1.4 Simplified Schematic Diagram of FGD Wastewater Treatment Plant

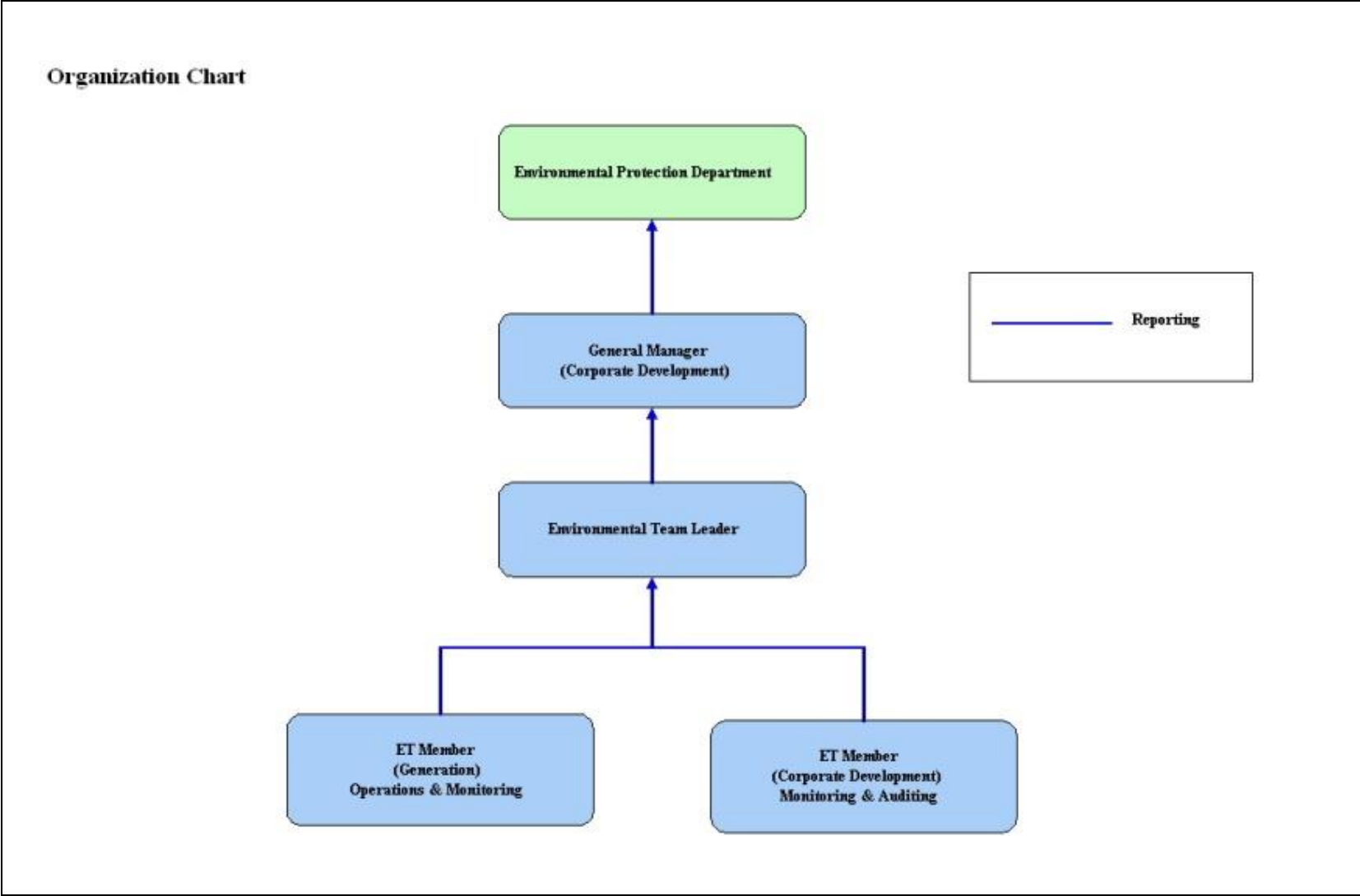


Figure 1.5 Organization Structure at Operational Phase of the Projects

2. AIR QUALITY

2.1 Monitoring Requirements

Since the Projects will bring a general air quality improvement, no additional EM&A activities are considered required, besides those already in place, such as those required by specified process licenses for the operation of the existing Lamma Power Station. Total Suspended Particulate (TSP) monitoring at East Gate and Reservoir area of Lamma Power Station is no longer required under the current SP Licence L-7-002(13). It is agreed with EPD that the results of continuous Respirable Suspended Particulate (RSP) monitoring at Lamma Power Station would be reported. In accordance with the requirements stipulated in the Specified Processes Licence issued under Air Pollution Control Ordinance, various operation parameters as stated in [Table 2.1](#) were monitored. Those parameters have to be checked against the Action/Limit Levels are shown in [Appendix A](#).

Table 2.1 Air Quality Monitoring Parameters and Frequency

Sources of Emission	Parameter	Frequency
Steam boilers L2, L4 & L5	Particulate	Once / year
	Particulate (Opacity)	Continuous
	SO ₂	Continuous
	NO _x expressed as NO ₂ (For L4 and L5 only)	Continuous
Fugitive Dust (Coal, PFA, Limestone, gypsum)	Respirable Suspended Particulate	Continuous
Chimney emissions	Ambient air	Continuous at existing ambient air monitoring stations
	SO ₂	
	NO ₂	

2.2 Summary of Results and Observations

Monitoring of various parameters as listed in [Table 2.1](#) above was conducted during the operation of Units L2, L4 and L5 in the reporting period. A summary of monitoring data is shown in [Appendix B](#).

No Action/Limit Level exceedance was recorded in the reporting period.

3. WATER QUALITY

3.1 Monitoring Requirements

According to the EIA Report/ Project Profile for the Projects, the current monitoring programme for the Lamma Power Station can cover the Projects and no additional EM&A measures are required besides those already in place. Hence, the EM&A work on water quality should strictly follow the relevant monitoring requirements stipulated in the discharge licence for Ash Lagoon issued under the Water Pollution Control Ordinance (WPCO).

Water quality monitoring was carried out for FGD Waste Water Treatment Plant (WWTP) in the reporting period. The parameters stated in [Table 3.1](#) were monitored and checked against the Action/Limit Levels as given in [Appendix A](#).

Table 3.1 Water Quality Monitoring Parameters and Frequencies

Item	Parameters	Frequencies
1	pH	Daily
2	Suspended Solids	Daily
3	Iron	Monthly
4	Barium	Monthly
5	Mercury	Monthly
6	Cadmium	Monthly
7	Cyanide	Monthly
8	Total Phosphorus	Monthly
9	Total Nitrogen	Monthly

3.2 Summary of Results and Observations

Monitoring of various parameters as listed in [Table 3.1](#) above was carried out during the discharge of the WWTP in the reporting period. A summary of the data is shown in [Appendix C](#).

The data recorded for the monitoring parameters were all below their corresponding Action/Limit Levels. No Action/Limit level exceedance was recorded in the reporting period. The effluent quality was generally satisfactory.

4. ENVIRONMENTAL AUDIT

4.1 Review of Environmental Monitoring Procedures

The environmental monitoring procedures were regularly reviewed by the Environmental Team. No modification to the existing monitoring procedures was recommended.

4.2 Assessment of Environmental Monitoring Results

Monitoring results for Air Quality and Water Quality

The environmental monitoring results for air quality and water quality are presented in [Sections 2 and 3](#) respectively are summarized in [Table 4.1](#).

Table 4.1 Summary of Action/Limit Level Exceedances on Monitoring Parameters

Item	Parameter Monitored	Monitoring Period	No. of Exceedances In		Event/Action Plan Implementation Status and Results
			Action Level	Limit Level	
Air					
1	Annual analysis of dust particulate emission rates at chimney stacks.	01/07/22-30/09/22	N.A.	0	PM stack sampling tests for L4 and L5 were conducted on 17/06/2022 and 14/06/2022 respectively.
2	Continuous monitoring of opacity, NOx, SO2 and CO2 in the flue gas at the chimney stacks	01/07/22-30/09/22	0	0	
3	Ambient SO2 & NOx monitoring at the Peak, Queen Mary Hospital, Victoria Road, Chung Hom Kok, Ap Lei Chau and Cheung Chau.	01/07/22-30/09/22	0	0	
Water					
1	pH in WWTP Effluent	01/07/22-30/09/22	0	0	
2	Suspended Solids in WWTP Effluent	01/07/22-30/09/22	0	0	

Item	Parameter Monitored	Monitoring Period	No. of Exceedances In		Event/Action Plan Implementation Status and Results
			Action Level	Limit Level	
3	Iron in WWTP Effluent	01/07/22-30/09/22	0	0	
4	Barium in WWTP Effluent	01/07/22-30/09/22	0	0	
5	Mercury in WWTP Effluent	01/07/22-30/09/22	0	0	
6	Cadmium in WWTP Effluent	01/07/22-30/09/22	0	0	
7	Cyanide in WWTP Effluent	01/07/22-30/09/22	0	0	
8	Total Phosphorus in WWTP Effluent	01/07/22-30/09/22	0	0	
9	Total Nitrogen in WWTP Effluent	01/07/22-30/09/22	0	0	

Waste Management Records

The quantity of FGD gypsum and sludge collected for reuse by contractor in the reporting period are shown in [Table 4.2](#).

Table 4.2 Amount of Gypsum and Sludge Collected for Reuse by Contractor

Period	Amount of Gypsum Collected	Amount of Sludge Collected
July 2022	3,850.60 MT	68.80 MT
August 2022	6,293.13 MT	0 MT
September 2022	3,259.01 MT	50.36 MT

4.3 Status of Environmental Licensing and Permitting

All permits/licenses obtained as of September 2022 are summarised in [Table 4.3](#).

Table 4.3 Summary of Environmental Licensing and Permit Status

Description	Permit / Licence No.	Valid Period		Status
		From	To	
Environmental Permit for Units L4/5 FGD Plants Retrofit	EP-248/2006	25/04/2006	-	Valid
Environmental Permit for Unit L2 FGD Plant Retrofit	EP-287/2007	02/10/2007	-	Valid
Specified Process Licence issued under APCO	L-7-002(13)	01/01/2021	31/12/2022	Valid
WPCO discharge licence for Ash Lagoon	WT00039618-2021	11/02/2022	31/12/2026	Valid

4.4 Implementation Status of Environmental Mitigation Measures

Mitigation measures detailed in the EIA Report and EP are required to be implemented. A summary of the Environmental Mitigation Implementation Schedule (EMIS) is presented in [Appendix D](#).

4.5 Implementation Status of Event/Action Plan

A list of specific actions in the event of exceedances of the various threshold levels for specific emission and discharge sources is given in [Appendix A](#).

As no Action/Limit level exceedance was recorded, no action has been devised.

4.6 Implementation Status of Environmental Complaint Handling Procedures

During the reporting period, there was one environmental feedback case regarding the operation of Lamma Power Station as summarized in Table 4.4. The reported issue was satisfactorily addressed.

Table 4.4 Environmental Complaint(s) / Feedback Cases(s) Received

Case Reference / Date, Time Received / Date, Time Concerned	Descriptions / Actions Taken	Conclusion / Status
<i>Reference:</i> LFB20220901	EPD relayed to HK Electric a concern from the public about “water around Lamma P/S being smelly and	Nothing abnormal was identified. EPD was explained

<p><i>Received:</i> On 22/09/2022 (pm) via EPD</p> <p><i>Concerned:</i> On 18/09/2022</p>	<p>oily”. HK Electric conducted immediate checks on the facilities, plant operations and site activities at Lamma P/S. No abnormalities that might have caused the alleged situation were identified and EPD was advised of the findings accordingly. Subsequently, EPD conveyed to HK Electric a message from the enquirer that the crew on a working boat near a pier of Lamma P/S were seen to throw polystyrene food boxes into the sea. HK Electric then carried out inspections and found no abnormalities. Nevertheless, all relevant contractors had been reminded to preserve environmental hygiene and not to commit marine littering.</p>	<p>of the findings and the case was closed.</p>
----------------------------------------------------------------------------------------------------------------------------------------------------------	------------------------------------------------------------------------------------------------------------------------------------------------------------------------------------------------------------------------------------------------------------------------------------------------------------------------------------------------------------------------------------------------------------------------------------------------------------------------------------------------------------------------------------------------------------------------------------------------------------------------------------------------------	-------------------------------------------------

Table 4.5 Outstanding Environmental Complaint(s) / Feedback Case(s) Carried Over

Case Reference / Date, Time Received / Date, Time Concerned	Descriptions / Actions Taken	Conclusion / Status
-	-	-

5. FUTURE KEY ISSUES

5.1 Outage Plan for the coming 3 months

Unit	Period	Remark
L5	20/09/2022 to 11/10/2022	Statutory inspection
L4	21/12/2022 to 30/12/2022	Statutory inspection

5.2 Key issues for the coming 3 months

Key issues to be considered in the coming 3 months include:

Air Impact

- To continuously carry out the air quality monitoring for Units L2, L4 and L5.

Water Impact

- To continuously carry out the water quality monitoring for FGD Waste Water Treatment Plant.

6. CONCLUSION

Environmental monitoring was performed as required in the reporting period from July to September 2022. All monitoring results were checked and reviewed.

No Action/Limit level exceedance on air quality parameters were recorded in the reporting period.

No Action/Limit level exceedance on water quality parameters were recorded in the reporting period.

Environmental mitigation measures recommended in the EIA Report and EP were implemented in the reporting period.

During the reporting period, there was one environmental feedback case regarding the operation of Lamma Power Station as summarized in Section 4.6. The reported issue was satisfactorily addressed.

No prosecution was received for the Projects in the reporting period.

The environmental performance of the Projects was generally satisfactory.

Appendix A Event/Action Plans in Response to Exceedance of AL Levels

A.1 Air

Source of Emissions	Parameters to be Monitored	Frequency	Concentration Not to Be Exceeded	Action	Limit	Proposed Action
Steam boilers L2, L4 and L5	Particulate	once/year	50 mg/Nm ³	-	50	ET Leader informs Generation Division at action level. Maintenance initiated. Temporary load shift until pollution control equipment repaired and reinstated. Report to EPD.
	Particulate (Opacity)	continuous	40% (bihourly)	35	40	
	SO ₂	continuous	200 mg/Nm ³ (1h)	190	200	
	NO _x expressed as NO ₂ (For L4 and L5 only)	continuous	615 mg/Nm ³ (1h)	585	615	
Chimney emissions	Ambient air	Continuous at existing ambient air monitoring stations				ET to review data on post-hoc basis and check for possible power station contribution.
	SO ₂		800 (µg/m ³) (1h)	-	800	
	NO ₂		300 (µg/m ³) (1h)	-	300	

A.2 Water

Source of Discharges	Parameters to be Monitored	Frequency	Concentration Not to Be Exceeded	Action	Limit	Proposed Action
FGD Wastewater Treatment Plant	pH	Daily	6-9	-	6-9	If pH exceeds limit level, consideration to be given to adjust chemical dosing. ET Leader inform Generation Division and investigation be initiated to identify and remedy cause. For all other parameters except pH, Generation Division to be informed, frequency of monitoring to be increased, and investigations to be initiated to identify cause and remedy if concentration exceeds action level. If problem persists to exceed the limit level, ET Leader verbally informs EPD and ensures remedial actions implemented.
	Suspended Solids	Daily	30 mg/L	25	30	
	Iron	Monthly	4 mg/L	3.6	4	
	Barium	Monthly	1.5 mg/L	1.3	1.5	
	Mercury	Monthly	0.005 mg/L	0.0045	0.005	
	Cadmium	Monthly	0.005 mg/L	0.0045	0.005	
	Cyanide	Monthly	0.1 mg/L	0.09	0.1	
	Total Phosphorus	Monthly	8 mg/L	7.2	8	
	Total Nitrogen	Monthly	400 mg/L	360	400	

Appendix B

Air Quality Monitoring Results

B.1 Ambient Respirable Suspended Particulate Monitoring at Lamma Power Station

Date: Second Quarter of 2022 (July – September)

Date	RSP concentration ($\mu\text{g}/\text{m}^3$)	
	Reservoir	East Gate
01/07/2022	14	18
02/07/2022	12	44
03/07/2022	18	46
04/07/2022	20	44
05/07/2022	19	43
06/07/2022	16	14
07/07/2022	14	24
08/07/2022	7	7
09/07/2022	9	17
10/07/2022	8	12
11/07/2022	8	7
12/07/2022	8	11
13/07/2022	9	14
14/07/2022	9	18
15/07/2022	11	23
16/07/2022	15	31
17/07/2022	17	37
18/07/2022	17	32
19/07/2022	16	14
20/07/2022	10	15
21/07/2022	11	11
22/07/2022	14	28
23/07/2022	16	36
24/07/2022	20	32
25/07/2022	15	26
26/07/2022	11	10
27/07/2022	11	21
28/07/2022	14	31
29/07/2022	21	38
30/07/2022	23	27
31/07/2022	32	44

Date	RSP concentration ($\mu\text{g}/\text{m}^3$)	
	Reservoir	East Gate
01/08/2022	14	13
02/08/2022	11	26
03/08/2022	13	18
04/08/2022	12	15
05/08/2022	8	14
06/08/2022	8	18
07/08/2022	10	25
08/08/2022	10	17
09/08/2022	10	17
10/08/2022	17	38
11/08/2022	11	23
12/08/2022	10	15
13/08/2022	11	18
14/08/2022	13	24
15/08/2022	12	16
16/08/2022	12	16
17/08/2022	8	11
18/08/2022	9	16
19/08/2022	8	11
20/08/2022	11	21
21/08/2022	13	30
22/08/2022	15	54
23/08/2022	27	49
24/08/2022	30	17
25/08/2022	19	51
26/08/2022	17	23
27/08/2022	13	11
28/08/2022	24	14
29/08/2022	13	18
30/08/2022	12	13
31/08/2022	28	32

Date	RSP concentration ($\mu\text{g}/\text{m}^3$)	
	Reservoir	East Gate
01/09/2022	24	41
02/09/2022	39	42
03/09/2022	26	65
04/09/2022	21	57
05/09/2022	30	56
06/09/2022	36	55
07/09/2022	18	19
08/09/2022	18	21
09/09/2022	30	40
10/09/2022	37	40
11/09/2022	35	33
12/09/2022	49	47
13/09/2022	41	60
14/09/2022	38	##
15/09/2022	48	49
16/09/2022	44	86
17/09/2022	43	68
18/09/2022	35	64
19/09/2022	48	41
20/09/2022	38	34
21/09/2022	34	28
22/09/2022	30	25
23/09/2022	31	60
24/09/2022	34	45
25/09/2022	39	53
26/09/2022	28	34
27/09/2022	26	25
28/09/2022	27	27
29/09/2022	31	36
30/09/2022	24	28

Remark: ## - No valid daily average of RSP due to equipment fault

B.2 Unit L2, L4 and L5 Stack Monitoring at Lamma Power Station

B.2.1 Monthly Summary of Stack NOx and SO2 for Unit L5

Date	Daily Maximum		
	SO2 concentration (mg/Nm3) #	NOx concentration (mg/Nm3) #	Opacity (%)
1/7/2022	21	250	6
2/7/2022	10	268	6
3/7/2022	*	*	*
4/7/2022	9	290	7
5/7/2022	13	222	6
6/7/2022	14	229	6
7/7/2022	18	256	6
8/7/2022	21	275	6
9/7/2022	29	265	7
10/7/2022	22	189	5
11/7/2022	23	253	6
12/7/2022	28	353	6
13/7/2022	24	291	7
14/7/2022	35	296	6
15/7/2022	34	283	6
16/7/2022	21	252	6
17/7/2022	*	*	*
18/7/2022	19	279	8
19/7/2022	22	267	7
20/7/2022	22	249	6
21/7/2022	30	299	6
22/7/2022	82	286	7
23/7/2022	82	234	7
24/7/2022	94	200	9
25/7/2022	101	204	9
26/7/2022	97	220	7
27/7/2022	55	258	7
28/7/2022	39	255	7
29/7/2022	24	198	8
30/7/2022	21	334	7
31/7/2022	*	*	*

Date	Daily Maximum		
	SO2 concentration (mg/Nm3) [#]	NOx concentration (mg/Nm3) [#]	Opacity (%)
1/8/2022	27	240	7
2/8/2022	24	276	7
3/8/2022	34	408	7
4/8/2022	28	329	7
5/8/2022	28	302	7
6/8/2022	29	239	7
7/8/2022	*	*	*
8/8/2022	29	222	6
9/8/2022	*	*	*
10/8/2022	27	240	7
11/8/2022	15	273	7
12/8/2022	18	299	6
13/8/2022	*	*	*
14/8/2022	*	*	*
15/8/2022	34	284	8
16/8/2022	*	*	*
17/8/2022	19	203	7
18/8/2022	22	218	7
19/8/2022	20	241	7
20/8/2022	*	*	*
21/8/2022	*	*	*
22/8/2022	11	298	7
23/8/2022	12	176	8
24/8/2022	14	235	8
25/8/2022	11	283	7
26/8/2022	*	*	*
27/8/2022	*	*	*
28/8/2022	*	*	*
29/8/2022	38	357	8
30/8/2022	17	321	7
31/8/2022	11	229	7

Date	Daily Maximum		
	SO2 concentration (mg/Nm3) [#]	NOx concentration (mg/Nm3) [#]	Opacity (%)
1/9/2022	14	272	7
2/9/2022	15	290	6
3/9/2022	21	299	7
4/9/2022	25	257	6
5/9/2022	42	305	6
6/9/2022	67	286	6
7/9/2022	55	291	10
8/9/2022	45	328	10
9/9/2022	53	334	10
10/9/2022	68	228	11
11/9/2022	76	297	10
12/9/2022	96	321	10
13/9/2022	92	333	12
14/9/2022	90	340	11
15/9/2022	72	297	11
16/9/2022	85	301	10
17/9/2022	97	303	9
18/9/2022	75	322	10
19/9/2022	54	338	9
20/9/2022	*	*	*
21/9/2022	*	*	*
22/9/2022	*	*	*
23/9/2022	*	*	*
24/9/2022	*	*	*
25/9/2022	*	*	*
26/9/2022	*	*	*
27/9/2022	*	*	*
28/9/2022	*	*	*
29/9/2022	*	*	*
30/9/2022	*	*	*

Note: # - Hourly average value. Expressed as at 0°C, 101.325kPa, dry and corrected to 12% CO₂ condition.

* - Unit L5 was not on load

B.2.2 Monthly Summary of Stack NOx and SO2 for Unit L4

Date	Daily Maximum		
	SO2 concentration (mg/Nm3) #	NOx concentration (mg/Nm3) #	Opacity (%)
1/7/2022	*	*	*
2/7/2022	*	*	*
3/7/2022	*	*	*
4/7/2022	34	252	9
5/7/2022	*	*	*
6/7/2022	16	168	11
7/7/2022	*	*	*
8/7/2022	*	*	*
9/7/2022	51	281	11
10/7/2022	*	*	*
11/7/2022	*	*	*
12/7/2022	*	*	*
13/7/2022	*	*	*
14/7/2022	*	*	*
15/7/2022	*	*	*
16/7/2022	42	231	9
17/7/2022	*	*	*
18/7/2022	*	*	*
19/7/2022	*	*	*
20/7/2022	*	*	*
21/7/2022	37	230	11
22/7/2022	46	352	11
23/7/2022	27	275	12
24/7/2022	*	*	*
25/7/2022	33	331	9
26/7/2022	36	221	10
27/7/2022	22	246	11
28/7/2022	22	354	11
29/7/2022	42	297	11
30/7/2022	*	*	*

Date	Daily Maximum		
	SO ₂ concentration (mg/Nm ³) [#]	NO _x concentration (mg/Nm ³) [#]	Opacity (%)
1/8/2022	23	324	10
2/8/2022	20	325	12
3/8/2022	29	194	11
4/8/2022	*	*	*
5/8/2022	*	*	*
6/8/2022	*	*	*
7/8/2022	*	*	*
8/8/2022	*	*	*
9/8/2022	33	293	11
10/8/2022	*	*	*
11/8/2022	*	*	*
12/8/2022	*	*	*
13/8/2022	*	*	*
14/8/2022	*	*	*
15/8/2022	*	*	*
16/8/2022	*	*	*
17/8/2022	*	*	*
18/8/2022	*	*	*
19/8/2022	*	*	*
20/8/2022	*	*	*
21/8/2022	*	*	*
22/8/2022	*	*	*
23/8/2022	*	*	*
24/8/2022	*	*	*
25/8/2022	*	*	*
26/8/2022	38	260	12
27/8/2022	*	*	*
28/8/2022	*	*	*
29/8/2022	*	*	*
30/8/2022	*	*	*
31/8/2022	*	*	*

Date	Daily Maximum		
	SO2 concentration (mg/Nm3) [#]	NOx concentration (mg/Nm3) [#]	Opacity (%)
1/9/2022	*	*	*
2/9/2022	*	*	*
3/9/2022	*	*	*
4/9/2022	*	*	*
5/9/2022	19	234	11
6/9/2022	80	363	15
7/9/2022	88	400	9
8/9/2022	49	548	13
9/9/2022	114	553	8
10/9/2022	*	*	*
11/9/2022	52	352	8
12/9/2022	58	372	13
13/9/2022	43	414	12
14/9/2022	25	558	10
15/9/2022	61	612	11
16/9/2022	32	511	8
17/9/2022	63	610	10
18/9/2022	*	*	*
19/9/2022	*	*	*
20/9/2022	*	*	*
21/9/2022	68	317	12
22/9/2022	35	357	8
23/9/2022	42	293	9
24/9/2022	*	*	*
25/9/2022	*	*	*
26/9/2022	29	278	8
27/9/2022	15	222	8
28/9/2022	19	298	8
29/9/2022	*	*	*
30/9/2022	*	*	*

Note: # - Hourly average value. Expressed as at 0°C, 101.325kPa, dry and corrected to 12% CO₂ condition.

* - Unit L4 was not on load.

B.2.3 Monthly Summary of Stack SO2 for Unit L2

Date	Daily Maximum	
	SO2 concentration (mg/Nm3) [#]	Opacity (%)
1/7/2022	*	*
2/7/2022	*	*
3/7/2022	*	*
4/7/2022	*	*
5/7/2022	*	*
6/7/2022	*	*
7/7/2022	*	*
8/7/2022	*	*
9/7/2022	*	*
10/7/2022	*	*
11/7/2022	*	*
12/7/2022	*	*
13/7/2022	*	*
14/7/2022	*	*
15/7/2022	*	*
16/7/2022	*	*
17/7/2022	*	*
18/7/2022	*	*
19/7/2022	*	*
20/7/2022	*	*
21/7/2022	*	*
22/7/2022	*	*
23/7/2022	*	*
24/7/2022	*	*
25/7/2022	*	*
26/7/2022	63	16
27/7/2022	*	*
28/7/2022	*	*
29/7/2022	*	*
30/7/2022	79	15

Date	Daily Maximum	
	SO2 concentration (mg/Nm3) [#]	Opacity (%)
1/8/2022	*	*
2/8/2022	*	*
3/8/2022	*	*
4/8/2022	*	*
5/8/2022	*	*
6/8/2022	*	*
7/8/2022	*	*
8/8/2022	*	*
9/8/2022	*	*
10/8/2022	*	*
11/8/2022	*	*
12/8/2022	*	*
13/8/2022	*	*
14/8/2022	*	*
15/8/2022	*	*
16/8/2022	*	*
17/8/2022	*	*
18/8/2022	*	*
19/8/2022	*	*
20/8/2022	*	*
21/8/2022	*	*
22/8/2022	*	*
23/8/2022	*	*
24/8/2022	*	*
25/8/2022	*	*
26/8/2022	*	*
27/8/2022	*	*
28/8/2022	*	*
29/8/2022	*	*
30/8/2022	*	*
31/8/2022	*	*

Date	Daily Maximum	
	SO2 concentration (mg/Nm3) [#]	Opacity (%)
1/9/2022	*	*
2/9/2022	*	*
3/9/2022	*	*
4/9/2022	*	*
5/9/2022	*	*
6/9/2022	*	*
7/9/2022	*	*
8/9/2022	*	*
9/9/2022	*	*
10/9/2022	*	*
11/9/2022	*	*
12/9/2022	*	*
13/9/2022	*	*
14/9/2022	*	*
15/9/2022	*	*
16/9/2022	*	*
17/9/2022	*	*
18/9/2022	*	*
19/9/2022	*	*
20/9/2022	*	*
21/9/2022	*	*
22/9/2022	*	*
23/9/2022	*	*
24/9/2022	*	*
25/9/2022	*	*
26/9/2022	*	*
27/9/2022	*	*
28/9/2022	*	*
29/9/2022	*	*
30/9/2022	*	*

Note: # - Hourly average value. Expressed as at 0°C, 101.325kPa, dry and corrected to 12% CO₂ condition.

* - Unit L2 was not on load.

B.2.4 Summary of Annual Stack Particulate Sampling

No stack particulate samplings for Units L4 & L5 were carried out in the reporting period.

.

B.3 Ambient SO₂ and NO₂ monitoring Data at Southern District and Cheung Chau

THE HONGKONG ELECTRIC COMPANY, LTD.
AIR QUALITY DATA MONTHLY TIME SERIES REPORT
MONTH: AUGUST

STATION : VICTORIA PEAK
POLLUTANT : SULPHUR DIOXIDE

YEAR : 2022
UNIT : MICROGRAMS/CUBIC METER

DAY	1	2	3	4	5	6	7	8	9	10	11	12	13	14	15	16	17	18	19	20	21	22	23	24	MEAN
1	3	3	3	3	3	3	3	3	3	3	3	4	4	4	7	15	9	8	5	3	4	8	8	6	5
2	5	4	4	5	4	3	3	4	4	4	3	4	4	4	4	4	4	5	4	4	3	3	3	4	4
3	3	3	3	3	3	3	3	5	10	M	M	5	5	4	5	3	3	3	3	3	3	3	3	4	4
4	3	3	4	4	4	4	4	4	4	3	3	4	4	5	4	4	4	3	3	3	3	3	3	4	4
5	3	3	3	3	3	3	3	3	3	3	3	3	3	3	3	3	3	3	3	3	3	3	3	4	3
6	3	3	3	3	3	3	3	3	3	3	3	3	3	3	3	3	3	3	3	3	3	3	3	4	3
7	3	3	3	3	3	3	3	3	3	3	3	M	4	3	3	3	3	3	3	3	3	3	3	4	3
8	3	3	3	3	3	3	3	3	3	3	3	3	3	3	3	3	3	3	3	3	3	3	3	4	3
9	3	3	3	3	3	3	3	3	3	3	3	3	3	3	3	3	3	3	3	3	3	3	3	4	3
10	3	3	3	3	3	3	3	3	3	3	3	3	3	3	3	3	3	3	3	3	3	3	3	4	3
11	3	3	3	3	3	3	3	3	3	3	3	3	3	3	3	3	3	3	3	3	3	3	3	4	3
12	3	3	3	3	3	3	3	3	3	3	3	3	4	4	4	4	5	4	4	3	3	3	3	4	3
13	3	3	3	3	3	3	3	3	3	3	3	4	3	3	3	4	4	4	3	3	4	3	3	5	3
14	4	3	3	3	3	3	3	3	3	3	3	5	7	5	6	8	6	5	4	5	6	4	4	5	4
15	4	3	3	4	4	3	3	3	3	3	4	4	5	6	7	8	8	7	5	4	4	4	4	4	4
16	4	4	4	4	4	4	4	4	4	3	4	4	4	4	4	4	4	3	3	3	3	3	3	3	4
17	3	3	3	3	3	3	3	3	3	3	4	4	4	4	4	4	3	3	3	3	3	3	3	4	3
18	3	3	3	3	3	3	3	3	3	4	4	4	4	4	5	5	4	4	4	3	3	3	3	3	4
19	3	3	4	3	3	3	3	3	3	4	4	4	4	3	3	3	3	3	3	3	3	3	3	3	3
20	3	3	3	3	3	3	3	4	4	3	4	3	3	3	3	3	3	3	3	3	3	3	3	4	3
21	3	3	3	3	3	3	3	3	3	3	4	3	4	3	3	4	4	4	4	3	4	3	3	5	3
22	4	4	3	3	3	4	3	4	4	4	4	4	4	4	4	4	4	4	4	4	4	4	3	5	4
23	4	4	4	4	8	6	7	6	6	7	7	7	8	8	7	7	7	6	6	6	5	5	5	6	6
24	5	5	5	5	5	5	5	5	5	5	5	5	5	4	4	5	4	4	4	3	3	3	3	3	4
25	3	3	3	3	3	3	3	3	3	3	3	3	3	3	3	3	3	3	3	3	3	3	3	3	3
26	3	3	3	3	3	3	3	3	3	3	4	3	3	3	4	4	5	4	4	4	4	4	4	4	3
27	3	3	3	3	3	3	3	3	4	4	4	5	5	5	5	5	5	4	4	4	4	4	4	4	4
28	3	3	4	4	5	5	5	6	7	7	7	8	7	7	5	5	5	4	3	3	3	3	3	3	5
29	3	3	3	3	3	3	3	3	3	3	3	3	3	4	4	4	4	4	4	4	4	4	4	4	3
30	4	4	4	4	4	4	4	6	6	7	8	7	7	6	7	5	4	4	4	4	4	4	4	4	5
31	4	4	6	4	5	6	7	6	6	6	7	7	7	5	6	6	6	6	5	4	5	7	5	5	6

MONTHLY STATISTICS:

ARITH-----PERCENTILES-----RANGE-----													STN	GEOM	PERCENT	NO. OF TIMES
MEAN	MEDIAN	MEAN	50	90	95	98	99	1-HR			24-HR	DEVIATION	VALID DATA	ABOVE	LIMIT	LEVEL
4	3	4	3	5	7	7	8	3	-	15	3	-	6	1	100	0

- NOTES: 1. FLAGS FOR INVALID DATA :
- D: DYNAMIC CALIBRATION
 - T: TELEMETRY/DATALOGGR FAULT
 - M: MAINTENANCE OR ANALYZER FAULT
 - P: POWER FAILURE

THE HONGKONG ELECTRIC COMPANY, LTD.
AIR QUALITY DATA MONTHLY TIME SERIES REPORT
MONTH: AUGUST

STATION : VICTORIA PEAK
POLLUTANT : NITROGEN DIOXIDE

YEAR : 2022
UNIT : MICROGRAMS/CUBIC METER

DAY	1	2	3	4	5	6	7	8	9	10	11	12	13	14	15	16	17	18	19	20	21	22	23	24	MEAN
1	7	7	5	6	4	5	4	5	7	5	8	14	13	14	17	44	26	25	16	13	18	26	23	15	14
2	10	7	6	13	7	5	6	9	6	6	7	9	11	22	17	12	9	15	15	12	15	8	6	6	10
3	4	M	15	6	5	7	12	41	42	M	M	32	22	20	29	25	10	8	12	13	9	12	8	16	
4	8	18	34	18	18	20	17	20	25	18	16	19	26	26	18	23	14	7	12	7	5	5	5	8	16
5	4	7	4	3	2	1	4	6	10	9	8	7	14	11	12	5	13	6	7	6	4	6	9	9	7
6	7	4	4	4	2	4	5	4	6	6	6	5	6	5	8	6	10	16	11	8	5	8	6	6	6
7	7	5	6	5	4	6	5	5	4	3	2	M	3	2	4	3	5	8	4	4	2	3	3	6	4
8	4	3	4	2	2	2	2	4	11	10	13	9	13	9	5	5	8	6	4	3	3	6	4	6	6
9	4	3	3	2	2	3	4	6	3	3	2	3	2	3	2	3	2	2	2	1	1	1	1	2	3
10	1	1	1	1	1	1	1	2	2	3	2	2	2	2	4	5	6	6	7	3	1	1	1	3	2
11	1	2	1	2	3	2	4	5	5	4	5	7	8	7	5	7	10	3	5	10	2	4	5	6	5
12	4	2	2	2	6	11	4	4	6	12	16	10	32	19	4	14	39	38	36	14	12	3	4	10	13
13	5	3	3	3	2	4	6	8	10	9	11	12	7	7	7	6	11	14	14	18	13	9	21	7	9
14	9	3	1	1	1	4	9	3	9	4	9	17	19	13	15	22	14	13	15	33	22	16	21	18	12
15	10	4	5	18	4	6	4	6	6	12	17	15	19	18	28	27	27	34	25	12	15	13	9	14	15
16	11	7	11	15	9	17	22	15	23	7	16	14	13	10	9	8	5	8	6	4	4	5	4	2	10
17	2	M	1	2	3	1	2	4	7	5	6	5	7	7	7	9	12	13	10	3	2	8	3	5	5
18	3	3	4	3	4	7	7	5	5	7	8	9	12	13	17	21	11	7	4	4	5	4	4	7	7
19	5	3	4	1	1	1	1	3	11	18	18	14	12	10	6	6	6	5	4	3	5	2	2	3	6
20	2	2	1	4	4	3	6	6	6	6	6	8	6	5	5	6	6	7	10	5	4	6	5	5	5
21	3	1	1	2	3	8	9	9	7	5	5	8	4	5	4	4	6	6	13	14	12	9	8	10	7
22	6	5	2	3	6	5	6	8	6	4	7	8	5	6	6	6	7	9	14	11	10	8	6	8	7
23	10	5	5	5	16	19	18	21	15	26	26	28	27	28	22	26	34	28	27	23	24	13	29	27	21
24	30	29	32	26	25	21	15	25	25	19	21	24	15	15	19	12	9	8	8	6	3	3	3	4	17
25	2	1	1	1	1	1	1	1	1	2	2	3	2	3	4	5	4	7	5	9	5	4	4	7	3
26	5	5	6	5	4	7	7	6	6	8	9	7	5	5	7	10	10	15	15	15	18	14	13	14	9
27	8	12	9	6	5	6	5	6	9	11	15	21	18	16	22	17	12	12	11	9	12	8	7	10	11
28	8	9	8	13	20	12	14	15	17	26	39	44	31	22	13	10	6	7	8	9	9	6	4	6	15
29	3	4	3	4	4	5	5	6	13	13	10	12	10	11	12	13	15	18	18	11	15	28	19	16	11
30	20	13	9	9	12	15	22	32	27	39	35	35	34	23	29	12	19	18	22	18	11	9	17	9	20
31	22	M	11	16	28	36	28	17	44	61	58	46	35	29	38	37	37	62	49	32	53	62	40	20	37

MONTHLY STATISTICS:

GEOM	ARITH-----PERCENTILES-----										RANGE-----			STN GEOM	PERCENT	NO. OF TIMES
MEAN	MEDIAN	MEAN	50	90	95	98	99	1-HR	24-HR	DEVIATION	VALID DATA	ABOVE	LIMIT	LEVEL		
7	7	11	7	23	29	39	44	1	-	62	2	-	37	2	99	0

- NOTES: 1. FLAGS FOR INVALID DATA :
- D: DYNAMIC CALIBRATION
 - T: TELEMETRY/DATALOGGR FAULT
 - M: MAINTENANCE OR ANALYZER FAULT
 - P: POWER FAILURE

THE HONGKONG ELECTRIC COMPANY, LTD.
AIR QUALITY DATA MONTHLY TIME SERIES REPORT

STATION : CHUNG HOM KOK ZONE SUBSTATION
POLLUTANT : SULPHUR DIOXIDE

MONTH: AUGUST

YEAR : 2022

UNIT : MICROGRAMS/CUBIC METER

DAY	1	2	3	4	5	6	7	8	9	10	11	12	13	14	15	16	17	18	19	20	21	22	23	24	MEAN	
1	0	0	0	0	0	0	0	0	0	0	0	0	0	0	0	0	0	0	0	0	0	0	0	0	1	0
2	2	3	2	2	2	2	3	3	2	1	1	1	1	2	2	1	1	1	2	2	1	3	2	0	2	0
3	0	0	0	0	0	0	0	0	0	0	0	0	1	1	0	1	0	0	0	0	0	0	0	0	0	0
4	0	0	0	0	0	0	0	0	0	0	0	0	2	1	1	1	0	0	0	0	0	0	0	0	0	0
5	1	1	1	1	2	1	1	0	0	1	0	0	1	3	1	0	2	1	1	0	1	1	1	1	0	1
6	0	0	0	0	0	0	0	0	0	0	0	0	1	0	0	0	0	0	0	0	0	0	0	0	0	0
7	0	0	0	0	0	0	0	0	0	0	0	0	0	0	0	0	0	0	0	0	0	0	0	0	0	0
8	0	0	1	1	1	1	1	1	1	1	0	0	1	1	0	1	2	1	0	1	1	1	1	1	0	1
9	0	0	0	0	0	0	0	0	0	0	0	0	0	0	0	0	0	0	0	0	0	0	0	0	0	0
10	0	0	0	0	0	0	0	0	0	0	0	0	1	0	0	0	1	1	0	0	0	0	0	0	0	0
11	0	0	0	0	0	0	0	0	0	0	0	0	0	0	0	0	0	0	0	0	0	0	0	0	0	0
12	0	0	0	0	0	0	0	0	0	0	1	0	0	0	0	0	0	1	1	1	0	0	0	0	0	0
13	1	0	0	0	0	0	2	0	0	0	0	0	0	0	0	0	0	0	2	1	0	1	2	1	0	0
14	1	0	0	0	0	0	0	0	0	0	0	0	1	0	5	1	0	0	0	0	0	0	0	0	0	0
15	0	0	0	0	0	0	0	0	0	0	0	0	0	0	2	1	1	0	0	0	0	0	0	0	0	0
16	2	1	1	2	2	2	2	1	1	1	0	0	1	0	1	2	1	0	1	2	1	1	1	1	0	1
17	0	0	0	0	0	0	0	0	0	0	0	0	0	0	0	0	1	0	0	0	0	0	0	0	0	0
18	1	1	0	0	1	1	1	1	0	0	0	0	0	0	0	0	1	0	1	1	1	1	1	1	0	1
19	0	0	0	0	0	0	0	0	0	0	0	0	0	0	1	0	0	0	0	1	0	0	0	0	0	0
20	1	1	1	1	1	1	1	1	1	0	0	0	0	1	1	1	0	0	2	2	1	1	1	1	0	1
21	0	0	0	0	0	0	0	0	0	0	0	0	0	0	0	0	0	0	0	0	0	0	0	0	0	0
22	1	1	1	1	1	1	1	2	2	2	1	0	1	1	0	0	2	1	1	1	1	1	1	1	1	1
23	1	1	1	1	1	1	1	1	1	2	M	0	0	0	0	0	0	0	0	0	0	0	0	0	0	0
24	0	0	0	0	0	0	0	0	0	0	0	0	0	0	0	0	0	0	0	0	0	0	0	0	0	0
25	0	0	0	0	0	0	0	0	0	0	0	0	1	0	0	0	0	0	0	0	0	0	0	0	0	0
26	0	0	0	0	0	0	0	0	0	0	0	0	0	0	0	0	0	0	0	0	0	0	0	0	0	0
27	1	1	1	1	1	1	1	0	0	2	1	1	1	0	0	0	1	1	2	1	1	1	1	1	0	1
28	0	0	0	0	0	0	0	0	1	3	3	0	0	0	0	0	0	0	0	0	0	0	0	0	0	0
29	1	0	1	1	0	1	0	0	0	0	0	0	0	0	0	0	1	2	1	1	0	1	0	0	0	0
30	0	0	0	0	0	0	0	0	0	0	1	0	1	0	0	0	0	0	0	0	0	0	0	0	0	0
31	0	0	0	0	0	1	1	1	0	0	0	0	1	0	1	0	0	0	0	0	0	0	0	0	0	0

MONTHLY STATISTICS:

GEOM	ARITH-----PERCENTILES-----										RANGE-----		STN GEOM	PERCENT	NO. OF TIMES	
MEAN	MEDIAN	MEAN	50	90	95	98	99	1-HR		24-HR		DEVIATION	VALID DATA	ABOVE	LIMIT	LEVEL
1	0	0	0	1	2	2	3	0	-	5	0	-	2	1	100	0

NOTES:

1. FLAGS FOR INVALID DATA :
 - D: DYNAMIC CALIBRATION
 - T: TELEMETRY/DATALOGGR FAULT
 - M: MAINTENANCE OR ANALYZER FAULT
 - P: POWER FAILURE

THE HONGKONG ELECTRIC COMPANY, LTD.
AIR QUALITY DATA MONTHLY TIME SERIES REPORT

STATION : CHUNG HOM KOK ZONE SUBSTATION
POLLUTANT : NITROGEN DIOXIDE

MONTH: AUGUST

YEAR : 2022

UNIT : MICROGRAMS/CUBIC METER

DAY	1	2	3	4	5	6	7	8	9	10	11	12	13	14	15	16	17	18	19	20	21	22	23	24	MEAN
1	13	7	11	13	9	10	7	3	3	9	7	9	8	10	5	10	13	8	7	15	10	20	9	25	10
2	19	30	19	11	5	5	18	10	4	5	8	4	8	7	7	8	11	13	15	11	7	4	1	2	10
3	0	M	4	1	0	15	7	10	8	31	39	43	52	41	33	11	7	8	5	3	1	2	2	2	14
4	1	1	7	25	17	21	19	19	22	24	23	26	27	13	12	17	8	4	8	4	3	2	1	2	13
5	0	2	0	0	2	3	4	13	4	3	1	0	2	3	3	5	6	1	5	6	1	9	6	6	4
6	3	2	1	0	0	0	2	2	0	0	0	1	4	1	0	1	0	1	4	1	4	4	0	2	1
7	5	2	2	2	2	2	1	1	0	0	0	0	0	0	0	0	0	0	0	0	0	0	0	0	1
8	0	0	2	0	0	0	0	1	1	0	0	1	0	1	0	0	0	1	0	0	0	1	0	0	0
9	0	0	0	0	0	0	0	0	0	0	0	0	0	0	0	0	0	0	0	0	0	0	0	0	0
10	0	0	0	0	0	0	0	1	0	1	0	0	0	0	3	1	1	3	2	4	1	0	0	1	1
11	0	0	0	1	1	0	3	5	4	1	2	2	2	1	0	2	0	0	0	2	2	1	7	3	2
12	2	1	0	1	7	9	3	2	1	4	14	7	3	6	4	4	18	18	19	19	8	7	3	6	7
13	3	6	3	3	3	7	32	12	4	4	1	4	7	3	1	2	5	9	9	12	17	15	20	19	8
14	14	5	0	3	15	7	7	11	3	12	19	21	23	12	20	10	14	13	30	11	12	8	9	15	12
15	22	15	11	4	6	18	7	2	6	12	17	11	9	11	16	15	21	14	8	5	8	8	10	12	11
16	10	3	6	9	12	5	4	6	7	6	7	3	2	0	0	0	0	0	0	1	2	0	1	4	4
17	1	M	0	1	0	0	2	3	1	4	1	4	2	1	4	9	2	2	3	0	0	2	4	2	2
18	5	3	5	3	4	5	3	2	6	4	0	3	5	3	5	3	2	4	3	3	7	8	7	7	4
19	2	1	1	0	0	0	4	4	7	5	2	2	1	0	1	2	5	5	8	8	4	5	0	0	3
20	0	0	1	2	2	1	3	2	2	1	1	1	1	0	2	0	2	3	5	3	6	5	3	3	2
21	1	0	0	1	3	4	6	5	3	1	1	3	0	0	3	3	5	4	6	9	8	7	10	8	4
22	7	8	11	3	2	9	12	18	20	13	11	6	3	4	4	7	7	9	10	17	10	12	13	10	9
23	7	6	7	4	4	6	13	19	21	33	M	33	35	71	37	17	22	23	23	22	15	14	10	16	20
24	16	10	8	10	9	34	33	27	8	3	3	5	3	1	1	1	0	0	0	0	0	0	0	1	7
25	0	0	0	0	0	0	0	0	0	0	2	1	0	1	1	3	5	5	4	7	8	4	10	1	2
26	4	1	7	5	8	12	9	7	4	3	1	3	0	0	2	4	8	8	10	9	8	10	12	6	6
27	12	15	13	18	19	23	16	8	10	23	25	18	14	15	15	19	18	28	21	27	23	12	13	28	18
28	19	20	12	11	21	33	40	30	36	50	53	40	28	19	8	5	4	6	8	7	2	2	3	1	19
29	1	1	1	0	1	1	1	3	3	4	2	1	3	2	1	1	5	17	16	12	13	13	10	6	5
30	4	10	6	6	3	3	3	5	7	10	32	20	15	13	6	4	10	14	12	15	20	14	10	16	11
31	13	M	22	22	36	44	39	29	26	30	27	26	51	29	29	31	29	25	18	12	10	13	15	8	25

MONTHLY STATISTICS:

GEOM	ARITH-----PERCENTILES-----										RANGE-----		STN GEOM	PERCENT	NO. OF TIMES	
MEAN	MEDIAN	MEAN	50	90	95	98	99	1-HR		24-HR		DEVIATION	VALID DATA	ABOVE	LIMIT	LEVEL
6	4	8	4	20	27	35	41	0	-	71	0	-	25	3	99	0

- NOTES: 1. FLAGS FOR INVALID DATA :
- D: DYNAMIC CALIBRATION
 - T: TELEMETRY/DATALOGGR FAULT
 - M: MAINTENANCE OR ANALYZER FAULT
 - P: POWER FAILURE

THE HONGKONG ELECTRIC COMPANY, LTD.
AIR QUALITY DATA MONTHLY TIME SERIES REPORT

STATION : VICTORIA ROAD SUBSTATION
POLLUTANT : SULPHUR DIOXIDE

MONTH: AUGUST

YEAR : 2022
UNIT : MICROGRAMS/CUBIC METER

DAY	1	2	3	4	5	6	7	8	9	10	11	12	13	14	15	16	17	18	19	20	21	22	23	24	MEAN	
1	7	7	7	7	7	7	7	7	7	7	7	7	7	7	7	8	7	7	7	7	7	8	8	9	7	
2	7	7	7	8	7	7	7	7	7	7	7	7	7	7	7	7	7	7	7	7	7	7	6	8	7	
3	7	7	7	7	7	7	7	7	8	8	8	8	8	8	7	7	6	7	7	7	7	8	8	8	7	
4	7	7	7	6	7	7	8	7	8	8	7	8	8	8	8	8	8	7	7	7	7	7	7	8	7	
5	7	7	7	7	7	7	7	7	7	7	7	7	7	7	7	7	7	7	7	7	7	7	7	8	7	
6	7	7	7	7	7	7	7	7	7	7	7	7	7	7	7	7	7	8	7	7	7	7	7	8	7	
7	7	7	7	7	7	7	7	7	7	7	7	7	7	7	7	7	7	7	7	7	7	7	7	8	7	
8	7	7	6	7	7	7	7	7	7	7	7	7	7	7	7	7	7	7	7	7	6	7	7	8	7	
9	7	7	7	7	7	7	7	7	7	7	7	7	7	7	7	7	7	7	7	7	7	7	7	8	7	
10	6	6	6	7	7	7	7	7	7	6	7	7	7	7	7	7	7	6	7	7	7	7	7	8	7	
11	6	7	6	7	7	7	6	6	6	6	7	6	7	7	7	7	7	6	6	7	7	6	6	7	7	
12	6	7	7	7	7	7	7	6	6	7	7	7	7	7	7	7	7	7	7	7	7	7	7	7	7	
13	7	7	7	7	7	7	7	8	8	7	7	7	7	6	7	7	7	7	7	7	7	7	7	7	7	
14	8	7	7	7	7	7	7	7	7	7	7	9	8	8	8	8	7	7	7	7	7	7	7	7	7	
15	7	7	7	7	7	7	7	7	7	7	8	7	7	8	10	8	9	9	8	7	7	8	7	7	8	
16	7	7	7	8	8	8	8	8	9	9	9	9	8	8	7	7	7	7	7	7	7	7	7	8	8	
17	7	7	7	7	7	7	7	7	7	7	7	7	7	7	7	7	7	7	7	7	7	7	7	7	7	
18	7	7	7	7	7	7	7	7	7	7	7	7	7	7	7	8	7	7	7	7	7	7	7	7	7	
19	7	7	7	7	7	7	7	7	7	7	8	7	7	7	7	7	7	7	7	7	7	7	7	7	7	
20	6	7	7	7	7	7	7	7	7	7	7	7	7	7	7	7	7	7	7	7	7	7	7	7	7	
21	7	7	7	7	7	7	7	7	7	7	7	7	7	7	7	7	7	7	7	7	7	7	7	7	7	
22	6	7	7	7	7	7	7	7	7	7	7	7	7	7	7	6	7	7	7	7	7	7	7	8	7	
23	7	7	7	7	7	7	7	7	8	8	9	9	8	8	8	8	8	8	8	8	8	8	7	7	9	8
24	7	7	8	7	7	7	7	8	8	8	8	8	8	8	8	8	8	8	8	8	8	7	7	9	8	
25	7	7	7	7	7	7	7	7	7	7	7	6	7	7	7	7	7	7	7	7	7	7	7	8	7	
26	7	7	7	7	7	7	7	7	7	7	M	7	6	7	7	7	7	7	7	7	7	7	7	9	7	
27	7	7	7	7	7	7	7	7	7	7	9	8	8	7	7	7	7	7	7	7	7	7	7	8	7	
28	7	7	7	7	7	7	7	7	8	8	9	8	8	9	8	8	8	7	7	7	7	7	7	8	8	
29	7	7	7	7	6	7	7	6	7	7	7	7	7	7	7	7	7	7	7	7	7	7	7	8	7	
30	7	7	7	7	7	7	7	8	8	10	8	10	8	8	7	7	7	7	7	7	7	7	6	8	7	
31	7	7	7	8	8	8	8	8	9	10	9	9	9	8	8	8	8	9	9	8	8	9	8	9	8	

MONTHLY STATISTICS:

GEOM	ARITH-----PERCENTILES-----							RANGE-----				STN GEOM	PERCENT	NO. OF TIMES		
MEAN	MEDIAN	MEAN	50	90	95	98	99	1-HR		24-HR		DEVIATION	VALID DATA	ABOVE LIMIT LEVEL		
7	7	7	7	8	8	9	9	6	-	10	7	-	8	1	100	0

NOTES: 1. FLAGS FOR INVALID DATA :
D: DYNAMIC CALIBRATION
T: TELEMETRY/DATALOGGR FAULT
M: MAINTENANCE OR ANALYZER FAULT
P: POWER FAILURE

THE HONGKONG ELECTRIC COMPANY, LTD.
AIR QUALITY DATA MONTHLY TIME SERIES REPORT
MONTH: AUGUST

STATION : VICTORIA ROAD SUBSTATION
POLLUTANT : NITROGEN DIOXIDE

YEAR : 2022
UNIT : MICROGRAMS/CUBIC METER

DAY	1	2	3	4	5	6	7	8	9	10	11	12	13	14	15	16	17	18	19	20	21	22	23	24	MEAN
1	3	4	1	2	0	1	1	1	6	8	5	6	2	4	5	9	6	4	4	6	9	14	13	10	5
2	6	3	4	7	3	1	6	4	3	1	0	1	4	3	4	5	5	5	5	1	3	5	3	5	4
3	5	M	15	5	4	17	17	16	12	22	21	23	19	22	20	12	10	18	13	4	8	1	1	1	12
4	1	8	8	9	7	9	5	7	9	8	8	9	8	7	12	11	12	6	9	4	4	4	3	4	7
5	3	1	0	0	0	0	2	2	5	7	3	3	4	2	8	10	9	5	5	2	0	0	1	1	3
6	0	0	0	0	0	0	2	0	0	0	1	0	2	2	3	1	3	6	7	4	1	1	0	0	1
7	0	0	0	0	0	0	0	0	0	0	0	0	0	0	0	0	0	0	0	0	0	0	0	0	0
8	0	0	0	0	0	0	0	0	1	2	1	2	2	1	1	2	3	3	0	0	0	0	0	0	1
9	0	0	0	0	0	0	0	0	0	1	1	0	0	0	0	0	0	0	0	0	0	0	0	0	0
10	0	0	0	0	0	0	0	0	0	0	0	0	0	0	1	3	4	3	2	0	0	0	0	0	1
11	0	0	0	0	0	0	0	1	2	2	3	5	4	4	1	1	1	0	0	0	0	0	0	0	1
12	0	0	0	0	0	1	0	0	1	4	5	3	2	1	5	9	9	9	10	9	7	4	4	5	4
13	2	1	2	1	0	2	6	5	8	3	4	3	6	3	2	3	5	5	5	6	7	6	7	8	4
14	9	3	1	0	0	0	1	0	0	1	2	9	10	4	5	8	7	7	8	2	3	3	5	6	4
15	4	2	1	5	1	2	1	1	1	0	4	3	6	6	13	11	15	18	13	7	8	4	4	4	6
16	2	3	9	11	8	9	5	5	8	7	9	10	10	10	10	5	3	2	1	0	0	0	0	0	5
17	0	M	0	0	0	0	0	0	3	3	3	2	1	2	2	2	3	4	4	1	0	1	1	0	1
18	0	0	0	0	1	4	1	2	4	3	3	3	2	3	4	7	5	4	2	1	0	0	0	0	2
19	0	0	0	0	0	1	1	1	3	4	5	3	4	3	4	3	3	3	1	1	1	0	0	0	2
20	0	0	0	0	0	0	1	5	4	5	3	4	3	4	1	3	2	2	1	0	0	0	0	0	2
21	0	0	0	0	0	1	1	1	0	0	1	0	0	0	0	0	0	0	3	5	2	0	0	2	1
22	3	2	0	0	0	2	2	2	3	1	2	0	0	3	6	3	2	2	4	6	4	2	2	3	2
23	2	0	0	0	0	2	3	4	8	11	13	21	26	34	24	23	23	23	14	15	12	8	6	6	12
24	4	2	1	2	7	8	13	23	24	10	7	6	4	3	4	3	2	1	0	0	0	0	0	0	5
25	0	0	0	0	0	0	0	0	0	0	0	1	2	1	3	2	1	0	3	0	0	0	0	0	1
26	0	1	1	0	0	0	0	1	3	4	M	4	2	2	0	4	5	6	5	7	9	6	2	4	3
27	2	5	5	1	0	3	0	1	3	6	8	5	6	5	7	5	4	7	3	2	5	2	1	3	4
28	2	1	1	0	7	5	3	4	9	14	19	15	17	16	11	8	5	5	2	3	2	1	0	0	6
29	0	0	0	0	0	0	6	5	12	10	6	3	1	2	5	6	12	10	10	6	7	6	7	5	5
30	5	2	0	0	0	3	5	5	10	16	10	21	14	4	8	3	6	6	6	9	3	2	2	3	6
31	0	M	3	9	12	10	14	12	22	37	25	23	16	18	17	18	26	33	45	29	26	27	28	17	20

MONTHLY STATISTICS:

GEOM	ARITH-----PERCENTILES-----							-----RANGE-----				STN GEOM	PERCENT	NO. OF TIMES		
MEAN	MEDIAN	MEAN	50	90	95	98	99	1-HR		24-HR		DEVIATION	VALID DATA	ABOVE LIMIT LEVEL		
4	2	4	2	10	16	23	26	0	-	45	0	-	20	2	99	0

- NOTES: 1. FLAGS FOR INVALID DATA :
- D: DYNAMIC CALIBRATION
 - T: TELEMETRY/DATALOGGR FAULT
 - M: MAINTENANCE OR ANALYZER FAULT
 - P: POWER FAILURE

THE HONGKONG ELECTRIC COMPANY, LTD.
AIR QUALITY DATA MONTHLY TIME SERIES REPORT
MONTH: AUGUST

STATION : POK FU LAM
POLLUTANT : SULPHUR DIOXIDE

YEAR : 2022
UNIT : MICROGRAMS/CUBIC METER

DAY	1	2	3	4	5	6	7	8	9	10	11	12	13	14	15	16	17	18	19	20	21	22	23	24	MEAN
1	0	0	0	0	0	0	0	0	0	4	2	3	0	1	0	0	0	1	1	1	1	1	0	1	1
2	0	0	0	1	1	0	0	0	1	2	4	1	0	0	0	0	0	0	0	1	2	0	0	0	1
3	0	0	2	1	0	2	3	2	3	2	1	2	2	1	0	1	0	0	1	1	0	0	1	1	1
4	0	0	0	2	0	0	1	1	0	1	2	0	1	2	0	1	0	0	1	0	0	1	0	0	1
5	0	1	1	0	1	1	0	1	0	1	0	0	1	0	1	1	0	0	1	0	0	1	0	1	1
6	0	0	1	0	0	1	1	0	0	1	0	0	1	0	0	0	1	0	0	1	1	0	0	0	0
7	1	0	0	0	1	0	0	0	1	0	0	0	0	1	0	1	0	0	0	1	0	0	0	0	0
8	1	1	0	0	0	1	1	0	0	0	1	0	1	0	1	1	0	0	0	1	1	0	1	0	1
9	0	0	1	0	0	1	0	0	0	1	0	1	1	0	1	0	0	0	1	0	0	1	0	0	0
10	0	0	0	0	0	1	1	0	1	0	0	1	1	0	0	1	0	1	1	0	0	1	1	1	0
11	0	0	1	1	0	0	1	0	0	0	1	2	0	0	1	0	0	1	1	0	1	0	0	0	0
12	1	0	0	1	1	0	0	1	0	1	1	0	1	0	1	2	1	1	2	1	1	1	1	1	1
13	1	0	1	1	0	1	2	0	1	0	1	1	0	0	2	1	1	1	0	0	0	1	1	1	1
14	1	0	0	1	1	0	0	0	0	2	4	1	1	0	1	3	1	1	0	0	0	1	0	0	1
15	1	1	0	0	1	1	1	0	0	1	5	3	0	0	1	0	3	2	2	1	0	0	1	0	1
16	0	1	0	1	0	1	2	1	1	1	1	2	1	2	0	1	1	0	1	0	0	1	0	0	1
17	1	1	0	0	1	0	0	1	1	1	0	0	1	0	2	0	2	2	0	0	1	0	0	0	1
18	1	1	0	0	1	1	0	0	1	0	1	0	0	0	1	1	1	0	1	1	0	0	1	1	1
19	1	1	0	0	0	1	0	0	1	0	1	0	0	0	1	1	0	1	0	0	1	0	0	0	0
20	1	0	1	1	0	1	1	0	1	1	0	0	0	2	1	2	0	0	1	0	0	1	1	0	1
21	0	0	1	0	0	1	1	0	0	0	0	0	0	1	1	1	0	2	0	0	1	1	1	1	0
22	1	0	0	1	1	1	0	0	0	2	19	0	0	0	0	0	1	1	0	1	1	1	1	1	1
23	1	1	0	0	0	0	1	1	5	6	8	6	5	1	2	0	0	0	1	0	0	1	1	0	2
24	0	0	1	2	1	1	0	0	3	3	0	0	3	0	0	0	0	1	1	0	1	2	0	1	1
25	1	1	0	2	0	1	0	1	0	1	0	1	1	0	0	1	0	0	1	0	1	2	2	2	1
26	0	0	1	1	0	0	1	1	0	0	1	0	0	2	1	0	1	0	1	0	1	1	1	1	1
27	0	1	2	0	0	0	1	1	0	M	6	2	0	0	0	0	1	1	1	0	0	1	1	1	1
28	0	0	1	1	1	1	1	0	1	7	6	0	0	0	0	0	2	1	1	1	0	0	0	8	1
29	2	1	0	0	0	0	2	1	1	1	1	1	1	0	0	2	2	1	2	1	0	1	2	3	1
30	0	0	2	1	0	1	1	0	1	7	5	2	0	2	0	0	1	0	0	1	1	1	0	2	1
31	1	1	2	3	2	1	1	1	3	5	2	4	1	1	1	1	0	1	4	2	0	0	1	2	2

MONTHLY STATISTICS:

GEOM	ARITH-----PERCENTILES-----										RANGE-----		STN GEOM	PERCENT	NO. OF TIMES	
MEAN	MEDIAN	MEAN	50	90	95	98	99	1-HR		24-HR		DEVIATION	VALID DATA	ABOVE LIMIT	LEVEL	
1	1	1	1	2	2	4	6	0	-	19	0	-	2	2	100	0

NOTES:

1. FLAGS FOR INVALID DATA :
 - D: DYNAMIC CALIBRATION
 - T: TELEMETRY/DATALOGGR FAULT
 - M: MAINTENANCE OR ANALYZER FAULT
 - P: POWER FAILURE

THE HONGKONG ELECTRIC COMPANY, LTD.
AIR QUALITY DATA MONTHLY TIME SERIES REPORT
MONTH: AUGUST

STATION : POK FU LAM
POLLUTANT : NITROGEN DIOXIDE

YEAR : 2022
UNIT : MICROGRAMS/CUBIC METER

DAY	1	2	3	4	5	6	7	8	9	10	11	12	13	14	15	16	17	18	19	20	21	22	23	24	MEAN
1	1	1	1	2	0	0	0	1	1	2	0	2	0	1	1	1	1	1	4	2	3	5	5	2	2
2	1	0	0	2	0	1	1	0	0	0	0	0	1	1	2	1	2	5	2	1	2	1	1	0	1
3	1	9	9	6	5	13	10	7	7	9	9	9	6	7	7	6	4	8	5	3	1	1	0	0	6
4	2	9	8	6	5	6	3	5	5	4	5	5	5	4	4	4	3	1	4	0	0	0	0	1	4
5	0	1	0	0	0	3	1	2	3	2	1	1	3	2	3	6	2	0	0	0	0	0	0	0	1
6	0	0	0	0	0	0	0	0	0	0	0	0	0	1	2	0	0	3	4	6	2	0	0	0	1
7	0	M	0	0	0	0	0	0	0	0	0	0	0	0	0	0	0	0	0	0	0	0	0	0	0
8	0	0	0	0	0	0	0	0	2	1	1	1	1	1	0	0	0	0	0	0	0	0	0	0	0
9	0	0	0	0	0	0	0	0	0	0	0	0	0	0	0	0	0	0	0	0	0	0	0	0	0
10	0	0	0	0	0	0	0	0	0	0	0	0	0	0	1	0	1	0	0	0	0	0	0	0	0
11	0	0	0	0	0	0	0	0	0	0	1	2	4	2	0	0	1	0	0	0	0	0	0	0	0
12	0	0	0	0	0	0	0	0	0	2	3	1	1	4	5	7	8	7	8	7	1	4	7	0	3
13	0	0	1	1	0	2	5	2	4	1	3	2	1	3	1	3	4	6	2	3	2	1	2	2	2
14	5	1	2	2	0	1	2	0	0	0	1	1	2	1	2	4	2	2	2	1	0	3	2	1	2
15	1	0	1	4	1	0	0	0	0	0	2	2	1	4	3	7	9	8	3	1	3	0	1	1	2
16	0	1	5	6	4	5	4	3	3	3	5	6	5	6	4	1	0	0	0	0	0	0	0	0	3
17	0	0	0	0	0	0	0	0	1	0	1	1	1	3	2	2	3	1	0	0	0	0	0	0	1
18	0	0	0	0	1	2	0	0	1	1	3	1	1	3	3	3	0	0	0	0	0	0	0	0	1
19	0	0	0	0	0	0	0	0	1	3	2	0	2	3	1	1	0	0	0	0	0	0	0	0	1
20	0	0	0	0	0	0	0	0	0	0	0	0	0	0	2	1	0	0	0	0	0	0	0	0	0
21	0	M	0	0	0	1	0	0	0	0	0	0	0	0	0	0	0	0	1	2	0	0	0	1	0
22	1	0	0	0	0	1	1	2	2	0	0	0	1	1	2	0	0	2	3	4	1	1	0	2	1
23	3	0	0	0	2	3	3	4	4	5	7	7	11	9	6	9	10	6	5	8	5	2	3	2	5
24	1	1	0	3	5	6	6	11	10	3	3	4	2	1	1	1	0	0	0	0	0	0	0	0	2
25	0	0	0	0	0	0	0	0	0	0	0	0	0	0	0	0	0	0	1	0	0	0	0	0	0
26	0	1	0	0	0	0	0	0	0	0	0	0	0	1	0	2	2	3	3	4	1	0	1	1	1
27	0	2	3	0	0	2	1	1	0	M	3	1	2	2	4	2	4	7	3	2	2	0	1	1	2
28	1	1	1	2	7	6	5	4	4	6	9	6	4	4	3	1	2	1	1	1	2	1	0	0	3
29	0	0	0	0	0	0	4	2	13	11	4	7	4	5	5	4	6	10	4	3	3	3	4	2	4
30	1	0	1	0	1	1	1	3	5	6	4	5	3	3	1	1	0	0	2	6	4	3	1	1	2
31	1	2	5	13	13	11	11	7	12	20	15	10	7	9	10	11	13	16	29	20	18	15	14	13	12

MONTHLY STATISTICS:

GEOM	ARITH-----PERCENTILES-----							-----RANGE-----					STN GEOM	PERCENT	NO. OF TIMES	
MEAN	MEDIAN	MEAN	50	90	95	98	99	1-HR		24-HR			DEVIATION	VALID DATA	ABOVE LIMIT LEVEL	
3	1	2	1	6	9	11	14	0	-	29	0	-	12	2	100	0

NOTES: 1. FLAGS FOR INVALID DATA :
D: DYNAMIC CALIBRATION
T: TELEMETRY/DATALOGGR FAULT
M: MAINTENANCE OR ANALYZER FAULT
P: POWER FAILURE

THE HONGKONG ELECTRIC COMPANY, LTD.
AIR QUALITY DATA MONTHLY TIME SERIES REPORT
MONTH: AUGUST

STATION : AP LEI CHAU
POLLUTANT : SULPHUR DIOXIDE

YEAR : 2022
UNIT : MICROGRAMS/CUBIC METER

DAY	1	2	3	4	5	6	7	8	9	10	11	12	13	14	15	16	17	18	19	20	21	22	23	24	MEAN
1	M	M	M	M	M	M	M	M	M	M	M	M	M	M	M	3	1	1	0	0	2	3	4	5	
2	2	2	1	1	0	0	0	0	0	0	0	0	0	1	4	1	0	0	0	0	0	0	0	0	1
3	0	2	2	0	1	3	6	1	1	1	4	3	3	3	2	0	0	0	0	0	0	0	0	0	1
4	0	1	0	0	0	0	0	1	0	0	0	1	2	2	0	0	0	0	0	0	0	0	0	0	0
5	0	0	0	0	0	0	0	0	0	0	0	0	0	0	0	0	0	0	0	0	0	0	0	0	0
6	0	0	0	0	0	0	0	0	0	0	0	0	0	0	0	0	0	0	0	0	0	0	0	0	0
7	0	0	0	0	0	0	0	0	0	0	0	0	0	0	0	0	0	0	0	0	0	0	0	0	0
8	0	0	0	0	0	0	0	0	0	0	0	M	0	0	0	0	0	0	0	0	0	0	0	0	0
9	0	0	0	0	0	0	0	0	0	0	0	0	0	0	0	0	0	0	0	0	0	0	0	0	0
10	0	0	0	0	0	0	0	0	0	0	0	0	0	0	0	0	0	0	0	0	0	0	0	0	0
11	0	0	0	0	0	0	0	0	0	0	0	0	0	0	0	0	0	0	0	0	0	0	0	0	0
12	0	0	0	0	0	0	0	0	0	0	0	0	0	0	1	1	0	0	0	0	0	0	0	0	0
13	0	0	0	0	0	5	4	2	1	0	1	1	1	1	1	1	1	3	0	1	1	1	10	2	2
14	1	0	0	0	0	0	1	0	0	1	7	3	2	3	7	2	1	2	0	0	0	0	1	4	1
15	2	1	1	1	1	1	1	0	1	1	9	2	3	5	9	4	8	4	2	1	3	3	2	1	3
16	0	0	1	1	2	0	0	1	4	0	8	5	2	4	0	0	0	0	0	0	0	0	0	0	1
17	0	0	0	0	0	0	0	0	0	0	0	0	0	0	1	0	0	0	0	0	0	0	0	0	0
18	0	0	0	0	0	0	0	0	0	0	0	1	1	1	2	1	0	0	0	0	0	0	0	0	0
19	0	0	0	0	0	0	0	0	0	1	0	0	0	0	0	0	0	0	0	0	0	0	0	0	0
20	0	0	0	0	0	0	1	0	0	0	0	0	0	0	0	0	0	0	0	0	0	0	0	0	0
21	0	0	0	0	0	0	0	0	0	0	0	0	0	0	0	0	0	0	0	0	0	0	0	0	0
22	0	0	0	0	0	1	1	2	2	0	2	0	0	1	2	1	0	0	0	1	0	0	0	1	1
23	0	0	0	0	0	2	3	3	2	3	4	5	3	3	3	3	2	2	1	1	0	0	0	1	2
24	1	0	0	0	2	3	3	1	0	0	0	1	1	0	1	1	0	0	0	0	0	0	0	0	1
25	0	0	0	0	0	0	0	0	0	0	0	0	0	0	0	0	0	0	0	0	0	0	0	0	0
26	0	0	0	0	0	0	0	0	0	0	0	0	0	0	0	0	1	0	0	0	0	0	0	0	0
27	1	3	2	1	0	1	0	0	2	2	4	3	1	1	2	2	2	2	0	1	1	0	0	1	1
28	0	0	0	0	1	0	0	0	4	5	5	3	3	1	0	0	0	0	0	0	0	0	0	0	1
29	0	0	0	0	0	0	0	0	0	0	0	0	0	0	1	1	2	1	1	1	1	1	1	0	0
30	0	0	0	0	0	0	1	2	4	12	5	9	3	3	3	1	0	0	0	1	0	0	0	1	2
31	1	1	4	2	3	2	3	3	4	5	8	10	6	3	5	4	6	4	1	2	1	1	1	1	3

MONTHLY STATISTICS:

ARITH-----PERCENTILES-----RANGE-----											STN GEOM	PERCENT	NO. OF TIMES				
GEOM	MEAN	MEDIAN	MEAN	50	90	95	98	99	1-HR	24-HR	DEVIATION	VALID DATA	ABOVE LIMIT LEVEL				
	2	0	1	0	2	4	5	8	0	-	12	0	-	3	2	98	0

NOTES:

1. FLAGS FOR INVALID DATA :
 - D: DYNAMIC CALIBRATION
 - T: TELEMETRY/DATALOGGR FAULT
 - M: MAINTENANCE OR ANALYZER FAULT
 - P: POWER FAILURE

THE HONGKONG ELECTRIC COMPANY, LTD.
AIR QUALITY DATA MONTHLY TIME SERIES REPORT
MONTH: AUGUST

STATION : AP LEI CHAU
POLLUTANT : NITROGEN DIOXIDE

YEAR : 2022
UNIT : MICROGRAMS/CUBIC METER

DAY	1	2	3	4	5	6	7	8	9	10	11	12	13	14	15	16	17	18	19	20	21	22	23	24	MEAN
1	M	M	M	M	M	M	M	M	M	M	M	M	M	M	M	8	15	10	7	9	13	17	26	32	
2	22	23	14	7	9	12	12	10	7	5	4	7	6	8	18	19	14	19	9	3	8	6	13	18	11
3	15	42	62	24	28	63	67	12	20	38	55	50	34	36	32	30	16	32	13	5	6	3	0	6	29
4	3	32	31	29	24	26	20	28	26	21	22	27	24	17	14	15	5	0	8	1	1	12	1	5	16
5	4	7	0	2	6	7	5	19	11	9	3	4	15	14	27	26	9	18	7	5	4	6	8	7	9
6	6	4	3	3	3	6	9	5	3	4	3	2	1	7	8	4	13	20	16	13	6	8	4	7	7
7	7	5	2	3	2	4	3	2	1	1	1	0	1	1	1	1	1	2	2	1	0	0	1	3	2
8	2	1	2	0	1	1	1	2	9	3	4	M	6	3	0	1	2	1	0	0	0	2	0	0	2
9	0	M	0	0	0	0	0	0	0	0	0	0	0	0	0	0	0	0	0	0	0	0	0	1	0
10	0	0	0	0	0	0	0	0	0	0	0	0	0	0	1	3	9	4	1	0	0	0	0	1	1
11	0	0	0	1	1	1	2	2	1	1	2	4	9	5	1	2	3	3	2	9	1	3	5	5	3
12	2	1	1	1	4	12	7	4	9	16	24	15	29	29	31	30	12	23	32	38	32	15	7	10	16
13	7	5	3	3	2	30	34	14	4	0	7	7	2	5	2	2	10	11	1	20	16	11	40	16	11
14	23	13	8	23	17	23	24	14	9	12	22	14	8	9	16	10	14	27	19	7	3	10	14	32	15
15	16	14	19	24	25	24	18	8	13	11	25	10	10	14	16	13	27	20	17	8	12	11	11	12	16
16	11	8	27	26	28	14	17	15	24	10	27	30	20	28	9	4	1	3	1	0	0	1	1	2	13
17	0	0	0	0	0	0	0	1	0	3	3	9	7	7	6	12	10	9	5	4	3	6	4	4	4
18	2	3	3	2	13	10	3	4	7	3	9	16	12	12	12	6	1	2	2	2	3	4	4	5	6
19	2	2	2	1	2	3	5	6	13	16	14	10	4	4	2	3	3	4	4	6	4	3	0	3	5
20	1	1	2	3	4	3	8	6	2	2	3	5	3	1	6	3	4	4	5	3	4	3	3	4	3
21	1	1	1	3	4	14	6	5	3	2	1	4	1	1	1	2	2	5	10	12	14	6	8	11	5
22	10	10	7	4	7	13	16	20	19	11	16	14	11	20	18	13	12	14	13	24	10	16	13	19	14
23	16	M	10	4	6	18	20	19	21	28	26	34	37	54	32	33	19	28	24	32	26	13	20	19	23
24	22	12	8	19	55	69	62	40	19	10	13	12	17	8	8	4	3	3	2	1	0	0	0	2	16
25	0	0	0	0	0	0	0	0	0	0	0	0	0	0	1	1	1	2	1	2	3	3	3	3	1
26	3	8	5	5	5	9	5	3	3	2	1	0	1	2	5	5	11	9	10	12	23	21	15	13	7
27	24	29	23	25	19	24	15	9	15	14	22	17	17	22	31	22	19	26	18	21	21	17	19	23	21
28	22	15	9	20	38	35	28	24	27	34	36	29	25	19	13	9	10	7	6	4	1	0	0	1	17
29	0	0	0	0	0	1	2	5	3	3	2	0	0	0	9	12	17	13	18	7	7	6	4	3	5
30	0	0	0	1	0	11	16	18	20	32	19	35	24	15	21	12	10	10	14	35	19	25	16	11	15
31	16	25	50	37	49	31	33	24	37	41	46	46	31	32	37	37	47	41	41	43	48	30	26	37	37

MONTHLY STATISTICS:

GEOM	ARITH-----PERCENTILES-----										RANGE-----		STN GEOM	PERCENT	NO. OF TIMES	
MEAN	MEDIAN	MEAN	50	90	95	98	99	1-HR		24-HR		DEVIATION	VALID DATA	ABOVE	LIMIT LEVEL	
8	7	11	7	28	34	45	53	0	-	69	0	-	37	3	98	0

NOTES: 1. FLAGS FOR INVALID DATA :
D: DYNAMIC CALIBRATION
T: TELEMETRY/DATALOGGR FAULT
M: MAINTENANCE OR ANALYZER FAULT
P: POWER FAILURE

THE HONGKONG ELECTRIC COMPANY, LTD.
AIR QUALITY DATA MONTHLY TIME SERIES REPORT
MONTH: AUGUST

STATION : CHEUNG CHAU
POLLUTANT : SULPHUR DIOXIDE

YEAR : 2022
UNIT : MICROGRAMS/CUBIC METER

DAY	1	2	3	4	5	6	7	8	9	10	11	12	13	14	15	16	17	18	19	20	21	22	23	24	MEAN	
1	1	1	1	1	0	1	1	1	1	1	0	0	0	0	1	1	1	1	1	1	0	0	1	2	1	
2	1	1	1	1	1	1	1	1	1	0	0	0	0	0	1	0	0	0	0	0	0	0	0	3	1	
3	1	1	1	1	1	1	0	1	0	1	1	1	1	2	1	1	0	1	1	1	1	1	1	2	1	
4	1	1	1	1	1	1	1	1	1	1	3	1	1	1	1	1	1	1	1	1	1	1	0	3	1	
5	1	1	1	1	1	1	1	1	1	1	1	0	1	0	1	1	1	1	1	1	1	1	1	3	1	
6	1	1	1	1	1	1	1	1	1	1	1	1	0	0	1	1	1	1	1	1	1	1	1	4	1	
7	1	1	1	1	1	1	1	1	1	1	1	0	1	1	1	1	1	1	1	1	1	0	0	4	1	
8	1	1	1	1	1	1	1	1	1	1	1	1	1	M	M	M	M	M	M	M	M	M	M	M		
9	M	M	M	M	M	M	M	M	M	M	M	M	M	M	M	M	M	M	M	M	M	M	M	M		
10	M	M	M	M	M	M	M	M	M	M	M	M	M	M	M	M	M	M	M	M	M	M	M	M		
11	M	M	M	M	M	M	M	M	M	M	M	M	M	M	3	1	1	1	1	1	0	1	0	3		
12	1	1	1	1	1	1	1	1	1	0	0	0	0	1	1	1	1	2	1	1	1	1	1	4	1	
13	1	1	2	2	1	2	2	2	3	3	2	1	1	1	1	1	1	1	0	1	1	0	0	4	1	
14	2	2	1	1	1	1	1	1	1	1	1	1	1	1	1	1	1	0	1	1	1	1	1	3	1	
15	1	1	1	1	1	1	1	1	1	1	1	1	1	0	1	1	M	1	1	1	1	1	1	4	1	
16	1	1	1	1	1	1	1	1	1	1	M	3	1	1	1	1	1	1	1	1	1	1	1	4	1	
17	1	1	1	1	1	1	1	1	1	1	1	1	1	1	0	1	1	1	1	1	1	1	1	3	1	
18	1	1	1	1	1	1	1	1	1	1	1	1	1	1	1	1	1	1	1	1	1	1	1	16	2	
19	4	2	2	1	1	1	2	2	2	2	2	1	1	1	1	1	1	1	1	1	1	1	1	4	2	
20	1	1	1	1	1	1	1	1	1	1	1	1	1	1	0	1	1	1	1	1	1	1	1	3	1	
21	1	1	1	1	1	1	1	1	1	1	1	1	1	1	1	0	0	1	0	1	1	1	1	4	1	
22	1	1	1	1	1	1	1	1	1	1	1	1	1	0	1	1	1	1	1	1	1	1	1	3	1	
23	1	1	1	1	1	1	1	1	1	1	1	2	1	1	1	1	1	1	1	1	1	1	1	3	1	
24	1	1	1	1	1	1	1	1	1	1	1	1	1	1	1	2	1	1	1	1	1	1	1	4	1	
25	1	1	1	1	1	1	1	1	1	1	1	1	1	1	1	1	1	0	1	1	1	1	1	3	1	
26	1	1	1	1	1	1	1	1	1	1	1	1	1	1	0	0	1	1	0	1	0	0	0	3	1	
27	1	1	1	1	1	1	1	1	1	1	1	1	0	0	0	0	1	1	1	1	1	1	1	4	1	
28	1	1	1	1	1	1	2	2	1	1	1	1	1	1	1	1	0	1	0	1	1	1	1	3	1	
29	1	1	1	1	1	1	1	1	1	1	1	0	1	1	1	1	1	1	1	1	1	1	1	3	1	
30	2	2	1	1	1	1	1	2	1	2	2	1	1	1	1	1	1	1	1	1	1	1	1	4	1	
31	2	1	1	1	2	2	2	2	3	3	2	2	2	2	2	2	2	2	2	2	1	1	1	2	3	2

MONTHLY STATISTICS:

GEOM	ARITH-----PERCENTILES-----										RANGE-----		STN GEOM	PERCENT	NO. OF TIMES		
MEAN	MEDIAN	MEAN	50	90	95	98	99	1-HR		24-HR		DEVIATION	VALID DATA	ABOVE	LIMIT LEVEL		
1	1	1	1	1	2	3	3	4	0	-	16	1	-	2	1	90	0

- NOTES: 1. FLAGS FOR INVALID DATA :
- D: DYNAMIC CALIBRATION
 - T: TELEMETRY/DATALOGGR FAULT
 - M: MAINTENANCE OR ANALYZER FAULT
 - P: POWER FAILURE

THE HONGKONG ELECTRIC COMPANY, LTD.
AIR QUALITY DATA MONTHLY TIME SERIES REPORT
MONTH: AUGUST

STATION : CHEUNG CHAU
POLLUTANT : NITROGEN DIOXIDE

YEAR : 2022
UNIT : MICROGRAMS/CUBIC METER

DAY	1	2	3	4	5	6	7	8	9	10	11	12	13	14	15	16	17	18	19	20	21	22	23	24	MEAN
1	9	8	11	8	4	17	32	23	21	12	7	5	2	2	8	3	4	4	10	8	8	11	10	17	10
2	9	11	8	12	18	30	26	24	23	8	4	4	4	6	7	7	5	4	10	9	22	12	13	11	12
3	11	M	15	14	21	27	12	5	11	32	36	40	45	53	34	36	35	37	37	40	48	31	27	34	30
4	47	32	22	29	32	16	20	27	15	15	15	12	10	9	8	7	6	9	4	5	3	6	1	4	15
5	3	2	4	2	2	6	24	38	31	30	17	2	7	2	21	28	27	12	55	29	32	20	13	28	18
6	10	19	30	16	24	27	27	31	19	19	15	5	6	3	12	12	7	18	29	39	39	39	44	39	22
7	34	26	20	11	11	17	15	18	15	11	7	3	3	4	7	4	6	6	10	7	2	2	3	10	11
8	4	5	4	11	5	6	3	8	12	12	16	26	27	M	M	M	M	M	M	M	M	M	M	M	M
9	M	M	M	M	M	M	M	M	M	M	M	M	M	M	M	M	M	M	M	M	M	M	M	M	M
10	M	M	M	M	M	M	M	M	M	M	M	M	M	M	M	M	M	M	M	M	M	M	M	M	M
11	M	M	M	M	M	M	M	M	M	M	M	M	M	M	28	10	9	9	7	4	6	6	9	6	
12	12	13	9	7	4	2	6	8	9	1	1	0	2	4	8	14	11	17	16	15	16	19	18	17	10
13	15	15	16	17	14	17	17	16	14	11	13	9	9	10	11	10	4	5	5	5	3	2	3	15	11
14	16	14	13	14	8	5	8	5	8	3	3	2	3	4	9	4	4	5	5	2	2	4	7	6	6
15	7	5	7	22	14	21	30	33	12	13	11	4	4	7	7	7	M	17	7	3	8	3	1	8	11
16	5	12	14	15	19	21	20	12	21	16	M	11	12	13	11	5	3	4	2	1	1	2	2	3	10
17	4	M	3	2	3	1	2	3	2	11	1	0	0	1	2	2	16	16	11	1	3	3	3	3	4
18	2	5	4	1	0	4	4	7	17	12	22	16	5	3	1	2	13	7	9	5	6	3	3	5	7
19	2	3	5	2	6	19	25	27	23	20	21	23	18	9	3	5	3	7	10	9	7	0	0	2	10
20	0	0	3	1	1	1	1	2	0	1	1	1	0	1	0	1	2	1	1	2	3	2	0	1	1
21	1	1	1	0	1	3	2	1	0	0	2	0	1	0	0	1	1	0	1	4	0	0	0	2	1
22	2	0	0	0	3	1	2	2	3	6	4	4	2	3	5	4	8	7	5	2	1	0	0	4	3
23	3	5	5	17	42	47	20	15	20	13	15	24	9	26	31	37	30	24	21	12	9	10	12	10	19
24	10	35	13	23	39	42	43	34	33	30	23	21	15	14	8	6	6	2	2	3	3	1	0	10	17
25	2	0	0	0	0	0	0	0	0	0	0	0	0	0	0	0	1	0	2	0	2	2	3	2	1
26	3	1	0	1	2	6	8	5	4	3	6	6	2	2	2	2	1	2	1	1	1	2	3	2	3
27	1	1	2	2	1	1	5	3	3	5	6	5	9	16	10	6	5	5	5	4	3	2	4	4	5
28	2	4	10	24	26	38	43	24	24	24	19	18	24	22	17	14	11	4	5	4	2	2	1	3	15
29	3	3	2	1	2	1	3	2	3	3	2	3	7	6	6	14	19	14	5	7	12	5	7	9	6
30	17	16	16	17	13	14	11	10	7	16	17	12	4	5	5	4	4	5	7	3	12	36	28	37	13
31	26	M	27	24	54	50	44	43	50	46	26	16	17	15	16	14	48	47	39	64	41	25	23	14	33

MONTHLY STATISTICS:

GEOM	ARITH-----PERCENTILES-----										RANGE-----			STN GEOM	PERCENT	NO. OF TIMES
MEAN	MEDIAN	MEAN	50	90	95	98	99	1-HR		24-HR		DEVIATION	VALID DATA	ABOVE LIMIT LEVEL		
7	7	11	7	28	37	44	48	0	-	64	1	-	33	3	90	0

- NOTES: 1. FLAGS FOR INVALID DATA :
- D: DYNAMIC CALIBRATION
 - T: TELEMETRY/DATALOGGR FAULT
 - M: MAINTENANCE OR ANALYZER FAULT
 - P: POWER FAILURE

THE HONGKONG ELECTRIC COMPANY, LTD.
AIR QUALITY DATA MONTHLY TIME SERIES REPORT
MONTH: SEPTEMBER

STATION : VICTORIA PEAK
POLLUTANT : SULPHUR DIOXIDE

YEAR : 2022
UNIT : MICROGRAMS/CUBIC METER

DAY	1	2	3	4	5	6	7	8	9	10	11	12	13	14	15	16	17	18	19	20	21	22	23	24	MEAN
1	5	6	6	6	6	5	4	6	8	7	7	6	6	7	6	6	4	4	3	3	4	4	4	4	5
2	4	4	6	5	5	4	4	4	5	4	M	4	4	4	4	4	4	4	4	4	4	4	5	5	4
3	5	6	6	6	6	6	6	6	6	5	5	6	6	5	5	5	6	5	4	4	5	5	6	5	5
4	5	5	5	5	5	5	5	6	6	6	5	5	5	5	5	5	5	6	8	7	5	5	6	7	6
5	6	7	7	7	7	6	6	7	6	6	6	6	6	6	8	9	9	9	8	7	6	6	6	6	7
6	6	7	7	7	7	7	7	7	7	8	8	9	7	7	7	8	7	6	5	4	4	4	4	4	6
7	4	4	4	3	3	3	3	3	3	3	3	3	4	4	4	4	4	4	4	3	3	3	3	3	3
8	3	3	3	3	3	3	3	4	4	4	4	4	4	4	4	4	4	4	4	4	4	4	4	4	4
9	4	4	4	4	5	6	6	5	5	5	6	5	5	5	8	8	8	7	6	4	5	5	5	4	5
10	4	4	4	4	4	4	4	4	4	5	7	5	4	4	4	4	4	4	4	4	5	5	5	5	4
11	4	4	4	4	4	4	4	4	5	4	5	5	5	6	7	8	9	8	7	6	6	5	5	5	5
12	4	4	7	7	7	7	8	8	8	7	8	8	8	8	8	10	9	8	8	8	8	9	9	8	8
13	7	7	9	9	13	15	12	10	8	7	6	5	5	6	6	9	10	9	9	8	8	8	8	7	8
14	7	9	8	7	7	6	5	5	5	6	6	6	6	6	8	7	7	7	7	7	8	7	8	9	7
15	7	6	8	7	6	6	6	7	6	5	5	5	6	8	12	18	13	19	10	8	7	7	7	6	8
16	6	5	5	5	8	10	10	14	11	10	10	9	9	9	10	9	9	9	8	8	7	7	7	7	8
17	6	6	7	6	6	5	5	4	5	5	5	6	6	10	15	13	11	6	6	5	4	4	4	4	7
18	4	4	4	4	4	4	6	11	13	14	10	8	12	9	8	6	6	4	4	4	4	7	5	4	7
19	4	4	4	4	4	4	4	4	4	4	5	6	7	7	7	4	4	5	5	5	4	5	5	5	5
20	5	4	4	4	4	4	4	4	4	4	4	4	3	4	4	4	4	4	4	4	4	4	4	4	4
21	4	4	4	4	4	4	4	4	4	4	4	4	4	4	4	4	4	4	4	4	4	4	4	4	4
22	4	4	4	4	4	4	4	4	4	4	4	4	4	4	4	4	4	4	4	4	4	4	4	4	4
23	4	4	4	4	4	4	4	4	4	4	7	5	5	6	5	6	6	6	5	4	4	4	4	4	5
24	4	4	4	4	4	4	4	4	4	4	4	4	4	4	5	5	5	5	4	4	4	4	4	4	4
25	4	4	4	4	4	4	5	4	5	5	5	5	5	5	5	5	5	5	5	5	4	4	4	4	5
26	4	4	4	4	4	4	4	6	6	5	5	5	6	5	5	5	5	4	4	4	4	4	4	4	5
27	4	4	4	4	4	4	4	4	4	4	5	5	4	5	5	5	4	4	4	4	4	4	4	4	4
28	4	4	4	4	4	4	4	4	4	4	4	4	4	4	4	4	4	4	4	4	4	4	4	4	4
29	4	4	4	4	4	4	4	4	4	3	4	4	4	4	4	4	4	4	4	4	4	4	4	4	4
30	4	4	3	4	4	4	3	4	4	3	3	3	3	3	3	4	3	3	3	3	3	3	4	4	3

MONTHLY STATISTICS:

GEOM	ARITH-----PERCENTILES-----										RANGE-----		STN GEOM	PERCENT	NO. OF TIMES	
MEAN	MEDIAN	MEAN	50	90	95	98	99	1-HR		24-HR		DEVIATION	VALID DATA	ABOVE LIMIT LEVEL		
5	4	5	4	8	9	11	13	3	-	19	3	-	8	1	100	0

NOTES: 1. FLAGS FOR INVALID DATA :
D: DYNAMIC CALIBRATION
T: TELEMETRY/DATALOGGR FAULT
M: MAINTENANCE OR ANALYZER FAULT
P: POWER FAILURE

THE HONGKONG ELECTRIC COMPANY, LTD.
AIR QUALITY DATA MONTHLY TIME SERIES REPORT
MONTH: SEPTEMBER

STATION : VICTORIA PEAK
POLLUTANT : NITROGEN DIOXIDE

YEAR : 2022
UNIT : MICROGRAMS/CUBIC METER

DAY	1	2	3	4	5	6	7	8	9	10	11	12	13	14	15	16	17	18	19	20	21	22	23	24	MEAN
1	35	15	21	33	31	19	14	20	27	28	38	30	28	27	26	22	29	35	28	54	35	26	21	21	28
2	17	12	32	20	20	12	16	15	16	16	M	7	13	13	9	14	15	20	16	23	10	14	26	13	16
3	13	15	14	9	10	9	8	16	17	8	9	9	13	10	7	10	12	9	8	8	8	10	14	12	11
4	12	7	10	3	7	5	0	7	13	10	6	4	3	4	2	2	9	11	31	19	13	12	14	8	9
5	10	14	14	12	8	2	3	18	18	15	18	11	8	9	19	29	22	24	32	34	21	15	18	23	17
6	13	12	14	11	6	7	7	18	55	48	37	38	5	0	1	5	6	6	0	0	0	0	0	0	12
7	0	0	0	0	0	0	0	1	3	1	0	0	1	3	6	6	7	7	1	0	0	0	0	1	2
8	0	0	0	0	0	0	0	4	8	3	0	0	0	1	1	1	1	1	0	0	0	4	2	2	1
9	0	0	0	0	0	16	31	22	12	6	8	4	7	9	18	14	26	14	15	5	0	0	0	1	9
10	0	0	0	0	0	0	0	0	2	28	41	9	5	5	3	0	3	11	13	17	16	17	35	2	9
11	0	0	0	0	0	0	0	1	0	0	3	6	5	2	6	9	10	12	9	4	4	1	0	2	3
12	0	0	0	0	7	10	7	15	20	24	19	18	20	15	19	30	29	28	34	30	27	37	34	18	18
13	11	14	21	21	14	21	23	23	32	48	36	25	17	17	25	31	33	25	25	17	23	17	17	19	23
14	15	M	19	16	5	0	5	13	18	25	23	21	20	15	21	25	17	22	22	18	27	30	23	16	18
15	8	16	36	12	5	10	14	23	37	25	23	19	22	19	28	41	25	44	30	16	17	16	8	5	21
16	0	0	0	0	0	7	10	15	15	30	41	33	19	19	22	24	21	25	20	14	8	10	7	4	14
17	1	0	6	1	0	0	0	0	1	2	0	6	3	10	18	22	17	3	8	5	2	0	0	2	4
18	0	0	0	0	0	0	0	1	2	5	9	9	3	2	2	1	2	5	1	4	4	37	1	1	4
19	1	5	5	0	1	0	7	9	2	11	44	37	26	28	36	13	17	21	43	19	6	6	8	1	14
20	0	2	0	0	0	0	0	1	7	6	3	8	12	8	2	7	0	1	0	0	0	0	0	1	2
21	0	0	0	0	0	0	0	0	0	1	0	0	0	0	0	1	2	2	0	0	0	0	0	1	0
22	0	0	0	0	0	0	0	5	5	4	0	0	1	1	1	1	0	0	0	0	0	0	0	2	1
23	0	0	0	0	0	0	3	10	21	45	23	23	26	15	5	18	5	6	3	0	0	0	0	2	9
24	0	0	0	0	0	0	0	0	2	3	4	6	3	1	1	0	1	4	0	0	0	0	0	1	1
25	0	0	0	0	0	0	0	3	6	5	6	5	3	2	3	4	9	5	3	2	2	0	0	1	2
26	0	0	0	0	0	0	1	4	13	16	9	8	7	6	13	10	5	5	3	2	0	0	0	1	4
27	0	0	0	0	0	0	1	3	4	2	0	3	0	3	4	1	1	0	0	2	0	0	0	2	1
28	0	M	0	0	0	0	0	0	1	2	0	2	0	1	2	7	5	3	1	0	0	0	0	0	1
29	0	0	0	0	0	0	0	0	0	7	6	4	1	4	4	1	2	2	1	0	0	0	0	1	1
30	0	0	0	0	0	0	0	0	0	0	0	0	1	0	0	2	1	0	0	0	1	3	3	1	1

MONTHLY STATISTICS:

GEOM	ARITH-----PERCENTILES-----							RANGE-----				STN GEOM	PERCENT	NO. OF TIMES		
MEAN	MEDIAN	MEAN	50	90	95	98	99	1-HR		24-HR		DEVIATION	VALID DATA	ABOVE LIMIT LEVEL		
8	4	9	4	25	31	37	43	0	-	55	0	-	28	3	100	0

NOTES:

1. FLAGS FOR INVALID DATA :
 D: DYNAMIC CALIBRATION
 T: TELEMETRY/DATALOGGR FAULT
 M: MAINTENANCE OR ANALYZER FAULT
 P: POWER FAILURE

THE HONGKONG ELECTRIC COMPANY, LTD.
AIR QUALITY DATA MONTHLY TIME SERIES REPORT

STATION : CHUNG HOM KOK ZONE SUBSTATION
POLLUTANT : SULPHUR DIOXIDE

MONTH: SEPTEMBER

YEAR : 2022

UNIT : MICROGRAMS/CUBIC METER

DAY	1	2	3	4	5	6	7	8	9	10	11	12	13	14	15	16	17	18	19	20	21	22	23	24	MEAN	
1	1	1	1	2	1	1	2	2	2	3	0	1	1	1	1	0	2	2	2	0	0	1	1	0	1	
2	0	0	0	0	0	0	0	0	0	0	0	0	0	0	0	0	0	0	0	0	0	0	0	0	0	
3	1	1	2	2	2	2	2	2	2	2	2	1	3	3	3	4	4	3	3	2	2	2	3	1	2	
4	0	0	0	0	0	0	0	0	0	0	0	0	0	0	1	0	0	0	3	3	2	1	0	2	1	
5	2	2	2	2	2	2	2	2	1	1	1	0	4	2	4	4	4	4	7	5	2	2	2	3	3	
6	5	7	7	9	10	11	6	6	6	6	15	5	5	4	5	4	4	4	3	3	2	2	2	0	5	
7	0	0	0	0	0	0	0	0	0	0	0	0	0	0	0	0	0	0	0	0	0	0	0	0	0	
8	1	1	1	1	1	1	1	2	1	1	M	1	5	5	6	6	6	7	6	6	6	6	6	0	3	
9	0	0	0	0	0	0	0	0	1	1	1	0	0	1	2	2	1	1	2	1	0	1	0	1	1	
10	1	0	0	0	0	0	0	0	0	0	0	0	0	0	0	0	0	0	1	1	1	2	1	4	0	
11	6	3	3	4	3	2	2	4	3	3	3	1	0	1	2	1	1	2	3	1	1	1	1	0	2	
12	0	1	1	1	1	2	3	3	4	3	5	8	4	3	2	3	3	4	5	4	6	5	6	9	4	
13	8	9	6	7	8	8	7	8	7	7	8	8	5	6	5	5	7	8	15	13	9	8	7	6	8	
14	5	4	4	2	2	1	2	0	1	1	1	4	9	1	5	11	4	6	5	11	6	2	3	4	4	
15	6	8	4	3	4	2	1	2	3	9	12	10	2	1	5	7	4	4	5	3	3	3	4	2	4	
16	3	3	3	2	1	1	2	4	5	7	6	3	2	1	2	3	5	4	4	3	4	4	3	3	3	
17	2	2	1	1	1	1	1	0	2	2	0	0	0	0	0	0	0	0	0	0	0	0	0	0	1	
18	1	0	0	1	1	1	1	1	0	1	2	1	0	1	1	1	1	2	1	1	1	2	1	0	1	
19	0	0	0	0	0	0	0	0	0	0	0	0	0	0	0	0	0	0	0	0	0	0	0	1	0	
20	2	2	2	1	2	1	1	1	1	1	1	1	2	0	1	0	2	2	2	1	1	1	1	1	0	1
21	0	0	0	0	0	0	0	0	0	0	0	0	0	0	0	0	0	1	1	0	0	0	0	0	0	
22	0	0	0	0	0	0	0	0	0	0	0	0	0	0	0	0	0	1	1	0	0	0	0	0	0	
23	2	2	1	2	2	2	1	1	1	1	1	2	1	2	2	3	3	4	3	2	2	1	2	0	2	
24	0	0	0	0	0	0	0	0	0	0	0	0	0	0	0	1	0	0	0	0	0	0	0	0	0	
25	0	0	0	0	0	0	1	0	0	0	0	0	0	0	1	1	1	1	2	0	0	0	0	0	0	
26	2	2	2	2	2	2	3	3	3	2	2	1	2	2	3	3	3	3	2	2	2	2	2	0	2	
27	0	0	0	0	0	0	0	0	0	0	0	0	0	0	0	2	1	0	0	0	0	0	0	0	0	
28	1	1	1	1	1	1	1	1	1	1	1	1	1	0	0	2	1	2	1	1	1	1	1	1	0	1
29	0	0	0	0	0	0	0	0	0	0	0	0	0	0	0	0	0	0	0	0	0	0	0	0	0	
30	0	0	0	0	0	0	0	0	0	0	0	0	0	0	0	0	0	0	0	0	0	0	0	0	0	

MONTHLY STATISTICS:

ARITH-----PERCENTILES-----RANGE-----													STN GEOM	PERCENT	NO. OF TIMES		
GEOM	MEAN	MEDIAN	MEAN	50	90	95	98	99	1-HR	24-HR	DEVIATION	VALID DATA	ABOVE	LIMIT	LEVEL		
	2	1	2	1	5	7	9	10	0	-	15	0	-	8	2	100	0

NOTES:

1. FLAGS FOR INVALID DATA :
 - D: DYNAMIC CALIBRATION
 - T: TELEMETRY/DATALOGGR FAULT
 - M: MAINTENANCE OR ANALYZER FAULT
 - P: POWER FAILURE

THE HONGKONG ELECTRIC COMPANY, LTD.
AIR QUALITY DATA MONTHLY TIME SERIES REPORT

STATION : CHUNG HOM KOK ZONE SUBSTATION
POLLUTANT : NITROGEN DIOXIDE

MONTH: SEPTEMBER

YEAR : 2022

UNIT : MICROGRAMS/CUBIC METER

DAY	1	2	3	4	5	6	7	8	9	10	11	12	13	14	15	16	17	18	19	20	21	22	23	24	MEAN
1	5	18	23	16	16	3	7	10	10	22	7	5	2	2	2	2	6	16	26	7	10	13	20	7	11
2	9	9	6	5	5	5	9	10	10	10	8	9	10	14	11	10	13	13	15	17	14	13	13	14	11
3	10	10	8	8	7	7	9	15	15	15	18	23	24	16	19	33	37	40	23	24	23	22	22	14	18
4	13	10	10	8	6	4	7	9	9	7	8	10	10	9	11	12	9	25	54	49	27	23	22	31	16
5	26	20	10	9	9	7	11	14	15	12	12	9	43	15	23	21	28	39	59	36	23	14	13	10	20
6	13	64	49	47	46	61	10	26	13	19	63	9	5	3	2	4	5	4	3	6	3	1	0	1	19
7	1	0	0	0	0	0	0	0	1	0	0	0	0	0	0	1	2	1	1	1	0	0	0	0	0
8	0	0	0	1	1	1	2	5	5	3	M	2	1	2	1	3	4	9	5	4	2	2	2	2	2
9	0	0	0	0	2	3	5	9	11	7	5	4	5	3	10	13	9	6	11	7	4	4	5	1	5
10	0	1	1	0	0	1	0	1	3	3	1	1	1	1	2	1	6	3	8	11	20	11	5	27	5
11	24	6	4	11	7	2	0	22	5	13	19	15	8	10	11	20	25	29	30	21	11	7	6	6	13
12	11	7	5	4	9	17	18	22	23	25	52	66	36	28	26	32	34	51	44	43	49	24	23	24	28
13	18	42	27	34	59	29	25	44	47	58	73	65	38	39	25	33	35	48	59	55	27	21	24	24	40
14	18	M	22	13	6	4	12	7	10	13	14	57	82	21	31	85	43	60	50	58	40	18	19	24	31
15	24	29	21	8	26	6	7	11	32	87	81	63	23	10	23	32	20	18	18	20	23	15	16	11	26
16	13	10	8	7	5	8	8	24	36	54	30	21	18	17	15	20	31	25	27	13	19	14	8	7	18
17	8	7	4	7	9	6	3	5	10	16	16	14	12	10	10	11	15	14	15	21	8	6	7	14	10
18	13	6	8	18	16	5	12	9	14	16	20	20	15	16	13	15	14	15	6	11	14	11	8	2	12
19	7	13	12	7	6	9	14	38	39	29	43	31	35	47	22	23	29	37	14	13	8	9	8	9	21
20	7	5	2	0	0	0	0	3	3	3	5	6	8	3	2	3	4	6	3	3	4	3	1	3	3
21	2	1	2	3	3	2	3	4	3	2	2	3	3	2	2	6	5	6	4	6	4	3	3	5	3
22	5	5	4	4	4	6	4	4	3	3	2	2	2	2	1	5	3	4	6	9	3	3	2	3	4
23	3	3	4	3	3	5	7	9	7	6	5	4	5	7	7	14	12	5	4	2	4	4	1	4	5
24	1	2	3	2	2	3	3	4	5	5	5	6	4	4	5	6	4	6	4	4	5	4	4	4	4
25	3	4	3	3	4	3	5	5	6	8	7	5	5	4	5	5	4	7	7	3	2	1	2	2	4
26	1	1	0	0	2	1	3	5	5	4	6	4	3	3	4	4	3	4	1	2	0	0	1	1	2
27	0	1	0	1	1	1	2	4	2	2	1	1	1	1	1	1	2	2	0	0	1	1	0	1	1
28	0	M	1	0	0	0	0	1	0	0	0	1	0	0	1	1	1	1	0	0	1	0	1	2	0
29	2	2	1	3	1	1	1	3	2	1	3	0	1	0	0	1	2	2	3	3	2	1	0	1	2
30	1	2	1	0	0	0	0	1	1	1	1	1	1	4	6	5	2	2	0	3	1	2	2	8	2

MONTHLY STATISTICS:

GEOM	ARITH-----PERCENTILES-----							-----RANGE-----				STN GEOM	PERCENT	NO. OF TIMES		
MEAN	MEDIAN	MEAN	50	90	95	98	99	1-HR		24-HR		DEVIATION	VALID DATA	ABOVE LIMIT LEVEL		
7	6	11	6	28	43	59	64	0	-	87	0	-	40	3	100	0

- NOTES: 1. FLAGS FOR INVALID DATA :
- D: DYNAMIC CALIBRATION
 - T: TELEMETRY/DATALOGGR FAULT
 - M: MAINTENANCE OR ANALYZER FAULT
 - P: POWER FAILURE

THE HONGKONG ELECTRIC COMPANY, LTD.
 AIR QUALITY DATA MONTHLY TIME SERIES REPORT

STATION : VICTORIA ROAD SUBSTATION
 POLLUTANT : SULPHUR DIOXIDE

MONTH: SEPTEMBER

YEAR : 2022

UNIT : MICROGRAMS/CUBIC METER

DAY	1	2	3	4	5	6	7	8	9	10	11	12	13	14	15	16	17	18	19	20	21	22	23	24	MEAN
1	7	8	8	8	8	8	8	8	8	9	8	8	9	8	8	9	8	8	8	8	8	7	8	9	8
2	8	8	8	8	8	8	8	8	8	8	8	8	8	8	8	7	7	8	8	8	8	7	8	9	8
3	8	8	8	8	8	8	8	8	8	8	8	8	8	8	8	8	8	7	8	8	7	8	8	8	8
4	8	8	8	8	8	8	8	8	8	8	8	8	8	8	8	8	8	7	8	8	7	7	8	10	8
5	8	8	8	8	8	8	8	8	9	8	7	8	8	8	8	9	9	8	8	8	8	8	8	9	8
6	7	8	8	8	8	8	8	8	9	10	10	9	8	8	8	8	8	8	7	8	7	7	7	8	8
7	7	7	7	7	7	7	7	7	7	7	7	7	7	7	7	7	7	7	7	7	7	7	7	8	7
8	7	7	7	7	7	7	7	7	7	7	7	7	7	7	7	7	7	7	7	6	7	7	7	8	7
9	7	7	7	7	7	7	8	7	7	7	7	7	7	7	7	8	8	7	7	7	7	7	7	8	7
10	7	7	7	7	7	7	7	7	7	8	7	7	7	7	7	7	7	7	7	7	7	7	7	8	7
11	7	7	7	7	7	7	7	7	7	7	7	7	7	7	8	8	8	7	8	7	7	7	7	9	7
12	7	7	7	7	7	8	7	6	8	9	9	9	8	8	8	9	8	8	8	8	8	8	8	9	8
13	8	8	8	8	8	8	9	9	9	9	9	8	8	7	8	8	8	9	8	8	8	8	8	9	8
14	8	8	8	7	8	8	8	8	8	8	8	8	8	8	8	8	8	8	8	9	8	8	9	9	8
15	7	8	8	8	7	8	8	8	8	9	M	0	0	0	0	0	0	0	0	0	0	0	0	0	3
16	0	0	0	0	0	0	0	0	0	0	0	0	0	0	0	0	0	0	0	0	0	0	0	0	0
17	0	0	0	0	0	0	0	0	0	0	0	0	0	0	0	0	0	0	0	0	0	0	0	0	0
18	0	0	0	0	0	0	0	0	0	0	0	0	0	0	0	0	0	0	0	0	0	0	0	0	0
19	0	0	0	0	0	0	0	0	0	0	0	0	0	0	0	0	0	0	0	0	0	0	0	0	0
20	0	0	0	0	0	0	0	0	0	0	0	0	0	0	0	0	0	0	0	0	0	0	0	0	0
21	0	0	0	0	0	0	0	0	0	0	0	0	0	0	0	0	0	0	0	0	0	0	0	0	0
22	0	0	0	0	0	0	0	0	0	0	0	0	0	0	0	0	0	0	0	0	0	0	0	0	0
23	0	0	0	0	0	0	0	0	0	0	0	0	0	0	0	0	0	0	0	0	0	0	0	0	0
24	0	0	0	0	0	0	0	0	0	0	0	0	0	0	0	0	0	0	0	0	0	0	0	0	0
25	0	0	0	0	0	0	0	0	0	0	0	0	0	0	0	0	0	0	0	0	0	0	0	0	0
26	0	0	0	0	0	0	0	0	0	0	0	0	0	0	0	0	0	0	0	0	0	0	0	1	0
27	0	0	0	0	0	0	0	0	0	0	0	0	0	0	0	0	0	0	0	0	0	0	0	1	0
28	0	0	0	0	0	0	0	0	0	0	0	0	0	0	0	0	0	0	0	0	0	1	1	1	0
29	0	0	0	0	0	0	0	0	0	0	0	0	0	0	0	0	0	0	0	0	0	0	0	1	0
30	0	0	0	0	0	0	0	0	0	0	0	0	0	0	0	0	0	0	0	0	0	0	0	1	0

MONTHLY STATISTICS:

GEOM	ARITH-----PERCENTILES-----							RANGE-----				STN GEOM	PERCENT	NO. OF TIMES		
MEAN	MEDIAN	MEAN	50	90	95	98	99	1-HR		24-HR		DEVIATION	VALID DATA	ABOVE LIMIT LEVEL		
7	0	4	0	8	8	9	9	0	-	10	0	-	8	1	100	0

NOTES:

1. FLAGS FOR INVALID DATA :
 - D: DYNAMIC CALIBRATION
 - T: TELEMETRY/DATALOGGR FAULT
 - M: MAINTENANCE OR ANALYZER FAULT
 - P: POWER FAILURE

THE HONGKONG ELECTRIC COMPANY, LTD.
AIR QUALITY DATA MONTHLY TIME SERIES REPORT
MONTH: SEPTEMBER

STATION : VICTORIA ROAD SUBSTATION
POLLUTANT : NITROGEN DIOXIDE

YEAR : 2022
UNIT : MICROGRAMS/CUBIC METER

DAY	1	2	3	4	5	6	7	8	9	10	11	12	13	14	15	16	17	18	19	20	21	22	23	24	MEAN
1	13	6	6	7	9	16	20	17	19	25	18	15	12	17	9	14	13	18	28	24	26	16	8	8	15
2	5	4	6	15	11	6	6	4	5	4	5	8	7	8	8	9	14	12	12	12	9	8	4	8	
3	4	4	3	3	2	3	5	10	11	10	14	14	10	16	15	16	26	15	12	11	9	11	9	10	10
4	7	5	4	5	3	2	4	6	5	5	4	3	4	3	3	4	7	11	16	15	12	9	8	6	6
5	7	7	14	11	6	7	7	16	24	17	11	16	13	21	29	23	24	27	29	21	10	7	8	15	15
6	9	8	10	8	9	6	13	19	28	39	48	29	18	9	6	7	10	10	7	3	3	2	1	1	13
7	0	0	0	0	0	0	1	2	3	2	2	2	3	3	3	4	4	5	4	1	1	0	0	0	2
8	0	0	0	0	0	0	1	3	6	7	7	6	4	6	9	7	6	6	4	3	2	4	3	2	4
9	0	0	0	6	3	3	16	20	14	11	8	4	3	4	13	13	13	10	10	7	4	4	5	5	7
10	3	2	1	1	6	5	4	7	23	25	13	4	4	7	10	4	6	8	11	13	10	4	7	8	8
11	2	1	1	2	0	0	0	5	4	5	5	7	4	5	7	11	11	13	7	5	6	4	4	3	5
12	2	1	0	0	4	6	7	9	13	16	24	23	14	13	16	20	19	23	18	23	23	19	17	11	13
13	7	7	4	7	9	12	18	26	31	35	31	20	16	16	25	21	16	17	29	24	20	14	10	9	18
14	7	M	11	8	4	3	5	11	16	21	17	31	25	19	26	33	26	32	23	21	22	13	14	9	17
15	8	7	12	6	5	6	8	16	26	37	M	32	22	21	16	14	13	19	17	17	19	15	12	11	16
16	5	4	3	3	3	3	7	14	19	28	33	20	21	14	19	21	26	17	14	16	12	8	8	4	13
17	5	4	5	4	2	1	2	4	5	9	6	12	9	10	9	9	7	12	12	12	8	5	5	5	7
18	3	3	2	2	2	2	4	4	7	8	11	13	13	10	12	8	9	11	8	9	8	9	7	5	7
19	6	6	5	3	4	2	7	10	13	21	27	21	21	25	25	16	15	27	38	32	37	33	23	36	19
20	36	19	5	3	3	2	5	7	10	11	13	12	11	10	11	9	8	7	8	4	2	2	2	2	8
21	2	1	1	1	1	1	2	4	6	6	7	7	7	9	8	9	10	8	5	3	4	3	2	2	5
22	1	2	1	1	1	1	4	4	7	7	6	7	7	8	8	10	10	6	5	4	4	3	3	3	5
23	3	2	2	1	1	1	4	9	15	19	11	12	11	10	10	17	8	11	9	6	5	3	2	2	7
24	1	1	1	1	1	1	2	3	4	5	6	7	6	8	8	10	9	7	4	3	3	3	3	3	4
25	4	3	2	1	1	1	2	4	6	4	8	9	6	5	7	6	7	11	6	8	6	4	4	3	5
26	2	1	1	0	1	1	4	8	9	9	7	7	7	5	9	9	12	9	5	3	2	1	1	2	5
27	0	0	0	0	0	0	2	4	5	3	2	3	4	3	6	6	6	6	3	2	1	2	0	1	2
28	2	M	1	0	0	0	0	1	2	3	3	3	3	4	5	5	6	4	2	1	1	1	2	0	2
29	0	0	0	0	0	0	1	3	5	4	6	5	3	4	7	5	5	6	3	1	1	1	0	1	3
30	0	0	0	0	0	0	0	2	3	2	3	4	3	5	4	5	5	3	3	2	3	2	1	1	2

MONTHLY STATISTICS:

GEOM	ARITH-----PERCENTILES-----							-----RANGE-----				STN GEOM	PERCENT	NO. OF TIMES		
MEAN	MEDIAN	MEAN	50	90	95	98	99	1-HR		24-HR		DEVIATION	VALID DATA	ABOVE LIMIT LEVEL		
6	6	8	6	19	25	31	35	0	-	48	2	-	19	2	100	0

- NOTES: 1. FLAGS FOR INVALID DATA :
- D: DYNAMIC CALIBRATION
 - T: TELEMETRY/DATALOGGR FAULT
 - M: MAINTENANCE OR ANALYZER FAULT
 - P: POWER FAILURE

THE HONGKONG ELECTRIC COMPANY, LTD.
AIR QUALITY DATA MONTHLY TIME SERIES REPORT
MONTH: SEPTEMBER

STATION : POK FU LAM
POLLUTANT : SULPHUR DIOXIDE

YEAR : 2022
UNIT : MICROGRAMS/CUBIC METER

DAY	1	2	3	4	5	6	7	8	9	10	11	12	13	14	15	16	17	18	19	20	21	22	23	24	MEAN
1	3	2	1	0	0	2	3	1	0	2	4	1	2	1	0	3	0	0	2	1	0	2	2	3	1
2	1	1	2	1	1	3	1	1	1	0	3	0	0	0	2	1	1	2	2	1	0	0	1	3	1
3	3	2	0	0	1	3	1	1	1	3	4	3	1	0	0	2	2	2	3	1	2	3	1	6	2
4	3	1	1	1	1	0	0	2	1	6	4	1	0	0	0	0	1	2	3	3	2	2	1	5	2
5	4	3	5	3	2	2	2	2	4	2	7	4	1	1	2	2	4	5	4	2	2	1	1	4	3
6	2	4	4	4	4	5	4	2	4	13	12	8	3	0	0	1	3	1	1	1	2	1	1	2	3
7	1	2	1	1	1	0	0	1	2	0	1	1	1	1	1	1	2	0	0	1	1	2	2	4	1
8	1	0	2	0	0	1	2	0	0	3	0	0	0	0	1	1	1	2	2	1	0	1	1	2	1
9	0	0	2	2	1	4	1	0	2	6	5	1	0	0	1	3	5	3	2	1	0	0	0	1	2
10	0	0	1	2	0	0	0	2	4	3	5	0	1	2	2	1	1	1	0	1	2	0	1	2	1
11	3	1	0	2	2	0	0	1	1	0	4	4	2	0	0	2	3	2	1	2	2	1	0	2	1
12	0	1	3	3	1	1	1	2	4	6	8	5	3	1	1	4	3	5	3	3	3	3	4	4	3
13	2	3	3	5	5	5	6	6	7	10	8	3	1	0	0	0	3	5	3	2	3	3	3	4	4
14	3	4	5	3	2	2	1	1	1	6	6	4	2	1	2	2	2	4	4	4	4	2	2	2	3
15	2	3	4	3	3	6	4	4	12	12	6	2	0	1	1	1	5	6	3	3	4	3	2	3	4
16	3	1	0	0	1	4	4	4	3	10	9	7	4	2	2	2	3	5	2	2	3	3	2	3	3
17	0	0	0	2	2	2	2	1	2	5	5	3	2	3	1	0	0	1	2	1	0	0	1	3	2
18	1	0	2	0	1	2	2	0	2	5	5	8	5	0	0	0	0	1	0	1	0	1	3	5	2
19	1	0	2	2	0	2	1	0	2	1	M	3	0	0	0	0	0	0	0	0	0	0	0	0	1
20	0	0	0	0	0	0	0	0	0	0	0	0	0	0	0	M	5	0	0	0	0	0	0	0	0
21	0	0	0	0	0	0	0	0	0	0	32	2	0	8	4	3	7	7	4	4	2	1	2	5	3
22	2	2	3	6	5	6	7	7	3	8	4	2	4	3	6	5	3	4	7	7	6	6	8	6	5
23	6	7	7	7	4	2	2	7	7	8	7	8	7	3	11	8	6	8	4	3	2	6	7	11	6
24	8	7	6	3	2	2	2	4	3	4	8	2	4	4	5	6	3	4	3	2	2	4	5	6	4
25	8	7	7	7	7	8	8	3	3	9	8	4	2	2	1	7	7	5	4	2	2	3	6	5	5
26	3	3	6	7	8	7	5	4	2	12	11	6	4	1	1	2	9	7	6	2	2	3	2	10	5
27	5	2	2	4	3	7	6	2	3	5	6	7	5	2	1	6	3	4	2	2	2	2	6	6	4
28	2	2	2	3	4	8	7	5	2	4	1	4	4	3	5	4	8	7	7	5	2	1	1	4	4
29	6	6	2	3	6	8	3	2	4	4	7	5	6	2	6	4	2	1	2	4	7	7	4	8	5
30	5	2	3	3	5	6	6	2	2	4	8	3	4	8	4	13	12	8	13	9	14	9	14	14	7

MONTHLY STATISTICS:

GEOM	ARITH-----PERCENTILES-----							-----RANGE-----				STN GEOM	PERCENT	NO. OF TIMES		
MEAN	MEDIAN	MEAN	50	90	95	98	99	1-HR		24-HR	DEVIATION	VALID DATA	ABOVE	LIMIT LEVEL		
3	2	3	2	7	8	11	12	0	-	32	0	-	7	2	100	0

NOTES: 1. FLAGS FOR INVALID DATA :
D: DYNAMIC CALIBRATION
T: TELEMETRY/DATALOGGR FAULT
M: MAINTENANCE OR ANALYZER FAULT
P: POWER FAILURE

THE HONGKONG ELECTRIC COMPANY, LTD.
AIR QUALITY DATA MONTHLY TIME SERIES REPORT
MONTH: SEPTEMBER

STATION : POK FU LAM
POLLUTANT : NITROGEN DIOXIDE

YEAR : 2022
UNIT : MICROGRAMS/CUBIC METER

DAY	1	2	3	4	5	6	7	8	9	10	11	12	13	14	15	16	17	18	19	20	21	22	23	24	MEAN	
1	12	8	9	7	7	8	8	10	8	11	9	7	5	5	6	10	12	13	15	14	20	15	5	3	9	
2	2	4	8	12	8	5	4	4	5	3	4	4	3	3	4	4	6	5	9	8	9	6	5	4	5	
3	3	3	3	2	3	3	4	7	6	8	7	5	5	4	4	7	6	5	7	7	8	7	8	7	6	5
4	5	M	6	5	3	3	4	5	4	4	3	3	3	2	2	2	4	8	10	9	8	7	6	6	5	
5	6	6	12	6	6	8	10	15	12	9	7	7	7	7	14	15	11	12	16	11	6	6	9	8	9	
6	7	12	9	10	9	7	9	12	17	26	24	18	10	3	2	3	3	2	1	0	0	0	0	0	8	
7	0	0	0	0	0	0	0	0	2	2	1	1	1	1	1	2	2	2	2	0	0	0	0	0	1	
8	0	0	0	0	0	0	0	1	4	1	0	1	1	1	0	1	0	0	0	0	0	1	1	0	1	
9	0	0	3	11	6	12	8	5	14	7	8	7	4	6	9	14	15	11	4	2	1	2	1	1	6	
10	1	1	10	18	4	6	8	9	15	13	9	8	3	2	1	4	5	3	4	5	3	1	2	1	6	
11	0	0	0	0	0	0	0	0	0	1	1	3	0	1	1	3	5	2	2	1	1	0	0	0	1	
12	0	0	0	1	4	5	5	6	9	9	9	9	8	6	6	12	8	11	9	10	11	12	9	6	7	
13	5	3	3	9	9	12	14	20	19	17	15	9	8	9	14	10	11	11	12	12	7	5	6	3	10	
14	4	9	7	6	1	1	4	6	11	11	8	12	11	8	12	11	11	16	10	9	10	6	7	4	8	
15	4	6	8	7	11	13	13	18	21	19	9	7	7	10	6	11	11	16	11	5	4	5	2	1	9	
16	1	0	0	0	1	1	2	5	6	10	13	7	6	8	12	9	10	9	4	4	2	1	2	1	5	
17	0	0	0	0	0	0	0	0	0	2	1	2	2	2	2	1	2	4	5	5	2	1	0	0	1	
18	0	M	2	1	0	1	1	1	1	4	4	3	2	2	1	1	3	4	2	5	2	2	1	0	2	
19	2	0	1	1	1	0	4	6	8	8	M	9	10	12	11	7	7	11	21	15	18	17	19	17	9	
20	21	4	2	2	1	1	1	4	5	3	3	3	4	3	2	M	M	7	4	2	2	2	2	3	4	
21	2	2	2	2	2	3	5	7	7	6	5	4	3	4	5	5	5	4	6	6	4	3	3	2	4	
22	3	3	2	2	3	4	8	10	13	10	5	3	3	4	5	6	6	4	3	3	5	9	7	8	5	
23	7	6	4	5	3	6	13	25	47	46	35	38	26	26	30	48	25	17	20	5	5	5	4	7	19	
24	4	4	3	3	3	3	4	7	10	11	10	8	6	8	6	7	10	10	7	5	4	5	6	6	6	
25	5	3	3	2	3	3	5	7	7	18	11	7	6	9	8	11	16	11	13	13	8	7	6	8		
26	4	3	3	2	3	3	7	12	12	15	16	10	10	14	26	18	11	11	11	9	5	4	4	4	9	
27	3	2	2	2	1	2	4	6	8	7	8	6	5	5	7	8	8	8	9	7	3	5	3	5	5	
28	3	2	2	2	2	2	4	5	7	7	5	4	4	6	7	7	8	10	9	6	5	5	4	4	5	
29	3	2	2	2	1	1	2	8	3	10	13	11	6	9	8	5	7	6	5	2	3	2	2	1	5	
30	0	1	0	0	0	1	1	4	4	5	2	2	7	5	7	7	6	6	21	10	13	7	9	5	5	

MONTHLY STATISTICS:

GEOM	ARITH-----PERCENTILES-----										RANGE-----		STN GEOM	PERCENT	NO. OF TIMES	
MEAN	MEDIAN	MEAN	50	90	95	98	99	1-HR		24-HR		DEVIATION	VALID DATA	ABOVE LIMIT LEVEL		
5	5	6	5	12	16	21	26	0	-	48	1	-	19	2	99	0

- NOTES: 1. FLAGS FOR INVALID DATA :
- D: DYNAMIC CALIBRATION
 - T: TELEMETRY/DATALOGGR FAULT
 - M: MAINTENANCE OR ANALYZER FAULT
 - P: POWER FAILURE

THE HONGKONG ELECTRIC COMPANY, LTD.
AIR QUALITY DATA MONTHLY TIME SERIES REPORT
MONTH: SEPTEMBER

STATION : AP LEI CHAU
POLLUTANT : SULPHUR DIOXIDE

YEAR : 2022
UNIT : MICROGRAMS/CUBIC METER

DAY	1	2	3	4	5	6	7	8	9	10	11	12	13	14	15	16	17	18	19	20	21	22	23	24	MEAN
1	1	0	1	1	3	1	1	3	3	8	3	2	3	2	1	1	0	4	3	1	3	7	4	1	2
2	0	0	1	3	1	0	0	0	0	0	0	0	0	0	0	0	0	0	0	0	0	0	1	1	0
3	1	2	2	2	2	2	2	2	2	2	3	4	3	2	3	4	4	3	2	1	1	2	2	1	2
4	1	1	1	1	1	1	1	1	1	1	1	1	1	1	1	1	2	2	3	3	1	0	1	1	1
5	2	2	2	3	2	3	2	3	3	4	1	2	3	4	4	6	6	5	4	4	2	2	1	2	3
6	3	2	4	3	3	3	5	6	11	22	13	5	4	3	3	3	2	2	0	0	0	0	0	0	4
7	0	0	0	0	0	0	0	0	0	0	0	0	0	0	0	0	0	0	0	0	0	0	0	0	0
8	0	0	0	0	0	0	0	0	0	0	0	0	0	0	0	0	1	0	0	0	0	0	0	0	0
9	0	0	0	1	0	0	0	0	1	1	M	2	3	4	7	5	3	3	2	2	2	2	2	1	2
10	1	1	1	1	1	1	1	1	1	1	1	0	1	0	0	0	0	0	0	1	1	0	0	1	1
11	0	0	0	0	0	0	0	0	0	0	0	0	0	0	0	0	0	0	0	0	0	0	0	1	0
12	0	0	0	0	0	1	1	2	2	1	2	2	1	1	1	2	1	1	1	1	1	3	2	5	1
13	4	3	3	4	5	7	6	6	5	3	2	1	2	3	5	3	4	5	4	5	5	3	1	1	4
14	0	2	3	3	4	5	7	4	3	1	1	5	5	2	9	7	5	5	3	6	2	2	2	3	4
15	3	4	3	3	4	4	5	10	5	5	6	9	5	4	3	4	5	3	4	4	5	2	2	3	4
16	2	2	2	1	1	2	3	5	5	6	5	3	3	1	3	3	4	4	2	5	3	1	0	1	3
17	1	0	0	0	0	0	0	0	0	0	0	0	0	1	0	0	0	0	0	0	0	0	0	2	0
18	0	0	0	0	0	0	0	0	1	2	2	1	1	0	1	0	0	0	0	0	0	0	0	0	0
19	1	1	0	0	0	0	0	0	0	1	2	1	1	2	2	1	0	1	1	1	1	1	2	2	1
20	0	0	0	0	0	0	0	0	0	0	0	0	0	0	0	0	0	0	0	0	0	0	0	1	0
21	0	0	0	0	0	0	0	0	0	0	0	0	0	0	0	0	0	0	0	0	0	0	0	1	0
22	1	1	0	0	0	0	0	0	0	0	0	0	0	0	0	0	1	0	0	0	0	0	0	1	0
23	0	0	0	0	0	0	0	0	0	0	0	0	0	0	0	1	0	0	0	0	0	0	0	1	0
24	0	0	0	0	0	0	0	0	1	1	0	1	0	0	1	1	1	1	1	0	0	0	0	1	0
25	0	0	0	0	0	0	0	0	0	0	1	0	1	0	0	1	1	1	0	0	0	0	0	1	0
26	0	0	0	0	0	0	0	1	1	1	0	0	0	1	1	0	0	0	0	0	0	0	0	1	0
27	1	1	0	0	0	0	0	1	1	1	1	1	1	1	1	1	0	0	0	0	0	0	0	0	0
28	0	0	0	0	0	0	0	0	0	0	0	0	0	0	0	0	0	0	0	0	0	0	0	0	0
29	0	0	0	0	0	0	0	0	0	0	0	0	0	0	0	0	0	0	0	0	0	0	0	1	0
30	0	0	0	0	0	0	0	0	0	0	0	0	0	0	0	0	0	0	0	0	0	0	0	0	0

MONTHLY STATISTICS:

ARITH ----- PERCENTILES ----- RANGE -----											STN GEOM	PERCENT	NO. OF TIMES			
MEAN	MEDIAN	MEAN	50	90	95	98	99	1-HR		24-HR	DEVIATION	VALID DATA	ABOVE LIMIT LEVEL			
2	0	1	0	4	5	6	7	0	-	22	0	-	4	2	100	0

NOTES: 1. FLAGS FOR INVALID DATA :
D: DYNAMIC CALIBRATION
T: TELEMETRY/DATALOGGR FAULT
M: MAINTENANCE OR ANALYZER FAULT
P: POWER FAILURE

THE HONGKONG ELECTRIC COMPANY, LTD.
AIR QUALITY DATA MONTHLY TIME SERIES REPORT
MONTH: SEPTEMBER

STATION : AP LEI CHAU
POLLUTANT : NITROGEN DIOXIDE

YEAR : 2022
UNIT : MICROGRAMS/CUBIC METER

DAY	1	2	3	4	5	6	7	8	9	10	11	12	13	14	15	16	17	18	19	20	21	22	23	24	MEAN
1	39	26	19	23	38	25	9	24	30	51	22	17	22	22	11	4	8	45	68	73	96	95	66	16	35
2	11	8	25	44	27	14	16	12	11	14	11	15	18	20	14	18	16	23	19	24	15	16	23	15	18
3	15	14	14	10	11	11	12	17	19	19	26	21	21	14	21	32	28	31	23	13	12	13	12	14	18
4	12	10	13	12	13	8	6	13	13	14	12	10	11	7	9	8	21	23	42	37	16	12	13	17	15
5	13	14	15	17	17	23	15	36	51	46	23	25	24	26	27	34	38	36	46	48	31	26	25	32	29
6	55	M	90	56	56	57	59	69	85	90	65	21	4	4	5	5	4	1	1	1	0	0	0	1	32
7	0	0	0	0	0	2	4	6	7	7	6	4	4	5	6	6	5	6	2	0	0	0	0	2	3
8	0	0	0	0	0	0	5	8	8	1	0	0	1	0	0	0	2	6	1	1	0	6	6	8	2
9	0	1	2	14	17	16	37	37	13	6	M	0	0	0	M	13	4	1	1	0	0	0	0	1	7
10	0	0	0	0	0	0	0	0	0	3	1	0	0	0	0	0	0	4	17	23	35	2	8	31	5
11	3	2	6	11	4	0	3	27	15	19	9	26	12	11	10	20	21	19	12	8	4	5	2	6	11
12	6	8	6	4	9	11	15	18	28	37	46	47	33	25	20	37	27	36	42	33	40	44	19	26	26
13	39	34	34	44	18	23	32	37	50	48	44	22	34	35	48	25	30	34	26	30	21	23	23	23	32
14	15	34	32	30	39	33	53	43	36	36	29	52	48	21	41	62	38	52	40	51	17	21	22	17	36
15	27	41	33	25	54	56	54	67	62	76	56	50	23	19	14	12	16	23	30	29	37	20	7	17	35
16	8	9	5	1	5	8	32	33	28	48	47	26	31	18	20	15	28	28	12	31	24	4	2	6	20
17	10	8	3	10	3	2	4	10	11	17	25	23	12	17	15	17	15	18	18	18	7	3	4	3	11
18	2	0	4	7	0	0	1	2	3	8	13	19	2	3	4	3	7	9	0	5	5	5	0	2	4
19	2	1	4	0	1	0	4	10	17	25	41	19	23	43	36	13	19	49	44	48	25	36	70	47	24
20	17	M	0	0	0	0	0	0	0	0	0	0	2	0	0	0	0	0	0	0	0	0	0	1	1
21	0	0	0	0	0	0	0	0	0	0	0	0	0	0	0	0	0	0	0	0	0	0	0	0	0
22	0	0	0	0	0	0	0	0	0	0	0	0	0	0	0	0	0	0	0	0	0	0	0	1	0
23	0	0	0	0	0	0	1	1	0	8	6	3	1	2	2	7	0	0	0	0	0	0	0	1	1
24	0	0	0	0	0	0	0	0	0	0	0	0	0	0	0	0	0	0	0	0	0	0	0	0	0
25	0	0	0	0	0	0	0	0	0	0	2	0	0	0	0	0	0	0	0	0	0	0	0	0	0
26	0	0	0	0	0	0	0	0	0	0	1	0	0	0	0	0	0	0	0	0	0	0	0	0	0
27	0	0	0	0	0	0	0	0	0	0	0	0	0	0	0	0	0	0	0	0	0	0	0	0	0
28	0	0	0	0	0	0	0	0	0	0	0	0	0	0	0	0	0	0	0	0	0	0	0	0	0
29	0	0	0	0	0	0	0	0	0	0	0	0	0	0	0	0	0	0	0	0	0	0	0	0	0
30	0	0	0	0	0	0	0	0	0	0	0	0	0	0	0	0	0	0	0	0	0	1	0	0	0

MONTHLY STATISTICS:

GEOM	ARITH-----PERCENTILES-----							RANGE-----				STN GEOM	PERCENT	NO. OF TIMES		
MEAN	MEDIAN	MEAN	50	90	95	98	99	1-HR		24-HR		DEVIATION	VALID DATA	ABOVE LIMIT LEVEL		
13	4	12	4	37	48	61	70	0	-	96	0	-	36	3	99	0

- NOTES: 1. FLAGS FOR INVALID DATA :
- D: DYNAMIC CALIBRATION
 - T: TELEMETRY/DATALOGGR FAULT
 - M: MAINTENANCE OR ANALYZER FAULT
 - P: POWER FAILURE

THE HONGKONG ELECTRIC COMPANY, LTD.
AIR QUALITY DATA MONTHLY TIME SERIES REPORT
MONTH: SEPTEMBER

STATION : CHEUNG CHAU
POLLUTANT : SULPHUR DIOXIDE

YEAR : 2022
UNIT : MICROGRAMS/CUBIC METER

DAY	1	2	3	4	5	6	7	8	9	10	11	12	13	14	15	16	17	18	19	20	21	22	23	24	MEAN
1	1	1	2	2	2	2	2	2	2	2	3	3	2	3	2	2	1	1	1	1	2	2	1	4	2
2	2	1	1	2	2	2	1	1	1	1	1	1	1	1	3	2	2	2	1	1	1	1	1	4	2
3	2	2	2	2	2	2	2	2	2	2	2	3	2	2	2	3	3	3	2	2	3	3	3	5	2
4	3	2	2	2	2	1	2	2	1	2	1	1	1	2	2	3	3	2	2	2	2	2	3	5	2
5	3	3	3	3	2	3	3	3	3	3	3	3	3	3	3	4	4	4	3	3	3	3	2	5	3
6	3	2	2	2	2	3	3	4	4	5	6	7	6	3	3	3	3	3	2	1	1	1	1	3	3
7	1	1	1	1	1	1	1	0	1	0	1	1	1	1	2	2	2	1	1	1	2	1	1	3	1
8	1	1	1	1	1	1	1	1	1	1	1	1	1	1	1	1	2	2	1	1	1	1	1	5	1
9	3	2	2	1	1	2	3	3	3	5	3	2	M	5	3	3	4	3	2	2	2	2	2	4	3
10	2	2	2	2	2	1	1	2	2	2	1	1	2	1	2	2	1	1	1	1	1	1	1	3	2
11	1	1	1	1	1	1	1	1	1	0	1	1	1	2	2	2	2	1	1	1	1	1	1	3	1
12	1	1	1	1	1	1	2	1	3	4	4	5	5	5	5	3	2	2	2	2	2	2	2	4	3
13	2	2	2	3	4	4	6	11	9	6	4	4	2	2	4	6	4	3	2	2	1	1	1	3	4
14	2	2	2	4	4	3	2	2	2	3	3	2	3	3	3	2	3	2	2	2	2	1	2	4	3
15	2	2	2	3	3	2	3	3	4	3	3	2	3	3	4	4	3	3	2	2	2	2	1	3	3
16	2	2	2	2	2	2	2	2	4	4	5	5	6	5	4	4	4	3	2	2	1	1	1	3	3
17	1	1	1	1	1	1	1	2	1	1	1	1	2	3	3	2	2	1	1	1	1	1	1	4	1
18	1	1	1	1	1	1	1	1	2	2	1	2	2	1	1	1	1	1	1	1	1	1	1	3	1
19	1	1	1	1	1	1	1	1	1	1	1	1	4	4	3	1	1	1	1	1	1	1	1	4	1
20	2	2	1	1	1	1	1	1	1	1	1	1	1	1	2	1	1	1	1	1	1	1	1	3	1
21	1	1	1	1	1	1	1	1	1	2	1	1	1	2	2	1	1	1	1	1	1	1	1	3	1
22	1	1	1	1	1	2	1	1	2	2	2	1	1	1	1	1	1	1	1	1	1	1	1	3	1
23	2	2	1	1	1	2	2	3	2	2	2	1	1	2	2	3	2	2	2	1	1	1	1	3	2
24	1	1	1	1	1	2	1	2	1	1	1	1	1	2	2	2	2	1	1	1	1	1	1	3	1
25	2	1	1	1	1	1	1	2	2	2	2	2	2	2	2	3	3	2	2	2	1	1	1	3	2
26	1	1	1	1	1	1	1	2	2	3	2	3	3	3	2	2	2	2	2	2	2	2	1	4	2
27	2	3	1	2	1	1	1	1	1	1	1	2	2	2	2	3	3	2	2	3	4	3	3	5	2
28	2	3	2	3	2	2	1	1	4	3	2	2	1	3	3	3	3	3	2	2	1	1	1	3	2
29	2	1	1	1	1	1	1	1	1	1	1	1	2	4	7	3	2	2	1	1	1	1	1	3	2
30	1	1	1	1	1	1	1	1	1	1	1	1	1	1	1	1	1	1	1	1	1	1	1	3	1

MONTHLY STATISTICS:

GEOM	ARITH-----PERCENTILES-----							-----RANGE-----				STN GEOM	PERCENT	NO. OF TIMES		
MEAN	MEDIAN	MEAN	50	90	95	98	99	1-HR		24-HR		DEVIATION	VALID DATA	ABOVE LIMIT LEVEL		
2	2	2	2	3	4	5	6	0	-	11	1	-	4	2	100	0

NOTES:

1. FLAGS FOR INVALID DATA :
 - D: DYNAMIC CALIBRATION
 - T: TELEMETRY/DATALOGGR FAULT
 - M: MAINTENANCE OR ANALYZER FAULT
 - P: POWER FAILURE

THE HONGKONG ELECTRIC COMPANY, LTD.
AIR QUALITY DATA MONTHLY TIME SERIES REPORT
MONTH: SEPTEMBER

STATION : CHEUNG CHAU
POLLUTANT : NITROGEN DIOXIDE

YEAR : 2022
UNIT : MICROGRAMS/CUBIC METER

DAY	1	2	3	4	5	6	7	8	9	10	11	12	13	14	15	16	17	18	19	20	21	22	23	24	MEAN
1	17	27	28	43	52	49	51	37	29	29	29	14	8	8	4	7	17	30	17	36	34	27	20	9	26
2	11	17	20	22	27	16	14	17	14	27	13	20	18	17	23	29	28	29	44	38	23	22	20	24	22
3	21	21	18	19	17	19	29	26	27	23	23	23	26	21	25	24	26	22	20	28	49	38	35	36	26
4	31	22	17	10	11	12	16	14	16	15	18	14	17	19	23	24	21	22	19	19	27	52	70	68	24
5	54	60	54	37	33	34	43	39	39	45	39	34	31	33	23	25	25	25	22	26	75	94	53	51	41
6	41	26	32	47	44	52	52	59	48	41	41	56	24	10	7	4	6	9	6	3	2	2	2	3	26
7	1	1	0	2	5	5	14	4	5	4	4	7	5	5	6	5	5	4	4	2	5	1	1	0	4
8	1	1	3	2	1	2	3	15	14	12	3	4	5	3	3	3	6	12	1	2	1	1	3	26	5
9	21	19	16	9	11	26	33	26	24	30	13	5	M	7	5	8	16	11	3	3	6	7	6	17	14
10	10	7	3	4	6	8	11	18	5	7	5	4	4	6	4	6	5	2	1	3	1	2	3	5	5
11	2	10	6	4	6	18	34	32	13	5	8	5	5	9	8	9	9	12	8	11	8	8	7	10	10
12	6	10	20	30	12	24	47	30	55	64	45	30	31	25	21	22	19	24	18	14	8	10	8	10	24
13	22	39	20	61	43	69	76	94	84	71	41	48	32	20	24	40	35	41	87	28	24	15	16	14	44
14	11	M	35	53	36	30	44	49	34	53	39	23	22	20	19	14	19	20	19	21	21	17	11	16	27
15	25	28	37	83	45	23	60	62	51	39	38	15	18	14	17	17	17	23	17	9	9	9	9	9	28
16	10	34	31	33	28	33	43	47	37	18	17	25	20	20	21	18	15	10	11	5	10	11	13	10	22
17	7	6	8	11	12	18	35	94	56	45	16	9	9	10	8	9	5	10	8	5	6	7	4	8	17
18	8	8	7	7	9	17	9	38	17	16	13	11	11	15	11	7	10	4	5	8	9	8	6	7	11
19	4	3	3	4	4	6	5	23	41	24	18	10	32	29	14	12	8	29	44	77	66	70	47	35	25
20	36	23	23	20	8	6	5	12	12	14	10	9	30	28	14	5	5	5	7	2	3	2	2	4	12
21	2	2	3	3	3	3	8	7	5	13	5	2	2	4	4	3	4	2	2	3	7	2	1	3	4
22	1	3	4	4	4	8	9	8	15	18	13	7	4	3	3	3	3	3	2	1	2	1	2	7	5
23	10	11	9	20	33	43	49	47	28	17	10	6	5	5	5	6	7	8	7	4	2	3	4	17	15
24	7	3	3	4	6	8	6	11	5	13	12	9	8	7	6	7	5	5	4	3	3	2	1	7	6
25	4	5	5	5	4	3	5	6	8	19	15	9	5	5	6	7	7	7	5	6	4	3	2	5	6
26	4	3	3	2	3	5	6	9	14	32	32	27	24	20	16	6	5	4	10	8	10	11	5	12	11
27	10	14	3	12	2	2	4	6	6	6	7	8	6	8	12	13	10	10	9	15	19	18	18	16	10
28	10	M	12	16	5	5	4	5	9	14	6	9	5	10	9	10	10	16	9	13	5	5	6	2	8
29	9	9	3	5	5	6	4	3	2	9	5	15	17	12	15	8	7	11	7	3	2	2	2	4	7
30	4	9	3	6	4	10	7	8	2	4	3	2	5	5	3	6	2	2	1	1	4	14	15	14	6

MONTHLY STATISTICS:

GEOM	ARITH-----PERCENTILES-----							-----RANGE-----				STN GEOM	PERCENT	NO. OF TIMES		
MEAN	MEDIAN	MEAN	50	90	95	98	99	1-HR	24-HR	DEVIATION	VALID DATA	ABOVE	LIMIT	LEVEL		
10	10	16	10	39	49	65	76	0	-	94	4	-	44	3	100	0

NOTES: 1. FLAGS FOR INVALID DATA :
D: DYNAMIC CALIBRATION
T: TELEMETRY/DATALOGGR FAULT
M: MAINTENANCE OR ANALYZER FAULT
P: POWER FAILURE

Appendix C Summary Results on Water Quality Monitoring

LAMMA POWER STATION FGD WASTEWATER TREATMENT PLANT EFFLUENT DISCHARGE TO ASH LAGOON SUSPENDED SOLIDS AND PH

Period : July - September 2022

Week Ending	No. of Samples	Suspended Solids, mg/L			pH		
		Maximum	Minimum	Average	Maximum	Minimum	Average
02/07/22	7	24	14	20	8.4	7.8	8.1
09/07/22	7	20	9	16	8.4	7.9	8.2
16/07/22	7	23	14	18	8.5	8.2	8.4
23/07/22	5*	22	11	17	8.3	8.1	8.2
30/07/22	5*	22	12	17	8.5	8.3	8.4
06/08/22	2*	22	20	21	8.8	8.5	8.7
13/08/22	4*	18	8	13	8.7	8.5	8.6
20/08/22	7	16	7	10	8.5	8.1	8.3
27/08/22	7	24	15	21	8.6	8.4	8.5
03/09/22	7	24	18	21	8.4	7.8	8.1
10/09/22	7	22	14	19	8.5	8.3	8.4
17/09/22	7	21	11	17	8.4	7.6	8.1
24/09/22	7	24	13	18	8.5	7.7	8.1

Remark :

* - No sampling for the remaining day(s) of the week / no sampling due to no discharge

**LAMMA POWER STATION
FGD WASTEWATER TREATMENT PLANT
EFFLUENT DISCHARGE TO ASH LAGOON
TRACE METAL, TOTAL PHOSPHORUS
AND TOTAL NITROGEN ANALYSIS**

Period : July – September 2022

Sampling date		6/7/2022	4/8/2022	9/9/2022
Barium,	ug/L	<150	<150	<150
Mercury,	ug/L	<0.5	<0.5	<0.5
Cadmium,	ug/L	2.4	1.3	1.2
Iron,	ug/L	<400	<400	<400
Total Phosphorous,	mg/L	<0.8	<0.8	<0.8
Total Nitrogen,	mg/L	78	51	61
Cyanide,	mg/L	0.01	<0.01	<0.01

Remark:

According to the WPCO Ash Lagoon Discharge Licence, contents at exact levels of trace metals below 1/10th of the WPCO Licence permitted limits will not be reported. When the concentration of a metal exceeds 1/10th of the limit, the exact value of the metal concentration will be reported.

Appendix D Summary of EMIS

EM&A Log Ref.	Mitigation Measures	Implementation Status
	GENERAL	
A1	No other process, except the Wet Limestone-Gypsum process used in the FGD plants of the coal-fired Units L6, L7 and L8 within the Lamma Power Station, shall be used in the FGD plants for the projects unless otherwise agreed by EPD.	Complied
	WATER QUALITY	
B1	All wastewater arising from the operation of the projects shall be collected and directed to the existing wastewater treatment plant within the Lamma Power Station for treatment.	Complied
B2	The operational plant effluent from the FGD plants should be reused as much as possible in order to minimise discharge to the WWTP.	Complied
B3	Maintenance of the WWTP should be performed regularly to ensure the effluent from the WWTP would not exceed the current requirements stipulated in the WPCO licence for Ash Lagoon.	Complied
	WASTE	
C1	No gypsum or sludge arising from the operation of the projects shall be disposed of anywhere. All gypsum and sludge shall be collected and reused.	Complied
	NOISE	
D1	Equipment including the Absorber Recirculation Pump, Oxidation Air Blower, Booster Fan and Booster Fan Motor of the FGD plants shall be acoustically insulated and the Gas-Gas Heater (untreated side) of the FGD plants shall be provided with reinforced lagging to reduce the noise impact.	Complied