



PROJECT No.: TCS/00408/08

DSD CONTRACT NO. DC/2007/17
DRAINAGE IMPROVEMENT WORKS IN
CHEUNG PO, MA ON KONG, YUEN KONG SAN TSUEN
AND TIN SAM TSUEN OF YUEN LONG DISTRICT AND
SEWERAGE AT TSENG TAU CHUNG TSUEN, TUEN MUN

MONTHLY EM&A REPORT FOR KT13
(AUGUST 2011)

PREPARED FOR
CHINA ROAD & BRIDGE CORPORATION

Quality Index

Date	Reference No.	Prepared By	Certified by
19 September 2011	TCS00408/08/600/R1657v2	 Nicola Hon Environmental Consultant	 T.W. Tam Environmental Team Leader

Version	Date	Prepared by:	Certified by:	Description
1	15 Sep 2011	Nicola Hon	T.W. Tam	First submission
2	19 Sep 2011	Nicola Hon	T.W. Tam	Amended against IEC's comments on 18 Sep 2011

This report has been prepared by Action-United Environmental Services & Consulting with all reasonable skill, care and diligence within the terms of the Agreement with the client, incorporating our General Terms and Conditions of Business and taking account of the resources devoted to it by agreement with the client. We disclaim any responsibility to the client and others in respect of any matters outside the scope of the above. This report is confidential to the client and we accept no responsibility of whatsoever nature to third parties to whom this report, or any part thereof, is made known. Any such party relies upon the report at their own risk.

By Fax & Post

Black & Veatch Hong Kong Limited
25/F, Millennium City 6
392 Kwun Tong Road
Kowloon
Hong Kong

Attention: Ms. Jenny Lui

20 September 2011

Dear Ms. Lui,

Level 5 Festival Walk
80 Tat Chee Avenue
Kowloon Tong
Kowloon
Hong Kong
PRC

t +852 2528 3031
d +852 2268 3097
f +852 2268 3950

coleman.ng@arup.com
www.arup.com

Contract No. DC/2007/17 Drainage Improvement Works in Cheung Po, Ma On Kong, Yuen King San and Tin Sam Tsuen of Yuen Long District and Sewerage at Tseng Tau Chung Tsuen, Tuen Mun
Monthly EM&A Report for KT13 (August 2011) – Version 2

We refer to the captioned report (ref.: TCS00408/08/600/R1657v2) and advise that we have no comments on the captioned submission.

We hereby endorse the captioned report for your onward submission.

If you require any further information, please do not hesitate to contact the undersigned.

Yours sincerely



Coleman Ng
Independent Environmental Checker

cc China Road and Bridge Corporation (Mr. Raymond Mau) (Fax: 2478 9612)
AUES (Mr. TW Tam / Ms. Nicola Hon) (Fax: 2959 6079)

Executive Summary

ES01 This is the 35th monthly EM&A report for the Channel KT13, covering the construction period from 26 July to 25 August 2011 (the Reporting Period).

Breaches of Action and Limit Levels

ES02 Monitoring results of the Reporting Period demonstrated no exceedances of environmental quality criteria for air quality, construction noise and ecology monitoring.

ES03 For stream water quality monitoring, there were 3 Limit Level exceedances were recorded which namely 1 exceedance at upstream Location W2 and 2 exceedances downstream Location W6 which included parameters of Suspended Solids, NH_4^+-N and Zinc. Investigation concluded that the exceedances were not related to the works under the Project.

ES04 During the Reporting Period, there was no construction work conducted within 100m of the cultural heritage site at KT13. Therefore, no cultural heritage monitoring was required in accordance with the approved methodology.

ES05 Landscape inspections were conducted on 6 and 20 August 2011. No significant changes were observed for the identified landscape resources and visual sensitive receivers, except for minor changes due to channel excavation, site clearance and preparation work at the identified landscape resources including LR1, LR2.1, LR2.2, LCA1, LCA3 and LCA4.

Environmental Complaint, Notification of Summons and Prosecution

ES06 No documented complaint, notification of summons or successful prosecution was received during the Reporting Period. Environmental audit of the Reporting Period indicated that the implemented mitigation measures for air quality, construction noise and ecology were effective. Minor deficiencies found in the weekly site inspection were in general rectified within the specified deadlines. The environmental performance of the Project was therefore considered satisfactory.

Reporting Changes

ES07 There is no reporting change in this reporting month.

Future Key Issues

ES08 During wet season, water quality mitigation measures to avoid ingress of runoff from wheel wash facilities and loose soil surface into Channel KT13 should be properly installed and maintained to prevent any muddy or sandy runoff from overflow on the site boundary.

ES09 Special attention should be also paid on construction noise and other environmental issues identified in the EM&A Manual as recommended in the EIA and summarized in Mitigation Measure Implementation Schedule. CRBC was reminded to implement the required mitigation measures during construction as far as possible.

ES10 In viewing that the major construction activities of the Project are substantially completed, the Contractor is reminded to maintain the housekeeping of the site in good standard.

Table of Contents

1	ENVIRONMENTAL STATUS.....	- 1 -
1.1	PROJECT AREA AND CONSTRUCTION PROGRAMME.....	- 1 -
1.2	WORKS UNDERTAKEN DURING THE REPORTING PERIOD.....	- 1 -
1.3	ENVIRONMENTAL MANAGEMENT ORGANIZATION.....	- 1 -
1.4	LICENSING STATUS.....	- 1 -
1.5	ENVIRONMENTAL PROTECTION AND POLLUTION CONTROL MITIGATION MEASURES.....	- 2 -
2	MONITORING METHODOLOGY.....	- 3 -
2.1	MONITORING PARAMETERS.....	- 3 -
2.2	MONITORING LOCATIONS.....	- 3 -
2.3	MONITORING FREQUENCY, DURATION AND SCHEDULE.....	- 4 -
2.4	MONITORING EQUIPMENT AND PROCEDURE.....	- 6 -
2.5	QUALITY ASSURANCE PROCEDURES AND DATA MANAGEMENT.....	- 10 -
2.6	REPORTING.....	- 11 -
3	MONITORING RESULTS.....	- 12 -
3.1	AIR QUALITY.....	- 12 -
3.2	CONSTRUCTION NOISE	- 13 -
3.3	WATER QUALITY.....	- 14 -
3.4	ECOLOGY.....	- 15 -
3.5	WASTE MANAGEMENT, CULTURAL HERITAGE AND LANDSCAPE & VISUAL.....	- 17 -
4	NON-COMPLIANCE, COMPLAINT, NOTIFICATION OF SUMMONS, SUCCESSFUL PROSECUTION AND OTHERS.....	- 18 -
4.1	NON-COMPLIANCE.....	- 18 -
4.2	ENVIRONMENTAL COMPLAINT.....	- 18 -
4.3	NOTIFICATION OF SUMMONS AND SUCCESSFUL PROSECUTION	- 18 -
4.4	OTHERS.....	- 18 -
5	CONCLUSIONS AND RECOMMENDATIONS.....	- 20 -

LIST OF TABLES

Table 2-1	Summary of Monitoring Parameters
Table 2-2	Summary of Monitoring Locations
Table 2-4-2	Air Quality Monitoring Equipment
Table 2-4-3	Construction Noise Monitoring Equipment
Table 2-4-4	Water Quality Monitoring Equipment
Table 2-6	Requirements for Report Submission
Table 3-1-1	Air Quality Action and Limit Levels
Table 3-1-2-1	Summary of Air Quality Monitoring Results at KT13-A1(a)
Table 3-1-2-2	Summary of Air Quality Monitoring Results at KT13-A2
Table 3-2-1	Construction Noise Action and Limit Levels
Table 3-2-2-1	Summary of Construction Noise Monitoring Results – N1(a)
Table 3-2-2-2	Summary of Construction Noise Monitoring Results – N2(a)
Table 3-2-2-3	Summary of Construction Noise Monitoring Results – N3
Table 3-3-1	Action and Limit Levels for Water Quality Monitoring
Table 3-3-2	Summary of Water Quality Exceedances
Table 3-4-1	Ecological Action and Limit Levels
Table 3-4-2	Summary of KT13 Ecology Impact Monitoring Bird Survey
Table 3-5-2	Cultural Heritage Resources Action and Limit Levels
Table 4-4-1	Summary of Findings of Site Inspection and Environmental Audit

LIST OF APPENDICES

Appendix A	Location Plan of the Project and Environmental Monitoring Locations under the Project
Appendix B	Construction Program
Appendix C	Environmental Management Organization and Contacts of Key Personnel
Appendix D	Monitoring Schedules and Meteorological Data
Appendix E	Calibration Certificates and HOKLAS-Accreditation Certificate
Appendix F	Event Action Plan
Appendix G	Environmental Monitoring Results and Graphical Plots
Appendix H	Photographic Records of Ecological Monitoring of Vegetation (Not Used)
Appendix I	Physical, Human and Cultural Landscape Resources at KT13
Appendix J	Monthly Summary Waste Flow Table

1 ENVIRONMENTAL STATUS

This is the 35th monthly EM&A report for KT13, covering the construction period from **26 July to 25 August 2011** (the Reporting Period).

1.1 PROJECT AREA AND CONSTRUCTION PROGRAMME

Drawings showing the project area, any environmental sensitive receivers and the locations of the monitoring and control stations are presented in **Appendix A**, and the construction program in **Appendix B**.

1.2 WORKS UNDERTAKEN DURING THE REPORTING PERIOD

Apart from general works of tree survey, structural survey and environmental monitoring & audit, works undertaken during the Reporting Period with fine tuning of construction activities showing the inter-relationship with environmental protection/mitigation measures for the month are summarized as follows:

- Gabion installation at Section B of KT13;
- Construction of surface drainage system at Section B of KT13;
- Compensatory planting;
- Remedial works

1.3 ENVIRONMENTAL MANAGEMENT ORGANIZATION

Management structure and key personnel contact names and telephone numbers of the environmental management organization are presented in Appendix C, where DSD is the Project Proponent; CRBC is the main Contractor; EPD and AFCD are the supervisory departments for environmental protection of the Project; BVHKL is the Engineer's Representative of DSD (the ER); ARUP is the Independent Environmental Checker (the IEC) and Action-United Environmental Services and Consulting (AUES) is the environmental team (the ET).

1.4 LICENSING STATUS

1.4.1 Air Pollution Control (Construction Dust) Regulation

Pursuant to the **Air Pollution Control (Construction Dust) Regulation**, CRBC has notified EPD, via submission of Form NA dated 14 February 2008, of the scope and nature of the works to be carried out under the Project, including construction activities such as stockpiling, loading and unloading, transfer of dusty material, use of vehicles and debris handling, etc. CRBC will continuously review the status of the environmental licenses and apply the required licenses/permits prior to the commencement of construction work.

1.4.2 Noise Control Ordinance

No **Construction Noise Permit** (CNP) is required for the Project pursuant to the Noise Control Ordinance (NCO) and the associated applicable subsidiary regulations of **Noise Control (General) Regulation, Noise Control (Hand-held Percussive Breaker) Regulation and Noise Control (Air Compressor) Regulation**, as the use of powered mechanical equipment, or conducting construction work in during restricted hours, i.e. 1900 to 0700 hours on normal weekdays and any time on general holidays including Sundays is not anticipated during the whole construction period. CRBC will continuously review the status of the environmental licenses under the NCO and apply the required licenses/permits prior to the commencement of construction work.

1.4.3 Waste Disposal (Charges for Disposal of Construction Waste) Regulation

CRBC has applied for a Billing Account (Construction Work Contract with Value of \$1million or above), under the **Waste Disposal (Charges for Disposal of Construction Waste) Regulation**. The account number 7006524 has been assigned on 9 Jan 2008.

1.4.4 Water Pollution Control Ordinance

CRBC has applied for a discharge license under Section 20 of the **Water Pollution Control Ordinance**, and the license No. 1U461/1 has been issued.

1.4.5 Waste Disposal (Chemical Waste) (General) Regulation

CRBC has registered as a Chemical Waste Producer with EPD under the Waste Disposal (Chemical Waste) (General) Regulation and the Waste Producer Number assigned is WPN: 5611-531-C3124-28 dated 2 May 08.

1.4.6 Dumping at Sea Permit

CRBC has been granted by the Environmental Protection Department a Permit Issued under the **Dumping at Sea Ordinance** (Permit no. EP/I4D/08-095, dated 18 September 2008, permit validity period of six months from 18 September 2008 to 17 March 2009) for disposal of 18,469 m³ sediment, requiring Type 1 – open sea disposal at East Sha Chau Contaminated Mud Disposal Site – Pit IV b, to be capped as directed by the Management Team of the Civil Engineering and Development Department. Note that this permit has expired. As there is no need for further sea disposal, no further permits will be required in the future.

1.5 ENVIRONMENTAL PROTECTION AND POLLUTION CONTROL MITIGATION MEASURES

CRBC has committed to implement environmental protection and pollution control and mitigation measures, as recommended in the EIA, EP, EM&A Manuals, and summarized in the Mitigation Measures Implementation Schedules. The implemented mitigation measures include

- (a) Watering of stockpiles of rip-rap at KT13;
- (b) Covering of the loose soil at KT13 to minimize water quality impacts;
- (c) Hard pavement of haul road leading to public roads at KT13;
- (d) Classification and disposal of illegally dumped construction and demolition materials at KT13;
- (e) Construction of noise barriers; and
- (f) Erection of dams with sand bags downstream the excavation site within the water course of KT13 to enhance sedimentation of turbidity and suspended solids (SS).

2 MONITORING METHODOLOGY

2.1 MONITORING PARAMETERS

According to the EM&A requirements set out in the EIA, Environmental Permit No. EP-263/2007/A (the EP) and the associated EM&A Manual, the required monitoring parameters are summarized as follows.

Table 2-1 Summary of Monitoring Parameters

Environmental Issue	Monitoring Parameters	
Air Quality	(a) 1-hour Total Suspended Particulate (1-hour TSP); and (b) 24-hour Total Suspended Particulate (24-hour TSP).	
Construction Noise	(a) A-weighted equivalent continuous sound pressure level (30min) (Leq(30min) during the normal working hours; and (b) A-weighted equivalent continuous sound pressure level (5min) (Leq(5min) for construction work during the Restricted Hours.	
Water Quality	(a) In Situ Measurement	temperature, dissolved oxygen (DO), pH & turbidity
	(b) Laboratory Analysis	suspended solids (SS), Ammonia Nitrogen (NH ₃ -N) and Zinc (Zn)
Ecology	Vegetation, all bird species of wetland, Ho Pui Egret, Ma On Hong Egret and Flight Line Survey	
Waste Management	Inspection and the document audit	
Cultural Heritage	Condition survey for a historical grave	
Landscape & Visual	To audit the implementation of the proposed construction phase mitigation measure stipulated in EIA.	

2.2 MONITORING LOCATIONS

Details of the monitoring locations are summarized in **Table 2-2** and shown in **Appendix A**. For ease of reference, monitoring locations denoted with “(a)” are relocated locations to differentiate them from the original ‘EM&A Manual’ locations.

Table 2-2 Summary of Monitoring Locations

Environmental Issues	Monitoring Location	Identified Address / Co-ordinates	Status of Monitoring Locations / Rationale for Recommended Replacement
Air	A1(a)	No.68 Ho Pui Village	The original location of EM&A Manuals A1 has permanently been abandoned. No access can be acquired in the vicinity of A1. Taken into consideration that Ho Pui Village is one of the most important sensitive receivers near KT-13 without monitoring, the most fronting house, No. 68 Ho Pui Village, is therefore recommended as the replacement location A1(a).
	A2	No.1 Ma On Kong Village	Original location of the EM&A Manual; access granted.
Noise	N1(a)	168-169 Kam Ho Road, Ma On Kong Village,	Original location of N1 identified in the EM&A Manual was relocated to proposed area as recommended by IEC.
	N2(a)	No. 68 Ho Pui Village,	The original location of EM&A Manuals N2 has permanently been abandoned. No access can be acquired in the vicinity of N2. Taken into consideration that Ho Pui Village is one of the most important sensitive receivers near KT-13 without monitoring, the most fronting house, No. 68 Ho Pui Village, is therefore recommended as the replacement location N2(a).
	N3	No.1 Ma On Kong Village	Original locations of the EM&A Manual; access granted.
Water	W1	E824539 / N830283	Original locations of the EM&A Manual; access resolved.

Environmental Issues	Monitoring Location	Identified Address / Co-ordinates	Status of Monitoring Locations / Rationale for Recommended Replacement
	W2	E824693 / N830258	Original locations of the EM&A Manual; access resolved.
	W3(a)	E824833 / N830374	The W3 is proposed to be relocated about 55 m down stream to W3(a) for safety reason as there is no any discharge point observed between W3 and the proposed W3(a).
	W4	E824936 / N830618	Original locations of the EM&A Manual; access resolved.
	W5	E825008 / N830812	Original locations of the EM&A Manual; access resolved.
	W6	E825100 / N830987	Original locations of the EM&A Manual; access resolved.
Ecology	Monthly monitoring along the boundary of the works area to confirm that there are no adverse impacts on habitats outside the site in particular the Conservation Area (CA) zone and Ho Pui Egretty. Photographic records at six-month intervals; Monthly monitoring of all bird numbers including wetland species and species identified as being of conservation importance; Monitoring of Ho Pui egretty during March to August. The Ma On Kong egretty is also surveyed to provide reference information on the breeding egrets nearby; and Flight line surveys twice per month during April to June.		
Waste Management	Whole construction site and document		
Cultural Heritage	Ma On Kong	Refer to EM&A Manual (KT13) Figure 7.1.	
Landscape & Visual	Refer to EIA Section 10		

2.3 MONITORING FREQUENCY, DURATION AND SCHEDULE

2.3.1 Monitoring Frequency and Duration

Environmental monitoring is conducted upon commencement of the construction activities and throughout the whole construction period to detect and minimize any adverse environmental impacts generated from the construction activities of the Project. The monitoring frequency and duration for air quality, construction noise, water quality, ecology and other parameters are summarized below.

Air Quality

Frequency: Once every 6 days for 24-hour TSP and three times every 6 days for 1-hour TSP, when the highest construction dust impacts are anticipated.

Duration: Throughout the construction period

Construction Noise

Frequency: Measurement of Leq(30min): Once a week during 0700-1900 hours on normal weekdays. If the construction work is undertake at restricted hours, the frequency of noise monitoring will be conducted in accordance with the requirements under the related Construction Noise Permit issued by EPD as follows:

- 3 consecutive Leq(5min) at restrict hour from 1700 – 2300 hours;
- 3 consecutive Leq(5min) for restrict hour from 2300 – 0700 hours next day;
- 3 consecutive Leq(5min) for Sunday or public holiday from 0700 – 1900 hours;

Duration: Throughout the construction period

Water Quality

Frequency: Three times a week with at least 36 hour intervals between any two consecutive monitoring events

Depths: As the water columns in the stream water within KT13 is generally less than 3m, measurement is performed at the mid-depths of the monitoring locations. In case the water columns are deeper than 6m, measurement shall be carried out at three water depths, namely, 1m below water surface, mid-depth, and 1m above river bed. If the water depths are between 3 to 6m, the mid-depth measurement is omitted.

Duration: Throughout the construction period.

Ecology

The Ecology Monitoring is required in accordance with the EM&A Manual.

Parameters: Vegetation, All bird species including wetland birds, Ho Pui and Ma On Hong Egrettries and Flight line survey

Frequency: Vegetation – Impact monitoring – monthly;
Photographic records/checks against baseline records– six monthly
Wetland Bird survey – Monthly of half-day survey;
Ma On Kong egrettry – Monthly between March to August; and
Ho Pui egrettry – Bi-weekly between March and August;
Flight line Survey – twice per Month during the period from April to June

Duration: Throughout the whole construction period

Waste Management Audit

Frequency: Once per month

Duration: Throughout the construction period.

Cultural Heritage

Scope: Condition survey and settlement monitoring of a Qing Dynasty Grave.

Frequency: Condition survey - Bi-monthly
Settlement monitoring - Bi-weekly

Duration: Throughout the construction phase period. (When construction work entered the 100m of the cultural heritage site)

Landscape & Visual

Frequency: Bi-weekly

Duration: Throughout the construction phase period.

2.3.2 Environmental Monitoring Schedule

The monitoring schedules for the Reporting Period and next month are presented in **Appendix D**.

2.4 MONITORING EQUIPMENT AND PROCEDURE

The monitoring equipment and procedures are summarized below. Calibration certificates of the equipment and the related laboratories are presented in **Appendix E**.

2.4.1 Weather Conditions during the Reporting Period

All meteorological information is extracted from the Hong Kong Observatory (Lau Fau Shan Station). The meteorological data include wind direction, wind speed, humidity, rainfall, air pressure and temperature etc., that are generally required for evaluating the environmental impact arising from the construction activities. The meteorological data are presented in **Appendix D**.

2.4.2 Air Quality

Monitoring Equipment

A list of air quality monitoring equipment is shown below.

Table 2-4-2 Air Quality Monitoring Equipment

Equipment	Model	Serial Number
24-hour TSP		
High Volume Air Sampler	Grasby Anderson GMWS 2310 HVS	-
Calibration Kit	TISCH Model TE-5025A	1941
1-hour TSP		
Portable Dust Meter	TSI DustTrak Model 8520	21060

Monitoring Procedure

1-hour TSP

The 1-hour TSP measurement follows manufacturer's Operation and Service Manual, using a 1-hour TSP monitor brand named TSI Dust Track Aerosol Monitor Model 8520 or Sibata LD-3 Laser Dust Meter, which is a portable, battery-operated laser photometer to record the real time 1-hour TSP based on 90° light scattering. The 1-hour TSP monitor consists of the following:

- (a) A pump to draw sample aerosol through the optic chamber where TSP is measured;
- (b) A sheath air system to isolate the aerosol in the chamber to keep the optics clean for maximum reliability; and
- (c) A built-in data logger compatible with Windows based program to facilitate data collection, analysis and reporting.

The 1-hour TSP meter to be used will be within the valid period, calibrated by the manufacturer prior to purchasing. Zero response of the instrument will be checked before and after each monitoring event.

24-hour TSP

The equipment used for 24-hour TSP measurement is the high volume air sampling system (hereinafter 'HVS') brand named Thermo Andersen, Model GS2310 TSP. The HVS complies with US EPA Code of Federal Regulation, Appendix B to Part 50. The HVS consists of the following:

- (a) An anodized aluminum shelter;
- (b) A 8"x10" stainless steel filter holder;
- (c) A blower motor assembly;
- (d) A continuous flow/pressure recorder;
- (e) A motor speed-voltage control/elapsed time indicator;
- (f) A 6-day mechanical timer, and
- (g) A power supply of 220v/50 Hz

The HVS is operated and calibrated on a regular basis following the manufacturer's instruction using the NIST-certified standard calibrator brand named TISCH Calibration Kit Model TE-5025A. Regular HVS operation and maintenance as well as filter paper

installation and collection is performed by the ET's competent technicians, whereas laboratory analyses are conducted in a local HOKLAS accredited laboratory, ALS Technichem (HK) Pty Ltd (herein after 'ALS'). The 24-hour TSP filters of the 24-hour TSP will be kept in ALS for six months prior to disposal.

All relevant data including temperature, pressure, weather conditions, elapsed-time meter reading for the start and stop of the sampler, identification and weight of the filter paper are recorded in details.

2.4.3 Construction Noise

Monitoring Equipment

A list of construction noise monitoring equipment is shown below.

Table 2-4-3 Construction Noise Monitoring Equipment

Equipment	Model	Serial Number
Integrating Sound Level Meter	Bruel & Kjaer 2238	2285721
Calibrator	Bruel & Kjaer 4231	2713428
Portable Wind Speed Indicator	Testo Anemometer	-

Monitoring Procedure

Sound level meters listed above comply with the International Electrotechnical Commission Publications 651: 1979 (Type 1) and 804: 1985 (Type 1) specifications, as recommended in Technical Memorandum (TM) issued under the Noise Control Ordinance (NCO).

All noise measurements will be performed with the meter set to FAST response and on the A-weighted equivalent continuous sound pressure level (Leq). Leq(30 min) in six consecutive Leq(5 min) measurements will be used as the monitoring parameter for the time period between 0700-1900 hours on weekdays throughout the construction period. Leq(15min) in three consecutive Leq(5 min) measurements for other time periods (e.g. during restricted hours) will only be conducted for monitoring the construction noise during restricted hours as necessary.

The sound level meter is mounted on a tripod at a height of 1.2 m and placed at the assessment point and oriented such that the microphone is pointed to the site with the microphone facing perpendicular to the line of sight. The windshield is fitted for all measurements. Where a measurement is to be carried out at a building, the assessment point is normally at a position 1 m from the exterior of the building façade. Where a measurement is to be made for noise being received at a place other than a building, the assessment point is at a position 1.2 m above the ground in a free-field situation, i.e. at least 3.5 m away from reflective surfaces such as adjacent buildings or walls.

Immediately prior to and following each noise measurement the accuracy of the sound level meter is checked using an acoustic calibrator generating a known sound pressure level at a known frequency. Measurements will be accepted as valid only if the calibration levels from before and after the noise measurement agree to within 1.0dB. No noise measurement will be made in the present of significant fog, rain, wind with a steady speed exceeding 5m/s or wind with gusts exceeding 10m/s. The wind speed is checked with a portable wind speed meter capable of measuring the wind speed in m/s.

2.4.4 Water Quality

Monitoring Equipment

Monitoring Equipment for water quality is listed below.

Table 2-4-4 Water Quality Monitoring Equipment

Equipment	Model	Serial Number
Water Depth Detector	Eagle Sonar	-
Water Sampler	Teflon bailer / bucket	-
Thermometer & DO meter	YSI 550A	05F2063AZ
pH meter	Extech pH Meter EC500	Work Order: HK1109433
Turbidimeter	Hach 2100p	950900008735
Hand Refractometer	ATAGO	289468
Sample Container	High density polythene bottles (provided by laboratory)	-
Storage Container	'Willow' 33-litter plastic cool box	-

Monitoring Procedure

Water Depth

As the water columns in the stream water within KT13 is generally less than 3 m, measurement is performed at the mid-depths of the monitoring locations. In case the water columns are deeper than 6 m, measurement shall be carried out at three water depths, namely, 1 m below water surface, mid-depth, and 1 m above river bed. If the water depths are between 3 to 6 m, the mid-depth measurement is omitted.

Water depths are determined prior to measurement and sampling, using a portable battery operated depth detector, brand named 'Eagle Sonar', if the depths exceed 1.5 meter. For the depths well below 1 meter, the depths of water columns are measured with a steel ruler with appropriate weight.

Dissolved Oxygen (DO)

A portable YSI 550A DO Meter will be used for in-situ DO measurement. The DO meter is capable of measuring DO in the range of 0 - 20 mg/L and 0 - 200 % saturation and checked against water saturated ambient air on each monitoring day prior to monitoring. Although the DO Meter automatically compensates ambient water temperature to a standard temperature of 20°C for ease of comparison of the data under the changing reality, the temperature readings of the DO Meter will be recorded in the field data sheets. Calibration of the equipment will be performed by ALS on quarterly basis.

pH

A portable Extech pH Meter will be used for in-situ pH measurement. The pH meter is capable of measuring pH in the range of 0 – 14 and readable to 0.1. Standard buffer solutions of pH 7 and pH 10 are used for calibration of the instrument before and after measurement. Quarterly calibration of the equipment will be performed by ALS.

Turbidity

A portable Hach 2100p turbidity Meter will be used for in-situ turbidity measurement. The turbidity meter is capable of measuring turbidity in the range of 0 – 1000 NTU. Calibration of the equipment will be performed by ALS on quarterly basis.

Salinity

A portable hand Refractometer AGATO will be used for in-situ salinity measurement. The refractometer is capable of measuring salinity in the range of 0-70ppt with accuracy ±1% reading. Calibration of the equipment will be performed by ALS on quarterly basis.

Suspended Solids (SS)

SS will be determined by ALS upon receipt of the water samples using the HOKLAS accredited analytical method - ALS Method EA-025.

Ammonia Nitrogen(NH₃-N)

NH₃-N will be examined by ALS upon receipt of the water samples using the HOKLAS accredited analytical methods - ALS Method EK-055A.

Zinc(Zn)

Zn will be analyzed by ALS upon receipt of the water samples using the HOKLAS accredited analytical methods - ALS Method EG-020.

Water Sampler

Water samples will be collected using a plastic sampler to prevent metal contamination. As the water depths in the stream water within KT13 are generally less than 0.5 m, a plastic bucket with a rope of appropriate length is used for water sampling. The sampler is rinsed before collection with the sample to be taken. For water depths deeper than 0.5 meter, a cleaned plastic bailer bucket will be used for sample collection.

1000 mL water sample is collected from each depth for SS determination. The samples collected are stored in a cool box maintained at 4°C and delivered to ALS upon completion of the sampling by end of each sampling day.

Sample Container

Water samples are contained in screw-cap PE (Poly-Ethylene) bottles, which are provided and pretreated according to corresponding HOKLAS and ALS analytical requirements. Where appropriate, the sampling bottles are rinsed with the water to be contained. Water samples are then transferred from the water sampler to the sampling bottles to 95% bottle capacity to allow possible volume expansion during delivery and storage.

Sample Storage

A 'Willow' 33-litter plastic cool box packed with ice will be used to preserve the collected water samples prior to arrival at ALS. The water temperature of the cool box will be maintained at a temperature as close to 4°C as possible without being frozen. Samples collected will be delivered to the laboratory upon collection within the maximum storage time required under the HOKLAS and ALS analytical requirements

2.4.5 Ecology

Monthly walk through survey will be conducted along the boundary of work area for KT13. Bird monitoring will be conducted in the study areas monthly for KT13. Monitoring on the Ho Pui egretty and Ma On Kong egretty will be conducted between March to August. Flight line surveys to record the feeding areas and the habitat use of breeding egrets will be conducted between April to June. Photographic record should be made at six month intervals.

Monitoring Equipment

The following equipment will be used for monitoring:-

Standard portable field survey equipment was used for ecological monitoring, including

- (a) Binoculars of 10 x 40 magnifications;
- (b) Digital camera; and
- (c) Notebook.

Study Area

The areas for the ecological monitoring programme would cover 60 m on either side of the existing channel as well as the proposed bypass culvert, as shown in Figure 6.1 of the EM&A Manual. Within these, emphasis will be given to the area around the Ho Pui and Ma On Kong egrettries and habitats of at least moderate ecological value. In addition, monitoring would also be undertaken at the Ho Pui egretty and Ma On Kong egretty (The Ma On Kong egretty is outside the demarcated monitoring area but is also monitored to identify any adverse effects on the breeding egrets).

Survey Method

Monthly monitoring will be conducted by means of walk through survey, along the boundary of work area for KT13. Any adverse impacts to the habitats outside the site,

in particular the Conservation Area (CA) zone and Ho Pui Egret, will be checked and reported.

Photographic records will be made every six months on the fixed photo record points selected during the baseline survey. The photos from the construction phase ecological monitoring will be compared with those taken during the baseline, which are used as the baseline conditions.

Bird monitoring will be conducted in the study areas monthly for KT13. Attention should be paid on wetland species and species identified as being of conservation importance, and the habitats utilized should also be recorded. Bird surveys should commence no later than 2 hours after dawn.

Monitoring on the Ho Pui egret and Ma On Kong egret will be conducted between March to August. The frequency would be twice per month during March to May. Depending upon the nesting conditions at Ho Pui egret, the frequency could be reduced to monthly between June and August if no egret nest found by the end of May, or maintained at twice per month till the end of August if there are egret nests. Number of active nests, species and number of birds present and breeding stage should be recorded.

Flight line surveys to record the feeding areas and the habitat use of breeding egrets will be conducted twice per month between April to June. The number and species of flying egrets, and their landing habitats and locations should be recorded.

2.4.6 Waste Management, Cultural Heritage and Landscape & Visual

Waste Management, Cultural Heritage and Landscape & Visual monitoring is required for KT13 as stipulated in the EM&A manual [382047/E/EMA/Issue 5] **Section 5**, **Section 7** and **Section 8** accordingly.

Waste Management

During the monthly audit, ETL will pay attention to the issues relating to waste management, and check whether the Contractor has followed the relevant contract Specifications and the procedures specified under the law of HKSAR.

Cultural Heritage

Condition survey by a qualified archaeologist is required for the historical grave near Ma On Kong before and during the construction phase. The method statement of condition survey of Ma On Kong Historic Grave (KT13-02-02) was issued to EPD and endorsed on 27 July 2008, the frequency of the condition survey during the construction phase and given the open cut method would be adopted for the construction of the proposed bypass box culvert under KT13 project, subject to the result of the condition survey carried out before the construction stage, it is recommended that bi-monthly condition survey be undertaken during the construction work within 100m area from the grave.

Landscape and Visual

In accordance with the EM&A manual [382047/E/EMA/Issue5] **Section 8** landscape and visual mitigation measures are required during construction and operation phase. Site inspection will be undertaken at least once every two weeks throughout the construction period to ensure compliance with the intended aims of the proposed mitigation measures.

2.5 QUALITY ASSURANCE PROCEDURES AND DATA MANAGEMENT

2.5.1 Documentation of the Environmental Monitoring

Field data including in-situ monitoring results, weather conditions and water sampling information and observation will be recorded in corresponding Field Data Sheets, which will be signed and dated by the respective environmental technician prior to submission to the ETL for validation and endorsement at the end of the monitoring day.

2.5.2 Data Management and Analysis

All impact monitoring data will be processed by the AUES data recording and management system, which complies with in-house Quality (*ISO 9001:2000*) Management System. Monitoring results recorded in the monitoring equipment e.g. 1-hour TSP Meters and Noise Meters will be downloaded directly from the equipment at the end of the monitoring period and input into a computerized database maintained by the ET. Laboratory results will be input directly into the computerized database and checked by personnel other than those who input the data.

2.5.3 Quality Assurance Procedures

Appropriate and standard QA/QC measures will be adopted for the environmental monitoring to ensure the scientific integrity of the data produced. Sources of error in the impact monitoring will be properly controlled with the following QA/QC procedures:

- (a) Appropriate field monitoring and sampling techniques, including monitoring equipment, storage and delivery of samples;
- (b) Well organized systematic field-data system e.g. all baseline monitoring information, field observation, results, weather conditions and water sampling information, etc. will be recorded in the field monitoring record sheets. The laboratory analysis records will be maintained by the HOKLAS following HOKLAS requirements;
- (c) HOKLAS requirements for QA/QC of all laboratory testing to ensure acceptable accuracy and reproducibility of the laboratory analysis indicated by consistent agreement between duplicate samples, validity of the analytical results by compliance with the required blanks and recovery of standard addition.

2.5.4 Records

All impact monitoring data will be clearly and systematically documented in both hardware and software format and the software copy will be available for inspection upon request. All the document and data will be kept for at least one year after completion of the Project. Field Data Sheets used to record the impact monitoring information, field observation, results, weather conditions and water sampling information, etc., will be properly maintained and kept by the ET. The copies of laboratory analysis records from ALS will be kept by the ET throughout the at least one year after completion of the EM&A program of the Project.

2.6 REPORTING

2.6.1 General Requirements for Report Submission

General requirements for Monthly EM&A report submission as stipulated in the EIA, EP and EM&A Manual are summarized below.

Table 2-6 Requirements for Report Submission

Report	Submission
Monthly EM&A Report	<ul style="list-style-type: none"> • Within 10 working days of the end of each reporting month.
Quarterly EM&A Summary Report	<ul style="list-style-type: none"> • No specific requirement, proposed three weeks after endorsement of the 3rd monthly EM&A report within a particular quarter.
Final EM&A Summary Report	<ul style="list-style-type: none"> • No specific requirement, proposed one month upon completion of entire EM&A program

2.6.2 Cut-Off Day of the Reporting Month

It was agreed among the ER, IEC, CRBC, ET and EPD that, in order to streamline the EM&A report submission and to cater for the occasional delay in obtaining laboratory analysis results, the cutoff day for each month is the 25th i.e. the first day of each report is the 26th of the last month and the end day, the 25th of that month.

3 MONITORING RESULTS

The environmental monitoring results will be compared against the Action and Limit Levels established based on the baseline monitoring results and statutory criteria. In case the measured data exceed the environmental quality criteria, remedial actions will be triggered according to the Event and Action Plan enclosed in **Appendix F**. The environmental monitoring results are tabulated below and the details of 24-hour TSP data and graphical plots of trends of monitored parameters at key stations over the past four Reporting Periods are presented in **Appendices G** and **H**.

3.1 AIR QUALITY

3.1.1 Action and Limit Levels

According to the Baseline Monitoring Report for KT13, the Action and Limit Levels for 24-hour and 1-hour TSP are established as follows:

Table 3-1-1 Air Quality Action and Limit Levels

Monitoring Station	Action Level ($\mu\text{g}/\text{m}^3$)		Limit Level ($\mu\text{g}/\text{m}^3$)	
	1-hour TSP	24-hour TSP	1-hour TSP	24-hour TSP
KT13(A1(a))	309	144	500	260
KT13(A2)	307	141	500	260

3.1.2 Results

Results of air quality monitoring at the identified locations during the Reporting Period are summarized in **Tables 3-1-2-1** and **3-1-2-2** below.

Table 3-1-2-1 Summary of Air Quality Monitoring Results at KT13-A1(a)

1-hour TSP ($\mu\text{g}/\text{m}^3$)						24-hour TSP ($\mu\text{g}/\text{m}^3$)	
Date	Start Time	1 st hour	2 nd hour	3 rd hour	Average	Date	Results
29-Jul-11	11:04	52	50	47	50	27-Jul-11	34
4-Aug-11	13:02	48	51	55	51	2-Aug-11	24
10-Aug-11	10:04	61	63	68	64	8-Aug-11	13
16-Aug-11	13:18	67	77	75	73	13-Aug-11	28
22-Aug-11	14:15	58	46	47	50	19-Aug-11	20
						25-Aug-11	13
Average (range)		58 (46 - 77)				Average (range) 22 (13-34)	

Table 3-1-2-2 Summary of Air Quality Monitoring Results at KT13-A2

1-hour TSP ($\mu\text{g}/\text{m}^3$)						24-hour TSP ($\mu\text{g}/\text{m}^3$)	
Date	Start Time	1 st hour	2 nd hour	3 rd hour	Average	Date	Results
29-Jul-11	11:32	45	57	51	51	27-Jul-11	19
4-Aug-11	13:27	53	50	50	51	2-Aug-11	10
10-Aug-11	10:26	60	71	65	65	8-Aug-11	14
16-Aug-11	13:56	59	62	63	61	13-Aug-11	16
22-Aug-11	14:37	73	61	65	66	19-Aug-11	12
						25-Aug-11	25
Average (range)		59 (45 - 73)				Average (range) 16 (10-25)	

3.1.3 Discussion

As shown in **Tables 3-1-2-1** and **3-1-2-2**, 1-hour TSP and 24-hour TSP results fluctuated well below the Action Level. No exceedance of Action or Limit Levels was recorded during the Reporting Period. Neither Notification of Exceedance (hereinafter 'NOE') of air quality criteria or corrective action was required.

3.2 CONSTRUCTION NOISE

3.2.1 Action and Limit Levels

The Action and Limit Levels for construction noise are illustrated in **Table 3-2-1**.

Table 3-2-1 Construction Noise Action and Limit Levels

Time Period	Action Level in dB(A)	Limit Level in dB(A)
0700-1900 hours on normal weekdays	When one documented complaint is received	> 75* dB(A)

Note: * Reduces to 70dB(A) for schools and 65dB(A) during the school examination periods.

3.2.2 Results

Results of construction noise monitoring at the identified locations N1(a), N2(a) and N3 during the Reporting Period are summarized in **Tables 3-2-2-1 to 3-2-2-3**.

The baseline monitoring for N1(a) and N2(a) was performed on the 1st floor of the bedroom of 168-169 Kam Ho Road, Ma On Kong Village and No. 68 Ho Pui Village respectively. The impact noise monitoring, however, was performed on the ground floor of the same house due to denial of access to the 1st floor. The change of noise monitoring from 1st floor to ground floor will negate the need for a 3dB(A) façade correction but will not introduce any significant difference in detection and minimization of the of construction noise impacts, or alteration of the established A/L Levels. The ET has obtained the approval from EPD with consultation with the ER and IEC.

Table 3-2-2-1 Summary of Construction Noise Monitoring Results – N1(a)

Date	Start Time	1 st set Leq5	2 nd set Leq5	3 rd set Leq5	4 th set Leq5	5 th set Leq5	6 th set Leq5	Leq30
29-Jul-11	10:16	54.1	56.3	55.8	54.7	55.3	54.9	55.2
4-Aug-11	13:06	57.2	56.4	55.8	57.3	57.0	56.7	56.8
10-Aug-11	10:12	57.6	56.3	56.1	57.2	56.4	55.8	56.6
16-Aug-11	15:07	55.4	54.7	54.7	55.8	56.2	55.3	55.4
22-Aug-11	14:11	57.4	58.3	58.5	58.5	57.6	57.1	57.9
Limit Level								75

Table 3-2-2-2 Summary of Construction Noise Monitoring Results – N2(a)

Date	Start Time	1 st set Leq5	2 nd set Leq5	3 rd set Leq5	4 th set Leq5	5 th set Leq5	6 th set Leq5	Leq30
29-Jul-11	10:51	59.3	58.4	59.1	59.0	58.7	58.2	58.8
4-Aug-11	13:41	60.2	61.3	61.7	60.1	62.3	60.7	61.1
10-Aug-11	10:47	61.5	60.2	60.3	61.1	60.8	59.6	60.6
16-Aug-11	15:48	61.3	62.7	61.4	60.8	61.2	60.7	61.4
22-Aug-11	15:02	60.7	59.4	59.7	58.9	59.3	59.6	59.6
Limit Level								75

Table 3-2-2-3 Summary of Construction Noise Monitoring Results – N3

Date	Start Time	1 st set Leq5	2 nd set Leq5	3 rd set Leq5	4 th set Leq5	5 th set Leq5	6 th set Leq5	Leq30
29-Jul-11	11:29	60.4	59.7	60.5	59.7	58.7	59.4	59.8
4-Aug-11	14:31	61.6	60.7	59.4	59.5	59.8	60.7	60.4
10-Aug-11	11:29	58.4	59.1	57.6	58.3	58.1	57.6	58.2
16-Aug-11	16:30	57.2	56.4	57.9	59.1	57.4	57.7	57.7
22-Aug-11	15:37	57.4	59.1	58.5	57.6	57.9	58.3	58.2
Limit Level								75

3.2.3 Discussion

It is confirmed that no raining during the course of noise monitoring as fulfill EM&A manual requirements. As shown in **Tables 3-2-2-1, Table 3-2-2-2 and Table 3-2-2-3**, all the construction noise results fluctuated well below the Limit Level. No exceedance of Limit Level or documented construction complaint was recorded during the Reporting Period. No NOE or corrective action was therefore required.

3.3 WATER QUALITY

3.3.1 Action and Limit Levels

The Action and Limit Levels for water quality are illustrated in **Table 3-3-1**.

Table 3-3-1 Action and Limit Levels for Water Quality Monitoring

Monitoring Location	DO (mg/L)		Turbidity (NTU)		pH		SS (mg/L)		Ammonia (µg/L)		Zinc (µg/L)	
	Action Level	Limit Level	Action Level	Limit Level	Action Level	Limit Level	Action Level	Limit Level	Action Level	Limit Level	Action Level	Limit Level
W1 (Upstream) Control Station	NA	NA	NA	NA	NA	NA	NA	NA	NA	NA	NA	NA
W2 (Downstream) Impact Station	1.04	1.00	36.81	37.16	8.65	8.69	79.0	86.2	16.85	16.89	234.95	266.19
W3(a) (Upstream) Control Station	NA	NA	NA	NA	NA	NA	NA	NA	NA	NA	NA	NA
W4 (Upstream) Control Station	NA	NA	NA	NA	NA	NA	NA	NA	NA	NA	NA	NA
W5 (Upstream) Control Station	NA	NA	NA	NA	NA	NA	NA	NA	NA	NA	NA	NA
W6 (Downstream) Impact Station	0.93	0.91	27.88	30.02	8.7	8.7	73.40	78.68	51.62	54.56	191.90	201.58

3.3.2 Results

Water quality monitoring results measured at W1, W2, W3(a), W4, W5 and W6 during the Reporting Period are presented in tabulation and graphical plots in **Appendix G**.

3.3.2 Discussion

In this Reporting Period, the exceedances registered at impact station W2 and W6 as shown in **Table 3-3-2**.

Table 3-3-2 Summary of Water Quality Exceedances

Location	Exceedance	DO	Turbidity	pH	SS	NH ₄ ⁺ N	Zn	Total
W2	Action Level	0	0	0	0	0	0	0
	Limit Level	0	0	0	0	1	0	1
W6	Action Level	0	0	0	0	0	0	0
	Limit Level	0	0	0	1	0	1	2
Total	Action Level	0	0	0	0	0	0	0
	Limit Level	0	0	0	1	1	1	3

No exceedances of Action and Limit Levels were recorded during the Reporting Period. No Notifications of Environmental Quality Limit Exceedances (NOE) or corrective actions were therefore required for all parameters.

DO and pH

No exceedances of Action and Limit Levels were recorded during the Reporting Period.

No Notifications of Environmental Quality Limit Exceedances (NOE) or corrective actions were therefore required for these parameters.

Turbidity, Suspended Solids, NH_4^+ -N and Zinc

In stream water quality monitoring, 3 Limit Level exceedances were recorded which namely 1 exceedance at upstream Location W2 and 2 exceedances downstream Location W6. According to the observation during site inspections by ET and information provided by the Contractor, installation of gabion lining was conducted at upstream. No direct disturbance was made to the stream but pigsty discharge was observed near monitoring location W2. Since high levels of Turbidity, Suspended Solids, NH_4^+ -N and Zinc were also recorded at upstream and control station, it is believed that the exceedances were likely due to the discharge from the agriculture farm and livestock at the vicinity as water quality throughout the channel was affected. Therefore, it is concluded that the exceedances were not related to the works under the Project.

3.4 ECOLOGY

3.4.1 Action and Limit Levels

The Action and Limit Levels for Construction Ecology Monitoring are shown in **Table 3-4-1** to according with the EM&A manual.

Table 3-4-1 Ecological Action and Limit Levels

Parameters	Action Level	Limit Level
Decrease in number of breeding egrets since previous year	>20%	> 40%

3.4.2 Results

Sixty-one (61) individuals of birds from **twenty (20)** species were recorded during the survey on **20 August 2011**. Among the birds recorded, **five (5)** individuals of wetland dependent birds (from **3 species**) were recorded. The summary of KT13 ecology bird survey can be referred to **Table 3-4-2**.

It is stated in the EP for Channel KT13 that the monitoring of the Ho Pui egretty shall be carried out during the period from 1st March to 31st August as specified in the EM&A Manual. If no egret nest is found at the egretty during the period from 1st March to 31st May, the Permit Holder can start the construction works within 100m of the ecological buffer area upon obtaining the Director's approval until February in the next year. If egret nests are found during the period from 1st March to 31st August, no construction shall take place within 100m of the ecological buffer area before 1st October.

Previously the monitoring during March to May 2011 did not record any nest in Ho Pui Egretty, and thus the construction works could be conducted within 100m of the ecological buffer area until February 2012. And the egretty monitoring frequency from June to August this year can be downgraded to monthly. No nest was found at the Ho Pui egretty during these surveys. Even though, as there had been no nest recorded at Ho Pui egretty in 2009, 2010 and 2011, the action/limit level for ecology is complied.

Monthly egretty surveys on Ho Pui Egretty were conducted on 28 August 2011. No nest was found at the Ho Pui egretty during these surveys and the action/limit level for ecology is complied. Construction works could be conducted within 100m of the ecological buffer area until February 2012.

Ma On Kong egretty was also surveyed 28 August 2011 to provide reference information on the breeding. No nest was found at Ma On Kong egretty neither. Flight line surveys are required between April to June and thus not needed in the present

monitoring.

During the walk through survey on 20 August 2011, other than the bamboo trees which are within Ho Pui Egretty boundary as shown in the EM&A manual and had been found to be cleared by villagers during site inspection on 11 July 2009, no further adverse impacts on habitats outside the boundary of the works area including the Conservation Area and the remaining Ho Pui Egretty was found. Ecological impact monitoring results are presented in the **Table 3-4-2**.

Photo records of trees are required in six-month interval and it is not required in this reporting month.

Table 3-4-2 Summary of KT13 Ecology Impact Monitoring Bird Survey

Scientific Name	Common Name	Reported in the project profile	Abundance recorded in the present survey (20 August 2011)	Habitat utilized
Birds				
Little Egret	<i>Egretta garzetta</i>	✓		
Cattle Egret	<i>Bubulcus ibis</i>	✓		
Chinese Pond Heron	<i>Ardeola bacchus</i>	✓	2	Stream
Crested Serpent Eagle	<i>Spilornis cheela</i>	✓		
Bonelli's Eagle	<i>Hieraaetus fasciatus</i>	✓		
Eurasian Hobby	<i>Falco subbuteo</i>	✓		
White-breasted Waterhen	<i>Amaunornis phoenicurus</i>	✓	2	Stream
Spotted Dove	<i>Streptopelia chinensis</i>	✓	4	Woodland, bare ground
Common Koel	<i>Eudynamis scolopacea</i>	✓	1	Woodland
Greater Coucal	<i>Centropus sinensis</i>	✓		
Little Swift	<i>Apus affinis</i>	✓		
White-Throated Kingfisher	<i>Halcyon smyrnensis</i>	✓	1	Stream
Barn Swallow	<i>Hirundo rustica</i>	✓	8	Bare ground/low lying ground,
Red-Whiskered Bulbul	<i>Pycnonotus jocosus</i>	✓	3	bare ground, woodland
Chinese Bulbul	<i>Pycnonotus sinensis</i>	✓	2	woodland
Long-Tailed Shrike	<i>Lanius schach</i>	✓	2	
Oriental Magpie Robin	<i>Copsychus saularis</i>	✓	5	Stream, agricultural land
Masked Laughingthrush	<i>Garrulax perspicillatus</i>	✓	4	Bare ground
Yellow-Bellied Prinia	<i>Prinia flaviventris</i>	✓	2	Low lying grassland
Common Tailorbird	<i>Orthotomus sutorius</i>	✓	2	Low lying grassland
Great Tit	<i>Parus major</i>	✓	1	Woodland
Japanese White-Eye	<i>Zosterops japonicus</i>	✓	3	Woodland
White-Rumped Munia	<i>Lonchura striata</i>	✓		
Eurasian Tree Sparrow	<i>Passer montanus</i>	✓	7	Agricultural land, bare ground
Black-Collared Starling	<i>Sturnus nigricollis</i>	✓	2	Woodland, bare ground
Common Myna	<i>Acridotheres tristis</i>	✓		
Crested Myna	<i>Acridotheres cristatellus</i>	✓	6	Agricultural land, bare ground
White Wagtail	<i>Motacilla alba</i>	\	3	Stream
Common Kingfisher	<i>Alcedo atthis</i>	\	1	Stream
Species Number		27	20	
Individual Number		NA	61	

*Wetland dependent species recorded with abundance during the baseline study with the names bolded

3.5 WASTE MANAGEMENT, CULTURAL HERITAGE AND LANDSCAPE & VISUAL

3.5.1 Waste Management

In order to comply with the waste management requirements, CRBC has been:

- (a) Assigned, since 9 Jan 2008, a Billing Account (account number 7006524) under the **Waste Disposal (Charges for Disposal of Construction Waste) Regulation**;
- (b) Issued a Discharge License No. 1U461/1 under Section 20 of the **Water Pollution Control Ordinance**;
- (c) Registered as a Chemical Waste Producer under the **Waste Disposal (Chemical Waste) (General) Regulation** (the Waste Producer Number assigned is WPN: 5611-531-C3124-28 dated 2 May 08); and
- (d) Granted by the Environmental Protection Department a Permit Issued under the **Dumping at Sea Ordinance** (Permit no. EP/I4D/08-095, dated 18 September 2008, permit validity period of six months from 18 September 2008 to 17 March 2009) for 18, 469 m³ sediment requiring Type 1 – open sea disposal at East Sha Chau Contaminated Mud Disposal Site – Pit IV b to be capped as directed by the management Team of the CEDD.

3.5.2 Cultural Heritage

The Action and Limit Levels for Cultural Heritage are shown in **Table 3-5-2** according to the EM&A Manual.

Table 3-5-2 Cultural Heritage Resources Action and Limit Levels

Action Level	Limit Level
When damage or structural instability is first detected	Signs of deterioration and structural instability continues on subsequent visits after Action Level is triggered

During the Reporting Period, there was no construction work conducted within 100m area from the cultural heritage site within KT13, and therefore no cultural heritage monitoring was required in accordance with the approved methodology.

3.5.3 Landscape and Visual

Landscape and visual inspections were conducted on **6 and 20 August 2011**. Current situation of the identified landscape resources remained the same as those of the baseline, except minor changes of river/stream/fish pond landscape character area at LR1, LR2.1, LR2.2, LCA1, LCA3 and LCA4 due to site clearance, soil stockpiling and preparation work within KT13. Updated landscape and visual status is presented in **Appendix I**.

4 NON-COMPLIANCE, COMPLAINT, NOTIFICATION OF SUMMONS, SUCCESSFUL PROSECUTION AND OTHERS

4.1 NON-COMPLIANCE

Exceedances in water quality monitoring were recorded but it concluded that all the exceedances were not project related in this reporting month as discussed in **Section 3.1 to 3.5**. No other non-compliance or deficiency was identified during regular site inspection and environmental audit. No associated remedial action was necessary.

4.2 ENVIRONMENTAL COMPLAINT

No written or verbal complaint was received for each environmental issue during the Reporting Period. No associated remedial action was necessary.

4.3 NOTIFICATION OF SUMMONS AND SUCCESSFUL PROSECUTION

No notifications of summons and successful prosecutions were recorded during the Reporting Period. No associated remedial action was necessary.

4.4 OTHERS

4.4.1 Waste Management Status

All types of waste arising from the construction work are classified into the following:

- Construction & Demolition (C&D) Material;
- Chemical Waste;
- General Refuse; and
- Excavated Soil and sediment

Waste generated, re-used, recycled and disposed of during the Reporting Period is shown in **Appendix J: Monthly Summary Waste Flow Table**. No Type I or Type II excavated soil were recorded in this Reporting Period.

4.4.2 Site Inspection and Environmental Audit

In this Reporting Period, **five** occasions of weekly environmental site inspection and audit were conducted during the Reporting Period jointly by the ER, EO and ET. No adverse environmental impacts were registered, indicating that the mitigation measures implemented were effective and sufficient for the construction activities undertaken. Minor deficiencies found in the site inspection and audit were in general rectified within the specified deadlines. Findings of the site inspection and environmental audit are summarized below.

Table 4-4-1 Summary of Findings of Site Inspection and Environmental Audit

Date	Findings / Deficiencies	Follow-Up Status
27 July 2011	• Used timber was observed inside the channel, the Contractor should remove them to prevent blocking of the channel.	Recommendation based on the observation on 2 August 2011 was followed.
2 August 2011	• Construction material placed inside the channel should be removed to prevent blocking during rainstorm.	Recommendation based on the observation on 10 August 2011 was followed.
10 August 2011	No adverse environmental impact was observed during site inspection.	N.A.
16 August 2011	No adverse environmental impact was observed during site inspection.	N.A.
23 August 2011	No adverse environmental impact was observed during site inspection.	N.A.

4.4.3 Works to be Undertaken Next Month

Works to be undertaken next month are shown in the construction program enclosed in **Appendix B**. The construction activities undertaken in the Reporting Period including:

- Compensatory planting;
- Remedial works

4.4.4 Future Key Issues and Mitigation Measures for the Forth-Coming Month

During wet season, water quality mitigation measures to avoid ingress of runoff from wheel wash facilities and loose soil surface into Channel KT13 should be properly installed and maintained to prevent any muddy or sandy runoff from overflow on the site boundary.

Special attention should be also paid on construction noise and other environmental issues identified in the EM&A Manual as recommended in the EIA and summarized in Mitigation Measure Implementation Schedule. CRBC was reminded to implement the required mitigation measures during construction as far as possible.

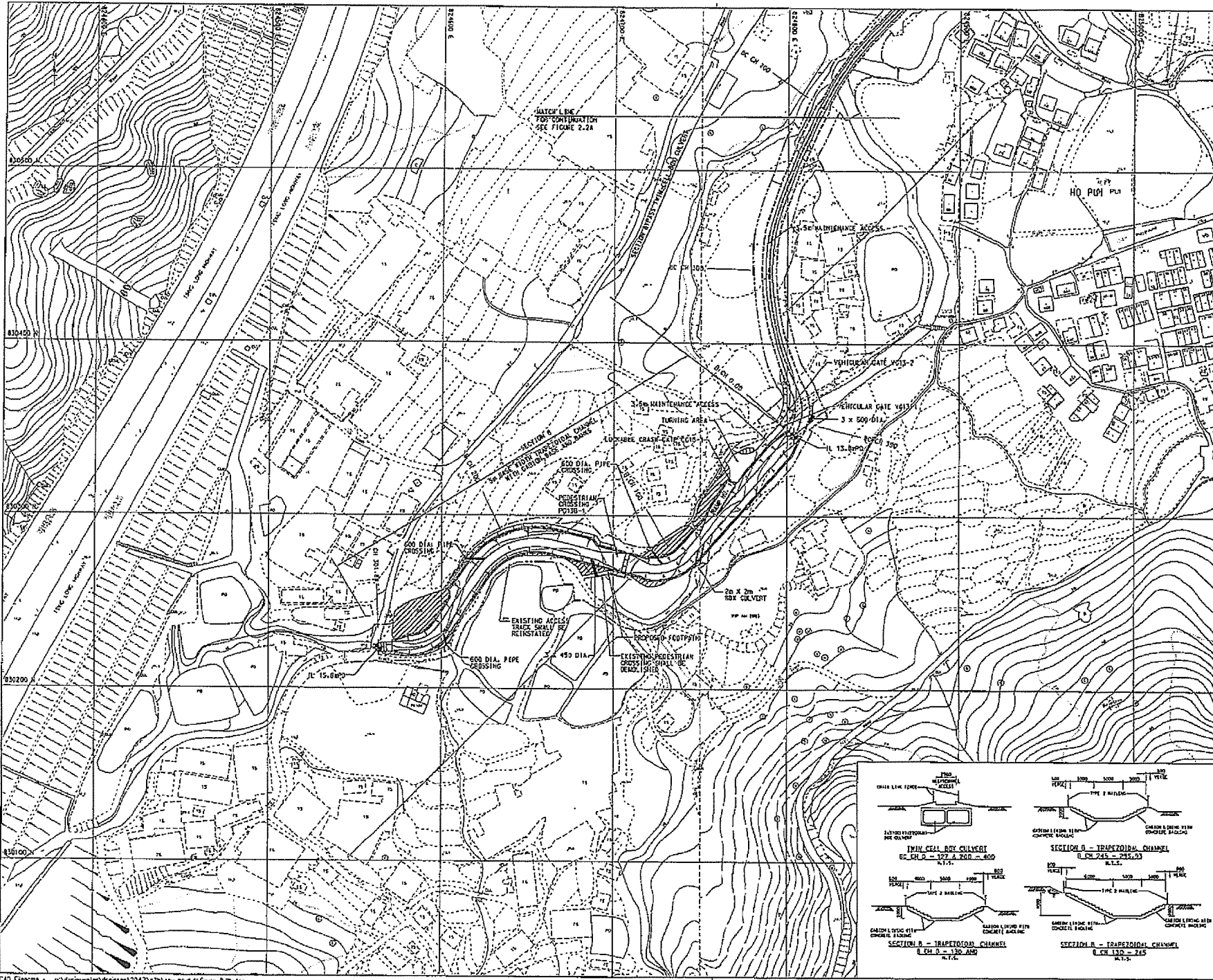
In viewing that the major construction activities of the Project are substantially completed, the Contractor is reminded to maintain the housekeeping of the site in good standard.

5 CONCLUSIONS AND RECOMMENDATIONS

- i) This is the 35th monthly EM&A report for Channel KT13, covering the construction period from **26 July to 25 August 2011** (the Reporting Period).
- ii) Monitoring results of the Reporting Period demonstrated no exceedances of environmental quality criteria for air quality, construction noise and ecology monitoring.
- iii) For stream water quality monitoring, there were 3 Limit Level exceedances were recorded which namely 1 exceedance at upstream Location W2 and 2 exceedances downstream Location W6 which included parameters of Suspended Solids, NH_4^+-N and Zinc. Investigation concluded that the exceedances were not related to the works under the Project.
- iv) During the Reporting Period, there was no construction work conducted within 100m of the cultural heritage site at KT13. Therefore, no cultural heritage monitoring was required in accordance with the approved methodology.
- v) Landscape inspections were conducted on **6 and 20 August 2011**. No significant changes were observed for identified landscape resources and visual sensitive receivers, except for minor changes due to channel excavation, site clearance and preparation work at the identified landscape resources including LR1, LR2.1, LR2.2, LCA1, LCA3 and LCA4.
- vi) To control the site performance on waste management, the Contractor shall ensure that all solid and liquid waste management works are fully in compliance with the relevant license/permit requirements, such as the effluent discharge licence and the chemical waste producer registration. CRBC is also reminded to implement the recommended environmental mitigation measures according to the Project Environmental Monitoring and Audit Manual.
- vii) No documented complaints, notifications of summons or successful prosecutions were received during the Reporting Period. No adverse environmental impacts were observed during the weekly site inspection and environmental audit of the Reporting Period, which suggested that the implemented mitigation measures for air quality, construction noise and ecology were effective. Minor deficiencies found in the weekly site inspection were in general rectified within the specified deadlines. The environmental performance of the Project was therefore considered satisfactory.
- viii) During wet season, water quality mitigation measures to avoid ingress of runoff from wheel wash facilities and loose soil surface into Channel KT13 should be properly installed and maintained to prevent any muddy or sandy runoff from overflow on the site boundary.
- ix) Special attention should be also paid on construction noise and other environmental issues identified in the EM&A Manual as recommended in the EIA and summarized in Mitigation Measure Implementation Schedule. CRBC was reminded to implement the required mitigation measures during construction as far as possible.
- x) In viewing that the major construction activities of the Project are substantially completed, the Contractor is reminded to maintain the housekeeping of the site in good standard.

END OF TEXT

Appendix A
Location Plan and
Environmental Monitoring Locations
Under the Project



- © COPYRIGHT BY BLACK & VEATCH HONG KONG LIMITED and Government of HONG KONG
- NOTES :
1. ALL DIMENSIONS ARE IN MILLIMETRES UNLESS STATED OTHERWISE.
 2. GRID LINES ARE HONG KONG METRIC GRID 1980.
 3. TYPE 2 RAILING WITH CORRUGATED TRAP BAR AND GENERAL WEAR PILES SHALL BE PROVIDED AT BOTH SIDES OF THE CHANNEL BANKS.

- LEGEND :
- SITE BOUNDARY
 - PROPOSED CHANNEL
 - PROPOSED SLOPE
 - ▨ AREA TO BE FILLED TO ADJACENT GROUND LEVEL
 - I.L. THWENT LEVEL
 - PROPOSED RETAINING WALL

C	05/06	AMENDMENT TO	BY-PASS CULVERT	K.I.L.
B	10/05	MINOR AMENDMENT TO	CHANNEL LAYOUT	K.I.L.
A	05/05	MINOR AMENDMENTS TO	SITE BOUNDARY	K.I.L.

REVISION	DATE	DESCRIPTION	BY	CHECKED	DATE
1	04/04		AK	AK	04/04
2	04/04		AK	AK	04/04

AGREEMENT NO. CE 62/93

Contract Title

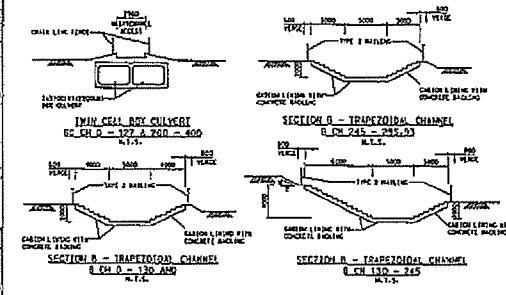
YUEN LONG, KAM TIN, NGAU TAM MEI AND TIN SHUI WAI DRAINAGE IMPROVEMENT, STAGE 1, PHASE 2B - KAM TIN

MA ON KONG CHANNEL KT13 PROPOSED LAYOUT PLAN (SHEET 2 OF 2)

FIGURE 1.3b

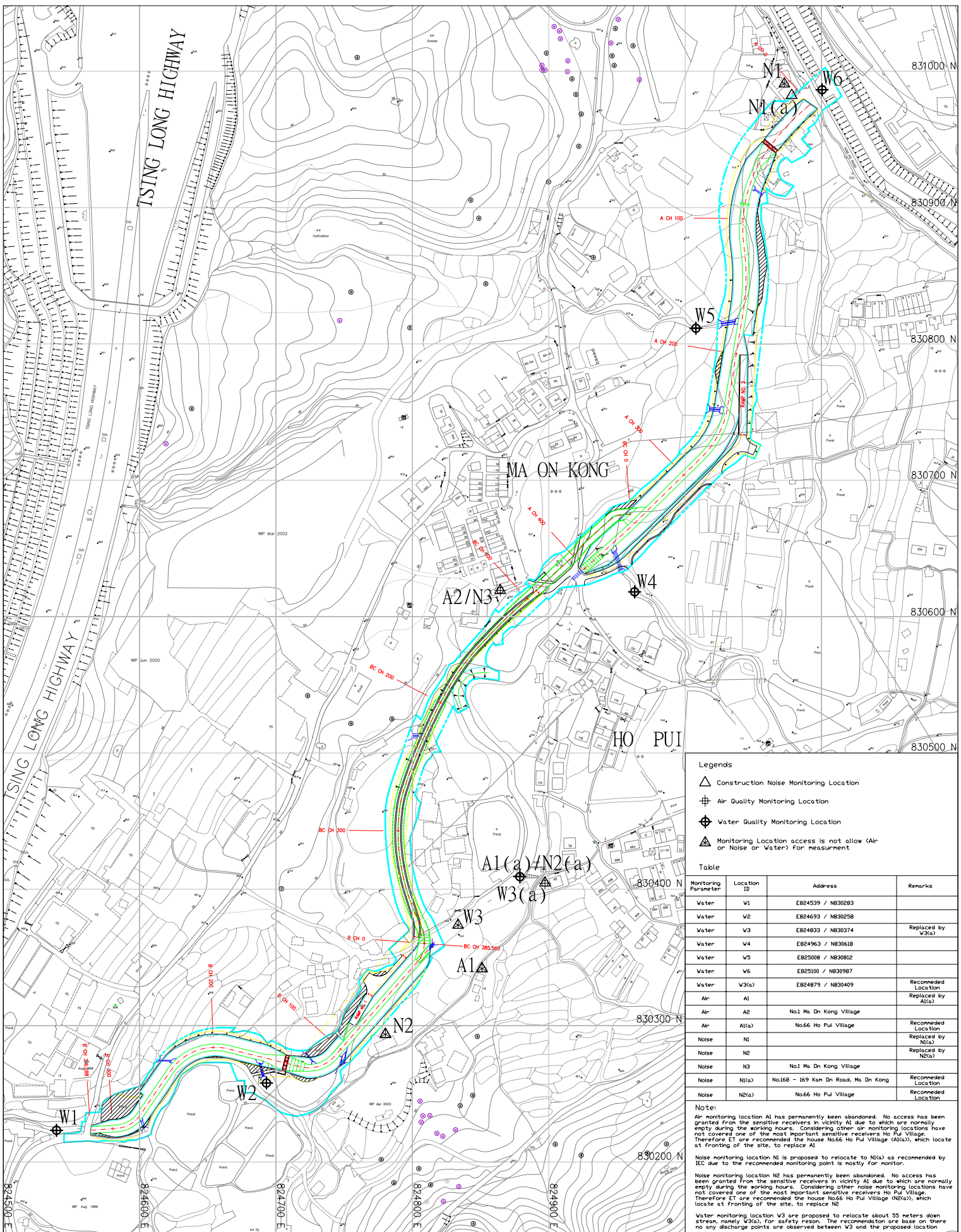
Scale

1:2000 A1
1:2000 A3



香港特別行政區政府渠務署
THE GOVERNMENT OF THE HONG KONG SPECIAL ADMINISTRATIVE REGION
DRAINAGE SERVICES DEPARTMENT

SLACK & VEATCH HONG KONG LIMITED
博斯工程顧問有限公司



- Legends**
- △ Construction Noise Monitoring Location
 - Air Quality Monitoring Location
 - Water Quality Monitoring Location
 - △ Monitoring Location access is not allow (Air or Noise or Water) for measurement

Table

Monitoring Parameter	Location ID	Address	Remarks
Water	W1	E824539 / N830283	
Water	W2	E824693 / N830258	
Water	W3	E824833 / N830374	Replaced by W3(a)
Water	W4	E824963 / N830618	
Water	W5	E825008 / N830812	
Water	W6	E825100 / N830987	
Water	W3(a)	E824879 / N830409	Recommended Location
Air	A1		Replaced by A1(a)
Air	A2	No.1 Ma Dn Kong Village	
Air	A1(a)	No.66 Ho Pul Village	Recommended Location
Noise	N1		Replaced by N1(a)
Noise	N2		Replaced by N2(a)
Noise	N3	No.1 Ma Dn Kong Village	
Noise	N1(a)	No.168 - 169 Kan Dn Road, Ma Dn Kong	Recommended Location
Noise	N2(a)	No.66 Ho Pul Village	Recommended Location

Note:
 Air monitoring location A1 has permanently been abandoned. No access has been granted from the sensitive receivers in vicinity A1 due to which are normally empty during the working hours. Considering other air monitoring locations have not covered one of the most important sensitive receivers Ho Pul Village. Therefore ET are recommended the house No.66 Ho Pul Village (A1(a)), which locate at fronting of the site, to replace A1.
 Noise monitoring location N1 is proposed to relocate to N1(a) as recommended by IEC due to the recommended monitoring point is mostly for monitor.
 Noise monitoring location N2 has permanently been abandoned. No access has been granted from the sensitive receivers in vicinity N2 due to which are normally empty during the working hours. Considering other noise monitoring locations have not covered one of the most important sensitive receivers Ho Pul Village. Therefore ET are recommended the house No.66 Ho Pul Village (N2(a)), which locate at fronting of the site, to replace N2.
 Water monitoring location W3 are proposed to relocate about 55 meters down stream, namely W3(a), for safety reason. The recommendation are base on there no any discharge points are observed between W3 and the proposed location.

Drawing:
 Air, Noise and Stream Water Monitoring Location at KT-13



Contract No. IC/2007/17-
 Bridge Improvement Works in Cheung Po
 Koi, Yuen, Tuen King, Sai Tsuen and San
 San Tsuen of Tuen Long District and Sewerage
 at Tseung Tsuen Tsuen, Tuen Mun



Copyright by Black & Veatch Hong Kong Limited and
Corporation of BESAR

NOTES:
1. GRID LINES ARE HONG KONG METRIC GRID 1980.

- LEGEND:
- MA ON KONG AND HO PUT ECRETIES
 - PROPOSED COMPENSATORY TREE PLANTING
 - CONSERVATION AREA DENOED ON OUTLINE ZONING PLAN
 - WORKS BOUNDARY OF CHANNEL XT13
 - ECOLOGY MONITORING AREAS

Revision	Date	Description			Initial
		Designed	Checked	Drawn	
Initial		MC	KIL	YLL	KIL
Date	09/05	09/05	09/05	09/05	09/05

Approved

AGREEMENT NO. CE 67/98

Contract title
YUEN LONG, KAM TIN,
NGAU TAM MEI AND TIN SHUI WAI
DRAINAGE IMPROVEMENT, STAGE 1,
PHASE 2B - KAM TIN

Drawing title
ECOLOGY MONITORING AREAS
RECOMMENDED FOR
CONSTRUCTION PHASE AND
OPERATION PHASE

Drawing no.	Scale
Figure 6.1	1:2000 A1 1:4000 A3

香港特別行政區政府渠務署
THE GOVERNMENT OF THE
HONG KONG
SPECIAL ADMINISTRATIVE REGION
DRAINAGE SERVICES DEPARTMENT

BLACK & VEATCH HONG KONG LIMITED
黑域工程顧問有限公司

Plot Date: 25 APR 2006
CAD Filename: p:\d\dr\water\dr\comp\12047\c20\env\plan\fig10-5.dwg

Appendix B

Construction Program

Monthly Rolling Programme - August 2011

ID	Task Name	Duration	Start	Finish	August				
					31/7	7/8	14/8	21/8	28/8
1	Section II (Channel KT13)	27 days	Mon 1/8/11	Wed 31/8/11					
2	Regular Environmental Impact Monitoring	27 days	Mon 1/8/11	Wed 31/8/11					
3	Regular Tree Survey & Protection	27 days	Mon 1/8/11	Wed 31/8/11					
4	Section A	27 days	Mon 1/8/11	Wed 31/8/11					
5	Remedial Works	27 days	Mon 1/8/11	Wed 31/8/11					
6	Hydroseeding & Compensatory Planting	27 days	Mon 1/8/11	Wed 31/8/11					
7	Section of Box Culvert	27 days	Mon 1/8/11	Wed 31/8/11					
8	Remedial Works	27 days	Mon 1/8/11	Wed 31/8/11					
9	Section B	27 days	Mon 1/8/11	Wed 31/8/11					
10	Construction of U-Channels	6 days	Mon 1/8/11	Sat 6/8/11					
11	Installation of Gabion Lining	12 days	Mon 1/8/11	Sat 13/8/11					
12	Remedial Works	27 days	Mon 1/8/11	Wed 31/8/11					
13	Hydroseeding & Compensatory Planting	27 days	Mon 1/8/11	Wed 31/8/11					
14									
15	Section V	27 days	Mon 1/8/11	Wed 31/8/11					
16	Preservation and Protection of Tree for Section II	27 days	Mon 1/8/11	Wed 31/8/11					
17									
18	Section VI	27 days	Mon 1/8/11	Wed 31/8/11					
19	Replacement & Rehabilitation Works for Existing Sewerage at Leung Tin Tsuen	27 days	Mon 1/8/11	Wed 31/8/11					

Task Split Progress Milestone Summary

Contract No. : DC/2007/17
Drainage Improvement Works in Cheung Po, Ma On Kong, Yuen Kong San Tsuen and Tin Sam Tsuen of Yuen Long District and Sewerage at Tseng Tau Chung Tsuen, Tuen Mun

Three Months Rolling Programme - September 2011 to November 2011

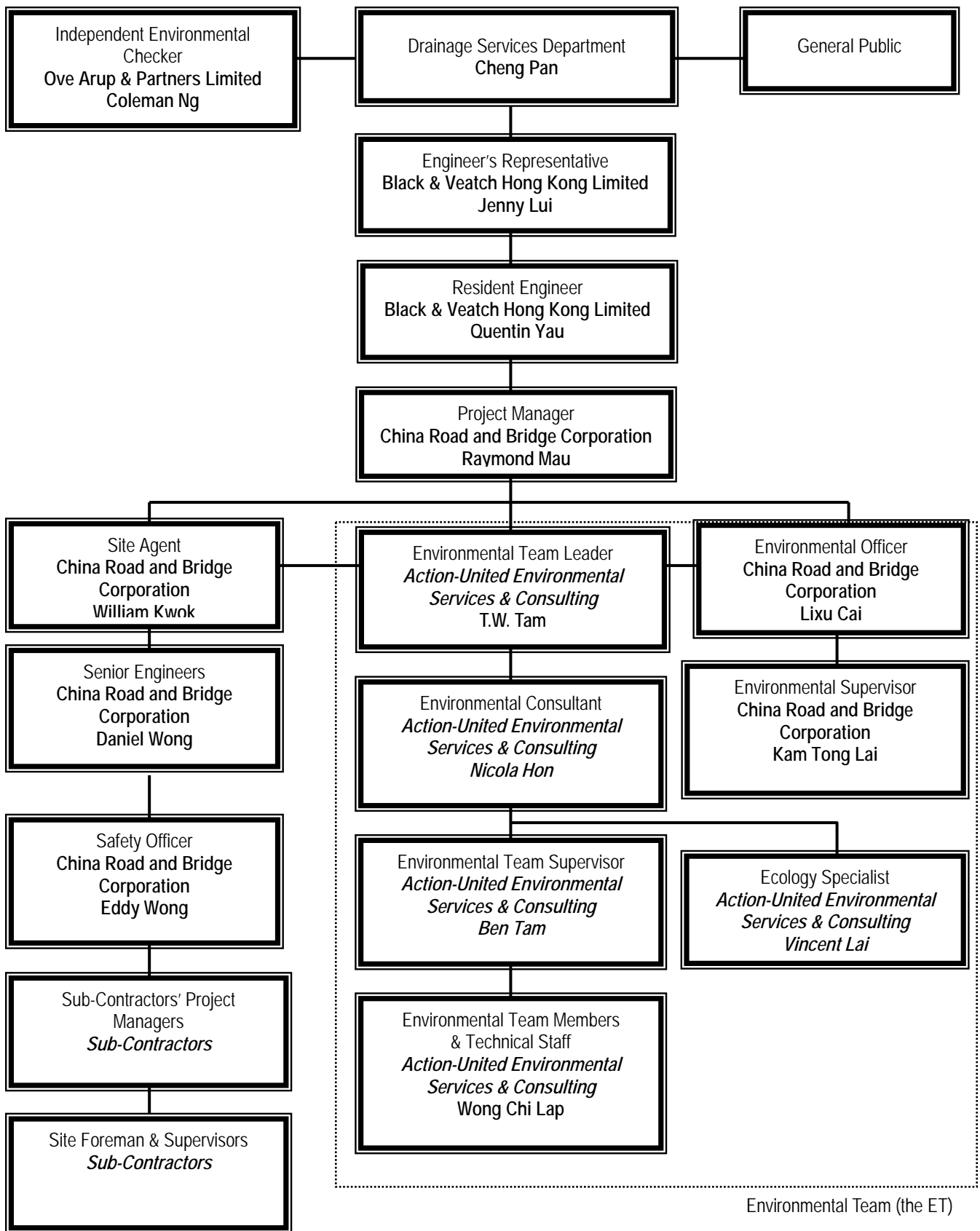
ID	Task Name	Duration	Start	Finish	September					October				November					
					28/8	4/9	11/9	18/9	25/9	2/10	9/10	16/10	23/10	30/10	6/11	13/11	20/11	27/11	
1	Section II (Channel KT13)	75 days	Thu 1/9/11	Wed 30/11/11															
2	Regular Tree Survey & Protection	75 days	Thu 1/9/11	Wed 30/11/11															
3	Section A	75 days	Thu 1/9/11	Wed 30/11/11															
4	Remedial Works	75 days	Thu 1/9/11	Wed 30/11/11															
5	Section of Box Culvert	75 days	Thu 1/9/11	Wed 30/11/11															
6	Remedial Works	75 days	Thu 1/9/11	Wed 30/11/11															
7	Section B	75 days	Thu 1/9/11	Wed 30/11/11															
8	Remedial Works	75 days	Thu 1/9/11	Wed 30/11/11															
9																			
10	Section V	75 days	Thu 1/9/11	Wed 30/11/11															
11	Preservation and Protection of Tree for Section II	75 days	Thu 1/9/11	Wed 30/11/11															
12																			
13	Section VI	75 days	Thu 1/9/11	Wed 30/11/11															
14	Installation of Retro-reflective Identification Tags in Manholes at Tseng Tau Chung Tsuen	75 days	Thu 1/9/11	Wed 30/11/11															
15	Replacement & Rehabilitation Works for Existing Sewerage at Leung Tin Tsuen	49 days	Thu 1/9/11	Mon 31/10/11															
16	Installation of uPVC Caps at Tapping Sewers at Tseng Tau Chung Tsuen	75 days	Thu 1/9/11	Wed 30/11/11															

Task Split Progress Milestone Summary

Appendix C

Environmental Management Organization and

Contacts of Key Personnel



Environmental Management Organization

Contact Details of Key Personnel

Organization	Project Role	Name of Key Staff	Tel No.	Fax No.
DSD	Employer	Mr. Cheng Pan	2594-7264	2827-8526
B&V	Engineer's Representative	Ms. Jenny Lui	2478-9161	2478-9369
B&V	Resident Engineer	Mr. Quentin Yau	2478-9161	2478-9369
OAP	Independent Environmental Checker	Mr. Coleman Ng	2268-3097	2268-3950
CRBC	Project Director	Mr. Wang Yanhua	2283-1688	2283-1689
CRBC	Project Manager	Mr. Raymond Mau	9048-3669	2283-1689
CRBC	Site Agent	Mr. William Kwok	2478-9618	2478-9612
CRBC	Senior Engineer (Tuen Mun Site)	Mr. Daniel Wong	9858-3176	2478-9612
CRBC	Environmental Officer	Mr. Lixu Cai	6474-6975	2478-9612
CRBC	Environmental / Construction Supervisor	Mr. Kam Tong Lai	2478-9618	2478-9612
CRBC	Safety Officer	Mr. Eddy Wong	2478-9618	2478-9612
AUES	Environmental Team Leader	Mr. T.W. Tam	2959-6059	2959-6079
AUES	Environmental Consultant	Miss Nicola Hon	2959-6059	2959-6079
AUES	Environmental Site Inspector	Mr. Ben Tam	2959-6059	2959-6079
AUES	Ecologist	Mr. Vincent Lai	2959-6059	2959-6079

Legend:

DSD (Employer) – Drainage Services Department

B&V (Engineer) – Black & Veatch Hong Kong Limited

CRBC (Main Contractor) – China Road and Bridge Corporation

OAP (IEC) – Ove Arup & Partners Ltd

AUES (ET) – Action-United Environmental Services & Consulting

Appendix D

(a) Monitoring Schedules

(b) Meteorological Data

Monitoring Schedule for KT 13 for Reporting Period – August 2011

Date		Air Quality		Noise Leq 30min	Water Quality	Ecology Surveys
		1-hour TSP	24-hour TSP			
Tue	26-July-11					
Wed	27-July-11		A1(a), A2		W1, W2, W3(a), W4, W5 & W6	
Thu	28-July-11					
Fri	29-July-11	A1(a), A2		N1(a), N2(a) & N3	W1, W2, W3(a), W4, W5 & W6	
Sat	30-July-11					
Sun	31-July-11					
Mon	1-Aug-11				W1, W2, W3(a), W4, W5 & W6	
Tue	2-Aug-11		A1(a), A2			
Wed	3-Aug-11					
Thu	4-Aug-11	A1(a), A2		N1(a), N2(a) & N3	W1, W2, W3(a), W4, W5 & W6	
Fri	5-Aug-11					
Sat	6-Aug-11				W1, W2, W3(a), W4, W5 & W6	
Sun	7-Aug-11					
Mon	8-Aug-11		A1(a), A2		W1, W2, W3(a), W4, W5 & W6	
Tue	9-Aug-11					
Wed	10-Aug-11	A1(a), A2		N1(a), N2(a) & N3	W1, W2, W3(a), W4, W5 & W6	
Thu	11-Aug-11					
Fri	12-Aug-11					
Sat	13-Aug-11		A1(a), A2		W1, W2, W3(a), W4, W5 & W6	
Sun	14-Aug-11					
Mon	15-Aug-11					
Tue	16-Aug-11	A1(a), A2		N1(a), N2(a) & N3	W1, W2, W3(a), W4, W5 & W6	
Wed	17-Aug-11					
Thu	18-Aug-11				W1, W2, W3(a), W4, W5 & W6	
Fri	19-Aug-11		A1(a), A2			
Sat	20-Aug-11				W1, W2, W3(a), W4, W5 & W6	
Sun	21-Aug-11					
Mon	22-Aug-11	A1(a), A2		N1(a), N2(a) & N3	W1, W2, W3(a), W4, W5 & W6	
Tue	23-Aug-11					
Wed	24-Aug-11					
Thu	25-Aug-11		A1(a), A2		W1, W2, W3(a), W4, W5 & W6	
Fri	26-Aug-11					
Sat	27-Aug-11					
Sun	28-Aug-11					

Cultural Heritage

Frequency: Condition survey - Bi-monthly
Settlement monitoring - Bi-weekly

Landscape & Visual

Frequency: Bi-weekly

	Monitoring Day
	Sunday or Public Holiday

Monitoring Schedule of KT 13 for next reporting month – September 2011

Date		Air Quality		Noise Leq 30min	Water Quality	Ecology Surveys
		1-hour TSP	24-hour TSP			
Fri	26-Aug-11					
Sat	27-Aug-11	A1(a), A2		N1(a), N2(a) & N3	W1, W2, W3(a), W4, W5 & W6	
Sun	28-Aug-11					
Mon	29-Aug-11				W1, W2, W3(a), W4, W5 & W6	
Tue	30-Aug-11					
Wed	31-Aug-11		A1(a), A2		W1, W2, W3(a), W4, W5 & W6	
Thu	1-Sep-11					
Fri	2-Sep-11	A1(a), A2		N1(a), N2(a) & N3	W1, W2, W3(a), W4, W5 & W6	
Sat	3-Sep-11					
Sun	4-Sep-11					
Mon	5-Sep-11					
Tue	6-Sep-11		A1(a), A2		W1, W2, W3(a), W4, W5 & W6	
Wed	7-Sep-11					
Thu	8-Sep-11	A1(a), A2		N1(a), N2(a) & N3	W1, W2, W3(a), W4, W5 & W6	
Fri	9-Sep-11					
Sat	10-Sep-11				W1, W2, W3(a), W4, W5 & W6	
Sun	11-Sep-11					
Mon	12-Sep-11		A1(a), A2		W1, W2, W3(a), W4, W5 & W6	
Tue	13-Sep-11					
Wed	14-Sep-11	A1(a), A2		N1(a), N2(a) & N3	W1, W2, W3(a), W4, W5 & W6	
Thu	15-Sep-11					
Fri	16-Sep-11				W1, W2, W3(a), W4, W5 & W6	
Sat	17-Sep-11		A1(a), A2			
Sun	18-Sep-11					
Mon	19-Sep-11					
Tue	20-Sep-11	A1(a), A2		N1(a), N2(a) & N3	W1, W2, W3(a), W4, W5 & W6	
Wed	21-Sep-11					
Thu	22-Sep-11				W1, W2, W3(a), W4, W5 & W6	
Fri	23-Sep-11		A1(a), A2			
Sat	24-Sep-11				W1, W2, W3(a), W4, W5 & W6	
Sun	25-Sep-11					

Cultural Heritage

Frequency: Condition survey - Bi-monthly
Settlement monitoring - Bi-weekly

Landscape & Visual

Frequency: Bi-weekly

	Monitoring Day
	Sunday or Public Holiday

Meteorological Data Extracted from HKO during the Reporting Period

Date		Weather	Lau Fau Shan Weather Station				
			Total Rainfall (mm)	Mean Air Temp. (°C)	Wind Speed (km/h)	Mean Relative Humidity (%)	Wind Direction
26-Jul-11	Tue	Mainly fine and very hot.	0	29.5	13.2	75	S/SE
27-Jul-11	Wed	Moderate westerly winds	Trace	29.5	10	72.2	E/SE
28-Jul-11	Thu	Cloudy with squally showers and thunderstorms.	Trace	30.5	23	71.5	E/NE
29-Jul-11	Fri	Cloudy with squally showers and a few thunderstorms	12.4	28	22.2	84	E
30-Jul-11	Sat	Fine and hot. Light winds.	Trace	28.4	13.7	80.5	E
31-Jul-11	Sun	Hot with sunny periods	0	28.2	7.6	80	W/NW
1-Aug-11	Mon	Fine and very hot	0	28.9	11.2	76.5	W
2-Aug-11	Tue	Fine and very hot. Light winds.	0	29	13.5	75	W
3-Aug-11	Wed	Fine and very hot.	0	29.6	12.7	74	W/SW
4-Aug-11	Thu	There will be a few showers	0	29.7	16.2	74	W
5-Aug-11	Fri	Very hot with sunny periods	0	29.7	12	77.7	W/SW
6-Aug-11	Sat	Light to moderate southwesterly winds.	0	29.9	13	72.1	W
7-Aug-11	Sun	Fine and very hot. Light winds.	0	31.2	17.2	69	S/SE
8-Aug-11	Mon	Fine and very hot.	22.1	30.1	13.4	84	S/SE
9-Aug-11	Tue	Light to moderate southerly winds.	9.9	26.7	16	91	SE
10-Aug-11	Wed	Cloudy with showers and a few squally thunderstorms.	60.5	26.1	14.2	94.5	S/SE
11-Aug-11	Thu	Fine and very hot.	17.9	28.3	8	92	S/SE
12-Aug-11	Fri	Light to moderate easterly winds.	0	29.4	13.5	79.7	S/SE
13-Aug-11	Sat	Very hot with sunny periods	0	29.8	14	75	S/SE
14-Aug-11	Sun	Fine and very hot. Light winds.	Trace	30	14.7	72	W
15-Aug-11	Mon	Mainly fine.	0	29.8	14.9	77.5	W
16-Aug-11	Tue	Moderate southeasterly winds.	8.5	29.6	16.2	77.5	W
17-Aug-11	Wed	Mainly fine.	10.1	30	17.5	76.5	S/SE
18-Aug-11	Thu	Very hot in the afternoon.	0	29.9	8.7	71.7	SE
19-Aug-11	Fri	Light to moderate easterly winds.	0	29.9	8.5	73.5	E/NE
20-Aug-11	Sat	Fine and very hot.	3.7	28.9	12.1	78.5	E/NE
21-Aug-11	Sun	Very hot with sunny periods	Trace	27.5	14.5	85.5	W/SW
22-Aug-11	Mon	Light to moderate northerly winds.	1.4	29	12.7	82.2	W
23-Aug-11	Tue	Mainly fine.	0	29.5	12	80.5	W
24-Aug-11	Wed	Fine and very hot. Light winds.	3.9	29.9	16.5	77.5	W
25-Aug-11	Thu	Light to moderate northerly winds.	13.7	28.1	15	83.5	E/NE

Appendix E
Calibration Certificates and
HOKLAS-Accreditation Certificate

Equipment Calibration List for Drainage Improvement Works in Cheung Po, Ma On Kong, Yuen Kong San Tsuen and Tin Sam Tsuen of Yuen Long District and Sewerage at Tseng Tau Chung Tsuen, Tuen Mun

Item	Issue	Description of Equipment	Date of Calibration	Date of Next Calibration
1 ⁽³⁾	Air	Tisch Calibration Kit Model TE-5025A (Serial No. 1941)	2 Jun 11	2 Jun 12
2 ^(*)		TSP Sampler Calibration Spreadsheet for KT13-A1a	1 Aug 11	1 Oct 11
3 ^(*)		TSP Sampler Calibration Spreadsheet for KT13-A2	1 Aug 11	1 Oct 11
4 ⁽²⁾		TSI DustTrak Model 8520 (Serial No. 21060)	27 Jan 11	27 Jan 12
5 ⁽²⁾	Noise	Bruel & Kjaer Integrating Sound Level Meter 2238 (Serial No. 2285721)	19 Apr 11	19 Apr 12
6 ⁽²⁾		Bruel & Kjaer Acoustical Calibrator 4231 (Serial No. 2713428)	19 Apr 11	19 Apr 12
7 ⁽¹⁾		YSI 550A (Serial No. 97F0837AM)	18 Jul 11	18 Oct 11
8 ⁽¹⁾		Extech pH Meter EC500 (Work Order: HK1116556)	18 Jul 11	18 Oct 11
9 ⁽¹⁾		Turbidimeter HACH 2100q (Serial No. 110 0C008499)	13 Jun 11	13 Sep 11
10 ⁽¹⁾		Hand Refractometer ATAGO EQ114 (Serial No. 289468)	18 Jul 11	18 Oct 11

Note: * Calibration certificates will only provide when monitoring equipment is re-calibrate or new.

- ⁽¹⁾ The calibration certificates could be referred to the previous EM&A monthly report – July 2011
- ⁽²⁾ The calibration certificates could be referred to the previous EM&A monthly report – May 2011
- ⁽³⁾ The calibration certificates could be referred to the previous EM&A monthly report – June 2011

TSP SAMPLER CALIBRATION CALCULATION SPREADSHEET

Location :	No.68 Ho Pui Village	Date of Calibration: 1-Aug-11
Location ID :	ASR14 (A1(a))	Next Calibration Date: 1-Oct-11
Technician: Mr. Ben Tam		

CONDITIONS

Sea Level Pressure (hPa)	1005.5	Corrected Pressure (mm Hg)	754.125
Temperature (°C)	29.5	Temperature (K)	303

CALIBRATION ORIFICE

Make->	TISCH	Qstd Slope ->	2.00279
Model->	5025A	Qstd Intercept ->	-0.00494
Serial # ->	1483		

CALIBRATION

Plate No.	H2O (L) (in)	H2O (R) (in)	H2O (in)	Qstd (m3/min)	I (chart)	IC corrected	LINEAR REGRESSION
18	5.3	5.3	10.6	1.610	48	47.10	Slope = 35.3140 Intercept = -9.6697 Corr. coeff. = 0.9999
13	4.4	4.4	8.8	1.467	43	42.20	
10	3.3	3.3	6.6	1.271	36	35.33	
7	2.4	2.4	4.8	1.084	29	28.46	
5	1.4	1.4	2.8	0.829	20	19.63	

Calculations :

$$Q_{std} = 1/m[\sqrt{H2O(Pa/P_{std})(T_{std}/T_a)} - b]$$

$$IC = I[\sqrt{Pa/P_{std})(T_{std}/T_a)}]$$

Qstd = standard flow rate

IC = corrected chart responses

I = actual chart response

m = calibrator Qstd slope

b = calibrator Qstd intercept

Ta = actual temperature during calibration (deg K

Pstd = actual pressure during calibration (mm Hg

For subsequent calculation of sampler flow:

$$1/m((I)[\sqrt{298/T_{av}}(P_{av}/760)] - b)$$

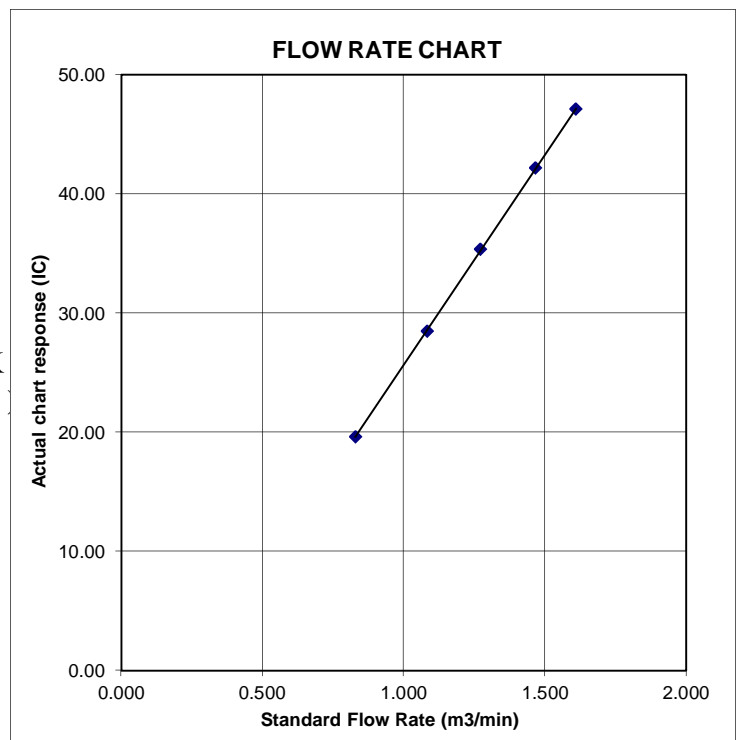
m = sampler slope

b = sampler intercept

I = chart response

Tav = daily average temperature

Pav = daily average pressure



TSP SAMPLER CALIBRATION CALCULATION SPREADSHEET

Location :	No.1 Ma On Kong Village	Date of Calibration: 1-Aug-11
Location ID :	ASR15 (A2)	Next Calibration Date: 1-Oct-11
Technician: Mr. Ben Tam		

CONDITIONS

Sea Level Pressure (hPa)	1005.5	Corrected Pressure (mm Hg)	754.125
Temperature (°C)	29.5	Temperature (K)	303

CALIBRATION ORIFICE

Make->	TISCH	Qstd Slope ->	2.00279
Model->	5025A	Qstd Intercept ->	-0.00494
Serial # ->	1483		

CALIBRATION

Plate No.	H2O (L) (in)	H2O (R) (in)	H2O (in)	Qstd (m3/min)	I (chart)	IC corrected	LINEAR REGRESSION
18	5.2	5.2	10.4	1.594	49	48.08	Slope = 36.1244 Intercept = -9.6472 Corr. coeff. = 0.9998
13	4.2	4.2	8.4	1.433	43	42.20	
10	3.2	3.2	6.4	1.251	36	35.33	
7	2.3	2.3	4.6	1.061	29	28.46	
5	1.5	1.5	3.0	0.858	22	21.59	

Calculations :

$$Qstd = 1/m[\text{Sqrt}(H2O(Pa/Pstd)(Tstd/Ta))-b]$$

$$IC = I[\text{Sqrt}(Pa/Pstd)(Tstd/Ta)]$$

Qstd = standard flow rate

IC = corrected chart responses

I = actual chart response

m = calibrator Qstd slope

b = calibrator Qstd intercept

Ta = actual temperature during calibration (deg]

Pstd = actual pressure during calibration (mm Hg

For subsequent calculation of sampler flow:

$$1/m((I)[\text{Sqrt}(298/Tav)(Pav/760)]-b)$$

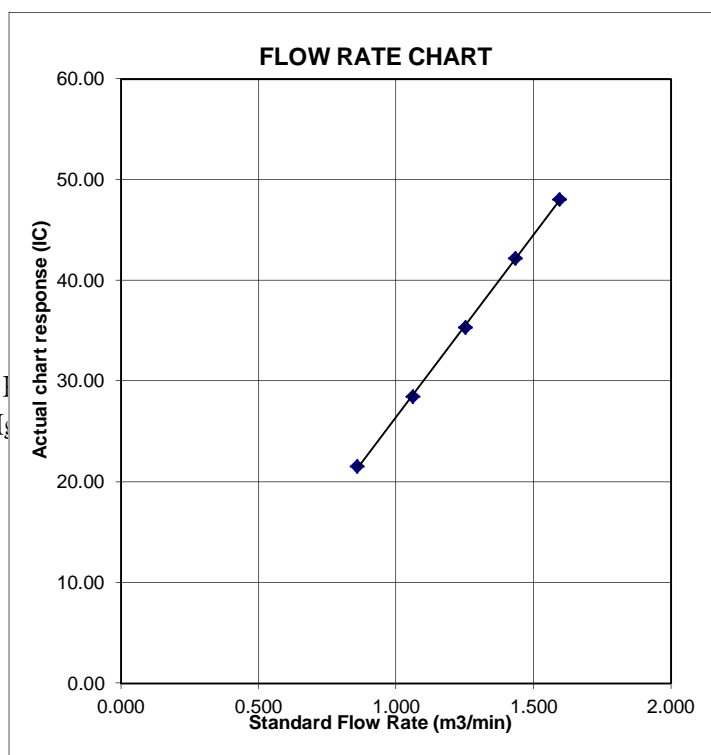
m = sampler slope

b = sampler intercept

I = chart response

Tav = daily average temperature

Pav = daily average pressure



Appendix F

Event and Action Plan

Event/Action Plan for Air Quality

EVENT	ACTION			
	Contractor's ET leader	IEC	ER	Contractor
1. Exceedance for one sample	<ol style="list-style-type: none"> Identify source Inform IEC, ER and Contractor Repeat measurement to confirm findings Increase monitoring frequency to daily 	<ol style="list-style-type: none"> Check monitoring data submitted by Contractor's ET leader Check Contractor's working method 	<ol style="list-style-type: none"> Notify Contractor 	<ol style="list-style-type: none"> Rectify any unacceptable practice Amend working methods if appropriate
2. Exceedance for two or more consecutive samples	<ol style="list-style-type: none"> Identify source Inform IEC, ER and Contractor Repeat measurement to confirm findings Increase monitoring frequency to daily Discuss with IEC, Contractor and ER on remedial actions required If exceedance continue, arrange meeting with IEC, ER and Contractor If exceedance stops, cease additional monitoring 	<ol style="list-style-type: none"> Checking monitoring data submitted by Contractor's ET leader. Check Contractor's working method Discuss with Contractor's ET leader and Contractor on possible remedial measures Advise the ER on the effectiveness of the proposed remedial measures Supervise implementation of remedial measures 	<ol style="list-style-type: none"> Confirm receipt of notification of failure in writing Notify Contractor Ensure remedial measures properly implemented 	<ol style="list-style-type: none"> Submit proposals for remedial actions to IEC and ER within 3 working days of notification Implement the agreed proposals Amend proposal if appropriate
LIMIT LEVEL				
1. Exceedance for one sample	<ol style="list-style-type: none"> Identify source Inform IEC, ER, EPD and Contractor Repeat measurement to confirm findings Increase monitoring frequency to daily Assess effectiveness of Contractor's remedial actions and kept IEC, EPD and ER informed of the results 	<ol style="list-style-type: none"> Check monitoring data submitted by Contractor's ET leader Check Contractor's working method Discuss with Contractor's ET leader and Contractor on possible remedial measures Advise the ER on the effectiveness of the proposed remedial measures Audit implementation of remedial measures 	<ol style="list-style-type: none"> Confirm receipt of notification of failure in writing Notify Contractor Ensure remedial measures properly implemented 	<ol style="list-style-type: none"> Take immediate action to avoid for the exceedance Submit proposals for remedial actions to IEC and ER within 3 working days of notification Implement the agreed proposals Amend proposal if appropriate
2. Exceedance for two or more consecutive samples	<ol style="list-style-type: none"> Notify IEC, ER, Contractor and EPD Identify source Repeat measurement to confirm findings Increase monitoring frequency to daily Carry out analysis of Contractor's working procedures to determine possible mitigation to be implemented Arrange meeting with IEC, Contractor and ER to discuss the remedial actions to be taken Assess effectiveness of Contractor's remedial actions and keep IEC, EPD and ER informed of the results If exceedance stops, cease additional monitoring 	<ol style="list-style-type: none"> Discuss amongst ER, Contractor's ET leader and Contractor on the potential remedial actions Review Contractor's remedial actions whenever necessary to assure their effectiveness and advise the ER accordingly Audit the implementation of remedial measures 	<ol style="list-style-type: none"> Confirm receipt of notification of failure in writing Notify Contractor In consultation with IEC, agree with the Contractor on the remedial measures to be implemented Ensure remedial measures properly implemented If exceedance continues, consider what portion of the work is responsible and instruct the Contractor to stop that portion of work until the exceedance is abated. 	<ol style="list-style-type: none"> Take immediate action to avoid for the exceedance Submit proposals for remedial actions to IEC and ER within 3 working days of notification Implement the agreed proposals Resubmit proposals if problem still not under control Stop the relevant portion of works as determined by the ER until the exceedance is abate.

Event and Action Plan for Water Quality

Event	ET Leader	IEC	ER	Contractor
Action level being exceeded by one sampling day	Repeat in-situ measurement to confirm findings. Identify Source(s) of impact; Inform IEC an Contractor; Check monitoring data, all plant, equipment and Contractor's working methods; Discuss mitigation measures with IEC and Contractor; Repeat measurement on next day of exceedance	Discuss with ET and Contractor on the mitigation measures Review proposals on mitigation measures submitted by Contractor and advise the ER accordingly Assess the effectiveness of the implemented mitigation measures.	Discuss with IEC on the proposed mitigation measures; Make agreement on the mitigation measures to be implemented;	Inform the ER and confirm notification of the non-compliance in writing; Rectify unacceptable practice; Check all plant and equipment; Consider changes of working methods; Discuss with ET and IEC and propose mitigation measures to IEC and ER; Implement the agreed mitigation measures.
Action level being exceeded by more than one consecutive sampling days	Repeat in-situ measurement to confirm findings; Identify source(s) of impact; Inform IEC and Contractor; Check monitoring data, all plant, equipment and Contractor's working methods; Discuss mitigation measures with IEC and Contractor; Ensure mitigation measures are implemented; Prepare to increase the monitoring frequency to daily; Repeat measurement on next day of exceedance.	Discuss with ET and Contractor on the mitigation measures Review proposals on mitigation measures submitted by Contractor and advise the ER accordingly Assess the effectiveness of the implemented mitigation measures.	Discuss with IEC, ET and Contractor on the proposed mitigation measures; Request Contract to critically review the working methods; Made agreement on the mitigation measures to be implemented; Assess the effectiveness of the implemented mitigation measures.	Inform the Engineer and confirm notification of the non-compliance in writing; Rectify unacceptable practice; Check all plant and equipment; consider changes of working methods; Discuss with ET, IEC and ER and propose mitigation measures to IEC and ER within 3 working days; Implement the agreed mitigation measures.
Limit level being exceeded by one sampling day	Repeat in-situ measurement to confirm findings; Identify source(s) of impact; Inform IEC, contractor and EPD; Check monitoring data, all plant, equipment and Contractor's working methods; Discuss mitigation measures with IEC, ER and Contractor; Ensure mitigation measures are implemented; Increase the monitoring frequency to daily until no exceedance of Limit level.	Discuss with ET and Contractor on the mitigation measures Review proposals on mitigation measures submitted by Contractor and advise the ER accordingly Assess the effectiveness of the implemented mitigation measures.	Discuss with IEC, ET and Contractor on the proposed mitigation measures; Request Contractor to critically review the working methods; Make agreement on the mitigation measures to be implemented; Assess the effectiveness of the implemented mitigation measures; Consider and instruct, if necessary, the Contractor to slow down or to stop all or part of the marine work until no exceedance of Limit level.	Inform the ER and confirm notification of the non-compliance in writing; Rectify unacceptable practice; Check all plant and equipment; Consider changes of working methods; Discuss with ET, IEC and ER and propose mitigation measures to IEC and ER within 3 working days; Implement the agreed mitigation measures; As directed by the Engineer, to slow down or to stop all or part of the marine work or construction activities.

Event/Action Plan for Construction Noise Monitoring

EVENT	ACTION			
	CONTRACTOR'S ET LEADER	IEC	ER	Contractor
Action Level	<ol style="list-style-type: none"> 1. Notify IEC, Contractor and ER 2. Carry out investigation 3. Report the results of investigation to the IEC, Contractor and ER 4. Discuss with the Contractor and formulate remedial measures 5. Double monitoring frequency 6. Check compliance to Action/Limit Levels after application of mitigation measures 	<ol style="list-style-type: none"> 1. Review the analysed results submitted by the Contract's ET leader 2. Review the proposed remedial measures by the Contractor and advise the ER accordingly 3. Review the implementation of remedial measures 	<ol style="list-style-type: none"> 1. Confirm receipt of notification of complaint in writing 2. Notify Contractor 3. Require Contractor to propose remedial measures for the analysed noise problem 4. Ensure remedial measures are properly implemented 	<ol style="list-style-type: none"> 1. Submit noise mitigation proposals to ER and IEC 2. Implement noise mitigation proposals
Limit Level	<ol style="list-style-type: none"> 1. Notify IEC, ER, EPD and Contractor 2. Identify Source 3. Repeat measurement to confirm findings 4. Increase monitoring frequency 5. Carry out analysis of Contractor's working procedures to determine possible mitigation to be implemented 6. Inform IEC, ER and EPD the causes & actions taken for the exceedances 7. Assess effectiveness of Contractor's remedial actions and keep IEC, EPD and ER informed of the results 8. If exceedance stops, cease additional monitoring 	<ol style="list-style-type: none"> 1. Discuss amongst ER, Contractor's ET leader and Contractor on the potential remedial actions 2. Review Contractor's remedial actions whenever necessary to assure their effectiveness and advise the ER accordingly 3. Audit the implementation of remedial measures 	<ol style="list-style-type: none"> 1. Confirm receipt of notification of failure in writing 2. Notify Contractor 3. Require Contractor to propose remedial measures for the analysed noise problem 4. Ensure remedial measures are properly implemented 5. If exceedance continues, consider what portion of the work is responsible and instruct the Contractor to stop that portion of work until the exceedance is abated 	<ol style="list-style-type: none"> 1. Take immediate action to avoid further exceedance 2. Submit proposals for remedial actions to within 3 working days of notification 3. Implement the agreed proposals 4. Resubmit proposals if problem still not under control 5. Stop the relevant portion of works as determined by the ER until the exceedance is abated

Event/Action Plan for Ecology

EVENT	ACTION			
	ET Leader	IEC	Engineer	Contractor
ACTION REACHED LEVEL	<ol style="list-style-type: none"> 1. Carry out investigation 2. Review results and assess whether amendment to action level is appropriate 3. Report the results of investigation to the IEC 4. Notify Contractor and Engineer 5. Discuss with the Contractor and formulate remedial measures 6. Repeat survey to confirm results 	<ol style="list-style-type: none"> 1. Review the analysed results submitted by ET 2. Review the proposed remedial measures by the Contractor and advice the Engineer accordingly 3. Supervise implementation of remedial measures 	<ol style="list-style-type: none"> 1. Confirm receipt of notification of failure in writing 2. Notify Contractor 3. Require Contractor to propose remedial measures for the analysed problem 4. Ensure remedial measures properly implemented 	<ol style="list-style-type: none"> 1. Take immediate action to avoid further problem 2. Submit proposals for remedial actions to IEC within 3 working days of notification 3. Implement the agreed proposals 4. Resubmit proposals if problem still not under control
LIMIT REACHED LEVEL	<ol style="list-style-type: none"> 1. Carry out investigation 2. Review results and assess whether amendment to limit level is appropriate 3. Report the results of investigation to the IEC 4. Notify Contractor and Engineer 5. Discuss with the Contractor and formulate remedial measures 6. Repeat survey to confirm results 	<ol style="list-style-type: none"> 1. Review the analysed results submitted by ET 2. Review the proposed remedial measures by the Contractor and advice the Engineer accordingly 3. Supervise implementation of remedial measures 	<ol style="list-style-type: none"> 1. Confirm receipt of notification of failure in writing 2. Notify Contractor 3. Require Contractor to propose remedial measures for the analysed problem 4. Ensure remedial measures properly implemented 5. Issue instruction to stop the relevant portion of the works until the problem is abated (construction period only). 	<ol style="list-style-type: none"> 1. Take immediate action to avoid further problem 2. Submit proposals for remedial actions to IEC within 3 working days of notification 3. Implement the agreed proposals 4. Resubmit proposals if problem still not under control 5. Stop the relevant portion of works as determined by the Engineer until the problem is abated (construction period only)

Event and Action Plan for Cultural Heritage

EVENT	ACTION			
	ET Leader	IEC	ER	Contractor
Action Level	<p>Notify IEC and Contractor to carry out investigation</p> <p>Report reasons of structural damage or instability to the IEC and Contractor Discuss with the Contractor and formulate remedial measures</p> <p>Increase monitoring frequency to once per week to check mitigation effectiveness</p>	<p>Review report of structural damage or instability by the ET.</p> <p>Review proposed remedial measures by the Contractor and advise the ER and Antiquities and Monuments Office (AMO) accordingly</p> <p>Supervise the implementation of remedial measures, with approval from AMO.</p>	<p>Confirm receipt of notification of failure in writing</p> <p>Notify Contractor</p> <p>Require Contractor to propose remedial measures and to notify and seek approval from AMO.</p> <p>Ensure remedial measures are properly implemented.</p>	<p>Notify AMO concerning the damage or structural instability of the cultural heritage resources</p> <p>Submit proposals for repair of damage to cultural heritage resources to AMO for approval and to implement approved measures.</p>
Limit Level	<p>Notify IEC and Contractor to carry out investigation and to stop construction work within 100m of cultural heritage resource to avoid further impact until AMO are satisfied that the relevant structure has been repaired or stabilized to an acceptable level.</p> <p>Report reasons of continued structural damage or instability to the IEC and Contractor Discuss with the Contractor and formulate remedial measures</p> <p>Increase monitoring frequency to daily to check mitigation effectiveness</p>	<p>Review report of structural damage or instability by the ET.</p> <p>Review proposed remedial measures by the Contractor and advise the ER and Antiquities and Monuments Office (AMO) accordingly.</p> <p>Supervise the implementation of remedial measures, with approval from AMO.</p>	<p>Confirm receipt of notification of failure in writing</p> <p>Notify Contractor</p> <p>Require Contractor to propose remedial measures and to notify and seek approval from AMO.</p> <p>Ensure remedial measures are properly implemented.</p>	<p>To carry out investigation and to stop construction work within 100m of cultural heritage resource to avoid further impact until AMO are satisfied that the relevant structure has been repaired or stabilized to an acceptable level.</p> <p>Propose remedial measures for the repair and stabilization of cultural heritage resources, up to liaison of moving and rebuilding the relevant structure with the approval of owner (usually the clan members) and AMO.</p>

Event and Action Plan for Landscape and Visual Impact - Construction Phase

Action Level	Environmental Team Leader (ETL)	Independent Environmental Checker (IEC)	Engineer's Representative (ER)	Contractor
Non-conformity on one occasion	<ol style="list-style-type: none"> 1. Identify source 2. Inform the IEC and the ER 3. Discuss remedial actions with the IEC, the ER and the Contractor 4. Monitor remedial actions until rectification has been completed 	<ol style="list-style-type: none"> 1. Check report 2. Check the Contractor's working method 3. Discuss with the ER and the Contractor on possible remedial measures 4. Advise the ER on effectiveness of proposed remedial measures 	<ol style="list-style-type: none"> 1. Notify the Contractor 2. Ensure remedial measures are properly implemented 	<ol style="list-style-type: none"> 1. Amend working methods 2. Rectify damage and undertake remedial measures or any necessary replacement
Repeated Non-conformity	<ol style="list-style-type: none"> 1. Identify source 2. Inform the IEC and the ER 3. Increase monitoring (site audit) frequency 4. Discuss remedial actions with the IEC, the ER and the Contractor 5. Monitor remedial actions until rectification has been completed 6. If exceedance stops, cease additional monitoring (site audit) 	<ol style="list-style-type: none"> 1. Check report 2. Check the Contractor's working method 3. Discuss with the ER and the Contractor on possible remedial measures 4. Advise the ER on effectiveness of proposed remedial measures 5. Supervise implementation of remedial measures 	<ol style="list-style-type: none"> 1. Notify the Contractor 2. Ensure remedial measures are properly implemented 	<ol style="list-style-type: none"> 1. Amend working methods 2. Rectify damage and undertake remedial measures or any necessary replacement

Appendix G

(a) Impact Environmental Monitoring Data

(b) Graphic Plot of Monitoring

- 1. Construction Noise**
- 2. Air Quality**
- 3. Water Quality**

DSD CONTRACT NO. DC/2007/17
 Drainage Improvement Works in Cheung Po, Ma On Kong, Yuen Kong San Tsuen and Tin Sam Tsuen of
 Yuen Long District and Sewerage at Tseng Tau Chung Tsuen, Tuen Mun

24-Hour TSP Monitoring Results

DATE	SAMPLE NUMBER	STANDARD											BLANK			SAMPLE OF FILTER PAPER			Dust 24-Hr TSP in Air ($\mu\text{g}/\text{m}^3$)	Action Level ($\mu\text{g}/\text{m}^3$)	Limit Level ($\mu\text{g}/\text{m}^3$)
		ELAPSED TIME			CHART READING		AVERAGE			FLOW	AIR	SAMPLE NUMBER	WEIGHT (g)								
		INITIAL	FINAL	(min)	MIN	MAX	CHART READING	TEMP ($^{\circ}\text{C}$)	PRESS (hPa)	RATE (m^3/min)	VOLUME (std m^3)		INITIAL	FINAL	DIFF	INITIAL	FINAL	DUST COLLECTION			
KT13(A1(a))																					
27-Jul-11	23957	4249.36	4273.04	1420.80	30	33	31.5	30.2	1007.1	1.15	1641	NA	2.8306	2.8311	0.0005	3.0191	3.0760	0.0569	34	144	260
2-Aug-11	24003	4273.04	4296.81	1426.20	30	32	31.0	29.5	1006.7	1.14	1629	NA	3.5762	3.5763	0.0001	2.8157	2.8556	0.0399	24	144	260
8-Aug-11	24044	4296.81	4320.58	1426.20	30	33	31.5	29.2	1004.3	1.16	1648	NA	3.5716	3.5713	-0.0003	2.8333	2.8538	0.0205	13	144	260
13-Aug-11	24039	4320.58	4344.28	1422.00	30	32	31.0	29.6	1008.8	1.14	1625	NA	3.5716	3.5713	-0.0003	2.8175	2.862	0.0445	28	144	260
19-Aug-11	24098	4344.28	4367.98	1422.00	30	31	30.5	29.6	1010.9	1.13	1607	NA	3.5716	3.5713	-0.0003	2.8276	2.8589	0.0313	20	144	260
25-Aug-11	24116	4367.98	4391.81	1429.80	30	33	31.5	28.6	1005.7	1.16	1654	NA	2.8435	2.8442	0.0007	2.8692	2.8908	0.0216	13	144	260
KT13(A2)																					
27-Jul-11	23958	4210.55	4234.61	1443.60	36	39	37.5	30.2	1007.1	1.30	1870	NA	2.8306	2.8311	0.0005	3.0395	3.0751	0.0356	19	141	260
2-Aug-11	24004	4234.61	4258.69	1444.80	28	30	29.0	29.5	1006.7	1.06	1533	NA	3.5762	3.5763	0.0001	2.8167	2.8314	0.0147	10	141	260
8-Aug-11	24045	4258.69	4282.73	1442.40	28	30	29.0	29.2	1004.3	1.06	1530	NA	3.5716	3.5713	-0.0003	2.8032	2.8240	0.0208	14	141	260
13-Aug-11	24040	4282.73	4306.81	1444.80	28	30	29.0	29.6	1008.8	1.06	1534	NA	3.5716	3.5713	-0.0003	2.8154	2.84	0.0246	16	141	260
19-Aug-11	24099	4306.81	4330.90	1445.40	28	30	29.0	29.6	1010.9	1.06	1536	NA	3.5716	3.5713	-0.0003	2.802	2.8204	0.0184	12	141	260
25-Aug-11	24117	4330.90	4355.02	1447.20	30	32	31.0	28.6	1005.7	1.12	1616	NA	2.8435	2.8442	0.0007	2.8978	2.9381	0.0403	25	141	260

Summary of Water Quality Monitoring Results - KT13

Date 27-Jul-11																		
Location	Time	Depth (m)	Temp (oC)		DO (mg/L)		DOS (%)		Turbidity (NTU)		pH		SS		Ammonia N		Zinc	
W1	13:06	0.10	30.8	30.8	6.82	6.7	89.5	88.9	21.2	21.0	8.36	8.4	13	13.0	9	9.00	68	68.0
			30.8		6.54		88.3		20.8		8.41		13		9		68	
			30.9		6.32		86.4		20.6		8.17		29		9.46		114	
W2	13:16	0.15	30.9	30.9	6.25	6.3	86.1	86.3	21.5	21.1	8.08	8.1	29	29.0	9.46	9.46	114	114.0
			30.9		5.27		78.3		28.3		8.23		9		8.61		91	
			31.1		5.21		77.9		28.1		8.16		9		8.61		91	
W3	13:24	0.20	30.9	30.9	5.27	5.2	78.3	78.1	28.3	28.2	8.23	8.2	9	9.0	8.61	8.61	91	91.0
			30.9		5.21		77.9		28.1		8.16		9		8.61		91	
			31.1		6.12		85.2		20.3		7.59		31		8.45		62	
W4	13:38	0.15	31.1	31.1	6.06	6.1	84.1	84.7	20.2	20.3	7.42	7.5	31	31.0	8.45	8.45	62	62.0
			31.1		6.06		84.1		20.2		7.42		31		8.45		62	
			31.1		5.02		77.7		25.4		7.43		30		8.27		59	
W5	13:46	0.20	31.1	31.1	4.97	5.0	77.3	77.5	25.3	25.4	7.38	7.4	30	30.0	8.27	8.27	59	59.0
			31.1		5.26		78.1		25.1		7.51		27		8.3		71	
			31.2		5.21		77.9		25.4		7.46		27		8.3		71	

Date 29-Jul-11																		
Location	Time	Depth (m)	Temp (oC)		DO (mg/L)		DOS (%)		Turbidity (NTU)		pH		SS		Ammonia N		Zinc	
W1	15:26	0.10	26.1	26.1	4.34	4.2	53.2	51.8	3.7	3.8	7.7	7.8	7	7.0	1.05	1.05	12	12.0
			26.0		4.06		50.3		4.0		7.8		7		1.05		12	
			26.1		3.58		45.9		5.1		7.8		6		1.02		11	
W2	15:38	0.10	26.0	26.1	4.27	3.9	53.1	49.5	5.8	5.5	7.9	7.9	6	6.0	1.02	1.02	11	11.0
			26.0		3.63		46.2		10.7		7.9		12		3.53		19	
			26.0		4.03		50.2		9.3		7.8		12		3.53		19	
W3	16:07	0.10	25.9	26.0	3.63	3.8	46.2	48.2	10.7	10.0	7.9	7.9	12	12.0	3.53	3.53	19	19.0
			26.0		4.03		50.2		9.3		7.8		12		3.53		19	
			26.0		3.85		48.6		5.4		7.8		6		1.06		12	
W4	16:12	0.10	25.8	25.9	3.61	3.7	45.7	47.2	5.0	5.2	7.7	7.8	6	6.0	1.06	1.06	12	12.0
			26.0		3.7		46.9		8.7		7.7		11		4.16		17	
			26.1		4.2		52.3		9.3		7.8		11		4.16		17	
W5	16:53	0.10	26.0	26.1	4.63	4.0	55.9	49.6	8.9	9.0	7.7	7.8	11	11.0	4.16	4.16	17	17.0
			26.1		4.63		55.9		8.9		7.7		11		4.32		18	
			26.1		4.55		56.7		8.6		7.8		11		4.32		18	

Date 1-Aug-11																		
Location	Time	Depth (m)	Temp (oC)		DO (mg/L)		DOS (%)		Turbidity (NTU)		pH		SS		Ammonia N		Zinc	
W1	13:08	0.15	28.5	28.5	8.37	8.3	96.3	96.0	14.9	13.1	7.58	7.5	7	7.0	1.06	1.06	12	12.0
			28.5		8.3		95.6		11.3		7.41		7		1.06		12	
			28.5		7.65		85.3		11.6		7.64		1		1.00		11	
W2	13:16	0.20	28.5	28.5	7.61	7.6	84.8	85.1	15.9	16.3	7.58	7.6	7	7.0	1	1.00	11	11.0
			28.5		4.82		82.8		26.6		7.63		5		1		12	
			29.1		4.76		81.5		25.7		7.53		5		1		12	
W3	13:25	0.15	29.1	29.1	7.79	8.8	86.7	86.4	12.8	12.2	7.68	7.6	3	3.0	0.97	0.97	11	11.0
			29.1		7.75		86.1		11.6		7.54		3		0.97		11	
			29.1		4.59		84.3		20.4		8.03		14		2.99		18	
W4	13:32	0.20	29.1	29.1	4.48	4.5	83.6	84.0	21.6	21.0	8.01	8.0	14	14.0	2.99	2.99	18	18.0
			29.1		4.69		81.8		26.5		8.15		11		4.08		18	
			29.1		4.63		76.8		26.4		8.12		11		4.08		18	

Date 4-Aug-11																		
Location	Time	Depth (m)	Temp (oC)		DO (mg/L)		DOS (%)		Turbidity (NTU)		pH		SS		Ammonia N		Zinc	
W1	15:02	0.10	26.2	28.1	4.34	3.8	42.6	46.2	6.9	8.0	7.5	7.6	10	10.0	1.73	1.73	12	12.0
			28.0		4.17		49.8		9.1		7.6		10		1.73		12	
			27.9		4.82		52.4		8.1		7.5		7		1.73		12	
W2	15:15	0.20	28.1	28.0	4.51	4.7	53.7	53.1	6.3	7.2	7.6	7.6	7	7.0	1.73	1.73	12	12.0
			28.3		2.93		37.2		8.3		7.7		8		1.71		11	
			28.1		2.58		33.9		7.3		7.5		8		1.71		11	
W3	15:27	0.10	28.3	28.2	4.62	2.8	54.2	35.6	6.1	7.8	7.5	7.6	10	8.0	1.73	1.71	11	11.0
			28.3		4.71		55.2		5.4		7.8		10		1.73		11	
			28.2		3.19		40.3		5.0		7.7		8		1.68		11	
W4	15:43	0.10	28.1	28.2	4.71	4.7	55.2	54.7	3.5	4.8	7.8	7.7	10	10.0	1.73	1.73	11	11.0
			28.2		3.19		40.3		5.0		7.7		8		1.68		11	
			28.1		3.54		43.5		10.2		7.5		8		1.68		11	
W5	15:57	0.10	28.2	28.2	3.54	3.4	43.5	41.9	10.2	7.6	7.5	7.6	8	8.0	1.68	1.68	11	11.0
			28.0		3.16		39.7		8.4		7.5		6		1.63		14	
			28.1		3.37		41.8		7.9		7.7		6		1.63		14	

Date 6-Aug-11																		
Location	Time	Depth (m)	Temp (oC)		DO (mg/L)		DOS (%)		Turbidity (NTU)		pH		SS		Ammonia N		Zinc	
W1	13:18	0.15	31.6	31.6	5.56	5.5	55.6	54.3	30.1	30.0	8.73	8.7	56	56.0	23.5	23.50	121	121.0
			31.6		5.51		52.9		29.8		8.65		56		23.5		121	
			31.8		5.48		52.3		32.4		8.64		51		15.8		141	
W2	13:26	0.20	31.8	31.8	5.42	5.5	51.7	52.0	31.6	32.0	8.52	8.6	51	51.0	15.8	15.80	141	141.0
			31.8		4.31		47.1		30.6		8.13		63		22.8		161	
			32.1		4.28		45.8		30.4		8.07		63		22.8		161	
W3	13:32	0.10	32.1	32.1	5.44	4.3	50.6	46.5	26.3	30.5	8.61	8.1	63	63.0	22.8	22.80	161	161.0
			32.1		5.38		49.2		21.8		8.52		63		23.5		148	
			32.2		4.32		47.3		31.7		8.63		69		23.4		170	
W4	13:46	0.15	32.1	32.1	5.38	5.4	49.2	49.9	21.8	24.1	8.52	8.6	54	54.0	23.5	23.50	148	148.0
			32.1		4.32		47.3		31.7		8.63		69		23.4		170	
			32.2		4.28		45.8		30.6		8.54		69		23.4		170	
W5	13:51	0.20	32.2	32.2	4.48	4.3	48.1	46.6	27.5	31.2	8.51	8.6	69	69.0	25.1	25.10	155	155.0
			32.2		4.48		48.1		27.5		8.51		56		25.1		155	
			32.2		4.29		46.9		27.9		8.52		56		25.1		155	

Date 8-Aug-11																		
Location	Time	Depth (m)	Temp (oC)		DO (mg/L)		DOS (%)		Turbidity (NTU)		pH		SS		Ammonia N		Zinc	
W1	13:09	0.15	29.2	29.2	5.73	5.7	57.1	57.0	28.7	28.3	8.31	8.3	78	78.0	25.4	25.40	190	190.0
			29.2		5.62		56.8		27.9		8.23		78		25.4		190	
			29.2		5.82		57.4		21.3		8.3		63		24		156	
W2	13:18	0.20	29.2	29.2	5.79	5.8	57.1	57.3	20.6	21.0	8.26	8.3	63	63.0	24	24.00	156	156.0
			29.2		4.39		47.5		31.4		8.41		128		26		340	
			29.1		4.36		47.2		31.2		8.32		128		26		340	
W3	13:26	0.10	29.1	29.1	4.36	4.4	47.2	47.4	31.4	31.3	8.41	8.4	128	128.0	26	26.00	340	340.0
			29.1		5.91		58.6		28.6		8.36		62		23.5		162	
			29.1		5.87		57.4		28.3		8.26		62		23.5		162	
W4	13:34	0.15	29.1	29.1	5.42	5.9	49.7	58.0	36.4	28.5	8.21	8.3	62	62.0	24.6	24.60	178	178.0
			29.1		5.38		49.2		35.2		8.08		62		24.6		178	
			29.1		4.37		46.9		28.1		8.18		73		28		155	
W5	13:48	0.10	29.1	29.1	5.38	5.4	49.2	49.5	35.2	35.8	8.08	8.1	62	62.0	24.6	24.60	178	178.0
			29.1		4.37		46.9		28.1		8.18		73		28		155	
			29.1		4.26		46.3		27.6		8.06		73		28		155	

Date 10-Aug-11																		
Location	Time	Depth (m)	Temp (oC)		DO (mg/L)		DOS (%)		Turbidity (NTU)		pH		SS		Ammonia N		Zinc	
W1	14:07	0.10	28.3	28.1	4.17	4.0	48.0	46.1	7.3	7.8	7.9	7.9	8	8.0	1.25	1.25	11	11.0
			27.9		3.84		44.1		8.4		7.9		8		1.25		11	
			28.2		4.56		47.5		5.3		7.7		9		1.2		11	
W2	14:11	0.20	28.1	28.2	3.55	4.1	41.3	44.4	6.1	5.7	7.9	7.8	9	9.0	1.2	1.20	11	11.0
			28.1		3.61		42.2		5.9		7.9		9		1.3		12	
			28.2		4.05		46.4		10.2		8		7		1.3		12	
W3	14:15	0.10	28.0	28.1														

Summary of Water Quality Monitoring Results - KT13

Date 13-Aug-11																		
Location	Time	Depth (m)	Temp (oC)		DO (mg/L)		DOS (%)		Turbidity (NTU)		pH		SS		Ammonia N		Zinc	
W1	13:06	0.10	32.4	32.4	5.03	5.0	78.6	77.3	19.8	19.6	7.59	7.5	79	79.0	17.3	17.30	156	156.0
			32.4		4.97		75.9		19.3		7.42		79		17.3		156	
W2	13:19	0.15	32.4	32.4	5.16	5.1	80.2	78.2	17.4	17.3	7.39	7.3	69	69.0	16.5	16.50	151	151.0
			32.4		4.98		76.1		17.2		7.26		69		16.5		151	
W3	13:23	0.20	32.5	32.5	4.38	4.3	75.1	74.7	36.2	36.1	7.44	7.6	78	78.0	17.4	17.40	149	149.0
			32.5		4.29		74.2		35.9		7.81		78		17.4		149	
W4	13:36	0.15	32.5	32.5	5.19	5.2	81.4	81.0	17.6	17.2	7.93	7.6	70	70.0	17.9	17.90	155	155.0
			32.5		5.17		80.6		16.8		7.27		70		17.9		155	
W5	13:48	0.20	32.6	32.6	4.26	4.2	73.7	73.4	34.2	34.2	7.82	7.8	82	82.0	17.4	17.40	169	169.0
			32.6		4.19		73.1		34.1		7.69		82		17.4		169	
W6	14:06	0.20	32.6	32.6	4.15	4.1	72.9	72.2	26.3	26.6	8.05	8.0	67	67.0	17.5	17.50	158	158.0
			32.6		4.06		71.5		26.8		8.01		67		17.5		158	

Date 16-Aug-11																		
Location	Time	Depth (m)	Temp (oC)		DO (mg/L)		DOS (%)		Turbidity (NTU)		pH		SS		Ammonia N		Zinc	
W1	16:13	0.10	28.4	28.5	4.65	5.4	56.4	64.2	6.3	6.7	7.7	7.8	7	7.0	2.33	2.33	<10	10.0
			28.6		6.17		71.9		7.1		7.8		7		2.33		<10	
W2	16:33	0.20	28.1	28.1	5.83	5.2	68.7	62.9	8.3	7.6	7.7	7.7	6	6.0	2.4	2.40	<10	10.0
			28.0		4.61		57.1		6.9		7.7		6		2.4		<10	
W3	16:42	0.10	28.1	28.2	4.57	4.9	55.8	59.2	8.3	8.7	7.8	7.9	4	4.0	2.4	2.40	<10	10.0
			28.2		5.2		62.5		9.2		7.9		4		2.4		<10	
W4	16:44	0.10	28.1	28.1	5.69	6.1	67.1	71.2	7.3	6.8	8	7.9	11	11.0	2.3	2.30	17	17.0
			28.0		6.44		75.2		6.3		7.7		11		2.3		17	
W5	16:57	0.10	27.9	28.0	5.12	4.1	62.1	51.5	7.9	8.0	7.8	7.9	19	19.0	2.36	2.36	20	20.0
			28.1		3.16		40.9		8.1		7.9		19		2.36		20	
W6	17:03	0.15	27.9	27.9	2.93	3.2	38.9	41.8	9.6	9.5	7.7	7.8	29	29.0	2.32	2.32	27	27.0
			27.8		3.42		44.7		9.3		7.8		29		2.32		27	

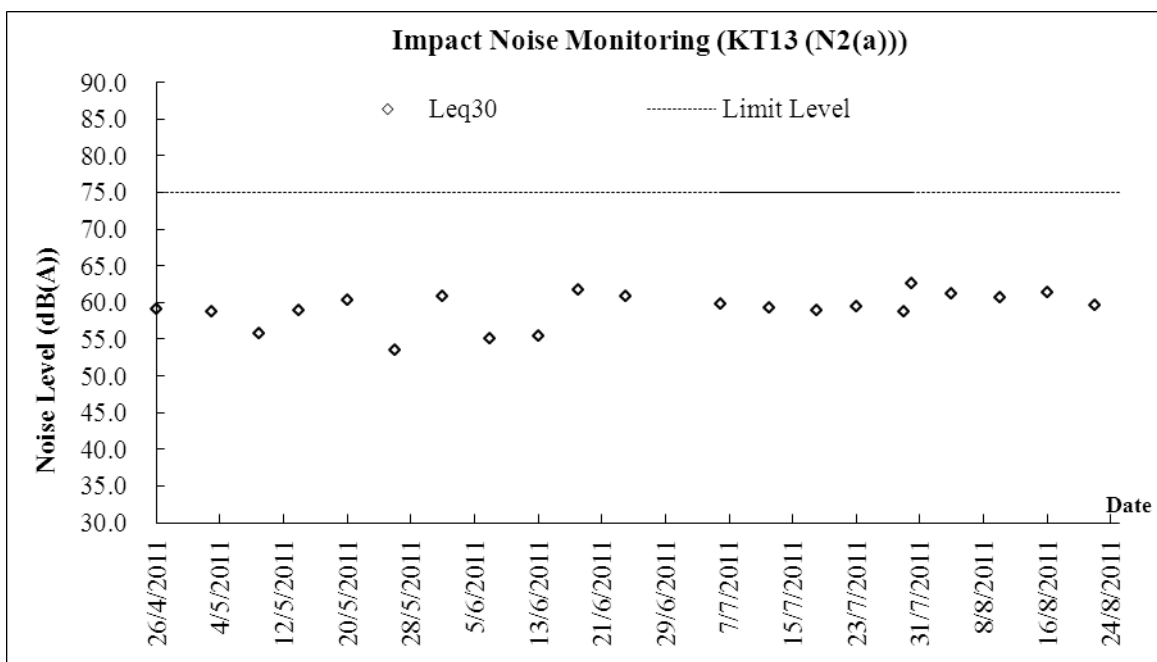
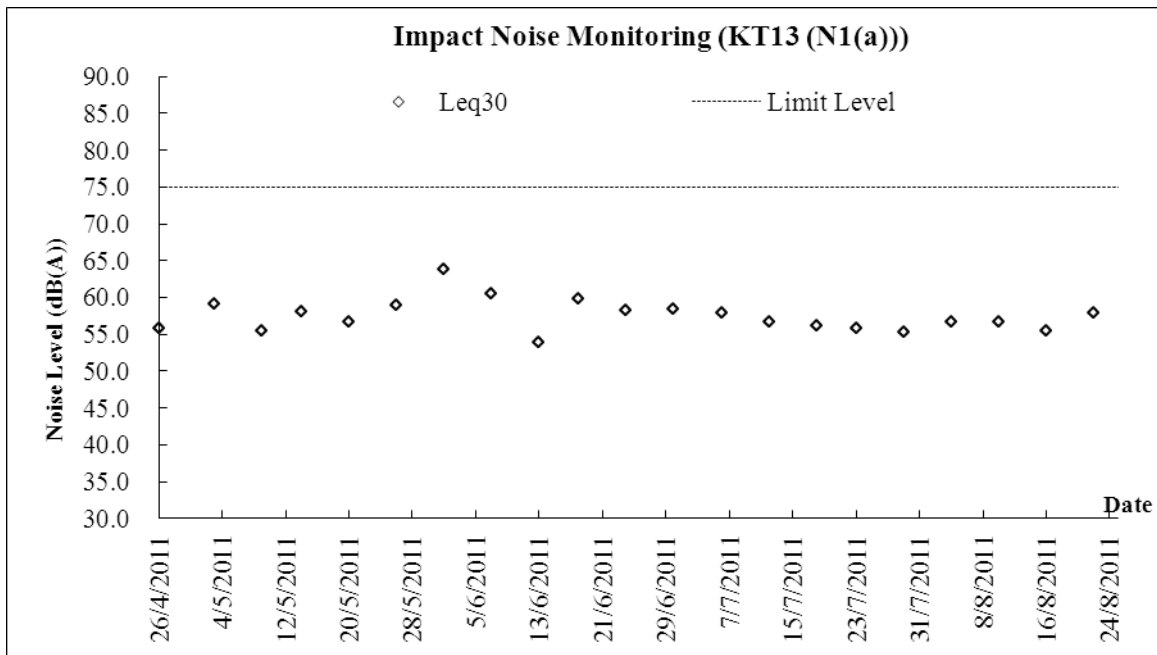
Date 18-Aug-11																		
Location	Time	Depth (m)	Temp (oC)		DO (mg/L)		DOS (%)		Turbidity (NTU)		pH		SS		Ammonia N		Zinc	
W1	13:07	0.15	33.5	33.5	3.6	3.6	44.1	43.7	22.5	21.9	7.68	7.6	19	19.0	0.03	0.03	29	29.0
			33.5		3.57		43.2		21.2		7.56		19		0.03		29	
W2	13:19	0.15	33.1	33.1	3.66	3.6	45.9	45.0	19.4	19.3	7.32	7.3	17	17.0	0.04	0.04	32	32.0
			33.1		3.6		44.1		19.2		7.18		17		0.04		32	
W3	13:28	0.20	32.9	32.9	5.86	5.8	91.6	91.5	30.8	30.2	8.23	8.2	13	13.0	0.1	0.10	24	24.0
			32.9		5.82		91.4		29.6		8.19		13		0.1		24	
W4	13:36	0.20	32.9	32.9	3.42	3.4	41.6	41.2	17.3	17.2	7.86	7.8	4	4.0	0.03	0.03	19	19.0
			32.9		3.39		40.7		17.1		7.81		4		0.03		19	
W5	13:49	0.15	32.9	32.9	5.8	5.8	89.6	89.0	15.2	15.1	8.06	8.0	10	10.0	<0.01	0.01	21	21.0
			32.9		5.73		88.3		14.9		8.03		10		<0.01		21	
W6	13:58	0.15	32.7	32.7	5.87	5.9	92.6	92.0	16.4	15.9	8.13	8.1	12	12.0	<0.01	0.01	23	23.0
			32.7		5.83		91.4		15.3		8.06		12		<0.01		23	

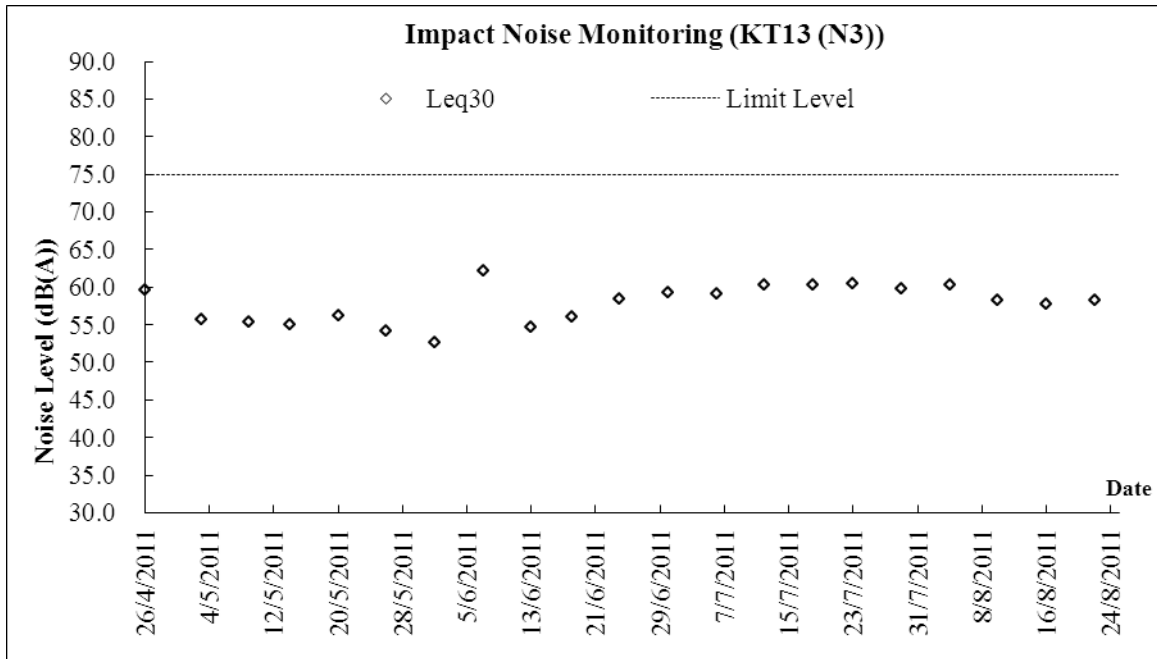
Date 20-Aug-11																		
Location	Time	Depth (m)	Temp (oC)		DO (mg/L)		DOS (%)		Turbidity (NTU)		pH		SS		Ammonia N		Zinc	
W1	13:06	0.10	32.8	32.8	2.83	2.8	56.8	56.1	19.8	19.6	7.43	7.4	12	12.0	1.85	1.85	21	21.0
			32.8		2.81		55.4		19.3		7.36		12		1.85		21	
W2	13:17	0.15	32.8	32.8	2.89	2.9	60.4	59.1	21.7	21.3	7.71	7.7	18	18.0	1.63	1.63	17	17.0
			32.8		2.85		57.7		20.9		7.62		18		1.63		17	
W3	13:25	0.20	32.8	32.8	4.96	4.9	80.5	79.9	36.3	36.2	7.86	7.8	11	11.0	2.31	2.31	34	34.0
			32.8		4.87		79.2		36.1		7.81		11		2.31		34	
W4	13:36	0.15	32.9	32.9	2.93	2.9	62.8	62.2	25.4	25.3	7.44	7.4	15	15.0	1.76	1.76	32	32.0
			32.9		2.9		61.6		25.2		7.39		15		1.76		32	
W5	13:44	0.20	32.9	32.9	4.76	4.7	77.6	76.5	31.6	31.5	7.59	7.5	26	26.0	2.26	2.26	50	50.0
			32.9		4.72		75.3		31.3		7.42		26		2.26		50	
W6	13:59	0.20	32.9	32.9	4.68	4.6	82.3	79.6	23.2	23.6	7.68	7.6	15	15.0	2.36	2.36	36	36.0
			32.9		4.61		76.9		23.9		7.61		15		2.36		36	

Date 22-Aug-11																		
Location	Time	Depth (m)	Temp (oC)		DO (mg/L)		DOS (%)		Turbidity (NTU)		pH		SS		Ammonia N		Zinc	
W1	13:09	0.15	32.4	32.4	3.45	3.4	52.6	52.2	21.2	21.0	7.59	7.5	11	11.0	2.36	2.36	12	12.0
			32.4		3.42		51.8		20.8		7.38		11		2.36		12	
W2	13:18	0.15	32.4	32.4	3.38	3.3	49.7	48.5	16.5	16.4	8.06	8.0	6	6.0	2.27	2.27	11	11.0
			32.4		3.31		47.3		16.2		8.01		6		2.27		11	
W3	13:26	0.20	32.4	32.4	5.31	5.3	85.6	84.4	25.4	24.7	7.42	7.4	21	21.0	2.28	2.28	25	25.0
			32.4		5.26		83.1		24.0		7.36		21		2.28		25	
W4	13:34	0.10	32.4	32.4	3.96	3.9	59.2	58.9	17.6	17.5	7.59	7.5	6	6.0	2.36	2.36	10	10.0
			32.4		3.85		58.6		17.3		7.44		6		2.36		10	
W5	13:46	0.15	32.3	32.3	5.69	5.7	88.1	87.9	36.4	36.3	8.31	8.3	31	31.0	2.43	2.43	21	21.0
			32.3		5.67		87.6		36.2		8.26		31		2.43		21	
W6	14:01	0.20	32.3	32.3	5.82	5.8	90.3	89.9	27.3	27.3	7.48	7.4	12	12.0	2.27	2.27	21	21.0
			32.3		5.79		89.4		27.1		7.39		12		2.27		21	

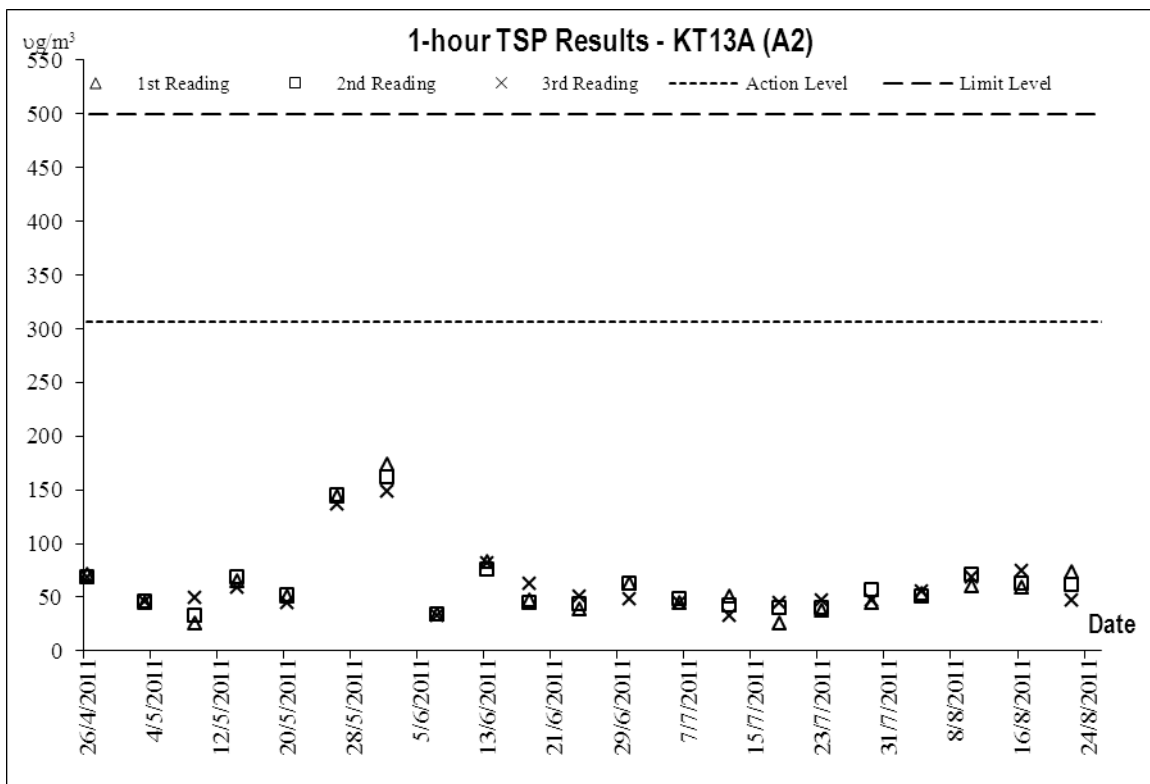
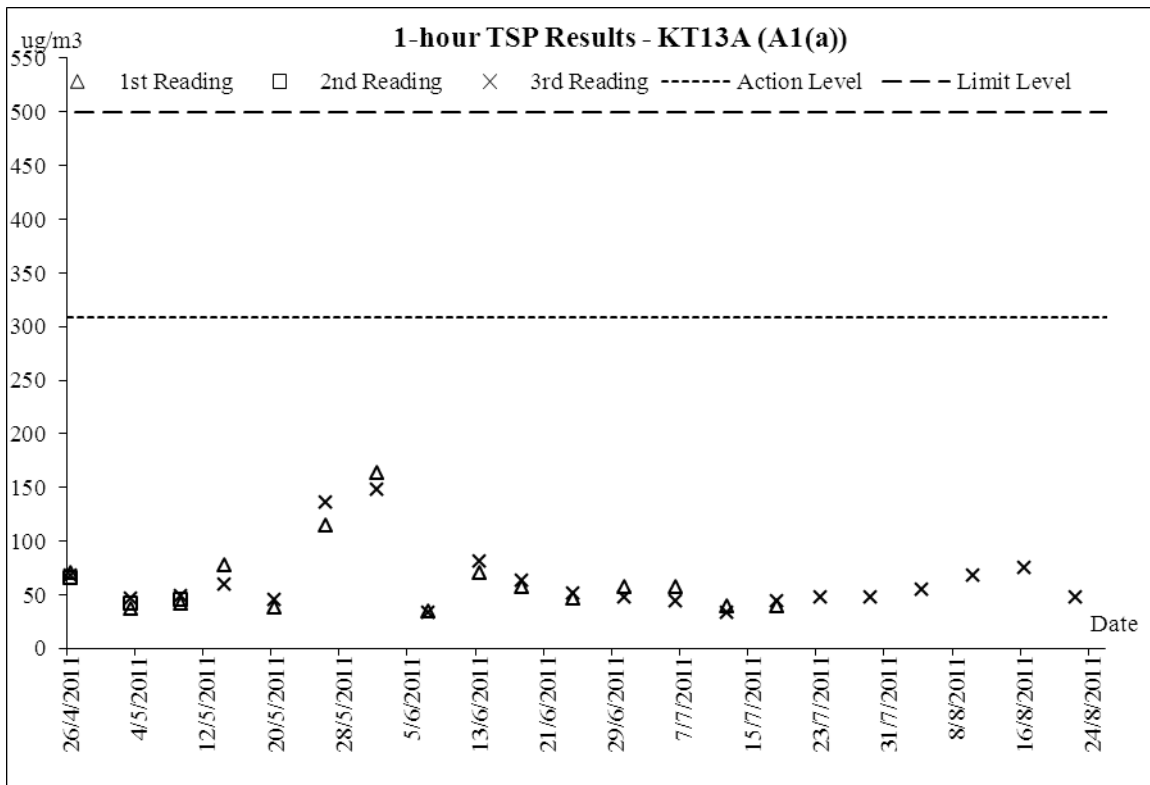
Date 24-Aug-11																		
Location	Time	Depth (m)	Temp (oC)		DO (mg/L)		DOS (%)		Turbidity (NTU)		pH		SS		Ammonia N		Zinc	
W1	14:05	0.15	26.8	27.0	5.82	6.0	65.3	66.8	5.5	5.0	7.9	7.8	57	57.0	8.66	8.66	205	205.0
			27.1		6.14		68.3		4.5		7.7		57		8.66		205	
W2	14:16	0.20	26.9	26.9	7.43	6.7	81.5	74.0	4.6	4.8	7.9	7.9	38	38.0	5.42	5.42	130	130.0
			26.8		5.94		66.4		5.0		7.8		38		5.42		130	
W3	14:23	0.10	26.8	26.9	3.64	4.6	43.2	52.8	3.3	3.4	7.9	8.0	186	186.0	30.3	30.30	589	589.0
			27.0		5.51		62.3		3.5		8		186		30.3		589	
W4	14:28	0.10	27.0	27.0	6.4	6.3	71.1	75.6	6.3	6.4	8.1	8.0	52	52.0	7.33	7.33	152	152.0
			26.9		6.27		80.0		6.4		7.9		52		7.33		152	
W5	14:35	0.10	268.0	147.5	4.28	3.7	49.6	44.0	9.3	9.4	8.1	8.1	152	152.0	29.1	29.10	535	535.0
			27.0		3.16		38.4		9.5		8		152		29.1		535	
W6	14:46	0.15	27.0	27.1	4.15	4.1	48.6	48.0	9.0	7.7	8	8.1	177	177.0	29.2	29.20	539	539.0
			27.1		4.02		47.3											

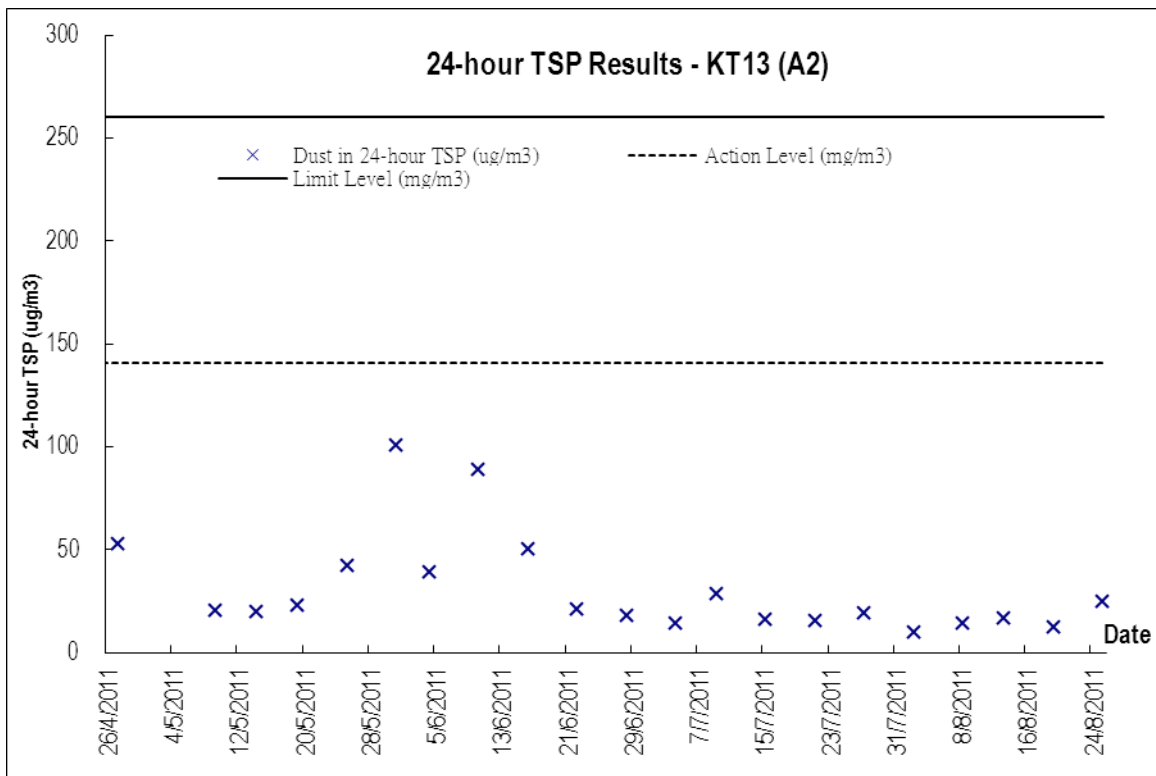
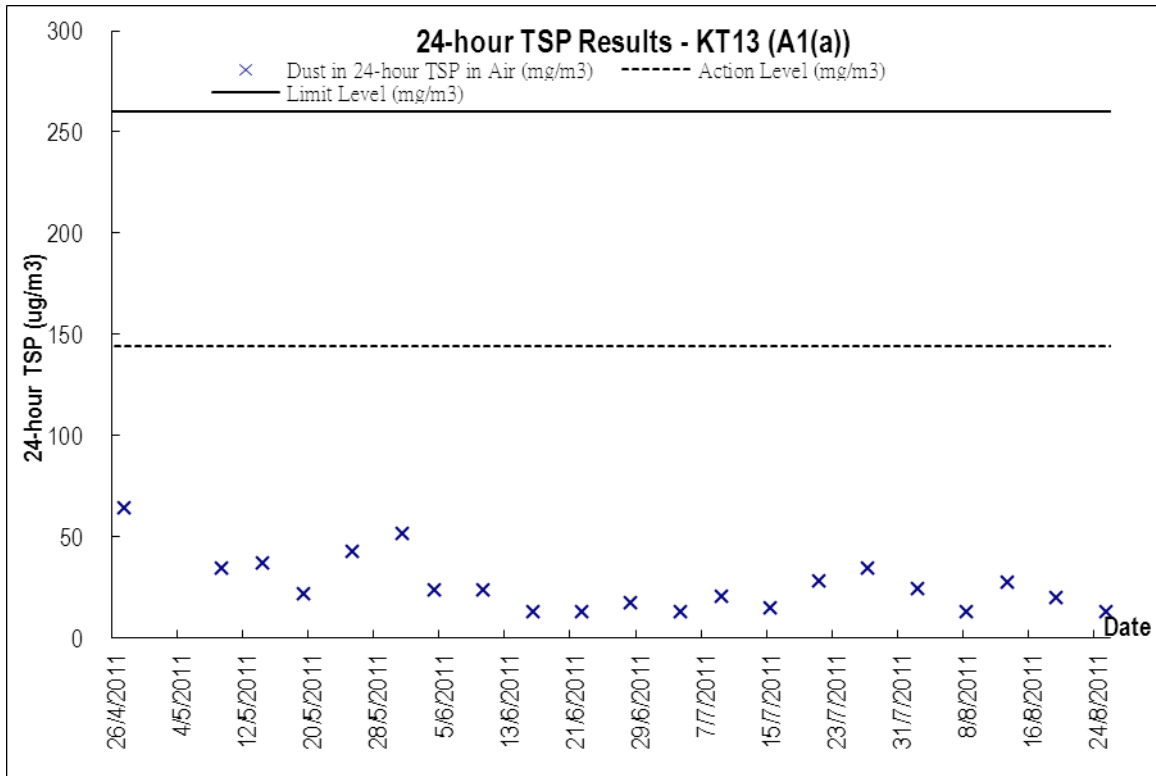
Graphic Plot of Monitoring - Construction Noise



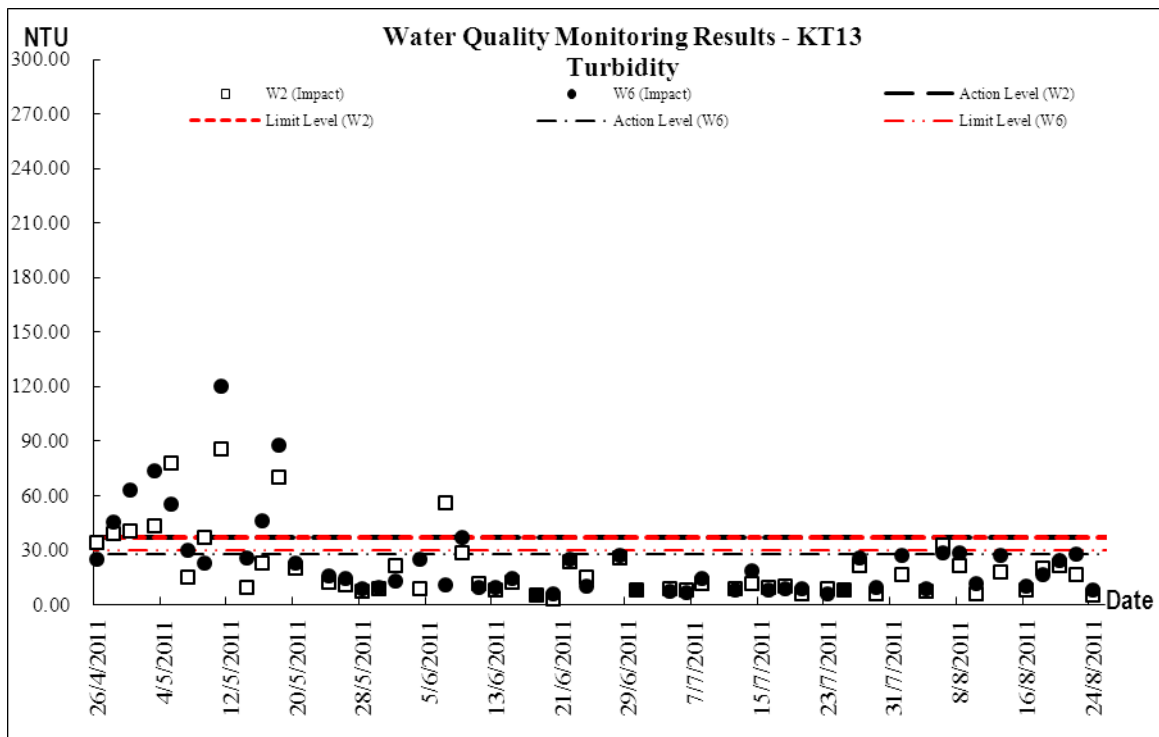
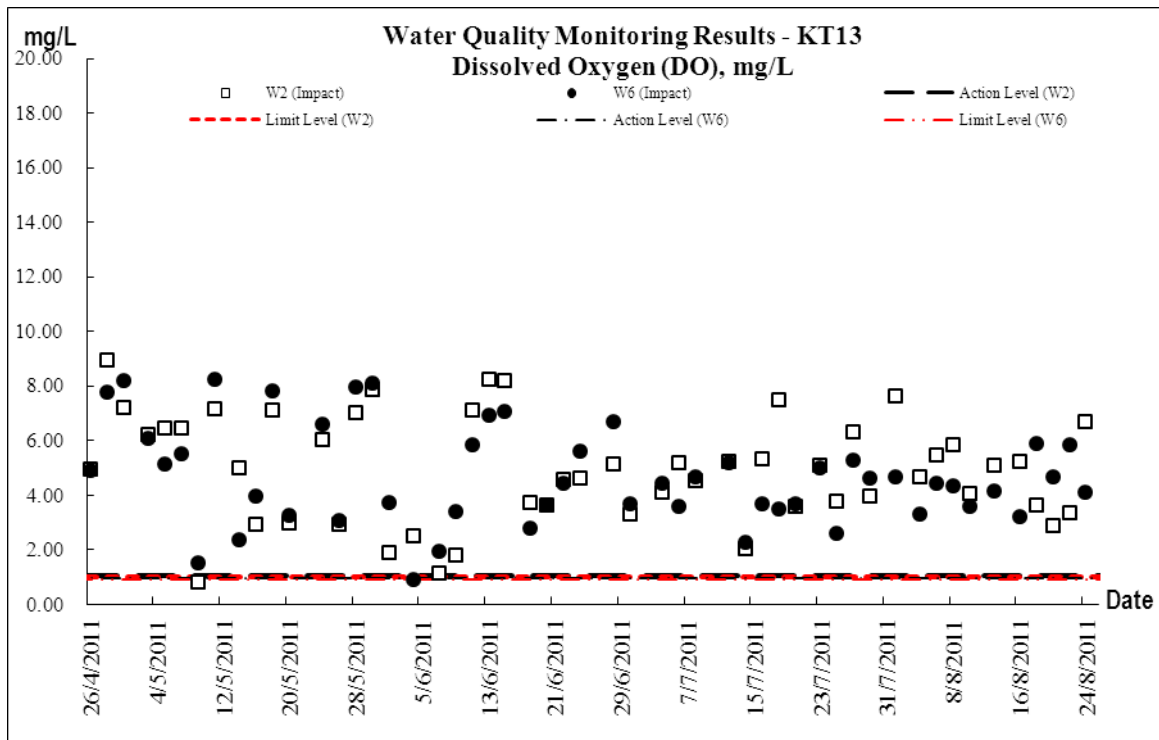


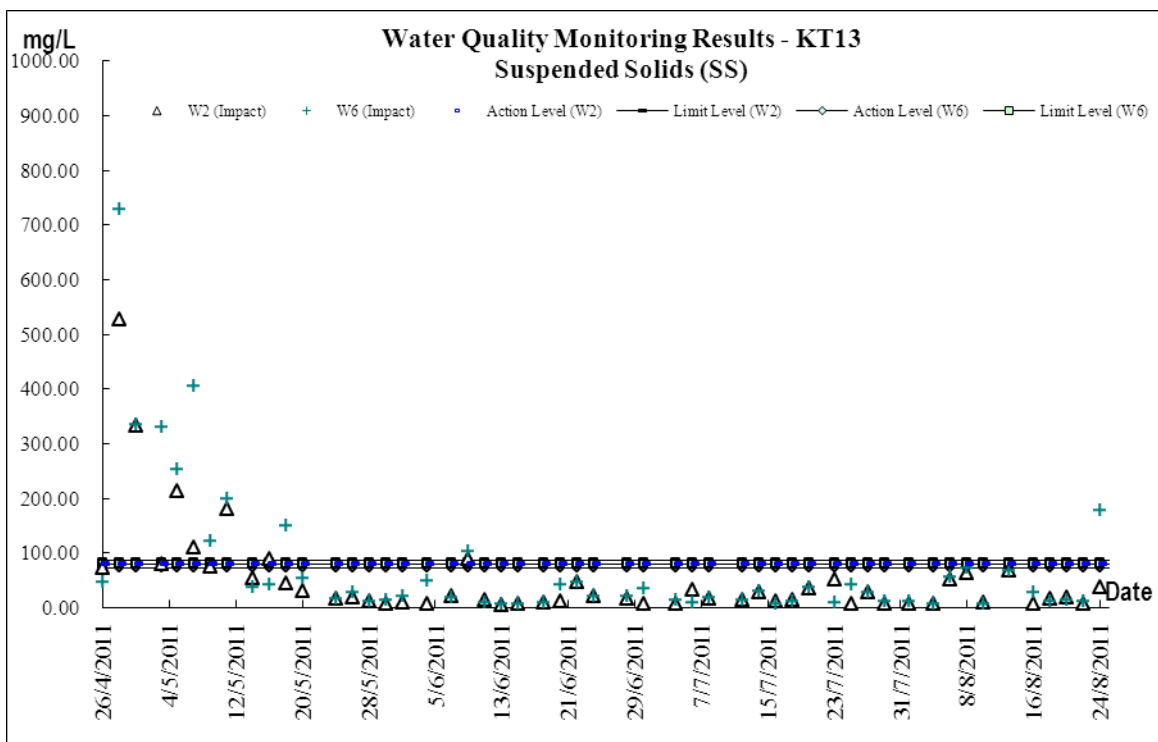
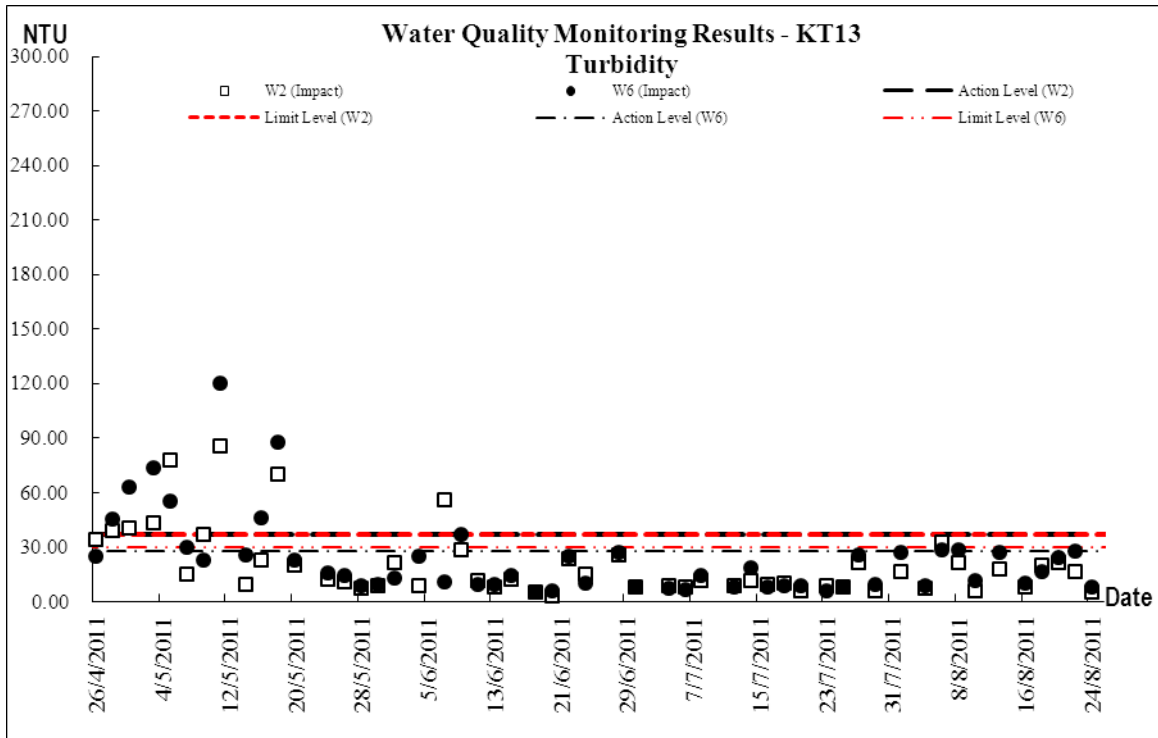
Graphic Plot of Monitoring – Air Quality

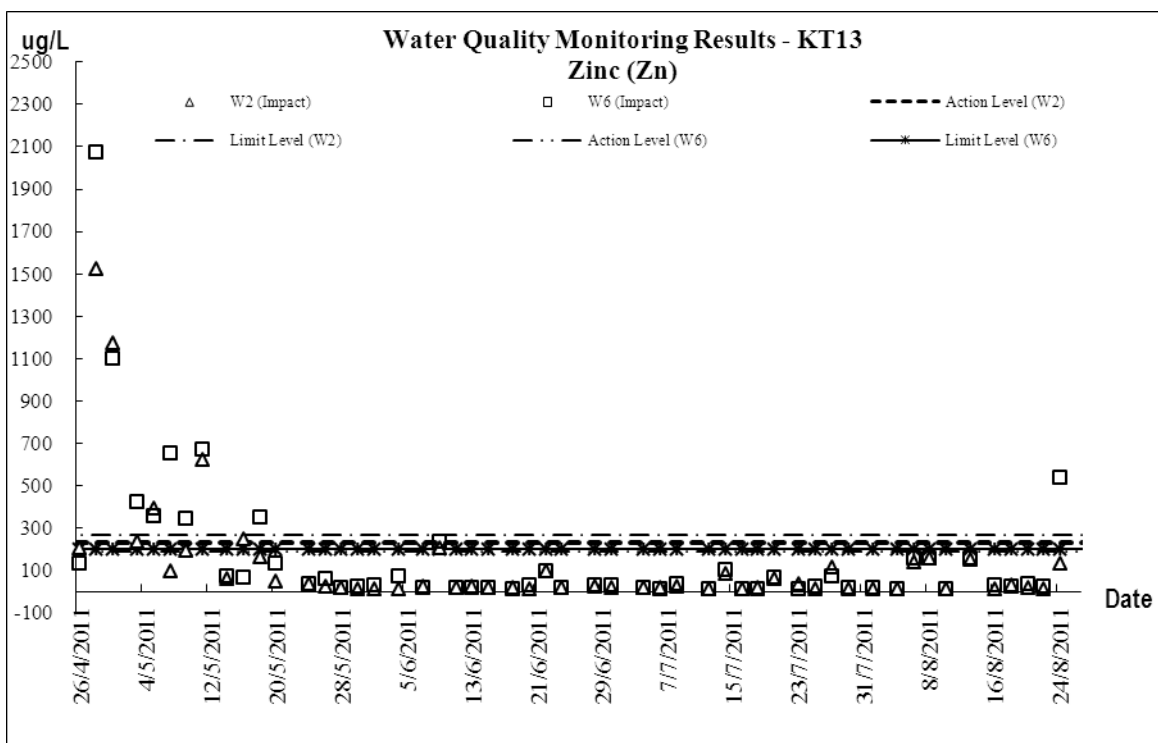
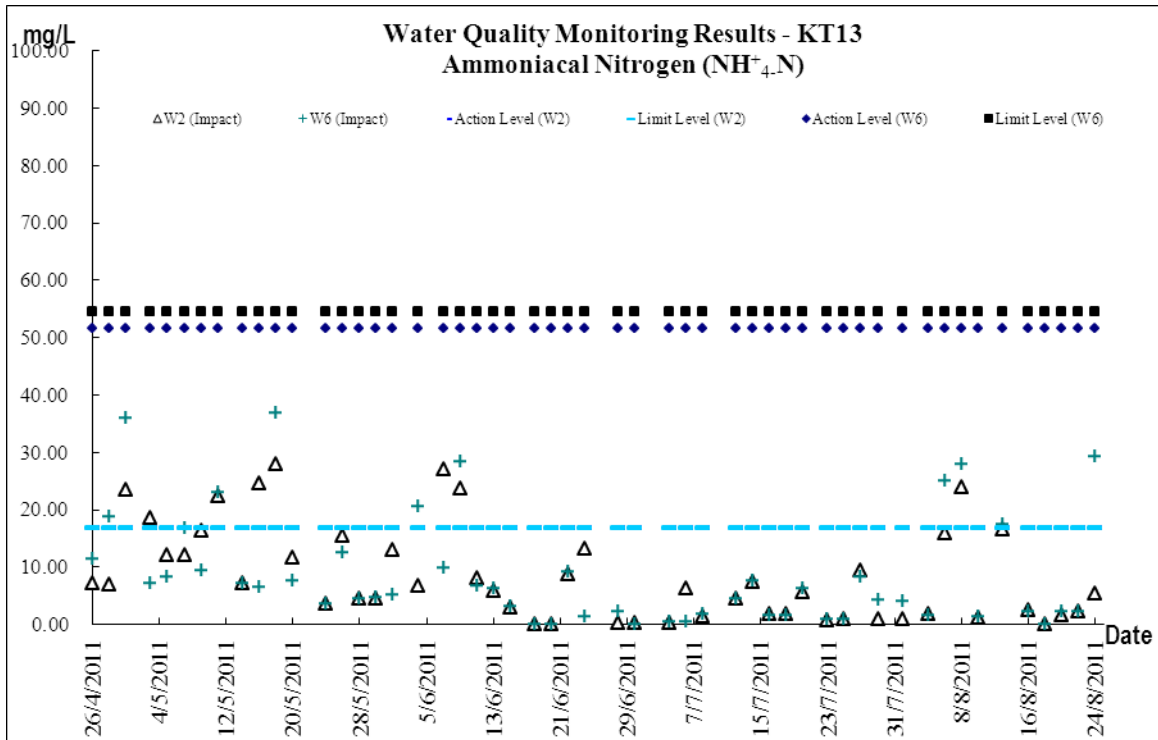




Graphic Plot of Monitoring –Water Quality







Appendix H
Photographic Records of
Ecological Monitoring of Vegetation
(Not Used)

Appendix I

Physical, Human and Cultural Landscape Resources at KT13

Current Situation of Physical, Human and Cultural Landscape Resources at KT13, inspected on 06 and 20 August 2011

The physical resources that will be affected during the Construction Phase and Operational Phase, together with their sensitivity to change, are described below. The locations of the baseline landscape resources are mapped in Drawing no. LR-001. The Landscape Resources in direct conflict with the Project are mapped together with their extent outside study boundary for integrity of information. Photo views illustrating the landscape resources of the study area are illustrated in Drawing Nos. PR-001 to 002 inclusive. For ease of reference and co-ordination between text, tables and figures each landscape resources is given an identity number.

Table compares the baseline study and the current situation for KT13: (Landscape Resources)

Section in EIA Report	Identify number – Landscape Resources	Photo	Baseline Study, Environmental Impact Assessment Final Report [382047/E/EIA/Issue 9]	Current Situation
Drainage				
10.7.3	LR1 – River/ Stream	A1 - A5	There is a semi-natural drainage features (the Ma On Kong Channel) in the study area with untrained natural upstream and partial trained downstream with a total length of 800m. The Channel originates from the South-West of the valley and discharge to the existing Primary Channel by Kam Ho Road running through and along the site area spanning across majority of the river valley, together with the existing vegetations forming the central part of riparian landscape network. They have medium landscape value and sensitive to change.	Changes due to construction work within the site boundary were completed
Fish Pond				
10.7.4	LR2.1 (Fish Pond) within site boundary LR2.2 (Fish Pond) outside site boundary	A6 A7	There are 4 numbers of fallowed fish ponds at the upstream of the Ma On Kong Channel. A chain of fish ponds near downstream but distant from the Channel is noted. The fish ponds cover area of in total 23,000 m2. Most of them are heavily colonized by aquatic plants, which attribute to their low visual quality as a water landscape element. They have low landscape value and sensitive to change.	Minor changes due to construction of structures within site boundary were completed. Also, a soil

				platform was created outside site boundary due to other project was noted
Marsh				
10.7.5	LR3 (Marsh)	A8	It comprises 2 marshes at the upstream channel of the Channel. They are inundated lowland heavily colonized with wetland aquatic plants. They have low landscape value and sensitive to change.	Remain the same as the baseline
Vegetation				
10.7.7	LR4 (Woodland/ Wooded Area)	A9 A10	It comprises two major communities of woodland/ wooded area. One is dense natural woodland stretching across the Conservation Area and area behind Ma On Kong and consists approximate 450 numbers of trees based on visual estimation. The trees are mainly native species and mature in size. It is dominated by <i>Schefflera octophylla</i> , <i>Pinus massoniana</i> , <i>Aporosa chinensis</i> , <i>Celtis sinensis</i> , <i>Bridelia tomentosa</i> , <i>Cinnamomum cmaphora</i> , <i>Rhus chinensis</i> and <i>Phus succedaneas</i> . Another one is a natural more sparse riparian wooded area at upstream of the Channel and consists approximate 60 numbers of trees based on visual estimation. The trees are mainly pioneer species and poorer in form and maturity. It is dominated by <i>Ficus hispide</i> and <i>Macaranga tanarius</i> . They have high landscape value and sensitivity to change.	Remain the same as the baseline
10.7.8	LR5 (Orchard/ Horticultural Trees)	A11	It comprises two groups of trees at downstream below Ma On Kong and north of Ho Pui Amongst there are approximate 400 numbers of trees based on visual estimation. They are fruit trees and landscape plants of horticultural practices. It is dominated by <i>Dimocarpus longan</i> , <i>Delonix regia</i> , <i>Roystonea regia</i> and <i>Pachira macrocarpa</i> . For their anthropogenic and not permanent in nature, they have medium landscape value and sensitivity to change.	Remain the same as the baseline
10.7.9	LR6 (Low-Lying Agricultural	A12	It comprises fallowed land and agricultural land in low rate of uses. The vegetation is mainly grass	Remain the same as

	Land/ Fallowed Land)		and sedge with mosaics of shrubs approaching the Channel. It fills up the about half of the existing landscape within the study area. They have low landscape value and sensitivity to change.	the baseline
Sitting-Out Area				
10.7.10	LR7 (Sitting-Out Area at Ma On Kong)	A13	It is located at the Ma On Kong next to the access road. It is a small sitting-out area primarily hard-paved with only 3 amenity trees and on pavilion. It has low landscape value and sensitivity to change.	Changes due to construction work were completed
Landscape Character Areas				
10.7.12	LCA1 (Agricultural Landscape Character Area)	B1 & B2	This comprises fallowed land & agricultural land not in active uses. This character area is flat and gentle sloping in landform and vegetated with grass of various heights. It forms the majority of the landscape character of the entire river valley and the connecting landscape element between other landscape character areas. The sensitivity to change of this area is low.	Minor change due to invasion of cows. Some of the grass on the land were consumed
10.7.13	LCA2 (Woodland Landscape Character Area)	B3	This is natural woodland between southern Ma On Kong and the Channel extending up to the access road behind Ma On Kong. The trees are mature in size forming a close woodland landscape. It is the location of egretry of conservation importance. The sensitivity to change of this area is high.	Remain the same as the baseline
10.7.14	LCA3 (River/ Stream Landscape Character Area)	B4 – B7	This is the main stream of the Channel in associate with its riparian vegetation. It meanders through the river valley landscape. It is used as a receptor of agricultural effluent from poultry farm around upstream, which contribute to the polluted appearance of the character area around upstream. The sensitivity to change of this area is medium.	Changes due to construction work within site boundary were completed
10.7.15	LCA4 (Fish Pond Landscape Area)	B8	This comprises a number of fish ponds of various sizes distributed about the Channel. Most of them are abandoned or with limited uses and colonized with aquatic plants. The sensitivity to change of this area is medium.	Changes due to construction of structures within site

				boundary were completed
10.7.16	LCA5 (Village Landscape Character Area)	B9 & B10	This comprises the four major village types rural settlement encompassing tai Kek, Ma On Kong, Ho Pui and north of Ho Pui. Except Tai Kek which is less revitalized and actively resided, all other three are actively resided. This area is lightly urbanized with low rise village house. The sensitivity to change of this area is low.	Remain the same as the baseline
10.7.17	LCA6 (Industrial Landscape Character Area)	B11 & B12	This comprise collection of slummy-built temporary structure and open storage uses land, which are characterized with metallic hoarding and used for poultry, recycling, vehicle repairing etc. The sensitivity to change of this area is low.	Reconstruction of hoarding was conducted by the land owner
10.7.18	LCA7 (Nullah Landscape Character Area)	B13	This is the trained nullah next to Kam Ho Road. It is the primary tributary connecting and receiving outflow from the Ma On Kong Channel. The area is man-made and with poor and monotonous riverside vegetation. The sensitivity to change of this area is low.	Remain the same as the baseline

10.7.19 Visual Character

The visual quality of the river valley of Ma On Kong Channel is semi-natural based on combination of rural landscape elements including agricultural land, village houses, woodland and pond and stream and industrial landscape elements including open storage and temporary structures. Interspersed landscape elements on general flat landform with minor undulation render numerous small enclosed views. No major vista and high quality open view identified.

10.7.20 Visual Sensitive Receiver (VSR)

Within the ZVI, a number of key Visual Sensitive Receivers (VSRs) have been identified. These VSRs are mapped in Drawing V-001. They are listed, together with their sensitivity, in Table 10/5. Photo views illustrating the VSRs are illustrated in Drawing nos. PV-001 to 002 inclusive. For the ease of reference, each VSR is given an identity number, which is used in the text, tables and figures.

Table compares the baseline study and the current situation for KT13: (Visual Sensitive Receiver)

Section in EIA Report	Identify number – VSR	Photo No.	Baseline Study, Environmental Impact Assessment Final Report [382047/E/EIA/Issue 9]	Current Situation
Industrial VSRs				
10.7.21	I1	C1	Open storage near junction between Kam Ho Road and Village access The VSRs is workers of the open storage. The number of individual is very few and their sensitivity to visual impacts is low.	Remain the same as the baseline
10.7.22	I2	C2	Plant Nursery at the east of Ma On Kong Channel The VSRs is workers of the plant nursery. The number of individual is very few and their sensitivity to visual impacts is low.	Remain the same as the baseline
10.7.23	I3	C3	Plant Nursery at the west of Ma On Kong Channel The VSRs is workers of the plant nursery. The number of individual is very few and their sensitivity to visual impacts is low.	Remain the same as the baseline
10.7.24	I4	C4	Temporary Structure for poultry east to Ho Pui The VSRs is workers of the temporary structure. The number of individual is very few and their sensitivity to visual impacts is low.	Reconstruction of hoarding was conducted by the land owner
10.7.25	I5	C5	Open Storage at the end of village access road The VSRs is workers of the open storage. The number of individual is very few and their sensitivity to visual impacts is low.	
10.7.26	I6	C6	Temporary Structure for poultry and Open Storage at upstream of Ma On Kong Channel The VSRs is workers of the temporary structure and open storage. The number of individual is very few and their sensitivity to visual impacts is low.	Remain the same as the baseline

Open Space / Sitting – Out Area VSRs				
10.7.27	O1	C7	<p>Users of Sitting-out Area at Ma On Kong</p> <p>The VSRs is future users of the re-provided sitting-out area during operation phase. The number of individual is few and their sensitivity to visual impacts is medium.</p>	Remain the same as the baseline
Residential VSRs				
10.7.28	R1	C8	<p>Tai Kek</p> <p>The VSRs is residents of the village. The number of individual is very few and their sensitivity to visual impacts is high.</p>	Remain the same as the baseline
10.7.29	R2	C9	<p>North of Ma On Kong</p> <p>The VSRs is residents of the village. The number of individual is very few and their sensitivity to visual impacts is high.</p>	Remain the same as the baseline
10.7.30	R3	C10	<p>Ma On Kong</p> <p>The VSRs is residents of the village. The number of individual is very few and their sensitivity to visual impacts is high.</p>	Remain the same as the baseline
10.7.31	R4	C11	<p>North of Ho Pui</p> <p>The VSRs is residents of the village. The number of individual is few and their sensitivity to visual impacts is high.</p>	Remain the same as the baseline

Transport-related VSRs			
10.7.32	T1	C12	Remain the same as the baseline
		Motorists and Pedestrians along village access road (lower section) The VSRs is the road users of the road section. The number of individual is few and their sensitivity to visual impacts is low.	
10.7.33	T2	C13	Remain the same as the baseline
		Motorists and Pedestrians along village access road (high section) The VSRs is the road users of the road section. The number of individual is very few and their sensitivity to visual impacts is low.	
10.7.34	T3	C14	Remain the same as the baseline
		Motorists, Pedestrians and Tourists along access road toward Ho Pui Reservoir The VSRs is the road users of the road section, part of which are tourist to Ho Pui Reservoir. The number of individual is very few and their sensitivity to change is low.	

DC/2007/17
Drainage Improvement Works in Cheung Po, Ma On Kong, Yuen Kong San Tsuen, Tin Sam Tsuen of Yuen Long District and
Sewerage at Tseng Tau Chung Tsuen, Tuen Mun

Physical, Human and Cultural Landscape Resources Photo record

06 August 2011



Photo No. A1 – LR1

River/Stream



Photo No. A2 – LR1

River/Stream



Photo No. A3 – LR1

River/Stream



Photo No. A4 – LR1

River/Stream



Photo No. A5 – LR1

River/Stream



Photo No. A6 – LR2.1

Fish Pond within site boundary



Photo No. A7 – LR2.2

River/Stream



Photo No. A8 – LR3

River/Stream



Photo No. A9 – LR4

Woodland/Wooded Area



Photo No. A10 – LR4

Woodland



Photo No. A11 – LR5

Orchard/ Horticultural Trees



Photo No. A12 – LR6

Low-Lying Agricultural Land/ Fallowed Land



Photo No. A13 –LR7

Sitting-Out Area at Ma On Kong



Photo No. B1 – LCA1 Agricultural Landscape Character Area



Photo No. B4 – LCA3 River/ Stream Landscape Character Area



Photo No. B7 – LCA3 River/ Stream Landscape Character Area



Photo No. B2 – LCA1 Agricultural Landscape Character Area



Photo No. B5 – LCA3 River/ Stream Landscape Character Area



Photo No. B8 – LCA4 Fish Pond Landscape Area



Photo No. B3 – LCA2 Woodland Landscape Character Area



Photo No. B6 – LCA3.1 River/ Stream Landscape Character Area



Photo No. B9 – LCA5 Village Landscape Character Area



Photo No. B10—LCA 5 Village Landscape Character Area



Photo No. B11—LCA 6 Industrial Landscape Character Area



Photo No. B12—LCA 6 Industrial Landscape Character Area



Photo No. B13—LCA 7 Nullah Landscape Character Area



Photo No. C1—11 Open storage near junction between Kam Ho Road and Village access road



Photo No. C4—14 Temporary Structure for poultry east to Ho Pui



Photo No. C7—01 Sitting-out Area at Ma On Kong



Photo No. C2—12 Plant Nursery at the east of Ma On Kong Channel



Photo No. C5—15 Open Storage at the end of village access road



Photo No. C8—R1
 Tei Kek



Photo No. C3—13 Plant Nursery at the east of Ma On Kong Channel



Photo No. C6—16 Temporary Structure for poultry and Open Storage at upstream of Ma On Kong Channel



Photo No. C9—R2
 North of Ma On Kong



Photo No. C10—R3
 Ma On Kong



Photo No. C11—R4
 North of Ho Pui



Photo No. C12—T1 Motorists and Pedestrians along village access road
 (lower section)



Photo No. C13—T2 Motorists and Pedestrians along village
 access road (high section)



Photo No. C14—T3 Motorists, Pedestrians and Tourists along
 access road toward Ho Pui Reservoir

Physical, Human and Cultural Landscape Resources Photo record

20 August 2011



Photo No. A1 – LR1

River/Stream



Photo No. A2 – LR1

River/Stream



Photo No. A3 – LR1

River/Stream



Photo No. A4 – LR1

River/Stream



Photo No. A5 – LR1

River/Stream



Photo No. A6 – LR2.1

Fish Pond within site boundary



Photo No. A7 – LR2.2

River/Stream



Photo No. A8 – LR3

River/Stream



Photo No. A9 – LR4

Woodland/Wooded Area



Photo No. A10 – LR4

Woodland



Photo No. A11 – LR5

Orchard/ Horticultural Trees



Photo No. A12 – LR6

Low-Lying Agricultural Land/ Fallowed Land



Photo No. A13 –LR7

Sitting-Out Area at Ma On Kong



Photo No. B1 – LCA1 Agricultural Landscape Character Area



Photo No. B4 – LCA3 River/ Stream Landscape Character Area

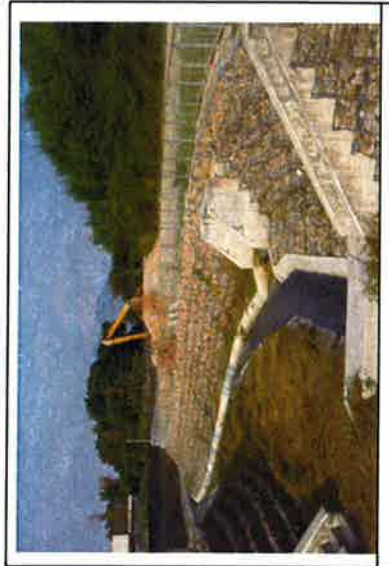


Photo No. B7 – LCA3 River/ Stream Landscape Character Area



Photo No. B2 – LCA1 Agricultural Landscape Character Area



Photo No. B5 – LCA3 River/ Stream Landscape Character Area



Photo No. B8 – LCA4 Fish Pond Landscape Area



Photo No. B3 – LCA2 Woodland Landscape Character Area



Photo No. B6 – LCA3.1 River/ Stream Landscape Character Area



Photo No. B9 – LCA5 Village Landscape Character Area



Photo No. B10—LCA 5 Village Landscape Character Area



Photo No. B11—LCA 6 Industrial Landscape Character Area



Photo No. B12—LCA 6 Industrial Landscape Character Area



Photo No. B13—LCA 7 Nullah Landscape Character Area



Photo No. C1-11 Open storage near junction between Kam Ho Road and Village access road



Photo No. C4-14 Temporary Structure for poultry east to Ho Pui



Photo No. C7-01 Sitting-out Area at Ma On Kong



Photo No. C2-12 Plant Nursery at the east of Ma On Kong Channel



Photo No. C5-15 Open Storage at the end of village access road



Photo No. C8-R1 Tei Kek



Photo No. C3-13 Plant Nursery at the east of Ma On Kong Channel



Photo No. C6-16 Temporary Structure for poultry and Open Storage at upstream of Ma On Kong Channel



Photo No. C9-R2 North of Ma On Kong

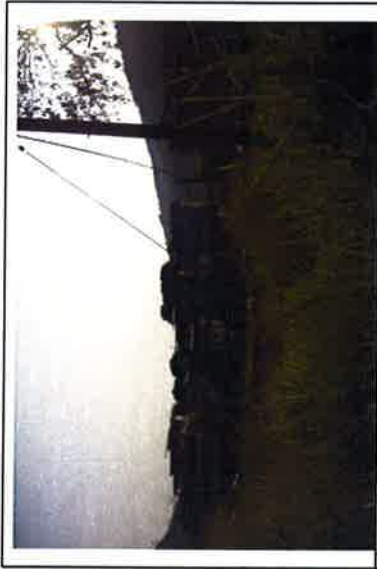


Photo No. C10—R3
 Ma On Kong



Photo No. C11—R4
 North of Ho Pui



Photo No. C12—T1
 Motorists and Pedestrians along village access road
 (lower section)



Photo No. C13—T2
 Motorists and Pedestrians along village
 access road (high section)



Photo No. C14—T3
 Motorists, Pedestrians and Tourists along
 access road toward Ho Pui Reservoir

Appendix J

Monthly Summary Waste Flow Table

Monthly Summary Waste Flow Table

Date: 31-Aug-11
 Year/Month: Aug-11

Year	Actual Quantities of Inert C & D Materials Generated Monthly					Estimated Annual Quantities of C & D Wastes Generated Monthly				
	Total Quantity Generated (in '000M ³)	Broken Concrete (see note 4) (in '000M ³)	Reused in the Contract (in '000M ³)	Reused in other Projects (in '000M ³)	Disposed as Public Fill (in '000M ³)	Metals (in '000KG)	Paper/ Cardboard packaging (in '000KG)	Plastics (see note 3) (in '000KG)	Chemical Waste (in '000KG)	Others, e.g. General refuse (in '000M ³)
Jan	2.452	0.001	2.5355	-0.085	0	0	0	0	0	0
Feb	4.167	0.001	1.7215	2.444	0	0	0	0	0	0
Mar	1.894	0.002	2.332	-0.44	0	0	0	0	0	0
Apr	1.123	0.001	1.551	-0.429	0	0	0	0	0	0
May	0.567	0.000	0.5665	0.000	0	0	0	0	0	0
Jun	0.115	0.000	0.297	-0.182	0	0	0	0	0	0
Sub-Total	10.32	0.005	9.004	1.308	0	0	0	0	0	0
Jul	-0.138	0.000	0.2145	-0.352	0	0	0	0	0	0
Aug	0.099	0.000	0.099	0.000	0	0	0	0	0	0
Sep	0.000				0	0	0	0	0	0
Oct	0.000				0	0	0	0	0	0
Nov	0.000				0	0	0	0	0	0
Dec	0.000				0	0	0	0	0	0
Total	10.278	0.005	9.317	0.956	0.000	0.000	0.000	0.000	0.000	0.000

- Notes:
- (1) The performance targets are given in PS Clause 28.10(14)
 - (2) The waste flow table shall also include C&D materials that are specified in the Contract to be imported for use at the Site.
 - (3) Plastics refer to plastic bottles/ containers, plastic sheets/ foam form packaging material
 - (4) Broken concrete for recycling into aggregates
 - (5) Negative numbers in "Reused in other Projects" indicate import of materials from other projects.