

東業德勤測試顧問有限公司
ETS-TESTCONSULT LIMITED

8/F., Block B, Veristrong Industrial Centre, 34-36 Au Pui Wan Street, Fotan, Hong Kong
Tel : 2695 8318 E-mail : etl@ets-testconsult.com
Fax : 2695 3944 Web site : www.ets-testconsult.com

TEST REPORT

Kaden Construction Limited

CONTRACT NO. DC/2007/18

**YUNG SHUE WAN AND
SOK KWU WAN VILLAGE SEWERAGE,
STAGE 1 WORKS**

**MONTHLY IMPACT MONITORING
REPORT NO.10**

(MARCH 2009)

Prepared by:

LAW, Sau Yee
Senior Environmental Officer

Checked by:

LAU, Chi Leung
Environmental Team Leader

Scott Wilson CDM Joint Venture

Chief Engineer/Harbour Area Treatment Scheme
Drainage Services Department
5/F Western Magistracy
2A Pok Fu Lam Road
Hong Kong

Your reference:

Our reference: 05117/6/10/323873

Date: 27 April 2009

Attention: Mr. C K Au

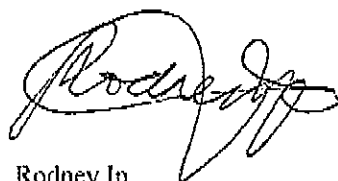
BY FAX ONLY

Dear Sir

Contract No. DC/2007/18
Yung Shue Wan and Sok Kwu Wan Village Sewerage, Stage 1 Works
Monthly Impact Monitoring Report No. 10

I refer to the Environmental Permit (EP-281/2007) and the email from the environmental team, ETS-Testeconsult Limited with the revised report, dated 24 April 2009. I do not have further comment and have verified the captioned report.

Yours faithfully
SCOTT WILSON CDM JOINT VENTURE



Rodney Ip

ANCP/anop

cc	Kaden Construction Ltd	(Attn: Mr Stephen Leung)
	ETS-Testeconsult	(Attn: Ms Linda Law)
	ER/LAMMA	(Attn: Mr Ian Jones)
	CDM	(Attn: Mr Mark Sin)



TABLE OF CONTENTS		Page
EXECUTIVE SUMMARY		
1.0	INTRODUCTION	1
2.0	PROJECT INFORMATION	1
	2.1 Background	1
	2.2 Site Description	1
	2.3 Construction Programme	1
	2.4 Project Organization and Management Structure	2
	2.5 Contact Details of Key Personnel	2
	2.6 Construction Progress in this reporting month	2
3.0	IMPACT AIR QUALITY MONITORING	
	3.1 Monitoring Requirement	2
	3.2 Monitoring Equipment	2 – 3
	3.3 Laboratory Measurement / Analysis	3
	3.4 Monitoring Parameters, Frequency and Duration	4
	3.5 Monitoring Locations	4
	3.6 Action and Limit levels	4
	3.7 Event-Action Plans	4
	3.8 Results	4 – 5
4.0	IMPACT NOISE MONITORING	
	4.1 Monitoring Requirement	5
	4.2 Monitoring Equipment	5
	4.3 Monitoring Parameters, Frequency and Duration	6
	4.4 Monitoring Locations	6
	4.5 Monitoring Methodology	6 – 7
	4.6 Action and Limit levels	7
	4.7 Event-Action Plans	7
	4.8 Results	7
5.0	SITE INSPECTION	8
	5.1 Summary of the site inspection findings and Action(s) taken by Kaden and ET	8
	5.2 Recommendations on site inspection findings in Site Inspections of this month	8
6.0	STATUS OF ENVIRONMENTAL PERMITS	8
7.0	WASTE MANAGEMENT	9
8.0	ECOLOGY	9
9.0	ARCHAEOLOGY AND CULTURAL HERITAGE	9
10.0	ENVIRONMENTAL NON-CONFORMANCE	
	10.1 Summary of Air Quality and Noise Monitoring	9
	10.2 Summary of Environmental Complaints, Notifications of Summons and Successful Prosecutions	10
11.0	IMPLEMENTATION STATUS	10
	11.1 Implementation Status of Environmental Mitigation Measures	10
	11.2 Implementation Status of Event and Action Plan	10
	11.3 Implementation Status of Environmental Complaint Handling	10
	11.4 Implementation Status of Notification of Summons and Prosecution	10
12.0	CONCLUSION AND DISCUSSION	10
13.0	FUTURE KEY ISSUES	
	13.1 Upcoming Environmental Monitoring Schedule in coming month	11
	13.2 Upcoming Construction Works Schedule in coming month	11
	13.3 Environmental Issues for the coming month	11



APPENDIX

- A Organization Chart and Lines of Communication
- B1 Calibration Certificates for Impact Air Quality Monitoring Equipments
- B2 Impact Air Quality Monitoring Results
- B3 Graphical Plots of Impact Air Quality Monitoring Data
- C1 Calibration Certificates for Impact Noise Monitoring Equipment
- C2 Impact Noise Monitoring Results
- C3 Graphical Plots of Impact Noise Monitoring Data
- D Event-Action Plans
- E Construction Programme
- F Summary of Implementation Status of Mitigation Measures during Site Inspection

Figures

- 2005/C1/2004 Village Sewerage Layout Plans – Sok Kwu Wan (Sheet 1 of 3)
- 2005/C1/2005 Village Sewerage Layout Plans – Sok Kwu Wan (Sheet 2 of 3)
- 2005/C1/2006 Village Sewerage Layout Plans – Sok Kwu Wan (Sheet 3 of 3)

Tables

- 2.1 Contact Details of Key Personnel
- 3.1 Monitoring Parameters, Duration and Frequency of Impact Air Quality Monitoring
- 3.2 Air Monitoring Stations
- 3.3 Action and Limit Levels for 24-hr TSP and 1-hr TSP
- 3.4 Summary of 1-hr and 24-hr TSP Monitoring Results
- 4.1 Noise Monitoring Equipment
- 4.2 Duration, Frequencies and Parameters of Noise Monitoring
- 4.3 Noise Monitoring Stations
- 4.4 Action and Limit Levels for Noise Monitoring
- 4.5 Summary of Noise Daytime Monitoring Results
- 5.1 Summary of Site Inspection Findings and Action(s) taken by Kaden and ET
- 6.1 Summary of Environmental Licensing and Permit Status
- 7.1 Summary of Quantities of Waste for Disposal in this reporting month
- 10.1 Statistical Summary of Environmental Complaint-log
- 13.1 Proposed Environmental Monitoring Schedule in coming month



EXECUTIVE SUMMARY

The Contractor, Kaden Construction Limited (Kaden), appointed Environmental Team of ETS-Testconsult Limited (ET) to undertake the environmental impact monitoring for "Contract No. DC/2007/18 Yung Shue Wan and Sok Kwu Wan Village Sewerage, Stage 1 Works" (the Project) under the requirements and specifications of "the Environmental Permit (Application No. AEP-281/2007)" (the EP) and "the Final EM&A Manual – Outlying Islands Sewerage Stage 1 Phase 2 Package J – Sok Kwu Wan Sewage Collection, Treatment and Disposal Facilities" (the EM&A Manual).

This Monthly Impact Monitoring Report No.10 has been prepared by the ET of ETS-Testconsult Limited to document the impact monitoring works conducted for the Project in March 2009.

Construction Progress

The major construction works in this monitoring period were as below:

- Excavation of inspection pits;
- Sewer construction including trench excavation;
- PE pipe laying;
- Backfilling and reinstatement of hard pavement; and
- Trenchless excavation by Tunnel Boring Machine.

Environmental Monitoring Progress

The summary of the monitoring activities in this monitoring period is listed below:

- Noise Monitoring (Day-time): 4 Occasions at 4 designated locations;
- 24-hour TSP Monitoring: 5 Occasions at 4 designated locations;
- 1-hour TSP Monitoring: 15 Occasions at 4 designated locations.

Impact Air Quality Monitoring

No exceedances of Action and Limit levels were recorded for 24-hr and 1-hr TSP monitoring in the reporting period.

Impact Noise Monitoring

No exceedances of Action and Limit Levels were recorded in this reporting month.

Waste Management

According to weekly site inspection, ET found that the Contractor followed the recommended procedures stipulated in the Waste Management Plan (WMP) on handling and disposal of wastes. In this reporting month, 35.3 m³ Public Fill and 0.33 tonne of general refuse were generated and disposed to Sok Kwu Wan Refuse Transfer Station (SKWRTS) properly. Besides, 20m³ inert C&D materials reused in the Contract and 2.0m³ hard rock & large broken concrete were recorded in this reporting month.

Site Inspection

Environmental site inspections conducted in this reporting month are presented as follows:

Concerned Parties

ET

RE / IEC / Kaden / ET

Dates of Audit / Inspection

05, 11, 17 and 23 March 2009

23 March 2009

According to the summary of the weekly site inspections carried out in this month, it indicated that site practices of the Kaden were generally undertaken in an environmentally acceptable manner and the overall site environmental performance was satisfactory.

Summary of the site inspection findings in this reporting month is shown as below:



Item	Aspect	Finding	Action(s) to be taken by the Contractor	ET Verification
1	Water	Rocks and debris were found accumulated inside the drainage at S171 during the weekly site inspection on 23/03/09.	The Contractor replied to clean up the rocks and debris accumulated inside the drainage in order to avoid any blockage.	Since the finding was observed during the last weekly site inspection in this reporting month, it will be verified in the coming month.
2	Water	During the weekly site inspection on 23/03/09, the sedimentation tank at 165 was considered to be insufficient to treat the site runoff since the flow rate was found to be too large.	The Contractor replied to reduce the flow rate or modify the sedimentation tank in order to improve its performance.	Since the finding was observed during the last weekly site inspection in this reporting month, it will be verified in the coming month.
3	Chemical	Oil drums at storage area were found without labels and drip trays during the weekly site inspection on 23/03/09.	The Contractor replied to provide appropriate labels and proper drip trays for all chemicals.	Since the finding was observed during the last weekly site inspection in this reporting month, it will be verified in the coming month.

Environmental Complaints, Notifications of Summons and Successful Prosecutions

No complaints, notifications of summons and successful prosecutions were received in this reporting period.

Conclusion and Recommendations

The monitored environmental data indicated that no unacceptable environmental impacts arising from the Project had been caused to the surrounding sensitive receivers. The environmental mitigation measures had been effective in controlling potential impacts to within acceptable sensitive receivers. Besides, the Contractor was recommended to maintain good site practice in order to minimize the environmental impacts at the site.

Construction Programme for Coming Month

The Construction programme for the Project is shown in Appendix E.

As informed by the Contractor, the activities to be conducted by them in coming month included:

- Excavation of inspection pits;
- Sewer construction including trench excavation;
- PE pipe laying;
- Backfilling and reinstatement of hard pavement;
- Trenchless excavation by Tunnel Boring Machine; and
- Pipe installation for trenchless section.

Future Key Issues

Based on the forecast of engineering works in the coming month, key issues to be considered are as follows:

- Noise and air quality impact due to construction works; and
- Maintain good site practice to minimize environmental impacts at the site.

Internet Website

The monthly EM&A report can be accessed on the web at <http://www.skwsewer.com>.



1.0 INTRODUCTION

The Customer, Kaden Construction Limited (Kaden), appointed Environmental Team of ETS-Testconsult Limited to undertake the environmental impact monitoring for "Contract No. DC/2007/18 Yung Shue Wan and Sok Kwu Wan Village Sewerage, Stage 1 Works" (the Project) under the requirements and specifications of "the Environmental Permit (Application No. AEP-281/2007)" (the EP) and "the Final EM&A Manual – Outlying Islands Sewerage Stage 1 Phase 2 Package J – Sok Kwu Wan Sewage Collection, Treatment and Disposal Facilities" (the EM&A Manual).

In accordance with the Section 5 of the EP, EM&A programme as set out in the EM&A Manual is required to be implemented. In accordance with the EM&A manual, environmental monitoring of air quality and noise is required for the Project. The EM&A requirement for each parameter are described in details in subsequent sections, including:

- All monitoring parameters;
- Action and Limit levels for all environmental parameters;
- Event-Action Plans;
- Environmental mitigation measures, as recommended in the project EIA study report;
- Environmental requirements in contract documents.

This monthly EM&A report summarizes the impact monitoring in March 2009. This monthly EM&A report can be accessed on the web at <http://www.skwsewer.com>.

2.0 PROJECT INFORMATION

2.1 Background

Under this Project, Kaden is required to construct village sewerage in Yung Shue Wan and Sok Kwu Wan, Lamma Island.

Village sewage works will undertake in this Project. These will comprise laying approximately 1.4km of sewerage pipes from 220mm to 350mm diameter in Sok Kwu Wan Village. These works will carry out under a conventional Design, Bid, Build (DBB) contract, entirely separate from the single Design, Build and Operate (DBO) contract for Sewage Treatment Works (STW) construction.

As the main Contractor of the captioned project contracted by, Kaden will follow the environmental monitoring recommendation stated in the EM&A Manual that was prepared with reference to the EIA Report (Register No.: AEIAR-075/2003).

According to the EP and the EM&A Manual, the environmental programme is mainly focused on the construction activities of this Project in Sok Kwu Wan. At the same time, all air quality and noise monitoring stations proposed in the EM&A Manual are located in Sok Kwu Wan. The baseline report is prepared in accordance with EP (No. EP-281/2007) for the Designated Project "Outlying Islands Sewerage Stage 1 Phase 2 – Sok Kwu Wan Sewage Collection, Treatment and Disposal Facilities" and the EM&A Manual.

2.2 Site Description

The general layout plan of the project in Sok Kwu Wan is shown in Drawing No. 2005/C1/2004, 2005/C1/2005 and 2005/C1/2006.

Surrounding the construction site, there are air and noise sensitive receivers at Chung Mei Village, Sok Kwu Wan and Ta Shui Wan.

2.3 Construction Programme

The construction programme is shown in Appendix E.



2.4 Project Organization and Management Structure

The organization chart with respect to the on-site environmental management and monitoring program are shown in Appendix A.

2.5 Contact Details of Key Personnel

The key personnel contact names and telephone numbers, and construction programme are shown in table 2.1.

Table 2.1 Contact Details of Key Personnel

Organization	Project Role	Key Staff	Tel. No.	Fax No.
Scott Wilson CDM JV	Engineer Representative	Ir Ian J Jones	2982 0240	2982 4129
Scott Wilson CDM JV	Independent Environmental Checker	Mr. Rodney Ip	2410 3750	2428 9922
Kaden Construction Ltd	Contractor	Ir Stephen Leung	2454 9102	2465 1207
ETS-Testconsult Ltd	Environmental Team	Mr. C L Lau	2946 7791	2695 3944

2.6 Construction Progress in this reporting month

A summary of the major construction activities undertaken in this monitoring month were:

- Excavation of inspection pits;
- Sewer construction including trench excavation;
- PE pipe laying;
- Backfilling and reinstatement of hard pavement; and
- Trenchless excavation by Tunnel Boring Machine.

3.0 IMPACT AIR QUALITY MONITORING

3.1 Monitoring Requirement

Both 1-hr and 24-hr TSP monitoring is required to be conducted in order to monitor the air quality of the environment during the construction period. For regular monitoring, a sampling frequency of at least one in every six days should be carried out at all designated monitoring stations.

3.2 Monitoring Equipment

24-hour TSP Monitoring

High volume sampler, as HVS, (Greasby GMWS2310) complete with appropriate sampling inlets are employed for 24-hour TSP. The sampler is composed of a motor, a filter holder, a flow controller and a sampling inlet and its performance specification complies with that required by USEPA standard Title 40, Code of Federation Regulations Chapter 1 (Part 50).

Installation

The installation of HVS refers to the requirement stated in EM&A Manual.

Operation/Analytical Procedures

Operating/analytical procedures for the operation of HVS are as below:

Prior to the commencement of the air sampling, the flow rate of the high volume sampler was properly set (between 0.6m³/min and 1.7m³/min.) in accordance with the manufacturer's instruction to within the range recommended in USEPA Standard Title 40, CFR Part 50.

- For TSP sampling, fiberglass filters (GA-55) were used.
- The power supply was checked to ensure the sampler worked properly.
- On sampling, the sampler was operated 5 minutes to establish thermal equilibrium before placing any filter media at designated air monitoring station.
- The filter holding frame was then removed by loosening the four nuts and carefully a weighted and conditioned filter was centered with the stamped number upwards, on a supporting screen.



- The filter was aligned on the screen so that the gasket formed an air-tight seal on the outer edges of the filter. Then the filter holder frame was tightened to the filter holder with swing bolts. The applied pressure should be sufficient to avoid air leakage at the edges.
- The programmable timer will be set for a sampling period of 24 hours. Information was recorded on the record sheet, which included the starting time, the weather condition and the filter number (the initial weight of the filter paper can be found out by using the filter number.).
- After sampling, the filter was transferred from the filter holder of the HVS to a sealed plastic bag and sent to the laboratory for weighting. The elapsed time was also recorded.
- Before weighting, all filters were equilibrated in a desiccator for 24 hour with the temperature of $25^{\circ}\text{C} \pm 3^{\circ}\text{C}$ and the relative humidity (RH) $<50\% \pm 5\%$.

Maintenance & Calibration

- The HVS and their accessories were maintained in good working condition, such as replacing motor brushes routinely and checking electrical wiring to ensure a continuous power supply.
- The HVSS used were calibrated before the commencement of air quality monitoring, after maintenance and every two months. Five-point calibration by using calibration kit (e.g. Tisch TE-5025A) was performed to establish a relationship between the flow recorder meter reading in cfm (cubic feet per minute) and the standard flow rate, QStd, in m^3/min .

1-hour TSP Monitoring

1-hour TSP levels were measured by using 1-hour dust meter which are capable of producing comparable results as the by high volume sampling method, to indicate short event impacts.

Measuring Procedures

The measuring procedures of the 1-hr dust meter are in accordance with the Manufacturer's instruction Manual as follows:

- Set POWER to ON, check the battery indicator to ensure whether the power supply is enough to conduct the TSP monitoring;
- Calibrate the dust meter by zero check;
- Set the TIME CONSTANT of the dust meter;
- Press SAMPLE to start the TSP monitoring;
- Record the maximum, minimum and average reading directly from the dust meter by press STATISTICS when monitoring complete.

Maintenance & Calibration

- 1-hour dust meter should be checked at 6-month intervals throughout all stages of impact air quality monitoring. Through a five-point calibration by placing the dust meter and calibrated HVS under the same environmental condition, a relationship in TSP level ($\mu\text{g}/\text{m}^3$) between dust meter and HVS was established.

3.3 Laboratory Measurement / Analysis

Environmental Laboratory of ETS-Testconsult which is HOKLAS accredited, carried out the laboratory analysis.

A clean filter paper with no pinholes was used for each time of monitoring. Before sampling, the filter paper of size 8" x 10" was labelled and conditioned in a humidity controlled chamber for over 24 hours and pre-weighed before use for the sampling.

After sampling, the filter paper loaded with dust was kept in a clean and tightly sealed plastic bag. The filter paper then returned to the laboratory for reconditioning in the humidity controlled chamber following by accurate weighing by an electronic balance with readout down to 0.1mg. The balance was calibrated against a traceable standard.

All the analysis results and collected samples were kept in a good condition for 6 months after completion of the monitoring exercise before disposal.



3.4 Monitoring Parameters, Frequency and Duration

Table 3.1 summarizes the monitoring parameters, monitoring duration and frequencies of impact air quality monitoring.

Table 3.1 Monitoring parameters, duration and frequencies of impact air quality monitoring

<i>Parameter</i>	<i>Duration</i>	<i>Frequency</i>
<i>24-hr TSP</i>	<i>24 hr (0000-2400)</i>	<i>One in every six days</i>
<i>1-hr TSP</i>	<i>1 hr (0700-1900)</i>	<i>3 times per day in every six days</i>

3.5 Monitoring Locations

As the requirement in the EM&A Manual, three designated air monitoring stations were selected. Table 3.2 tabulates the air quality monitoring locations of this Project.

Table 3.2 Air monitoring stations

<i>Air monitoring station</i>	<i>Description of location</i>
<i>AM1</i>	<i>Squatter house in Chung Mei Village</i>
<i>AM2</i>	<i>Squatter house in Chung Mei Village</i>
<i>AM3</i>	<i>Football Court</i>

3.6 Action and Limit Levels

Action and Limit levels for 24-hr TSP and 1-hr TSP derived as illustrated in Table 3.3.

Table 3.3 Action and Limit levels for 24-hr TSP and 1-hr TSP

<i>Monitoring Station</i>	<i>24-hr TSP ($\mu\text{g}/\text{m}^3$)</i>		<i>1-hr TSP ($\mu\text{g}/\text{m}^3$)</i>	
	<i>Action Level</i>	<i>Limit Level</i>	<i>Action Level</i>	<i>Limit Level</i>
<i>AM1</i>	<i>173</i>	<i>260</i>	<i>343</i>	<i>500</i>
<i>AM2</i>	<i>175</i>	<i>260</i>	<i>331</i>	<i>500</i>
<i>AM3</i>	<i>191</i>	<i>260</i>	<i>353</i>	<i>500</i>

3.7 Event-Action Plans

Should the results of the monitoring parameters at any designated monitoring stations indicate that the air quality criteria are exceeded, the actions in accordance with the Event and Action Plan that summarized in Appendix D should be carried out.

3.8 Results

Totally 5 occasions of 24-hr TSP monitoring and 15 occasions of 1-hr TSP monitoring were carried out in this reporting period. All monitoring data of 1-hr and 24-hr TSP monitoring is provided in Appendix B2. Graphical presentation of both 1-hr and 24-hr TSP monitoring results for the reporting month is shown in Appendix B3.

No exceedances of Action and Limit Level of 1-hr and 24-hr TSP monitoring results were recorded during the reporting month. Table 3.4 summaries the 1-hr and 24-hr TSP monitoring results.



Table 3.4 Summary of 1-hr and 24-hr TSP Monitoring Results

Parameter	1-hr TSP Monitoring								
	AM1			AM2			AM3		
Station	Time	Result	Exceed*	Time	Result	Exceed*	Time	Result	Exceed*
05/03/09	09:10	91	X	13:00	90	X	13:15	138	X
05/03/09	10:10	101	X	14:00	80	X	14:15	126	X
05/03/09	11:10	106	X	15:00	101	X	15:15	145	X
11/03/09	09:14	138	X	09:16	121	X	13:00	115	X
11/03/09	10:14	130	X	10:16	115	X	14:00	126	X
11/03/09	11:14	141	X	11:16	116	X	15:00	132	X
17/03/09	09:20	148	X	09:30	130	X	14:30	120	X
17/03/09	10:20	156	X	10:30	146	X	15:30	132	X
17/03/09	13:00	137	X	13:10	140	X	16:30	143	X
23/03/09	09:50	140	X	09:53	140	X	14:15	146	X
23/03/09	10:50	154	X	10:53	153	X	15:15	140	X
23/03/09	13:00	130	X	13:00	126	X	16:15	121	X
27/03/09	09:22	117	X	09:20	112	X	13:00	140	X
27/03/09	10:22	132	X	10:20	130	X	14:00	127	X
27/03/09	11:22	103	X	11:20	107	X	15:00	112	X
Parameter	24-hr TSP Monitoring								
Station	AM1		AM2		AM3				
Date	Result	Exceed*	Result	Exceed*	Result	Exceed*			
05/03/09	61	X	57	X	41	X			
11/03/09	69	X	70	X	81	X			
17/03/09	60	X	74	X	65	X			
23/03/09	85	X	72	X	105	X			
27/03/09	50	X	55	X	81	X			

Remark (*): L=Limit Level exceedance, A=Action Level exceedance and X=not an exceedance

4.0 IMPACT NOISE MONITORING

4.1 Monitoring Requirements

As the requirement in the EM&A Manual, impact noise monitoring was conducted for a weekly basis at designated monitoring locations.

4.2 Monitoring Equipment

Integrating Sound Level Meters used for impact noise monitoring were Type 1 sound level meters capable of giving a continuous readout of the noise level reading including equivalent continuous sound pressure level (L_{eq}) and percentile sound pressure level (L_x). They complied with International Electro technical Commission Publications 651:1979 (Type1) and speed in m/s was used to monitor the wind speed. Table 4.1 summarized the noise monitoring equipment model used during the impact monitoring. Copies of calibration certificates and Calibration Summary for noise meters and calibrators used are attached in Appendix C1.

Table 4.1 Noise Monitoring Equipment

Equipment	Model
Integrating Sound Level Meter	Rion NL-31 Sound Level Meter
Calibrator	Rion NC-73 Sound Level Meter
Portable Wind Speed Indicator	TSI Model 8340-M Air Velocity Meter



4.3 Monitoring Parameters, duration and Frequency

Impact noise monitoring for the A-weighted levels L_{eq} , L_{10} and L_{90} were recorded once per week. Data obtained from impact noise monitoring was processed and presented as below:

- Daytime: three sets of 30-minute noise level monitored between 0700-1900 hrs on normal weekdays;
- Evening-time*: three sets of 5-minute noise level monitored between 1900-2300 hrs ;
- Night-time*: three sets of 5-minute noise level monitored between 2300-0700 hrs of next day; and
- Holiday*: three sets of 5-minute noise level monitored between 0700-1900 hrs on holiday.

(*): Noise monitoring to be conducted only when there is construction work.

Duration, frequencies and parameters of noise measurement are presented in Table 4.2.

Table 4.2 Duration, Frequencies and Parameters of Noise Monitoring

Time period	Duration/min	Parameters
Day-time: 0700-1900 hrs on normal weekday	30	L_{eq} , L_{10} , L_{90}
Evening-time: 1900-2300 hrs	5	L_{eq} , L_{10} , L_{90}
Night-time: 2300-0700 hrs of next day	5	L_{eq} , L_{10} , L_{90}
Holiday: 0700-1900 hrs	5	L_{eq} , L_{10} , L_{90}

4.4 Monitoring Locations

Since the owner of 1B Sok Kwu Wan objected to set up the noise monitoring station NM3 at 1B Sok Kwu Wan (Eastern Façade), an alternative position, Sok Kwu Wan Sitting-out Area RNM3, which is just a 3m width footpath away from house 1B for the free field noise measurement, was proposed by ET. Under the approval from ER and agreement from the IEC and EPD, both baseline and impact noise monitoring was carried out at RNM3.

Hence, there were four noise monitoring locations NM1, NM2, RNM3 and NM4 required to carry out impact noise monitoring.

The details of noise monitoring stations are summarized in Table 4.3.

Table 4.3 Noise Monitoring Stations

Noise monitoring station	Description of location	Type of Measurement
NM1	1, Chung Mei Village	Façade
NM2	20, Sok Kwu Wan	Façade
RNM3	Sok Kwu Wan Sitting-out Area	Free Field
NM4	2-storey village house at Ta Shui Wan	Façade

4.5 Monitoring Methodology

Instrumentation

Integrating Sound Level Meters were employed for noise monitoring.

Operation/Analysis Procedures

- Sound Level Meter was set on a tripod at a height of 1.2m above the ground;
- For free field measurement, the meter was positioned away from any nearby reflective surfaces.
- The battery condition was checked to ensure the correct functioning of the meter:
- Parameters such as frequency weighting, the time weighting and the measurement time were set as follows:
 - Frequency weighting : A
 - Time weighting : Fast
 - Time measurement : 5 mins



- Prior to and after each noise measurement, the meter was calibrated using a Calibrator for 94 dB at 1000HZ. If the difference in the calibration level before and after measurement was more than 1.0 dB(A), the measurement would be considered invalid and repeat measurement would be required after re-calibration or repair of the equipment;
- During the monitoring period, the L_{eq} , L_{10} and L_{90} were recorded. In addition, site conditions and noise sources were recorded on a standard record sheet;
- Noise measurement may be paused during periods of high intrusive noise (e.g. dog barking directly towards the receiver of noise level meter). If noise measurement was paused during high intrusive noise, the noise level meter would be resumed and continued the noise measurement and the observations would also be recorded. Any pause intervals were not included in the measurement time; and
- Noise monitoring would be cancelled in the presence of fog, rain, storm, wind with a steady speed exceeding 5m/s, or wind gusts exceeding 10m/s.

Maintenance and Calibration

- The microphone head of the sound level meter and calibrator are cleaned with soft cloth at quarterly intervals; and
- The meters are sent to supplier or HOKLAS laboratory to check and calibrated at yearly intervals.

4.6 Actions and Limit Levels

The Action and Limit Levels (AL Levels) were established in accordance to the Clause 3.6.4 of the EM&A Manual. Table 4.4 presents the AL levels for noise monitoring.

Table 4.4 Action and Limit Levels for Noise Monitoring

Time Period	Action	Limit
0700 – 1900 hrs normal weekdays	When one documented complaint is received	75 dB(A)

4.7 Event-Action Plans

Should the results of the monitoring parameters at any designated monitoring stations indicate that the noise level criteria are exceeded, the actions in accordance with the Event and Action Plan that summarized in Appendix D should be carried out.

4.8 Results

Totally 4 occasions of Day-time noise monitoring were carried out at monitoring stations in this reporting month. No Evening-time, Night-time and Holiday noise monitoring were required since no construction works were processed during the night-time period.

No exceedances of Action Level of noise monitoring were recorded in this reporting month since no complaint on noise issue was received. Besides, no exceedances in Limit Level were recorded according to the results from Day-time noise monitoring. Table 4.5 summaries the noise daytime monitoring results in the reporting period.

Table 4.5 Summary of Noise Daytime Monitoring Results

Monitoring Parameter	Date	NM1		NM2		RNM3 [#]		NM4	
		Result	Exceedance*	Result	Exceedance*	Result	Exceedance*	Result	Exceedance*
Noise Daytime Monitoring	05/03/09	51.9	X	64.7	X	63.5	X	50.7	X
	11/03/09	64.4	X	71.2	X	68.3	X	51.8	X
	17/03/09	62.3	X	69.9	X	67.3	X	52.6	X
	23/03/09	68.5	X	69.2	X	66.1	X	60.2	X

Remark (*): L = Limit Level exceedance, A = Action Level exceedance and X = not an Exceedance
(#): 3dB(A) correction had been added to the results since noise measurements at RNM3 were free-field.



5.0 SITE INSPECTION

During this reporting month, weekly site inspections were undertaken on 05, 11, 17 and 23 March 2009 by ET. Monthly joint site inspection at 23 March 2009 was carried out by Engineer's Representative, IEC, Kaden and ET. A summary of implementation status of mitigation measures on site inspections is presented in Appendix F.

5.1 Summary of the site inspection findings and Action(s) taken by Kaden and ET

According to the summary of the weekly site inspections carried out in this month, it indicated that site practices of the Kaden were generally undertaken in an environmentally acceptable manner and the overall site environmental performance was satisfactory. Summary of the site inspection findings in this reporting month is shown in Table 5.1.

Table 5.1 Summary of Site Inspection Findings and Action(s) taken by Kaden and ET

Item	Aspect	Finding	Action(s) to be taken by the Contractor	ET Verification
1	Water	Rocks and debris were found accumulated inside the drainage at S171 during the weekly site inspection on 23/03/09.	The Contractor replied to clean up the rocks and debris accumulated inside the drainage in order to avoid any blockage.	Since the finding was observed during the last weekly site inspection in this reporting month, it will be verified in the coming month.
2	Water	During the weekly site inspection on 23/03/09, the sedimentation tank at 165 was considered to be insufficient to treat the site runoff since the flow rate was found to be too large.	The Contractor replied to reduce the flow rate or modify the sedimentation tank in order to improve its performance.	Since the finding was observed during the last weekly site inspection in this reporting month, it will be verified in the coming month.
3	Chemical	Oil drums at storage area were found without labels and drip trays during the weekly site inspection on 23/03/09.	The Contractor replied to provide appropriate labels and proper drip trays for all chemicals.	Since the finding was observed during the last weekly site inspection in this reporting month, it will be verified in the coming month.

5.2 Recommendations on site inspection findings in Site Inspections of this month

Based on the site inspection findings, the recommendations are as below:

- Providing dust suppression measures (such as water spraying) during the construction works especially excavation and earth moving operation;
- Checking and maintaining all the site machines to prevent black smoke emission;
- Providing briefing to the concerned site staff on remedial actions, such as handling method of chemicals and chemical waste;
- Maintain good waste management at the site; and
- Remove all stagnant water and applied proper treatment facilities to wastewater before discharge.

6.0 Status of Environmental Permits

All permits/licenses obtained in this reporting month are summarized in Table 6.1.

Table 6.1 Summary of Environmental Licensing and Permit Status

Description	Permit No.	Valid Period		Section
		From	To	
Environmental Permit	EP-281/2007	29/06/07	End of Project	Valid
Water Discharge Licence	EP890/W2/XD 026	23/05/08	31/03/12	Valid
Notification under APCO	Application had been submitted to EPD on 15 April 2008			



7.0 WASTE MANAGEMENT

The quantities of waste for disposal from Sok Kwu Wan in this month are summarized in Table 7.1.

Table 7.1 Summary of Quantities of Waste for Disposal in this reporting month

Type of Waste		Quantity	Disposal Location	Cumulative Quantity
Inert C&D Materials	Total Quantity Generated (in '000m ³)	0.0553		0.3106
	Broken Concrete (in '000m ³)	0.0020	N/A	0.0105
	Reused in the Contract (in '000m ³)	0.02	For Stockpile / Reuse	0.095
	Reused in other Projects (in '000m ³)	0	N/A	0.09
	Disposal as Public Fill (in '000m ³)	0.0353	SKWRTS	0.1256
C&D Waste	Metals (in '000kg)	0	N/A	0
	Paper/Cardboard Packaging (in '000kg)	0	N/A	0
	Plastics (in '000kg)	0	N/A	0
	Chemical Waste (in '000kg)	0	N/A	0
	Other, e.g. General Refuse (tonne)	0.33	SKWRTS	1.83

8.0 ECOLOGY

A comprehensive tree survey was carried out by Kaden in mid 2008. The two uncommon tree species (*Celtis timorensis* and *Celtis biondii*) could not be identified on site as per the Figure 4 of the EP.

Besides, a joint visit amongst EPD, AFCD, Kaden, DSD and RE was held on 24 March 2009 and some immature *Celtis timorensis* plants were identified at certain locations at Chung Mei. It was agreed that a full vegetation survey (in addition to the previous tree survey) should be conducted to identify the immature uncommon species.

No sewerage works have been taken place in the concerned areas as yet. Protection would be provided for those uncommon species during the construction works which would however be carried out only in the existing footpaths anyway.

9.0 ARCHAEOLOGY AND CULTURAL HERITAGE

Refer to the Section 9 of EM&A Manual, a watching brief was conducted in Chung Mei, Sok Kwu Wan by Archaeological Assessments Limited on 01 September 2008.

The watching brief took place along the length of sewer trench alignment between manholes MH52 and MH54. In overview, the sewer trench between manholes MH52 and MH54 has seen little or no human activity in the past and can be considered to have no archaeological potential.

10.0 ENVIRONMENTAL NON-CONFORMANCE

10.1 Summary of Air Quality and Noise monitoring

No exceedances of Action and Limit Level of 24-hour and 1-hour TSP monitoring results were recorded during the reporting period.

No exceedances of Action Level of noise monitoring were recorded in this reporting month since no complaint on noise issue was received. Besides, no exceedances in Limit Level were recorded according to the results from Day-time noise monitoring.

No evening-time, night-time and holiday noise monitoring were required since no construction works were processed during these periods.



10.2 Summary of Environmental Complaints, Notifications of Summons and Successful Prosecutions

No complaints, notifications of summons and successful prosecutions were received in this reporting month. A summary of environmental complaints, notifications of summons and successful prosecutions was given Table 9.1.

Table 10.1 Statistical Summary of Environmental Complaint-log

Reporting Period	Complaint logged		Summons served		Successful Prosecution	
	Frequency	Cumulative	Frequency	Cumulative	Frequency	Cumulative
June 2008	0	0	0	0	0	0
July 2008	0	0	0	0	0	0
August 2008	0	0	0	0	0	0
September 2008	0	0	0	0	0	0
October 2008	1	1	0	0	0	0
November 2008	0	1	0	0	0	0
December 2008	0	1	0	0	0	0
January 2009	0	1	0	0	0	0
February 2009	0	1	0	0	0	0
March 2009	0	1	0	0	0	0

11.0 IMPLEMENTATION STATUS

11.1 Implementation Status of Environmental Mitigation Measures

Kaden has been implementing the required environmental mitigation measures indicating in Appendix A of the EM&A manual. A summary of the implementation status of the mitigation measures is presented in Appendix F.

11.2 Implementation Status of Event and Action Plan

No exceedances of Action and limit Levels of noise air quality monitoring were recorded in this reporting month and hence no further actions were required to be taken.

11.3 Implementation Status of Environmental Complaint Handling

No complaints was received in this reporting month and hence no further actions were required to be handled.

11.4 Implementation Status of Notification of Summons and Prosecution

There were no notifications of summons respect to environmental issues registered in this reporting month.

12.0 CONCLUSION AND DISCUSSION

According to the summary of noise and air quality monitoring results, no exceedances of Action and Limit Level were recorded during the reporting period.

According to the ET weekly site inspections carried out in this reporting month, it indicated that site practices of the Kaden were generally undertaken in an environmentally acceptable manner and the overall site environmental performance was satisfactory. Summary of the site inspection findings is shown in Table 5.1.

The monitored environmental results indicated that no unacceptable environmental impacts arising from the Project had been caused to the surrounding sensitive receivers. The environmental measures had been effective in controlling potential impacts to within acceptable sensitive receivers.

No complaints, notifications of summons and successful prosecutions were received in this reporting period.



13.0 FUTURE KEY ISSUES

13.1 Upcoming Environmental Monitoring Schedule in coming monitoring month

Proposed Environmental Monitoring program in coming month is presented as following table:

Table 13.1 Proposed Environmental Monitoring Schedule in coming month

April 2009						
Sun	Mon	Tue	Wed	Thu	Fri	Sat
			1	2 1-hr TSP x 3 24-hr TSP NM Weekly SI	3	4 Holiday
5	6	7	8 1-hr TSP x 3 24-hr TSP NM Weekly SI	9	10 Holiday	11 Holiday
12	13 Holiday	14 1-hr TSP x 3 24-hr TSP NM Weekly SI	15	16	17	18
19	20 1-hr TSP x 3 24-hr TSP NM Weekly SI	21	22	23	24 1-hr TSP x 3 24-hr TSP	25
26	27	28	29	30 1-hr TSP x 3 24-hr TSP NM Weekly SI		

13.2 Upcoming Construction Works Schedule in coming month

Major construction works planned to be carried out in coming month are shown as below:

- Excavation of inspection pits;
- Sewer construction including trench excavation;
- PE pipe laying;
- Backfilling and reinstatement of hard pavement;
- Trenchless excavation by Tunnel Boring Machine; and
- Pipe installation for trenchless section

13.3 Environmental Issues for the Coming Month

Key issues to be considered in the coming month include:

- Dust generated from the construction activities; and
- Noise generated from the noisy activities.

Mitigation measures to be required in the coming month:

Air Quality Impact

- To provide adequate water spraying on roads and working platform;
- To ensure implementation of the dust mitigation measures for the construction activities; and
- To provide proper maintenance for vehicles and machines on site.

Noise

- To switch off equipment if not in use;
- To operate silent equipment;
- To identify the noise sources inside and outside of the site; and
- To re-schedule the work activities in the event of valid noise exceedance.



Appendix A

Organization Chart and Lines of Communication

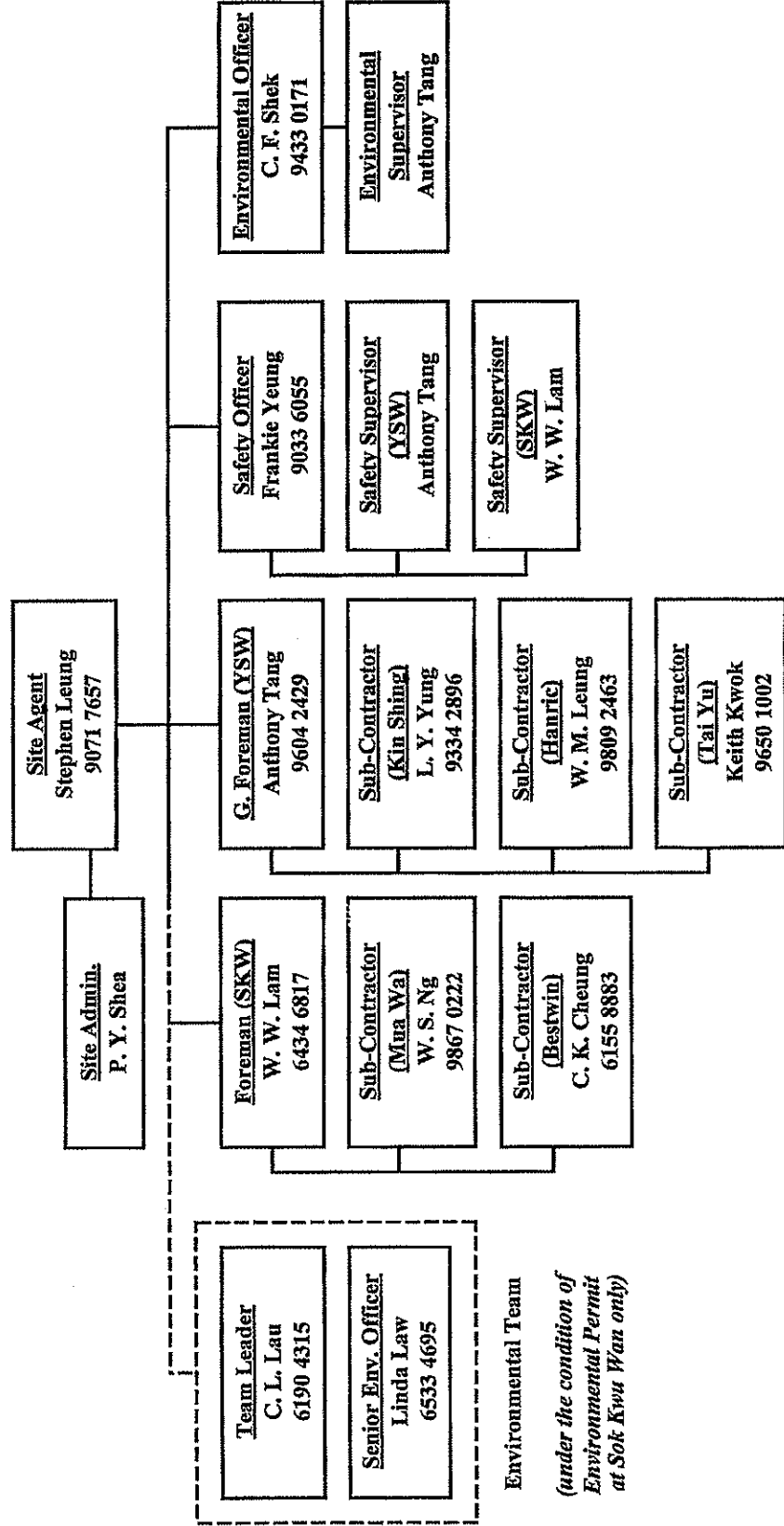
Kaden Construction Limited



DSD Contract No. DC/2007/18

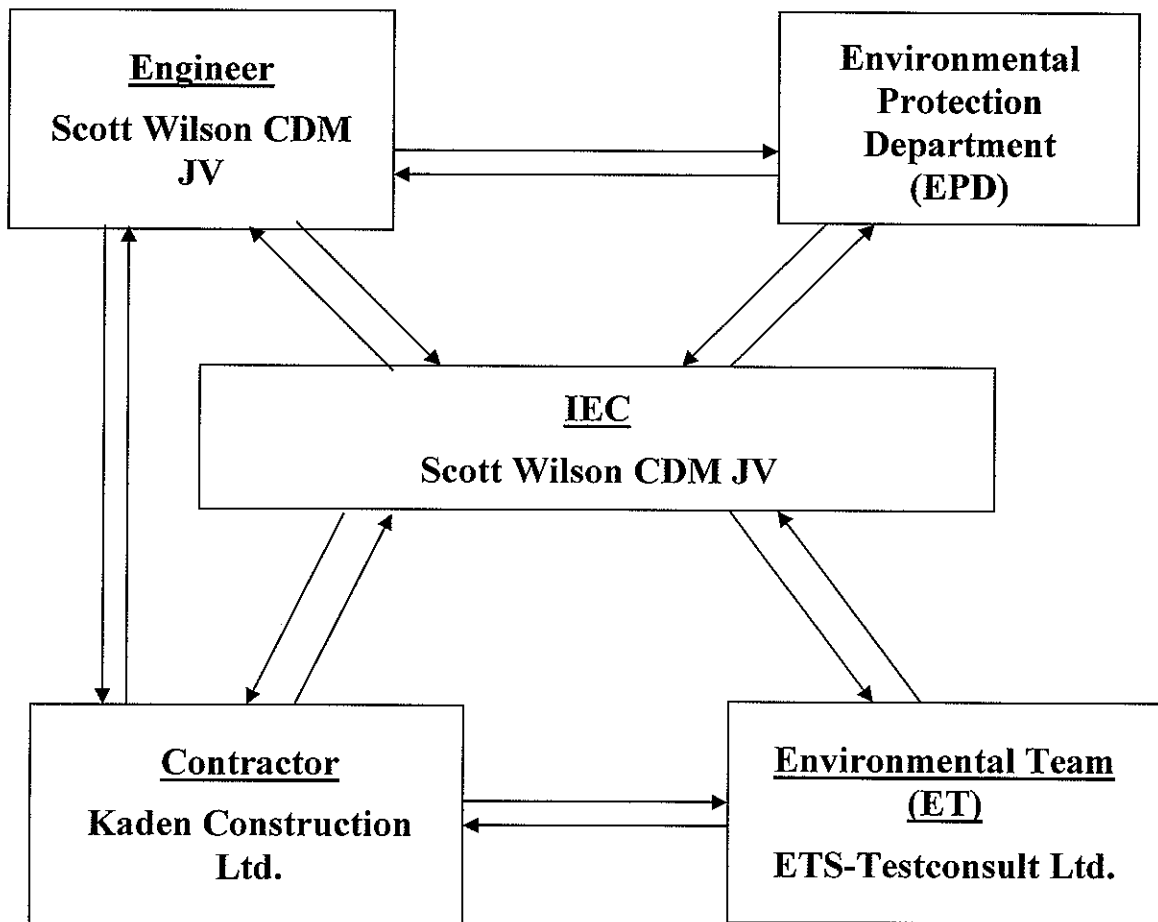
Yung Shue Wan and Sok Kwu Wan Village Sewerage, Stage 1 Works

Organization Structure for Environmental Management (EMP Rev. 13.00)





Lines of Communication





Appendix B1

Calibration Certificates for Impact Air Quality Monitoring Equipments



東業德勤測試顧問有限公司
ETS-TESTCONSULT LIMITED

8/F, Block B, Veristrong Industrial Centre, 34-36 Au Pui Wan Street, Fotan, Hong Kong
Tel : 2695 8318 E-mail : etl@ets-testconsult.com
Fax : 2695 3944 Web site : www.ets-testconsult.com

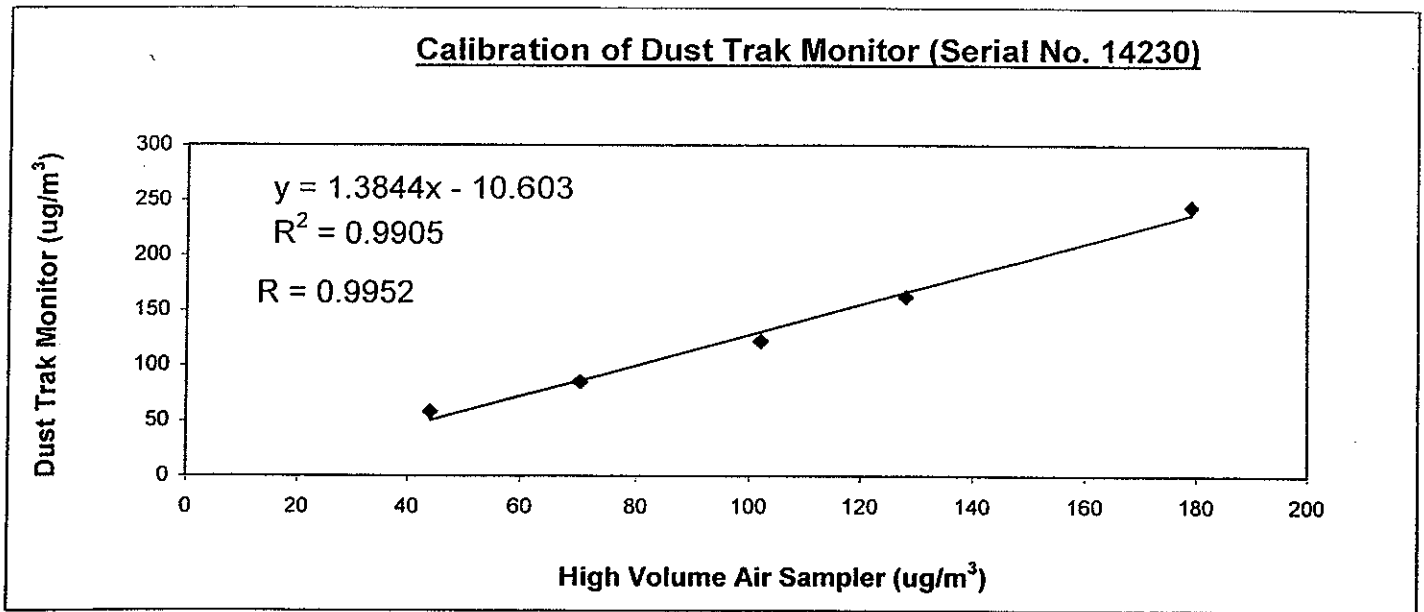
TEST REPORT

Internal Calibration Report
of
Dust Trak Monitor

Manufacturer : TSI - 8520 Dust Trak Date of Calibration : 13 January 2009
Serial No. : 14230 (ET/EA/001/04) Due Date : 12 July 2009
Method : Parallel measurement (five-point calibration) by placing the Dust Trak Monitor and High Volume Air Samper together under the same environmental condition

Results :

Dust Trak Monitor (ug/m ³)	58	85	155	162	244
High Volume Air Sampler (ug/m ³)	44	70	102	128	179
High Volume Air Sampler Serail No.: 1178			Calibration Due Date: 01 March 2009		

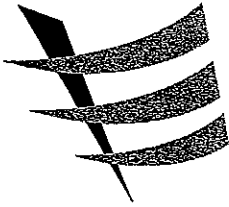


Acceptance Criteria : Correlation coefficient (r) of the calibration curve greater than 0.990 after a five point calibration

The Dust Trak Monitor complies * / does not comply * with the internal calibration procedures and is deemed acceptable * / unacceptable * for use.

Calibrated by : MAK Kei Wai
MAK, Kei Wai
(Senior Site Technician)

Approved by : LAW Sau Yee
LAW, Sau Yee
(Senior Environmental Officer)



東業德勤測試顧問有限公司
ETS-TESTCONSULT LIMITED

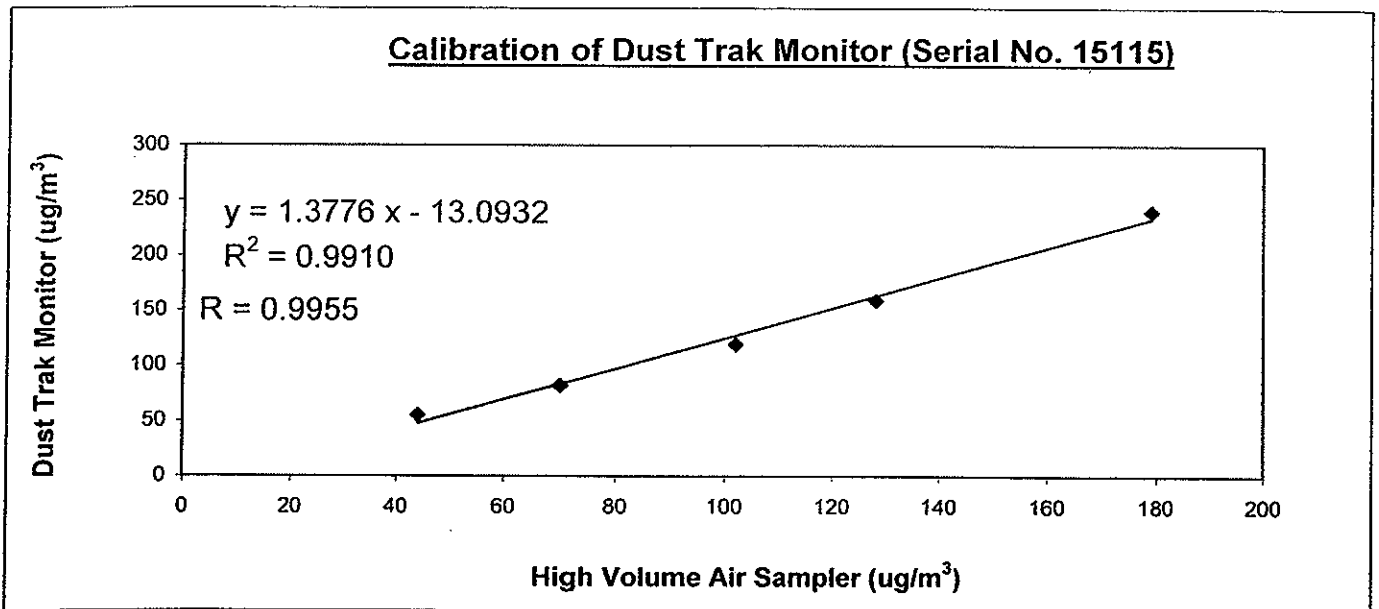
8/F., Block B, Veristrong Industrial Centre, 34-36 Au Pui Wan Street, Fotan, Hong Kong
Tel : 2695 8318 E-mail : etf@ets-testconsult.com
Fax : 2695 3944 Web site : www.ets-testconsult.com

TEST REPORT

Internal Calibration Report
of
Dust Trak Monitor

Manufacturer : TSI - 8520 Dust Trak Date of Calibration : 13 January 2009
Serial No. : 15115 (ET/EA/001/02) Calibration Due Date : 12 July 2009
Method : Parallel measurement (five-point calibration) by placing the Dust Trak Monitor and High Volume Air Sampler together under the same environmental condition

Results	Dust Trak Monitor (ug/m ³)	55	82	119	159	240
	High Volume Air Sampler (ug/m ³)	44	70	102	128	179
	Serial No of High Volume Air Sampler : 1178		Calibration Date: 01 March 2009			



Acceptance Criteria :

Correlation coefficient (r) of the calibration curve greater than 0.990 after a five point calibration

The Dust Trak Monitor complies * / ~~does not comply~~ * with the internal calibration procedures and is deemed acceptable * / unacceptable * for use.

Calibrated by : MAK, Kei Wai
MAK, Kei Wai
(Senior Site Technician)

Approved by : LAW, Sau Yee
LAW, Sau Yee
(Senior Environmental Officer)



東業德勤測試顧問有限公司
ETS-TESTCONSULT LIMITED

8/F., Block B, Veristrong Industrial Centre, 34-36 Au Pui Wan Street, Fotan, Hong Kong
Tel : 2695 8318 E-mail : etl@ets-testconsult.com
Fax : 2695 3944 Web site : www.ets-testconsult.com

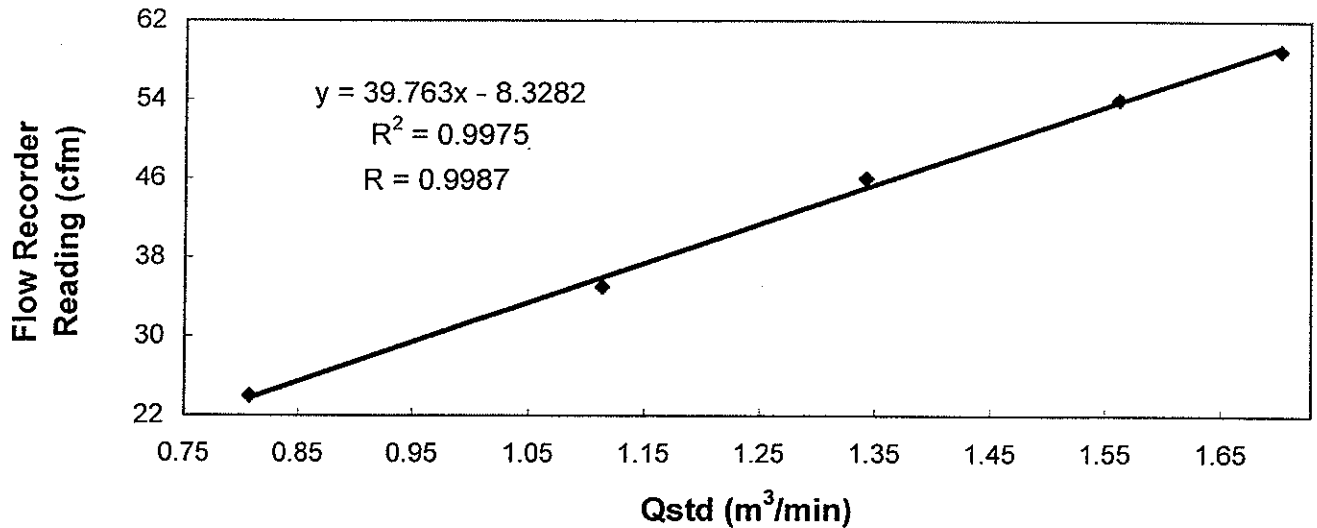
TEST REPORT

Calibration Report
of
High Volume Air Sampler

Manufacturer : Graseby GMW **Date of Calibration** : 17 February 2009
Serial No. : 1173 (ET/EA/003/17) **Calibration Due Date** : 16 April 2009
Method : Five-point calibration by using standard calibration kit Tisch TE-5025A refer to the Operations Manual

Results	Flow recorder reading (cfm)	59	54	46	35	24
	Qstd (Actual flow rate, m ³ /min)	1.70	1.56	1.34	1.11	0.81
	Pressure : 766.56 mmHg	Temp. : 294 K				

Sampler 1173 Calibration Curve
Site: Sok Kwu Wan (AM-1)



Acceptance Criteria : Correlation coefficient (r) of the calibration curve greater than 0.990 after 5-point calibration

The high volume sampler complies* / ~~does not comply*~~ with the specified requirements and is deemed acceptable* / unacceptable* for use.

Calibrated by :
LI, Wan Lung
(Technician)

Approved by :
CHOW, Hoi Tat
(Assistant Environmental Officer)



東業德勤測試顧問有限公司
ETS-TESTCONSULT LIMITED

8/F., Block B, Veristrong Industrial Centre, 34-36 Au Pui Wan Street, Fotan, Hong Kong

Tel : 2695 8318

E-mail : etl@ets-testconsult.com

Fax : 2695 3944

Web site : www.ets-testconsult.com

TEST REPORT

Calibration Report
of
High Volume Air Sampler

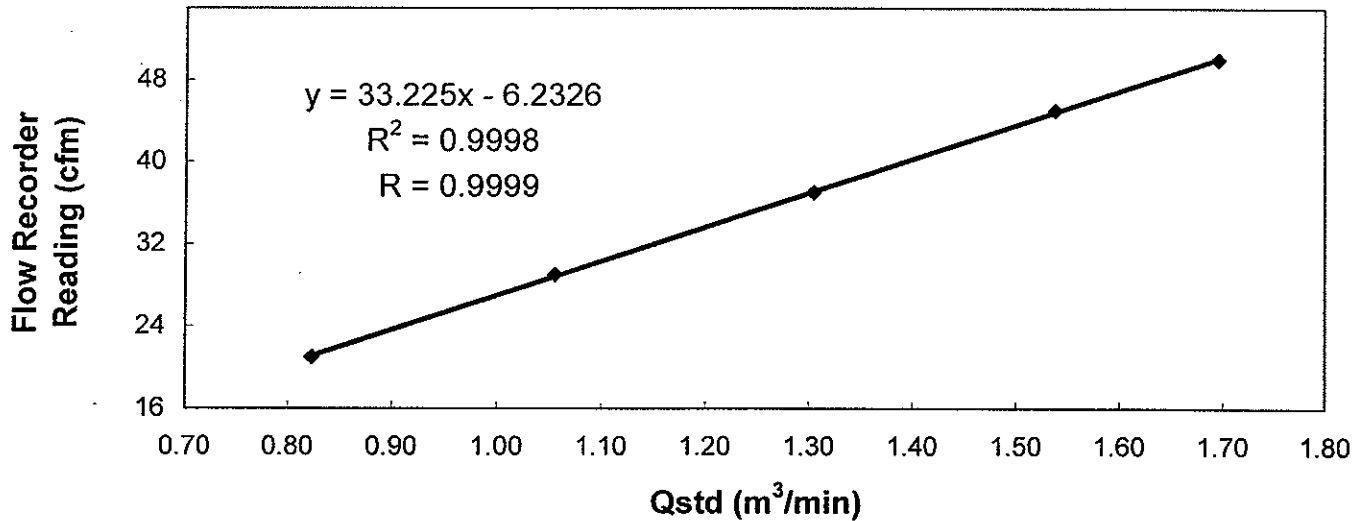
Manufacturer : Graseby GMW Date of Calibration : 17 February 2009

Serial No. : 9865 (ET / EA / 003 / 14) Calibration Due Date : 16 April 2009

Method : Five-point calibration by using standard calibration kit Tisch TE-5025A refer to the Operations Manual

Results	Flow recorder reading (cfm)	50	45	37	29	21
	Qstd (Actual flow rate, m ³ /min)	1.70	1.54	1.30	1.06	0.82
	Pressure : 766.56 mm Hg	Temp. : 294 K				

Sampler 9865 Calibration Curve
Site: Sok Kwu Wan (AM-2)



Acceptance Criteria : Correlation coefficient (r) of the calibration curve greater than 0.990 after a 5-point calibration

The high volume sampler complies* / does not comply* with the specified requirements and is deemed acceptable* / unacceptable* for use.

Calibrated by :
LI, Wan Lung
(Technician)

Approved by :
CHOW, Hoi Tat
(Assistant Environmental Officer)



東業德勤測試顧問有限公司
ETS-TESTCONSULT LIMITED

8/F., Block B, Veristrong Industrial Centre, 34-36 Au Pui Wan Street, Fotan, Hong Kong
Tel : 2695 8318 E-mail : etf@ets-testconsult.com
Fax : 2695 3944 Web site : www.ets-testconsult.com

TEST REPORT

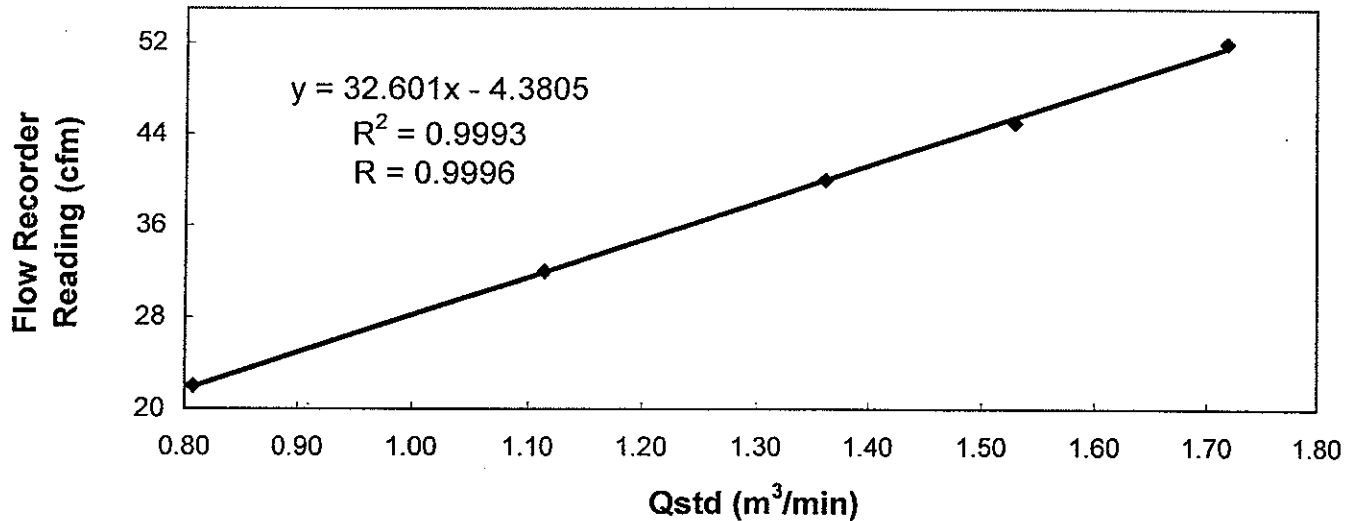
Calibration Report
of
High Volume Air Sampler

Manufacturer : Graseby GMW Date of Calibration : 17 February 2009
Serial No. : 9912 (ET / EA / 003 / 15) Calibration Due Date : 16 April 2009
Method : Five-point calibration by using standard calibration kit Tisch TE-5025A refer to the Operations Manual

Results :

Flow recorder reading (cfm)	52	45	40	32	22
Qstd (Actual flow rate, m ³ /min)	1.72	1.53	1.36	1.11	0.81
Pressure :	766.56 mm Hg			Temp. :	294 K

Sampler 9912 Calibration Curve
Site: Sok Kwu Wan (AM-3)



Acceptance Criteria : Correlation coefficient (r) of the calibration curve greater than 0.990 after a 5-point calibration

The high volume sampler complies* / ~~does not comply*~~ with the specified requirements and is deemed acceptable* / unacceptable* for use.

Calibrated by :
LI, Wan Lung
(Technician)

Approved by :
CHOW, Hoi Tat
(Assistant Environmental Officer)



TISCH ENVIRONMENTAL, INC.
 145 SOUTH MIAMI AVE.
 VILLAGE OF CLEVES, OH 45002
 513.467.9000
 877.263.7610 TOLL FREE
 513.467.9009 FAX
 WWW.TISCH-ENV.COM

AIR POLLUTION MONITORING EQUIPMENT

ORIFICE TRANSFER STANDARD CERTIFICATION WORKSHEET TE-5025A

Date - May 14, 2008 Rootmeter S/N 9833620 Ta (K) - 295
 Operator Tisch Orifice I.D. - 1172 Pa (mm) - 750.57

PLATE OR Run #	VOLUME START (m3)	VOLUME STOP (m3)	DIFF VOLUME (m3)	DIFF TIME (min)	METER DIFF Hg (mm)	ORFICE DIFF H2O (in.)
1	NA	NA	1.00	1.3800	3.1	2.00
2	NA	NA	1.00	0.9650	6.3	4.00
3	NA	NA	1.00	0.8630	7.9	5.00
4	NA	NA	1.00	0.8230	8.6	5.50
5	NA	NA	1.00	0.6770	12.7	8.00

DATA TABULATION

Vstd	(x axis) Qstd	(y axis)	Va	(x axis) Qa	(y axis)
0.9935	0.7199	1.4125	0.9958	0.7216	0.8866
0.9893	1.0252	1.9976	0.9916	1.0276	1.2538
0.9870	1.1437	2.2334	0.9894	1.1464	1.4018
0.9862	1.1983	2.3424	0.9885	1.2011	1.4703
0.9807	1.4486	2.8251	0.9830	1.4521	1.7732
Qstd slope (m) = 1.94106			Qa slope (m) = 1.21546		
intercept (b) = 0.01311			intercept (b) = 0.00823		
coefficient (r) = 0.99996			coefficient (r) = 0.99996		
y axis = SQRT[H2O(Pa/760) (298/Ta)]			y axis = SQRT[H2O(Ta/Pa)]		

CALCULATIONS

$$Vstd = \text{Diff. Vol} [(Pa - \text{Diff. Hg}) / 760] (298 / Ta)$$

$$Qstd = Vstd / \text{Time}$$

$$Va = \text{Diff Vol} [(Pa - \text{Diff Hg}) / Pa]$$

$$Qa = Va / \text{Time}$$

For subsequent flow rate calculations:

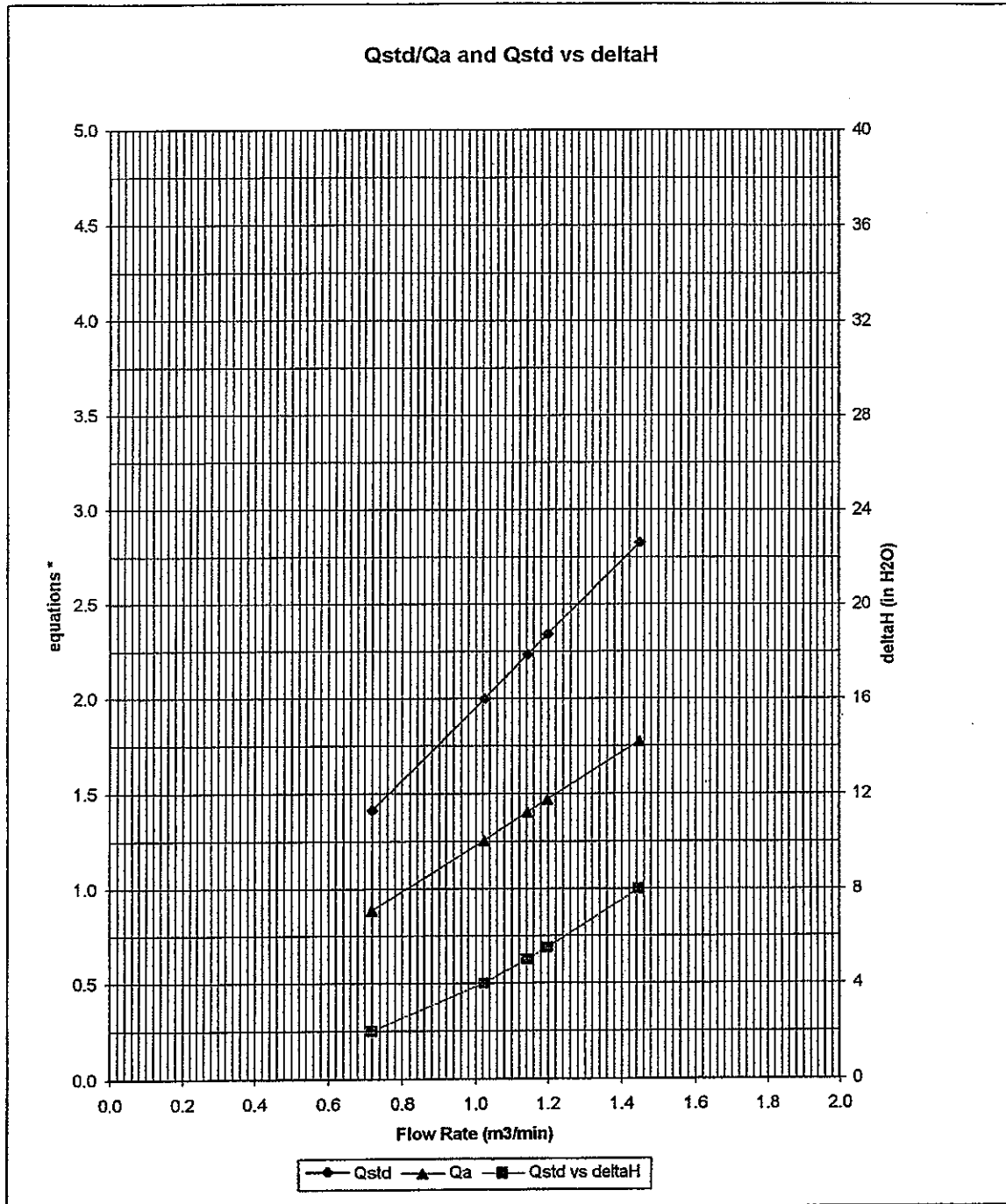
$$Qstd = 1/m \{ [\text{SQRT}(\text{H2O}(\text{Pa}/760) (298/\text{Ta}))] - b \}$$

$$Qa = 1/m \{ [\text{SQRT} \text{H2O}(\text{Ta}/\text{Pa})] - b \}$$



TISCH ENVIRONMENTAL, INC.
 145 SOUTH MIAMI AVE.
 VILLAGE OF CLEVELAND, OH 45002
 513.467.9000
 877.263.7610 TOLL FREE
 513.467.9009 FAX
 WWW.TISCH-ENV.COM

AIR POLLUTION MONITORING EQUIPMENT



* y-axis equations:

Qstd series:
$$\sqrt{\Delta H \left(\frac{P_a}{P_{std}} \right) \left(\frac{T_{std}}{T_a} \right)}$$

Qa series:
$$\sqrt{(\Delta H (T_a / P_a))}$$

1172



Appendix B2

Impact Air Quality Monitoring Results

Summary of 24-hr TSP Monitoring Results

Monitoring Station : AM1

Start Date	Start Time	Finish		Elapse Time		Sampling Time (hrs)	Flow Rate (m ³ /min.)		Average (m ³ /min.)	Filter Weight (g)		Conc. (µg/m ³)	Weather Condition
		Date	Time	Initial	Final		Initial	Final		Initial	Final		
05/03/09	12:58	06/03/09	12:58	13847.25	13871.25	24.00	1.1148	1.1148	1.1148	2.8093	2.9079	61	Cloudy
11/03/09	12:18	12/03/09	12:17	13871.25	13895.24	23.99	1.1903	1.1903	1.1903	2.8070	2.9256	69	Cloudy
17/03/09	11:40	18/03/09	11:40	13895.24	13919.24	24.00	1.1400	1.1400	1.1400	2.7927	2.8908	60	Fine
23/03/09	12:30	24/03/09	12:30	13919.24	13943.24	24.00	1.1148	1.1148	1.1148	2.8283	2.9640	85	Cloudy
27/03/09	12:35	28/03/09	12:35	13943.24	13967.24	24.00	1.2154	1.2154	1.2154	2.8041	2.8910	50	Cloudy

Monitoring Station : AM2

Start Date	Start Time	Finish		Elapse Time		Sampling Time (hrs)	Flow Rate (m ³ /min.)		Average (m ³ /min.)	Filter Weight (g)		Conc. (µg/m ³)	Weather Condition
		Date	Time	Initial	Final		Initial	Final		Initial	Final		
05/03/09	12:51	06/03/09	12:51	17883.04	17907.04	24.00	1.2109	1.2109	1.2109	2.7959	2.8954	57	Cloudy
11/03/09	12:20	12/03/09	12:20	17907.04	17931.04	24.00	1.3012	1.3012	1.3012	2.8044	2.9362	70	Cloudy
17/03/09	11:42	18/03/09	11:42	17931.04	17955.04	24.00	1.2109	1.2109	1.2109	2.8327	2.9609	74	Fine
23/03/09	12:34	24/03/09	12:34	17955.04	17979.04	24.00	1.3012	1.3012	1.3012	2.8225	2.9570	72	Cloudy
27/03/09	12:38	28/03/09	12:50	17979.04	18003.24	24.20	1.3313	1.3313	1.3313	2.7855	2.8900	55	Cloudy

Monitoring Station : AM3

Start Date	Start Time	Finish		Elapse Time		Sampling Time (hrs)	Flow Rate (m ³ /min.)		Average (m ³ /min.)	Filter Weight (g)		Conc. (µg/m ³)	Weather Condition
		Date	Time	Initial	Final		Initial	Final		Initial	Final		
05/03/09	10:20	06/03/09	10:20	1943.51	1967.51	24.00	1.1159	1.1159	1.1159	2.7996	2.8654	41	Cloudy
11/03/09	11:45	12/03/09	11:45	1967.51	1991.51	24.00	1.1773	1.1773	1.1773	2.7703	2.9083	81	Cloudy
17/03/09	11:58	18/03/09	11:58	1991.51	2015.51	24.00	1.0546	1.0546	1.0546	2.8165	2.9153	65	Fine
23/03/09	16:00	24/03/09	16:00	2015.51	2039.51	24.00	0.9012	0.9012	0.9012	2.8270	2.9631	105	Cloudy
27/03/09	16:02	28/03/09	16:02	2039.51	3063.51	24.00	1.0546	1.0546	1.0546	2.7793	2.9018	81	Cloudy

Summary of 1-hr TSP Monitoring Results

Monitoring Station : AM1

Date	Monitoring Period		1-hr TSP ($\mu\text{g}/\text{m}^3$)			Weather
	Start	Finish	Minimum	Maximum	Average	
05/03/09	09:10	10:10	44	368	91	Cloudy
05/03/09	10:10	11:10	48	405	101	Cloudy
05/03/09	11:10	12:10	47	421	106	Cloudy
11/03/09	09:14	10:14	82	424	138	Cloudy
11/03/09	10:14	11:14	90	406	130	Cloudy
11/03/09	11:14	12:14	72	372	141	Cloudy
17/03/09	09:20	10:20	81	406	148	Fine
17/03/09	10:20	11:20	90	428	156	Fine
17/03/09	13:00	14:00	72	387	137	Fine
23/03/09	09:50	10:50	92	377	140	Cloudy
23/03/09	10:50	11:50	84	406	154	Cloudy
23/03/09	13:00	14:00	82	352	130	Cloudy
27/03/09	09:22	10:22	95	365	117	Cloudy
27/03/09	10:22	11:22	102	422	132	Cloudy
27/03/09	11:22	12:22	90	384	103	Cloudy

Monitoring Station : AM2

Date	Monitoring Period		1-hr TSP ($\mu\text{g}/\text{m}^3$)			Weather
	Start	Finish	Minimum	Maximum	Average	
05/03/09	13:00	14:00	40	414	90	Cloudy
05/03/09	14:00	15:00	37	410	80	Cloudy
05/03/09	15:00	16:00	41	435	101	Drizzle
11/03/09	09:16	10:16	75	429	121	Cloudy
11/03/09	10:16	11:16	68	395	115	Cloudy
11/03/09	11:16	12:16	65	356	116	Cloudy
17/03/09	09:30	10:30	78	396	130	Fine
17/03/09	10:30	11:30	96	432	146	Fine
17/03/09	13:10	14:10	87	415	140	Fine
23/03/09	09:53	10:53	91	399	140	Cloudy
23/03/09	10:53	11:53	100	422	153	Cloudy
23/03/09	13:00	14:00	97	376	126	Cloudy
27/03/09	09:20	10:20	107	373	112	Cloudy
27/03/09	10:20	11:20	96	402	130	Cloudy
27/03/09	11:20	12:20	102	411	107	Cloudy

Summary of 1-hr TSP Monitoring Results

Monitoring Station : AM3

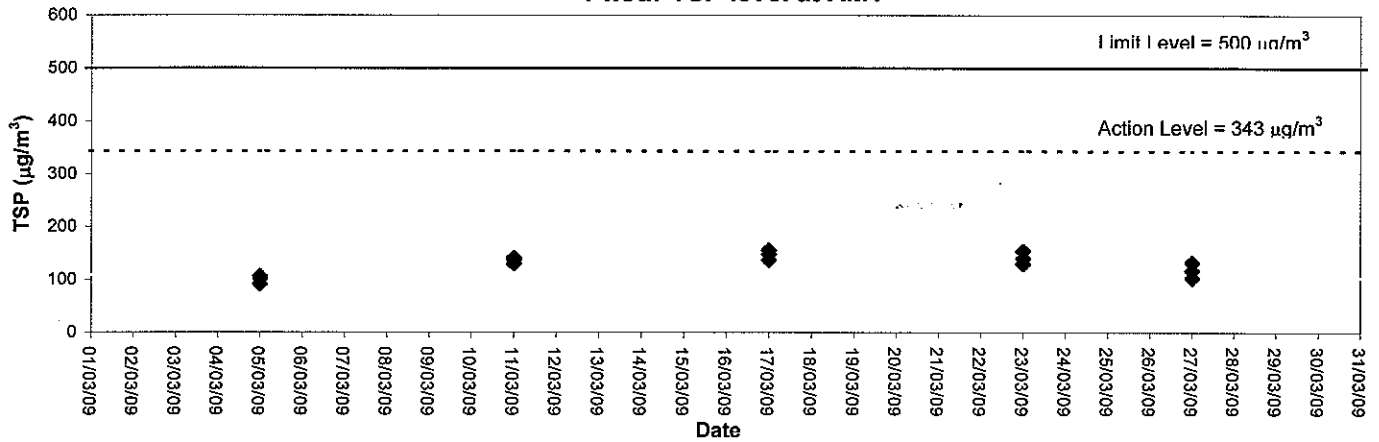
Date	Monitoring Period		1-hr TSP ($\mu\text{g}/\text{m}^3$)			Weather
	Start	Finish	Minimum	Maximum	Average	
05/03/09	13:15	14:15	62	554	138	Cloudy
05/03/09	14:15	15:15	60	537	126	Cloudy
05/03/09	15:15	16:15	65	560	145	Drizzle
11/03/09	13:00	14:00	72	422	115	Cloudy
11/03/09	14:00	15:00	74	384	126	Cloudy
11/03/09	15:00	16:00	82	402	132	Cloudy
17/03/09	14:30	15:30	64	353	120	Fine
17/03/09	15:30	16:30	69	364	132	Fine
17/03/09	16:30	17:30	75	375	143	Fine
23/03/09	14:15	15:15	72	356	146	Cloudy
23/03/09	15:15	16:15	83	381	140	Cloudy
23/03/09	16:15	17:15	85	367	121	Cloudy
27/03/09	13:00	14:00	122	406	140	Cloudy
27/03/09	14:00	15:00	102	452	127	Cloudy
27/03/09	15:00	16:00	95	427	112	Cloudy

Appendix C3

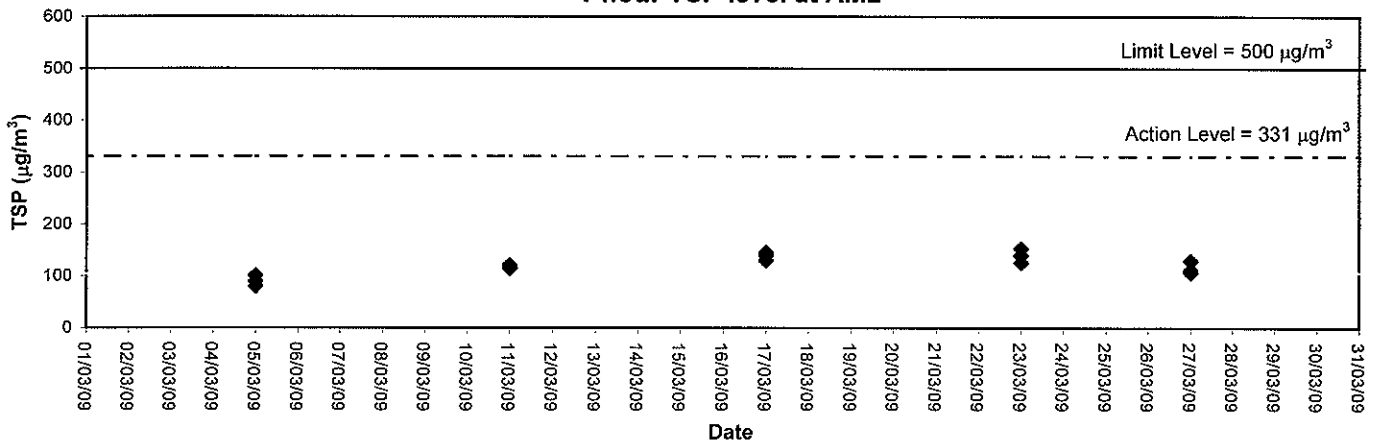
Graphical Plots of Impact Air Quality Monitoring Data



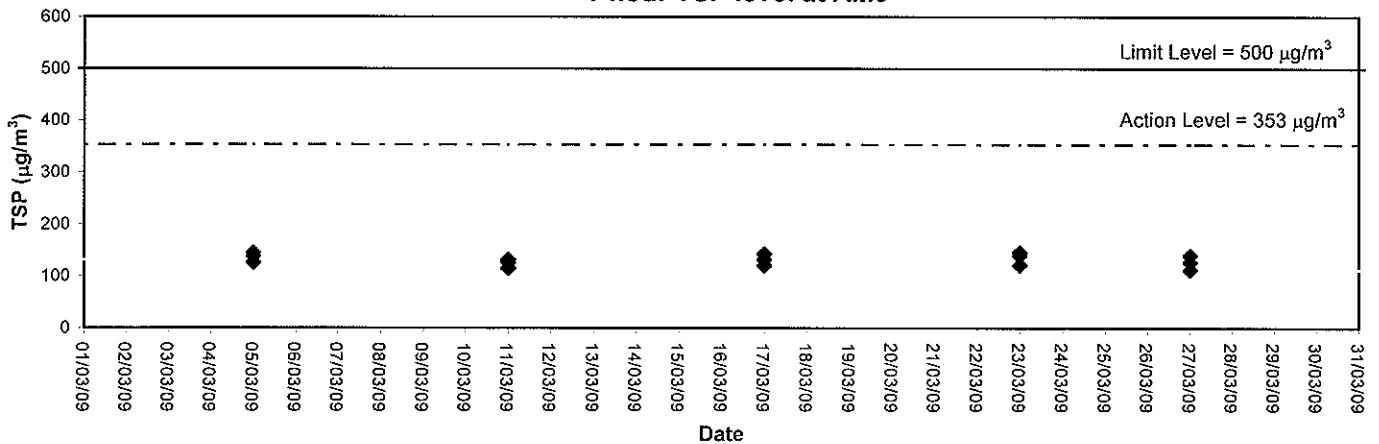
1-hour TSP level at AM1



1-hour TSP level at AM2

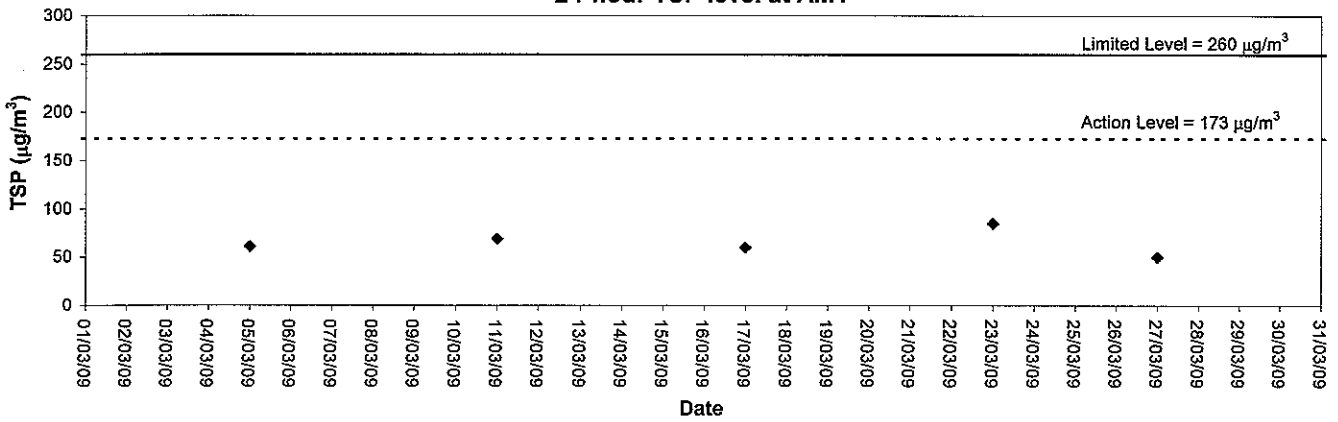


1-hour TSP level at AM3

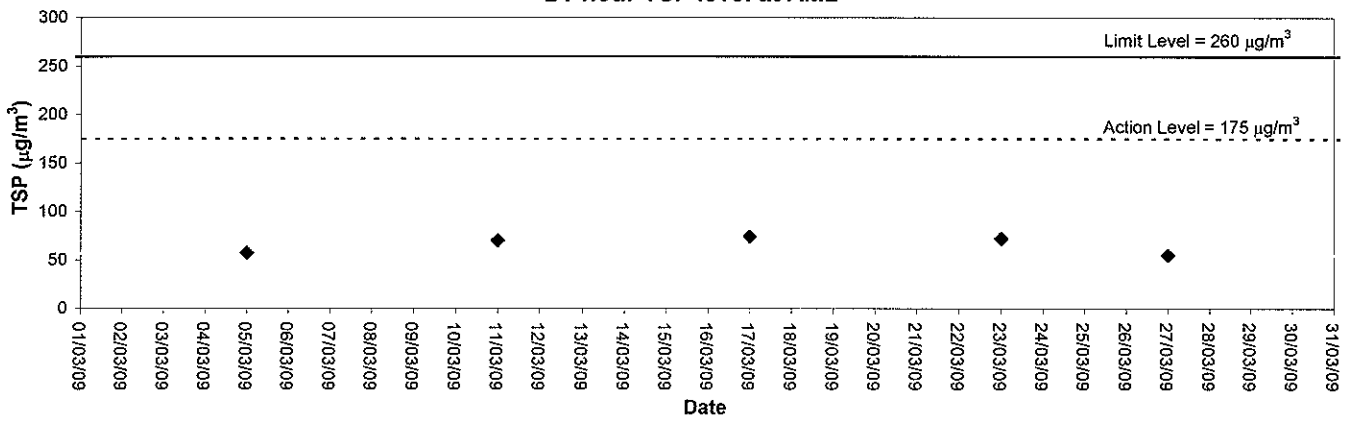




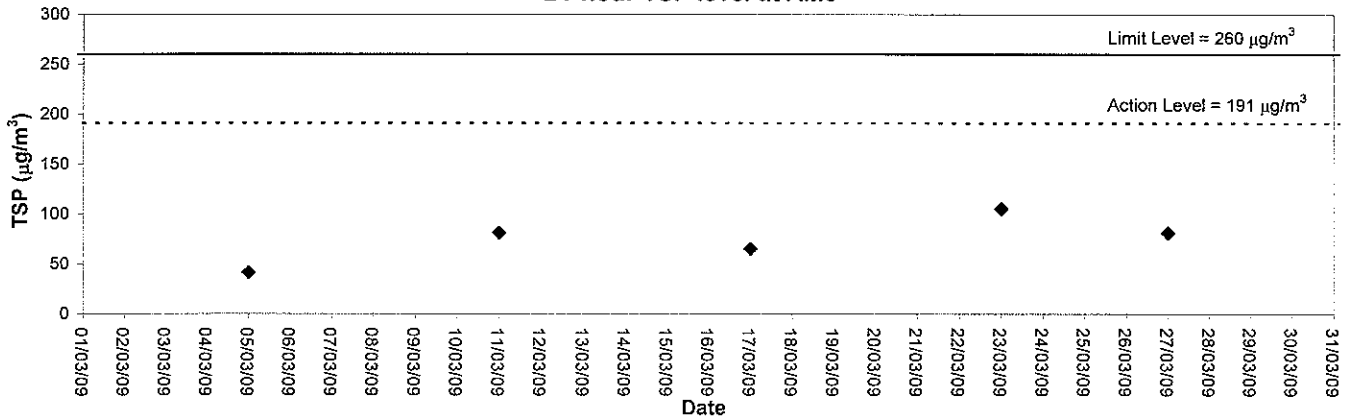
24-hour TSP level at AM1



24-hour TSP level at AM2



24-hour TSP level at AM3





Appendix C1

Calibration Certificates for Impact Noise Monitoring Equipments



Calibration Certificate

Certificate No. **81354**

Page 1 of 4 Pages

Customer : ETS-Testconsult Limited

Address : 8/F., Block B, Veristrong Industrial Centre, 34-36 Au Pui Wan St., Fotan, Hong Kong.

Order No. : Q80566

Date of receipt : 1-Apr-08

Item Tested

Description : Precision Integrating Sound Level Meter

Manufacturer : Rion

Model : NL-31

Serial No. : 00110024

Test Conditions

Date of Test : 3-Apr-08

Supply Voltage : --

Ambient Temperature : (23 ± 3)°C

Relative Humidity : (50 ± 25) %

Test Specifications

Calibration check.

Calibration procedure : Z01.

Test Results

All results were within the IEC 651 Type 1 & IEC 804 Type 1 specification.

The results are shown in the attached page(s).

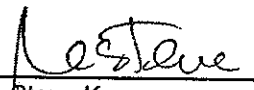
Main Test equipment used:

<u>Equipment No.</u>	<u>Description</u>	<u>Cert. No.</u>	<u>Due Date</u>	<u>Traceable to</u>
S017	Multi-Function Generator	C081456	18-Mar-09	SCL-HKSAR
S024	Sound Level Calibrator	71791	16-Jul-08	NIM-PRC & SCL-HKSAR

The values given in this Calibration Certificate only relate to the values measured at the time of the test and any uncertainties quoted will not include allowance for the equipment long term drift, variations with environmental changes, vibration and shock during transportation, overloading, mis-handling, or the capability of any other laboratory to repeat the measurement. Hong Kong Calibration Ltd. shall not be liable for any loss or damage resulting from the use of the equipment.

The test equipment used for calibration are traceable to International System of Units (SI).
The test results apply to the above Unit-Under-Test only

Calibrated by : 
Dorothy Cheuk

Approved by : 
Steve Kwan

Date: 3-Apr-08

This Certificate is issued by:
Hong Kong Calibration Ltd.
Unit 8B, 24/F., Well Fung Industrial Centre, No. 58-76, Ta Chuen Ping Street, Kwai Chung, NT, Hong Kong.
Tel: 2425 8801 Fax: 2425 8646



Calibration Certificate

Certificate No. 81354

Page 2 of 4 Pages

Results :

1. SPL Accuracy

UUT Setting			Applied Value (dB)	UUT Reading (dB)
Level Range (dB)	Weight	Response		
20 – 100	L _A	Fast	94.03	94.0
		Slow		94.0
	L _C	Fast		94.0
	L _p	Fast		94.1
30 – 120	L _A	Fast	94.03	94.0
		Slow		93.9
	L _C	Fast		94.0
	L _p	Fast		94.0
30 – 120	L _A	Fast	113.97	114.0
		Slow		113.9
	L _C	Fast		113.9
	L _p	Fast		113.9

IEC 651 Type 1 Spec. : ± 0.7 dB
Uncertainty : ± 0.1 dB

2. **Level Stability** : 0.0 dB
IEC 651 Type 1 Spec. : ± 0.3 dB
Uncertainty : ± 0.01 dB



Calibration Certificate

Certificate No. 81354

Page 3 of 4 Pages

3. Linearity

3.1 Level Linearity

UUT Range	Applied Value (dB)	UUT Reading (dB)	Variation (dB)	IEC 651 Type 1 Spec. (Primary Indicator Range)
130	114.0	114.1	+ 0.1	± 0.7 dB
130	104.0	104.0	0.0	
120	94.0	94.0 (Ref.)	--	
110	84.0	84.1	+ 0.1	
100	74.0	74.0	0.0	
90	64.0	64.1	+ 0.1	
80	54.0	54.2	+ 0.2	

Uncertainty : ± 0.1 dB

3.2 Differential level linearity

UUT Range	Applied Value (dB)	UUT Reading (dB)	Variation (dB)	IEC 651 Type 1 Spec.
120	84.0	84.0	0.0	± 0.4 dB
	94.0	94.0 (Ref.)	--	
	95.0	95.1	+ 0.1	± 0.2 dB
	104.0	104.0	0.0	± 0.3 dB
	105.0	105.0	0.0	± 1.0 dB

Uncertainty : ± 0.1 dB

4. Frequency Weighting

A weighting

Frequency	Attenuation (dB)	IEC 651 Type 1 Spec.
31.5 Hz	- 39.7	- 39.4 dB, ± 1.5 dB
63 Hz	- 26.3	- 26.2 dB, ± 1.5 dB
125 Hz	- 16.2	- 16.1 dB, ± 1 dB
250 Hz	- 8.7	- 8.6 dB, ± 1 dB
500 Hz	- 3.3	- 3.2 dB, ± 1 dB
1 kHz	0.0 (Ref.)	0 dB, ± 1 dB
2 kHz	+ 1.4	+ 1.2 dB, ± 1 dB
4 kHz	+ 1.2	+ 1.0 dB, ± 1 dB
8 kHz	- 1.0	- 1.1 dB, + 1.5 dB ~ - 3 dB
16 kHz	- 6.6	- 6.6 dB, + 3 dB ~ ∞

Uncertainty : ± 0.1 dB



Calibration Certificate

Certificate No. 81354

Page 4 of 4 Pages

4. Time Averaging

Applied Burst duty Factor	Applied Leq Value (dB)	UUT Reading (dB)	IEC 804 Type 1 Spec.
continuous	40.0	40.0	--
1/10	40.0	40.0	± 0.5 dB
1/10 ²	40.0	40.0	
1/10 ³	40.0	40.0	± 1.0 dB
1/10 ⁴	40.0	40.0	

Uncertainty : ± 0.1 dB

- Remark : 1. UUT : Unit-Under-Test
2. The uncertainty claimed is for a confidence probability of not less than 95%.
3. Atmospheric Pressure : 1 008 hPa.

----- END -----



Calibration Certificate

Certificate No. **81355**

Page 1 of 2 Pages

Customer : ETS-Testconsult Limited

Address : 8/F., Block B, Veristrong Industrial Centre, 34-36 Au Pui Wan St., Fotan, Hong Kong.

Order No. : Q80566

Date of receipt : 1-Apr-08

Item Tested

Description : Sound Level Calibrator

Manufacturer : Rion

Model : NC-73

Serial No. : 10196943

Test Conditions

Date of Test : 3-Apr-08

Supply Voltage : --

Ambient Temperature : (23 ± 3)°C

Relative Humidity : (50 ± 25) %

Test Specifications

Calibration check.

Calibration procedure : F21, Z02.

Test Results

All results were within the manufacturer's specification.

The results are shown in the attached page(s).

Main Test equipment used:

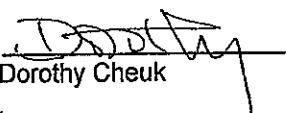
<u>Equipment No.</u>	<u>Description</u>	<u>Cert. No.</u>	<u>Due Date</u>	<u>Traceable to</u>
S014	Spectrum Analyzer	73602	7-Jul-08	NIM-PRC & SCL-HKSAR
S024	Sound Level Calibrator	71791	16-Jul-08	NIM-PRC & SCL-HKSAR
S041	Universal Counter	73453	22-Aug-08	SCL-HKSAR

The values given in this Calibration Certificate only relate to the values measured at the time of the test and any uncertainties quoted will not include allowance for the equipment long term drift, variations with environmental changes, vibration and shock during transportation, overloading, mis-handling, or the capability of any other laboratory to repeat the measurement. Hong Kong Calibration Ltd. shall not be liable for any loss or damage resulting from the use of the equipment.

The test equipment used for calibration are traceable to International System of Units (SI).

The test results apply to the above Unit-Under-Test only

Calibrated by :


Dorothy Cheuk

Approved by :


Steve Kwan

Date: 3-Apr-08

This Certificate is issued by:

Hong Kong Calibration Ltd.

Unit 8B, 24/F., Well Fung Industrial Centre, No. 58-76, Ta Chuen Ping Street, Kwai Chung, NT, Hong Kong.

Tel: 2425 8801 Fax: 2425 8646

The copyright of this certificate is owned by Hong Kong Calibration Ltd.. It may not be reproduced except in full.



Calibration Certificate

Certificate No. 81355

Page 2 of 2 Pages

Results :

1. Level Accuracy (at 1 kHz)

UUT Nominal Value	Measured Value	Mfr's Spec.
94 dB	94.0 dB	± 1 dB

Uncertainty : ± 0.1 dB

2. Frequency Accuracy

UUT Nominal Value	Measured Value	Mfr's Spec.
1 kHz	0.990 8 kHz	± 2 %

Uncertainty : ± 0.1 %

3. Level Stability : 0.0 dB

Uncertainty : ± 0.01 dB

4. Total Harmonic Distortion : < 0.1 %

Mfr's Spec. : < 3 %

Uncertainty : ± 2.3 % of reading

Remark : 1. UUT : Unit-Under-Test

2. The uncertainty claimed is for a confidence probability of not less than 95%.

3. The above measured values are the mean of 3 measurement.

4. Atmospheric Pressure : 1 005 hPa

----- END -----



Appendix C2

Impact Noise Monitoring Results



Day-time Noise Monitoring

Monitoring Station: NM1

Date	Weather Condition	Start Time (hh:mm)	End Time (hh:mm)	Noise Level at the monitoring point, dB (A)			Wind Speed (m/s)
				Leq (30min)	L10	L90	
05/03/09	Cloudy	09:20	09:50	51.9	55.2	49.7	1.2
11/03/09	Cloudy	09:20	09:50	64.4	66.1	47.5	0.4
17/03/09	Fine	13:15	13:45	62.3	65.0	59.4	1.2
23/03/09	Cloudy	11:12	11:42	68.5	70.3	59.1	0.4

Monitoring Station: NM2

Date	Weather Condition	Start Time (hh:mm)	End Time (hh:mm)	Noise Level at the monitoring point, dB (A)			Wind Speed (m/s)
				Leq (30min)	L10	L90	
05/03/09	Cloudy	10:08	10:38	64.7	67.6	62.3	1.0
11/03/09	Cloudy	09:55	10:25	71.2	75.1	57.8	0.7
17/03/09	Fine	14:00	14:30	69.9	74.4	65.8	0.6
23/03/09	Cloudy	13:30	14:00	69.2	71.1	58.2	0.5

Monitoring Station: RNM3

Date	Weather Condition	Start Time (hh:mm)	End Time (hh:mm)	Noise Level at the monitoring point, dB (A)			Wind Speed (m/s)
				Leq (30min)	L10	L90	
05/03/09	Cloudy	10:55	11:25	63.5	68.8	61.7	1.0
11/03/09	Cloudy	10:30	11:00	68.3	70.2	60.6	1.0
17/03/09	Fine	14:42	15:12	67.3	69.8	64.7	0.9
23/03/09	Cloudy	14:10	14:40	66.1	68.4	58.0	0.6

Remark: 3dB(A) correction had been added to the results since noise measurements at RNM3 were free-field.

Monitoring Station: NM4

Date	Weather Condition	Start Time (hh:mm)	End Time (hh:mm)	Noise Level at the monitoring point, dB (A)			Wind Speed (m/s)
				Leq (30min)	L10	L90	
05/03/09	Cloudy	11:35	12:05	50.7	56.7	45.8	1.5
11/03/09	Cloudy	11:10	11:40	51.8	53.6	46.3	0.5
17/03/09	Fine	15:25	15:55	52.6	55.0	49.9	1.7
23/03/09	Cloudy	14:50	15:20	60.2	63.1	55.1	1.0



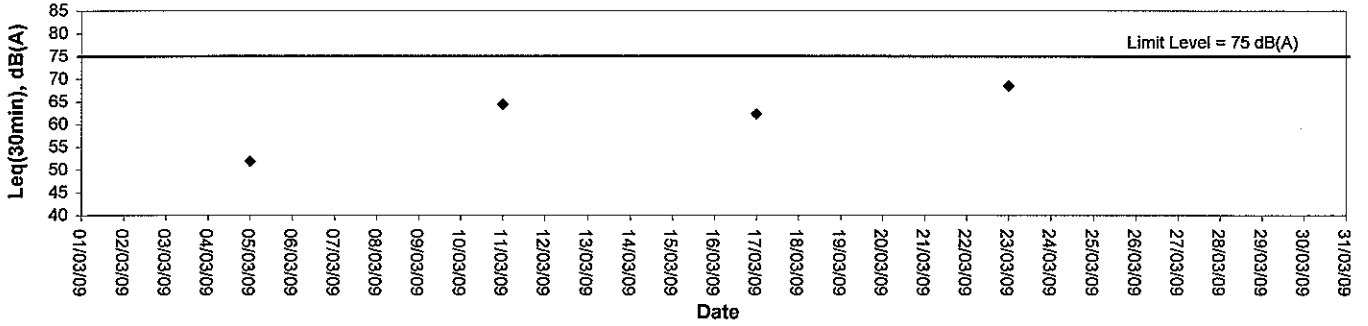
Appendix C3

Graphical Plots of Impact Noise Monitoring Data

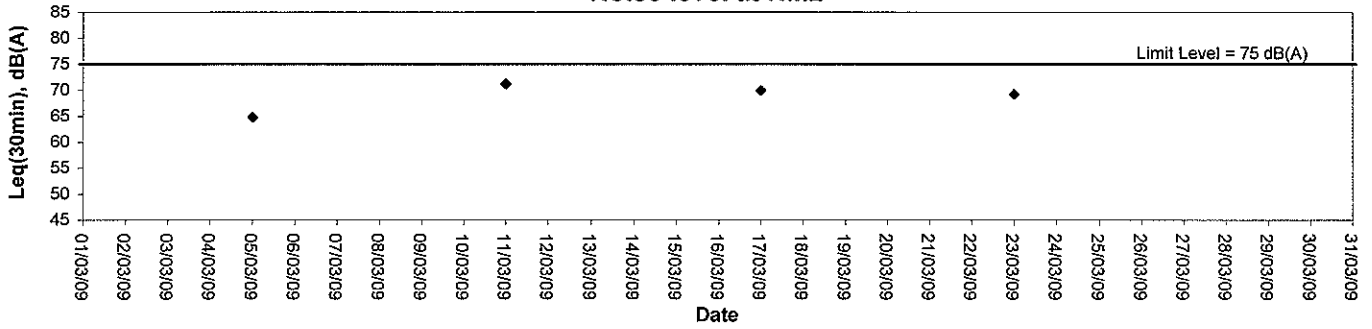


Noise Monitoring (Day-time)

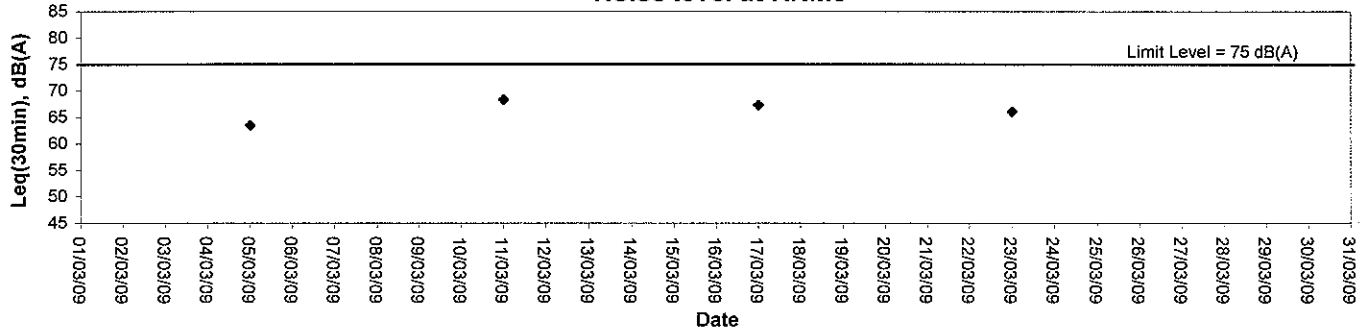
Noise level at NM1



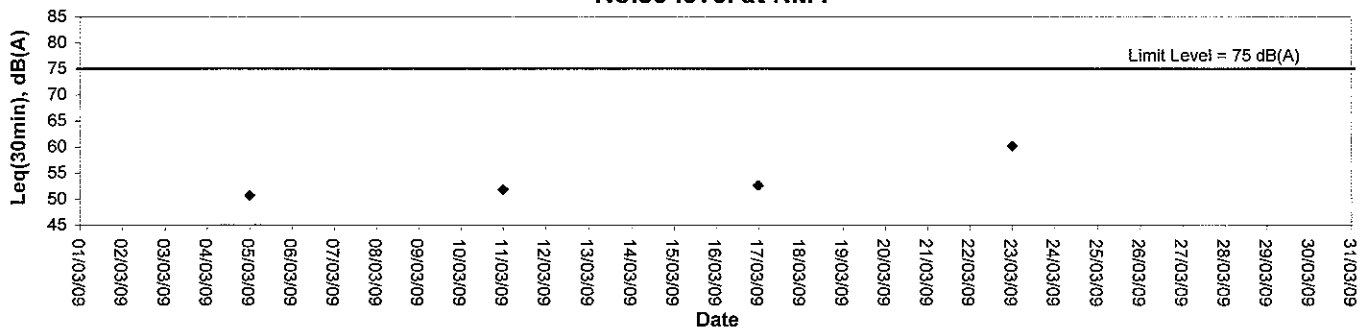
Noise level at NM2



Noise level at RNM3



Noise level at NM4





Appendix D

Event-Action Plans

Event / Action Plan for Air Quality

EVENT	ACTION				CONTRACTOR
	ET	IC(E)	ER	ER	
Action Level					
Action Level being exceeded for one sample	<ol style="list-style-type: none"> Identify source, investigate the causes of Exceedance and propose remedial measures; Inform IC(E) and ER; Repeat measurement to confirm finding; Increase monitoring frequency to daily 	<ol style="list-style-type: none"> Check monitoring data submitted by ET; Check Contractor's working method. 	<ol style="list-style-type: none"> Notify Contractor. 	<ol style="list-style-type: none"> Rectify any unacceptable practice; Amend working methods if appropriate. 	
Action Level being exceeded for two or more consecutive samples	<ol style="list-style-type: none"> Same as the above; Advise the ER on the effectiveness of the proposed remedial measures; Discuss with IC(E) and Contractor on remedial actions required; If exceedance continues, arrange meeting with IC(E) and ER; If exceedance stops, cease additional monitoring. 	<ol style="list-style-type: none"> Same as the above; Discuss with ET and Contractor on possible remedial measures; Advise the ET on the effectiveness of the proposed remedial measures; Supervise implementation of remedial measures. 	<ol style="list-style-type: none"> Same as the above; Confirm receipt of notification of failure in writing; Ensure remedial measures properly implemented. 	<ol style="list-style-type: none"> Submit proposals for remedial actions to ER within 3 working days of notification; Implement the agreed proposals; Amend proposal if appropriate. 	
Limit Level					
Limit Level being exceeded for one sample	<ol style="list-style-type: none"> Identify source; Inform ER, Contractor and EPD; Repeat measurement to confirm finding; Increase monitoring frequency to daily; Assess effectiveness of Contractor's remedial actions and keep IC(E), EPD and ER informed of the results. 	<ol style="list-style-type: none"> Checking monitoring data submitted by ET; Check Contractor's working method; Discuss with ET and Contractor on the possible remedial measures; Advise the ER on the effectiveness of the proposed remedial measures; Supervise the implementation of remedial measures. 	<ol style="list-style-type: none"> Confirm receipt of notification of failure in writing; Notify Contractor; Ensure remedial actions properly implemented. 	<ol style="list-style-type: none"> Take immediate action to avoid further exceedance; Submit proposals for remedial actions to IC(E) within 3 working days of notification; Implement the agreed proposals; Amend proposal if appropriate. 	
Limit Level being exceeded for two or more consecutive samples	<ol style="list-style-type: none"> Same as the above; Carry our analysis of Contractor's working procedures to determine possible mitigation to be implemented; Arrange meeting with IC(E) and ER to discuss the remedial actions to be taken; If exceedance stops, cease additional monitoring. 	<ol style="list-style-type: none"> Discuss with ER, ET and Contractor on the potential remedial actions; Review Contractor's remedial actions whenever necessary to assume their effectiveness and advise the ER accordingly; Supervise the implementation of remedial measures. 	<ol style="list-style-type: none"> Same as the above; In consolidation with the IC(E), agree with the Contractor on the remedial measures to be implemented; If exceedance continues, consider what portion of the work is responsible and instruct the Contractor to stop that portion of work until the exceedance is abated. 	<ol style="list-style-type: none"> Same as the above; Resubmit proposals if problem still not under control; Stop the relevant portion of works as determined by the ER until the exceedance is abated. 	

Event / Action Plan for Construction Noise

EVENT	ACTION				CONTRACTOR
	ET	IC(E)	ER		
Action level	<ol style="list-style-type: none"> 1. Notify IC(E) and Contractor; 2. Carry out investigation; 3. Report the results of investigation to the IC(E), ER and Contractor; 4. Discuss with the Contractor and formulate remedial measures ; 5. Increase monitoring frequency to check mitigation effectiveness. 	<ol style="list-style-type: none"> 1. Review and investigation results submitted by the ET; 2. Review the proposed remedial measures by the Contractor and advise the ER accordingly; 3. Supervise the implementation of remedial measures. 	<ol style="list-style-type: none"> 1. Confirm receipt of notification of failure in writing; 2. Notify Contractor; 3. Require Contractor to propose remedial measures for the analysed noise problem; 4. Ensure proper implementation of remedial measures. 	<ol style="list-style-type: none"> 1. Submit noise mitigation proposal to IC(E); 2. Implement noise mitigation proposals. 	
Limit level	<ol style="list-style-type: none"> 1. Identify source; 2. Inform IC(E), ER, EPD and Contractor; 3. Repeat measurement to confirm findings; 4. Increase monitoring frequency; 5. Carry out analysis of Contractor's working procedures to determine possible mitigation to be implemented; 6. Inform IC(E), ER and EPD the causes and actions taken for the exceedances; 7. Assess the effectiveness of Contractor's remedial actions and keep IC(E), EPD and ER informed of the results; 8. If exceedance stops, cease additional monitoring. 	<ol style="list-style-type: none"> 1. Discuss amongst ER, ET, and Contractor on the potential remedial actions; 2. Review Contractor's remedial actions to ensure their effectiveness and advise the ER accordingly; 3. Supervise the implementation of remedial measures. 	<ol style="list-style-type: none"> 1. Same as above; 2. If exceedances continue, consider what portion of the work is responsible and instruct the Contractor to stop that portion of work until the exceedance is abated. 	<ol style="list-style-type: none"> 1. Take immediate action to avoid further exceedance; 2. Submit proposals for remedial actions to IC(E); 3. Implement the agreed proposals; 4. Resubmit proposals if problem still out of control; 5. Stop the relevant portion of works as determined by ER, until the exceedance is abated. 	

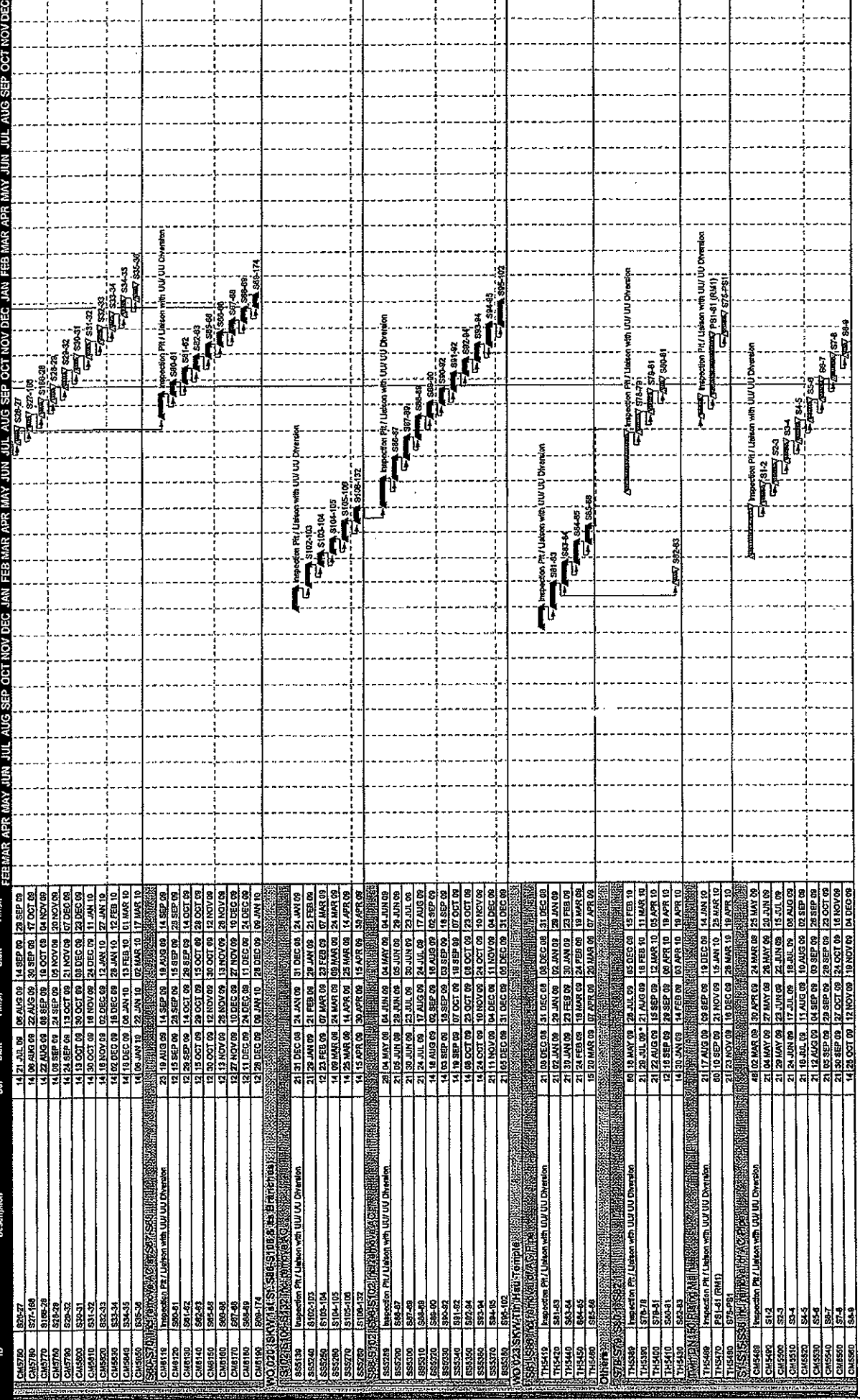


Appendix E

Construction Programme

2009
FEB MAR APR MAY JUN JUL AUG SEP OCT NOV DEC JAN FEB MAR APR MAY JUN JUL AUG SEP OCT NOV DEC 2010

Act 10
Activity Description



Item No.	Start Date	End Date	Early Start	Early Finish	Late Start	Late Finish
CH5700	17 Jul 09	06 Aug 09	14 Sep 09	10 Sep 09	28 Sep 09	17 Oct 09
CH5701	14 Aug 09	22 Aug 09	30 Sep 09	18 Oct 09	04 Nov 09	04 Nov 09
CH5702	14 Aug 09	08 Sep 09	10 Oct 09	04 Nov 09	20 Nov 09	20 Nov 09
CH5703	14 Aug 09	24 Sep 09	21 Nov 09	17 Dec 09	28 Dec 09	28 Dec 09
CH5704	14 Aug 09	13 Oct 09	08 Dec 09	24 Dec 09	11 Jan 10	11 Jan 10
CH5705	14 Aug 09	18 Nov 09	12 Dec 09	24 Dec 09	12 Feb 10	12 Feb 10
CH5706	14 Aug 09	02 Dec 09	18 Dec 09	24 Dec 09	01 Mar 10	01 Mar 10
CH5707	14 Aug 09	15 Dec 09	24 Dec 09	31 Dec 09	17 Mar 10	17 Mar 10
CH5708	14 Aug 09	29 Dec 09	18 Aug 09	14 Sep 09	28 Sep 09	14 Sep 09
CH5709	14 Aug 09	11 Oct 09	28 Sep 09	25 Sep 09	14 Oct 09	14 Oct 09
CH5710	14 Aug 09	29 Oct 09	30 Oct 09	30 Oct 09	28 Oct 09	28 Oct 09
CH5711	14 Aug 09	12 Nov 09	13 Nov 09	13 Nov 09	26 Nov 09	26 Nov 09
CH5712	14 Aug 09	26 Nov 09	10 Dec 09	27 Nov 09	19 Dec 09	19 Dec 09
CH5713	14 Aug 09	10 Dec 09	27 Nov 09	19 Dec 09	24 Dec 09	24 Dec 09
CH5714	14 Aug 09	24 Dec 09	24 Dec 09	24 Dec 09	09 Jan 10	09 Jan 10
CH5715	12 Dec 09	09 Jan 10	28 Dec 09	11 Dec 09	10 Nov 09	10 Nov 09
CH5716	21 Dec 09	24 Jan 09	31 Dec 09	31 Dec 09	24 Jan 09	24 Jan 09
CH5717	21 Dec 09	21 Feb 09	29 Jan 09	21 Feb 09	07 Mar 09	07 Mar 09
CH5718	21 Dec 09	07 Mar 09	09 Mar 09	09 Mar 09	24 Mar 09	24 Mar 09
CH5719	14 Mar 09	14 Apr 09	15 Apr 09	15 Apr 09	30 Apr 09	30 Apr 09
CH5720	14 Mar 09	25 Apr 09	15 Apr 09	15 Apr 09	30 Apr 09	30 Apr 09
CH5721	28 Apr 09	04 Jun 09	04 May 09	04 Jun 09	04 Jun 09	04 Jun 09
CH5722	28 Apr 09	18 Jun 09	18 Jun 09	18 Jun 09	29 Jun 09	29 Jun 09
CH5723	21 Jun 09	23 Jul 09	24 Jul 09	24 Jul 09	17 Aug 09	17 Aug 09
CH5724	21 Jun 09	08 Aug 09	14 Aug 09	14 Aug 09	29 Aug 09	29 Aug 09
CH5725	21 Jun 09	17 Aug 09	24 Jul 09	24 Jul 09	06 Sep 09	06 Sep 09
CH5726	14 Aug 09	14 Aug 09	14 Aug 09	14 Aug 09	28 Sep 09	28 Sep 09
CH5727	14 Aug 09	14 Aug 09	14 Aug 09	14 Aug 09	07 Oct 09	07 Oct 09
CH5728	14 Aug 09	07 Oct 09	13 Oct 09	13 Oct 09	28 Oct 09	28 Oct 09
CH5729	14 Aug 09	22 Oct 09	13 Oct 09	13 Oct 09	30 Nov 09	30 Nov 09
CH5730	14 Aug 09	10 Nov 09	11 Nov 09	11 Nov 09	26 Dec 09	26 Dec 09
CH5731	14 Aug 09	31 Dec 09	18 Dec 09	18 Dec 09	16 Dec 09	16 Dec 09
CH5732	21 Dec 09	06 Dec 09	18 Dec 09	18 Dec 09	16 Dec 09	16 Dec 09
CH5733	21 Dec 09	16 Dec 09	24 Mar 10	24 Mar 10	19 Apr 10	19 Apr 10
CH5734	21 Dec 09	16 Dec 09	24 Mar 10	24 Mar 10	19 Apr 10	19 Apr 10
CH5735	21 Dec 09	16 Dec 09	24 Mar 10	24 Mar 10	19 Apr 10	19 Apr 10
CH5736	21 Dec 09	16 Dec 09	24 Mar 10	24 Mar 10	19 Apr 10	19 Apr 10
CH5737	21 Dec 09	16 Dec 09	24 Mar 10	24 Mar 10	19 Apr 10	19 Apr 10
CH5738	21 Dec 09	16 Dec 09	24 Mar 10	24 Mar 10	19 Apr 10	19 Apr 10
CH5739	21 Dec 09	16 Dec 09	24 Mar 10	24 Mar 10	19 Apr 10	19 Apr 10
CH5740	21 Dec 09	16 Dec 09	24 Mar 10	24 Mar 10	19 Apr 10	19 Apr 10
CH5741	21 Dec 09	16 Dec 09	24 Mar 10	24 Mar 10	19 Apr 10	19 Apr 10
CH5742	21 Dec 09	16 Dec 09	24 Mar 10	24 Mar 10	19 Apr 10	19 Apr 10
CH5743	21 Dec 09	16 Dec 09	24 Mar 10	24 Mar 10	19 Apr 10	19 Apr 10
CH5744	21 Dec 09	16 Dec 09	24 Mar 10	24 Mar 10	19 Apr 10	19 Apr 10
CH5745	21 Dec 09	16 Dec 09	24 Mar 10	24 Mar 10	19 Apr 10	19 Apr 10
CH5746	21 Dec 09	16 Dec 09	24 Mar 10	24 Mar 10	19 Apr 10	19 Apr 10
CH5747	21 Dec 09	16 Dec 09	24 Mar 10	24 Mar 10	19 Apr 10	19 Apr 10
CH5748	21 Dec 09	16 Dec 09	24 Mar 10	24 Mar 10	19 Apr 10	19 Apr 10
CH5749	21 Dec 09	16 Dec 09	24 Mar 10	24 Mar 10	19 Apr 10	19 Apr 10
CH5750	21 Dec 09	16 Dec 09	24 Mar 10	24 Mar 10	19 Apr 10	19 Apr 10
CH5751	21 Dec 09	16 Dec 09	24 Mar 10	24 Mar 10	19 Apr 10	19 Apr 10
CH5752	21 Dec 09	16 Dec 09	24 Mar 10	24 Mar 10	19 Apr 10	19 Apr 10
CH5753	21 Dec 09	16 Dec 09	24 Mar 10	24 Mar 10	19 Apr 10	19 Apr 10
CH5754	21 Dec 09	16 Dec 09	24 Mar 10	24 Mar 10	19 Apr 10	19 Apr 10
CH5755	21 Dec 09	16 Dec 09	24 Mar 10	24 Mar 10	19 Apr 10	19 Apr 10
CH5756	21 Dec 09	16 Dec 09	24 Mar 10	24 Mar 10	19 Apr 10	19 Apr 10
CH5757	21 Dec 09	16 Dec 09	24 Mar 10	24 Mar 10	19 Apr 10	19 Apr 10
CH5758	21 Dec 09	16 Dec 09	24 Mar 10	24 Mar 10	19 Apr 10	19 Apr 10
CH5759	21 Dec 09	16 Dec 09	24 Mar 10	24 Mar 10	19 Apr 10	19 Apr 10
CH5760	21 Dec 09	16 Dec 09	24 Mar 10	24 Mar 10	19 Apr 10	19 Apr 10
CH5761	21 Dec 09	16 Dec 09	24 Mar 10	24 Mar 10	19 Apr 10	19 Apr 10
CH5762	21 Dec 09	16 Dec 09	24 Mar 10	24 Mar 10	19 Apr 10	19 Apr 10
CH5763	21 Dec 09	16 Dec 09	24 Mar 10	24 Mar 10	19 Apr 10	19 Apr 10
CH5764	21 Dec 09	16 Dec 09	24 Mar 10	24 Mar 10	19 Apr 10	19 Apr 10
CH5765	21 Dec 09	16 Dec 09	24 Mar 10	24 Mar 10	19 Apr 10	19 Apr 10
CH5766	21 Dec 09	16 Dec 09	24 Mar 10	24 Mar 10	19 Apr 10	19 Apr 10
CH5767	21 Dec 09	16 Dec 09	24 Mar 10	24 Mar 10	19 Apr 10	19 Apr 10
CH5768	21 Dec 09	16 Dec 09	24 Mar 10	24 Mar 10	19 Apr 10	19 Apr 10
CH5769	21 Dec 09	16 Dec 09	24 Mar 10	24 Mar 10	19 Apr 10	19 Apr 10
CH5770	21 Dec 09	16 Dec 09	24 Mar 10	24 Mar 10	19 Apr 10	19 Apr 10
CH5771	21 Dec 09	16 Dec 09	24 Mar 10	24 Mar 10	19 Apr 10	19 Apr 10
CH5772	21 Dec 09	16 Dec 09	24 Mar 10	24 Mar 10	19 Apr 10	19 Apr 10
CH5773	21 Dec 09	16 Dec 09	24 Mar 10	24 Mar 10	19 Apr 10	19 Apr 10
CH5774	21 Dec 09	16 Dec 09	24 Mar 10	24 Mar 10	19 Apr 10	19 Apr 10
CH5775	21 Dec 09	16 Dec 09	24 Mar 10	24 Mar 10	19 Apr 10	19 Apr 10
CH5776	21 Dec 09	16 Dec 09	24 Mar 10	24 Mar 10	19 Apr 10	19 Apr 10
CH5777	21 Dec 09	16 Dec 09	24 Mar 10	24 Mar 10	19 Apr 10	19 Apr 10
CH5778	21 Dec 09	16 Dec 09	24 Mar 10	24 Mar 10	19 Apr 10	19 Apr 10
CH5779	21 Dec 09	16 Dec 09	24 Mar 10	24 Mar 10	19 Apr 10	19 Apr 10
CH5780	21 Dec 09	16 Dec 09	24 Mar 10	24 Mar 10	19 Apr 10	19 Apr 10
CH5781	21 Dec 09	16 Dec 09	24 Mar 10	24 Mar 10	19 Apr 10	19 Apr 10
CH5782	21 Dec 09	16 Dec 09	24 Mar 10	24 Mar 10	19 Apr 10	19 Apr 10
CH5783	21 Dec 09	16 Dec 09	24 Mar 10	24 Mar 10	19 Apr 10	19 Apr 10
CH5784	21 Dec 09	16 Dec 09	24 Mar 10	24 Mar 10	19 Apr 10	19 Apr 10
CH5785	21 Dec 09	16 Dec 09	24 Mar 10	24 Mar 10	19 Apr 10	19 Apr 10
CH5786	21 Dec 09	16 Dec 09	24 Mar 10	24 Mar 10	19 Apr 10	19 Apr 10
CH5787	21 Dec 09	16 Dec 09	24 Mar 10	24 Mar 10	19 Apr 10	19 Apr 10
CH5788	21 Dec 09	16 Dec 09	24 Mar 10	24 Mar 10	19 Apr 10	19 Apr 10
CH5789	21 Dec 09	16 Dec 09	24 Mar 10	24 Mar 10	19 Apr 10	19 Apr 10
CH5790	21 Dec 09	16 Dec 09	24 Mar 10	24 Mar 10	19 Apr 10	19 Apr 10
CH5791	21 Dec 09	16 Dec 09	24 Mar 10	24 Mar 10	19 Apr 10	19 Apr 10
CH5792	21 Dec 09	16 Dec 09	24 Mar 10	24 Mar 10	19 Apr 10	19 Apr 10
CH5793	21 Dec 09	16 Dec 09	24 Mar 10	24 Mar 10	19 Apr 10	19 Apr 10
CH5794	21 Dec 09	16 Dec 09	24 Mar 10	24 Mar 10	19 Apr 10	19 Apr 10
CH5795	21 Dec 09	16 Dec 09	24 Mar 10	24 Mar 10	19 Apr 10	19 Apr 10
CH5796	21 Dec 09	16 Dec 09	24 Mar 10	24 Mar 10	19 Apr 10	19 Apr 10
CH5797	21 Dec 09	16 Dec 09	24 Mar 10	24 Mar 10	19 Apr 10	19 Apr 10
CH5798	21 Dec 09	16 Dec 09	24 Mar 10	24 Mar 10	19 Apr 10	19 Apr 10
CH5799	21 Dec 09	16 Dec 09	24 Mar 10	24 Mar 10	19 Apr 10	19 Apr 10
CH5800	21 Dec 09	16 Dec 09	24 Mar 10	24 Mar 10	19 Apr 10	19 Apr 10

DC/2007/18
Yung Shue Wan and Sok Kwu Wan Village Sewerage, Stage 1 Works
Project Programme Rev. 5

Start Date 31 JAN 08
Finish Date 18 APR 10

▲ Progress point
▲ Critical point
▲ Summary point
▲ Start milestone point
▲ Finish milestone point

▲ Early start point
▲ Early finish point
▲ Progress bar
▲ Critical bar
▲ Summary bar

Page : 4A

Approved
Checked
Date
18 JUN 08
03 SEP 08
31 OCT 08
24 DEC 08

Act ID	Activity Description	Rem Dur	Early Start	Early Finish	Late Start	Late Finish
CH570	S1-10	14	13 NOV 09	28 NOV 09	05 DEC 09	21 DEC 09
CH580	S10-11	14	30 NOV 09	15 DEC 09	22 DEC 09	06 JAN 10
CH590	S11-12	14	10 DEC 09	02 JAN 10	09 JAN 10	23 JAN 10
CH600	S12-13	14	04 JAN 10	19 JAN 10	26 JAN 10	10 FEB 10
CH610	S13-14	14	20 JAN 10	04 FEB 10	11 FEB 10	26 FEB 10
CH620	S14-15	14	05 FEB 10	20 FEB 10	27 FEB 10	15 MAR 10
CH630	S15-16	14	22 FEB 10	09 MAR 10	16 MAR 10	31 MAR 10
CH640	S17-18	27	15 OCT 09	27 JAN 10	15 OCT 09	27 JAN 10
CH650	S19-20	20	29 JAN 10	18 APR 10	23 JAN 10	18 APR 10



Date	Revision	Checked	Approved
16 JUN 08	Revision 2	SIL	KYS
03 SEP 08	Revision 3	SIL	KYS
31 OCT 08	Revision 4	SIL	KYS
24 DEC 08	Revision 5	SIL	KYS

DC/2007/18
 Yung Shue Wan and Sok Kwu Wan Villages Sewerage, Stage 1 Works
 Project Programme Rev. 5

Start Date 31 JAN 08
 Finish Date 18 APR 10
 Page : 5A



Appendix F

Summary of Implementation Status

of

Mitigation Measures during Site Inspection



Environmental Mitigation Implementation Schedule

Environmental Protection Measures	Location	Implementation Status			
		Implemented	Partially implemented	Not implemented	Not Applicable
Air Quality					
<ul style="list-style-type: none"> Stockpiles of imported material kept on site should be contained within hoarding, dampened and / or covered during dry and windy weather. 	All areas	√			
<ul style="list-style-type: none"> Material stockpiled alongside trenches should be covered with tarpaulins whenever works are close to village houses. 	All areas	√			
<ul style="list-style-type: none"> Water sprays should be used during the delivery and handling of cement, sands, aggregates and the like. 	All areas	√			
<ul style="list-style-type: none"> Any vehicle used for moving sands, aggregates and construction waste should have properly fitting side and tail boards. Materials should not be loaded to a level higher than the side and tail boards, and should be covered by a clean tarpaulin. 	All areas	√			
<ul style="list-style-type: none"> Unpaved areas should be watered regularly to avoid dust generation. 	Site Egress	√			
<ul style="list-style-type: none"> The enclosures should be around the main dust-generating activities. 	All areas	√			
<ul style="list-style-type: none"> All plant and equipment should be well maintained e.g. without black smoke emission. 	All areas	√			
<ul style="list-style-type: none"> Open burning should be prohibited. 	All areas	√			
Noise Impact					
<ul style="list-style-type: none"> Quite powered mechanical equipment (PME) or method should be used. 	All areas	√			
<ul style="list-style-type: none"> The number plant should be restricted (1 item for each type of plant). 	All areas	√			
<ul style="list-style-type: none"> Only well maintained plant should be operated on-site and plant should be serviced regularly during the construction works. 	All areas	√			
<ul style="list-style-type: none"> Mobile plant, if any, should be sited as far away from NSRs as possible. 	All areas	√			
<ul style="list-style-type: none"> Machines and plants that may be in intermittent use should be shut down between work periods or should be throttled down to a minimum. 	All areas	√			
<ul style="list-style-type: none"> Plant known to emit noise strongly should be orientated so that the noise is directed away from nearby NSRs. 	All areas	√			
<ul style="list-style-type: none"> The constructions works should be scheduled to minimize noise nuisance. 	All areas	√			
<ul style="list-style-type: none"> Air compressors and hand held breakers should have noise labels. 	All areas	√			√
<ul style="list-style-type: none"> Compressors and generators should operate with door closed. 	All areas	√			
Water Quality					
General Construction Works					
<ul style="list-style-type: none"> Debris and rubbish generated on-site should be collected, handled and disposed of properly to avoid entering the nearby coastal water and stormwater drains. 	All areas		√		
<ul style="list-style-type: none"> All fuel tanks and storage areas should be provided with locks and be sited on sealed area, within bunds of a capacity equal to 110% of the storage capacity of the largest tank. 	All areas		√		
<ul style="list-style-type: none"> Open drainage channels and culverts near the works areas should be covered to block the entrance of large debris and refuse. 	All areas		√		

Environmental Protection Measures	Location	Implementation Status			
		Implemented	Partially implemented	Not implemented	Not Applicable
Waste Management					
General Site Wastes					
<ul style="list-style-type: none"> Appropriate measures, such as transporting wastes in enclosed containers, should be taken to minimize windblown litter and dust to nearby environment. Sufficient waste disposal points and regular waste collection for disposal should be provided. A collection area for construction site waste should be provided where waste can be stored prior to removal from site. Good site practices should be adopted to clean the rubbish and litter on a regular basis so as to prevent the rubbish and litter from dropping into the nearby environment. Records of the quantities of waste generated, recycled and disposed should be kept and maintained. Different types of waste should be segregated and stored in different containers, skips or stockpiles to enhance reuse or recycling of material and their proper disposal. 	All areas	√			
	All areas	√			
	All areas	√			
	All areas	√			
	All areas	√			
	All areas	√			
	All areas	√			
Chemical Wastes					
<ul style="list-style-type: none"> After use, chemical waste should be handled according to the Code of Practice on the Package, Labelling and Storage of Chemical Wastes. Any unused chemicals or those with remaining functional capacity should be recycled. Waste should be properly stored on site within suitably designed containers and should be collected by an approved licensed waste collectors for disposal at the Chemical Waste Treatment Facility or other licensed facility in accordance with the Waste Disposal (Chemical Waste) (General) Regulation under the Waste Disposal Ordinance. Any service shop and minor maintenance facilities should be located on hard standing within a bunded area, and sumps and oil interceptors should be provided. Maintenance of vehicles and equipment involving activities with potential for leakage and spillage should be undertaken within the designated areas equipped control these discharges. 	All areas	√			
	All areas	√			
	All areas	√			
	All areas	√			
	All areas	√			
	All areas	√			
Construction and Demolition (C&D) Wastes					
<ul style="list-style-type: none"> C&D waste should be separated on site before disposal. Inert material, such as concrete and rubble, should be re-used on site. Steel and other metals should be separated for re-use and / or recycling prior to disposal of C&D material. 	All areas	√			
	All areas	√			
	All areas	√			
	All areas	√			
Ecological Impact					
<ul style="list-style-type: none"> Labelling and fencing of the uncommon tree species. Avoidance of use of woodland habitats as Works Area, in particular where trees located. 	All areas	√			
	All areas	√			

	Location	Implementation Status		
		Implemented	Partially implemented	Not implemented
Environmental Protection Measures				
Landscape and Visual Impact				
<ul style="list-style-type: none"> Existing trees should be retained. Damage to vegetation should be minimized by close coordination and on site alignment adjusted of rising main and gravity sewer pipelines. Short excavation and immediate backfilling section upon completion of works should be performed to reduce active site area. 	All areas	√		
Site Practice				
<ul style="list-style-type: none"> The Contractor assigned worker is responsible for good site practices, arrangements for collection and effective disposal to an appropriate facility, of all wastes generated at the site. Proper storage and site practices to minimise the potential for damage or contamination of construction materials. All generators, fuel and oil storage are within bundle areas. Oil leakage from machinery, vehicle and plant should be prevented. The Environmental Permit should be displaced conspicuously on site. 	All areas	√		
	All areas	√		
	All areas	√		
	All areas	√		
	All areas	√		



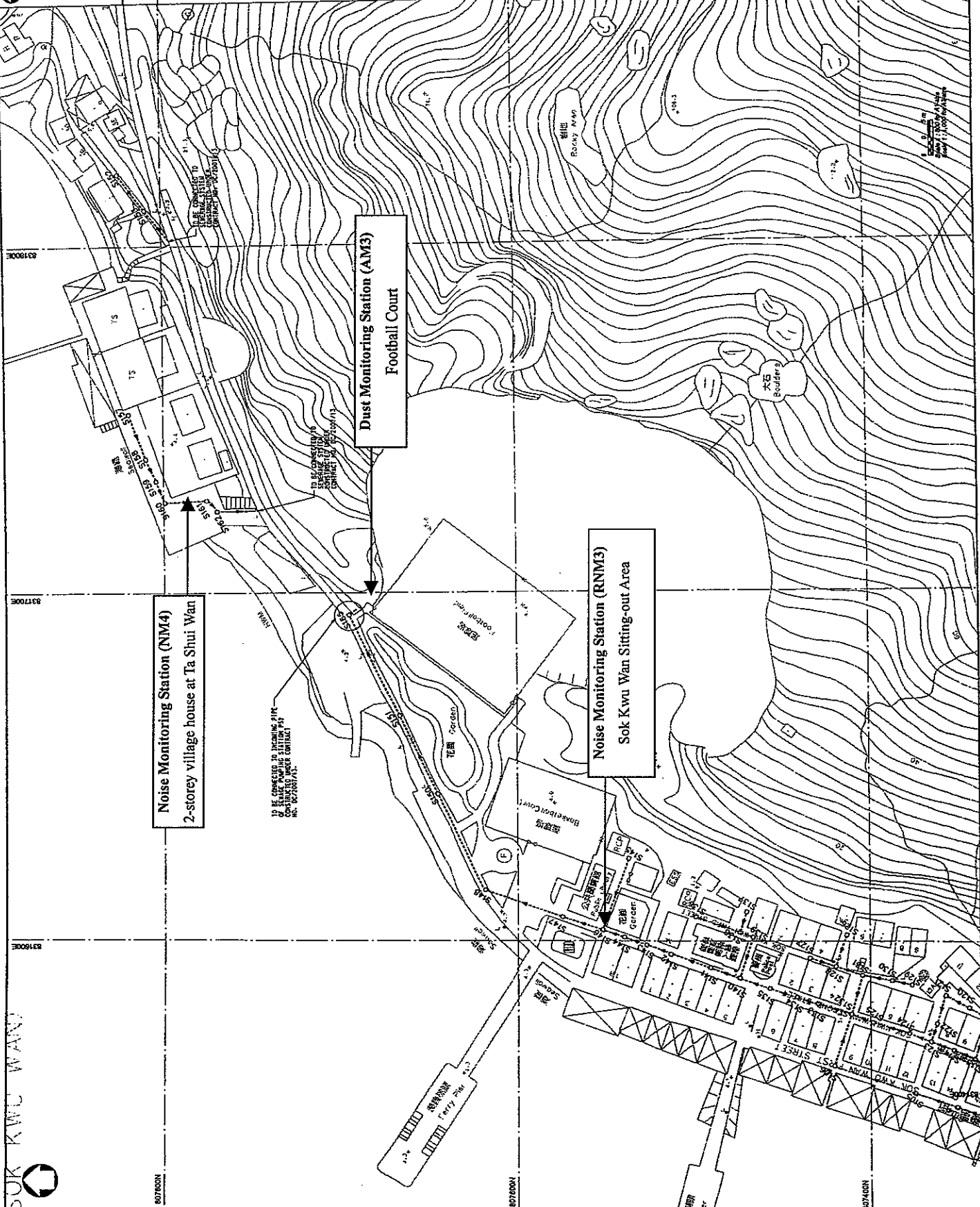
Figures

SOK KWU WAN



KEY PLAN

NOTES :
 1. FOR GENERAL NOTES AND LEGEND, REFER TO DRAWING NO. 2005/01/2006.
 2. THE CONTRACTOR IS RESPONSIBLE FOR OBTAINING ALL NECESSARY PERMITS AND APPROVALS FROM THE RELEVANT AUTHORITIES FOR ANY INTERFERING WORKS TO THEIR WORKS.



Noise Monitoring Station (NM4)
 2-storey village house at Ta Shui Wan

Dust Monitoring Station (AM3)
 Football Court

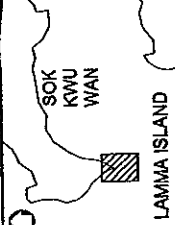
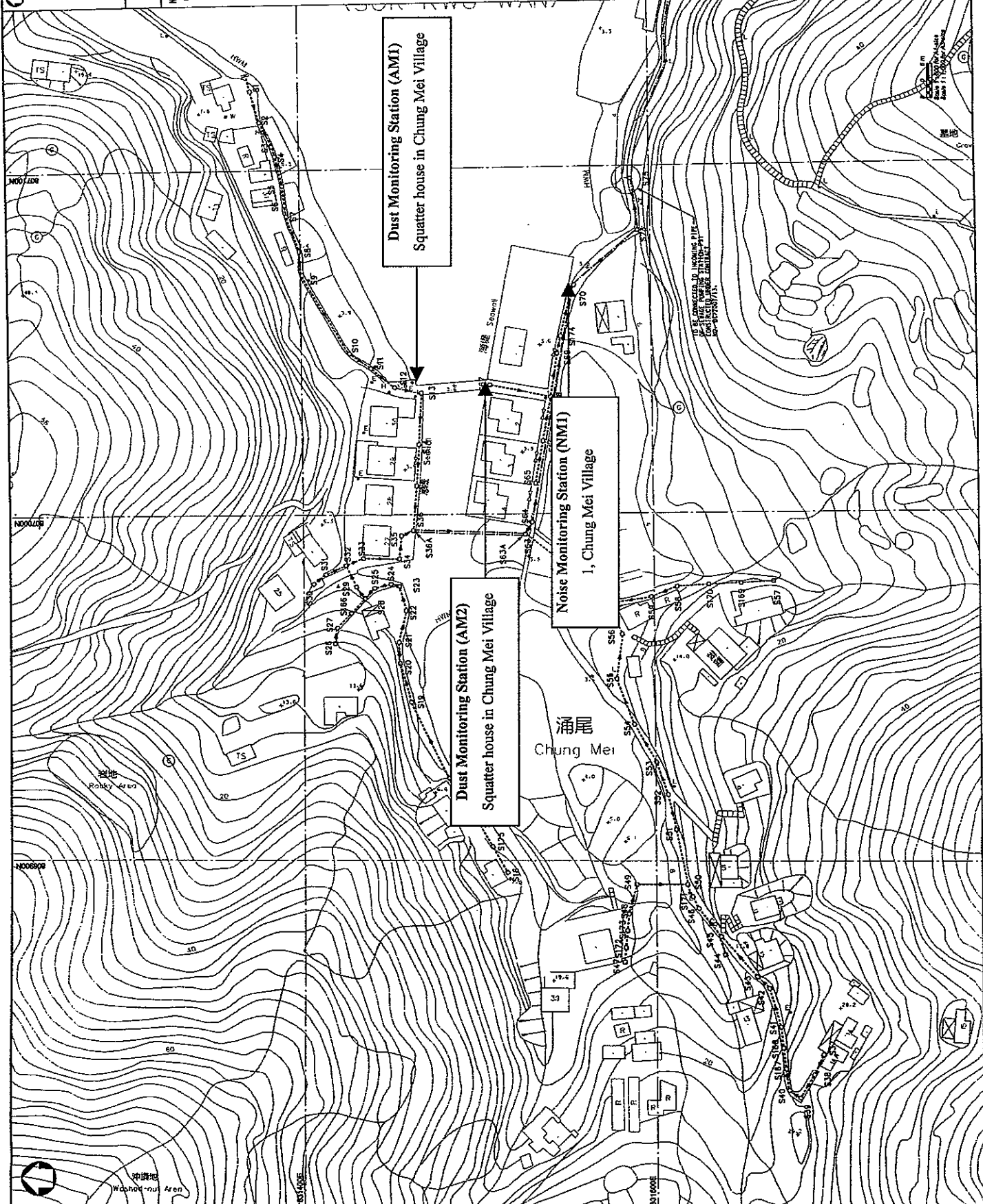
Noise Monitoring Station (RNM3)
 Sok Kwu Wan Sitting-out Area

DRAWING NO.		2005/C1/2006	
DATE		15/05/2006	
DRAWN BY		L.S. CHAN	
CHECKED BY		L.S. CHAN	
APPROVED BY		L.S. CHAN	
SCALE		AS SHOWN	
PROJECT NO.		2005/01/2006	
SHEET NO.		3 OF 3	

THE GOVERNMENT OF THE HONG KONG SPECIAL ADMINISTRATIVE REGION
 DRAINAGE SERVICES DEPARTMENT

CONTRACT NO. DC/2007/18
 YUNG SHUI WAN AND SOK KWU WAN VILLAGE SEWERAGE, STAGE 1 WORKS

VILLAGE SEWERAGE LAYOUT PLANS - SOK KWU WAN (SHEET 3 OF 3)



KEY PLAN

NOTES :
 1. FOR GENERAL NOTES AND LEGEND, REFER TO DRAWING NO. DS03/01/2004.

NO.	REVISION	DATE	BY	CHECKED	APPROVED
1	ISSUED FOR CONSTRUCTION	11/05/04	Y. W. CHAN	S. W. CHAN	S. W. CHAN
2	REVISED TO REFLECT THE LATEST DESIGN	12/05/04	Y. W. CHAN	S. W. CHAN	S. W. CHAN
3	REVISED TO REFLECT THE LATEST DESIGN	13/05/04	Y. W. CHAN	S. W. CHAN	S. W. CHAN
4	REVISED TO REFLECT THE LATEST DESIGN	14/05/04	Y. W. CHAN	S. W. CHAN	S. W. CHAN
5	REVISED TO REFLECT THE LATEST DESIGN	15/05/04	Y. W. CHAN	S. W. CHAN	S. W. CHAN
6	REVISED TO REFLECT THE LATEST DESIGN	16/05/04	Y. W. CHAN	S. W. CHAN	S. W. CHAN

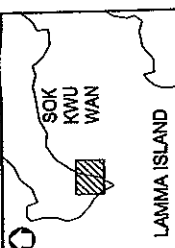
THE GOVERNMENT OF THE HONG KONG SPECIAL ADMINISTRATIVE REGION
 DRAINAGE SERVICES DEPARTMENT

CONTRACT NO. DC/2007/18
 YUNG SHUE WAN AND SOK KWU WAN
 VILLAGE SEWERAGE, STAGE 1 WORKS

VILLAGE SEWERAGE LAYOUT
 PLANS - SOK KWU WAN
 (SHEET 1 OF 3)

Drawing No. 2005/C1/2004
 Scale: 1:500
 Date: 15/05/04
 Project: DC/2007/18

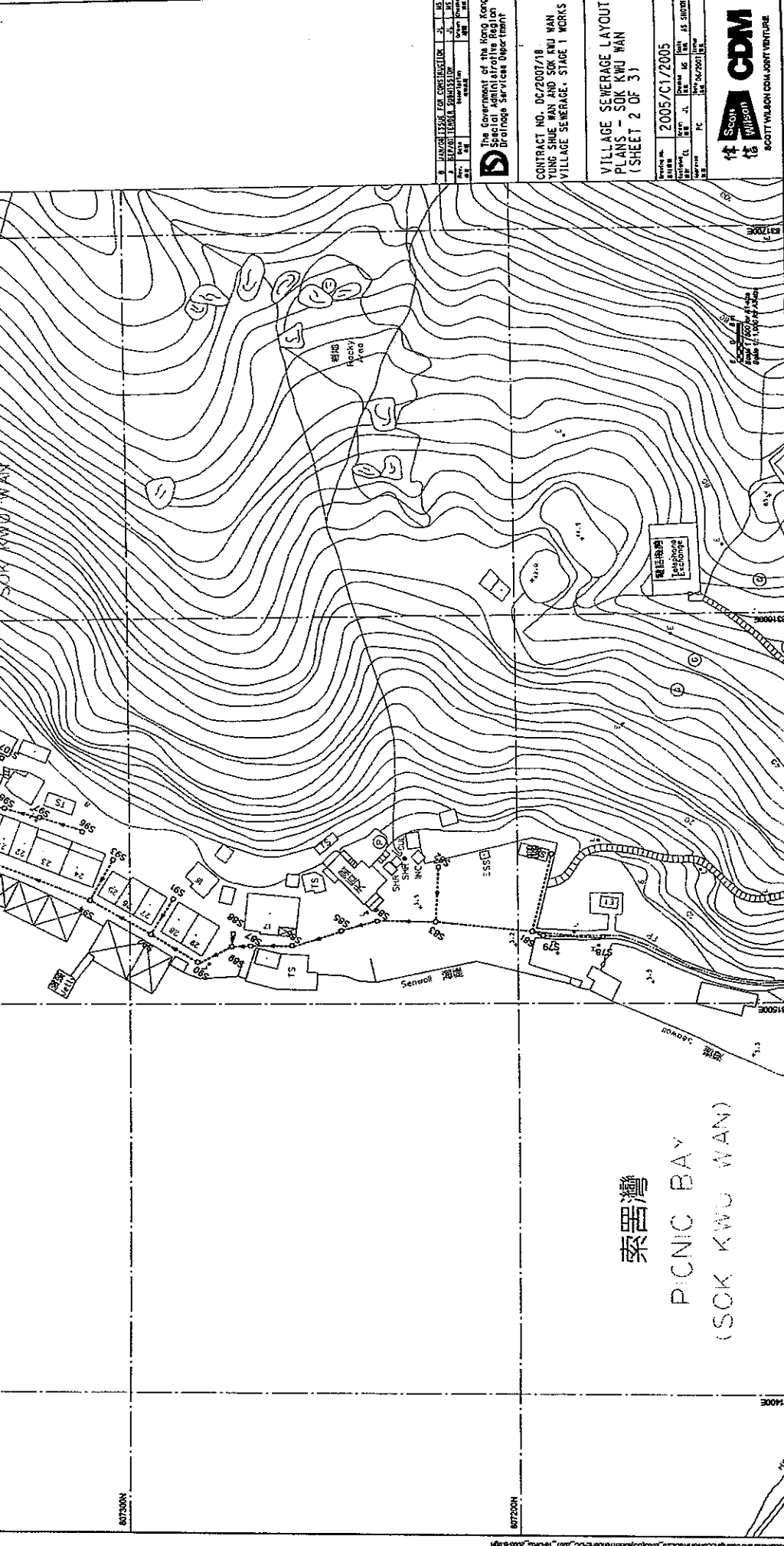
CDM
 SCOTT WILSON CDM JOINT VENTURE



KEY PLAN

NOTES:
1. FOR GEODATA, NOTES AND LEGEND, REFER TO DRAWING NO. 2005/C1/2005.

Noise Monitoring Station (NM2)
20, Sok Kwu Wan



DATE	DESCRIPTION	BY	CHECKED
15 JAN 2006	ISSUE FOR CONSTRUCTION	JL	AK
15 JAN 2006	ISSUE FOR CONSTRUCTION	JL	AK
15 JAN 2006	ISSUE FOR CONSTRUCTION	JL	AK

The Government of the Hong Kong Special Administrative Region
Drainage Services Department

CONTRACT NO. DC/2007/18
YUNG SHUE WAN AND SOK KWU WAN
VILLAGE SEWERAGE, STAGE 1 WORKS

VILLAGE SEWERAGE LAYOUT
PLANS, SOK KWU WAN
(SHEET 2 OF 3)

Work No. 2005/C1/2005
Scale: 1:1000
Date: 15 JAN 2006

CDM
SCOTT WILSON CONSULTANTS



807500N

807500N

807500N