

香港電燈有限公司
The Hongkong Electric Co., Ltd.



**Lamma Power Station
Units L2, L4 & L5 Flue Gas Desulphurization
Plants Retrofit**

Operational Phase

Quarterly Environmental Monitoring & Audit Report

April – June 2015

香港電燈有限公司
The Hongkong Electric Co., Ltd.



ENVIRONMENTAL IMPACT ASSESSMENT (EIA) ORDINANCE, CAP. 499

ENVIRONMENTAL PERMITS NO. EP-248/2006 & EP-287/2007

**LAMMA POWER STATION
UNITS L2, L4 & L5 FLUE GAS DESULPHURIZATION PLANTS RETROFIT**

**ENVIRONMENTAL MONITORING & AUDIT PROGRAMME
AT OPERATIONAL PHASE**

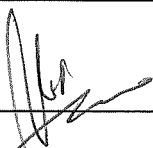
Report Title	Quarterly EM&A Report (April to June 2015)
Date	16 September 2015
Certified by	 (Mr. IP Tat-Yan, Environmental Team Leader)

TABLE OF CONTENT

EXECUTIVE SUMMARY

1.	INTRODUCTION.....	1
1.1	Background	1
1.2	Project Organisation	2
1.3	Plant Availability during the Reporting Period	2
1.4	Malfunction/Outage Records of Pollution Control Equipment	2
1.5	Summary of EM&A Requirements	4
2.	AIR QUALITY.....	12
2.1	Monitoring Requirements	12
2.2	Summary of Results and Observations	12
3.	WATER QUALITY	13
3.1	Monitoring Requirements	13
3.2	Summary of Results and Observations	13
4.	ENVIRONMENTAL AUDIT	14
4.1	Review of Environmental Monitoring Procedures	14
4.2	Assessment of Environmental Monitoring Results	14
4.3	Status of Environmental Licensing and Permitting	16
4.4	Implementation Status of Environmental Mitigation Measures	16
4.5	Implementation Status of Event/Action Plan	16
4.6	Implementation Status of Environmental Complaint Handling Procedures	16
5.	FUTURE KEY ISSUES.....	18
5.1	Outage Plan for the coming 3 months	18
5.2	Key issues for the coming 3 months	18
6.	CONCLUSION	19

LIST OF TABLES

Table 2.1	Air Quality Monitoring Parameters and Frequency
Table 3.1	Water Quality Monitoring Parameters and Frequencies
Table 4.1	Summary of Action/Limit Level Exceedances on Monitoring Parameters
Table 4.2	Amount of Gypsum and Sludge Collected for Reuse by Contractor
Table 4.3	Summary of Environmental Licensing and Permit Status
Table 4.4	Environmental Complaints Received
Table 4.5	Outstanding Environmental Complaints Carried Over

LIST OF FIGURES

- Figure 1.1a Location of New Facilities for L4 & L5 FGD Plant
- Figure 1.1b Location of New Facilities for L2 FGD Plant
- Figure 1.2a General Arrangement of L4 & L5 FGD Plant
- Figure 1.2b General Arrangement of L2 FGD Plant
- Figure 1.3 Schematic Diagram of L2, L4 & L5 FGD Plant
- Figure 1.4 Simplified Schematic Diagram of FGD Wastewater Treatment Plant
- Figure 1.5 Organization Chart at Operational Phase

APPENDIX

- Appendix A Event/Action Plans in Response to Exceedance of AL Levels
- Appendix B Air Quality Monitoring Results
- Appendix C Summary Results on Water Quality Monitoring
- Appendix D Summary of EMIS

EXECUTIVE SUMMARY

This is the quarterly Environmental Monitoring and Audit (EM&A) report for the Projects “Lamma Power Station Units L4 & L5 Flue Gas Desulphurization Plant Retrofit” and “Lamma Power Station Unit L2 Flue Gas Desulphurization Plant Retrofit” prepared by the Environmental Team (ET). This report presents the results of impact monitoring on air and water quality and environmental audit for the operation of the said projects in the period from April to June 2015.

Environmental monitoring for air quality and water quality were carried out for the purpose of this EM&A program as well as for fulfilling the requirements stipulated in the relevant licences. The results were checked against the established Action/Limit (AL) levels. The implementation status of the environmental mitigation measures, Event/Action Plan and environmental complaint handling procedures were also checked.

Plant Availability

Units L2, L4 and L5 were out of service during the following period:

Unit	Period	Remark
L2	01/04/2015 11:49 to 05/04/2015 21:00	Station Board 1 Outage
L2	22/05/2015 20:17 to 26/05/2015 06:10	Defect Rectification
L4	06/04/2015 17:20 to 10/04/2015 05:39	Defect Rectification
L4	11/04/2015 09:00 to 11/04/2015 17:00	Defect Rectification
L4	16/04/2015 21:22 to 17/04/2015 05:30	Defect Rectification
L4	13/05/2015 05:41 to 13/05/2015 18:43	Defect Rectification
L5	11/04/2015 21:54 to 12/04/2015 18:49	Defect Rectification
L5	17/04/2015 20:30 to 19/04/2015 16:30	Defect Rectification

Malfunction/Outage Records of Pollution Control Equipment

Major outages of the Pollution Control Equipment during the reporting period are listed below:

Equipment	Period	Cause	Actions Taken
L4 FGD	(1) 08/05/2015 06:08 to 06:30 (2) 09/05/2015 19:12 to 19:48	FGD plant was bypassed to facilitate the switching between single and dual fan group operation for defect rectification	EPD was informed by letter dated 12/05/2015

Equipment	Period	Cause	Actions Taken
L4 FGD	21/06/2015 10:18 to 18:12	FGD plant was bypassed due to booster fan inlet pressure abnormal.	EPD was informed by letter dated 24/06/2015
L5 FGD	22/06/2015 18:08 to 19:02	FGD plant was bypassed due to operation of booster fan stalling alarm	EPD was informed by letter dated 24/06/2015

For other minor outages, please refer to section 1.4 of the report.

Environmental Monitoring Works

Environmental monitoring works were performed during the operation of Units L2, L4 and L5 FGD Plants in the reporting period.

Air Quality

No exceedance of Action and Limit levels for air quality were recorded in the reporting period.

Water Quality

No exceedance of Action and Limit levels for water quality were recorded in the reporting period.

Environmental Licensing and Permitting

Description	Permit / Licence No.	Valid Period		Issued To	Date of Issuance
		From	To		
Environmental Permit for L4/5 FGD plants retrofit project	EP-248/2006	25/04/2006	-	HK Electric	25/04/2006
Environmental Permit for Unit L2 FGD plant retrofit project	EP-287/2007	02/10/2007	-	HK Electric	02/10/2007
Specified Process Licence issued under APCO	L-7-002(10)	01/01/2015	31/12/2016	HK Electric	23/12/2014
WPCO discharge licence for Ash Lagoon	WT00011131-2011	15/12/2011	31/12/2016	HK Electric	15/12/2011

Implementation Status of Environmental Mitigation Measures

Environmental mitigation measures were implemented in the reporting period.

Environmental Complaints

One environmental concern against the operation of Lamma Power Station was received during the reporting period, for which nothing abnormal was identified at the Power Station.

Future key issues

Key issues to be considered in the coming months include:

Air Impact

- To continuously carry out the air quality monitoring for Units L2, L4 and L5.

Water Impact

- To continuously carry out the water quality monitoring for FGD WWT plant.

Concluding Remarks

The environmental performance of the projects was generally satisfactory.

1. INTRODUCTION

The Environmental Team (hereinafter called the “ET”) was formed within The Hongkong Electric Co. Ltd (HK Electric) to undertake Environmental Monitoring and Audit for the “Operation of Lamma Power Station Units L4 & L5 Flue Gas Desulphurization Plant Retrofit Project” under the requirements of Clause 2.18 of Environmental Permit (EP) No. EP-248/2006 and “Operation of Lamma Power Station Unit L2 Flue Gas Desulphurization Plant Retrofit Project” under the requirements of Clause 2.10 of Environmental Permit (EP) No. EP-287/2007.

This report summarizes the environmental monitoring and audit work for the said Projects for the period from April to June 2015.

1.1 Background

The Projects involves retrofitting the three existing coal-fired generating Units L2, L4 and L5 of Lamma Power Station with Flue Gas Desulphurisation (FGD) plants for reducing sulphur dioxide emissions in support of Government policy to improve the air quality of the Pearl River Delta.

The Projects include the installation and operation of FGD plants with flue gas desulphurization efficiency of 90% for the three coal-fired Units L2, L4 & L5 to reduce the overall SO₂ emissions from Lamma Power Station. The process adopted for the FGD plants is “Wet Limestone-Gypsum”, a technology which has already been used in, and proved effective and reliable for the existing coal-fired units L6, L7 & L8. The flue gas from the boiler is directed to the FGD absorber inside which removal of SO₂ is take place by reaction with limestone slurry. After passing through the absorber, the treated flue gas is heated up by a gas-gas heater to over 80°C at boiler rated capacity and directed back to the existing chimney for discharge to the atmosphere. Figure 1.1a, Figure 1.1b, Figure 1.2a, Figure 1.2b and Figure 1.3 show the location and schematic of the FGD plants.

Wastewater filtrated from the reacted limestone slurry, i.e. gypsum slurry, is produced and it is directed to the existing FGD wastewater treatment plant (WWTP). The FGD WWTP is designed to treat the effluent from FGD plants by alkalization, precipitation and neutralization processes. The schematic diagram of the FGD WWTP is illustrated in Figure 1.4.

The additional equipment for the FGD Plants retrofit projects for Units L2, L4 and L5 includes:

- Three sets of FGD absorbers and associated ductworks
- Three sets of booster fans
- Three sets of gas-gas heaters
- Two FGD Switchgear and Equipment Buildings
- Gypsum dewatering system comprising two sets of hydrocyclones and belt filters

1.2 Project Organisation

The management structure to oversee the Projects includes the following:

- Environmental Protection Department (The Authority);
- General Manager (Corporate Development) (The official contact person between HK Electric and EPD);
- Environmental Team Leader (ET Leader);
- Environmental Team (ET).

The organization chart for the Operation EM&A programme is shown in Figure 1.5.

1.3 Plant Availability during the Reporting Period

Units L2, L4 and L5 were out of service during the following period:

Unit	Period	Remark
L2	01/04/2015 11:49 to 05/04/2015 21:00	Station Board 1 Outage
L2	22/05/2015 20:17 to 26/05/2015 06:10	Defect Rectification
L4	06/04/2015 17:20 to 10/04/2015 05:39	Defect Rectification
L4	11/04/2015 09:00 to 11/04/2015 17:00	Defect Rectification
L4	16/04/2015 21:22 to 17/04/2015 05:30	Defect Rectification
L4	13/05/2015 05:41 to 13/05/2015 18:43	Defect Rectification
L5	11/04/2015 21:54 to 12/04/2015 18:49	Defect Rectification
L5	17/04/2015 20:30 to 19/04/2015 16:30	Defect Rectification

1.4 Malfunction/Outage Records of Pollution Control Equipment

Equipment	Period	Cause	Actions Taken
L2 FGD	20/05/2015 18:18 to 18:24	FGD plant was bypassed due to furnace pressure fluctuation.	EPD was informed by letter dated 26/05/2015

Equipment	Period	Cause	Actions Taken
L2 FGD	29/05/2015 22:50 to 22:52	FGD plant was bypassed due to furnace pressure fluctuation.	EPD was informed by letter dated 02/06/2015
L4 FGD	02/05/2015 02:56 to 02:58	Routine damper exercise	EPD was informed by letter dated 05/05/2015
L4 FGD	(1) 08/05/2015 06:08 to 06:30 (2) 09/05/2015 19:12 to 19:48	FGD plant was bypassed to facilitate the switching between single and dual fan group operation for defect rectification	EPD was informed by letter dated 12/05/2015
L4 FGD	13/05/2015 03:03 to 03:37	FGD plant was bypassed due to turbine control fluctuated.	EPD was informed by letter dated 15/05/2015
L4 FGD	23/05/2015 02:11 to 02:15	Routine damper exercise	EPD was informed by letter dated 26/05/2015
L4 FGD	30/05/2015 03:43 to 03:46	Routine damper exercise	EPD was informed by letter dated 02/06/2015
L4 FGD	06/06/2015 01:22 to 01:37	Routine damper exercise	EPD was informed by letter dated 10/06/2015
L4 FGD	13/06/2015 01:54 to 01:56	Routine damper exercise	EPD was informed by letter dated 18/06/2015
L4 FGD	21/06/2015 10:18 to 18:12	FGD plant was bypassed due to booster fan inlet pressure abnormal.	EPD was informed by letter dated 24/06/2015
L5 FGD	04/04/2015 02:08 to 02:23	Routine damper exercise	EPD was informed by letter dated 09/04/2015
L5 FGD	11/04/2015 00:50 to 00:54	Routine damper exercise	EPD was informed on 15/04/2015
L5 FGD	02/05/2015 02:24 to 02:27	Routine damper exercise	EPD was informed on 05/05/2015
L5 FGD	09/05/2015 02:37 to 02:39	Routine damper exercise	EPD was informed on 12/05/2015
L5 FGD	16/05/2015 02:54 to 03:08	Routine damper exercise	EPD was informed on 19/05/2015
L5 FGD	24/05/2015 02:50 to 02:58	Routine damper exercise	EPD was informed on 26/05/2015
L5 FGD	30/05/2015 03:36 to 03:39	Routine damper exercise	EPD was informed on 02/06/2015
L5 FGD	06/06/2015 01:50 to 02:08	Routine damper exercise	EPD was informed on 10/06/2015
L5 FGD	13/06/2015 01:49 to 01:51	Routine damper exercise	EPD was informed on 18/06/2015
L5 FGD	22/06/2015 02:03 to 02:10	Routine damper exercise	EPD was informed on 24/06/2015

Equipment	Period	Cause	Actions Taken
L5 FGD	22/06/2015 18:08 to 19:02	FGD plant was bypassed due to operation of booster fan stalling alarm	EPD was informed by letter dated 24/06/2015
L5 FGD	27/06/2015 02:23 to 02:25	Routine damper exercise	EPD was informed on 30/06/2015

1.5 Summary of EM&A Requirements

Environmental Monitoring and Audit (EM&A) requirements have been discussed in the Environmental Impact Assessment (EIA) Report/ Project Profile for the Projects. The assessment results indicate that environmental monitoring works required for the EM&A programmes of these Projects are already in place or would be implemented under Lamma Power Station Extension Environmental Permit or environmental licenses for the operation of the existing Lamma Power Station. Such monitoring works are considered adequate for the Projects and no additional EM&A activities are required. Hence, environmental monitoring for air quality and water quality are carried out for the purpose of this EM&A program as well as for fulfilling the requirements stipulated in the relevant licences.

The EM&A monitoring work for air and water quality are described in Section 2 and Section 3 respectively.

The following environmental audits are summarized in Section 4 of the report:

- Environmental monitoring results;
- The status of environmental licensing and permits for the Projects;
- The implementation status of environmental protection and pollution control / mitigation measures.

The future key issues for the Projects will be reported in Section 5 of this report.

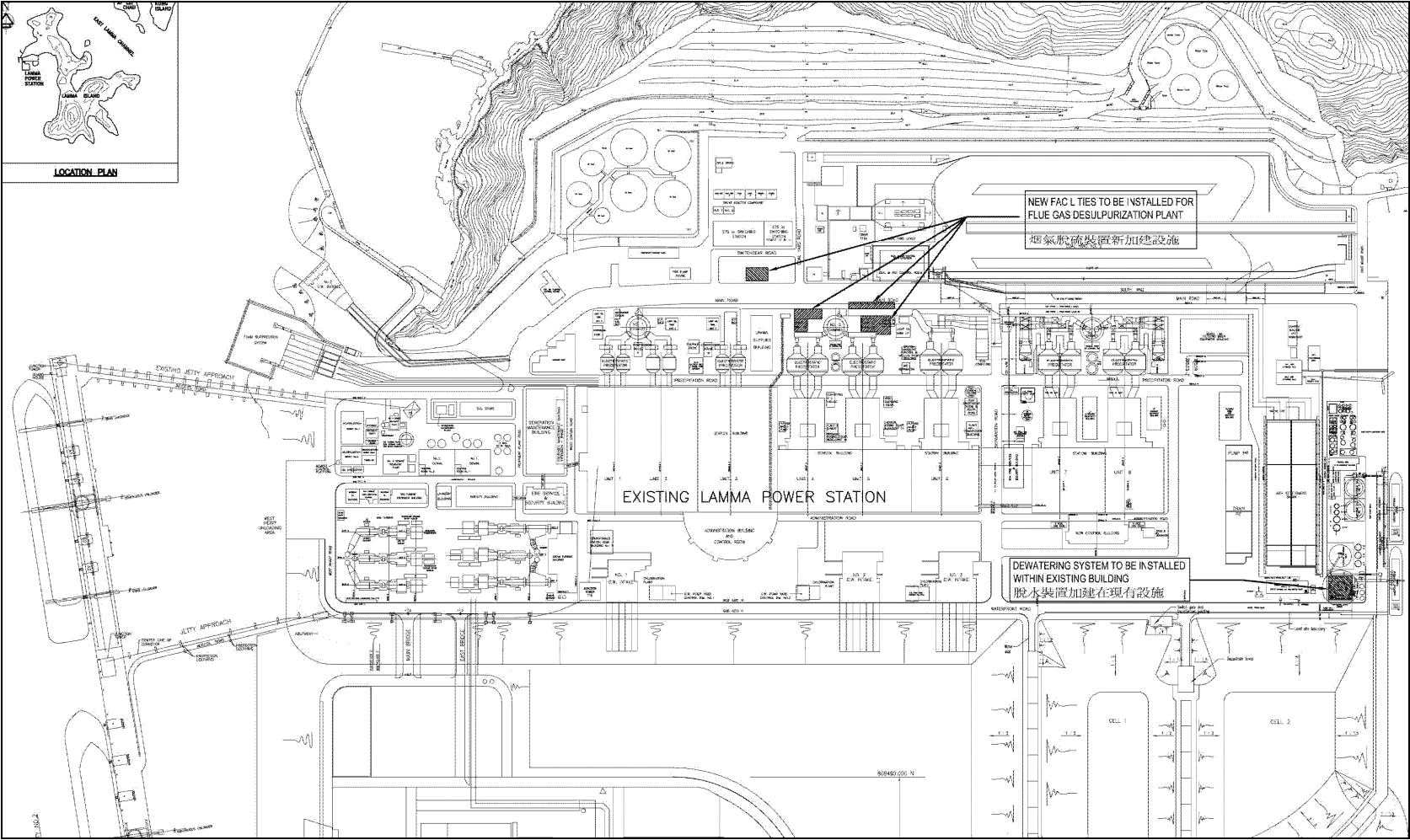


Figure 1.1a Location of New Facilities for L4 & L5 FGD Plants

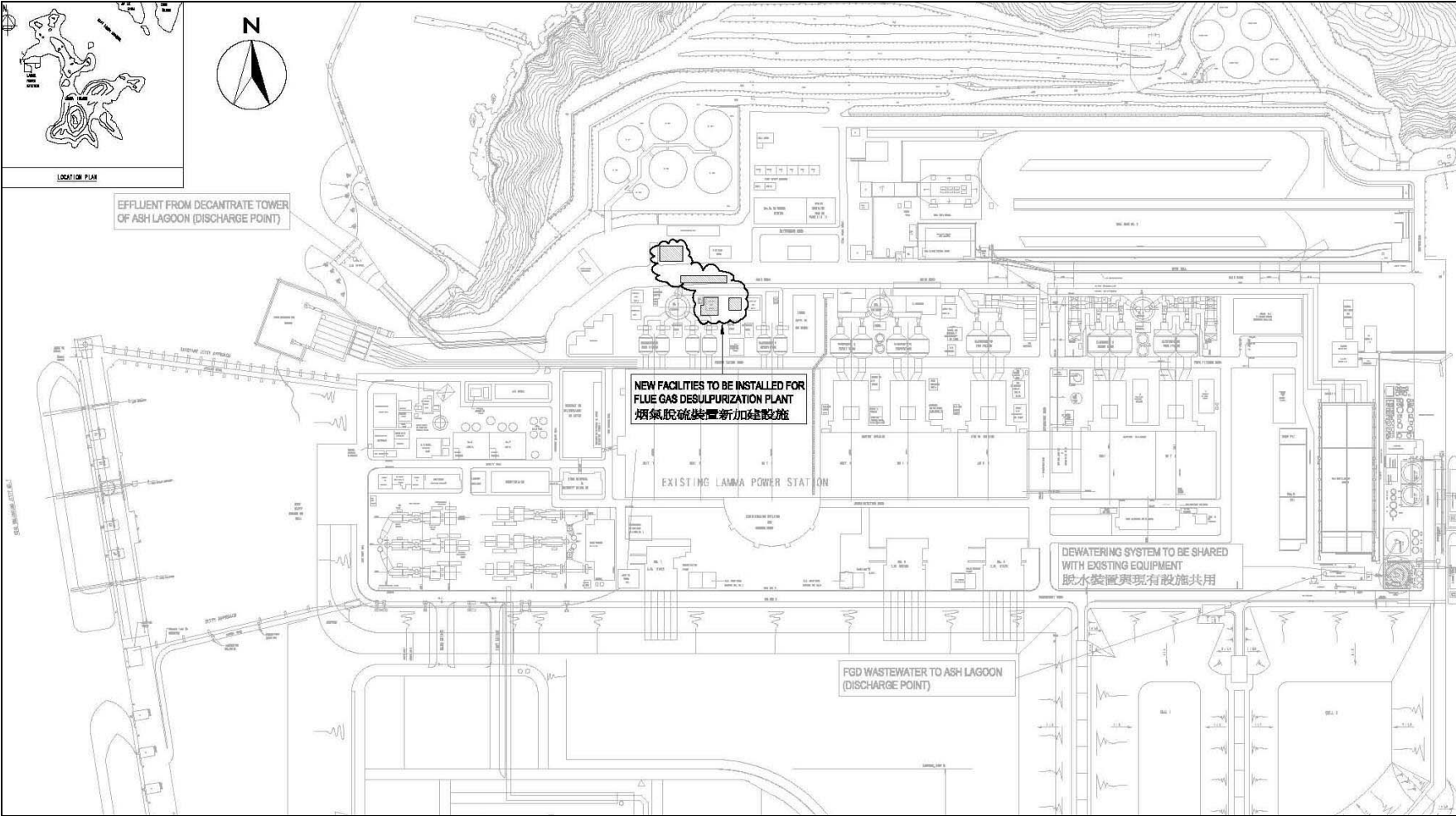


Figure 1.1b Location of New Facilities for L2 FGD Plant

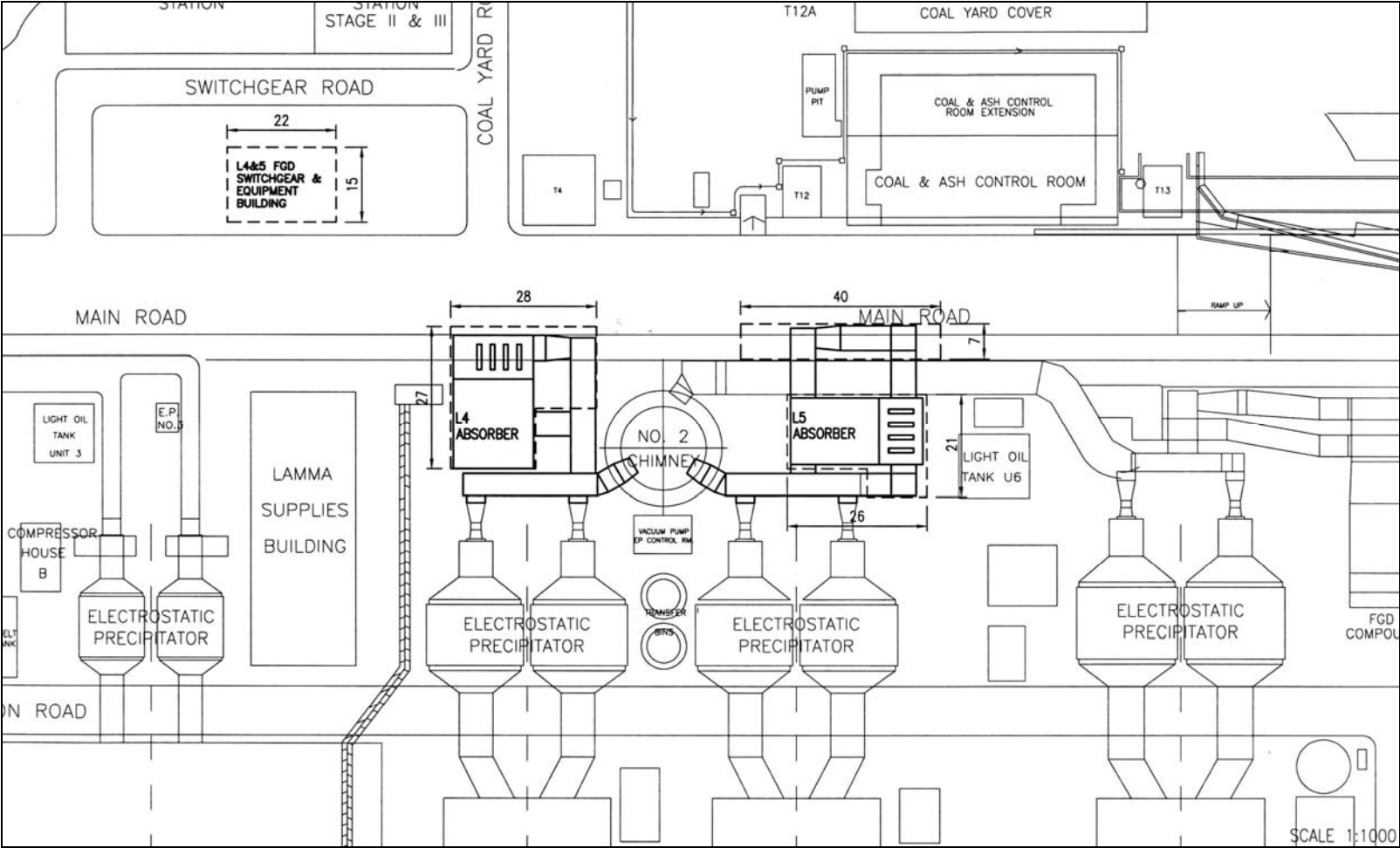


Figure 1.2a General Arrangement of L4 & L5 FGD Plants

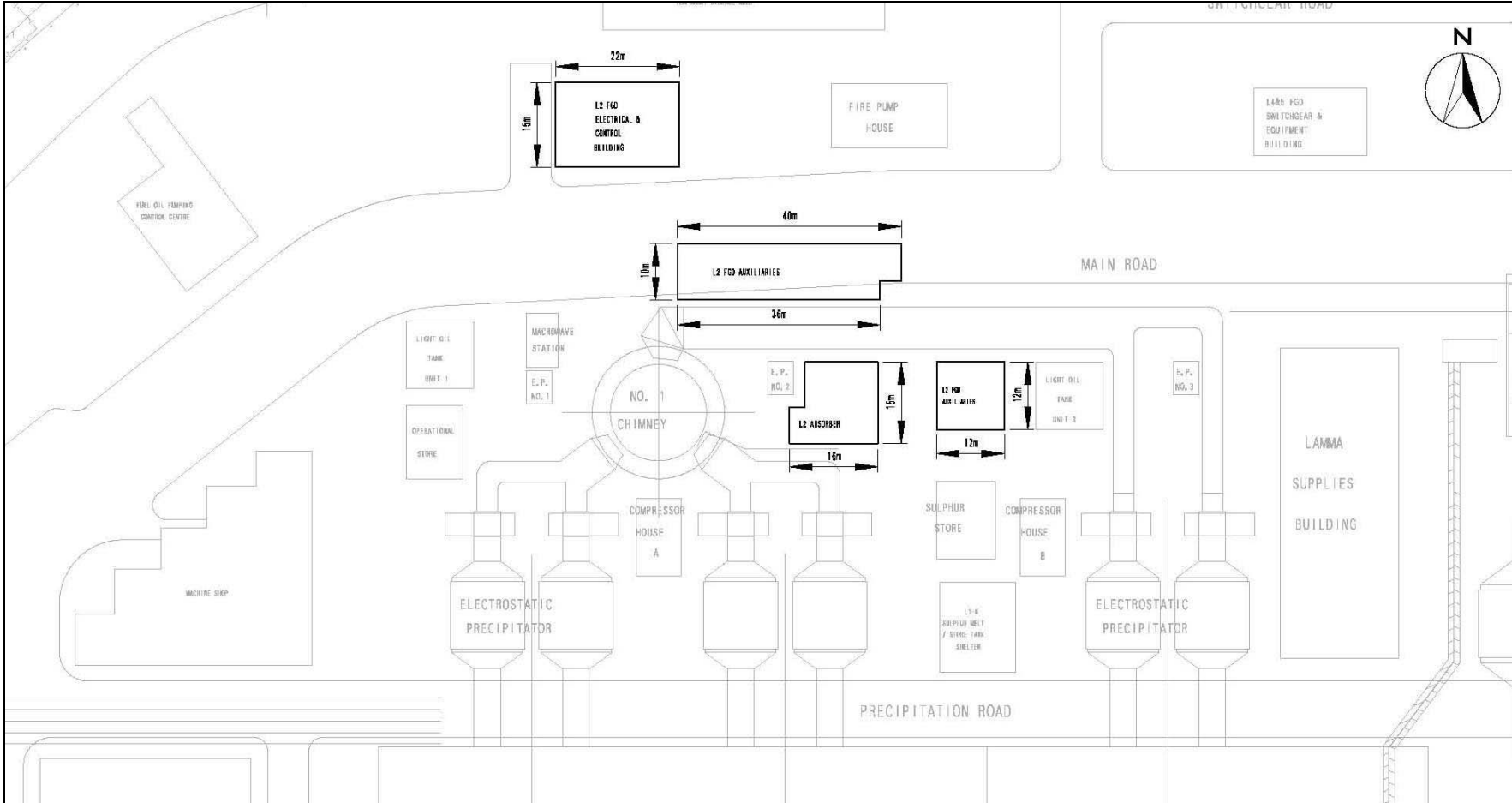


Figure 1.2b General Arrangement of L2 FGD Plant

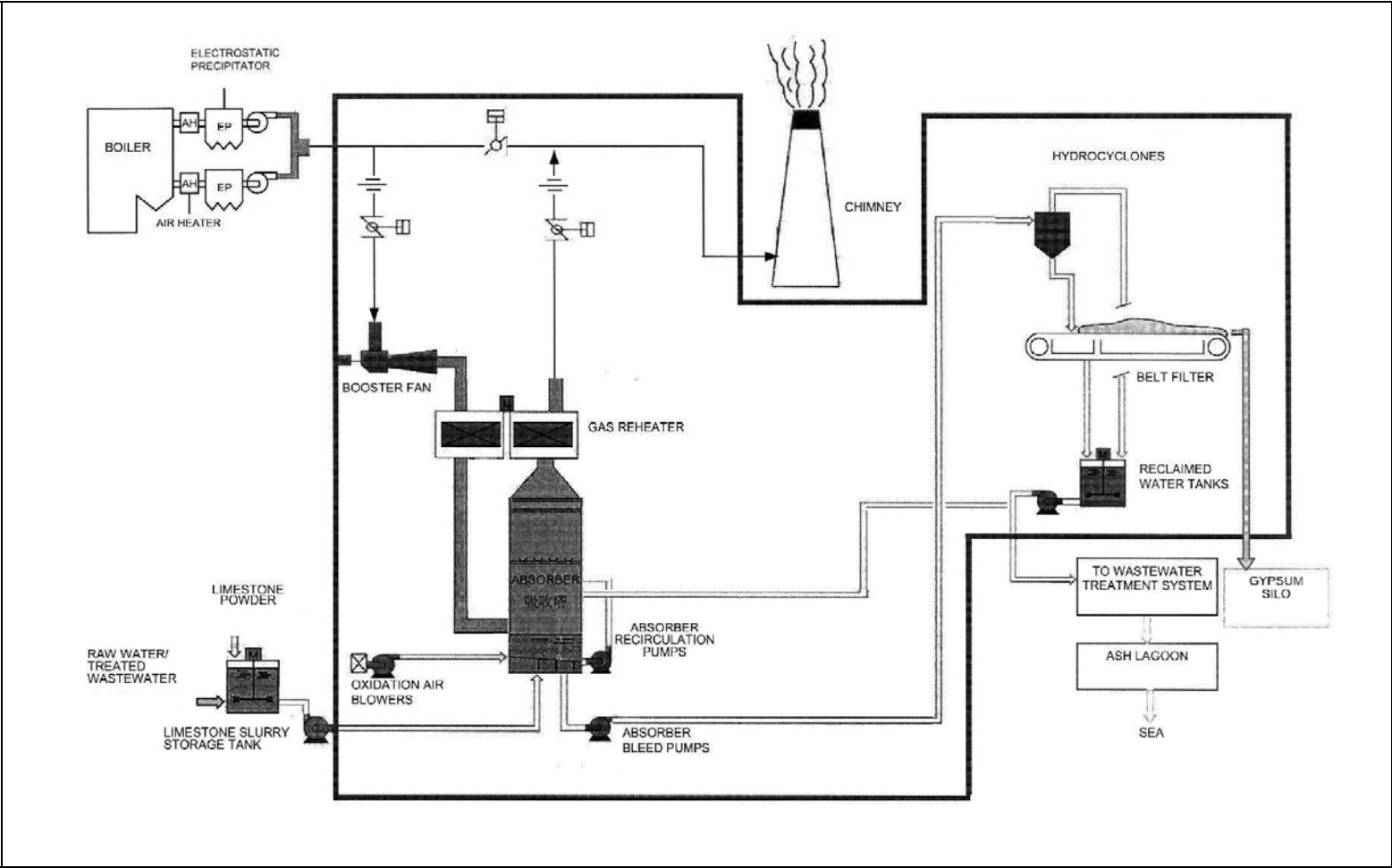


Figure 1.3 Schematic Diagram of the L2, L4 & L5 FGD Plant

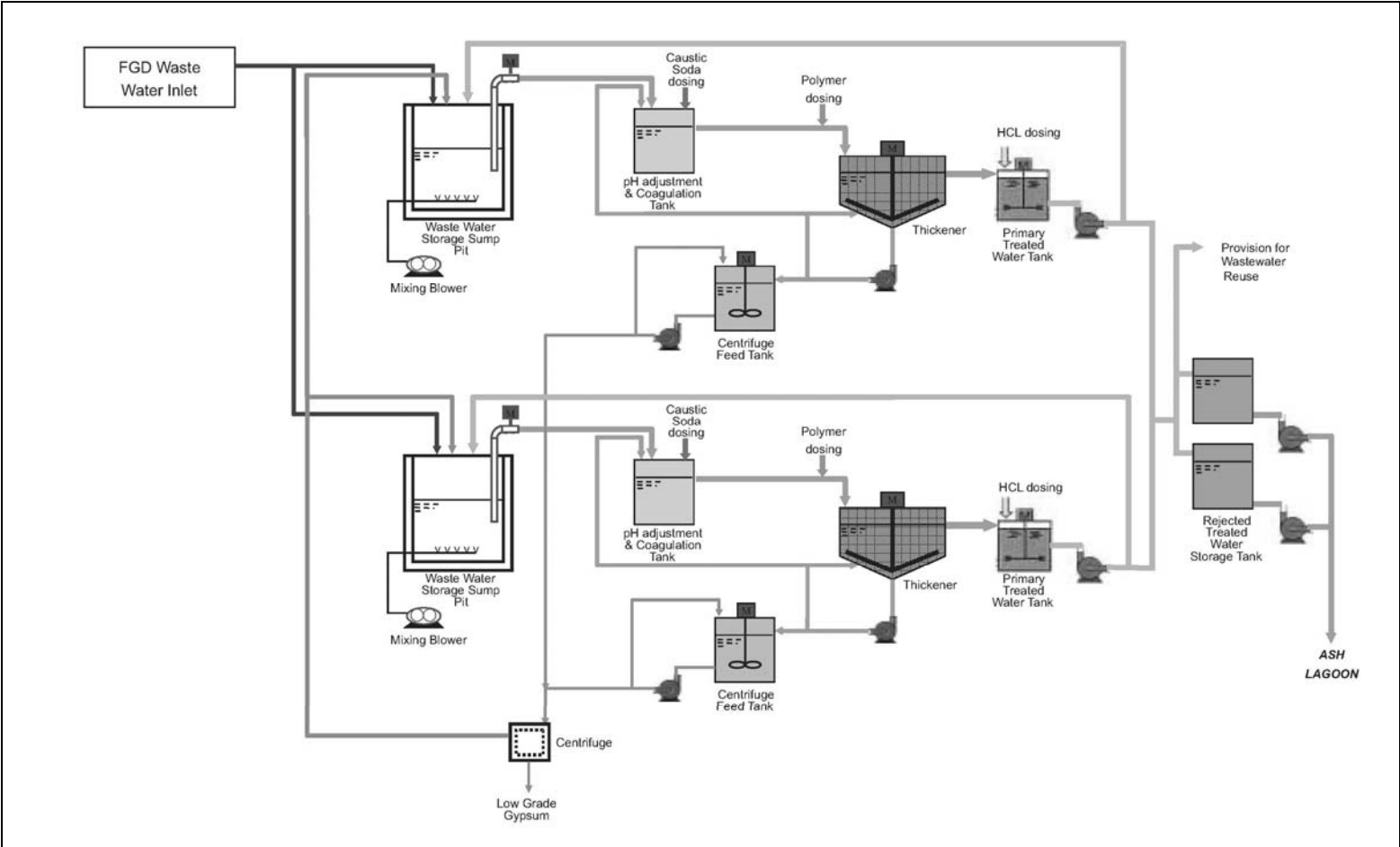


Figure 1.4 Simplified Schematic Diagram of FGD Wastewater Treatment Plant

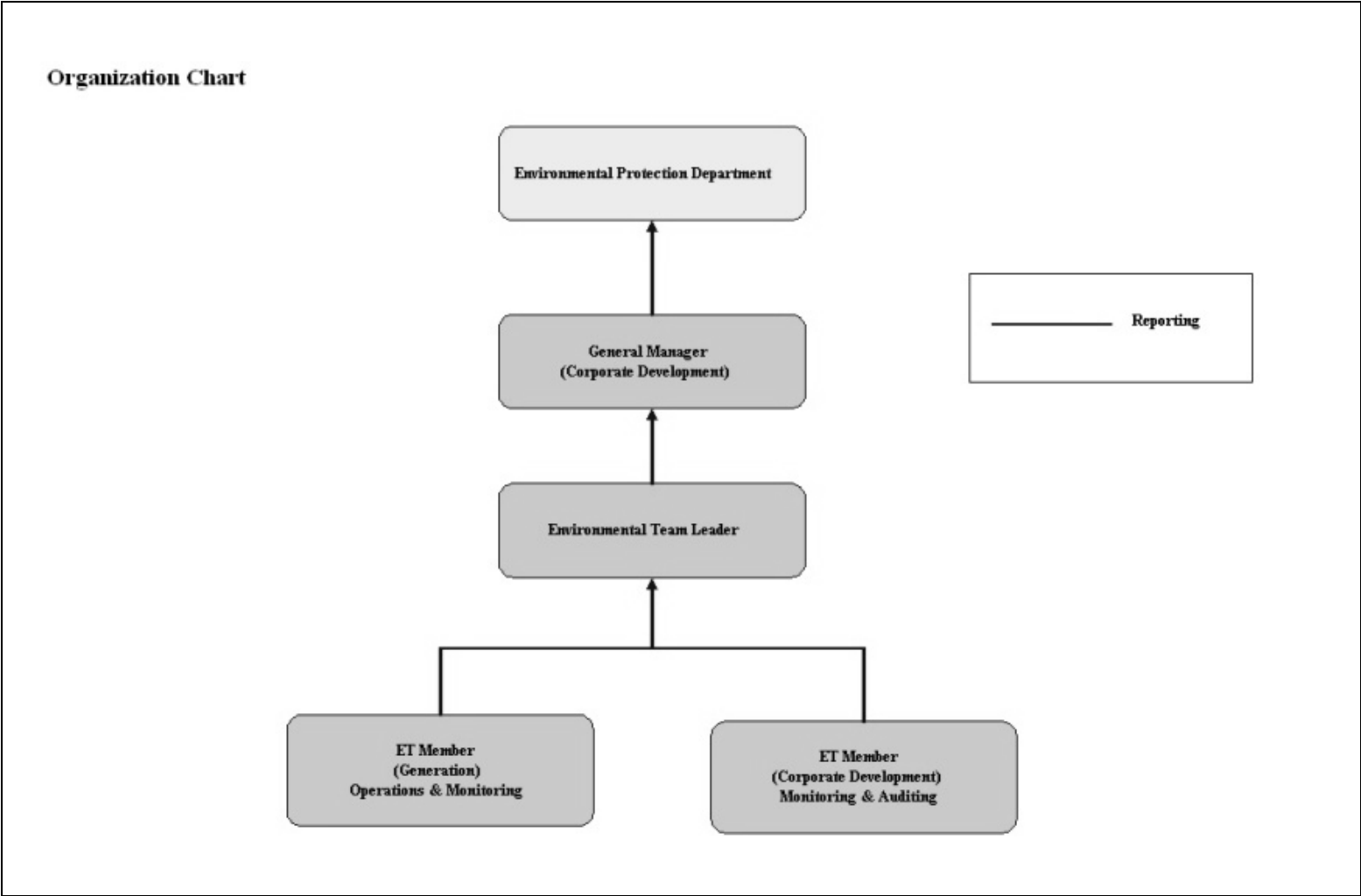


Figure 1.5 Organization Structure at Operational Phase of the Projects

2. AIR QUALITY

2.1 Monitoring Requirements

Since the Projects will bring a general air quality improvement, no additional EM&A activities are considered required, besides those already in place, such as those required by specified process licenses for the operation of the existing Lamma Power Station. In accordance with the requirements stipulated in the Specified Processes Licence issued under Air Pollution Control Ordinance, various operation parameters as stated in Table 2.1 were monitored and checked against the Action/Limit Levels shown in Appendix A.

Table 2.1 Air Quality Monitoring Parameters and Frequency

Sources of Emission	Parameter	Frequency
Steam boilers L2, L4 & L5	Particulate	Once / year
	Particulate (Opacity)	Continuous
	SO ₂	Continuous
	NO _x expressed as NO ₂ (For L4 and L5 only)	Continuous
Fugitive Dust (Coal, PFA, Limestone, gypsum)	Total Suspended Particulate	Once every six days
Chimney emissions	Ambient air	Continuous at existing ambient air monitoring stations
	SO ₂	
	NO ₂	

2.2 Summary of Results and Observations

Monitoring of various parameters as listed in Table 2.1 above was conducted during the operation of Units L2, L4 and L5 in the reporting period. Ambient air monitoring at Chung Hom Kok was temporarily suspended since 1/5/2015 for the replacement of the aged shelter of the station. A summary of monitoring data is shown in Appendix B.

No Action/Limit Level exceedance was recorded in the reporting period.

3. WATER QUALITY

3.1 Monitoring Requirements

According to the EIA Report/ Project Profile for the Projects, the current monitoring programme for the Lamma Power Station can cover the Projects and no additional EM&A measures are required besides those already in place. Hence, the EM&A work on water quality should strictly follow the relevant monitoring requirements stipulated in the discharge licence for Ash Lagoon issued under the Water Pollution Control Ordinance (WPCO).

Water quality monitoring was carried out for FGD Waste Water Treatment Plant (WWTP) in the reporting period. The parameters stated in Table 3.1 were monitored and checked against the Action/Limit Levels as given in Appendix A.

Table 3.1 Water Quality Monitoring Parameters and Frequencies

Item	Parameters	Frequencies
1	pH	Daily
2	Suspended Solids	Daily
3	Iron	Monthly
4	Barium	Monthly
5	Mercury	Monthly
6	Cadmium	Monthly
7	Cyanide	Monthly
8	Total Phosphorus	Monthly
9	Total Nitrogen	Monthly

3.2 Summary of Results and Observations

Monitoring of various parameters as listed in Table 3.1 above was carried out during the discharge of the WWTP in the reporting period. A summary of the data is shown in Appendix C.

The data recorded for the monitoring parameters were all below their corresponding Action/Limit Levels. No Action/Limit level exceedance was recorded in the reporting period. The effluent quality was generally satisfactory.

4. ENVIRONMENTAL AUDIT

4.1 Review of Environmental Monitoring Procedures

The environmental monitoring procedures were regularly reviewed by the Environmental Team. No modification to the existing monitoring procedures was recommended.

4.2 Assessment of Environmental Monitoring Results

Monitoring results for Air Quality and Water Quality

The environmental monitoring results for air quality and water quality are presented in Sections 2 and 3 respectively are summarized in Table 4.1.

Table 4.1 Summary of Action/Limit Level Exceedances on Monitoring Parameters

Item	Parameter Monitored	Monitoring Period	No. of Exceedances In		Event/Action Plan Implementation Status and Results
			Action Level	Limit Level	
Air					
1	Annual analysis of dust particulate emission rates at chimney stacks.	01/04/15-30/06/15	N.A.	0	No sampling was conducted in the reporting period.
2	Continuous monitoring of opacity, NO _x , SO ₂ and CO ₂ in the flue gas at the chimney stacks	01/04/15-30/06/15	0	0	
3	TSP monitoring at Lamma Power Station Boundary (ie East Gate and Reservoir).	01/04/15-30/06/15	0	0	
4	Ambient SO ₂ & NO _x monitoring at the Peak, Queen Mary Hospital, Victoria Road, Chung Hom Kok, Ap Lei Chau and	01/04/15-30/06/15	0	0	

Item	Parameter Monitored	Monitoring Period	No. of Exceedances In		Event/Action Plan Implementation Status and Results
			Action Level	Limit Level	
	Cheung Chau.				
Water					
1	pH in WWTP Effluent	01/04/15-30/06/15	0	0	
2	Suspended Solids in WWTP Effluent	01/04/15-30/06/15	0	0	
3	Iron in WWTP Effluent	01/04/15-30/06/15	0	0	
4	Barium in WWTP Effluent	01/04/15-30/06/15	0	0	
5	Mercury in WWTP Effluent	01/04/15-30/06/15	0	0	
6	Cadmium in WWTP Effluent	01/04/15-30/06/15	0	0	
7	Cyanide in WWTP Effluent	01/04/15-30/06/15	0	0	
8	Total Phosphorus in WWTP Effluent	01/04/15-30/06/15	0	0	
9	Total Nitrogen in WWTP Effluent	01/04/15-30/06/15	0	0	

Waste Management Records

The quantity of FGD gypsum and sludge collected for reuse by contractor in the reporting period are shown in Table 4.2.

Table 4.2 Amount of Gypsum and Sludge Collected for Reuse by Contractor

Period	Amount of Gypsum Collected	Amount of Sludge Collected
April 2015	4890.1 MT	0 MT
May 2015	6540.3 MT	0 MT
June 2015	4809.8 MT	0 MT

4.3 Status of Environmental Licensing and Permitting

All permits/licenses obtained as of June 2015 are summarised in Table 4.3.

Table 4.3 Summary of Environmental Licensing and Permit Status

Description	Permit / Licence No.	Valid Period		Status
		From	To	
Environmental Permit for Units L4/5 FGD Plants Retrofit	EP-248/2006	25/04/2006	-	Valid
Environmental Permit for Unit L2 FGD Plant Retrofit	EP-287/2007	02/10/2007	-	Valid
Specified Process Licence issued under APCO	L-7-002(10)	01/01/2015	31/12/2016	Valid
WPCO discharge licence for Ash Lagoon	WT00011131-2011	15/12/2011	31/12/2016	Valid

4.4 Implementation Status of Environmental Mitigation Measures

Mitigation measures detailed in the EIA Report and EP are required to be implemented. A summary of the Environmental Mitigation Implementation Schedule (EMIS) is presented in Appendix D.

4.5 Implementation Status of Event/Action Plan

A list of specific actions in the event of exceedances of the various threshold levels for specific emission and discharge sources is given in Appendix A.

As no Action/Limit level exceedance was recorded, no action has been devised.

4.6 Implementation Status of Environmental Complaint Handling Procedures

During the reporting period, there was one (1) environmental concern against the operation of Lamma Power Station as summarized in Table 4.4.

Table 4.4 Environmental Complaint(s) Received

Case Reference / Date, Time Received / Date, Time Concerned	Descriptions / Actions Taken	Conclusion / Status
<p><i>Reference:</i> EC150500202</p> <p><i>Received:</i> 29/04/2015 (7:11 p.m.)</p> <p><i>Concerned:</i> At the time received</p>	<p>The complainant said that the “middle chimney” of Lamma Power Station was emitting black smoke. An investigation (with local inspection and emission data review) was carried out at once. The chimney emission was found normal during the concerned period and the complainant was explained of the findings accordingly. There was no further enquiry since then.</p>	<p>Nothing abnormal was identified. Case closed.</p>

Table 4.5 Outstanding Environmental Complaint(s) Carried Over

Case Reference / Date, Time Received / Date, Time Concerned	Descriptions / Actions Taken	Conclusion / Status
Nil	N/A	N/A

5. FUTURE KEY ISSUES

5.1 Outage Plan for the coming 3 months

No major outage plan for the coming three months.

5.2 Key issues for the coming 3 months

Key issues to be considered in the coming 3 months include:

Air Impact

- To continuously carry out the air quality monitoring for Units L2, L4 and L5.

Water Impact

- To continuously carry out the water quality monitoring for FGD Waste Water Treatment Plant.

6. CONCLUSION

Environmental monitoring was performed as required in the reporting period from April to June 2015. All monitoring results were checked and reviewed.

No Action/Limit level exceedance on air quality parameters were recorded in the reporting period.

No Action/Limit level exceedance on water quality parameters were recorded in the reporting period.

Environmental mitigation measures recommended in the EIA Report and EP were implemented in the reporting period. One environmental concern against the operation of Lamma Power Station was received during the reporting period, for which nothing abnormal was identified at the Power Station. No prosecution was received for the Projects in the reporting period.

The environmental performance of the Projects was generally satisfactory.

Appendix A Event/Action Plans in Response to Exceedance of AL Levels

A.1 Air

Source of Emissions	Parameters to be Monitored	Frequency	Concentration Not to Be Exceeded	Action	Limit	Proposed Action
Steam boilers L2, L4 and L5	Particulate Particulate (Opacity) SO2 NOx expressed as NO2 (For L4 and L5 only)	once/year continuous continuous continuous	50 mg/Nm3 40% (bihourly) 200 mg/Nm3 (1h) 615 mg/Nm3 (1h)	- 35 190 585	50 40 200 615	ET Leader informs Generation Division at action level. Maintenance initiated. Temporary load shift until pollution control equipment repaired and reinstated. Report to EPD.
Fugitive dust (Coal, PFA, limestone, gypsum)	TSP	Once every six days.	260 (µg/m3) (24 hours)	-	260	Investigation of sources and additional dust suppression to be employed at Limit level. Frequency of monitoring to be increased as necessary.
Chimney emissions	Ambient air SO2 NO2	Continuous at existing ambient air monitoring stations	800 (µg/m3) (1h) 300 (µg/m3) (1h)	- -	800 300	ET to review data on post-hoc basis and check for possible power station contribution.

A.2 Water

Source of Discharges	Parameters to be Monitored	Frequency	Concentration Not to Be Exceeded	Action	Limit	Proposed Action
FGD Wastewater Treatment Plant	pH	Daily	6-9	-	6-9	If pH exceeds limit level, consideration to be given to adjust chemical dosing. ET Leader inform Generation Division and investigation be initiated to identify and remedy cause. For all other parameters except pH, Generation Division to be informed, frequency of monitoring to be increased, and investigations to be initiated to identify cause and remedy if concentration exceeds action level. If problem persists to exceed the limit level, ET Leader verbally informs EPD and ensures remedial actions implemented.
	Suspended Solids	Daily	30 mg/L	25	30	
	Iron	Monthly	4 mg/L	3.6	4	
	Barium	Monthly	1.5 mg/L	1.3	1.5	
	Mercury	Monthly	0.005 mg/L	0.0045	0.005	
	Cadmium	Monthly	0.005 mg/L	0.0045	0.005	
	Cyanide	Monthly	0.1 mg/L	0.09	0.1	
	Total Phosphorus	Monthly	8 mg/L	7.2	8	
	Total Nitrogen	Monthly	400 mg/L	360	400	

B.2 Unit L2, L4 and L5 Stack Monitoring at Lamma Power Station

B.2.1 Monthly Summary of Stack NOx and SO2 for Unit L5

Date	Daily Maximum		
	SO2 concentration (mg/Nm3) #	NOx concentration (mg/Nm3) #	Opacity (%)
1/4/2015	69	441	11
2/4/2015	72	446	12
3/4/2015	70	461	13
4/4/2015	45	397	12
5/4/2015	60	428	11
6/4/2015	97	421	18
7/4/2015	143	375	15
8/4/2015	121	472	12
9/4/2015	90	422	12
10/4/2015	87	434	16
11/4/2015	73	401	17
12/4/2015	*	*	*
13/4/2015	62	332	13
14/4/2015	74	312	12
15/4/2015	82	348	13
16/4/2015	91	352	13
17/4/2015	104	363	13
18/4/2015	*	*	*
19/4/2015	*	*	*
20/4/2015	87	433	15
21/4/2015	105	419	15
22/4/2015	122	421	16
23/4/2015	133	421	11
24/4/2015	113	427	12
25/4/2015	123	421	11
26/4/2015	49	418	11
27/4/2015	109	400	17
28/4/2015	102	394	16
29/4/2015	24	383	14
30/4/2015	23	340	21

Date	Daily Maximum		
	SO2 concentration (mg/Nm3) [#]	NOx concentration (mg/Nm3) [#]	Opacity (%)
1/5/2015	27	330	18
2/5/2015	28	415	21
3/5/2015	30	329	21
4/5/2015	27	370	22
5/5/2015	52	319	13
6/5/2015	33	418	19
7/5/2015	21	372	22
8/5/2015	17	363	21
9/5/2015	38	380	25
10/5/2015	59	372	11
11/5/2015	38	371	23
12/5/2015	73	405	11
13/5/2015	100	364	12
14/5/2015	89	347	12
15/5/2015	103	374	24
16/5/2015	78	363	13
17/5/2015	69	394	12
18/5/2015	77	352	13
19/5/2015	78	421	13
20/5/2015	38	341	22
21/5/2015	33	417	17
22/5/2015	38	521	23
23/5/2015	33	394	19
24/5/2015	30	425	23
25/5/2015	26	417	27
26/5/2015	25	382	24
27/5/2015	31	367	25
28/5/2015	27	384	28
29/5/2015	16	291	25
30/5/2015	17	422	31
31/5/2015	16	325	27

Date	Daily Maximum		
	SO2 concentration (mg/Nm3) [#]	NOx concentration (mg/Nm3) [#]	Opacity (%)
1/6/2015	21	359	26
2/6/2015	15	342	25
3/6/2015	38	395	25
4/6/2015	68	351	26
5/6/2015	93	321	28
6/6/2015	50	332	26
7/6/2015	51	339	13
8/6/2015	55	344	14
9/6/2015	52	335	13
10/6/2015	56	318	13
11/6/2015	37	305	15
12/6/2015	48	362	15
13/6/2015	39	300	16
14/6/2015	31	275	12
15/6/2015	45	385	14
16/6/2015	43	273	15
17/6/2015	51	269	16
18/6/2015	31	330	15
19/6/2015	18	261	19
20/6/2015	56	274	23
21/6/2015	53	295	24
22/6/2015	37	385	26
23/6/2015	30	418	25
24/6/2015	32	390	24
25/6/2015	39	412	25
26/6/2015	24	418	26
27/6/2015	23	354	14
28/6/2015	44	357	18
29/6/2015	22	285	21
30/6/2015	19	282	23

Note: # - Hourly average value. Expressed as at 0°C, 101.325kPa, dry and corrected to 12% CO₂ condition.

B.2.2 Monthly Summary of Stack NOx and SO2 for Unit L4

Date	Daily Maximum		
	SO2 concentration (mg/Nm3) #	NOx concentration (mg/Nm3) #	Opacity (%)
1/4/2015	55	290	18
2/4/2015	48	379	22
3/4/2015	57	374	24
4/4/2015	31	370	23
5/4/2015	43	377	16
6/4/2015	27	366	15
7/4/2015	*	*	*
8/4/2015	*	*	*
9/4/2015	*	*	*
10/4/2015	25	343	18
11/4/2015	13	390	15
12/4/2015	17	422	25
13/4/2015	34	426	22
14/4/2015	38	472	21
15/4/2015	55	389	16
16/4/2015	84	311	25
17/4/2015	76	311	26
18/4/2015	88	406	18
19/4/2015	125	373	19
20/4/2015	88	412	31
21/4/2015	93	427	28
22/4/2015	93	473	32
23/4/2015	68	298	26
24/4/2015	56	336	29
25/4/2015	86	495	26
26/4/2015	61	415	17
27/4/2015	57	353	29
28/4/2015	112	361	26
29/4/2015	38	322	22
30/4/2015	22	325	23

Date	Daily Maximum		
	SO2 concentration (mg/Nm3) #	NOx concentration (mg/Nm3) #	Opacity (%)
1/5/2015	20	344	21
2/5/2015	37	298	28
3/5/2015	56	366	28
4/5/2015	61	346	23
5/5/2015	100	397	23
6/5/2015	27	357	31
7/5/2015	23	354	32
8/5/2015	9	350	25
9/5/2015	15	334	29
10/5/2015	25	354	26
11/5/2015	31	355	30
12/5/2015	30	367	26
13/5/2015	22	324	16
14/5/2015	63	366	26
15/5/2015	82	340	27
16/5/2015	92	370	20
17/5/2015	35	359	19
18/5/2015	36	343	24
19/5/2015	71	399	24
20/5/2015	74	397	23
21/5/2015	35	315	20
22/5/2015	26	442	23
23/5/2015	18	354	22
24/5/2015	51	374	23
25/5/2015	49	364	31
26/5/2015	27	365	26
27/5/2015	32	371	28
28/5/2015	23	346	29
29/5/2015	41	352	31
30/5/2015	22	399	31
31/5/2015	27	320	30

Date	Daily Maximum		
	SO2 concentration (mg/Nm3) [#]	NOx concentration (mg/Nm3) [#]	Opacity (%)
1/6/2015	29	317	27
2/6/2015	19	326	25
3/6/2015	20	309	35
4/6/2015	58	288	24
5/6/2015	52	315	33
6/6/2015	54	379	34
7/6/2015	57	372	19
8/6/2015	48	353	27
9/6/2015	49	359	28
10/6/2015	74	368	29
11/6/2015	102	433	28
12/6/2015	91	331	25
13/6/2015	72	381	24
14/6/2015	69	300	19
15/6/2015	118	385	22
16/6/2015	88	335	22
17/6/2015	72	337	23
18/6/2015	72	392	24
19/6/2015	29	366	24
20/6/2015	62	322	27
21/6/2015	48	285	26
22/6/2015	42	365	27
23/6/2015	30	357	27
24/6/2015	29	350	25
25/6/2015	32	340	17
26/6/2015	53	355	21
27/6/2015	25	358	16
28/6/2015	*	*	*
29/6/2015	38	264	18
30/6/2015	49	331	22

Note: # - Hourly average value. Expressed as at 0°C, 101.325kPa, dry and corrected to 12% CO₂ condition.

* - Unit L4 was not on load.

B.2.3 Monthly Summary of Stack SO2 for Unit L2

Date	Daily Maximum	
	SO2 concentration (mg/Nm3) #	Opacity (%)
1/4/2015	*	*
2/4/2015	*	*
3/4/2015	*	*
4/4/2015	*	*
5/4/2015	*	*
6/4/2015	117	12
7/4/2015	136	10
8/4/2015	128	11
9/4/2015	81	12
10/4/2015	*	*
11/4/2015	*	*
12/4/2015	*	*
13/4/2015	42	10
14/4/2015	59	10
15/4/2015	40	11
16/4/2015	61	14
17/4/2015	110	13
18/4/2015	51	15
19/4/2015	95	13
20/4/2015	114	14
21/4/2015	100	12
22/4/2015	*	*
23/4/2015	*	*
24/4/2015	*	*
25/4/2015	*	*
26/4/2015	*	*
27/4/2015	101	10
28/4/2015	66	10
29/4/2015	68	12
30/4/2015	34	12

Date	Daily Maximum	
	SO2 concentration (mg/Nm3) [#]	Opacity (%)
1/5/2015	32	12
2/5/2015	54	13
3/5/2015	63	12
4/5/2015	67	12
5/5/2015	56	11
6/5/2015	42	10
7/5/2015	29	11
8/5/2015	28	12
9/5/2015	62	12
10/5/2015	*	*
11/5/2015	22	11
12/5/2015	9	9
13/5/2015	22	11
14/5/2015	64	11
15/5/2015	134	10
16/5/2015	67	10
17/5/2015	*	*
18/5/2015	52	11
19/5/2015	47	11
20/5/2015	40	12
21/5/2015	45	12
22/5/2015	36	12
23/5/2015	*	*
24/5/2015	*	*
25/5/2015	*	*
26/5/2015	29	11
27/5/2015	38	10
28/5/2015	23	11
29/5/2015	30	11
30/5/2015	56	11
31/5/2015	22	9

Date	Daily Maximum	
	SO2 concentration (mg/Nm3) [#]	Opacity (%)
1/6/2015	35	10
2/6/2015	50	11
3/6/2015	33	12
4/6/2015	21	11
5/6/2015	76	10
6/6/2015	47	8
7/6/2015	*	*
8/6/2015	45	8
9/6/2015	60	9
10/6/2015	53	8
11/6/2015	77	8
12/6/2015	86	7
13/6/2015	68	7
14/6/2015	63	10
15/6/2015	80	10
16/6/2015	85	10
17/6/2015	57	10
18/6/2015	60	8
19/6/2015	48	10
20/6/2015	43	9
21/6/2015	*	*
22/6/2015	60	9
23/6/2015	63	8
24/6/2015	37	7
25/6/2015	42	8
26/6/2015	29	9
27/6/2015	*	*
28/6/2015	*	*
29/6/2015	29	10
30/6/2015	32	10

Note: # - Hourly average value. Expressed as at 0°C, 101.325kPa, dry and corrected to 12% CO₂ condition.

* - Unit L2 was not on load.

B.3 Ambient SO₂ and NO₂ monitoring Data at Southern District and Cheung Chau

THE HONGKONG ELECTRIC COMPANY, LTD.
AIR QUALITY DATA MONTHLY TIME SERIES REPORT
MONTH: APRIL

STATION : VICTORIA PEAK
POLLUTANT : SULPHUR DIOXIDE

YEAR : 2015
UNIT : MICROGRAMS/CUBIC METER

DAY	1	2	3	4	5	6	7	8	9	10	11	12	13	14	15	16	17	18	19	20	21	22	23	24	MEAN	
1	0	0	0	0	0	0	0	0	0	0	0	0	0	0	0	1	1	0	0	0	0	0	0	0	1	0
2	1	0	0	0	0	0	0	2	2	1	1	0	1	1	3	3	3	2	1	1	1	0	0	1	1	
3	2	2	3	3	1	2	2	1	2	2	2	3	3	2	3	2	3	2	3	2	2	2	2	2	1	2
4	3	1	1	2	1	1	1	1	0	2	1	1	2	1	2	2	2	2	2	2	0	0	0	0	0	1
5	0	0	0	0	0	0	0	0	0	0	0	0	0	0	0	0	0	0	0	0	0	0	0	0	0	0
6	0	0	0	0	0	0	0	0	0	1	2	11	14	7	9	10	12	5	3	0	0	0	0	2	2	3
7	1	0	0	0	0	0	0	0	1	1	0	0	0	0	0	0	0	0	0	0	0	0	0	0	1	0
8	1	0	1	1	1	1	1	1	3	7	3	2	2	4	4	3	2	6	3	1	2	2	1	0	0	2
9	0	0	0	0	0	0	0	0	1	1	1	M	0	0	0	0	1	0	0	1	0	1	1	3	0	
10	2	1	0	2	1	3	1	3	11	4	6	9	4	5	8	9	9	8	7	9	9	8	3	3	5	
11	2	0	0	0	0	0	0	0	0	0	0	0	0	0	0	0	0	0	0	0	0	0	0	0	0	0
12	0	0	0	0	0	0	1	0	1	1	1	2	4	7	8	9	9	7	6	6	5	5	4	3	3	3
13	2	2	3	4	4	5	13	20	19	8	7	8	12	17	22	18	16	19	19	22	28	35	58	17	16	
14	11	7	5	4	4	3	3	4	4	4	4	6	7	8	13	26	20	24	19	29	18	9	9	6	10	
15	6	6	6	5	5	6	8	9	7	17	13	15	12	10	14	17	13	9	8	7	6	8	21	8	10	
16	8	6	4	4	4	5	7	6	5	4	4	5	8	9	7	9	13	12	6	3	4	4	3	1	6	
17	2	12	10	3	1	2	3	7	9	7	4	5	4	3	4	6	7	3	2	3	2	1	1	1	4	
18	1	1	1	1	1	0	0	0	1	1	1	1	3	3	2	2	2	2	2	1	2	1	1	1	1	1
19	1	1	1	1	1	1	0	1	1	1	2	2	2	3	6	4	3	2	1	2	1	2	5	2	2	
20	1	2	2	3	1	2	2	0	1	3	1	1	1	5	4	6	6	10	5	2	4	6	5	4	3	
21	6	2	4	5	6	3	1	1	4	5	9	4	3	3	24	13	9	6	5	3	3	2	1	1	5	
22	1	1	0	0	1	1	1	2	1	2	2	2	2	3	2	2	2	2	2	2	1	1	2	2	2	
23	2	2	2	2	1	2	2	3	4	3	4	3	3	3	3	3	3	2	2	3	3	3	3	3	3	
24	3	3	4	5	5	4	5	6	8	8	6	6	4	4	4	8	10	13	12	11	13	12	13	12	7	
25	12	13	12	8	5	2	1	1	1	1	2	3	2	3	2	2	3	3	4	4	3	3	2	2	4	
26	1	1	0	1	1	1	0	1	1	1	1	2	2	2	3	2	2	2	2	3	4	5	4	3	2	
27	3	2	2	2	2	2	2	2	0	1	2	6	4	4	5	2	6	7	10	8	5	2	1	0	3	
28	1	1	3	7	10	4	2	3	12	18	4	2	4	16	31	6	4	23	16	25	37	11	8	4	11	
29	2	1	2	1	0	0	0	0	1	2	3	7	13	20	11	7	4	8	7	14	8	8	5	3	5	
30	1	1	2	5	3	2	3	3	3	5	6	5	8	17	28	9	7	10	11	12	11	9	8	4	7	

MONTHLY STATISTICS:

GEOM	ARITH-----PERCENTILES-----								-----RANGE-----				STN GEOM	PERCENT	NO. OF TIMES	
MEAN	MEDIAN	MEAN	50	90	95	98	99	1-HR	24-HR	DEVIATION	VALID DATA	ABOVE	LIMIT	LEVEL		
3	2	4	2	10	14	21	26	0	-	58	0	-	16	2	100	0

NOTES: 1. FLAGS FOR INVALID DATA :
D: DYNAMIC CALIBRATION
T: TELEMETRY/DATALOGGR FAULT
M: MAINTENANCE OR ANALYZER FAULT
P: POWER FAILURE

THE HONGKONG ELECTRIC COMPANY, LTD.
AIR QUALITY DATA MONTHLY TIME SERIES REPORT
MONTH: APRIL

STATION : VICTORIA PEAK
POLLUTANT : NITROGEN DIOXIDE

YEAR : 2015
UNIT : MICROGRAMS/CUBIC METER

DAY	1	2	3	4	5	6	7	8	9	10	11	12	13	14	15	16	17	18	19	20	21	22	23	24	MEAN
1	0	0	3	0	0	0	0	3	5	3	3	1	2	2	5	8	6	5	3	1	2	3	2	5	3
2	6	1	1	0	0	0	1	12	11	8	8	3	5	1	14	16	11	5	2	7	4	2	0	2	5
3	3	6	6	1	1	6	6	0	3	4	5	2	7	15	5	14	6	11	11	5	7	8	5	1	6
4	8	0	0	2	0	0	0	0	1	2	0	1	8	4	10	9	9	17	16	14	9	15	6	1	6
5	1	0	0	0	0	0	0	0	0	0	0	1	0	0	0	1	3	0	0	0	0	0	0	0	0
6	0	0	0	0	0	0	0	2	1	14	10	19	21	18	21	31	36	16	12	5	0	0	5	9	9
7	16	4	0	0	0	0	0	1	0	0	0	2	0	3	1	6	0	3	4	8	8	14	16	14	4
8	13	3	4	1	0	0	7	23	30	42	36	33	29	37	41	46	44	51	39	38	26	20	13	13	25
9	7	7	2	3	2	2	3	10	16	24	29	M	11	25	27	38	46	48	43	37	33	45	50	54	24
10	47	39	16	17	13	17	14	37	48	50	54	56	48	52	56	56	59	61	56	58	56	49	40	30	43
11	24	12	0	0	0	0	1	5	8	15	18	19	14	23	34	22	26	20	17	19	20	18	15	21	15
12	18	23	24	16	14	13	18	16	24	18	15	16	32	37	42	44	43	42	82	122	75	59	28	1	34
13	0	0	0	0	0	1	24	40	47	41	28	29	27	38	39	30	35	59	61	51	128	177	235	125	51
14	36	6	0	0	0	0	5	18	27	49	37	36	20	24	26	74	55	70	75	87	51	27	19	5	31
15	6	3	6	4	1	0	14	11	15	53	35	38	24	23	23	39	35	21	28	29	26	32	42	21	22
16	19	4	0	0	0	0	1	5	13	5	7	7	10	22	19	27	48	44	40	27	33	16	11	1	15
17	8	63	33	5	0	0	11	10	17	8	4	4	2	1	4	8	12	4	8	12	1	0	1	0	9
18	0	0	0	0	0	0	0	0	1	0	0	0	4	2	0	0	0	0	3	0	0	0	0	1	0
19	0	0	0	0	0	0	0	0	3	1	4	5	5	8	14	4	6	4	3	4	0	2	12	5	3
20	0	4	13	15	0	10	14	0	3	18	12	7	2	24	31	33	31	34	19	8	22	49	56	54	19
21	48	23	27	32	28	16	20	26	57	63	72	59	44	41	74	53	46	49	54	83	25	8	10	8	40
22	3	0	0	0	0	0	6	14	10	14	21	19	9	13	0	1	0	0	6	0	0	0	0	0	5
23	0	M	0	0	0	0	0	2	14	14	9	20	10	17	30	44	33	32	43	34	20	17	15	15	16
24	14	4	4	0	1	1	9	31	42	46	36	27	18	24	29	17	27	44	119	143	58	35	66	28	34
25	30	70	37	4	0	0	0	2	2	6	9	20	2	5	11	2	6	15	11	3	3	0	0	1	10
26	0	0	0	0	0	0	0	0	0	0	0	0	0	0	0	0	0	0	0	7	25	9	5	0	2
27	0	0	0	0	0	0	0	5	34	32	37	14	25	5	11	5	14	14	31	44	14	2	0	1	12
28	0	0	4	23	48	19	3	4	21	18	1	1	1	5	17	2	1	21	26	36	41	23	22	13	15
29	1	0	0	0	0	0	0	1	0	1	3	9	24	37	29	19	7	24	20	40	11	19	8	0	11
30	0	0	0	8	3	0	1	1	1	2	2	0	6	27	31	13	10	9	23	32	17	11	6	3	9

MONTHLY STATISTICS:

GEOM	ARITH-----PERCENTILES-----							-----RANGE-----				STN GEOM	PERCENT	NO. OF TIMES		
MEAN	MEDIAN	MEAN	50	90	95	98	99	1-HR	24-HR	DEVIATION	VALID DATA	ABOVE	LIMIT	LEVEL		
12	7	16	7	43	54	71	86	0	-	235	0	-	51	3	100	0

NOTES: 1. FLAGS FOR INVALID DATA :
D: DYNAMIC CALIBRATION
T: TELEMETRY/DATALOGGR FAULT
M: MAINTENANCE OR ANALYZER FAULT
P: POWER FAILURE

THE HONGKONG ELECTRIC COMPANY, LTD.
AIR QUALITY DATA MONTHLY TIME SERIES REPORT

STATION : CHUNG HOM KOK ZONE SUBSTATION
POLLUTANT : SULPHUR DIOXIDE

MONTH: APRIL

YEAR : 2015

UNIT : MICROGRAMS/CUBIC METER

DAY	1	2	3	4	5	6	7	8	9	10	11	12	13	14	15	16	17	18	19	20	21	22	23	24	MEAN
1	2	2	1	2	2	2	3	3	4	3	3	2	3	2	4	5	2	3	3	3	5	3	3	4	3
2	7	6	7	5	9	6	8	7	8	5	3	4	4	8	9	9	8	8	10	4	8	5	4	12	7
3	12	6	12	14	16	5	11	13	10	9	11	6	12	9	8	10	6	9	9	7	6	8	7	6	9
4	10	6	7	7	3	6	3	2	5	2	3	7	5	8	4	6	5	5	7	4	5	5	3	7	5
5	4	3	2	5	3	2	1	2	3	5	6	8	10	6	4	2	2	6	2	1	1	4	5	0	4
6	0	1	0	0	1	0	0	0	0	0	0	0	1	2	41	29	52	31	15	12	6	1	3	5	8
7	1	1	1	1	1	1	1	1	1	1	2	0	0	0	0	0	2	2	2	2	1	1	2	1	1
8	2	0	1	0	0	1	1	1	1	1	1	0	1	1	1	1	1	0	1	0	0	1	0	0	1
9	0	0	0	0	0	0	0	1	0	0	0	1	0	0	0	0	2	2	0	0	0	0	0	0	0
10	0	0	0	0	0	0	0	0	1	0	0	1	1	2	11	15	4	6	2	1	1	0	0	0	2
11	0	0	0	0	0	0	0	0	0	0	0	0	0	0	0	0	0	0	0	0	0	0	0	1	0
12	1	0	1	0	0	0	0	0	1	1	1	14	12	9	21	24	14	17	17	16	9	4	1	3	7
13	4	5	6	15	15	7	8	8	9	10	10	9	8	9	13	30	26	46	30	22	20	23	11	10	15
14	10	7	6	6	5	5	5	5	4	4	4	4	4	4	6	9	11	14	13	11	17	17	26	11	9
15	21	16	13	14	11	7	7	8	8	13	17	27	13	17	25	14	9	8	7	4	4	7	6	16	12
16	20	15	17	21	8	4	4	8	20	15	25	36	14	11	12	15	17	13	4	5	11	9	16	12	14
17	17	12	10	10	15	22	15	13	11	13	7	6	5	6	6	8	5	3	2	4	3	3	M	3	9
18	4	4	3	5	4	3	4	3	5	7	4	7	9	10	10	15	10	6	10	16	9	15	11	6	8
19	8	7	13	7	8	6	10	10	13	13	8	14	8	11	7	9	9	9	10	10	8	8	26	11	10
20	7	25	17	14	13	11	8	4	8	17	M	M	M	4	4	M	M	8	9	13	15	9	6	4	10
21	5	6	8	7	7	4	1	0	3	4	M	M	0	0	0	0	1	4	2	0	2	2	1	3	3
22	2	2	3	2	3	2	3	4	3	2	4	5	5	4	4	2	2	1	2	4	3	6	3	3	3
23	2	2	2	1	2	3	3	5	5	6	6	5	3	3	4	5	3	3	5	4	5	6	6	5	4
24	6	9	7	8	9	8	8	9	8	10	11	9	5	5	8	7	7	8	6	0	0	0	0	0	6
25	0	0	0	0	0	0	0	0	0	0	M	M	M	M	M	M	M	M	M	M	M	M	M	M	M
26	M	M	M	M	M	M	M	M	M	M	M	M	M	M	M	M	M	M	M	M	M	M	M	M	M
27	M	M	M	M	M	M	M	M	M	M	M	M	M	M	M	M	M	M	M	M	M	M	M	M	M
28	M	M	M	M	M	M	M	M	M	M	M	M	M	M	M	M	M	M	M	M	M	M	M	M	M
29	M	M	M	M	M	M	M	M	M	M	M	M	M	M	M	M	M	M	M	M	M	M	M	M	M
30	M	M	M	M	M	M	M	M	M	M	M	M	M	M	M	M	M	M	M	M	M	M	M	M	M

MONTHLY STATISTICS:

GEOM	ARITH-----PERCENTILES-----										RANGE-----		STN GEOM	PERCENT	NO. OF TIMES	
MEAN	MEDIAN	MEAN	50	90	95	98	99	1-HR		24-HR		DEVIATION	VALID DATA	ABOVE	LIMIT LEVEL	
5	4	6	4	14	17	25	30	0	-	52	0	-	15	2	80	0

NOTES: 1. FLAGS FOR INVALID DATA :
D: DYNAMIC CALIBRATION
T: TELEMETRY/DATALOGGR FAULT
M: MAINTENANCE OR ANALYZER FAULT
P: POWER FAILURE

THE HONGKONG ELECTRIC COMPANY, LTD.
AIR QUALITY DATA MONTHLY TIME SERIES REPORT

STATION : CHUNG HOM KOK ZONE SUBSTATION
POLLUTANT : NITROGEN DIOXIDE

MONTH: APRIL

YEAR : 2015

UNIT : MICROGRAMS/CUBIC METER

DAY	1	2	3	4	5	6	7	8	9	10	11	12	13	14	15	16	17	18	19	20	21	22	23	24	MEAN
1	10	8	8	10	11	11	21	18	14	10	9	6	9	3	4	7	7	11	14	12	19	13	9	7	10
2	13	6	8	6	9	3	11	10	7	5	3	1	2	4	8	11	8	5	9	6	9	3	4	17	7
3	12	2	16	15	21	3	7	9	6	4	6	1	8	7	8	6	5	10	16	11	10	10	8	12	9
4	12	6	10	9	2	7	1	1	1	0	1	3	2	2	1	4	2	6	14	11	6	9	9	16	6
5	6	1	3	7	3	1	2	6	4	6	4	5	4	1	1	1	2	11	6	1	0	3	2	0	3
6	0	1	0	0	6	1	2	2	3	0	0	0	1	1	31	27	36	29	25	27	15	0	2	11	9
7	2	2	0	0	0	0	0	3	3	2	5	2	1	1	1	0	2	4	5	7	2	3	5	6	2
8	6	M	3	2	3	4	5	8	11	14	11	12	10	13	12	14	14	14	13	12	10	10	9	16	10
9	12	11	9	8	9	8	8	10	9	10	9	9	8	8	8	11	20	20	19	16	20	22	16	13	12
10	16	24	28	11	10	8	13	18	23	18	24	24	22	27	34	45	41	47	45	44	32	15	14	32	26
11	18	14	5	4	5	6	8	7	9	9	7	5	4	8	11	8	10	10	8	7	6	8	9	7	8
12	6	9	7	4	5	4	16	17	20	19	20	30	23	22	35	42	29	39	38	37	50	22	9	6	21
13	4	4	8	35	36	4	4	5	10	8	6	7	6	8	18	45	38	79	37	23	53	56	10	12	22
14	10	6	3	2	2	3	6	7	5	6	6	8	7	5	10	18	23	34	25	17	23	20	35	17	12
15	27	17	14	14	13	11	12	18	16	M	26	32	18	30	31	20	21	21	17	16	17	14	9	18	19
16	18	18	24	30	10	5	6	18	25	23	33	39	20	13	13	18	25	23	16	14	22	19	25	15	20
17	18	14	11	8	12	24	20	33	22	23	7	7	5	7	6	6	11	10	18	20	18	16	M	10	14
18	14	5	2	4	3	5	5	12	12	13	5	5	11	16	9	14	10	6	11	19	9	13	12	4	9
19	7	7	13	7	12	4	11	9	9	11	8	14	4	13	7	11	12	11	16	12	8	7	23	15	10
20	10	32	25	27	22	17	16	5	9	16	M	M	42	40	22	M	M	27	25	32	29	54	61	60	29
21	58	53	50	46	44	36	26	24	30	33	M	M	8	10	11	12	16	18	12	4	6	9	6	6	24
22	5	M	4	5	4	3	6	10	8	5	6	5	5	5	8	7	7	5	5	8	6	9	4	5	6
23	3	3	2	2	3	4	5	9	9	10	11	8	5	6	7	16	14	11	20	21	16	16	14	11	9
24	11	11	7	8	9	7	11	23	19	18	16	14	9	10	11	14	13	15	15	17	25	33	25	38	16
25	30	16	12	8	5	1	2	5	5	5	5	5	5	5	4	6	7	7	8	6	4	4	4	3	7
26	3	1	1	4	2	0	2	4	4	4	7	4	5	4	7	8	6	5	14	9	16	15	6	6	6
27	4	3	2	2	3	2	1	8	8	5	9	5	4	4	2	7	5	10	8	13	16	21	20	9	7
28	11	13	39	45	32	22	17	18	12	15	21	17	14	12	7	13	18	25	23	24	10	19	15	24	19
29	24	26	16	9	13	24	18	10	11	18	12	13	6	9	9	10	15	11	15	14	9	9	12	10	13
30	5	13	27	11	19	21	16	17	8	11	15	25	21	25	6	11	7	10	15	19	20	16	22	14	16

MONTHLY STATISTICS:

GEOM	ARITH-----PERCENTILES-----							-----RANGE-----					STN GEOM	PERCENT	NO. OF TIMES	
MEAN	MEDIAN	MEAN	50	90	95	98	99	1-HR	24-HR	DEVIATION	VALID DATA	ABOVE	LIMIT	LEVEL		
9	10	13	10	25	35	45	53	0	-	79	2	-	29	2	99	0

NOTES: 1. FLAGS FOR INVALID DATA :
D: DYNAMIC CALIBRATION
T: TELEMETRY/DATALOGGR FAULT
M: MAINTENANCE OR ANALYZER FAULT
P: POWER FAILURE

THE HONGKONG ELECTRIC COMPANY, LTD.
AIR QUALITY DATA MONTHLY TIME SERIES REPORT

STATION : VICTORIA ROAD SUBSTATION
POLLUTANT : SULPHUR DIOXIDE

MONTH: APRIL

YEAR : 2015

UNIT : MICROGRAMS/CUBIC METER

DAY	1	2	3	4	5	6	7	8	9	10	11	12	13	14	15	16	17	18	19	20	21	22	23	24	MEAN
1	2	2	3	2	2	2	3	2	2	3	5	2	4	5	5	11	7	6	4	3	2	4	4	4	4
2	6	7	6	5	7	5	5	10	8	13	6	4	8	5	10	9	12	9	6	9	8	6	8	9	8
3	13	12	19	13	16	11	14	9	13	12	10	10	13	15	8	10	9	11	10	11	11	9	8	6	11
4	14	7	7	9	7	8	6	8	7	11	6	6	8	6	8	12	8	9	12	12	5	5	6	5	8
5	5	3	1	1	1	1	0	0	1	2	3	4	4	4	3	6	3	5	1	0	0	2	2	4	2
6	9	6	52	26	41	10	4	8	41	24	50	52	27	18	19	18	20	12	49	20	9	3	2	14	22
7	28	34	5	1	1	2	14	35	4	3	2	1	1	3	3	1	1	1	1	1	1	1	1	2	6
8	2	1	1	2	2	2	2	2	5	4	4	4	1	5	9	3	3	5	3	3	2	1	1	0	3
9	1	0	0	2	0	0	0	0	1	1	1	0	3	2	1	0	1	3	1	2	0	1	2	2	1
10	3	2	3	4	2	3	4	4	7	13	24	27	23	13	11	13	13	12	12	11	12	14	8	10	10
11	7	4	1	1	6	3	1	3	1	1	1	1	0	0	1	1	0	1	2	1	2	2	1	1	2
12	1	3	6	6	2	1	9	4	3	7	9	16	14	10	17	21	18	14	13	8	9	11	10	4	9
13	3	4	6	6	6	6	6	11	9	10	8	8	21	17	25	22	29	39	27	18	18	19	27	13	15
14	9	6	5	5	4	3	2	3	3	3	4	20	15	11	10	19	12	13	10	8	16	8	11	8	9
15	7	8	6	5	8	10	10	13	9	14	10	16	16	17	26	19	16	12	12	10	7	15	24	13	13
16	10	9	12	7	4	4	6	8	13	7	7	8	10	7	7	6	12	7	3	5	5	6	5	2	7
17	4	5	5	3	5	5	4	11	11	9	4	5	5	3	7	7	8	3	2	4	2	2	2	2	5
18	3	1	1	1	1	1	1	1	2	2	4	4	7	8	6	6	3	4	7	7	8	6	5	6	4
19	4	4	6	6	6	6	6	8	9	10	9	8	10	11	11	6	13	10	9	10	7	6	5	4	8
20	5	3	6	5	6	9	4	2	3	7	12	12	7	16	16	13	16	24	12	6	12	17	16	13	10
21	12	17	15	10	11	8	4	6	8	15	21	41	18	25	16	11	13	13	6	9	4	4	3	3	12
22	2	2	1	1	1	2	2	2	3	3	3	3	2	2	3	3	4	2	3	3	2	2	3	3	2
23	2	3	2	2	2	3	3	4	4	4	4	4	2	3	4	14	17	17	13	8	3	3	3	4	5
24	5	5	6	6	7	7	8	8	9	11	19	14	24	12	6	12	16	13	15	10	16	12	10	10	11
25	16	22	24	40	17	5	3	3	2	2	3	3	2	2	2	2	3	3	4	4	4	4	3	3	7
26	2	2	1	2	1	1	1	1	1	1	1	1	2	2	2	3	3	2	3	3	5	4	3	3	2
27	12	27	21	18	13	6	4	5	15	40	19	4	2	5	6	10	17	17	19	16	26	23	15	18	15
28	15	15	14	16	7	6	17	37	15	12	3	3	15	13	10	4	8	8	6	8	6	8	8	7	11
29	9	4	6	5	3	4	2	4	8	7	9	15	16	17	8	7	6	7	11	5	5	14	13	5	8
30	6	12	10	4	4	6	7	11	18	22	13	8	17	30	19	4	3	8	10	23	16	15	12	6	12

MONTHLY STATISTICS:

GEOM	ARITH-----PERCENTILES-----									-----RANGE-----				STN GEOM	PERCENT	NO. OF TIMES
MEAN	MEDIAN	MEAN	50	90	95	98	99	1-HR	24-HR	DEVIATION	VALID DATA	ABOVE	LIMIT	LEVEL		
6	6	8	6	17	22	29	40	0	-	52	1	-	22	2	100	0

- NOTES: 1. FLAGS FOR INVALID DATA :
- D: DYNAMIC CALIBRATION
 - T: TELEMETRY/DATALOGGR FAULT
 - M: MAINTENANCE OR ANALYZER FAULT
 - P: POWER FAILURE

THE HONGKONG ELECTRIC COMPANY, LTD.
AIR QUALITY DATA MONTHLY TIME SERIES REPORT

STATION : VICTORIA ROAD SUBSTATION
POLLUTANT : NITROGEN DIOXIDE

MONTH: APRIL

YEAR : 2015
UNIT : MICROGRAMS/CUBIC METER

DAY	1	2	3	4	5	6	7	8	9	10	11	12	13	14	15	16	17	18	19	20	21	22	23	24	MEAN
1	11	8	8	1	0	3	15	21	19	19	65	15	8	7	12	26	19	16	15	10	11	14	11	14	15
2	16	13	10	6	13	8	21	33	23	20	11	8	11	11	22	20	22	25	22	26	22	17	17	23	18
3	23	24	25	15	20	24	27	17	20	13	10	15	19	18	17	17	20	29	29	25	23	23	18	13	20
4	21	7	6	10	6	8	9	10	8	10	5	4	5	3	8	14	11	12	24	23	9	14	13	11	10
5	10	5	2	0	0	1	3	4	12	7	4	4	3	1	1	5	3	14	8	6	19	29	20	28	8
6	31	19	31	18	19	7	16	15	16	20	23	19	16	12	19	20	21	16	43	43	32	13	13	29	21
7	35	29	4	0	0	3	16	27	4	6	3	5	2	6	8	6	2	5	4	10	12	14	16	18	10
8	15	M	7	4	3	3	10	21	35	39	40	43	28	44	40	50	42	50	48	42	30	25	22	12	28
9	16	7	7	9	1	2	5	9	16	26	27	16	22	26	24	34	35	57	51	42	30	38	49	47	25
10	43	33	24	24	12	17	14	27	41	38	40	39	36	34	39	42	49	53	52	50	48	45	38	33	36
11	28	13	2	0	26	8	9	20	18	22	25	27	18	28	37	31	35	45	45	51	54	49	44	35	28
12	38	32	31	31	27	18	25	21	25	23	26	32	29	35	41	46	39	46	70	68	72	81	59	13	39
13	4	8	6	0	2	10	20	45	29	42	29	43	49	34	65	41	49	108	143	90	85	143	166	82	54
14	26	8	2	0	0	5	22	29	37	24	27	48	15	12	12	31	24	24	23	60	68	25	16	19	23
15	17	14	10	8	9	11	14	37	29	30	18	31	21	19	38	40	28	24	25	43	49	76	81	40	30
16	21	13	12	4	0	0	8	72	45	15	12	15	16	13	12	12	26	21	9	24	31	21	34	24	19
17	18	8	7	6	5	9	36	53	40	49	11	3	1	4	28	29	29	23	23	19	9	8	5	6	18
18	8	1	0	0	0	0	3	6	11	16	13	11	13	7	5	5	3	8	11	9	9	5	4	15	7
19	9	7	8	8	10	11	17	21	22	20	18	17	19	17	13	12	30	25	26	22	10	10	9	4	15
20	5	1	11	8	7	15	8	13	12	14	21	16	8	19	17	37	27	36	36	16	38	56	55	49	22
21	42	41	37	24	29	23	26	36	52	53	58	58	37	51	57	48	58	35	39	69	52	17	10	17	40
22	11	M	3	2	0	2	17	23	15	16	20	19	17	17	15	17	23	15	16	13	7	7	9	6	13
23	0	0	0	0	0	0	2	13	27	25	19	22	21	28	34	56	61	74	69	65	46	36	26	27	27
24	22	14	14	8	8	12	18	41	21	16	24	17	41	21	11	15	30	17	38	72	117	102	97	97	36
25	98	84	95	91	34	5	7	12	12	30	25	31	14	11	15	12	15	21	18	15	17	9	9	5	29
26	2	2	0	0	0	0	2	1	6	4	2	2	2	6	5	7	10	12	8	20	42	49	44	30	11
27	36	62	39	30	20	6	23	38	39	53	22	0	0	3	5	9	22	24	35	49	63	53	55	58	31
28	48	25	21	32	15	22	36	37	23	14	0	1	8	18	8	5	16	10	12	16	26	24	26	28	20
29	17	4	4	2	0	1	8	12	7	4	7	7	22	21	10	12	14	8	17	7	4	17	12	20	10
30	17	14	10	1	3	6	10	20	10	13	8	8	15	33	13	1	2	12	23	35	31	25	19	13	14

MONTHLY STATISTICS:

GEOM	ARITH-----PERCENTILES-----							-----RANGE-----				STN GEOM	PERCENT	NO. OF TIMES		
MEAN	MEDIAN	MEAN	50	90	95	98	99	1-HR	24-HR	DEVIATION	VALID DATA	ABOVE	LIMIT	LEVEL		
16	17	23	17	48	58	82	97	0	-	166	7	-	54	3	100	0

NOTES: 1. FLAGS FOR INVALID DATA :
D: DYNAMIC CALIBRATION
T: TELEMETRY/DATALOGGR FAULT
M: MAINTENANCE OR ANALYZER FAULT
P: POWER FAILURE

THE HONGKONG ELECTRIC COMPANY, LTD.
AIR QUALITY DATA MONTHLY TIME SERIES REPORT
MONTH: APRIL

STATION : POK FU LAM
POLLUTANT : SULPHUR DIOXIDE

YEAR : 2015
UNIT : MICROGRAMS/CUBIC METER

DAY	1	2	3	4	5	6	7	8	9	10	11	12	13	14	15	16	17	18	19	20	21	22	23	24	MEAN
1	1	2	2	2	1	1	3	1	1	2	1	2	3	5	5	12	6	4	4	3	2	4	4	4	3
2	5	5	5	3	6	4	3	9	6	10	4	3	6	3	9	7	6	5	4	6	6	6	7	8	6
3	10	10	17	12	14	8	11	9	9	9	8	8	12	12	6	8	6	8	8	8	8	8	7	3	9
4	10	4	3	4	3	3	2	4	3	5	2	3	4	3	4	6	4	5	6	10	2	1	2	1	4
5	2	3	3	1	1	1	0	1	1	1	3	5	4	4	2	6	5	6	2	0	1	1	4	4	3
6	7	1	63	62	35	15	2	3	25	M	51	46	29	24	21	19	30	38	57	19	2	1	2	6	24
7	15	13	2	1	1	3	24	36	4	3	2	1	1	4	3	4	2	2	2	2	1	1	2	3	6
8	3	3	3	3	3	3	2	4	6	5	5	5	4	7	6	4	5	5	4	4	3	4	2	1	4
9	2	2	4	2	0	0	0	0	1	1	1	1	3	2	0	0	4	4	3	5	2	2	3	1	2
10	1	1	2	3	2	2	3	1	4	8	15	19	20	11	12	13	13	16	12	13	16	18	10	9	9
11	11	7	1	2	8	3	4	5	2	1	1	1	1	1	2	1	1	0	0	1	2	1	1	2	2
12	1	8	10	6	3	3	12	6	6	5	5	18	16	14	20	13	14	14	13	9	10	15	20	9	10
13	4	17	19	M	7	7	7	8	9	9	10	10	25	20	27	24	24	34	26	22	22	23	28	22	18
14	10	7	7	7	6	4	3	4	5	4	7	12	16	15	12	21	14	16	12	15	15	9	16	8	10
15	7	9	8	6	13	14	13	17	8	9	8	17	12	18	36	21	17	11	15	10	10	16	32	11	14
16	14	12	10	8	5	7	8	8	10	6	7	10	10	8	6	D	7	5	3	5	6	6	5	3	7
17	6	5	5	5	6	5	4	13	19	8	6	6	7	4	5	6	9	4	3	4	3	2	2	2	6
18	3	2	1	1	2	1	1	1	2	2	4	3	6	7	6	6	3	5	7	7	8	6	5	7	4
19	4	5	8	6	6	6	6	7	7	8	9	7	11	14	17	12	13	10	8	9	7	9	14	9	9
20	6	4	5	5	6	7	4	1	2	8	14	15	6	12	13	14	15	22	12	5	17	19	19	16	10
21	11	14	15	9	11	6	4	2	2	10	8	35	25	37	19	14	11	15	12	7	5	5	3	3	12
22	2	2	2	2	2	2	2	3	5	4	3	4	4	4	5	4	4	3	4	4	3	3	4	4	3
23	4	4	3	3	3	4	4	6	6	5	5	5	6	5	4	14	6	5	9	7	5	6	6	10	6
24	11	8	8	9	9	9	11	16	15	15	36	47	31	23	12	16	16	18	15	12	11	11	12	8	16
25	11	21	34	27	27	26	11	16	3	2	3	3	3	4	2	3	3	3	5	5	5	4	4	10	
26	3	3	3	3	3	2	1	2	2	2	2	2	3	3	3	4	4	4	3	4	5	6	7	23	4
27	17	9	11	16	5	3	7	9	35	41	54	9	4	8	8	7	11	14	17	14	17	9	4	8	14
28	20	22	22	22	17	7	8	35	8	7	6	3	9	3	10	5	10	10	10	14	22	10	9	6	12
29	8	5	9	5	3	2	4	3	5	4	12	14	15	12	7	7	10	6	13	7	6	9	13	4	8
30	5	12	17	5	6	10	8	6	13	16	16	11	15	34	29	7	4	6	5	19	15	17	13	5	12

MONTHLY STATISTICS:

GEOM	ARITH-----PERCENTILES-----							-----RANGE-----					STN GEOM	PERCENT	NO. OF TIMES	
MEAN	MEDIAN	MEAN	50	90	95	98	99	1-HR	24-HR	DEVIATION	VALID DATA	ABOVE	LIMIT	LEVEL		
6	6	9	6	17	24	35	41	0	-	63	2	-	24	2	100	0

NOTES: 1. FLAGS FOR INVALID DATA :
D: DYNAMIC CALIBRATION
T: TELEMETRY/DATALOGGR FAULT
M: MAINTENANCE OR ANALYZER FAULT
P: POWER FAILURE

THE HONGKONG ELECTRIC COMPANY, LTD.
AIR QUALITY DATA MONTHLY TIME SERIES REPORT
MONTH: APRIL

STATION : POK FU LAM
POLLUTANT : NITROGEN DIOXIDE

YEAR : 2015
UNIT : MICROGRAMS/CUBIC METER

DAY	1	2	3	4	5	6	7	8	9	10	11	12	13	14	15	16	17	18	19	20	21	22	23	24	MEAN
1	5	2	7	1	0	1	7	11	16	14	10	8	7	8	10	24	12	14	13	8	6	9	5	9	9
2	12	9	9	5	11	5	9	26	23	23	12	8	8	7	16	16	14	17	12	14	13	13	14	15	13
3	17	21	27	12	17	20	24	12	16	13	10	13	17	15	13	14	14	21	22	16	14	21	12	5	16
4	13	4	3	6	3	3	3	5	6	8	5	6	7	4	6	7	6	10	18	18	4	8	5	4	7
5	3	4	3	0	0	0	0	2	14	14	7	7	8	7	5	8	7	20	8	6	23	21	29	26	9
6	30	8	42	40	30	23	14	18	26	M	28	25	21	25	26	27	41	45	53	38	8	4	5	21	26
7	33	18	3	1	1	4	34	32	8	8	10	14	7	13	9	14	12	13	17	16	9	11	14	28	14
8	26	18	15	13	10	12	18	35	45	48	45	43	47	45	54	58	56	55	51	39	35	22	26	36	
9	39	34	29	22	10	9	11	18	26	35	33	29	38	34	37	41	60	70	57	58	48	55	62	62	38
10	55	45	38	37	24	19	28	45	52	54	57	55	50	48	51	55	63	64	63	64	60	55	52	46	49
11	42	25	6	12	41	24	24	34	32	29	30	25	36	49	54	48	42	43	48	66	68	59	57	52	39
12	50	48	46	46	36	33	37	33	37	32	33	40	36	48	62	41	48	58	74	89	127	135	125	52	57
13	27	79	56	M	30	39	40	39	35	50	44	36	57	42	52	56	65	117	146	113	98	120	196	149	73
14	35	13	9	8	7	6	11	23	36	37	41	45	31	26	23	54	39	42	41	55	41	26	34	18	29
15	16	17	12	10	18	19	28	35	33	25	21	37	18	22	51	40	31	27	36	29	28	35	45	12	27
16	27	22	11	8	6	6	12	31	24	16	20	24	22	17	14	D	29	35	26	33	23	28	19	12	20
17	17	11	9	10	10	13	12	26	47	21	14	10	10	12	11	18	25	20	18	18	10	8	8	7	15
18	11	5	2	1	2	2	5	7	10	15	15	12	19	15	13	11	12	13	18	14	15	11	10	17	11
19	12	10	14	15	12	14	14	18	20	18	21	16	21	25	32	28	28	26	23	23	15	21	36	24	20
20	19	19	18	21	17	24	24	11	15	32	32	36	19	35	29	41	46	45	46	26	47	73	72	61	34
21	55	51	52	33	41	37	39	51	68	69	73	70	64	74	71	68	78	57	63	80	62	32	19	19	55
22	17	17	12	12	10	10	24	34	36	30	35	29	27	26	26	19	20	21	33	19	11	14	17	13	21
23	10	7	6	5	6	7	9	21	34	41	35	40	42	40	40	63	57	48	77	63	47	41	42	43	34
24	35	26	19	19	16	16	23	47	46	43	53	60	53	40	31	29	48	54	77	85	128	136	122	110	55
25	112	111	124	74	58	54	26	40	16	21	27	38	29	26	25	24	25	24	37	30	25	18	17	22	42
26	11	M	6	5	5	5	5	8	9	8	7	8	10	12	13	14	14	18	22	35	49	59	54	89	20
27	54	27	25	30	10	8	23	42	69	59	63	13	10	12	14	13	21	28	55	54	42	25	34	34	32
28	54	41	37	43	49	27	21	50	21	20	14	18	11	10	17	13	19	19	31	41	45	28	28	17	28
29	20	8	9	4	1	2	6	8	9	10	15	14	18	14	16	13	15	14	20	14	12	15	16	12	12
30	14	16	22	4	9	17	26	22	18	18	20	16	20	33	31	10	6	6	13	41	28	26	18	9	18

MONTHLY STATISTICS:

GEOM		ARITH ----- PERCENTILES -----							----- RANGE -----				STN GEOM	PERCENT	NO. OF TIMES	
MEAN	MEDIAN	MEAN	50	90	95	98	99	1-HR	24-HR	DEVIATION	VALID DATA	ABOVE	LIMIT	LEVEL		
21	22	29	22	56	68	111	125	0	-	196	7	-	73	2	99	0

NOTES: 1. FLAGS FOR INVALID DATA :
D: DYNAMIC CALIBRATION
T: TELEMETRY/DATALOGGR FAULT
M: MAINTENANCE OR ANALYZER FAULT
P: POWER FAILURE

THE HONGKONG ELECTRIC COMPANY, LTD.
AIR QUALITY DATA MONTHLY TIME SERIES REPORT
MONTH: APRIL

STATION : AP LEI CHAU
POLLUTANT : SULPHUR DIOXIDE

YEAR : 2015
UNIT : MICROGRAMS/CUBIC METER

DAY	1	2	3	4	5	6	7	8	9	10	11	12	13	14	15	16	17	18	19	20	21	22	23	24	MEAN
1	3	3	1	1	0	1	2	1	0	0	0	0	3	0	1	14	8	3	9	10	7	9	9	6	4
2	16	19	12	10	24	3	24	11	21	4	5	6	2	5	22	34	40	17	21	24	18	14	9	15	16
3	23	37	26	27	23	22	14	17	22	11	8	4	19	14	22	25	19	34	21	22	15	15	11	8	19
4	19	11	19	12	10	15	6	19	9	11	7	7	4	3	18	18	10	9	24	20	9	8	8	6	12
5	5	4	3	3	4	3	2	1	0	0	0	1	1	0	0	0	0	1	3	12	9	5	3	1	3
6	1	2	2	8	18	47	20	3	8	0	25	21	2	14	33	33	12	12	16	24	16	9	6	9	14
7	5	5	2	2	11	5	2	6	0	0	2	3	4	0	0	0	0	4	10	9	8	5	4	4	4
8	7	5	4	7	5	3	2	2	3	2	0	0	0	1	1	0	4	6	6	8	5	4	3	4	3
9	4	3	1	1	2	2	1	1	0	0	0	0	0	1	1	0	2	2	2	3	1	1	2	4	1
10	5	4	3	4	6	3	4	5	5	4	19	15	19	11	12	M	M	7	8	14	12	16	17	17	10
11	18	17	17	17	12	12	15	15	15	12	13	12	12	12	13	13	14	14	15	15	14	14	14	T	14
12	T	T	T	T	T	T	T	T	T	T	T	T	T	T	T	T	T	T	T	T	T	T	T	T	T
13	T	T	T	T	T	T	T	T	T	T	T	T	T	T	T	T	T	T	T	T	T	T	T	T	T
14	T	T	T	T	T	T	T	T	T	T	T	T	T	T	T	44	28	28	26	22	34	41	32	36	
15	44	31	29	23	24	24	24	28	37	38	39	46	19	20	28	17	14	3	2	0	3	11	15	19	22
16	18	20	21	17	8	7	7	17	15	25	26	17	18	9	11	8	17	8	1	9	6	14	11	11	13
17	23	13	11	11	20	23	27	17	18	19	8	8	9	5	5	9	7	2	2	4	2	3	3	2	10
18	4	2	2	2	2	1	1	1	3	4	4	7	27	18	14	10	4	4	7	7	13	8	4	12	7
19	9	12	14	11	13	8	17	12	15	16	11	13	16	30	26	20	21	15	13	20	15	14	13	9	15
20	12	6	9	7	17	20	3	4	13	11	19	32	24	42	13	17	16	23	9	10	16	15	13	10	15
21	14	21	13	12	10	9	5	7	10	16	27	36	10	20	18	15	8	6	4	2	2	3	4	1	11
22	1	0	0	0	0	0	0	0	1	1	3	3	3	2	2	0	1	0	0	1	0	1	1	2	1
23	2	1	0	0	1	2	2	1	3	3	4	3	2	2	0	0	0	0	0	1	1	2	2	4	2
24	5	6	7	8	9	9	9	11	10	11	12	11	7	6	8	9	28	10	9	11	28	8	7	16	11
25	12	23	16	9	6	4	3	2	1	2	5	5	2	1	3	3	4	2	1	2	3	3	2	3	5
26	4	2	1	3	1	1	1	2	2	2	2	2	2	2	5	3	2	3	4	5	6	6	6	3	3
27	4	2	2	2	1	2	2	3	3	2	3	3	1	3	3	7	14	12	16	8	24	34	24	27	8
28	21	27	34	22	5	8	21	42	11	12	16	11	12	7	4	9	13	10	7	10	4	37	19	21	16
29	22	15	11	9	11	13	12	6	17	20	29	18	14	21	10	4	15	8	10	8	7	13	13	15	13
30	12	49	26	8	9	8	9	27	29	20	24	33	32	61	33	11	9	19	23	23	16	17	11	10	22

MONTHLY STATISTICS:

GEOM	ARITH-----PERCENTILES-----										RANGE-----		STN GEOM	PERCENT	NO. OF TIMES	
MEAN	MEDIAN	MEAN	50	90	95	98	99	1-HR		24-HR		DEVIATION	VALID DATA	ABOVE	LIMIT	LEVEL
7	8	10	8	24	29	37	42	0	-	61	1	-	22	3	91	0

- NOTES: 1. FLAGS FOR INVALID DATA :
- D: DYNAMIC CALIBRATION
 - T: TELEMETRY/DATALOGGR FAULT
 - M: MAINTENANCE OR ANALYZER FAULT
 - P: POWER FAILURE

THE HONGKONG ELECTRIC COMPANY, LTD.
AIR QUALITY DATA MONTHLY TIME SERIES REPORT
MONTH: APRIL

STATION : AP LEI CHAU
POLLUTANT : NITROGEN DIOXIDE

YEAR : 2015
UNIT : MICROGRAMS/CUBIC METER

DAY	1	2	3	4	5	6	7	8	9	10	11	12	13	14	15	16	17	18	19	20	21	22	23	24	MEAN
1	0	4	0	0	0	0	1	0	0	0	0	0	0	0	0	3	0	0	1	0	0	2	2	2	1
2	9	9	7	4	14	0	16	6	12	1	1	2	1	1	10	21	17	1	4	9	8	2	1	14	7
3	13	25	15	17	19	20	4	4	11	3	4	1	9	7	9	10	13	23	9	7	8	12	5	4	11
4	13	3	15	6	2	8	0	2	0	1	3	3	4	0	6	3	1	4	18	9	0	0	2	2	4
5	0	0	0	0	0	0	0	0	0	0	0	0	0	0	0	0	0	0	0	1	14	4	11	15	2
6	9	3	3	20	18	25	23	12	9	2	17	14	1	11	27	26	13	6	3	21	21	22	19	12	14
7	13	7	0	1	11	2	8	13	0	0	0	0	0	0	0	0	0	0	0	2	3	2	2	5	3
8	13	M	1	0	0	0	5	18	25	34	18	11	6	20	31	27	36	39	34	28	18	12	10	12	17
9	10	10	2	0	0	0	2	3	3	10	11	3	10	17	16	25	35	43	27	26	15	23	41	51	16
10	45	40	29	15	13	14	13	26	32	38	42	41	40	37	40	M	43	49	48	50	50	48	42	33	36
11	26	18	1	0	0	0	5	4	7	11	12	12	17	24	27	24	25	27	28	25	20	21	18	T	15
12	T	T	T	T	T	T	T	T	T	T	T	T	T	T	T	T	T	T	T	T	T	T	T	T	T
13	T	T	T	T	T	T	T	T	T	T	T	T	T	T	T	T	T	T	T	T	T	T	T	T	T
14	T	T	T	T	T	T	T	T	T	T	T	T	T	T	T	24	17	14	12	7	23	37	23	34	
15	42	20	9	4	12	8	15	22	34	35	36	34	4	17	25	28	16	2	4	1	3	38	17	2	18
16	9	24	28	22	5	1	18	52	15	36	50	42	22	16	20	15	33	20	5	21	4	14	9	6	20
17	26	25	35	5	19	28	20	3	6	6	0	0	1	1	2	0	0	0	0	0	0	0	0	0	7
18	0	0	0	0	0	0	0	0	0	0	0	0	7	1	2	0	0	0	0	1	0	0	0	4	1
19	3	3	5	4	6	0	6	2	4	2	1	2	2	19	17	17	12	4	8	7	4	4	2	4	6
20	2	0	1	0	10	14	5	3	7	3	5	19	9	29	14	11	12	20	3	6	21	50	52	46	14
21	40	38	32	27	18	21	25	31	44	53	50	49	13	29	47	42	35	7	8	9	0	0	0	1	26
22	0	M	0	0	0	0	0	8	2	1	1	0	0	0	0	0	0	0	0	0	0	0	0	0	1
23	0	0	0	0	0	0	0	4	8	4	1	7	3	9	16	15	25	32	31	17	17	11	10	7	9
24	7	2	2	0	0	2	6	3	3	0	12	0	0	0	0	0	32	4	3	16	39	2	15	52	8
25	51	70	84	26	0	0	0	0	0	0	0	0	0	0	0	0	0	0	0	0	0	0	0	1	10
26	0	0	0	0	0	0	0	0	0	0	0	0	0	0	0	0	0	0	0	1	12	17	20	8	2
27	2	0	1	0	0	0	8	6	0	0	0	0	0	1	0	1	2	5	7	3	24	23	16	31	5
28	32	30	35	24	1	4	19	24	7	7	10	8	7	2	3	3	9	7	6	10	1	17	11	19	12
29	20	11	2	3	6	8	10	0	2	4	16	11	5	15	8	2	13	10	9	4	2	5	5	7	7
30	3	16	12	1	5	4	6	15	6	2	14	21	17	27	19	3	1	13	24	17	10	9	0	2	10

MONTHLY STATISTICS:

GEOM	ARITH-----PERCENTILES-----								-----RANGE-----				STN GEOM	PERCENT	NO. OF TIMES	
MEAN	MEDIAN	MEAN	50	90	95	98	99	1-HR	24-HR	DEVIATION	VALID DATA	ABOVE	LIMIT	LEVEL		
9	5	11	5	30	40	49	51	0	-	84	1	-	36	3	91	0

- NOTES: 1. FLAGS FOR INVALID DATA :
- D: DYNAMIC CALIBRATION
 - T: TELEMETRY/DATALOGGR FAULT
 - M: MAINTENANCE OR ANALYZER FAULT
 - P: POWER FAILURE

THE HONGKONG ELECTRIC COMPANY, LTD.
AIR QUALITY DATA MONTHLY TIME SERIES REPORT
MONTH: APRIL

STATION : CHEUNG CHAU
POLLUTANT : SULPHUR DIOXIDE

YEAR : 2015
UNIT : MICROGRAMS/CUBIC METER

DAY	1	2	3	4	5	6	7	8	9	10	11	12	13	14	15	16	17	18	19	20	21	22	23	24	MEAN
1	6	9	12	9	7	6	9	8	8	10	20	21	18	19	12	9	12	13	11	7	7	4	4	8	10
2	3	3	4	3	2	3	4	3	4	10	7	5	10	4	3	4	2	2	4	3	3	3	3	3	4
3	2	2	1	2	2	2	3	4	3	4	3	4	4	5	3	3	7	11	4	3	3	2	2	2	3
4	3	7	6	5	6	6	3	4	7	5	2	2	3	4	4	3	6	6	3	2	9	16	10	5	5
5	8	6	6	9	12	8	6	5	9	12	12	19	30	7	5	4	19	49	26	17	7	6	3	6	12
6	6	7	T	T	T	T	T	T	T	T	T	T	T	T	T	T	T	T	T	T	T	T	T	T	T
7	T	T	T	T	T	T	T	T	T	T	T	T	T	T	T	T	T	T	T	T	T	T	T	T	T
8	T	T	T	T	T	T	T	T	T	T	T	T	2	3	3	1	2	2	1	1	1	2	1	1	
9	1	0	1	1	2	2	1	2	3	4	4	3	3	5	6	4	5	3	3	4	3	3	3	1	3
10	1	1	0	0	0	0	0	1	1	1	2	4	5	2	2	2	2	2	2	2	2	2	2	2	2
11	0	0	0	1	0	1	2	2	3	5	4	4	3	2	2	2	2	1	1	1	1	1	1	1	2
12	1	1	1	1	2	1	1	2	2	3	3	3	3	2	3	4	3	5	4	3	4	5	5	3	3
13	2	2	2	4	4	5	8	10	10	11	7	9	10	12	13	11	10	8	6	7	5	4	5	7	7
14	17	20	15	12	8	7	7	6	8	8	6	5	8	8	6	5	5	5	4	4	4	3	3	3	7
15	3	2	4	6	6	6	6	8	14	11	8	8	8	7	7	5	4	3	3	3	2	2	2	5	6
16	3	2	2	2	2	2	3	6	7	6	6	7	4	3	3	2	2	4	3	2	2	2	2	2	3
17	2	2	3	2	2	1	1	2	3	3	3	2	1	1	1	2	5	3	2	2	2	1	2	3	2
18	3	5	5	3	5	3	3	6	14	16	14	5	5	4	3	3	3	2	1	1	1	1	1	1	5
19	1	3	2	1	1	1	1	1	2	2	3	3	D	4	3	2	3	2	1	1	1	1	1	2	2
20	2	2	2	3	2	2	2	2	2	4	3	4	7	6	5	5	3	2	1	2	3	7	7	6	4
21	5	5	4	3	4	2	2	2	2	4	2	2	5	6	5	7	8	6	6	5	3	4	4	3	4
22	4	4	3	2	2	2	3	8	6	7	7	5	5	5	4	3	3	3	2	5	5	8	5	4	
23	5	5	4	3	4	3	3	4	6	7	6	5	7	6	6	6	8	8	6	4	4	5	5	4	5
24	5	4	5	6	6	6	6	9	9	11	12	11	14	13	11	14	10	13	11	12	11	12	7	7	9
25	7	5	6	6	7	6	6	5	4	2	3	4	3	3	4	3	4	4	4	4	4	4	3	7	4
26	4	3	3	3	3	2	2	2	3	2	2	1	2	2	2	4	6	3	5	6	6	7	7	8	4
27	7	6	4	3	3	3	5	5	4	6	8	6	3	3	10	12	15	12	11	14	7	4	4	3	7
28	2	3	2	1	0	1	2	9	8	3	4	9	10	4	3	2	5	3	1	1	1	2	4	3	3
29	2	3	3	2	1	1	2	2	3	3	5	5	7	3	3	1	1	1	1	0	2	1	1	2	2
30	2	3	3	4	2	2	3	3	2	3	17	9	14	13	6	2	2	2	2	2	2	3	7	12	5

MONTHLY STATISTICS:

GEOM	ARITH-----PERCENTILES-----										RANGE-----		STN GEOM	PERCENT	NO. OF TIMES	
MEAN	MEDIAN	MEAN	50	90	95	98	99	1-HR		24-HR		DEVIATION	VALID DATA	ABOVE	LIMIT	LEVEL
4	3	5	3	9	12	16	19	0	-	49	2	-	12	2	92	0

- NOTES: 1. FLAGS FOR INVALID DATA :
- D: DYNAMIC CALIBRATION
 - T: TELEMETRY/DATALOGGR FAULT
 - M: MAINTENANCE OR ANALYZER FAULT
 - P: POWER FAILURE

THE HONGKONG ELECTRIC COMPANY, LTD.
AIR QUALITY DATA MONTHLY TIME SERIES REPORT
MONTH: APRIL

STATION : CHEUNG CHAU
POLLUTANT : NITROGEN DIOXIDE

YEAR : 2015
UNIT : MICROGRAMS/CUBIC METER

DAY	1	2	3	4	5	6	7	8	9	10	11	12	13	14	15	16	17	18	19	20	21	22	23	24	MEAN
1	30	43	43	36	25	26	36	25	16	13	22	25	19	24	25	20	18	26	31	23	22	15	21	50	26
2	27	12	26	11	10	21	35	17	17	26	14	11	21	13	10	12	10	11	14	9	11	10	11	13	16
3	7	7	7	9	12	10	13	16	9	9	18	17	14	12	11	35	51	25	21	18	13	14	21	16	
4	29	41	33	28	32	34	20	16	13	7	4	5	6	9	5	7	20	24	21	17	26	50	35	21	21
5	33	33	32	41	43	23	17	17	14	13	13	18	17	8	8	7	19	30	38	37	15	28	15	48	24
6	52	48	T	T	T	T	T	T	T	T	T	T	T	T	T	T	T	T	T	T	T	T	T	T	T
7	T	T	T	T	T	T	T	T	T	T	T	T	T	T	T	T	T	T	T	T	T	T	T	T	T
8	T	T	T	T	T	T	T	T	T	T	T	45	43	44	40	48	52	53	45	43	46	38	36		
9	32	30	28	26	33	26	25	25	32	46	44	26	26	53	45	57	70	72	79	87	79	70	62	49	47
10	45	37	23	20	14	15	26	31	33	37	49	50	50	50	52	59	59	63	64	62	59	56	54	32	43
11	28	18	29	40	28	31	39	30	39	47	43	46	47	46	42	50	54	57	60	57	54	50	47	36	42
12	40	46	44	38	35	28	35	30	29	28	25	26	31	19	24	22	20	26	30	42	109	80	88	79	41
13	41	33	40	15	19	41	40	34	36	59	32	37	39	37	34	25	22	23	24	26	31	108	114	64	41
14	97	76	53	27	20	25	30	34	49	61	51	29	15	12	11	9	12	13	14	12	9	19	32	29	31
15	18	19	31	47	43	61	82	49	64	27	20	21	19	17	18	13	11	9	8	7	9	5	6	15	26
16	27	39	23	12	17	26	34	64	34	18	16	17	7	7	8	10	7	9	18	9	14	33	40	39	22
17	34	41	52	24	34	17	11	15	8	4	6	3	5	5	6	9	13	11	9	7	7	4	8	11	14
18	11	21	20	7	14	10	11	18	28	30	20	6	9	8	7	7	7	6	4	5	3	4	3	8	11
19	8	14	7	4	8	11	12	9	13	13	12	14	D	14	9	12	14	6	8	8	9	7	13	16	10
20	23	12	14	18	17	12	16	19	14	23	14	14	16	13	12	11	20	16	18	24	32	66	60	63	23
21	56	56	51	43	42	25	30	36	41	54	48	48	50	51	53	38	25	25	28	35	20	14	16	14	37
22	15	M	12	13	9	10	25	62	40	24	43	22	9	10	10	8	7	10	15	9	19	20	24	15	19
23	21	13	12	9	14	9	27	18	23	22	25	35	23	54	41	39	37	71	45	26	17	21	19	13	26
24	15	15	15	17	12	20	29	28	15	22	18	15	16	19	18	24	18	25	24	32	36	30	16	78	23
25	85	92	76	47	63	20	18	16	12	5	4	6	5	8	9	8	8	10	9	10	8	7	6	21	23
26	8	9	8	8	9	9	9	5	9	5	5	6	6	7	9	11	16	10	15	15	16	16	16	77	13
27	64	45	10	7	8	7	12	9	8	27	25	11	8	10	14	19	28	26	29	44	23	15	14	11	20
28	10	11	3	3	2	5	12	32	27	10	7	11	11	7	5	4	11	10	9	8	7	9	23	18	11
29	13	9	11	10	7	8	21	14	10	12	9	10	10	8	9	5	5	7	8	6	7	9	10	9	9
30	23	37	29	25	19	22	36	21	6	7	22	17	24	22	8	5	8	9	9	8	10	12	19	42	18

MONTHLY STATISTICS:

GEOM	ARITH-----PERCENTILES-----							-----RANGE-----				STN GEOM	PERCENT	NO. OF TIMES		
MEAN	MEDIAN	MEAN	50	90	95	98	99	1-HR	24-HR	DEVIATION	VALID DATA	ABOVE	LIMIT	LEVEL		
19	19	25	19	50	61	78	86	2	-	114	9	-	47	2	92	0

NOTES: 1. FLAGS FOR INVALID DATA :
D: DYNAMIC CALIBRATION
T: TELEMETRY/DATALOGGR FAULT
M: MAINTENANCE OR ANALYZER FAULT
P: POWER FAILURE

THE HONGKONG ELECTRIC COMPANY, LTD.
AIR QUALITY DATA MONTHLY TIME SERIES REPORT
MONTH: MAY

STATION : VICTORIA PEAK
POLLUTANT : SULPHUR DIOXIDE

YEAR : 2015
UNIT : MICROGRAMS/CUBIC METER

DAY	1	2	3	4	5	6	7	8	9	10	11	12	13	14	15	16	17	18	19	20	21	22	23	24	MEAN
1	4	2	2	2	2	2	2	3	2	2	1	1	2	2	3	3	5	8	6	5	4	3	2	2	3
2	2	2	2	2	1	3	2	3	2	3	4	5	5	3	2	1	1	2	2	2	1	2	2	1	2
3	1	1	1	1	1	1	1	2	3	4	3	6	6	9	4	2	2	1	2	2	1	1	1	1	2
4	1	0	1	1	1	2	3	9	16	24	21	36	82	67	74	35	8	5	3	4	3	2	2	2	17
5	4	4	3	2	2	0	1	1	3	4	2	6	6	3	2	3	3	6	4	3	2	0	0	0	3
6	0	0	1	1	2	3	4	2	2	3	7	4	2	3	4	3	3	5	4	8	6	4	1	2	3
7	1	1	1	1	2	1	1	2	3	3	4	4	4	4	4	5	4	3	4	3	2	2	6	4	3
8	2	2	2	0	1	5	5	2	2	5	6	3	2	2	2	3	3	2	1	2	2	2	2	3	3
9	3	3	4	3	2	2	1	1	1	3	6	3	5	10	7	4	2	1	0	0	0	0	0	0	3
10	0	0	0	0	0	0	1	1	1	2	2	8	3	1	1	1	1	1	1	1	1	1	1	1	1
11	1	0	0	0	0	0	0	0	0	0	1	0	0	0	1	3	2	1	0	0	0	0	0	1	0
12	3	4	5	5	5	4	3	3	11	3	8	13	15	17	11	13	12	4	2	2	3	4	3	3	7
13	3	2	1	1	2	2	2	1	2	2	1	1	1	1	0	1	1	1	1	0	0	1	1	1	1
14	0	1	1	1	1	2	4	5	4	5	2	2	3	5	4	4	5	11	7	9	3	3	3	2	4
15	7	6	3	3	3	3	4	4	3	4	5	5	4	7	11	10	6	6	4	3	3	7	4	6	5
16	6	8	5	2	1	1	2	1	3	4	3	5	6	11	9	7	5	2	1	5	27	5	3	18	6
17	7	3	3	5	3	2	2	3	4	4	7	6	2	1	1	2	1	3	1	2	3	10	3	7	4
18	4	1	2	3	3	4	4	4	3	3	3	2	3	2	1	1	2	4	2	2	1	3	5	2	3
19	2	2	1	1	0	1	1	1	2	3	2	1	1	1	2	4	4	5	4	3	2	1	1	2	2
20	1	1	1	1	1	1	1	0	1	1	1	1	1	1	2	3	2	2	1	2	1	0	1	2	1
21	2	3	3	1	1	1	1	0	1	1	0	0	0	0	0	1	1	1	0	0	1	1	1	0	1
22	0	0	0	0	0	0	0	1	1	1	0	0	0	0	0	0	0	0	0	0	0	0	1	0	0
23	0	0	0	0	0	0	0	0	0	0	0	0	0	0	0	0	1	0	0	0	0	0	0	0	0
24	2	5	2	2	1	1	2	2	2	1	0	1	2	3	3	3	2	2	1	1	1	2	1	2	2
25	1	2	4	2	2	2	1	1	2	9	9	12	10	6	9	8	8	7	2	1	3	1	1	0	4
26	1	2	2	2	2	2	2	1	1	2	0	0	1	3	1	1	1	1	0	1	1	1	1	1	1
27	0	1	1	1	2	1	1	1	1	1	0	1	0	1	1	1	1	1	1	1	1	1	1	1	1
28	2	2	1	0	1	1	1	2	2	3	2	2	3	3	4	2	1	1	3	2	1	1	3	3	2
29	1	1	1	1	1	0	1	1	1	2	D	D	0	0	0	0	0	1	0	0	0	0	0	1	1
30	1	1	1	1	1	1	1	1	4	2	3	2	2	2	2	3	2	2	2	5	1	0	0	1	2
31	1	1	2	2	2	1	1	0	1	3	4	2	2	2	2	1	2	4	2	1	1	3	1	1	2

MONTHLY STATISTICS:

GEOM	ARITH-----PERCENTILES-----										RANGE-----		STN GEOM	PERCENT	NO. OF TIMES	
MEAN	MEDIAN	MEAN	50	90	95	98	99	1-HR	24-HR	DEVIATION	VALID DATA	ABOVE	LIMIT	LEVEL		
2	2	3	2	5	8	12	20	0	-	82	0	-	17	2	100	0

- NOTES: 1. FLAGS FOR INVALID DATA :
- D: DYNAMIC CALIBRATION
 - T: TELEMETRY/DATALOGGR FAULT
 - M: MAINTENANCE OR ANALYZER FAULT
 - P: POWER FAILURE

THE HONGKONG ELECTRIC COMPANY, LTD.
AIR QUALITY DATA MONTHLY TIME SERIES REPORT
MONTH: MAY

STATION : VICTORIA PEAK
POLLUTANT : NITROGEN DIOXIDE

YEAR : 2015
UNIT : MICROGRAMS/CUBIC METER

DAY	1	2	3	4	5	6	7	8	9	10	11	12	13	14	15	16	17	18	19	20	21	22	23	24	MEAN	
1	2	0	0	0	0	0	0	0	0	0	3	3	5	2	2	4	9	13	15	12	1	6	3	0	3	
2	0	0	0	0	0	0	0	0	0	2	1	2	2	4	1	3	3	2	9	4	4	10	5	8	3	
3	0	0	0	0	0	0	0	2	7	5	2	7	2	10	6	3	5	4	4	3	1	1	0	1	3	
4	0	0	0	1	2	0	1	7	17	28	18	16	29	22	23	9	3	6	7	9	4	0	0	2	9	
5	2	0	2	1	0	0	0	1	4	4	2	9	5	0	0	3	3	6	3	3	1	0	0	0	2	
6	0	0	0	0	0	0	2	2	1	1	3	0	1	3	0	1	1	5	2	11	6	2	0	0	2	
7	0	M	0	0	0	0	0	0	1	1	1	1	0	0	0	0	0	0	0	0	0	0	0	1	0	
8	0	0	0	0	0	1	0	0	0	0	0	0	0	0	0	1	0	1	1	1	2	0	0	0	0	
9	0	0	0	0	0	0	0	0	0	1	5	1	0	3	1	1	2	5	1	11	11	0	0	0	2	
10	0	0	0	0	0	0	0	0	1	2	3	6	2	2	0	0	0	0	0	0	0	0	0	0	1	
11	0	0	0	0	0	0	0	0	1	0	0	0	0	0	0	0	0	1	0	0	4	3	1	0	0	
12	35	21	12	11	14	4	0	23	44	37	27	28	19	25	15	24	30	14	0	0	0	0	0	0	16	
13	0	0	0	0	0	0	0	0	15	4	5	5	0	0	0	1	3	1	6	0	1	3	0	0	2	
14	0	0	0	0	0	0	2	6	1	1	0	1	1	1	1	1	5	10	9	14	4	4	1	0	3	
15	0	0	0	0	0	0	1	0	0	0	0	1	1	1	1	2	1	3	2	1	3	8	0	5	1	
16	3	1	1	0	0	0	0	0	6	5	8	5	7	27	34	28	19	3	0	4	28	2	2	25	9	
17	16	8	4	23	12	0	0	3	3	3	1	1	0	1	7	6	17	4	13	17	51	13	3	9		
18	0	0	0	0	0	0	1	0	0	0	2	0	1	0	0	0	1	5	0	0	1	1	5	0	1	
19	0	0	0	0	0	0	0	0	0	1	0	0	0	1	1	11	11	8	7	4	1	0	0	0	2	
20	0	0	0	0	0	0	0	0	1	0	0	0	1	0	11	29	6	10	2	23	1	0	0	5	4	
21	19	M	12	13	0	0	0	0	4	4	0	1	0	0	0	0	0	0	0	0	0	0	0	0	2	
22	0	1	1	0	0	0	1	5	14	20	15	15	8	2	9	13	14	12	10	3	11	1	15	0	7	
23	0	0	0	0	0	0	0	0	5	9	11	5	2	9	22	15	3	1	19	18	6	5	0	0	5	
24	25	53	23	24	0	0	0	3	3	1	1	6	15	24	27	20	10	22	6	2	0	4	1	11	12	
25	2	0	0	0	0	0	0	1	3	23	12	23	14	7	26	11	13	19	4	7	22	12	21	2	9	
26	0	1	1	2	0	0	3	1	3	9	0	0	9	28	13	6	11	11	1	4	2	1	0	0	4	
27	0	0	0	0	0	0	0	1	2	3	0	1	0	0	0	3	2	1	0	1	1	1	1	2	0	1
28	0	0	0	0	0	0	0	2	6	5	5	1	3	3	10	3	0	0	1	1	0	0	4	3	2	
29	0	0	0	0	0	0	0	0	0	1	D	D	8	5	8	10	8	8	7	6	1	1	0	0	3	
30	0	0	0	0	0	1	0	11	23	37	30	32	23	5	11	20	14	10	1	23	8	0	0	3	11	
31	12	0	4	1	3	0	0	0	1	3	5	1	2	4	22	8	7	23	21	5	4	9	0	4	6	

MONTHLY STATISTICS:

GEOM	ARITH-----PERCENTILES-----										RANGE-----		STN GEOM	PERCENT	NO. OF TIMES	
MEAN	MEDIAN	MEAN	50	90	95	98	99	1-HR		24-HR		DEVIATION	VALID DATA	ABOVE	LIMIT	LEVEL
4	1	4	1	14	23	28	31	0	-	53	0	-	16	3	99	0

NOTES: 1. FLAGS FOR INVALID DATA :
D: DYNAMIC CALIBRATION
T: TELEMETRY/DATALOGGR FAULT
M: MAINTENANCE OR ANALYZER FAULT
P: POWER FAILURE

THE HONGKONG ELECTRIC COMPANY, LTD.
AIR QUALITY DATA MONTHLY TIME SERIES REPORT
MONTH: MAY

STATION : VICTORIA ROAD SUBSTATION
POLLUTANT : SULPHUR DIOXIDE

YEAR : 2015
UNIT : MICROGRAMS/CUBIC METER

DAY	1	2	3	4	5	6	7	8	9	10	11	12	13	14	15	16	17	18	19	20	21	22	23	24	MEAN
1	6	4	5	6	5	4	5	4	4	2	2	1	3	3	7	6	15	18	29	13	9	7	5	8	7
2	6	5	9	8	6	11	12	18	12	9	7	6	10	8	5	4	3	4	5	6	6	4	5	4	7
3	3	6	5	5	4	3	4	6	8	9	8	18	10	9	4	4	6	3	7	6	6	5	7	12	7
4	8	7	10	5	6	10	7	7	10	19	20	16	16	10	13	7	8	5	9	12	4	7	9	14	10
5	16	17	14	8	11	9	18	6	11	8	4	10	13	10	5	8	8	14	15	15	8	2	1	1	10
6	1	1	2	3	5	8	11	8	5	6	13	9	7	6	8	8	8	9	8	14	12	8	4	4	7
7	2	4	3	2	6	8	9	12	29	9	9	6	8	9	8	4	8	8	14	6	6	14	19	16	9
8	15	7	9	4	8	13	13	7	10	14	11	9	5	7	5	9	10	8	6	5	10	11	9	8	9
9	8	13	21	11	11	9	7	7	4	6	10	3	7	6	6	4	2	1	1	1	1	1	1	2	6
10	8	7	1	5	5	5	7	2	2	4	5	12	10	3	3	2	2	2	1	1	1	1	1	2	4
11	2	1	1	1	1	1	1	1	1	1	1	1	1	1	3	8	6	5	2	4	3	4	2	2	2
12	6	6	8	8	7	4	3	5	4	12	11	24	17	17	12	24	21	5	2	2	3	4	4	5	9
13	4	3	2	2	3	3	4	3	3	2	2	1	1	1	1	1	1	1	1	1	1	1	1	2	2
14	2	4	3	4	5	8	13	13	9	9	5	6	10	9	8	9	11	18	14	12	5	5	6	6	8
15	13	13	6	5	7	6	6	7	6	9	9	7	9	11	14	15	6	5	5	8	8	11	6	15	9
16	23	10	10	2	6	7	8	4	5	3	9	11	11	35	11	8	10	3	6	3	8	8	9	16	9
17	14	6	4	6	6	4	7	5	7	10	18	11	4	3	4	4	5	9	3	2	10	6	10	10	7
18	13	7	5	13	10	12	11	8	9	5	3	2	3	3	1	3	4	6	3	3	2	7	10	3	6
19	5	2	2	2	1	2	1	1	2	2	2	0	0	0	0	2	1	2	1	1	1	1	1	2	1
20	1	0	0	0	0	1	0	0	0	0	0	0	0	0	0	1	0	0	0	1	0	0	0	1	0
21	0	0	2	1	0	0	0	0	0	0	0	0	0	0	0	0	0	0	0	0	0	0	0	0	0
22	0	0	0	0	0	0	0	0	1	0	0	0	0	0	0	0	0	0	0	0	0	5	9	12	1
23	4	1	2	1	0	0	0	0	0	0	1	1	1	1	1	1	0	0	0	1	2	2	2	2	1
24	2	2	2	3	1	0	1	2	1	1	0	0	1	2	1	3	2	1	0	0	0	0	0	1	1
25	1	1	2	1	2	1	1	7	9	15	20	25	17	14	10	13	15	8	2	2	3	1	0	0	7
26	0	1	3	5	5	4	4	3	2	2	0	0	0	1	0	0	0	0	0	0	0	2	3	3	2
27	2	1	2	1	2	1	1	3	2	1	0	0	0	0	0	0	0	0	0	0	0	1	2	3	1
28	1	2	1	0	0	0	0	1	1	0	0	0	0	0	0	0	0	0	0	0	0	0	0	6	1
29	3	1	0	0	0	0	0	0	0	1	0	0	0	0	0	0	0	0	0	0	0	1	2	4	1
30	2	0	1	1	0	2	2	0	0	1	0	0	0	0	0	0	0	0	0	1	0	0	0	1	0
31	0	0	7	6	6	6	1	0	0	2	6	1	1	0	0	0	0	0	0	0	0	2	5	6	2

MONTHLY STATISTICS:

GEOM	ARITH-----PERCENTILES-----							-----RANGE-----				STN GEOM	PERCENT	NO. OF TIMES		
MEAN	MEDIAN	MEAN	50	90	95	98	99	1-HR		24-HR		DEVIATION	VALID DATA	ABOVE LIMIT LEVEL		
4	3	5	3	11	14	18	21	0	-	35	0	-	10	2	100	0

- NOTES: 1. FLAGS FOR INVALID DATA :
- D: DYNAMIC CALIBRATION
 - T: TELEMETRY/DATALOGGR FAULT
 - M: MAINTENANCE OR ANALYZER FAULT
 - P: POWER FAILURE

THE HONGKONG ELECTRIC COMPANY, LTD.
AIR QUALITY DATA MONTHLY TIME SERIES REPORT
MONTH: MAY

STATION : VICTORIA ROAD SUBSTATION
POLLUTANT : NITROGEN DIOXIDE

YEAR : 2015
UNIT : MICROGRAMS/CUBIC METER

DAY	1	2	3	4	5	6	7	8	9	10	11	12	13	14	15	16	17	18	19	20	21	22	23	24	MEAN
1	13	8	7	5	6	4	10	11	7	6	5	8	9	4	7	6	20	25	35	27	16	15	13	11	12
2	8	2	5	5	3	9	13	18	14	11	17	3	2	5	13	8	8	4	8	8	9	7	9	2	8
3	1	4	2	3	1	1	1	6	6	3	4	14	5	4	1	1	3	1	9	10	7	5	9	16	5
4	12	4	8	1	4	7	8	11	10	25	20	15	11	3	5	7	8	6	17	18	8	6	8	17	10
5	15	15	7	3	8	9	17	3	8	3	1	4	11	13	5	11	12	27	33	28	16	0	0	0	10
6	0	M	2	2	3	11	18	19	12	7	M	M	13	15	11	11	13	11	22	29	20	15	9	6	12
7	1	3	1	0	3	6	17	21	18	9	7	3	4	3	1	2	7	8	14	10	17	17	16	17	9
8	13	4	5	1	3	11	10	2	5	6	3	3	0	1	0	3	6	7	6	12	14	18	17	8	7
9	6	11	11	4	10	6	6	2	1	4	12	4	2	2	2	1	4	20	40	54	52	49	41	42	16
10	44	39	5	21	13	24	23	4	6	11	13	19	15	6	7	6	5	5	4	6	1	1	4	5	12
11	3	0	0	0	0	0	2	6	7	6	6	7	2	1	8	11	6	5	11	19	30	35	26	20	9
12	40	46	35	27	23	10	19	32	35	39	29	25	31	25	17	25	32	13	23	17	24	12	6	3	25
13	0	0	0	0	0	0	6	8	12	8	4	4	1	3	4	10	11	15	12	5	4	5	5	7	5
14	4	6	1	3	3	6	21	22	11	10	4	1	3	3	4	6	16	21	20	22	13	12	13	9	10
15	14	10	3	1	2	2	8	13	9	10	7	4	3	4	5	9	5	4	7	11	11	19	13	22	8
16	27	11	8	0	4	4	17	19	29	20	28	23	22	40	51	44	48	28	38	37	36	21	28	44	26
17	38	18	17	19	21	7	15	14	15	21	17	7	4	2	0	11	14	21	15	15	19	32	43	22	17
18	20	4	6	12	12	19	21	19	15	7	0	0	3	3	0	6	6	9	6	7	10	21	24	5	10
19	13	3	2	0	0	3	9	9	8	8	6	1	1	1	6	20	12	12	15	7	5	5	4	4	6
20	0	M	1	1	0	3	0	2	6	3	1	0	10	5	17	25	14	M	16	30	13	8	6	27	9
21	12	37	41	31	1	1	9	21	5	1	1	1	1	1	1	3	2	2	2	3	6	7	7	11	9
22	3	1	0	0	0	0	9	26	26	11	12	7	5	4	5	8	7	7	14	3	16	47	48	46	13
23	9	0	1	0	1	3	20	6	14	18	26	23	12	26	29	30	13	8	27	39	50	45	40	35	20
24	37	32	22	30	15	7	11	20	18	14	9	17	25	31	19	34	26	38	27	16	9	12	15	30	21
25	15	6	16	4	14	11	25	28	21	20	20	28	19	19	15	15	22	20	12	23	23	27	27	19	19
26	15	18	16	22	18	16	23	15	14	14	13	6	9	35	23	30	31	27	20	19	26	24	23	17	20
27	10	5	8	4	9	9	17	18	14	9	2	6	1	2	2	2	2	4	7	8	12	8	7	10	7
28	10	10	7	1	3	2	14	15	19	11	6	3	10	9	15	10	6	11	10	8	7	10	20	26	10
29	10	5	5	5	4	5	24	18	12	16	12	17	11	10	11	11	8	10	13	10	18	19	13	8	11
30	10	0	8	4	0	14	10	9	18	19	19	16	11	3	6	10	5	9	13	27	20	18	20	14	12
31	25	10	24	17	19	18	14	6	10	10	8	2	4	2	11	9	9	16	19	25	16	30	17	25	14

MONTHLY STATISTICS:

GEOM	ARITH-----PERCENTILES-----								-----RANGE-----				STN GEOM	PERCENT	NO. OF TIMES	
MEAN	MEDIAN	MEAN	50	90	95	98	99	1-HR	24-HR	DEVIATION	VALID DATA	ABOVE	LIMIT	LEVEL		
9	10	12	10	27	35	42	47	0	-	54	5	-	26	3	99	0

NOTES: 1. FLAGS FOR INVALID DATA :
D: DYNAMIC CALIBRATION
T: TELEMETRY/DATALOGGR FAULT
M: MAINTENANCE OR ANALYZER FAULT
P: POWER FAILURE

THE HONGKONG ELECTRIC COMPANY, LTD.
AIR QUALITY DATA MONTHLY TIME SERIES REPORT
MONTH: MAY

STATION : POK FU LAM
POLLUTANT : SULPHUR DIOXIDE

YEAR : 2015
UNIT : MICROGRAMS/CUBIC METER

DAY	1	2	3	4	5	6	7	8	9	10	11	12	13	14	15	16	17	18	19	20	21	22	23	24	MEAN	
1	6	4	4	5	5	3	4	4	3	2	1	1	3	3	5	4	10	16	25	12	7	6	5	8	6	
2	6	5	8	9	7	9	8	15	10	10	6	4	9	10	8	4	4	4	5	4	5	6	4	5	7	
3	4	5	4	3	2	2	2	6	10	8	9	7	7	8	10	6	7	3	5	5	6	4	4	5	6	
4	6	6	11	5	8	7	7	9	11	5	8	11	16	14	13	11	3	5	6	10	4	5	7	15	8	
5	13	17	11	7	10	6	11	4	8	7	15	3	11	11	5	7	8	11	14	15	7	1	1	0	8	
6	0	1	3	3	6	11	13	8	4	6	9	8	5	5	6	9	7	9	5	11	10	5	2	1	6	
7	1	2	1	1	6	4	5	8	23	6	8	3	5	4	4	2	6	5	10	3	4	9	12	11	6	
8	11	5	7	3	4	11	12	5	8	11	8	6	3	3	4	7	9	6	4	3	7	10	6	7	7	
9	6	11	15	8	8	4	4	3	2	5	3	2	4	3	6	3	0	0	0	0	0	2	3	3	4	
10	20	12	2	4	3	32	25	4	2	3	5	15	12	3	1	1	1	0	0	0	0	0	0	0	1	6
11	2	0	0	0	0	0	1	0	0	0	0	0	1	1	2	8	2	2	1	5	5	4	1	2	2	
12	11	8	9	10	7	3	3	3	3	3	15	36	21	23	15	16	20	7	2	1	2	3	3	4	10	
13	4	3	2	2	3	3	3	2	2	1	1	0	0	0	1	1	1	0	1	0	0	1	0	1	1	
14	0	1	1	2	3	6	10	10	5	5	3	3	8	7	4	7	8	9	10	10	4	4	4	3	5	
15	12	11	4	3	4	3	5	8	4	7	5	5	7	10	14	8	4	2	2	5	4	9	4	8	6	
16	20	16	8	1	4	4	7	3	1	2	4	8	13	35	12	11	13	2	2	4	9	8	8	10	9	
17	11	7	6	9	7	5	6	4	6	8	14	10	2	3	2	3	4	8	3	3	10	4	8	10	6	
18	15	8	6	9	10	9	10	6	9	8	1	1	3	4	0	2	4	6	2	3	1	7	13	2	6	
19	6	4	7	2	0	2	2	1	3	3	2	0	1	0	2	1	3	7	6	8	4	5	2	5	3	
20	1	0	0	0	0	4	0	0	1	2	0	0	2	0	1	M	M	0	0	0	0	0	0	1	1	
21	2	9	14	4	1	6	10	6	0	0	0	0	0	0	0	0	0	0	0	0	0	0	0	0	2	
22	0	0	1	1	0	1	0	1	8	4	1	0	0	0	0	0	0	0	0	0	1	7	10	9	2	
23	6	1	2	0	0	0	0	0	0	0	0	0	0	1	1	0	0	0	0	0	1	0	0	0	1	
24	6	2	0	5	2	1	3	6	7	6	4	13	9	16	14	13	9	8	1	2	1	2	2	6	6	
25	3	1	4	5	6	11	2	14	17	39	28	27	11	8	7	8	10	15	1	1	2	5	0	1	9	
26	1	4	5	7	8	6	8	5	3	4	1	0	0	1	0	1	3	1	0	1	3	4	5	2	3	
27	0	0	0	0	0	0	0	2	1	0	0	0	0	0	0	0	0	0	0	0	0	0	2	4	0	
28	1	3	1	0	0	0	2	5	2	2	0	0	0	0	3	1	0	6	2	0	0	0	2	3	1	
29	0	0	0	0	0	0	0	2	0	9	0	0	0	1	0	0	0	0	0	0	T	T	T	T	1	
30	T	T	T	T	T	T	T	T	T	T	M	4	0	1	0	1	0	0	0	1	0	0	0	0	0	
31	1	1	7	8	6	7	2	0	1	5	8	6	2	4	2	5	0	3	1	0	0	8	10	7	4	

MONTHLY STATISTICS:

GEOM	ARITH-----PERCENTILES-----								-----RANGE-----				STN GEOM	PERCENT	NO. OF TIMES	
MEAN	MEDIAN	MEAN	50	90	95	98	99	1-HR	24-HR	DEVIATION	VALID DATA	ABOVE	LIMIT	LEVEL		
4	3	5	3	11	14	17	24	0	-	39	0	-	10	2	98	0

- NOTES: 1. FLAGS FOR INVALID DATA :
- D: DYNAMIC CALIBRATION
 - T: TELEMETRY/DATALOGGR FAULT
 - M: MAINTENANCE OR ANALYZER FAULT
 - P: POWER FAILURE

THE HONGKONG ELECTRIC COMPANY, LTD.
AIR QUALITY DATA MONTHLY TIME SERIES REPORT
MONTH: MAY

STATION : POK FU LAM
POLLUTANT : NITROGEN DIOXIDE

YEAR : 2015
UNIT : MICROGRAMS/CUBIC METER

DAY	1	2	3	4	5	6	7	8	9	10	11	12	13	14	15	16	17	18	19	20	21	22	23	24	MEAN
1	10	6	3	2	3	2	6	8	6	5	4	4	9	3	3	2	10	23	31	24	11	9	8	10	8
2	9	5	8	9	6	8	11	18	14	15	8	6	5	14	16	7	7	8	11	9	12	13	8	26	11
3	12	10	6	6	1	3	5	11	18	14	14	6	3	6	9	4	7	3	9	11	11	9	9	12	8
4	13	5	12	3	8	7	8	13	14	13	9	15	14	12	12	9	3	6	14	19	8	6	9	25	11
5	18	22	10	8	11	12	16	10	13	15	13	3	12	19	11	19	19	26	28	22	13	6	8	3	14
6	0	0	5	5	5	17	20	17	12	11	12	11	10	8	12	16	17	20	21	25	19	9	3	6	12
7	6	5	4	1	10	5	14	24	27	18	11	9	6	6	6	4	13	15	21	12	16	18	21	23	12
8	20	13	13	6	7	20	20	13	16	16	12	13	9	9	10	11	18	15	17	17	18	23	18	15	15
9	13	18	17	10	15	8	8	8	9	15	10	6	8	9	17	12	17	32	42	48	54	58	51	54	22
10	72	M	9	29	23	63	43	12	9	13	17	25	26	12	9	6	6	7	6	9	4	3	4	7	18
11	6	1	1	1	1	2	4	10	13	12	10	16	11	8	11	19	13	12	18	40	42	46	41	27	15
12	67	70	53	44	39	18	23	47	56	63	57	55	47	46	35	29	54	39	33	21	37	31	19	12	41
13	6	2	1	1	1	1	8	M	13	14	15	15	7	9	13	14	16	16	12	7	4	4	4	6	8
14	4	5	4	5	8	10	20	21	15	16	13	12	14	14	12	12	18	19	25	29	15	14	11	9	14
15	20	15	7	8	5	5	9	17	16	16	11	13	9	11	16	16	14	10	15	15	18	24	17	24	14
16	36	26	13	5	7	9	19	36	30	28	28	24	35	55	73	67	73	41	23	29	50	31	33	38	34
17	43	34	34	15	18	12	9	8	12	21	19	13	8	10	6	16	15	25	13	14	25	15	30	19	18
18	24	10	13	14	18	20	26	23	25	20	9	7	8	10	11	18	18	20	16	13	14	23	28	7	16
19	12	6	8	0	0	1	5	10	11	13	10	5	9	10	15	14	19	25	26	27	14	11	6	9	11
20	5	5	7	10	5	12	3	5	15	16	13	12	30	21	26	M	M	20	22	30	32	19	26	36	17
21	37	69	61	43	14	21	31	29	17	22	19	15	16	16	20	19	19	19	18	18	20	22	18	16	25
22	12	10	12	11	6	9	12	25	43	39	31	27	25	17	23	25	29	25	29	21	32	51	62	45	26
23	29	6	6	4	7	5	20	12	15	24	35	38	18	22	28	28	27	25	49	58	69	51	34	45	27
24	66	M	34	49	14	11	17	24	24	23	23	38	43	51	38	39	40	52	23	25	14	19	24	42	32
25	24	12	16	18	18	40	19	37	35	40	35	35	19	16	23	17	20	34	18	21	23	44	32	21	26
26	17	22	20	23	23	17	23	20	18	25	28	17	15	30	25	27	33	21	19	17	20	22	23	15	22
27	14	10	13	10	14	13	17	24	24	25	18	20	12	18	14	13	14	14	17	14	17	14	18	12	16
28	16	16	13	7	11	12	20	26	34	23	19	13	11	13	21	17	16	23	21	M	13	15	23	29	18
29	11	10	8	10	6	9	15	27	17	32	19	12	16	21	14	18	13	12	12	14	T	T	T	T	15
30	T	T	T	T	T	T	T	T	T	T	M	11	10	16	14	22	25	22	28	39	30	32	41	21	
31	16	7	28	44	38	32	23	13	16	20	16	17	15	13	12	23	13	30	19	23	17	41	33	32	23

MONTHLY STATISTICS:

GEOM	ARITH-----PERCENTILES-----										RANGE-----		STN GEOM	PERCENT	NO. OF TIMES	
MEAN	MEDIAN	MEAN	50	90	95	98	99	1-HR		24-HR		DEVIATION	VALID DATA	ABOVE	LIMIT	LEVEL
14	15	18	15	36	45	58	67	0	-	73	8	-	41	2	97	0

- NOTES: 1. FLAGS FOR INVALID DATA :
- D: DYNAMIC CALIBRATION
 - T: TELEMETRY/DATALOGGR FAULT
 - M: MAINTENANCE OR ANALYZER FAULT
 - P: POWER FAILURE

THE HONGKONG ELECTRIC COMPANY, LTD.
AIR QUALITY DATA MONTHLY TIME SERIES REPORT
MONTH: MAY

STATION : AP LEI CHAU
POLLUTANT : SULPHUR DIOXIDE

YEAR : 2015
UNIT : MICROGRAMS/CUBIC METER

DAY	1	2	3	4	5	6	7	8	9	10	11	12	13	14	15	16	17	18	19	20	21	22	23	24	MEAN
1	8	7	9	9	10	5	6	6	7	3	3	3	3	4	10	10	36	30	23	15	10	8	6	6	10
2	7	6	7	3	8	8	11	19	18	10	11	13	12	3	6	6	1	11	11	9	6	11	23	9	10
3	10	12	17	8	6	3	7	11	24	14	18	13	12	15	5	8	8	7	19	14	9	8	12	8	11
4	4	16	14	3	6	13	10	11	10	10	15	13	17	7	7	7	5	9	17	20	10	6	11	9	10
5	9	14	23	10	10	8	16	12	18	11	12	13	10	3	3	12	11	15	11	6	6	0	0	1	10
6	2	2	5	6	6	10	10	6	7	9	17	9	14	8	13	8	23	13	13	19	11	6	7	4	10
7	4	5	3	2	11	22	19	20	39	10	8	7	9	6	10	9	1	4	14	5	7	15	30	26	12
8	21	12	15	6	9	30	20	9	15	20	15	12	12	10	5	11	7	7	7	7	12	16	19	11	13
9	13	12	24	8	11	25	20	10	13	10	7	6	5	6	12	7	2	0	0	0	1	1	1	1	8
10	1	0	2	2	1	1	2	2	2	5	9	11	10	3	3	3	4	4	1	1	0	1	2	2	3
11	2	0	0	2	1	2	1	1	0	1	1	1	0	0	2	10	13	10	3	9	3	6	6	3	3
12	6	6	6	7	5	4	2	2	11	28	13	2	9	21	42	26	4	0	0	1	3	5	3	5	9
13	5	4	3	3	4	4	4	5	5	4	4	3	2	3	2	3	2	1	1	0	1	2	2	4	3
14	5	9	7	8	6	8	17	16	18	18	13	12	24	16	15	12	19	40	34	13	5	6	6	12	14
15	20	18	8	8	11	9	9	8	11	18	24	13	7	12	17	10	7	11	10	6	10	24	14	26	13
16	14	9	4	2	10	6	11	2	2	13	21	16	20	40	12	9	12	1	1	8	11	22	23	15	12
17	14	12	11	5	5	9	12	11	11	17	38	16	7	1	7	7	9	11	6	3	15	6	9	20	11
18	16	8	13	17	14	18	17	8	14	8	7	2	12	9	0	3	5	5	1	4	4	14	13	7	9
19	14	4	8	5	4	8	17	14	18	20	8	4	2	3	3	2	1	5	11	2	6	6	8	9	8
20	5	3	5	4	3	10	2	3	7	6	4	3	3	5	4	4	5	4	8	10	1	1	0	4	4
21	2	9	23	16	1	1	0	1	1	1	0	0	0	0	0	0	1	0	0	0	0	0	1	1	2
22	2	1	1	1	1	0	1	2	1	1	2	1	2	0	0	0	0	0	0	0	0	0	0	0	1
23	0	0	0	0	0	0	0	0	1	0	2	0	5	9	6	6	0	0	0	2	6	2	0	1	2
24	2	0	1	3	7	9	14	48	26	28	19	10	17	18	40	36	15	14	5	12	7	8	10	12	15
25	19	14	24	49	31	15	12	13	23	34	30	32	30	31	24	31	36	3	1	7	23	0	1	3	20
26	10	18	32	25	27	30	19	8	21	19	0	1	3	2	3	5	9	6	7	8	10	19	25	13	13
27	15	13	12	13	22	12	11	9	12	10	7	6	5	8	7	7	2	5	3	10	13	11	8	13	10
28	12	18	12	1	11	6	15	9	14	3	4	2	7	3	12	2	2	6	7	7	1	10	20	17	8
29	12	3	11	4	10	3	11	10	7	10	11	6	10	4	10	D	D	37	25	22	29	28	22	30	14
30	30	20	32	20	21	31	26	21	27	22	24	19	23	25	22	35	29	24	18	24	17	15	45	26	25
31	24	28	40	32	44	38	22	22	35	38	37	31	32	21	22	27	26	54	26	27	26	30	21	26	30

MONTHLY STATISTICS:

GEOM	ARITH-----PERCENTILES-----								-----RANGE-----				STN GEOM	PERCENT	NO. OF TIMES	
MEAN	MEDIAN	MEAN	50	90	95	98	99	1-HR	24-HR	DEVIATION	VALID DATA	ABOVE	LIMIT	LEVEL		
8	8	10	8	24	30	37	40	0	-	54	1	-	30	3	100	0

NOTES: 1. FLAGS FOR INVALID DATA :
D: DYNAMIC CALIBRATION
T: TELEMETRY/DATALOGGR FAULT
M: MAINTENANCE OR ANALYZER FAULT
P: POWER FAILURE

THE HONGKONG ELECTRIC COMPANY, LTD.
AIR QUALITY DATA MONTHLY TIME SERIES REPORT
MONTH: MAY

STATION : AP LEI CHAU
POLLUTANT : NITROGEN DIOXIDE

YEAR : 2015
UNIT : MICROGRAMS/CUBIC METER

DAY	1	2	3	4	5	6	7	8	9	10	11	12	13	14	15	16	17	18	19	20	21	22	23	24	MEAN	
1	1	0	1	1	1	0	0	0	0	0	0	0	1	0	0	0	13	12	10	15	3	1	0	1	3	
2	3	0	0	0	0	0	1	2	1	1	1	1	1	0	2	1	0	3	5	3	5	4	20	2	2	
3	2	3	4	0	0	0	4	1	3	1	2	0	2	2	1	0	0	1	11	11	2	1	4	3	2	
4	0	7	4	0	2	3	10	5	0	4	9	13	6	2	5	6	2	7	14	13	4	1	3	4	5	
5	3	2	13	5	4	2	7	6	9	2	2	2	2	0	0	3	8	4	2	0	1	0	0	0	3	
6	0	M	0	0	0	2	3	0	0	0	0	0	0	0	1	0	7	4	3	10	4	0	1	1	2	
7	0	0	0	0	0	8	3	5	6	0	0	0	1	0	1	1	0	1	5	0	1	5	7	8	2	
8	6	2	2	0	2	8	2	0	0	1	1	0	0	0	1	2	1	0	1	2	5	4	4	0	2	
9	2	3	3	0	1	9	5	0	2	2	0	0	0	0	0	1	5	27	27	7	16	19	1	4	6	
10	21	6	1	4	0	0	0	0	0	0	0	5	2	0	0	0	0	0	0	2	0	0	0	0	2	
11	0	0	0	0	0	0	0	0	0	0	0	0	0	0	0	1	7	1	2	18	14	25	16	5	4	
12	25	24	12	16	13	7	5	18	32	42	16	0	3	24	38	9	1	0	0	0	0	0	0	0	12	
13	0	0	0	0	0	0	0	0	0	0	0	0	0	0	0	0	0	0	0	0	0	0	0	0	1	0
14	0	3	0	1	0	0	2	0	0	0	0	0	0	0	1	0	6	14	10	5	0	0	0	0	1	2
15	6	9	2	0	1	0	0	0	0	0	1	0	0	1	1	1	1	1	2	1	4	18	6	22	3	
16	4	1	0	0	1	0	9	9	17	13	10	8	4	23	36	37	36	12	0	9	28	29	26	34	14	
17	21	8	6	13	6	5	3	0	0	6	7	0	1	0	6	11	10	3	0	8	0	0	0	14	5	
18	10	1	6	7	7	10	10	2	2	3	0	0	2	2	0	0	0	0	0	0	1	5	5	4	3	
19	2	1	1	1	0	1	10	5	4	6	1	0	0	0	0	0	0	1	6	0	0	1	1	2	2	
20	0	M	0	0	0	2	0	0	0	1	0	1	0	0	0	0	0	2	8	16	0	1	0	11	2	
21	8	27	43	33	0	0	1	7	0	0	0	0	0	0	0	0	0	0	0	0	0	0	0	0	5	
22	0	0	0	0	0	0	0	1	4	0	1	0	0	0	0	1	3	3	0	0	4	0	2	0	1	
23	0	0	0	0	3	3	0	1	0	1	2	2	1	3	6	9	0	0	10	24	51	42	17	38	9	
24	42	40	20	21	20	6	7	28	17	23	9	14	24	20	26	21	25	32	17	29	6	7	9	17	20	
25	18	17	12	22	19	22	17	9	15	12	9	8	9	9	4	7	9	2	1	0	16	13	10	2	11	
26	4	9	12	17	18	18	11	0	6	7	0	5	15	13	14	4	4	2	0	0	3	10	18	3	8	
27	2	2	1	2	7	3	1	1	1	1	1	0	0	0	1	0	0	0	0	1	2	1	0	4	1	
28	1	4	2	0	7	1	9	2	4	0	3	2	8	0	11	5	6	13	3	2	0	7	15	11	5	
29	5	0	3	0	4	1	7	6	2	3	3	2	5	0	5	D	D	8	4	2	8	6	1	6	4	
30	6	0	12	0	2	9	5	5	8	5	6	0	3	4	7	7	9	6	2	17	7	5	39	26	8	
31	23	13	23	17	29	19	3	0	8	5	4	4	4	0	2	4	3	23	7	9	3	6	0	4	9	

MONTHLY STATISTICS:

GEOM	ARITH-----PERCENTILES-----								-----RANGE-----				STN GEOM	PERCENT	NO. OF TIMES	
MEAN	MEDIAN	MEAN	50	90	95	98	99	1-HR	24-HR	DEVIATION	VALID DATA	ABOVE	LIMIT	LEVEL		
5	2	5	2	16	23	32	38	0	-	51	0	-	20	3	99	0

- NOTES: 1. FLAGS FOR INVALID DATA :
- D: DYNAMIC CALIBRATION
 - T: TELEMETRY/DATALOGGR FAULT
 - M: MAINTENANCE OR ANALYZER FAULT
 - P: POWER FAILURE

THE HONGKONG ELECTRIC COMPANY, LTD.
AIR QUALITY DATA MONTHLY TIME SERIES REPORT
MONTH: MAY

STATION : CHEUNG CHAU
POLLUTANT : SULPHUR DIOXIDE

YEAR : 2015
UNIT : MICROGRAMS/CUBIC METER

DAY	1	2	3	4	5	6	7	8	9	10	11	12	13	14	15	16	17	18	19	20	21	22	23	24	MEAN
1	13	7	6	6	11	12	11	15	16	25	21	20	10	6	2	2	2	2	2	1	1	1	2	10	9
2	7	3	2	2	2	2	3	4	4	3	4	3	1	3	3	3	2	2	1	1	1	2	2	1	3
3	1	1	0	1	1	1	1	2	3	3	1	1	2	2	2	2	1	1	2	1	0	1	0	2	1
4	1	1	1	1	2	2	2	3	6	6	4	2	2	5	9	4	2	2	1	1	1	1	1	1	3
5	1	1	2	2	2	1	2	2	2	2	1	2	1	2	1	1	2	1	2	1	3	3	2	3	2
6	2	3	1	1	1	1	2	2	2	2	2	1	2	2	2	1	1	1	1	2	1	1	4	2	2
7	3	4	4	5	4	3	2	2	4	3	2	2	2	2	1	2	1	1	0	1	1	1	2	1	2
8	1	1	1	1	0	1	1	2	2	2	3	1	2	1	1	1	1	0	2	1	2	1	2	2	1
9	1	2	1	1	1	0	1	1	2	2	2	2	4	2	1	2	2	0	0	1	1	1	2	1	1
10	1	1	2	1	2	3	3	3	2	4	5	4	4	8	11	5	4	4	6	2	1	1	1	2	3
11	2	2	2	3	2	4	5	4	3	3	3	2	3	1	3	2	1	1	0	0	0	0	0	0	2
12	0	0	4	5	5	3	2	2	3	4	12	6	7	3	4	5	11	8	3	4	4	4	7	4	5
13	3	3	3	3	2	3	3	4	6	5	4	3	3	4	2	3	4	3	2	2	4	4	4	3	3
14	4	5	9	12	11	7	3	3	3	5	3	5	5	4	3	2	3	2	1	2	4	5	3	3	4
15	1	2	2	5	4	4	4	M	M	M	M	M	M	M	M	M	M	M	M	M	M	M	M	M	
16	M	M	M	M	M	M	M	M	M	M	M	M	0	0	0	2	1	0	1	1	1	1	1	1	8
17	4	3	2	2	2	2	3	4	4	3	1	2	1	1	1	1	1	1	1	1	1	1	1	12	2
18	4	3	2	2	1	1	1	1	1	1	5	M	M	M	M	0	0	0	0	0	0	0	0	0	1
19	0	0	0	0	0	0	0	0	0	0	0	0	0	0	0	0	0	0	0	0	0	0	0	0	0
20	0	0	0	0	0	0	0	0	0	0	0	0	0	0	0	0	0	0	0	0	0	0	0	0	0
21	0	0	0	0	0	0	0	0	0	1	1	2	0	0	0	0	1	0	1	1	0	0	0	0	0
22	1	1	1	1	1	1	1	1	1	1	3	2	1	1	0	0	0	0	0	0	0	0	1	1	1
23	1	0	0	0	0	0	0	0	0	0	0	0	1	1	3	3	0	0	0	0	0	0	3	14	1
24	12	9	5	5	4	4	7	8	9	10	8	6	5	7	9	7	6	1	1	5	5	3	1	1	6
25	1	1	5	5	7	12	13	15	29	33	30	41	42	37	21	25	13	3	2	1	0	0	0	9	14
26	5	1	1	1	0	1	1	0	1	0	0	0	0	0	2	7	6	6	7	6	6	2	1	1	2
27	3	2	2	1	1	1	0	0	1	1	1	M	M	2	4	5	4	3	3	3	4	3	3	0	2
28	0	0	1	1	0	1	2	2	2	3	3	2	2	1	0	0	1	0	0	1	0	0	0	0	1
29	0	0	0	0	0	0	0	1	2	2	1	2	2	1	0	0	0	1	1	0	1	0	0	1	1
30	0	0	0	0	0	0	0	1	1	1	1	1	1	0	0	0	0	1	1	0	1	1	1	1	0
31	2	2	3	3	2	3	1	1	3	2	1	0	1	1	0	0	1	0	0	0	0	0	0	0	1

MONTHLY STATISTICS:

GEOM	ARITH-----PERCENTILES-----										RANGE-----		STN GEOM	PERCENT	NO. OF TIMES		
MEAN	MEDIAN	MEAN	50	90	95	98	99	1-HR		24-HR		DEVIATION	VALID DATA	ABOVE	LIMIT	LEVEL	
2	1	3	1	5	9	14	25	0	-	42	0	-	14	2	95	0	

NOTES:

1. FLAGS FOR INVALID DATA :
 - D: DYNAMIC CALIBRATION
 - T: TELEMETRY/DATALOGGR FAULT
 - M: MAINTENANCE OR ANALYZER FAULT
 - P: POWER FAILURE

THE HONGKONG ELECTRIC COMPANY, LTD.
AIR QUALITY DATA MONTHLY TIME SERIES REPORT
MONTH: MAY

STATION : CHEUNG CHAU
POLLUTANT : NITROGEN DIOXIDE

YEAR : 2015
UNIT : MICROGRAMS/CUBIC METER

DAY	1	2	3	4	5	6	7	8	9	10	11	12	13	14	15	16	17	18	19	20	21	22	23	24	MEAN
1	45	18	22	14	30	36	30	27	26	24	21	26	15	9	6	5	5	6	8	6	6	4	10	34	18
2	24	7	4	4	5	8	11	7	3	4	8	6	4	6	10	12	8	10	8	7	6	10	7	9	8
3	7	2	3	5	4	7	9	6	6	5	3	2	3	2	2	5	2	4	9	8	5	6	3	10	5
4	4	1	0	2	0	2	3	2	2	4	2	0	0	7	20	8	1	1	1	1	2	0	0	5	3
5	5	2	3	3	4	0	4	3	2	4	2	2	2	2	3	4	4	4	5	2	13	11	4	10	4
6	6	M	2	2	2	3	5	2	4	5	6	4	7	7	4	3	5	5	6	10	6	8	24	11	6
7	16	17	19	21	15	15	12	7	10	8	4	3	4	4	3	5	3	4	5	5	7	10	11	7	9
8	8	1	4	0	0	2	2	0	2	0	2	0	0	0	0	1	1	2	4	3	8	5	12	11	3
9	5	6	3	5	2	3	3	2	4	4	3	3	1	1	2	1	12	24	28	21	11	10	32	11	8
10	10	9	13	13	21	38	55	28	12	13	15	39	14	17	27	12	9	9	19	14	9	8	4	18	18
11	10	9	6	15	12	24	31	16	8	6	6	5	4	5	6	1	6	3	29	64	9	9	16	9	13
12	18	24	46	57	47	21	17	23	27	35	39	60	29	22	12	19	19	29	26	11	9	7	11	8	26
13	4	6	4	5	3	6	7	7	11	7	6	6	6	8	6	6	9	13	10	10	6	13	17	14	8
14	17	18	40	48	42	31	11	10	11	19	8	5	6	5	2	2	2	3	2	9	13	16	10	12	14
15	8	8	9	18	29	37	M	M	M	M	M	M	M	M	M	M	M	M	M	M	M	M	M	M	M
16	M	M	M	M	M	M	M	M	M	M	M	50	49	63	78	57	46	39	39	44	42	35	55		
17	50	29	36	41	27	35	36	41	31	13	7	5	3	2	6	9	10	12	24	10	3	7	4	3	19
18	2	3	1	2	1	2	1	1	0	1	1	17	M	M	M	M	6	6	6	5	9	6	11	2	4
19	3	1	1	1	1	7	5	1	1	0	0	0	0	1	0	2	1	5	1	3	10	2	3	0	2
20	0	M	0	0	2	0	0	0	0	0	0	1	0	1	0	1	2	0	2	2	1	9	2	1	1
21	13	12	0	2	5	6	20	10	7	21	21	M	20	19	24	23	24	25	19	26	9	4	8	10	14
22	17	13	11	11	13	10	12	11	11	13	21	21	17	17	22	23	27	14	19	21	24	51	58	13	20
23	15	8	9	7	4	12	8	10	6	14	9	10	40	23	43	66	22	40	68	48	57	65	68	79	30
24	77	72	62	60	40	58	76	65	51	41	30	29	30	53	42	59	53	39	53	84	84	59	44	59	55
25	20	28	48	52	53	62	52	44	47	32	28	39	37	32	25	33	23	5	12	11	2	34	34	71	34
26	58	14	9	6	6	9	6	5	5	3	9	4	7	22	49	69	44	20	33	58	36	12	5	9	21
27	28	17	6	6	9	8	5	9	3	1	1	M	M	5	4	4	2	2	6	9	7	2	3	9	7
28	3	6	6	4	5	5	16	15	5	4	5	9	7	7	7	3	1	1	1	4	3	4	3	8	6
29	6	6	4	5	2	3	6	13	6	5	2	1	2	3	2	0	1	2	6	2	4	2	4	6	4
30	7	5	5	1	4	6	8	4	5	3	3	3	1	0	1	4	1	5	6	16	13	27	38	19	8
31	21	31	37	39	18	29	13	7	9	5	2	0	1	2	6	3	8	4	14	14	8	9	2	3	12

MONTHLY STATISTICS:

GEOM	ARITH-----PERCENTILES-----										RANGE-----		STN GEOM	PERCENT	NO. OF TIMES	
MEAN	MEDIAN	MEAN	50	90	95	98	99	1-HR		24-HR		DEVIATION	VALID DATA	ABOVE	LIMIT LEVEL	
8	7	14	7	39	53	64	71	0	-	84	1	-	55	3	95	0

- NOTES: 1. FLAGS FOR INVALID DATA :
D: DYNAMIC CALIBRATION
T: TELEMETRY/DATALOGGR FAULT
M: MAINTENANCE OR ANALYZER FAULT
P: POWER FAILURE

THE HONGKONG ELECTRIC COMPANY, LTD.
AIR QUALITY DATA MONTHLY TIME SERIES REPORT
MONTH: JUNE

STATION : VICTORIA PEAK
POLLUTANT : SULPHUR DIOXIDE

YEAR : 2015
UNIT : MICROGRAMS/CUBIC METER

DAY	1	2	3	4	5	6	7	8	9	10	11	12	13	14	15	16	17	18	19	20	21	22	23	24	MEAN
1	1	3	1	1	1	0	1	1	3	3	4	2	1	3	6	6	5	6	4	3	3	5	4	6	3
2	5	4	2	2	2	2	4	4	4	6	5	1	1	6	6	5	4	4	5	4	2	3	5	4	4
3	3	2	3	3	1	2	1	1	2	6	7	18	6	7	5	2	13	4	2	5	2	5	2	3	4
4	1	2	2	3	2	1	1	2	2	3	5	2	6	12	10	6	9	8	3	3	2	3	3	2	4
5	2	1	1	3	4	3	3	4	5	6	4	3	2	3	2	1	1	1	2	5	3	5	2	3	3
6	4	6	2	2	2	4	6	8	9	12	10	6	6	3	3	3	3	4	3	3	2	3	4	3	5
7	7	5	7	6	3	5	4	4	7	6	7	2	4	5	5	5	5	3	3	7	7	7	8	7	5
8	4	5	4	3	2	7	8	3	3	9	6	2	2	2	3	5	3	2	4	3	3	4	2	2	4
9	3	4	4	3	6	4	4	5	4	8	12	11	8	3	3	3	3	3	3	3	3	3	4	2	5
10	1	2	3	1	2	2	2	1	2	2	1	1	4	3	1	2	7	14	10	2	3	1	0	1	3
11	2	1	2	1	2	2	4	3	9	7	15	2	2	3	2	8	62	48	43	26	6	4	4	2	11
12	2	3	2	1	0	0	0	2	12	1	20	39	22	28	23	6	4	2	2	5	4	3	4	3	8
13	3	3	1	3	3	4	3	3	3	5	2	4	4	4	4	3	2	3	4	3	2	4	2	1	3
14	7	6	6	6	11	7	3	3	6	9	7	9	4	6	7	6	5	5	14	3	3	5	12	9	7
15	8	7	9	3	4	2	1	0	2	2	3	M	3	3	4	2	4	7	4	3	4	2	2	4	4
16	9	6	7	4	1	3	12	13	14	12	5	7	6	20	21	19	13	18	11	4	4	4	2	3	9
17	3	2	1	2	1	2	3	2	8	8	6	7	7	7	8	1	4	12	12	7	3	2	5	4	5
18	2	4	2	1	2	2	2	4	5	3	4	4	2	4	2	13	3	16	8	12	5	4	3	2	5
19	2	6	4	4	2	5	4	4	5	5	7	2	3	4	3	34	26	24	26	10	10	14	10	11	9
20	8	7	6	5	3	3	6	10	2	2	2	2	2	2	2	1	1	3	3	1	1	2	2	2	3
21	1	0	0	0	1	0	1	1	1	0	1	1	1	1	1	0	1	0	0	0	0	0	0	0	0
22	0	0	0	0	0	0	0	1	1	1	0	1	1	0	1	1	3	1	1	1	1	0	0	1	1
23	1	1	1	1	1	1	1	2	1	1	1	2	2	1	2	2	2	2	3	2	2	2	2	5	2
24	4	1	1	1	1	0	0	1	1	0	1	4	2	2	2	3	3	2	4	4	5	2	2	3	2
25	3	2	4	2	2	2	6	7	4	2	2	1	2	2	2	1	1	3	2	2	1	5	2	4	3
26	3	2	3	3	2	1	1	0	1	2	1	1	4	2	1	1	3	1	1	1	3	4	4	4	2
27	5	6	3	1	1	2	1	4	4	3	3	2	2	2	3	2	2	1	2	2	2	2	1	2	2
28	3	7	5	3	1	1	1	1	2	5	10	8	11	6	3	2	3	2	1	2	2	2	2	1	4
29	2	1	1	0	2	1	1	2	3	1	1	3	2	1	2	2	4	1	1	1	2	1	1	2	2
30	2	2	2	2	2	3	2	3	3	2	5	M	4	3	2	2	3	2	3	3	4	4	3	1	3

MONTHLY STATISTICS:

GEOM	ARITH-----PERCENTILES-----										RANGE-----		STN GEOM	PERCENT	NO. OF TIMES	
MEAN	MEDIAN	MEAN	50	90	95	98	99	1-HR		24-HR		DEVIATION	VALID DATA	ABOVE OBJECTIVE		
3	3	4	3	8	12	20	26	0	-	62	0	-	11	2	100	0

NOTES: 1. FLAGS FOR INVALID DATA :
D: DYNAMIC CALIBRATION
T: TELEMETRY/DATALOGGR FAULT
M: MAINTENANCE OR ANALYZER FAULT
P: POWER FAILURE

THE HONGKONG ELECTRIC COMPANY, LTD.
AIR QUALITY DATA MONTHLY TIME SERIES REPORT
MONTH: JUNE

STATION : VICTORIA PEAK
POLLUTANT : NITROGEN DIOXIDE

YEAR : 2015
UNIT : MICROGRAMS/CUBIC METER

DAY	1	2	3	4	5	6	7	8	9	10	11	12	13	14	15	16	17	18	19	20	21	22	23	24	MEAN
1	1	6	0	0	0	0	0	0	1	3	4	1	2	6	9	9	8	11	9	2	0	8	4	4	4
2	0	0	0	0	0	0	1	1	0	2	1	0	0	1	0	2	1	2	4	2	1	3	4	6	1
3	2	0	1	0	0	0	0	0	0	6	6	14	7	3	7	1	14	3	1	9	4	12	0	4	4
4	0	M	0	0	0	0	0	1	1	0	1	1	3	9	10	5	11	12	1	4	3	8	2	4	3
5	2	0	0	1	1	0	0	2	3	2	1	0	0	2	1	0	1	0	4	14	8	33	10	35	5
6	19	13	0	0	1	5	17	13	12	15	11	5	5	2	0	0	1	8	15	4	2	12	4	2	7
7	5	2	3	0	0	1	0	0	3	1	1	0	1	4	3	1	2	2	4	14	11	12	10	7	4
8	0	0	0	0	0	5	7	0	0	7	2	0	0	0	0	3	3	2	2	1	1	2	1	0	2
9	0	1	0	0	0	0	0	0	2	9	5	4	5	0	1	0	0	0	0	1	2	4	2	1	2
10	0	0	0	0	0	0	0	0	0	0	0	0	2	6	6	6	19	33	20	1	8	2	0	0	4
11	0	0	0	0	0	0	0	0	2	1	3	0	0	1	0	2	31	20	25	10	3	1	1	1	4
12	6	0	1	0	0	0	0	1	4	0	13	20	12	20	16	0	1	4	1	8	13	3	1	7	5
13	6	7	1	7	7	4	4	5	3	11	7	12	7	10	9	7	10	13	14	12	12	26	16	13	9
14	16	15	15	14	26	17	5	8	13	13	13	15	9	15	16	14	12	14	25	20	24	27	41	23	17
15	18	19	19	3	9	5	6	8	23	19	16	M	17	11	16	11	10	18	13	20	29	25	23	7	15
16	18	8	7	1	0	2	13	10	8	5	1	2	0	5	8	6	5	8	5	1	6	4	0	0	5
17	0	0	0	0	0	0	0	0	4	1	1	2	1	0	1	0	1	3	3	2	2	1	1	0	1
18	0	0	0	0	0	0	0	1	2	1	1	0	2	1	1	2	0	9	6	14	6	5	2	2	2
19	1	2	0	3	0	0	0	1	2	0	1	2	0	0	1	14	10	16	16	16	35	39	25	18	8
20	19	3	1	0	0	0	0	1	0	0	5	3	4	2	0	1	3	8	7	1	1	0	0	0	2
21	0	0	0	0	0	0	0	0	0	0	0	0	0	0	0	0	0	2	0	0	0	0	0	0	0
22	0	0	0	0	0	0	0	0	0	2	2	0	1	0	0	3	7	1	0	0	0	0	0	0	1
23	0	0	0	0	0	0	0	1	0	0	4	7	1	2	1	8	8	4	4	1	0	0	0	5	2
24	2	0	0	0	0	0	0	0	0	0	2	8	1	0	0	1	5	1	11	6	12	1	0	1	2
25	0	0	3	0	0	4	18	18	1	0	2	1	0	10	7	3	0	5	5	9	1	19	3	1	5
26	0	0	1	5	0	0	1	1	0	1	1	5	6	1	0	1	6	0	0	4	3	9	5	8	2
27	11	9	1	0	0	0	0	6	7	1	2	2	0	2	1	0	2	2	2	7	3	12	4	4	3
28	1	13	6	1	0	1	0	1	1	14	30	24	26	12	2	3	3	2	2	4	2	5	1	0	6
29	0	0	0	0	0	0	0	0	0	0	1	0	0	1	1	4	8	0	1	0	1	2	0	0	1
30	0	0	0	0	0	0	0	0	1	0	10	M	19	14	9	7	15	9	14	11	12	13	8	14	7

MONTHLY STATISTICS:

GEOM	ARITH-----PERCENTILES-----										RANGE-----		STN GEOM	PERCENT	NO. OF TIMES	
MEAN	MEDIAN	MEAN	50	90	95	98	99	1-HR		24-HR		DEVIATION	VALID DATA	ABOVE OBJECTIVE		
4	1	4	1	14	18	25	30	0	-	41	0	-	17	3	100	1-HR
																0

- NOTES: 1. FLAGS FOR INVALID DATA :
- D: DYNAMIC CALIBRATION
 - T: TELEMETRY/DATALOGGR FAULT
 - M: MAINTENANCE OR ANALYZER FAULT
 - P: POWER FAILURE

THE HONGKONG ELECTRIC COMPANY, LTD.
AIR QUALITY DATA MONTHLY TIME SERIES REPORT
MONTH: JUNE

STATION : VICTORIA ROAD SUBSTATION
POLLUTANT : SULPHUR DIOXIDE

YEAR : 2015
UNIT : MICROGRAMS/CUBIC METER

DAY	1	2	3	4	5	6	7	8	9	10	11	12	13	14	15	16	17	18	19	20	21	22	23	24	MEAN
1	6	11	3	0	0	0	1	0	1	1	1	1	0	0	0	2	2	9	4	1	0	5	6	6	3
2	3	1	0	1	0	1	6	7	3	2	0	0	0	0	0	0	M	4	5	4	0	2	6	6	2
3	5	4	5	2	0	3	1	1	4	8	0	2	0	3	1	6	M	6	2	3	3	7	2	6	3
4	2	2	6	4	1	0	0	1	2	2	5	2	1	7	5	1	6	10	5	7	3	13	8	5	4
5	10	2	3	2	9	6	7	5	4	6	9	6	4	10	4	1	4	5	8	8	5	5	4	10	6
6	22	16	8	18	11	7	11	14	22	27	12	13	4	3	4	3	4	6	4	4	5	3	5	4	10
7	17	7	9	11	6	17	12	5	5	10	3	3	4	7	5	5	4	1	2	8	15	15	12	7	8
8	2	8	8	5	4	12	8	4	4	7	3	3	2	4	3	M	M	1	6	5	9	6	3	8	5
9	10	7	3	5	3	1	2	9	3	3	5	10	9	2	2	2	2	2	3	1	1	4	3	2	4
10	6	3	2	0	1	3	8	4	3	3	0	0	4	5	2	3	2	8	2	2	1	0	2	1	3
11	3	1	2	1	3	5	3	5	2	3	3	0	0	2	0	2	39	18	7	4	1	3	4	3	5
12	1	1	1	0	0	0	0	0	0	2	10	21	12	10	8	2	1	2	0	5	1	0	3	5	4
13	2	4	1	3	4	8	3	5	2	3	1	4	3	3	3	4	3	4	3	1	1	5	3	3	3
14	10	16	7	4	10	5	3	3	3	8	11	8	7	3	4	2	8	13	15	2	3	6	18	12	8
15	9	12	18	9	8	3	7	3	7	5	6	9	3	3	5	4	9	9	5	9	4	3	7	10	7
16	9	20	21	34	4	7	42	17	10	12	7	5	4	10	7	7	17	6	9	3	7	14	5	9	12
17	8	9	2	6	4	4	6	3	11	10	10	13	13	7	3	1	1	4	4	4	8	3	8	8	6
18	2	4	4	1	2	3	2	3	7	7	5	6	1	6	2	5	4	7	2	6	4	4	5	13	4
19	6	4	5	4	3	8	7	4	9	12	7	3	10	2	6	14	3	3	4	9	8	21	49	12	9
20	8	16	11	7	5	4	9	17	5	6	15	1	2	2	1	1	1	2	2	1	1	1	1	2	5
21	0	0	0	0	0	0	0	0	0	0	1	0	0	0	0	0	0	0	0	0	0	0	0	1	0
22	0	0	0	0	0	0	0	0	0	0	0	0	1	0	0	1	7	1	0	0	0	0	0	1	0
23	0	0	0	0	1	1	0	1	0	0	1	1	2	2	2	3	1	2	4	6	3	1	3	6	2
24	4	1	0	0	0	0	0	0	2	0	1	5	3	3	2	6	7	6	7	8	7	5	6	3	3
25	2	2	3	1	0	1	2	3	4	1	1	0	1	1	0	0	0	1	1	0	0	2	6	7	2
26	5	2	2	2	4	3	2	0	0	0	0	3	1	0	0	0	0	0	0	0	0	0	1	5	1
27	3	3	2	0	0	0	0	3	2	1	0	0	0	0	2	0	0	0	1	0	1	0	1	1	1
28	1	7	5	4	2	0	0	0	2	3	1	1	6	2	2	2	3	2	0	2	2	2	0	2	2
29	1	0	0	0	1	0	0	3	3	1	0	1	1	0	1	1	1	0	0	2	2	5	1	1	1
30	0	0	1	0	0	1	1	4	4	0	0	0	4	1	0	0	0	1	0	0	1	4	2	6	1

MONTHLY STATISTICS:

GEOM	ARITH-----PERCENTILES-----										RANGE-----		STN GEOM	PERCENT	NO. OF TIMES	
MEAN	MEDIAN	MEAN	50	90	95	98	99	1-HR		24-HR		DEVIATION	VALID DATA	ABOVE OBJECTIVE		
4	3	4	3	9	12	18	21	0	-	49	0	-	12	2	99	0

- NOTES: 1. FLAGS FOR INVALID DATA :
- D: DYNAMIC CALIBRATION
 - T: TELEMETRY/DATALOGGR FAULT
 - M: MAINTENANCE OR ANALYZER FAULT
 - P: POWER FAILURE

THE HONGKONG ELECTRIC COMPANY, LTD.
AIR QUALITY DATA MONTHLY TIME SERIES REPORT
MONTH: JUNE

STATION : VICTORIA ROAD SUBSTATION
POLLUTANT : NITROGEN DIOXIDE

YEAR : 2015
UNIT : MICROGRAMS/CUBIC METER

DAY	1	2	3	4	5	6	7	8	9	10	11	12	13	14	15	16	17	18	19	20	21	22	23	24	MEAN
1	18	22	2	0	1	1	15	13	14	14	10	2	0	2	12	17	16	23	15	14	11	21	18	13	11
2	8	3	2	2	0	10	16	11	5	5	1	0	1	0	0	1	M	7	12	11	7	17	22	21	7
3	20	M	9	5	2	9	12	M	5	12	1	1	0	3	1	7	M	8	4	5	6	13	4	9	6
4	8	5	7	4	3	0	1	4	1	0	3	0	0	3	4	2	8	13	6	6	4	13	5	7	4
5	18	3	3	2	13	3	10	10	9	3	6	5	5	11	3	0	3	9	17	20	21	35	27	48	12
6	48	40	18	23	21	15	23	17	21	22	9	12	3	2	2	2	4	9	8	10	8	8	13	11	15
7	21	9	7	9	7	21	16	7	4	9	1	1	1	5	5	1	2	1	3	15	19	18	18	5	9
8	2	9	8	2	3	18	15	6	4	6	1	1	0	1	1	M	M	0	2	2	3	3	0	1	4
9	1	1	0	0	0	0	0	2	0	1	0	3	3	0	0	0	0	0	0	1	1	1	2	0	1
10	4	0	0	0	0	0	4	0	0	0	0	0	3	5	11	5	1	7	1	7	2	5	6	1	3
11	3	0	0	0	0	1	2	3	1	3	1	0	0	3	2	0	13	4	2	1	0	5	1	1	2
12	8	0	0	0	0	0	5	6	1	5	5	7	5	2	0	0	0	1	1	6	0	0	3	2	2
13	0	2	0	1	2	0	2	1	0	0	0	0	0	1	0	0	0	0	0	0	0	6	0	2	1
14	7	8	1	2	8	1	4	0	0	1	2	1	0	2	0	0	2	5	8	8	9	16	24	15	5
15	7	10	11	2	3	1	18	22	20	18	8	5	0	3	0	0	1	3	1	16	3	4	7	18	8
16	11	17	18	25	0	4	21	12	3	0	0	0	0	2	2	1	3	1	3	0	2	9	5	8	6
17	2	M	0	1	0	0	1	2	3	0	0	1	0	0	0	0	0	0	0	4	1	0	2	4	1
18	0	0	1	0	0	0	0	0	2	0	0	1	0	0	0	0	0	1	0	3	2	2	0	5	1
19	0	0	4	0	0	1	0	1	2	1	0	0	1	0	0	2	0	0	0	4	8	17	22	12	3
20	7	9	5	0	0	0	4	9	1	0	4	0	0	0	0	0	0	2	3	1	2	0	0	1	2
21	0	0	0	0	0	0	0	0	0	0	0	0	0	0	0	0	0	2	0	0	0	0	0	0	0
22	0	0	0	0	0	0	0	0	0	0	2	2	1	0	2	15	1	0	0	0	0	0	0	0	1
23	0	0	0	0	1	0	2	12	4	11	16	2	4	6	7	9	5	9	13	11	8	2	4	8	6
24	2	0	0	0	0	0	0	5	4	15	11	10	4	5	5	12	20	24	25	19	13	9	12	3	8
25	0	0	4	0	1	3	5	12	8	3	13	16	7	4	8	9	10	14	14	15	16	21	16	15	9
26	7	0	2	3	3	3	15	7	8	3	0	0	6	0	0	0	1	1	1	8	4	2	9	12	4
27	4	3	0	0	2	0	1	7	3	0	0	0	0	0	0	0	0	1	1	1	1	2	0	0	1
28	2	8	5	3	0	0	1	0	2	1	0	0	3	0	1	0	2	0	0	1	0	2	0	0	1
29	2	0	0	0	1	0	2	7	1	0	0	1	3	1	2	1	0	0	0	0	1	4	0	1	1
30	0	0	0	0	0	0	3	7	2	1	0	0	5	1	0	1	1	1	0	0	2	9	2	4	2

MONTHLY STATISTICS:

GEOM	ARITH-----PERCENTILES-----								-----RANGE-----				STN GEOM	PERCENT	NO. OF TIMES	
MEAN	MEDIAN	MEAN	50	90	95	98	99	1-HR	24-HR	DEVIATION	VALID DATA	ABOVE OBJECTIVE				
4	2	4	2	14	18	22	24	0	-	48	0	-	15	3	99	0

NOTES: 1. FLAGS FOR INVALID DATA :
D: DYNAMIC CALIBRATION
T: TELEMETRY/DATALOGGR FAULT
M: MAINTENANCE OR ANALYZER FAULT
P: POWER FAILURE

THE HONGKONG ELECTRIC COMPANY, LTD.
AIR QUALITY DATA MONTHLY TIME SERIES REPORT
MONTH: JUNE

STATION : POK FU LAM
POLLUTANT : SULPHUR DIOXIDE

YEAR : 2015
UNIT : MICROGRAMS/CUBIC METER

DAY	1	2	3	4	5	6	7	8	9	10	11	12	13	14	15	16	17	18	19	20	21	22	23	24	MEAN
1	5	7	1	0	0	0	0	0	2	2	2	0	0	0	3	5	3	9	2	0	1	6	8	4	3
2	3	0	0	0	0	4	4	2	0	0	0	1	0	0	0	0	0	1	2	1	0	1	7	9	1
3	8	8	7	3	2	4	3	4	8	6	2	4	1	5	2	2	2	2	10	6	5	6	7	7	5
4	3	3	9	8	3	2	1	2	4	6	10	4	3	9	3	1	1	6	6	5	5	10	5	5	5
5	7	3	5	4	8	13	11	7	9	10	14	8	6	10	9	2	6	7	10	12	8	6	3	2	8
6	18	35	7	5	5	5	7	13	20	21	12	11	3	3	4	1	3	6	6	6	2	2	3	2	8
7	13	9	8	7	5	14	11	5	4	9	3	8	4	3	2	3	5	2	1	7	9	12	11	5	7
8	2	5	8	5	2	10	8	4	8	4	2	4	3	6	5	1	2	2	2	3	5	4	3	5	4
9	8	6	4	5	6	2	3	15	5	1	5	4	2	5	5	4	3	2	5	1	1	3	4	3	4
10	3	5	2	0	1	6	9	2	3	3	0	1	2	1	2	5	1	2	0	6	3	1	2	2	3
11	3	1	3	2	3	6	4	6	2	4	4	0	2	9	3	9	2	1	0	1	2	2	4	0	3
12	1	2	0	0	0	0	0	0	3	5	17	12	4	6	5	6	4	3	2	4	2	1	14	7	4
13	4	4	1	7	5	2	2	4	4	2	2	11	4	2	3	3	4	3	3	1	0	5	3	1	3
14	7	12	8	5	10	4	2	3	4	13	10	6	6	2	2	2	5	12	8	2	2	5	22	10	7
15	8	10	13	7	8	4	7	4	3	3	1	6	3	3	4	5	6	10	6	9	4	2	4	8	6
16	10	18	15	25	4	5	21	16	15	16	10	7	10	5	4	4	7	9	8	4	9	9	5	7	10
17	7	9	2	5	8	10	2	3	12	14	21	27	20	17	6	1	3	5	3	3	7	2	5	5	8
18	2	6	7	1	3	8	3	7	8	12	10	12	8	16	3	6	4	9	1	6	4	2	1	5	6
19	6	2	3	3	3	8	6	3	14	10	6	8	14	5	3	4	3	1	4	6	6	13	17	9	7
20	5	8	6	5	2	3	8	9	17	9	9	2	2	1	1	2	1	2	1	1	0	1	1	0	4
21	0	0	0	0	0	0	1	1	0	1	1	0	0	0	0	0	0	0	0	0	0	0	0	0	0
22	0	0	0	0	0	0	0	0	0	0	0	0	0	0	0	0	2	0	0	0	0	0	0	0	0
23	0	1	0	1	1	1	1	1	0	1	2	2	4	2	2	3	2	2	5	6	3	3	4	6	2
24	3	1	1	0	0	0	0	0	2	1	1	4	3	2	1	2	2	2	5	5	2	1	2	3	2
25	2	2	3	1	3	1	3	4	5	0	2	0	1	0	2	2	0	3	1	1	1	3	7	5	2
26	3	0	1	1	1	1	0	0	1	0	0	1	6	1	1	0	1	0	0	1	1	0	3	11	1
27	5	6	3	1	1	1	0	5	4	2	2	0	1	2	2	1	0	0	0	0	1	2	0	1	2
28	4	7	6	4	0	0	1	0	6	4	5	5	5	4	5	1	2	2	0	1	1	2	1	2	3
29	1	0	1	0	3	1	1	7	10	1	3	2	2	0	1	1	0	0	0	0	0	2	0	3	2
30	1	0	0	0	0	1	2	4	6	2	0	0	3	1	0	1	2	0	0	1	2	3	1	6	2

MONTHLY STATISTICS:

GEOM	ARITH-----PERCENTILES-----										RANGE-----		STN GEOM	PERCENT	NO. OF TIMES	
MEAN	MEDIAN	MEAN	50	90	95	98	99	1-HR	24-HR	DEVIATION	VALID DATA	ABOVE OBJECTIVE				
4	3	4	3	9	12	17	20	0	-	35	0	-	10	2	100	0

- NOTES: 1. FLAGS FOR INVALID DATA :
- D: DYNAMIC CALIBRATION
 - T: TELEMETRY/DATALOGGR FAULT
 - M: MAINTENANCE OR ANALYZER FAULT
 - P: POWER FAILURE

THE HONGKONG ELECTRIC COMPANY, LTD.
AIR QUALITY DATA MONTHLY TIME SERIES REPORT
MONTH: JUNE

STATION : POK FU LAM
POLLUTANT : NITROGEN DIOXIDE

YEAR : 2015
UNIT : MICROGRAMS/CUBIC METER

DAY	1	2	3	4	5	6	7	8	9	10	11	12	13	14	15	16	17	18	19	20	21	22	23	24	MEAN
1	27	27	8	3	6	8	19	18	24	25	21	15	6	8	20	28	29	36	36	49	41	45	33	27	23
2	21	12	8	9	4	19	20	17	14	11	6	12	9	8	8	9	9	13	25	18	5	20	29	28	14
3	28	21	18	11	12	11	14	16	22	19	15	13	11	13	12	11	14	16	26	21	17	22	18	25	17
4	19	13	17	14	10	9	6	9	12	15	16	11	9	14	10	12	12	20	16	18	19	22	18	18	14
5	25	14	15	12	24	23	20	18	24	23	25	20	18	27	23	19	25	26	34	33	35	56	48	50	27
6	63	70	19	16	14	13	20	30	30	30	18	20	13	12	12	11	16	24	24	25	19	14	13	16	23
7	29	M	14	12	12	27	21	17	11	17	7	9	4	3	3	4	7	7	11	22	25	26	28	11	14
8	7	18	20	10	6	24	24	15	20	12	8	17	12	14	14	11	13	10	15	15	18	12	12	14	14
9	21	14	15	16	15	9	11	22	18	12	18	16	9	14	17	15	13	11	21	12	15	13	18	11	15
10	15	14	6	3	6	17	18	13	13	14	11	15	12	20	25	28	12	14	13	30	24	20	18	13	16
11	15	9	12	10	12	14	17	22	16	19	16	14	16	24	15	16	17	17	12	15	20	22	24	16	16
12	25	15	14	12	2	4	9	10	16	27	23	19	16	17	14	17	20	25	24	24	22	19	25	17	17
13	14	13	5	14	14	7	12	12	11	10	16	23	13	13	11	14	14	20	17	14	13	21	11	14	14
14	18	25	20	17	26	12	10	11	12	18	13	10	9	4	8	10	10	21	19	17	19	23	45	26	17
15	21	24	29	15	18	14	21	24	30	32	19	20	12	12	12	11	14	25	16	34	29	21	20	26	21
16	21	33	26	44	8	13	33	31	25	20	15	16	15	14	16	15	15	17	21	15	26	26	15	18	21
17	17	17	8	12	19	15	9	11	23	22	25	25	25	26	16	19	21	23	16	19	22	15	17	19	18
18	14	18	16	7	11	17	8	15	19	24	23	25	22	23	17	17	17	18	12	24	23	19	11	17	17
19	16	11	14	10	9	15	11	14	25	18	14	15	19	13	15	16	14	8	15	26	28	35	36	22	17
20	17	20	19	12	8	9	15	21	27	25	15	7	8	7	6	10	12	13	11	12	13	12	10	8	13
21	3	M	0	0	4	1	5	4	4	6	3	2	1	1	2	5	13	9	9	8	9	8	1	0	4
22	0	0	0	0	0	0	3	10	12	20	13	8	11	11	8	14	25	15	7	7	3	1	1	4	7
23	2	4	0	3	4	4	6	20	14	20	34	16	15	16	18	18	17	15	24	20	17	17	13	17	14
24	8	5	3	2	3	2	3	8	16	28	20	17	17	16	16	19	21	24	27	23	10	10	13	12	13
25	10	10	15	10	14	12	19	24	27	16	20	18	20	12	28	26	21	26	26	27	18	28	32	23	20
26	21	11	14	13	11	12	14	13	28	18	16	16	24	14	13	14	19	12	13	20	20	19	28	33	17
27	21	21	11	6	8	8	7	19	20	14	12	7	14	12	10	8	4	7	13	14	11	15	8	8	12
28	16	22	22	14	5	3	12	7	18	13	16	10	12	8	10	6	8	9	6	11	8	13	9	10	11
29	11	4	7	5	13	6	13	21	23	16	18	14	16	18	15	10	11	12	13	13	11	17	8	13	13
30	12	5	6	7	7	7	13	26	26	18	12	12	11	12	13	15	17	11	14	14	20	18	10	23	14

MONTHLY STATISTICS:

GEOM	ARITH-----PERCENTILES-----										RANGE-----		STN GEOM	PERCENT	NO. OF TIMES	
MEAN	MEDIAN	MEAN	50	90	95	98	99	1-HR		24-HR		DEVIATION	VALID DATA	ABOVE OBJECTIVE		
14	15	16	15	26	28	35	45	0	-	70	4	-	27	2	100	1-HR
																0

NOTES: 1. FLAGS FOR INVALID DATA :
D: DYNAMIC CALIBRATION
T: TELEMETRY/DATALOGGR FAULT
M: MAINTENANCE OR ANALYZER FAULT
P: POWER FAILURE

THE HONGKONG ELECTRIC COMPANY, LTD.
AIR QUALITY DATA MONTHLY TIME SERIES REPORT
MONTH: JUNE

STATION : AP LEI CHAU
POLLUTANT : SULPHUR DIOXIDE

YEAR : 2015
UNIT : MICROGRAMS/CUBIC METER

DAY	1	2	3	4	5	6	7	8	9	10	11	12	13	14	15	16	17	18	19	20	21	22	23	24	MEAN
1	1	11	0	0	0	1	10	3	19	11	9	3	2	12	8	8	13	22	2	3	8	12	10	10	7
2	10	3	4	2	2	4	8	12	12	8	10	8	10	8	6	5	11	4	13	6	5	32	25	23	10
3	10	3	7	5	8	3	7	5	1	8	0	3	10	12	0	0	2	7	6	3	5	18	16	13	6
4	5	1	11	3	3	11	10	17	14	18	4	0	3	6	2	1	0	6	0	8	5	12	0	8	6
5	12	4	2	7	21	18	6	14	9	10	25	6	4	6	0	0	5	3	14	9	6	5	0	59	10
6	58	88	34	15	13	7	22	26	37	50	25	26	6	5	11	1	3	11	2	3	4	2	0	10	19
7	26	15	21	9	7	28	15	12	14	12	12	7	1	6	4	8	5	1	1	13	20	22	20	15	12
8	10	8	5	3	15	15	17	10	9	13	4	3	5	5	2	4	1	5	7	4	5	5	0	3	7
9	4	13	2	4	12	0	3	18	2	3	1	4	1	4	6	9	10	4	6	2	0	8	3	4	5
10	13	6	6	0	2	8	11	5	13	6	2	5	9	2	8	8	5	11	3	15	3	4	3	14	7
11	12	8	12	6	9	4	9	12	6	16	4	3	9	21	11	8	9	5	1	4	5	18	10	8	9
12	27	6	4	0	2	8	5	10	29	18	41	36	9	4	7	5	7	2	2	8	4	4	16	6	11
13	6	17	8	12	22	12	14	6	16	8	10	20	6	13	9	9	16	15	5	2	2	22	9	18	12
14	30	24	13	10	16	15	5	12	13	20	12	18	5	10	10	8	4	7	18	2	9	12	10	24	13
15	15	37	24	16	14	12	16	14	15	11	7	6	9	8	12	12	12	10	6	10	8	7	22	24	14
16	26	23	43	30	19	40	48	24	16	16	22	M	6	12	4	10	13	23	8	4	10	22	3	12	19
17	16	4	1	12	26	12	9	6	21	25	20	12	5	3	4	4	4	7	5	2	7	3	7	15	10
18	8	16	9	4	13	11	7	10	25	13	13	16	4	15	5	8	10	14	4	8	6	11	20	35	12
19	14	8	17	10	7	32	13	20	16	25	16	23	27	4	20	11	5	4	7	14	8	17	63	24	17
20	19	28	27	12	15	8	12	13	7	13	4	4	7	4	5	3	2	5	2	2	3	3	5	2	9
21	0	0	0	0	0	0	0	1	1	1	1	0	0	0	0	0	1	0	0	0	0	0	0	1	0
22	2	0	1	1	1	0	0	1	2	1	1	4	2	1	5	5	11	1	2	3	1	2	1	1	2
23	1	1	0	1	0	3	0	3	0	0	2	2	3	3	5	4	2	3	6	4	7	6	2	14	3
24	11	5	3	4	1	0	0	2	5	2	13	13	12	19	10	27	11	6	13	16	10	6	11	10	9
25	9	15	12	4	12	13	24	20	10	2	11	4	4	3	4	7	9	11	6	9	11	18	16	20	11
26	10	12	12	10	19	8	7	2	10	8	6	9	14	6	4	6	7	7	7	7	14	14	3	14	9
27	16	9	7	2	15	6	12	12	14	6	4	4	5	12	5	5	2	4	8	2	4	6	3	5	7
28	15	12	9	5	7	3	6	7	19	5	22	18	11	13	12	15	6	9	2	6	7	10	6	6	10
29	2	3	7	3	4	3	5	19	14	4	7	7	4	5	3	3	1	0	2	4	3	5	3	6	5
30	7	4	6	8	5	6	13	13	10	7	3	2	10	3	2	10	5	2	4	5	7	17	9	15	7

MONTHLY STATISTICS:

GEOM	ARITH-----PERCENTILES-----							-----RANGE-----				STN GEOM	PERCENT	NO. OF TIMES													
MEAN	MEDIAN	MEAN	50	90	95	98	99	1-HR		24-HR		DEVIATION	VALID DATA	ABOVE OBJECTIVE													
			7	9	7	19	24	32	41	0	-	88	0	-	19		100										0

NOTES:

1. FLAGS FOR INVALID DATA :
 - D: DYNAMIC CALIBRATION
 - T: TELEMETRY/DATALOGGR FAULT
 - M: MAINTENANCE OR ANALYZER FAULT
 - P: POWER FAILURE

THE HONGKONG ELECTRIC COMPANY, LTD.
AIR QUALITY DATA MONTHLY TIME SERIES REPORT
MONTH: JUNE

STATION : AP LEI CHAU
POLLUTANT : NITROGEN DIOXIDE

YEAR : 2015
UNIT : MICROGRAMS/CUBIC METER

DAY	1	2	3	4	5	6	7	8	9	10	11	12	13	14	15	16	17	18	19	20	21	22	23	24	MEAN
1	1	7	0	0	0	0	7	2	15	9	4	0	0	8	4	7	11	23	4	3	3	12	5	6	5
2	2	1	0	1	1	2	2	3	0	0	1	3	6	1	0	0	3	0	9	5	2	18	16	13	4
3	6	M	4	2	5	1	4	0	0	4	7	5	3	5	0	0	0	6	2	3	5	13	10	17	4
4	4	0	5	1	2	11	7	7	3	10	5	1	2	3	3	3	9	4	9	3	6	1	5	4	
5	10	2	4	5	13	9	7	10	8	9	14	4	3	6	4	1	9	7	16	13	16	36	24	56	12
6	58	61	48	29	17	7	22	16	17	19	10	13	4	1	3	0	3	11	6	3	3	0	0	8	15
7	16	12	15	3	3	18	11	1	4	1	2	1	0	1	0	3	2	0	2	6	16	17	13	13	7
8	3	4	2	3	12	10	10	4	2	2	0	0	4	3	1	2	1	1	2	1	1	1	0	1	3
9	0	8	0	2	9	0	3	10	1	2	2	3	0	1	1	3	3	0	2	2	0	3	3	1	2
10	3	1	1	0	0	2	1	0	2	1	0	4	2	1	6	3	5	9	8	15	1	2	3	4	3
11	3	0	3	0	1	0	5	2	0	3	2	3	1	13	3	0	2	4	1	1	2	8	4	5	3
12	19	4	3	0	1	5	11	28	16	7	20	16	4	1	1	3	8	8	5	5	1	0	7	1	7
13	0	4	1	5	7	2	4	0	2	1	3	8	1	1	4	3	3	2	1	0	0	11	1	3	3
14	10	14	4	2	13	7	2	1	0	3	2	4	0	3	2	3	0	1	6	1	3	4	21	15	5
15	8	20	15	6	8	8	14	13	8	8	0	2	2	1	1	4	9	6	4	11	11	10	18	22	9
16	20	25	36	20	14	26	24	4	0	4	16	M	1	5	2	9	9	17	6	3	7	12	2	4	12
17	7	M	0	7	8	4	9	2	8	11	10	10	7	1	1	2	5	6	8	2	4	0	1	5	5
18	1	6	4	0	4	4	0	1	8	7	8	14	3	8	10	13	13	10	9	9	11	10	14	19	8
19	7	6	11	2	3	22	12	13	8	13	11	17	18	4	12	8	4	10	14	21	13	14	30	15	12
20	12	18	21	6	5	0	8	4	2	2	0	0	1	0	0	1	1	6	1	1	2	1	1	1	4
21	0	0	0	0	1	0	0	0	0	0	0	0	0	0	0	2	5	3	1	0	1	1	0	0	1
22	0	0	0	0	0	0	0	1	0	0	0	1	1	0	0	4	10	2	0	0	0	0	0	0	1
23	0	1	0	1	0	4	0	6	0	8	4	1	1	0	4	4	1	3	6	2	6	6	3	11	3
24	10	4	0	0	0	0	0	0	1	6	14	6	2	4	1	9	9	4	9	11	6	2	6	5	5
25	3	12	13	1	9	19	33	19	6	1	11	1	1	2	3	9	12	12	9	10	11	26	10	15	10
26	7	9	12	11	9	5	4	2	6	6	5	5	18	6	2	8	8	4	5	6	17	15	1	12	8
27	18	2	6	0	7	3	6	7	8	3	1	0	1	5	1	1	0	2	4	1	3	4	1	4	4
28	12	9	9	5	2	0	11	3	13	2	10	10	5	5	4	9	5	4	1	2	3	6	6	6	6
29	1	3	4	3	2	3	13	16	9	8	11	10	7	6	7	2	3	1	0	2	1	1	2	3	5
30	5	3	1	4	2	2	18	15	9	13	9	8	7	0	5	7	4	3	11	8	6	19	6	14	7

MONTHLY STATISTICS:

GEOM	ARITH ----- PERCENTILES -----							----- RANGE -----				STN GEOM	PERCENT	NO. OF TIMES		
MEAN	MEDIAN	MEAN	50	90	95	98	99	1-HR		24-HR	DEVIATION	VALID DATA	ABOVE OBJECTIVE			
5	4	6	4	14	18	24	30	0	-	61	1	-	15	3	100	0

NOTES: 1. FLAGS FOR INVALID DATA :
D: DYNAMIC CALIBRATION
T: TELEMETRY/DATALOGGR FAULT
M: MAINTENANCE OR ANALYZER FAULT
P: POWER FAILURE

THE HONGKONG ELECTRIC COMPANY, LTD.
AIR QUALITY DATA MONTHLY TIME SERIES REPORT
MONTH: JUNE

STATION : CHEUNG CHAU
POLLUTANT : SULPHUR DIOXIDE

YEAR : 2015
UNIT : MICROGRAMS/CUBIC METER

DAY	1	2	3	4	5	6	7	8	9	10	11	12	13	14	15	16	17	18	19	20	21	22	23	24	MEAN
1	0	0	0	0	0	0	0	0	0	1	1	1	1	D	D	D	1	2	1	1	1	1	1	1	1
2	1	1	0	0	1	1	1	1	2	3	1	0	1	1	1	1	1	1	1	1	1	1	1	1	1
3	1	0	1	1	1	1	0	2	3	2	1	1	0	0	0	0	0	1	0	0	1	1	1	2	1
4	1	1	2	1	1	2	2	9	11	8	5	4	2	2	1	2	1	2	3	2	2	5	4	4	3
5	3	3	2	3	4	2	4	4	8	9	9	3	1	3	7	4	2	3	5	3	2	2	2	1	4
6	1	1	1	1	1	4	6	20	30	28	12	8	3	2	1	1	2	2	2	1	3	2	1	1	6
7	1	1	0	1	1	1	1	2	2	2	1	0	1	1	0	1	1	1	1	0	1	1	0	0	1
8	0	0	0	0	1	1	1	1	1	1	1	1	1	1	1	2	1	1	1	1	0	1	0	1	1
9	1	0	0	0	0	0	2	2	4	3	2	1	0	1	1	1	1	1	1	0	0	0	0	0	1
10	0	0	0	0	0	2	1	1	1	1	1	0	1	1	1	0	0	0	0	1	0	0	0	0	0
11	0	0	1	0	0	0	0	0	1	3	3	2	1	1	1	1	1	1	1	2	1	0	0	1	1
12	0	0	0	0	0	0	0	0	1	3	2	2	1	1	1	1	1	1	1	3	2	1	0	1	1
13	1	1	0	1	1	1	1	1	2	1	2	2	2	1	1	1	1	1	1	1	0	1	1	1	1
14	2	1	0	1	0	0	1	1	1	1	0	0	1	1	1	1	0	0	1	1	4	0	0	0	1
15	0	1	1	1	1	0	1	1	2	4	5	9	10	11	9	6	3	1	2	1	1	1	1	2	3
16	2	2	2	2	1	1	2	8	8	6	5	3	3	2	1	1	2	2	1	3	2	3	2	3	3
17	1	1	1	2	1	1	2	5	7	9	8	8	4	12	7	1	3	3	3	3	3	3	2	1	4
18	1	1	0	1	1	2	2	5	2	1	2	0	1	1	2	2	3	8	3	3	2	2	2	1	2
19	2	3	4	2	2	1	2	6	8	6	7	7	6	1	1	8	2	3	4	3	4	3	4	2	4
20	2	2	2	2	2	2	3	7	12	7	9	13	15	16	11	8	9	8	2	1	1	2	5	3	6
21	4	6	7	7	1	0	1	2	3	3	3	5	3	2	1	1	1	2	1	0	1	0	1	1	2
22	0	1	1	1	1	0	0	1	2	1	3	1	1	4	6	2	0	1	2	3	2	1	1	1	2
23	1	3	1	1	0	0	0	0	0	0	0	0	0	1	1	1	0	0	1	0	0	0	0	0	0
24	1	2	2	1	0	0	1	0	0	0	0	1	3	1	1	1	1	0	0	1	1	4	2	2	1
25	1	0	0	0	0	0	0	0	0	0	0	0	0	0	0	1	0	0	0	0	1	0	0	1	0
26	0	0	1	0	0	0	0	0	0	2	3	2	2	1	1	1	0	0	1	1	1	0	0	1	1
27	0	0	0	0	1	0	0	1	1	1	1	1	1	1	1	1	1	0	1	0	0	0	0	0	1
28	0	0	0	0	0	0	0	1	2	1	1	2	2	1	0	0	1	1	1	0	0	0	0	0	1
29	0	0	0	1	0	0	0	0	0	0	1	2	1	1	1	0	1	1	0	0	0	0	0	0	0
30	0	0	0	0	0	0	0	1	1	1	1	1	0	0	0	1	1	1	1	0	1	0	0	0	0

MONTHLY STATISTICS:

GEOM	ARITH-----PERCENTILES-----										RANGE-----		STN GEOM	PERCENT	NO. OF TIMES	
MEAN	MEDIAN	MEAN	50	90	95	98	99	1-HR		24-HR		DEVIATION	VALID DATA	ABOVE OBJECTIVE		
2	1	2	1	4	7	9	12	0	-	30	0	-	6	2	100	0

- NOTES: 1. FLAGS FOR INVALID DATA :
- D: DYNAMIC CALIBRATION
 - T: TELEMETRY/DATALOGGR FAULT
 - M: MAINTENANCE OR ANALYZER FAULT
 - P: POWER FAILURE

THE HONGKONG ELECTRIC COMPANY, LTD.
AIR QUALITY DATA MONTHLY TIME SERIES REPORT
MONTH: JUNE

STATION : CHEUNG CHAU
POLLUTANT : NITROGEN DIOXIDE

YEAR : 2015
UNIT : MICROGRAMS/CUBIC METER

DAY	1	2	3	4	5	6	7	8	9	10	11	12	13	14	15	16	17	18	19	20	21	22	23	24	MEAN
1	3	2	3	4	1	6	4	5	6	8	6	4	1	D	D	D	5	5	5	10	6	4	2	3	4
2	2	4	2	2	3	6	7	5	5	4	1	0	2	1	1	1	3	2	3	3	7	7	9	4	4
3	5	M	9	7	6	11	7	12	7	6	5	0	0	1	3	1	2	3	3	2	7	10	13	23	6
4	13	11	9	6	6	8	13	21	21	12	9	5	3	4	4	5	3	5	7	5	8	21	22	10	10
5	11	9	6	11	17	5	12	10	16	15	11	4	1	6	16	7	8	13	23	16	32	35	35	39	15
6	43	40	39	27	30	43	41	44	38	32	17	14	6	5	3	3	4	10	7	3	11	14	10	9	21
7	6	5	5	6	8	10	9	9	6	5	1	1	1	1	0	1	1	2	3	4	10	M	M	3	4
8	3	3	4	2	6	7	8	6	3	3	3	2	1	1	2	5	2	2	2	5	1	4	3	3	3
9	3	2	0	2	4	5	8	4	6	2	0	1	0	0	0	0	1	1	1	0	0	1	0	1	2
10	0	2	2	2	3	10	6	3	2	4	3	1	2	1	5	0	0	1	1	15	7	4	9	3	4
11	7	3	6	4	1	4	1	1	1	7	6	2	0	1	2	0	1	3	2	8	4	5	3	6	3
12	3	10	3	3	1	5	11	16	21	26	9	2	11	2	0	2	3	4	5	24	15	3	1	6	8
13	6	2	3	4	3	3	4	5	2	3	3	2	3	4	2	0	1	2	1	1	2	2	3	7	3
14	10	5	0	5	3	2	6	4	2	4	6	2	3	2	2	2	1	0	11	23	42	21	17	2	7
15	17	10	4	5	6	6	9	29	32	39	17	9	11	11	5	4	4	1	2	2	3	21	35	18	13
16	29	26	28	32	25	22	23	24	13	10	10	5	1	0	0	1	2	3	4	11	8	11	6	16	13
17	6	M	7	11	8	1	16	20	15	14	12	11	6	18	11	2	4	6	8	17	15	16	11	5	10
18	5	4	2	2	10	20	17	20	9	4	2	1	2	5	9	6	7	15	9	13	12	15	7	8	9
19	15	13	17	13	12	11	19	26	20	12	13	10	9	1	5	12	4	5	9	13	24	23	29	12	14
20	22	27	24	12	12	26	26	21	13	11	8	12	12	15	10	7	8	7	1	1	2	3	10	5	12
21	8	12	13	17	1	6	16	11	8	4	4	5	1	0	0	5	18	8	23	7	1	15	8	6	8
22	4	5	4	5	5	1	2	9	6	4	8	0	0	9	9	4	1	2	9	13	4	2	1	12	5
23	9	15	2	2	0	0	3	1	0	15	2	0	2	2	3	0	0	1	2	1	1	0	6	19	4
24	22	10	14	5	1	0	2	2	0	5	5	1	6	1	0	1	2	M	M	M	M	M	M	M	5
25	M	M	M	M	M	M	M	M	M	M	M	1	1	4	1	2	2	3	4	1	4	11	4	3	
26	0	2	5	3	3	4	3	0	5	12	12	10	3	2	0	0	0	0	0	1	1	2	1	4	3
27	2	0	0	0	2	1	2	2	1	2	1	1	0	2	0	1	2	0	0	0	0	0	0	0	1
28	0	2	1	0	0	1	1	3	6	0	0	2	2	0	0	0	0	0	1	0	0	0	0	0	1
29	1	1	1	1	0	1	1	1	0	2	6	9	2	12	6	4	2	0	1	0	1	0	0	1	2
30	1	3	2	1	1	0	2	2	1	2	7	5	0	2	4	4	1	1	2	1	3	0	0	1	2

MONTHLY STATISTICS:

GEOM	ARITH-----PERCENTILES-----										RANGE-----		STN GEOM	PERCENT	NO. OF TIMES	
MEAN	MEDIAN	MEAN	50	90	95	98	99	1-HR		24-HR		DEVIATION	VALID DATA	ABOVE OBJECTIVE		
5	4	7	4	16	23	32	39	0	-	44	1	-	21	3	97	0

- NOTES: 1. FLAGS FOR INVALID DATA :
- D: DYNAMIC CALIBRATION
 - T: TELEMETRY/DATALOGGR FAULT
 - M: MAINTENANCE OR ANALYZER FAULT
 - P: POWER FAILURE

Appendix C Summary Results on Water Quality Monitoring

LAMMA POWER STATION FGD WASTEWATER TREATMENT PLANT EFFLUENT DISCHARGE TO ASH LAGOON SUSPENDED SOLIDS AND PH

Period : April – June 2015

Week Ending	No. of Samples	Suspended Solids, mg/L			pH		
		Maximum	Minimum	Average	Maximum	Minimum	Average
04/04/15	3*	19	11	15	8.2	8.0	8.1
11/04/15	3*	15	13	14	8.2	8.0	8.1
18/04/15	4*	16	10	13	8.1	7.8	7.9
25/04/15	6*	17	11	14	8.0	7.8	7.9
02/05/15	4*	18	10	14	8.2	7.9	8.1
09/05/15	4*	20	12	15	8.1	8.0	8.0
16/05/15	5*	18	10	14	8.2	8.0	8.1
23/05/15	5*	16	12	13	8.2	8.0	8.1
30/05/15	7	22	10	15	8.2	8.0	8.1
06/06/15	5*	20	16	18	8.1	8.1	8.1
13/06/15	7	23	12	17	8.3	8.0	8.1
20/06/15	3*	19	15	17	8.2	8.0	8.1
27/06/15	6*	17	11	15	8.3	8.0	8.2

Remark :

* - No sampling for the remaining day(s) of the week / no sampling due to no discharge

LAMMA POWER STATION
FGD WASTEWATER TREATMENT PLANT
EFFLUENT DISCHARGE TO ASH LAGOON
TRACE METAL, TOTAL PHOSPHORUS
AND TOTAL NITROGEN ANALYSIS

Period : April – June 2015

Sampling date		2/4/2015	5/5/2015	11/6/2015
Barium,	ug/L	190	<150	<150
Mercury,	ug/L	<0.5	<0.5	<0.5
Cadmium,	ug/L	2	2	1
Iron,	ug/L	<400	<400	<400
Total Phosphorous,	mg/L	<0.8	<0.8	<0.8
Total Nitrogen,	mg/L	88	51	68
Cyanide,	mg/L	0.02	0.01	<0.01

Remark:

According to the WPCO Ash Lagoon Discharge Licence, contents at exact levels of trace metals below 1/10 th of the WPCO Licence permitted limits will not be reported. When the concentration of a metal exceeds 1/10 th of the limit, the exact value of the metal concentration will be reported.

Appendix D Summary of EMIS

EM&A Log Ref.	Mitigation Measures	Implementation Status
	GENERAL	
A1	No other process, except the Wet Limestone-Gypsum process used in the FGD plants of the coal-fired Units L6, L7 and L8 within the Lamma Power Station, shall be used in the FGD plants for the projects unless otherwise agreed by EPD.	Complied
	WATER QUALITY	
B1	All wastewater arising from the operation of the projects shall be collected and directed to the existing wastewater treatment plant within the Lamma Power Station for treatment.	Complied
B2	The operational plant effluent from the FGD plants should be reused as much as possible in order to minimise discharge to the WWTP.	Complied
B3	Maintenance of the WWTP should be performed regularly to ensure the effluent from the WWTP would not exceed the current requirements stipulated in the WPCO licence for Ash Lagoon.	Complied
	WASTE	
C1	No gypsum or sludge arising from the operation of the projects shall be disposed of anywhere. All gypsum and sludge shall be collected and reused.	Complied
	NOISE	
D1	Equipment including the Absorber Recirculation Pump, Oxidation Air Blower, Booster Fan and Booster Fan Motor of the FGD plants shall be acoustically insulated and the Gas-Gas Heater (untreated side) of the FGD plants shall be provided with reinforced lagging to reduce the noise impact.	Complied