

Figure D1 Dissolved Oxygen (mg/L) at the surface and mid-depth, dissolved oxygen (mg/L) near the bottom and depth-averaged turbidity (NTU) of water samples measured at all the impact monitoring stations within Zone A on 22 May 2009.



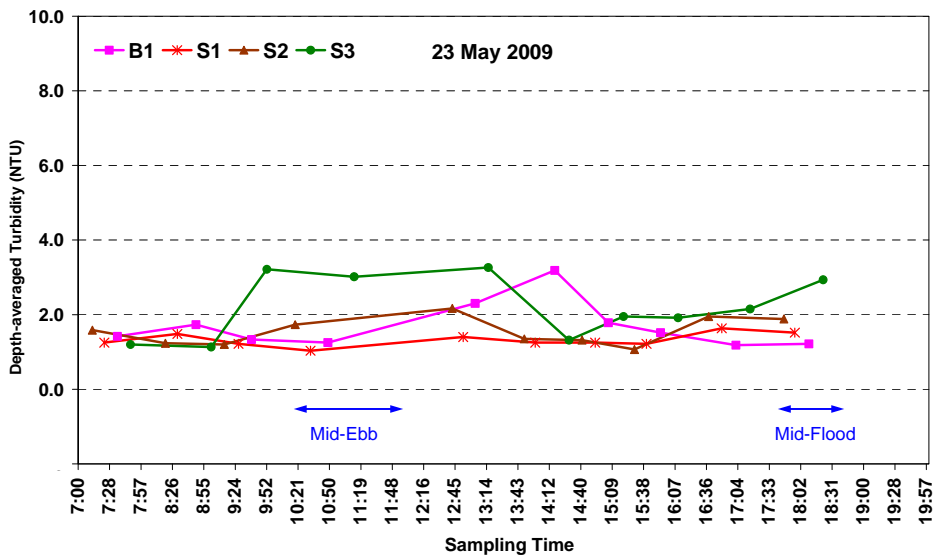
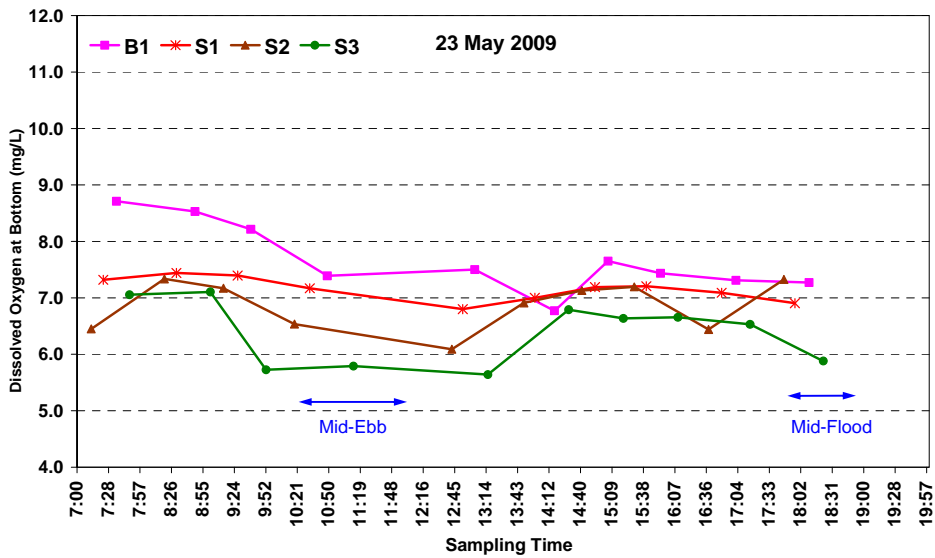
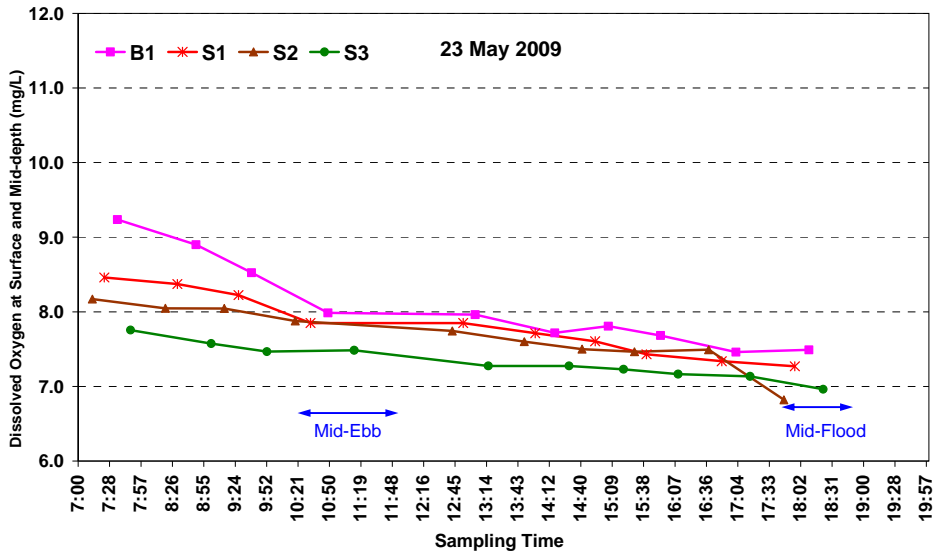


Figure D2 Dissolved Oxygen (mg/L) at the surface and mid-depth, dissolved oxygen (mg/L) near the bottom and depth-averaged turbidity (NTU) of water samples measured at all the impact monitoring stations within Zone A on 23 May 2009.



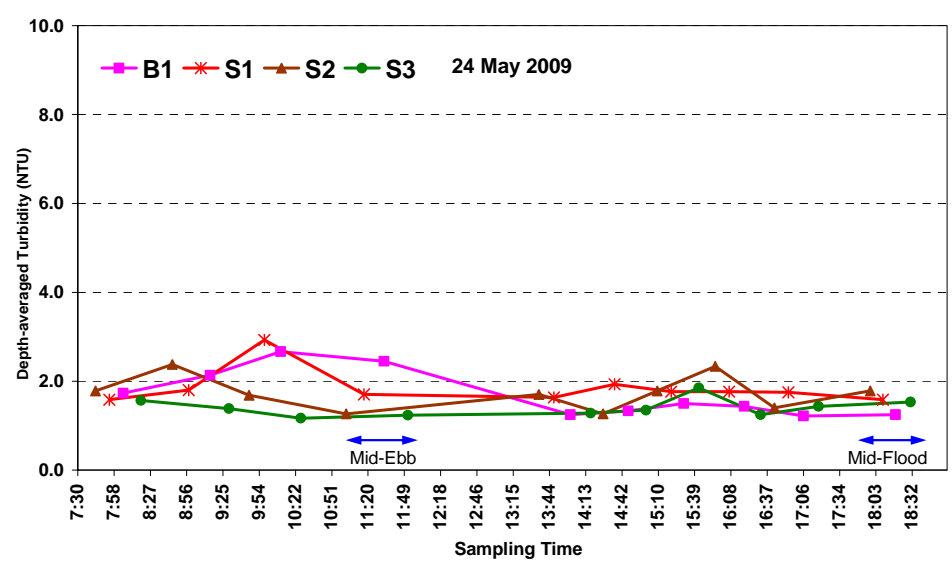
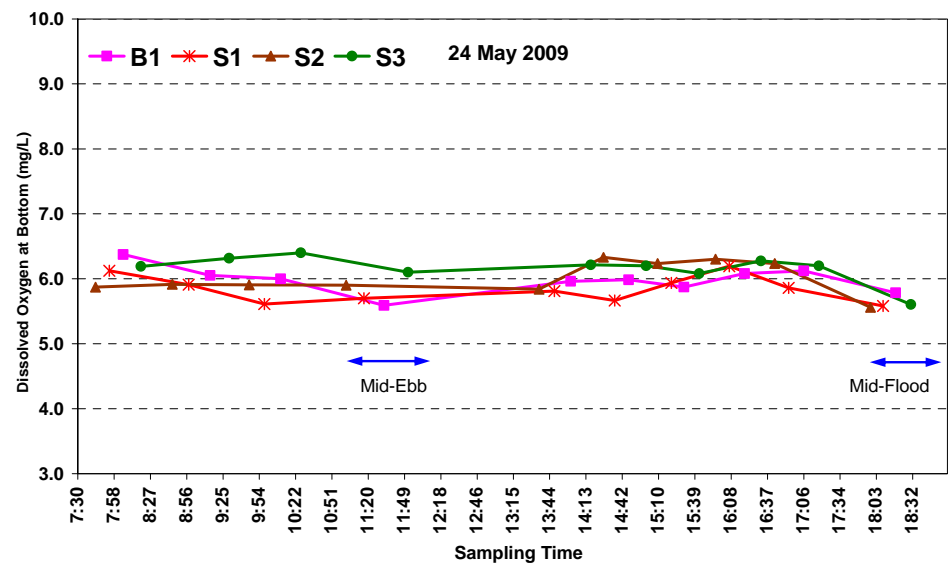
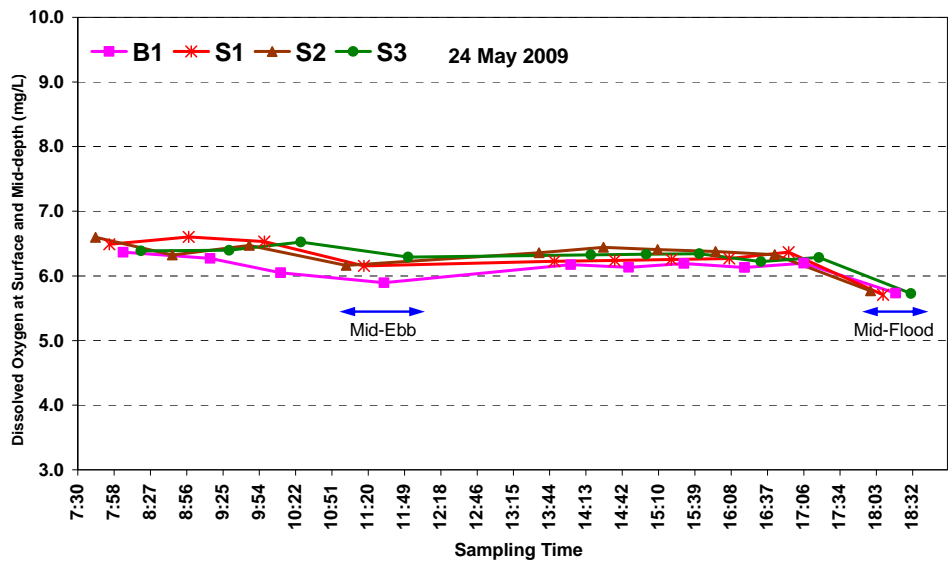


Figure D3 Dissolved Oxygen (mg/L) at the surface and mid-depth, dissolved oxygen (mg/L) near the bottom and depth-averaged turbidity (NTU) of water samples measured at all the impact monitoring stations within Zone A on 24 May 2009



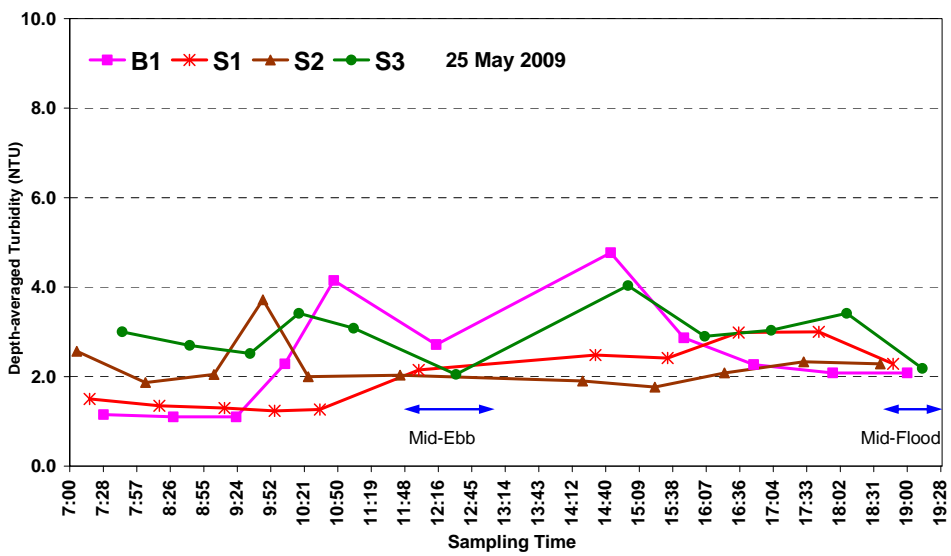
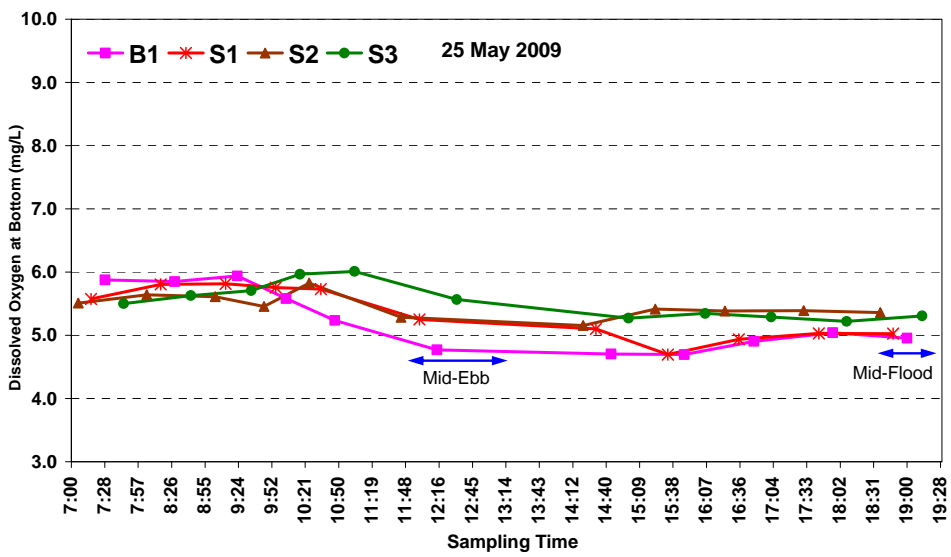
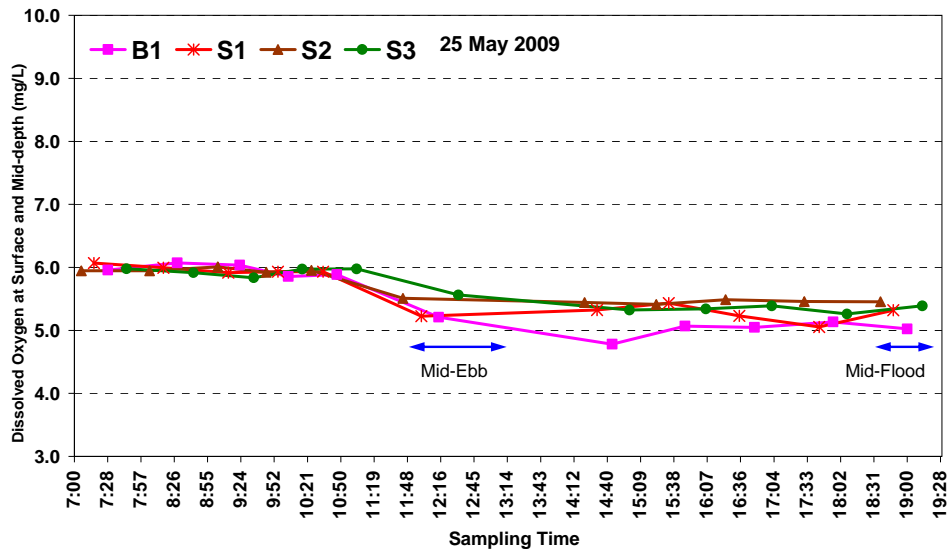


Figure D4 Dissolved Oxygen (mg/L) at the surface and mid-depth, dissolved oxygen (mg/L) near the bottom and depth-averaged turbidity (NTU) of water samples measured at all the impact monitoring stations within Zone A on 25 May 2009.

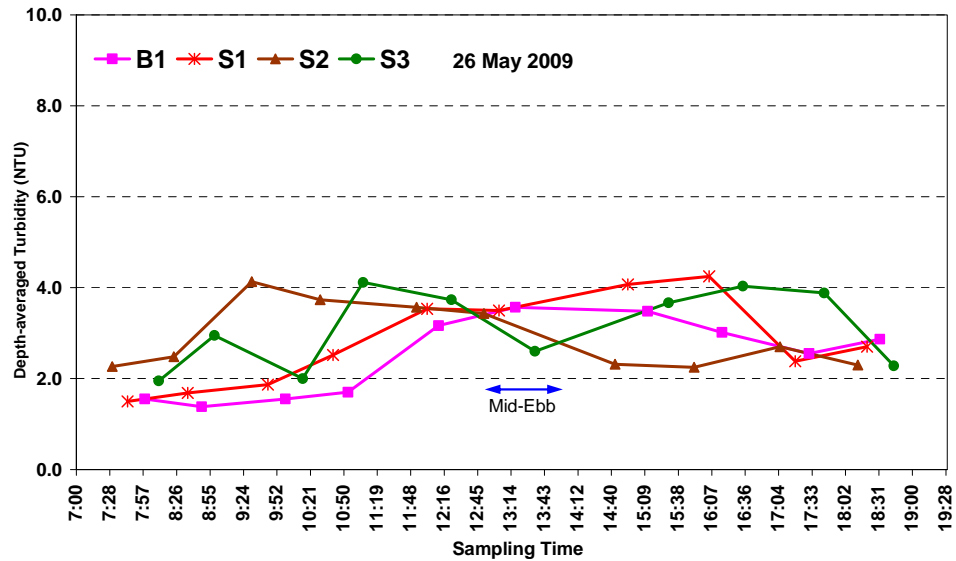
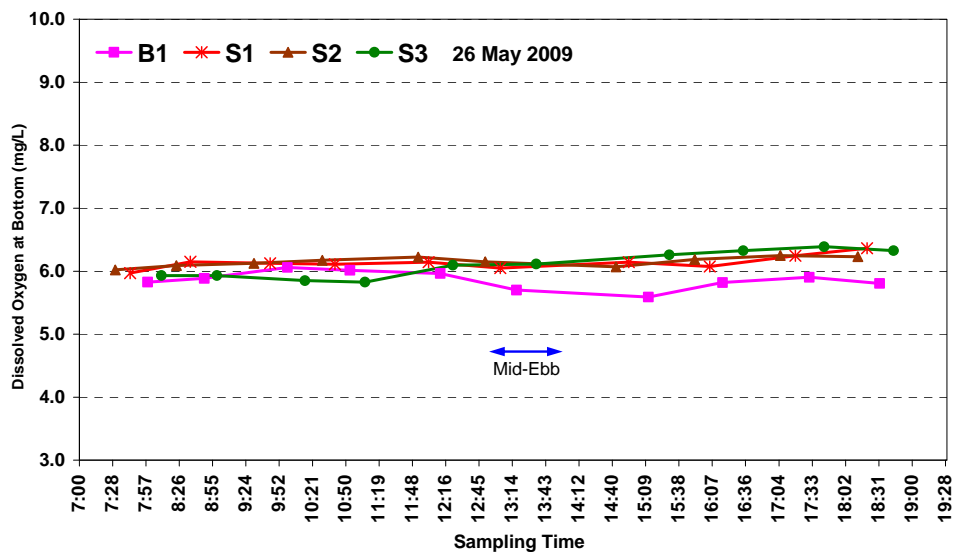
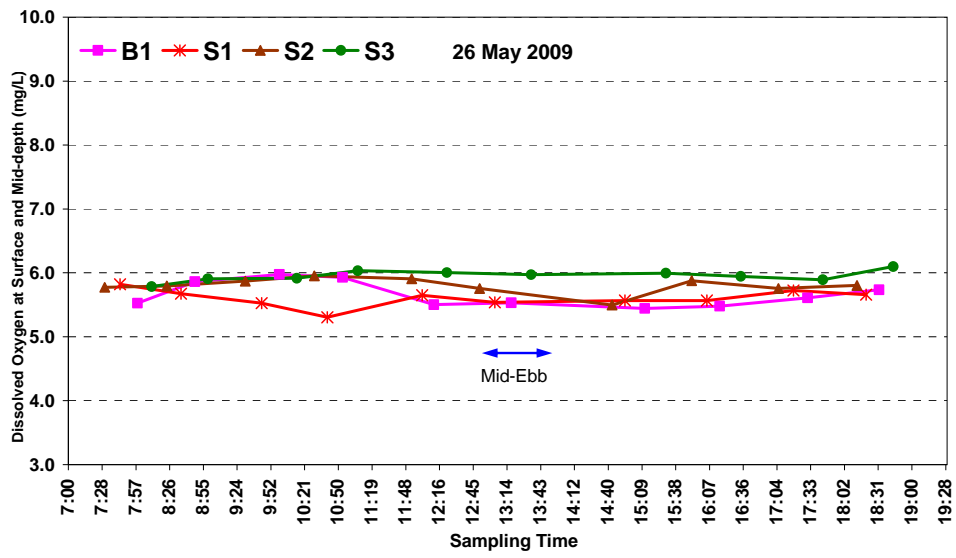


Figure D5 Dissolved Oxygen (mg/L) at the surface and mid-depth, dissolved oxygen (mg/L) near the bottom and depth-averaged turbidity (NTU) of water samples measured at all the impact monitoring stations within Zone A on 26 May 2009.



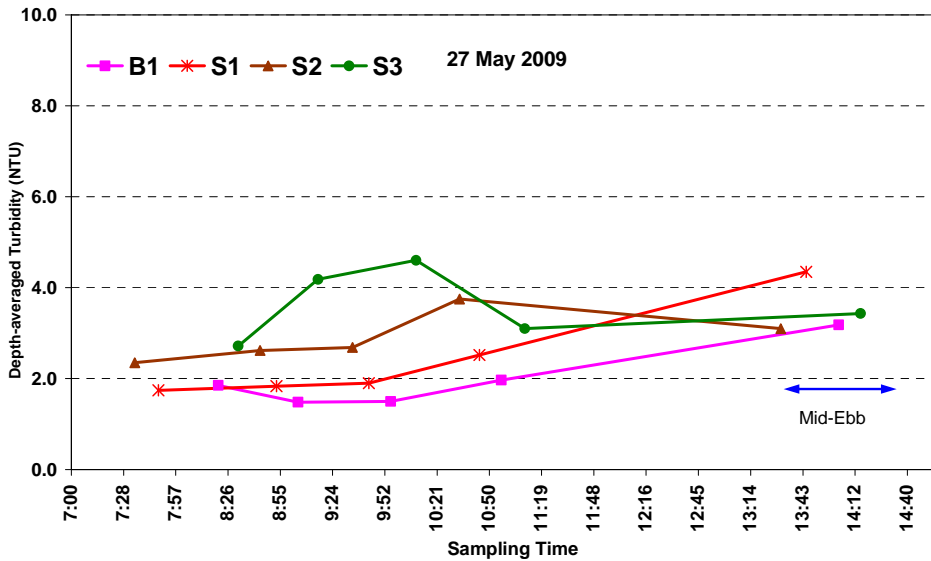
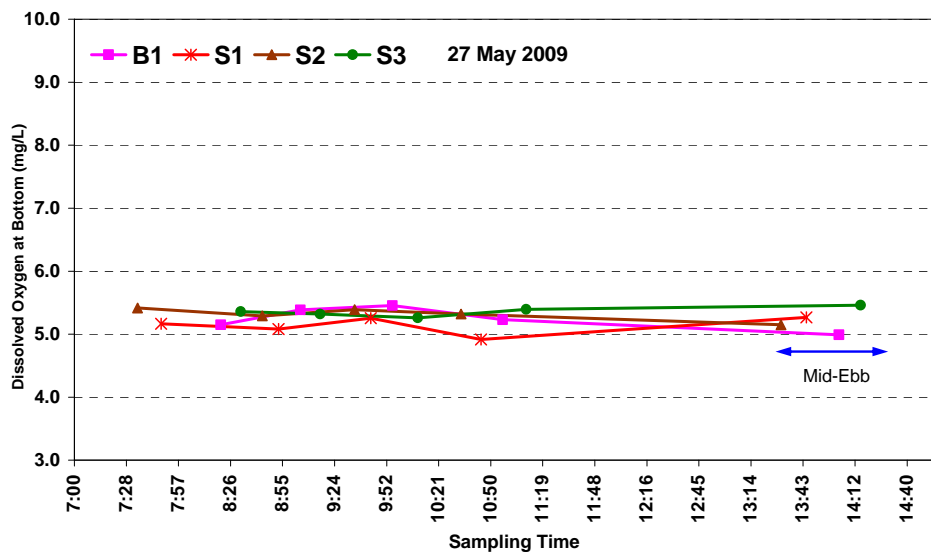
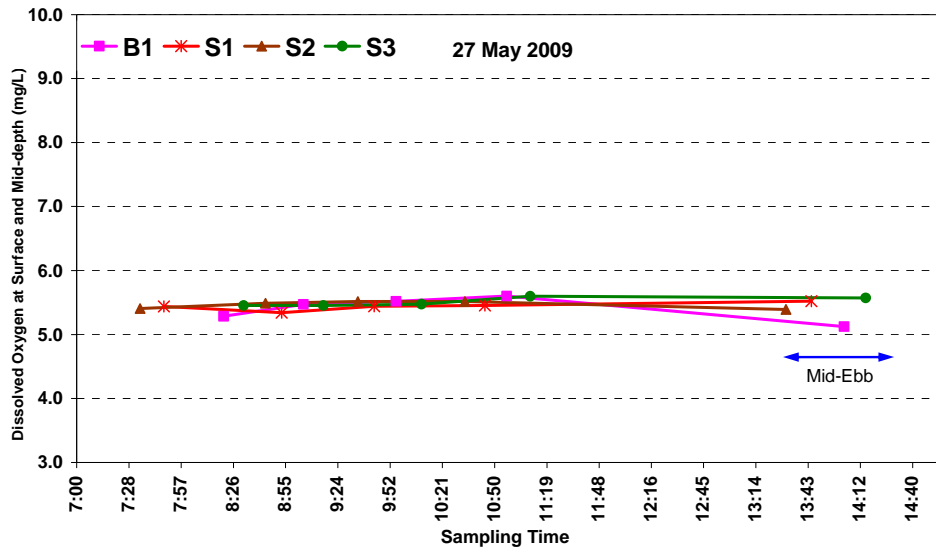


Figure D6 Dissolved Oxygen (mg/L) at the surface and mid-depth, dissolved oxygen (mg/L) near the bottom and depth-averaged turbidity (NTU) of water samples measured at all the impact monitoring stations within Zone A on 27 May 2009

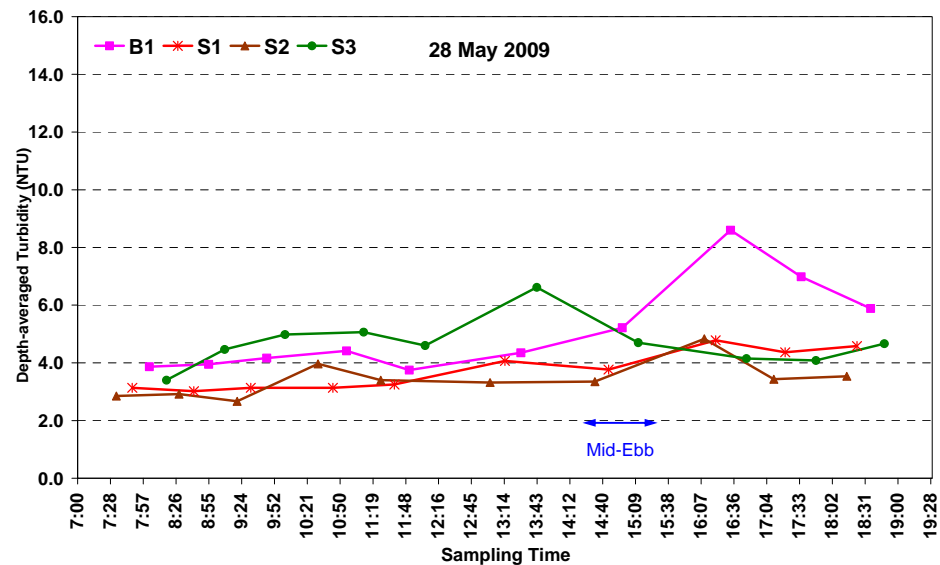
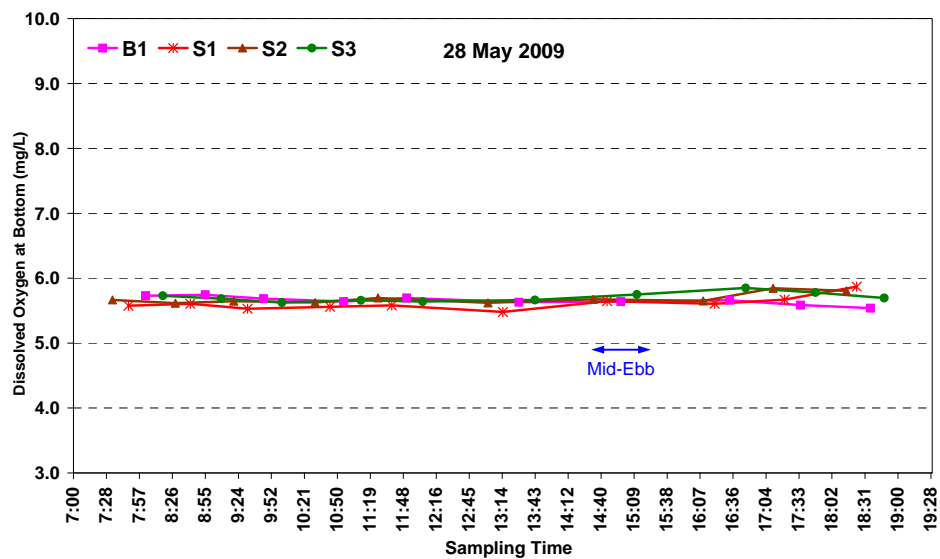
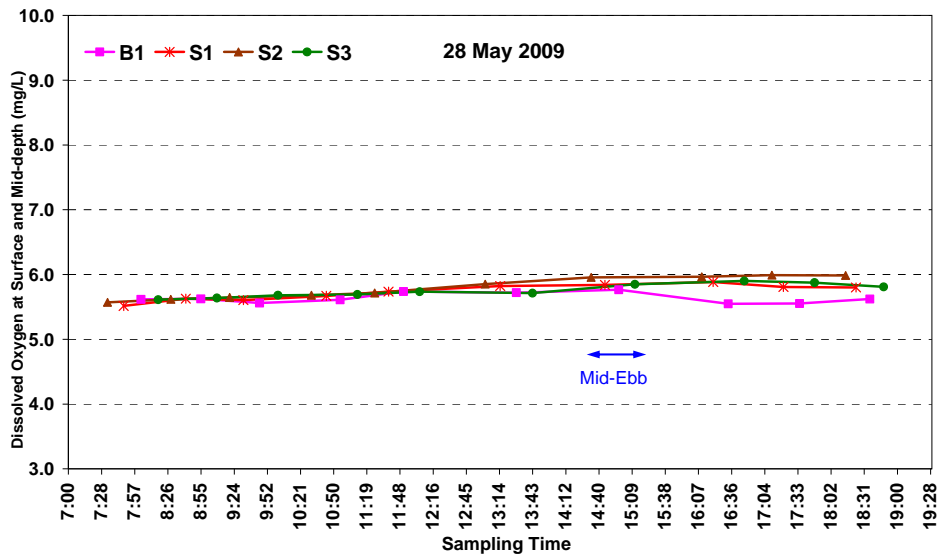


Figure D7 Dissolved Oxygen (mg/L) at the surface and mid-depth, dissolved oxygen (mg/L) near the bottom and depth-averaged turbidity (NTU) of water samples measured at all the impact monitoring stations within Zone A on 28 May 2009.



### Annex D Continuous *In-situ* Measurement Data

Zone	Station	Sampling Date	Time	Depth (m)	Depth	Water Temp (°C)	Salinity (ppt)	D.O. Saturation (%)	D.O. (mg/L)	Turbidity (NTU)
A	S2	5/22/2009	7:04:32	8.9	B	25.68	31.88	122.2	8.32	1.4
A	S2	5/22/2009	7:05:27	8.9	B	25.67	31.88	114.9	7.83	1.7
A	S2	5/22/2009	7:06:22	5.2	M	26.67	29.07	139	9.46	1.6
A	S2	5/22/2009	7:07:19	5.2	M	26.7	29.11	141.8	9.65	1.4
A	S2	5/22/2009	7:08:23	1	S	27.27	28.74	163	11.01	1.2
A	S2	5/22/2009	7:09:04	1	S	27.26	28.75	163.9	11.07	1.2
A	S1	5/22/2009	7:17:33	8	B	26.12	30.89	127.4	8.66	1.9
A	S1	5/22/2009	7:18:22	8.1	B	26.06	31.05	126.5	8.61	1.7
A	S1	5/22/2009	7:19:34	4.4	M	26.85	29.1	148.2	10.05	1.4
A	S1	5/22/2009	7:20:20	4.5	M	26.82	29.05	150.3	10.21	1.4
A	S1	5/22/2009	7:21:07	0.9	S	27.14	28.58	156.5	10.6	1.3
A	S1	5/22/2009	7:21:57	0.9	S	27.19	28.76	162.7	11	1.1
A	B1	5/22/2009	7:33:27	6	B	26.89	29.26	148.1	10.04	1.5
A	B1	5/22/2009	7:34:21	6	B	26.89	29.24	154.1	10.44	1.4
A	B1	5/22/2009	7:35:33	3.3	M	27.01	29.14	158.1	10.7	1.4
A	B1	5/22/2009	7:36:28	3.3	M	27.07	29.04	161.6	10.93	1.4
A	B1	5/22/2009	7:37:13	1.2	S	27.34	28.92	164.8	11.11	1.5
A	B1	5/22/2009	7:38:14	0.7	S	27.36	28.91	166.6	11.22	1.4
A	S3	5/22/2009	7:49:09	12.3	B	24.36	33.62	91.5	6.32	3.8
A	S3	5/22/2009	7:50:09	12.4	B	24.43	33.56	86.6	5.97	4.3
A	S3	5/22/2009	7:51:11	6.4	M	26.31	30.31	124.6	8.47	2
A	S3	5/22/2009	7:52:09	6.4	M	26.35	30.2	134.2	9.13	2.2
A	S3	5/22/2009	7:53:07	1.1	S	26.75	28.62	142.4	9.71	1.3
A	S3	5/22/2009	7:53:58	1.1	S	26.74	28.61	142.9	9.74	1.3
A	S2	5/22/2009	8:07:05	9.1	B	25.04	32.94	112.7	7.72	4.1
A	S2	5/22/2009	8:08:01	9.2	B	25.4	32.27	104.5	7.14	4.4
A	S2	5/22/2009	8:09:00	5.2	M	26.77	29.53	141.6	9.6	1.8
A	S2	5/22/2009	8:09:53	5.2	M	26.8	29.54	153.2	10.38	1.4
A	S2	5/22/2009	8:10:49	1.2	S	27.22	28.77	160.1	10.81	1.3
A	S2	5/22/2009	8:11:26	1.2	S	27.21	28.78	161	10.88	1.1
A	S1	5/22/2009	8:20:31	8	B	26.05	31.12	124.9	8.49	4.1
A	S1	5/22/2009	8:21:21	7.9	B	26.1	31.24	124.9	8.48	4
A	S1	5/22/2009	8:22:10	4.5	M	26.81	29.58	144.8	9.81	1.8
A	S1	5/22/2009	8:23:00	4.5	M	26.85	29.42	150.6	10.2	1.7
A	S1	5/22/2009	8:23:56	1.2	S	27.33	28.77	164.4	11.09	1.2
A	S1	5/22/2009	8:24:29	1.2	S	27.34	28.78	165.5	11.16	1.3
A	B1	5/22/2009	8:34:03	6.1	B	26.83	29.84	137.5	9.3	4.5
A	B1	5/22/2009	8:35:04	6.1	B	26.93	29.59	148.4	10.03	4
A	B1	5/22/2009	8:36:00	3.4	M	27.09	29.22	157.4	10.63	1.7
A	B1	5/22/2009	8:36:48	3.4	M	26.99	29.22	158.4	10.72	1.6
A	B1	5/22/2009	8:37:53	1.1	S	27.28	28.99	167.1	11.26	1.5
A	B1	5/22/2009	8:38:27	1.1	S	27.26	29	167.5	11.3	1.6
A	S3	5/22/2009	8:49:58	11.9	B	24.34	33.6	94.2	6.51	3.1
A	S3	5/22/2009	8:50:33	11.9	B	24.31	33.62	89.2	6.16	3.4
A	S3	5/22/2009	8:51:24	5.9	M	25.5	32	108.4	7.4	1.7
A	S3	5/22/2009	8:52:08	6	M	25.52	31.96	112.2	7.67	1.6
A	S3	5/22/2009	8:53:00	1	S	27.14	28.78	153	10.35	1.2
A	S3	5/22/2009	8:53:49	1	S	27.08	28.82	158.2	10.71	1.3
A	S2	5/22/2009	9:06:10	9.1	B	24.21	33.73	117.7	8.14	1.1
A	S2	5/22/2009	9:06:54	9.3	B	24.19	33.74	85.4	5.91	6.7
A	S2	5/22/2009	9:07:59	9.3	B	24.06	33.83	84.9	5.88	6.3
A	S2	5/22/2009	9:08:58	5.2	M	26.3	30.42	128.4	8.73	1.9
A	S2	5/22/2009	9:09:59	5.2	M	26.37	30.3	132.4	9	1.9
A	S2	5/22/2009	9:10:55	1	S	27.33	28.76	157.5	10.62	1.3
A	S2	5/22/2009	9:11:28	1	S	27.32	28.77	162.8	10.98	1.2
A	S1	5/22/2009	9:20:24	8	B	24.96	33.03	100.3	6.87	4.9
A	S1	5/22/2009	9:21:15	8.1	B	25.12	32.87	89.6	6.13	5.7
A	S1	5/22/2009	9:22:01	4.5	M	26.72	29.76	138.1	9.36	1.7
A	S1	5/22/2009	9:23:00	4.5	M	26.78	29.68	148.5	10.06	1.7
A	S1	5/22/2009	9:23:53	0.9	S	27.34	28.87	163.6	11.03	1.3
A	S1	5/22/2009	9:24:32	0.8	S	27.25	28.89	165.6	11.18	1.3
A	B1	5/22/2009	9:34:26	5.1	B	26.2	31.12	130	8.82	3
A	B1	5/22/2009	9:35:17	5.1	B	26.12	31.23	127.4	8.65	2.3
A	B1	5/22/2009	9:37:34	3.1	M	26.95	29.4	151	10.21	2.4
A	B1	5/22/2009	9:38:22	3.1	M	26.87	29.26	156.3	10.6	1.4
A	B1	5/22/2009	9:39:11	1.2	S	27.23	29.16	167.3	11.28	1.8



### Annex D Continuous *In-situ* Measurement Data

Zone	Station	Sampling Date	Time	Depth (m)	Depth	Water Temp (°C)	Salinity (ppt)	D.O. Saturation (%)	D.O. (mg/L)	Turbidity (NTU)
A	B1	5/22/2009	9:40:00	1.2	S	27.32	29.11	165.5	11.14	1.7
A	S3	5/22/2009	9:47:28	11.4	B	24.1	33.74	95	6.58	4
A	S3	5/22/2009	9:48:19	11.4	B	24.09	33.75	87.9	6.09	4.4
A	S3	5/22/2009	9:49:18	6	M	26.14	30.82	128.6	8.75	2.1
A	S3	5/22/2009	9:50:06	6	M	26.12	30.84	127.1	8.65	2.1
A	S3	5/22/2009	9:51:02	1.2	S	26.84	28.76	144.1	9.8	1.5
A	S3	5/22/2009	9:52:00	1.2	S	26.81	28.89	149.5	10.16	1.4
A	S2	5/22/2009	9:58:24	8.6	B	24.89	33.32	99.3	6.80	3.2
A	S2	5/22/2009	9:59:26	5.0	M	26.57	30.37	131.7	8.92	2.1
A	S2	5/22/2009	10:00:32	1.2	S	27.54	28.84	160.9	10.81	1.5
A	S2	5/22/2009	10:02:04	8.9	B	24.86	33.31	101.3	6.94	2.5
A	S2	5/22/2009	10:03:13	4.8	M	26.68	30.25	136.5	9.23	1.8
A	S2	5/22/2009	10:04:27	1.2	S	27.53	28.85	161.7	10.86	1.2
A	S1	5/22/2009	10:10:45	8.0	B	24.48	33.76	89.7	6.17	6.6
A	S1	5/22/2009	10:11:37	4.4	M	26.37	30.76	126.0	8.54	1.5
A	S1	5/22/2009	10:12:39	1.2	S	27.41	29.06	159.8	10.75	1.4
A	S1	5/22/2009	10:13:33	8.1	B	24.56	33.71	91.8	6.31	6.8
A	S1	5/22/2009	10:14:26	4.6	M	26.81	30.01	137.6	9.30	1.8
A	S1	5/22/2009	10:15:23	1.2	S	27.51	29.01	159.4	10.70	1.4
A	B1	5/22/2009	10:22:51	4.8	B	26.19	31.64	116.1	7.86	4.6
A	B1	5/22/2009	10:23:34	3.1	M	27.15	29.65	139.1	9.36	3.3
A	B1	5/22/2009	10:24:29	1.3	S	27.69	29.02	157.5	10.54	1.8
A	B1	5/22/2009	10:25:20	4.8	B	26.16	31.65	119.3	8.07	5.1
A	B1	5/22/2009	10:26:40	3.1	M	27.17	29.65	153.0	10.29	2.6
A	B1	5/22/2009	10:27:31	1.3	S	27.63	29.10	163.4	10.94	2.0
A	S3	5/22/2009	10:46:44	10.9	B	24.42	33.79	90.0	6.20	3.1
A	S3	5/22/2009	10:47:33	5.7	M	24.72	33.33	91.0	6.25	2.7
A	S3	5/22/2009	10:48:26	1.4	S	26.99	29.15	145.6	9.86	1.4
A	S3	5/22/2009	10:49:15	10.9	B	24.42	33.78	95.8	6.60	3.2
A	S3	5/22/2009	10:50:03	6.3	M	25.19	32.74	100.6	6.88	2.6
A	S3	5/22/2009	10:50:55	1.1	S	27.28	28.84	142.5	9.61	1.3
A	R1	5/22/2009	11:05:28	19.9	B	23.82	34.06	85.8	5.96	5.9
A	R1	5/22/2009	11:06:28	9.9	M	24.38	33.64	86.2	5.95	3.2
A	R1	5/22/2009	11:07:27	1.1	S	26.81	28.83	131.6	8.95	1.4
A	R1	5/22/2009	11:08:33	19.7	B	23.81	34.06	85.7	5.95	5.3
A	R1	5/22/2009	11:09:47	10.4	M	24.56	33.48	90.1	6.20	2.7
A	R1	5/22/2009	11:10:47	1.3	S	26.81	28.85	132.5	9.01	1.4
A	S2	5/22/2009	12:07:01	8	B	25.07	33.3	88.5	6.05	3.8
A	S2	5/22/2009	12:08:00	8.2	B	24.72	33.63	80	5.49	8.5
A	S2	5/22/2009	12:08:37	8.2	B	24.97	33.41	81.1	5.54	6.6
A	S2	5/22/2009	12:10:51	7.6	M	25.1	33.18	88.2	6.03	3.5
A	S2	5/22/2009	12:11:18	7.7	M	25.05	33.32	87.2	5.96	4.3
A	S2	5/22/2009	12:12:09	4.5	M	26.56	30.78	120.1	8.11	2.2
A	S2	5/22/2009	12:12:41	4.5	M	26.65	30.56	131	8.85	2.1
A	S2	5/22/2009	12:13:19	1.1	S	27.83	28.81	160.1	10.71	1.2
A	S2	5/22/2009	12:14:30	1.1	S	27.87	28.8	170	11.36	0.9
A	S1	5/22/2009	12:19:51	6.8	B	25.09	33.33	82.3	5.62	5.9
A	S1	5/22/2009	12:20:30	6.7	B	25.4	33	86.6	5.89	5.6
A	S1	5/22/2009	12:21:23	3.9	M	27.07	29.9	142.2	9.57	2
A	S1	5/22/2009	12:22:14	3.9	M	27.05	29.88	135.8	9.15	2.1
A	S1	5/22/2009	12:23:04	1.4	S	27.83	28.88	169.2	11.31	1.3
A	S1	5/22/2009	12:23:48	1.4	S	27.87	28.86	173.1	11.56	1.5
A	B1	5/22/2009	12:29:47	4.9	B	26.77	30.83	128.8	8.67	4.4
A	B1	5/22/2009	12:30:21	4.9	B	26.76	30.82	133.3	8.97	4.5
A	B1	5/22/2009	12:31:19	3	M	27.43	29.19	163.8	11	2.4
A	B1	5/22/2009	12:32:21	3	M	27.41	29.17	170.3	11.45	1.3
A	B1	5/22/2009	12:33:13	1.1	S	27.85	29	174.8	11.67	1.4
A	B1	5/22/2009	12:34:01	1.1	S	27.85	29	173.7	11.6	1.3
A	S3	5/22/2009	12:41:45	11.1	B	24.6	33.72	90.2	6.2	5.8
A	S3	5/22/2009	12:42:35	11	B	24.6	33.73	84.5	5.8	5.9
A	S3	5/22/2009	12:43:32	5.6	M	25.83	32.09	105.3	7.15	2.4
A	S3	5/22/2009	12:44:21	5.7	M	25.79	32.15	107.2	7.28	2.5
A	S3	5/22/2009	12:45:13	1.1	S	27.41	29.02	155.1	10.43	1.1
A	S3	5/22/2009	12:45:59	1.2	S	27.42	29.02	158.3	10.64	1
A	S2	5/22/2009	13:20:33	7.8	B	24.91	33.46	83.3	5.7	4.2
A	S2	5/22/2009	13:21:15	7.8	B	25.02	33.31	87.4	5.97	4.4

### Annex D Continuous *In-situ* Measurement Data

Zone	Station	Sampling Date	Time	Depth (m)	Depth	Water Temp (°C)	Salinity (ppt)	D.O. Saturation (%)	D.O. (mg/L)	Turbidity (NTU)
A	S2	5/22/2009	13:22:06	4.7	M	26.63	30.81	126.3	8.52	1.7
A	S2	5/22/2009	13:22:50	4.7	M	26.74	30.61	137.9	9.3	1.7
A	S2	5/22/2009	13:23:45	1.1	S	28.07	28.82	172.6	11.49	1.1
A	S2	5/22/2009	13:24:23	1.1	S	28.07	28.81	173.2	11.54	1.3
A	S1	5/22/2009	13:31:55	7.1	B	26.59	31.23	127.5	8.59	2.2
A	S1	5/22/2009	13:32:39	6.9	B	26.31	31.7	117.5	7.93	3.3
A	S1	5/22/2009	13:33:35	3.8	M	26.99	30.17	134.6	9.06	2.4
A	S1	5/22/2009	13:34:04	4	M	27.23	29.83	140.8	9.46	2.7
A	S1	5/22/2009	13:35:11	0.9	S	27.96	28.86	173.6	11.58	1
A	S1	5/22/2009	13:35:33	0.9	S	27.95	28.87	175.2	11.69	0.7
A	B1	5/22/2009	13:45:11	4.9	B	27.27	29.88	155.3	10.42	4.9
A	B1	5/22/2009	13:45:49	4.9	B	27.25	29.91	153.8	10.32	5.1
A	B1	5/22/2009	13:46:45	3	M	27.58	29.08	176.5	11.83	1.6
A	B1	5/22/2009	13:47:11	3	M	27.52	29.09	176.7	11.86	1.5
A	B1	5/22/2009	13:47:57	1	S	28.14	29.07	174.3	11.58	1.7
A	B1	5/22/2009	13:48:22	1	S	28.16	29.07	172.8	11.48	2.3
A	S3	5/22/2009	13:58:52	9.9	B	24.62	33.73	84.1	5.78	4.6
A	S3	5/22/2009	13:59:19	10	B	24.62	33.73	84.2	5.78	4.5
A	S3	5/22/2009	14:00:10	5.6	M	26.96	29.97	143	9.64	1.6
A	S3	5/22/2009	14:00:53	5.5	M	26.89	30.06	146.2	9.86	1.7
A	S3	5/22/2009	14:01:45	1.3	S	27.41	29.25	160.5	10.78	1.2
A	S3	5/22/2009	14:02:18	1.3	S	27.42	29.24	161.4	10.84	1.3
A	S2	5/22/2009	14:09:21	8.1	B	25.2	33.17	87.1	5.94	4.8
A	S2	5/22/2009	14:10:05	8.1	B	25.02	33.4	82.9	5.67	5.8
A	S2	5/22/2009	14:11:04	4.6	M	27.54	29.2	157.1	10.53	1.6
A	S2	5/22/2009	14:11:37	4.6	M	26.78	30.47	143.1	9.65	2
A	S2	5/22/2009	14:13:00	1.4	S	27.84	28.87	173	11.56	1.1
A	S2	5/22/2009	14:13:35	1.4	S	27.95	28.83	174.9	11.67	1
A	S1	5/22/2009	14:32:55	6.9	B	26.04	32.17	107	7.24	2.5
A	S1	5/22/2009	14:33:35	6.9	B	26.16	32	108.4	7.32	2.8
A	S1	5/22/2009	14:34:52	4.1	M	27.38	29.65	154.8	10.38	1.9
A	S1	5/22/2009	14:35:17	4.1	M	27.2	30.02	147.3	9.89	2.3
A	S1	5/22/2009	14:36:12	1.1	S	27.87	28.9	170.3	11.37	1.4
A	S1	5/22/2009	14:36:56	1.1	S	27.94	28.89	173.8	11.6	1.1
A	B1	5/22/2009	14:43:16	4.9	B	27.34	29.71	155.6	10.44	5.8
A	B1	5/22/2009	14:44:02	4.9	B	27.43	29.5	157.8	10.58	6
A	B1	5/22/2009	14:45:15	3.1	M	27.54	29.2	180.4	12.1	1.6
A	B1	5/22/2009	14:45:43	3.1	M	27.52	29.2	181.1	12.15	1.7
A	B1	5/22/2009	14:46:52	1.3	S	27.78	29.14	184.2	12.3	1.5
A	B1	5/22/2009	14:47:18	1.3	S	27.78	29.14	184.3	12.32	1.5
A	S3	5/22/2009	14:55:37	10.1	B	25.14	33.19	91.3	6.23	3.6
A	S3	5/22/2009	14:56:29	10.1	B	25.14	33.21	88.4	6.03	4.3
A	S3	5/22/2009	14:57:14	5.6	M	26.33	31.38	119.5	8.08	1.7
A	S3	5/22/2009	14:57:40	5.6	M	26.42	31.03	121.6	8.22	1.7
A	S3	5/22/2009	14:58:26	1.2	S	27.52	29.22	159.9	10.72	1.4
A	S3	5/22/2009	14:59:06	1.2	S	27.53	29.21	162.6	10.9	1.5
A	S2	5/22/2009	15:05:22	8.9	B	24.74	33.6	88.4	6.06	4.2
A	S2	5/22/2009	15:06:04	8.9	B	24.72	33.58	86.1	5.91	3.8
A	S2	5/22/2009	15:06:49	4.7	M	26.4	31.49	117.7	7.94	1.7
A	S2	5/22/2009	15:07:14	4.7	M	26.38	31.51	122.5	8.27	1.5
A	S2	5/22/2009	15:07:59	1.3	S	27.95	28.94	166.1	11.08	1.2
A	S2	5/22/2009	15:08:26	1.3	S	28	28.85	173.6	11.57	1.2
A	S1	5/22/2009	15:15:29	6.8	B	26.08	32.05	113.6	7.68	2.4
A	S1	5/22/2009	15:15:53	6.8	B	26.05	32.09	108.8	7.36	2.7
A	S1	5/22/2009	15:16:45	3.7	M	27.6	29.08	162.5	10.89	1.3
A	S1	5/22/2009	15:17:13	3.7	M	27.61	29.07	167.5	11.23	1.2
A	S1	5/22/2009	15:18:01	1.1	S	28.09	28.84	175.4	11.68	1.1
A	S1	5/22/2009	15:18:31	1.1	S	28.11	28.84	175.7	11.69	1.4
A	B1	5/22/2009	15:26:03	4.8	B	27.22	29.96	139.3	9.35	5.4
A	B1	5/22/2009	15:26:27	4.8	B	27.24	29.89	142.8	9.59	5.5
A	B1	5/22/2009	15:27:32	2.9	M	27.53	29.25	176	11.8	2.1
A	B1	5/22/2009	15:27:58	2.9	M	27.52	29.38	173.6	11.63	3.4
A	B1	5/22/2009	15:28:54	1.1	S	27.75	29.23	176.3	11.78	2.3
A	B1	5/22/2009	15:29:24	1.1	S	27.99	29.1	175.8	11.7	2.3
A	S3	5/22/2009	15:39:04	9.9	B	24.95	33.43	91.1	6.23	4.2
A	S3	5/22/2009	15:39:27	9.9	B	24.85	33.54	91.2	6.24	4.2

### Annex D Continuous *In-situ* Measurement Data

Zone	Station	Sampling Date	Time	Depth (m)	Depth	Water Temp (°C)	Salinity (ppt)	D.O. Saturation (%)	D.O. (mg/L)	Turbidity (NTU)
A	S3	5/22/2009	15:40:09	5.4	M	26.73	30.38	130.2	8.79	1.9
A	S3	5/22/2009	15:40:40	5.4	M	26.83	30.25	144.3	9.73	1.7
A	S3	5/22/2009	15:41:29	1.1	S	27.58	29.22	166	11.12	1.5
A	S3	5/22/2009	15:42:23	1.1	S	27.59	29.21	168.6	11.29	1.8
A	S2	5/22/2009	16:09:10	1.2	S	28	28.97	171.2	11.4	1.2
A	S2	5/22/2009	16:10:09	1.2	S	28.05	28.98	173.3	11.54	1.3
A	S2	5/22/2009	16:11:12	4.6	M	26.48	31.01	126.6	8.55	2.7
A	S2	5/22/2009	16:12:24	4.5	M	26.71	30.62	140.6	9.48	2.6
A	S2	5/22/2009	16:14:03	8.1	B	25.84	32.04	114.8	7.79	3.5
A	S2	5/22/2009	16:14:59	8	B	26.02	31.69	116.7	7.91	2.4
A	S1	5/22/2009	16:23:46	1.1	S	28.09	28.87	174.1	11.59	1.2
A	S1	5/22/2009	16:24:44	1.3	S	28.04	28.9	172.7	11.51	1.2
A	S1	5/22/2009	16:25:42	4	M	27.13	29.91	166.2	11.18	1.5
A	S1	5/22/2009	16:27:20	4.2	M	27.09	29.95	164.3	11.05	1.4
A	S1	5/22/2009	16:28:24	7.1	B	26.24	31.84	115.6	7.81	1.8
A	S1	5/22/2009	16:29:23	6.9	B	26.31	31.72	123.6	8.34	1.6
A	B1	5/22/2009	16:41:49	1.1	S	27.9	29.12	186.3	12.42	1.6
A	B1	5/22/2009	16:42:44	1.1	S	28.02	29.02	178.8	11.91	1.4
A	B1	5/22/2009	16:43:39	3	M	27.66	29.21	183.1	12.24	2.3
A	B1	5/22/2009	16:44:43	3.1	M	27.49	29.61	173.2	11.59	2.3
A	B1	5/22/2009	16:45:46	4.9	B	27.24	29.92	156.2	10.48	2.5
A	B1	5/22/2009	16:46:43	5.1	B	27.02	30.35	140.8	9.46	4.9
A	S3	5/22/2009	16:58:42	1.4	S	27.56	29.32	171.7	11.5	1.6
A	S3	5/22/2009	16:59:35	1.2	S	27.58	29.28	172.2	11.53	1.6
A	S3	5/22/2009	17:00:38	5.9	M	27.31	29.58	159.2	10.69	2
A	S3	5/22/2009	17:01:40	5.9	M	27.46	29.41	164.9	11.06	1.5
A	S3	5/22/2009	17:03:20	10.9	B	25.16	33.14	95.4	6.51	2.8
A	S3	5/22/2009	17:04:43	10.8	B	25.25	33.08	95.3	6.5	3.5
A	R1	5/22/2009	17:27:55	1.1	S	27.67	27.74	145.2	9.8	1
A	R1	5/22/2009	17:30:13	1.2	S	27.64	27.74	145.9	9.84	1
A	R1	5/22/2009	17:31:15	10.4	M	26.17	31.26	124.3	8.43	1.6
A	R1	5/22/2009	17:33:20	10.5	M	25.77	32.03	112.9	7.68	1.6
A	R1	5/22/2009	17:34:55	17.9	B	24.36	33.8	88.1	6.07	9.2
A	R1	5/22/2009	17:36:18	20.1	B	24.18	33.93	83.9	5.8	11.8
A	S2	5/22/2009	18:21:40	8.1	B	25.73	32.18	109.9	7.47	3.3
A	S2	5/22/2009	18:22:07	8.1	B	25.65	32.27	105.1	7.15	3.4
A	S2	5/22/2009	18:23:00	4.4	M	27.64	29.1	157.6	10.56	1.6
A	S2	5/22/2009	18:23:24	4.4	M	27.68	29.1	163.4	10.93	1.3
A	S2	5/22/2009	18:24:53	1.3	S	27.94	28.98	171.8	11.46	1.3
A	S2	5/22/2009	18:25:32	1.3	S	27.88	28.97	171.5	11.45	1.3
A	S1	5/22/2009	18:32:30	7	B	26.57	31.09	131	8.83	2.4
A	S1	5/22/2009	18:33:16	7	B	26.43	31.35	127.3	8.59	2.8
A	S1	5/22/2009	18:34:11	3.9	M	27.6	29.26	162.3	10.87	2.1
A	S1	5/22/2009	18:34:59	3.9	M	27.61	29.24	165.1	11.06	2.1
A	S1	5/22/2009	18:35:50	1.2	S	28	28.94	171.9	11.45	1.3
A	S1	5/22/2009	18:36:40	1.2	S	27.99	28.94	172.4	11.49	1.1
A	B1	5/22/2009	18:44:18	5.1	B	27.37	29.68	163.6	10.97	2.3
A	B1	5/22/2009	18:45:06	5.1	B	27.37	29.64	171.4	11.5	2
A	B1	5/22/2009	18:46:12	3	M	27.58	29.34	177.7	11.9	1.9
A	B1	5/22/2009	18:47:04	3	M	27.56	29.31	182.1	12.2	2.2
A	B1	5/22/2009	18:47:55	1.1	S	27.87	29.06	178.8	11.93	1.7
A	B1	5/22/2009	18:48:41	1.1	S	27.92	29.05	174.2	11.61	1.7
A	S3	5/22/2009	19:00:27	10.7	B	25	33.41	87.2	5.96	11
A	S3	5/22/2009	19:01:22	10.7	B	25.16	33.21	82.2	5.61	11.2
A	S3	5/22/2009	19:02:31	5.8	M	27.28	29.62	162.7	10.93	1.7
A	S3	5/22/2009	19:03:06	5.8	M	27.01	29.66	155	10.46	1.9
A	S3	5/22/2009	19:04:25	0.8	S	27.46	28.18	146.1	9.86	1.3
A	S3	5/22/2009	19:05:20	0.8	S	27.5	28.08	144.2	9.73	1.1
A	S2	5/22/2009	19:15:35	7.9	B	26.41	30.92	122.5	8.29	2.7
A	S2	5/22/2009	19:16:37	7.9	B	26.3	31.37	125.1	8.46	2.6
A	S2	5/22/2009	19:17:40	4.7	M	27.35	28.91	148.3	9.99	1.5
A	S2	5/22/2009	19:18:18	4.7	M	27.47	28.61	151.3	10.19	1.5
A	S2	5/22/2009	19:19:08	1.1	S	27.36	28.25	144.3	9.76	1.2
A	S2	5/22/2009	19:19:49	1.1	S	27.36	28.38	146.1	9.87	1.2
A	S1	5/22/2009	19:27:04	8	B	26.52	31.13	127.8	8.62	2.3
A	S1	5/22/2009	19:28:01	8	B	26.73	30.8	123.4	8.32	5.8

### Annex D Continuous *In-situ* Measurement Data

Zone	Station	Sampling Date	Time	Depth (m)	Depth	Water Temp (°C)	Salinity (ppt)	D.O. Saturation (%)	D.O. (mg/L)	Turbidity (NTU)
A	S1	5/22/2009	19:28:58	4.1	M	27.78	29.06	167.3	11.18	1.5
A	S1	5/22/2009	19:29:59	4.4	M	27.89	29	171.4	11.44	1.3
A	S1	5/22/2009	19:31:03	1	S	27.58	28.77	158.9	10.67	1.2
A	S1	5/22/2009	19:31:51	1	S	27.62	28.78	159.2	10.69	1.3
A	B1	5/22/2009	19:38:50	5.8	B	27.45	29.51	172.7	11.58	2.3
A	B1	5/22/2009	19:39:36	5.8	B	27.41	29.63	176.9	11.86	2
A	B1	5/22/2009	19:40:20	3.3	M	27.51	29.48	175.8	11.77	3.1
A	B1	5/22/2009	19:41:07	3.3	M	27.53	29.4	177	11.85	2.4
A	B1	5/22/2009	19:41:53	1	S	27.73	29.14	175.7	11.75	1.6
A	B1	5/22/2009	19:42:26	1	S	27.65	29.19	175.8	11.76	1.6
A	S3	5/22/2009	19:51:18	11.1	B	25.67	32.52	112.8	7.66	3.8
A	S3	5/22/2009	19:52:05	10.9	B	26.03	31.92	110	7.45	1.9
A	S3	5/22/2009	19:53:35	6.4	M	26.83	29.56	137.1	9.29	2.2
A	S3	5/22/2009	19:54:25	6.2	M	26.82	29.55	136.5	9.24	1.6
A	S3	5/22/2009	19:55:28	1.1	S	27.47	28.11	141.7	9.57	1.1
A	S3	5/22/2009	19:56:13	1.1	S	27.46	28.15	141.8	9.58	1.1

## Annex D Continuous *In-situ* Measurement Data

Zone	Station	Sampling Date	Time	Depth (m)	Depth	Water Temp (°C)	Salinity (ppt)	D.O. Saturation (%)	D.O. (mg/L)	Turbidity (NTU)
A	S2	5/23/2009	7:13:16	9	B	25.54	32.13	99.1	6.76	2.2
A	S2	5/23/2009	7:14:05	8.9	B	25.27	32.51	89.9	6.14	3.1
A	S2	5/23/2009	7:14:59	5.1	M	26.49	30.32	115	7.8	1.1
A	S2	5/23/2009	7:15:54	5.2	M	26.43	30.46	116.8	7.92	1.1
A	S2	5/23/2009	7:16:52	1	S	27.02	29.23	125.2	8.47	0.9
A	S2	5/23/2009	7:17:40	0.9	S	27	29.26	125.6	8.49	1.1
A	S1	5/23/2009	7:24:29	7.9	B	26.18	31.51	109.4	7.41	1.3
A	S1	5/23/2009	7:25:16	8	B	26.07	31.66	106.7	7.23	1.6
A	S1	5/23/2009	7:26:13	4.4	M	26.74	30.1	122.3	8.27	1.3
A	S1	5/23/2009	7:26:56	4.5	M	26.71	30.07	123.1	8.33	1.4
A	S1	5/23/2009	7:27:46	1	S	27.2	28.83	127.5	8.61	1
A	S1	5/23/2009	7:28:31	1	S	27.22	28.78	127.8	8.63	0.9
A	B1	5/23/2009	7:36:07	5.9	B	26.76	30.22	128	8.64	1.6
A	B1	5/23/2009	7:36:54	5.9	B	26.8	30.15	130	8.78	1.4
A	B1	5/23/2009	7:37:47	3.4	M	27.07	29.84	136.8	9.21	1.5
A	B1	5/23/2009	7:38:44	3.4	M	27.11	29.69	138	9.3	1.4
A	B1	5/23/2009	7:39:40	1.1	S	27.09	29.59	136.4	9.2	1.4
A	B1	5/23/2009	7:40:29	1.1	S	27.1	29.6	137.1	9.24	1.2
A	S3	5/23/2009	7:48:52	11.8	B	26	31.63	105	7.13	1.4
A	S3	5/23/2009	7:49:40	11.8	B	25.91	31.83	102.8	6.98	1.6
A	S3	5/23/2009	7:50:39	6	M	26.13	31	109.5	7.44	1.2
A	S3	5/23/2009	7:51:28	6	M	26.1	31.04	109.5	7.44	1
A	S3	5/23/2009	7:52:33	1.2	S	26.62	30.08	121.3	8.22	1
A	S3	5/23/2009	7:53:26	1.2	S	26.45	30.33	116.7	7.92	1
A	S2	5/23/2009	8:20:39	8.9	B	26.06	31.3	107.8	7.33	1.3
A	S2	5/23/2009	8:21:27	8.8	B	26.07	31.3	108	7.34	1.3
A	S2	5/23/2009	8:22:43	4.9	M	26.37	30.53	113.6	7.71	1.4
A	S2	5/23/2009	8:23:26	5	M	26.18	30.97	111.5	7.57	1.3
A	S2	5/23/2009	8:24:31	1.1	S	27	29.24	124.8	8.44	1.2
A	S2	5/23/2009	8:25:28	1.1	S	27.05	29.12	125.3	8.47	0.9
A	S1	5/23/2009	8:31:57	8.1	B	26.43	31.24	110.5	7.46	2.3
A	S1	5/23/2009	8:32:48	8	B	26.34	31.38	109.7	7.42	2.3
A	S1	5/23/2009	8:34:01	4.2	M	26.55	30.32	118.6	8.04	1.3
A	S1	5/23/2009	8:34:54	4.5	M	26.54	30.3	117.6	7.97	1.1
A	S1	5/23/2009	8:36:04	1.3	S	27.16	29.01	129.3	8.73	1
A	S1	5/23/2009	8:36:51	1.3	S	27.17	29.01	129.6	8.75	0.9
A	B1	5/23/2009	8:48:17	5.7	B	26.9	30.38	125.7	8.46	2.8
A	B1	5/23/2009	8:49:05	5.7	B	26.89	30.21	127.6	8.6	2
A	B1	5/23/2009	8:50:07	3.6	M	26.74	30.07	126.2	8.54	1.1
A	B1	5/23/2009	8:50:56	3.6	M	26.91	29.94	130.8	8.83	1.3
A	B1	5/23/2009	8:51:52	1.3	S	27.16	29.59	135.5	9.12	1.7
A	B1	5/23/2009	8:52:43	1.3	S	27.18	29.53	135.3	9.11	1.5
A	S3	5/23/2009	9:02:44	11.8	B	25.93	31.51	104.2	7.09	1.1
A	S3	5/23/2009	9:03:30	11.5	B	25.92	31.51	104.7	7.12	1.2
A	S3	5/23/2009	9:04:30	6.8	M	26.04	31.27	107.3	7.29	1.1
A	S3	5/23/2009	9:05:15	6.8	M	26	31.33	107.4	7.3	1.2
A	S3	5/23/2009	9:07:46	1.3	S	26.49	30.35	115	7.8	1.1
A	S3	5/23/2009	9:08:38	1.3	S	26.54	30.27	116.7	7.91	1.1
A	S2	5/23/2009	9:14:31	8.9	B	25.95	31.49	105.4	7.17	1.3
A	S2	5/23/2009	9:15:13	8.9	B	25.96	31.48	105.5	7.17	1.3
A	S2	5/23/2009	9:16:06	4.9	M	26.18	31.04	108.5	7.37	1.7
A	S2	5/23/2009	9:16:53	4.9	M	26.25	30.9	114.4	7.76	1.1
A	S2	5/23/2009	9:17:53	1.2	S	27.07	29.09	125.5	8.49	0.9
A	S2	5/23/2009	9:18:48	1.2	S	27.05	29.17	126.5	8.56	0.9
A	S1	5/23/2009	9:27:43	7.8	B	26.07	31.29	108.7	7.38	1.5
A	S1	5/23/2009	9:28:27	7.9	B	26.08	31.27	109.2	7.41	1.3
A	S1	5/23/2009	9:29:17	4.5	M	26.37	30.68	114.6	7.77	1.3
A	S1	5/23/2009	9:30:03	4.6	M	26.42	30.53	115.8	7.85	1.1
A	S1	5/23/2009	9:30:58	1.3	S	27.1	29.23	127.9	8.64	1
A	S1	5/23/2009	9:31:53	1.3	S	27.1	29.26	127.9	8.64	1.1
A	B1	5/23/2009	9:39:46	5.8	B	26.67	30.79	119.4	8.05	1.9
A	B1	5/23/2009	9:40:31	5.7	B	26.71	30.57	124.2	8.38	1.5
A	B1	5/23/2009	9:41:28	3.4	M	26.75	30.16	125.6	8.49	1.1
A	B1	5/23/2009	9:42:18	3.4	M	26.61	30.4	125.4	8.48	1.1
A	B1	5/23/2009	9:43:39	1.2	S	26.79	29.97	126.7	8.56	1.2
A	B1	5/23/2009	9:44:06	1.2	S	26.79	29.96	126.7	8.57	1.2

### Annex D Continuous *In-situ* Measurement Data

Zone	Station	Sampling Date	Time	Depth (m)	Depth	Water Temp (°C)	Salinity (ppt)	D.O. Saturation (%)	D.O. (mg/L)	Turbidity (NTU)
A	S3	5/23/2009	9:53:19	11.8	B	24.62	33.43	83.1	5.72	7.9
A	S3	5/23/2009	9:54:09	11.7	B	24.62	33.43	83.2	5.73	6.8
A	S3	5/23/2009	9:55:14	6.6	M	26.01	31.32	105.5	7.17	1.2
A	S3	5/23/2009	9:56:06	6.4	M	26.05	31.28	106.9	7.26	1.1
A	S3	5/23/2009	9:57:14	1.3	S	26.47	30.4	113.5	7.69	1.2
A	S3	5/23/2009	9:58:01	1.3	S	26.46	30.43	114.3	7.75	1.1
A	S2	5/23/2009	10:19:15	1.1	S	27.07	29.03	124.1	8.4	0.9
A	S2	5/23/2009	10:20:16	1.3	S	27.07	29.02	123.6	8.36	0.9
A	S2	5/23/2009	10:21:21	4.8	M	26.18	31.15	104.4	7.08	1.9
A	S2	5/23/2009	10:22:46	5	M	26.62	30.02	113.1	7.67	1.6
A	S2	5/23/2009	10:23:54	8.9	B	25.69	32.06	95	6.47	2.8
A	S2	5/23/2009	10:24:31	8.9	B	25.7	31.95	96.9	6.6	2.3
A	S1	5/23/2009	10:33:05	1.1	S	27.06	29.39	125.5	8.47	1.1
A	S1	5/23/2009	10:34:11	1.2	S	27.11	29.21	122.8	8.3	0.8
A	S1	5/23/2009	10:35:36	4.5	M	26.02	31.22	106.7	7.26	1
A	S1	5/23/2009	10:36:43	4.6	M	26.06	31.2	108.4	7.37	0.9
A	S1	5/23/2009	10:37:45	7.9	B	25.96	31.4	104.9	7.14	1.2
A	S1	5/23/2009	10:38:55	7.9	B	25.95	31.44	105.8	7.2	1.2
A	B1	5/23/2009	10:49:37	1.4	S	26.58	30.46	120.9	8.18	1.2
A	B1	5/23/2009	10:50:44	1.4	S	26.66	30.21	122.1	8.26	1.2
A	B1	5/23/2009	10:51:44	3.7	M	26.49	30.78	116.2	7.86	1.4
A	B1	5/23/2009	10:52:48	3.6	M	26.32	30.89	112.7	7.64	1.1
A	B1	5/23/2009	10:53:59	5.8	B	26.2	30.97	108.3	7.36	1.3
A	B1	5/23/2009	10:55:17	5.9	B	26.18	31	109.2	7.42	1.3
A	S3	5/23/2009	11:13:19	0.9	S	26.43	30.32	113	7.67	0.9
A	S3	5/23/2009	11:14:23	0.9	S	26.39	30.38	112.4	7.63	0.8
A	S3	5/23/2009	11:15:31	6.1	M	26.17	30.93	107	7.27	1.1
A	S3	5/23/2009	11:18:16	5.9	M	26.26	30.69	108.5	7.37	1
A	S3	5/23/2009	11:19:26	10.8	B	24.46	33.62	83.8	5.77	7.3
A	S3	5/23/2009	11:20:31	10.8	B	24.46	33.61	84.3	5.81	7
A	R1	5/23/2009	11:56:16	0.8	S	26.23	30.57	104.7	7.12	1.4
A	R1	5/23/2009	11:59:42	1.1	S	26.21	30.54	105.6	7.19	1
A	R1	5/23/2009	12:01:00	10.5	M	25.52	31.88	93.9	6.41	2
A	R1	5/23/2009	12:04:25	10.9	M	25.34	32.3	92.5	6.32	2.4
A	R1	5/23/2009	12:05:24	19.9	B	24.04	33.87	79.6	5.51	7.5
A	R1	5/23/2009	12:06:43	19.9	B	24.05	33.84	81.6	5.66	10.9
A	S2	5/23/2009	12:43:51	8.9	B	25.35	32.55	90.4	6.17	4.1
A	S2	5/23/2009	12:44:36	8.8	B	25.33	32.6	88.1	6.01	3.5
A	S2	5/23/2009	12:45:39	5.2	M	26.36	30.75	107.7	7.3	1.7
A	S2	5/23/2009	12:46:22	5.2	M	26.44	30.58	109	7.39	1.7
A	S2	5/23/2009	12:47:24	1.2	S	26.84	29.62	120.3	8.14	1
A	S2	5/23/2009	12:48:07	1.2	S	26.86	29.55	120.3	8.14	1
A	S1	5/23/2009	12:53:36	7.7	B	25.83	31.77	100.2	6.81	1.5
A	S1	5/23/2009	12:54:29	7.7	B	25.92	31.68	99.9	6.79	2.1
A	S1	5/23/2009	12:55:32	4.6	M	26.46	30.63	115.4	7.82	1.1
A	S1	5/23/2009	12:56:23	4.6	M	26.32	30.87	113.1	7.66	1
A	S1	5/23/2009	12:57:31	1.3	S	26.91	29.32	117.5	7.96	1.2
A	S1	5/23/2009	12:58:25	1.3	S	26.77	29.84	117.6	7.96	1.5
A	B1	5/23/2009	13:04:47	4.8	B	26.59	30.58	117.7	7.96	2.7
A	B1	5/23/2009	13:05:39	4.8	B	26.42	30.89	104.1	7.04	3.9
A	B1	5/23/2009	13:06:46	3.1	M	26.63	30.33	116.7	7.89	2.1
A	B1	5/23/2009	13:07:36	3.1	M	26.66	30.23	118.6	8.02	2.2
A	B1	5/23/2009	13:08:31	1.1	S	26.73	29.68	117.3	7.95	1.5
A	B1	5/23/2009	13:09:21	1.1	S	26.76	29.6	117.8	7.99	1.4
A	S3	5/23/2009	13:16:38	10.7	B	24.52	33.55	82.4	5.67	7.4
A	S3	5/23/2009	13:17:27	10.7	B	24.48	33.58	81.4	5.61	8.0
A	S3	5/23/2009	13:18:28	6.2	M	26.13	30.98	105.1	7.15	1.1
A	S3	5/23/2009	13:19:10	6.3	M	26.12	31	105.7	7.18	1.1
A	S3	5/23/2009	13:20:16	1.4	S	26.29	30.57	108.5	7.37	1
A	S3	5/23/2009	13:21:05	1.4	S	26.3	30.54	108.9	7.4	1
A	S2	5/23/2009	13:49:13	8.7	B	25.94	31.45	101.1	6.88	2.1
A	S2	5/23/2009	13:49:48	8.5	B	25.96	31.39	102.1	6.94	1.7
A	S2	5/23/2009	13:50:36	5.3	M	26.25	30.74	107.3	7.29	1.1
A	S2	5/23/2009	13:51:02	5.3	M	26.25	30.74	108	7.33	1
A	S2	5/23/2009	13:51:48	1.3	S	26.64	29.93	116	7.86	1.2
A	S2	5/23/2009	13:52:30	1.3	S	26.66	29.91	116.9	7.92	1

### Annex D Continuous *In-situ* Measurement Data

Zone	Station	Sampling Date	Time	Depth (m)	Depth	Water Temp (°C)	Salinity (ppt)	D.O. Saturation (%)	D.O. (mg/L)	Turbidity (NTU)
A	S1	5/23/2009	13:59:25	7.8	B	25.96	31.5	103	7	1.6
A	S1	5/23/2009	14:00:08	7.9	B	25.97	31.44	103	7	1.6
A	S1	5/23/2009	14:00:54	4.6	M	26.23	30.86	108.3	7.35	0.9
A	S1	5/23/2009	14:01:19	4.6	M	26.23	30.84	109	7.41	0.9
A	S1	5/23/2009	14:08:32	1.2	S	26.84	29.3	118.3	8.02	1.3
A	S1	5/23/2009	14:08:53	1.2	S	26.84	29.3	119	8.07	1.2
A	B1	5/23/2009	14:17:14	5	B	26.1	31.42	99.6	6.76	5.0
A	B1	5/23/2009	14:18:12	5	B	26.14	31.36	100	6.78	4.8
A	B1	5/23/2009	14:19:13	3.2	M	26.62	30.45	113.3	7.66	2.3
A	B1	5/23/2009	14:19:39	3.2	M	26.61	30.48	114.3	7.73	2.1
A	B1	5/23/2009	14:20:48	1.2	S	26.74	29.83	114.7	7.77	2.6
A	B1	5/23/2009	14:21:12	1.3	S	26.72	29.92	113.8	7.71	2.4
A	S3	5/23/2009	14:30:31	10.9	B	25.87	31.61	99.9	6.79	1.3
A	S3	5/23/2009	14:31:09	10.9	B	25.86	31.59	99.8	6.79	1.2
A	S3	5/23/2009	14:32:05	6.1	M	26.18	30.8	106.1	7.21	1.3
A	S3	5/23/2009	14:32:37	6.1	M	26.18	30.81	106.4	7.23	1.5
A	S3	5/23/2009	14:33:18	1.2	S	26.28	30.53	107.8	7.33	1.4
A	S3	5/23/2009	14:34:11	1.2	S	26.29	30.54	107.8	7.33	1.2
A	S2	5/23/2009	14:42:35	8.2	B	26.17	31	104.2	7.08	1.8
A	S2	5/23/2009	14:43:06	7.8	B	26.21	30.83	105.6	7.18	1.5
A	S2	5/23/2009	14:44:22	4.7	M	26.23	30.72	106.9	7.27	1.2
A	S2	5/23/2009	14:44:54	4.7	M	26.23	30.72	107.4	7.3	1
A	S2	5/23/2009	14:45:55	1.3	S	26.48	30.16	113.1	7.68	1.2
A	S2	5/23/2009	14:46:22	1.3	S	26.55	29.98	114.1	7.75	1.2
A	S1	5/23/2009	14:54:15	7.1	B	26.12	31.14	105.3	7.16	1.1
A	S1	5/23/2009	14:54:49	6.9	B	26.15	31.12	106.3	7.22	1.2
A	S1	5/23/2009	14:55:43	3.9	M	26.41	30.65	109.8	7.44	1.3
A	S1	5/23/2009	14:56:07	3.9	M	26.38	30.72	110.7	7.5	1.2
A	S1	5/23/2009	14:56:48	1.2	S	26.73	29.42	113	7.67	1.5
A	S1	5/23/2009	14:57:11	1.2	S	26.74	29.28	115	7.81	1.2
A	B1	5/23/2009	15:06:56	4.8	B	26.49	30.67	112.3	7.6	1.7
A	B1	5/23/2009	15:07:25	4.8	B	26.49	30.69	113.8	7.7	1.5
A	B1	5/23/2009	15:08:17	3.1	M	26.48	30.42	114.5	7.76	1.3
A	B1	5/23/2009	15:09:04	3.1	M	26.61	30.14	114.4	7.75	1.6
A	B1	5/23/2009	15:10:10	1.1	S	26.79	29.92	115.7	7.83	2.2
A	B1	5/23/2009	15:10:35	1.2	S	26.84	29.78	116.7	7.89	2.4
A	S3	5/23/2009	15:20:19	9.8	B	25.49	32.15	96.1	6.56	4.3
A	S3	5/23/2009	15:20:45	9.5	B	25.91	31.48	98.6	6.71	2.6
A	S3	5/23/2009	15:22:03	5.6	M	26.09	31.05	104.6	7.11	1.2
A	S3	5/23/2009	15:22:28	5.5	M	26.14	30.88	105.7	7.19	1
A	S3	5/23/2009	15:23:11	1.3	S	26.28	30.47	107.5	7.31	1.3
A	S3	5/23/2009	15:23:34	1.3	S	26.29	30.42	107.5	7.31	1.3
A	S2	5/23/2009	15:30:20	7.9	B	26.17	30.88	105.7	7.18	1.2
A	S2	5/23/2009	15:30:57	7.9	B	26.17	30.87	106.1	7.21	1
A	S2	5/23/2009	15:31:40	4.5	M	26.26	30.62	107.5	7.31	1.1
A	S2	5/23/2009	15:32:25	4.6	M	26.22	30.73	107.5	7.3	0.9
A	S2	5/23/2009	15:33:10	1.1	S	26.56	29.46	112	7.62	1
A	S2	5/23/2009	15:33:43	1.1	S	26.55	29.45	112.1	7.63	1.2
A	S1	5/23/2009	15:41:46	6.9	B	26.19	31.13	106.1	7.2	1
A	S1	5/23/2009	15:42:27	6.8	B	26.16	31.13	106.3	7.21	1.1
A	S1	5/23/2009	15:43:10	4.1	M	26.25	30.85	106.8	7.25	1.6
A	S1	5/23/2009	15:43:34	4	M	26.24	30.86	106.7	7.25	1.4
A	S1	5/23/2009	15:44:15	1.2	S	26.61	29.25	110.9	7.55	1.2
A	S1	5/23/2009	15:45:03	1.2	S	26.59	29.27	112.5	7.67	1
A	B1	5/23/2009	15:54:42	4.7	B	26.42	30.69	109.5	7.42	1.5
A	B1	5/23/2009	15:55:07	4.7	B	26.43	30.69	110	7.45	1.8
A	B1	5/23/2009	15:56:00	3.1	M	26.46	30.52	112.6	7.63	1.2
A	B1	5/23/2009	15:56:27	3.1	M	26.43	30.65	111.7	7.57	1.5
A	B1	5/23/2009	15:57:14	1.2	S	26.56	30.2	114	7.72	1.6
A	B1	5/23/2009	15:57:56	1.1	S	26.6	30.09	115.1	7.81	1.5
A	S3	5/23/2009	16:10:01	9.3	B	25.78	31.69	98.3	6.7	2.7
A	S3	5/23/2009	16:10:55	9.2	B	25.74	31.77	97.1	6.61	2.8
A	S3	5/23/2009	16:11:53	5	M	26.12	30.95	104.3	7.09	1.3
A	S3	5/23/2009	16:12:42	5	M	26.12	30.97	104.8	7.12	1.3
A	S3	5/23/2009	16:13:52	1.1	S	26.23	30.5	106.2	7.23	1.9
A	S3	5/23/2009	16:15:00	1.1	S	26.2	30.67	106.1	7.22	1.5

### Annex D Continuous *In-situ* Measurement Data

Zone	Station	Sampling Date	Time	Depth (m)	Depth	Water Temp (°C)	Salinity (ppt)	D.O. Saturation (%)	D.O. (mg/L)	Turbidity (NTU)
A	S2	5/23/2009	16:38:29	7.8	B	25.78	31.81	95.1	6.47	3.3
A	S2	5/23/2009	16:39:22	7.7	B	25.85	31.56	94.1	6.41	4.2
A	S2	5/23/2009	16:40:26	4.7	M	26.38	30.18	109.1	7.42	1
A	S2	5/23/2009	16:41:28	4.3	M	26.42	29.98	109.8	7.47	1
A	S2	5/23/2009	16:42:39	1.1	S	26.51	29.17	110.4	7.54	1.1
A	S2	5/23/2009	16:43:25	1	S	26.5	29.39	110.6	7.54	1.1
A	S1	5/23/2009	16:50:20	6.9	B	26.18	30.95	104.1	7.07	1.7
A	S1	5/23/2009	16:51:03	6.9	B	26.19	30.96	104.7	7.11	1.7
A	S1	5/23/2009	16:52:18	4	M	26.18	30.91	105.8	7.18	1.4
A	S1	5/23/2009	16:53:06	4	M	26.19	30.84	106.2	7.21	1.2
A	S1	5/23/2009	16:54:07	1.2	S	26.53	29.67	109.8	7.47	1.9
A	S1	5/23/2009	16:54:56	1.2	S	26.52	29.71	110.1	7.49	1.9
A	B1	5/23/2009	17:03:50	4.8	B	26.27	30.79	107.6	7.31	1.1
A	B1	5/23/2009	17:04:39	4.8	B	26.27	30.79	107.8	7.31	1.1
A	B1	5/23/2009	17:05:34	3	M	26.3	30.68	109.2	7.41	1.6
A	B1	5/23/2009	17:06:18	3	M	26.29	30.7	109.1	7.4	1
A	B1	5/23/2009	17:07:13	1	S	26.39	30.52	111	7.53	1.1
A	B1	5/23/2009	17:07:59	1	S	26.37	30.53	110.5	7.5	1.2
A	S3	5/23/2009	17:16:01	9.8	B	25.66	31.84	96.9	6.6	3
A	S3	5/23/2009	17:16:48	9.8	B	25.51	32	94.6	6.46	4
A	S3	5/23/2009	17:17:46	5.5	M	26.06	31.09	102.9	7	1.3
A	S3	5/23/2009	17:18:37	5.5	M	26.04	31.04	103	7.01	1.5
A	S3	5/23/2009	17:19:44	1.2	S	26.28	30.21	106.7	7.26	1.7
A	S3	5/23/2009	17:20:32	1.2	S	26.27	30.21	106.8	7.27	1.4
A	S2	5/23/2009	17:47:27	0.9	B	26.4	29.28	107.1	7.31	1.4
A	S2	5/23/2009	17:48:27	1.2	B	26.39	29.33	107.4	7.34	1.1
A	S2	5/23/2009	17:49:31	4.6	M	26.39	29.62	105.7	7.21	1.6
A	S2	5/23/2009	17:50:31	4.4	M	26.38	29.46	105.3	7.18	1.4
A	S2	5/23/2009	17:51:33	7.7	S	25.71	31.88	94.9	6.46	3
A	S2	5/23/2009	17:52:30	7.9	S	25.72	31.84	94.3	6.43	2.8
A	S1	5/23/2009	17:57:32	1.3	S	26.42	29.18	107.4	7.34	1.8
A	S1	5/23/2009	17:58:52	1.2	S	26.41	29.12	107.6	7.36	1.6
A	S1	5/23/2009	18:00:06	4.1	M	26.24	31.06	104.8	7.11	1.8
A	S1	5/23/2009	18:01:12	4	M	26.29	30.87	107.1	7.27	1.5
A	S1	5/23/2009	18:02:17	6.9	B	26.03	31.45	101.7	6.91	1.3
A	S1	5/23/2009	18:03:20	6.9	B	26.01	31.49	101.6	6.9	1.1
A	B1	5/23/2009	18:10:19	1.3	S	26.36	30.61	110.1	7.47	1.5
A	B1	5/23/2009	18:11:26	1.5	S	26.45	30.28	111.5	7.57	1.7
A	B1	5/23/2009	18:12:29	3.1	M	26.35	30.68	109.9	7.46	1.1
A	B1	5/23/2009	18:13:40	3.1	M	26.35	30.64	109.9	7.46	0.9
A	B1	5/23/2009	18:14:59	4.8	B	26.28	30.83	106.7	7.24	1.2
A	B1	5/23/2009	18:15:52	5	B	26.25	30.87	107.5	7.3	0.9
A	S3	5/23/2009	18:23:27	1.4	S	26.22	30.7	104.9	7.13	1.5
A	S3	5/23/2009	18:24:37	1.1	S	26.15	30.87	101.9	6.93	2
A	S3	5/23/2009	18:25:51	6.1	M	25.99	31.32	100.8	6.85	1.2
A	S3	5/23/2009	18:27:23	5.5	M	26.04	31.24	102.1	6.94	0.9
A	S3	5/23/2009	18:28:30	10.8	B	24.81	32.94	85.4	5.87	7.1
A	S3	5/23/2009	18:29:24	11	B	24.85	32.92	85.7	5.89	4.9



### Annex D Continuous *In-situ* Measurement Data

Zone	Station	Sampling Date	Time	Depth (m)	Depth	Water Temp (°C)	Salinity (ppt)	D.O. Saturation (%)	D.O. (mg/L)	Turbidity (NTU)
A	S2	5/24/2009	7:44:25	8.7	B	25.21	32.5	86	5.88	3.6
A	S2	5/24/2009	7:45:25	8.7	B	25.21	32.49	85.6	5.86	3.3
A	S2	5/24/2009	7:46:24	5.1	M	25.75	31.32	95.1	6.49	1
A	S2	5/24/2009	7:47:11	5.1	M	25.72	31.46	94.8	6.47	1
A	S2	5/24/2009	7:48:04	1.3	S	25.95	30.67	98.2	6.71	0.9
A	S2	5/24/2009	7:48:58	1.3	S	25.95	30.62	98.4	6.72	0.9
A	S1	5/24/2009	7:55:17	8	B	25.38	32.16	90.1	6.16	2.3
A	S1	5/24/2009	7:56:03	8	B	25.37	32.15	89.1	6.09	2.5
A	S1	5/24/2009	7:57:01	4.6	M	25.69	31.6	92.7	6.33	1.6
A	S1	5/24/2009	7:57:55	4.6	M	25.74	31.34	92.3	6.3	1.5
A	S1	5/24/2009	7:58:51	1.2	S	25.89	30.89	97.5	6.66	0.8
A	S1	5/24/2009	7:59:44	1.2	S	25.9	30.91	97.7	6.67	0.8
A	B1	5/24/2009	8:06:56	5.8	B	25.67	31.61	94	6.41	1.7
A	B1	5/24/2009	8:07:49	5.8	B	25.68	31.6	92.9	6.34	2.0
A	B1	5/24/2009	8:08:41	3.4	M	25.8	31.42	92.1	6.28	2.1
A	B1	5/24/2009	8:09:22	3.4	M	25.77	31.5	92.1	6.28	1.7
A	B1	5/24/2009	8:10:22	1.1	S	25.89	31.16	94.9	6.47	1.5
A	B1	5/24/2009	8:11:07	1.2	S	25.9	31.18	94.4	6.44	1.4
A	S3	5/24/2009	8:20:33	11.1	B	25.24	32.67	90.7	6.2	2.1
A	S3	5/24/2009	8:21:21	11.1	B	25.24	32.67	90.4	6.18	2
A	S3	5/24/2009	8:22:18	6.1	M	25.32	32.49	91.6	6.26	1.7
A	S3	5/24/2009	8:23:13	6	M	25.32	32.48	91.7	6.26	1.7
A	S3	5/24/2009	8:24:11	1.3	S	25.72	31.5	95.5	6.52	0.9
A	S3	5/24/2009	8:24:57	1.3	S	25.8	31.35	95.5	6.51	1
A	S2	5/24/2009	8:45:21	8.7	B	25.29	32.46	87.2	5.97	3.6
A	S2	5/24/2009	8:46:15	8.7	B	25.28	32.46	85.8	5.86	3.9
A	S2	5/24/2009	8:47:25	5	M	25.37	32.2	88	6.02	2.4
A	S2	5/24/2009	8:48:26	5	M	25.33	32.28	86.7	5.93	2.6
A	S2	5/24/2009	8:49:22	1.3	S	25.91	30.77	97.4	6.65	1
A	S2	5/24/2009	8:50:11	1.3	S	25.91	30.8	98	6.69	0.8
A	S1	5/24/2009	8:58:05	7.7	B	25.33	32.27	85.4	5.84	4.1
A	S1	5/24/2009	8:58:44	7.7	B	25.38	32.23	87.4	5.98	2.9
A	S1	5/24/2009	9:01:53	4.1	M	25.91	31.03	95.7	6.53	1.1
A	S1	5/24/2009	9:02:34	4.1	M	25.91	31.04	96.6	6.59	0.9
A	S1	5/24/2009	9:03:42	1.3	S	25.91	31	97.4	6.65	0.9
A	S1	5/24/2009	9:04:22	1.2	S	25.91	30.99	97.4	6.64	0.9
A	B1	5/24/2009	9:15:38	5.7	B	25.51	31.93	90.1	6.16	2.7
A	B1	5/24/2009	9:16:23	5.7	B	25.42	32.1	86.9	5.94	3.2
A	B1	5/24/2009	9:17:22	3.4	M	25.78	31.49	91.5	6.24	1.7
A	B1	5/24/2009	9:18:08	3.3	M	25.78	31.49	91.6	6.25	1.7
A	B1	5/24/2009	9:19:08	1.2	S	25.81	31.38	91.9	6.27	1.8
A	B1	5/24/2009	9:19:48	1.2	S	25.82	31.34	92.7	6.32	1.7
A	S3	5/24/2009	9:30:20	10.9	B	25.46	32.38	92.6	6.32	1.6
A	S3	5/24/2009	9:31:17	10.9	B	25.45	32.41	92.5	6.31	1.8
A	S3	5/24/2009	9:32:15	5.6	M	25.63	31.75	94.2	6.43	1.2
A	S3	5/24/2009	9:33:03	5.6	M	25.62	31.75	94.4	6.44	1.2
A	S3	5/24/2009	9:34:08	1.2	S	25.66	31.68	93.2	6.36	1.3
A	S3	5/24/2009	9:34:56	1.2	S	25.67	31.65	93.1	6.36	1.2
A	S2	5/24/2009	9:46:16	8.9	B	25.33	32.39	87.4	5.98	2.7
A	S2	5/24/2009	9:47:08	8.9	B	25.33	32.35	85.2	5.83	2.9
A	S2	5/24/2009	9:48:12	4.9	M	25.59	31.78	89.8	6.13	1.8
A	S2	5/24/2009	9:49:02	5	M	25.84	31.08	94.9	6.48	1
A	S2	5/24/2009	9:50:17	1.1	S	25.89	30.92	97.6	6.67	0.8
A	S2	5/24/2009	9:51:06	1.1	S	25.87	30.96	96.8	6.61	0.9
A	S1	5/24/2009	9:58:34	7.7	B	25.17	32.56	83.1	5.69	6.7
A	S1	5/24/2009	9:59:29	7.6	B	25.13	32.67	80.8	5.53	6.8
A	S1	5/24/2009	10:00:30	4.5	M	25.84	31.14	93.1	6.36	1.2
A	S1	5/24/2009	10:01:17	4.5	M	25.88	31.1	95.7	6.53	1
A	S1	5/24/2009	10:02:12	1.3	S	25.88	31.05	96.9	6.61	0.9
A	S1	5/24/2009	10:03:11	1.3	S	25.89	31.06	97.1	6.62	1
A	B1	5/24/2009	10:11:11	5.9	B	25.23	32.59	88	6.02	2.6
A	B1	5/24/2009	10:11:56	5.9	B	25.22	32.6	87.4	5.98	2.7
A	B1	5/24/2009	10:12:58	3.6	M	25.25	32.5	86.6	5.92	3.4
A	B1	5/24/2009	10:13:59	3.6	M	25.57	31.8	87.3	5.96	3
A	B1	5/24/2009	10:15:17	1.3	S	25.77	31.39	90.6	6.18	2
A	B1	5/24/2009	10:15:59	1.2	S	25.75	31.55	90.1	6.14	2.3
A	S3	5/24/2009	10:27:25	10.9	B	25.56	32.19	94	6.41	1.4
A	S3	5/24/2009	10:28:14	10.9	B	25.56	32.19	93.7	6.39	1.4
A	S3	5/24/2009	10:29:18	5.7	M	25.64	31.91	95.1	6.48	1.2

### Annex D Continuous *In-situ* Measurement Data

Zone	Station	Sampling Date	Time	Depth (m)	Depth	Water Temp (°C)	Salinity (ppt)	D.O. Saturation (%)	D.O. (mg/L)	Turbidity (NTU)
A	S3	5/24/2009	10:30:17	5.9	M	25.67	31.79	95.1	6.48	1.1
A	S3	5/24/2009	10:31:13	1.4	S	25.73	31.51	96.3	6.57	0.9
A	S3	5/24/2009	10:32:04	1.4	S	25.73	31.51	96.3	6.57	1
A	S2	5/24/2009	11:03:32	8.9	B	25.43	32.04	86.6	5.92	1.5
A	S2	5/24/2009	11:04:45	5.3	M	25.6	31.71	88	6.01	1.3
A	S2	5/24/2009	11:05:47	1.6	S	25.9	30.79	92.6	6.33	0.9
A	S2	5/24/2009	11:07:19	8.9	B	25.45	32.02	86	5.88	1.5
A	S2	5/24/2009	11:08:25	5.2	M	25.59	31.74	88.3	6.03	1.4
A	S2	5/24/2009	11:09:20	1.2	S	25.91	30.74	91.9	6.28	1
A	S1	5/24/2009	11:17:48	7.8	B	25.26	32.38	84.5	5.79	2.6
A	S1	5/24/2009	11:18:51	4.3	M	25.8	31.18	88.3	6.03	1.3
A	S1	5/24/2009	11:19:56	1.3	S	25.86	30.98	92.8	6.33	1
A	S1	5/24/2009	11:20:59	7.9	B	25.24	32.41	82	5.61	2.9
A	S1	5/24/2009	11:22:04	4.8	M	25.6	31.73	87.6	5.98	1.4
A	S1	5/24/2009	11:23:07	1	S	25.82	31.09	92	6.28	1
A	B1	5/24/2009	11:33:17	4.6	B	25.59	31.83	83.6	5.71	3.3
A	B1	5/24/2009	11:34:22	2.9	M	25.75	31.41	87.1	5.94	1.8
A	B1	5/24/2009	11:35:28	0.9	S	25.73	31.44	87.5	5.97	1.5
A	B1	5/24/2009	11:37:19	4.8	B	25.33	32.32	79.9	5.47	3.8
A	B1	5/24/2009	11:38:32	3.1	M	25.7	31.61	83.7	5.71	2.5
A	B1	5/24/2009	11:39:14	1.3	S	25.74	31.39	87.3	5.96	1.8
A	S3	5/24/2009	11:52:51	10.1	B	25.52	32.27	90	6.13	2
A	S3	5/24/2009	11:54:28	5.7	M	25.68	31.72	91.8	6.26	0.9
A	S3	5/24/2009	11:55:38	1.3	S	25.69	31.61	92.6	6.32	0.9
A	S3	5/24/2009	11:57:18	9.9	B	25.5	32.27	89	6.07	1.7
A	S3	5/24/2009	11:58:27	5.4	M	25.68	31.7	91.8	6.26	1
A	S3	5/24/2009	11:59:25	1.2	S	25.68	31.57	92.5	6.32	0.9
A	R1	5/24/2009	12:26:04	19.4	B	24.74	33.13	80.2	5.51	9.5
A	R1	5/24/2009	12:27:24	10	M	25.58	31.74	87.4	5.97	1.9
A	R1	5/24/2009	12:28:44	1.1	S	25.69	31.3	90	6.15	2
A	R1	5/24/2009	12:32:07	19.8	B	24.77	33.08	80.7	5.55	8
A	R1	5/24/2009	12:33:14	10.2	M	25.63	31.5	86.8	5.94	2.1
A	R1	5/24/2009	12:34:16	1.5	S	25.71	31.29	89.9	6.14	1.6
A	S2	5/24/2009	13:36:20	7.7	B	25.59	31.89	89.3	6.09	2.5
A	S2	5/24/2009	13:37:04	7.8	B	25.47	32.09	81.8	5.59	3.0
A	S2	5/24/2009	13:37:50	4.7	M	25.69	31.7	91.7	6.26	1.3
A	S2	5/24/2009	13:38:16	4.7	M	25.68	31.71	92.4	6.3	1.2
A	S2	5/24/2009	13:39:04	0.9	S	25.84	30.41	93.8	6.43	1.1
A	S2	5/24/2009	13:39:30	0.9	S	25.84	30.37	93.9	6.44	1.1
A	S1	5/24/2009	13:48:19	6.7	B	25.37	32.29	85.8	5.86	1.8
A	S1	5/24/2009	13:48:56	6.8	B	25.44	32.13	84.4	5.76	2
A	S1	5/24/2009	13:49:52	3.9	M	25.73	31.49	90.3	6.16	1.3
A	S1	5/24/2009	13:50:38	4	M	25.74	31.39	89.5	6.11	1.4
A	S1	5/24/2009	13:51:32	1.3	S	25.78	30.52	92.1	6.31	1.7
A	S1	5/24/2009	13:52:03	1.3	S	25.78	30.56	92.3	6.33	1.6
A	B1	5/24/2009	14:01:26	4.9	B	25.72	31.59	88.2	6.01	1.1
A	B1	5/24/2009	14:01:51	4.9	B	25.72	31.62	86.7	5.91	1.3
A	B1	5/24/2009	14:02:33	3	M	25.75	31.45	90	6.14	1.5
A	B1	5/24/2009	14:03:02	3	M	25.74	31.51	88.8	6.06	1.1
A	B1	5/24/2009	14:03:41	1.1	S	25.77	31.16	91.2	6.23	1.3
A	B1	5/24/2009	14:04:48	1.1	S	25.77	31.2	91.8	6.27	1.2
A	S3	5/24/2009	14:17:47	9.8	B	25.63	31.98	91.2	6.22	1.4
A	S3	5/24/2009	14:18:19	9.8	B	25.63	31.98	91.1	6.21	1.3
A	S3	5/24/2009	14:19:16	5.5	M	25.67	31.8	92.1	6.28	1.3
A	S3	5/24/2009	14:19:43	5.5	M	25.67	31.79	92.3	6.29	1.3
A	S3	5/24/2009	14:20:40	1.1	S	25.72	31.32	93	6.35	1.2
A	S3	5/24/2009	14:21:18	1.2	S	25.72	31.3	93.4	6.38	1.2
A	S2	5/24/2009	14:27:35	7.8	B	25.68	31.71	93.1	6.35	1.4
A	S2	5/24/2009	14:28:03	7.8	B	25.69	31.71	92.6	6.31	1.4
A	S2	5/24/2009	14:28:59	4.5	M	25.73	31.58	93.3	6.36	1.3
A	S2	5/24/2009	14:29:23	4.6	M	25.73	31.57	93.3	6.37	1.2
A	S2	5/24/2009	14:30:04	1.2	S	25.75	30.26	94.9	6.52	1.1
A	S2	5/24/2009	14:30:32	1.2	S	25.76	30.39	95	6.52	1.2
A	S1	5/24/2009	14:36:55	6.9	B	25.51	32	83.6	5.71	2.3
A	S1	5/24/2009	14:37:19	6.9	B	25.53	31.96	82.3	5.62	2.5
A	S1	5/24/2009	14:38:27	4.1	M	25.76	31.4	89.4	6.1	1.6
A	S1	5/24/2009	14:39:10	4.1	M	25.74	31.49	88.8	6.06	1.8
A	S1	5/24/2009	14:40:00	1.2	S	25.78	30.19	93.1	6.4	1.6
A	S1	5/24/2009	14:40:26	1.2	S	25.78	30.27	93.1	6.39	1.8

### Annex D Continuous *In-situ* Measurement Data

Zone	Station	Sampling Date	Time	Depth (m)	Depth	Water Temp (°C)	Salinity (ppt)	D.O. Saturation (%)	D.O. (mg/L)	Turbidity (NTU)
A	B1	5/24/2009	14:47:50	4.9	B	25.71	31.62	88	6	1.4
A	B1	5/24/2009	14:48:17	4.9	B	25.7	31.64	87.5	5.97	1.5
A	B1	5/24/2009	14:49:19	3.1	M	25.75	31.43	90.3	6.16	1.1
A	B1	5/24/2009	14:49:48	3.1	M	25.74	31.46	90.3	6.16	1.2
A	B1	5/24/2009	14:50:35	1.1	S	25.79	31.34	89.5	6.1	1.4
A	B1	5/24/2009	14:50:58	1	S	25.79	31.17	89.4	6.11	1.4
A	S3	5/24/2009	15:01:30	9.8	B	25.6	31.95	91.2	6.22	1.4
A	S3	5/24/2009	15:02:00	9.9	B	25.61	31.93	90.7	6.18	1.4
A	S3	5/24/2009	15:02:44	5.6	M	25.68	31.77	92.6	6.31	1.2
A	S3	5/24/2009	15:03:20	5.6	M	25.68	31.77	92.7	6.32	1.3
A	S3	5/24/2009	15:04:12	1.1	S	25.71	31.34	93.1	6.36	1.4
A	S3	5/24/2009	15:04:57	1.1	S	25.72	31.26	92.9	6.35	1.4
A	S2	5/24/2009	15:10:39	7.8	B	25.72	31.5	91.8	6.27	2.4
A	S2	5/24/2009	15:11:02	7.8	B	25.72	31.49	90.8	6.2	2.5
A	S2	5/24/2009	15:12:05	4.5	M	25.71	31.46	93	6.35	1.2
A	S2	5/24/2009	15:12:37	4.5	M	25.7	31.43	92.7	6.33	1.4
A	S2	5/24/2009	15:13:40	1.2	S	25.74	30.74	94.4	6.46	1.5
A	S2	5/24/2009	15:14:25	1.2	S	25.77	30.47	94.6	6.49	1.7
A	S1	5/24/2009	15:21:15	6.8	B	25.47	32.11	87	5.94	1.5
A	S1	5/24/2009	15:21:37	6.8	B	25.47	32.11	86.8	5.93	1.4
A	S1	5/24/2009	15:22:24	4	M	25.64	31.77	89.3	6.09	1.6
A	S1	5/24/2009	15:23:05	4.1	M	25.72	31.6	88.8	6.06	1.8
A	S1	5/24/2009	15:23:50	1.3	S	25.78	30.32	93.4	6.41	1.9
A	S1	5/24/2009	15:24:17	1.3	S	25.78	30.17	93.7	6.45	2.4
A	B1	5/24/2009	15:31:18	4.9	B	25.75	31.54	86.3	5.89	1.5
A	B1	5/24/2009	15:31:43	4.9	B	25.75	31.53	85.8	5.85	1.5
A	B1	5/24/2009	15:32:31	3.1	M	25.77	31.45	89	6.07	1.1
A	B1	5/24/2009	15:32:57	3	M	25.76	31.43	89.7	6.12	1.1
A	B1	5/24/2009	15:33:43	1.1	S	25.83	30.85	92	6.29	1.7
A	B1	5/24/2009	15:34:06	1	S	25.83	30.77	91.9	6.29	2.1
A	S3	5/24/2009	15:43:09	9.8	B	25.61	31.99	89.6	6.11	2.8
A	S3	5/24/2009	15:44:01	9.8	B	25.62	31.97	88.7	6.05	3
A	S3	5/24/2009	15:44:40	5.8	M	25.68	31.8	92	6.27	1.5
A	S3	5/24/2009	15:45:06	5.8	M	25.68	31.8	92.5	6.3	1.4
A	S3	5/24/2009	15:46:01	1.2	S	25.72	31.32	93.7	6.4	1.2
A	S3	5/24/2009	15:46:34	1.2	S	25.72	31.33	93.7	6.4	1.2
A	S2	5/24/2009	15:56:25	7.8	B	25.6	31.71	90.7	6.19	2.1
A	S2	5/24/2009	15:57:25	7.8	B	25.59	31.76	89	6.08	5.6
A	S2	5/24/2009	15:58:30	4.4	M	25.68	31.37	93.6	6.4	1.3
A	S2	5/24/2009	15:59:28	4.4	M	25.68	31.31	93.7	6.41	1.4
A	S2	5/24/2009	16:00:26	1.2	S	25.8	30.05	94.9	6.52	1.8
A	S2	5/24/2009	16:01:17	1.2	S	25.77	30.53	95	6.51	1.8
A	S1	5/24/2009	16:07:11	6.8	B	25.52	31.99	88.5	6.04	2.3
A	S1	5/24/2009	16:08:19	6.8	B	25.53	31.98	86.7	5.92	1.5
A	S1	5/24/2009	16:09:23	4	M	25.73	31.4	92.2	6.3	1.6
A	S1	5/24/2009	16:10:18	3.9	M	25.69	31.46	93	6.35	1.3
A	S1	5/24/2009	16:11:27	1.1	S	25.82	30.86	93.5	6.39	1.6
A	S1	5/24/2009	16:12:06	1.1	S	25.81	29.95	94	6.46	2.3
A	B1	5/24/2009	16:19:13	4.6	B	25.65	31.65	89.1	6.08	1.3
A	B1	5/24/2009	16:20:03	4.6	B	25.66	31.63	86.4	5.9	1.8
A	B1	5/24/2009	16:21:09	3.1	M	25.8	31.3	89	6.07	0.9
A	B1	5/24/2009	16:21:59	3	M	25.79	31.34	89.1	6.08	0.7
A	B1	5/24/2009	16:22:58	1.2	S	25.82	30.79	91.7	6.28	1.8
A	B1	5/24/2009	16:23:33	1.2	S	25.82	30.56	91.5	6.27	2.1
A	S3	5/24/2009	16:32:29	9.9	B	25.61	31.93	90.9	6.2	1
A	S3	5/24/2009	16:33:11	9.9	B	25.57	32.06	90.1	6.15	1.3
A	S3	5/24/2009	16:34:14	5.6	M	25.69	31.55	92.7	6.33	1
A	S3	5/24/2009	16:34:57	5.6	M	25.69	31.6	93.1	6.35	0.9
A	S3	5/24/2009	16:35:51	1.4	S	25.72	31.25	90.8	6.21	1.7
A	S3	5/24/2009	16:36:53	1.3	S	25.7	31.27	90.7	6.2	1.6
A	S2	5/24/2009	16:43:30	7.8	B	25.57	31.72	89.5	6.12	1.2
A	S2	5/24/2009	16:44:26	7.8	B	25.57	31.71	88.5	6.05	1.3
A	S2	5/24/2009	16:45:19	4.6	M	25.68	31.5	92.7	6.33	0.9
A	S2	5/24/2009	16:45:56	4.5	M	25.68	31.52	93	6.35	0.8
A	S2	5/24/2009	16:46:52	1.1	S	25.79	30.55	94.4	6.47	1.9
A	S2	5/24/2009	16:47:39	1.1	S	25.86	29.99	94.2	6.47	2.3
A	S1	5/24/2009	16:54:21	6.9	B	25.62	31.71	86.2	5.89	2.9
A	S1	5/24/2009	16:55:13	6.9	B	25.59	31.77	85.4	5.83	2.1
A	S1	5/24/2009	16:56:08	4.2	M	25.7	31.38	91.9	6.28	1.3

### Annex D Continuous *In-situ* Measurement Data

Zone	Station	Sampling Date	Time	Depth (m)	Depth	Water Temp (°C)	Salinity (ppt)	D.O. Saturation (%)	D.O. (mg/L)	Turbidity (NTU)
A	S1	5/24/2009	16:56:42	4.2	M	25.69	31.36	92.6	6.33	1
A	S1	5/24/2009	16:57:37	1.1	S	25.83	30.29	93.7	6.43	1.4
A	S1	5/24/2009	16:58:24	1.1	S	25.82	30.3	93.8	6.43	1.8
A	B1	5/24/2009	17:06:00	4.8	B	25.72	31.46	91	6.22	1.4
A	B1	5/24/2009	17:06:50	4.8	B	25.7	31.53	88.3	6.02	1.1
A	B1	5/24/2009	17:07:49	3.1	M	25.77	31.37	89.1	6.08	0.8
A	B1	5/24/2009	17:08:23	3	M	25.76	31.36	89.2	6.09	0.9
A	B1	5/24/2009	17:09:16	1.2	S	25.8	30.93	92.1	6.3	1.4
A	B1	5/24/2009	17:09:52	1.2	S	25.82	30.7	92.3	6.32	1.7
A	S3	5/24/2009	17:18:50	9.9	B	25.61	31.9	91.2	6.22	1.2
A	S3	5/24/2009	17:19:35	9.8	B	25.61	31.9	90.6	6.18	1
A	S3	5/24/2009	17:20:39	5.6	M	25.69	31.54	92.5	6.31	1.2
A	S3	5/24/2009	17:21:34	5.6	M	25.7	31.54	92.7	6.33	0.9
A	S3	5/24/2009	17:22:31	1.2	S	25.76	31.23	91.6	6.26	2.3
A	S3	5/24/2009	17:23:14	1.2	S	25.76	31.24	91.3	6.24	2
A	S2	5/24/2009	17:59:34	7.8	B	25.56	31.82	81.5	5.57	2.2
A	S2	5/24/2009	18:00:41	4.7	M	25.67	31.47	83.8	5.72	1.4
A	S2	5/24/2009	18:01:35	1.3	S	25.74	30.85	85	5.82	1.9
A	S2	5/24/2009	18:02:25	7.8	B	25.61	31.76	81.3	5.55	2.1
A	S2	5/24/2009	18:03:18	4.7	M	25.67	31.46	83.5	5.71	1.4
A	S2	5/24/2009	18:04:08	1.5	S	25.75	30.67	85	5.83	1.7
A	S1	5/24/2009	18:09:23	6.9	B	25.62	31.78	82.2	5.61	1.4
A	S1	5/24/2009	18:10:24	4.8	M	25.63	31.67	81	5.53	1.7
A	S1	5/24/2009	18:11:28	1.5	S	25.69	31.4	84.1	5.75	1.7
A	S1	5/24/2009	18:12:21	6.9	B	25.63	31.76	81.3	5.55	1.2
A	S1	5/24/2009	18:13:23	3.7	M	25.68	31.59	83.8	5.72	1.4
A	S1	5/24/2009	18:14:17	1.2	S	25.82	30.76	85.1	5.83	2.1
A	B1	5/24/2009	18:19:56	5.1	B	25.73	31.54	84.8	5.79	1.1
A	B1	5/24/2009	18:21:06	3.3	M	25.78	31.16	83.6	5.71	1.2
A	B1	5/24/2009	18:22:08	1.3	S	25.77	30.82	83.9	5.74	1.5
A	B1	5/24/2009	18:23:28	5	B	25.74	31.48	84.7	5.78	1.1
A	B1	5/24/2009	18:24:33	3.2	M	25.76	31.4	84.3	5.75	1
A	B1	5/24/2009	18:25:37	1.1	S	25.76	30.68	83.8	5.74	1.6
A	S3	5/24/2009	18:31:22	10.2	B	25.62	31.91	82.7	5.64	1.6
A	S3	5/24/2009	18:32:21	5.7	M	25.7	31.51	83.9	5.73	1.6
A	S3	5/24/2009	18:33:27	1.3	S	25.73	31.07	84.5	5.78	1.5
A	S3	5/24/2009	18:34:34	10.3	B	25.62	31.88	81.6	5.57	1.3
A	S3	5/24/2009	18:35:51	5.7	M	25.71	31.48	83.7	5.71	1.5
A	S3	5/24/2009	18:36:41	1.2	S	25.72	31.12	83.2	5.69	1.7
A	R1	5/24/2009	18:45:45	19.8	B	25.14	32.7	75.8	5.19	8.9
A	R1	5/24/2009	18:46:50	10.7	M	25.51	32.11	79.9	5.45	3.6
A	R1	5/24/2009	18:47:47	1.3	S	25.62	30.26	78	5.37	2.6
A	R1	5/24/2009	18:48:49	19.8	B	25.15	32.66	75.2	5.15	8.3
A	R1	5/24/2009	18:49:41	10.5	M	25.5	32.1	79.2	5.4	3.8
A	R1	5/24/2009	18:50:36	1.1	S	25.6	30.63	77.7	5.35	2.2

### Annex D Continuous *In-situ* Measurement Data

Zone	Station	Sampling Date	Time	Depth (m)	Depth	Water Temp (°C)	Salinity (ppt)	D.O. Saturation (%)	D.O. (mg/L)	Turbidity (NTU)
A	S2	5/25/2009	7:06:31	9.9	B	25.42	32.08	81.2	5.55	5.2
A	S2	5/25/2009	7:07:09	9.9	B	25.42	32.09	80	5.47	5.6
A	S2	5/25/2009	7:08:17	5.5	M	25.55	31.68	83.3	5.7	1.6
A	S2	5/25/2009	7:09:14	5.5	M	25.55	31.68	83.8	5.73	1.6
A	S2	5/25/2009	7:10:07	1.2	S	25.54	30.86	89.8	6.17	0.8
A	S2	5/25/2009	7:10:55	1.1	S	25.55	30.95	90.2	6.19	0.8
A	S1	5/25/2009	7:17:54	9.1	B	25.5	31.91	83	5.67	2.6
A	S1	5/25/2009	7:18:32	9	B	25.5	31.9	80.2	5.48	2.8
A	S1	5/25/2009	7:19:38	4.9	M	25.59	31.33	87.1	5.96	1
A	S1	5/25/2009	7:20:13	4.9	M	25.58	31.31	87.3	5.97	1
A	S1	5/25/2009	7:21:05	1	S	25.54	30.68	89.6	6.16	0.8
A	S1	5/25/2009	7:21:53	1	S	25.55	30.74	89.9	6.18	0.8
A	B1	5/25/2009	7:29:39	6.1	B	25.57	31.76	87.5	5.98	1.5
A	B1	5/25/2009	7:30:19	6.1	B	25.57	31.77	84.5	5.77	1.6
A	B1	5/25/2009	7:31:25	3.4	M	25.62	31.46	86.7	5.93	0.9
A	B1	5/25/2009	7:32:08	3.4	M	25.61	31.42	86.8	5.94	1
A	B1	5/25/2009	7:33:08	1.4	S	25.59	31.29	87.3	5.98	0.9
A	B1	5/25/2009	7:33:44	1.4	S	25.59	31.31	87.4	5.98	1
A	S3	5/25/2009	7:45:41	12.2	B	25.41	32.18	81.2	5.55	6
A	S3	5/25/2009	7:46:35	12.2	B	25.41	32.2	79.8	5.45	7.4
A	S3	5/25/2009	7:47:45	6.3	M	25.58	31.52	85.9	5.88	1.3
A	S3	5/25/2009	7:48:33	6.3	M	25.59	31.5	86.7	5.93	1.3
A	S3	5/25/2009	7:49:45	1.1	S	25.57	31.33	88.5	6.06	1.1
A	S3	5/25/2009	7:50:18	1.1	S	25.57	31.33	88.4	6.05	1.1
A	S2	5/25/2009	8:05:21	10.2	B	25.44	32.1	83.9	5.73	2.7
A	S2	5/25/2009	8:06:51	10.1	B	25.44	32.09	81.2	5.55	2.9
A	S2	5/25/2009	8:07:47	5.5	M	25.54	31.88	83.9	5.73	1.9
A	S2	5/25/2009	8:08:36	5.5	M	25.55	31.76	84.4	5.77	1.8
A	S2	5/25/2009	8:09:26	1.4	S	25.56	30.93	89.3	6.13	0.9
A	S2	5/25/2009	8:10:14	1.4	S	25.56	30.89	89.7	6.16	1
A	S1	5/25/2009	8:17:14	9.2	B	25.55	31.84	86.1	5.88	1.7
A	S1	5/25/2009	8:17:58	9.2	B	25.55	31.83	84	5.73	1.6
A	S1	5/25/2009	8:19:09	4.9	M	25.58	31.45	86.2	5.9	1.5
A	S1	5/25/2009	8:19:52	4.9	M	25.57	31.49	85.5	5.85	1.5
A	S1	5/25/2009	8:20:51	1.3	S	25.56	30.93	88.9	6.1	1
A	S1	5/25/2009	8:21:33	1.4	S	25.56	30.92	89.4	6.13	0.8
A	B1	5/25/2009	8:29:08	7	B	25.61	31.47	86.3	5.9	1.5
A	B1	5/25/2009	8:29:56	7.1	B	25.61	31.44	84.7	5.8	1.5
A	B1	5/25/2009	8:30:55	3.3	M	25.59	31.25	86.9	5.95	1
A	B1	5/25/2009	8:31:48	3.7	M	25.59	31.27	88.1	6.03	0.9
A	B1	5/25/2009	8:32:40	1	S	25.56	31.03	89.7	6.15	0.9
A	B1	5/25/2009	8:33:27	1	S	25.57	31.02	89.8	6.16	0.8
A	S3	5/25/2009	8:43:05	11.3	B	25.51	32.28	82.9	5.65	5
A	S3	5/25/2009	8:43:45	12	B	25.48	32.25	82.3	5.61	5.1
A	S3	5/25/2009	8:44:48	6.3	M	25.56	31.88	84.5	5.77	2.1
A	S3	5/25/2009	8:45:29	6.2	M	25.61	31.83	85.5	5.83	1.8
A	S3	5/25/2009	8:46:35	1.1	S	25.61	31.46	88.2	6.03	1.2
A	S3	5/25/2009	8:47:14	1.1	S	25.6	31.38	88.3	6.04	1.2
A	S2	5/25/2009	9:04:11	9.4	B	25.48	32.08	83.1	5.68	3.3
A	S2	5/25/2009	9:05:02	9.4	B	25.48	32.07	81.2	5.54	3.9
A	S2	5/25/2009	9:06:05	5.1	M	25.59	31.59	84.6	5.78	2
A	S2	5/25/2009	9:06:54	4.8	M	25.59	31.36	86.7	5.94	1.4
A	S2	5/25/2009	9:07:46	1	S	25.6	31.05	89.7	6.15	0.9
A	S2	5/25/2009	9:08:28	1	S	25.6	31.06	90	6.17	0.9
A	S1	5/25/2009	9:13:20	8.2	B	25.54	31.84	86.1	5.88	1.4
A	S1	5/25/2009	9:14:11	8.2	B	25.55	31.83	84.1	5.75	1.6
A	S1	5/25/2009	9:15:14	4.3	M	25.57	31.72	83.7	5.72	1.5
A	S1	5/25/2009	9:16:07	4.4	M	25.56	31.71	84.1	5.75	1.6
A	S1	5/25/2009	9:17:06	1	S	25.61	31.1	88.9	6.09	0.8
A	S1	5/25/2009	9:17:51	1	S	25.61	31.09	89.2	6.11	0.9
A	B1	5/25/2009	9:23:58	6	B	25.62	31.36	87.7	6	1.4
A	B1	5/25/2009	9:24:34	6	B	25.62	31.37	85.9	5.88	1.4
A	B1	5/25/2009	9:25:55	3.7	M	25.61	31.33	85.6	5.86	1.3
A	B1	5/25/2009	9:26:30	3.7	M	25.61	31.28	87.8	6.01	0.8
A	B1	5/25/2009	9:27:31	1.1	S	25.6	31.04	89.5	6.13	0.8
A	B1	5/25/2009	9:28:09	1.1	S	25.6	30.97	89.6	6.14	0.9
A	S3	5/25/2009	9:35:48	11.2	B	25.55	32.16	84.2	5.74	2.9
A	S3	5/25/2009	9:36:42	11.1	B	25.54	32.16	83.2	5.67	3.4
A	S3	5/25/2009	9:38:00	5.9	M	25.55	32.16	83.5	5.69	3

### Annex D Continuous *In-situ* Measurement Data

Zone	Station	Sampling Date	Time	Depth (m)	Depth	Water Temp (°C)	Salinity (ppt)	D.O. Saturation (%)	D.O. (mg/L)	Turbidity (NTU)
A	S3	5/25/2009	9:38:53	5.9	M	25.55	32.16	83.7	5.71	2.9
A	S3	5/25/2009	9:39:48	1.3	S	25.65	31.57	87.3	5.97	1.5
A	S3	5/25/2009	9:40:35	1.3	S	25.64	31.53	87.4	5.97	1.4
A	S2	5/25/2009	9:46:38	8.8	B	25.45	32.14	80	5.46	8.2
A	S2	5/25/2009	9:47:16	8.8	B	25.45	32.14	79.8	5.45	7.5
A	S2	5/25/2009	9:48:11	4.9	M	25.53	32.08	82.8	5.65	2.6
A	S2	5/25/2009	9:48:57	5	M	25.51	32.11	83.1	5.67	2.5
A	S2	5/25/2009	9:49:50	1.2	S	25.64	30.93	90.1	6.17	0.9
A	S2	5/25/2009	9:50:21	1.2	S	25.64	30.95	90.5	6.2	0.8
A	S1	5/25/2009	9:56:33	8	B	25.56	31.82	84.8	5.79	1.3
A	S1	5/25/2009	9:57:10	8	B	25.55	31.82	83.7	5.72	1.5
A	S1	5/25/2009	9:58:01	4.6	M	25.57	31.71	83.8	5.73	1.5
A	S1	5/25/2009	9:58:36	4.6	M	25.58	31.72	84	5.74	1.3
A	S1	5/25/2009	9:59:29	1.1	S	25.65	31.19	89.2	6.11	0.9
A	S1	5/25/2009	10:00:06	1.1	S	25.64	31.18	89.7	6.14	0.9
A	B1	5/25/2009	10:05:46	5.9	B	25.54	31.85	83	5.67	3.6
A	B1	5/25/2009	10:06:38	5.9	B	25.54	31.85	80.4	5.49	3.1
A	B1	5/25/2009	10:08:02	3.3	M	25.62	31.51	82.9	5.66	3.3
A	B1	5/25/2009	10:08:45	3.3	M	25.62	31.37	84.2	5.76	1.8
A	B1	5/25/2009	10:09:42	1.2	S	25.61	31.26	87.2	5.97	1
A	B1	5/25/2009	10:10:13	1.2	S	25.62	31.29	88.3	6.04	0.9
A	S3	5/25/2009	10:17:02	11.1	B	25.68	32.31	88.1	5.99	4.5
A	S3	5/25/2009	10:17:44	11.1	B	25.68	32.31	87.3	5.94	4.6
A	S3	5/25/2009	10:18:43	6.1	M	25.69	32.21	87.9	5.98	3.3
A	S3	5/25/2009	10:19:22	6.1	M	25.7	32.28	87.9	5.97	3.8
A	S3	5/25/2009	10:20:17	1.1	S	25.67	31.99	87.7	5.97	2.3
A	S3	5/25/2009	10:20:52	1.2	S	25.66	31.99	87.6	5.97	2.3
A	S2	5/25/2009	10:25:51	9.4	B	25.49	32.14	88.5	6.04	2.3
A	S2	5/25/2009	10:26:44	9.4	B	25.48	32.14	82.2	5.61	3.1
A	S2	5/25/2009	10:27:33	5.2	M	25.54	32.07	83.6	5.71	2.4
A	S2	5/25/2009	10:28:09	5.2	M	25.54	32.07	83.8	5.72	2.4
A	S2	5/25/2009	10:29:05	1	S	25.65	30.96	90.3	6.19	0.9
A	S2	5/25/2009	10:29:37	1	S	25.66	30.97	90.4	6.19	0.9
A	S1	5/25/2009	10:35:59	7.9	B	25.53	31.84	84.2	5.76	1.5
A	S1	5/25/2009	10:36:37	7.9	B	25.54	31.82	83.4	5.7	1.4
A	S1	5/25/2009	10:37:39	4.4	M	25.58	31.69	84.3	5.76	1.4
A	S1	5/25/2009	10:38:14	4.4	M	25.59	31.66	84.1	5.75	1.5
A	S1	5/25/2009	10:39:13	1	S	25.66	31.22	89	6.09	0.9
A	S1	5/25/2009	10:39:47	1	S	25.66	31.22	89.4	6.12	0.9
A	B1	5/25/2009	10:47:57	6.1	B	25.48	31.97	77.4	5.29	9.2
A	B1	5/25/2009	10:48:43	6.1	B	25.47	31.98	75.8	5.18	9
A	B1	5/25/2009	10:49:38	3.5	M	25.62	31.48	82.2	5.62	3
A	B1	5/25/2009	10:50:12	3.5	M	25.62	31.49	83.7	5.73	2.1
A	B1	5/25/2009	10:51:08	1.2	S	25.63	31.25	88.7	6.07	0.9
A	B1	5/25/2009	10:51:43	1.2	S	25.64	31.21	89.4	6.12	0.9
A	S3	5/25/2009	11:04:05	11.1	B	25.71	32.36	88.6	6.02	4.6
A	S3	5/25/2009	11:04:43	11.1	B	25.71	32.36	88.3	6	5.1
A	S3	5/25/2009	11:05:56	6	M	25.69	32.11	87.8	5.98	2.6
A	S3	5/25/2009	11:06:26	6.1	M	25.7	32.15	87.9	5.98	2.6
A	S3	5/25/2009	11:07:30	1	S	25.65	31.91	87.7	5.98	2.1
A	S3	5/25/2009	11:08:02	1	S	25.63	31.8	87.3	5.96	1.7
A	S2	5/25/2009	11:44:59	8.9	B	25.61	32.27	78.2	5.33	4
A	S2	5/25/2009	11:46:07	5	M	25.66	31.18	80.9	5.54	1
A	S2	5/25/2009	11:47:08	1.2	S	25.67	31.09	81.8	5.6	0.9
A	S2	5/25/2009	11:48:12	9.1	B	25.58	32.28	76.9	5.24	4.3
A	S2	5/25/2009	11:49:23	5.4	M	25.64	31.34	77.8	5.32	1.3
A	S2	5/25/2009	11:50:14	1.6	S	25.67	31.11	81.4	5.57	0.9
A	S1	5/25/2009	12:00:34	8	B	25.61	32.24	77.3	5.26	2.9
A	S1	5/25/2009	12:01:25	4.7	M	25.5	32.02	74.5	5.09	2.2
A	S1	5/25/2009	12:02:44	0.8	S	25.64	31.44	78.9	5.4	1.1
A	S1	5/25/2009	12:04:27	7.9	B	25.61	32.24	76.9	5.24	2.9
A	S1	5/25/2009	12:05:39	4.4	M	25.49	32.04	72.8	4.97	2.8
A	S1	5/25/2009	12:06:39	1.1	S	25.66	31.3	79.6	5.44	1
A	B1	5/25/2009	12:15:39	5.9	B	25.51	31.92	69.7	4.76	5
A	B1	5/25/2009	12:16:45	3.1	M	25.61	31.7	75.4	5.15	1.8
A	B1	5/25/2009	12:18:18	1.2	S	25.63	31.46	77.6	5.31	1.2
A	B1	5/25/2009	12:19:58	5.8	B	25.51	31.91	70	4.78	4.4
A	B1	5/25/2009	12:21:11	2.8	M	25.56	31.83	73.8	5.04	2.5
A	B1	5/25/2009	12:22:23	1.2	S	25.63	31.38	78.1	5.34	1.6

### Annex D Continuous *In-situ* Measurement Data

Zone	Station	Sampling Date	Time	Depth (m)	Depth	Water Temp (°C)	Salinity (ppt)	D.O. Saturation (%)	D.O. (mg/L)	Turbidity (NTU)
A	S3	5/25/2009	12:31:32	10.1	B	25.75	32.11	82.3	5.59	2.4
A	S3	5/25/2009	12:32:28	5.6	M	25.74	32.08	82.4	5.61	2
A	S3	5/25/2009	12:33:32	1	S	25.72	32.02	82.5	5.62	2
A	S3	5/25/2009	12:34:38	9.9	B	25.74	32.12	81.5	5.54	2.1
A	S3	5/25/2009	12:35:46	5.5	M	25.75	32.07	82.6	5.61	1.9
A	S3	5/25/2009	12:37:29	1.3	S	25.64	31.9	79.3	5.41	1.9
A	R1	5/25/2009	13:19:34	19.7	B	25.64	32.48	78.4	5.33	7.1
A	R1	5/25/2009	13:21:23	10.9	M	25.71	32.2	79.7	5.42	3.9
A	R1	5/25/2009	13:23:44	1.1	S	25.72	31.85	79.5	5.41	3.2
A	R1	5/25/2009	13:25:34	19.2	B	25.63	32.47	77.8	5.29	6.9
A	R1	5/25/2009	13:28:06	10.7	M	25.72	32.16	79	5.37	4.6
A	R1	5/25/2009	13:29:32	1.3	S	25.73	31.86	79.8	5.44	3.4
A	S2	5/25/2009	14:21:20	8.1	B	25.57	32.13	75.9	5.17	3.3
A	S2	5/25/2009	14:21:50	8.1	B	25.59	32.14	75.4	5.14	2.7
A	S2	5/25/2009	14:23:01	4.7	M	25.68	32.01	79.7	5.42	1.7
A	S2	5/25/2009	14:23:29	4.7	M	25.66	31.94	79.5	5.42	1.6
A	S2	5/25/2009	14:24:23	1.2	S	25.65	31.35	79.4	5.43	1.1
A	S2	5/25/2009	14:24:49	1.2	S	25.66	31.3	80.4	5.5	1
A	S1	5/25/2009	14:32:01	7	B	25.55	32.26	75.2	5.12	4.5
A	S1	5/25/2009	14:32:26	7	B	25.55	32.26	74.5	5.08	4.2
A	S1	5/25/2009	14:33:31	3.9	M	25.54	31.83	76.2	5.2	2.1
A	S1	5/25/2009	14:33:55	3.9	M	25.61	31.59	76.1	5.2	2.1
A	S1	5/25/2009	14:35:24	1.1	S	25.63	31.26	79.4	5.43	1.1
A	S1	5/25/2009	14:35:53	1.1	S	25.63	31.27	79.7	5.46	1.1
A	B1	5/25/2009	14:45:15	5.1	B	25.41	32.13	69.1	4.73	6.3
A	B1	5/25/2009	14:45:39	5.1	B	25.41	32.12	68.4	4.68	6.2
A	B1	5/25/2009	14:47:02	2.9	M	25.43	32.1	68.4	4.67	5.3
A	B1	5/25/2009	14:47:46	2.9	M	25.42	32.09	68	4.65	5.8
A	B1	5/25/2009	14:49:57	1.1	S	25.64	31.62	71.6	4.89	2.8
A	B1	5/25/2009	14:50:23	1	S	25.64	31.6	71.9	4.91	2.6
A	S3	5/25/2009	15:00:44	10.4	B	25.68	32.33	77.7	5.28	6.4
A	S3	5/25/2009	15:01:13	10.2	B	25.68	32.32	77.3	5.26	7
A	S3	5/25/2009	15:02:02	5.5	M	25.69	32.23	78.6	5.35	4
A	S3	5/25/2009	15:02:53	5.6	M	25.68	32.15	79.2	5.39	2.9
A	S3	5/25/2009	15:03:48	1.1	S	25.6	31.97	77.6	5.3	2.1
A	S3	5/25/2009	15:04:30	1.1	S	25.6	31.97	77	5.25	2.1
A	S2	5/25/2009	15:23:15	8.2	B	25.7	32.24	79.6	5.41	2.2
A	S2	5/25/2009	15:23:44	8.2	B	25.7	32.21	79.8	5.42	2.2
A	S2	5/25/2009	15:24:39	4.4	M	25.69	32.05	79.9	5.44	1.7
A	S2	5/25/2009	15:25:24	4.4	M	25.65	32.05	77.7	5.29	1.9
A	S2	5/25/2009	15:26:08	1.4	S	25.64	31.5	79	5.4	1.3
A	S2	5/25/2009	15:26:55	1.4	S	25.64	31.58	80.8	5.52	1.3
A	S1	5/25/2009	15:34:40	7.1	B	25.45	32.09	68.5	4.68	4.7
A	S1	5/25/2009	15:35:06	7.1	B	25.46	32.07	68.9	4.71	4.4
A	S1	5/25/2009	15:36:07	4	M	25.7	32.04	78.8	5.37	1.8
A	S1	5/25/2009	15:36:54	4	M	25.69	32.02	79.4	5.41	1.5
A	S1	5/25/2009	15:37:45	1.1	S	25.64	31.24	79.4	5.44	1.2
A	S1	5/25/2009	15:38:36	1.1	S	25.63	31.18	80.7	5.52	1.1
A	B1	5/25/2009	15:48:21	4.9	B	25.56	31.85	68.9	4.71	4
A	B1	5/25/2009	15:48:43	4.9	B	25.54	31.9	68.5	4.68	4.3
A	B1	5/25/2009	15:50:08	2.5	M	25.62	31.67	73.3	5	2.2
A	B1	5/25/2009	15:52:10	2.7	M	25.59	31.74	72.8	4.97	2.6
A	B1	5/25/2009	15:53:18	1.3	S	25.63	31.4	75	5.13	2.1
A	B1	5/25/2009	15:54:03	1.3	S	25.63	31.37	75.5	5.17	2.2
A	S3	5/25/2009	16:06:06	9.8	B	25.67	32.35	79.1	5.37	4.5
A	S3	5/25/2009	16:06:41	10.1	B	25.67	32.37	78.3	5.32	4.6
A	S3	5/25/2009	16:08:17	5.5	M	25.64	32.12	77.9	5.31	2.8
A	S3	5/25/2009	16:08:43	5.5	M	25.67	32.2	78.5	5.34	3
A	S3	5/25/2009	16:09:37	1.5	S	25.59	31.72	78.3	5.35	1.4
A	S3	5/25/2009	16:10:03	1.5	S	25.59	31.73	78.4	5.36	1.3
A	S2	5/25/2009	16:23:17	7.9	B	25.7	32.29	79	5.37	3
A	S2	5/25/2009	16:24:04	7.9	B	25.71	32.28	79.5	5.4	3.2
A	S2	5/25/2009	16:25:04	4.6	M	25.71	32.06	80.9	5.51	1.9
A	S2	5/25/2009	16:25:44	4.6	M	25.7	32.03	81	5.52	1.7
A	S2	5/25/2009	16:26:37	1.2	S	25.65	31.5	79.8	5.45	1.5
A	S2	5/25/2009	16:27:22	1.1	S	25.65	31.46	79.9	5.47	1.2
A	S1	5/25/2009	16:35:05	6.8	B	25.51	32.16	72.7	4.96	4.4
A	S1	5/25/2009	16:35:43	6.8	B	25.52	32.17	72	4.91	4
A	S1	5/25/2009	16:36:51	3.9	M	25.58	32.14	74.5	5.08	3.8

### Annex D Continuous *In-situ* Measurement Data

Zone	Station	Sampling Date	Time	Depth (m)	Depth	Water Temp (°C)	Salinity (ppt)	D.O. Saturation (%)	D.O. (mg/L)	Turbidity (NTU)
A	S1	5/25/2009	16:37:26	3.9	M	25.56	32.14	74.4	5.07	3.5
A	S1	5/25/2009	16:38:30	1.2	S	25.64	31.38	79.1	5.41	1.2
A	S1	5/25/2009	16:39:15	1.2	S	25.64	31.41	78.4	5.36	1.3
A	B1	5/25/2009	16:48:19	4.8	B	25.52	31.95	71.9	4.91	2.7
A	B1	5/25/2009	16:49:01	4.8	B	25.51	31.96	71.7	4.9	2.4
A	B1	5/25/2009	16:49:55	3.2	M	25.53	31.92	71.1	4.86	2.7
A	B1	5/25/2009	16:50:37	3.2	M	25.53	31.91	71.3	4.87	2.6
A	B1	5/25/2009	16:51:24	1.3	S	25.64	31.43	75.9	5.19	1.6
A	B1	5/25/2009	16:52:10	1.2	S	25.64	31.41	77	5.27	1.6
A	S3	5/25/2009	17:03:32	10	B	25.66	32.36	78	5.3	4.6
A	S3	5/25/2009	17:04:04	10	B	25.66	32.37	77.7	5.28	4.7
A	S3	5/25/2009	17:05:04	5.7	M	25.66	32.22	78.6	5.35	3.5
A	S3	5/25/2009	17:05:49	5.6	M	25.65	32.18	78.5	5.34	3.4
A	S3	5/25/2009	17:06:52	1.1	S	25.62	31.57	79.6	5.44	1.1
A	S3	5/25/2009	17:07:31	1.1	S	25.63	31.57	79.5	5.43	1.1
A	S2	5/25/2009	17:31:29	8.2	B	25.72	32.36	79.7	5.42	3.8
A	S2	5/25/2009	17:34:10	7.4	B	25.72	32.34	79	5.36	3.3
A	S2	5/25/2009	17:34:59	4.1	M	25.69	32.08	80.1	5.45	2.2
A	S2	5/25/2009	17:35:58	4.7	M	25.65	32.08	77.7	5.29	2.5
A	S2	5/25/2009	17:37:11	1	S	25.65	31.27	81	5.54	1.1
A	S2	5/25/2009	17:38:06	1.1	S	25.65	31.27	81.1	5.55	1.2
A	S1	5/25/2009	17:44:22	6.8	B	25.55	32.21	74.1	5.05	4
A	S1	5/25/2009	17:45:05	6.9	B	25.55	32.2	73.4	5.01	4.2
A	S1	5/25/2009	17:45:55	4.2	M	25.58	31.98	70.8	4.83	3.2
A	S1	5/25/2009	17:46:39	4.2	M	25.55	32.03	71.1	4.85	3.6
A	S1	5/25/2009	17:47:23	1.3	S	25.63	31.52	76.8	5.25	1.6
A	S1	5/25/2009	17:48:03	1.3	S	25.63	31.57	77.3	5.28	1.6
A	B1	5/25/2009	17:56:31	4.6	B	25.55	32.07	74.1	5.06	2
A	B1	5/25/2009	17:57:20	4.6	B	25.49	32.06	73.4	5.02	2.2
A	B1	5/25/2009	17:58:15	2.8	M	25.61	32.03	76.9	5.24	1.7
A	B1	5/25/2009	17:58:48	2.8	M	25.66	32.04	78.5	5.35	1.6
A	B1	5/25/2009	17:59:40	1.2	S	25.62	31.73	73.1	4.99	2.4
A	B1	5/25/2009	18:00:12	1.2	S	25.63	31.69	72.6	4.96	2.6
A	S3	5/25/2009	18:08:07	10	B	25.67	32.28	76.8	5.23	4.5
A	S3	5/25/2009	18:08:41	9.8	B	25.67	32.29	76.7	5.21	4.5
A	S3	5/25/2009	18:09:38	5.6	M	25.63	32.11	77.5	5.28	3.4
A	S3	5/25/2009	18:10:15	5.6	M	25.63	32.1	77.6	5.28	3.4
A	S3	5/25/2009	18:11:19	1.1	S	25.6	31.93	76.7	5.23	2.5
A	S3	5/25/2009	18:12:07	1.1	S	25.62	31.99	77	5.25	2.4
A	S2	5/25/2009	18:37:23	7.8	B	25.68	32.35	79.3	5.39	3.8
A	S2	5/25/2009	18:38:22	4.6	M	25.66	31.89	80.3	5.48	1.6
A	S2	5/25/2009	18:39:27	1.3	S	25.64	31.65	80.4	5.49	1.4
A	S2	5/25/2009	18:40:24	7.7	B	25.69	32.36	78.4	5.33	3.4
A	S2	5/25/2009	18:41:21	4.5	M	25.67	32.11	79	5.37	2.3
A	S2	5/25/2009	18:42:14	1.2	S	25.62	31.42	80.2	5.48	1.3
A	S1	5/25/2009	18:48:46	6.8	B	25.63	32.25	76.5	5.2	3.3
A	S1	5/25/2009	18:49:36	4	M	25.61	31.84	77.7	5.3	1.5
A	S1	5/25/2009	18:50:41	1.3	S	25.6	31.79	78	5.32	1.4
A	S1	5/25/2009	18:51:47	6.9	B	25.53	32.23	71.2	4.85	3.9
A	S1	5/25/2009	18:53:01	4	M	25.68	32.06	77.9	5.31	2
A	S1	5/25/2009	18:53:57	0.9	S	25.6	31.58	78.3	5.35	1.6
A	B1	5/25/2009	19:00:49	4.9	B	25.52	32.08	73.9	5.04	2.2
A	B1	5/25/2009	19:01:55	3.2	M	25.52	32.07	73.5	5.02	1.9
A	B1	5/25/2009	19:02:54	1.3	S	25.58	31.98	74.3	5.07	1.9
A	B1	5/25/2009	19:04:30	4.8	B	25.47	32.12	71.3	4.87	2.3
A	B1	5/25/2009	19:05:40	3.2	M	25.52	32.05	72.3	4.93	2.1
A	B1	5/25/2009	19:06:38	1.3	S	25.59	32.04	74.5	5.08	2.1
A	S3	5/25/2009	19:13:11	10.2	B	25.59	32.13	77.7	5.3	2.2
A	S3	5/25/2009	19:14:36	5.6	M	25.64	31.85	78.2	5.33	2.4
A	S3	5/25/2009	19:15:40	1.1	S	25.69	31.58	79.7	5.44	2
A	S3	5/25/2009	19:16:54	10.2	B	25.64	32.03	77.9	5.31	2.5
A	S3	5/25/2009	19:17:51	5.6	M	25.64	31.82	78.5	5.35	2.1
A	S3	5/25/2009	19:19:29	1.1	S	25.67	31.51	79.7	5.44	1.9
A	R1	5/25/2009	19:32:04	19.5	B	25.66	32.82	79.5	5.39	14.7
A	R1	5/25/2009	19:33:31	10.6	M	25.72	32.4	79.9	5.42	3.5
A	R1	5/25/2009	19:34:33	1.3	S	25.65	31.5	77.2	5.27	2.5
A	R1	5/25/2009	19:35:45	20.1	B	25.66	32.84	79.4	5.39	13.2
A	R1	5/25/2009	19:37:03	10.5	M	25.74	32.52	80.5	5.46	3.2
A	R1	5/25/2009	19:38:12	1.1	S	25.64	31.29	76.7	5.25	2.5



### Annex D Continuous *In-situ* Measurement Data

Zone	Station	Sampling Date	Time	Depth (m)	Depth	Water Temp (°C)	Salinity (ppt)	D.O. Saturation (%)	D.O. (mg/L)	Turbidity (NTU)
A	S2	5/26/2009	7:31:56	9.7	S	25.66	32.16	83.4	5.68	3.4
A	S2	5/26/2009	7:32:44	9.6	S	25.66	32.19	82.8	5.63	3.3
A	S2	5/26/2009	7:34:22	5.6	M	25.66	32.04	86.5	5.89	1.7
A	S2	5/26/2009	7:35:00	5.6	M	25.66	32.05	86.6	5.9	1.9
A	S2	5/26/2009	7:36:04	1.1	B	25.6	31.6	88	6.01	1.6
A	S2	5/26/2009	7:36:42	1.1	B	25.6	31.6	88	6.02	1.7
A	S1	5/26/2009	7:44:35	8.8	S	25.62	32.03	84.7	5.78	1.8
A	S1	5/26/2009	7:45:29	8.9	S	25.61	32.03	82.5	5.62	1.9
A	S1	5/26/2009	7:46:35	5.1	M	25.61	31.83	86.8	5.92	1.5
A	S1	5/26/2009	7:47:26	5.1	M	25.6	31.81	87.3	5.96	1.3
A	S1	5/26/2009	7:48:36	1	B	25.57	31.71	88.4	6.04	1.2
A	S1	5/26/2009	7:49:21	1	B	25.57	31.72	86.3	5.9	1.3
A	B1	5/26/2009	7:59:22	5.9	S	25.57	31.91	79.7	5.44	2.1
A	B1	5/26/2009	7:59:56	5.9	S	25.57	31.9	80	5.46	2.1
A	B1	5/26/2009	8:00:51	3.8	M	25.57	31.88	82.2	5.61	1.3
A	B1	5/26/2009	8:01:26	3.8	M	25.57	31.87	82	5.6	1.3
A	B1	5/26/2009	8:02:34	1.4	B	25.57	31.75	85.4	5.83	1.3
A	B1	5/26/2009	8:03:06	1.4	B	25.58	31.79	85.2	5.82	1.2
A	S3	5/26/2009	8:11:36	11.2	S	25.68	32.29	85.4	5.81	2.4
A	S3	5/26/2009	8:12:26	11.3	S	25.68	32.29	85	5.78	2.4
A	S3	5/26/2009	8:15:30	6	M	25.64	32.17	85.9	5.85	1.9
A	S3	5/26/2009	8:16:12	6.1	M	25.64	32.22	83.7	5.7	2.2
A	S3	5/26/2009	8:17:01	1.3	B	25.55	31.55	86.4	5.91	1.5
A	S3	5/26/2009	8:17:45	1.3	B	25.52	31.5	86.8	5.95	1.3
A	S2	5/26/2009	8:24:41	9.2	S	25.68	32.35	83.7	5.69	4
A	S2	5/26/2009	8:25:27	9.2	S	25.69	32.35	83.7	5.68	4.7
A	S2	5/26/2009	8:26:38	5.1	M	25.66	32	86.1	5.86	1.8
A	S2	5/26/2009	8:27:16	5	M	25.65	31.93	87.2	5.95	1.6
A	S2	5/26/2009	8:27:58	0.9	B	25.59	31.33	88.9	6.09	1.4
A	S2	5/26/2009	8:28:35	0.9	B	25.58	31.32	89	6.09	1.4
A	S1	5/26/2009	8:36:03	8	S	25.6	31.99	81.6	5.56	2.2
A	S1	5/26/2009	8:36:43	8	S	25.6	32.02	78.8	5.37	2.6
A	S1	5/26/2009	8:37:41	4.7	M	25.54	31.62	84.9	5.81	1.2
A	S1	5/26/2009	8:38:19	4.6	M	25.55	31.57	87.2	5.96	1.2
A	S1	5/26/2009	8:39:22	1.2	B	25.62	31.49	89.9	6.15	1.5
A	S1	5/26/2009	8:39:59	1.2	B	25.61	31.5	90	6.15	1.4
A	B1	5/26/2009	8:48:12	5.8	S	25.59	31.95	85.7	5.84	1.4
A	B1	5/26/2009	8:48:59	5.8	S	25.63	31.97	84.4	5.76	1.5
A	B1	5/26/2009	8:49:50	3.6	M	25.64	31.91	86.7	5.91	1.4
A	B1	5/26/2009	8:50:25	3.5	M	25.63	31.86	87.1	5.94	1.4
A	B1	5/26/2009	8:51:16	1.2	B	25.61	31.73	86.2	5.88	1.3
A	B1	5/26/2009	8:52:00	1.2	B	25.61	31.73	86.2	5.89	1.3
A	S3	5/26/2009	8:59:48	10.8	S	25.74	32.66	88.8	6.02	5.2
A	S3	5/26/2009	9:00:20	11.2	S	25.75	32.68	88.4	5.99	5.2
A	S3	5/26/2009	9:01:11	6.3	M	25.69	32.29	85.6	5.82	2.4
A	S3	5/26/2009	9:01:54	6.2	M	25.69	32.3	85.4	5.8	2.2
A	S3	5/26/2009	9:02:42	1.1	B	25.63	31.85	86.7	5.91	1.4
A	S3	5/26/2009	9:03:21	1.1	B	25.61	31.76	87.2	5.95	1.3
A	S2	5/26/2009	9:31:24	9.1	S	25.74	32.51	87.2	5.92	8
A	S2	5/26/2009	9:32:01	9.1	S	25.74	32.52	86.4	5.86	8.9
A	S2	5/26/2009	9:33:05	4.9	M	25.68	32.09	86	5.85	2.5
A	S2	5/26/2009	9:33:51	5	M	25.74	32.32	86.1	5.85	2.6
A	S2	5/26/2009	9:34:44	1.1	B	25.65	31.41	89.6	6.12	1.4
A	S2	5/26/2009	9:35:31	1.1	B	25.65	31.41	89.6	6.13	1.4
A	S1	5/26/2009	9:45:01	9	S	25.59	32.21	82.7	5.64	2.4
A	S1	5/26/2009	9:46:18	9	S	25.6	32.18	80	5.45	2.2
A	S1	5/26/2009	9:47:20	5.1	M	25.63	32.01	81	5.52	2
A	S1	5/26/2009	9:48:26	5	M	25.63	32.02	80.6	5.49	2.1
A	S1	5/26/2009	9:49:48	1.2	B	25.63	31.5	89.6	6.12	1.2
A	S1	5/26/2009	9:50:31	1.3	B	25.62	31.51	89.7	6.13	1.3
A	B1	5/26/2009	10:00:58	5.9	S	25.66	31.95	88.4	6.03	1.6
A	B1	5/26/2009	10:01:41	5.9	S	25.66	31.94	87.3	5.95	1.6
A	B1	5/26/2009	10:02:21	3.6	M	25.67	31.92	87.5	5.96	1.6
A	B1	5/26/2009	10:03:12	3.6	M	25.66	31.91	87.4	5.96	1.6
A	B1	5/26/2009	10:04:22	1.1	B	25.68	31.75	88.9	6.06	1.5
A	B1	5/26/2009	10:05:12	1	B	25.68	31.74	88.8	6.06	1.4
A	S3	5/26/2009	10:15:20	11.3	S	25.74	32.6	89.1	6.04	3.7
A	S3	5/26/2009	10:16:02	11.2	S	25.74	32.62	88.6	6.01	4
A	S3	5/26/2009	10:17:27	6	M	25.7	32.38	85.2	5.78	2.8

### Annex D Continuous *In-situ* Measurement Data

Zone	Station	Sampling Date	Time	Depth (m)	Depth	Water Temp (°C)	Salinity (ppt)	D.O. Saturation (%)	D.O. (mg/L)	Turbidity (NTU)
A	S3	5/26/2009	10:22:53	6.2	M	25.7	32.39	85.9	5.83	2.6
A	S3	5/26/2009	10:23:56	1.3	B	25.67	32.06	85.9	5.85	1.8
A	S3	5/26/2009	10:24:23	1.3	B	25.67	32.03	85.9	5.85	1.7
A	S2	5/26/2009	10:30:11	9.2	S	25.76	32.69	88.6	6	7.2
A	S2	5/26/2009	10:31:01	9.2	S	25.76	32.69	88.2	5.97	7.4
A	S2	5/26/2009	10:32:10	5.1	M	25.72	32.19	87.2	5.93	2.5
A	S2	5/26/2009	10:32:51	5.1	M	25.73	32.2	87.1	5.92	2.4
A	S2	5/26/2009	10:33:37	1.4	B	25.71	31.45	90.1	6.16	1.5
A	S2	5/26/2009	10:34:23	1.2	B	25.76	31.45	90.7	6.19	1.4
A	S1	5/26/2009	10:41:31	8.2	S	25.58	32.26	77.3	5.26	3.7
A	S1	5/26/2009	10:42:17	8.2	S	25.59	32.26	75.2	5.12	3.6
A	S1	5/26/2009	10:43:16	4.7	M	25.61	32.21	78.6	5.35	2.4
A	S1	5/26/2009	10:44:06	4.7	M	25.65	32.24	80.6	5.49	2.8
A	S1	5/26/2009	10:44:52	1.2	B	25.7	31.58	88.9	6.06	1.4
A	S1	5/26/2009	10:45:36	1.2	B	25.73	31.57	90.2	6.16	1.2
A	B1	5/26/2009	10:54:37	6.3	S	25.66	31.97	88.5	6.03	1.7
A	B1	5/26/2009	10:55:21	6.1	S	25.66	31.97	86.4	5.89	1.9
A	B1	5/26/2009	10:56:11	3.4	M	25.67	31.96	86.1	5.86	1.9
A	B1	5/26/2009	10:56:57	3.4	M	25.67	31.94	87.1	5.94	1.6
A	B1	5/26/2009	10:57:43	1.1	B	25.7	31.85	88.2	6.01	1.6
A	B1	5/26/2009	10:58:30	1.2	B	25.7	31.84	88.4	6.02	1.5
A	S3	5/26/2009	11:07:10	12.1	S	25.76	32.82	89.7	6.07	5.6
A	S3	5/26/2009	11:07:58	12.1	S	25.76	32.8	88.8	6.01	6.4
A	S3	5/26/2009	11:09:12	6.4	M	25.75	32.66	89	6.03	4.3
A	S3	5/26/2009	11:09:48	6.5	M	25.76	32.7	88.8	6.02	4.8
A	S3	5/26/2009	11:11:01	0.9	B	25.69	31.91	86	5.86	1.9
A	S3	5/26/2009	11:11:45	0.9	B	25.7	32.15	85.2	5.79	1.7
A	S2	5/26/2009	11:53:55	8.9	S	25.76	32.67	87.7	5.94	6.3
A	S2	5/26/2009	11:54:43	8.9	S	25.76	32.68	87.4	5.92	6.3
A	S2	5/26/2009	11:55:35	5	M	25.74	32.41	86.7	5.89	4.6
A	S2	5/26/2009	11:56:08	5	M	25.73	31.69	86.3	5.88	1.9
A	S2	5/26/2009	11:57:00	1.3	B	25.79	31.55	91.2	6.22	1.2
A	S2	5/26/2009	11:57:36	1.3	B	25.78	31.55	91.4	6.23	1.1
A	S1	5/26/2009	12:02:44	8.1	S	25.73	32.55	86.9	5.9	6.6
A	S1	5/26/2009	12:03:32	8.1	S	25.73	32.61	83.4	5.65	7.3
A	S1	5/26/2009	12:04:27	4.6	M	25.61	32.25	77.3	5.26	3.2
A	S1	5/26/2009	12:05:13	4.6	M	25.71	31.88	85	5.79	1.6
A	S1	5/26/2009	12:05:59	1.2	B	25.83	31.61	89.9	6.12	1.2
A	S1	5/26/2009	12:06:44	1.2	B	25.81	31.61	90.6	6.17	1.3
A	B1	5/26/2009	12:12:30	6	S	25.67	32.27	85.1	5.79	2.9
A	B1	5/26/2009	12:13:16	6	S	25.67	32.29	82.6	5.62	3
A	B1	5/26/2009	12:14:28	3.7	M	25.63	32.13	78	5.31	4.9
A	B1	5/26/2009	12:15:11	3.7	M	25.63	32.12	77.7	5.29	4.8
A	B1	5/26/2009	12:16:15	1.2	B	25.73	31.92	87	5.92	1.7
A	B1	5/26/2009	12:16:51	1.2	B	25.75	31.9	88.3	6.01	1.7
A	S3	5/26/2009	12:23:53	11.1	S	25.77	32.75	88.6	6	5.7
A	S3	5/26/2009	12:24:43	11.1	S	25.77	32.75	88.1	5.96	5.6
A	S3	5/26/2009	12:26:01	6.2	M	25.77	32.5	88.9	6.03	3.2
A	S3	5/26/2009	12:26:47	6.2	M	25.77	32.51	88.9	6.03	3.2
A	S3	5/26/2009	12:28:27	1.2	B	25.94	32.14	90.2	6.11	2.3
A	S3	5/26/2009	12:29:14	1.2	B	25.95	32.12	89.7	6.08	2.4
A	S2	5/26/2009	12:51:31	8.9	S	25.77	32.6	87	5.9	4.7
A	S2	5/26/2009	12:52:25	4.9	M	25.75	32.42	82.7	5.61	4.1
A	S2	5/26/2009	12:53:30	1.1	B	25.97	31.56	90.3	6.13	3.1
A	S2	5/26/2009	12:54:33	8.9	S	25.77	32.6	86.6	5.87	4.6
A	S2	5/26/2009	12:55:21	4.9	M	25.69	31.89	82.8	5.64	1.7
A	S2	5/26/2009	12:56:21	1.1	B	25.93	31.58	90.8	6.17	2.4
A	S1	5/26/2009	13:04:30	7.6	S	25.74	32.53	80.5	5.46	6.6
A	S1	5/26/2009	13:05:58	4.9	M	25.71	32.01	83.6	5.69	2.1
A	S1	5/26/2009	13:06:47	1.1	B	25.95	31.63	89.3	6.07	1.5
A	S1	5/26/2009	13:08:31	7.7	S	25.74	32.58	80.5	5.46	7.3
A	S1	5/26/2009	13:09:37	5	M	25.67	32.08	81.4	5.54	1.9
A	S1	5/26/2009	13:10:26	1	B	25.96	31.62	88.8	6.03	1.6
A	B1	5/26/2009	13:18:59	5.1	S	25.73	32.55	83.8	5.68	5
A	B1	5/26/2009	13:20:02	3	M	25.69	32.31	80	5.44	3.6
A	B1	5/26/2009	13:21:05	1.2	B	25.8	31.98	82.4	5.6	2.2
A	B1	5/26/2009	13:22:10	4.8	S	25.73	32.52	81.7	5.54	5
A	B1	5/26/2009	13:23:35	3	M	25.7	32.26	80.5	5.47	3.4
A	B1	5/26/2009	13:24:44	0.9	B	25.77	31.98	85.3	5.8	2.2

### Annex D Continuous *In-situ* Measurement Data

Zone	Station	Sampling Date	Time	Depth (m)	Depth	Water Temp (°C)	Salinity (ppt)	D.O. Saturation (%)	D.O. (mg/L)	Turbidity (NTU)
A	S3	5/26/2009	13:35:06	10.9	S	25.79	32.52	87.5	5.93	3
A	S3	5/26/2009	13:36:16	6.1	M	25.81	32.31	88	5.97	2.4
A	S3	5/26/2009	13:37:10	1.1	B	25.89	32.13	90.2	6.11	2.3
A	S3	5/26/2009	13:38:34	10.7	S	25.79	32.53	87.6	5.94	3.4
A	S3	5/26/2009	13:39:28	5.7	M	25.87	32.22	89.2	6.05	2.3
A	S3	5/26/2009	13:40:28	1.2	B	25.93	32.11	90.3	6.12	2.2
A	R1	5/26/2009	13:58:24	19.6	S	25.76	32.82	87.6	5.93	9.8
A	R1	5/26/2009	13:59:51	10	M	25.75	32.35	86.5	5.87	4.1
A	R1	5/26/2009	14:00:57	1.1	B	26.01	31.41	88.8	6.04	2.1
A	R1	5/26/2009	14:04:49	20	S	25.76	32.83	87.9	5.95	11.1
A	R1	5/26/2009	14:06:08	10.4	M	25.76	32.33	86.6	5.88	3.8
A	R1	5/26/2009	14:07:15	1.1	B	26.04	31.52	88	5.98	2.5
A	S2	5/26/2009	14:44:01	8	S	25.77	32.45	79.1	5.36	4.2
A	S2	5/26/2009	14:44:47	7.9	S	25.78	32.49	81.6	5.53	4.1
A	S2	5/26/2009	14:45:37	4.5	M	25.71	31.94	81.4	5.54	1.5
A	S2	5/26/2009	14:46:23	4.5	M	25.71	31.97	81.6	5.56	1.5
A	S2	5/26/2009	14:47:12	1.2	B	26.09	31.62	88.5	6	1.3
A	S2	5/26/2009	14:47:57	1.2	B	26.17	31.56	90.7	6.14	1.3
A	S1	5/26/2009	14:55:30	6.8	S	25.75	32.72	79.4	5.38	8.6
A	S1	5/26/2009	14:56:23	6.8	S	25.75	32.72	80.9	5.48	8.5
A	S1	5/26/2009	14:57:22	4.6	M	25.8	32.09	82.9	5.63	3.2
A	S1	5/26/2009	14:58:57	4.6	M	25.71	32.11	83.3	5.66	2.1
A	S1	5/26/2009	14:59:48	4.6	M	25.72	32.09	83.6	5.69	2.7
A	S1	5/26/2009	15:00:43	1.1	B	26.21	31.66	90.5	6.12	1.7
A	S1	5/26/2009	15:01:47	1.1	B	26.27	31.65	91.3	6.17	1.7
A	B1	5/26/2009	15:12:16	4.8	S	25.77	32.37	81	5.49	3.7
A	B1	5/26/2009	15:13:16	4.7	S	25.74	32.37	79.4	5.39	4.8
A	B1	5/26/2009	15:15:16	2.8	M	25.73	32.4	79.9	5.42	3.9
A	B1	5/26/2009	15:16:06	2.8	M	25.72	32.33	80.5	5.47	3.4
A	B1	5/26/2009	15:17:14	1.1	B	25.93	32.06	82.1	5.57	2.5
A	B1	5/26/2009	15:18:01	1.1	B	25.95	32.05	82.8	5.61	2.6
A	S3	5/26/2009	15:30:20	10.2	S	25.79	32.64	87.3	5.92	6.6
A	S3	5/26/2009	15:31:08	10.2	S	25.79	32.64	87.5	5.93	5.7
A	S3	5/26/2009	15:32:11	5.7	M	25.93	32.18	90.8	6.15	2.2
A	S3	5/26/2009	15:33:10	5.6	M	25.84	32.41	88.3	5.98	3.7
A	S3	5/26/2009	15:34:01	1.2	B	26	32.06	92.4	6.26	1.9
A	S3	5/26/2009	15:34:48	1.1	B	25.99	32.05	92.5	6.26	1.9
A	S2	5/26/2009	15:52:48	7.1	S	25.78	32.48	87.6	5.94	2.9
A	S2	5/26/2009	15:53:29	7.1	S	25.78	32.48	87.7	5.95	2.8
A	S2	5/26/2009	15:54:45	4.1	M	25.79	32.39	88.2	5.98	2.8
A	S2	5/26/2009	15:55:19	4.1	M	25.72	32.26	82.9	5.64	2.5
A	S2	5/26/2009	15:56:16	1.1	B	26.05	31.7	90.9	6.16	1.3
A	S2	5/26/2009	15:56:47	1.1	B	26.03	31.7	91.6	6.21	1.2
A	S1	5/26/2009	16:05:08	7	S	25.76	32.73	82.5	5.59	6.7
A	S1	5/26/2009	16:05:40	6.9	S	25.75	32.72	81.7	5.53	6.6
A	S1	5/26/2009	16:06:57	3.9	M	25.76	32.52	81.5	5.52	4.4
A	S1	5/26/2009	16:07:31	3.9	M	25.76	32.55	83	5.63	4.7
A	S1	5/26/2009	16:08:53	1.1	B	26	31.79	89.3	6.05	1.6
A	S1	5/26/2009	16:09:24	1.1	B	26.02	31.78	90	6.1	1.5
A	B1	5/26/2009	16:16:53	5.2	S	25.76	32.33	82.2	5.58	3.9
A	B1	5/26/2009	16:17:40	5.1	S	25.76	32.41	78.2	5.3	4.8
A	B1	5/26/2009	16:18:52	3.1	M	25.78	32.14	81.2	5.52	2.6
A	B1	5/26/2009	16:19:37	3.1	M	25.8	32.14	81.2	5.51	2.5
A	B1	5/26/2009	16:20:44	1.2	B	26.06	31.91	85.9	5.81	2.2
A	B1	5/26/2009	16:21:16	1.2	B	26.03	31.94	86	5.83	2.1
A	S3	5/26/2009	16:34:22	10.1	S	25.77	32.71	85.5	5.79	8.5
A	S3	5/26/2009	16:35:05	10.1	S	25.78	32.69	86.3	5.84	6.6
A	S3	5/26/2009	16:36:11	5.7	M	25.88	32.31	88.6	6	2.7
A	S3	5/26/2009	16:36:54	5.7	M	25.94	32.15	90.8	6.15	2.3
A	S3	5/26/2009	16:37:44	1	B	26.05	32.05	93.4	6.32	2.2
A	S3	5/26/2009	16:38:20	1	B	26.06	32.04	93.5	6.33	1.9
A	S2	5/26/2009	17:06:17	7.3	S	25.78	32.52	87.4	5.92	3.4
A	S2	5/26/2009	17:07:09	7	S	25.77	32.61	86.1	5.83	4.6
A	S2	5/26/2009	17:08:15	4	M	25.78	32.42	86	5.83	2.4
A	S2	5/26/2009	17:09:16	4	M	25.72	32.27	80.2	5.45	3.1
A	S2	5/26/2009	17:10:40	1	B	26.04	31.77	91.5	6.2	1.4
A	S2	5/26/2009	17:11:30	1	B	26.11	31.72	93	6.3	1.3
A	S1	5/26/2009	17:19:20	5.7	S	25.76	32.47	82.1	5.57	4.3
A	S1	5/26/2009	17:20:11	5.8	S	25.77	32.46	82.9	5.62	3.8

### Annex D Continuous *In-situ* Measurement Data

Zone	Station	Sampling Date	Time	Depth (m)	Depth	Water Temp (°C)	Salinity (ppt)	D.O. Saturation (%)	D.O. (mg/L)	Turbidity (NTU)
A	S1	5/26/2009	17:21:11	3.6	M	25.79	32.03	86.5	5.88	1.7
A	S1	5/26/2009	17:22:01	3.6	M	25.74	32.11	85.6	5.82	1.7
A	S1	5/26/2009	17:22:46	1.1	B	26.16	31.71	92	6.23	1.4
A	S1	5/26/2009	17:23:35	1.1	B	26.14	31.72	92.6	6.26	1.4
A	B1	5/26/2009	17:31:09	5.1	S	25.8	32.23	78.9	5.36	3.3
A	B1	5/26/2009	17:32:03	5	S	25.89	32.05	81.5	5.53	2.5
A	B1	5/26/2009	17:32:56	3.2	M	25.87	32.06	85.1	5.78	2.1
A	B1	5/26/2009	17:33:37	3.2	M	25.91	32.03	85	5.76	2
A	B1	5/26/2009	17:35:08	1.1	B	26.19	31.88	87	5.88	2.8
A	B1	5/26/2009	17:35:52	1.2	B	26.22	31.85	87.8	5.93	2.6
A	S3	5/26/2009	17:44:25	10.3	S	25.77	32.71	85.5	5.79	7.1
A	S3	5/26/2009	17:45:09	10.3	S	25.77	32.7	85.2	5.77	7
A	S3	5/26/2009	17:46:07	5.7	M	25.83	32.42	88.2	5.98	2.8
A	S3	5/26/2009	17:46:52	5.7	M	25.82	32.39	88.9	6.03	2.4
A	S3	5/26/2009	17:47:38	1.3	B	26.1	32.03	94.3	6.38	2
A	S3	5/26/2009	17:48:17	1.3	B	26.08	32.03	94.6	6.4	2
A	S2	5/26/2009	18:13:00	6.7	S	25.79	32.54	85.8	5.81	3.6
A	S2	5/26/2009	18:13:32	6.7	S	25.78	32.57	86.8	5.88	3.5
A	S2	5/26/2009	18:14:28	3.9	M	25.79	32.08	84.3	5.73	2.2
A	S2	5/26/2009	18:14:55	4.2	M	25.8	32.03	85.3	5.8	1.8
A	S2	5/26/2009	18:15:36	1	B	26.1	31.82	90.7	6.14	1.3
A	S2	5/26/2009	18:16:03	1	B	26.15	31.71	93.4	6.32	1.4
A	S1	5/26/2009	18:21:53	7.1	S	25.77	32.52	84.5	5.73	4.4
A	S1	5/26/2009	18:22:33	7.2	S	25.77	32.52	82.6	5.6	4.3
A	S1	5/26/2009	18:23:26	4	M	25.77	32.11	82.7	5.62	2.2
A	S1	5/26/2009	18:24:05	4	M	25.78	32.06	83.8	5.69	1.9
A	S1	5/26/2009	18:24:51	1	B	26.3	31.63	93.7	6.33	1.7
A	S1	5/26/2009	18:25:28	1	B	26.27	31.65	94.6	6.4	1.7
A	B1	5/26/2009	18:32:14	5.2	S	25.77	32.66	85.3	5.78	4.2
A	B1	5/26/2009	18:32:50	5.2	S	25.76	32.69	85.5	5.79	4
A	B1	5/26/2009	18:34:12	3.1	M	25.83	32.15	82.6	5.6	2.1
A	B1	5/26/2009	18:34:52	3.1	M	25.85	32.08	85.1	5.77	2
A	B1	5/26/2009	18:35:35	1.2	B	26.06	31.99	85.9	5.82	2.6
A	B1	5/26/2009	18:36:11	1.2	B	26.06	31.99	85.6	5.79	2.3
A	S3	5/26/2009	18:44:15	9.9	S	25.83	32.44	87.8	5.95	2.8
A	S3	5/26/2009	18:44:52	9.9	S	25.82	32.4	87.8	5.95	2.8
A	S3	5/26/2009	18:45:41	5.5	M	26	32.08	92.2	6.24	2.1
A	S3	5/26/2009	18:46:16	5.5	M	26.01	32.08	92.5	6.26	2.1
A	S3	5/26/2009	18:47:11	1.1	B	25.99	32.05	93.4	6.33	1.9
A	S3	5/26/2009	18:47:48	1.1	B	25.99	32.06	93.3	6.32	2

### Annex D Continuous *In-situ* Measurement Data

Zone	Station	Sampling Date	Time	Depth (m)	Depth	Water Temp (°C)	Salinity (ppt)	D.O. Saturation (%)	D.O. (mg/L)	Turbidity (NTU)
A	S2	5/27/2009	7:35:55	10	B	25.87	32.57	80.1	5.42	2.9
A	S2	5/27/2009	7:36:42	10.1	B	25.87	32.57	79.9	5.41	2.9
A	S2	5/27/2009	7:37:48	5.5	M	25.86	32.35	78.2	5.3	2.3
A	S2	5/27/2009	7:38:37	5.5	M	25.86	32.35	78.6	5.32	2.5
A	S2	5/27/2009	7:39:33	1	S	25.83	31.58	80.9	5.51	1.8
A	S2	5/27/2009	7:40:21	1	S	25.84	31.61	80.9	5.5	1.7
A	S1	5/27/2009	7:48:50	8	B	25.87	32.17	78.2	5.3	1.9
A	S1	5/27/2009	7:49:40	7.8	B	25.88	32.16	77.3	5.24	1.9
A	S1	5/27/2009	7:50:58	4.7	M	25.9	31.96	80	5.43	1.7
A	S1	5/27/2009	7:51:42	4.7	M	25.91	31.93	80.4	5.46	1.6
A	S1	5/27/2009	7:53:32	1.1	S	25.86	31.57	80.9	5.5	1.6
A	S1	5/27/2009	7:54:30	1.1	S	25.89	31.63	80.8	5.49	1.5
A	S1	5/27/2009	8:10:40	8.1	B	25.84	32.22	74.8	5.07	2.3
A	S1	5/27/2009	8:11:28	8.1	B	25.84	32.21	74.4	5.05	2.3
A	S1	5/27/2009	8:12:13	4.6	M	25.92	31.86	78.6	5.34	1.6
A	S1	5/27/2009	8:12:54	4.6	M	25.93	31.91	78.9	5.35	1.5
A	S1	5/27/2009	8:13:42	0.8	S	25.89	31.68	80.3	5.46	1.5
A	S1	5/27/2009	8:14:23	0.8	S	25.89	31.66	80.6	5.48	1.5
A	B1	5/27/2009	8:21:59	5.9	B	25.87	32.05	74.8	5.07	2
A	B1	5/27/2009	8:22:39	5.9	B	25.89	31.98	77.1	5.23	1.9
A	B1	5/27/2009	8:23:31	3.6	M	25.86	31.87	76.7	5.21	1.9
A	B1	5/27/2009	8:24:09	3.6	M	25.88	31.93	76.7	5.21	1.9
A	B1	5/27/2009	8:24:57	1	S	25.91	31.82	79.5	5.4	1.5
A	B1	5/27/2009	8:25:34	1	S	25.88	31.89	78.3	5.32	1.9
A	S3	5/27/2009	8:32:46	12.3	B	25.87	32.6	79.5	5.38	3.8
A	S3	5/27/2009	8:33:27	12.3	B	25.87	32.6	79	5.34	3.6
A	S3	5/27/2009	8:34:47	6.7	M	25.87	32.53	79.5	5.38	2.9
A	S3	5/27/2009	8:35:24	6.7	M	25.87	32.53	79.6	5.39	2.8
A	S3	5/27/2009	8:36:54	1.1	S	25.94	31.71	81.3	5.52	1.7
A	S3	5/27/2009	8:37:35	1.1	S	25.95	31.79	81.3	5.52	1.6
A	S2	5/27/2009	8:44:16	9.3	B	25.87	32.55	78.6	5.32	3.6
A	S2	5/27/2009	8:44:55	9.3	B	25.87	32.56	77.7	5.26	3.4
A	S2	5/27/2009	8:45:51	5	M	25.88	32.42	79.8	5.4	2.6
A	S2	5/27/2009	8:46:34	5	M	25.88	32.43	79.8	5.4	2.6
A	S2	5/27/2009	8:47:21	1.1	S	25.92	31.3	81.8	5.57	1.8
A	S2	5/27/2009	8:48:01	1.1	S	25.92	31.32	82	5.58	1.7
A	S1	5/27/2009	8:53:52	8.1	B	25.84	32.21	76.2	5.17	2.2
A	S1	5/27/2009	8:54:31	8.1	B	25.83	32.23	73.5	4.99	2.2
A	S1	5/27/2009	8:55:21	4.5	M	25.95	32.02	77.8	5.27	1.7
A	S1	5/27/2009	8:55:59	4.5	M	25.94	32.03	76.4	5.18	1.6
A	S1	5/27/2009	8:56:46	1.1	S	25.91	31.65	80.6	5.48	1.7
A	S1	5/27/2009	8:57:27	1.1	S	25.92	31.69	80	5.44	1.6
A	B1	5/27/2009	9:05:22	6.1	B	25.92	31.98	79.7	5.4	1.7
A	B1	5/27/2009	9:05:57	6.1	B	25.91	31.97	79.2	5.37	1.6
A	B1	5/27/2009	9:06:54	3.6	M	26.03	31.74	80.7	5.47	1.3
A	B1	5/27/2009	9:07:32	3.6	M	25.96	31.77	80.1	5.44	1.5
A	B1	5/27/2009	9:08:11	1.3	S	26.04	31.76	80.8	5.48	1.4
A	B1	5/27/2009	9:08:48	1.3	S	26.05	31.75	81	5.49	1.4
A	S3	5/27/2009	9:16:57	12.2	B	25.88	32.83	78.9	5.33	7.5
A	S3	5/27/2009	9:17:35	12.2	B	25.88	32.83	78.5	5.31	7.7
A	S3	5/27/2009	9:18:41	6.6	M	25.87	32.59	79	5.34	3.6
A	S3	5/27/2009	9:19:19	6.6	M	25.87	32.6	79.1	5.35	3.5
A	S3	5/27/2009	9:20:13	1.1	S	25.96	31.9	82	5.56	1.5
A	S3	5/27/2009	9:20:52	1.1	S	25.95	31.91	82	5.56	1.5
A	S2	5/27/2009	9:35:31	9.1	B	25.87	32.58	80.2	5.42	3.9
A	S2	5/27/2009	9:36:16	9.1	B	25.87	32.59	79.2	5.36	3.1
A	S2	5/27/2009	9:37:18	5.2	M	25.88	32.52	80.1	5.42	2.8
A	S2	5/27/2009	9:38:02	5.2	M	25.88	32.52	80.1	5.42	3
A	S2	5/27/2009	9:38:51	1.2	S	26.09	31.2	82.2	5.59	1.7
A	S2	5/27/2009	9:39:35	1.2	S	26.17	31.16	82.9	5.63	1.7
A	S1	5/27/2009	9:44:40	8.3	B	25.86	32.32	78.7	5.34	2.3
A	S1	5/27/2009	9:45:27	8.3	B	25.85	32.32	76.2	5.17	2.3
A	S1	5/27/2009	9:46:20	4.7	M	25.92	32.11	78	5.29	1.7
A	S1	5/27/2009	9:47:10	4.7	M	25.92	32.09	79.2	5.37	1.8
A	S1	5/27/2009	9:48:02	1.1	S	26.05	31.58	81.3	5.52	1.6
A	S1	5/27/2009	9:48:52	1.1	S	26.07	31.53	82.2	5.58	1.7
A	B1	5/27/2009	9:56:09	6	B	25.93	31.96	81.6	5.53	1.6
A	B1	5/27/2009	9:56:55	6	B	25.93	31.97	79.4	5.38	1.6
A	B1	5/27/2009	9:57:42	3.4	M	26.11	31.77	80.8	5.47	1.5

### Annex D Continuous *In-situ* Measurement Data

Zone	Station	Sampling Date	Time	Depth (m)	Depth	Water Temp (°C)	Salinity (ppt)	D.O. Saturation (%)	D.O. (mg/L)	Turbidity (NTU)
A	B1	5/27/2009	9:58:28	3.4	M	26.07	31.77	81.4	5.52	1.5
A	B1	5/27/2009	9:59:27	1.1	S	26.12	31.74	81.8	5.54	1.4
A	B1	5/27/2009	10:00:14	1.1	S	26.13	31.74	81.8	5.54	1.4
A	S3	5/27/2009	10:10:31	11.9	B	25.87	32.85	78.1	5.28	9.1
A	S3	5/27/2009	10:11:20	11.9	B	25.88	32.85	77.6	5.24	9.3
A	S3	5/27/2009	10:12:15	6.6	M	25.86	32.54	78.2	5.3	3.2
A	S3	5/27/2009	10:13:00	6.6	M	25.85	32.52	77.8	5.27	2.9
A	S3	5/27/2009	10:14:03	1.1	S	26.18	31.83	83.6	5.65	1.7
A	S3	5/27/2009	10:14:50	1.1	S	26.17	31.84	84	5.68	1.6
A	S2	5/27/2009	10:34:15	9.4	B	25.88	32.76	79.1	5.34	6.7
A	S2	5/27/2009	10:35:04	9.5	B	25.88	32.75	78.4	5.3	6.1
A	S2	5/27/2009	10:36:25	5.5	M	25.9	32.51	78.7	5.32	3.3
A	S2	5/27/2009	10:37:15	5.5	M	25.9	32.5	79.1	5.35	3.1
A	S2	5/27/2009	10:38:12	1.3	S	26.4	31.09	84	5.68	1.7
A	S2	5/27/2009	10:39:05	1.3	S	26.08	31.35	84.1	5.71	1.8
A	S1	5/27/2009	10:45:23	8.1	B	25.83	32.4	73.5	4.98	4.0
A	S1	5/27/2009	10:46:09	8.1	B	25.83	32.38	71.5	4.85	4.8
A	S1	5/27/2009	10:47:04	4.6	M	25.93	32.1	76.9	5.21	1.8
A	S1	5/27/2009	10:47:46	4.6	M	25.94	32.08	79.5	5.39	1.6
A	S1	5/27/2009	10:48:40	1.1	S	26.06	31.65	81.8	5.55	1.5
A	S1	5/27/2009	10:49:28	1.1	S	26.41	31.36	83.8	5.66	1.6
A	B1	5/27/2009	10:57:48	5.9	B	25.92	32.08	77.7	5.27	2.6
A	B1	5/27/2009	10:58:39	5.9	B	25.92	32.07	76.6	5.19	2.6
A	B1	5/27/2009	10:59:34	3.8	M	26.08	31.82	81.3	5.51	1.8
A	B1	5/27/2009	11:00:28	3.8	M	26.05	31.85	81.6	5.53	1.8
A	B1	5/27/2009	11:01:25	1.2	S	26.26	31.73	84.3	5.69	1.5
A	B1	5/27/2009	11:02:14	1.2	S	26.28	31.75	84.1	5.67	1.5
A	S3	5/27/2009	11:10:28	11.6	B	25.88	32.81	80.4	5.43	5.1
A	S3	5/27/2009	11:12:16	11.5	B	25.88	32.81	79.4	5.36	5.4
A	S3	5/27/2009	11:13:19	6.4	M	25.87	32.62	79.2	5.36	2.8
A	S3	5/27/2009	11:14:06	6.3	M	25.87	32.64	79.4	5.37	3
A	S3	5/27/2009	11:14:54	1.2	S	26.28	31.79	84.8	5.72	2.5
A	S3	5/27/2009	11:15:36	1.3	S	26.19	31.83	85.4	5.77	1.6
A	S3	5/27/2009	11:16:07	1.4	S	26.31	31.8	85.6	5.77	1.5
A	S2	5/27/2009	13:31:52	9.1	B	25.91	32.89	76.6	5.17	6.2
A	S2	5/27/2009	13:33:05	4.9	M	26.01	32.1	77.7	5.26	1.8
A	S2	5/27/2009	13:34:08	1.2	S	26.84	31.5	83.9	5.62	1.5
A	S2	5/27/2009	13:35:23	9.1	B	25.91	32.87	76	5.13	5.5
A	S2	5/27/2009	13:36:31	5	M	25.99	32.22	73.8	4.99	2.1
A	S2	5/27/2009	13:37:47	1.3	S	26.74	31.54	84.7	5.69	1.5
A	S1	5/27/2009	13:45:49	7.9	B	25.88	32.88	78.2	5.28	9.0
A	S1	5/27/2009	13:49:22	4.5	M	25.93	32.4	74.6	5.05	3.4
A	S1	5/27/2009	13:50:21	1.4	S	26.61	31.76	86.5	5.81	1.5
A	S1	5/27/2009	13:51:27	7.8	B	25.89	32.88	77.8	5.25	8.7
A	S1	5/27/2009	13:52:57	4.4	M	25.99	32.17	78.6	5.32	2.1
A	S1	5/27/2009	13:54:08	1.2	S	26.2	31.92	87.4	5.9	1.6
A	B1	5/27/2009	14:03:05	5.7	B	25.83	32.55	74.5	5.04	3.4
A	B1	5/27/2009	14:04:29	2.8	M	25.89	32.46	76.5	5.18	2.4
A	B1	5/27/2009	14:05:21	1.1	S	26	32.26	76.6	5.18	3
A	B1	5/27/2009	14:06:15	5.7	B	25.83	32.53	72.9	4.94	3.4
A	B1	5/27/2009	14:07:06	3	M	25.85	32.49	73.3	4.96	3.3
A	B1	5/27/2009	14:08:05	1.3	S	26.18	32.08	76.6	5.17	3.6
A	S3	5/27/2009	14:15:47	10.9	B	25.94	32.81	81.3	5.48	4.6
A	S3	5/27/2009	14:16:45	6	M	26.13	32.53	81	5.46	3.6
A	S3	5/27/2009	14:17:52	1.1	S	26.4	32.1	85.7	5.76	2.5
A	S3	5/27/2009	14:18:45	10.2	B	25.95	32.79	80.7	5.44	4.0
A	S3	5/27/2009	14:19:40	6	M	25.96	32.67	79.9	5.39	3.5
A	S3	5/27/2009	14:20:41	1.3	S	26.3	32.21	84.4	5.68	2.6
A	R1	5/27/2009	14:32:54	19.3	B	25.89	32.9	80	5.4	10.1
A	R1	5/27/2009	14:34:21	10.6	M	25.91	32.62	78.8	5.32	4.9
A	R1	5/27/2009	14:36:11	0.8	S	26.25	31.94	84	5.67	2.5
A	R1	5/27/2009	14:38:36	19.5	B	25.89	32.9	79.8	5.39	13.9
A	R1	5/27/2009	14:39:57	10.9	M	25.91	32.68	79.9	5.4	4.2
A	R1	5/27/2009	14:41:20	1.3	S	26.31	31.9	84.3	5.68	2.6

### Annex D Continuous *In-situ* Measurement Data

Zone	Station	Sampling Date	Time	Depth (m)	Depth	Water Temp (°C)	Salinity (ppt)	D.O. Saturation (%)	D.O. (mg/L)	Turbidity (NTU)
A	S2	5/28/2009	7:34:12	B	9.3	26.06	32.77	84.5	5.7	3.4
A	S2	5/28/2009	7:35:03	B	9.3	26.06	32.78	83.6	5.63	3.4
A	S2	5/28/2009	7:36:41	M	5.3	25.97	32.68	83.1	5.61	3.1
A	S2	5/28/2009	7:37:39	M	5.3	25.98	32.67	83.1	5.61	3
A	S2	5/28/2009	7:38:31	S	1.1	25.89	32.04	81.7	5.54	2.1
A	S2	5/28/2009	7:39:17	S	1.1	25.89	32.03	81.4	5.52	2.1
A	S1	5/28/2009	7:48:11	B	8.1	26.1	32.96	84	5.65	4.3
A	S1	5/28/2009	7:49:11	B	8.1	26.05	32.89	81.7	5.5	4
A	S1	5/28/2009	7:50:25	M	4.6	25.98	32.63	81.8	5.52	2.9
A	S1	5/28/2009	7:51:30	M	4.5	26.04	32.62	82.1	5.53	2.8
A	S1	5/28/2009	7:52:35	S	1.2	25.82	32.23	81.2	5.51	2.4
A	S1	5/28/2009	7:53:23	S	1.2	25.82	32.25	81	5.5	2.4
A	B1	5/28/2009	8:03:48	B	6.1	26.13	32.99	85.1	5.72	4.1
A	B1	5/28/2009	8:04:39	B	6.3	26.14	32.99	85.4	5.74	4.3
A	B1	5/28/2009	8:05:34	M	3.6	26.13	32.98	84.6	5.68	4.0
A	B1	5/28/2009	8:06:42	M	3.6	26.12	32.91	84.4	5.67	4.0
A	B1	5/28/2009	8:07:43	S	1.1	26.01	32.8	82.4	5.56	3.6
A	B1	5/28/2009	8:08:34	S	1.1	26.04	32.86	82.6	5.56	3.6
A	S3	5/28/2009	8:18:09	B	12.2	26.07	32.93	85.5	5.75	3.5
A	S3	5/28/2009	8:18:55	B	12.3	26.09	32.97	84.9	5.71	3.6
A	S3	5/28/2009	8:19:55	M	6.2	25.99	32.76	84	5.66	3.2
A	S3	5/28/2009	8:20:48	M	6.2	25.99	32.76	83.8	5.66	3.7
A	S3	5/28/2009	8:21:56	S	1	25.92	32.68	82.2	5.56	3.2
A	S3	5/28/2009	8:22:44	S	1	25.92	32.68	82.5	5.57	3.2
A	S2	5/28/2009	8:29:31	B	9.3	26.01	32.76	82.9	5.59	3.7
A	S2	5/28/2009	8:30:22	B	9.2	26	32.76	83.7	5.64	3.1
A	S2	5/28/2009	8:31:34	M	5.2	25.94	32.7	83.5	5.64	2.8
A	S2	5/28/2009	8:32:23	M	5.2	25.95	32.69	83.4	5.63	2.9
A	S2	5/28/2009	8:33:17	S	1.2	25.95	32.43	82.7	5.59	2.4
A	S2	5/28/2009	8:34:05	S	1.2	25.98	32.47	83	5.61	2.6
A	S1	5/28/2009	8:42:29	B	8.1	26.08	32.87	83.4	5.61	3.5
A	S1	5/28/2009	8:43:24	B	8.1	26.08	32.84	83.2	5.6	3.4
A	S1	5/28/2009	8:44:23	M	4.7	26.01	32.74	83.6	5.64	2.9
A	S1	5/28/2009	8:45:10	M	4.7	26.03	32.7	83.7	5.64	3.2
A	S1	5/28/2009	8:46:01	S	1.1	25.85	32.28	83	5.63	2.6
A	S1	5/28/2009	8:46:50	S	1.1	25.88	32.35	82.7	5.6	2.5
A	B1	5/28/2009	8:55:43	B	6.1	26.11	32.99	85.6	5.76	4.4
A	B1	5/28/2009	8:56:29	B	6.1	26.13	33	85.2	5.73	4.2
A	B1	5/28/2009	8:57:28	M	3.6	26.04	32.87	83.7	5.64	4.1
A	B1	5/28/2009	8:58:10	M	3.6	26.06	32.89	83.6	5.63	3.8
A	B1	5/28/2009	8:59:04	S	1	26.05	32.87	83.4	5.61	3.9
A	B1	5/28/2009	8:59:53	S	1	26.06	32.89	83.5	5.62	3.9
A	S3	5/28/2009	9:09:02	B	11.7	26.1	33.01	84.8	5.7	6.4
A	S3	5/28/2009	9:09:56	B	11.7	26.11	33.01	84.3	5.67	6.8
A	S3	5/28/2009	9:10:59	M	6.6	26.03	32.84	84.3	5.68	3.8
A	S3	5/28/2009	9:11:49	M	6.7	26.02	32.82	83.9	5.66	3.6
A	S3	5/28/2009	9:12:55	S	1.2	25.92	32.68	83.1	5.62	3.1
A	S3	5/28/2009	9:13:48	S	1.2	25.93	32.69	82.8	5.59	3.1
A	S2	5/28/2009	9:20:06	B	9.7	25.98	32.74	83.8	5.65	3.3
A	S2	5/28/2009	9:21:00	B	9.6	25.99	32.73	83.6	5.64	3.1
A	S2	5/28/2009	9:22:01	M	5.2	25.92	32.4	83.3	5.64	2.5
A	S2	5/28/2009	9:22:50	M	5.2	25.94	32.54	83.4	5.64	2.6
A	S2	5/28/2009	9:23:46	S	1.2	25.91	32.27	83.4	5.65	2.3
A	S2	5/28/2009	9:24:40	S	1.2	25.91	32.28	83.3	5.65	2.2
A	S1	5/28/2009	9:32:36	B	8.2	26.02	32.78	82.1	5.53	3.6
A	S1	5/28/2009	9:33:22	B	8.2	26.03	32.8	82	5.53	3.7
A	S1	5/28/2009	9:34:13	M	5	25.97	32.71	82.8	5.59	2.9
A	S1	5/28/2009	9:35:13	M	5.2	25.98	32.71	83	5.6	2.9
A	S1	5/28/2009	9:36:35	S	1.2	25.96	32.65	83.1	5.61	2.9
A	S1	5/28/2009	9:37:23	S	1.2	25.96	32.64	83.2	5.62	2.8
A	B1	5/28/2009	9:46:33	B	6.3	26.1	32.96	85.2	5.73	4.3
A	B1	5/28/2009	9:47:29	B	6.3	26.08	32.94	83.8	5.64	4.4
A	B1	5/28/2009	9:48:31	M	3.6	26.03	32.89	82.6	5.56	4.5
A	B1	5/28/2009	9:49:19	M	3.3	26.04	32.9	82.5	5.56	4.2
A	B1	5/28/2009	9:50:29	S	1.2	26.04	32.88	82.4	5.55	4.2
A	B1	5/28/2009	9:51:18	S	1.2	26.05	32.89	82.7	5.57	4.0
A	S3	5/28/2009	10:02:50	B	11.4	26.1	33.03	83.9	5.64	8.2
A	S3	5/28/2009	10:03:38	B	11.1	26.1	33.03	83.5	5.61	8.9
A	S3	5/28/2009	10:04:55	M	6.1	26.03	32.85	84.2	5.67	3.6
A	S3	5/28/2009	10:06:27	M	6.2	26.03	32.87	83.9	5.65	3.8
A	S3	5/28/2009	10:07:28	S	1.1	25.94	32.55	84.3	5.7	2.6

### Annex D Continuous *In-situ* Measurement Data

Zone	Station	Sampling Date	Time	Depth (m)	Depth	Water Temp (°C)	Salinity (ppt)	D.O. Saturation (%)	D.O. (mg/L)	Turbidity (NTU)
A	S3	5/28/2009	10:08:17	S	1.1	25.94	32.55	84.3	5.7	2.8
A	S2	5/28/2009	10:31:39	B	9	26.12	33.01	84	5.65	6.3
A	S2	5/28/2009	10:32:30	B	9	26.11	32.96	83.3	5.6	6.3
A	S2	5/28/2009	10:33:29	M	5.1	25.96	32.7	84.2	5.69	3
A	S2	5/28/2009	10:34:25	M	5.1	25.98	32.72	83.4	5.63	3.4
A	S2	5/28/2009	10:35:17	S	1.4	25.97	32.38	84.3	5.7	2.5
A	S2	5/28/2009	10:36:07	S	1.3	25.97	32.37	84.3	5.7	2.3
A	S1	5/28/2009	10:44:45	B	6.9	26.02	32.77	82.5	5.56	3.5
A	S1	5/28/2009	10:45:32	B	6.9	26.02	32.78	82.5	5.56	3.4
A	S1	5/28/2009	10:46:27	M	4	25.99	32.73	83.8	5.65	3.2
A	S1	5/28/2009	10:47:17	M	4	26	32.7	84	5.67	2.9
A	S1	5/28/2009	10:48:02	S	1	26.01	32.66	84.1	5.68	2.9
A	S1	5/28/2009	10:48:54	S	1	26.01	32.69	84.2	5.68	2.9
A	B1	5/28/2009	10:56:56	B	5.8	26.08	32.92	84	5.65	4.3
A	B1	5/28/2009	10:57:43	B	5.8	26.08	32.93	83.7	5.63	4.5
A	B1	5/28/2009	10:58:36	M	3.5	26.07	32.86	83.4	5.62	4.4
A	B1	5/28/2009	10:59:22	M	3.5	26.1	32.9	83.3	5.61	4.7
A	B1	5/28/2009	11:00:28	S	1.1	26.12	32.89	83.5	5.61	4.8
A	B1	5/28/2009	11:01:15	S	1.1	26.12	32.88	83.3	5.6	4.4
A	S3	5/28/2009	11:11:32	B	10.8	26.08	33.05	84.6	5.69	7.4
A	S3	5/28/2009	11:12:08	B	10.7	26.07	33.05	83.7	5.63	8.6
A	S3	5/28/2009	11:13:13	M	5.6	26.08	32.95	83.9	5.65	4.1
A	S3	5/28/2009	11:13:50	M	5.9	26.11	32.99	83.9	5.64	4.5
A	S3	5/28/2009	11:15:26	S	1.2	26.03	32.69	85	5.74	2.9
A	S3	5/28/2009	11:16:05	S	1.1	26.03	32.66	85.2	5.74	2.9
A	S2	5/28/2009	11:26:29	B	9	26.13	33.01	85	5.71	4.4
A	S2	5/28/2009	11:27:14	B	9	26.14	33	84.5	5.68	4.2
A	S2	5/28/2009	11:28:39	M	5.1	26.03	32.79	83.4	5.62	3.9
A	S2	5/28/2009	11:29:26	M	5.1	25.99	32.71	83.9	5.66	3
A	S2	5/28/2009	11:30:23	S	1.5	26	32.51	85.7	5.79	2.4
A	S2	5/28/2009	11:31:09	S	1.2	26.01	32.53	85.7	5.79	2.5
A	S1	5/28/2009	11:38:31	B	6.9	26.01	32.78	83.2	5.61	3.7
A	S1	5/28/2009	11:39:08	B	6.9	26.01	32.77	82.3	5.55	3.7
A	S1	5/28/2009	11:40:37	M	4	26.07	32.7	85.2	5.74	3.1
A	S1	5/28/2009	11:41:18	M	4	26.07	32.7	85.2	5.74	3
A	S1	5/28/2009	11:42:12	S	1.3	26.05	32.7	85	5.73	2.8
A	S1	5/28/2009	11:42:49	S	1.4	26.05	32.7	85	5.73	3.2
A	B1	5/28/2009	11:51:17	B	5.7	26.1	32.88	84.9	5.71	4.2
A	B1	5/28/2009	11:52:00	B	5.8	26.12	32.89	84.5	5.68	4.0
A	B1	5/28/2009	11:52:56	M	3.6	26.2	32.83	85.5	5.75	3.5
A	B1	5/28/2009	11:53:36	M	3.5	26.14	32.88	85.2	5.73	3.9
A	B1	5/28/2009	11:54:32	S	1.3	26.2	32.85	85.6	5.75	4.0
A	B1	5/28/2009	11:55:14	S	1.3	26.2	32.84	85.1	5.72	3.3
A	S3	5/28/2009	12:05:23	B	11.2	26.03	33.02	83.9	5.65	6.9
A	S3	5/28/2009	12:06:11	B	11	26.04	33.01	83.7	5.63	7.1
A	S3	5/28/2009	12:07:38	M	6.1	26.03	32.91	84.5	5.69	3.8
A	S3	5/28/2009	12:08:12	M	6.1	26.03	32.9	84.5	5.69	3.5
A	S3	5/28/2009	12:09:15	S	1.3	26.08	32.77	85.9	5.79	3.1
A	S3	5/28/2009	12:09:53	S	1.2	26.07	32.84	85.7	5.77	3.2
A	S2	5/28/2009	13:02:52	B	9.4	26.13	33.03	83.4	5.6	5.2
A	S2	5/28/2009	13:03:30	B	9.5	26.14	33.01	83.9	5.64	4.2
A	S2	5/28/2009	13:04:38	M	5.1	26.09	32.63	86	5.79	2.8
A	S2	5/28/2009	13:05:26	M	5.1	26.07	32.63	86.2	5.81	2.7
A	S2	5/28/2009	13:06:42	S	1	26.21	32.57	87.8	5.9	2.4
A	S2	5/28/2009	13:07:21	S	0.9	26.22	32.57	87.8	5.91	2.6
A	S1	5/28/2009	13:15:32	B	8.1	26.1	32.96	81.1	5.45	6.7
A	S1	5/28/2009	13:16:21	B	8.1	26.11	32.95	81.9	5.51	5.2
A	S1	5/28/2009	13:17:21	M	4.7	26.16	32.73	85.6	5.76	3.2
A	S1	5/28/2009	13:17:52	M	4.7	26.17	32.73	86.4	5.81	3.4
A	S1	5/28/2009	13:18:45	S	1	26.19	32.74	87.2	5.86	3
A	S1	5/28/2009	13:19:23	S	1	26.19	32.73	87.2	5.86	2.9
A	B1	5/28/2009	13:29:24	B	6.2	26.09	32.92	83.7	5.63	6.1
A	B1	5/28/2009	13:30:01	B	6.2	26.09	32.91	83.7	5.63	6.1
A	B1	5/28/2009	13:31:01	M	3.6	26.18	32.85	85.3	5.73	3.4
A	B1	5/28/2009	13:31:39	M	3.6	26.15	32.86	85.2	5.73	3.8
A	B1	5/28/2009	13:32:48	S	0.9	26.11	32.85	84.9	5.71	3.5
A	B1	5/28/2009	13:33:32	S	0.8	26.11	32.85	84.9	5.71	3.5
A	S3	5/28/2009	13:43:42	B	11.2	26.03	33.17	84.3	5.67	7.7
A	S3	5/28/2009	13:44:17	B	11.2	26.03	33.18	84.1	5.66	7.9
A	S3	5/28/2009	13:45:34	M	6.3	26.04	33.03	83.8	5.64	8
A	S3	5/28/2009	13:46:14	M	6.2	26.04	33.02	83.9	5.64	7.2



### Annex D Continuous *In-situ* Measurement Data

Zone	Station	Sampling Date	Time	Depth (m)	Depth	Water Temp (°C)	Salinity (ppt)	D.O. Saturation (%)	D.O. (mg/L)	Turbidity (NTU)
A	S3	5/28/2009	13:47:17	S	1.2	26.1	32.95	85.9	5.78	4.5
A	S3	5/28/2009	13:47:52	S	1.2	26.1	32.95	86.1	5.79	4.4
A	S2	5/28/2009	14:34:38	B	7.8	26.11	32.95	84.4	5.67	4.1
A	S2	5/28/2009	14:35:33	M	4.4	26.17	32.74	87.6	5.89	3
A	S2	5/28/2009	14:36:30	S	1.1	26.2	32.73	89.5	6.01	2.8
A	S2	5/28/2009	14:37:39	B	8	26.12	32.97	84.5	5.68	3.8
A	S2	5/28/2009	14:38:33	M	4.7	26.17	32.76	88	5.92	3.3
A	S2	5/28/2009	14:39:20	S	1.3	26.2	32.72	89.3	6	3.1
A	S1	5/28/2009	14:46:22	B	8	26.11	33.01	83.7	5.62	3.9
A	S1	5/28/2009	14:47:06	M	4.4	26.11	32.81	86.8	5.84	3.5
A	S1	5/28/2009	14:47:55	S	0.9	26.11	32.8	87.5	5.89	3.6
A	S1	5/28/2009	14:48:56	B	7.9	26.12	33.01	84.4	5.67	4.2
A	S1	5/28/2009	14:50:14	M	4.7	26.09	32.88	85.8	5.77	3.8
A	S1	5/28/2009	14:51:01	S	1.3	26.1	32.81	87	5.86	3.6
A	B1	5/28/2009	14:58:29	B	6	26.12	33.01	83.8	5.64	6.4
A	B1	5/28/2009	14:59:32	M	3.3	26.2	32.95	84.3	5.66	5.7
A	B1	5/28/2009	15:00:17	S	1.1	26.24	32.95	87	5.84	4.8
A	B1	5/28/2009	15:01:35	B	5.8	26.12	33.01	83.9	5.64	6.2
A	B1	5/28/2009	15:02:44	M	3.7	26.17	32.98	85.4	5.73	4.2
A	B1	5/28/2009	15:03:49	S	1.2	26.24	32.95	86.9	5.83	4.6
A	S3	5/28/2009	15:12:45	B	10.7	26.03	33.11	85.6	5.76	5.5
A	S3	5/28/2009	15:13:54	M	5.9	26.06	33	86.7	5.84	4.6
A	S3	5/28/2009	15:15:15	S	1	26.08	32.96	87.2	5.87	4.2
A	S3	5/28/2009	15:16:13	B	10.7	26.04	33.09	85.4	5.74	5.3
A	S3	5/28/2009	15:17:16	M	5.9	26.05	33.01	86.6	5.83	4.6
A	S3	5/28/2009	15:18:06	S	1	26.12	32.91	87.2	5.86	4
A	R1	5/28/2009	15:32:26	B	19.2	26.02	33.05	84.5	5.69	6.4
A	R1	5/28/2009	15:33:41	M	10.1	26.06	32.82	83.5	5.62	6.2
A	R1	5/28/2009	15:35:07	S	1	26.09	32.65	85.6	5.77	4.1
A	R1	5/28/2009	15:36:08	B	19.7	26.02	33.05	84	5.65	7.9
A	R1	5/28/2009	15:37:08	M	10.3	26.09	32.76	83.6	5.63	5.1
A	R1	5/28/2009	15:38:02	S	1.2	26.1	32.66	85.3	5.75	4.1
A	S2	5/28/2009	16:10:35	B	9.3	26.02	33.23	84.2	5.66	8.5
A	S2	5/28/2009	16:11:17	B	9.3	26.03	33.21	83.9	5.64	8.3
A	S2	5/28/2009	16:12:16	M	5.3	26.14	32.83	88.9	5.98	3.4
A	S2	5/28/2009	16:12:57	M	5.3	26.15	32.82	88.8	5.97	3.1
A	S2	5/28/2009	16:14:04	S	1.1	26.09	32.67	88.3	5.95	2.9
A	S2	5/28/2009	16:14:36	S	1.2	26.1	32.67	88.4	5.96	2.8
A	S1	5/28/2009	16:20:44	B	7.2	26.1	32.95	84.8	5.7	5
A	S1	5/28/2009	16:21:31	B	7.2	26.09	33.05	82	5.51	7.3
A	S1	5/28/2009	16:22:59	M	4.9	26.09	32.87	87.1	5.86	4.1
A	S1	5/28/2009	16:23:31	M	4.9	26.08	32.85	87.4	5.88	4.1
A	S1	5/28/2009	16:25:22	S	1.1	26.09	32.83	87.7	5.9	4.1
A	S1	5/28/2009	16:25:54	S	1	26.09	32.82	87.7	5.9	4.1
A	B1	5/28/2009	16:33:33	B	5.1	26.03	33.08	84.7	5.7	8.9
A	B1	5/28/2009	16:34:18	B	4.9	26.04	33.09	83.6	5.62	9.6
A	B1	5/28/2009	16:35:59	M	2.6	26.08	33.05	81	5.45	10.0
A	B1	5/28/2009	16:36:33	M	2.6	26.08	33.03	82	5.51	8.6
A	B1	5/28/2009	16:37:38	S	1.1	26.1	32.99	84.2	5.66	7.2
A	B1	5/28/2009	16:38:13	S	1.1	26.09	33.01	82.8	5.57	7.9
A	S3	5/28/2009	16:47:56	B	10.3	26.04	32.98	87.1	5.87	4.4
A	S3	5/28/2009	16:48:41	B	10.4	26.05	32.98	86.6	5.83	4.5
A	S3	5/28/2009	16:50:18	M	5.7	26.06	32.93	87.4	5.88	4
A	S3	5/28/2009	16:50:53	M	5.7	26.06	32.93	87.3	5.88	4.1
A	S3	5/28/2009	16:51:50	S	0.9	26.05	32.92	88	5.92	4
A	S3	5/28/2009	16:52:20	S	1	26.05	32.92	88	5.92	3.9
A	S2	5/28/2009	17:11:23	B	8.2	26.14	32.88	87.5	5.88	3.7
A	S2	5/28/2009	17:12:09	B	8.2	26.12	32.96	86.5	5.81	4.4
A	S2	5/28/2009	17:13:11	M	4.5	26.12	32.85	88.8	5.97	3.5
A	S2	5/28/2009	17:13:54	M	4.5	26.12	32.84	89.4	6.01	3.1
A	S2	5/28/2009	17:15:18	S	1.2	26.1	32.74	89	5.99	3
A	S2	5/28/2009	17:15:52	S	1.2	26.09	32.73	88.9	5.99	2.9
A	S1	5/28/2009	17:21:38	B	7	26.07	32.89	84	5.65	5
A	S1	5/28/2009	17:22:12	B	7	26.09	32.89	84.6	5.69	4.6
A	S1	5/28/2009	17:23:08	M	4.2	26.08	32.86	85	5.72	4.6
A	S1	5/28/2009	17:23:40	M	4.2	26.08	32.86	85.5	5.75	4.3
A	S1	5/28/2009	17:25:23	S	1	26.06	32.85	87.3	5.88	3.8
A	S1	5/28/2009	17:25:57	S	1	26.06	32.84	87.3	5.88	3.9
A	B1	5/28/2009	17:35:22	B	5	26.06	33.05	83.5	5.62	7.3
A	B1	5/28/2009	17:35:58	B	5	26.05	33.07	82.5	5.55	8.3
A	B1	5/28/2009	17:36:57	M	2.8	26.1	32.99	81.9	5.51	6.8

### Annex D Continuous *In-situ* Measurement Data

Zone	Station	Sampling Date	Time	Depth (m)	Depth	Water Temp (°C)	Salinity (ppt)	D.O. Saturation (%)	D.O. (mg/L)	Turbidity (NTU)
A	B1	5/28/2009	17:37:29	M	2.9	26.1	32.95	82.4	5.54	6.7
A	B1	5/28/2009	17:38:24	S	1.1	26.09	32.97	83	5.58	6.7
A	B1	5/28/2009	17:38:59	S	1.1	26.09	32.98	83	5.58	6.7
A	S3	5/28/2009	17:48:38	B	10.5	26.04	33.01	85.9	5.78	4.6
A	S3	5/28/2009	17:49:11	B	10.5	26.05	32.99	85.8	5.78	4.6
A	S3	5/28/2009	17:50:20	M	5.9	26.08	32.92	87.1	5.86	3.8
A	S3	5/28/2009	17:50:59	M	5.9	26.07	32.92	87	5.86	3.9
A	S3	5/28/2009	17:52:12	S	1.2	26.07	32.92	87.5	5.89	3.9
A	S3	5/28/2009	17:52:52	S	1.2	26.06	32.92	87.5	5.89	3.7
A	S2	5/28/2009	18:15:14	B	7.9	26.12	32.9	87	5.85	4.2
A	S2	5/28/2009	18:15:55	B	7.9	26.12	32.91	85.7	5.76	4.3
A	S2	5/28/2009	18:17:06	M	4.5	26.11	32.85	89.3	6.01	3.4
A	S2	5/28/2009	18:17:37	M	4.5	26.1	32.81	88.4	5.95	3.3
A	S2	5/28/2009	18:18:46	S	1.1	26.08	32.78	88.9	5.99	3
A	S2	5/28/2009	18:19:09	S	1.1	26.07	32.79	89	5.99	3
A	S1	5/28/2009	18:24:40	B	7.2	26.13	32.96	87.6	5.89	4.6
A	S1	5/28/2009	18:25:05	B	7.1	26.13	32.96	87	5.85	4.4
A	S1	5/28/2009	18:25:51	M	4.3	26.08	32.9	85.7	5.77	4.4
A	S1	5/28/2009	18:26:46	M	4.3	26.04	32.87	86.3	5.81	4.5
A	S1	5/28/2009	18:27:41	S	0.8	26.05	32.88	86.3	5.81	4.9
A	S1	5/28/2009	18:28:05	S	0.8	26.05	32.88	86.2	5.81	4.7
A	B1	5/28/2009	18:36:22	B	4.5	26.1	33.02	82.4	5.54	6.7
A	B1	5/28/2009	18:36:57	B	4.5	26.1	33.03	82.4	5.54	7.0
A	B1	5/28/2009	18:38:30	M	2.4	26.11	32.95	83.6	5.62	5.3
A	B1	5/28/2009	18:39:03	M	2.4	26.12	32.97	83.5	5.61	5.9
A	B1	5/28/2009	18:40:20	S	1	26.1	32.95	83.7	5.63	5.6
A	B1	5/28/2009	18:40:57	S	1	26.08	32.91	83.7	5.63	5.4
A	S3	5/28/2009	18:48:08	B	10.2	26.04	33.03	84.9	5.71	5.5
A	S3	5/28/2009	18:48:43	B	10.2	26.04	33.03	84.4	5.68	5.9
A	S3	5/28/2009	18:50:29	M	5.7	26.06	32.97	86.2	5.8	4.7
A	S3	5/28/2009	18:51:04	M	5.7	26.07	32.96	86.2	5.8	4.2
A	S3	5/28/2009	18:52:04	S	1	26.02	32.93	86.4	5.82	4
A	S3	5/28/2009	18:52:45	S	1.1	26.02	32.93	86.4	5.82	3.7