

Figure D1 Dissolved Oxygen (mg/L) at the surface and mid-depth, dissolved oxygen (mg/L) near the bottom and depth-averaged turbidity (NTU) of water samples measured at all the impact monitoring stations within Zone A on 19 May 2009.



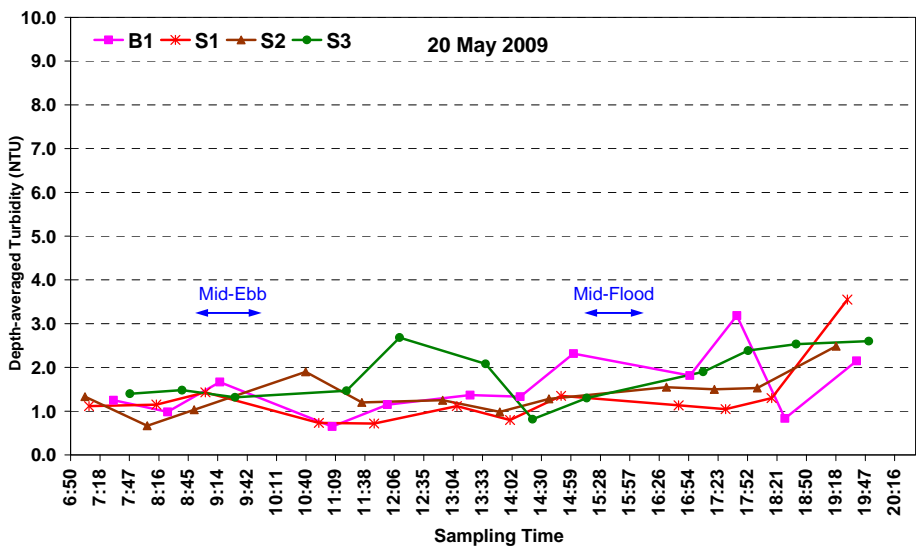
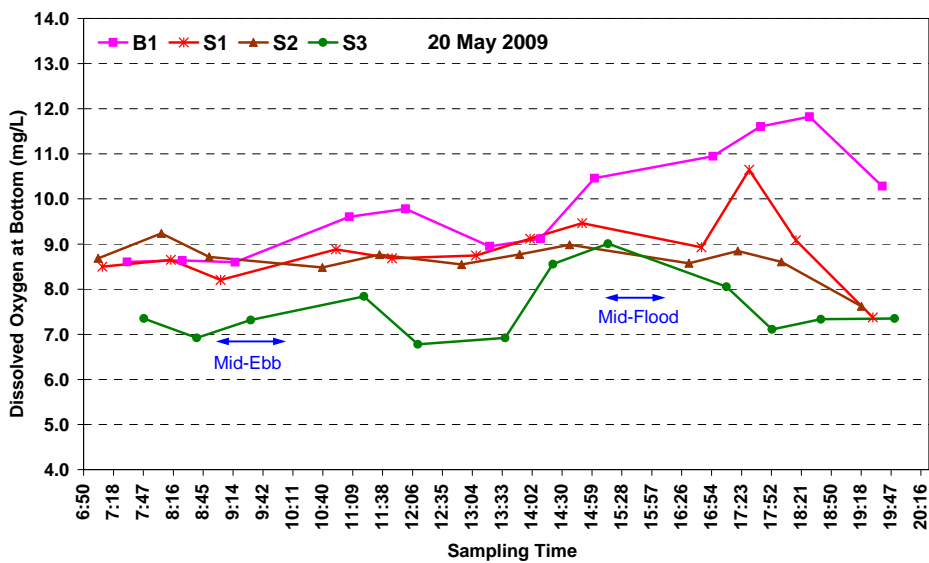
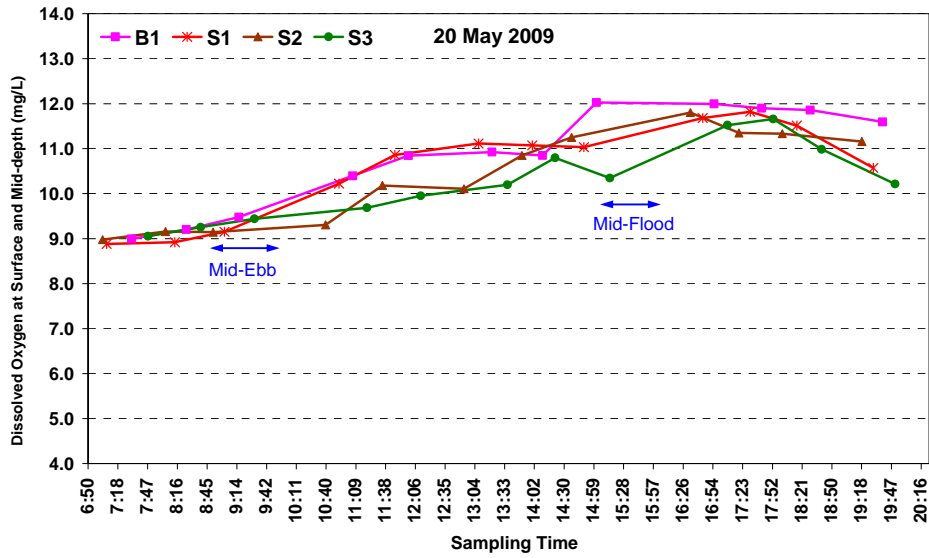


Figure D2 Dissolved Oxygen (mg/L) at the surface and mid-depth, dissolved oxygen (mg/L) near the bottom and depth-averaged turbidity (NTU) of water samples measured at all the impact monitoring stations within Zone A on 20 May 2009.



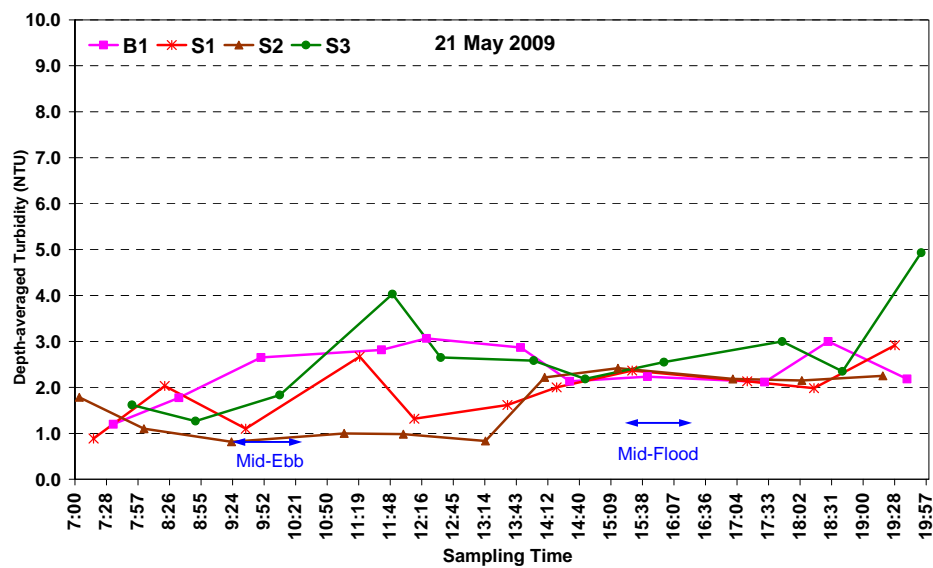
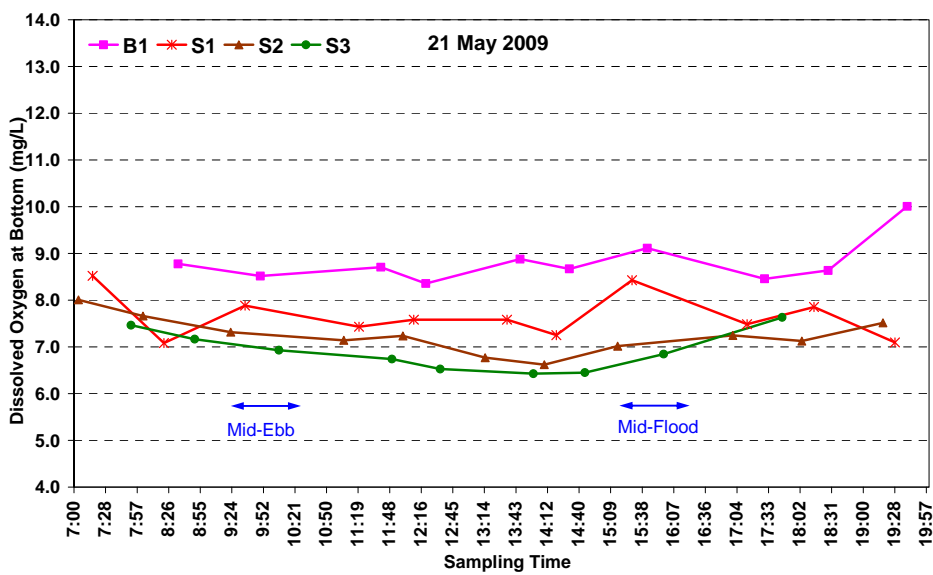
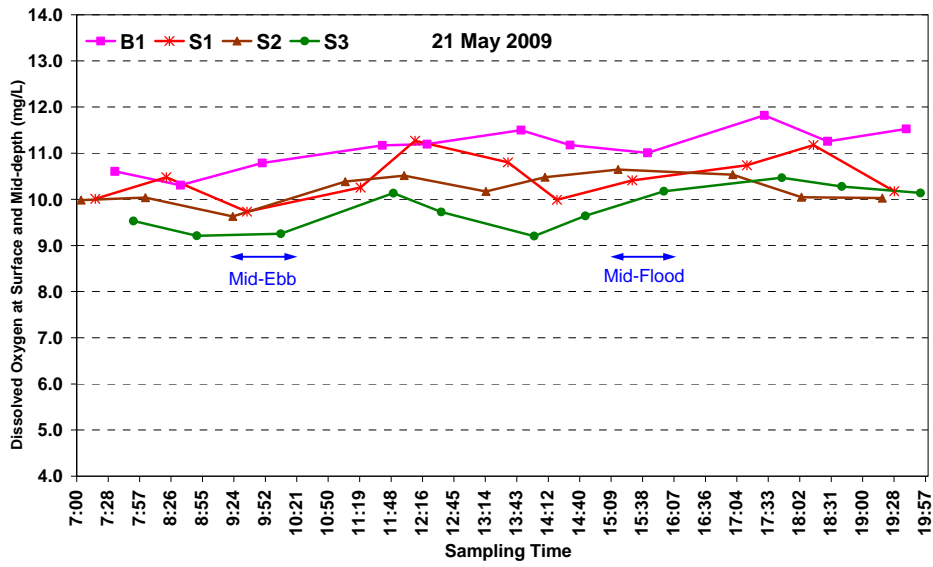


Figure D3 Dissolved Oxygen (mg/L) at the surface and mid-depth, dissolved oxygen (mg/L) near the bottom and depth-averaged turbidity (NTU) of water samples measured at all the impact monitoring stations within Zone E on 21 May 2009



Annex D Continuous *In-situ* Measurement Data

Zone	Station	Sampling Date	Time	Depth (m)	Depth	Water Temp (°C)	Salinity (ppt)	D.O. Saturation (%)	D.O. (mg/L)	Turbidity (NTU)	
A	S2	19/05/09	13:59 to 14:13	1	S	27.2	32.7	142.60	9.39	3.24	
A	S2	19/05/09				S	27.2	32.7	142.10	9.35	3.29
A	S2	19/05/09			5.6	M	26.3	32.9	143.30	9.43	2.23
A	S2	19/05/09				M	26.3	32.8	142.90	9.40	2.29
A	S2	19/05/09			10.2	B	26	33	131.50	8.86	3.02
A	S2	19/05/09				B	26	33	131.00	8.82	3.10
A	S3	19/05/09	14:18 to 14:33	1	S	27.2	32.8	145.40	4.57	1.64	
A	S3	19/05/09				S	27.2	32.7	144.70	9.52	1.69
A	S3	19/05/09			6.7	M	26.4	32.9	141.30	9.30	4.51
A	S3	19/05/09				M	26.3	32.9	142.40	9.37	4.57
A	S3	19/05/09			12.4	B	26.2	33.1	133.60	8.79	4.30
A	S3	19/05/09				B	26.1	33	134.20	8.83	4.33
A	R1	19/05/09	14:38 to 14:52	1	S	26.6	32.6	146.20	9.62	1.79	
A	R1	19/05/09			1	S	26.6	32.7	146.80	9.66	1.72
A	R1	19/05/09			7.3	M	26.1	32.7	143.40	9.50	1.48
A	R1	19/05/09			7.3	M	26.1	32.8	142.90	9.47	1.52
A	R1	19/05/09			13.6	B	25.4	33.2	110.20	7.50	2.49
A	R1	19/05/09			13.6	B	25.4	33.2	110.80	7.55	2.53
A	B1	19/05/09	15:05 to 15:20	1	S	28.3	33	133.80	8.75	3.01	
A	B1	19/05/09			1	S	28.3	32.6	133.40	8.72	3.01
A	B1	19/05/09			5.3	M	27.2	32.9	145.80	9.63	2.05
A	B1	19/05/09			5.3	M	27.3	32.8	145.50	9.65	2.06
A	B1	19/05/09			9.6	B	26.6	33.2	123.40	8.42	3.61
A	B1	19/05/09			9.6	B	26.6	33	123.00	8.40	3.62
A	S1	19/05/09	15:25 to 15:36	1	S	27.4	32.7	158.20	10.68	1.21	
A	S1	19/05/09			1	S	27.3	32.5	158.00	10.64	1.22
A	S1	19/05/09			5	M	27.2	32.8	161.40	10.61	1.51
A	S1	19/05/09			5	M	27.1	32.6	161.10	10.61	1.52
A	S1	19/05/09			9	B	27.1	32.9	153.30	10.22	2.42
A	S1	19/05/09			9	B	27	32.8	153.40	10.20	2.44
A	S2	19/05/09	15:41 to 15:52	1	S	27.4	32.6	160.10	10.62	3.41	
A	S2	19/05/09			1	S	27.3	32.7	160.20	10.63	3.41
A	S2	19/05/09			5.5	M	26.3	32.8	155.30	10.41	2.41
A	S2	19/05/09			5.5	M	26.3	32.7	155.00	10.40	2.40
A	S2	19/05/09			10	B	26	33	140.30	9.54	1.95
A	S2	19/05/09			10	B	26	33.1	140.40	9.55	1.90
A	S3	19/05/09	15:56 to 16:07	1	S	27.2	32.4	161.40	10.35	2.31	
A	S3	19/05/09			1	S	27.6	32.3	161.20	10.30	2.32
A	S3	19/05/09			6.5	M	27.2	33	153.70	10.28	1.64
A	S3	19/05/09			6.5	M	27.1	33	153.50	10.24	1.61
A	S3	19/05/09			12	B	27.1	33.1	154.50	10.39	1.41
A	S3	19/05/09			12	B	27.1	33.2	154.40	10.41	1.41
A	R1	19/05/09	16:14 to 16:25	1	S	27.3	31.6	161.40	10.73	1.42	
A	R1	19/05/09			1	S	27.4	27.4	161.00	10.71	1.42
A	R1	19/05/09			6.9	M	26.2	32.9	144.60	9.77	1.47
A	R1	19/05/09			6.9	M	26.3	32.8	144.00	9.74	1.47
A	R1	19/05/09			12.8	B	25.9	33	136.50	9.20	2.54
A	R1	19/05/09			12.8	B	25.8	32.9	136.30	9.17	2.60
A	B1	19/05/09	16:35 to 16:45	1	S	28.3	33	136.50	8.86	2.64	
A	B1	19/05/09			1	S	28.4	33.2	135.80	8.82	2.64
A	B1	19/05/09			5.4	M	27.5	33	138.80	9.11	2.31
A	B1	19/05/09			5.4	M	27.5	33.1	138.40	9.10	2.31
A	B1	19/05/09			9.8	B	26.4	33.2	125.70	8.42	4.41
A	B1	19/05/09			9.8	B	26.2	33.4	125.30	8.40	4.40
A	S1	19/05/09	16:49 to 17:00	1	S	27.3	32.8	155.50	10.30	1.71	
A	S1	19/05/09			1	S	27.4	33	155.00	10.25	1.72
A	S1	19/05/09			5.5	M	27.1	33.1	148.00	9.96	1.28
A	S1	19/05/09			5.5	M	27	33	147.60	9.95	1.29
A	S1	19/05/09			10	B	26.3	33.3	140.90	9.49	2.51
A	S1	19/05/09			10	B	26.2	33.2	140.50	9.47	2.51
A	S2	19/05/09	17:03 to 17:13	1	S	27.3	32.6	156.60	10.07	2.05	
A	S2	19/05/09			1	S	27.5	32.4	156.00	10.00	2.13
A	S2	19/05/09			5.9	M	26.7	33.2	148.50	9.91	1.86
A	S2	19/05/09			5.9	M	26.3	33	148.00	9.89	1.86
A	S2	19/05/09			10.8	B	25.9	33.1	128.70	8.98	3.00
A	S2	19/05/09			10.8	B	25.7	33	128.00	8.94	2.92
A	S3	19/05/09	17:17 to 17:27	1	S	27	32.4	169.10	11.22	2.00	
A	S3	19/05/09			1	S	26.9	32.1	169.20	11.20	2.00
A	S3	19/05/09			6.7	M	26.1	33.1	135.90	9.10	1.71
A	S3	19/05/09			6.7	M	26.2	33	135.90	9.10	1.76
A	S3	19/05/09			12.4	B	25.6	33.3	115.90	8.03	1.14
A	S3	19/05/09			12.4	B	25.5	33.4	115.60	8.00	1.14

Annex D Continuous *In-situ* Measurement Data

Zone	Station	Sampling Date	Time	Depth (m)	Depth	Water Temp (°C)	Salinity (ppt)	D.O. Saturation (%)	D.O. (mg/L)	Turbidity (NTU)
A	R1	19/05/09	17:33 to 17:44	1	S	26.5	32.4	167.10	11.12	1.13
A	R1	19/05/09		1	S	26.1	32.1	166.70	11.10	1.10
A	R1	19/05/09		6.8	M	25.8	33	133.40	9.11	1.40
A	R1	19/05/09		6.8	M	25.7	33.1	133.00	9.10	1.41
A	R1	19/05/09		12.6	B	25.7	33.1	132.40	8.95	2.21
A	R1	19/05/09		12.6	B	25.6	33	132.00	8.92	2.22
A	B1	19/05/09	17:55 to 18:08	1	S	27.6	33	147.80	9.74	2.40
A	B1	19/05/09		1	S	27.6	33.1	147.20	9.70	2.47
A	B1	19/05/09		5.2	M	27.2	32.9	162.00	10.68	2.15
A	B1	19/05/09		5.2	M	27.2	32.9	161.50	10.64	2.19
A	B1	19/05/09		9.4	B	26.8	33.1	144.50	9.57	2.30
A	B1	19/05/09		9.4	B	26.8	33.1	144.40	9.54	2.37
A	S1	19/05/09	18:11 to 18:23	1	S	27.6	32.9	150.20	10.39	3.21
A	S1	19/05/09		1	S	27.6	32.8	149.60	10.36	3.25
A	S1	19/05/09		5.4	M	27.3	33	159.10	10.52	2.96
A	S1	19/05/09		5.4	M	27.3	33	160.40	10.55	2.92
A	S1	19/05/09		9.8	B	27.1	33.1	160.40	10.61	2.47
A	S1	19/05/09		9.8	B	27.1	33.1	160.90	10.64	2.53
A	S2	19/05/09	18:27 to 18:40	1	S	27.2	32.1	157.50	10.34	2.10
A	S2	19/05/09		1	S	27.2	32	157.00	10.30	2.17
A	S2	19/05/09		6.2	M	27	32.9	149.10	9.86	1.98
A	S2	19/05/09		6.2	M	27	32.9	149.50	9.89	1.92
A	S2	19/05/09		11.4	B	26.7	33.1	151.00	10.02	2.32
A	S2	19/05/09		11.4	B	26.7	33	151.70	10.07	2.27
A	S3	19/05/09	18:45 to 18:51	1	S	27.1	32.3	161.90	10.85	1.91
A	S3	19/05/09		1	S	27.1	32.3	162.40	10.88	1.98
A	S3	19/05/09		6.9	M	26.7	32.7	160.40	10.73	1.75
A	S3	19/05/09		6.9	M	26.7	32.7	159.90	10.70	1.79
A	S3	19/05/09		12.8	B	26.3	33	147.70	9.90	2.70
A	S3	19/05/09		12.8	B	26.3	33	148.20	9.94	2.77
A	R1	19/05/09	18:56 to 19:06	1	S	27	32.4	164.60	10.91	2.50
A	R1	19/05/09		1	S	27	32.4	164.00	10.87	2.56
A	R1	19/05/09		7.1	M	26.2	32.9	142.20	9.58	1.84
A	R1	19/05/09		7.1	M	26.1	33	142.50	9.59	1.89
A	R1	19/05/09		13.2	B	25.6	33.2	126.20	8.61	2.40
A	R1	19/05/09		13.2	B	25.6	33.2	125.50	8.57	2.48
A	B1	19/05/09	19:16 to 19:26	1	S	27.6	33	154.60	10.06	2.38
A	B1	19/05/09		1	S	27.6	33.1	155.00	10.09	2.32
A	B1	19/05/09		5.3	M	27.3	33	155.40	10.23	3.46
A	B1	19/05/09		5.3	M	27.3	33	154.90	10.20	3.49
A	B1	19/05/09		9.6	B	26.2	33.1	146.20	9.78	2.39
A	B1	19/05/09		9.6	B	26.2	33	145.70	9.74	2.32
A	S1	19/05/09	19:30 to 19:40	1	S	27.6	33	148.20	9.77	2.40
A	S1	19/05/09		1	S	27.6	33	147.70	9.74	2.45
A	S1	19/05/09		4.9	M	27.2	33	158.70	10.49	2.24
A	S1	19/05/09		4.9	M	27.2	33.1	158.20	10.46	2.29
A	S1	19/05/09		8.8	B	26.8	33	156.80	10.42	2.62
A	S1	19/05/09		8.8	B	26.8	33	156.20	10.37	2.66
A	S2	19/05/09	19:44 to 19:55	1	S	26.9	32.5	160.30	10.69	2.60
A	S2	19/05/09		1	S	26.9	32.5	160.80	10.65	2.64
A	S2	19/05/09		6.3	M	26.6	32.9	148.60	9.97	2.39
A	S2	19/05/09		6.3	M	26.6	32.8	148.10	9.93	2.32
A	S2	19/05/09		11.6	B	26.1	33.1	147.10	9.90	2.74
A	S2	19/05/09		11.6	B	26.1	33	147.60	9.94	2.79
A	S3	19/05/09	20:00 to 20:12	1	S	26.8	32.7	158.80	10.61	3.17
A	S3	19/05/09		1	S	26.8	32.8	159.30	10.64	3.21
A	S3	19/05/09		6.95	M	26.6	32.8	154.60	10.35	2.95
A	S3	19/05/09		6.95	M	26.6	32.9	154.90	10.37	2.99
A	S3	19/05/09		13.9	B	25.8	33.1	129.40	8.72	3.06
A	S3	19/05/09		13.9	B	25.7	33.1	129.00	8.69	3.09
A	R1	19/05/09	20:18 to 20:30	1	S	26.7	32.6	152.30	10.21	3.40
A	R1	19/05/09		1	S	26.7	32.6	152.70	10.24	3.47
A	R1	19/05/09		7.4	M	26.3	32.8	150.20	10.08	3.15
A	R1	19/05/09		7.4	M	26.3	32.8	150.70	10.11	3.19
A	R1	19/05/09		13.8	B	26.2	32.7	149.00	9.99	2.95
A	R1	19/05/09		13.8	B	26.2	32.8	148.50	9.95	2.98
A	B1	19/05/09	20:40 to 20:50	1	S	27.6	33.1	151.00	9.91	2.80
A	B1	19/05/09		1	S	27.6	33.1	151.40	9.94	2.84
A	B1	19/05/09		5.2	M	27.6	33.1	151.50	9.92	2.69
A	B1	19/05/09		5.2	M	27.6	33.1	152.00	9.96	2.73
A	B1	19/05/09		9.4	B	27.2	33	153.00	10.13	2.92
A	B1	19/05/09		9.4	B	27.1	33.1	152.60	10.10	3.01

Annex D Continuous *In-situ* Measurement Data

Zone	Station	Sampling Date	Time	Depth (m)	Depth	Water Temp (°C)	Salinity (ppt)	D.O. Saturation (%)	D.O. (mg/L)	Turbidity (NTU)
A	S1	19/05/09	20:53 to 21:04	1	S	27.5	33	154.4	10.15	2.5
A	S1	19/05/09		1	S	27.6	33	154.90	10.19	2.55
A	S1	19/05/09		5.1	M	27.6	33.1	140.00	9.32	2.43
A	S1	19/05/09		5.1	M	27.6	33.1	140.40	9.35	2.49
A	S1	19/05/09		9.2	B	26.7	33.2	139.10	9.26	2.30
A	S1	19/05/09		9.2	B	26.7	33.1	138.70	9.23	2.37
A	S2	19/05/09	21:08 to 21:20	1	S	27.3	33	147.40	9.72	2.27
A	S2	19/05/09		1	S	27.3	33	147.80	9.75	2.31
A	S2	19/05/09		6.4	M	27	33.1	148.30	9.84	2.15
A	S2	19/05/09		6.4	M	27	33.1	147.90	9.80	2.19
A	S2	19/05/09		11.8	B	26.2	33.1	151.60	10.08	2.50
A	S2	19/05/09		11.8	B	26.2	33.1	151.10	10.04	2.57
A	S3	19/05/09	21:25 to 21:35	1	S	27.2	33	142.60	9.39	2.42
A	S3	19/05/09		1	S	27.2	33.1	143.10	9.35	2.45
A	S3	19/05/09		7	M	26.8	33.3	145.30	9.62	1.80
A	S3	19/05/09		7	M	26.8	33.2	144.70	9.57	1.84
A	S3	19/05/09		13	B	26	33.1	137.30	9.25	2.09
A	S3	19/05/09		13	B	26	33.2	137.80	9.29	2.14
A	R1	19/05/09	21:38 to 21:47	1	S	26.6	32.3	148.10	9.91	1.96
A	R1	19/05/09		1	S	26.6	32.4	148.80	9.96	1.93
A	R1	19/05/09		7.2	M	26.5	32.9	150.60	10.06	1.77
A	R1	19/05/09		7.2	M	26.5	32.9	150.90	10.08	1.79
A	R1	19/05/09		13.4	B	26.2	33.2	149.40	9.98	2.15
A	R1	19/05/09		13.4	B	26.2	33.2	149.00	9.95	2.18
A	B1	19/05/09	21:57 to 22:07	1	S	27.5	33.2	147.20	9.67	1.78
A	B1	19/05/09		1	S	27.5	33.2	146.60	9.62	1.72
A	B1	19/05/09		5.3	M	26.3	33.2	148.20	9.90	1.84
A	B1	19/05/09		5.3	M	26.3	33.2	148.80	9.95	1.88
A	B1	19/05/09		9.6	B	26.1	33.4	127.20	8.54	1.42
A	B1	19/05/09		9.6	B	26.1	33.4	127.70	8.58	1.39
A	S1	19/05/09	22:10 to 22:19	1	S	27.6	33.2	140.30	9.19	2.22
A	S1	19/05/09		1	S	27.7	33.2	139.80	9.15	2.27
A	S1	19/05/09		5.4	M	26.7	33.2	148.20	9.87	2.78
A	S1	19/05/09		5.4	M	26.7	33.2	147.70	9.84	2.75
A	S1	19/05/09		9.8	B	25.8	33.5	111.40	7.55	3.02
A	S1	19/05/09		9.8	B	25.8	33.5	110.80	7.50	2.98
A	S2	19/05/09	22:23 to 22:33	1	S	26.7	32.7	150.30	10.01	1.88
A	S2	19/05/09		1	S	26.7	32.6	150.80	10.04	1.85
A	S2	19/05/09		6.6	M	27.1	32.9	149.80	9.94	2.80
A	S2	19/05/09		6.6	M	27.1	33	149.30	9.90	2.84
A	S2	19/05/09		12.2	B	27.3	33.2	147.20	9.68	2.97
A	S2	19/05/09		12.2	B	27.3	33.2	146.80	4.65	2.99
A	S3	19/05/09	22:37 to 22:47	1	S	26.8	32.4	142.20	9.87	2.09
A	S3	19/05/09		1	S	26.8	32.4	141.40	9.84	2.17
A	S3	19/05/09		6.9	M	26.9	32.7	151.00	10.03	2.79
A	S3	19/05/09		6.9	M	26.8	32.7	151.40	10.06	2.75
A	S3	19/05/09		12.8	B	26.8	33	152.00	10.11	2.64
A	S3	19/05/09		12.8	B	26.8	33.1	152.60	10.15	2.60
A	R1	19/05/09	22:51 to 23:30	1	S	26.4	32.4	138.00	9.22	3.01
A	R1	19/05/09		1	S	26.5	32.4	138.40	9.25	2.97
A	R1	19/05/09		7.3	M	26.5	32.3	138.80	9.29	2.85
A	R1	19/05/09		7.3	M	26.5	32.4	138.20	9.25	2.89
A	R1	19/05/09		13.6	B	26.4	33.1	154.00	10.32	2.30
A	R1	19/05/09		13.6	B	26.4	33.1	154.60	10.37	2.37

Annex D Continuous *In-situ* Measurement Data

Zone	Station	Sampling Date	Time	Depth (m)	Depth	Water Temp (°C)	Salinity (ppt)	D.O. Saturation (%)	D.O. (mg/L)	Turbidity (NTU)
A	S2	20/5/2009	7:04:25	9	B	26.19	32.08	126.2	8.52	1.9
A	S2	20/5/2009	7:05:43	9	B	26.17	32.06	131.1	8.85	1.9
A	S2	20/5/2009	7:06:31	5.1	M	26.23	30.35	131.5	8.96	1.2
A	S2	20/5/2009	7:07:23	5.1	M	26.21	30.6	131.6	8.94	1.2
A	S2	20/5/2009	7:07:58	1.1	S	26.34	29.46	131.3	8.97	1.2
A	S2	20/5/2009	7:08:56	1.1	S	26.33	29.51	132.3	9.04	0.6
A	S1	20/5/2009	7:17:49	8.1	B	26.37	32.56	112.2	7.53	1.2
A	S1	20/5/2009	7:18:37	8.1	B	26.5	32.59	141.4	9.47	1.3
A	S1	20/5/2009	7:19:25	4.7	M	26.32	29.79	129.4	8.82	1.4
A	S1	20/5/2009	7:20:14	4.6	M	26.32	29.94	127	8.65	1.5
A	S1	20/5/2009	7:20:50	1.1	S	26.36	29.17	131.4	8.99	0.7
A	S1	20/5/2009	7:21:35	1.1	S	26.35	29.23	132.5	9.06	0.6
A	B1	20/5/2009	7:32:03	6.2	B	26.32	30.64	126	8.56	2
A	B1	20/5/2009	7:32:50	6.2	B	26.27	31.23	127.8	8.65	2.8
A	B1	20/5/2009	7:33:24	3.5	M	26.32	29.71	129.8	8.86	0.8
A	B1	20/5/2009	7:34:04	3.5	M	26.32	29.72	130.9	8.94	0.7
A	B1	20/5/2009	7:34:45	1	S	26.34	29.64	133	9.07	0.7
A	B1	20/5/2009	7:35:21	1	S	26.34	29.64	133.5	9.11	0.5
A	S3	20/5/2009	7:48:40	11	B	24.87	33.49	107.1	7.33	2.4
A	S3	20/5/2009	7:49:18	11	B	25.01	33.42	107.9	7.37	2.3
A	S3	20/5/2009	7:49:58	5.5	M	26.25	30.74	127.6	8.67	1.5
A	S3	20/5/2009	7:50:49	5.7	M	26.27	30.13	130.3	8.87	1
A	S3	20/5/2009	7:51:26	1	S	26.47	28.84	135.9	9.3	0.6
A	S3	20/5/2009	7:52:14	1	S	26.47	28.85	137.1	9.38	0.6
A	S2	20/5/2009	8:05:24	9	B	26.34	32.36	132.1	8.88	0.9
A	S2	20/5/2009	8:06:04	9	B	26.38	32.49	142.9	9.59	0.5
A	S2	20/5/2009	8:06:44	5.1	M	26.3	30.01	134.3	9.15	0.7
A	S2	20/5/2009	8:07:29	5.1	M	26.25	30.26	132.4	9.02	0.7
A	S2	20/5/2009	8:08:14	1.1	S	26.36	29.44	134.9	9.21	0.5
A	S2	20/5/2009	8:08:58	1.1	S	26.34	29.61	135.6	9.25	0.7
A	S1	20/5/2009	8:14:46	8.2	B	26.28	31.3	125.5	8.49	1
A	S1	20/5/2009	8:15:31	8.2	B	26.29	31.24	130.1	8.81	1.4
A	S1	20/5/2009	8:16:06	4.5	M	26.26	30.53	128.5	8.75	1.5
A	S1	20/5/2009	8:16:41	4.5	M	26.31	29.89	125.3	8.54	1.7
A	S1	20/5/2009	8:17:15	1.1	S	26.39	29.32	133.1	9.09	0.7
A	S1	20/5/2009	8:17:51	1	S	26.39	29.33	136.1	9.3	0.6
A	B1	20/5/2009	8:25:29	5.9	B	26.32	30.47	125.1	8.5	1.4
A	B1	20/5/2009	8:26:05	5.9	B	26.34	30.76	129.3	8.77	1.8
A	B1	20/5/2009	8:26:42	4.5	M	26.36	29.55	133.5	9.11	0.8
A	B1	20/5/2009	8:27:21	3.4	M	26.36	29.53	134.8	9.2	0.6
A	B1	20/5/2009	8:28:03	1.2	S	26.36	29.52	134.9	9.21	0.7
A	B1	20/5/2009	8:28:41	1.2	S	26.38	29.49	136.1	9.29	0.6
A	S3	20/5/2009	8:39:44	11.2	B	24.39	33.75	103	7.1	2.4
A	S3	20/5/2009	8:40:25	11.2	B	24.38	33.75	97.8	6.74	3.5
A	S3	20/5/2009	8:41:06	6	M	26.33	29.79	128.4	8.76	1.1
A	S3	20/5/2009	8:41:41	6.1	M	26.33	29.85	134.1	9.14	0.8
A	S3	20/5/2009	8:42:19	1.2	S	26.54	28.78	139.6	9.54	0.5
A	S3	20/5/2009	8:43:01	1.2	S	26.54	28.77	140.2	9.58	0.6
A	S2	20/5/2009	8:51:03	9	B	26.21	32.1	128	8.63	2.3
A	S2	20/5/2009	8:52:04	4.9	M	26.3	29.94	133.1	9.07	0.7
A	S2	20/5/2009	8:52:48	1	S	26.43	29.43	136.1	9.28	0.6
A	S2	20/5/2009	8:53:40	8.6	B	26.15	31.07	129.6	8.8	1.1
A	S2	20/5/2009	8:54:20	5.1	M	26.27	30.25	129.2	8.8	0.9
A	S2	20/5/2009	8:54:58	1.1	S	26.39	29.49	138.1	9.42	0.6
A	S1	20/5/2009	9:02:52	8.1	B	26.26	31.4	109.8	7.43	1.5
A	S1	20/5/2009	9:03:44	4.6	M	26.25	30.48	128.4	8.74	1.9
A	S1	20/5/2009	9:04:27	1.2	S	26.46	29.2	141.1	9.63	0.7
A	S1	20/5/2009	9:05:13	8	B	26.25	31.58	132.8	8.98	2
A	S1	20/5/2009	9:05:54	4.4	M	26.3	29.88	125	8.53	2
A	S1	20/5/2009	9:06:42	1	S	26.48	29.16	142.1	9.7	0.5
A	B1	20/5/2009	9:16:08	5.8	B	26.35	30.84	124.6	8.44	2.6
A	B1	20/5/2009	9:16:55	3.5	M	26.41	29.38	138.1	9.43	0.8
A	B1	20/5/2009	9:17:50	1.3	S	26.41	29.37	139.5	9.52	0.6
A	B1	20/5/2009	9:18:56	6.1	B	26.34	31	129.4	8.76	4.5
A	B1	20/5/2009	9:19:40	3.5	M	26.41	29.43	138.3	9.44	0.9
A	B1	20/5/2009	9:20:13	1.2	S	26.4	29.4	139.7	9.53	0.6
A	S3	20/5/2009	9:31:53	11.2	B	24.71	33.58	108.4	7.44	2.1
A	S3	20/5/2009	9:32:56	6	M	26.38	29.81	128.4	8.75	1.1
A	S3	20/5/2009	9:33:40	1.1	S	26.63	28.7	145.6	9.94	0.5
A	S3	20/5/2009	9:34:42	11.1	B	24.55	33.65	104.5	7.19	2.5
A	S3	20/5/2009	9:35:40	5.8	M	26.32	30.48	135.4	9.2	1.1
A	S3	20/5/2009	9:36:26	1	S	26.61	28.78	144.6	9.87	0.6
A	R1	20/5/2009	9:50:30	19.9	B	24.2	33.85	99	6.84	2.4
A	R1	20/5/2009	9:51:21	10.5	M	25.46	32.57	112.8	7.68	0.9
A	R1	20/5/2009	9:52:20	1.2	S	26.43	30.06	144.2	9.81	0.7

Annex D Continuous *In-situ* Measurement Data

Zone	Station	Sampling Date	Time	Depth (m)	Depth	Water Temp (°C)	Salinity (ppt)	D.O. Saturation (%)	D.O. (mg/L)	Turbidity (NTU)
A	R1	20/5/2009	9:55:47	20	B	24.18	33.87	99.1	6.85	2.6
A	R1	20/5/2009	9:56:49	10.6	M	25.19	32.84	112.1	7.66	1
A	R1	20/5/2009	9:57:51	0.9	S	26.39	30.24	136.2	9.25	0.7
A	S2	20/5/2009	10:40:01	9.1	B	26.11	33.06	126.8	8.52	3.3
A	S2	20/5/2009	10:40:49	9.1	B	25.9	33.09	125.3	8.44	4.6
A	S2	20/5/2009	10:41:32	5	M	26.31	30.05	130.7	8.9	1.2
A	S2	20/5/2009	10:42:20	4.9	M	26.32	30	131.7	8.97	0.9
A	S2	20/5/2009	10:42:56	1	S	26.54	29.38	131.3	8.94	0.8
A	S2	20/5/2009	10:43:44	1	S	26.62	29.29	153.1	10.42	0.6
A	S1	20/5/2009	10:53:24	6.9	B	26.3	30.31	130.1	8.85	0.9
A	S1	20/5/2009	10:54:02	6.9	B	26.3	30.31	130.9	8.91	1
A	S1	20/5/2009	10:54:53	3.9	M	26.48	29.54	147.3	10.04	0.7
A	S1	20/5/2009	10:55:39	3.9	M	26.57	29.32	142.8	9.72	0.8
A	S1	20/5/2009	10:56:29	1	S	26.79	28.97	154.8	10.52	0.5
A	S1	20/5/2009	10:57:18	1.1	S	26.78	28.98	156	10.61	0.5
A	B1	20/5/2009	11:06:12	5	B	26.45	29.32	137.3	9.37	0.9
A	B1	20/5/2009	11:06:57	5	B	26.47	29.27	144.3	9.84	0.8
A	B1	20/5/2009	11:07:48	2.9	M	26.58	29.21	147.9	10.07	0.6
A	B1	20/5/2009	11:08:33	2.9	M	26.64	29.24	154	10.48	0.5
A	B1	20/5/2009	11:09:24	1.1	S	26.59	29.23	153.8	10.48	0.6
A	B1	20/5/2009	11:10:10	1.1	S	26.6	29.24	154.9	10.55	0.5
A	S3	20/5/2009	11:20:56	11.4	B	25.32	33.17	114.8	7.82	2.2
A	S3	20/5/2009	11:21:36	11.4	B	25.16	33.27	115.2	7.86	3.6
A	S3	20/5/2009	11:22:36	6	M	26.27	31.38	131.4	8.89	0.9
A	S3	20/5/2009	11:23:27	6	M	26.3	31.55	134.8	9.11	0.7
A	S3	20/5/2009	11:24:13	1	S	26.75	29	151.2	10.29	0.9
A	S3	20/5/2009	11:24:57	1	S	26.76	28.98	153.8	10.46	0.5
A	S2	20/5/2009	11:35:33	8.2	B	26.25	32.08	127.3	8.59	2.5
A	S2	20/5/2009	11:36:20	8.3	B	26.26	32.22	132.8	8.94	2.5
A	S2	20/5/2009	11:37:34	4.5	M	26.33	29.92	138.3	9.43	0.6
A	S2	20/5/2009	11:38:30	4.5	M	26.53	29.67	146.1	9.94	0.7
A	S2	20/5/2009	11:39:22	1.1	S	26.97	28.97	156.9	10.64	0.4
A	S2	20/5/2009	11:40:08	1.1	S	26.95	29	158	10.71	0.5
A	S1	20/5/2009	11:47:43	7.1	B	26.29	30.39	124.8	8.49	1
A	S1	20/5/2009	11:48:31	7.2	B	26.29	30.46	130.7	8.88	1.2
A	S1	20/5/2009	11:49:17	3.8	M	26.79	29.09	157.1	10.67	0.6
A	S1	20/5/2009	11:50:09	3.9	M	26.83	29.09	160.8	10.92	0.6
A	S1	20/5/2009	11:51:04	1.1	S	26.96	28.99	160.7	10.89	0.4
A	S1	20/5/2009	11:52:04	1.1	S	26.98	29	161.6	10.95	0.5
A	B1	20/5/2009	12:00:28	5.1	B	26.42	29.7	139.3	9.49	2.6
A	B1	20/5/2009	12:01:16	5.1	B	26.55	29.31	147.8	10.07	1.7
A	B1	20/5/2009	12:02:05	3.1	M	26.65	29.14	158.2	10.78	0.7
A	B1	20/5/2009	12:03:03	3.1	M	26.6	29.16	157.8	10.75	0.8
A	B1	20/5/2009	12:04:03	1.1	S	26.85	29.13	160.7	10.9	0.5
A	B1	20/5/2009	12:05:02	1.1	S	26.83	29.13	161.2	10.94	0.6
A	S3	20/5/2009	12:12:03	11.1	B	24.36	33.69	100.7	6.94	6.6
A	S3	20/5/2009	12:13:04	11.2	B	24.36	33.7	96	6.62	6.4
A	S3	20/5/2009	12:14:03	6.2	M	26.26	30.91	134.3	9.13	1
A	S3	20/5/2009	12:15:03	6.2	M	26.24	31.23	136.7	9.26	1
A	S3	20/5/2009	12:16:02	1	S	26.97	28.85	156.9	10.65	0.6
A	S3	20/5/2009	12:17:02	0.9	S	26.98	28.81	158.7	10.77	0.5
A	S2	20/5/2009	12:54:08	7.9	B	26.23	31.71	126.2	8.53	1.8
A	S2	20/5/2009	12:55:05	7.9	B	26.17	31.69	126.5	8.56	2.7
A	S2	20/5/2009	12:56:01	4.4	M	26.34	29.84	138.4	9.44	1.1
A	S2	20/5/2009	12:57:00	4.4	M	26.33	29.94	138	9.4	0.8
A	S2	20/5/2009	12:58:03	1.1	S	27.02	29.03	153.9	10.42	0.6
A	S2	20/5/2009	12:58:58	1.1	S	27.02	29.03	165	11.17	0.5
A	S1	20/5/2009	13:08:23	7.3	B	26.27	30.63	130.1	8.84	1.7
A	S1	20/5/2009	13:09:11	7.3	B	26.24	31.25	127.7	8.65	2.6
A	S1	20/5/2009	13:10:02	4	M	26.81	29.22	158.2	10.74	0.7
A	S1	20/5/2009	13:11:02	4	M	26.8	29.22	163.7	11.11	0.6
A	S1	20/5/2009	13:12:02	1.2	S	27.19	28.95	167.5	11.31	0.4
A	S1	20/5/2009	13:13:01	1.2	S	27.19	28.95	167.3	11.3	0.7
A	B1	20/5/2009	13:21:18	5.2	B	26.33	30.17	132.3	9.01	1.8
A	B1	20/5/2009	13:22:09	5.2	B	26.31	30.34	130.7	8.89	2.7
A	B1	20/5/2009	13:23:02	3.2	M	26.79	29.13	138.7	9.42	1.6
A	B1	20/5/2009	13:24:02	3.2	M	26.8	29.07	165.9	11.27	0.6
A	B1	20/5/2009	13:25:00	0.9	S	26.83	29.06	169.1	11.49	0.7
A	B1	20/5/2009	13:26:01	0.9	S	26.92	29.05	170	11.52	0.8
A	S3	20/5/2009	13:36:33	11.4	B	24.45	33.63	105.2	7.25	4.1
A	S3	20/5/2009	13:37:29	11.4	B	24.44	33.64	95.6	6.59	5.6
A	S3	20/5/2009	13:38:34	6	M	26.16	30.99	135.4	9.2	0.6
A	S3	20/5/2009	13:39:25	6	M	26.22	30.74	137.6	9.35	0.8
A	S3	20/5/2009	13:40:19	1	S	27.13	28.85	163.5	11.06	0.8
A	S3	20/5/2009	13:41:09	1	S	27.05	28.94	165.1	11.18	0.6

Annex D Continuous *In-situ* Measurement Data

Zone	Station	Sampling Date	Time	Depth (m)	Depth	Water Temp (°C)	Salinity (ppt)	D.O. Saturation (%)	D.O. (mg/L)	Turbidity (NTU)
A	S2	20/5/2009	13:50:32	9	B	26.29	31.19	130.3	8.82	0.6
A	S2	20/5/2009	13:51:39	8.9	B	26.16	31.53	128.7	8.72	2.6
A	S2	20/5/2009	13:52:43	5	M	26.41	29.58	151	10.3	0.8
A	S2	20/5/2009	13:53:33	5	M	26.43	29.46	150.1	10.24	0.7
A	S2	20/5/2009	13:54:27	1.2	S	27.35	28.94	168.2	11.33	0.6
A	S2	20/5/2009	13:55:22	1.2	S	27.2	28.99	170.6	11.52	0.6
A	S1	20/5/2009	14:00:09	8	B	26.43	32.48	133.9	8.98	1
A	S1	20/5/2009	14:01:04	8	B	26.43	32.32	137.9	9.26	1.3
A	S1	20/5/2009	14:02:02	4.4	M	26.49	29.57	151.2	10.3	0.9
A	S1	20/5/2009	14:03:03	4.4	M	26.52	29.49	155.9	10.61	0.7
A	S1	20/5/2009	14:04:07	1.3	S	27.2	28.97	172.7	11.66	0.4
A	S1	20/5/2009	14:05:01	1.3	S	27.11	29.01	173.3	11.72	0.5
A	B1	20/5/2009	14:10:57	4.9	B	26.35	29.99	134	9.13	2
A	B1	20/5/2009	14:11:50	4.9	B	26.34	29.97	133.7	9.11	2.7
A	B1	20/5/2009	14:13:19	3.1	M	26.93	29.18	169.7	11.5	0.9
A	B1	20/5/2009	14:14:15	3.1	M	26.91	29.05	169.3	11.48	0.9
A	B1	20/5/2009	14:15:07	1.1	S	27.11	29.01	174.8	11.82	0.8
A	B1	20/5/2009	14:16:02	1.2	S	27.05	29.04	173.7	11.75	0.7
A	S3	20/5/2009	14:22:44	11.1	B	25.79	32.91	124.9	8.45	0.8
A	S3	20/5/2009	14:23:38	11.1	B	25.95	32.8	128.3	8.66	1
A	S3	20/5/2009	14:24:38	5.9	M	26.56	29.51	151.6	10.32	1
A	S3	20/5/2009	14:25:33	5.9	M	26.41	30.02	148.2	10.08	1
A	S3	20/5/2009	14:26:20	1.3	S	27.18	28.65	167.5	11.33	0.6
A	S3	20/5/2009	14:27:09	1.3	S	27.17	28.65	169.3	11.45	0.5
A	S2	20/5/2009	14:38:15	9	B	26.26	31.22	130.6	8.85	1.8
A	S2	20/5/2009	14:39:14	5	M	27.12	29.09	167.5	11.32	0.9
A	S2	20/5/2009	14:40:43	1.1	S	27.26	29.02	170.3	11.48	1
A	S2	20/5/2009	14:41:40	9	B	26.25	31.33	134.7	9.12	1.7
A	S2	20/5/2009	14:42:51	5.1	M	26.61	29.48	157.9	10.74	1.3
A	S2	20/5/2009	14:43:51	1	S	27.28	29.02	170	11.46	1
A	S1	20/5/2009	14:50:30	8.1	B	26.31	31.55	143	9.66	1.6
A	S1	20/5/2009	14:51:47	4.5	M	26.73	29.36	166.6	11.31	1.1
A	S1	20/5/2009	14:52:58	1.2	S	27.34	29.03	175.4	11.81	1.3
A	S1	20/5/2009	14:54:01	8	B	26.3	31.48	137.1	9.27	1.4
A	S1	20/5/2009	14:54:50	5.2	M	26.72	29.37	135.5	9.2	1.6
A	S1	20/5/2009	14:55:43	1	S	27.39	29.01	175.7	11.82	1.1
A	B1	20/5/2009	15:02:40	4.8	B	26.58	29.68	142.6	9.69	5.7
A	B1	20/5/2009	15:03:47	3.1	M	27.08	29.08	175.7	11.88	1.8
A	B1	20/5/2009	15:05:02	1	S	27.17	29.04	178.4	12.05	1.1
A	B1	20/5/2009	15:06:17	4.6	B	27.08	29.32	166.4	11.23	3.1
A	B1	20/5/2009	15:07:30	3.1	M	27.07	29.07	177.6	12.01	1.1
A	B1	20/5/2009	15:08:24	0.9	S	27.15	29.04	180.1	12.17	1.1
A	S3	20/5/2009	15:15:49	11.2	B	26.02	32.91	130.3	8.78	1.9
A	S3	20/5/2009	15:16:47	5.9	M	26.33	30.4	136.4	9.27	1.2
A	S3	20/5/2009	15:17:55	1.3	S	27.13	28.76	168.2	11.39	1.1
A	S3	20/5/2009	15:18:55	11	B	26.37	32.55	137.7	9.24	1.3
A	S3	20/5/2009	15:20:05	6	M	26.33	30.48	138.6	9.42	1.2
A	S3	20/5/2009	15:20:53	1.1	S	27.12	28.8	167	11.3	1.1
A	R1	20/5/2009	15:33:58	19.7	B	23.95	33.99	94.2	6.54	10.5
A	R1	20/5/2009	15:35:29	10.8	M	25.04	32.91	109.5	7.5	1.3
A	R1	20/5/2009	15:36:46	1.2	S	27.23	29.13	169.4	11.42	1
A	R1	20/5/2009	15:37:52	19.4	B	23.94	33.99	94.6	6.57	12.1
A	R1	20/5/2009	15:39:09	10.4	M	25.19	32.66	110.2	7.54	1.6
A	R1	20/5/2009	15:40:18	1.2	S	27.23	29.12	169.6	11.44	1
A	S2	20/5/2009	16:33:51	9.3	B	26.26	31.68	129	8.71	2
A	S2	20/5/2009	16:35:20	9.3	B	26.13	31.94	124.8	8.44	3.8
A	S2	20/5/2009	16:36:11	4.9	M	27.24	28.92	170.6	11.52	1
A	S2	20/5/2009	16:36:58	5	M	27.23	28.91	175.2	11.82	0.9
A	S2	20/5/2009	16:37:46	1.1	S	27.22	28.87	176.3	11.91	0.8
A	S2	20/5/2009	16:38:41	1.1	S	27.21	28.86	176.9	11.95	0.8
A	S1	20/5/2009	16:45:28	8.3	B	26.24	31.27	130.6	8.84	1.6
A	S1	20/5/2009	16:46:05	8.3	B	26.22	31.33	133.2	9.02	1.5
A	S1	20/5/2009	16:46:52	4.6	M	27.23	28.86	168.4	11.37	1
A	S1	20/5/2009	16:47:33	4.6	M	27.24	28.84	173	11.68	0.9
A	S1	20/5/2009	16:48:11	1.2	S	27.27	28.79	174.6	11.79	0.8
A	S1	20/5/2009	16:48:58	1.2	S	27.26	28.81	176	11.88	1
A	B1	20/5/2009	16:56:35	4.9	B	27.03	29.27	151.8	10.26	4
A	B1	20/5/2009	16:57:19	4.9	B	27.16	29.09	172.2	11.63	2.1
A	B1	20/5/2009	16:58:08	3.1	M	27.25	29.04	175.2	11.81	1.1
A	B1	20/5/2009	16:59:03	3.1	M	27.23	29.06	176.3	11.9	1.1
A	B1	20/5/2009	16:59:51	1.1	S	27.35	29.01	180.1	12.12	1
A	B1	20/5/2009	17:00:38	1.1	S	27.36	29.01	180.4	12.15	1.6
A	S3	20/5/2009	17:09:53	11	B	25.58	33.07	120.9	8.2	3
A	S3	20/5/2009	17:10:43	11	B	25.55	33.09	116.7	7.91	3.6
A	S3	20/5/2009	17:11:26	6.1	M	27.11	29.09	162.2	10.96	1.7

Annex D Continuous *In-situ* Measurement Data

Zone	Station	Sampling Date	Time	Depth (m)	Depth	Water Temp (°C)	Salinity (ppt)	D.O. Saturation (%)	D.O. (mg/L)	Turbidity (NTU)
A	S3	20/5/2009	17:12:15	6.2	M	27.12	29.03	173.9	11.76	1.3
A	S3	20/5/2009	17:13:28	1.3	S	27.19	28.86	174	11.76	1.1
A	S3	20/5/2009	17:14:12	1.4	S	27.19	28.86	171.8	11.61	0.7
A	S2	20/5/2009	17:20:46	9	B	26.29	30.88	130.4	8.84	2.2
A	S2	20/5/2009	17:21:36	9.1	B	26.28	30.99	130.5	8.85	2.1
A	S2	20/5/2009	17:22:15	5	M	27.21	28.96	163.7	11.05	1.2
A	S2	20/5/2009	17:22:56	5	M	26.88	29.37	157.3	10.64	1.4
A	S2	20/5/2009	17:23:33	1.4	S	27.2	28.91	174.4	11.78	1.2
A	S2	20/5/2009	17:24:23	1.3	S	27.19	28.91	176.5	11.92	0.9
A	S1	20/5/2009	17:31:21	5.7	B	26.64	29.45	153.3	10.44	1.3
A	S1	20/5/2009	17:32:18	5.6	B	26.92	29.21	160.1	10.85	1.5
A	S1	20/5/2009	17:33:08	3.1	M	27.23	28.82	173	11.68	0.9
A	S1	20/5/2009	17:34:05	3.1	M	27.2	28.9	173.3	11.71	0.9
A	S1	20/5/2009	17:35:04	1.1	S	27.26	28.83	176.6	11.92	0.8
A	S1	20/5/2009	17:35:49	1.1	S	27.26	28.82	177.2	11.96	0.9
A	B1	20/5/2009	17:42:22	6.1	B	27.26	29.01	170.2	11.48	7.3
A	B1	20/5/2009	17:42:58	6.1	B	27.27	29.01	174	11.73	7.9
A	B1	20/5/2009	17:43:36	3.6	M	27.25	28.98	175.6	11.85	0.8
A	B1	20/5/2009	17:44:18	3.6	M	27.25	28.99	176.4	11.9	1.2
A	B1	20/5/2009	17:45:07	1	S	27.28	28.96	176.8	11.92	0.9
A	B1	20/5/2009	17:46:02	1	S	27.28	28.96	176.8	11.92	1
A	S3	20/5/2009	17:53:27	11.4	B	25.42	33.17	100.2	6.81	4.7
A	S3	20/5/2009	17:54:20	11.3	B	25.16	33.31	108.7	7.41	5.6
A	S3	20/5/2009	17:55:12	5.9	M	27.1	29.05	170.2	11.5	1.2
A	S3	20/5/2009	17:56:02	5.9	M	27.11	29.05	176.7	11.94	1
A	S3	20/5/2009	17:57:01	1.1	S	27.17	28.83	171.1	11.57	0.8
A	S3	20/5/2009	17:58:00	1.1	S	27.17	28.87	172.1	11.63	1
A	S2	20/5/2009	18:02:52	8.9	B	26.08	32.33	127.6	8.62	2.6
A	S2	20/5/2009	18:03:28	9	B	26.12	32.32	127.3	8.59	2.6
A	S2	20/5/2009	18:04:10	4.9	M	27.09	29.04	159.2	10.76	1.2
A	S2	20/5/2009	18:05:01	4.9	M	26.75	29.44	160.1	10.86	1.2
A	S2	20/5/2009	18:06:01	1.1	S	27.17	28.91	174.7	11.8	0.8
A	S2	20/5/2009	18:07:00	1.1	S	27.17	28.91	176.2	11.91	0.8
A	S1	20/5/2009	18:16:16	8.1	B	26.35	31.73	135.8	9.16	2.4
A	S1	20/5/2009	18:17:01	8.1	B	26.38	31.82	133.8	9.01	1.1
A	S1	20/5/2009	18:18:01	4.7	M	27.15	28.96	163.6	11.05	1.3
A	S1	20/5/2009	18:19:00	4.6	M	27.17	28.95	167.3	11.3	1.4
A	S1	20/5/2009	18:20:00	1	S	27.18	28.84	175.8	11.88	0.8
A	S1	20/5/2009	18:21:03	1	S	27.21	28.85	174.8	11.81	0.8
A	B1	20/5/2009	18:29:56	4.8	B	27.21	28.92	174.5	11.78	0.9
A	B1	20/5/2009	18:30:37	4.8	B	27.21	28.92	175.7	11.86	0.8
A	B1	20/5/2009	18:31:23	2.8	M	27.21	28.91	175.4	11.84	0.9
A	B1	20/5/2009	18:32:02	2.8	M	27.21	28.91	175.8	11.87	0.8
A	B1	20/5/2009	18:33:00	1.1	S	27.23	28.89	175.7	11.86	0.9
A	B1	20/5/2009	18:34:00	1.1	S	27.22	28.9	175.6	11.86	0.7
A	S3	20/5/2009	18:40:52	11.4	B	25.04	33.38	109	7.44	5.7
A	S3	20/5/2009	18:41:27	11.1	B	25.21	33.31	106	7.23	4.8
A	S3	20/5/2009	18:42:21	6.3	M	27.18	28.98	164.2	11.09	1.3
A	S3	20/5/2009	18:43:01	6.3	M	26.72	29.7	148.2	10.06	1.5
A	S3	20/5/2009	18:44:00	1.3	S	27.16	28.81	168	11.36	0.9
A	S3	20/5/2009	18:45:00	1.3	S	27.16	28.84	169	11.43	1
A	S2	20/5/2009	19:19:28	9.5	B	25.19	33.19	115.1	7.85	4.1
A	S2	20/5/2009	19:20:12	9.5	B	25.15	33.22	108.3	7.39	6.4
A	S2	20/5/2009	19:21:01	5.1	M	26.93	29.27	159.2	10.78	1.3
A	S2	20/5/2009	19:22:00	5.1	M	26.68	29.46	155.7	10.57	1.4
A	S2	20/5/2009	19:22:52	1.1	S	27.16	28.94	172.2	11.64	0.9
A	S2	20/5/2009	19:23:30	1.1	S	27.16	28.94	172.3	11.64	0.8
A	S1	20/5/2009	19:30:24	8.5	B	25.28	33.17	112.6	7.67	7.2
A	S1	20/5/2009	19:31:07	8.6	B	25.22	33.2	103.8	7.08	8.8
A	S1	20/5/2009	19:32:02	4.8	M	26.47	29.55	140.6	9.58	1.8
A	S1	20/5/2009	19:32:54	4.5	M	26.5	29.5	146.3	9.97	1.3
A	S1	20/5/2009	19:33:49	1.2	S	27.21	28.86	167.4	11.31	1.2
A	S1	20/5/2009	19:34:34	0.9	S	27.2	28.86	169.2	11.43	1
A	B1	20/5/2009	19:39:51	5.1	B	26.8	30.1	143.7	9.7	5
A	B1	20/5/2009	19:40:41	4.9	B	27.12	29.12	160.8	10.87	3.7
A	B1	20/5/2009	19:41:24	2.9	M	27.22	28.88	170.6	11.52	1.1
A	B1	20/5/2009	19:42:07	2.9	M	27.22	28.88	172.4	11.64	1.1
A	B1	20/5/2009	19:43:00	1	S	27.21	28.85	171.9	11.61	0.9
A	B1	20/5/2009	19:43:54	1	S	27.18	28.86	171.7	11.6	1.1
A	S3	20/5/2009	19:51:10	11.2	B	24.98	33.29	109.3	7.48	4.4
A	S3	20/5/2009	19:52:02	11.2	B	25.02	33.27	105.6	7.22	4.6
A	S3	20/5/2009	19:53:00	5.8	M	26.24	31.05	131.8	8.94	2
A	S3	20/5/2009	19:53:49	5.7	M	26.49	31.1	143.3	9.67	2.1
A	S3	20/5/2009	19:54:32	1.1	S	27.13	28.81	163.2	11.04	1.1
A	S3	20/5/2009	19:55:07	1	S	27.14	28.85	165.8	11.21	1.4

Annex D Continuous *In-situ* Measurement Data

Zone	Station	Sampling Date	Time	Depth (m)	Depth	Water Temp (°C)	Salinity (ppt)	D.O. Saturation (%)	D.O. (mg/L)	Turbidity (NTU)
A	S2	21/5/2009	7:04:10	9.3	B	25.88	32.39	119	8.06	3.9
A	S2	21/5/2009	7:05:04	9.2	B	25.91	32.36	117.4	7.95	4.5
A	S2	21/5/2009	7:06:01	5	M	26.65	29.8	144.5	9.8	0.8
A	S2	21/5/2009	7:07:01	5	M	26.66	29.73	147.9	10.03	0.8
A	S2	21/5/2009	7:08:11	1.1	S	26.82	28.68	148.2	10.08	0.3
A	S2	21/5/2009	7:09:01	1.1	S	26.78	28.62	147.1	10.02	0.4
A	S1	21/5/2009	7:17:25	8.2	B	26.06	32.03	122.3	8.27	1.3
A	S1	21/5/2009	7:18:11	8.2	B	26.2	31.53	129.6	8.77	1
A	S1	21/5/2009	7:19:48	8.1	B	26.21	31.42	135.6	9.18	0.4
A	S1	21/5/2009	7:20:43	4.3	M	26.92	28.86	153.8	10.44	0.4
A	S1	21/5/2009	7:21:35	4.3	M	26.93	28.85	155.7	10.56	0.4
A	S1	21/5/2009	7:22:32	1.1	S	26.81	28.64	147.2	10.02	0.4
A	S1	21/5/2009	7:23:31	1.1	S	26.78	28.62	144.7	9.85	2.3
A	B1	21/5/2009	7:35:00	3.4	M	27.07	28.94	155.7	10.54	2.5
A	B1	21/5/2009	7:36:02	3.3	M	27.06	28.92	158.6	10.74	0.8
A	B1	21/5/2009	7:37:06	1	S	27.05	28.9	156.4	10.59	1
A	B1	21/5/2009	7:38:00	1	S	27.02	28.89	155.9	10.56	0.5
A	S3	21/5/2009	7:52:40	12.5	B	25.07	33.16	111.6	7.63	0.5
A	S3	21/5/2009	7:53:16	12.4	B	25.05	33.15	106.8	7.3	2.2
A	S3	21/5/2009	7:54:10	6.5	M	26.21	30.95	127.7	8.67	2.1
A	S3	21/5/2009	7:54:50	6.5	M	25.54	32.28	119.8	8.17	1.8
A	S3	21/5/2009	7:55:30	1.1	S	26.97	28.9	154	10.44	2
A	S3	21/5/2009	7:56:04	1.1	S	26.98	28.9	160	10.85	1.1
A	S2	21/5/2009	8:03:08	9	B	25.21	33	112.7	7.69	1.1
A	S2	21/5/2009	8:04:00	9	B	25.34	32.9	112	7.63	1.8
A	S2	21/5/2009	8:04:47	5.1	M	26.75	29.52	145.2	9.85	1.6
A	S2	21/5/2009	8:05:20	5.1	M	26.75	29.53	149	10.1	0.7
A	S2	21/5/2009	8:06:01	1	S	26.78	28.63	148.6	10.12	0.8
A	S2	21/5/2009	8:07:01	1	S	26.82	28.74	148.1	10.07	0.6
A	S1	21/5/2009	8:22:32	8.2	B	25.15	33.1	105.2	7.18	0.3
A	S1	21/5/2009	8:23:11	8.2	B	25.11	33.13	102.2	6.98	4.8
A	S1	21/5/2009	8:24:07	4.5	M	26.81	29.43	150.1	10.17	5.3
A	S1	21/5/2009	8:25:00	4.5	M	26.8	29.44	155.2	10.52	0.8
A	S1	21/5/2009	8:25:45	1.2	S	26.91	28.83	156	10.59	0.6
A	S1	21/5/2009	8:26:16	1.2	S	26.92	28.84	156.6	10.63	0.3
A	B1	21/5/2009	8:35:42	6	B	26.21	31.3	128.7	8.72	0.3
A	B1	21/5/2009	8:36:31	5.9	B	26.24	31.19	130.3	8.83	5.1
A	B1	21/5/2009	8:37:07	3.4	M	27.07	28.99	128.9	8.72	4.4
A	B1	21/5/2009	8:38:00	3.4	M	27.05	28.93	157.2	10.64	0.7
A	B1	21/5/2009	8:38:49	1	S	27.05	28.89	158.4	10.72	0.5
A	B1	21/5/2009	8:39:31	1	S	27.05	28.89	158.7	10.75	0.4
A	B1	21/5/2009	8:40:16	3.6	M	27.05	28.95	158	10.7	1
A	S3	21/5/2009	8:50:32	11.5	B	24.85	33.28	107.1	7.34	2
A	S3	21/5/2009	8:51:21	11.4	B	24.84	33.29	101.9	6.99	2.2
A	S3	21/5/2009	8:52:33	6	M	25.98	31.67	128.2	8.7	1.1
A	S3	21/5/2009	8:53:03	6	M	25.52	32.48	117.7	8.01	1.2
A	S3	21/5/2009	8:53:50	1	S	26.79	28.52	147.5	10.05	0.5
A	S3	21/5/2009	8:54:23	1	S	26.79	28.52	147.8	10.08	0.6
A	S2	21/5/2009	9:23:38	8.8	B	24.73	33.42	107	7.35	1.2
A	S2	21/5/2009	9:24:29	5.1	M	26.16	31.83	125.3	8.47	0.5
A	S2	21/5/2009	9:25:30	1.5	S	26.97	28.83	154.6	10.49	0.3
A	S2	21/5/2009	9:26:35	8.6	B	24.73	33.36	106	7.28	1.6
A	S2	21/5/2009	9:27:36	5.1	M	26.32	30.8	131.4	8.91	1
A	S2	21/5/2009	9:28:31	1.3	S	26.97	28.86	157	10.65	0.3
A	S1	21/5/2009	9:36:54	8	B	25.35	32.86	116.6	7.95	1.5
A	S1	21/5/2009	9:37:37	4.6	M	26.52	30.19	127.7	8.66	0.9
A	S1	21/5/2009	9:38:31	1.1	S	27	28.84	157.7	10.69	0.4
A	S1	21/5/2009	9:39:31	8	B	25.3	32.91	114.6	7.82	2.2
A	S1	21/5/2009	9:40:26	4.6	M	26.32	30.91	129.4	8.77	1.1
A	S1	21/5/2009	9:41:23	1.2	S	27.01	28.82	159.5	10.81	0.5
A	B1	21/5/2009	9:50:27	5	B	26.04	31.78	120	8.13	5.1
A	B1	21/5/2009	9:51:12	3.1	M	27.07	29.02	147.6	9.98	2.3
A	B1	21/5/2009	9:52:08	1.2	S	27.23	28.89	160.6	10.85	0.8
A	B1	21/5/2009	9:53:03	4.9	B	26.22	31.27	131.4	8.9	6.5
A	B1	21/5/2009	9:54:01	3	M	27.15	28.89	163.8	11.08	0.7
A	B1	21/5/2009	9:55:05	1.5	S	27.22	28.88	166.5	11.24	0.5
A	S3	21/5/2009	10:07:33	10.9	B	24.44	33.6	97.2	6.7	3.6
A	S3	21/5/2009	10:08:22	6.1	M	25.55	32.18	114.2	7.79	1.6
A	S3	21/5/2009	10:09:32	1.3	S	27.03	28.69	157.3	10.67	0.6
A	S3	21/5/2009	10:10:27	10.9	B	24.44	33.6	103.8	7.16	3.7
A	S3	21/5/2009	10:11:19	6	M	25.91	31.66	121.6	8.27	1.3
A	S3	21/5/2009	10:12:18	1	S	27.08	28.66	151.8	10.29	0.2
A	R1	21/5/2009	10:29:34	20.2	B	23.67	34.01	90.5	6.31	8
A	R1	21/5/2009	10:30:42	10.6	M	24.82	33.18	102.3	7.02	1.2
A	R1	21/5/2009	10:31:56	1.3	S	26.89	29.09	145.2	9.85	0.6

Annex D Continuous *In-situ* Measurement Data

Zone	Station	Sampling Date	Time	Depth (m)	Depth	Water Temp (°C)	Salinity (ppt)	D.O. Saturation (%)	D.O. (mg/L)	Turbidity (NTU)
A	R1	21/5/2009	10:33:49	19.5	B	23.75	33.97	88	6.13	8.5
A	R1	21/5/2009	10:34:55	10.5	M	24.86	32.98	102.9	7.07	1.5
A	R1	21/5/2009	10:35:55	1.2	S	27.07	28.81	145.7	9.87	0.7
A	S2	21/5/2009	11:06:33	9.1	B	24.81	33.3	105.6	7.25	1.2
A	S2	21/5/2009	11:07:14	9.1	B	24.78	33.33	102.4	7.03	1.4
A	S2	21/5/2009	11:08:01	5.1	M	26.49	30.46	139	9.42	1.1
A	S2	21/5/2009	11:08:50	5.1	M	26.34	30.87	138.5	9.38	1
A	S2	21/5/2009	11:09:36	1.1	S	27.15	28.86	167.6	11.33	0.6
A	S2	21/5/2009	11:10:06	1.1	S	27.21	28.84	168.9	11.41	0.7
A	S1	21/5/2009	11:20:05	7	B	25.28	32.96	108.6	7.41	5.2
A	S1	21/5/2009	11:20:50	7	B	25.34	32.91	109.4	7.45	5.3
A	S1	21/5/2009	11:21:33	4.8	M	26.46	30.27	136	9.23	2.7
A	S1	21/5/2009	11:22:18	4.8	M	26.41	30.54	135.4	9.18	1.5
A	S1	21/5/2009	11:23:09	1.3	S	27.12	29.03	164.5	11.12	0.6
A	S1	21/5/2009	11:24:01	1.3	S	27.09	28.94	169.8	11.49	0.7
A	B1	21/5/2009	11:40:08	5	B	26.34	30.88	132.3	8.96	6.3
A	B1	21/5/2009	11:41:01	5	B	26.48	30.45	124.6	8.45	6.9
A	B1	21/5/2009	11:41:55	3.1	M	27.18	28.91	161.7	10.93	1
A	B1	21/5/2009	11:42:40	3.1	M	27.18	28.91	164.4	11.11	1.8
A	B1	21/5/2009	11:43:32	1.1	S	27.42	28.71	167.8	11.31	0.6
A	B1	21/5/2009	11:44:04	1.1	S	27.41	28.7	168.2	11.33	0.3
A	S3	21/5/2009	11:50:56	10.4	B	24.38	33.64	99.2	6.84	7.1
A	S3	21/5/2009	11:51:44	10.4	B	24.38	33.65	96.3	6.64	7.1
A	S3	21/5/2009	11:52:39	5.5	M	26.22	31.09	129.4	8.78	3.7
A	S3	21/5/2009	11:53:26	5.5	M	26.18	31.22	132.2	8.97	2.7
A	S3	21/5/2009	11:54:26	1.1	S	27.23	28.62	167.7	11.34	1.8
A	S3	21/5/2009	11:55:07	1.1	S	27.23	28.61	169.2	11.44	1.8
A	S2	21/5/2009	12:00:49	8.2	B	24.85	33.24	103.8	7.12	1.4
A	S2	21/5/2009	12:01:29	8.2	B	25.44	32.62	107.9	7.35	1.6
A	S2	21/5/2009	12:02:23	4.5	M	26.42	30.57	133.3	9.04	1.1
A	S2	21/5/2009	12:03:11	4.5	M	26.32	30.81	135	9.16	0.8
A	S2	21/5/2009	12:04:01	1	S	27.13	28.88	174	11.77	0.7
A	S2	21/5/2009	12:04:44	1	S	27.13	28.85	178.7	12.09	0.3
A	S1	21/5/2009	12:10:07	7.2	B	25.06	33.18	120.2	8.22	2.5
A	S1	21/5/2009	12:11:00	7.2	B	25.06	33.17	101.5	6.94	3.1
A	S1	21/5/2009	12:12:20	3.9	M	26.78	29.56	151.4	10.26	1
A	S1	21/5/2009	12:13:12	3.9	M	26.88	29.38	168.4	11.41	0.7
A	S1	21/5/2009	12:14:10	1	S	27.24	28.82	173.1	11.69	0.4
A	S1	21/5/2009	12:15:01	1	S	27.21	28.8	173.4	11.72	0.2
A	B1	21/5/2009	12:21:22	5	B	26.26	31.13	119.9	8.13	7
A	B1	21/5/2009	12:22:13	5	B	26.46	30.41	126.5	8.58	6
A	B1	21/5/2009	12:23:05	2.9	M	27.03	29.19	156.4	10.58	2.3
A	B1	21/5/2009	12:23:55	2.9	M	27.05	29.15	161	10.89	2.3
A	B1	21/5/2009	12:24:43	1	S	27.27	28.71	172.3	11.64	0.5
A	B1	21/5/2009	12:25:29	1	S	27.3	28.69	173.1	11.68	0.3
A	S3	21/5/2009	12:34:06	10.8	B	24.22	33.74	95.1	6.57	7
A	S3	21/5/2009	12:35:01	10.8	B	24.25	33.72	93.7	6.48	6
A	S3	21/5/2009	12:36:01	5.9	M	25.94	31.74	123.5	8.38	1
A	S3	21/5/2009	12:36:54	5.9	M	25.95	31.57	126.8	8.61	1.3
A	S3	21/5/2009	12:37:48	1.1	S	27.33	28.65	161.6	10.91	0.3
A	S3	21/5/2009	12:38:21	1.1	S	27.37	28.64	163.1	11	0.3
A	S2	21/5/2009	13:15:48	8.3	B	24.8	33.25	98.4	6.75	1.6
A	S2	21/5/2009	13:16:18	8.2	B	24.85	33.17	99	6.79	1.1
A	S2	21/5/2009	13:17:11	4.7	M	26.25	31.04	126.2	8.56	0.9
A	S2	21/5/2009	13:18:12	4.7	M	26.35	30.62	132.1	8.96	0.5
A	S2	21/5/2009	13:19:07	1.1	S	27.17	29.01	169.1	11.42	0.5
A	S2	21/5/2009	13:19:31	1.1	S	27.29	28.87	174.1	11.74	0.4
A	S1	21/5/2009	13:35:53	6.9	B	25.27	32.88	116	7.92	1.3
A	S1	21/5/2009	13:36:19	6.9	B	25.43	32.73	106.3	7.24	1.9
A	S1	21/5/2009	13:37:21	4.1	M	26.91	29.43	143.7	9.72	2
A	S1	21/5/2009	13:37:58	4.1	M	26.63	30.01	147.6	10	1.9
A	S1	21/5/2009	13:38:42	1.2	S	27.38	28.8	172.4	11.61	1.3
A	S1	21/5/2009	13:39:35	1.2	S	27.37	28.8	176.4	11.88	1.3
A	B1	21/5/2009	13:47:35	5	B	26.57	30.11	132.2	8.96	5.3
A	B1	21/5/2009	13:48:03	5	B	26.5	30.42	129.8	8.8	5.2
A	B1	21/5/2009	13:49:43	3.2	M	27.1	29.16	172.1	11.63	1.8
A	B1	21/5/2009	13:50:14	3.1	M	27.19	29.1	172	11.59	2.1
A	B1	21/5/2009	13:51:34	1	S	27.72	28.75	171.4	11.47	1.5
A	B1	21/5/2009	13:52:20	1	S	27.83	28.71	169	11.3	1.3
A	S3	21/5/2009	13:59:40	11.3	B	24.34	33.71	93.9	6.48	3.8
A	S3	21/5/2009	14:00:04	11.3	B	24.33	33.71	92.3	6.37	4.3
A	S3	21/5/2009	14:01:03	5.9	M	25.97	31.82	102.6	6.96	2.5
A	S3	21/5/2009	14:01:45	5.9	M	25.96	31.83	121.8	8.26	2.1
A	S3	21/5/2009	14:02:50	0.9	S	27.56	28.82	161.5	10.85	1.1
A	S3	21/5/2009	14:03:14	0.9	S	27.61	28.8	160.2	10.75	1.7

Annex D Continuous *In-situ* Measurement Data

Zone	Station	Sampling Date	Time	Depth (m)	Depth	Water Temp (°C)	Salinity (ppt)	D.O. Saturation (%)	D.O. (mg/L)	Turbidity (NTU)
A	S2	21/5/2009	14:09:20	8.1	B	24.85	33.25	96.9	6.65	3.8
A	S2	21/5/2009	14:10:34	8.1	B	24.88	33.21	96.2	6.59	3.5
A	S2	21/5/2009	14:11:30	4.5	M	26.25	31.01	132.3	8.97	1.5
A	S2	21/5/2009	14:12:22	4.4	M	26.28	30.96	137.3	9.31	1.7
A	S2	21/5/2009	14:13:14	1.1	S	27.24	29.22	172	11.59	1.4
A	S2	21/5/2009	14:13:40	1.1	S	27.35	29.07	178.7	12.04	1.4
A	S1	21/5/2009	14:20:16	7	B	25.3	32.86	107.4	7.32	1.7
A	S1	21/5/2009	14:20:58	7	B	25.4	32.76	105.4	7.18	1.6
A	S1	21/5/2009	14:21:44	3.9	M	26.58	30.34	124.4	8.43	2.9
A	S1	21/5/2009	14:22:11	3.9	M	26.43	30.83	125.1	8.47	2.9
A	S1	21/5/2009	14:22:58	1	S	27.76	28.83	171.7	11.5	1.3
A	S1	21/5/2009	14:23:22	1	S	27.78	28.83	172.7	11.56	1.6
A	B1	21/5/2009	14:32:32	5.2	B	26.24	31.37	129.1	8.74	2.5
A	B1	21/5/2009	14:33:37	5.1	B	26.21	31.47	127.1	8.6	2.9
A	B1	21/5/2009	14:34:18	2.9	M	27.16	29.19	163.1	11	2.4
A	B1	21/5/2009	14:34:43	2.9	M	27.53	29.02	167.8	11.27	2.1
A	B1	21/5/2009	14:35:36	0.9	S	28.08	28.77	167.6	11.17	1.5
A	B1	21/5/2009	14:36:25	0.9	S	28.18	28.71	169.3	11.26	1.4
A	S3	21/5/2009	14:46:40	11	B	24.52	33.57	93.8	6.46	2.8
A	S3	21/5/2009	14:47:12	10.9	B	24.52	33.58	93.5	6.44	2.8
A	S3	21/5/2009	14:48:10	6	M	25.71	32.19	113.5	7.72	2
A	S3	21/5/2009	14:48:34	6.1	M	25.71	32.2	114.8	7.8	2.3
A	S3	21/5/2009	14:49:29	0.9	S	27.36	28.99	169.6	11.42	1.6
A	S3	21/5/2009	14:50:16	0.9	S	27.48	28.95	173	11.63	1.6
A	S2	21/5/2009	15:16:34	8.7	B	24.9	33.33	101.2	6.93	3.1
A	S2	21/5/2009	15:17:26	5.1	M	26.01	31.62	126.9	8.61	2.6
A	S2	21/5/2009	15:18:22	1.3	S	27.39	28.94	188.6	12.7	1.6
A	S2	21/5/2009	15:19:34	9	B	24.86	33.35	103.6	7.1	3.5
A	S2	21/5/2009	15:20:27	5.1	M	25.85	31.76	124.6	8.48	2.2
A	S2	21/5/2009	15:21:23	1.2	S	27.52	28.96	190.6	12.8	1.5
A	S1	21/5/2009	15:29:22	6.9	B	26.08	32.17	122.6	8.29	2.6
A	S1	21/5/2009	15:30:18	4.1	M	26.43	30.77	139.6	9.45	2.6
A	S1	21/5/2009	15:31:09	1.2	S	27.8	28.9	154.2	10.32	1.9
A	S1	21/5/2009	15:32:09	6.9	B	26.07	32.17	126.7	8.56	2.9
A	S1	21/5/2009	15:33:10	4	M	26.56	30.47	143.6	9.72	2.5
A	S1	21/5/2009	15:34:01	1.1	S	27.79	28.9	181.6	12.15	1.7
A	B1	21/5/2009	15:43:52	4.8	B	26.21	31.52	130.7	8.84	1.7
A	B1	21/5/2009	15:44:49	3.2	M	26.46	30.85	138.5	9.37	2.8
A	B1	21/5/2009	15:45:47	1.5	S	27.84	28.93	173	11.56	1.9
A	B1	21/5/2009	15:46:44	4.9	B	26.16	31.53	138.6	9.38	2.1
A	B1	21/5/2009	15:48:02	3.1	M	27.09	29.45	170.2	11.46	3.3
A	B1	21/5/2009	15:49:27	0.9	S	28.31	28.79	175.4	11.64	1.6
A	S3	21/5/2009	15:58:46	11	B	24.53	33.64	100.2	6.9	4.5
A	S3	21/5/2009	15:59:46	6.3	M	25.46	32.58	111.1	7.57	2
A	S3	21/5/2009	16:00:48	1.4	S	27.77	28.88	180.4	12.07	1.6
A	S3	21/5/2009	16:02:02	10.9	B	24.64	33.55	98.9	6.79	3.3
A	S3	21/5/2009	16:03:49	6.1	M	26.08	31.33	127.7	8.67	2.3
A	S3	21/5/2009	16:04:39	1.1	S	27.76	28.91	185.2	12.39	1.6
A	R1	21/5/2009	16:20:58	17.7	B	24.02	33.95	87.1	6.03	5.6
A	R1	21/5/2009	16:22:16	9.8	M	24.95	32.83	106.7	7.32	2.2
A	R1	21/5/2009	16:23:23	1.2	S	26.9	28.56	157.6	10.72	1.9
A	R1	21/5/2009	16:24:27	18.3	B	23.68	34.06	91.6	6.38	5.4
A	R1	21/5/2009	16:25:31	9.5	M	25.21	32.29	109.7	7.52	2.1
A	R1	21/5/2009	16:26:39	1	S	27.16	27.85	154.8	10.52	1.9
A	S2	21/5/2009	17:01:28	8	B	24.99	33.07	107.5	7.36	2.6
A	S2	21/5/2009	17:02:20	8	B	25.01	33.04	104.2	7.13	3
A	S2	21/5/2009	17:03:14	4.7	M	26.04	31.19	135.5	9.21	2.2
A	S2	21/5/2009	17:04:02	4.7	M	26.25	30.6	143.3	9.74	1.9
A	S2	21/5/2009	17:05:02	1	S	27.51	28.81	173.6	11.67	1.8
A	S2	21/5/2009	17:05:51	1	S	27.54	28.74	171.4	11.52	1.6
A	S1	21/5/2009	17:14:27	7.9	B	25.26	32.81	111.6	7.62	2.6
A	S1	21/5/2009	17:15:16	7.9	B	25.29	32.75	107.6	7.35	2.7
A	S1	21/5/2009	17:16:06	4.6	M	26.49	30.59	110.5	7.48	2.4
A	S1	21/5/2009	17:17:02	4.6	M	26.55	30.41	155.5	10.53	2
A	S1	21/5/2009	17:18:10	1.1	S	27.93	28.9	185.9	12.41	1.6
A	S1	21/5/2009	17:19:02	1.2	S	27.83	28.89	187.3	12.53	1.5
A	B1	21/5/2009	17:30:58	5.1	B	26.32	31.08	111.9	7.57	2.6
A	B1	21/5/2009	17:31:39	5.1	B	26.28	31.13	137.9	9.34	2.1
A	B1	21/5/2009	17:32:29	3	M	27.64	29.03	175.3	11.75	2.2
A	B1	21/5/2009	17:33:15	3	M	27.51	29.1	181.3	12.17	2.4
A	B1	21/5/2009	17:34:02	1	S	28.37	28.75	178.8	11.85	1.7
A	B1	21/5/2009	17:34:51	1.1	S	28.4	28.75	173.7	11.51	1.7
A	S3	21/5/2009	17:46:01	11.1	B	24.35	33.74	131.1	9.04	3.9
A	S3	21/5/2009	17:47:01	11	B	24.33	33.75	90.2	6.22	5.6
A	S3	21/5/2009	17:48:01	5.9	M	25.77	32.48	116.7	7.91	2.5

Annex D Continuous *In-situ* Measurement Data

Zone	Station	Sampling Date	Time	Depth (m)	Depth	Water Temp (°C)	Salinity (ppt)	D.O. Saturation (%)	D.O. (mg/L)	Turbidity (NTU)
A	S3	21/5/2009	17:48:55	5.9	M	26.27	31.01	131.7	8.93	2.8
A	S3	21/5/2009	17:49:52	1.1	S	27.89	28.86	186.1	12.43	1.6
A	S3	21/5/2009	17:50:24	1.1	S	27.9	28.86	188.8	12.6	1.6
A	S2	21/5/2009	18:04:12	8.7	B	24.93	33.08	105.4	7.23	2.6
A	S2	21/5/2009	18:05:02	8.7	B	24.93	33.14	102.4	7.02	2.7
A	S2	21/5/2009	18:05:55	4.9	M	25.84	31.24	119.2	8.13	2.1
A	S2	21/5/2009	18:06:28	5	M	25.97	30.89	131.4	8.96	2.1
A	S2	21/5/2009	18:07:18	1.2	S	27.46	28.62	169.4	11.41	1.7
A	S2	21/5/2009	18:08:05	1.2	S	27.49	28.64	173.7	11.69	1.7
A	S1	21/5/2009	18:15:43	8.4	B	25.64	32.45	117.8	8.01	2.2
A	S1	21/5/2009	18:16:28	8.4	B	25.59	32.56	113.2	7.7	2.3
A	S1	21/5/2009	18:17:15	4.5	M	26.48	30.56	147.9	10.02	2
A	S1	21/5/2009	18:18:08	4.5	M	26.5	30.56	150.7	10.2	2.2
A	S1	21/5/2009	18:19:01	1	S	27.91	28.89	184.5	12.31	1.6
A	S1	21/5/2009	18:19:52	1	S	27.95	28.89	182.4	12.17	1.6
A	B1	21/5/2009	18:28:29	5.4	B	26.07	31.94	125.2	8.47	2.4
A	B1	21/5/2009	18:29:25	5.3	B	26.09	31.87	130	8.8	2
A	B1	21/5/2009	18:30:13	3.2	M	26.88	29.74	155.2	10.49	4.5
A	B1	21/5/2009	18:31:02	3.2	M	26.88	29.86	147.1	9.94	5.4
A	B1	21/5/2009	18:31:50	1	S	27.81	28.9	184.6	12.34	1.8
A	B1	21/5/2009	18:32:20	1	S	27.91	28.86	183.9	12.26	1.9
A	S3	21/5/2009	18:41:33	10.9	B	24.71	33.46	96.1	6.6	3.4
A	S3	21/5/2009	18:42:16	10.9	B	24.71	33.45	96.4	6.62	2.9
A	S3	21/5/2009	18:43:07	5.9	M	25.78	31.66	119.7	8.15	2.1
A	S3	21/5/2009	18:43:53	5.9	M	25.73	31.6	121.8	8.31	2
A	S3	21/5/2009	18:44:46	1.1	S	27.56	28.78	181.2	12.17	1.9
A	S3	21/5/2009	18:45:20	1.1	S	27.58	28.78	185.9	12.49	1.8
A	S2	21/5/2009	19:18:24	9.3	B	25.36	32.55	111.6	7.62	2.7
A	S2	21/5/2009	19:19:30	9.3	B	25.33	32.54	108.5	7.41	3.1
A	S2	21/5/2009	19:20:16	5.3	M	25.69	31.23	119.9	8.2	2
A	S2	21/5/2009	19:21:01	5.3	M	25.74	31.07	121.9	8.34	2.1
A	S2	21/5/2009	19:22:02	1.1	S	27.44	28.53	172.7	11.64	1.8
A	S2	21/5/2009	19:23:03	1.1	S	27.48	28.63	177.2	11.93	1.8
A	S1	21/5/2009	19:29:47	8.2	B	25.1	33.03	105.8	7.23	3.4
A	S1	21/5/2009	19:30:23	8.2	B	25.2	32.9	101.8	6.96	4.3
A	S1	21/5/2009	19:31:15	4.5	M	26.42	30.63	100.6	6.82	3.9
A	S1	21/5/2009	19:32:01	4.6	M	26.63	30.24	154.6	10.46	2.4
A	S1	21/5/2009	19:32:55	1.1	S	27.46	28.79	173.3	11.66	1.7
A	S1	21/5/2009	19:33:35	1.1	S	27.46	28.83	174.9	11.76	1.8
A	B1	21/5/2009	19:40:08	5.2	B	26.44	30.56	146.2	9.91	2.2
A	B1	21/5/2009	19:41:06	5.2	B	26.43	30.66	149.1	10.1	2.2
A	B1	21/5/2009	19:41:56	3.2	M	26.6	30.15	162.2	10.99	2.5
A	B1	21/5/2009	19:42:30	3.2	M	26.7	29.9	165.4	11.21	2.7
A	B1	21/5/2009	19:43:23	1.2	S	28.04	28.83	178.6	11.9	1.8
A	B1	21/5/2009	19:44:05	1.2	S	28.03	28.84	180.1	12	1.7
A	S3	21/5/2009	19:53:25	11.1	B	24.08	33.87	89	6.16	9
A	S3	21/5/2009	19:54:14	11.1	B	24.22	33.79	88.9	6.14	8
A	S3	21/5/2009	19:55:03	6	M	25.57	31.75	117.9	8.05	4.6
A	S3	21/5/2009	19:55:53	6	M	25.66	31.58	123.1	8.41	4.6
A	S3	21/5/2009	19:56:43	1	S	27.64	28.79	177.2	11.89	1.7
A	S3	21/5/2009	19:57:28	1	S	27.71	28.83	182.1	12.2	1.7