

PROJECT No.: TCS/00553/11



CONTRACT NO. DC/2009/22
DRAINAGE IMPROVEMENT WORKS IN SHUEN WAN

CONTRACT NO. DC/2010/02
DRAINAGE IMPROVEMENT WORKS IN SHUEN WAN
AND SHEK WU WAI

MONTHLY ENVIRONMENTAL MONITORING AND
AUDIT REPORT FOR OPERATION PHASE-
SEPTEMBER 2015

PREPARED FOR
KWAN LEE-KULY JOINT VENTURE

Quality Index

Date	Reference No.	Prepared By	Certified by
19 October 2015	TCS00553/11/600/R0460v1	 Ben Tam (Environmental Consultant)	 T.W. Tam (Environmental Team Leader)

Ver.	Date	Description
1	13 October 2015	First submission
2	19 October 2015	Amended against the IEC's comments on 16 October 2015

This report has been prepared by Action-United Environmental Services & Consulting with all reasonable skill, care and diligence within the terms of the Agreement with the client, incorporating our General Terms and Conditions of Business and taking account of the resources devoted to it by agreement with the client. We disclaim any responsibility to the client and others in respect of any matters outside the scope of the above. This report is confidential to the client and we accept no responsibility of whatsoever nature to third parties to whom this report, or any part thereof, is made known. Any such party relies upon the report at their own risk.

Ref.: DSDSHUWNEM00_0_0713.15

20 October 2015

Drainage Services Department
Drainage Projects Division
44 & 45/F., Revenue Tower
5 Gloucester Road,
Wan Chai, Hong Kong

By Fax (2827 8700) and Post

Attention: Mr. H.K.Chan and Mr. Max Tai

Dear Sirs,

**Re: Agreement No. DP 01/2010
Services as Independent Environmental Checker for the Drainage
Improvement Works in Sha Tin and Tai Po under Contract No.
DC/2009/22 & DC/2010/02
Monthly Environmental Monitoring and Audit Report for September 2015**

Reference is made to Environment Team's submission of the Monthly Environmental Monitoring and Audit Report for September 2015 by Email on 19 October 2015 (entitled "DC/2009/22 & DC/2010/02 – Monthly EM&A Report for Operation Phase – September 2015").

Please be informed that we have no comment on the captioned report. We write to verify the captioned submission in accordance with Condition 5.4 of EP-303/2008.

Thank you very much for your kind attention and please do not hesitate to contact Mr. Tony Cheng (3465-2822) should you have any queries.

Yours faithfully,



Tony Cheng
Independent Environmental Checker

c.c.

AUES
Kwan Lee-Kuly JV

Attn: Mr. T. W. Tam
Attn: Mr. W. K. Chan

By Fax: 2959 6079
By Fax: 2674 6688

Q:\Projects\DSDSHUWNEM00\Corr\Out\DSDSHUWNEM00_0_0713.15.docx

EXECUTIVE SUMMARY

- ES.01. This is the Monthly Environmental Monitoring and Audit (EM&A) Report for DSD Contract No. DC/2009/22 (hereafter “Contract 1”) and DC/2010/02 (hereafter “Contract 2”) for Drainage Improvement in Shuen Wan under Environmental Permit No.EP-303/2008, covering the Operation Phase period from **1 to 30 September 2015** (hereinafter ‘the Reporting Period’).
- ES.02. Joint site inspection with EPD, DSD, Contractor, IEC and ET was carried out on 24 March 2015 regarding the proposal of commencement of operation phase of DC/2010/02. EPD accepted that the proposal and the operation phase of DC/2010/02 was commenced from 1 April 2015. Therefore, the EM&A programme for both Contracts 1 and 2 were performed in Operation Phase in the Reporting Period.

ENVIRONMENTAL MONITORING AND AUDIT ACTIVITIES

- ES.03. In the Reporting Period, environmental monitoring activities for the Operation Phase of the Project under the of EM&A programme are summarized in the following table.

Environmental Aspect	Monitoring Parameters / Inspection	Contract 1	Contract 2
		Operation Phase	Operation Phase
Water Quality	Hydrological characteristics measurement – H1, H2, H3 and H4	4 events	4 events
Ecological	Ecological Monitoring	0 event	0 event
Landscape & Visual	Inspection by a registered Landscape Architect	1 event	1 event

- ES.04. Operation phase ecological monitoring in area under the Project should be undertaken on a quarterly basis and it was not carried out in this Reporting Period.
- ES.05. Operation phase Landscape and visual inspection of the Contracts 1 and 2 should be undertaken on a quarterly basis and it was carried out on 17 September 2015.
- ES.06. The hydrological characteristics of water depth and water flow rate as compared baseline monitoring period, the currently water depth and volumetric flow rate has insignificant change.

ENVIRONMENTAL COMPLAINT

- ES.07. No written or verbal complaint was recorded in this Reporting Period.

NOTIFICATION OF SUMMONS AND SUCCESSFUL PROSECUTIONS

- ES.08. No environmental summons or successful prosecutions were recorded in this Reporting Period.

REPORTING CHANGE

- ES.09. In the Reporting Period, no reporting change was made.

TABLE OF CONTENTS

1.0 INTRODUCTION	1
PROJECT BACKGROUND	1
REPORT STRUCTURE	1
2.0 PROJECT ORGANIZATION AND SUBMISSION	2
PROJECT ORGANIZATION AND MANAGEMENT STRUCTURE	2
SUMMARY OF ENVIRONMENTAL SUBMISSIONS	2
3.0 EM&A PROGRAM REQUIREMENT	3
MONITORING PARAMETERS	3
MONITORING LOCATIONS	3
MONITORING FREQUENCY OF OPERATION PHASE	3
MONITORING EQUIPMENT	4
MONITORING METHODOLOGY	4
OTHERS MONITORING IMPLEMENTATION FOR THE PROJECT	4
DETERMINATION OF ACTION/LIMIT (A/L) LEVELS	4
4.0 MONITORING RESULTS OF CONTRACT 1 AND 2 FOR OPERATION PHASE	5
RESULTS OF HYDROLOGICAL CHARACTERISTICS MONITORING	5
RESULTS OF ECOLOGICAL MONITORING	6
5.0 SITE INSPECTION	7
REGULAR SITE INSPECTION AND MONTHLY AUDIT	7
LANDSCAPE AND VISUAL INSPECTION	7
6.0 ENVIRONMENTAL COMPLAINT AND NON-COMPLIANCE	8
ENVIRONMENTAL COMPLAINT, SUMMONS AND PROSECUTION	8
7.0 IMPLEMENTATION STATUS OF MITIGATION MEASURES	9
8.0 CONCLUSIONS AND RECOMMENTATIONS	10
CONCLUSIONS	10
RECOMMENDATIONS	10

LIST OF TABLES

TABLE 2-1	STATUS OF ENVIRONMENTAL LICENSES AND PERMITS
TABLE 3-1	SUMMARY OF MONITORING PARAMETERS FOR THE PROJECT
TABLE 3-2	MONITORING LOCATIONS OF OPERATION PHASE
TABLE 3-3	MONITORING EQUIPMENT USED FOR OPERATION PHASE
TABLE 4-1	DETAILED MONITORING RESULTS OF HYDROLOGICAL CHARACTERISTICS AT DESIGNATED MEASUREMENT POINTS
TABLE 4-2	SUMMARIZED HYDROLOGICAL CHARACTERISTICS OF WATER DEPTH, M
TABLE 4-3	SUMMARIZED HYDROLOGICAL CHARACTERISTICS OF AVERAGE VOLUMETRIC FLOW RATE (Q), M ³ /S
TABLE 4-4	METEOROLOGICAL DATA IN REPORTING PERIOD
TABLE 6-1	STATISTICAL SUMMARY OF ENVIRONMENTAL COMPLAINTS
TABLE 6-2	STATISTICAL SUMMARY OF ENVIRONMENTAL SUMMONS
TABLE 6-3	STATISTICAL SUMMARY OF ENVIRONMENTAL PROSECUTION

LIST OF APPENDICES

APPENDIX A	PROJECT LOCATION AT SHUEN WAN
APPENDIX B	ORGANIZATION CHART AND THE KEY CONTACT PERSON
APPENDIX C	OPERATION PHASE ENVIRONMENTAL MONITORING LOCATIONS
APPENDIX D	OPERATION PHASE MONITORING SCHEDULE
APPENDIX E	GRAPHICAL PLOTS OF HYDROLOGICAL CHARACTERISTICS
APPENDIX F	ECOLOGICAL MONITORING REPORT FOR OPERATION PHASE (NOT USED)
APPENDIX G	QUARTERLY EM&A (LANDSCAPE & VISUAL) REPORT

1.0 INTRODUCTION

PROJECT BACKGROUND

- 1.01 ***Kwan Lee-Kuly Joint Venture*** (hereinafter ‘KLKJV’) has been awarded by Drainage Services Department (hereinafter ‘DSD’) of the Contract No. DC/2010/02 - Drainage Improvement in Shuen Wan and Shek Wu Wai (hereinafter ‘the Project’). For the Project, construction works at Tung Tsz Road Shuen Wan is part of the Drainage Improvement works amongst Shatin and Tai Po and it is defined as a “Designated Project” which controlled under Environmental Permit EP-303/2008. On the other hand, Shek Wu Wai San Tin is a non-designated project work.
- 1.02 The Works at Tung Tsz Road Shuen Wan was divided two DSD Contracts i.e. DC/2009/22 (hereinafter called the “Contract 1”) and DC/2010/02 (hereinafter called the “Contract 2”). The construction works of Contract 1 was commenced in **August 2010** and the Operation Phase was commenced in **December 2014**. For Contract 2, the construction works was commenced in **May 2011** and the Operation Phase was commenced in **April 2015**. The Project site boundary is shown in **Appendix A**.
- 1.03 Action-United Environmental Services and Consulting (AUES) was appointed as the Environmental Team (ET) of Contracts 1 and 2 to implement the relevant EM&A programme of the Project.
- 1.04 This is the Monthly EM&A Report presenting the monitoring results for Operation Phase during the Reporting Period from **1** to **30 September 2015**.

REPORT STRUCTURE

- 1.05 The Monthly Environmental Monitoring and Audit (EM&A) Report is structured into the following sections:-
- | | |
|-----------|--|
| SECTION 1 | INTRODUCTION |
| SECTION 2 | PROJECT ORGANIZATION AND WORKS PROGRESS AND SUBMISSION |
| SECTION 3 | EM&A PROGRAM REQUIREMENT FOR THE PROJECT |
| SECTION 4 | IMPACT MONITORING RESULTS |
| SECTION 5 | SITE INSPECTIONS |
| SECTION 6 | ENVIRONMENTAL COMPLAINTS AND NON-COMPLIANCE |
| SECTION 7 | IMPLEMENTATION STATUES OF MITIGATION MEASURES |
| SECTION 8 | CONCLUSIONS AND RECOMMENDATION |

2.0 PROJECT ORGANIZATION AND SUBMISSION

PROJECT ORGANIZATION AND MANAGEMENT STRUCTURE

- 2.01 Organization structure and contact details of relevant parties with respect to on-site environmental management are shown in *Appendix B*.

SUMMARY OF ENVIRONMENTAL SUBMISSIONS

- 2.02 Summary of the relevant permits, licences, and/or notifications on environmental protection for this Project in this Reporting Period is presented in *Table 2-1*.

Table 2-1 Status of Environmental Licenses and Permits

Item	Description	License/Permit Status
1	Air Pollution Control (Construction Dust)	Notified EPD on 17 October 2011
2	Chemical Waste Producer Registration (WPN5213-727-K2972-02)	Approved on 28 October 2011
3	Water Pollution Control Ordinance (Discharge License) WT00009528-2011	Valid to 31 July 2016
4	Billing Account for Disposal of Construction Waste (Account No.: 7012838)	Effective

3.0 EM&A PROGRAM REQUIREMENT

3.01 The EM&A requirements for the Operation Phases are according to the PP, EIAR, Environmental Permit EP303/2008 (hereinafter ‘the EP’), and the associated updated EM&A Manual and they are presented in below sub-section.

MONITORING PARAMETERS

3.02 According to the updated EM&A Manual of the Project, the Operation Phases monitoring requirement is showed in **Table 3-1**.

Table 3-1 Summary of Monitoring Parameters for the Project

Environmental Aspect	Requirement / Parameter
Hydrological Characteristics Monitoring	<ul style="list-style-type: none"> In-situ measurement including water flow and depth
(*) Ecological Monitoring and Audit	<ul style="list-style-type: none"> Monitor and inspect including the vegetation, fauna (includes avifauna, herpetofauna, odonate and butterfly) and Stream (includes fish and macroinvertebrates)
([#]) Landscape and Visual Monitoring	<ul style="list-style-type: none"> Inspect and audit the implementation and maintenance of landscape and visual mitigation measures

Remarks:

(*) the monitoring is carried out by IEC

([#]) The monitoring is carried out by the registered Landscape Architect

MONITORING LOCATIONS

3.03 Monitoring locations have been proposed in the updated EM&A Manual. The monitoring location is summarized in **Table 3-2** and shown in **Appendix C**.

Table 3-2 Monitoring Locations of Operation Phase

Aspect	Location ID	Address
Hydrological	H1	Between the Shuen Wan Marsh and ECA <ul style="list-style-type: none"> Coordinates: E839306, N836379)
	H2	Route 10 Sam Kung Temple <ul style="list-style-type: none"> Coordinates: E839163, N836433
	H3	Upstream of Tung Tze Shan Road <ul style="list-style-type: none"> Coordinates: E838760, N836714
	H4	Wai Ha Village 29D <ul style="list-style-type: none"> Coordinates: E838865, N836621
Ecology	Areas within 100m of the works boundary under Contract 1 and Contract 2	
Landscape & Visual	As within and adjacent to the construction sites and works areas under the Contract 1 and Contract 2	

MONITORING FREQUENCY OF OPERATION PHASE

3.04 According to the updated EM&A Manual, frequency and duration of the Operation Phase monitoring are summarized below.

Hydrological Characteristics

Frequency: Once per week at mid-flood and mid-ebb tides

Duration: One year after the construction is complete as operation phase monitoring (in accordance with the Updated EM&A Manual Section 4.32).

Ecology

3.05 In according with Section 6.17 of the Updated EM&A Manual, the Operation Phase ecological monitoring would be to conduct by the Independent Environmental Checker (hereinafter ‘IEC’). Regular checking and monitoring by quarter month would be performed for one year duration

Landscape & Visual

- 3.06 According to Section 7.5 of the Updated EM&A Manual, all landscape and visual mitigation measures would be monitored quarterly during the first year of the Operation Phase to check on the effectiveness of the mitigations.

MONITORING EQUIPMENT

Hydrological Characteristics

- 3.07 **Water Depth Detector** - A portable, battery-operated echo sounder shall be used for the determination of water depth at each designated monitoring station.
- 3.08 **Stream water flow Equipment** –A portable, battery-operated flow meter should be used for the determination of water flow rate at each designated monitoring location and record in m³/s.
- 3.09 The monitoring equipment using for the Project’s EM&A program were proposed by the ET and verified by the IEC prior commencement of the monitoring. Details of the equipment used for impact monitoring are listed in **Table 3-3**.

Table 3-3 Monitoring Equipment Used for Operation Phase

Equipment	Model
Hydrological Characteristics	
Water flow meter	GLOBAL WATER model FP211
Water Depth Detector	Eagle Sonar or an appropriate steel ruler or rope with appropriate weight

MONITORING METHODOLOGY

Hydrological Characteristics

- 3.10 A portable, water flow meter, brand named “*GLOBAL WATER model FP211*” are used to determine the water current flow at the designated monitoring stations. A water flow velocity is measured at mid depth of current water body or 0.5m below water level.
- 3.11 Water depths are determined prior to measurement, using a portable battery operated depth detector, brand named ‘Eagle Sonar’, if the depths exceed 1.5 meter. If the depth between 1.5 meter and 1 meter, plastic tape measurement tied with appropriate weight are used the depth estimation. For the depths well below 1 meter, an appropriate steel ruler or rope with appropriate weight are used for the depth measurement.

OTHERS MONITORING IMPLEMENTATION FOR THE PROJECT

Ecology

- 3.12 Ecological monitoring and reporting should be performed by IEC. Site survey will be carried out during the construction and 1-year establishment period of the Ecological Compensatory Area. These monitoring events include regular check on the retained and transplanted trees and shrubs, monitoring on fauna groups and aquatic fauna. No equipment and procedure are presented in the EM&A Monthly Report.

Landscape and Visual

- 3.13 A registered Landscape Architect as member of the ET is employed by the Contractor to undertake site inspection. Site inspection will undertake once every three months during the first year of the Operation Phase to check on the effectiveness of the mitigations.

DETERMINATION OF ACTION/LIMIT (A/L) LEVELS

- 3.14 No performance criteria i.e. Action and Limit levels of hydrological is used for the Operation Phase. The locations H3 and H4 are a reference measurement point in order to monitor any changes in the hydrological characteristics of Wai Ha River arising from the work Contract 2 to affect the Shuen Wan Marsh.

4.0 MONITORING RESULTS OF CONTRACT 1 AND 2 FOR OPERATION PHASE

4.01 The operation phase monitoring schedule is presented in *Appendix D*. The monitoring results are presented in the following sub-sections.

RESULTS OF HYDROLOGICAL CHARACTERISTICS MONITORING

4.02 In this Reporting Period, hydrological characteristics measurements were carried out on **5, 10, 19 and 25 September 2015**. The detailed measurement results in this Reporting Period are presented in *Tables 4-1* and the graphical plot area shown in *Appendix E*.

Table 4-1 Detailed Monitoring Results of hydrological characteristics at Designated Measurement Points

Measurement		Tide Condition	River Width (m)	Water Depth (m)	Cut Section (m ²)	Velocity Flow Rate (m/s)	Average Volumetric Flow Rate (Q), m ³ /s
Point	Time						
Date: 5 September 2015							
H1	9:50	Flood	5.5	0.47	2.5850	0.3	0.776
	17:48	Ebb	5.5	0.41	2.2550	0.3	0.677
H2	9:20	Flood	4.7	0.3	1.4100	0.1	0.141
	17:19	Ebb	4.7	0.3	1.4100	0.1	0.141
H3	9:03	Flood	7.45	0.38	2.8310	0.3	0.849
	17:04	Ebb	7.45	0.37	2.7565	0.2	0.551
H4	9:11	Flood	2.74	0.26	0.7124	0.2	0.142
	17:12	Ebb	2.74	0.27	0.7398	0.2	0.148
Date: 10 September 2015							
H1	9:51	Flood	5.5	0.49	2.6950	0.3	0.809
	17:31	Ebb	5.5	0.44	2.4200	0.3	0.726
H2	9:33	Flood	4.7	0.31	1.4570	0.1	0.146
	17:08	Ebb	4.7	0.3	1.4100	0.1	0.141
H3	9:11	Flood	7.45	0.39	2.9055	0.2	0.581
	16:47	Ebb	7.45	0.38	2.8310	0.3	0.849
H4	9:20	Flood	2.74	0.27	0.7398	0.2	0.148
	16:59	Ebb	2.74	0.25	0.6850	0.3	0.206
Date: 19 September 2015							
H1	17:02	Flood	5.5	0.43	2.3650	0.4	0.946
	9:13	Ebb	5.5	0.45	2.4750	0.2	0.495
H2	17:33	Flood	4.7	0.29	1.3630	0.1	0.136
	9:51	Ebb	4.7	0.3	1.4100	0.1	0.141
H3	17:18	Flood	7.45	0.36	2.6820	0.3	0.805
	9:51	Ebb	7.45	0.38	2.8310	0.2	0.566
H4	17:25	Flood	2.74	0.25	0.6850	0.3	0.206
	9:44	Ebb	2.74	0.27	0.7398	0.2	0.148
Date: 25 September 2015							
H1	17:48	Flood	5.5	0.43	2.3650	0.3	0.710
	10:13	Ebb	5.5	0.48	2.6400	0.4	1.056
H2	17:34	Flood	4.7	0.29	1.3630	0.1	0.136
	10:59	Ebb	4.7	0.3	1.4100	0.1	0.141
H3	17:18	Flood	7.45	0.38	2.8310	0.2	0.566
	10:36	Ebb	7.45	0.39	2.9055	0.2	0.581
H4	17:26	Flood	2.74	0.26	0.7124	0.1	0.071
	10:49	Ebb	2.74	0.26	0.7124	0.2	0.142

4.03 Hydrological characteristics results of the all measurement points are summarized in *Tables 4-2* and *4-3*.

Table 4-2 Summarized Hydrological Characteristics of Water Depth, m

Date	Mid-Flood				Mid-Ebb			
	H1	H2	H3	H4	H1	H2	H3	H4
5-Sep-15	0.47	0.30	0.38	0.26	0.41	0.30	0.37	0.27
10-Sep-15	0.49	0.31	0.39	0.27	0.44	0.30	0.38	0.25
19-Sep-15	0.43	0.29	0.36	0.25	0.45	0.30	0.38	0.27
25-Sep-15	0.43	0.29	0.38	0.26	0.48	0.30	0.39	0.26

Table 4-3 Summarized Hydrological Characteristics of Average Volumetric flow rate (Q), m³/s

Date	Mid-Flood				Mid-Ebb			
	H1	H2	H3	H4	H1	H2	H3	H4
5-Sep-15	0.776	0.141	0.849	0.142	0.677	0.141	0.551	0.148
10-Sep-15	0.809	0.146	0.581	0.148	0.726	0.141	0.849	0.206
19-Sep-15	0.946	0.136	0.805	0.206	0.495	0.141	0.566	0.148
25-Sep-15	0.710	0.136	0.566	0.071	1.056	0.141	0.581	0.142

4.04 To compare the monitoring data between the Reporting Period and baseline monitoring period, the currently water depth and volumetric flow rate has insignificant change.

RESULTS OF ECOLOGICAL MONITORING

4.05 According to updated EM&A Manual, quarterly ecological monitoring shall be conducted and it is undertaken by the IEC – Ramboll Environ Hong Kong Limited. In brief, the monitoring tasks include regular check on the retained and transplanted trees and shrubs, monitoring on fauna groups and aquatic fauna within the works area and any ecologically sensitive area within 100 m of the works boundary.

4.06 The last quarterly ecological monitoring under the Contract Area was carried out **27 July 2015** and it is not required to carry out in the Reporting Period.

METEOROLOGICAL INFORMATION

4.07 The meteorological information during the measurement day of Operation Phase would be extracted from Tai Po and Shatin Stations of the Hong Kong Observatory (HKO). The meteorological data during the measurement days are presented in **Table 4-4**.

Table 4-4 Meteorological Data in Reporting Period

Date	Weather	Total Rainfall (mm)	Tai Po Station		Shatin Station		
			Mean Air Temp. (°C)	Mean Relative Humidity (%)	Wind Speed (km/h)	Wind Direction	
5-Sep-15	Sat	Sunny periods in the afternoon. Mainly cloudy tonight. Moderate easterly winds, fresh at times.	0	28.9	75.7	14.5	SW
10-Sep-15	Thu	Mainly fine. Moderate easterly winds.	0	27.3	73.7	7.6	E
19-Sep-15	Sat	Mainly fine. Hot during the day. There will be isolated showers at first. Light winds.	0	27.7	84.2	4.5	S/SW
25-Sep-15	Fri	Mainly fine and hot. Light to moderate southwesterly winds.	0	30.1	69.5	7.3	SW

5.0 SITE INSPECTION

REGULAR SITE INSPECTION AND MONTHLY AUDIT

- 5.01 According to the Updated Environmental Monitoring and Audit Manual, regular site inspection to evaluate the project environmental performance is not required during operation phase.

LANDSCAPE AND VISUAL INSPECTION

- 5.02 According to Section 7.5 of the Updated EM&A Manual, quarterly landscape and visual inspection shall be carried out during the first year of the Operation Phase.

Operation Phase of Contract 1

- 5.03 The 2nd quarterly Landscape & Visual inspection for Contract 1 which signed by the Registered Landscape Architect was last undertaken on 29 May 2015. In the Reporting Period, the 3rd quarterly Landscape & Visual inspection for Contract 1 was conducted on 17 September 2015.

Operation Phase of Contract 2

- 5.04 The 1st quarterly Landscape & Visual inspection for Contract 2 which signed by the Registered Landscape Architect was undertaken on 30 May 2015. In the Reporting Period, the 2nd quarterly Landscape & Visual inspection for Contract 2 was conducted on 17 September 2015.
- 5.05 The landscape and visual monitoring findings for the 3rd quarterly monitoring for Contract 1 (DC/2009/22) works areas, and the 2nd quarterly monitoring for Contract 2 (DC/2010/02) works area during the first year of operation phase were shown in Appendix G.

6.0 ENVIRONMENTAL COMPLAINT AND NON-COMPLIANCE

ENVIRONMENTAL COMPLAINT, SUMMONS AND PROSECUTION

6.01 For the Project, no environmental complaint, summons and prosecution was received in this Reporting Period. The statistical summary table of environmental complaint for the **Contract 2** is presented in *Tables 6-1, 6-2 and 6-3*.

Table 6-1 Statistical Summary of Environmental Complaints

Reporting Period	Environmental Complaint Statistics		
	Frequency	Cumulative	Complaint Nature
July 2011 –August 2015	1	1	Air Quality (1)
September 2015	0	1	Air Quality (1)

Table 6-2 Statistical Summary of Environmental Summons

Reporting Period	Environmental Summons Statistics		
	Frequency	Cumulative	Complaint Nature
July 2011 –August 2015	0	0	NA
September 2015	0	0	NA

Table 6-3 Statistical Summary of Environmental Prosecution

Reporting Period	Environmental Prosecution Statistics		
	Frequency	Cumulative	Complaint Nature
July 2011 –August 2015	0	0	NA
September 2015	0	0	NA

7.0 IMPLEMENTATION STATUS OF MITIGATION MEASURES

7.01 According to the Updated Environmental Monitoring and Audit Manual, mitigation measures of Operation Phase of the Project is included the Ecological and Landscape & Visual as listed below.

Ecological

- To minimize sedimentation, de-silting should be limited to the dry season; and
- Waste material produced during de-silting should be disposed of in a timely and appropriate manner

Landscape and visual

- Viewing area formation by planting with shrubs, grasses and benches along the area
- Architectural design of the pump house will help it fit into the existing suburban, natural to semi-natural surroundings
- Landscape design of pump house by providing sufficient planting around its boundary fence
- Enhancement planting along Tung Tsz Road with shrubs / trees of suitable species to help protect the stream and marshes
- Construction of box culvert should be with at least 1.0m soil depth for enhancement planting
- Transplanting of existing affected trees to adjacent locations should be carried out
- Preparation for transplanting is needed to allow sufficient time for root pruning and rootball preparation prior to transplanting
- Reinstatement of affected area should be carried out to check that the works areas are properly reinstated

8.0 CONCLUSIONS AND RECOMMENTATIONS

CONCLUSIONS

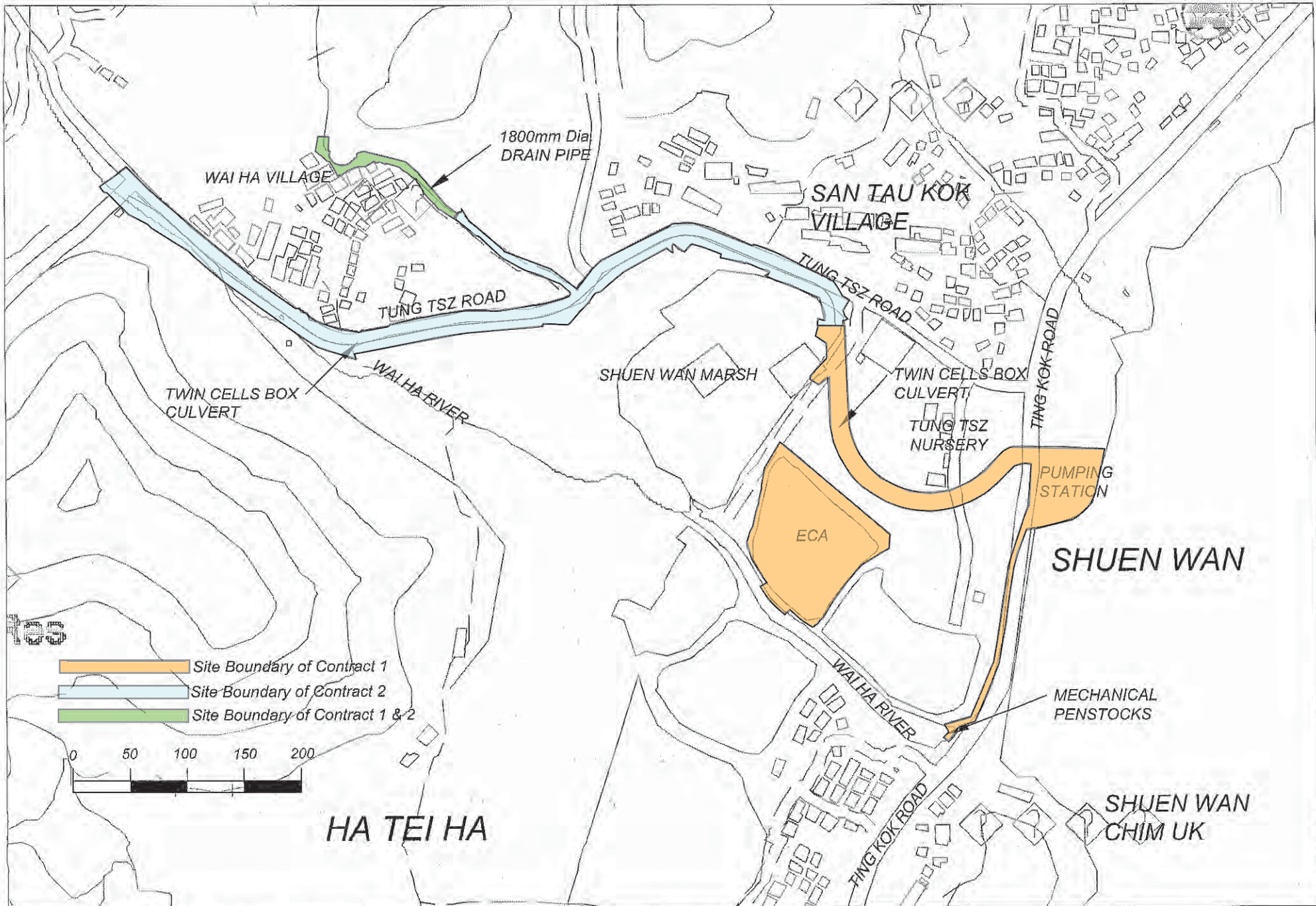
- 8.01 This is the monthly EM&A report for Contract 1 and Contract 2 presenting the Operation Phases monitoring results during the Reporting Period of **1 to 30 September 2015**.
- 8.02 The hydrological characteristics of water depth and water flow rate as compared baseline monitoring period, the currently water depth and volumetric flow rate has insignificant change.
- 8.03 Operation phase ecological monitoring in area under the Project should be undertaken on quarterly basis and it was not carried out in this Reporting Period.
- 8.04 Operation phase Landscape and visual inspection of the Contracts 1 and 2 should be undertaken on quarterly basis and it was carried out on 17 September 2015.
- 8.05 No documented complaint, notification of summons or successful prosecution was received in the Reporting Period.

RECOMMENDATIONS

- 8.06 Mitigation Measures of Operation Phase shall fulfill the updated EM&A Manual requirements.

Appendix A

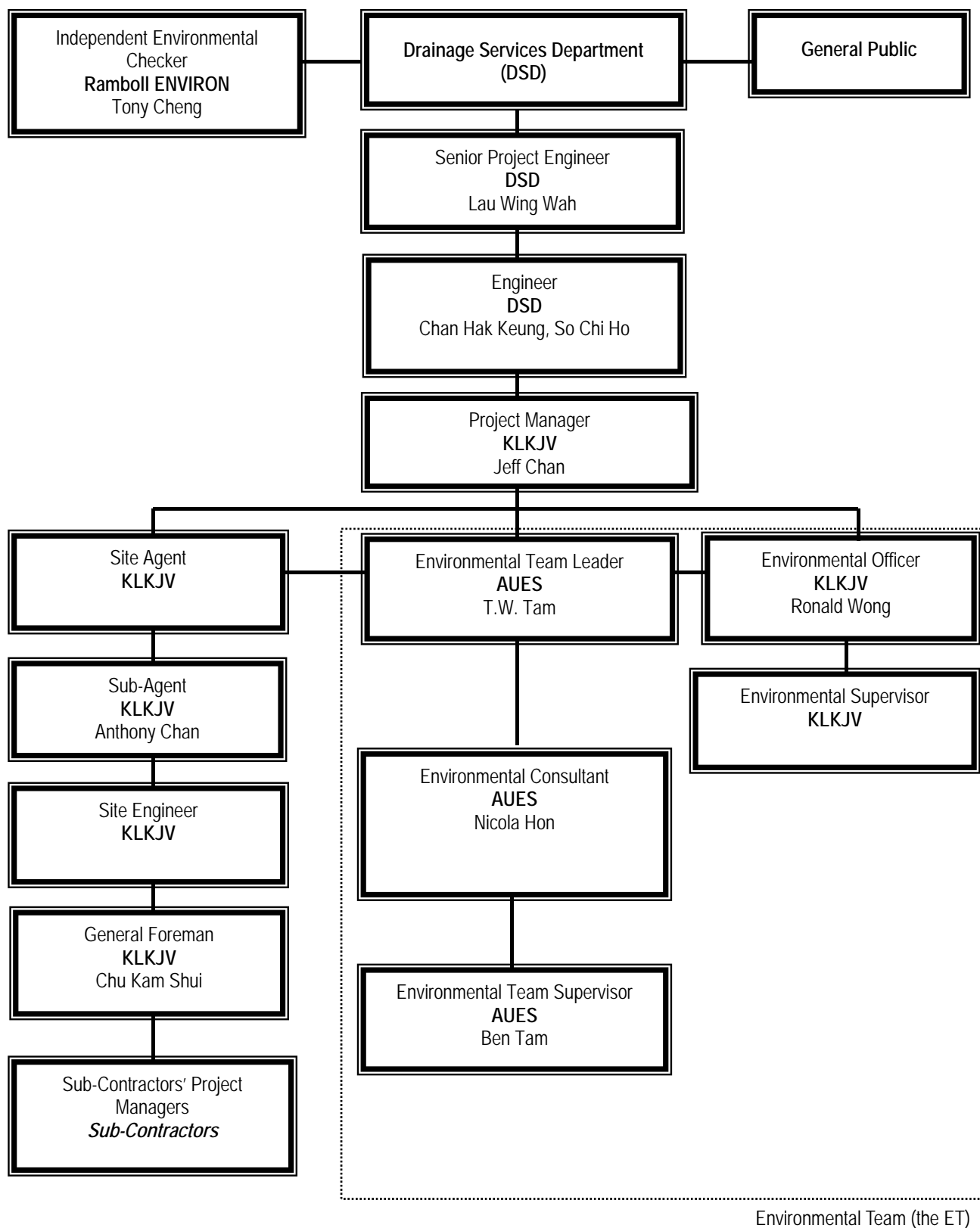
Project Location at Shuen Wan



Site Location Plan of DSD Contract 1 and Contract at Shuen Wan

Appendix B

Organization Chart and the Key Contact Person



Environmental Management Organization

Contact Details of Key Personnel

Organization	Project Role	Name of Key Staff	Tel No.	Fax No.
DSD	Employer	Mr. Luk Wai Hung	2594 7400	2827 8700
DSD	Senior Engineer	Mr. Lau Wing Wah	2594 7402	2827 8700
DSD	Engineer	Mr. Chan Hak Keung	2594 7596	2827 8700
DSD	Engineer	Mr. So Chi Ho	2594 7356	2827 8700
DSD	Senior Inspector	Mr. Tso Si On	6778 2708	2827 8700
Ramboll Environ	Independent Environmental Checker	Mr. Tong Cheng	3465-2888	3465-2899
KLKJV	Project Director	Mr. Poon Chi Yeung Francis	2674 3888	2674 9988
KLKJV	Project Manager	Mr. Jeff Chan	2674 3888	2674 9988
KLKJV	Sub- Agent	Mr. Anthony Chan	2674 3888	2674 9988
KLKJV	Site Forman	Mr. Chu Kam Shui	2674 3888	2674 9988
KLKJV	Environmental Officer	Mr. Ronald Wong	2674 3888	2674 9988
AUES	Environmental Team Leader	Mr. T.W. Tam	2959-6059	2959-6079
AUES	Environmental Consultant	Miss. Nicola Hon	2959-6059	2959-6079
AUES	Environmental Supervisor	Mr. Ben Tam	2959-6059	2959-6079

Legends:

DSD (Employer) – Drainage Services Department

DSD (Engineer) – Drainage Services Department

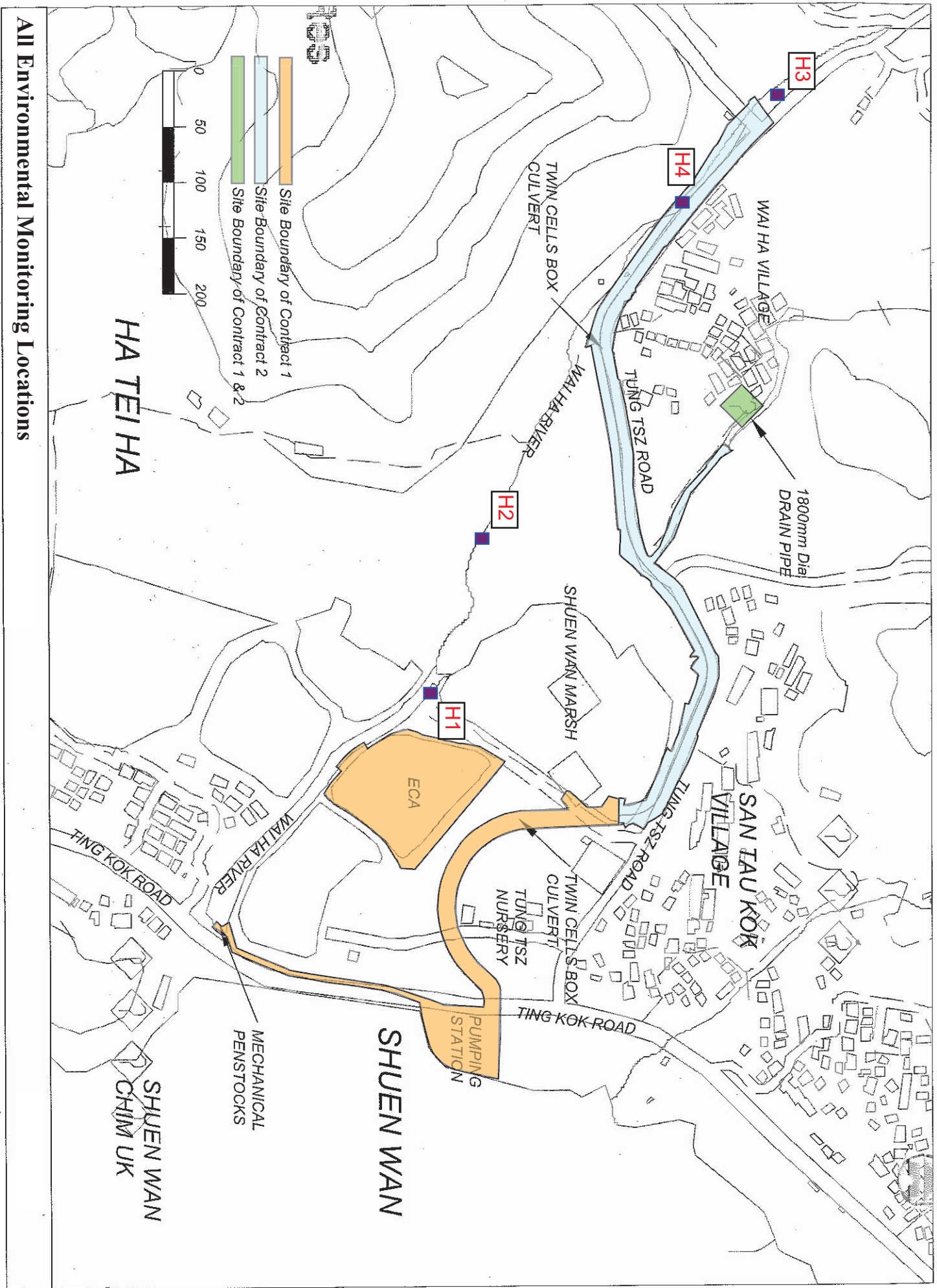
KLKJV (Main Contractor) – Kwan Lee-Kuly Joint Venture

RAMBOLL ENVIRON (IEC) – Ramboll Environ Hong Kong Limited

AUES (ET) – Action-United Environmental Services & Consulting

Appendix C

Operation Phase Environmental Monitoring Locations



All Environmental Monitoring Locations

Appendix D

Operation Phase Monitoring Schedule

Monitoring/Inspection Schedule for the coming year (April 2015 to March 2016)

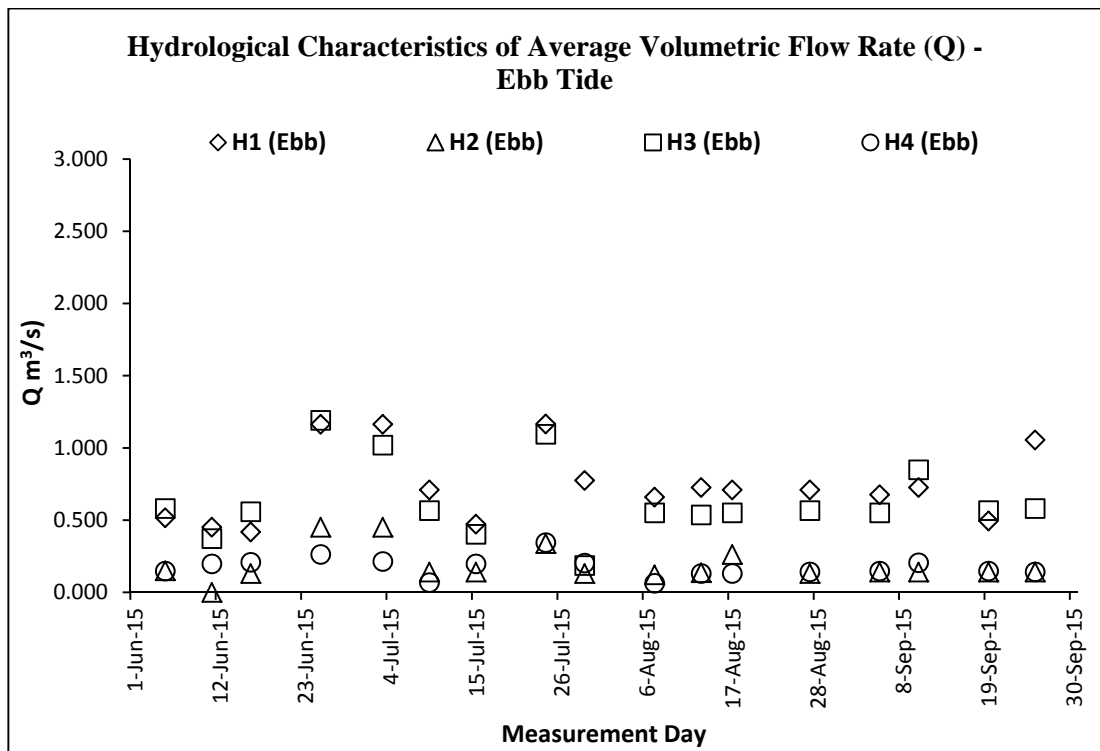
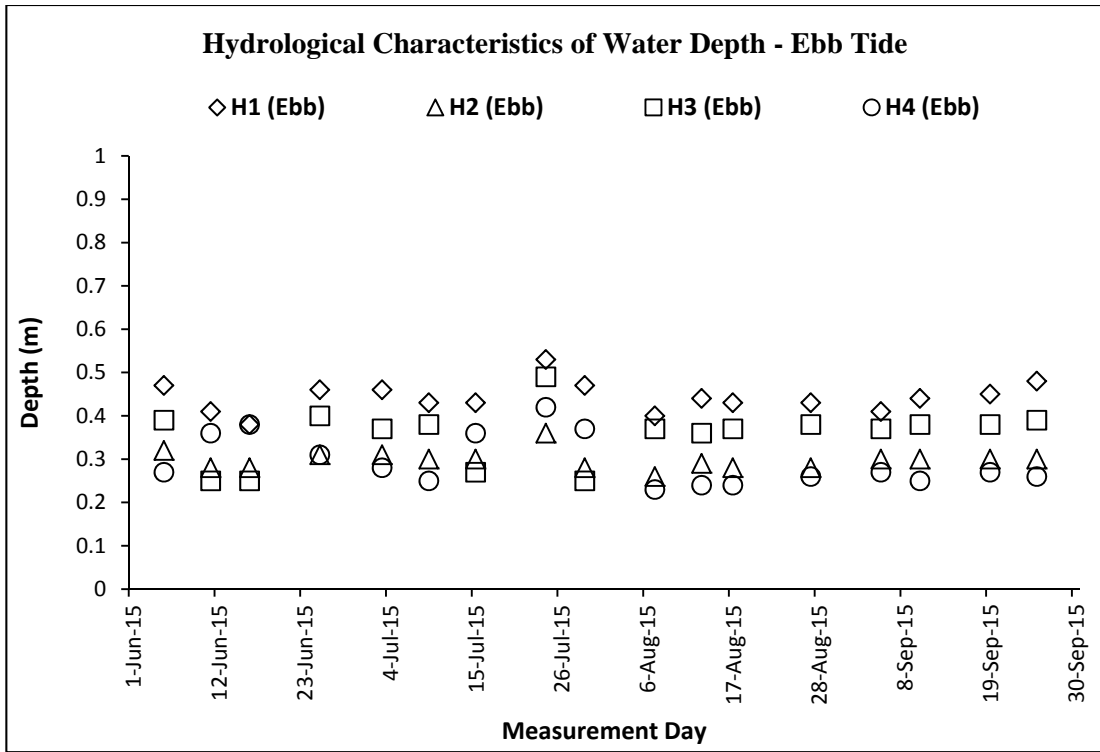
Operational Phase Commencement Date		Hydrological Monitoring											
		Apr-15	May-15	Jun-15	Jul-15	Aug-15	Sep-15	Oct-15	Nov-15	Dec-15	Jan-16	Feb-16	Mar-16
Contract 1	4-Dec-14	Once per week at mid-flood and mid-ebb tides								N/A	N/A	N/A	N/A
Contract 2	1-Apr-15	Once per week at mid-flood and mid-ebb tides											

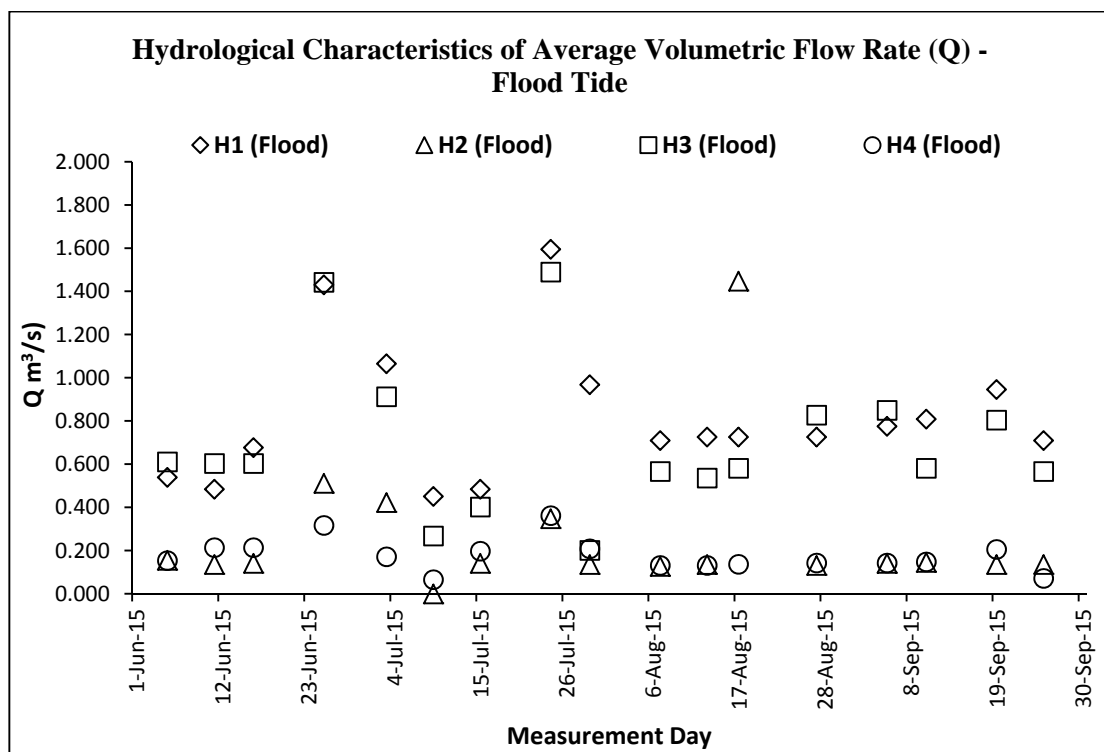
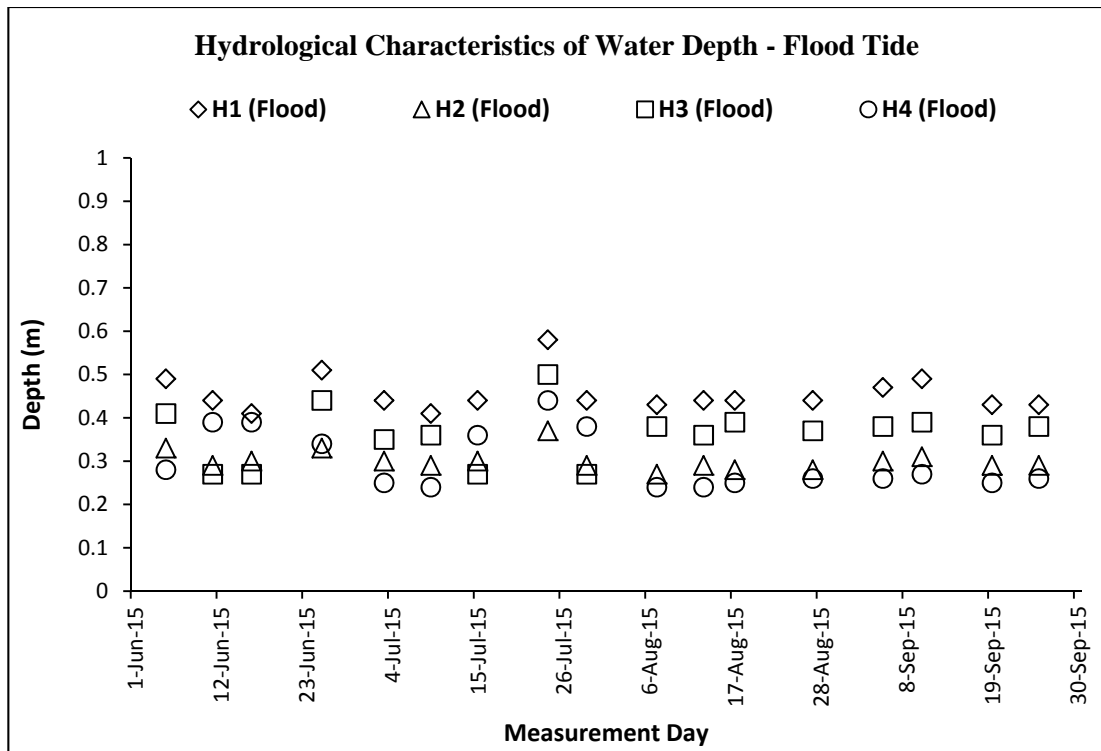
Operational Phase Commencement Date		Landscape & Visual Inspection											
		Apr-15	May-15	Jun-15	Jul-15	Aug-15	Sep-15	Oct-15	Nov-15	Dec-15	Jan-16	Feb-16	Mar-16
Contract 1	4-Dec-14		×				×			×			
Contract 2	1-Apr-15		×				×			×			×

Operational Phase Commencement Date		Ecology Monitoring											
		Apr-15	May-15	Jun-15	Jul-15	Aug-15	Sep-15	Oct-15	Nov-15	Dec-15	Jan-16	Feb-16	Mar-16
Contract 1	4-Dec-14	×			×			×					
Contract 2	1-Apr-15	×			×			×			×		

Appendix E

Graphical Plots of Hydrological Characteristics





Appendix F

Ecological Monitoring Report for Operation Phase

(Not Used)

Appendix G

Quarterly EM&A (Landscape & Visual) Report

Contract No. DC/2009/22 & DC/2010/02
Drainage Improvement Works in Shuen Wan and Shek Wu Wai
Landscape & Visual Monitoring

Quarterly EM&A (Landscape & Visual) Report (September 2015)
(Issue 1)

Job Ref.: 09/317/161G KLKJV-SW
Date: October 2015

Environmental
Resources
Management

16/F
Berkshire House
25 Westlands Road
Quarry Bay
Hong Kong

Telephone: (852) 2271 3000
Facsimile: (852) 2723 5660
E-mail: post.hk@erm.com
<http://www.erm.com>

16 October 2015

Kwan Lee - Kuly Joint Venture
Unit 6, 16/F, Yuen Long Trading Centre
33 Wang Yip Street West
Yuen Long, Hong Kong

Attn.: Nicola Hon



Our ref: 0125606_Cert02_20151016

Dear Shan,

*Contract No. DC/2009/22 & DC/2010/02 -
Drainage Improvement in Shuen Wan, Tai Po
Quarterly EM&A (Landscape & Visual) Report - September 2015*

Reference is made to the combined Quarterly EM&A (Landscape & Visual) Reports for Contract 1 (3rd) and Contract 2 (2nd) for the month of September 2015 (Operational phase), please kindly note that we have no adverse comment on the combined reports.

Should you have any queries, please feel free to contact Mr. Jon Binalay at 2271 3212.

Yours sincerely,
For ERM-Hong Kong, Limited

Kenneth Ng
Landscape Architect



Registered Office
ERM-Hong Kong, Ltd
16/F Berkshire House
25 Westlands Road
Quarry Bay
Hong Kong



Offices worldwide

Contract No. DC/2009/22 & DC/2010/02
Drainage Improvement Works in Shuen Wan and
Shek Wu Wai
Landscape & Visual Monitoring

Quarterly EM&A (Landscape & Visual) Report (September 2015)

(Issue 1)

October 2015

	Name	Signature
Prepared by:	Henry To	
Reviewed by:	Ida YU	
Date:	12th October 2015	

Job Ref.: 09/317/161G KLKJV-SW

CONTENTS

1	INTRODUCTION	1
2	SCOPE OF MONITORING	1
3	LANDSCAPE & VISUAL MONITORING PROGRAMME	2
4	QUARTERLY LANDSCAPE & VISUAL MONITORING (OPERATION PHASE) FOR CONTRACT 1 (DC/2009/22).....	2
5	QUARTERLY LANDSCAPE & VISUAL MONITORING (OPERATION PHASE) FOR CONTRACT 2 (DC/2010/02).....	5
6	AUDIT SCHEDULE.....	7

LIST OF APPENDICES

Appendix A – Photographs for Quarterly Monitoring (Operational Phase) for Contract 1 (DC/2009/22)

Appendix B – Photographs for Quarterly Monitoring (Operational Phase) for Contract 2 (DC/2010/02)

1 INTRODUCTION

1.1.1 The Landscape and Visual Monitoring of the Project is conducted to fulfill Clauses 5.2 and 5.4 of EP-303/2008 and the monitoring requirements in accordance with Section 7 of the approved updated EM&A Manual (approved by EPD on 31st May 2012) of the Project. A Baseline Review on updating the landscape and visual condition, and the mitigation measures of the Project (including Contracts 1 and 2 of the Project) was undertaken before the commencement of the Project. The review findings were updated in the Baseline Environmental Monitoring Report submitted to the EPD on 14th February 2011.

1.1.2 The construction work within Contracts 1 (Areas A, B and C) and 2 works areas were completed and formally agreed by EPD. The official commencement dates of the Operation Phase of Contracts 1 and 2 were 4th December 2014 and 1st April 2015 respectively. This monthly monitoring report will detail the scope of landscape and visual monitoring work, monitoring findings and observations, and any recommendation and advice on proper implementation of the landscape mitigation measures during Operation Phase in the works areas under Contract 1 and 2 of the Project.

2 SCOPE OF MONITORING

2.1 Monitoring objectives

2.1.1 Landscape and Visual Monitoring of the Project should be conducted on a bi-weekly basis for checking the design, implementation and maintenance of the landscape and visual mitigation measures throughout the construction phase and in a quarterly basis to check the effectiveness of the mitigations during the first year of the operational phase of the Project. Observations of any potential conflicts between the proposed mitigation measures and the project works carried out by the Contractors should be recorded. Recommendation and advice on proper implementation of the landscape mitigation measures should be provided to the Contractor for minimizing any potential impacts on the landscape and visual elements.

2.2 Monitoring during Construction Phase

2.2.1 The following landscape and visual mitigation measures should be implemented during the construction phase of the project to minimize the potential impacts:

- *Visual Screen* – Use of hoardings as visual screens for the construction in the works areas;
- *Contaminant/ Sediment Control* – Use of temporary barriers, covers and drainage provision around the construction works as contaminant/ sediment control to prevent the contaminants and sediments from entering the sensitive water-based habitats;
- *Pollution Control* – Implementation of pollution control measures to minimize any adverse environmental impacts to the surrounding habitats;
- *Liaison with Nursery* (Not relevant to Contract 2 of the Project) – Liaison with the nursery operator as necessary to minimize any adverse impact to the daily operation and plant holding capacity of the nursery;
- *Existing Trees within Works Area* – Maintenance and protection of the existing trees, especially their crowns, trunks and roots, within work sites; and

- Construction Light – Provision of construction light should be controlled at night to avoid excessive glare to the surrounding villages and to Plover Cove.

2.3 Monitoring during Operational Phase

2.3.1 The following landscape and visual mitigation measures should be implemented during the operational phase of the project to minimize the potential impacts:

- *Viewing Area Formation* - Planting of shrubs, grasses and building benches along Ting Kok Road along the shore;
- *Architectural Design for Pump House* – Architectural design to help the pump house fit into the existing suburban, natural to semi-natural surroundings (Not relevant to Contract 2 of the Project);
- *Landscape Design for Pump House* – Provide sufficient planting around its boundary fence (Not relevant to Contract 2 of the Project);
- *Enhancement Planting along Tung Tsz Road* – Planting of shrubs/ trees of suitable species to help protect the stream and marshes;
- *Soil Depth for Enhancement Planting* – Construction of box culvert should be with at least 1.0m soil depth for enhancement planting;
- *Transplanting of Trees to Adjacent Locations* – Transplanting of existing affected trees to adjacent locations should be carried out;
- *Preparation for Transplanting* – Preparation for transplanting is needed to allow sufficient time for root pruning and rootball preparation prior to transplanting; and
- *Reinstatement of Affected Area* – The works area should be properly reinstated to the satisfaction of relevant government departments.

3 LANDSCAPE & VISUAL MONITORING PROGRAMME

3.1 Monitoring Date(s)

3.1.1 This report documents the landscape and visual monitoring findings for the 3rd quarterly monitoring for Contract 1 (DC/2009/22) works areas, and the 2nd quarterly monitoring for Contract 2 (DC/2010/02) works area during the first year of operation phase. The quarterly monitoring for Contract 1 (Areas A, B and C) and 2 was conducted on 17th September 2015. Area A (i.e. Pump House) was formally handed over to DSD for management and maintenance. No access into the Pump House for monitoring is allowed. Area C (i.e. Ecological Compensatory Area (ECA)) was formally handed over to AFCD on 16th October 2012 for management and maintenance and hence no access into the ECA is allowed afterwards. Accordingly, no quarterly monitoring was carried out in Area A and C.

3.1.2 All photos stated for the quarterly monitoring for Contract 1 and 2 are recorded in **Appendices A and B** respectively.

4 QUARTERLY LANDSCAPE & VISUAL MONITORING (OPERATION PHASE) FOR CONTRACT 1 (DC/2009/22)

4.1 Viewing Area Formation

Observations

4.1.1 The roadside planters in Ting Kok Road were hydroseeded and planted with shrubs *Duranta erecta* which were in fair condition as observed in September 2015 (**Photo A1**).

4.1.2 According to EIA Report of the Project, planters with shrubs and grasses, and putting a few benches were suggested as Landscape & Visual Mitigation Measure (i.e. OM-01) along Ting Kok Road. However, with reference to the approved Landscape Plan of this Project, provision of benches along Ting Kok Road was not included in accordance with the engineering design. Thus only the record of reinstated planters and the monitoring of shrubs and grass along Ting Kok Road were adopted under this mitigation measure.

Recommendation

4.1.3 The roadside planters in Ting Kok Road were handed over to Highway Department and under maintenance by the corresponding party. No further recommendation on the growth performance of these planters is given from the current observation.

4.2 Architectural Design for Pump House

Observation

4.2.1 As observed in September 2015, the architectural design of the pump house generally follows the proposed materials and color (e.g. a wall of clay cladding to facilitate the development of climbers for vertical greening) as stated in the approved Landscape Plan (**Photo A2**).

Recommendations

4.2.2 No specific recommendation is required for this mitigation measure.

4.3 Landscape Design for Pump House

Observation

No entry into the Pump House (Area A) was allowed after the formal handover. Monitoring was made by observing the green roof outside the fenced Pump House Area. As observed in September 2015, the planted ground cover *Arachis duranensis* on the green roof was in fair condition (**Photo A3**). Other landscape design (including the planting of ground cover *Iris tectorum*, creeping climbers *Ficus pumila* and *Parthenocissus dalzielii*, shrubs *Ficus microcarpa* (Golden Leaf) and trees *Cinnamomum burmannii* were unobservable in this monitoring due to the inaccessibility of pump house.

Recommendations

4.3.1 The daily operation of the pump house were handed over to Drainage Services Department and under maintenance by corresponding party. No further recommendation is given from the current observation on the landscape planting within the pump house.

4.4 Soil Depth for Enhancement Planting

Observations

4.4.1 Planting of trees and shrubs were already finished at construction phase. Soil depth on the box culvert was unable to be checked during Operational Phase. Moreover, Area B was handed over back to Tung Tsz Nursery after the construction phase for routine maintenance

practice by the nursery. The roadside planters in Ting Kok Road were also handed over to Highway Department and under maintenance by the corresponding party.

Recommendations

4.4.2 No specific recommendation is required for this mitigation measure.

4.5 Transplanting of Trees to Adjacent Locations

Observation

4.5.1 Transplantation of trees was finished during the early construction phase of Contract 1 (**Photo A4**). The health performance of these transplanted trees had been regularly monitored and reported during the construction phase. Any trees of poor performance were reported to the Contractor and replaced accordingly. Area B was handed over to Tung Tze Nursery after the construction phase, and the transplanted trees were under the maintenance of the Nursery Operator.

4.5.2 Some of the locations of the transplanted trees were different from those proposed in the approved Landscape Plan. Moreover, as reported during the construction phase, gap was observed between the root balls of some transplanted trees and the inner surface of their newly built planters. However, these trees were accepted by the Nursery Operator.

4.5.3 The remaining retained and transplanted trees within the nursery were maintained generally in fair condition, with no significant damage on tree crowns, trunks and roots observed during the monitoring in September 2015.

4.5.4 Trees proposed for transplantation from Area A to Area C were already carried out in 2011 and Area C was handed over to AFCD in October 2012.

Recommendation

4.5.5 Area B was handed over to Tung Tze Nursery which will provide routine maintenance of these transplanted trees. No further recommendation is given under this mitigation measures.

4.6 Preparation for Transplanting

Observation

4.6.1 Transplantation of trees was finished during the construction phase. No preparation of root balls for transplantation could be monitored during the operation phase.

Recommendation

4.6.2 No specific recommendation is required for this mitigation measures.

4.7 Reinstatement of affected area

Observation

4.7.1 The reinstatement works for the original access paths, ground of the nursery beds, basic nursery utility (such as irrigation pipes and lamp posts), shelters for potted plants, planters for transplanting trees, and wire mesh fences within the nursery were already finished in Area B as observed in September 2015 (**Photo A5**). Some of the individual tree planters in the

Nursery were broken, but the maintenance of these planters were already handed over and accepted by the Nursery in December 2014. The planters along Ting Kok Road were also reinstated (**Photo A1**).

Recommendation

4.7.2 No specific recommendation is required for this mitigation measures.

5 QUARTERLY LANDSCAPE & VISUAL MONITORING (OPERATION PHASE) FOR CONTRACT 2 (DC/2010/02)

5.1 Viewing Area Formation

5.1.1 This mitigation measure applies on the viewing area and the associated landscape planting lined along Ting Kok Road for having an open view to Plover Cove. The concerned viewing area and landscape planting area fall within the works area under Contract 1. This is not applicable to Contract 2 of the Project.

5.2 Architectural Design for Pump House

5.2.1 The pump house of the Project is located in Area A under Contract 1. This is not applicable to Contract 2 of the Project, and the according monitoring finding was reported above in **Section 4.2**.

5.3 Landscape Design for Pump House

5.3.1 The pump house of the Project is located in Area A under Contract 1. This is not applicable to Contract 2 of the Project, and the according monitoring finding was reported above in **Section 4.3**.

5.4 Enhancement Planting along Tung Tsz Road

Observation

5.4.1 A total of 207 tagged compensatory trees were planted under Contract 2, and the planting work and replacement of trees with poor condition were completed in the end of the construction phase. The health conditions of majority of these compensatory trees were generally in fair condition (**Photos B1-B3**). However, four compensatory trees, including three *Hibiscus tiliaceus* (tree tag no. T111, T127 and T148) and one *Cleistocalyx operculatus* (tree tag no. T021) were missing, this may due to previous tree failure under adverse weather.

5.4.2 As inspected on 17th September 2015, excavation work related to CLP Project was carried out immediately next to compensatory trees planted opposite to San Tau Kok (i.e. the area at the junction of Contracts 1 and 2) (**Photos B4-B5**). No tree protection measures were applied on the planted compensatory trees during the excavation work. Five compensatory trees (T193 – T196 and T201) were missing and their locations were at the excavation area (**Photo B6**). Such observation was reported to DSD and the Main Contractor. As the area was formally handed over to LandsD, the excavation work was possibly approved officially. Besides, considerable numbers of planted compensatory trees showed poor condition or with no leaves (**Photos B7-B8**).

5.4.3 No shrub planting was proposed in the approved Landscape Plan, while hydroseeding was applied on the reinstated soil ground above the alignment of the box-culvert along Tung Tsz

Road (**Photo B9**), as well as the reinstated area above the drain pipe along the access path leading towards Treasure Spot Garden II (**Photo B10**). Grass germination in these hydroseeded areas was in fair condition, and other native grass species have also naturally established in these areas. Overgrown problem by climbers (*Mikania micrantha* and *Pueraria lobata*) and grass was quite obvious along the roadside area (**Photo B11**).

Recommendation

- 5.4.4 According to the information from DSD and the Contractor, the areas planted with compensatory trees along Tung Tsz Road were handed over to LandsD in May 2015. In principle, LandsD will be responsible for maintaining these vegetated areas and provide *ad hoc* tree maintenance if necessary. Since the areas were officially handed over, implementation of any tree maintenance and management practices within these areas should inform and discuss with the corresponding government department. By the time of preparing this monitoring report, any re-planting and vegetation maintenance work are not authorized. While such official negotiation is still on-going, if practical, it is recommended to have regular watering for all planted compensatory trees by the appointed landscape contractor within the establishment period. The landscape contractor should regularly check the stability and condition of the bamboo stakes used to support the compensatory trees. They should also remove the climbers on the bamboo stakes. If re-planting of trees of less satisfactory health and/or structural condition within this area is authorized by the corresponding government department, these trees should be replaced prior to the end of the establishment period of the trees.
- 5.4.5 For the replacement of the missing or removed compensatory trees due to previous tree failure under adverse weather(except the five missing trees in relation to the excavation work), the Contractor and DSD will further liaise with the LandsD for any further follow-up action in replacing such compensatory tree within the handed over areas.

5.5 Soil Depth for Enhancement Planting

Observation

- 5.5.1 A box-culvert of approximately 1.0km long was constructed along Tung Tsz Road and passed through the underground of Tung Tsz Nursery and finally reach the newly built Shuen Wan Storewater Pumping Station (**Photo B12**). According to the approved Landscape Plan of the Project, the ground above the box-culvert was backfilled with soil and hydroseeded (**Photos B9-B10**). No compensatory trees were designed to be planted on top of the box-culvert due to the potential maintenance concern by DSD. Compensatory trees were planted mainly to the south and northeast (for trees planted at San Tau Kok) of the box-culvert during the construction phase of Contract 2. Since only hydroseeding was applied on top of the box-culvert, the backfilled soil depth should be adequate for the germination and growth of the grass.

Recommendations

- 5.5.2 No specific recommendation is required for this mitigation measure.

5.6 Transplanting of Trees to Adjacent Locations

- 5.6.1 According to the approved Tree Felling Application Report and Landscape Plan of this Project, no existing tree was proposed to be transplanted under Contract 2. This monitoring item was not applicable to Contract 2 of the Project.

5.7 Preparation for Transplanting

- 5.7.1 As abovementioned, no transplantation of existing tree under Contract 2 was proposed in accordance with the approved Tree Felling Application Report and Landscape Plan of the Project. This monitoring item was not applicable to Contract 2 of the Project.

5.8 Reinstatement of affected area

Observation

- 5.8.1 The reinstatement works for the original access roads (Tung Tsz Road), access paths to the villages, low-lying wetland areas to the south of San Tau Kok, and planting areas for compensatory trees were inspected (**Photos B13-B16**). A refuse collection chamber was newly built by the Contractor to facilitate the daily operation by Food and Environmental Hygiene Department (FEHD). All these reinstatement works were completed by end of the construction phase and these reinstated areas have been used daily by the villagers and government department. Information by the Contractor revealed that these reinstated works were handed over to the corresponding government departments.

Recommendation

- 5.8.2 No specific recommendation is required for the reinstated areas.

6 AUDIT SCHEDULE

- 6.1.1 The 4th quarterly Landscape & Visual Monitoring (during operational phase) for Contract 1 and the 3rd quarterly monitoring for Contract 2 will be tentatively scheduled in December 2015.

Appendix A

Photographs for Quarterly Monitoring (Operational Phase) for Contract 1 (DC/2009/22)



Photo A1 – Planters at Ting Kok Road were hydroseeded and planted with shrubs.



Photo A2 – General appearance of the pump house in Area A.



Photo A3 – View of sloping area with ground cover on the Pump House.



Photo A4 – Example of the transplanted trees in Area B.



Photo A5 – Example of the completed reinstatement works within the nursery (such as lamp posts, shelters for potted plants and new planters for the transplanted tree).

Appendix B

Photographs for Quarterly Monitoring (Operation Phase) for Contract 2 (DC/2010/02)

	
<p>Photo B1 – Overall view of the compensatory trees planted opposite to San Tau Kok.</p>	<p>Photo B2 – Overall view of the compensatory trees planted opposite to Wai Ha.</p>
	
<p>Photo B3 – Overall view of the compensatory trees planted opposite to Wai Ha.</p>	<p>Photo B4 – Excavation work related to CLP Project was carried out at the locations where the compensatory trees were planted.</p>
	
<p>Photo B5 – Another view of the excavation work.</p>	<p>Photo B6 – Five missing trees were originally located at the area where the excavation work was conducted.</p>



Photo B7 – Example of compensatory trees had poor health condition.



Photo B8 – Example of compensatory trees had poor health condition and located opposite to Wai Ha area.



Photo B9 – Hydroseeding was applied on the reinstated soil ground above the alignment of the box-culvert along Tung Tsz Road.



Photo B10 – The reinstated area above the drain pipe along the access path leading towards Treasure Spot Garden II.



Photo B11 – Overgrown problem caused by climbers and grass was quite obvious along the roadside area.



Photo B12 – The box culvert and the associated drainage work were completed at the upper part of Wai Ha River.



Photo B13 – The original access road, Tung Tsz Road, was reinstated.



Photo B14 – The access path in Treasure Spot Garden II was reinstated.



Photo B15 – The low-lying area with wetland character was reinstated in area opposite to Jade View Villa.



Photo B16 – Both bunds along Wai Ha River were naturally vegetated.