



PROJECT NO.: TCS/00553/11

**CONTRACT NO. DC/2010/02 –
DRAINAGE IMPROVEMENT IN SHUEN WAN AND
SHEK WU WAI**

**QUARTERLY ENVIRONMENTAL MONITORING AND
AUDIT (EM&A) SUMMARY REPORT (NO. 5) –
JULY TO SEPTEMBER 2012**

PREPARED FOR
KWAN LEE-KULY JOINT VENTURE

Quality Index

Date	Reference No.	Prepared By	Certified by
22 October 2012	TCS00553/11/600/R0195v1	 Nicola Hon (Environmental Consultant)	 T.W. Tam (Environmental Team Leader)

Ver.	Date	Description
1	22 October 2012	First submission

This report has been prepared by Action-United Environmental Services & Consulting with all reasonable skill, care and diligence within the terms of the Agreement with the client, incorporating our General Terms and Conditions of Business and taking account of the resources devoted to it by agreement with the client. We disclaim any responsibility to the client and others in respect of any matters outside the scope of the above. This report is confidential to the client and we accept no responsibility of whatsoever nature to third parties to whom this report, or any part thereof, is made known. Any such party relies upon the report at their own risk.

Ref.: DSDSHUWNEM00_0_0505L.12

2nd Nov 2012

Drainage Services Department
Projects and Development Branch
Drainage Projects Division
44 & 45/F., Revenue Tower
5 Gloucester Road,
Wan Chai, Hong Kong

By Post and Fax (2827 8700)

Attention : Mr. H.K.Chan

Dear Mr. Chan,

**Re: Agreement No. DP 01/2010
Services as Independent Environmental Checker for the Drainage Improvement
Works in Sha Tin and Tai Po under Contract No. DC/2010/02
Quarterly Environmental Monitoring and Audit Report for Jul to Sept 2012**

Reference is made to Environment Team's submission of the Quarterly Environmental Monitoring and Audit Report for Jul to Sept 2012 by Email on 22nd Oct 2012 (entitled "DC/2010/22 - Quarterly EM&A Summary Report (No.5) - Jul to Sept 2012").

Please be informed that we have no comment on the captioned revised report. We write to verify the captioned submission in accordance with Section 9.9 of EM&A Manual under EP-303/2008.

Thank you very much for your kind attention and please do not hesitate to contact the undersigned or Max Lee (3743 -0359) should you have any queries.

Yours sincerely,



Tony Cheng
Independent Environmental Checker

c.c. AUES
Kwan Lee-Kuly JV

Attn: Mr. T. W. Tam
Attn: Mr. W. K. Chan

By Fax: 2959 6079
By Fax: 2674 6688

Q:\Projects\DSDSHUWNEM00\Corr\Out\DSDSHUWNEM00_0_0505L.12.doc

EXECUTIVE SUMMARY

ES.01. This is the 5th Quarterly EM&A Summary Report under Environmental Permit No.EP-303/2008 (hereinafter “the EP”) for the Contract No. DC/2010/02 - Drainage Improvement in Shuen Wan and Shek Wu Wai (hereinafter “the Project”), covering the period from **1 July to 30 September 2012** (hereinafter “Reporting Quarter”).

ES.02. Environmental monitoring activities under the EM&A programme in the Reporting Quarter are summarized in the following table.

Aspects	Environmental Monitoring Parameters / Inspection	Occasions
Construction Noise	Leq (30min) Daytime – M2, M3 & M4	39
	Leq (30min) Daytime – M1 & AL1	26
Water Quality	Local Stream Water Sampling - W1 and W2	39
	Local Stream Water Sampling - W3 and W4	39
	Hydrological characteristics measurement – H1 and H2	13
	Hydrological characteristics measurement – H3 and H4	13
Inspection / Audit	Monthly Environmental Site Inspection and audit by Environmental Team and IEC	3
	Regular weekly Environmental inspection by the Contractor and Site Representative Engineer	13
Ecological	Bi- monthly Ecological Monitoring	2
Landscape & Visual	Bi-weekly Inspection by a registered Landscape	6

ES.03. No noise complaint (which is an Action Level exceedance) and exceedance was received in this Reporting Quarter. For water quality monitoring, a total of 302 Action/Limit Levels exceedances, namely 138 dissolved oxygen, 99 turbidity and 65 suspended solids were recorded in this Reporting Quarter. Investigation reports concluded that all registered exceedances were not related to the work under the Project. The statistics of environmental exceedance, NOE issued and investigation of exceedance are summarized in the following table.

Environmental Issues	Monitoring Parameters	Action Level	Limit Level	Event & Action		
				NOE Issued	Investigation	Corrective Actions
Construction Noise	L _{eq30min} Daytime	0	0	0	N.A	N.A
Water Quality	Dissolved Oxygen	131	7	138	Not related Contract 2	Not required
	Turbidity	10	89	99		
	Suspended Solids	10	55	65		
Hydrological Characteristics	Water Flow	0	0	0	N.A	N.A
	Water Depth	0	0	0	N.A	N.A

ES.04. No documented complaint, notification of summons and successful prosecution was received during the Reporting Quarter.

ES.05. No major environmental impacts were observed during the weekly site inspection which indicated that the implemented mitigation measures for construction noise and water quality were effective. Minor deficiencies found in the weekly site inspection were in general rectified within the specified deadlines. The environmental performance of the Project was therefore considered satisfactory.

ES.06. No site inspection was undertaken by external parties i.e. EPD or AFCD within the Reporting Quarter.

ES.07. No reporting changes were made during the Reporting Quarter.

ES.08. During dry season, dust mitigation measures to avoid fugitive dust emissions from loose soil surface or haul road would be a key issue in coming months.

- ES.09. Special attention should be also paid on the muddy water and other water quality pollutants via site surface water runoff into the local stream Wah Ha River. As an effective water quality mitigation measure, the rock bund in the de-silting channel should be repaired regularly and ensure the de-silting performance.
- ES.10. On the other hand, construction noise should be other key environmental issue during sheet-piling process. The noise mitigation measures should be necessary to implement in accordance with EM&A Manual stipulation. Dust mitigation measures to avoid fugitive dust emissions from loose soil surface or haul road is also reminded.

TABLE OF CONTENTS

1.0	INTRODUCTION	1
	PROJECT BACKGROUND	1
	REPORT STRUCTURE	1
2.0	PROJECT ORGANIZATION AND CONSTRUCTION PROGRESS AND SUBMISSION	2
	PROJECT ORGANIZATION AND MANAGEMENT STRUCTURE	2
	CONSTRUCTION PROGRESS	2
	SUMMARY OF ENVIRONMENTAL SUBMISSIONS	2
3.0	EM&A PROGRAMME REQUIREMENT FOR THE PROJECT	3
	MONITORING PARAMETERS	3
	MONITORING LOCATIONS	3
	MONITORING FREQUENCY	4
	MONITORING EQUIPMENT	4
	MONITORING METHODOLOGY	5
	DATA MANAGEMENT AND DATA QA/QC CONTROL	7
	OTHERS MONITORING IMPLEMENTATION FOR THE CONTRACT	7
	DETERMINATION OF ACTION/LIMIT (A/L) LEVELS	8
	EQUIPMENT CALIBRATION	9
	METEOROLOGICAL INFORMATION	9
4.0	IMPACT MONITORING RESULTS	10
	RESULTS OF CONSTRUCTION NOISE MONITORING	10
	RESULTS OF LOCAL STREAM WATER QUALITY MONITORING	10
	RESULTS OF HYDROLOGICAL CHARACTERISTICS MONITORING	11
5.0	WASTE MANAGEMENT	13
	RECORDS OF WASTE QUANTITIES	13
6.0	SITE INSPECTION	14
	LANDSCAPE AND VISUAL INSPECTION	15
7.0	ENVIRONMENTAL COMPLAINT AND NON-COMPLIANCE	16
	ENVIRONMENTAL COMPLAINT, SUMMONS AND PROSECUTION	16
8.0	IMPLEMENTATION STATUS OF MITIGATION MEASURES	17
9.0	CONCLUSIONS AND RECOMMENTATIONS	21
	CONCLUSIONS	21
	RECOMMENDATIONS	21

LIST OF TABLES

TABLE 2-1	STATUS OF ENVIRONMENTAL LICENSES AND PERMITS
TABLE 3-1	SUMMARY OF MONITORING PARAMETERS
TABLE 3-2	DESIGNATED MONITORING LOCATIONS OF THE EM&A PROGRAMME
TABLE 3-3	MONITORING EQUIPMENT USED IN EM&A PROGRAMME
TABLE 3-4	TESTING METHOD AND DETECTION LIMIT OF SS TO BE PROVIDED BY THE LABORATORY
TABLE 3-5	ACTION AND LIMIT LEVELS FOR CONSTRUCTION NOISE
TABLE 3-6	ACTION AND LIMIT LEVELS FOR WATER QUALITY
TABLE 3-7	ACTION AND LIMIT LEVELS FOR HYDROLOGICAL CHARACTERISTICS
TABLE 4-1	SUMMARY OF CONSTRUCTION NOISE MONITORING RESULTS, dB(A)
TABLE 4-2	SUMMARIES OF BREACHES OF CONSTRUCTION NOISE A/L LEVELS
TABLE 4-3	SUMMARIES OF BREACHES OF THE EXISTING WATER QUALITY A/L LEVELS
TABLE 4-4	STATISTICS WATER QUALITY EXCEEDANCE IN THE REPORTING QUARTER
TABLE 4-5	SUMMARIZED HYDROLOGICAL CHARACTERISTICS OF WATER DEPTH, M
TABLE 4-6	SUMMARIZED HYDROLOGICAL CHARACTERISTICS OF AVERAGE VOLUMETRIC FLOW RATE (Q), M ³ /S
TABLE 5-1	SUMMARY OF QUANTITIES OF INERT C&D MATERIALS
TABLE 5-2	SUMMARY OF QUANTITIES OF C&D WASTES
TABLE 6-1	SITE OBSERVATIONS DURING THIS REPORTING QUARTER
TABLE 7-1	STATISTICAL SUMMARY OF ENVIRONMENTAL COMPLAINTS
TABLE 7-2	STATISTICAL SUMMARY OF ENVIRONMENTAL SUMMONS
TABLE 7-3	STATISTICAL SUMMARY OF ENVIRONMENTAL PROSECUTION
TABLE 8-1	ENVIRONMENTAL MITIGATION MEASURES

LIST OF APPENDICES

APPENDIX A	SITE LOCATION PLAN OF DSD CONTRACT 1 AND CONTRACT 2 AT SHUEN WAN
APPENDIX B	ORGANIZATION CHART AND THE KEY CONTACT PERSON
APPENDIX C	MASTER AND THREE MONTH ROLLING CONSTRUCTION PROGRAMMES
APPENDIX D	ENVIRONMENTAL MONITORING LOCATIONS
APPENDIX E	GRAPHICAL PLOTS OF IMPACT MONITORING –NOISE, WATER QUALITY AND HYDROLOGICAL CHARACTERISTICS
APPENDIX F	EVENT AND ACTION PLAN
APPENDIX G	MONTHLY SUMMARY WASTE FLOW TABLE

1.0 INTRODUCTION

PROJECT BACKGROUND

- 1.01 Kwan Lee-Kuly Joint Venture (hereinafter ‘KLKJV’) has been awarded by Drainage Services Department (hereinafter ‘DSD’) of the Contract No. DC/2010/02 - Drainage Improvement in Shuen Wan and Shek Wu Wai. The Project is scheduled to commence in May 2011 and complete in March 2014 for about 35 months.
- 1.02 The works to be executed under the Project are located in Shuen Wan and Shek Wu Wai. The works mainly comprise construction of about 735 metres long single-cell box culvert along Tung Tsz Road in Shuen Wan, Tai Po and construction of about 15 m long three-cell box culvert in Shek Wu Wai, Shatin.
- 1.03 This Project (hereinafter ‘the Contract 2’) is part of the Drainage Improvement works amongst Shatin and Tai Po and it is defined as a “Designated Project” which controlled under Environmental Permit EP-303/2008. Currently, DSD has another Contract DC/2009/22 (hereinafter ‘the Contract 1’) ongoing for construction at Shuen Wan working area which under the same Environmental Permit and the updated Environmental Monitoring and Audit Manual (hereinafter ‘the Updated EM&A Manual’). Both DSD contract’s site boundary at Shuen Wan are shown in *Appendix A*. On the other hand, Shek Wu Wai Sha Tin is a non-designated project work and no environmental monitoring and audit is requested to carry out.
- 1.04 In order to effectively implement the environmental protection measures stipulated in the Project Profile (hereinafter ‘the PP’), Environmental Impact Assessment Report (hereinafter “the EIAR”), Environmental Permit EP303/2008, a corresponding EM&A Manual have been prepared to outline the environmental monitoring and auditing (hereinafter ‘the EM&A’) programme undertake for the Contracts 1 and 2.
- 1.05 KLKJV has commissioned Action-United Environmental Services and Consulting (AUES) as an independent environmental team (hereinafter ‘the ET’) to implement the EM&A programme for the environmental protection of the Project. Since the construction of Contracts 1 and 2 is carry out at same period, a Proposal Environmental Monitoring Programme and Methodology (hereinafter the “PEMPM”) was prepared to address the EM&A programme for Contract 2. It had been accepted by the IEC and also submitted to the EPD for endorsement.
- 1.06 The baseline monitoring of EM&A programme has been performed by the Contract 1 ET. The Action and Limit Levels environmental performance criteria have also been established by the Contract 1. Therefore, no baseline monitoring was performed for the Contract 2 of Project.
- 1.07 This is the 5th Quarterly EM&A Summary Report under Environmental Permit No.EP-303/2008 for the Contract No. DC/2010/02 - Drainage Improvement in Shuen Wan and Shek Wu Wai, covering the period from **1 July to 30 September 2012**.

REPORT STRUCTURE

- 1.08 The Monthly Environmental Monitoring and Audit (EM&A) Report is structured into the following sections:-

SECTION 1 INTRODUCTION

SECTION 2 PROJECT ORGANIZATION AND CONSTRUCTION PROGRESS AND SUBMISSION

SECTION 3 EM&A PROGRAMME REQUIREMENT FOR THE PROJECT

SECTION 4 IMPACT MONITORING RESULTS

SECTION 5 WASTE MANAGEMENT

SECTION 6 SITE INSPECTIONS

SECTION 7 ENVIRONMENTAL COMPLAINTS AND NON-COMPLIANCE

SECTION 8 IMPLEMENTATION STATUES OF MITIGATION MEASURES

SECTION 9 CONCLUSIONS AND RECOMMENDATION

2.0 PROJECT ORGANIZATION AND CONSTRUCTION PROGRESS AND SUBMISSION

PROJECT ORGANIZATION AND MANAGEMENT STRUCTURE

- 2.01 Organization structure and contact details of relevant parties with respect to on-site environmental management are shown in *Appendix B*.

CONSTRUCTION PROGRESS

- 2.02 The master and three month rolling construction programme are enclosed in *Appendix C* and the major construction activities undertaken in this reporting period are listed below:-

Reporting Month	Construction activities
July 2012	<ul style="list-style-type: none"> • Formwork erection of side walls and top slab of Bay 38 • Fixing of reinforcement of top slab of Bay 38 • Concreting of side walls and top slab of Bay 37, 38, 39 • Removal 1st layer of railing and strut for Bay 35, 36, 37, 38, 39 • Backfilling of Bay 35, 36, 37, 38, 39 • Withdrawal of sheetpile for Bay 35, 36, 37 • Installation of sheetpile for Bay 40, 41, 42, 54, 55 • Excavation of Bay 40, 41
August 2012	<ul style="list-style-type: none"> • Withdrawal of sheetpile for Bay 36, 38, 39 • Installation of sheetpile for Bay 51-55 • Excavation of Bay 40-42 • Driving sheetpiles at Bay 10-12 • Excavation of Bay 11-12 • Concreting of Bay 13
September 2012	<ul style="list-style-type: none"> • Excavation, Laying of rockfill & blinding for Bay 40-42 • Fixing of reinforcement, erection of formwork & concreting for base slab of Bay 40-42 • Excavation, installation for shoring at bay 51-55 • Laying of rockfill & blinding for bay 55 • Excavation, Laying of rockfill & blinding for Bay 11 • Erection of formwork, Fixing of reinforcement & Concreting at Bay 12

SUMMARY OF ENVIRONMENTAL SUBMISSIONS

- 2.03 Summary of the relevant permits, licences, and/or notifications on environmental protection for this Project in this Reporting Quarter is presented in *Table 2-1*.

Table 2-1 Status of Environmental Licenses and Permits

Item	Description	License/Permit Status
1	Air Pollution Control (Construction Dust)	Notified EPD on 17 October 2011
2	Chemical Waste Producer Registration (WPN5213-727-K2972-02)	Approved on 28 October 2011
3	Water Pollution Control Ordinance (Discharge License) WT00009528-2011	Valid to 31 July 2016
4	Billing Account for Disposal of Construction Waste (Account No.: 7012838)	Effective

- 2.04 The “Proposal Environmental Monitoring Programme and Methodology (R0006 Version 2)” was set out in accordance with the Updated Environmental Monitoring and Audit Manual. It was approved by the ER and agreed with the Independent Environmental Checker (IEC) and submitted to the EPD for endorsement.
- 2.05 For Contract 2 of the Project, no Baseline Monitoring Report was issued by the ETL. However, a new set of the Action/ Limit levels as used to Contract 2 were proposed by ET, it had been accepted by the IEC and also submitted to the EPD seek for endorsement.

3.0 EM&A PROGRAMME REQUIREMENT FOR THE PROJECT

3.01 The EM&A requirements set out in the PP, EIAR, Environmental Permit EP303/2008 (hereinafter ‘the EP’), and the associated updated EM&A Manual, are presented below sub-section.

MONITORING PARAMETERS

3.02 According to the EIAR and the updated EM&A Manual, the monitoring parameters of each environmental aspect summarized in *Table 3-1* will be performed as under the Project.

Table 3-1 Summary of Monitoring Parameters

Environmental Aspect	Parameters	
Construction Noise	<ul style="list-style-type: none"> A-weighted equivalent continuous sound pressure level (30min) (hereinafter ‘Leq(30min)’ during the normal working hours; and A-weighted equivalent continuous sound pressure level (5min) (hereinafter ‘Leq(5min)’ for construction work during the restricted hours. 	
Water Quality	In Situ Measurement	Temperature, Dissolved Oxygen, Dissolved Oxygen Saturation, pH and Turbidity
	Laboratory Analysis	Suspended Solids (hereinafter ‘SS’)
Hydrological	The water flow and depth measurement onsite	
*Ecology	Monitor and audit the proper implementation of mitigation measures stipulated in EIA report and the updated EM&A Manual	
Landscape & Visual	Inspect and audit the implementation and maintenance of landscape and visual mitigation measures	

Remarks: * the monitoring is carried out by IEC

MONITORING LOCATIONS

3.03 Monitoring locations have been proposed in the updated EM&A Manual and the location map is shown show in *Appendix D* and summarized in *Table 3-2*.

Table 3-2 Designated Monitoring Locations of the EM&A Programme

Aspect	Location ID	Address
Construction Noise	M1	14, Shuen Wan Chim Uk
	AL1	Joint Village Office for Villages in Shuen Wan, Tai PO
	M2	150, San Tau Kok
	M3	31, Wai Ha
	M4	Block 15, Treasure Spot Garden
Water Quality	(#) W1	Between the Shuen Wan Marsh and ECA (Co-ordinates: E 839301, N 836386; and Existing River Bed Level: +1.75mPD).
	W2	Between Tolo Harbour and Proposed Penstock (Co-ordinates: E839542, N 836184; and Existing River Bed Level: +1.48mPD)
	(*) W3	Upstream of Tung Tze Shan Road (Co-ordinates: E 838760, N 836714; and Existing River Bed Level: +5.08mPD)
	W4	Wai Ha Village 29D (Co-ordinates: E 838865, N 836621; and Existing River Bed Level: +4.05mPD)
Hydrological	H1	Between the Shuen Wan Marsh and ECA (Coordinates: E 839306, N 836379)
	H2	Route 10 Sam Kung Temple (Coordinates: E 839163, N 836433)
	H3	Upstream of Tung Tze Shan Road (Coordinates: E 838760, N 836714)
	H4	Wai Ha Village 29D (Coordinates: E 838865, N 836621)
Ecology	Areas within 100m of the works boundary under Contract 2	
Landscape & Visual	As within and adjacent to the construction sites and works areas under the Contract 2,	

Remarks:

(#) Control Station of Contract 1, however impact station of Contract 2

(*) Control Station of Contract 2

MONITORING FREQUENCY

- 3.04 The monitoring frequency and duration as specified in the updated EM&A Manual are summarized below.

Construction Noise

Frequency: Once a week during 0700-1900 on normal weekdays for Leq30min

If the construction work is undertaken at restricted hour, the monitoring frequency of construction noise will be conducted in accordance with the related Construction Noise Permit requirement issued by EPD as follows

- 3 consecutive Leq5min at restricted hour from 1700 – 2300;
- 3 consecutive Leq5min for restricted hour from 2300 – 0700 next day;
- 3 consecutive Leq5min for Sunday or public holiday from 0700 – 1900;

Duration: Throughout the construction period when the major construction activities are undertaken

Water Quality

Frequency: Three times a week. The interval between 2 sets of monitoring are not less than 36 hours

Duration: During the construction phase of Contract 2 to undertake (in accordance with the Updated EM&A Manual Section 4.27).

Hydrological Characteristics

Frequency: Once per week at mid-flood and mid-ebb tides

Duration: During the construction phase of Contract 2 to undertake; and one year after the construction is complete as operation phase monitoring (in accordance with the Updated EM&A Manual Section 4.32).

Ecology

- 3.05 In accordance with Section 6.17 of the Updated EM&A Manual, ecological monitoring should be conducted by the Independent Environmental Checker (hereinafter 'IEC'). Monitoring programme details should be agreed with the Agriculture, Fisheries and Conservation Department (AFCD). Moreover, the IEC should submit reports on the findings of each monitoring trip, and a final report summarizing the monitoring results over the entire monitoring period to AFCD and Environmental Protection Department (EPD). Hence, no monitoring or surveying should be carried out by ET of the Project.

Landscape & Visual

- 3.06 According to Section 7.4 of the Updated EM&A Manual, site inspection bi-weekly should be performed to check the implementation and maintenance of landscape and visual mitigation measures whether to fully realize.

MONITORING EQUIPMENT

Noise Monitoring

- 3.07 Sound level meter in compliance with the *International Electrotechnical Commission Publications 651: 1979 (Type 1) and 804: 1985 (Type 1)* specifications shall be used for noise monitoring. The sound level meter shall be checked with an acoustic calibrator. The wind speed shall be checked with a portable wind speed meter which is capable to measure wind speed in m/s.

Water Quality Monitoring

- 3.08 **Dissolved Oxygen and Temperature Measuring Equipment** – The instrument should be a portable and weatherproof dissolved oxygen (DO) measuring instrument complete with cable and sensor, and use a DC power source. The equipment should be capable of measuring DO level in the range of 0 – 20mg L⁻¹ and 0 – 200% saturation; and temperature of 0 – 45 degree Celsius.
- 3.09 **pH Meter** – The instrument shall consist of a potentiometer, a glass electrode, a reference

- electrode and a temperature-compensating device. It shall be readable to 0.1 pH in arrange of 0 to 14.
- 3.10 **Turbidity (NTU) Measuring Equipment** – The instrument should be a portable and weatherproof turbidity measuring instrument using a DC power source. It should have a photoelectric sensor capable of measuring turbidity between 0 - 1000 NTU.
- 3.11 **Water Sampling Equipment** – A water sampler should comprise a transparent PVC cylinder, with a capacity of not less than 2 litres, which can be effectively sealed with latex cups at both ends. The sampler should have a positive latching system to keep it open and prevent premature closure until released by a messenger when the sampler is at the selected water depth.
- 3.12 **Water Depth Detector** – A portable, battery-operated echo sounder should be used for the determination of water depth at each designated monitoring station. The unit can either be hand held or affixed to the bottom of the work boat.
- 3.13 **Sample Containers and Storage** – Water samples for SS should be stored in high density polythene bottles with no preservative added, packed in ice (cooled to 4°C without being frozen).
- 3.14 **Suspended Solids Analysis** – Analysis of suspended solids shall be carried out in a HOKLAS or other international accredited laboratory.

Hydrological Characteristics

- 3.15 **Water Depth Detector** - A portable, battery-operated echo sounder shall be used for the determination of water depth at each designated monitoring station.
- 3.16 **Stream water flow Equipment** –A portable, battery-operated flow meter should be used for the determination of water flow rate at each designated monitoring location and record in m³/s.
- 3.17 The monitoring equipment using for the Project’s EM&A programme were proposed by the ET and verified by the IEC prior commencement of the monitoring. Details of the equipment used for impact monitoring are listed in **Table 3-3**.

Table 3-3 Monitoring Equipment Used in EM&A Programme

Equipment	Model
<i>Construction Noise</i>	
Integrating Sound Level Meter	B&K Type 2238
Calibrator	B&K Type 4231
Portable Wind Speed Indicator	Testo Anemometer
<i>Water quality</i>	
Water Depth Detector	Eagle Sonar
Water Sampler	A transparent PVC cylinder / bucket
Thermometer & DO meter	DO Meter YSI 55
pH meter	Extech EC500
Turbidimeter	Hach 2100Q
Sample Container	High density polythene bottles (provided by laboratory)
Storage Container	‘Willow’ 33-litre plastic cool box
Suspended Solids	HOKLAS-accredited laboratory (ALS Technichem (HK) Pty Ltd)
<i>Hydrological Characteristics</i>	
Water flow meter	GLOBAL WATER model FP211
Water Depth Detector	Eagle Sonar or an appropriate steel ruler or rope with appropriate weight

MONITORING METHODOLOGY

Noise Monitoring

- 3.18 Noise measurements were taken in terms of the A-weighted equivalent sound pressure level (L_{eq}) measured in decibels (dB). Supplementary statistical results (L₁₀ and L₉₀) were also obtained for reference.
- 3.19 Sound level meter as listed in **Table 3-3** are complied with the *International Electrotechnical*

Commission Publications 651: 1979 (Type 1) and 804: 1985 (Type 1) specifications, as recommended in Technical Memorandum (TM) issued under the Noise Control Ordinance (NCO).

- 3.20 During the monitoring, all noise measurements were performed with the meter set to FAST response and on the A-weighted equivalent continuous sound pressure level (L_{eq}). $L_{eq(30min)}$ in six consecutive $L_{eq(5min)}$ measurements were used as the monitoring parameter for the time period between 0700-1900 hours on weekdays; and also $L_{eq(15min)}$ in three consecutive $L_{eq(5min)}$ measurements is used as monitoring parameter for other time periods (e.g. during restricted hours), if necessary.
- 3.21 During the course of measurement, the sound level meter is mounted on a tripod with a height of 1.2m above ground and placed at the assessment point and oriented such that the microphone is pointed to the site with the microphone facing perpendicular to the line of sight. The windshield is fitted for all measurements. The assessment point is normally set as free-field situation for the measurement.
- 3.22 Prior to noise measurement, the accuracy of the sound level meter is checked by an acoustic calibrator which generated a known sound pressure level at a known frequency. The checking was performed before and after the noise measurement.

Water Quality

- 3.23 Water quality monitoring are conducted at the depth below:-
- Three depths: 1m below water surface, 1m above river bed and at mid-depth when the water depth exceeds 6m, or
 - If the water depth is between 3m and 6m, two depths: 1m below water surface and 1m above river bed, and or
 - If the water depth is less than 3m, 1 sample at mid-depth is taken
- 3.24 Water depths are determined prior to measurement and sampling, using a portable battery operated depth detector, brand named 'Eagle Sonar', if the depths exceed 1.5 meter. If the depth between 1.5 meter and 1 meter, plastic tape measurement tied with appropriate weight are used the depth estimation. For the depth well below 1 meter, an appropriate steel ruler or rope with appropriate weight are used for the depth measurement.
- 3.25 A transparent PVC cylinder, with a capacity of not less than 2 litres, is used for water sampling. The water sampler is lowered into the water body at a predetermined depth. The trigger system of the sampler is activated with a messenger and opening ends of the sampler are closed accordingly then the sample of water is collected. If the water depth is less than 500mm, a water bucket is be used as a water sampler to minimize the possibility of the latching system disturbing sediment during water sampling
- 3.26 A portable YSI 55 DO Meter is used for in-situ DO measurement. The DO meter is capable of measuring DO in the range of 0 - 20 mg/L and 0 - 200 % saturation and checked against water saturated ambient air on each monitoring day prior to monitoring. Although the DO Meter automatically compensates ambient water temperature to a standard temperature of 20⁰C for ease of comparison of the data under the changing reality, the temperature readings of the DO Meter are be recorded in the field data sheets. The equipment calibration is performed on quarterly basis.
- 3.27 A portable Extech EC500 pH Meter is used for in-situ pH measurement. The pH meter is capable of measuring pH in the range of 0 – 14 and readable to 0.1. Standard buffer solutions of pH 7 and pH 10 are used for calibration of the instrument before and after measurement. The equipment calibration is performed on quarterly basis.
- 3.28 A portable Hach 2100Q Turbidity Meter is be used for in-situ turbidity measurement. The turbidity meter is capable of measuring turbidity in the range of 0 – 1000 NTU. The equipment calibration is performed on quarterly basis.

- 3.29 Water samples are contained in screw-cap PE (Poly-Ethylene) bottles, which are provided and pretreated and ‘PE’ (Poly-Ethylene) sampling bottles provided and pre-treated according to corresponding analytical requirements. Where appropriate, the sampling bottles are rinsed with the water to be contained. Water sample is then transferred from the sampler to the sample bottles.
- 3.30 One liter or 500 mL water sample are collected from each depth for SS determination. The collected samples are stored in a cool box maintained at 4⁰C and delivered to laboratory upon completion of the sampling by end of each sampling day.
- 3.31 All water samples are analyzed with Suspended Solids (SS) as specified in the updated *EM&A Manual* by a local HOKLAS-accredited testing laboratory (ALS Technichem (HK) Pty Ltd HOKLAS registration no. 66). SS are determined by the laboratory upon receipt of the water samples using HOKLAS accredited analytical method. The detection limits and testing method are shown below in *Table 3-4*. The certificate of ALS Technichem (HK) Pty Ltd is provided in the relevant Monthly EM&A Reports .

Table 3-4 Testing Method and Detection limit of SS to be provided by the Laboratory

Determinant	Testing Method	Detection Limit
Suspended solid	Determination use HOKLAS accredited analytical methods namely ALS Method EA-025 (based on APHA 2540 D)	2mg/L

Hydrological Characteristics

- 3.32 A portable, water flow meter, brand named “*GLOBAL WATER model FP211*” are used to determine the water current flow at the designated monitoring stations. A water flow velocity is measured at mid depth of current water body or 0.5m below water level.
- 3.33 Water depths are determined prior to measurement, using a portable battery operated depth detector, brand named ‘Eagle Sonar’, if the depths exceed 1.5 meter. If the depth between 1.5 meter and 1 meter, plastic tape measurement tied with appropriate weight are used the depth estimation. For the depths well below 1 meter, an appropriate steel ruler or rope with appropriate weight are used for the depth measurement.

DATA MANAGEMENT AND DATA QA/QC CONTROL

- 3.34 The impact monitoring data are handled by the ET’s systematic data recording and management, which complies with in-house Quality Management System. Standard Field Data Sheets (FDS) are used in the impact monitoring programme.
- 3.35 The monitoring data recorded in the equipment e.g. noise meter and Multi-parameter Water Quality Monitoring System are downloaded directly from the equipment at the end of each monitoring day. The downloaded monitoring data are input into a computerized database properly maintained by the ET. The laboratory results are input directly into the computerized database and QA/QC checked by personnel other than those who input the data. For monitoring activities require laboratory analysis, the local laboratory follows the QA/QC requirements as set out under the HOKLAS scheme for all laboratory testing.

OTHERS MONITORING IMPLEMENTATION FOR THE CONTRACT

Ecology

- 3.36 Ecological monitoring and reporting should be performed by IEC. No equipment and procedure are presented in the EM&A Monthly Report.

Landscape and Visual

- 3.37 A registered Landscape Architect as member of the ET is employed by the Contractor to undertake site inspection. Site inspection will undertake at least once every two weeks throughout the construction period to ensure compliance with the intended aims of the mitigation measures are proposed in the EIA and the updated EM&A Manual, implemented by the Contractor.

DETERMINATION OF ACTION/LIMIT (A/L) LEVELS

3.38 According to the Updated Environmental Monitoring and Audit Manual, the performance criteria for construction noise, water quality and hydrological, namely Action and Limit levels were established by Contract DC/2009/22. The Action/Limit Levels proposed by DC/2009/22 are listed in *Tables 3-5, 3-6, and 3-7*.

Table 3-5 Action and Limit Levels for Construction Noise

Location	Time Period	Action Level in dB(A)	Limit Level in dB(A)
M1, AL1, M2, M3, M4	Daytime 0700 – 1900 hrs on normal weekdays	When one documented complaint is received	> 75* dB(A)
	1900 – 2300 on all days and 0700 – 2300 on general holidays (including Sundays)		60/65/70 dB(A)**
	2300 – 0700 on all days		45/50/55 dB(A)**

Note: * Reduces to 70dB(A) for schools and 65dB(A) during the school examination periods.

** To be selected based on the Area Sensitivity Rating of A/B/C, and the conditions of the applicable CNP(s) must be followed

Table 3-6 Action and Limit Levels for Water Quality

Parameter	Performance Criteria	Impact Station		
		W1	W2	W4
DO Concentration (mg/L)	Action Level	7.27	7.26	9.27
	Limit Level	7.05	6.44	7.98
pH	Action Level	NA	NA	NA
	Limit Level	6 - 9	6 - 9	6 - 9
Turbidity (NTU)	Action Level	4.77	2.46	3.32
	Limit Level	5.26	3.42	4.52
Suspended Solids (mg/L)	Action Level	9.73	8.89	6.98
	Limit Level	10.77	9.75	7.66

Notes:

- The proposed Action/Limit Levels of DO are established to be used 5%-ile/1%-ile of all the baseline data;
- The proposed Action/Limit Levels of Turbidity and SS are established to be used 95%-ile/99%-ile of all the baseline data;
- For DO, non-compliance of the water quality limits occur is when monitoring result lower than the action/limit levels;
- For turbidity and SS, non-compliance of the water quality limits occurs is when monitoring result higher than the limits; and
- For pH, non-compliance of the quality limit occur is when monitoring result lower than 6 and higher than 9; and
- All the figures given in the table are used for reference only and the EPD may amend the figures whenever it is considered necessary

Table 3-7 Action and Limit Levels for Hydrological Characteristics

Parameter	Acceptance Criteria	Monitoring Station			
		H1	H2	H3	H4
Water Depth (m)	Action Level	0.08 (80% of baseline water depth)	0.40 (80% of baseline water depth)	0.40 (80% of baseline water depth)	0.24 (80% of baseline water depth)
	Limit Level	0.06 (60% of baseline water depth)	0.30 (60% of baseline water depth)	0.30 (60% of baseline water depth)	0.18 (60% of baseline water depth)
Water Flow Rate (m3/s)	Action Level	120% of control station's water flow rate on the same day of measurement	120% of control station's water flow rate on the same day of measurement	120% of control station's water flow rate on the same day of measurement	120% of control station's water flow rate on the same day of measurement

	Limit Level	140% of control station's water flow rate on the same day of measurement	140% of control station's water flow rate on the same day of measurement	140% of control station's water flow rate on the same day of measurement	140% of control station's water flow rate on the same day of measurement
--	-------------	--	--	--	--

- 3.39 The locations H3 and H4 are a reference measurement point in order to monitor any changes in the hydrological characteristics of Wai Ha River arising from the work Contract 2 to affect the Shuen Wan Marsh.
- 3.40 Should non-compliance of the environmental quality criteria occurs, remedial actions will be triggered according to the Event and Action Plan enclosed in **Appendix F**.

EQUIPMENT CALIBRATION

- 3.41 The sound level meter and calibrator are calibrated and certified by a laboratory accredited under HOKLAS or any other international accreditation scheme in yearly basis.
- 3.42 All the water quality monitoring equipment such as the DO, pH and Turbidity meters are calibrated by HOKLAS accredited laboratory of three month intervals.
- 3.43 A portable, water flow meter, brand named “*GLOBAL WATER model FP211*” is calibrated in yearly basis.
- 3.44 All updated calibration certificates of the monitoring equipment used for the impact monitoring programme in this Reporting Quarter are attached in the relevant Monthly EM&A Reports.

METEOROLOGICAL INFORMATION

- 3.45 The meteorological information during the construction phase is obtained from Tai Po and Shatin Stations of the Hong Kong Observatory (HKO). The meteorological data during the impact monitoring days are summarized in the relevant Monthly EM&A Reports.

4.0 IMPACT MONITORING RESULTS

RESULTS OF CONSTRUCTION NOISE MONITORING

4.01 Summary of construction noise monitoring at the identified locations during the Reporting Quarter are summarized in *Table 4-1* and the summary of breaches of A/L Level are presented in *Table 4-2*. In this Reporting Quarter, a total of **65** events of construction noise measurement were conducted and the graphic plots in are presented in *Appendix E*.

Table 4-1 Summary of Construction Noise Monitoring Results, dB(A)

Station	Leq30min (dB(A))				
	M1 ^(#)	AL1 ^(#)	M2 ^(*)	M3 ^(*)	M4 ^(*)
Minimum	58.8	62.3	63.8	56.8	52.7
Min. recorded date	29-Aug-12	29-Aug-12	7-Jul-12	5-Sep-12	17-Sep-12
Maximum	64.4	68.5	72.9	71.7	71.7
Max. recorded date	18-Jul-12	19-Sep-12	13-Aug-12	25-Jul-12	10-Sep-12

Remarks:

(#) *The monitoring is undertaken under façade situation. No façade correction is added according to acoustical principles and EPD guidelines.*

(*) *The monitoring is undertaken under free field situation. A façade correction of +3 dB(A) has been added according to acoustical principles and EPD guidelines*

Table 4-2 Summaries of Breaches of Construction Noise A/L Levels

Station	Exceedance of Environmental Quality Criteria	
	Action Level	Limit Level
M1	0	0
AL1	0	0
M2	0	0
M3	0	0
M4	0	0

4.02 No noise complaint (which is an Action Level exceedance) was received in this Reporting Period. All the noise monitoring result are well below 75dB(A) and no Action or Limit Level exceedance was triggered during this Reporting Period .

RESULTS OF LOCAL STREAM WATER QUALITY MONITORING

4.03 In this Reporting Quarter, **39** sampling days at Locations W1 to W4 have been carried out for local steam water quality monitoring. Breaches of water quality A/L Levels and statistics of the compliance status during the Reporting Quarter are summarized in *Tables 4-3* and *4-4* and graphical plots are shown in *Appendix E*.

4.04 During the Reporting Quarter, field measurements showed that stream water temperatures were within 21.1°C to 34.25°C and pH values within 6.25 to 8.65.

Table 4-3 Summaries of Breaches of the Existing Water Quality A/L Levels

Location	Dissolve Oxygen		Turbidity		Suspended Solids		Total Exceedance	
	Action	Limit	Action	Limit	Action	Limit	Action	Limit
July 2012								
W1	25	1	0	17	3	16	28	34
W2	8	1	0	12	2	6	10	19
W4	13	0	2	4	1	4	16	8
August 2012								
W1	24	3	2	18	1	12	27	33

Location	Dissolve Oxygen		Turbidity		Suspended Solids		Total Exceedance	
	Action	Limit	Action	Limit	Action	Limit	Action	Limit
W2	7	0	2	12	2	4	11	16
W4	14	0	2	0	0	1	16	1
September 2012								
W1	23	1	1	14	1	7	25	22
W2	8	1	1	9	0	1	9	11
W4	12	0	0	3	0	4	12	7
Total	134	7	10	89	10	55	154	151

Table 4-4 Statistics Water Quality Exceedance in the Reporting Quarter

Parameter	Statistics		
	Number of Monitoring Event (W1, W2 & W4)	No. of Exceedances	Compliance %
Dissolve Oxygen	156	115	26.3%
Turbidity	156	81	48.1%
Suspended Solids	156	31	80.1%

Exceedances in July 2012

4.05 In July 2012, a total of 115 Action/ Limit Level exceedances, namely 48 exceedances in dissolved oxygen, 35 exceedances in turbidity and 32 exceedances in suspended solids were recorded in this Reporting Period. According to site activity and precautionary measures provided by KLKJVJ, investigation report concluded that all the exceedances were not related to the works under the Project.

Exceedances in August 2012

4.06 In August 2012, a total of 104 Action/ Limit Level exceedances, namely 48 exceedances in dissolved oxygen, 36 exceedances in turbidity and 20 exceedances in suspended solids were recorded in this Reporting Period. According to site activity and precautionary measures provided by KLKJVJ, investigation report concluded that all the exceedances were not related to the works under the Project.

Exceedances in September 2012

4.07 In June 2012, a total of 86 Action/ Limit Level exceedances, namely 45 exceedances in dissolved oxygen, 28 exceedances in turbidity and 13 exceedances in suspended solids were recorded in this Reporting Period. According to site activity and precautionary measures provided by KLKJVJ, investigation report concluded that all the exceedances were not related to the works under the Project.

RESULTS OF HYDROLOGICAL CHARACTERISTICS MONITORING

4.08 In this Reporting Quarter, **13** sampling days of hydrological characteristics monitoring were carried out at designated measurement points H1 to H4. Hydrological characteristics results of the all measurement points are summarized in *Tables 4-5* and *4-6*.

Table 4-5 Summarized Hydrological Characteristics of Water Depth, m

Date	Mid-Flood				Mid-Ebb			
	H1	H2	H3	H4	H1	H2	H3	H4
7-Jul-12	0.12	0.12	0.30	0.30	0.12	0.12	0.30	0.30
13-Jul-12	0.12	0.12	0.40	0.30	0.12	0.12	0.30	0.20
20-Jul-12	#	#	0.30	0.20	0.18	0.18	0.30	0.30
27-Jul-12	0.12	0.18	0.40	0.40	#	#	0.50	0.50
3-Aug-12	#	#	0.30	0.40	0.12	0.12	0.30	0.40
10-Aug-12	0.3	0.18	0.30	0.35	#	#	0.35	0.45
17-Aug-12	#	#	0.35	0.45	0.12	0.12	0.35	0.45
24-Aug-12	0.24	0.18	0.30	0.35	#	#	0.30	0.35
31-Aug-12	#	#	0.30	0.45	0.18	0.3	0.30	0.50

7-Sep-12	0.24	0.3	0.20	0.40	0.12	0.18	0.20	0.40
14-Sep-12	#	#	0.20	0.30	0.12	0.12	0.20	0.40
21-Sep-12	0.6	0.36	0.20	0.20	0.18	0.12	0.20	0.30
28-Sep-12	#	#	0.20	0.30	0.24	0.24	0.20	0.20

No data was provided by ET of Contract 1.

Table 4-6 Summarized Hydrological Characteristics of Average Volumetric flow rate (Q), m³/s

Date	Mid-Flood				Mid-Ebb			
	H1	H2	H3	H4	H1	H2	H3	H4
7-Jul-12	0.225	1.13	1.12	0.33	0.15	0.225	1.12	0.33
13-Jul-12	0.225	0.754	1.19	0.33	0.15	0.377	0.89	0.22
20-Jul-12	#	#	0.67	0.22	0.225	1.507	0.67	0.33
27-Jul-12	0.15	0.754	1.49	0.55	#	#	2.24	0.82
3-Aug-12	#	#	0.56	0.44	0.075	0.225	0.67	0.44
10-Aug-12	0.15	0.377	0.56	0.38	#	#	0.78	0.49
17-Aug-12	#	#	0.78	0.62	0.075	0.754	0.78	0.62
24-Aug-12	0.075	0.754	0.56	0.38	#	#	0.56	0.38
31-Aug-12	#	#	0.67	0.49	0.15	0.377	0.67	0.55
7-Sep-12	0.15	0.754	0.15	0.44	0.15	0.075	0.15	0.44
14-Sep-12	#	#	0.30	0.25	0.15	0.754	0.15	0.33
21-Sep-12	0.15	1.13	0.15	0.16	0.75	0.754	0.30	0.25
28-Sep-12	#	#	0.60	0.25	0.075	0.754	0.60	0.16

No data was provided by ET of Contract 1.

- 4.09 To compare the monitoring data between the Reporting Quarter and baseline monitoring period, the current water depth and volumetric flow rate has insignificant change. Furthermore, water depth and water flow rate were found no exceedance in this Reporting Quarter.

RESULTS OF ECOLOGICAL MONITORING

- 4.10 According to updated EM&A Manual Section 6.17, ecological monitoring is conducted by the IEC – ENVIRON Hong Kong Limited. In brief, the monitoring tasks include regular check on the retained and transplanted trees and shrubs, monitoring on fauna groups and aquatic fauna within the works area and any ecologically sensitive area within 100 m of the works boundary.

In this Reporting Quarter, bi-monthly ecological monitoring is conducted by the IEC – ENVIRON Hong Kong Limited on **31 July and 26 September 2012**. The detailed reports are presented in the Monthly EM&A Report (**July and September 2012**).

5.0 WASTE MANAGEMENT

5.01 Waste management was carried out by an on-site Environmental Officer or an Environmental Supervisor from time to time.

RECORDS OF WASTE QUANTITIES

5.02 All types of waste arising from the construction work are classified into the following:

- Construction & Demolition (C&D) Material;
- Chemical Waste;
- General Refuse; and
- Excavated Soil

5.03 The quantities of waste for disposal in this Reporting Quarter are summarized in *Table 5-1* and *5-2* and the Monthly Summary Waste Flow Table is shown in *Appendix G*. Whenever possible, materials were reused on-site as far as practicable.

Table 5-1 Summary of Quantities of Inert C&D Materials

Type of Waste	Quantity			Disposal Location
	Jul 12	Aug 12	Sep 12	
C&D Materials (Inert) (m ³)	0	0	0	-
Reused in this Contract (Inert) (m ³)	0	0	0	-
Reused in other Projects (Inert) (m ³)	0	0	0	-
Disposal as Public Fill (Inert) (m ³)	5	775	210	Tuen Mum Area 38

Table 5-2 Summary of Quantities of C&D Wastes

Type of Waste	Quantity			Disposal Location
	Jul 12	Aug 12	Sep 12	
Recycled Metal (kg)	0	0	0	-
Recycled Paper / Cardboard Packing (kg)	0	0	0	-
Recycled Plastic (kg)	0	0	0	-
Chemical Wastes (kg)	0	0	0	-
General Refuses (m ³)	5	0	0	Local refuse station

5.04 To control over the site performance on waste management, the Contractor shall ensure that all solid and liquid waste management works are in full compliance with the relevant license/permit requirements, such as the effluent discharge licence and the chemical waste producer registration. The Contractor is also reminded to implement the recommended environmental mitigation measures according to the EM&A Manual based on actual site conditions.

6.0 SITE INSPECTION

- 6.01 According to the Updated Environmental Monitoring and Audit Manual, regular site inspection to evaluate the project environmental performance should be carried out during construction phase. Weekly environmental site inspections had been carried out by the Contractor and the RE on **4, 11, 18 and 25 July, 1, 8, 15, 22 and 29 August and 5, 13, 19 and 27 September 2012**. Furthermore, the RE, IEC, the Contractor and ET of joint site inspection were carried out on **11 July, 8 August and 13 September 2012**. In this Reporting Quarter, no non-compliance were recorded but **15** observations and **1** reminder were noted.
- 6.02 Observations for the site inspection and monthly audit within this Reporting Quarter are summarized in *Table 6-1*.

Table 6-1 Site Observations during this Reporting Quarter

Date	Findings / Deficiencies	Follow-Up Status
4 July 12	<ul style="list-style-type: none"> As a reminder, water spraying should be applied to the haul road and stock pile to minimize dust generation. 	Not required for reminder.
11 July 12	<ul style="list-style-type: none"> No adverse environmental impact was observed during site inspection. 	N.A.
18 July 12	<ul style="list-style-type: none"> The rock bund in the de-silting channel was broken by rainstorm; the Contractor was reminded to repair it regularly to ensure the desilting channel function properly. 	Rectified on 1 August 2012.
25 July 12	<ul style="list-style-type: none"> The rock bund in the de-silting channel was broken by rainstorm; the Contractor was reminded to repair it regularly to ensure the desilting channel function properly. 	Rectified on 1 August 2012.
1 August 12	<ul style="list-style-type: none"> Mud trail was observed at the site exit/ entrance, the Contractor should provide water spraying regularly in order to maintain the site cleanliness. 	Rectified on 8 August 2012.
8 August 12	<ul style="list-style-type: none"> Free standing chemical container without drip tray was observed, the contractor was reminded to provide drip tray for all chemical container to prevent leakage. The rock bund in the de-silting channel was broken by rainstorm; the Contractor was reminded to repair it regularly to ensure the de-silting channel functional properly. Stagnant water cumulated on site was observed, the contractor was reminded to clean to prevent mosquito breeding. 	Rectified on 15 August 2012.
15 August 12	<ul style="list-style-type: none"> Wastewater generated from the wheel washing facility should be cleared regularly to avoid overflow out of the site. 	Rectified on 22 August 2012.
22 August 12	<ul style="list-style-type: none"> The rock bund in the de-silting channel was broken by rainstorm, the Contractor should repair it regularly to ensure the de-silting channel function properly. 	Rectified on 29 August 2012.
29 August 12	<ul style="list-style-type: none"> No adverse environmental impact was observed during site inspection. 	N.A.
1 August 12	<ul style="list-style-type: none"> Mud trail was observed at the site exit/ entrance, the Contractor should provide water spraying regularly in order to maintain the site cleanliness. 	Rectified on 8 August 2012.

5 September 2012	<ul style="list-style-type: none"> Muddy runoff was observed at the site exit/entrance, the Contractor is advised to erect sand bags at proper area to avoid muddy runoff divert to the drainage. 	Rectified on 19 September 2012.
13 September 2012	<ul style="list-style-type: none"> Muddy runoff was observed at the site exit/entrance, the Contractor is advised to erect sand bags at proper area to avoid muddy runoff divert to the drainage Water spraying should be applied to the dry haul road to minimize dust generation. Filter inside the de-silting channel was full of sediment was observed, the contractor was reminded to maintain the de-silting channel properly. The rock bund in the de-silting channel was broken by rainstorm; the Contractor was reminded to repair it regularly to ensure the de-silting channel functional properly. 	All the items were rectified on 19 September 2012.
19 September 2012	<ul style="list-style-type: none"> Regular watering spraying should be applied at the site exit/ entrance. 	Rectified on 27 September 2012.
27 September 2012	<ul style="list-style-type: none"> No adverse environmental impact was observed during site inspection. 	N.A.

LANDSCAPE AND VISUAL INSPECTION

6.03 In this Reporting Quarter, 6 events of landscape and visual inspection were carried out by the landscape sub-contractor. The detailed reports are presented in the Monthly EM&A Report ([July 2012](#), [August 2012](#) and [September 2012](#)).

7.0 ENVIRONMENTAL COMPLAINT AND NON-COMPLIANCE

ENVIRONMENTAL COMPLAINT, SUMMONS AND PROSECUTION

7.01 No environmental complaint, summons and prosecution was received in this Reporting Quarter. The statistical summary table of environmental complaint is presented in *Tables 7-1, 7-2 and 7-3*.

Table 7-1 Statistical Summary of Environmental Complaints

Reporting Period	Environmental Complaint Statistics		
	Frequency	Cumulative	Complaint Nature
July – December 2011	0	0	NA
January – June 2012	0	0	NA
July 2012	0	0	NA
August 2012	0	0	NA
September 2012	0	0	NA

Table 7-2 Statistical Summary of Environmental Summons

Reporting Period	Environmental Summons Statistics		
	Frequency	Cumulative	Complaint Nature
July – December 2011	0	0	NA
January – June 2012	0	0	NA
July 2012	0	0	NA
August 2012	0	0	NA
September 2012	0	0	NA

Table 7-3 Statistical Summary of Environmental Prosecution

Reporting Period	Environmental Prosecution Statistics		
	Frequency	Cumulative	Complaint Nature
July – December 2011	0	0	NA
January – June 2012	0	0	NA
July 2012	0	0	NA
August 2012	0	0	NA
September 2012	0	0	NA

8.0 IMPLEMENTATION STATUS OF MITIGATION MEASURES

8.01 The environmental mitigation measures that recommended in the Updated Environmental Monitoring and Audit Manual covered the issues of dust, noise and waste and they are summarized as follows:

Noise Mitigation Measure

- (a) Only well-maintained plant should be operated on-site and plant shall be serviced regularly during the construction programme;
- (b) Silencers or mufflers on construction equipment should be utilized and shall be properly maintained during the construction programme;
- (c) Mobile plant, if any, should be sited as far from NSRs as possible;
- (d) Machines and plant (such as trucks) that may be in intermittent use should be shut down between work periods or should be throttled down to a minimum;
- (e) Plant known to emit noise strongly in one direction should, wherever possible, be orientated so that the noise is directed away from the nearby NSRs;
- (f) Material stockpiles and other structures should be effectively utilized, wherever practicable, in screening noise from on-site construction activities;
- (g) Use of quieter plants to carry out the construction tasks proposed for the Project;
- (h) Use about 3.5m high of temporary noise barriers as screened the noisy PMEs to carry out construction of box culvert and site clearance.
- (i) Low Impact Method, such as using PMEs smaller in size and to be enclosed by noise enclosure, should be adopted for the construction of box culvert and pipe laying in Wai Ha; and
- (j) Use of noise enclosure during the works area for pipe laying in Wai Ha.

Dust Mitigation Measure

8.02 Implementation of mitigation measures stipulated in the Air Pollution Control (Construction Dust) Regulation and good site practices including but not limited to the following:

- (a) Use of regular watering to reduce dust emissions from exposed site surfaces and unpaved road, with complete coverage, particularly during dry weather;
- (b) Use of frequent watering for particularly dusty static construction areas and areas close to ASRs;
- (c) Tarpaulin covering of all dusty vehicle loads transported to, from and between site location;
- (d) Establishment and use of vehicle wheel and body washing facilities at the exit points of the site;
- (e) Routing of vehicles and positioning of construction plant should be at the maximum possible distance from ASRs;
- (f) Stockpiled excavated materials should be covered with tarpaulin and should be removed offsite within 24 hours to avoid any odour nuisance arising.

Local Stream Water Quality Mitigation Measure

- (a) Before commencing any site formation work, all sewer and drainage connections shall be sealed to prevent debris, soil, sand etc. from entering public sewers/drains;
- (b) Temporary ditches shall be provided to facilitate run-off discharge into appropriate watercourses, via a silt retention pond. No site run-off shall enter the fishponds at Shuen Wan;
- (c) Sand/silt removal facilities such as sand traps, silt traps and sediment basins shall be provided to remove sand/silt particles from runoff to meet the requirements of the Technical Memorandum standard under the Water Pollution Control Ordinance. The design of silt removal facilities shall be based on the guidelines provided in ProPECC PN 1/94. All drainage facilities and erosion and sediment control structures shall be inspected monthly and maintained to ensure proper and efficient operation at all times and particularly during rainstorms
- (d) Water pumped out from excavated pits shall be discharged into silt removal facilities;

- (e) During rainstorms, exposed slope/soil surfaces shall be covered by a tarpaulin or other means. Other measures that need to be implemented before, during, and after rainstorms as summarized in ProPECC PN 1/94 shall be followed
- (f) Exposed soil areas shall be minimized to reduce potential for increased siltation and contamination of runoff
- (g) Earthwork final surfaces shall be well compacted and subsequent permanent work or surface protection shall be immediately performed to reduce the potential of soil erosion;
- (h) Open stockpiles of construction materials or construction wastes on-site shall be covered with tarpaulin or similar fabric during rainstorms;
- (i) For the construction of the box culvert next to the existing channel of the Wai Ha River, sand bags should be deployed around the boundary of the works trench to prevent muddy water ingress into the adjacent CA or Wai Ha River. Sand bags should also be used to surround the excavated trench. Generally, the sand bags will be placed up to a height 01 300mm to provide adequate allowance for the built-up water level during rainstorm event. With sand bags in place surface runoff will be intercepted and flow to Wai Ha River or collected by the existing drainage system as usual;
- (j) For the construction of the box culvert in the extreme northeast corner of Shuen Wan Marsh Conservation Area sand bags should be deployed along the limit of the works area to prevent muddy water ingress into the CA. Sand bags should be placed to a height 0.1 at least 300mm from ground level and +2.5 mPD (whichever is greater) to provide adequate allowance for the built-up water level during rainstorm events Unpolluted surface runoff within the works area should then be collected and directed into the existing drainage system;
- (k) Sheet-piles, which would be installed around the works trench near the Conservation Area, would be extended above ground level for about 2m to serve as hoardings to isolate the works site;
- (l) Tarpaulin sheets would be used to cover the excavation areas during heavy rainstorms. This would prevent the ingress of rainwater into the trench minimizing the risk of muddy water getting into Wai Ha River and the adjacent Conservation Area;
- (m) Any concrete washing water would be contained inside the works site surrounded by the extended sheet piles. A pump sump at the bottom of the trench would be provided to pump any excess water during concrete washing;
- (n) Stockpiling the excavated materials adjacent to the Conservation Area would not be allowed. The excavated materials would be either removed off site immediately after excavation, or stockpile at location(s) away from the Conservation Area. The stockpile locations shall be approved by the site engineer;
- (o) Debris and refuse generated on-site should be collected, handled and disposed of properly to avoid entering the Wai Ha River and fish ponds at Shuen Wan. Stockpiles of cement and other construction materials should be kept covered when not being used.
- (p) Oils and fuels should only be used and stored in designated areas which have pollution prevention facilities to prevent spillage of fuels and solvents to nearby water bodies, all fuel tanks and storage areas should be provided with locks and be sited on sealed areas, within bunds of a capacity equal to 110% of the storage capacity of the largest tank The bund should be drained of rainwater after a rain event
- (q) Temporary sanitary facilities, such as portable chemical toilets, should be employed on-site. A licensed contractor would be responsible for appropriate disposal and maintenance of these facilities;
- (r) The excavation works within the upstream end of the existing river channel of the Wai Ha River for the construction of the proposed box culvert should be carried out in dry condition. Containment measures such as bunds and barriers shall be used within the affected length of the river channel and the excavation works restricted to within an enclosed dry section of the channel. The excavation works within Wai Ha River shall be restricted to the period from October to April

Waste Mitigation Measures

- (a) The Contractor shall observe and comply with the Waste Disposal Ordinance (WDO) and its subsidiary regulations.
- (b) The Contractor shall submit to the Engineer for approval a Waste Management Plan with appropriate mitigation measures including the allocation of an area for waste segregation and shall ensure that the day-to-day site operations comply with the approved waste management plan.
- (c) The Contractor shall minimise the generation of waste from his work. Avoidance and minimisation of waste generation can be achieved through changing or improving design and practices, careful planning and good site management.
- (d) The reuse and recycling of waste shall be practised as far as possible. The recycled materials shall include paper/cardboard, timber and metal etc.
- (e) The Contractor shall ensure that Construction and Demolition (C&D) materials are sorted into public fill (inert portion) and C&D waste (non-inert portion). The public fill which comprises soil, rock, concrete, brick, cement plaster/mortar, inert building debris, aggregates and asphalt shall be reused in earth filling, reclamation or site formation works. The C&D waste which comprises metal, timber, paper, glass, junk and general garbage shall be reused or recycled where possible and, as the last resort, disposal of at landfills.
- (f) The Contractor shall record the amount of wastes generated, recycled and disposed of (including the disposal sites). The Contractor shall use a trip ticket system for the disposal of C&D materials to any designated public filling facility and/or landfill.
- (g) In order to avoid dust or odour impacts, any vehicles leaving a works area carrying construction waste or public fill shall have their load covered.
- (h) To avoid the excessive use of wood, reusable steel shutters shall be used as a preferred alternative to formwork and falsework where possible.
- (i) The Contractor shall observe and comply with the Waste Disposal (Chemical Waste) (General) Regulation. The Contractor shall apply for registration as chemical waste producer under the Waste Disposal (Chemical Waste) (General) Regulation when chemical waste is produced. All chemical waste shall be properly stored, labeled, packaged and collected in accordance with the Regulation.

8.03 KLKJV had been implementing the required environmental mitigation measures according to the Updated Environmental Monitoring and Audit Manual subject to the site condition. Environmental mitigation measures generally implemented by KLKJV in this Reporting Quarter are summarized in **Table 8-1**.

Table 8-1 Environmental Mitigation Measures

Issues	Environmental Mitigation Measures
Water Quality	<ul style="list-style-type: none"> • Wastewater were appropriately treated by treatment facilities; • Drainage channels were provided to convey run-off into the treatment facilities; and • Drainage systems were regularly and adequately maintained.
Air Quality	<ul style="list-style-type: none"> • Regular watering to reduce dust emissions from all exposed site surface, particularly during dry weather; • Frequent watering for particularly dusty construction areas and areas close to air sensitive receivers; • Cover all excavated or stockpile of dusty material by impervious sheeting or sprayed with water to maintain the entire surface wet; • Public roads around the site entrance/exit had been kept clean and free from dust; and • Tarpaulin covering of any dusty materials on a vehicle leaving the site.
Noise	<ul style="list-style-type: none"> • Good site practices to limit noise emissions at the sources; • Use of quiet plant and working methods; • Use of site hoarding or other mass materials as noise barrier to screen noise at ground level of NSRs; • Use of shrouds/temporary noise barriers to screen noise from relatively static PMEs; • Scheduling of construction works nearly Tung Tsz Road; and • Alternative use of plant items within one worksite, where practicable.

Issues	Environmental Mitigation Measures
Waste and Chemical Management	<ul style="list-style-type: none">• Excavated material should be reused on site as far as possible to minimize off-site disposal. Scrap metals or abandoned equipment should be recycled if possible;• Waste arising should be kept to a minimum and be handled, transported and disposed of in a suitable manner;• The Contractor should adopt a trip ticket system for the disposal of C&D materials to any designed public filling facility and/or landfill; and• Chemical waste shall be handled in accordance with the Code of Practice on the Packaging, Handling and Storage of Chemical Wastes.
General	<ul style="list-style-type: none">• The site was generally kept tidy and clean.

9.0 CONCLUSIONS AND RECOMMENTATIONS

CONCLUSIONS

- 9.01 This is the 5th Quarterly EM&A Summary Report under Environmental Permit No.EP-303/2008 for the Contract No. DC/2010/02 - Drainage Improvement in Shuen Wan and Shek Wu Wai, covering the period from **1 July to 31 September 2012**.
- 9.02 No noise complaint (which is an Action Level exceedance) was received and no construction noise measurement results that exceeded the Limit Level were recorded in this Reporting Period. No NOE or the associated corrective actions were therefore issued.
- 9.03 For water quality monitoring, a total of 302 Action/Limit Levels exceedances, namely 138 dissolved oxygen, 99 turbidity and 65 suspended solids were recorded in this Reporting Quarter. Investigation reports concluded that all registered exceedances were not related to the work under the Project.
- 9.04 The hydrological characteristics of water depth and water flow rate were found no exceedance in this Reporting Period.
- 9.05 No documented complaint, notification of summons or successful prosecution was received.
- 9.06 Weekly environmental site inspections had been carried out by the Contractor and the RE on **4, 11, 18 and 25 July, 1, 8, 15, 22 and 29 August and 5, 13, 19 and 27 September 2012**. Furthermore, the RE, IEC, the Contractor and ET of joint site inspection were carried out on **11 July, 8 August and 13 September 2012**. No non-compliance were recorded but **15** observations and **1** reminder were noted. The environmental performance of the Project was therefore considered satisfactory.
- 9.07 During this Reporting Quarter, **6** events of landscape and visual inspection were carried out by a landscape sub-contractor.
- 9.08 No site visit was undertaken by any external party in this Reporting Quarter.

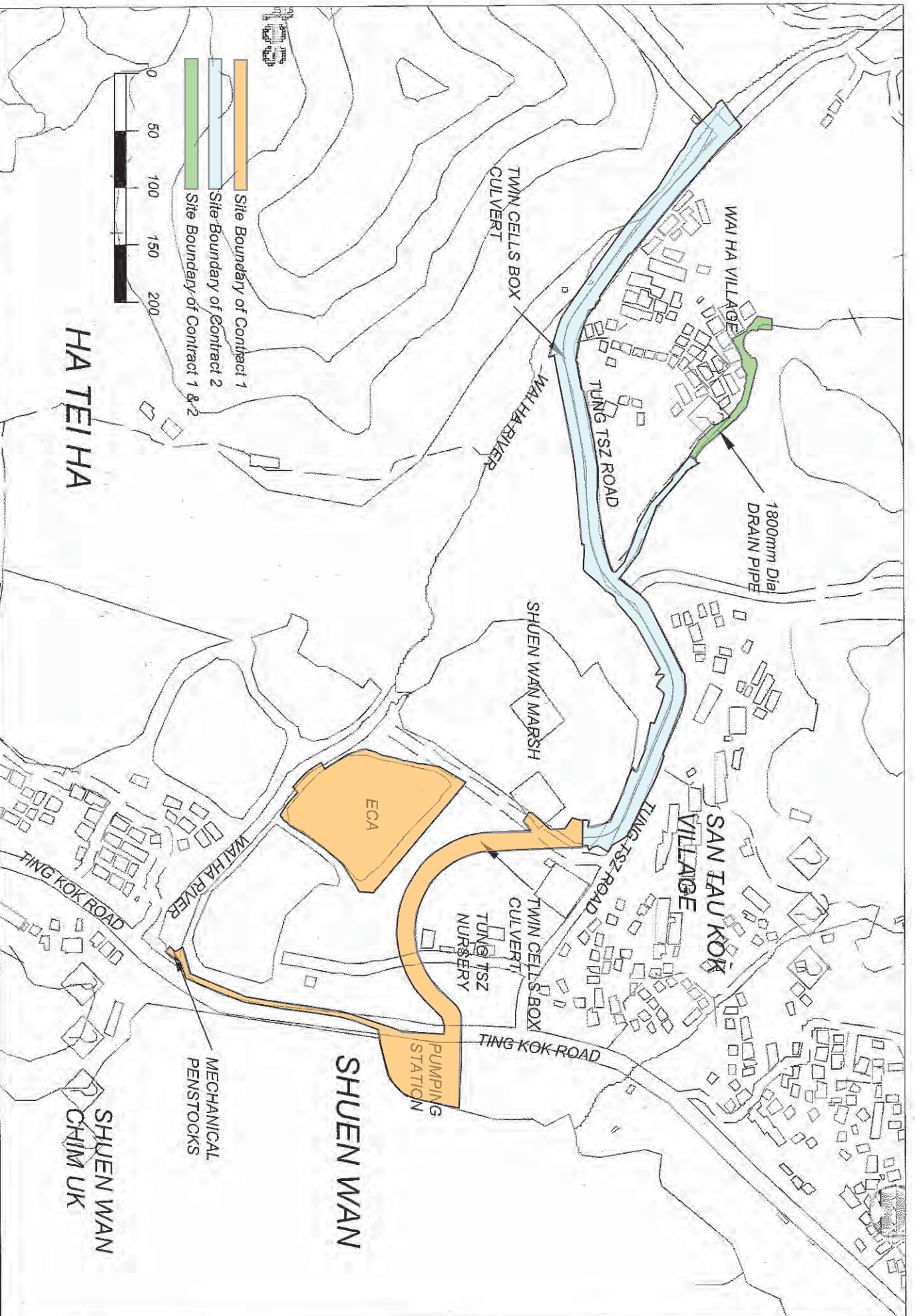
RECOMMENDATIONS

- 9.09 In the progress of excavation for construction box culvert or trench, surface runoff or water discharge to local stream course would be key environment issue. The Contractor is reminded that mitigation measures for water quality and ecology should be fully implemented. As an effective water quality mitigation measure, the rock bund in the de-silting channel should be repaired regularly and ensure the de-silting performance.
- 9.10 On the other hand, construction noise should be other key environmental issue during sheet-piling process. The noise mitigation measures should be necessary to implement in accordance with EM&A Manual stipulation. Dust mitigation measures to avoid fugitive dust emissions from loose soil surface or haul road is also reminded.
- 9.11 To control the site performance on waste management, the KLKJV shall ensure that all solid and liquid waste management works are fully in compliance with the relevant license/permit requirements, such as the effluent discharge licence and the chemical waste producer registration. KLKJV is also reminded to implement the recommended environmental mitigation measures according to the Updated Environmental Monitoring and Audit Manual.
- 9.12 The mitigation measures recommended in the EM&A Manual were implemented properly during the Reporting Quarter. Although breaches of water quality criteria were frequently recorded, all the exceedances were concluded that not related to works under the Project. Therefore, the implemented mitigation measures recommended in the EM&A Manual effectively minimize the environmental impact arise from the works on the Project.

END OF TEXT

Appendix A

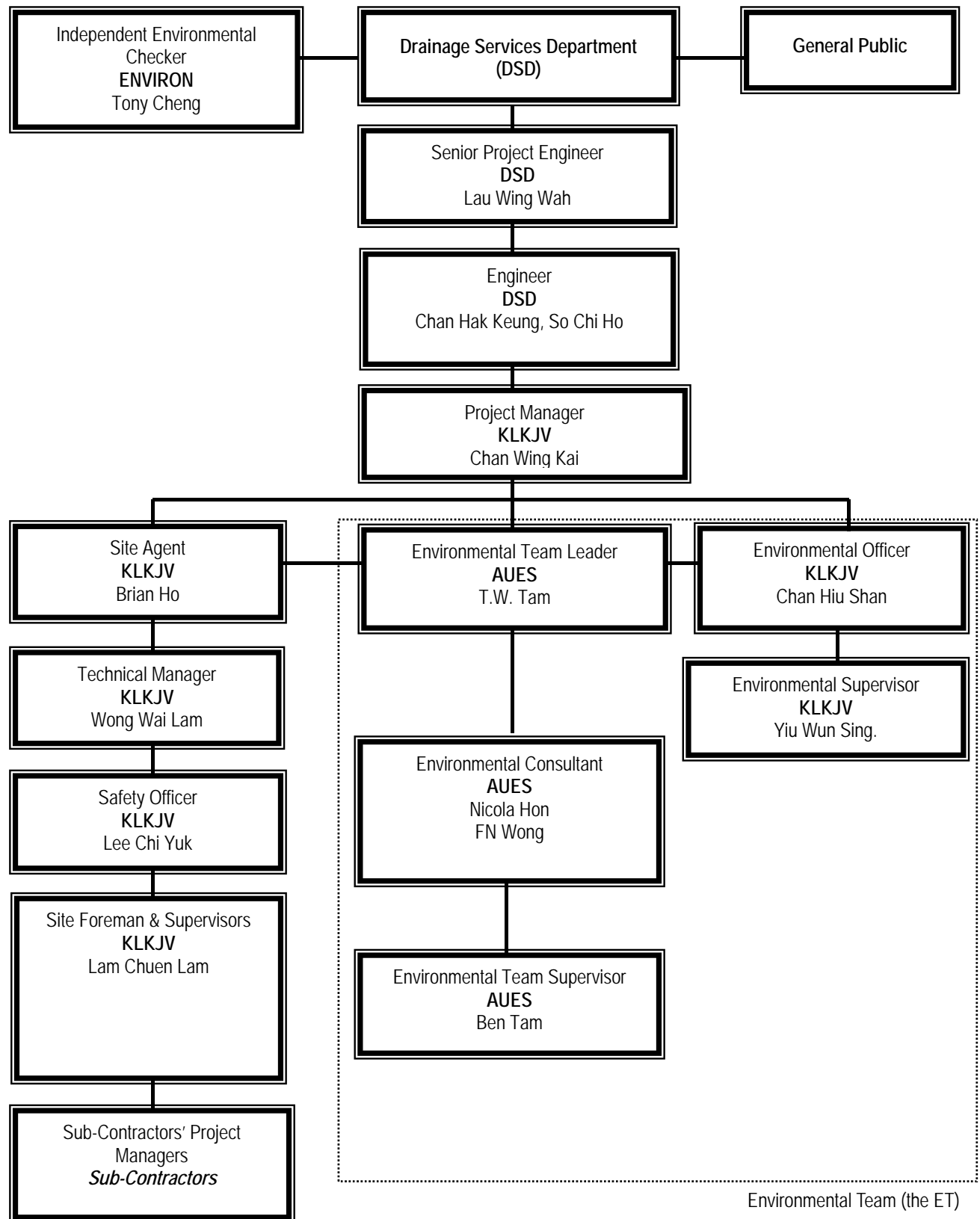
Site Location Plan (DSD Contract 1 and Contract 2 at Shuen Wan)



Site Location Plan of DSD Contract 1 and Contract 2 at Shuen Wan

Appendix B

Organization Chart and the Key Contact Person



Environmental Management Organization

Contact Details of Key Personnel

Organization	Project Role	Name of Key Staff	Tel No.	Fax No.
DSD	Employer	Mr. Luk Wai Hung	2594 7400	2827 8700
DSD	Senior Engineer	Mr. Lau Wing Wah	2594 7402	2827 8700
DSD	Engineer	Mr. Chan Hak Keung	2594 7596	2827 8700
DSD	Engineer	Mr. So Chi Ho	2594 7356	2827 8700
DSD	Senior Inspector	Mr. Tso Si On	6778 2708	2827 8700
ENVIRON	Independent Environmental Checker	Mr. Tong Cheng	3743-0788	3548-6988
KLKJV	Project Director	Mr. Poon Chi Yeung Francis	2674 3888	2674 9988
KLKJV	Project Manager	Mr. Chan Wing Kai	2674 3888	2674 9988
KLKJV	Site Agent	Mr. Brian Ho	2674 3888	2674 9988
KLKJV	Sub- Agent	Mr. Wong Wai Lam,	2674 3888	2674 9988
KLKJV	Technical Manager	Mr. Yeung Tai Yung	9674 9712	2674 9988
KLKJV	Site Forman	Mr. Lam Chuen Lam	2674 3888	2674 9988
KLKJV	Environmental Officer	Miss. Chan Hiu Shan	2674 3888	2674 9988
KLKJV	Environmental Supervisor	Mr. Yiu Wun Sing	2674 3888	2674 9988
AUES	Environmental Team Leader	Mr. T.W. Tam	2959-6059	2959-6079
AUES	Senior Environmental Consultant	Mr. Wong Fu Nam	2959-6059	2959-6079
AUES	Environmental Consultant	Miss. Nicola Hon	2959-6059	2959-6079
AUES	Environmental Supervisor	Mr. Ben Tam	2959-6059	2959-6079

Legends:

DSD (Employer) – Drainage Services Department

DSD (Engineer) – Drainage Services Department

KLKJV (Main Contractor) – Kwan Lee-Kuly Joint Venture

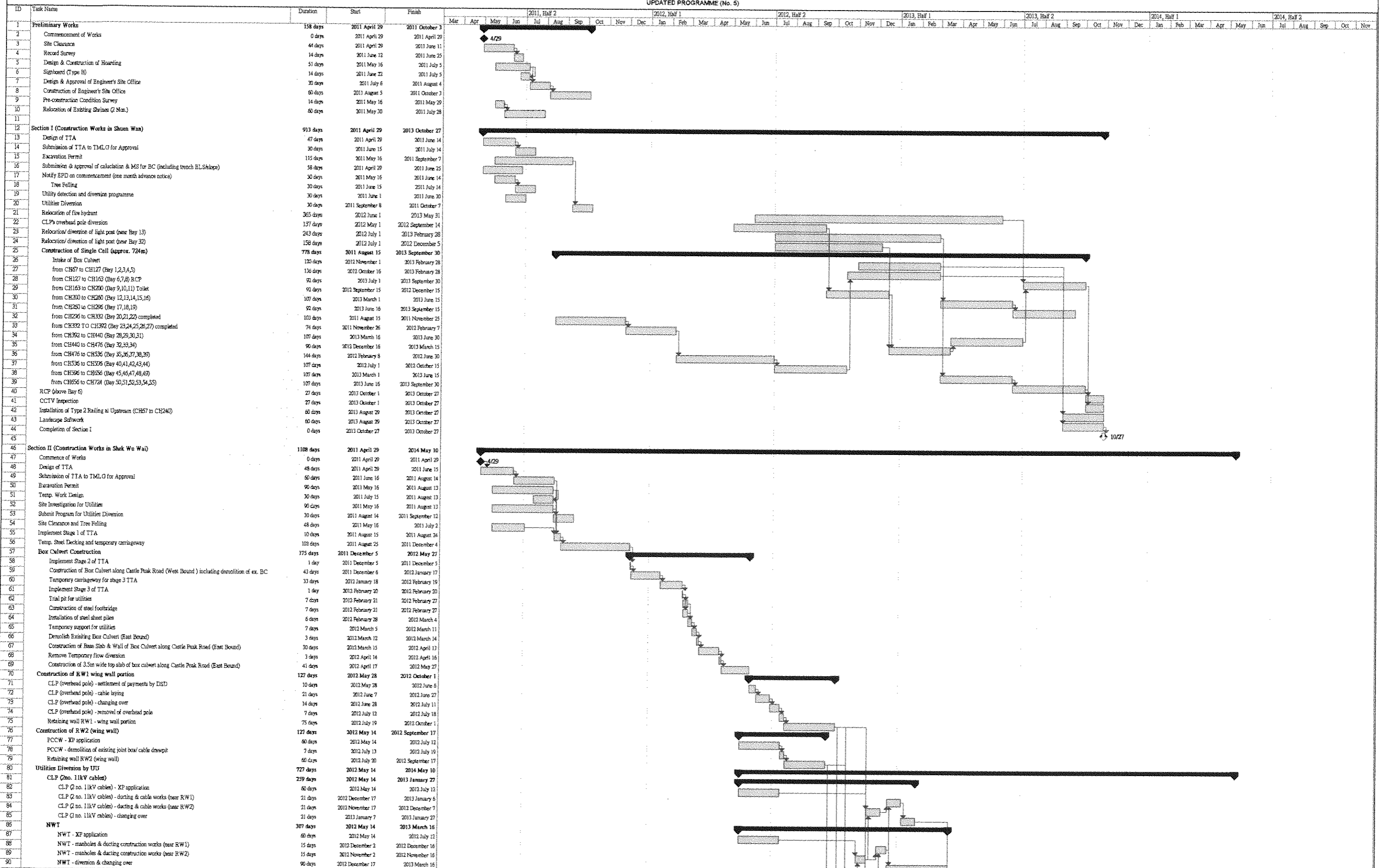
ENVIRON (IEC) – ENVIRON Hong Kong Limited

AUES (ET) – Action-United Environmental Services & Consulting

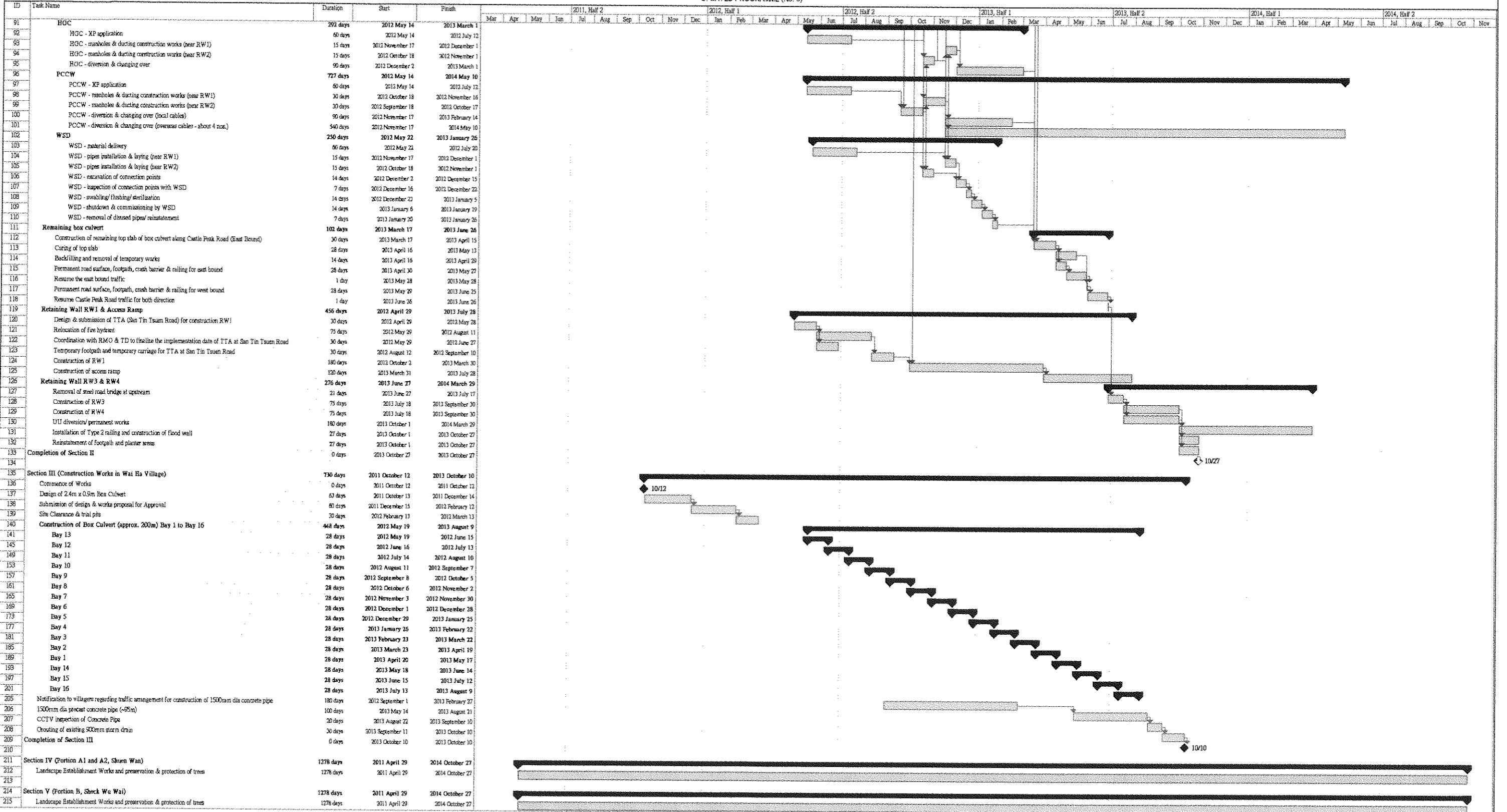
Appendix C

Master and Three Months Rolling Construction Programme

UPDATED PROGRAMME (No. 5)

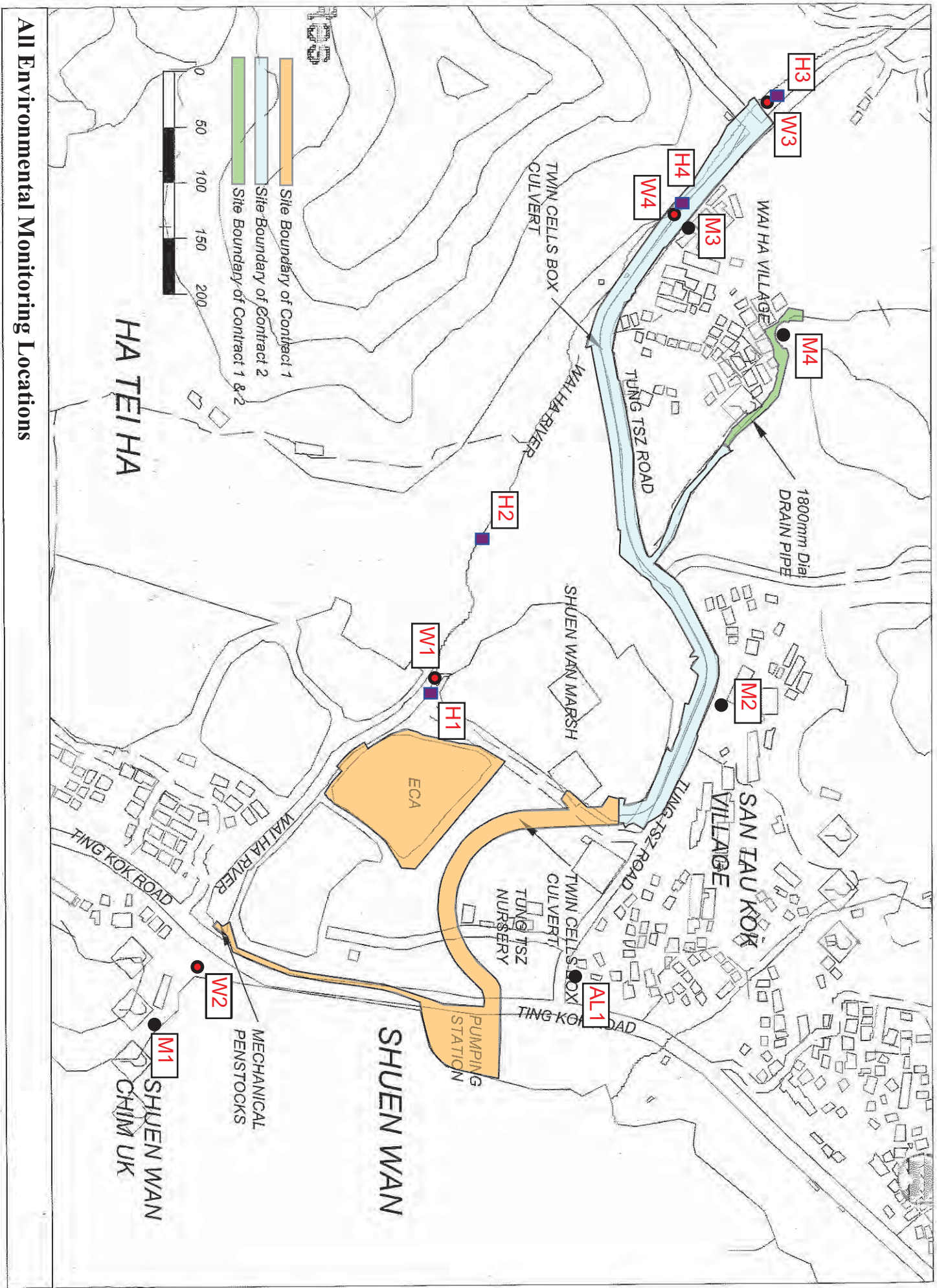


UPDATED PROGRAMME (No. 6)



Appendix D

Environmental Monitoring Locations

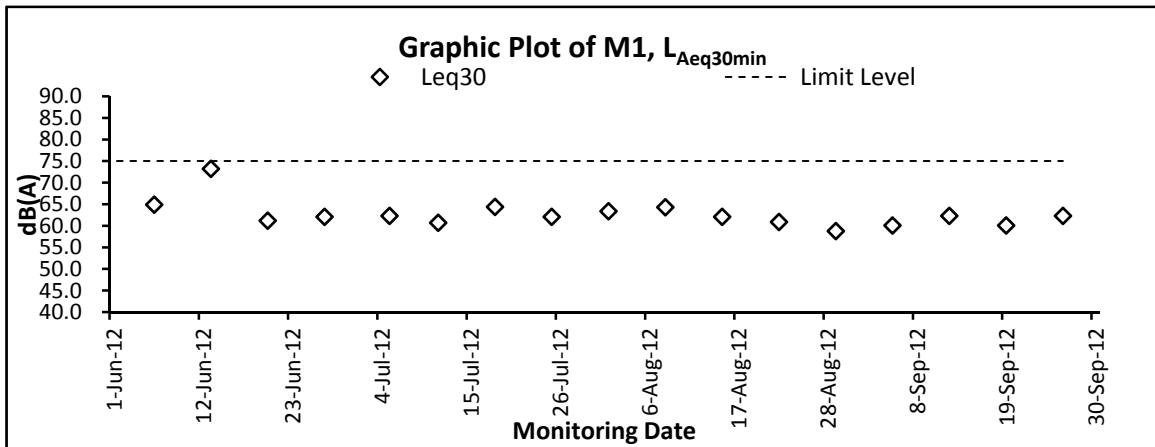


All Environmental Monitoring Locations

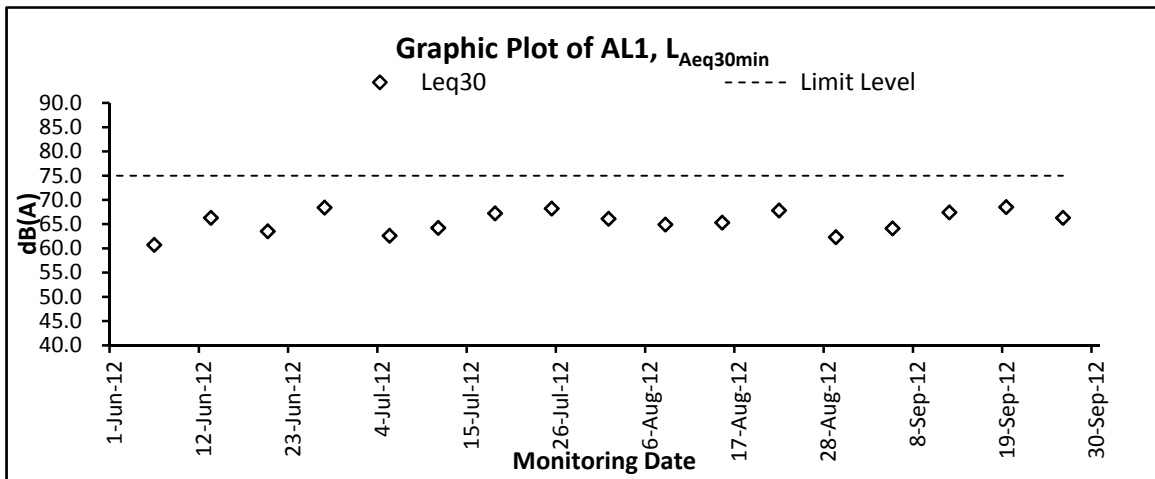
Appendix E

**Graphical Plots of Impact Monitoring –
Noise,
Water Quality
and
Hydrological Characteristics**

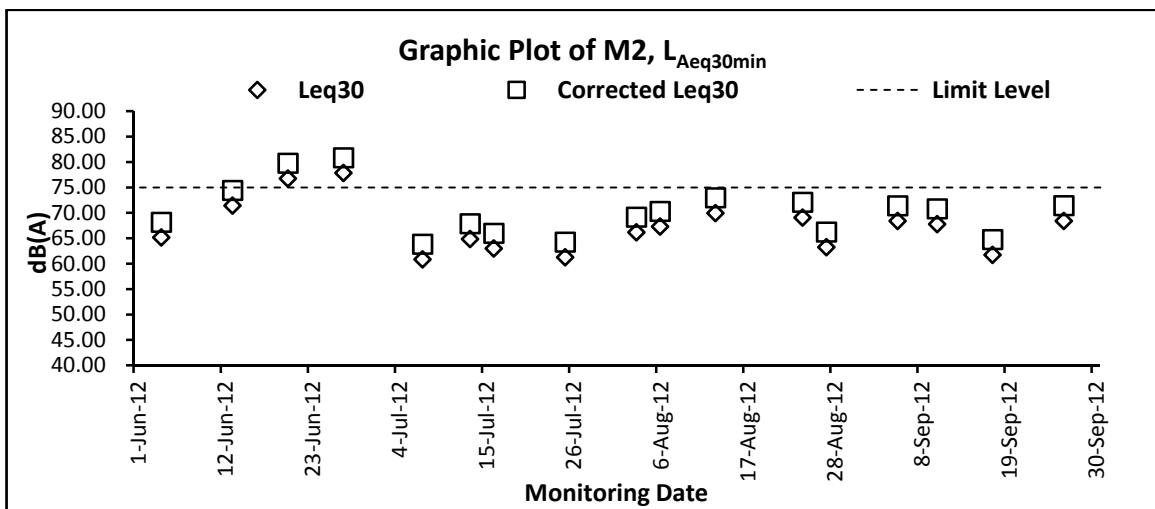
Graphic Plot – Construction Noise



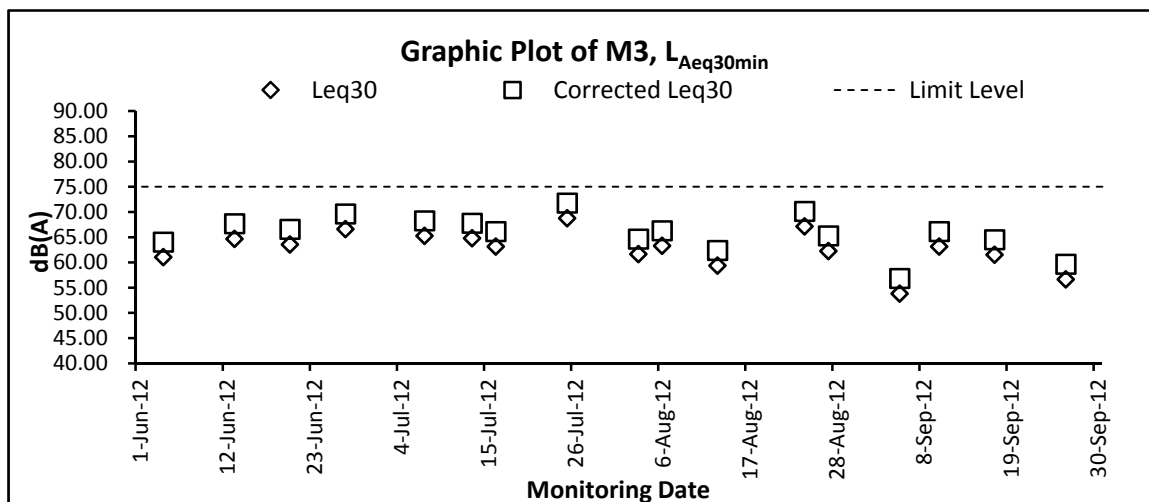
Remark: The monitoring is undertaken under façade situation. No façade correction is added according to acoustical principles and EPD guidelines.



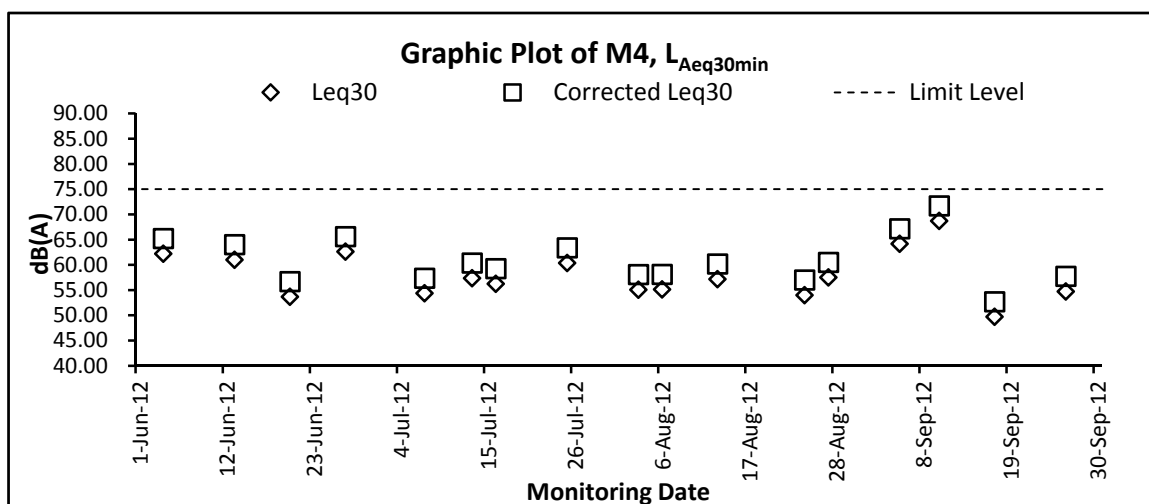
Remark: The monitoring is undertaken under façade situation. No façade correction is added according to acoustical principles and EPD guidelines.



Remark: The monitoring is undertaken under free field situation. A façade correction of +3 dB(A) has been added according to acoustical principles and EPD guidelines

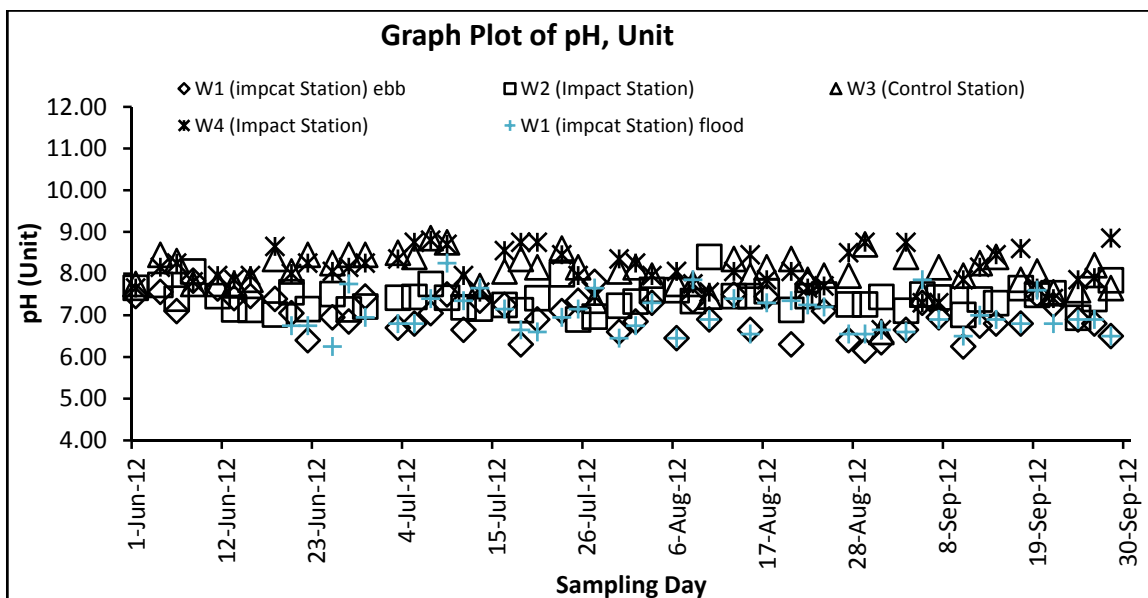
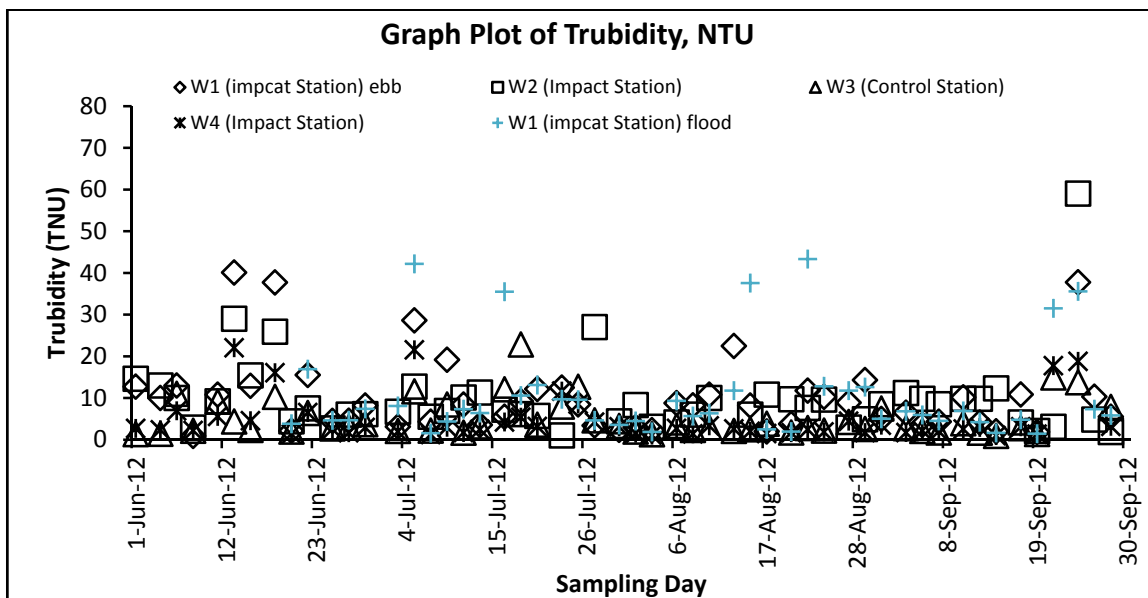
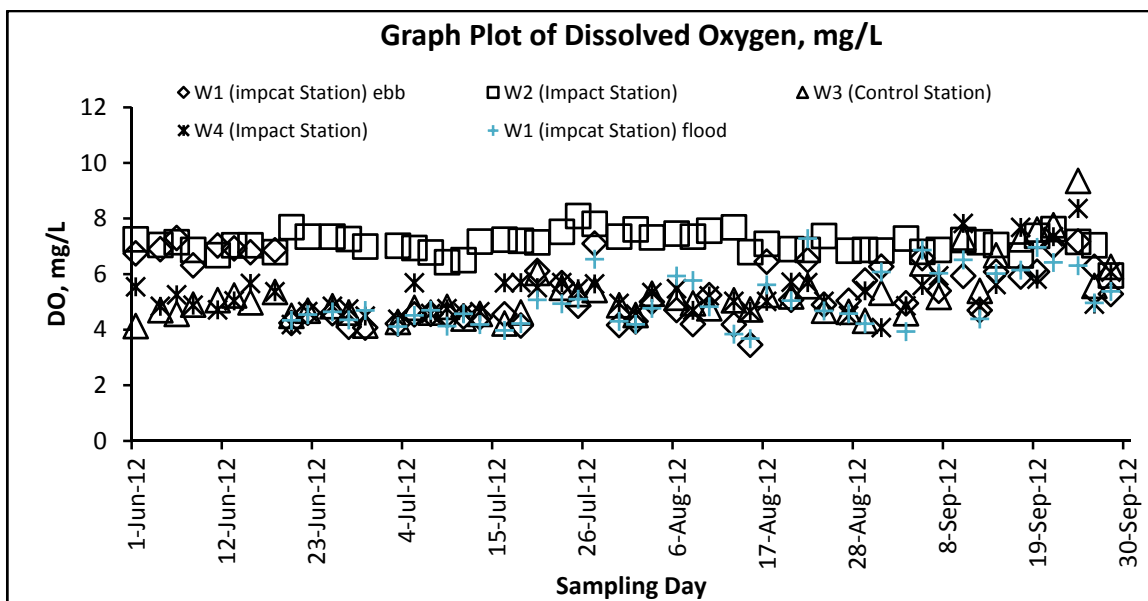


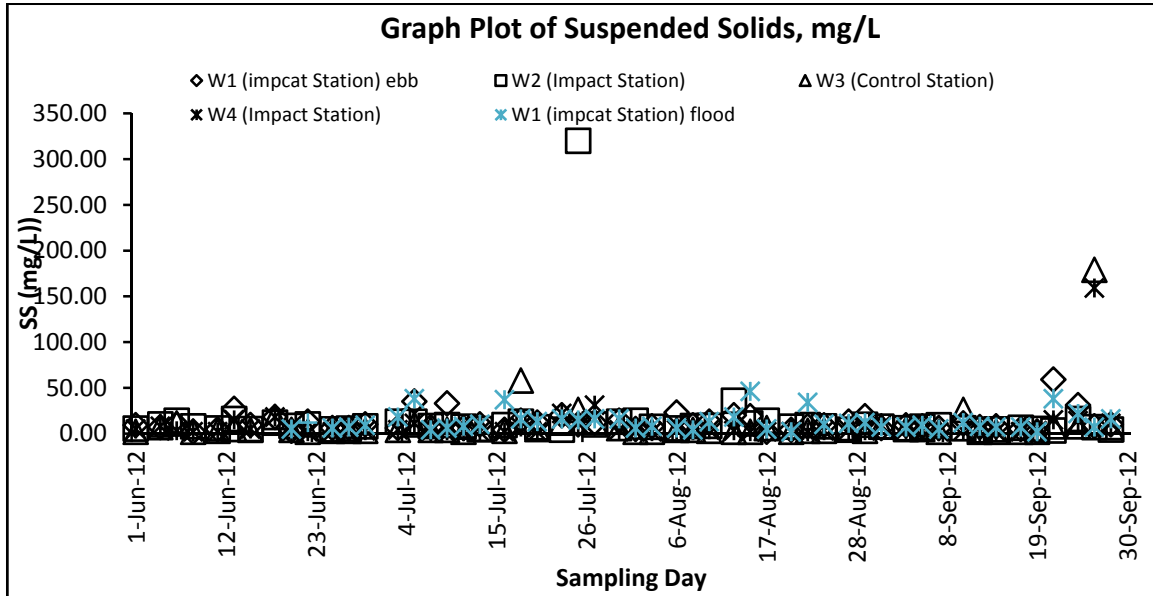
Remark: The monitoring is undertaken under free field situation. A façade correction of +3 dB(A) has been added according to acoustical principles and EPD guidelines



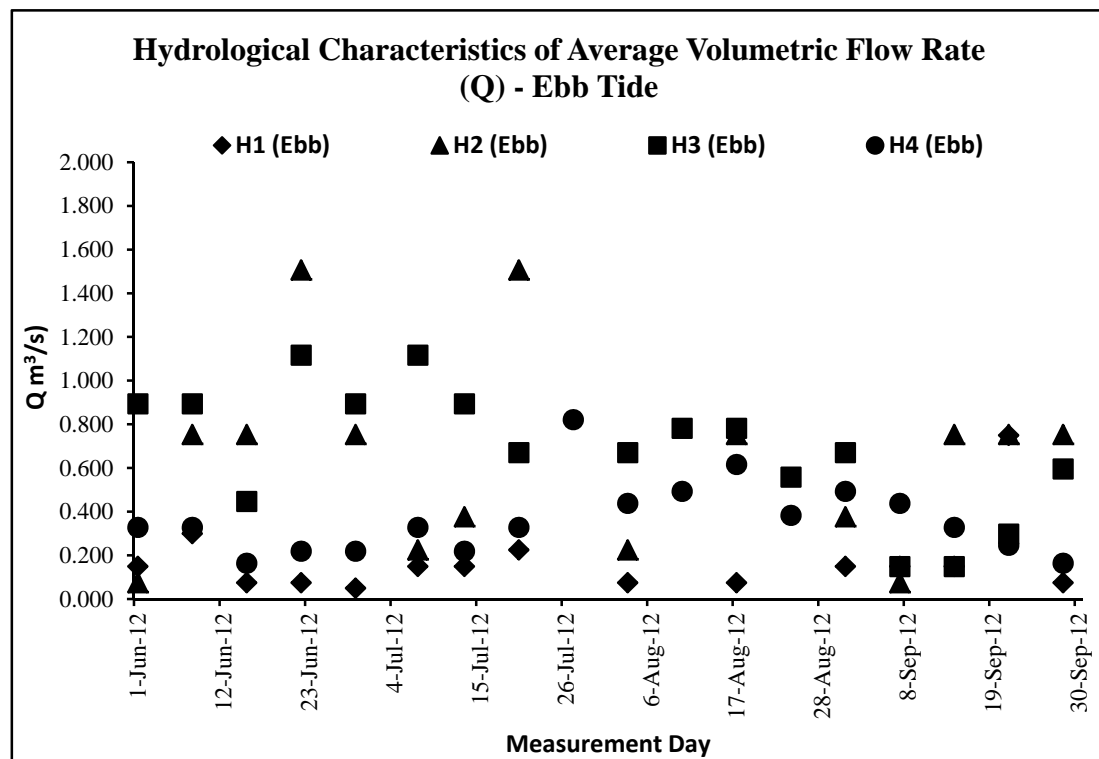
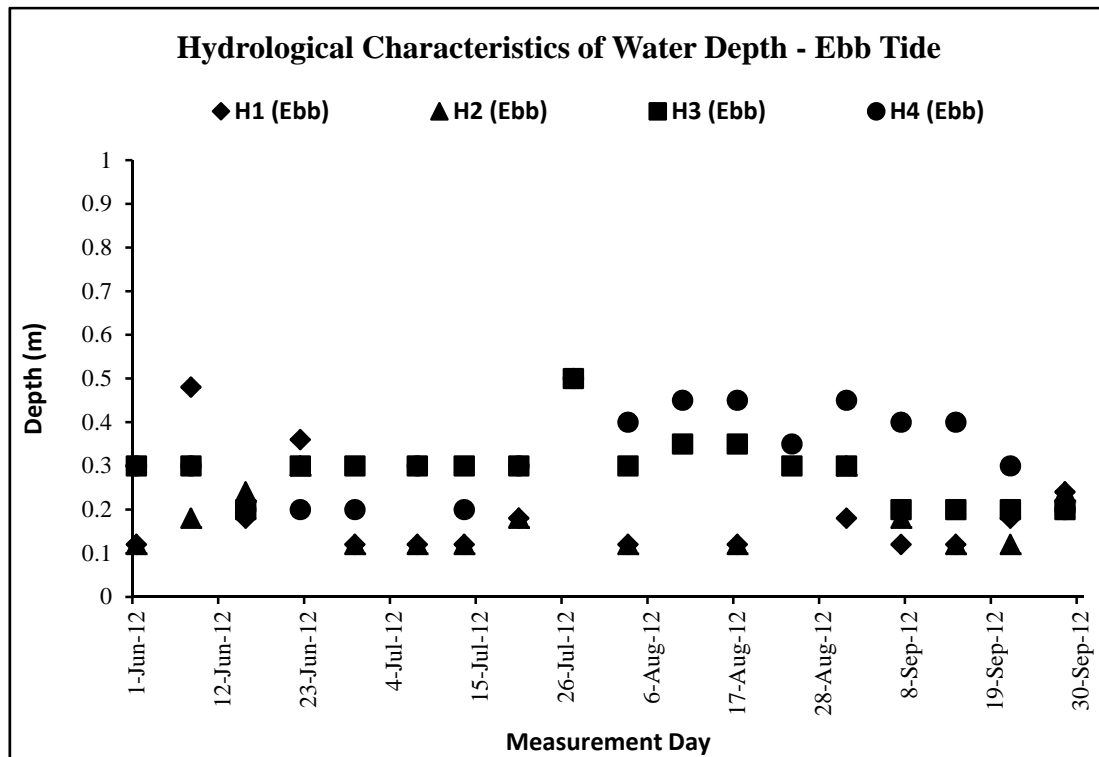
Remark: The monitoring is undertaken under free field situation. A façade correction of +3 dB(A) has been added according to acoustical principles and EPD guidelines

Graphic Plot – Water Quality

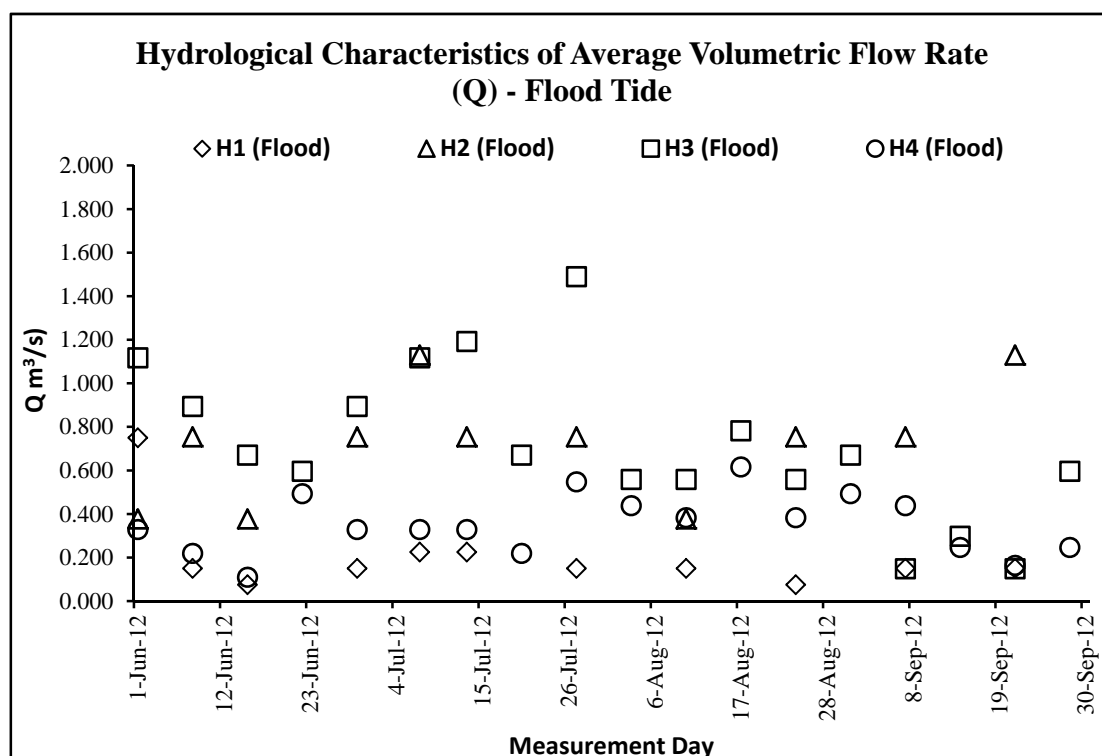
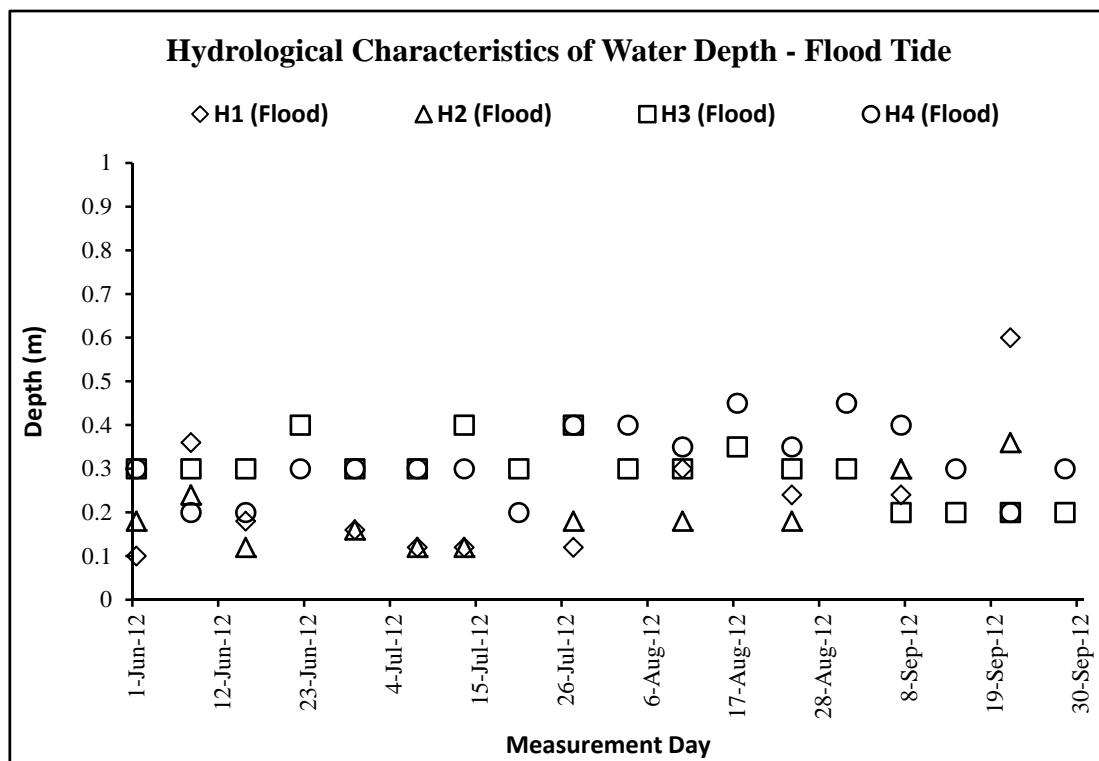




Graphic Plot – Hydrological Characteristics (Water Depth)



Graphic Plot – Hydrological Characteristics (Water Flow Rate)



Appendix F

Event and Action Plan

Event Action Plan for Construction Noise

EVENT	ACTION			
	ET Leader	IEC	ER	Contractor
Action Level	1. Notify IEC and Contractor 2. Carry out investigation. 3. Report the results of investigation to the IEC, ER and Contractor. 4. Discuss with the Contractor and formulate remedial measures 5. Increase monitoring frequency to check mitigation effectiveness.	1. Review the analyzed results submitted by the ET. 2. Review the proposed remedial measures by the Contractor and advise the ER accordingly 3. Supervise the implementation of remedial measures	1. Confirm receipt of notification of failure in writing 2. Notify Contractor 3. Require Contractor to propose remedial measures for the analyzed noise problem 4. Check remedial measures are properly implemented.	1. Submit noise mitigation proposals to IEC 2. Implement noise mitigation proposals
Limit Level	1. Notify IEC, ER, EPD and Contractor 2. Identify source. 3. Repeat measurements to confirm findings 4. Increase monitoring frequency. 5. Carry out analysis of Contractor's working procedures to determine possible mitigation to be implemented 6. Inform IEC, ER and EPD the causes and actions taken for the exceedances 7. Assess effectiveness of Contractor's remedial actions and keep IEC, EPD and ER informed of the results 8. If exceedance stops, cease additional monitoring.	1. Discuss amongst ER, ET, and Contractor on the potential remedial actions 2. Review Contractor's remedial actions whenever necessary to assure their effectiveness and advise the ER accordingly 3. Supervise the implementation of remedial measures	1. Confirm receipt of notification of failure in writing 2. Notify Contractor 3. Require Contractor to propose remedial measures for the analyzed noise problem 4. Check remedial measures properly implemented. 5. If exceedance continues, consider what portion of the work is responsible and instruct the Contractor to stop that portion of work until the exceedance is abated	1. Take immediate action to avoid further exceedance 2. Submit proposals for remedial actions to IEC within 3 working days of notification 3. Implement the agreed proposals 4. Resubmit proposals if problem still not under control 5. Stop the relevant portion of works as determined by the ER until the exceedance is abated

Event and action Plan for Water Quality

Event	ET Leader	IEC	ER	Contractor
ACTION LEVEL				
Action level being exceeded by one sampling day	<ol style="list-style-type: none"> 1. Repeat in-situ measurements to confirm findings; 2. Identify reasons for non-compliance and source(s) of impact; 3. Inform IEC, Contractor and Engineer; 4. Check monitoring data, all plant, equipment and Contractor's working methods; 5. Discuss mitigation measures with IEC, Engineer and Contractor; 6. Ensure mitigation measures are implemented. 7. Repeat measurement on next day of exceedance. 	<ol style="list-style-type: none"> 1. Discuss mitigation measures with ET, Engineer and Contractor; 2. Review proposals on mitigation measures submitted by Contractor and advise the Engineer accordingly; 3. Assess effectiveness of implemented mitigation measures. 	<ol style="list-style-type: none"> 1. Discuss proposed mitigation measures with IEC, ET and Contractor; 2. Make agreement on mitigation measures to be implemented; 3. Assess effectiveness of implemented mitigation measures. 	<ol style="list-style-type: none"> 1. Inform Engineer and confirm in writing notification of the non-compliance; 2. Rectify unacceptable practice; 3. Check all plant and equipment; 4. Consider changes in working methods; 5. Discuss with ET, IEC and Engineer and propose mitigation measures to IEC and Engineer within three working days; 6. Implement agreed mitigation measures.
Action level being exceeded by more than two consecutive sampling days	<ol style="list-style-type: none"> 1. Repeat in-situ measurements to confirm findings; 2. Identify reasons for non-compliance and source(s) of impact; 3. Inform IEC, Contractor and Engineer; 4. Check monitoring data, all plant, equipment and Contractor's working methods; 5. Discuss mitigation measures with IEC, Engineer and Contractor; 6. Ensure mitigation measures are implemented. 7. Prepare to increase the monitoring frequency to daily; 8. Repeat measurement on next day of exceedance. 	<ol style="list-style-type: none"> 1. Discuss mitigation measures with ET, Engineer and Contractor; 2. Review proposals on mitigation measures submitted by Contractor and advise the Engineer accordingly; 3. Assess effectiveness of implemented mitigation measures. 	<ol style="list-style-type: none"> 1. Discuss proposed mitigation measures with IEC, ET and Contractor; 2. Make agreement on mitigation measures to be implemented; 3. Assess effectiveness of implemented mitigation measures. 	<ol style="list-style-type: none"> 1. Inform Engineer and confirm in writing notification of the non-compliance; 2. Rectify unacceptable practice; 3. Check all plant and equipment; 4. Consider changes in working methods; 5. Discuss with ET, IEC and Engineer and propose mitigation measures to IEC and Engineer within three working days; 6. Implement agreed mitigation measures
LIMIT LEVEL				
Limit level being exceeded by one sampling day	<ol style="list-style-type: none"> 1. Repeat in-situ measurements to confirm findings; 2. Identify reasons for non-compliance and source(s) of impact; 3. Inform EPD, IEC, Contractor and Engineer; 4. Check monitoring data, all plant, equipment and Contractor's working methods; 5. Discuss mitigation measures with IEC, Engineer and Contractor; 6. Ensure mitigation measures are implemented; 7. Increase the monitoring frequency to daily until no exceedance of Limit Level. 	<ol style="list-style-type: none"> 1. Discuss mitigation measures with ET, Engineer and Contractor; 2. Review proposals on mitigation measures submitted by Contractor and advise the Engineer accordingly; 3. Assess effectiveness of implemented mitigation measures. 	<ol style="list-style-type: none"> 1. Discuss proposed mitigation measures with IEC, ET and Contractor; 2. Request Contractor to critically review the working methods; 3. Make agreement on mitigation measures to be implemented; 4. Assess effectiveness of implemented mitigation measures. 	<ol style="list-style-type: none"> 1. Inform Engineer and confirm in writing notification of the non-compliance; 2. Rectify unacceptable practice; 3. Check all plant and equipment; 4. Consider changes in working methods; 5. Discuss with ET, IEC and Engineer and propose mitigation measures to IEC and Engineer within three working days; 6. Implement agreed mitigation measures.
Limit level being exceeded by more than two consecutive sampling days	<ol style="list-style-type: none"> 1. Repeat in-situ measurements to confirm findings; 2. Identify reasons for non-compliance and source(s) of impact; 3. Inform EPD, IEC, Contractor and Engineer; 4. Check monitoring data, all plant, equipment and Contractor's working methods; 5. Discuss mitigation measures with IEC, Engineer and Contractor; 6. Ensure mitigation measures are implemented. 7. Increase the monitoring frequency to daily until no exceedance of Limit level for two consecutive days. 	<ol style="list-style-type: none"> 1. Discuss mitigation measures with ET, Engineer and Contractor; 2. Review proposals on mitigation measures submitted by Contractor and advise the Engineer accordingly; 3. Assess effectiveness of implemented mitigation measures. 	<ol style="list-style-type: none"> 1. Discuss proposed mitigation measures with IEC, ET and Contractor; 2. Request Contractor to critically review the working methods; 3. Make agreement on mitigation measures to be implemented; 4. Assess effectiveness of implemented mitigation measures; 5. Consider and if necessary instruct Contractor to slow down or to stop all or part of the construction activities until no exceedance of Limit Level. 	<ol style="list-style-type: none"> 1. Inform Engineer and confirm in writing notification of the non-compliance; 2. Rectify unacceptable practice; 3. Check all plant and equipment; 4. Consider changes in working methods; 5. Discuss with ET, IEC and Engineer and propose mitigation measures to IEC and Engineer within three working days; 6. Implement agreed mitigation measures; 7. As directed by the Engineer, slow down or stop all or part of the construction activities until no exceedance of Limit level.

Event and action Plan for Hydrological Characteristics

Event	ET Leader	IEC	ER	Contractor
ACTION LEVEL				
Action level being exceeded by one sampling day	<ol style="list-style-type: none"> 1. Repeat in-situ measurements to confirm findings; 2. Identify reasons for non-compliance and source(s) of impact; 3. Inform IEC, Contractor and Engineer; 4. Check monitoring data, Contractor's working methods and any excavation works or dewatering processes; 5. Discuss mitigation measures with IEC, Engineer and Contractor; 6. Ensure mitigation measures are implemented. 7. Repeat measurement on next day of exceedance. 	<ol style="list-style-type: none"> 1. Discuss mitigation measures with ET, Engineer and Contractor; 2. Review proposals on mitigation measures submitted by Contractor and advise the Engineer accordingly; 3. Assess effectiveness of implemented mitigation measures. 	<ol style="list-style-type: none"> 1. Discuss proposed mitigation measures with IEC, ET and Contractor; 2. Make agreement on mitigation measures to be implemented; 3. Assess effectiveness of implemented mitigation measures. 	<ol style="list-style-type: none"> 1. Inform Engineer and confirm in writing notification of the non-compliance; 2. Rectify unacceptable practice; 3. Check working methods and any excavation works or dewatering processes; 4. Consider changes in working methods and plans; 5. Discuss with ET, IEC and Engineer and propose mitigation measures to IEC and Engineer within three working days; 6. Implement agreed mitigation measures.
Action level being exceeded by more than two consecutive sampling days	<ol style="list-style-type: none"> 1. Repeat in-situ measurements to confirm findings; 2. Identify reasons for non-compliance and source(s) of impact; 3. Inform IEC, Contractor and Engineer; 4. Check monitoring data, Contractor's working methods and any excavation works or dewatering processes; 5. Discuss mitigation measures with IEC, Engineer and Contractor; 6. Ensure mitigation measures are implemented. 7. Prepare to increase the monitoring frequency to daily; 8. Repeat measurement on next day of exceedance. 	<ol style="list-style-type: none"> 1. Discuss mitigation measures with ET, Engineer and Contractor; 2. Review proposals on mitigation measures submitted by Contractor and advise the Engineer accordingly; 3. Assess effectiveness of implemented mitigation measures. 	<ol style="list-style-type: none"> 1. Discuss proposed mitigation measures with IEC, ET and Contractor; 2. Make agreement on mitigation measures to be implemented; 3. Assess effectiveness of implemented mitigation measures. 	<ol style="list-style-type: none"> 1. Inform Engineer and confirm in writing notification of the non-compliance; 2. Rectify unacceptable practice; 3. Check working methods and any excavation works or dewatering processes; 4. Consider changes in working methods and plans; 5. Discuss with ET, IEC and Engineer and propose mitigation measures to IEC and Engineer within three working days; 6. Implement agreed mitigation measures
LIMIT LEVEL				
Limit level being exceeded by one sampling day	<ol style="list-style-type: none"> 1. Repeat in-situ measurements to confirm findings; 2. Identify reasons for non-compliance and source(s) of impact; 3. Inform AFCD, IEC, Contractor and Engineer; 4. Check monitoring data, and Contractor's working methods and any excavation works or dewatering processes; 5. Discuss mitigation measures with IEC, Engineer and Contractor; 6. Ensure mitigation measures are implemented; 7. Increase the monitoring frequency to daily until no exceedance of Limit level. 	<ol style="list-style-type: none"> 1. Discuss mitigation measures with ET, Engineer and Contractor; 2. Review proposals on mitigation measures submitted by Contractor and advise the Engineer accordingly; 3. Assess effectiveness of implemented mitigation measures. 	<ol style="list-style-type: none"> 1. Discuss proposed mitigation measures with IEC, ET and Contractor; 2. Request Contractor to critically review the working methods; 3. Make agreement on mitigation measures to be implemented; 4. Assess effectiveness of implemented mitigation measures. 	<ol style="list-style-type: none"> 1. Inform Engineer and confirm in writing notification of the non-compliance; 2. Rectify unacceptable practice; 3. Check working methods and any excavation works or dewatering processes; 4. Consider changes in working methods and plans; 5. Discuss with ET, IEC and Engineer and propose mitigation measures to IEC and Engineer within three working days; 6. Implement agreed mitigation measures.
Limit level being exceeded by more than two consecutive sampling days	<ol style="list-style-type: none"> 1. Repeat in-situ measurements to confirm findings; 2. Identify reasons for non-compliance and source(s) of impact; 3. Inform AFCD, IEC, Contractor and Engineer; 4. Check monitoring data and Contractor's working methods and any excavation works or dewatering processes; 5. Discuss mitigation measures with IEC, Engineer and Contractor; 6. Ensure mitigation measures are implemented. 7. Increase the monitoring frequency to daily until no exceedance of Limit level for two consecutive days. 	<ol style="list-style-type: none"> 1. Discuss mitigation measures with ET, Engineer and Contractor; 2. Review proposals on mitigation measures submitted by Contractor and advise the Engineer accordingly; 3. Assess effectiveness of implemented mitigation measures. 	<ol style="list-style-type: none"> 1. Discuss proposed mitigation measures with IEC, ET and Contractor; 2. Request Contractor to critically review the working methods; 3. Make agreement on mitigation measures to be implemented; 4. Assess effectiveness of implemented mitigation measures; 5. Consider and if necessary instruct Contractor to slow down or to stop all or part of the construction activities until no exceedance of Limit Level. 	<ol style="list-style-type: none"> 1. Inform Engineer and confirm in writing notification of the non-compliance; 2. Rectify unacceptable practice; 3. Check working methods and any excavation works or dewatering processes; 4. Consider changes in working methods and plans; 5. Discuss with ET, IEC and Engineer and propose mitigation measures to IEC and Engineer within three working days; 6. Implement agreed mitigation measures; 7. As directed by the Engineer, slow down or stop all or part of the construction activities until no exceedance of Limit level.

Appendix G

Monthly Summary Waste Flow Table

Name of Department: DSD

Contract No.: DC/2010/02

Monthly Summary Waste Flow Table for 2011 to 2012 (Year)

Month	Actual Quantities of Inert C&D Materials Generated Monthly						Actual Quantities of C&D Wastes Generated Monthly				
	Total Quantity Generated	Hard Rock and Large Broken Concrete	Reused in the Contract	Reused in other Projects	Disposed as Public Fill	Imported Fill	Metals	Paper/ cardboard packaging	Plastics (see Note 3)	Chemical Waste	Others, e.g. general refuse
	(in '000m ³)	(in '000m ³)	(in '000m ³)	(in '000m ³)	(in '000m ³)	(in '000m ³)	(in '000 kg)	(in '000kg)	(in '000kg)	(in '000kg)	(in '000m ³)
Apr 2011	Nil	0	0	0	0	0	0	0	0	0	0
May 2011	Nil	0	0	0	0	0	0	0	0	0	0
June 2011	Nil	0	0	0	0	0	0	0	0	0	0
July 2011	Nil	0	0	0	0	0	0	0	0	0	0
Aug 2011	0.7855	0	0	0.7855	0	0	0	0	0	0	0
Sept 2011	Nil	0	0	0	0	0	0	0	0	0	0
Oct 2011	Nil	0	0	0	0	0	0	0	0	0	0.02
Nov 2011	Nil	0	0	0	0	0	0	0	0	0	0.045
Dec 2011	0.08	0	0	0	0.08	0	0	0	0	0	0
Jan 2012	Nil	0	0	0	0	0	0	0	0	0	0.01
Feb 2012	0.01	0	0	0	0.01	0	0	0	0	0	0.03
Mar 2012	0.405	0	0	0	0.405	0	0	0	0	0	0
Apr 2012	0.005	0	0	0	0.005	0	0	0	0	0	0
May 2012	0.165	0	0	0	0.165	0	0	0	0	0	0
June 2012	0.145	0	0	0	0.145	0	0	0	0	0	0.035
July 2012	0.005	0	0	0	0.005	0	0	0	0	0	0.005
Aug 2012	0.775	0	0	0	0.775	0	0	0	0	0	0
Sept 2012	0.21	0	0	0	0.21	0	0	0	0	0	0
Oct 2012											
Nov 2012											
Dec 2012											
Total	2.5855	0	0	0.7855	1.8	0	0	0	0	0	0.145

Forecast of Total Quantities of C&D Materials to be Generated from the Contract*										
Total Quantity Generated	Hard Rock and Large Broken Concrete	Reused in the Contract	Reused in other Projects	Disposed as Public Fill	Imported Fill	Metals	Paper/ cardboard packaging	Plastics (see Note 3)	Chemical Waste	Others, e.g. general refuse
(in '000m ³)	(in '000m ³)	(in '000m ³)	(in '000m ³)	(in '000m ³)	(in '000m ³)	(in '000 kg)	(in '000kg)	(in '000kg)	(in '000kg)	(in '000m ³)
23	1	10	0	10	2	5	2	1	1	3

Notes:

- (1) The performance targets are given in ETWB Technical Circular PS Clause 6(14).
- (2) The waste flow table shall also include C&D materials that are specified in the Contract to be imported for use at the Site.
- (3) Plastics refer to plastic bottles/containers, plastic sheets/foam from packaging material
- (4) The Contractor shall also submit the latest forecast of the total amount of C&D materials expected to be generated from the Works, together with a breakdown of the nature where the total amount of C&D materials expected to be generated from the Works is equal to or exceeding 50,000 m³. (ETWB Technical Circular PS Clause 5(4)(b) refers). [Delete Note (4) and the table above on the forecast, where inapplicable].

Summary Table for Work Processes or Activities Requiring Timber for Temporary Works

Contract No. : DC/2010/02

Contract Title : Drainage Improvement Works in Shuen Wan and Shek Wu Wai

Item No.	Description of Works Process or Activity [see note (a) below]	Justifications for Using Timber in Temporary Construction Works	Est. Quantities of Timber Used (m3)	Actual Quantities used (m3)	Remarks
1.	Formwork for concreting	Easy handle by manpower	1.35	1.3	
2.					
3.					
4.					
5.					
6.					
7.					
8.					
Total Estimated Quantity of Timber Used			1.35		

Notes:

- a. The Contractor shall list out all the work items requiring timber for use in temporary construction works. Several minor work items may be grouped into one for ease of updating.
- b. The summary table shall be submitted to the *Architect/Engineer's Representative monthly together with the Waste Flow Table for review and monitoring in accordance with the ETWB Technical Circular 19/2005 PS sub-clause 5(5) in Appendix C.