

## Provision of Cremators at Wo Hop Shek Crematorium

### Transplantation Proposal for Plant Species of Conservation Interest – *Cibotium barometz*

#### (A.) Qualification of the specialist to carry out the transplantation works

The transplantation work is to be carried out by Tarzan Landscape Contractors Ltd., whom is selected under the Landscaping category of the List of Approved Suppliers of Materials and Specialist Contractors for Public Works managed by the Development Bureau.

#### (B) Number, locations and photographs of plants to be transplanted

One colony of *Cibotium barometz* is to be transplanted in this project. The existing location of the species is shown in Appendix I. Photograph and information of the species is shown below:

<b>Botanical Name</b>	<b>中文名</b>	<b>Height (m)</b>	<b>Spread (m)</b>	<b>Quantity</b>
<i>Cibotium barometz</i>	金毛狗	1.0	1.0	1 colony



#### (C) Location of the receptor site for transplantation

The location of the receptor site, which is within the Wo Hop Shek Cemetery, is shown in Appendix II.

#### (D) Methodology and implementation programme

##### (1) Preparation, Surgery and Crown Pruning

- (a.) Erect protective fencing around the plant
- (b.) Removal of broken, damaged and diseased parts.

## (2) Root Pruning

- (a.) Rootball size at 1m x 1m x 600mm depth is to be adopted.
- (b.) Roots shall be cut free from ground, not pulled, using sharp and suitable equipment to give clean cut.

## (3.) Lifting, protection and preparation of receptor site

- (a.) Wrap the rootball by damp hessian, covers around the rootball with wire mesh tangled to its outer surface.
- (b.) Tie loosely together to protect the foliage.
- (c.) Lifting up the entire rootball with the aid of nylon webbing.
- (d.) Uplifted rootball shall be kept moist at all times until re-plant to receptor site.
- (e.) The bottom of hole to receive the tree ferns will be well dug over to assist drainage and root development.
- (f.) The hole will be 300mm approx. wider than the root ball and wide enough to allow adequate clearance between root and the side of the pit; and
- (g.) Well-mixed topsoil will be set aside for use.

## (4.) Transplanting

- (a.) Conducting a final inspection to the prepared pit before unloading from the vehicle for transplanting. The plant will be placed upright in the pit and set at the same depth, which it was growing before its removal.
- (b.) Topsoil approved by the Architect will be used for backfilling.
- (c.) Immediately after transplanting and before mulching, thoroughly water the plant to settle the soil around the roots. Continue watering as necessary so as to maintain soil moisture at all times.
- (d.) After planting and watering, place and spread 25 mm thick of mulch around the plant, leaving 100mm space around the bottom of tree fern. Mulch shall not cover the creeping rhizomes.
- (e.) To assist the creeping rhizomes to stay in place, they shall be anchored by hooks made by stainless steel metal wires, driven 200mm into the ground.

## (5.) Tree fern protection

- (a.) Installation of 1.2m high plastic security fencing with steel angle iron to fence off the tree fern.

## (6.) Implementation Programme

- (a.) The implementation programme is attached in Appendix III.

**(E) Post-transplantation maintenance and monitoring**

(a.) The tree fern will be maintained by the Landscape Contractor for 12 months after transplanting.

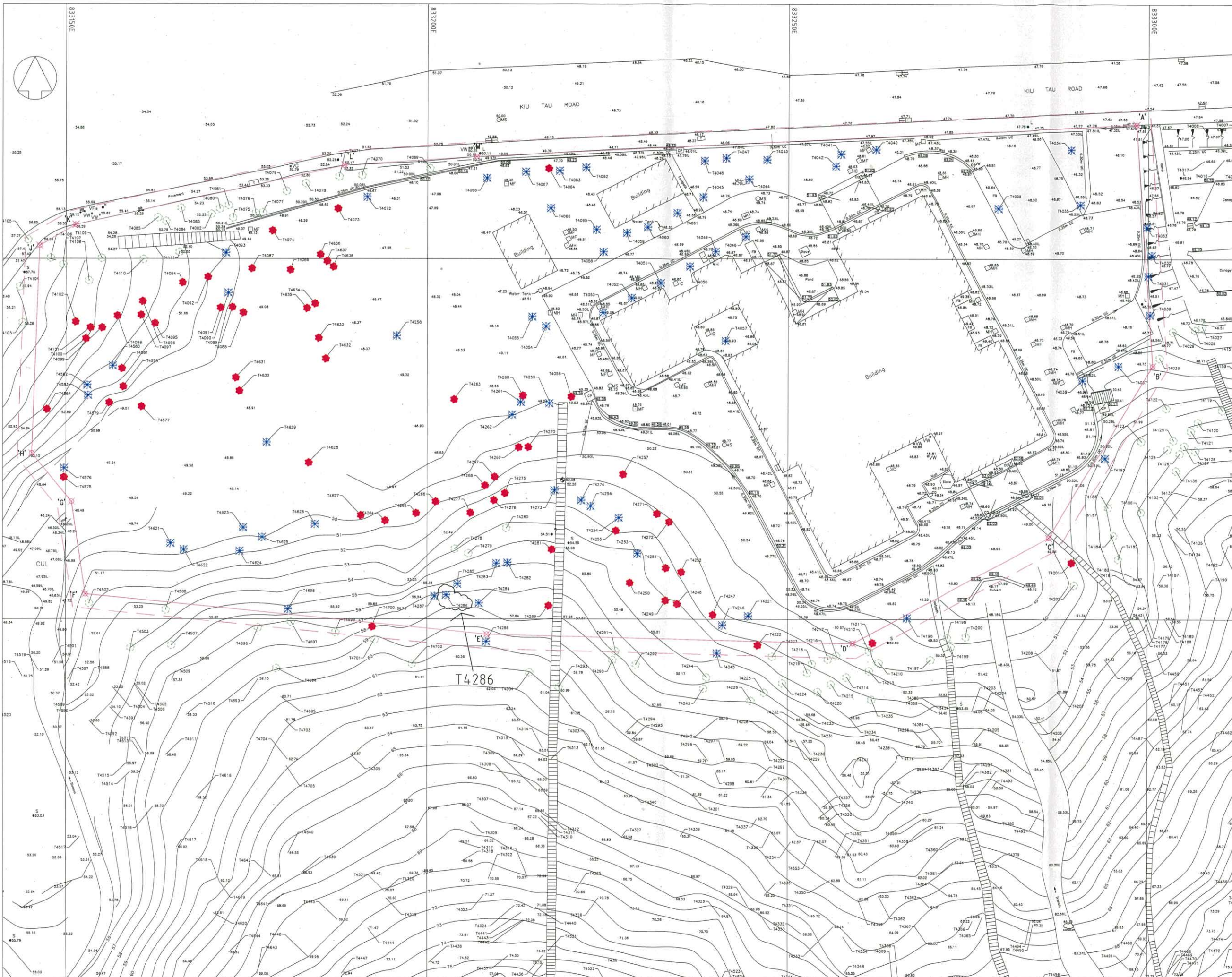
(b.) Details of the maintenance works are shown in Appendix IV.

(c.) Regular monitoring will be conducted during the 12 months period to check the health and conditions of the tree fern.

## Appendix I

## Appendix II





- NOTES:
1. REPORT ON OCCURRENCE OF DAMAGE TO PRESERVED TREES WITHIN THE SAME DAY AND SUBMIT WITHIN 7 DAYS A TREE DAMAGE REPORT IN ACCORDANCE WITH GS 25 69.13.3.
  2. SUBMIT WITHIN 65 DAYS OF THE DATE OF THE LETTER OF ACCEPTANCE THE ASSIGNED PERSON TO SUPERVISE TREE WORKS FOR APPROVAL IN ACCORDANCE WITH GS 25 69.2.
  3. NO SITE CLEARANCE SHALL COMMENCE BEFORE THE LIMITS OF SITE CLEARANCE HAVE BEEN AGREED BY THE ARCHITECT.
  4. SUBMIT TREE SURVEY RECORD WITHIN 18 DAYS OF THE DATE FOR COMMENCEMENT OF THE WORKS IN ACCORDANCE WITH GS 25 69.2.2. THE TREE SURVEY RECORD SHALL COVER ALL EXISTING TREES PRESENT WITHIN THE SITE AND WITHIN 20M OF THE SITE BOUNDARY AND ANY OTHER TREES LIKELY TO BE AFFECTED BY THE WORKS.
  5. MARK ON SITE WITH TREE IDENTITY LABELS IN ACCORDANCE WITH GS 25 69.2.3.
  6. ERECT SECURE AND MAINTAIN TEMPORARY PROTECTIVE FENCING TO ALL PRESERVED TREES IN ACCORDANCE WITH GS 25 69.3(a), (f), and (g).
  7. SUBMIT BIMONTHLY PHOTOGRAPHIC RECORD REPORT IN ACCORDANCE WITH GS 25 69.2.5(i).
  8. WHERE IT IS FOUND NECESSARY TO REMOVE ANY PRESERVED TREES, PRIOR APPROVAL SHALL BE OBTAINED IN ACCORDANCE WITH GS 25 69.2.4(i).
  9. REPORT ON OCCURRENCE OF DAMAGE TO PRESERVED TREES WITHIN THE SAME DAY AND SUBMIT WITHIN 7 DAYS A TREE DAMAGE REPORT IN ACCORDANCE WITH GS 25 69.13.3.

- LEGEND:
- TREE TO BE PRESERVED
  - TREE TO BE TRANSPLANTED (BY OTHERS)
  - TREE TO BE FELLED / DEAD TREES TO BE REMOVED BY BUILDING CONTRACTOR
  - SITE BOUNDARY
  - 2000 MM ALIGNMENT FROM THE SITE BOUNDARY

no.	date	description	initial
REVISION			
		name	date
designed		KF. SO	08-10-08
checked		DESMOND K.H. WONG	

approved	Chief Architect: DA/1.H.K. LI	
	Senior Architect: SA/11.M.C. CHUNG	
	Landscape Architect: LA/2.SALINA LEE	
contract no.	SST326	
file no.	ASD 51/5549F/1C/RC/001	
project no.	013 NB	

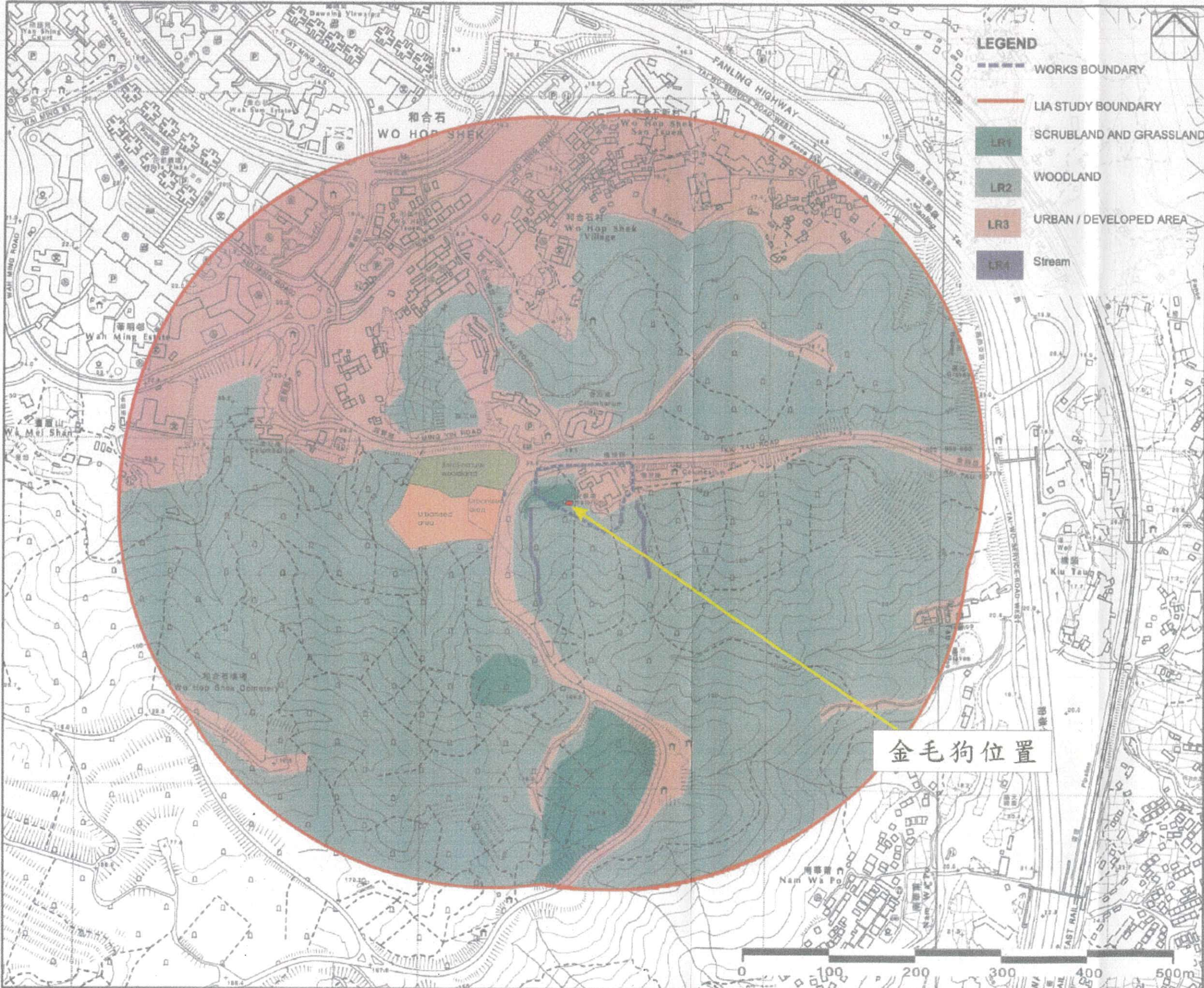
REPROVISIONING OF  
WO HOP SHEK CREMATORIUM

TREE PRESERVATION PLAN




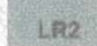
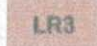

drawing no. AB/5549/LA001 scale 1 : 200

ARCHITECTURAL BRANCH  
ARCHITECTURAL SERVICES DEPARTMENT





**LEGEND**

-  WORKS BOUNDARY
-  LIA STUDY BOUNDARY
-  LR1 SCRUBLAND AND GRASSLAND
-  LR2 WOODLAND
-  LR3 URBAN / DEVELOPED AREA
-  LR4 Stream



No.	Date	Description	Drawn

Project Director / (DAWAN LEE) / Ove Arup & Partners / Hong Kong Ltd / Date /

Agreement no. \_\_\_\_\_

Site project no. \_\_\_\_\_

Contract: \_\_\_\_\_

Location: \_\_\_\_\_

Drawing title: \_\_\_\_\_

Drawing no.	Rev.	Date

Drawing engineer: \_\_\_\_\_

Office: \_\_\_\_\_

金毛狗位置







Appendix III





## Appendix IV



**Post-transplantation Maintenance  
and  
Monitoring Programme**

Operation	Month	1	2	3	4	5	6	7	8	9	10	11	12
Site Inspection													
Watering													
Weeding													
Firming-Up & Secure													
Apply Fertilizers													
Pruning													
Litter Collection													
Control of Pest & Disease													

As Required

As Required

As Required

As Required

**Post-transplantation Maintenance**  
**and**  
**Monitoring Programme**

Operation	1	2	3	4	5	6	7	8	9	10	11	12
Site Inspection												
Watering												
Weeding												
Firming-Up & Secure												
Apply Fertilizers												
Pruning												
Litter Collection												
Control of Pest & Disease												

As Required

As Required

As Required



## Provision of Cremators at Wo Hop Shek Crematorium

### Transplantation Proposal for Plant Species of Conservation Interest – *Aquilaria sinensis*

#### (A.) Qualification of the specialist to carry out the transplantation works

The transplantation works is to be carried out by Tarzan Landscape Contractors Ltd., whom is selected under the Landscaping category of the List of Approved Suppliers of Materials and Specialist Contractors for Public Works managed by the Development Bureau.

#### (B) Number, locations and photographs of plants to be transplanted

One *Aquilaria sinensis* (Tree No. 4286) is to be transplanted in this project. The existing location of the tree is shown in Appendix I. Photograph and information of the tree is shown below:

Tree No	Botanical Name	中文名	Trunk Diameter (measured about 1.3m above ground (m)	Overall Height (m)	Crown spread (m)
4286	<i>Aquilaria sinensis</i>	土沉香	0.20	8	5



#### (C) Location of the receptor site for transplantation

The location of the receptor site, which is within the Wo Hop Shek Cemetery, is shown in Appendix II.

#### (D) Methodology and implementation programme

### (1) Preparation, Surgery and Crown Pruning

- (a.) Removal of broken, damaged and diseased branches.
- (b.) Removal of competitive leaders or twin forks, which could develop into a dangerous structure.
- (c.) Removal of weak or crossing branches to ensure a well-balanced crown.

### (2) Root Pruning

- (a.) Rootball size at 10 times of its dBH (0.2m) is to be adopted, i.e. 2m diameters with depth of 1.5m.
- (b.) 1<sup>st</sup> stage of root pruning (immediate after pruning of Crown)
  - (i.) Digging a trench around the tree so as to cut the roots, which grow outwards from it and roughly parallel to the surface of surrounding ground.
  - (ii.) The circumference of the proposed trench will be divided into four segments and only alternate segments are cut at one time.
  - (iii.) Backfill soil mix and water the plant thoroughly from top to bottom after each root pruning operation and always keep the soil remains moist.
  - (iv.) Secure the plant with bamboo tripod staking for stabilization.
- (c.) 2<sup>nd</sup> stage of root pruning (14 days after 1<sup>st</sup> root pruning)
  - (i.) Similar process will be carried out on root pruning for the remaining 2 segments as (b.) above.

### (3.) Lifting, protection and preparation of receptor site

- (a.) Excavate the backfill soil mix, cut bottom roots and wrap the rootball by tie Hessian covers around the rootball with wire mesh tangled to its outer surface.
- (b.) Tie loosely together to secure tree canopy for main branches.
- (c.) Hydraulic crane for lifting up the entire rootball with the aid of nylon webbing.
- (d.) Using wood beam for supporting the material on vehicle and side-down to wind direction with shade cloth during transportation to planting location.
- (e.) The bottom of hole to receive the trees will be well dug over to assist drainage and root development.



(f.) The hole will be 300mm approx. deeper than the root ball and wide enough to allow adequate clearance between root ends or sides of root ball and the side of the pit; and

(g.) Well-mixed topsoil will be set aside for use.

#### (4.) Transplanting

(a.) Conducting a final inspection to the prepared tree pit before unloading from the vehicle for transplanting. The tree will be placed upright in the pit and set at the same depth, which it was growing before its removal.

(b.) Topsoil approved by the Architect will be used for backfilling.

(c.) A slight ridge of soil will be formed around the circumference of the planting pit (after it has been filled in) so as to form a 'dam' to retain water when watering.

(d.) Immediately after planting and before mulching, thoroughly water the tree to settle the soil around the roots. Continue watering as necessary so as to maintain soil moisture at all times.

(e.) After planting and watering the tree, place and spread 75 mm thick of mulch around the tree, leaving 100mm space around the tree trunk.

(f.) Transplanted tree will securely supported by bamboo tripod staking or angle iron with wire guying.

#### (5.) Tree protection

(a.) Installation of 1.2m high plastic security fencing with steel angle iron to fence off the tree.

#### (6.) Implementation Programme

(a.) The implementation programme is attached in Appendix III.

### **(E) Post-transplantation maintenance and monitoring**

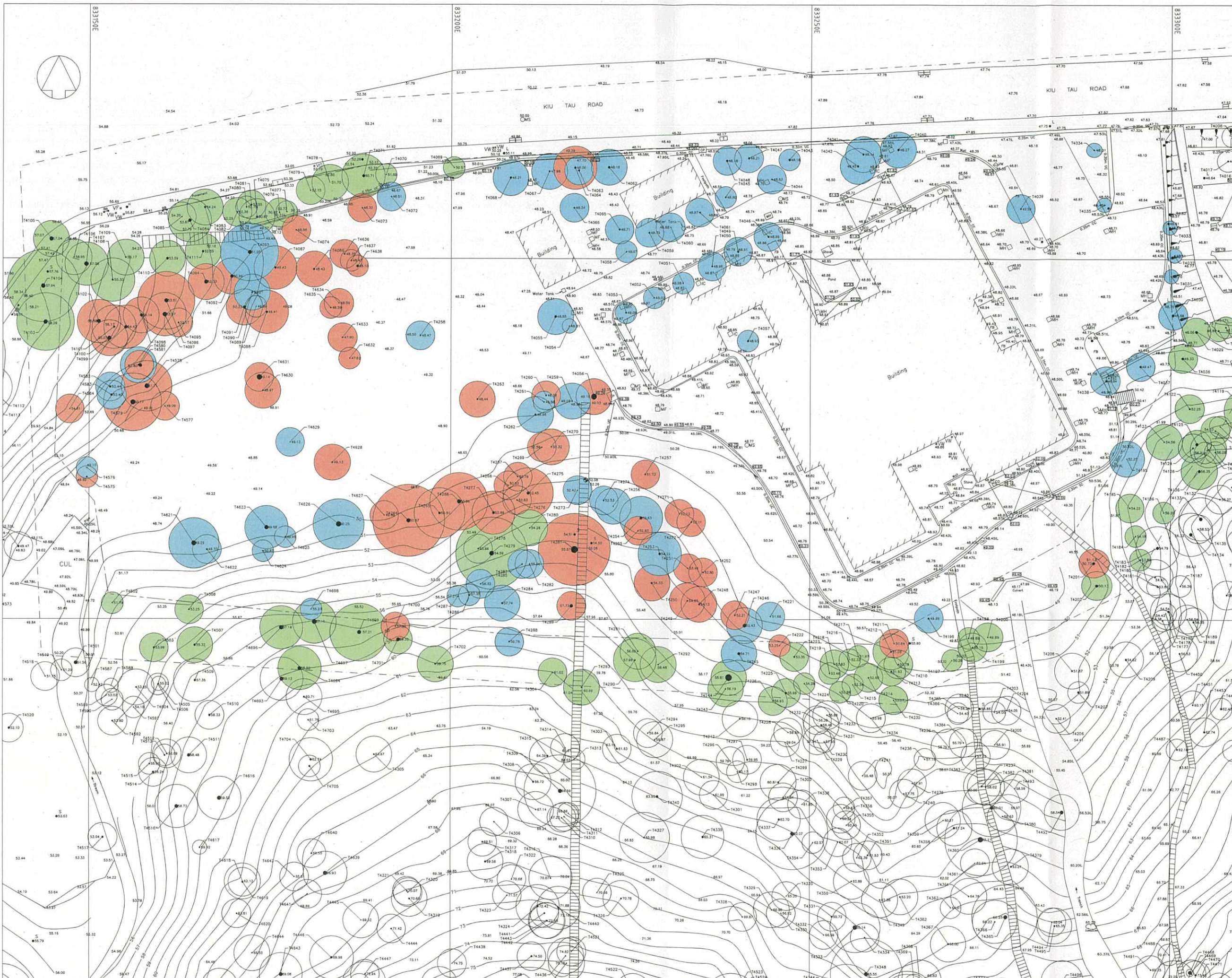
(a.) The tree will be maintained by the Landscape Contractor for 12 months after transplanting.

(b.) Details of the maintenance works are shown in Appendix IV.

(c.) Regular monitoring will be conducted during the 12 months period to check on the health and conditions of the tree.

## Appendix I





NOTES:

LEGEND:

- TREE TO BE RETAINED
- TREE TO BE TRANSPLANTED
- TREE TO BE FELLED / DEAD TREES

no.	date	description	initial
1		REVISED TREE FELLING	

DESIGNED: [Name] DATE: [Date]

DRAWN: M.B. WONG / E. CHEUNG 02-11-06

CHECKED: [Name]

APPROVED: [Name]

Chief Architect: CA/1.H.K. U

Senior Architect: SA/13.C.H. LU

Project Architect: PA/99.M.C. CHUNG

contract no. ASD 51/5549F/1C/RCC/001

project no. 013 NB

contract

**RE-PROVISIONING OF CREMATORS AT WO HOP SHEK CREMATORIUM**

**TREE FELLING PROPOSAL (EXISTING CONDITION)**

drawing no. AB/5549/TF001a

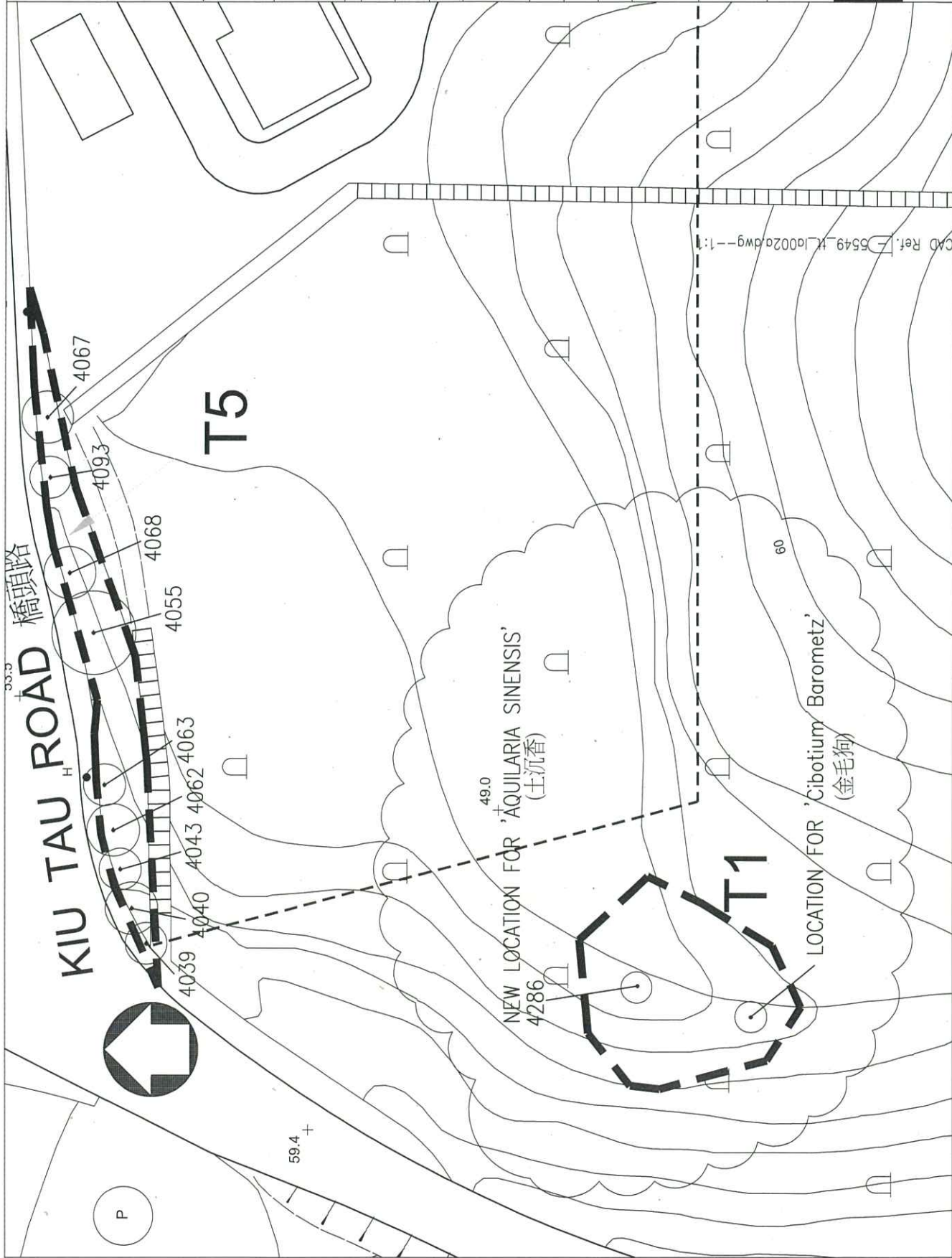
scale 1:200

office ARCHITECTURAL BRANCH





## Appendix II



SYMBOLS AND ABBREVIATIONS :

- SITE BOUNDARY
- 4032 TREE NUMBER
- + 49.0 LEVEL IN METRE
- RECEPTOR LOCATION OF TREE TO BE TRANSPLANTED

no.	date	description
1.		T1 RELOCATED AND DETAILS AMENDED AS SHOWN

REVISION	
drawn	E. CHEUNG
checked	D. WONG

approved  
 checked  
 date  
 project no.  
 contract no.

file no.  
 project no.

contract  
**RE-PROVISIONING OF  
 CREMATORIUMS AT WO HOP SHEK  
 CREMATORIUM**

drawing title  
**TRANSPLANTING RECEPTOR  
 SITES 'T1' & 'T5'**

drawing no.  
 scale  
 1:500

office  
**ARCHITECTURAL BRANCH**



C:\N\Ref\... (mirrored text)

## Appendix III



## Implementation Programme

Tasks	Day																														
	1	2	3	4	5	6	7	8	9	10	11	12	13	14	15	16	17	18	19	20	21	22	23	24	25	26	27	28	29	30	
1. Crown pruning works and leaf-picking																															
2. Carry out 1st root pruning works																															
3. Application of Root Activator																															
4. Continuous watering works																															
5. Carry out 2nd root pruning works																															
6. Application of Root Activator																															
7. Root under cutting works and uplifting to final location																															

## **Appendix IV**

