

VW-VES

VW-VES (HK) Limited

Our Ref: HKSTF-VWVE-EPD-EIA-LE-160707-001

(By hand)

7 July 2016

The EIA Ordinance Register Office
Environmental Protection Department
27/F Southorn Centre
130 Hennessy Road
Wan Chai, Hong Kong

Attn: Mr Alex Tang

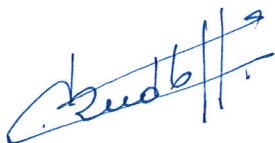
Dear Sir

**Contract No. EP/SP/58/08 – Sludge Treatment Facilities
Environmental Monitoring Results in Operation Phase – Landscape and Visual Impact
Monitoring Reports – June 2016**

We refer to the Clause 7.5.1.2 of the EM&A Manual and would like to submit herewith three hard copies and one electronic copy of the captioned for your information and record.

Should you have any queries, please do not hesitate to contact our Mr WB Chu on 2910 9666. Thank you for your kind attention.

Yours faithfully
For and on behalf of
VW-VES (HK) LIMITED



Francois Rudloff
Operation Manager

FR/EZ/WB/hk


Attachment: Landscape and Visual Impact Monitoring Reports – June 2016 (3 hard copies + 1CD)

cc: EPD – Davie Kan w/o CD
Jacobs (ER) – Leslie Swann w/ letter only
Jacobs (ER site) – David Downs w/ CD only

Sludge Treatment Facilities

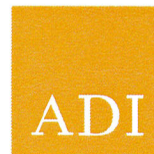
Office: Nim Wan Road, Tsang Tsui, Tuen Mun, New Territories, Hong Kong
Correspondence: Unit 7601, The Center, 99 Queen's Road Central, Hong Kong
Tel: +852 2910 9600 • Fax: +852 2430 8011

www.veolia.com

operated by  VEOLIA

Monthly EM & A Record for Landscape and Visual Impact
(June 2016)

Prepared By:
ADI Limited



Monthly EM & A Record for Landscape and Visual Impact

The landscape and visual impact assessment of the EIA Study recommended a series of mitigation measures to ameliorate the landscape and visual impacts of the Project. The measures for the operation phase as recommended in the EIA Report are summarized in Table 1.1.

Observation of the implementation of proposed landscape and visual mitigation measures are summarized in Table 1.1.

Table 1.1 Record of Implementation of the Proposed Landscape and Visual Mitigation Measures in Operation Phase (June 2016)

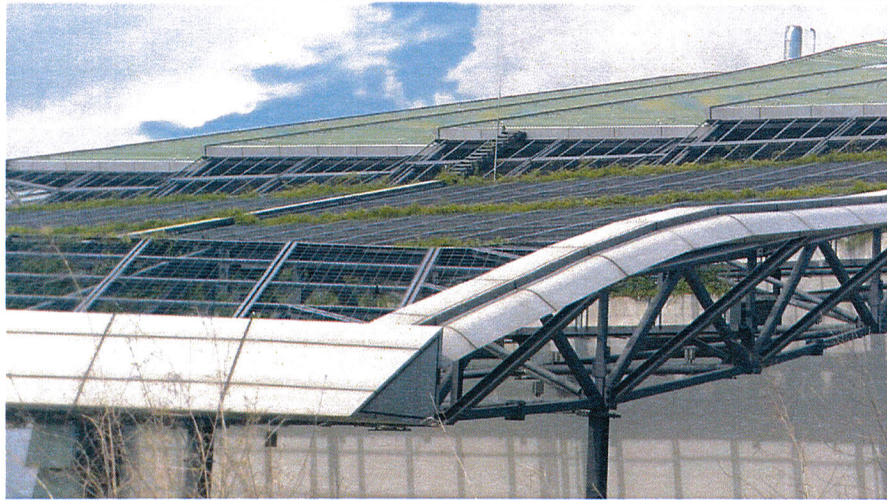
ID No.	Nature / Type	Landscape and Visual Mitigation Measures	Status (June 2016)	Remarks
OM1	Design/ Construction Planning	Aesthetic design of the façade, chimneys of STF and associated structures to harmonize with the settings.	The development to the design of the facade has improved upon the aesthetic aspects of the scheme from a landscape and contextual perspective. The chimneys of STF used to be a separate element, but it is now part of the building and is much more coordinated. Also, the main building is now more sinuously profiled with an elegant and pleasing form and more sympathetic to the environment. The trellis roof profile also sits more sympathetically	Site photos refer to Appendix 1-1. The climber planting are well established on the pergola.

ID No.	Nature / Type	Landscape and Visual Mitigation Measures	Status (June 2016)	Remarks
			with the peaks and mounds of the surrounding mountainous terrain. The used of recessive colors results in scheme which is less visually prominent.	
OM2	Design/ Construction Planning	Shrub and climbing planting to soften proposed structures.	The proposed climbing planting along the boundary fence wall is being established.	Site photos refer to Appendix 1-2 Majority of shrubs and climbing planting are in good condition.
OM3	Design/ Construction Planning	Heavy standard tree planting to screen proposed associated structures.	Heavy standard tree plantings have been planted and well established along the road and to screen the structures and enhance the environment.	Site photos refer to Appendix 1-3 Majority of trees are in good condition.
OM4	Design/ Construction Planning	Reinstatement / Restoration of disturbed area.	The disturbed area within the works boundary has been reinstated with heavy standard trees planting according to the compensatory planting proposal to DLO or reinstated to its original condition.	Site photos refer to Appendix 1-4 Majority of trees are in good condition.

- OM1:** assessing the effectiveness of the aesthetic design of the façade, chimneys of STF and associated structures (including the establishment of the plantings on pergola) to harmonize with the settings.
- OM2:** assessing the effectiveness of the climbing planting (along the boundary fence wall) to soften the proposed structures
- OM3:** assessing the conditions of tree according to the site record, for its effectiveness to screen the proposed associated structures.
- OM4:** assessing the effectiveness on the reinstatement / restoration of disturbed area (mainly refer to the temporary works area). The reinstatement / restoration includes area either reinstated with heavy standard trees planting, or reinstated back to its original condition once the construction activities have been completed.

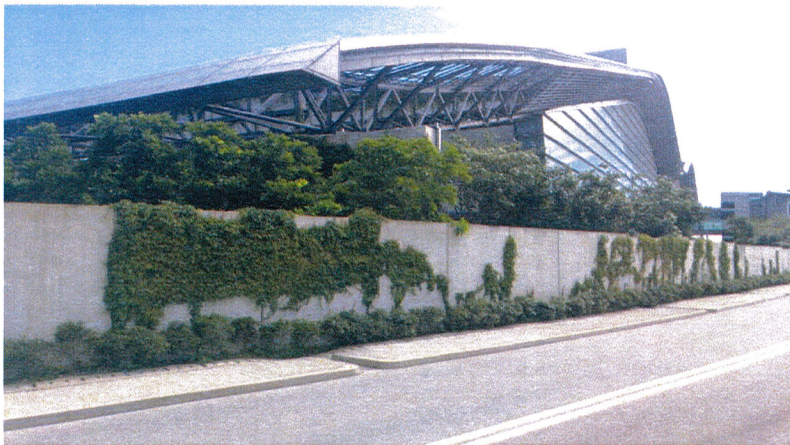
Appendix I Photographic Record

1. Photographic record of main building and climber planting on pergola



The climber planting on pergola is well established and provides a greening effect on the roof.

2. Photographic record of climbing planting



The proposed climbing planting along the boundary fence wall is well established, and provide a green screening effect together with tree planting within the site area and shrub planting at the bottom of the fence wall.



3. Photographic record of the buffer trees



Heavy standard tree plantings have been planted and well established along the entrance road to screen the structures and enhance the environment.



4. Photographic record of reinstated area



The disturbed area has been reinstated with heavy standard tree planting.
The trees are well established