

**Kai Tak Development – Stage 2 Infrastructure Works at
North Apron Area of Kai Tak Airport
for Residential Development and Government Facilities**

啓德發展計劃 – 配合啓德機場北面停機坪住宅發展及政府設施的
第二期基建工程

Site Office for the Engineer's Representative
North Apron Area, Kai Tak Airport
Telephone : (852) 2716 0122 Facsimile : (852) 2716 0232

ARUP

Level 5 Festival Walk
80 Tat Chee Avenue
Kowloon Tong
Kowloon
Hong Kong
China

www.arup.com

FAXED
DATE 21 NOV 2011

BY FAX(2591 0558) & POST

Your ref (24) in Ax(13) to EP2/K19/S3/10 Pt.15
Our ref 23462/(KL/2010/03)/M45/100(0025)
Date 21 November 2011

Environmental Protection Department
Environmental Impact Assessment Ordinance Register Office
27/F Southern Centre
130 Hennessy Road
Wan Chai Hong Kong

For the attention of Mr KEUNG Pui Yun, Colin

Dear Sirs

**Contract No. KL/2010/03
Kai Tak Development - Stage 2 Infrastructure Works at
North Apron Area of Kai Tak Airport for
Residential Development and Government Facilities
Submission under Condition 2.11 of Environmental Permit No. EP-337/2009 Landscape
Mitigation Plan for Road D2(part)**

I refer to your letter ref. (24) in Ax(13) to EP2/K19/S3/10 Pt.15 dated 8 November 2011 regarding the Landscape Mitigation Plan for Road D2(part) submitted under Condition 2.11 of Environmental Permit No. EP-337/2009.

I enclose, on behalf of my client, CEDD, three hard copies and one electronic copy (in CD Rom) of the revised Landscape Mitigation Plan for Road D2(part) pursuant to Condition 2.11 of the aforementioned Environmental Permit. Please be advised that the above submission were certified and verified by the ET Leader and IEC according to Condition 1.9 of the Environmental Permit. A copy of the certification letter and verification letter provided by the ET Leader and the IEC is enclosed for your record.

Should you have any queries or require any further information, please contact my RE Ms Gloria Kwok on 2716 0122.

Yours faithfully

Michael Chan
Engineer's Representative

cc CEDD - Mr Edmund Chau -w/e
The Engineer - Mr Fergal Whyte -w/e
EDMS - Mr Adi Lee -w/o (By Fax: 3007 8556)

Response required : Nil
Date required : N/A
Attachments : Yes

MC/GK/mt

23462/O-00337



3D Visualisation
Environment & Energy
Information Technology

RECEIVED
16 NOV 2011
BY: 000482



Ove Arup & Partners Hong Kong Limited
Site Office for the Engineer's Representative
North Apron Area
Kai Tak Airport

Your reference:

Our reference: HKCEDD03/50/100936

Date: 16 November 2011

Attn.: Mr Michael Chan, SRE

BY FAX & POST
(Fax no.: 2716 0232)

Dear Sirs

Contract No. KLN/2011/06
Independent Environmental Checker for "Contract No. KL/2010/03 Kai Tak Development –
Stage 2 Infrastructure Works at North Apron Area of Kai Tak Airport for
Residential Development and Government Facilities"
Verification of Revised Landscape Mitigation Plans for Sewage Pumping Station PS1A & Road D2 (part)

We refer to your transmittal (no. 23462/(KL/2010/03)/R10/100(0016) dated 11 November 2011) enclosing Revised Landscape Mitigation Plans for Sewage Pumping Station PS1A and Road D2 (part).

We have no comment and hereby verify the captioned documents in accordance with Clauses 2.11 and 2.12 of the Environmental Permits No. EP-344/2009 and No. EP-337/2009.

Please do not hesitate to contact the undersigned or our Mr. Adi Lee at 2869 6018 should you have any queries.

Yours faithfully
EDMS CONSULTING LTD

James Choi
Independent Environmental Checker

CPSJ/LYMA/jc

ARUP		Project No. 23462/(KL/2010/03)			
File No. 145/617					
File No. 0031					
KL/2010/03 Kai Tak Development Stage 2 Infrastructure Works at NAKTA-ET's Office					
	A	C	I	Seen	Copy
SRE					
RE/1					
RE/2					
ARE/1					
ARE/2					
S10W					
I10W					
A10W					
SSO(O)					
SSO(E)					
TO					
LRO					
Remarks					

Our Ref: CCL/MA11038/Corres/Out/jf111115

Ove Arup & Partners Hong Kong Limited
Site Office for the Engineer's Representatives
North Apron Area, Kai Tak Airport

Attn: Mr. Michael Chan

By Fax (2716 0232) & Mail

15 November 2011

Dear Sir,

Contract No. KL/2010/03

Kai Tak Development – Stage 2 Infrastructure Works at North Apron Area of Kai Tak Airport for

Residential Development and Government Facilities

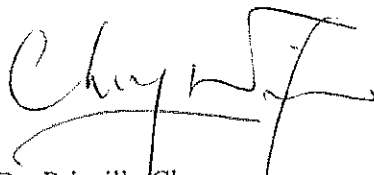
Certification of Design Drawing and Landscape Mitigation Plan for Road D2(part) and Sewage Pumping Station PS1A

We refer to your letter (Ref.: 23462/(KL/2010/03)/R10/100/(0015)) regarding the onward submission of Design Drawing and Landscape Mitigation Plan for Road D2(part) and Sewage Pumping Station PS1A.

We have no comment on the plan and hereby certify it in accordance with Clause 3.2 and 3.3 of EP no. EP-337/2009 and EP-344/2009.

If you have queries, please contact the undersigned at 2151 2089.

Yours faithfully,
Cinotech Consultants Limited



Dr. Priscilla Choy
Environmental Team Leader

1

Landscape Mitigation Plan

1a

Summary Table of Compliance of
Landscape Mitigation Plan with Landscape
and Visual Mitigation Measures in Section
2.8.11 of KTD EM&A Manual

Compliance of Landscape Mitigation Plan with Landscape and Visual Mitigation Measures in Section 2.8.11 of KTD EM&A Manual

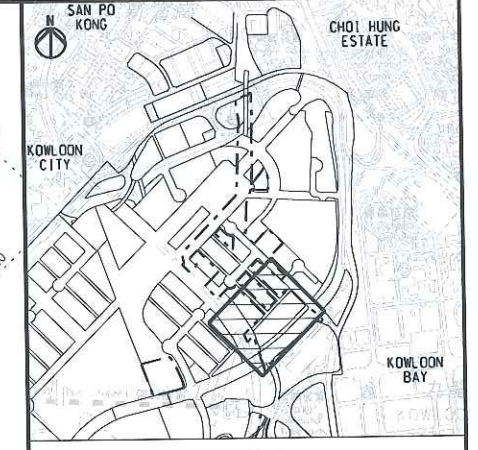
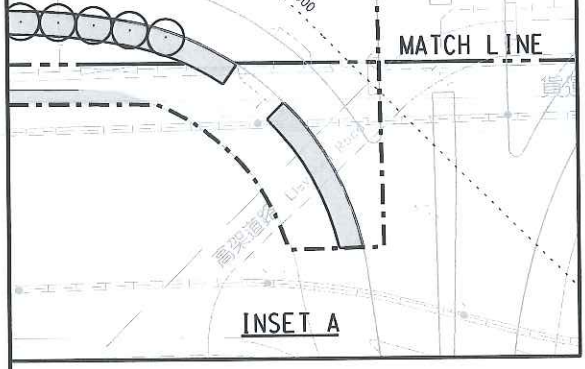
Suggested Landscape and Visual Mitigation Measures in Section 2.8.11 of KTD EM&A Manual	Landscape and Visual Mitigation Measures adopted in the Landscape Mitigation Plan
Landscape and Visual Mitigation Measures during Construction Phase	
<ul style="list-style-type: none"> • All existing trees should be carefully protected during construction (CM1). 	<ul style="list-style-type: none"> • Existing trees within the site area of the proposed Road D2(part) will be felled and compensatory tree planting was proposed.
<ul style="list-style-type: none"> • Trees unavoidably affected by the works should be transplanted where practical. Detailed transplanting proposal will be submitted to relevant government departments for approval in accordance with ETWBC 2/2004 and 3/2006. Final locations of transplanted trees should be agreed prior to commencement of the work (CM2). 	<ul style="list-style-type: none"> • As above. The detailed compensatory planting proposal was agreed with LandsD and LCSD respectively.
<ul style="list-style-type: none"> • Control of night-time lighting (CM3). 	<ul style="list-style-type: none"> • The working hour is from 08.00 to 18.00. No night-time work is allowed for the construction of Road D2(part).
<ul style="list-style-type: none"> • Erection of decorative screen hoarding (CM4). 	<ul style="list-style-type: none"> • Hoarding with beautification works were proposed along the site boundary of the Contract at certain locations facing sensitive receivers.
Landscape and Visual Mitigation Measures during Operation Phase	
<ul style="list-style-type: none"> • Compensatory tree planting should be incorporated into the proposed projects where trees are affected (OM1), 	<ul style="list-style-type: none"> • Compensatory tree planting was incorporated into the project.
<ul style="list-style-type: none"> • Tall buffer screen tree / shrub / climber planting should be incorporated to soften hard engineering structures and facilities (OM2), 	<ul style="list-style-type: none"> • Various types of tall buffer screen trees and shrubs, approved by the DevB/GLO were proposed along the footpath and central divider of Road D2(part).
<ul style="list-style-type: none"> • Sensitive streetscape design should be incorporated along all new roads to reflect the new urban development in Kai Tak 	<ul style="list-style-type: none"> • Streetscape design (soft and hard landscaping) according to the Planning, Landscape & Urban Design (PLUD) Study

<p>(OM3),</p>	<p>for SEKD was incorporated in the project. The design was in principal agreed by DevB/GLO.</p>
<ul style="list-style-type: none"> • Structure, ornamental tree / shrub / climber planting should be provided along roadside amenity strips and central dividers to enhance the townscape quality, where space is available (OM4), 	<ul style="list-style-type: none"> • Various types of trees and shrubs, ornament lightings were proposed along the roadside amenity strips and central dividers to enhance the townscape quality.
<ul style="list-style-type: none"> • Aesthetically pleasing design as regard to the form, material and finishes should be incorporated to all buildings, engineering structures and associated infrastructure facilities (OM5). 	<ul style="list-style-type: none"> • Aesthetic pleasing design (e.g. paving blocks at footpath with aesthetically pleasing paving patterns) was proposed at roadside footpaths. All the associated structures in the vicinity of the site area will be designed according to the guideline given in the Planning, Landscape & Urban Design Study (PLUD) for SEKD such that an aesthetically pleasing design could be achieved.

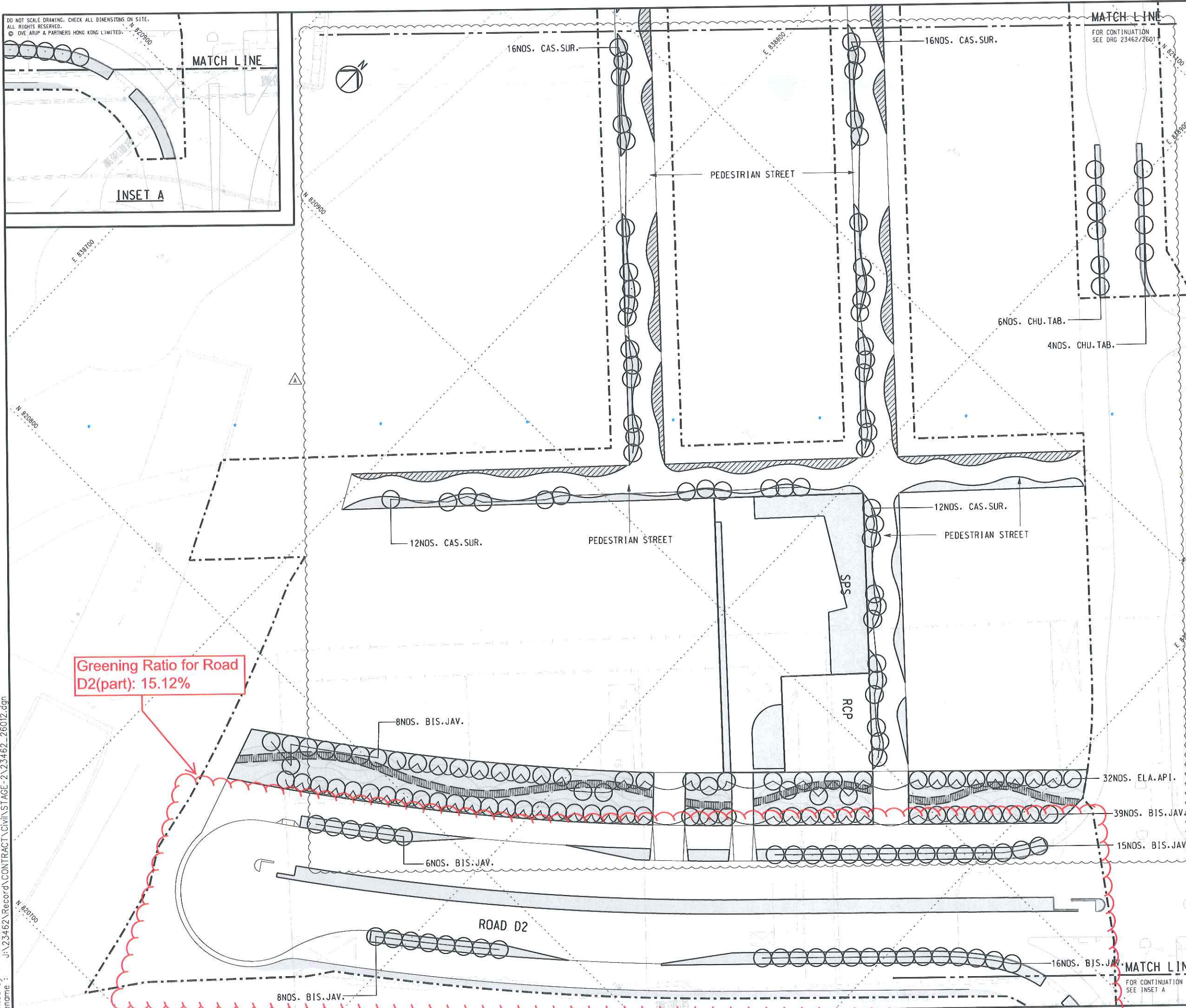
1b

Landscape Design Drawings for
Road D2 (part)

DO NOT SCALE DRAWING. CHECK ALL DIMENSIONS ON SITE.
ALL RIGHTS RESERVED.
© OVE ARUP & PARTNERS HONG KONG LIMITED.



NOTES :
1. FOR NOTES AND LEGEND REFER TO DRAWING NO. 23462/26011.



Greening Ratio for Road D2(part): 15.12%

Rev	Description	By	Date
A	TENDER ADDENDUM NO.2	LL	02/11
-	FOR TENDER	GK	01/11

Consultant
ARUP 奧雅納工程顧問
Ove Arup & Partners Hong Kong Limited

Project title
**Kai Tak Development - Stage 2
Infrastructure Works at North Apron
Area of Kai Tak Airport for Residential
Development and Government Facilities**

Drawing title
TREE PLANTING PLAN

(SHEET 2 OF 2)

Drawing no. **23462/26012** Rev. **A**

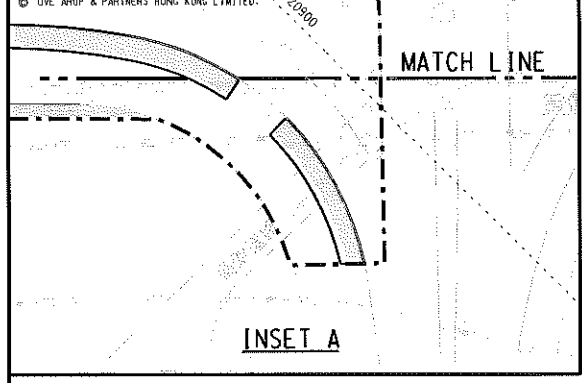
Drawn KKL	Date 08/10	Checked TL	Approved FW
Scale 1:500 @A1, 1:1000 @A3		Status CONTRACT	

COPYRIGHT RESERVED

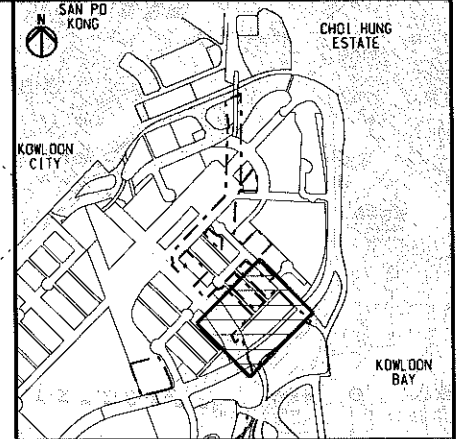
土木工程拓展署
Civil Engineering and
Development Department

Printed by : 10/6/2011
Filename : J:\23462\Record\CONTRACT\Civil\STAGE-2\23462_26012.dgn

DO NOT SCALE DRAWING. CHECK ALL DIMENSIONS ON SITE.
ALL RIGHTS RESERVED.
© OVE ARUP & PARTNERS HONG KONG LIMITED.



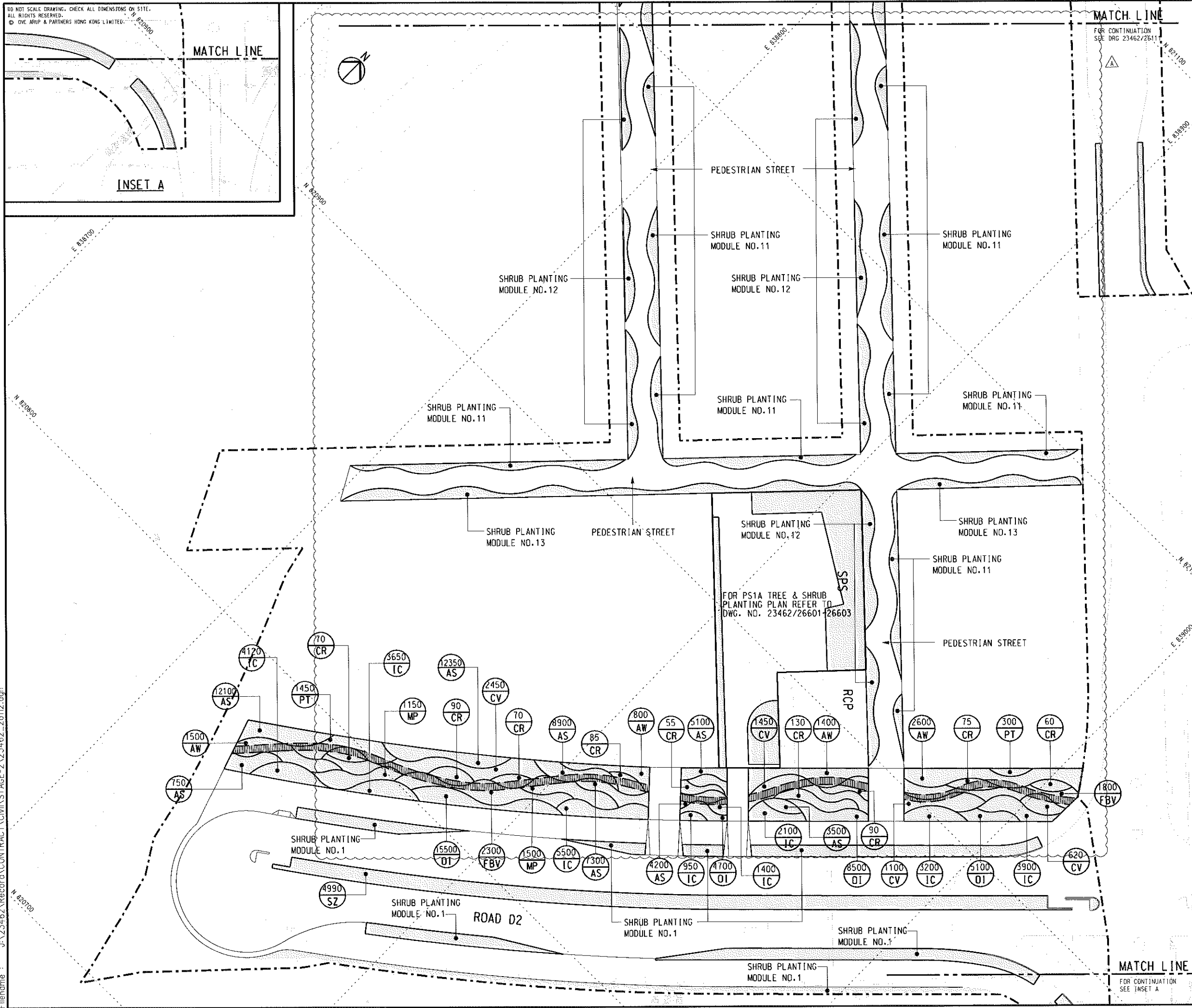
INSET A



KEY PLAN

NOTES :

- FOR NOTES AND LEGEND REFER TO DRAWING NO. 23462/26111.
- FOR PS1A TREE & SHRUB PLANTING PLAN REFER TO DWG. NO. 23462/26601 - 26603.



Rev	Description	By	Date
A	TENDER ADDENDUM NO.2	LL	02/11
-	FOR TENDER	GK	01/11

Consultant
ARUP 奧雅納工程顧問
Ove Arup & Partners Hong Kong Limited

Project title
Contract No. KL/2010/03
Kai Tak Development - Stage 2
Infrastructure Works at North Apron
Area of Kai Tak Airport for Residential
Development and Government Facilities

Drawing title
SHRUB PLANTING PLAN

(SHEET 2 OF 2)

Drawing no. 23462/26112		Rev. A	
Drawn KKL	Date 08/10	Checked TL	Approved FW
Scale 1:500 @A1, 1:1000 @A3		Status CONTRACT	

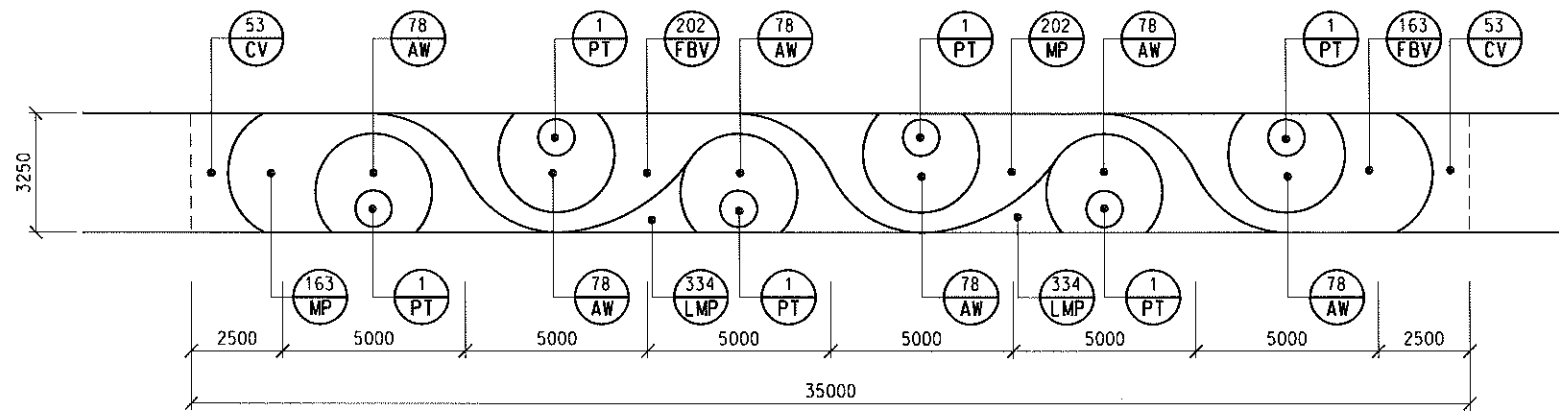
COPYRIGHT RESERVED



土木工程拓展署
Civil Engineering and
Development Department

Printed by : 10/6/2011
Filename : J:\23462\Record\CONTRACT\Civil\STAGE-2\23462_26112.dgn

DO NOT SCALE DRAWING. CHECK ALL DIMENSIONS ON SITE.
 ALL RIGHTS RESERVED.
 © OVE ARUP & PARTNERS HONG KONG LIMITED.



SHRUB PLANTING MODULE NO. 1 FOR LINEAR PLANTING AREAS

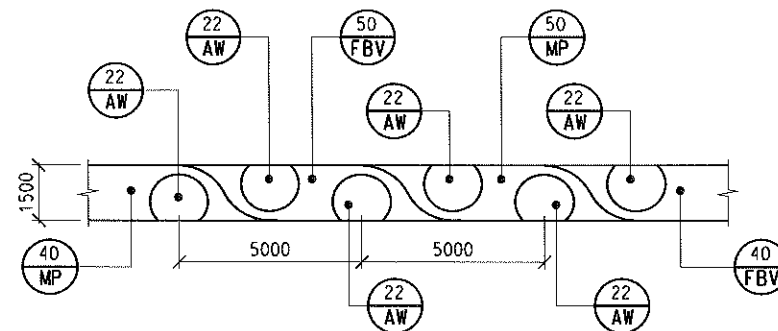
SCALE 1:100

SHRUB PLANTING SCHEDULE (PER 35 METER)

ABB	SCIENTIFIC NAME	CHINESE NAME	SPACING(mm)	HEIGHT(mm)	SPREAD(mm)	QTY
AW	ACALYPHA WILKESIANA	紅桑	300	500	400	468
CV	CODIAEUM VARIEGATUM	灑金榕	300	500	400	106
FBV	FICUS BENJAMINA 'VAR'	黃果垂榕	300	300	400	365
MP	MURRAYA PANICULATA	九里香	300	300	400	365
PT	PITTIOSPORUM TOBIRA	海桐花	AS SHOWN	1200	1200	6

GROUND COVER PLANTING SCHEDULE

LMP	LANTANA MONTEVIDENSIS 'PURPLE'	紫花馬纓丹	100	200	200	668
-----	--------------------------------	-------	-----	-----	-----	-----



SHRUB PLANTING MODULE NO. 10 FOR LINEAR PLANTING AREAS

SCALE 1:100

SHRUB PLANTING SCHEDULE (PER 10 METER)

ABB	SCIENTIFIC NAME	CHINESE NAME	SPACING(mm)	HEIGHT(mm)	SPREAD(mm)	QTY
AW	ACALYPHA WILKESIANA	紅桑	300	500	400	132
FBV	FICUS BENJAMINA 'VAR'	黃果垂榕	300	400	400	90
MP	MURRAYA PANICULATA	九里香	300	300	400	90

NOTE:

- FOR SHRUB PLANTING PLAN REFER TO DWG. NO. 23462/26111 & 26112.

Rev	Description	By	Date
-	FOR TENDER	GK	01/11

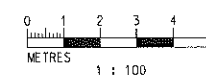
Consultant
ARUP 奧雅納工程顧問
 Ove Arup & Partners Hong Kong Limited

Project title
Contract No. KL/2010/03
Kai Tak Development - Stage 2
Infrastructure Works at North Apron
Area of Kai Tak Airport for Residential
Development and Government Facilities

Drawing title
SHRUB PLANTING DETAIL
MODULE NO. 1 AND NO. 10

Drawing no.	23462/26121	Rev.	-
Drawn	Date	Checked	Approved
KKL	10/10	TL	FW
Scale	Status	CONTRACT	
1:100 eA1, 1:200 eA3			

COPYRIGHT RESERVED



CEDD 土木工程拓展署
 Civil Engineering and
 Development Department

TREE PLANTING SCHEDULE							
TREE PLANTING PLAN DRAWING REFER TO DRWING NOS. 23462/26011 AND 26012.							
PLANTING CODE	BOTANICAL NAME	HEIGHT (mm)	SPREAD (mm)	CALIPER (mm)	SPACING (mm)	REMARKS	QUANTITY
TREE							
BIS.JAV.	BISCHOFIA JAVANICA	5000	3500	120	AS SHOWN	HEAVY STANDARD	92
CAS.SUR.	CASSIA SURATTENSIS	5000	3500	100	AS SHOWN	HEAVY STANDARD	97
CHU.TAB.	CHUKRASIA TABULARIS	5000	3000	120	AS SHOWN	HEAVY STANDARD	48
ELA.API.	ELAEOCARPUS APICULATUS	5000	3500	120	AS SHOWN	HEAVY STANDARD	32
TOTAL :							269

TREE PLANTING SCHEDULE FOR SEWAGE PUMPING STATION PS1A							
TREE PLANTING PLAN DRAWING REFER TO DRWING NOS. 23462/26601.							
PLANTING CODE	BOTANICAL NAME	HEIGHT (mm)	SPREAD (mm)	CALIPER (mm)	SPACING (mm)	REMARKS	QUANTITY
TREE							
BRA.ACT.	BRASSAIA ACTINOPHYLLA	4000	2500	100	AS SHOWN	HEAVY STANDARD	4
MAG.GRA.	MAGNOLIA GRANDIFLORA	5000	3500	120	AS SHOWN	HEAVY STANDARD	7
PHY.AUR.	PHYLLOSTACHYS AUREA	3500-3000	NOT APPLICABLE	NOT APPLICABLE	3500	G.S. CLAUSE 3.21	56
TOTAL :							67

NOTE :

- REFER TO DRAWING NO. 23462/26001 FOR PLANTING WORKS SPECIFICATION.

Rev	Description	By	Date
A	TENDER ADDENDUM NO.2	LL	02/11
-	FOR TENDER	GK	01/11

Consultant
ARUP 奧雅納工程顧問
 Ove Arup & Partners Hong Kong Limited

Project title
Contract No. KL/2010/03
Kai Tak Development - Stage 2
Infrastructure Works at North Apron
Area of Kai Tak Airport for Residential
Development and Government Facilities

Drawing title
TREE PLANTING SCHEDULE

Drawing no. **23462/26031** Rev. **A**

Drawn KKL	Date 08/10	Checked TL	Approved FW
Scale N.T.S	Status CONTRACT		

COPYRIGHT RESERVED

 **土木工程拓展署**
 Civil Engineering and
 Development Department