


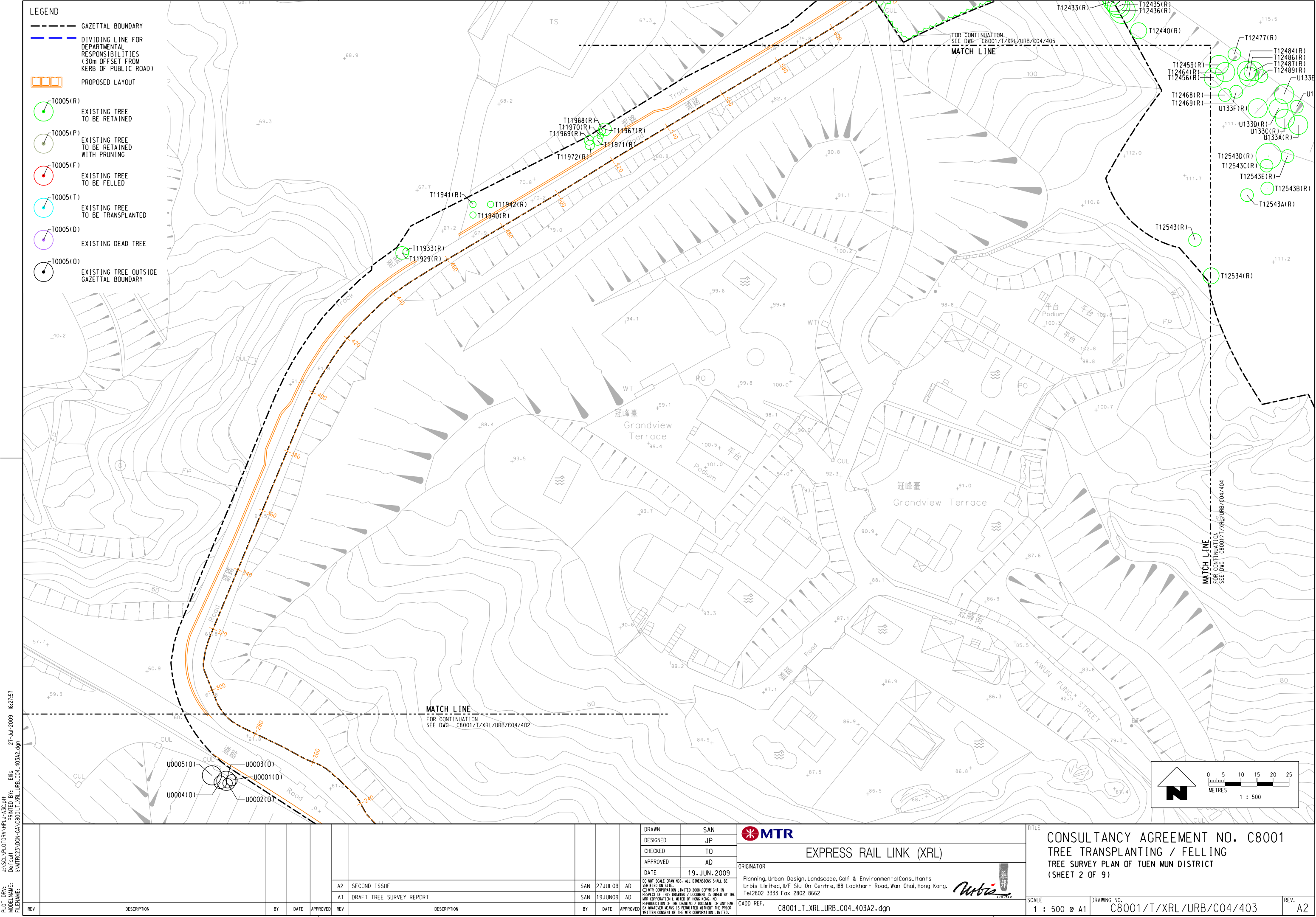
LEGEND

- GAZETAL BOUNDARY
- DIVIDING LINE FOR DEPARTMENTAL RESPONSIBILITIES (30m OFFSET FROM KERB OF PUBLIC ROAD)
- PROPOSED LAYOUT
- T0005(R) EXISTING TREE TO BE RETAINED
- T0005(P) EXISTING TREE TO BE RETAINED WITH PRUNING
- T0005(F) EXISTING TREE TO BE FELLED
- T0005(T) EXISTING TREE TO BE TRANSPLANTED
- T0005(D) EXISTING DEAD TREE
- T0005(O) EXISTING TREE OUTSIDE GAZETAL BOUNDARY

 0 5 10 15 20 25 METRES
1 : 500

PLOT DRW: J:\SCL\PL01DRW\HPLU-A3C.plt
MODELNAME: Defaul
FILENAME: I:\MTRC23\DON-GA-C8001-T_XRL_URB_C04_402A2.dgn
27-Jul-2009 16:27:28

																																																																																																																																																																																																																																																																																																																																																																																																																																																																																																																																																																																																																																																																																																																																																																																																																																																																																																																																																																																																																																																																																																																																																																																																																																																																		</	
--	--	--	--	--	--	--	--	--	--	--	--	--	--	--	--	--	--	--	--	--	--	--	--	--	--	--	--	--	--	--	--	--	--	--	--	--	--	--	--	--	--	--	--	--	--	--	--	--	--	--	--	--	--	--	--	--	--	--	--	--	--	--	--	--	--	--	--	--	--	--	--	--	--	--	--	--	--	--	--	--	--	--	--	--	--	--	--	--	--	--	--	--	--	--	--	--	--	--	--	--	--	--	--	--	--	--	--	--	--	--	--	--	--	--	--	--	--	--	--	--	--	--	--	--	--	--	--	--	--	--	--	--	--	--	--	--	--	--	--	--	--	--	--	--	--	--	--	--	--	--	--	--	--	--	--	--	--	--	--	--	--	--	--	--	--	--	--	--	--	--	--	--	--	--	--	--	--	--	--	--	--	--	--	--	--	--	--	--	--	--	--	--	--	--	--	--	--	--	--	--	--	--	--	--	--	--	--	--	--	--	--	--	--	--	--	--	--	--	--	--	--	--	--	--	--	--	--	--	--	--	--	--	--	--	--	--	--	--	--	--	--	--	--	--	--	--	--	--	--	--	--	--	--	--	--	--	--	--	--	--	--	--	--	--	--	--	--	--	--	--	--	--	--	--	--	--	--	--	--	--	--	--	--	--	--	--	--	--	--	--	--	--	--	--	--	--	--	--	--	--	--	--	--	--	--	--	--	--	--	--	--	--	--	--	--	--	--	--	--	--	--	--	--	--	--	--	--	--	--	--	--	--	--	--	--	--	--	--	--	--	--	--	--	--	--	--	--	--	--	--	--	--	--	--	--	--	--	--	--	--	--	--	--	--	--	--	--	--	--	--	--	--	--	--	--	--	--	--	--	--	--	--	--	--	--	--	--	--	--	--	--	--	--	--	--	--	--	--	--	--	--	--	--	--	--	--	--	--	--	--	--	--	--	--	--	--	--	--	--	--	--	--	--	--	--	--	--	--	--	--	--	--	--	--	--	--	--	--	--	--	--	--	--	--	--	--	--	--	--	--	--	--	--	--	--	--	--	--	--	--	--	--	--	--	--	--	--	--	--	--	--	--	--	--	--	--	--	--	--	--	--	--	--	--	--	--	--	--	--	--	--	--	--	--	--	--	--	--	--	--	--	--	--	--	--	--	--	--	--	--	--	--	--	--	--	--	--	--	--	--	--	--	--	--	--	--	--	--	--	--	--	--	--	--	--	--	--	--	--	--	--	--	--	--	--	--	--	--	--	--	--	--	--	--	--	--	--	--	--	--	--	--	--	--	--	--	--	--	--	--	--	--	--	--	--	--	--	--	--	--	--	--	--	--	--	--	--	--	--	--	--	--	--	--	--	--	--	--	--	--	--	--	--	--	--	--	--	--	--	--	--	--	--	--	--	--	--	--	--	--	--	--	--	--	--	--	--	--	--	--	--	--	--	--	--	--	--	--	--	--	--	--	--	--	--	--	--	--	--	--	--	--	--	--	--	--	--	--	--	--	--	--	--	--	--	--	--	--	--	--	--	--	--	--	--	--	--	--	--	--	--	--	--	--	--	--	--	--	--	--	--	--	--	--	--	--	--	--	--	--	--	--	--	--	--	--	--	--	--	--	--	--	--	--	--	--	--	--	--	--	--	--	--	--	--	--	--	--	--	--	--	--	--	--	--	--	--	--	--	--	--	--	--	--	--	--	--	--	--	--	--	--	--	--	--	--	--	--	--	--	--	--	--	--	--	--	--	--	--	--	--	--	--	--	--	--	--	--	--	--	--	--	--	--	--	--	--	--	--	--	--	--	--	--	--	--	--	--	--	--	--	--	--	--	--	--	--	--	--	--	--	--	--	--	--	--	--	--	--	--	--	--	--	--	--	--	--	--	--	--	--	--	--	--	--	--	--	--	--	--	--	--	--	--	--	--	--	--	--	--	--	--	--	--	--	--	--	--	--	--	--	--	--	--	--	--	--	--	--	--	--	--	--	--	--	--	--	--	--	--	--	--	--	--	--	--	--	--	--	--	--	--	--	--	--	--	--	--	--	--	--	--	--	--	--	--	--	--	--	--	--	--	--	--	--	--	--	--	--	--	--	--	--	--	--	--	--	--	--	--	--	--	--	--	--	--	--	--	--	--	--	--	--	--	--	--	--	--	--	--	--	--	--	--	--	--	--	--	--	--	--	--	--	--	--	--	--	--	--	--	--	--	--	--	--	--	--	--	--	--	--	--	--	--	--	--	--	--	--	--	--	--	--	--	--	--	--	--	--	--	--	--	--	--	--	--	--	--	--	--	--	--	--	--	--	--	--	--	--	--	--	--	--	--	--	--	--	--	--	--	--	--	--	--	--	--	--	--	--	--	--	--	--	--	--	--	--	--	--	--	--	--	--	--	--	--	--	--	--	--	--	--	--	--	--	--	--	--	--	--	--	--	--	--	--	--	--	--	--	--	--	--	--	--	--	--	--	--	--	--	--	--	--	--	--	--	--	--	--	--	--	--	--	--	--	--	--	--	--	--	--	--	--	--	--	--	--	--	--	--	--	--	--	--	--	--	--	--	--	--	--	--	--	--	--	--	--	--	--	--	--	--	--	--	--	--	--	--	--	--	--	--	--	--	--	--	--	--	--	--	--	--	--	--	--	--	--	--	--	--	--	--	--	--	--	--	--	--	--	--	--	--	--	--	--	--	--	--	--	--	--	--	--	--	--	--	--	--	--	--	--	--	--	--	--	--	--	--	--	--	--	--	--	--	--	--	--	----	--



- LEGEND**
- GAZETAL BOUNDARY
 - DIVIDING LINE FOR DEPARTMENTAL RESPONSIBILITIES (30m OFFSET FROM KERB OF PUBLIC ROAD)
 - PROPOSED LAYOUT
 - T0005(R) EXISTING TREE TO BE RETAINED
 - T0005(P) EXISTING TREE TO BE RETAINED WITH PRUNING
 - T0005(F) EXISTING TREE TO BE FELLED
 - T0005(T) EXISTING TREE TO BE TRANSPLANTED
 - T0005(D) EXISTING DEAD TREE
 - T0005(O) EXISTING TREE OUTSIDE GAZETAL BOUNDARY

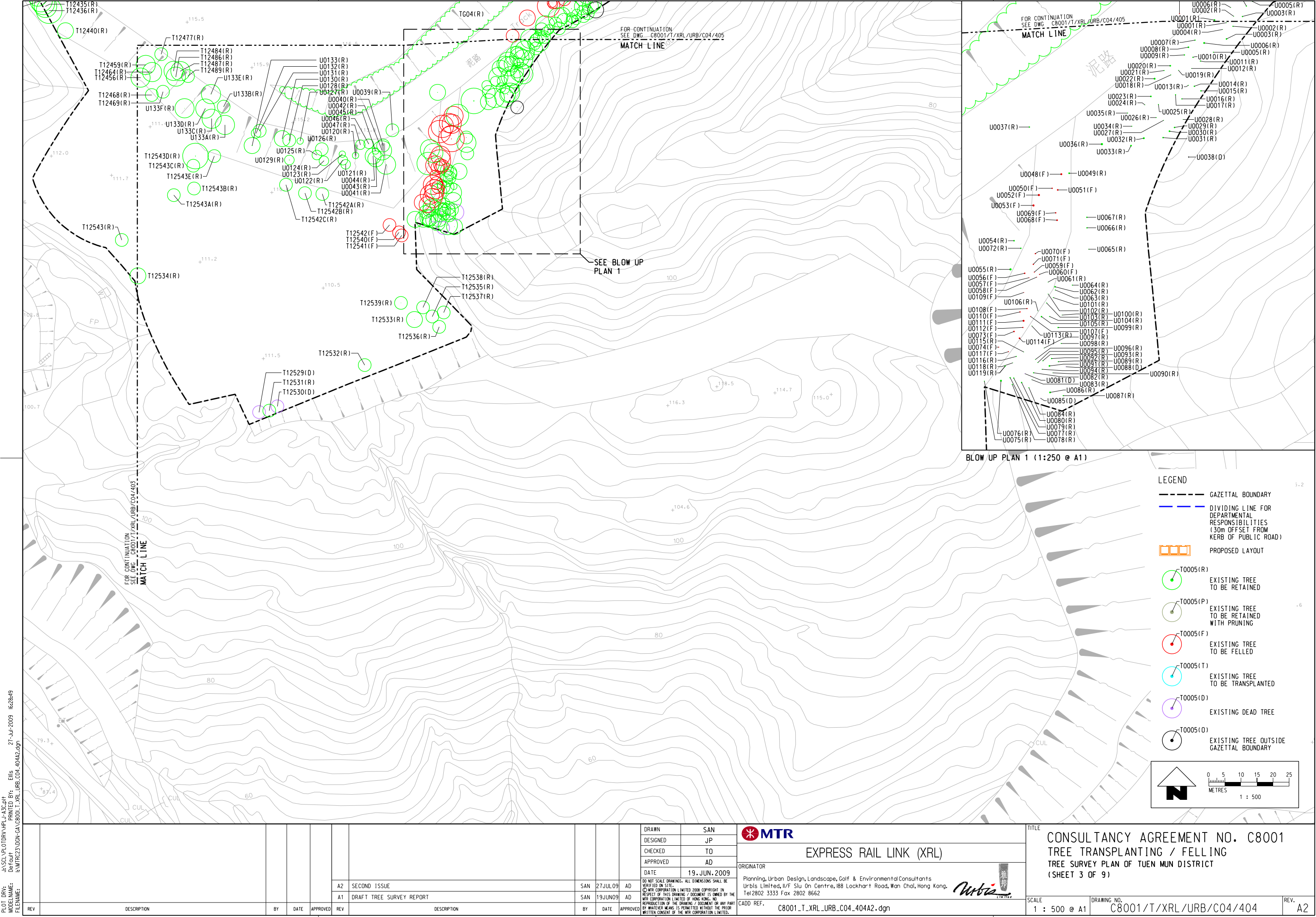
PLOT DRW: J:\SCL\PROJECTS\URB\URB_C04\403A2.dgn
MODELNAME: Default
FILENAME: J:\MTRC23\DON-GA\C8001.T_XRL_URB_C04_403A2.dgn
27-Jul-2009 16:27:57

REV	DESCRIPTION	BY	DATE	APPROVED	REV	DESCRIPTION	BY	DATE	APPROVED
A2	SECOND ISSUE				SAN	27JUL09	AD		
A1	DRAFT TREE SURVEY REPORT				SAN	19JUN09	AD		

DRAWN	SAN
DESIGNED	JP
CHECKED	TD
APPROVED	AD
DATE	19. JUN. 2009
DO NOT SCALE DRAWINGS. ALL DIMENSIONS SHALL BE VERIFIED ON SITE. © MTR CORPORATION LIMITED 2008. COPYRIGHT IN RESPECT OF THIS DRAWING / DOCUMENT IS OWNED BY THE MTR CORPORATION LIMITED OF HONG KONG. NO REPRODUCTION OF THE DRAWING / DOCUMENT OR ANY PART BY ANY MEANS IS PERMITTED WITHOUT THE PRIOR WRITTEN CONSENT OF THE MTR CORPORATION LIMITED.	

EXPRESS RAIL LINK (XRL)	
ORIGINATOR	
Planning, Urban Design, Landscape, Golf & Environmental Consultants Urbis Limited, 11/F Siu On Centre, 188 Lockhart Road, Wan Chai, Hong Kong. Tel 2802 3333 Fax 2802 8662	
CADD REF.	C8001.T_XRL_URB_C04_403A2.dgn

TITLE		CONSULTANCY AGREEMENT NO. C8001	
		TREE TRANSPLANTING / FELLING	
		TREE SURVEY PLAN OF TUEN MUN DISTRICT	
		(SHEET 2 OF 9)	
SCALE	DRAWING NO.	REV.	
1 : 500 @ A1	C8001/T/XRL/URB/C04/403	A2	



PLOT DRW: J:\SCL\PROJECT\HPLU-A3C.dwg
MODELNAME: J:\MTRC23\DON-GA-C8001-T_XRL_URB_C04_404A2.dgn
FILENAME: J:\MTRC23\DON-GA-C8001-T_XRL_URB_C04_404A2.dgn
27-Jul-2009 16:28:49
PRINTED BY: Ellis
Default

REV	DESCRIPTION	BY	DATE	APPROVED	REV	DESCRIPTION	BY	DATE	APPROVED
A2	SECOND ISSUE	SAN	27JUL09	AD					
A1	DRAFT TREE SURVEY REPORT	SAN	19JUN09	AD					

DRAWN

DESIGNED

CHECKED

APPROVED

DATE

SAN

JP

TD

AD

19 JUN 2009

DO NOT SCALE DRAWINGS. ALL DIMENSIONS SHALL BE VERIFIED ON SITE.

© MTR CORPORATION LIMITED 2008. COPYRIGHT IN RESPECT OF THIS DRAWING / DOCUMENT IS OWNED BY THE MTR CORPORATION LIMITED OF HONG KONG. NO REPRODUCTION OF THE DRAWING / DOCUMENT OR ANY PART BY WHATEVER MEANS IS PERMITTED WITHOUT THE PRIOR WRITTEN CONSENT OF THE MTR CORPORATION LIMITED.

EXPRESS RAIL LINK (XRL)

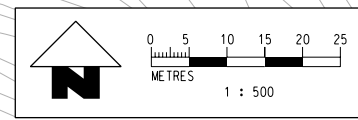
ORIGINATOR
Planning, Urban Design, Landscape, Golf & Environmental Consultants
Urbis Limited, 11/F Siu On Centre, 188 Lockhart Road, Wan Chai, Hong Kong.
Tel 2802 3333 Fax 2802 8662

Urbis
LTD

CADD REF. C8001_T_XRL_URB_C04_404A2.dgn

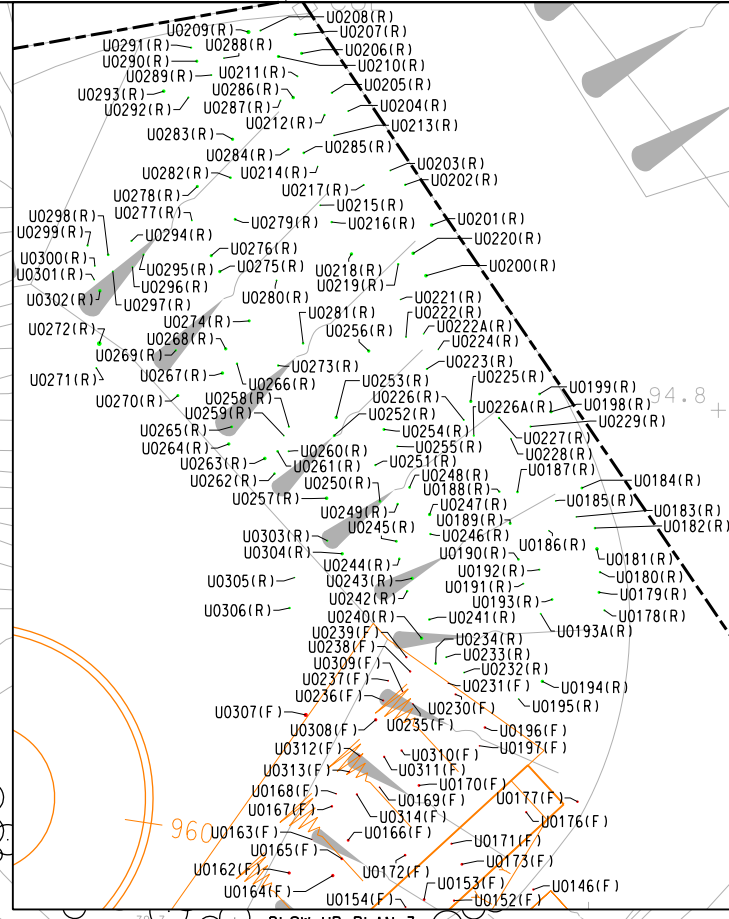
TITLE CONSULTANCY AGREEMENT NO. C8001 TREE TRANSPLANTING / FELLING TREE SURVEY PLAN OF TUEN MUN DISTRICT (SHEET 3 OF 9)	
SCALE 1 : 500 @ A1	DRAWING NO. C8001/T/XRL/URB/C04/404
REV. A2	

PLOT DRW: J:\ASCL\PL010\DRY\NPLU-A33.cpt
MODELNAME: Default
FILENAME: I:\MTRC23\DON-CA\C8001_T_XRL_URB_C04_405A2.dgn
27-Jul-2009 16:25:40
PRINTED BY: Ellis

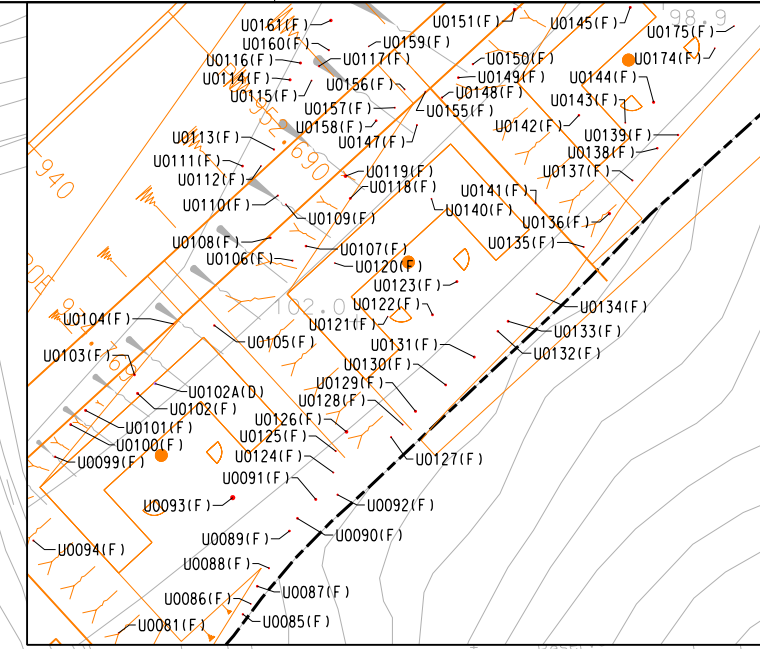


LEGEND

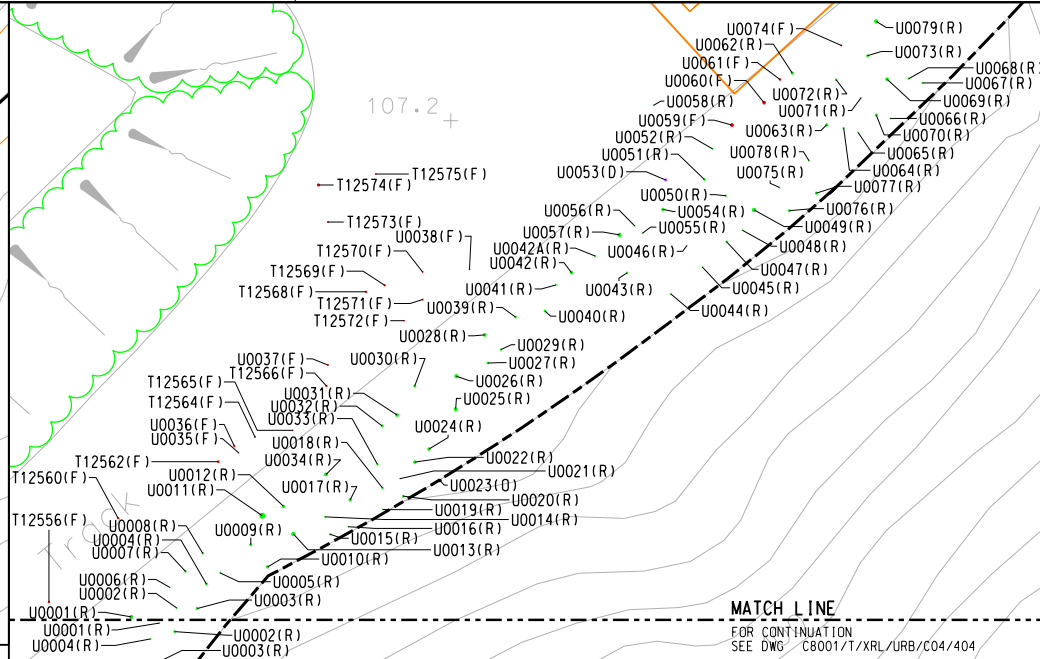
- GAZETAL BOUNDARY
- DIVIDING LINE FOR DEPARTMENTAL RESPONSIBILITIES (30m OFFSET FROM KERB OF PUBLIC ROAD)
- PROPOSED LAYOUT
- T0005(R) EXISTING TREE TO BE RETAINED
- T0005(P) EXISTING TREE TO BE RETAINED WITH PRUNING
- T0005(F) EXISTING TREE TO BE FELLED
- T0005(T) EXISTING TREE TO BE TRANSPLANTED
- T0005(D) EXISTING DEAD TREE
- T0005(O) EXISTING TREE OUTSIDE GAZETAL BOUNDARY



BLOW UP PLAN 3 (1:250 @ A1)

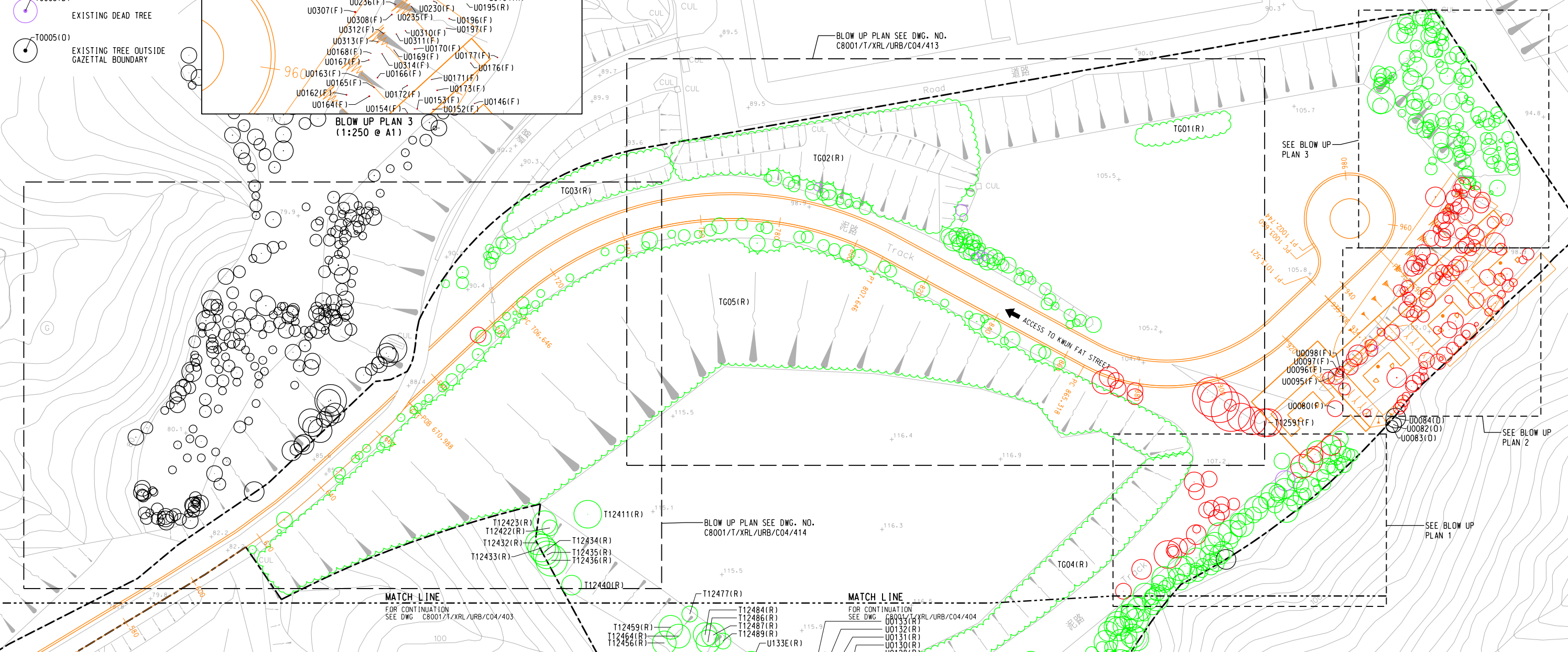


BLOW UP PLAN 2 (1:250 @ A1)



BLOW UP PLAN 1 (1:250 @ A1)

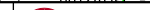

MATCH LINE
FOR CONTINUATION
SEE DWG. C8001/T/XRL/URB/C04/404



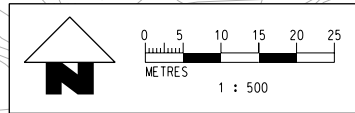
MATCH LINE
FOR CONTINUATION
SEE DWG. C8001/T/XRL/URB/C04/403

BLOW UP PLAN SEE DWG. NO. C8001/T/XRL/URB/C04/414

MATCH LINE
FOR CONTINUATION
SEE DWG. C8001/T/XRL/URB/C04/404

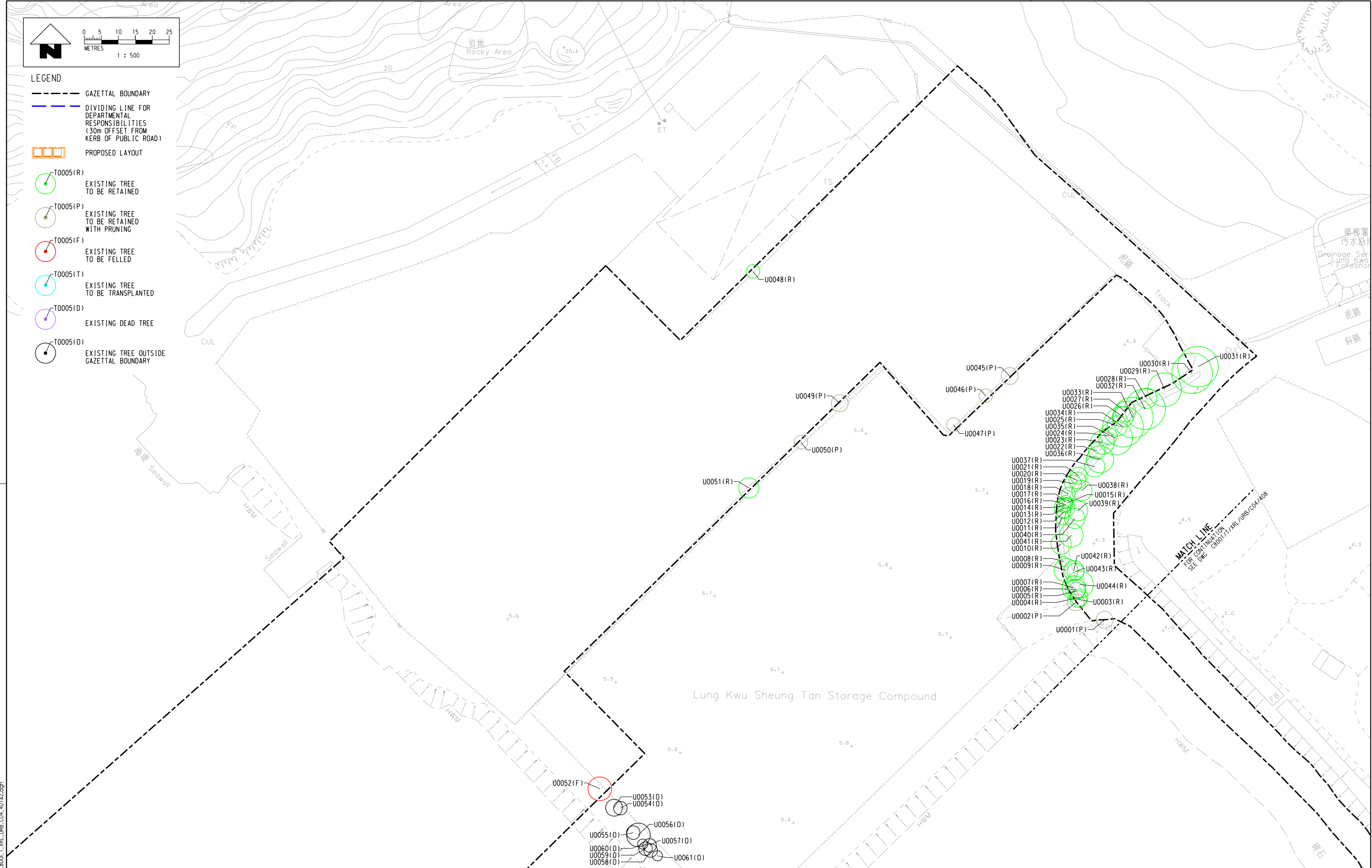
										DRAWN		SAN			EXPRESS RAIL LINK (XRL)										ORIGINATOR Planning, Urban Design, Landscape, Golf & Environmental Consultants Urbis Limited, 11/F Siu On Centre, 188 Lockhart Road, Wan Chai, Hong Kong. Tel 2802 3333 Fax 2802 8662				TITLE CONSULTANCY AGREEMENT NO. C8001 TREE TRANSPLANTING / FELLING TREE SURVEY PLAN OF TUEN MUN DISTRICT (SHEET 4 OF 9)	
										DESIGNED		JP																		
										CHECKED		TD																		
										APPROVED		AD																		
										DATE		19 JUN 2009																		
										DO NOT SCALE DRAWINGS. ALL DIMENSIONS SHALL BE VERIFIED ON SITE. © MTR CORPORATION LIMITED 2008. COPYRIGHT IN RESPECT OF THIS DRAWING / DOCUMENT IS OWNED BY THE MTR CORPORATION LIMITED OF HONG KONG. NO REPRODUCTION OF THE DRAWING / DOCUMENT OR ANY PART BY WATERMEANS IS PERMITTED WITHOUT THE PRIOR WRITTEN CONSENT OF THE MTR CORPORATION LIMITED.										CADD REF.		C8001_T_XRL_URB_C04_405A2.dgn		SCALE 1 : 500 @ A1		DRAWING NO. C8001/T/XRL/URB/C04/405		REV. A2		
DESCRIPTION		BY	DATE	APPROVED	REV	DESCRIPTION		BY	DATE	APPROVED	A2		SECOND ISSUE		SAN		27JUL09		AD		A1		DRAFT TREE SURVEY REPORT		SAN		19JUN09		AD	

PLOT DRW: J:\SCL\PROJECTS\HPLU-A3C\p1
MODELNAME: Default
FILENAME: I:\MTRC23\DON-GA-C8001_T_XRL_URB_C04_407A2.dgn
27-Jul-2009 16:29:43
PRINTED BY: Ellis



LEGEND

- GAZETAL BOUNDARY
- DIVIDING LINE FOR DEPARTMENTAL RESPONSIBILITIES (30m OFFSET FROM KERB OF PUBLIC ROAD)
- PROPOSED LAYOUT
- T0005(R) EXISTING TREE TO BE RETAINED
- T0005(P) EXISTING TREE TO BE RETAINED WITH PRUNING
- T0005(F) EXISTING TREE TO BE FELLED
- T0005(T) EXISTING TREE TO BE TRANSPLANTED
- T0005(D) EXISTING DEAD TREE
- T0005(O) EXISTING TREE OUTSIDE GAZETAL BOUNDARY



REV	DESCRIPTION	BY	DATE	APPROVED	REV	DESCRIPTION	BY	DATE	APPROVED
A2	SECOND ISSUE				SAN	27JUL09	AD		
A1	DRAFT TREE SURVEY REPORT				SAN	19JUN09	AD		

DRAWN	SAN
DESIGNED	JP
CHECKED	TD
APPROVED	AD
DATE	19 JUN 2009

DO NOT SCALE DRAWINGS. ALL DIMENSIONS SHALL BE VERIFIED ON SITE.
© MTR CORPORATION LIMITED 2008. COPYRIGHT IN RESPECT OF THIS DRAWING / DOCUMENT IS OWNED BY THE MTR CORPORATION LIMITED OF HONG KONG. NO REPRODUCTION OF THE DRAWING / DOCUMENT OR ANY PART BY WHATEVER MEANS IS PERMITTED WITHOUT THE PRIOR WRITTEN CONSENT OF THE MTR CORPORATION LIMITED.

EXPRESS RAIL LINK (XRL)

ORIGINATOR
Planning, Urban Design, Landscape, Golf & Environmental Consultants
Urbis Limited, II/F Siu On Centre, 188 Lockhart Road, Wan Chai, Hong Kong.
Tel 2802 3333 Fax 2802 8662

URBIS

CADD REF. C8001_T_XRL_URB_C04_407A2.dgn

TITLE	CONSULTANCY AGREEMENT NO. C8001 TREE TRANSPLANTING / FELLING TREE SURVEY PLAN OF TUEN MUN DISTRICT (SHEET 6 OF 9)
SCALE	1 : 500 @ A1
DRAWING NO.	C8001/T/XRL/URB/C04/407
REV.	A2



PLOT DRW: J:\SCL\PROJECTS\HPLU-A3C\p1
MODELNAME: Default
FILENAME: I:\MTRC23\DON-GA-C8001-T_XRL_URB_C04_408A2.dgn
27-Jul-2009 16:29:58
PRINTED BY: Ellis

REV	DESCRIPTION	BY	DATE	APPROVED	REV	DESCRIPTION	BY	DATE	APPROVED
A2	SECOND ISSUE				SAN	27JUL09	AD		
A1	DRAFT TREE SURVEY REPORT				SAN	19JUN09	AD		

DRAWN	SAN
DESIGNED	JP
CHECKED	TD
APPROVED	AD
DATE	19 JUN 2009
DO NOT SCALE DRAWINGS. ALL DIMENSIONS SHALL BE VERIFIED ON SITE. © MTR CORPORATION LIMITED 2008. COPYRIGHT IN RESPECT OF THIS DRAWING / DOCUMENT IS OWNED BY THE MTR CORPORATION LIMITED OF HONG KONG. NO REPRODUCTION OF THE DRAWING / DOCUMENT OR ANY PART BY WHATEVER MEANS IS PERMITTED WITHOUT THE PRIOR WRITTEN CONSENT OF THE MTR CORPORATION LIMITED.	

ORIGINATOR	Planning, Urban Design, Landscape, Golf & Environmental Consultants Urbis Limited, 11/F Siu On Centre, 188 Lockhart Road, Wan Chai, Hong Kong. Tel 2802 3333 Fax 2802 8662
CADD REF.	C8001_T_XRL_URB_C04_408A2.dgn

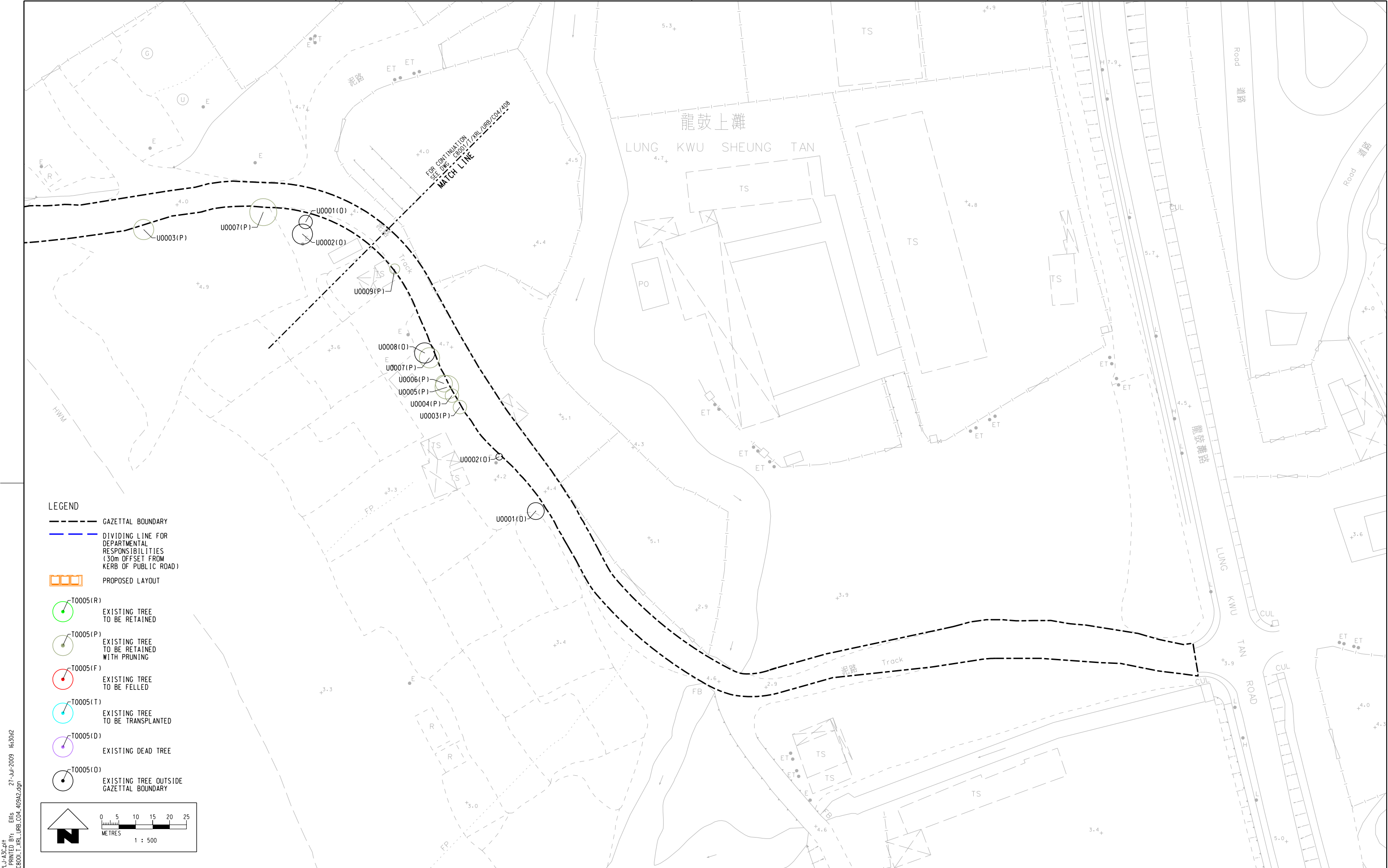


EXPRESS RAIL LINK (XRL)



TITLE	CONSULTANCY AGREEMENT NO. C8001 TREE TRANSPLANTING / FELLING TREE SURVEY PLAN OF TUEN MUN DISTRICT (SHEET 7 OF 9)
SCALE	1 : 500 @ A1
DRAWING NO.	C8001/T/XRL/URB/C04/408
REV.	A2

PLOT DRW: J:\SCL\PROJECTS\HPLU-A3C\p1
MODELNAME: Default
FILENAME: I:\MTRC23\DON-GA-C8001.T_XRL_URB_C04_409A2.dgn
27-Jul-2009 16:30:42



REV	DESCRIPTION	BY	DATE	APPROVED	REV	DESCRIPTION	BY	DATE	APPROVED
					A2	SECOND ISSUE	SAN	27JUL09	AD
					A1	DRAFT TREE SURVEY REPORT	SAN	19JUN09	AD

DRAWN	SAN
DESIGNED	JP
CHECKED	TO
APPROVED	AD
DATE	19 JUN 2009
DO NOT SCALE DRAWINGS. ALL DIMENSIONS SHALL BE VERIFIED ON SITE. © MTR CORPORATION LIMITED 2008. COPYRIGHT IN RESPECT OF THIS DRAWING / DOCUMENT IS OWNED BY THE MTR CORPORATION LIMITED OF HONG KONG. NO REPRODUCTION OF THE DRAWING / DOCUMENT OR ANY PART BY WHATEVER MEANS IS PERMITTED WITHOUT THE PRIOR WRITTEN CONSENT OF THE MTR CORPORATION LIMITED.	

EXPRESS RAIL LINK (XRL)	
ORIGINATOR	
Planning, Urban Design, Landscape, Golf & Environmental Consultants Urbis Limited, 11/F Siu On Centre, 188 Lockhart Road, Wan Chai, Hong Kong. Tel 2802 3333 Fax 2802 8662	
CADD REF. C8001.T_XRL_URB_C04_409A2.dgn	

TITLE		CONSULTANCY AGREEMENT NO. C8001	
		TREE TRANSPLANTING / FELLING	
		TREE SURVEY PLAN OF TUEN MUN DISTRICT	
		(SHEET 8 OF 9)	
SCALE	DRAWING NO.	REV.	
1 : 500 @ A1	C8001/T/XRL/URB/C04/409	A2	



PLOT DRW: J:\ASCL\PL010\DRW\NPLJ-A3C.plt
MODELNAME: Default
FILENAME: I:\MTR\23\DCN-GA\C8001_T_XRL_URB_C04_410A2.dgn
27-Jul-2009 16:30:31
PRINTED BY: Ellis

REV	DESCRIPTION	BY	DATE	APPROVED	REV	DESCRIPTION	BY	DATE	APPROVED
					A2	SECOND ISSUE	SAN	27JUL09	AD
					A1	DRAFT TREE SURVEY REPORT	SAN	19JUN09	AD

DRAWN	SAN
DESIGNED	JP
CHECKED	TD
APPROVED	AD
DATE	19. JUN. 2009

MTR

EXPRESS RAIL LINK (XRL)

ORIGINATOR

Planning, Urban Design, Landscape, Golf & Environmental Consultants
Urbis Limited, 11/F Siu On Centre, 188 Lockhart Road, Wan Chai, Hong Kong.
Tel 2802 3333 Fax 2802 8662

CADD REF.

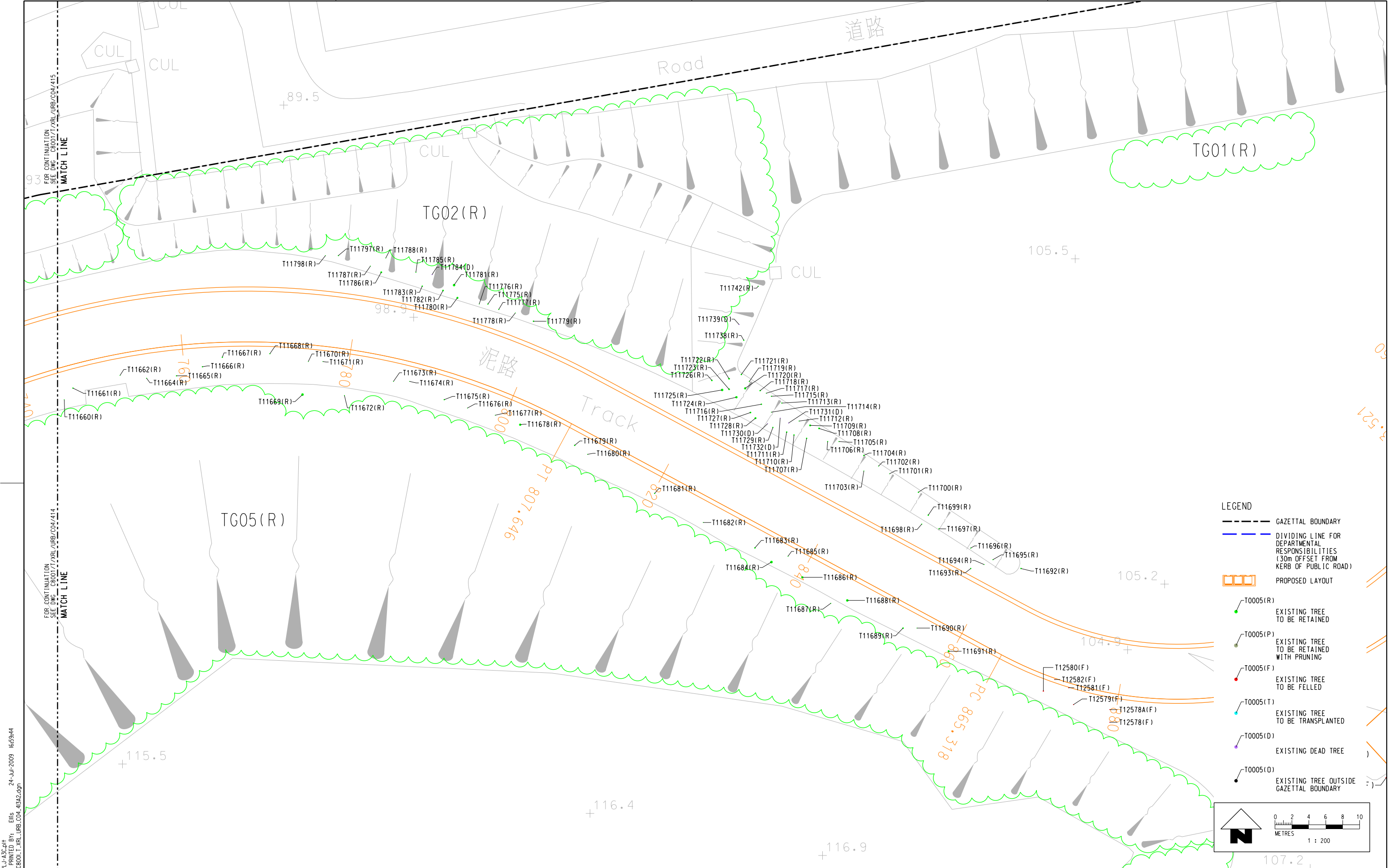
C8001_T_XRL_URB_C04_410A2.dgn

DO NOT SCALE DRAWINGS. ALL DIMENSIONS SHALL BE VERIFIED ON SITE.
© MTR CORPORATION LIMITED 2009. COPYRIGHT IN RESPECT OF THIS DRAWING / DOCUMENT IS OWNED BY THE MTR CORPORATION LIMITED OF HONG KONG. NO REPRODUCTION OF THE DRAWING / DOCUMENT OR ANY PART BY WHATEVER MEANS IS PERMITTED WITHOUT THE PRIOR WRITTEN CONSENT OF THE MTR CORPORATION LIMITED.

Urbis


URBIS LTD

TITLE		
CONSULTANCY AGREEMENT NO. C8001 TREE TRANSPLANTING / FELLING TREE SURVEY PLAN OF TUEN MUN DISTRICT (SHEET 9 OF 9)		
SCALE	DRAWING NO.	REV.
1 : 500 @ A1	C8001/T/XRL/URB/C04/410	A2



LEGEND

- GAZETAL BOUNDARY
- DIVIDING LINE FOR DEPARTMENTAL RESPONSIBILITIES (30m OFFSET FROM KERB OF PUBLIC ROAD)
- PROPOSED LAYOUT
- T0005(R) EXISTING TREE TO BE RETAINED
- T0005(P) EXISTING TREE TO BE RETAINED WITH PRUNING
- T0005(F) EXISTING TREE TO BE FELLED
- T0005(T) EXISTING TREE TO BE TRANSPLANTED
- T0005(D) EXISTING DEAD TREE
- T0005(O) EXISTING TREE OUTSIDE GAZETAL BOUNDARY

 0 2 4 6 8 10 METRES 1 : 200

PLOT DRW: J:\SCL\PL01\DRW\HPLU-A3C.dgn
MODELNAME: Default
FILENAME: I:\MTRC23\DON-GA-C8001-T_XRL_URB_C04_413A2.dgn
24-Jul-2009 16:59:44
PRINTED BY: Ellis

REV		DESCRIPTION		BY	DATE	APPROVED	REV	DESCRIPTION		BY	DATE	APPROVED
A2		SECOND ISSUE						DRAWN		SAN		
A1		DRAFT TREE SURVEY REPORT						DESIGNED		JP		
								CHECKED		TO		
								APPROVED		AD		
								DATE		19. JUN. 2009		
								DO NOT SCALE DRAWINGS. ALL DIMENSIONS SHALL BE VERIFIED ON SITE.				
								COPYRIGHT © MTR CORPORATION LIMITED 2008. ALL RIGHTS RESERVED.				
								REPRODUCTION OF THIS DRAWING / DOCUMENT OR ANY PART BY WATERMEANS IS PERMITTED WITHOUT THE PRIOR WRITTEN CONSENT OF THE MTR CORPORATION LIMITED.				
								DRAWN		SAN		
								DESIGNED		JP		
								CHECKED		TO		
								APPROVED		AD		
								DATE		19. JUN. 2009		
								DO NOT SCALE DRAWINGS. ALL DIMENSIONS SHALL BE VERIFIED ON SITE.				
								COPYRIGHT © MTR CORPORATION LIMITED 2008. ALL RIGHTS RESERVED.				
								REPRODUCTION OF THIS DRAWING / DOCUMENT OR ANY PART BY WATERMEANS IS PERMITTED WITHOUT THE PRIOR WRITTEN CONSENT OF THE MTR CORPORATION LIMITED.				

MTR

EXPRESS RAIL LINK (XRL)

ORIGINATOR

Planning, Urban Design, Landscape, Golf & Environmental Consultants
Urbis Limited, 11/F Siu On Centre, 188 Lockhart Road, Wan Chai, Hong Kong.
Tel 2802 3333 Fax 2802 8662

CADD REF. C8001-T_XRL_URB_C04_413A2.dgn

TITLE

CONSULTANCY AGREEMENT NO. C8001
TREE TRANSPLANTING / FELLING
TREE SURVEY BLOW UP PLAN OF TUEN MUN DISTRICT
(SHEET 1 OF 2)

SCALE 1 : 200 @ A1

DRAWING NO. C8001/T/XRL/URB/C04/413

REV. A2

