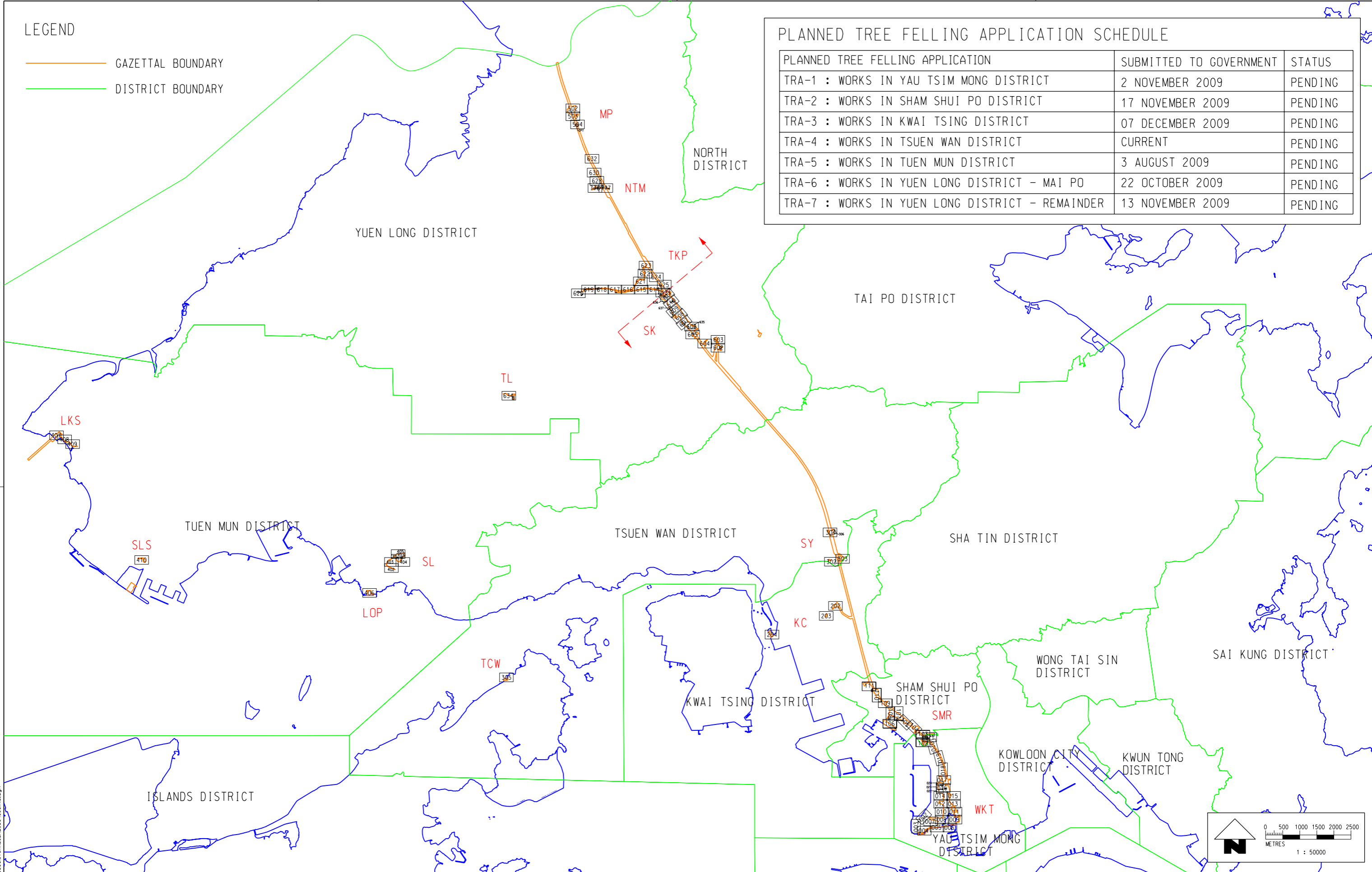


LEGEND

- GAZETTAL BOUNDARY
- DISTRICT BOUNDARY

PLANNED TREE FELLING APPLICATION	SUBMITTED TO GOVERNMENT	STATUS
TRA-1 : WORKS IN YAU TSIM MONG DISTRICT	2 NOVEMBER 2009	PENDING
TRA-2 : WORKS IN SHAM SHUI PO DISTRICT	17 NOVEMBER 2009	PENDING
TRA-3 : WORKS IN KWAI TSING DISTRICT	07 DECEMBER 2009	PENDING
TRA-4 : WORKS IN TSUEN WAN DISTRICT	CURRENT	PENDING
TRA-5 : WORKS IN TUEN MUN DISTRICT	3 AUGUST 2009	PENDING
TRA-6 : WORKS IN YUEN LONG DISTRICT - MAI PO	22 OCTOBER 2009	PENDING
TRA-7 : WORKS IN YUEN LONG DISTRICT - REMAINDER	13 NOVEMBER 2009	PENDING



REV	DESCRIPTION	BY	DATE	APPROVED	REV	DESCRIPTION	BY	DATE	APPROVED
A8	EIGHTH ISSUE FOR TRA7	SAN	14OCT09	AD	A1	DRAFT TREE SURVEY REPORT	SAN	01APR09	AD
A9	NINTH ISSUE FOR TRA-1 REV1	SAN	23OCT09	AD	A2	SECOND ISSUE	SAN	30APR09	AD
A10	TENTH ISSUE FOR TRA-7	SAN	09NOV09	AD	A3	THIRD ISSUE	SAN	25MAY09	AD
A11	ELEVENTH ISSUE FOR TRA-2	SAN	13NOV09	AD	A4	FOURTH ISSUE	SAN	19JUN09	AD
A12	TWELFTH ISSUE FOR TRA-3 & TRA-4	SAN	27NOV09	AD	A5	FIFTH ISSUE	SAN	30JUN09	AD
A13	THIRTEENTH ISSUE FOR TRA-4	SAN	15DEC09	AD	A6	SIXTH ISSUE	SAN	13AUG09	AD
					A7	SEVENTH ISSUE FOR TRA6	SAN	12OCT09	AD

MTR

EXPRESS RAIL LINK (XRL)

ORIGINATOR
 Planning, Urban Design, Landscape, Golf & Environmental Consultants
 Urbis Limited, 11/F Siu On Centre, 188 Lockhart Road, Wan Chai, Hong Kong.
 Tel 2802 3333 Fax 2802 8662

CADD REF. C8001_T_XRL_URB_C04_901A13.dgn

DATE 01.APR.2009

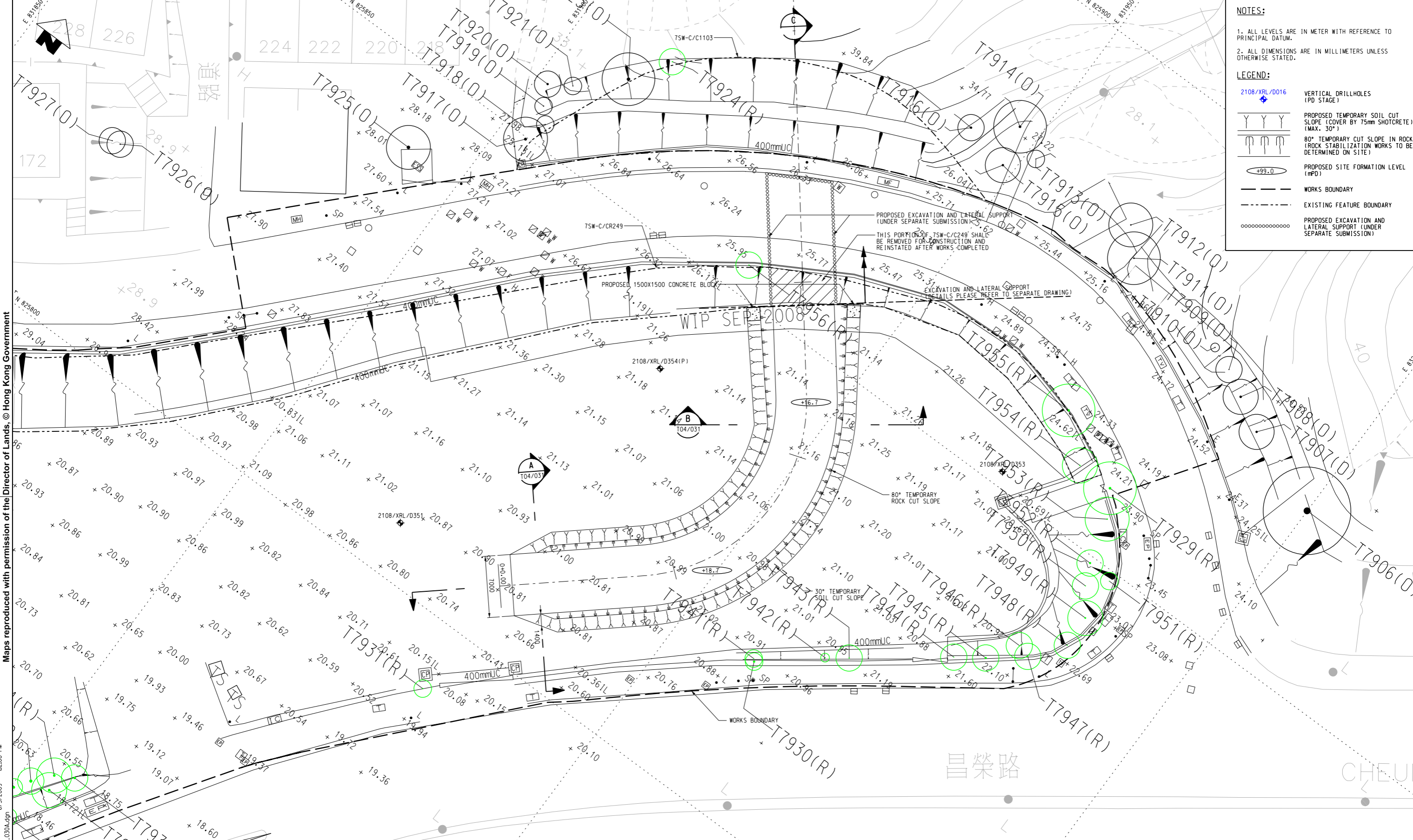
DO NOT SCALE DRAWINGS. ALL DIMENSIONS SHALL BE VERIFIED ON SITE.
 © MTR CORPORATION LIMITED 2008. COPYRIGHT IN RESPECT OF THIS DRAWING / DOCUMENT IS OWNED BY THE MTR CORPORATION LIMITED OF HONG KONG. NO REPRODUCTION OF THE DRAWING / DOCUMENT OR ANY PART BY WHATEVER MEANS IS PERMITTED WITHOUT THE PRIOR WRITTEN CONSENT OF THE MTR CORPORATION LIMITED.

TITLE
 CONSULTANCY AGREEMENT NO. C8001
 TREE TRANSPLANTING / FELLING
 XRL TREE FELLING APPLICATIONS
 KEY PLAN

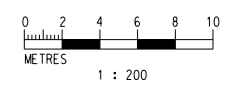
SCALE 1 : 50000 @ A1
 DRAWING NO. C8001/T/XRL/URB/C04/901
 REV. A13

PLOT DRW: J:\SCL\PL01\DR\XRL\URB_C04_901A13.dgn
 MODELNAME: Default
 FILENAME: J:\MTR\23\DCN-CAC\8001_T_XRL_URB_C04_901A13.dgn
 15-Dec-2009 12:01:36

- NOTES:**
1. ALL LEVELS ARE IN METER WITH REFERENCE TO PRINCIPAL DATUM.
 2. ALL DIMENSIONS ARE IN MILLIMETERS UNLESS OTHERWISE STATED.
- LEGEND:**
- 2108/XRL/D016 VERTICAL DRILLHOLES (PD STAGE)
 - PROPOSED TEMPORARY SOIL CUT SLOPE (COVER BY 75mm SHOTCRETE) (MAX. 30°)
 - 80° TEMPORARY CUT SLOPE IN ROCK (ROCK STABILIZATION WORKS TO BE DETERMINED ON SITE)
 - PROPOSED SITE FORMATION LEVEL (mPD)
 - WORKS BOUNDARY
 - EXISTING FEATURE BOUNDARY
 - PROPOSED EXCAVATION AND LATERAL SUPPORT (UNDER SEPARATE SUBMISSION)



ENGINEER TEMPORARY SITE FORMATION WORKS AT SHEK YAM



Maps reproduced with permission of the Director of Lands, © Hong Kong Government

PLOT: D:\MTR\23\Standard\Plot_driver\VPL\A3c.dwg
 MODELNAME: E:\MTR\23\CON-TM\822_P_361\TK_T04_030A.dgn
 FILENAME: 6/27/2009 8:24:00 PM
 PRINTED BY: Tai

REV	DESCRIPTION	BY	DATE	APPROVED
A	FIRST ISSUE		31/MAR/2009	TM

DRAWN	JN
DESIGNED	CKF
CHECKED	KL
APPROVED	TM
DATE	31/MAR/2009

MTR

EXPRESS RAIL LINK

ATKINS

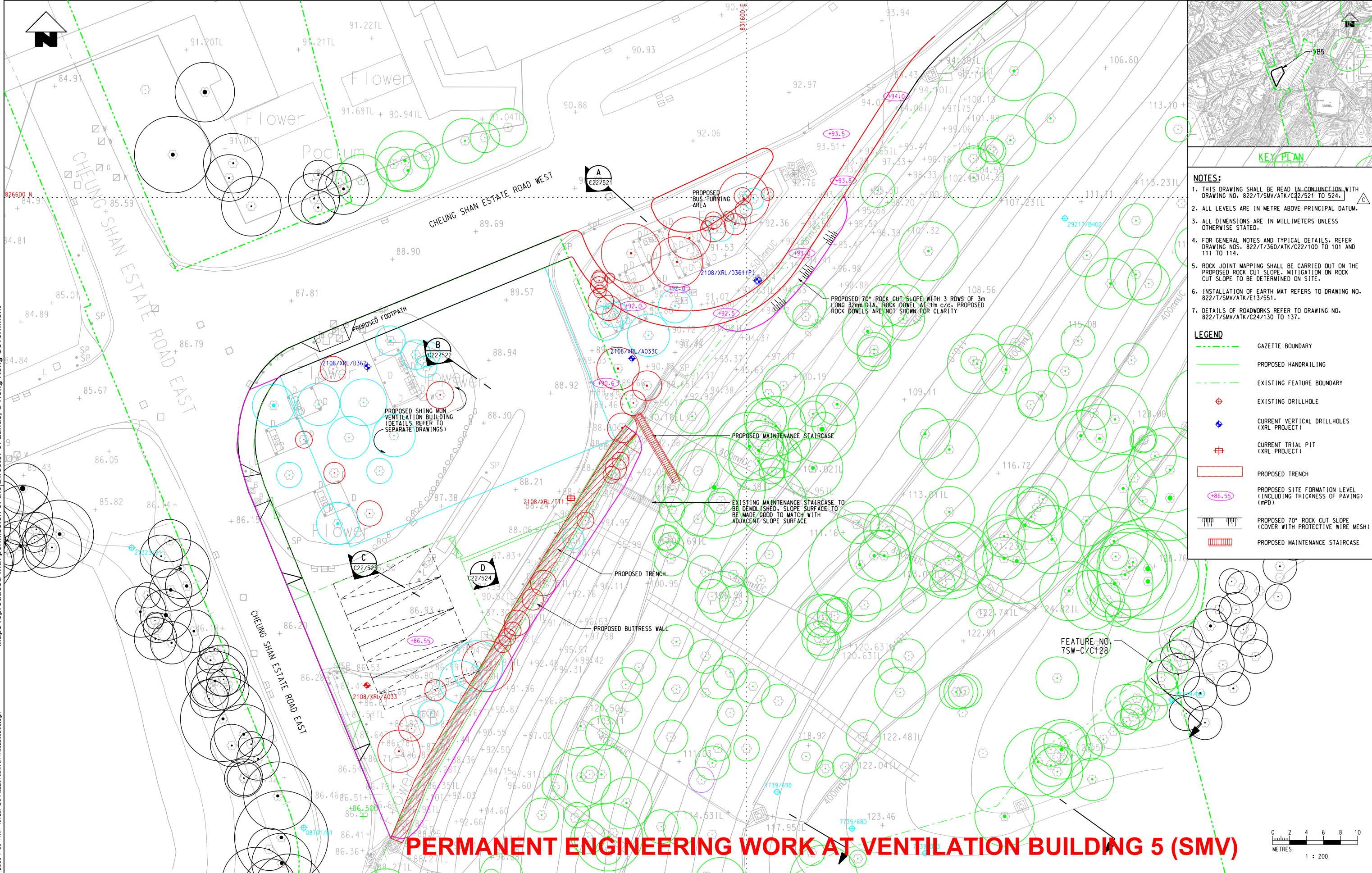
Supported by
Arup, TFP Farrells, DLS
Kenneth Ng

CADD REF. \$FILEA\$

TITLE		CONTRACT 822	
		PAT HEUNG TO SHEK YAM	
		SHEK YAM WORKS AREA (SYP)	
		TEMPORARY SITE FORMATION WORKS	
		LAYOUT PLAN	
SCALE	1 : 200 (A1)	DRAWING NO.	822/P/361/ATK/T04/030
REV.			A

Maps reproduced with permission of the Director of Lands, © Hong Kong Government

26-Nov-2009 16:51:17
 J:\ASCL\PL\OTDRV\HPL\A3C.dwg
 PLOT DRW: Default
 MODELNAME: I:\MTR\23\CON-OUT\2009-11-26\TRA-4-VB5\ADON\822.T.SMV.ATK.C22.520C.dgn
 FILENAME:



KEY PLAN

NOTES:

- THIS DRAWING SHALL BE READ IN CONJUNCTION WITH DRAWING NO. 822/T/SMV/ATK/C22/521 TO 524.
- ALL LEVELS ARE IN METRE ABOVE PRINCIPAL DATUM.
- ALL LEVELS ARE IN MILLIMETERS UNLESS OTHERWISE STATED.
- FOR GENERAL NOTES AND TYPICAL DETAILS, REFER DRAWING NOS. 822/T/360/ATK/C22/100 TO 101 AND 111 TO 114.
- ROCK JOINT MAPPING SHALL BE CARRIED OUT ON THE PROPOSED ROCK CUT SLOPE. MITIGATION ON ROCK CUT SLOPE TO BE DETERMINED ON SITE.
- INSTALLATION OF EARTH MAT REFERS TO DRAWING NO. 822/T/SMV/ATK/E13/551.
- DETAILS OF ROADWORKS REFER TO DRAWING NO. 822/T/SMV/ATK/C24/130 TO 137.

LEGEND

- GAZETTE BOUNDARY
- PROPOSED HANDRAILING
- EXISTING FEATURE BOUNDARY
- EXISTING DRILLHOLE
- CURRENT VERTICAL DRILLHOLES (XRL PROJECT)
- CURRENT TRIAL PIT (XRL PROJECT)
- PROPOSED TRENCH
- PROPOSED SITE FORMATION LEVEL (INCLUDING THICKNESS OF PAVING) (mPD)
- PROPOSED 70° ROCK CUT SLOPE (COVER WITH PROTECTIVE WIRE MESH)
- PROPOSED MAINTENANCE STAIRCASE

PERMANENT ENGINEERING WORK AT VENTILATION BUILDING 5 (SMV)



REV	DESCRIPTION	BY	DATE	APPROVED	REV	DESCRIPTION	BY	DATE	APPROVED
C	TENDER ADDENDUM NO.2	JN	25SEP09	TM					
B	TENDER ADDENDUM NO.1	JN	28AUG09	TM					
A	TENDER ISSUE	JN	03AUG09	TM					

DRAWN	JN
DESIGNED	CKF
CHECKED	VA
APPROVED	TM
DATE	26/APR/2009
DO NOT SCALE DRAWINGS. ALL DIMENSIONS SHALL BE VERIFIED ON SITE. © MTR CORPORATION LIMITED 2009. COPYRIGHT IN RESPECT OF THIS DRAWING / DOCUMENT IS OWNED BY MTR CORPORATION LIMITED OF HONG KONG. NO REPRODUCTION OF THIS DRAWING / DOCUMENT OR ANY PART OF EITHER HEREIN IS PERMITTED WITHOUT THE PRIOR WRITTEN CONSENT OF THE MTR CORPORATION LIMITED.	

MTR

EXPRESS RAIL LINK

ORIGINATOR

ATKINS Supported by Arup, TFP Farrells, DLS Kenneth Ng

CADD REF. \$FILEA\$

TITLE		CONTRACT 822	
		TSE UK TSUEN TO SHEK YAM TUNNELS	
		VB5 - SHING MUN VENTILATION BUILDING (SMV)	
		PERMANENT SITE FORMATION LAYOUT PLAN	
SCALE	DRAWING NO.	REV.	
1 : 200 (A1)	822/T/SMV/ATK/C22/520	C	