

**Wan Chai Development Phase II –**

**Operation Landscape Plan**

**for EP-376/2009**

(For the section of landscape mitigation measures under  
Contract no. HK/2012/08 via FEP 01/376-2009 and FEP 02/376-2009)

Version 1 – May 2021

## **Table of Content**

### **Section**

- 1 Introduction**
- 2 Operation Landscape Plan**
- 3 Implementation Programme, Maintenance and Management Schedule**

### ***Annexes***

- |           |   |
|-----------|---|
| Annex I   | Location of the Project                     |
| Annex II  | Extent of the Project under the Submission  |
| Annex III | Location Plan of Visual Sensitive Receivers |
| Annex IV  | Operation Landscape Plans                   |

## 1. Introduction

- 1.1 Wan Chai Development Phase II – Central – Wan Chai Bypass at Wan Chai West (Contract No. HK/2012/08) is part of the Central - Wan Chai Bypass (CWB) including Road P2 and other roads which are classified as primary/district distributor roads under the Environmental Permit No. EP-376/2009 (hereafter referred to as “the Project”).
- 1.2 The Project involves construction and operation of primary and district distributor roads. The location of the Project is shown in Figure 1 appended in **Annex I**. The concerned extent of the Project under this submission is shown in **Annex II**.
- 1.3 With respect to the EP-376/2009, the scope of works under Contract No. HK/2012/08 includes:
  - (i) a dual 2-lane primary distributor road, Road P2; and
  - (ii) other new primary and district distributor roads connecting to the slip roads of the Central-Wan Chai Bypass.
- 1.4 Pursuant to Condition 2.11 of Part C of the EP-376/2009, the Permit Holder shall, at least one month before the commencement of corresponding parts of operation landscape works of the Project, deposit with the Director four hard copies and one electronic copy of operation landscape plans.
- 1.5 The purpose of this submission is to submit the operation landscape plan including the design details, locations, implementation programme, maintenance and management schedules, and drawings of the operation landscape and visual mitigation measures of the Project (For the section of landscape mitigation measures under Contract no. HK/2012/08 via FEP 01/376-2009 and FEP 02/376-2009).
- 1.6 CITIC Tower (C14), Fleet Arcade (C15), Grand Hyatt Hotel (C22) and Hong Kong Convention and Exhibition Centre (C24) are identified to be the key Visual Sensitive receivers (VSRs) that will be affected during the construction phase of the Project. C14, C15, C22 and C24 are mapped in **Annex III**.

## 2. Operation Landscape Plan

- 2.1 The requirements on landscape and visual mitigation measures during operation phase under the approved Environmental Impact Assessment (EIA) Report for Wan Chai Development Phase II and Central-Wan Chai Bypass (Register No.: AEIAR-125/2008) are summarized as below:

ID No.	Landscape and Visual Mitigation Measures	Remark
OM1	Aesthetic design of buildings and road-related structures, including viaducts, vent buildings, subways, footbridges and noise barriers and enclosure.	Not relevant as no building and structures
OM2	Shrub and Climbing Plants to soften proposed structures.	Relevant
OM3	Buffer Tree and Shrub Planting to screen proposed roads and associated structures.	Relevant
OM4	Aesthetic design of proposed waterfront promenade.	Not relevant as no waterfront promenade
OM5	Aesthetic streetscape design.	Relevant
OM6	Aesthetic design of roadside amenity areas.	Relevant

OM2 (Shrub only), OM3, OM5 and OM6 are relevant to this operation landscape plan.



2.2 Total no. of tree planted under Contract No. HK/2012/08 in EP-376/2009 area are listed below:

Description	No. of tree carried out under HK/2012/08	No. of tree relevant to this operation landscape plan (within EP-376 Area)
Total number of trees under site area of Contract No. HK/2012/08 transplanted to tree nursery	35 (A) (A=B+C)	Nil
Number of transplanted trees of Contract No. HK/2012/08 transplanted back to site area under Contract No. HK/2012/08	0	Nil
Number of transplanted trees of Contract No. HK/2012/08 transplanted to the Cross Harbour Tunnel Approach Rest Garden at Gloucester Road	25 (B)	Nil
Number of transplanted trees of Contract No. HK/2012/08 felled at tree nursery of Contract No. HK/2012/08	10 (C)	Nil
Number of compensatory trees of Contract No. HK/2012/08 planted to site area under Contract No. HK/2012/08	10 (Compensation for C)	Nil
Number of transplanted trees of Contract No. HK/2009/02 transplanted to site area under Contract No. HK/2012/08	57	36
Number of compensatory trees of Contract No. HK/2009/02 planted to site area under Contract No. HK/2012/08	41	32
Total		68

N.B. The trees planted under Contract No. HK/2012/08 which are outside the EP-376/2009 area should strictly follow the procedures as set out under Development Bureau Technical Circular TC(W) No. 6/2015 - Maintenance of Vegetation and Hard Landscape Features and Technical Circular (Works) No. 4/2020 – Tree Preservation shall be referred on the applicable measures for operation landscape management and maintenance.

2.3 Details of the operation landscape plans (For the section of landscape mitigation measures under Contract no. HK/2012/08 via FEP 01/376-2009 and FEP 02/376-2009), including shrubs and trees are shown in the following drawings appended in **Annex IV**:

- 60041297/C3/SSK2801 (Rev. A)
- 60041297/C3/SSK2802 (Rev. A)
- 60041297/C3/SSK2803 (Rev. A)
- 60041297/C3/SSK2804 (Rev. A)
- 60041297/C3/SSK2807 (Rev. A)
- 60041297/C3/SSK2821

Four hard copies and one electronic copy (in DGN and PDF formats contained in CD-R) of the above drawings are also appended in **Annex IV**.

### **3. Implementation Programme, Maintenance and Management Schedule**

#### **3.1 Implementation Programme**

3.1.1 The operation landscape plans as mentioned in Section 2 was started at early June 2020. Leisure and Cultural Services Department (LCSD) are responsible for maintenance and management of the operation landscape plans.

#### **3.2 Maintenance and Management Schedule**

3.2.1 The maintenance authority has been recommended to maintain regular watering, weeding/site clearance, pruning, fertilizing, pest control if required shall be strictly followed the procedures as set out under Development Bureau Technical Circular TC(W) No. 6/2015 - Maintenance of Vegetation and Hard Landscape Features and Technical Circular (W) No. 4/2020 – Tree Preservation. Implementation programme, maintenance and management

schedules will be provided by the maintenance authority for consideration separately.

### 3.3 Long Term Operation (5 years)

- 3.3.1 Monitoring of the long-term management of the planting works at the 12-months interval in the period up to 5 years after completion of the construction should be implemented pursuant to Table 8.1 under Section 8.2.1 of Environmental Monitoring and Audit Manual under Environmental Permit No. EP-376/2009. The Maintenance Agency, should report the compliance and The Management Agency should counter-sign of report.

# Annex I

## Location of the Project

DP2 主要幹路和地區幹路  
PRIMARY AND DISTRICT DISTRIBUTOR ROADS

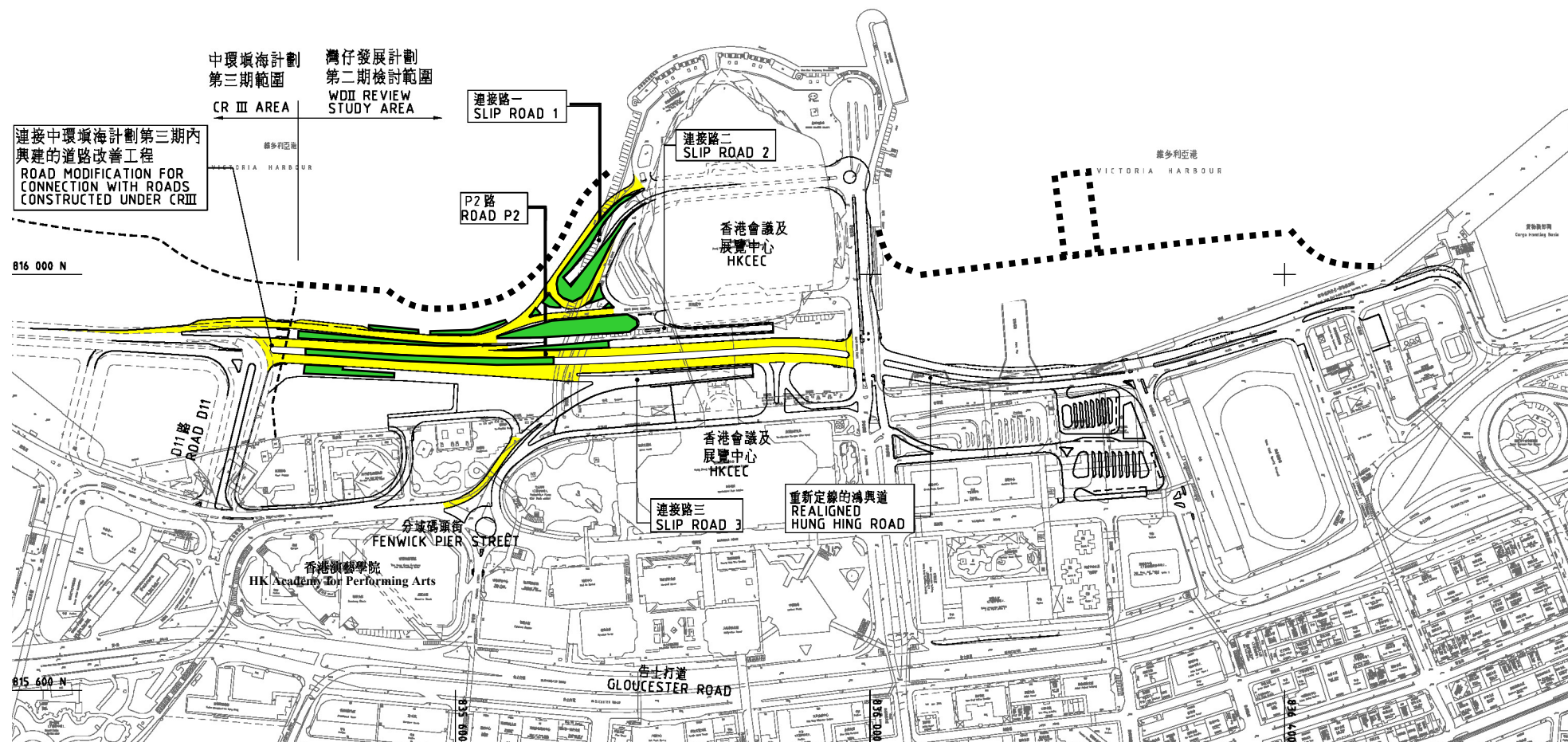
填海範圍(只供指示, 不屬於 DP2)  
EXTENT OF RECLAMATION (SHOWN FOR INFORMATION ONLY, NOT PART OF DP2)

## Legend

## Description



Extent of roadside planters under this EP



Project Title : Road P2 and other roads which are classified as primary/district distributor roads (referred to as "DP2" in the WDII&CWB EIA Report)

工程項目名稱: P2路及其他分類為主要幹路或地區幹路的道路(WDII&CWB 環評報告內稱 "DP2")

Environmental Permit No.: EP-376/2009

環境許可證編號 : EP-376/2009

Figure 1: Location of the Project

圖 1: 工程項目位置圖

(This figure was prepared based on Figure 1.2b of the WDII&CWB EIA report (Register No.: AEIAR-125/2008))  
(本圖是根據 WDII&CWB 環評報告 (登記冊編號 AEIAR-125/2008) 圖 1.2b 編制)

## Annex II

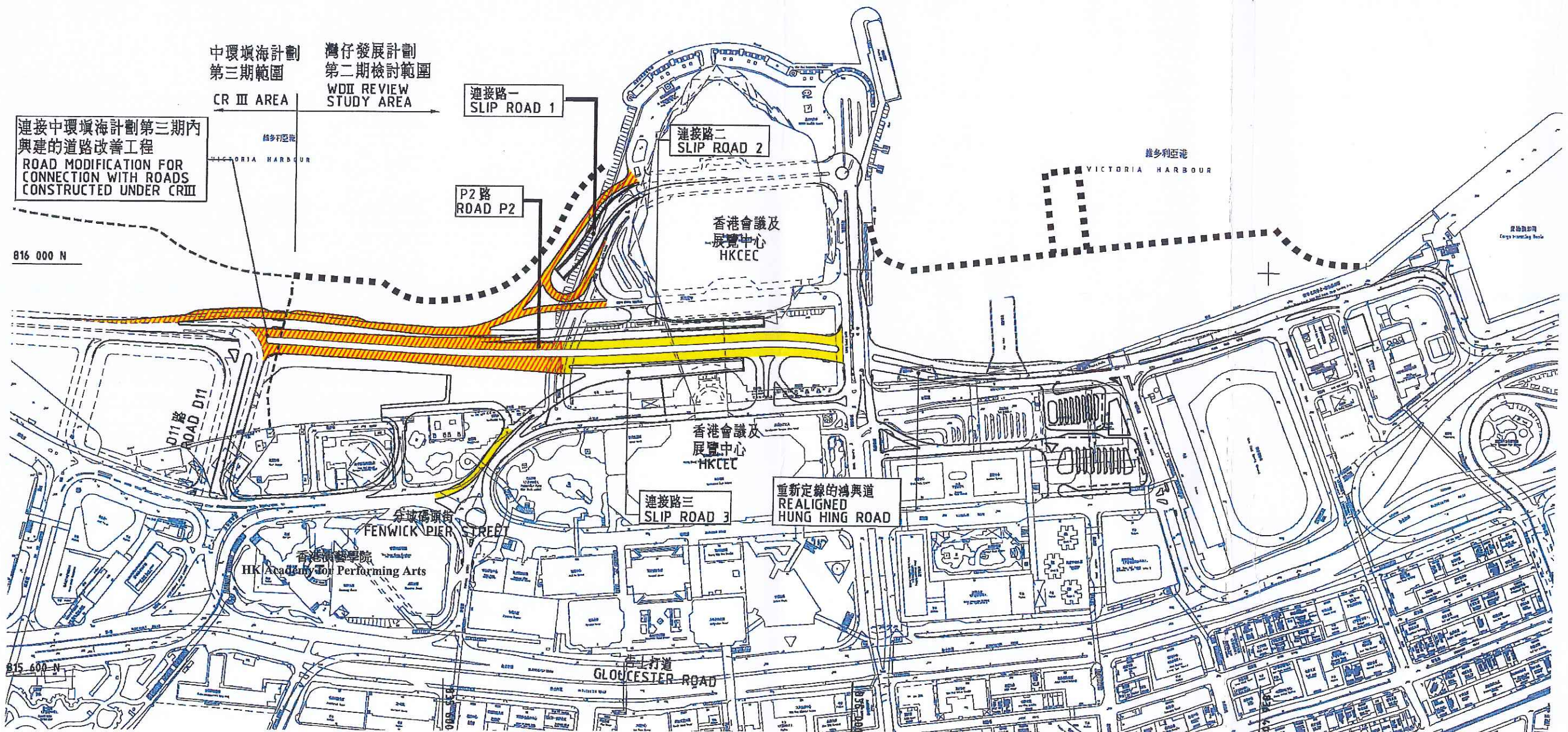
### Extent the Project under the Operation Landscape



LEGEND:



EXTENT OF PRIMARY AND DISTRICT DISTRIBUTOR ROADS UNDER HK/2012/08



(PREPARED BY )

EXTRACTED FROM EP-376-2009 Figure 1

WAN CHAI DEVELOPMENT PHASE II - CENTRAL-WAN CHAI BYPASS AT WAN CHAI WEST

EXTENT OF THE PROJECT UNDER HK/2012/08

**AECOM**

SCALE	1:4000 (A3)	DATE	18-APR-2020
CHECK	EL	DRAWN	PC
CONTRACT No.	HK/2012/08	DRAWING No.	60041297/C3/SSK2800
		REV	-

5/5/2020

S:\DRAFTING\C3\C3\_SSK\SSK2000-2999\C3SSK2800.dgn



# Annex III

## Location Plan of Visual Sensitive Receivers



# KEY FOR VISUAL SENSITIVE RECEIVERS

C1	International Finance Centre
C2	Hong Kong Station Development Phase 2
C3	Exchange Square
C4	Jardine House
C5	Mandarin Hotel
C6	Hong Kong Club
C7	Ritz Carlton Hotel
C8	AIA Tower
C9	Hutchinson House
C10	Bank of America Tower
C11	Far East Financial Centre
C12	Admiralty Centre
C13	United Centre
C14	CITIC Tower
C15	Fleet Arcade
C16	Asian House
C17	Chung Nam Building
C18	Fleet House, Harcourt House
C19	Telecom House, Hong Kong Arts Centre, Harbour View International House
C20	Shui On Centre
C21	Central Plaza
C22	Grand Hyatt Hotel
C23	Renaissance Harbour View Hotel
C24	Hong Kong Convention and Exhibition Centre
C25	Great Eagle Centre
C26	Harbour Centre
C27	China Resources Building
C28	Sun Hung Kai Centre
C29	AXA Centre
C30	Sino Plaza
C31	World Trade Centre
C32	Excelsior Hotel
C33	The Park Lane Hotel
C34	Windsor House
C35	19-31 Yee Wo Street
C36	Chicorp Centre
C37	Victoria Centre
C38	Ocean Terminal
C39	Star House
C40	Peninsula Hotel
C41	Sheraton Hotel
C42	InterContinental Hotel
C43	New World Centre and Hotel
C44	Wing On Plaza
C45	Shangri-La Hotel
C46	Tsim Sha Tsui Centre
C47	Empire Centre
C48	Grand Stanford Harbour View Hotel
C49	Nikko Hotel
C50	Four Season Hotel
C51	Harbour Plaza Metropolis
C52	AIA Tower
C53	Newton Hotel
C54	Electric Centre
C54A	Sea View Estate

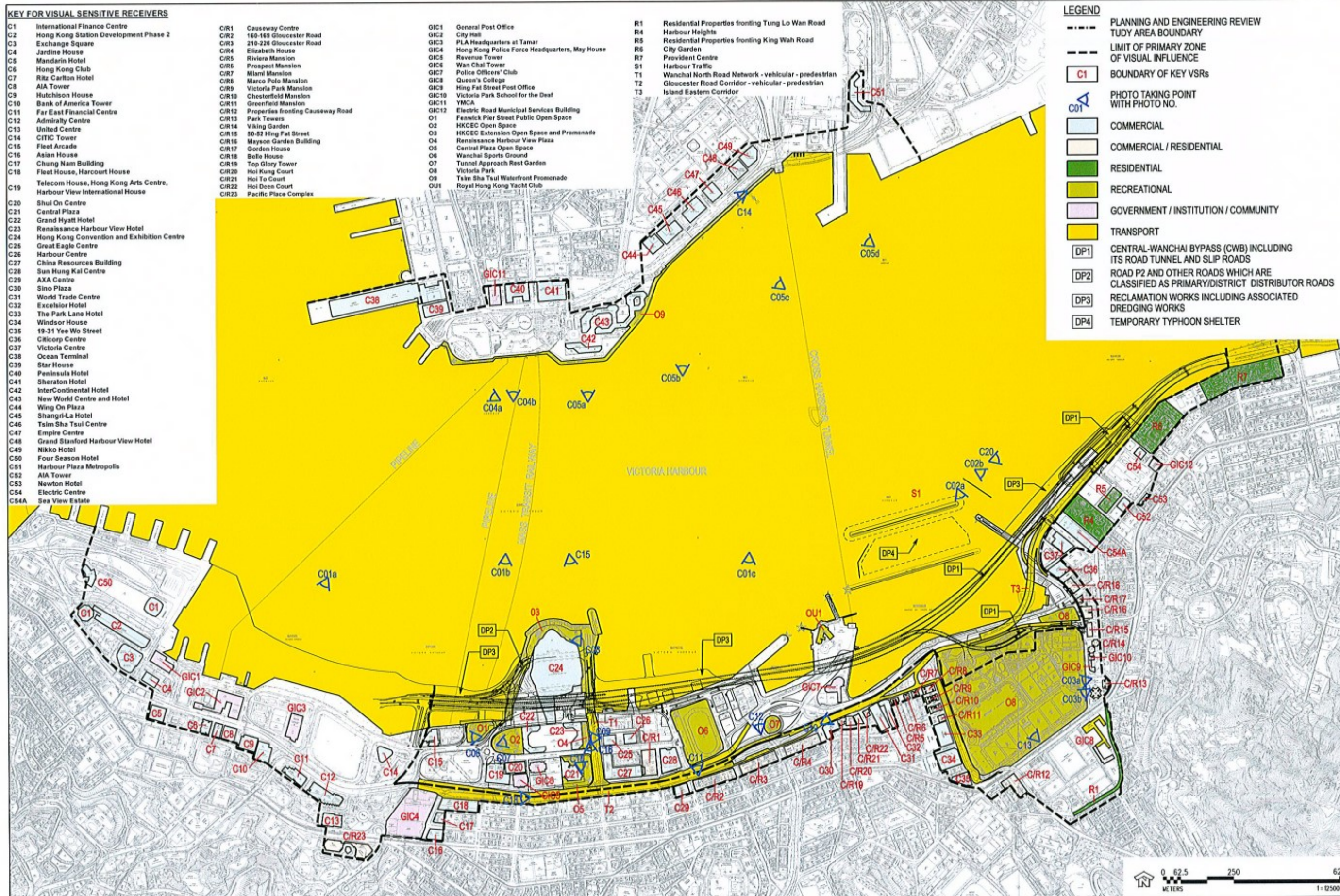
C/R1	Causeway Centre
C/R2	160-168 Gloucester Road
C/R3	210-228 Gloucester Road
C/R4	Elizabeth House
C/R5	Riviera Mansion
C/R6	Prospect Mansion
C/R7	Miami Mansion
C/R8	Marco Polo Mansion
C/R9	Victoria Park Mansion
C/R10	Chesterfield Mansion
C/R11	Greenfield Mansion
C/R12	Properties fronting Causeway Road
C/R13	Park Towers
C/R14	Viking Garden
C/R15	50-52 King Fat Street
C/R16	Mayson Garden Building
C/R17	Gordon House
C/R18	Belle House
C/R19	Top Glory Tower
C/R20	Hoi Kung Court
C/R21	Hoi To Court
C/R22	Hoi Deen Court
C/R23	Pacific Place Complex

GIC1	General Post Office
GIC2	City Hall
GIC3	PLA Headquarters at Tamar
GIC4	Hong Kong Police Force Headquarters, May House
GIC5	Revenue Tower
GIC6	Wan Chai Tower
GIC7	Police Officers' Club
GIC8	Queen's College
GIC9	Hong Fat Street Post Office
GIC10	Victoria Park School for the Deaf
GIC11	YMCA
GIC12	Electric Road Municipal Services Building
O1	Fenwick Pier Street Public Open Space
O2	HKCEC Open Space
O3	HKCEC Extension Open Space and Promenade
O4	Renaissance Harbour View Plaza
O5	Central Plaza Open Space
O6	Wanchai Sports Ground
O7	Tunnel Approach Rest Garden
O8	Victoria Park
O9	Tsim Sha Tsui Waterfront Promenade
OU1	Royal Hong Kong Yacht Club

R1	Residential Properties fronting Tung Lo Wan Road
R4	Harbour Heights
R5	Residential Properties fronting King Wah Road
R6	City Garden
R7	Provident Centre
S1	Harbour Traffic
T1	Wanchai North Road Network - vehicular - pedestrian
T2	Gloucester Road Corridor - vehicular - pedestrian
T3	Island Eastern Corridor

## LEGEND

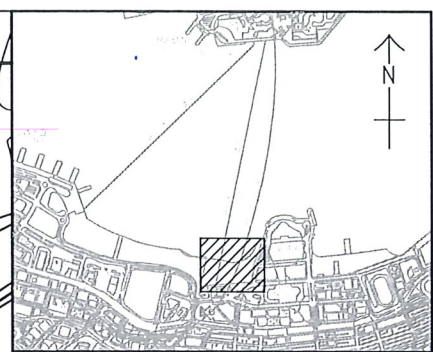
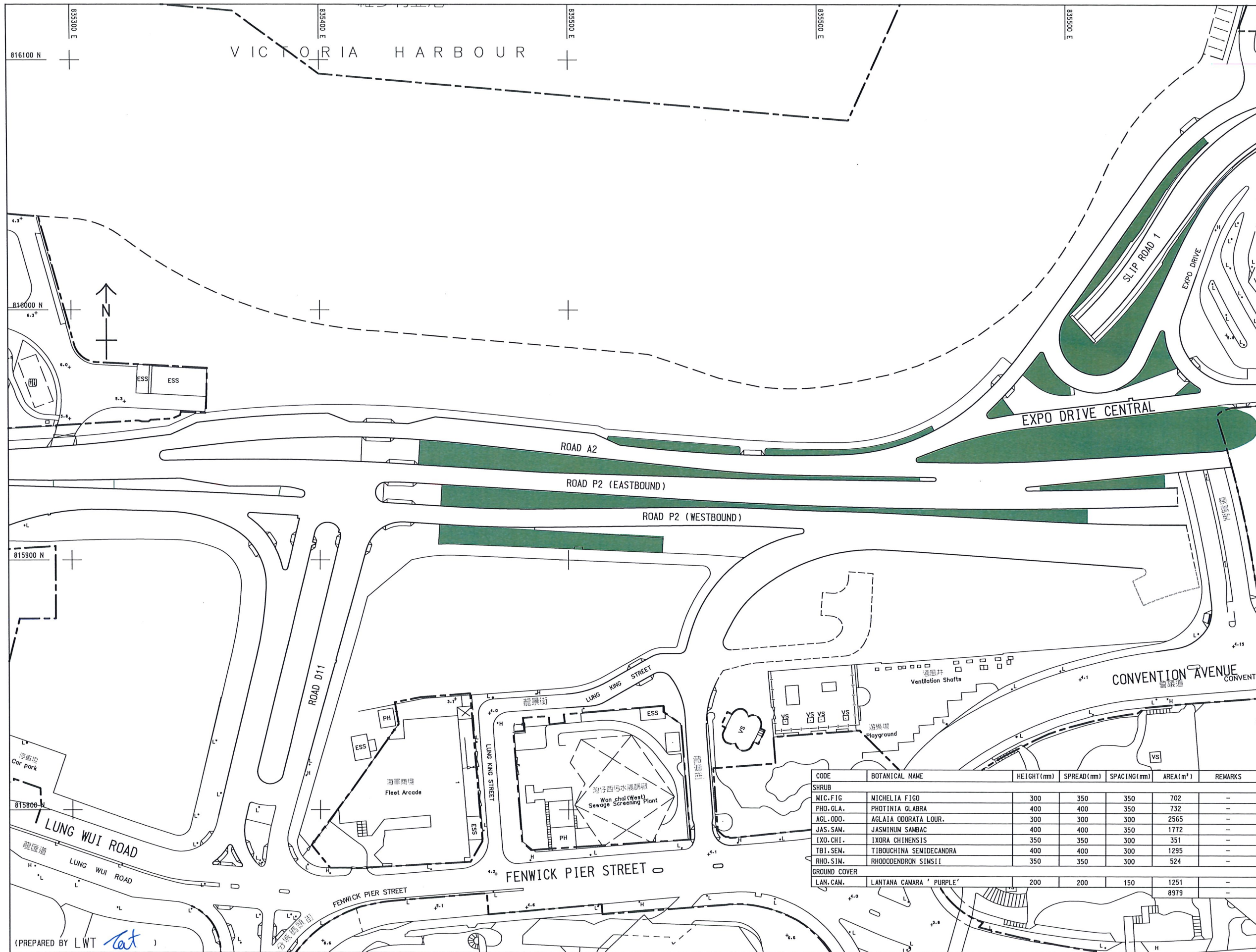
- PLANNING AND ENGINEERING REVIEW
- TUDY AREA BOUNDARY
- LIMIT OF PRIMARY ZONE OF VISUAL INFLUENCE
- BOUNDARY OF KEY VSRs
- PHOTO TAKING POINT WITH PHOTO NO.
- COMMERCIAL
- COMMERCIAL / RESIDENTIAL
- RESIDENTIAL
- RECREATIONAL
- GOVERNMENT / INSTITUTION / COMMUNITY
- TRANSPORT
- CENTRAL-WANCHAI BYPASS (CWB) INCLUDING ITS ROAD TUNNEL AND SLIP ROADS
- ROAD P2 AND OTHER ROADS WHICH ARE CLASSIFIED AS PRIMARY/DISTRICT DISTRIBUTOR ROADS
- RECLAMATION WORKS INCLUDING ASSOCIATED DREDGING WORKS
- TEMPORARY TYPHOON SHELTER





## Annex IV

# Operation Landscape Plan



KEY PLAN  
SCALE 1 : 30000

NOTES:

1. THIS DRAWING TO BE READ IN CONJUNCTION WITH DRAWING NOS. 60041297/C3/SSK2801 TO 2804.
2. LEGEND OF PLANTER AND SHRUB SHALL REFER TO THE LEGEND OF DRAWING NO.60041297/C3/SSK2801.

LEGEND:

PLANTER UNDER OPERATION  
LANDSCAPE PLAN OF EP-376/2009

CODE	BOTANICAL NAME	HEIGHT (mm)	SPREAD (mm)	SPACING (mm)	AREA (m <sup>2</sup> )	REMARKS
SHRUB						
MIC.FIG	MICHELIA FIGO	300	350	350	702	-
PHO.GLA.	PHOTINIA GLABRA	400	400	350	732	-
AGL.OOO.	AGLAIA ODORATA LOUR.	300	300	300	2565	-
JAS.SAM.	JASMINUM SAMBAC	400	400	350	1772	-
IXO.CHI.	IXORA CHINENSIS	350	350	300	351	-
TBI.SEN.	TIBOUCHINA SEMIDECANDRA	400	400	300	1295	-
RHO.SIM.	RHODODENDRON SIMSII	350	350	300	524	-
GROUND COVER						
LAN.CAM.	LANTANA CAMARA 'PURPLE'	200	200	150	1251	-
					8979	-

(PREPARED BY LWT *cat*)

**AECOM**

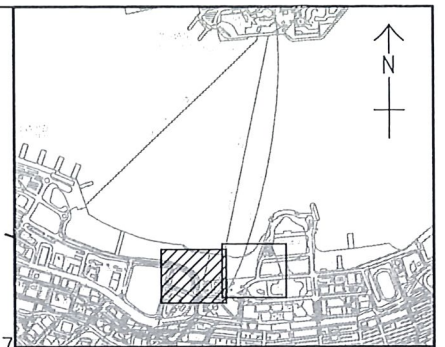
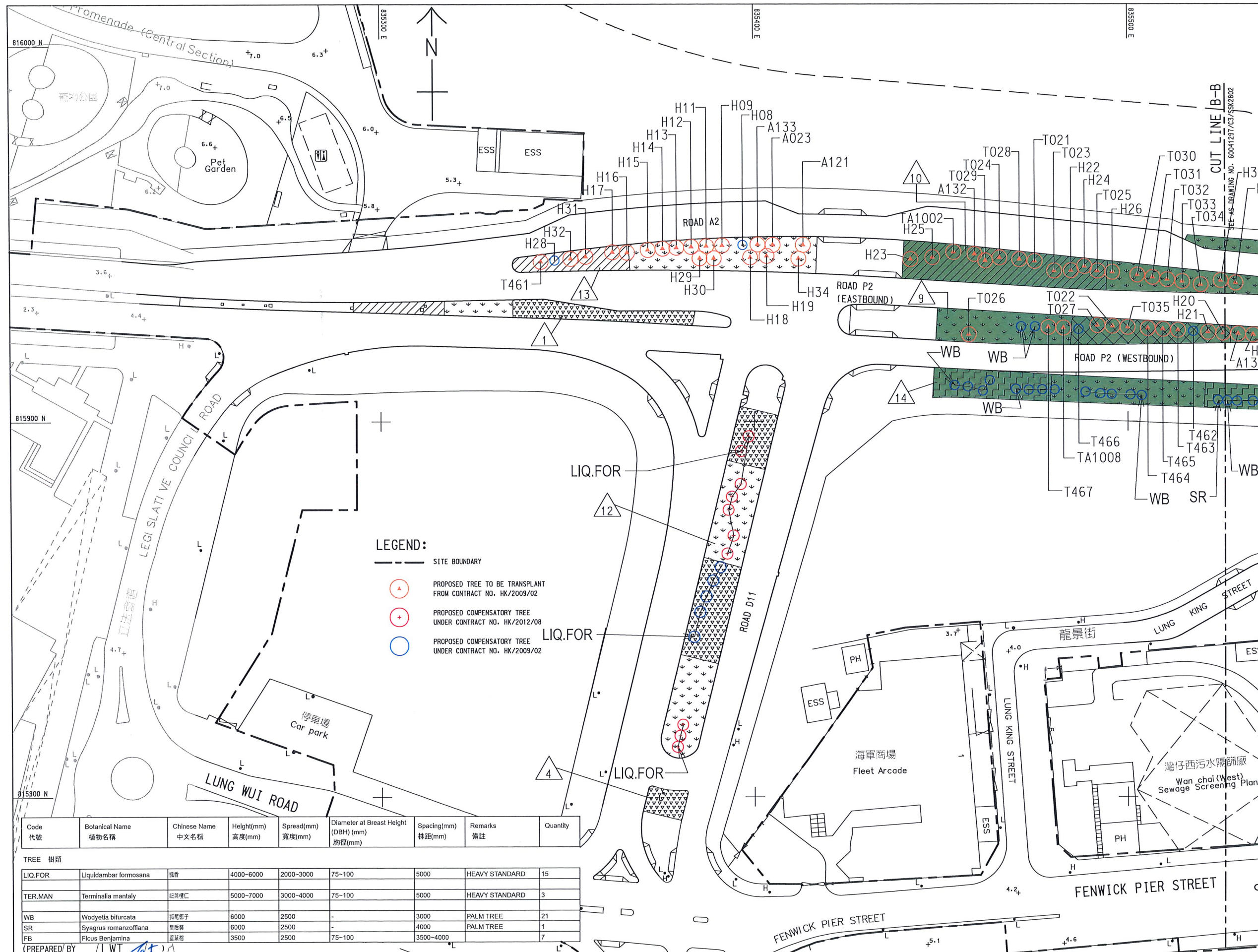
WAN CHAI DEVELOPMENT PHASE II - CENTRAL-WAN CHAI BYPASS AT WAN CHAI WEST

OPERATION LANDSCAPE PLAN UNDER EP-376/2009

SHEET 1 OF 6

SCALE	1: SCALE (A3)	DATE	17-MAY-2021
CHECK	PY <i>ch</i>	DRAWN	PC <i>M</i>
CONTRACT No.	HK/2012/08	DRAWING No.	60041297/C3/SSK2807
		REV	A





**NOTES:**

1. THIS DRAWING TO BE READ IN CONJUNCTION WITH DRAWING NOS. 60041297/C3/SSK2802 TO 2804 AND 2807.

**LEGEND:**

- ▲ PLANTER NO.
- PLANTER UNDER OPERATION LANDSCAPE PLAN OF EP-376/2009

**SHRUB**

- MIC.FIG.
- PHO.GLA.
- AGL.OOO.
- IXO.CHI.
- JAS.SAM.
- TIB.SEM.
- RHO.SIM.

**GROUND COVER**

- LAN.CAM.

WAN CHAI DEVELOPMENT PHASE II - CENTRAL-WAN CHAI BYPASS AT WAN CHAI WEST

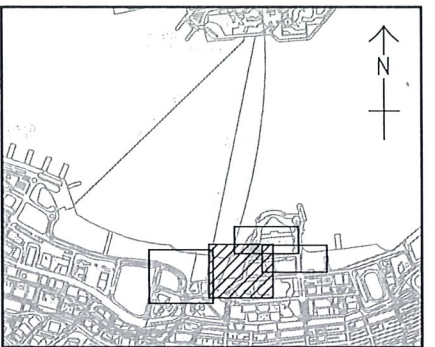
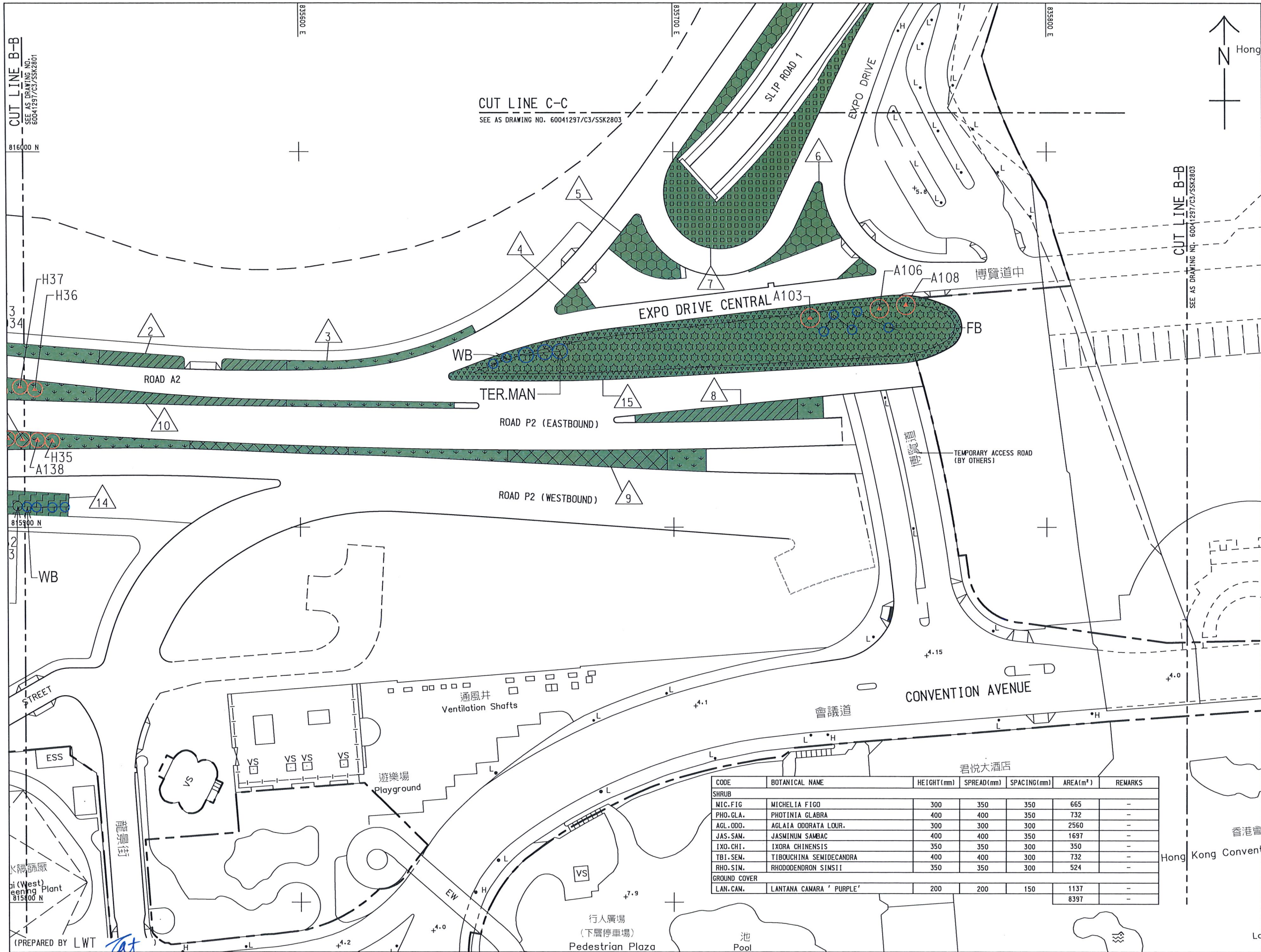
OPERATION LANDSCAPE PLAN UNDER EP-376/2009

SHEET 2 OF 6

SCALE	1:1000 (A3)	DATE	17-MAY-2021
CHECK	PY	DRAWN	PC
CONTRACT No.	HK/2012/08	DRAWING No.	60041297/C3/SSK2801
REV	A		

**AECOM**





KEY PLAN  
SCALE 1 : 20000

NOTES:

1. THIS DRAWING TO BE READ IN CONJUNCTION WITH DRAWING NOS. 60041297/C3/SSK2801, 2803, 2804 AND 2807.
2. LEGEND OF PLANTER AND SHRUB SHALL REFER TO THE LEGEND OF DRAWING NO.60041297/C3/SSK2801.

LEGEND:

PLANTER UNDER OPERATION  
LANDSCAPE PLAN OF EP-376/2009

CODE	BOTANICAL NAME	HEIGHT(mm)	SPREAD(mm)	SPACING(mm)	AREA(m <sup>2</sup> )	REMARKS
SHRUB						
MIC.FIG.	MICHELIA FIGO	300	350	350	665	-
PHO.GLA.	PHOTINIA GLABRA	400	400	350	732	-
AGL.ODO.	AGLAIA ODORATA LOUR.	300	300	300	2560	-
JAS.SAM.	JASMINUM SAMBAC	400	400	350	1697	-
IXO.CHI.	IXORA CHINENSIS	350	350	300	350	-
TBI.SEN.	TIBOUCHINA SEMIDECANDRA	400	400	300	732	-
RHO.SIN.	RHODODENDRON SINENSIS	350	350	300	524	-
GROUND COVER						
LAN.CAN.	LANTANA CAMARA 'PURPLE'	200	200	150	1137	-
					8397	-

WAN CHAI DEVELOPMENT PHASE II - CENTRAL-WAN CHAI BYPASS AT WAN CHAI WEST

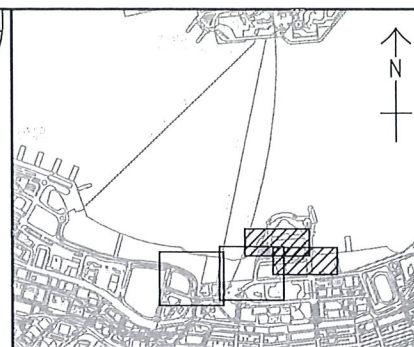
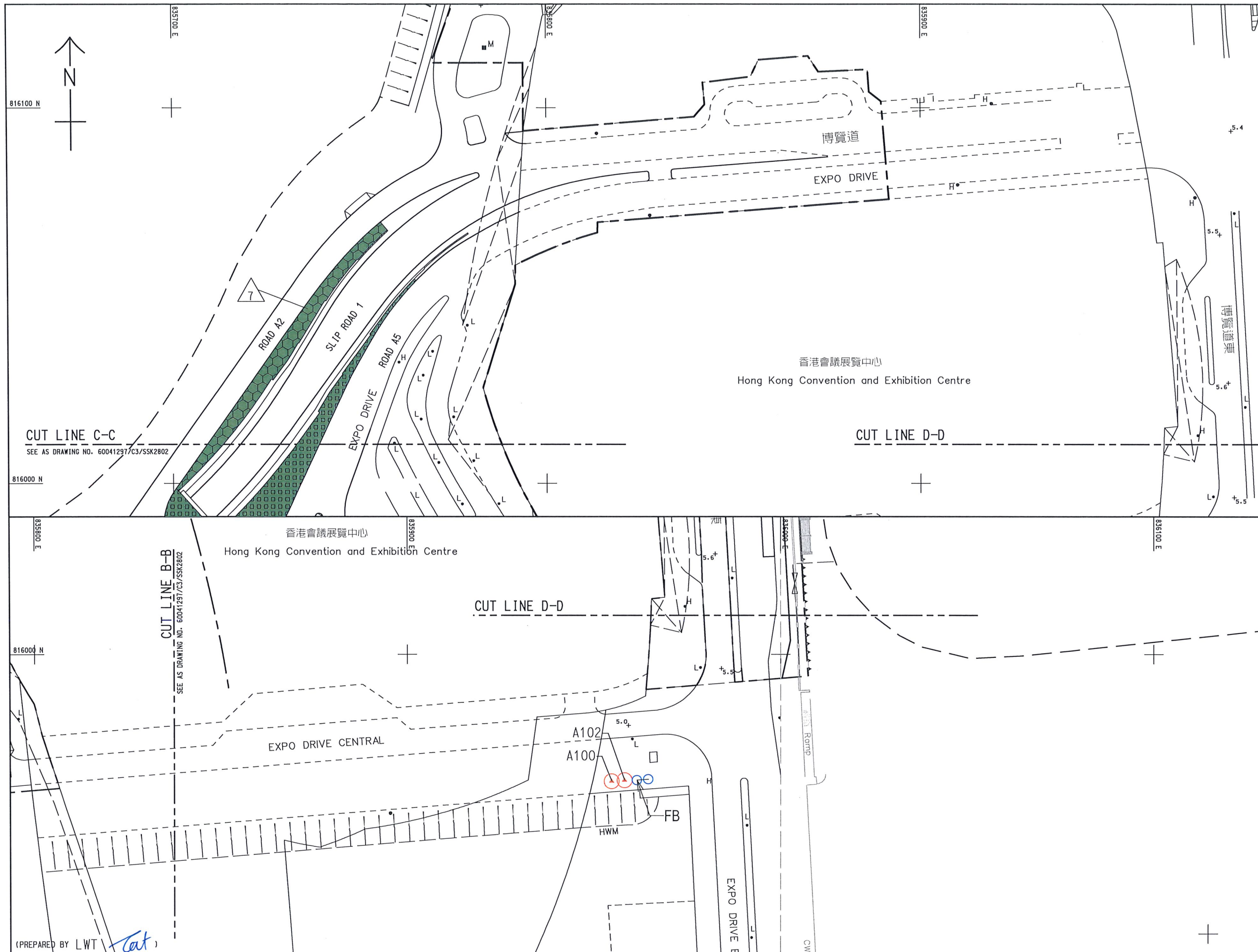
OPERATION LANDSCAPE PLAN UNDER EP-376/2009

SHEET 3 OF 6

SCALE	1:1000 (A3)	DATE	17-MAY-2021
CHECK	PY	DRAWN	PC
CONTRACT No.	HK/2012/08	DRAWING No.	60041297/C3/SSK2802
		REV	A

AECOM





KEY PLAN  
SCALE 1 : 20000

NOTES:

1. THIS DRAWING TO BE READ IN CONJUNCTION WITH DRAWING NOS. 60041297/C3/SSK2801, 2802, 2804 AND 2807.
2. LEGEND OF PLANTER AND SHRUB SHALL REFER TO THE LEGEND OF DRAWING NO.60041297/C3/SSK2801.

LEGEND:

PLANTER UNDER OPERATION  
LANDSCAPE PLAN OF EP-376/2009

SCALE 1:1000 (A3)		DATE 17-MAY-2021	
CHECK PYL		DRAWN PC	
CONTRACT No. HK/2012/08		DRAWING No. 60041297/C3/SSK2803	
		REV A	

18-May-21

AECOM

WAN CHAI DEVELOPMENT PHASE II - CENTRAL-WAN CHAI BYPASS AT WAN CHAI WEST

OPERATION LANDSCAPE PLAN UNDER EP-376/2009


SHEET 4 OF 6



# NOTES:

1. THIS DRAWING TO BE READ IN CONJUNCTION WITH DRAWING NOS. 60041297/C3/SSK2801 TO 2803 AND 2807.
2. LEGEND OF PLANTER AND SHRUB SHALL REFER TO THE LEGEND OF DRAWING NO.60041297/C3/SSK2801.

# LEGEND:

 TREES UNDER OPERATION LANDSCAPE PLAN OF EP-376/2009

## TREE SCHEDULE OF TRANSPLANTED TREES:

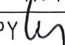

TREE ID	Botanical Name 植物名稱	Chinese Name 中文名稱	Height(m) 高度(m)	Spread(m) 寬度(m)	Diameter at Breast Height 胸徑 (DBH) (mm)
A023	Phoenix loureiroi	刺葵	6.0	4.0	375
A100	Ficus benjamina	垂葉榕	7.0	3.0	180
A102	Ficus benjamina	垂葉榕	6.0	2.0	195
A103	Ficus benjamina	垂葉榕	7.0	3.0	145
A106	Ficus benjamina	垂葉榕	8.0	2.0	175
A108	Ficus benjamina	垂葉榕	6.0	3.0	170
A121	Livistona chinensis	蒲葵	5.0	2.5	240
A132	Livistona chinensis	蒲葵	5.0	2.5	230
A133	Livistona chinensis	蒲葵	5.0	2.5	250
A138	Livistona chinensis	蒲葵	6.0	2.0	240
H08	Roystonea regia	王棕	7.0	3.0	342
H09	Roystonea regia	王棕	8.0	2.0	320
H11	Roystonea regia	王棕	8.0	2.0	356
H12	Roystonea regia	王棕	8.0	3.0	308
H13	Roystonea regia	王棕	8.0	2.0	307
H14	Roystonea regia	王棕	8.0	2.0	299
H15	Roystonea regia	王棕	8.0	3.0	348
H16	Roystonea regia	王棕	8.0	2.5	338
H17	Roystonea regia	王棕	7.0	2.5	342
H18	Roystonea regia	王棕	8.0	2.0	312
H19	Roystonea regia	王棕	8.0	3.0	245
H20	Livistona chinensis	蒲葵	4.0	2.5	185
H21	Livistona chinensis	蒲葵	6.0	3.0	179
H22	Livistona chinensis	蒲葵	4.0	2.5	202
H23	Livistona chinensis	蒲葵	4.0	2.5	187
H24	Livistona chinensis	蒲葵	4.0	3.0	240
H25	Livistona chinensis	蒲葵	5.0	2.5	190
H26	Livistona chinensis	蒲葵	5.0	2.0	167
H28	Roystonea regia	王棕	8.0	3.0	403
H29	Roystonea regia	王棕	10.0	3.0	292
H30	Roystonea regia	王棕	8.0	2.0	305
H31	Roystonea regia	王棕	9.0	2.0	290
H32	Roystonea regia	王棕	9.0	2.0	328
H34	Roystonea regia	王棕	8.0	2.5	308
H35	Roystonea regia	王棕	8.0	2.5	200
H36	Archontophoenix alexandrae	假檳榔	7.5	2.0	152
H37	Archontophoenix alexandrae	假檳榔	7.0	2.5	165
T021	Archontophoenix alexandrae	假檳榔	6.0	3.0	134
T022	Archontophoenix alexandrae	假檳榔	7.0	1.0	180
T023	Archontophoenix alexandrae	假檳榔	7.0	3.0	200
T024	Archontophoenix alexandrae	假檳榔	7.0	3.0	172
T025	Archontophoenix alexandrae	假檳榔	8.0	2.0	210
T026	Archontophoenix alexandrae	假檳榔	7.0	3.0	230
T027	Archontophoenix alexandrae	假檳榔	8.0	2.0	230
T028	Archontophoenix alexandrae	假檳榔	7.0	1.0	240
T029	Archontophoenix alexandrae	假檳榔	7.0	3.0	205
T030	Archontophoenix alexandrae	假檳榔	5.0	3.0	153
T031	Archontophoenix alexandrae	假檳榔	8.0	2.5	175
T032	Archontophoenix alexandrae	假檳榔	7.0	1.0	131
T033	Archontophoenix alexandrae	假檳榔	7.0	2.0	235
T034	Archontophoenix alexandrae	假檳榔	9.0	1.0	220
T035	Archontophoenix alexandrae	假檳榔	7.0	2.0	210
T461	Phoenix loureiroi	刺葵	6.0	2.5	350
T462	Phoenix loureiroi	刺葵	5.0	2.5	573
T463	Phoenix loureiroi	刺葵	5.0	2.5	573
T464	Phoenix loureiroi	刺葵	4.0	2.5	478
T465	Phoenix loureiroi	刺葵	5.0	2.5	573
T466	Phoenix loureiroi	刺葵	5.0	2.5	478
T467	Phoenix loureiroi	刺葵	5.0	2.5	478
TA1002	Livistona chinensis	蒲葵	9.0	3.5	225
TA1008	Elaeis guineensis	油棕	7.0	3.0	475

(PREPARED BY LWT )

**AECOM**

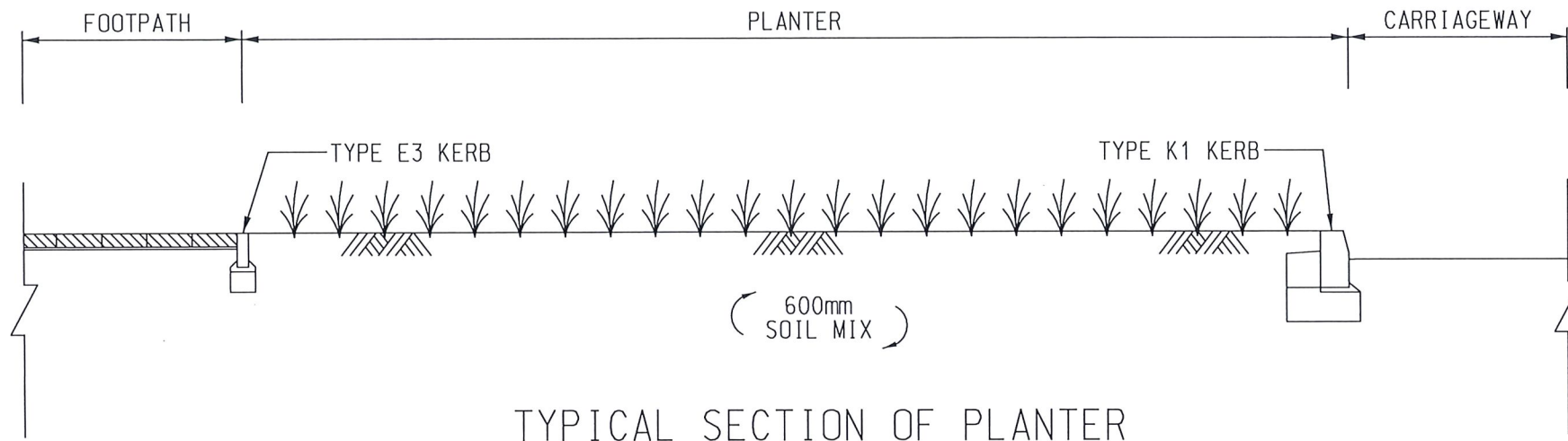
WAN CHAI DEVELOPMENT PHASE II -  
CENTRAL-WAN CHAI BYPASS AT WAN CHAI WEST  
OPERATION LANDSCAPE PLAN  
UNDER EP-376/2009

SHEET 5 OF 6

SCALE	N.T.S. (A4)	DATE	17-MAY-2021
CHECK	PY 	DRAWN	PC 
CONTRACT No.	HK/2012/08	DRAWING No.	60041297/C3/SSK2804
		REV	A

# NOTE:

LANDSCAPE TREATMENTS WAS CARRIED OUT IN ACCORDANCE WITH THE REQUIREMENTS AS SPECIFIED IN THE HONG KONG GOVERNMENT GENERAL SPECIFICATION FOR CIVIL ENGINEERING WORKS 2006 EDITION.



(PREPARED BY LWT *cat*)

**AECOM**

WAN CHAI DEVELOPMENT PHASE II -  
CENTRAL-WAN CHAI BYPASS AT WAN CHAI WEST  
OPERATION LANDSCAPE PLAN UNDER EP-376/2009

SHEET 6 OF 6

SCALE	1:30 (A4)	DATE	17-MAY-2021
CHECK	PY <i>py</i>	DRAWN	PC <i>pc</i>
CONTRACT No.	HK/2012/08	DRAWING No.	60041297/C3/SSK2821
		REV	-



END

---