



Your ref.  
Our ref.

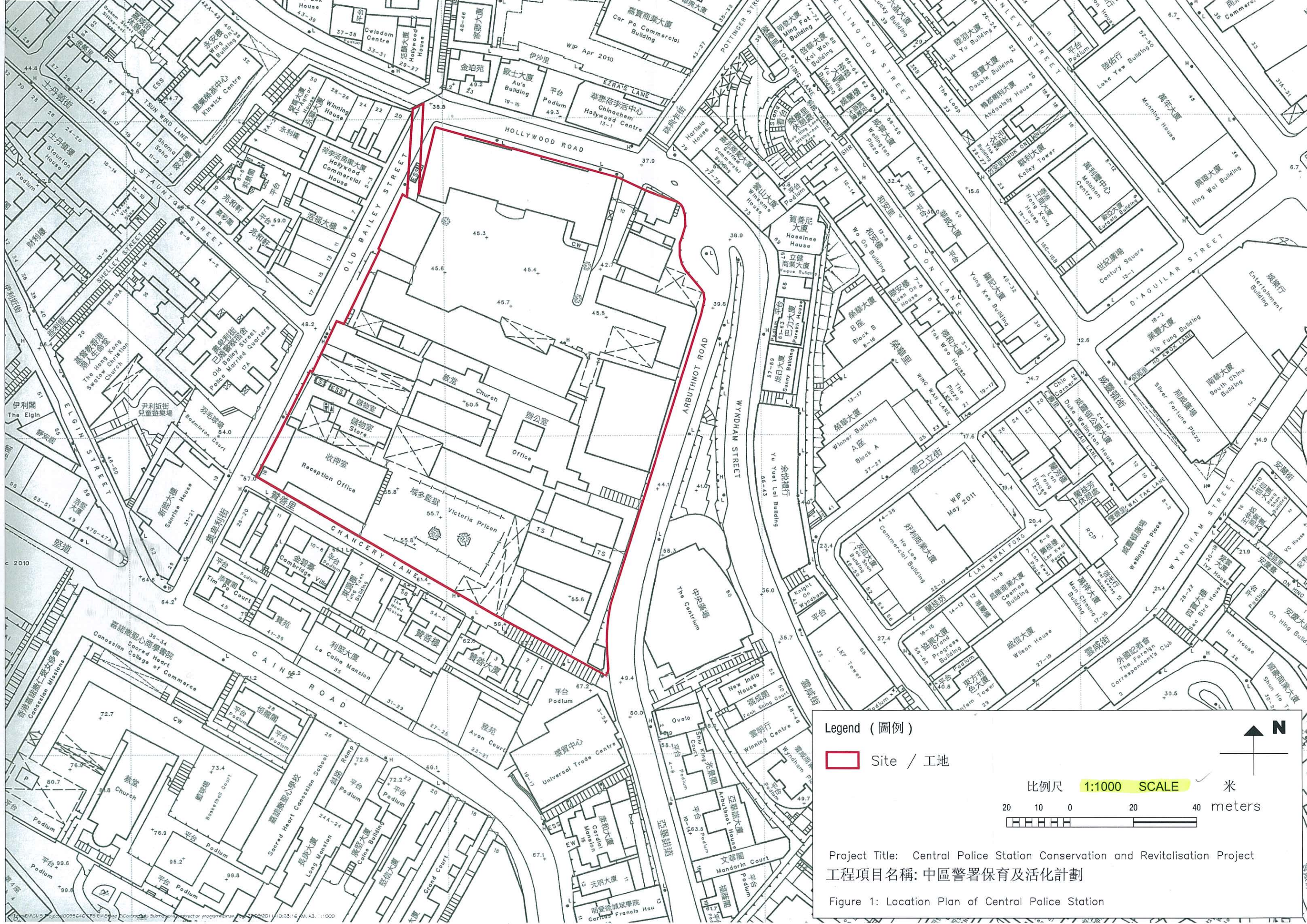
Date: 3 October 2011

By Fax and Post

**Central Police Station Conservation and Revitalization Project**  
**Verification of Construction Programme**


We refer to your letter dated 3 October 2011 regarding the Construction Programme. Atkins China Ltd. verifies, in the capacity of Independent Environmental Checker, that the Construction Programme, in principle, conforms the requirements provided in Clause 2.5 of Environmental Permit (EP-408/2011).

**Yours sincerely,**  
**For Atkins China Ltd.**



**Legend (圖例)**

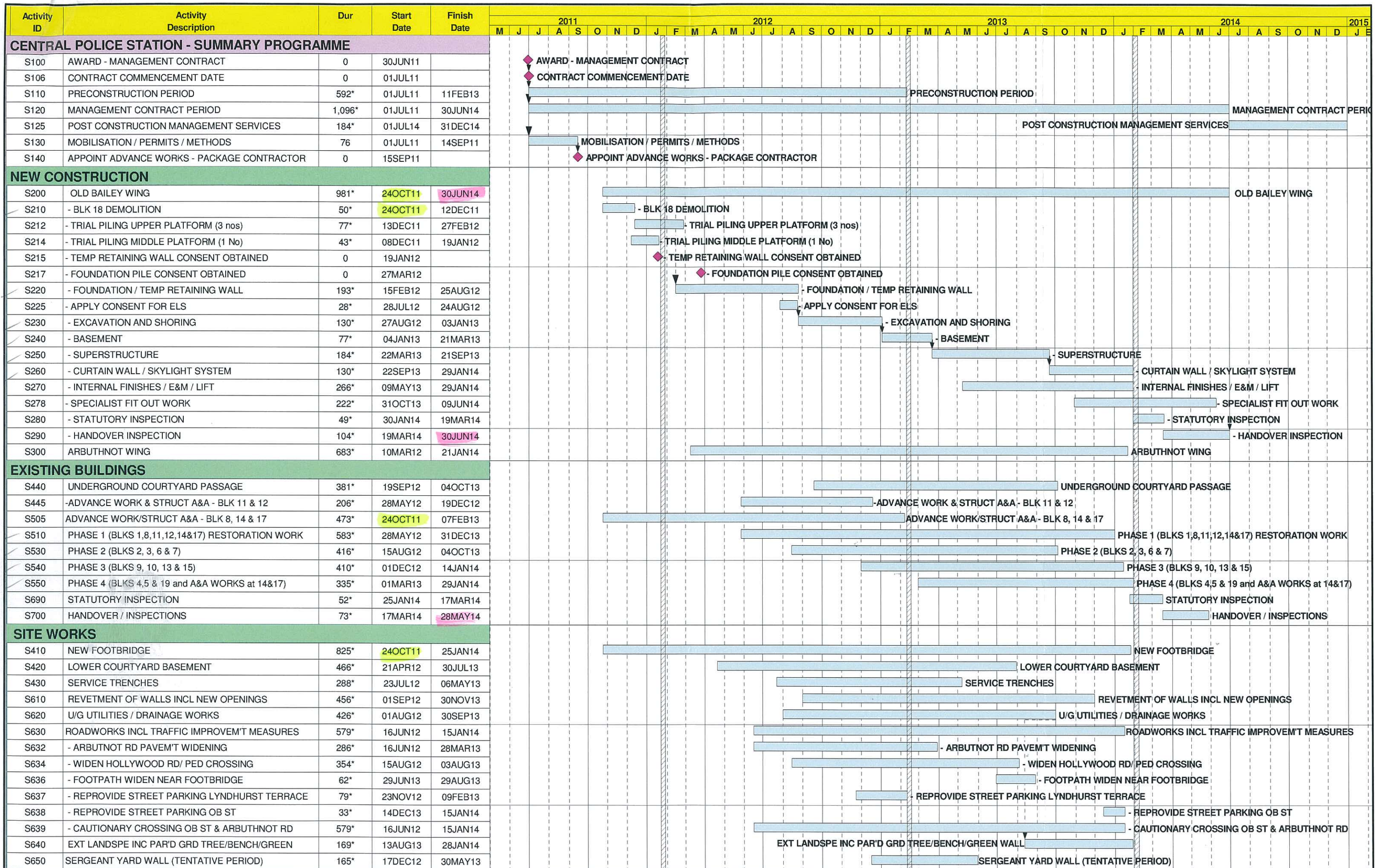
Site / 工地

 **N**

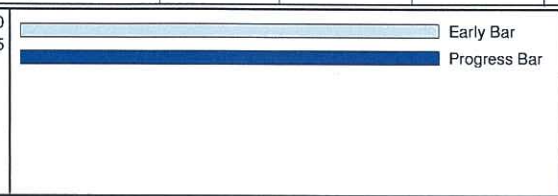
比例尺 **1:1000** SCALE 米  
 20 10 0 20 40 meters

Project Title: Central Police Station Conservation and Revitalisation Project  
 工程項目名稱: 中區警署保育及活化計劃

Figure 1: Location Plan of Central Police Station



Data Date: 07JUL10  
 Run Date: 30SEP11 13:35



TP30  
 Sheet 1 of 1  
**CENTRAL POLICE STATION  
 CONSERVATION AND REVITALIZATION  
 (MANAGEMENT CONTRACT)  
 CONSTRUCTION PROGRAMME SUMMARY (Rev 2)  
 CRITICAL PATH ANALYSIS**



Date	Revision	Checked	Approved
05JUL11	draft issue included in Progress Report No 1		
22JUL11	final issue		
15AUG11	Rev 1 inc comment in RDA letter recd on 03Aug11		
05SEP11	Rev 2 inc comment in RDA letter recd on 25Aug11		
30SEP11	Adjusted for EPD Submission		

?Primavera Systems, Inc.