

Our ref AFK/TK/ro/T322036/40.02/L-0013  
T 2828 5919  
E Terence.Kong@mottmac.com.hk

Your ref

EIAO Register Office  
27/F, Southorn Centre,  
130 Hennessy Road, Wanchai,  
Hong Kong

Attn: Mr. Vincent Lau

16/12

15 December 2014  
By Post

Dear Sir,

**Agreement No. SP 05/2012**  
**Environmental Audit for Sewerage Works at Pik Shui Sun Tsuen**  
**Independent Checker (IC)**  
**Monthly Environmental Audit Report –November 2014**  
**(Environmental Permit No.: EP-435/2011/A)**

In accordance with Section 1.11 of the Environmental Permit No. EP-435/2011/A, we are pleased to submit herewith 1 hardcopy and 1 softcopy of the November 2014 Monthly Environmental Audit Report which has been certified by the Independent Checker (IC) for your retention.

Should you have any queries, please contact the undersigned at 2828 5919.

Yours faithfully  
for MOTT MACDONALD HONG KONG LIMITED



Terence Kong  
Independent Checker

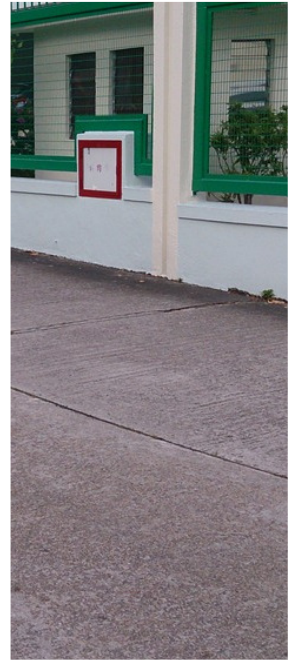
Encl.

c.c.

Environmental Protection Department  
Drainage Services Department  
Black & Veatch H.K. Limited

Mr. Edwin Chen  
Mr. Chow Sui Ping  
Mr. Eugene Chan

By Post (1 hard copy and 1 soft copy)  
By Post (1 hard copies and 1 soft copy)  
By Post (1 hard copy)



Agreement No. SP 05/2012  
Environmental Audit for Sewerage Works at  
Pik Shui Sun Tsuen

Monthly Environmental Audit Report No. 12 – November 2014  
Ref: 322036/ENL/02/12/A

December 2014  
Drainage Services Department





Agreement No. SP 05/2012  
Environmental Audit for Sewerage Works at  
Pik Shui Sun Tsuen

Monthly Environmental Audit Report No. 12 – November 2014  
Ref: 322036/ENL/02/12/A

December 2014

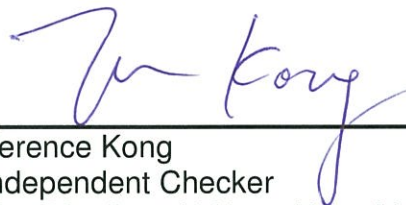
Drainage Services Department

44/F, Revenue Tower  
5 Gloucester Road  
Wan Chai  
Hong Kong



**Pursuant to Condition 2.2 of Environmental Permit No. EP-435/ 2011/A,  
this Monthly Environmental Audit Report has been reviewed and  
certified by the Independent Checker (IC)**

**Certified by:**



---

Terence Kong  
Independent Checker  
Mott MacDonald Hong Kong Limited

Date 12 December 2014

# Content

<b>Chapter</b>	<b>Title</b>	<b>Page</b>
	Executive Summary	9
<b>1.</b>	<b>Environmental Status during the reporting month</b>	<b>10</b>
1.1	Construction Programme _____	10
1.2	Key Issues for the reporting month _____	10
1.3	Project Organisation _____	10
1.4	Environmental Mitigation Measures - Implementation Status _____	10
<b>2.</b>	<b>Environmental Site Inspection</b>	<b>11</b>
2.1	Site Inspection _____	11
2.2	Advice on the Solid and Liquid Waste Management Status _____	11
2.3	Status of Environmental Licenses and Permits _____	11
<b>3.</b>	<b>Report on Complaints, Notifications of Summons and Successful Prosecutions</b>	<b>12</b>
3.1	Record on Environmental Complaints Received _____	12
3.2	Record on Notifications of Summons and Successful Prosecution _____	12
3.3	Review of Reasons for and Implications of Non-compliance, Complaints, Summons and Prosecutions _____	12
3.4	Follow-up Actions Taken _____	12
<b>4.</b>	<b>Future Key Issues</b>	<b>13</b>
4.1	Major Site Works for the Coming Month(s) _____	13
4.2	Key Issues for the Coming Month _____	13
<b>5.</b>	<b>Conclusion and Recommendation</b>	<b>14</b>
5.1	Conclusion _____	14
5.2	Recommendations _____	14

[Appendix A. Tentative Construction Programme](#)

[Appendix B. Project Organization](#)

[Appendix C. Environmental Mitigation Measures- Implementation Status](#)

[Appendix D. Waste Flow Table](#)

[Appendix E. Cumulative statistics on complaints, notifications of summons and successful prosecutions](#)

[Figures](#)



# Executive Summary

On 3 May 2013, Mott MacDonald Hong Kong Limited (MMHK) was commissioned by the Drainage Services Department (DSD) under Agreement No. SP 05/2012 to undertake the Independent Checker (IC) services for the Sewerage Works at Pik Shui Sun Tsuen (The Project).

The Environmental Permit (EP) No. EP- 435/2011 for the “Sewerage Works at Pik Shui Sun Tsuen” was granted by the Environmental Protection Department (EPD) on 20 December 2011. The construction works was carried out Welcome Construction Co Ltd. (the Contractor), commenced on 26 August 2013.

In accordance with Section 5.1 and 5.3 of the Brief for the Project and Condition 2.2 of the EP, a Monthly Environmental Audit Report shall be prepared and submitted at monthly intervals to confirm in writing the full implementation of the mitigation measures recommended in the Project Profile (PP) (Register No. PP-454/ 2011) during and upon completion of the construction works.

When construction of the sewerage works at Pik Shui Sun Tsuen commenced, objections from the local residents were encountered. Therefore, the sewerage works were temporarily suspended. DSD arranged meetings with the local residents and tried to resolve the objections. However, there were still majority amongst the local residents showing their objections to the proposed works in a meeting held on 18 January 2014. In March 2014, DSD and the client office SIG of EPD decided to curtail the proposed sewerage works at Pik Shui Sun Tsuen from the construction contract.

Regarding the sewerage work on University Road, some sewer alignments were revised subject to actual condition. Therefore, DSD submitted the application for variation of environmental permit for the sewerage works at Pik Shui Sun Tsuen to EPD on 16 July 2014 and the amended Environmental Permit (No. EP-435/2011/A) was issued by EPD to DSD on 29 July 2014.

This is the 12<sup>th</sup> Monthly Environmental Audit Report covering the period from 1 November 2014 and 30 November 2014 (the reporting month).



# 1. Environmental Status during the reporting month

## 1.1 Construction Programme

Site preparation works was conducted in this reporting month. No construction work was conducted during this reporting month.

The construction works programme of the Project is provided in [Appendix A](#). A layout plan of the Project is provided in [Figure 1.1](#).

## 1.2 Key Issues for the reporting month

No construction work was conducted during this reporting month.

## 1.3 Project Organisation

The organisation chart and lines of communication with respect to the on-site environmental management structure together with the contact information of the key personnel are shown in [Appendix B](#).

## 1.4 Environmental Mitigation Measures - Implementation Status

No construction work was conducted during this reporting month. Therefore, no environmental site audit was conducted during this reporting month. The checklist of implementation status of the environmental mitigation measures is provided in [Appendix C](#).

## 2. Environmental Site Inspection

### 2.1 Site Inspection

No construction work was conducted during this reporting month. Therefore, no environmental site audit was conducted during this reporting month.

### 2.2 Advice on the Solid and Liquid Waste Management Status

The Contractor has been applied for a bill account for disposal. No waste was disposed of in this reporting month.

The waste flow table is present in [Appendix D](#).

### 2.3 Status of Environmental Licenses and Permits

The environmental permits, licenses, and/or notifications on environmental protection for this Project which were valid during the period is summarised in **Table 2-1**.

Table 2-1: Status of Environmental Submissions, Licenses and Permits

Statutory Reference	Description	Permit /Reference No.	Status
EIAO	Environmental Permit	EP- 435/2011	Valid
APCO	Notification of Construction Work under APCO	355015	Valid
WPCO	Discharge License	WT00016437-2013	Valid
	Discharge License	WT00016957-2013	Valid
WDO	Bill Account for disposal	7016760	Valid

Legend: EIAO – Environmental Impact Assessment Ordinance  
 APCO – Air Pollution Control Ordinance  
 WPCO – Water Pollution Control Ordinance  
 WDO – Waste Disposal Ordinance

## 3. Report on Complaints, Notifications of Summons and Successful Prosecutions

### 3.1 Record on Environmental Complaints Received

No environmental complaint was received this month. The cumulative statistics on complaints were provided in [Appendix E](#).

### 3.2 Record on Notifications of Summons and Successful Prosecution

No notifications of summons or successful prosecution were received this month. The cumulative statistics on notifications of summons and successful prosecutions were provided in [Appendix E](#).

### 3.3 Review of Reasons for and Implications of Non-compliance, Complaints, Summons and Prosecutions

Not applicable.

### 3.4 Follow-up Actions Taken

Not applicable.

## 4. Future Key Issues

### 4.1 Major Site Works for the Coming Month(s)

The major site works scheduled to be commissioned in the coming month include:

- Site preparation works

### 4.2 Key Issues for the Coming Month

Key issues to be considered in the coming month include:

- Generation of dust from construction and demolition works;
- Noise impact from operating equipment and machinery on-site;
- Generation of site surface runoffs and wastewater from activities on-site;
- Management of stockpiles and slopes, particularly on rainy days;
- Sorting, recycling, storage and disposal of general refuse and construction waste; and
- Management of chemicals and avoidance of oil spillage on-site.

## 5. Conclusion and Recommendation

### 5.1 Conclusion

No construction activity was conducted during the reporting month.

### 5.2 Recommendations

With consideration on the construction activities in the next reporting month, recommendations on mitigation measures for impacts on air quality, noise, water quality and waste were provided.

# Appendix A. Tentative Construction Programme

Welcome Constuction Co Ltd.  
 Contract No. DC/2012/06  
 Sewerage at Clear Water Bay Road, Pik Shui Sun Tsuen and West of Sai Kung Town  
 3 Month Rolling Programme (1 Nov 2014 to 31 Jan 2015)

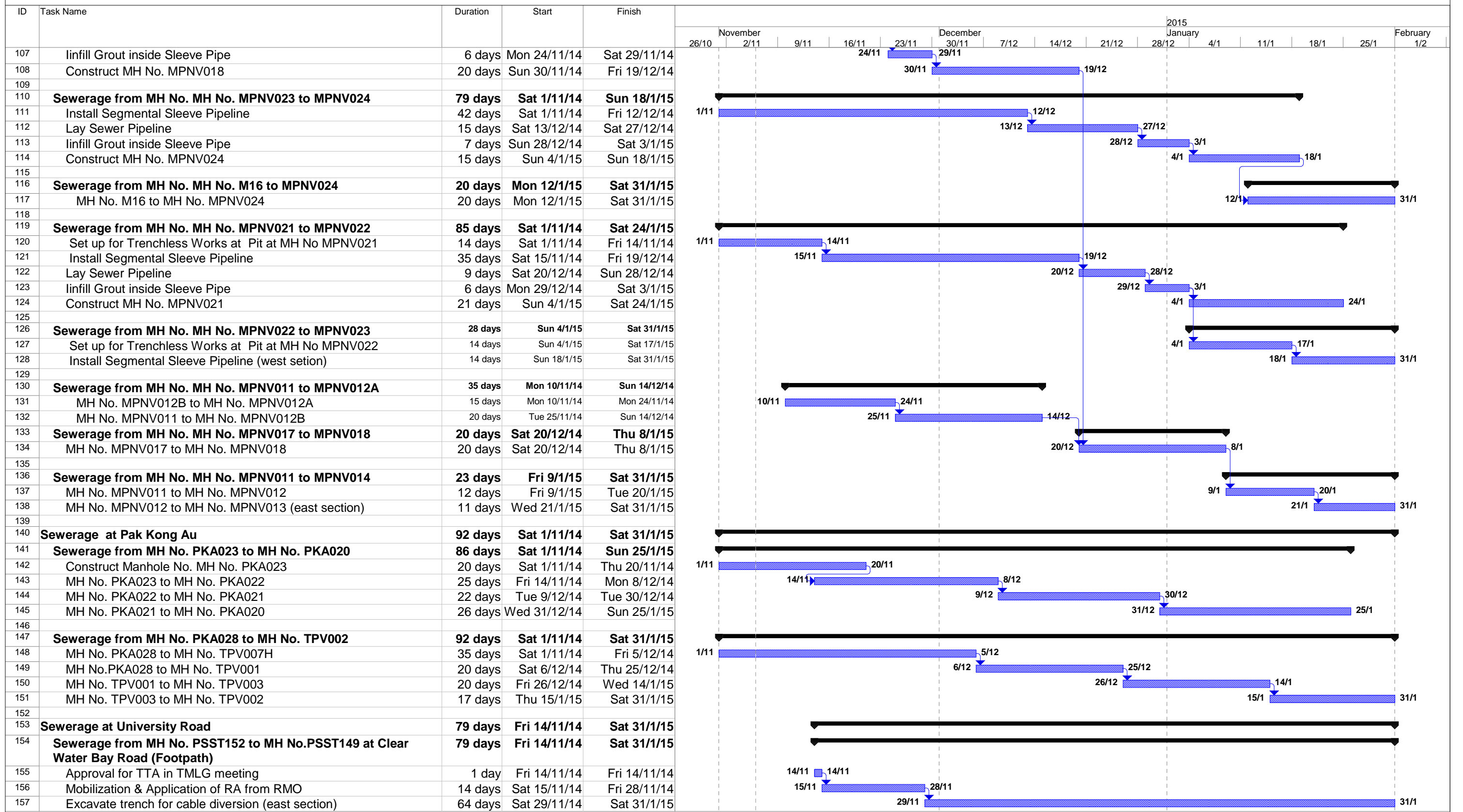
ID	Task Name	Duration	Start	Finish	2015															
					26/10	November 2/11	9/11	16/11	23/11	December 30/11	7/12	14/12	21/12	28/12	January 4/1	11/1	18/1	25/1	February 1/2	
1	<b>Trunk Sewer and Rising Mains along CWBR -Work Front A</b>	<b>92 days</b>	<b>Sat 1/11/14</b>	<b>Sat 31/1/15</b>	[Gantt bar from 1/11 to 31/1]															
2	350 dia Rising Main near Tseng Lan Shue (Ch17.00 to Ch.30.00)	20 days	Sat 1/11/14	Thu 20/11/14	[Gantt bar from 1/11 to 20/11]															
3	MH No. CWBR043 to MH No. CWBR034	72 days	Fri 21/11/14	Sat 31/1/15	[Gantt bar from 21/11 to 31/1]															
4	200 dia Rising Main near Ka Shue Rd (Ch132.00 to Ch 152.63)	25 days	Sat 1/11/14	Tue 25/11/14	[Gantt bar from 1/11 to 25/11]															
5	MH No. CWBR033 to MH No. CWBR034	20 days	Wed 26/11/14	Mon 15/12/14	[Gantt bar from 26/11 to 15/12]															
6	MH No. CWBR034 to MH No. CWBR034A	15 days	Tue 16/12/14	Tue 30/12/14	[Gantt bar from 16/12 to 30/12]															
7	MH No. CWBR034A to MH No. CWBR036	32 days	Wed 31/12/14	Sat 31/1/15	[Gantt bar from 31/12 to 31/1]															
8																				
9	<b>Trunk Sewer along CWBR -Work Front B</b>	<b>92 days</b>	<b>Sat 1/11/14</b>	<b>Sat 31/1/15</b>	[Gantt bar from 1/11 to 31/1]															
10	<b>Sewerage from MH No. CWBR014 to MH No. CWBR010</b>	<b>92 days</b>	<b>Sat 1/11/14</b>	<b>Sat 31/1/15</b>	[Gantt bar from 1/11 to 31/1]															
11	<b>Pipe Jacking from MH No. CWBR012 to MH No. CWBR011</b>	<b>90 days</b>	<b>Mon 3/11/14</b>	<b>Sat 31/1/15</b>	[Gantt bar from 3/11 to 31/1]															
12	Excavate & Set Up for Jacking Pit	21 days	Mon 3/11/14	Sun 23/11/14	[Gantt bar from 3/11 to 23/11]															
13	Jack pipeline (west section)	64 days	Mon 24/11/14	Mon 26/1/15	[Gantt bar from 24/11 to 26/1]															
14	Lay Sewer Pipeline	5 days	Tue 27/1/15	Sat 31/1/15	[Gantt bar from 27/1 to 31/1]															
15	<b>Sewerage from MH No. CWBR014 to MH No. CWBR010</b>	<b>92 days</b>	<b>Sat 1/11/14</b>	<b>Sat 31/1/15</b>	[Gantt bar from 1/11 to 31/1]															
16	MH No. CWBR001 to MH No. CWBR002	45 days	Sat 1/11/14	Mon 15/12/14	[Gantt bar from 1/11 to 15/12]															
17	MH No. CWBR002 to MH No. CWBR005 east section	47 days	Tue 16/12/14	Sat 31/1/15	[Gantt bar from 16/12 to 31/1]															
18	<b>Sewerage from MH No. CWBR010 to MH No. PUA014</b>	<b>48 days</b>	<b>Mon 15/12/14</b>	<b>Sat 31/1/15</b>	[Gantt bar from 15/12 to 31/1]															
19	MH No. CWBR001 to MH No. PUA014 (pipe jacking) west section	48 days	Mon 15/12/14	Sat 31/1/15	[Gantt bar from 15/12 to 31/1]															
20																				
21	<b>Trunk Sewer along CWBR -Work Front C</b>	<b>90 days</b>	<b>Mon 3/11/14</b>	<b>Sat 31/1/15</b>	[Gantt bar from 3/11 to 31/1]															
22	<b>Sewerage from MH No. CWBR083 to MH No. CWBR078</b>	<b>62 days</b>	<b>Mon 1/12/14</b>	<b>Sat 31/1/15</b>	[Gantt bar from 1/12 to 31/1]															
23	MH No. CWBR081 to MH No. CWBR080 (trenchless)	31 days	Mon 1/12/14	Wed 31/12/14	[Gantt bar from 1/12 to 31/12]															
24	MH No. CWBR080 to MH No. CWBR079	31 days	Thu 1/1/15	Sat 31/1/15	[Gantt bar from 1/1 to 31/1]															
25	<b>Sewerage from MH No. CWBR055 to MH No. CWBR058 near Lung Wo Tsuen</b>	<b>90 days</b>	<b>Mon 3/11/14</b>	<b>Sat 31/1/15</b>	[Gantt bar from 3/11 to 31/1]															
26	MH No. CWBR055 to MH No. CWBR057	75 days	Mon 3/11/14	Fri 16/1/15	[Gantt bar from 3/11 to 16/1]															
27	MH No. CWBR057 to MH No. CWBR058 (east section)	15 days	Sat 17/1/15	Sat 31/1/15	[Gantt bar from 17/1 to 31/1]															
28																				
29	<b>Watermains along Clear Water Bay Road from Denon Terrace to Pik Uk (Work Front A)</b>	<b>24 days</b>	<b>Sat 3/1/15</b>	<b>Mon 26/1/15</b>	[Gantt bar from 3/1 to 26/1]															
30	Watermains Crossing at CWBR near Tan Shan Rd, Central Verge	3 days	Sat 3/1/15	Mon 5/1/15	[Gantt bar from 3/1 to 5/1]															
31	Watermains Crossing at CWBR near Tan Shan Rd, C/W (E/B)	20 days	Tue 6/1/15	Sun 25/1/15	[Gantt bar from 6/1 to 25/1]															
32	Watermains Crossing at CWBR near Tan Shan Rd, F/W (WB)	3 days	Sat 24/1/15	Mon 26/1/15	[Gantt bar from 24/1 to 26/1]															
33																				
34	<b>Watermains along Clear Water Bay Road from Pik Uk to Razor Hill Rd (Work Front B)</b>	<b>92 days</b>	<b>Sat 1/11/14</b>	<b>Sat 31/1/15</b>	[Gantt bar from 1/11 to 31/1]															
35	Watermains at CWBR (Ch A3 412 to Ch A3 550.00) F/W(EB)	92 days	Sat 1/11/14	Sat 31/1/15	[Gantt bar from 1/11 to 31/1]															
36																				
37	<b>Watermains along Clear Water Bay Road from Anderson Road to Denon Terrace (Work Front C)</b>	<b>92 days</b>	<b>Sat 1/11/14</b>	<b>Sat 31/1/15</b>	[Gantt bar from 1/11 to 31/1]															
38	Watermains near Esso P Station (Ch A2 150.00 to Ch A2 263.00) F/W(EB)	92 days	Sat 1/11/14	Sat 31/1/15	[Gantt bar from 1/11 to 31/1]															
39																				
40	<b>Watermains along FNSR</b>	<b>30 days</b>	<b>Fri 2/1/15</b>	<b>Sat 31/1/15</b>	[Gantt bar from 2/1 to 31/1]															
41	FNSR (CH000 to CH20)	30 days	Fri 2/1/15	Sat 31/1/15	[Gantt bar from 2/1 to 31/1]															
42																				
43	<b>Village Sewer at Kap Pin Long</b>	<b>92 days</b>	<b>Sat 1/11/14</b>	<b>Sat 31/1/15</b>	[Gantt bar from 1/11 to 31/1]															
44	<b>Sewers at Southern Portion of Village</b>	<b>92 days</b>	<b>Sat 1/11/14</b>	<b>Sat 31/1/15</b>	[Gantt bar from 1/11 to 31/1]															
45	MH No. KPL183 to MH No. KPL180	25 days	Sat 1/11/14	Tue 25/11/14	[Gantt bar from 1/11 to 25/11]															
46	MH No. KPL165b to MH No.KPL165a	35 days	Sat 1/11/14	Fri 5/12/14	[Gantt bar from 1/11 to 5/12]															
47	MH No. KPL165a to MH No.KPL165	25 days	Sat 6/12/14	Tue 30/12/14	[Gantt bar from 6/12 to 30/12]															
48	MH No. KPL165 to MH No.KPL164	32 days	Wed 31/12/14	Sat 31/1/15	[Gantt bar from 31/12 to 31/1]															
49	MH No. KPL213 to MH No.KPL214	15 days	Wed 26/11/14	Wed 10/12/14	[Gantt bar from 26/11 to 10/12]															
50	MH No. KPL214 to MH No.KPL215	12 days	Thu 11/12/14	Mon 22/12/14	[Gantt bar from 11/12 to 22/12]															
51	MH No. KPL215 to MH No.KPL202	26 days	Tue 23/12/14	Sat 17/1/15	[Gantt bar from 23/12 to 17/1]															

Welcome Constuction Co Ltd.  
 Contract No. DC/2012/06  
 Sewerage at Clear Water Bay Road, Pik Shui Sun Tsuen and West of Sai Kung Town  
 3 Month Rolling Programme (1 Nov 2014 to 31 Jan 2015)

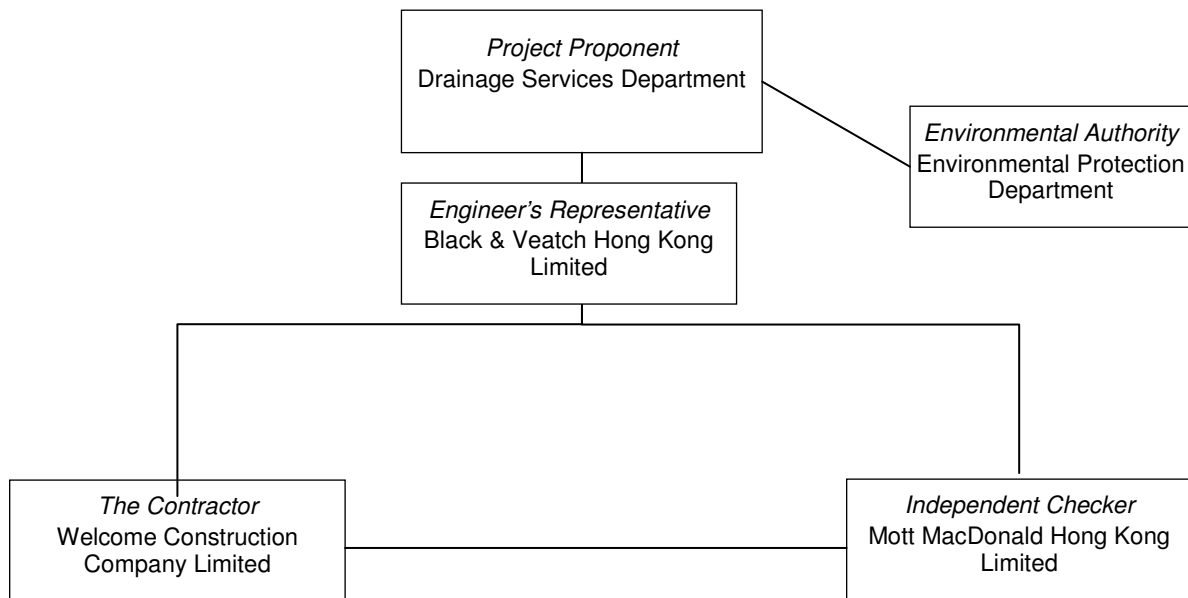
ID	Task Name	Duration	Start	Finish	2015															
					November					December	January			February						
					26/10	2/11	9/11	16/11	23/11	30/11	7/12	14/12	21/12	28/12	4/1	11/1	18/1	25/1	31/1	
52	MH No. KPL202 to MH No.KPL201 (south section)	14 days	Sun 18/1/15	Sat 31/1/15																
53																				
54	<b>Sewers at Northern Portion of Village</b>	<b>92 days</b>	<b>Sat 1/11/14</b>	<b>Sat 31/1/15</b>																
55	MH No. KPL048a to MH No. KPL048 (section across river)	61 days	Sat 1/11/14	Wed 31/12/14	1/11															
56	MH No. KPL006 to MH No. KPL008	36 days	Sat 1/11/14	Sat 6/12/14	1/11						6/12									
57	MH No. KPL008 to MH No. KPL007	26 days	Sun 7/12/14	Thu 1/1/15						7/12										
58	MH No. KPL009 to MH No. KPL008	30 days	Fri 2/1/15	Sat 31/1/15																
59	MH No. KPL003 to MH No. KPL002	31 days	Thu 1/1/15	Sat 31/1/15																
60	MH No. KPL013 to MH No. KPL004	33 days	Mon 10/11/14	Fri 12/12/14																
61	MH No. KPL004 to MH No. KPL003	25 days	Sat 13/12/14	Tue 6/1/15																
62	MH No. KPL003 to MH No. KPL001	25 days	Wed 7/1/15	Sat 31/1/15																
63																				
64	<b>Sewers at Middle Portion of Village</b>	<b>92 days</b>	<b>Sat 1/11/14</b>	<b>Sat 31/1/15</b>																
65	MH No. KPL119 to MH No.KPL118	15 days	Sat 1/11/14	Sat 15/11/14	1/11															
66	MH No. KPL118 to MH No.KPL117	9 days	Sun 16/11/14	Mon 24/11/14																
67	MH No. KPL119 to MH No.KPL116	15 days	Tue 25/11/14	Tue 9/12/14																
68	MH No. KPL116 to MH No.KPL115	14 days	Wed 10/12/14	Tue 23/12/14																
69	MH No. KPL115 to MH No.KPL114	12 days	Wed 24/12/14	Sun 4/1/15																
70	MH No. KPL114 to MH No.KPL113	12 days	Mon 5/1/15	Fri 16/1/15																
71	MH No. KPL113 to MH No.KPL112	15 days	Sat 17/1/15	Sat 31/1/15																
72																				
73	<b>Village Sewer at Pak Kong</b>	<b>92 days</b>	<b>Sat 1/11/14</b>	<b>Sat 31/1/15</b>																
74	<b>Sewer at Pak Kong (Phase 1)</b>	<b>92 days</b>	<b>Sat 1/11/14</b>	<b>Sat 31/1/15</b>																
75	MH No. PK009 to MH No. PK008	68 days	Sat 1/11/14	Wed 7/1/15	1/11															
76	Mh No. PK107 to MH No. PK108	10 days	Sat 1/11/14	Mon 10/11/14	1/11															
77	Mh No. PK008 to MH No. PK006	24 days	Thu 8/1/15	Sat 31/1/15																
78	MH No. PK070 to MH No. PK066	35 days	Tue 11/11/14	Mon 15/12/14																
79	MH No. PK066 to MH No. PK012	47 days	Tue 16/12/14	Sat 31/1/15																
80																				
81	<b>Sewer at Pak Kong (Phase 2)</b>	<b>44 days</b>	<b>Tue 11/11/14</b>	<b>Wed 24/12/14</b>																
82	MH No. PK066 to MH No. PK059	44 days	Tue 11/11/14	Wed 24/12/14																
83																				
84	<b>Sewerage at Fei Ha Road, Fei Wan Road, Lam Ha Road and Fei Ngo Shan Road (Phase 1)</b>	<b>92 days</b>	<b>Sat 1/11/14</b>	<b>Sat 31/1/15</b>																
85	<b>Sewerage at Fei Wan Road</b>	<b>92 days</b>	<b>Sat 1/11/14</b>	<b>Sat 31/1/15</b>																
86	MH No.FHS023 to MH No.FHS023A	7 days	Sat 1/11/14	Fri 7/11/14	1/11															
87	MH No.FHS023A to MH No.FHS022	14 days	Sat 8/11/14	Fri 21/11/14																
88	MH No.FHS020A to MH No.FHS019	30 days	Fri 7/11/14	Sat 6/12/14																
89	MH No.FHS020 to MH No.FHS020A	35 days	Sun 7/12/14	Sat 10/1/15																
90	MH No.FHS059 to MH No.FHS020	21 days	Sun 11/1/15	Sat 31/1/15																
91																				
92	<b>Sewerage between Lam Ha Road and Fei Ngo Shan Road</b>	<b>71 days</b>	<b>Sat 22/11/14</b>	<b>Sat 31/1/15</b>																
93	MH No.FHS006 to MH No.FHS007	20 days	Sat 22/11/14	Thu 11/12/14																
94	MH No.FHS007 to MH No.FHS008	16 days	Fri 12/12/14	Sat 27/12/14																
95	MH No.FHS008 to MH No.FHS009	17 days	Sun 28/12/14	Tue 13/1/15																
96	MH No.FHS009 to MH No.FHS010	18 days	Wed 14/1/15	Sat 31/1/15																
97																				
98	<b>Sewerage at Fei Ngo Shan Road (Phase 2)</b>	<b>52 days</b>	<b>Thu 11/12/14</b>	<b>Sat 31/1/15</b>																
99	MH No.FHS039 to MH No.FHS038	21 days	Thu 11/12/14	Wed 31/12/14																
100	MH No.FHS038 to MH No.FHS037	21 days	Thu 1/1/15	Wed 21/1/15																
101	MH No.FHS037 to MH No.FHS036 (south section)	10 days	Thu 22/1/15	Sat 31/1/15																
102																				
103	<b>Sewerage at Mau Ping New Village</b>	<b>92 days</b>	<b>Sat 1/11/14</b>	<b>Sat 31/1/15</b>																
104	<b>Sewerage from MH No. MH No. MPNV018 to MPNV021</b>	<b>49 days</b>	<b>Sat 1/11/14</b>	<b>Fri 19/12/14</b>																
105	Modify Segmental Sleeve Pipeline	14 days	Sat 1/11/14	Fri 14/11/14	1/11															
106	Lay Sewer Pipeline	9 days	Sat 15/11/14	Sun 23/11/14																



Welcome Constuction Co Ltd.  
 Contract No. DC/2012/06  
 Sewerage at Clear Water Bay Road, Pik Shui Sun Tsuen and West of Sai Kung Town  
 3 Month Rolling Programme (1 Nov 2014 to 31 Jan 2015)



## Appendix B. Project Organization



Company / Department	Position	Name	Telephone / Mobile
Drainage Services Department	Project Proponent	Mr Chow Sui Ping	2594 7453
Black & Veatch Hong Kong Limited	Engineer's Representative	Mr Eugene Chan	6075 8606
Mott MacDonald Hong Kong Ltd.	Independent Checker	Mr Terence Kong	2828 5919
Welcome Construction Company Limited	Project Director	Mr Sunny Ngan	6109 5569
Welcome Construction Company Limited	Site Agent	Mr Frankie Lui	6021 7973
Welcome Construction Company Limited	Environmental Officer	Mr W K Leung	6120 4085

## Appendix C. Environmental Mitigation Measures- Implementation Status

Table C1: Construction Noise – Recommended Mitigation Measures

* PP / ^ EP ref:	Recommended measures	Implementation Status
*5.2.6	• Only well-maintained plant should be operated on-site and plant should be serviced regularly during the construction works.	N/A
	• Machines and plant that may be in intermittent use should be shut down between work periods or should be throttled down to a minimum.	N/A
	• Plant known to emit noise strongly in one direction, should, where possible, be orientated to direct noise away from nearby NSRs.	N/A
	• Silencers or mufflers on construction equipment should be utilised and should be properly maintained during the construction works.	N/A
	• Mobile plant should be sited as far away from NSRs as possible.	N/A
*5.2.2, 5.2.6	• Use of temporary noise barrier, mobile barrier	N/A
*5.2.6	• Material stockpiles and other structures should be effectively utilised, where practicable, to screen noise from on-site construction activities	N/A
*5.2.6	• Noisy construction activities such as road breaking, should be scheduled to less sensitive hours during the day	N/A
*5.2.6	• Liaise with the affected noise sensitive receivers on the anticipated construction activities, possible impacts, expected duration and communication channel with the project office.	N/A
*5.2.1,*Table 6.1	• Adoption of quiet powered mechanical equipment (QPME) during construction	N/A
*5.2.4, ^2.3	• For the sewer works located less than 15 m away from Cheng Chek Chee Secondary School, construction works can only be conducted after school hours or during school breaks. For the sewer works located between 15 m – 30 m away from the School, the contractor should liaise with the school and/or the Examination Authority to ascertain the exact dates and times of all examination periods and to avoid noisy construction activities during these periods.	N/A

Table C2: Air Quality – Recommended Mitigation Measures

* PP / ^ EP ref:	Recommended measures	Implementation Status
*5.2.8, ^1.2	• Comply with the control measures in the Air Pollution Control (Construction dust) Ordinance.	N/A
*5.2.8	• Excavated dusty materials should be covered by impervious sheeting or sprayed with water to keep the entire surface wet.	N/A
*5.2.8	• Use of regular watering, with complete coverage, to reduce dust emissions from exposed site surfaces and unpaved roads, particularly during dry weather.	N/A

Table C3: Water Quality – Recommended Mitigation Measures

* PP / ^ EP ref:	Recommended measures	Implementation Status
*5.2.10, * Table 6.1	• Follow the guidelines in ProPECC PN 1/94 “Construction Site Drainage”.	N/A
	• Silt removal facilities should be provided according to the guidelines stipulated in EPD’s ProPECC PN 1/94.	N/A
	• Cover open stockpiles of construction materials with tarpaulin or similar fabric during rainstorms.	N/A

Table C4: Waste Management – Recommended Mitigation Measures

* PP / ^ EP ref:	Recommended measures	Implementation Status
*5.2.12, *Table 6.1	• Sort all C&D materials and waste into different categories for reuse on site, recycling and disposal at designated public fill reception facilities or landfills.	N/A
	• C&D material and excavated materials should be reused on-site as fill material as far as possible.	N/A
	• Disposal of C&D materials should be managed through the trip ticket system for disposal of C&D materials.	N/A
*5.2.12	• All Chemical waste should be handled, stored and disposed of in accordance with the Waste Disposal (Chemical Waste) (General) Regulation.	N/A

Table C5: Landscape and Visual Impact – Recommended Mitigation Measures

* PP / ^ EP ref:	Recommended measures	Implementation Status
*5.2.14, *Table 6.2	• Retain and protect existing trees near works site.	N/A
	• Erect site hoarding compatible with the surrounding environment for the pumping station works area	N/A
	• Maintain site cleanliness and tidiness in accordance with the requirements stipulated in DEVB TCW No. 8/2010.	N/A
	• Properly manage construction waste in the works area.	N/A
	• Minimize the number and size of temporary works area.	N/A
	• Promptly reinstate each section of the trench upon completion of the sewer works.	N/A
	• Control of night-time security lightning to minimize night-time glare to nearby village.	N/A

Table C6: Others

* PP / ^ EP ref:	Recommended measures	Implementation Status
^1.5	<ul style="list-style-type: none"> <li>A copy of the valid Environmental Permit shall be displayed conspicuously on the Project site(s) at all vehicular site entrances/exits or at a convenient location for public information at all times. The most updated information about the Permit, including any amended Permit, shall be displayed at such locations. If the Permit Holder surrenders a part or whole of the Permit, the notice he send to the Director shall also be displayed at the same locations as the original Permit. The suspended, varied or cancelled Permit shall be removed from display at the Project site(s).</li> </ul>	N/A
n/a	<ul style="list-style-type: none"> <li>The required licenses should be obtained by the Contractor (including CNP (if any), WPCO license, etc.)</li> </ul>	✓

Legend:

- ✓ Implemented
- × Not implemented
- P Partially implemented
- N/A Not applicable
- N/O Not observed

## Appendix D- Waste Flow Table



## Appendix E- Cumulative statistics on complaints, notifications of summons and successful prosecutions

Cumulative statistics for complaints, notifications of summons and successful prosecutions for the Project account for period starting from the date of commencement of construction works (i.e. 26 August 2013) to the end of the reporting month and are summarized in the **Table E1** below.

Table E1: Statistics for complaints, notifications of summons and successful prosecutions

Reporting Period	Cumulative Statistics		
	Complaints	Notifications of summons	Successful prosecutions
This reporting month	0	0	0
From 26 August 2013 to end of the reporting month	0	0	0





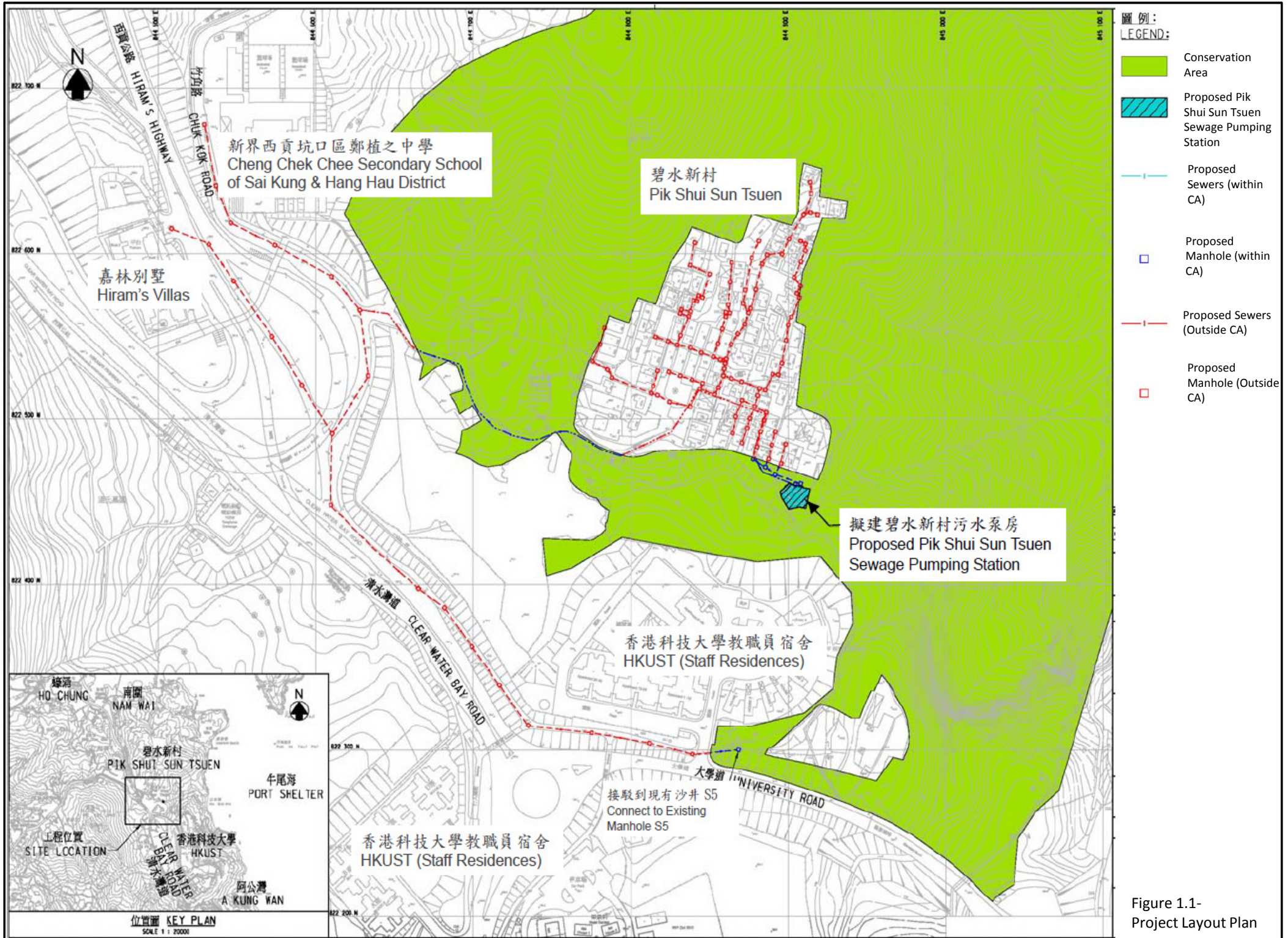


Figure 1.1-  
Project Layout Plan

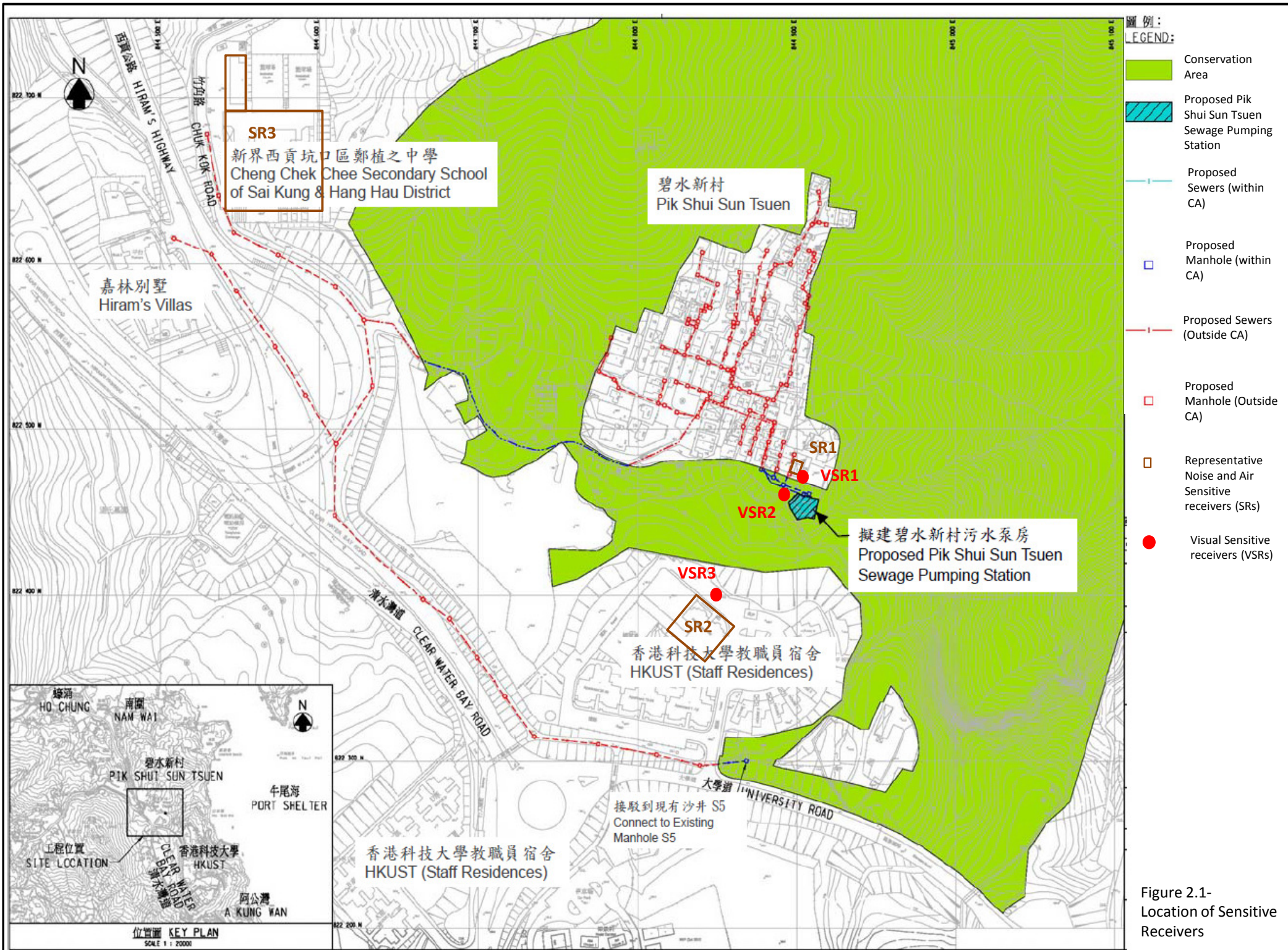


Figure 2.1- Location of Sensitive Receivers