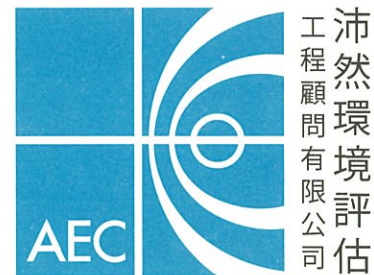


Allied Environmental Consultants Limited
Acousticians & Environmental Engineers

19/F., Kwan Chart Tower, 6 Tonnochy Road, Wan Chai, Hong Kong
Tel.: (852) 2815 7028 Fax: (852) 2815 5399 Email: info@aechk.com



Our Ref: 1330/19-0015

17 June 2019

By Email

**Food and Environmental Hygiene Department
Planning & Development Section**

Room 101,
1/F, New Wan Chai Market
258 Queen's Road East, Wan Chai,
Hong Kong

Attn: Ms. Lorraine Lo

Dear Madam,

**Contract No. SS D505
Environmental Permit No. EP-454/2013
Reprovisioning of FEHD Sai Yee Street Environmental Hygiene Offices-cum-Vehicle
Depot at Yen Ming Road, West Kowloon Reclamation Area
Independent Environmental Checker for Construction Phase
Condition 2.6 – Submission of As-Built Landscape Drawings**

Further to the receipt from Environmental Team (ET) of the captioned Landscape Drawings on 17th June 2019 via email, pursuant to Condition 2.6 of Environmental Permit, I hereby verify that the As-built Landscape Drawings conforms to the recommendations of the Landscape and Visual Mitigation Plan (s) approved under condition 2.4 of Environmental Permit (EP)

Yours faithfully,
For ALLIED ENVIRONMENTAL CONSULTANTS LIMITED

Grace Kwok
Independent Environmental Checker
GK/cwh

c.c.		
FEHD	Ms. May NG, ASO(P)4/ Mr. Vincent TAM, CTSO(Ops)2	Email
ArchSD	Mr. Shing-hin SAT, Saadullah, SPM335 / Mr. WAN Koon Piu, Dick, PM342	Email
PTA	Ms. Clara PANG / Mr. Jim HUNG	Email
TEEM (ET Leader)	Mr. Nelson Tam	Email
CRBC (Main Contractor)	Mr. Vincent CHEUNG, Project Manager / Mr. KK FU, Site Agent	Email





Our Ref. : TEEM/334/19/L/069/JT
Date : 17 June 2019

By Hand

Environmental Protection Department
Environmental Assessment Division
Metro Assessment Group, Kowloon Section (2)
27/F Southorn Centre, 130 Hennessy Road
Wan Chai, Hong Kong

Attn: Mr. Tse Kiu Chung

Dear Sir,

Contract No. SS D505
Environmental Permit No. EP-454/2013
Reprovisioning of FEHD Sai Yee Street Environmental Hygiene Offices-cum-Vehicle Depot at Yen Ming Road, West Kowloon Reclamation Area
Certification of As-Built Landscape Drawings (Supplementary Documents)

Further to the submission of As-Built Drawings on 27th May 2019, pursuant to Condition 2.6 of Environmental Permit, I hereby certify the following:

1. The Landscape Drawings conforms to the recommendations of the Landscape and Visual Mitigation Plan (s) approved under condition 2.4 of Environmental Permit (EP).
2. The planting works of Tree, shrub and ground cover provision along Lin Cheung Road / Yen Chow Street West on G/F, and 6 nos. of planters on 3/F were completed.
3. The as-built landscape condition conforms to the approved Landscape Drawings.

Should you have any questions, please do not hesitate to contact the undersigned at (852) 3610 8777 or our Ir Nelson Tam at (852) 3610 8701. Thank you.

Yours faithfully,

For and on behalf of
Telemax Environmental and Energy Management Limited




Ir Nelson TAM
Environmental Team Leader

EM / NT / ~~KM~~ / ~~JT~~ / ~~WW~~

Encl.



Our Ref. : TEEM/334/19/L/069/JT
Date : 17 June 2019
Page : 2 of 2

c.c. ArchSD – Mr. Sing-hin SAT, Saadullah / Mr. WAN Koon Piu, Dick (by email)
FEHD – Ms. May NG (by email)
PTA – Ms. Clara PANG / Mr. Jim HUNG (by email)
AEC – Ms. Grace KWOK / Mr. HO Tin Kit (by email)
CRBC – Mr. Vincent CHUNG / Mr. FU Kwok Kwan (by email)

To be completed by
15/6/2019

EXISTING FOOTPATH

AIL FOR: 15 nos.

MTR reserve zone

Drainage/ MTR reserve

Cable reserve

• ALL DIMENSIONS ARE IN MILLIMETER EXCEPT OTHERWISE NOTED
• DO NOT SCALE DRAWING
• ALL MEASUREMENTS SHOULD BE VERIFIED ON SITE
THE ONSENER OF THE CONSULTANT FOR THIS DRAWING IS LIMITED BY THE ARCHITECTS AND ENGINEERS LTD WHICH CONSENT MUST BE OBTAINED BEFORE ANY USE OR REPRODUCTION OF THE DRAWING OR ANY PART THEREOF CAN BE MADE.

LEGEND:

- SITE BOUNDARY
- ⊙ COMPENSATORY HEAVY STANDARD TREE
- ⊙ COMPENSATORY HEAVY STANDARD TREE (IN RAISED PLANTER BOX)
- ⊙ EXISTING TREES TO BE RETAINED
T21(R)
- ▨ MTR RESERVE
- ▨ DRAINAGE / MTR RESERVE
- ▨ CABLE RESERVE

AS BUILT LANDSCAPE DRAWING

A CONSTRUCTION DRAWING JUN2016

REVISION

P&T Architects and Engineers Ltd.
Architectural Lead Consultant

P&T Architects and Engineers Ltd.
Structural Consultant

P&T (M&E) Ltd.
Building Services Consultant

Urbis Limited
Landscape Consultant

AECOM Consulting Services Limited
Geotechnical, Traffic, Environmental, SRM & CDM Consultant

contract no. SS D505

file no. ---

project no. 182GK

Title -

REPROVISIONING OF FEHD SAI YEE STREET ENVIRONMENTAL HYGIENE OFFICES - CUM-VEHICLE DEPOT WEST KOWLOON RECLAMATION AREA

drawing title

TREE PLANTING PLAN AT GROUND FLOOR

drawing no. AB/7919/EW401 scale 1:200

CHINA ROAD AND BRIDGE CORPORATION

YEN CHOW STREET WEST 欽州街西
4.5 X
YEN CHOW STREET WEST
4.5 X
YEN MING R
4.6 X



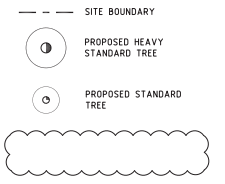
The details of the tree planted along Lin Cheung Road on G/F are shown in Appendix A.

TREE PLANTING SCHEDULE

ABB.	SCIENTIFIC NAME	CHINESE NAME	SPACING (M)	DBH (MM)	HEIGHT (M)	SPREAD (M)	TYPE	REMARKS	QTY
TREES									
AIL FOR.	Ailanthus fordii	福氏臭椿	4	100	3	2	Heavy St.	Ball and Burlap	15
GAR SPI.	Garcinia spicata	福木	4	100	3	2	Heavy St.	Ball and Burlap	10
TER MAN.	Terminalia mantaly	小葉欖仁	4	100	4	3	Heavy St.	Ball and Burlap	2

• ALL DIMENSIONS ARE IN MILLIMETER EXCEPT OTHERWISE NOTED
 • DO NOT SCALE DRAWING
 • ALL MEASUREMENTS SHOULD BE VERIFIED ON SITE
 THE ONSENER OF THE CONTRACTOR IS THE DRAWING IS ISSUED BY P&T ARCHITECTS AND ENGINEERS LTD. BEFORE CONSTRUCTION MUST BE OBTAINED BEFORE ANY USE OR REPRODUCTION OF THE DRAWING OR ANY PART THEREOF CAN BE MADE.

LEGEND:



AS BUILT LANDSCAPE DRAWING

A	CONSTRUCTION DRAWING	JUN2016
REVISION		
	P&T Architects and Engineers Ltd. Architectural Lead Consultant	
	P&T Architects and Engineers Ltd. Structural Consultant	
	P&T (M&E) Ltd. Building Services Consultant	
	Urbis Limited Landscape Consultant	
	AECOM Consulting Services Limited Geotechnical, Traffic, Environmental, SRM & CDM Consultant	

contract no. SS D505

file no. ---

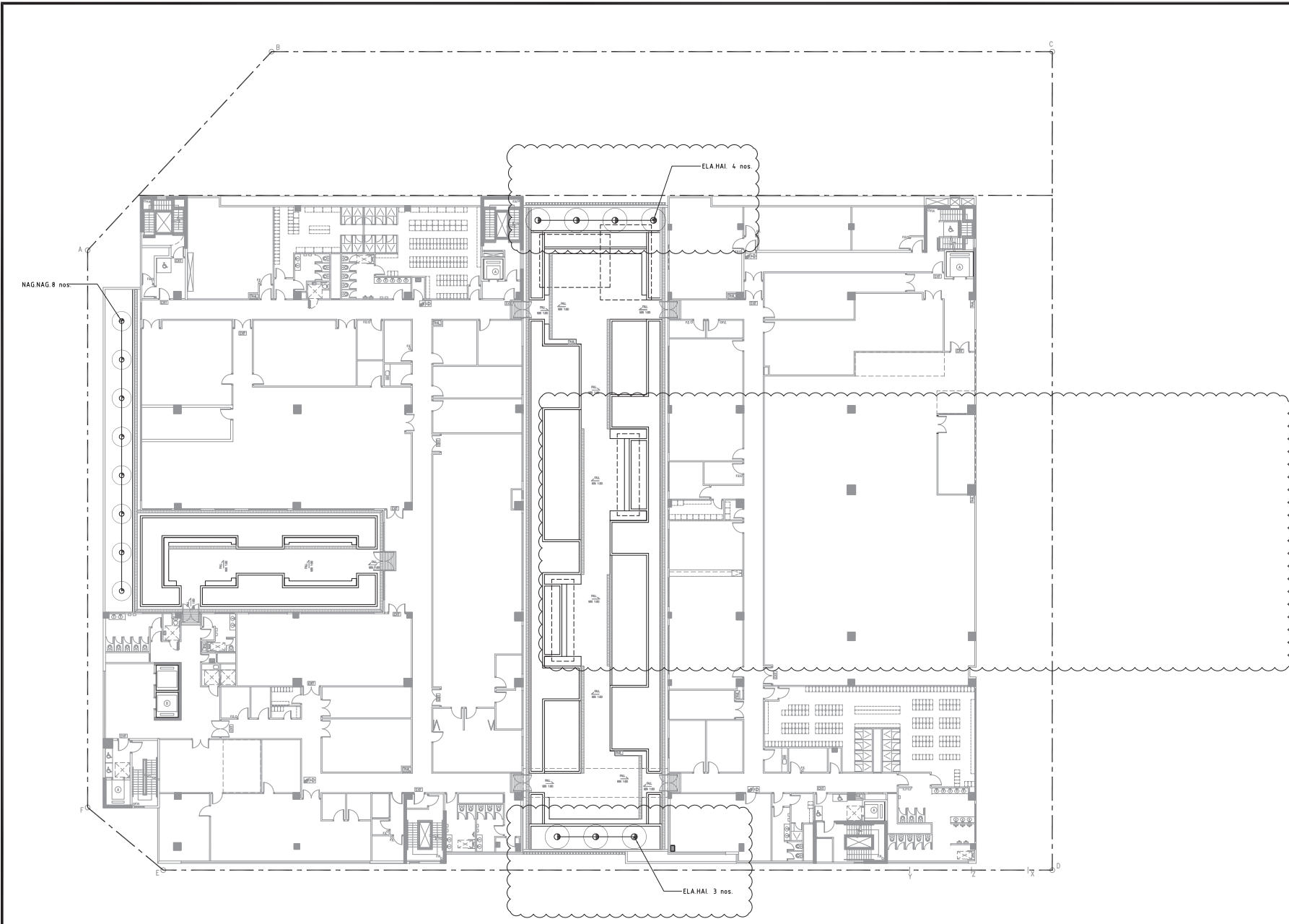
project no. 182GK

Title :
 REPROVISIONING OF FEHD SAI YEE STREET ENVIRONMENTAL HYGIENE OFFICES - CUM-VEHICLE DEPOT WEST KOWLOON RECLAMATION AREA

drawing title
 TREE PLANTING PLAN AT THIRD FLOOR

drawing no. AB/7919/EW402 scale 1:200

CHINA ROAD AND BRIDGE CORPORATION




TREE PLANTING SCHEDULE

ABB	SCIENTIFIC NAME	CHINESE NAME	SPACING (M)	DBH (MM)	HEIGHT (M)	SPREAD (M)	TYPE	REMARKS	QTY
TREES									
NAG NAG	Nageia nagi	竹柏	4	75	3	2	Standard	Ball and Burlap	8
ELA HAI	Elaeocarpus hainanensis	水石榕	4	75	4	2.5	Heavy St.	Ball and Burlap	7

P:\182GK\182GK-VEHICLE DEPOT\182GK-VEHICLE DEPOT-ENVIRONMENTAL HYGIENE OFFICES\182GK-VEHICLE DEPOT-ENVIRONMENTAL HYGIENE OFFICES-TREE PLANTING PLAN AT THIRD FLOOR.dwg


• ALL DIMENSIONS ARE IN MILLIMETER EXCEPT OTHERWISE NOTED
 • DO NOT SCALE DRAWING
 • ALL MEASUREMENTS SHOULD BE VERIFIED ON SITE
 THE OWNERSHIP OF THE CONTENT IN THIS DRAWING IS RESERVED BY P&T ARCHITECTS AND ENGINEERS LTD. WHICH CONSENT MUST BE OBTAINED BEFORE ANY USE OR REPRODUCTION OF THE DRAWING OR ANY PART THEREOF CAN BE MADE.

LEGEND:

- SITE BOUNDARY
-  COMPENSATORY HEAVY STANDARD TREE

AS BUILT LANDSCAPE DRAWING

REVISION

	P&T Architects and Engineers Ltd. Architectural Lead Consultant
	P&T Architects and Engineers Ltd. Structural Consultant
	P&T (M&E) Ltd. Building Services Consultant
	Urbis Limited Landscape Consultant
	AECOM Consulting Services Limited Geotechnical, Traffic, Environmental, SRM & CDM Consultant

contract no. SS D505

file no. ---

project no. 182GK

Title -
 REPROVISIONING OF FEHD SAI YEE STREET ENVIRONMENTAL HYGIENE OFFICES - CUM-VEHICLE DEPOT WEST KOWLOON RECLAMATION AREA

drawing title
 SHRUB AND GROUND COVER PLANTING PLAN AT SECOND FLOOR

drawing no. AB/7919/EW405 scale 1:200

CHINA ROAD AND BRIDGE CORPORATION

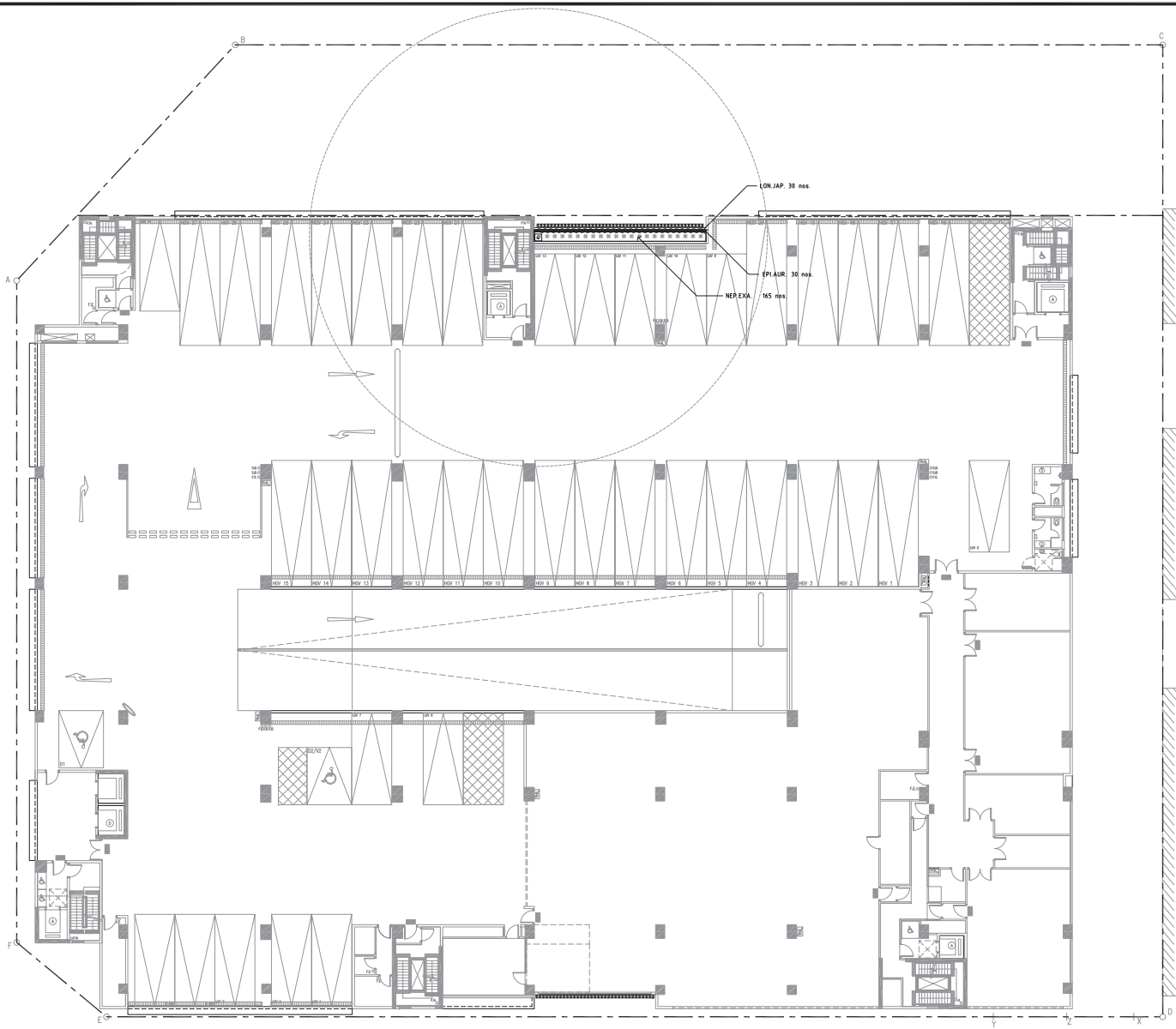


ABB	SCIENTIFIC NAME	CHINESE NAME	SPACING (MM)	SIZE (MM)	REMARKS	QTY	AREA (m ²)
CLIMBER							
EPLAUR	Epipremnum aureum	綠蘿	As shown	2000x100		30	
LON JAP	Lonicera japonica	忍冬	As shown	2000x100		30	
SHRUB							
NEP EXA	Nephrolepis exaltata	腎蕨	300	300x300		165	12.75

Appendix A - Trees planted along Lin Cheung Road on G/F





4

5

6

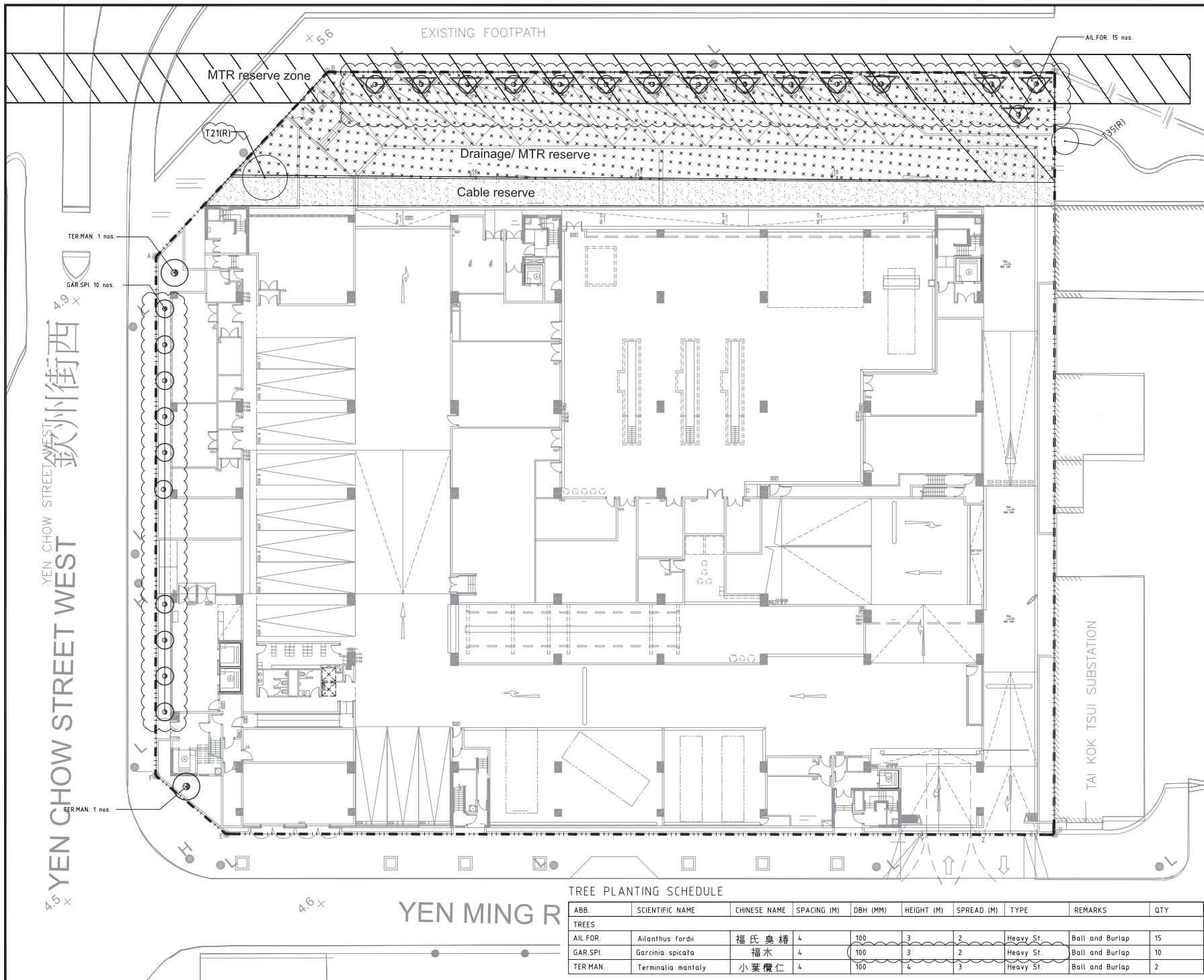
7

8

9

10





• ALL DIMENSIONS ARE IN MILLIMETER EXCEPT OTHERWISE NOTED
 • DO NOT SCALE DRAWING
 • ALL MEASUREMENTS SHOULD BE VERIFIED ON SITE
 THE ONSENER OF THE CONCEPT OF THIS DRAWING IS REMOVED BY P&T ARCHITECTS AND ENGINEERS LTD. BEFORE CONSENT MUST BE OBTAINED BEFORE ANY USE OR REPRODUCTION OF THE DRAWING OR ANY PART THEREOF CAN BE MADE.

- LEGEND:
- SITE BOUNDARY
 - ⊙ COMPENSATORY HEAVY STANDARD TREE
 - ⊙ COMPENSATORY HEAVY STANDARD TREE (IN RAISED PLANTER BOX)
 - ⊙ EXISTING TREES TO BE RETAINED (T21(R))
 - ▨ MTR RESERVE
 - ▨ DRAINAGE / MTR RESERVE
 - ▨ CABLE RESERVE

AS BUILT LANDSCAPE DRAWING

A CONSTRUCTION DRAWING JUN2016

- REVISION
- P&T Architects and Engineers Ltd.
Architectural Lead Consultant
 - P&T Architects and Engineers Ltd.
Structural Consultant
 - P&T (M&E) Ltd.
Building Services Consultant
 - Urbis Limited
Landscape Consultant
 - AECOM Consulting Services Limited
Geotechnical, Traffic, Environmental, SRM & CDM Consultant

contract no. SS D505

file no. ---

project no. 182GK

Title :
 REPROVISIONING OF FEHD SAI YEE STREET ENVIRONMENTAL HYGIENE OFFICES - CUM-VEHICLE DEPOT WEST KOWLOON RECLAMATION AREA

drawing title
 TREE PLANTING PLAN AT GROUND FLOOR

drawing no. AB/7919/EW401 scale 1:200

TREE PLANTING SCHEDULE

ABB.	SCIENTIFIC NAME	CHINESE NAME	SPACING (M)	DBH (MM)	HEIGHT (M)	SPREAD (M)	TYPE	REMARKS	QTY
TREES									
AIL.FOR.	Ailanthus fordii	福氏臭椿	4	100	3	2	Heavy St.	Ball and Burlap	15
GAR.SPI.	Garcinia spicata	福木	4	100	3	2	Heavy St.	Ball and Burlap	10
TER.MAN.	Terminalia mantaly	小葉欖仁	4	100	4	3	Heavy St.	Ball and Burlap	2

YEN CHOW STREET WEST 欽州街西

YEN MING R

CHINA ROAD AND BRIDGE CORPORATION

• ALL DIMENSIONS ARE IN MILLIMETER EXCEPT OTHERWISE NOTED
 • DO NOT SCALE DRAWING
 • ALL MEASUREMENTS SHOULD BE VERIFIED ON SITE
 THE OWNERSHIP OF THE CONTENT IN THIS DRAWING IS RESERVED BY THE ARCHITECTS AND ENGINEERS LTD. WHICH CONSENT MUST BE OBTAINED BEFORE ANY USE OR REPRODUCTION OF THE DRAWING OR ANY PART THEREOF CAN BE MADE.



AS BUILT LANDSCAPE DRAWING

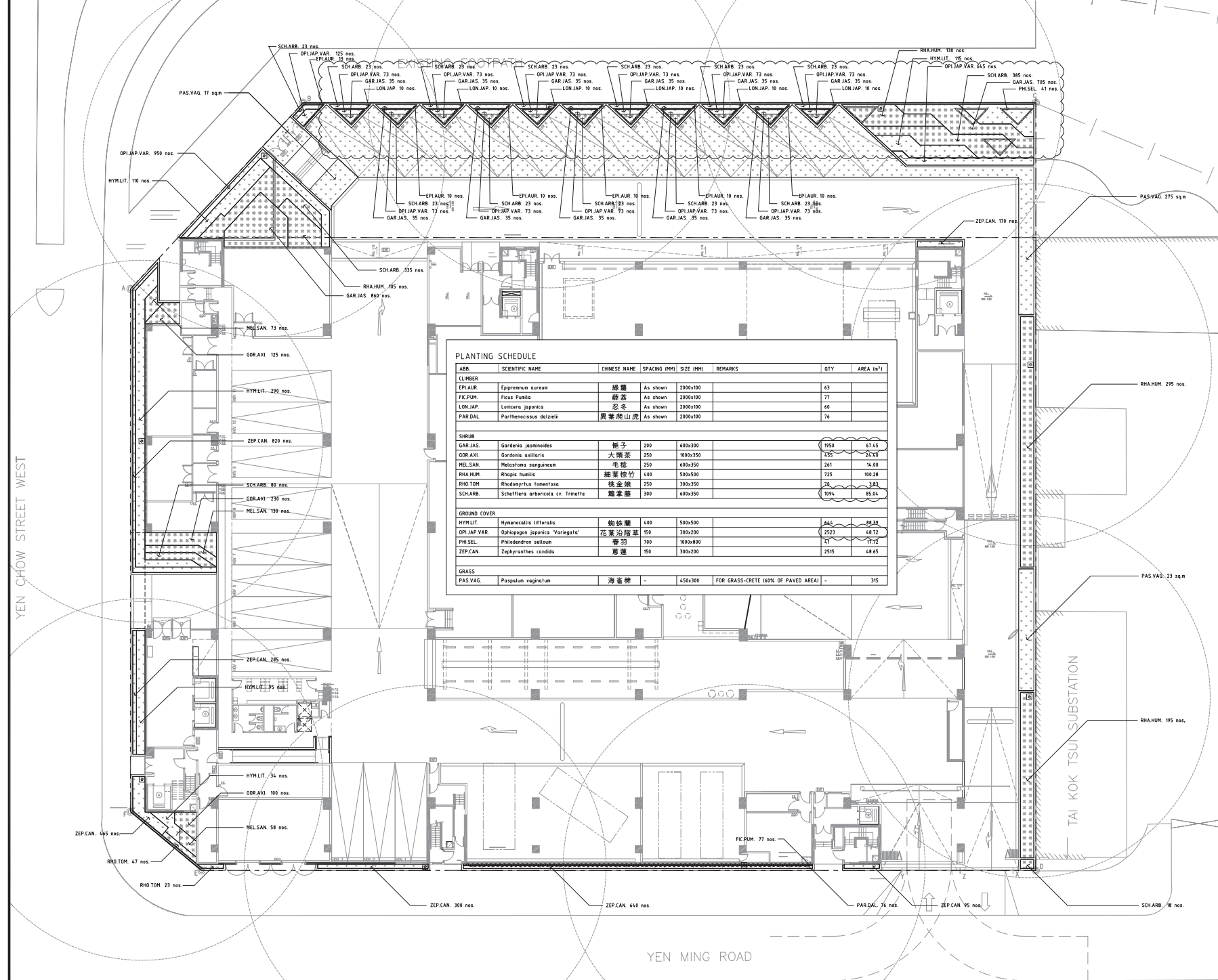
PLANTING SCHEDULE

ABB.	SCIENTIFIC NAME	CHINESE NAME	SPACING (MM)	SIZE (MM)	REMARKS	QTY	AREA (m ²)
CLIMBER							
EPI.AUR.	<i>Epipremnum aureum</i>	綠蘿	As shown	2000x100		63	
FIC.PUM.	<i>Ficus Pumila</i>	藤荔	As shown	2000x100		77	
LON.JAP.	<i>Lonicera japonica</i>	忍冬	As shown	2000x100		60	
PAR.DAL.	<i>Parthenocissus dalzielii</i>	異葉爬山虎	As shown	2000x100		76	
SHRUB							
GAR.JAS.	<i>Gardenia jasminoides</i>	梔子	200	600x300		1950	37.65
GOR.AXI.	<i>Gordonia axillaris</i>	大頭茶	250	1000x350		155	32.68
MEL.SAN.	<i>Melastoma sanguineum</i>	毛稔	250	600x350		261	14.00
RHA.HUM.	<i>Rhapis humilis</i>	細葉棕竹	400	500x500		725	100.28
RHO.TOM.	<i>Rhodomyrtus tomentosa</i>	桃金娘	250	300x350		78	3.83
SCH.ARB.	<i>Schefflera arboricola</i> cv. Trinitate	鶴掌蕨	300	600x350		1094	85.04
GROUND COVER							
HYMLIT.	<i>Hymenocallis littoralis</i>	繖形草	400	500x500		414	82.28
OPI.JAP.VAR.	<i>Ophiopogon japonicus</i> "Variegata"	花葉沿階草	150	300x200		2523	48.72
PHI.SEL.	<i>Phileodendron sellowii</i>	毒箭	700	1000x800		11	17.72
ZEP.CAN.	<i>Zephyranthes candida</i>	蔥蓮	150	300x200		2515	48.65
GRASS							
PAS.VAG.	<i>Paspalum vaginatum</i>	海雀舞	-	450x300	FOR GRASS-CRETE (60% OF PAVED AREA)	-	315

A	CONSTRUCTION DRAWING	JUN2016
REVISION		
P&T Architects and Engineers Ltd. Architectural Lead Consultant		
P&T Architects and Engineers Ltd. Structural Consultant		
P&T (M&E) Ltd. Building Services Consultant		
Urbis Limited Landscape Consultant		
AECOM Consulting Services Limited Geotechnical, Traffic, Environmental, SRM & CDM Consultant		

contract no.	SS D505
file no.	---
project no.	182GK
Title	REPROVISIONING OF FEHD SAI YEE STREET ENVIRONMENTAL HYGIENE OFFICES - CUM-VEHICLE DEPOT WEST KOWLOON RECLAMATION AREA
drawing title	SHRUB AND GROUNDCOVER PLANTING PLAN AT GROUND FLOOR
drawing no.	AB/7919/EW403
scale	1:200

CHINA ROAD AND BRIDGE CORPORATION



YEN CHOW STREET WEST

YEN MING ROAD

TAI KOK TSUI SUBSTATION

P:\2016\182GK\182GK-01\182GK-01-01\182GK-01-01-01\182GK-01-01-01-01.dwg, 18/06/2016, 10:00:00 AM, 182GK-01-01-01-01.dwg, 18/06/2016, 10:00:00 AM, 182GK-01-01-01-01.dwg

• ALL DIMENSIONS ARE IN MILLIMETER EXCEPT OTHERWISE NOTED
 • DO NOT SCALE DRAWING
 • ALL MEASUREMENTS SHOULD BE VERIFIED ON SITE
 THE OWNERSHIP OF THE CONTENT IN THIS DRAWING IS RESERVED BY P&T ARCHITECTS AND ENGINEERS LTD. WHICH CONSENT MUST BE OBTAINED BEFORE ANY USE OR REPRODUCTION OF THE DRAWING OR ANY PART THEREOF CAN BE MADE.

LEGEND:



AS BUILT LANDSCAPE DRAWING

REVISION

	P&T Architects and Engineers Ltd. Architectural Lead Consultant
	P&T Architects and Engineers Ltd. Structural Consultant
	P&T (M&E) Ltd. Building Services Consultant
	Urbis Limited Landscape Consultant
	AECOM Consulting Services Limited Geotechnical, Traffic, Environmental, SRM & CDM Consultant

contract no. SS D505

file no. ---

project no. 182GK

Title -
 REPROVISIONING OF FEHD SAI YEE STREET ENVIRONMENTAL HYGIENE OFFICES -CUM-VEHICLE DEPOT WEST KOWLOON RECLAMATION AREA

drawing title
 SHRUB AND GROUNDCOVER PLANTING PLAN AT FIRST FLOOR

drawing no. AB/7919/EW404 scale 1:200

CHINA ROAD AND BRIDGE CORPORATION

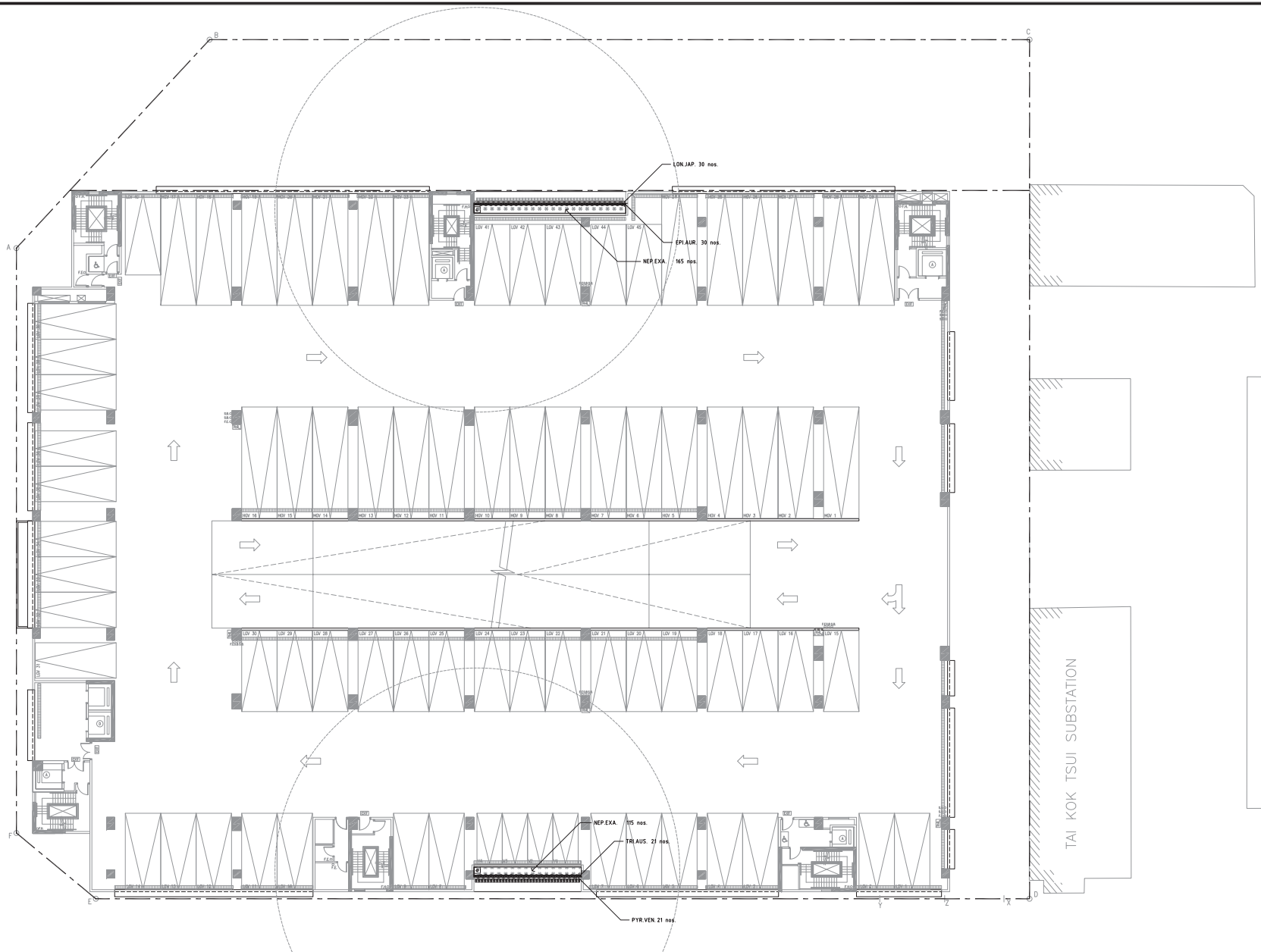



ABB.	SCIENTIFIC NAME	CHINESE NAME	SPACING (MM)	SIZE (DHP)	REMARKS	QTY	AREA (sq.m)
CLIMBER							
EPI.AUR	Eggenetia suriana	綠藤	As shown	200x100		30	
LON.JAP	Lonicera japonica	忍冬	As shown	200x100		30	
PYR.VEN	Pyrostegia venusta	簕欖花	As shown	200x100		21	
TRI.AUS	Trehalasia australasica	三星果	As shown	200x100		21	
SHRUB							
NEP.EXA	Neptrolepis exaltata	腎蕨	300	300x300		280	21.76


• ALL DIMENSIONS ARE IN MILLIMETER EXCEPT OTHERWISE NOTED
 • DO NOT SCALE DRAWING
 • ALL MEASUREMENTS SHOULD BE VERIFIED ON SITE
 THE OWNERSHIP OF THE CONTENT IN THIS DRAWING IS RESERVED BY P&T ARCHITECTS AND ENGINEERS LTD. WRITTEN CONSENT MUST BE OBTAINED BEFORE ANY USE OR REPRODUCTION OF THE DRAWING OR ANY PART THEREOF CAN BE MADE.

LEGEND:

- SITE BOUNDARY
-  COMPENSATORY HEAVY STANDARD TREE

AS BUILT LANDSCAPE DRAWING

REVISION

	P&T Architects and Engineers Ltd. Architectural Lead Consultant
	P&T Architects and Engineers Ltd. Structural Consultant
	P&T (M&E) Ltd. Building Services Consultant
	Urbis Limited Landscape Consultant
	AECOM Consulting Services Limited Geotechnical, Traffic, Environmental, SRM & CDM Consultant

contract no. SS D505

file no. ---

project no. 182GK

Title -
 REPROVISIONING OF FEHD SAI YEE STREET ENVIRONMENTAL HYGIENE OFFICES - CUM-VEHICLE DEPOT WEST KOWLOON RECLAMATION AREA

drawing title
 SHRUB AND GROUNDCOVER PLANTING PLAN AT SECOND FLOOR

drawing no. AB/7919/EW405 scale 1:200

CHINA ROAD AND BRIDGE CORPORATION

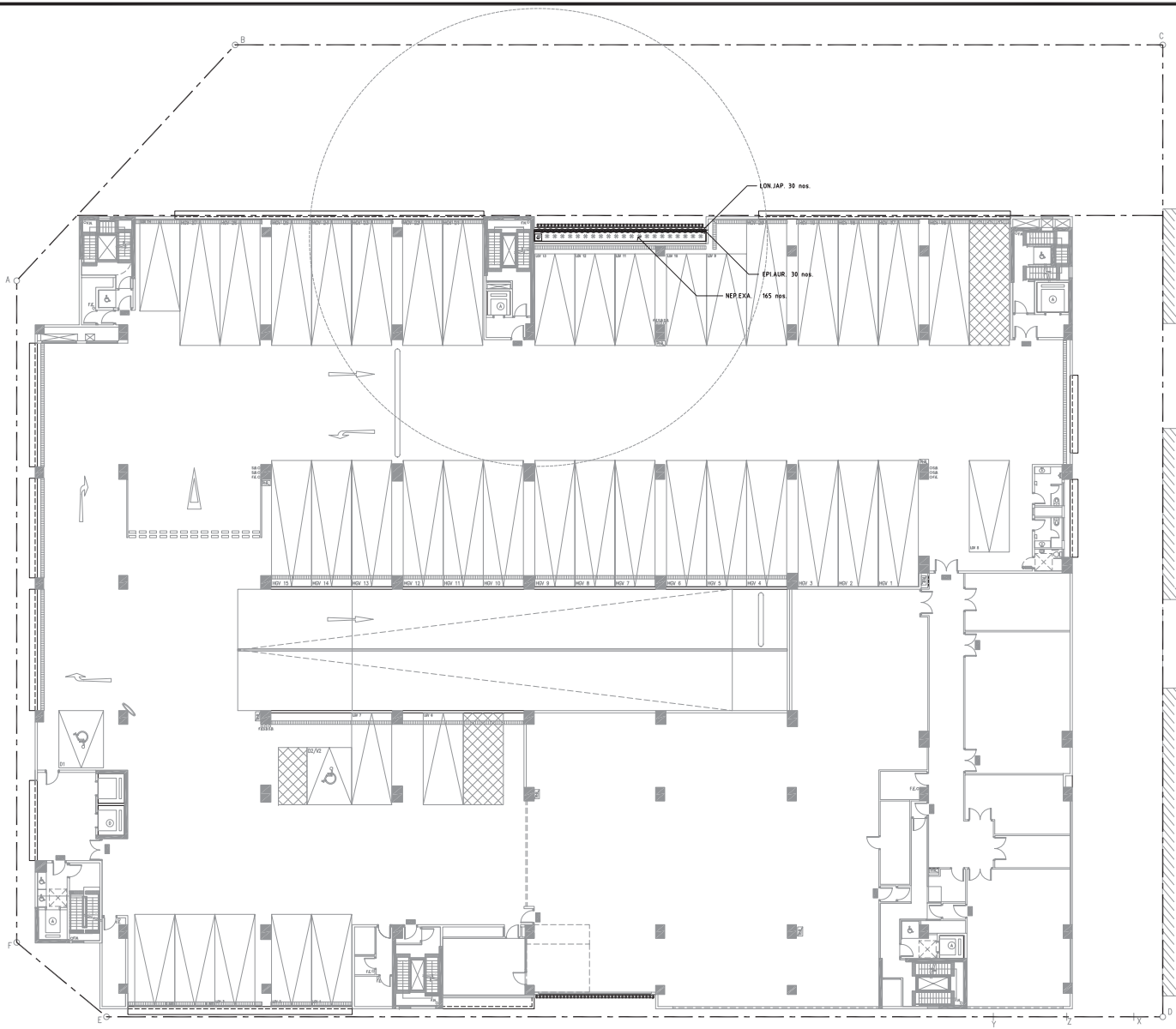
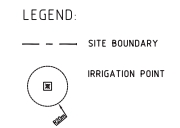


ABB	SCIENTIFIC NAME	CHINESE NAME	SPACING (MM)	SIZE (MM)	REMARKS	QTY	AREA (m ²)
CLIMBER							
EPLAUR	<i>Epipremnum aureum</i>	綠蘿	As shown	2000x100		30	
LON JAP	<i>Lonicera japonica</i>	忍冬	As shown	2000x100		30	
SHRUB							
NEP EXA	<i>Nephrolepis exaltata</i>	腎蕨	300	300x300		165	12.75

* ALL DIMENSIONS ARE IN MILLIMETER EXCEPT OTHERWISE NOTED
 * DO NOT SCALE DRAWING
 * ALL MEASUREMENTS SHOULD BE VERIFIED ON SITE
 THE OWNERSHIP OF THE CONTENT IN THIS DRAWING IS RESERVED BY P&T ARCHITECTS AND ENGINEERS LTD. WHICH CONTENT MUST BE OBTAINED BEFORE ANY USE OR REPRODUCTION OF THE DRAWING OR ANY PART THEREOF CAN BE MADE.



AS BUILT LANDSCAPE DRAWING

PLANTING SCHEDULE

ABB.	SCIENTIFIC NAME	CHINESE NAME	SPACING (MM)	SIZE (MM)	REMARKS	QTY	AREA (m ²)
CLIMBER							
EPIAUR.	<i>Epipremnum aureum</i>	綠蘿	As shown	2000x100		15	
LONJAP.	<i>Lonicera japonica</i>	忍冬	As shown	2000x100		15	
SHRUB							
CODVAR.	<i>Codiaeum variegatum</i>	變葉木	300	300x350		2210	171.53
DURREP.	<i>Duranta repens</i>	假連翹	250	300x350		3745	201.80
LANCAM.	<i>Lantana Camara</i>	馬鞭丹	400	500x500		947	130.36
PHYMYR.	<i>Phyllanthus myrtilifolius</i>	瘤眼蕆下珠	400	500x500		120	16.75
RHAPHUM.	<i>Spargangium angustifolium</i>	細葉榕	400	500x500		26	3.44
MICFIG.	<i>Michelia figo</i>	含笑	1m DIA		BALL SHAPE, IN PLANTER POT	6	
GROUND COVER							
ALT.DEN.	<i>Alternanthera Dentata 'Ruby'</i>	紅龍尾	300	250x300		1155	39.32
ASP.DEN.	<i>Asparagus densiflorus cv. Sprenger</i>	天冬	150	200x200		830	16.10
CAT.ROS.	<i>Catharanthus roseus</i>	長春花	150	250x200		585	11.36
HYMLIT.	<i>Hymenocallis littoralis</i>	勒絲團	400	500x500		115	15.90
TRA.SPA.	<i>Tradescantia spathacea</i>	紫萼草青	200	300x300		2745	94.72

A CONSTRUCTION DRAWING JUN2016

REVISION

P&T Architects and Engineers Ltd.
 Architectural Lead Consultant
 P&T Architects and Engineers Ltd.
 Structural Consultant
 P&T (M&E) Ltd.
 Building Services Consultant

Urbis Limited
 Landscape Consultant
 AECOM Consulting Services Limited
 Geotechnical, Traffic, Environmental, SRM & CDM Consultant

contract no. SS D505

file no. ---

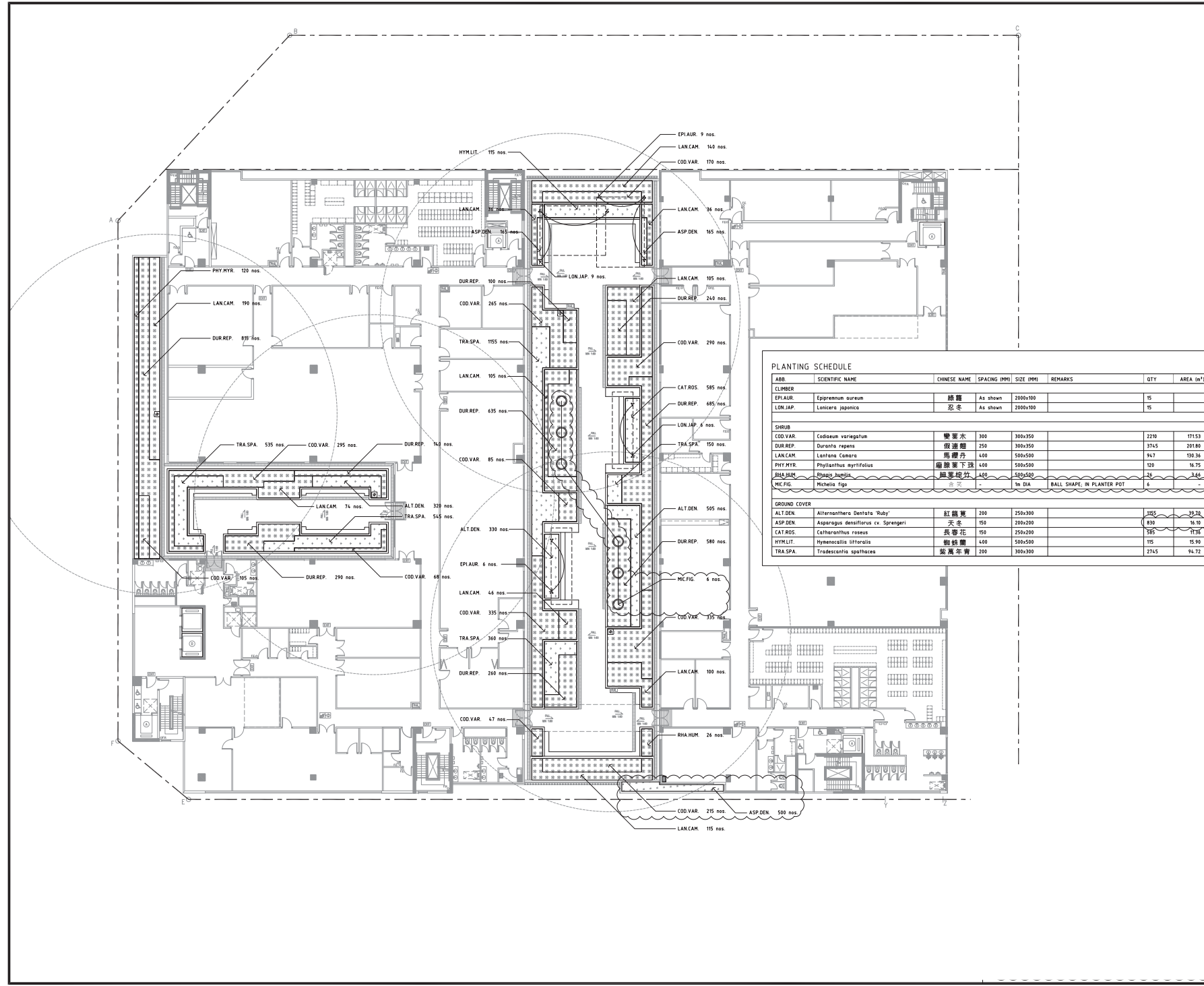
project no. 182GK

Title -
 REPROVISIONING OF FEHD SAI YEE STREET
 ENVIRONMENTAL HYGIENE OFFICES
 -CUM-VEHICLE DEPOT
 WEST KOWLOON RECLAMATION AREA

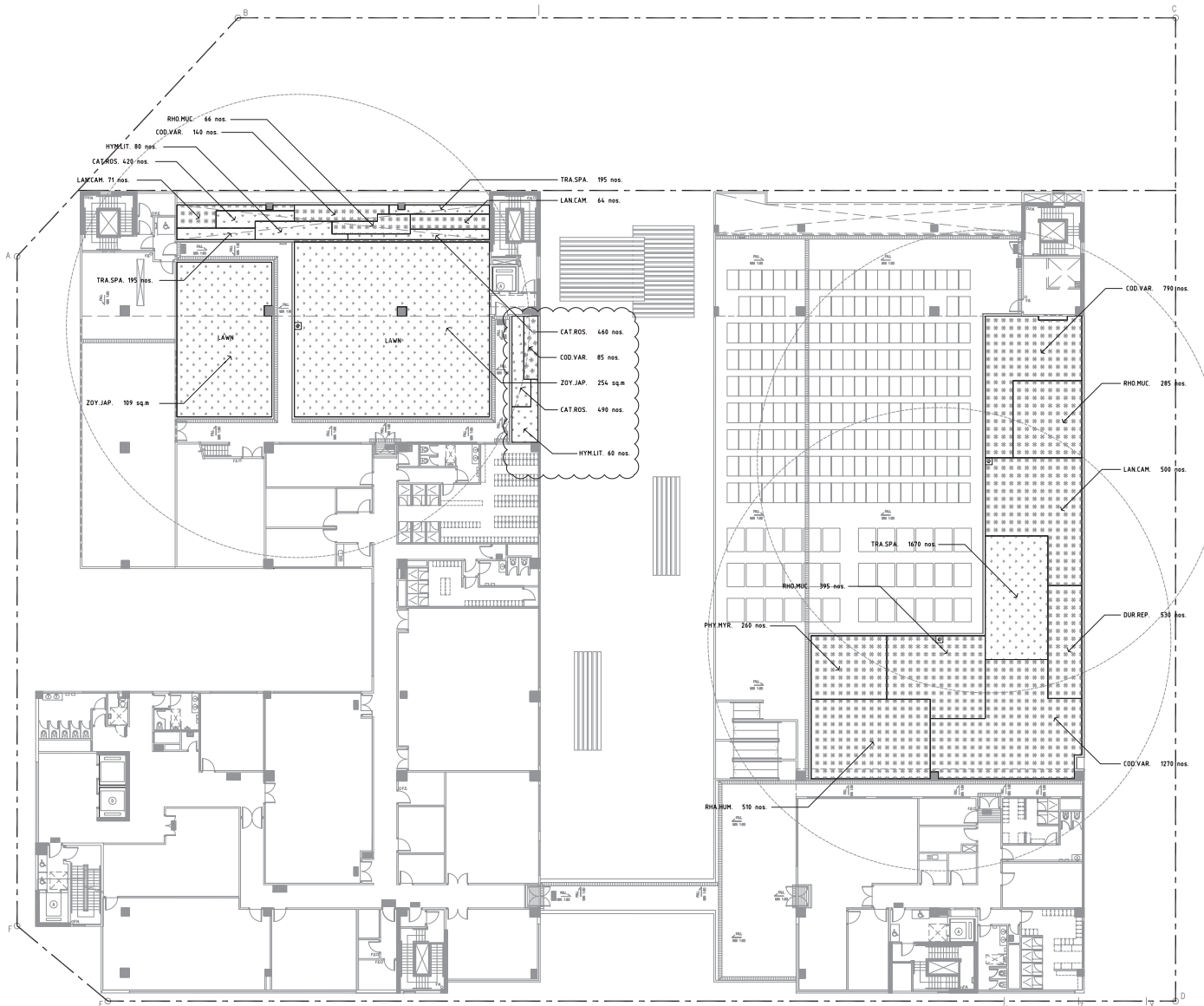
drawing title
 SHRUB AND GROUND COVER PLANTING PLAN
 AT THIRD FLOOR

drawing no. AB/7919/EW406 scale 1:200

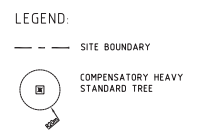
CHINA ROAD AND BRIDGE CORPORATION



P:\2016\182GK\182GK-01\182GK-01-01\182GK-01-01-01\182GK-01-01-01-01.dwg, 11/20/2016 10:00:00 AM, P&T Architects and Engineers Ltd.



• ALL DIMENSIONS ARE IN MILLIMETER EXCEPT OTHERWISE NOTED
 • DO NOT SCALE DRAWING
 • ALL MEASUREMENTS SHOULD BE VERIFIED ON SITE
 THE OWNERSHIP OF THE CONTENT IN THIS DRAWING IS RESERVED BY P&T ARCHITECTS AND ENGINEERS LTD. WHICH CONTENT MUST BE OBTAINED BEFORE ANY USE OR REPRODUCTION OF THE DRAWING OR ANY PART THEREOF CAN BE MADE.



AS BUILT LANDSCAPE DRAWING

A	CONSTRUCTION DRAWING	JUN2016
REVISION		
P&T Architects and Engineers Ltd. Architectural Lead Consultant		
P&T Architects and Engineers Ltd. Structural Consultant		
P&T (M&E) Ltd. Building Services Consultant		
Urbis Limited Landscape Consultant		
AECOM Consulting Services Limited Geotechnical, Traffic, Environmental, SRM & CDM Consultant		

contract no. SS D505
 file no. ---
 project no. 182GK
 Title -
 REPROVISIONING OF FEHD SAI YEE STREET ENVIRONMENTAL HYGIENE OFFICES -CUM-VEHICLE DEPOT WEST KOWLOON RECLAMATION AREA

drawing title
 SHRUB AND GROUND COVER PLANTING PLAN AT FOURTH FLOOR

drawing no. AB/7919/EW407 scale 1:200

CHINA ROAD AND BRIDGE CORPORATION

PLANTING SCHEDULE

ABB.	SCIENTIFIC NAME	CHINESE NAME	SPACING (MM)	SIZE (MM)	REMARKS	QTY	AREA (m ²)
SHRUB							
COD.VAR	<i>Codiaeum variegatum</i>	變葉木	300	300x350		2285	178.31
DUR.REP	<i>Duranta repens</i>	假連翹	250	300x350		530	28.65
LANCAM	<i>Lantana Camara</i>	馬纓丹	400	500x500		435	87.72
PHY.MYR	<i>Phyllanthus myrsinifolius</i>	瘤腺葉下珠	400	500x500		240	35.87
RHA.HUM	<i>Rhapis humilis</i>	細葉棕竹	400	500x500		510	70.65
RHO.MUC	<i>Rhododendron mucronatum</i>	白杜鵑	400	500x500		746	103.38
GROUND COVER							
CAT.ROS	<i>Catharanthus roseus</i>	長春花	350	250x200		1310	26.53
HYMLIT	<i>Hymenocallis littoralis</i>	龍葵屬	400	500x500		140	19.60
TRA.SPA	<i>Tradescantia spathacea</i>	紫萼半青	200	300x300		2000	71.17
GRASS							
ZDY.JAP	<i>Zoysia japonica</i>	朝鮮草	-	450x300		-	363