

Intended for

Architectural Services Department

Document type

Report

Date

August 2018

**CONVERSION OF THE FORMER FRENCH MISSION
BUILDING FOR ACCOMMODATION USE BY LAW-RELATED
ORGANISATIONS AND RELATED PURPOSES**

IEC MONTHLY AUDIT REPORT FOR JULY 2018

CONVERSION OF THE FORMER FRENCH MISSION BUILDING FOR ACCOMMODATION USE BY LAW-RELATED ORGANISATIONS AND RELATED PURPOSES

IEC MONTHLY AUDIT REPORT FOR JULY 2018

Revision **1.0**
Date **14/08/2018**
Made by **Harris Wong**
Checked by **Simon Cheung**



Approved by **Simon Cheung**



No part of this document may be reproduced or transmitted, in any form or by any means electronic, mechanical, photographic, recording or otherwise, or stored in a retrieval system of any nature without the written permission of Ramboll Hong Kong Ltd, application for which shall be made to Ramboll Hong Kong Ltd, 21/F, BEA Harbour View Centre, 56 Gloucester Road, Wan Chai, Hong Kong.

Disclaimer This report is made on behalf of Ramboll Hong Kong Ltd. No individual is personally liable in connection with the preparation of this report. By receiving this report and acting on it, the client or any third party relying on it accepts that no individual is personally liable in contract, tort or breach of statutory duty (including negligence).

Ref **R6410_V1.0**

Ramboll Hong Kong Limited
21/F, BEA Harbour View Centre
56 Gloucester Road, Wan Chai, Hong Kong
T +852 3465 2888
F +852 3465 2899
www.ramboll.com

Q:\Projects\ASDCFFMBM00\04 Deliverables\02_IEC_Monthly_Audit_Report\07_201807\R6410_V1.0.docx

CONTENTS

	Page
EXECUTIVE SUMMARY	1
1. INTRODUCTION	2
1.1 Background	2
1.2 Project Organization.....	3
1.3 Construction activities	3
2. AIR QUALITY AND NOISE MONITORING	4
2.1 Monitoring Requirement	4
2.2 Monitoring Location.....	4
2.3 Monitoring Equipment and Methodology	4
2.4 Monitoring Result.....	5
3. ENVIRONMENTAL SITE INSPECTION AND AUDIT.....	6
3.1 Site Inspection	6
3.2 Advice on the Waste Management Status	6
3.3 Status of Environmental Licences and Permits	6
3.4 Implementation Status of Mitigation Measures	6
4. REPORT ON COMPLAINT, NOTIFICATION OF SUMMONS AND SUCCESSFUL PROSECUTION	7
4.1 Record of Environmental Complaint Received	7
4.2 Record of Environmental Quality Performance Exceedance.....	7
4.3 Record of Notification of Summons and Successful Prosecution.....	7
4.4 Cumulative Statistics for Complaint, Notification of Summons and Successful Prosecution	7
5. FUTURE KEY ISSUES	8
5.1 Monitoring Schedule for the Coming Month	8
5.2 Construction Works for the Coming Month	8
6. CONCLUSION	9
6.1 Conclusion	9

TABLES

Table 1.1	Contact information	3
Table 2.1	Impact Air Quality and Noise Monitoring Parameters, Frequencies and Durations	4
Table 2.2	Locations of Impact Air Quality and Noise Monitoring Stations	4
Table 2.3	Equipment for Impact Air Quality and Noise Monitoring	5
Table 2.4	Summary of Impact Air Quality and Noise Monitoring Results in the Reporting Month.....	5
Table 3.1	Summary of Environmental Licences and Permits	6
Table 4.1	Statistics for Complaint, Notification of Summons and Successful Prosecution.....	7

FIGURES

Figure 1	Site Location and Monitoring Locations of the Project
----------	---

APPENDICES

Appendix A	Summary of Mitigation Measures during Construction
Appendix B	Organization Chart of the Project
Appendix C	Construction Programme
Appendix D	Event and Action Plan

EXECUTIVE SUMMARY

Ramboll Hong Kong Limited has been commissioned by the Architectural Service Department (ArchSD) as the Independent Environmental Checker (IEC) under the Environmental Permit no. EP-518/2016 (EP) to audit the implementation of all mitigation measures and Environmental Monitoring and Audit (EM&A) programme recommended in the EP and Project Profile (Register No.: PP-535/2016) as well as to confirm in writing in the monthly audit report full implementation of the measures and EM&A programme.

Construction works were undertaken during this reporting month since 1 July 2018.

This is the 1st IEC Monthly Audit Report prepared and submitted under Condition 2.3 of the EP.

Implementation of Mitigation Measures

One site inspection was carried out by IEC on 6 July 2018 in the reporting month. The inspection finding is summarized in **Section 3.1.2**.

The status of implementation of mitigation measures is presented in **Appendix A**.

Air Quality and Noise Monitoring

Impact monitoring for air quality (1-hr TSP) and noise were required according to the Contract Particular Specification of the Project.

No Action and Limit Level exceedances of 1-hr TSP were recorded at air monitoring stations – A, B, C and D the reporting month.

No Action and Limit Level exceedances of noise was recorded at noise monitoring stations – A, B, C and D in the reporting month.

Record of Environmental Complaint, Notification of Summons and Successful Prosecution

No environmental complaint was received in the reporting month.

No notification of summons or successful prosecution was received in the reporting month.

1. INTRODUCTION

1.1 Background

- 1.1.1 The conversion of the former French Mission Building (FMB) for Accommodation use by law-related organisations (LROs) and related purposes, which hereinafter is referred to as the "Project", has an objective to convert the former FMB into general office accommodation and ancillary facilities with central air-condition system.
- 1.1.2 The Project is located at No.1, Battery Path, Central, and the Project site covers a footprint of about 1,364 m².
- 1.1.3 The purpose of the Project includes the following:
- To renovate and enhance the FMB to meet the needs of LROs and related purposes;
 - To upgrade the FMB in order to comply with the prevailing statutory requirements without compromising the conservation principles; and
 - To restore the Building to the French Mission era dating back in 1919 based on available records, while the history of CFA will be displayed by means of interpretation so as to enhance the understanding of the cultural significance of FMB.
- 1.1.4 Given the status of FMB being a declared monument under the Antiquities and Monuments Ordinance since 1989, the Project constitutes a Designated Project under item Q.1, Part I, Schedule 2 of the Environmental Impact Assessment Ordinance (EIAO). An Environmental Permit no. EP-518/2016 (EP) has been issued to Department of Justice (DoJ) on 26 July 2016 for the construction of the Project.
- 1.1.5 Department of Justice (DoJ) is the Project Proponent. The Architectural Services Department (ArchSD) is the works agent of DoJ. ArchSD will be responsible for project management, contract preparation and site supervision and will consult DoJ at all stages of the Project.
- 1.1.6 Ramboll Hong Kong Limited has been commissioned by the Architectural Service Department, as the Independent Environmental Checker (IEC) to audit the implementation of all mitigation measure and environmental monitoring and audit (EM&A) programme recommended in the Project Profile (PP) (Register No.: PP-535/2016) and to confirm in writing in the monthly audit report full implementation of the measures and EM&A programme in accordance with condition 2.3 of the EP.
- 1.1.7 This is the 1st monthly audit report summarising the findings of implementation status of the mitigation measures and EM&A programme under the Project from 1 July 2018 to 31 July 2018.
- 1.1.8 The site location of the Project is presented in **Figure 1**.

1.2 Project Organization

1.2.1 The contact information of key personnel is summarized in **Table 1.1**. An organization chart is presented in **Appendix B**.

Table 1.1 Contact information

Party	Position	Contact Person	Telephone	Fax
Department of Justice (DoJ)	Project Proponent	Carrie Lee	2867 4590	2520 2601
Architectural Service Department (ArchSD)	Works Agent of DoJ	Teresa Leung	2867 3964	2716 0504
Design 2 (HK) Limited	Architectural Consultant	William Lai	2525 3011	2521 8203
Ramboll Hong Kong Limited	Independent Environmental Checker (IEC)	Simon Cheung	3465 2861	3465 2899
Hop Lee Builders Company Limited	Contractor	Lo Ting Fung	6223 5549	2356 9167

1.3 Construction activities

1.3.1 The construction activities undertaken in this reporting month are presented below:

- Condition survey of existing flooring at LG, G/F, 1/F, 2/F;
- Dimensional survey and cartographic survey at 2/F, 1/F, G/F & LG (Door);
- Hammer Tapping;
- Demolition works for fixtures at LG, G/F, 1/F 2/F;
- Demolition works of BS above ceiling at LG, G/F, 1/F & 2/F;
- Mock-up for conservation (Paint Removal);
- Hoarding erection;
- Acoustic measurement; and
- Site survey for existing opening

1.3.2 The Construction Programme of the Project is provided in **Appendix C**.

2. AIR QUALITY AND NOISE MONITORING

2.1 Monitoring Requirement

- 2.1.1 Baseline and Impact monitoring for air quality (1-hr TSP) and noise were required according to the Contract Particular Specification (PS) of the Project.
- 2.1.2 The Baseline Monitoring for Air Quality and Noise was carried out by the Contractor for 14 consecutive days between April 2018 and 29 April 2018 at 4 monitoring locations prior to the commencement of construction works of the Project according to the agreed methodology.
- 2.1.3 The Action and Limit Levels for impact air quality were determined from the baseline air quality monitoring result. The Action and Limit Levels for both impact air quality and noise monitoring are presented in **Table 2.4**.
- 2.1.4 The event and action plans for impact air quality and noise monitoring are presented in **Appendix D**.
- 2.1.5 Impact air quality and noise monitoring were conducted in the reporting month. **Table 2.1** summarizes the details of the parameter, frequency and duration of the monitoring.

Table 2.1 Impact Air Quality and Noise Monitoring Parameters, Frequencies and Durations

Parameter	Frequency and Duration
Air Quality	
1-hour Total Suspended Particulates (1-hr TSP)	At least 3 times in every six-days
Noise	
L _{Aeq} (30 mins), L ₁₀ and L ₉₀	One set of measurement between 0700-1900 hours on normal weekdays (i.e. Monday to Saturday)

- 2.1.6 Impact air quality and noise monitoring in this reporting month were conducted on 6, 12, 18, 24 and 30 July 2018.

2.2 Monitoring Location

- 2.2.1 Four locations were proposed as the air quality and noise monitoring stations during the construction phase of the Project. **Table 2.2** summarizes the details of these monitoring stations.

Table 2.2 Locations of Impact Air Quality and Noise Monitoring Stations

Monitoring Station	Location	Type of Noise Monitoring Measurement
A	Cheung Kong Park	Free-field
B	Battery Path	Free-field
C	North corner of the Project site with the site boundary	Façade
D	West side of Battery Path	Free-field

2.3 Monitoring Equipment and Methodology

- 2.3.1 **Table 2.3** summarizes the equipment used to carry out the impact air quality and noise monitoring.

Table 2.3 Equipment for Impact Air Quality and Noise Monitoring

Equipment	Model/Brand	Calibration Certificate Expiry Date
Air Quality		
Portable direct reading dust meter	TSI Model 8532	19 Dec 2018
	LD-5R	2 May 2019
Noise		
Sound Level Meter	Type 6224	1 August 2018
Sound Level Calibrator	Pulsar 105	17 September 2018

2.3.2 For maintenance and calibration, the portable direct reading dust meter(s), sound level meter(s) and sound level calibrator(s) were calibrated annually. The calibration certificates of these equipment were checked by IEC in this reporting month.

2.4 Monitoring Result

2.4.1 The monitoring results for impact air quality and noise monitoring in the reporting month are summarized in **Table 2.4**.

Table 2.4 Summary of Impact Air Quality and Noise Monitoring Results in the Reporting Month

Monitoring Station	Average (Air Quality: $\mu\text{g}/\text{m}^3$ Noise: dB(A), L_{eq} (30 mins))	Range (Air Quality: $\mu\text{g}/\text{m}^3$ Noise: dB(A), L_{eq} (30 mins))	Action Level (Air Quality: $\mu\text{g}/\text{m}^3$)	Limit Level (Air Quality: $\mu\text{g}/\text{m}^3$ Noise: dB(A), L_{eq} (30 mins))
Air Quality				
A	57	32 - 75	296	500
B	62	39 - 81	294	500
C	73	37 - 106	293	500
D	64	33 - 99	295	500
Noise				
A	65.1	67.3 - 68.7	When one documented complaint is received	75
B	64.7	65.7 - 69.1		
C	69.3	68.4 - 70.1		
D	65.9	67.5 - 70.6		

2.4.2 No Action and Limit Level exceedances of 1-hr TSP were recorded at air monitoring stations – A, B, C and D the reporting month.

2.4.3 No Limit Level exceedance of noise was recorded at noise monitoring stations – A, B, C and D in the reporting month.

3. ENVIRONMENTAL SITE INSPECTION AND AUDIT

3.1 Site Inspection

- 3.1.1 Site inspections are required to be conducted by IEC on a monthly basis to monitor the implementation of proper environmental pollution control and mitigation measures recommended in the PP of the Project as required in the EP.
- 3.1.2 One site inspection was carried out on 6 July 2018 in the reporting month. The finding(s) of the site inspection are described as below:
- No major observation was noted during site inspection.
- 3.1.3 Only hand-held power tools and hand-held manual tools were used for carrying out the internal works of the Project.
- 3.1.4 Cultural heritage mitigation measure set out in Sections 2.6 and 2.7 of the Project Profile were implemented in the reporting period.

3.2 Advice on the Waste Management Status

- 3.2.1 A billing account for disposal of construction waste was created for the Project on 9 February 2018.
- 3.2.2 The Project was registered as a Chemical Waste Producer on 23 February 2018.
- 3.2.3 According to information provided by the Contractor, 8440 kg of general refuse were disposed of at the Landfill in the reporting month.

3.3 Status of Environmental Licences and Permits

- 3.3.1 The environmental licenses and permits for the Project that were valid in the reporting month are summarized in **Table 3.1**.

Table 3.1 Summary of Environmental Licences and Permits

Permit / Licence	Reference No.	Date of Issue	Valid Thru	Status
Environmental Permit	EP-518/2016	26 Jul 2016	N/A	Valid
Notification of Works under APCO	430032	24 Jan 2018	N/A	Valid
Billing account under Waste Disposal Ordinance	7030054	9 Feb 2018	N/A	Valid
Registration as a Chemical Waste Producer	5213-123-H3927-01	23 Feb 2018	N/A	Valid

3.4 Implementation Status of Mitigation Measures

- 3.4.1 The implementation status of mitigation measures recommended in the PP is summarized in **Appendix A**.

4. REPORT ON COMPLAINT, NOTIFICATION OF SUMMONS AND SUCCESSFUL PROSECUTION

4.1 Record of Environmental Complaint Received

4.1.1 No environmental complaint was received in the reporting month.

4.2 Record of Environmental Quality Performance Exceedance

4.2.1 No Action and Limit Level exceedances of 1-hr TSP were recorded at air monitoring stations – A, B, C and D the reporting month.

4.2.2 No Action and Limit Level exceedances of noise was recorded at noise monitoring stations – A, B, C and D in the reporting month.

4.3 Record of Notification of Summons and Successful Prosecution

4.3.1 No notification of summons or successful prosecution was received in the reporting month.

4.4 Cumulative Statistics for Complaint, Notification of Summons and Successful Prosecution

4.4.1 Cumulative statistics of complaint, notification of summons and successful prosecution for the period from the date of commencement of construction to end of the reporting month are summarized in **Table 4.1**.

Table 4.1 Statistics for Complaint, Notification of Summons and Successful Prosecution

	Complaints	Notifications of Summons	Successful Prosecution
Within the reporting month (July 2018)	0	0	0
From the date of commencement of construction to end of the reporting month	0	0	0

5. FUTURE KEY ISSUES

5.1 Monitoring Schedule for the Coming Month

5.1.1 The tentative dates of air quality and noise monitoring for next month are 4, 10, 16, 22 and 28 August 2018.

5.2 Construction Works for the Coming Month

5.2.1 The construction works that are anticipated to be conducted in the coming month include:

- Removal of existing furniture at LG, G/F, 1/F and 2/F;
- Removal of existing E&M services at LG, G/F, 1/F and 2/F;
- Removal of existing fixture at LG, G/F, 1/F and 2/F;
- Paint removal of timber items;
- Paint removal of wall finishing;
- Saw cut for deboned plaster; and
- Tilting & settlement check point on existing structures.

6. CONCLUSION

6.1 Conclusion

- 6.1.1 The EM&A programme recommended in the PP has been undertaken since 1 July 2018
- 6.1.2 No environmental complaint was received in the reporting month.
- 6.1.3 No Action and Limit Level exceedances of 1-hr TSP were recorded at air monitoring stations – A, B, C and D the reporting month.
- 6.1.4 No Action and Limit Level exceedances of noise was recorded at noise monitoring stations – A, B, C and D in the reporting month.
- 6.1.5 One site inspection was conducted in the reporting month by IEC, and the implementation of mitigation measures by Contractor as recommended in the PP was audited.
- 6.1.6 No notification of summons or successful prosecution was received in the reporting month.

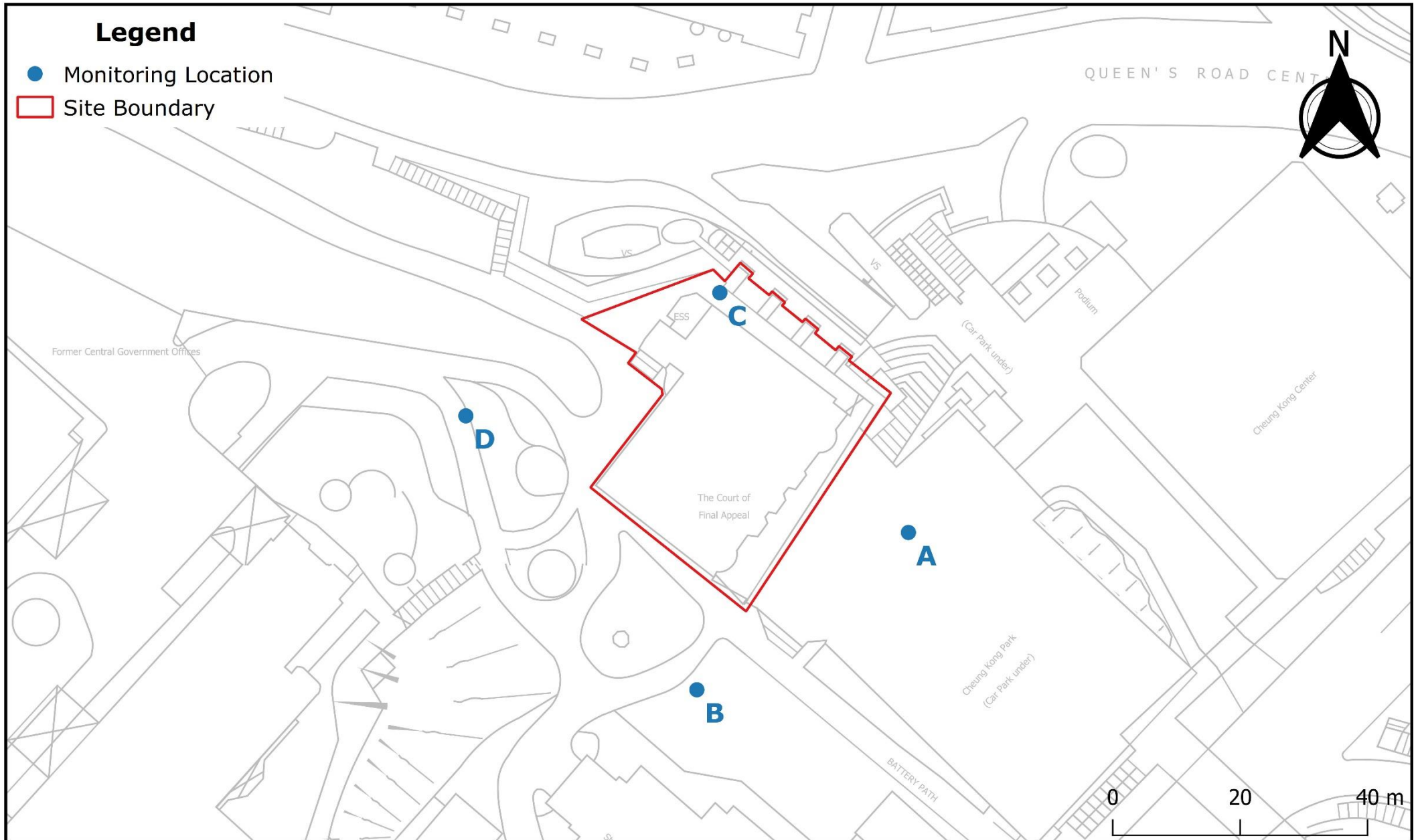


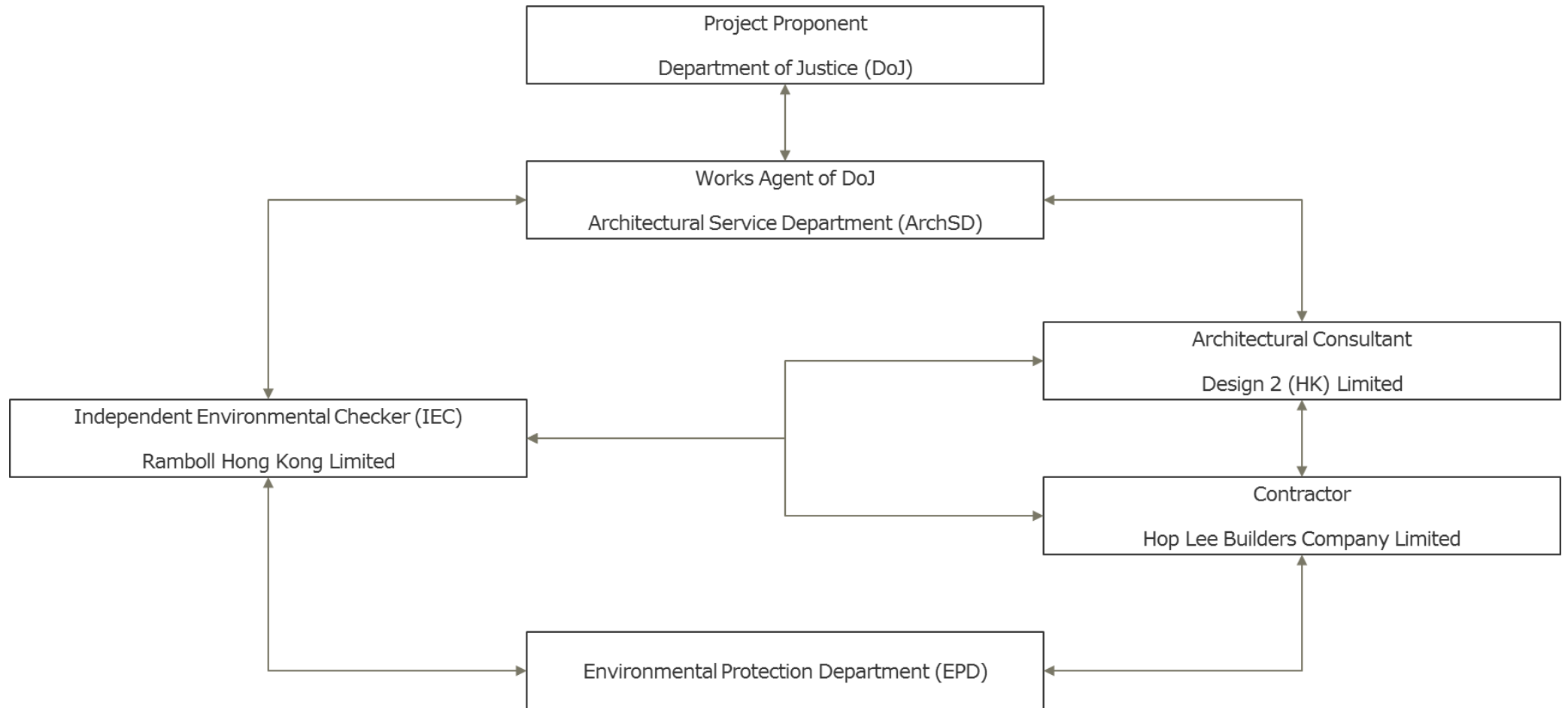
Figure: 1 Title: Site Location and the Monitoring Locations of the Project Project: Conversion of the Former French Mission Building for Accommodation Use by Law-related Organisations and Related Purposes	RAMBOLL
	Drawn by: HW
	Checked by: SC
	Rev.: 1
	Date: Jun-2018

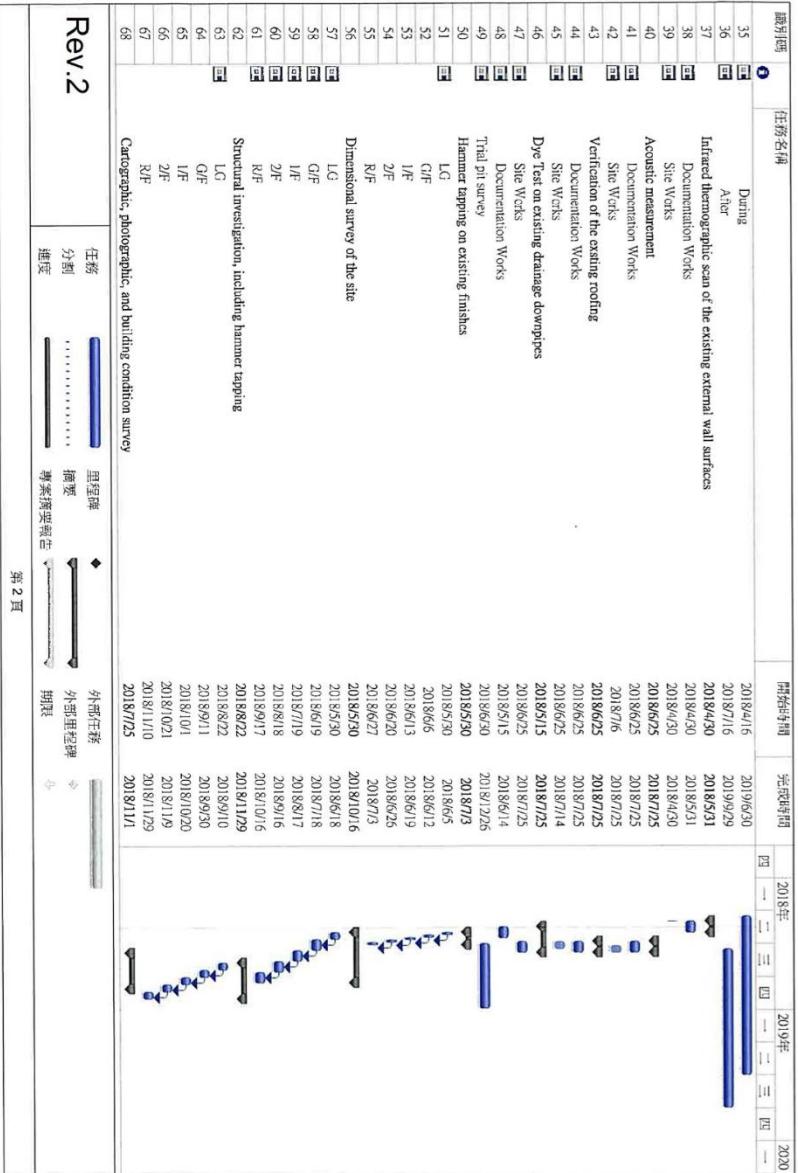
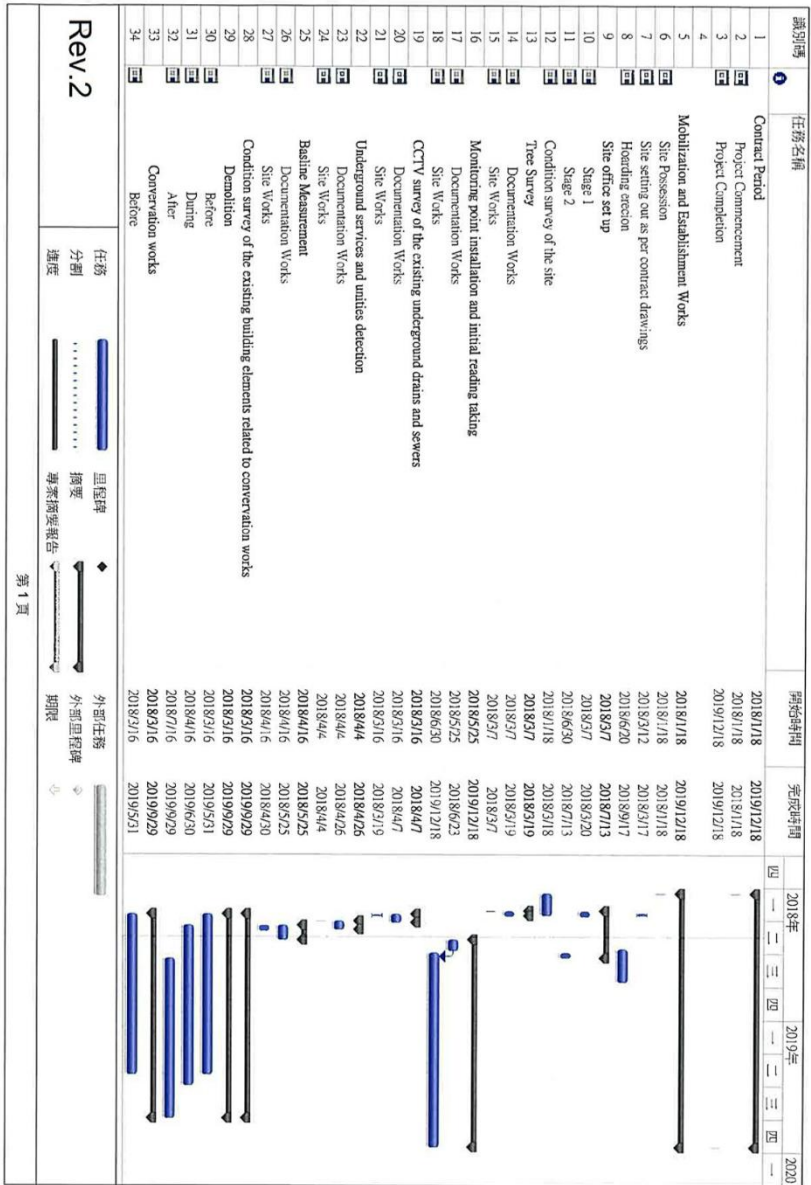
Appendix A
Summary of Mitigation Measures during Construction

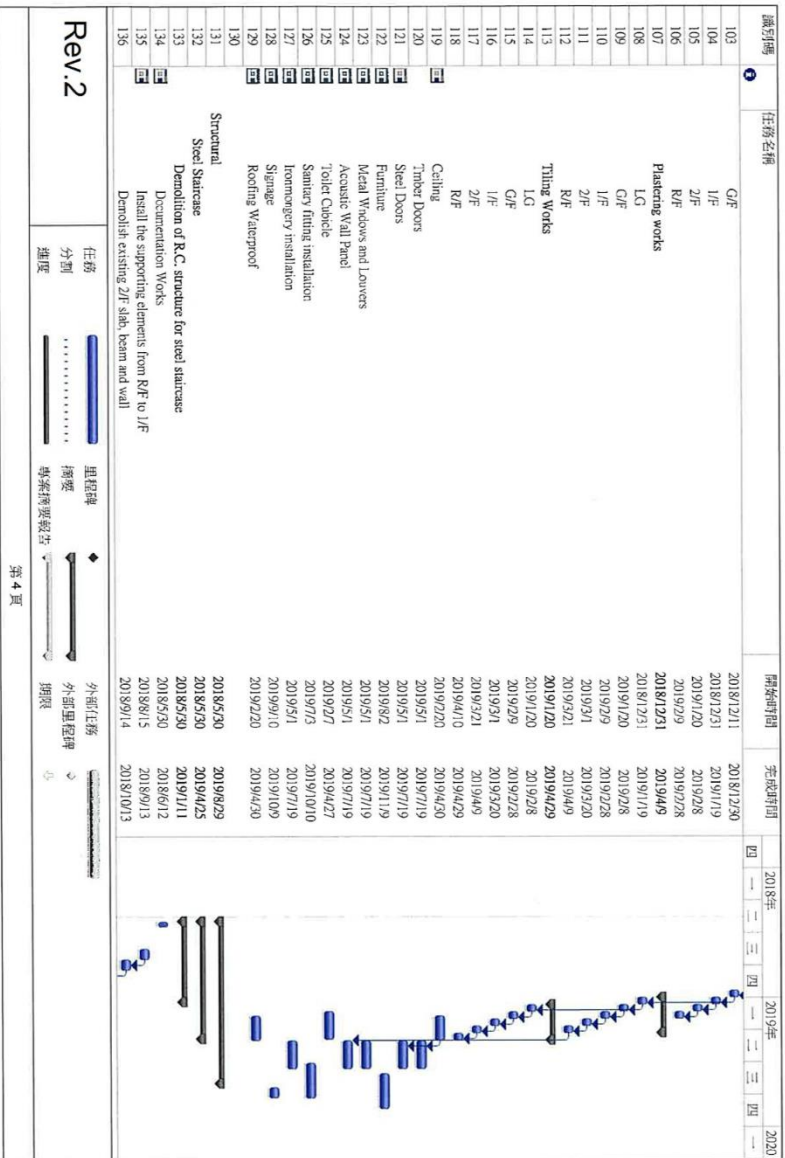
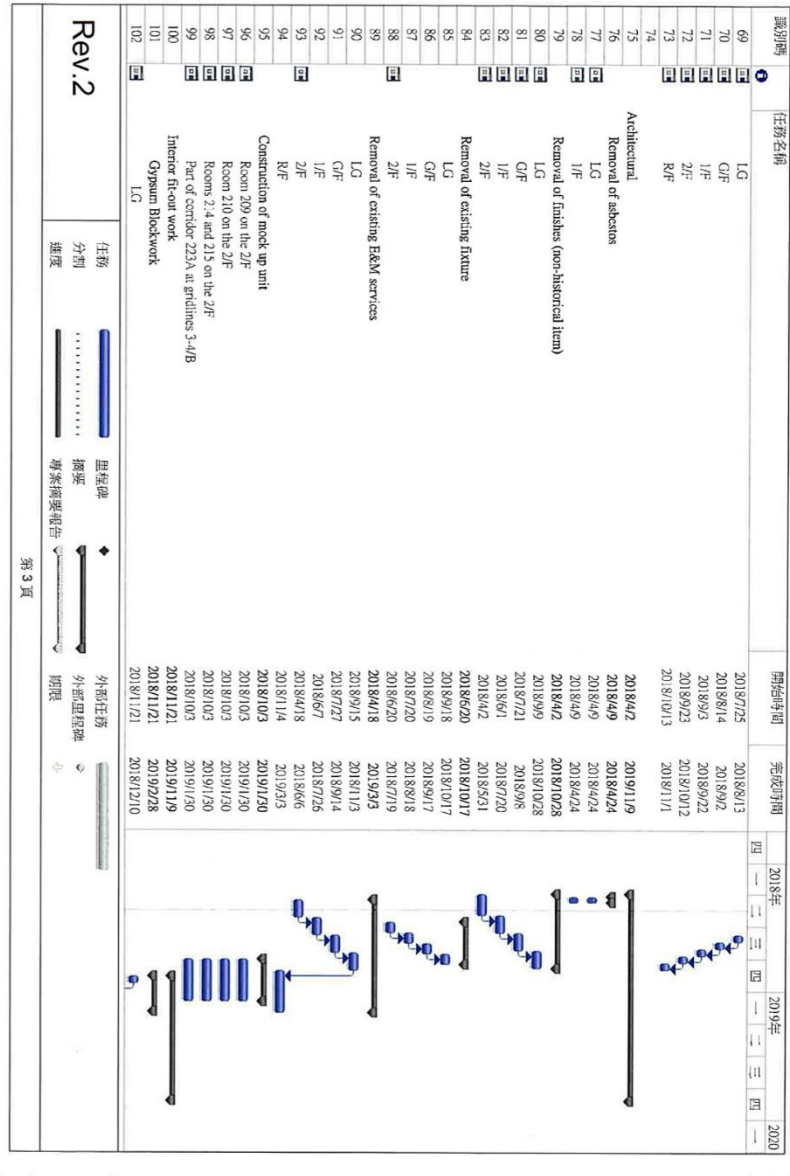
Reference	Potential Environmental Impact	Mitigation Measures	Implementation Agent
Project Profile – Appendix G	Construction Noise	<p>Common noise control measures:</p> <ul style="list-style-type: none"> – Use of quiet PME with lower sound power levels – Use of temporary noise barriers – Locating noise emitting plants as far as practicable away from sensitive receivers – Define contractual clauses for construction works – No construction works will be carried out during 7 p.m. to 7 a.m. from Monday to Saturday and any time on Sundays and General Holidays <p>General Site practices:</p> <ul style="list-style-type: none"> – Only well-maintained plant should be operated on-site and plant should be serviced regularly – Silencers or mufflers on construction equipment should be utilised and should be properly maintained – Mobile plant should be sited as far away from NSRs as possible – PME that may be in intermittent use should be shut down between works periods or should be throttled down to a minimum level – Plant known to emit noise strongly in one direction should, wherever possible, be orientated so that the noise is directed away from the nearby NSRs – Material stockpiles and other structures should be effectively utilised, wherever practicable, in screening noise from on-site construction works – The schedule and location of noisy construction works of the Project should be well coordinated on site in order to minimise cumulative construction noise impact 	Contractor
Project Profile – Appendix G	Construction Dust	<p>Implement dust control and suppression measures stipulated in the Air Pollution Control (Construction Dust) Regulation:</p> <ul style="list-style-type: none"> – Regular water spraying of exposed surfaces – Covering dusty material stockpiles with tarpaulin sheet – Erection of hoarding – Provision of covers for all trucks 	Contractor
Project Profile – Appendix G	Waste Management	<p>Implement good waste management plan and practices on minimising, handling and disposal of waste:</p> <ul style="list-style-type: none"> – Handle, store and dispose of all wastes in accordance with the Waste Disposal Ordinance 	Contractor

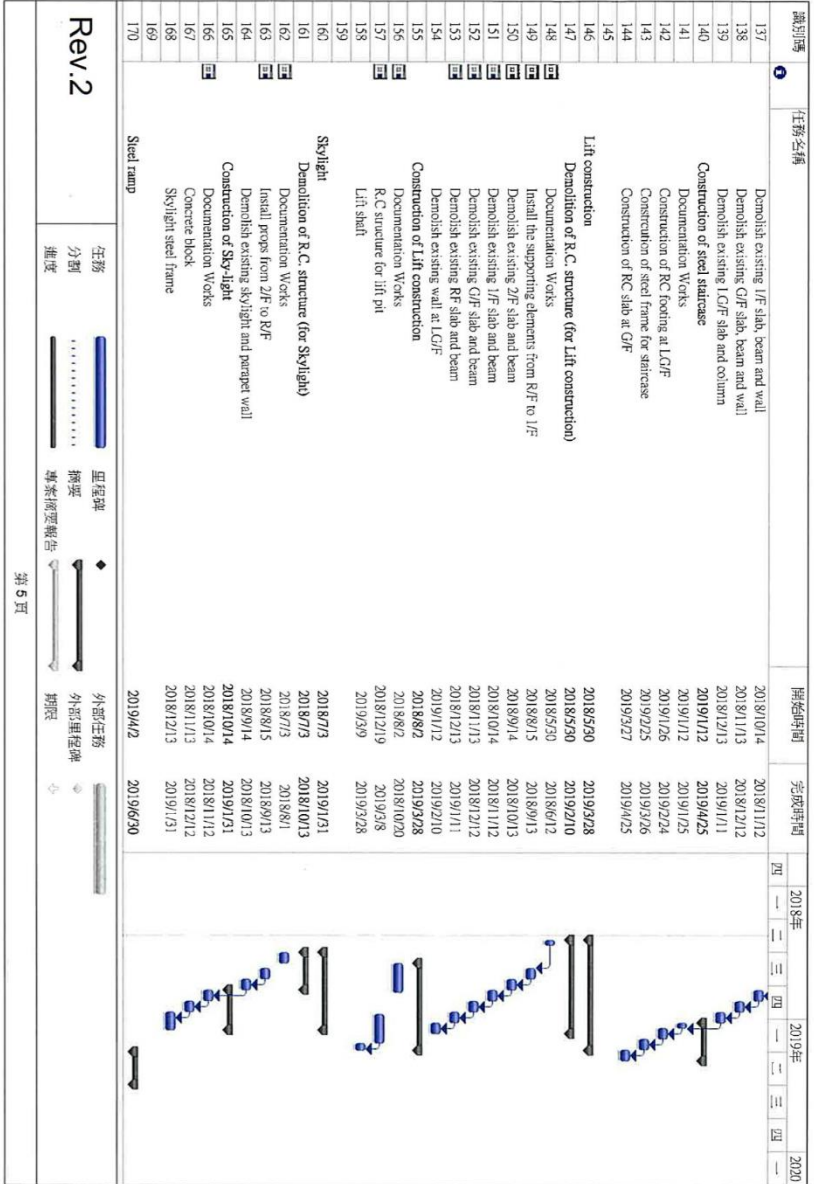
Appendix A
Summary of Mitigation Measures during Construction

Reference	Potential Environmental Impact	Mitigation Measures	Implementation Agent
		<ul style="list-style-type: none"> - Handle, store and dispose of asbestos waste in accordance with all Codes of Practice regarding asbestos works issued pursuant to Section 37 of the APCO - Store general refuse in enclosed bins or compaction units separate from C&D materials and chemical wastes - Employ a reputable waste collector to collect and dispose of general refuse from the site on a daily or every second day basis 	
Project Profile – Appendix G	Water Quality	Adopt site practices outlined in ProPECC PN 1/94 “Construction Site Drainage”: <ul style="list-style-type: none"> - Provide sand/silt removal facilities to remove sand/silt particles from runoff - Inspect and maintain all drainage facilities and erosion and sediment control structures - Clean all vehicles and plant before leaving the construction site - Cover open stockpiles of construction materials or construction wastes on-site with tarpaulin or similar fabric during rainstorms - Adopt good site practices to remove rubbish and litter from construction site to prevent them from entering public sewers or drains - Deploy temporary sanitary facilities 	Contractor
Project Profile – Appendix G	Landscape and Visual Impact	Landscape Impact: <ul style="list-style-type: none"> - Monitoring and inspection will be carried out for landscape resources during construction period - Suitable tree protection will be provided Visual Impact: <ul style="list-style-type: none"> - Decorative hoarding and scaffolding could be used to soften the visual impact 	Contractor
Environmental Permit – Condition 2.3 and Project Profile – S 4.1.3	Cultural Heritage	Only hand-held power tools and hand-held manual tools shall be used for carrying out the internal works of the Project.	Contractor
Project Profile – S 6.2.1.3		Mitigation measure set out in Sections 2.6 and 2.7 of the Project Profile are implemented. Character Defining Elements are persevered, repaired or reinstated with minimum intervention.	Contractor

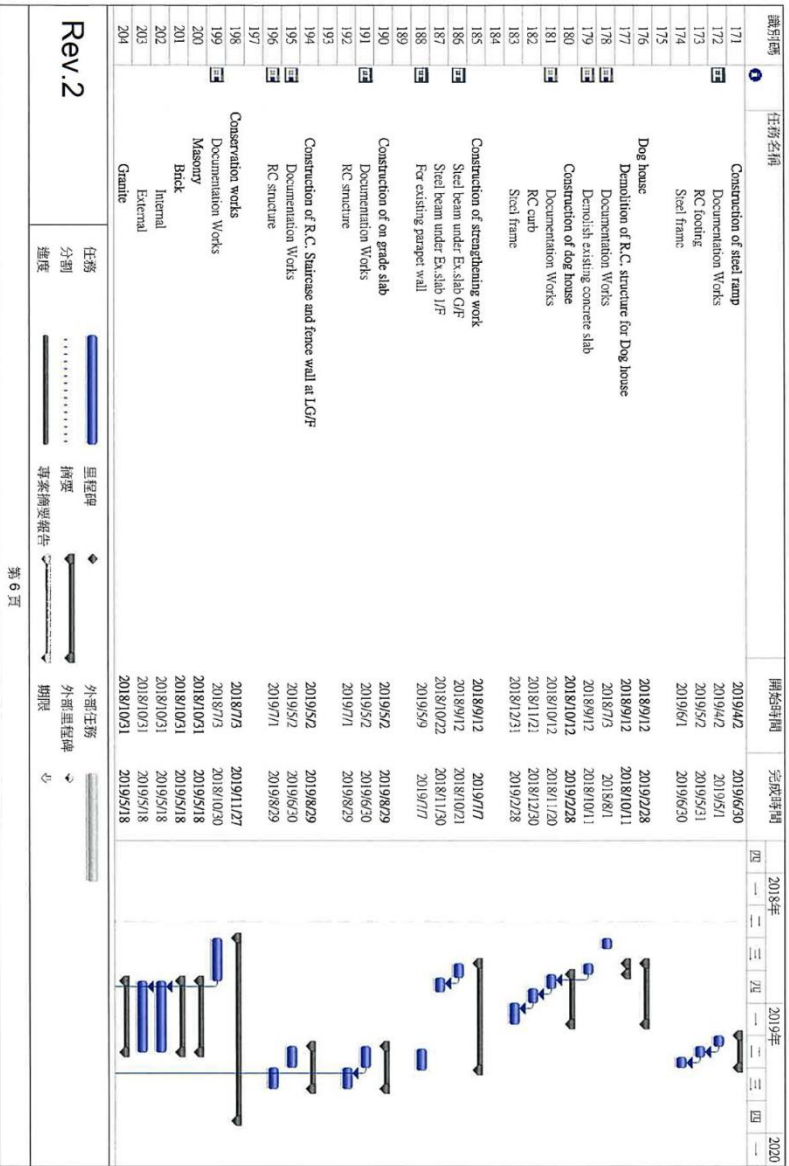




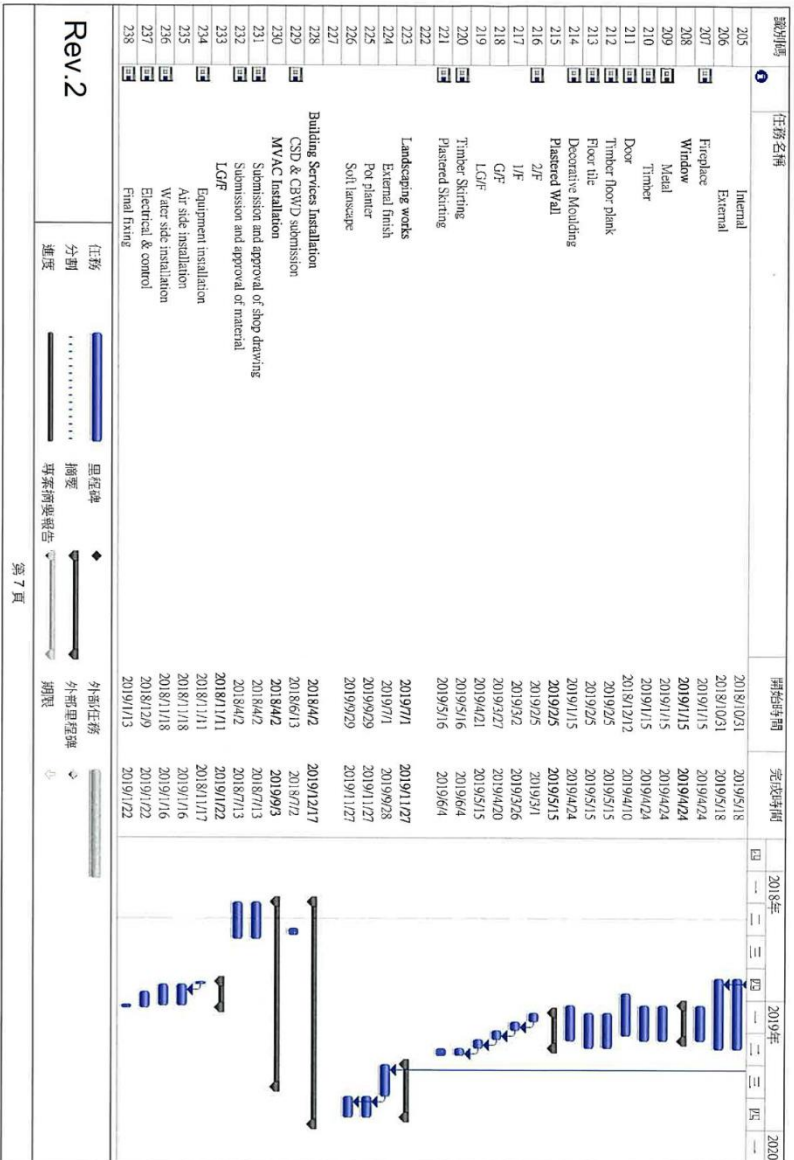




第 5 頁

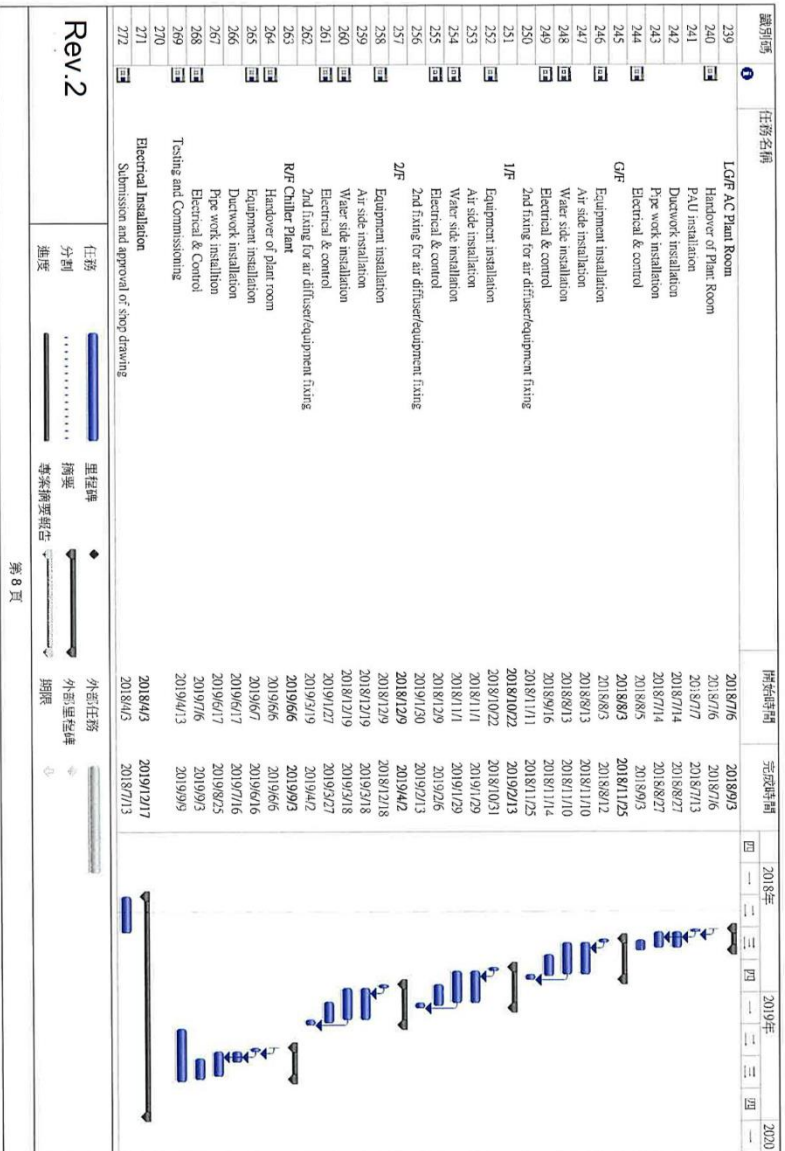


第 6 頁



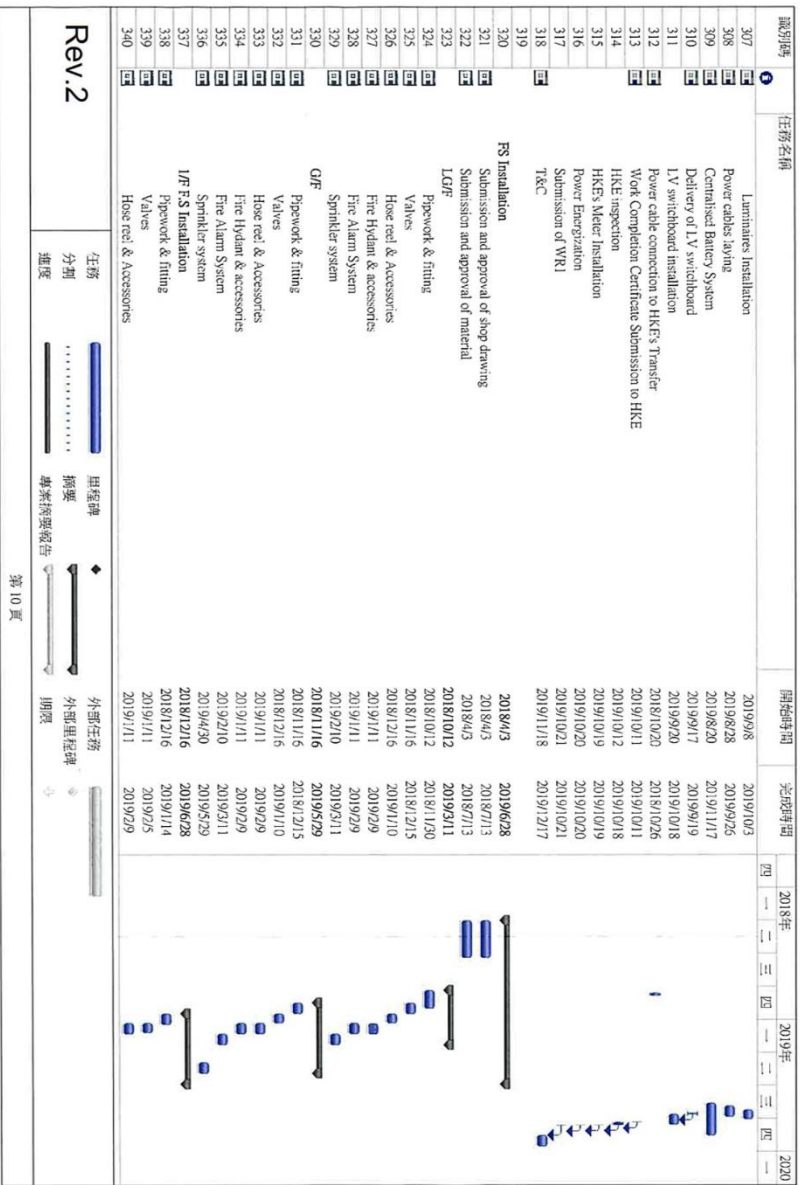
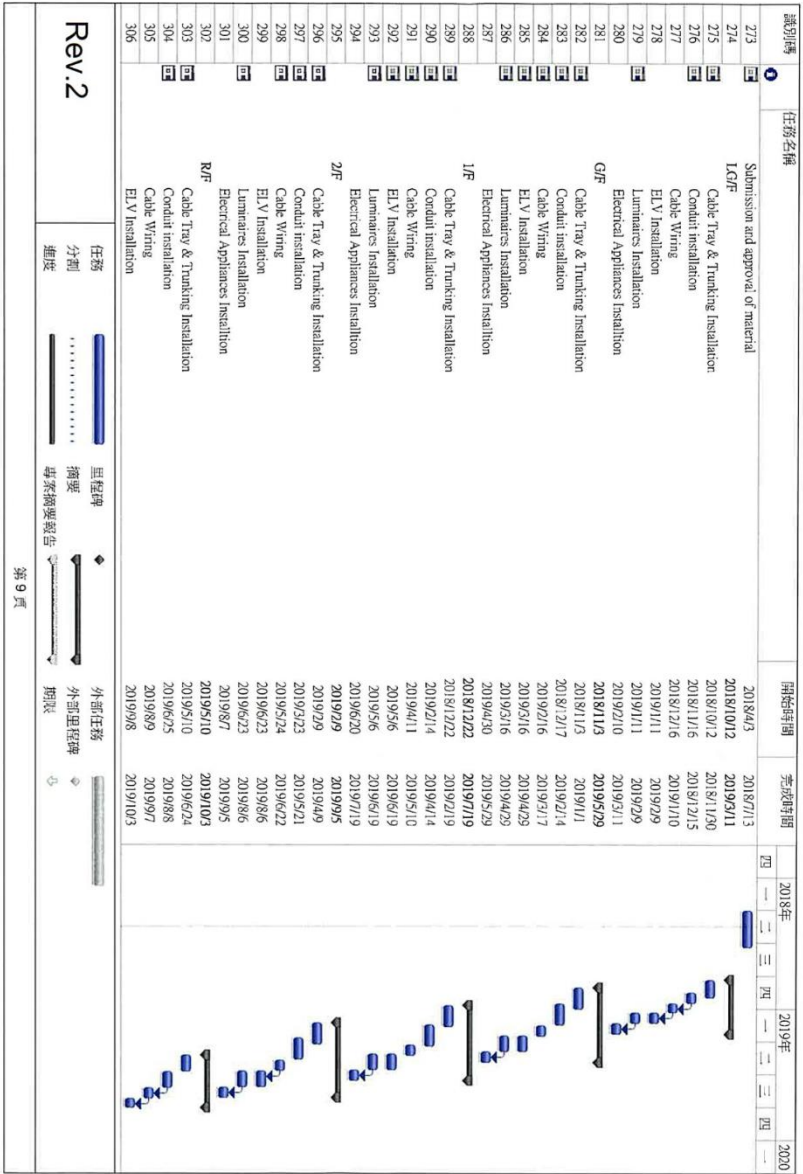
Rev. 2

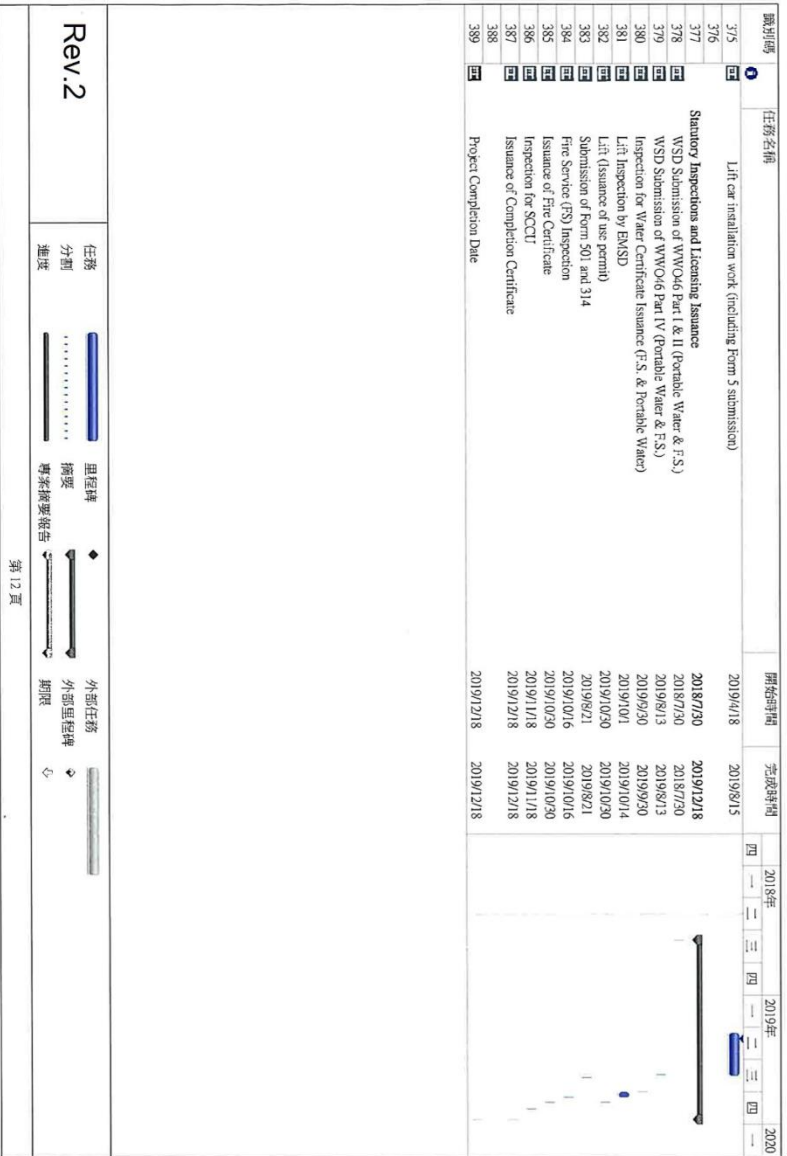
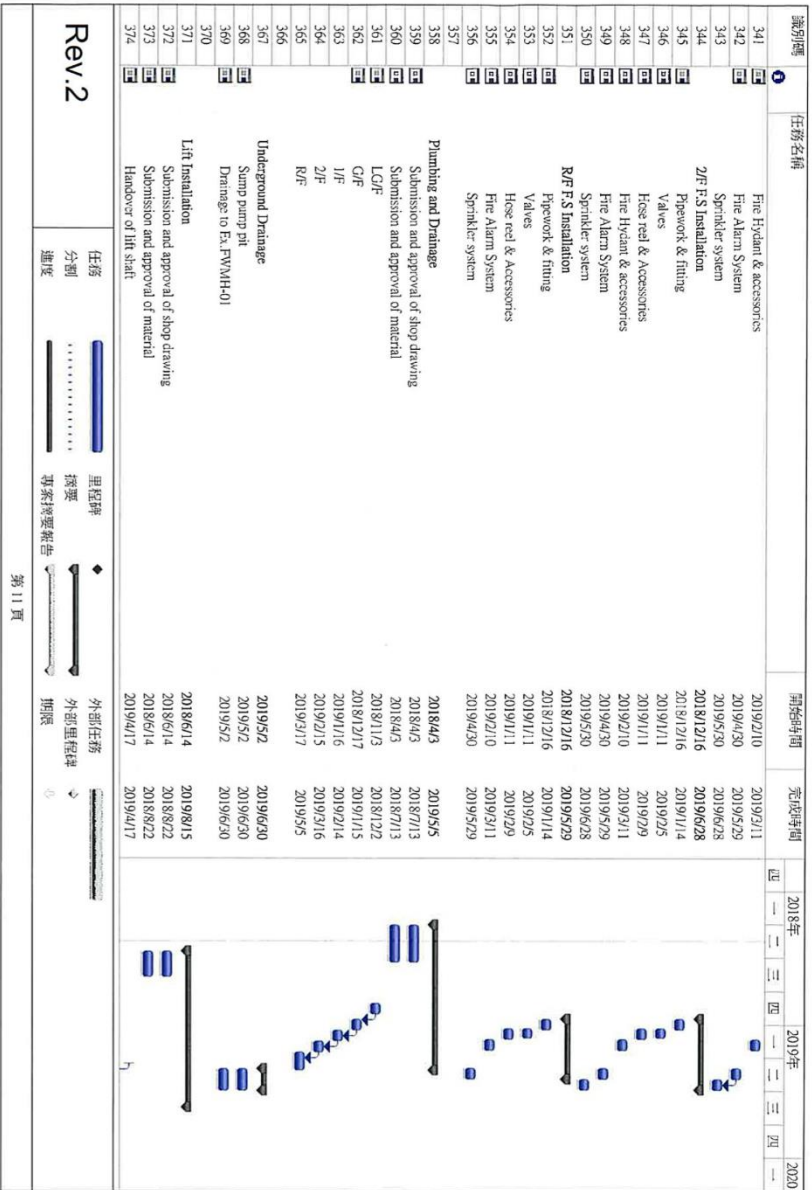
第 7 頁



Rev. 2

第 8 頁





Rev.2

任務
分割
進度



里程碑
摘要
專案摘要報告



外部任務
外部里程碑
期限



Event	Action
Air Quality	
Action Level	<p>Step 1</p> <ul style="list-style-type: none"> • Identify source and check monitoring data and working method. <p>Step 2</p> <ul style="list-style-type: none"> • Notify IEC, Beam Consultant and Architectural Consultant to discuss and implement remedial action; • Rectify any unacceptable practice; • Amend working methods if appropriate; • If exceedance continues, commence additional monitoring. <p>Step 3</p> <ul style="list-style-type: none"> • Report the results of investigation to IEC, Beam Consultant and Architectural Consultant and notify them following correction of the situation; • Cease additional monitoring if exceedance stops.
Limit Level	<p>Step 1</p> <ul style="list-style-type: none"> • Identify source and check monitoring data and working method; • Notify IEC, Beam Consultant and Architectural Consultant check monitoring data working methods; • Repeat measurement to confirm finding; • If exceedance continues, commence additional monitoring. <p>Step 2</p> <ul style="list-style-type: none"> • Take immediate action to avoid further exceedance; • Submit proposal for remedial actions to clients/project manager within 3 working days; • Implement the agreed proposal; • If exceedance continues, amend and resubmit the proposal. <p>Step 3</p> <ul style="list-style-type: none"> • Notify IEC, Beam Consultant and Architectural Consultant following correction of the situation; • Submit proposal for remedial actions to clients/project manager within 3 working days; • Cease additional monitoring if exceedance stops.

Event	Action
Noise	
Action Level	<p>Contractor Environmental Officer</p> <ul style="list-style-type: none"> • Identify source; • Repeat measurement to confirm findings; • Notify IEC, Beam Consultant and Architectural Consultant site agent of exceedance carry out investigation; • Increase monitoring frequency to check mitigation effectiveness. <p>Contractor Site Agent</p> <ul style="list-style-type: none"> • Notify IEC, Beam Consultant and Architectural Consultant identification of the exceedance; • Submit noise mitigation proposals to Beam Consultant and Architectural Consultant; • Implement agreed noise mitigation proposals within time scale agreed with IEC, Beam Consultant and Architectural Consultant; • If exceedance continues, commence additional monitoring. <p>ArchSD</p> <ul style="list-style-type: none"> • Require Contractor to propose remedial measures; • Ensure remedial measures are properly implemented; • Assess the effectiveness of mitigation measure.
Limit Level	<p>Environmental Officer</p> <ul style="list-style-type: none"> • Identify source; • Repeat measurement to confirm findings; • Notify Beam Consultant and Architectural Consultant and site agent of exceedance carry out investigation; • Increase monitoring frequency; • Assess effectiveness of remedial actions and keep site agent informed of results ; • Commence additional monitoring; • If exceedance continues, commence additional monitoring. <p>Contractor Site Agent</p> <ul style="list-style-type: none"> • Notify IEC, Beam Consultant and Architectural Consultant of exceedance; • Take immediate action to avoid further exceedance; • Implement agreed noise mitigation proposals within time scale agreed with IEC, Beam Consultant and Architectural Consultant; • If exceedance continues, commence additional monitoring; • Submit investigation report concerning exceedance within 3 working days to client; • Submit proposals for remedial actions to Client; • Implement agreed proposals within the time scale as agreed with client; • Stop the relevant portion of works until exceedance is abated. <p>ArchSD</p> <ul style="list-style-type: none"> • Require Contractor to propose mitigation measures for analysed noise problem; • If exceedance continues, arrange meeting with Contractor to determine what to determine what portion of work is responsible for the exceedance; • Instruct Contractor to stop that portion of work if no other mitigation measures can be implemented until the exceedance is abated.