

Intended for

Architectural Services Department

Document type

Report

Date

July 2020

**CONVERSION OF THE FORMER FRENCH MISSION
BUILDING FOR ACCOMMODATION USE BY LAW-RELATED
ORGANISATIONS AND RELATED PURPOSES**

IEC MONTHLY AUDIT REPORT (JUNE 2020)


CONVERSION OF THE FORMER FRENCH MISSION BUILDING FOR ACCOMMODATION USE BY LAW-RELATED ORGANISATIONS AND RELATED PURPOSES

IEC MONTHLY AUDIT REPORT FOR JUNE 2020

Revision **1.0**
Date **14/07/2020**
Made by **Rachel Wong**
Checked by **Y H Hui**

P.P. 

Approved by **Y H Hui**

P.P. 

Disclaimer No part of this document may be reproduced or transmitted, in any form or by any means electronic, mechanical, photographic, recording or otherwise, or stored in a retrieval system of any nature without the written permission of Ramboll Hong Kong Ltd, application for which shall be made to Ramboll Hong Kong Ltd, 21/F, BEA Harbour View Centre, 56 Gloucester Road, Wan Chai, Hong Kong.

This report is made on behalf of Ramboll Hong Kong Ltd. No individual is personally liable in connection with the preparation of this report. By receiving this report and acting on it, the client or any third party relying on it accepts that no individual is personally liable in contract, tort or breach of statutory duty (including negligence).

Ref **R7519_v1.0**

Ramboll Hong Kong Limited
21/F, BEA Harbour View Centre
56 Gloucester Road, Wan Chai, Hong Kong
T +852 3465 2888
F +852 3465 2899
www.ramboll.com

Q:\Projects\ASDCFFMBM000\04 Deliverables\02_IEC_Monthly_Audit_Report\30_202006\R7519_v1.0.docx

CONTENTS

	Page
EXECUTIVE SUMMARY	1
1. INTRODUCTION	2
1.1 Background	2
1.2 Project Organization.....	3
1.3 Construction activities	3
2. AIR QUALITY AND NOISE MONITORING	4
2.1 Monitoring Requirement	4
2.2 Monitoring Location.....	4
2.3 Monitoring Equipment and Methodology	5
2.4 Action & Limit Level	5
2.5 Monitoring Result.....	6
3. ENVIRONMENTAL SITE INSPECTION AND AUDIT.....	7
3.1 Site Inspection	7
3.2 Advice on the Waste Management Status	7
3.3 Status of Environmental Licences and Permits	7
3.4 Implementation Status of Mitigation Measures	7
4. REPORT ON COMPLAINT, NOTIFICATION OF SUMMONS AND SUCCESSFUL PROSECUTION	8
4.1 Record of Environmental Complaint Received	8
4.2 Record of Environmental Quality Performance Exceedance.....	8
4.3 Record of Notification of Summons and Successful Prosecution.....	8
4.4 Cumulative Statistics for Complaint, Notification of Summons and Successful Prosecution	8
5. FUTURE KEY ISSUES	9
5.1 Monitoring Schedule for the Coming Month	9
5.2 Construction Works for the Coming Month	9
5.3 Key Issues for the Coming Month	9
6. CONCLUSION	10
6.1 Conclusion	10

TABLES

Table 1.1	Contact information	3
Table 2.1	Impact Air Quality and Noise Monitoring Parameters, Frequencies and Durations	4
Table 2.2	Locations of Impact Air Quality and Noise Monitoring Stations	4
Table 2.3	Equipment for Impact Air Quality and Noise Monitoring	5
Table 2.4	Action & Limit Level for Air Quality and Noise Monitoring	5
Table 2.5	Summary of Impact Air Quality Monitoring Results in the Reporting Month	6
Table 2.6	Summary of Impact Noise Monitoring Results in the Reporting Month ..	6
Table 3.1	Summary of Environmental Licences and Permits	7
Table 4.1	Statistics for Complaint, Notification of Summons and Successful Prosecution	8

FIGURES

Figure 1 **Site Location and Monitoring Locations of the Project**

APPENDICES

Appendix A **Summary of Mitigation Measures during Construction**

Appendix B **Organization Chart of the Project**

Appendix C **Construction Programme**

Appendix D **Event and Action Plan**

EXECUTIVE SUMMARY

Ramboll Hong Kong Limited has been commissioned by the Architectural Service Department (ArchSD) as the Independent Environmental Checker (IEC) under the Environmental Permit no. EP-518/2016 (EP) to audit the implementation of all mitigation measures and Environmental Monitoring and Audit (EM&A) programme recommended in the EP and Project Profile (Register No.: PP-535/2016) as well as to confirm in writing in the monthly audit report full implementation of the measures and EM&A programme.

Construction works were undertaken during this reporting month since 1 July 2018.

This is the Final IEC Monthly Audit Report prepared and submitted under Condition 2.3 of the EP. The IEC services will be completed in mid-July of 2020.

Implementation of Mitigation Measures

One site inspection was carried out by IEC on 29 June 2020 in the reporting month. The inspection finding is summarized in **Section 3.1.2**.

The status of implementation of mitigation measures is presented in **Appendix A**.

Air Quality and Noise Monitoring

Impact monitoring for air quality (1-hr TSP) and noise were required according to the Contract Particular Specification of the Project.

No Action and Limit Level exceedances of 1-hr TSP were recorded at air monitoring stations – A, B, C and D in the reporting month.

No Action and Limit Level exceedances of noise were recorded at noise monitoring stations – A, B, C and D in the reporting month.

Record of Environmental Complaint, Notification of Summons and Successful Prosecution

No environmental complaint was received in the reporting month.

No notification of summons or successful prosecution was received in the reporting month.

1. INTRODUCTION

1.1 Background

- 1.1.1 The conversion of the former French Mission Building (FMB) for Accommodation use by law-related organisations (LROs) and related purposes, which hereinafter is referred to as the "Project", has an objective to convert the former FMB into general office accommodation and ancillary facilities with central air-condition system.
- 1.1.2 The Project is located at No.1, Battery Path, Central, and the Project site covers a footprint of about 1,364 m².
- 1.1.3 The purpose of the Project includes the following:
- To renovate and enhance the FMB to meet the needs of LROs and related purposes;
 - To upgrade the FMB in order to comply with the prevailing statutory requirements without compromising the conservation principles; and
 - To restore the Building to the French Mission era dating back in 1919 based on available records, while the history of CFA will be displayed by means of interpretation so as to enhance the understanding of the cultural significance of FMB.
- 1.1.4 Given the status of FMB being a declared monument under the Antiquities and Monuments Ordinance since 1989, the Project constitutes a Designated Project under item Q.1, Part I, Schedule 2 of the Environmental Impact Assessment Ordinance (EIAO). An Environmental Permit no. EP-518/2016 (EP) has been issued to the Department of Justice (DoJ) on 26 July 2016 for the construction of the Project.
- 1.1.5 Department of Justice (DoJ) is the Project Proponent. The Architectural Services Department (ArchSD) is the works agent of DoJ. ArchSD will be responsible for project management, contract preparation and site supervision and will consult DoJ at all stages of the Project.
- 1.1.6 Ramboll Hong Kong Limited has been commissioned by the Architectural Service Department, as the Independent Environmental Checker (IEC) to audit the implementation of all mitigation measure and environmental monitoring and audit (EM&A) programme recommended in the Project Profile (PP) (Register No.: PP-535/2016) and to confirm in writing in the monthly audit report full implementation of the measures and EM&A programme in accordance with condition 2.3 of the EP. The IEC services will be completed in mid-July of 2020.
- 1.1.7 This is the 24th and the final monthly audit report summarising the findings of implementation status of the mitigation measures and EM&A programme under the Project from 1 June 2020 to 30 June 2020.
- 1.1.8 The site location of the Project is presented in **Figure 1**.

1.2 Project Organization

1.2.1 The contact information of key personnel is summarized in **Table 1.1**. An organization chart is presented in **Appendix B**.

Table 1.1 Contact information

Party	Position	Contact Person	Telephone	Fax
Department of Justice (DoJ)	Project Proponent	Carrie Lee	2867 4590	2520 2601
Architectural Service Department (ArchSD)	Works Agent of DoJ	Teresa Leung	2867 3964	2716 0504
Design 2 (HK) Limited	Architectural Consultant	William Lai	2525 3011	2521 8203
Ramboll Hong Kong Limited	Independent Environmental Checker (IEC)	Y H Hui	3465 2850	3465 2899
Hop Lee Builders Company Limited	Contractor	Lo Ting Fung	6223 5549	2356 9167

1.3 Construction activities

1.3.1 The construction activities undertaken in this reporting month are presented below:

- External area:
 - Metal gate construction
 - Planter pot installation
- Internal area:
 - Laying of cement tiles at ST No.1
 - Wall finishing (painting)
- Cladding and timber floor at ST No.2
- Cleaning of retaining wall
- Brick repair and crack repair
- Testing & Commissioning

1.3.2 The Construction Programme of the Project is provided in **Appendix C**.

2. AIR QUALITY AND NOISE MONITORING

2.1 Monitoring Requirement

- 2.1.1 Baseline and Impact monitoring for air quality (1-hr TSP) and noise were required according to the Contract Particular Specification (PS) of the Project.
- 2.1.2 The Baseline Monitoring for Air Quality and Noise was carried out by the Contractor for 14 consecutive days between 16 April 2018 and 29 April 2018 at 4 monitoring locations prior to the commencement of construction works of the Project according to the agreed methodology.
- 2.1.3 The Action and Limit Levels for impact air quality were determined from the baseline air quality monitoring result. The Action and Limit Levels for both impact air quality and noise monitoring are presented in **Table 2.4**.
- 2.1.4 The event and action plans for impact air quality and noise monitoring are presented in **Appendix D**.
- 2.1.5 Impact air quality and noise monitoring were conducted in the reporting month. **Table 2.1** summarizes the details of the parameter, frequency and duration of the monitoring.

Table 2.1 Impact Air Quality and Noise Monitoring Parameters, Frequencies and Durations

Parameter	Frequency and Duration
Air Quality	
1-hour Total Suspended Particulates (1-hr TSP)	At least 3 times in every six-days
Noise	
L _{Aeq} (30 mins), L ₁₀ and L ₉₀	One set of measurement between 0700-1900 hours on normal weekdays (i.e. Monday to Saturday)

- 2.1.6 Impact air quality and noise monitoring in this reporting month were conducted on 3, 9, 15, 20 and 26 June 2020.

2.2 Monitoring Location

- 2.2.1 Four locations were proposed as the air quality and noise monitoring stations during the construction phase of the Project. **Table 2.2** summarizes the details of these monitoring stations.

Table 2.2 Locations of Impact Air Quality and Noise Monitoring Stations

Monitoring Station	Location	Type of Noise Monitoring Measurement
A	Cheung Kong Park	Free-field
B	Battery Path	Free-field
C	North corner of the Project site with the site boundary	Façade
D	West side of Battery Path	Free-field

2.3 Monitoring Equipment and Methodology

2.3.1 **Table 2.3** summarizes the equipment used to carry out the impact air quality and noise monitoring. The calibration certificates were checked by IEC in the reporting month.

Table 2.3 Equipment for Impact Air Quality and Noise Monitoring

Equipment	Model/Brand (Serial No.)	Calibration Certificate Expiry Date
Air Quality		
Portable Direct Reading Dust Meter	LD-5R (851817)	4 July 2020
Portable Direct Reading Dust Meter	LD-5R (851816)	22 August 2020
Portable Direct Reading Dust Meter	LD-5R (851820)	22 August 2020
Portable Direct Reading Dust Meter	LD-5R (992821)	2 September 2020
Noise		
Sound Level Meter	NTi Audio XL2 (A2A-13548-E0)	9 January 2021
Sound Level Meter	RION NL-31 (00303811)	23 April 2021
Sound Level Meter	Pulsar 43 (PN1755)	17 December 2020
Sound Level Meter	Lutron SL-4033SD (I.491835)	4 December 2020
Acoustic Calibrator	Pulsar 105 (63705)	27 September 2020

2.3.2 The portable direct reading dust meters, sound level meters and acoustic calibrator were calibrated annually.

2.4 Action & Limit Level

2.4.1 The Action and Limit Levels was established in accordance with the approved EM&A Manual. **Table 2.4** presents the Action and Limit Levels for air quality and noise monitoring.

Table 2.4 Action & Limit Level for Air Quality and Noise Monitoring

Monitoring Station	Action Level	Limit Level
Air Quality		
	($\mu\text{g}/\text{m}^3$)	($\mu\text{g}/\text{m}^3$)
A	296	500
B	294	500
C	293	500
D	295	500
Noise		
		(L_{eq} (30 mins) , dB(A))
A,B,C,D	When one documented complaint is received	75

2.5 Monitoring Result

2.5.1 The monitoring results for impact air quality and noise monitoring in the reporting month are summarized in **Table 2.5** and **Table 2.6** respectively.

Table 2.5 Summary of Impact Air Quality Monitoring Results in the Reporting Month

Monitoring Station	Average, $\mu\text{g}/\text{m}^3$	Range, $\mu\text{g}/\text{m}^3$
A	48	41 – 52
B	47	43 – 52
C	61	56 – 67
D	54	47 – 61

2.5.2 No Action and Limit Level exceedances of 1-hr TSP were recorded at air monitoring stations – A, B, C and D in the reporting month.

Table 2.6 Summary of Impact Noise Monitoring Results in the Reporting Month

Monitoring Station	Average, dB(A) (with free-field correction for A, B and D)		Range, dB(A)	
	L _{eq} (30 mins)	L _{eq} (5mins)	L ₁₀ (5 mins)	L ₉₀ (5 mins)
	A	68	61 – 68	63 – 71
B	69	62 – 68	63 – 71	60 – 66
C	68	61 – 69	62 – 70	58 – 68
D	67	59 – 67	63 – 70	56 – 65

2.5.3 No Limit Level exceedance of noise was recorded at noise monitoring stations – A, B, C and D in the reporting month.

3. ENVIRONMENTAL SITE INSPECTION AND AUDIT

3.1 Site Inspection

- 3.1.1 Site inspections are required to be conducted by IEC on a monthly basis to monitor the implementation of proper environmental pollution control and mitigation measures recommended in the PP of the Project as required in the EP.
- 3.1.2 One site inspection was carried out on 29 June 2020 in the reporting month. The finding(s) of the site inspection are described as below:
- No major observation was noted during site inspection.
- 3.1.3 Only hand-held power tools and hand-held manual tools were used for carrying out the internal works of the Project.
- 3.1.4 Cultural heritage mitigation measure set out in Sections 2.6 and 2.7 of the Project Profile were implemented in the reporting period.

3.2 Advice on the Waste Management Status

- 3.2.1 A billing account for disposal of construction waste was created for the Project on 9 February 2018.
- 3.2.2 The Project was registered as a Chemical Waste Producer on 23 February 2018.
- 3.2.3 According to information provided by the Contractor, 0 tonnes of inert C&D materials were disposed in public fill. 6.98 tonnes of other non-inert C&D waste, such as general refuse, were disposed to the landfill in the reporting month, and 0 tonnes of metals were recycled.

3.3 Status of Environmental Licences and Permits

- 3.3.1 The environmental licenses and permits for the Project that were valid in the reporting month are summarized in **Table 3.1**.

Table 3.1 Summary of Environmental Licences and Permits

Permit / Licence	Reference No.	Date of Issue	Valid Thru	Status
Environmental Permit	EP-518/2016	26 Jul 2016	N/A	Valid
Notification of Works under APCO	430032	24 Jan 2018	N/A	Valid
Billing account under Waste Disposal Ordinance	7030054	9 Feb 2018	N/A	Valid
Registration as a Chemical Waste Producer	5213-123-H3927-01	23 Feb 2018	N/A	Valid
WPCO Discharge License	WT00031811-2018	8 Oct 2018	31 Oct 2023	Valid

3.4 Implementation Status of Mitigation Measures

- 3.4.1 The implementation status of mitigation measures recommended in the PP is summarized in **Appendix A**.

4. REPORT ON COMPLAINT, NOTIFICATION OF SUMMONS AND SUCCESSFUL PROSECUTION

4.1 Record of Environmental Complaint Received

4.1.1 No environmental complaint was received in the reporting month.

4.2 Record of Environmental Quality Performance Exceedance

4.2.1 No Action and Limit Level exceedances of 1-hr TSP were recorded at air monitoring stations – A, B, C and D in the reporting month.

4.2.2 No Action and Limit Level exceedances of noise were recorded at noise monitoring stations – A, B, C and D in the reporting month.

4.3 Record of Notification of Summons and Successful Prosecution

4.3.1 No notification of summons or successful prosecution was received in the reporting month.

4.4 Cumulative Statistics for Complaint, Notification of Summons and Successful Prosecution

4.4.1 Cumulative statistics of complaint, notification of summons and successful prosecution for the period from the date of commencement of construction to end of the reporting month are summarized in **Table 4.1**.

Table 4.1 Statistics for Complaint, Notification of Summons and Successful Prosecution

	Complaints	Notifications of Summons	Successful Prosecution
Within the reporting month (June 2020)	0	0	0
From the date of commencement of construction to end of the reporting month	0	0	0

5. FUTURE KEY ISSUES

5.1 Monitoring Schedule for the Coming Month

5.1.1 The tentative dates of air quality and noise monitoring for next month are 2, 7, 13, 18, 24 and 30 July 2020.

5.2 Construction Works for the Coming Month

5.2.1 The construction works that are anticipated to be conducted in the coming month include:

- External area:
 - Timber louvre (mock-up)
 - Floor painting
- Internal area:
 - Wall finishing (painting)
 - Cabinet at corridor
- Cladding and timber floor at ST No.2
- Cleaning of retaining wall
- Brick repair and crack repair
 - Testing & Commissioning

5.3 Key Issues for the Coming Month

5.3.1 The key environmental issues to be considered in the coming month include:

- Sorting, recycling, storage and disposal of general refuse and C&D materials

6. CONCLUSION

6.1 Conclusion

- 6.1.1 The EM&A programme recommended in the PP has been undertaken since 1 July 2018.
- 6.1.2 No environmental complaint was received in the reporting month.
- 6.1.3 No Action and Limit Level exceedances of 1-hr TSP were recorded at air monitoring stations – A, B, C and D in the reporting month.
- 6.1.4 No Action and Limit Level exceedances of noise were recorded at noise monitoring stations – A, B, C and D in the reporting month.
- 6.1.5 One site inspection was conducted in the reporting month by IEC, and the implementation of mitigation measures by Contractor as recommended in the PP was audited.
- 6.1.6 No notification of summons or successful prosecution was received in the reporting month.

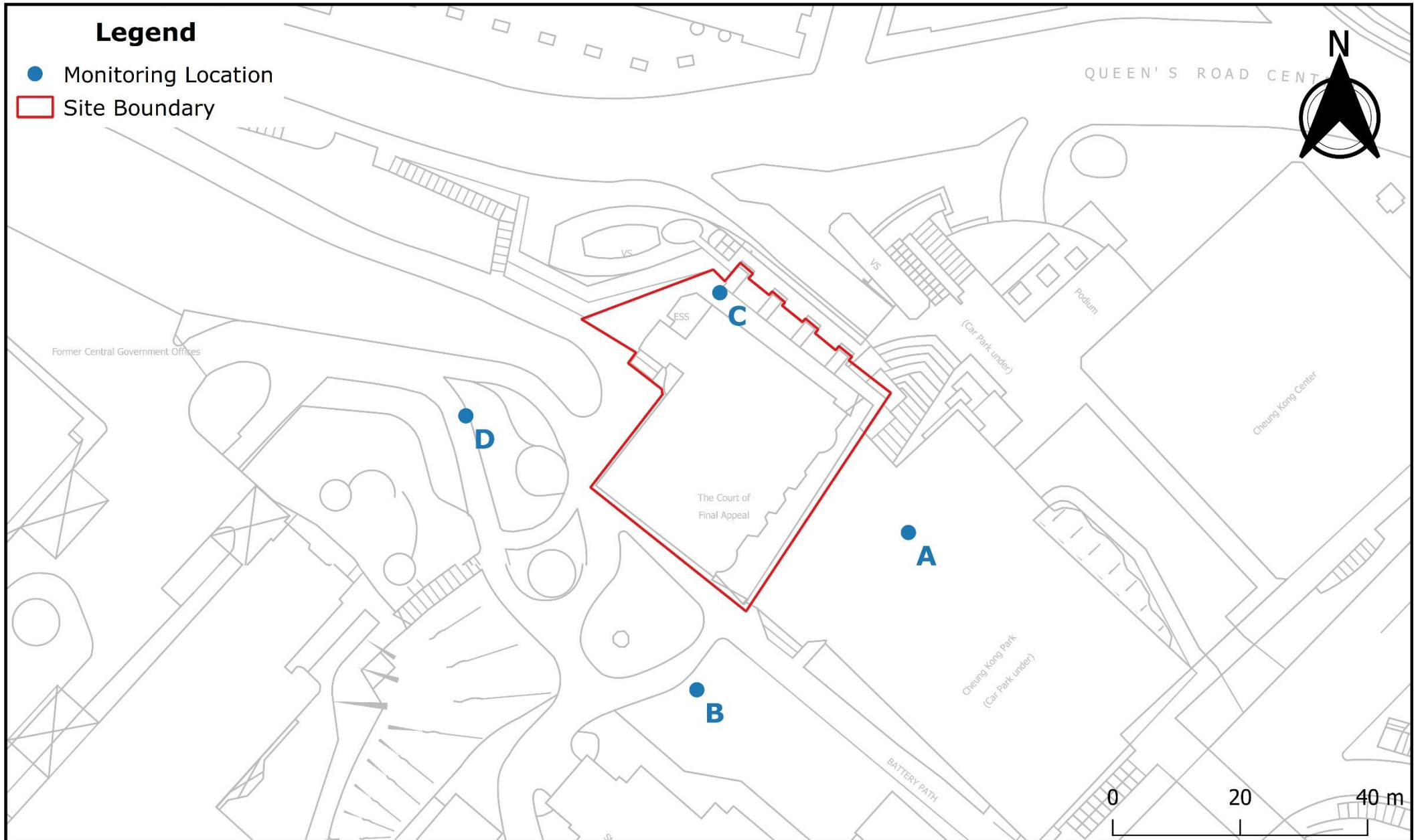


Figure: 1 Title: Site Location and the Monitoring Locations of the Project Project: Conversion of the Former French Mission Building for Accommodation Use by Law-related Organisations and Related Purposes	RAMBOLL
	Drawn by: HW
	Checked by: SC
	Rev.: 1
	Date: Jun-2018

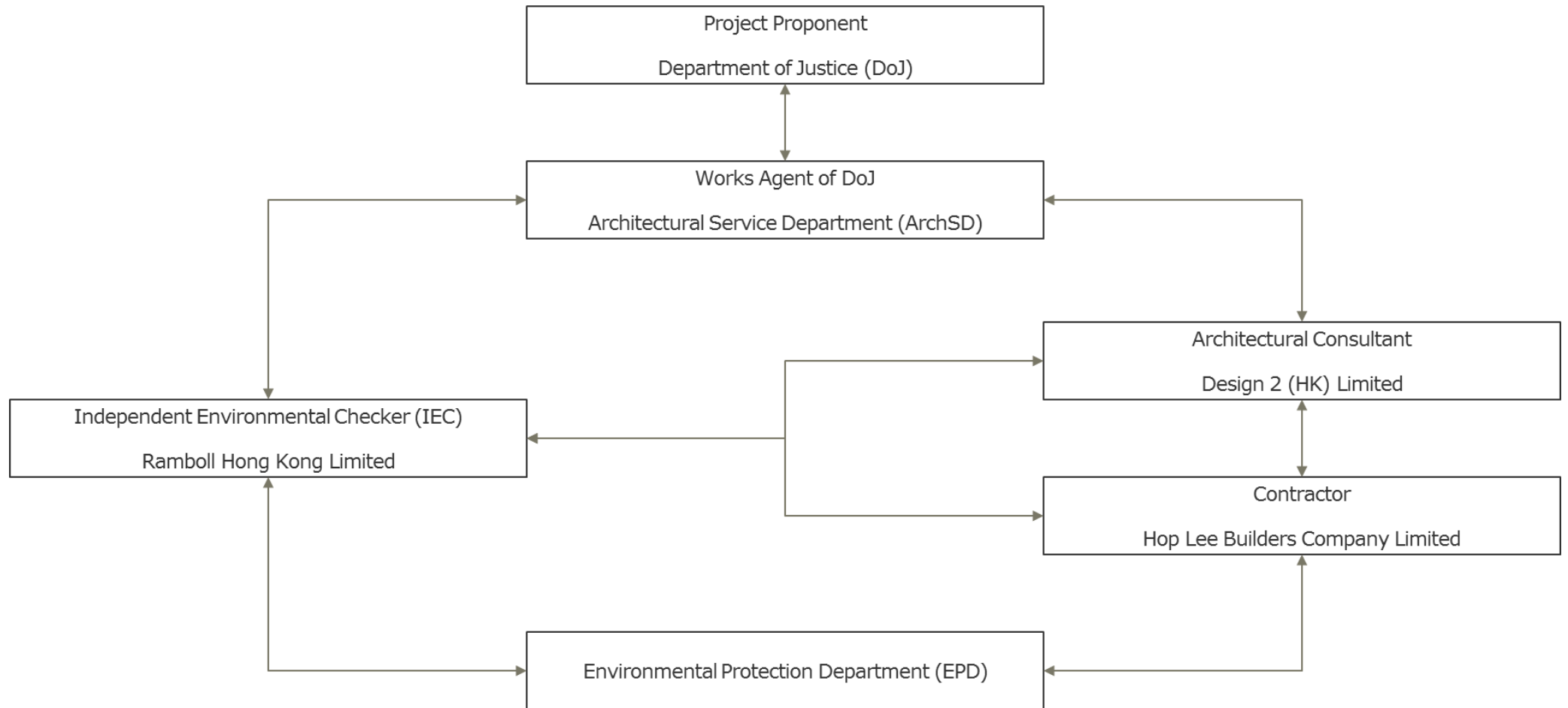
Appendix A
Summary of Mitigation Measures during Construction

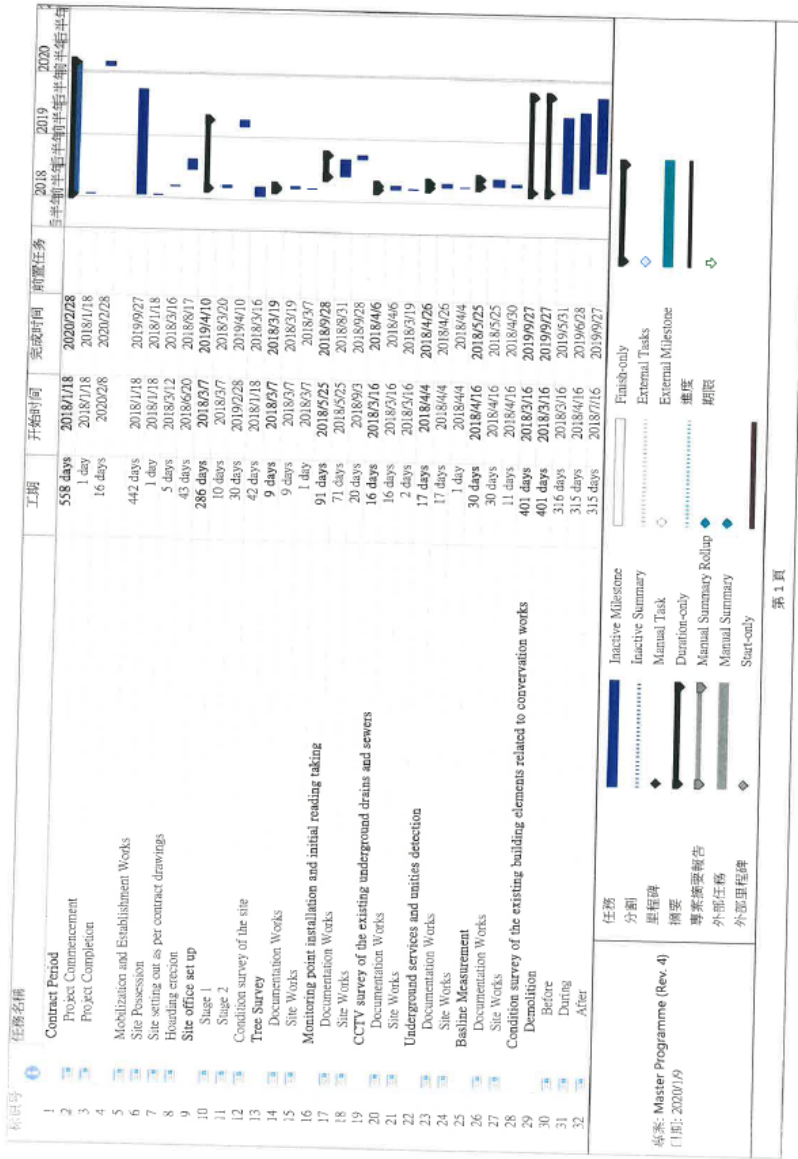


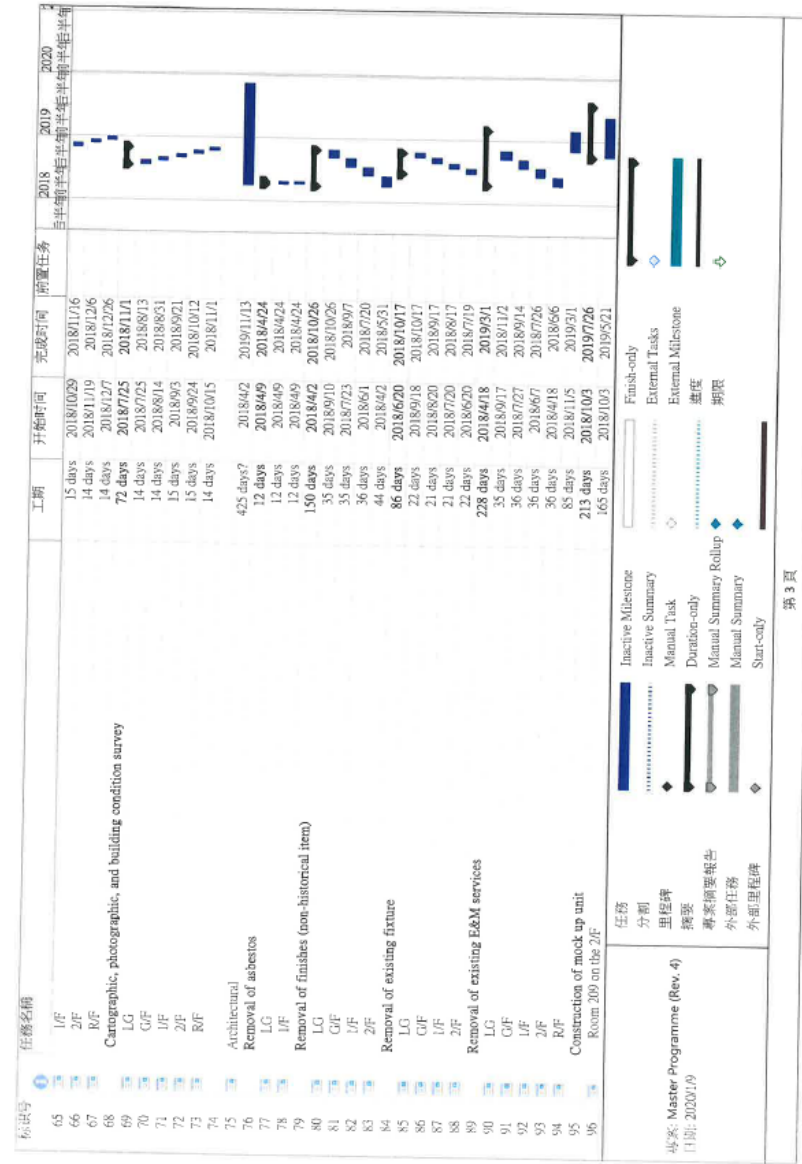
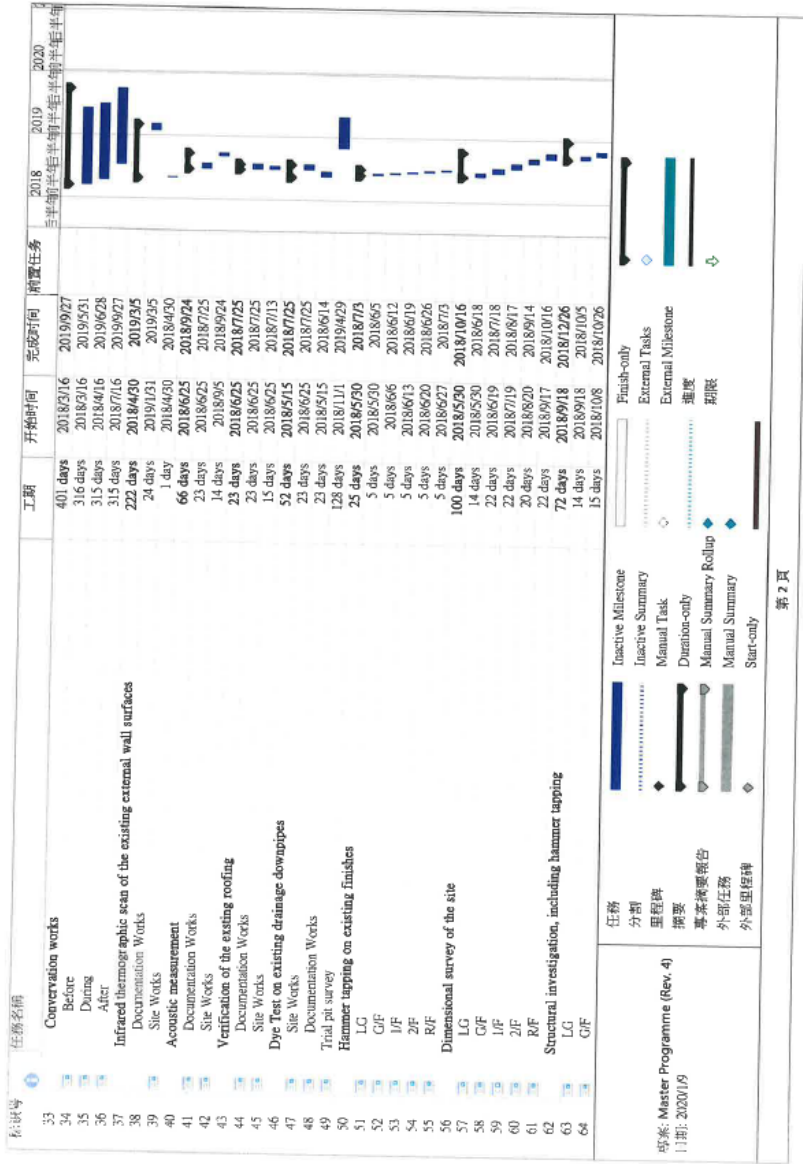
Reference	Potential Environmental Impact	Mitigation Measures	Implementation Agent
Project Profile – Appendix G	Construction Noise	<p>Common noise control measures:</p> <ul style="list-style-type: none"> – Use of quiet PME with lower sound power levels – Use of temporary noise barriers – Locating noise emitting plants as far as practicable away from sensitive receivers – Define contractual clauses for construction works – No construction works will be carried out during 7 p.m. to 7 a.m. from Monday to Saturday and any time on Sundays and General Holidays <p>General Site practices:</p> <ul style="list-style-type: none"> – Only well-maintained plant should be operated on-site and plant should be serviced regularly – Silencers or mufflers on construction equipment should be utilised and should be properly maintained – Mobile plant should be sited as far away from NSRs as possible – PME that may be in intermittent use should be shut down between works periods or should be throttled down to a minimum level – Plant known to emit noise strongly in one direction should, wherever possible, be orientated so that the noise is directed away from the nearby NSRs – Material stockpiles and other structures should be effectively utilised, wherever practicable, in screening noise from on-site construction works – The schedule and location of noisy construction works of the Project should be well coordinated on site in order to minimise cumulative construction noise impact 	Contractor
Project Profile – Appendix G	Construction Dust	<p>Implement dust control and suppression measures stipulated in the Air Pollution Control (Construction Dust) Regulation:</p> <ul style="list-style-type: none"> – Regular water spraying of exposed surfaces – Covering dusty material stockpiles with tarpaulin sheet – Erection of hoarding – Provision of covers for all trucks 	Contractor
Project Profile – Appendix G	Waste Management	<p>Implement good waste management plan and practices on minimising, handling and disposal of waste:</p> <ul style="list-style-type: none"> – Handle, store and dispose of all wastes in accordance with the Waste Disposal Ordinance 	Contractor

Appendix A
Summary of Mitigation Measures during Construction

Reference	Potential Environmental Impact	Mitigation Measures	Implementation Agent
		<ul style="list-style-type: none"> - Handle, store and dispose of asbestos waste in accordance with all Codes of Practice regarding asbestos works issued pursuant to Section 37 of the APCO - Store general refuse in enclosed bins or compaction units separate from C&D materials and chemical wastes - Employ a reputable waste collector to collect and dispose of general refuse from the site on a daily or every second day basis 	
Project Profile – Appendix G	Water Quality	Adopt site practices outlined in ProPECC PN 1/94 “Construction Site Drainage”: <ul style="list-style-type: none"> - Provide sand/silt removal facilities to remove sand/silt particles from runoff - Inspect and maintain all drainage facilities and erosion and sediment control structures - Clean all vehicles and plant before leaving the construction site - Cover open stockpiles of construction materials or construction wastes on-site with tarpaulin or similar fabric during rainstorms - Adopt good site practices to remove rubbish and litter from construction site to prevent them from entering public sewers or drains - Deploy temporary sanitary facilities 	Contractor
Project Profile – Appendix G	Landscape and Visual Impact	Landscape Impact: <ul style="list-style-type: none"> - Monitoring and inspection will be carried out for landscape resources during construction period - Suitable tree protection will be provided Visual Impact: <ul style="list-style-type: none"> - Decorative hoarding and scaffolding could be used to soften the visual impact 	Contractor
Environmental Permit – Condition 2.3 and Project Profile – S 4.1.3	Cultural Heritage	Only hand-held power tools and hand-held manual tools shall be used for carrying out the internal works of the Project.	Contractor
Project Profile – S 6.2.1.3		Mitigation measure set out in Sections 2.6 and 2.7 of the Project Profile are implemented. Character Defining Elements are persevered, repaired or reinstated with minimum intervention.	Contractor







標記号	任務名稱	工期	開始時間	完成時間	前置任務
97	Room 210 on the 2/F	165 days	2018/0/3	2019/5/21	
98	Rooms 214 and 215 on the 2/F	165 days	2018/0/3	2019/5/21	
99	Part of corridor 223A at ardlines 3-4/B	85 days	2019/4/1	2019/7/26	
100	Interior fit-out work	150 days	2018/11/21	2019/6/78	
101	Blockwork	14 days	2018/11/21	2019/6/18	
102	LG	14 days	2018/11/21	2019/6/18	
103	G/F	14 days	2019/4/1	2019/4/18	
104	1/F	14 days	2019/4/22	2019/5/29	
105	2/F	14 days	2019/5/10	2019/5/29	
106	R/F	14 days	2019/5/30	2019/6/18	
107	Plastering works	70 days	2019/4/22	2019/7/26	
108	LG	14 days	2019/4/22	2019/5/29	
109	G/F	14 days	2019/5/10	2019/5/29	
110	1/F	14 days	2019/5/30	2019/6/18	
111	2/F	14 days	2019/6/19	2019/7/26	
112	R/F	14 days	2019/7/9	2019/7/26	
113	Tiling Works	71 days	2019/5/10	2019/8/16	
114	LG	14 days	2019/5/10	2019/5/29	
115	G/F	14 days	2019/5/30	2019/6/18	
116	1/F	14 days	2019/6/19	2019/7/26	
117	2/F	14 days	2019/7/9	2019/7/26	
118	R/F	15 days	2019/7/29	2019/8/16	
119	Ceilings	50 days	2019/10/29	2019/12/31	
120	Timber Doors	58 days	2019/10/18	2019/12/31	
121	Steel Doors	58 days	2019/10/18	2019/12/31	
122	Furniture	71 days	2019/0/27	2019/7/27	
123	Metal Windows and Louvers	58 days	2019/0/13	2019/11/29	
124	Acoustic Wall Panel	88 days	2019/0/13	2019/11/29	
125	Toilet Cubicle	110 days	2019/0/13	2019/11/29	
126	Sanitary fitting installation	72 days	2019/0/26	2019/11/29	
127	Inventory installation	57 days	2019/0/29	2019/11/23	
128	Signage	22 days	2020/1/2	2020/1/31	

任務

分劃

里程碑

摘要

專家摘要報告

外部任務

外部里程碑

Inactive Milestone

Inactive Summary

Manual Task

Duration-only

Manual Summary Rollup

Manual Summary

Start-only

Finish-only

External Tasks

External Milestone

進度

期限

第 4 頁

標記号	任務名稱	工期	開始時間	完成時間	前置任務
129	Roofing Waterproof	80 days	2019/0/18	2019/12/31	
130	R/F	244 days	2019/1/31	2019/12/31	
131	Phase 1	75 days	2019/1/31	2019/5/5	
132	Phase 2	30 days	2019/1/25	2019/2/31 131	
133	2/F	10 days	2019/4/1	2019/4/12	
134	1/F	10 days	2019/4/15	2019/4/26 133	
135	G/F	10 days	2019/4/29	2019/5/0 134	
136	LG/F	208 days	2019/7/31	2019/11/8	
137	Corridor with terrazzo	14 days	2019/5/1	2019/5/20	
138	Plant Room	30 days	2019/1/31	2019/3/13	
139	External area	30 days	2019/1/01	2019/1/18	
140	Structural				
141	Steel Staircase	310 days	2018/5/30	2019/8/6	
142	Demolition of R.C. structure for steel staircase	256 days	2018/5/30	2019/5/22	
143	Documentation Works	242 days	2018/5/30	2019/5/2	
144	Install the supporting elements from R/F to 1/F	10 days	2018/5/30	2018/6/12	
145	Demolish existing 2/F slab, beam and wall	100 days	2018/5/30	2019/1/22	
146	Demolish existing 1/F slab, beam and wall	7 days	2019/1/23	2019/1/31	
147	Demolish existing LG/F slab and column	7 days	2019/2/1	2019/2/11 146	
148	Installation for additional supporting elements of strengthening works	9 days	2019/2/12	2019/2/20 147	
149	Construction of steel staircase	42 days	2019/2/21	2019/3/5 148	
150	Documentation Works	63 days	2019/3/6	2019/5/22 149	
151	Construction of RC footing at LG/F	10 days	2019/2/25	2019/3/8	
152	Construction of steel frame for staircase	10 days	2019/3/11	2019/3/29	
153	Construction of RC slab at G/F	26 days	2019/3/25	2019/4/29 153	
154	Demolition of R.C. structure (for Lift construction)	14 days	2019/5/3	2019/5/22 150	
155	Documentation Works	310 days	2018/5/30	2019/8/6	
156	Install the supporting elements from R/F to 1/F	133 days	2018/5/30	2018/11/30	
157	Lift construction	72 days	2018/12/3	2019/3/12 159	
158	Demolition of R.C. structure (for Lift construction)	310 days	2018/5/30	2019/8/6	
159	Documentation Works	133 days	2018/5/30	2018/11/30	
160	Install the supporting elements from R/F to 1/F	72 days	2018/12/3	2019/3/12 159	

任務

分劃

里程碑

摘要

專家摘要報告

外部任務

外部里程碑

Inactive Milestone

Inactive Summary

Manual Task

Duration-only

Manual Summary Rollup

Manual Summary

Start-only

Finish-only

External Tasks

External Milestone

進度

期限

第 5 頁

标识号	任务名称	工期	开始时间	完成时间	前置任务	2018	2019	2020
161	Order of helical bar	30 days	2019/2/20	2019/4/2				
162	Check repair	90 days	2019/4/3	2019/8/6, 161				
163	Revised design of SCU drawings	1 day	2019/2/20	2019/2/20				
164	Material testing for additional supporting elements for strengthening works	21 days	2019/2/21	2019/3/21, 163				
165	Insulation for additional supporting elements of strengthening works	8 days	2019/3/13	2019/3/22, 160				
166	Demolish existing 2/F slab and beam	8 days	2019/3/25	2019/4/3, 166				
167	Demolish existing 1/F slab and beam	8 days	2019/4/4	2019/4/15, 167				
168	Demolish existing GF slab and beam	8 days	2019/4/16	2019/4/25, 168				
169	Demolish existing RF slab and beam	8 days	2019/4/26	2019/5/7, 169				
170	Demolish existing wall at LG/F	239 days	2018/8/2	2019/7/2				
171	Construction of Lift construction	57 days	2018/8/2	2018/10/19				
172	Documentation Works	22 days	2019/4/29	2019/5/28				
173	RC structure for lift pit	25 days	2019/5/29	2019/7/2, 173				
174	Lift shaft	143 days	2018/10/2	2019/4/18				
175		138 days	2018/10/2	2019/4/11				
176	Skylight	108 days	2018/10/2	2019/7/28				
177	Demolition of R.C. structure (for Skylight)	9 days	2019/3/1	2019/3/13, 178				
178	Documentation Works	21 days	2019/3/14	2019/4/11, 179				
179	Install props from 2/F to R/F	138 days	2019/7/10	2019/7/10				
180	Demolish existing skylight and parapet wall	80 days	2018/12/31	2019/4/19				
181	Construction of Sky-light	22 days	2019/4/22	2019/5/21, 182				
182	Documentation Works	36 days	2019/5/22	2019/7/10, 183				
183	Concrete block	64 days	2019/4/2	2019/6/28				
184	Skylight steel frame	64 days	2019/4/2	2019/6/28				
185		22 days	2019/4/2	2019/5/1				
186	Steel ramp	22 days	2019/5/2	2019/5/24				
187	Construction of steel ramp	20 days	2019/6/5	2019/6/28				
188	Documentation Works	72 days	2019/7/2	2019/8/22				
189	RC footing							
190	Steel frame							
191								
192	Dog house							

任务名称

- Order of helical bar
- Check repair
- Revised design of SCU drawings
- Material testing for additional supporting elements for strengthening works
- Insulation for additional supporting elements of strengthening works
- Demolish existing 2/F slab and beam
- Demolish existing 1/F slab and beam
- Demolish existing GF slab and beam
- Demolish existing RF slab and beam
- Demolish existing wall at LG/F
- Construction of Lift construction
- Documentation Works
- RC structure for lift pit
- Lift shaft
- Skylight
- Demolition of R.C. structure (for Skylight)
- Documentation Works
- Install props from 2/F to R/F
- Demolish existing skylight and parapet wall
- Construction of Sky-light
- Documentation Works
- Concrete block
- Skylight steel frame
- Steel ramp
- Construction of steel ramp
- Documentation Works
- RC footing
- Steel frame
- Dog house

任务

- Inactive Milestone
- Inactive Summary
- Manual Task
- Manual Summary
- Duration-only
- Manual Summary Rollup
- Manual Summary
- Start-only
- Finish-only
- External Tasks
- External Milestone
- 里程碑
- 期限

第 6 页

标识号	任务名称	工期	开始时间	完成时间	前置任务	2018	2019	2020
193	Demolition of R.C. structure for Dog house	44 days	2019/2/12	2019/4/12				
194	Documentation Works	22 days	2019/2/12	2019/3/13				
195	Demolish existing concrete slab	22 days	2019/3/14	2019/4/12, 194				
196	Construction of dog house	72 days	2019/2/12	2019/5/22				
197	Documentation Works	22 days	2019/2/12	2019/3/13				
198	RC curb	28 days	2019/4/15	2019/5/22, 195				
199	Steel frame	28 days	2019/4/15	2019/5/22, 195				
200		227 days	2018/10/16	2019/8/28				
201	Construction of strengthening work	120 days	2018/10/16	2019/4/1				
202	Steel beam under Ex-slab GF	120 days	2018/11/5	2019/4/19				
203	Steel beam under Ex-slab 1/F	80 days	2019/5/9	2019/8/28				
204	For existing parapet wall	122 days	2019/5/2	2019/10/18				
205	Construction of on grade slab	42 days	2019/5/2	2019/6/28				
206	Documentation Works	80 days	2019/7/1	2019/10/18				
207	RC structure	122 days	2019/5/2	2019/10/18				
208	Documentation Works	45 days	2019/5/2	2019/7/1				
209	Construction of R.C. Staircase and fence wall at LG/F	80 days	2019/7/1	2019/10/18				
210	RC structure	367 days	2018/7/3	2019/11/25				
211	Documentation Works	350 days	2018/7/3	2019/11/1				
212	Masonry	220 days	2019/4/8	2020/1/31				
213	Brick	220 days	2019/4/8	2020/1/31				
214	Internal	220 days	2019/4/8	2020/1/31				
215	External	220 days	2019/4/8	2020/1/31				
216	Granite	220 days	2019/4/8	2020/1/31				
217	Internal	220 days	2019/4/8	2020/1/31				
218	External	220 days	2019/4/8	2020/1/31				
219	Fileplace	220 days	2019/4/8	2020/1/31				
220	Window	220 days	2019/4/8	2020/1/31				
221		120 days	2019/8/26	2020/1/31				
222		120 days	2019/8/26	2020/1/31				
223		120 days	2019/8/26	2020/1/31				
224		120 days	2019/8/26	2020/1/31				

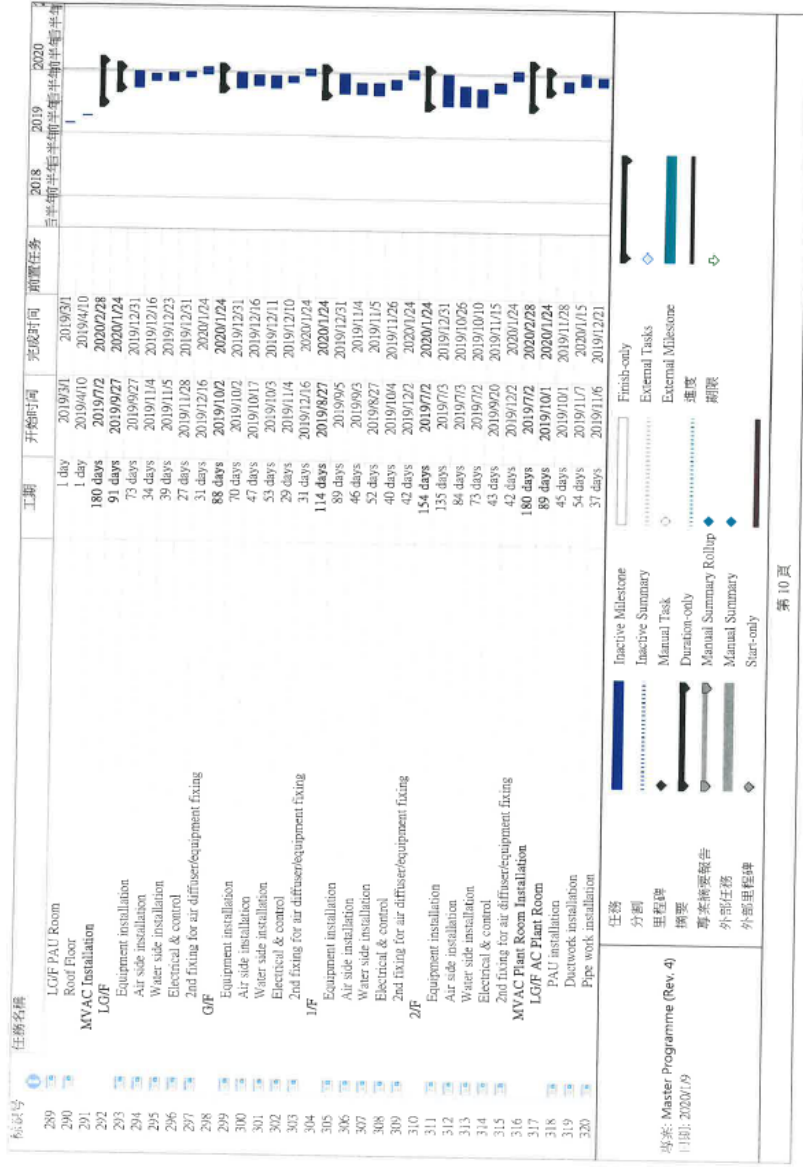
任务名称

- Demolition of R.C. structure for Dog house
- Documentation Works
- Demolish existing concrete slab
- Construction of dog house
- Documentation Works
- RC curb
- Steel frame
- Construction of strengthening work
- Steel beam under Ex-slab GF
- Steel beam under Ex-slab 1/F
- For existing parapet wall
- Construction of on grade slab
- Documentation Works
- RC structure
- Construction of R.C. Staircase and fence wall at LG/F
- Documentation Works
- RC structure
- Conservation works
- Documentation Works
- Masonry
- Brick
- Internal
- External
- Granite
- Internal
- External
- Fileplace
- Window

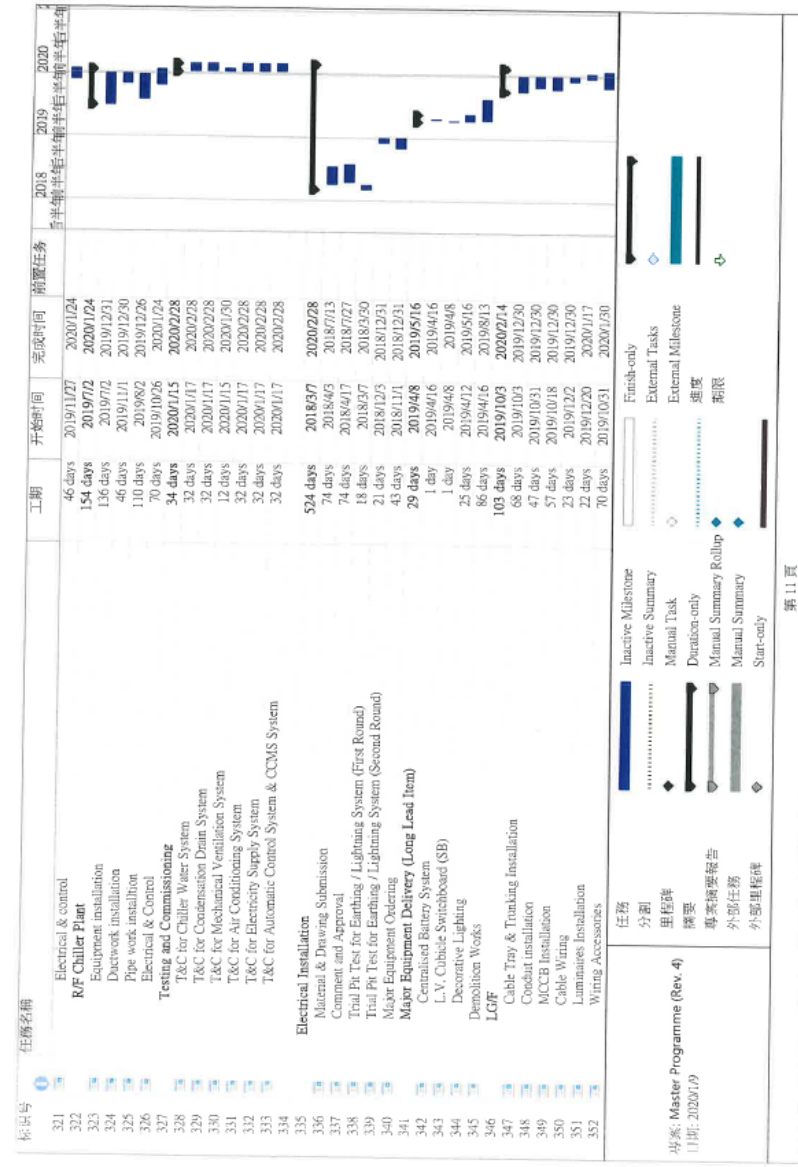
任务

- Inactive Milestone
- Inactive Summary
- Manual Task
- Manual Summary
- Duration-only
- Manual Summary Rollup
- Manual Summary
- Start-only
- Finish-only
- External Tasks
- External Milestone
- 里程碑
- 期限

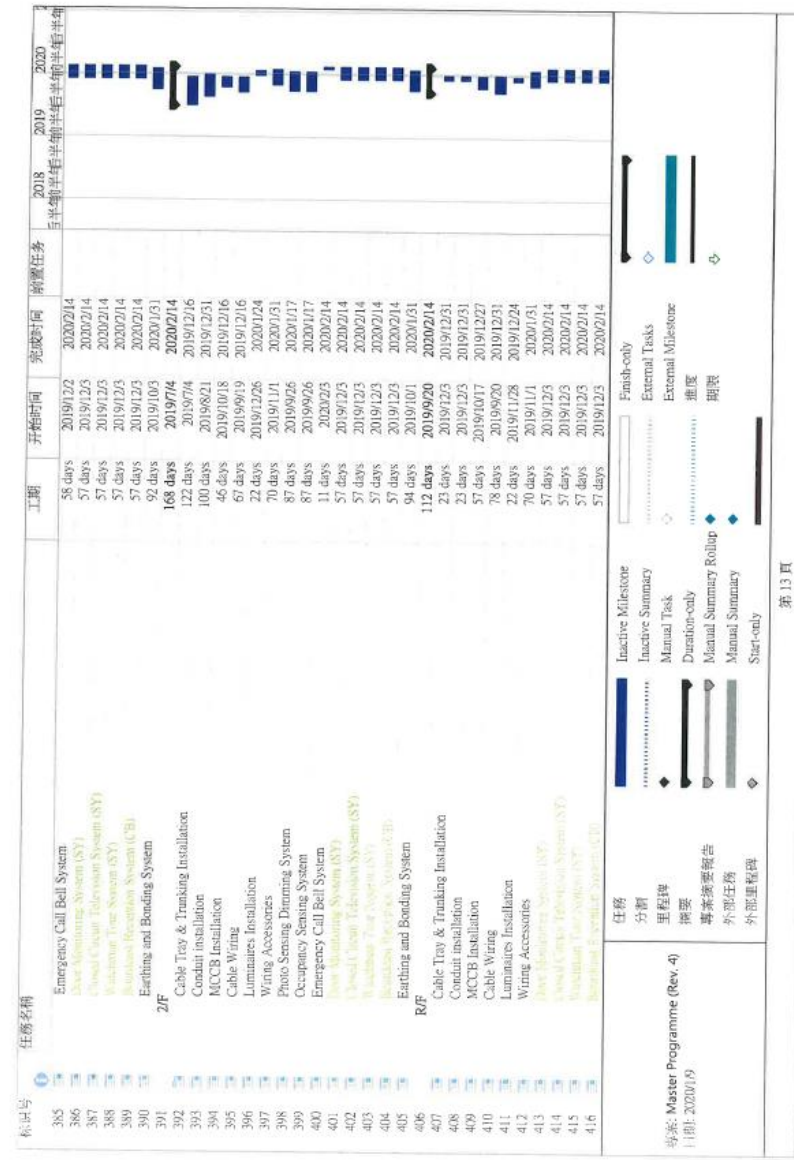
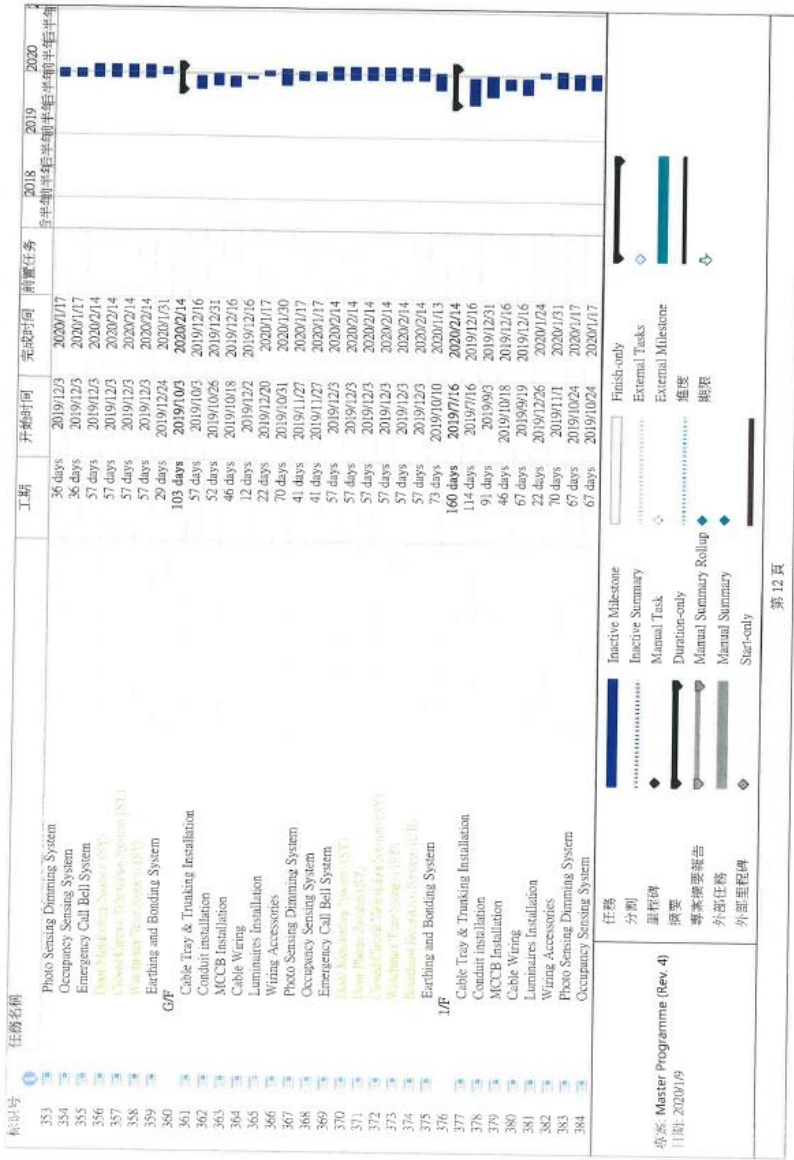
第 7 页

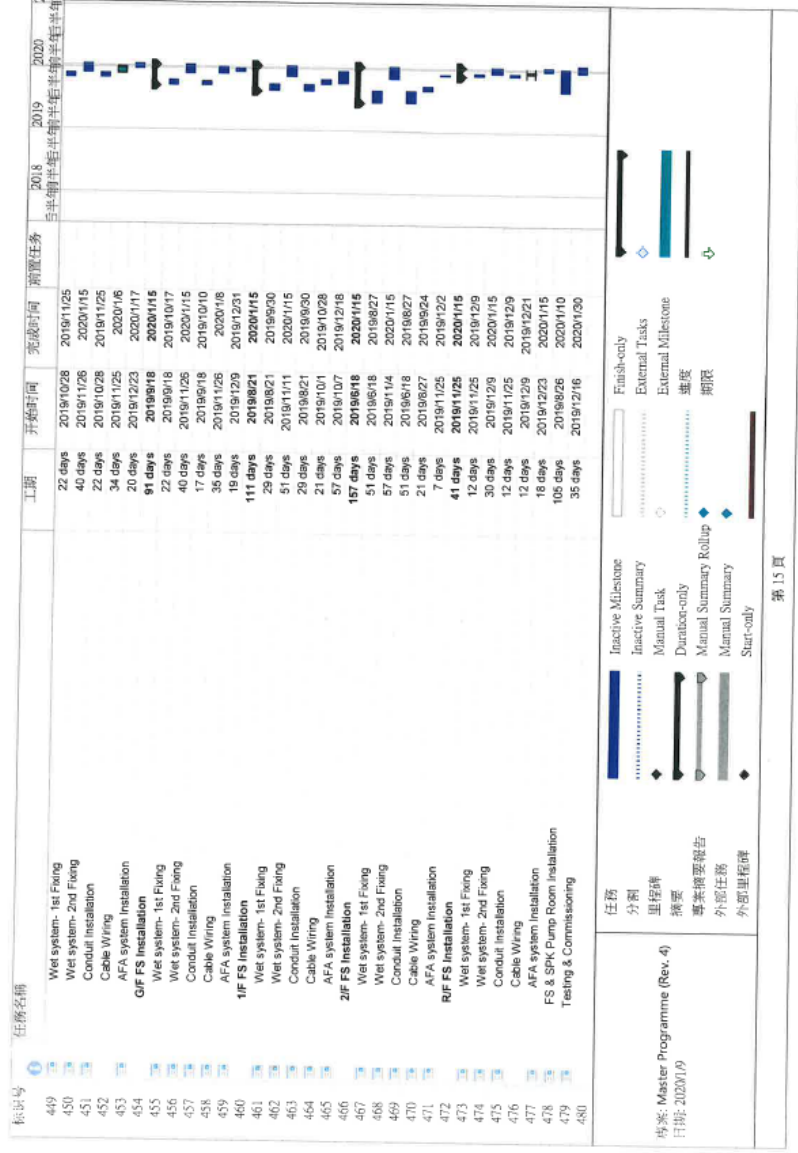
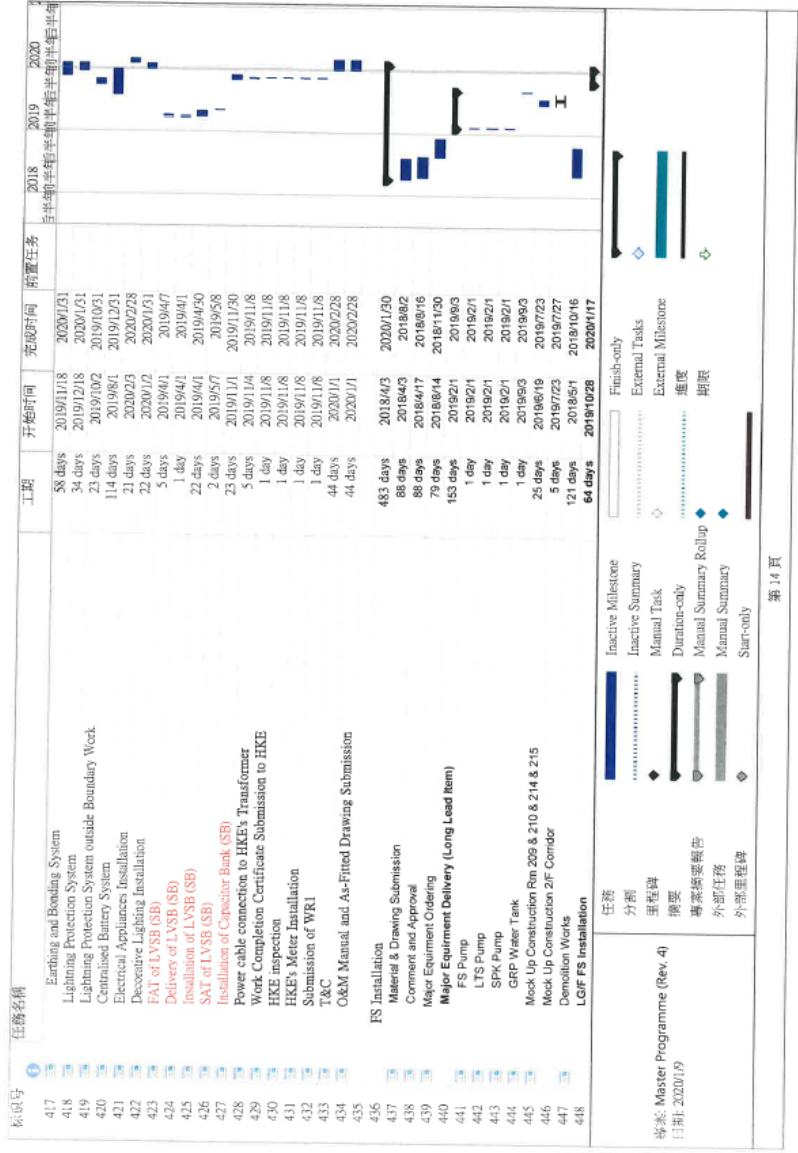


第 10 頁



第 11 頁





任务名称	工期	开始时间	完成时间	前置任务	2018	2019	2020
Plumbing and Drainage	441 days	2018/7/2	2020/2/28				
Material & Drawing Submission	63 days	2019/5/7	2019/8/1				
Comment and Approval	63 days	2019/5/7	2019/8/1				
Method Statement Submission	50 days	2018/7/2	2018/9/7				
Demolition Works for Existing Plumbing Installation	10 days	2018/8/13	2018/8/25				
LG/F	10 days	2018/7/30	2018/8/11				
G/F	10 days	2018/7/16	2018/7/28				
1/F	10 days	2018/7/2	2018/7/14				
2/F	10 days	2018/6/27	2018/6/9				
R/F	113 days	2019/7/1	2019/11/20				
Pipework Installation	60 days	2019/9/12	2019/11/30				
LG/F	15 days	2019/9/10	2019/9/10				
G/F	14 days	2019/8/21	2019/9/10				
1/F	23 days	2019/8/1	2019/8/20				
2/F	23 days	2019/7/11	2019/7/31				
R/F	36 days	2019/11/1	2019/11/30				
Sanitary Fitting Installation	15 days	2020/1/5	2020/1/31				
LG/F	13 days	2019/12/16	2020/1/31				
G/F	13 days	2019/12/16	2019/12/31				
1/F	13 days	2019/12/16	2019/12/31				
2/F	47 days	2019/10/1	2019/11/30				
R/F	47 days	2019/10/1	2019/11/30				
Major Plant Installation	46 days	2019/10/2	2019/11/30				
LG/F Flushing Water Pump Set & Accessories	46 days	2019/10/2	2019/11/30				
LG/F Flushing Water Tank	46 days	2019/10/2	2019/11/30				
R/F Cleansing Water Pump Set & Accessories	46 days	2019/10/2	2019/11/30				
R/F Cleansing Water Tank	46 days	2019/10/2	2019/11/30				
LG/F Sump Pump Set & Accessories	46 days	2019/10/2	2019/11/30				
Testing & Commissioning	44 days	2020/1/1	2020/2/28				
Underground Drainage	90 days	2019/6/1	2019/11/30				
Sump pump pit	44 days	2019/8/1	2019/10/31				
Drainage to Ex.FWMH-01	46 days	2019/10/2	2019/11/30				
任务	Inactive Milestone	Finish-only	External Tasks				
分类	Inactive Summary	External Milestone	External Milestone				
里程碑	Manual Task	速度	速度				
摘要	Duration-only	期限	期限				
專案摘要報告	Manual Summary Rollup						
外部任务	Manual Summary						
外部里程碑	Start-only						

第 16 頁

任务名称	工期	开始时间	完成时间	前置任务	2018	2019	2020
Lift Installation	417 days	2018/6/14	2020/1/10				
Submission and approval of shop drawing	50 days	2018/6/14	2018/8/22				
Submission and approval of material	50 days	2018/6/14	2018/8/22				
Handover of lift shaft	1 day	2019/7/2	2019/7/2				
Class lift shaft	17 days	2019/1/1	2019/1/22				
Lift car installation work (including Form 5 submission)	144 days	2019/7/2	2020/1/10				
Statutory Inspections and Licensing Issuance	421 days	2018/7/30	2020/2/28				
WSD Submission of WWO46 Part I & II (Potable Water & F.S.)	1 day	2018/7/30	2018/7/30				
WSD Submission of WWO46 Part IV (Potable Water & F.S.)	1 day	2019/11/29	2019/11/29				
Inspection for Water Certificate Issuance (F.S. & Potable Water)	1 day	2019/12/13	2019/12/13				
Lift Inspection by EMSD	10 days	2020/1/10	2020/1/23				
Lift (Issuance of use permit)	1 day	2020/1/24	2020/1/24 5:25				
Submission of Form 501 and 314	13 days	2020/1/14	2020/1/30				
Fire Service (FS) Inspection	1 day	2020/1/31	2020/1/31 3:27				
Issuance of Fire Certificate	1 day	2020/2/3	2020/2/3 5:28				
Inspection for SCCU	7 days	2020/2/4	2020/2/11				
Issuance of Completion Certificate	1 day	2020/2/28	2020/2/28				
Project Completion Date	1 day	2020/2/28	2020/2/28				
任务	Inactive Milestone	Finish-only	External Tasks				
分类	Inactive Summary	External Milestone	External Milestone				
里程碑	Manual Task	速度	速度				
摘要	Duration-only	期限	期限				
專案摘要報告	Manual Summary Rollup						
外部任务	Manual Summary						
外部里程碑	Start-only						

第 17 頁

Event	Action
Air Quality	
Action Level	<p>Step 1</p> <ul style="list-style-type: none"> • Identify source and check monitoring data and working method. <p>Step 2</p> <ul style="list-style-type: none"> • Notify IEC, Beam Consultant and Architectural Consultant to discuss and implement remedial action; • Rectify any unacceptable practice; • Amend working methods if appropriate; • If exceedance continues, commence additional monitoring. <p>Step 3</p> <ul style="list-style-type: none"> • Report the results of investigation to IEC, Beam Consultant and Architectural Consultant and notify them following correction of the situation; • Cease additional monitoring if exceedance stops.
Limit Level	<p>Step 1</p> <ul style="list-style-type: none"> • Identify source and check monitoring data and working method; • Notify IEC, Beam Consultant and Architectural Consultant check monitoring data working methods; • Repeat measurement to confirm finding; • If exceedance continues, commence additional monitoring. <p>Step 2</p> <ul style="list-style-type: none"> • Take immediate action to avoid further exceedance; • Submit proposal for remedial actions to clients/project manager within 3 working days; • Implement the agreed proposal; • If exceedance continues, amend and resubmit the proposal. <p>Step 3</p> <ul style="list-style-type: none"> • Notify IEC, Beam Consultant and Architectural Consultant following correction of the situation; • Submit proposal for remedial actions to clients/project manager within 3 working days; • Cease additional monitoring if exceedance stops.

Event	Action
Noise	
Action Level	<p>Contractor Environmental Officer</p> <ul style="list-style-type: none"> • Identify source; • Repeat measurement to confirm findings; • Notify IEC, Beam Consultant and Architectural Consultant site agent of exceedance carry out investigation; • Increase monitoring frequency to check mitigation effectiveness. <p>Contractor Site Agent</p> <ul style="list-style-type: none"> • Notify IEC, Beam Consultant and Architectural Consultant identification of the exceedance; • Submit noise mitigation proposals to Beam Consultant and Architectural Consultant; • Implement agreed noise mitigation proposals within time scale agreed with IEC, Beam Consultant and Architectural Consultant; • If exceedance continues, commence additional monitoring. <p>ArchSD</p> <ul style="list-style-type: none"> • Require Contractor to propose remedial measures; • Ensure remedial measures are properly implemented; • Assess the effectiveness of mitigation measure.
Limit Level	<p>Environmental Officer</p> <ul style="list-style-type: none"> • Identify source; • Repeat measurement to confirm findings; • Notify Beam Consultant and Architectural Consultant and site agent of exceedance carry out investigation; • Increase monitoring frequency; • Assess effectiveness of remedial actions and keep site agent informed of results ; • Commence additional monitoring; • If exceedance continues, commence additional monitoring. <p>Contractor Site Agent</p> <ul style="list-style-type: none"> • Notify IEC, Beam Consultant and Architectural Consultant of exceedance; • Take immediate action to avoid further exceedance; • Implement agreed noise mitigation proposals within time scale agreed with IEC, Beam Consultant and Architectural Consultant; • If exceedance continues, commence additional monitoring; • Submit investigation report concerning exceedance within 3 working days to client; • Submit proposals for remedial actions to Client; • Implement agreed proposals within the time scale as agreed with client; • Stop the relevant portion of works until exceedance is abated. <p>ArchSD</p> <ul style="list-style-type: none"> • Require Contractor to propose mitigation measures for analysed noise problem; • If exceedance continues, arrange meeting with Contractor to determine what to determine what portion of work is responsible for the exceedance; • Instruct Contractor to stop that portion of work if no other mitigation measures can be implemented until the exceedance is abated.