

**Central Reclamation, Phase III
Quarterly EM&A Report No. 41
(August 2013 through October 2013)**

<i>Client</i>	Civil Engineering Development Department, Hong Kong Hong Kong Island and Islands Development Office		
<i>Project</i>	Supplementary Agreement No. 3 to Agreement No. CE 15/94 Central Reclamation, Phase III Design and Construction for the Minimum Option		
<i>Report No.</i>	3128-REP-508-00	<i>Copy No.</i>	
<i>Date of Issue</i>	14 November 2013	<i>File Ref.</i>	L:\S-proj\CR3\CR3.NEW\3128\ Reports\508.doc
<i>Report Title</i>	Central Reclamation, Phase III Quarterly EM&A Report No. 41 August 2013 through October 2013		
	<i>Name</i>	<i>Sign</i>	<i>Date</i>
<i>Prepared by:</i>	Keith Chau, ACL – Senior Consultant		14 November 2013
<i>Reviewed by:</i>	Sharifah Or, ACL – ET Leader		14 November 2013
<i>Authorised by:</i>	Tommy Ng, ACL – Project Mgr		14 November 2013
<i>Distribution</i>			
<i>Copy No</i>	<i>Issue to</i>	<i>Attention</i>	<i>Corr. Ref.</i>
1	CEDD	Mr. C B Mak	3128/M45/200/OC14139/SO/TWC/fl
2, 3	EPD	Director of EPD	3128/M45/200/OC14139/SO/TWC/fl
4	EPD (LCO)	Miss W. Y. Yiu	3128/M45/200/OC14139/SO/TWC/fl
5	Leighton-China State-Van Oord JV	Mr. Norman Croker	3128/M45/200/OC14139/SO/TWC/fl
6	CRIII Sites/SRE	Mr. Cedric Tam	3128/M45/200/OC14139/SO/TWC/fl
7	Independent Checker (Environment)	Mr. Bill Douglas	3128/M45/200/OC14139/SO/TWC/fl
8	Environmental Team Leader	Ms. Sharifah Or	3128/M45/200/OC14139/SO/TWC/fl
9	Office Copy		

	Page
1. Introduction	1
1.1 Basic Project Information	1
1.2 Project Organisation and Management Structure	1
1.3 Works Undertaken	1
2. EM&A Requirements	3
2.1 Summary of Impact EM&A Requirements	3
2.2 Environmental Quality Performance Limits	3
2.3 Event Action Plan	3
3. Environmental Status.....	5
3.1 Implementation of Environmental Measures	5
3.2 Environmental Monitoring Locations.....	5
3.3 Air Quality Monitoring Results.....	5
3.4 Noise Quality Monitoring Results	5
3.5 Water Quality Monitoring Results	5
3.6 Solid and Liquid Waste Management Status.....	5
3.7 Landscape and Visual Audit	5
4. Environmental Complaint and Non-Compliance.....	7
4.1 Environmental Exceedances	7
4.2 Non-Compliance.....	7
4.3 Summary of Actions Taken by the Contractor	7
4.4 Environmental Enquiries	7
4.5 Environmental Complaints and Prosecutions	7
4.6 Record of Environmental Complaints and Summons & Prosecutions	7
5. Conclusion.....	9

Contents

List of Annexes

Annex A	Project Organisation/ Contact Information
Annex B	Quality Performance Limits for Air and Noise Quality
Annex C	Event and Action Plans for Air and Noise Quality
Annex D	Monitoring Stations Locations
Annex E	Contractor's Works Programme
Annex F	Graphical Representation of Air Quality Monitoring Results
Annex G	Graphical Representation of Noise Quality Monitoring Results

List of Tables

Table 2.1 - Summary of Impact EM&A Requirements.....	3
--	---

Abbreviations & Acronyms

ACL	Atkins China Limited
AL	Action Level
CEDD	Civil Engineering and Development Department
CRIII	Central Reclamation Phase III
DO	Dissolved Oxygen
EIA	Environmental Impact Assessment
EIAO	Environmental Impact Assessment Ordinance
EM&A	Environmental Monitoring and Audit
EPD	Environmental Protection Department
ER	Engineer's Representatives
ET	Environmental Team
IEC	Independent Environmental Checker
LCSD	Leisure and Cultural Services Department
LCSVO-JV	Leighton China State Van Oord Joint Venture
LL	Limit Level
PLA	People's Liberation Army Forces Hong Kong
TDD	Territory Development Department
TSP	Total Suspended Particulates
SS	Suspended Solids
WMP	Waste Management Plan

Not Used

Executive Summary

The Central Reclamation Phase III (CRIII) Works, Contract No. HK 12/02, was awarded to Leighton China State Van Oord Joint Venture (LCSVO-JV) by the Civil Engineering and Development Department (CEDD). (Previously called the Territory Development Department before merger with the Civil Engineering Department on 1st July 2004.)

The works under the Contract HK 12/02 commenced on 28th February 2003. Contract HK 16/03 for the CRIII Hinterland Drainage Improvement Works was awarded to Wang Kee Construction Co. Ltd., and works for this contract commenced on 17th December 2003.

Atkins China Limited (ACL) has been commissioned by CEDD as the Environmental Team (ET) to undertake the Environmental Monitoring and Audit (EM&A) programme described in the approved EM&A Manual for the CRIII Project. The noise and air monitoring works have been handed over to the ET of the Contract No. HK/2011/07. “Wanchai Development Phase II and Central-Wanchai Bypass Sampling, Field Measurement and Testing Works (Stage 2)” since May 2013. Therefore, noise and air monitoring data was obtained from the “Wan Chai Development Phase II and Central – Wan Chai Bypass and Island Eastern Corridor Link” project website.

This is the 41st quarterly EM&A Report for the works specified in Section 1.3 of the CRIII EIA Report. This report summarises the monitoring results and audit findings of the EM&A program during the reporting period from 1st August 2013 to 31st October 2013.

Environmental Monitoring and Audit Progress

Air quality and noise quality monitoring were conducted during this quarter. The post project water quality monitoring was completed on October 2011. Weekly environmental site inspections were also conducted during this reporting quarter.

Additional water quality monitoring for the “the water quality of embayment area between the eastern seawall and the Hong Kong Convention and Exhibition Centre (HKCEC) upon completion of eastern seawall”, in accordance with the Environmental Permit No. EP-01/122/2003/D Condition 3.9, was completed on October 2011.

Exceedance of Action and Limit Levels

No exceedances in TSP level were recorded at the monitoring stations during this reporting quarter.

No exceedances in noise level was recorded at the monitoring station during this reporting quarter.

Complaint Log

There was no complaint received in relation to the environmental impact during the reporting period.

Notifications of Summons and Prosecutions

There were no notifications of summons and prosecutions received during this reporting quarter.

Site Inspection and Audit

Weekly environmental site inspections were carried out during this quarter. Minor deficiencies noted during the site inspections were rectified by the Contractor upon receipt of notification. The observations and findings are outlined below:

8th August 2013

Nil.

17th August 2013

Nil.

22nd August 2013

Nil.

30th August 2013

Nil.

5th September 2013

Nil.

14th September 2013

Nil.

19th September 2013

Nil.

25th September 2013

Nil.

30th September 2013

Nil.

12th October 2013

Nil.

16th October 2013

Nil.

21st October 2013

Nil.

30th October 2013

Nil.

1. INTRODUCTION

1.1 Basic Project Information

The Main Works Contract HK 12/02 for CRIII commenced on 28th February 2003 and was awarded to Leighton-China State-Van Oord Joint Venture (LCSVO-JV) for the construction of the CRIII Engineering Works. The main construction works that were identified in the EIA Report for the Project, requiring environmental monitoring and audit, have commenced.

This is the 41st quarterly EM&A Report for the works specified in Section 1.3 of the CRIII EIA Report. This report summarises the monitoring results and audit findings of the EM&A program during the reporting period from 1st August 2013 to 31st October 2013.

The Contractor's works programme for the quarter is provided in **Annex E**.

1.2 Project Organisation and Management Structure

Atkins China Limited (ACL) has been commissioned by CEDD as the Environmental Team (ET) to undertake the Environmental Monitoring and Audit (EM&A) programme described in the approved EM&A Manual and required under Clause 4 of the Variation of Further Environmental Permit (No. EP-01/122/2003/A) issued to Leighton-China State-Van Oord Joint Venture in December 2007 for the CRIII Project. A variation of the Further Environmental Permit for the Project (EP-01/122/2003/B) and (EP-01/122/2003/C) were granted on 26 May 2008 and 17 July 2009. This was then superseded by another variation of the Further Environmental Permit for the Project (EP-01/122/2003/D) granted on 1 September 2009. The noise and air monitoring works have been handed over to the ET of the Contract No. HK/2011/07. "Wanchai Development Phase II and Central-Wanchai Bypass Sampling, Field Measurement and Testing Works (Stage 2)" since May 2013. Therefore, noise and air monitoring data was obtained from the "Wan Chai Development Phase II and Central – Wan Chai Bypass and Island Eastern Corridor Link" project website. The CRIII Project Organisation is shown in **Annex A**.

1.3 Works Undertaken

The works undertaken in the project area requiring environmental monitoring and audit as identified in the EIA Report (not including Chai Wan Basin) during this reporting quarter include:

- **Surface drainage behind GPO boundary wall** – complete.
- **Modification to the junction of Road D8 and Road P2** - complete
- **Landscaping work behind GPO boundary wall** – tree planted
- **Footpath construction adjacent to GPO** – complete

Not Used

2. EM&A REQUIREMENTS

2.1 Summary of Impact EM&A Requirements

The EM&A programme requires environmental monitoring for air quality, noise, waster quality, waste management and landscape and visual aspects as specified in the CRIII Project EIA. The EM&A requirements for each issue area are described in subsequent sections including:

- All required monitoring parameters;
- Action and Limit Levels; and
- Event-Action Plans.

A summary of impact EM&A requirements is presented in **Table 2-1**.

Table 2.1 - Summary of Impact EM&A Requirements

Parameters	Descriptions	Locations	Frequencies	Duration
TSP	24-Hour TSP	2 Locations	Once every 6 days	During dust generating construction works
	1-Hour TSP	2 Locations	Three times in every 6 days	During dust generating construction works
Noise	Leq (30 mins), Leq (15 mins), L10, L90,	1 Location	Continuous measurements	Two weeks before Construction and During Construction
Water Quality	Dissolved Oxygen; Salinity; Temp; Suspended Solids; Turbidity.	Since 11 th January 2010 3 Locations ⁽¹⁾	3 times a week, Mid-ebb/flood tides	During Marine Works and for 4 weeks after completion of Marine Works
Waste	On-Site Waste Audit	Active Work Sites	Periodically	During Construction
	On-Site Waste Inspection			
Landscape and Visual	Audits to ensure effective implementation of mitigation measures			During Construction
General Site Conditions	Environmental Site Inspection	Works areas and areas affected by works	Periodically	During Construction

Note ⁽¹⁾ Seawater Intake M01A, M04B and land based Monitoring Station "Culvert F" was monitored since 11th January 2010

2.2 Environmental Quality Performance Limits

Environmental Quality Performance Limits for air quality and noise quality have been established as part of the Baseline Monitoring Report and are provided in **Annex B**.

2.3 Event Action Plan

Event Action Plans for air quality and noise quality have been developed as part of the Baseline Monitoring Report and are provided in **Annex C**.

Not Used

3. ENVIRONMENTAL STATUS

3.1 Implementation of Environmental Measures

The Contractor has implemented relevant mitigation measures listed in the EIA Report, EM&A Manual and Further Environmental Permit.

3.2 Environmental Monitoring Locations

Drawings showing the project area and locations of the monitoring stations are provided in **Annex D**.

3.3 Air Quality Monitoring Results

The graphical plot of air quality monitoring results for this reporting quarter is provided in **Annex F**.

3.4 Noise Quality Monitoring Results

The graphical plot of noise monitoring results for this reporting quarter is provided in **Annex G**.

3.5 Water Quality Monitoring Results

The post project water quality monitoring was completed in October 2011.

Additional water quality monitoring for the “the water quality of embayment area between the eastern seawall and the Hong Kong Convention and Exhibition Centre (HKCEC) upon completion of eastern seawall”, in accordance with the Environmental Permit No. EP-01/122/2003/D Condition 3.9, was completed in October 2011.

3.6 Solid and Liquid Waste Management Status

Solid and liquid waste management was implemented according to the Waste Management Plan during this reporting quarter.

3.7 Landscape and Visual Audit

As the works undertaken during this reporting quarter were mainly related to reclamation, buildings and infrastructure works, the landscape and visual impacts are considered to be minimal.

Not Used

4. ENVIRONMENTAL COMPLAINT AND NON-COMPLIANCE

4.1 Environmental Exceedances

No exceedances in TSP level were recorded at the monitoring stations during this reporting quarter.

No exceedance in noise level was recorded at the monitoring station during this reporting quarter.

4.2 Non-Compliance

No non-compliance with regard to site environmental audit was recorded during the reporting period.

4.3 Summary of Actions Taken by the Contractor

The Contractor has implemented the following measures to prevent air and water quality impacts:

- Contractor has implemented their Drainage Management Plan to Control Site Run-off for the wet season – actions completed and underway include: repair and improvement of existing bunds/sandbags on the edge of the reclamation; installation of additional bunds; compaction of soil surface and paths where possible to prevent erosion, creation of drainage channels and soak pits;
- Provision of additional settlement tanks to remove suspended solids from discharge waters;
- Provision of catch pits to collect spill over from wheel washing facilities and increased frequency of cleaning of catch-pits; and
- Water browsing of haul roads and other areas of the site and covering of stockpiles.

4.4 Environmental Enquiries

No environmental enquiries were received during this reporting quarter.

4.5 Environmental Complaints and Prosecutions

No environmental complaints were received during this reporting quarter.

4.6 Record of Environmental Complaints and Summons & Prosecutions

There was no record of environmental complaints during this reporting quarter.

There were no notifications of summons and prosecutions during this reporting quarter.

Not Used

5. CONCLUSION

During the environmental site inspections conducted within this reporting quarter, no non-compliances were noted and no notifications of summons and prosecutions were received during this reporting quarter.

There was no complaint received in relation to the environmental impact during the reporting period.

No exceedances in TSP level were recorded at the monitoring stations during this reporting quarter.

No exceedances in noise level was recorded at the monitoring station during this reporting quarter.

The post project water quality monitoring was completed on October 2011.

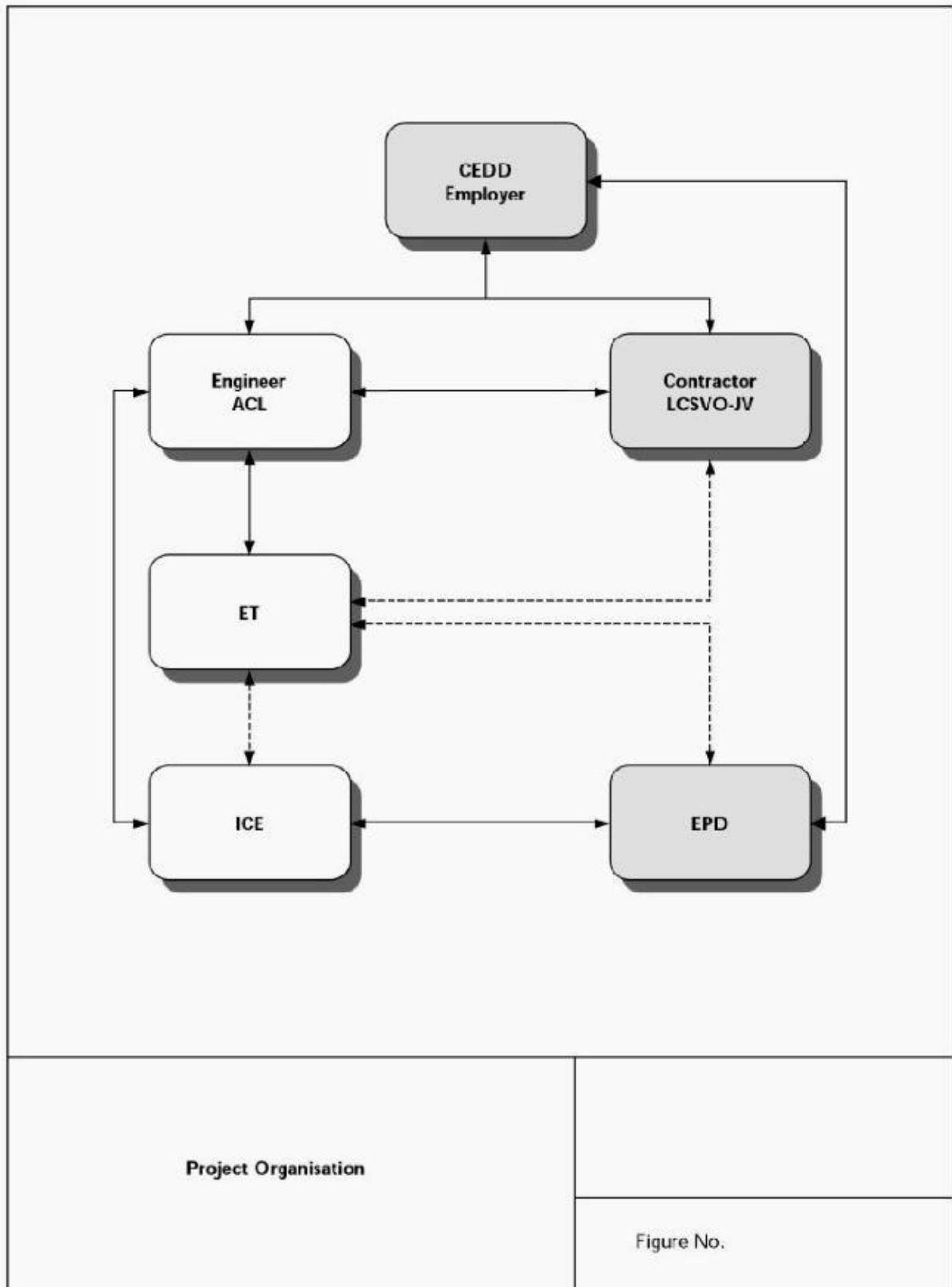
Additional water quality monitoring for the “the water quality of embayment area between the eastern seawall and the Hong Kong Convention and Exhibition Centre (HKCEC) upon completion of eastern seawall”, in accordance with the Environmental Permit No. EP-01/122/2003/D Condition 3.9, was completed on October 2011.

Conclusion

Not Used

Annex A

***Project Organisation/
Contact Information***



**Employer, Civil Engineering and Development
Department**

Mr. C. B. Mak
Chief Engineer/HK(1)
Tel: 2231 4436
Fax: 2577 5040

Mr. Edmund K M CHIU
Engineer 3
Tel: 2231 4427
Fax: 2577 5040

Resident Engineers, Atkins China Ltd.

Mr. Cedric Tam
Senior Resident Engineer
Tel: 2230 9616
Fax: 2523 2768
Email: cedric.tam@cr3.com.hk

Environmental Team, Atkins China Ltd.

Ms. Sharifah Or
Environmental Team Leader
Tel: 2972 1802
Fax: 2890 6343
Email: sharifah.or@atkinsglobal.com

Mr. Keith Chau
Senior Consultant
Tel: 2972 1721
Fax: 2890 6343
Email: keith.chau@atkinsglobal.com

Independent Environmental Checker

Mr. Bill Douglas
Fax: 2575 3635
Email: bill@magneticfox.com

**Contractor, Leighton China State Van Oord
Joint Venture**

Mr. Norman Croker
Project Director
Tel: 2625 1800
Fax: 2511 1810
Email: norman.croker@leightonasia.com

Environmental Protection Department

Metro Assessment Group:
Contact: Mr. MA Chi Wai
Phone: 2835 2390
Fax: 2591 0558
Email: cwma@epd.gov.hk

Environmental Protection Department

Regional Office (South)
Contact: Mr. Sean S. H. Law
Phone: 2516 1806
Fax: 2960 1760
Email: seanlaw@epd.gov.hk

Regional Office (South)
Contact: Miss W. Y. Yiu
Phone: 2516 1721
Fax: 2960 1760
Email: wyiu@epd.gov.hk

Annex B

***Quality Performance Limits for
Air and Noise Quality***

Environmental Quality Performance Limits – Action & Limit Levels

Parameter	Station	Action Level	Limit Level
Air Quality			
1-Hour TSP Level in µg/m ³	City Hall	460 µg/m ³	500 µg/m ³
1-Hour TSP Level in µg/m ³	PLA	432 µg/m ³	500 µg/m ³
24-Hour TSP Level in µg/m ³	City Hall	163 µg/m ³	260 µg/m ³
24-Hour TSP Level in µg/m ³	PLA	154 µg/m ³	260 µg/m ³
Noise Quality			
07:00-19:00 hrs on normal weekdays	City Hall	When one documented compliant is received	75dB(A)
07:00-23:00 hrs on holidays; and 19:00-23:00 hrs on all other days	City Hall	When one documented compliant is received	60/65/70* dB(A)
23:00-07:00 hrs of next day	City Hall	When one documented compliant is received	40/50/55* dB(A)

Annex C

***Event Action Plans for
Air and Noise Quality***

Central Reclamation Phase III : Environmental Monitoring and Audit - Event and Action Plan for Air and Noise Quality

Event and Action Plan for Air Quality				
Event	Action			
	ET Leader	IC(E)	ER	Contractor
Action Level - Exceedance for one sample	<ol style="list-style-type: none"> 1. Identify source 2. Inform IC(E) and ER 3. Repeat measurement to confirm finding 4. Increase monitoring frequency to daily 	<ol style="list-style-type: none"> 1. Check monitoring data submitted by ET 2. Check Contractor's working method 	<ol style="list-style-type: none"> 1. Notify Contractor 	<ol style="list-style-type: none"> 1. Rectify any unacceptable practice 2. Amend working methods if appropriate
Action Level - Exceedance for two or more consecutive samples	<ol style="list-style-type: none"> 1. Identify source 2. Inform IC(E) and ER 3. Repeat measurement to confirm finding 4. Increase monitoring frequency to daily 5. Discuss with IC(E) and Contractor on remedial actions 6. If exceedance continues, arrange meeting with IC(E) and ER 7. If exceedance stops cease additional monitoring 	<ol style="list-style-type: none"> 1. Check monitoring data submitted by ET 2. Check Contractor's working method 3. Discuss with ET and Contractor on possible remedial measures 4. Advise the ER on the effectiveness of the proposed remedial measures 5. Supervise the implementation of remedial measures 	<ol style="list-style-type: none"> 1. Confirm receipt of notification of failure in writing 2. Notify Contractor 3. Ensure remedial measures properly implemented 	<ol style="list-style-type: none"> 1. Submit proposals for remedial actions to IC(E) within 3 working days of notification 2. Implement the agreed proposals 3. Amend proposal if appropriate
Limit Level - Exceedance for one sample	<ol style="list-style-type: none"> 1. Identify source 2. Inform ER and EPD 3. Repeat measurement to confirm findings 4. Increase monitoring frequency to daily 5. Assess effectiveness of Contractor's remedial actions and keep IC(E), EPD and ER informed of the results 	<ol style="list-style-type: none"> 1. Check monitoring data submitted by ET 2. Check Contractor's working method 3. Discuss with ET and Contractor on possible remedial measures 4. Advise the ER on the effectiveness of the proposed remedial measures 5. Supervise the implementation of remedial measures 	<ol style="list-style-type: none"> 1. Confirm receipt of notification of failure in writing 2. Notify Contractor 3. Ensure remedial measures properly implemented 	<ol style="list-style-type: none"> 1. Take immediate action to avoid further exceedance 2. Submit proposal for remedial actions to IC(E) within 3 working days of notification 3. Implement the agreed measures
Limit Level - Exceedance for two or more consecutive samples	<ol style="list-style-type: none"> 1. Notify IC(E), ER, Contractor and EPD 2. Identify source 3. Repeat measurements to confirm findings 4. Increase monitoring frequency to daily 5. Carry out analysis of Contractor's working procedures to determine possible mitigation to be implemented 6. Arrange meeting with IC(E) and ER to discuss the remedial actions to be taken 7. Assess effectiveness of Contractor's remedial actions and keep IC(E), EPD and ER informed of the results 8. If exceedance stops, cease additional monitoring 	<ol style="list-style-type: none"> 1. Discuss amongst ER, ET, and Contractor on the potential remedial actions 2. Review Contractor's remedial actions whenever necessary to assure their effectiveness and advise the ER accordingly 3. Supervise the implementation of remedial measures 	<ol style="list-style-type: none"> 1. Confirm receipt of notification of failure in writing 2. Notify Contractor 3. In consultation with the IC(E), agree with the Contractor on the remedial measures to be implemented 4. Ensure remedial measures properly implemented 5. If exceedance continues, consider what portion of the work is responsible and instruct the Contractor to stop that portion of work until the exceedance is abated 	<ol style="list-style-type: none"> 1. Take immediate action to avoid further exceedance 2. Submit proposals for remedial actions to IC(E) within 3 working days of notification 3. Implement the agreed proposals 4. Resubmit proposals if problem still not under control 5. Stop the relevant portion of works as determined by the ER until the exceedance is abated

Central Reclamation Phase III : Environmental Monitoring and Audit - Event and Action Plan for Air and Noise Quality

Event and Action Plan for Noise Quality				
Event	Action			
	ET Leader	IC(E)	ER	Contractor
Action Level is reached	<ol style="list-style-type: none"> 1. Notify IC(E) and Contractor 2. Carry out investigation 3. Report the results of the investigation to the IC(E) and Contractor 4. Discuss with the Contractor and formulate remedial measures 	<ol style="list-style-type: none"> 1. Discuss amongst ER, ET and Contractor on the potential remedial actions 2. Review Contractor's remedial actions whenever necessary to assure their effectiveness and advise the ER accordingly 3. Supervise the implementation of remedial measures 	<ol style="list-style-type: none"> 1. Confirm receipt of notification of failure in writing 2. Notify Contractor 3. Require Contractor to propose remedial measures for the analyzed noise problem 4. Ensure remedial measures are properly implemented 	<ol style="list-style-type: none"> 1. Submit noise mitigation proposal to IC(E) 2. Implement noise mitigation proposals
Limit Level is reached	<ol style="list-style-type: none"> 1. Notify IC(E), ER, EPD and Contractor 2. Identify source 3. Repeat measurement to confirm findings 4. Carry out analysis of Contractor's working procedures to determine possible mitigation to be implemented 5. Inform IC(E), ER and EPD the causes & actions taken for the exceedances 6. Assess effectiveness of Contractor's remedial actions and keep IC(E), EPD and ER informed of the results 7. If exceedance stops cease additional monitoring 	<ol style="list-style-type: none"> 1. Discuss amongst ER, ET and Contractor on the potential remedial actions 2. Review Contractor's remedial actions whenever necessary to assure their effectiveness and advise the ER accordingly 3. Supervise the implementation of remedial measures 	<ol style="list-style-type: none"> 1. Confirm receipt of notification of failure in writing 2. Notify Contractor 3. Require Contractor to propose remedial measures for the analyzed noise problem 4. Ensure remedial measures are properly implemented 5. If exceedance continues, consider what portion of the work is responsible and instruct the Contractor to stop that portion or work until the exceedance is abated 	<ol style="list-style-type: none"> 1. Take immediate action to avoid further exceedance 2. Submit proposals for remedial actions to IC(E) within 3 working days of notification 3. Implement the agreed proposals 4. Resubmit proposals if problem still not under control 5. Stop the relevant portion of works as determined by the ER until the exceedance is abated

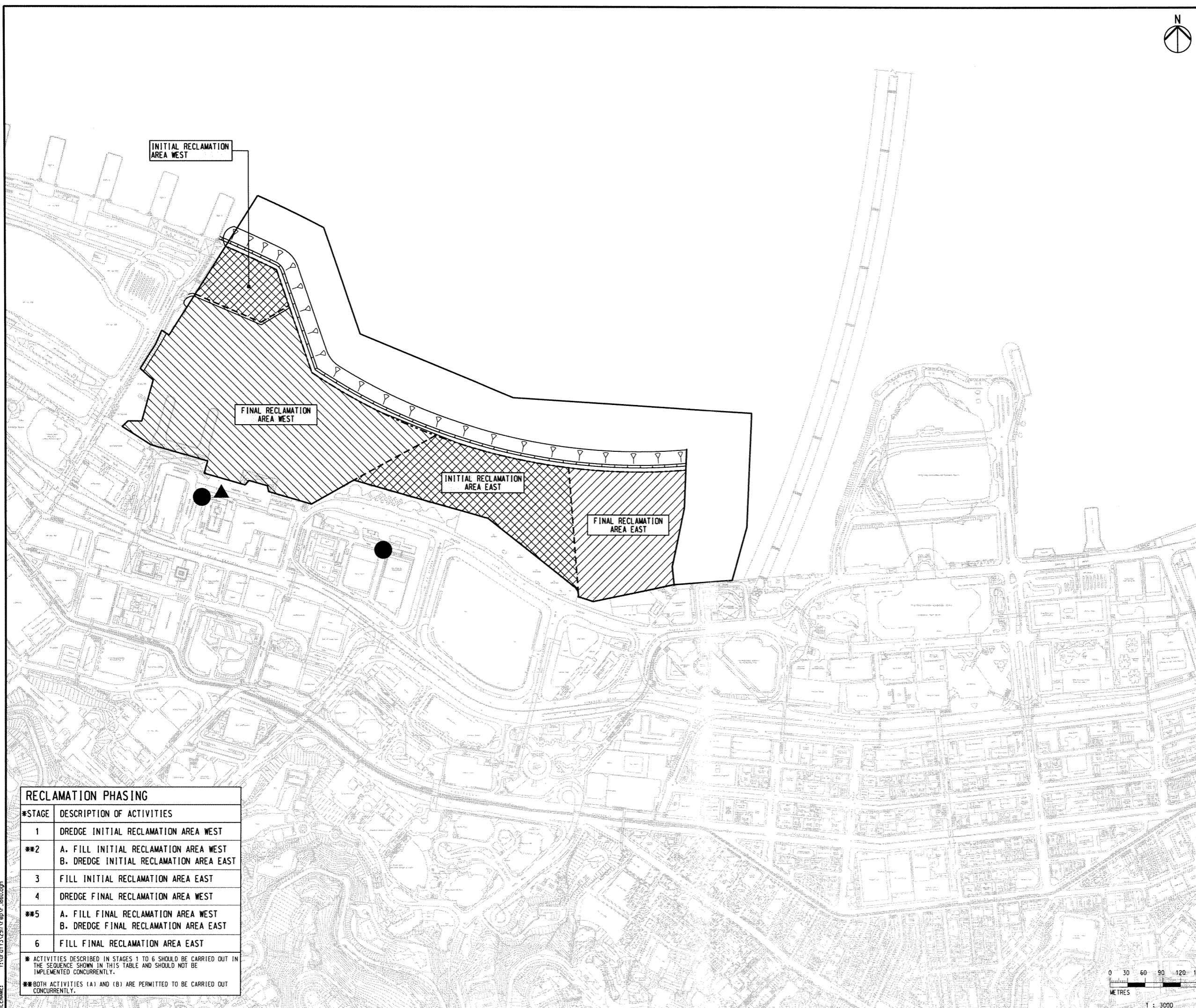
Annex D

Monitoring Stations Locations



LEGEND:

- DUST MONITORING STATIONS
- ▲ NOISE MONITORING STATION



RECLAMATION PHASING

*STAGE	DESCRIPTION OF ACTIVITIES
1	DREDGE INITIAL RECLAMATION AREA WEST
**2	A. FILL INITIAL RECLAMATION AREA WEST B. DREDGE INITIAL RECLAMATION AREA EAST
3	FILL INITIAL RECLAMATION AREA EAST
4	DREDGE FINAL RECLAMATION AREA WEST
**5	A. FILL FINAL RECLAMATION AREA WEST B. DREDGE FINAL RECLAMATION AREA EAST
6	FILL FINAL RECLAMATION AREA EAST

* ACTIVITIES DESCRIBED IN STAGES 1 TO 6 SHOULD BE CARRIED OUT IN THE SEQUENCE SHOWN IN THIS TABLE AND SHOULD NOT BE IMPLEMENTED CONCURRENTLY.
 **BOTH ACTIVITIES (A) AND (B) ARE PERMITTED TO BE CARRIED OUT CONCURRENTLY.

REV	DESCRIPTION	BY	DATE	CHK'D	AUTH

拓展署 Territory Development Department
 港島及離島拓展處
 HONG KONG ISLAND AND ISLANDS
 DEVELOPMENT OFFICE

ATKINS 安達顧問有限公司
 Atkins China Ltd

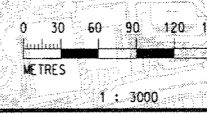
CONTRACT
CONTRACT NO. HK 12/02
 Central Reclamation Phase III
 Engineering Works

DRAWING TITLE
**DUST & NOISE
 MONITORING STATIONS**

STATUS
BASELINE MONITORING REPORT

SCALE AT A1	DESIGNED	DRAWN	CHECKED	AUTHORISED
1:3000	VAR	MAD	JV	JCN
DATE	DATE	DATE	DATE	DATE
JAN2003	JAN2003	JAN2003	JAN2003	JAN2003

DRAWING NUMBER
3128/ACL/FIGURE 2.1 0



PRINTED BY: bsc 14 MAY 03 08:50:06
 FILENAME: f:\draft\3128\top\3128_860.dwg

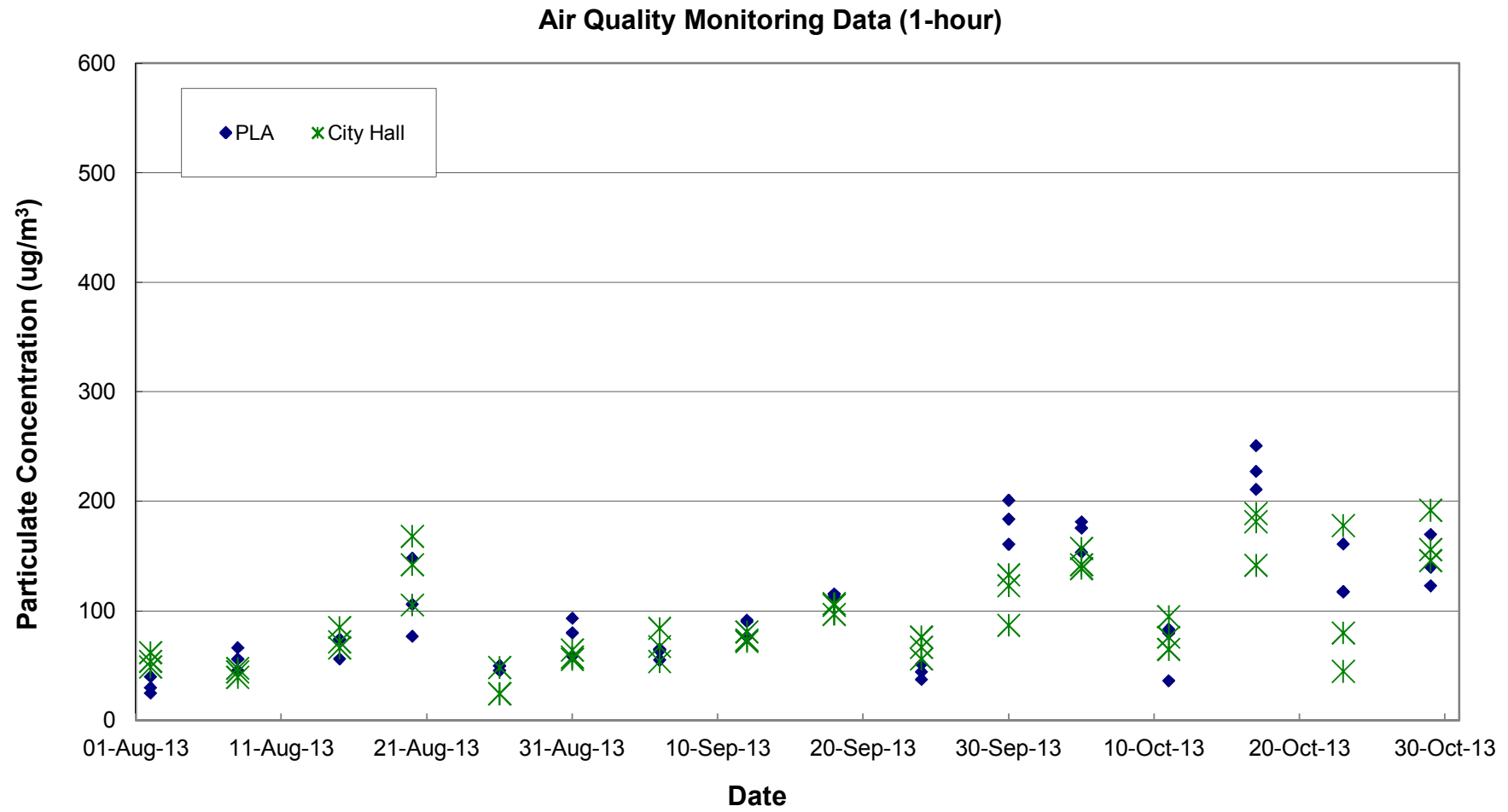
© 2002 ACL

Annex E

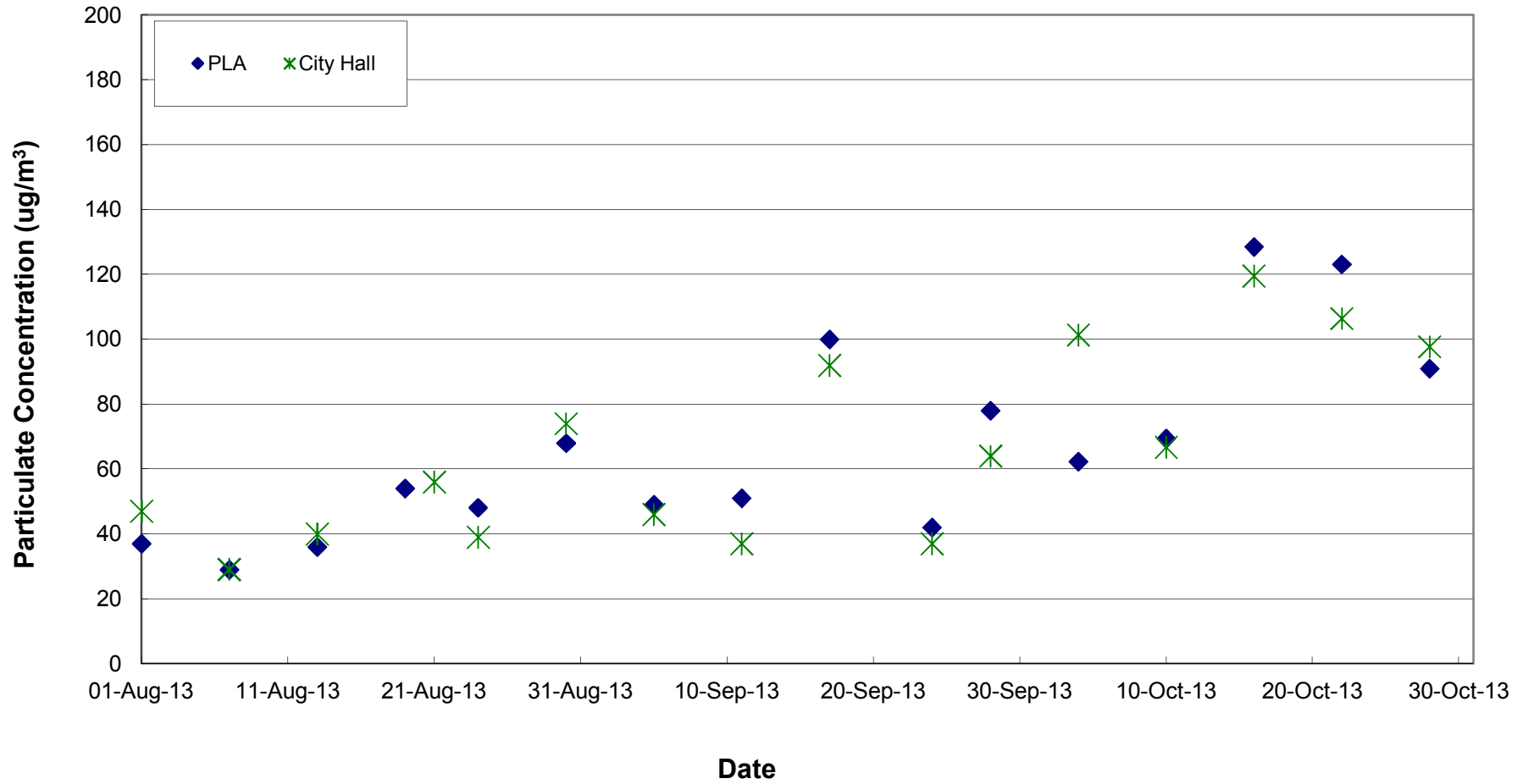
Contractor's Work Programme

Annex F

***Graphical Representation of
Air Quality Monitoring Results***



Air Quality Monitoring Data (24-hour)



Annex G

***Graphical Representation of
Noise Monitoring Results***

Continuous Noise Monitoring Data

