

**Central Reclamation, Phase III  
Environmental Monitoring & Audit  
Monthly Report No. 122 – September 2013**



<i>Client</i>	<b>Civil Engineering and Development Department Hong Kong Island and Islands Development Office</b>		
<i>Project</i>	<b>Supplementary Agreement No. 3 to Agreement No. CE 15/94 Central Reclamation, Phase III Design and Construction for the Minimum Option</b>		
<i>Report No.</i>	<b>3128-REP-505-00</b>	<i>Copy No.</i>	
<i>Date of Issue</i>	<b>16 October 2013</b>	<i>File Ref.</i>	<b>L:\S-proj\CR3\CR3.NEW\3128\ Reports\505.doc</b>
<i>Report Title</i>	<b>Central Reclamation, Phase III Environmental Monitoring &amp; Audit Monthly Report No. 122 – September 2013</b>		
	<i>Name</i>	<i>Sign</i>	<i>Date</i>
<i>Prepared by:</i>	Wing Wong, ACL – Associate Director		16 October 2013
<i>Reviewed by:</i>	Susana Halliday, ACL – ET Leader		16 October 2013
<i>Authorised by:</i>	Tommy Ng, ACL – Project Manager		16 October 2013
<i>Distribution</i>			
<i>Copy No</i>	<i>Issue to</i>	<i>Attention</i>	<i>Corr. Ref.</i>
1	CEDD	Mr. C B Mak	3128/M45/200/OC14114/SH/WW/TWC/fl
2, 3	EPD	Director of EPD	3128/M45/200/OC14114/SH/WW/TWC/fl
4	EPD (LCO)	Miss W. Y. Yiu	3128/M45/200/OC14114/SH/WW/TWC/fl
5	Leighton-China State-Van Oord JV	Mr. Norman Croker	3128/M45/200/OC14114/SH/WW/TWC/fl
6	CRIII Sites/CRE	Mr. Colin Meadows	3128/M45/200/OC14114/SH/WW/TWC/fl
7	Independent Environmental Checker	Mr. Bill Douglas	3128/M45/200/OC14114/SH/WW/TWC/fl
8	Environmental Team Leader	Ms Susana Halliday	3128/M45/200/OC14114/SH/WW/TWC/fl
9	Office Copy		



---

	<b>Page</b>
<b>1. INTRODUCTION .....</b>	<b>1</b>
1.1 Basic Project Information .....	1
<b>2. Environmental Status .....</b>	<b>3</b>
2.1 Works Undertaken .....	3
2.2 Environmental Permits .....	3
2.3 Environmental Document Submission .....	3
2.4 Environmental Meetings.....	3
2.5 Environmental Monitoring Locations.....	3
<b>3. EM&amp;A Requirements .....</b>	<b>5</b>
3.1 Summary of Impact EM&A Requirements .....	5
3.2 Environmental Quality Performance Limits .....	5
3.3 Event Action Plan .....	5
3.4 Implementation of Environmental Measures .....	5
<b>4. Monitoring Results.....</b>	<b>7</b>
4.1 Impact Monitoring Schedule in September 2013 .....	7
4.2 Monitoring Methodology .....	7
4.3 Monitoring Equipment .....	7
4.4 Impact Monitoring Results.....	8
<b>5. Environmental Complaints and Non-Compliance .....</b>	<b>11</b>
5.1 Environmental Exceedances .....	11
5.2 Environmental Complaint and Prosecution .....	11
5.3 Environmental Enquiries .....	11
5.4 Unusual Events.....	12
<b>6. Forecast and Schedule.....</b>	<b>13</b>
6.1 Key Engineering Works for the Coming Month .....	13
6.2 Monitoring Schedules for the Coming Months .....	13
6.3 Construction Programme for the Next 3 Months .....	13
<b>7. Conclusion.....</b>	<b>15</b>

**Contents**

---

**List of Annexes**

Annex A	Project Organisation / Contact Information
Annex B	Contractor’s Work Programme
Annex C	Location of Monitoring Stations
Annex D	Environmental Quality Performance Limits for Air and Noise Quality
Annex E	Event and Action Plan for Air and Noise Quality
Annex F	Air Quality Monitoring Results
Annex G	Graphical Representation of Air Quality Monitoring Results
Annex H	Noise Monitoring Results
Annex I	Graphical Representation of Noise Monitoring Results

**List of Tables**

Table 2.1 - Summary of Environmental Certification Sheet Submissions.....	3
Table 3.1 - Summary of Impact EM&A Requirements .....	5
Table 4.1 - Equipment for Air Quality Monitoring .....	7
Table 4.2 - Noise Monitoring Equipment.....	8
Table 4.3 - Monthly Summary Waste Flow Table for September 2013 .....	8
Table 5.1 - Summary of Environmental Site Inspections .....	11

ACL	Atkins China Limited
AL	Action Level
CEDD	Civil Engineering and Development Department
CRIII	Central Reclamation Phase III
DO	Dissolved Oxygen
EIA	Environmental Impact Assessment
EIAO	Environmental Impact Assessment Ordinance
EM&A	Environmental Monitoring and Audit
EPD	Environmental Protection Department
ER	Engineer’s Representatives
ET	Environmental Team
IEC	Independent Environmental Checker
LCSD	Leisure and Cultural Services Department
LCSVO-JV	Leighton China State Van Oord Joint Venture
LL	Limit Level
PLA	People's Liberation Army Forces Hong Kong
TSP	Total Suspended Particulates
SS	Suspended Solids
WMP	Waste Management Plan

*Not Used*



## **EXECUTIVE SUMMARY**

The Central Reclamation Phase III (CRIII) Works, Contract No. HK 12/02, was awarded to Leighton China State Van Oord Joint Venture (LCSVO-JV) by the Civil Engineering and Development Department (CEDD) (Previously called the Territory Development Department before merger with the Civil Engineering Department on 1<sup>st</sup> July 2004.).

The works under the Contract HK 12/02 commenced on 28<sup>th</sup> February 2003. Contract HK 16/03 for the CRIII Hinterland Drainage Improvement Works was awarded to Wang Kee Construction Co. Ltd., and works for this contract commenced on 17<sup>th</sup> December 2003.

Atkins China Limited (ACL) has been commissioned by CEDD as the Environmental Team (ET) to undertake the Environmental Monitoring and Audit (EM&A) programme described in the approved EM&A Manual for the CRIII Project. The noise and air monitoring works have been handed over to the ET of the Contract No. HK/2011/07. “Wanchai Development Phase II and Central-Wanchai Bypass Sampling, Field Measurement and Testing Works (Stage 2)” since May 2013. Therefore, noise and air monitoring data was obtained from the “Wan Chai Development Phase II and Central – Wan Chai Bypass and Island Eastern Corridor Link” project website.

This is the 122<sup>nd</sup> Monthly EM&A Report for the works specified in Section 1.3 of the CRIII EIA Report. This report summarises the findings and results of the EM&A during the reporting month in September 2013.

### ***Environmental Monitoring and Audit Progress***

The monthly EM&A programme has been undertaken in accordance with the approved EM&A Manual. A summary of the monitoring activities performed in this reporting period is listed below:

- Continuous 24-hour noise monitoring was conducted throughout the monitoring period.
- 1-hour TSP monitoring was undertaken at PLA and City Hall on 6<sup>th</sup>, 12<sup>th</sup>, 18<sup>th</sup>, 24<sup>th</sup> and 30<sup>th</sup> September 2013.
- 24-hour TSP monitoring was undertaken at PLA and City Hall on 5<sup>th</sup>, 11<sup>th</sup>, 17<sup>th</sup>, 24<sup>th</sup> and 28<sup>th</sup> September 2013. Due to hoisting of typhoon signal no.8, the 24-hr TSP monitoring at PLA and City Hall were rescheduled from 23<sup>rd</sup> September 2013 to 24<sup>th</sup> September 2013.
- The post project water quality monitoring was completed in October 2011.
- Additional water quality monitoring for the “the water quality of embayment area between the eastern seawall and the Hong Kong Convention and Exhibition Centre (HKCEC) upon completion of eastern seawall”, in accordance with the Environmental Permit No. EP-01/122/2003/D Condition 3.9, was completed in October 2011.

### ***Exceedance of Action and Limit Levels***

No exceedances in TSP level were recorded at the monitoring stations during the reporting period.

No exceedance in noise level was recorded at City Hall during the reporting period.

### ***Complaint Log***

## **Executive Summary**

---

There was no complaint received in relation to the environmental impact during the reporting period.

### ***Notifications of Summons and Prosecutions***

There were no notifications of summons and prosecutions received in relation to the environmental impact during the reporting period.

### ***Site Inspection and Audit***

Environmental site inspections for the CRIII project works area were undertaken on 5<sup>th</sup>, 14<sup>th</sup>, 19<sup>th</sup>, 25<sup>th</sup> and 30<sup>th</sup> September 2013. The observations and findings of the site inspection are summarised as below:

#### **5<sup>th</sup> September 2013**

Nil.

#### **14<sup>th</sup> September 2013**

Nil.

#### **19<sup>th</sup> September 2013**

Nil.

#### **25<sup>th</sup> September 2013**

Nil.

#### **30<sup>th</sup> September 2013**

Nil.

### ***Key Works for the Coming Month***

Future key works in the coming month (October 2013) are as follows:

- Modification to the junction of Road D8 and Road P2;
- Paving and Landscaping work behind GPO boundary wall; and
- Additional run-in at Road P2 footpath (north bound) outside ESB S8.1.

## **1. INTRODUCTION**

### **1.1 Basic Project Information**

Civil Engineering and Development Department (CEDD) is the Project Proponent of the Central Reclamation Phase III Project (CRIII).

The Main Works Contract HK 12/02 for CRIII commenced on 28<sup>th</sup> February 2003 and was awarded to Leighton-China State-Van Oord Joint Venture (LCSVO-JV) for the construction of the CRIII Engineering Works. Contract HK 16/03 for the CRIII Hinterland Drainage Improvement Works was awarded to Wang Kee Construction Co. Ltd. and works for this contract commenced on 17<sup>th</sup> December 2003.

Atkins China Limited (ACL) has been commissioned by CEDD as the Environmental Team (ET) to undertake the Environmental Monitoring and Audit (EM&A) programme described in the approved EM&A Manual and required under Clause 4 of the Variation of Further Environmental Permit (No. EP-01/122/2003/A) issued to Leighton-China State-Van Oord Joint Venture in December 2007 for the CRIII Project. A variation of the Further Environmental Permit for the Project (EP-01/122/2003/B) and (EP-01/122/2003/C) were granted on 26 May 2008 and 17 July 2009. This was then superseded by another variation of the Further Environmental Permit for the Project (EP-01/122/2003/D) granted on 1 September 2009. The noise and air monitoring works have been handed over to the ET of the Contract No. HK/2011/07. “Wanchai Development Phase II and Central-Wanchai Bypass Sampling, Field Measurement and Testing Works (Stage 2)” since May 2013. Therefore, noise and air monitoring data was obtained from the “Wan Chai Development Phase II and Central – Wan Chai Bypass and Island Eastern Corridor Link” project website. The CRIII Project Organisation is shown in **Annex A**.

This is the 122<sup>nd</sup> Monthly EM&A Report for the works specified in Section 1.3 of the CRIII EIA Report. This report summarises the findings and results of the EM&A during the reporting period in September 2013.

*Not Used*

## 2. ENVIRONMENTAL STATUS

### 2.1 Works Undertaken

Details of the main works in progress are as follows:

- Surface drainage behind GPO boundary wall – complete
- Modification to the junction of Road D8 and Road P2 – in progress

### 2.2 Environmental Permits

No environmental permits, licences, and/or notifications to EPD for this project during the reporting period.

### 2.3 Environmental Document Submission

No submissions were provided to the ER during the reporting period.

A summary of Environmental Certification Sheet submissions during the reporting period is presented in **Table 2.1**.

**Table 2.1 - Summary of Environmental Certification Sheet Submissions**

No	Certification Subject	Letter Ref.	Date of Submission	Approved Status
1	Certification of Monthly Environmental Monitoring & Audit Report No.121, August 2013	3128/M45/200/OC14077/SH/WW/TWC/fl	13 <sup>th</sup> September 2013	13 <sup>th</sup> September 2013

### 2.4 Environmental Meetings

No environmental meeting was held in this reporting period.

### 2.5 Environmental Monitoring Locations

The current environmental monitoring locations are shown in **Annex C**.

*Not Used*

### 3. EM&A REQUIREMENTS

#### 3.1 Summary of Impact EM&A Requirements

The EM&A programme requires environmental monitoring for air quality, noise, water quality, waste management, landscape and visual aspects as specified in the CRIII Project EIA. The EM&A requirements for each issue area are described in subsequent sections including:

- All required monitoring parameters;
- Action and Limit Levels; and
- Event/ Action Plans.

A summary of impact EM&A requirements is presented in **Table 3.1**.

**Table 3.1 - Summary of Impact EM&A Requirements**

Parameters	Descriptions	Locations	Frequencies	Duration
TSP	24-Hour TSP	2 Locations	Once every 6 days	During dust generating construction works
	1-Hour TSP	2 Locations	Three times in every 6 days	During dust generating construction works
Noise	Leq (30 mins), Leq (15 mins), L10, L90,	1 Location	Continuous measurements	Two weeks before Construction and During Construction
Water Quality	The post project monitoring was completed in October 2011			
Waste	On-Site Waste Audit	Active Work Sites	Periodically	During Construction
	On-Site Waste Inspection			
Landscape and Visual	Audits to ensure effective implementation of mitigation measures			During Construction
General Site Conditions	Environmental Site Inspection	Works areas and areas affected by works	Periodically	During Construction

#### 3.2 Environmental Quality Performance Limits

Environmental Quality Performance Limits for air and noise quality as provided in the Baseline Monitoring Report (Final) are shown in **Annex D**.

#### 3.3 Event Action Plan

The Event Action Plans for air and noise quality as provided in the Baseline Monitoring Report (Final) are shown in **Annex E**.

#### 3.4 Implementation of Environmental Measures

The Contractor is required to implement mitigation measures listed in the EIA Report, EM&A Manual and Further Environmental Permit. During routine site inspections, the Contractor's implementation of mitigation measures was reviewed. The Contractor has implemented their Drainage Management Plan and Silt Curtain Operation Plan for VEP (rev 1).

*Not Used*



## **4. MONITORING RESULTS**

### **4.1 Impact Monitoring Schedule in September 2013**

Regular site inspections were carried out to assess whether the project's environmental protection and pollution control measures are in compliance with the contract specifications. Inspections were carried out on 5<sup>th</sup>, 14<sup>th</sup>, 19<sup>th</sup>, 25<sup>th</sup> and 30<sup>th</sup> September 2013.

Continuous 24-hour noise monitoring was conducted during this reporting period.

1-hour TSP monitoring was undertaken at PLA and City Hall on 6<sup>th</sup>, 12<sup>th</sup>, 18<sup>th</sup>, 24<sup>th</sup> and 30<sup>th</sup> September 2013.

24-hour TSP monitoring was undertaken at PLA and City Hall on 5<sup>th</sup>, 11<sup>th</sup>, 17<sup>th</sup>, 24<sup>th</sup> and 28<sup>th</sup> September 2013. Due to hoisting of typhoon signal no.8, the 24-hr TSP monitoring at PLA and City Hall were rescheduled from 23<sup>rd</sup> September 2013 to 24<sup>th</sup> September 2013.

The post project water quality monitoring was completed in October 2011.

Additional water quality monitoring for the “the water quality of embayment area between the eastern seawall and the Hong Kong Convention and Exhibition Centre (HKCEC) upon completion of eastern seawall”, in accordance with the Environmental Permit No. EP-01/122/2003/D Condition 3.9, was completed in October 2011.

### **4.2 Monitoring Methodology**

#### **4.2.1 Air Quality Monitoring**

Air quality monitoring was conducted in accordance with the methodology described in the EM&A Manual. The monitoring stations are located at the City Hall and the PLA Barracks as shown in **Annex C**.

#### **4.2.2 Noise Monitoring**

Continuous 24-hour noise monitoring was conducted in accordance with the methodology described in the EM&A Manual in the reporting period. The noise monitoring station is located at the City Hall as shown in **Annex C**.

#### **4.2.3 Water Quality Monitoring**

The post project water quality monitoring was completed in October 2011.

### **4.3 Monitoring Equipment**

#### **4.3.1 Air Quality**

The equipment used for air quality monitoring is listed in **Table 4.1**.

**Table 4.1 - Equipment for Air Quality Monitoring**

<b>Parameter Measured</b>	<b>Equipment</b>
24-Hour Sampling	High Volume Sampler Model GS2310 by Anderson Instruments
1-Hour Sampling	High Volume Sampler Model GS2310 by Anderson Instruments

**Monitoring Results**

**4.3.2 Noise**

The equipment used for continuous noise monitoring is listed in **Table 4.2**.

**Table 4.2 - Noise Monitoring Equipment**

Equipment	Model
Integrated Sound Level Meter (SLM)	B&K 2238
Calibrator	B&K 4231, Class 1

**4.3.3 Water Quality**

The post project water quality monitoring was completed in October 2011.

**4.4 Impact Monitoring Results**

**4.4.1 Air Quality & Noise Monitoring Results**

The air quality monitoring results at the PLA Barracks and City Hall monitoring stations are presented in **Annex F**. Graphical representation of the air quality monitoring data is provided in **Annex G**.

The noise monitoring results at the City Hall monitoring station is provided in **Annex H**. Graphical representation of the noise monitoring data is provided in **Annex I**.

**4.4.2 Water Quality Monitoring Results**

The post project water quality monitoring was completed in October 2011.

Additional water quality monitoring for the “the water quality of embayment area between the eastern seawall and the Hong Kong Convention and Exhibition Centre (HKCEC) upon completion of eastern seawall”, in accordance with the Environmental Permit No. EP-01/122/2003/D Condition 3.9, was completed in October 2011.

**4.4.3 Waste Management**

**Table 4.3 - Monthly Summary Waste Flow Table for September 2013**

Month	Actual Quantities of Inert C&D Materials Generated Monthly				
	Total Quantity Generated	Broken Concrete	Reused in the Contract	Reused in other Projects	Reused as Public Fill
	(in '000 m <sup>3</sup> )				
September 2013	0.200	-	0	-	0.200
Month	Actual Quantities of C&D Materials Generated Monthly				
	Metals	Paper/cardboard packaging	Plastics (see Note 3)	Chemical Waste	Others, e.g. general refuse
	(in '000 kg)	(in '000 kg)	(in '000 kg)		(in '000 m <sup>3</sup> )
September 2013	0	0	0	0	0.020

**Notes:**

- (1) The performance targets are given in PS Sub-clause 2(5)(c).
- (2) The waste flow table shall also include C&D materials that are specified in the Contract to be imported for use at the Site.
- (3) Plastics refer to plastic bottles/containers, plastic sheets/foam from packaging material.

#### **4.4.4 *Landscape and Visual***

As major construction activities undertaken during the reporting period were paving works, the landscape and visual impacts are considered minimal.

*Not Used*

## **5. ENVIRONMENTAL COMPLAINTS AND NON-COMPLIANCE**

### **5.1 Environmental Exceedances**

The number of exceedances for air quality and noise quality are presented in the following sections.

#### **5.1.1 Air Quality**

No exceedances in TSP level were recorded at the monitoring stations during the reporting period.

#### **5.1.2 Noise Impact**

No exceedances in noise level were recorded at City Hall during the reporting period.

#### **5.1.3 Waste Management**

No non-compliances with regard to waste management were recorded in the reporting period.

#### **5.1.4 Landscape and Visual Impact**

No non-compliances with regard to landscape and visual impacts were recorded in the reporting period.

#### **5.1.5 Site Environmental Audit**

No non-compliances with regard to site environmental audit were recorded for the reporting period.

A summary of findings from site inspections conducted during the reporting period is provided in **Table 5.1**.

**Table 5.1 - Summary of Environmental Site Inspections**

<b>Date of Inspection</b>	<b>Observations</b>	<b>Action(s)</b>
5 <sup>th</sup> September 2013	Nil.	Nil.
14 <sup>th</sup> September 2013	Nil.	Nil.
19 <sup>th</sup> September 2013	Nil.	Nil.
25 <sup>th</sup> September 2013	Nil.	Nil.
30 <sup>th</sup> September 2013	Nil.	Nil.

### **5.2 Environmental Complaint and Prosecution**

There were no notification of prosecutions and complaint received during the reporting period.

### **5.3 Environmental Enquiries**

No environmental enquiries were received during the reporting period.

#### **5.4 Unusual Events**

No unusual events were recorded during the reporting period.

## **6. FORECAST AND SCHEDULE**

### **6.1 Key Engineering Works for the Coming Month**

Future key works in the coming month (October 2013) are as follows:

- Modification to the junction of Road D8 and Road P2;
- Paving and Landscaping work behind GPO boundary wall; and
- Additional run-in at Road P2 footpath (north bound) outside ESB S8.1.

### **6.2 Monitoring Schedules for the Coming Months**

Based on the Contractor's programme, the Environmental Monitoring Programme for the following months is planned as follows:

#### ***TSP (24-hour and 1-hour monitoring)***

TSP will be sampled once every 6 days, during the entire construction period. On each of the sampling days a single continuous 24-hour sample shall be taken, together with 3 separate 1-hour samples.

#### ***Noise (Continuous Measurements)***

Noise monitoring will be round the clock throughout the entire construction period.

#### ***Water Quality Monitoring***

The Post project Water quality monitoring was completed in October 2011.

### **6.3 Construction Programme for the Next 3 Months**

The Contractor's works programme for the next 3 months is provided in **Annex B**.

The ET will follow up with the Contractor's proposed programme to ensure compliance in environmental performance and proper implementation of all necessary mitigation measures.

*Not Used*



## **7. CONCLUSION**

No exceedances in TSP level were recorded at the monitoring stations during the reporting period.

No exceedances in noise level were recorded at City Hall during the reporting period.

The post project water quality monitoring was completed in October 2011. Additional water quality monitoring for the “the water quality of embayment area between the eastern seawall and the Hong Kong Convention and Exhibition Centre (HKCEC) upon completion of eastern seawall”, in accordance with the Environmental Permit No. EP-01/122/2003/D Condition 3.9, was completed in October 2011.

There was no complaint received in relation to the environmental impact during the reporting period.

Environmental site inspections for the CRIII project works area were undertaken on 5<sup>th</sup>, 14<sup>th</sup>, 19<sup>th</sup>, 25<sup>th</sup> and 30<sup>th</sup> September 2013. The observations and findings of the site inspection are summarised as below:

### **5<sup>th</sup> September 2013**

Nil.

### **14<sup>th</sup> September 2013**

Nil.

### **19<sup>th</sup> September 2013**

Nil.

### **25<sup>th</sup> September 2013**

Nil.

### **30<sup>th</sup> September 2013**

Nil.

**Conclusion**

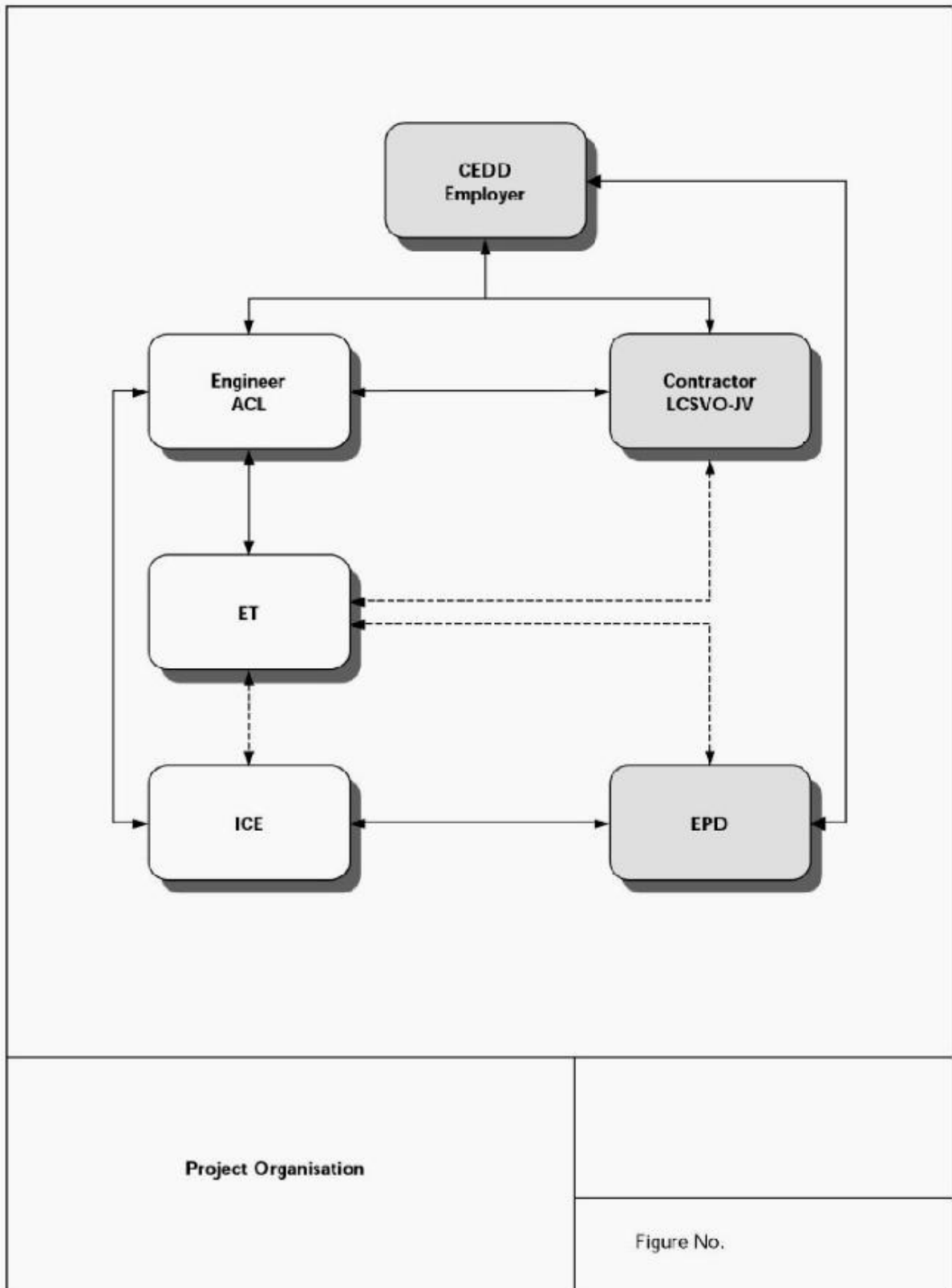
*Not Used*

***Annex A***

---

***Project Organisation /  
Contact Information***





**Employer, Civil Engineering and Development Department**

Mr. C. B. Mak  
Chief Engineer/HK(1)  
Tel: 2231 4436  
Fax: 2577 5040

Mr. Edmund K M CHIU  
Engineer 3  
Tel: 2231 4427  
Fax: 2577 5040

**Resident Engineers, Atkins China Ltd.**

Mr. Cedric Tam  
Senior Resident Engineer  
Tel: 2230 9616  
Fax: 2523 2768  
Email: cedric.tam@cr3.com.hk

**Environmental Team, Atkins China Ltd.**

Ms. Susana Halliday  
Environmental Team Leader  
Tel: 2972 1717  
Fax: 2890 6343  
Email: susana.halliday@atkinsglobal.com

Ms. Wing Wong  
Associate Director  
Tel: 2972 1715  
Fax: 2890 6343  
Email: wing.wong@atkinsglobal.com

**Independent Environmental Checker**

Mr. Bill Douglas  
Fax: 2575 3635  
Email: bill@magneticfox.com

**Contractor, Leighton China State Van Oord Joint Venture**

Mr. Norman Croker  
Project Director  
Tel: 2625 1800  
Fax: 2511 1810  
Email: norman.croker@leightonasia.com

**Environmental Protection Department**

Metro Assessment Group:  
Contact: Mr. MA Chi Wai  
Phone: 2835 2390  
Fax: 2591 0558  
Email: cwma@epd.gov.hk

**Environmental Protection Department**

Regional Office (South)  
Contact: Mr. Sean S. H. Law  
Phone: 2516 1806  
Fax: 2960 1760  
Email: seanlaw@epd.gov.hk

Regional Office (South)  
Contact: Miss W. Y. Yiu  
Phone: 2516 1721  
Fax: 2960 1760  
Email: wyyiu@epd.gov.hk

***Annex B***

---

***Contractor's Work Programme***









***Annex C***

---

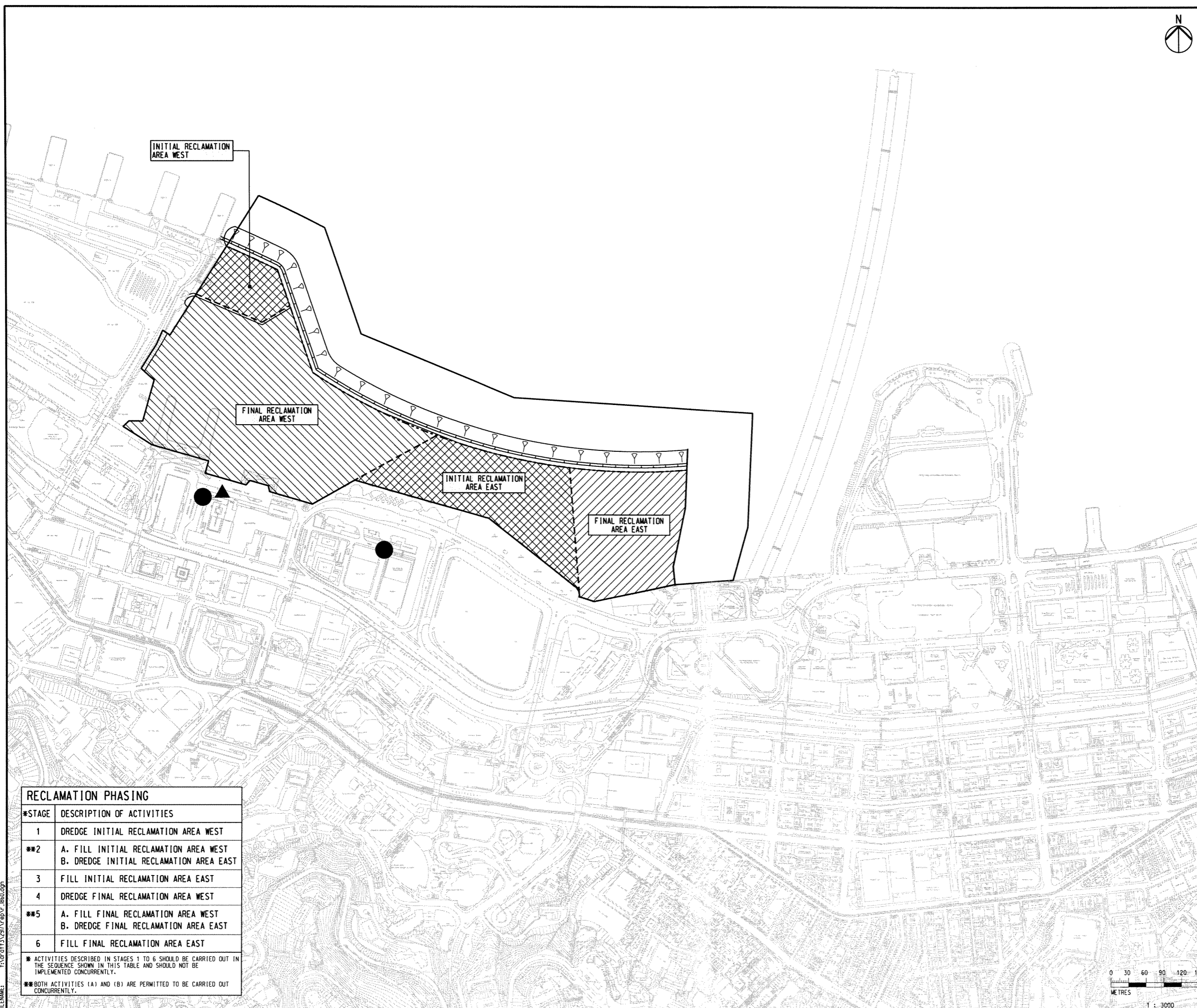
***Location of Monitoring Stations***





**LEGEND:**

- DUST MONITORING STATIONS
- ▲ NOISE MONITORING STATION



**RECLAMATION PHASING**

*STAGE	DESCRIPTION OF ACTIVITIES
1	DREDGE INITIAL RECLAMATION AREA WEST
**2	A. FILL INITIAL RECLAMATION AREA WEST B. DREDGE INITIAL RECLAMATION AREA EAST
3	FILL INITIAL RECLAMATION AREA EAST
4	DREDGE FINAL RECLAMATION AREA WEST
**5	A. FILL FINAL RECLAMATION AREA WEST B. DREDGE FINAL RECLAMATION AREA EAST
6	FILL FINAL RECLAMATION AREA EAST

\* ACTIVITIES DESCRIBED IN STAGES 1 TO 6 SHOULD BE CARRIED OUT IN THE SEQUENCE SHOWN IN THIS TABLE AND SHOULD NOT BE IMPLEMENTED CONCURRENTLY.  
 \*\*BOTH ACTIVITIES (A) AND (B) ARE PERMITTED TO BE CARRIED OUT CONCURRENTLY.

REV	DESCRIPTION	BY	DATE	CHK'D	AUTH


**拓展署 Territory Development Department**  
 港島及離島拓展處  
 HONG KONG ISLAND AND ISLANDS  
 DEVELOPMENT OFFICE

**ATKINS** 安達顧問有限公司  
 Atkins China Ltd

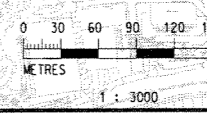
CONTRACT  
**CONTRACT NO. HK 12/02**  
 Central Reclamation Phase III  
 Engineering Works

DRAWING TITLE  
**DUST & NOISE  
 MONITORING STATIONS**

**STATUS BASELINE MONITORING REPORT**

SCALE AT A1	DESIGNED VAR	DRAWN MAD	CHECKED JV	AUTHORISED JCN
1:3000	DATE JAN2003	DATE JAN2003	DATE JAN2003	DATE JAN2003

DRAWING NUMBER  
**3128/ACL/FIGURE 2.1 0**





***Annex D***

---

***Environmental Quality Performance Limits  
for Air and Noise Quality***





**Environmental Quality Performance Limits – Action & Limit Levels**

<b>Parameter</b>	<b>Station</b>	<b>Action Level</b>	<b>Limit Level</b>
<b>Air Quality</b>			
1-Hour TSP Level in µg/m <sup>3</sup>	City Hall	460 µg/m <sup>3</sup>	500 µg/m <sup>3</sup>
1-Hour TSP Level in µg/m <sup>3</sup>	PLA	432 µg/m <sup>3</sup>	500 µg/m <sup>3</sup>
24-Hour TSP Level in µg/m <sup>3</sup>	City Hall	163 µg/m <sup>3</sup>	260 µg/m <sup>3</sup>
24-Hour TSP Level in µg/m <sup>3</sup>	PLA	154 µg/m <sup>3</sup>	260 µg/m <sup>3</sup>
<b>Noise Quality</b>			
07:00-19:00 hrs on normal weekdays	City Hall	When one documented compliant is received	75dB(A)
07:00-23:00 hrs on holidays; and 19:00-23:00 hrs on all other days	City Hall	When one documented compliant is received	60/65/70* dB(A)
23:00-07:00 hrs of next day	City Hall	When one documented compliant is received	40/50/55* dB(A)



***Annex E***

---

***Event and Action Plan for  
Air and Noise Quality***



Central Reclamation Phase III : Environmental Monitoring and Audit - Event and Action Plan for Air and Noise Quality

Event and Action Plan for Air Quality				
Event	Action			
	ET Leader	IC(E)	ER	Contractor
Action Level - Exceedance for one sample	<ol style="list-style-type: none"> <li>1. Identify source</li> <li>2. Inform IC(E) and ER</li> <li>3. Repeat measurement to confirm finding</li> <li>4. Increase monitoring frequency to daily</li> </ol>	<ol style="list-style-type: none"> <li>1. Check monitoring data submitted by ET</li> <li>2. Check Contractor's working method</li> </ol>	<ol style="list-style-type: none"> <li>1. Notify Contractor</li> </ol>	<ol style="list-style-type: none"> <li>1. Rectify any unacceptable practice</li> <li>2. Amend working methods if appropriate</li> </ol>
Action Level - Exceedance for two or more consecutive samples	<ol style="list-style-type: none"> <li>1. Identify source</li> <li>2. Inform IC(E) and ER</li> <li>3. Repeat measurement to confirm finding</li> <li>4. Increase monitoring frequency to daily</li> <li>5. Discuss with IC(E) and Contractor on remedial actions</li> <li>6. If exceedance continues, arrange meeting with IC(E) and ER</li> <li>7. If exceedance stops cease additional monitoring</li> </ol>	<ol style="list-style-type: none"> <li>1. Check monitoring data submitted by ET</li> <li>2. Check Contractor's working method</li> <li>3. Discuss with ET and Contractor on possible remedial measures</li> <li>4. Advise the ER on the effectiveness of the proposed remedial measures</li> <li>5. Supervise the implementation of remedial measures</li> </ol>	<ol style="list-style-type: none"> <li>1. Confirm receipt of notification of failure in writing</li> <li>2. Notify Contractor</li> <li>3. Ensure remedial measures properly implemented</li> </ol>	<ol style="list-style-type: none"> <li>1. Submit proposals for remedial actions to IC(E) within 3 working days of notification</li> <li>2. Implement the agreed proposals</li> <li>3. Amend proposal if appropriate</li> </ol>
Limit Level - Exceedance for one sample	<ol style="list-style-type: none"> <li>1. Identify source</li> <li>2. Inform ER and EPD</li> <li>3. Repeat measurement to confirm findings</li> <li>4. Increase monitoring frequency to daily</li> <li>5. Assess effectiveness of Contractor's remedial actions and keep IC(E), EPD and ER informed of the results</li> </ol>	<ol style="list-style-type: none"> <li>1. Check monitoring data submitted by ET</li> <li>2. Check Contractor's working method</li> <li>3. Discuss with ET and Contractor on possible remedial measures</li> <li>4. Advise the ER on the effectiveness of the proposed remedial measures</li> <li>5. Supervise the implementation of remedial measures</li> </ol>	<ol style="list-style-type: none"> <li>1. Confirm receipt of notification of failure in writing</li> <li>2. Notify Contractor</li> <li>3. Ensure remedial measures properly implemented</li> </ol>	<ol style="list-style-type: none"> <li>1. Take immediate action to avoid further exceedance</li> <li>2. Submit proposal for remedial actions to IC(E) within 3 working days of notification</li> <li>3. Implement the agreed measures</li> </ol>
Limit Level - Exceedance for two or more consecutive samples	<ol style="list-style-type: none"> <li>1. Notify IC(E), ER, Contractor and EPD</li> <li>2. Identify source</li> <li>3. Repeat measurements to confirm findings</li> <li>4. Increase monitoring frequency to daily</li> <li>5. Carry out analysis of Contractor's working procedures to determine possible mitigation to be implemented</li> <li>6. Arrange meeting with IC(E) and ER to discuss the remedial actions to be taken</li> <li>7. Assess effectiveness of Contractor's remedial actions and keep IC(E), EPD and ER informed of the results</li> <li>8. If exceedance stops, cease additional monitoring</li> </ol>	<ol style="list-style-type: none"> <li>1. Discuss amongst ER, ET, and Contractor on the potential remedial actions</li> <li>2. Review Contractor's remedial actions whenever necessary to assure their effectiveness and advise the ER accordingly</li> <li>3. Supervise the implementation of remedial measures</li> </ol>	<ol style="list-style-type: none"> <li>1. Confirm receipt of notification of failure in writing</li> <li>2. Notify Contractor</li> <li>3. In consultation with the IC(E), agree with the Contractor on the remedial measures to be implemented</li> <li>4. Ensure remedial measures properly implemented</li> <li>5. If exceedance continues, consider what portion of the work is responsible and instruct the Contractor to stop that portion of work until the exceedance is abated</li> </ol>	<ol style="list-style-type: none"> <li>1. Take immediate action to avoid further exceedance</li> <li>2. Submit proposals for remedial actions to IC(E) within 3 working days of notification</li> <li>3. Implement the agreed proposals</li> <li>4. Resubmit proposals if problem still not under control</li> <li>5. Stop the relevant portion of works as determined by the ER until the exceedance is abated</li> </ol>

Central Reclamation Phase III : Environmental Monitoring and Audit - Event and Action Plan for Air and Noise Quality

Event and Action Plan for Noise Quality				
Event	Action			
	ET Leader	IC(E)	ER	Contractor
Action Level is reached	<ol style="list-style-type: none"> <li>1. Notify IC(E) and Contractor</li> <li>2. Carry out investigation</li> <li>3. Report the results of the investigation to the IC(E) and Contractor</li> <li>4. Discuss with the Contractor and formulate remedial measures</li> </ol>	<ol style="list-style-type: none"> <li>1. Discuss amongst ER, ET and Contractor on the potential remedial actions</li> <li>2. Review Contractor's remedial actions whenever necessary to assure their effectiveness and advise the ER accordingly</li> <li>3. Supervise the implementation of remedial measures</li> </ol>	<ol style="list-style-type: none"> <li>1. Confirm receipt of notification of failure in writing</li> <li>2. Notify Contractor</li> <li>3. Require Contractor to propose remedial measures for the analyzed noise problem</li> <li>4. Ensure remedial measures are properly implemented</li> </ol>	<ol style="list-style-type: none"> <li>1. Submit noise mitigation proposal to IC(E)</li> <li>2. Implement noise mitigation proposals</li> </ol>
Limit Level is reached	<ol style="list-style-type: none"> <li>1. Notify IC(E), ER, EPD and Contractor</li> <li>2. Identify source</li> <li>3. Repeat measurement to confirm findings</li> <li>4. Carry out analysis of Contractor's working procedures to determine possible mitigation to be implemented</li> <li>5. Inform IC(E), ER and EPD the causes &amp; actions taken for the exceedances</li> <li>6. Assess effectiveness of Contractor's remedial actions and keep IC(E), EPD and ER informed of the results</li> <li>7. If exceedance stops cease additional monitoring</li> </ol>	<ol style="list-style-type: none"> <li>1. Discuss amongst ER, ET and Contractor on the potential remedial actions</li> <li>2. Review Contractor's remedial actions whenever necessary to assure their effectiveness and advise the ER accordingly</li> <li>3. Supervise the implementation of remedial measures</li> </ol>	<ol style="list-style-type: none"> <li>1. Confirm receipt of notification of failure in writing</li> <li>2. Notify Contractor</li> <li>3. Require Contractor to propose remedial measures for the analyzed noise problem</li> <li>4. Ensure remedial measures are properly implemented</li> <li>5. If exceedance continues, consider what portion of the work is responsible and instruct the Contractor to stop that portion or work until the exceedance is abated</li> </ol>	<ol style="list-style-type: none"> <li>1. Take immediate action to avoid further exceedance</li> <li>2. Submit proposals for remedial actions to IC(E) within 3 working days of notification</li> <li>3. Implement the agreed proposals</li> <li>4. Resubmit proposals if problem still not under control</li> <li>5. Stop the relevant portion of works as determined by the ER until the exceedance is abated</li> </ol>

***Annex F***

---

***Air Quality Monitoring Results***





**Central Reclamation Phase III  
TSP Monitoring Result**

STATION	Date	Weather Condition	24-hour TSP conc., $\mu\text{g}/\text{m}^3$	Date	Weather Condition	1-hour TSP conc., $\mu\text{g}/\text{m}^3$	Time	
PLA	05-Sep-13	Rainy	49	06-Sep-13	Rainy	65	08:21	09:21
						64	09:33	10:33
						55	10:42	11:42
City Hall	05-Sep-13	Rainy	46	06-Sep-13	Rainy	68	08:33	09:33
						84	09:43	10:43
						54	10:50	11:50

STATION	Date	Weather Condition	24-hour TSP conc., $\mu\text{g}/\text{m}^3$	Date	Weather Condition	1-hour TSP conc., $\mu\text{g}/\text{m}^3$	Time	
PLA	11-Sep-13	Fine	51	12-Sep-13	Fine	76	08:15	09:15
						90	09:15	10:15
						92	10:15	11:15
City Hall	11-Sep-13	Fine	37	12-Sep-13	Fine	72	08:00	09:00
						74	09:00	10:00
						81	10:00	11:00

STATION	Date	Weather Condition	24-hour TSP conc., $\mu\text{g}/\text{m}^3$	Date	Weather Condition	1-hour TSP conc., $\mu\text{g}/\text{m}^3$	Time	
PLA	17-Sep-13	Rainy	100	18-Sep-13	Cloudy	113	08:09	09:09
						111	09:15	10:15
						115	10:33	11:33
City Hall	17-Sep-13	Rainy	92	18-Sep-13	Cloudy	107	08:19	09:19
						105	09:38	10:38
						97	10:42	11:42

STATION	Date	Weather Condition	24-hour TSP conc., $\mu\text{g}/\text{m}^3$	Date	Weather Condition	1-hour TSP conc., $\mu\text{g}/\text{m}^3$	Time	
PLA	24-Sep-13	Rainy	42	24-Sep-13	Fine	51	08:03	09:03
						38	09:14	10:14
						45	10:20	11:20
City Hall	24-Sep-13	Cloudy	37	24-Sep-13	Fine	76	08:19	09:19
						56	09:32	10:32
						67	10:43	11:43

STATION	Date	Weather Condition	24-hour TSP conc., $\mu\text{g}/\text{m}^3$	Date	Weather Condition	1-hour TSP conc., $\mu\text{g}/\text{m}^3$	Time	
PLA	28-Sep-13	Rainy	78	30-Sep-13	Fine	184	08:04	09:04
						161	09:08	10:08
						201	10:20	11:20
City Hall	28-Sep-13	Rainy	64	30-Sep-13	Fine	87	08:00	09:00
						123	09:04	10:04
						133	10:12	11:12

Remark:

\*\* Due to hoisting of No. 8 Southwest Gale or Storm Signal, the 24 hr TSP at PLA and City Hall were rescheduled from 23 Sep 2013 to 24 Sep 2013.

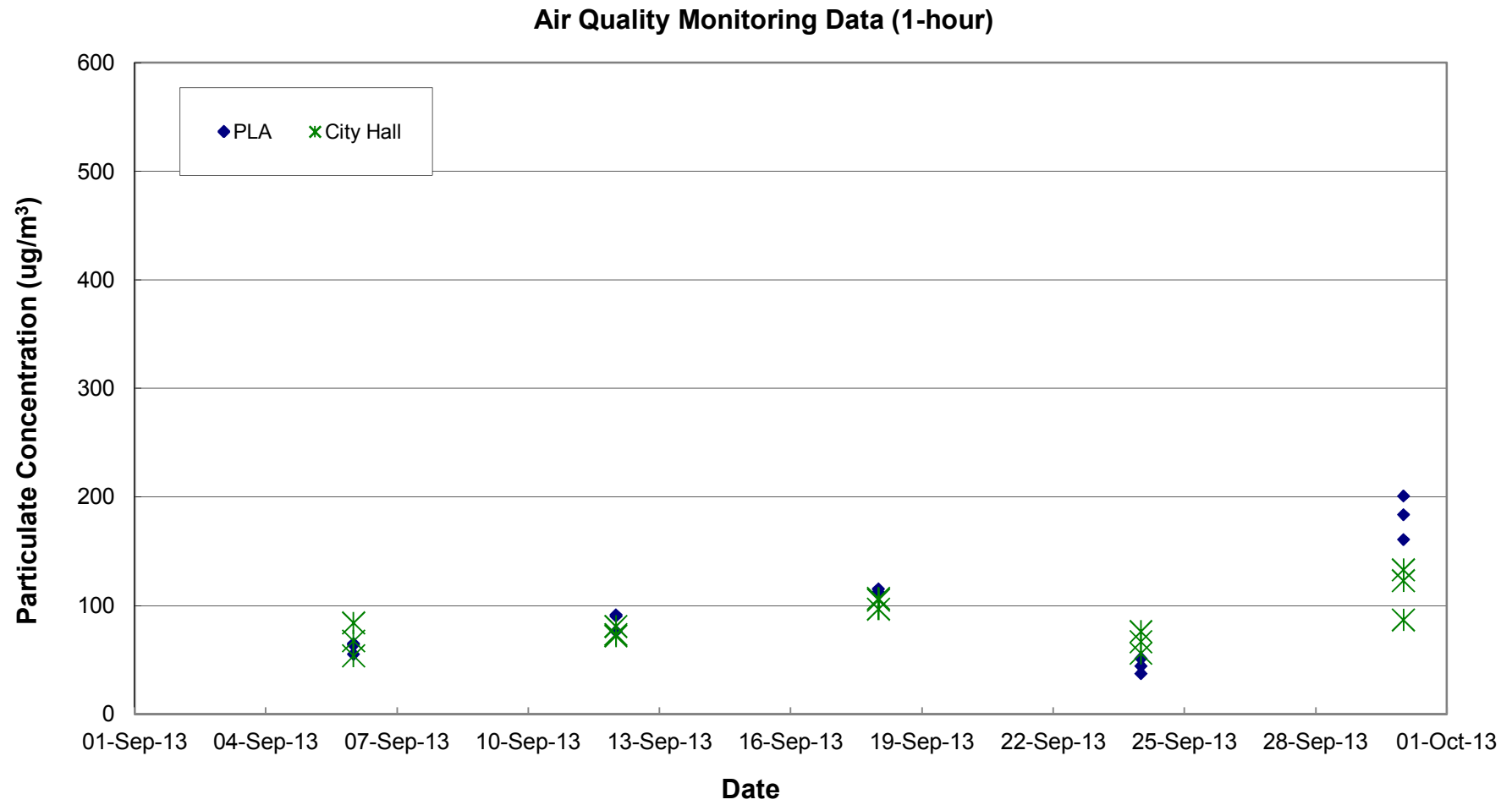


***Annex G***

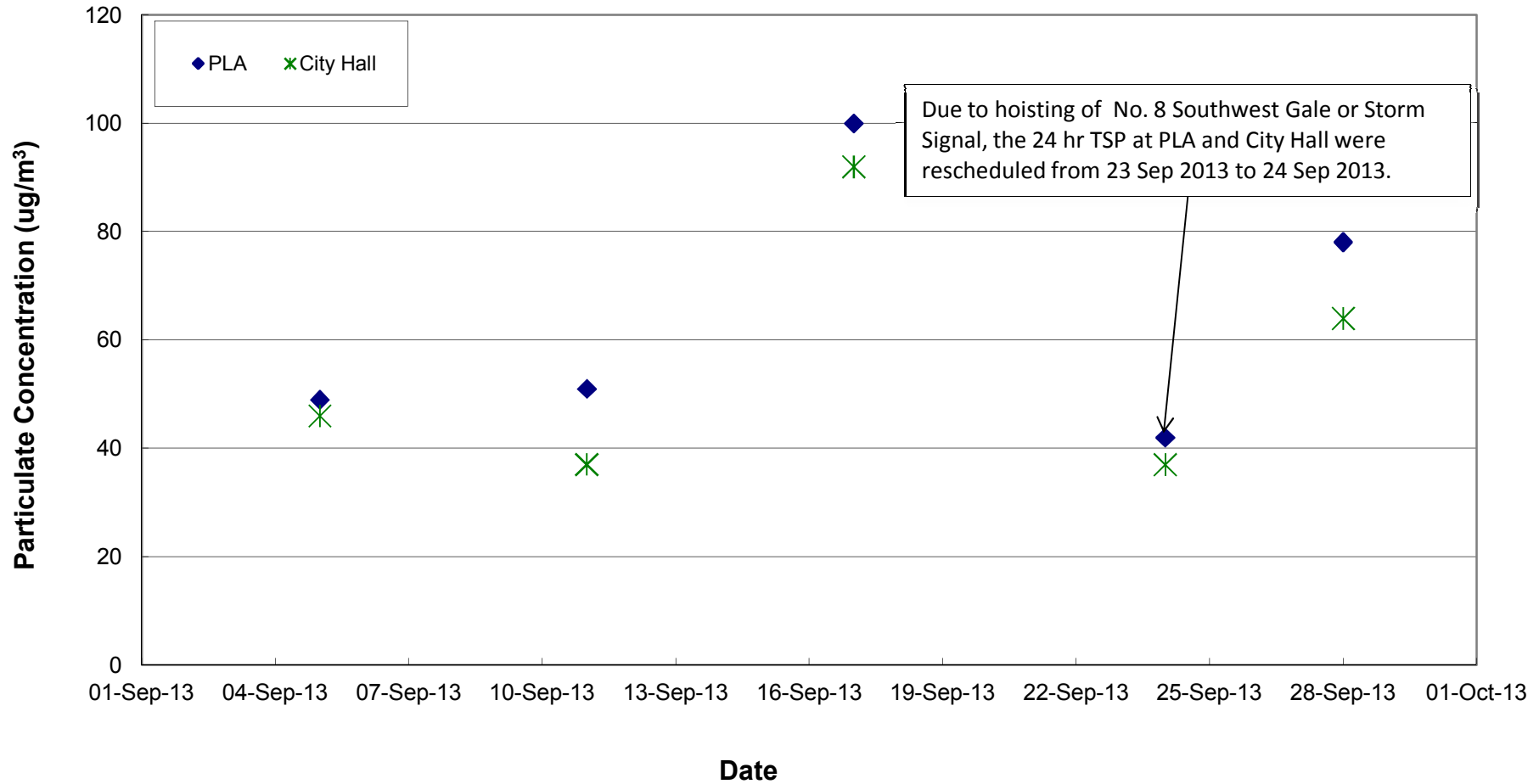
---

***Graphical Representation of  
Air Quality Monitoring Results***





### Air Quality Monitoring Data (24-hour)



***Annex H***

---

***Noise Monitoring Results***





Central Reclamation Phase III : Environmental Monitoring and Audit - Noise Monitoring Results

Start Date	Start Time	LAeq
01-Sep-13	00:01	57.4
01-Sep-13	00:31	56.6
01-Sep-13	01:01	56.7
01-Sep-13	01:31	56.9
01-Sep-13	02:01	57.0
01-Sep-13	02:31	56.3
01-Sep-13	03:01	56.2
01-Sep-13	03:31	55.9
01-Sep-13	04:01	56.0
01-Sep-13	04:31	55.9
01-Sep-13	05:01	56.3
01-Sep-13	05:31	56.0
01-Sep-13	06:01	56.4
01-Sep-13	06:31	57.5
01-Sep-13	07:01	58.6
01-Sep-13	07:31	58.1
01-Sep-13	08:01	57.9
01-Sep-13	08:31	59.2
01-Sep-13	09:01	60.5
01-Sep-13	09:31	60.5
01-Sep-13	10:01	60.8
01-Sep-13	10:31	63.7
01-Sep-13	11:01	62.5
01-Sep-13	11:31	62.1
01-Sep-13	12:01	61.2
01-Sep-13	12:31	62.3
01-Sep-13	13:01	61.7
01-Sep-13	13:31	61.3
01-Sep-13	14:01	61.8
01-Sep-13	14:31	62.2
01-Sep-13	15:01	62.6
01-Sep-13	15:31	62.5
01-Sep-13	16:01	62.2
01-Sep-13	16:31	62.7
01-Sep-13	17:01	63.1
01-Sep-13	17:31	64.3
01-Sep-13	18:01	63.5
01-Sep-13	18:31	63.2
01-Sep-13	19:01	63.0
01-Sep-13	19:31	62.5
01-Sep-13	20:01	61.9
01-Sep-13	20:31	61.8
01-Sep-13	21:01	61.2
01-Sep-13	21:31	59.8
01-Sep-13	22:01	57.9
01-Sep-13	22:31	58.6
01-Sep-13	23:01	58.0
01-Sep-13	23:31	57.4
02-Sep-13	00:01	56.3
02-Sep-13	00:31	55.6
02-Sep-13	01:01	55.0
02-Sep-13	01:31	54.3
02-Sep-13	02:01	56.2
02-Sep-13	02:31	55.9
02-Sep-13	03:01	54.5
02-Sep-13	03:31	54.8
02-Sep-13	04:01	55.5
02-Sep-13	04:31	57.0
02-Sep-13	05:01	56.4
02-Sep-13	05:31	57.5
02-Sep-13	06:01	57.6
02-Sep-13	06:31	59.5
02-Sep-13	07:01	61.3
02-Sep-13	07:31	61.7
02-Sep-13	08:01	62.2
02-Sep-13	08:31	62.9
02-Sep-13	09:01	63.5
02-Sep-13	09:31	65.5
02-Sep-13	10:01	65.4
02-Sep-13	10:31	63.5
02-Sep-13	11:01	63.0
02-Sep-13	11:31	62.2
02-Sep-13	12:01	62.0
02-Sep-13	12:31	62.4

Start Date	Start Time	LAeq
02-Sep-13	13:01	65.9
02-Sep-13	13:31	62.6
02-Sep-13	14:01	62.9
02-Sep-13	14:31	63.1
02-Sep-13	15:01	65.7
02-Sep-13	15:31	65.5
02-Sep-13	16:01	64.7
02-Sep-13	16:31	64.5
02-Sep-13	17:01	63.4
02-Sep-13	17:31	62.5
02-Sep-13	18:01	63.3
02-Sep-13	18:31	62.2
02-Sep-13	19:01	62.5
02-Sep-13	19:31	62.1
02-Sep-13	20:01	60.7
02-Sep-13	20:31	59.9
02-Sep-13	21:01	61.3
02-Sep-13	21:31	61.7
02-Sep-13	22:01	60.8
02-Sep-13	22:31	59.2
02-Sep-13	23:01	58.5
02-Sep-13	23:31	56.8
03-Sep-13	00:01	56.2
03-Sep-13	00:31	55.0
03-Sep-13	01:01	55.2
03-Sep-13	01:31	54.5
03-Sep-13	02:01	54.7
03-Sep-13	02:31	54.9
03-Sep-13	03:01	55.0
03-Sep-13	03:31	54.8
03-Sep-13	04:01	54.9
03-Sep-13	04:31	56.6
03-Sep-13	05:01	55.7
03-Sep-13	05:31	56.6
03-Sep-13	06:01	57.7
03-Sep-13	06:31	58.9
03-Sep-13	07:01	60.9
03-Sep-13	07:31	61.8
03-Sep-13	08:01	62.7
03-Sep-13	08:31	63.7
03-Sep-13	09:01	63.8
03-Sep-13	09:31	64.2
03-Sep-13	10:01	64.2
03-Sep-13	10:31	63.9
03-Sep-13	11:01	63.3
03-Sep-13	11:31	62.9
03-Sep-13	12:01	62.8
03-Sep-13	12:31	62.6
03-Sep-13	13:01	62.5
03-Sep-13	13:31	62.8
03-Sep-13	14:01	64.2
03-Sep-13	14:31	63.2
03-Sep-13	15:01	62.8
03-Sep-13	15:31	62.6
03-Sep-13	16:01	63.1
03-Sep-13	16:31	62.9
03-Sep-13	17:01	62.9
03-Sep-13	17:31	62.7
03-Sep-13	18:01	62.2
03-Sep-13	18:31	62.5
03-Sep-13	19:01	61.8
03-Sep-13	19:31	61.6
03-Sep-13	20:01	60.8
03-Sep-13	20:31	61.2
03-Sep-13	21:01	60.9
03-Sep-13	21:31	61.0
03-Sep-13	22:01	59.3
03-Sep-13	22:31	58.2
03-Sep-13	23:01	57.4
03-Sep-13	23:31	57.7
04-Sep-13	00:01	56.5
04-Sep-13	00:31	55.5
04-Sep-13	01:01	55.4
04-Sep-13	01:31	54.6

Start Date	Start Time	LAeq
04-Sep-13	02:01	54.9
04-Sep-13	02:31	54.6
04-Sep-13	03:01	54.6
04-Sep-13	03:31	54.5
04-Sep-13	04:01	54.5
04-Sep-13	04:31	55.0
04-Sep-13	05:01	55.4
04-Sep-13	05:31	56.1
04-Sep-13	06:01	57.3
04-Sep-13	06:31	58.6
04-Sep-13	07:01	61.9
04-Sep-13	07:31	65.1
04-Sep-13	08:01	63.7
04-Sep-13	08:31	65.7
04-Sep-13	09:01	66.8
04-Sep-13	09:31	64.6
04-Sep-13	10:01	63.9
04-Sep-13	10:31	64.5
04-Sep-13	11:01	63.9
04-Sep-13	11:31	64.0
04-Sep-13	12:01	64.0
04-Sep-13	12:31	63.0
04-Sep-13	13:01	62.7
04-Sep-13	13:31	63.3
04-Sep-13	14:01	63.3
04-Sep-13	14:31	63.4
04-Sep-13	15:01	62.8
04-Sep-13	15:31	62.8
04-Sep-13	16:01	62.7
04-Sep-13	16:31	62.3
04-Sep-13	17:01	62.0
04-Sep-13	17:31	62.6
04-Sep-13	18:01	62.4
04-Sep-13	18:31	62.7
04-Sep-13	19:01	62.4
04-Sep-13	19:31	61.2
04-Sep-13	20:01	61.2
04-Sep-13	20:31	60.4
04-Sep-13	21:01	60.5
04-Sep-13	21:31	60.3
04-Sep-13	22:01	59.5
04-Sep-13	22:31	58.1
04-Sep-13	23:01	57.1
04-Sep-13	23:31	57.1
05-Sep-13	00:01	56.6
05-Sep-13	00:31	57.0
05-Sep-13	01:01	55.7
05-Sep-13	01:31	56.4
05-Sep-13	02:01	56.8
05-Sep-13	02:31	59.6
05-Sep-13	03:01	57.3
05-Sep-13	03:31	56.0
05-Sep-13	04:01	58.4
05-Sep-13	04:31	55.2
05-Sep-13	05:01	55.8
05-Sep-13	05:31	56.7
05-Sep-13	06:01	57.8
05-Sep-13	06:31	60.2
05-Sep-13	07:01	61.3
05-Sep-13	07:31	62.7
05-Sep-13	08:01	63.6
05-Sep-13	08:31	63.6
05-Sep-13	09:01	63.4
05-Sep-13	09:31	63.4
05-Sep-13	10:01	63.3
05-Sep-13	10:31	64.8
05-Sep-13	11:01	65.8
05-Sep-13	11:31	65.8
05-Sep-13	12:01	64.6
05-Sep-13	12:31	64.9
05-Sep-13	13:01	63.8
05-Sep-13	13:31	63.6
05-Sep-13	14:01	64.1
05-Sep-13	14:31	63.7

Central Reclamation Phase III : Environmental Monitoring and Audit - Noise Monitoring Results

Start Date	Start Time	LAeq
05-Sep-13	15:01	64.2
05-Sep-13	15:31	63.5
05-Sep-13	16:01	63.7
05-Sep-13	16:31	64.1
05-Sep-13	17:01	63.5
05-Sep-13	17:31	63.7
05-Sep-13	18:01	62.8
05-Sep-13	18:31	62.0
05-Sep-13	19:01	62.8
05-Sep-13	19:31	61.7
05-Sep-13	20:01	60.9
05-Sep-13	20:31	60.7
05-Sep-13	21:01	60.5
05-Sep-13	21:31	60.1
05-Sep-13	22:01	58.6
05-Sep-13	22:31	58.3
05-Sep-13	23:01	57.9
05-Sep-13	23:31	57.6
06-Sep-13	00:01	56.6
06-Sep-13	00:31	56.6
06-Sep-13	01:01	55.6
06-Sep-13	01:31	54.9
06-Sep-13	02:01	55.3
06-Sep-13	02:31	55.3
06-Sep-13	03:01	55.1
06-Sep-13	03:31	57.0
06-Sep-13	04:01	55.0
06-Sep-13	04:31	55.3
06-Sep-13	05:01	55.6
06-Sep-13	05:31	56.4
06-Sep-13	06:01	57.6
06-Sep-13	06:31	60.3
06-Sep-13	07:01	61.5
06-Sep-13	07:31	61.9
06-Sep-13	08:01	62.8
06-Sep-13	08:31	63.2
06-Sep-13	09:01	64.1
06-Sep-13	09:31	64.9
06-Sep-13	10:01	64.6
06-Sep-13	10:31	64.5
06-Sep-13	11:01	63.0
06-Sep-13	11:31	62.6
06-Sep-13	12:01	61.9
06-Sep-13	12:31	61.8
06-Sep-13	13:01	62.3
06-Sep-13	13:31	62.7
06-Sep-13	14:01	62.9
06-Sep-13	14:31	62.8
06-Sep-13	15:01	62.4
06-Sep-13	15:31	62.9
06-Sep-13	16:01	63.9
06-Sep-13	16:31	63.0
06-Sep-13	17:01	62.7
06-Sep-13	17:31	62.7
06-Sep-13	18:01	62.2
06-Sep-13	18:31	62.6
06-Sep-13	19:01	62.4
06-Sep-13	19:31	61.7
06-Sep-13	20:01	61.4
06-Sep-13	20:31	60.5
06-Sep-13	21:01	61.0
06-Sep-13	21:31	60.4
06-Sep-13	22:01	59.1
06-Sep-13	22:31	59.2
06-Sep-13	23:01	58.6
06-Sep-13	23:31	58.1
07-Sep-13	00:01	56.8
07-Sep-13	00:31	56.1
07-Sep-13	01:01	55.6
07-Sep-13	01:31	55.3
07-Sep-13	02:01	56.0
07-Sep-13	02:31	55.3
07-Sep-13	03:01	55.4
07-Sep-13	03:31	55.4

Start Date	Start Time	LAeq
07-Sep-13	04:01	55.4
07-Sep-13	04:31	55.2
07-Sep-13	05:01	55.7
07-Sep-13	05:31	56.0
07-Sep-13	06:01	57.1
07-Sep-13	06:31	57.8
07-Sep-13	07:01	60.0
07-Sep-13	07:31	60.7
07-Sep-13	08:01	61.4
07-Sep-13	08:31	61.8
07-Sep-13	09:01	62.9
07-Sep-13	09:31	62.4
07-Sep-13	10:01	63.2
07-Sep-13	10:31	63.3
07-Sep-13	11:01	62.9
07-Sep-13	11:31	62.0
07-Sep-13	12:01	62.3
07-Sep-13	12:31	62.1
07-Sep-13	13:01	62.2
07-Sep-13	13:31	62.8
07-Sep-13	14:01	63.0
07-Sep-13	14:31	63.3
07-Sep-13	15:01	62.9
07-Sep-13	15:31	62.7
07-Sep-13	16:01	61.9
07-Sep-13	16:31	61.9
07-Sep-13	17:01	62.5
07-Sep-13	17:31	62.1
07-Sep-13	18:01	61.9
07-Sep-13	18:31	62.3
07-Sep-13	19:01	61.5
07-Sep-13	19:31	62.2
07-Sep-13	20:01	60.9
07-Sep-13	20:31	60.8
07-Sep-13	21:01	60.6
07-Sep-13	21:31	60.8
07-Sep-13	22:01	60.2
07-Sep-13	22:31	58.8
07-Sep-13	23:01	58.1
07-Sep-13	23:31	57.7
08-Sep-13	00:01	57.2
08-Sep-13	00:31	55.9
08-Sep-13	01:01	55.6
08-Sep-13	01:31	55.0
08-Sep-13	02:01	55.2
08-Sep-13	02:31	55.0
08-Sep-13	03:01	55.0
08-Sep-13	03:31	54.7
08-Sep-13	04:01	54.8
08-Sep-13	04:31	55.6
08-Sep-13	05:01	55.2
08-Sep-13	05:31	55.9
08-Sep-13	06:01	56.7
08-Sep-13	06:31	58.0
08-Sep-13	07:01	58.7
08-Sep-13	07:31	59.5
08-Sep-13	08:01	59.7
08-Sep-13	08:31	59.9
08-Sep-13	09:01	60.3
08-Sep-13	09:31	61.1
08-Sep-13	10:01	61.4
08-Sep-13	10:31	62.1
08-Sep-13	11:01	62.1
08-Sep-13	11:31	62.2
08-Sep-13	12:01	61.5
08-Sep-13	12:31	61.7
08-Sep-13	13:01	61.3
08-Sep-13	13:31	62.5
08-Sep-13	14:01	61.4
08-Sep-13	14:31	61.9
08-Sep-13	15:01	61.9
08-Sep-13	15:31	63.1
08-Sep-13	16:01	62.5
08-Sep-13	16:31	65.5

Start Date	Start Time	LAeq
08-Sep-13	17:01	64.5
08-Sep-13	17:31	64.7
08-Sep-13	18:01	64.4
08-Sep-13	18:31	63.7
08-Sep-13	19:01	62.9
08-Sep-13	19:31	62.4
08-Sep-13	20:01	61.1
08-Sep-13	20:31	60.8
08-Sep-13	21:01	60.4
08-Sep-13	21:31	60.8
08-Sep-13	22:01	59.4
08-Sep-13	22:31	58.4
08-Sep-13	23:01	57.9
08-Sep-13	23:31	57.1
09-Sep-13	00:01	56.5
09-Sep-13	00:31	55.7
09-Sep-13	01:01	55.6
09-Sep-13	01:31	54.9
09-Sep-13	02:01	55.1
09-Sep-13	02:31	54.8
09-Sep-13	03:01	54.8
09-Sep-13	03:31	55.2
09-Sep-13	04:01	55.4
09-Sep-13	04:31	55.5
09-Sep-13	05:01	55.9
09-Sep-13	05:31	56.6
09-Sep-13	06:01	57.8
09-Sep-13	06:31	58.8
09-Sep-13	07:01	60.7
09-Sep-13	07:31	62.2
09-Sep-13	08:01	63.4
09-Sep-13	08:31	63.1
09-Sep-13	09:01	63.1
09-Sep-13	09:31	64.3
09-Sep-13	10:01	63.9
09-Sep-13	10:31	63.5
09-Sep-13	11:01	64.7
09-Sep-13	11:31	62.8
09-Sep-13	12:01	62.7
09-Sep-13	12:31	63.0
09-Sep-13	13:01	63.1
09-Sep-13	13:31	64.0
09-Sep-13	14:01	64.2
09-Sep-13	14:31	65.1
09-Sep-13	15:01	63.4
09-Sep-13	15:31	62.9
09-Sep-13	16:01	62.8
09-Sep-13	16:31	62.7
09-Sep-13	17:01	62.9
09-Sep-13	17:31	62.6
09-Sep-13	18:01	62.7
09-Sep-13	18:31	63.0
09-Sep-13	19:01	62.3
09-Sep-13	19:31	62.5
09-Sep-13	20:01	61.4
09-Sep-13	20:31	61.5
09-Sep-13	21:01	60.1
09-Sep-13	21:31	60.3
09-Sep-13	22:01	59.5
09-Sep-13	22:31	57.9
09-Sep-13	23:01	57.6
09-Sep-13	23:31	56.8
10-Sep-13	00:01	57.1
10-Sep-13	00:31	55.9
10-Sep-13	01:01	54.9
10-Sep-13	01:31	54.4
10-Sep-13	02:01	54.6
10-Sep-13	02:31	54.6
10-Sep-13	03:01	55.2
10-Sep-13	03:31	54.3
10-Sep-13	04:01	54.5
10-Sep-13	04:31	54.9
10-Sep-13	05:01	55.4
10-Sep-13	05:31	56.4

Central Reclamation Phase III : Environmental Monitoring and Audit - Noise Monitoring Results

Start Date	Start Time	LAeq
10-Sep-13	06:01	58.0
10-Sep-13	06:31	58.6
10-Sep-13	07:01	61.9
10-Sep-13	07:31	61.8
10-Sep-13	08:01	63.4
10-Sep-13	08:31	62.7
10-Sep-13	09:01	62.8
10-Sep-13	09:31	63.8
10-Sep-13	10:01	62.9
10-Sep-13	10:31	63.2
10-Sep-13	11:01	62.1
10-Sep-13	11:31	62.3
10-Sep-13	12:01	62.6
10-Sep-13	12:31	61.7
10-Sep-13	13:01	62.3
10-Sep-13	13:31	62.5
10-Sep-13	14:01	61.9
10-Sep-13	14:31	62.1
10-Sep-13	15:01	62.4
10-Sep-13	15:31	62.6
10-Sep-13	16:01	63.5
10-Sep-13	16:31	63.8
10-Sep-13	17:01	62.6
10-Sep-13	17:31	62.5
10-Sep-13	18:01	62.8
10-Sep-13	18:31	62.5
10-Sep-13	19:01	62.0
10-Sep-13	19:31	62.0
10-Sep-13	20:01	61.5
10-Sep-13	20:31	61.2
10-Sep-13	21:01	60.5
10-Sep-13	21:31	61.7
10-Sep-13	22:01	59.4
10-Sep-13	22:31	60.0
10-Sep-13	23:01	59.1
10-Sep-13	23:31	57.3
11-Sep-13	00:01	56.7
11-Sep-13	00:31	55.9
11-Sep-13	01:01	55.9
11-Sep-13	01:31	55.0
11-Sep-13	02:01	55.1
11-Sep-13	02:31	54.3
11-Sep-13	03:01	55.0
11-Sep-13	03:31	54.6
11-Sep-13	04:01	55.0
11-Sep-13	04:31	56.0
11-Sep-13	05:01	56.0
11-Sep-13	05:31	56.5
11-Sep-13	06:01	57.9
11-Sep-13	06:31	59.0
11-Sep-13	07:01	60.6
11-Sep-13	07:31	62.1
11-Sep-13	08:01	63.0
11-Sep-13	08:31	63.1
11-Sep-13	09:01	63.6
11-Sep-13	09:31	63.9
11-Sep-13	10:01	63.9
11-Sep-13	10:31	64.0
11-Sep-13	11:01	63.6
11-Sep-13	11:31	62.5
11-Sep-13	12:01	62.0
11-Sep-13	12:31	62.0
11-Sep-13	13:01	63.3
11-Sep-13	13:31	62.4
11-Sep-13	14:01	62.5
11-Sep-13	14:31	62.5
11-Sep-13	15:01	62.4
11-Sep-13	15:31	62.2
11-Sep-13	16:01	62.4
11-Sep-13	16:31	62.4
11-Sep-13	17:01	62.5
11-Sep-13	17:31	62.8
11-Sep-13	18:01	63.1
11-Sep-13	18:31	62.6

Start Date	Start Time	LAeq
11-Sep-13	19:01	62.7
11-Sep-13	19:31	62.3
11-Sep-13	20:01	62.0
11-Sep-13	20:31	62.3
11-Sep-13	21:01	61.2
11-Sep-13	21:31	60.1
11-Sep-13	22:01	60.0
11-Sep-13	22:31	59.0
11-Sep-13	23:01	58.0
11-Sep-13	23:31	58.2
12-Sep-13	00:01	57.2
12-Sep-13	00:31	55.9
12-Sep-13	01:01	55.1
12-Sep-13	01:31	54.8
12-Sep-13	02:01	54.4
12-Sep-13	02:31	54.2
12-Sep-13	03:01	54.9
12-Sep-13	03:31	54.6
12-Sep-13	04:01	55.0
12-Sep-13	04:31	55.2
12-Sep-13	05:01	55.7
12-Sep-13	05:31	56.5
12-Sep-13	06:01	57.5
12-Sep-13	06:31	58.8
12-Sep-13	07:01	60.5
12-Sep-13	07:31	62.0
12-Sep-13	08:01	62.5
12-Sep-13	08:31	62.6
12-Sep-13	09:01	63.5
12-Sep-13	09:31	63.4
12-Sep-13	10:01	62.8
12-Sep-13	10:31	62.7
12-Sep-13	11:01	62.9
12-Sep-13	11:31	62.7
12-Sep-13	12:01	62.8
12-Sep-13	12:31	62.9
12-Sep-13	13:01	63.0
12-Sep-13	13:31	62.5
12-Sep-13	14:01	62.7
12-Sep-13	14:31	62.9
12-Sep-13	15:01	63.4
12-Sep-13	15:31	63.7
12-Sep-13	16:01	63.5
12-Sep-13	16:31	63.0
12-Sep-13	17:01	63.3
12-Sep-13	17:31	63.1
12-Sep-13	18:01	63.2
12-Sep-13	18:31	62.9
12-Sep-13	19:01	61.8
12-Sep-13	20:01	61.1
12-Sep-13	20:31	60.3
12-Sep-13	21:01	60.7
12-Sep-13	21:31	60.2
12-Sep-13	22:01	59.9
12-Sep-13	22:31	59.1
12-Sep-13	23:01	60.2
12-Sep-13	23:31	57.2
13-Sep-13	00:01	56.4
13-Sep-13	00:31	55.7
13-Sep-13	01:01	55.5
13-Sep-13	01:31	54.7
13-Sep-13	02:01	54.3
13-Sep-13	02:31	54.3
13-Sep-13	03:01	54.5
13-Sep-13	03:31	54.6
13-Sep-13	04:01	54.9
13-Sep-13	04:31	55.0
13-Sep-13	05:01	56.0
13-Sep-13	05:31	56.6
13-Sep-13	06:01	57.7
13-Sep-13	06:31	58.7
13-Sep-13	07:01	61.4
13-Sep-13	07:31	62.4

Start Date	Start Time	LAeq
13-Sep-13	08:01	62.9
13-Sep-13	08:31	62.6
13-Sep-13	09:01	62.4
13-Sep-13	09:31	62.2
13-Sep-13	10:01	63.3
13-Sep-13	10:31	64.0
13-Sep-13	11:01	64.2
13-Sep-13	11:31	63.0
13-Sep-13	12:01	63.2
13-Sep-13	12:31	62.6
13-Sep-13	13:01	62.1
13-Sep-13	13:31	62.7
13-Sep-13	14:01	62.7
13-Sep-13	14:31	62.7
13-Sep-13	15:01	62.8
13-Sep-13	15:31	63.1
13-Sep-13	16:01	63.0
13-Sep-13	16:31	63.2
13-Sep-13	17:01	63.2
13-Sep-13	17:31	62.9
13-Sep-13	18:01	62.8
13-Sep-13	18:31	63.1
13-Sep-13	19:01	62.3
13-Sep-13	19:31	61.7
13-Sep-13	20:01	61.4
13-Sep-13	20:31	60.8
13-Sep-13	21:01	60.5
13-Sep-13	21:31	59.5
13-Sep-13	22:01	59.6
13-Sep-13	22:31	59.3
13-Sep-13	23:01	58.7
13-Sep-13	23:31	57.9
14-Sep-13	00:01	58.1
14-Sep-13	00:31	56.6
14-Sep-13	01:01	55.7
14-Sep-13	01:31	55.7
14-Sep-13	02:01	55.0
14-Sep-13	02:31	54.7
14-Sep-13	03:01	54.7
14-Sep-13	03:31	54.6
14-Sep-13	04:01	54.9
14-Sep-13	04:31	55.3
14-Sep-13	05:01	55.6
14-Sep-13	05:31	56.1
14-Sep-13	06:01	57.3
14-Sep-13	06:31	59.1
14-Sep-13	07:01	60.7
14-Sep-13	07:31	60.9
14-Sep-13	08:01	61.3
14-Sep-13	08:31	61.6
14-Sep-13	09:01	61.4
14-Sep-13	09:31	62.7
14-Sep-13	10:01	62.7
14-Sep-13	10:31	62.7
14-Sep-13	11:01	62.5
14-Sep-13	11:31	62.0
14-Sep-13	12:01	62.5
14-Sep-13	12:31	62.4
14-Sep-13	13:01	62.6
14-Sep-13	13:31	62.6
14-Sep-13	14:01	62.8
14-Sep-13	14:31	63.3
14-Sep-13	15:01	62.6
14-Sep-13	15:31	63.3
14-Sep-13	16:01	62.8
14-Sep-13	16:31	62.2
14-Sep-13	17:01	62.3
14-Sep-13	17:31	62.1
14-Sep-13	18:01	62.2
14-Sep-13	18:31	61.7
14-Sep-13	19:01	61.7
14-Sep-13	19:31	61.5
14-Sep-13	20:01	60.4
14-Sep-13	20:31	59.4

Central Reclamation Phase III : Environmental Monitoring and Audit - Noise Monitoring Results

Start Date	Start Time	LAeq
14-Sep-13	21:01	59.8
14-Sep-13	21:31	58.7
14-Sep-13	22:01	59.8
14-Sep-13	22:31	59.6
14-Sep-13	23:01	58.3
14-Sep-13	23:31	57.6
15-Sep-13	00:01	57.2
15-Sep-13	00:31	56.4
15-Sep-13	01:01	55.4
15-Sep-13	01:31	54.8
15-Sep-13	02:01	55.6
15-Sep-13	02:31	55.4
15-Sep-13	03:01	55.6
15-Sep-13	03:31	55.2
15-Sep-13	04:01	55.4
15-Sep-13	04:31	55.2
15-Sep-13	05:01	55.4
15-Sep-13	05:31	56.1
15-Sep-13	06:01	57.1
15-Sep-13	06:31	57.1
15-Sep-13	07:01	58.1
15-Sep-13	07:31	59.8
15-Sep-13	08:01	59.6
15-Sep-13	08:31	59.8
15-Sep-13	09:01	60.2
15-Sep-13	09:31	61.4
15-Sep-13	10:01	61.4
15-Sep-13	10:31	62.0
15-Sep-13	11:01	61.4
15-Sep-13	11:31	61.8
15-Sep-13	12:01	61.8
15-Sep-13	12:31	62.2
15-Sep-13	13:01	62.0
15-Sep-13	13:31	63.5
15-Sep-13	14:01	63.9
15-Sep-13	14:31	64.6
15-Sep-13	15:01	63.1
15-Sep-13	15:31	63.1
15-Sep-13	16:01	63.8
15-Sep-13	16:31	64.4
15-Sep-13	17:01	64.6
15-Sep-13	17:31	64.8
15-Sep-13	18:01	64.3
15-Sep-13	18:31	62.4
15-Sep-13	19:01	62.4
15-Sep-13	19:31	63.3
15-Sep-13	20:01	61.1
15-Sep-13	20:31	60.0
15-Sep-13	21:01	59.8
15-Sep-13	21:31	59.9
15-Sep-13	22:01	59.6
15-Sep-13	22:31	58.7
15-Sep-13	23:01	57.9
15-Sep-13	23:31	57.5
16-Sep-13	00:01	56.6
16-Sep-13	00:31	55.7
16-Sep-13	01:01	55.2
16-Sep-13	01:31	54.5
16-Sep-13	02:01	55.6
16-Sep-13	02:31	56.4
16-Sep-13	03:01	56.7
16-Sep-13	03:31	56.5
16-Sep-13	04:01	56.5
16-Sep-13	04:31	57.6
16-Sep-13	05:01	56.2
16-Sep-13	05:31	57.1
16-Sep-13	06:01	58.3
16-Sep-13	06:31	59.2
16-Sep-13	07:01	61.0
16-Sep-13	07:31	62.4
16-Sep-13	08:01	63.2
16-Sep-13	08:31	63.1
16-Sep-13	09:01	63.4
16-Sep-13	09:31	63.6

Start Date	Start Time	LAeq
16-Sep-13	10:01	63.9
16-Sep-13	10:31	64.1
16-Sep-13	11:01	63.0
16-Sep-13	11:31	63.2
16-Sep-13	12:01	62.9
16-Sep-13	12:31	62.6
16-Sep-13	13:01	62.8
16-Sep-13	13:31	62.8
16-Sep-13	14:01	63.2
16-Sep-13	14:31	63.0
16-Sep-13	15:01	63.0
16-Sep-13	15:31	63.1
16-Sep-13	16:01	65.8
16-Sep-13	16:31	63.7
16-Sep-13	17:01	63.2
16-Sep-13	17:31	62.9
16-Sep-13	18:01	63.2
16-Sep-13	18:31	62.9
16-Sep-13	19:01	62.6
16-Sep-13	19:31	62.2
16-Sep-13	20:01	61.3
16-Sep-13	20:31	62.1
16-Sep-13	21:01	61.0
16-Sep-13	21:31	60.5
16-Sep-13	22:01	60.6
16-Sep-13	22:31	59.8
16-Sep-13	23:01	57.9
16-Sep-13	23:31	57.6
17-Sep-13	00:01	57.4
17-Sep-13	00:31	56.5
17-Sep-13	01:01	56.3
17-Sep-13	01:31	56.3
17-Sep-13	02:01	55.6
17-Sep-13	02:31	55.8
17-Sep-13	03:01	55.3
17-Sep-13	03:31	55.4
17-Sep-13	04:01	55.1
17-Sep-13	04:31	55.7
17-Sep-13	05:01	55.9
17-Sep-13	05:31	56.4
17-Sep-13	06:01	58.0
17-Sep-13	06:31	59.8
17-Sep-13	07:01	61.0
17-Sep-13	07:31	61.7
17-Sep-13	08:01	62.7
17-Sep-13	08:31	62.9
17-Sep-13	09:01	62.8
17-Sep-13	09:31	63.0
17-Sep-13	10:01	64.1
17-Sep-13	10:31	63.0
17-Sep-13	11:01	62.3
17-Sep-13	11:31	61.9
17-Sep-13	12:01	62.4
17-Sep-13	12:31	62.2
17-Sep-13	13:01	62.3
17-Sep-13	13:31	62.3
17-Sep-13	14:01	62.4
17-Sep-13	14:31	62.6
17-Sep-13	15:01	63.0
17-Sep-13	15:31	62.3
17-Sep-13	16:01	62.5
17-Sep-13	16:31	63.1
17-Sep-13	17:01	62.9
17-Sep-13	17:31	62.9
17-Sep-13	18:01	62.6
17-Sep-13	18:31	63.5
17-Sep-13	19:01	62.6
17-Sep-13	19:31	62.4
17-Sep-13	20:01	62.1
17-Sep-13	20:31	62.3
17-Sep-13	21:01	61.7
17-Sep-13	21:31	61.0
17-Sep-13	22:01	61.0
17-Sep-13	22:31	61.9

Start Date	Start Time	LAeq
17-Sep-13	23:01	60.0
17-Sep-13	23:31	58.5
18-Sep-13	00:01	57.5
18-Sep-13	00:31	56.3
18-Sep-13	01:01	56.2
18-Sep-13	01:31	55.7
18-Sep-13	02:01	55.4
18-Sep-13	02:31	55.7
18-Sep-13	03:01	55.3
18-Sep-13	03:31	55.1
18-Sep-13	04:01	55.3
18-Sep-13	04:31	55.3
18-Sep-13	05:01	55.9
18-Sep-13	05:31	57.0
18-Sep-13	06:01	59.6
18-Sep-13	06:31	59.1
18-Sep-13	07:01	60.7
18-Sep-13	07:31	62.1
18-Sep-13	08:01	63.1
18-Sep-13	08:31	63.2
18-Sep-13	09:01	64.4
18-Sep-13	09:31	64.9
18-Sep-13	10:01	64.5
18-Sep-13	10:31	64.5
18-Sep-13	11:01	64.1
18-Sep-13	11:31	63.5
18-Sep-13	12:01	64.1
18-Sep-13	12:31	64.5
18-Sep-13	13:01	63.2
18-Sep-13	13:31	63.2
18-Sep-13	14:01	63.3
18-Sep-13	14:31	63.1
18-Sep-13	15:01	63.1
18-Sep-13	15:31	63.3
18-Sep-13	16:01	63.4
18-Sep-13	16:31	63.5
18-Sep-13	17:01	63.8
18-Sep-13	17:31	63.0
18-Sep-13	18:01	62.7
18-Sep-13	18:31	62.4
18-Sep-13	19:01	62.5
18-Sep-13	19:31	62.3
18-Sep-13	20:01	62.4
18-Sep-13	20:31	61.8
18-Sep-13	21:01	61.8
18-Sep-13	21:31	62.5
18-Sep-13	22:01	61.2
18-Sep-13	22:31	60.2
18-Sep-13	23:01	58.2
18-Sep-13	23:31	58.0
19-Sep-13	00:01	57.2
19-Sep-13	00:31	56.3
19-Sep-13	01:01	55.6
19-Sep-13	01:31	54.7
19-Sep-13	02:01	55.1
19-Sep-13	02:31	54.6
19-Sep-13	03:01	54.8
19-Sep-13	03:31	55.0
19-Sep-13	04:01	54.4
19-Sep-13	04:31	54.6
19-Sep-13	05:01	56.5
19-Sep-13	05:31	56.4
19-Sep-13	06:01	57.2
19-Sep-13	06:31	58.9
19-Sep-13	07:01	60.3
19-Sep-13	07:31	61.8
19-Sep-13	08:01	62.4
19-Sep-13	08:31	62.4
19-Sep-13	09:01	62.7
19-Sep-13	09:31	63.5
19-Sep-13	10:01	63.6
19-Sep-13	10:31	62.6
19-Sep-13	11:01	62.1
19-Sep-13	11:31	62.6

Central Reclamation Phase III : Environmental Monitoring and Audit - Noise Monitoring Results

Start Date	Start Time	LAeq
19-Sep-13	12:01	62.2
19-Sep-13	12:31	62.1
19-Sep-13	13:01	62.4
19-Sep-13	13:31	62.6
19-Sep-13	14:01	62.5
19-Sep-13	14:31	62.6
19-Sep-13	15:01	62.7
19-Sep-13	15:31	62.7
19-Sep-13	16:01	62.5
19-Sep-13	16:31	62.2
19-Sep-13	17:01	62.6
19-Sep-13	17:31	62.9
19-Sep-13	18:01	62.0
19-Sep-13	18:31	62.2
19-Sep-13	19:01	62.5
19-Sep-13	19:31	60.9
19-Sep-13	20:01	60.4
19-Sep-13	20:31	60.6
19-Sep-13	21:01	61.0
19-Sep-13	21:31	60.2
19-Sep-13	22:01	60.1
19-Sep-13	22:31	59.1
19-Sep-13	23:01	57.6
19-Sep-13	23:31	57.0
20-Sep-13	00:01	56.9
20-Sep-13	00:31	56.1
20-Sep-13	01:01	55.8
20-Sep-13	01:31	56.1
20-Sep-13	02:01	55.2
20-Sep-13	02:31	54.9
20-Sep-13	03:01	54.8
20-Sep-13	03:31	55.0
20-Sep-13	04:01	54.6
20-Sep-13	04:31	54.4
20-Sep-13	05:01	55.3
20-Sep-13	05:31	56.7
20-Sep-13	06:01	56.8
20-Sep-13	06:31	57.2
20-Sep-13	07:01	58.0
20-Sep-13	07:31	59.7
20-Sep-13	08:01	59.6
20-Sep-13	08:31	59.6
20-Sep-13	09:01	59.3
20-Sep-13	09:31	59.6
20-Sep-13	10:01	60.1
20-Sep-13	10:31	60.5
20-Sep-13	11:01	61.2
20-Sep-13	11:31	61.0
20-Sep-13	12:01	61.3
20-Sep-13	12:31	61.2
20-Sep-13	13:01	61.4
20-Sep-13	13:31	61.3
20-Sep-13	14:01	61.8
20-Sep-13	14:31	61.8
20-Sep-13	15:01	62.4
20-Sep-13	15:31	62.6
20-Sep-13	16:01	62.1
20-Sep-13	16:31	63.1
20-Sep-13	17:01	63.5
20-Sep-13	17:31	63.4
20-Sep-13	18:01	63.8
20-Sep-13	18:31	63.1
20-Sep-13	19:01	62.6
20-Sep-13	19:31	62.3
20-Sep-13	20:01	62.3
20-Sep-13	20:31	60.8
20-Sep-13	21:01	60.3
20-Sep-13	21:31	59.7
20-Sep-13	22:01	59.1
20-Sep-13	22:31	58.6
20-Sep-13	23:01	57.9
20-Sep-13	23:31	57.9
21-Sep-13	00:01	57.3
21-Sep-13	00:31	57.2

Start Date	Start Time	LAeq
21-Sep-13	01:01	56.2
21-Sep-13	01:31	56.2
21-Sep-13	02:01	58.5
21-Sep-13	02:31	56.0
21-Sep-13	03:01	55.3
21-Sep-13	03:31	55.5
21-Sep-13	04:01	55.9
21-Sep-13	04:31	55.2
21-Sep-13	05:01	56.1
21-Sep-13	05:31	56.4
21-Sep-13	06:01	57.7
21-Sep-13	06:31	58.2
21-Sep-13	07:01	59.2
21-Sep-13	07:31	60.6
21-Sep-13	08:01	61.1
21-Sep-13	08:31	61.4
21-Sep-13	09:01	61.5
21-Sep-13	09:31	61.3
21-Sep-13	10:01	62.6
21-Sep-13	10:31	62.4
21-Sep-13	11:01	62.5
21-Sep-13	11:31	62.2
21-Sep-13	12:01	62.3
21-Sep-13	12:31	61.7
21-Sep-13	13:01	64.0
21-Sep-13	13:31	66.3
21-Sep-13	14:01	64.5
21-Sep-13	14:31	64.7
21-Sep-13	15:01	65.8
21-Sep-13	15:31	63.6
21-Sep-13	16:01	62.3
21-Sep-13	16:31	62.1
21-Sep-13	17:01	62.4
21-Sep-13	17:31	62.2
21-Sep-13	18:01	62.7
21-Sep-13	18:31	62.1
21-Sep-13	19:01	61.7
21-Sep-13	19:31	61.7
21-Sep-13	20:01	61.7
21-Sep-13	20:31	62.2
21-Sep-13	21:01	61.4
21-Sep-13	21:31	61.5
21-Sep-13	22:01	60.0
21-Sep-13	22:31	59.8
21-Sep-13	23:01	60.1
21-Sep-13	23:31	58.5
22-Sep-13	00:01	58.1
22-Sep-13	00:31	56.6
22-Sep-13	01:01	58.1
22-Sep-13	01:31	56.1
22-Sep-13	02:01	56.7
22-Sep-13	02:31	55.4
22-Sep-13	03:01	55.1
22-Sep-13	03:31	55.0
22-Sep-13	04:01	54.8
22-Sep-13	04:31	54.8
22-Sep-13	05:01	55.5
22-Sep-13	05:31	56.0
22-Sep-13	06:01	56.6
22-Sep-13	06:31	56.5
22-Sep-13	07:01	58.2
22-Sep-13	07:31	59.0
22-Sep-13	08:01	59.4
22-Sep-13	08:31	59.1
22-Sep-13	09:01	59.9
22-Sep-13	09:31	60.3
22-Sep-13	10:01	60.7
22-Sep-13	10:31	61.8
22-Sep-13	11:01	62.6
22-Sep-13	11:31	61.7
22-Sep-13	12:01	62.2
22-Sep-13	12:31	61.6
22-Sep-13	13:01	62.4
22-Sep-13	13:31	61.8

Start Date	Start Time	LAeq
22-Sep-13	14:01	64.1
22-Sep-13	14:31	65.2
22-Sep-13	15:01	66.2
22-Sep-13	15:31	66.1
22-Sep-13	16:01	64.3
22-Sep-13	16:31	65.2
22-Sep-13	17:01	63.2
22-Sep-13	17:31	59.7
22-Sep-13	18:01	59.3
22-Sep-13	18:31	58.6
22-Sep-13	19:01	58.0
22-Sep-13	19:31	58.0
22-Sep-13	20:01	57.8
22-Sep-13	20:31	57.8
22-Sep-13	21:01	57.3
22-Sep-13	21:31	57.3
22-Sep-13	22:01	57.1
22-Sep-13	22:31	57.0
22-Sep-13	23:01	56.2
22-Sep-13	23:31	59.0
23-Sep-13	00:01	59.6
23-Sep-13	00:31	62.5
23-Sep-13	01:01	56.8
23-Sep-13	01:31	56.5
23-Sep-13	02:01	55.1
23-Sep-13	02:31	54.3
23-Sep-13	03:01	52.9
23-Sep-13	03:31	53.5
23-Sep-13	04:01	54.1
23-Sep-13	04:31	54.0
23-Sep-13	05:01	54.2
23-Sep-13	05:31	55.1
23-Sep-13	06:01	55.2
23-Sep-13	06:31	56.3
23-Sep-13	07:01	58.3
23-Sep-13	07:31	58.0
23-Sep-13	08:01	58.7
23-Sep-13	08:31	59.3
23-Sep-13	09:01	59.9
23-Sep-13	09:31	60.2
23-Sep-13	10:01	61.1
23-Sep-13	10:31	61.5
23-Sep-13	11:01	61.7
23-Sep-13	11:31	62.0
23-Sep-13	12:01	61.7
23-Sep-13	12:31	61.5
23-Sep-13	13:01	61.4
23-Sep-13	13:31	61.5
23-Sep-13	14:01	62.3
23-Sep-13	14:31	62.2
23-Sep-13	15:01	62.4
23-Sep-13	15:31	62.8
23-Sep-13	16:01	66.5
23-Sep-13	16:31	66.3
23-Sep-13	17:01	66.5
23-Sep-13	17:31	64.6
23-Sep-13	18:01	62.9
23-Sep-13	18:31	62.8
23-Sep-13	19:01	62.2
23-Sep-13	19:31	61.7
23-Sep-13	20:01	60.9
23-Sep-13	20:31	60.7
23-Sep-13	21:01	60.6
23-Sep-13	21:31	60.3
23-Sep-13	22:01	60.3
23-Sep-13	22:31	59.4
23-Sep-13	23:01	58.2
23-Sep-13	23:31	58.7
24-Sep-13	00:01	57.8
24-Sep-13	00:31	56.9
24-Sep-13	01:01	57.1
24-Sep-13	01:31	55.9
24-Sep-13	02:01	55.3
24-Sep-13	02:31	54.7

Central Reclamation Phase III : Environmental Monitoring and Audit - Noise Monitoring Results

Start Date	Start Time	LAeq
24-Sep-13	03:01	54.9
24-Sep-13	03:31	55.0
24-Sep-13	04:01	55.1
24-Sep-13	04:31	55.1
24-Sep-13	05:01	55.6
24-Sep-13	05:31	58.2
24-Sep-13	06:01	58.2
24-Sep-13	06:31	59.4
24-Sep-13	07:01	60.8
24-Sep-13	07:31	61.8
24-Sep-13	08:01	64.1
24-Sep-13	08:31	65.3
24-Sep-13	09:01	65.8
24-Sep-13	09:31	65.9
24-Sep-13	10:01	66.1
24-Sep-13	10:31	66.8
24-Sep-13	11:01	64.7
24-Sep-13	11:31	63.0
24-Sep-13	12:01	62.8
24-Sep-13	12:31	62.5
24-Sep-13	13:01	63.6
24-Sep-13	13:31	63.4
24-Sep-13	14:01	63.4
24-Sep-13	14:31	63.9
24-Sep-13	15:01	63.5
24-Sep-13	15:31	63.7
24-Sep-13	16:01	64.0
24-Sep-13	16:31	63.2
24-Sep-13	17:01	63.3
24-Sep-13	17:31	62.6
24-Sep-13	18:01	62.6
24-Sep-13	18:31	62.6
24-Sep-13	19:01	62.1
24-Sep-13	19:31	62.3
24-Sep-13	20:01	61.8
24-Sep-13	20:31	61.8
24-Sep-13	21:01	61.3
24-Sep-13	21:31	61.2
24-Sep-13	22:01	61.2
24-Sep-13	22:31	59.3
24-Sep-13	23:01	58.1
24-Sep-13	23:31	57.5
25-Sep-13	00:01	56.6
25-Sep-13	00:31	55.6
25-Sep-13	01:01	55.5
25-Sep-13	01:31	55.6
25-Sep-13	02:01	56.0
25-Sep-13	02:31	57.6
25-Sep-13	03:01	55.4
25-Sep-13	03:31	54.8
25-Sep-13	04:01	54.8
25-Sep-13	04:31	55.1
25-Sep-13	05:01	55.8
25-Sep-13	05:31	56.8
25-Sep-13	06:01	57.9
25-Sep-13	06:31	69.0
25-Sep-13	07:01	60.9
25-Sep-13	07:31	62.6
25-Sep-13	08:01	63.1
25-Sep-13	08:31	63.6
25-Sep-13	09:01	63.4
25-Sep-13	09:31	64.2
25-Sep-13	10:01	64.1
25-Sep-13	10:31	63.2
25-Sep-13	11:01	63.4
25-Sep-13	11:31	62.7
25-Sep-13	12:01	62.2
25-Sep-13	12:31	61.9
25-Sep-13	13:01	62.6
25-Sep-13	13:31	63.5
25-Sep-13	14:01	63.7
25-Sep-13	14:31	63.2
25-Sep-13	15:01	62.4
25-Sep-13	15:31	63.9

Start Date	Start Time	LAeq
25-Sep-13	16:01	64.8
25-Sep-13	16:31	63.3
25-Sep-13	17:01	62.8
25-Sep-13	17:31	62.7
25-Sep-13	18:01	62.8
25-Sep-13	18:31	62.4
25-Sep-13	19:01	62.2
25-Sep-13	19:31	61.6
25-Sep-13	20:01	61.8
25-Sep-13	20:31	61.4
25-Sep-13	21:01	61.4
25-Sep-13	21:31	60.8
25-Sep-13	22:01	60.2
25-Sep-13	22:31	59.9
25-Sep-13	23:01	57.8
25-Sep-13	23:31	57.3
26-Sep-13	00:01	56.6
26-Sep-13	00:31	55.4
26-Sep-13	01:01	54.8
26-Sep-13	01:31	54.3
26-Sep-13	02:01	55.3
26-Sep-13	02:31	54.7
26-Sep-13	03:01	54.5
26-Sep-13	03:31	54.5
26-Sep-13	04:01	54.9
26-Sep-13	04:31	55.1
26-Sep-13	05:01	56.0
26-Sep-13	05:31	56.5
26-Sep-13	06:01	57.8
26-Sep-13	06:31	58.8
26-Sep-13	07:01	59.8
26-Sep-13	07:31	62.1
26-Sep-13	08:01	62.7
26-Sep-13	08:31	63.0
26-Sep-13	09:01	62.9
26-Sep-13	09:31	62.7
26-Sep-13	10:01	62.7
26-Sep-13	10:31	63.0
26-Sep-13	11:01	62.9
26-Sep-13	11:31	62.5
26-Sep-13	12:01	61.9
26-Sep-13	12:31	62.4
26-Sep-13	13:01	62.6
26-Sep-13	13:31	62.4
26-Sep-13	14:01	62.9
26-Sep-13	14:31	62.6
26-Sep-13	15:01	62.4
26-Sep-13	15:31	62.7
26-Sep-13	16:01	62.5
26-Sep-13	16:31	63.3
26-Sep-13	17:01	63.1
26-Sep-13	17:31	63.7
26-Sep-13	18:01	62.8
26-Sep-13	18:31	63.6
26-Sep-13	19:01	63.3
26-Sep-13	19:31	62.3
26-Sep-13	20:01	62.0
26-Sep-13	20:31	61.9
26-Sep-13	21:01	62.2
26-Sep-13	21:31	60.7
26-Sep-13	22:01	59.9
26-Sep-13	22:31	59.4
26-Sep-13	23:01	58.2
26-Sep-13	23:31	57.7
27-Sep-13	00:01	56.9
27-Sep-13	00:31	56.1
27-Sep-13	01:01	55.4
27-Sep-13	01:31	54.7
27-Sep-13	02:01	55.3
27-Sep-13	02:31	54.8
27-Sep-13	03:01	54.7
27-Sep-13	03:31	54.3
27-Sep-13	04:01	54.5
27-Sep-13	04:31	54.7

Start Date	Start Time	LAeq
27-Sep-13	05:01	56.9
27-Sep-13	05:31	56.1
27-Sep-13	06:01	57.5
27-Sep-13	06:31	58.5
27-Sep-13	07:01	61.0
27-Sep-13	07:31	62.3
27-Sep-13	08:01	63.1
27-Sep-13	08:31	63.2
27-Sep-13	09:01	63.1
27-Sep-13	09:31	63.0
27-Sep-13	10:01	62.7
27-Sep-13	10:31	63.2
27-Sep-13	11:01	62.5
27-Sep-13	11:31	62.8
27-Sep-13	12:01	63.1
27-Sep-13	12:31	62.2
27-Sep-13	13:01	62.5
27-Sep-13	13:31	63.0
27-Sep-13	14:01	62.7
27-Sep-13	14:31	63.1
27-Sep-13	15:01	63.4
27-Sep-13	15:31	62.3
27-Sep-13	16:01	63.5
27-Sep-13	16:31	63.7
27-Sep-13	17:01	64.5
27-Sep-13	17:31	63.0
27-Sep-13	18:01	63.7
27-Sep-13	18:31	63.1
27-Sep-13	19:01	62.8
27-Sep-13	19:31	63.0
27-Sep-13	20:01	63.1
27-Sep-13	20:31	61.1
27-Sep-13	21:01	60.8
27-Sep-13	21:31	60.8
27-Sep-13	22:01	61.1
27-Sep-13	22:31	58.9
27-Sep-13	23:01	58.2
27-Sep-13	23:31	58.4
28-Sep-13	00:01	57.5
28-Sep-13	00:31	57.4
28-Sep-13	01:01	55.8
28-Sep-13	01:31	55.7
28-Sep-13	02:01	55.8
28-Sep-13	02:31	55.1
28-Sep-13	03:01	55.0
28-Sep-13	03:31	54.8
28-Sep-13	04:01	55.0
28-Sep-13	04:31	55.1
28-Sep-13	05:01	55.5
28-Sep-13	05:31	56.3
28-Sep-13	06:01	57.4
28-Sep-13	06:31	58.3
28-Sep-13	07:01	59.7
28-Sep-13	07:31	60.4
28-Sep-13	08:01	61.5
28-Sep-13	08:31	61.8
28-Sep-13	09:01	61.7
28-Sep-13	09:31	62.0
28-Sep-13	10:01	62.6
28-Sep-13	10:31	63.0
28-Sep-13	11:01	62.3
28-Sep-13	11:31	62.7
28-Sep-13	12:01	62.9
28-Sep-13	12:31	63.1
28-Sep-13	13:01	61.8
28-Sep-13	13:31	62.9
28-Sep-13	14:01	62.7
28-Sep-13	14:31	61.7
28-Sep-13	15:01	62.0
28-Sep-13	15:31	61.9
28-Sep-13	16:01	61.7
28-Sep-13	16:31	61.9
28-Sep-13	17:01	61.7
28-Sep-13	17:31	62.3

Central Reclamation Phase III : Environmental Monitoring and Audit - Noise Monitoring Results

Start Date	Start Time	LAeq
28-Sep-13	18:01	62.0
28-Sep-13	18:31	61.2
28-Sep-13	19:01	60.8
28-Sep-13	19:31	60.9
28-Sep-13	20:01	60.3
28-Sep-13	20:31	60.9
28-Sep-13	21:01	59.9
28-Sep-13	21:31	59.6
28-Sep-13	22:01	59.1
28-Sep-13	22:31	58.8
28-Sep-13	23:01	57.9
28-Sep-13	23:31	57.4
29-Sep-13	00:01	56.9
29-Sep-13	00:31	56.5
29-Sep-13	01:01	56.2
29-Sep-13	01:31	55.5
29-Sep-13	02:01	55.3
29-Sep-13	02:31	55.6
29-Sep-13	03:01	54.9
29-Sep-13	03:31	55.3
29-Sep-13	04:01	55.7
29-Sep-13	04:31	55.6
29-Sep-13	05:01	55.9
29-Sep-13	05:31	56.3
29-Sep-13	06:01	57.1
29-Sep-13	06:31	57.6
29-Sep-13	07:01	59.2
29-Sep-13	07:31	59.6
29-Sep-13	08:01	59.7
29-Sep-13	08:31	60.0
29-Sep-13	09:01	61.7
29-Sep-13	09:31	62.8
29-Sep-13	10:01	61.7
29-Sep-13	10:31	62.4
29-Sep-13	11:01	62.2
29-Sep-13	11:31	62.3
29-Sep-13	12:01	61.9
29-Sep-13	12:31	61.9
29-Sep-13	13:01	62.3
29-Sep-13	13:31	61.8
29-Sep-13	14:01	62.3
29-Sep-13	14:31	62.5
29-Sep-13	15:01	63.3
29-Sep-13	15:31	64.4
29-Sep-13	16:01	62.1
29-Sep-13	16:31	62.6
29-Sep-13	17:01	63.5
29-Sep-13	17:31	63.7
29-Sep-13	18:01	62.4
29-Sep-13	18:31	61.9
29-Sep-13	19:01	62.2
29-Sep-13	19:31	61.9
29-Sep-13	20:01	61.5
29-Sep-13	20:31	61.9
29-Sep-13	21:01	60.5
29-Sep-13	21:31	61.5
29-Sep-13	22:01	61.7
29-Sep-13	22:31	59.1
29-Sep-13	23:01	60.9
29-Sep-13	23:31	60.2
30-Sep-13	00:01	59.0
30-Sep-13	00:31	55.9
30-Sep-13	01:01	55.1
30-Sep-13	01:31	54.9
30-Sep-13	02:01	55.4
30-Sep-13	02:31	54.3
30-Sep-13	03:01	54.5
30-Sep-13	03:31	54.8
30-Sep-13	04:01	55.1
30-Sep-13	04:31	55.6
30-Sep-13	05:01	56.3
30-Sep-13	05:31	56.7
30-Sep-13	06:01	57.7
30-Sep-13	06:31	58.9

Start Date	Start Time	LAeq
30-Sep-13	07:01	61.0
30-Sep-13	07:31	63.1
30-Sep-13	08:01	62.9
30-Sep-13	08:31	63.3
30-Sep-13	09:01	63.5
30-Sep-13	09:31	63.1
30-Sep-13	10:01	62.5
30-Sep-13	10:31	62.6
30-Sep-13	11:01	62.6
30-Sep-13	11:31	63.5
30-Sep-13	12:01	63.9
30-Sep-13	12:31	63.0
30-Sep-13	13:01	63.2
30-Sep-13	13:31	63.2
30-Sep-13	14:01	62.6
30-Sep-13	14:31	62.6
30-Sep-13	15:01	62.7
30-Sep-13	15:31	62.7
30-Sep-13	16:01	62.8
30-Sep-13	16:31	62.4
30-Sep-13	17:01	62.9
30-Sep-13	17:31	63.2
30-Sep-13	18:01	63.5
30-Sep-13	18:31	62.6
30-Sep-13	19:01	62.6
30-Sep-13	19:31	61.9
30-Sep-13	20:01	61.8
30-Sep-13	20:31	61.7
30-Sep-13	21:01	61.2
30-Sep-13	21:31	60.9
30-Sep-13	22:01	60.6
30-Sep-13	22:31	59.2
30-Sep-13	23:01	57.9
30-Sep-13	23:31	57.9





***Annex I***

---

***Graphical Representation of  
Noise Monitoring Results***



### Continuous Noise Monitoring Data

