

**Central Reclamation, Phase III
Environmental Monitoring & Audit
Monthly Report No. 125 – December 2013**

	Page
1. INTRODUCTION	1
1.1 Basic Project Information	1
2. Environmental Status	3
2.1 Works Undertaken	3
2.2 Environmental Permits	3
2.3 Environmental Document Submission	3
2.4 Environmental Meetings.....	3
2.5 Environmental Monitoring Locations.....	3
3. EM&A Requirements	5
3.1 Summary of Impact EM&A Requirements	5
3.2 Environmental Quality Performance Limits	5
3.3 Event Action Plan	5
3.4 Implementation of Environmental Measures	5
4. Monitoring Results.....	7
4.1 Impact Monitoring Schedule in December 2013.....	7
4.2 Monitoring Methodology	7
4.3 Monitoring Equipment	7
4.4 Impact Monitoring Results.....	8
5. Environmental Complaints and Non-Compliance	11
5.1 Environmental Exceedances	11
5.2 Environmental Complaint and Prosecution	12
5.3 Environmental Enquiries	12
5.4 Unusual Events.....	12
6. Forecast and Schedule.....	13
6.1 Key Engineering Works for the Coming Month	13
6.2 Monitoring Schedules for the Coming Months	13
6.3 Construction Programme for the Next 3 Months	13
7. Conclusion.....	15

List of Annexes

Annex A	Project Organisation / Contact Information
Annex B	Contractor’s Work Programme
Annex C	Location of Monitoring Stations
Annex D	Environmental Quality Performance Limits for Air and Noise Quality
Annex E	Event and Action Plan for Air and Noise Quality
Annex F	Air Quality Monitoring Results
Annex G	Graphical Representation of Air Quality Monitoring Results
Annex H	Noise Monitoring Results
Annex I	Graphical Representation of Noise Monitoring Results

List of Tables

Table 2.1 - Summary of Environmental Certification Sheet Submissions.....	3
Table 3.1 - Summary of Impact EM&A Requirements.....	5
Table 4.1 - Monthly Summary Waste Flow Table for December 2013	8
Table 5.1 - Summary of Environmental Site Inspections	11

ACL	Atkins China Limited
AL	Action Level
CEDD	Civil Engineering and Development Department
CRIII	Central Reclamation Phase III
DO	Dissolved Oxygen
EIA	Environmental Impact Assessment
EIAO	Environmental Impact Assessment Ordinance
EM&A	Environmental Monitoring and Audit
EPD	Environmental Protection Department
ER	Engineer's Representatives
ET	Environmental Team
IEC	Independent Environmental Checker
LCSD	Leisure and Cultural Services Department
LCSVO-JV	Leighton China State Van Oord Joint Venture
LL	Limit Level
PLA	People's Liberation Army Forces Hong Kong
TSP	Total Suspended Particulates
SS	Suspended Solids
WMP	Waste Management Plan

Not Used

EXECUTIVE SUMMARY

The Central Reclamation Phase III (CRIII) Works, Contract No. HK 12/02, was awarded to Leighton China State Van Oord Joint Venture (LCSVO-JV) by the Civil Engineering and Development Department (CEDD) (Previously called the Territory Development Department before merger with the Civil Engineering Department on 1st July 2004.).

The works under the Contract HK 12/02 commenced on 28th February 2003. Contract HK 16/03 for the CRIII Hinterland Drainage Improvement Works was awarded to Wang Kee Construction Co. Ltd., and works for this contract commenced on 17th December 2003.

Atkins China Limited (ACL) has been commissioned by CEDD as the Environmental Team (ET) to undertake the Environmental Monitoring and Audit (EM&A) programme described in the approved EM&A Manual for the CRIII Project. The noise and air monitoring works have been handed over to the ET of the Contract No. HK/2011/07. “Wanchai Development Phase II and Central-Wanchai Bypass Sampling, Field Measurement and Testing Works (Stage 2)” since May 2013. Therefore, noise and air monitoring data was obtained from the “Wan Chai Development Phase II and Central – Wan Chai Bypass and Island Eastern Corridor Link” project website.

This is the 125th Monthly EM&A Report for the works specified in Section 1.3 of the CRIII EIA Report. This report summarises the findings and results of the EM&A during the reporting month in December 2013.

Environmental Monitoring and Audit Progress

The monthly EM&A programme has been undertaken in accordance with the approved EM&A Manual. A summary of the monitoring activities performed in this reporting period is listed below:

- Continuous 24-hour noise monitoring was conducted throughout the monitoring period.
- 1-hour TSP monitoring was undertaken at Contract HK/2012/08 Site Office on 9th, 14th, 20th, 24th and 30th December 2013.
- 1-hour TSP monitoring was undertaken at City Hall on 3rd, 9th, 14th, 20th, 24th and 30th December 2013.
- 24-hour TSP monitoring was undertaken at Contract HK/2012/08 Site Office on 7th, 13th, 19th, 23rd, and 28th December 2013.
- 24-hour TSP monitoring was undertaken at City Hall on 2nd, 7th, 13th, 19th, 23rd, and 28th December 2013.
- Air quality monitoring events at relocated monitoring station ACL2a (Contract HK/2012/08 Site Office) were commenced since 7th December 2013.
- The post project water quality monitoring was completed in October 2011.
- Additional water quality monitoring for the “the water quality of embayment area between the eastern seawall and the Hong Kong Convention and Exhibition Centre (HKCEC) upon completion of eastern seawall”, in accordance with the Environmental Permit No. EP-01/122/2003/D Condition 3.9, was completed in October 2011.

Exceedance of Action and Limit Levels

No exceedances in TSP level were recorded at the monitoring stations during the reporting period.

1 exceedance in noise level was recorded at City Hall during the reporting period.

Complaint Log

There was no complaint received in relation to the environmental impact during the reporting period.

Notifications of Summons and Prosecutions

There were no notifications of summons and prosecutions received in relation to the environmental impact during the reporting period.

Site Inspection and Audit

Environmental site inspections for the CRIII project works area were undertaken on 7th, 11th, 20th and 27th December 2013. The observations and findings of the site inspection are summarised as below:

7th December 2013

Nil.

11th December 2013

Nil.

20th December 2013

Nil.

27th December 2013

Nil.

Key Works for the Coming Month

Future key works in the coming month (January 2014) are as follows:

- Installation of directional signs at Road P2
- Remove two existing E&M drawpits at East Bound Road P2 near Road D8
- Additional surface drain at ACL CER office compound

1. INTRODUCTION

1.1 Basic Project Information

Civil Engineering and Development Department (CEDD) is the Project Proponent of the Central Reclamation Phase III Project (CRIII).

The Main Works Contract HK 12/02 for CRIII commenced on 28th February 2003 and was awarded to Leighton-China State-Van Oord Joint Venture (LCSVO-JV) for the construction of the CRIII Engineering Works. Contract HK 16/03 for the CRIII Hinterland Drainage Improvement Works was awarded to Wang Kee Construction Co. Ltd. and works for this contract commenced on 17th December 2003.

Atkins China Limited (ACL) has been commissioned by CEDD as the Environmental Team (ET) to undertake the Environmental Monitoring and Audit (EM&A) programme described in the approved EM&A Manual and required under Clause 4 of the Variation of Further Environmental Permit (No. EP-01/122/2003/A) issued to Leighton-China State-Van Oord Joint Venture in December 2007 for the CRIII Project. A variation of the Further Environmental Permit for the Project (EP-01/122/2003/B) and (EP-01/122/2003/C) were granted on 26 May 2008 and 17 July 2009. This was then superseded by another variation of the Further Environmental Permit for the Project (EP-01/122/2003/D) granted on 1 September 2009. The noise and air monitoring works have been handed over to the ET of the Contract No. HK/2011/07. “Wanchai Development Phase II and Central-Wanchai Bypass Sampling, Field Measurement and Testing Works (Stage 2)” since May 2013. Therefore, noise and air monitoring data was obtained from the “Wan Chai Development Phase II and Central – Wan Chai Bypass and Island Eastern Corridor Link” project website. The CRIII Project Organisation is shown in **Annex A**.

This is the 125th Monthly EM&A Report for the works specified in Section 1.3 of the CRIII EIA Report. This report summarises the findings and results of the EM&A during the reporting period in December 2013.

Not Used

2. ENVIRONMENTAL STATUS

2.1 Works Undertaken

Details of the main works in progress are as follows:

- Remaining soft landscaping work behind GPO boundary - completed
- Installation of street lights behind GPO boundary wall - completed
- Remaining footpath construction adjacent to GPO – complete

2.2 Environmental Permits

No environmental permits, licences, and/or notifications to EPD for this project during the reporting period.

2.3 Environmental Document Submission

No submissions were provided to the ER during the reporting period.

A summary of Environmental Certification Sheet submissions during the reporting period is presented in **Table 2.1**.

Table 2.1 - Summary of Environmental Certification Sheet Submissions

No	Certification Subject	Letter Ref.	Date of Submission	Approved Status
1	Certification of Monthly Environmental Monitoring & Audit Report No.124, November 2013	3128/M45/200/OC14196/SO/TWC/fl	13 th December 2013	13 th December 2013

2.4 Environmental Meetings

No environmental meeting was held in this reporting period.

2.5 Environmental Monitoring Locations

The current environmental monitoring locations are shown in **Annex C**.

Not Used

3. EM&A REQUIREMENTS

3.1 Summary of Impact EM&A Requirements

The EM&A programme requires environmental monitoring for air quality, noise, water quality, waste management, landscape and visual aspects as specified in the CRIII Project EIA. The EM&A requirements for each issue area are described in subsequent sections including:

- All required monitoring parameters;
- Action and Limit Levels; and
- Event/ Action Plans.

A summary of impact EM&A requirements is presented in **Table 3.1**.

Table 3.1 - Summary of Impact EM&A Requirements

Parameters	Descriptions	Locations	Frequencies	Duration
TSP	24-Hour TSP	2 Locations*	Once every 6 days	During dust generating construction works
	1-Hour TSP	2 Locations*	Three times in every 6 days	During dust generating construction works
Noise	Leq (30 mins), Leq (15 mins), L10, L90,	1 Location	Continuous measurements	Two weeks before Construction and During Construction
Water Quality	The post project monitoring was completed in October 2011			
Waste	On-Site Waste Audit	Active Work Sites	Periodically	During Construction
	On-Site Waste Inspection			
Landscape and Visual	Audits to ensure effective implementation of mitigation measures			During Construction
General Site Conditions	Environmental Site Inspection	Works areas and areas affected by works	Periodically	During Construction

Remark: * Air quality monitoring events at relocated monitoring station ACL2a (Contract HK/2012/08 Site Office) were commenced since 7th December 2013.

3.2 Environmental Quality Performance Limits

Environmental Quality Performance Limits for air and noise quality as provided in the Baseline Monitoring Report (Final) are shown in **Annex D**.

3.3 Event Action Plan

The Event Action Plans for air and noise quality as provided in the Baseline Monitoring Report (Final) are shown in **Annex E**.

3.4 Implementation of Environmental Measures

The Contractor is required to implement mitigation measures listed in the EIA Report, EM&A Manual and Further Environmental Permit. During routine site inspections, the Contractor's implementation of mitigation measures was reviewed. The Contractor has implemented their Drainage Management Plan and Silt Curtain Operation Plan for VEP (rev 1).

Not Used

4. MONITORING RESULTS

4.1 Impact Monitoring Schedule in December 2013

Regular site inspections were carried out to assess whether the project's environmental protection and pollution control measures are in compliance with the contract specifications. Inspections were carried out on 7th, 11th, 20th and 27th December 2013.

Continuous 24-hour noise monitoring was conducted during this reporting period.

1-hour TSP monitoring was undertaken at Contract HK/2012/08 Site Office on 9th, 14th, 20th, 24th and 30th December 2013. 1-hour TSP monitoring was undertaken at City Hall on 3rd, 9th, 14th, 20th, 24th and 30th December 2013.

24-hour TSP monitoring was undertaken at Contract HK/2012/08 Site Office on 7th, 13th, 19th, 23rd and 28th December 2013. 24-hour TSP monitoring was undertaken at City Hall on 2nd, 7th, 13th, 19th, 23rd and 28th December 2013.

Air quality monitoring events at relocated monitoring station ACL2a (Contract HK/2012/08 Site Office) were commenced since 7th December 2013.

The post project water quality monitoring was completed in October 2011.

Additional water quality monitoring for the “the water quality of embayment area between the eastern seawall and the Hong Kong Convention and Exhibition Centre (HKCEC) upon completion of eastern seawall”, in accordance with the Environmental Permit No. EP-01/122/2003/D Condition 3.9, was completed in October 2011.

4.2 Monitoring Methodology

4.2.1 Air Quality Monitoring

Air quality monitoring was conducted in accordance with the methodology described in the EM&A Manual. The monitoring stations are located at the City Hall and the Contract HK/2012/08 Site Office as shown in **Annex C**.

4.2.2 Noise Monitoring

Continuous 24-hour noise monitoring was conducted in accordance with the methodology described in the EM&A Manual in the reporting period. The noise monitoring station is located at the City Hall as shown in **Annex C**.

4.2.3 Water Quality Monitoring

The post project water quality monitoring was completed in October 2011.

4.3 Monitoring Equipment

4.3.1 Air Quality

The details of the equipment used in the impact air monitoring programme could be referred to the monthly report of Contact No. HK/2011/07.

4.3.2 Noise

The details of the equipment used in the impact noise monitoring programme could be referred to the monthly report of Contact No. HK/2011/07.

4.3.3 Water Quality

The post project water quality monitoring was completed in October 2011.

4.4 Impact Monitoring Results

4.4.1 Air Quality & Noise Monitoring Results

The air quality monitoring results at the Contract HK/2012/08 Site Office and City Hall monitoring stations are presented in **Annex F**. Graphical representation of the air quality monitoring data is provided in **Annex G**.

The noise monitoring results at the City Hall monitoring station is provided in **Annex H**. Graphical representation of the noise monitoring data is provided in **Annex I**.

4.4.2 Water Quality Monitoring Results

The post project water quality monitoring was completed in October 2011.

Additional water quality monitoring for the “the water quality of embayment area between the eastern seawall and the Hong Kong Convention and Exhibition Centre (HKCEC) upon completion of eastern seawall”, in accordance with the Environmental Permit No. EP-01/122/2003/D Condition 3.9, was completed in October 2011.

4.4.3 Waste Management

Table 4.1 - Monthly Summary Waste Flow Table for December 2013

Month	Actual Quantities of Inert C&D Materials Generated Monthly				
	Total Quantity Generated	Broken Concrete	Reused in the Contract	Reused in other Projects	Reused as Public Fill
(in '000 m ³)					
December 2013	0	-	0	-	0
Month	Actual Quantities of C&D Materials Generated Monthly				
	Metals	Paper/cardboard packaging	Plastics (see Note 3)	Chemical Waste	Others, e.g. general refuse
	(in '000 kg)	(in '000 kg)	(in '000 kg)		(in '000 m ³)
December 2013	-	0	0	0	0

Notes:

- (1) The performance targets are given in PS Sub-clause 2(5) (c).
- (2) The waste flow table shall also include C&D materials that are specified in the Contract to be imported for use at the Site.
- (3) Plastics refer to plastic bottles/containers, plastic sheets/foam from packaging material
- (4) Broken concrete for recycling into aggregates

4.4.4 *Landscape and Visual*

As major construction activities undertaken during the reporting period were paving works, the landscape and visual impacts are considered minimal.

Not used

5. ENVIRONMENTAL COMPLAINTS AND NON-COMPLIANCE

5.1 Environmental Exceedances

The number of exceedances for air quality and noise quality are presented in the following sections.

5.1.1 Air Quality

No exceedances in TSP level were recorded at the monitoring stations during the reporting period.

5.1.2 Noise Impact

One exceedance in noise level was recorded at City Hall during the reporting period. During the monitoring period (19th December 2013 to 27th December 2013), 1 noise exceedance was recorded on 23rd December 2013. According to Contractor's record, there was no construction activity from the CR3 sites. It was noted that the repairing works of the air conditioning system on the roof of lower block of City Hall was undertaken during the monitoring period. As such, the noise exceedances are considered to be attributed to the external factors and unlikely to be related to project works.

5.1.3 Waste Management

No non-compliances with regard to waste management were recorded in the reporting period.

5.1.4 Landscape and Visual Impact

No non-compliances with regard to landscape and visual impacts were recorded in the reporting period.

5.1.5 Site Environmental Audit

No non-compliances with regard to site environmental audit were recorded for the reporting period.

A summary of findings from site inspections conducted during the reporting period is provided in **Table 5.1**.

Table 5.1 - Summary of Environmental Site Inspections

Date of Inspection	Observations	Action(s)
7 th December 2013	Nil	N.A.
11 th December 2013	Nil	N.A.
20 th December 2013	Nil	N.A.
27 th December 2013	Nil	N.A.

5.2 Environmental Complaint and Prosecution

There were no notification of prosecutions and complaint received during the reporting period.

5.3 Environmental Enquiries

No environmental enquiries were received during the reporting period.

5.4 Unusual Events

No unusual events were recorded during the reporting period.

6. FORECAST AND SCHEDULE

6.1 Key Engineering Works for the Coming Month

Future key works in the coming month (January 2014) are as follows:

- Installation of directional signs at Road P2
- Remove two existing E&M drawpits at East Bound Road P2 near Road D8
- Additional surface drain at ACL CER office compound

6.2 Monitoring Schedules for the Coming Months

Based on the Contractor's programme, the Environmental Monitoring Programme for the following months is planned as follows:

TSP (24-hour and 1-hour monitoring)

TSP will be sampled once every 6 days, during the entire construction period. On each of the sampling days a single continuous 24-hour sample shall be taken, together with 3 separate 1-hour samples.

- Air quality monitoring events at relocated monitoring station ACL2a (Contract HK/2012/08 Site Office) were commenced since 7th December 2013.

Noise (Continuous Measurements)

Noise monitoring will be round the clock throughout the entire construction period.

Water Quality Monitoring

The Post project Water quality monitoring was completed in October 2011.

6.3 Construction Programme for the Next 3 Months

The Contractor's works programme for the next 3 months is provided in **Annex B**.

The ET will follow up with the Contractor's proposed programme to ensure compliance in environmental performance and proper implementation of all necessary mitigation measures.

Not Used

7. CONCLUSION

No exceedances in TSP level were recorded at the monitoring stations during the reporting period.

Air quality monitoring events at relocated monitoring station ACL2a (Contract HK/2012/08 Site Office) were commenced since 7th December 2013.

One exceedance in noise level was recorded at City Hall during the reporting period.

The post project water quality monitoring was completed in October 2011. Additional water quality monitoring for the “the water quality of embayment area between the eastern seawall and the Hong Kong Convention and Exhibition Centre (HKCEC) upon completion of eastern seawall”, in accordance with the Environmental Permit No. EP-01/122/2003/D Condition 3.9, was completed in October 2011.

There was no complaint received in relation to the environmental impact during the reporting period.

Environmental site inspections for the CRIII project works area were undertaken on 7th, 11th, December 2013. The observations and findings of the site inspection are summarised as below:

7th December 2013

Nil.

11th December 2013

Nil.

20th December 2013

Nil.

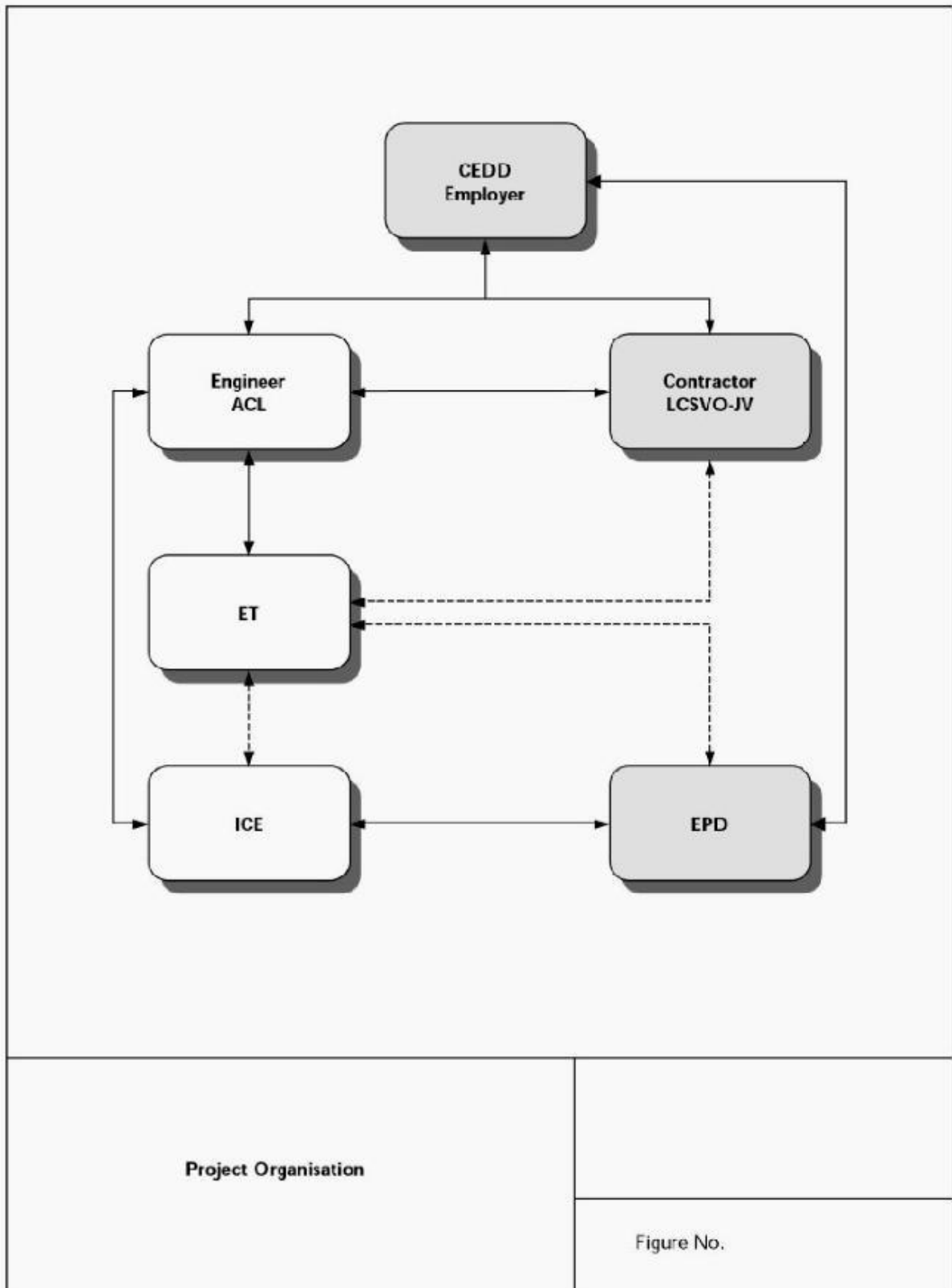
27th December 2013

Nil.

Not Used

Annex A

***Project Organisation /
Contact Information***



**Employer, Civil Engineering and Development
Department**

Mr. C. B. Mak
Chief Engineer/HK(1)
Tel: 2231 4436
Fax: 2577 5040

Mr. Edmund K M CHIU
Engineer 3
Tel: 2231 4427
Fax: 2577 5040

Resident Engineers, Atkins China Ltd.

Mr. Cedric Tam
Senior Resident Engineer
Tel: 2230 9616
Fax: 2523 2768
Email: cedric.tam@cr3.com.hk

Environmental Team, Atkins China Ltd.

Ms. Sharifah Or
Environmental Team Leader
Tel: 2972 1802
Fax: 2890 6343
Email: sharifah.or@atkinsglobal.com

Mr. Keith Chau
Senior Consultant
Tel: 2972 1721
Fax: 2890 6343
Email: keith.chau@atkinsglobal.com

Independent Environmental Checker

Mr. Bill Douglas
Fax: 2575 3635
Email: bill@magneticfox.com

**Contractor, Leighton China State Van Oord
Joint Venture**

Mr. Norman Croker
Project Director
Tel: 2625 1800
Fax: 2511 1810
Email: norman.croker@leightonasia.com

Environmental Protection Department

Metro Assessment Group:
Contact: Mr. MA Chi Wai
Phone: 2835 2390
Fax: 2591 0558
Email: cwma@epd.gov.hk

Environmental Protection Department

Regional Office (South)
Contact: Mr. Sean S. H. Law
Phone: 2516 1806
Fax: 2960 1760
Email: seanlaw@epd.gov.hk

Regional Office (South)
Contact: Miss W. Y. Yiu
Phone: 2516 1721
Fax: 2960 1760
Email: wyiu@epd.gov.hk

Annex B

Contractor's Work Programme

Activity	Status	2013																2014			
		Sep				Oct				Nov				Dec				Jan			
		1	2	3	4	1	2	3	4	1	2	3	4	1	2	3	4	1	2	3	4
<u>Area outside GPO boundary wall</u>																					
Installation of street lights by HyD lighting division	Completed																				
Paving work surrounding street lights	Completed																				
<u>Road P2</u>																					
Installation of directional signs	RC footings completed																				
Remove existing E&M drawpits near Road D8	TTA trial run on 9 Jan 2014																				
<u>Area C</u>																					
Additional surface drain at CRE office compound	In progress																				

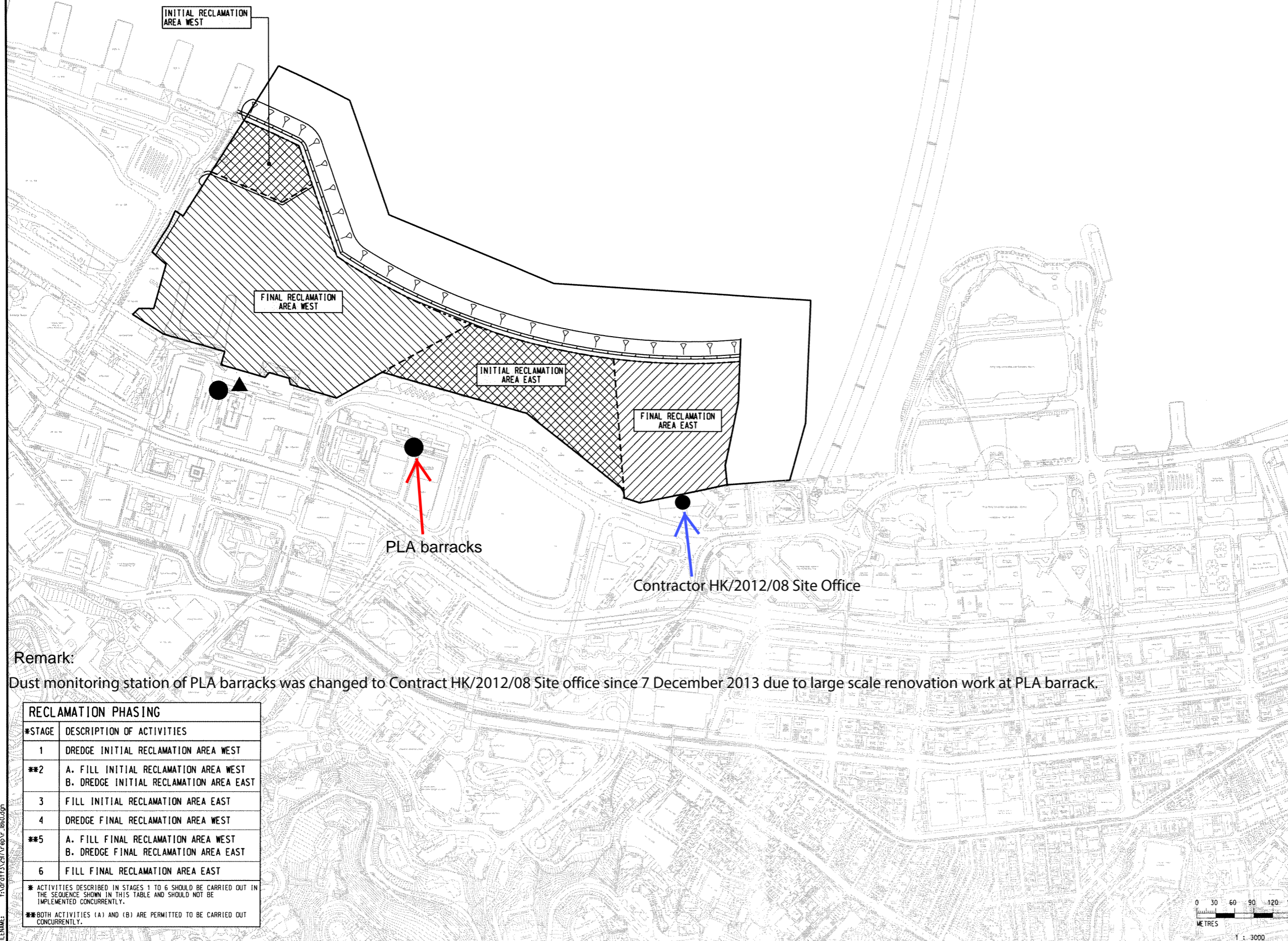
Annex C

Location of Monitoring Stations



LEGEND:

- DUST MONITORING STATIONS
- ▲ NOISE MONITORING STATION



Remark:

Dust monitoring station of PLA barracks was changed to Contract HK/2012/08 Site office since 7 December 2013 due to large scale renovation work at PLA barrack.

RECLAMATION PHASING

*STAGE	DESCRIPTION OF ACTIVITIES
1	DREDGE INITIAL RECLAMATION AREA WEST
**2	A. FILL INITIAL RECLAMATION AREA WEST B. DREDGE INITIAL RECLAMATION AREA EAST
3	FILL INITIAL RECLAMATION AREA EAST
4	DREDGE FINAL RECLAMATION AREA WEST
**5	A. FILL FINAL RECLAMATION AREA WEST B. DREDGE FINAL RECLAMATION AREA EAST
6	FILL FINAL RECLAMATION AREA EAST

* ACTIVITIES DESCRIBED IN STAGES 1 TO 6 SHOULD BE CARRIED OUT IN THE SEQUENCE SHOWN IN THIS TABLE AND SHOULD NOT BE IMPLEMENTED CONCURRENTLY.
 ** BOTH ACTIVITIES (A) AND (B) ARE PERMITTED TO BE CARRIED OUT CONCURRENTLY.

REV	DESCRIPTION	BY	DATE	CHK'D	AUTH


 拓展署 Territory Development Department
 港島及離島拓展處
 HONG KONG ISLAND AND ISLANDS DEVELOPMENT OFFICE

ATKINS 安達顧問有限公司
 Atkins China Ltd

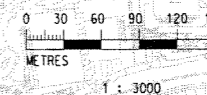
CONTRACT
CONTRACT NO. HK 12/02
 Central Reclamation Phase III
 Engineering Works

DRAWING TITLE
DUST & NOISE MONITORING STATIONS

STATUS
BASELINE MONITORING REPORT

SCALE AT A1	DESIGNED VAR	DRAWN MAD	CHECKED JV	AUTHORISED JCN
1:3000	DATE JAN2003	DATE JAN2003	DATE JAN2003	DATE JAN2003

DRAWING NUMBER
3128/ACL/FIGURE 2.1 0



Annex D

***Environmental Quality Performance Limits
for Air and Noise Quality***

Environmental Quality Performance Limits – Action & Limit Levels

Parameter	Station	Action Level	Limit Level
Air Quality			
1-Hour TSP Level in $\mu\text{g}/\text{m}^3$	City Hall	460 $\mu\text{g}/\text{m}^3$	500 $\mu\text{g}/\text{m}^3$
1-Hour TSP Level in $\mu\text{g}/\text{m}^3$	PLA ⁽¹⁾	432 $\mu\text{g}/\text{m}^3$	500 $\mu\text{g}/\text{m}^3$
1-Hour TSP Level in $\mu\text{g}/\text{m}^3$	Contract HK/2012/08 Site office ⁽¹⁾	300.1 $\mu\text{g}/\text{m}^3$	500 $\mu\text{g}/\text{m}^3$
24-Hour TSP Level in $\mu\text{g}/\text{m}^3$	City Hall	163 $\mu\text{g}/\text{m}^3$	260 $\mu\text{g}/\text{m}^3$
24-Hour TSP Level in $\mu\text{g}/\text{m}^3$	PLA ⁽¹⁾	154 $\mu\text{g}/\text{m}^3$	260 $\mu\text{g}/\text{m}^3$
24-Hour TSP Level in $\mu\text{g}/\text{m}^3$	Contract HK/2012/08 Site office ⁽¹⁾	187.3 $\mu\text{g}/\text{m}^3$	260 $\mu\text{g}/\text{m}^3$
Noise Quality			
07:00-19:00 hrs on normal weekdays	City Hall	When one documented compliant is received	75dB(A)
07:00-23:00 hrs on holidays; and 19:00-23:00 hrs on all other days	City Hall	When one documented compliant is received	60/65/70* dB(A)
23:00-07:00 hrs of next day	City Hall	When one documented compliant is received	40/50/55* dB(A)

Remark:

- (1) Dust monitoring station of PLA barracks was changed to Contract HK/2012/08 Site office since 7 December 2013 due to large scale renovation work at PLA barrack.

Annex E

***Event and Action Plan for
Air and Noise Quality***

Central Reclamation Phase III : Environmental Monitoring and Audit - Event and Action Plan for Air and Noise Quality

Event and Action Plan for Air Quality				
Event	Action			
	ET Leader	IC(E)	ER	Contractor
Action Level - Exceedance for one sample	<ol style="list-style-type: none"> 1. Identify source 2. Inform IC(E) and ER 3. Repeat measurement to confirm finding 4. Increase monitoring frequency to daily 	<ol style="list-style-type: none"> 1. Check monitoring data submitted by ET 2. Check Contractor's working method 	<ol style="list-style-type: none"> 1. Notify Contractor 	<ol style="list-style-type: none"> 1. Rectify any unacceptable practice 2. Amend working methods if appropriate
Action Level - Exceedance for two or more consecutive samples	<ol style="list-style-type: none"> 1. Identify source 2. Inform IC(E) and ER 3. Repeat measurement to confirm finding 4. Increase monitoring frequency to daily 5. Discuss with IC(E) and Contractor on remedial actions 6. If exceedance continues, arrange meeting with IC(E) and ER 7. If exceedance stops cease additional monitoring 	<ol style="list-style-type: none"> 1. Check monitoring data submitted by ET 2. Check Contractor's working method 3. Discuss with ET and Contractor on possible remedial measures 4. Advise the ER on the effectiveness of the proposed remedial measures 5. Supervise the implementation of remedial measures 	<ol style="list-style-type: none"> 1. Confirm receipt of notification of failure in writing 2. Notify Contractor 3. Ensure remedial measures properly implemented 	<ol style="list-style-type: none"> 1. Submit proposals for remedial actions to IC(E) within 3 working days of notification 2. Implement the agreed proposals 3. Amend proposal if appropriate
Limit Level - Exceedance for one sample	<ol style="list-style-type: none"> 1. Identify source 2. Inform ER and EPD 3. Repeat measurement to confirm findings 4. Increase monitoring frequency to daily 5. Assess effectiveness of Contractor's remedial actions and keep IC(E), EPD and ER informed of the results 	<ol style="list-style-type: none"> 1. Check monitoring data submitted by ET 2. Check Contractor's working method 3. Discuss with ET and Contractor on possible remedial measures 4. Advise the ER on the effectiveness of the proposed remedial measures 5. Supervise the implementation of remedial measures 	<ol style="list-style-type: none"> 1. Confirm receipt of notification of failure in writing 2. Notify Contractor 3. Ensure remedial measures properly implemented 	<ol style="list-style-type: none"> 1. Take immediate action to avoid further exceedance 2. Submit proposal for remedial actions to IC(E) within 3 working days of notification 3. Implement the agreed measures
Limit Level - Exceedance for two or more consecutive samples	<ol style="list-style-type: none"> 1. Notify IC(E), ER, Contractor and EPD 2. Identify source 3. Repeat measurements to confirm findings 4. Increase monitoring frequency to daily 5. Carry out analysis of Contractor's working procedures to determine possible mitigation to be implemented 6. Arrange meeting with IC(E) and ER to discuss the remedial actions to be taken 7. Assess effectiveness of Contractor's remedial actions and keep IC(E), EPD and ER informed of the results 8. If exceedance stops, cease additional monitoring 	<ol style="list-style-type: none"> 1. Discuss amongst ER, ET, and Contractor on the potential remedial actions 2. Review Contractor's remedial actions whenever necessary to assure their effectiveness and advise the ER accordingly 3. Supervise the implementation of remedial measures 	<ol style="list-style-type: none"> 1. Confirm receipt of notification of failure in writing 2. Notify Contractor 3. In consultation with the IC(E), agree with the Contractor on the remedial measures to be implemented 4. Ensure remedial measures properly implemented 5. If exceedance continues, consider what portion of the work is responsible and instruct the Contractor to stop that portion of work until the exceedance is abated 	<ol style="list-style-type: none"> 1. Take immediate action to avoid further exceedance 2. Submit proposals for remedial actions to IC(E) within 3 working days of notification 3. Implement the agreed proposals 4. Resubmit proposals if problem still not under control 5. Stop the relevant portion of works as determined by the ER until the exceedance is abated

Central Reclamation Phase III : Environmental Monitoring and Audit - Event and Action Plan for Air and Noise Quality

Event and Action Plan for Noise Quality				
Event	Action			
	ET Leader	IC(E)	ER	Contractor
Action Level is reached	<ol style="list-style-type: none"> 1. Notify IC(E) and Contractor 2. Carry out investigation 3. Report the results of the investigation to the IC(E) and Contractor 4. Discuss with the Contractor and formulate remedial measures 	<ol style="list-style-type: none"> 1. Discuss amongst ER, ET and Contractor on the potential remedial actions 2. Review Contractor's remedial actions whenever necessary to assure their effectiveness and advise the ER accordingly 3. Supervise the implementation of remedial measures 	<ol style="list-style-type: none"> 1. Confirm receipt of notification of failure in writing 2. Notify Contractor 3. Require Contractor to propose remedial measures for the analyzed noise problem 4. Ensure remedial measures are properly implemented 	<ol style="list-style-type: none"> 1. Submit noise mitigation proposal to IC(E) 2. Implement noise mitigation proposals
Limit Level is reached	<ol style="list-style-type: none"> 1. Notify IC(E), ER, EPD and Contractor 2. Identify source 3. Repeat measurement to confirm findings 4. Carry out analysis of Contractor's working procedures to determine possible mitigation to be implemented 5. Inform IC(E), ER and EPD the causes & actions taken for the exceedances 6. Assess effectiveness of Contractor's remedial actions and keep IC(E), EPD and ER informed of the results 7. If exceedance stops cease additional monitoring 	<ol style="list-style-type: none"> 1. Discuss amongst ER, ET and Contractor on the potential remedial actions 2. Review Contractor's remedial actions whenever necessary to assure their effectiveness and advise the ER accordingly 3. Supervise the implementation of remedial measures 	<ol style="list-style-type: none"> 1. Confirm receipt of notification of failure in writing 2. Notify Contractor 3. Require Contractor to propose remedial measures for the analyzed noise problem 4. Ensure remedial measures are properly implemented 5. If exceedance continues, consider what portion of the work is responsible and instruct the Contractor to stop that portion or work until the exceedance is abated 	<ol style="list-style-type: none"> 1. Take immediate action to avoid further exceedance 2. Submit proposals for remedial actions to IC(E) within 3 working days of notification 3. Implement the agreed proposals 4. Resubmit proposals if problem still not under control 5. Stop the relevant portion of works as determined by the ER until the exceedance is abated

Annex F

Air Quality Monitoring Results

**Central Reclamation Phase III
TSP Monitoring Result**

STATION	Date	Weather Condition	24-hour TSP conc., $\mu\text{g}/\text{m}^3$	Date	Weather Condition	1-hour TSP conc., $\mu\text{g}/\text{m}^3$	Time	
Contract HK/2012/08 Site Office	07-Dec-13	Fine	119	09-Dec-13	Fine	257	08:21	09:21
						213	09:33	10:33
						135	10:42	11:42
City Hall	02-Dec-13	Fine	59	03-Dec-13	Fine	190	08:33	09:33
						163	09:43	10:43
						131	10:50	11:50

STATION	Date	Weather Condition	24-hour TSP conc., $\mu\text{g}/\text{m}^3$	Date	Weather Condition	1-hour TSP conc., $\mu\text{g}/\text{m}^3$	Time	
Contract HK/2012/08 Site Office	13-Dec-13	Fine	154	14-Dec-13	Fine	161	08:15	09:15
						124	09:15	10:15
						67	10:15	11:15
City Hall	07-Dec-13	Fine	118	09-Dec-13	Fine	106	08:00	09:00
						101	09:00	10:00
						125	10:00	11:00

STATION	Date	Weather Condition	24-hour TSP conc., $\mu\text{g}/\text{m}^3$	Date	Weather Condition	1-hour TSP conc., $\mu\text{g}/\text{m}^3$	Time	
Contract HK/2012/08 Site Office	19-Dec-13	Rainy	61	20-Dec-13	Cloudy	15	08:09	09:09
						18	09:15	10:15
						102	10:33	11:33
City Hall	13-Dec-13	Cloudy	137	14-Dec-13	Rainy	87	08:19	09:19
						128	09:38	10:38
						123	10:42	11:42

STATION	Date	Weather Condition	24-hour TSP conc., $\mu\text{g}/\text{m}^3$	Date	Weather Condition	1-hour TSP conc., $\mu\text{g}/\text{m}^3$	Time	
Contract HK/2012/08 Site Office	23-Dec-13	Rainy	134	24-Dec-13	Fine	122	08:03	09:03
						113	09:14	10:14
						106	10:20	11:20
City Hall	19-Dec-13	Cloudy	48	20-Dec-13	Fine	40	08:19	09:19
						41	09:32	10:32
						48	10:43	11:43

STATION	Date	Weather Condition	24-hour TSP conc., $\mu\text{g}/\text{m}^3$	Date	Weather Condition	1-hour TSP conc., $\mu\text{g}/\text{m}^3$	Time	
Contract HK/2012/08 Site Office	28-Dec-13	Rainy	141	30-Dec-13	Fine	256	08:04	09:04
						285	09:08	10:08
						277	10:20	11:20
City Hall	23-Dec-13	Rainy	68	24-Dec-13	Fine	148	08:00	09:00
						94	09:04	10:04
						88	10:12	11:12

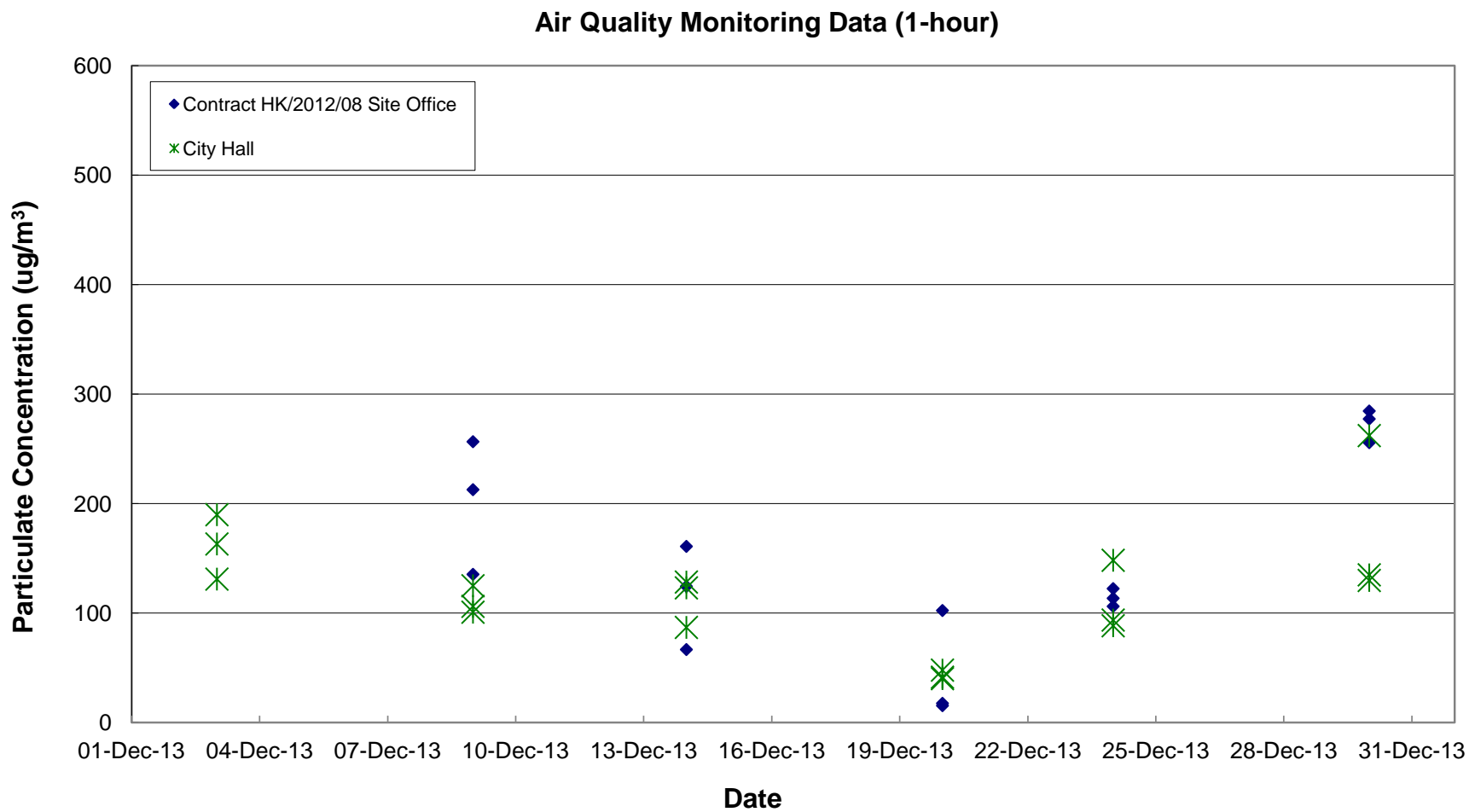
STATION	Date	Weather Condition	24-hour TSP conc., $\mu\text{g}/\text{m}^3$	Date	Weather Condition	1-hour TSP conc., $\mu\text{g}/\text{m}^3$	Time	
City Hall	28-Dec-13	Rainy	128	30-Dec-13	Rainy	135	08:11	09:11
						262	09:15	10:15
						130	10:29	11:29

Remarks:

1. Air quality monitoring events at relocated monitoring station ACL2a (Contract HK/2012/08 Site Office) were commenced since 7 Dec 2013.

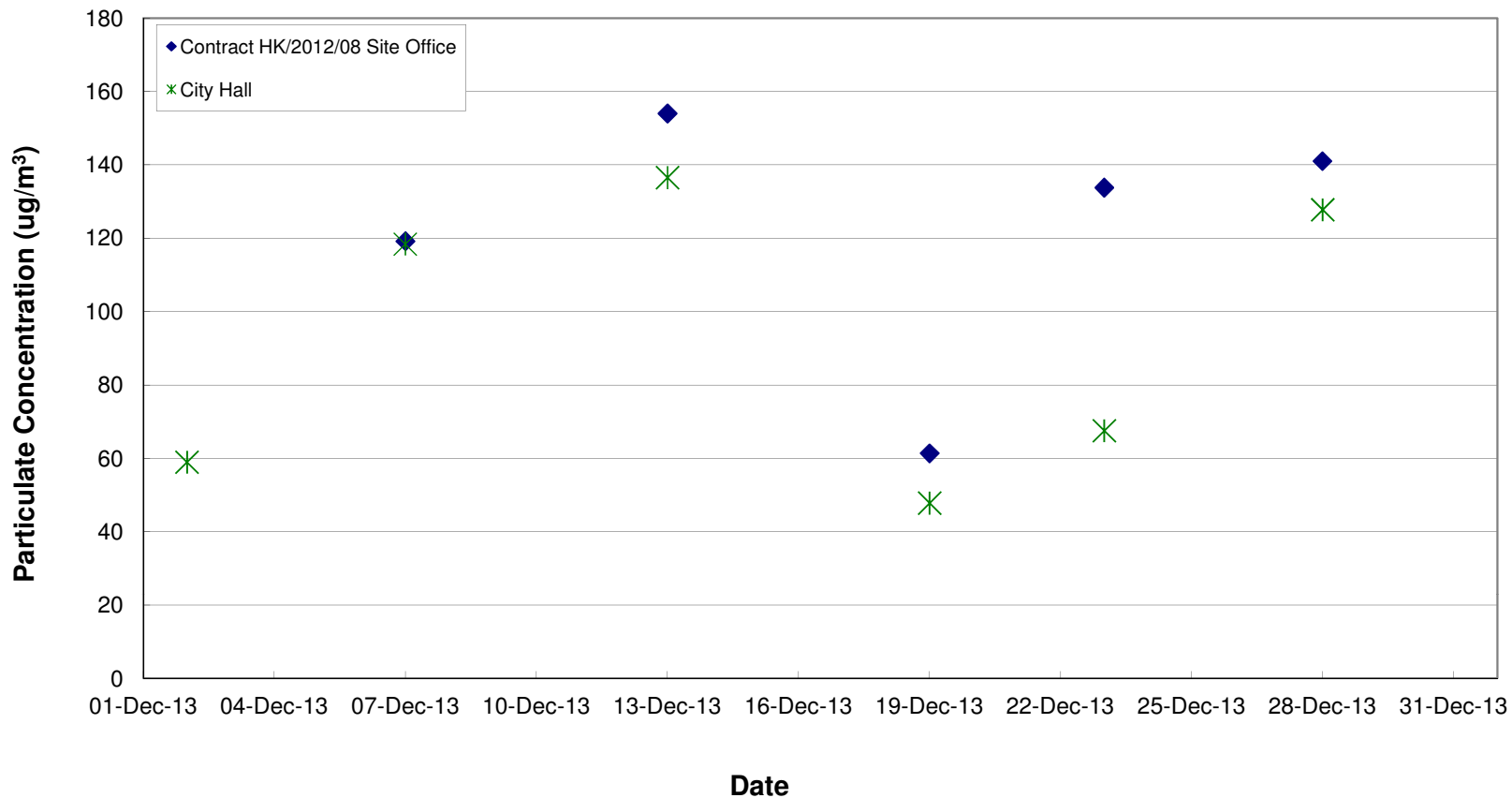
Annex G

***Graphical Representation of
Air Quality Monitoring Results***



Remark:
 Air quality monitoring events at relocated monitoring station ACL2a (Contract HK/2012/08 Site Office) were commenced since 7 Dec 2013.

Air Quality Monitoring Data (24-hour)



Remark:

Air quality monitoring events at relocated monitoring station ACL2a (Contract HK/2012/08 Site Office) were commenced since 7 Dec 2013.

Annex H

Noise Monitoring Results

Central Reclamation Phase III : Environmental Monitoring and Audit - Noise Monitoring Results

Start Date	Start Time	LAeq
01-Dec-13	00:01	57.5
01-Dec-13	00:31	56.6
01-Dec-13	01:01	56.2
01-Dec-13	01:31	56.2
01-Dec-13	02:01	56.9
01-Dec-13	02:31	57.5
01-Dec-13	03:01	56.4
01-Dec-13	03:31	57.6
01-Dec-13	04:01	56.2
01-Dec-13	04:31	56.7
01-Dec-13	05:01	56.2
01-Dec-13	05:31	58.3
01-Dec-13	06:01	58.4
01-Dec-13	06:31	59.1
01-Dec-13	07:01	59.5
01-Dec-13	07:31	60.8
01-Dec-13	08:01	58.9
01-Dec-13	08:31	57.8
01-Dec-13	09:01	59.2
01-Dec-13	09:31	58.7
01-Dec-13	10:01	59.6
01-Dec-13	10:31	60.6
01-Dec-13	11:01	59.7
01-Dec-13	11:31	60.9
01-Dec-13	12:01	60.5
01-Dec-13	12:31	61.4
01-Dec-13	13:01	61.1
01-Dec-13	13:31	62.1
01-Dec-13	14:01	62.8
01-Dec-13	14:31	62.9
01-Dec-13	15:01	61.0
01-Dec-13	15:31	61.1
01-Dec-13	16:01	61.3
01-Dec-13	16:31	61.5
01-Dec-13	17:01	62.3
01-Dec-13	17:31	61.7
01-Dec-13	18:01	62.8
01-Dec-13	18:31	62.8
01-Dec-13	19:01	61.5
01-Dec-13	19:31	62.8
01-Dec-13	20:01	61.5
01-Dec-13	20:31	60.2
01-Dec-13	21:01	58.7
01-Dec-13	21:31	58.9
01-Dec-13	22:01	58.3
01-Dec-13	22:31	57.9
01-Dec-13	23:01	58.4
01-Dec-13	23:31	57.3
02-Dec-13	00:01	56.7
02-Dec-13	00:31	55.4
02-Dec-13	01:01	54.7
02-Dec-13	01:31	54.0
02-Dec-13	02:01	54.0
02-Dec-13	02:31	53.5
02-Dec-13	03:01	53.5
02-Dec-13	03:31	54.1
02-Dec-13	04:01	53.9
02-Dec-13	04:31	53.6
02-Dec-13	05:01	55.1
02-Dec-13	05:31	55.9
02-Dec-13	06:01	56.9
02-Dec-13	06:31	59.0
02-Dec-13	07:01	59.8
02-Dec-13	07:31	61.1
02-Dec-13	08:01	61.3
02-Dec-13	08:31	61.8
02-Dec-13	09:01	62.6
02-Dec-13	09:31	62.1
02-Dec-13	10:01	61.6
02-Dec-13	10:31	62.1
02-Dec-13	11:01	60.8
02-Dec-13	11:31	60.7
02-Dec-13	12:01	60.6
02-Dec-13	12:31	60.9

Start Date	Start Time	LAeq
02-Dec-13	13:01	60.8
02-Dec-13	13:31	61.3
02-Dec-13	14:01	60.7
02-Dec-13	14:31	61.7
02-Dec-13	15:01	61.6
02-Dec-13	15:31	61.3
02-Dec-13	16:01	62.1
02-Dec-13	16:31	62.3
02-Dec-13	17:01	61.8
02-Dec-13	17:31	62.1
02-Dec-13	18:01	62.0
02-Dec-13	18:31	61.5
02-Dec-13	19:01	61.5
02-Dec-13	19:31	61.6
02-Dec-13	20:01	62.1
02-Dec-13	20:31	60.0
02-Dec-13	21:01	59.8
02-Dec-13	21:31	59.4
02-Dec-13	22:01	59.3
02-Dec-13	22:31	59.7
02-Dec-13	23:01	58.1
02-Dec-13	23:31	56.7
03-Dec-13	00:01	56.2
03-Dec-13	00:31	55.9
03-Dec-13	01:01	54.8
03-Dec-13	01:31	54.7
03-Dec-13	02:01	54.0
03-Dec-13	02:31	54.0
03-Dec-13	03:01	53.8
03-Dec-13	03:31	53.9
03-Dec-13	04:01	54.7
03-Dec-13	04:31	54.2
03-Dec-13	05:01	57.0
03-Dec-13	05:31	55.9
03-Dec-13	06:01	56.8
03-Dec-13	06:31	58.8
03-Dec-13	07:01	60.2
03-Dec-13	07:31	61.5
03-Dec-13	08:01	62.3
03-Dec-13	08:31	62.4
03-Dec-13	09:01	62.9
03-Dec-13	09:31	63.2
03-Dec-13	10:01	63.9
03-Dec-13	10:31	63.3
03-Dec-13	11:01	62.4
03-Dec-13	11:31	61.8
03-Dec-13	12:01	60.9
03-Dec-13	12:31	62.5
03-Dec-13	13:01	61.7
03-Dec-13	13:31	62.0
03-Dec-13	14:01	62.0
03-Dec-13	14:31	62.5
03-Dec-13	15:01	62.7
03-Dec-13	15:31	62.7
03-Dec-13	16:01	63.5
03-Dec-13	16:31	62.5
03-Dec-13	17:01	62.1
03-Dec-13	17:31	62.1
03-Dec-13	18:01	62.1
03-Dec-13	18:31	62.4
03-Dec-13	19:01	62.1
03-Dec-13	19:31	61.1
03-Dec-13	20:01	60.7
03-Dec-13	20:31	59.8
03-Dec-13	21:01	59.6
03-Dec-13	21:31	60.2
03-Dec-13	22:01	61.5
03-Dec-13	22:31	58.8
03-Dec-13	23:01	58.1
03-Dec-13	23:31	57.6
04-Dec-13	00:01	56.7
04-Dec-13	00:31	55.7
04-Dec-13	01:01	55.1
04-Dec-13	01:31	54.4

Start Date	Start Time	LAeq
04-Dec-13	02:01	54.7
04-Dec-13	02:31	54.6
04-Dec-13	03:01	54.6
04-Dec-13	03:31	57.6
04-Dec-13	04:01	54.3
04-Dec-13	04:31	54.6
04-Dec-13	05:01	55.2
04-Dec-13	05:31	56.2
04-Dec-13	06:01	56.9
04-Dec-13	06:31	58.9
04-Dec-13	07:01	61.1
04-Dec-13	07:31	61.6
04-Dec-13	08:01	62.2
04-Dec-13	08:31	62.4
04-Dec-13	09:01	62.8
04-Dec-13	09:31	62.4
04-Dec-13	10:01	62.1
04-Dec-13	10:31	62.4
04-Dec-13	11:01	62.8
04-Dec-13	11:31	61.9
04-Dec-13	12:01	61.8
04-Dec-13	12:31	61.8
04-Dec-13	13:01	63.6
04-Dec-13	13:31	63.0
04-Dec-13	14:01	63.1
04-Dec-13	14:31	62.8
04-Dec-13	15:01	64.9
04-Dec-13	15:31	63.6
04-Dec-13	16:01	62.3
04-Dec-13	16:31	62.2
04-Dec-13	17:01	62.0
04-Dec-13	17:31	61.9
04-Dec-13	18:01	62.4
04-Dec-13	18:31	62.4
04-Dec-13	19:01	61.7
04-Dec-13	19:31	61.6
04-Dec-13	20:01	61.1
04-Dec-13	20:31	60.2
04-Dec-13	21:01	59.6
04-Dec-13	21:31	59.9
04-Dec-13	22:01	59.1
04-Dec-13	22:31	58.9
04-Dec-13	23:01	58.8
04-Dec-13	23:31	57.5
05-Dec-13	00:01	58.2
05-Dec-13	00:31	55.7
05-Dec-13	01:01	56.1
05-Dec-13	01:31	54.7
05-Dec-13	02:01	54.3
05-Dec-13	02:31	54.0
05-Dec-13	03:01	54.8
05-Dec-13	03:31	54.0
05-Dec-13	04:01	54.5
05-Dec-13	04:31	54.6
05-Dec-13	05:01	55.5
05-Dec-13	05:31	55.9
05-Dec-13	06:01	57.2
05-Dec-13	06:31	58.1
05-Dec-13	07:01	60.2
05-Dec-13	07:31	61.4
05-Dec-13	08:01	62.5
05-Dec-13	08:31	62.8
05-Dec-13	09:01	63.0
05-Dec-13	09:31	63.1
05-Dec-13	10:01	63.1
05-Dec-13	10:31	62.8
05-Dec-13	11:01	62.7
05-Dec-13	11:31	61.7
05-Dec-13	12:01	61.5
05-Dec-13	12:31	62.1
05-Dec-13	13:01	62.1
05-Dec-13	13:31	62.5
05-Dec-13	14:01	62.0
05-Dec-13	14:31	62.7

Central Reclamation Phase III : Environmental Monitoring and Audit - Noise Monitoring Results

Start Date	Start Time	LAeq
05-Dec-13	15:01	62.6
05-Dec-13	15:31	63.7
05-Dec-13	16:01	62.2
05-Dec-13	16:31	62.5
05-Dec-13	17:01	62.0
05-Dec-13	17:31	61.7
05-Dec-13	18:01	61.5
05-Dec-13	18:31	61.3
05-Dec-13	19:01	61.8
05-Dec-13	19:31	61.0
05-Dec-13	20:01	61.4
05-Dec-13	20:31	60.6
05-Dec-13	21:01	59.5
05-Dec-13	21:31	60.9
05-Dec-13	22:01	59.4
05-Dec-13	22:31	59.4
05-Dec-13	23:01	57.9
05-Dec-13	23:31	57.4
06-Dec-13	00:01	56.8
06-Dec-13	00:31	55.2
06-Dec-13	01:01	56.8
06-Dec-13	01:31	54.3
06-Dec-13	02:01	54.9
06-Dec-13	02:31	55.0
06-Dec-13	03:01	54.7
06-Dec-13	03:31	54.8
06-Dec-13	04:01	56.4
06-Dec-13	04:31	54.5
06-Dec-13	05:01	55.8
06-Dec-13	05:31	57.2
06-Dec-13	06:01	56.9
06-Dec-13	06:31	58.2
06-Dec-13	07:01	59.7
06-Dec-13	07:31	60.9
06-Dec-13	08:01	61.9
06-Dec-13	08:31	62.4
06-Dec-13	09:01	62.9
06-Dec-13	09:31	64.3
06-Dec-13	10:01	61.8
06-Dec-13	10:31	62.7
06-Dec-13	11:01	62.0
06-Dec-13	11:31	61.4
06-Dec-13	12:01	61.6
06-Dec-13	12:31	61.8
06-Dec-13	13:01	62.1
06-Dec-13	13:31	61.6
06-Dec-13	14:01	62.1
06-Dec-13	14:31	62.6
06-Dec-13	15:01	62.3
06-Dec-13	15:31	62.2
06-Dec-13	16:01	65.4
06-Dec-13	16:31	63.4
06-Dec-13	17:01	62.4
06-Dec-13	17:31	61.8
06-Dec-13	18:01	61.0
06-Dec-13	18:31	61.5
06-Dec-13	19:01	61.1
06-Dec-13	19:31	61.9
06-Dec-13	20:01	61.0
06-Dec-13	20:31	60.9
06-Dec-13	21:01	59.9
06-Dec-13	21:31	59.6
06-Dec-13	22:01	59.1
06-Dec-13	22:31	59.9
06-Dec-13	23:01	58.7
06-Dec-13	23:31	58.6
07-Dec-13	00:01	58.2
07-Dec-13	00:31	56.7
07-Dec-13	01:01	56.0
07-Dec-13	01:31	55.3
07-Dec-13	02:01	55.5
07-Dec-13	02:31	55.1
07-Dec-13	03:01	55.2
07-Dec-13	03:31	55.3

Start Date	Start Time	LAeq
07-Dec-13	04:01	55.1
07-Dec-13	04:31	54.9
07-Dec-13	05:01	55.7
07-Dec-13	05:31	56.9
07-Dec-13	06:01	57.1
07-Dec-13	06:31	58.0
07-Dec-13	07:01	58.9
07-Dec-13	07:31	60.1
07-Dec-13	08:01	61.2
07-Dec-13	08:31	61.8
07-Dec-13	09:01	61.9
07-Dec-13	09:31	62.1
07-Dec-13	10:01	63.8
07-Dec-13	10:31	63.5
07-Dec-13	11:01	62.5
07-Dec-13	11:31	62.4
07-Dec-13	12:01	61.7
07-Dec-13	12:31	61.9
07-Dec-13	13:01	62.4
07-Dec-13	13:31	61.8
07-Dec-13	14:01	62.2
07-Dec-13	14:31	62.2
07-Dec-13	15:01	62.4
07-Dec-13	15:31	63.2
07-Dec-13	16:01	61.4
07-Dec-13	16:31	61.0
07-Dec-13	17:01	61.1
07-Dec-13	17:31	61.1
07-Dec-13	18:01	60.9
07-Dec-13	18:31	61.4
07-Dec-13	19:01	60.7
07-Dec-13	19:31	61.3
07-Dec-13	20:01	60.3
07-Dec-13	20:31	61.0
07-Dec-13	21:01	61.0
07-Dec-13	21:31	60.0
07-Dec-13	22:01	59.1
07-Dec-13	22:31	59.4
07-Dec-13	23:01	58.6
07-Dec-13	23:31	58.9
08-Dec-13	00:01	57.1
08-Dec-13	00:31	57.0
08-Dec-13	01:01	55.9
08-Dec-13	01:31	55.8
08-Dec-13	02:01	55.8
08-Dec-13	02:31	56.8
08-Dec-13	03:01	56.9
08-Dec-13	03:31	54.8
08-Dec-13	04:01	55.2
08-Dec-13	04:31	54.9
08-Dec-13	05:01	55.5
08-Dec-13	05:31	55.9
08-Dec-13	06:01	56.3
08-Dec-13	06:31	56.8
08-Dec-13	07:01	57.6
08-Dec-13	07:31	59.8
08-Dec-13	08:01	59.3
08-Dec-13	08:31	59.6
08-Dec-13	09:01	60.7
08-Dec-13	09:31	60.7
08-Dec-13	10:01	61.9
08-Dec-13	10:31	63.3
08-Dec-13	11:01	61.2
08-Dec-13	11:31	62.6
08-Dec-13	12:01	62.6
08-Dec-13	12:31	62.5
08-Dec-13	13:01	63.3
08-Dec-13	13:31	64.2
08-Dec-13	14:01	64.4
08-Dec-13	14:31	65.2
08-Dec-13	15:01	65.2
08-Dec-13	15:31	64.4
08-Dec-13	16:01	64.5
08-Dec-13	16:31	63.8

Start Date	Start Time	LAeq
08-Dec-13	17:01	64.4
08-Dec-13	17:31	63.8
08-Dec-13	18:01	63.9
08-Dec-13	18:31	64.2
08-Dec-13	19:01	63.4
08-Dec-13	19:31	63.0
08-Dec-13	20:01	63.1
08-Dec-13	20:31	62.5
08-Dec-13	21:01	59.9
08-Dec-13	21:31	59.0
08-Dec-13	22:01	59.1
08-Dec-13	22:31	59.7
08-Dec-13	23:01	59.7
08-Dec-13	23:31	57.7
09-Dec-13	00:01	56.8
09-Dec-13	00:31	55.4
09-Dec-13	01:01	54.5
09-Dec-13	01:31	54.1
09-Dec-13	02:01	54.2
09-Dec-13	02:31	54.3
09-Dec-13	03:01	54.2
09-Dec-13	03:31	54.2
09-Dec-13	04:01	54.0
09-Dec-13	04:31	56.2
09-Dec-13	05:01	55.7
09-Dec-13	05:31	56.4
09-Dec-13	06:01	57.5
09-Dec-13	06:31	58.7
09-Dec-13	07:01	60.1
09-Dec-13	07:31	61.7
09-Dec-13	08:01	62.8
09-Dec-13	08:31	62.4
09-Dec-13	09:01	62.8
09-Dec-13	09:31	62.6
09-Dec-13	10:01	62.8
09-Dec-13	10:31	64.0
09-Dec-13	11:01	62.2
09-Dec-13	11:31	62.2
09-Dec-13	12:01	62.6
09-Dec-13	12:31	62.2
09-Dec-13	13:01	62.6
09-Dec-13	13:31	62.6
09-Dec-13	14:01	63.0
09-Dec-13	14:31	62.1
09-Dec-13	15:01	62.3
09-Dec-13	15:31	61.7
09-Dec-13	16:01	61.6
09-Dec-13	16:31	62.1
09-Dec-13	17:01	61.8
09-Dec-13	17:31	61.6
09-Dec-13	18:01	61.9
09-Dec-13	18:31	62.5
09-Dec-13	19:01	62.5
09-Dec-13	19:31	61.4
09-Dec-13	20:01	61.0
09-Dec-13	20:31	60.0
09-Dec-13	21:01	59.4
09-Dec-13	21:31	60.0
09-Dec-13	22:01	58.7
09-Dec-13	22:31	58.6
09-Dec-13	23:01	57.4
09-Dec-13	23:31	57.2
10-Dec-13	00:01	55.7
10-Dec-13	00:31	55.1
10-Dec-13	01:01	54.8
10-Dec-13	01:31	54.1
10-Dec-13	02:01	54.3
10-Dec-13	02:31	54.0
10-Dec-13	03:01	53.6
10-Dec-13	03:31	54.1
10-Dec-13	04:01	54.0
10-Dec-13	04:31	54.1
10-Dec-13	05:01	54.8
10-Dec-13	05:31	55.8

Central Reclamation Phase III : Environmental Monitoring and Audit - Noise Monitoring Results

Start Date	Start Time	LAeq
10-Dec-13	06:01	56.8
10-Dec-13	06:31	58.3
10-Dec-13	07:01	59.9
10-Dec-13	07:31	63.8
10-Dec-13	08:01	62.6
10-Dec-13	08:31	62.8
10-Dec-13	09:01	73.5
10-Dec-13	09:31	63.5
10-Dec-13	10:01	63.3
10-Dec-13	10:31	63.1
10-Dec-13	11:01	62.4
10-Dec-13	11:31	62.9
10-Dec-13	12:01	61.8
10-Dec-13	12:31	63.1
10-Dec-13	13:01	62.8
10-Dec-13	13:31	62.3
10-Dec-13	14:01	62.4
10-Dec-13	14:31	63.4
10-Dec-13	15:01	62.9
10-Dec-13	15:31	62.4
10-Dec-13	16:01	62.8
10-Dec-13	16:31	62.9
10-Dec-13	17:01	62.4
10-Dec-13	17:31	62.1
10-Dec-13	18:01	62.0
10-Dec-13	18:31	61.9
10-Dec-13	19:01	61.6
10-Dec-13	19:31	60.8
10-Dec-13	20:01	60.4
10-Dec-13	20:31	60.0
10-Dec-13	21:01	60.2
10-Dec-13	21:31	59.8
10-Dec-13	22:01	61.4
10-Dec-13	22:31	58.5
10-Dec-13	23:01	58.0
10-Dec-13	23:31	57.7
11-Dec-13	00:01	56.5
11-Dec-13	00:31	55.6
11-Dec-13	01:01	55.3
11-Dec-13	01:31	54.6
11-Dec-13	02:01	54.4
11-Dec-13	02:31	54.1
11-Dec-13	03:01	54.2
11-Dec-13	03:31	54.5
11-Dec-13	04:01	54.2
11-Dec-13	04:31	54.2
11-Dec-13	05:01	55.1
11-Dec-13	05:31	56.0
11-Dec-13	06:01	56.7
11-Dec-13	06:31	58.1
11-Dec-13	07:01	59.4
11-Dec-13	07:31	61.7
11-Dec-13	08:01	62.6
11-Dec-13	08:31	63.0
11-Dec-13	09:01	63.1
11-Dec-13	09:31	64.2
11-Dec-13	10:01	63.5
11-Dec-13	10:31	63.7
11-Dec-13	11:01	62.9
11-Dec-13	11:31	62.1
11-Dec-13	12:01	61.5
11-Dec-13	12:31	61.8
11-Dec-13	13:01	61.9
11-Dec-13	13:31	63.6
11-Dec-13	14:01	61.8
11-Dec-13	14:31	62.4
11-Dec-13	15:01	62.8
11-Dec-13	15:31	63.4
11-Dec-13	16:01	65.4
11-Dec-13	16:31	64.2
11-Dec-13	17:01	62.2
11-Dec-13	17:31	62.4
11-Dec-13	18:01	61.8
11-Dec-13	18:31	61.4

Start Date	Start Time	LAeq
11-Dec-13	19:01	61.6
11-Dec-13	19:31	62.0
11-Dec-13	20:01	61.4
11-Dec-13	20:31	60.6
11-Dec-13	21:01	59.7
11-Dec-13	21:31	60.0
11-Dec-13	22:01	58.7
11-Dec-13	22:31	59.1
11-Dec-13	23:01	57.9
11-Dec-13	23:31	58.4
12-Dec-13	00:01	56.6
12-Dec-13	00:31	55.7
12-Dec-13	01:01	55.3
12-Dec-13	01:31	54.6
12-Dec-13	02:01	54.7
12-Dec-13	02:31	54.3
12-Dec-13	03:01	54.6
12-Dec-13	03:31	54.1
12-Dec-13	04:01	55.3
12-Dec-13	04:31	54.3
12-Dec-13	05:01	55.3
12-Dec-13	05:31	56.1
12-Dec-13	06:01	57.8
12-Dec-13	06:31	59.6
12-Dec-13	07:01	60.5
12-Dec-13	07:31	62.1
12-Dec-13	08:01	63.1
12-Dec-13	08:31	68.0
12-Dec-13	09:01	63.3
12-Dec-13	09:31	63.7
12-Dec-13	10:01	63.5
12-Dec-13	10:31	63.9
12-Dec-13	11:01	63.7
12-Dec-13	11:31	62.2
12-Dec-13	12:01	61.0
12-Dec-13	12:31	62.3
12-Dec-13	13:01	62.2
12-Dec-13	13:31	62.4
12-Dec-13	14:01	62.9
12-Dec-13	14:31	62.9
12-Dec-13	15:01	62.7
12-Dec-13	15:31	63.2
12-Dec-13	16:01	63.3
12-Dec-13	16:31	63.1
12-Dec-13	17:01	62.4
12-Dec-13	17:31	61.9
12-Dec-13	18:01	62.3
12-Dec-13	18:31	62.1
12-Dec-13	19:01	62.1
12-Dec-13	19:31	61.8
12-Dec-13	20:01	61.4
12-Dec-13	20:31	60.9
12-Dec-13	21:01	60.6
12-Dec-13	21:31	61.0
12-Dec-13	22:01	60.4
12-Dec-13	22:31	60.0
12-Dec-13	23:01	58.1
12-Dec-13	23:31	57.9
13-Dec-13	00:01	57.2
13-Dec-13	00:31	56.4
13-Dec-13	01:01	56.0
13-Dec-13	01:31	55.8
13-Dec-13	02:01	55.0
13-Dec-13	02:31	54.3
13-Dec-13	03:01	54.6
13-Dec-13	03:31	54.5
13-Dec-13	04:01	54.4
13-Dec-13	04:31	54.6
13-Dec-13	05:01	55.7
13-Dec-13	05:31	56.5
13-Dec-13	06:01	57.1
13-Dec-13	06:31	58.6
13-Dec-13	07:01	59.6
13-Dec-13	07:31	61.9

Start Date	Start Time	LAeq
13-Dec-13	08:01	62.8
13-Dec-13	08:31	63.9
13-Dec-13	09:01	63.3
13-Dec-13	09:31	62.8
13-Dec-13	10:01	63.2
13-Dec-13	10:31	62.8
13-Dec-13	11:01	63.3
13-Dec-13	11:31	61.8
13-Dec-13	12:01	61.6
13-Dec-13	12:31	62.2
13-Dec-13	13:01	62.3
13-Dec-13	13:31	62.7
13-Dec-13	14:01	63.0
13-Dec-13	14:31	63.3
13-Dec-13	15:01	62.8
13-Dec-13	15:31	63.3
13-Dec-13	16:01	66.1
13-Dec-13	16:31	63.6
13-Dec-13	17:01	63.1
13-Dec-13	17:31	62.9
13-Dec-13	18:01	62.4
13-Dec-13	18:31	62.4
13-Dec-13	19:01	62.2
13-Dec-13	19:31	62.4
13-Dec-13	20:01	60.9
13-Dec-13	20:31	60.7
13-Dec-13	21:01	59.9
13-Dec-13	21:31	61.2
13-Dec-13	22:01	59.7
13-Dec-13	22:31	59.2
13-Dec-13	23:01	58.8
13-Dec-13	23:31	58.5
14-Dec-13	00:01	57.6
14-Dec-13	00:31	57.3
14-Dec-13	01:01	57.3
14-Dec-13	01:31	56.4
14-Dec-13	02:01	55.6
14-Dec-13	02:31	55.5
14-Dec-13	03:01	55.2
14-Dec-13	03:31	55.4
14-Dec-13	04:01	55.6
14-Dec-13	04:31	54.9
14-Dec-13	05:01	55.6
14-Dec-13	05:31	56.1
14-Dec-13	06:01	56.7
14-Dec-13	06:31	57.4
14-Dec-13	07:01	59.5
14-Dec-13	07:31	61.0
14-Dec-13	08:01	61.8
14-Dec-13	08:31	61.3
14-Dec-13	09:01	61.6
14-Dec-13	09:31	62.2
14-Dec-13	10:01	63.6
14-Dec-13	10:31	63.0
14-Dec-13	11:01	64.1
14-Dec-13	11:31	61.8
14-Dec-13	12:01	61.9
14-Dec-13	12:31	62.1
14-Dec-13	13:01	63.1
14-Dec-13	13:31	63.5
14-Dec-13	14:01	62.6
14-Dec-13	14:31	62.1
14-Dec-13	15:01	62.3
14-Dec-13	15:31	62.3
14-Dec-13	16:01	61.9
14-Dec-13	16:31	63.5
14-Dec-13	17:01	62.4
14-Dec-13	17:31	61.6
14-Dec-13	18:01	62.0
14-Dec-13	18:31	61.3
14-Dec-13	19:01	63.8
14-Dec-13	19:31	66.4
14-Dec-13	20:01	63.6
14-Dec-13	20:31	62.7

Central Reclamation Phase III : Environmental Monitoring and Audit - Noise Monitoring Results

Start Date	Start Time	LAeq
14-Dec-13	21:01	63.1
14-Dec-13	21:31	60.6
14-Dec-13	22:01	59.9
14-Dec-13	22:31	59.8
14-Dec-13	23:01	59.3
14-Dec-13	23:31	58.8
15-Dec-13	00:01	58.1
15-Dec-13	00:31	57.1
15-Dec-13	01:01	56.9
15-Dec-13	01:31	56.5
15-Dec-13	02:01	56.1
15-Dec-13	02:31	55.4
15-Dec-13	03:01	55.1
15-Dec-13	03:31	55.2
15-Dec-13	04:01	56.3
15-Dec-13	04:31	55.4
15-Dec-13	05:01	56.0
15-Dec-13	05:31	56.5
15-Dec-13	06:01	57.4
15-Dec-13	06:31	57.1
15-Dec-13	07:01	57.4
15-Dec-13	07:31	59.3
15-Dec-13	08:01	59.9
15-Dec-13	08:31	59.5
15-Dec-13	09:01	59.8
15-Dec-13	09:31	61.3
15-Dec-13	10:01	60.5
15-Dec-13	10:31	60.9
15-Dec-13	11:01	63.8
15-Dec-13	11:31	61.8
15-Dec-13	12:01	60.9
15-Dec-13	12:31	60.7
15-Dec-13	13:01	61.2
15-Dec-13	13:31	64.0
15-Dec-13	14:01	62.5
15-Dec-13	14:31	62.7
15-Dec-13	15:01	63.0
15-Dec-13	15:31	63.2
15-Dec-13	16:01	63.9
15-Dec-13	16:31	64.3
15-Dec-13	17:01	63.7
15-Dec-13	17:31	62.9
15-Dec-13	18:01	63.0
15-Dec-13	18:31	62.7
15-Dec-13	19:01	62.9
15-Dec-13	19:31	62.6
15-Dec-13	20:01	61.5
15-Dec-13	20:31	61.1
15-Dec-13	21:01	60.6
15-Dec-13	21:31	59.3
15-Dec-13	22:01	59.2
15-Dec-13	22:31	59.0
15-Dec-13	23:01	58.6
15-Dec-13	23:31	57.8
16-Dec-13	00:01	56.9
16-Dec-13	00:31	56.1
16-Dec-13	01:01	54.8
16-Dec-13	01:31	54.6
16-Dec-13	02:01	54.5
16-Dec-13	02:31	54.4
16-Dec-13	03:01	54.8
16-Dec-13	03:31	54.6
16-Dec-13	04:01	54.9
16-Dec-13	04:31	54.9
16-Dec-13	05:01	55.6
16-Dec-13	05:31	57.2
16-Dec-13	06:01	57.2
16-Dec-13	06:31	58.6
16-Dec-13	07:01	60.0
16-Dec-13	07:31	61.8
16-Dec-13	08:01	62.2
16-Dec-13	08:31	62.8
16-Dec-13	09:01	63.3
16-Dec-13	09:31	63.4

Start Date	Start Time	LAeq
16-Dec-13	10:01	64.1
16-Dec-13	10:31	63.8
16-Dec-13	11:01	64.0
16-Dec-13	11:31	63.5
16-Dec-13	12:01	63.7
16-Dec-13	12:31	63.6
16-Dec-13	13:01	63.2
16-Dec-13	13:31	63.2
16-Dec-13	14:01	63.2
16-Dec-13	14:31	63.7
16-Dec-13	15:01	63.3
16-Dec-13	15:31	64.5
16-Dec-13	16:01	62.6
16-Dec-13	16:31	62.6
16-Dec-13	17:01	62.6
16-Dec-13	17:31	62.8
16-Dec-13	18:01	62.9
16-Dec-13	18:31	62.6
16-Dec-13	19:01	62.9
16-Dec-13	19:31	63.6
16-Dec-13	20:01	62.2
16-Dec-13	20:31	60.8
16-Dec-13	21:01	60.2
16-Dec-13	21:31	60.1
16-Dec-13	22:01	60.4
16-Dec-13	22:31	60.8
16-Dec-13	23:01	59.1
16-Dec-13	23:31	58.5
17-Dec-13	00:01	58.2
17-Dec-13	00:31	56.8
17-Dec-13	01:01	56.4
17-Dec-13	01:31	55.8
17-Dec-13	02:01	55.2
17-Dec-13	02:31	55.6
17-Dec-13	03:01	55.4
17-Dec-13	03:31	57.8
17-Dec-13	04:01	55.7
17-Dec-13	04:31	56.0
17-Dec-13	05:01	57.0
17-Dec-13	05:31	57.1
17-Dec-13	06:01	58.0
17-Dec-13	06:31	59.6
17-Dec-13	07:01	60.9
17-Dec-13	07:31	62.4
17-Dec-13	08:01	63.4
17-Dec-13	08:31	63.6
17-Dec-13	09:01	63.7
17-Dec-13	09:31	64.3
17-Dec-13	10:01	64.6
17-Dec-13	10:31	64.4
17-Dec-13	11:01	63.4
17-Dec-13	11:31	62.7
17-Dec-13	12:01	63.4
17-Dec-13	12:31	64.0
17-Dec-13	13:01	64.2
17-Dec-13	13:31	64.0
17-Dec-13	14:01	63.2
17-Dec-13	14:31	63.6
17-Dec-13	15:01	63.0
17-Dec-13	15:31	63.6
17-Dec-13	16:01	63.3
17-Dec-13	16:31	63.2
17-Dec-13	17:01	63.2
17-Dec-13	17:31	62.9
17-Dec-13	18:01	62.3
17-Dec-13	18:31	62.5
17-Dec-13	19:01	61.6
17-Dec-13	19:31	62.1
17-Dec-13	20:01	61.0
17-Dec-13	20:31	60.3
17-Dec-13	21:01	60.2
17-Dec-13	21:31	60.4
17-Dec-13	22:01	60.2
17-Dec-13	22:31	60.7

Start Date	Start Time	LAeq
17-Dec-13	23:01	58.2
17-Dec-13	23:31	57.3
18-Dec-13	00:01	56.6
18-Dec-13	00:31	55.6
18-Dec-13	01:01	56.1
18-Dec-13	01:31	58.4
18-Dec-13	02:01	58.3
18-Dec-13	02:31	57.9
18-Dec-13	03:01	57.9
18-Dec-13	03:31	55.6
18-Dec-13	04:01	54.8
18-Dec-13	04:31	56.0
18-Dec-13	05:01	58.4
18-Dec-13	05:31	57.4
18-Dec-13	06:01	57.9
18-Dec-13	06:31	60.4
18-Dec-13	07:01	60.8
18-Dec-13	07:31	61.5
18-Dec-13	08:01	62.6
18-Dec-13	08:31	62.6
18-Dec-13	09:01	62.5
18-Dec-13	09:31	62.2
18-Dec-13	10:01	62.4
18-Dec-13	10:31	62.2
18-Dec-13	11:01	61.9
18-Dec-13	11:31	62.0
18-Dec-13	12:01	61.8
18-Dec-13	12:31	62.5
18-Dec-13	13:01	61.9
18-Dec-13	13:31	63.4
18-Dec-13	14:01	63.0
18-Dec-13	14:31	61.7
18-Dec-13	15:01	62.5
18-Dec-13	15:31	62.2
18-Dec-13	16:01	62.4
18-Dec-13	16:31	62.1
18-Dec-13	17:01	62.1
18-Dec-13	17:31	62.4
18-Dec-13	18:01	62.4
18-Dec-13	18:31	61.8
18-Dec-13	19:01	61.8
18-Dec-13	19:31	61.3
18-Dec-13	20:01	61.5
18-Dec-13	20:31	61.0
18-Dec-13	21:01	60.5
18-Dec-13	21:31	60.9
18-Dec-13	22:01	59.8
18-Dec-13	22:31	59.9
18-Dec-13	23:01	58.0
18-Dec-13	23:31	57.5
19-Dec-13	00:01	56.7
19-Dec-13	00:31	55.7
19-Dec-13	01:01	55.8
19-Dec-13	01:31	55.6
19-Dec-13	02:01	54.9
19-Dec-13	02:31	54.5
19-Dec-13	03:01	54.6
19-Dec-13	03:31	54.6
19-Dec-13	04:01	54.9
19-Dec-13	04:31	54.7
19-Dec-13	05:01	55.1
19-Dec-13	05:31	56.6
19-Dec-13	06:01	57.1
19-Dec-13	06:31	58.5
19-Dec-13	07:01	60.2
19-Dec-13	07:31	61.4
19-Dec-13	08:01	61.9
19-Dec-13	08:31	62.7
19-Dec-13	09:01	62.7
19-Dec-13	09:31	63.0
19-Dec-13	10:01	61.8
19-Dec-13	10:31	62.3
19-Dec-13	11:01	61.8
19-Dec-13	11:31	62.2

Central Reclamation Phase III : Environmental Monitoring and Audit - Noise Monitoring Results

Start Date	Start Time	LAeq
19-Dec-13	12:01	61.3
19-Dec-13	12:31	62.2
19-Dec-13	13:01	61.8
19-Dec-13	13:31	62.5
19-Dec-13	14:01	62.0
19-Dec-13	14:31	63.0
19-Dec-13	15:01	63.7
19-Dec-13	15:31	65.1
19-Dec-13	16:01	61.9
19-Dec-13	16:31	62.2
19-Dec-13	17:01	62.1
19-Dec-13	17:31	62.3
19-Dec-13	18:01	62.5
19-Dec-13	18:31	62.3
19-Dec-13	19:01	62.3
19-Dec-13	19:31	62.5
19-Dec-13	20:01	61.3
19-Dec-13	20:31	61.2
19-Dec-13	21:01	59.8
19-Dec-13	21:31	60.7
19-Dec-13	22:01	60.0
19-Dec-13	22:31	59.5
19-Dec-13	23:01	58.1
19-Dec-13	23:31	57.6
20-Dec-13	00:01	57.1
20-Dec-13	00:31	56.1
20-Dec-13	01:01	55.9
20-Dec-13	01:31	54.7
20-Dec-13	02:01	55.0
20-Dec-13	02:31	54.9
20-Dec-13	03:01	54.6
20-Dec-13	03:31	56.9
20-Dec-13	04:01	54.8
20-Dec-13	04:31	54.8
20-Dec-13	05:01	55.5
20-Dec-13	05:31	56.5
20-Dec-13	06:01	56.8
20-Dec-13	06:31	58.3
20-Dec-13	07:01	60.4
20-Dec-13	07:31	60.9
20-Dec-13	08:01	62.4
20-Dec-13	08:31	62.4
20-Dec-13	09:01	62.4
20-Dec-13	09:31	62.8
20-Dec-13	10:01	62.4
20-Dec-13	10:31	62.7
20-Dec-13	11:01	62.2
20-Dec-13	11:31	61.7
20-Dec-13	12:01	61.4
20-Dec-13	12:31	61.8
20-Dec-13	13:01	61.9
20-Dec-13	13:31	64.0
20-Dec-13	14:01	62.3
20-Dec-13	14:31	61.8
20-Dec-13	15:01	62.1
20-Dec-13	15:31	62.0
20-Dec-13	16:01	62.5
20-Dec-13	16:31	62.4
20-Dec-13	17:01	62.2
20-Dec-13	17:31	62.1
20-Dec-13	18:01	61.9
20-Dec-13	18:31	61.6
20-Dec-13	19:01	61.5
20-Dec-13	19:31	61.8
20-Dec-13	20:01	61.5
20-Dec-13	20:31	60.7
20-Dec-13	21:01	60.3
20-Dec-13	21:31	60.6
20-Dec-13	22:01	59.7
20-Dec-13	22:31	59.1
20-Dec-13	23:01	58.8
20-Dec-13	23:31	58.7
21-Dec-13	00:01	57.5
21-Dec-13	00:31	56.9

Start Date	Start Time	LAeq
21-Dec-13	01:01	55.9
21-Dec-13	01:31	55.4
21-Dec-13	02:01	55.1
21-Dec-13	02:31	55.2
21-Dec-13	03:01	55.4
21-Dec-13	03:31	55.3
21-Dec-13	04:01	55.2
21-Dec-13	04:31	54.7
21-Dec-13	05:01	55.7
21-Dec-13	05:31	55.9
21-Dec-13	06:01	56.8
21-Dec-13	06:31	59.1
21-Dec-13	07:01	58.8
21-Dec-13	07:31	59.8
21-Dec-13	08:01	60.8
21-Dec-13	08:31	61.5
21-Dec-13	09:01	63.6
21-Dec-13	09:31	67.4
21-Dec-13	10:01	68.4
21-Dec-13	10:31	69.5
21-Dec-13	11:01	69.7
21-Dec-13	11:31	61.5
21-Dec-13	12:01	60.9
21-Dec-13	12:31	62.0
21-Dec-13	13:01	62.0
21-Dec-13	13:31	61.4
21-Dec-13	14:01	63.5
21-Dec-13	14:31	62.1
21-Dec-13	15:01	61.9
21-Dec-13	15:31	61.0
21-Dec-13	16:01	70.3
21-Dec-13	16:31	66.7
21-Dec-13	17:01	64.5
21-Dec-13	17:31	61.7
21-Dec-13	18:01	60.2
21-Dec-13	18:31	60.7
21-Dec-13	19:01	60.1
21-Dec-13	19:31	60.5
21-Dec-13	20:01	59.9
21-Dec-13	20:31	59.0
21-Dec-13	21:01	58.3
21-Dec-13	21:31	59.2
21-Dec-13	22:01	59.0
21-Dec-13	22:31	59.0
21-Dec-13	23:01	57.9
21-Dec-13	23:31	57.4
22-Dec-13	00:01	57.2
22-Dec-13	00:31	55.9
22-Dec-13	01:01	55.0
22-Dec-13	01:31	54.5
22-Dec-13	02:01	54.4
22-Dec-13	02:31	54.0
22-Dec-13	03:01	53.4
22-Dec-13	03:31	53.7
22-Dec-13	04:01	54.0
22-Dec-13	04:31	54.2
22-Dec-13	05:01	54.4
22-Dec-13	05:31	54.8
22-Dec-13	06:01	55.8
22-Dec-13	06:31	56.5
22-Dec-13	07:01	59.3
22-Dec-13	07:31	58.1
22-Dec-13	08:01	57.9
22-Dec-13	08:31	58.9
22-Dec-13	09:01	59.8
22-Dec-13	09:31	59.6
22-Dec-13	10:01	60.6
22-Dec-13	10:31	60.5
22-Dec-13	11:01	61.4
22-Dec-13	11:31	60.9
22-Dec-13	12:01	63.0
22-Dec-13	12:31	63.6
22-Dec-13	13:01	62.5
22-Dec-13	13:31	63.0

Start Date	Start Time	LAeq
22-Dec-13	14:01	67.3
22-Dec-13	14:31	66.9
22-Dec-13	15:01	66.5
22-Dec-13	15:31	66.1
22-Dec-13	16:01	66.3
22-Dec-13	16:31	66.1
22-Dec-13	17:01	66.2
22-Dec-13	17:31	65.0
22-Dec-13	18:01	65.4
22-Dec-13	18:31	65.1
22-Dec-13	19:01	63.8
22-Dec-13	19:31	62.3
22-Dec-13	20:01	60.5
22-Dec-13	20:31	59.5
22-Dec-13	21:01	59.5
22-Dec-13	21:31	60.1
22-Dec-13	22:01	59.0
22-Dec-13	22:31	58.1
22-Dec-13	23:01	57.7
22-Dec-13	23:31	56.5
23-Dec-13	00:01	55.7
23-Dec-13	00:31	55.0
23-Dec-13	01:01	54.1
23-Dec-13	01:31	53.3
23-Dec-13	02:01	53.5
23-Dec-13	02:31	52.6
23-Dec-13	03:01	52.6
23-Dec-13	03:31	53.6
23-Dec-13	04:01	53.6
23-Dec-13	04:31	54.0
23-Dec-13	05:01	54.5
23-Dec-13	05:31	55.7
23-Dec-13	06:01	56.5
23-Dec-13	06:31	57.8
23-Dec-13	07:01	58.6
23-Dec-13	07:31	60.4
23-Dec-13	08:01	61.2
23-Dec-13	08:31	62.0
23-Dec-13	09:01	62.5
23-Dec-13	09:31	63.1
23-Dec-13	10:01	65.1
23-Dec-13	10:31	76.5
23-Dec-13	11:01	66.9
23-Dec-13	11:31	63.2
23-Dec-13	12:01	62.2
23-Dec-13	12:31	61.6
23-Dec-13	13:01	66.9
23-Dec-13	13:31	69.1
23-Dec-13	14:01	67.5
23-Dec-13	14:31	69.5
23-Dec-13	15:01	63.6
23-Dec-13	15:31	62.4
23-Dec-13	16:01	70.6
23-Dec-13	16:31	70.6
23-Dec-13	17:01	68.9
23-Dec-13	17:31	63.7
23-Dec-13	18:01	62.3
23-Dec-13	18:31	61.5
23-Dec-13	19:01	61.3
23-Dec-13	19:31	61.0
23-Dec-13	20:01	60.2
23-Dec-13	20:31	60.0
23-Dec-13	21:01	60.2
23-Dec-13	21:31	58.7
23-Dec-13	22:01	58.9
23-Dec-13	22:31	58.8
23-Dec-13	23:01	57.4
23-Dec-13	23:31	56.6
24-Dec-13	00:01	55.8
24-Dec-13	00:31	55.1
24-Dec-13	01:01	54.9
24-Dec-13	01:31	53.9
24-Dec-13	02:01	54.0
24-Dec-13	02:31	53.7

Central Reclamation Phase III : Environmental Monitoring and Audit - Noise Monitoring Results

Start Date	Start Time	LAeq
24-Dec-13	03:01	53.2
24-Dec-13	03:31	54.3
24-Dec-13	04:01	54.1
24-Dec-13	04:31	53.8
24-Dec-13	05:01	54.8
24-Dec-13	05:31	55.7
24-Dec-13	06:01	56.5
24-Dec-13	06:31	57.4
24-Dec-13	07:01	58.9
24-Dec-13	07:31	59.9
24-Dec-13	08:01	61.1
24-Dec-13	08:31	61.4
24-Dec-13	09:01	68.6
24-Dec-13	09:31	66.2
24-Dec-13	10:01	67.3
24-Dec-13	10:31	69.9
24-Dec-13	11:01	64.9
24-Dec-13	11:31	63.7
24-Dec-13	12:01	62.0
24-Dec-13	12:31	61.2
24-Dec-13	13:01	67.8
24-Dec-13	13:31	64.6
24-Dec-13	14:01	69.6
24-Dec-13	14:31	67.1
24-Dec-13	15:01	65.6
24-Dec-13	15:31	61.9
24-Dec-13	16:01	67.4
24-Dec-13	16:31	68.3
24-Dec-13	17:01	62.9
24-Dec-13	17:31	61.7
24-Dec-13	18:01	61.3
24-Dec-13	18:31	60.9
24-Dec-13	19:01	61.0
24-Dec-13	19:31	60.8
24-Dec-13	20:01	61.1
24-Dec-13	20:31	61.0
24-Dec-13	21:01	60.2
24-Dec-13	21:31	59.8
24-Dec-13	22:01	59.8
24-Dec-13	22:31	59.1
24-Dec-13	23:01	58.9
24-Dec-13	23:31	59.5
25-Dec-13	00:01	58.4
25-Dec-13	00:31	56.6
25-Dec-13	01:01	57.1
25-Dec-13	01:31	55.2
25-Dec-13	02:01	54.7
25-Dec-13	02:31	54.2
25-Dec-13	03:01	54.6
25-Dec-13	03:31	54.2
25-Dec-13	04:01	54.1
25-Dec-13	04:31	53.6
25-Dec-13	05:01	54.4
25-Dec-13	05:31	55.0
25-Dec-13	06:01	56.5
25-Dec-13	06:31	56.3
25-Dec-13	07:01	57.4
25-Dec-13	07:31	57.5
25-Dec-13	08:01	57.3
25-Dec-13	08:31	58.1
25-Dec-13	09:01	59.3
25-Dec-13	09:31	73.6
25-Dec-13	10:01	59.5
25-Dec-13	10:31	60.5
25-Dec-13	11:01	60.8
25-Dec-13	11:31	60.3
25-Dec-13	12:01	60.6
25-Dec-13	12:31	61.9
25-Dec-13	13:01	62.0
25-Dec-13	13:31	66.4
25-Dec-13	14:01	67.4
25-Dec-13	14:31	65.7
25-Dec-13	15:01	66.8
25-Dec-13	15:31	68.5

Start Date	Start Time	LAeq
25-Dec-13	16:01	64.9
25-Dec-13	16:31	64.3
25-Dec-13	17:01	63.3
25-Dec-13	17:31	65.1
25-Dec-13	18:01	63.1
25-Dec-13	18:31	64.7
25-Dec-13	19:01	62.7
25-Dec-13	19:31	63.1
25-Dec-13	20:01	62.3
25-Dec-13	20:31	60.5
25-Dec-13	21:01	59.7
25-Dec-13	21:31	59.6
25-Dec-13	22:01	59.9
25-Dec-13	22:31	59.3
25-Dec-13	23:01	58.1
25-Dec-13	23:31	56.6
26-Dec-13	00:01	56.6
26-Dec-13	00:31	55.5
26-Dec-13	01:01	54.5
26-Dec-13	01:31	54.3
26-Dec-13	02:01	54.7
26-Dec-13	02:31	54.6
26-Dec-13	03:01	53.6
26-Dec-13	03:31	53.9
26-Dec-13	04:01	53.6
26-Dec-13	04:31	54.2
26-Dec-13	05:01	54.6
26-Dec-13	05:31	55.4
26-Dec-13	06:01	55.4
26-Dec-13	06:31	57.9
26-Dec-13	07:01	57.4
26-Dec-13	07:31	57.5
26-Dec-13	08:01	58.8
26-Dec-13	08:31	57.3
26-Dec-13	09:01	58.4
26-Dec-13	09:31	61.6
26-Dec-13	10:01	58.8
26-Dec-13	10:31	60.4
26-Dec-13	11:01	72.2
26-Dec-13	11:31	63.2
26-Dec-13	12:01	59.8
26-Dec-13	12:31	58.4
26-Dec-13	13:01	69.5
26-Dec-13	13:31	62.9
26-Dec-13	14:01	70.5
26-Dec-13	14:31	61.0
26-Dec-13	15:01	63.6
26-Dec-13	15:31	58.8
26-Dec-13	16:01	67.2
26-Dec-13	16:31	61.6
26-Dec-13	17:01	70.1
26-Dec-13	17:31	60.4
26-Dec-13	18:01	59.6
26-Dec-13	18:31	59.1
26-Dec-13	19:01	59.2
26-Dec-13	19:31	59.7
26-Dec-13	20:01	59.0
26-Dec-13	20:31	58.9
26-Dec-13	21:01	58.5
26-Dec-13	21:31	58.8
26-Dec-13	22:01	59.3
26-Dec-13	22:31	60.1
26-Dec-13	23:01	57.7
26-Dec-13	23:31	57.6
27-Dec-13	00:01	55.8
27-Dec-13	00:31	55.5
27-Dec-13	01:01	54.3
27-Dec-13	01:31	54.1
27-Dec-13	02:01	54.3
27-Dec-13	02:31	53.8
27-Dec-13	03:01	53.5
27-Dec-13	03:31	52.7
27-Dec-13	04:01	53.6
27-Dec-13	04:31	55.1

Start Date	Start Time	LAeq
27-Dec-13	05:01	54.9
27-Dec-13	05:31	55.2
27-Dec-13	06:01	56.9
27-Dec-13	06:31	57.6
27-Dec-13	07:01	58.4
27-Dec-13	07:31	59.9
27-Dec-13	08:01	60.7
27-Dec-13	08:31	61.5
27-Dec-13	09:01	61.3
27-Dec-13	09:31	62.3
27-Dec-13	10:01	68.9
27-Dec-13	10:31	66.7
27-Dec-13	11:01	62.7
27-Dec-13	11:31	61.1
27-Dec-13	12:01	60.7
27-Dec-13	12:31	60.2
27-Dec-13	13:01	70.0
27-Dec-13	13:31	68.6
27-Dec-13	14:01	71.7
27-Dec-13	14:31	68.4
27-Dec-13	15:01	67.1
27-Dec-13	15:31	62.2
27-Dec-13	16:01	68.6
27-Dec-13	16:31	69.5
27-Dec-13	17:01	61.7
27-Dec-13	17:31	61.0
27-Dec-13	18:01	60.4
27-Dec-13	18:31	60.7
27-Dec-13	19:01	60.2
27-Dec-13	19:31	60.2
27-Dec-13	20:01	59.4
27-Dec-13	20:31	60.0
27-Dec-13	21:01	58.5
27-Dec-13	21:31	58.3
27-Dec-13	22:01	58.7
27-Dec-13	22:31	58.5
27-Dec-13	23:01	57.3
27-Dec-13	23:31	56.6
28-Dec-13	00:01	56.0
28-Dec-13	00:31	55.1
28-Dec-13	01:01	54.4
28-Dec-13	01:31	54.0
28-Dec-13	02:01	54.0
28-Dec-13	02:31	53.9
28-Dec-13	03:01	53.6
28-Dec-13	03:31	53.5
28-Dec-13	04:01	54.0
28-Dec-13	04:31	55.1
28-Dec-13	05:01	54.9
28-Dec-13	05:31	55.0
28-Dec-13	06:01	56.0
28-Dec-13	06:31	56.7
28-Dec-13	07:01	59.8
28-Dec-13	07:31	59.1
28-Dec-13	08:01	60.3
28-Dec-13	08:31	60.6
28-Dec-13	09:01	64.3
28-Dec-13	09:31	67.5
28-Dec-13	10:01	70.6
28-Dec-13	10:31	61.3
28-Dec-13	11:01	65.8
28-Dec-13	11:31	64.6
28-Dec-13	12:01	61.4
28-Dec-13	12:31	60.2
28-Dec-13	13:01	62.1
28-Dec-13	13:31	63.2
28-Dec-13	14:01	63.1
28-Dec-13	14:31	64.4
28-Dec-13	15:01	66.5
28-Dec-13	15:31	61.1
28-Dec-13	16:01	65.0
28-Dec-13	16:31	65.5
28-Dec-13	17:01	60.7
28-Dec-13	17:31	60.4

Central Reclamation Phase III : Environmental Monitoring and Audit - Noise Monitoring Results

Start Date	Start Time	LAeq
28-Dec-13	18:01	59.6
28-Dec-13	18:31	59.3
28-Dec-13	19:01	59.3
28-Dec-13	19:31	59.3
28-Dec-13	20:01	58.7
28-Dec-13	20:31	59.3
28-Dec-13	21:01	58.7
28-Dec-13	21:31	58.3
28-Dec-13	22:01	58.5
28-Dec-13	22:31	58.0
28-Dec-13	23:01	57.5
28-Dec-13	23:31	57.1
29-Dec-13	00:01	55.4
29-Dec-13	00:31	54.6
29-Dec-13	01:01	53.7
29-Dec-13	01:31	54.0
29-Dec-13	02:01	53.6
29-Dec-13	02:31	53.5
29-Dec-13	03:01	53.3
29-Dec-13	03:31	53.1
29-Dec-13	04:01	53.5
29-Dec-13	04:31	54.4
29-Dec-13	05:01	53.7
29-Dec-13	05:31	54.0
29-Dec-13	06:01	54.9
29-Dec-13	06:31	55.3
29-Dec-13	07:01	56.5
29-Dec-13	07:31	56.4
29-Dec-13	08:01	57.1
29-Dec-13	08:31	56.7
29-Dec-13	09:01	57.8
29-Dec-13	09:31	61.9
29-Dec-13	10:01	59.3
29-Dec-13	10:31	64.9
29-Dec-13	11:01	62.0
29-Dec-13	11:31	61.0
29-Dec-13	12:01	60.7
29-Dec-13	12:31	62.1
29-Dec-13	13:01	62.8
29-Dec-13	13:31	63.8
29-Dec-13	14:01	69.8
29-Dec-13	14:31	73.0
29-Dec-13	15:01	67.7
29-Dec-13	15:31	62.7
29-Dec-13	16:01	65.1
29-Dec-13	16:31	63.5
29-Dec-13	17:01	64.4
29-Dec-13	17:31	63.1
29-Dec-13	18:01	61.5
29-Dec-13	18:31	61.0
29-Dec-13	19:01	61.1
29-Dec-13	19:31	60.2
29-Dec-13	20:01	59.6
29-Dec-13	20:31	59.0
29-Dec-13	21:01	59.3
29-Dec-13	21:31	60.2
29-Dec-13	22:01	58.4
29-Dec-13	22:31	58.6
29-Dec-13	23:01	57.8
29-Dec-13	23:31	57.1
30-Dec-13	00:01	56.4
30-Dec-13	00:31	54.8
30-Dec-13	01:01	54.6
30-Dec-13	01:31	53.5
30-Dec-13	02:01	53.9
30-Dec-13	02:31	53.9
30-Dec-13	03:01	53.3
30-Dec-13	03:31	53.7
30-Dec-13	04:01	54.0
30-Dec-13	04:31	54.6
30-Dec-13	05:01	55.5
30-Dec-13	05:31	55.9
30-Dec-13	06:01	56.9
30-Dec-13	06:31	57.6

Start Date	Start Time	LAeq
30-Dec-13	07:01	59.6
30-Dec-13	07:31	60.6
30-Dec-13	08:01	61.1
30-Dec-13	08:31	61.8
30-Dec-13	09:01	63.3
30-Dec-13	09:31	67.7
30-Dec-13	10:01	69.1
30-Dec-13	10:31	66.2
30-Dec-13	11:01	66.9
30-Dec-13	11:31	64.5
30-Dec-13	12:01	61.5
30-Dec-13	12:31	61.5
30-Dec-13	13:01	66.9
30-Dec-13	13:31	63.7
30-Dec-13	14:01	62.4
30-Dec-13	14:31	63.9
30-Dec-13	15:01	68.6
30-Dec-13	15:31	62.5
30-Dec-13	16:01	63.2
30-Dec-13	16:31	65.5
30-Dec-13	17:01	63.7
30-Dec-13	17:31	62.2
30-Dec-13	18:01	61.4
30-Dec-13	18:31	61.5
30-Dec-13	19:01	61.6
30-Dec-13	19:31	60.7
30-Dec-13	20:01	60.2
30-Dec-13	20:31	59.6
30-Dec-13	21:01	59.8
30-Dec-13	21:31	59.6
30-Dec-13	22:01	59.0
30-Dec-13	22:31	58.1
30-Dec-13	23:01	57.4
30-Dec-13	23:31	56.6
31-Dec-13	00:01	56.0
31-Dec-13	00:31	55.3
31-Dec-13	01:01	55.1
31-Dec-13	01:31	54.0
31-Dec-13	02:01	54.3
31-Dec-13	02:31	53.7
31-Dec-13	03:01	53.8
31-Dec-13	03:31	54.1
31-Dec-13	04:01	54.1
31-Dec-13	04:31	54.3
31-Dec-13	05:01	54.7
31-Dec-13	05:31	55.1
31-Dec-13	06:01	56.6
31-Dec-13	06:31	58.0
31-Dec-13	07:01	58.1
31-Dec-13	07:31	60.4
31-Dec-13	08:01	61.2
31-Dec-13	08:31	61.4
31-Dec-13	09:01	63.1
31-Dec-13	09:31	64.2
31-Dec-13	10:01	66.2
31-Dec-13	10:31	65.0
31-Dec-13	11:01	70.8
31-Dec-13	11:31	68.6
31-Dec-13	12:01	61.4
31-Dec-13	12:31	61.1
31-Dec-13	13:01	66.0
31-Dec-13	13:31	62.6
31-Dec-13	14:01	69.5
31-Dec-13	14:31	68.2
31-Dec-13	15:01	67.3
31-Dec-13	15:31	62.3
31-Dec-13	16:01	61.9
31-Dec-13	16:31	64.9
31-Dec-13	17:01	62.4
31-Dec-13	17:31	62.1
31-Dec-13	18:01	61.1
31-Dec-13	18:31	62.1
31-Dec-13	19:01	60.6
31-Dec-13	19:31	61.2

Start Date	Start Time	LAeq
31-Dec-13	20:01	61.1
31-Dec-13	20:31	60.9
31-Dec-13	21:01	61.7
31-Dec-13	21:31	62.4
31-Dec-13	22:01	62.9
31-Dec-13	22:31	62.8
31-Dec-13	23:01	63.1
31-Dec-13	23:31	63.0

Annex I

***Graphical Representation of
Noise Monitoring Results***

Continuous Noise Monitoring Data

