

Gammon Construction Limited

Reprovisioning and Upgrading of Salt  
Water Service Reservoirs in Western  
District for Water Supplies Department:  
*Seventh Monthly Environmental  
Monitoring and Audit Report*

March 2008

**Environmental Resources Management**

21/F Lincoln House  
979 King's Road  
Taikoo Place  
Island East, Hong Kong  
Telephone: (852) 2271 3000  
Facsimile: (852) 2723 5660  
E-mail: [post.hk@erm.com](mailto:post.hk@erm.com)  
<http://www.erm.com>

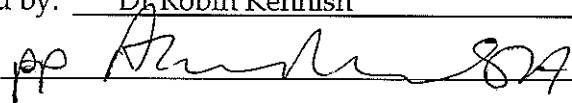
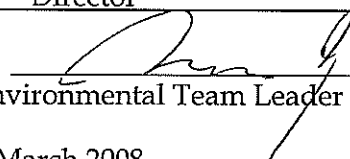
MONTHLY ENVIRONMENTAL  
MONITORING & AUDIT REPORT

Gammon Construction Limited

Reprovisioning and Upgrading of Salt  
Water Service Reservoirs in Western  
District for Water Supplies Department:  
*Seventh Monthly Environmental  
Monitoring and Audit Report*

4<sup>th</sup> March 2008

Reference 0067560

For and on behalf of Environmental Resources Management
Approved by: <u>Dr Robin Kennish</u>
Signed: <u></u>
Position: <u>Director</u>
Certified by: <u></u> (Environmental Team Leader - Marcus Ip)
Date: <u>4<sup>th</sup> March 2008</u>

This report has been prepared by Environmental Resources Management the trading name of 'ERM Hong-Kong, Limited', with all reasonable skill, care and diligence within the terms of the Contract with the client, incorporating our General Terms and Conditions of Business and taking account of the resources devoted to it by agreement with the client.

We disclaim any responsibility to the client and others in respect of any matters outside the scope of the above.

This report is confidential to the client and we accept no responsibility of whatsoever nature to third parties to whom this report, or any part thereof, is made known. Any such party relies on the report at their own risk.

## CONTENTS

	<i>EXECUTIVE SUMMARY</i>	<i>I</i>
<i>1</i>	<i>INTRODUCTION</i>	<i>1</i>
<i>1.1</i>	<i>PURPOSE OF THE REPORT</i>	<i>1</i>
<i>1.2</i>	<i>STRUCTURE OF THE REPORT</i>	<i>1</i>
<i>2</i>	<i>PROJECT INFORMATION</i>	<i>3</i>
<i>2.1</i>	<i>BACKGROUND</i>	<i>3</i>
<i>2.2</i>	<i>CONSTRUCTION ACTIVITIES</i>	<i>3</i>
<i>2.3</i>	<i>STATUS OF ENVIRONMENTAL APPROVAL DOCUMENTS</i>	<i>3</i>
<i>3</i>	<i>ENVIRONMENTAL MONITORING REQUIREMENTS</i>	<i>5</i>
<i>3.1</i>	<i>AIR QUALITY MONITORING</i>	<i>5</i>
<i>3.2</i>	<i>NOISE MONITORING</i>	<i>7</i>
<i>3.3</i>	<i>CULTURAL HERITAGE</i>	<i>9</i>
<i>4</i>	<i>IMPLEMENTATION STATUS OF ENVIRONMENTAL PROTECTION REQUIREMENTS</i>	<i>10</i>
<i>5</i>	<i>MONITORING RESULTS</i>	<i>11</i>
<i>5.1</i>	<i>AIR QUALITY</i>	<i>11</i>
<i>5.2</i>	<i>NOISE</i>	<i>11</i>
<i>5.3</i>	<i>CULTURAL HERITAGE</i>	<i>11</i>
<i>5.4</i>	<i>WASTE MANAGEMENT</i>	<i>11</i>
<i>6</i>	<i>ENVIRONMENTAL SITE AUDITING</i>	<i>13</i>
<i>7</i>	<i>ENVIRONMENTAL NON-CONFORMANCE</i>	<i>15</i>
<i>7.1</i>	<i>SUMMARY OF MONITORING EXCEEDANCE</i>	<i>15</i>
<i>7.2</i>	<i>SUMMARY OF ENVIRONMENTAL NON-COMPLIANCE</i>	<i>15</i>
<i>7.3</i>	<i>SUMMARY OF ENVIRONMENTAL COMPLAINT</i>	<i>15</i>
<i>7.4</i>	<i>SUMMARY OF ENVIRONMENTAL SUMMON AND SUCCESSFUL PROSECUTION</i>	<i>15</i>
<i>8</i>	<i>FUTURE KEY ISSUES</i>	<i>16</i>
<i>8.1</i>	<i>KEY ISSUES FOR THE COMING MONTH</i>	<i>16</i>
<i>8.2</i>	<i>MONITORING SCHEDULE FOR THE COMING MONTHS</i>	<i>16</i>
<i>9</i>	<i>CONCLUSION</i>	<i>17</i>

## ***LIST OF TABLES***

Table 2.1	Summary of Construction Activities Undertaken during the Reporting Period
Table 2.2	Summary of Environmental Licensing, Notification and Permit Status
Table 3.1	Air Monitoring Station
Table 3.2	Action and Limit Levels for Air Quality
Table 3.3	TSP Monitoring Equipment
Table 3.4	Noise Monitoring Station
Table 3.5	Action and Limit Level for Construction Noise Monitoring
Table 3.6	Noise Monitoring Equipment
Table 3.7	Monitoring Frequency
Table 3.8	Alert, Action and Alarm Levels
Table 4.1	Status of Required Submission
Table 5.1	Quantities of Different Waste
Table 8.1	Construction Works to be undertaken in the Coming Month

## ***LIST OF ANNEXES***

Annex A	Location of Works Areas and Construction Activities during the Reporting period, and Construction Programme
Annex B	Location of Monitoring Stations and Photographs showing Monitoring Stations
Annex C	Monitoring Schedule during the reporting period and coming period
Annex D	Calibration Reports for HVSs and Sound Level Meters
Annex E	Summary of Implementation Status
Annex F	24-hour TSP Monitoring Results
Annex G	Construction Noise Monitoring Results
Annex H	Cultural Heritage Monitoring Results
Annex I	Waste Flow Table

## EXECUTIVE SUMMARY

The construction works for Reprovisioning and Upgrading of Salt Water Service Reservoirs in Western District for Water Supplies Department commenced on 21 July 2007. This is the seventh monthly Environmental Monitoring and Audit (EM&A) report presenting the EM&A work carried out during the period from 21 January 2008 to 20 February 2008 in accordance with the EM&A Manual.

### Summary of construction works undertaken during reporting period

The major construction works undertaken during the reporting month were the excavation of the tunnel.

### Environmental Monitoring and Audit Progress

A summary of the monitoring activities in this reporting period is listed below:

24-hour TSP monitoring	5 times
Construction Noise Monitoring	5 times
Joint environmental site auditing	5 times

### Air Quality

Five sets of 24-hour TSP measurements were carried out at the designated monitoring station AM1 during the reporting period. No exceedance was recorded during the reporting period.

### Noise

Five sets of 30-minute noise measurements were carried out at the designated monitoring stations NM1 & NM2 during the reporting period. No exceedance was recorded during the reporting period.

### Cultural Heritage

Monitoring of potential building movements of the Elliot Treatment Works (ETW) during construction of the Designated Project was conducted during the reporting period. No exceedance of Alarm, Action and Alert Levels in this respect was recorded during the reporting period.

### Construction Waste Management

Wastes from this Project include inert construction and demolition (C&D) wastes and non-inert C&D wastes. A total of 9,895 tonnes of inert C&D wastes and no non-inert C&D materials were generated during the reporting period. The inert C&D materials were transferred to the public fill barging point at Quarry Bay.

### Environmental Non-compliance

No non-compliance event was recorded during the reporting period.

No environmental complaint and summons was received in this reporting period.

#### Future Key Issues

Works to be undertaken in the coming monitoring period are the excavation of the tunnel for both Reservoir Nos. 1 and 2 and the permanent arch lining of Reservoir No. 2.

Potential environmental impacts arising from the construction activities in the coming month are expected to be mainly associated with dust, site runoff, waste management and construction noise.

ERM-Hong Kong, Limited (ERM) was appointed by Gammon Construction Limited (the Contractor) as the Environmental Team (ET) to implement the Environmental Monitoring and Audit (EM&A) programme for the Reprovisioning and Upgrading of Salt Water Service Reservoirs in Western District for Water Supplies Department (the Project).

### **1.1 PURPOSE OF THE REPORT**

This is the seventh EM&A report which summarizes the impact monitoring results and audit findings for the EM&A programme during the reporting period from **21 January 2008** to **20 February 2008**.

### **1.2 STRUCTURE OF THE REPORT**

The structure of the report is as follows:

Section 1 : **Introduction**

Details the scope and structure of the report.

Section 2 : **Project Information**

Summarizes background and scope of the project, site description, construction programme, the construction works undertaken and the status of Environmental Permits/Licenses during the reporting period.

Section 3 : **Environmental Monitoring Requirement**

Summarizes the monitoring parameters, monitoring programmes, monitoring methodologies, monitoring frequency, monitoring locations, Action and Limit Levels, environmental mitigation measures as recommended in the EIA report and relevant environmental requirements.

Section 4 : **Implementation Status on Environmental Mitigation Measures**

Summarizes the implementation of environmental protection measures during the reporting period.

Section 5 : **Monitoring Results**

Summarizes the monitoring results obtained in the reporting period.

Section 6 : **Environmental Site Auditing**

Summarizes the audit findings of the weekly site inspections undertaken within the reporting period.

Section 7 : **Environmental Non-conformance**

Summarizes any monitoring exceedance, environmental complaints and environmental summons within the reporting period.

Section 8 : **Future Key Issues**

Summarizes the impact forecast and monitoring schedule for the next three months.

Section 9 : **Conclusion**



## 2 PROJECT INFORMATION

### 2.1 BACKGROUND

Project background, associated construction works, organization chart and contact details are all detailed in Section 2 of the first Monthly EM&A Report.

The potential environmental impacts of the Project have been presented in the Project Profile (PP) “*Reprovisioning and Upgrading of Salt Water Service Reservoirs in Western District for Water Supplies Department*” (Application No. DIR-150/2007), and an Environmental Permit (EP-279/2007) (EP) for the Project was granted on 4 June 2007. Under the requirements of Condition 3.2 of Environmental Permit EP-279/2007, an EM&A programme as set out in the EM&A Manual is required to be implemented. In accordance with the EM&A Manual, baseline monitoring of air quality and noise is required for the Project.

The construction works commenced on 21 July 2007 and are scheduled to be completed by December 2008. An updated construction programme is shown in *Annex A*.

A Further Environmental Permit (FEP-01/279/2007) (FEP) for the construction phase of the Project was granted to Gammon Construction Limited on 23 October 2007.

### 2.2 CONSTRUCTION ACTIVITIES

A summary of the major construction activities undertaken in this reporting period is shown in *Table 2.1*. The locations of the construction activities are shown in *Annex A*.

*Table 2.1 Summary of Construction Activities Undertaken during the Reporting Period*

---

**Construction Activities Undertaken**

---

- Excavation works for tunnel
- 

### 2.3 STATUS OF ENVIRONMENTAL APPROVAL DOCUMENTS

A summary of the relevant permits, licences, and/or notifications on environmental protection for this Project is presented in *Table 2.2*.

**Table 2.2 Summary of Environmental Licensing, Notification and Permit Status**

<b>Permit/ Licences/ Notification</b>	<b>Reference</b>	<b>Validity Period</b>	<b>Remarks</b>
Environmental Permit	EP-279/2007	Throughout the construction and operation of the Project	Permit granted on 4 June 2007
Notification of Construction Works under Air Pollution Control (Construction Dust) Regulation	--	--	Reference Number for Notification Pursuant to APC (Construction Dust) Regulation: 001019768
Effluent Discharge Licence	EP880/W10/XX0275	N/A	Discharge of industrial trade effluent into communal storm water drain
Chemical Waste Producer Registration	5919-141-G2336-17	N/A	Chemical waste types: spent paint, acid, alkaline, adhesive, diesel fuel, lubricating oil and bitumen.
Construction Noise Permit	GW-RS0652-07	14 November 2007 (0600 hour)	Permit granted on 9 October 2007
Construction Noise Permit	GW-RS0725-07	29 February 2008 (2300 hour)	Permit granted on 9 November 2007 and cancelled on 24 December 2007
Construction Noise Permit	GW-RS0810-07	16 June 2008 (2300 hour)	Permit granted on 24 December 2007
Further Environmental Permit	FEP-01/279/2007	Throughout the construction of the Project	Permit granted on 23 October 2007

### 3.1 AIR QUALITY MONITORING

#### 3.1.1 Monitoring Location

In accordance with the EM&A Manual, monitoring of ambient 24-hour Total Suspended Particulates (TSP) level was conducted at the monitoring station listed in *Table 3.1*. The map and photographs showing the monitoring station are presented in *Annex B*.

**Table 3.1** *Air Monitoring Station*

Monitoring Station	Description
AM1	Chow Yei Ching Building, HKU

#### 3.1.2 Monitoring Parameter, Frequency and Programme

Weekly 24-hour TSP monitoring was conducted in accordance with the requirements stipulated in the EM&A Manual. The monitoring programme for this and the next reporting period is shown in *Annex C*.

#### 3.1.3 Action and Limit Levels

The Action and Limit levels have been established in accordance with the EM&A Manual and are presented in *Table 3.2*.

**Table 3.2** *Action and Limit Levels for Air Quality*

Parameter	Air Monitoring Station	Action Level, $\mu\text{gm}^{-3}$	Limit Level, $\mu\text{gm}^{-3}$
24-hour TSP	AM1	173	260

#### 3.1.4 Monitoring Equipment

Continuous 24-hour TSP monitoring was performed using High Volume Samplers (HVS) with appropriate sampling inlets installed, located at the designated monitoring station. The performance specification of HVS complies with the standard method “*Determination of Suspended Particulate Matter in the Atmosphere (High Volume Method)*” as stipulated in *US EPA Standard Title 40, Code of Federation Regulations Chapter 1 (Part 50 Appendix B)*. *Table 3.3* summarizes the equipment that was used in the 24-hour TSP monitoring.

**Table 3.3** *TSP Monitoring Equipment*

Monitoring Station	Equipment	Model (HVS, Calibration Kit)
AM1	HVS, Calibration Kit	GMWS-2310, CM-AIR-43

### 3.1.5

#### *Monitoring Methodology*

##### *Installation*

The HVS at AM1 were placed at the rooftop of Chow Yei Ching Building at about 33 m above local ground level. The HVS was free-standing with no obstruction.

The following criteria were considered in the installation of the HVS:

- appropriate support to secure the samplers against gusty wind was provided at AM1;
- a minimum of 2-metre separation from walls, parapets and penthouses was required for rooftop samplers;
- no furnace or incinerator flues were nearby;
- airflow around the sampler was unrestricted; and
- permission was obtained to set up the samplers and to gain access to the monitoring stations.

##### *Preparation of Filter Papers by SGS Hong Kong Ltd*

- glass fibre filters were labelled and sufficient filters that were clean and without pinholes were selected;
- all filters were equilibrated in the conditioning environment for 24 hours before weighing. The conditioning environment temperature was around 25 °C and not variable by more than  $\pm 3$  °C; the relative humidity (RH) was 40%; and
- SGS Hong Kong Ltd, a HOKLAS accredited laboratory, implements comprehensive quality assurance and quality control programmes.

##### *Field Monitoring*

- the power supply was checked to ensure that the HVS was working properly;
- the filter holder and the area surrounding the filter were cleaned;
- the filter holder was removed by loosening the foul bolts and a new filter, with stamped number upward, on a supporting screen was aligned carefully;
- the filter was properly aligned on the screen so that the gasket formed an airtight seal on the outer edges of the filter;
- the swing bolts were fastened to hold the filter holder down to the frame. The pressure applied should be sufficient to avoid air leakage at the edges;

- then the shelter lid was closed and secured with the aluminium strip;
- the HVS was warmed-up for about 5 minutes to establish run-temperature conditions;
- a new flow rate record sheet was set into the flow recorder;
- the flow rate of the HVS was checked and adjust at around 1.21 m<sup>3</sup>/min. The range specified in the EM&A Manual was between 0.6 – 1.7 m<sup>3</sup>/min;
- the programmable timer was set for a sampling period of 24 hours ± 1 hour, and the starting time, weather condition and the filter number were recorded;
- the initial elapsed time was recorded;
- at the end of sampling, the sampled filter was removed carefully and folder in half length so that only surfaces with collected particulate matter were in contact;
- it was then placed in a clean plastic envelope and sealed;
- all monitoring information was recorded on a standard data sheet; and
- filters were sent to SGS Hong Kong Ltd for analysis.

#### *Maintenance and Calibration*

- the HVS and its accessories were maintained in good working condition, such as replacing motor brushes routinely and checking electrical wiring to ensure a continuous power supply; and
- the flow rate of HVS with mass flow controller were calibrated using an orifice calibrator. Initial calibrations of the dust monitoring equipments were conducted upon installation and prior to commissioning. Five-point calibration was carried out for HVS using Tisch TE-5025 A Calibration Kit. The calibration records for the HVS are given in *Annex D*.

## 3.2 NOISE MONITORING

### 3.2.1 Monitoring Location

In accordance with the EM&A Manual, monitoring of construction noise impact was conducted at the monitoring stations listed in *Table 3.4*. The map and photographs showing the monitoring stations are presented in *Annex B*.

**Table 3.4** *Noise Monitoring Station*

Monitoring Station	Description
NM1	Tower 3 of The Belcher's
NM2	Starr Hall, HKU

### 3.2.2 Action and Limit Levels

Action and Limit (A/L) Levels provide an appropriate framework for the interpretation of monitoring results. Interpretation of monitoring results is undertaken through checking them against the Action and Limit (A/L) Levels defined in *Table 3.5*.

**Table 3.5** *Action and Limit Level for Construction Noise Monitoring*

Time Period	Action Level	Limit Level
0700 – 1900 hours on normal weekdays	When one documented complaint is received from any one of the sensitive receivers	75 dB(A) <sup>(Note)</sup>
<b>Note:</b> Acceptable Noise Levels for Area Sensitivity Rating of A/B/C. Limit Level is reduced to 70dB(A) for schools and 65dB(A) during school examination periods.		

### 3.2.3 Monitoring Parameters, Frequency and Programme

Weekly construction noise monitoring was conducted in accordance with the requirements stipulated in the EM&A Manual. The monitoring programme for this and the next reporting period is shown in *Annex C*.

The construction noise levels were measured in terms of A-weighted equivalent continuous sound pressure level ( $L_{eq}$ ) in decibels dB(A). Supplementary information for data auditing, two statistical sound levels  $L_{10}$  and  $L_{90}$ ; the levels exceeded for 10 and 90 percent of the time respectively, were also recorded during the monitoring for reference.

### 3.2.4 Monitoring Equipment and Methodology

Noise measurements were conducted in accordance with the calibration and measurement procedures as stated in *Annex – General Calibration and Measurement Procedures of Technical Memorandum on Noise from Construction Work other than Percussive Piling (GW-TM)* issued under the *Noise Control Ordinance (NCO) (Cap.400)*.

The sound level meters and calibrator used for the noise measurement, as listed in *Table 3.6*, complies with IEC 651: 1979 and 804:1985 (Type 1) specification. The calibration certificates of the sound level meters are given in *Annex D*.

**Table 3.6** *Noise Monitoring Equipment*

Monitoring Station	Monitoring Equipment
NM1	Rion NL-31
NM2	Rion NL-31

Immediately prior to and following the noise measurements, the accuracy of the measurement equipment was checked using an acoustic calibrator generating a known sound pressure level at a known frequency.

Measurements were accepted as the calibration level from before and after the noise measurement agree to within 1.0 dB.

### 3.3 CULTURAL HERITAGE

#### 3.3.1 Monitoring Location and Methodology

Building settlement markers and building tiltmeters were installed at the monitoring locations which have been agreed with Antiquities and Monuments Office (AMO) of Leisure and Cultural Services Department (LCSD) (*Annex H*). Building settlement marker BS10 was moved for a small distance of about 2m to BS10a due to difficulties in accessing BS10 after the provision of a security office. The monitoring frequency during the reporting period is summarized in *Table 3.7*.

**Table 3.7** *Monitoring Frequency*

<b>Instrument</b>	<b>Monitoring Frequency</b>
Building settlement markers	Monitoring was taken every day except Sundays and general holidays
Building tiltmeters	Monitoring was taken every hour

#### 3.3.2 Alert, Action and Alarm Levels

The Alert, Action and Alarm Levels which were agreed with AMO are presented in *Table 3.8*.

**Table 3.8** *Alert, Action and Alarm Levels*

<b>Instrument</b>		<b>Alert Level</b>	<b>Action Level</b>	<b>Alarm Level</b>
Building settlement markers	Vertical	12 mm or 4 mm/day	20 mm or 6 mm/day	25 mm or 8 mm/day
	Tilt	1:1000	1:600	1:500
	Horizontal	4 mm	6 mm	8 mm
Building tiltmeters		0.1 Degree (±1.75mm/m)	0.15 Degree (±2.62mm/m)	0.2 Degree (± 3.49mm/m)

## IMPLEMENTATION STATUS OF ENVIRONMENTAL PROTECTION REQUIREMENTS

### *Environmental Control Requirements under EIAO*

The Contractor has implemented environmental mitigation measures and requirements as stated in the Project Profile (DIR-150/2007), the Environmental Permit, Further Environmental Permit and EM&A Manual. The implementation status of environmental protection and pollution control/mitigation measures is summarized in *Annex E*. The status of the submissions required under the EP and FEP during the reporting period is presented in *Table 4.1*.

**Table 4.1** *Status of Required Submission*

EP Condition	Submission	Submission Date
Condition 3.3	Submission of Sixth Monthly EM&A Report	31 January 2008

### *Other Environmental Control Requirements*

Mitigation measures including the provision of temporary drainage system, wastewater treatment facilities and sedimentation tanks were implemented by the Contractor to manage and treat construction effluents and runoff. In accordance with the discharge licence issued under *Water Pollution Control Ordinance* (WPCO), effluent sampling and testing for suspended solids is required to be conducted monthly to ensure that the quality of treated effluent at designated discharge points complies with the criteria stipulated in the discharge licence. An effluent sample was tested by the Contractor during the reporting period and the test result indicated compliance.



## 5 MONITORING RESULTS

### 5.1 AIR QUALITY

Five sets of 24-hour TSP measurements were carried out at monitoring station AM1 during the reporting period. The monitoring data for 24-hour TSP together with wind data and graphical presentations are presented in *Annex F*. The weather condition during the monitoring period varied from sunny to cloudy. The local impacts near the monitoring station were mainly associated with vehicular emissions from the road traffic along Pok Fu Lam Road. No exceedance of the Action and Limit Levels for 24-hour TSP was recorded during the reporting period.

### 5.2 NOISE

Five sets of 30-minute construction noise measurements were carried out at monitoring stations NM1 & NM2 during the reporting period. The monitoring results together with graphical presentations are presented in *Annex G*. The local impacts observed near the monitoring stations were mainly traffic noise from Pok Fu Lam Road and the concurrent projects undertaken in the vicinity. No exceedance of the Action and Limit Levels for construction noise was recorded during the reporting period.

### 5.3 CULTURAL HERITAGE

The monitoring results of building settlement markers and tiltmeters were presented in *Annex H*. Instrumentation errors for tiltmeters TM2 and TM9 were identified on 05 and 20 February 2008 respectively and the relevant instruments were fixed immediately. No exceedance of the Alert, Action and Alarm Levels for building movements was recorded during the reporting period.

### 5.4 WASTE MANAGEMENT

Wastes from this Project include mainly inert construction and demolition (C&D) wastes and non-inert C&D wastes. Reference has been made to the Monthly Summary Waste Flow Table prepared by Gammon Construction Ltd (*Annex I*). The quantities of different types of wastes are summarized in *Table 5.1* with reference to relevant handling records and trip tickets for this Project. Appropriate measures have been implemented by the Contractor to minimise dust impact associated with waste management (*Annex E*).

**Table 5.1 Quantities of Different Waste**

Month / Year	Quantity		
	C&D Materials (inert) (a)	C&D Materials (non-inert) (b)	Chemical Waste
21 January - 20 February 2008	9,895 tonnes	0.0 tonnes	0.0 litre

Notes:

- (a) Inert C&D materials include bricks, concrete, building debris, rubble and excavated soil and were disposed of at the Quarry Bay public fill barging point.
- (b) Non-inert C&D materials after segregation were disposed of at SENT Landfill.

Weekly site inspections were carried out by the representatives of Gammon Construction Ltd and the ET. Five site inspections were conducted on 23 & 29 January 2008; and 5, 12 and 19 February 2008. No non-compliance event was recorded during the reporting period.

Major findings and recommendations including observations are summarized as follows:

- (i) Deposited silt and grit were observed to have accumulated in the peripheral channel on the western boundary of the site. The Contractor was reminded to ensure that deposited silt and grit are cleared regularly as part of the normal house keeping work. The corrective action was undertaken as observed in the site audit conducted in the reporting period.
- (ii) Stagnant water was observed to have accumulated in the u-channel in the works area next to the SWSR1. The Contractor was recommended to clear the stagnant water promptly to prevent mosquito breeding. The corrective action was undertaken as observed in the site audit conducted in the reporting period.
- (iii) Oil sheens were observed on the haul road near the wheel washing area. The Contractor was recommended to clear the oil sheens promptly and properly. The corrective action was undertaken as observed in the site audit conducted in the reporting period.
- (iv) Refuse was observed to be accumulated in the refuse skip and scattered around the refuse skip near the demolished SWSR2. The Contractor was reminded to provide refuse skip of sufficient capacity and to arrange ad hoc waste collection if necessary. The corrective action was undertaken as observed in the site audit conducted in the reporting period.
- (v) Debris, leaves, silt and grit were observed to be accumulated in the u-channels at the slope toe of Slopes 11SW-A/C148 and 11SW-A/C151. The Contractor was recommended to clear the accumulated debris, leaves, silt and grit promptly and to ensure that deposited silt and grit are cleared regularly as part of the normal house keeping work. The corrective action was undertaken as observed in the site audit conducted in the reporting period.
- (vi) The haul road at the slope toe of Slope 11SW-A/C151 was observed to be dry. The Contractor was reminded to water the haul road regularly and to arrange ad hoc watering, if necessary, to reduce dust generation from vehicle movement and sweeping the ground. The corrective action was undertaken as observed in the site audit conducted in the reporting period.

- (vii) Two dumped trucks were observed not having their wheels washed before leaving the site. The Contractor was reminded to remind all drivers to have vehicle wheels washed before leaving the site to ensure no earth, mud, debris and the like is deposited by the vehicles on roads. The corrective action was undertaken as observed in the site audit conducted in the reporting period.
- (viii) Plant maintenance work was observed to be undertaken in the demolished SWSR2 works area without enough protective measures. Lubricant oil was observed to have leaked on the bare soil surface. The Contractor was recommended to ensure that plant maintenance be undertaken only on hardstanding and with appropriate provisions of oil interceptor for the drainage system. The corrective action was undertaken as observed in the site audit conducted in the reporting period.
- (ix) The Contractor was recommended to change the filter materials and clear the soil/silt sediment in the sedimentation tank located in the works area next to the SWSR1 regularly and to arrange ad hoc changing and cleaning, if necessary, to maintain the efficiency of the sedimentation tank. The corrective action was undertaken as observed in the site audit conducted in the reporting period.
- (x) The Contractor was reminded to keep the road section between the wheel washing bay and the public road free from grit/soil/silt.

## 7 ENVIRONMENTAL NON-CONFORMANCE

### 7.1 SUMMARY OF MONITORING EXCEEDANCE

No exceedance of the Action Level for 24-hour TSP and construction noise, and the Alert Level for building movements was recorded at monitoring stations during the reporting period.

### 7.2 SUMMARY OF ENVIRONMENTAL NON-COMPLIANCE

No non-compliance event was recorded during the reporting period.

### 7.3 SUMMARY OF ENVIRONMENTAL COMPLAINT

No complaint was received during the reporting period.

### 7.4 SUMMARY OF ENVIRONMENTAL SUMMON AND SUCCESSFUL PROSECUTION

No summons was received during the reporting period.

### 8.1 KEY ISSUES FOR THE COMING MONTH

Works to be undertaken for the coming monitoring period are summarized in *Table 8.1*.

**Table 8.1 Construction Works to be undertaken in the Coming Month**

Work to be taken
<ul style="list-style-type: none"> <li>• Excavation of the tunnel for both Reservoir Nos. 1 and 2</li> <li>• Permanent arch lining of Reservoir No. 2</li> </ul>

Potential environmental impacts arising from the above construction activities are mainly associated with dust, site runoff, waste management and construction noise.

### 8.2 MONITORING SCHEDULE FOR THE COMING MONTHS

The tentative schedule of TSP and construction noise monitoring for the next reporting period is presented in *Annex C*. The environmental monitoring will be conducted at the same monitoring locations in this reporting period. The monitoring programme has been reviewed and was considered as adequate to cater for the nature of works in progress.

The Environmental Monitoring and Audit (EM&A) Report presents the EM&A work undertaken during the period from 21 January 2008 to 20 February 2008 in accordance with the EM&A Manual and the requirement under EP-279/2007 and FEP-01/279/2007.

No exceedance of the Action Level for 24-hour TSP and construction noise, and the Alert Level for building movements was recorded at the monitoring stations during the reporting period.

No non-compliance event was recorded during the reporting period.

There was no complaint and summons/prosecution received during the reporting period.

The ET will keep track of the EM&A programme to ensure compliance of environmental requirements and the proper implementation of all necessary mitigation measures.

Annex A

Locations of Works Areas  
and Construction Activities  
during the Reporting  
Period, and updated  
Construction Programme



**Key**

- Designated Project Boundary
- Concurrent Adjacent Activities
- Location of Works Area and Construction Activities

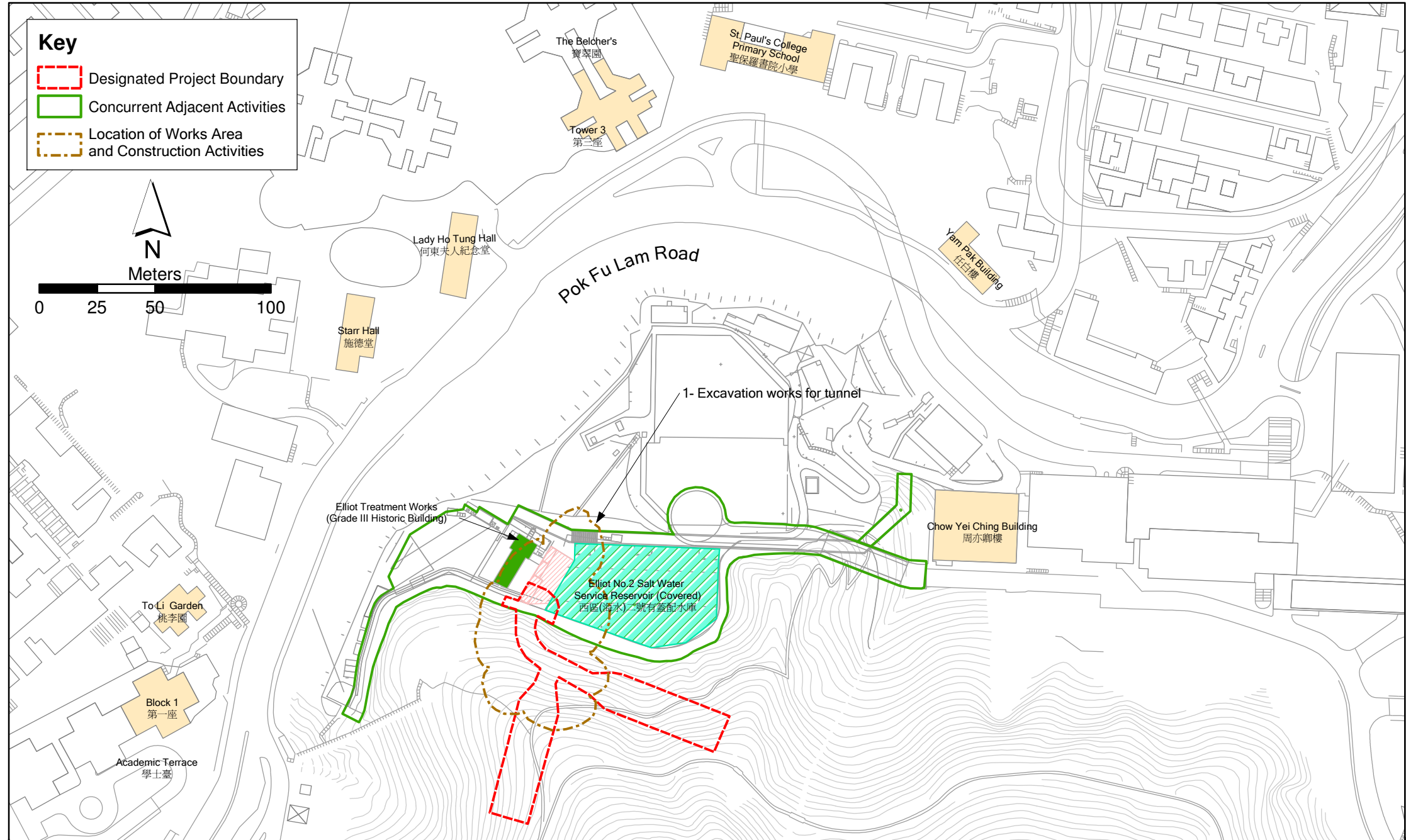
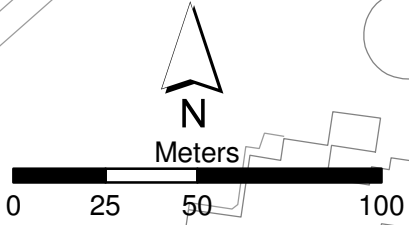
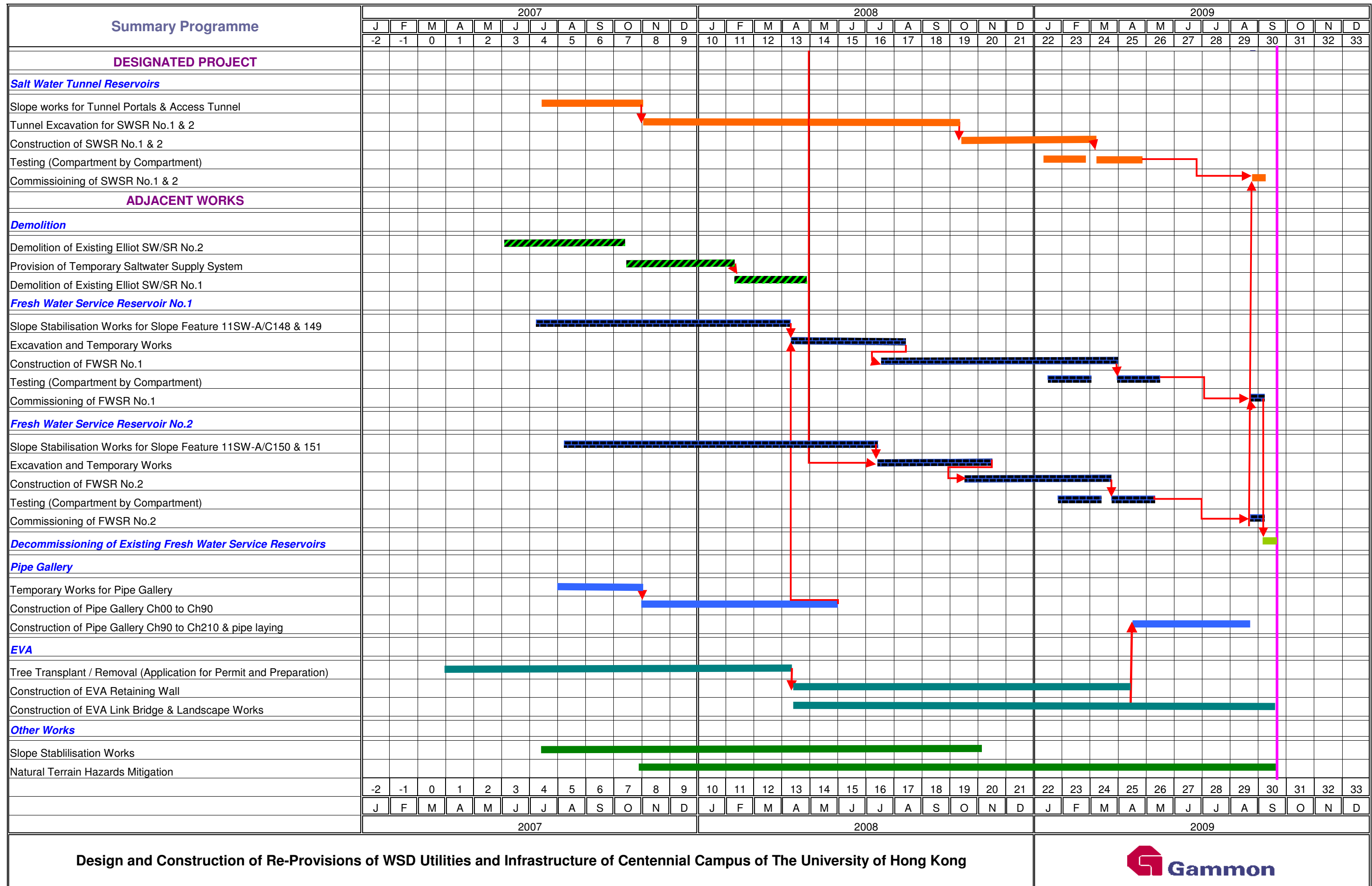
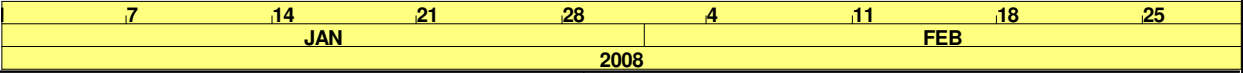
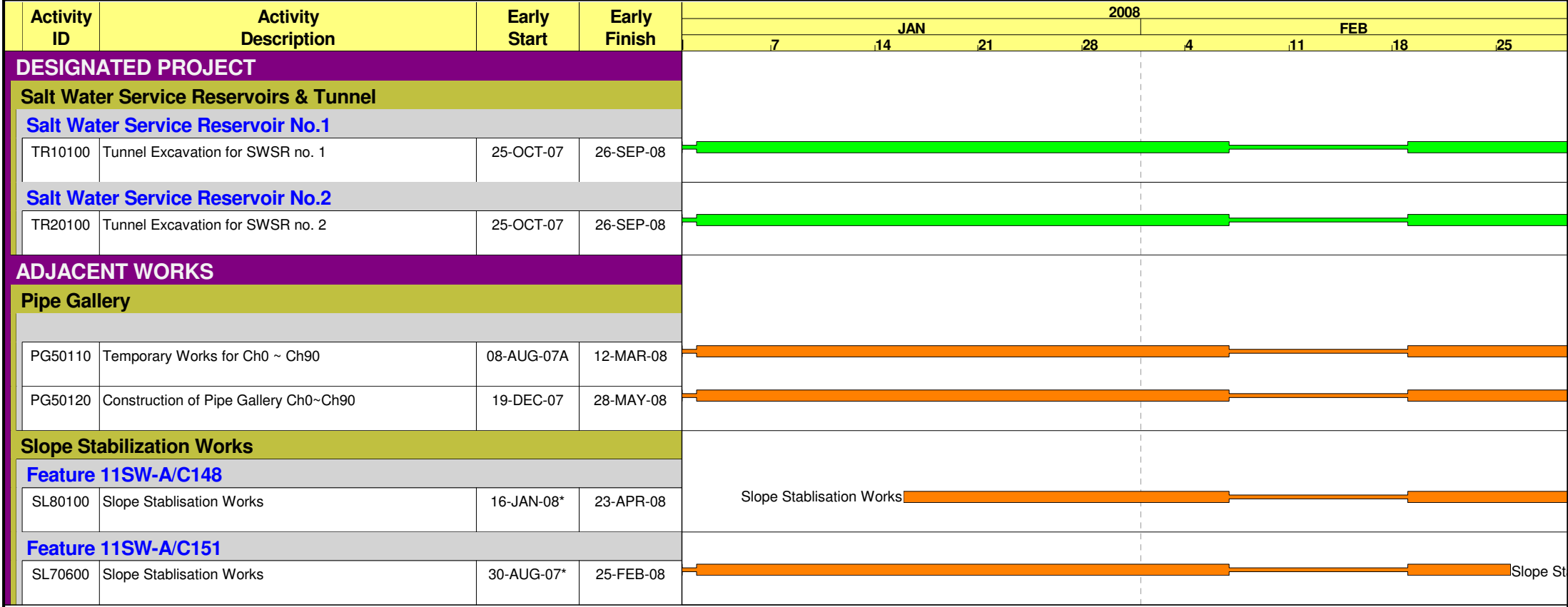





Figure A1

Project Location and Works Location





 Early Bar  
 Progress Bar  
 Critical Activity

© Primavera Systems, Inc.

EP01

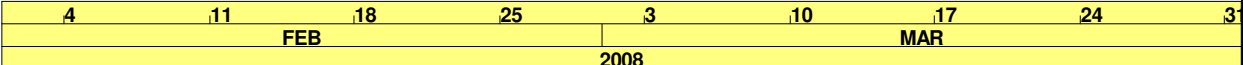
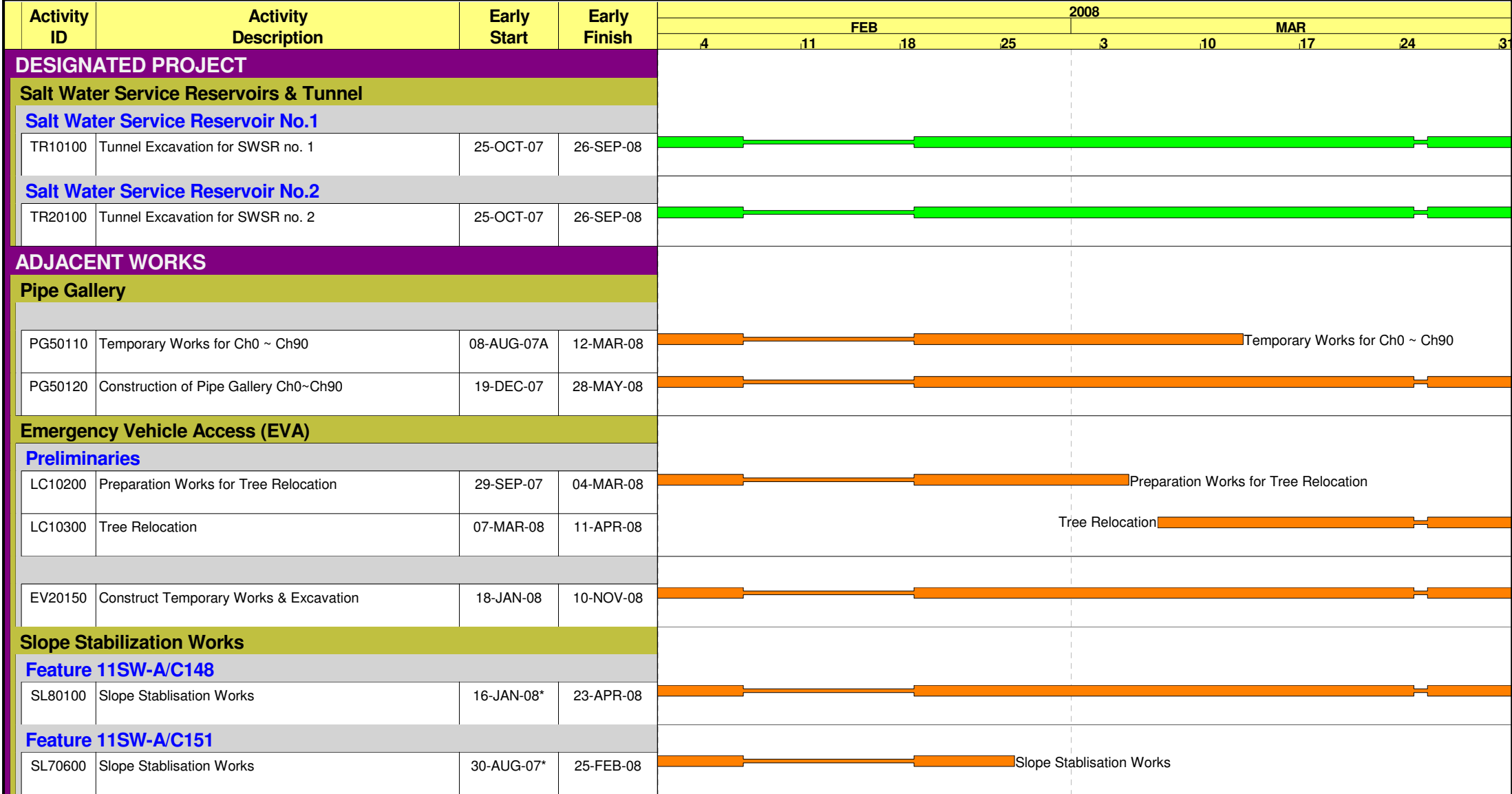
Reprovision of Salt Water Service Reservoirs in Western District




Construction Programme

(21 Jan to 20 Feb 08)

Sheet 1 of 1

Date	Revision	Checked	Approved



 Early Bar  
 Progress Bar  
 Critical Activity

© Primavera Systems, Inc.

EP01

Reprovision of Salt Water Service Reservoirs in Western District

Construction Programme

(21 Feb to 21 Mar 08)

Sheet 1 of 1

Date	Revision	Checked	Approved

Annex B

Location of Monitoring  
Stations and Photographs  
showing Monitoring  
Stations

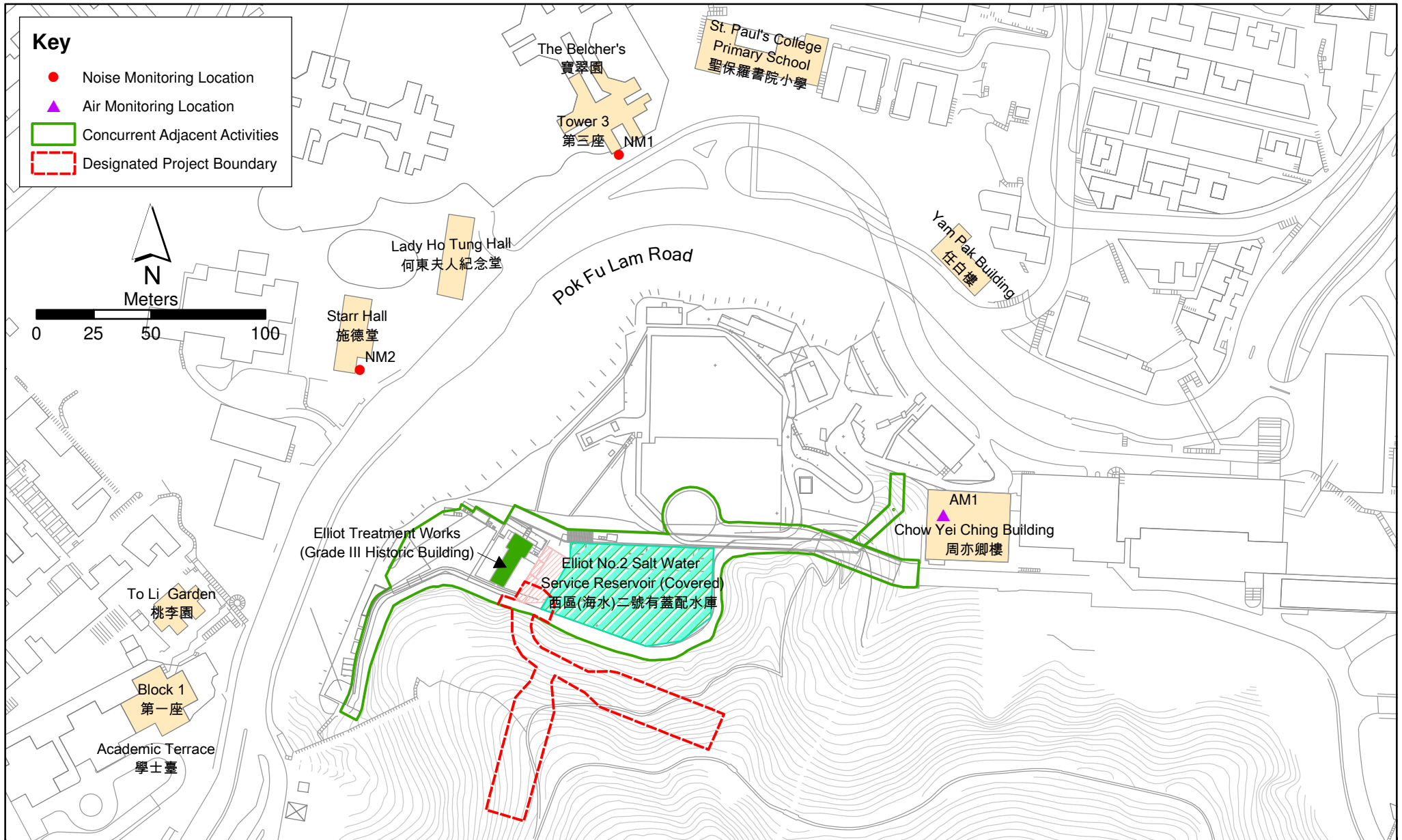


Figure B1

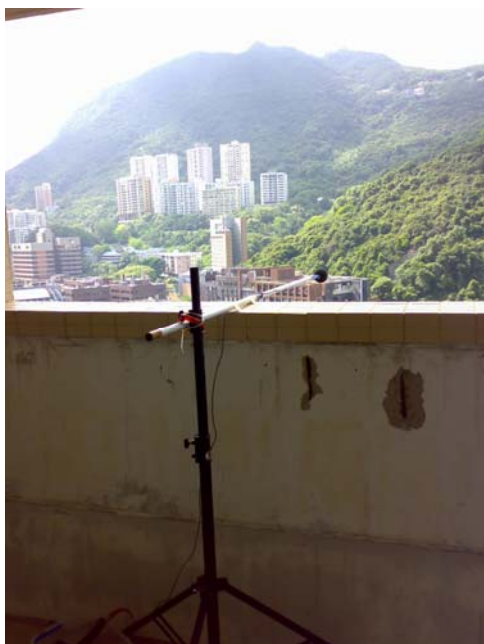
Air and Noise Monitoring Locations

*Air quality Monitoring Station*



Air Quality Monitoring Station (AM1)

*Noise Monitoring Station*



Noise Monitoring Station (NM1)



Baseline Noise Monitoring Station (NM2)

Annex C

## Monitoring Schedule



**Reprovisioning and Upgrading of Salt Water Service Reservoirs in Western District for Water Supplies Department  
Air Quality and Noise Monitoring Schedule - January 2008**

Sunday	Monday	Tuesday	Wednesday	Thursday	Friday	Saturday
		1-Jan	2-Jan	3-Jan	4-Jan	5-Jan
6-Jan	7-Jan	8-Jan	9-Jan	10-Jan	11-Jan	12-Jan
	Air Monitoring Noise Monitoring					
13-Jan	14-Jan	15-Jan	16-Jan	17-Jan	18-Jan	19-Jan
		Air Monitoring Noise Monitoring				
20-Jan	21-Jan	22-Jan	23-Jan	24-Jan	25-Jan	26-Jan
	Air Monitoring Noise Monitoring					
27-Jan	28-Jan	29-Jan	30-Jan	31-Jan		
	Air Monitoring Noise Monitoring					

**Reprovisioning and Upgrading of Salt Water Service Reservoirs in Western District for Water Supplies Department  
Air Quality and Noise Monitoring Schedule - February 2008**

Sunday	Monday	Tuesday	Wednesday	Thursday	Friday	Saturday
					1-Feb	2-Feb
3-Feb	4-Feb	5-Feb	6-Feb	7-Feb	8-Feb	9-Feb
	Air Monitoring Noise Monitoring					
10-Feb	11-Feb	12-Feb	13-Feb	14-Feb	15-Feb	16-Feb
	Air Monitoring Noise Monitoring					
17-Feb	18-Feb	19-Feb	20-Feb	21-Feb	22-Feb	23-Feb
	Air Monitoring Noise Monitoring					
24-Feb	25-Feb	26-Feb	27-Feb	28-Feb	29-Feb	
	Air Monitoring Noise Monitoring					

**Reprovisioning and Upgrading of Salt Water Service Reservoirs in Western District for Water Supplies Department  
Air Quality and Noise Monitoring Schedule - March 2008**

Sunday	Monday	Tuesday	Wednesday	Thursday	Friday	Saturday
						1-Mar
2-Mar	3-Mar	4-Mar	5-Mar	6-Mar	7-Mar	8-Mar
	Air Monitoring Noise Monitoring					
9-Mar	10-Mar	11-Mar	12-Mar	13-Mar	14-Mar	15-Mar
	Air Monitoring Noise Monitoring					
16-Mar	17-Mar	18-Mar	19-Mar	20-Mar	21-Mar	22-Mar
	Air Monitoring Noise Monitoring					
23-Mar	24-Mar	25-Mar	26-Mar	27-Mar	28-Mar	29-Mar
		Air Monitoring Noise Monitoring				
30-Mar	31-Mar					
	Air Monitoring Noise Monitoring					

Annex D

## Calibration Reports for HVSs and Sound Level Meter

High-Volume TSP Sampler  
5-Point Calibration Record

Location : HKU (24-hr)  
 Calibrated by : K.T.Ho  
 Date : 16/05/07  
 Sampler :  
 Model : GMWS-2310 ACCU-VOL  
 Serial Number : S/N 1060

Calibration Office and Standard Calibration Relationship

Serial Number : CM-AIR-43  
 Service Date : 18 May 2006  
 Slope (m) : 0.057363  
 Intercept (b) : -0.025638  
 Correlation Coefficient(r) : 0.999913

Standard Condition

Pstd (hpa) : 1013  
 Tstd (K) : 298.18

Calibration Condition

Pa (hpa) : 1010  
 Ta(K) : 300

Resistance Plate	dH [green liquid] (inch water)	Z	X=Qstd (cubic meter/min)	IC (indicated flow)	Y
1   18 holes	9.4	3.054	1.546	56	55.8
2   13 holes	7.4	2.710	1.374	48	47.8
3   10 holes	6.0	2.440	1.240	40	39.8
4   7 holes	3.8	1.942	0.991	30	29.9
5   5 holes	2.4	1.543	0.792	22	21.9

Sampler Calibration Relationship

Slope(m): 44.968    Intercept(b): -14.397    Correlation Coefficient(r): 0.9977

Checked by: Magnum Fan

Date: 20/05/07

To = EPT  
Accn = Angela Tong  
pages = 4

**High-Volume TSP Sampler**  
**1-Point Calibration Record**

Location : HKU  
Calibrated by : K.T.Ho  
Date : 16/07/07

**Sampler**

Model : GMWS-2310 ACCU-VOL  
Serial Number : S/N 1060

**Calibration Office and Standard Calibration Relationship**

Serial Number : CM-AIR-43  
Service Date : 2 July 2007  
Slope (m) : 0.057452  
Intercept (b) : -0.026137  
Correlation Coefficient(r) : 0.999910

**Standard Condition**

Pstd (hpa) : 1013  
Tstd (K) : 298.18

**Calibration Condition**

Pa (hpa) : 1010  
Ta(K) : 303

**IC (Indicated flow)** : 40 cfm

**Actual flow** : 1.21 m<sup>3</sup>/min

Checked by: Magnum Fan

Date: 16/07/07

**High-Volume TSP Sampler**  
**1-Point Calibration Record**

Location : HKU  
Calibrated by : K.T.Ho  
Date : 13/09/07

**Sampler**

Model : GMWS-2310 ACCU-VOL  
Serial Number : S/N 1060

**Calibration Office and Standard Calibration Relationship**

Serial Number : CM-AIR-43  
Service Date : 2 July 2007  
Slope (m) : 0.057452  
Intercept (b) : -0.026137  
Correlation Coefficient(r) : 0.999910

**Standard Condition**

Pstd (hpa) : 1013  
Tstd (K) : 298.18

**Calibration Condition**

Pa (hpa) : 1011  
Ta(K) : 302

**IC (Indicated flow)** : 40 cfm

**Actual flow** : 1.21 m<sup>3</sup>/min

Checked by: Magnum Fan

Date: 14/09/07

High-Volume TSP Sampler  
5-Point Calibration Record

Location : HKU  
 Calibrated by : K.T.Ho  
 Date : 12/11/07  
Sampler  
 Model : GMWS-2310 ACCU-VOL  
 Serial Number : S/N 1060

Calibration Office and Standard Calibration Relationship

Serial Number : CM-AIR-43  
 Service Date : 2 July 2007  
 Slope (m) : 0.057452  
 Intercept (b) : -0.026137  
 Correlation Coefficient(r) : 0.999910

Standard Condition

Pstd (hpa) : 1013  
 Tstd (K) : 298.18

Calibration Condition

Pa (hpa) : 1011  
 Ta(K) : 298

Resistance Plate	dH [green liquid] (inch water)	Z	X=Qstd (cubic meter/min)	IC (indicated flow)	Y
1 18 holes	9.6	3.087	1.563	57	56.8
2 13 holes	7.2	2.673	1.356	47	46.8
3 10 holes	6.5	2.538	1.289	41	42.8
4 7 holes	3.8	1.942	0.991	30	29.9
5 5 holes	2.5	1.575	0.806	22	21.9

Sampler Calibration Relationship

Slope(m): 45.961 Intercept(b): -15.562 Correlation Coefficient(r): 0.9992

Checked by: Magnum Fan

Date: 13/11/07



**High-Volume TSP Sampler**  
**1-Point Calibration Record**

Location : HKU  
Calibrated by : K.T.Ho  
Date : 12/11/07

**Sampler**

Model : GMWS-2310 ACCU-VOL  
Serial Number : S/N 1060

**Calibration Office and Standard Calibration Relationship**

Serial Number : CM-AIR-43  
Service Date : 2 July 2007  
Slope (m) : 0.057452  
Intercept (b) : -0.026137  
Correlation Coefficient(r) : 0.999910

**Standard Condition**

Pstd (hpa) : 1013  
Tstd (K) : 298.18

**Calibration Condition**

Pa (hpa) : 1011  
Ta(K) : 298

**IC (Indicated flow)** : 40 cfm

**Actual flow** : 1.21 m<sup>3</sup>/min

Checked by: Magnum Fan

Date: 13/11/07

T6 = ERM  
 Allen = Ng Angela Tong

High-Volume TSP Sampler  
5-Point Calibration Record

Location : HKU  
 Calibrated by : K.T.Ho  
 Date : 15/01/08  
Sampler  
 Model : GMWS-2310 ACCU-VOL  
 Serial Number : S/N 1060

Calibration Office and Standard Calibration Relationship

Serial Number : CM-AIR-43  
 Service Date : 2 July 2007  
 Slope (m) : 0.057452  
 Intercept (b) : -0.026137  
 Correlation Coefficient(r) : 0.999910

Standard Condition

Pstd (hpa) : 1013  
 Tstd (K) : 298.18

Calibration Condition

Pa (hpa) : 1011  
 Ta (K) : 290


Resistance Plate	dH [green liquid] (inch water)	Z	X=Qstd (cubic meter/min)	IC (indicated flow)	Y
1   18 holes	12.6	3.578	1.808	65	65.5
2   13 holes	10.0	3.188	1.613	56	56.4
3   10 holes	8.0	2.851	1.445	50	50.4
4   7 holes	4.8	2.208	1.124	36	36.3
5   5 holes	3.0	1.746	0.893	26	26.2

Sampler Calibration Relationship

Slope(m): 42.641, Intercept(b): -11.724 Correlation Coefficient(r): 0.9996

Checked by: Magnum Fan

Date: 17/01/08



輝創工程有限公司

Sun Creation Engineering Limited Calibration and Testing Laboratory

Certificate No. : C071448

## Certificate of Calibration

*This is to certify that the equipment*

*Description : Sound Level Meter*

*Manufacturer : Rion*

*Model No. : NL-31*

*Serial No. : 00410224*

*has been calibrated for the specific items and ranges.  
The results are shown in the Calibration Report No. C071448.*

*The equipment is supplied by*

*Co. Name : Envirotech Services Co.*

*Address : Shop 6, G/F., Casio Mansion, 209 Shaukeiwan Road,  
Hong Kong*

*Date of Issue : 29 March 2007*

*Certified by :*



*K. Lee*

The test equipment used for testing are traceable to the National Standards as specified in this report.  
This report shall not be reproduced except in full and with prior written approval from this laboratory.

Calibration and Testing Laboratory of Sun Creation Engineering Limited

c/o 4/F, Tsing Shau Wai Exchange Building, 1 Hing On Lane, Tuen Mun, New Territories, Hong Kong  
Tel: 2927 2606 Fax: 2744 8986 E-mail: callab@suncreation.com Website: www.suncreation.com



輝創工程有限公司  
Sun Creation Engineering Limited

Post-It® Fax Note	7671	Date	13/14/07	# of pages	4
To	Angela Tong	From	K. W. Fan		
Co./Dept.	ERT	Co.	Envirotech		
Phone #	27723000	Phone #	2868450		
Fax #	27738660	Fax #	28681113		

Report No. : C071448

## Calibration Report

### ITEM TESTED

DESCRIPTION : Sound Level Meter  
MANUFACTURER : Rion  
MODEL NO. : NL-31  
SERIAL NO. : 00410224

### TEST CONDITIONS

AMBIENT TEMPERATURE : (23 ± 2)°C  
RELATIVE HUMIDITY : (55 ± 20)%  
LINE VOLTAGE : ---

### TEST SPECIFICATIONS

Calibration check

DATE OF TEST : 28 March 2007

JOB NO. : IC07-0797

### TEST RESULTS

The results apply to the particular unit-under-test only.  
All results are within manufacturer's specification.  
The results are detailed in the subsequent page(s).

The test equipment used for calibration are traceable to National Standards via :

- The Government of The Hong Kong Special Administrative Region Standard & Calibration Laboratory

Tested by : Chen Han Chan  
H. C. Chan

Date : 29 March 2007

The test equipment used for testing are traceable to the National Standards as specified in this report.  
This report shall not be reproduced except in full and with prior written approval from this laboratory.

Calibration and Testing Laboratory of Sun Creation Engineering Limited

c/o 41 Tsing Shan Wan Exchange Building, 1 Hing On Lane, Tuen Mun, New Territories, Hong Kong  
Tel: 2927 2606 Fax: 2741 8986 E-mail: calllab@suncreation.com Website: www.suncreation.com

Page 1 of 4

# 輝創工程有限公司

Sun Creation Engineering Limited Calibration and Testing Laboratory

Report No. : C071448

## Calibration Report

- The unit-under-test (UUT) was allowed to stabilize in the laboratory for over 24 hours, and switched on to warm up for over 10 minutes before the commencement of the test.
- Self-calibration using the Laboratory Acoustical Calibrator was performed before the test.
- The results presented are the mean of 3 measurements at each calibration point.
- Test equipment :

<u>Equipment ID</u>	<u>Description</u>	<u>Certificate No.</u>
CL280	40 MHz Arbitrary Waveform Generator	C072023
CL281	Multifunction Acoustic Calibrator	LF060193

- Test procedure : MA101N.

- Results :

- 6.1 Sound Pressure Level

- 6.1.1 Reference Sound Pressure Level

UUT Setting				Applied Value		UUT Reading (dB)	IEC 651 Type 1 Spec. (dB)
Range (dB)	Mode	Weight	Response	Level (dB)	Freq. (kHz)		
20 - 100	L	A	Fast	94.00	1	94.0	± 0.7

- 6.1.2 Linearity

UUT Setting				Applied Value		UUT Reading (dB)
Range (dB)	Mode	Weight	Response	Level (dB)	Freq. (kHz)	
30 - 120	L	A	Fast	94.00	1	94.0 (Ref.)
				104.00		104.0
				114.00		114.0

IEC 651 Type 1 Spec. : ± 0.4 dB per 10 dB step and + 0.7 dB for overall different.

- 6.2 Time Weighting

- 6.2.1 Continuous Signal

UUT Setting				Applied Value		UUT Reading (dB)	IEC 651 Type 1 Spec. (dB)
Range (dB)	Mode	Weight	Response	Level (dB)	Freq. (kHz)		
20 - 100	L	A	Fast	94.00	1	94.0	Ref.
			Slow			94.0	± 0.1

The test equipment used for testing are traceable to the National Standards as specified in this report.  
This report shall not be reproduced except in full and with prior written approval from this Laboratory.

Calibration and Testing Laboratory of Sun Creation Engineering Limited

c/o 1/F, Fong Shan Wan Exchange Building, 1 Hong On Lane, Tuen Mun, New Territories, Hong Kong

Tel: 2927 2606 Fax: 2714 8986 E-mail: calllab@suncreation.com Website: www.suncreation.com

Page 2 of 4

# 輝創工程有限公司

Sun Creation Engineering Limited Calibration and Testing Laboratory

Report No. : C071448

## Calibration Report

### 6.2.2 Tone Burst Signal (2 kHz)

UUT Setting				Applied Value		UUT Reading (dB)	IEC 651 Type 1 Spec. (dB)
Range (dB)	Mode	Weight	Response	Level (dB)	Burst Duration		
30 - 110	L	A	Fast	106.00	Continuous	106.0	Ref.
					200 ms	105.0	-1.0 ± 1.0
			Slow		Continuous	106.0	Ref.
					500 ms	102.0	-4.1 ± 1.0

### 6.3 Frequency Weighting

#### 6.3.1 A-Weighting

UUT Setting				Applied Value		UUT Reading (dB)	IEC 651 Type 1 Spec. (dB)
Range (dB)	Mode	Weight	Response	Level (dB)	Freq.		
20 - 100	L	A	Fast	94.00	31.5 Hz	55.0	-39.4 ± 1.5
					63 Hz	68.1	-26.2 ± 1.5
					125 Hz	78.0	-16.1 ± 1.0
					500 Hz	90.8	-3.2 ± 1.0
					1 kHz	94.0	Ref.
					2 kHz	95.2	+1.2 ± 1.0
					4 kHz	94.8	+1.0 ± 1.0
					8 kHz	90.6	-1.1 (+1.5 ; -3.0)

#### 6.3.2 C-Weighting

UUT Setting				Applied Value		UUT Reading (dB)	IEC 651 Type 1 Spec. (dB)
Range (dB)	Mode	Weight	Response	Level (dB)	Freq.		
20 - 100	L	C	Fast	94.00	31.5 Hz	91.4	-3.0 ± 1.5
					63 Hz	93.4	-0.8 ± 1.5
					125 Hz	94.0	-0.2 ± 1.0
					500 Hz	94.1	0.0 ± 1.0
					1 kHz	94.0	Ref.
					2 kHz	93.9	-0.2 ± 1.0
					4 kHz	93.0	-0.8 ± 1.0
					8 kHz	88.7	-3.0 (+1.5 ; -3.0)

The test equipment used for testing are traceable to the National Standards as specified in this report.  
This report shall not be reproduced except in full and with prior written approval from this laboratory.

Calibration and Testing Laboratory of Sun Creation Engineering Limited

c/o #41, Tsing Shan Wan Exchange Building, 1 Ding On Lane, Tuen Mun, New Territories, Hong Kong

Tel: 2927 2606 Fax: 2744 8986 E-mail: callabo@suncreation.com Website: www.suncreation.com

Page 3 of 4


**輝創工程有限公司**
**Sun Creation Engineering Limited Calibration and Testing Laboratory**

Report No. : C071448

## Calibration Report

## 6.4 Time Averaging

UUT Setting			Applied Value						UUT	IEC 60804	
Range (dB)	Mode	Weight	Integrating Time	Freq. (kHz)	Burst Duration (ms)	Burst Duty Factor	Burst Level (dB)	Equivalent Level (dB)	Reading (dB)	Type 1 Spec (dB)	
30 - 110	Leq	A	10 sec.	4	1	1/10	110.0	100	100.0	± 0.5	
								1/10 <sup>2</sup>	90	90.0	± 0.5
			60 sec.					1/10 <sup>3</sup>	80	80.0	± 1.0
			5 min					1/10 <sup>4</sup>	70	70.0	± 1.0

Remarks : - Mfr's Spec. : IEC 651 &amp; IEC 60804 Type 1

- Uncertainties of Applied Value : 94 dB : 31.5Hz - 125 Hz : ± 0.35 dB  
 500 Hz : ± 0.30 dB  
 1 kHz : ± 0.20 dB  
 2 kHz - 4 kHz : ± 0.35 dB  
 8 kHz : ± 0.45 dB  
 104 dB : 1 kHz : ± 0.30 dB (Ref. 94 dB)  
 114 dB : 1 kHz : ± 0.10 dB (Ref. 94 dB)  
 Burst equivalent level : ± 0.2 dB (Ref. 110 dB continuous sound level)

- The uncertainties are for a confidence probability of not less than 95 %.

## Note :

The values given in this Calibration Report only relate to the values measured at the time of the test and any uncertainties quoted will not include allowance for the equipment long term drift, variations with environment changes, vibration and shock during transportation, overloading, mis-handling, or the capability of any other laboratory to repeat the measurement. Sun Creation Engineering Limited shall not be liable for any loss or damage resulting from the use of the equipment.

The test equipment used for testing are traceable to the National Standards as specified in this report.  
 This report shall not be reproduced except in full and with prior written approval from this laboratory.

Calibration and Testing Laboratory of Sun Creation Engineering Limited

 C/O 41, Tsing Shan Wan Exchange Building, 1 Hoi Yee Lane, Tuen Mun, New Territories, Hong Kong  
 Tel: 2977 2696 Fax: 2744 8986 E-mail: collab@suncreation.com Website: www.suncreation.com

Annex E

## Summary of Implementation Status



## Annex E Environmental Mitigation Implementation Schedule

Environmental Protection Measures	Location	Implementation Agent	Implementation Status
<i>Construction Air Quality</i>			
The areas for temporary stockpiling of excavated materials should be provided with enclosed shelters.	Stockpile zone	Contractor	N/A.
Stockpile of dusty material outside the cavern and the stockpile zone shelters should be covered entirely with impervious sheeting or sprayed with water or a dust suppression chemical to keep the entire surface wet.	Work areas	Contractor	√
Skip hoist for material transport should be totally enclosed by impervious sheeting.	Work areas	Contractor	N/A
Every vehicle should be washed to remove any dusty materials from its body and wheels before leaving a construction site.	Work areas	Contractor	Δ
The area where vehicle washing takes place and the section of the road between the washing facilities and the exit point should be paved with concrete, bituminous materials or hardcores.	Work areas	Contractor	√
Where a site boundary adjoins a road, streets or other accessible to the public, hoarding of not less than 2.4 m high from ground level should be provided along the entire length except for a site entrance or exit.	Work areas	Contractor	√
Every stock of more than 20 bags of cement should be covered entirely by impervious sheeting placed in an area sheltered on the top and the 3 sides.	Work areas	Contractor	√
All dusty materials should be sheltered, covered entirely or sprayed with water prior to any loading, unloading or transfer operation so as to maintain the dusty materials wet.	Work areas	Contractor	Δ
The height from which excavated materials dropped should be controlled to a minimum practical height to limit fugitive dust generation from unloading.	Work areas	Contractor	√
The load of dusty materials carried by vehicle leaving a construction site should be covered entirely by clean impervious sheeting to ensure dust materials do not leak from the vehicle.	Work areas	Contractor	√

### Remarks:

- √ Compliance of Mitigation Measures
- <> Compliance of Mitigation but need improvement
- x Non-compliance of Mitigation Measures
- ▲ Non-compliance of Mitigation Measures but rectified by Gammon
- Δ Deficiency of Mitigation Measures but rectified by Gammon
- N/A Not Applicable

<b>Environmental Protection Measures</b>	<b>Location</b>	<b>Implementation Agent</b>	<b>Implementation Status</b>
Diesel-powered equipment should be properly maintained to control gaseous emissions.	Work areas	Contractor	√
Regular watering should be provided to the unpaved haul road and dusty material.	All unpaved haul roads, bulldozed material, exposed site areas	Contractor	Δ
Excavation / earth moving operation should be sprayed with water.	Work areas	Contractor	√
Continuous 24-hour TSP monitoring should be conducted at designated location once per week throughout the construction period.	Designated location	ET	√
<b>Construction Noise</b>			
Noise enclosure at the portal of the Project should be provided in accordance with the submitted noise enclosure design plan.	Portal area	Contractor	√
Noise enclosure should be properly maintained to ensure that it is properly functioning throughout the construction stage of the Project.	Portal area	Contractor	√
Idling PME should be switched off.	Work areas	Contractor	√
Noisy PME should be placed inside the cavern or sited as far away from the NSRs as practicable.	Work areas	Contractor	√
Quiet PME should be used as far as practicable.	Work areas	Contractor	√
Stored materials and temporary structures, if applicable, should be sited in practical locations to screen NSRs from noisy on-site construction activities.	Work areas	Contractor	√
Work sequences should be scheduled to avoid the simultaneous use of noisy PME in close proximity to NSRs.	Work areas	Contractor	√
Quieter power units of stationary and earth moving plant with partial or full enclosures or vibratory isolation	All areas	Contractor	√
All plant and equipment to be used on the construction site shall be properly maintained in good operating condition.	All areas	Contractor	√
Construction noise monitoring should be conducted at designated locations once per week throughout the construction period	Designated locations	ET	√
<b>Construction Water Quality</b>			

Remarks:

- √ Compliance of Mitigation Measures
- <> Compliance of Mitigation but need improvement
- x Non-compliance of Mitigation Measures
- ▲ Non-compliance of Mitigation Measures but rectified by Gammon
- Δ Deficiency of Mitigation Measures but rectified by Gammon
- N/A Not Applicable

Environmental Protection Measures	Location	Implementation Agent	Implementation Status
Discharge license for discharge of effluent from the construction site should be applied under the WPCO. The discharge quality must meet the requirements specified in the discharge license. All the runoff and wastewater generated from the works areas should be treated so that it satisfies all the standards listed in the TM-DSS.	-	Contractor	Δ
Provide proper sewage treatment and disposal facilities in the form of chemical toilets for site staff and workers.	Work areas	Contractor	√
Open stockpiles of construction material on the work site should be covered with tarpaulin or similar fabric during rainstorms.	Work areas	Contractor	√
Treatment facility (e.g. WetSep) should be provided on site to treat all tunneling groundwater.	Work areas	Contractor	√
All runoff should be properly collected and treated prior to discharge to the stormwater drain.	Work areas	Contractor	Δ
Peripheral interceptor drains around the site boundary should be provided to segregate surface runoff.	Site boundary	Contractor	√
Silt removal facilities, channels and manholes should be maintained and the deposited silt and grit should be removed regularly, at the onset of and after each rainstorm to ensure that these facilities are functioning properly at all times	Work areas	Contractor	Δ
Earthworks final surfaces should be well compacted and the subsequent permanent work or surface protection should be carried out immediately after the final surfaces are formed to prevent erosion caused by rainstorms. Appropriate drainage like intercepting channels should be provided where necessary.	Work areas	Contractor	N/A
Open stockpiles of construction materials (e.g. aggregates, sand and fill material) on sites should be covered with tarpaulin or similar fabric during rainstorms. Measures should be taken to prevent the washing away of construction materials, soil, silt or debris into any drainage system.	Work areas	Contractor	√

Remarks:

- √ Compliance of Mitigation Measures
- <> Compliance of Mitigation but need improvement
- x Non-compliance of Mitigation Measures
- ▲ Non-compliance of Mitigation Measures but rectified by Gammon
- Δ Deficiency of Mitigation Measures but rectified by Gammon
- N/A Not Applicable

Environmental Protection Measures	Location	Implementation Agent	Implementation Status
Manholes (including newly constructed ones) should always be adequately covered and temporarily sealed so as to prevent silt, construction materials or debris from getting into the drainage system, and to prevent storm run-off from getting into foul sewers. Discharge of surface run-off into foul sewers must always be prevented in order not to unduly overload the foul sewerage system.	Work areas	Contractor	√
Water used in ground boring and drilling or rock /soil anchoring should as far as practicable be re-circulated after sedimentation. When there is a need for final disposal, the wastewater should be discharged into storm drains via silt removal facilities.	Work areas	Contractor	N/A (The re-circulated system is being connected.)
A wheel washing bay should be provided at every site exit if practicable and wash-water should have sand and silt settled out or removed before discharging into storm drains. The section of construction road between the wheel washing bay and the public road should be paved with backfall to reduce vehicle tracking of soil and to prevent site run-off from entering public road drains.	Wheel washing bay	Contractor	√
<b>Construction Waste</b>			
Contractor should register as a chemical waste producer if chemical wastes would be produced from the construction activities.	-	Contractor	√
Good quality containers compatible with the chemical wastes should be used, and incompatible chemicals should be stored separately. Appropriate labels should be securely attached on each chemical waste container.	Work areas	Contractor	√
The Contractor shall use a licensed collector to transport and dispose of the chemical wastes in accordance with the Waste Disposal (Chemical Waste) (General) Regulation.	Work areas	Contractor	N/A
Training to site personnel in proper waste management and chemical handling procedures should be provided.	Work areas	Contractor	√
Regular cleaning and maintenance programme for drainage systems, sumps and oil interceptors should be conducted.	Work areas	Contractor	Δ

Remarks:

- √ Compliance of Mitigation Measures
- <> Compliance of Mitigation but need improvement
- x Non-compliance of Mitigation Measures
- ▲ Non-compliance of Mitigation Measures but rectified by Gammon
- Δ Deficiency of Mitigation Measures but rectified by Gammon
- N/A Not Applicable

Environmental Protection Measures	Location	Implementation Agent	Implementation Status
Appropriate measures to minimize windblown litter and dust during transportation of waste by either covering trucks or by transporting wastes in enclosed containers should be implemented.	Work areas	Contractor	√
Sufficient waste disposal points and regular collection of waste should be provided.	Work areas	Contractor	Δ
Sorting of demolition debris and excavated materials from demolition works to recover reusable/ recyclable portions (ie soil, broken concrete, metal, etc) should be implemented.	All areas	Contractor	√
Different types of waste should be segregate and stored in different containers, skips or stockpiles to enhance reuse or recycling of materials and their proper disposal.	Work areas	Contractor	√
Encourage collection of aluminum cans by individual collectors by providing separate labeled bins to enable this waste to be segregated from other general refuse generated by the work force.	Work areas	Contractor	√
Proper storage and site practices should be implemented to minimize the potential for damage to contamination of construction materials.	Work areas	Contractor	√
Construction materials should be carefully planned and stocked to minimize amount of waste generated and avoid unnecessary generation of waste.	Work areas	Contractor	√
General refuse should be stored in enclosed bins or compaction units separate from C&D material. A reputable waste collector should be employed by the contractor to remove general refuse from the site, separately from C&D material. Preferably an enclosed and covered area should be provided to reduce the occurrence of 'wind blown' light material.	Work areas	Contractor	√
A Waste Management Plan should be prepared in accordance with ETWB TCW No. 19/2005 and to be implemented throughout the construction stage.	Work areas	Contractor	√

Remarks:

- √ Compliance of Mitigation Measures
- <> Compliance of Mitigation but need improvement
- x Non-compliance of Mitigation Measures
- ▲ Non-compliance of Mitigation Measures but rectified by Gammon
- Δ Deficiency of Mitigation Measures but rectified by Gammon
- N/A Not Applicable

<b>Environmental Protection Measures</b>	<b>Location</b>	<b>Implementation Agent</b>	<b>Implementation Status</b>
A recording system with details on the amount of wastes and construction and demolition material generated, recycled and disposed (including the disposal sites) should be developed in accordance with ETWB TCW No.31/2004.	Work areas	Contractor	√
<b>Ecology</b>			
No construction works should be carried out on the ground surface within the secondary woodland habitat as shown in Figure 2 of Environmental Permit EP-279/2007. Fence or hoardings should be provided along the boundary to prevent vehicles movement, and encroachment of personnel, onto adjacent woodland areas.	Woodland areas	Contractor	√
No construction discharge should be discharged into the two natural seasonal streams as shown in Figure 2 of Environmental Permit EP-279/2007.	Work areas	Contractor	√
Storm water runoff should be directed into existing drainage channel via silt removal facility.	Work areas	Contractor	√
Channels, bunds or sand bag barriers will be provided on site to properly direct site runoff to such silt removal facilities.	Work areas	Contractor	Δ
<b>Landscape and Visual</b>			
Site hoarding, roof covers, noise barriers and offices should be coloured to complement the surrounding landscape and to minimize visual impacts.	Site boundary	Contractor	√
The Contractor should maintain the site in a neat and tidy state during construction phase.	All areas	Contractor	√
The portal should be finished with materials and finishes that complement the surrounding landscape and are of low reflectivity.	All areas	Contractor	N/A
New plantings should be installed at the location that is not conflicts with the completion of the reprovisioning works.	All areas	Contractor	N/A
<b>Cultural Heritage</b>			
Fencing should be erected around the entire Elliot Treatment Works.	Elliot Treatment Works	Contractor	√

Remarks:

- √ Compliance of Mitigation Measures
- <> Compliance of Mitigation but need improvement
- x Non-compliance of Mitigation Measures
- ▲ Non-compliance of Mitigation Measures but rectified by Gammon
- Δ Deficiency of Mitigation Measures but rectified by Gammon
- N/A Not Applicable

Environmental Protection Measures	Location	Implementation Agent	Implementation Status
Concurrent construction works of the Project with the adjacent works should be carefully planned to minimize the potential building movement on the Elliot Treatment Works.	Elliot Treatment Works	Contractor	√
Monitoring should be conducted at designated locations in accordance with the EM&A Manual.	Designated locations	Contractor	√

Remarks:

- √ Compliance of Mitigation Measures
- <> Compliance of Mitigation but need improvement
- x Non-compliance of Mitigation Measures
- ▲ Non-compliance of Mitigation Measures but rectified by Gammon
- Δ Deficiency of Mitigation Measures but rectified by Gammon
- N/A Not Applicable

Annex F

## 24-hour TSP Monitoring Results



## Impact 24-hr TSP Monitoring Results

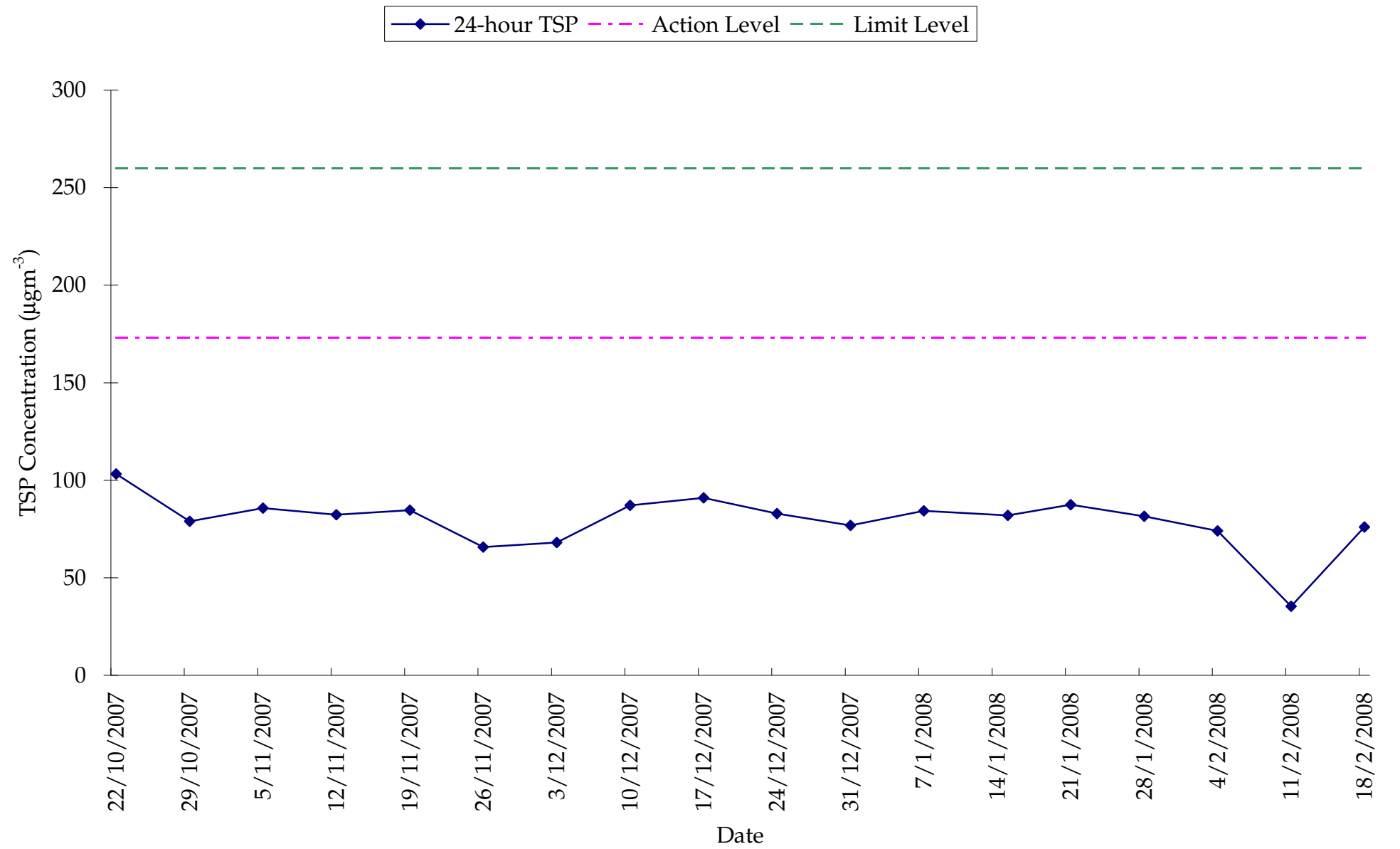
### 24-hour TSP Monitoring Results at Station AM1 (Rooftop of Chow Yei Ching Building)

Date	Filter Weight (g)		Flow Rate (m <sup>3</sup> /min.)		Elapse Time		Sampling Time(hrs.)	Conc. (µg/m <sup>3</sup> )	Weather Condition	Ave. Air Temp. (°C)	Particulate weight(g)	Av. flow (m <sup>3</sup> /min)	Total vol. (m <sup>3</sup> )
	Initial	Final	Initial	Final	Initial	Final							
21-Jan-08	2.8535	3.0060	1.21	1.21	10069.1	10093.1	24.0	88	Sunny	18	0.1525	1.21	1742.4
28-Jan-08	2.7554	2.8975	1.21	1.21	10093.1	10117.1	24.0	82	Cloudy	14	0.1421	1.21	1742.4
4-Feb-08	2.7888	2.9179	1.21	1.21	10117.1	10141.1	24.0	74	Cloudy	13	0.1291	1.21	1742.4
11-Feb-08	2.8064	2.9298	1.21	1.21	10141.1	10165.1	24.0	71	Cloudy	14	0.1234	1.21	1742.4
18-Feb-08	2.7969	2.9295	1.21	1.21	10165.1	10189.1	24.0	76	Sunny	19	0.1326	1.21	1742.4
								Min	71				
								Max	88				
								Average	78				

## Meteorological Data Extracted from King's Park Stations of the Hong Kong Observatory

Date	Weather	King's Park Station				
		Average Air Temperature (°C)	Average Wind Speed (km/h)	Average Relative Humidity (%)	Total Rainfall (mm)	Prevailing Wind Direction (Degrees)
21-Jan-08	Sunny	17.8	5.5	77.0	0.0	260
28-Jan-08	Cloudy	13.9	3.5	86.0	0.0	110
4-Feb-08	Cloudy	11.9	25.0	82.0	1.5	70
11-Feb-08	Cloudy	10.1	24.0	69.0	1.8	70
18-Feb-08	Sunny	16.9	26.0	72.0	0.0	70

Figure F1 - Measured 24-hour TSP Concentration ( $\mu\text{gm}^{-3}$ ) at AM1



Annex G

# Construction Noise Monitoring Results

## Construction Noise Monitoring Results

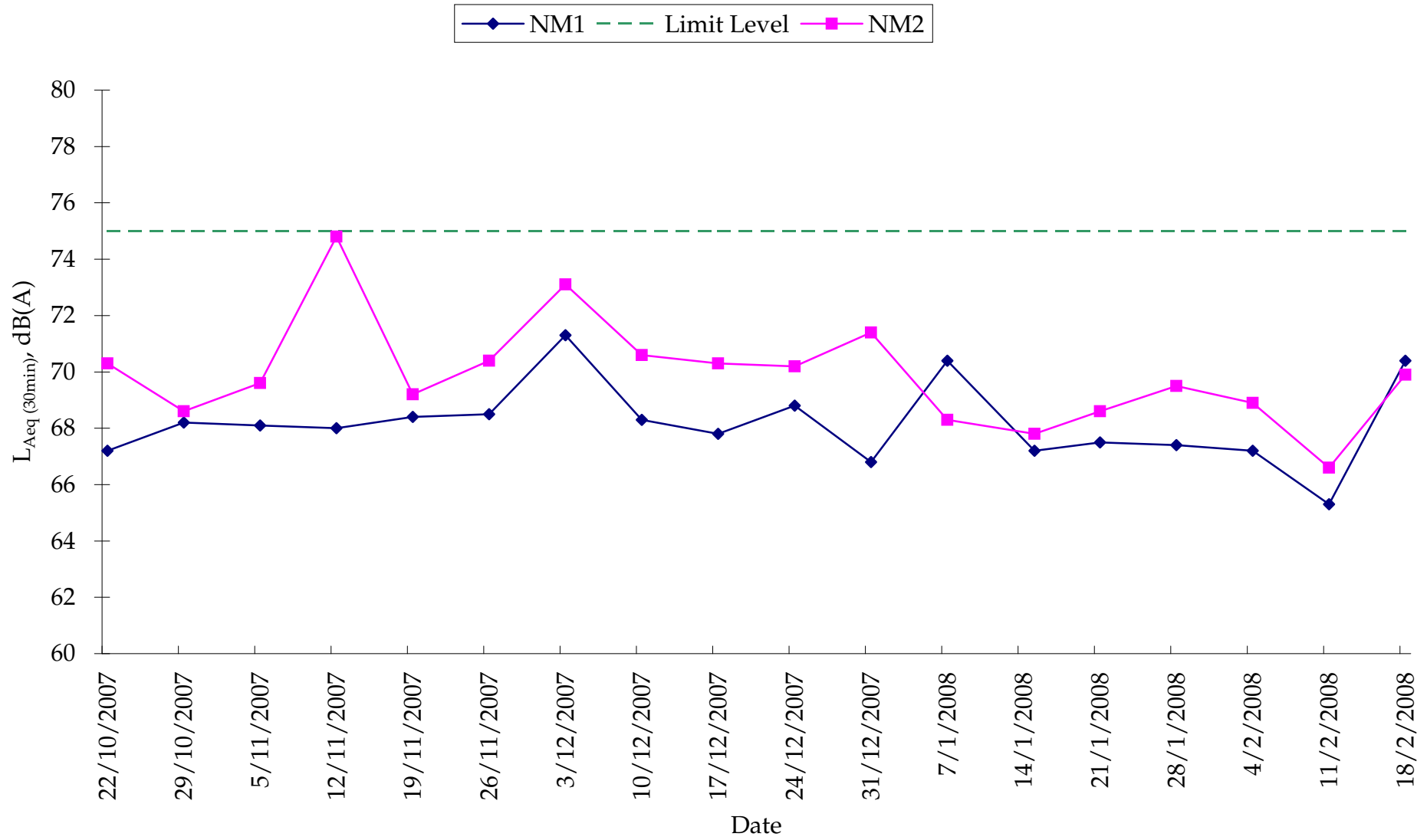
Monitoring Location: NM1 - Refuge Floor of Tower 3, The Belcher's

Date	Measurement Period, hours		Measured Noise Level, dB(A)			Noise Criteria, L <sub>eq(30mins)</sub> , dB(A)	Compliance (Y/N)	Remark
	Start	End	L <sub>eq</sub>	L <sub>10</sub>	L <sub>90</sub>			
21-Jan-08	13:27	13:57	67.5	69.5	64.5	75.0	Y	-
28-Jan-08	13:22	13:52	67.4	69.1	64.5	75.0	Y	-
4-Feb-08	13:25	13:55	67.2	69.2	64.4	75.0	Y	-
11-Feb-08	13:25	13:55	65.3	67.6	61.9	75.0	Y	-
18-Feb-08	13:25	13:55	70.4	72.7	65.6	75.0	Y	-

Monitoring Location: NM2 - Roof of Starr Hall

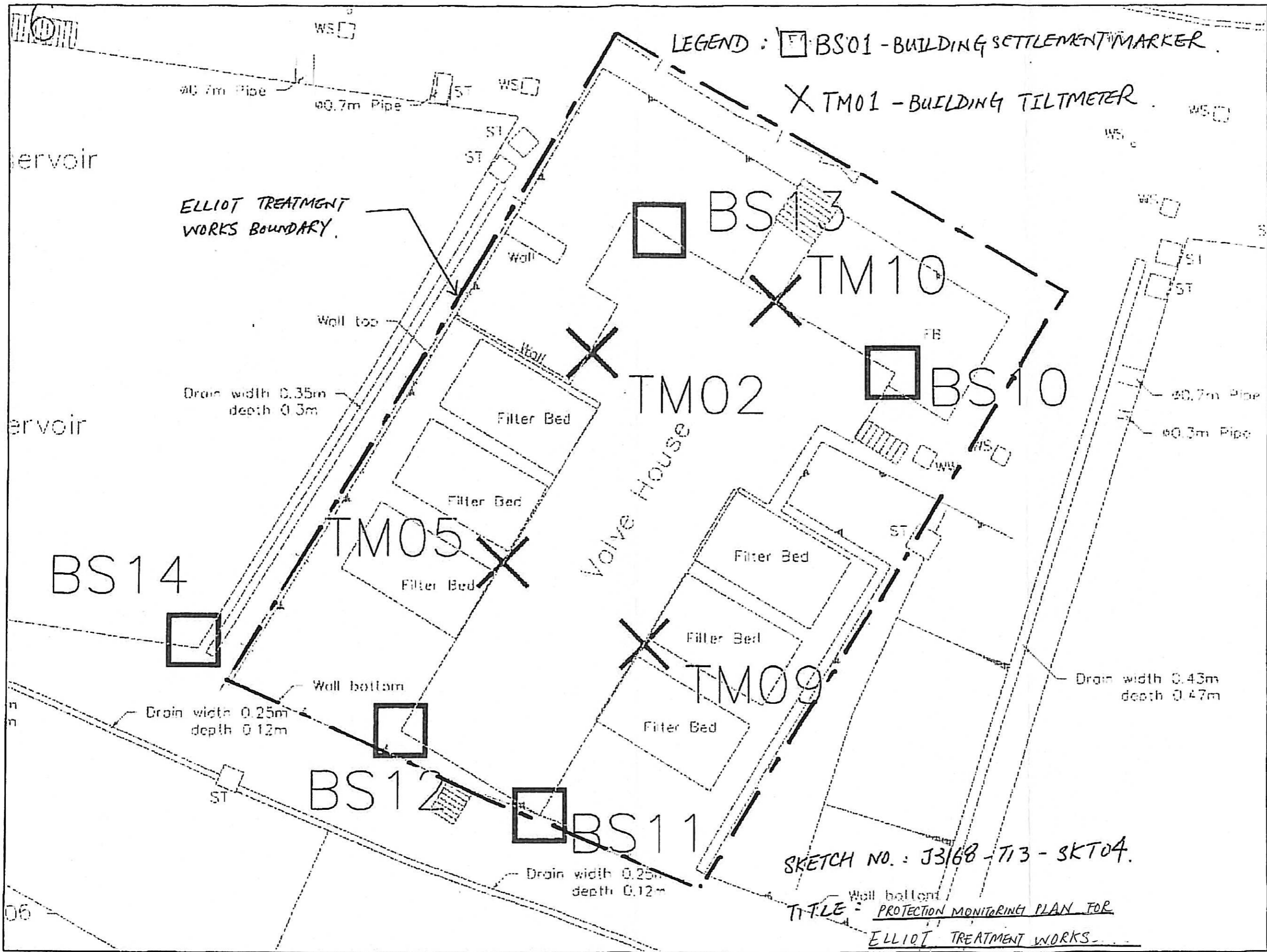
Date	Measurement Period, hours		Measured Noise Level, dB(A)			Noise Criteria, L <sub>eq(30mins)</sub> , dB(A)	Compliance (Y/N)	Remark
	Start	End	L <sub>eq</sub>	L <sub>10</sub>	L <sub>90</sub>			
21-Jan-08	14:12	14:42	68.6	70.6	65.8	75.0	Y	-
28-Jan-08	14:06	14:36	69.5	71.7	65.8	75.0	Y	-
4-Feb-08	14:10	14:40	68.9	71.5	65.3	75.0	Y	-
11-Feb-08	14:10	14:40	66.6	69.3	61.9	75.0	Y	-
18-Feb-08	14:07	14:37	69.9	72.2	66.3	75.0	Y	-

Figure G1 - Noise Monitoring Results ( $L_{eq, 30min}$ )



Annex H

## Cultural Heritage Monitoring Results









**SETTLEMENT MONITORING RECORD SHEET**

Instrument ID : BS-010A

Type : Building Settlement Marker Type DMP5

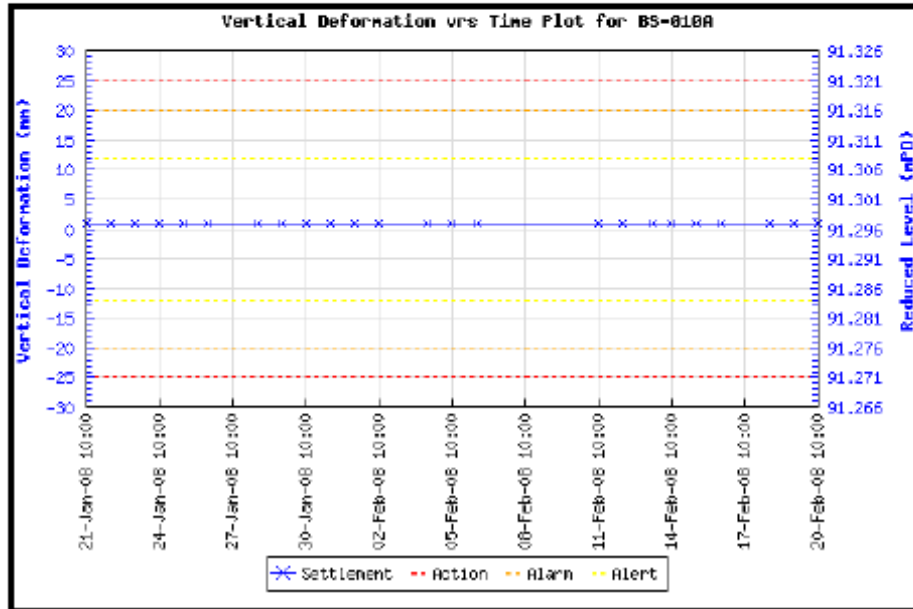
Easting : 831808.247

Northing : 816016.001

Initial Level : 91.298 mPD

Location : Valve House

Remark :


**SETTLEMENT MONITORING RECORD SHEET**

Instrument ID : BS-011

Type : Building Settlement Marker Type DMP5

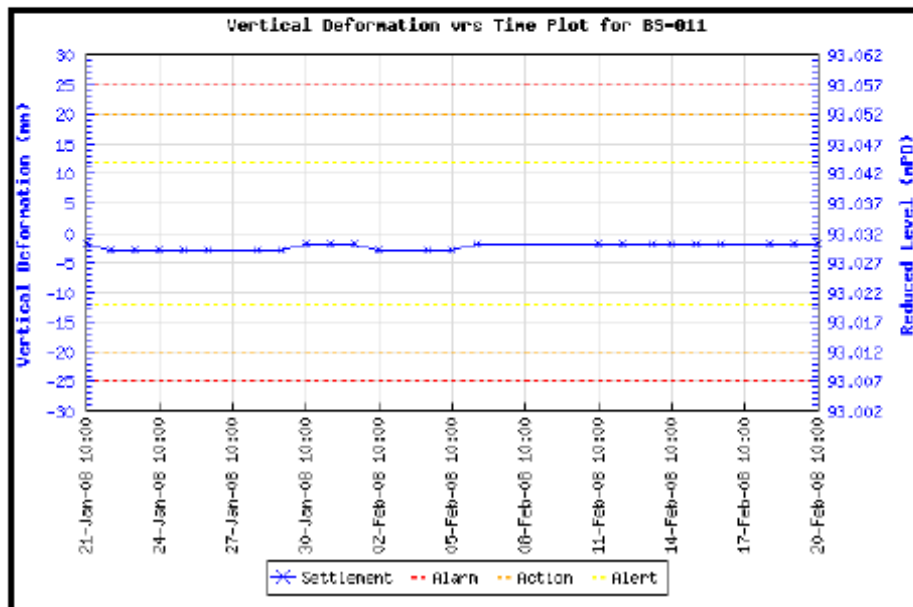
Easting : 831795.830

Northing : 815997.133

Initial Level : 93.032 mPD

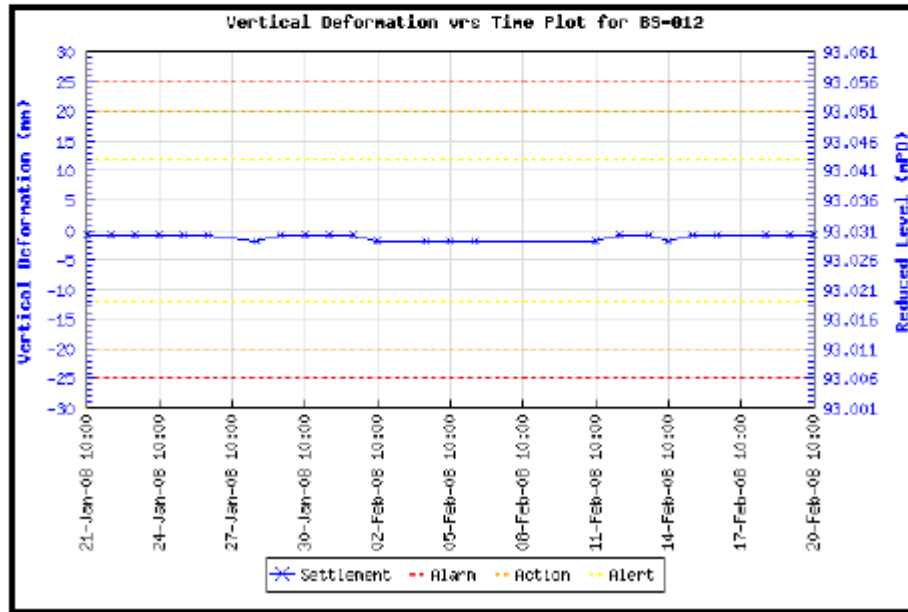
Location : Valve House

Remark :

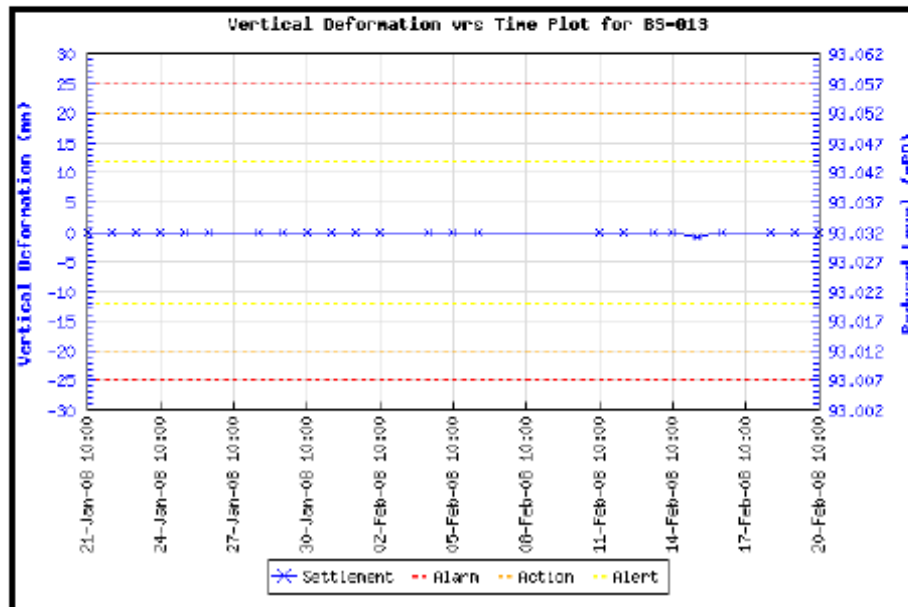


**SETTLEMENT MONITORING RECORD SHEET**

 Instrument ID : BS-012  
 Easting : 831796.239  
 Location : Valve House  
 Remark :

 Type : Building Settlement Marker Type DMP5  
 Northing : 816000.503 Initial Level : 93.031 mPD

**SETTLEMENT MONITORING RECORD SHEET**

 Instrument ID : BS-013  
 Easting : 831800.805  
 Location : Valve House  
 Remark :

 Type : Building Settlement Marker Type DMP5  
 Northing : 816020.664 Initial Level : 93.032 mPD


**SETTLEMENT MONITORING RECORD SHEET**

Instrument ID : BS-014

Type : Building Settlement Marker Type DMP5

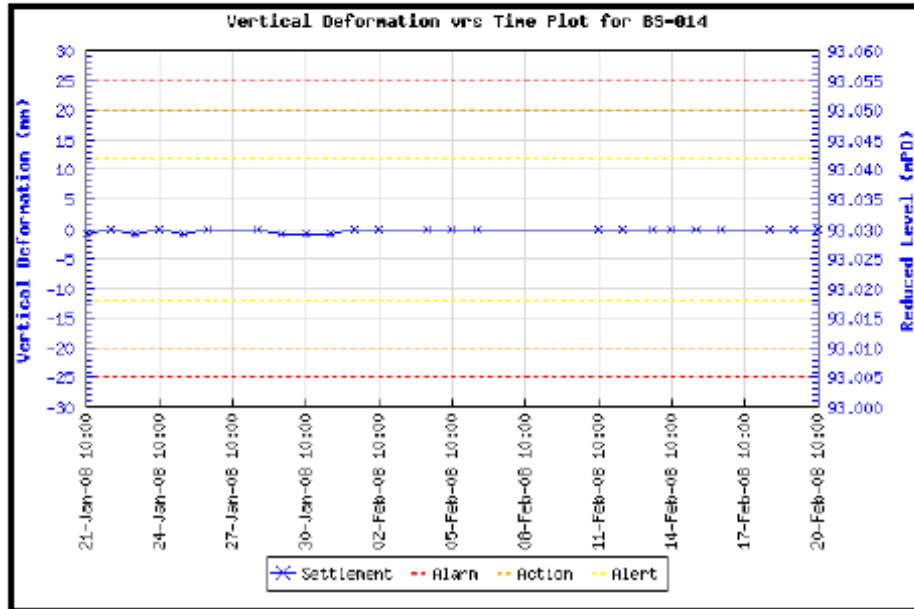
Easting : 831781.965

Northing : 816004.142

Initial Level : 93.030 mPD

Location : Reservoir

Remark :



Annex I

## Waste Flow Table

## Re-provisioning and Upgrading of Salt Water Service Reservoirs in Western District for Water Supplies Department

**Name of Project Proponent: The University of Hong Kong**

**Project Commencement Date: 21 July 2007**

**Construction Completion Date: December 2008**

### Monthly Summary Waste Flow Table for Year 2008

Period	Actual Quantities of inert C&D Materials (in 10 <sup>3</sup> Kg) <sup>(1)</sup>					Actual Quantities of C&D Wastes (in 10 <sup>3</sup> Kg) <sup>(4)</sup>								
	Total Quantity Generated	Broken Concrete <sup>(2)</sup>	Reused in the Contract	Reused in other Projects <sup>(3)</sup>	Disposed as Public Fill	Metals		Plastic		Paper/cardboard packaging		Chemical Waste (L)		Other waste (e.g. general refuse)
	(a)	(b)	(c)	(d)	(a)-(b)-(c)-(d)	Recycle	Disposal	Recycle	Disposal	Recycle	Disposal	Recycle	Disposal	Disposal
21 Dec 07 – 20 Jan 08	5877	0	0	0	5877	0	0	0	0	0	0	0	0	0
21 Jan 08 – 20 Feb 08	9895	0	0	0	9895	0	0	0	0	0	0	0	0	0
<b>Total</b>	15772	0	0	0	15772	0	0	0	0	0	0	0	0	0

Note: <sup>(1)</sup> Inert C&D materials include bricks, concrete, building debris, rubble and excavated soil.

<sup>(2)</sup> Broken concrete for recycling into aggregates.

<sup>(3)</sup> Plastics refer to plastic bottles/containers, plastic sheets/foam from packaging material

<sup>(4)</sup> C&D material includes metals, paper / cardboard packaging waste, chemical waste and other wastes such as general refuse.