



Construction of a Secondary Boundary Fence and New Sections of Primary Boundary Fence and Boundary Patrol Road

Section 4 – Lin Ma Hang Village to Sha Tau Kok
Monthly EM&A Report for February 2012 (Rev A)

March 2012
Architectural Services Department



Construction of a Secondary Boundary
Fence and New Sections of Primary
Boundary Fence and Boundary Patrol Road

Section 4 – Lin Ma Hang Village to Sha Tau Kok
Monthly EM&A Report for February 2012 (Rev A)

March 2012

Architectural Services Department

39/F Queensway Government Offices, 66 Queensway, Hong Kong

**Pursuant to Condition 4.5 of Environmental Permit No. EP-347/2009/A,
Condition 4.5 of Further Environmental Permit No. FEP-03/347/2009, and
Condition 4.5 of Further Environmental Permit No. FEP-04/347/2009/A,
this Monthly EM&A Report for February 2012 has been certified by the
Environmental Team Leader and verified by the Independent
Environmental Checker as having complied with the requirements as set
out in the EM&A Manual.**

Certified by:



Florence Yuen
Environmental Team Leader (ETL)
Mott MacDonald Hong Kong Limited

Date

14 March 2012

Verified by:



David Yeung
Independent Environmental Checker (IEC)
ENVIRON Hong Kong Limited

Date

14 March 2012

Content

Chapter	Title	Page
	Executive Summary	i
1.	Introduction	1
1.1	Background	1
1.2	Project Organisation	2
1.3	Works Undertaken in the Reporting Month	2
2.	EM&A Requirements	5
2.1	Summary of EM&A Requirements	5
2.2	Implementation of Environmental Mitigation Measures	5
3.	Noise Impact Monitoring	6
3.1	Monitoring Parameters, Frequency and Duration	6
3.2	Monitoring Location	6
3.3	Monitoring Equipment	7
3.4	Equipment Calibration	7
3.5	Monitoring Methodology	7
3.5.1	Field Monitoring	7
3.5.2	Maintenance and Calibration	8
3.6	Results of Impact Monitoring	8
4.	Environmental Site Inspection and Audit	9
4.1	Site Inspections	9
4.2	Environmental Meetings	9
4.3	Status of Environmental Submissions, Permits and Licences	9
4.4	Advice on the Solid and Liquid Waste Management Status	10
4.5	Review of Environmental Monitoring Procedures	10
4.6	Implementation Status of Environmental Mitigation Measures	10
5.	Record of Non-compliance, Complaints, Notifications of Summons and Successful Prosecutions	11
5.1	Non-compliance of Action and Limit Levels	11
5.2	Environmental Complaints	11
5.3	Notifications of Summons and Successful Prosecutions	11
6.	Future Key Issues	12
6.1	Construction Programme for the Next Reporting Month	12
6.2	Key Issues for the Next Reporting Month	12
6.2.1	Air	12
6.2.2	Noise	12
6.2.3	Water Quality	12
6.2.4	Waste	13
6.2.5	Ecology	13
6.2.6	Landscape and Visual	13

6.3	Monitoring Schedule for the Next Reporting Month	13
-----	--	----

7.	Conclusions and Recommendations	14
7.1	Conclusions	14
7.2	Recommendations	14

Appendices 15

Appendix A.	Construction Works Programme	17
Appendix B.	Project Organisation Chart for Section 4	25
Appendix C.	Environmental Quality Performance Limits	27
Appendix D.	Event and Action Plans	29
Appendix E.	Schedule of Mitigation Measures from the EIA Report and EM&A Manual	31
Appendix F.	EM&A Schedule	43
Appendix G.	Calibration Certificates	45
Appendix H.	Noise Monitoring Results and Graphical Presentation	47
Appendix I.	Monthly Waste Flow Table	49
Appendix J.	Complaint Log	52
Appendix K.	Weather Information from Hong Kong Observatory	53

Figures

Figure 1.1:	General Layout Plan	3
Figure 1.2:	Location of Secondary Boundary Fence and Noise Monitoring Station at Section 4	4

Tables

Table 2.1:	Summary of EM&A Impact Requirements	5
Table 3.1:	Noise Monitoring Parameters, Frequency and Duration	6
Table 3.2:	Noise Impact Monitoring Location	6
Table 3.3:	Noise Monitoring Equipment	7
Table 3.4:	Noise Monitoring Equipment Calibration Frequencies	7
Table 4.1:	Summary of Environmental Site Inspections	9
Table 4.2:	Status of Environmental Submissions, Permits and Licences	9
Table 4.3:	Environmental Submissions Made under the Valid EP & FEP(s) during the Reporting Month	10
Table 4.4:	Implementation Schedule of Mitigation Measures	10
Table C.1:	Action and Limit Levels for Construction Noise	27
Table D.1:	Event and Action Plan for Construction Noise	29
Table E.1:	Recommended Mitigation Measures – Air Quality	31
Table E.2:	Recommended Mitigation Measures – Noise	32
Table E.3:	Recommended Mitigation Measures – Water Quality	33
Table E.4:	Recommended Mitigation Measures – Waste Management	35
Table E.5:	Recommended Mitigation Measures – Ecology	37
Table E.6:	Recommended Mitigation Measures – Landscape and Visual	38
Table I.1:	Monthly Summary Waste Flow Table for 2010	49
Table I.2:	Monthly Summary Waste Flow Table for 2011	50
Table I.3:	Monthly Summary Waste Flow Table for 2012	51
Table J.1:	Complaint Log for the Reporting Month	52

Executive Summary

Mott MacDonald Hong Kong Limited (MMHK) has been commissioned by the Architectural Services Department (ArchSD) as the Environmental Team (ET) to carry out Environmental Monitoring and Audit (EM&A) services for the construction of a secondary boundary fence (SBF) at Section 4 along the boundary in the Frontier Closed Area (FCA).

This is the 21st Monthly EM&A Report for the works carried out during the reporting month from 1 to 29 February 2012, and presents a summary of the environmental monitoring and audit works, list of activities, and mitigation measures implemented during the same period.

Site Activities

The following major construction activities took place during the reporting month:

Works Order No. 1 (ASD 010962):

- No major works. (Substantial completion was certified on 12 October 2010.)

Works Order No. 2 (ASD 010969):

- No major works. (Substantial completion was certified on 27 July 2011.)

Works Order No. 3 (ASD 010974):

- No major works. (Substantial completion was certified on 17 October 2011.)

In addition, the following works not related to the Project took place during the reporting month:

- Footpath improvement works by the Highways Department (HyD) adjacent to the Project site at Sha Tau Kok Road.

Breach of Action and Level Limits

There was no breach of Action or Limit levels for noise level (measured as L_{eq}) in the reporting month.

Complaints

There was no record of complaints received in the reporting month.

Notification of Summons and Successful Prosecutions

There was no record of Notification of summons and successful prosecution in the reporting month.

Reporting Changes

Noise monitoring at STK-DBD was discontinued in early January 2012. Weekly EM&A site inspections continued during the reporting month.

Future Key Issues

There are some works outstanding at the new SBF, checkpoint and kiosk/guard house sites, however the commencement date is yet to be confirmed. Key issues to be considered during such works are expected to include:

Air

- Regular maintenance of all plant and equipment;
- Handling of any excavated dusty materials or stockpile of dusty materials;
- Spraying of water prior to any loading, unloading or transfer of dusty materials; and
- Washing of vehicles before leaving the construction sites.

Noise

- Location of noisy equipment and noisy activities relative to the Noise Sensitive Receivers (NSRs);
- Avoiding the operation of unused equipment, and minimising the use of Powered Mechanical Equipment (PME) and parallel use of noisy equipment / machinery;
- Adoption of Level 1 site-specific direction mitigation measures (use of quiet plant and movable noise barrier) for construction/demolition work undertaken at a distance of 60m or less to the NSRs; and
- Regular maintenance of all plant and equipment.

Water Quality

- No discharge of silty water into the storm drain and drainage channel within and the vicinity of the site;
- Removal off-site of construction plant causing pollution to water system due to leakage of oil or fuel; and
- Temporary stockpiling of excavated soil in a specially designated area with provision of tarpaulin cover.

Waste

- Control measures at the stockpiling area to prevent the generation of dust and pollution of stormwater channels, fish ponds or river channels;
- Segregation, storage, transportation and disposal of different types of waste; and
- Keeping of records of quantities of wastes generated, recycled and disposal (with locations).

Ecology

- Good site practices for controlling the dust and water quality; and
- Clear definition of works limit to avoid impact on adjacent habitats.

Landscape and Visual

- Prohibition of the storage of materials including fuel, the movement of construction vehicles, and the refuelling and washing of equipment including concrete mixers within the precautionary area; and
- Enforcement of construction site controls including storage of materials, location and appearance of site accommodation and the careful design of site lighting to prevent light spillage.

Environmental mitigation measures will be implemented on site as recommended and weekly site audits will be carried out to ensure that the environmental conditions are acceptable.

Apart from the abovementioned outstanding works, the remaining construction works for Section 4 comprise mostly demolition works at the existing checkpoint at Shek Chung Au and are scheduled to commence in about June 2012.

1. Introduction

1.1 Background

The Frontier Closed Area (FCA) is an integral part of the package of measures aimed at maintaining the integrity of the boundary of the Hong Kong Special Administrative Region (HKSAR) with mainland China, and combating illegal immigration and other cross-boundary criminal activities. Following a recent review, the HKSAR Government has concluded that with the erection of a secondary boundary fence (SBF) along the boundary patrol road (BPR) and construction of new sections of the BPR and primary boundary fence (PBF) at certain sections along the boundary, the FCA coverage can be substantially reduced without affecting the objective of maintaining the integrity of the boundary.

The PBF and SBF (hereafter referred to as 'The Project') will be erected along the northern and southern curbs of the realigned BPR respectively to facilitate the Hong Kong Police Force (HKPF) in combating cross-boundary criminal activities. The reduced FCA will comprise a narrow strip of land covering the realigned BPR and areas to its north, together with the points of crossing the boundary (i.e. the Boundary Control Points and Sha Tau Kok town). Areas south of the SBF will generally be excised from the FCA.

An Environmental Impact Assessment (EIA) for the proposed works was carried out under the Environmental Impact Assessment Ordinance (EIAO, Cap 499). An EIA Report and an Environmental Monitoring and Audit (EM&A) Manual were completed in January 2009 and approved by the Environmental Protection Department (EPD) in April 2009 (Register No. AEIAR-136/2009). The entire length of the proposed works is about 21.7 km from west of Pak Hok Chau to east of Sha Tau Kok and is divided into four sections. A general layout plan of the Project site is presented in Figure 1.1, while the location of the SBF at Section 4 in Sha Tau Kok is presented in Figure 1.2.

An Environmental Permit (EP) covering the overall proposed works was issued in June 2009 (Permit No. EP-347/2009). An application for Variation of the Environmental Permit (VEP) (Application No. VEP-314/2010) was subsequently submitted on 24 May 2010 and the amended Environmental Permit (Permit No. EP-347/2009/A) was issued by EPD on 9 June 2010.

With regard to Section 4, an application for a Further Environmental Permit (FEP) covering the works under Works Order No. ASD 010962 (also known as Works Order No. 1) was submitted to EPD on 2 March 2010 (Application No. FEP-104/2010) and this was granted on 29 March 2010 (Permit No. FEP-03/347/2009). Furthermore, another application for an FEP covering the works under Works Order Nos. ASD 010969 and ASD 010974 (also known as Works Order Nos. 2 and 3 respectively) – including a new section of SBF consisting of transparent panel, a new checkpoint and kiosk/guard house – was submitted to EPD on 13 August 2010 (Application No. FEP-112/2010) and was granted on 7 September 2010 (Permit No. FEP-04/347/2009/A).

The Architectural Services Department (ArchSD) has been entrusted with the management of the Project by the Project Proponent – the Secretary for Security of the HKSAR Government. Mott MacDonald Hong Kong Limited (MMHK) has in turn been commissioned by ArchSD as the consulting engineer for the entire Project under Consultancy Agreement No. 9SN005, and is the Engineer's Representative (ER) for construction of the Project.

For Section 4 of the Project, MMHK and ENVIRON Hong Kong Limited (ENVIRON) have been commissioned as the Environmental Team (ET) and Independent Environmental Checker (IEC)

respectively to undertake the Environmental Monitoring and Audit (EM&A) programme as described in the approved EM&A Manual of the Project. Also, the Contract to undertake and perform the construction works for Section 4 was awarded to Chun Wo Construction & Engineering Company Limited ('The Contractor') and was originally scheduled to last for approximately 18 months. It formally commenced on 28 May 2010, and the construction works and EM&A programme under the above-mentioned EP and FEP(s) also commenced on this date. The construction works programme is presented in [Appendix A](#).

This monthly EM&A report summarises the environmental monitoring and audit works, list of activities and mitigation measures implemented at Section 4 during the period of 1 to 29 February 2012 inclusive ('reporting month').

The scope of works for Section 4 consists of:

- Erection of an SBF from the entrance of the Sha Tau Kok town (i.e. the location of 'Gate One') to the Sha Tau Kok Control Point (approximately 0.5 km);
- Use of transparent panel for a section of an SBF;
- Provision of a two-storey high checkpoint at 'Gate One';
- Addition of a kiosk/guard house on an existing footpath of Sha Tau Kok Road; and
- Removal of the existing checkpoint at Shek Chung Au.

1.2 Project Organisation

The organisation chart and lines of communication with respect to the on-site environmental management structure together with the contact information of the key personnel are shown in [Appendix B](#).

1.3 Works Undertaken in the Reporting Month

The following activities have taken place during the reporting month:

Works Order No. 1 (ASD 010962):

- No major works. (Substantial completion was certified on 12 October 2010.)

Works Order No. 2 (ASD 010969):

- No major works. (Substantial completion was certified on 27 July 2011.)

Works Order No. 3 (ASD 010974):

- No major works. (Substantial completion was certified on 17 October 2011.)

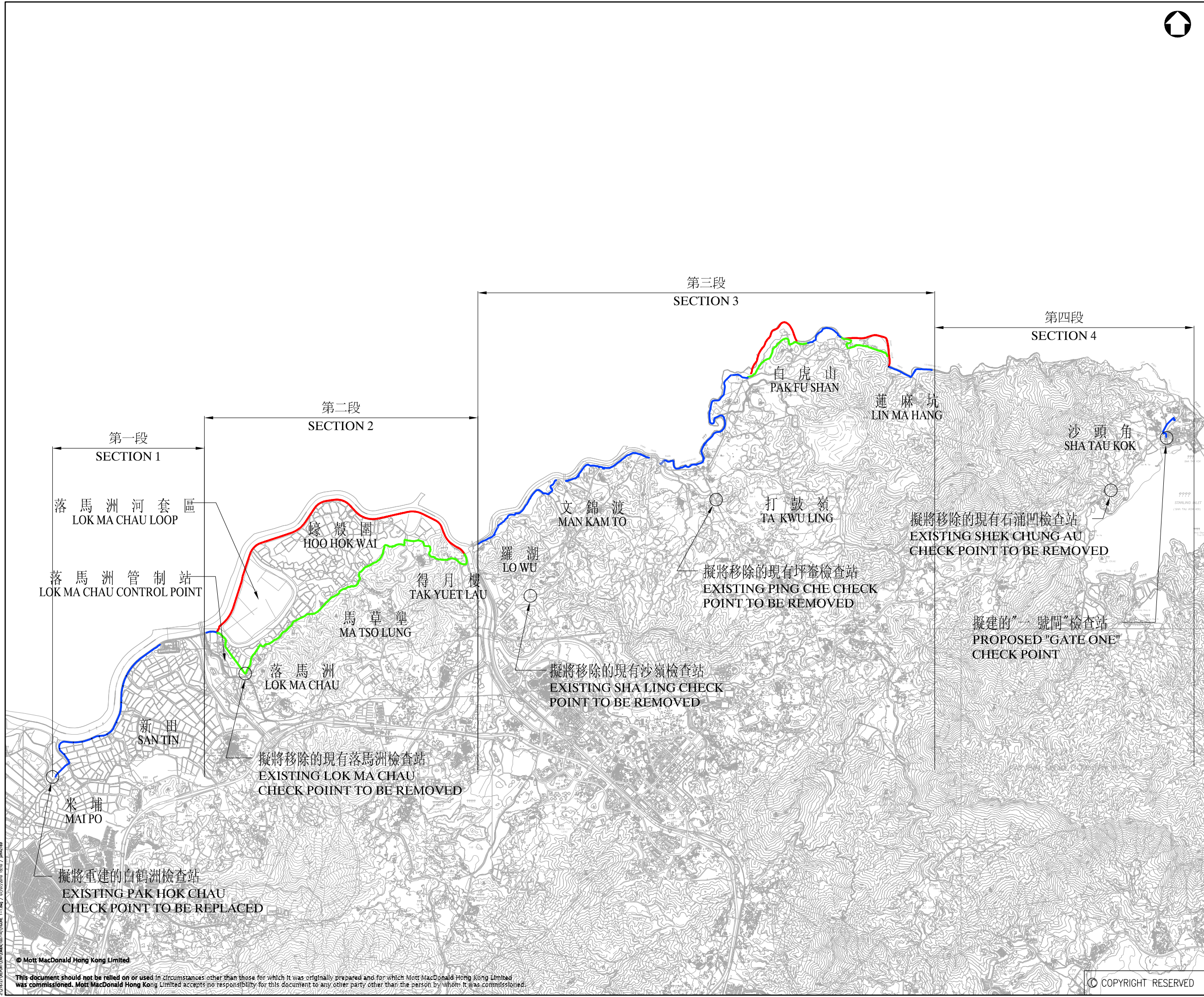
In addition, the following works not related to the Project took place during the reporting month:

- Footpath improvement works by the Highways Department (HyD) adjacent to the Project site at Sha Tau Kok Road.



圖例：
LEGEND:

- 建議於現有邊界巡邏通路興建的輔助邊界圍網
PROPOSED SECONDARY BOUNDARY FENCE
ALONG EXISTING BOUNDARY PATROL ROAD
- 建議的主要及輔助邊界圍網及新邊界巡邏通路
PROPOSED NEW BOUNDARY PATROL ROAD WITH
PRIMARY AND SECONDARY BOUNDARY FENCES
- 擬將移除的現有邊界圍網
EXISTING BOUNDARY FENCE TO BE REMOVED



P1	JUL 10	AT	FIRST ISSUE	BW	TI
Rev	Date	Drawn	Description	Ch'k'd	App'd

ARCHITECTURAL SERVICES DEPARTMENT

Mott MacDonald

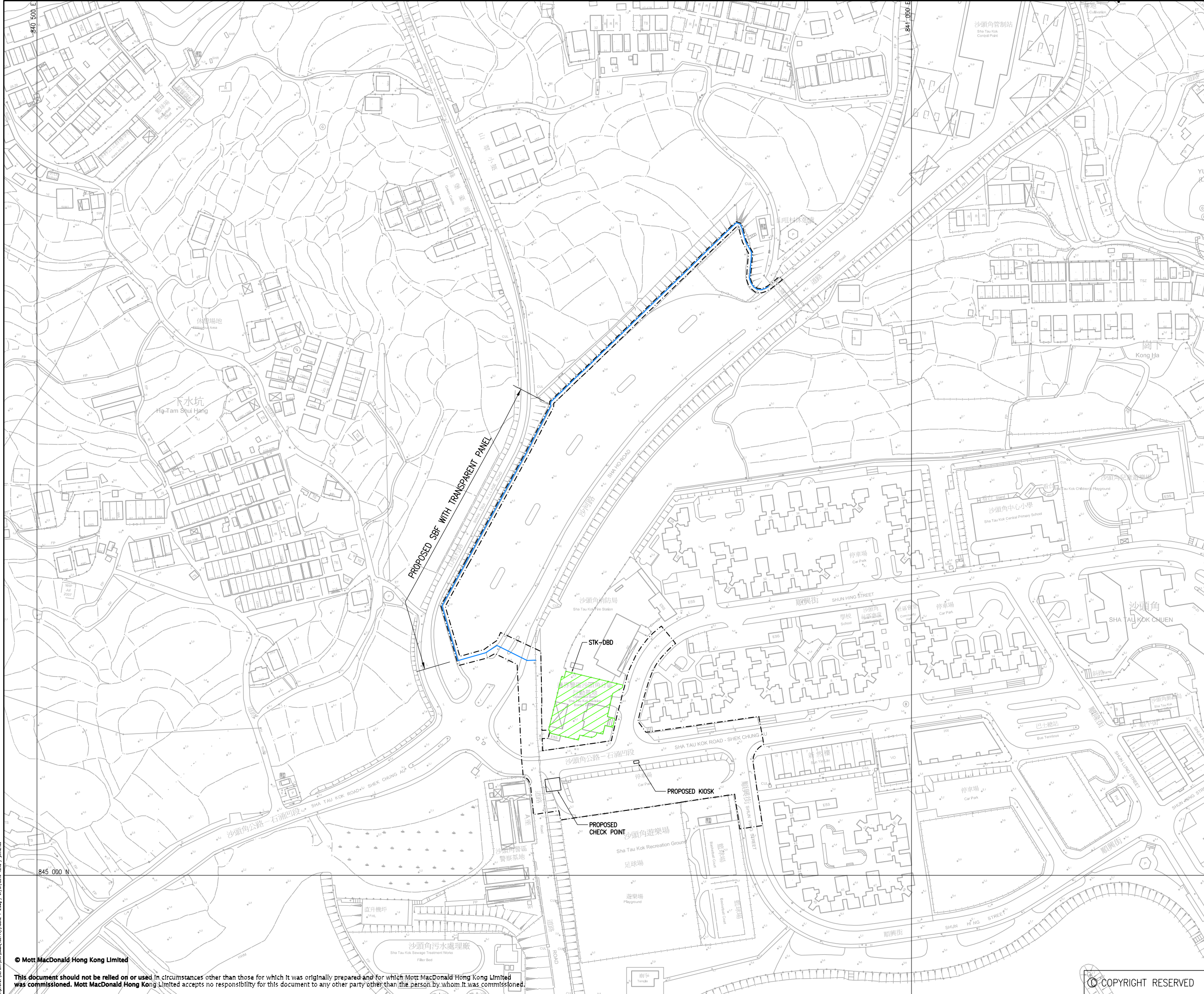
20/F Two Landmark East
100 Hoi King Street
Kowloon, Hong Kong
T +852 2828 8707
F +852 2827 1823
W www.mottmac.com.hk

Project
CONSTRUCTION OF A SECONDARY BOUNDARY FENCE AND NEW SECTIONS OF PRIMARY BOUNDARY FENCE AND BOUNDARY PATROL ROAD

Title
概覽圖
GENERAL LAYOUT PLAN

Designed	WHC	Eng.Chk.	WHC
Drawn	MCL	Coordination	WHC
Dwg.Chk.	WHC	Approved	TI
Scale	Project 216727		Status
N.T.S.	CAD File		INF
Drawing No.			Rev

FIGURE 1.1 (圖 1.1)



LEGEND:
 PROPOSED SBF ALIGNMENT

P1	JUL 10	AT	FIRST ISSUE	BW	TI
Rev	Date	Drawn	Description	Ch'k'd	App'd

ARCHITECTURAL SERVICES DEPARTMENT

Mott MacDonald
 20/F Two Landmark East
 100 Hoi Ming Street
 Kowloon Tong, Kowloon
 Hong Kong
 T +852 2828 8707
 F +852 2827 1823
 W www.mottmac.com.hk

Project
 CONSTRUCTION OF A SECONDARY BOUNDARY FENCE AND NEW SECTIONS OF PRIMARY BOUNDARY FENCE AND BOUNDARY PATROL ROAD

Title
 LOCATION OF SECONDARY BOUNDARY FENCE AND NOISE MONITORING STATION AT SECTION 4

Designed	PW	Eng.Chk.	AL
Drawn	MING	Coordination	PW
Dwg.Chk.	PW	Approved	TI

Scale	Project	Status
1 : 1000@A1	216727	PRE
	CAD File	
	Z:\216727\REPORT\DWG\MS&A(100714)\FIGURE 1-2.dwg	

Drawing No.	Rev
FIGURE 1.2	P1

© Mott MacDonald Hong Kong Limited

This document should not be relied on or used in circumstances other than those for which it was originally prepared and for which Mott MacDonald Hong Kong Limited was commissioned. Mott MacDonald Hong Kong Limited accepts no responsibility for this document to any other party other than the person by whom it was commissioned.

© COPYRIGHT RESERVED

J:\216727\REPORT\DWG\MS&A(100714)\FIGURE 1-2.dwg / 07/07/2010 15:42 / 4442189

2. EM&A Requirements

2.1 Summary of EM&A Requirements

The EM&A programme requires environmental monitoring of construction noise as well as environmental site inspections for air quality, noise, water quality, waste management, ecology, landscape and visual, as specified in the approved EM&A Manual.

Originally, the EM&A Manual designated two locations as noise monitoring stations during the construction phase. However, noise levels at only one of these monitoring stations (as shown in Figure 1.2) were monitored until early January 2012. The reasons for this arrangement are detailed in Section 3.2.

A summary of impact EM&A requirements is presented in Table 2.1. The Environmental Quality Performance Limits and the Event and Action Plans (for construction noise only) are shown in Appendix C and Appendix D respectively.

Table 2.1: Summary of EM&A Impact Requirements

Parameters	Description	Location(s)	Frequency	Duration
Air	On-site Inspection	Active Works Sites	Weekly	During Construction
Noise	L_{eq} , 30min	STK-DBD	Weekly	During Construction
Waste management	On-site Waste Audit	Active Works Sites	Weekly	During Construction
	On-site Waste Inspection			
Wastewater	On-site Wastewater Audit	Active Works Sites	Weekly	During Construction
Ecology	On-site Audit of Recommended Ecological Mitigation Measures	Active Works Sites	Periodically (by Contractor)	As specified in EM&A Manual (see Table E.5)
Landscape and Visual	On-site Audit of Recommended Landscape and Visual Mitigation Measures	Active Works Areas	Regular intervals (by Contractor/ Landscape Sub-Contractor)	As specified in EM&A Manual (see Table E.6)
General Site Conditions	Environmental Site Inspection	Works areas and areas affected by works	Weekly	During Construction

2.2 Implementation of Environmental Mitigation Measures

The Contractor is required to implement mitigation measures listed in the latest valid EP and FEP(s) (where applicable), EIA Report and EM&A Manual. During routine site inspections, the Contractor's implementation of mitigation measures, if any, are to be inspected and reviewed. A schedule of the implementation of mitigation measures identified at the EIA stage is given in Appendix E.

3. Noise Impact Monitoring

3.1 Monitoring Parameters, Frequency and Duration

Following the requirements in the EM&A Manual for noise, noise monitoring has to be carried out during the construction phase. Continuous noise monitoring for the A-weighted levels L_{eq} , L_{10} and L_{90} is undertaken once per every week during daytime hours (between 07:00 and 19:00) on normal weekdays.

Table 3.1 summarizes the monitoring parameters, frequency and duration of air quality monitoring. The noise monitoring schedule during the reporting month is presented in Appendix F.

Table 3.1: Noise Monitoring Parameters, Frequency and Duration

Monitoring Station	Parameters	Frequency	Duration
STK-DBD	L_{eq} , L_{90} & L_{10}	Once every week	30 min

3.2 Monitoring Location

Originally, two construction noise monitoring stations were proposed in the EM&A Manual, namely: STK03 (Block 1, Sha Tau Kok Estate) and STK05 (Village House at Sha Tau Kok). STK03 was mainly selected for the construction works related to the SBF and the new checkpoint and kiosk/guard house in Sha Tau Kok, while STK05 was mainly selected for the removal of the existing checkpoint at Shek Chung Au.

However, access to STK03 to perform noise monitoring was not granted, therefore an alternative nearby location – STK-DBD (HKPF Operation Base, Sha Tau Kok Division, Border District) – was proposed by ET and agreed to by IEC and EPD. Baseline noise monitoring was subsequently conducted at STK-DBD from 16 to 29 March 2010.

Currently, the demolition works at the existing checkpoint at Shek Chung Au are scheduled to commence in about June 2012. No baseline or impact noise monitoring at STK05 has been carried out at this stage.

As a result, only one noise impact monitoring station is included in the current EM&A programme for Section 4. The location of the agreed noise quality monitoring station is listed in Table 3.2 and shown in Figure 1.2.

Table 3.2: Noise Impact Monitoring Location

Monitoring Station	Description of Location	Type of measurement
STK-DBD	HKPF Operational Base, Sha Tau Kok Division, Border District	Façade

Potentially noisy site activities continued until early January 2012. Thereafter, only minor site activities were conducted at the new SBF, checkpoint and kiosk/guard house sites. In addition, the noise monitoring levels recorded at the designated monitoring location STK-DBD (HKPF Operational Base, Sha Tau Kok Division, Border District) in early January 2012 were within the range recorded during baseline monitoring prior to commencement of the abovementioned works. Therefore, noise monitoring at STK-DBD was discontinued in early January 2012.

3.3 Monitoring Equipment

Integrating Sound Level Meter will be used for noise monitoring. It is a Type 1 sound level meter capable of giving a continuous readout of the noise level readings including equivalent continuous sound pressure level (L_{eq}) and percentile sound pressure level (L_x). They comply with International Electrotechnical Commission Publications 651:1979 (Type 1) and 804:1985 (Type 1). Table 3.3 summarizes the typical noise monitoring equipment used.

Table 3.3: Noise Monitoring Equipment

Equipment
Integrating Sound Level Meter
Acoustic Calibrator

Since no noise impact monitoring was conducted during the reporting month, no noise monitoring equipment was used during this time.

3.4 Equipment Calibration

The calibration frequencies of the monitoring equipment are provided in Table 3.4.

Table 3.4: Noise Monitoring Equipment Calibration Frequencies

Equipment, Model and Serial Number	Calibration Frequency
Integrating Sound Level Meter	Every year
Acoustic Calibrator	Every year

Since no noise impact monitoring was conducted during the reporting month, no calibration certificates are presented in this report.

3.5 Monitoring Methodology

3.5.1 Field Monitoring

- The Sound Level Meter was set on a tripod at a height of at least 1.2 m above the ground.
- Façade measurements were made at the monitoring locations.
- The battery condition was checked to ensure the correct functioning of the meter.
- Parameters such as frequency weighting, the time weighting and the measurement time were set as follows:
 - frequency weighting: A
 - time weighting: Fast
 - time measurement: 5-minute intervals (between 07:00 and 19:00); L_{eq} (30 min) was determined by calculating the logarithmic average of six L_{eq} (5-min) data.
- Prior to and after each noise measurement, the meter was calibrated using a Calibrator for 94 dB at 1 kHz. If the difference in the calibration level before and after measurement was more than 1 dB, the measurement would be considered invalid and have to be repeated after re-calibration or repair of the equipment.
- During the monitoring period, the L_{eq} , L_{10} and L_{90} noise levels were recorded. In addition, any site observations and noise sources were recorded on a standard record sheet.

3.5.2 Maintenance and Calibration

- The microphone head of the sound level meter and calibrator is cleaned with soft cloth at quarterly intervals.
- The meter and calibrator are sent to the supplier or Hong Kong Laboratory Accreditation Scheme (HOKLAS) laboratory to check and calibrate at yearly intervals.

3.6 Results of Impact Monitoring

Since no noise impact monitoring was conducted during the reporting month, no impact monitoring results were obtained. Furthermore, no direct comparison between the measured noise levels and the construction noise levels predicted in the EIA Report for this Project was possible, and no wind data is presented in this report.

No exceedance of Action / Limit Levels for construction noise was recorded.

Graphical presentations of the measured construction noise levels over this reporting month and the previous three reporting months are presented in [Appendix H](#).

4. Environmental Site Inspection and Audit

4.1 Site Inspections

Environmental site inspections were carried out on a weekly basis to monitor the proper implementation of environmental pollution control and mitigation measures for Section 4. In the reporting month, no monthly site inspection was carried out jointly by the ER, Contractor, ET and IEC. Additional weekly site inspections were carried out by the ER, Contractor and ET on 8, 15 and 22 February 2012. The EM&A schedule is presented in Appendix F.

Major findings provided by ET during the weekly site inspections are summarised in Table 4.1. In general, the works site areas were found to be in compliance with the environmental mitigation requirements listed in the EM&A Manual and no adverse impacts were found.

Table 4.1: Summary of Environmental Site Inspections

Date of Inspection	Major Observations	Status
8 Feb 2012	No new observations.	-
15 Feb 2012	No new observations.	-
22 Feb 2012	No new observations.	-

4.2 Environmental Meetings

No environmental meeting was held during the reporting month.

4.3 Status of Environmental Submissions, Permits and Licences

A summary of status of all environmental submissions, valid permits/licences, and/or notifications to EPD for this Project during the reporting month is presented in Table 4.2. A summary of submissions made under the valid EP and FEP(s) for Section 4 during the same period is presented in Table 4.3.

Table 4.2: Status of Environmental Submissions, Permits and Licences

Statutory Reference	Description	Permit / Reference No.	Valid Period	Status
EIAO	Environmental Permit	EP-347/2009/A	9 Jun 2010 – present	Valid
EIAO	Application for Further Environmental Permit	FEP-104/2010	-	Submitted to EPD on 2 Mar 2010. Approved by EPD on 29 Mar 2010.
EIAO	Further Environmental Permit	FEP-03/347/2009	29 Mar 2010 – present	Valid
EIAO	Application for Further Environmental Permit (Remaining Section)	FEP-112/2010	-	Submitted to EPD on 13 Aug 2010. Approved by EPD on 7 Sep 2010.
EIAO	Further Environmental Permit (Remaining Section)	FEP-04/347/2009/A	7 Sep 2010 – present	Valid
APCO	Notification pursuant to Section 3(1) of the Air Pollution Control (Construction Dust) Regulation (Form NA)	312959 EPD notified on 4 Jan 2010	-	Valid

Legend: EIAO – Environmental Impact Assessment Ordinance (Cap 499)

216727/ENL/12/03/A 14 March 2012

P:\Hong Kong\INF\Projects2\216727-Boundary Fence\Environmental\Environmental Team\Section 4\Deliverable\Monthly EM&A Report\2012-02\EM&A Report (Feb 2012) Rev A.doc

- APCO – Air Pollution Control Ordinance (Cap 311)
- WPCO – Water Pollution Control Ordinance (Cap 358)
- WDO – Waste Disposal Ordinance (Cap 354)
- NCO – Noise Control Ordinance (Cap 400)

Table 4.3: Environmental Submissions Made under the Valid EP & FEP(s) during the Reporting Month

EP/FEP Ref.	Description	Submission Date
EP Condition 4.5 & FEP(s) Condition 4.5	Monthly EM&A Report (Jan 2012)	14 Feb 2012

4.4 Advice on the Solid and Liquid Waste Management Status

The construction and demolition (C&D) material and general refuse generated by Section 4 of the Project in the reporting month are shown in Appendix I. Wastes were handled and disposed from site in accordance with the EM&A Manual and all relevant legislation and regulations.

4.5 Review of Environmental Monitoring Procedures

The monitoring works conducted by the Environmental Team have been reviewed regularly. No changes in the environmental monitoring procedures are considered necessary at this stage.

4.6 Implementation Status of Environmental Mitigation Measures

An Implementation Schedule of Mitigation Measures from the EIA Report / EM&A Manual is provided in Appendix E, in the following order (see Table 4.4):

Table 4.4: Implementation Schedule of Mitigation Measures

Parameter	Table	Parameter	Table
Air Quality	Table E.1	Waste Management	Table E.4
Noise	Table E.2	Ecology	Table E.5
Water Quality	Table E.3	Landscape and Visual	Table E.6

5. Record of Non-compliance, Complaints, Notifications of Summons and Successful Prosecutions

5.1 Non-compliance of Action and Limit Levels

There was no breach of Action or Limit Levels for construction noise impact monitoring in the reporting month.

5.2 Environmental Complaints

No environmental complaints were received or made against Section 4 of the Project during the reporting month. The complaint log is presented in Appendix J.

5.3 Notifications of Summons and Successful Prosecutions

No notifications of summons or successful prosecution were received or made against Section 4 of the Project during the reporting month.

6. Future Key Issues

6.1 Construction Programme for the Next Reporting Month

No major construction works are forecast for Section 4 in March 2012.

According to the ER, there are some works outstanding at the new SBF, checkpoint and kiosk/guard house sites, including road resurfacing at the new check point car park and rectification of some manholes. While these are expected to last about one week, the commencement date is subject to confirmation between RE and Contractor. The construction phase EM&A programme at these sites (consisting of weekly site audits but not noise monitoring) is expected to continue until these works are completed.

The remaining construction works for Section 4 comprise mostly demolition works at the existing checkpoint at Shek Chung Au and are scheduled to commence in about June 2012.

6.2 Key Issues for the Next Reporting Month

As mentioned in Section 6.1, some works remain outstanding, however the commencement date is yet to be confirmed. The key environmental issues expected to be considered during the performance of such works are presented below.

6.2.1 Air

- All plant and equipment to be maintained to prevent any undue air emissions.
- Any excavated dusty materials or stockpile of dusty materials should be covered entirely by impervious sheeting or sprayed with water so as to maintain the entire surface wet, and recovered or backfilled or reinstated within 24 hours of the excavation or unloading;
- All dusty materials should be sprayed with water prior to any loading, unloading or transfer; and
- Every vehicle should be washed to remove any dusty materials from its body and wheels before leaving the construction sites.

6.2.2 Noise

- Noisy equipment and noisy activities should be located as far away from the Noise Sensitive Receivers (NSRs) as is practical;
- Unused equipment should be turned off. Powered Mechanical Equipment (PME) should be kept to a minimum and the parallel use of noisy equipment / machinery should be avoided;
- Adoption of Level 1 site-specific direction mitigation measures (use of quiet plant and movable noise barrier) for construction/demolition work undertaken at a distance of 60m or less to the NSRs; and
- Regular maintenance of all plant and equipment.

6.2.3 Water Quality

- No discharge of silty water into the storm drain and drainage channel within and the vicinity of the site;
- Any construction plant which causes pollution to the water system due to leakage of oil or fuel shall be removed off-site immediately; and
- Excavated soil which needs to be temporarily stockpiled should be stored in a specially designated area and provided with a tarpaulin cover to avoid runoff into the drainage channels.

6.2.4 Waste

- Control measures should be taken at the stockpiling area to prevent the generation of dust and pollution of stormwater channels, fish ponds or river channels;
- Different types of waste should be segregated, stored, transported and disposed of in accordance with the relevant legislative requirements and guidelines; and
- Records of quantities of wastes generated, recycled and disposal (with locations) shall be kept.

6.2.5 Ecology

- Good site practices for controlling the dust and water quality (avoid stockpiles adjacent to wetlands, covering the stockpiles with impervious sheeting, control of vehicle speed, no discharge of silty water to the rivers, streams and drainage channels); and
- Clear definition of works limit to avoid impact on adjacent habitats.

6.2.6 Landscape and Visual

- Prohibition of the storage of materials including fuel, the movement of construction vehicles, and the refuelling and washing of equipment including concrete mixers within the precautionary area; and
- Construction site controls should be enforced including the storage of materials, the location and appearance of site accommodation and the careful design of site lighting to prevent light spillage.

6.3 Monitoring Schedule for the Next Reporting Month

The tentative schedule for environmental site inspections in March 2012 is provided in Appendix F. Actual dates may change due to unforeseen events such as inclement weather.

The status of the construction phase EM&A programme will be monitored and reviewed in view of the substantial completion of the construction works at the new SBF, check point and kiosk/guard house sites, as well as any subsequent update in the status of the remaining construction works for Section 4.

7. Conclusions and Recommendations

7.1 Conclusions

The construction phase EM&A programme for Section 4 commenced on 28 May 2010. EM&A was performed from 1 to 29 February 2012 during which no major works were conducted. All audit results in the reporting month were checked and reviewed.

No construction noise monitoring was carried out in the reporting month. No exceedance of the noise Limit Level was recorded. Furthermore, no noise-related complaint was received or followed-up by ET during the reporting month, therefore no Action Level exceedance was recorded.

Environmental site inspections were carried out three times during the reporting month. During the site audits, no deficiencies were identified which required remedial actions.

There were no compliance issues involving wastes in accordance with the EM&A Manual and all relevant legislation and regulations.

No environmental complaints, notification of summons of successful prosecutions were received or made against Section 4 of the Project during the reporting month.

Overall, the EM&A programme for Section 4 during the reporting month was in compliance with the relevant EIA Report, EM&A Manual, EP and FEP(s) and all relevant legislation and regulations.

7.2 Recommendations

No further recommendations were made at this stage pending more site progress achieved.

Appendices

Appendix A. Construction Works Programme	17
Appendix B. Project Organisation Chart for Section 4	25
Appendix C. Environmental Quality Performance Limits	27
Appendix D. Event and Action Plans	29
Appendix E. Schedule of Mitigation Measures from the EIA Report and EM&A Manual	31
Appendix F. EM&A Schedule	43
Appendix G. Calibration Certificates	45
Appendix H. Noise Monitoring Results and Graphical Presentation	47
Appendix I. Monthly Waste Flow Table	49
Appendix J. Complaint Log	52
Appendix K. Weather Information from Hong Kong Observatory	53

Construction of a Secondary Boundary Fence and New Sections of
Primary Boundary Fence and Boundary Patrol Road
Section 4 – Lin Ma Hang Village to Sha Tau Kok
Monthly EM&A Report for February 2012



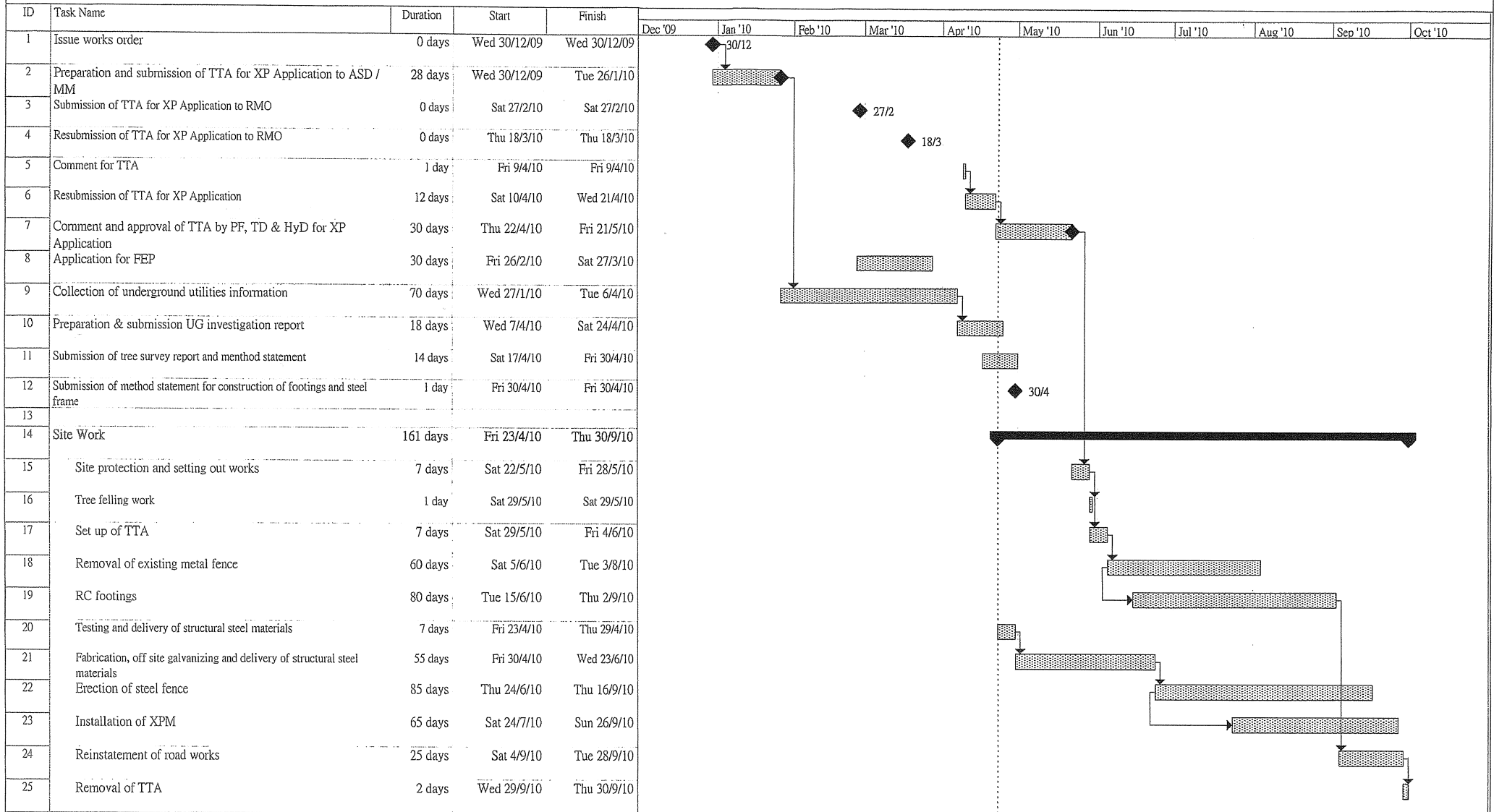
This page left intentionally blank for pagination.

Appendix A. Construction Works Programme

This Appendix begins on the next page.

Master Programme for Construction of a Secondary Boundary Fence at Sha Tau Kok (Rev. 0)

ASD 010962



Project: STK Boundary Fence 200912

Task: ▨ Progress

Split: Milestone

Summary: **▬**

Project Summary: **▬**

External Tasks: ▨

External Milestone: ◆

Deadline: ▨

Master Programme for Construction of a Secondary Boundary Fence near Shan Tsui Village & Sha Ho Road at Sha Tau Kok (Rev. 5)
ASD 010569

ID	Task Name	Duration	Start	Finish	2011											
					Jan '10	Jul '10	Aug '10	Sep '10	Oct '10	Nov '10	Dec '10	Jan '11	Feb '11	Mar '11	Apr '11	May '11
1	Sha Tau Kok Phase 2 - Construction Secondary fence	389 days	Mon 21/6/10	Thu 14/7/11	[Gantt bar from Mon 21/6/10 to Thu 14/7/11]											
2	Issue works order	0 days	Mon 21/6/10	Mon 21/6/10	[Gantt bar from Mon 21/6/10 to Mon 21/6/10]											
3	Site Handover date	28 days	Mon 5/7/10	Sun 1/8/10	[Gantt bar from Mon 5/7/10 to Sun 1/8/10]											
4	Material submission	30 days	Mon 28/6/10	Tue 27/7/10	[Gantt bar from Mon 28/6/10 to Tue 27/7/10]											
5	Material approval	30 days	Wed 28/7/10	Thu 26/8/10	[Gantt bar from Wed 28/7/10 to Thu 26/8/10]											
6	Star rate application (Transparent panel)	30 days	Wed 30/6/10	Thu 29/7/10	[Gantt bar from Wed 30/6/10 to Thu 29/7/10]											
7	TTA Submission	30 days	Wed 30/6/10	Thu 29/7/10	[Gantt bar from Wed 30/6/10 to Thu 29/7/10]											
8	Xp issue	62 days	Wed 4/8/10	Mon 4/10/10	[Gantt bar from Wed 4/8/10 to Mon 4/10/10]											
9	Submit initial tree survey & tree risk assessment	1 day	Fri 20/6/10	Fri 20/6/10	[Gantt bar from Fri 20/6/10 to Fri 20/6/10]											
10	Further EP application	1 day	Fri 20/8/10	Fri 20/8/10	[Gantt bar from Fri 20/8/10 to Fri 20/8/10]											
11	Notification to EPD for work commencement	14 days	Sat 21/6/10	Fri 3/9/10	[Gantt bar from Sat 21/6/10 to Fri 3/9/10]											
12	Submission of U/G utilities report	1 day	Sat 11/9/10	Sat 11/9/10	[Gantt bar from Sat 11/9/10 to Sat 11/9/10]											
13	Submission the testing specimen	1 day	Fri 27/8/10	Fri 27/8/10	[Gantt bar from Fri 27/8/10 to Fri 27/8/10]											
14	Material testing	14 days	Sat 28/8/10	Fri 10/9/10	[Gantt bar from Sat 28/8/10 to Fri 10/9/10]											
15	Submission of Method statement	1 day	Fri 20/8/10	Fri 20/8/10	[Gantt bar from Fri 20/8/10 to Fri 20/8/10]											
16	Approval material statement	7 days	Sat 21/8/10	Fri 27/8/10	[Gantt bar from Sat 21/8/10 to Fri 27/8/10]											
17	Erection of Mock up panel	7 days	Mon 11/10/10	Sun 17/10/10	[Gantt bar from Mon 11/10/10 to Sun 17/10/10]											
18																
19	Site Work	303 days	Wed 15/8/10	Thu 14/7/11	[Gantt bar from Wed 15/8/10 to Thu 14/7/11]											
20	Site protection and setting out works	7 days	Tue 19/10/10	Mon 25/10/10	[Gantt bar from Tue 19/10/10 to Mon 25/10/10]											
21	Material delivery on site	260 days	Wed 15/9/10	Wed 1/6/11	[Gantt bar from Wed 15/9/10 to Wed 1/6/11]											
22																
23	Tree transplant work	265 days	Mon 18/10/10	Sat 9/7/11	[Gantt bar from Mon 18/10/10 to Sat 9/7/11]											
24	Received the instructed for tree transplant and approved by DLO	1 day	Wed 30/9/11	Wed 30/9/11	[Gantt bar from Wed 30/9/11 to Wed 30/9/11]											
25	Site preparation work for tree transplanting work	14 days	Thu 31/9/11	Wed 13/10/11	[Gantt bar from Thu 31/9/11 to Wed 13/10/11]											
26	Tree felling & pruning work work	14 days	Mon 18/10/10	Sun 31/10/10	[Gantt bar from Mon 18/10/10 to Sun 31/10/10]											
27	Tree transplant	87 days	Thu 14/4/11	Sat 9/7/11	[Gantt bar from Thu 14/4/11 to Sat 9/7/11]											
28	New boundary fence	229 days	Tue 12/10/10	Sat 28/5/11	[Gantt bar from Tue 12/10/10 to Sat 28/5/11]											
29	Erection TTA (20 M /phase)	7 days	Tue 12/10/10	Mon 18/10/10	[Gantt bar from Tue 12/10/10 to Mon 18/10/10]											

Project: Sha Tau Kok Phase 2 (Rev.5) Task: [Task ID] Split: [Symbol] Progress: [Symbol] Milestone: [Symbol] Summary: [Symbol] Project Summary: [Symbol] External Tasks: [Symbol] External Milestone: [Symbol] Deadline: [Symbol]

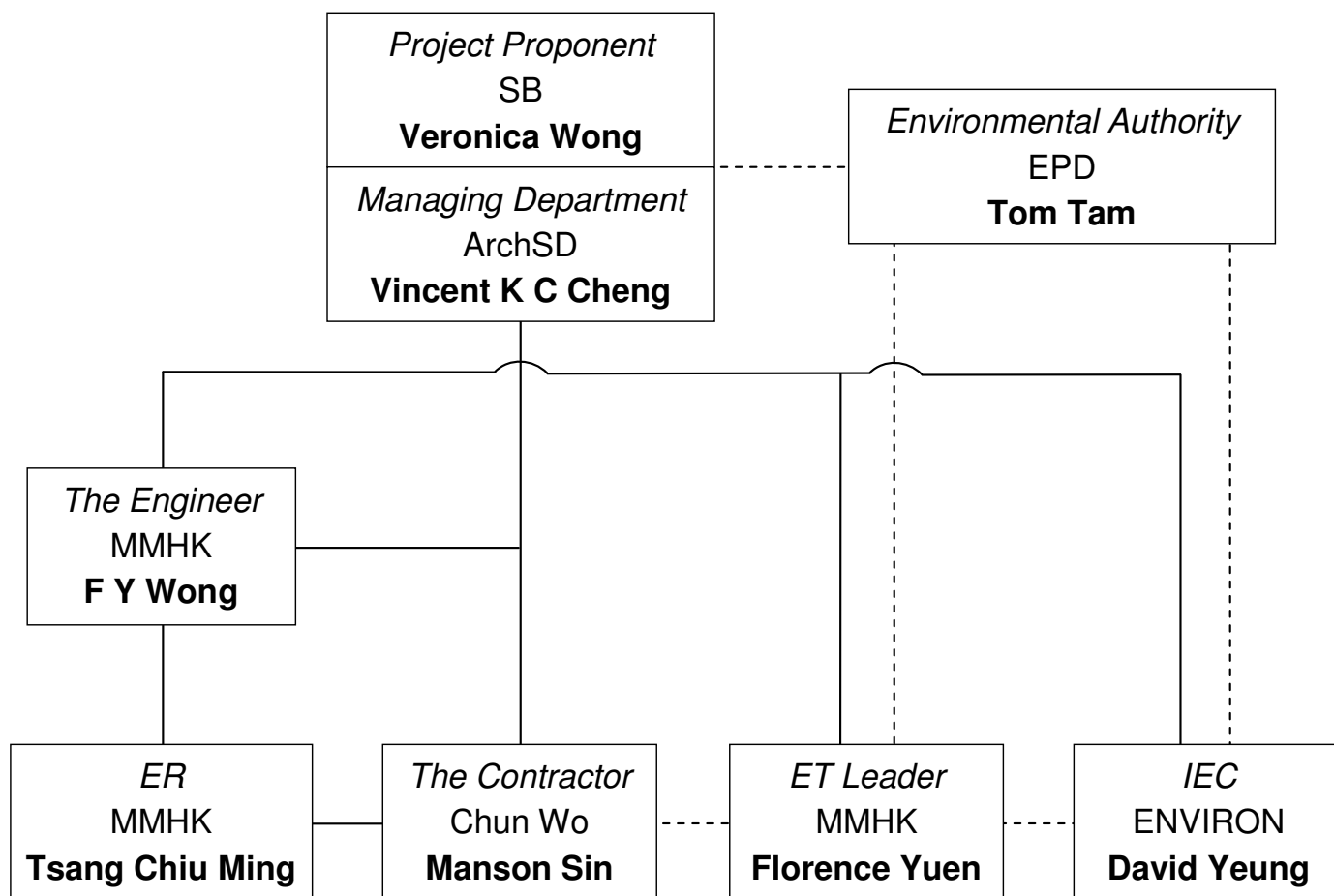
Construction of a Secondary Boundary Fence and New Sections of
Primary Boundary Fence and Boundary Patrol Road
Section 4 – Lin Ma Hang Village to Sha Tau Kok
Monthly EM&A Report for February 2012



This page left intentionally blank for pagination.

Appendix B. Project Organisation Chart for Section 4

This Appendix is presented on the next page.



—— Line of Reporting
 - - - - Line of Communication

Key Personnel Contact List			
Role	Department / Company	Name	Telephone No.
Project Proponent	Security Bureau (SB)	Ms. Veronica Wong	2810 3523
Managing Department	Architectural Services Department (ArchSD)	Mr. Vincent K C Cheng	2867 3871
Environmental Authority	Environmental Protection Department (EPD)	Mr. Tom Tam	2835 1843
The Engineer	Mott MacDonald Hong Kong Limited (MMHK)	Mr. F Y Wong	2828 5967
Engineer's Representative (ER)	Mott MacDonald Hong Kong Limited (MMHK)	Mr. Tsang Chiu Ming	2683 1179
Independent Environmental Checker (IEC)	ENVIRON Hong Kong Limited (ENVIRON)	Mr. David Yeung	3743 0788
Environmental Team (ET) Leader	Mott MacDonald Hong Kong Limited (MMHK)	Ms. Florence Yuen	2828 5768
The Contractor / Project Manager	Chun Wo Construction & Engineering Company Limited (Chun Wo)	Mr. Manson Sin	9129 7165



Construction of a Secondary Boundary Fence and New Sections of Primary Boundary Fence and Boundary Patrol Road
 Section 4 – Lin Ma Hang Village to Sha Tau Kok
 Environmental Permit No. EP-347/2009/A
 Further Environmental Permits Nos. FEP-03-347/2009 and FEP-04/347/2009/A

Title:
 Project Organisation Chart for Section 4

Appendix B

Appendix C. Environmental Quality Performance Limits

Table C.1: Action and Limit Levels for Construction Noise

Time Period	Action Level	Limit Level
Daytime (07:00-19:00) except general holidays and Sundays <i>Measurements in L_{eq} (30min)</i>	When one documented complaint is received	75 dB(A)

Construction of a Secondary Boundary Fence and New Sections of
Primary Boundary Fence and Boundary Patrol Road
Section 4 – Lin Ma Hang Village to Sha Tau Kok
Monthly EM&A Report for February 2012



This page left intentionally blank for pagination.

Appendix D. Event and Action Plans

Table D.1: Event and Action Plan for Construction Noise

EVENT	ACTION				
	ET Leader	IEC	ER	Contractor	
Action Level	<ol style="list-style-type: none"> 1. Notify IEC and the Contractor. 2. Carry out investigation. 3. Report the results of investigation to IEC and the Contractor. 4. Discuss with the Contractor and formulate remedial measures. 5. Increase monitoring frequency to check mitigation measures. 	<ol style="list-style-type: none"> 1. Review with analyzed results submitted by ET. 2. Review the proposed remedial measures by the Contractor and advise ER accordingly. 3. Supervise the implement of remedial measures. 	<ol style="list-style-type: none"> 1. Confirm receipt of notification of exceedance in writing. 2. Notify the Contractor. 3. Require the Contractor to propose remedial measures for the analyzed noise problem. 4. Ensure remedial measures are properly implemented. 	<ol style="list-style-type: none"> 1. Submit noise mitigation proposals to IEC. 2. Implement noise mitigation proposals. 	
Limit Level	<ol style="list-style-type: none"> 1. Identify the source. 2. Notify IEC, ER, EPD and the Contractor. 3. Repeat measurement to confirm findings. 4. Increase monitoring frequency. 5. Carry out analysis of Contractor's working procedures to determine possible mitigation to be implemented. 6. Inform IEC, ER, and EPD the causes & actions taken for the exceedances. 7. Assess effectiveness of the Contractor's remedial actions and keep IEC, EPD and ER informed of the results. 8. If exceedance stops, cease additional monitoring. 	<ol style="list-style-type: none"> 1. Discuss amongst ER, ET Leader and the Contractor on the potential remedial actions. 2. Review the Contractor's remedial actions whenever necessary to assure their effectiveness and advise ER accordingly. 3. Supervise the implementation of remedial measures. 	<ol style="list-style-type: none"> 1. Confirm receipt of notification of exceedance in writing. 2. Notify the Contractor. 3. Require the Contractor to propose remedial measures for the analyzed noise problem. 4. Ensure remedial measures are properly implemented. 5. If exceedance continues, consider what activity of the work is responsible and instruct the Contractor to stop that activity of work until the exceedance is abated. 	<ol style="list-style-type: none"> 1. Take immediate action to avoid further exceedance. 2. Submit proposals for remedial actions to IEC within 3 working days of notification. 3. Implement the agreed proposals. 4. Resubmit proposals if problem still not under control. 5. Stop the relevant activity of works as determined by the ER until the exceedance is abated. 	

Construction of a Secondary Boundary Fence and New Sections of
Primary Boundary Fence and Boundary Patrol Road
Section 4 – Lin Ma Hang Village to Sha Tau Kok
Monthly EM&A Report for February 2012



This page left intentionally blank for pagination.

Appendix E. Schedule of Mitigation Measures from the EIA Report and EM&A Manual

Table E.1: Recommended Mitigation Measures – Air Quality

EIA Ref.	EM&A Manual Ref.	Recommended Mitigation Measures	Who to implement?	When to implement? (1)	Implementation Status (2)
2.5.2	3.2.2	The following good site practice should be implemented: <ul style="list-style-type: none"> ■ any excavated dusty materials or stockpile of dusty materials should be covered entirely by impervious sheeting or sprayed with water so as to maintain the entire surface wet, and recovered or backfilled or reinstated within 24 hours of the excavation or unloading; ■ the working area of excavation should be sprayed with water immediately before, during and immediately after the operations so as to maintain the entire surface wet; ■ dusty materials carried by vehicle leaving a construction site should be covered entirely by clean impervious sheeting; ■ the area where vehicle washing takes place and the section of the road between the washing facilities and the exit point should paved with concrete, bituminous materials or hardcore; ■ the portion of road leading only to a construction site that is within 30m of designated vehicle entrance or exit should be kept clear of dusty materials; ■ all dusty materials should be sprayed with water prior to any loading, unloading or transfer; ■ vehicle speed should be limited to 10kph except on completed access roads; ■ every vehicle should be washed to remove any dusty materials from its body and wheels before leaving the construction sites. 	Contractor	C	✓

Legend: (1) C - During Construction
 (2) ✓ - Implemented
 P - Partially Implemented
 X - Not Implemented
 REC - Rectified by Contractor
 (REC) - Partially Rectified by Contractor
 ! - Pending Contractor's Rectification Action
 N/A - Not Applicable

Table E.2: Recommended Mitigation Measures – Noise

EIA Ref.	EM&A Manual Ref.	Recommended Mitigation Measures	Who to implement?	When to implement? (1)	Implementation Status (2)
3.8.14	4.8.1	<p>The following good site practical should be implemented:</p> <ul style="list-style-type: none"> ■ The Contractor shall adopt the Code of Practice on Good Management Practice to Prevent Violation of the Noise Control Ordinance (Chapter 400) (for Construction Industry) published by EPD; ■ The Contractor shall observe and comply with the statutory and non-statutory requirements and guidelines; ■ Before commencing any work, the Contractor shall submit to the Engineer Representative for approval the method of working, equipment and noise mitigation measures intended to be used at the site; ■ The Contractor shall devise and execute working methods to minimise the noise impact on the surrounding sensitive uses, and provide experienced personnel with suitable training to ensure that those methods are implemented; ■ Noisy equipment and noisy activities should be located as far away from the Noise Sensitive Receivers (NSRs) as is practical; ■ Unused equipment should be turned off. Powered Mechanical Equipment (PME) should be kept to a minimum and the parallel use of noisy equipment / machinery should be avoided; ■ Regular maintenance of all plant and equipment; ■ Material stockpiles and other structures should be effectively utilised as noise barriers, where practicable. 	Contractor	C	✓
3.8.1 - 3.8.3	4.8.2 - 4.8.3	<p>Other than good site practice, the Contractor is required to adopt Levels 1 and 2 site-specific direct mitigation measures as specified below during the construction phase.</p> <p>With construction / demolition work undertaken at a distance of 60m or less to the NSRs, below mitigation measures should be included:</p> <p>Level 1 – Use of Quiet Plant and Movable Noise Barrier</p> <ul style="list-style-type: none"> ■ The Contractor shall obtain particular models of plant that are quieter than standards given in the Technical Memorandum on Noise from Construction Work other than Percussive Piling (GW-TM). ■ Purpose-built movable noise barriers should be used to mitigate construction noise directly at sources that are not usually mobile provide that the direct line of sight to the source is blocked. 	Contractor	C	N/A
3.8.9	4.8.4	<p>In addition to the use of quiet plant and movable noise barrier, alternative demolition method of existing boundary fence at Section 2-3 shall be used where demolition works would be undertaken at a distance of 12m or less to the NSRs. These particular mitigation measures should be included:</p> <p>Level 2 – Alternative Demolition Method of Existing Boundary Fence</p> <ul style="list-style-type: none"> ■ The use of welder is recommended to replace the use of hand-held driller; ■ The use of hand-held breaker with movable noise barrier is recommended to replace the use of mini-robot mounted breaker; and the duration for the use of hand-held breaker is minimal as only the surface level of the footing to be broken; and ■ The removal of the footing of the existing boundary fence should be carried by concrete crusher mini-robot mounted after the surface level broken by hand-held breaker. 	Contractor	C	N/A
<p>Legend: (1) C - During Construction</p> <p>(2) ✓ - Implemented (REC) - Partially Rectified by Contractor</p> <p>P - Partially Implemented ! - Pending Contractor's Rectification Action</p> <p>X - Not Implemented N/A - Not Applicable</p> <p>REC - Rectified by Contractor</p>					

Table E.3: Recommended Mitigation Measures – Water Quality

EIA Ref.	EM&A Manual Ref.	Recommended Mitigation Measures	Who to implement?	When to implement? (1)	Implementation Status (2)
4.7.1	5.3.1	<p>Good site practices in addition to the implementation of mitigation measures would minimize the impact to the surrounding environment.</p> <p><i>General Prevention and Precaution Measures:</i></p> <ul style="list-style-type: none"> ■ The site should be confined to avoid silt runoff to the site. ■ No discharge of silty water into the storm drain and drainage channel within and the vicinity of the site. ■ Any soil contaminated with chemicals/oils shall be removed from site and the void created shall be filled with suitable materials. ■ Stockpiles to be covered by tarpaulin to avoid spreading of materials during rainstorms; ■ Suitable containers shall be used to hold the chemical wastes to avoid leakage or spillage during storage, handling and transport; ■ Chemical waste containers shall be labelled with appropriate warning signs in English and Chinese to avoid accidents. there shall also be clear instructions showing what action to take in the event of an accidental; ■ Storage areas shall be selected at safe locations on site and adequate space shall be allocated to the storage area; ■ Any construction plant which causes pollution to the water system due to leakage of oil or fuel shall be removed off-site immediately; ■ Spillage or leakage of chemical waste to be controlled by using suitable absorbent materials; ■ Chemicals will always be stored on drip trays or in bunded areas where the volume is 110% of the stored volume; ■ Regular clearance of domestic waste generated in the temporary sanitary facilities to avoid waste water spillage. ■ Temporary sanitary facilities to be provided for on-site workers during construction. 	Contractor	C	✓
4.7.2 - 4.7.3	5.3.2 - 5.3.3	<p>Concreting Work</p> <p>A temporary drainage channel and associated facilities should be provided to collect the runoff generated and prevent concrete-contaminated water from entering watercourses. Adjustment of pH can be achieved by adding a suitable neutralising reagent to wastewater prior to discharge.</p> <p>The concreting works should be temporarily isolated with proper methods, such as by placing of sandbags or silt curtains with lead edge at bottom and properly supported props.</p>	Contractor	C	N/A
4.7.4	5.3.4	<p>Soil Excavation and Stockpiling</p> <p>Excavated soil which needs to be temporarily stockpiled should be stored in a specially designated area and provided with a tarpaulin cover to avoid runoff into the drainage channels.</p>	Contractor	C	N/A

EIA Ref.	EM&A Manual Ref.	Recommended Mitigation Measures	Who to implement?	When to implement? (1)	Implementation Status (2)
4.7.5 - 4.7.6	5.3.5 - 5.3.6	<p>Site Depot</p> <p>All compounds in works areas should be located on areas of hard standing with provision of drainage channels and settlement ponds where necessary to allow interception and controlled release of settled/treated water. Hard standing compounds should drain via an oil interceptor. The oil interceptor should be regularly inspected and cleaned to avoid wash-out of oil during storm conditions. A bypass should be provided to avoid overload of the interceptor's capacity. Any contractor generating waste oil or other chemicals as a result of his activities should register as a chemical waste producer. Disposal of the waste oil should be done by a licensed collector.</p> <p>Good housekeeping practices should be implemented to minimise careless spillage and to keep the storage and the work space in a tidy and clean condition. Appropriate training including safety codes and relevant manuals should be given to the personnel who regularly handle the chemicals on site.</p>	Contractor	C	✓
4.7.7	5.3.7	<p>Construction of Checkpoint</p> <p>Sewage system should be constructed to divert domestic sewage, which will be generated from the sanitary facilities provided in the new checkpoint at Sha Tau Kok, to public sewer connected to government sewage treatment facilities.</p>	Contractor	C	✓

- Legend: (1) C - During Construction
- (2) ✓ - Implemented
 P - Partially Implemented
 X - Not Implemented
 REC - Rectified by Contractor
 (REC) - Partially Rectified by Contractor
 ! - Pending Contractor's Rectification Action
 N/A - Not Applicable

Table E.4: Recommended Mitigation Measures – Waste Management

EIA Ref.	EM&A Manual Ref.	Recommended Mitigation Measures	Who to implement?	When to implement? (1)	Implementation Status (2)
5.6.7	6.3.6	<p>Site Clearance</p> <p>The topsoil and vegetation removed and excavated material may have to be temporarily stockpiled on-site. Control measures should be taken at the stockpiling area to prevent the generation of dust and pollution of stormwater channels, fish ponds or river channels. However, to eliminate the risk of blocking drains in the wet season, it is recommended that stockpiling of excavated materials during the wet season should be avoided as far as practicable.</p>	Contractor	C	N/A
5.6.10 - 5.6.12	6.3.8	<p>Construction and Demolition Materials</p> <p>Careful design, planning and good site management can minimize over-ordering and generation of waste materials such as concrete mortars and cement grouts. The design of formwork should maximize the use of standard wooden panels so to achieve high reuse levels. Alternatives such as steel formwork or plastic facing should be considered to increase the potential for reuse.</p> <p>The Contractor should recycle as much of the C&D materials as possible on-site. Proper segregation of waste on-site will increase the feasibility of certain components of the waste stream by the recycling contractors. Different areas of the worksite shall be designated for such segregation and storage wherever site conditions permit.</p> <p>Trip-ticket system should be employed to monitor the disposal of C&D material and solid at public filling facilities and landfills, and to control fly-tipping. Government has established a differentiated charging scheme for the disposal of waste to landfill, construction waste sorting facilities and public fill facilities. This will provide additional incentives to reduce the volume of waste generated and to ensure proper segregation of wastes.</p>	Contractor	C	✓
5.6.13 - 5.6.14	6.3.9 - 6.3.13	<p>Chemical Waste</p> <p>For those processes which generate chemical waste, it may be possible to find alternatives which generate reduced quantities or even no chemical waste, or less dangerous types of chemical waste. Chemical waste that is produced, as defined by Schedule 1 of the Waste Disposal (Chemical Waste) (General) Regulation, should be handed in accordance with the Code of Practice on the Packaging, Handling and Storage of Chemical Waste as follows:</p> <p>Containers used for the storage of chemical wastes should:</p> <ul style="list-style-type: none"> ■ be suitable for the substance they are holding, resistant to corrosion, maintained in a good condition, and securely closed; ■ have a capacity of less than 450 litres unless the specification have been approved by the EPD; and ■ display a label in English and Chinese in accordance with instructions prescribed in Schedule 2 of the Regulations, <p>The storage area for chemical wastes should:</p> <ul style="list-style-type: none"> ■ be clearly labelled and used solely for the storage of chemical waste; ■ be enclosed on at least 3 sides; ■ have an impermeable floor and bunding, of capacity to accommodate 110% of the volume of the largest container or 20% by volume of the chemical waste stored in that area 	Contractor	PL	N/A

EIA Ref.	EM&A Manual Ref.	Recommended Mitigation Measures	Who to implement?	When to implement? (1)	Implementation Status (2)
		whichever is the greatest; <ul style="list-style-type: none"> ■ have adequate ventilation; ■ be covered to prevent rainfall entering (water collected within the bund must be tested and disposed as chemical waste if necessary); and ■ be arranged so that incompatible materials are adequately separated. Disposal of chemical waste should: <ul style="list-style-type: none"> ■ be via a licensed waste collector; and ■ be to a facility licensed to receive chemical waste, such as the Chemical Waste Treatment Facility which also offers a chemical waste collection service and can supply the necessary storage containers, or ■ to be re-user of the waste, under approval from the EPD. 			
5.6.16	6.3.15	General Refuse Should be stored in enclosed bins or compaction units separate from C&D and chemical wastes. The Contractor should employ a reputable waste collector to remove general refuse from the site, separate from C&D and chemical wastes, on a regular basis to minimise odour, pest and litter impacts. Burning of refuse on construction sites is prohibited by law.	Contractor	C	✓
5.6.18	6.3.16	Construction Waste Management Plan A construction waste management plan (CWMP) should be prepared and developed by the contractor to ensure proper collection, treatment and disposal of waste on site. This CWMP will also take into account the requirement to handle chemical wastes on site which will need to be managed by a licensed waste collection contractor.	Contractor	C	✓

- Legend: (1) C - During Construction
 PL - During Construction Planning
- (2) ✓ - Implemented
 P - Partially Implemented
 X - Not Implemented
 REC - Rectified by Contractor
 (REC) - Partially Rectified by Contractor
 ! - Pending Contractor's Rectification Action
 N/A - Not Applicable

Table E.5: Recommended Mitigation Measures – Ecology

EIA Ref.	EM&A Manual Ref.	Recommended Mitigation Measures	Who to implement?	When to implement? (1)	Implementation Status (2)
Table 6.38	7.2	Ecological Impacts on Floral Species of Conservation Concern ■ Erection of protective fencing to protect the plant during construction period	Contractor	C	✓
Table 6.40	7.2	Potential Ecological Impacts on Offsite Habitats ■ Good site practices for controlling the dust and water quality (avoid stockpiles adjacent to wetlands, covering the stockpiles with impervious sheeting, control of vehicle speed, no discharge of silty water to the rivers, streams and drainage channels); ■ Clear definition of works limit to avoid impact on adjacent habitats.	Contractor	C	✓
Table 6.39 - Table 6.45	7.2	Disturbance to Wetland-Dependent Birds, Raptors, Terrestrial Birds and Egretty ■ Good working practices include switching off unused equipment, keep minimum number of powered mechanical equipment in operation at the same period, the use of stockpiles and other structures to form noise barriers where practicable, avoidance of feeding the wildlife to cause disturbance, site confinement and proper cover of stockpiles with impervious sheeting to minimize construction noise, uncontrolled surface runoff and discharge of silts; ■ Avoidance of construction works using Power Mechanical Equipments within the Wetland Conservation Area during bird migratory season (15th November – 15th March); and ■ Restriction of excavation works within a 150m buffer zone from the egretty to ardeid non-breeding season (from August to February).	Contractor	C	✓

- Legend: (1) C - During Construction
 (2) ✓ - Implemented
 P - Partially Implemented
 X - Not Implemented
 REC - Rectified by Contractor
 (REC) - Partially Rectified by Contractor
 ! - Pending Contractor's Rectification Action
 N/A - Not Applicable

Table E.6: Recommended Mitigation Measures – Landscape and Visual

EIA Ref.	EM&A Manual Ref.	Recommended Mitigation Measures	Who to implement?	When to implement? (1)	Implementation Status (2)
Preservation of Existing Vegetation					
Table 7-13 CP1	Table 9-1	<ul style="list-style-type: none"> To retain trees that have high amenity or ecology value and contribute most to the landscape and visual amenity of the site and its immediate environs. 	Project Landscape Architect / Contractor	C1	✓
Table 7-13 CP1	Table 9-1	<ul style="list-style-type: none"> Creation of precautionary area around trees to be retained equal to half of the trees canopy diameter. Precautionary area to be fenced. 	Project Landscape Architect / Contractor	BC	✓
Table 7-13 CP1	Table 9-1	<ul style="list-style-type: none"> Prohibition of the storage of materials including fuel, the movement of construction vehicles, and the refuelling and washing of equipment including concrete mixers within the precautionary area. 	Project Landscape Architect / Contractor	C1	✓
Table 7-13 CP1	Table 9-1	<ul style="list-style-type: none"> Phased segmental root pruning for trees to be retained and transplanted over a suitable period (determined by species and size) prior to lifting or site formation works which affect the existing rootball of trees identified for retention. The extent of the pruning will be based on the size and the species of the tree in each case. 	Project Landscape Architect / Contractor	C1	✓
Table 7-13 CP1	Table 9-1	<ul style="list-style-type: none"> Pruning of the branches of existing trees identified for transplantation and retention to be based on the principle of crown thinning maintaining their form and amenity value. 	Project Landscape Architect / Contractor	C1	✓
Table 7-13 CP1	Table 9-1	<ul style="list-style-type: none"> The watering of existing vegetation particularly during periods of excavation when the water table beneath the existing vegetation is lowered. 	Project Landscape Architect / Contractor	C1	N/A
Table 7-13 CP1	Table 9-1	<ul style="list-style-type: none"> The rectification and repair of damaged vegetation following the construction phase to its original condition prior to the commencement of the works or replacement using specimens of the same species, size and form where appropriate to the design intention of the area affected. 	Project Landscape Architect / Contractor	C1	✓
Table 7-13 CP1	Table 9-1	<ul style="list-style-type: none"> All works affecting the trees identified for retention and transplantation will be carefully monitored. This includes the key stages in the preparation of the trees, the implementation of protection measures and health monitoring through out the construction period. 	Project Landscape Architect / Contractor	C1	✓
Table 7-13 CP1	Table 9-1	<ul style="list-style-type: none"> Detailed landscape and tree preservation proposals will be submitted to the relevant government departments for approval under the lease conditions and in accordance with ETWB TCW No. 2/2004 and WBTC No. 3/2006. 	Project Landscape Architect / Contractor	C1	✓
Table 7-13 CP1	Table 9-1	<ul style="list-style-type: none"> The tree preservation works should be implemented by approved Landscape Contractors and inspected and approved on site by a qualified Landscape Architect. A tree protection specification would be included within the contract documents. 	Contractor	C1	✓
Preservation of Existing Topsoil					
Table 7-13 CP2	Table 9-1	<ul style="list-style-type: none"> Topsoil disturbed during the construction phase should be tested using a standard soil testing methodology and where it is found to be worthy of retention stored for re-use. 	Contractor	C1	✓

EIA Ref.	EM&A Manual Ref.	Recommended Mitigation Measures	Who to implement?	When to implement? (1)	Implementation Status (2)
Table 7-13 CP2	Table 9-1	<ul style="list-style-type: none"> The soil will be stockpiled to a maximum height of 2m and will be either temporarily vegetated with hydroseeded grass during construction or covered with a waterproof covering to prevent erosion. 	Contractor	C1	✓
Table 7-13 CP2	Table 9-1	<ul style="list-style-type: none"> The stockpile should be turned over on a regular basis to avoid acidification and the degradation of the organic material, and reused after completion. Alternatively, if this is not practicable, it should be considered for use elsewhere, including other projects. 	Contractor	C1	✓
Permanent and Temporary Works Areas					
Table 7-13 CP3	Table 9-1	<ul style="list-style-type: none"> Where appropriate to the final design the landscape of these works areas should be restored following the completion of the construction phase. 	Contractor	C1	✓
Table 7-13 CP3	Table 9-1	<ul style="list-style-type: none"> Construction site controls should be enforced including the storage of materials, the location and appearance of site accommodation and the careful design of site lighting to prevent light spillage. 	Contractor	C1	✓
Mitigation Planting					
Table 7-13 CP4	Table 9-1	<ul style="list-style-type: none"> Replanting of disturbed vegetation should be undertaken at the earliest possible stage of the construction phase. 	Contractor	C1	✓
Table 7-13 CP4	Table 9-1	<ul style="list-style-type: none"> Use of native plant species predominantly in the planting design for the buffer areas. 	Contractor	C1	✓
Table 7-13 CP4	Table 9-1	<ul style="list-style-type: none"> The tree planting works should be implemented by approved Landscape Contractors and inspected and approved on site by a qualified Landscape Architect. A tree planting specification would be included within the contract documents. 	Contractor	C1	✓
Transplantation of Existing Trees					
Table 7-13 CP5	Table 9-1	<ul style="list-style-type: none"> The tree transplanting works should be implemented by approved Landscape Contractors and inspected and approved on site by a qualified Landscape Architect. A tree protection / transplanting specification would be included within the contract documents. 	Contractor	BC1	✓
Design of the Fence and associated Structures					
Table 7-14 OP1	Table 9-2	<p>Design of Boundary Fence, Boundary Patrol Road and Police Check Point – These structural elements will be designed in accordance with security requirement from Police Force and incorporate design features as part of design mitigation measures including:</p> <ol style="list-style-type: none"> Integrated design approach – the boundary fence should be integrated, as far as technically feasible, with existing built structures such as existing road, footpath and track and embankment of fishponds, river and drainage channel as part of design mitigation measures to reduce the potential cumulative impact of the proposed works. The location and orientation of the police check points should be away from landscape and visually sensitive areas such as wetland, fishpond and agricultural field. Building massing - the proposed use of simple 	ArchSD	D	✓

EIA Ref.	EM&A Manual Ref.	Recommended Mitigation Measures	Who to implement?	When to implement? (1)	Implementation Status (2)
		<p>responsive design for the built structures with a low building height profile to reduce the potential visual mass of the structure within a rural context.</p> <p>3. Treatment of built structures - the architectural design should seek to reduce the apparent visual mass of the facilities further through the use of natural materials such as wooden frame, vertical greening or other sustainable materials such as recycled plastic.</p> <p>4. Responsive building and fence finishes - In terms of the proposed finishes natural tones should be considered for the colour palette with non-reflective finishes are recommended to reduce glare effect. The use of colour blocking on the proposed fence could be used to break up the visual mass of the structure.</p> <p>5. Responsive lighting design – Aesthetic design of architectural and track lighting with following glare design measures:</p> <ul style="list-style-type: none"> – Directional and full cut off lighting is recommended particularly for areas adjacent to existing village to minimise light spillage. – Minimise geographical spread of lighting, only applied for safety and security reasons; – Limited lighting intensity to meet the minimum safety and operation requirement; and – High-pressure sodium road lighting is recommended for more stringent light control reducing spillage and thus visual impacts. 			
Compensatory Planting Proposals					
Table 7-14 OP2	Table 9-2	<ul style="list-style-type: none"> ■ Utilise native to Hong Kong will be utilized within the buffer planting areas. 	Contractor	D	✓
Table 7-14 OP2/3	Table 9-2	<ul style="list-style-type: none"> ■ A qualified or registered landscape architect will be involved in the design, construction supervision and monitoring, and maintenance period to oversee the implementation of the recommended landscape and visual mitigation measures including the tree preservation and landscape works on site. 	Contractor	D	✓
Table 7-14 OP2	Table 9-2	<p>Tree and Shrub Planting – Given the rural nature of the proposed alignment it is recommended that the where possible tree and shrub species which are native to Hong Kong be used. In addition where possible the planting of new trees and shrubs will aim to link together existing woodland areas and small tree groups to improve the connectivity between habitats and create more coherent landscape framework. The planting of small groups of trees along the alignment of the proposed fence will serve to de-emphasise the horizontality of the fence structure and provide for better sense of visual integration with the landscape context. Where practicable vertical greening measures should also be considered on engineering structures.</p>	Contractor	D	✓
Table 7-14 OP2	Table 9-2	<p>Compensatory Planting Proposals – Given the works extent is largely limited along existing roadside embankment to minimise impact to existing village settlements and valuable landscape resources such as wetland, fishpond, stream course and existing trees, and considered the importance of</p>	Contractor	D	✓

EIA Ref.	EM&A Manual Ref.	Recommended Mitigation Measures	Who to implement?	When to implement? (1)	Implementation Status (2)
		<p>tree retention within the works area, new tree planting will concentrate in selected new amenity areas along the alignment, infilling between retained and transplanted trees. The preliminary planting proposals for the proposed works include the planting of some 357 new trees utilising a combination of mature to light standard sized stock (i.e. approximately 15% of mature trees, 75% of standard trees, and 10% light standard trees). These trees will be planted in woodland clumps and small tree groups at strategic locations to de-emphasise the horizontality of the fence alignment. Based on preliminary findings the proposed planting will result in a compensatory planting ratio of 1:1 (new planting: trees recommended for felling). This compares favourably with the report's assertion that some 357 trees would be felled due to the proposed works. With the proposed preservation of existing trees, transplantation of trees in conflict with the proposals and the planting of new trees the project area will contain approximately 2000 trees. Trees forming part of the new planting will provide screening to neighbourhood villagers and will utilise species native to Hong Kong. These proposals will be subject to review at detailed design stage of the project.</p>			

- Legend: (1) C1 - Throughout Construction Phase
 BC - Before Construction Phase Commences
 BC1 - Prior to the Commencement of the Proposed Works
 D - Throughout Design Phase
- (2) ✓ - Implemented
 P - Partially Implemented
 X - Not Implemented
 REC - Rectified by Contractor
 (REC) - Partially Rectified by Contractor
 ! - Pending Contractor's Rectification Action
 N/A - Not Applicable

Construction of a Secondary Boundary Fence and New Sections of
Primary Boundary Fence and Boundary Patrol Road
Section 4 – Lin Ma Hang Village to Sha Tau Kok
Monthly EM&A Report for February 2012



This page left intentionally blank for pagination.

Appendix F. EM&A Schedule

Environmental Monitoring and Audit Schedule for Feb 2012

Sun	Mon	Tue	Wed	Thu	Fri	Sat
			1	2	3	4
5	6	7	8	9	10	11
12	13	14	15	16	17	18
19	20	21	22	23	24	25
26	27	28	29			

-  Noise Monitoring
- * Site Audit by Mott MacDonald (MM)
- @ Report Submission (EM&A Report)
-  Public Holiday

Tentative Environmental Monitoring and Audit Schedule for Mar 2012

Sun	Mon	Tue	Wed	Thu	Fri	Sat
				1	2	3
4	5	6	7	8	9	10
11	12	13	14	15	16	17
18	19	20	21	22	23	24
25	26	27	28	29	30	31

-  Noise Monitoring
- * Site Audit by Mott MacDonald (MM)
- @ Report Submission (EM&A Report)
-  Public Holiday

Construction of a Secondary Boundary Fence and New Sections of
Primary Boundary Fence and Boundary Patrol Road
Section 4 – Lin Ma Hang Village to Sha Tau Kok
Monthly EM&A Report for February 2012



This page left intentionally blank for pagination.

Appendix G. Calibration Certificates

Since no noise impact monitoring was conducted during the reporting month, no calibration certificates are presented in this report.

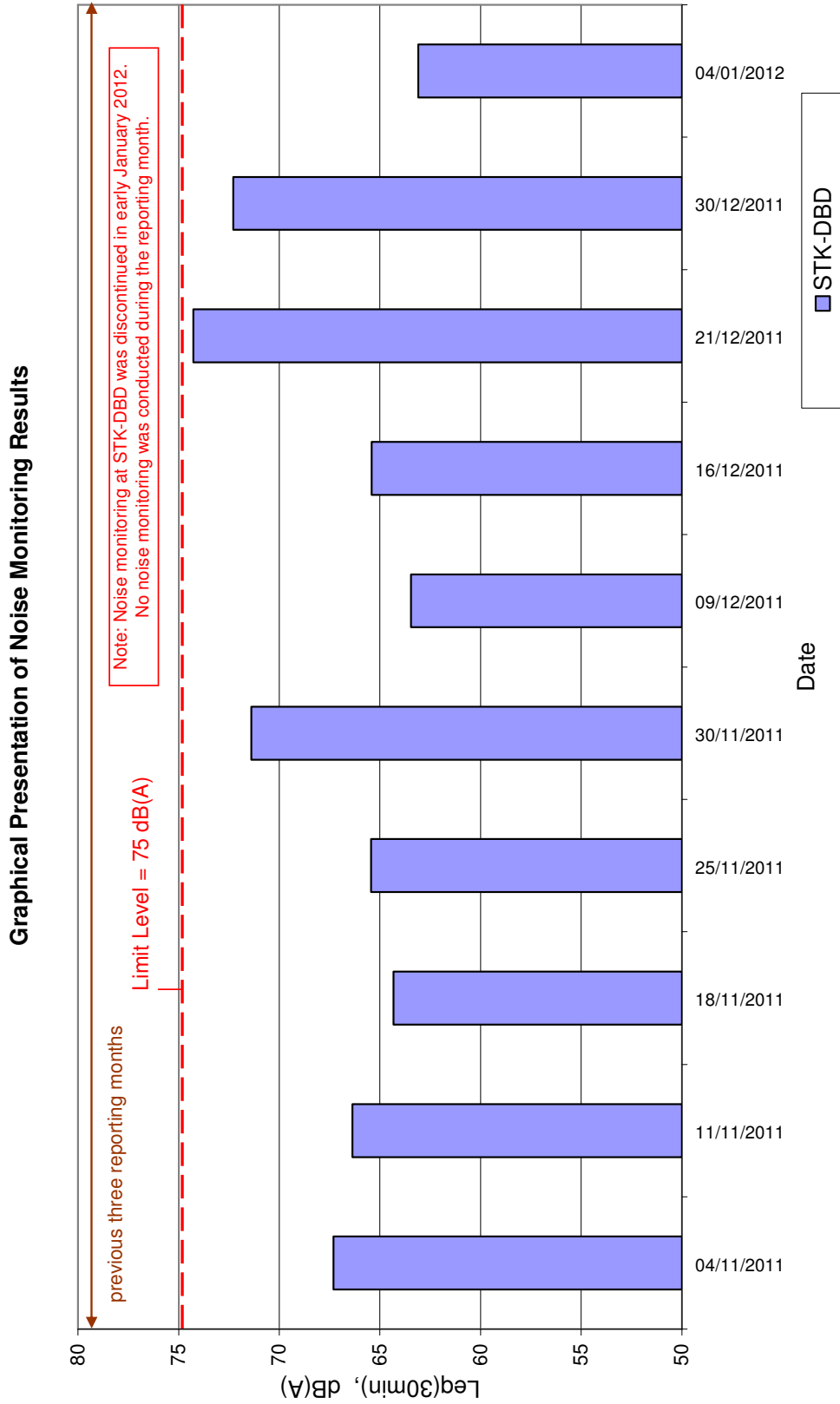
Construction of a Secondary Boundary Fence and New Sections of
Primary Boundary Fence and Boundary Patrol Road
Section 4 – Lin Ma Hang Village to Sha Tau Kok
Monthly EM&A Report for February 2012



This page left intentionally blank for pagination.

Appendix H. Noise Monitoring Results and Graphical Presentation

Since no noise impact monitoring was conducted during the reporting month, no impact monitoring results were obtained. The graphical presentation of measured construction noise levels over the past four reporting periods are presented on the next page.



Appendix I. Monthly Waste Flow Table

Table I.1: Monthly Summary Waste Flow Table for 2010

Month	Actual Quantities of Inert C&D Materials Generated Monthly (in '000 m ³)										Actual Quantities of C&D Wastes Generated Monthly									
	Total Quantity Generated		Broken Concrete		Reused in the Contract		Reused in other Projects		Disposed of at Public Fill		Metals ('000 kg)		Paper/ Cardboard ('000 kg)		Plastics ('000 kg)		Chemical waste ('000 kg)		Others (e.g. refuse) ('000 m ³)	
	Est.	Act.	Est.	Act.	Est.	Act.	Est.	Act.	Est.	Act.	Est.	Act.	Est.	Act.	Est.	Act.	Est.	Act.	Est.	Act.
Jan	-	-	-	-	-	-	-	-	-	-	-	-	-	-	-	-	-	-	-	-
Feb	-	-	-	-	-	-	-	-	-	-	-	-	-	-	-	-	-	-	-	-
Mar	-	0	-	0	-	0	-	0	-	0	-	0	-	0	-	0	-	0	-	0
Apr	-	0	-	0	-	0	-	0	-	0	-	0	-	0	-	0	-	0	-	0
May	-	0	-	0	-	0	-	0	-	0	-	0	-	0	-	0	-	0	-	0.0195
Jun	-	0	-	0	-	0	-	0	-	0	-	0	-	0	-	0	-	0	-	0
Sub-total	-	0	-	0	-	0	-	0	-	0	-	0	-	0	-	0	-	0	-	0.0195
Jul	-	0.0195	-	0	-	0	-	0	-	0.0195	-	0	-	0	-	0	-	0	-	0.013
Aug	-	0.1625	-	0	-	0	-	0	-	0.1625	-	0	-	0	-	0	-	0	-	0.013
Sep	-	0.2405	-	0	-	0	-	0	-	0.2405	-	0	-	0	-	0	-	0	-	0
Oct	-	0.0780	-	0	-	0	-	0	-	0.0780	-	0	-	0	-	0	-	0	-	0.0007
Nov	-	0.1755	-	0	-	0	-	0	-	0.1755	-	0	-	0	-	0	-	0	-	0
Dec	-	0.2925	-	0	-	0	-	0	-	0.2925	-	0	-	0	-	0	-	0	-	0.0065
Total	-	0.9685	-	0	-	0	-	0	-	0.9685	-	0	-	0	-	0	-	0	-	0.0527

Construction of a Secondary Boundary Fence and New Sections of
 Primary Boundary Fence and Boundary Patrol Road
 Section 4 – Lin Ma Hang Village to Sha Tau Kok
 Monthly EM&A Report for February 2012



Table I.2: Monthly Summary Waste Flow Table for 2011

Month	Actual Quantities of Inert C&D Materials Generated Monthly (in '000 m ³)										Actual Quantities of C&D Wastes Generated Monthly									
	Total Quantity Generated		Broken Concrete		Reused in the Contract		Reused in other Projects		Disposed of at Public Fill		Metals ('000 kg)		Paper/ Cardboard ('000 kg)		Plastics ('000 kg)		Chemical waste ('000 kg)		Others (e.g. refuse) ('000 m ³)	
	Est.	Act.	Est.	Act.	Est.	Act.	Est.	Act.	Est.	Act.	Est.	Act.	Est.	Act.	Est.	Act.	Est.	Act.	Est.	Act.
Jan	-	0.1365	-	0	-	0	-	0	-	0.1365	-	0	-	0	-	0	-	0	-	0
Feb	-	0.0260	-	0	-	0	-	0	-	0.0260	-	0	-	0	-	0	-	0	-	0
Mar	-	0.1365	-	0	-	0	-	0	-	0.1365	-	0	-	0	-	0	-	0	-	0
Apr	-	0.0065	-	0	-	0	-	0	-	0.0065	-	0	-	0	-	0	-	0	-	0
May	-	0.0130	-	0	-	0	-	0	-	0.0130	-	0	-	0	-	0	-	0	-	0
Jun	-	0	-	0	-	0	-	0	-	0	-	0	-	0	-	0	-	0	-	0
Sub-total	-	0.3185	-	0	-	0	-	0	-	0.3185	-	0	-	0	-	0	-	0	-	0
Jul	-	0.0130	-	0	-	0	-	0	-	0.0130	-	0.0065	-	0	-	0	-	0	-	0.0065
Aug	-	0.0065	-	0	-	0	-	0	-	0.0065	-	0	-	0	-	0	-	0	-	0
Sep	-	0.0130	-	0	-	0	-	0	-	0.0130	-	0.0065	-	0	-	0	-	0	-	0.0065
Oct	-	0	-	0	-	0	-	0	-	0	-	0	-	0	-	0	-	0	-	0
Nov	-	0	-	0	-	0	-	0	-	0	-	0	-	0	-	0	-	0	-	0
Dec	-	0	-	0	-	0	-	0	-	0	-	0	-	0	-	0	-	0	-	0
Total	-	0.3510	-	0	-	0	-	0	-	0.3510	-	0.0130	-	0	-	0	-	0	-	0.0130

Construction of a Secondary Boundary Fence and New Sections of
 Primary Boundary Fence and Boundary Patrol Road
 Section 4 – Lin Ma Hang Village to Sha Tau Kok
 Monthly EM&A Report for February 2012



Table I.3: Monthly Summary Waste Flow Table for 2012

Month	Actual Quantities of Inert C&D Materials Generated Monthly (in '000 m ³)										Actual Quantities of C&D Wastes Generated Monthly									
	Total Quantity Generated		Broken Concrete		Reused in the Contract		Reused in other Projects		Disposed of at Public Fill		Metals ('000 kg)		Paper/Cardboard ('000 kg)		Plastics ('000 kg)		Chemical waste ('000 kg)		Others (e.g. refuse) ('000 m ³)	
	Est.	Act.	Est.	Act.	Est.	Act.	Est.	Act.	Est.	Act.	Est.	Act.	Est.	Act.	Est.	Act.	Est.	Act.	Est.	Act.
Jan	-	0	-	-	-	0	-	0	-	0	-	0	-	0	-	0	-	0	-	0
Feb	-	0	-	-	-	0	-	0	-	0	-	0	-	0	-	0	-	0	-	0
Mar																				
Apr																				
May																				
Jun																				
Sub-total	-	0	-	0	-	0	-	0	-	0	-	0	-	0	-	0	-	0	-	0
Jul																				
Aug																				
Sep																				
Oct																				
Nov																				
Dec																				
Total																				

Appendix J. Complaint Log

Table J.1: Complaint Log for the Reporting Month

Log Ref.	Location	Complainant / Date of Contact	Details of Complaint	Investigation / Mitigation Action	File Closed
N/A	N/A	N/A	N/A	N/A	N/A

Note: No environmental complaint was received in February 2012.

Appendix K. Weather Information from Hong Kong Observatory

This Appendix presents wind data obtained from the nearest Hong Kong Observatory monitoring station, at Ta Kwu Ling, during noise impact monitoring days.

Since no noise impact monitoring was conducted during the reporting month, no wind data is included in this report.