

Ref	Comments	Responses
Comments from EPD		
1	Please be advised that ETWB TC(W) No.3/2006 has been superseded by DEVB TC(W) No. 10/2013. Please update all the references in the submission.	Section 9 & 10 have been updated.
2	Details of the compensatory tree planting for the 4 dead trees, T1905, T1906, T1907 and T1909, such as proposed species, sizes, quantity and future locations, according to the requirements as stipulated in DEVB TC (W) No. 10/2013 should be included in the Landscape Plan.	<p>Section 8 &amp; 10 has been revised.</p> <p>Please be informed that trees T1906 and T1907 will be compensated in accordance with the requirement as stipulated in DEVB TC(W) No. 10/2013 and the proposed species, sizes, quantity and future locations will be included in the Landscape Plan. For details, please refer to Table 1 of the revised Landscape Plan.</p> <p>An initial tree survey was carried out in November 2010 upon handover of the site, Tree T1909 and T1905 were found dead and damaged respectively. The condition of the trees was reported to LandsD and these trees were proposed to be felled in December 2010, please refer to the attached letter. Tree T1905 was subsequently fell down on 24 January 2011 and the incident was due to termite attack which resulted in less than 20% of sound wood remains. The incident report prepared by the Engineer' s Representative is also attached for easy reference. As the death of the trees was not caused by the works, we consider that compensation for the dead trees T1905 and T1909 was not required.</p>
3	It is noted that all the tree record photos were taken on 10.10.2013 which are outdated. More recent tree record photos should be provided instead.	Appendix H & I has been updated.



**CONTRACT HY/2009/15**

**CENTRAL – WAN CHAI BYPASS  
TUNNEL (CAUSEWAY BAY TYPHOON SHELTER SECTION)**

**Landscape Plan**

**Submission Status: For Approval**

<b>Revision</b>	<b>Description</b>	<b>Date</b>
0	1 <sup>st</sup> Submission	19 October 2011
1	2 <sup>nd</sup> Submission	13 August 2013
2	3 <sup>rd</sup> Submission	9 May 2014
3	4 <sup>th</sup> Submission	20 January 2015

Prepared by:	Esther Choi		20/1/2015
	Environmental Supervisor	Signature	Date
Checked by	Andy Mak		20/1/2015
	Environmental Officer	Signature	Date
Approved by:	Gene Cheung		20/1/2015
	Contractor's Representative	Signature	Date





## LIST OF CONTENT

1. Introduction.....	1
2. Master Green Plan.....	1
3. Identified Visual Sensitive Receivers .....	1
4. Landscape Mitigation Measures .....	1
5. Topsoil .....	3
6. Tree Preservation and Protection Measures .....	3
7. Protection of Existing Trees.....	4
8. Transplantation of Existing Trees .....	4
9. Felling of Existing Trees .....	5
10. Trees Compensation.....	5
11. Control of Night-time Lighting.....	6
12. Erection of Decorative Screen Hoarding Compatible with the Surrounding Setting .....	7
13. Screening of Tree Planting at POC.....	7



## APPENDICES

Appendix A	Site Layout Plan
Appendix B	Location Plan of Visual Sensitive Receivers
Appendix C	Design and Location Plan of Decorative Screen Hoarding
Appendix D	Location Plan of Trees
Appendix E	Tree Schedule for Retained Trees
Appendix F	Tree Schedule for Transplanted Trees
Appendix G	Transplanted Trees in Holding Nursery - Report of Dead Trees T1906 and T1907
Appendix H	Report of Tree Preservation and Protection Plan with photos of retained trees
Appendix I	Transplanted Trees Inspection Record with photos of transplanted trees
Appendix J	Permanent Location of Dead Trees T1906 and T1907

## 1. Introduction

The purpose of this plan is to demonstrate design details, locations, implementation programme, maintenance and management schedules in accordance with contract requirement, Condition 2.14 of Environmental Permit No. EP-364/2009/A and Condition 2.10 of Further Environmental Permit No. FEP-06/364/2009/A.

## 2. Master Green Plan

The Master Greening Plan will not form part of the scope of this project. The final planting works will be carried out by another main contractor.

## 3. Identified Visual Sensitive Receivers

The following visual sensitive receivers (VSRs) are likely to be affected during the construction phase of this project:

- C/R4 (Elizabeth House);
- C/R5 (Riviera Mansion);
- C/R6 (Prospect Mansion);
- C/R7 (Miami Mansion);
- C/R8 (Marco Polo Mansion);
- C/R9 (Victoria Park Mansion);
- C/R18 (Belle House);
- C32 (Excelsior Hotel);
- C36 (Citicorp Centre); and
- C37 (Victoria Centre).

The above VSRs are mapped in Appendix B.

## 4. Landscape Mitigation Measures

The CEDD/HyD's Contractor shall be responsible for implementing a series of construction phase Landscape and visual mitigation measures. All mitigation measures stated in this plan are in compliance with relevant requirements in both CWB&IECL EIA Report (Register No. AEIAR-041/2001) and the WDII&CWB EIA Report (Register No. AEIAR-125/2008). While the operational phase mitigation measures as mentioned in EIA Reports should be carried out by other contractor(s) under separate contract(s).

The proposed landscape mitigation measures during construction phase for HY/2009/15, but not limited to, are listed as below:



### Implementation Schedule for Landscape and Visual Impact Mitigation (Specific in CWB)

EIA Report Ref.	Environmental Protection Measures/ Mitigation Measures	Location /Timing	Implementation Agency	Relevant Legislation and Guidelines	Referring Section in this Plan
Table 10.5	CM1 Topsoil, where identified, shall be stripped and stored for re-use in the construction of the soft landscape works, where practical.	Work site / During Construction Phase	CEDD/HyD's Contractor	EIAO TM	Section 5
Table 10.5	CM2 Existing trees to be retained on site shall be carefully protected during construction (Site Tree Survey Report, Tree Preservation and Protection Plan, and Method Statement for Tree Transplanting Works have been submitted to the Engineer's Representatives for approval).	Work site / During Construction Phase	CEDD/HyD's Contractor	EIAO TM	Section 7
Table 10.5	CM3 Trees unavoidably affected by the works shall be transplanted where practical.	Work site / During Construction Phase	CEDD/HyD's Contractor	EIAO TM	Section 8
Table 10.5	CM4 Compensatory tree planting shall be provided to compensate for felled trees.	Work site / During Construction Phase	CEDD/HyD's Contractor	EIAO TM	Section 10
Table 10.5	CM5 Control of night-time lighting.	Work site / During Construction Phase	CEDD/HyD's Contractor	EIAO TM	Section 11
Table 10.5	CM6 Erection of decorative screen hoarding compatible with the surrounding setting (Please refer to Appendix C).	Work site / During Construction Phase	CEDD/HyD's Contractor	EIAO TM	Section 12
Table 7.4	Screen tree planting for Police Officers' Club (within Project boundary)	Adjacent to POC carpark	CEDD/HyD's Contractor	WBTC 18/94	Section 7

## **5. Topsoil**

Stripped topsoil will be re-used in the construction of the soft landscape works where practical. For the topsoil which comprises reclamation fill material and is not desirable from a horticultural maintenance point of view, approved new soil-mix will be specified for new planting areas.

## **6. Tree Preservation and Protection Measures**

There are a number of measures are adopted to protect trees and the details are described below.

### **i. Label all trees with tree numbers**

The preserved trees have been clearly labeled with tree reference numbers.

### **ii. Temporary protection fencing**

Temporary protective fencing of 1.2m height should be erected around tree protection zone to protect the preserved trees from construction damage.

### **iii. Regular monitoring of trees**

Trees shall be inspected regularly to check the health of the tree. Any sign of deterioration shall be notified to the Engineer's Representatives and remedial action shall be adopted.

### **iv. Insect and disease control**

Preserved tree shall be checked for insect attraction or fungal infestation. Dead or infected or infested branches should be pruned if necessary to prevent falling down.

Any infection and infestation shall be reported to Engineer's Representatives. Remedial eradication by use of sprayed insecticide or fungicide shall be carried out.

### **v. Watering**

Fresh water shall be used for watering and all planted areas shall be watered. Watering shall be carried out in early morning and later afternoon so as to keep the soil moist around the roots and plants.

Watering operation shall be completed within 24 hours of an inspection which deems watering to be necessary.

**vi. Pruning of tree branches**

If any branches of preserved trees interferes with construction works or is in poor condition which may affect public safety and health of the tree and thus pruning is required, the Engineer's approval should be obtained prior to carrying out pruning works. The pruning works shall be carried out in compliance with G.S. Clause 3.86.

( i to vi - apply to retained trees at CBTS and Police Officer's Club;

i to ii - apply to retained trees at Siu Ho Wan)

**7. Protection of Existing Trees**

The existing trees recommended to be retained shall be protected by means of fencing to prevent vehicular, construction machines or pedestrian intrusion which may potentially damage tree canopies, trunks and root zones. Site tree survey report, and tree preservation and protection plan have been approved by Engineer's Representatives. Appendix D shows the location of trees namely T009, T010, T011, T012 and T013 are being retained and protected by HY/2009/15 in Siu Ho Wan, Lantau Island. While the trees being retained near Police Office's Club and at Portion 7 of the project area are also indicated. A tree schedule summarizes the details of retained trees is shown in Appendix E. A bi-monthly report of the Tree Preservation and Protection Plan with photos of retained trees is included in Appendix H. Referred to the follow-up discussion with Planning Department (PlanD), it has been clarified that the future progress photos of the retained trees would be forwarded to PlanD on bi-monthly basis by the contractor via regular submission for the tree reports.

**8. Transplantation of Existing Trees**

A total of 13 nos. trees were originally required to be transplanted at the commencement of the Contract. However, the trees T1909 and T1905 were found dead in November 2010 and in January 2011 respectively before any works had been carried out in the initial stage of the project. The remaining 11 trees were transplanted to the temporary holding nursery in Tai Po Lam Tsuen

on 11 May 2011. As agreed with the Engineer's Representative, CSHK is not responsible for the compensation for the dead trees T1905 and T1909.

During the holding period, two trees T1906 and T1907 were confirmed dead in November 2011 at the temporary hold nursery and removed/disposed in December 2012. On 16 January 2013, the temporary holding nursery was moved from Lam Tsuen to Lau Fau Shan to which the 11 trees, excluding T1906 and T1907, were transplanted. Appendix F presents the tree schedule for all transplanted trees. A Transplanted Trees Inspection Record with photos of transplanted trees is included in Appendix I. Referred to the follow-up discussion with PlanD, it has been clarified that the future progress photos of the transplanted trees would be forwarded to PlanD on bi-monthly basis by the contractor via regular submission for the tree reports. The transplanted trees temporarily stored at holding nursery will be transplanted to Central Interchange by Central-Wan Chai Bypass – Central Interchange (CWB(CI)). The final permanent locations of the transplanted trees will be determined by CWB(CI). The corresponding planting plans are included in the landscape plan under CWB(CI). Referring to the planting plans under CWB(CI), all the transplanted trees under CWB(T1), eleven in total (including tree numbers T1900, T1902, T1903, T1904, T1906, T1907, T1908, T1910, T1911, T1912 and T2015), shall be handled by CWB(CI). Further information and details shall be supplemented after the interface meeting for the permanent tree transplanting works.

## **9. Felling of Existing Trees**

In case of EIA specifically identified trees required to be felled during the construction phase, proposal and compensation scheme will be submitted to relevant government department(s) for approval and implemented accordingly upon receipt of approval. As both T1906 and T1907 are not EIA identified trees, the compensation of the felled trees would be handled according to the Contract and DEVB TC(W)No.10/2013.

## **10. Trees Compensation**

According to the Contract, compensatory trees for any dead tree shall be provided, and the provision of compensatory trees would be tentatively completed before end of contract. Compensatory planting shall be provided in

accordance with the requirements of DEVB TC(W)No.10/2013. This being of a ratio not less than 1:1 in terms of the total numbers of aggregated girth size of compensatory trees and shall not be less than that of dead trees. The size of compensatory trees should be at least of “heavy standard”. (Please refer to Table 1 for details.) Compensatory trees will be planted in our holding nursery and will be transplanted to Central Interchange by Central-Wan Chai Bypass – Central Interchange (CWB(CI)). Please refer to Appendix J for the permanent location.

**Table 1**

Tree No.	Botanical Name	Chinese Name	Size	Quantity
T1906	Celtis sinensis	朴樹	75mm= $\leq$ DBH= $\leq$ 150mm	1
T1907	Ficus variegata	青果榕	75mm= $\leq$ DBH= $\leq$ 150mm	1

## 11. Control of Night-time Lighting

Sources of night-time lighting impacts during construction phase would include:

- Night-time terrestrial works;
- Construction site traffic;
- Lighting devices at site offices;

The following measures, but not limited to, would be implemented where practical to minimize impact:

- a. Carefully planning of any night-time work would be adopted to minimize the use of unnatural lighting;
- b. The need of using lighting devices would be carefully assessed based on work task to minimize usage;
- c. Where lighting devices are needed to be operated, the devices would be aimed away from the visual sensitive receivers where necessary.
- d. Site office lighting will be oriented away from VSRs.

The lighting impact will be monitored and assessed by designated person during night-time construction work. Upon any public concerns or complaints, the lights will be repositioned or shielded where necessary.



## **12. Erection of Decorative Screen Hoarding Compatible with the Surrounding Setting**

Decorative screen hoarding not less than 2.4m high from ground level shall be supplied, erected and maintained in good condition, and to be removed upon completion of the works. The design of hoarding is compatible with the surround setting and has been approved by the Engineer. The design and location plan can be found in attached Appendix C.

## **13. Screening of Tree Planting at POC**

Tree planting adjacent to the Police Officer's Club (identified as DLA17) car park boundary (within site boundary) shall be screened to mitigate source of landscape impact from the construction of tunnel portal.

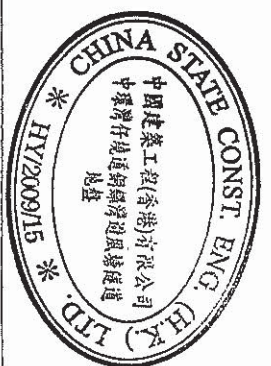
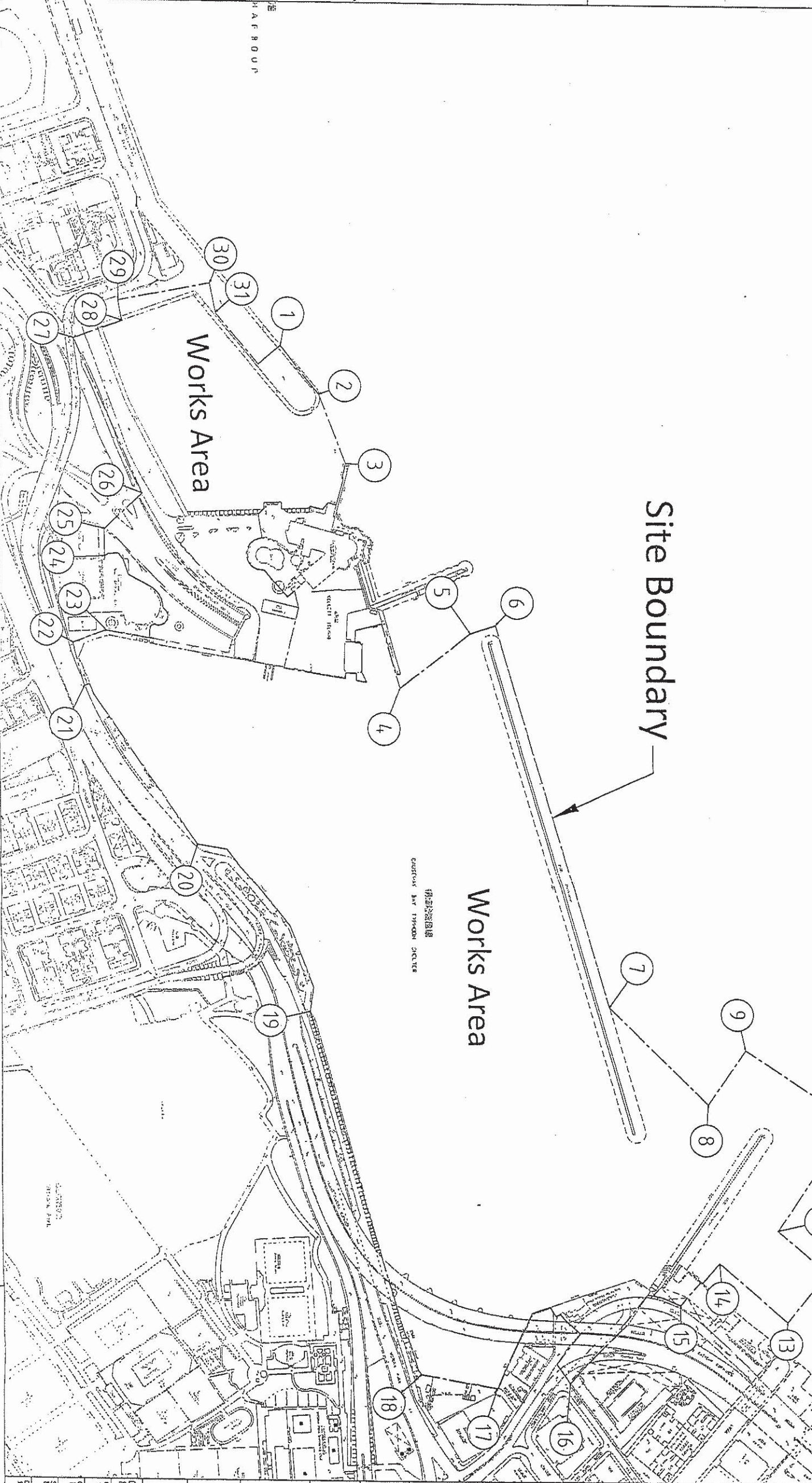
# Appendix A

## Site Layout Plan



Point	HK 1980 Grid Coordinate		WGS 84 (Deg°MM'SS.S'')	
	Northing(m)	Easting(m)	Latitude(N)	Longitude(E)
1	816123.163	836627.778	22° 17' 2.4"	114° 10' 49.3"
2	816158.294	836672.793	22° 17' 3.5"	114° 10' 50.9"
3	816183.090	836737.200	22° 17' 4.3"	114° 10' 53.1"
4	816233.339	836944.955	22° 17' 6.0"	114° 11' 0.4"
5	816297.883	836893.247	22° 17' 8.1"	114° 10' 58.6"
6	816321.616	836885.404	22° 17' 8.8"	114° 10' 58.3"
7	816424.234	837243.006	22° 17' 12.2"	114° 11' 10.8"
8	816515.377	837333.839	22° 17' 15.1"	114° 11' 14.0"
9	816550.091	837282.247	22° 17' 16.3"	114° 11' 12.2"
10	816648.248	837348.530	22° 17' 19.4"	114° 11' 14.5"
11	816579.824	837450.429	22° 17' 17.2"	114° 11' 18.1"
12	816625.456	837490.089	22° 17' 18.7"	114° 11' 19.4"
13	816597.945	837535.332	22° 17' 17.5"	114° 11' 21.0"
14	816525.608	837481.240	22° 17' 15.5"	114° 11' 19.1"
15	816489.139	837520.385	22° 17' 14.3"	114° 11' 20.5"
16	816386.319	837585.553	22° 17' 10.9"	114° 11' 23.1"

Point	HK 1980 Grid Coordinate		WGS 84 (Deg°MM'SS.S'')	
	Northing(m)	Easting(m)	Latitude(N)	Longitude(E)
17	816318.982	837600.533	22° 17' 8.7"	114° 11' 23.3"
18	816248.756	837588.973	22° 17' 6.5"	114° 11' 22.9"
19	816147.576	837248.874	22° 17' 3.2"	114° 11' 11.0"
20	816044.312	837091.645	22° 16' 59.8"	114° 11' 5.5"
21	815941.724	836945.745	22° 16' 56.5"	114° 11' 0.4"
22	815931.125	836905.152	22° 16' 56.1"	114° 10' 59.0"
23	815961.289	836893.217	22° 16' 57.1"	114° 10' 58.6"
24	815960.075	836824.609	22° 16' 57.1"	114° 10' 56.2"
25	815959.749	836799.530	22° 16' 57.1"	114° 10' 55.3"
26	815994.733	836766.563	22° 16' 58.2"	114° 10' 54.2"
27	815931.497	836622.837	22° 16' 56.1"	114° 10' 49.1"
28	815976.887	836606.580	22° 16' 57.6"	114° 10' 48.6"
29	815973.209	836587.866	22° 16' 57.5"	114° 10' 47.9"
30	816058.039	836571.193	22° 17' 0.3"	114° 10' 47.3"
31	816063.332	836598.132	22° 17' 0.4"	114° 10' 48.3"
32	816102.525	836645.064	22° 17' 1.7"	114° 10' 49.9"



港務局  
HIGHWAYS DEPARTMENT  
Large Work Project Management Office

CENTRAL - WAN CHAI BYPASS  
AND IEC LINK

TIME  
General Layout Plan

AECOM  
AECOM Asia Co. Ltd.  
(Formerly known as Jeanneret Consultants Asia Ltd.)  
中國建築工程(香港)有限公司  
CHINA STATE CONSTRUCTION (HONG KONG) LTD.

DRG. NO. CWB/MN/SK-001

CONTRACT NO. HY/2009/15  
CHECKED BY KYCHAN  
SCALE 1:4000  
DATE OF ISSUE 21-09-2010  
DRAWN BY KCCHUNG

OVERSIZING ARE IN METRES  
PAPER SIZE A3



## Appendix B

### Location Plan of Visual Sensitive Receivers



**KEY FOR VISUAL SENSITIVE RECEIVERS**

- C1 International Finance Centre
- C2 Hong Kong Station Development Phase 2
- C3 Exchange Square
- C4 Jardine House
- C5 Mandarin Hotel
- C6 Hong Kong Club
- C7 Ritz Carlton Hotel
- C8 AIA Tower
- C9 Hutchison House
- C10 Bank of America Tower
- C11 Far East Financial Centre
- C12 Admiralty Centre
- C13 United Centre
- C14 CITIC Tower
- C15 Fleet Arcade
- C16 Asian House
- C17 Chung Nam Building
- C18 Fleet House, Harcourt House
- C19 Telecom House, Hong Kong Arts Centre, Harbour View International House
- C20 Shui On Centre
- C21 Central Plaza
- C22 Grand Hyatt Hotel
- C23 Renaissance Harbour View Hotel
- C24 Hong Kong Convention and Exhibition Centre
- C25 Great Eagle Centre
- C26 Harbour Centre
- C27 China Resources Building
- C28 Sun Hung Kai Centre
- C29 AXA Centre
- C30 Sino Plaza
- C31 World Trade Centre
- C32 Excelsior Hotel
- C33 The Park Lane Hotel
- C34 Windsor House
- C35 19-31 Yee Wo Street
- C36 Citicorp Centre
- C37 Victoria Centre
- C38 Ocean Terminal
- C39 Star House
- C40 Peninsula Hotel
- C41 Sheraton Hotel
- C42 InterContinental Hotel
- C43 New World Centre and Hotel
- C44 Wing On Plaza
- C45 Shangri-La Hotel
- C46 Tsim Sha Tsui Centre
- C47 Empire Centre
- C48 Grand Stanford Harbour View Hotel
- C49 Nikko Hotel
- C50 Four Season Hotel
- C51 Harbour Plaza Metropolis
- C52 AIA Tower
- C53 Newton Hotel
- C54 Electric Centre
- C54A Sea View Estate

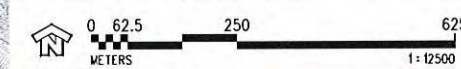
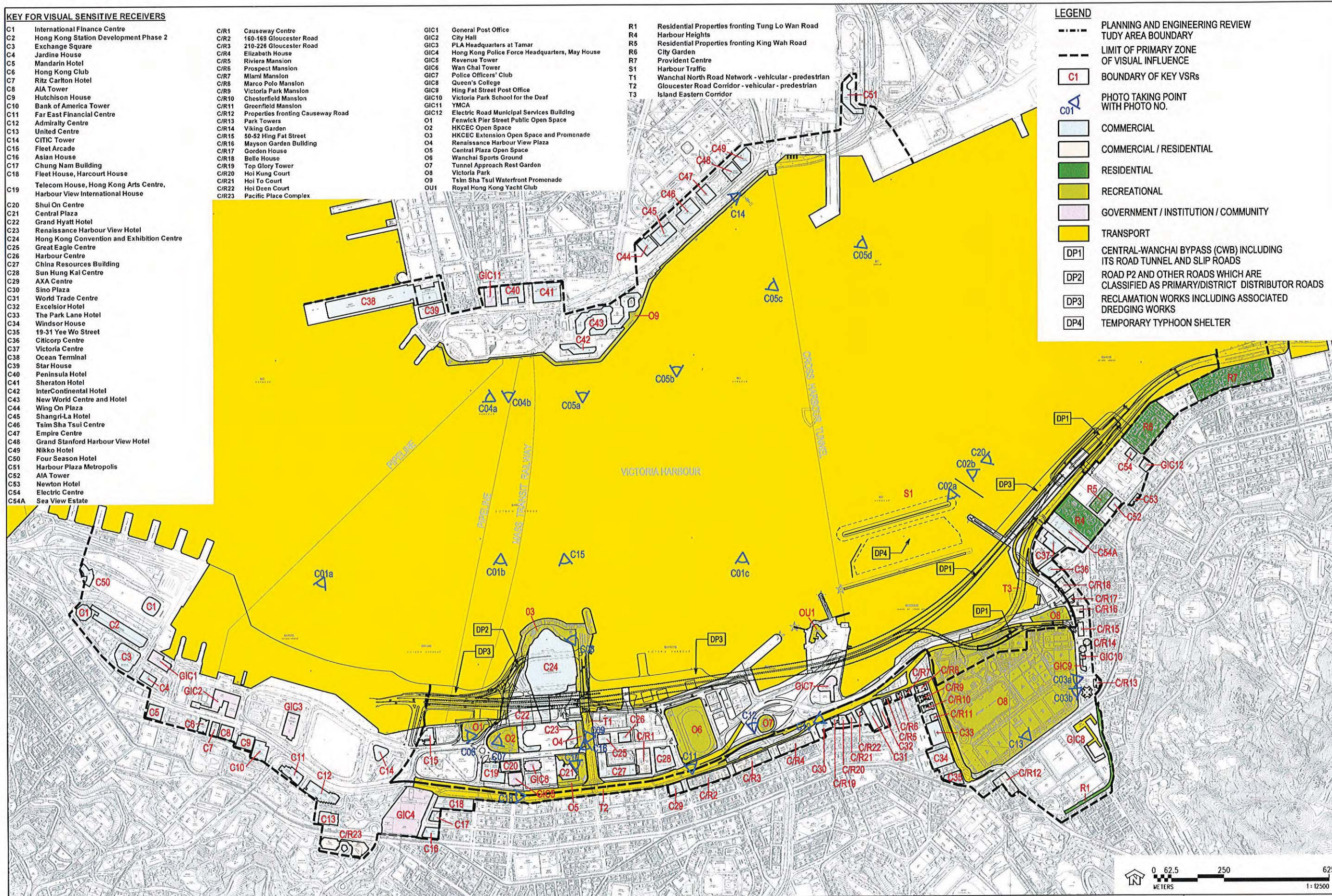
- C/R1 Causeway Centre
- C/R2 160-168 Gloucester Road
- C/R3 218-226 Gloucester Road
- C/R4 Elizabeth House
- C/R5 Riviera Mansion
- C/R6 Prospect Mansion
- C/R7 Mlami Mansion
- C/R8 Marco Polo Mansion
- C/R9 Victoria Park Mansion
- C/R10 Chesterfield Mansion
- C/R11 Greenfield Mansion
- C/R12 Properties fronting Causeway Road
- C/R13 Park Towers
- C/R14 Viking Garden
- C/R15 50-52 Hing Fat Street
- C/R16 Mayson Garden Building
- C/R17 Garden House
- C/R18 Belle House
- C/R19 Top Glory Tower
- C/R20 Hoi Kung Court
- C/R21 Hoi To Court
- C/R22 Hoi Deen Court
- C/R23 Pacific Place Complex

- GIC1 General Post Office
- GIC2 City Hall
- GIC3 PLA Headquarters at Tamar
- GIC4 Hong Kong Police Force Headquarters, May House
- GIC5 Revenue Tower
- GIC6 Wan Chai Tower
- GIC7 Police Officers' Club
- GIC8 Queen's College
- GIC9 Hing Fat Street Post Office
- GIC10 Victoria Park School for the Deaf
- GIC11 YMCA
- GIC12 Electric Road Municipal Services Building
- O1 Fenwick Pier Street Public Open Space
- O2 HKCEC Open Space
- O3 HKCEC Extension Open Space and Promenade
- O4 Renaissance Harbour View Plaza
- O5 Central Plaza Open Space
- O6 Wanchai Sports Ground
- O7 Tunnel Approach Rest Garden
- O8 Victoria Park
- O9 Tsim Sha Tsui Waterfront Promenade
- OU1 Royal Hong Kong Yacht Club

- R1 Residential Properties fronting Tung Lo Wan Road
- R4 Harbour Heights
- R5 Residential Properties fronting King Wah Road
- R6 City Garden
- R7 Provident Centre
- S1 Harbour Traffic
- T1 Wanchai North Road Network - vehicular - pedestrian
- T2 Gloucester Road Corridor - vehicular - pedestrian
- T3 Island Eastern Corridor

**LEGEND**

- PLANNING AND ENGINEERING REVIEW
- STUDY AREA BOUNDARY
- LIMIT OF PRIMARY ZONE OF VISUAL INFLUENCE
- C1 BOUNDARY OF KEY VSRs
- C01 PHOTO TAKING POINT WITH PHOTO NO.
- COMMERCIAL
- COMMERCIAL / RESIDENTIAL
- RESIDENTIAL
- RECREATIONAL
- GOVERNMENT / INSTITUTION / COMMUNITY
- TRANSPORT
- DP1 CENTRAL-WANCHAI BYPASS (CWB) INCLUDING ITS ROAD TUNNEL AND SLIP ROADS
- DP2 ROAD P2 AND OTHER ROADS WHICH ARE CLASSIFIED AS PRIMARY/DISTRICT DISTRIBUTOR ROADS
- DP3 RECLAMATION WORKS INCLUDING ASSOCIATED DREDGING WORKS
- DP4 TEMPORARY TYPHOON SHELTER



WAN CHAI DEVELOPMENT PHASE II - PLANNING AND ENGINEERING REVIEW

**KEY VSRs AND PRIMARY ZONE OF VISUAL INFLUENCE DURING CONSTRUCTION**

**FIGURE 10.4**



## Appendix C

# Design and Location Plan of Decorative Screen Hoarding



**CONTROLLED COPY**  
FOR CONSTRUCTION



**KEY PLAN**  
SCALE A1 : 1: 20000  
A3 : 1: 40000

**NOTES:**

1. ALL HOARDING ALIGNMENT/SETTING OUT SHOWN ON THE DRAWINGS ARE INDICATIVE ONLY. THE CONTRACTOR SHALL SUBMIT PROPOSED HOARDING PLANS PHASE BY PHASE, SHOWING THE PROPOSED TEMPORARY VEHICULAR ACCESS, EXISTING TRAFFIC SIGNS OR TRAFFIC PROVISIONS AND EXISTING TREES, AS WELL AS OTHER RELEVANT INFORMATION FOR THE ENGINEER'S AGREEMENT.
2. DETAILS OF THE HOARDING SHALL REFER TO H/0 STANDARD DRAWING H6110-H6111.
3. THE REQUIREMENTS OF THE AESTHETIC DESIGN OF THE HOARDING SHALL REFER TO PARTICULAR SPECIFICATION.
4. THE HOARDING ARRANGEMENT AT CONTRACT INTERFACE SHALL BE AGREED WITH OTHER CONTRACTORS.
5. ANY MODIFICATION OF STANDARD DRAWING TO SUIT THE CONTRACTOR'S REQUIREMENTS SHALL BE SUBMITTED TO THE ENGINEER FOR CONSENT.

**LEGEND:**

- SITE BOUNDARY
- HOARDING TO BE ERECTED ON EXISTING LAND
- HOARDING WITH AESTHETIC DESIGN TO BE ERECTED ON EXISTING LAND
- HOARDING TO BE ERECTED ON TEMPORARY RECLAIMED LAND
- HOARDING WITH AESTHETIC DESIGN TO BE ERECTED ON TEMPORARY RECLAIMED LAND
- BOUNDARY FOR TEMPORARY RECLAMATION

12 OCT 2010

B	WORKING DRAWING	12 OCT 10
A	TENDER DRAWING	MAY 10

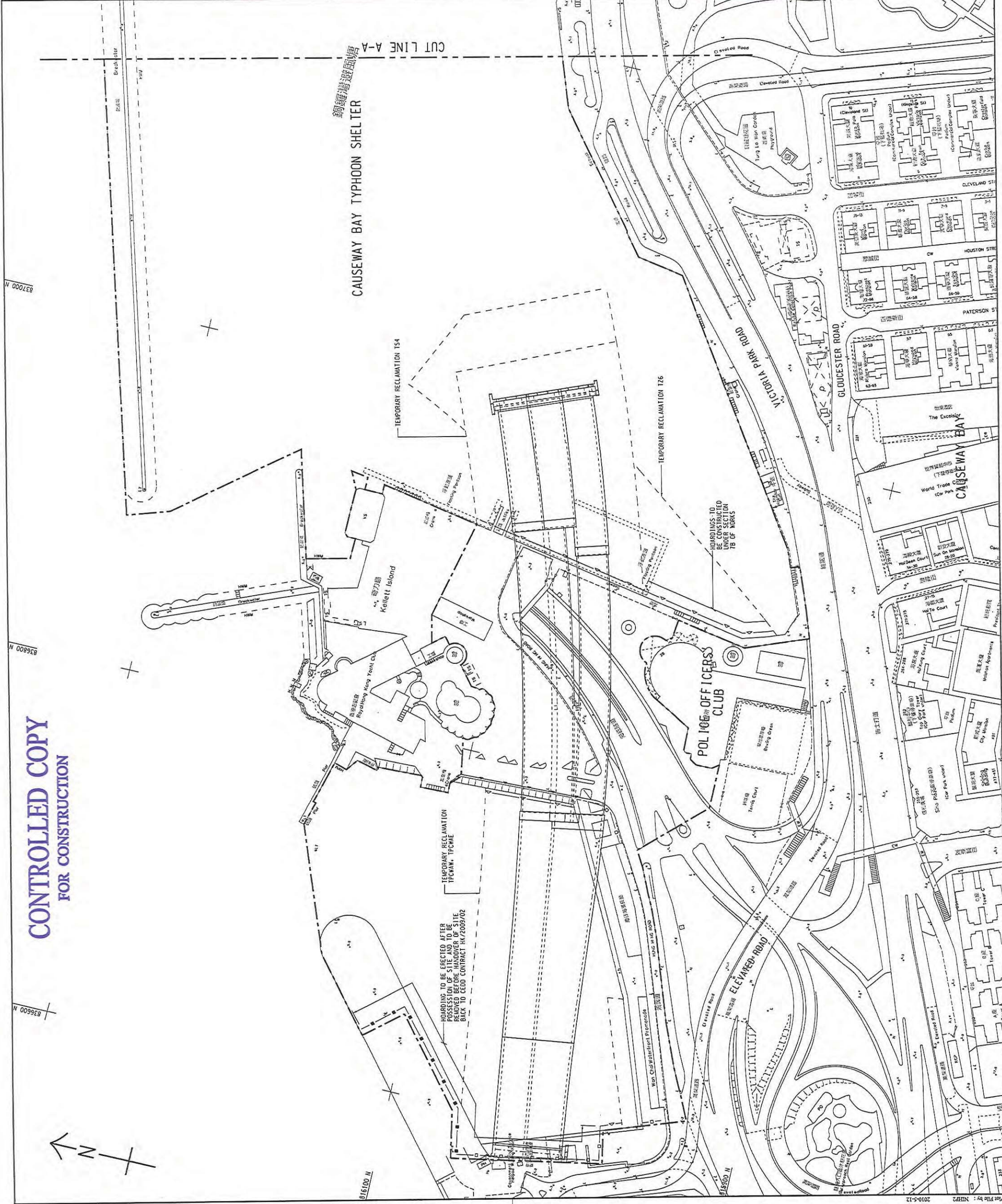
Highways Department  
Major Works Project Management Office

CENTRAL - WAN CHAI BYPASS AND IEG LINK  
PWP ITEM NO. 579 TH  
工務計劃項目編號

CENTRAL WAN CHAI BYPASS - TUNNEL  
(CAUSEWAY BAY TYPHOON SHELTER SECTION)  
HOARDING PLAN

**AECOM**

DRGNO. 60095653/T1/1211B  
圖號  
DATE: 12 OCT 2010  
DATE: 12 OCT 2010  
SCALE: A1 : 1: 20000  
SCALE: A3 : 1: 40000  
SHEET 1 OF 2  
WORKING DRAWING  
COPYRIGHT RESERVED







**KEY PLAN**  
SCALE A1 : 10000  
A3 : 40000

**NOTE:**  
1. FOR NOTES AND LEGEND, REFER TO DRAWING NO. 60095653/T1/1271.

**CONTROLLED COPY**  
FOR CONSTRUCTION

12 OCT 2010

B	WORKING DRAWING	REVISED	DATE
1		12 OCT 10	
A	TENDER DRAWING	REVISED	DATE
1		JULY 09	MAY 10

Highways Department 路政署  
Major Works Project Management Office 主要工程項目管理處

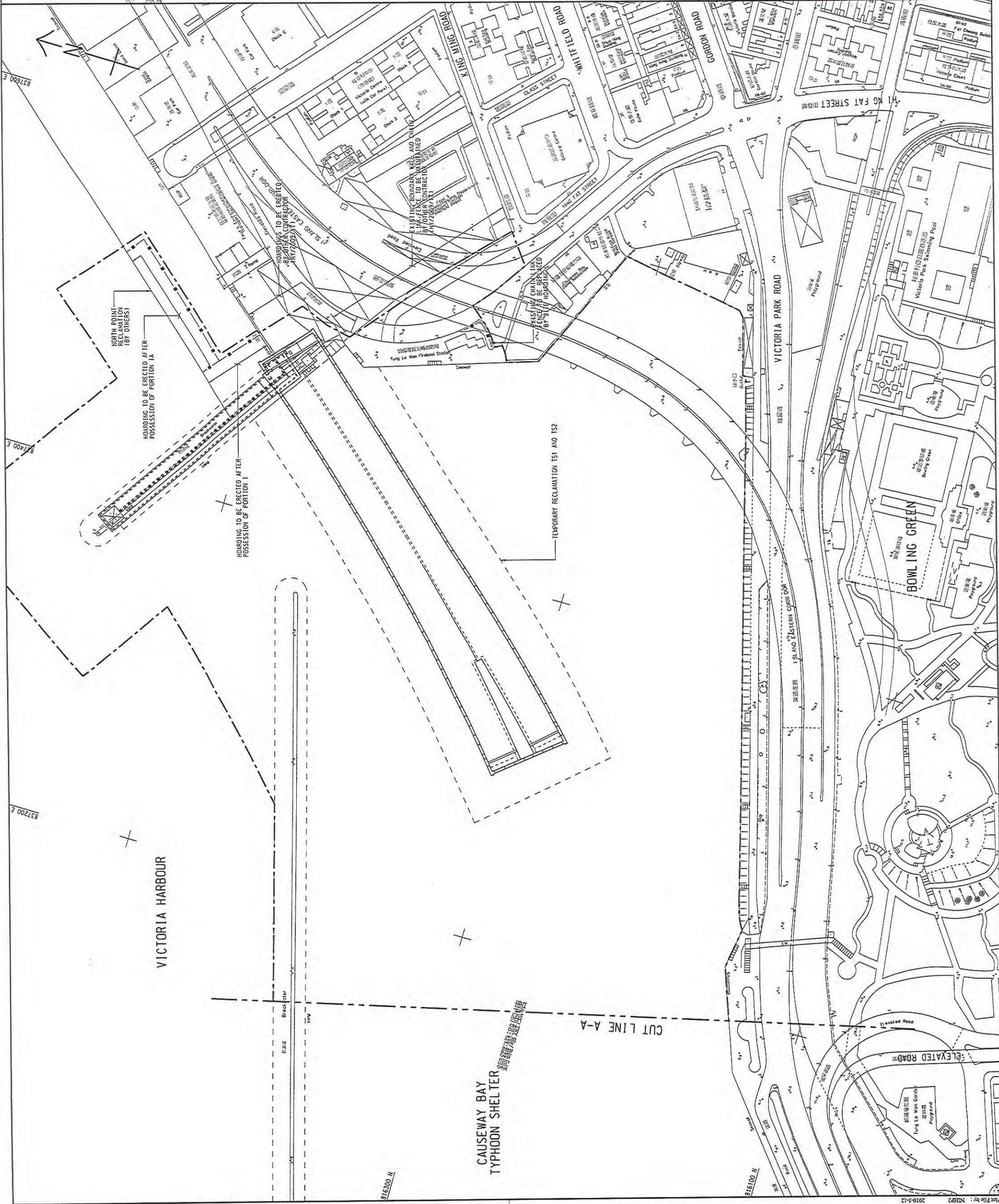
CENTRAL - WAN CHAI BYPASS AND IEC LINK  
PWP ITEM NO. 579 TH  
工務計劃項目編號

CENTRAL WAN CHAI BYPASS - TUNNEL  
(CAUSEWAY BAY TYPHOON SHELTER SECTION)  
HOARDING PLAN  
SHEET 2 OF 2

**AECOM**

DRGNO. 圖號: 60095653/T1/1272B  
CONTRACT NO. 合約編號: HY/2009/15  
SCALE 比例尺: 1:1000  
DATE 日期: 11 OCT 2010  
DRAWN BY 繪圖人: VLUK  
CHECKED BY 校核人: JYK  
DESIGNED BY 設計人: JYK  
APPROVED BY 核准人: CMW

**WORKING DRAWING**  
© COPYRIGHT RESERVED 版權所有





2m



CENTRAL - WAN CHAI BYPASS AND ISLAND EASTERN CORRIDOR LINK



2m



CENTRAL - WAN CHAI BYPASS AND ISLAND EASTERN CORRIDOR LINK



2m



15m

15m

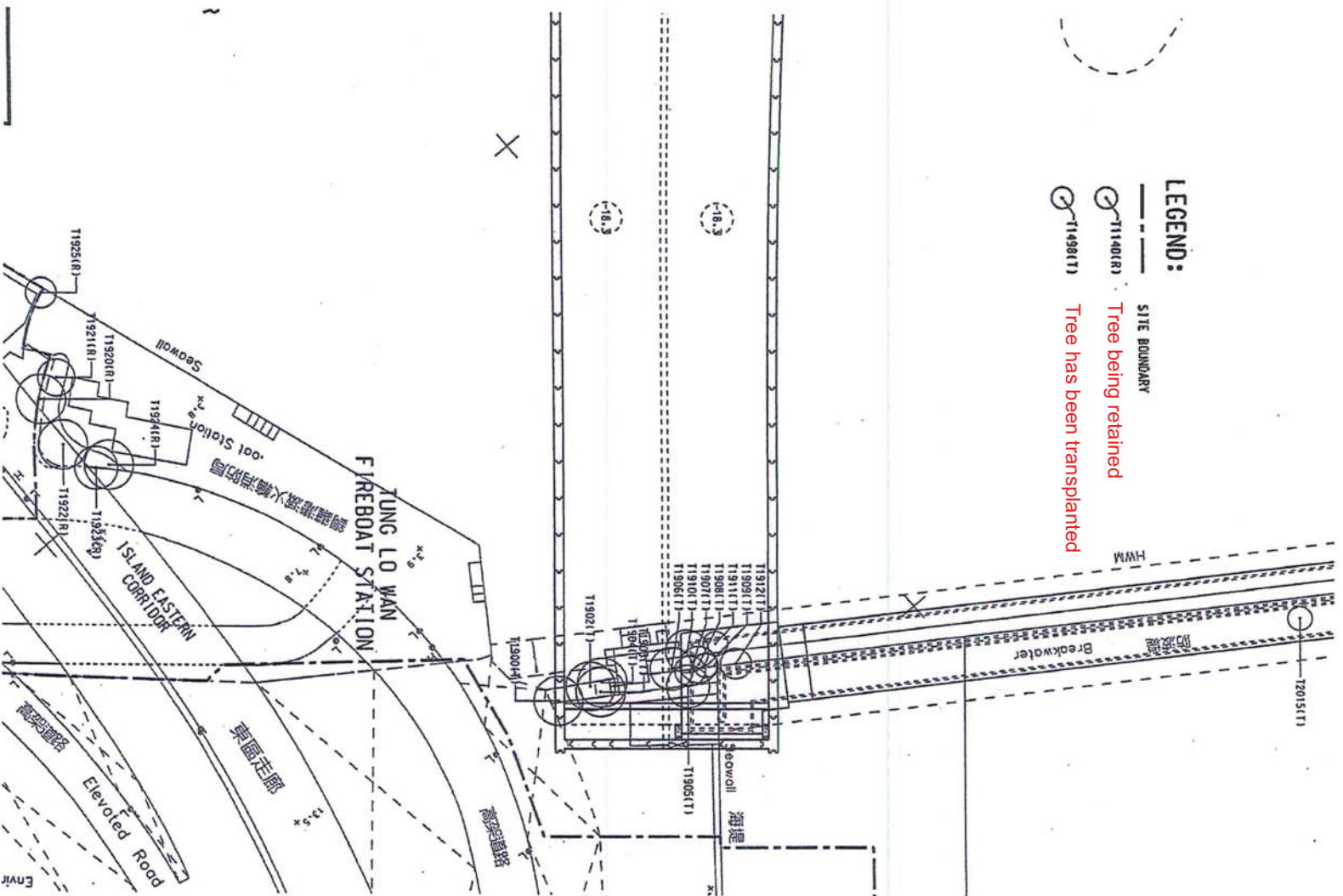
36m

# Appendix D

## Location Plan of Trees

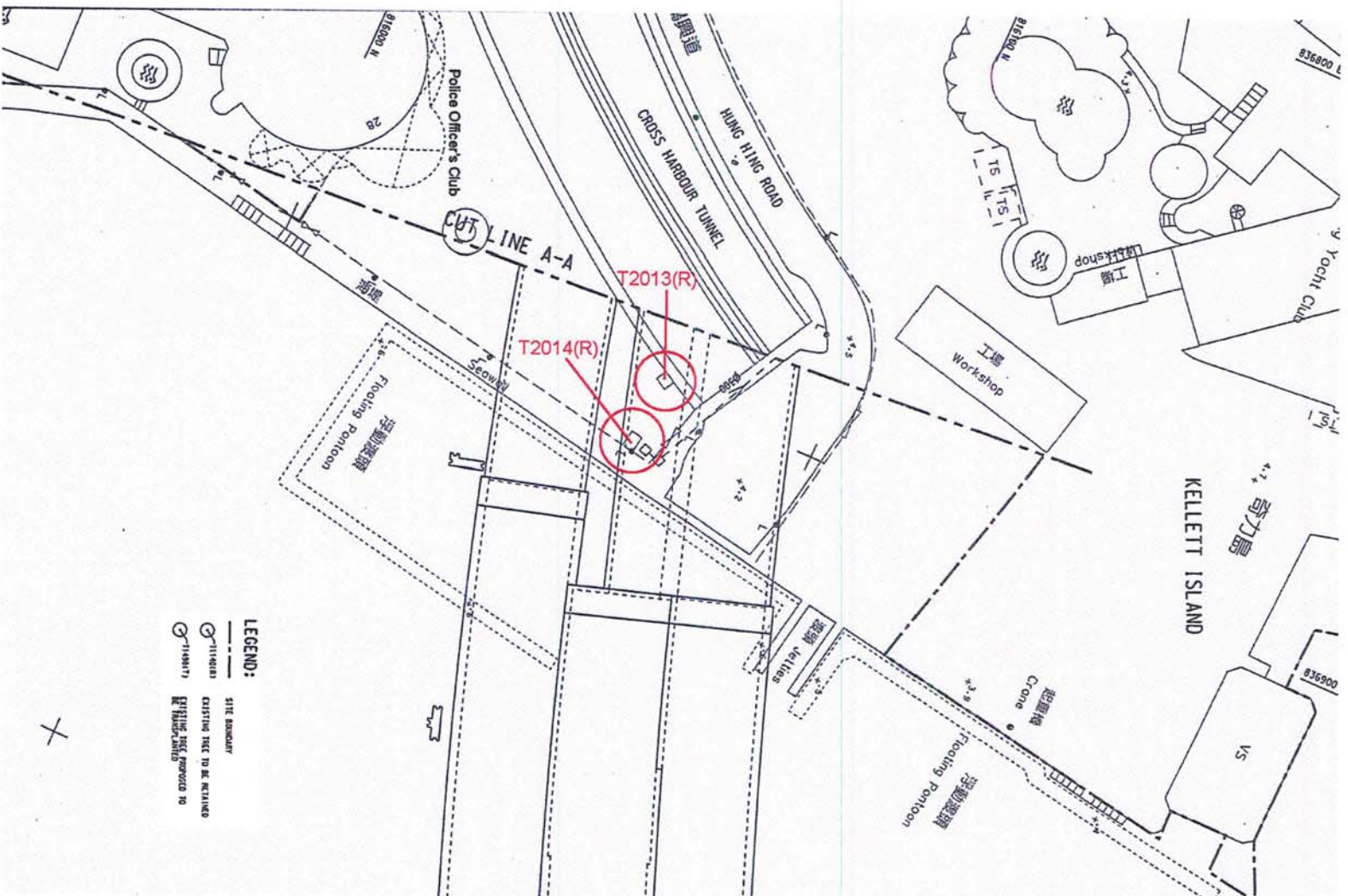


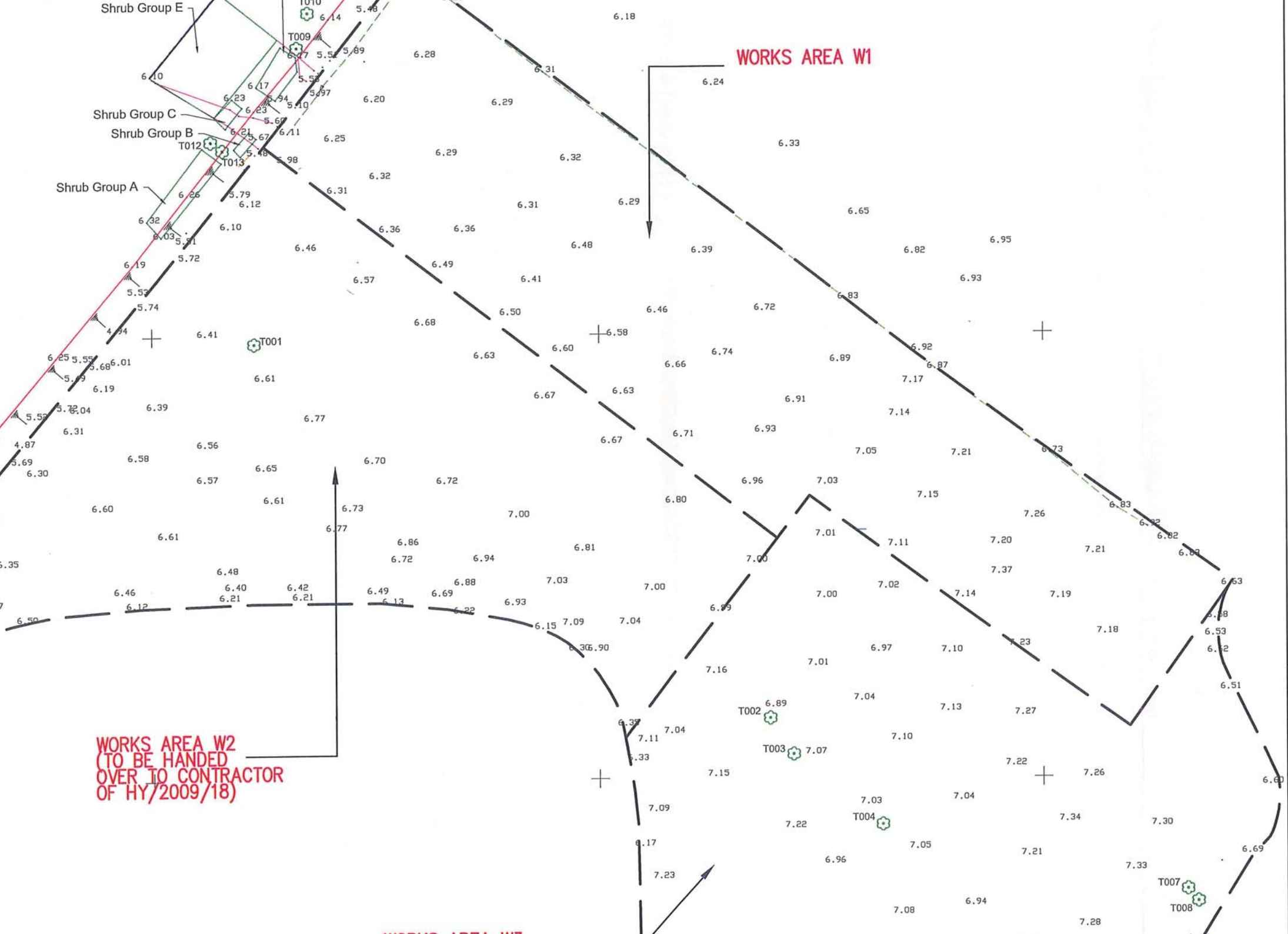
1. Location Plans showing the Preserved Trees





Contract No. HY/2009/15  
 Central – Wanchai Bypass – Tunnel  
 (Causeway Bay Typhoon Shelter Section)





LEGE

CI  
(CAU

TITLE:

DRG.

## Appendix E

### Tree Schedule for Retained Trees



Tree Schedule for Retained Trees

Tree No.	Botanical Name	Chinese Name	Location	Size			Ground Level (mPD)	Form (G/F/P)	Health (G/F/P)	Tree Condition	Mitigation Measures
				Height (m)	Crown Spread (m)	Girth (mm)					
T1920	Ficus virens	大葉榕, 黃葛樹	At Portion 7	10	7	760	4.8	G	F	No significant defect observed 未有察覺明顯缺陷	Nil
T1921	Morus alba	桑	At Portion 7	8	7	330	4.4	G	F	Sign of decay - Minor 呈現腐爛 - 輕微	Tree condition under close observation 密切監察樹木狀況
T1922	Ficus virens	大葉榕, 黃葛樹	At Portion 7	9	6	360	4.74	P	F	No significant defect observed 未有察覺明顯缺陷	Nil
T1923	Ficus microcarpa	榕樹, 細葉榕	At Portion 7	9	7	420	4.84	F	F	No significant defect observed 未有察覺明顯缺陷	Nil
T1924	Morus alba	桑	At Portion 7	8	7	360	4.77	P	F		Nil
T1925	Ficus virens	大葉榕, 黃葛樹	At Portion 7	6	5	270	3.7	F	P	No significant defect observed 未有察覺明顯缺陷	Nil
T2013	Aleurites moluccana	石栗	Police Officer's Club	7	5	414	5.38	G	G	No significant defect observed 未有察覺明顯缺陷	Cabling / other support (to be done by POC) 安裝纜索或支撐物(由警察員工會所負責) Reminded POC of the tree condition 已通知警察員工會所有關樹木情況
T2014	Aleurites moluccana	石栗	Police Officer's Club	8	4.5	481	5.48	G	G	No significant defect observed 未有察覺明顯缺陷	Cabling / other support (to be done by POC) 安裝纜索或支撐物(由警察員工會所負責) Reminded POC of the tree condition 已通知警察員工會所有關樹木情況
T009	Liquidamber Formosana	楓香	Works Area W1 at Siu Ho Wan	4	3	100	6.17	F	F	No significant defect observed 未有察覺明顯缺陷	Nil
T010	Acacia Confusa	臺灣相思	Works Area W1 at Siu Ho Wan	5	5	115	6.14	F	F	No significant defect observed 未有察覺明顯缺陷	Nil
T011	Liquidamber Formosana	楓香	Works Area W1 at Siu Ho Wan	4	3	95	6.12	F	F	No significant defect observed 未有察覺明顯缺陷	Nil
T012	Acacia Confusa	臺灣相思	Works Area W1 at Siu Ho Wan	9	7	302	6.21	F	F	No significant defect observed 未有察覺明顯缺陷	Nil
T013	Acacia Confusa	臺灣相思	Works Area W1 at Siu Ho Wan	8	5	153	6.21	F	F	No significant defect observed 未有察覺明顯缺陷	Nil

## Appendix F

### Tree Schedule for Transplanted Trees





### Tree Schedule for Transplanted Trees

Tree No.	Botanical Name	Chinese Name	Size (m)			Health Condition ( Good / Fair / Poor / Dead )	Date of Transplant to Nursery	Date of Re-Transplant to Nursery	Holding Nursery	Area of Land Occupied	Remarks
			Height (m)	Crown Spread (m)	DBH (mm)						
T-1900	Ficus virens	大葉榕, 黃葛樹	8	3.5	300	Fair	21/2/2011	16/1/2013	***Lau Fau Shan	21 m <sup>2</sup>	
T-1902	Ficus benjamina	垂葉榕	7.5	4.0	370	Fair	22/2/2011	16/1/2013	***Lau Fau Shan	24 m <sup>2</sup>	
T-1903	Ficus benjamina	垂葉榕	9	3.5	360	Fair	22/2/2011	16/1/2013	***Lau Fau Shan	21 m <sup>2</sup>	
T-1904	Ficus benjamina	垂葉榕	8	3.5	385	Fair	21/2/2011	16/1/2013	***Lau Fau Shan	21 m <sup>2</sup>	
T-1906	Celtis sinensis	朴樹	8.5	4.0	380	Dead	21/2/2011	Nil	Tai Po Lam Tsuen	24 m <sup>2</sup>	Report of dead trees for tree nos. T1906 has been submitted under CSF ref. no. CCW/CSF/LDS/002073 dated 17 Jan 2012. With approval from AECOM, the dead tree has been removed on 1 Sep 2012.
T-1907	Ficus variegata	青果榕	8	3.5	190	Dead	18/2/2011	Nil	Tai Po Lam Tsuen	21 m <sup>2</sup>	Report of dead trees for tree nos. T1907 has been submitted under CSF ref. no. CCW/CSF/LDS/002073 dated 17 Jan 2012. With approval from AECOM, the dead tree has been removed on 14 Sep 2012.
T-1908	Albizia lebbek	大葉合歡	4.5	3.5	280	Fair	18/2/2011	16/1/2013	***Lau Fau Shan	21 m <sup>2</sup>	
T-1910	Ficus virens	大葉榕, 黃葛樹	9	4.0	600	Fair	23/2/2011	16/1/2013	***Lau Fau Shan	24 m <sup>2</sup>	
T-1911	Albizia lebbek	大葉合歡	2.5	2.5	130	Poor	18/2/2011	16/1/2013	***Lau Fau Shan	10 m <sup>2</sup>	
T-1912	Ficus benjamina	垂葉榕	4	2.5	170	Fair	18/2/2011	16/1/2013	***Lau Fau Shan	10 m <sup>2</sup>	
T-2015	Ficus microcarpa	榕樹, 細葉榕	3.5	5.0	212	Fair	23/2/2011	16/1/2013	***Lau Fau Shan	30 m <sup>2</sup>	

Remarks: \*\*\* indicates that the tree has been relocated from Tai Po Lam Tsuen Tree Nursery to Lau Fau Shan Tree Nursery on the re-transplant date.

Total area of land occupied by the trees : 227 m<sup>2</sup>

## Appendix G

### Transplanted Trees in Holding Nursery - Report of Dead Trees T1906 and T1907



HY/2009/15: Central – Wan Chai Bypass-Tunnel  
(Causeway Bay Typhoon Shelter Section)

### Contractor's Submission Form

To: The Engineer's Representative – Attn: Mr Peter Poon

Title of Submission: Transplanted Trees in Holding Nursery –  
Report of Dead Trees T1906 and T1907

Submission Ref. No.: CCW/CSF/LDS/002073

Description of Contents: (for materials submissions, use Material Submission Form)

Please refer to attachment

See Below

#### Specification/Drawing Reference (if applicable):

We refer to your correspondence ref CWB/(HY/2009/15)/C30/940/15B004797 dated 3 January 2012 concerning the dead trees T1906 and T1907 in the holding nursery.

Pursuant to PS Clause 3.101(3), we submit herewith a report for the aforesaid dead trees for your perusal.

Purpose of Submission:  
 For Approval

For Information

For Record Purposes

From: Contractor's Representative

Name:

Signature:

Date Response required by:

David Lau

N/A

Date: 17/01/2012

Prepared by: DLRE/GOA  
cc: MasterFile/QA



## Report of Damages to the Plant in Holding Nursery

Central-Wan Chai Bypass - Tunnel (Causeway Bay Typhoon Shelter Section)

Contract  
HY/2009/15

MS

Revision :  
A

Tree Mark:

T1906 and T1907

### 1. Report of Damages

Pursuant to PS Clause 3.101(3)(b), we report that the trees T1906 and T1907, transplanted from Portion IV of the Site to the temporary holding nursery in Yuen Long, were both identified dead during our routine inspection for the month in November 2011. The photographic records are appended in Annex A.

### 2. Reason of Damages

After thorough investigation, the reasons that the trees die are as follow:

1. The trees grew near the seaside of the rocky embankment of the East Breakwater before they were transplanted. During the transplanting works in early 2011, concrete and rock breaking around their root balls could not be avoided. During the process, we also found that the root balls were not intact attached with soil and hence no pruning works were done for the transplanting. After transplanted to the holding nursery, they intended to grow unhealthily and became weak gradually and died as a consequence.
2. Referring to the Tree Survey Report submitted under cover of Contractor's Submission ref CCW/CSSF/LDS/000037B dated 23 December 2010, our landscape specialist had already highlighted the following:
  - (a) For tree No. T1906, the root system distorted due to confined growing space between rock. Preparation of root ball was unfeasible for survival of transplanting.
  - (b) For tree No. T1907, the root system distorted due to rock and limited root system coverage for stability.

### 3. Remedial Measure

There were pre-existed conditions that the trees T1906 and T1907 were not suitable for being transplanted that we had pointed out before the execution of such works. Nevertheless, we have made our best endeavors to maintain the trees in healthy conditions during the whole process of the transplanting and in the holding nursery as required under the Contract. Therefore, under such circumstances, it is considered that we are not responsible for remedial works or replacement for the dead trees.



# Report of Damages to the Plant in Holding Nursery

Central-Wan Chai Bypass - Tunnel (Causeway Bay Typhoon Shelter Section)	Contract HY/2009/15	M/S	Revision : A
---	------------------------	-----	-----------------

Tree Mark:	T1906 and T1907
------------	-----------------

## Annex A

Record Photos of Dead Trees T1906 and T1907





# Report of Damages to the Plant in Holding Nursery

Central-Wan Chai Bypass - Tunnel (Causeway Bay Typhoon Shelter Section)

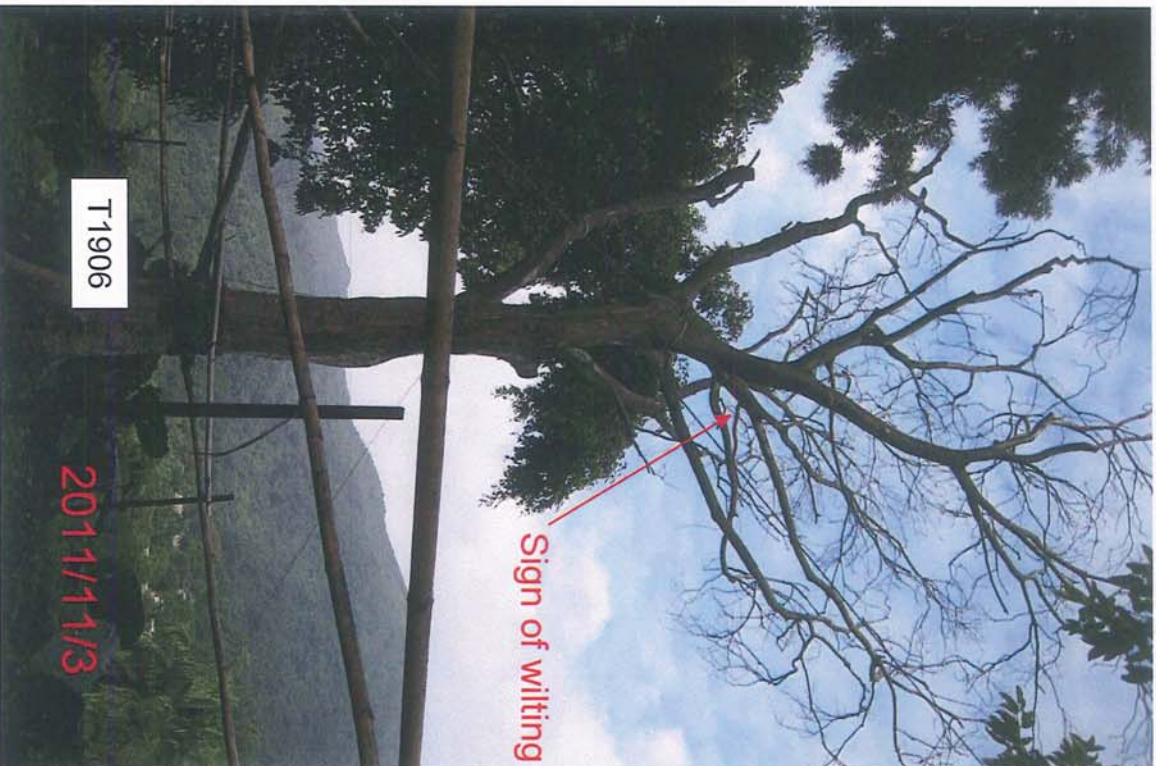
Contract  
HY/2009/15

MS

Revision :  
A

Tree Mark:

T1906 and T1907





# Report of Damages to the Plant in Holding Nursery

Central-Wan Chai Bypass - Tunnel (Causeway Bay Typhoon Shelter Section)

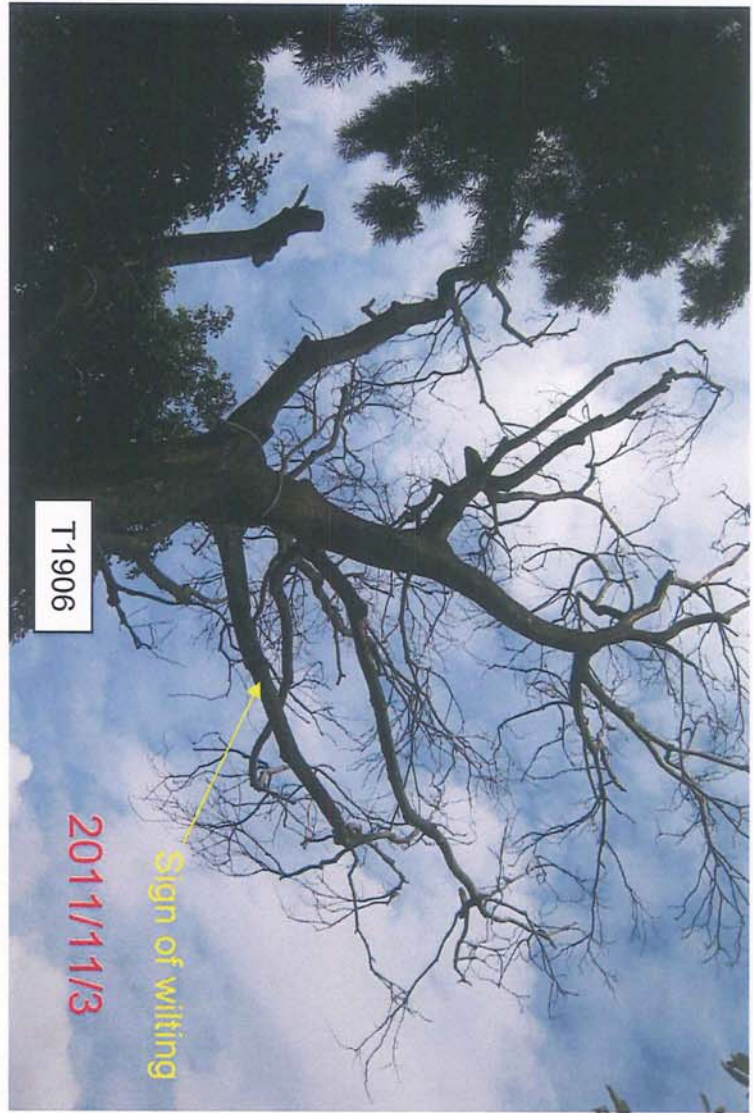
Contract  
HY/2009/15

MIS

Revision :  
A

Tree Mark:

T1906 and T1907



Sign of wilting





# Report of Damages to the Plant in Holding Nursery

Central-Wan Chai Bypass - Tunnel (Causeway Bay Typhoon Shelter Section)

Contract HY/2009/15	M/S	Revision : A
------------------------	-----	-----------------

Tree Mark: T1906 and T1907







## Report of Damages to the Plant in Holding Nursery

Central-Wan Chai Bypass - Tunnel (Causeway Bay Typhoon Shelter Section)

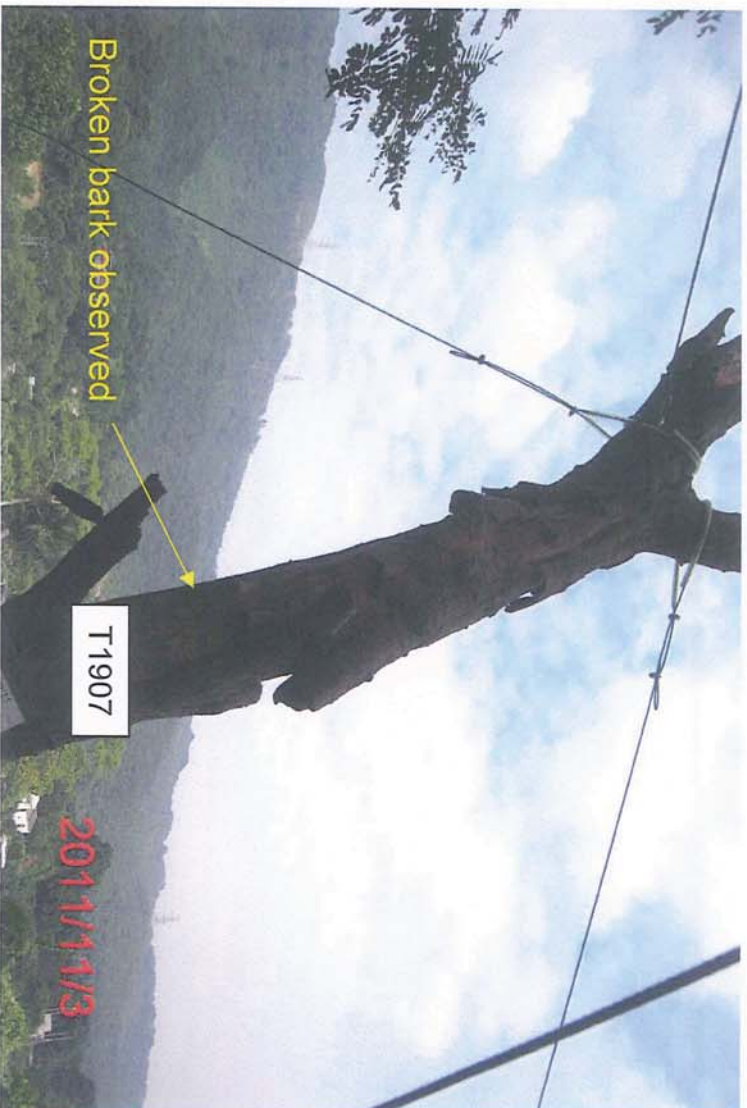
Contract  
HY/2009/15

MS

Revision :  
A

Tree Mark:

T1906 and T1907



## Appendix H

# Report of Tree Preservation and Protection Plan with photos of retained trees



**中國建築工程(香港)有限公司**  
CHINA STATE CONSTRUCTION ENGRG. (HONG KONG) LTD.

Contract No. HY/2009/15  
Central - Wan Chai Bypass – Tunnel  
(Causeway Bay Typhoon Shelter Section)

## CONTRACTOR'S SUBMISSION FORM

**To : The Engineer's Representative**  
**Attn : Mr. Peter Poon**

**CSF Ref. No.:**

**CCW / 2002 / CSF / LDS / ALL / 006359**

Old CSF ref. no. (if applicable) :  
AECOM ref. no. (if applicable) :

**Title of Submission:**

Bi-Monthly Report No. 23 of the Tree Preservation and Protection Plan

**Description of Contents:**

Please refer to attachment

See Below

**Specification/Drawing Reference (if applicable):**

We are pleased to submit herewith the bi-monthly report no.23 of the tree preservation and protection plan for your perusal.

Encl.

**Purpose of Submission:**

For Approval

For Information

For Record Purposes

**From: Contractor's Representative**

Name : Gene Cheung

Date Response required by:

Signature:

N/A

Date : 10/11/2014



# Tree Preservation and Protection Plan

## Bi-Monthly Report No. 23

(For the Month from September 2014 to October 2014)

Endorsed by:

A handwritten signature in black ink, appearing to read 'D. Bloxham', written over a horizontal line.

**David Bloxham**  
**Senior Landscape Architect**  
**China State Construction**  
**Engineering(Hong Kong)Ltd.**

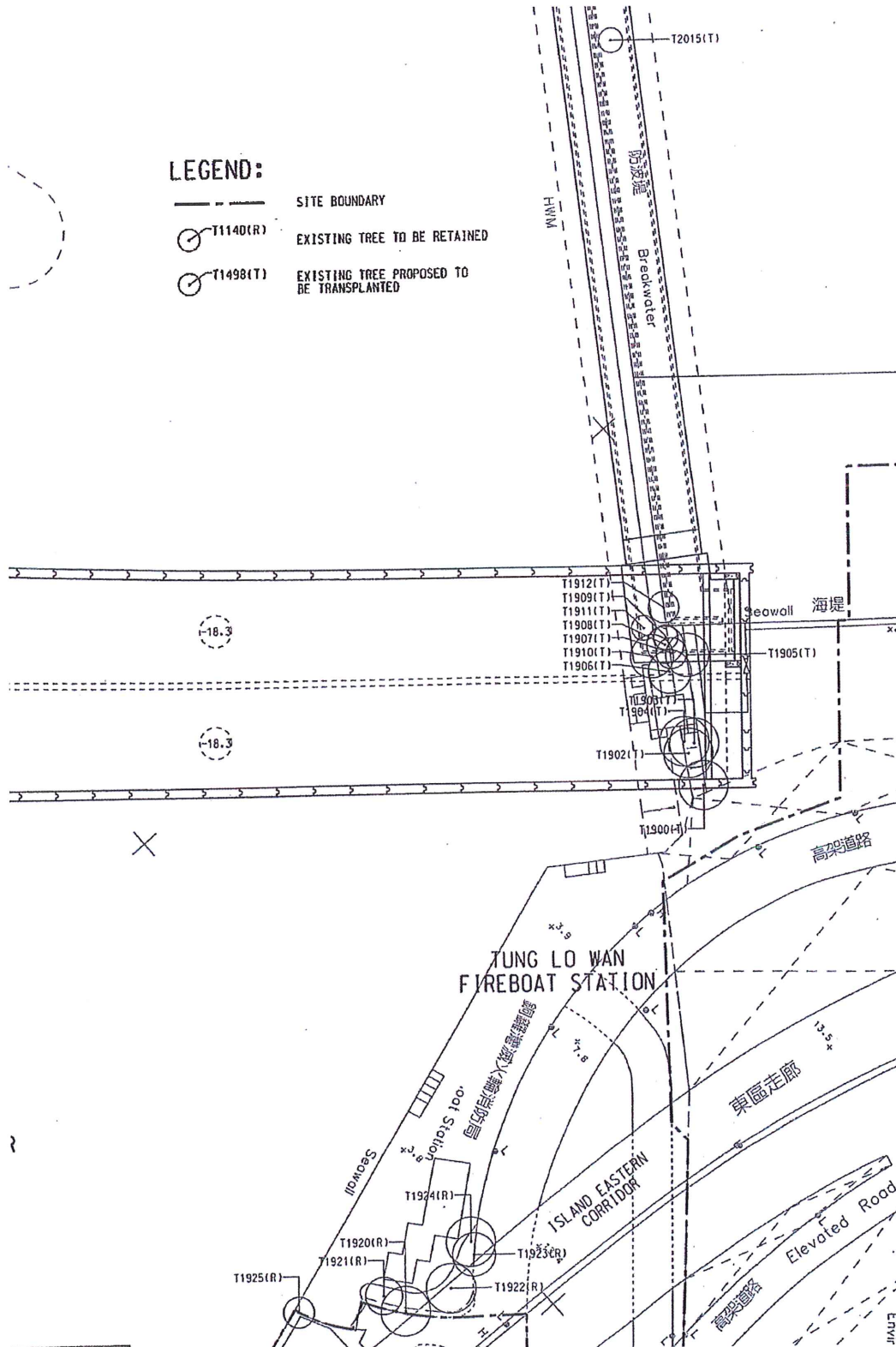


## Contents –

1. Location plans showing the preserved trees
2. Tree Schedule
3. Photographic Records of the Preserved Trees

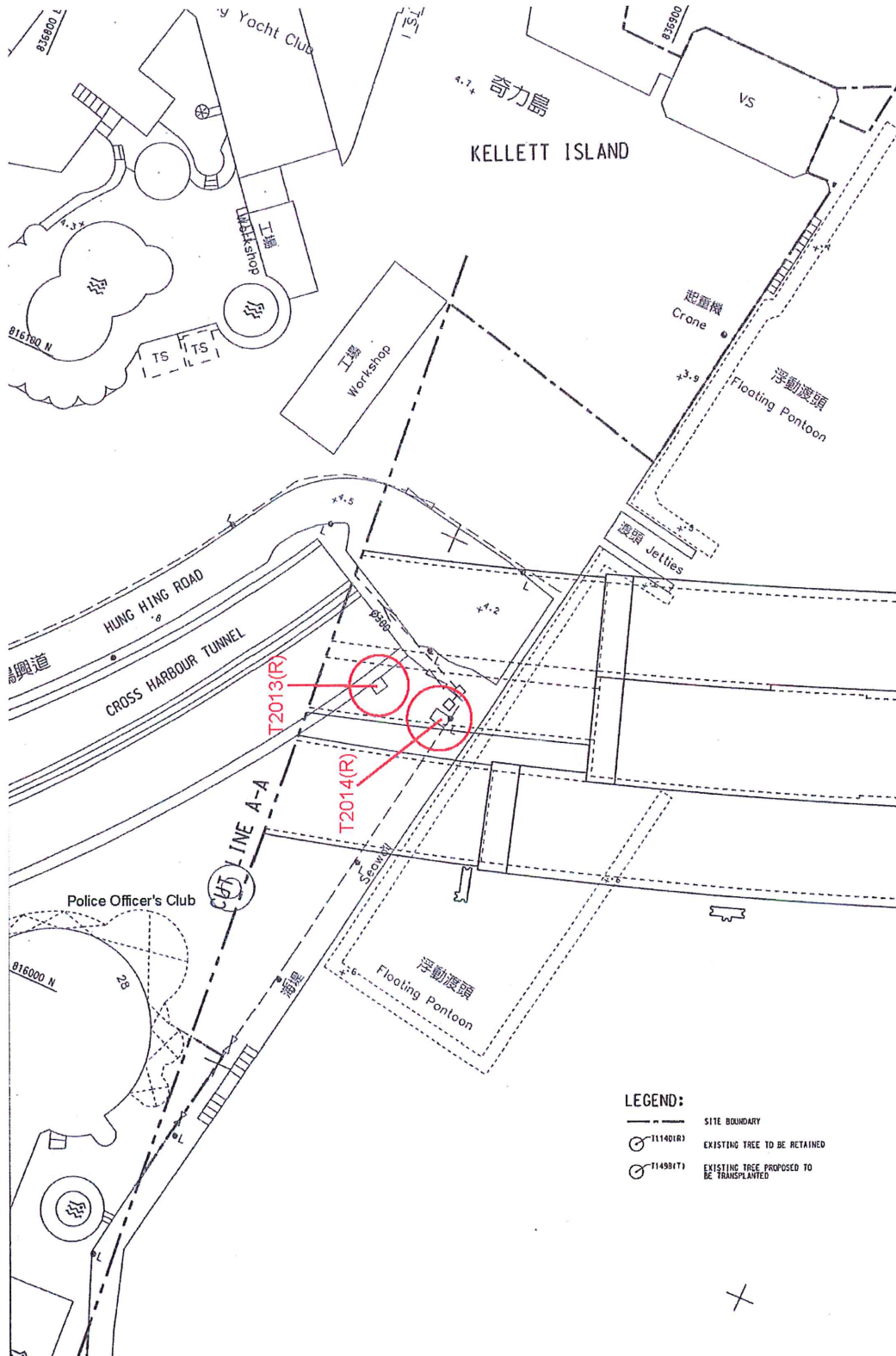


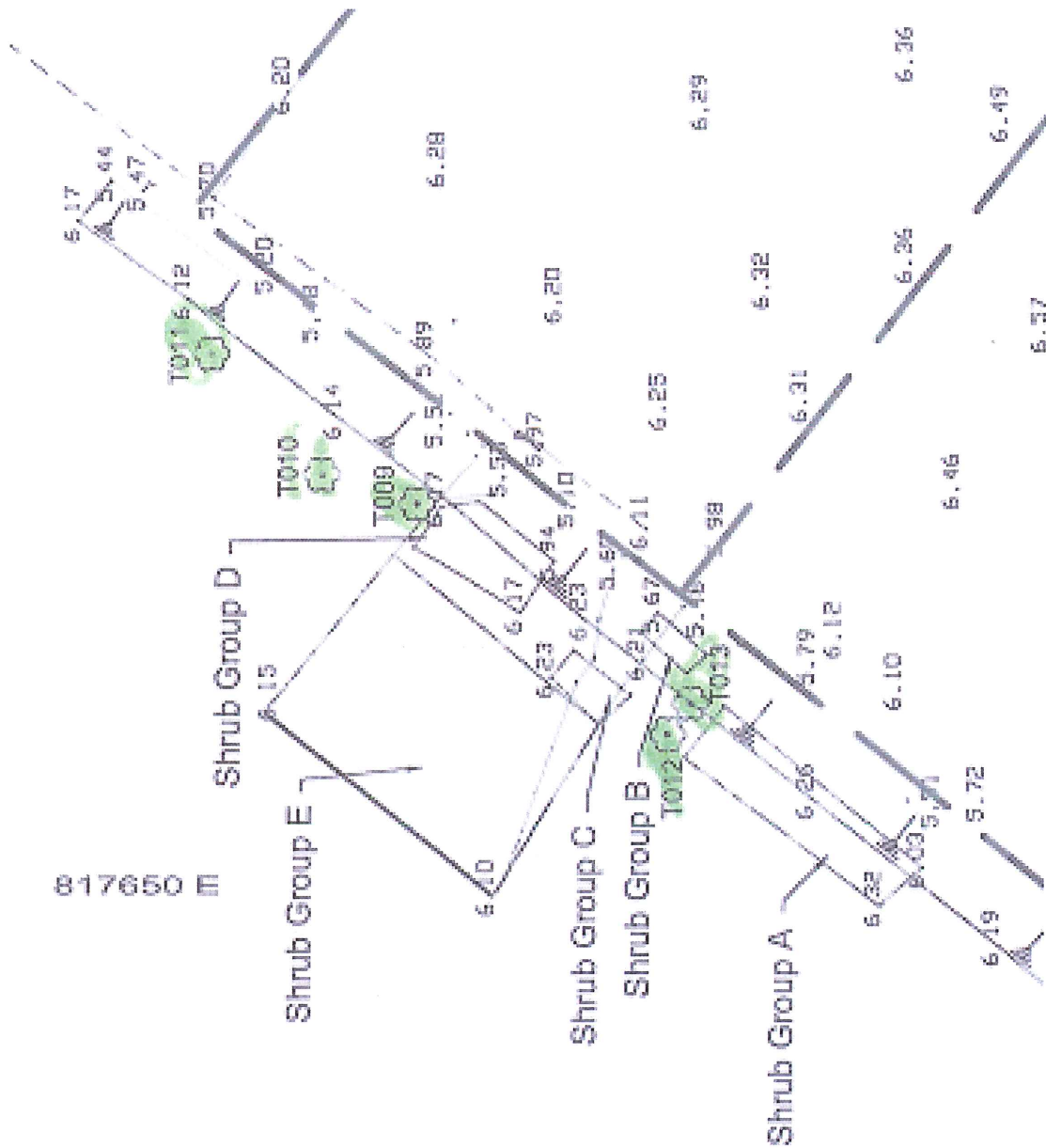
1. Location Plans showing the Preserved Trees



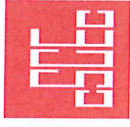


Contract No. HY/2009/15  
 Central – Wanchai Bypass – Tunnel  
 (Causeway Bay Typhoon Shelter Section)









## 2. Tree Schedule

Tree No.	Botanical Name	Chinese Name	Location	Size			Ground Level (mPD)	Form (G/F/P)	Health (G/F/P)	Tree Condition	Mitigation Measures
				Height (m)	Crown Spread (m)	Girth (mm)					
T1920	Ficus virens	大葉榕, 黃葛樹	At Portion 7	10	7	760	4.8	G	F	No significant defect observed 未有察覺明顯缺陷	Nil
T1921	Morus alba	桑	At Portion 7	8	7	330	4.4	G	F	Sign of decay - Minor 呈現腐爛 - 輕微	Tree condition under close observation 密切監察樹木狀況
T1922	Ficus virens	大葉榕, 黃葛樹	At Portion 7	9	6	360	4.74	P	F	No significant defect observed 未有察覺明顯缺陷	Nil
T1923	Ficus microcarpa	榕樹, 細葉榕	At Portion 7	9	7	420	4.84	F	F	No significant defect observed 未有察覺明顯缺陷	Nil
T1924	Morus alba	桑	At Portion 7	8	7	360	4.77	P	F		Nil
T1925	Ficus virens	大葉榕, 黃葛樹	At Portion 7	6	5	270	3.7	F	P	No significant defect observed 未有察覺明顯缺陷	Nil
T2013	Aleurites moluccana	石栗	Police Officer's Club	7	5	414	5.38	G	G		Cabling / other support (to be done by POC) 安裝纜索或支撐物(由督察員工會所負責) Reminded POC of the tree condition 已通知督察員工會所有關樹木情況
T2014	Aleurites moluccana	石栗	Police Officer's Club	8	4.5	481	5.48	G	G	No significant defect observed 未有察覺明顯缺陷	Cabling / other support (to be done by POC) 安裝纜索或支撐物(由督察員工會所負責) Reminded POC of the tree condition 已通知督察員工會所有關樹木情況
T009	Liquidamber Formosana	楓香	Works Area W1 at Siu Ho Wan	4	3	100	6.17	F	F	No significant defect observed 未有察覺明顯缺陷	Nil
T010	Acacia Confusa	臺灣相思	Works Area W1 at Siu Ho Wan	5	5	115	6.14	F	F	No significant defect observed 未有察覺明顯缺陷	Nil
T011	Liquidamber Formosana	楓香	Works Area W1 at Siu Ho Wan	4	3	95	6.12	F	F	No significant defect observed 未有察覺明顯缺陷	Nil
T012	Acacia Confusa	臺灣相思	Works Area W1 at Siu Ho Wan	9	7	302	6.21	F	F	No significant defect observed 未有察覺明顯缺陷	Nil
T013	Acacia Confusa	臺灣相思	Works Area W1 at Siu Ho Wan	8	5	153	6.21	F	F	No significant defect observed 未有察覺明顯缺陷	Nil



### **3. Photographic Records of the Preserved Trees**

T1920 - *Ficus virens* 大葉榕, 黃葛樹







T1921 - Morus alba 桑



T1921 :  
Sign of decay –  
Minor  
(Tree  
condition  
under close  
observation)









T1922 - *Ficus virens* 大葉榕, 黃葛樹







T1923 - *Ficus microcarpa* 榕樹, 細葉榕



2014/11/10





T1924 - Morus alba 桑







T1925 - *Ficus virens* 大葉榕, 黃葛樹







T1923 - *Ficus microcarpa* 榕樹, 細葉榕  
T1924 - *Morus alba* 桑



T1923

T1924





T2013 - *Aleurites moluccana* 石栗







T2014 - *Aleurites moluccana* 石栗







T009 Liquidamber Formosana 楓香







T010 Acacia Confusa 臺灣相思







T011 Liquidamber Formosana 楓香





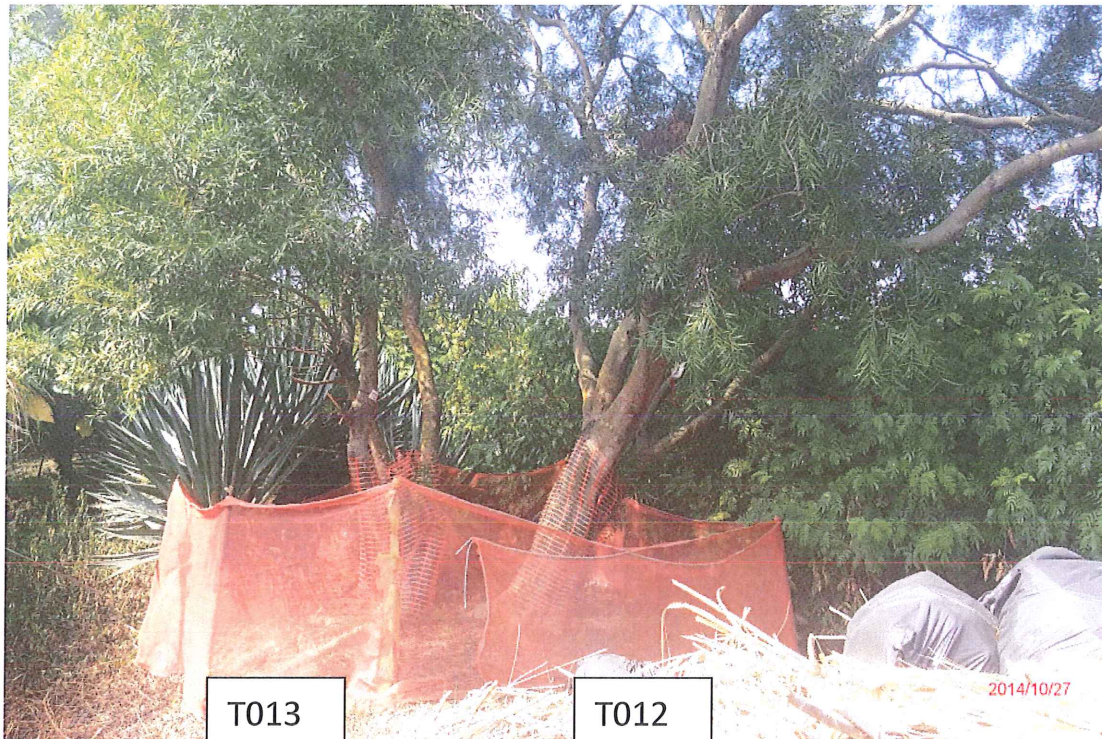


T011





T012 Acacia Confusa 臺灣相思  
T013 Acacia Confusa 臺灣相思



## Appendix I

### Transplanted Trees Inspection Record with photos of transplanted trees



**中國建築工程(香港)有限公司**  
CHINA STATE CONSTRUCTION ENGRG. (HONG KONG) LTD.

Contract No. HY/2009/15  
Central - Wan Chai Bypass – Tunnel  
(Causeway Bay Typhoon Shelter Section)

## CONTRACTOR'S SUBMISSION FORM

**To : The Engineer's Representative**  
**Attn : Mr. Peter Poon**

**CSF Ref. No.:**

**CCW / 2002 / CSF / LDS / TS1 / 006360**

Old CSF ref. no. (if applicable) :  
AECOM ref. no. (if applicable) :

**Title of Submission:** Transplanted Trees Inspection Record for the Month of  
October 2014

**Description of Contents:**

Please refer to attachment

See Below

**Specification/Drawing Reference (if applicable):**

Pursuant to P.S. Clause 3.101(4), we submit herewith the transplanted trees inspection record for the month of October 2014 for your perusal.

Encl.

**Purpose of Submission:**

For Approval

For Information

For Record Purposes

**From: Contractor's Representative**

Name : Gene Cheung

Date Response required by:

Signature:

N/A

Date : 10/11/2014





# Transplanted Trees Inspection Record

For the Month of October 2014

Endorsed by:

A handwritten signature in black ink, appearing to read 'D. Bloxham', positioned above a horizontal line.

**David Bloxham**

**Senior Landscape Architect**

**China State Construction**

**Engineering(Hong Kong)Ltd**



## 1. Tree Survey Schedule of Transplanted Trees at Holding Nursery

(for October 2014)

Tree No.	Botanical Name	Chinese Name	Size (m)			Health Condition ( Good / Fair / Poor / Dead )	Date of Transplant to Nursery	Date of Re-Transplant to Nursery	Holding Nursery	Area of Land Occupied	Remarks
			Height (m)	Crown Spread (m)	DBH (mm)						
T1900	Ficus virens	大葉榕, 黃葛樹	8	3.5	300	Fair	21/2/2011	16/1/2013	***Lau Fau Shan	21 m <sup>2</sup>	
T1902	Ficus benjamina	垂葉榕	7.5	4.0	370	Fair	22/2/2011	16/1/2013	***Lau Fau Shan	24 m <sup>2</sup>	
T1903	Ficus benjamina	垂葉榕	9	3.5	360	Fair	22/2/2011	16/1/2013	***Lau Fau Shan	21 m <sup>2</sup>	
T1904	Ficus benjamina	垂葉榕	8	3.5	385	Fair	21/2/2011	16/1/2013	***Lau Fau Shan	21 m <sup>2</sup>	
T1906	Celtis sinensis	朴樹	8.5	4.0	380	Dead	21/2/2011	Nil	Tai Po Lam Tsuen	24 m <sup>2</sup>	Report of dead trees for tree nos. T1906 has been submitted under CSF ref. no. CCW/CSF/LDS/002073 dated 17 Jan 2012. Dead tree has been removed on 1 Sep 2012.
T1907	Ficus variegata	青果榕	8	3.5	190	Dead	18/2/2011	Nil	Tai Po Lam Tsuen	21 m <sup>2</sup>	Report of dead trees for tree nos. T1907 has been submitted under CSF ref. no. CCW/CSF/LDS/002073 dated 17 Jan 2012. Dead tree has been removed on 14 Sep 2012.
T1908	Albizia lebbek	大葉合歡	4.5	3.5	280	Fair	18/2/2011	16/1/2013	***Lau Fau Shan	21 m <sup>2</sup>	
T1910	Ficus virens	大葉榕, 黃葛樹	9	4.0	600	Fair	23/2/2011	16/1/2013	***Lau Fau Shan	24 m <sup>2</sup>	
T1911	Albizia lebbek	大葉合歡	2.5	2.5	130	Fair	18/2/2011	16/1/2013	***Lau Fau Shan	10 m <sup>2</sup>	
T1912	Ficus benjamina	垂葉榕	4	2.5	170	Fair	18/2/2011	16/1/2013	***Lau Fau Shan	10 m <sup>2</sup>	
T2015	Ficus microcarpa	榕樹, 細葉榕	3.5	5.0	212	Fair	23/2/2011	16/1/2013	***Lau Fau Shan	30 m <sup>2</sup>	

Remarks: \*\*\* indicates that the tree has been relocated from Tai Po Lam Tsuen Tree Nursery to Lau Fau Shan Tree Nursery on the re-transplant date.

Total area of land occupied by the trees : 227 m<sup>2</sup>







## Content

1. Tree Survey Schedule of Transplanted Trees at Holding Nursery
2. Photographic Records

Contract No. HY/2009/15  
Central – Wanchai Bypass – Tunnel  
(Causeway Bay Typhoon Shelter Section)

---







## 2. Photographic Records

### General View of the Holding Nursery







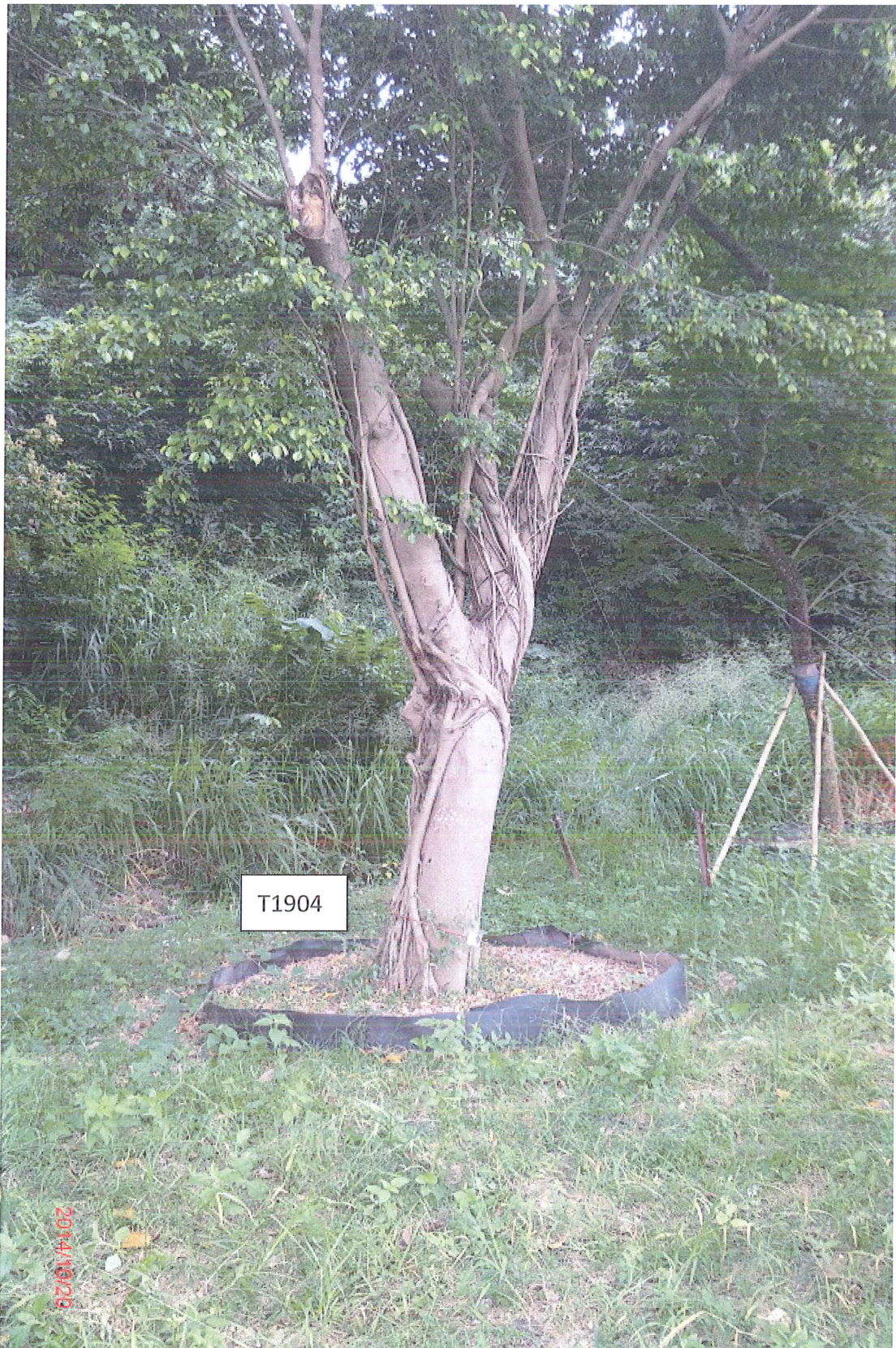
































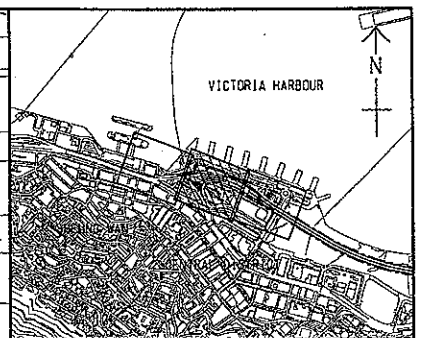
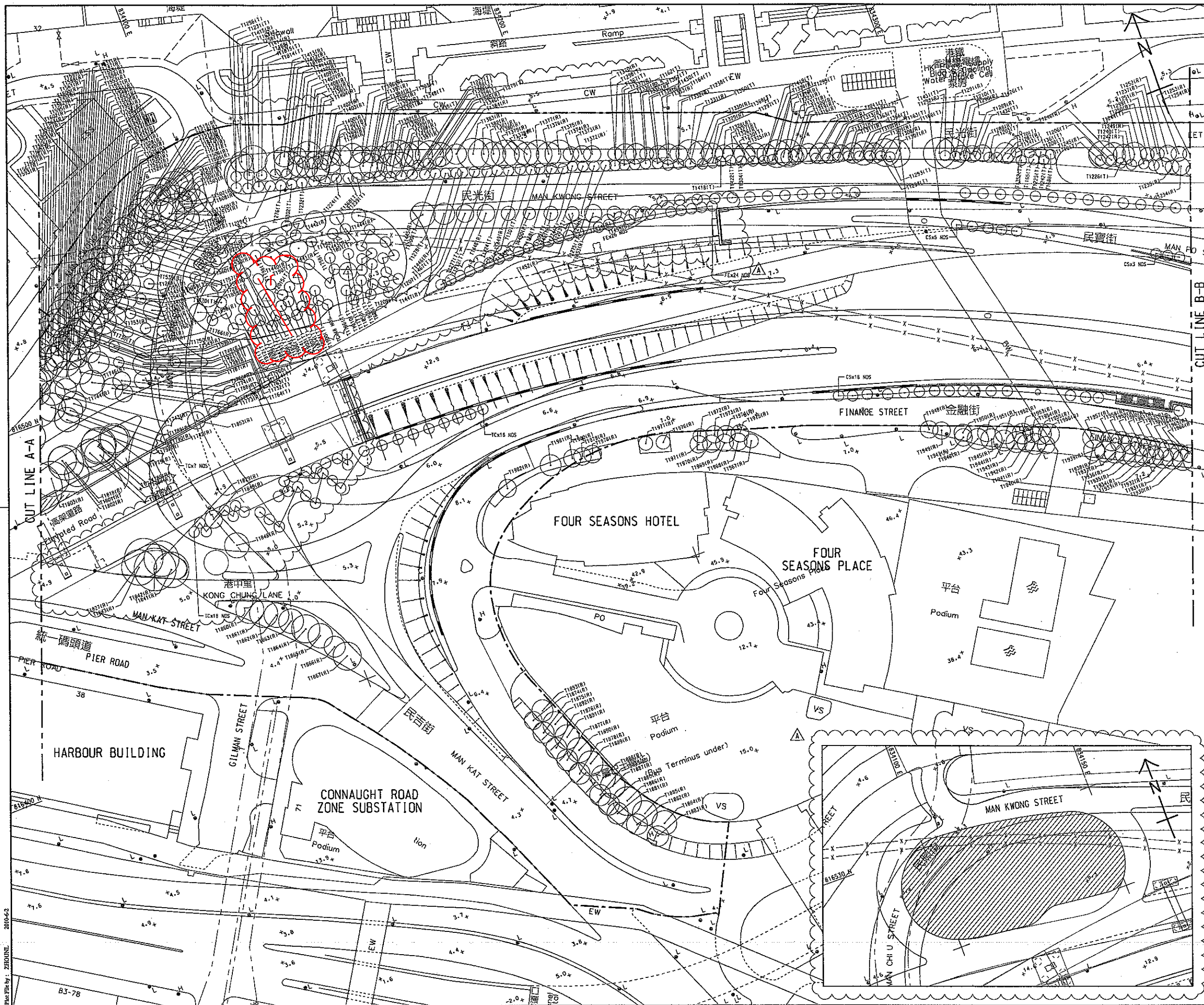






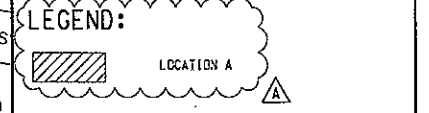
## Appendix J

### Permanent Location of Dead Trees T1906 & T1907



**KEY PLAN**  
SCALE A1 1 : 20000  
A3 1 : 40000

**NOTE:**  
1. FOR NOTES AND LEGEND SEE DRG. NO. 60095653/C1/9011.



B	WORKING DRAWING	APPROVED	BCC	DCT 10
A	TENDER ADDENDUM NO. 1	APPROVED	BCC	JUN 10
-	TENDER DRAWING	APPROVED	BCC	APR 10
REV.	DESCRIPTION	DATE	BY	CHK

Highways Department 路政署  
Major Works Project Management Office

CENTRAL - WAN CHAI BYPASS AND IEC LINK

PWP ITEM NO. **579 TH**  
工務計劃項目編號

CENTRAL - WAN CHAI BYPASS - CENTRAL INTERCHANGE

**TREE PLANTING PLAN**

SHEET 2 OF 3



DRG. NO. **60095653/C1/9012B**  
圖紙編號

DESIGNED BY	VLK	CONTRACT NO.	HY/2009/18	APPROVED BY	CW
DRAWN BY	LHC	STATUS	WORKING DRAWING	COPYRIGHT RESERVED	
SCALE	A1 1 : 500 A3 1 : 1000	METRES			

2010-6-2