

Decommissioning of West Portion of Middle Ash Lagoon at Tsang Tsui, Tuen Mun

Quarterly EM&A Report for January - March 2017

May 2017

20/F AIA Kowloon Tower
Landmark East
100 How Ming Street
Kwun Tong
Kowloon
Hong Kong

T +852 2828 5757
F +852 2827 1823
mottmac.hk

Decommissioning of West Portion of Middle Ash Lagoon at Tsang Tsui, Tuen Mun

Quarterly EM&A Report for January - March 2017

May 2017

**This Quarterly EM&A Summary Report for January 2017 – March 2017
has been reviewed and certified by the Environmental Team Leader
(ETL) and verified by the Independent Environmental Checker (IEC) as
having complied with the requirements as set out in the EM&A Manual.**

Certified by:



Gary Chow
Environmental Team Leader (ETL)
Mott MacDonald Hong Kong Limited

Date:

23 MAY 2017

Verified by:



Y.H. Hui
Independent Environmental Checker (IEC)
Ramboll Environ Hong Kong Limited

Date:

23 May 2017

Contents

Executive Summary	1
1 Introduction	2
1.1 Background	2
1.2 Project Organization	2
1.3 Environmental Status in the Reporting Quarter	2
1.4 Summary of EM&A Requirements	2
1.5 Recommended Mitigation Measures	3
2 Summary of Environmental Monitoring Results	4
2.1 Water Quality Monitoring	4
2.2 Ecological Monitoring	4
2.3 Health Impact Monitoring	5
3 Summary of Environmental Site Inspection and Audit	6
3.1 Site Inspection	6
3.2 Solid and Liquid Waste Management Status	6
4 Summary of Environmental Quality Performance Limits	7
4.1 Record on Non-compliance of Action and Limit Levels	7
4.2 Record on Environmental Complaints Received	8
4.3 Follow-up Actions Taken	8
5 Comments and Recommendations	9
5.1 Conclusions	9
5.2 Recommendations	9
Appendices	10
A. Project Organization Chart	11
B. Tentative Construction Programme	13
C. The Environmental Quality Performance Limits for water quality	15
D. Environmental Mitigation Measures - Implementation Status	17

Tables

Table 1: Summary of Impact EM&A Requirements	3
Table 2: Findings of Impact Measurement of Radon	5
Table 3: Summary of Exceedances and Compliance Status at Impact Stations	7

Figures

Figure 1	General Site Layout and Locations of Monitoring Stations
Figure 2	Locations of water quality monitoring stations

Executive Summary

Mott MacDonald Hong Kong Ltd. (“MMHK”) has been commissioned by the Leighton Contractors (Asia) Limited, to undertake the Environmental Team (ET) services to carry out environmental monitoring and audit (EM&A) for decommissioning of West Portion of the Middle Ash Lagoon at Tsang Tsui, Tuen Mun.

This is the 2nd Quarterly EM&A Summary report and this report summarises the findings on EM&A during the period from 1 January to 31 March 2017.

Result of Water Quality Monitoring and Exceedance of Action and Limit Levels

The summary of water quality monitoring results is presented in **Section 2**. For stream water quality monitoring, one exceedance of Limit Level for suspended solids (SS) was recorded; for marine water quality monitoring, 12 incidents of Limit Level exceedance for cadmium, 1 incident of Limit Level exceedance for chromium, and 3 incidents of Limited Level exceedance for aluminium were recorded in the reporting quarter.

The summary of measured water quality is presented in **Section 2.3**.

Result of Ecological Monitoring

Little Grebes were seen in West Ash Lagoon but no breeding activities were observed from January to March 2017. No other findings on the remaining portion of the Middle Ash Lagoon and man-made channel at the northern edge of the PFA platform. Detail of the result is presented in **Section 3**.

Result of Health Impact Monitoring

The summary of measured Radon is presented in **Section 4**. There was no incident of any non-compliance of radon concentration in the reporting month according to ProPECC PN 1/99“Environmental Protection Department Practice Note For Professional Persons-Control of Radon Concentration in New Buildings”.

Record of Complaints

There was no record of complaints received in the reporting quarter.

Record of Notification of Summons and Successful Prosecutions

There was no record of notification of summons and successful prosecution in the reporting month.

Reporting Changes

There are no reporting changes.

Future Key Issues

The major site works scheduled to be undertaken in the coming three months include:

- Outfall installation
- Minor site clearance works

1 Introduction

1.1 Background

On 25 March 2015, the Environment Impact Assessment (EIA) Report and Environmental Monitoring and Audit (EM&A) Manual (Register No.: AEIAR-186/2015) for the “Decommissioning of West Portion of the Middle Ash Lagoon at Tsang Tsui, Tuen Mun” (the Project) was approved and an Environmental Permit (EP) (Permit No.: EP-497/2015) was issued to the Food and Environmental Hygiene Department for the Project. Leighton Contractors (Asia) Limited was commissioned as the contractor for the Project. On 1 August 2016, a Further EP (Permit No.: FEP-01/497/2015) was issued to Leighton Contractors (Asia) Limited to decommission the West Portion of the Middle Ash Lagoon at Tsang Tsui, Tuen Mun as indicated in **Figure 1**.

Mott MacDonald Hong Kong Ltd. (“MMHK”) has been commissioned by Leighton Contractors (Asia) Limited to undertake the Environmental Team (ET) services to carry out environmental monitoring and audit for the decommissioning of West Portion of the Middle Ash Lagoon at Tsang Tsui, Tuen Mun.

This report summarises the findings during the period from 1 January to 31 March 2017.

1.2 Project Organization

The organisation chart and lines of communication with respect to the on-site environmental management structure together with the contact information of the key personnel are shown in **Appendix A**.

1.3 Environmental Status in the Reporting Quarter

During the reporting quarter, works of the Project undertaken include:

- Improvement of site hoarding at construction access road
- Decommissioning works
- Removal works of asbestos pipe
- Outfall installation
- Minor site clearance work

The Construction Works Programme of the Project is provided in **Appendix B**. The general layout plan of the Project site is shown in **Figure 1**.

1.4 Summary of EM&A Requirements

The EM&A programme requires environmental monitoring of water quality, health impact and ecology as specified in the approved EM&A Manual.

As the proposed WENT Landfill Extension is not in place during the Project works, landfill gas monitoring was not necessary to be undertaken in this reporting quarter.

A summary of impact EM&A requirements is presented in **Table 1** below:

Table 1: Summary of Impact EM&A Requirements

Parameters	Descriptions	Locations	Frequencies
Water Quality	Dissolved Oxygen (DO), pH, suspended solids (SS) and turbidity	C1A, S1, S2	Three days per week
	Metals (aluminium, chromium, and cadmium)	C2, C3, M1, M2	Three days per week
Ecology	Little Grebe, habitat condition, coverage of water and any observable construction works.	West Ash Lagoon, the remaining portion of the Middle Ash Lagoon and the man-made water channel	Monthly
Health Impact	Indoor radon concentration	SP1, SP2, SP3	Monthly
Regular Site Inspection	To monitor the implementation of proper environmental protection and pollution control measures for the Project	Project site	Weekly

The Environmental Quality Performance Limits for water quality is shown in **Appendix C**.

1.5 Recommended Mitigation Measures

The EM&A programme followed the recommended mitigation measures in the EM&A Manual. The EM&A requirements as well as the summary of implementation status of the environmental mitigation measures are provided in **Appendix D**. In particular, the following mitigation measures were brought to attention during the site inspections:

Dust Impact

- Sufficient water spraying in the construction site and covering of stockpile were reminded as a good practice for dust suppression.
- Provision of sufficient wheel-washing facilities was recommended

Air Quality

- Regular maintenance of generator was recommended.

Ecological Impact

- Improvement for the hoarding along the boundary of site area between the northern edge of the site area and the man-made channel north of the site was recommended to minimize potential disturbance impact on ecology.
- Repair of the bottom of the hoarding was reminded to prevent any leakage.

Waste Management

- Proper waste recycling and management of general waste were reminded.
- Proper management of chemical containers.

Water Quality

- Repair and maintenance of fuel injector were reminded to prevent oil leakage.
- Proper collection and treatment of wheel washing water were recommended.
- Provision of preventive measure to avoid any surface runoff.

2 Summary of Environmental Monitoring Results

Based on the HKO Monthly Weather Summary, January 2017 was marked by record-breaking high mean temperatures and was much drier than usual in terms of rainfall. February 2017 was brighter than usual, with long duration of sunshine during daytime. March 2017 was marked by fluctuating temperatures as Hong Kong moved into a transition between the northeast monsoon and the mild and humid maritime airstream over the south China coast.

2.1 Water Quality Monitoring

Monitoring of water quality has been conducted as scheduled and in accordance with the requirements in the EM&A Manual. The water quality monitoring results and the graphical plots of the monitoring data are shown in **Appendix C**.

During January 2017, a total of nine incidents of Limit Level exceedance of cadmium were observed. Six cases of exceedance were recorded at impact station M1 and three cases of exceedance were recorded at impact station M2. It was noted that elevated levels of cadmium were also recorded at the control stations. The abovementioned exceedances were unlikely due to any project works or site activities and therefore not considered to be related to the project.

During February 2017, incidents of Limit Level exceedances including one case of SS exceedance, one case of cadmium exceedance, one case of chromium exceedance and two cases of aluminium exceedances of Limit Level were observed. The case of exceedance of SS was recorded at impact station S2. The cases of exceedance of aluminium were recorded at both impact stations M1 and M2. The cases of exceedance of cadmium and chromium were recorded at impact station M2. It was noted that an elevated level of cadmium was also recorded at the control station. The abovementioned exceedance was unlikely due to any project works or site activities and therefore not considered to be related to the project.

During March 2017, two cases of Limit Level exceedance of cadmium and one case of Limit Level exceedance of aluminium were observed. The cases of Limit Level exceedance of cadmium were both recorded at impact station M1. The case of Limit Level exceedance of aluminium was recorded at impact station M2. The abovementioned exceedance was unlikely due to any project works or site activities and therefore not considered to be related to the project.

The locations of water quality monitoring stations are shown in **Figure 2**.

2.2 Ecological Monitoring

Monitoring was undertaken following the survey methodology in the EM&A Manual by qualified ecologist. A transect was followed for monitoring the target species Little Grebe (*Tachybaptus ruficollis*) within the West Ash Lagoon, the remaining portion of Middle Ash Lagoon, and the man-made channel at the northern edge of the PFA platform in the Middle Ash Lagoon for once per month. Number of Little Grebe in each of these areas was recorded separately. Attention

was paid on any signs of breeding activities of Little Grebe. Signs of breeding activities should be recorded and location of nests should be mapped if any.

Ecological surveys were conducted in a monthly basis. In the West Ash Lagoon, a total of 6, 7 and 14 nos. of Little Grebe were recorded in January, February and March 2017 respectively. However, no signs of breeding or any breeding activities were observed. No Little Grebe were seen whilst no nests or juveniles were noted in Middle Ash Lagoon and man-made water channel during the surveys in this reporting quarter.

2.3 Health Impact Monitoring

In accordance with Section 3.2 of the EM&A Manual, indoor radon concentration has been measured monthly during the decommissioning phase.

Indoor radon concentration measurement has been performed in accordance with Appendix 2 of “Protocol of Radon Measurement for Non-residential Building” of EPD ProPECC Note PN 1/99 “Control of Radon Concentration in New Buildings”. The average indoor radon concentration during the measurement period should preferably be lower than the territory-wide mean concentration of 100 Bq/m³ and in any case, any individual measurement must not exceed 200 Bq/m³ according to the Protocol.

The 48-hour average and the maximum radon concentrations measured at the three indoor sampling locations are summarised in **Table 2** in the reporting quarter. The radon concentration of the sampling locations during the measurement period were all complied with the criteria of average indoor radon concentration being lower than 100 Bq/m³ and individual measurement not exceeding 200 Bq/m³ according to the Protocol.

Table 2: Findings of Impact Measurement of Radon

Sampling month	January 2017		February 2017		March 2017	
Sampling Location ID	Radon Concentration (Bq/m ³) (48-hour average)	Radon Concentration (Bq/m ³) (Maximum)	Radon Concentration (Bq/m ³) (48-hour average)	Radon Concentration (Bq/m ³) (Maximum)	Radon Concentration (Bq/m ³) (48-hour average)	Radon Concentration (Bq/m ³) (Maximum)
SP1	33	46	14	63	7	29
SP2	33	44	20	63	23	68
SP3	34	49	28	86	21	74

3 Summary of Environmental Site Inspection and Audit

3.1 Site Inspection

The ET carried out construction phase weekly site inspections on 6, 13, 20, and 27 January and 3, 9, 17 and 24 February and 3, 8, 17, 24 and 31 March 2017. All observations have been recorded in the site inspection checklist and passed to the Contractor together with the appropriate recommended mitigation measures where necessary. Some of the key observations from site inspections during the reporting quarter are summarised below:

Air Quality

- Smoke from generator was observed.
- Stockpile of PFA and exposed PFA between two access roads and in the platform were not covered well.
- Wheel washing facility was closed.

Water Quality

- Stagnant water was found on site
- Substandard water discharge to nearby water body at the drainage outfall system should be avoided

Ecology impact

- Damage was observed at the bottom of the hoarding
- Surface of the earthwork should be well compacted
- The Contractor was reminded to seal up the hoarding to prevent any run-off. Also the hoarding at the access road should not less than 2.4m high from ground level as a mitigation measure to dust control.

Waste Management

- Chemical drums and pump should be stored in drip tray properly to avoid any leakage

3.2 Solid and Liquid Waste Management Status

The Contractor has been registered as a chemical waste producer for the Project. Construction and demolition (C&D) material sorting was carried out on site. A sufficient number of receptacles were available for general refuse collection.

As advised by the Contractor, 47.04 tonnes of Non-inert C&D material were generated on site during the period. 37.41 tonnes of metals were generated and recycled. No paper cardboard packing and plastic were generated on site and collected by registered recycling collector. 9.50 tonnes chemical waste was generated and collected by licensed chemical waste collector. Total of 0.044 tonnes of timber was generated on site and disposed to landfill. 0.079 tonnes of other types of wastes (e.g. general refuse) was generated on site and disposed of at public landfill facility.

4 Summary of Environmental Quality Performance Limits

4.1 Record on Non-compliance of Action and Limit Levels

4.1.1 Record of Non-compliance

Exceedances of some Limit Levels were recorded for Water Quality during the reporting quarter. Exceedances of SS, cadmium, chromium, and aluminium were observed as described below.

SS Limit Level was exceeded at impact station S2 in February 2017.

Cadmium Limit Level was exceeded at impact station M1 (six times in January 2017 and twice in March 2017), and M2 (three times in January 2017 and once in February 2017) during the reporting quarter.

Chromium Limit Level was exceeded at impact station M2 in February 2017.

Aluminium Limit Level was exceeded at impact station M1 (once in February 2017) and M2 (once in February 2017 and once in March 2017) during the reporting quarter.

4.1.2 Exceedance Investigations

Water Quality

The Contractor was reminded to continue implementation of the water quality mitigation measures and site practices in accordance with the recommendations stated in the implementation Schedule of the EM&A Manual as far as practicable. The contractor has also taken mitigation measures such as sandbags for to avoid the contaminated and untreated runoff flowing to the river. As the water discharge licence has been granted and the wastewater treatment facilities are in use, regular checks are conducted at the discharge points and the vicinity areas by the Contractor and the ET during weekly site inspection.

The site activities for the decommissioning project and any possible project-related causes of exceedances have been investigated and reported to the IEC. The exceedance investigations have also been included in the monthly EM&A reports and some of them are extracted and summarised in **Table 3**. All of them were considered not related to the decommissioning project. For details, please refer to the relevant monthly EM&A reports.

Table 3: Summary of Exceedances and Compliance Status at Impact Stations

Descriptions of exceedances	Site Activities	Exceedance related to project?
Exceedance of SS at S2 during February 2017	Decommissioning works at the external access road	No project-related activity which might have caused the recorded exceedance of SS was identified. No effluent or any pre-treated water was discharged from the site during site inspection. The abovementioned exceedance was unlikely due to any project works or site activities and therefore considered not related to the project.

Descriptions of exceedances	Site Activities	Exceedance related to project?
Exceedance of Cadmium at M1 and M2 during January, February, and March 2017	Soil filling at PFA platform and access roads, removal of asbestos pipe, and outfall pipe installation (breaking surface to expose lamp cable)	No project-related activity which might have caused the limit level exceedances of Cadmium was identified. No water discharge was observed. Based on the above observations, the limit level exceedances of Cadmium were found unlikely due to project works or site activities, therefore considered not related to the project.
Exceedance of Chromium at M2 during February 2017	Sand Replacement Test (SRT) for external access road	No project-related activity which might have caused the limit level exceedance of Chromium was identified. No water discharge was observed. The exceedances were found unlikely due to project works or site activities and therefore considered not related to the project.
Exceedance of Aluminium at M1 and M2 during February and March 2017	Decommissioning works (soil filling at external access road) and outfall pipe installation (breaking surface to expose lamp cable)	No project-related activity which might have caused the limit level exceedances of Aluminium was identified. No water discharge was observed. The exceedances were found unlikely due to project works or site activities and therefore considered not related to the project.

In summary, no water discharge from the site was observed in the reporting period. Due to the nature of the project works or site activities, the exceedances were considered not due to Project works.

4.2 Record on Environmental Complaints Received

There was no new record of complaints received in the reporting quarter.

4.3 Follow-up Actions Taken

Non-compliance

Although it is considered that the exceedances were not related to the Project, the Contractor was reminded to implement the water quality mitigation measures in accordance with the recommendations stated in in the Implementation Schedule of the EM&A Manual as far as practicable.

Complaints

Not applicable for this reporting quarter.

5 Comments and Recommendations

5.1 Conclusions

The EM&A programme as recommended in the EM&A manual has been undertaken in the reporting quarter.

Monitoring of water quality, ecology and health impacts for the Project were conducted as scheduled in the reporting quarter. Water quality parameters (including pH, DO, turbidity, SS and metals) under monitoring have been checked against the established Action and Limit levels.

Investigations of exceedances recorded for water quality monitoring found that the exceedances were unlikely due to any project works or site activities and therefore not considered to be related to the project.

For ecological monitoring, a maximum count of 14 individuals of Little Grebe was recorded in the West Ash Lagoon and no breeding activities were observed.

For health impact monitoring, no non-compliance of indoor radon concentration was recorded in the reporting quarter.

5.2 Recommendations

With considerations on the construction activities and environment, the following reminders and recommendations were provided:

Dust Impact

- Sufficient water spraying in the construction site and covering of stockpile were reminded as a good practice for dust suppression.
- Provision of sufficient wheel-washing facilities was recommended

Air Quality

- Regular maintenance of generator was recommended.

Ecological Impact

- Improvement for the hoarding along the boundary of site area between the northern edge of the site area and the man-made channel north of the site was recommended to minimize potential disturbance impact on ecology.
- Repair of the bottom of the hoarding was reminded to prevent any leakage.

Waste Management

- Proper waste recycling and management of general waste were reminded.
- Proper management of chemical containers.

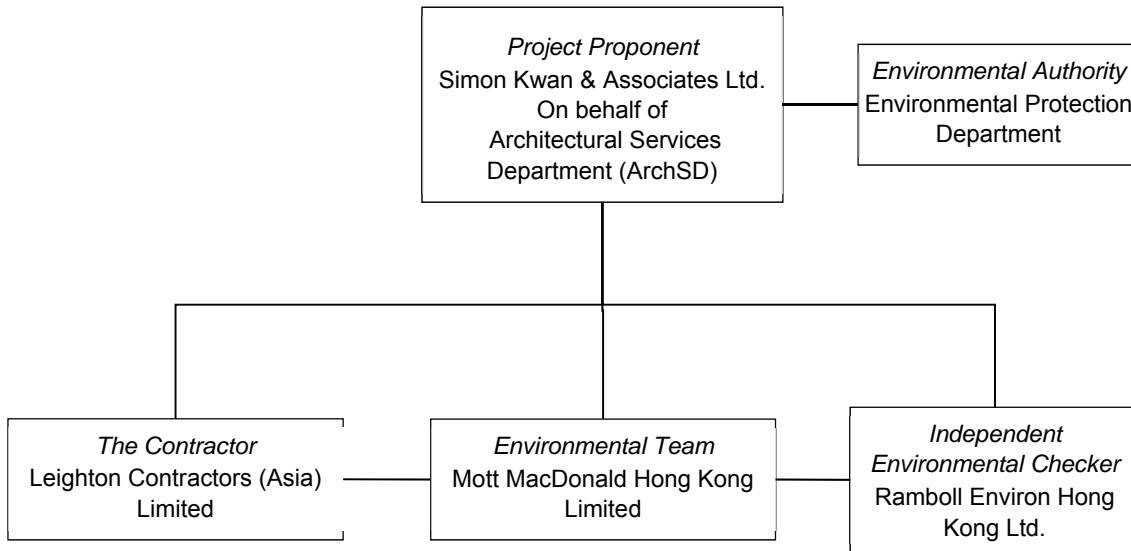
Water Quality

- Repair and maintenance of fuel injector were reminded to prevent oil leakage.
- Proper collection and treatment of wheel washing water were recommended.
- Provision of preventive measure to avoid any surface runoff.

Appendices

A.	Project Organization Chart	11
B.	Tentative Construction Programme	13
C.	The Environmental Quality Performance Limits for water quality	15
D.	Environmental Mitigation Measures - Implementation Status	17

A. Project Organization Chart



Contact information:

Company / Department	Position	Name	Telephone / Mobile
Simon Kwan & Associates Ltd. on behalf of Architectural Services Department (ArchSD)	Architectural and lead consultant	Mr K.K. Chung	2882 2500
Ramboll Environ Hong Kong Ltd.	Independent Environmental Checker	Mr Y.H. Hui	3465 2850
Mott MacDonald Hong Kong Ltd.	Environmental Team Leader	Mr Gary Chow	2828 5874
Leighton Contractors (Asia) Limited	Project Manager	Mr Wing Chung AU	3973 1391
Leighton Contractors (Asia) Limited	Site Agent	Mr Josh Liu	9336 3997
Leighton Contractors (Asia) Limited	Environmental Officer	Mr Valentine Ho	3973 0357

B. Tentative Construction Programme

EM&A Programme for Decommissioning of West Portion of the Middle Ash Lagoon at Tsang Tsui, Tuen Mun

Works Programme

Month and Week	Oct-16				Nov-16				Dec-16				Jan-17				Feb-17				Mar-17				Apr-17				May-17			
Tasks	1	2	3	4	1	2	3	4	1	2	3	4	1	2	3	4	1	2	3	4	1	2	3	4	1	2	3	4	1	2	3	4
Decommissioning work mainly on Columbarium site (e.g. site hoarding works, site clearance)																																
Decommissioning work on Columbarium site and external access road; site hoarding at access road																																
Decommissioning work on external access road and surface outfall construction																																

C. The Environmental Quality Performance Limits for water quality

Water Quality

Table C.1: Action and Limit Levels for Water Quality

Parameters	Action Level	Limit Level
DO in mg/L	≤ 4.2 mg/L	≤ 4 mg/L
SS in mg/L	≥ 45 mg/L or 120% of control station's SS on the same day of measurement	≥ 59 mg/L or 130% of control station's SS on the same day of measurement
Turbidity in NTU	≥ 31 NTU or 120% of control station's turbidity on the same day of measurement	≥ 39 NTU or 130% of control station's turbidity on the same day of measurement
pH	≤ 7.3 or ≥ 8.2	pH ≤ 6 or pH ≥ 9
Cadmium in $\mu\text{g/L}$	0.5 $\mu\text{g/L}$	0.5 $\mu\text{g/L}$
Chromium in $\mu\text{g/L}$	1 $\mu\text{g/L}$	1 $\mu\text{g/L}$
Aluminium in $\mu\text{g/L}$	20 $\mu\text{g/L}$	20 $\mu\text{g/L}$

Note:

1. For DO, non-compliance of the water quality limits occurs when monitoring result is lower than the limits.
2. For metals, SS and turbidity, non-compliance of the water quality limit occurs when monitoring result is higher than the limits.

Project Name: Decommissioning of West Portion of the middle ash lagoon at Tsang Tsui, Tuen Mun

Monitoring Station: C1A

Date of Monitoring	Weather Condition	Time	Water Depth (m)	pH		Temperature (°C)		DO (mg/L)		DO Saturation, %		Turbidity (NTU)		SS (mg/L)
				Value	Average	Value	Average	Value	Average	Value	Average	Value	Average	Value
02/12/2016	Sunny	11:30	0.3	7.4	7.4	18.5	18.5	8.2	8.2	88%	88%	6	6	2.0
				7.4		18.5		8.2		88%		6		
05/12/2016	Fine	14:56	0.3	7.4	7.4	21.5	21.5	7.2	7.2	81%	81%	6	6	4.0
				7.4		21.5		7.2		81%		6		
07/12/2016	Fine	15:21	0.3	7.4	7.4	18.8	18.8	7.5	7.5	81%	81%	5	5	3.0
				7.4		18.8		7.5		81%		5		
09/12/2016	Sunny	11:22	0.3	7.5	7.5	17.3	17.3	8.1	8.1	84%	84%	6	6	4.0
				7.5		17.3		8.1		84%		6		
12/12/2016	Fine	15:16	0.3	7.4	7.4	20.3	20.3	7.2	7.2	79%	79%	5	5	2.0
				7.4		20.3		7.2		79%		5		
14/12/2016	Sunny	10:32	0.3	7.4	7.4	19.6	19.6	8.1	8.1	89%	89%	4	4	3.0
				7.4		19.6		8.1		89%		4		
16/12/2016	Sunny	11:21	0.3	7.6	7.6	16.1	16.1	10.1	10.1	103%	103%	5	5	5.0
				7.6		16.1		10.1		103%		5		
19/12/2016	Sunny	11:06	0.2	7.6	7.6	18.4	18.4	9.5	9.5	101%	101%	5	5	3.0
				7.6		18.4		9.5		101%		5		
21/12/2016	Rainy	14:55	0.2	7.4	7.4	20.0	20	8.6	8.6	95%	95%	7	7	3.0
				7.4		20.0		8.6		95%		7		
23/12/2016	Cloudy	11:01	0.2	7.4	7.4	18.3	18.3	9.2	9.2	98%	98%	5	5	6.0
				7.4		18.3		9.2		98%		5		
26/12/2016	Sunny	10:21	0.2	7.4	7.4	18.3	18.3	7.5	7.5	100%	100%	6	6	5.0
				7.4		18.3		7.5		100%		6		
28/12/2016	Fine	10:38	0.2	7.4	7.4	13.9	13.9	8.5	8.5	83%	83%	7	7	3.0
				7.4		13.9		8.5		83%		7		
30/12/2016	Cloudy	10:03	0.2	7.4	7.4	14.6	14.6	8.9	8.9	88%	88%	5	5	3.0
				7.4		14.6		8.9		88%		5		

Project Name: Decommissioning of West Portion of the middle ash lagoon at Tsang Tsui, Tuen Mun

Monitoring Station: S1

Date of Monitoring	Weather Condition	Time	Water Depth (m)	pH		Temperature (°C)		DO (mg/L)		DO Saturation, %		Turbidity (NTU)		SS (mg/L)
				Value	Average	Value	Average	Value	Average	Value	Average	Value	Average	
02/12/2016	Sunny	11:40	0.4	7.4	7.4	19.1	19.1	9.0	9	100%	100%	6	6	9.0
				7.4		19.1		9.0		100%		6		
05/12/2016	Fine	15:06	0.3	7.4	7.4	22.1	22.1	7.6	7.6	88%	88%	8	8	10.0
				7.4		22.1		7.6		88%		8		
07/12/2016	Fine	15:31	0.3	7.4	7.4	19.6	19.6	8.1	8.1	90%	90%	6	6	4.0
				7.4		19.6		8.1		90%		6		
09/12/2016	Sunny	11:32	0.3	7.4	7.4	17.4	17.4	8.3	8.3	87%	87%	5	5	4.0
				7.4		17.4		8.3		87%		5		
12/12/2016	Fine	15:26	0.3	7.4	7.4	21	21	7.4	7.4	84%	84%	4	4	4.0
				7.4		21		7.4		84%		4		
14/12/2016	Sunny	10:42	0.4	7.4	7.4	19.9	19.9	7.9	7.9	88%	88%	5	5	7.0
				7.4		19.9		7.9		88%		5		
16/12/2016	Sunny	11:31	0.4	7.4	7.4	17.7	17.7	10.7	10.7	118%	118%	6	6	11.0
				7.4		17.7		10.7		118%		6		
19/12/2016	Sunny	11:16	0.3	7.4	7.4	19.0	19	9.3	9.3	101%	101%	5	5	5.0
				7.4		19.0		9.3		101%		5		
21/12/2016	Rainy	15:05	0.3	7.5	7.5	20.2	20.2	8.7	8.7	97%	97%	7	7	6.0
				7.5		20.2		8.7		97%		7		
23/12/2016	Cloudy	11:11	0.3	7.4	7.4	18.6	18.6	9.7	9.7	104%	104%	7	7	12.0
				7.4		18.6		9.7		104%		7		
26/12/2016	Sunny	10:31	0.3	7.7	7.7	19	19	7.7	7.7	106%	106%	5	5	6.0
				7.7		19		7.7		106%		5		
28/12/2016	Fine	10:48	0.3	7.4	7.4	14.6	14.6	9.1	9.1	92%	92%	8	8	6.0
				7.4		14.6		9.1		92%		8		
30/12/2016	Cloudy	10:13	0.3	7.4	7.4	15.2	15.2	7.6	7.6	78%	78%	4	4	6.0
				7.4		15.2		7.6		78%		4		

Project Name: Decommissioning of West Portion of the middle ash lagoon at Tsang Tsui, Tuen Mun

Monitoring Station: S2

Date of Monitoring	Weather Condition	Time	Water Depth (m)	pH		Temperature (°C)		DO (mg/L)		DO Saturation, %		Turbidity (NTU)		SS (mg/L)
				Value	Average	Value	Average	Value	Average	Value	Average	Value	Average	
02/12/2016	Sunny	11:51	0.8	7.5	7.5	20.6	20.6	9.1	9.1	103%	103%	5	5	7.0
				7.5		20.6		9.1		103%		5		
05/12/2016	Fine	15:16	0.5	7.4	7.4	22.3	22.3	8.3	8.3	97%	97%	6	6	8.0
				7.4		22.3		8.3		97%		6		
07/12/2016	Fine	15:41	0.7	7.5	7.5	23	23.0	8.5	8.5	96%	96%	7	7	6.0
				7.5		23		8.5		96%		7		
09/12/2016	Sunny	11:42	0.3	7.4	7.4	17.7	17.7	8.5	8.5	90%	90%	11	11	15.0
				7.4		17.7		8.5		90%		11		
12/12/2016	Fine	16:09	0.4	7.4	7.4	21.3	21.3	7.1	7.1	82%	82%	9	9	14.0
				7.4		21.3		7.1		82%		9		
14/12/2016	Sunny	10:52	0.6	7.4	7.4	20.7	20.7	9.6	9.6	112%	112%	6	6	8.0
				7.4		20.7		9.6		112%		6		
16/12/2016	Sunny	11:41	0.7	7.4	7.4	17.8	17.8	9.9	9.9	115%	115%	11	11	16.0
				7.4		17.8		9.9		115%		11		
19/12/2016	Sunny	11:26	0.3	7.4	7.4	19.3	19.3	9.1	9.1	102%	102%	12	12	7.0
				7.4		19.3		9.1		102%		12		
21/12/2016	Rainy	15:15	0.5	7.4	7.4	21.0	21.0	9.4	9.4	107%	107%	5	5	4.0
				7.4		21.0		9.4		107%		5		
23/12/2016	Cloudy	11:21	0.4	7.4	7.4	18.9	18.9	10.2	10.2	110%	110%	6	6	6.0
				7.4		18.9		10.2		110%		6		
26/12/2016	Sunny	10:41	0.3	7.4	7.4	19.1	19.1	10.2	10.2	111%	111%	7	7	10.0
				7.4		19.1		10.2		111%		7		
28/12/2016	Fine	10:58	0.4	7.4	7.4	14.5	14.5	6.9	6.9	75%	75%	10	10	10.0
				7.4		14.5		6.9		75%		10		
30/12/2016	Cloudy	10:24	0.5	7.4	7.4	15.9	15.9	7.5	7.5	79%	79%	5	5	6.0
				7.4		15.9		7.5		79%		5		

Project Name: Decommissioning of West Portion of the middle ash lagoon at Tsang Tsui, Tuen Mun

Monitoring Station: C1A

Date of Monitoring	Weather Condition	Time	Water Depth (m)	pH		Temperature (°C)		DO (mg/L)		DO Saturation, %		Turbidity (NTU)		SS (mg/L)
				Value	Average	Value	Average	Value	Average	Value	Average	Value	Average	Value
02/01/2017	Sunny	11:08	0.2	7.4	7.4	18.9	18.9	8.7	8.7	93%	93%	6	6	2.0
				7.4		18.9		8.7		93%		6		
04/01/2017	Sunny	08:47	0.2	7.4	7.4	18.0	18.0	9.1	9.1	97%	97%	4	4	2.0
				7.4		18.0		9.1		97%		4		
06/01/2017	Sunny	08:03	0.2	7.4	7.4	17.9	17.9	9.0	9	96%	96%	5	5	4.0
				7.4		17.9		9.0		96%		5		
09/01/2017	Fine	09:01	0.2	7.6	7.6	18.6	18.6	9.0	9	96%	96%	5	5	2.0
				7.6		18.6		9.0		96%		5		
11/01/2017	Fine	09:59	0.5	8.1	8.1	18.6	18.6	9.1	9.1	97.5%	97.6%	4	4	3.0
				8.1		18.6		9.1		97.7%		4		
13/01/2017	Cloudy	08:45	0.2	7.7	7.7	16.4	16.2	9.2	9.2	93.7%	93.7%	4.3	4.4	4.0
				7.7		16.0		9.1		93.6%		4.5		
16/01/2017	Cloudy	15:27	0.2	7.5	7.5	16.2	16.2	9.4	9.4	96%	96%	5	5	5.0
				7.5		16.2		9.4		96%		5		
18/01/2017	Cloudy	14:32	0.2	7.5	7.5	18.3	18.3	9.4	9.4	100%	100%	5	5	2.0
				7.5		18.3		9.4		100%		5		
20/01/2017	Fine	15:55	0.2	7.4	7.4	18.2	18.2	9.2	9.2	98%	98%	5	5	4.0
				7.4		18.2		9.2		98%		5		
23/01/2017	Fine	11:09	0.2	7.4	7.4	15.5	15.5	10.4	10.4	104%	104%	4	4	4.0
				7.4		15.5		10.4		104%		4		
25/01/2017	Fine	14:52	0.2	7.5	7.5	18.1	18.1	9.6	9.6	102%	102%	4	4	2.0
				7.5		18.1		9.6		102%		4		
27/01/2017	Sunny	10:20	0.2	7.4	7.4	16.0	16.0	10.1	10.1	102%	102%	4	4	4.0
				7.4		16.0		10.1		102%		4		
31/01/2017	Fine	10:55	0.2	7.4	7.4	15.9	15.9	9.8	9.8	98%	98%	4	4	2.0
				7.4		15.9		9.8		98%		4		

Project Name: Decommissioning of West Portion of the middle ash lagoon at Tsang Tsui, Tuen Mun

Monitoring Station: S1

Date of Monitoring	Weather Condition	Time	Water Depth (m)	pH		Temperature (°C)		DO (mg/L)		DO Saturation, %		Turbidity (NTU)		SS (mg/L)
				Value	Average	Value	Average	Value	Average	Value	Average	Value	Average	Value
02/01/2017	Sunny	11:18	0.3	7.4	7.4	20.1	20.1	8.9	8.9	98%	98%	13	13	24.0
				7.4		20.1		8.9		98%		13		
04/01/2017	Sunny	08:57	0.3	7.5	7.5	18.4	18.4	8.4	8.4	92%	92%	12	12	24.0
				7.5		18.4		8.4		92%		12		
06/01/2017	Sunny	08:13	0.3	7.4	7.4	17.8	17.8	8.6	8.6	91%	91%	14	14	36.0
				7.4		17.8		8.6		91%		14		
09/01/2017	Fine	09:11	0.3	7.5	7.5	18.8	18.8	8.8	8.8	95%	95%	8	8	12.0
				7.5		18.8		8.8		95%		8		
11/01/2017	Fine	10:08	0.5	7.6	7.6	19.5	19.5	9.5	9.5	107.4%	107.3%	3.8	3.8	5.0
				7.6		19.5		9.5		107.2%		3.8		
13/01/2017	Cloudy	08:54	0.2	7.5	7.5	17	17.05	8.3	8.3	88.2%	88.0%	4.3	4.35	4.0
				7.5		17.1		8.3		87.8%		4.4		
16/01/2017	Cloudy	15:37	0.4	7.4	7.4	17	17	9.5	9.5	100%	100%	5	5	9.0
				7.4		17		9.5		100%		5		
18/01/2017	Cloudy	14:42	0.5	7.4	7.4	19.8	19.8	11.1	11.1	128%	128%	5	5	8.0
				7.4		19.8		11.1		128%		5		
20/01/2017	Fine	16:05	0.4	7.4	7.4	20.2	20.2	10.6	10.6	121%	121%	9	9	19.0
				7.4		20.2		10.6		121%		9		
23/01/2017	Fine	11:19	0.3	7.4	7.4	15.4	15.4	10.4	10.4	105%	105%	5	5	7.0
				7.4		15.4		10.4		105%		5		
25/01/2017	Fine	15:02	0.3	7.4	7.4	19.5	19.5	10.1	10.1	112%	112%	4	4	3.0
				7.4		19.5		10.1		112%		4		
27/01/2017	Sunny	10:30	0.3	7.4	7.4	15.8	15.8	10.1	10.1	104%	104%	8	8	7.0
				7.4		15.8		10.1		104%		8		
31/01/2017	Fine	11:05	0.3	7.4	7.4	15.8	15.8	9.9	9.9	101%	101%	5	5	6.0
				7.4		15.8		9.9		101%		5		

Project Name: Decommissioning of West Portion of the middle ash lagoon at Tsang Tsui, Tuen Mun

Monitoring Station: S2

Date of Monitoring	Weather Condition	Time	Water Depth (m)	pH		Temperature (°C)		DO (mg/L)		DO Saturation, %		Turbidity (NTU)		SS (mg/L)
				Value	Average	Value	Average	Value	Average	Value	Average	Value	Average	Value
02/01/2017	Sunny	11:28	0.5	7.4	7.4	20.2	20.2	10.9	10.9	125%	125%	8	8	10.0
				7.4		20.2		10.9		125%		8		
04/01/2017	Sunny	09:07	0.4	7.4	7.4	18.9	18.9	8.5	8.5	94%	94%	6	6	13.0
				7.4		18.9		8.5		94%		6		
06/01/2017	Sunny	08:23	0.3	7.4	7.4	18.2	18.2	8.6	8.6	92%	92%	11	11	24.0
				7.4		18.2		8.6		92%		11		
09/01/2017	Fine	09:21	0.5	7.4	7.4	19.0	19.0	9.1	9.1	99%	99%	9	9	17.0
				7.4		19.0		9.1		99%		9		
11/01/2017	Fine	10:13	0.8	7.5	7.5	20	20.0	7.9	7.9	95.3%	95.5%	5.4	5.4	9.0
				7.5		20		7.9		95.6%		5.4		
13/01/2017	Cloudy	09:01	0.1	7.4	7.4	17.7	17.7	8.0	8.05	87.5%	87.6%	12	11.85	22.0
				7.4		17.6		8.1		87.7%		11.7		
16/01/2017	Cloudy	15:47	0.7	7.4	7.4	17.6	17.6	9.8	9.8	108%	108%	8	8	12.0
				7.4		17.6		9.8		108%		8		
18/01/2017	Cloudy	14:52	0.8	7.4	7.4	20.3	20.3	9.1	9.1	112%	112%	8	8	7.0
				7.4		20.3		9.1		112%		8		
20/01/2017	Fine	16:15	0.6	7.4	7.4	23.2	23.2	10.2	10.2	129%	129%	8	8	9.0
				7.4		23.2		10.2		129%		8		
23/01/2017	Fine	11:29	0.5	7.4	7.4	15.5	15.5	10.5	10.5	107%	107%	11	11	23.0
				7.4		15.5		10.5		107%		11		
25/01/2017	Fine	15:12	0.5	7.4	7.4	19.4	19.4	10.1	10.1	113%	113%	8	8	15.0
				7.4		19.4		10.1		113%		8		
27/01/2017	Sunny	10:40	0.5	7.4	7.4	16.2	16.2	9.9	9.9	106%	106%	5	5	9.0
				7.4		16.2		9.9		106%		5		
31/01/2017	Fine	11:15	0.6	7.5	7.5	16.2	16.2	9.9	9.9	102%	102%	6	6	13.0
				7.5		16.2		9.9		102%		6		

Project Name: Decommissioning of West Portion of the middle ash lagoon at Tsang Tsui, Tuen Mun

Monitoring Station: C1A

Date of Monitoring	Weather Condition	Time	Water Depth (m)	pH		Temperature (°C)		DO (mg/L)		DO Saturation, %		Turbidity (NTU)		SS (mg/L)
				Value	Average	Value	Average	Value	Average	Value	Average	Value	Average	Value
02/02/2017	Cloudy	11:33	0.2	7.4	7.4	17.5	17.5	9.5	9.5	100%	100%	6	6	5.0
				7.4		17.5		9.5		100%		6		
04/02/2017	Fine	15:01	0.2	7.4	7.4	19.1	19.1	9.4	9.4	101%	101%	9	9	23.0
				7.4		19.1		9.4		101%		9		
06/02/2017	Fine	11:09	0.2	7.8	7.8	19.2	19.2	9.6	9.6	104%	104%	8	8	13.0
				7.8		19.2		9.6		104%		8		
08/02/2017	Cloudy	09:14	0.2	7.4	7.4	19.1	19.1	9.5	9.5	102%	102%	6	6	2.0
				7.4		19.1		9.5		102%		6		
10/02/2017	Fine	14:10	0.2	7.6	7.6	14.3	14.3	10.8	10.8	105%	105%	4	4	4.0
				7.6		14.3		10.8		105%		4		
13/02/2017	Sunny	11:51	0.2	7.8	7.8	16.0	16	9.7	9.7	108%	108%	6	6	13.0
				7.8		16.0		9.7		108%		6		
15/02/2017	Sunny	15:02	0.2	7.5	7.5	17.3	17.3	10.0	10	105%	105%	7	7	7.0
				7.5		17.3		10.0		105%		7		
17/02/2017	Sunny	11:03	0.2	7.4	7.4	18.7	18.7	9.9	9.5	106%	106%	5	5	4.0
				7.4		18.7		9.0		106%		5		
20/02/2017	Sunny	10:13	0.2	7.4	7.4	18.2	18.2	9.2	9.2	98%	98%	8	8	20.0
				7.4		18.2		9.2		98%		8		
22/02/2017	Fine	14:44	0.2	7.4	7.4	20.7	20.7	8.5	8.5	95%	95%	10	10	13.0
				7.4		20.7		8.5		95%		10		
24/02/2017	Cloudy	11:17	0.2	7.4	7.4	14.8	14.8	9.9	9.9	97%	97%	7	7	7.0
				7.4		14.8		9.9		97%		7		
27/02/2017	Sunny	10:23	0.2	7.4	7.4	15.8	15.8	9.9	9.9	100%	100%	4	4	5.0
				7.4		15.8		9.9		100%		4		

Project Name: Decommissioning of West Portion of the middle ash lagoon at Tsang Tsui, Tuen Mun

Monitoring Station: S1

Date of Monitoring	Weather Condition	Time	Water Depth (m)	pH		Temperature (°C)		DO (mg/L)		DO Saturation, %		Turbidity (NTU)		SS (mg/L)
				Value	Average	Value	Average	Value	Average	Value	Average	Value	Average	Value
02/02/2017	Cloudy	11:43	0.3	7.4	7.4	17.9	17.9	9.6	9.6	103%	103%	7	7	13.0
				7.4		17.9		9.6		103%		7		
04/02/2017	Fine	15:11	0.3	7.6	7.6	22.5	22.5	10.9	10.9	136%	136%	8	8	18.0
				7.6		22.5		10.9		136%		8		
06/02/2017	Fine	11:19	0.3	7.6	7.6	19.2	19.2	9.8	9.8	107%	107%	7	7	12.0
				7.6		19.2		9.8		107%		7		
08/02/2017	Cloudy	09:24	0.3	7.6	7.6	19.1	19.1	9.7	9.7	105%	105%	9	9	13.0
				7.6		19.1		9.7		105%		9		
10/02/2017	Fine	14:20	0.3	7.4	7.4	15.3	15.3	10.9	10.9	107%	107%	8	8	16.0
				7.4		15.3		10.9		107%		8		
13/02/2017	Sunny	12:01	0.4	7.6	7.6	16.3	16.3	10.1	10.1	111%	111%	5	5	8.0
				7.6		16.3		10.1		111%		5		
15/02/2017	Sunny	15:12	0.3	7.6	7.6	19.2	19.2	9.9	9.9	99%	99%	5	5	6.0
				7.6		19.2		9.9		99%		5		
17/02/2017	Sunny	11:13	0.3	7.5	7.5	18.7	18.7	10.4	10.4	112%	112%	10	10	16.0
				7.5		18.7		10.4		112%		10		
20/02/2017	Sunny	10:23	0.3	7.6	7.6	18.4	18.4	9.3	9.3	100%	100%	18	18	39.0
				7.6		18.4		9.3		100%		18		
22/02/2017	Fine	14:54	0.4	7.6	7.6	21.2	21.2	8.8	8.8	99%	99%	9	9	10.0
				7.6		21.2		8.8		99%		9		
24/02/2017	Cloudy	11:27	0.3	7.6	7.6	16.3	16.3	9.0	9	92%	92%	14	14	34.0
				7.6		16.3		9.0		92%		14		
27/02/2017	Sunny	10:33	0.3	7.5	7.5	16.9	16.9	9.9	9.9	102%	102%	5	5	6.0
				7.5		16.9		9.9		102%		5		

Project Name: Decommissioning of West Portion of the middle ash lagoon at Tsang Tsui, Tuen Mun

Monitoring Station: S2

Date of Monitoring	Weather Condition	Time	Water Depth (m)	pH		Temperature (°C)		DO (mg/L)		DO Saturation, %		Turbidity (NTU)		SS (mg/L)
				Value	Average	Value	Average	Value	Average	Value	Average	Value	Average	Value
02/02/2017	Cloudy	11:53	0.5	7.4	7.4	18.5	18.5	9.9	9.9	111%	111%	5	5	7.0
				7.4		18.5		9.9		111%		5		
04/02/2017	Fine	15:21	0.6	7.8	7.8	23.9	23.9	8.1	8.1	109%	109%	8	8	14.0
				7.8		23.9		8.1		109%		8		
06/02/2017	Fine	11:29	0.3	7.5	7.5	19.2	19.2	10.0	10.0	111%	111%	10	10	18.0
				7.5		19.2		10.0		111%		10		
08/02/2017	Cloudy	09:34	0.6	7.6	7.6	19.1	19.1	9.9	9.9	108%	108%	7	7	15.0
				7.6		19.1		9.9		108%		7		
10/02/2017	Fine	14:30	0.4	7.4	7.4	16.5	16.5	11.0	11.0	110%	110%	9	9	19.0
				7.4		16.5		11.0		110%		9		
13/02/2017	Sunny	12:12	0.5	7.6	7.6	17.5	17.5	9.6	9.6	105%	105%	9	9	16.0
				7.6		17.5		9.6		105%		9		
15/02/2017	Sunny	15:22	0.5	7.6	7.6	19.2	19.2	9.7	9.7	95%	95%	4	4	4.0
				7.6		19.2		9.7		95%		4		
17/02/2017	Sunny	11:23	0.4	7.5	7.5	18.0	18.0	10.3	10.3	117%	117%	6	6	7.0
				7.5		18.0		10.3		117%		6		
20/02/2017	Sunny	10:33	0.5	7.6	7.6	18.9	18.9	9.9	9.9	108%	108%	27	27	62.0
				7.6		18.9		9.9		108%		27		
22/02/2017	Fine	15:04	0.6	7.6	7.6	22.3	22.3	10.0	10.0	117%	117%	10	10	13.0
				7.6		22.3		10.0		117%		10		
24/02/2017	Cloudy	11:37	0.5	7.6	7.6	15.2	15.2	9.1	9.1	93%	93%	5	5	44.0
				7.6		15.2		9.1		93%		5		
27/02/2017	Sunny	10:43	0.5	7.5	7.5	17.1	17.1	7.9	7.9	93%	93%	12	12	10.0
				7.5		17.1		7.9		93%		12		

Project Name: Decommissioning of West Portion of the middle ash lagoon at Tsang Tsui, Tuen Mun

Monitoring Station: C1A

Date of Monitoring	Weather Condition	Time	Water Depth (m)	pH		Temperature (°C)		DO (mg/L)		DO Saturation, %		Turbidity (NTU)		SS (mg/L)
				Value	Average	Value	Average	Value	Average	Value	Average	Value	Average	Value
01/03/2017	Fine	10:55	0.2	7.4	7.4	17.2	17.2	9.8	9.8	102%	102%	8	8	12.0
				7.4		17.2		9.8		102%		8		
03/03/2017	Sunny	14:48	0.2	7.4	7.4	18.7	18.7	9.8	9.8	105%	105%	7	7	8.0
				7.4		18.7		9.8		105%		7		
06/03/2017	Fine	11:59	0.2	7.4	7.4	19.3	19.3	9.5	9.5	103%	103%	13	13	25.0
				7.4		19.3		9.5		103%		13		
08/03/2017	Cloudy	11:45	0.2	7.4	7.4	16.7	16.7	9.3	9.33	97%	97%	32	32	19.0
				7.4		16.7		9.3		97%		32		
10/03/2017	Cloudy	10:29	0.2	7.4	7.4	19.1	19.1	9.5	9.5	104.0%	104.0%	6	6	7.0
				7.4		19.1		9.5		104.0%		6		
13/03/2017	Fine	11:02	0.2	7.4	7.4	21.7	21.7	9.4	9.4	107.0%	107.0%	6	6	7.0
				7.4		21.7		9.4		107.0%		6		
15/03/2017	Fine	11:04	0.2	7.4	7.4	18.3	18.3	9.1	9.1	98%	98%	6	6	5.0
				7.4		18.3		9.1		98%		6		
17/03/2017	Cloudy	11:02	0.2	7.4	7.4	19.3	19.3	7.4	7.4	99%	99%	6	6	6.0
				7.4		19.3		7.4		99%		6		
20/03/2017	Sunny	10:32	0.2	7.4	7.4	21.7	21.7	8.8	8.8	99%	99%	14	14	41.0
				7.4		21.7		8.8		99%		14		
22/03/2017	Fine	11:23	0.2	7.4	7.4	20.1	20.1	8.5	8.5	94%	94%	10	10	31.0
				7.4		20.1		8.5		94%		10		
24/03/2017	Sunny	10:10	0.2	7.4	7.4	22.2	22.2	8.9	8.9	102%	102%	13	13	18.0
				7.4		22.2		8.9		102%		13		
27/03/2017	Fine	10:43	0.3	7.4	7.4	18.5	18.5	10.0	10	106%	106%	4	4	2.0
				7.4		18.5		10.0		106%		4		
29/03/2017	Fine	10:28	0.3	7.4	7.4	20.7	20.7	8.3	8.3	94%	94%	5	5	6.0
				7.4		20.7		8.3		94%		5		
31/03/2017	Rainy	11:31	0.2	7.4	7.4	22.6	22.6	4.0	4.0	46%	46%	25	25	33.0
				7.4		22.6		4.0		46%		25		

Project Name: Decommissioning of West Portion of the middle ash lagoon at Tsang Tsui, Tuen Mun

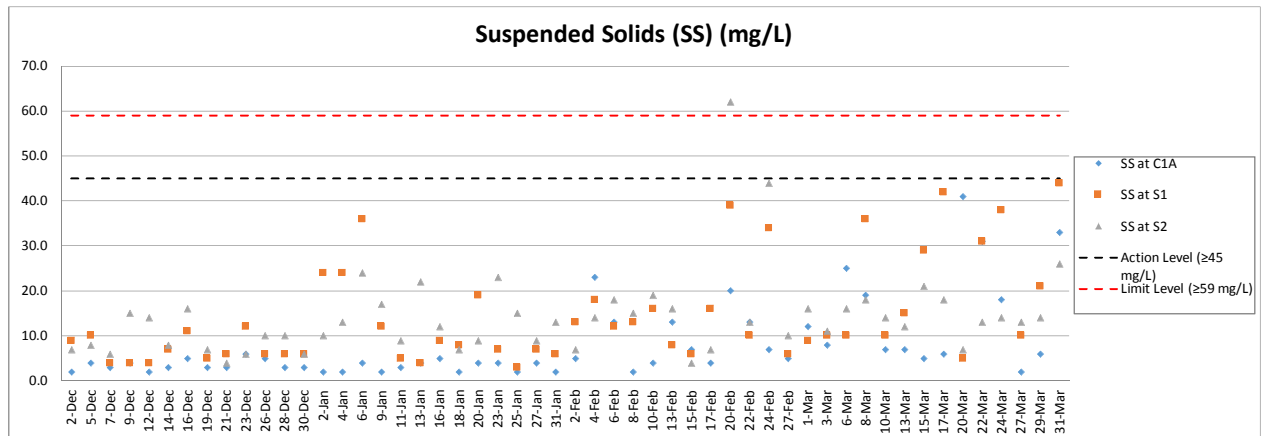
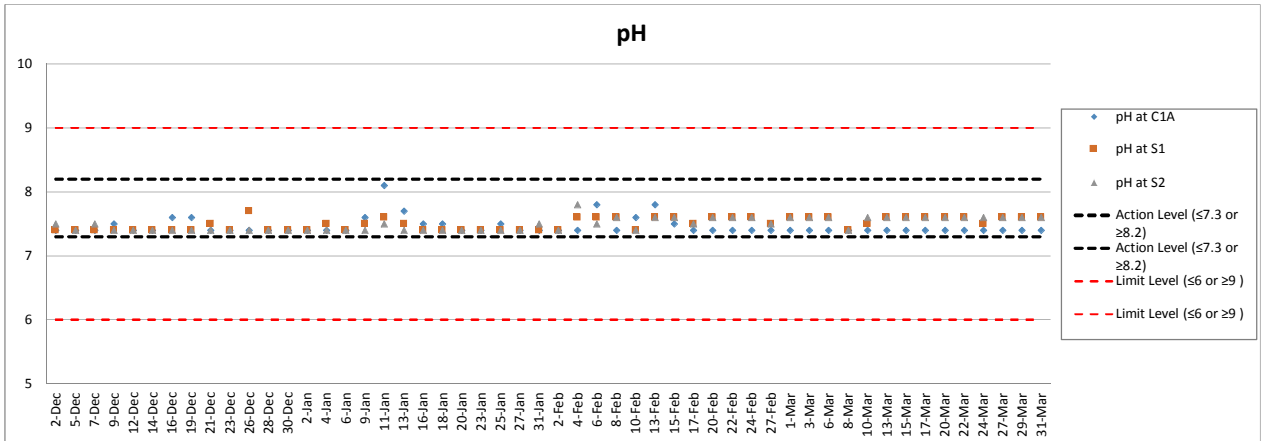
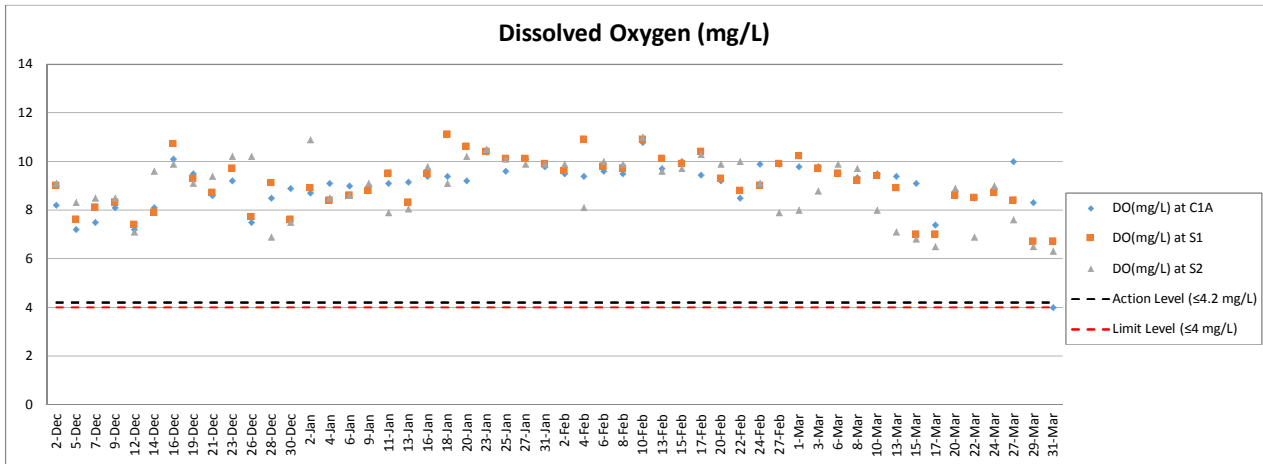
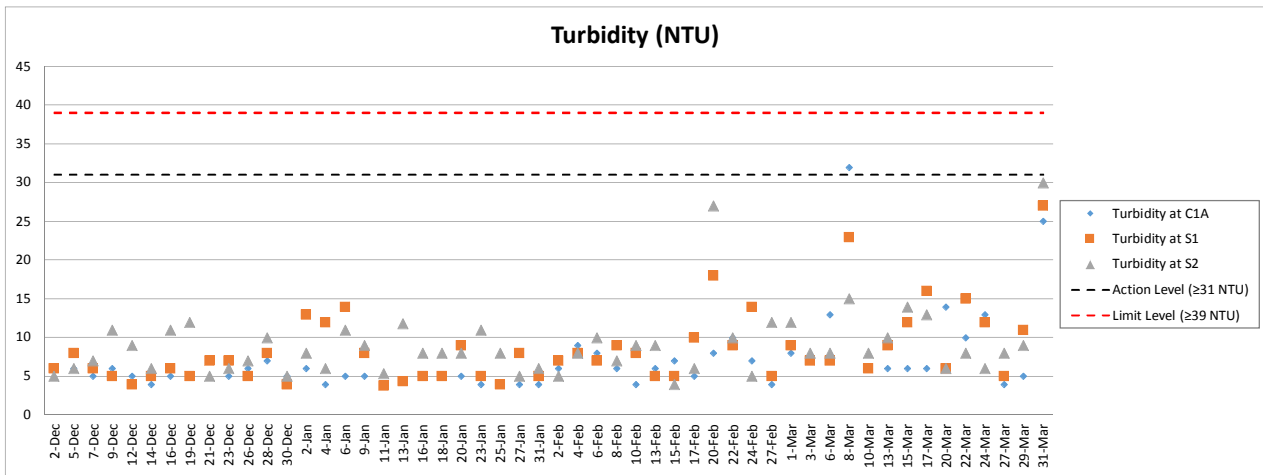
Monitoring Station: S1

Date of Monitoring	Weather Condition	Time	Water Depth (m)	pH		Temperature (°C)		DO (mg/L)		DO Saturation, %		Turbidity (NTU)		SS (mg/L)
				Value	Average	Value	Average	Value	Average	Value	Average	Value	Average	Value
01/03/2017	Fine	11:05	0.5	7.6	7.6	18.5	18.5	10.2	10.2	118%	118%	9	9	9.0
				7.6		18.5		10.2		118%		9		
03/03/2017	Sunny	14:58	0.5	7.6	7.6	19.6	19.6	9.7	9.7	102%	102%	7	7	10.0
				7.6		19.6		9.7		102%		7		
06/03/2017	Fine	12:09	0.3	7.6	7.6	19.5	19.5	9.5	9.5	104%	104%	7	7	10.0
				7.6		19.5		9.5		104%		7		
08/03/2017	Cloudy	11:55	0.3	7.4	7.4	17	17	9.2	9.2	96%	96%	23	23	36.0
				7.4		17		9.2		96%		23		
10/03/2017	Cloudy	10:39	0.4	7.5	7.5	19.5	19.5	9.4	9.4	102.0%	102%	6	6	10.0
				7.5		19.5		9.4		102.0%		6		
13/03/2017	Fine	11:12	0.5	7.6	7.6	21.5	21.5	8.9	8.9	109.0%	109%	9	9	15.0
				7.6		21.5		8.9		109.0%		9		
15/03/2017	Fine	11:14	0.5	7.6	7.6	18.5	18.5	7.0	7	83%	83%	17	12	29.0
				7.6		18.5		7.0		83%		7		
17/03/2017	Cloudy	11:12	0.5	7.6	7.6	19.4	19.4	7.0	7	86%	86%	16	16	42.0
				7.6		19.4		7.0		86%		16		
20/03/2017	Sunny	10:42	0.4	7.6	7.6	21.3	21.3	8.6	8.6	97%	97%	6	6	5.0
				7.6		21.3		8.6		97%		6		
22/03/2017	Fine	11:33	0.4	7.6	7.6	20.2	20.2	8.5	8.5	94%	94%	15	15	31.0
				7.6		20.2		8.5		94%		15		
24/03/2017	Sunny	10:21	0.4	7.5	7.5	21.5	21.5	8.7	8.7	99%	99%	12	12	38.0
				7.5		21.5		8.7		99%		12		
27/03/2017	Fine	10:53	0.5	7.6	7.6	17.9	17.9	8.4	8.4	97%	97%	5	5	10.0
				7.6		17.9		8.4		97%		5		
29/03/2017	Fine	10:38	0.6	7.6	7.6	21.1	21.1	6.7	6.7	83%	83%	11	11	21.0
				7.6		21.1		6.7		83%		11		
31/03/2017	Rainy	11:41	0.6	7.6	7.6	22.8	22.8	6.7	6.7	78%	78%	27	27	44.0
				7.6		22.8		6.7		78%		27		

Project Name: Decommissioning of West Portion of the middle ash lagoon at Tsang Tsui, Tuen Mun

Monitoring Station: S2

Date of Monitoring	Weather Condition	Time	Water Depth (m)	pH		Temperature (°C)		DO (mg/L)		DO Saturation, %		Turbidity (NTU)		SS (mg/L)
				Value	Average	Value	Average	Value	Average	Value	Average	Value	Average	Value
01/03/2017	Fine	11:15	0.7	7.6	7.6	18.5	18.5	8.0	8.0	96%	95%	12	12	16.0
				7.6		18.5		8.0		93%		12		
03/03/2017	Sunny	15:08	0.8	7.6	7.6	19.4	19.4	8.8	8.8	92%	92%	8	8	11.0
				7.6		19.4		8.8		92%		8		
06/03/2017	Fine	12:19	0.4	7.6	7.6	19.7	19.7	9.9	9.9	110%	110%	8	8	16.0
				7.6		19.7		9.9		110%		8		
08/03/2017	Cloudy	12:05	0.5	7.4	7.4	17.3	17.3	9.7	9.7	103%	103%	15	15	18.0
				7.4		17.3		9.7		103%		15		
10/03/2017	Cloudy	10:49	0.7	7.6	7.6	19.2	19.2	8.0	8.0	95.0%	95%	8	8	14.0
				7.6		19.2		8.0		95.0%		8		
13/03/2017	Fine	11:22	0.7	7.6	7.6	20.9	20.9	7.1	7.1	91.0%	91%	10	10	12.0
				7.6		20.9		7.1		91.0%		10		
15/03/2017	Fine	11:24	0.7	7.6	7.6	18.4	18.4	6.8	6.8	80%	80%	14	14	21.0
				7.6		18.4		6.8		80%		14		
17/03/2017	Cloudy	11:22	0.8	7.6	7.6	19.1	19.1	6.5	6.5	80%	80%	13	13	18.0
				7.6		19.1		6.5		80%		13		
20/03/2017	Sunny	10:52	0.5	7.6	7.6	21.3	21.3	8.9	8.9	101%	101%	6	6	7.0
				7.6		21.3		8.9		101%		6		
22/03/2017	Fine	11:43	0.6	7.6	7.6	20.4	20.4	6.9	6.9	80%	80%	8	8	13.0
				7.6		20.4		6.9		80%		8		
24/03/2017	Sunny	10:31	0.6	7.6	7.6	21.3	21.3	9.0	9.0	105%	105%	6	6	14.0
				7.6		21.3		9.0		105%		6		
27/03/2017	Fine	11:03	0.8	7.6	7.6	18.4	18.4	7.6	7.6	93%	93%	8	8	13.0
				7.6		18.4		7.6		93%		8		
29/03/2017	Fine	10:48	0.8	7.6	7.6	21.2	21.2	6.5	6.5	81%	81%	9	9	14.0
				7.6		21.2		6.5		81%		9		
31/03/2017	Rainy	11:51	0.7	7.6	7.6	22.8	22.8	6.3	6.3	75%	75%	30	30	26.0
				7.6		22.8		6.3		75%		30		



Decommissioning of West Portion of the middle ash lagoon at Tsang Tsui, Tuen Mun

Monitoring Station: C2 Tide: Mid-Ebb

Date of Monitoring	Weather Condition	Sea Condition	Time	Water Depth (m)	Sampling Water Depth (m)		Water Temperature (°C)		Cadmium (µg/L)		Chromium (µg/L)		Aluminium (µg/L)	
							Value	Depth-averaged	Value	Depth-averaged	Value	Depth-averaged	Value	Depth-averaged
02/01/2017	Cloudy	Calm	16:30	6.4	Surface	1.0	22.6	22.6	<0.5	<0.5	<1	<1	<20	<20
					Middle	3.2	22.6		<0.5		<1		<20	
					Bottom	5.4	22.6		<0.5		<1		<20	
04/01/2017	Sunny	Calm	18:06	6.4	Surface	1.0	22.2	22.2	<0.5	<0.5	<1	<1	<20	<20
					Middle	3.2	22.2		<0.5		<1		<20	
					Bottom	5.4	22.2		<0.5		<1		<20	
06/01/2017	Cloudy	Calm	20:21	6.7	Surface	1.0	19.8	19.8	<0.5	1.3	<1	<1	<20	<20
					Middle	3.4	19.8		0.9		<1		<20	
					Bottom	5.7	19.7		2.4		<1		<20	
09/01/2017	Cloudy	Calm	10:53	6.4	Surface	1.0	20.9	21.0	<0.5	<0.5	<1	<1	<20	<20
					Middle	3.2	21.0		<0.5		<1		<20	
					Bottom	5.4	21.0		<0.5		<1		<20	
11/01/2017	Cloudy	Calm	12:48	6.5	Surface	1.0	21.2	21.2	0.6	0.6	<1	<1	<20	<20
					Middle	3.2	21.2		0.8		<1		<20	
					Bottom	5.5	21.1		0.5		<1		<20	
13/01/2017	Cloudy	Moderate	14:20	6.4	Surface	1.0	19.6	19.6	<0.5	0.5	<1	<1	<20	<20
					Middle	3.2	19.6		0.6		<1		<20	
					Bottom	5.4	19.7		<0.5		<1		<20	
16/01/2017	Cloudy	Moderate	16:23	6.5	Surface	1.0	18.2	18.2	<0.5	<0.5	<1	<1	<20	<20
					Middle	3.2	18.2		<0.5		<1		<20	
					Bottom	5.5	18.2		<0.5		<1		<20	
18/01/2017	Cloudy	Calm	17:57	6.3	Surface	1.0	19.3	19.4	<0.5	<0.5	<1	<1	<20	<20
					Middle	3.1	19.4		<0.5		<1		<20	
					Bottom	5.3	19.4		<0.5		<1		<20	
20/01/2017	Sunny / Cloudy	Calm	19:59	6.4	Surface	1.0	18.2	18.2	<0.5	<0.5	<1	<1	<20	<20
					Middle	3.2	18.2		<0.5		<1		<20	
					Bottom	5.4	18.3		<0.5		<1		<20	
23/01/2017	Fine	Calm	10:54	6.7	Surface	1.0	18.8	19.1	0.8	0.6	<1	<1	<20	<20
					Middle	3.4	19.2		<0.5		<1		<20	
					Bottom	5.7	19.2		<0.5		<1		<20	
25/01/2017	Sunny	Moderate	12:16	6.6	Surface	1.0	19.2	19.2	<0.5	<0.5	<1	<1	<20	<20
					Middle	3.3	19.2		<0.5		<1		<20	
					Bottom	5.6	19.2		<0.5		<1		<20	
27/01/2017	Sunny	Moderate	13:42	6.6	Surface	1.0	19.8	19.9	0.6	0.5	<1	<1	<20	<20
					Middle	3.3	19.8		<0.5		<1		<20	
					Bottom	5.6	20.0		<0.5		<1		<20	
31/01/2017	Cloudy	Calm	0.67	6.40	Surface	1.00	19.40	19.40	<0.5	<0.5	<1	<1	<20	<20
					Middle	3.20	19.40		<0.5		<1		<20	
					Bottom	5.40	19.40		<0.5		<1		<20	

Decommissioning of West Portion of the middle ash lagoon at Tsang Tsui, Tuen Mun

Monitoring Station: C3 Tide: Mid-Ebb

Date of Monitoring	Weather Condition	Sea Condition	Time	Water Depth (m)	Sampling Depth (m)		Water Temperature (°C)		Cadmium (µg/L)		Chromium (µg/L)		Aluminium (µg/L)	
							Value	Depth-averaged	Value	Depth-averaged	Value	Depth-averaged	Value	Depth-averaged
02/01/2017	Cloudy	Calm	16:07	4.3	Surface	1.0	22.2	22.2	<0.5	<0.5	<1	<1	<20	<20
					Middle	-	-		-		<1		<20	
					Bottom	3.3	22.2		<0.5		<1		<20	
04/01/2017	Sunny	Calm	17:51	4.4	Surface	1.0	22.0	22.0	<0.5	<0.5	<1	<1	<20	<20
					Middle	-	-		-		<1		<20	
					Bottom	3.4	22.0		<0.5		<1		<20	
06/01/2017	Cloudy	Calm	20:00	4.1	Surface	1.0	19.7	19.7	0.7	1.8	<1	<1	<20	<20
					Middle	-	-		-		<1		<20	
					Bottom	3.1	19.7		2.8		<1		<20	
09/01/2017	Cloudy	Calm	11:15	4.4	Surface	1.0	20.9	21.0	<0.5	<0.5	<1	<1	<20	<20
					Middle	-	-		-		<1		<20	
					Bottom	3.4	21.0		<0.5		<1		<20	
11/01/2017	Cloudy	Calm	13:10	4.4	Surface	1.0	21.4	21.4	<0.5	<0.5	<1	<1	<20	<20
					Middle	-	-		-		<1		<20	
					Bottom	3.4	21.3		<0.5		<1		<20	
13/01/2017	Cloudy	Moderate	14:00	4.4	Surface	1.0	19.7	19.7	<0.5	<0.5	<1	<1	<20	<20
					Middle	-	-		-		<1		<20	
					Bottom	3.4	19.7		<0.5		<1		<20	
16/01/2017	Cloudy	Moderate	16:05	4.3	Surface	1.0	18.0	18.0	<0.5	<0.5	<1	<1	<20	<20
					Middle	-	-		-		<1		<20	
					Bottom	3.3	18.0		<0.5		<1		<20	
18/01/2017	Cloudy	Calm	17:39	4.4	Surface	1.0	19.2	19.3	<0.5	<0.5	<1	<1	<20	<20
					Middle	-	-		-		<1		<20	
					Bottom	3.4	19.3		<0.5		<1		<20	
20/01/2017	Sunny / Cloudy	Calm	19:35	4.3	Surface	1.0	18.7	18.7	<0.5	<0.5	<1	<1	<20	<20
					Middle	-	-		-		<1		<20	
					Bottom	3.3	18.7		<0.5		<1		<20	
23/01/2017	Fine	Calm	11:20	4.4	Surface	1.0	19.2	19.3	<0.5	<0.5	<1	<1	<20	<20
					Middle	-	-		-		<1		<20	
					Bottom	3.4	19.3		<0.5		<1		<20	
25/01/2017	Sunny	Moderate	12:34	4.3	Surface	1.0	19.4	19.4	<0.5	<0.5	<1	<1	<20	<20
					Middle	-	-		-		<1		<20	
					Bottom	3.3	19.4		<0.5		<1		<20	
27/01/2017	Sunny	Moderate	13:26	4.3	Surface	1.0	19.9	19.9	<0.5	<0.5	<1	<1	<20	<20
					Middle	-	-		-		<1		<20	
					Bottom	3.3	19.9		<0.5		<1		<20	
31/01/2017	Cloudy	Calm	15:45	4.4	Surface	1.0	19.7	19.7	<0.5	<0.5	<1	<1	<20	<20
					Middle	-	-		-		<1		<20	
					Bottom	3.4	19.6		<0.5		<1		<20	

Decommissioning of West Portion of the middle ash lagoon at Tsang Tsui, Tuen Mun

Monitoring Station: M1

Tide:

Mid-Ebb

Date of Monitoring	Weather Condition	Sea Condition	Time	Water Depth (m)	Sampling Depth (m)		Water Temperature (°C)		Cadmium (µg/L)		Chromium (µg/L)		Aluminium (µg/L)	
							Value	Depth-averaged	Value	Depth-averaged	Value	Depth-averaged	Value	Depth-averaged
02/01/2017	Cloudy	Calm	16:20	6.5	Surface	1.0	22.3	22.4	<0.5	<0.5	<1	<1	<20	<20
					Middle	3.2	22.4		<0.5		<1		<20	
					Bottom	5.5	22.4		<0.5		<1		<20	
04/01/2017	Sunny	Calm	18:01	6.3	Surface	1.0	22.1	22.1	<0.5	<0.5	<1	<1	<20	<20
					Middle	3.1	22.1		<0.5		<1		<20	
					Bottom	5.3	22.2		<0.5		<1		<20	
06/01/2017	Cloudy	Calm	20:15	6.5	Surface	1.0	19.7	19.7	1.3	0.8	<1	<1	<20	<20
					Middle	3.2	19.7		0.6		<1		<20	
					Bottom	5.5	19.7		0.6		<1		<20	
09/01/2017	Cloudy	Calm	11:04	6.3	Surface	1.0	20.9	21.0	<0.5	<0.5	<1	<1	<20	<20
					Middle	3.2	21.1		<0.5		<1		<20	
					Bottom	5.3	21.0		<0.5		<1		<20	
11/01/2017	Cloudy	Calm	12:58	6.5	Surface	1.0	21.4	21.3	<0.5	0.6	<1	<1	<20	<20
					Middle	3.2	21.3		0.8		<1		<20	
					Bottom	5.5	21.1		0.5		<1		<20	
13/01/2017	Cloudy	Moderate	14:15	6.2	Surface	1.0	19.4	19.4	<0.5	0.5	<1	<1	<20	<20
					Middle	3.1	19.4		0.5		<1		<20	
					Bottom	5.2	19.4		<0.5		<1		<20	
16/01/2017	Cloudy	Moderate	16:17	6.6	Surface	1.0	18.1	18.1	<0.5	<0.5	<1	<1	<20	<20
					Middle	3.3	18.1		<0.5		<1		<20	
					Bottom	5.6	18.1		<0.5		<1		<20	
18/01/2017	Cloudy	Calm	17:52	6.4	Surface	1.0	19.5	19.4	<0.5	<0.5	<1	<1	<20	<20
					Middle	3.2	19.4		<0.5		<1		<20	
					Bottom	5.4	19.3		<0.5		<1		<20	
20/01/2017	Sunny / Cloudy	Calm	19:47	6.5	Surface	1.0	18.6	18.6	<0.5	<0.5	<1	<1	<20	<20
					Middle	3.2	18.6		<0.5		<1		<20	
					Bottom	5.5	18.6		<0.5		<1		<20	
23/01/2017	Fine	Calm	11:10	6.5	Surface	1.0	18.9	19.1	<0.5	<0.5	<1	<1	<20	<20
					Middle	3.2	19.3		<0.5		<1		<20	
					Bottom	5.5	19.2		<0.5		<1		<20	
25/01/2017	Sunny	Moderate	12:21	6.6	Surface	1.0	19.5	19.5	<0.5	<0.5	<1	<1	<20	<20
					Middle	3.3	19.5		<0.5		<1		<20	
					Bottom	5.6	19.5		<0.5		<1		<20	
27/01/2017	Sunny	Moderate	13:36	6.4	Surface	1.0	19.9	19.9	0.6	0.5	<1	<1	<20	<20
					Middle	3.2	19.9		<0.5		<1		<20	
					Bottom	5.4	19.9		<0.5		<1		<20	
31/01/2017	Cloudy	Calm	16:01	6.3	Surface	1.0	20.2	20.0	<0.5	<0.5	<1	<1	<20	<20
					Middle	3.1	19.9		<0.5		<1		<20	
					Bottom	5.3	19.8		<0.5		<1		<20	

Decommissioning of West Portion of the middle ash lagoon at Tsang Tsui, Tuen Mun

Monitoring Station: M2

Tide:

Mid-Ebb

Date of Monitoring	Weather Condition	Sea Condition	Time	Water Depth (m)	Sampling Depth (m)		Water Temperature (°C)		Cadmium (µg/L)		Chromium (µg/L)		Aluminium (µg/L)	
							Value	Depth-averaged	Value	Depth-averaged	Value	Depth-averaged	Value	Depth-averaged
02/01/2017	Cloudy	Calm	16:14	4.4	Surface	1.0	22.2	22.2	<0.5	<0.5	<1	<1	<20	<20
					Middle	-	-		-		-			
					Bottom	3.4	22.2		<0.5		<1		<20	
04/01/2017	Sunny	Calm	17:58	4.3	Surface	1.0	21.9	22.0	<0.5	<0.5	<1	<1	<20	<20
					Middle	-	-		-		-			
					Bottom	3.3	22.0		<0.5		<1		<20	
06/01/2017	Cloudy	Calm	20:05	4.3	Surface	1.0	19.9	19.9	28.8	16.3	<1	<1	<20	<20
					Middle	-	-		-		-			
					Bottom	3.3	19.9		3.7		<1		<20	
09/01/2017	Cloudy	Calm	11:09	4.3	Surface	1.0	20.9	21.0	<0.5	<0.5	<1	<1	<20	<20
					Middle	-	-		-		-			
					Bottom	3.3	21.1		<0.5		<1		<20	
11/01/2017	Cloudy	Calm	13:06	4.5	Surface	1.0	21.4	21.4	<0.5	<0.5	<1	<1	<20	<20
					Middle	-	-		-		-			
					Bottom	3.5	21.4		<0.5		<1		<20	
13/01/2017	Cloudy	Moderate	14:05	4.3	Surface	1.0	19.2	19.2	<0.5	<0.5	<1	<1	<20	<20
					Middle	-	-		-		-			
					Bottom	3.3	19.2		<0.5		<1		<20	
16/01/2017	Cloudy	Moderate	16:10	4.6	Surface	1.0	18.2	18.2	<0.5	<0.5	<1	<1	<20	<20
					Middle	-	-		-		-			
					Bottom	3.6	18.2		<0.5		<1		<20	
18/01/2017	Cloudy	Calm	17:47	4.5	Surface	1.0	19.2	19.3	<0.5	<0.5	<1	<1	<20	<20
					Middle	-	-		-		-			
					Bottom	3.5	19.3		<0.5		<1		<20	
20/01/2017	Sunny / Cloudy	Calm	19:41	4.5	Surface	1.0	18.4	18.5	<0.5	<0.5	<1	<1	<20	<20
					Middle	-	-		-		-			
					Bottom	3.5	18.5		<0.5		<1		<20	
23/01/2017	Fine	Calm	11:14	4.7	Surface	1.0	18.9	19.0	<0.5	<0.5	<1	<1	<20	<20
					Middle	-	-		-		-			
					Bottom	3.7	19.0		<0.5		<1		<20	
25/01/2017	Sunny	Moderate	12:26	4.2	Surface	1.0	19.8	19.8	<0.5	<0.5	<1	<1	<20	<20
					Middle	-	-		-		-			
					Bottom	3.2	19.8		<0.5		<1		<20	
27/01/2017	Sunny	Moderate	13:32	4.3	Surface	1.0	19.7	19.7	0.6	0.6	<1	<1	<20	<20
					Middle	-	-		-		-			
					Bottom	3.3	19.7		<0.5		<1		<20	
31/01/2017	Cloudy	Calm	15:52	4.2	Surface	1.0	20.3	20.1	<0.5	<0.5	<1	<1	<20	<20
					Middle	-	-		-		-			
					Bottom	3.2	19.9		<0.5		<1		<20	

Decommissioning of West Portion of the middle ash lagoon at Tsang Tsui, Tuen Mun

Monitoring Station: C2

Tide: Mid-Flood

Date of Monitoring	Weather Condition	Sea Condition	Time	Water Depth (m)	Sampling Depth (m)		Water Temperature (°C)		Cadmium (µg/L)		Chromium (µg/L)		Aluminium (µg/L)	
							Value	Depth-averaged	Value	Depth-averaged	Value	Depth-averaged	Value	Depth-averaged
02/01/2017	Cloudy	Calm	10:55	6.2	Surface	1.0	22.5	22.5	<0.5	<0.5	<1	<1	<20	<20
					Middle	3.1	22.5		<0.5		<1		<20	
					Bottom	5.2	22.6		<0.5		<1		<20	
04/01/2017	Sunny	Calm	12:12	6.6	Surface	1.0	21.9	22.0	<0.5	<0.5	<1	<1	<20	<20
					Middle	3.3	21.9		<0.5		<1		<20	
					Bottom	5.6	22.2		<0.5		<1		<20	
06/01/2017	Cloudy	Calm	13:45	6.8	Surface	1.0	20.8	20.8	<0.5	<0.5	<1	<1	<20	<20
					Middle	3.4	20.8		<0.5		<1		<20	
					Bottom	5.8	20.8		<0.5		<1		<20	
09/01/2017	Cloudy	Calm	16:28	6.6	Surface	1.0	21.0	21.0	<0.5	<0.5	<1	<1	<20	<20
					Middle	3.3	21.0		<0.5		<1		<20	
					Bottom	5.6	21.1		<0.5		<1		<20	
11/01/2017	Cloudy	Calm	18:06	6.2	Surface	1.0	21.2	21.1	<0.5	<0.5	<1	<1	<20	<20
					Middle	3.1	21.1		<0.5		<1		<20	
					Bottom	5.2	21.1		<0.5		<1		<20	
13/01/2017	Cloudy	Moderate	09:00	6.6	Surface	1.0	19.4	19.4	<0.5	<0.5	<1	<1	<20	<20
					Middle	3.3	19.4		<0.5		<1		<20	
					Bottom	5.6	19.5		<0.5		<1		<20	
16/01/2017	Cloudy	Moderate	12:50	6.6	Surface	1.0	18.1	18.1	<0.5	<0.5	<1	<1	<20	<20
					Middle	3.3	18.1		<0.5		<1		<20	
					Bottom	5.6	18.1		<0.5		<1		<20	
18/01/2017	Cloudy	Calm	11:58	6.5	Surface	1.0	19.3	19.3	<0.5	<0.5	<1	<1	<20	<20
					Middle	3.2	19.3		<0.5		<1		<20	
					Bottom	5.5	19.4		<0.5		<1		<20	
20/01/2017	Sunny / Cloudy	Calm	13:12	6.6	Surface	1.0	19.7	19.7	<0.5	<0.5	<1	<1	<20	<20
					Middle	3.3	19.7		<0.5		<1		<20	
					Bottom	5.6	19.7		<0.5		<1		<20	
23/01/2017	Fine	Calm	16:02	6.6	Surface	1.0	19.6	19.5	<0.5	<0.5	<1	<1	<20	<20
					Middle	3.3	19.4		<0.5		<1		<20	
					Bottom	5.6	19.4		<0.5		<1		<20	
25/01/2017	Sunny	Moderate	17:31	6.6	Surface	1.0	20.0	20.0	<0.5	<0.5	<1	<1	<20	<20
					Middle	3.3	20.0		<0.5		<1		<20	
					Bottom	5.6	20.0		<0.5		<1		<20	
27/01/2017	Sunny	Moderate	08:18	6.5	Surface	1.0	18.4	18.4	<0.5	<0.5	<1	<1	<20	<20
					Middle	3.2	18.4		<0.5		<1		<20	
					Bottom	5.5	18.4		<0.5		<1		<20	
31/01/2017	Cloudy	Calm	10:15	6.1	Surface	1.0	19.4	19.4	<0.5	<0.5	<1	<1	<20	<20
					Middle	3.0	19.4		<0.5		<1		<20	
					Bottom	5.1	19.4		<0.5		<1		<20	

Decommissioning of West Portion of the middle ash lagoon at Tsang Tsui, Tuen Mun

Monitoring Station: C3

Tide:

Mid-Flood

Date of Monitoring	Weather Condition	Sea Condition	Time	Water Depth (m)	Sampling Depth (m)		Water Temperature (°C)		Cadmium (µg/L)		Chromium (µg/L)		Aluminium (µg/L)		
							Value	Depth-averaged	Value	Depth-averaged	Value	Depth-averaged	Value	Depth-averaged	
02/01/2017	Cloudy	Calm	11:20	4.1	Surface	1.0	22.2		<0.5		<1		<20		
					Middle	-	-		-		-		<1		<20
					Bottom	3.1	22.1		<0.5		<1		<1		<20
04/01/2017	Sunny	Calm	12:26	4.4	Surface	1.0	21.7		<0.5		<1		<20		
					Middle	-	-		-		-		<1		<20
					Bottom	3.4	21.7		<0.5		<1		<1		<20
06/01/2017	Cloudy	Calm	14:00	4.2	Surface	1.0	20.9		<0.5		<1		<20		
					Middle	-	-		-		-		<1		<20
					Bottom	3.2	20.9		<0.5		<1		<1		<20
09/01/2017	Cloudy	Calm	16:07	4.5	Surface	1.0	21.8		<0.5		<1		<20		
					Middle	-	-		-		-		<1		<20
					Bottom	3.5	21.3		<0.5		<1		<1		<20
11/01/2017	Cloudy	Calm	17:43	4.3	Surface	1.0	21.2		<0.5		<1		<20		
					Middle	-	-		-		-		<1		<20
					Bottom	3.3	21.1		<0.5		<1		<1		<20
13/01/2017	Cloudy	Moderate	09:25	4.5	Surface	1.0	19.6		<0.5		<1		<20		
					Middle	-	-		-		-		<1		<20
					Bottom	3.5	19.6		<0.5		<1		<1		<20
16/01/2017	Cloudy	Moderate	13:05	4.5	Surface	1.0	17.9		<0.5		<1		<20		
					Middle	-	-		-		-		<1		<20
					Bottom	3.5	17.9		<0.5		<1		<1		<20
18/01/2017	Cloudy	Calm	12:17	4.6	Surface	1.0	19.2		<0.5		<1		<20		
					Middle	-	-		-		-		<1		<20
					Bottom	3.6	19.2		<0.5		<1		<1		<20
20/01/2017	Sunny / Cloudy	Calm	13:32	4.5	Surface	1.0	19.5		<0.5		<1		<20		
					Middle	-	-		-		-		<1		<20
					Bottom	3.5	19.5		<0.5		<1		<1		<20
23/01/2017	Fine	Calm	15:38	4.5	Surface	1.0	20.2		<0.5		<1		<20		
					Middle	-	-		-		-		<1		<20
					Bottom	3.5	20.1		<0.5		<1		<1		<20
25/01/2017	Sunny	Moderate	17:12	4.2	Surface	1.0	20.1		<0.5		<1		<20		
					Middle	-	-		-		-		<1		<20
					Bottom	3.2	20.1		<0.5		<1		<1		<20
27/01/2017	Sunny	Moderate	08:36	4.2	Surface	1.0	18.2		0.6		<1		<20		
					Middle	-	-		-		-		<1		<20
					Bottom	3.2	18.3		<0.5		<1		<1		<20
31/01/2017	Cloudy	Calm	10:39	4.1	Surface	1.0	19.4		<0.5		<1		<20		
					Middle	-	-		-		-		<1		<20
					Bottom	3.1	19.5		<0.5		<1		<1		<20

Decommissioning of West Portion of the middle ash lagoon at Tsang Tsui, Tuen Mun

Monitoring Station: M1

Tide: Mid-Flood

Date of Monitoring	Weather Condition	Sea Condition	Time	Water Depth (m)	Sampling Depth (m)		Water Temperature (°C)		Cadmium (µg/L)		Chromium (µg/L)		Aluminium (µg/L)	
							Value	Depth-averaged	Value	Depth-averaged	Value	Depth-averaged	Value	Depth-averaged
02/01/2017	Cloudy	Calm	11:06	6.2	Surface	1.0	22.4	22.4	<0.5	<0.5	<1	<1	<20	<20
					Middle	3.1	22.4		<0.5		<1		<20	
					Bottom	5.2	22.3		<0.5		<1		<20	
04/01/2017	Sunny	Calm	12:17	6.8	Surface	1.0	22.0	22.0	<0.5	<0.5	<1	<1	<20	<20
					Middle	3.4	22.0		<0.5		<1		<20	
					Bottom	5.8	22.1		<0.5		<1		<20	
06/01/2017	Cloudy	Calm	13:50	6.6	Surface	1.0	20.8	20.8	<0.5	<0.5	<1	<1	<20	<20
					Middle	3.3	20.8		<0.5		<1		<20	
					Bottom	5.6	20.9		<0.5		<1		<20	
09/01/2017	Cloudy	Calm	16:20	6.8	Surface	1.0	21.6	21.4	<0.5	<0.5	<1	<1	<20	<20
					Middle	3.4	21.4		<0.5		<1		<20	
					Bottom	5.8	21.3		<0.5		<1		<20	
11/01/2017	Cloudy	Calm	17:52	6.1	Surface	1.0	21.3	21.5	<0.5	<0.5	<1	<1	<20	<20
					Middle	3.0	21.4		<0.5		<1		<20	
					Bottom	5.1	21.8		<0.5		<1		<20	
13/01/2017	Cloudy	Moderate	09:05	6.8	Surface	1.0	19.7	19.7	<0.5	0.6	<1	<1	<20	<20
					Middle	3.4	19.7		0.7		<1		<20	
					Bottom	5.8	19.7		<0.5		<1		<20	
16/01/2017	Cloudy	Moderate	12:55	6.8	Surface	1.0	17.8	17.8	<0.5	<0.5	<1	<1	<20	<20
					Middle	3.4	17.8		<0.5		<1		<20	
					Bottom	5.8	17.8		<0.5		<1		<20	
18/01/2017	Cloudy	Calm	12:08	6.3	Surface	1.0	19.8	19.6	<0.5	<0.5	<1	<1	<20	<20
					Middle	3.2	19.7		<0.5		<1		<20	
					Bottom	5.3	19.3		<0.5		<1		<20	
20/01/2017	Sunny / Cloudy	Calm	13:18	6.8	Surface	1.0	19.4	19.4	<0.5	<0.5	<1	<1	<20	<20
					Middle	3.4	19.4		<0.5		<1		<20	
					Bottom	5.8	19.4		<0.5		<1		<20	
23/01/2017	Fine	Calm	15:52	6.4	Surface	1.0	20.9	20.0	<0.5	<0.5	<1	<1	<20	<20
					Middle	3.2	19.6		<0.5		<1		<20	
					Bottom	5.4	19.5		<0.5		<1		<20	
25/01/2017	Sunny	Moderate	17:25	6.5	Surface	1.0	20.2	20.2	<0.5	<0.5	<1	<1	<20	<20
					Middle	3.2	20.1		<0.5		<1		<20	
					Bottom	5.5	20.2		<0.5		<1		<20	
27/01/2017	Sunny	Moderate	08:24	6.5	Surface	1.0	18.6	18.7	0.7	0.6	<1	<1	<20	<20
					Middle	3.2	18.7		<0.5		<1		<20	
					Bottom	5.5	18.7		<0.5		<1		<20	
31/01/2017	Cloudy	Calm	10:22	6.3	Surface	1.0	19.8	19.6	<0.5	<0.5	<1	<1	<20	<20
					Middle	3.1	19.5		<0.5		<1		<20	
					Bottom	5.3	19.5		<0.5		<1		<20	

Decommissioning of West Portion of the middle ash lagoon at Tsang Tsui, Tuen Mun

Monitoring Station: M2

Tide: Mid-Flood

Date of Monitoring	Weather Condition	Sea Condition	Time	Water Depth (m)	Sampling Depth (m)		Water Temperature (°C)		Cadmium (µg/L)		Chromium (µg/L)		Aluminium (µg/L)	
							Value	Depth-averaged	Value	Depth-averaged	Value	Depth-averaged	Value	Depth-averaged
02/01/2017	Cloudy	Calm	11:13	4.2	Surface	1.0	22.4	22.4	<0.5	<0.5	<1	<1	<20	<20
					Middle	-	-		-		-			
					Bottom	3.2	22.3		<0.5		<1		<20	
04/01/2017	Sunny	Calm	12:21	4.7	Surface	1.0	22.0	22.0	<0.5	<0.5	<1	<1	<20	<20
					Middle	-	-		-		-			
					Bottom	3.7	22.0		<0.5		<1		<20	
06/01/2017	Cloudy	Calm	13:55	4.4	Surface	1.0	20.7	20.7	<0.5	<0.5	<1	<1	<20	<20
					Middle	-	-		-		-			
					Bottom	3.4	20.7		<0.5		<1		<20	
09/01/2017	Cloudy	Calm	16:16	4.7	Surface	1.0	22.1	21.8	<0.5	<0.5	<1	<1	<20	<20
					Middle	-	-		-		-			
					Bottom	3.7	21.4		<0.5		<1		<20	
11/01/2017	Cloudy	Calm	17:49	4.2	Surface	1.0	21.5	21.6	<0.5	<0.5	<1	<1	<20	<20
					Middle	-	-		-		-			
					Bottom	3.2	21.6		<0.5		<1		<20	
13/01/2017	Cloudy	Moderate	09:15	4.6	Surface	1.0	19.1	19.1	<0.5	<0.5	<1	<1	<20	<20
					Middle	-	-		-		-			
					Bottom	3.6	19.1		<0.5		<1		<20	
16/01/2017	Cloudy	Moderate	13:00	4.7	Surface	1.0	18.0	18.0	<0.5	<0.5	<1	<1	<20	<20
					Middle	-	-		-		-			
					Bottom	3.7	18.0		<0.5		<1		<20	
18/01/2017	Cloudy	Calm	12:14	4.5	Surface	1.0	19.2	19.2	<0.5	<0.5	<1	<1	<20	<20
					Middle	-	-		-		-			
					Bottom	3.5	19.2		<0.5		<1		<20	
20/01/2017	Sunny / Cloudy	Calm	13:25	4.7	Surface	1.0	19.8	19.8	<0.5	<0.5	<1	<1	<20	<20
					Middle	-	-		-		-			
					Bottom	3.7	19.8		<0.5		<1		<20	
23/01/2017	Fine	Calm	15:47	4.8	Surface	1.0	20.2	19.9	<0.5	<0.5	<1	<1	<20	<20
					Middle	-	-		-		-			
					Bottom	3.8	19.6		<0.5		<1		<20	
25/01/2017	Sunny	Moderate	17:20	4.3	Surface	1.0	20.4	20.4	<0.5	<0.5	<1	<1	<20	<20
					Middle	-	-		-		-			
					Bottom	3.3	20.4		<0.5		<1		<20	
27/01/2017	Sunny	Moderate	08:30	4.4	Surface	1.0	18.5	18.5	0.7	0.6	<1	<1	<20	<20
					Middle	-	-		-		-			
					Bottom	3.4	18.5		<0.5		<1		<20	
31/01/2017	Cloudy	Calm	10:28	4.1	Surface	1.0	19.9	19.9	<0.5	<0.5	<1	<1	<20	<20
					Middle	-	-		-		-			
					Bottom	3.1	19.8		<0.5		<1		<20	

Decommissioning of West Portion of the middle ash lagoon at Tsang Tsui, Tuen Mun

Monitoring Station: C2

Tide: Mid-Ebb

Date of Monitoring	Weather Condition	Sea Condition	Time	Water Depth (m)	Sampling Depth (m)		Water Temperature (°C)		Cadmium (µg/L)		Chromium (µg/L)		Aluminium (µg/L)	
							Value	Depth-averaged	Value	Depth-averaged	Value	Depth-averaged	Value	Depth-averaged
02/02/2017	Cloudy	Calm	15:37	6.7	Surface	1.0	19.6	19.6	<0.5	<0.5	<1	<1	<20	<20
					Middle	3.3	19.6		<0.5		<1		<20	
					Bottom	5.7	19.6		<0.5		<1		<20	
04/02/2017	Cloudy	Calm	19:28	6.6	Surface	1.0	20.3	20.0	<0.5	<0.5	<1	<1	<20	<20
					Middle	3.3	20.1		<0.5		<1		<20	
					Bottom	5.6	19.6		<0.5		<1		<20	
06/02/2017	Cloudy	Calm	09:26	6.4	Surface	1.0	19.7	19.6	<0.5	<0.5	<1	<1	<20	<20
					Middle	3.2	19.6		<0.5		<1		<20	
					Bottom	5.4	19.6		<0.5		<1		<20	
08/02/2017	Cloudy	Moderate	11:48	6.4	Surface	1.0	18.2	18.2	<0.5	<0.5	<1	<1	<20	<20
					Middle	3.2	18.2		<0.5		<1		<20	
					Bottom	5.4	18.3		<0.5		<1		<20	
10/02/2017	Cloudy	Moderate	13:41	6.5	Surface	1.0	16.7	16.7	<0.5	<0.5	<1	<1	<20	<20
					Middle	3.3	16.7		<0.5		<1		<20	
					Bottom	5.5	16.8		<0.5		<1		<20	
13/02/2017	Fine	Calm	15:29	6.5	Surface	1.0	18.6	18.4	<0.5	<0.5	<1	<1	<20	<20
					Middle	3.2	18.4		<0.5		<1		<20	
					Bottom	5.5	18.2		<0.5		<1		<20	
15/02/2017	Sunny	Moderate	16:31	6.4	Surface	1.0	18.1	18.1	<0.5	<0.5	<1	<1	<20	<20
					Middle	3.2	18.1		<0.5		<1		<20	
					Bottom	5.4	18.0		<0.5		<1		<20	
17/02/2017	Sunny	Moderate	17:40	6.4	Surface	1.0	18.0	18.0	<0.5	<0.5	<1	<1	<20	<20
					Middle	3.2	18.0		<0.5		<1		<20	
					Bottom	5.4	18.0		<0.5		<1		<20	
20/02/2017	Cloudy	Calm	08:58	6.4	Surface	1.0	17.6	17.7	<0.5	<0.5	<1	<1	<20	<20
					Middle	3.2	17.8		<0.5		<1		<20	
					Bottom	5.4	17.8		<0.5		<1		<20	
22/02/2017	Cloudy	Moderate	11:20	6.4	Surface	1.0	18.4	18.4	<0.5	<0.5	<1	<1	<20	<20
					Middle	3.2	18.4		<0.5		<1		<20	
					Bottom	5.4	18.5		<0.5		<1		<20	
24/02/2017	Cloudy	Moderate	12:35	6.4	Surface	1.0	18.2	18.3	<0.5	<0.5	<1	<1	<20	<20
					Middle	3.2	18.3		<0.5		<1		<20	
					Bottom	5.4	18.3		<0.5		<1		<20	
27/02/2017	Cloudy	Moderate	14:40	6.4	Surface	1.0	18.6	18.7	<0.5	<0.5	<1	<1	<20	<20
					Middle	3.2	18.7		<0.5		<1		<20	
					Bottom	5.4	18.7		<0.5		<1		<20	

Decommissioning of West Portion of the middle ash lagoon at Tsang Tsui, Tuen Mun

Monitoring Station: C3

Tide:

Mid-Ebb

Date of Monitoring	Weather Condition	Sea Condition	Time	Water Depth (m)	Sampling Depth (m)		Water Temperature (°C)		Cadmium (µg/L)		Chromium (µg/L)		Aluminium (µg/L)	
							Value	Depth-averaged	Value	Depth-averaged	Value	Depth-averaged	Value	Depth-averaged
02/02/2017	Cloudy	Calm	15:15	4.5	Surface	1.0	19.7	19.7	<0.5	<0.5	<1	<1	<20	<20
					Middle	-	-		-		-			
					Bottom	3.5	19.6		<0.5		<1		<20	
04/02/2017	Cloudy	Calm	19:00	4.4	Surface	1.0	20.2	19.9	<0.5	<0.5	<1	<1	<20	<20
					Middle	-	-		-		-			
					Bottom	3.4	19.6		<0.5		<1		<20	
06/02/2017	Cloudy	Calm	09:50	4.2	Surface	1.0	26.1	23.0	1.8	1.5	<1	<1	<20	<20
					Middle	-	-		-		-			
					Bottom	3.2	19.8		1.2		<1		<20	
08/02/2017	Cloudy	Moderate	12:06	4.4	Surface	1.0	18.6	18.7	<0.5	<0.5	<1	<1	<20	<20
					Middle	-	-		-		-			
					Bottom	3.4	18.7		<0.5		<1		<20	
10/02/2017	Cloudy	Moderate	13:20	4.3	Surface	1.0	16.5	16.6	<0.5	<0.5	<1	<1	<20	<20
					Middle	-	-		-		-			
					Bottom	3.3	16.6		<0.5		<1		<20	
13/02/2017	Fine	Calm	15:11	4.3	Surface	1.0	18.6	18.6	<0.5	<0.5	<1	<1	<20	<20
					Middle	-	-		-		-			
					Bottom	3.3	18.5		<0.5		<1		<20	
15/02/2017	Sunny	Moderate	16:15	4.5	Surface	1.0	18.2	18.2	<0.5	<0.5	<1	<1	<20	<20
					Middle	-	-		-		-			
					Bottom	3.5	18.2		<0.5		<1		<20	
17/02/2017	Sunny	Moderate	17:20	4.2	Surface	1.0	18.3	18.3	<0.5	<0.5	<1	<1	<20	<20
					Middle	-	-		-		-			
					Bottom	3.2	18.3		<0.5		<1		<20	
20/02/2017	Cloudy	Calm	09:18	4.6	Surface	1.0	18.0	17.9	<0.5	<0.5	<1	<1	<20	<20
					Middle	-	-		-		-			
					Bottom	3.6	17.7		<0.5		<1		<20	
22/02/2017	Cloudy	Moderate	11:35	4.3	Surface	1.0	18.6	18.6	<0.5	<0.5	<1	<1	<20	<20
					Middle	-	-		-		-			
					Bottom	3.3	18.6		<0.5		<1		<20	
24/02/2017	Cloudy	Moderate	12:52	4.4	Surface	1.0	18.1	18.2	<0.5	<0.5	<1	<1	<20	<20
					Middle	-	-		-		-			
					Bottom	3.4	18.2		<0.5		<1		<20	
27/02/2017	Cloudy	Moderate	14:25	4.2	Surface	1.0	18.5	18.5	<0.5	<0.5	<1	<1	<20	<20
					Middle	-	-		-		-			
					Bottom	3.2	18.5		<0.5		<1		<20	

Decommissioning of West Portion of the middle ash lagoon at Tsang Tsui, Tuen Mun

Monitoring Station: M1 Tide: Mid-Ebb

Date of Monitoring	Weather Condition	Sea Condition	Time	Water Depth (m)	Sampling Depth (m)		Water Temperature (°C)		Cadmium (µg/L)		Chromium (µg/L)		Aluminium (µg/L)	
							Value	Depth-averaged	Value	Depth-averaged	Value	Depth-averaged	Value	Depth-averaged
02/02/2017	Cloudy	Calm	15:29	6.5	Surface	1.0	19.8	19.6	<0.5	<0.5	<1	<1	<20	<20
					Middle	3.3	19.6		<0.5		<1		<20	
					Bottom	5.5	19.5		<0.5		<1		<20	
04/02/2017	Cloudy	Calm	19:16	6.5	Surface	1.0	19.9	19.7	<0.5	<0.5	<1	<1	<20	<20
					Middle	3.2	19.5		<0.5		<1		<20	
					Bottom	5.5	19.6		<0.5		<1		<20	
06/02/2017	Cloudy	Calm	09:36	6.2	Surface	1.0	19.8	19.7	<0.5	<0.5	<1	<1	<20	<20
					Middle	3.1	19.7		<0.5		<1		<20	
					Bottom	5.2	19.7		<0.5		<1		<20	
08/02/2017	Cloudy	Moderate	11:54	6.3	Surface	1.0	18.7	18.7	<0.5	<0.5	<1	<1	<20	22
					Middle	3.2	18.7		<0.5		<1		<20	
					Bottom	5.3	18.7		<0.5		<1		26	
10/02/2017	Cloudy	Moderate	13:36	6.4	Surface	1.0	17.0	17.0	<0.5	<0.5	<1	<1	<20	<20
					Middle	3.2	17.0		<0.5		<1		<20	
					Bottom	5.4	17.1		<0.5		<1		<20	
13/02/2017	Fine	Calm	15:23	6.4	Surface	1.0	18.4	18.3	<0.5	<0.5	<1	<1	<20	<20
					Middle	3.2	18.2		<0.5		<1		<20	
					Bottom	5.4	18.3		<0.5		<1		<20	
15/02/2017	Sunny	Moderate	16:25	6.3	Surface	1.0	18.4	18.4	<0.5	<0.5	<1	<1	<20	<20
					Middle	3.2	18.4		<0.5		<1		<20	
					Bottom	5.3	18.4		<0.5		<1		<20	
17/02/2017	Sunny	Moderate	17:32	6.2	Surface	1.0	18.4	18.4	<0.5	<0.5	<1	<1	<20	<20
					Middle	3.1	18.4		<0.5		<1		<20	
					Bottom	5.2	18.4		<0.5		<1		<20	
20/02/2017	Cloudy	Calm	09:05	6.6	Surface	1.0	17.7	17.6	<0.5	<0.5	<1	<1	<20	<20
					Middle	3.3	17.6		<0.5		<1		<20	
					Bottom	5.6	17.6		<0.5		<1		<20	
22/02/2017	Cloudy	Moderate	11:25	6.3	Surface	1.0	18.3	18.3	<0.5	<0.5	<1	<1	<20	<20
					Middle	3.2	18.3		<0.5		<1		<20	
					Bottom	5.3	18.4		<0.5		<1		<20	
24/02/2017	Cloudy	Moderate	12:40	6.6	Surface	1.0	18.3	18.3	<0.5	<0.5	<1	<1	<20	<20
					Middle	3.3	18.3		<0.5		<1		<20	
					Bottom	5.6	18.3		<0.5		<1		<20	
27/02/2017	Cloudy	Moderate	14:35	6.5	Surface	1.0	18.4	18.5	<0.5	<0.5	<1	<1	<20	<20
					Middle	3.3	18.5		<0.5		<1		<20	
					Bottom	5.5	18.5		<0.5		<1		<20	

Decommissioning of West Portion of the middle ash lagoon at Tsang Tsui, Tuen Mun

Monitoring Station: M2

Tide: Mid-Ebb

Date of Monitoring	Weather Condition	Sea Condition	Time	Water Depth (m)	Sampling Depth (m)		Water Temperature (°C)		Cadmium (µg/L)		Chromium (µg/L)		Aluminium (µg/L)	
							Value	Depth-averaged	Value	Depth-averaged	Value	Depth-averaged	Value	Depth-averaged
02/02/2017	Cloudy	Calm	15:24	4.6	Surface	1.0	19.6	19.6	<0.5	<0.5	<1	<1	<20	<20
					Middle	-	-		-		-			
					Bottom	3.6	19.5		<0.5		<1		<20	
04/02/2017	Cloudy	Calm	19:07	4.3	Surface	1.0	19.8	19.7	<0.5	<0.5	<1	<1	<20	<20
					Middle	-	-		-		-			
					Bottom	3.3	19.5		<0.5		<1		<20	
06/02/2017	Cloudy	Calm	09:42	4.3	Surface	1.0	20.2	20.0	0.6	1.7	<1	<1	<20	<20
					Middle	-	-		-		-			
					Bottom	3.3	19.8		2.8		<1		<20	
08/02/2017	Cloudy	Moderate	11:59	4.3	Surface	1.0	18.0	18.1	<0.5	<0.5	<1	<1	<20	21.5
					Middle	-	-		-		-			
					Bottom	3.3	18.1		<0.5		<1		23	
10/02/2017	Cloudy	Moderate	13:27	4.3	Surface	1.0	16.8	16.9	<0.5	<0.5	<1	<1	<20	<20
					Middle	-	-		-		-			
					Bottom	3.3	16.9		<0.5		<1		<20	
13/02/2017	Fine	Calm	15:18	4.5	Surface	1.0	18.5	18.4	<0.5	<0.5	<1	<1	<20	<20
					Middle	-	-		-		-			
					Bottom	3.5	18.2		<0.5		<1		<20	
15/02/2017	Sunny	Moderate	16:20	4.6	Surface	1.0	18.2	18.2	<0.5	<0.5	<1	<1	<20	<20
					Middle	-	-		-		-			
					Bottom	3.6	18.2		<0.5		<1		<20	
17/02/2017	Sunny	Moderate	17:25	4.6	Surface	1.0	18.1	18.1	<0.5	<0.5	<1	<1	<20	<20
					Middle	-	-		-		-			
					Bottom	3.6	18.1		<0.5		<1		<20	
20/02/2017	Cloudy	Calm	09:11	4.4	Surface	1.0	17.8	17.7	<0.5	<0.5	<1	<1	<20	<20
					Middle	-	-		-		-			
					Bottom	3.4	17.6		<0.5		<1		<20	
22/02/2017	Cloudy	Moderate	11:30	4.2	Surface	1.0	18.7	18.7	<0.5	<0.5	<1	<1	<20	<20
					Middle	-	-		-		-			
					Bottom	3.2	18.7		<0.5		<1		<20	
24/02/2017	Cloudy	Moderate	12:48	4.3	Surface	1.0	18.3	18.3	<0.5	<0.5	<1	<1	<20	<20
					Middle	-	-		-		-			
					Bottom	3.3	18.2		<0.5		<1		<20	
27/02/2017	Cloudy	Moderate	14:30	4.4	Surface	1.0	18.6	18.6	<0.5	<0.5	<1	<1	<20	<20
					Middle	-	-		-		-			
					Bottom	3.4	18.6		<0.5		<1		<20	

Decommissioning of West Portion of the middle ash lagoon at Tsang Tsui, Tuen Mun

Monitoring Station: C2

Tide: Mid-Flood

Date of Monitoring	Weather Condition	Sea Condition	Time	Water Depth (m)	Sampling Depth (m)		Water Temperature (°C)		Cadmium (µg/L)		Chromium (µg/L)		Aluminium (µg/L)	
							Value	Depth-averaged	Value	Depth-averaged	Value	Depth-averaged	Value	Depth-averaged
02/02/2017	Cloudy	Calm	11:14	6.5	Surface	1.0	19.4	19.5	<0.5	<0.5	<1	<1	<20	<20
					Middle	3.2	19.5		<0.5		<1		<20	
					Bottom	5.5	19.5		<0.5		<1		<20	
04/02/2017	Cloudy	Calm	12:20	6.4	Surface	1.0	19.8	19.7	<0.5	<0.5	<1	<1	<20	<20
					Middle	3.2	19.7		<0.5		<1		<20	
					Bottom	5.4	19.6		<0.5		<1		<20	
06/02/2017	Cloudy	Calm	15:07	6.6	Surface	1.0	20.2	20.1	<0.5	<0.5	<1	<1	<20	<20
					Middle	3.3	20.2		<0.5		<1		<20	
					Bottom	5.6	19.9		<0.5		<1		<20	
08/02/2017	Cloudy	Moderate	17:06	6.6	Surface	1.0	19.0	19.0	<0.5	<0.5	<1	<1	<20	<20
					Middle	3.3	19.0		<0.5		<1		<20	
					Bottom	5.6	19.1		<0.5		<1		<20	
10/02/2017	Cloudy	Moderate	07:52	6.6	Surface	1.0	17.0	17.1	<0.5	<0.5	<1	<1	<20	<20
					Middle	3.3	17.1		<0.5		<1		<20	
					Bottom	5.6	17.1		<0.5		<1		<20	
13/02/2017	Fine	Calm	09:39	6.6	Surface	1.0	18.0	17.9	<0.5	<0.5	<1	<1	<20	<20
					Middle	3.3	17.9		<0.5		<1		<20	
					Bottom	5.6	17.8		<0.5		<1		<20	
15/02/2017	Sunny	Moderate	10:25	6.8	Surface	1.0	17.2	17.2	<0.5	<0.5	<1	<1	<20	<20
					Middle	3.4	17.2		<0.5		<1		<20	
					Bottom	5.8	17.3		<0.5		<1		<20	
17/02/2017	Sunny	Moderate	11:15	6.4	Surface	1.0	17.7	17.7	<0.5	<0.5	<1	<1	<20	<20
					Middle	3.2	17.7		<0.5		<1		<20	
					Bottom	5.4	17.7		<0.5		<1		<20	
20/02/2017	Cloudy	Calm	14:08	6.6	Surface	1.0	18.2	18.1	<0.5	<0.5	<1	<1	<20	<20
					Middle	3.3	18.2		<0.5		<1		<20	
					Bottom	5.6	18.0		<0.5		<1		<20	
22/02/2017	Cloudy	Moderate	16:15	6.5	Surface	1.0	19.0	19.1	<0.5	<0.5	<1	<1	<20	<20
					Middle	3.4	19.1		<0.5		<1		<20	
					Bottom	5.5	19.1		<0.5		<1		<20	
24/02/2017	Cloudy	Moderate	18:10	6.5	Surface	1.0	17.8	17.8	<0.5	<0.5	<1	<1	<20	<20
					Middle	3.3	17.8		<0.5		<1		<20	
					Bottom	5.5	17.7		<0.5		<1		<20	
27/02/2017	Cloudy	Moderate	08:40	6.4	Surface	1.0	18.1	18.2	<0.5	<0.5	<1	<1	<20	<20
					Middle	3.2	18.2		<0.5		<1		<20	
					Bottom	5.4	18.2		<0.5		<1		<20	

Decommissioning of West Portion of the middle ash lagoon at Tsang Tsui, Tuen Mun

Monitoring Station: C3

Tide:

Mid-Flood

Date of Monitoring	Weather Condition	Sea Condition	Time	Water Depth (m)	Sampling Depth (m)		Water Temperature (°C)		Cadmium (µg/L)		Chromium (µg/L)		Aluminium (µg/L)	
							Value	Depth-averaged	Value	Depth-averaged	Value	Depth-averaged	Value	Depth-averaged
02/02/2017	Cloudy	Calm	11:36	4.4	Surface	1.0	19.4	19.5	<0.5	<0.5	<1	<1	<20	<20
					Middle	-	-		-		-			
					Bottom	3.4	19.5		<0.5		<1		<20	
04/02/2017	Cloudy	Calm	12:40	4.5	Surface	1.0	20.1	19.9	<0.5	<0.5	<1	<1	<20	<20
					Middle	-	-		-		-			
					Bottom	3.5	19.7		<0.5		<1		<20	
06/02/2017	Cloudy	Calm	14:42	4.3	Surface	1.0	20.2	19.8	<0.5	<0.5	<1	<1	<20	<20
					Middle	-	-		-		-			
					Bottom	3.3	19.4		<0.5		<1		<20	
08/02/2017	Cloudy	Moderate	16:48	4.4	Surface	1.0	18.7	18.7	<0.5	<0.5	<1	<1	<20	<20
					Middle	-	-		-		-			
					Bottom	3.4	18.7		<0.5		<1		<20	
10/02/2017	Cloudy	Moderate	08:09	4.4	Surface	1.0	16.9	16.9	<0.5	<0.5	<1	<1	<20	<20
					Middle	-	-		-		-			
					Bottom	3.4	16.9		<0.5		<1		<20	
13/02/2017	Fine	Calm	09:59	4.5	Surface	1.0	18.1	18.0	<0.5	<0.5	<1	<1	<20	<20
					Middle	-	-		-		-			
					Bottom	3.5	17.8		<0.5		<1		<20	
15/02/2017	Sunny	Moderate	10:43	4.3	Surface	1.0	17.6	17.6	<0.5	<0.5	<1	<1	<20	<20
					Middle	-	-		-		-			
					Bottom	3.3	17.6		<0.5		<1		<20	
17/02/2017	Sunny	Moderate	11:30	4.2	Surface	1.0	17.4	17.4	<0.5	<0.5	<1	<1	<20	<20
					Middle	-	-		-		-			
					Bottom	3.2	17.4		<0.5		<1		<20	
20/02/2017	Cloudy	Calm	13:45	4.7	Surface	1.0	18.6	18.3	<0.5	<0.5	<1	<1	<20	<20
					Middle	-	-		-		-			
					Bottom	3.7	17.9		<0.5		<1		<20	
22/02/2017	Cloudy	Moderate	16:00	4.4	Surface	1.0	18.9	18.9	<0.5	<0.5	<1	<1	<20	<20
					Middle	-	-		-		-			
					Bottom	3.4	18.9		<0.5		<1		<20	
24/02/2017	Cloudy	Moderate	17:50	4.6	Surface	1.0	18.0	18.0	<0.5	<0.5	<1	<1	<20	<20
					Middle	-	-		-		-			
					Bottom	3.6	17.9		<0.5		<1		<20	
27/02/2017	Cloudy	Moderate	08:55	4.3	Surface	1.0	18.0	18.0	<0.5	<0.5	<1	<1	<20	<20
					Middle	-	-		-		-			
					Bottom	3.3	18.0		<0.5		<1		<20	

Decommissioning of West Portion of the middle ash lagoon at Tsang Tsui, Tuen Mun

Monitoring Station: M1

Tide:

Mid-Flood

Date of Monitoring	Weather Condition	Sea Condition	Time	Water Depth (m)	Sampling Depth (m)		Water Temperature (°C)		Cadmium (µg/L)		Chromium (µg/L)		Aluminium (µg/L)	
							Value	Depth-averaged	Value	Depth-averaged	Value	Depth-averaged	Value	Depth-averaged
02/02/2017	Cloudy	Calm	11:20	6.3	Surface	1.0	19.5	19.5	<0.5	<0.5	<1	<1	<20	<20
					Middle	3.2	19.5		<0.5		<1		<20	
					Bottom	5.3	19.5		<0.5		<1		<20	
04/02/2017	Cloudy	Calm	12:28	6.6	Surface	1.0	20.2	19.8	<0.5	<0.5	<1	<1	<20	<20
					Middle	3.3	19.6		<0.5		<1		<20	
					Bottom	5.6	19.6		<0.5		<1		<20	
06/02/2017	Cloudy	Calm	15:00	6.4	Surface	1.0	20.7	20.4	<0.5	<0.5	<1	<1	<20	<20
					Middle	3.2	20.6		<0.5		<1		<20	
					Bottom	5.4	19.9		<0.5		<1		<20	
08/02/2017	Cloudy	Moderate	16:59	6.7	Surface	1.0	18.4	18.4	<0.5	<0.5	<1	<1	<20	<20
					Middle	3.4	18.4		<0.5		<1		<20	
					Bottom	5.7	18.5		<0.5		<1		<20	
10/02/2017	Cloudy	Moderate	07:56	6.4	Surface	1.0	17.0	17.0	<0.5	<0.5	<1	<1	<20	<20
					Middle	3.2	17.0		<0.5		<1		<20	
					Bottom	5.4	17.0		<0.5		<1		<20	
13/02/2017	Fine	Calm	09:45	6.5	Surface	1.0	18.0	17.9	<0.5	<0.5	<1	<1	<20	<20
					Middle	3.2	17.9		<0.5		<1		<20	
					Bottom	5.5	17.9		<0.5		<1		<20	
15/02/2017	Sunny	Moderate	10:31	6.3	Surface	1.0	17.5	17.5	<0.5	<0.5	<1	<1	<20	<20
					Middle	3.2	17.5		<0.5		<1		<20	
					Bottom	5.3	17.5		<0.5		<1		<20	
17/02/2017	Sunny	Moderate	11:20	6.3	Surface	1.0	17.5	17.5	<0.5	<0.5	<1	<1	<20	<20
					Middle	3.2	17.5		<0.5		<1		<20	
					Bottom	5.3	17.6		<0.5		<1		<20	
20/02/2017	Cloudy	Calm	13:59	6.7	Surface	1.0	18.4	18.5	<0.5	<0.5	<1	<1	<20	<20
					Middle	3.3	18.5		<0.5		<1		<20	
					Bottom	5.7	18.6		<0.5		<1		<20	
22/02/2017	Cloudy	Moderate	16:10	6.4	Surface	1.0	19.4	19.4	<0.5	<0.5	<1	<1	<20	<20
					Middle	3.4	19.4		<0.5		<1		<20	
					Bottom	5.4	19.5		<0.5		<1		<20	
24/02/2017	Cloudy	Moderate	18:04	6.6	Surface	1.0	18.0	17.9	<0.5	<0.5	<1	<1	<20	<20
					Middle	3.3	17.9		<0.5		<1		<20	
					Bottom	5.6	17.9		<0.5		<1		<20	
27/02/2017	Cloudy	Moderate	08:45	6.4	Surface	1.0	18.3	18.3	<0.5	<0.5	<1	<1	<20	<20
					Middle	3.2	18.3		<0.5		<1		<20	
					Bottom	5.4	18.4		<0.5		<1		<20	

Decommissioning of West Portion of the middle ash lagoon at Tsang Tsui, Tuen Mun

Monitoring Station: M2

Tide: Mid-Flood

Date of Monitoring	Weather Condition	Sea Condition	Time	Water Depth (m)	Sampling Depth (m)		Water Temperature (°C)		Cadmium (µg/L)		Chromium (µg/L)		Aluminium (µg/L)	
							Value	Depth-averaged	Value	Depth-averaged	Value	Depth-averaged	Value	Depth-averaged
02/02/2017	Cloudy	Calm	11:25	4.4	Surface	1.0	19.5	19.4	<0.5	<0.5	<1	<1	<20	<20
					Middle	-	-		-		-			
					Bottom	3.4	19.3		<0.5		<1		<20	
04/02/2017	Cloudy	Calm	12:35	4.4	Surface	1.0	19.9	19.7	<0.5	<0.5	<1	<1	<20	<20
					Middle	-	-		-		-			
					Bottom	3.4	19.5		<0.5		<1		<20	
06/02/2017	Cloudy	Calm	14:05	4.6	Surface	1.0	21.0	20.5	<0.5	<0.5	<1	<1	<20	<20
					Middle	-	-		-		-			
					Bottom	3.6	19.9		<0.5		<1		<20	
08/02/2017	Cloudy	Moderate	16:54	4.6	Surface	1.0	18.6	18.6	<0.5	<0.5	<1	<1	<20	<20
					Middle	-	-		-		-			
					Bottom	3.6	18.6		<0.5		<1		<20	
10/02/2017	Cloudy	Moderate	08:02	4.3	Surface	1.0	16.8	16.8	<0.5	<0.5	<1	<1	<20	<20
					Middle	-	-		-		-			
					Bottom	3.3	16.8		<0.5		<1		<20	
13/02/2017	Fine	Calm	09:52	4.5	Surface	1.0	19.2	19.1	<0.5	<0.5	<1	<1	<20	<20
					Middle	-	-		-		-			
					Bottom	3.5	18.9		<0.5		<1		<20	
15/02/2017	Sunny	Moderate	10:33	4.2	Surface	1.0	17.8	17.8	<0.5	<0.5	<1	<1	<20	<20
					Middle	-	-		-		-			
					Bottom	3.2	17.8		<0.5		<1		<20	
17/02/2017	Sunny	Moderate	11:25	4.5	Surface	1.0	17.5	17.5	<0.5	<0.5	<1	<1	<20	<20
					Middle	-	-		-		-			
					Bottom	3.5	17.5		<0.5		<1		<20	
20/02/2017	Cloudy	Calm	13:50	4.6	Surface	1.0	18.8	18.7	<0.5	<0.5	<1	<1	<20	<20
					Middle	-	-		-		-			
					Bottom	3.6	18.6		<0.5		<1		<20	
22/02/2017	Cloudy	Moderate	16:05	4.1	Surface	1.0	19.2	19.2	<0.5	<0.5	<1	<1	<20	<20
					Middle	-	-		-		-			
					Bottom	3.1	19.2		<0.5		<1		<20	
24/02/2017	Cloudy	Moderate	17:58	4.3	Surface	1.0	18.0	18.0	<0.5	<0.5	<1	<1	<20	<20
					Middle	-	-		-		-			
					Bottom	3.3	17.9		<0.5		<1		<20	
27/02/2017	Cloudy	Moderate	08:50	4.3	Surface	1.0	18.3	18.3	<0.5	<0.5	<1	1	<20	<20
					Middle	-	-		-		-			
					Bottom	3.3	18.3		<0.5		1		<20	

Decommissioning of West Portion of the middle ash lagoon at Tsang Tsui, Tuen Mun

Monitoring Station: C2

Tide:

Mid-Ebb

Date of Monitoring	Weather Condition	Sea Condition	Time	Water Depth (m)	Sampling Depth (m)		Water Temperature (°C)		Cadmium (µg/L)		Chromium (µg/L)		Aluminium (µg/L)	
							Value	Depth-averaged	Value	Depth-averaged	Value	Depth-averaged	Value	Depth-averaged
01/03/2017	Cloudy	Calm	15:50	6.4	Surface	1.0	17.2	17.3	<0.5	<0.5	<1	<1	<20	<20
					Middle	3.2	17.4		<0.5		<1		<20	
					Bottom	5.4	17.4		<0.5		<1		<20	
03/03/2017	Sunny	Moderate	17:00	6.2	Surface	1.0	17.0	17.0	<0.5	<0.5	<1	<1	<20	<20
					Middle	3.1	17.0		<0.5		<1		<20	
					Bottom	5.2	17.0		<0.5		<1		<20	
06/03/2017	Cloudy	Moderate	07:35	6.8	Surface	1.0	18.2	18.2	<0.5	<0.5	<1	<1	<20	<20
					Middle	3.4	18.2		<0.5		<1		<20	
					Bottom	5.8	18.2		<0.5		<1		<20	
08/03/2017	Rainy	Moderate	10:55	6.4	Surface	1.0	18.0	18.1	<0.5	<0.5	<1	<1	<20	<20
					Middle	3.2	18.1		<0.5		<1		<20	
					Bottom	5.4	18.1		<0.5		<1		<20	
10/03/2017	Cloudy	Calm	12:35	6.3	Surface	1.0	18.4	18.5	<0.5	<0.5	<1	<1	<20	<20
					Middle	3.1	18.6		<0.5		<1		<20	
					Bottom	5.3	18.6		<0.5		<1		<20	
13/03/2017	Cloudy	Calm	14:43	6.5	Surface	1.0	18.5	18.4	<0.5	<0.5	<1	<1	<20	<20
					Middle	3.2	18.3		<0.5		<1		<20	
					Bottom	5.5	18.3		<0.5		<1		<20	
15/03/2017	Cloudy	Calm	15:32	6.3	Surface	1.0	18.5	18.5	<0.5	<0.5	<1	<1	<20	<20
					Middle	3.2	18.5		<0.5		<1		<20	
					Bottom	5.3	18.4		<0.5		<1		<20	
17/03/2017	Cloudy	Moderate	16:20	6.4	Surface	1.0	18.5	18.6	<0.5	<0.5	<1	<1	<20	<20
					Middle	3.2	18.5		<0.5		<1		<20	
					Bottom	5.4	18.9		<0.5		<1		<20	
20/03/2017	Sunny	Calm	11:25	6.2	Surface	1.0	18.6	18.6	<0.5	<0.5	<1	<1	<20	<20
					Middle	3.1	18.6		<0.5		<1		<20	
					Bottom	5.2	18.7		<0.5		<1		<20	
22/03/2017	Cloudy	Calm	10:45	6.4	Surface	1.0	19.3	19.1	<0.5	<0.5	<1	<1	<20	<20
					Middle	3.2	19.1		<0.5		<1		<20	
					Bottom	5.4	19.0		<0.5		<1		<20	
24/03/2017	Sunny	Moderate	10:50	6.2	Surface	1.0	18.3	18.1	<0.5	<0.5	<1	<1	<20	<20
					Middle	3.5	18.1		<0.5		<1		<20	
					Bottom	5.2	18.0		<0.5		<1		<20	
27/03/2017	Cloudy	Calm	13:25	6.4	Surface	1.0	19.6	19.5	<0.5	<0.5	<1	<1	<20	<20
					Middle	3.2	19.6		<0.5		<1		<20	
					Bottom	5.4	19.4		<0.5		<1		<20	
29/03/2017	Cloudy	Calm	14:56	6.6	Surface	1.0	20.1	20.0	<0.5	<0.5	<1	<1	<20	<20
					Middle	3.3	20.0		<0.5		<1		<20	
					Bottom	5.6	19.8		<0.5		<1		<20	
31/03/2017	Rainy	Calm	15:30	6.3	Surface	1.0	18.6	18.7	<0.5	<0.5	<1	<1	<20	<20
					Middle	3.1	18.8		<0.5		<1		<20	
					Bottom	5.3	18.8		<0.5		<1		<20	

Decommissioning of West Portion of the middle ash lagoon at Tsang Tsui, Tuen Mun

Monitoring Station: C3

Tide: Mid-Ebb

Date of Monitoring	Weather Condition	Sea Condition	Time	Water Depth (m)	Sampling Depth (m)		Water Temperature (°C)		Cadmium (µg/L)		Chromium (µg/L)		Aluminium (µg/L)	
							Value	Depth-averaged	Value	Depth-averaged	Value	Depth-averaged	Value	Depth-averaged
01/03/2017	Cloudy	Calm	15:30	4.4	Surface	1.0	17.3	17.4	<0.5	<0.5	<1	<1	<20	<20
					Middle	-	-		-		-			
					Bottom	3.4	17.4		<0.5		<1		<20	
03/03/2017	Sunny	Moderate	16:45	4.2	Surface	1.0	17.4	17.4	<0.5	<0.5	<1	<1	<20	<20
					Middle	-	-		-		-			
					Bottom	3.2	17.4		<0.5		<1		<20	
06/03/2017	Cloudy	Moderate	07:56	4.3	Surface	1.0	18.4	18.4	<0.5	<0.5	<1	<1	<20	<20
					Middle	-	-		-		-			
					Bottom	3.3	18.4		<0.5		<1		<20	
08/03/2017	Rainy	Moderate	11:10	4.3	Surface	1.0	18.3	18.3	<0.5	<0.5	<1	<1	<20	<20
					Middle	-	-		-		-			
					Bottom	3.3	18.3		<0.5		<1		<20	
10/03/2017	Cloudy	Calm	12:58	4.3	Surface	1.0	18.7	18.6	<0.5	<0.5	<1	<1	<20	<20
					Middle	-	-		-		-			
					Bottom	3.3	18.5		<0.5		<1		<20	
13/03/2017	Cloudy	Calm	14:20	4.2	Surface	1.0	18.6	18.5	<0.5	<0.5	<1	<1	<20	<20
					Middle	-	-		-		-			
					Bottom	3.2	18.3		<0.5		<1		<20	
15/03/2017	Cloudy	Calm	15:10	4.3	Surface	1.0	18.6	18.7	<0.5	<0.5	<1	<1	<20	<20
					Middle	-	-		-		-			
					Bottom	3.3	18.7		<0.5		<1		<20	
17/03/2017	Cloudy	Moderate	15:55	4.2	Surface	1.0	18.3	18.4	<0.5	<0.5	<1	<1	<20	<20
					Middle	-	-		-		-			
					Bottom	3.2	18.4		<0.5		<1		<20	
20/03/2017	Sunny	Calm	11:43	4.3	Surface	1.0	18.4	18.4	<0.5	<0.5	<1	<1	<20	<20
					Middle	-	-		-		-			
					Bottom	3.3	18.4		<0.5		<1		<20	
22/03/2017	Cloudy	Calm	11:08	4.3	Surface	1.0	19.6	19.4	<0.5	<0.5	<1	<1	<20	<20
					Middle	-	-		-		-			
					Bottom	3.3	19.2		<0.5		<1		<20	
24/03/2017	Sunny	Moderate	11:10	4.2	Surface	1.0	18.1	18.1	<0.5	<0.5	<1	<1	<20	<20
					Middle	-	-		-		-			
					Bottom	3.2	18.0		<0.5		<1		<20	
27/03/2017	Cloudy	Calm	13:46	4.6	Surface	1.0	19.7	19.6	<0.5	<0.5	<1	<1	<20	<20
					Middle	-	-		-		-			
					Bottom	3.6	19.5		<0.5		<1		<20	
29/03/2017	Cloudy	Calm	14:30	4.6	Surface	1.0	20.2	20.1	<0.5	<0.5	<1	<1	<20	<20
					Middle	-	-		-		-			
					Bottom	3.6	20.0		<0.5		<1		<20	
31/03/2017	Rainy	Calm	15:10	4.4	Surface	1.0	18.2	18.2	<0.5	<0.5	<1	<1	<20	<20
					Middle	-	-		-		-			
					Bottom	3.4	18.1		<0.5		<1		<20	

Decommissioning of West Portion of the middle ash lagoon at Tsang Tsui, Tuen Mun

Monitoring Station: M1 Tide: Mid-Ebb

Date of Monitoring	Weather Condition	Sea Condition	Time	Water Depth (m)	Sampling Depth (m)		Water Temperature (°C)		Cadmium (µg/L)		Chromium (µg/L)		Aluminium (µg/L)	
							Value	Depth-averaged	Value	Depth-averaged	Value	Depth-averaged	Value	Depth-averaged
01/03/2017	Cloudy	Calm	15:42	6.6	Surface	1.0	17.3	17.4	<0.5	<0.5	<1	<1	<20	<20
					Middle	3.3	17.4		<0.5		<1		<20	
					Bottom	5.6	17.5		<0.5		<1		<20	
03/03/2017	Sunny	Moderate	16:55	6.5	Surface	1.0	17.2	17.2	0.6	0.7	<1	<1	<20	<20
					Middle	3.4	17.2		<0.5		<1		<20	
					Bottom	5.5	17.2		1		<1		<20	
06/03/2017	Cloudy	Moderate	07:42	19.7	Surface	1.0	18.6	18.6	<0.5	<0.5	<1	<1	<20	<20
					Middle	3.2	18.6		<0.5		<1		<20	
					Bottom	5.4	18.7		<0.5		<1		<20	
08/03/2017	Rainy	Moderate	11:00	6.3	Surface	1.0	18.2	18.2	<0.5	<0.5	<1	<1	<20	<20
					Middle	3.3	18.2		<0.5		<1		<20	
					Bottom	5.3	18.2		<0.5		<1		<20	
10/03/2017	Cloudy	Calm	12:45	6.3	Surface	1.0	18.4	18.5	<0.5	<0.5	<1	<1	<20	<20
					Middle	3.1	18.6		<0.5		<1		<20	
					Bottom	5.3	18.6		<0.5		<1		<20	
13/03/2017	Cloudy	Calm	14:35	6.4	Surface	1.0	18.6	18.4	<0.5	<0.5	<1	<1	<20	<20
					Middle	3.2	18.4		<0.5		<1		<20	
					Bottom	5.4	18.3		<0.5		<1		<20	
15/03/2017	Cloudy	Calm	15:24	6.4	Surface	1.0	18.6	18.5	<0.5	<0.5	<1	<1	<20	<20
					Middle	3.2	18.4		<0.5		<1		<20	
					Bottom	5.4	18.5		<0.5		<1		<20	
17/03/2017	Cloudy	Moderate	16:10	6.3	Surface	1.0	18.5	18.6	<0.5	<0.5	<1	<1	<20	<20
					Middle	3.2	18.5		<0.5		<1		<20	
					Bottom	5.3	18.8		<0.5		<1		<20	
20/03/2017	Sunny	Calm	11:30	6.2	Surface	1.0	18.8	18.8	<0.5	<0.5	<1	<1	<20	<20
					Middle	3.2	18.8		<0.5		<1		<20	
					Bottom	5.2	18.8		<0.5		<1		<20	
22/03/2017	Cloudy	Calm	10:52	6.6	Surface	1.0	19.6	19.3	<0.5	<0.5	<1	<1	<20	<20
					Middle	3.3	19.4		<0.5		<1		<20	
					Bottom	5.6	19.0		<0.5		<1		<20	
24/03/2017	Sunny	Moderate	11:00	6.3	Surface	1.0	18.2	18.1	<0.5	<0.5	<1	<1	<20	<20
					Middle	3.6	18.1		<0.5		<1		<20	
					Bottom	5.3	18.1		<0.5		<1		<20	
27/03/2017	Cloudy	Calm	13:32	6.5	Surface	1.0	19.6	19.5	<0.5	<0.5	<1	<1	<20	<20
					Middle	3.3	19.5		<0.5		<1		<20	
					Bottom	5.5	19.4		<0.5		<1		<20	
29/03/2017	Cloudy	Calm	14:45	6.5	Surface	1.0	20.3	20.1	<0.5	<0.5	<1	<1	<20	<20
					Middle	3.3	20.1		<0.5		<1		<20	
					Bottom	5.5	20.0		<0.5		<1		<20	
31/03/2017	Rainy	Calm	15:25	6.4	Surface	1.0	18.8	18.8	<0.5	<0.5	<1	<1	<20	<20
					Middle	3.2	18.7		<0.5		<1		<20	
					Bottom	5.4	18.8		<0.5		<1		<20	

Decommissioning of West Portion of the middle ash lagoon at Tsang Tsui, Tuen Mun

Monitoring Station: M2 Tide: Mid-Ebb

Date of Monitoring	Weather Condition	Sea Condition	Time	Water Depth (m)	Sampling Depth (m)		Water Temperature (°C)		Cadmium (µg/L)		Chromium (µg/L)		Aluminium (µg/L)	
							Value	Depth-averaged	Value	Depth-averaged	Value	Depth-averaged	Value	Depth-averaged
01/03/2017	Cloudy	Calm	15:36	4.2	Surface	1.0	17.3	17.3	<0.5	<0.5	<1	<1	<20	<20
					Middle	-	-		-		-			
					Bottom	3.2	17.3		<0.5		<1		<20	
03/03/2017	Sunny	Moderate	16:50	4.3	Surface	1.0	17.6	17.6	<0.5	<0.5	<1	<1	<20	<20
					Middle	-	-		-		-			
					Bottom	3.3	17.6		<0.5		<1		<20	
06/03/2017	Cloudy	Moderate	07:50	4.4	Surface	1.0	18.8	18.8	<0.5	<0.5	<1	<1	<20	<20
					Middle	-	-		-		-			
					Bottom	3.4	18.8		<0.5		<1		<20	
08/03/2017	Rainy	Moderate	11:05	4.2	Surface	1.0	18.4	18.4	<0.5	<0.5	<1	<1	<20	21.5
					Middle	-	-		-		-			
					Bottom	3.2	18.4		<0.5		<1		23	
10/03/2017	Cloudy	Calm	12:51	4.4	Surface	1.0	18.5	18.4	<0.5	<0.5	<1	<1	<20	<20
					Middle	-	-		-		-			
					Bottom	3.4	18.3		<0.5		<1		<20	
13/03/2017	Cloudy	Calm	14:28	4.3	Surface	1.0	18.5	18.4	<0.5	<0.5	<1	<1	<20	<20
					Middle	-	-		-		-			
					Bottom	3.3	18.2		<0.5		<1		<20	
15/03/2017	Cloudy	Calm	15:18	4.4	Surface	1.0	18.7	18.6	<0.5	<0.5	<1	<1	<20	<20
					Middle	-	-		-		-			
					Bottom	3.4	18.5		<0.5		<1		<20	
17/03/2017	Cloudy	Moderate	16:02	4.4	Surface	1.0	18.4	18.4	<0.5	<0.5	<1	<1	<20	<20
					Middle	-	-		-		-			
					Bottom	3.4	18.4		<0.5		<1		<20	
20/03/2017	Sunny	Calm	11:35	4.1	Surface	1.0	18.7	18.7	<0.5	<0.5	<1	<1	<20	<20
					Middle	-	-		-		-			
					Bottom	3.1	18.7		<0.5		<1		<20	
22/03/2017	Cloudy	Calm	10:57	4.5	Surface	1.0	19.5	19.4	<0.5	<0.5	<1	<1	<20	<20
					Middle	-	-		-		-			
					Bottom	3.5	19.3		<0.5		<1		<20	
24/03/2017	Sunny	Moderate	11:05	4.2	Surface	1.0	18.1	18.1	<0.5	<0.5	<1	<1	<20	<20
					Middle	-	-		-		-			
					Bottom	3.2	18.0		<0.5		<1		<20	
27/03/2017	Cloudy	Calm	13:38	4.3	Surface	1.0	19.5	19.4	<0.5	<0.5	<1	<1	<20	<20
					Middle	-	-		-		-			
					Bottom	3.3	19.3		<0.5		<1		<20	
29/03/2017	Cloudy	Calm	14:38	4.5	Surface	1.0	20.2	20.1	<0.5	<0.5	<1	<1	<20	<20
					Middle	-	-		-		-			
					Bottom	3.5	20.0		<0.5		<1		<20	
31/03/2017	Rainy	Calm	15:20	4.2	Surface	1.0	18.0	18.0	<0.5	<0.5	<1	<1	<20	<20
					Middle	-	-		-		-			
					Bottom	3.2	17.9		<0.5		<1		<20	

Decommissioning of West Portion of the middle ash lagoon at Tsang Tsui, Tuen Mun

Monitoring Station: C2

Tide: Mid-Flood

Date of Monitoring	Weather Condition	Sea Condition	Time	Water Depth (m)	Sampling Depth (m)		Water Temperature (°C)		Cadmium (µg/L)		Chromium (µg/L)		Aluminium (µg/L)	
							Value	Depth-averaged	Value	Depth-averaged	Value	Depth-averaged	Value	Depth-averaged
01/03/2017	Cloudy	Calm	09:30	6.6	Surface	1.0	17.7	17.7	<0.5	<0.5	<1	<1	<20	<20
					Middle	3.3	17.7		<0.5		<1		<20	
					Bottom	5.6	17.6		<0.5		<1		<20	
03/03/2017	Sunny	Moderate	10:25	6.6	Surface	1.0	17.3	17.3	<0.5	<0.5	<1	<1	<20	<20
					Middle	3.2	17.3		<0.5		<1		<20	
					Bottom	5.6	17.4		<0.5		<1		<20	
06/03/2017	Cloudy	Moderate	13:04	6.6	Surface	1.0	19.0	18.7	<0.5	<0.5	<1	<1	<20	<20
					Middle	3.3	18.6		<0.5		<1		<20	
					Bottom	5.6	18.5		<0.5		<1		<20	
08/03/2017	Rainy	Moderate	16:05	6.2	Surface	1.0	18.6	18.6	<0.5	<0.5	<1	<1	<20	<20
					Middle	3.1	18.6		<0.5		<1		<20	
					Bottom	5.2	18.6		<0.5		<1		<20	
10/03/2017	Cloudy	Calm	18:15	6.1	Surface	1.0	18.5	18.6	<0.5	<0.5	<1	<1	<20	<20
					Middle	3.0	18.6		<0.5		<1		<20	
					Bottom	5.1	18.6		<0.5		<1		<20	
13/03/2017	Cloudy	Calm	08:30	6.7	Surface	1.0	19.0	18.8	<0.5	<0.5	<1	<1	<20	<20
					Middle	3.3	18.7		<0.5		<1		<20	
					Bottom	5.7	18.7		<0.5		<1		<20	
15/03/2017	Cloudy	Calm	09:20	6.4	Surface	1.0	18.5	18.4	<0.5	<0.5	<1	<1	<20	<20
					Middle	3.2	18.4		<0.5		<1		<20	
					Bottom	5.4	18.4		<0.5		<1		<20	
17/03/2017	Cloudy	Moderate	10:00	6.2	Surface	1.0	18.2	18.5	<0.5	<0.5	<1	<1	<20	<20
					Middle	3.1	18.4		<0.5		<1		<20	
					Bottom	5.2	18.9		<0.5		<1		<20	
20/03/2017	Sunny	Calm	18:43	6.2	Surface	1.0	19.2	19.1	<0.5	<0.5	<1	<1	<20	<20
					Middle	3.3	19.1		<0.5		<1		<20	
					Bottom	5.2	19.1		<0.5		<1		<20	
22/03/2017	Cloudy	Calm	14:36	6.5	Surface	1.0	19.4	19.2	<0.5	<0.5	<1	<1	<20	<20
					Middle	3.3	19.2		<0.5		<1		<20	
					Bottom	5.5	19.0		<0.5		<1		<20	
24/03/2017	Sunny	Moderate	16:15	6.2	Surface	1.0	18.6	18.3	<0.5	<0.5	<1	<1	<20	<20
					Middle	3.1	18.2		<0.5		<1		<20	
					Bottom	5.2	18.1		<0.5		<1		<20	
27/03/2017	Cloudy	Calm	19:38	6.3	Surface	1.0	19.4	19.4	<0.5	<0.5	<1	<1	<20	<20
					Middle	3.2	19.4		<0.5		<1		<20	
					Bottom	5.3	19.5		<0.5		<1		<20	
29/03/2017	Cloudy	Calm	08:30	6.5	Surface	1.0	19.8	19.8	<0.5	<0.5	<1	<1	<20	<20
					Middle	3.3	19.8		<0.5		<1		<20	
					Bottom	5.5	19.9		<0.5		<1		<20	
31/03/2017	Rainy	Calm	08:45	6.2	Surface	1.0	18.8	18.7	<0.5	<0.5	<1	<1	<20	<20
					Middle	3.1	18.7		<0.5		<1		<20	
					Bottom	5.2	18.6		<0.5		<1		<20	

Decommissioning of West Portion of the middle ash lagoon at Tsang Tsui, Tuen Mun

Monitoring Station: C3

Tide:

Mid-Flood

Date of Monitoring	Weather Condition	Sea Condition	Time	Water Depth (m)	Sampling Depth (m)		Water Temperature (°C)		Cadmium (µg/L)		Chromium (µg/L)		Aluminium (µg/L)	
							Value	Depth-averaged	Value	Depth-averaged	Value	Depth-averaged	Value	Depth-averaged
01/03/2017	Cloudy	Calm	09:48	4.5	Surface	1.0	17.6	17.6	<0.5	<0.5	<1	<1	<20	<20
					Middle	-	-		-		-			
					Bottom	3.5	17.5		<0.5		<1		<20	
03/03/2017	Sunny	Moderate	10:40	4.3	Surface	1.0	17.6	17.6	<0.5	<0.5	<1	<1	<20	<20
					Middle	-	-		-		-			
					Bottom	3.3	17.6		<0.5		<1		<20	
06/03/2017	Cloudy	Moderate	12:40	4.4	Surface	1.0	18.5	18.9	<0.5	<0.5	<1	<1	<20	<20
					Middle	-	-		-		-			
					Bottom	3.4	19.2		<0.5		<1		<20	
08/03/2017	Rainy	Moderate	15:50	4.2	Surface	1.0	18.5	18.5	<0.5	<0.5	<1	<1	<20	<20
					Middle	-	-		-		-			
					Bottom	3.2	18.5		<0.5		<1		<20	
10/03/2017	Cloudy	Calm	17:52	4.4	Surface	1.0	18.8	18.7	<0.5	<0.5	<1	<1	<20	<20
					Middle	-	-		-		-			
					Bottom	3.4	18.6		<0.5		<1		<20	
13/03/2017	Cloudy	Calm	08:52	4.4	Surface	1.0	19.0	18.9	<0.5	<0.5	<1	<1	<20	<20
					Middle	-	-		-		-			
					Bottom	3.4	18.8		<0.5		<1		<20	
15/03/2017	Cloudy	Calm	09:38	4.5	Surface	1.0	18.6	18.5	<0.5	<0.5	<1	<1	<20	<20
					Middle	-	-		-		-			
					Bottom	3.5	18.4		<0.5		<1		<20	
17/03/2017	Cloudy	Moderate	10:22	4.3	Surface	1.0	18.0	18.1	<0.5	<0.5	<1	<1	<20	<20
					Middle	-	-		-		-			
					Bottom	3.3	18.2		<0.5		<1		<20	
20/03/2017	Sunny	Calm	18:26	4.2	Surface	1.0	19.3	19.3	<0.5	<0.5	<1	<1	<20	<20
					Middle	-	-		-		-			
					Bottom	3.2	19.2		<0.5		<1		<20	
22/03/2017	Cloudy	Calm	14:15	4.4	Surface	1.0	19.5	19.4	<0.5	<0.5	<1	<1	<20	<20
					Middle	-	-		-		-			
					Bottom	3.4	19.2		<0.5		<1		<20	
24/03/2017	Sunny	Moderate	15:55	4.1	Surface	1.0	18.3	18.2	<0.5	<0.5	<1	<1	<20	<20
					Middle	-	-		-		-			
					Bottom	3.1	18.1		<0.5		<1		<20	
27/03/2017	Cloudy	Calm	19:15	4.5	Surface	1.0	19.6	19.6	<0.5	<0.5	<1	<1	<20	<20
					Middle	-	-		-		-			
					Bottom	3.5	19.5		<0.5		<1		<20	
29/03/2017	Cloudy	Calm	08:57	4.4	Surface	1.0	19.9	19.8	<0.5	<0.5	<1	<1	<20	<20
					Middle	-	-		-		-			
					Bottom	3.4	19.7		<0.5		<1		<20	
31/03/2017	Rainy	Calm	09:00	4.5	Surface	1.0	17.9	18.4	<0.5	<0.5	<1	<1	<20	<20
					Middle	-	-		-		-			
					Bottom	3.5	18.9		<0.5		<1		<20	

Decommissioning of West Portion of the middle ash lagoon at Tsang Tsui, Tuen Mun

Monitoring Station: M1 Tide: Mid-Flood

Date of Monitoring	Weather Condition	Sea Condition	Time	Water Depth (m)	Sampling Depth (m)		Water Temperature (°C)		Cadmium (µg/L)		Chromium (µg/L)		Aluminium (µg/L)	
							Value	Depth-averaged	Value	Depth-averaged	Value	Depth-averaged	Value	Depth-averaged
01/03/2017	Cloudy	Calm	09:35	6.5	Surface	1.0	17.5	17.4	<0.5	<0.5	<1	<1	<20	<20
					Middle	3.2	17.4		<0.5		<1		<20	
					Bottom	5.5	17.4		<0.5		<1		<20	
03/03/2017	Sunny	Moderate	10:30	6.2	Surface	1.0	17.2	17.2	0.5	0.6	<1	<1	<20	<20
					Middle	3.4	17.2		<0.5		<1		<20	
					Bottom	5.2	17.2		0.7		<1		<20	
06/03/2017	Cloudy	Moderate	12:56	6.4	Surface	1.0	19.2	18.9	<0.5	<0.5	<1	<1	<20	<20
					Middle	3.2	19.0		<0.5		<1		<20	
					Bottom	5.4	18.6		<0.5		<1		<20	
08/03/2017	Rainy	Moderate	16:00	6.3	Surface	1.0	18.9	18.9	<0.5	<0.5	<1	<1	<20	<20
					Middle	3.2	18.9		<0.5		<1		<20	
					Bottom	5.3	18.9		<0.5		<1		<20	
10/03/2017	Cloudy	Calm	18:05	6.3	Surface	1.0	18.6	18.6	<0.5	<0.5	<1	<1	<20	<20
					Middle	3.1	18.6		<0.5		<1		<20	
					Bottom	5.3	18.5		<0.5		<1		<20	
13/03/2017	Cloudy	Calm	08:38	6.5	Surface	1.0	19.0	18.8	<0.5	<0.5	<1	<1	<20	<20
					Middle	3.3	18.7		<0.5		<1		<20	
					Bottom	5.5	18.6		<0.5		<1		<20	
15/03/2017	Cloudy	Calm	09:26	6.6	Surface	1.0	18.7	18.5	<0.5	<0.5	<1	<1	<20	<20
					Middle	3.3	18.5		<0.5		<1		<20	
					Bottom	5.6	18.4		<0.5		<1		<20	
17/03/2017	Cloudy	Moderate	10:10	6.4	Surface	1.0	18.1	18.4	<0.5	<0.5	<1	<1	<20	<20
					Middle	3.3	18.3		<0.5		<1		<20	
					Bottom	5.4	18.9		<0.5		<1		<20	
20/03/2017	Sunny	Calm	18:37	6.0	Surface	1.0	19.3	19.4	<0.5	<0.5	<1	<1	<20	<20
					Middle	3.1	19.4		<0.5		<1		<20	
					Bottom	5.0	19.4		<0.5		<1		<20	
22/03/2017	Cloudy	Calm	14:28	6.7	Surface	1.0	19.6	19.4	<0.5	<0.5	<1	<1	<20	<20
					Middle	3.3	19.4		<0.5		<1		<20	
					Bottom	5.7	19.3		<0.5		<1		<20	
24/03/2017	Sunny	Moderate	16:05	6.3	Surface	1.0	18.4	18.3	<0.5	<0.5	<1	<1	<20	<20
					Middle	3.1	18.3		<0.5		<1		<20	
					Bottom	5.3	18.1		<0.5		<1		<20	
27/03/2017	Cloudy	Calm	19:28	6.4	Surface	1.0	19.4	19.4	<0.5	<0.5	<1	<1	<20	<20
					Middle	3.2	19.5		<0.5		<1		<20	
					Bottom	5.4	19.4		<0.5		<1		<20	
29/03/2017	Cloudy	Calm	08:38	6.4	Surface	1.0	19.8	19.8	<0.5	<0.5	<1	<1	<20	<20
					Middle	3.2	19.7		<0.5		<1		<20	
					Bottom	5.4	19.8		<0.5		<1		<20	
31/03/2017	Rainy	Calm	08:50	6.4	Surface	1.0	18.6	18.5	<0.5	<0.5	<1	<1	<20	<20
					Middle	3.2	18.5		<0.5		<1		<20	
					Bottom	5.4	18.5		<0.5		<1		<20	

Decommissioning of West Portion of the middle ash lagoon at Tsang Tsui, Tuen Mun

Monitoring Station: M2

Tide: Mid-Flood

Date of Monitoring	Weather Condition	Sea Condition	Time	Water Depth (m)	Sampling Depth (m)		Water Temperature (°C)		Cadmium (µg/L)		Chromium (µg/L)		Aluminium (µg/L)	
							Value	Depth-averaged	Value	Depth-averaged	Value	Depth-averaged	Value	Depth-averaged
01/03/2017	Cloudy	Calm	09:41	4.5	Surface	1.0	17.4		<0.5		<1		<20	
					Middle	-	-		-		-		-	
					Bottom	3.5	17.4		<0.5		<1		<20	
03/03/2017	Sunny	Moderate	10:35	4.4	Surface	1.0	17.8		<0.5		<1		<20	
					Middle	-	-		-		-		-	
					Bottom	3.4	17.9		<0.5		<1		<20	
06/03/2017	Cloudy	Moderate	12:48	4.3	Surface	1.0	18.7		<0.5		<1		<20	
					Middle	-	-		-		-		-	
					Bottom	3.3	18.6		<0.5		<1		<20	
08/03/2017	Rainy	Moderate	15:55	4.2	Surface	1.0	18.8		<0.5		<1		<20	
					Middle	-	-		-		-		-	
					Bottom	3.2	18.8		<0.5		<1		<20	
10/03/2017	Cloudy	Calm	17:58	4.2	Surface	1.0	18.6		<0.5		<1		<20	
					Middle	-	-		-		-		-	
					Bottom	3.2	18.4		<0.5		<1		<20	
13/03/2017	Cloudy	Calm	08:45	4.5	Surface	1.0	19.2		<0.5		<1		<20	
					Middle	-	pro		-		-		-	
					Bottom	3.5	18.9		<0.5		<1		<20	
15/03/2017	Cloudy	Calm	09:32	4.6	Surface	1.0	18.6		<0.5		<1		<20	
					Middle	-	-		-		-		-	
					Bottom	3.6	18.4		<0.5		<1		<20	
17/03/2017	Cloudy	Moderate	10:16	4.2	Surface	1.0	19.0		<0.5		<1		<20	
					Middle	-	-		-		-		-	
					Bottom	3.2	18.1		<0.5		<1		<20	
20/03/2017	Sunny	Calm	18:32	4.2	Surface	1.0	19.0		<0.5		<1		<20	
					Middle	-	-		-		-		-	
					Bottom	3.2	19.0		<0.5		<1		<20	
22/03/2017	Cloudy	Calm	14:22	4.6	Surface	1.0	19.7		<0.5		<1		<20	
					Middle	-	-		-		-		-	
					Bottom	3.6	19.4		<0.5		<1		<20	
24/03/2017	Sunny	Moderate	16:00	4.2	Surface	1.0	18.3		<0.5		<1		<20	
					Middle	-	-		-		-		-	
					Bottom	3.2	18.2		<0.5		<1		<20	
27/03/2017	Cloudy	Calm	19:22	4.4	Surface	1.0	19.4		<0.5		<1		<20	
					Middle	-	-		-		-		-	
					Bottom	3.4	19.6		<0.5		<1		<20	
29/03/2017	Cloudy	Calm	08:45	4.4	Surface	1.0	19.9		<0.5		<1		<20	
					Middle	-	-		-		-		-	
					Bottom	3.4	19.7		<0.5		<1		<20	
31/03/2017	Rainy	Calm	08:55	4.4	Surface	1.0	18.2		<0.5		<1		<20	
					Middle	-	-		-		-		-	
					Bottom	3.4	18.1		<0.5		<1		<20	

D. Environmental Mitigation Measures - Implementation Status

Air Quality Mitigation Measures during construction

Recommended measures	Implementation Status
Dust Suppression by watering of construction area at least 10 times per day.	✓
The access roads provide covering of 50% of open area with impervious materials or concrete paving.	N/A
Limited working period to 180 days.	✓
Provision pavement to construction access road with concrete paving and provide wheel washing facility at entrance and exit.	✓
Skip hoist for material transport enclosed by impervious sheeting	N/A
Vehicles washing facilities provided at every vehicle exit point.	✓
The area where vehicle washing takes place and the section of the road between the washing facilities and the exit point paved with concrete, bituminous materials or hardcore or similar.	✓
Any hoarding (not less than 2.4, high from ground level) provided along the entire length except for a site entrance or exit where a site boundary adjoining a road, streets or other areas accessible to the public	P
Every main haul road should be paved with concrete and kept clear of dusty materials or sprayed with water so as to maintain the entire road surface wet	✓
The portion of road leading only to a construction site that is within 30m of a designated vehicle entrance or exit kept clear of dusty materials.	✓
Every stock of more than 20 bags of cement or dry PFA covered entirely by impervious sheeting or placed in an area sheltered on the top and the 3 sides.	P
All dusty materials sprayed with water prior to any loading, unloading or transfer operation so as to maintain the dusty materials wet.	✓
Every vehicle should be washed to remove any dusty materials from its body and wheels before leaving the construction sites.	✓
The load of dusty materials carried by vehicle leaving a construction site should be covered entirely by clean impervious sheeting to ensure that the dusty materials do not leak from the vehicle?	N/A
Provision of wind shield and dust extraction units or similar dust mitigation measures at the loading points, and use of water sprinklers at the loading area where dust generation is likely during the loading process of loose material, particularly in dry seasons/ periods.	N/A
Imposition of speed controls for vehicles on unpaved site roads. Ten kilometres per hour is the recommended limit.	✓
The routing of vehicles and positioning of construction plant at the maximum possible distance from ASRs.	N/A
Instigation of an environmental auditing program to monitor the construction process in order to enforce controls and modify method of work if dusty conditions arise.	✓

Health Impact – Recommended Mitigation Measures

Recommended measures	Implementation Status
Dust Suppression by watering of construction area at least 10 times per day.	N/A
Provide covering of 50% of open area with impervious materials or concrete paving.	N/A
Limited working period to 180 days.	N/A
Provision pavement to construction access road with concrete paving and provide wheel washing facility at entrance and exit.	✓

Recommended measures	Implementation Status
Signage and training provided to inform the Contractor and respective personnel on-site to avoid ingestion of chemical/contaminants through the consumption of PFA soil and leachate water from nearby water streams.	N/A
Shower facilities to workers to wash away any PFA attached to skin surfaces.	✓
Provision of soil covers on top of ash lagoon.	N/A
Sufficient ventilation through introduction of forced and natural ventilation to the interior of the site office.	✓

Noise Impact – Recommended Mitigation Measures

Recommended measures	Implementation Status
Only well-maintained plant should be operated on-site and plants should be serviced regularly during the construction period.	✓
Mobile plant, if any, should be sited as far from NSRs as possible.	✓
Plant known to emit noise strongly in one direction, where possible, orientated to direct noise away from the NSRs.	✓
Use of site hoarding as a noise barrier to screen noise at low level NSRs.	N/A
Machines and plant in intermittent use shut down between work periods or throttled down to a minimum	✓
Material stockpiles and other structures effectively utilised, where practicable, to screen noise from on-site construction activities.	N/A

Water Quality– Recommended Mitigation Measures

Recommended measures	Implementation Status
At the start of the site establishment, perimeter cut-off drains to direct off-site water around the site should be constructed with internal drainage works and erosion and sedimentation control facilities implemented. Channels (both temporary and permanent drainage pipes and culverts), earth bunds or sand bag barriers should be provided on site to direct storm water to silt removal facilities. The design of the temporary on-site drainage system will be undertaken by the contractor prior to the commencement of construction.	✓
Boundaries of earthworks should be surrounded by dykes or embankments for flood protection, as necessary.	N/A
Sand/silt removal facilities such as sand/silt traps and sediment basins should be provided to remove sand/silt from runoff to meet the requirements of the TM-DSS. The design of efficient silt removal facilities should be based on the guidelines in Appendix A1 of ProPECC PN 1/94, which states that the retention time for silt/sand traps should be 5 minutes under maximum flow conditions. The detailed design of the sand/silt traps shall be undertaken by the contractor prior to the commencement of construction	N/A
Slope Stabilization works and construction of surface drainage outfall shall be carried out during dry season to minimize surface and storm water runoff discharge into the water channel Silt fences shall be erected to prevent contaminated surface runoff from entering the water channel.	N/A
Silt surface runoff and construction site drainage should be discharged into storm drains via silt removal facilities.	N/A
During rainstorm, exposed slope/soil surfaces should be covered by tarpaulin or other means, as far as practicable. Other measures that need to be implemented before, during and after rainstorms are summarized in ProPECC PN 1/94.	N/A
All exposed PFA/earth areas covered immediately after the earthworks have been completed.	N/A
Earthwork final surfaces should be well compacted and subsequent permanent work or surface protection is immediately performed.	N/A
Open stockpiles of construction materials or construction wastes on-site should be covered with tarpaulin or similar fabric during rainstorms.	P
All vehicles should be cleaned before leaving the works area to ensure no earth, mud and debris is deposited on roads. An adequately designed and sited wheel washing bay should be provided at every exit. The wheel washing facility should be designed to minimize the intake of surface water (rainwater). Wash-water should have sand and silt settled out and removed at least on a weekly basis to ensure the continued efficiency of the process.	✓

Recommended measures	Implementation Status
Construction solid waste should be collected, handled and disposed of properly to avoid entering into the nearby watercourses and public drainage system. Rubbish and litter from construction sites should also be collected to prevent spreading of rubbish and litter from the site area. It is recommended to clean the construction sites on a regular basis.	✓
The discharge quality must meet the requirements specified in the discharge license. All the run-off and wastewater generated from the works areas should be treated so that it satisfies all the standards listed in the TM-DSS.	N/A
Contractor must register as a chemical waste producer of chemical wastes that would be produced from construction activities. The Waste Disposal Ordinance (Cap 354) and its subsidiary regulations in particular the Waste Disposal (Chemical Waste) (General) Regulation should be observed and complied with for control of chemical wastes.	✓
Maintenance of vehicles and equipment involving activities with potential for leakage and spillage should only be undertaken within the areas which appropriately equipped to control these discharges.	✓
Oils and fuels should only be used and stored in designated areas which have pollution prevention facilities. All fuel tanks and storage areas should be sited on sealed areas in order to prevent spillage of fuels and solvents to the nearby watercourses. All waste oils and fuels should be collected in designated tanks prior to disposal.	P
Suitable containers should be used to hold the chemical wastes to avoid leakage or spillage during storage, handling and transport.	✓
Chemical waste containers should be suitably labelled, to notify and warn the personnel who are handling the wastes, to avoid accidents.	✓
Storage area should be selected at a safe location on site and adequate space should be allocated to the storage area.	✓
Temporary sanitary facilities, such as portable chemical toilets, should be employed on-site where necessary to handle sewage from the workforce. A licensed contractor would be responsible for appropriate disposal and maintenance of these facilities.	✓
Any service shop and maintenance facilities should be located on hard standings within a bunded area, and sumps and oil interceptors should be provided. Maintenance of vehicles and equipment involving activities with potential for leakage and spillage should only be undertaken within the areas appropriately equipped to control these discharges.	N/A

Waste Management and Land Contamination – Recommended Mitigation

Recommended measures	Implementation Status
Obtain the necessary waste disposal permits from the appropriate authorities, in accordance with the Waste Disposal Ordinance (Cap. 354) and Waste Disposal (Chemical Waste) (General) Regulation.	✓
Nomination of an approved person to be responsible for good site practice, arrangements for collection and effective disposal to an appropriate facility of all wastes generated at the site.	N/A
Use of a waste haulier licensed to collect specific category of waste.	N/A
A trip-ticket system should be included as one of the contractual requirements and implemented by the Environmental Team to monitor the disposal of solid wastes at landfills, and to control fly tipping.	N/A
Training of site personnel in proper waste management and chemical waste handling procedures.	N/A
Separation of chemical wastes for special handling and appropriate treatment at a licensed facility.	✓
Routine cleaning and maintenance programme for drainage systems, sumps and oil interceptors.	N/A
Provision of sufficient waste disposal points and regular collection for disposal.	✓
Adoption of appropriate measures to minimize windblown litter and dust during transportation of waste, such as covering trucks or transporting wastes in enclosed containers.	✓
Implementation of a recording system for the amount of wastes generated, recycled and disposed of (including the disposal sites).	N/A
Segregation and storage of different types of waste in different containers, skips or stockpiles to enhance reuse or recycling of materials and their proper disposal.	✓
Encourage collection of aluminium cans, plastics bottles and packaging material (e.g. carton boxes) and office paper by individual collectors. Separate labelled bins should be provided to help segregate this waste from other general refuse generated by the work force.	✓
Any unused chemicals or those with remaining functional capacity should be reused as far as practicable.	N/A
Use of reusable non-timber formwork to reduce the amount of C&D materials.	N/A

Recommended measures	Implementation Status
Maximizing the use of reusable steel formwork to reduce the amount of C&D material	N/A
Prior to disposal of construction waste, wood, steel and other metals should be separated for re-use and/or recycling to minimize the quantity of waste to be disposed of to landfill.	✓
Proper storage and site practices to reduce the potential for damage or contamination of construction materials.	N/A
C&D material and excavated materials should be reused on-site as fill material as far as possible.	N/A
Open stockpiles of construction materials (e.g. aggregates sand and fill material) and excavated material on sites shall be covered with tarpaulin or similar fabric during rainstorms.	✓
Chemicals and chemical wastes should only be stored in suitable containers in purpose-built areas.	N/A
The storage of chemical wastes should comply with the requirements of the Code of Practice on the Packaging, Labelling and Storage of Chemical Wastes.	N/A
Be suitable for the substance they are holding, resistant to corrosion, maintained in a good condition, and securely closed.	N/A
Have a capacity of less than 450 L unless the specifications have been approved by the EPD.	N/A
Displaying a label in English and Chinese in accordance with instructions prescribed in Schedule 2 of the Regulations.	N/A
Be clearly labelled and used solely for the storage of chemical waste.	✓
Be enclosed on at least 3 sides..	✓
Have an impermeable floor and bunding, of capacity to accommodate 110% of the volume of the largest container or 20% by volume of the chemical waste stored in that area whichever is the greatest.	✓
Have adequate ventilation.	✓
Be covered to prevent rainfall entering (water collected within the bund must be tested and disposed of as chemical waste, if necessary).	✓
Be arranged so that incompatible materials are appropriately separated.	✓
All recyclable materials (separated from the general waste) should be stored on-site in appropriate containers with cover prior to collection by a local recycler.	✓
Residual, non-recyclable, general waste should be stored in appropriate containers to avoid odour. Regular collection should be arranged by an approved waste collector in purpose-built vehicles that minimise environmental impacts during transportation.	P

Ecology – Recommended Mitigation Measures

Recommended measures	Implementation Status
Hoarding of not less than 2.4m high should be set up as a precautionary measure along the boundary of the works areas between the Middle and the West Ash Lagoon and between the northern edge of the ash platform and the water channel to shield the Little Grebe, if any, from the disturbance of human activities during decommissioning and construction phase.	✓
The hoarded area should be inspected weekly for any damage by illegal access and to evaluate the effectiveness of the measures. Damage sighted should be reported to the site manager and damaged hoarding should be repaired by the Contractor as soon as possible.	✓
Silt fences shall be erected and permanent fencing shall be erected along the top of the embankment as a physical barrier to minimize the human disturbance to the Little Grebes	N/A
Vegetation shall be used as slope stabilization strategy during both design and construction stages. Vegetation such as trees, shrubs and groundcovers shall be planted along the embankment to reduce the slope's susceptibility to surface erosion and slump falls and act as sight and sound barriers to avoid human contact with the ecological activities at the water channel.	N/A
Any construction works at water channel shall only be conducted within the non-breeding season (i.e. November to March of the following year) to minimize any disturbance to nesting activities of Little Grebes. Scheduling of work items should be implemented during design stage.	N/A

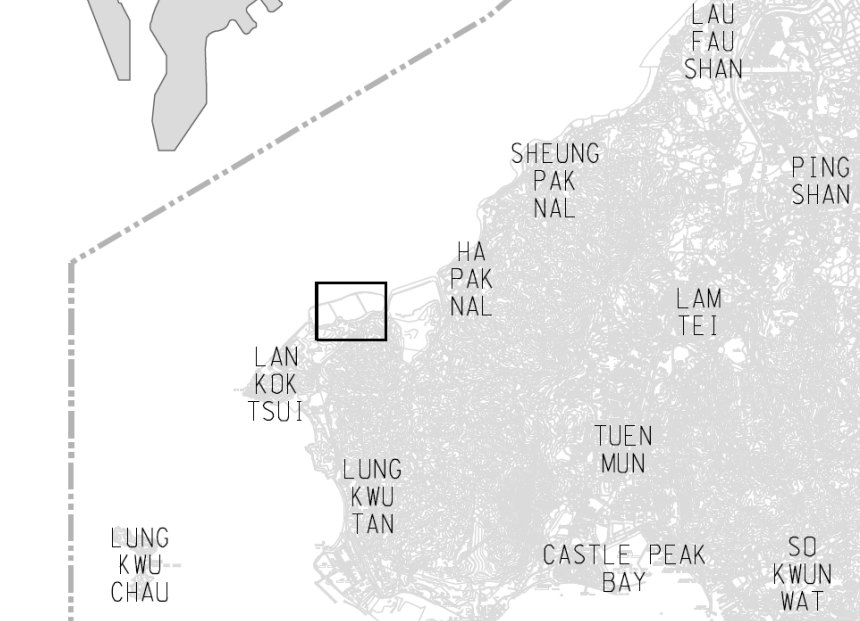
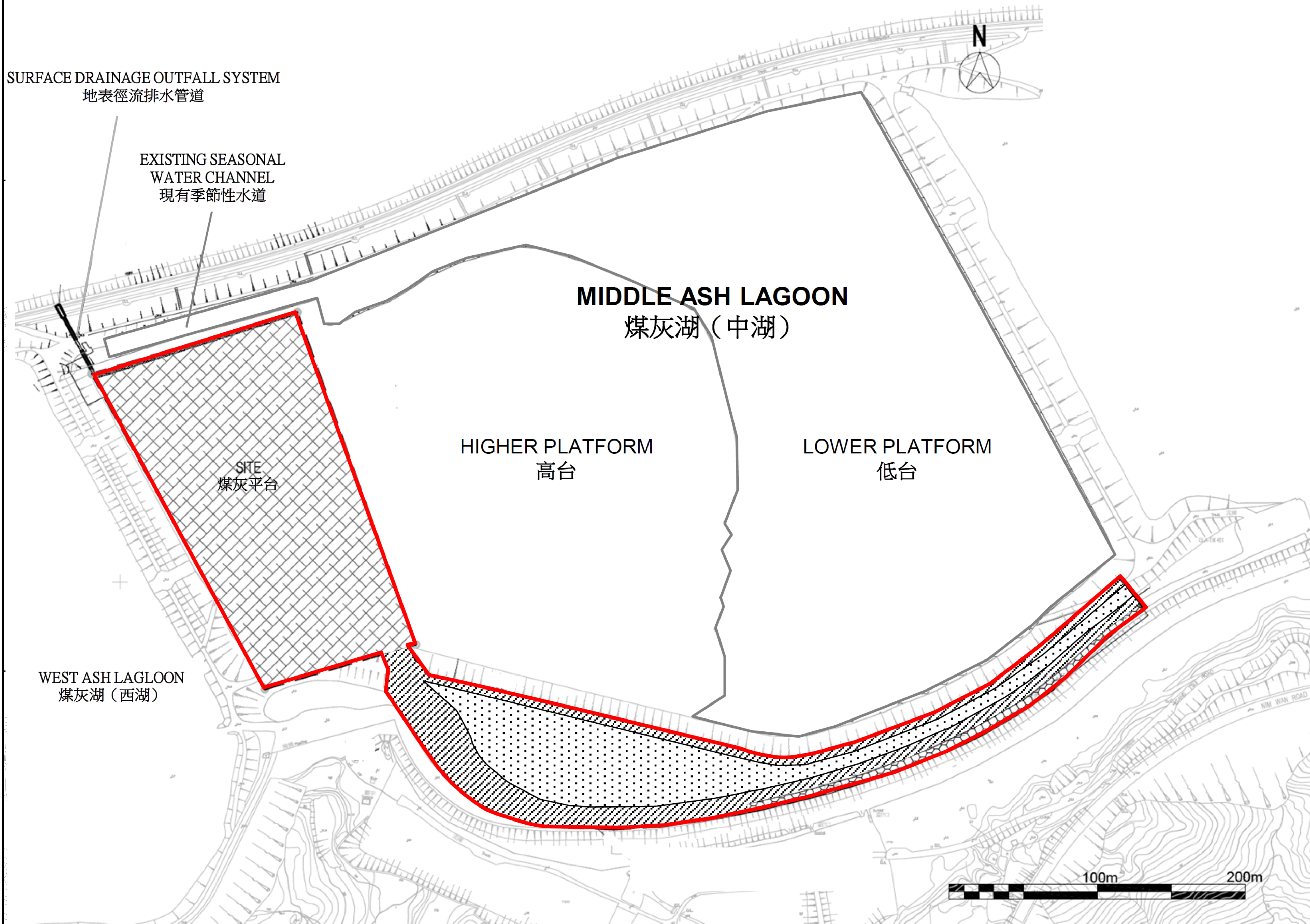
Recommended measures	Implementation Status
Regular checking should be undertaken to ensure that the work site boundaries are not exceeded and that no damage occurs to surrounding areas.	✓
Implementation of mitigation measures specified in ProPECC PN 1/94 to control site runoff and drainage at all work sites during construction.	N/A
Implementation of noise control measures at all construction sites to reduce impacts of construction noise to wildlife habitats adjacent works areas.	N/A
Construction debris and spoil should be covered up and/or properly disposed of as soon as possible to avoid being washed into nearby waterbodies by rain.	N/A
Coverage of filled slopes and materials with tarpaulin sheet.	✓
Construction effluent, site run-off and sewage should be properly collected and/or treated. Wastewater from a construction site should be managed with the following approach in descending order	✓
Placement of sand bags at fencing near the watercourse.	N/A
Proper locations for discharge outlets of wastewater treatment facilities well away from the aquatic habitats should be identified.	✓
Supervisory staff should be assigned to station on site to closely supervise and monitor the works.	✓

Other

Recommended measures	Implementation Status
A copy of the Environmental Permit displayed conspicuously at all vehicular site entrances/exits for public information at all times.	✓

Legend:

- ✓ Implemented
- × Not implemented
- P Partially implemented
- N/A Not applicable
- * Representative photos showing the implementation of mitigation measures are presented in Appendix G



Legend 圖例

	Site boundary	項目邊界
	PFA platform to be decommissioned	須解除運煤灰斗
	Construction access roads over PFA to be decommissioned	須解除運作的在煤灰上的施工通道
	Construction access road over existing road to be upgraded	以提升現有道路方式建造的施工通道
	Non-works area outside of decommissioning area	解除運作地區之外的非施工地方

Reference drawings

P2	NOV 16	MING	GENERAL REVISION	RH	EC
P1	SEP 16	MING	FIRST ISSUE	RH	EC
Rev	Date	Drawn	Description	Ch'kd	App'd

MOTT MACDONALD

20/F AIA Kowloon Tower
Landmark East
100 How Ming Street
Kwun Tong, Kowloon
Hong Kong
T +852 2828 5757
F +852 2827 1823
W mottmac.com

Client

LEIGHTON CONTRACTORS (ASIA) LIMITED

Project

DECOMMISSIONING OF WEST PORTION OF THE MIDDLE ASH LAGOON AT TSANG TSUI, TUEN MUN

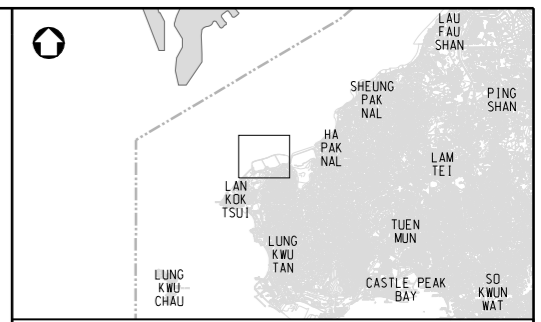
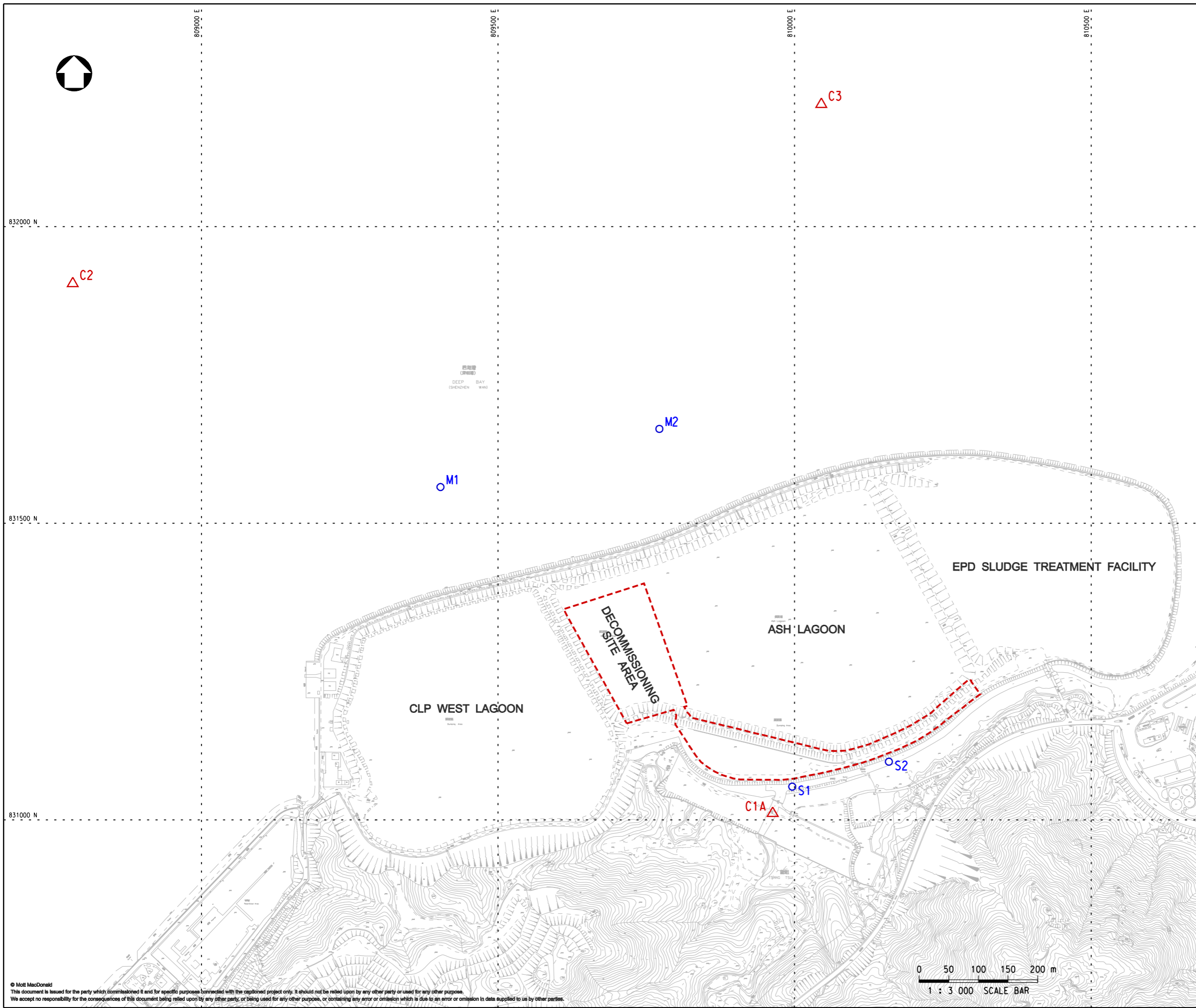
Title

LAYOUT PLAN

Designed	RH	Eng check	GC
Drawn	MING	Coordination	HY
Dwg check	RH	Approved	EC
Scale at A1	Status	Rev	
1:2000	PRE	P2	

Drawing Number

FIGURE 1



LEGEND:

- SITE BOUNDARY
- △ CONTROL STATION
- MONITORING STATION

Reference drawings

Rev	Date	Drawn	Description	Ch'kd	App'd
P3	NOV 16	MING	GENERAL REVISION	RH	EC
P2	SEP 16	MING	GENERAL REVISION	HY	EC
P1	SEP 16	MING	FIRST ISSUE	RH	EC

MOTT MACDONALD

20/F AJA Kowloon Tower
Landmark East
100 How Ming Street
Kwun Tong, Kowloon
Hong Kong
T +852 2828 5757
F +852 2827 1823
W mottmac.com

Client

LEIGHTON CONTRACTORS (ASIA) LIMITED

Project

DECOMMISSIONING OF WEST PORTION OF THE MIDDLE ASH LAAGOON AT TSANG TSUI, TUEN MUN

Title

LOCATIONS OF WATER QUALITY MONITORING STATIONS

Designed	RH	Eng check	GC
Drawn	MING	Coordination	HY
Dwg check	RH	Approved	EC
Scale at A1	1:3000	Status	PRE
Drawing Number	FIGURE 2		P3