



翠谷工程有限公司  
Green Valley Landfill, Limited

## South East New Territories (SENT) Landfill Extension

Monthly Environmental Monitoring & Audit Report No.23  
for November 2020

December 2020

**ERM**

2507, 25/F  
One Harbourfront  
18 Tak Fung Street  
Hung Hom, Kowloon  
Hong Kong  
T: 2271 3000  
F: 2723 5660  
[www.erm.com](http://www.erm.com)





翠谷工程有限公司  
Green Valley Landfill, Limited

## South East New Territories (SENT) Landfill Extension

### Environmental Certification Sheet EP-308/2008/B and FEP-01/308/2008/B

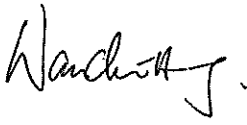
#### Reference Document/Plan

Document/Plan to be Certified/Verified:	Monthly Environmental Monitoring & Audit Report No.23 for November 2020 for South East New Territories (SENT) Landfill Extension
Date of Report:	10 December 2020

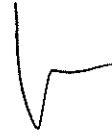
#### Reference EP Condition

EP Condition:	Condition No. 3.4
Four hard copies and one electronic copy of monthly EM&A Report shall be submitted to the Director within 10 working days after the end of the reporting month. The EM&A Reports shall include a summary of all non-compliance (exceedances) of the environmental quality performance limits (Action and Limit Levels). The submissions shall be verified by the IEC. Additional copies of the submission shall be provided to the Director upon request by the Director.	

#### ET Certification

I hereby certify that the above referenced document/plan complies with the above referenced condition of EP-308/2008/B and FEP-01/308/2008/B.	
Frank Wan, Environmental Team Leader: (ERM Hong-Kong, Limited)	 Date: 10 December 2020

#### IEC Verification




I hereby verify that the above referenced document/plan complies with the above referenced condition of EP-308/2008/B and FEP-01/308/2008/B.	
W.K. Chiu, Independent Environmental Checker: (Meinhardt Infrastructure and Environment Limited)	 Date: 14/12/2020

# South East New Territories (SENT) Landfill Extension

## Monthly Environmental Monitoring & Audit Report for November 2020

### Environmental Resources Management

2507, 25/F, One Harbourfront  
18 Tak Fung Street  
Hung Hom, Kowloon  
Hong Kong  
Telephone: (852) 2271 3000  
Facsimile: (852) 2723 5660  
E-mail: post.hk@erm.com  
http://www.erm.com

Client:  Green Valley Landfill Ltd.		Project No:  0465169			
Summary:  This document presents the Monthly EM&A Report No.23 for November 2020 for <i>South East New Territories (SENT) Landfill Extension</i>		Date: 10 December 2020			
		Approved by:   Frank Wan Partner			
0	Monthly EM&A Report No.23 (for November 2020)	AL	FW	FW	10 Dec 20
Revision	Description	By	Checked	Approved	Date
<p>This report has been prepared by Environmental Resources Management the trading name of 'ERM Hong-Kong, Limited', with all reasonable skill, care and diligence within the terms of the Contract with the client, incorporating our General Terms and Conditions of Business and taking account of the resources devoted to it by agreement with the client.</p> <p>We disclaim any responsibility to the client and others in respect of any matters outside the scope of the above.</p> <p>This report is confidential to the client and we accept no responsibility of whatsoever nature to third parties to whom this report, or any part thereof, is made known. Any such party relies on the report at their own risk.</p>		<p>Distribution</p> <p><input type="checkbox"/> Internal</p> <p><input checked="" type="checkbox"/> Public</p> <p><input type="checkbox"/> Confidential</p> <div style="text-align: right;">    </div>			

## CONTENTS

	<b>EXECUTIVE SUMMARY</b>	<b>1</b>
<b>1</b>	<b>INTRODUCTION</b>	<b>1</b>
1.1	BACKGROUND	1
1.2	PROJECT DESCRIPTION	1
1.3	SCOPE OF THE EM&A REPORT	2
1.4	PROJECT ORGANISATION	2
1.5	SUMMARY OF CONSTRUCTION WORKS	3
1.6	SUMMARY OF EM&A PROGRAMME REQUIREMENTS	5
1.7	STATUS OF STATUTORY ENVIRONMENTAL COMPLIANCE WITH THE ENVIRONMENTAL PERMIT	6
1.8	STATUS OF OTHER STATUTORY ENVIRONMENTAL REQUIREMENTS	6
<b>2</b>	<b>EM&amp;A RESULTS</b>	<b>8</b>
2.1	AIR QUALITY MONITORING	8
2.2	NOISE MONITORING	10
2.3	SURFACE WATER QUALITY MONITORING	12
2.4	LANDSCAPE AND VISUAL MONITORING	13
2.5	EM&A SITE INSPECTION	14
2.6	WASTE MANAGEMENT STATUS	16
2.7	IMPLEMENTATION STATUS OF ENVIRONMENTAL MITIGATION MEASURES	17
2.8	SUMMARY OF EXCEEDANCES OF THE ENVIRONMENTAL QUALITY PERFORMANCE LIMIT	17
2.9	SUMMARY OF COMPLAINTS, NOTIFICATION OF SUMMONS AND SUCCESSFUL PROSECUTIONS	17
<b>3</b>	<b>FUTURE KEY ISSUES</b>	<b>18</b>
3.1	CONSTRUCTION PROGRAMME FOR THE COMING MONTH	18
3.2	KEY ISSUES FOR THE COMING MONTH	18
3.3	MONITORING SCHEDULE FOR THE COMING MONTH	19
<b>4</b>	<b>CONCLUSION AND RECOMMENDATION</b>	<b>20</b>



## *ANNEXES*

*ANNEX A WORK PROGRAMME*

*ANNEX B ENVIRONMENTAL MITIGATION IMPLEMENTATION SCHEDULE*

*ANNEX C MONITORING SCHEDULE FOR THIS REPORTING PERIOD*

*ANNEX D AIR QUALITY*

*ANNEX D1 CALIBRATION CERTIFICATES FOR DUST MONITORING EQUIPMENT*

*ANNEX D2 24-HOUR TSP MONITORING RESULTS*

*ANNEX D3 EVENT AND ACTION PLAN FOR DUST MONITORING*

*ANNEX D4 METEOROLOGICAL DATA*

*ANNEX E NOISE*

*ANNEX E1 CALIBRATION CERTIFICATES FOR NOISE MONITORING EQUIPMENT*

*ANNEX E2 NOISE MONITORING RESULTS*

*ANNEX E3 EVENT AND ACTION PLAN FOR NOISE MONITORING*

*ANNEX F SURFACE WATER QUALITY*

*ANNEX F1 CALIBRATION CERTIFICATES FOR SURFACE WATER QUALITY  
MONITORING EQUIPMENT*

*ANNEX F2 SURFACE WATER QUALITY MONITORING RESULTS*

*ANNEX F3 EVENT AND ACTION PLAN FOR SURFACE WATER QUALITY  
MONITORING*

*ANNEX G CUMULATIVE STATISTICS ON EXCEEDANCES, ENVIRONMENTAL  
COMPLAINTS, NOTIFICATION OF SUMMONS AND STATUS OF PROSECUTIONS*

*ANNEX H MONITORING SCHEDULE FOR THE NEXT REPORTING PERIOD*

## **EXECUTIVE SUMMARY**

The SENT Landfill Extension (SENTX) forms an integral part in the Strategic Plan in maintaining the continuity of landfill capacity in the Hong Kong for the cost-effective and environmentally satisfactory disposal of waste. ERM-Hong Kong, Limited (ERM) is commissioned to undertake the role of Environmental Team (ET) for the construction, operation/restoration and aftercare of SENTX Project (“the Project”) in accordance with the requirements specified in the Environmental Permit (EP), updated Environmental Monitoring and Audit (EM&A) Manual, the approved Environmental Impact Assessment (EIA) Report of the Project taking account of the latest design and other relevant statutory requirements. The construction (not including works related to site clearance and preparation) of the Project commenced on 2 January 2019.

This Monthly EM&A report presents the EM&A works carried out during the period from 1 to 30 November 2020 for the Project in accordance with the updated EM&A Manual.

### **Exceedance of Action and Limit Levels for Air Quality**

No exceedance of Action and Limit Levels for construction air quality monitoring was recorded in the reporting period.

### **Exceedance of Action and Limit Levels for Noise**

No exceedance of Action and Limit Levels for construction noise monitoring was recorded in the reporting period.

### **Exceedance of Action and Limit Levels for Surface Water Quality**

Sampling could not be carried out for all the scheduled impact surface water quality monitoring events during the reporting period due to insufficient flow.

### **Environmental Complaints, Summons and Prosecutions**

There were no complaints, notification of summons or prosecution recorded in the reporting period.

### **Reporting Change**

There was no reporting change in the reporting period.

### **Future Key Issues**

Potential environmental impacts arising from the upcoming construction activities in the next reporting period of December 2020 are mainly associated with dust emission from the exposed area and loading and unloading operation of dusty materials.

# 1 INTRODUCTION

## 1.1 BACKGROUND

The SENT Landfill Extension (SENTX) forms an integral part in the Strategic Plan in maintaining the continuity of landfill capacity in the Hong Kong for the cost-effective and environmentally satisfactory disposal of waste. The *Environmental Impact Assessment (EIA) Report* and the associated *Environmental Monitoring and Audit (EM&A) Manual* for the construction, operation, restoration and aftercare of the SENTX (hereafter referred to as “the Project”) have been approved under the *Environmental Impact Assessment Ordinance (EIAO)* in May 2008 (Register No.: AEIAR-117/2008) (hereafter referred to as the approved EIA Report) and an Environmental Permit (EP-308/2008) (EP) was granted by the Director of Environmental Protection (DEP) on 5 August 2008.

Since then, applications for Variation of an Environmental Permit (No. VEP-531/2017) were submitted to EPD and the Variation of Environmental Permits (EP-308/2008/A and EP-308/2008/B) were granted on 6 January 2012 and 20 January 2017, respectively, as the Hong Kong SAR Government has decided to reduce the scale of the design scheme of SENTX assessed in the approved EIA Report and SENTX will only receive construction waste. In May 2018, a Further Environmental Permit (FEP) (FEP-01/308/2008/B) was granted to the SENTX’s contractor, Green Valley Landfill, Limited (GVL).

ERM-Hong Kong, Limited (ERM) and Meinhardt Infrastructure and Environment Limited (Meinhardt) are commissioned to undertake the roles of Environmental Team (ET) and the Independent Environmental Checker (IEC), respectively, to undertake the EM&A activities for the Project in accordance with the requirements specified in the EP, updated EM&A Manual <sup>(1)</sup>, approved EIA Report <sup>(2)</sup> taking account of the latest design and other relevant statutory requirements.

## 1.2 PROJECT DESCRIPTION

The SENTX is a piggyback landfill, occupying the southern part of the existing SENT Landfill (including its infrastructure area) and 13 ha of Tseung Kwan O (TKO) Area 137. A layout plan of the SENTX is shown in *Figure 1.1*. Under the latest design, the SENTX has a net void capacity of about 6.5 Mm<sup>3</sup> and provides an additional lifespan of about 6 years, commencing operation upon exhaustion of the SENT Landfill. The SENTX will receive construction waste only.

(1) ERM (2018). South East New Territories (SENT) Landfill Extension: Environmental Monitoring & Audit Manual

(2) ERM (2007). South East New Territories (SENT) Landfill Extension - Feasibility Study: Environmental Impact Assessment Report

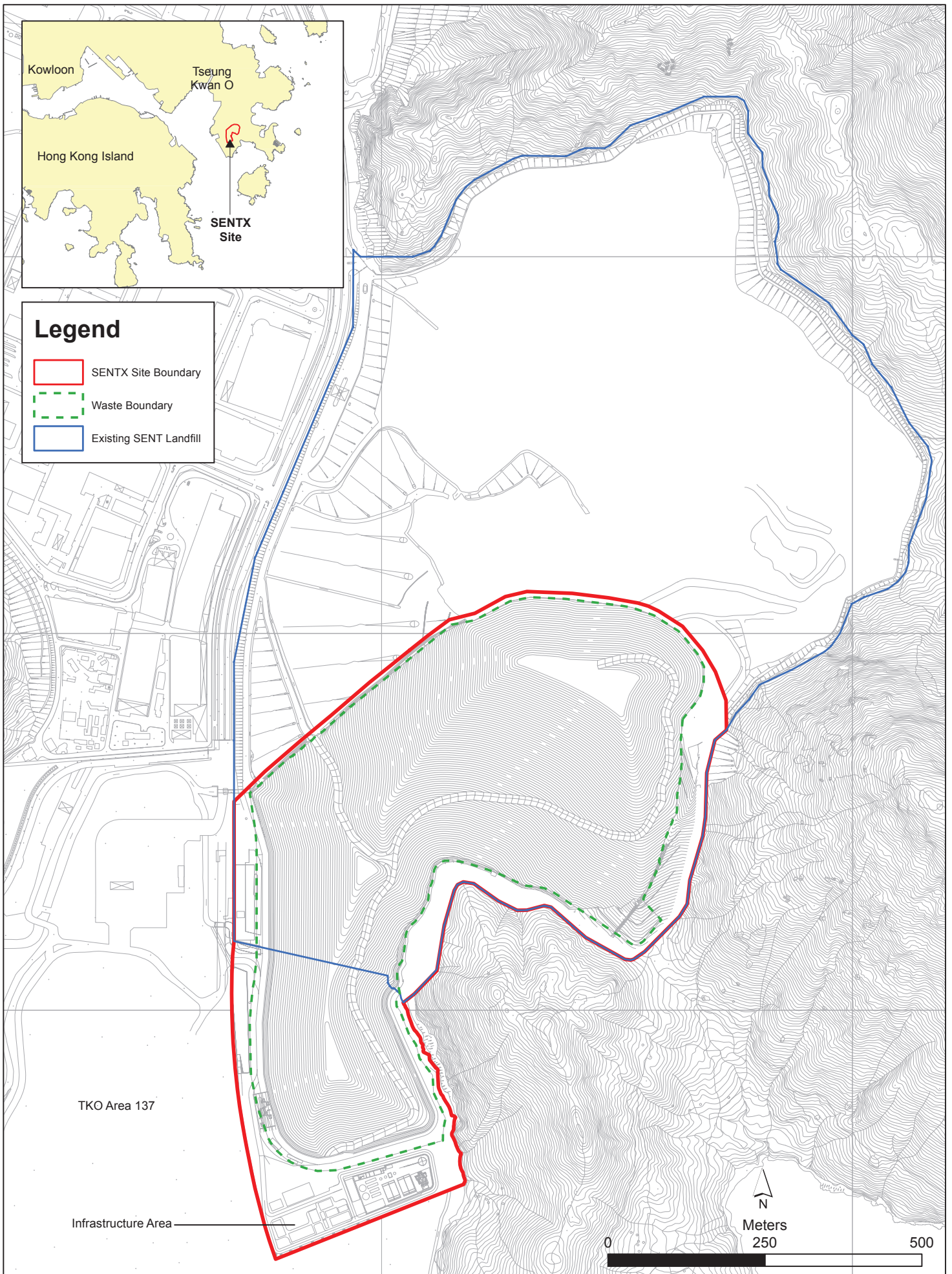


Figure 1.1

Layout Plan of SENTX

File: T:\GIS\CONTRACT\0354924\Mxd\0354924\_Layout\_Plan\_of\_SENTX.mxd  
 Date: 5/9/2018

The key implementation milestones of the Project are indicatively summarised in *Table 1.1*. The construction works of the Project commenced on 2 January 2019.

**Table 1.1** *Estimated Key Dates of Implementation Programme*

<b>Key Stage of the Project</b>	<b>Indicative Date</b>
Start construction	2 January 2019
Commissioning of new infrastructure facilities	2020
Demolition of existing infrastructure facilities	2021
Start waste intake at SENTX	2021 or upon exhaustion of SENT Landfill
Estimated exhaustion date of SENTX	2027
End of aftercare for SENTX	2057

The major construction works of the SENTX includes:

- Site formation at the TKO Area 137 and the existing infrastructure area at SENT Landfill;
- Construction of surface and groundwater drainage systems;
- Construction of the leachate containment and collection systems;
- Construction of new leachate and landfill gas treatment facilities, site offices, maintenance yards at the new infrastructure area;
- Construction of new pipelines to transfer the leachate and landfill gas collected from the existing SENT Landfill to the treatment facilities at the new infrastructure area;
- Construction of the site access and new waste reception facilities; and
- Demolition of the facilities at the existing SENT Landfill infrastructure area.

### **1.3** *SCOPE OF THE EM&A REPORT*

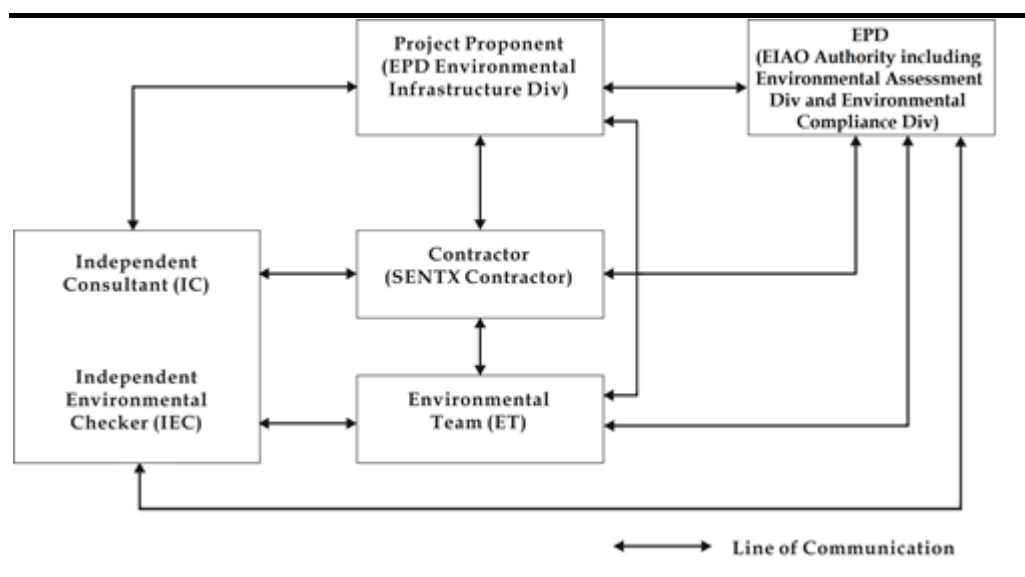
This is the Monthly EM&A Report for the Project which summarises the key findings of the EM&A programme during the reporting period from 1 to 30 November 2020 for the construction works.

### **1.4** *PROJECT ORGANISATION*

The organisation structure of the Project is presented in *Figure 1.2*.



Figure 1.2 Organisation Chart



Contact details of the key personnel are summarised in *Table 1.2* below.

Table 1.2 Contact Information of Key Personnel

Party	Position	Name	Telephone
Contractor (Green Valley Landfill Limited)	Project Manager	Gary Barnicott	2706 8827
Environmental Team (ET) (ERM-Hong Kong, Limited)	ET Leader	Frank Wan	2271 3152
Independent Environmental Checker (IEC) (Meinhardt Infrastructure and Environment Limited)	IEC	W.K. Chiu	2859 1881

### 1.5 SUMMARY OF CONSTRUCTION WORKS

The programme of the construction is shown in *Annex A*. As informed by the Contractor, the major works carried out in this reporting period include:

- Electro-mechanical installation at landfill gas (LFG) plant;
- Dry testing at LFG plant;
- Installation of chimney at LFG plant;
- Installation of cables and cable containment at Leachate Treatment Plant (LTP) area;
- Electro-mechanical installation (including pipe) at LTP area;



- Dry testing at LTP;
- Building services works and fitting-out works for infrastructure buildings (EPD building, GVL building and laboratory building);
- Steel members installation for superstructure of maintenance building;
- Construction of superstructure of fire service tank room and water service room;
- Windows and doors installation at fire service tank room and water service room;
- Construction of pits and ducting for underground utilities;
- Installation of diesel fuel tanks;
- Sewerage system works for infrastructure buildings;
- Water main pipe installation for infrastructure buildings;
- Construction of perimeter bund channel;
- Equipment installation at sump house 1 and 2;
- Surface channel works at buttress wall;
- Filling works at the West of Cell 3X;
- Maintenance and improvement of temporary surface water drainage;
- Construction of Cell 3X formation;
- Construction of Mechanically Stabilized Earth (MSE) wall;
- Installation of steel members for vehicle washing facilities;
- Underground utilities and pipes installation at waste reception area;
- Installation of water mains and telecom pipes;
- Sewerage system works at waste reception area; and
- Civil provision works (draw pits and ducts laying) for Extra-low voltage (ELV) and low voltage (LV) cables.

The implementation schedule of the mitigation measured recommended in the Updated EM&A Manual is presented in *Annex B*.

The status for all environmental aspects are presented in *Table 1.3*. The EM&A requirements remained unchanged during the reporting period.

**Table 1.3** *Summary of Status for the Environmental Aspects under the Updated EM&A Manual*

Parameters	Status
<b>Air Quality</b>	
Baseline Monitoring	The results of baseline air quality monitoring were reported in Baseline Monitoring Report and submitted to EPD under EP Condition 3.3
Impact Monitoring	On-going
<b>Noise</b>	
Baseline Monitoring	The results of baseline noise monitoring were reported in Baseline Monitoring Report and submitted to EPD under EP Condition 3.3
Impact Monitoring	On-going
<b>Surface Water Quality</b>	
Baseline Monitoring	The results of baseline surface water quality monitoring were reported in Baseline Monitoring Report and submitted to EPD under EP Condition 3.3
Impact Monitoring	On-going
<b>Waste Management</b>	
Waste Monitoring	On-going
<b>Landscape and Visual</b>	
Baseline Monitoring	The results of baseline landscape and visual monitoring were reported in Baseline Monitoring Report and submitted to EPD under EP Condition 3.3
Construction Phase Audit	On-going
<b>Site Environmental Audit</b>	
Regular Site Inspection	On-going
Complaint Hotline and Email Channel	On-going
Environmental Log Book	On-going
<b>Groundwater Quality</b>	
Pre-operation Baseline Monitoring	Commenced on 24 March 2020
<b>Landfill Gas</b>	
Pre-operation Baseline Monitoring	Commenced on 24 March 2020
<b>Ambient VOCs, ammonia and H<sub>2</sub>S</b>	
Pre-operation Baseline Monitoring	Commenced on 27 May 2020

Taking into account the construction works, impact monitoring of air quality, noise, surface water quality and waste management were carried out in the reporting period. The impact monitoring schedule of air quality, noise and surface water quality monitoring are provided in *Annex C*. Groundwater and landfill gas pre-operation baseline monitoring and ambient VOCs, ammonia and H<sub>2</sub>S pre-operation baseline monitoring were commenced on 24 March 2020 and 27 May 2020 respectively.

The EM&A programme also involved environmental site inspections and related auditing conducted by the ET for checking the implementation of the

required environmental mitigation measures recommended in the approved EIA Report and relevant EP submissions. To promote the environmental awareness and enhance the environmental performance of the contractors, environmental trainings and regular environmental management meetings were conducted during the reporting period, which are summarised as below:

- One environmental management meeting was held with the Contractor, ER, ET, IEC and EPD on 26 November 2020; and
- Environmental toolbox trainings on Green Procurement and Site Practice for Waste Reduction in Construction Industry were provided on 17 November and 25 November 2020 respectively by the Contractor to the workers.

### 1.7 STATUS OF STATUTORY ENVIRONMENTAL COMPLIANCE WITH THE ENVIRONMENTAL PERMIT

The status of statutory environmental compliance with the EP conditions under the EIAO, submission status under the EP and implementation status of mitigation measures are presented in *Table 1.4*.

**Table 1.4** Status of Submissions required under the EP and Implementation Status of Mitigation Measures

EP Condition	Submission / Implementation Status	Status
2.3	Management Organisation of Main Construction Companies	Submitted and accepted by EPD.
2.4	Setting up of Community Liaison Group	Community Liaison Group was set up.
2.5	Submission of Detailed Landfill Gas Hazard Assessment Report	Submitted and accepted by EPD on 10 January 2019.
2.6	Submission of Restoration and Ecological Enhancement Plan	Submitted to EPD on 28 June 2019.
2.7	Setting up of Trial Nursery	Trial Nursery works was commenced on 28 August 2019.
2.8	Advance Screen Planting	Advance Screen Planting works were completed on 28 June 2019.
2.9	Provision of Multi-layer Composite Liner System	Under implementation.

### 1.8 STATUS OF OTHER STATUTORY ENVIRONMENTAL REQUIREMENTS

The environmental licenses and permits (including EP, *Water Pollution Control Ordinance* (WPCO) discharge license, registration as a chemical waste producer, and construction noise permit) that are valid in the reporting period are presented in *Table 1.5*. No non-compliance with environmental statutory requirements was identified.

**Table 1.5**      **Status of Statutory Environmental Requirements**

<b>Description</b>	<b>Ref No.</b>	<b>Status</b>
Environmental Permit	EP-308/2008	Granted on 5 August 2008
Variation of Environmental Permit	EP-308/2008/A	Granted on 6 January 2012
	EP-308/2008/B	Granted on 20 January 2017
Further Environmental Permit	FEP-01/308/2008/B	Granted on 16 May 2018
Water Discharge License under WPCO (Permit Holder: Chun Wo)	Licence No.: WT00033525-2019	Validity from 27 March 2019 to 31 March 2024
Billing Account for Disposal of Construction Waste	Chit Account Number: 5001692	Approved on 28 December 2005
Registration as a Chemical Waste Producer (Permit Holder: Chun Wo)	5213-839-C3507-10	Issued on 23 August 2018
Registration as a Chemical Waste Producer (Permit Holder: REC)	5518-839-R2289-06	Issued on 24 October 2019
Construction Noise Permit (Permit Holder: GVL)	GW-RE0542-20	Validity from 1 September 2020 to 28 February 2021
Construction Noise Permit (Permit Holder: Chun Wo)	GW-RE0516-20	Validity from 17 June 2020 to 7 December 2020
Construction Noise Permit (Permit Holder: REC)	GW-RE0889-20	Validity from 1 November 2020 to 31 March 2021

The EM&A programme for the Project required environmental monitoring for air quality, noise and surface water quality as well as environmental site inspections for air quality, noise, surface water quality, waste management, and landscape and visual impacts. The EM&A requirements and related findings for each component are summarised in the following sections.

## 2.1 AIR QUALITY MONITORING

### 2.1.1 Monitoring Requirements and Equipment

According to the updated EM&A Manual of the Project, impact air quality monitoring (dust, in term of Total Suspended Particulates (TSP)) was carried out at the two designated monitoring locations (i.e. DM1 and DM2) at a 6-day interval. As there are two existing TSP monitoring stations (i.e. TKO-A1 and TKO-A2a) currently operating by the Civil Engineering and Development Department (CEDD) to monitor the 24-hour TSP levels at the proposed dust monitoring stations for the SENTX, it is considered that the CEDD monitoring data can represent the dust condition of the SENTX during the construction phase.

The Action and Limit Levels of the air quality monitoring is provided in *Table 2.1* below.

**Table 2.1 Action and Limit Levels for 24-hour TSP**

Monitoring Station	Action Level	Limit Level
DM-1 – Site Egress of TKO Area 137 Fill Bank	204 $\mu\text{g m}^{-3}$	260 $\mu\text{g m}^{-3}$
DM-2A – Combined Reception and Exit Office (CREO) of TKO Area 137 Fill Bank	193 $\mu\text{g m}^{-3}$	260 $\mu\text{g m}^{-3}$

High volume air samplers (HVSs) in compliance with the specifications listed under Section 3.2.2 of the updated EM&A Manual were used to measure 24-hour TSP levels at the CEDD dust monitoring stations. The HVSs were calibrated upon installation and thereafter at bi-monthly intervals to check the validity and accuracy of the results.

The equipment used in the impact air quality monitoring programme and monitoring locations are summarised in *Table 2.2* and illustrated in *Figure 2.1* respectively. Copies of the calibration certificates for the equipment are presented in *Annex D1*.

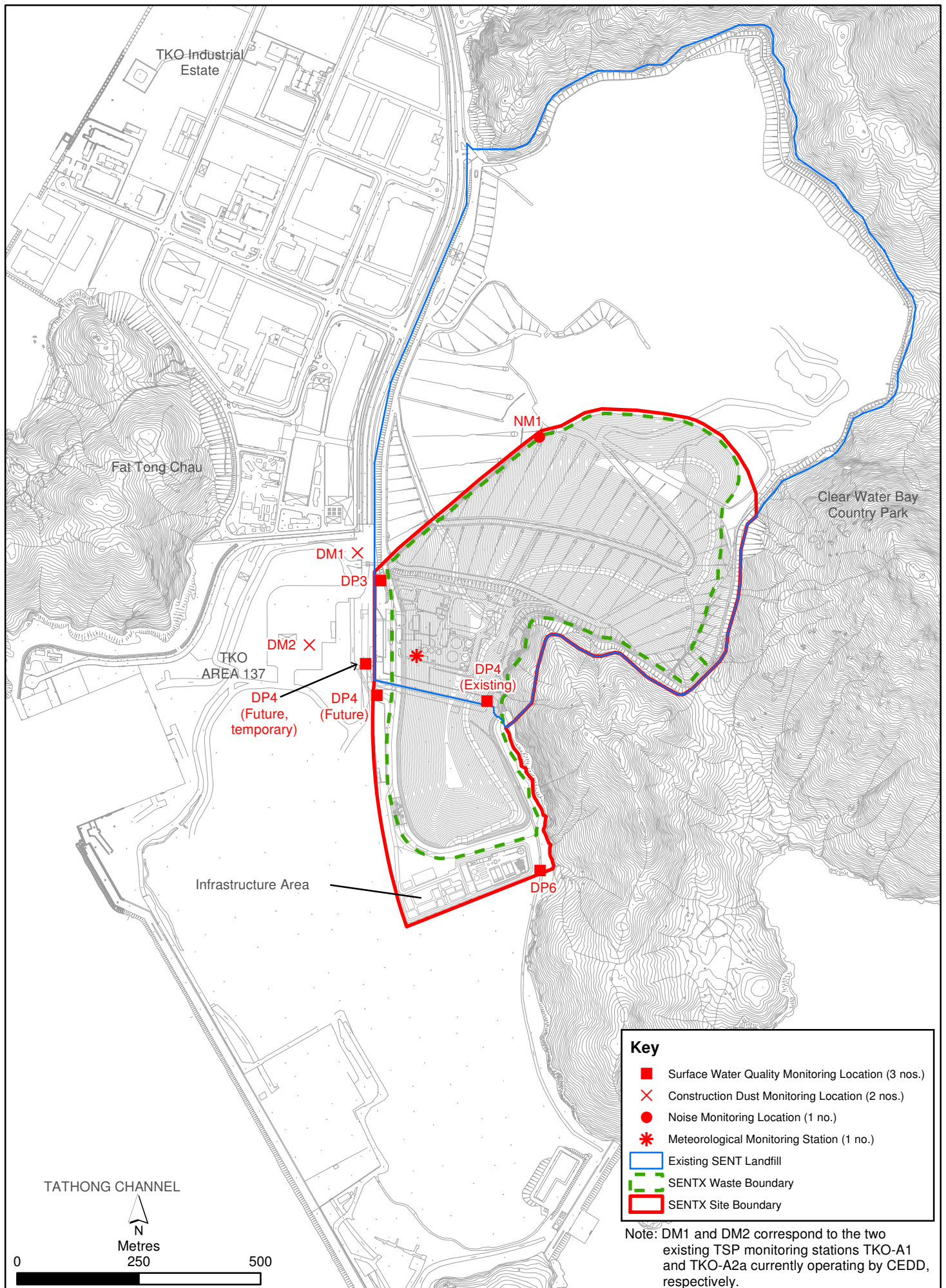


Figure 2.1

Environmental Impact Monitoring Locations



**Table 2.2 Dust Monitoring Details**

Monitoring Station	Location	Parameter	Frequency and Duration	Monitoring Dates	Equipment
DM1	Site Egress of TKO Area 137 Fill Bank	24-hour TSP	Once every 6 days during the construction phase of the Project	6, 12, 18, 24, 30 November 2020	HVS Greasby 105 (S/N: 9795 (ET/EA/003/18))
DM2	Combined Reception and Exit Office (CREO) of TKO Area 137 Fill Bank				HVS Andersen G1051 (S/N: 1176 (ET/EA/003/05))

**2.1.2 Monitoring Schedule for the Reporting Month**

The schedule for air quality monitoring during the reporting period is provided in *Annex C*.

**2.1.3 Results and Observations**

The monitoring results for 24-hour TSP are summarised in *Table 2.3*. The detailed monitoring results and the graphical presentation of the 24-hour TSP results at each monitoring location are provided in *Annex D2*.

**Table 2.3 Summary of 24-hour TSP Monitoring Results in the Reporting Period**

Monitoring Station	Average 24-hr TSP Concentration ( $\mu\text{g m}^{-3}$ ) (Range in bracket)	Action Level ( $\mu\text{g/m}^3$ )	Limit Level ( $\mu\text{g/m}^3$ )
DM-1 – Site Egress of TKO Area 137 Fill Bank	107 (98 - 115)	204	260
DM-2A – Combined Reception and Exit Office (CREO) of TKO Area 137 Fill Bank	99 (91 - 106)	193	260

The major dust sources in the reporting period included fugitive dust emission from exposed area in SENTX, as well as nearby operations of the existing SENT landfill and the TKO Area 137 Fill Bank.

All the 24-hour TSP results were below the Action and Limit Levels at the monitoring locations in the reporting period. No action is thus required to be undertaken in accordance with the Event and Action Plan presented in *Annex D3*.

**2.1.4 Meteorological Data**

Meteorological data obtained from the on-site meteorological monitoring station at the existing SENT landfill (see *Figure 2.1*) were used for the dust monitoring and are shown in *Annex D4*. The meteorological station will be relocated to a new position for SENTX as per the updated EM&A Manual after the new infrastructure area at the SENTX is constructed. It is

considered that meteorological data obtained at the existing the on-site meteorological monitoring station are representative of the Project area and could be used for the construction phase dust monitoring programme for the Project.

## 2.2 NOISE MONITORING

### 2.2.1 Monitoring Requirements and Equipment

According to the updated EM&A Manual of the Project, impact noise monitoring was conducted weekly at the monitoring location (i.e. NM1) to obtain one set of 30 minutes measurement between 07:00 and 19:00 hours on normal weekdays.

The Action and Limit Levels for construction noise of the Project are provided in *Table 2.4* below.

**Table 2.4** *Action and Limit Levels for Construction Noise*

<b>Time Period</b>	<b>Action Level (a)</b>	<b>Limit Level (b)</b>
07:00 – 19:00 hrs on normal weekdays	When one documented complaint is received from any one of the noise sensitive receivers (NSRs) or 75 dB(A) recorded at the monitoring station	75 dB(A) at NSRs
<b>Notes:</b>		
(a)	75dB(A) along and at about 100m from the SENTX site boundary was set as the Action Level.	
(b)	Limits specified in the GW-TM and IND-TM for construction and operational noise, respectively.	

Noise monitoring was performed by ALS Technichem (HK) Pty Ltd. (HOKLAS Registration No. 066) using sound level meter at the designated monitoring station NM1 (see *Figure 2.1*) in accordance with the requirements stipulated in the updated EM&A Manual. Acoustic calibrator was deployed to check the sound level meter at a known sound pressure level. Details of the deployed equipment are provided in *Table 2.5*. Copies of the calibration certificates for the equipment are presented in *Annex E1*.

**Table 2.5 Noise Monitoring Details**

Monitoring Station <sup>(1)</sup>	Location	Parameter	Frequency and Duration	Monitoring Dates	Equipment
NM1	SENTX Site Boundary (North)	L <sub>eq</sub> (30 min) measurement between 07:00 and 19:00 hours on normal weekdays (Monday to Saturday)	Once per week for 30 mins during the construction period of the Project	5, 12, 19, 25 November 2020	Sound Level Meter: B&K 2238 (S/N: 2285722)  NL-52 (S/N: 0014581)  Acoustic Calibrator: Rion NC-74 (S/N: 34657230)  Rion NC-73 (S/N: 10655561)  3M AC-300 (S/N: AC300005555)

**2.2.2 Monitoring Schedule for the Reporting Month**

The schedule for noise monitoring during the reporting period is provided in *Annex C*.

**2.2.3 Results and Observations**

A total of 4 impact noise monitoring events were scheduled during the reporting period. Results for noise monitoring are summarised in *Table 2.6*. The monitoring results and the graphical presentation of the data are provided in *Annex E2*.

**Table 2.6 Summary of Construction Noise Monitoring Results in the Reporting Period**

Monitoring Station	Measured Noise Level L <sub>eq</sub> (30 min), dB(A)		
	Average	Range	Action and Limit Level
NM1	50.7	48.1 - 52.2	75

Major noise sources identified during the noise monitoring included noise from operations of the existing SENT landfill and the TKO Area 137 Fill Bank, aircrafts and insects.

No Action and Limit Levels exceedance was recorded for construction noise monitoring in the reporting period. No action is thus required to be undertaken in accordance with the Event and Action Plan presented in *Annex E3*.

## 2.3 SURFACE WATER QUALITY MONITORING

### 2.3.1 Monitoring Requirements and Equipment

According to the updated EM&A Manual of the Project, impact surface water quality monitoring were carried out at the three designated surface water discharge points (i.e. DP3, DP4 and DP6) weekly to ensure that the SENTX will not cause adverse water quality impact. Temporary relocation of surface water discharge point DP4 to DP4 (Future, temporary) as an interim arrangement due to site constraints and construction sequence was approved by EPD on 14 May 2019. Surface water quality monitoring was carried out at DP4 (Future, temporary) (i.e. DP4T) from the monitoring event on 16 May 2019. In addition, suspension of impact surface water quality monitoring at DP3 was approved under the Baseline Monitoring Report by EPD on 24 July 2019 until the actual commencement of construction works affecting DP3 in 2021.

Dissolved Oxygen (DO) and pH value were measured in-situ whereas the level of suspended solids (SS) were determined by ALS Technichem (HK) Pty Ltd. (HOKLAS Registration No. 066).

The Action and Limit Levels of the surface water quality impact monitoring are provided in *Table 2.7*.

**Table 2.7** *Action and Limit Levels for Surface Water Quality*

Parameters	Action Level	Limit Level
	<b>DP4 &amp; DP6</b>	
DO	< 5.80 mg/L	< 5.42 mg/L
SS	> 11.7 mg/L	> 12.7 mg/L
pH	> 8.39	> 8.40

The locations of the monitoring stations for the Project are shown in *Figure 2.1*. All *in situ* monitoring instruments were checked, calibrated and certified by a laboratory accredited under HOKLAS or other international accreditation scheme before use, and subsequently re-calibrated at 3 monthly intervals throughout all stages of the surface water quality monitoring programme. Calibration for a DO meter was carried out before measurement according to the instruction manual of the equipment model. Details of the equipment used in the impact surface water quality monitoring works are provided in *Table 2.8*. Copies of the calibration certificates for the equipment are presented in *Annex F1*.

**Table 2.8 Impact Surface Water Quality Monitoring Details**

Monitoring Station	Location	Frequency	Monitoring Dates	Parameter	Equipment
DP4 (Future, temporary)	Surface water discharge point DP4	Weekly	5, 12, 19, 25 November 2020	•pH •DO	YSI Professional DSS (S/N: 17B102764)
DP6	Surface water discharge point DP6			•SS	YSI Professional DSS (S/N: 15H103928)
					pH Meter AZ8685 (S/N:1259868)

Notes:

- (a) DP4 was temporary relocated to DP4 (Future, temporary) (i.e. DP4T) as an interim discharge point from the monitoring event on 16 May 2019.
- (b) Impact surface water quality monitoring at DP3 was suspended from the monitoring event on 25 July 2019 until the actual commencement of construction works affecting DP3 in 2021.

### 2.3.2 *Monitoring Schedule for the Reporting Month*

The schedule for surface water quality monitoring during the reporting period is provided in *Annex C*.

### 2.3.3 *Results and Observations*

A total of 4 monitoring events for impact surface water quality monitoring were scheduled at all designated monitoring stations during the reporting period. However, sampling could not be carried out for all scheduled events during the reporting period due to insufficient flow. Details of impact water quality monitoring events are provided in *Annex F2*.

## 2.4 *LANDSCAPE AND VISUAL MONITORING*

### 2.4.1 *Monitoring Requirements*

According to the updated EM&A Manual of the Project, the monthly landscape and visual audit was conducted on 24 November 2020 to monitor the implementation of the landscape and visual mitigation measures during construction phase.

All relevant environmental mitigation measures listed in the approved EIA Report and the updated EM&A Manual and their implementation status are summarised in *Annex B*.

## 2.4.2

### *Results and Observations*

The Contractor has implemented environmental mitigation measures as stated in the approved EIA Report and the EM&A Manual.

Regarding the landscape and visual audit, the Contractor was reminded to maintain the advance screen planting works as soon as possible to ensure effective screening of views of project works from the High Junk Peak Trail. The Contractor shall consider the mitigation measures during the design phase, including the preparation of the Construction Drawings and Detailed Landscape Design Drawings.

## 2.5

### *EM&A SITE INSPECTION*

Site inspections were carried out on a weekly basis with the Contractor, IEC and ER to monitor the implementation of proper environmental pollution control and mitigation measures for air quality, noise, surface water quality and waste management under the Project. In the reporting period, 4 site inspections were carried out on 5, 12, 19 and 26 November 2020.

Key observations during the site inspections are summarised in *Table 2.9*.

**Table 2.9** *Key Observations Identified during the Site Inspection in this Reporting Month*

<b>Inspection Date</b>	<b>Environmental Observations and Recommendations</b>
5 November 2020	<ul style="list-style-type: none"><li>• The Contractor shall clear the general refuse and construction materials accumulated at the temporary drains along Southern and Western site boundary regularly.</li><li>• The Contractor shall maintain the drip trays of the chemicals stored at the Wetsep near DP4T and provide drip trays for chemicals stored at transition area, future GVL building and LTP.</li><li>• The Contractor shall cover the cement stored at future GVL building to minimise dust impact.</li><li>• The Contractor shall clean up the oil spillage near site entrance and treat the clean-up materials as chemical waste.</li><li>• The Contractor shall remove the stagnant water accumulated in the LTP parts at future LTP to minimise pest issues.</li></ul>
12 November 2020	<ul style="list-style-type: none"><li>• The Contractor shall implement dust control measures when carrying out activities related to dusty materials (i.e. handling of sawdust).</li><li>• The Contractor shall remove the general refuse accumulated near Cell 1X, future weighbridge, bioplant building, drain around LTP, temporary drain along Southern site boundary, LTP sump pit and near DP6 and dispose of the waste accumulated in the refuse skip near DP4T regularly to minimise odour and pest issues.</li><li>• The Contractor shall provide drip trays for chemicals stored on the roof of future GVL building, at bioplant building and near DP6.</li><li>• The Contractor shall clean the chemical toilets near Cell 1X and the room on 1/F of future GVL building to minimise odour issues.</li></ul>



Inspection Date	Environmental Observations and Recommendations
19 November 2020	<ul style="list-style-type: none"> <li>• The Contractor shall remove the general refuse and maintain the bund at DP4T channel and ensure that all surface water is treated before discharge.</li> <li>• The Contractor shall maintain the excavator near Cell 2X, clean up the oil spillage at the excavator and treat the clean-up materials as chemical waste.</li> <li>• The Contractor shall provide drip trays for chemicals stored at DP4T Wetsep, future LTP and near DP6.</li> <li>• The Contractor shall remove the stagnant water accumulated at future LTP regularly.</li> </ul>
26 November 2020	<ul style="list-style-type: none"> <li>• The Contractor shall remove the deposited silt and grit and the general refuse accumulated at DP6 channel regularly to ensure it is functioning properly.</li> <li>• The Contractor shall clean up the oil spillage at the drip trays near site entrance and future LFG plant and treat the clean-up materials as chemical waste.</li> <li>• The Contractor shall remove the general refuse around the site, especially near DP4T bar bending area, RC15, future EPD building and DP6 and dispose the waste accumulated in the refuse skip near Southern site boundary regularly.</li> </ul>

The Contractor has rectified all of the observations identified during environmental site inspections in the reporting period. Key environmental deficiencies identified and the corresponding rectification actions are presented in *Table 2.10*.

**Table 2.10** *Summary of Environmental Deficiencies Identified and Corresponding Rectification Actions*

Deficiencies	Rectifications Implemented	Proposed Additional Control Measures
<b>Surface Water</b>		
Intercepting channels & drainage system	<ul style="list-style-type: none"> <li>Reviewed drainage plan.</li> </ul>	<ul style="list-style-type: none"> <li>Addition of channels.</li> <li>Expedite the construction of permanent sediment trap and discharge culverts.</li> </ul>
DP channels (design & regular silt removal)	<ul style="list-style-type: none"> <li>Carried out regular maintenance and cleaning of channels.</li> <li>DP4 channel: Area near the channel was paved with concrete and a bund was built.</li> <li>DP6 channel: Gravel piles on the channel were covered with concrete which serve as blocks for running water and to divide the channel into several sections. A pump was placed in the water zone in the upstream section to pump water to the Wetsep for treatment prior to the discharge to the last section before the weir plate.</li> <li>DP6: Pipes through the gravel piles between different channel sections were covered with geotextiles to block debris and silt.</li> </ul>	N.A.
Stockpiles & exposed soil	<ul style="list-style-type: none"> <li>Installed silt fencing near surface water channel along DP6 channel.</li> </ul>	<ul style="list-style-type: none"> <li>Improve soil covering.</li> <li>Compaction and cover for stockpiles and soil slopes.</li> </ul>
Wetsep (treatment capacity & number)	<ul style="list-style-type: none"> <li>Reviewed Wetsep capacity.</li> <li>Chemicals dosage of the Wetsep was increased to enhance the efficiency.</li> </ul>	<ul style="list-style-type: none"> <li>Install additional Wetsep.</li> </ul>
Backflow / ponding during heavy rainfall	<ul style="list-style-type: none"> <li>Raised with EPD (LDG) and CEDD.</li> </ul>	N.A.

## 2.6

### **WASTE MANAGEMENT STATUS**

The Contractor has registered as chemical waste producer under the Contract. Sufficient numbers of receptacles were available for general refuse collection and sorting.

As informed by the Contractor, waste generated during this reporting period include mainly inert C&D materials. Reference has been made to the waste flow table prepared by the Contractor. The quantities of different types of wastes and imported fill materials are summarised in *Table 2.11*.

**Table 2.11** *Quantities of Different Waste Generated and Imported Fill Materials*

Month/ Year	Inert C&D Materials (a) (in '000m <sup>3</sup> )	Imported Fill (in '000kg) (b)		Inert Construction Waste Re- used (in '000m <sup>3</sup> )	Non-inert Construction Waste (c) (in '000m <sup>3</sup> )	Recyclable Materials (d) (in '000kg)	Chemical Wastes (in '000kg)
		Rock	Soil				
1 - 30 Nov 2020	4.643	0	14357.02	0	0.144	0	0

Notes:

- (a) Inert construction wastes include hard rock and large broken concrete, and materials disposed as public fill. Density assumption: 1.6 (kg/L) for public fill.
- (b) Imported fill refers to materials generated from other project for on-site reuse.
- (c) Non-inert construction wastes include general refuse disposed at landfill. Density assumption: 0.9 (kg/L) for general refuse.
- (d) Recyclable materials include metals, paper, cardboard, plastics and others.

## 2.7 *IMPLEMENTATION STATUS OF ENVIRONMENTAL MITIGATION MEASURES*

A summary of the Environmental Mitigation Implementation Schedule is presented in *Annex B*. The necessary mitigation measures were implemented properly for the Project.

## 2.8 *SUMMARY OF EXCEEDANCES OF THE ENVIRONMENTAL QUALITY PERFORMANCE LIMIT*

The 24-hour TSP monitoring results and construction noise monitoring results complied with the Action and Limit Levels in the reporting period. Impact surface water quality monitoring could not be carried out for all the scheduled events during the reporting period due to insufficient flow.

Cumulative statistics on exceedances is provided in *Annex G*.

## 2.9 *SUMMARY OF COMPLAINTS, NOTIFICATION OF SUMMONS AND SUCCESSFUL PROSECUTIONS*

There were no complaints, notification of summons or prosecution recorded in the reporting period.

Statistics on complaints, notifications of summons, successful prosecutions are summarised in *Annex G*.

**3.1***CONSTRUCTION PROGRAMME FOR THE COMING MONTH*

As informed by the Contractor, the major works for the Project in December 2020 will be:

- Excavation and removal of unsuitable fill materials;
- Filling of perimeter bund for Cell 3X;
- Construction of formation of Cell 3X;
- Screeding works at LTP;
- Installation of pipes and electrical cables at LTP;
- Installation of pipes with draw pits and laying LV cables for infrastructure buildings;
- Building service and fitting-out works at infrastructure buildings;
- Installation of outstanding parts of equipment at LFG plant;
- Pavement works at Part X1 area;
- Construction of surface channel;
- Construction of superstructure at maintenance building;
- Construction of concrete pits, drainage, sewage and ducting for underground utilities (including ELV, water mains and telecom);
- Construction of superstructure and equipment installation for fire service tank room and water services room;
- Installation of equipment at sump house 1, 2 and 3;
- Road pavement construction;
- Construction of MSE wall;
- Demolition of SENT infrastructure area;
- Construction of waste reception area, including weighbridge, vehicle washing facilities, wheel wash bay and guard house; and
- Trial nursery at SENT and tree felling at Part X3.

### 3.2 *KEY ISSUES FOR THE COMING MONTH*

Potential environmental impacts arising from the above upcoming construction activities in the next reporting period of December 2020 are mainly associated with dust emission from the exposed area and loading and unloading operation of dusty materials. The ET will keep track on the construction works to confirm compliance of environmental requirements and the proper implementation of all necessary mitigation measures.

### 3.3 *MONITORING SCHEDULE FOR THE COMING MONTH*

The tentative schedules for environmental monitoring in December 2020 are provided in *Annex H*.

## CONCLUSION AND RECOMMENDATION

This EM&A Report presents the findings of the EM&A activities undertaken during the period from 1 to 30 November 2020 in accordance with the updated EM&A Manual and the requirements of the Environmental Permit (EP-308/2008/B).

Air quality (24-hour TSP), noise and water quality (DO, pH and SS) monitoring were carried out in the reporting period. Results for air quality monitoring (24-hour TSP) complied with the Action and Limit Levels in the reporting period. No Action and Limit Levels exceedances were recorded for construction noise monitoring. Impact surface water quality monitoring could not be carried out for all the scheduled events during the reporting period due to insufficient flow.

Environmental site inspections were carried out during the reporting period. Recommendations on remedial actions were given to the Contractor for the deficiencies identified during the site inspections.

There were no complaints, notification of summons or prosecution recorded in the reporting period.

The ET will keep track on the construction works to confirm compliance of environmental requirements and the proper implementation of all necessary mitigation measures.



Annex A

## Work Programme









Annex B

# Environmental Mitigation Implementation Schedule

## Annex B Environmental Mitigation Implementation Schedule

EIA Ref.	EM&A Ref	Environmental Protection Measures/ Mitigation Measures	Objectives of the Recommended Measure & Main Concerns to address	Location of the Measures	Who to implement the measure?	When to implement the measure? <sup>(1)</sup>				What requirements or standards for the measure to achieve?	Implementation Status and Remarks	
						D	C	O/R	A			
<i>Air Quality - Construction Phase</i>												
4.8.1	AQ1	<u>Blasting</u> <ul style="list-style-type: none"> <li>The area within 30m of the blasting area will be wetted prior to blasting.</li> <li>Blasting will not be carried out when the strong wind signal or tropical cyclone warning signal No. 3 or higher is hoisted, unless this is with the express prior permission of the Commissioner of Mines.</li> <li>loose material and stones in the Site will be removed prior to the blast operation</li> <li>During blasting, blast nets, screens and other protective covers will be used to prevent the projection of flying fragments and material resulting from blasting</li> </ul>	To minimise potential dust nuisance	Blasting area and 30m of blasting area	SENTX Contractor					✓	<i>Air Pollution Control (Construction Dust) Regulations</i>	Not applicable. Blasting is not required in the latest landfill design
4.8.1	AQ2	<u>Rock Drilling</u> <ul style="list-style-type: none"> <li>Watering will be carried out at the rock drilling activities to avoid fugitive dust emissions.</li> </ul>	To minimise potential dust nuisance	Rock drilling area	SENTX Contractor					✓	<i>Air Pollution Control (Construction Dust) Regulations</i>	Not applicable. Rock drilling is not required in the latest landfill design

(1) D=Design; C=Construction; O/R=Operation/Restoration; A=Aftercare

EIA Ref.	EM&A Ref	Environmental Protection Measures/ Mitigation Measures	Objectives of the Recommended Measure & Main Concerns to address	Location of the Measures	Who to implement the measure?	When to implement the measure? <sup>(1)</sup>				What requirements or standards for the measure to achieve?	Implementation Status and Remarks	
						D	C	O/R	A			
4.8.1	AQ3	<u>Site Access Road</u> <ul style="list-style-type: none"> <li>The main haul road will be kept clear of dusty materials or sprayed with water.</li> <li>The main haul road will be paved with aggregate or gravel.</li> <li>Vehicle speed will be limited to 10kph.</li> </ul>	To minimise potential dust nuisance	Main haul road	SENTX Contractor					✓	<i>Air Pollution Control (Construction Dust) Regulations</i>  <i>HKAQO and EIAO-TM Annex 4</i>	Reminder was given to the Contractor
4.8.1	AQ4	<u>Stockpiling of Dusty Materials</u> <ul style="list-style-type: none"> <li>Any stockpile of dusty materials will be covered entirely by impervious sheeting or placed in an area sheltered on the top and three sides or sprayed with water so as to ensure that the entire surface is wet.</li> </ul>	To minimise potential dust nuisance	All construction works area	SENTX Contractor					✓	<i>Air Pollution Control (Construction Dust) Regulations</i>  <i>HKAQO and EIAO-TM Annex 4</i>	Deficiency of mitigation measures but rectified by the Contractor
4.8.1	AQ5	<u>Loading, unloading or transfer of dusty materials</u> <ul style="list-style-type: none"> <li>All dusty materials will be sprayed with water immediately prior to any loading, unloading or transfer operation so as to maintain the dusty material wet.</li> </ul>	To minimise potential dust nuisance	All construction works area	SENTX Contractor					✓	<i>Air Pollution Control (Construction Dust) Regulations</i>  <i>HKAQO and EIAO-TM Annex 4</i>	Implemented
4.8.1	AQ6	<u>Site Boundary and Entrance</u> <ul style="list-style-type: none"> <li>Where a site boundary adjoins a road, street, service lane or other area accessible to the public, hoarding of height not less than 2.4m from</li> </ul>	To minimise potential dust nuisance	Site boundary and entrance	SENTX Contractor					✓	<i>Air Pollution Control (Construction Dust) Regulations</i>  <i>HKAQO and EIAO-</i>	Not applicable

EIA Ref.	EM&A Ref	Environmental Protection Measures/ Mitigation Measures	Objectives of the Recommended Measure & Main Concerns to address	Location of the Measures	Who to implement the measure?	When to implement the measure? <sup>(1)</sup>				What requirements or standards for the measure to achieve?	Implementation Status and Remarks
						D	C	O/R	A		
		ground level will be provided along the entire length of that portion of the site boundary except for the site entrance or exit.									<i>TM Annex 4</i>
4.8.1	AQ7	<u>Excavation Works</u> <ul style="list-style-type: none"> <li>Working area of any excavation or earth moving operation will be sprayed with water immediately before, during and immediately after the operation so as to ensure that the entire surface is wet.</li> </ul>	To minimise potential dust nuisance	All construction works area	SENTX Contractor			✓		<i>Air Pollution Control (Construction Dust) Regulations</i>  <i>HKAQO and EIAO-TM Annex 4</i>	Not applicable
4.8.1	AQ8	<u>Building Demolition</u> <ul style="list-style-type: none"> <li>The area where the demolition works are planned to take place will be sprayed with water immediately prior to, during and immediately after the demolition activities.</li> <li>Any dusty materials remaining after a stockpile is removed will be wetted with water and cleared from the surface of roads or street.</li> </ul>	To minimise potential dust nuisance	All construction works area	SENTX Contractor			✓		<i>Air Pollution Control (Construction Dust) Regulations</i>  <i>HKAQO and EIAO-TM Annex 4</i>	Not applicable
4.8.1	AQ9	<u>Construction of the Superstructure of Building</u> <ul style="list-style-type: none"> <li>Effective dust screens, sheeting or netting will be provided to enclose the scaffolding from the ground level up to the highest level of the scaffolding.</li> </ul>	To minimise potential dust nuisance	All construction works area	SENTX Contractor			✓		<i>Air Pollution Control (Construction Dust) Regulations</i>  <i>HKAQO and EIAO-TM Annex 4</i>	Implemented

EIA Ref.	EM&A Ref	Environmental Protection Measures/ Mitigation Measures	Objectives of the Recommended Measure & Main Concerns to address	Location of the Measures	Who to implement the measure?	When to implement the measure? <sup>(1)</sup>				What requirements or standards for the measure to achieve?	Implementation Status and Remarks
						D	C	O/R	A		
4.8.1	AQ10	Should a stone crushing plant be needed on site, the control measures recommended in the <i>Best Practicable Means Requirement for Mineral Works (Stone Crushing Plants) BPM 11/1</i> should be implemented.	To minimise potential dust nuisance	Stone crushing plant/ construction phase	SENTX Contractor		✓			<i>Best Practicable Means Requirement for Mineral Works (Stone Crushing Plants) BPM 11/1</i>	Not applicable. Stone crushing plant is not required in the latest landfill design
4.8.1	AQ11	Good site practices such as regular maintenance and checking of the diesel powered mechanical equipment will be adopted to avoid any black smoke emissions and to minimize gaseous emissions.	To minimise potential dust nuisance	All construction works area	SENTX Contractor		✓			<i>HKAQO and EIAO-TM Annex 4</i>	Implemented
4.10.1	AQ12	Dust monitoring once every 6 days	Ensure the dust generated from the project meets the air quality requirement	At monitoring locations shown in <i>Figure 3.2a</i>	SENTX Contractor		✓			<i>HKAQO and EIAO-TM Annex 4</i>	Implemented
4.10.2	AQ41	Monitoring of ambient TSP once every 6 days	Ensure the dust emission from the project meets the dust requirement	At monitoring locations shown in <i>Figure 11.3a</i>	SENTX Contractor		✓	✓		<i>HKAQO and EIAO-TM Annex 4</i>	Implemented
4.10.2	AQ46	Monitoring of meteorological station, continuously	Collect site specific meteorological data	At meteorological station shown in <i>Figure 11.3a</i>	SENTX Contractor		✓	✓	✓	-	Implemented

**Noise - Construction Phase**



EIA Ref.	EM&A Ref	Environmental Protection Measures/ Mitigation Measures	Objectives of the Recommended Measure & Main Concerns to address	Location of the Measures	Who to implement the measure?	When to implement the measure? <sup>(1)</sup>				What requirements or standards for the measure to achieve?	Implementation Status and Remarks
						D	C	O/R	A		
5.7.1	N1	<p>Adopt good site practice listed below:</p> <ul style="list-style-type: none"> <li>• Only well-maintained plant will be operated on-site and plant should be serviced regularly during the construction program;</li> <li>• Silencers or mufflers on construction equipment should be utilized and will be properly maintained during the construction program;</li> <li>• Mobile plant, if any, will be sited as far from NSRs as possible;</li> <li>• Machines and plant (such as trucks) that may be in intermittent use will be shut down between work periods or should be throttled down to a minimum;</li> <li>• Plant known to emit noise strongly in one direction will, wherever possible, be orientated so that the noise is directed away from the nearby NSRs; and</li> <li>• Material stockpiles and other structures will be effectively utilised, wherever practicable, in screening noise from on-site construction activities.</li> </ul>	To minimise potential construction noise nuisance.	All construction works area	SENTX Contractor				✓	<i>Noise Control Ordinance (NCO) and EIAO-TM Annex 5</i>	Implemented

EIA Ref.	EM&A Ref	Environmental Protection Measures/ Mitigation Measures	Objectives of the Recommended Measure & Main Concerns to address	Location of the Measures	Who to implement the measure?	When to implement the measure? <sup>(1)</sup>				What requirements or standards for the measure to achieve?	Implementation Status and Remarks
						D	C	O/R	A		
5.8	N2	Weekly noise monitoring	Ensure noise generated from the project meets the criteria	At monitoring locations shown in Figure 6.4a	SENTX Contractor		✓			Noise Control Ordinance (NCO) and EIAO-TM Annex 5	Implemented
<b>Water Quality - Construction Phase</b>											
6.8.1	WQ1	<u>Construction Runoff</u> <ul style="list-style-type: none"> <li>Exposed soil areas will be minimised to reduce the contamination of runoff and erosion.</li> </ul>	To minimise potential water quality impacts arising from the construction works	All construction works area	SENTX Contractor		✓			ProPECC PN 1/94 EIAO-TM Annex 6	Implemented
6.8.1	WQ2	<ul style="list-style-type: none"> <li>Perimeter channels will be constructed in advance of site formation works and earthworks and intercepting channels will be provided for example along the edge of excavation.</li> </ul>	To minimise potential water quality impacts arising from the construction works	All construction works area	SENTX Contractor	✓	✓			ProPECC PN 1/94 Water Pollution Control Ordinance (WPCO) EIAO-TM Annex 6	Deficiency of mitigation measures but rectified by the Contractor
6.8.1	WQ3	<ul style="list-style-type: none"> <li>Silt removal facilities, channels and manholes will be maintained and the deposited silt and grit should be removed regularly to ensure they are functioning properly at all times.</li> </ul>	To minimise potential water quality impacts arising from the construction works	All construction works area	SENTX Contractor		✓			ProPECC PN 1/94 WPCO EIAO-TM Annex 6	Deficiency of mitigation measures but rectified by the Contractor
6.8.1	WQ4	<ul style="list-style-type: none"> <li>Temporary covers such as tarpaulin will also be provided to minimise the generation of high SS runoff.</li> </ul>	To minimise potential water quality impacts arising from the construction works	All construction works area	SENTX Contractor		✓			ProPECC PN 1/94 WPCO	Implemented
6.8.1	WQ5	<ul style="list-style-type: none"> <li>The surface runoff contained any oil</li> </ul>	To minimise potential	All	SENTX		✓			ProPECC PN 1/94	Implemented

EIA Ref.	EM&A Ref	Environmental Protection Measures/ Mitigation Measures	Objectives of the Recommended Measure & Main Concerns to address	Location of the Measures	Who to implement the measure?	When to implement the measure? <sup>(1)</sup>				What requirements or standards for the measure to achieve?	Implementation Status and Remarks
						D	C	O/R	A		
		and grease will pass through the oil interceptors.	water quality impacts arising from the construction works	construction works area	Contractor					WPCO EIAO-TM Annex 6	
6.8.1	WQ6	<ul style="list-style-type: none"> <li>All sewer and drains will be sealed to prevent building debris, soil etc from entering public sewers/drains before commencing any demolition works</li> </ul>	To minimise potential water quality impacts arising from the demolition works	Infrastructure area at existing SENT Landfill	SENTX Contractor		✓			ProPECC PN 1/94 WPCO EIAO-TM Annex 6	Not applicable
6.8.1	WQ7	<ul style="list-style-type: none"> <li>During the excavation works for the twin drainage tunnels, the recycle water for cooling the cutter head of the TBM will be conveyed to the sedimentation tanks for treatment and most of the treated water will be reused, where applicable and as much as possible, in the boring operations.</li> </ul>	To minimise potential water quality impacts arising from the tunnel works	Tunnel boring sites	SENTX Contractor		✓			ProPECC PN 1/94 WPCO EIAO-TM Annex 6	Not applicable. Excavation of drainage tunnels is not required in the latest landfill design.
6.8.1	WQ8	<ul style="list-style-type: none"> <li>The fuel and waste lubricant oil from the on-site maintenance of machinery and equipment will be collected by a licensed chemical waste collector.</li> </ul>	To minimise potential water quality impacts arising from improper handling of fuel and oil	SENTX Site	SENTX Contractor		✓			ProPECC PN 1/94 WPCO Waste Disposal Ordinance (WDO)	Implemented
6.8.1	WQ9	<ul style="list-style-type: none"> <li>Implementation of excavation schedules, lining and covering of excavated stockpiles</li> </ul>	To minimise contaminated stormwater run-off from the SENTX Site	All construction works	SENTX Contractor		✓			ProPECC PN 1/94 WPCO EIAO-TM Annex 6	Implemented
6.13	WQ10	<ul style="list-style-type: none"> <li>Monitoring of surface water quality will be conducted on a regular basis as stated in the EM&amp;A Manual.</li> </ul>	To minimise potential water quality impacts on surface water arising from the construction works	SENTX Site	SENTX Contractor		✓			WPCO Water-TM	Implemented

EIA Ref.	EM&A Ref	Environmental Protection Measures/ Mitigation Measures	Objectives of the Recommended Measure & Main Concerns to address	Location of the Measures	Who to implement the measure?	When to implement the measure? <sup>(1)</sup>				What requirements or standards for the measure to achieve?	Implementation Status and Remarks
						D	C	O/R	A		
6.8.2	WQ11	<u>Sewage Effluents</u>  • Sufficient chemical toilets will be provided for the construction workforce.	To minimise potential water quality impacts arising from the sewage effluents	SENTX Site	SENTX Contractor		✓			WPCO	Implemented
6.8.2	WQ12	• Untreated sewage will not be allowed to discharge into the surrounding water body.	To minimise potential water quality impacts arising from the sewage effluents	SENTX Site	SENTX Contractor		✓			WPCO WDO	Implemented
6.8.2	WQ13	• A licensed waste collector will be employed to clean the chemical toilets on a regular basis.	To minimise potential water quality impacts arising from the sewage effluents	SENTX Site	SENTX Contractor		✓			WPCO WDO	Deficiency of mitigation measures but rectified by the Contractor
<b>Waste Management – Construction Phase</b>											
7.6.1	WM1	All the necessary waste disposal permits are obtained prior to the commencement of construction work.	To ensure compliance with relevant statutory requirements	Before construction works commence	SENTX Contractor	✓	✓			WDO	Implemented
7.6.1	WM2	<u>Management of Waste Disposal</u>  The construction contractor will open a billing account with the EPD. Every construction waste or public fill load to be transferred to the Government waste disposal facilities such as public fill reception facilities, sorting facilities, landfills will required a valid “chit” which contains the information of the account holder to facilitate waste	To ensure that adverse environmental impacts are prevented	SENTX Site	SENTX Contractor		✓			WDO  Waste Disposal (Charges for Disposal of Construction Waste) Regulation;  Works Bureau Technical Circular No.31/2004; and	Implemented

EIA Ref.	EM&A Ref	Environmental Protection Measures/ Mitigation Measures	Objectives of the Recommended Measure & Main Concerns to address	Location of the Measures	Who to implement the measure?	When to implement the measure? <sup>(1)</sup>				What requirements or standards for the measure to achieve?	Implementation Status and Remarks
						D	C	O/R	A		
		<p>transaction recording and billing to the waste producer. A trip-ticket system will also be established to monitor the disposal of construction waste at the SENT Landfill and to control fly-tipping. The trip-ticket system will be included as one of the contractual requirements and implemented by the contractor.</p> <p>A recording system for the amount of waste generated, recycled and disposed of (including the disposal sites) will be established.</p>								Annex 5 and Annex 6 of Appendix G of ETWBTC No. 19/2005)	
7.6.1	WM3	<p><u>Measures for the Reduction of Construction Waste Generation</u></p> <p>Inert and non-inert construction waste will be segregated and stored in different containers or skips to facilitate reuse or recycling of the inert waste and proper disposal of the non-inert construction waste. Specific areas of the work site will be designated for such segregation and storage if immediate use is not practicable.</p>	To reduce construction waste generation	SENTX Site	SENTX Contractor			✓		WDO EIAO-TM Annex 7	Implemented
7.6.1	WM4	<p><u>Chemical Waste</u></p> <p>The construction contractor will register as a chemical waste producer with the EPD. Chemical waste will be handled in accordance with the <i>Code of Practice on the Packaging, Handling and Storage of</i></p>	To ensure proper handling of chemical waste	SENTX Site	SENTX Contractor			✓		WDO <i>Code of Practice on the Packaging, Handling and Storage of Chemical Wastes</i>	Reminder was given to the Contractor

EIA Ref.	EM&A Ref	Environmental Protection Measures/ Mitigation Measures	Objectives of the Recommended Measure & Main Concerns to address	Location of the Measures	Who to implement the measure?	When to implement the measure? <sup>(1)</sup>				What requirements or standards for the measure to achieve?	Implementation Status and Remarks
						D	C	O/R	A		
<i>Chemical Wastes.</i>											
7.6.1	WM5	<u>Sewage</u>  An adequate number of portable toilets will be provided at the site to ensure that sewage from site staff is properly collected. The portable toilets will be desludged and maintained regularly by a specialist contractor.	To ensure proper handling of sewage	SENTX Site	SENTX Contractor					WDO EIAO-TM Annex 7	Implemented
7.6.1 and SENTX latest design	WM6	<u>General Refuse</u>  General refuse will be stored in enclosed bins separately from construction and chemical wastes. The general refuse will be delivered to a transfer station or other landfill, separately from construction and chemical wastes, on a daily basis to reduce odour, pest and litter impacts.  Recycling bins will be provided at strategic locations to facilitate recovery of aluminium can and waste paper from the SENTX Site. Materials recovered will be sold for recycling.	To ensure proper handling of general refuse	SENTX Site	SENTX Contractor					WDO EIAO-TM Annex 7	Deficiency of mitigation measures but rectified by the Contractor
7.6.1	WM7	<u>Staff Training</u>  At the commencement of the construction works, training will be provided to workers on the concepts of site cleanliness and on appropriate waste management procedures, including	To ensure that adverse environmental impacts are prevented	SENTX Site	SENTX Contractor						Implemented

EIA Ref.	EM&A Ref	Environmental Protection Measures/ Mitigation Measures	Objectives of the Recommended Measure & Main Concerns to address	Location of the Measures	Who to implement the measure?	When to implement the measure? <sup>(1)</sup>				What requirements or standards for the measure to achieve?	Implementation Status and Remarks
						D	C	O/R	A		
7.8	WM8	waste reduction, reuse and recycling.  <u>Environmental Monitoring &amp; Audit Requirements</u>  Weekly audits of the waste management practices will be carried out during the construction phase. The audits examine all aspects of waste management including waste generation, storage, recycling, transport and disposal.	To ensure that adverse environmental impacts are prevented	SENTX Site	SENTX Contractor		✓		WDO	Implemented	
<b>Landfill Gas Hazards - Design and Construction Phase</b>											
8.6.2 and SENTX latest design	LFG1	Precautionary measures to be adopted by the contractors at the Project site and the adjacent development site within the landfill consultation zone are outlined in Paragraphs 8.3 to 8.49 of EPD's <i>Landfill Gas Hazard Assessment Guidance Notes (the Guidance Note)</i> . Those precautionary measures applicable to the SENTX will be confirmed in the detailed Qualitative Landfill Gas Hazard Assessment to be submitted by the contractor.	To protect workers from landfill gas risk	All construction works area	SENTX Contractor		✓		<i>Paragraphs 8.3 to 8.49 of EPD's Landfill Gas Hazards Assessment Guidance Note</i>  <i>EIAO-TM Annex 7</i>	Implemented	
8.6.2	LFG2	Monitoring will be undertaken when construction works are carried out in confined space within the consultation zone with reference to the monitoring requirements and procedures specified in Paragraphs 8.23 to 8.28 of EPD's <i>Guidance Note</i> will be followed.	To protect workers from landfill gas risk	Confined space within the construction works area	SENTX Contractor		✓			Implemented	

EIA Ref.	EM&A Ref	Environmental Protection Measures/ Mitigation Measures	Objectives of the Recommended Measure & Main Concerns to address	Location of the Measures	Who to implement the measure?	When to implement the measure? <sup>(1)</sup>				What requirements or standards for the measure to achieve?	Implementation Status and Remarks
						D	C	O/R	A		
		In the event of the trigger levels being exceeded, it is recommended that a person, such as the Safety Officer, is nominated, with deputies, to be responsible for dealing with any emergency which may occur due to landfill gas. In an emergency situation, the nominated person, or his deputies, shall have the necessary authority and shall ensure that the confined space is evacuated and the necessary works implemented for reducing the concentrations of gas. The appropriate organisations shall be contact.									
8.6.3	LFG4	Implementation of engineering measures according to Contract Specification requirements. These measures will include the placement of liner and installation of landfill gas management system to contain, manage and control landfill gas.	To protect workers from landfill gas risk	SENTX Site	SENTX Contractor	✓	✓	✓	✓	EIAO-TM Annex 7	Implemented
8.6.3	LFG5	Engineering measures to significant engineering measures will be required in the design of the SENTX to protect the staff working in the infrastructure area. These measures include a combination of passive and active systems (examples are recommended in EPD's <i>Guidance Notes</i> ).  Landfill gas monitoring boreholes will be installed at the edge of the waste slope	To protect workers from landfill gas risk	Infrastructure Area	SENTX Contractor	✓	✓			EPD's <i>Landfill Gas Hazards Assessment Guidance Note</i>  EIAO-TM Annex 7	Implemented





EIA Ref.	EM&A Ref	Environmental Protection Measures/ Mitigation Measures	Objectives of the Recommended Measure & Main Concerns to address	Location of the Measures	Who to implement the measure?	When to implement the measure? <sup>(1)</sup>				What requirements or standards for the measure to achieve?	Implementation Status and Remarks
						D	C	O/R	A		
		<ul style="list-style-type: none"> <li>The surface runoff contained any oil and grease will pass through the oil interceptors; and,</li> <li>Control measures, including implementation of excavation schedules, lining and covering of excavated stockpiles will be implemented to minimise contaminated stormwater run-off from the SENTX site.</li> </ul>								-	Not applicable
		<p><u>Good Construction Practice:</u></p> <ul style="list-style-type: none"> <li>Fences along the boundary of the SENTX Site will be erected before the commencement of works to prevent vehicle movements, and encroachment of personnel, onto adjacent areas.</li> <li>The work site boundaries will be regularly checked to ensure that they are not breached and that damage does not occur to surrounding areas.</li> </ul>	To minimise potential ecological impacts arising from the Project	SENTX Site	SENTX Contractor				✓	<i>EIAO-TM Annex 16</i>	Implemented
9.12.1	EC9	<p><u>Environmental Monitoring &amp; Audit Requirements</u></p> <p>The implementation of the ecological mitigation measures should be checked as part of the environmental monitoring and audit procedures during the</p>	To ensure that adverse ecological impacts are prevented	SENTX	SENTX Contractor	✓	✓	✓		<i>EIAO-TM Annex 16</i>	Implemented

EIA Ref.	EM&A Ref	Environmental Protection Measures/ Mitigation Measures	Objectives of the Recommended Measure & Main Concerns to address	Location of the Measures	Who to implement the measure?	When to implement the measure? <sup>(1)</sup>				What requirements or standards for the measure to achieve?	Implementation Status and Remarks
						D	C	O/R	A		
construction period.											
<b>Landscape and Visual – Construction Phase</b>											
10.6.5	LV1	CM1 - The construction area and area allowed for the contractor's office, leachate treatment plant and laboratory areas will be minimised to a practical minimum, to avoid impacts on adjacent landscape.	To minimise the landscape and visual impacts	SENTX Site	SENTX Contractor	✓				<i>EIAO-TM Annex 18 and ETWBC 3/2006</i>	Implemented
10.6.5	LV2	CM2 - Topsoil, where identified, will be stripped and stored for re-use in the construction of the soft landscape works, where practical. The Contract Specification will include storage and reuse of topsoil as appropriate.	To minimise the landscape and visual impacts	All construction works area	SENTX Contractor	✓				<i>EIAO-TM Annex 18</i>	Not applicable
10.6.5	LV3	CM3 - All existing trees at the edges of the landfill will be carefully protected during construction. Detailed Tree Protection Specification will be provided in the Contract Specification. Under this Specification, the Contractor will be required to submit, for approval, a detailed working method statement for the protection of trees prior to undertaking any works adjacent to all retained trees, including trees in Contractor's works areas.	To minimise the landscape and visual impacts	Potential impacted area	SENTX Contractor	✓				<i>EIAO-TM Annex 18 and ETWBC 3/2006</i>	Implemented
10.6.5	LV4	CM4 - Trees unavoidably affected by the works will be transplanted, where necessary and practical. A detailed Tree	To minimise the landscape and visual impacts	Potential impacted area	SENTX Contractor	✓	✓			<i>EIAO-TM Annex 18 and ETWBC 3/2006</i>	Not applicable

EIA Ref.	EM&A Ref	Environmental Protection Measures/ Mitigation Measures	Objectives of the Recommended Measure & Main Concerns to address	Location of the Measures	Who to implement the measure?	When to implement the measure? <sup>(1)</sup>				What requirements or standards for the measure to achieve?	Implementation Status and Remarks
						D	C	O/R	A		
		Transplanting Specification will be provided in the Contract Specification, if applicable. Sufficient time for necessary tree root and crown preparation periods will be allowed in the project programme.									
10.6.5 and SENTX latest design	LV5	CM5 - Within 3 months of taking possession of the SENTX Site, the Contractor will plant advance screen planting of native species at Light Standard size at 1.5m centres along the High Junk Peak Trail so as to screen views of the Works from the trail. Tree planting locations will be agreed with AFCD. Works will be completed within 9 months of taking possession of the SENTX Site.	To minimise the landscape and visual impacts	At High Junk Peak Hiking Trail	SENTX Contractor		✓			<i>EIAO-TM Annex 18</i>	Implemented
10.6.5	LV6	CM6 - The Contractor's office, leachate treatment plant and laboratory will be given an aesthetic treatment in earth tones to reduce their visual impact and albedo and blend them into the surrounding landscape.	To minimise the landscape and visual impacts	Infrastructure area	SENTX Contractor	✓	✓			<i>EIAO-TM Annex 18</i>	Implemented
10.6.5	LV7	CM7 - The Contractor's office, leachate treatment plant and laboratory will be surrounded by a minimum of 5m wide and 0.75m high earth bund on the west and south sides planted with a dense screen of tree and shrub vegetation. Additional tree planting will be provided in unused spaces with thin infrastructure	To minimise the landscape and visual impacts	Infrastructure area	SENTX Contractor	✓	✓			<i>EIAO-TM Annex 18 and ETWBC 7/2002</i>	Not applicable

EIA Ref.	EM&A Ref	Environmental Protection Measures/ Mitigation Measures	Objectives of the Recommended Measure & Main Concerns to address	Location of the Measures	Who to implement the measure?	When to implement the measure? <sup>(1)</sup>				What requirements or standards for the measure to achieve?	Implementation Status and Remarks
						D	C	O/R	A		
		site, along access roads and in and around car parks. This will be supplemented with shrub planting, where appropriate.									
10.6.5	LV8	CM8 - Planting trials will be carried out in an on-site nursery prior to implementation of the first phase of restoration to establish the best planting matrix and management intensity of the recommended plant materials for the restoration.	To minimise the landscape and visual impacts	SENTX Site	SENTX Contractor		✓			<i>EIAO-TM Annex 18</i>	Implemented
11.4.1 and SENTX latest design	LV9	During the preparation of the detailed landscape design plan, the design submission will be audited against the recommendation proposed in the <i>ER Report</i> by the Registered Landscape Architect from the ET.	To ensure the implementation of mitigation measures proposed in this EIA Report	SENTX Site	SENTX Contractor/ET	✓	✓			<i>EIAO-TM Annex 18</i>	Implemented

Annex C

## Monitoring Schedule for This Reporting Period

**South East New Territories (SENT) Landfill Extension  
EM&A Impact Monitoring Schedule during Construction Phase**

November 2020

Sun	Mon	Tue	Wed	Thu	Fri	Sat
1	2	3	4	5 Surface Water Monitoring (pm) Noise Monitoring (pm)	6 Dust Monitoring	7
8	9	10	11	12 Surface Water Monitoring (pm) Noise Monitoring (pm) Dust Monitoring	13	14
15	16	17	18 Dust Monitoring	19 Surface Water Monitoring (pm) Noise Monitoring (pm)	20	21
22	23	24 Dust Monitoring	25 Surface Water Monitoring (pm) Noise Monitoring (pm)	26	27	28
29	30 Dust Monitoring					

Note:

Impact dust monitoring will be conducted at two monitoring stations (DM1 and DM2) under the on-going EM&A programme TKO Area 137 Fill Bank and the results will be shared with SENTX.

Annex D

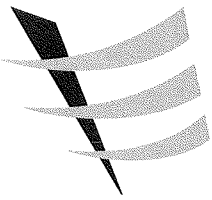
## Air Quality



Annex D1

# Calibration Certificates for Dust Monitoring Equipment





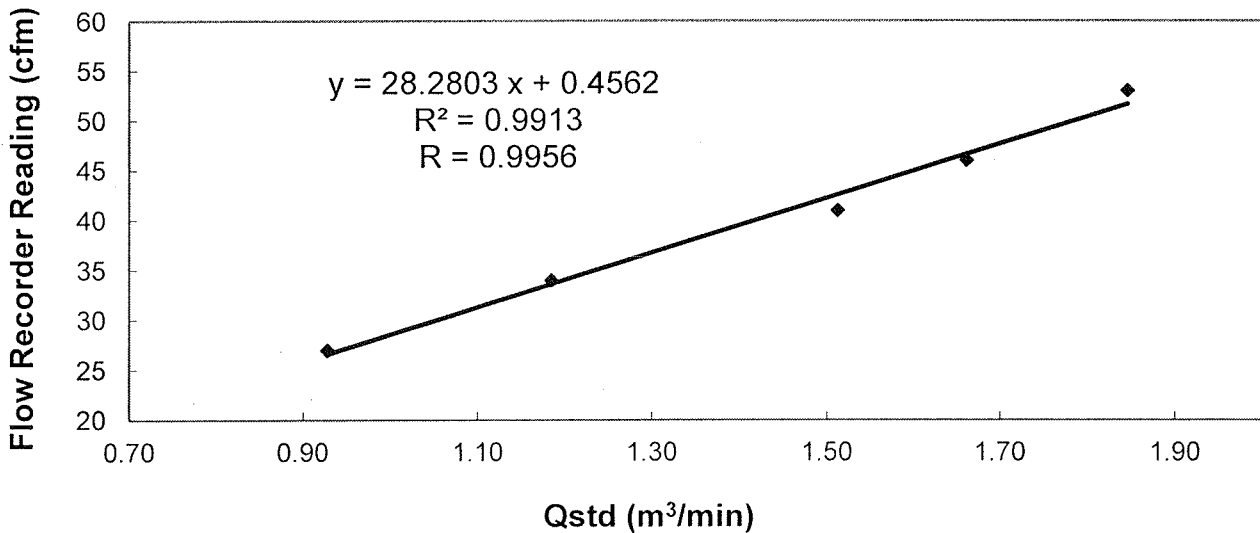
Calibration Report  
of  
High Volume Air Sampler

**Manufacturer** : Andersen G1051                      **Date of Calibration** : 05 October 2020  
**Serial No.** : 1176 ( ET / EA / 003 / 05 )                      **Calibration Due Date** : 04 December 2020  
**Method** : Based on Operations Manual for the 5-point calibration using standard calibration kit  
manufactured by Tisch TE-5025 A

**Results** :


Flow recorder reading (cfm)	53	46	41	34	27
Qstd (Actual flow rate, m <sup>3</sup> /min)	1.84	1.66	1.51	1.18	0.93
Pressure :	758.31 mm Hg		Temp. :	301 K	

**Sampler 1176 Calibration Curve**  
Site: Tseung Kwan O 137 (TKO-A2a)



Acceptance Criteria : Correlation coefficient (r) of the calibration curve greater than 0.990 after a 5-point calibration

The high volume sampler complies\* / does not comply\* with the specified requirements and is deemed acceptable\* / unacceptable \* for use.

Calibrated by :   
CHAN, Wai Man  
(Technician)

Checked by :   
LAU, Chi Leung  
(Environmental Team Leader)

Annex D2

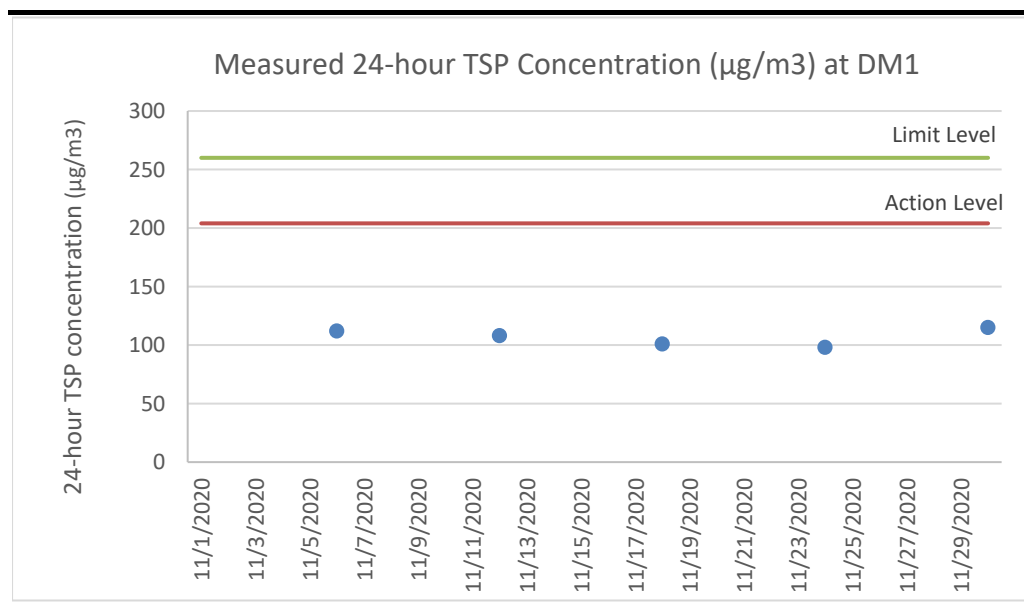
## 24-hour TSP Monitoring Results

**Table D2.1 24-hour TSP Monitoring Results at DM1**

Start Date	Start Time	Finish Date	Finish Time	Weather	24-hour TSP ( $\mu\text{g}/\text{m}^3$ )
6 Nov 20	13:00	7 Nov 20	13:00	Cloudy	112
12 Nov 20	8:00	13 Nov 20	8:00	Fine	108
18 Nov 20	13:15	19 Nov 20	13:15	Cloudy	101
24 Nov 20	8:00	25 Nov 20	8:00	Cloudy	98
30 Nov 20	9:30	1 Dec 20	9:30	Cloudy	115
<b>Average</b>					107
<b>Min</b>					98
<b>Max</b>					115

**Note:**  
DM1 corresponds to the existing TSP monitoring station TKO-A1 currently operating by CEDD.

**Figure D2.1 Graphical Presentation for 24-hr TSP Monitoring at DM1**



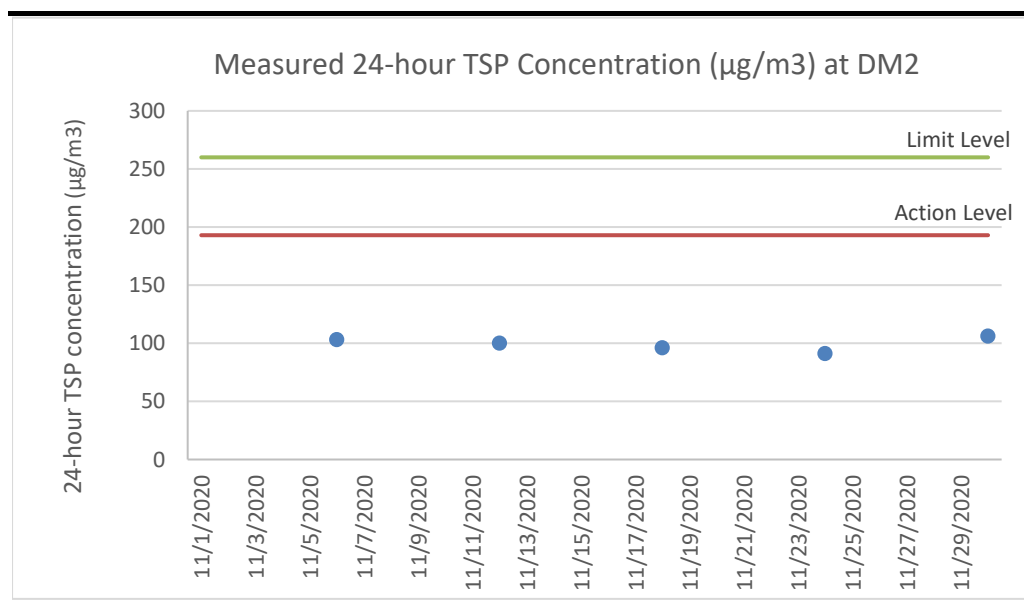
**Table D2.2 24-hour TSP Monitoring Results at DM2**

Start Date	Start Time	Finish Date	Finish Time	Weather	24-hour TSP ( $\mu\text{g}/\text{m}^3$ )
6 Nov 20	13:05	7 Nov 20	13:05	Cloudy	103
12 Nov 20	8:00	13 Nov 20	8:00	Fine	100
18 Nov 20	13:25	19 Nov 20	13:25	Cloudy	96
24 Nov 20	8:00	25 Nov 20	8:00	Cloudy	91
30 Nov 20	9:40	1 Dec 20	9:40	Cloudy	106
<b>Average</b>					99
<b>Min</b>					91
<b>Max</b>					106

**Note:**

DM2 corresponds to the existing TSP monitoring station TKO-A2a currently operating by CEDD.

**Figure D2.2 Graphical Presentation for 24-hr TSP Monitoring at DM2**



Annex D3

## Event and Action Plan for Dust Monitoring

**Annex D3**     *Event and Action Plan for Dust Monitoring During Construction Phase*

Event	Action		
	ET	IEC	Contractor
<i>Action Level</i>			
Exceedance for one sample	<ul style="list-style-type: none"> <li>Identify the source(s) and investigate the cause(s) of exceedance</li> <li>Prepare Notification of Exceedance within 24 hours</li> <li>Inform Contractor, IEC and Project Proponent whether the cause of exceedance is due to the Project</li> <li>Repeat measurement to confirm finding if exceedance is due to the Project</li> <li>Increase monitoring frequency to daily if exceedance is due to the Project and continue until the monitoring results reduce to below action level</li> </ul>	<ul style="list-style-type: none"> <li>Verify the Notification of Exceedance</li> <li>Check monitoring data submitted by ET</li> <li>Check Contractor's working methods</li> </ul>	<ul style="list-style-type: none"> <li>Rectify any unacceptable practice</li> <li>Amend working methods if appropriate</li> </ul>
Exceedance for two or more consecutive samples	<ul style="list-style-type: none"> <li>Identify the source(s) and investigate the cause(s) of exceedance</li> <li>Prepare Notification of Exceedance within 24 hours</li> <li>Inform Contractor, IEC and Project Proponent whether the cause of exceedance is due to the Project</li> <li>Discuss with Contractor and IEC for remedial measures required</li> <li>Ensure remedial measures are properly implemented</li> <li>If exceedance continues, arrange meeting with Contractor &amp; IEC</li> <li>Continue monitoring at daily intervals if exceedance is due to the Project</li> <li>If no exceedance for 3 consecutive days, cease additional monitoring</li> </ul>	<ul style="list-style-type: none"> <li>Verify the Notification of Exceedance</li> <li>Check monitoring data submitted by ET</li> <li>Check Contractor's working methods</li> <li>Discuss with ET and Contractor on proposed remedial measures</li> <li>Review proposals on remedial measures</li> <li>Audit the implementation of the remedial measures</li> <li>Audit the effectiveness of the implemented remedial measures</li> </ul>	<ul style="list-style-type: none"> <li>Submit proposals for remedial measures to IEC</li> <li>Implement the agreed proposals</li> <li>Amend proposal if appropriate</li> </ul>

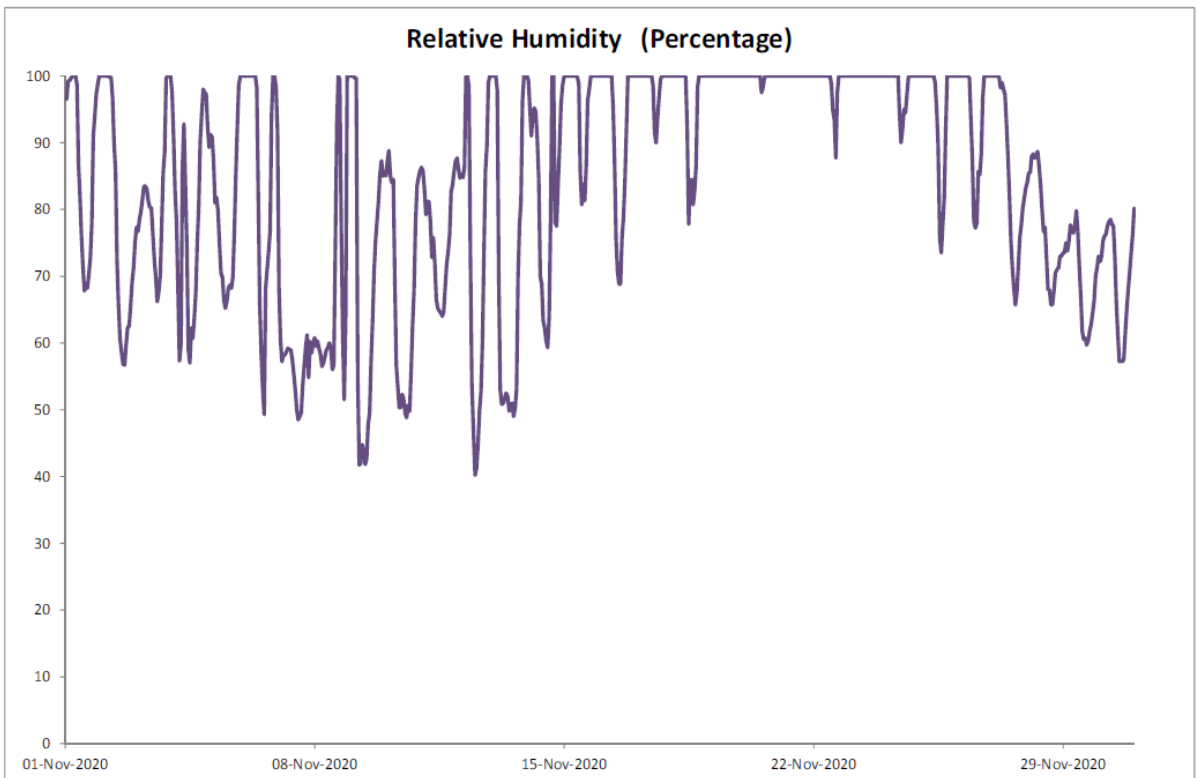
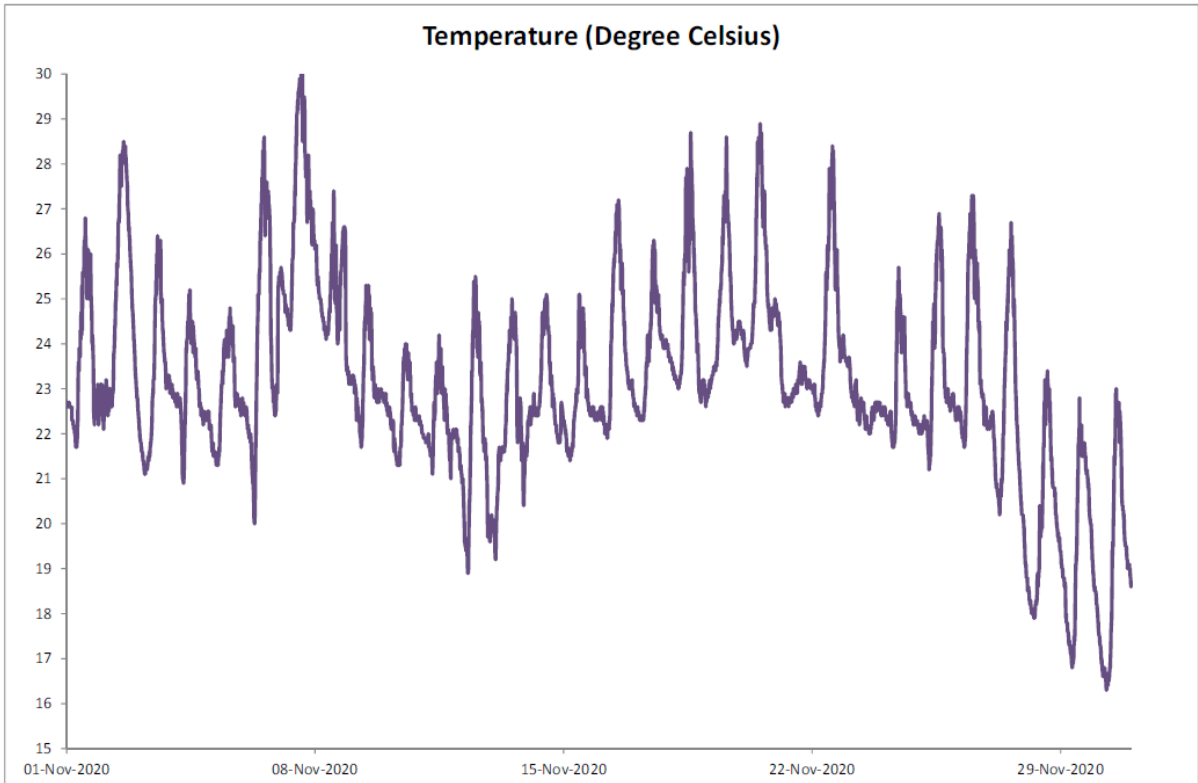


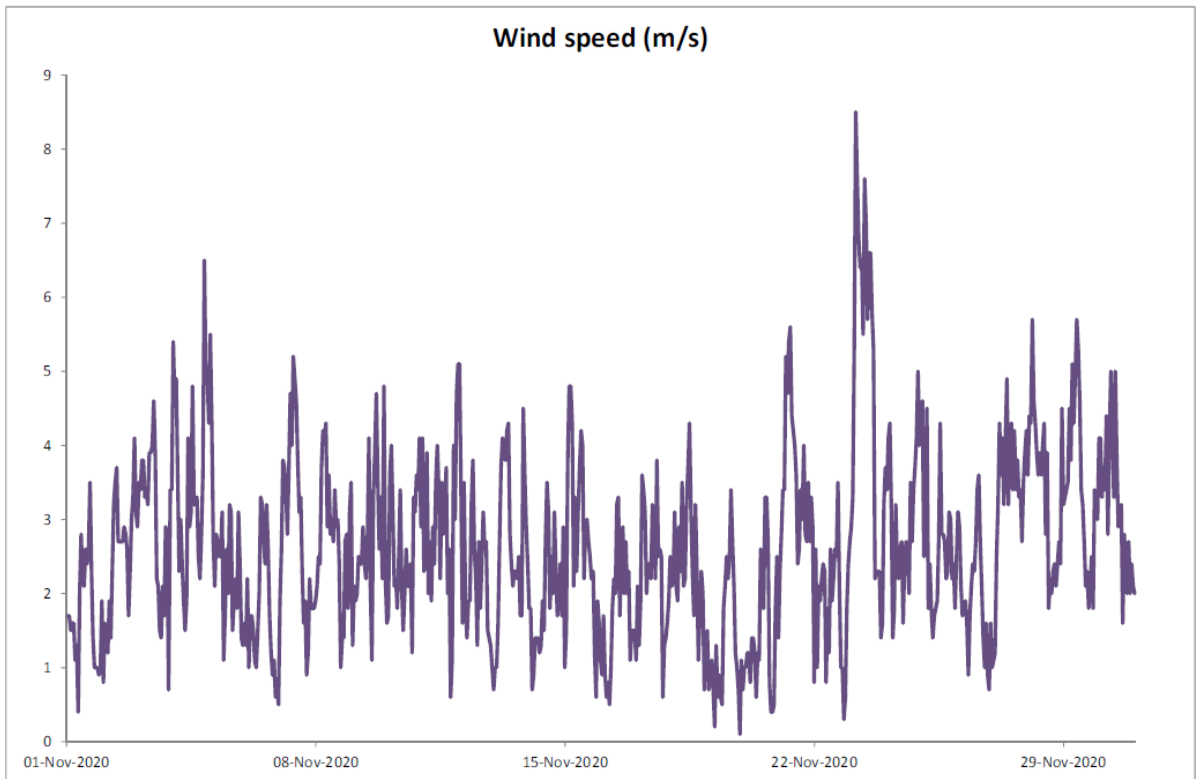
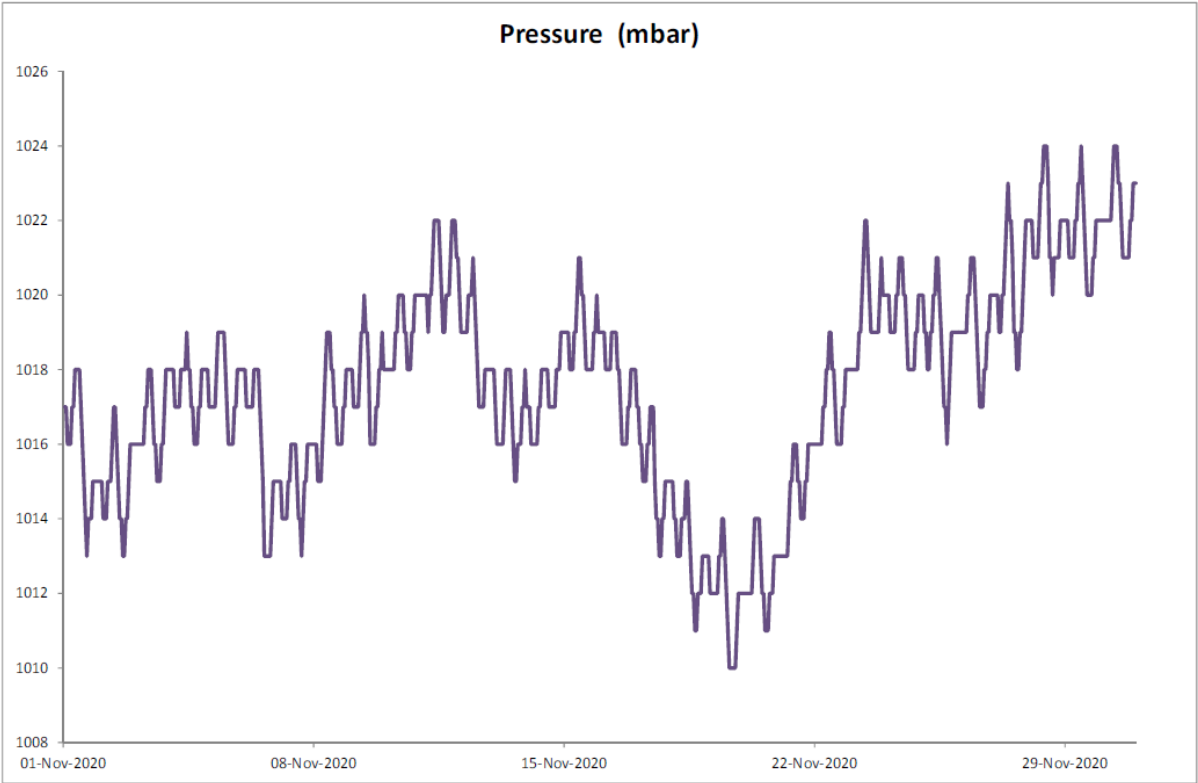
Event	Action		
	ET	IEC	Contractor
<i>Limit Level</i>			
Exceedance for one sample	<ul style="list-style-type: none"> <li>Identify the source(s) and investigate the cause(s) of exceedance</li> <li>Prepare Notification of Exceedance within 24 hours</li> <li>Inform Contractor, IEC, Project Proponent and EPD whether the cause of exceedance is due to the Project</li> <li>Discuss with Contractor and IEC for remedial measures required</li> <li>Ensure remedial measures are properly implemented</li> <li>Repeat measurement to confirm finding if exceedance is due to the Project</li> <li>Increase monitoring frequency to daily if exceedance is due to the Project and continue until the monitoring results reduce to below limit level</li> </ul>	<ul style="list-style-type: none"> <li>Verify the Notification of Exceedance</li> <li>Check monitoring data submitted by ET</li> <li>Check Contractor's working methods</li> <li>Discuss with ET and Contractor on proposed remedial measures</li> <li>Review proposals on remedial measures</li> <li>Audit the implementation of the remedial measures</li> <li>Audit the effectiveness of the implemented remedial measures</li> </ul>	<ul style="list-style-type: none"> <li>Take immediate action to avoid further exceedance</li> <li>Submit proposals for remedial measures to IEC</li> <li>Implement the agreed proposals</li> <li>Amend proposal if appropriate</li> </ul>
Exceedance for two or more consecutive samples	<ul style="list-style-type: none"> <li>Identify source(s) and investigate the cause(s) of exceedance</li> <li>Prepare Notification of Exceedance within 24 hours</li> <li>Inform Contractor, IEC, Project Proponent and EPD the causes &amp; actions taken for the exceedances</li> <li>Discuss with Contractor and IEC for remedial measures required</li> <li>Ensure remedial measures are properly implemented</li> <li>Continue monitoring at daily intervals if exceedance is due to the Project</li> <li>If no exceedance for 3 consecutive days, cease additional monitoring</li> <li>If exceedance due to the Project continues, consider what portion of the work is responsible and stop that portion of work until the exceedance is abated</li> </ul>	<ul style="list-style-type: none"> <li>Verify the Notification of Exceedance</li> <li>Check monitoring data submitted by ET</li> <li>Check Contractor's working methods</li> <li>Discuss with ET and Contractor on proposed remedial measures</li> <li>Review proposals on remedial measures</li> <li>Audit the implementation of the remedial measures</li> <li>Audit the effectiveness of the implemented remedial measures</li> </ul>	<ul style="list-style-type: none"> <li>Take immediate action to avoid further exceedance</li> <li>Submit proposals for remedial measures to IEC</li> <li>Implement the agreed proposals</li> <li>Resubmit proposals if problem still not under control</li> </ul>

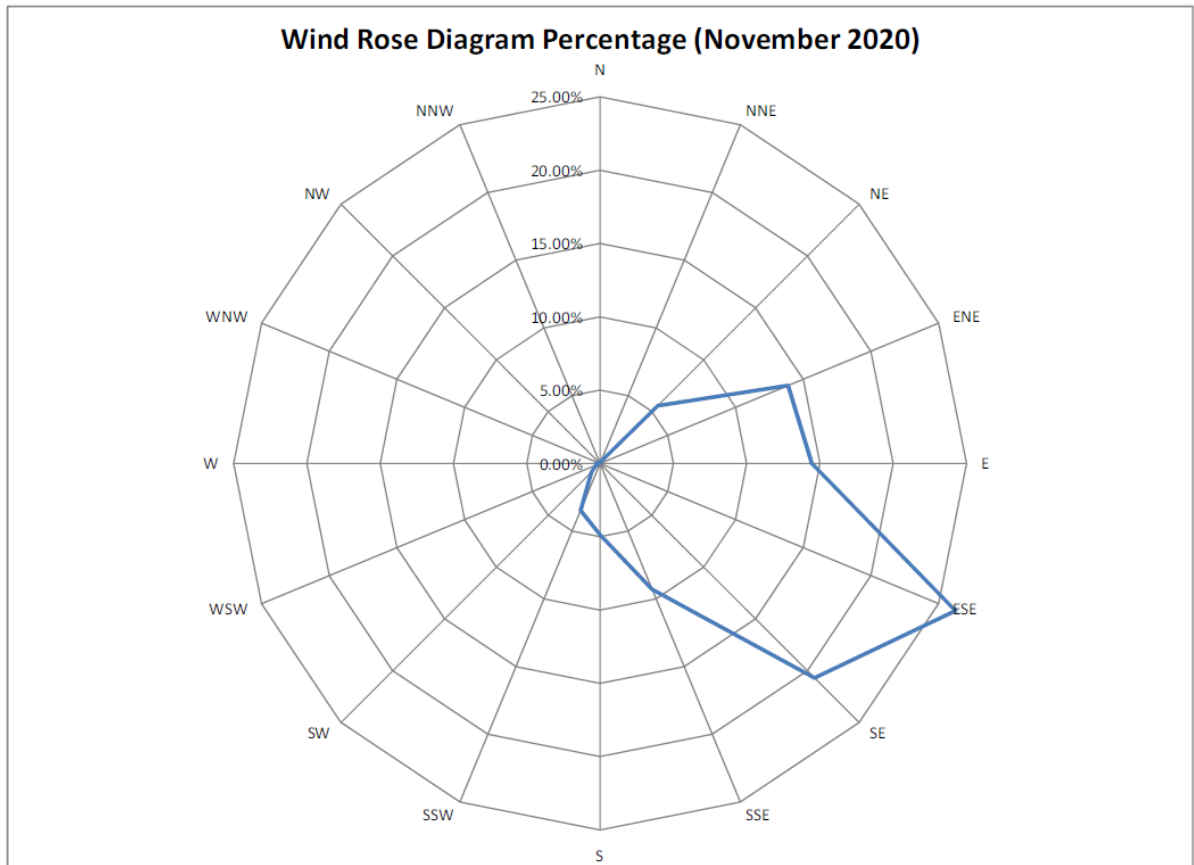
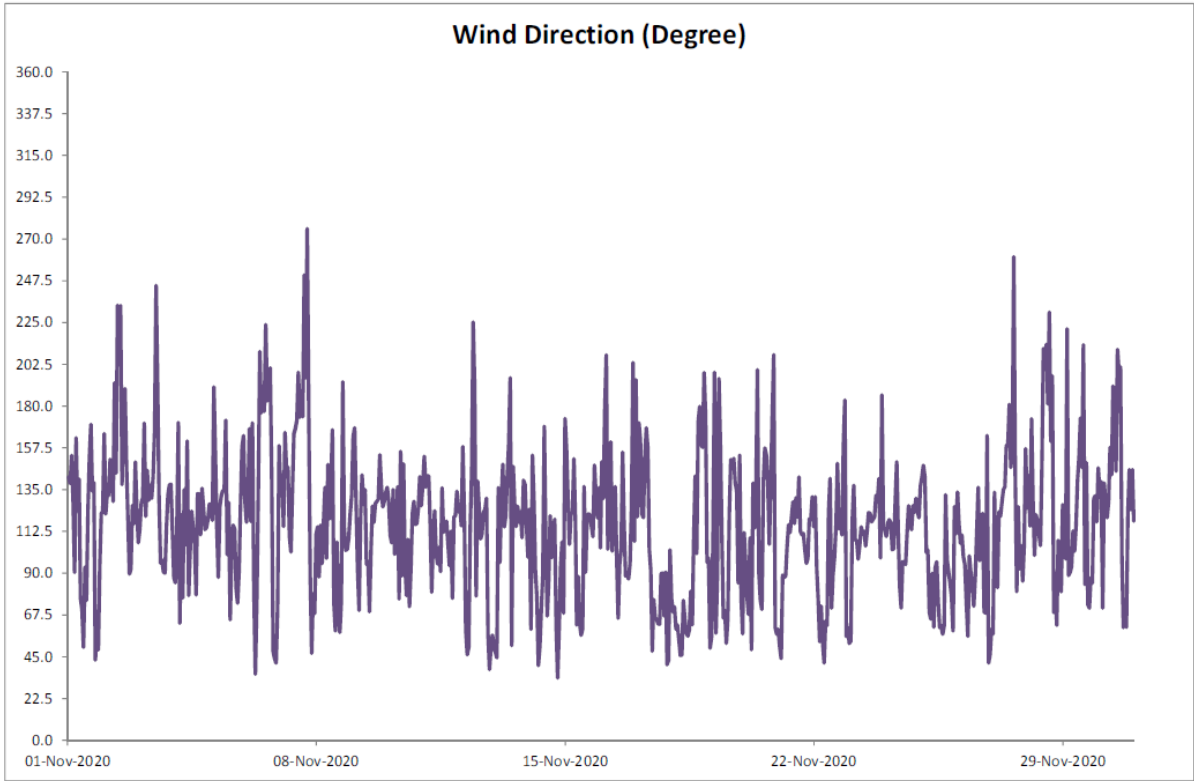
Annex D4

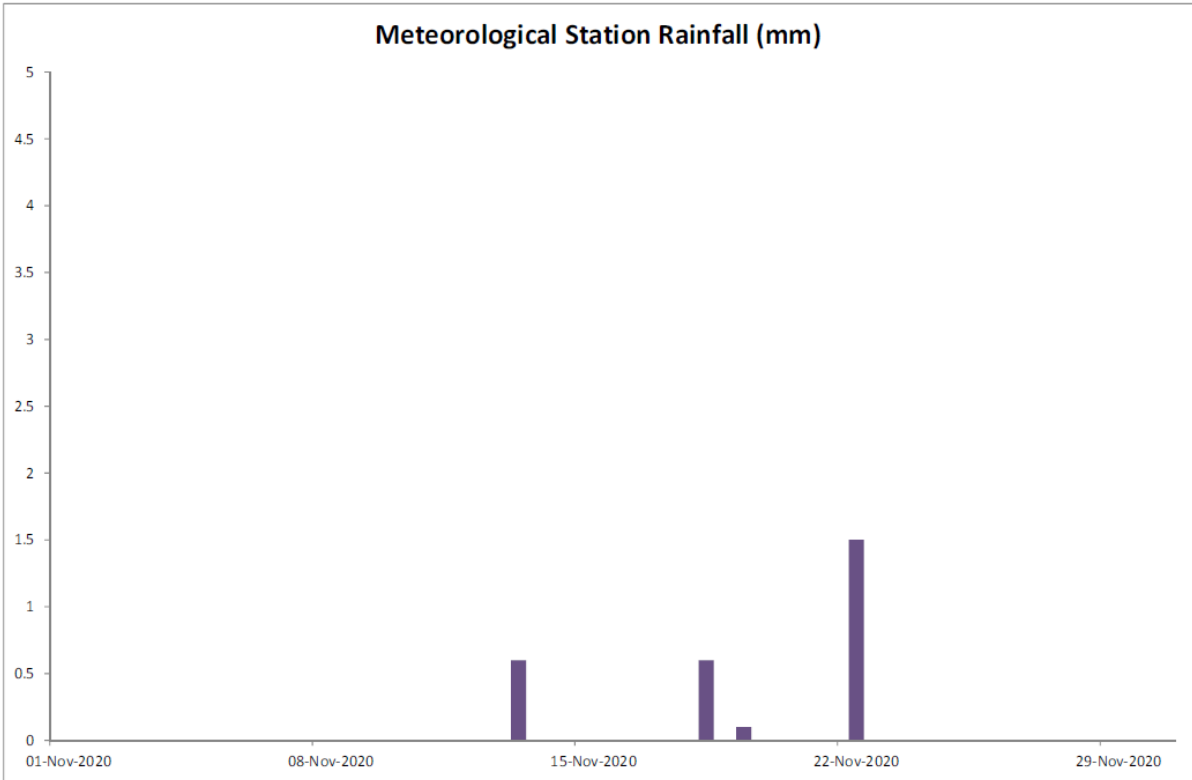
## Meteorological Data

*Annex D4 Meteorological Data*









Annex E

## Noise

Annex E1

# Calibration Certificates for Noise Monitoring Equipment





輝創工程有限公司

Sun Creation Engineering Limited

Calibration & Testing Laboratory

# Certificate of Calibration

## 校正證書

Certificate No. : C203574

證書編號

ITEM TESTED / 送檢項目 ( Job No. / 序引編號 : IC20-1324 )

Date of Receipt / 收件日期 : 19 June 2020

Description / 儀器名稱 : Integrating Sound Level Meter (EQ009)  
Manufacturer / 製造商 : Brüel & Kjær  
Model No. / 型號 : 2238  
Serial No. / 編號 : 2285722  
Supplied By / 委託者 : Action-United Environmental Services and Consulting  
Unit A, 20/F., Gold King Industrial Building,  
35-41 Tai Lin Pai Road, Kwai Chung, N.T.

### TEST CONDITIONS / 測試條件

Temperature / 溫度 : (23 ± 2)°C

Relative Humidity / 相對濕度 : (50 ± 25)%

Line Voltage / 電壓 : ---

### TEST SPECIFICATIONS / 測試規範

Calibration check

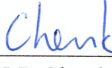
DATE OF TEST / 測試日期 : 29 June 2020


### TEST RESULTS / 測試結果

The results apply to the particular unit-under-test only.  
The results do not exceed manufacturer's specification.  
The results are detailed in the subsequent page(s).

The test equipment used for calibration are traceable to National Standards via :

- The Government of The Hong Kong Special Administrative Region Standard & Calibration Laboratory
- The Bruel & Kjaer Calibration Laboratory, Denmark
- Agilent Technologies / Keysight Technologies
- Fluke Everett Service Center, USA

Tested By :   
測試 : \_\_\_\_\_  
K P Cheuk  
Assistant Engineer

Certified By :   
核證 : \_\_\_\_\_  
K C Lee  
Engineer

Date of Issue : 6 July 2020  
簽發日期

The test equipment used for calibration is traceable to the National Standards as specified in this certificate. This certificate shall not be reproduced except in full, without the prior written approval of this laboratory.

本證書所載校正用之測試器材均可溯源至國際標準。局部複印本證書需先獲本實驗所書面批准。

Sun Creation Engineering Limited – Calibration & Testing Laboratory

c/o 4/F, 1 Hing On Lane, Tuen Mun, New Territories, Hong Kong

輝創工程有限公司 - 校正及檢測實驗室

c/o 香港新界屯門興安里一號四樓

Tel/電話: (852) 2927 2606

Fax/傳真: (852) 2744 8986

E-mail/電郵: callab@suncreation.com

Website/網址: www.suncreation.com

# Certificate of Calibration

## 校正證書

Certificate No. : C203574

證書編號

- The unit-under-test (UUT) was allowed to stabilize in the laboratory for over 12 hours, and switched on to warm up for over 10 minutes before the commencement of the test.
- Self-calibration using laboratory acoustic calibrator was performed before the test from 6.1.1.2 to 6.4.
- The results presented are the mean of 3 measurements at each calibration point.
- Test equipment :

<u>Equipment ID</u>	<u>Description</u>	<u>Certificate No.</u>
CL280	40 MHz Arbitrary Waveform Generator	C200258
CL281	Multifunction Acoustic Calibrator	CDK1806821

- Test procedure : MA101N.

- Results :

### 6.1 Sound Pressure Level

#### 6.1.1 Reference Sound Pressure Level

##### 6.1.1.1 Before Self-calibration

UUT Setting				Applied Value		UUT Reading (dB)
Range (dB)	Parameter	Frequency Weighting	Time Weighting	Level (dB)	Freq. (kHz)	
52 - 132	L <sub>AFP</sub>	A	F	94.00	1	93.8

##### 6.1.1.2 After Self-calibration

UUT Setting				Applied Value		UUT Reading (dB)	IEC 60651 Type 1 Spec. (dB)
Range (dB)	Parameter	Frequency Weighting	Time Weighting	Level (dB)	Freq. (kHz)		
52 - 132	L <sub>AFP</sub>	A	F	94.00	1	94.0	± 0.7

##### 6.1.2 Linearity

UUT Setting				Applied Value		UUT Reading (dB)
Range (dB)	Parameter	Frequency Weighting	Time Weighting	Level (dB)	Freq. (kHz)	
52 - 132	L <sub>AFP</sub>	A	F	94.00	1	94.0 (Ref.)
				104.00		104.0
				114.00		114.0

IEC 60651 Type 1 Spec. : ± 0.4 dB per 10 dB step and ± 0.7 dB for overall different.

The test equipment used for calibration is traceable to the National Standards as specified in this certificate. This certificate shall not be reproduced except in full, without the prior written approval of this laboratory.

本證書所載校正用之測試器材均可溯源至國際標準。局部複印本證書需先獲本實驗室所書面批准。



# Certificate of Calibration

## 校正證書

Certificate No. : C203574

證書編號

### 6.2 Time Weighting

#### 6.2.1 Continuous Signal

UUT Setting				Applied Value		UUT Reading (dB)	IEC 60651 Type 1 Spec. (dB)
Range (dB)	Parameter	Frequency Weighting	Time Weighting	Level (dB)	Freq. (kHz)		
52 - 132	L <sub>AFP</sub>	A	F	94.00	1	94.0	Ref.
	L <sub>ASP</sub>		S			94.0	± 0.1
	L <sub>AIP</sub>		I			94.1	± 0.1

#### 6.2.2 Tone Burst Signal (2 kHz)

UUT Setting				Applied Value		UUT Reading (dB)	IEC 60651 Type 1 Spec. (dB)
Range (dB)	Parameter	Frequency Weighting	Time Weighting	Level (dB)	Burst Duration		
32 - 112	L <sub>AFP</sub>	A	F	106.0	Continuous	106.0	Ref.
	L <sub>AFMax</sub>				200 ms	105.0	-1.0 ± 1.0
	L <sub>ASP</sub>		S		Continuous	106.0	Ref.
	L <sub>ASMax</sub>				500 ms	102.0	-4.1 ± 1.0

### 6.3 Frequency Weighting

#### 6.3.1 A-Weighting

UUT Setting				Applied Value		UUT Reading (dB)	IEC 60651 Type 1 Spec. (dB)
Range (dB)	Parameter	Frequency Weighting	Time Weighting	Level (dB)	Freq.		
52 - 132	L <sub>AFP</sub>	A	F	94.00	31.5 Hz	54.5	-39.4 ± 1.5
					63 Hz	67.8	-26.2 ± 1.5
					125 Hz	77.8	-16.1 ± 1.0
					250 Hz	85.3	-8.6 ± 1.0
					500 Hz	90.8	-3.2 ± 1.0
					1 kHz	94.0	Ref.
					2 kHz	95.2	+1.2 ± 1.0
					4 kHz	95.0	+1.0 ± 1.0
					8 kHz	92.8	-1.1 (+1.5 ; -3.0)
12.5 kHz	89.7	-4.3 (+3.0 ; -6.0)					

The test equipment used for calibration is traceable to the National Standards as specified in this certificate. This certificate shall not be reproduced except in full, without the prior written approval of this laboratory.

本證書所載校正用之測試器材均可溯源至國際標準。局部複印本證書需先獲本實驗室書面批准。

# Certificate of Calibration

## 校正證書

Certificate No. : C203574

證書編號

### 6.3.2 C-Weighting

UUT Setting				Applied Value		UUT Reading (dB)	IEC 60651 Type 1 Spec. (dB)
Range (dB)	Parameter	Frequency Weighting	Time Weighting	Level (dB)	Freq.		
52 - 132	L <sub>CFP</sub>	C	F	94.00	31.5 Hz	90.9	-3.0 ± 1.5
					63 Hz	93.2	-0.8 ± 1.5
					125 Hz	93.8	-0.2 ± 1.0
					250 Hz	94.0	0.0 ± 1.0
					500 Hz	94.0	0.0 ± 1.0
					1 kHz	94.0	Ref.
					2 kHz	93.8	-0.2 ± 1.0
					4 kHz	93.2	-0.8 ± 1.0
					8 kHz	90.9	-3.0 (+1.5 ; -3.0)
					12.5 kHz	87.8	-6.2 (+3.0 ; -6.0)

### 6.4 Time Averaging

UUT Setting				Applied Value					UUT Reading (dB)	IEC 60804 Type 1 Spec. (dB)
Range (dB)	Parameter	Frequency Weighting	Integrating Time	Frequency (kHz)	Burst Duration (ms)	Burst Duty Factor	Burst Level (dB)	Equivalent Level (dB)		
32 - 112	L <sub>Aeq</sub>	A	10 sec.	4	1	1/10	110.0	100	99.9	± 0.5
			60 sec.			1/10 <sup>2</sup>		90	89.6	± 0.5
			5 min.			1/10 <sup>3</sup>		80	79.1	± 1.0
						1/10 <sup>4</sup>		70	69.2	± 1.0

Remarks : - UUT Microphone Model No. : 4188 & S/N : 2812706

- Mfr's Spec. : IEC 60651 Type 1 & IEC 60804 Type 1

- Uncertainties of Applied Value :

94 dB : 31.5 Hz - 125 Hz	: ± 0.35 dB
250 Hz - 500 Hz	: ± 0.30 dB
1 kHz	: ± 0.20 dB
2 kHz - 4 kHz	: ± 0.35 dB
8 kHz	: ± 0.45 dB
12.5 kHz	: ± 0.70 dB
104 dB : 1 kHz	: ± 0.10 dB (Ref. 94 dB)
114 dB : 1 kHz	: ± 0.10 dB (Ref. 94 dB)
Burst equivalent level	: ± 0.2 dB (Ref. 110 dB continuous sound level)

- The uncertainties are for a confidence probability of not less than 95 %.

Note :

Only the original copy or the laboratory's certified true copy is valid.

The values given in this Certificate only relate to the values measured at the time of the test and any uncertainties quoted will not include allowance for the equipment long term drift, variations with environment changes, vibration and shock during transportation, overloading, mis-handling, or the capability of any other laboratory to repeat the measurement. Sun Creation Engineering Limited shall not be liable for any loss or damage resulting from the use of the equipment.

The test equipment used for calibration is traceable to the National Standards as specified in this certificate. This certificate shall not be reproduced except in full, without the prior written approval of this laboratory.

本證書所載校正用之測試器材均可溯源至國際標準。局部複印本證書需先獲本實驗室書面批准。





# Certificate of Calibration

## 校正證書

Certificate No. : C205469  
證書編號

- The unit-under-test (UUT) was allowed to stabilize in the laboratory for over 12 hours, and switched on to warm up for over 10 minutes before the commencement of the test.
- Self-calibration using the internal standard (After Adjustment) was performed before the test 6.1.1.2 to 6.3.2.
- The results presented are the mean of 3 measurements at each calibration point.
- Test equipment :

<u>Equipment ID</u>	<u>Description</u>	<u>Certificate No.</u>
CL280	40 MHz Arbitrary Waveform Generator	C200258
CL281	Multifunction Acoustic Calibrator	CDK1806821

- Test procedure : MA101N.

- Results :

- 6.1 Sound Pressure Level

- 6.1.1 Reference Sound Pressure Level

- 6.1.1.1 Before Adjustment

UUT Setting				Applied Value		UUT Reading (dB)	IEC 61672 Class 1 Spec. (dB)
Range (dB)	Function	Frequency Weighting	Time Weighting	Level (dB)	Freq. (kHz)		
30 - 130	L <sub>A</sub>	A	Fast	94.00	1	* 92.4	± 1.1

\* Out of IEC 61672 Class 1 Spec.

- 6.1.1.2 After Adjustment

UUT Setting				Applied Value		UUT Reading (dB)	IEC 61672 Class 1 Spec. (dB)
Range (dB)	Function	Frequency Weighting	Time Weighting	Level (dB)	Freq. (kHz)		
30 - 130	L <sub>A</sub>	A	Fast	94.00	1	94.0	± 1.1

- 6.1.2 Linearity

UUT Setting				Applied Value		UUT Reading (dB)
Range (dB)	Function	Frequency Weighting	Time Weighting	Level (dB)	Freq. (kHz)	
30 - 130	L <sub>A</sub>	A	Fast	94.00	1	94.0 (Ref.)
				104.00		104.0
				114.00		114.2

IEC 61672 Class 1 Spec. : ± 0.6 dB per 10 dB step and ± 1.1 dB for overall different.

The test equipment used for calibration is traceable to the National Standards as specified in this certificate. This certificate shall not be reproduced except in full, without the prior written approval of this laboratory.

本證書所載校正用之測試器材均可溯源至國際標準。局部複印本證書需先獲本實驗室書面批准。

# Certificate of Calibration

## 校正證書

Certificate No. : C205469

證書編號

### 6.2 Time Weighting

UUT Setting				Applied Value		UUT Reading (dB)	IEC 61672 Class 1 Spec. (dB)
Range (dB)	Function	Frequency Weighting	Time Weighting	Level (dB)	Freq. (kHz)		
30 - 130	L <sub>A</sub>	A	Fast	94.00	1	94.0	Ref.
			Slow			94.0	± 0.3

### 6.3 Frequency Weighting

#### 6.3.1 A-Weighting

UUT Setting				Applied Value		UUT Reading (dB)	IEC 61672 Class 1 Spec. (dB)
Range (dB)	Function	Frequency Weighting	Time Weighting	Level (dB)	Freq.		
30 - 130	L <sub>A</sub>	A	Fast	94.00	63 Hz	67.7	-26.2 ± 1.5
					125 Hz	77.8	-16.1 ± 1.5
					250 Hz	85.3	-8.6 ± 1.4
					500 Hz	90.7	-3.2 ± 1.4
					1 kHz	94.0	Ref.
					2 kHz	95.2	+1.2 ± 1.6
					4 kHz	95.0	+1.0 ± 1.6
					8 kHz	93.0	-1.1 (+2.1 ; -3.1)
					12.5 kHz	89.6	-4.3 (+3.0 ; -6.0)

#### 6.3.2 C-Weighting

UUT Setting				Applied Value		UUT Reading (dB)	IEC 61672 Class 1 Spec. (dB)
Range (dB)	Function	Frequency Weighting	Time Weighting	Level (dB)	Freq.		
30 - 130	L <sub>C</sub>	C	Fast	94.00	63 Hz	93.1	-0.8 ± 1.5
					125 Hz	93.8	-0.2 ± 1.5
					250 Hz	94.0	0.0 ± 1.4
					500 Hz	94.0	0.0 ± 1.4
					1 kHz	94.0	Ref.
					2 kHz	93.8	-0.2 ± 1.6
					4 kHz	93.2	-0.8 ± 1.6
					8 kHz	91.1	-3.0 (+2.1 ; -3.1)
					12.5 kHz	87.6	-6.2 (+3.0 ; -6.0)

The test equipment used for calibration is traceable to the National Standards as specified in this certificate. This certificate shall not be reproduced except in full, without the prior written approval of this laboratory.

本證書所載校正用之測試器材均可溯源至國際標準。局部複印本證書需先獲本實驗室書面批准。





# Certificate of Calibration

## 校正證書

Certificate No. : C205469  
證書編號

- Remarks :
- UUT Microphone Model No. : UC-59 & S/N : 15585
  - Mfr's Spec. : IEC 61672 Class 1
  - Uncertainties of Applied Value :

94 dB	: 63 Hz - 125 Hz	: ± 0.35 dB
	250 Hz - 500 Hz	: ± 0.30 dB
	1 kHz	: ± 0.20 dB
	2 kHz - 4 kHz	: ± 0.35 dB
	8 kHz	: ± 0.45 dB
	12.5 kHz	: ± 0.70 dB
104 dB	: 1 kHz	: ± 0.10 dB (Ref. 94 dB)
114 dB	: 1 kHz	: ± 0.10 dB (Ref. 94 dB)
  - The uncertainties are for a confidence probability of not less than 95 %.

Note :

Only the original copy or the laboratory's certified true copy is valid.

The values given in this Certificate only relate to the values measured at the time of the test and any uncertainties quoted will not include allowance for the equipment long term drift, variations with environment changes, vibration and shock during transportation, overloading, mis-handling, or the capability of any other laboratory to repeat the measurement. Sun Creation Engineering Limited shall not be liable for any loss or damage resulting from the use of the equipment.

The test equipment used for calibration is traceable to the National Standards as specified in this certificate. This certificate shall not be reproduced except in full, without the prior written approval of this laboratory.

本證書所載校正用之測試器材均可溯源至國際標準。局部複印本證書需先獲本實驗室所書面批准。

Sun Creation Engineering Limited – Calibration & Testing Laboratory

c/o 4/F, 1 Hing On Lane, Tuen Mun, New Territories, Hong Kong

輝創工程有限公司 – 校正及檢測實驗室

c/o 香港新界屯門興安里一號四樓

Tel/電話: (852) 2927 2606

Fax/傳真: (852) 2744 8986

E-mail/電郵: callab@suncreation.com

Website/網址: www.suncreation.com





輝創工程有限公司

Sun Creation Engineering Limited

Calibration & Testing Laboratory

# Certificate of Calibration

## 校正證書

Certificate No. : C201348

證書編號

ITEM TESTED / 送檢項目 ( Job No. / 序引編號 : IC19-1098 )      Date of Receipt / 收件日期 : 27 February 2020

Description / 儀器名稱 : Sound Level Calibrator (EQ085)  
Manufacturer / 製造商 : Rion  
Model No. / 型號 : NC-73  
Serial No. / 編號 : 10655561  
Supplied By / 委託者 : Action-United Environmental Services and Consulting  
Unit A, 20/F., Gold King Industrial Building,  
35-41 Tai Lin Pai Road, Kwai Chung, N.T.

### TEST CONDITIONS / 測試條件

Temperature / 溫度 :  $(23 \pm 2)^{\circ}\text{C}$       Relative Humidity / 相對濕度 :  $(50 \pm 25)\%$   
Line Voltage / 電壓 : ---

### TEST SPECIFICATIONS / 測試規範

Calibration check


DATE OF TEST / 測試日期 : 7 March 2020


### TEST RESULTS / 測試結果

The results apply to the particular unit-under-test only.  
The results do not exceed manufacturer's specification & user's specified acceptance criteria.  
The results are detailed in the subsequent page(s).

The test equipment used for calibration are traceable to National Standards via :

- The Government of The Hong Kong Special Administrative Region Standard & Calibration Laboratory
- The Bruel & Kjaer Calibration Laboratory, Denmark
- Agilent Technologies / Keysight Technologies
- Fluke Everett Service Center, USA

Tested By :   
測試 : \_\_\_\_\_  
H T Wong  
Technical Officer

Certified By :   
核證 : \_\_\_\_\_  
K C Lee  
Engineer

Date of Issue : 10 March 2020  
簽發日期

The test equipment used for calibration is traceable to the National Standards as specified in this certificate. This certificate shall not be reproduced except in full, without the prior written approval of this laboratory.

本證書所載校正用之測試器材均可溯源至國際標準。局部複印本證書需先獲本實驗室書面批准。

Sun Creation Engineering Limited – Calibration & Testing Laboratory

c/o 4/F, 1 Hing On Lane, Tuen Mun, New Territories, Hong Kong

輝創工程有限公司 - 校正及檢測實驗室

c/o 香港新界屯門興安里一號四樓

Tel/電話: (852) 2927 2606 Fax/傳真: (852) 2744 8986

E-mail/電郵: callab@suncreation.com

Website/網址: www.suncreation.com



# Certificate of Calibration

## 校正證書

Certificate No. : C201348  
證書編號

1. The unit-under-test (UUT) was allowed to stabilize in the laboratory for over 12 hours before the commencement of the test.
2. The results presented are the mean of 3 measurements at each calibration point.
3. Test equipment :

<u>Equipment ID</u>	<u>Description</u>	<u>Certificate No.</u>
CL130	Universal Counter	C193756
CL281	Multifunction Acoustic Calibrator	CDK1806821
TST150A	Measuring Amplifier	C201309

4. Test procedure : MA100N.

5. Results :

5.1 Sound Level Accuracy

UUT Nominal Value	Measured Value (dB)	Mfr's Spec. (dB)	Uncertainty of Measured Value (dB)
94 dB, 1 kHz	94.2	$\pm 0.5$	$\pm 0.2$

5.2 Frequency Accuracy

UUT Nominal Value (kHz)	Measured Value (kHz)	User's Spec.	Uncertainty of Measured Value (Hz)
1	0.958	1 kHz $\pm 6\%$	$\pm 1$

Remarks : - The user's specified acceptance criteria (user's spec.) is a customer pre-defined operating tolerance of the UUT, suitable for one's own intended use.

- The uncertainties are for a confidence probability of not less than 95 %.

Note :

Only the original copy or the laboratory's certified true copy is valid.

The values given in this Certificate only relate to the values measured at the time of the test and any uncertainties quoted will not include allowance for the equipment long term drift, variations with environment changes, vibration and shock during transportation, overloading, mis-handling, or the capability of any other laboratory to repeat the measurement. Sun Creation Engineering Limited shall not be liable for any loss or damage resulting from the use of the equipment.

The test equipment used for calibration is traceable to the National Standards as specified in this certificate. This certificate shall not be reproduced except in full, without the prior written approval of this laboratory.

本證書所載校正用之測試器材均可溯源至國際標準。局部複印本證書需先獲本實驗室書面批准。

Sun Creation Engineering Limited – Calibration & Testing Laboratory

c/o 4/F, 1 Hing On Lane, Tuen Mun, New Territories, Hong Kong

輝創工程有限公司 - 校正及檢測實驗室

c/o 香港新界屯門興安里一號四樓

Tel/電話: (852) 2927 2606

Fax/傳真: (852) 2744 8986

E-mail/電郵: callab@suncreation.com

Website/網址: www.suncreation.com



輝創工程有限公司

Sun Creation Engineering Limited

Calibration & Testing Laboratory

# Certificate of Calibration

## 校正證書

Certificate No. : C204289

證書編號

ITEM TESTED / 送檢項目 (Job No. / 序引編號 : IC20-1324)

Date of Receipt / 收件日期 : 30 July 2020

Description / 儀器名稱 : Sound Calibrator (EQ086)

Manufacturer / 製造商 : Rion

Model No. / 型號 : NC-74

Serial No. / 編號 : 34657230

Supplied By / 委託者 : Action-United Environmental Services and Consulting

Unit A, 20/F., Gold King Industrial Building,

35-41 Tai Lin Pai Road, Kwai Chung, N.T.

### TEST CONDITIONS / 測試條件

Temperature / 溫度 :  $(23 \pm 2)^{\circ}\text{C}$

Relative Humidity / 相對濕度 :  $(50 \pm 25)\%$

Line Voltage / 電壓 : ---

### TEST SPECIFICATIONS / 測試規範

Calibration check

DATE OF TEST / 測試日期 : 2 August 2020

### TEST RESULTS / 測試結果

The results apply to the particular unit-under-test only.

The results do not exceed manufacturer's specification.

The results are detailed in the subsequent page(s).

The test equipment used for calibration are traceable to National Standards via :

- The Government of The Hong Kong Special Administrative Region Standard & Calibration Laboratory
- The Bruel & Kjaer Calibration Laboratory, Denmark
- Agilent Technologies / Keysight Technologies
- Fluke Everett Service Center, USA

Tested By

測試

  
H T Wong

Assistant Engineer

Certified By

核證

  
K C Lee

Engineer

Date of Issue

簽發日期

3 August 2020

The test equipment used for calibration is traceable to the National Standards as specified in this certificate. This certificate shall not be reproduced except in full, without the prior written approval of this laboratory.

本證書所載校正用之測試器材均可溯源至國際標準。局部複印本證書需先獲本實驗室書面批准。

Sun Creation Engineering Limited – Calibration & Testing Laboratory

c/o 4/F, 1 Hing On Lane, Tuen Mun, New Territories, Hong Kong

輝創工程有限公司 - 校正及檢測實驗室

c/o 香港新界屯門興安里一號四樓

Tel/電話: (852) 2927 2606

Fax/傳真: (852) 2744 8986

E-mail/電郵: callab@suncreation.com

Website/網址: www.suncreation.com



# Certificate of Calibration

## 校正證書

Certificate No. : C204289  
證書編號

- The unit-under-test (UUT) was allowed to stabilize in the laboratory for over 12 hours before the commencement of the test.
- The results presented are the mean of 3 measurements at each calibration point.
- Test equipment :

<u>Equipment ID</u>	<u>Description</u>	<u>Certificate No.</u>
CL130	Universal Counter	C203952
CL281	Multifunction Acoustic Calibrator	CDK1806821
TST150A	Measuring Amplifier	C201309

- Test procedure : MA100N.

- Results :

### 5.1 Sound Level Accuracy

UUT Nominal Value	Measured Value (dB)	Mfr's Spec. (dB)	Uncertainty of Measured Value (dB)
94 dB, 1 kHz	94.1	± 0.3	± 0.2

### 5.2 Frequency Accuracy

UUT Nominal Value (kHz)	Measured Value (kHz)	Mfr's Spec.	Uncertainty of Measured Value (Hz)
1	1.002	1 kHz ± 1 %	± 1

Remark : The uncertainties are for a confidence probability of not less than 95 %.

#### Note :

Only the original copy or the laboratory's certified true copy is valid.

The values given in this Certificate only relate to the values measured at the time of the test and any uncertainties quoted will not include allowance for the equipment long term drift, variations with environment changes, vibration and shock during transportation, overloading, mis-handling, or the capability of any other laboratory to repeat the measurement. Sun Creation Engineering Limited shall not be liable for any loss or damage resulting from the use of the equipment.



## CERTIFICATE OF CALIBRATION

Certificate No.: 20CA0909 03-02

Page: 1 of 2

### Item tested

Description: Acoustical Calibrator (Class 1)  
Manufacturer: 3M  
Type/Model No.: AC-300  
Serial/Equipment No.: AC300005555 / EM373  
Adaptors used: -

### Item submitted by

Customer: Green Valley Landfill Limited  
Address of Customer: Wan Po Road, Tai Chik Sha, Third Industrial Estate, Tseung Kwan O, Kowloon  
Request No.: PO20080155  
Date of receipt: 09-Sep-2020

Date of test: 12-Sep-2020

### Reference equipment used in the calibration

Description:	Model:	Serial No.	Expiry Date:	Traceable to:
Lab standard microphone	B&K 4180	2341427	11-May-2021	SCL
Preamplifier	B&K 2673	2743150	03-Jun-2021	CEPREI
Measuring amplifier	B&K 2610	2346941	03-Jun-2021	CEPREI
Signal generator	DS 360	33873	19-May-2021	CEPREI
Digital multi-meter	34401A	US36087050	19-May-2021	CEPREI
Audio analyzer	8903B	GB41300350	18-May-2021	CEPREI
Universal counter	53132A	MY40003662	18-May-2021	CEPREI

### Ambient conditions

Temperature:  $22 \pm 1$  °C  
Relative humidity:  $55 \pm 10$  %  
Air pressure:  $1005 \pm 5$  hPa

### Test specifications

- 1, The Sound Calibrator has been calibrated in accordance with the requirements as specified in IEC 60942 1997 Annex B and the lab calibration procedure SMTP004-CA-156.
- 2, The calibrator was tested with its axis vertical facing downwards at the specific frequency using insert voltage technique.
- 3, The results are rounded to the nearest 0.01 dB and 0.1 Hz and have not been corrected for variations from a reference pressure of 1013.25 hectoPascals as the maker's information indicates that the instrument is insensitive to pressure changes.

### Test results

This is to certify that the sound calibrator conforms to the requirements of annex B of IEC 60942: 1997 for the conditions under which the test was performed. This does not imply that the sound calibrator meets IEC 60942 under any other conditions.

Details of the performed measurements are presented on page 2 of this certificate.

Approved Signatory:



Feng Junqi

Date: 14-Sep-2020

Company Chop:



Comments: The results reported in this certificate refer to the condition of the instrument on the date of calibration and carry no implication regarding the long-term stability of the instrument.





# CERTIFICATE OF CALIBRATION

(Continuation Page)

Certificate No.: 20CA0909 03-02

Page: 2 of 2

## 1, Measured Sound Pressure Level

The output Sound Pressure Level in the calibrator head was measured at the setting and frequency shown using a calibrated laboratory standard microphone and insert voltage technique. The results are given in below with the estimated uncertainties.

(Output level in dB re 20  $\mu$ Pa)

Frequency Shown Hz	Output Sound Pressure Level Setting dB	Measured Output Sound Pressure Level dB	Estimated Expanded Uncertainty dB
1000	114.00	114.22	0.10

## 2, Sound Pressure Level Stability - Short Term Fluctuations

The Short Term Fluctuations was determined by measuring the maximum and minimum of the fast weighted DC output of the B&K 2610 measuring amplifier over a 20 second time interval as required in the standard. The Short Term Fluctuation was found to be:

At 1000 Hz STF = 0.008 dB

Estimated expanded uncertainty 0.005 dB

## 3, Actual Output Frequency

The determination of actual output frequency was made using a B&K 4180 microphone together with a B&K 2673 preamplifier connected to a B&K 2610 measuring amplifier. The AC output of the B&K 2610 was taken to an universal counter which was used to determine the frequency averaged over 20 second of operation as required by the standard. The actual output frequency at 1 KHz was:

At 1000 Hz Actual Frequency = 1000.0 Hz

Estimated expanded uncertainty 0.1 Hz Coverage factor k = 2.2

## 4, Total Noise and Distortion

For the Total Noise and Distortion measurement, the unfiltered AC output of the B&K 2610 measuring amplifier was connected to an Agilent Type 8903 B distortion analyser. The TND result at 1 KHz was:

At 1000 Hz TND = 0.3 %

Estimated expanded uncertainty 0.7 %

The expanded uncertainties have been calculated in accordance with the ISO Publication "Guide to the expression of uncertainty in measurement", and gives an interval estimated to have a level of confidence of 95%. A coverage factor of 2 is assumed unless explicitly stated.

- End -

Calibrated by:

Date:

Fung Chi Yip  
12-Sep-2020

Checked by:

Date:

Feng Junqi  
14-Sep-2020

The standard(s) and equipment used in the calibration are traceable to national or international recognised standards and are carry no implication regarding the long-term stability of the instrument. The results apply to the item as received.

Annex E2

## Noise Monitoring Results

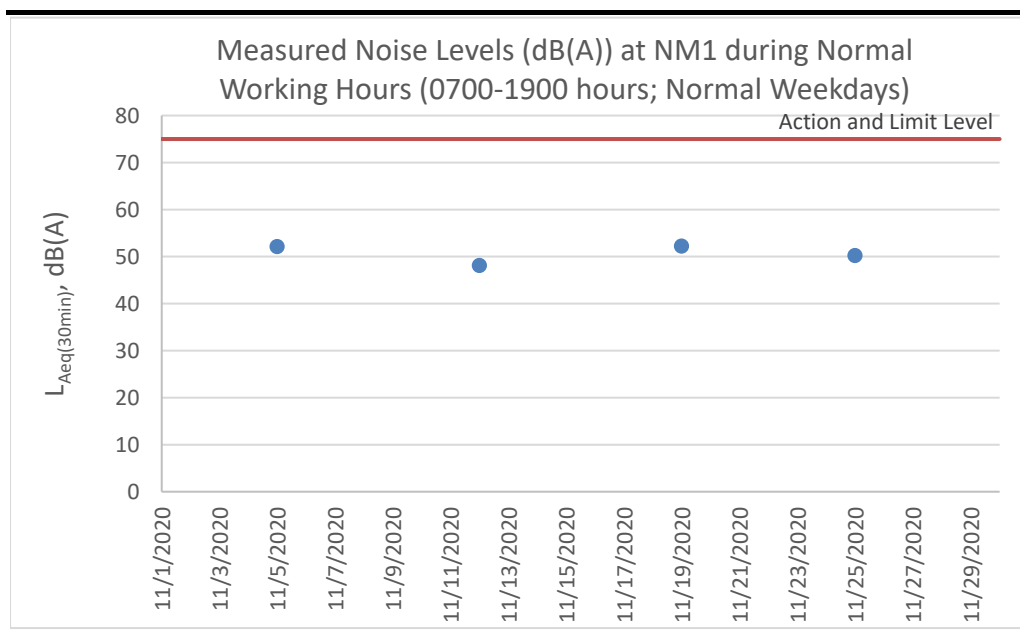
**Table E2.1 Measured Noise Levels (dB(A)) at NM1 during Normal Working Hours (0700-1900 hours; Normal Weekdays)**

Date	Start Time	Finish Time	Weather	L10 (30min)	L90 (30min)	Leq (30min)
5 Nov 20	14:33	15:03	Sunny	53.5	48.0	52.1
12 Nov 20	14:34	15:04	Sunny	50.0	45.5	48.1
19 Nov 20	14:48	15:18	Sunny	54.1	49.4	52.2
25 Nov 20	13:25	13:55	Sunny	52.0	47.0	50.2
						<b>Average</b> 50.7
						<b>Min</b> 48.1
						<b>Max</b> 52.2

**Note:**

Correction of +3 dB(A) was made for free field measurements.

**Figure E2.1 Graphical Presentation for Noise Monitoring at NM1**





Annex E3

## Event and Action Plan for Noise Monitoring

**Annex E3**      *Event and Action Plan for Construction Noise*

Event	Action		
	ET	IEC	Contractor
<p>Action Level</p> <ul style="list-style-type: none"> <li>Identify the source(s) and investigate the cause(s) of exceedance and complaint</li> <li>Prepare Notification of Exceedance within 24 hours</li> <li>Inform Contractor, IEC and Project Proponent whether the cause of exceedance is due to the Project</li> <li>Discuss with Contractor and IEC for remedial measures required</li> <li>Ensure remedial measures are properly implemented</li> <li>Have additional monitoring if exceedance is due to the Project. If exceedance stops, cease additional monitoring</li> </ul>	<ul style="list-style-type: none"> <li>Verify the Notification of Exceedance</li> <li>Check monitoring data submitted by ET</li> <li>Discuss with ET and Contractor on proposed remedial measures</li> <li>Review proposals on remedial measures</li> <li>Audit the implementation of the remedial measures</li> <li>Audit the effectiveness of the implemented remedial measures</li> </ul>	<ul style="list-style-type: none"> <li>Submit proposals for remedial measures to IEC</li> <li>Implement the agreed proposals</li> </ul>	
<p>Limit Level</p> <ul style="list-style-type: none"> <li>Identify the source(s) and investigate the cause(s) of exceedance and complaint</li> <li>Prepare Notification of Exceedance within 24 hours</li> <li>Inform Contractor, IEC, Project Proponent and EPD whether the cause of exceedance is due to the Project</li> <li>Analyse the operation of SENTX and investigate the causes of exceedance</li> <li>Provide interim report to Contractor, IEC, Project Proponent and EPD the causes of the exceedances</li> <li>Discuss with Contractor and IEC for remedial measures required</li> <li>Ensure remedial measures are properly implemented</li> <li>Report the remedial measures implemented and the additional monitoring results to Contractor, IEC, Project Proponent and EPD</li> <li>Have additional monitoring if exceedance is due to the Project. If exceedance stops, cease additional monitoring</li> </ul>	<ul style="list-style-type: none"> <li>Verify the Notification of Exceedance</li> <li>Check monitoring data submitted by ET</li> <li>Discuss with ET and Contractor on proposed remedial measures</li> <li>Review proposals on remedial measures</li> <li>Audit the implementation of the remedial measures</li> <li>Audit the effectiveness of the implemented remedial measures</li> </ul>	<ul style="list-style-type: none"> <li>Take immediate measures to avoid further exceedance</li> <li>Submit proposals for remedial measures to IEC within 3 working days of notification</li> <li>Implement the agreed proposals</li> <li>Resubmit proposals if problem still not under control</li> <li>Stop the relevant activity of works as determined by the Project Proponent until the exceedance is abated</li> </ul>	

Annex F

## Surface Water Quality

Annex F1

Calibration Certificates for  
Surface Water Quality  
Monitoring Equipment



## REPORT OF EQUIPMENT PERFORMANCE CHECK/CALIBRATION

CONTACT: **BEN TAM**  
CLIENT: **ACTION UNITED ENVIRONMENT SERVICES AND CONSULTING**  
ADDRESS: **RM A 20/F., GOLD KING IND BLDG,  
NO. 35-41 TAI LIN PAI ROAD,  
KWAI CHUNG, N.T. HONG KONG**

WORK ORDER: **HK2037829**  
SUB-BATCH: **0**  
LABORATORY: **HONG KONG**  
DATE RECEIVED: **06-Oct-2020**  
DATE OF ISSUE: **14-Oct-2020**

### SPECIFIC COMMENTS

Equipment information (Brand name, Model No., Serial No. and Equipment No.) is provided by client. The performance of the equipment stated in this report is checked with independent reference material and results compared against a calibrated secondary source.

The "Tolerance Limit" quoted is the acceptance criteria applicable for similar equipment used by the laboratory or quoted from relevant international standards.

The "Next Calibration Date" is recommended according to best practice principle as practised by the laboratory or quoted from relevant international standards.

The validity of equipment/ meter performance only applies to the result(s) stated in the report.

Equipment Type: Multifunctional Meter  
Service Nature: Performance Check  
Scope: Conductivity, Dissolved Oxygen, pH Value, Turbidity, Salinity and Temperature  
Brand Name/ Model No.: YSI Professional DSS  
Serial No./ Equipment No.: 20J101862/ 15H103928 (EQW018)  
Date of Calibration: 12-October-2020

### GENERAL COMMENTS

This is the Final Report and supersedes any preliminary report with this batch number.

Ms. Lin Wai Yu, Iris  
Assistant Manager - Inorganic

*This report may not be reproduced except with prior written approval from ALS Technichem (HK) Pty Ltd.*

# REPORT OF EQUIPMENT PERFORMANCE CHECK/CALIBRATION



**WORK ORDER:** HK2037829  
**SUB-BATCH:** 0  
**DATE OF ISSUE:** 14-Oct-2020  
**CLIENT:** ACTION UNITED ENVIRONMENT SERVICES AND CONSULTING

**Equipment Type:** Multifunctional Meter  
**Brand Name/ Model No.:** YSI Professional DSS  
**Serial No./ Equipment No.:** 20J101862/ 15H103928 (EQW018)  
**Date of Calibration:** 12-October-2020      **Date of Next Calibration:** 12-January-2021

**PARAMETERS:**

Conductivity      Method Ref: APHA (21st edition), 2510B

Expected Reading (µS/cm)	Displayed Reading (µS/cm)	Tolerance (%)
146.9	151.8	+3.3
6667	6782	+1.7
12890	12701	-1.5
58670	58210	-0.8
Tolerance Limit (%)		±10.0

Dissolved Oxygen      Method Ref: APHA (21st edition), 4500O: G

Expected Reading (mg/L)	Displayed Reading (mg/L)	Tolerance (mg/L)
3.28	3.13	-0.15
5.02	4.96	-0.06
7.29	7.34	+0.05
Tolerance Limit (mg/L)		±0.20

pH Value      Method Ref: APHA (21st edition), 4500H: B

Expected Reading (pH unit)	Displayed Reading (pH unit)	Tolerance (pH unit)
4.0	4.08	+0.08
7.0	6.94	-0.06
10.0	10.07	+0.07
Tolerance Limit (pH unit)		±0.20

Remark: "Displayed Reading" presents the figures shown on item under calibration / checking regardless of equipment precision or significant figures.

Ms. Lin Wai Yu, Iris  
 Assistant Manager - Inorganic

# REPORT OF EQUIPMENT PERFORMANCE CHECK/CALIBRATION



**WORK ORDER:** HK2037829  
**SUB-BATCH:** 0  
**DATE OF ISSUE:** 14-Oct-2020  
**CLIENT:** ACTION UNITED ENVIRONMENT SERVICES AND CONSULTING

**Equipment Type:** Multifunctional Meter  
**Brand Name/ Model No.:** YSI Professional DSS  
**Serial No./ Equipment No.:** 20J101862/ 15H103928 (EQW018)  
**Date of Calibration:** 12-October-2020      **Date of Next Calibration:** 12-January-2021

**PARAMETERS:**

**Turbidity**      Method Ref: APHA (21st edition), 2130B

Expected Reading (NTU)	Displayed Reading (NTU)	Tolerance (%)
0	0.93	--
4	4.28	+7.0
40	41.76	+4.4
80	82.59	+3.2
400	410.72	+2.7
800	832.10	+4.0
	<b>Tolerance Limit (%)</b>	<b>±10.0</b>

**Salinity**      Method Ref: APHA (21st edition), 2520B

Expected Reading (ppt)	Displayed Reading (ppt)	Tolerance (%)
0	0.01	--
10	9.85	-1.5
20	19.74	-1.3
30	29.82	-0.6
	<b>Tolerance Limit (%)</b>	<b>±10.0</b>

Remark: "Displayed Reading" presents the figures shown on item under calibration / checking regardless of equipment precision or significant figures.

---

Ms. Lin Wai Yu, Iris  
 Assistant Manager - Inorganic

# REPORT OF EQUIPMENT PERFORMANCE CHECK/CALIBRATION



WORK ORDER: HK2037829  
SUB-BATCH: 0  
DATE OF ISSUE: 14-Oct-2020  
CLIENT: ACTION UNITED ENVIRONMENT SERVICES AND CONSULTING

Equipment Type: Multifunctional Meter  
Brand Name/ Model No.: YSI Professional DSS  
Serial No./ Equipment No.: 20J101862/ 15H103928 (EQW018)  
Date of Calibration: 12-October-2020 Date of Next Calibration: 12-January-2021

## PARAMETERS:

Temperature Method Ref: Section 6 of International Accreditation New Zealand Technical Guide No. 3 Second edition March 2008: Working Thermometer Calibration Procedure.

Expected Reading (°C)	Displayed Reading (°C)	Tolerance (°C)
10.5	10.3	-0.2
20.5	21.0	+0.5
39.0	39.3	+0.3
	Tolerance Limit (°C)	±2.0

Remark: "Displayed Reading" presents the figures shown on item under calibration / checking regardless of equipment precision or significant figures.

Ms. Lin Wai Yu, Iris  
Assistant Manager - Inorganic





## REPORT OF EQUIPMENT PERFORMANCE CHECK/CALIBRATION

CONTACT:	<b>BEN TAM</b>	WORK ORDER:	<b>HK2031198</b>
CLIENT:	<b>ACTION UNITED ENVIRONMENT SERVICES AND CONSULTING</b>		
ADDRESS:	<b>RM A 20/F., GOLD KING IND BLDG, NO. 35-41 TAI LIN PAI ROAD, KWAI CHUNG, N.T. HONG KONG</b>	SUB-BATCH:	<b>0</b>
		LABORATORY:	<b>HONG KONG</b>
		DATE RECEIVED:	<b>18-Aug-2020</b>
		DATE OF ISSUE:	<b>24-Aug-2020</b>

### SPECIFIC COMMENTS

Equipment information (Brand name, Model No., Serial No. and Equipment No.) is provided by client. The performance of the equipment stated in this report is checked with independent reference material and results compared against a calibrated secondary source.

The "Tolerance Limit" quoted is the acceptance criteria applicable for similar equipment used by the laboratory or quoted from relevant international standards.

The "Next Calibration Date" is recommended according to best practice principle as practised by the laboratory or quoted from relevant international standards.

The validity of equipment/ meter performance only applies to the result(s) stated in the report.

Equipment Type:	Multifunctional Meter
Service Nature:	Performance Check
Scope:	Conductivity, Dissolved Oxygen, pH Value, Turbidity, Salinity and Temperature
Brand Name/ Model No.:	YSI Professional DSS
Serial No./ Equipment No.:	17B102764/17B100758 (EQW019)
Date of Calibration:	24-August-2020

### GENERAL COMMENTS

This is the Final Report and supersedes any preliminary report with this batch number.

Ms. Lin Wai Yu, Iris  
Assistant Manager - Inorganic

*This report may not be reproduced except with prior written approval from ALS Technichem (HK) Pty Ltd.*

# REPORT OF EQUIPMENT PERFORMANCE CHECK/CALIBRATION



**WORK ORDER:** HK2031198  
**SUB-BATCH:** 0  
**DATE OF ISSUE:** 24-Aug-2020  
**CLIENT:** ACTION UNITED ENVIRONMENT SERVICES AND CONSULTING

**Equipment Type:** Multifunctional Meter  
**Brand Name/ Model No.:** YSI Professional DSS  
**Serial No./ Equipment No.:** 17B102764/17B100758 (EQW019)  
**Date of Calibration:** 24-August-2020      **Date of Next Calibration:** 24-November-2020

**PARAMETERS:**

Conductivity      Method Ref: APHA (21st edition), 2510B

Expected Reading (µS/cm)	Displayed Reading (µS/cm)	Tolerance (%)
146.9	153.6	+4.6
6667	6973	+4.6
12890	13340	+3.5
58670	61031	+4.0
	<b>Tolerance Limit (%)</b>	<b>±10.0</b>

Dissolved Oxygen      Method Ref: APHA (21st edition), 4500O: G

Expected Reading (mg/L)	Displayed Reading (mg/L)	Tolerance (mg/L)
3.72	3.82	+0.10
5.39	5.44	+0.05
7.33	7.29	-0.04
	<b>Tolerance Limit (mg/L)</b>	<b>±0.20</b>

pH Value      Method Ref: APHA (21st edition), 4500H: B

Expected Reading (pH unit)	Displayed Reading (pH unit)	Tolerance (pH unit)
4.0	4.04	+0.04
7.0	7.08	+0.08
10.0	10.08	+0.08
	<b>Tolerance Limit (pH unit)</b>	<b>±0.20</b>

Remark: "Displayed Reading" presents the figures shown on item under calibration / checking regardless of equipment precision or significant figures.

Ms. Lin Wai Yu, Iris  
 Assistant Manager - Inorganic

# REPORT OF EQUIPMENT PERFORMANCE CHECK/CALIBRATION



**WORK ORDER:** HK2031198  
**SUB-BATCH:** 0  
**DATE OF ISSUE:** 24-Aug-2020  
**CLIENT:** ACTION UNITED ENVIRONMENT SERVICES AND CONSULTING

**Equipment Type:** Multifunctional Meter  
**Brand Name/ Model No.:** YSI Professional DSS  
**Serial No./ Equipment No.:** 17B102764/17B100758 (EQW019)  
**Date of Calibration:** 24-August-2020      **Date of Next Calibration:** 24-November-2020

**PARAMETERS:**

**Turbidity**      Method Ref: APHA (21st edition), 2130B

Expected Reading (NTU)	Displayed Reading (NTU)	Tolerance (%)
0	0.82	--
4	4.21	+5.3
40	41.52	+3.8
80	83.91	+4.9
400	403.92	+1.0
800	789.93	-1.3
	<b>Tolerance Limit (%)</b>	<b>±10.0</b>

**Salinity**      Method Ref: APHA (21st edition), 2520B

Expected Reading (ppt)	Displayed Reading (ppt)	Tolerance (%)
0	0.00	--
10	10.06	+0.6
20	21.29	+6.5
30	31.36	+4.5
	<b>Tolerance Limit (%)</b>	<b>±10.0</b>

**Remark:** "Displayed Reading" presents the figures shown on item under calibration / checking regardless of equipment precision or significant figures.

---

Ms. Lin Wai Yu, Iris  
 Assistant Manager - Inorganic

# REPORT OF EQUIPMENT PERFORMANCE CHECK/CALIBRATION



WORK ORDER: HK2031198  
SUB-BATCH: 0  
DATE OF ISSUE: 24-Aug-2020  
CLIENT: ACTION UNITED ENVIRONMENT SERVICES AND CONSULTING

Equipment Type: Multifunctional Meter  
Brand Name/ Model No.: YSI Professional DSS  
Serial No./ Equipment No.: 17B102764/17B100758 (EQW019)  
Date of Calibration: 24-August-2020 Date of Next Calibration: 24-November-2020

## PARAMETERS:

Temperature Method Ref: Section 6 of International Accreditation New Zealand Technical Guide No. 3 Second edition March 2008: Working Thermometer Calibration Procedure.

Expected Reading (°C)	Displayed Reading (°C)	Tolerance (°C)
10.5	10.7	+0.2
20.5	20.8	+0.3
39.5	39.8	+0.3
	Tolerance Limit (°C)	±2.0

Remark: "Displayed Reading" presents the figures shown on item under calibration / checking regardless of equipment precision or significant figures.

Ms. Lin Wai Yu, Iris  
Assistant Manager - Inorganic



## REPORT OF EQUIPMENT PERFORMANCE CHECK/CALIBRATION

CONTACT:	BEN TAM	WORK ORDER:	HK2037835
CLIENT:	ACTION UNITED ENVIRONMENT SERVICES AND CONSULTING		
ADDRESS:	RM A 20/F., GOLD KING IND BLDG, NO. 35-41 TAI LIN PAI ROAD, KWAI CHUNG, N.T. HONG KONG	SUB-BATCH:	0
		LABORATORY:	HONG KONG
		DATE RECEIVED:	06-Oct-2020
		DATE OF ISSUE:	14-Oct-2020

### SPECIFIC COMMENTS

Equipment information (Brand name, Model No., Serial No. and Equipment No.) is provided by client. The performance of the equipment stated in this report is checked with independent reference material and results compared against a calibrated secondary source.

The "Tolerance Limit" quoted is the acceptance criteria applicable for similar equipment used by the laboratory or quoted from relevant international standards.

The "Next Calibration Date" is recommended according to best practice principle as practised by the laboratory or quoted from relevant international standards.

The validity of equipment/ meter performance only applies to the result(s) stated in the report.

Equipment Type:	pH meter
Service Nature:	Performance Check
Scope:	pH Value and Temperature
Brand Name/ Model No.:	AZ8685
Serial No./ Equipment No.:	1259868
Date of Calibration:	12-October-2020

### GENERAL COMMENTS

This is the Final Report and supersedes any preliminary report with this batch number.

Ms. Lin Wai Yu, Iris  
Assistant Manager - Inorganic

*This report may not be reproduced except with prior written approval from ALS Technichem (HK) Pty Ltd.*

# REPORT OF EQUIPMENT PERFORMANCE CHECK/CALIBRATION



**WORK ORDER:** HK2037835  
**SUB-BATCH:** 0  
**DATE OF ISSUE:** 14-Oct-2020  
**CLIENT:** ACTION UNITED ENVIRONMENT SERVICES AND CONSULTING

**Equipment Type:** pH meter  
**Brand Name/ Model No.:** AZ8685  
**Serial No./ Equipment No.:** 1259868  
**Date of Calibration:** 12-October-2020      **Date of Next Calibration:** 12-January-2021

**PARAMETERS:**

pH Value      Method Ref: APHA (21st edition), 4500H: B

Expected Reading (pH unit)	Displayed Reading (pH unit)	Tolerance (pH unit)
4.0	4.1	+0.10
7.0	6.9	-0.10
10.0	9.9	-0.10
<b>Tolerance Limit (pH unit)</b>		<b>±0.20</b>

Temperature      Method Ref: Section 6 of International Accreditation New Zealand Technical Guide No. 3 Second edition March 2008: Working Thermometer Calibration Procedure.

Expected Reading (°C)	Displayed Reading (°C)	Tolerance (°C)
10.5	10.6	+0.1
20.5	20.8	+0.3
39.0	39.1	+0.1
<b>Tolerance Limit (°C)</b>		<b>±2.0</b>

Remark: "Displayed Reading" presents the figures shown on item under calibration / checking regardless of equipment precision or significant figures.

---

Ms. Lin Wai Yu, Iris  
 Assistant Manager - Inorganic

Annex F2

## Surface Water Quality Monitoring Results

**Table F2.1 Surface Water Quality Monitoring Results at DP4T**

Date	Time	Weather Condition	Water Appearance	Water Condition	Water Temperature (°C)	Dissolved Oxygen (DO) (mg/L)	pH	Suspended Solids (SS) (mg/L)	Remarks
5 Nov 20	14:27	Sunny		Unable to collect water sample due to insufficient flow					-
12 Nov 20	14:20	Sunny		Unable to collect water sample due to insufficient flow					-
19 Nov 20	14:35	Sunny		Unable to collect water sample due to insufficient flow					-
25 Nov 20	14:27	Sunny		Unable to collect water sample due to insufficient flow					-
					<b>Average</b>	-	-	-	-
					<b>Min</b>	-	-	-	-
					<b>Max</b>	-	-	-	-

Notes: DP4 was temporary relocated to DP4 (Future, temporary) (i.e. DP4T) as an interim discharge point from the monitoring event on 16 May 2019.

**Table F2.2 Surface Water Quality Monitoring Results at DP6**

Date	Time	Weather Condition	Water Appearance	Water Condition	Water Temperature (°C)	Dissolved Oxygen (DO) (mg/L)	pH	Suspended Solids (SS) (mg/L)	Remarks
5 Nov 20	14:18	Sunny		Unable to collect water sample due to insufficient flow					-
12 Nov 20	14:08	Sunny		Unable to collect water sample due to insufficient flow					-
19 Nov 20	14:30	Sunny		Unable to collect water sample due to insufficient flow					-
25 Nov 20	14:22	Sunny		Unable to collect water sample due to insufficient flow					-
					<b>Average</b>	-	-	-	-
					<b>Min</b>	-	-	-	-
					<b>Max</b>	-	-	-	-



Annex F3

# Event and Action Plan for Surface Water Quality Monitoring

**Annex F3**      *Event and Action Plan for Surface Water Quality During Construction Phase*

Event	Action		
	ET	IEC	Contractor
Action Level being exceeded by one sampling day	<ul style="list-style-type: none"> <li>Repeat <i>in situ</i> measurement to confirm findings</li> <li>Identify the source(s) and investigate the cause(s) of exceedance</li> <li>Prepare Notification of Exceedance within 24 hours</li> <li>Inform Contractor, IEC and Project Proponent whether the cause of exceedance is due to the Project</li> <li>Repeat measurement on the next day of exceedance if exceedance is due to the Project</li> </ul>	<ul style="list-style-type: none"> <li>Verify the Notification of Exceedance</li> <li>Check monitoring data submitted by ET</li> <li>Check Contractor's working methods</li> </ul>	<ul style="list-style-type: none"> <li>Rectify any unacceptable practice</li> <li>Amend working methods if appropriate</li> </ul>
Action Level being exceeded by two consecutive sampling days	<ul style="list-style-type: none"> <li>Repeat <i>in situ</i> measurement to confirm findings</li> <li>Identify the source(s) and investigate the cause(s) of exceedance</li> <li>Prepare Notification of Exceedance within 24 hours</li> <li>Inform Contractor, IEC and Project Proponent whether the cause of exceedance is due to the Project</li> <li>Discuss with Contractor and IEC for remedial measures required</li> <li>Ensure remedial measures are properly implemented</li> <li>Increase the monitoring frequency to daily if exceedance is due to the Project and continue until no exceedance of Action Level</li> </ul>	<ul style="list-style-type: none"> <li>Verify the Notification of Exceedance</li> <li>Check monitoring data submitted by ET</li> <li>Check Contractor's working methods</li> <li>Discuss with ET Leader and Contractor on proposed remedial measures</li> <li>Review proposals on remedial measures</li> <li>Audit the implementation of the remedial measures</li> <li>Audit the effectiveness of the implemented remedial measures</li> </ul>	<ul style="list-style-type: none"> <li>Submit proposals for remedial measures to IEC</li> <li>Implement the agreed proposals</li> <li>Amend proposal if appropriate</li> </ul>

Event	Action		
	ET	IEC	Contractor
Limit Level being exceeded by two consecutive sampling days	<ul style="list-style-type: none"> <li>Repeat <i>in situ</i> measurement to confirm findings</li> <li>Identify source(s) of impact and cause(s) of exceedance</li> <li>Prepare the Notification of Exceedance within 24 hours</li> <li>Inform Contractor, IEC, Project Proponent and EPD whether the cause of exceedance is due to the Project</li> <li>Discuss with Contractor and IEC for remedial measures required</li> <li>Ensure remedial measures are properly implemented</li> <li>Increase the monitoring frequency to daily if exceedance is due to the Project until no exceedance of Limit Level</li> </ul>	<ul style="list-style-type: none"> <li>Verify the Notification of Exceedance</li> <li>Check monitoring data submitted by ET</li> <li>Check Contractor's working methods</li> <li>Discuss with ET and Contractor on proposed remedial measures</li> <li>Review proposals on remedial measures</li> <li>Audit the implementation of the remedial measures</li> <li>Audit the effectiveness of the implemented remedial measures</li> </ul>	<ul style="list-style-type: none"> <li>Critically review the working methods</li> <li>Rectify unacceptable practice</li> <li>Check all plant and equipment</li> <li>Consider changes of working methods</li> <li>Discuss with the ET and IEC and propose mitigation measures to the IEC</li> <li>Implement the agreed mitigation measures</li> </ul>
Limit Level being exceeded by more than two consecutive sampling days	<ul style="list-style-type: none"> <li>Repeat <i>in situ</i> measurement to confirm findings</li> <li>Identify source(s) of impact and cause(s) of exceedance</li> <li>Prepare the Notification of Exceedance within 24 hours</li> <li>Inform Contractor, IEC, Project Proponent and EPD whether the cause of exceedance is due to the Project</li> <li>Check monitoring data, all plant, equipment and Contractor's working methods</li> <li>Discuss with Contractor and IEC for remedial measures required</li> <li>Ensure mitigation measures are implemented</li> <li>Increase the monitoring frequency to daily if exceedance is due to the Project until no exceedance of Limit Level for two consecutive days</li> </ul>	<ul style="list-style-type: none"> <li>Verify the Notification of Exceedance</li> <li>Check monitoring data submitted by ET</li> <li>Check Contractor's working methods</li> <li>Discuss with ET and Contractor on proposed remedial measures</li> <li>Review proposals on remedial measures</li> <li>Audit the implementation of the remedial measures</li> <li>Audit the effectiveness of the implemented remedial measures</li> </ul>	<ul style="list-style-type: none"> <li>Critically review the working methods</li> <li>Rectify unacceptable practice</li> <li>Check all plant and equipment</li> <li>Consider changes of working methods</li> <li>Discuss with the ET and IEC and propose mitigation measures</li> <li>Implement the agreed mitigation measures</li> <li>As directed by the Project Proponent, slow down or stop all or part of the construction activities</li> </ul>

Annex G

Cumulative Statistics on  
Exceedances,  
Environmental Complaints,  
Notification of Summons  
and Status of Prosecutions

**Table G1** *Cumulative Statistics on Exceedances*

		Total No. recorded in this reporting period	Total No. recorded since project commencement
Air Quality (24-hr TSP)	Action	0	0
	Limit	0	0
Noise	Action	0	0
	Limit	0	0
Surface Water Quality	Action	0	0
	Limit	0	47

**Table G2** *Cumulative Statistics on Complaints, Notifications of Summons and Successful Prosecutions*

Reporting Period	Cumulative Statistics		
	Complaints	Notifications of Summons	Prosecutions
This Reporting Period (1 – 30 November 2020)	0	0	0
Total no. received since project commencement	1	0	0

Annex H

## Monitoring Schedule for the Next Reporting Period

**South East New Territories (SENT) Landfill Extension  
EM&A Impact Monitoring Schedule during Construction Phase**

December 2020

Sun	Mon	Tue	Wed	Thu	Fri	Sat
		1	2	3 Surface Water Monitoring (pm) Noise Monitoring (pm)	4	5
Dust Monitoring 6	7	8	9	10 Surface Water Monitoring (pm) Noise Monitoring (pm)	11	Dust Monitoring 12
13	14	15	16	17 Surface Water Monitoring (pm) Noise Monitoring (pm)	Dust Monitoring 18	19
20	21	22	23 Surface Water Monitoring (pm) Noise Monitoring (pm)	Dust Monitoring 24	25	26
27	28	29	Dust Monitoring 30	31 Surface Water Monitoring (pm) Noise Monitoring (pm)		

Note:

Impact dust monitoring will be conducted at two monitoring stations (DM1 and DM2) under the on-going EM&A programme TKO Area 137 Fill Bank and the results will be shared with SENTX.