



Water Supplies Department  
New Works Branch  
Consultants Management Division  
6/F Sha Tin Government Offices  
1 Sheung Wo Che Road  
Sha Tin  
New Territories

Your reference:

Our reference: HKWSD202/50/107197

Date: 31 March 2021

Attention: Mr W K Lau

**BY EMAIL & POST**  
**(email: [simon\\_wk\\_lau@wsd.gov.hk](mailto:simon_wk_lau@wsd.gov.hk))**

Dear Sirs

Agreement No. CE 5/2019 (EP)  
Independent Environmental Checker for First Stage of  
Tseung Kwan O Desalination Plant– Investigation  
Verification of Quarterly EM&A Report No.4 (December 2020 - February 2021)

We refer to emails of 26 and 30 March 2021 attaching Quarterly EM&A Report No.4 (December 2020 - February 2021) for the captioned project prepared by the ET.

We have no further comments and hereby verify the captioned report.

Should you have any queries regarding the above, please do not hesitate to contact the undersigned on 2618 2831.

Yours faithfully  
ANewR CONSULTING LIMITED

Louis Kwan  
Independent Environmental Checker

KSYL/CYYR/lsmt



水務署

Water Supplies Department

**Contract No. 13/WSD/17**

**Design, Build and Operate First Stage of Tseung Kwan O  
Desalination Plant**

**Quarterly EM&A Report No.4  
(Period from 1 Dec 2020 to 28 Feb 2021)**

Document No.

ASCL	/	200168078	/	QEMA4	/	A
Publisher		Project Code		Sequential No.		Revision Index

	Prepared by:	Reviewed by:	Certified by:
Name	Charlene LAI	Nelson TSUI	Jacky LEUNG
Position	Environmental Team Member	Environmental Team Member	Environmental Team Leader
Signature			
Date:	26/03/2021	26/03/2021	26/03/2021

## REVISION HISTORY

<b>REV.</b>	<b>DESCRIPTION OF MODIFICATION</b>	<b>DATE</b>
A	First Issue for Comments	26 Mar 2021

## CONTENTS

Executive Summary.....	1
1. Basic Project Information.....	3
2. Noise.....	7
3. Water Quality.....	12
4. Waste .....	17
5. Landfill Gas Monitoring.....	18
6. SUMMARY OF MONITORING EXCEEDANCE, COMPLAINTS, NOTIFICATION OF SUMMONS AND PROSECUTIONS .....	19
7. EM&A Site Inspection.....	21
8. Conclusions and Recommendations .....	22
Appendix A Master Programme	
Appendix B Overview of Desalination Plant in Tseung Kwan O	
Appendix C Summary of Implementation Status of Environmental Mitigation	
Appendix D Impact Monitoring Schedule of the Reporting Period	
Appendix E Event/Action Plan for Noise Exceedance	
Appendix F Event/Action Plan for Water Quality Exceedance	
Appendix G Waste Flow Table	
Appendix H Complaint Log	

## **EXECUTIVE SUMMARY**

### **INTRODUCTION**

- A1. The Project, Design, Build and Operate First Stage of Tseung Kwan O Desalination Plant (TKODP), is a Designated Project under the Environmental Impact Assessment Ordinance (Cap. 499) (EIAO) and is currently governed by a Further Environmental Permit (EP No. FEP – 01/503/2015/A) for the construction and operation of the Project.
- A2. In accordance with the Updated Environmental Monitoring and Audit (EM&A) Manual for the Project, EM&A works for marine water quality, noise, waste management and ecology should be carried out by Environmental Team (ET), Acuity Sustainability Consulting Limited (ASCL), during the construction phase of the Project.
- A3. This is the 4<sup>th</sup> Quarterly EM&A Report, prepared by ASCL, for the Project summarizing the monitoring results and audit findings of the EM&A programme at and around Tseung Kwan O Area 137 (TKO 137) during the reporting period from 1 Dec 2020 to 28 Feb 2021.
- A4. The EM&A programme for this contract has covered environmental monitoring on construction noise level at selected NSRs and Contractor’s environmental performance auditing in the aspects of construction dust, construction noise, water quality, waste management, Landscape and Visual and Ecology.

### **SUMMARY OF MAIN WORKS UNDERTAKEN & KEY MITIGATION MEASURES IMPLEMENTED**

- A5. Key activities carried out in this reporting period for the Project included the followings:
- Land Survey;
  - Access Road Construction;
  - Construction of 132kV substation, internal finishing and E&M installation;
  - Construction of ActiDAFF footing, perimeter wall and water tank;
  - Excavation and construction of RO/electrical building footing and ground floor slab;
  - Excavation and installation of temporary soil nail for Product Water Storage Tank;
  - Construction for Product Water Storage Tank footing and perimeter wall;
  - Excavation and ELS installation for Combined Shaft Area;
  - Installation of socketed H pile, pile load test and footing construction at administration building;
  - Excavation and construction of footing at post treatment building;
  - Excavation of 11kV substation;
  - Construction of Main electrical and chiller plant building
- A6. The major environmental impacts brought by the above construction works include:
- Construction dust and noise generation from the construction and excavation works, installation of soil nails, sheet piling works and ELS works;
  - Waste generation from the construction activities

A7. The key environmental mitigation measures implemented for the Project in this reporting period associated with the above construction works include:

- Dust suppression by regular wetting and water spraying for construction works
- Dust suppression by covering dusty materials with tarpaulin sheet
- Reduction of noise from equipment and machinery on-site
- Sorting and storage of general refuse and construction waste

#### SUMMARY OF EXCEEDANCE & INVESTIGATION & FOLLOW-UP

A8. No noise monitoring was conducted during the reporting period since there are no project-related construction activities undertaken within a radius of 300m from the monitoring locations. No project-related exceedance of the Action Level was recorded during the reporting period.

A9. No impact water quality monitoring was conducted in the reporting period since the commencement of marine construction and dredging activities for the Project are scheduled in March 2021 the earliest. No project-related exceedance of the Action Level was recorded during the reporting period.

A10. Weekly site inspections of the construction works were carried out by ET to audit the mitigation measures implementation status. Bi-weekly joint site inspections were carried out by ET and IEC.

#### COMPLAINT HANDLING AND PROSECUTION

A11. No project-related environmental complaint was received during the reporting period.

A12. Neither notifications of summons nor prosecution was received for the Project.

#### REPORTING CHANGE

A13. There was no change to be reported that may affect the on-going EM&A programme.

## 1. BASIC PROJECT INFORMATION

### 1.1. BACKGROUND

The Jardine Engineering Corporation Limited, China State Construction Engineering (Hong Kong) Limited and Acciona Agua, S.A. Trading As AJC Joint Venture (AJCJV) is contracted to carry out the Design, Build and Operate First Stage of Tseung Kwan O Desalination Plant (DPTKO) under Contract No. 13/WSD/17 (the Project).

Acuity Sustainability Consulting Limited (ASCL) is commissioned by AJCJV to undertake the Environmental Team (ET) services as required and/or implied, both explicitly and implicitly, in the Environmental Permit (EP), Environmental Impact Assessment Report (EIA Report) (Register No. AEIAR-192/2015) and Environmental Monitoring and Audit Manual (EM&A Manual) for the Project; and to carry out the Environmental Monitoring and Audit (EM&A) programme in fulfillment of the EIA Report's EM&A requirements and Contract No. 13/WSD/17 Specification requirements.

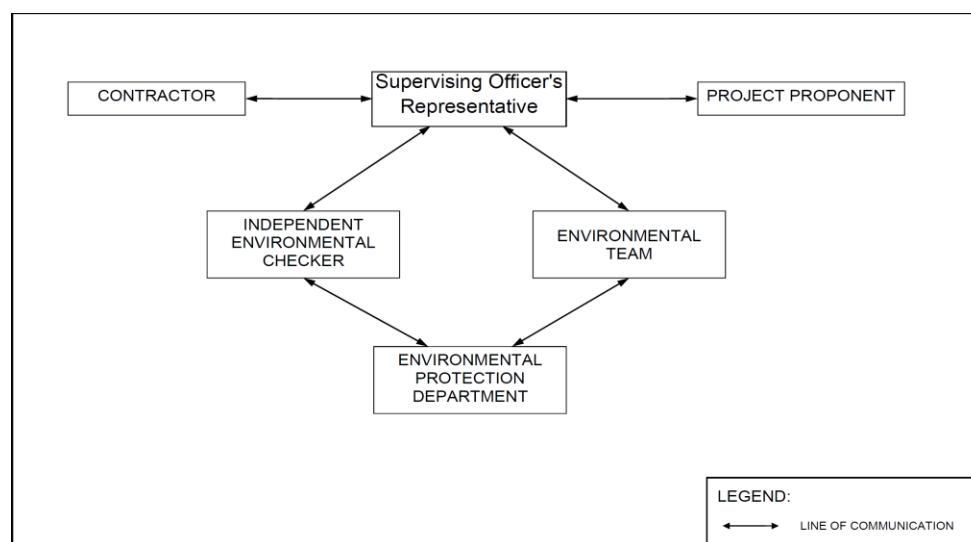
Pursuant to the Environmental Impact Assessment Ordinance (EIAO), the Director of Environmental Protection granted the Environmental Permit (No. EP-01/503/2015) and Variation of Environmental Permit (No. EP-01/503/2015/A) to Water Supplies Department (WSD); and granted the Further Environmental Permit (No. FEP-01/503/2015/A) to AJCJV for the Project.

### 1.2. THE REPORTING SCOPE

This is the 4<sup>th</sup> Quarterly EM&A Report for the Project which summarizes the key findings of the EM&A programme during the reporting period from 1 Dec to 28 Feb 2020.

### 1.3. PROJECT ORGANIZATION-

The Project Organization structure for Construction Phase is presented in **Figure 1.1**.



**Figure 1.1 Project Organization Chart**

Contact details of the key personnel are presented in Table 1.1 below:

**Table 1.1 Contact Details of Key Personnel**

<b>Party</b>	<b>Position</b>	<b>Name</b>	<b>Telephone no.</b>
Project Proponent	SE/CM2	Benny Lam	2634-3573
Supervising Officer (Black & Veatch)	Project Manager	Christina Ko	2608-7302
	Chief Resident Engineer	Roger Wu	6343-1002
The Jardine Engineering Corporation, Limited, China State Construction Engineering (Hong Kong) Limited and Acciona Agua, S.A. Trading	Project Manager	Stephen Yeung	2807-4665
	Environmental Monitoring Manager	Brian Kam	9456-9541
Acuity Sustainability Consulting Limited	Environmental Team Leader	Jacky Leung	2698-6833
ANewR Consulting Limited	Independent Environmental Checker (IEC)	Louis Kwan	2618-2831



#### 1.4. SUMMARY OF CONSTRUCTION WORKS

Details of the major construction activities undertaken in this reporting period are shown in below. The construction programme is presented in **Appendix A**.

Key activities carried out in this reporting period for the Project included the following:

- Land Survey;
- Access Road Construction;
- Construction of 132kV substation, internal finishing and E&M installation;
- Construction of ActiDAFF footing, perimeter wall and water tank;
- Excavation and construction of RO/electrical building footing and ground floor slab;
- Excavation and installation of temporary soil nail for Product Water Storage Tank;
- Construction for Product Water Storage Tank footing and perimeter wall;
- Excavation and ELS installation for Combined Shaft Area;
- Installation of socketed H pile, pile load test and footing construction at administration building;
- Excavation and construction of footing at post treatment building;
- Excavation of 11kV substation;
- Construction of Main electrical and chiller plant building

#### 1.5. SUMMARY OF ENVIRONMENTAL STATUS

A summary of the valid permits, licences, and /or notifications on environmental protection for this Project is presented in **Table 1.2**.

**Table 1.2 Summary of the Status of Valid Environmental Licence, Notification, Permit and Documentations**

Permit/ Licenses/ Notification	Reference	Validity Period	Remarks
Environmental Permit	FEP – 01/503/2015/A	Throughout the Contract	
Notification of Construction Works under the Air Pollution Control (Construction Dust) Regulation (Form NA)	Ref. No.: 451539	30/12/2019 – 30/03/2023	
Wastewater Discharge Licence	WT00035775-2020	24/07/2020 – 31/07/2025	
Chemical Waste Producer Registration	5213-839-A2987-01	Throughout the Contract	
Construction Noise Permit (24 hours)	GW-RE0474-20	04/06/2020 – 03/12/2020	
	GW-RE0784-20	01/10/2020 – 31/03/2021	
Billing Account for Disposal of Construction Waste	7036276	Throughout the Contract	

The status for all environmental aspects is presented in **Table 1.3**.

**Table 1.3 Summary of Status for Key Environmental Aspects under the Updated EM&A Manual**

Parameters	Status
<b>Water Quality</b>	
Baseline Monitoring under EM&A Manual	The baseline water quality monitoring was conducted between 12 May 2020 and 6 June 2020
Impact Monitoring	The impact water quality monitoring has been scheduled after the commencement of marine construction works
<b>Noise</b>	
Baseline Monitoring	The baseline noise monitoring result has been reported in Baseline Monitoring Report and submitted to EPD under EP Condition 3.4
Impact Monitoring	On-going
<b>Waste Management</b>	
Mitigation Measures in Waste Monitoring Plan	On-going
<b>Environmental Audit</b>	
Site Inspection covering Measures of Air Quality, Noise Impact, Water Quality, Waste, Ecological Quality, Fisheries, Landscape and Visual	On-going

Other than the EM&A work by ET, environmental briefings, trainings and regular environmental management meetings were conducted, in order to enhance environmental awareness and closely monitor the environmental performance of the contractors.

The EM&A programme has been implemented in accordance with the recommendations presented in the approved EIA Report and the EM&A Manual. A summary of implementation status of the environmental mitigation measures for the construction phase of the Project during the reporting period is provided in **Appendix C**.

## 2. NOISE

### 2.1. MONITORING REQUIREMENTS

To ensure no adverse noise impact, noise monitoring is recommended to be carried out within 300m radius from the nearby noise sensitive receivers (NSRs), during construction phase. The NSRs selected as monitoring station are (i) NSR4 – Creative Secondary School, (ii) NSR24 – PLK Laws Foundation College, and (iii) NSR31 – School of Continuing and Professional Studies – CUHK respectively.

In accordance with the EM&A Manual, baseline noise level at the noise monitoring stations were established as presented in the Baseline Monitoring Report. Impact noise monitoring will be conducted once per week in the form of 30-minutes measurements Leq, L10 and L90 levels recorded at each monitoring station between 0700 and 1900 on normal weekdays.

Referring to EM&A manual Section 4.1.2, the impact noise monitoring should be carried out at all the designated monitoring stations when there are project-related construction activities undertaken within a radius of 300m from the monitoring stations.

No impact monitoring for noise impact was conducted in the reporting period due to the overly distant monitoring station from the works location, where they were farther than 1 km from the closet monitoring station NSR4 to the works location.

Construction noise level measured in terms of the A-weighted equivalent continuous sound pressure level (LAeq). Leq<sub>30min</sub> was used as the monitoring parameter for the time period between 0700 and 1900 on normal weekdays. **Table 2.1** summarizes the monitoring parameters, frequency and duration of the impact noise monitoring.

**Table 2.1 Noise Monitoring Parameters, Time, Frequency and Duration**

Time	Duration	Interval	Parameters
Daytime: 0700-1900	Day time: 0700-1900 (during weekdays)	Continuously in Leq <sub>5min</sub> /Leq <sub>30min</sub> (average of 6 consecutive Leq <sub>5min</sub> )	Leq <sub>30min</sub> L <sub>10 30min</sub> & L <sub>90 30min</sub>

### 2.2. MONITORING LOCATIONS

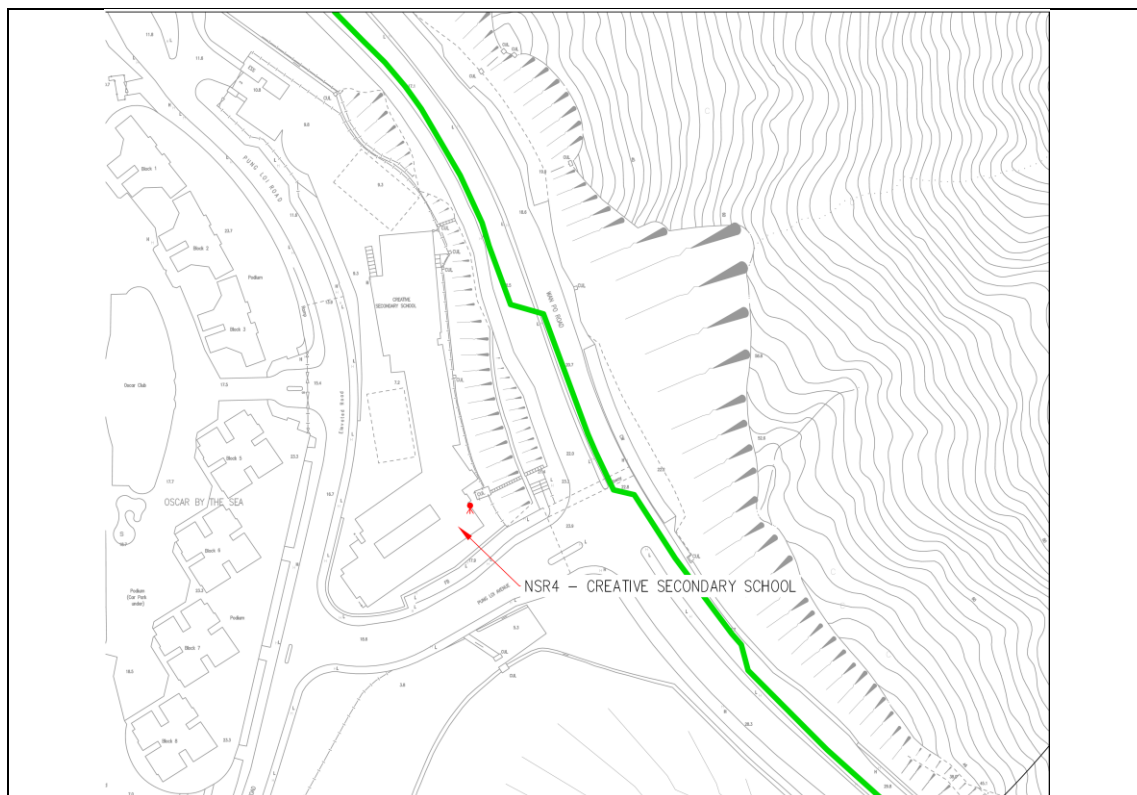
The monitoring locations should normally be made at a point 1m from the exterior of the NSRs building façade and be at a position 1.2m above the ground. A correction of +3dB(A) should be made to the free-field measurements.

According to the environmental findings detailed in the EIA report and Baseline Monitoring Report, the designated locations for the construction noise monitoring are listed in **Table 2.2** below.

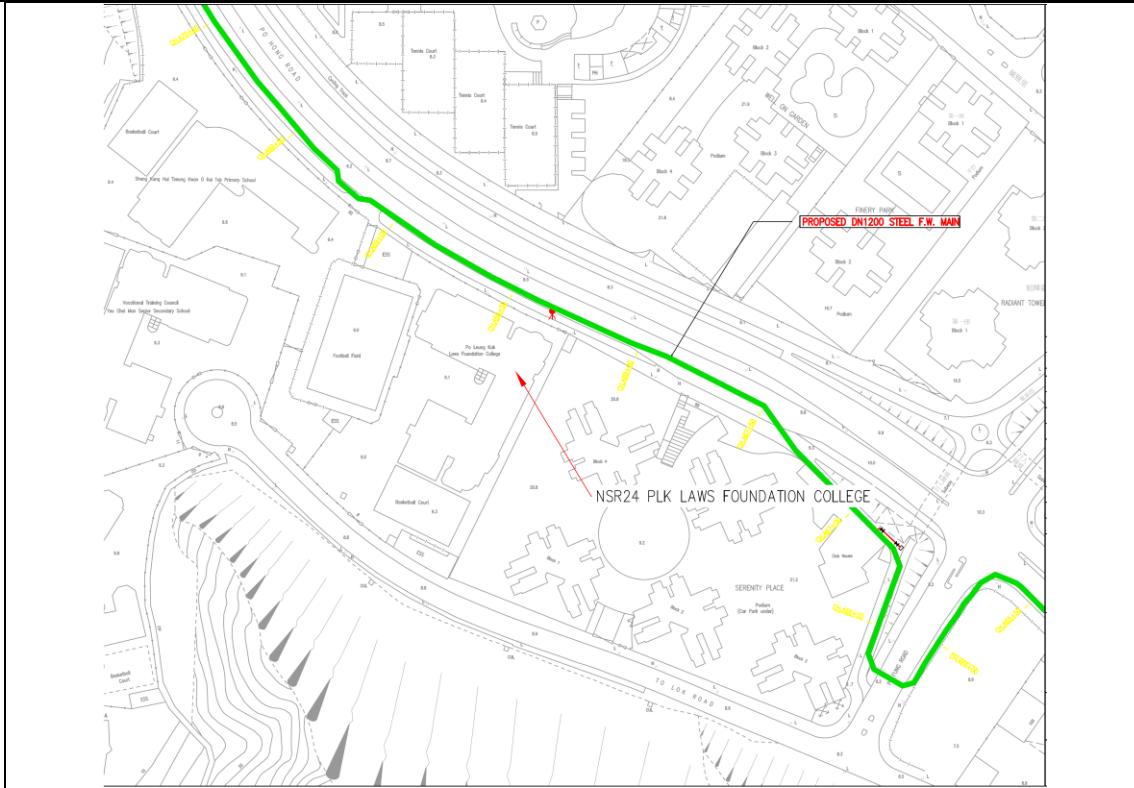
**Table 2.2 Noise Sensitive Receivers**

NSR ID	Noise Sensitive Receivers	Monitoring Location	Position
NSR 4	Creative Secondary School	Roof Floor	1 m from facade
NSR 24	PLK Laws Foundation College	Pedestrian Road on Ground Floor	Free-field
NSR 31	School of Continuing and Professional Studies - CUHK	Roof Floor	1 m from facade

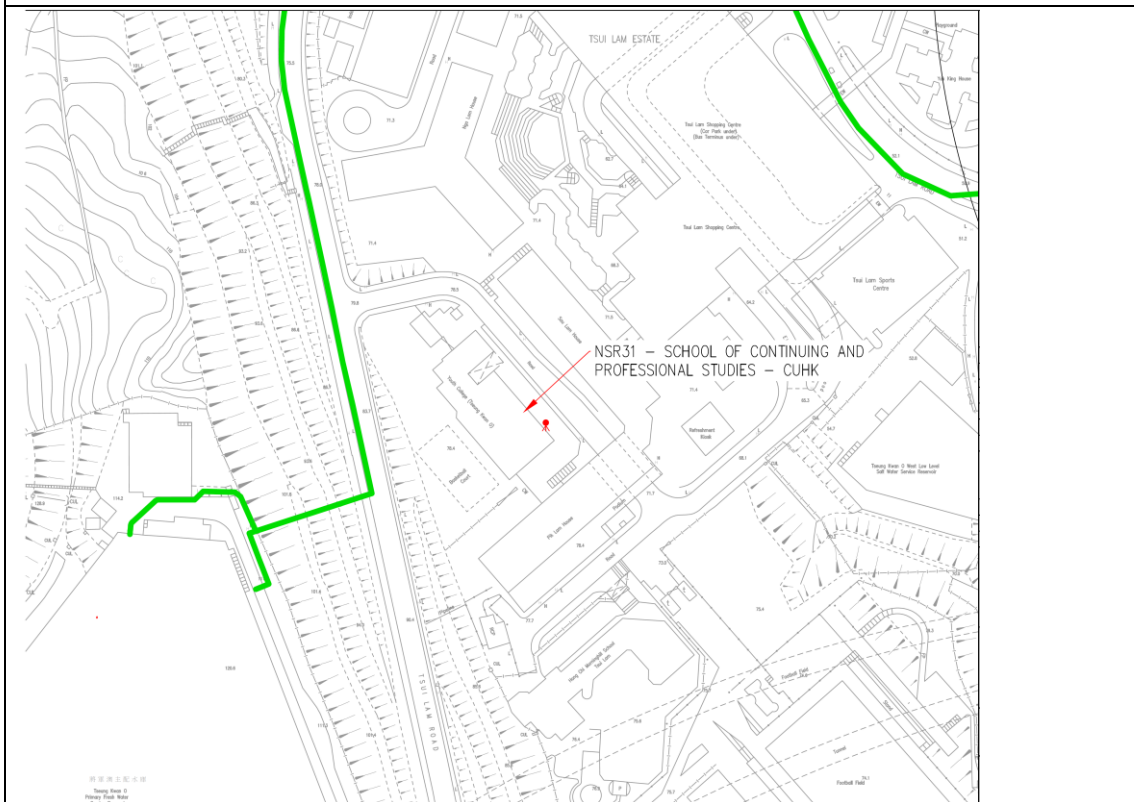
The monitoring locations should normally be made at a point 1m from the exterior of the NSRs building façade and be at a position 1.2m above the ground. A correction of +3dB(A) should be made to the free-field measurements. Three noise monitoring locations for impact monitoring at the nearby sensitive receivers are shown in **Figure 2.1-2.3**.



**Figure 2.1 NSR4 Creative Secondary School**



**Figure 2.2 NSR24 PLK Laws Foundation College**



**Figure 2.3 NSR31 School of Continuing and Professional Studies - CUHK**

### 2.3. ACTION AND LIMIT LEVELS

The Action/Limit Levels are in line with the criteria of Practice Note for Professional Persons (ProPECC PN 2/93) “Noise from Construction Activities – Non-statutory Controls” and Technical Memorandum on Environmental Impact Assessment Process issued by HKSAR Environmental Protection Department [“EPD”] under the Environmental Impact Assessment Ordinance, Cap 499, S.16 are presented in **Table 2.3**.

**Table 2.3 Action and Limit Levels for Noise per Updated EM&A Manual**

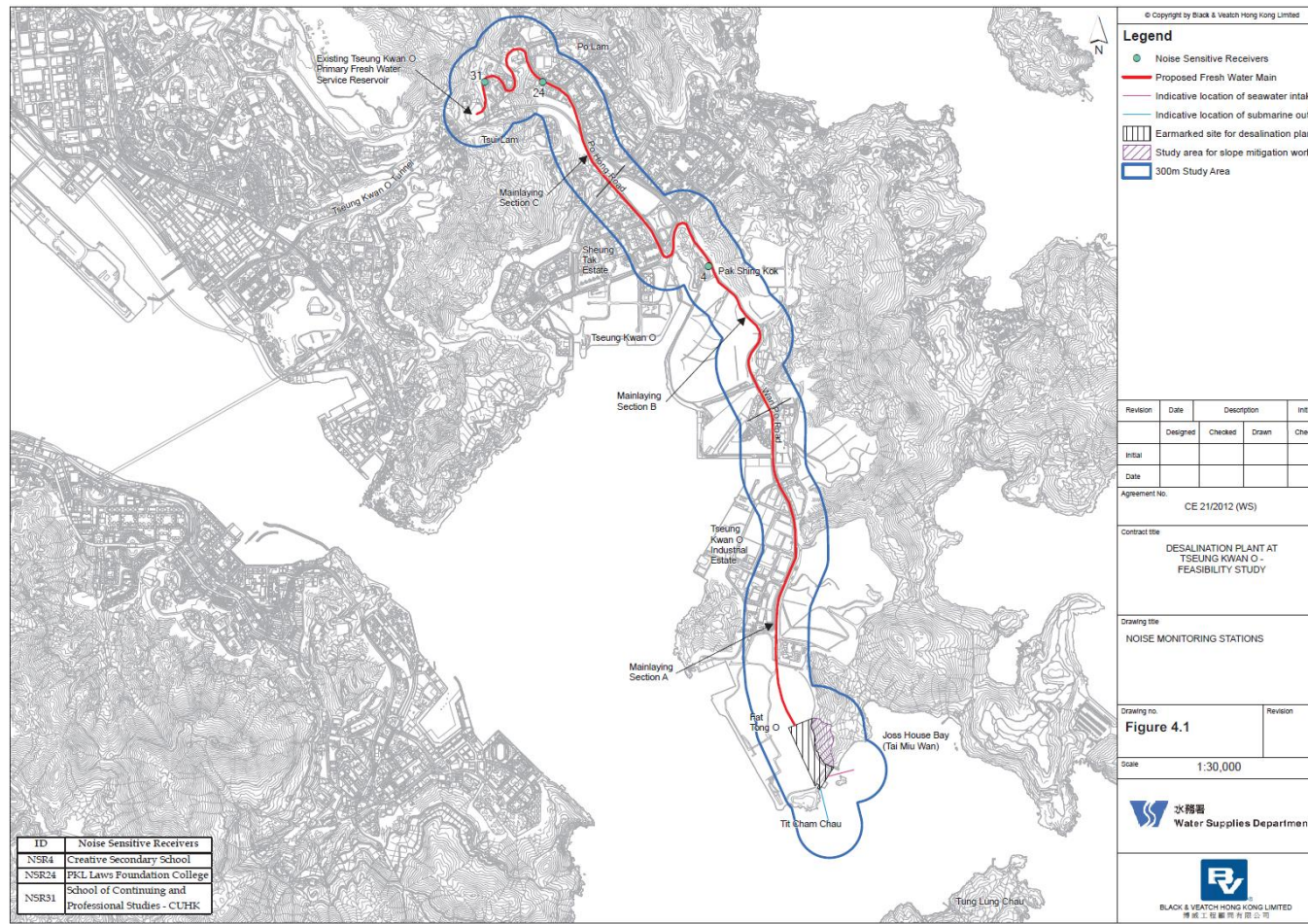
Time Period	Action Level	Limit Level (dB(A))
0700-1900 on normal weekdays	When one documented complaint is received from any one of the noise sensitive receivers	<ul style="list-style-type: none"> <li>• 70 dB(A) for school and</li> <li>• 65 dB(A) during examination period</li> </ul>

Notes: Limits specified in the GW-TM and IND-TM for construction and operation noise, respectively.

If exceedances were found during noise monitoring, the actions in accordance with the Event and Action Plan shall be carried out according to **Appendix E**.

## 2.4. MONITORING RESULTS AND OBSERVATIONS

Referring to EM&A manual Section 4.1.2, the impact noise monitoring should be carried out when there are project-related construction activities undertaken within a radius of 300m from the monitoring stations. No monitoring station was located within a radius of 300m of the Project site as shown in **Figure 2.4**, no impact monitoring for noise impact was conducted in the reporting period.



**Figure 2.4 Site Layout Plan with Noise Sensitive Receivers and Desalination Plant**

### 3. WATER QUALITY

In accordance with the recommendations of the EIA, water quality EM&A is required during dredging for the submarine pipelines and, during operation phase. In addition, baseline water quality monitoring will be required prior to the commencement of marine construction activities. The following Section provides details of the water quality monitoring to be undertaken by the Environmental Team (ET) to verify the distance of sediment and brine plume dispersion and to identify whether the potential exists for any indirect impacts to occur to ecological sensitive receivers. The water quality monitoring programme will be carried out to allow any deteriorating water quality to be readily detected and timely action taken to rectify the situation. The status and locations of water quality sensitive receivers and the marine works location may change after issuing this Document. If required, the ET in consultation with IEC will propose updated monitoring locations and seek approval from EPD.

Water quality monitoring for the Project can be divided into the following stages:

- Dredging activities during construction phase;
- Discharge of effluent from main disinfection during construction phase;
- Operation phase – first year upon commissioning; and,
- Continuous monitoring of effluent quality.

In addition, the marine works contractor is required to complete a silt curtain efficiency test for the combined use of floating silt curtain type and cage type silt curtain for dredging at seawater intake to confirm the silt curtain reduction efficiency assumptions of the assessment. The details of testing plan together with the silt curtain deployment plan updated testing plan shall be submitted by the ET to seek approval from the IEC and EPD.

#### 3.1. IMPACT MONITORING METHODOLOGY

##### 3.1.1. WATER QUALITY PARAMETERS

The parameters that have been selected for measurement in situ and in the laboratory are those that were either determined in the EIA to be those with the most potential to be affected by the construction works or are a standard check on water quality conditions. Parameters to be measured in the baseline monitoring are listed in **Table 3.1**.



**Table 3.1 Parameters measured in the baseline marine water quality monitoring**

Parameters	Unit	Abbreviation
<b>In-situ measurements</b>		
Dissolved oxygen	mg/L	DO
Temperature	°C	-
pH	-	-
Turbidity	NTU	-
Salinity	‰	-
Total Residual Chlorine <sup>NOTE1</sup>	mg/L	TRC
<b>Laboratory measurements</b>		
Suspended Solids	mg/L	SS
Iron-Soluble <sup>NOTE2</sup>	mg/L	Fe
Anti-scalant as Reactive Phosphorus <sup>NOTE2</sup>	mg/L	PO <sub>4</sub> as P-

NOTE 1: Monitoring of TRC will be conducted when cleaning and sterilization of the new freshwater main is carried out.

NOTE 2: The testing methods shall be submitted to EPD for approval prior to the commencement of monitoring programme

In addition to the water quality parameters, other relevant data will also be measured and recorded in Water Quality Monitoring Logs, including the location of the sampling stations, water depth, time, weather conditions, sea conditions, tidal stage, current direction and velocity, special phenomena and work activities undertaken around the monitoring and works area that may influence the monitoring results.

### 3.1.2. MONITORING LOCATION

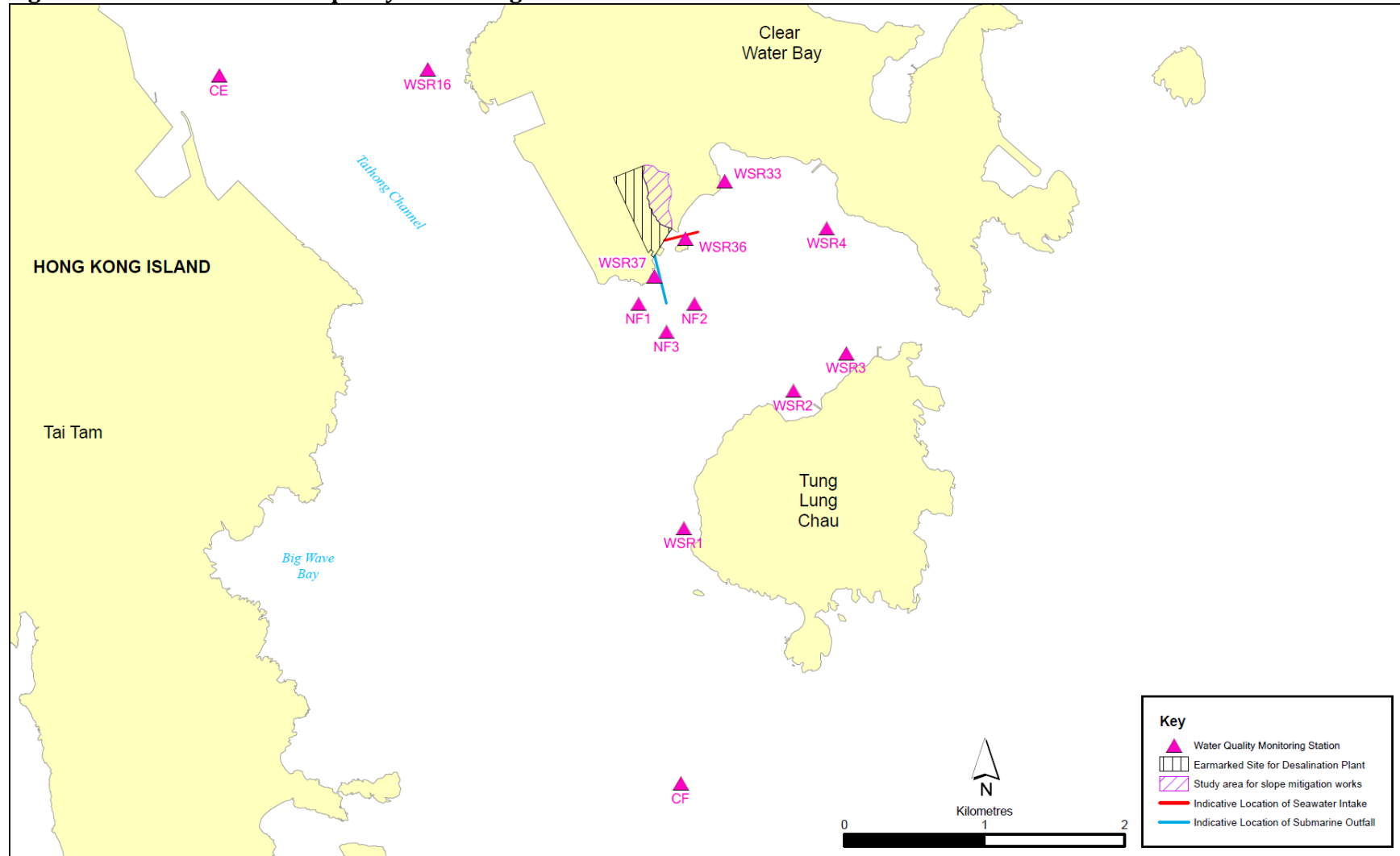
The water quality monitoring locations for baseline in accordance to the EM&A Manual and Contract Specification are shown in Figure 3.1 respectively, and detailed in Table 3.2 below. A schedule for water quality monitoring shall be prepared by the ET and approved by IEC and EPD prior to the commencement of the monitoring.

**Table 3.2 Location of Baseline Water Quality Monitoring Station**

Station	Easting	Northing	Description
CE	843550	815243	Upstream control station at ebb tide
CF	846843	810193	Upstream control station at flood tide
WSR1	846864	812014	Ecological sensitive receiver at Tung Lung Chau
WSR2	847645	812993	Fisheries sensitive receiver at Tung Lung Chau
WSR3	848023	813262	Ecological sensitive receiver at Tung Lung Chau
WSR4	847886	814154	Ecological sensitive receiver at Tai Miu Wan
WSR16	845039	815287	Ecological sensitive receiver at Fat Tong Chau
WSR33	847159	814488	Ecological sensitive receiver at Tai Miu Wan
WSR36	846878	814081	Ecological sensitive receiver at Kwun Tsai
WSR37	846655	813810	Ecological sensitive receiver at Tit Cham Chau
NF1	846542	813614	Edge of mixing zone, ~ 200m west of outfall diffuser
NF2	846942	813614	Edge of mixing zone, ~ 200m east of outfall diffuser
NF3	846742	813414	Edge of mixing zone, ~ 200m south of outfall diffuser

WSR1 to WSR37 were identified in accordance with Annex 14 of the EIAO-TM as well as Clause 3.4.4.2 of the Environmental Impact Assessment Study Brief for Desalination Plant at Tseung Kwan O (No. ESB-266/2013). WSR1 to WSR3 are sited near the Tung Lung Chau Fish Culture Zone; WSR16 and WSR36 are sited near the coral assemblages along the coastlines of Fat Tong Chau and Kwun Tsai respectively; WSR 4 and WSR33 are sited near the Coastal Protection Area and coral assemblages in waters of Tai Miu Wan; WSR37 is sited near the fisheries resource including spawning and nursery grounds at the coastal water of Tit Cham Chau.

**Figure 3.1 Baseline water quality monitoring locations under EM&A Manual**



### **3.2. MONITORING PROGRAMME**

The ET of the Project had conducted the baseline water monitoring between 12 May 2020 to 6 June 2020 at the thirteen designated monitoring stations and the six designated monitoring at waters near TKO in accordance with the EM&A Manual and Contract Specification respectively. The monitoring results was presented in Baseline Water Quality Monitoring Report separately.

The commencement of marine construction and dredging activities for the Project are scheduled in March 2021 the earliest. The impact water monitoring shall be scheduled after the commencement of marine construction and dredging activities. Hence, no impact water monitoring was conducted during the reporting period.

## 4. WASTE

The waste generated from this Project includes inert construction and demolition (C&D) materials, and non-inert C&D materials. Non-inert C&D materials are made up of general refuse, vegetative wastes and recyclable wastes such as plastics and paper/cardboard packaging waste. Steel materials generated from the project are also grouped into non-inert C&D materials as the materials were not disposed of with other inert C&D materials. With reference to relevant handling records and trip tickets of this Project, the quantities of different types of waste generated in the reporting month are summarised in **Table 4.1**. Details of cumulative waste management data are presented as a waste flow table in **Appendix G**.

**Table 4.1 Quantities of Waste Generated from the Project during reporting period**

Reporting Months	Actual Quantities of Inert C&D Materials Generated Monthly						Actual Quantities of C&D Wastes Generated Monthly				
	Total Quantity Generated	Hard Rock and Large Broken Concrete	Reused in the Contract	Reused in other Projects	Disposed as Public Fill	Imported Fill	Metals	Paper / cardboard packaging	Plastics (see Note)	Chemical Waste	Others, e.g. general refuse
	(in ,000kg)	(in ,000kg)	(in ,000kg)	(in ,000kg)	(in ,000kg)	(in ,000kg)	(in ,000kg)	(in ,000kg)	(in ,000kg)	(in ,000kg)	(in ,000kg)
Dec 2020	0	0	0	12860.314	0	0	9.912	0.030	0.018	0	63.92
Jan 2021	11823.060	0	0	11816.130**	6.930	0	0	0	0	0	73.96
Feb 2021	0	0	0	0*	0	0	0.007	0.123	0.008	0	45.080

Notes: (1) Plastics refer to plastic bottles / containers, plastic sheets / foam from packaging material

\* The data will be updated in the next reporting quarter.

\*\* The data was updated in February 2021 report

## **5. LANDFILL GAS MONITORING**

### **5.1. MONITORING REQUIREMENT**

In accordance with Section 11 of the EM&A Manual, monitoring of landfill gas is required for construction works within the 250m Consultation Zone. Part of the desalination plant and the indicative area of natural slope mitigation works fall within the SENT Landfill Extension Consultation Zone; and part of the 1,200 mm diameter fresh water mains along Wan Po Road falls within the SENT Landfill and SENT Landfill Extension Consultation Zones, TKO Stage II/III Restored Landfill and TKO Stage I Restored Landfill Consultation Zones.

### **5.2. MONITORING LOCATION**

Monitoring of oxygen, methane, carbon dioxide and barometric pressure was performed for excavations at 1m depth or more within the consultation Zone.

During construction of works within the consultation zones, excavations of 1m depth or more was monitored:

- At the ground surface before excavation commences;
- Immediately before any worker enters the excavation;
- At the beginning of each working day for the entire period the excavation remains open; and
- Periodically through the working day whilst workers are in the excavation.

For excavations between 300mm and 1m deep, measurements should be carried out:

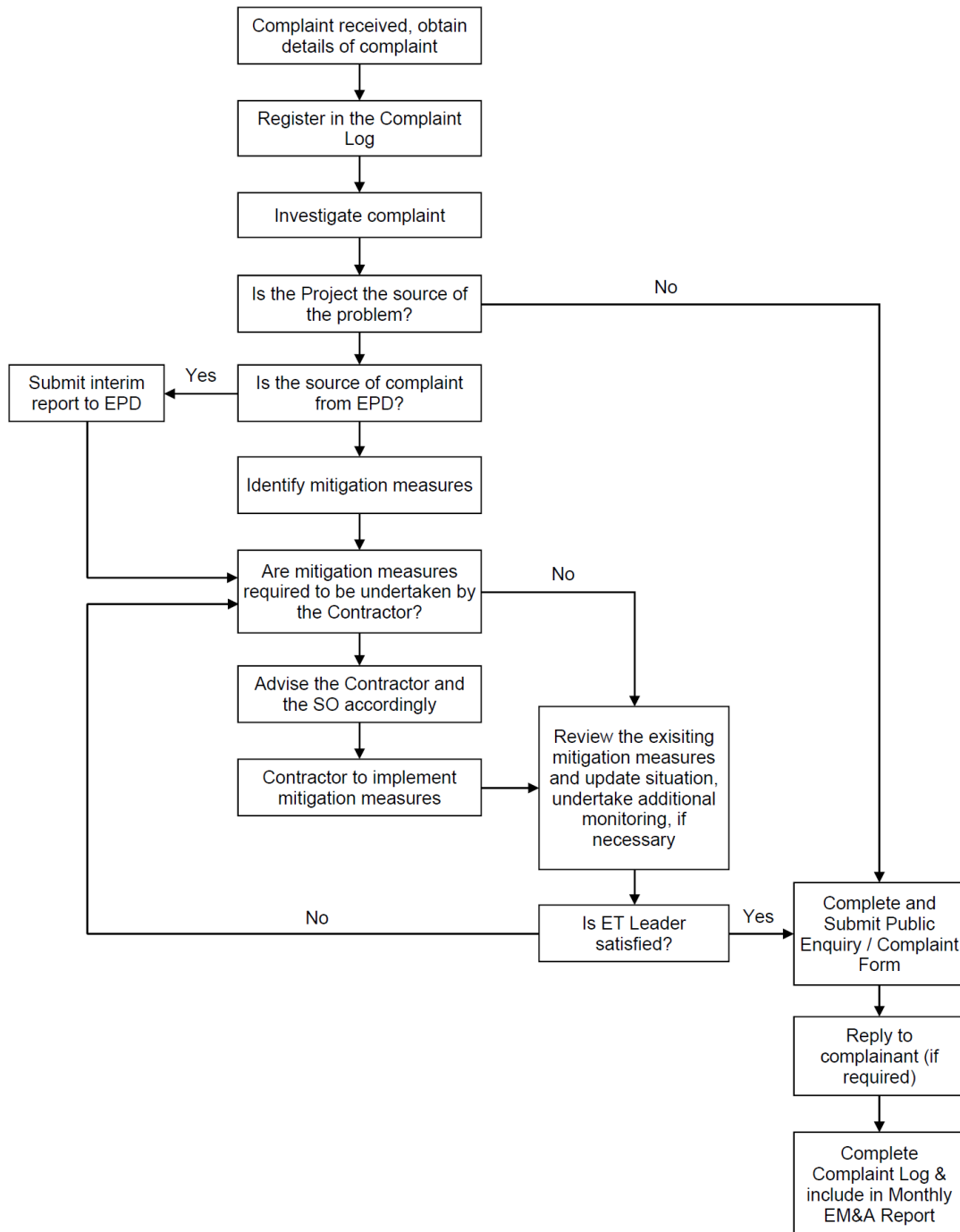
- Directly after the excavation has been completed; and
- Periodically whilst the excavation remains open.

### **5.3. MONITORING PROGRAMME**

For the part of the desalination plant and the indicative area of natural slope mitigation works fall within the SENT Landfill Extension Consultation Zone in this contract. Since the SENT Landfill Extension is still under construction, the Landfill gas monitoring shall be conducted after the commencement of operation of the SENT Landfill Extension which will be 2021 Quarter 3 according to the latest construction programme shown in the monthly EM&A Report of SENT Landfill Extension. The Contractor's safety officer shall keep review the necessity of landfill gas monitoring during the construction stage. No landfill gas monitoring was conducted in the reporting period.

## 6. SUMMARY OF MONITORING EXCEEDANCE, COMPLAINTS, NOTIFICATION OF SUMMONS AND PROSECUTIONS

The Environmental Complaint Handling Procedure is shown in below **Figure 6.1**:



**Figure 6.1 Environmental Complaint Handling Procedures**

No noise monitoring was conducted during the reporting period since there are no project-related construction activities undertaken within a radius of 300m from the monitoring locations.

The baseline water monitoring had been conducted between 12 May 2020 to 6 Jun 2020 at the thirteen designated monitoring stations and the six designated monitoring at waters near TKO. No impact water quality monitoring was conducted in the reporting period since the commencement of marine construction and dredging activities for the Project are scheduled in March 2021 the earliest.

No project-related exceedance of the Action Level was recorded during the reporting period.

No notification of summons and prosecution was received in the reporting period.

Statistics on complaints and regulatory compliance are summarized in **Appendix H**.



## 7. EM&A SITE INSPECTION

Site inspections were carried out on a weekly basis to monitor the implementation of proper environmental pollution control and mitigation measures under the Contract.

Joint site inspection with IEC was carried out on a bi-weekly basis.

Minor deficiencies were observed during weekly site inspection. Key observations during the site inspections are summarized below:

- Storage of chemicals and construction materials on-site was not conducted properly
- Dust suppression mitigation measures were not implemented properly
- Housekeeping was not implemented properly

The Contractor has rectified the observations identified during environmental site inspections in the reporting period.

According to the EIA Study Report, Environmental Permit, contract documents and EM&A Manual, the mitigation measures detailed in the documents are implemented as much as practical during the reporting period. An updated Implementation Status of Environmental Mitigation Measures (EMIS) is provided in **Appendix C**.

## **8. CONCLUSIONS AND RECOMMENDATIONS**

This is the 4<sup>th</sup> Quarterly EM&A Report for the Project which summarizes the key findings of the EM&A programme during the reporting period from 1 Dec to 28 Feb 2021, in accordance with the EM&A Manual and the requirement under FEP-01/503/2015/A.

No noise monitoring was conducted in the reporting period due to the over distant monitoring station from the works location.

The baseline water monitoring had been conducted between 12 May 2020 to 6 Jun 2020 at the thirteen designated monitoring stations and the six designated monitoring at waters near TKO. No impact water quality monitoring was conducted in the reporting period since the commencement of marine construction and dredging activities for the Project are scheduled in March 2021 the earliest.

No project-related exceedance of the Action / Limit Level was recorded during the reporting period.

Weekly environmental site inspection was conducted during the reporting period. Minor deficiency was observed during site inspection and was rectified. The environmental performance of the project was therefore considered satisfactory.

According to the environmental site inspections performed in the reporting period, the Contractor is reminded to pay attention on maintaining proper materials storage.

No environmental complaint was received in the reporting period.

No notification of summons or prosecution was received since commencement of the Contract.

The ET will keep track on the construction works to confirm compliance of environmental requirements and the proper implementation of all necessary mitigation measures.

# Appendix A

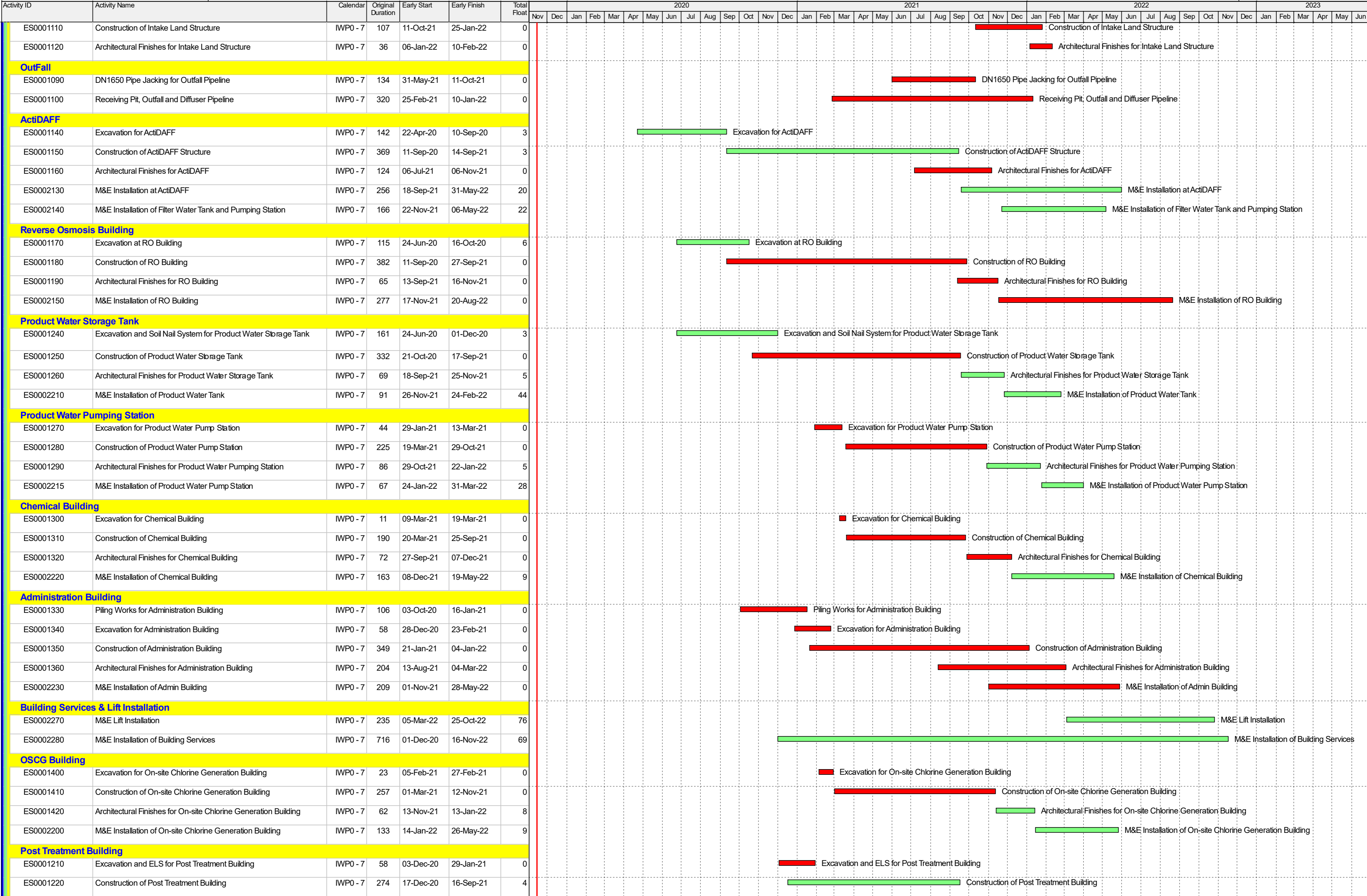
  

# Master Programme

Activity ID	Activity Name	Calendar	Original Duration	Early Start	Early Finish	Total Float	2020																																				2021												2022												2023					
							Nov	Dec	Jan	Feb	Mar	Apr	May	Jun	Jul	Aug	Sep	Oct	Nov	Dec	Jan	Feb	Mar	Apr	May	Jun	Jul	Aug	Sep	Oct	Nov	Dec	Jan	Feb	Mar	Apr	May	Jun	Jul	Aug	Sep	Oct	Nov	Dec	Jan	Feb	Mar	Apr	May	Jun																						
<b>Project Programme (Level 2)</b>																																																																								
<b>Key Dates</b>																																																																								
<b>Commencement and Completion Date</b>																																																																								
KD0000100	Letter of Acceptance	IWP0 - 7	0	15-Nov-19		0	◆ Letter of Acceptance																																																																	
KD0000110	Commencement of the Works	IWP0 - 7	0	30-Dec-19		0	◆ Commencement of the Works																																																																	
KD0000120	Completion of the Works (1170 Days)	IWP0 - 7	0		13-Mar-23	0																																																													◆ Completion of the Works					
KD0000130	EOT Granted for Completion of the Works (52.5 Days)	IWP0 - 7	53	14-Mar-23	05-May-23	0																																																													◆ EOT Granted					
KD0000500	Extended Completion of the Works	IWP0 - 7	0		05-May-23	0																																																													◆ Extended Completion					
KD0000510	Planned Completion of the Works incl. DfMA	IWP0 - 7	0		05-May-23	0																																																													◆ Planned Completion					
<b>Executive Summaries</b>																																																																								
<b>Preliminary Setup</b>																																																																								
ES0001000	Mobilization and Preliminary Set Up	IWP0 - 7	204	30-Dec-19	20-Jul-20	119	Mobilization and Preliminary Set Up																																																																	
<b>Civil Design AIP and DDA</b>																																																																								
ES0001010	AIP Civil Design Submission and Approval	IWP0 - 7	246	30-Dec-19	31-Aug-20	107	AIP Civil Design Submission and Approval																																																																	
ES0001020	DDA Civil Design Submission and Approval	IWP0 - 7	465	22-Jan-20	30-Apr-21	226	DDA Civil Design Submission and Approval																																																																	
<b>M&amp;E Design AIP and DDA</b>																																																																								
ES0002000	M&E AIP Process Mechanical Submission and Approval	IWP0 - 7	359	30-Dec-19	22-Dec-20	111	M&E AIP Process Mechanical Submission and Approval																																																																	
ES0002010	M&E DDA Process Mechanical Submission and Approval	IWP0 - 7	240	21-Jul-20	17-Mar-21	98	M&E DDA Process Mechanical Submission and Approval																																																																	
ES0002020	M&E AIP Instrumentation & Control Submission and Approval	IWP0 - 7	22	04-Feb-20	25-Feb-20	771	M&E AIP Instrumentation & Control Submission and Approval																																																																	
ES0002030	M&E DDA Instrumentation & Control Submission and Approval	IWP0 - 7	349	30-Jan-21	13-Jan-22	158	M&E DDA Instrumentation & Control Submission and Approval																																																																	
ES0002050	M&E DDA Electrical and Renewable Energy Submission and Approval	IWP0 - 7	144	17-Aug-20	07-Jan-21	70	M&E DDA Electrical and Renewable Energy Submission and Approval																																																																	
ES0002060	M&E AIP Building Services Submission and Approval	IWP0 - 7	306	30-Dec-19	30-Oct-20	102	M&E AIP Building Services Submission and Approval																																																																	
ES0002065	M&E Design Basis & Civil Guidance Dwg	IWP0 - 7	208	30-Dec-19	24-Jul-20	250	M&E Design Basis & Civil Guidance Dwg																																																																	
ES0002070	M&E DDA Building Services Submission and Approval	IWP0 - 7	379	01-Mar-20	14-Mar-21	31	M&E DDA Building Services Submission and Approval																																																																	
ES0002085	M&E AIP Site Electrical Submission and Approval	IWP0 - 7	124	21-Mar-20	22-Jul-20	202	M&E AIP Site Electrical Submission and Approval																																																																	
ES0002090	M&E DDA Lift Submission and Approval	IWP0 - 7	114	01-Oct-20	22-Jan-21	179	M&E DDA Lift Submission and Approval																																																																	
ES0002095	M&E DDA Site Electrical Submission and Approval	IWP0 - 7	246	23-Jul-20	25-Mar-21	256	M&E DDA Site Electrical Submission and Approval																																																																	
ES0002100	M&E AIP T&C Design Submission and Approval	IWP0 - 7	155	18-Mar-22	19-Aug-22	89	M&E AIP T&C Design Submission and Approval																																																																	
ES0002110	M&E DDA T&C Design Submission and Approval	IWP0 - 7	60	20-Aug-22	18-Oct-22	89	M&E DDA T&C Design Submission and Approval																																																																	
<b>Procurement of Major Plant &amp; Equipment Schedule</b>																																																																								
ES0002320	M&E Procurement of Major Plant, Equipment, Material and Delivery	IWP0 - 7	730	04-Feb-20	02-Feb-22	138	M&E Procurement of Major Plant, Equipment, Material and Delivery																																																																	
ES2420	M&E Procurement of Mechanical Equipment - Intake Pumps	IWP0 - 7	661	04-Feb-20	25-Nov-21	81	M&E Procurement of Mechanical Equipment - Intake Pumps																																																																	
ES2430	M&E Procurement of Mechanical Equipment - ActiDAFF Underdrain	IWP0 - 7	385	02-Aug-20	21-Aug-21	27	M&E Procurement of Mechanical Equipment - ActiDAFF Underdrain																																																																	
ES2440	M&E Procurement of Mechanical Equipment - ActiDAFF Media	IWP0 - 7	361	23-Jul-20	18-Jul-21	151	M&E Procurement of Mechanical Equipment - ActiDAFF Media																																																																	
ES2450	M&E Procurement of Mechanical Equipment - RO and ERD Rack	IWP0 - 7	425	22-Jul-20	19-Sep-21	58	M&E Procurement of Mechanical Equipment - RO and ERD Rack																																																																	
ES2460	M&E Procurement of Mechanical Equipment - RO Membrane	IWP0 - 7	937	12-Feb-20	05-Sep-22	39	M&E Procurement of Mechanical Equipment - RO Membrane																																																																	
ES2470	M&E Procurement of Electrical Equipment - CLP Substation for LV Switchboard / Genset / Building Services	IWP0 - 7	349	14-Mar-20	25-Feb-21	213	M&E Procurement of Electrical Equipment - CLP Substation for LV Switchboard / Genset / Building Services																																																																	
<b>132kV Substation</b>																																																																								
ES0001460	Excavation and Formation Works for 132kV Substation	IWP0 - 7	39	16-Mar-20	23-Apr-20	3	Excavation and Formation Works for 132kV Substation																																																																	
ES0001470	Construction of 132kV Substation	IWP0 - 7	248	27-Apr-20	30-Dec-20	0	Construction of 132kV Substation																																																																	
ES0001480	Architectural Finishes for 132kV Substation	IWP0 - 7	68	23-Nov-20	29-Jan-21	0	Architectural Finishes for 132kV Substation																																																																	
ES0002240	M&E Installation of 132kV Substation	IWP0 - 7	92	01-Dec-20	02-Mar-21	0	M&E Installation of 132kV Substation																																																																	
<b>Combine Shaft</b>																																																																								
ES0001060	Construction of Combine Shaft	IWP0 - 7	350	02-May-20	16-Apr-21	0	Construction of Combine Shaft																																																																	
ES0002120	M&E Installation at Combine Shaft	IWP0 - 7	123	11-Feb-22	13-Jun-22	0	M&E Installation at Combine Shaft																																																																	
<b>Intake</b>																																																																								
ES0001070	DN2500 Pipe Jacking for Intake Pipeline	IWP0 - 7	176	17-Apr-21	09-Oct-21	0	DN2500 Pipe Jacking for Intake Pipeline																																																																	
ES0001080	Receiving Pit and Marine Intake Structure	IWP0 - 7	460	07-Mar-21	09-Jun-22	0	Receiving Pit and Marine Intake Structure																																																																	

█ Summary Bar    █ Early Bar  
█ Actual Summary    █ Critical Bar  
█ Actual Work    ◆ ◆ Milestone





■ Summary Bar    ■ Early Bar  
■ Actual Summary    ■ Critical Bar  
■ Actual Work    ◆ ◆ Milestone



Activity ID	Activity Name	Calendar	Original Duration	Early Start	Early Finish	Total Float	2020 2021 2022 2023																																															
							Nov	Dec	Jan	Feb	Mar	Apr	May	Jun	Jul	Aug	Sep	Oct	Nov	Dec	Jan	Feb	Mar	Apr	May	Jun	Jul	Aug	Sep	Oct	Nov	Dec	Jan	Feb	Mar	Apr	May	Jun																
ES0001230	Architectural Finishes for Post Treatment Building	IWP0 - 7	113	17-Sep-21	07-Jan-22	4																									Architectural Finishes for Post Treatment Building																							
ES0002180	M&E Installation of Post Treatment System	IWP0 - 7	172	08-Jan-22	28-Jun-22	4																									M&E Installation of Post Treatment System																							
<b>Sludge Thickener</b>																																																						
ES0001680	Excavation and ELS for Sludge Thickener	IWP0 - 7	71	19-Jun-21	28-Aug-21	10																									Excavation and ELS for Sludge Thickener																							
ES0001690	Construction of Sludge Thickener	IWP0 - 7	109	30-Aug-21	16-Dec-21	12																									Construction of Sludge Thickener																							
ES0001700	Architectural Finishes for Sludge Thickener	IWP0 - 7	54	17-Dec-21	08-Feb-22	9																									Architectural Finishes for Sludge Thickener																							
ES0002190	M&E Installation of Sludge Thickener	IWP0 - 7	134	09-Feb-22	22-Jun-22	10																									M&E Installation of Sludge Thickener																							
<b>Irrigation Tank &amp; Pump Room</b>																																																						
ES0001550	Piling for Irrigation Tank and Pump Room	IWP0 - 7	66	14-Apr-21	18-Jun-21	61																									Piling for Irrigation Tank and Pump Room																							
ES0001560	Excavation for Irrigation Tank and Pump Room	IWP0 - 7	8	17-Sep-21	24-Sep-21	21																									Excavation for Irrigation Tank and Pump Room																							
ES0001570	Construction of Irrigation Tank and Pump Room	IWP0 - 7	185	25-Sep-21	28-Mar-22	45																									Construction of Irrigation Tank and Pump Room																							
ES0001580	Architectural Finishes for Irrigation Tank and Pump Room	IWP0 - 7	72	24-Feb-22	06-May-22	41																									Architectural Finishes for Irrigation Tank and Pump Room																							
<b>Inspection Gallery</b>																																																						
ES0001590	Piling for Inspection Gallery (Elevated Walkway)	IWP0 - 7	31	15-Dec-20	14-Jan-21	84																									Piling for Inspection Gallery (Elevated Walkway)																							
ES0001600	Excavation for Inspection Gallery	IWP0 - 7	120	12-May-21	08-Sep-21	33																									Excavation for Inspection Gallery																							
ES0001610	Construction of Inspection Gallery	IWP0 - 7	397	20-May-21	20-Jun-22	31																									Construction of Inspection Gallery																							
ES0001620	Architectural Finishes for Inspection Gallery	IWP0 - 7	82	21-Jun-22	10-Sep-22	34																									Architectural Finishes for Inspection Gallery																							
<b>Main Electrical and Central Chiller Plant Building</b>																																																						
ES0001430	Excavation for Main Electrical and Central Chiller Plant Building	IWP0 - 7	6	04-Jan-21	09-Jan-21	0																									Excavation for Main Electrical and Central Chiller Plant Building																							
ES0001440	Construction of Main Electrical and Central Chiller Plant Building	IWP0 - 7	216	11-Jan-21	14-Aug-21	0																									Construction of Main Electrical and Central Chiller Plant Building																							
ES0001450	Architectural Finishes for Main Electrical and Central Chiller Plant Building	IWP0 - 7	97	16-Jul-21	20-Oct-21	0																									Architectural Finishes for Main Electrical and Central Chiller Plant Building																							
ES0002260	M&E Installation of LV/HV Cabling and Field Panels	IWP0 - 7	251	21-Oct-21	28-Jun-22	4																									M&E Installation of LV/HV Cabling and Field Panels																							
<b>Guard House</b>																																																						
ES0001490	Excavation for Guard House at Main Gate	IWP0 - 7	7	17-Apr-21	23-Apr-21	3																									Excavation for Guard House at Main Gate																							
ES0001500	Construction of Guard House at Main Gate	IWP0 - 7	143	24-Apr-21	13-Sep-21	2																									Construction of Guard House at Main Gate																							
ES0001510	Architectural Finishes for Guard House at Main Gate	IWP0 - 7	71	14-Sep-21	23-Nov-21	200																									Architectural Finishes for Guard House at Main Gate																							
ES0001520	Excavation for Guard House near Pier	IWP0 - 7	9	28-Sep-21	06-Oct-21	20																									Excavation for Guard House near Pier																							
ES0001530	Construction of Guard House near Pier	IWP0 - 7	152	07-Oct-21	07-Mar-22	18																									Construction of Guard House near Pier																							
ES0001540	Architectural Finishes for Guard House near Pier	IWP0 - 7	77	08-Mar-22	23-May-22	19																									Architectural Finishes for Guard House near Pier																							
<b>CO2 Tank</b>																																																						
ES0001370	Filling to Formation for CO2 Tanks Area	IWP0 - 7	30	21-Apr-21	20-May-21	78																									Filling to Formation for CO2 Tanks Area																							
ES0001380	Construction of CO2 Tanks Area	IWP0 - 7	116	21-May-21	13-Sep-21	79																									Construction of CO2 Tanks Area																							
ES0001390	Architectural Finishes for CO2 Tanks Area	IWP0 - 7	73	14-Sep-21	25-Nov-21	87																									Architectural Finishes for CO2 Tanks Area																							
ES0002170	M&E Installation of CO2 Tank	IWP0 - 7	138	26-Nov-21	12-Apr-22	198																									M&E Installation of CO2 Tank																							
<b>Diesel Emergency Generator</b>																																																						
ES0002250	M&E Diesel Emergency Generator	IWP0 - 7	57	12-Feb-22	09-Apr-22	26																									M&E Diesel Emergency Generator																							
<b>Switch Room and Transformer Installation</b>																																																						
ES0002300	M&E Installation of HV/LV Switchroom and Transformer	IWP0 - 7	290	25-Nov-21	10-Sep-22	84																									M&E Installation of HV/LV Switchroom and Transformer																							
<b>Miscellaneous</b>																																																						
ES0001630	Remaining Architectural Finishes for All Buildings	IWP0 - 7	231	13-May-22	29-Dec-22	37																									Remaining Architectural Finishes																							
ES0001640	External Process and Non-Process Pipe	IWP0 - 7	581	13-Mar-21	14-Oct-22	4																									External Process and Non-Process Pipe																							
ES0001650	Road and Drainage	IWP0 - 7	530	12-Jun-21	23-Nov-22	98																									Road and Drainage																							
ES0001660	Slope Mitigation and Maintenance Access	IWP0 - 7	642	22-Feb-21	25-Nov-22	137																									Slope Mitigation and Maintenance Access																							
ES0001670	Landscaping Works	IWP0 - 7	438	05-Nov-21	16-Jan-23	109																									Landscaping Works																							
ES0002290	M&E PV Panels	IWP0 - 7	191	17-Nov-21	26-May-22	25																									M&E PV Panels																							
ES0002310	M&E Chiller & Irrigation System Installation	IWP0 - 7	392	21-Oct-21	16-Nov-22	139																									M&E Chiller & Irrigation System Installation																							
ES0002350	M&E Installation of Surge Vessel	IWP0 - 7	198	13-Jan-22	29-Jul-22	127																									M&E Installation of Surge Vessel																							
ES0002360	M&E Installation of Flowmeter Pit	IWP0 - 7	70	13-Jan-22	23-Mar-22	43																									M&E Installation of Flowmeter Pit																							

Summary Bar (Orange)  
 Actual Summary (Blue)  
 Actual Work (Green)

Early Bar (Light Green)  
 Critical Bar (Red)  
 Milestone (Black Diamond)



## Appendix B

# Overview of Desalination Plant in Tseung Kwan O

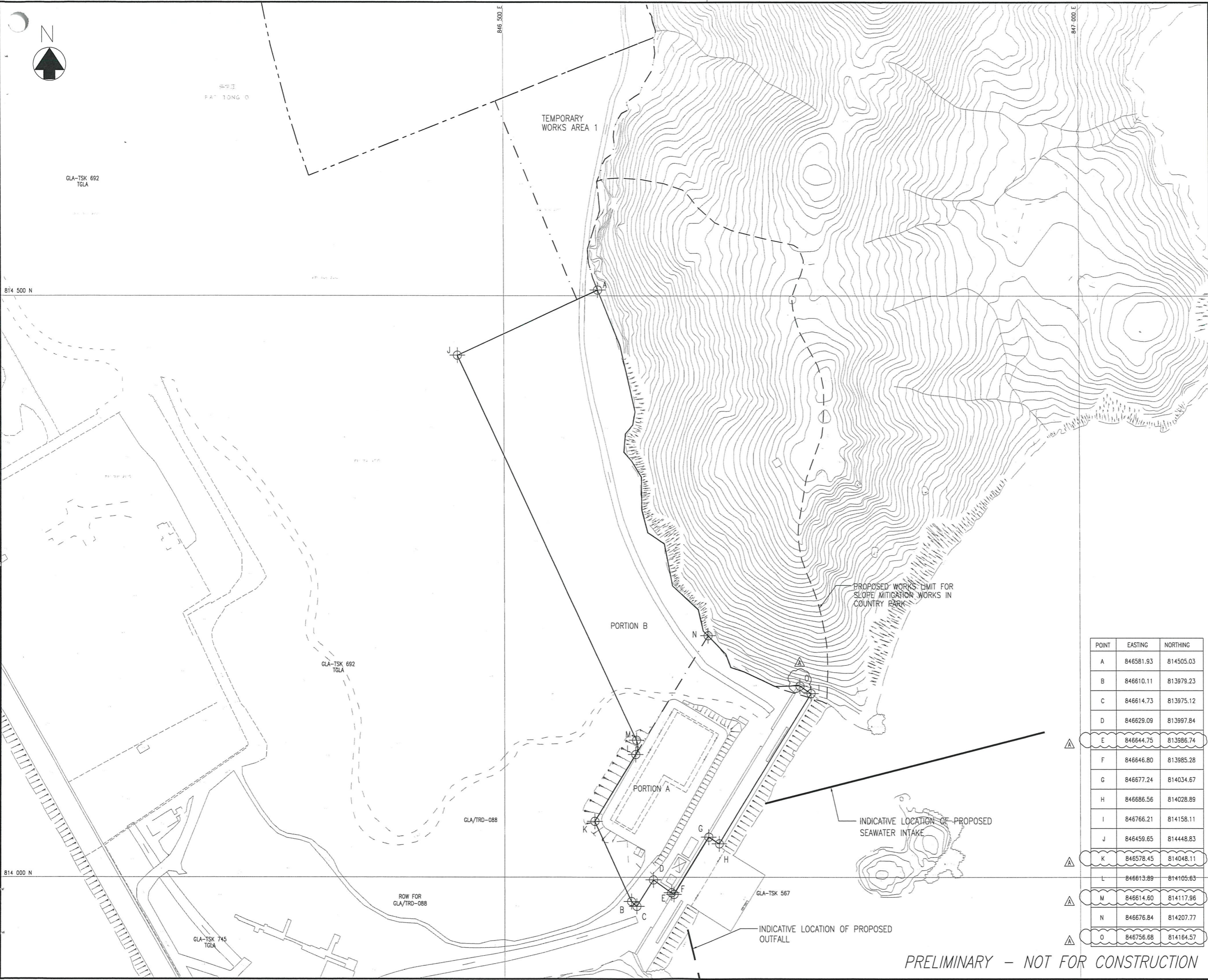


LEGEND:

- BOUNDARY OF SENT LANDFILL EXTENSION
- BOUNDARY OF WORKS AREA FOR TKO DESALINATION PLANT
- - - SITE PHASING
- ALLOCATED LAND BOUNDARIES

NOTE:

TEMPORARY WORKS AREA 1 WILL BE HANDED OVER AT +6 MPD WITH A TOLERANCE OF ±500mm.



B	10/03	UPDATE NOTES	YLC
A	07/18	UPDATE COORDINATES	YLC
Revision	Date	Description	Initial
	Designed	Checked	Drawn
Initial	YLC	CKH	SZ
Date	02/18	02/18	02/18

Approved  
*Christina Go*

Agreement No. CE 8/2015 (WS)

Contract No. 13/WSD/17

Contract Title  
DESIGN, BUILD AND OPERATE FIRST STAGE OF TSEUNG KWAN O DESALINATION PLANT

Drawing Title  
SITE HANDOVER WORKS AREAS

Drawing No.	Revision
190495/K/TEND/10/0003	B

Scale A1 1 : 1500  
A3 1 : 3000



POINT	EASTING	NORTHING
A	846581.93	814505.03
B	846610.11	813979.23
C	846614.73	813975.12
D	846629.09	813997.84
E	846644.75	813986.74
F	846646.80	813985.28
G	846677.24	814034.67
H	846686.56	814028.89
I	846766.21	814158.11
J	846459.65	814448.83
K	846578.45	814048.11
L	846613.89	814105.63
M	846614.60	814117.96
N	846676.84	814207.77
O	846756.68	814164.57

PRELIMINARY - NOT FOR CONSTRUCTION

BUILDINGS IN FIRST STAGE

CODE	NAME OF BUILDING	TOTAL G.F.A. (m <sup>2</sup> )	SITE COVERAGE (m <sup>2</sup> )
B	COMBINE SHAFT	759,876	759,876
C	ACTIDAFF	10027,547	5455,346
G	REVERSE OSMOSIS BUILDING AND ELECTRICAL BUILDING	4511,455	5367,935
H	CO2 TANKS AREA	-	-
J	PRODUCT WATER STORAGE TANK, PUMP STATION AND ELECTRICAL BUILDING	1974,610	2933,980
K	SLUDGE TREATMENT BUILDING, TANK AND PUMP ROOM	2531,044	1228,361
M	ADMINISTRATION BUILDING & ELECTRICAL BUILDING C	2450,713	1114,062
N	MAIN ELECTRICAL AND CENTRAL CHILLER PLANT BUILDING	-	499,893
R1	ELECTROCHLORINATION BUILDING & ELECTRICAL BUILDING A	657,992	825,776
S	132 KV SUBSTATION	-	943,560
T	IRRIGATION WATER TANK AND PUMP ROOM	-	156,148
R2	CHEMICAL BUILDING	813,056	813,056
V	VISITOR GALLERY	1330,410	1330,410
X1	GUARD HOUSE AND FS CONTROL ROOM	39,585	39,585
X2	GUARD HOUSE	22,035	22,035
Y	R + D OUTDOOR	-	-
Z	WASTE WATER TREATMENT PLANT	48,000	48,000
TOTAL =		25175,323	21490,023

LEGEND / ABBREVIATION

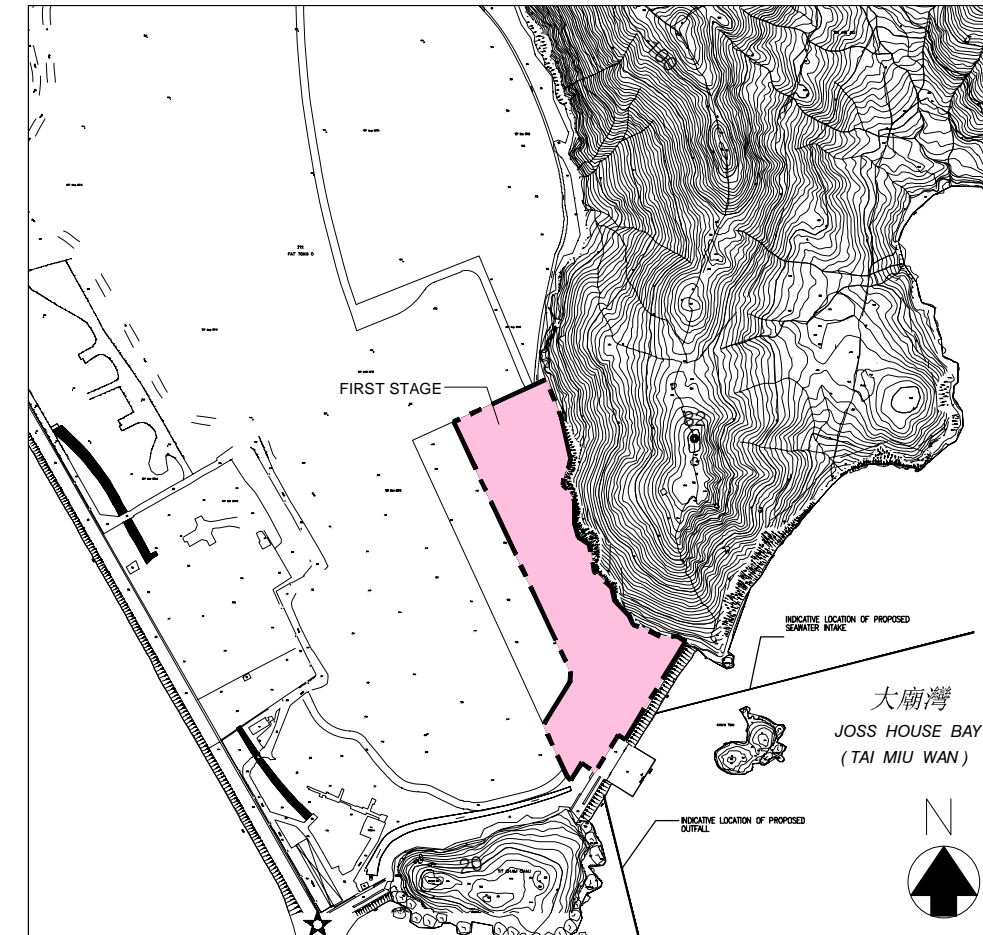
- H.L. WINDOW HIGH LEVEL WINDOW
- M.L. METAL LOUVRES
- C.L. CAT LADDER
- A.U.T. ACCESSIBLE UNISEX TOILET
- ⊕ PROPOSED FINISH FLOOR LEVEL IN METER ABOVE P.D.
- ⊕ STRUCTURAL FLOOR LEVEL IN METER ABOVE P.D.
- M.V.I.A.L. MECHANICAL VENTILATION & ARTIFICIAL LIGHTING
- F.E. 4.5kg CO<sub>2</sub> FIRE EXTINGUISHER
- H.R. HOSE REEL
- ⊕ FIREMANS LIFT
- ⊕ LIFT FOR THE BARRIER FREE ACCESS
- P.D. PIPE DUCT

PLOT RATIO & SITE COVERAGE CALCULATION:

SITE AREA OF THE FIRST STAGE	=	56108 m <sup>2</sup>
TOTAL G.F.A.	=	25092.141 m <sup>2</sup>
TOTAL SITE COVERAGE	=	21414.841 m <sup>2</sup>
PLOT RATIO	=	25092.141 / 56108
	=	0.447 < PERMITTED
SITE COVERAGE	=	21414.841 / 56108 x 100
	=	38.167%

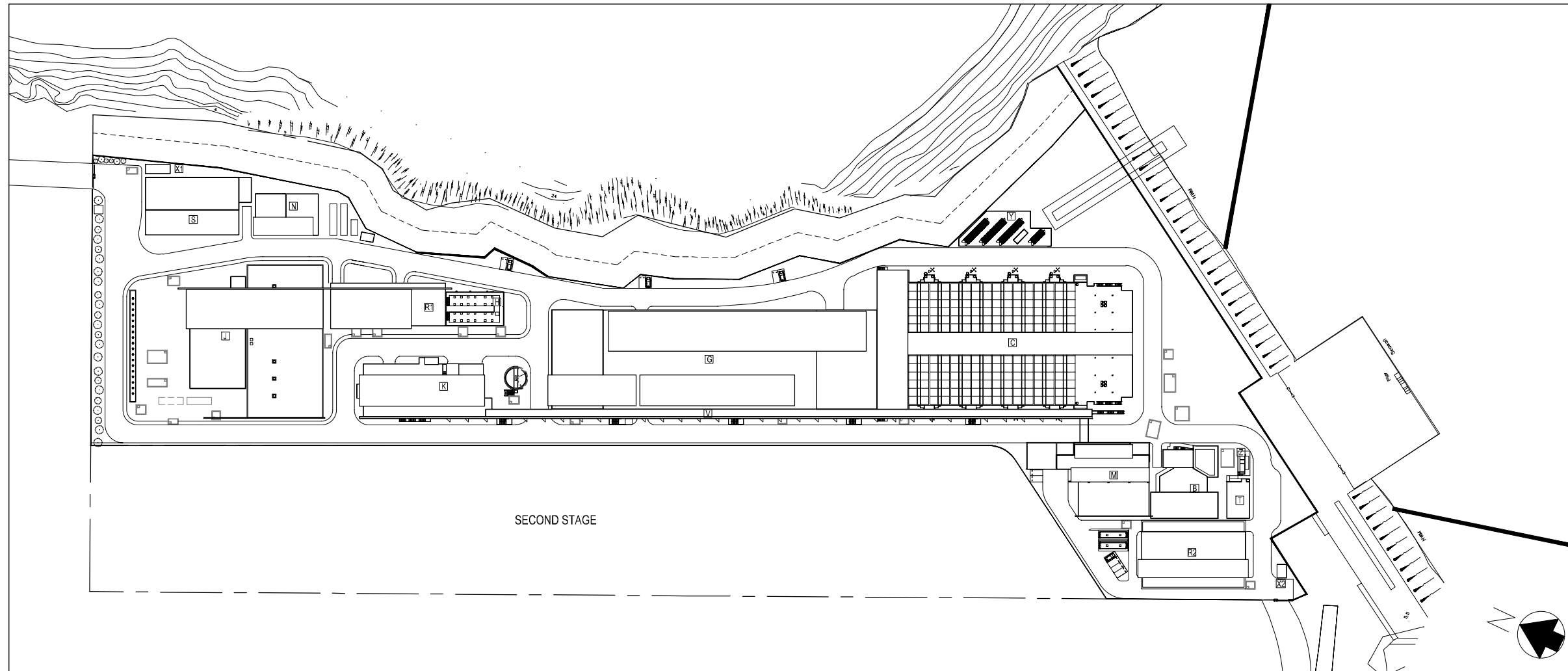
SITE LOCATION PLAN

1 : 5000



FIRST STAGE OF TSEUNG KWAN O DESALINATION PLANT

1 : 1000



0	TENDER SUBMISSION	CAD	JAN 19
Rev	Description	By	Date
Employer			
Employer's Consultant			
Tenderer			
Designer			
Project title			
CONTRACT NO. 13/WSD/17			
DESIGN, BUILD AND OPERATE FIRST STAGE OF TSEUNG KWAN O DESALINATION PLANT			
Drawing title			
ARCHITECTURAL – PLOT RATIO AND SITE COVERAGE CALCULATION, LEGEND ABBREVIATION			
Drawing no.			Rev.
TKO/AJC/W/A000/AR/001			0
Drawn	Date	Checked	Approved
OKAL	JAN 19	S.C.	T.C.
Scale	N.T.S.	Status	-

# Appendix C

## Summary of Implementation Status of Environmental Mitigation

Contract No. 13/WSD/17  
Design, Build and Operate First Stage of Tseung Kwan O Desalination Plant



EIA Reference	Recommended Environmental Protection Measures/ Mitigation Measures	Objectives of the recommended measures & main concerns to address	Implementation Agent	Implementation Stage			Implementation status	Relevant Legislation & Guidelines
				D	C	O		
<b>Air Quality</b>								
S4.8.1	Impervious dust screen or sheeting will be provided to enclose scaffolding from the ground floor level of building for construction of superstructure of the new buildings.	Land site/ During Construction	Contractor(s)		✓		Implemented	Air Pollution Control (Construction Dust)
S4.8.1	Impervious sheet will be provided for skip hoist for material transport.	Land site/ During Construction, particularly dry season	Contractor(s)		✓		NA	
S4.8.1	The area where dusty work takes place should be sprayed with water or a dust suppression chemical immediately prior to, during and immediately after dusty activities as far as practicable.	Land site/ During Construction	Contractor(s)		✓		Implemented	
S4.8.1	All dusty materials should be sprayed with water or a dust suppression chemical immediately prior to any loading, unloading or transfer operation.	Land site/ During Construction	Contractor(s)		✓		Implemented	
S4.8.1	Dropping heights for excavated materials should be controlled to a practical height to minimize the fugitive dust arising from unloading.	Land site/ During Construction	Contractor(s)		✓		Implemented	
S4.8.1	During transportation by truck, materials should not be loaded to a level higher than the side and tail boards, and should be dampened or covered before transport.	Land site/ During Construction	Contractor(s)		✓		Implemented	
S4.8.1	Wheel washing device should be provided at the exits of the work sites. Immediately before leaving a construction site, every vehicle shall be washed to remove any dusty material from its body and wheels as far as practicable.	Land site/ During Construction	Contractor(s)		✓		Implemented	
S4.8.1	Road sections between vehicle-wash areas and vehicular entrance will be paved.	Land site/ During Construction	Contractor(s)		✓		Implemented	

Contract No. 13/WSD/17  
Design, Build and Operate First Stage of Tseung Kwan O Desalination Plant



EIA Reference	Recommended Environmental Protection Measures/ Mitigation Measures	Objectives of the recommended measures & main concerns to address	Implementation Agent	Implementation Stage			Implementation status	Relevant Legislation & Guidelines
				D	C	O		
S4.8.1	Hoarding of not less than 2.4m high from ground level will be provided along the length of the Project Site boundary.	Land site/ During construction	Contractor(s)	✓	✓		Implemented	
S4.8.1	Haul roads will be kept clear of dusty materials and will be sprayed with water so as to maintain the entire road surface wet at all times.	Land site/ During construction	Contractor(s)		✓		Implemented	
S4.8.1	Temporary stockpiles of dusty materials will be either covered entirely by impervious sheets or sprayed with water to maintain the entire surface wet all the time.	Land site/ During construction	Contractor(s)		✓		Implemented	
S4.8.1	Stockpiles of more than 20 bags of cement, dry pulverised fuel ash and dusty construction materials will be covered entirely by impervious sheeting sheltered on top and 3-sides.	Land site/ During construction	Contractor(s)		✓		Implemented, rectified after observation	
S4.8.1	All exposed areas will be kept wet always to minimise dust emission.	Land site/ During construction	Contractor(s)		✓		Implemented	
S4.8.1	Ultra-low-sulphur diesel (ULSD) will be used for all construction plant on-site, as defined as diesel fuel containing not more than 0.005% sulphur by weight) as stipulated in Environment, Transport and Works Bureau Technical Circular (ETWB-TC(W)) No 19/2005 on Environmental Management on Construction Sites.	Land site/ During construction/ During Operation	Contractor(s)		✓	✓	Implemented	Environment, Transport and Works Bureau Technical Circular (ETWB-TC(W)) No 19/2005 on Environmental Management on Construction Sites
S4.8.1	The engine of the construction equipment during idling will be switched off.	Land site/ During construction	Contractor(s)		✓		Implemented	

Contract No. 13/WSD/17  
Design, Build and Operate First Stage of Tseung Kwan O Desalination Plant



EIA Reference	Recommended Environmental Protection Measures/ Mitigation Measures	Objectives of the recommended measures & main concerns to address	Implementation Agent	Implementation Stage			Implementation status	Relevant Legislation & Guidelines
				D	C	O		
S4.8.1	Concrete batching plant will be required on site. control measures recommended in the Guidance Note on a Best Practicable Means for Cement Works (Concrete Batching Plant) (BPM 3/2 (93)) will be implemented. The control measures recommended in the Guidance Note on a Best Practicable Means for Cement Works (Concrete Batching Plant) (BPM 3/2 (93)) will be implemented.	Land site/ During construction	Contractor(s)		✓		N/A	
S4.8.1	Regular maintenance of construction equipment deployed on-site will be conducted to prevent black smoke emission.	Land site/ During construction	Contractor(s)		✓		Implemented	
S4.10	To ensure proper implementation of the recommended dust mitigation measures and good construction site practices during the construction phase, environmental site audits on weekly basis is recommended throughout the construction period.	Land site/ During construction	Contractor(s)/ Environmental Team (ET) & Independent Environmental Checker (IEC)		✓		Implemented	

Note: D – Design stage C – Construction O – Operation

Contract No. 13/WSD/17  
Design, Build and Operate First Stage of Tseung Kwan O Desalination Plant



EIA Reference	Recommended Environmental Protection Measures/ Mitigation Measures	Objectives of the recommended measures & main concerns to address	Implementation Agent	Implementation Stage			Implementation status	Relevant Legislation & Guidelines
				D	C	O		
<b>Noise</b>								
S5.7	Only well-maintained plant will be operated on-site and plant will be serviced regularly during the construction phase.	All area/ During construction	Contractor(s)		✓		Implemented	A Practical Guide for the Reduction of Noise from Construction Works,
S5.7	Silencers or mufflers on construction equipment will be utilised and will be properly maintained during the construction phase.	Noise control/ During construction	Contractor(s)		✓		N/A	A Practical Guide for the Reduction of Noise from Construction Works,
S5.7	Mobile plant, if any, will be sited as far away from NSRs as possible.	Noise control/ During construction	Contractor(s)		✓		N/A	A Practical Guide for the Reduction of Noise from Construction Works,
S5.7	Machines and plant (such as trucks) that may be in intermittent use will be shut down between work periods or will be throttled down to a minimum.	Noise control/ During construction	Contractor(s)		✓		Implemented	A Practical Guide for the Reduction of Noise from Construction Works,
S5.7	Plants known to emit noise strongly in one direction will, wherever possible, be orientated so that the noise is directed away from the nearby NSRs.	Noise control/ During construction	Contractor(s)		✓		N/A	A Practical Guide for the Reduction of Noise from Construction Works,
S5.7	Material stockpiles and other structures will be effectively utilised, wherever practicable, in screening noise from on-site construction activities.	Noise control/ During construction	Contractor(s)		✓		N/A	A Practical Guide for the Reduction of Noise from Construction Works,
S5.7	Use of Quiet Powered Mechanical Equipment (QPME).	Noise control/ During construction	Contractor(s)		✓		Implemented	A Practical Guide for the Reduction of Noise from Construction Works,
S5.7	Movable noise barriers of 3m in height with skid footing should be used and located within a few metres of stationary plant and mobile plant such that the line of sight to the NSR is blocked by the barriers. The length of the barrier should be at least five times greater than its height. The noise barrier material should have a superficial surface density of at least 7 kg m <sup>-2</sup> and have	Noise control/ During construction	Contractor(s)		✓		N/A	A Practical Guide for the Reduction of Noise from Construction Works,

Contract No. 13/WSD/17  
Design, Build and Operate First Stage of Tseung Kwan O Desalination Plant



EIA Reference	Recommended Environmental Protection Measures/ Mitigation Measures	Objectives of the recommended measures & main concerns to address	Implementation Agent	Implementation Stage			Implementation status	Relevant Legislation & Guidelines
				D	C	O		
	no openings or gaps.							
S5.7	The noise insulating sheet should be deployed such that there would be no opening or gaps on the joints.	Noise control/ During construction	Contractor(s)		✓		N/A	A Practical Guide for the Reduction of Noise from Construction Works,
S5.7	Construction activities (e.g. excavation/shoring, reinstatement (asphalt), and pipe jacking) will be planned and carried out in sequence, such that items of PME proposed for these activities will not be operated simultaneously.	Noise control/ During construction	Contractor(s)	✓	✓		Implemented	A Practical Guide for the Reduction of Noise from Construction Works
S5.7	PMEs will not be used at the works areas near educational institutions with residual impact (ie the "influence area" within a radius of 40m) during school hours in order to reduce impact to the educational institutions.	Noise control / During construction	Contractor(s)		✓		N/A	A Practical Guide for the Reduction of Noise from Construction Works
S5.7	Noise enclosures or acoustic sheds would be used to cover stationary PME such as generators. Portable/Movable noise enclosure made of material with superficial surface density of at least 7 kg m <sup>-2</sup> may be used for screening the noise from operation of the saw/groover, concrete.	Noise control/ Pre-construction/ During construction	Contractor(s)	✓	✓		N/A	
S5.9	Sawcutting pavement, breaking up of pavement, excavation /shoring, pipe laying, backfilling, reinstatement (concrete) and pipe jacking shall be scheduled outside the examination period.	Noise control/ Pre-construction/ During construction	Contractor(s)	✓	✓		N/A	



Contract No. 13/WSD/17  
Design, Build and Operate First Stage of Tseung Kwan O Desalination Plant



EIA Reference	Recommended Environmental Protection Measures/ Mitigation Measures	Objectives of the recommended measures & main concerns to address	Implementation Agent	Implementation Stage			Implementation status	Relevant Legislation & Guidelines
				D	C	O		
S5.9	In view the duration of noise exceedance at Creative Secondary School, PLK Laws Foundation College, TKO Kei Tak Primary School and School of Continuing and Professional Studies-CUHK is limited to 8 weeks, the construction work in the influence areas near the four schools shall be scheduled during long school holidays (eg summer holiday, Easter holiday or Christmas holiday, etc) as far as practicable. Scheduling the construction work for the four schools.	Noise control/ Pre-construction/ During construction	Contractor(s)	✓	✓		N/A	
S5.10	A noise monitoring programme shall be implemented for the construction phase.	Designated monitoring stations as defined in EM&A Manual/ During construction phase	Environmental Team (ET)		✓		N/A	
S5.10	The effectiveness of on-site control measures could also be evaluated through the regular site audits.	All facilities/ During construction	Contractor(s)/ Environmental Team (ET) & Independent Environmental Checker (IEC)		✓		Implemented	-

Note: D – Design stage C – Construction O – Operation

Contract No. 13/WSD/17  
Design, Build and Operate First Stage of Tseung Kwan O Desalination Plant



EIA Reference	Recommended Environmental Protection Measures/ Mitigation Measures	Objectives of the recommended measures & main concerns to address	Implementation Agent	Implementation Stage			Implementation status	Relevant Legislation & Guidelines
				D	C	O		
<b>Water Quality</b>								
S6.9	Dredged marine sediment will be disposed of in a gazetted marine disposal area in accordance with marine dumping permit conditions of the Dumping at Sea Ordinance (DASO).	Marine Dredging/ During construction	Contractor(s)		✓		N/A	Dumping at Sea Ordinance (DASO)
S6.9	Disposal vessels will be fitted with tight bottom seals in order to prevent leakage of material during transport.	Marine Dredging/ During construction	Contractor(s)		✓		N/A	-
S6.9	Barges will be filled to a level, which ensures that material does not spill over during transport to the disposal site and that adequate freeboard is maintained to ensure that the decks are not washed by wave action.	Marine Dredging/ During construction	Contractor(s)		✓		N/A	-
S6.9	After dredging, any excess materials will be cleaned from decks and exposed fittings before the vessel is moved from the dredging area.	Marine Dredging/ During construction	Contractor(s)		✓		N/A	-
S6.9	All vessels should be well maintained and inspected before use to limit any potential discharges to the marine environment.	Marine Dredging/ During construction	Contractor(s)		✓		N/A	-
S6.9	All vessels must have a clean ballast system.	Marine Dredging/ During construction	Contractor(s)		✓		N/A	-
S6.9	No discharge of sewage/grey wastewater should be allowed. Waste water from potentially contaminated area on working vessels should be minimized and collected. These kinds of wastewater should be brought back to port and discharged at appropriate collection and treatment system.	Marine Dredging/ During construction	Contractor(s)		✓		N/A	-
S6.9	No soil waste is allowed to be disposed overboard.	Marine Dredging/ During construction	Contractor(s)		✓		N/A	-

Contract No. 13/WSD/17  
Design, Build and Operate First Stage of Tseung Kwan O Desalination Plant



EIA Reference	Recommended Environmental Protection Measures/ Mitigation Measures	Objectives of the recommended measures & main concerns to address	Implementation Agent	Implementation Stage			Implementation status	Relevant Legislation & Guidelines
				D	C	O		
S6.9	Silt removal facilities such as silt traps or sedimentation facilities will be provided to remove silt particles from runoff to meet the requirements of the TM standard under the WPCO. The design of silt removal facilities will be based on the guidelines provided in ProPECC PN 1/94. All drainage facilities and erosion and sediment control structures will be inspected on a regular basis and maintained to confirm proper and efficient operation at all times and particularly during rainstorms. Deposited silt and grit will be removed regularly.	Land site & drainage/ During construction	Contractor(s)		✓		Implemented, rectified after reminder	ProPECC PN 1/94 TM Standard under the WPCO
S6.9	Earthworks to form the final surfaces will be followed up with surface protection and drainage works to prevent erosion caused by rainstorms.	Land site & drainage/ During construction	Contractor(s)		✓		Implemented	-
S6.9	Appropriate surface drainage will be designed and provided where necessary.	Land site & drainage/ During construction	Contractor(s)		✓		Implemented	-
S6.9	The precautions to be taken at any time of year when rainstorms are likely together with the actions to be taken when a rainstorm is imminent or forecasted and actions to be taken during or after rainstorms are summarised in Appendix A2 of ProPECC PN 1/94.	Land site & drainage/ During construction	Contractor(s)	✓	✓		Implemented	ProPECC PN 1/94
S6.9	Oil interceptors will be provided in the drainage system where necessary and regularly emptied to prevent the release of oil and grease into the storm water drainage system after accidental spillages.	Land site & drainage/ During construction	Contractor(s)		✓		N/A	-

Contract No. 13/WSD/17  
Design, Build and Operate First Stage of Tseung Kwan O Desalination Plant



EIA Reference	Recommended Environmental Protection Measures/ Mitigation Measures	Objectives of the recommended measures & main concerns to address	Implementation Agent	Implementation Stage			Implementation status	Relevant Legislation & Guidelines
				D	C	O		
S6.9	Temporary and permanent drainage pipes and culverts provided to facilitate runoff discharge, if any, will be adequately designed for the controlled release of storm flows.	Land site & drainage/ During construction	Contractor(s)		✓		Implemented	-
S6.9	The temporary diverted drainage, if any, will be reinstated to the original condition when the construction work has finished or when the temporary diversion is no longer required.	Land site & drainage/ During construction	Contractor(s)		✓		N/A	-
S6.9	Appropriate numbers of portable toilets shall be provided by a licensed contractor to serve the construction workers over the construction site to prevent direct disposal of sewage into the water environment.	Land site & drainage/ During construction	Contractor(s)		✓		Implemented	-
S6.9 and S6.12	The sterilization water should be dechlorinated with total residual chlorine (TRC) level below 1 mg/L before discharge to public sewer. In situ testing of TRC should also be conducted for the discharge of chlorinated water for pipeline disinfection to ensure sufficient dechlorination before discharge to public sewer.	Sterilization of water mains prior to commissioning	Contractor(s)		✓	✓	N/A	Technical Memorandum for Effluents Discharged into Drainage and Sewerage Systems Inland and Coastal Waters
S6.9	The cleaning and flushing water should also be treated and desilted to the relevant discharge requirement stipulated in TM-DSS before discharging.	Sterilization of water mains prior to commissioning	Contractor(s)		✓	✓	N/A	Technical Memorandum for Effluents Discharged into Drainage and Sewerage Systems Inland and Coastal Waters

Contract No. 13/WSD/17  
Design, Build and Operate First Stage of Tseung Kwan O Desalination Plant



EIA Reference	Recommended Environmental Protection Measures/ Mitigation Measures	Objectives of the recommended measures & main concerns to address	Implementation Agent	Implementation Stage			Implementation status	Relevant Legislation & Guidelines
				D	C	O		
S6.9	Site drainage should be well maintained and good construction practices should be observed to ensure that oil, fuels, solvents and other chemicals are managed, stored and handled properly and do not enter the nearby water streams.	Land site & drainage/ During construction/ During operation	Contractor(s)		✓	✓	Implemented, rectified after reminder	-
S6.12	Regular site inspections will be carried out in order to confirm that regulatory requirements are being met and that contractors are implementing the standard site practice and mitigation measures as proposed to reduce potential impacts to water quality.	During construction	Contractor(s)/ Environmental Team (ET) & Independent Environmental Checker (IEC)		✓		Implemented	-

Note: D - Design stage C - Construction O - Operation

Contract No. 13/WSD/17  
Design, Build and Operate First Stage of Tseung Kwan O Desalination Plant



EIA Reference	Recommended Environmental Protection Measures/ Mitigation Measures	Objectives of the recommended measures & main concerns to address	Implementation Agent	Implementation Stage			Implementation Status	Relevant Legislation & Guidelines
				D	C	O		
<b>Waste Management</b>								
S8.5	Nomination of approved personnel to be responsible for standard site practices, arrangements for collection and effective disposal to an appropriate facility of all wastes generated at the site.	Contract mobilisation/ During construction	Contractor(s)		✓		Implemented	-
S8.5	Training of site personnel in proper waste management and chemical handling procedures. Training will be provided to workers on the concepts of site cleanliness and appropriate waste management procedures, including waste reduction, reuse and recycling at the beginning of the construction works.	Contract mobilisation/ During construction	Contractor(s)		✓		Implemented	-
S8.5	Provision of sufficient waste disposal points and regular collection for disposal.	All area/ During construction/ During operation	Contractor(s)		✓	✓	Implemented	DEVB TC(W) No. 8/2010, Enhanced Specification for Site Cleanliness and Tidiness.
S8.5	Appropriate measures to reduce windblown litter and dust transportation of waste by either covering trucks or by transporting wastes in enclosed containers.	All area/ During construction	Contractor(s)		✓		Implemented	DEVB TC(W) No. 8/2010, Enhanced Specification for Site Cleanliness and Tidiness.
S8.5	A waste management plan (WMP) as stated in the "ETWB TC(W) No. 19/2005, Environmental Management on Construction Sites" for the amount of waste generated, recycled and disposed of (including the disposal sites) will be established and implemented during the construction phase as part of the Environmental Management Plan (EMP). The Contractor will be required to prepare the EMP and submits it to the Architect/ Engineer under the Contract for approval prior to implementation.	All area/ During construction	Contractor(s)		✓		Implemented	ETWB TC(W) No. 19/2005, Environmental Management on Construction Sites
S8.5	Separation of chemical wastes for special handling and appropriate treatment at the Chemical Waste Treatment Centre at Tsing Yi.	All area/ During construction	Contractor(s)		✓		N/A	Chapters 2 & 3 Code of Practice on the Packaging, Labelling & Storage of Chemical Wastes published under the Waste Disposal Ordinance (Cap 354), Section 35
S8.5	Regular cleaning and maintenance programme for drainage systems, sumps and oil interceptors.	Land site/ During construction	Contractor(s)		✓		Implemented, rectified after	Waste Disposal Ordinance (Cap 354)

Contract No. 13/WSD/17  
Design, Build and Operate First Stage of Tseung Kwan O Desalination Plant



EIA Reference	Recommended Environmental Protection Measures/ Mitigation Measures	Objectives of the recommended measures & main concerns to address	Implementation Agent	Implementation Stage			Implementation Status	Relevant Legislation & Guidelines
				D	C	O		
							reminder	
S8.5	A recording system for the amount of wastes generated/ recycled and disposal sites. The trip-ticket system will be included as one of the contractual requirements and implemented by the contractor(s).	Land site/ During construction	Contractor(s)		✓		Implemented	DEVB TC(W) No. 6/2010, Trip Ticket System for Disposal of Construction & Demolition Materials
S8.5	Segregation and storage of different types of waste in different containers, skips or stockpiles to enhance reuse or recycling of material and their proper disposal.	Land site/ During construction/ During operation	Contractor(s)		✓		Implemented	WBTC 32/92, The Use of Tropical Hard Wood on Construction Site
S8.5	Encourage collection of aluminium cans and waste paper by individual collectors during construction with separate labelled bins provided to segregate these wastes from other general refuse by the workforce.	Land site/ During construction	Contractor(s)		✓		Implemented	ETWB TCW No. 33/2002, Management of Construction and Demolition Material Including Rock
S8.5	Any unused chemicals and those with remaining functional capacity will be recycled as far as possible.	Land site/ During construction	Contractor(s)		✓		N/A	-
S8.5	Use of reusable non-timber formwork to reduce the amount of C&D materials.	All areas/ During construction	Contractor(s)		✓		N/A	WBTC 32/92, The Use of Tropical Hard Wood on Construction Site
S8.5	Prior to disposal of construction waste, wood, steel and other metals will be separated to the extent practical, for re-use and/or recycling to reduce the quantity of waste to be disposed of to landfill.	All areas/ During construction	Contractor(s)		✓		Implemented	DEVB TC(W) No. 6/2010, Trip Ticket System for Disposal of Construction & Demolition Materials
S8.5	Proper storage and site practices to reduce the potential for damage or contamination of construction materials.	All areas/ During construction	Contractor(s)		✓		Implemented, rectified after reminder.	-
S8.5	Plan and stock construction materials carefully to reduce amount of waste generated and avoid unnecessary generation of waste.	All areas/ During construction	Contractor(s)		✓		Implemented	-
S8.5	A Sediment Quality Report (SQR) for sampling and chemical testing of the sediment will be prepared and submitted to the EPD for approval. The approved detailed sampling and chemical testing will be carried out prior to the commencement of the dredging activities to confirm the sediment disposal method.	Marine works/ During construction	Contractor(s)		✓		N/A	ETWB TC(W) No. 34/2002 and Dumping at Sea Ordinance (DASO)
S8.5	The management of dredged/ excavated sediment	Marine works/ During	WSD/		✓		Implemented	ETWB TC(W) No. 34/2002

Contract No. 13/WSD/17  
Design, Build and Operate First Stage of Tseung Kwan O Desalination Plant



EIA Reference	Recommended Environmental Protection Measures/ Mitigation Measures	Objectives of the recommended measures & main concerns to address	Implementation Agent	Implementation Stage			Implementation Status	Relevant Legislation & Guidelines
				D	C	O		
	management requirement from <i>ETWB TC(W) No. 34/2002</i> will be incorporated in the Specification of the Contract Documents.	construction	Contractor(s)					and Dumping at Sea Ordinance (DASO)
S8.5	The contractor will open a billing account with EPD in accordance with the Waste Disposal (Charges for Disposal of Construction Waste) Regulation for the payment of disposal charges.	Contract mobilisation/ During construction	Contractor(s)		✓		Implemented	Cap 354N Waste Disposal (Charges for Disposal of Construction Waste) Regulation
S8.5	A trip-ticket system will be established in accordance with DEVB TC(W) No. 6/2010 to monitor the reuse of surplus excavated materials off-site and disposal of construction waste and general refuse at transfer facilities/ landfills, and to control fly-tipping.	Contract mobilisation/ During construction	Contractor(s)		✓		Implemented	DEVB TC(W) No. 6/2010, Trip Ticket System for Disposal of Construction & Demolition Materials
S8.5	The project proponent will also conduct regular inspection of the waste management measures implemented on site as described in the Waste Management Plan.	All area/ During construction	Contractor(s)/ Environmental Team (ET) & Independent Environmental Checker (IEC)		✓		Implemented	ETWB TC(W) No. 19/2005, Environmental Management on Construction Sites
S8.5	A recording system (similar to summary table as shown in Annex 5 and Annex 6 of Appendix G of ETWB TC(W) No. 19/2005) for the amount of waste generated, recycled and disposed of (including the disposal sites) will be established during the construction phase.	All area/ During construction	Contractor(s)		✓		Implemented	Annex 5 and Annex 6 of Appendix G of ETWB TC(W) No. 19/2005
S8.5	Inert C&D materials (public fill) will be reused within the Project as far as practicable.	All area/ During construction	Contractor(s)		✓		N/A	-
S8.5	Public fill and construction waste shall be segregated and stored in different containers or skips to facilitate reuse or recycling of materials and their proper disposal.	All area/ During construction	Contractor(s)		✓		Implemented	-
S8.5	Specific areas of the work site will be designated for such segregation and storage if immediate use is not practicable.	All area/ During construction	Contractor(s)		✓		Implemented	-
S8.5	To reduce the potential dust and water quality impacts of site formation works, C&D materials will be wetted as quickly as possible to the extent practice after filling.	All area/ During construction	Contractor(s)		✓		Implemented	Air Pollution Control (Construction Dust) Regulation (Cap 311R); WPCO (Cap 358)



Contract No. 13/WSD/17  
Design, Build and Operate First Stage of Tseung Kwan O Desalination Plant



EIA Reference	Recommended Environmental Protection Measures/ Mitigation Measures	Objectives of the recommended measures & main concerns to address	Implementation Agent	Implementation Stage			Implementation Status	Relevant Legislation & Guidelines
				D	C	O		
S8.5	Open stockpiles of excavated/ fill materials or construction wastes on-site should be covered with tarpaulin or similar fabric.	Land site/ During Construction, particularly dry season	Contractor(s)		✓		Implemented	Air Pollution Control (Construction Dust) Regulation (Cap 311R)
S8.5	Chemical waste container shall be suitable for the substance they are holding, resistant to corrosion, maintained in a good condition, and securely closed.	All area/ During construction/ During operation	Contractor(s)/ WSD		✓	✓	Implemented	Waste Disposal (Chemical Waste) (General) Regulation; Code of Practice on the Packaging, Handling and Storage of Chemical Wastes
S8.5	Chemical waste container shall have a capacity of less than 450 L unless the specifications have been approved by the EPD.	All area/ During construction/ During operation	Contractor(s)/ WSD		✓	✓	Implemented	Waste Disposal (Chemical Waste) (General) Regulation; Code of Practice on the Packaging, Handling and Storage of Chemical Wastes
S8.5	A label in English and Chinese shall be displayed on the chemical container in accordance with instructions prescribed in Schedule 2 of the Regulations.	All area/ During construction/ During operation	Contractor(s)/ WSD		✓	✓	Implemented	Waste Disposal (Chemical Waste) (General) Regulation; Code of Practice on the Packaging, Handling and Storage of Chemical Wastes
S8.5	Storage areas for chemical waste shall be enclosed on at least 3 sides.	All area/ During construction/ During operation	Contractor(s)/ WSD		✓	✓	Implemented	Waste Disposal (Chemical Waste) (General) Regulation; Code of Practice on the Packaging, Handling and Storage of Chemical Wastes
S8.5	Storage areas for chemical waste shall have an impermeable floor and bunding, of capacity to accommodate 110% of the volume of the largest container or 20% by volume of the chemical waste stored in that area, whichever is the greatest.	All area/ During construction/ During operation	Contractor(s)/ WSD		✓	✓	Implemented	Waste Disposal (Chemical Waste) (General) Regulation; Code of Practice on the Packaging, Handling and Storage of Chemical Wastes
S8.5	Storage areas for chemical waste shall have adequate ventilation.	All area/ During construction/ During operation	Contractor(s)/ WSD		✓	✓	Implemented	Waste Disposal (Chemical Waste) (General) Regulation; Code of Practice on the Packaging, Handling and Storage of Chemical Wastes

Contract No. 13/WSD/17  
Design, Build and Operate First Stage of Tseung Kwan O Desalination Plant



EIA Reference	Recommended Environmental Protection Measures/ Mitigation Measures	Objectives of the recommended measures & main concerns to address	Implementation Agent	Implementation Stage			Implementation Status	Relevant Legislation & Guidelines
				D	C	O		
S8.5	Storage areas for chemical waste shall be covered to prevent rainfall entering (water collected within the bund must be tested and disposed of as chemical waste, if necessary).	All area/ During construction/ During operation	Contractor(s)/ WSD		✓	✓	Implemented	Waste Disposal (Chemical Waste) (General) Regulation; Code of Practice on the Packaging, Handling and Storage of Chemical Wastes
S8.5	Storage areas for chemical waste shall be arranged so that incompatible materials are appropriately separated.	All area/ During construction/ During operation	Contractor(s)/ WSD		✓	✓	Implemented	Waste Disposal (Chemical Waste) (General) Regulation; Code of Practice on the Packaging, Handling and Storage of Chemical Wastes
S8.5	General refuse will be stored in enclosed bins or compaction units separately from construction and chemical wastes.	All area/ During construction/ During operation	Contractor(s)/ WSD		✓	✓	Implemented	Waste Disposal (Chemical Waste) (General) Regulation; Code of Practice on the Packaging, Handling and Storage of Chemical Wastes
S8.5	Adequate number of waste containers will be provided to avoid over-spillage of waste.	All area/ During construction/ During operation	Contractor(s)/ WSD		✓	✓	Implemented	DEVB TC(W) No. 8/2010 Enhanced Specification for Site Cleanliness and Tidiness.
S8.5	A reputable waste collector will be employed by the Contractor to remove general refuse from the site, separately from construction and chemical wastes, on a daily basis to minimise odour, pest and litter impacts.	All area/ During construction/ During operation	Contractor(s)/ WSD		✓	✓	Implemented	-
S8.5	Recycling bins will be provided at strategic locations within the Site to facilitate recovery of recyclable materials (including aluminium can, waste paper, glass bottles and plastic bottles) from the Site. Materials recovered will be sold for recycling.	All area/ During construction/ During operation	Contractor(s)/ WSD		✓	✓	Implemented	-
S8.5	To avoid any odour and litter impact, accurate number of portable toilets will be provided for workers on-site.	All area/ During construction	Contractor(s)		✓		Implemented	-
S8.5	The burning of refuse on construction sites is prohibited by law.	All area/ During construction	Contractor(s)		✓		Implemented	Air Pollution Control Ordinance (Cap 311)
S8.7	To facilitate monitoring and control over the contractors' performance on waste management, a waste inspection and audit programme will be	All facilities/ During construction	ET/ IEC		✓		Implemented	-

Contract No. 13/WSD/17  
 Design, Build and Operate First Stage of Tseung Kwan O Desalination Plant



EIA Reference	Recommended Environmental Protection Measures/ Mitigation Measures	Objectives of the recommended measures & main concerns to address	Implementation Agent	Implementation Stage			Implementation Status	Relevant Legislation & Guidelines
				D	C	O		
	implemented throughout the construction phase.							

Note: D - Design stage C - Construction O - Operation

Contract No. 13/WSD/17  
Design, Build and Operate First Stage of Tseung Kwan O Desalination Plant



	Recommended Environmental Protection Measures/ Mitigation Measures	Objectives of the recommended measures & main concerns to address	Implementation Agent	Implementation Stage			Implementation Status	Relevant Legislation & Guidelines
				D	C	O		
<b>Ecology</b>								
S9.7	For slope mitigation works within the Clear Water Bay Country Park, to avoid tree felling and damages to trees, the exact locations of the flexible barrier foundation plates, soil nails and rock dowels can be adjusted during detailed design, and a setback distance from existing trees is recommended to be maintained as far as practical. A detailed specification describing the exact locations of the flexible barrier foundation plates, soil nails and rock dowels will be prepared to illustrate how the setback distance from existing trees would be implemented for tree avoidance.	Slope mitigation works area/ During detailed design/ During construction	Contractor(s)	✓	✓		Implemented	-
S9.7	Pruning of tree canopies along the alignment of the flexible barriers shall be limited to a minimum.	Slope mitigation works area/ During construction	Contractor(s)		✓		Implemented	
S9.7	The alignment of flexible barriers shall be optimized to preserve all species of conservation interest and minimize the impact to the existing vegetation as far as practicable. All individuals of <i>Marsdenia lachnostoma</i> within the slope mitigation areas shall be retained <i>in-situ</i> , by positioning the alignment of flexible barrier at a minimum 1.5m in a radius away from these individuals.	Slope mitigation works area/ During detailed design/ During construction	Contractor(s)	✓	✓		N/A	-
S9.7 and 9.10	At the detailed design stage prior to the commencement of the slope mitigation works, a vegetation survey shall be carried out at the slope mitigation areas within the Clear Water Bay Country Park to assess the condition and identify the location of each individual of <i>Marsdenia lachnostoma</i> and other flora species of conservation interest that may be directly affected by the construction works.	Slope mitigation works area/ During detailed design/ During construction	Contractor(s)	✓	✓		Implemented	-
S9.7	Temporary fencing will be installed to fence off the concerned species either in groups of individually within the works area and in the close proximity to prevent from being damaged and disturbed during construction. A sign identifying the site shall be attached to the fence and flagging tape shall be attached to the individuals to visualize their locations.	Slope mitigation works area/ During construction	Contractor(s)		✓		N/A	-

Contract No. 13/WSD/17  
Design, Build and Operate First Stage of Tseung Kwan O Desalination Plant



	Recommended Environmental Protection Measures/ Mitigation Measures	Objectives of the recommended measures & main concerns to address	Implementation Agent	Implementation Stage			Implementation Status	Relevant Legislation & Guidelines
				D	C	O		
S9.7 and S9.10	A specification for fencing and demarcating individuals of <i>Marsdenia lachnostoma</i> (or other flora species of conservation interest, if found) adjacent to the proposed alignment of the flexible barriers will be prepared to protect the species.	Slope mitigation works area/ During construction	Contractor(s)		✓		N/A	-
S9.7	Induction training shall also be provided to all site personnel in order to brief them on this flora of conservation interest including the locations and their importance.	Slope mitigation works area/ During construction	Contractor(s)		✓		N/A	-
S9.7	The resident site supervisory staff will closely monitor the conditions of concerned individuals during construction of flexible barriers in the close proximity.	Slope mitigation works area/ During construction	Contractor(s)		✓		N/A	-
S9.7	Erect fences along the boundary of the works area before the commencement of works to prevent vehicle movements and encroachment of personnel onto adjacent areas.	All area/ During construction	Contractor(s)		✓		Implemented	-
S9.7	Regularly check the work site boundaries to ensure that they are not breached and that damage does not occur to surrounding areas.	All area/ During construction	Contractor(s)/ Environmental Team (ET)		✓		Implemented	-
S9.7	Avoid any damage and disturbance, particularly those caused by filling and illegal dumping, to the surrounding habitats through proper management of waste disposal.	All area/ During construction	Contractor(s)		✓		Implemented	-
S9.7	Reinstate temporarily affected areas, particularly the habitats of plantation and shrubland-grassland immediately after completion of construction works, through on-site tree/shrub planting. The tree/shrub species will be chosen with reference to those in the surrounding area.	All area/ During construction	Contractor(s)		✓		N/A	-
S9.7	Affected habitats within the Clear Water Bay Country Bay shall be reinstated by hydro-seeding and planting of climbers and native shrub seedlings where practical upon completion of the slope mitigation works.	All area/ During construction	Contractor(s)		✓		N/A	-

Note: D – Design stage C – Construction O – Operation

Contract No. 13/WSD/17  
Design, Build and Operate First Stage of Tseung Kwan O Desalination Plant



EIA Reference	Recommended Environmental Protection Measures/ Mitigation Measures	Objectives of the recommended measures & main concerns to address	Implementation Agent	Implementation Stage			Implementation Status	Relevant Legislation & Guidelines
				D	C	O		
<b>Landscape &amp; Visual</b>								
S11.10 & 11.11	The construction area and area allowed for temporary structures, such as the contractor's office, will be minimized to a practical minimum. (MM1)	All area/ Detailed design/ During construction/ During operation	WSD/ Contractor(s)	✓	✓	✓	Implemented	-
S11.10 & 11.11	At the detailed design stage, the design team will seek to minimize the landscape footprint of the Project and above ground facilities, while satisfying all other requirements. (MM2)	All area/ Detailed design/ During construction/ During operation	WSD/ Contractor(s)	✓	✓	✓	Implemented	-
S11.10 & 11.11	Design principles will be adopted to take into account the surrounding area, particularly Clear Water Bay Country Park behind and the nearby waterfront, with due consideration given to: - green roofs where practical (ie without equipment on the roof); - roadside planting; - aesthetic treatment of all structures; - vertical greening; screen planting along application site; and - landscape enhancement with amenity planting where practical including planting along the edge (site boundary) fence with native shrubs where feasible, - to reduce their visual impact and blend them into the surrounding landscape. (MM3)	All area/ Detailed design/ During construction/ During operation	WSD/ Contractor(s)	✓	✓	✓	Implemented	-
S11.10 & 11.11	All trees within the Project Site or the potential slope mitigation works area will be carefully protected during construction according to DEVB TCW No. 10/2013 – Tree Preservation (MM4)	All area/ Detailed design/ During construction/ During operation	WSD/ Contractor(s)	✓	✓	✓	Implemented	ETWB TCW No. 3/2006 - Tree Preservation.
S11.10 & 11.11	No tree within the Country Park will be felled. Trees within the Site unavoidably affected by the works will be transplanted where necessary and practical. For trees that need to be felled, compensatory planting will be provided to the satisfaction of relevant Government departments. A compensatory tree planting proposal including locations of tree compensation will be submitted to seek relevant government department's approval, in accordance with DEVB TC(W) No. 10/2013. (MM5)	All area/ Detailed design/ During construction/ During operation	WSD/ Contractor(s)	✓	✓	✓	Implemented	DEVB TC(W) No. 10/2013
S11.10 &	Any slope mitigation works necessary to address natural terrain	All area/ Detailed	WSD/	✓	✓	✓	N/A	

Contract No. 13/WSD/17  
 Design, Build and Operate First Stage of Tseung Kwan O Desalination Plant



EIA Reference	Recommended Environmental Protection Measures/ Mitigation Measures	Objectives of the recommended measures & main concerns to address	Implementation Agent	Implementation Stage			Implementation Status	Relevant Legislation & Guidelines
				D	C	O		
11.11	hazards, will be minimized to minimize any potential environmental impact to the Country Park e.g. soil nailing and rock stabilization will aim to avoid existing trees e.g. should any restoration of vegetation be necessary, the best planting matrix with native species will be established, with the aim of resembling the existing vegetation. (MM6)	design/ During construction/ During operation	Contractor(s)					
S11.10 & 11.11	Dredging works for the installation of intake structures and outfall diffusers should be minimized to avoid or reduce any potential environmental impacts to as low as reasonably practicable (ALARP). The intake and outfall structures (e.g. intake openings and diffuser heads) will be prefabricated and transferred to site for installation. (MM7)	All area/ Detailed design/ During construction/ During operation	WSD/ Contractor(s)	✓	✓	✓	N/A	
S11.10 & 11.11	All night-time lighting will be reduced to a practical minimum both in terms of number of level and will be hooded and directional. (MM8) units and lux level and will be hooded and directional. (MM8)	All area/ Detailed design/ During construction/ During operation	WSD/ Contractor(s)	✓	✓	✓	Implemented	-

Note: D – Design stage C – Construction O – Operation

Contract No. 13/WSD/17  
Design, Build and Operate First Stage of Tseung Kwan O Desalination Plant



EIA Reference	Recommended Environmental Protection Measures/ Mitigation Measures	Objectives of the recommended measures & main concerns to address	Implementation Agent	Implementation Stage			Implementation Status	Relevant Legislation & Guidelines
				D	C	O		
<b>Landfill Gas Hazard</b>								
S12.7	During all works, safety procedures should be implemented to minimise the risks of fires and explosions, asphyxiation of workers and toxicity effects resulting from contact with contaminated soil and groundwater.	All area/ Detailed design/ During construction/ During operation	Contractor(s)	✓	✓	✓	Implemented	-
S12.7	During trenching and excavation as well as creation of confined spaces at near to or below ground level, precautions should be clearly laid down and rigidly Gas detection equipment and appropriate breathing apparatus should be available and used when entering confined spaces or trenches deeper than 1 metre.	All area/ Detailed design/ During construction/ During operation	Contractor(s)	✓	✓	✓	N/A	
S12.7	The Contractor should make the workers are aware of potential hazards of working in confined spaces (any chamber, manhole or culvert which is large enough to permit access to personnel). Such work in confined spaces is controlled by the Factories and Industrial Undertakings (Confined Spaces) Regulations of the Factories and Industrial Undertakings Ordinance. Following the Safety Guide to Working in Confined Spaces ensures compliance with the above regulations.	All area/ Detailed design/ During construction/ During operation	Contractor(s)	✓	✓	✓	Implemented	
S12.7	Safety officers, specifically trained with regard to landfill gas and leachate related hazards and the appropriate actions to take in adverse circumstances, should be present on the site throughout the works, in particular, when works are undertaken below grade.	All area/ Detailed design/ During construction/ During operation	Contractor(s)	✓	✓	✓	Implemented	
S12.7	All personnel who work on site and all visitors to the site should be made aware of the possibility of ignition of gas in the vicinity of the works, the possible presence of contaminated water and the need to avoid	All area/ Detailed design/ During construction/ During operation	Contractor(s)	✓	✓	✓	Implemented	



Contract No. 13/WSD/17  
Design, Build and Operate First Stage of Tseung Kwan O Desalination Plant



EIA Reference	Recommended Environmental Protection Measures/ Mitigation Measures	Objectives of the recommended measures & main concerns to address	Implementation Agent	Implementation Stage			Implementation Status	Relevant Legislation & Guidelines
				D	C	O		
	physical contact with it.							
S12.7	Monitoring for landfill gas should be undertaken in all excavations, manholes, chambers (particularly during pipe jacking) and any confined spaces through the use of an intrinsically safe portable instrument, appropriately calibrated and capable of measuring the concentrations of methane, carbon dioxide and oxygen.	All area/ Detailed design/ During construction/ During operation	Contractor(s)	✓	✓	✓	N/A	
S12.7	Monitoring frequency and areas to be monitored should be specified prior to commencement of groundwork, either by the Safety Officer, or by an appropriately qualified person. All measurements should be recorded and documented.	All area/ Detailed design/ During construction/ During operation	Contractor(s)	✓	✓	✓	N/A	
S12.7	Proceed drilling with adequate care and precautions against the potential hazards which may be encountered.	All area/ Detailed design/ During construction/ During operation	Contractor(s)	✓	✓	✓	Implemented	
S12.7	Prior to the commencement of the site works, the drilling contractor should devise a 'method-of- working' statement covering all normal and emergency procedures (including but not limited to number of operatives, experience and special skills of operatives, normal method of operations, emergency procedures, supervisors responsibilities, storage and use of safety equipment, safety procedures and signs, barriers and guarding). The site supervisor and all operatives must be familiar with this statement.	All area/ During construction/ During operation	Contractor(s)	✓	✓	✓	Implemented	

Contract No. 13/WSD/17  
Design, Build and Operate First Stage of Tseung Kwan O Desalination Plant



EIA Reference	Recommended Environmental Protection Measures/ Mitigation Measures	Objectives of the recommended measures & main concerns to address	Implementation Agent	Implementation Stage			Implementation Status	Relevant Legislation & Guidelines
				D	C	O		
S12.7	Where below ground service entries are necessary to the Incoming Switchgear Room, 132 kV Substation and Chlorine Store (I) and (II), the entry point should be sealed to prevent gas entry. In addition, any below grade cable trenches entering the Incoming Switchgear Room and 132 kV Substation can become the pathway for landfill gas and hence grilled metal covers should be used.	All area/ Detailed design/ During construction/ During operation	Contractor(s)	✓	✓	✓	N/A	
S12.7	It is recommended regular landfill gas monitoring should be carried out at the Incoming Switchgear Room, 132 kV Substation and Chlorine Store (I) and (II). The monitoring frequency will be monthly for the first year of operation. If the monitoring results show no sign of landfill gas migration, reduce the monitoring frequency to once every six months.	All area/ Detailed design/ During construction/ During operation	Contractor(s)	✓	✓	✓	N/A	
S12.7	The manholes and utility pits within the Project Site and along the fresh water mains. Each manhole/ utility pit should be monitored with two measurements (at mid depth and base). Each measurement should be monitored for a minimum of 10 minutes. A steady reading and peak reading should be recorded at each manhole/ utility pit and for each measurement. The need for venting the manhole/ utility pit and further monitoring will be reviewed after the initial monitoring.	All area/ Detailed design/ During construction/ During operation	Contractor(s)	✓	✓	✓	N/A	
S12.7	All construction, operation and maintenance personnel working on-site as well as visitors should be made aware of the hazards of landfill gas and its possible presence on-site. This should be achieved through a combination of posting warning signs in prominent places and also by access to detailed information on landfill gas hazards and the designs and procedural means by which these hazards are	All area/ Detailed design/ During construction/ During operation	Contractor(s)	✓	✓	✓	Implemented	

Contract No. 13/WSD/17  
 Design, Build and Operate First Stage of Tseung Kwan O Desalination Plant



EIA Reference	Recommended Environmental Protection Measures/ Mitigation Measures	Objectives of the recommended measures & main concerns to address	Implementation Agent	Implementation Stage			Implementation Status	Relevant Legislation & Guidelines
				D	C	O		
	being minimized on-site.							

Note: D - Design stage C - Construction O - Operation

## Appendix D

# Impact Monitoring Schedule of the Reporting Period (BLANK)

(BLANK)

# Appendix E

## Event/Action Plan for Noise Exceedance

### Event and Action Plan for Construction Noise Monitoring

Event	Action			
	ET	IEC	ER	Contractor
Action Level	<ol style="list-style-type: none"> <li>Carry out investigation to identify the source and cause of the complaint/ exceedance(s)</li> <li>Notify IEC, ER, and Contractor and report the results of investigation to the Contractor, ER and the IEC</li> <li>Discuss with the Contractor and IEC for remedial measures required</li> <li>If the complaint is related to the Project, conduct additional monitoring for checking mitigation effectiveness and report the findings and results to the IEC, ER and the Contractor</li> </ol>	<ol style="list-style-type: none"> <li>Review the analyzed results submitted by the ET</li> <li>Review the proposed remedial measures by the Contractor and advise the ER accordingly</li> <li>Supervise the implementation of remedial measures</li> </ol>	<ol style="list-style-type: none"> <li>Confirm receipt of Notification of Exceedance in writing</li> <li>Require Contractor to propose remedial measures for the analysed noise problem</li> <li>Ensure remedial measures are properly implemented</li> </ol>	<ol style="list-style-type: none"> <li>Submit noise mitigation proposals, if required, to the IEC and ER</li> <li>Implement noise mitigation proposals.</li> </ol>

Limit Level	<ol style="list-style-type: none"> <li>Notify IEC, ER, EPD and Contractor</li> <li>Identify the source(s) of impact by reviewing all the relevant monitoring data and the corresponding construction activities. Exceedances should also be confirmed by immediate verification in the field as far as practical.</li> <li>Repeat measurement to confirm findings</li> <li>Increase monitoring frequency</li> <li>Carry out analysis of Contractor's working procedures to determine possible mitigation to be implemented.</li> <li>inform IEC, ER and EPD the cause &amp; actions taken for the exceedances</li> <li>Assess effectiveness of Contractor's remedial actions and keep IEC, EPD and ER informed of the results</li> <li>If exceedance stops, cease additional monitoring.</li> </ol>	<ol style="list-style-type: none"> <li>Discuss amongst ER, ET, and Contractor on the potential remedial actions</li> <li>Review Contractor's remedial actions to assure their effectiveness and advise the ER &amp; ET accordingly</li> <li>Supervise the implementation of the remedial measures</li> </ol>	<ol style="list-style-type: none"> <li>Confirm receipt of notification of exceedance in writing</li> <li>Notify Contractor</li> <li>Require Contractor to propose remedial measures for the analyzed noise problem</li> <li>Ensure remedial measures are properly implemented</li> <li>If exceedance continuous, consider what portion of the work is responsible and instruct the Contractor to stop that portion of work until the exceedance is aborted</li> </ol>	<ol style="list-style-type: none"> <li>Take immediate action to avoid further exceedance</li> <li>Identify practicable measures to minimize the noise impact. Submit proposals for remedial actions to ER within three working days of notification</li> <li>Implement the agreed proposals</li> <li>Resubmit proposal if problem still not under control</li> <li>Stop the relevant portion of works as determined by the ER until the exceedance is abated</li> </ol>
-------------	---	--	---	---

# Appendix F

## Event/Action Plan for Water Quality Exceedance



Event	Action			
	ET	IEC	SO	Contractor
Action level being exceeded by one sampling day	Repeat in-situ measurement to confirm findings; Identify source(s) of impact; Inform IEC and Contractor; Check monitoring data, all plant, equipment and Contractor's working methods; Discuss mitigation measures with IEC and Contractor; Repeat measurement on next day of exceedance. (The above actions should be taken within 1 working day after the exceedance is identified)	Discuss with ET and Contractor on the mitigation measures; Review proposals on mitigation measures submitted by Contractor and advise the SO accordingly; Assess the effectiveness of the implemented mitigation measures. (The above actions should be taken within 1 working day after the exceedance is identified)	Discuss with IEC on the proposed mitigation measures; Make agreement on the mitigation measures to be implemented. (The above actions should be taken within 1 working day after the exceedance is identified)	Inform the SO and confirm notification of the non-compliance in writing; Rectify unacceptable practice; Check all plant and equipment; Consider changes of working methods; Discuss with ET and IEC and propose mitigation measures to IEC and SO within 3 working days; Implement the agreed mitigation measures. (The above actions should be taken within 1 working day after the exceedance is identified)
Action level being exceeded by more than one consecutive sampling days	Identify source(s) of impact; Inform IEC and Contractor; Check monitoring data, all plant, equipment and Contractor's working methods; Discuss mitigation measures with IEC and Contractor; Ensure mitigation measures are implemented; Prepare to increase the monitoring frequency to daily; Repeat measurement on next working day of exceedance. (The above actions should be taken within 1 working day after Action Level being exceeded by two consecutive sampling days)	Discuss with ET and Contractor on the mitigation measures; Review proposals on mitigation measures submitted by Contractor and advise the SO accordingly; Assess the effectiveness of the implemented mitigation measures. (The above actions should be taken within 1 working day after Action Level being exceeded by two consecutive sampling days)	Discuss with IEC on the proposed mitigation measures; Make agreement on the mitigation measures to be implemented. Assess the effectiveness of the implemented mitigation measures. (The above actions should be taken within 1 working day after Action Level being exceeded by two consecutive sampling days)	Inform the SO and confirm notification of the non-compliance in writing; Rectify unacceptable practice; Check all plant and equipment; Consider changes of working methods; Discuss with ET and IEC and propose mitigation measures to IEC and SO within 3 working days; Implement the agreed mitigation measures. (The above actions should be taken within 1 working day after Action Level being exceeded by two consecutive sampling days)

Event	Action			
	ET	IEC	SO	Contractor
Limit level being exceeded by one sampling day	Inform the SO and confirm notification of the non-compliance in writing; Rectify unacceptable practice; Check all plant and equipment; Consider changes of working methods; Discuss with Contractor, IEC and SO and propose mitigation measures to IEC and SO within 3 working days; Implement the agreed mitigation measures. (The above actions should be taken within 1 working day after the exceedance is identified)	Discuss with ET and Contractor on the mitigation measures; Review proposals on mitigation measures submitted by Contractor and advise the SO accordingly; Assess the effectiveness of the implemented mitigation measures. (The above actions should be taken within 1 working day after the exceedance is identified)	Discuss with IEC, ET and Contractor on the proposed mitigation measures; Request Contractor to critically review the working methods; Make agreement on the mitigation measures to be implemented. Assess the effectiveness of the implemented measures. (The above actions should be taken within 1 working day after the exceedance is identified)	Inform the SO and confirm notification of the non-compliance in writing; Rectify unacceptable practice; Check all plant and equipment; Consider changes of working methods; Discuss with ET, IEC and SO and propose mitigation measures to IEC and SO within 3 working days; Implement the agreed mitigation measures. (The above actions should be taken within 1 working day after the exceedance is identified)

Event	Action			
	ET	IEC	SO	Contractor
Limit level being exceeded by more than one consecutive sampling days	<p>Identify source(s) of impact; Inform IEC, Contractor and EPD;</p> <p>Check monitoring data, all plant, equipment and Contractor's working methods. Discuss mitigation measures with IEC, SO and Contractor. Ensure mitigation measures are implemented;</p> <p>Increase the monitoring frequency to daily until no exceedance of Limit level for two consecutive days. (The above actions should be taken within 1 working day after Limit Level being exceeded by two consecutive sampling days)</p>	<p>Discuss with ET and Contractor on the mitigation measures;</p> <p>Review proposals on mitigation measures submitted by Contractor and advise the SO accordingly;</p> <p>Assess the effectiveness of the implemented mitigation measures. (The above actions should be taken within 1 working day after Limit Level being exceeded by two consecutive sampling days)</p>	<p>Discuss with IEC, ET and Contractor on the proposed mitigation measures;</p> <p>Request Contractor to critically review the working methods;</p> <p>Make agreement on the mitigation measures to be implemented.</p> <p>Assess the effectiveness of the implemented measures. Consider and instruct, if necessary, the Contractor to slow down or to stop all or part of the marine work until no exceedance of Limit level. (The above actions should be taken within 1 working day after Limit Level being exceeded by two consecutive sampling days)</p>	<p>Inform the SO and confirm notification of the non-compliance in writing;</p> <p>Rectify unacceptable practice; Check all plant and equipment;</p> <p>Consider changes of working methods;</p> <p>Discuss with ET, IEC and SO and propose mitigation measures to IEC and SO within 3 working days;</p> <p>Implement the agreed mitigation measures;</p> <p>As directed by the SOR, to slow down or to stop all or part of the marine work or construction activities. (The above actions should be taken within 1 working day after Limit Level being exceeded by two consecutive sampling days)</p>

# Appendix G

## Waste Flow Table

Contract No. 13/WSD/17  
 Design, Build and Operate First Stage of Tseung Kwan O Desalination Plant  
 BEAM Plus Monthly Report

Appendix G – Monthly Summary Waste Flow Table

Monthly Summary Waste Flow Table

Month	Total Quantity Generated (a1)	Total Quantity Generated (Excluded Excavated Material) (a2)	Actual Quantities of Inert C&D Materials Generated Monthly						Actual Quantities of C&D Wastes Generated Monthly					
			Excavated Material Total Quantity Generated (b)	Non-excavated Material					Broken Concrete of construction waste collected by recycling company (g)	Metals (h)	Paper/ cardboard packaging (i)	Plastics (j)	Chemical Waste (k)	Others, e.g. general refuse (l)
				Reused in the Contract (c)	Reused in other Projects (d)	Disposed as Public Fill (e)	Disposed in sorting facility (f)	Total Quantity Generated (a)						
				(in '000kg)	(in '000kg)	(in '000kg)	(in '000kg)							
Jan-2020	-	-	-	-	-	-	-	-	-	-	-	-	-	
Feb-2020	-	-	-	-	-	-	-	-	-	-	-	-	-	
Mar-2020	0.420	0.420	0.000	0.000	0.000	0.000	0.000	0.000	0.000	0.000	0.000	0.000	0.420	
Apr-2020	2.400	2.400	0.000	0.000	0.000	0.000	0.000	0.000	0.000	0.000	0.000	0.000	2.400	
May-2020	18.470	18.470	0.000	0.000	0.000	0.000	0.000	0.000	5.900	0.000	0.000	0.000	12.570	
Jun-2020	1118.110	1118.110	0.000	0.000	0.000	0.000	1081.950	0.000	0.000	0.000	0.000	0.000	34.160	
Jul-2020	758.120	758.120	0.000	0.000	0.000	0.000	724.360	0.000	0.000	0.000	0.000	0.000	33.760	
Aug-2020	203.150	203.150	0.000	0.000	0.000	0.000	161.080	0.000	0.000	0.000	0.000	0.000	42.070	
Sep-2020	105.926	105.926	0.000	0.000	0.000	0.000	0.000	0.000	22.766	0.000	0.010	0.000	83.150	
Oct-2020	46.320	46.320	0.000	0.000	0.000	0.000	0.000	0.000	7.050	0.040	0.020	0.000	39.210	
Nov-2020	71.815	71.815	0.000	0.000	0.000	0.000	0.000	0.000	5.351	0.030	0.014	0.000	66.420	
Dec-2020	12934.194	12934.194	0.000	0.000	12860.314	0.000	0.000	0.000	9.912	0.030	0.018	0.000	63.920	
<b>Total</b>	<b>15256.925</b>	<b>15256.925</b>	<b>0.000</b>	<b>0.000</b>	<b>12860.314</b>	<b>0.000</b>	<b>1967.390</b>	<b>0.000</b>	<b>50.979</b>	<b>0.100</b>	<b>0.062</b>	<b>0.000</b>	<b>378.080</b>	

Total C&D waste generated	15256.925	Tonnes	(a: a1 = b+c+d+e+f+g+h+i+j+k+l)
Total C&D waste generated (excluded excavated materials)	15256.925	Tonnes	(a: a2 = c+d+e+f+g+h+i+j+k+l)
Total Recycled C&D Waste	12911.455	Tonnes	(a: a3 = c+d+g+h+i+j)
% of recycled C&D Waste for BEAM Plus MA 11	84.63%		(a: a3/a2 x 100%)

- Notes:
- (1) metal, paper & plastic were collected by recycler
  - (2) The performance target of waste recycling are specified in the Contract
  - (3) The waste flow table shall also include C&D materials that are specified in the Contract to be imported for use at the Site.
  - (4) Plastics refer to plastic bottles/ containers, plastic/ foam from packaging material.
  - (5) Broken concrete for recycling into aggregates
  - (6) Excavated materials/waste will **NOT** be considered as part of construction waste. It should be excluded in the calculation
  - (7) Disposal of inert waste to public fill or sorting facilities will **NOT** be considered as recycled waste.

Contract No. 13/WSD/17  
 Design, Build and Operate First Stage of Tseung Kwan O Desalination Plant



Contract No. 13/WSD/17  
 Environmental Management Plan for Design, Build and Operate First Stage of Tseung Kwan O Desalination Plant

Appendix G – Monthly Summary Waste Flow Table

Name of Department: WSD

Contract No.: 13/WSD/17

**Monthly Summary Waste Flow Table for 2021 (year)**

Month	Actual Quantities of Inert C&D Materials Generated Monthly						Actual Quantities of C&D Wastes Generated Monthly				
	Total Quantity Generated	Hard Rock and Large Broken Concrete	Reused in the Contract	Reused in other Projects	Disposed as Public Fill	Imported Fill	Metals	Paper/ cardboard packaging	Plastics (see Note 3)	Chemical Waste	Others, e.g. general refuse
	(in '000kg)	(in '000kg)	(in '000kg)	(in '000kg)	(in '000kg)	(in '000kg)	(in '000 kg)	(in '000kg)	(in '000kg)	(in '000kg)	(in '000kg)
Jan	11823.060	0.000	0.000	**11816.130	6.930	0.000	0.000	0.000	0.000	0.000	73.960
Feb	0.000	0.000	0.000	*0.000	0.000	0.000	0.007	0.123	0.008	0.000	45.080
Mar											
Apr											
May											
Jun											
Sub-total	11823.060	0.000	0.000	11816.130	6.930	0.000	0.007	0.123	0.008	0.000	119.040
Jul											
Aug											
Sep											
Oct											
Nov											
Dec											
Total	11823.060	0.000	0.000	11816.130	6.930	0.000	0.007	0.123	0.008	0.000	119.040

Notes:

- (1) The performance targets are given in Section 1.69 of Specification B
- (2) The waste flow table shall also include C&D materials that are specified in the Contract to be imported for use at the Site.
- (3) Plastics refer to plastic bottles/containers, plastic sheets/ foam from packaging material

\* The data will be updated in next month.

\*\* The data was updated in February 2021 report

# Appendix H

## Complaint Log

**Statistical Summary of Environmental Complaints**

Reporting Period	Environmental Complaint Statistics		
	Frequency	Cumulative	Complaint Nature
01 Dec 2020 - 28 Feb 2021	0	0	N/A

**Statistical Summary of Environmental Summons**

Reporting Period	Environmental Summons Statistics		
	Frequency	Cumulative	Details
01 Dec 2020 - 28 Feb 2021	0	0	N/A

**Statistical Summary of Environmental Prosecution**

Reporting Period	Environmental Prosecution Statistics		
	Frequency	Cumulative	Details
01 Dec 2020 - 28 Feb 2021	0	0	N/A