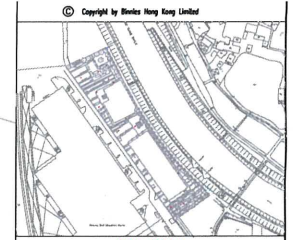
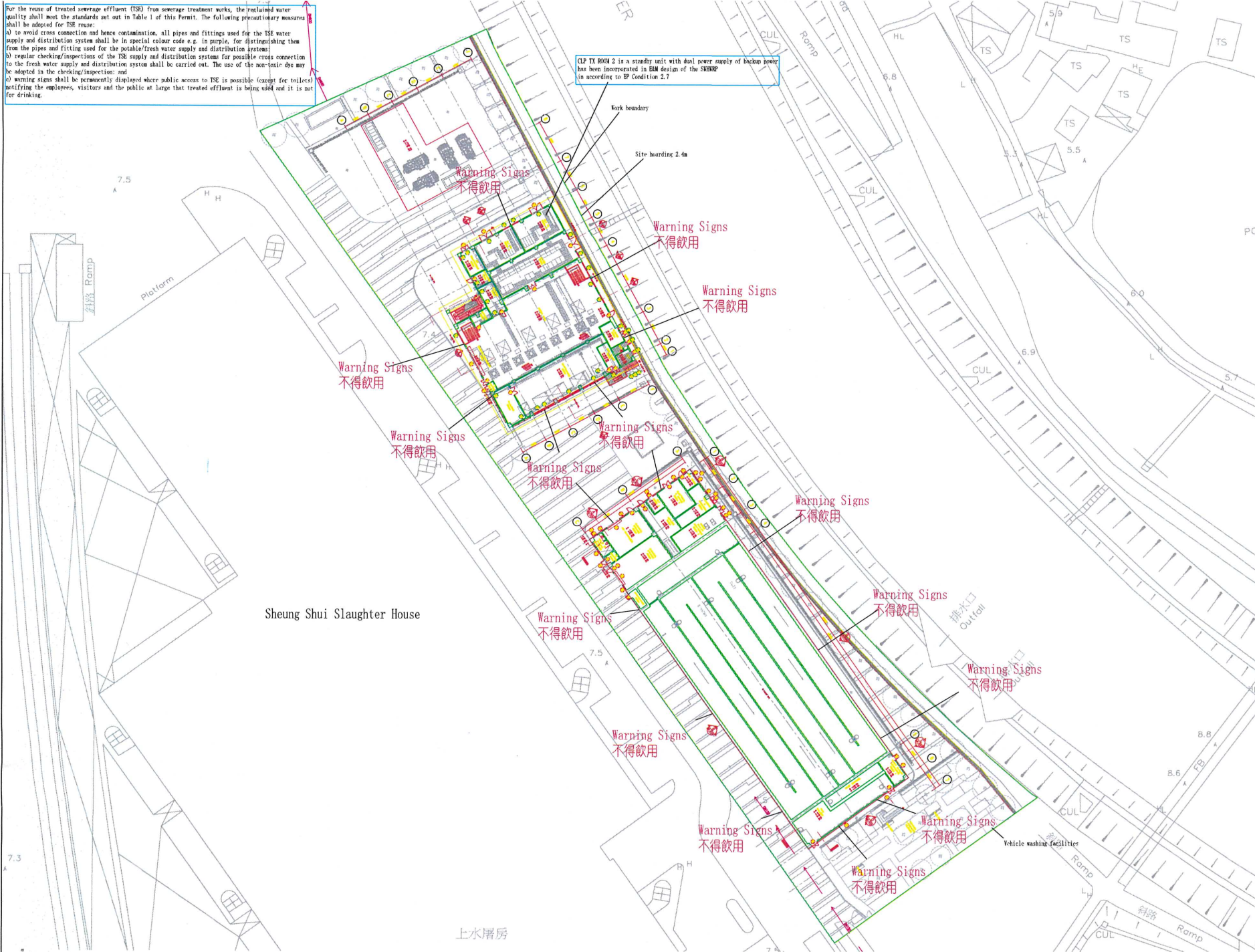


For the reuse of treated sewerage effluent (TSE) from sewerage treatment works, the reclaimed water quality shall meet the standards set out in Table 1 of this Permit. The following precautionary measures shall be adopted for TSE reuse:

- to avoid cross connection and hence contamination, all pipes and fittings used for the TSE water supply and distribution system shall be in special colour code e.g. in purple, for distinguishing them from the pipes and fitting used for the potable/fresh water supply and distribution systems;
- regular checking/inspections of the TSE supply and distribution systems for possible cross connection to the fresh water supply and distribution system shall be carried out. The use of the non-toxic dye may be adopted in the checking/inspection; and
- warning signs shall be permanently displayed where public access to TSE is possible (except for toilets) notifying the employees, visitors and the public at large that treated effluent is being used and it is not for drinking.

CLP TX ROOM 2 is a standby unit with dual power supply of backup power has been incorporated in EAM design of the SKDRP in accordance to EP Condition 2.7



- NOTES:**
- FOR NOTES AND LEGENDS, PLEASE REFER TO DRAWING NO. WSD/20/001/000.
  - THIS DRAWING TO BE READ IN CONJUNCTION WITH DRAWING SERIES NO. AR-101.
  - DO NOT SCALE THE DRAWINGS.
  - ALL LEVELS ARE REFERENCE TO MEER ABOVE HONG KONG PRINCIPAL WATER (MWD) UNLESS OTHERWISE STATED.
  - ALL DIMENSIONS ARE IN MILLIMETERS UNLESS OTHERWISE STATED.
- LEGEND:**
- WORK BOUNDARY
  - Site Boarding 2.4m
  - RECLAIMED WATER P/S
  - HYPO-CHLORINATION FACILITIES (HCP)
  - Vehicle washing facilities
  - DW/TREATED SEWERAGE EFFLUENT (TSE)
  - DW/TREATED SEWERAGE EFFLUENT (TSE)
  - WARNING SIGNS 不得飲用
- IJC: YEGA T.L. WONG    DATE:    INITIAL:  
 ET: T.S. TAN    DATE:    INITIAL:

Revision	Date	Description	Drawn	Initial
Initial	ZL	GC	SZ	CS/YGC
Date	02/21	02/21	02/21	02/21

Approved

Contract No. **3/WSD/20**

Contract Title  
**RECLAIMED WATER SUPPLY TO SHEUNG SHUI AND FANLING**

Drawing Title  
**LOCATION PLAN**

Drawing No. 401582/B&V/WRP/TR/301    Revision -

Scale: A1 1:1000

