

香港電燈有限公司
The Hongkong Electric Co., Ltd.



**Lamma Power Station Extension
Construction Phase
Monthly Environmental Monitoring & Audit Report**

April 2017

香港電燈有限公司
The Hongkong Electric Co., Ltd.



ENVIRONMENTAL IMPACT ASSESSMENT (EIA) ORDINANCE, CAP. 499

ENVIRONMENTAL PERMIT NO. EP-071/2000/C

**LAMMA POWER STATION EXTENSION
ENVIRONMENTAL MONITORING & AUDIT PROGRAMME
AT CONSTRUCTION PHASE**



Report Title	Lamma Power Station Extension – Unit L10 & L11 Monthly EM&A Report (April 2017)
Date	11 May 2017
Certified by	 (Mr. IP Tat-Yan, Environmental Team Leader)
Verified by	 Mr. Y T Tang (AECOM Asia Company Limited, Independent Environmental Checker)

TABLE OF CONTENT

EXECUTIVE SUMMARY

1.	INTRODUCTION.....	1
1.1	Background	1
1.2	Project Organisation	1
1.3	Construction Works undertaken during the Reporting Month	2
1.4	Summary of EM&A Requirements	4
2.	AIR QUALITY.....	6
2.1	Monitoring Requirements	6
2.2	Monitoring Locations	6
2.3	Monitoring Equipment	6
2.4	Monitoring Parameters, Frequency and Duration	7
2.5	Monitoring Procedures and Calibration Details	7
2.6	Results and Observations	8
3.	NOISE	10
3.1	Monitoring Requirements	10
3.2	Monitoring Locations	10
3.3	Monitoring Equipment	10
3.4	Monitoring Parameters, Frequency and Duration	10
3.5	Monitoring Procedures and Calibration Details	11
3.6	Results and Observations	12
4.	ENVIRONMENTAL AUDIT	14
4.1	Review of Environmental Monitoring Procedures	14
4.2	Assessment of Environmental Monitoring Results	14
4.3	Waste Management	14
4.4	Site Environmental Audit	15
4.5	Status of Environmental Licensing and Permitting	15
4.6	Implementation Status of Environmental Mitigation Measures	16
4.7	Implementation Status of Event/Action Plans	16
4.8	Implementation Status of Environmental Complaint Handling Procedures	16
5.	FUTURE KEY ISSUES.....	18
5.1	Key Issues for the Coming Month	18
5.2	Monitoring Schedules for the Next 3 Months	19
5.3	Construction Program for the Next 3 Months	19
6.	CONCLUSION	20

LIST OF TABLES

Table 1.1	Construction Activities and Their Corresponding Environmental Mitigation Measures
Table 2.1	Air Quality Monitoring Locations
Table 2.2	Air Quality Monitoring Equipment
Table 2.3	Air Quality Monitoring Parameter, Duration and Frequency
Table 3.1	Noise Monitoring Equipment
Table 3.2	Noise Monitoring Duration and Parameter
Table 4.1	Summary of AL Level Exceedances on Monitoring Parameters
Table 4.2	Estimated Amounts of Waste in April 2017
Table 4.3	Summary of Environmental Licensing and Permit Status
Table 4.4	Environmental Complaints Received in April 2017
Table 4.5	Outstanding Environmental Complaints Carried Over

LIST OF FIGURES

Figure 1.1	Layout of Work Site
Figure 2.1	Location of Air Quality Monitoring Stations
Figure 3.1	Location of Noise Monitoring Stations

APPENDICES

Appendix A	Organization Chart
Appendix B	Action and Limit Levels for Air Quality and Noise
Appendix C	Environmental Monitoring Schedule
Appendix D	Air Quality Monitoring Results for April 2017
Appendix E	Noise Monitoring Results for April 2017
Appendix F	The QA/QC Procedures and Results
Appendix G	Event/Action Plans
Appendix H	Site Audit Summary
Appendix I	Summary of EMIS
Appendix J	Tentative Construction Programme
Appendix K	Monthly Waste Flow Table for April 2017

EXECUTIVE SUMMARY

This is the 85th monthly Environmental Monitoring and Audit (EM&A) report for the Project “Construction of Lamma Power Station Extension” prepared by the Environmental Team (ET). This report presents the results of impact monitoring on air quality and noise for the said project in April 2017.

The reclamation and submarine pipeline works were completed with the first gas-fired combined cycle unit (viz. Unit L9) commissioned in October 2006, working currently on base load operation. To cope with the scheduled retirement of the existing units at Lamma Power Station, the second gas-fired combined cycle unit (viz. Unit L10) is planned for commercial operation in early 2020 and the associated construction work commenced in February 2016.

In September 2016, the Government approved HK Electric to construct the third combined cycle gas-fired generating unit (L11) to implement the 2020 Fuel Mix Target. L11 is planned for commercial operation in 2022 and the associated construction work commenced in November 2016.

Air and noise monitoring were performed. The results were checked against the established Action/Limit (AL) levels. An on-site audit was conducted once per week. The implementation status of the environmental mitigation measures, Event/Action Plan and environmental complaint handling procedures were also checked.

Construction Activities Undertaken

Construction activities for Lamma Extension during the reporting month are tabulated as follows:

Item	Construction Activities
275kV Switching Station	Full core work
Unit L10 Civil and Building	Main Station Building (excavation and backfilling, sheet piling, breaking of pile head, erection of tower crane, formwork, steel fixing and concreting), and Site Office Building (pile installation, backfilling, formwork, steel fixing and concreting)
Unit L11 Piling	Bored pile construction work

Environmental Monitoring Works

All monitoring work at designated stations was performed as scheduled satisfactorily.

Air Quality

No exceedance of Action/Limit levels on 1-hour TSP and 24-hour TSP for air quality was recorded in the month.

Noise

Construction work for Lamma Extension was carried out during the restricted hours including evening-time, holidays and night-time under valid Construction Noise Permit. No exceedance of Action and Limit levels for noise arising from the construction of Lamma Extension was recorded in the month.

Site Environmental Audit

Site audits were carried out on a weekly basis to monitor environmental issues on the construction site. The site conditions were generally satisfactory. All required mitigation measures were implemented.

Environmental Licensing and Permitting

Description	Permit No.	Valid Period		Issued To	Date of Issuance
		From	To		
Varied Environmental Permit	EP-071/2000/C	18/05/05	-	HK Electric	18/05/05
Construction Noise Permit	GW-RS1026-16	11/10/16	10/04/17	Contractor	07/10/16
Construction Noise Permit	GW-RS1299-16	26/12/16	25/06/17	Contractor	22/12/16
Construction Noise Permit	GW-RS0183-17	13/03/17	12/09/17	Contractor	07/03/17
WPCO Discharge Licence	WT00025747-2016	05/10/16	31/10/21	Contractor	06/10/16
WPCO Discharge Licence	WT00027040-2017	06/02/17	28/02/22	Contractor	06/02/17
WPCO Discharge Licence	WT00027316-2017	01/03/17	31/03/22	Contractor	01/03/17
Registration of Chemical Waste Producer	WPN5113-912-S3180-19	21/01/16	-	Contractor	21/01/16
Registration of Chemical Waste Producer	WPN5213-912-P2781-22	22/02/16	-	Contractor	22/02/16
Registration of Chemical Waste Producer	WPN5113-912-S3180-20	11/01/17	-	Contractor	11/01/17
Waste Disposal Billing Account	Account No.: 7024247	03/02/16	-	Contractor	03/02/16
Waste Disposal Billing Account	Account No.: 7026035	06/10/16	-	Contractor	06/12/16
Waste Disposal Billing Account	Account No.: 7026793	28/12/16	-	Contractor	28/12/16

Implementation Status of Environmental Mitigation Measures

Environmental mitigation measures for the construction activities as recommended in the EM&A manual were implemented in the reporting month.

Environmental Complaints

No complaint against the construction activities was received in the reporting month.

Future Key Issues

The future key issues to be considered in the coming month are as follows:

275kV Switching Station

- to continue executing the preventive measures for avoiding noise exceedance and keep monitoring/ reviewing the performance;
- to monitor and review the sufficiency of the dust suppression measures provided and increase the resources accordingly if necessary;
- to recycle and reuse wastewater from bored pipe construction work and to ensure compliance with the WPCO discharge licence already obtained.

Unit L10 Civil and Building Works

- to continue monitoring the noise level during construction and to ensure compliance with the CNP's already obtained;
- to continue executing the preventive measures for avoiding noise exceedance and keep monitoring/ reviewing the performance;
- to monitor and review the sufficiency of the dust suppression measures provided and increase the resources accordingly if necessary;
- to recycle and reuse wastewater from bored pipe construction work and to ensure compliance with the WPCO discharge licence already obtained.

Unit L11 Piling Works

- to continue monitoring the noise level during construction and to ensure compliance with the CNP's already obtained;
- to continue executing the preventive measures for avoiding noise exceedance and keep monitoring/ reviewing the performance;
- to monitor and review the sufficiency of the dust suppression measures provided and increase the resources accordingly if necessary;
- to recycle and reuse wastewater from bored pipe construction work and to ensure compliance with the WPCO discharge licence already obtained.

Concluding Remarks

The environmental performance of the project was generally satisfactory.

1. INTRODUCTION

1.1 Background

The Environmental Team (hereinafter called the “ET”) was formed within the Hongkong Electric Co. Ltd (HEC) to undertake Environmental Monitoring and Audit for “Construction of Lamma Power Station Extension” (hereinafter called the “Project”). Under the requirements of Section 6 of Environmental Permit EP-071/2000/C, an EM&A programme for impact environmental monitoring set out in the EM&A Manual (Construction Phase) is required to be implemented. In accordance with the EM&A Manual, environmental monitoring of air quality, noise and water quality and regular environmental audits are required for the Project. With the completion of reclamation and submarine pipeline works, no further marine water quality monitoring would be required.

The Project involves the construction of a gas-fired power station employing combined cycled gas turbine technology, forming an extension to the existing Lamma Power Station. The key elements of the Project including the construction activities associated with the transmission system and submarine gas pipeline are outlined as follows.

- dredging and reclamation to form approximately 22 hectares of usable area;
- construction of six 300MW class gas-fired combined cycle units;
- construction of a gas receiving station;
- construction of a transmission system linking the Lamma Extension to load centres on Hong Kong Island;
- laying of a gas pipeline for the supply of natural gas to the new power station

This report summarizes the environmental monitoring and audit work for the Project for the month of April 2017.

1.2 Project Organisation

An Environmental Management Committee (EMC) has been set up in HEC to oversee the Project. The management structure includes the following:

- Environmental Protection Department (The Authority);
- Environmental Manager (The Chairman of the Environmental Management Committee);
- Engineer;
- Independent Environmental Checker (IEC);
- Environmental Team (ET);
- Contractor.

The project organisation chart for the construction EM&A programme is shown in [Appendix A](#).

1.3 Construction Works undertaken during the Reporting Month

Construction activity for 275kV Switching Station was full core work. Majorities of the construction activities for L10 piling foundation work had been completed apart from the full core testing which would be carried out in May 2017. Construction activities for Unit L10 civil and building works were carried out for Main Station Building (excavation and backfilling, sheet piling, breaking of pile head, erection of tower crane, formwork, steel fixing and concreting), and for Site Office Building (Piling installation, backfilling, formwork, steel fixing and concreting). Construction activity for Unit L11 piling was bored pile construction work. Layout plan for construction site is shown in [Figure 1.1](#).

The main construction activities carried out during the reporting month and the corresponding environmental mitigation measures are summarized in [Table 1.1](#). The implementation of major mitigation measures in the month is provided in [Appendix I](#).

Table 1.1 Construction Activities and Their Corresponding Environmental Mitigation Measures

Item	Construction Activities	Environmental Mitigation Measures
275kV Switching Station		
1.	Full core	Noise <ul style="list-style-type: none">– General noise mitigation measures employed at all work sites throughout the construction phase. Waste Management <ul style="list-style-type: none">– Waste Management Plan submitted and implemented.

Item	Construction Activities	Environmental Mitigation Measures
Unit L10 Civil and Building Works		
2.	Main Station Building (excavation and backfilling, sheet piling, breaking of pile head, erection of tower crane, formwork, steel fixing and concreting)	<p>Air</p> <ul style="list-style-type: none"> - All regulated machine attached with valid exception/approval NRMM labels. - Water truck was used for water spraying of the haul road. - Water spraying for concrete breaking of pile head. - Excavated slope covered with cement or tarpaulin. <p>Noise</p> <ul style="list-style-type: none"> - Works conducted during holiday should comply with the valid CNP GW-RS1299-16. <p>Wastewater</p> <ul style="list-style-type: none"> - Wastewater should be treated in sedimentation pit and tanks before discharge. Solution should be added to speed up the sedimentation process. Sediment in pit and tanks must be removed regularly. <p>Waste Management</p> <ul style="list-style-type: none"> - Excavated soil was temporary stored for backfilling. - Scrape metal will be recycled. - Timber will be reused as much as possible.
3.	Site Office Building (pile installation, backfilling, formwork, steel fixing and concreting)	<p>Air</p> <ul style="list-style-type: none"> - Water spraying on backfilled surface. Blinding was laid. <p>Waste Management</p> <ul style="list-style-type: none"> - Scrape metal will be recycled. - Timber will be reused as much as possible.
Unit L11 Piling Works		

Item	Construction Activities	Environmental Mitigation Measures
4.	Bored pile construction	<p>Air</p> <ul style="list-style-type: none">- Dust suppression in the main haul road.- Using ULSD for PMEs.- Cover dusty stockpile with tarpaulin and water spraying. <p>Water</p> <ul style="list-style-type: none">- All wastewater will be pumped to the sedimentation ponds for desilting process. After that, wastewater will be re-used for construction activities or pumped for storage. Discharging to communal storm water drain is the last priority. <p>Noise</p> <ul style="list-style-type: none">- General noise mitigation measures employed at all work sites throughout the construction phase. <p>Waste Management</p> <ul style="list-style-type: none">- Waste Management Plan submitted and implemented.

1.4 Summary of EM&A Requirements

The detailed EM&A monitoring work for air quality and noise are described in Sections 2 and 3 respectively. Regular environmental site audits for air quality, noise, water quality and waste management were carried out.

The following environmental audits are summarized in Section 4 of this report:

- Environmental monitoring results;
- Waste Management Records;
- Weekly site audit results;
- The status of environmental licensing and permits for the Project;
- The implementation status of environmental protection and pollution control/mitigation measures.

Future key issues will be reported in Section 5 of this report.

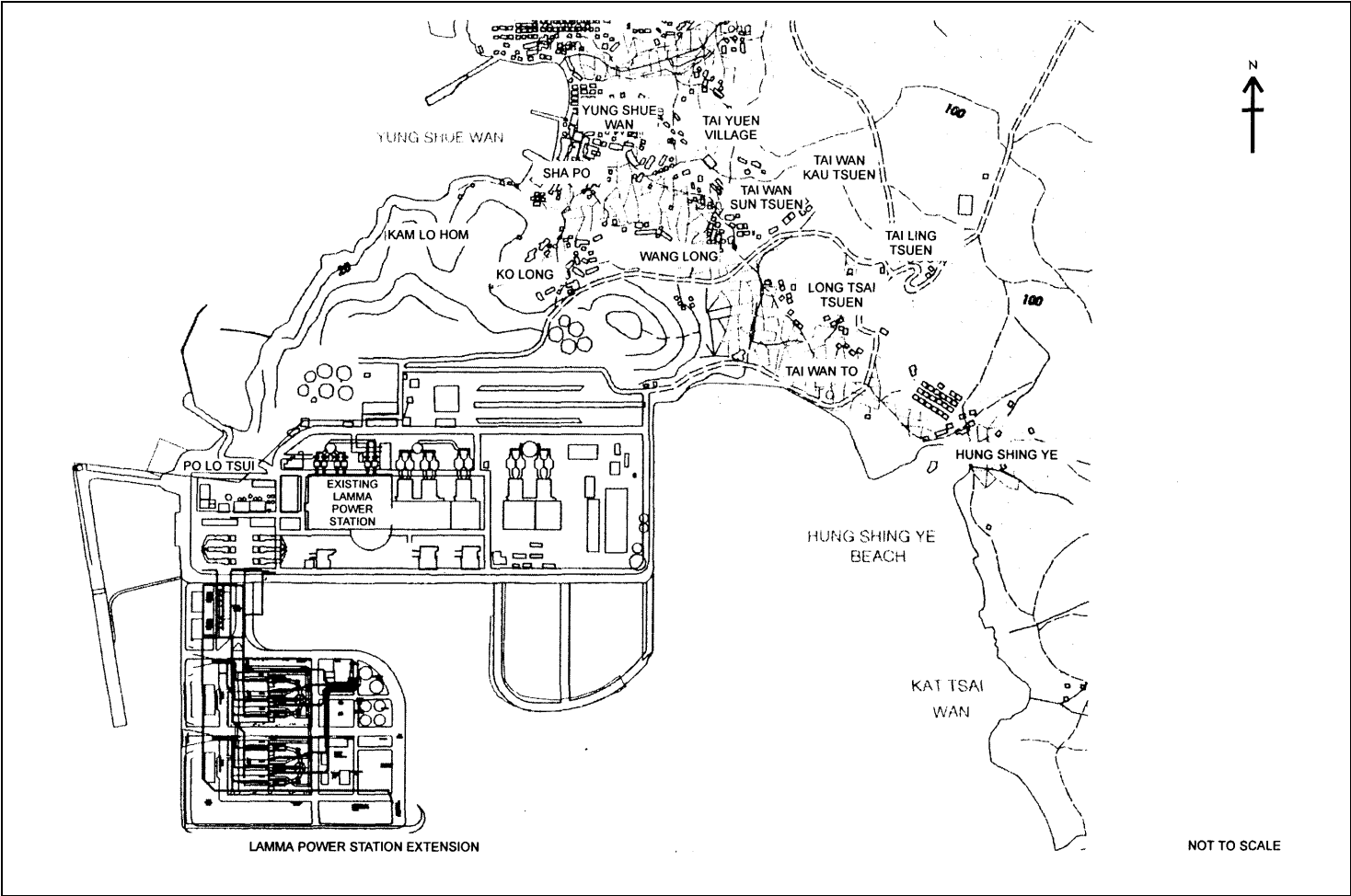


Figure 1.1 Layout of Work Site

2. AIR QUALITY

2.1 Monitoring Requirements

1-hour and 24-hour TSP monitoring at agreed frequencies were conducted to monitor air quality. The impact monitoring data were checked against the Action/Limit Levels as determined in the Baseline Monitoring Report (Construction Phase). [Appendix B](#) shows the established Action/Limit Levels for Air Quality.

2.2 Monitoring Locations

Three dust monitoring locations were selected for 1-hour TSP sampling (AM1, AM2 & AM3) while four monitoring locations were selected for 24-hour TSP sampling (AM1, AM2, AM3 and AM4). [Table 2.1](#) tabulates the monitoring stations. The locations of the monitoring stations are shown in [Figure 2.1](#).

Table 2.1 Air Quality Monitoring Locations

Location I.D.	Description
AM1	Reservoir
AM2	East Gate
AM3	Ash Lagoon
AM4	Tai Yuen Village

2.3 Monitoring Equipment

Continuous 24-hour TSP air quality monitoring was performed using the High Volume Air Samplers (HVAS), TEOM continuous dust monitor and the MINIVOL Portable Sampler at AM1&2, AM3 and AM4 respectively. TEOM continuous dust monitors were used to carry out 1-hour TSP monitoring at AM1, AM2 and AM3. [Table 2.2](#) summarises the equipment used in dust monitoring.

Table 2.2 Air Quality Monitoring Equipment

Equipment	Model and Make
<i>24-hour sampling:</i> HVAS Sampler	Model TE5170x Tisch Environmental Inc.
Continuous TSP Dust Meter	TEOM continuous dust monitor Thermo Scientific
MINIVOL Portable Sampler	AIRMETRICS
<i>1-hour sampling:</i> Continuous TSP Dust Meter	TEOM continuous dust monitor Thermo Scientific

2.4 Monitoring Parameters, Frequency and Duration

Table 2.3 summarises the monitoring parameters, duration and frequency of air quality monitoring. The monitoring schedule for the reporting month is shown in [Appendix C](#).

Table 2.3 Air Quality Monitoring Parameter, Duration and Frequency

Monitoring Stations	Parameter	Duration	Frequency
AM1	1-hour TSP	1	3 hourly samples every 6 days
	24-hour TSP	24	Once every 6 days
AM2	1-hour TSP	1	3 hourly samples every 6 days
	24-hour TSP	24	Once every 6 days
AM3	1-hour TSP	1	3 hourly samples every 6 days
	24-hour TSP	24	Once every 6 days
AM4	24-hour TSP	24	Once every 6 days

2.5 Monitoring Procedures and Calibration Details

HVAS and MINIVOL (24- hour TSP Monitoring):

Preparation of Filter Papers

- Visual inspection of filter papers was carried out to ensure that there were no pinholes, tears and creases;
- The filter papers were then labeled before sampling.
- The filter papers were equilibrated at room temperature and relative humidity < 50% for at least 24 hours before weighing.

Field Monitoring

- During collection of the sampled filter paper, the information on the elapse timer was logged. Site observations around the monitoring stations, which might have affected the monitoring results, were also recorded. Major pollution sources, if any, would be identified and reported. The flow record chart for the previous sampling was checked to see if there was any abnormality.
- The post-sampling filter papers were removed carefully from the filter holder and folded to avoid loss of fibres or dust particles from the filter papers;
- The filter holder and its surrounding were cleaned;
- A pre-weighed blank filter paper for the next sampling was put in place and aligned carefully. The filter holder was then tightened firmly to avoid leakage;
- A new flow record chart was loaded into the flow recorder;
- The programmable timer was set for the next 24 hrs sampling period;
- The post-sampling filter papers were equilibrated at room temperature and relative humidity < 50% for at least 24 hours before weighing.

TEOM continuous dust monitor (24- hour TSP and 1- hour TSP Monitoring):

- The following parameters of the TEOM model dust meters are regularly checked to ensure proper functionality:
 - Operation Mode;
 - Frequency of the tapered element;
 - Main flow;
 - Bypass flow.

Maintenance & Calibration

- The monitoring equipment and their accessories are maintained in good working conditions.
- Monitoring equipment is calibrated at monthly intervals. Calibration details are shown in [Appendix F](#).

2.6 Results and Observations

All dust monitoring works were conducted on schedule. All monitoring data and graphical presentation of the monitoring results are provided in [Appendix D](#). Key findings and observations are provided below:

1-hour TSP

No exceedance of 1-hour TSP Action/Limit Level was recorded in the month.

24-hour TSP

No exceedance of 24-hour TSP Action/Limit Level was recorded in the month.

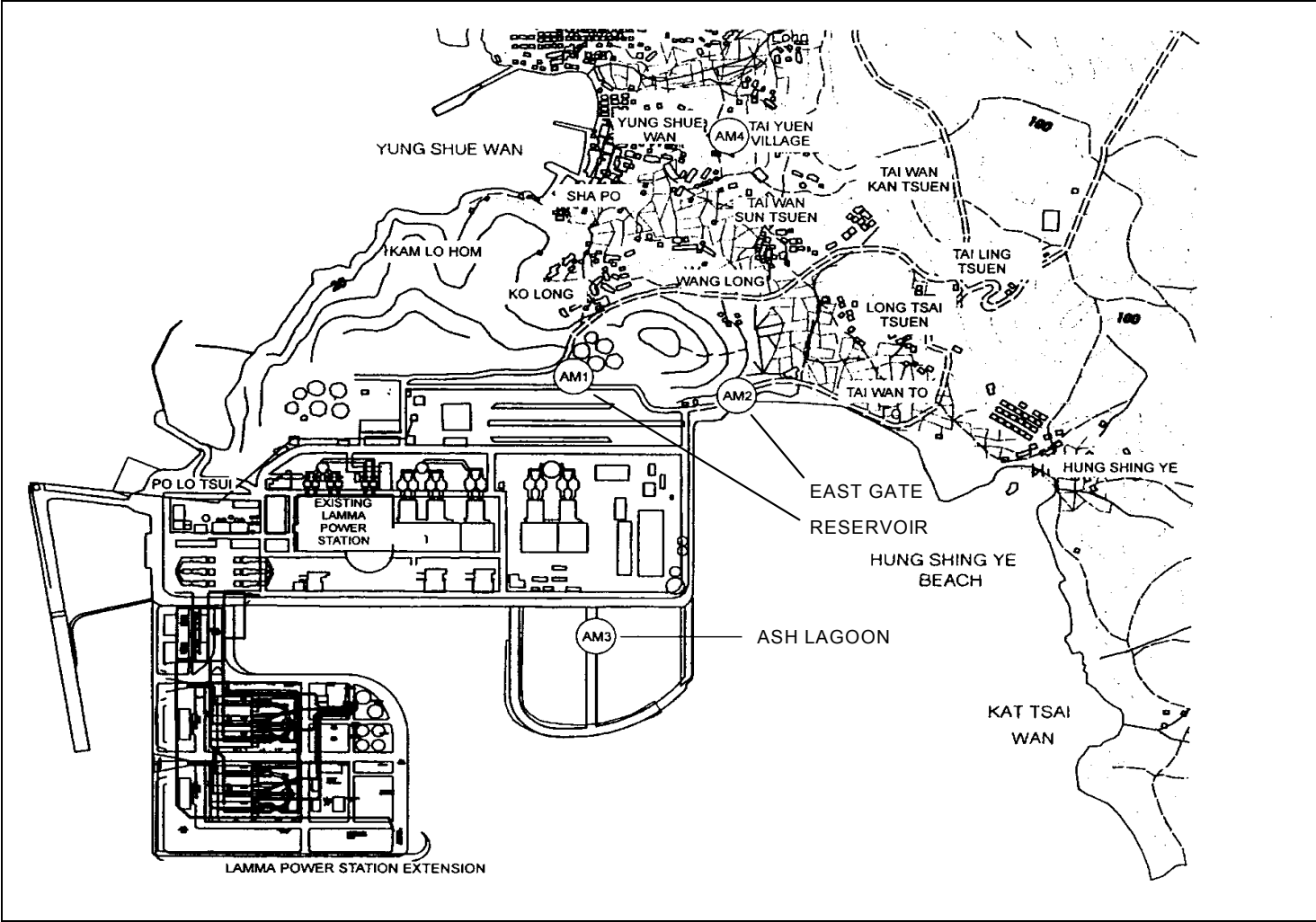


Figure 2.1 Location of Air Quality Monitoring Stations

3. NOISE

3.1 Monitoring Requirements

Continuous noise alarm monitoring at Ash Lagoon/Ching Lam were carried out to calculate the noise contributed by the construction activities at the two critical NSR's, viz. Long Tsai Tsuen/Hung Shing Ye and the school within the village of Tai Wan San Tsuen. The impact monitoring data for construction noise were checked against the limit levels specified in the EM&A Manual. With the availability of the construction noise permits, impact monitoring for the construction work during the restricted hours was also carried out. Section 4 presents the details of the construction noise permits.

The impact noise monitoring data were checked against the limit levels specified in the EM&A Manual. [Appendix B](#) shows the established Action/Limit Levels for noise.

3.2 Monitoring Locations

In accordance with the EM&A manual, the identified noise monitoring locations of Ash Lagoon and Ching Lam are shown in [Figure 3.1](#).

3.3 Monitoring Equipment

The sound level meters used for noise monitoring complied with International Electrotechnical Commission Publications 651:1979 (Type 1) and 804:1985 (Type 1). The noise monitoring equipment used is shown in [Table 3.1](#).

Table 3.1 Noise Monitoring Equipment

Equipment	Model
Sound level meters	B&K 2250
Sound level calibrator	B&K 4231

3.4 Monitoring Parameters, Frequency and Duration

Continuous alarm monitoring was carried out at Ash Lagoon and Ching Lam. The measurement duration and parameter of noise monitoring were presented in [Table 3.2](#) as follows:

Table 3.2 Noise Monitoring Duration and Parameter

Location	Time Period	Frequency	Parameter
Ash Lagoon	Day-time: 0700-1900 hrs on normal weekdays	Day-time: 30 minutes	30-min L_{Aeq}
Ching Lam	Evening-time & holidays: 0700-2300 hrs on holidays; and 1900-2300 hrs on all other days	Evening-time & holidays: 5 minutes	5-min L_{Aeq}
	Night-time: 2300-0700 hrs of next day	Night-time: 5 minutes	5-min L_{Aeq}

3.5 Monitoring Procedures and Calibration Details

Monitoring Procedures

Continuous Noise Monitoring for Lamma Extension Construction

The measured noise levels (MNL's) were collected at the noise alarm monitoring stations at Ash Lagoon and Ching Lam. The notional background noise levels (viz. baseline noise data at Ash Lagoon and Ching Lam) were applied to correct the corresponding MNL's in 30-min/5-min L_{Aeq} .

A wind speed sensor was installed at Station Building Rooftop. The wind speed signal was used to determine whether the data from Ash Lagoon and Ching Lam noise alarm monitoring stations were affected. The instantaneous data was discarded in case the instantaneous wind speed exceeded 10 m/s. The 30-min/5-min L_{Aeq} was considered valid only if the amount of valid data was equal to or above 70%.

Equipment Calibration

The sound level meters and calibrators have been verified by the manufacturer or accredited laboratory. Equipment for continuous noise monitoring was calibrated at least once per month.

3.6 Results and Observations

Continuous noise monitoring was conducted at the two monitoring stations at Ash Lagoon and Ching Lam.

All monitoring results and their graphical presentations are provided in [Appendix E](#). No exceedance of noise Action/Limit Level was recorded in the month.

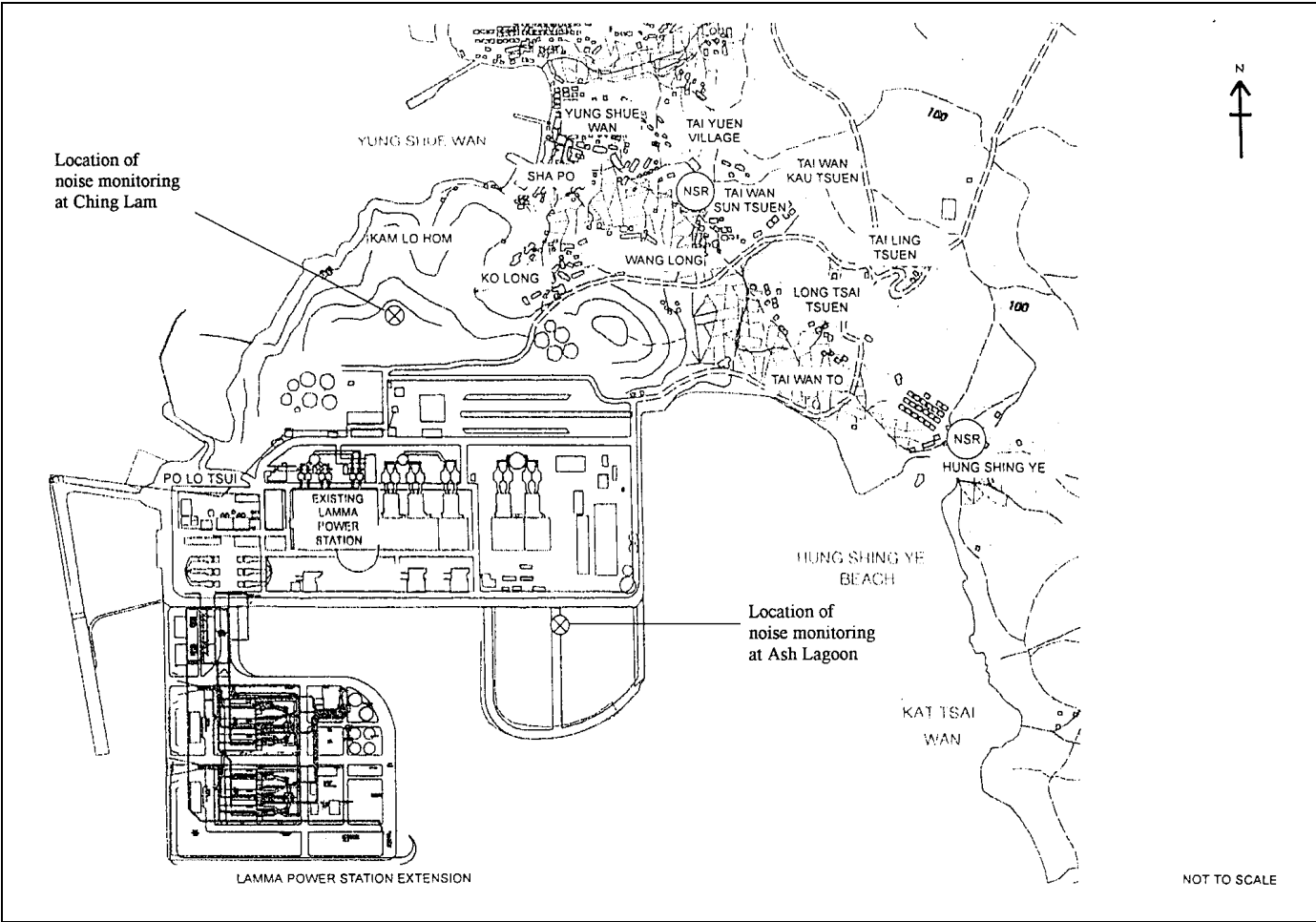


Figure 3.1 Location of Noise Monitoring Stations

4. ENVIRONMENTAL AUDIT

4.1 Review of Environmental Monitoring Procedures

The environmental monitoring procedures were regularly reviewed by the Environmental Team. No modification to the existing monitoring procedures was recommended.

4.2 Assessment of Environmental Monitoring Results

Monitoring results for Air Quality and Noise

The environmental monitoring results for Air Quality and Noise in the reporting month presented in sections 2, 3 and 4 respectively are summarized in [Table 4.1](#).

Table 4.1 Summary of AL Level Exceedances on Monitoring Parameters

Item	Parameter Monitored	Monitoring Period	No. of Exceedances In		Event/Action Plan Implementation Status and Results
			Action Level	Limit Level	
Air					
1	Ambient TSP (24-hour)	01/04/17-30/04/17	0	0	
2	Ambient TSP (1-hour)	01/04/17-30/04/17	0	0	
Noise					
1	Noise level at the critical NSR's predicted by the noise alarm monitoring system	01/04/17-30/04/17	0	0	

4.3 Waste Management

Wastes generated from this Project include inert construction and demolition (C&D) materials and non-inert C&D materials. Inert C&D materials comprise excavated materials and broken concrete. Non-inert C&D materials comprise general refuse, metals and paper/ cardboard packaging, plastics, chemical waste, etc.

No inert C&D material nor non-inert C&D material were disposed of in April 2017 as shown in [Table 4.2](#).

Table 4.2 Estimated Amounts of Waste in April 2017

Total Inert C&D Waste Materials	Non-inert C&D Materials		
	C&D Materials Recycled	C&D Waste Disposed of at Landfill	Chemical Waste
7481.83 Tonnes	65.84 Tonnes	6.36 Tonnes	0 Litres

The monthly waste flow tables prepared by the contractors are attached in [Appendix K](#).

4.4 Site Environmental Audit

Site audits were carried out by ET on a weekly basis to monitor environmental issues at the construction sites to ensure that all mitigation measures were implemented timely and properly. The site audit findings for the reporting month are summarized in [Appendix H](#). The site conditions were generally satisfactory. All required mitigation measures were implemented.

4.5 Status of Environmental Licensing and Permitting

All permits/licenses obtained for the project are summarised in [Table 4.3](#).

Table 4.3 Summary of Environmental Licensing and Permit Status

Description	Permit No.	Valid Period		Highlights	Status
		From	To		
Varied Environmental Permit	EP-071/2000/C	18/05/05	-	The whole construction work site	Valid
Construction Noise Permit	GW-RS1026-16	11/10/16	10/04/17	Foundation works for Unit L10 (275kV Switching Station). Operation of PME during restricted hours.	Valid
Construction Noise Permit	GW-RS1299-16	26/12/16	25/06/17	Civil and Building Works for Unit L10. Operation of PME during restricted hours.	Valid
Construction Noise Permit	GW-RS0183-17	13/03/17	12/09/17	Foundation work for Unit L11. Operation of PME during restricted hours.	Valid
WPCO Discharge Licence*	WT00025747-2016	05/10/16	31/10/21	The construction site of 275kV Switching Station	Valid

Description	Permit No.	Valid Period		Highlights	Status
		From	To		
WPCO Discharge Licence*	WT00027040-2017	06/02/17	28/02/22	Foundation works for Unit L11	Valid
WPCO Discharge Licence	WT00027316-2017	01/03/17	31/03/22	Civil and Building Works for Unit L10	Valid
Registration of Chemical Waste Producer	WPN5113-912-S3180-19	21/01/16	-	Foundation works for Unit L10	Valid
Registration of Chemical Waste Producer	WPN5213-912-P2781-22	22/02/16	-	Civil and Building Works for Unit L10	Valid
Registration of Chemical Waste Producer	WPN5113-912-S3180-20	11/01/17	-	Foundation works for Unit L11	Valid
Waste Disposal Billing Account	Account No.: 7024247	03/02/16	-	Foundation works for Unit L10	Valid
Waste Disposal Billing Account	Account No.: 7026035	06/10/16	-	Civil and Building Works for Unit L10	Valid
Waste Disposal Billing Account	Account No.: 7026793	28/12/16	-	Foundation works for Unit L11	Valid

Note: * - Water quality monitoring was carried out in April 2017 and the result had been reported under a separate cover by the contractor.

4.6 Implementation Status of Environmental Mitigation Measures

Mitigation measures detailed in the permits and the EM&A Manual (Construction Phase) are required to be implemented. An updated summary of the Environmental Mitigation Implementation Schedule (EMIS) is presented in [Appendix I](#).

4.7 Implementation Status of Event/Action Plans

The Event/Action Plans extracted from the EM&A Manual (Construction Phase) are presented in [Appendix G](#).

4.8 Implementation Status of Environmental Complaint Handling Procedures

In April 2017, no complaint against the construction activities was received.

Table 4.4 Environmental Complaints Received in April 2017

Case Reference / Date, Time Received / Date, Time Concerned	Descriptions /Actions Taken	Conclusion / Status
Nil	N/A	N/A

Table 4.5 Outstanding Environmental Complaints Carried Over

Case Reference / Date, Time Received / Date, Time Concerned	Descriptions /Actions Taken	Conclusion / Status
Nil	N/A	N/A

5. FUTURE KEY ISSUES

5.1 Key Issues for the Coming Month

Key issues to be considered in the coming month include:

275kV Switching Station

Noise Impact

- To continue executing the preventive measures for avoiding noise exceedance and keep monitoring/ reviewing the noise performance.

Air Impact

- To monitor and review the sufficiency of the dust suppression measures provided and increase the resources accordingly if necessary.

Water Impact

- To recycle and reuse wastewater from bored pipe construction work and to ensure compliance in accordance with the WPCO discharge licence already obtained.

Unit L10 Civil and Building Works

Noise Impact

- To continue monitoring the noise level during construction and to ensure compliance with the CNP's already obtained.
- To continue executing the preventive measures for avoiding noise exceedance and keep monitoring/ reviewing the noise performance.

Air Impact

- To monitor and review the sufficiency of the dust suppression measures provided and increase the resources accordingly if necessary.

Water Impact

- To recycle and reuse wastewater from bored pipe construction work and to ensure compliance in accordance with the WPCO discharge licence already obtained.

Unit L11 Piling Works

Noise Impact

- To continue monitoring the noise level during construction and to ensure compliance with the CNP's already obtained.
- To continue executing the preventive measures for avoiding noise exceedance and keep monitoring/ reviewing the noise performance.

Air Impact

- To monitor and review the sufficiency of the dust suppression measures provided and increase the resources accordingly if necessary.

Water Impact

- To recycle and reuse wastewater from bored pipe construction work and to ensure compliance in accordance with the WPCO discharge licence already obtained.

5.2 Monitoring Schedules for the Next 3 Months

The tentative environmental monitoring schedules for the next 3 months are shown in [Appendix C](#).

5.3 Construction Program for the Next 3 Months

The tentative construction programs for the next 3 months are shown in [Appendix J](#).

6. CONCLUSION

All monitoring work at designated stations was performed as scheduled satisfactorily. The environmental monitoring works and site inspection were performed as scheduled in the reporting month. All monitoring results were checked and reviewed.

No Action/Limit level exceedance on 1-hour and 24-hour TSP level was recorded in the reporting month.

No Action/Limit level exceedance on noise was recorded in the reporting month.

Environmental mitigation measures recommended in the EM&A manual for the construction activities were implemented in the reporting month. No complaint against the construction activities was received in the reporting month. No prosecution was received for this Project in the reporting period.

The environmental performance of the Project was generally satisfactory.

Appendix A Organization Chart

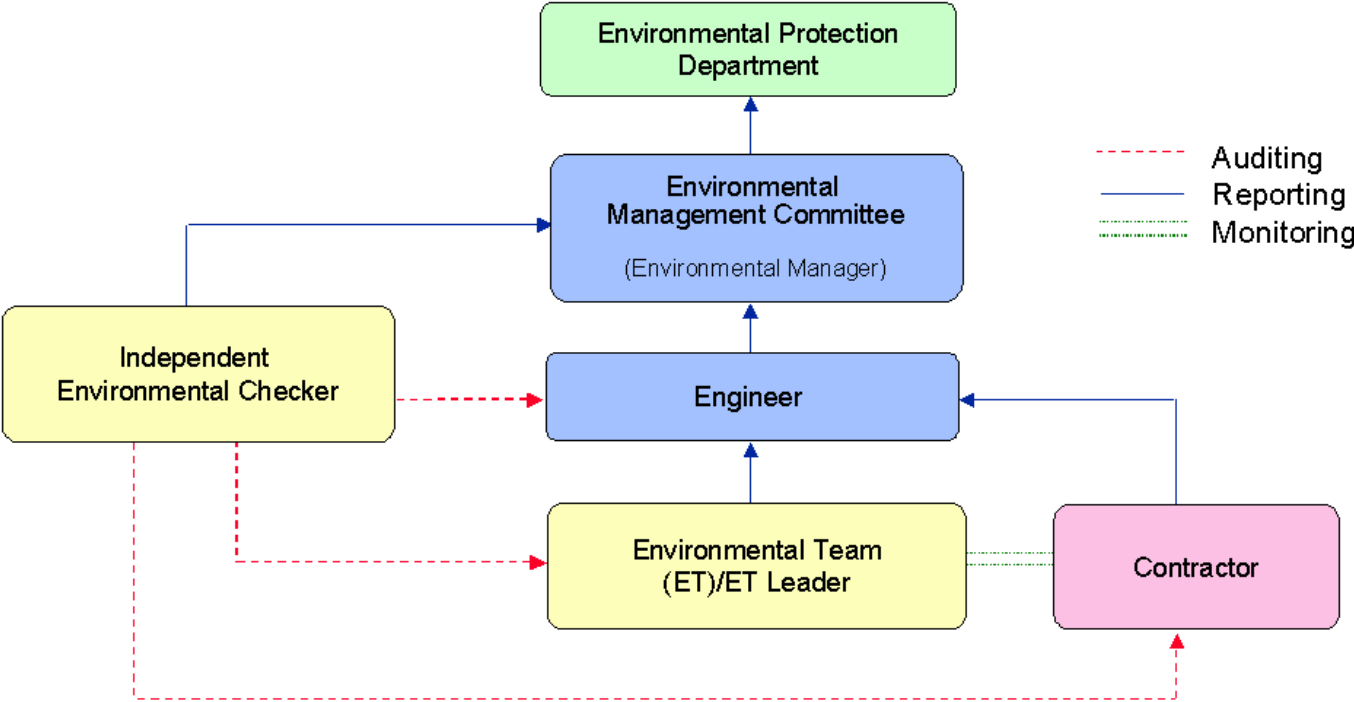


Figure A.1 Organisation of EM&A Programme at Construction Phase

Appendix B Action and Limit Levels for Air Quality and Noise Monitoring

B.1. Air

Table B.1 Action and Limit Levels for 1-hour and 24-hour TSP

	Action Level, $\mu\text{g}/\text{m}^3$	Limit Level, $\mu\text{g}/\text{m}^3$
1-hour TSP*	340	500
24-hour TSP	190	260

* No Action/Limit Level for 1-hour TSP is applied to AM4 where no real time dust monitor is installed.

B.2. Noise

Table B.2 AL Levels for Construction Noise (Other than Percussive Piling)

Parameters	Action	Limit
Noise Levels at the NSR's at Long Tsai Tsuen/Hung Shing Ye and school within the village of Tai Wan San Tsuen predicted by the noise alarm monitoring system	When one or more documented complaints are received	a. 75 dB(A) in $L_{Aeq,30 \text{ min}}$ (07:00-19:00 hrs on normal weekdays) (Note 1)
Manual noise monitoring at the nearest Pak Kok Tsui residences to cable landing points N4 and N5		b. subject to statutory control under the Noise Control Ordinance (07:00-23:00 hrs on holidays and 19:00-23:00 hrs on all other days). Set to 60 dB(A) in $L_{Aeq,5 \text{ min}}$ c. subject to statutory control under the Noise Control Ordinance (23:00-07:00 hrs of next day). Set to 45 dB(A) in $L_{Aeq,5 \text{ min}}$
Note:		
1. For educational institution, the limit level shall be 70 dB(A), reduced to 65 dB(A) during examination periods.		

Appendix C Environmental Monitoring Schedule

Table C.1 Monitoring schedule for 24hr and 1hr TSP monitoring for Lamma Extension Construction (April 2017 to July 2017)

24hr TSP Monitoring	1hr TSP Monitoring
04/Apr/2017	04/Apr/2017 1500hr to 1800hr
10/Apr/2017	10/Apr/2017 1500hr to 1800hr
16/Apr/2017	16/Apr/2017 1500hr to 1800hr
22/Apr/2017	22/Apr/2017 1500hr to 1800hr
28/Apr/2017	28/Apr/2017 1500hr to 1800hr
04/May/2017	04/May/2017 1500hr to 1800hr
10/May/2017	10/May/2017 1500hr to 1800hr
16/May/2017	16/May/2017 1500hr to 1800hr
22/May/2017	22/May/2017 1500hr to 1800hr
28/May/2017	28/May/2017 1500hr to 1800hr
03/June/2017	03/June/2017 1500hr to 1800hr
09/June/2017	09/June/2017 1500hr to 1800hr
15/June/2017	15/June/2017 1500hr to 1800hr
21/June/2017	21/June/2017 1500hr to 1800hr
27/June/2017	27/June/2017 1500hr to 1800hr
03/July/2017	03/July/2017 1500hr to 1800hr
09/July/2017	09/July/2017 1500hr to 1800hr
15/July/2017	15/July/2017 1500hr to 1800hr
21/July/2017	21/July/2017 1500hr to 1800hr
27/July/2017	27/July/2017 1500hr to 1800hr

APPENDIX D AIR QUALITY MONITORING RESULTS

Site: Lamma Power Station Extension

Month: April 2017

24 hour TSP Measurement:-

Date	TSP concentration ($\mu\text{g}/\text{m}^3$)				Weather Information (From Hong Kong Observatory)		
	Reservoir (AM1)	East Gate (AM2)	Ash Lagoon (AM3)	Tai Yuen Village (AM4)	Mean Wind Speed (km/hr)	Prevailing Wind Dir. ($^{\circ}$)	Mean R.H. (%)
04/04/2017	63	86	55	29	080	31.4	77
10/04/2017	40	46	20	13 (12/4)*	200	27.7	83
16/04/2017	37	40	27	38	070	12.5	86
22/04/2017	48	70	29	8	010	26.1	84
28/04/2017	27	28	15	19	090	17.7	84

Note:

* - TSP monitoring at AM4 (Tai Yuen Village) was suspended on 10/04/2017 due to breakdown of MiniVol Portable Sampler. Make-up 24-hr TSP sampling at AM4 was conducted on 12/04/2017.

1 hour TSP Measurement:-

Date	Time	TSP concentration ($\mu\text{g}/\text{m}^3$)		
		Reservoir (AM1)	East Gate (AM2)	Ash Lagoon (AM3)
04/04/2017	15:00 - 15:59	59	58	52
	16:00 - 16:59	62	60	56
	17:00 - 17:59	64	61	58
10/04/2017	15:00 - 15:59	62	29	16
	16:00 - 16:59	26	32	9
	17:00 - 17:59	31	33	20
16/04/2017	15:00 - 15:59	14	18	14
	16:00 - 16:59	41	19	16
	17:00 - 17:59	21	20	16
22/04/2017	15:00 - 15:59	37	43	24
	16:00 - 16:59	37	46	30
	17:00 - 17:59	38	48	33
28/04/2017	15:00 - 15:59	35	21	12
	16:00 - 16:59	24	22	12
	17:00 - 17:59	18	25	14

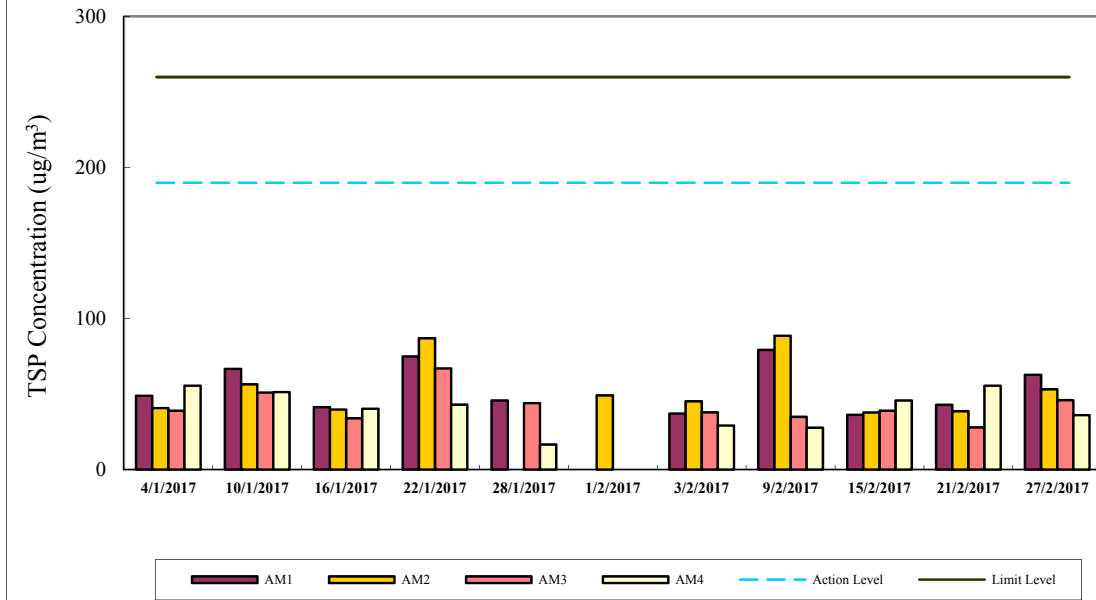
	1-hr TSP ($\mu\text{g}/\text{m}^3$)	24-hr TSP ($\mu\text{g}/\text{m}^3$)
Action Level	340	190
Limit Level	500	260

Calibration: Calibration details are shown in appendix F.

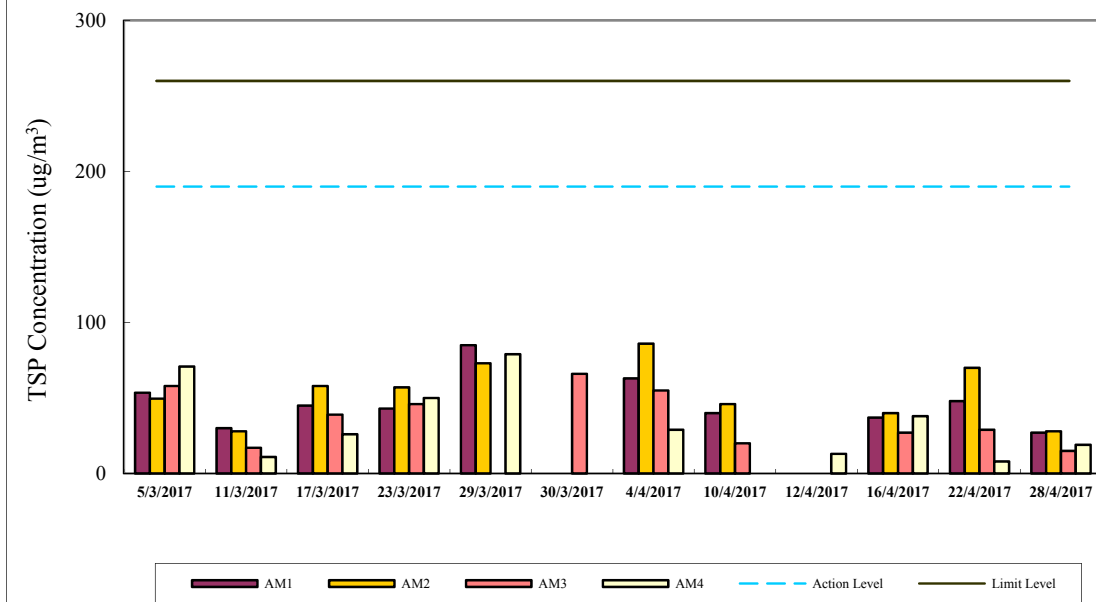
Equipment used:

Location	1-hr TSP	24-hr TSP
Reservoir and East Gate	TEOM	High Volume Air Sampler
Ash Lagoon	TEOM	TEOM
Tai Yuen Village	-	MINIVOL Portable Sampler

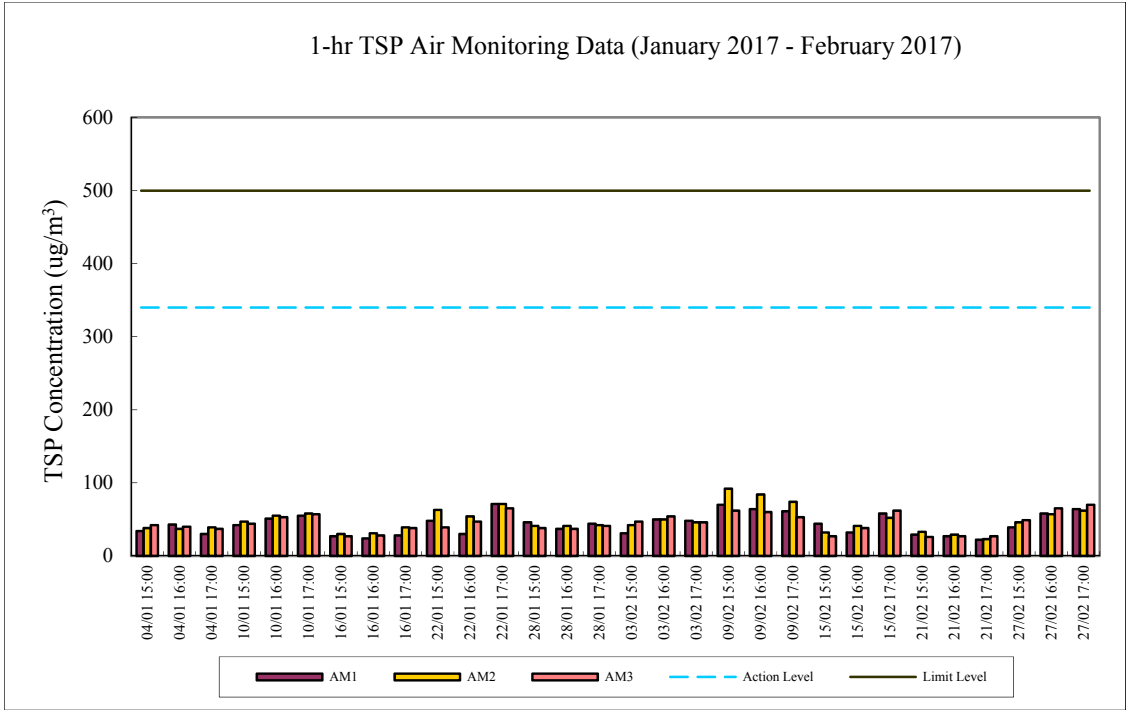
24-hr TSP Air Monitoring Data (January 2017 - February 2017)



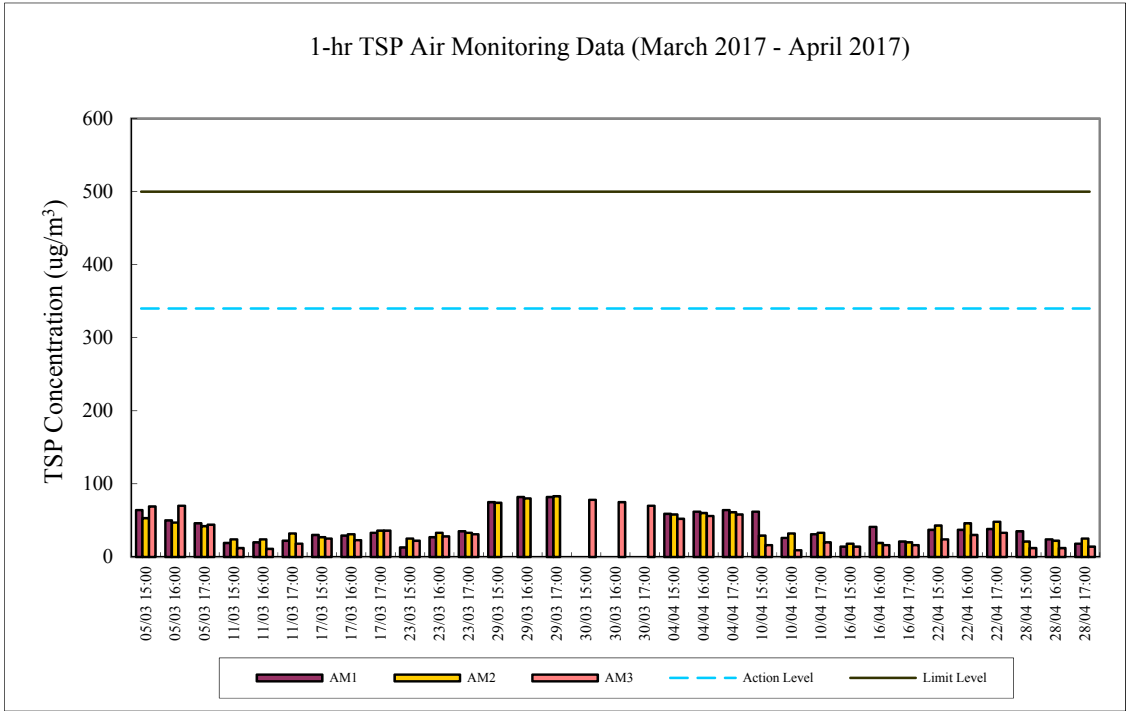
24-hr TSP Air Monitoring Data (March 2017 - April 2017)



1-hr TSP Air Monitoring Data (January 2017 - February 2017)



1-hr TSP Air Monitoring Data (March 2017 - April 2017)



Appendix E

Continuous Noise Monitoring Results for April 2017

Site: Lamma Power Station Extension Construction
 Measurement Location: Ash Lagoon and Ching Lam
 Measurement Parameter: 30-min Leq (07:00-19:00 hrs on normal weekdays)
 5-min Leq (07:00-23:00 hrs on holidays and
 19:00-23:00 hrs on all other days, and 23:00-
 07:00 hrs of next day)
 Noise Equipment Used: B&K 2250 sound level meters and B&K 4231 sound
 level calibrator
 Last Calibration Date: B&K 2250 sound level meters - 09/11/2015 (Ching Lam)
 19/08/2016 (Ash Lagoon)
 B&K 4231 calibrator - 03/04/2017

Date	Time	Calculated Noise Level at NSR at Long Tsai Tsuen/Hung Shing Ye (dB(A))		Limit Noise Level (dB(A))	Calculated Noise Level at NSR at the school within Tai Wan San Tsuen (dB(A))		Limit Noise Level (dB(A))
		Max	Avg		Max	Avg	
01/04/2017	07:00-19:00	---	---	75	---	---	70
01/04/2017	19:00-23:00	---	---	60	26	26	60
01/04/2017	23:00-07:00	---	---	45	---	---	45
02/04/2017	07:00-23:00	---	---	60	---	---	60
02/04/2017	23:00-07:00	---	---	45	25	20	45
03/04/2017	07:00-19:00	---	---	75	---	---	70
03/04/2017	19:00-23:00	---	---	60	31	31	60
03/04/2017	23:00-07:00	---	---	45	22	22	45
04/04/2017	07:00-23:00	---	---	60	19	19	60
04/04/2017	23:00-07:00	---	---	45	23	21	45
05/04/2017	07:00-19:00	---	---	75	---	---	70
05/04/2017	19:00-23:00	---	---	60	---	---	60
05/04/2017	23:00-07:00	---	---	45	15	15	45
06/04/2017	07:00-19:00	---	---	75	---	---	70
06/04/2017	19:00-23:00	---	---	60	---	---	60
06/04/2017	23:00-07:00	---	---	45	29	26	45
07/04/2017	07:00-19:00	---	---	75	---	---	75
07/04/2017	19:00-23:00	---	---	60	22	22	60
07/04/2017	23:00-07:00	---	---	45	---	---	45
08/04/2017	07:00-19:00	---	---	75	---	---	70
08/04/2017	19:00-23:00	---	---	60	---	---	60
08/04/2017	23:00-07:00	---	---	45	32	32	45
09/04/2017	07:00-23:00	---	---	60	32	32	60
09/04/2017	23:00-07:00	---	---	45	35	35	45
10/04/2017	07:00-19:00	---	---	75	---	---	70

10/04/2017	19:00-23:00	---	---	60	26	23	60
10/04/2017	23:00-07:00	---	---	45	---	---	45
11/04/2017	07:00-19:00	---	---	75	---	---	70
11/04/2017	19:00-23:00	---	---	60	---	---	60
11/04/2017	23:00-07:00	---	---	45	---	---	45
12/04/2017	07:00-19:00	---	---	75	---	---	70
12/04/2017	19:00-23:00	---	---	60	---	---	60
12/04/2017	23:00-07:00	---	---	45	27	27	45
13/04/2017	07:00-19:00	---	---	75	---	---	70
13/04/2017	19:00-23:00	---	---	60	15	15	60
13/04/2017	23:00-07:00	---	---	45	32	27	45
14/04/2017	07:00-23:00	---	---	60	---	---	60
14/04/2017	23:00-07:00	---	---	45	31	27	45
15/04/2017	07:00-23:00	---	---	60	---	---	60
15/04/2017	23:00-07:00	---	---	45	30	27	45
16/04/2017	07:00-23:00	---	---	60	36	26	60
16/04/2017	23:00-07:00	---	---	45	34	32	45
17/04/2017	07:00-23:00	---	---	60	39	34	60
17/04/2017	23:00-07:00	39	26	45	30	25	45
18/04/2017	07:00-19:00	54	46	75	35	28	70
18/04/2017	19:00-23:00	34	33	60	29	28	60
18/04/2017	23:00-07:00	---	---	45	26	23	45
19/04/2017	07:00-19:00	50	42	75	28	28	70
19/04/2017	19:00-23:00	33	33	60	28	28	60
19/04/2017	23:00-07:00	34	28	45	29	23	45
20/04/2017	07:00-19:00	47	45	75	---	---	70
20/04/2017	19:00-23:00	---	---	60	---	---	60
20/04/2017	23:00-07:00	33	31	45	28	26	45
21/04/2017	07:00-19:00	52	47	75	48	39	70
21/04/2017	19:00-23:00	29	27	60	---	---	60
21/04/2017	23:00-07:00	45	26	45	39	21	45
22/04/2017	07:00-19:00	---	---	75	---	---	70
22/04/2017	19:00-23:00	17	17	60	---	---	60
22/04/2017	23:00-07:00	45	27	45	30	22	45
23/04/2017	07:00-23:00	34	28	60	32	25	60
23/04/2017	23:00-07:00	41	38	45	36	33	45
24/04/2017	07:00-19:00	53	43	75	39	35	70
24/04/2017	19:00-23:00	39	33	60	34	28	60
24/04/2017	23:00-07:00	39	29	45	34	25	45
25/04/2017	07:00-19:00	50	48	75	40	39	70
25/04/2017	19:00-23:00	19	19	60	42	35	60
25/04/2017	23:00-07:00	43	29	45	37	24	45
26/04/2017	07:00-19:00	42	41	75	37	36	70
26/04/2017	19:00-23:00	37	36	60	39	31	60
26/04/2017	23:00-07:00	---	---	45	39	27	45
27/04/2017	07:00-19:00	55	40	75	32	32	70
27/04/2017	19:00-23:00	37	32	60	31	27	60
27/04/2017	23:00-07:00	40	31	45	38	26	45
28/04/2017	07:00-19:00	54	50	75	29	29	70
28/04/2017	19:00-23:00	43	39	60	37	33	60

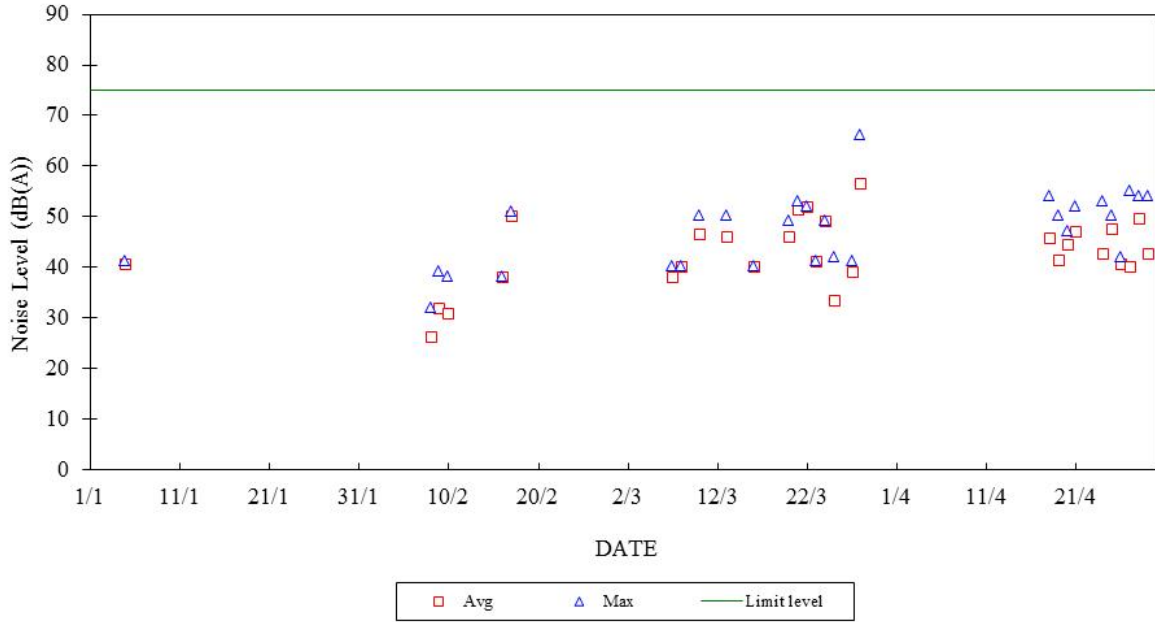
28/04/2017	23:00-07:00	41	37	45	36	32	45
29/04/2017	07:00-19:00	54	43	75	36	36	70
29/04/2017	19:00-23:00	41	33	60	37	27	60
29/04/2017	23:00-07:00	---	---	45	31	23	45
30/04/2017	07:00-23:00	---	---	60	19	19	60
30/04/2017	23:00-07:00	---	---	45	24	22	45

Note:

- a. "---" represents the measured noise monitoring data lower than the established notional background level, particularly for the period of 01/04/2017 07:00 - 17/04/2017 23:00. The Ash Lagoon noise monitoring station was in normal operation but there were no data of calculated noise level at NSR at Long Tsai Tsuen/Hung Shing Ye.
- b. Continuous noise monitoring was carried out at holidays & evening-time (07:00-23:00 hrs on holidays and 19:00-23:00 hrs on all other days) and night-time (23:00-07:00 hrs of next day) under construction noise permit.

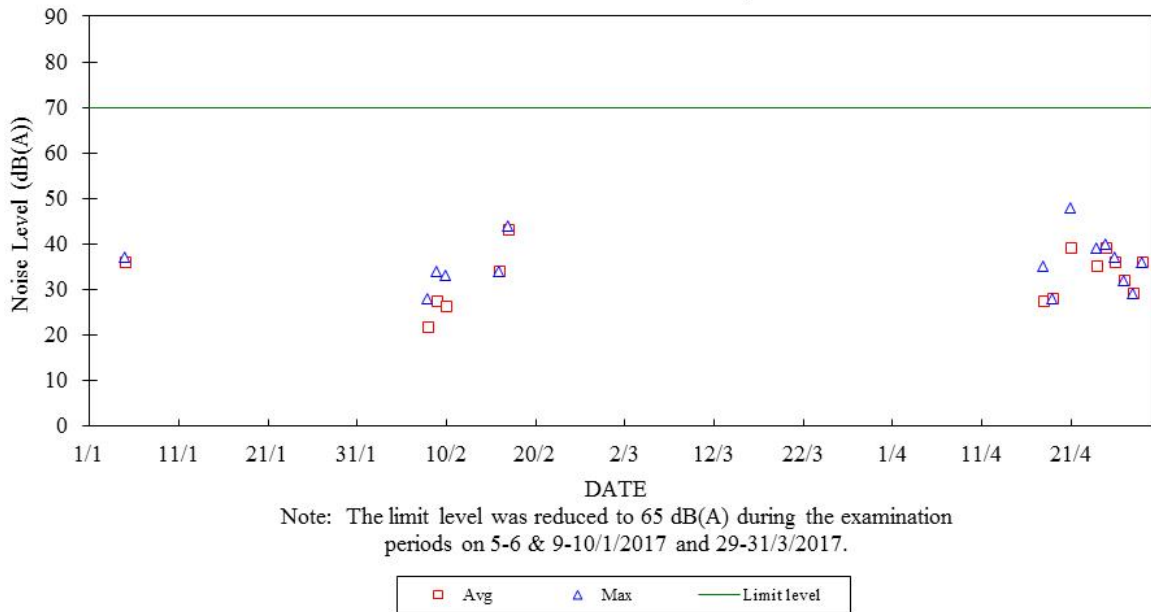
Construction Noise Monitoring in January - April 2017

NSR at Long Tsai Tsuen/Hung Shing Ye
07:00-19:00 hrs on Normal Weekdays

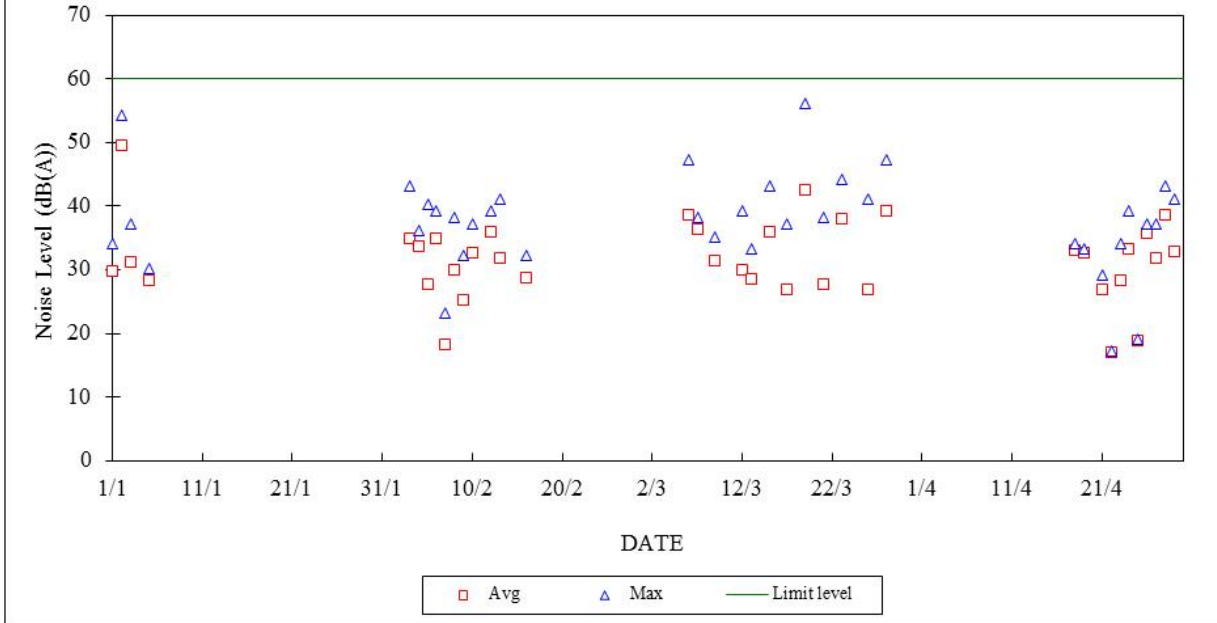


Construction Noise Monitoring in January - April 2017

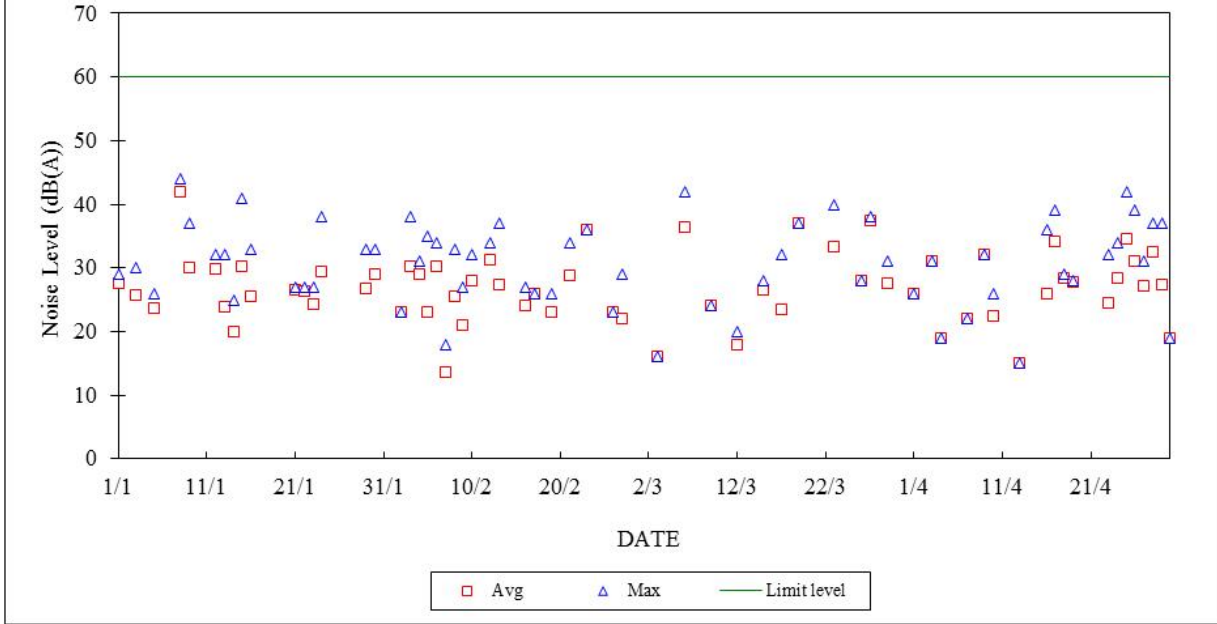
NSR at School within Tai Wan San Tsuen
07:00-19:00 hrs on Normal Weekdays



Construction Noise Monitoring in January - April 2017
 NSR at Long Tsai Tsuen/Hung Shing Ye
 07:00-23:00 hrs on Holidays and 19:00-23:00 hrs on All Other Days

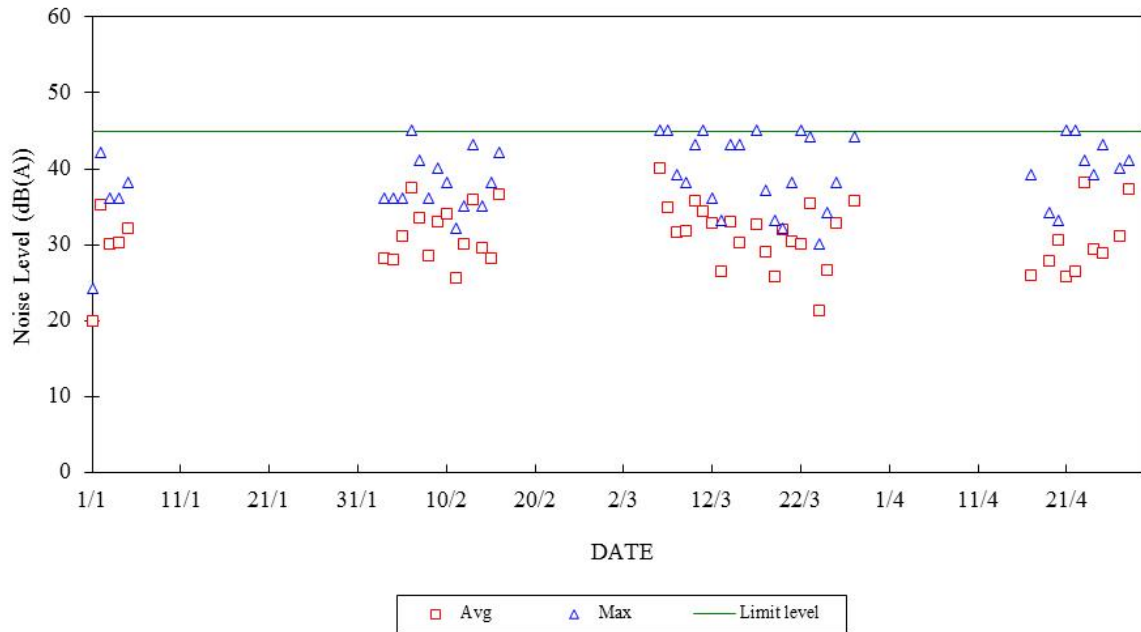


Construction Noise Monitoring in January - April 2017
 NSR at School within Tai Wan San Tsuen
 07:00-23:00 hrs on Holidays and 19:00-23:00 hrs on All Other Days



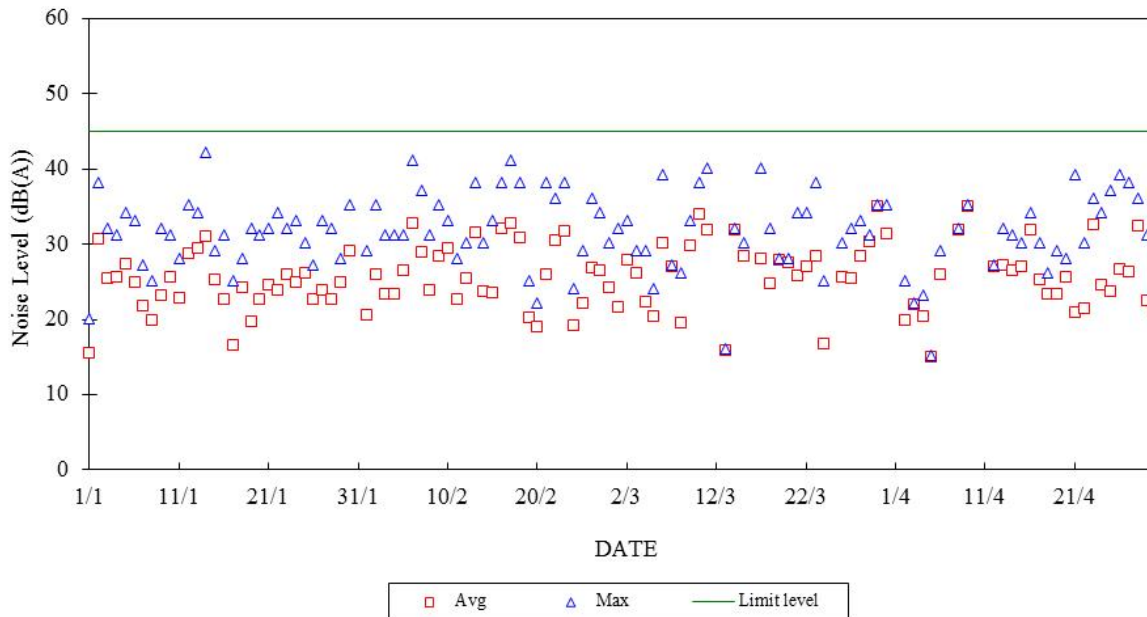
Construction Noise Monitoring in January - April 2017

NSR at Long Tsai Tsuen/Hung Shing Ye
23:00-07:00 hrs of Next Day



Construction Noise Monitoring in January - April 2017

NSR at School within Tai Wan San Tsuen
23:00-07:00 hrs of Next Day



Appendix F

The QA/QC Procedures and Results

The Hongkong Electric Co., Ltd.
Lamma Power Station Extension
TEOM Continuous Dust Monitor
Data Quality Assurance Log Sheet

Month: April Year: 2017

Reservoir (AM1)				
Date	Frequency (Hz) (240 - 275)	Operation Mode (Mode 4)	Main Flow (l/min) (2.70 - 3.30)	Bypass Flow (l/min) (12.30 - 15.04)
04/04/2017	267.941	4	3.03	13.78
10/04/2017	259.265	4	2.97	13.55
16/04/2017	258.871	4	2.96	13.48
22/04/2017	258.519	4	3.06	13.93
28/04/2017	257.997	4	3.02	13.77

East Gate (AM2)				
Date	Frequency (Hz) (240 - 275)	Operation Mode (Mode 4)	Main Flow (l/min) (2.70 - 3.30)	Bypass Flow (l/min) (12.30 - 15.04)
04/04/2017	257.476	4	3.02	13.77
10/04/2017	257.015	4	2.97	13.53
16/04/2017	259.618	4	2.97	13.53
22/04/2017	259.160	4	3.02	13.75
28/04/2017	258.600	4	3.02	13.75

Ash Lagoon (AM3)				
Date	Frequency (Hz) (240 - 275)	Operation Mode (Mode 4)	Main Flow (l/min) (2.70 - 3.30)	Bypass Flow (l/min) (12.30 - 15.04)
04/04/2017	265.436	4	2.96	13.49
10/04/2017	265.111	4	2.92	13.30
16/04/2017	265.313	4	2.90	13.20
22/04/2017	264.948	4	2.91	13.61
28/04/2017	264.611	4	2.92	13.49

Maintenance Record			
	Reservoir	East Gate	Ash Lagoon
TEOM Filter Exchange	✓	✓	✓
Clean TSP Inlet	✓	✓	✓
Replace flow in-line filter	x	x	x
Pump Repair	x	x	x
Leak Check	x	x	x
Flow audit	x	x	x
Flow Controller Calibration	x	x	x
A/C filter cleaning	✓	✓	✓

Remarks:

/

Prepared by: HY Chan

Checked by: KF Chan

The Hongkong Electric Co., Ltd.
High Volume Air Sampler Site Visit Log Sheet

Attendance Log

Site Name: Reservoir (AM1)

Date/Time	Staff Name
11/04/2017 / 13:45	WM Tam / WH Man

Equipment / Item

Equipment / Item	Serial No. / No.
HVAS	0131
Used filter paper no.	MH98
New filter paper no.	MI00

Type of filter: Glass-fibre

I. Ambient Conditions

Temperature, Ta: 302.5 K Pressure, Pa: 1000.4 mb

II. Correction of manometer reading

Calibration orifice No.	Manometer reading at site conditions Corresponds to $Q_{STD} = 40$ cubic ft/min. (inch H ₂ O)
1534(10/2016)	$H_a = 18.32(T_a/P_a) = \underline{5.54}$

Manometer reading before calibration: 5.30

Adjustment of flow controller (Y/N): Yes

Manometer reading after calibration: 5.50

Note: Tolerance Limit of HVAS flow: ± 1.0 cubic ft/min. Corresponding limits for manometer : ± 0.2 inch H₂O.

III. General Conditions of HVAS

/

IV. Remarks

Carbon brushes were replaced before audit.

Conducted by: WM Tam / WH Man

Checked by: SM Hon

The Hongkong Electric Co., Ltd.
High Volume Air Sampler Site Visit Log Sheet

Attendance Log

Site Name: East Gate (AM2)

Date/Time	Staff Name
11/04/2017 / 14:30	WM Tam / WH Man

Equipment / Item

Equipment / Item	Serial No. / No.
HVAS	0132
Used filter paper no.	MH99
New filter paper no.	MI01

Type of filter: Glass-fibre

I. Ambient Conditions

Temperature, Ta: 303.2 K Pressure, Pa: 1004.6 mb

II. Correction of manometer reading

Calibration orifice No.	Manometer reading at site conditions Corresponds to $Q_{STD} = 40$ cubic ft/min. (inch H ₂ O)
1534(10/2016)	$H_a = 18.32(T_a/P_a) = \underline{5.53}$

Manometer reading before calibration: 5.70

Adjustment of flow controller (Y/N): Yes

Manometer reading after calibration: 5.50

Note: Tolerance Limit of HVAS flow: ± 1.0 cubic ft/min. Corresponding limits for manometer : ± 0.2 inch H₂O

III. General Conditions of HVAS

/

IV. Remarks

/

Conducted by: WM Tam / WH Man

Checked by: SM Hon

The Hongkong Electric Co., Ltd.
Mini Volume Air Sampler Site Visit Log Sheet

Attendance Log

Site Name: Tai Yuen Village (AM4)

Date/Time	Staff Name
12/04/2017 / 11:30	WH Man

Equipment / Item

Equipment / Item	Serial No. / No.
MINIVOL	3393
Used filter paper no.	M086
New filter paper no.	M087

Type of filter: Glass-fibre

- I. Calibration is performed by using Drycal DC-2 Flow Calibrator
5 std. L/min set point is recommended

Before: 5.01
After: 5.01

- II. General Services

1. Clean Rotameter: Yes
2. Clean / Replace Pump Valves: No
3. Clean / Replace Pump Diaphragms: Yes
4. Clean Impaction Inlet: No
5. Replace Timer Battery Every 6 months: No
6. Replace Inlet Filter: Yes

Remarks

/

Conducted by: WH Man

Checked by: SM Hon

The Hongkong Electric Co., Ltd.
Lamma Power Station and Lamma Extension
Noise Monitoring Stations
Site Visit Log Sheet

Location: Ash Lagoon

Date/Time	Staff Attended
13/04/2017 / 10:00	WM Tam / WH Man

Equipment	Serial No.
B&K 2250	3009916

1. Calibration

Acoustic calibrator: B&K 4231 (S/N:2730419)

Noise level measured in calibration: 93.7 (94 ±1.0 dBA)

2. Weather Conditions

a. Cloudy

b. Calm

3. Beacon

Function normally: Yes

4. Remark/Observation

=

Conducted by: WM Tam / WH Man

Checked by: TL Chu

The Hongkong Electric Co., Ltd.
Lamma Power Station and Lamma Extension
Noise Monitoring Stations
Site Visit Log Sheet

Location: Ching Lam

Date/Time	Staff Attended
21/04/2017 / 10:00	WM Tam / WH Man

Equipment	Serial No.
B&K 2250	3008621

1. Calibration

Acoustic calibrator: B&K 4231 (S/N:2730419)

Noise level measured in calibration: 93.7 (94 ±1.0 dBA)

2. Weather Conditions

- a. Fine
- b. Breeze

3. Beacon

Function normally: Yes

4. Remark/Observation

=

Conducted by: WM Tam / WH Man

Checked by: TL Chu

Appendix G Event/Action Plans

Table G.1 Event and Action Plans for Air Quality

Event	Monitoring		Action	
	ET Leader	IEC	Engineer	Contractor
Action Level				
Exceedance of one sample	Identify source Inform Engineer and IEC verbally Repeat measurement to confirm finding	Check monitoring data submitted by ET and advise Engineer.	Notify Contractor Checking monitoring data and contractor's working methods	Rectify any unacceptable practice amend any working methods if appropriate
Exceedance of two or more consecutive samples	Identify source Inform Engineer and IEC verbally Repeat measurement to confirm finding Increase monitoring frequency Discuss with Engineer and Contractor on remedial actions required If exceedance continues, arrange meeting with Engineer If exceedance stops, discontinue additional monitoring	Check monitoring data submitted by ET and advise Engineer. Provide feedback to the Engineer on the remedial actions proposed by the ET / Contractor Advise Engineer on the effectiveness of the proposed remedial measures Verify the implementation of the remedial measures	Confirm receipt of notification of failure in writing Notify contractor Checking monitoring data and contractor's working methods Discuss proposed remedial actions with the ET and Contractor Ensure remedial actions properly implemented	Submit proposals for remedial actions to Engineer within 3 working days of notifications Implement the agreed proposals Amend proposal if appropriate
Limit level				
Exceedance of one sample	Repeat measurement to confirm finding. Identify the source(s) of the impact. If the exceedance is found to be valid and due to the Construction works, verbally advise the Contractor, Engineer and IEC, and inform the EPD of the exceedance, as soon as practicable. Increase monitoring frequency to daily Assess the effectiveness of the contractor's remedial actions and keep Engineer, IEC and EPD informed of the results	Check monitoring data submitted by ET and advise Engineer Provide feedback to the Engineer on the remedial actions proposed by the ET / Contractor Advise Engineer on the effectiveness of the proposed remedial measures Verify the implementation of the remedial measures	Confirm receipt of notification of failure in writing Notify Contractor Checking monitoring data and Contractor's working method Discuss with ET and Contractor on remedial actions to be provided Ensure remedial measures properly implemented	Take immediate action to avoid further exceedance Submit proposals for remedial actions to Engineer within 3 working days of notifications Implement the agreed proposals Amend proposal if appropriate
Exceedance of two or more	Identify source	Provide feedback to the Engineer on the remedial actions proposed by the	Confirm receipt of notification of	Take immediate action to

Event	Monitoring			Action		
	ET Leader	IEC	Engineer	Contractor		
consecutive samples	<p>If the exceedance is found to be valid and due to the construction works, verbally advise the Contractor, Engineer and IEC, and inform the EPD of the exceedance as soon as practicable.</p> <p>Repeat measurement to confirm finding</p> <p>Increase monitoring frequency to daily</p> <p>Carry out analysis of Contractor's working procedures to determine possible mitigation to be implemented</p> <p>Arrange meeting with Engineer and Contractor to discuss the remedial actions to be taken</p> <p>If exceedance stops, discontinue additional monitoring</p>	<p>ET / Contractor</p> <p>Advise Engineer on the effectiveness of the proposed remedial measures</p> <p>Verify the implementation of the remedial measures</p>	<p>failure in writing</p> <p>Checking monitoring data and Contractor's working methods</p> <p>Notify Contractor</p> <p>Discuss proposed remedial actions with ET and Contractor</p> <p>Ensure remedial measures properly implemented</p> <p>If exceedance continues, consider what portion of the work is responsible and instruct the Contractor to stop the portion of work until the exceedance is abated</p>	<p>avoid further exceedance</p> <p>Submit proposals for remedial actions to Engineer within 3 working days of notifications</p> <p>Implement the agreed proposals</p> <p>Resubmit proposals if problem still not under control</p> <p>Stop the relevant portion of works as determined by the Engineer until the exceedance is abated</p>		

Table G.2 Event and Action Plans for Construction Noise

Exceedance	ET Leader	IEC	Engineer	Contractor
Action Level	Undertake noise measurement/check monitoring data to establish validity of complaint.	Review the analysed results submitted by the ET.	Notify Contractor of the complaint if proven.	Submit proposals for remedial actions to Engineer.
	If the complaint is valid, inform Engineer and IEC verbally.	Review the remedial measures proposed by the Contractor and advise the Engineer and ET accordingly.	Check Contractor's working methods and advise IEC and ET accordingly.	Amend proposals if required by the Engineer.
	Identify the source(s) of the noise.	Verify the implementation of the remedial measures.	Remind the Contractor of his contractual obligations and discuss remedial actions.	Implement the remedial actions immediately upon instruction from the Engineer.
	Discuss remedial actions required with Contractor and Engineer.		Keep the Contractor informed of the efficacy of remedial actions.	Liaise with the Engineer to optimise the effectiveness of the agreed mitigation.
	Increase manual monitoring frequency to assess efficacy of remedial measures.			
	If exceedance continues, review implementation of appropriate mitigation measures.			
Limit Level	Repeat manual measurement/check monitoring data to confirm findings.	Agree potential remedial actions with Engineer, ET and Contractor.	Notify Contractor of exceedance.	Take immediate action to avoid further exceedance.
	Identify the source(s) of the impact. If the exceedance is found to be valid and due to the Construction works, verbally advise the Contractor, Engineer and IEC, and inform the EPD of the exceedance, as soon as practicable.	Review Contractor's remedial actions / measures to ensure their effectiveness and advise the Engineer and ET accordingly.	Check Contractor's working methods and advise IEC and ET accordingly. Discuss with Contractor the remedial actions to be implemented.	Submit proposals for remedial actions to Engineer. Amend proposals if required by the Engineer.
	Discuss remedial actions required with Engineer.	Verify the implementation of the remedial measures	Keep the Contractor informed of the efficacy of remedial actions. If the exceedance continues, consider what portion of the work is responsible and instruct the Contractor to stop the portion of work until the exceedance is abated	Implement remedial actions immediately upon instruction from the Engineer. If the exceedance continues, consider what portion of the work is responsible and, as instructed by the Engineer, stop the portion of work until the exceedance is abated
	Increase manual monitoring frequency to assess efficacy of remedial measures.			

Table G.3 Event and Action Plans for Water Quality

Exceedance	ET Leader	IEC	Engineer	Contractor
Action level exceeded on one sampling day	Verbally inform the Contractor, and IEC. Repeat in-situ measurement to confirm findings; Identify source(s) of impact; Check monitoring data, all plant, equipment and Contractor's working methods; Discuss mitigation measures with Engineer and Contractor; Repeat measurement on next day of exceedance.	Provide feedback to the Engineer on the remedial actions proposed by the ET / Contractor Advise Engineer on the effectiveness of the proposed remedial measures Verify the implementation of the remedial measures	Discuss with Contractor the proposed mitigation measures; Make agreement on the mitigation measures to be implemented; Assess the effectiveness of the implemented mitigation measures.	Inform the Engineer and confirm notification of the non-compliance in writing; Rectify unacceptable practice; Check all plant and equipment; Consider changes of working methods; Propose and discuss mitigation measures with Engineer; Implement the agreed mitigation measures.
Action level exceeded on more than one consecutive sampling day	Repeat in-situ measurements to confirm findings; Identify source(s) of impact; Inform Contractor and IEC; Check monitoring data, all plant, equipment and Contractor's working methods; Discuss mitigation measure with Engineer and Contractor; Ensure mitigation measures are implemented; Prepare to increase the monitoring frequency to daily; Repeat measurement on next day of exceedance.	Provide feedback to the Engineer on the remedial actions proposed by the ET / Contractor Advise Engineer on the effectiveness of the proposed remedial measures Verify the implementation of the remedial measures	Discuss with ET and Contractor on the proposed mitigation measures; Make agreement on the mitigation measures to be implemented; Assess the effectiveness of the implemented mitigation measures.	Inform the Engineer and confirm notification of the non-compliance in writing; Rectify unacceptable practice; Check all plant and equipment; Consider changes of working methods; Propose mitigation measures to Engineer within 3 working days and discuss with ET and Engineer; Implement the agreed mitigation measures.
Limit level exceeded on one sampling day	Verbally inform the Contractor, IEC and the EPD of the exceedance; Repeat in-situ measurement to confirm findings; Identify source(s) of impact; Check monitoring data, all plant,	Provide feedback to the Engineer on the remedial actions proposed by the ET / Contractor Advise Engineer on the effectiveness of the proposed remedial measures Verify the implementation of the remedial measures	Discuss with Contractor on the proposed mitigation measures; Request Contractor to critically review the working methods; Make agreement on the mitigation measures to be implemented; Assess the effectiveness of the	Inform the Engineer and confirm notification of the non-compliance in writing; Rectify unacceptable practice; Check all plant and equipment; Consider changes of working methods; Propose mitigation measures to Engineer

Exceedance	ET Leader	IEC	Engineer	Contractor
	<p>equipment and Contractor's working methods;</p> <p>Discuss mitigation measure with Engineer and Contractor;</p> <p>Ensure mitigation measures are implemented;</p> <p>Increase the monitoring frequency to daily until no exceedance of Limit level.</p>		<p>implemented mitigation measures.</p>	<p>within 3 working days and discuss with Engineer;</p> <p>Implement the agreed mitigation measures.</p>
<p>Limit level exceeded by more than one consecutive sampling day</p>	<p>Repeat in-situ measurement to confirm findings;</p> <p>Identify source(s) of impact;</p> <p>Inform Contractor, IEC and EPD;</p> <p>Check monitoring data, all plant, equipment and Contractor's working methods;</p> <p>Discuss mitigation measure with Engineer and Contractor;</p> <p>Ensure mitigation measures are implemented;</p> <p>Increase the monitoring frequency to daily until no exceedance of Limit level for two consecutive days.</p>	<p>Provide feedback to the Engineer on the remedial actions proposed by the ET / Contractor</p> <p>Advise Engineer on the effectiveness of the proposed remedial measures</p> <p>Verify the implementation of the remedial measures</p>	<p>Discuss with Contractor on the proposed mitigation measures;</p> <p>Request Contractor to critically review the working methods;</p> <p>Make agreement on the mitigation measures to be implemented;</p> <p>Assess the effectiveness of the implemented mitigation measures;</p> <p>Consider and instruct, if necessary, the Contractor to slow down or to stop all or part of the marine works until no exceedance of the Limit Level.</p>	<p>Inform the Engineer and confirm notification of the non-compliance in writing;</p> <p>Rectify unacceptable practice;</p> <p>Check all plant and equipment; Consider changes of working methods;</p> <p>Propose mitigation measures to Engineer within 3 working days and discuss with Engineer;</p> <p>Implement the agreed mitigation measures..</p> <p>As directed by the Engineer, to slow down or to stop all or part of the marine work</p>

Appendix H Summary of Site Audit Findings

L10 Piling Foundation Work (275 kV S/S Construction Sites)

Dates of Inspection: 07/04/2017, 13/04/2017, 21/04/2017 and 28/04/2017.

Summary of Findings

General

- No environmental deficiency identified.

Air Quality

- No environmental deficiency identified.

Noise

- No environmental deficiency identified.

Water Quality

- No environmental deficiency identified.

Waste Management

- No environmental deficiency identified.

L10 Civil & Building Superstructure Work

Dates of Inspection: 03/04/2017, 10/04/2017, 18/04/2017 and 25/04/2017.

Summary of Findings

General

- No environmental deficiency identified.

Air Quality

- No environmental deficiency identified.

Noise

- No environmental deficiency identified.

Water Quality

- No environmental deficiency identified.

Waste Management

- No environmental deficiency identified.

L11 Piling Foundation Work

Dates of Inspection: 07/04/2017, 13/04/2017, 21/04/2017 and 28/04/2017.

Summary of Findings

General

- No environmental deficiency identified.

Air Quality

- No environmental deficiency identified.

Noise

- No environmental deficiency identified.

Water Quality

- No environmental deficiency identified.

Waste Management

- No environmental deficiency identified.

Summary of EMIS

Power Station – (Part B of EIA Report)

Construction Phase Mitigation Measures and their Implementation

EM&A Log Ref.	Mitigation Measures	Implementation Status
	AIR QUALITY	
A1	For general construction works, the dust control measures stipulated under the Air Pollution Control (Construction Dust) Regulation shall be complied with, such as: <ul style="list-style-type: none"> the haul roads shall be sprayed with water to keep the entire road surface wet. the load carried by vehicle shall be covered by impervious sheeting to ensure no leakage of dusty materials from the vehicle. the heights from which fill materials are dropped shall be controlled to a practical level to minimise the fugitive dust arising from unloading. 	C C C
A2	For the concrete batching plant, the following control measures are recommended: <ul style="list-style-type: none"> loading, unloading, handling, transfer or storage of any dusty materials shall be carried out in a totally enclosed system. The materials which may generate airborne dust emissions shall be wetted by water spray system. All receiving hoppers shall be enclosed on three sides up to 3m above unloading point. All conveyor transfer points shall be totally enclosed. 	C C C C
	WATER QUALITY	
B1	Silt curtains shall be installed on the eastern, southern and north western sides of the reclamation site during dredging for the reclamation construction. This is a required mitigation measure for the construction works and shall be implemented prior to the commencement of bulk dredging. **	N/A
B3	As a necessary operational constraint combined bulk dredging and sand filling for site formation shall not be permitted at any time. In addition, sand filling for site platform shall take place behind constructed sea walls which pierce the water surface. **	N/A
B4	HEC shall ensure design to divert all storm drains away from Hung Shing Ye Bay. **	N/A
B5	Sand fill for the rubble mound seawalls shall be placed by controlled pumping down the trailer arm. **	N/A
B6	EM&A shall confirm the acceptability of any impacts during construction and should any unacceptable impacts be found then one or more of the following mitigation measures shall be implemented: ** <ul style="list-style-type: none"> reducing the number of dredgers working at any one time; reducing the rate of working of the dredgers; temporary suspension of operations; phasing of the works so that dredging / filling is only undertaken at certain stages of the tidal cycle. 	N/A

EM&A Log Ref.	Mitigation Measures	Implementation Status
B7	<p>In addition to the above specific measures the following general working procedures shall be adopted. **</p> <ul style="list-style-type: none"> • fully-enclosed or watertight grabs shall be used to minimise loss of sediment during the raising of loaded grabs through the water column; • the descent speed of grabs shall be controlled to minimise the seabed impact speed and to reduce the volume of over dredging; • barges shall be loaded carefully to avoid splashing of material; • all barges used for the transport of dredged materials shall be fitted with tight bottom seals in order to prevent leakage of material during loading and transport; • all barges shall be filled to a level which ensures that material does not spill over during loading and transport to the disposal site and that adequate freeboard is maintained to ensure that the decks are not washed by wave action; • the speed of trailer dredgers shall be controlled to prevent propeller wash from stirring up the sea bed sediments; • "rainbowing" sand fill from trailer dredgers shall not be permitted; and • the works shall cause no visible foam, oil, grease or litter or other objectionable matter to be present in the water within and adjacent to the dredging site and along the route to the disposal site. 	
B8	<p>Cumulative impacts shall be assessed through EM&A. Co-ordination with the EM&A consultants for other projects to determine if any exceedances are caused by the other projects or by HEC's activities. Should monitoring results indicate exceedances at sensitive receivers due to HEC's activities, then the above described mitigation measures shall be implemented until impacts reduce to acceptable levels. **</p>	N/A
NOISE		
C1	General noise mitigation measures shall be employed at all work sites throughout the construction phase.	C
C2	Mitigate against general construction noise during Sunday's and public holidays, either at source with portable noise barriers, or by rescheduling of some PME's to less sensitive time periods.	C
C3	Mitigate against night time noise from dredging equipment, with silencers or mufflers. **	N/A
LANDSCAPE & VISUAL IMPACTS		
D1	<p>The following mitigation measures shall be allowed for landscape and visual improvement:</p> <ul style="list-style-type: none"> • Use rubble mound seawall along south and west edges of the reclamation to provide a more natural look. • Break the mass of main buildings by varying the height/division into smaller units. • Plant trees and vegetation for screening. • Adopt colour scheme to blend the buildings into the scenery. 	

EM&A Log Ref.	Mitigation Measures	Implementation Status
WASTE MANAGEMENT		
E1	HEC to submit a Waste Management Plan for the construction phase to EPD. The Plan shall be verified by the IEC and shall describe the arrangements for avoidance, reuse, recovery and recycling, storage, collection, treatment and disposal of different categories of waste to be generated from the construction activities and shall take into account the recommendations of the EIA report.	C
<i>Dredging Waste</i>		
E2	All vessels for marine transportation of dredged sediment shall be fitted with tight fitting seals to their bottom openings to prevent leakage of materials. In addition, loading of barges and hoppers shall be controlled to prevent splashing of dredged material into the surrounding water, and barges or hoppers should under no circumstances be filled to a level which shall cause the overflowing of materials or polluted water during loading or transportation**	N/A
<i>Storage, Collection and Transport of Waste</i>		
E3	<ul style="list-style-type: none"> • Minimise windblown litter and dust during transportation by either covering trucks or transporting wastes in enclosed containers. 	C
	<ul style="list-style-type: none"> • Obtain the necessary waste disposal permits from the appropriate authorities, if they are required, in accordance with the Waste Disposal Ordinance (Cap.354), Waste Disposal (Chemical Waste) (General) Regulation (Cap.354), the Crown Land Ordinance (Cap 28), Dumping at Sea Ordinance (Cap 466) and Work Branch Technical Circular No. 22/92, Marine Disposal of Dredged Mud. 	C
	<ul style="list-style-type: none"> • Disposal of waste at Licensed sites; 	C
	<ul style="list-style-type: none"> • Develop procedures such as a ticketing system to facilitate tracking of marine mud and chemical waste, and to ensure that illegal disposal does not occur; 	C
	<ul style="list-style-type: none"> • Segregate and sort the waste materials into 3 categories: <ul style="list-style-type: none"> • public fill (e.g. concrete and rubble) for re-use on-site or disposal at a public filling area; • re-use and/or recycling waste (e.g. steel and other metals); • waste which cannot be re-used and/or recycled (e.g. wood, glass and plastic) for landfill disposal. • The sorting process shall be carefully monitored to avoid missing of the 3 categories. Different types of wastes shall be stockpiled and stored in different containers or skips to enhance re-use or recycling of materials and their proper disposal. • Maintain records of the quantities of wastes generated and disposed off-site for each category of waste. 	C
E4	Chemical waste that is produced, as defined by Schedule 1 of the Waste Disposal (Chemical Waste) (General) Regulation, shall be handled in accordance with the Code of Practice on the Packaging, Handling and Storage of Chemical Wastes	C
LAND CONTAMINATION		
F1	No land Contamination mitigation measures are required during the construction phase.	N/A
MARINE ECOLOGY		

EM&A Log Ref.	Mitigation Measures	Implementation Status
G1	All percussive piling works shall be conducted on reclaimed land to avoid noise impact to marine mammals**	N/A
G2	All construction related vessels shall approach the extension site from the north and via the East Lamma Channel to avoid disturbance to the finless porpoise**	N/A
G3	Rubble mound seawall to the south and west edges of the reclamation to enhance recolonisation of marine organisms**	N/A
G4	Artificial Reefs of a volume not less than 400 m ³ shall be deployed in a location to be decided upon consultation with the Director of Agriculture and Fisheries to serve the purpose of an Additional Habitat Enhancement Measure.**	N/A
FISHERIES		
H1	No Fisheries-specific mitigation measures are required during the construction phase.	N/A
RISK ASSESSMENT		
I1	No risk mitigation measures are required during the construction phase.	N/A

Remarks:

- ** - No dredging and reclamation work would be involved for L10 construction
- C - Compliance with mitigation measure
- NC - Non-compliance with mitigation measure
- N/A - Not Applicable

SUNLEY ENGINEERING & CONSTRUCTION CO., LTD.

Contract No. 15/8009 - Lamma Power Station Extension Foundation Works for Unit L10

Master Programme Revision 1

ID	Item	Task Name	Duration	Start	Finish
1	1	Key Date	486 days	2016/1/1	2017/4/30
2	1.1	Commencement date	0 days	2016/1/1	2016/1/1
3	1.2	Duration of works	486 days	2016/1/1	2017/4/30
4	1.3	Possession date	0 days	2016/1/1	2016/1/1
5	1.4	Completion of the Contract	0 days	2017/4/30	2017/4/30
6					
7	2	Total Contract Period	486 days	2016/1/1	2017/5/1
8					
9	2.1	Preliminaries	37 days	2016/1/1	2016/2/6
10	2.1.1	Coordination with utility companies	14 days	2016/1/1	2016/1/14
11	2.1.2	Condition survey	20 days	2016/1/1	2016/1/20
12	2.1.3	Notification of commencement of works to Labour Department	7 days	2016/1/1	2016/1/7
13	2.1.4	Notification of air pollution control for commencement of works to EPD	7 days	2016/1/1	2016/1/7
14	2.1.5	Application of water discharge licence from EPD	7 days	2016/1/1	2016/1/7
15	2.1.6	Application for billing account for disposal of construction waste from EPD	7 days	2016/1/1	2016/1/7
16	2.1.7	CCTV for existing underground drainage pipe around site boundary	21 days	2016/1/1	2016/1/21
17	2.1.8	Utility detection for existing underground cables	20 days	2016/1/1	2016/1/20
18	2.1.9	Site clearance	21 days	2016/1/1	2016/1/21
19	2.1.10	Erection of contractor's site office	21 days	2016/1/1	2016/1/21
20	2.1.11	Installation of monitoring checkpoints	20 days	2016/1/18	2016/2/6
21	2.1.12	Submission of BA10 for ELS & foundation works	0 days	2016/1/1	2016/1/1
22					
23	2.2	Section A	305 days	2016/1/1	2016/10/31
24	2.2.1	Hoarding	90 days	2016/1/1	2016/3/30
25	2.2.1.1	Erection of Hoarding	90 days	2016/1/1	2016/3/30
26	2.2.2	Foundation Works at Unit L10	295 days	2016/1/11	2016/10/31
27	2.2.2.1	Bored Pile - Temporary Steel Casing	56 days	2016/1/22	2016/3/17
28	2.2.2.1.1	Duration for delivery temporary steel casing	56 days	2016/1/22	2016/3/17
29	2.2.2.2	Bored Pile - Permanent Casing & Double Wall Liner	172 days	2016/2/24	2016/8/13
30	2.2.2.2.1	Testing for double wall liner	0 days	2016/2/24	2016/2/24
31	2.2.2.2.2	Duration for delivery permanent casing & double wall liner	160 days	2016/3/7	2016/8/13
32	2.2.2.3	Bored Pile - Plant Mobilization	56 days	2016/1/15	2016/3/11
33	2.2.2.3.1	Crawler Crane	53 days	2016/1/15	2016/3/8
34	2.2.2.3.1.1	1st & 2nd set	0 days	2016/1/15	2016/1/15
35	2.2.2.3.1.2	3rd set	0 days	2016/2/4	2016/2/4
36	2.2.2.3.1.3	4th & 5th set	0 days	2016/2/19	2016/2/19
37	2.2.2.3.1.4	6th set	0 days	2016/3/8	2016/3/8
38	2.2.2.3.2	Oscillator	35 days	2016/1/29	2016/3/4
39	2.2.2.3.2.1	1st & 2nd set	0 days	2016/1/29	2016/1/29
40	2.2.2.3.2.2	3rd & 4th set	0 days	2016/2/24	2016/2/24
41	2.2.2.3.2.3	5th set	0 days	2016/3/4	2016/3/4
42	2.2.2.3.3	RCD	7 days	2016/3/4	2016/3/11
43	2.2.2.3.3.1	1st & 2nd set	0 days	2016/3/4	2016/3/4
44	2.2.2.3.3.2	3rd, 4th & 5th set	0 days	2016/3/11	2016/3/11
45	2.2.2.4	Predrilling	60 days	2016/1/11	2016/3/10
46	2.2.2.4.1	Predrilling works (38 nos.)	60 days	2016/1/11	2016/3/10
47	2.2.2.5	Bored Pile Construction	263 days	2016/2/12	2016/10/31
48	2.2.2.5.1	Bored pile construction (38 piles)	215 days	2016/2/12	2016/9/13
49	2.2.2.5.2	Interface & sonic test	30 days	2016/8/25	2016/9/23
50	2.2.2.5.3	Prepare & submit as-built record plan	7 days	2016/9/17	2016/9/23
51	2.2.2.5.4	Submission of BA14	1 day	2016/9/23	2016/9/23
52	2.2.2.5.5	Allow 14 days for selection of pile for concrete full core test	14 days	2016/9/24	2016/10/7

M17
5月

Master Programme
Revision 1

Task  Critical Task  Milestone  Summary 

SUNLEY ENGINEERING & CONSTRUCTION CO., LTD.

Contract No. 15/8009 - Lamma Power Station Extension Foundation Works for Unit L10

Master Programme Revision 1

ID	Item	Task Name	Duration	Start	Finish
53	2.2.2.5.6	Concrete full core test	14 days	2016/10/8	2016/10/21
54	2.2.2.5.7	Compression test for concrete core	7 days	2016/10/22	2016/10/28
55	2.2.2.5.8	Submission of log report & compression test report	4 days	2016/10/28	2016/10/31
56	2.2.2.6	Sheet Pile	92 days	2016/7/22	2016/10/21
57	2.2.2.6.1	Plant mobilization	0 days	2016/7/31	2016/7/31
58	2.2.2.6.2	Delivery sheet pile material	0 days	2016/7/22	2016/7/22
59	2.2.2.6.3	Installation of sheet pile - Type A (approx. 212 piles)	50 days	2016/8/1	2016/9/19
60	2.2.2.6.4	Installation of sheet pile - Type B (approx. 100 piles)	24 days	2016/9/20	2016/10/13
61	2.2.2.6.5	Prepare & submit as-built record plan	7 days	2016/10/14	2016/10/20
62	2.2.2.6.6	Submission of BA14	1 day	2016/10/21	2016/10/21
63	2.2.2.7	Completion of foundation works at Unit L10	0 days	2016/10/31	2016/10/31
64	2.2.3	New Site Facilities	198 days	2016/1/1	2016/7/16
65	2.2.3.1	Submission for design of site office A	90 days	2016/1/1	2016/3/30
66	2.2.3.2	Approval for design of site office A	28 days	2016/3/31	2016/4/27
67	2.2.3.3	Erection of site office A	50 days	2016/4/28	2016/6/16
68	2.2.3.4	Erection of wasing facilities with shelter & container shower facilities	20 days	2016/5/28	2016/6/16
69	2.2.3.5	Installation of earthing	30 days	2016/6/7	2016/7/6
70	2.2.3.6	Installation of portable water pipes	30 days	2016/6/17	2016/7/16
71	2.2.3.7	Installation of sewage drain pipes	30 days	2016/6/17	2016/7/16
72	2.2.3.8	Completion of new site facilities	0 days	2016/7/16	2016/7/16
73	2.2.4	Completion of section A	0 days	2016/10/31	2016/10/31
74	2.2.5	Demobilization of plants	0 days	2016/10/21	2016/10/21
75	2.3	Handover of site works area for Section A	0 days	2016/11/1	2016/11/1
76					
77	2.4	Section B	121 days	2016/1/1	2016/4/30
78	2.4.1	Ground Treatment Works	121 days	2016/1/1	2016/4/30
79	2.4.1.1	Verification GI works (approx. 20 nos.)	14 days	2016/2/20	2016/3/4
80	2.4.1.2	Plant mobilization	55 days	2016/1/1	2016/2/24
81	2.4.1.3	Trial installation of band drain	5 days	2016/2/25	2016/2/29
82	2.4.1.4	Installation of band drain (approx. 2477 nos.)	45 days	2016/3/1	2016/4/14
83	2.4.1.5	Installation of steel plate & geotextile on existing U-channel	20 days	2016/3/28	2016/4/16
84	2.4.1.6	Filling of surcharge (approx. 21000 m3)	20 days	2016/4/7	2016/4/26
85	2.4.1.7	Installation of ground settlement markers	10 days	2016/4/21	2016/4/30
86	2.4.2	Completion of section B	0 days	2016/4/30	2016/4/30
87					
88	2.5	Section C	229 days	2016/9/14	2017/4/30
89	2.5.1	Hoarding	45 days	2016/11/1	2016/12/15
90	2.5.1.1	Erection of Hoarding	45 days	2016/11/1	2016/12/15
91	2.5.2	Foundation Works at 275kV Substation Building	229 days	2016/9/14	2017/4/30
92	2.5.2.1	Early start milestone	0 days	2016/10/6	2016/10/6
93	2.5.2.2	Bored Pile - Temporary Steel Casing	7 days	2016/9/14	2016/9/20
94	2.5.2.2.1	Duration for delivery temporary steel casing	7 days	2016/9/14	2016/9/20
95	2.5.2.3	Bored Pile - Permanent Casing & Double Wall Liner	120 days	2016/9/26	2017/1/23
96	2.5.2.3.1	Duration for delivery permanent casing & double wall liner	120 days	2016/9/26	2017/1/23
97	2.5.2.4	Bored Pile - Plant Mobilization	14 days	2016/10/1	2016/10/15
98	2.5.2.4.1	Crawler Crane	0 days	2016/10/1	2016/10/1
99	2.5.2.4.1.1	1st & 2nd set	0 days	2016/10/1	2016/10/1
100	2.5.2.4.2	Oscillator	0 days	2016/10/5	2016/10/5
101	2.5.2.4.2.1	1st & 2nd set	0 days	2016/10/5	2016/10/5
102	2.5.2.4.3	RCD	0 days	2016/10/15	2016/10/15
103	2.5.2.4.3.1	1st & 2nd set	0 days	2016/10/15	2016/10/15
104	2.5.2.5	Predrilling	21 days	2016/11/1	2016/11/21

M17
5月

Master Programme
Revision 1

Task  Critical Task  Milestone  Summary 

SUNLEY ENGINEERING & CONSTRUCTION CO., LTD.

Contract No. 15/8009 - Lamma Power Station Extension Foundation Works for Unit L10

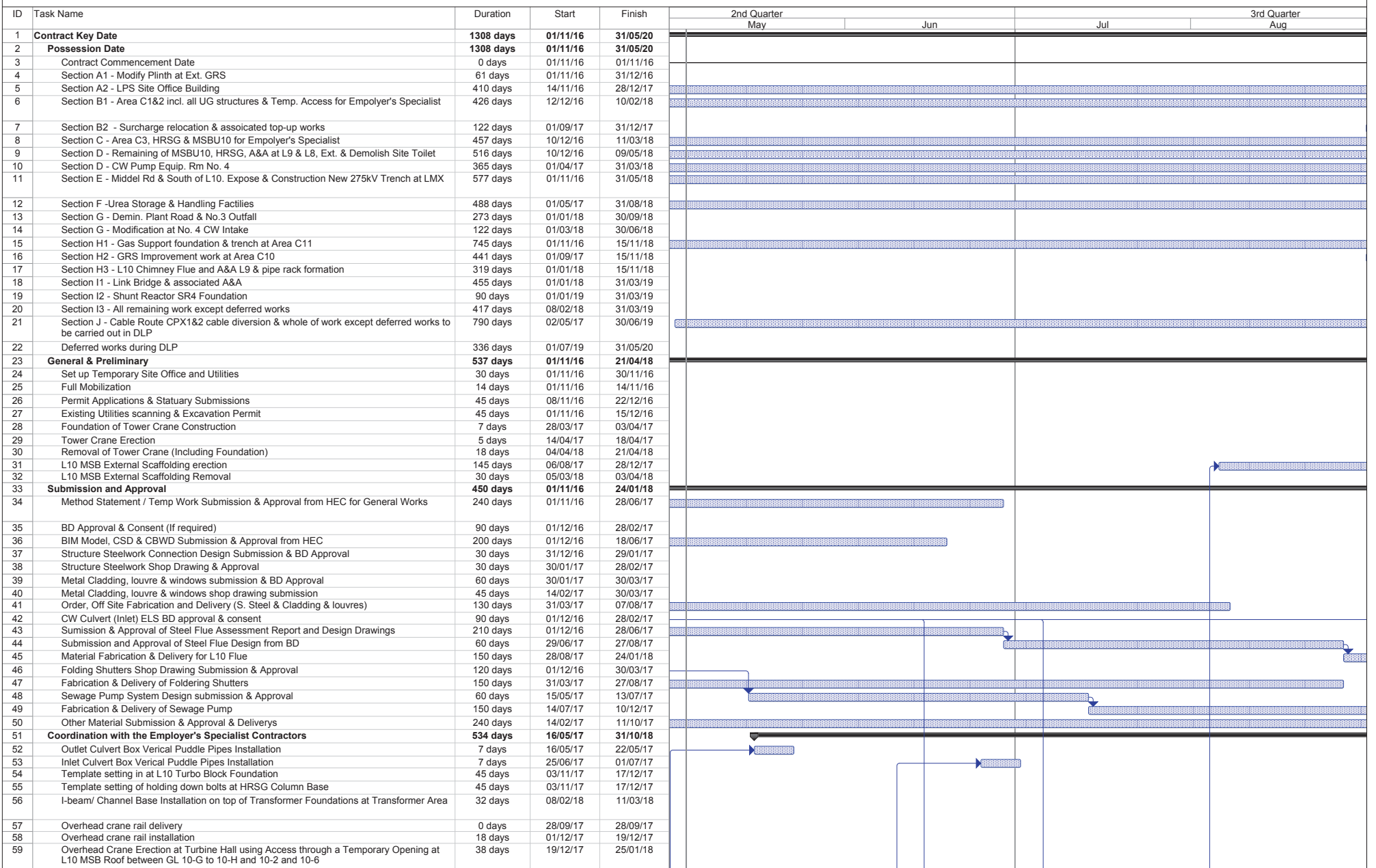
Master Programme Revision 1

ID	Item	Task Name	Duration	Start	Finish
105	2.5.2.5.1	Predrilling works (10 nos.)	21 days	2016/11/1	2016/11/21
106	2.5.2.6	Bored Pile	181 days	2016/11/1	2017/4/30
107	2.5.2.6.1	Installation of monitoring checkpoints	7 days	2016/11/1	2016/11/7
108	2.5.2.6.2	Bored pile construction (10 piles)	125 days	2016/11/10	2017/3/14
109	2.5.2.6.3	Interface & sonic test	20 days	2017/3/9	2017/3/28
110	2.5.2.6.4	Prepare & submit as-built record plan	7 days	2017/3/22	2017/3/28
111	2.5.2.6.5	Submission of BA14	1 day	2017/3/28	2017/3/28
112	2.5.2.6.6	Allow 14 days for selection of pile for concrete full core test	14 days	2017/3/29	2017/4/11
113	2.5.2.6.7	Concrete full core test	10 days	2017/4/12	2017/4/21
114	2.5.2.6.8	Compression test for concrete core	7 days	2017/4/21	2017/4/27
115	2.5.2.6.9	Submission of log report & compression test report	4 days	2017/4/27	2017/4/30
116	2.5.2.7	Completion of foundation works at 275kV substation building	0 days	2017/4/30	2017/4/30
117	2.5.3	Trial Pile	212 days	2016/10/1	2017/4/30
118	2.5.3.1	Early start milestone	0 days	2016/10/1	2016/10/1
119	2.5.3.2	Submission of BA10 for trial pile	7 days	2016/11/1	2016/11/7
120	2.5.3.3	Predrilling	28 days	2016/11/8	2016/12/5
121	2.5.3.3.1	Predrilling works (3 nos.)	28 days	2016/11/8	2016/12/5
122	2.5.3.4	Ground Instrumentation	24 days	2016/11/22	2016/12/15
123	2.5.3.4.1	Installation of magnetic extensometer in predrilled hole (3 nos.)	16 days	2016/11/22	2016/12/7
124	2.5.3.4.2	Installation of settlement plate	10 days	2016/12/6	2016/12/15
125	2.5.3.5	Construction of Trial Pile	136 days	2016/12/16	2017/4/30
126	2.5.3.5.1	Installation of trial pile (6 piles)	84 days	2016/12/16	2017/3/9
127	2.5.3.5.2	Dynamic pile test	72 days	2016/12/29	2017/3/10
128	2.5.3.5.3	Static load test	42 days	2017/3/11	2017/4/21
129	2.5.3.5.4	Prepare & submit as-built record plan	7 days	2017/4/17	2017/4/23
130	2.5.3.5.5	Submission of BA14	1 day	2017/4/23	2017/4/23
131	2.5.3.5.6	Cut off the piles to level +3.0mPD	7 days	2017/4/24	2017/4/30
132	2.5.3.6	Completion of trial pile	0 days	2017/4/30	2017/4/30
133	2.5.4	Completion of section C	0 days	2017/4/30	2017/4/30
134	2.5.5	Demobilization of plants	0 days	2017/4/30	2017/4/30
135	2.6	Handover of site works area for Section C	0 days	2017/5/1	2017/5/1
136					
137	2.7	Section D	383 days	2016/1/15	2017/1/31
138	2.7.1	General Site Works	36 days	2016/3/1	2016/4/5
139	2.7.1.1	Cable duct & draw pit	21 days	2016/3/1	2016/3/21
140	2.7.1.2	Relocation of lamp pole (5 poles)	20 days	2016/3/17	2016/4/5
141	2.7.2	G.I. Works	99 days	2016/3/4	2016/6/10
142	2.7.2.1	Submission of BA10 for G.I. works	7 days	2016/3/4	2016/3/10
143	2.7.2.2	Carry out G.I. works (11 nos.)	85 days	2016/3/11	2016/6/3
144	2.7.2.3	Prepare & submit as-built record plan	7 days	2016/6/4	2016/6/10
145	2.7.2.4	Submission of BA14	1 day	2016/6/10	2016/6/10
146	2.7.3	Ground Treatment Time	276 days	2016/5/1	2017/1/31
147	2.7.3.1	9 months for monitoring settlement after completion of ground treatment	276 days	2016/5/1	2017/1/31
148	2.7.4	External Works	227 days	2016/1/15	2016/8/28
149	2.7.4.1	Repair & make good site office B & existing latrines	90 days	2016/3/1	2016/5/29
150	2.7.4.2	Removal of the employer's materials stored in E6 area as instructed by the Engineer	90 days	2016/1/15	2016/4/13
151	2.7.4.3	Installation of bund wall of sandbags	60 days	2016/5/1	2016/6/29
152	2.7.4.4	Construction of new type 3 road	60 days	2016/6/30	2016/8/28
153	2.7.5	Completion of section D	0 days	2017/1/31	2017/1/31
154					
155	2.8	Contract completion	0 days	2017/4/30	2017/4/30

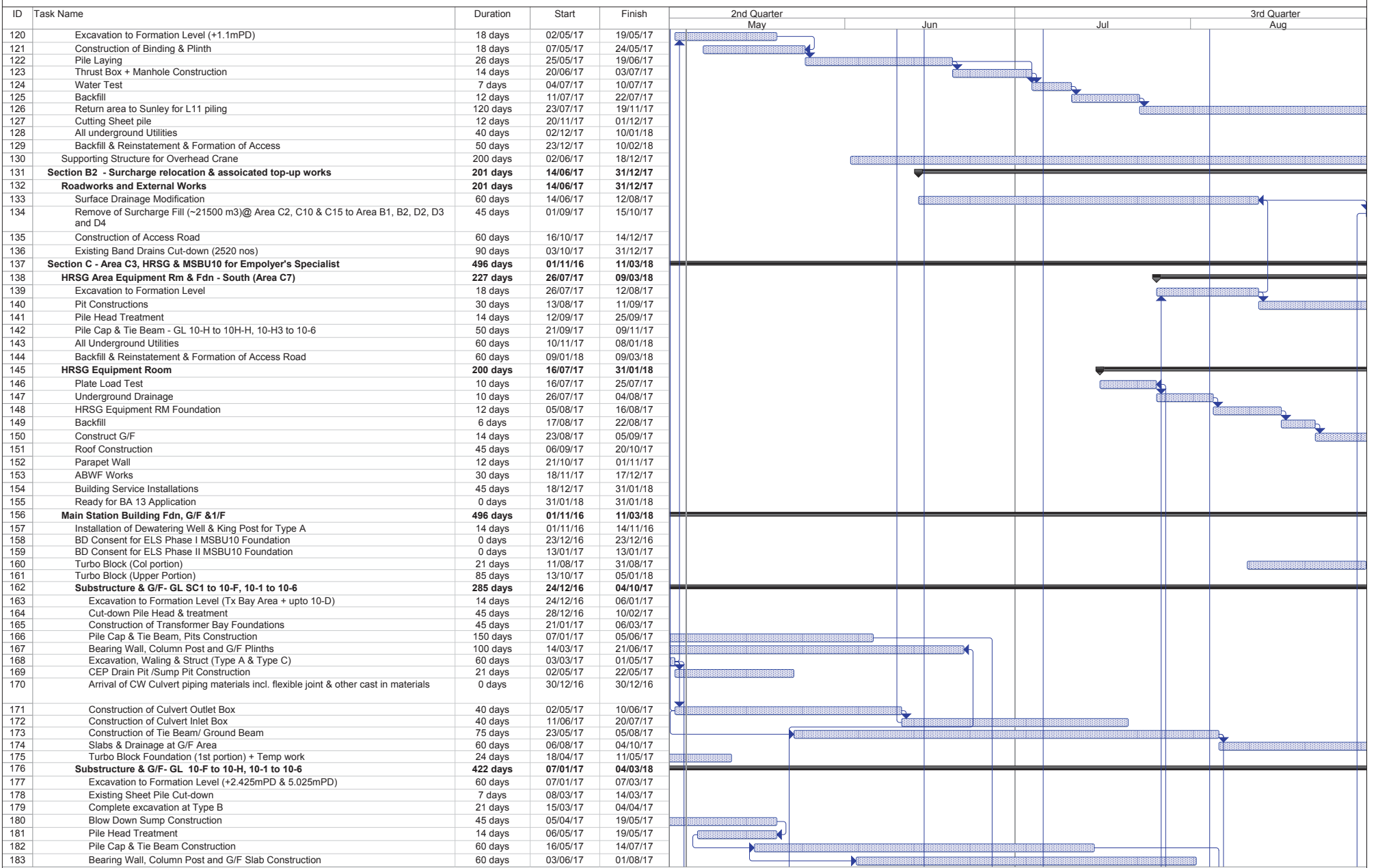
M17
5月

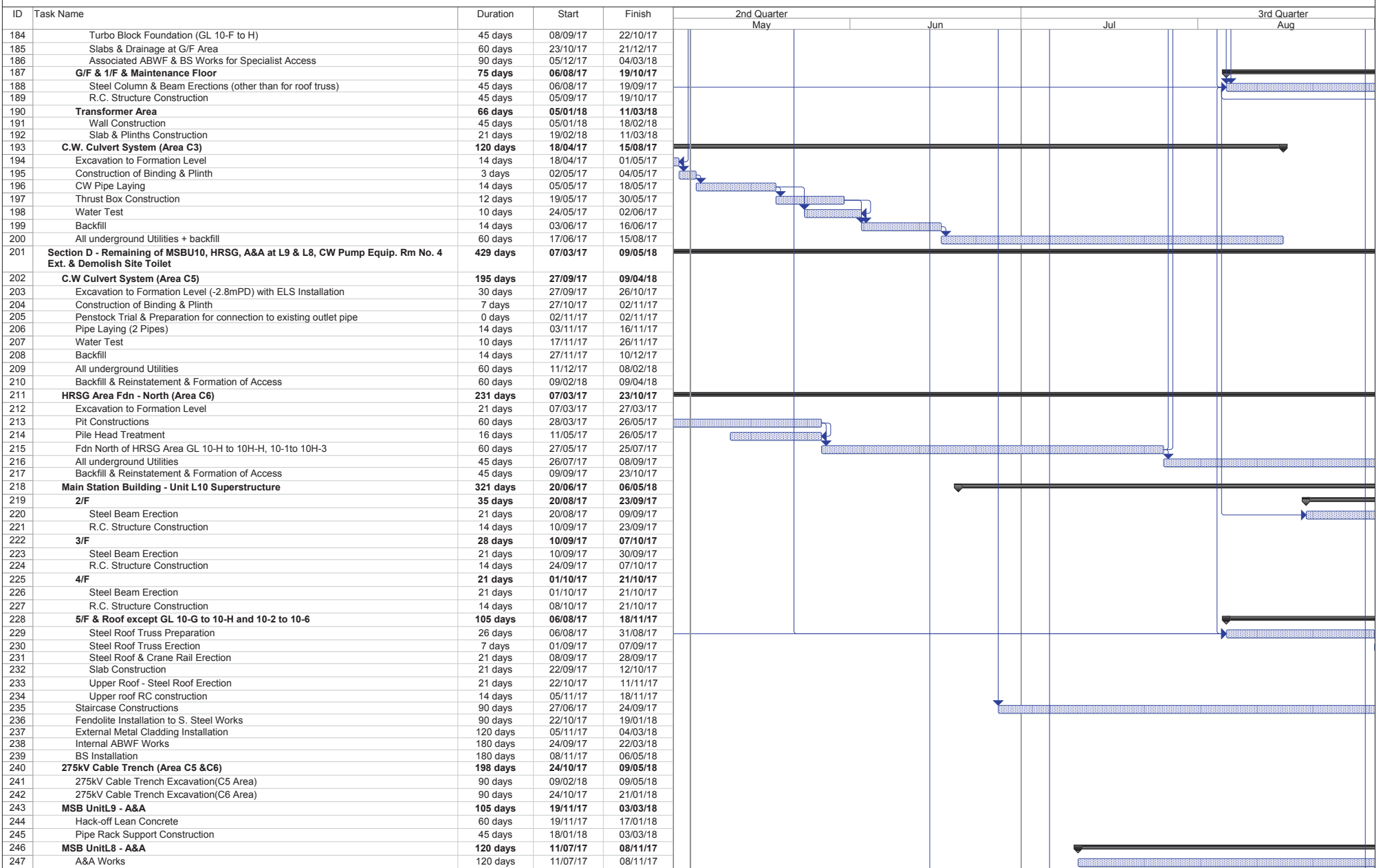
Master Programme
Revision 1

Task  Critical Task  Milestone  Summary 



ID	Task Name	Duration	Start	Finish	2nd Quarter			3rd Quarter	
					May	Jun	Jul	Aug	
60	Condenser Assembly and Erection using Access through a Temporary Opening at L10 MSE below 1/F along GL 10-6 from GL 10-B to 10-C including a Clear Space below 1/F between GL 10-B to 10-C	89 days	11/02/18	10/05/18					
61	Installation of Power Train Equipment including Air Inlet Duct using Access through a Temporary Façade Opening at L10 MSB below 1/F along GL 10-6 from GL 10-F to 10-H including a Clear Space below 1/F of the above Area	89 days	11/02/18	10/05/18					
62	Installation of Equipment in L10 HRSG Area after the Temporary Paving was Removed to Expose the Respective Foundations by the Contractor	78 days	15/08/18	31/10/18					
63	Installation of Embedded Materials such as Holding Down Bolts for Equipment Foundation	300 days	16/05/17	11/03/18	[Gantt bar spanning from May 2017 to August 2018]				
64	Section A1 - Modify Plinth at Ext. GRS	61 days	01/11/16	31/12/16					
65	Existing Plinth Removal	18 days	01/11/16	18/11/16					
66	Wall Base & Plinth Construction	45 days	17/11/16	31/12/16					
67	Pipe Rack at Unit 9 North (VO under EI No. 6)	152 days	29/01/17	30/06/17	[Gantt bar spanning from Jan 2017 to Jun 2017]				
68	Consent and BA10 Submissions	0 days	29/01/17	29/01/17					
69	Hoarding & Plant Load Test	18 days	30/01/17	16/02/17					
70	Footing Construction & Reinstatement	75 days	17/02/17	02/05/17					
71	Structural Steel Fabrication, Delivery & Erection	60 days	02/05/17	30/06/17					
72	Section A2 - LPS Site Office Building	423 days	01/11/16	28/12/17	[Gantt bar spanning from Nov 2016 to Dec 2017]				
73	Submissions of Shop Drawings and Approval	90 days	01/11/16	29/01/17					
74	Submission & Approval of CSD & CBWD	60 days	15/01/17	15/03/17					
75	Complete site clearance by HKE	0 days	01/11/16	01/11/16					
76	Demolish of existing site office	21 days	01/11/16	21/11/16					
77	BA 10 Application	0 days	01/11/16	01/11/16					
78	Erection of Hording	7 days	01/11/16	07/11/16					
79	Plate Load Test	7 days	08/11/16	14/11/16					
80	Installation of Earthing Grid	18 days	15/11/16	02/12/16					
81	Construction of pad footing, bearing wall, columns up to G/F	45 days	03/12/16	16/01/17					
82	Chinese New Year	10 days	27/01/17	05/02/17					
83	Backfill & UG Drainage within Building	75 days	17/01/17	01/04/17					
84	Backfill & Blinding	4 days	02/04/17	05/04/17					
85	Construct G/F on-grade slab & External Scaffold Erection	12 days	06/04/17	17/04/17					
86	RC Walls, Columns and Slab up to 1/F	50 days	18/04/17	06/06/17					
87	RC Walls, Columns and Slab up to R/F	50 days	18/05/17	06/07/17					
88	Parapet Wall, FS Water Tank, Top Roofs + RC curb, hatch door etc	18 days	07/07/17	24/07/17					
89	Waterproofing for Lift pit + Water test	14 days	25/07/17	07/08/17					
90	G/F Window, Louvre, Doors Frame & Shutter Frame	40 days	07/07/17	15/08/17					
91	G/F Finishing Works	55 days	21/07/17	13/09/17					
92	G/F Plumbing & Drainage Works	60 days	14/08/17	12/10/17					
93	G/F Sanitary Fitting and Cubicles	60 days	13/09/17	11/11/17					
94	G/F Other sundry metal, railing, etc	30 days	12/11/17	11/12/17					
95	G/F Placing Furnitures	10 days	17/12/17	26/12/17					
96	1/F Window, Louvre & Door Frames	45 days	21/07/17	03/09/17					
97	1/F Finishing Works	35 days	20/08/17	23/09/17					
98	1/F Plumbing, Sanitary Fittings & Drainage Works	21 days	24/09/17	14/10/17					
99	1/F Other sundry metal, railing, etc	45 days	15/10/17	28/11/17					
100	R+UR/F Waterproofing Installation + Testing	60 days	15/08/17	13/10/17					
101	R/F Finishing Works (incl. Water Tank & FS Pump Room)	30 days	04/10/17	02/11/17					
102	R/F Plumbing Works	14 days	03/11/17	16/11/17					
103	R/F Sundry Metal, Handrail & Glazed Railing	30 days	03/11/17	02/12/17					
104	Installation of Door a& Shutter leaves	30 days	03/11/17	02/12/17					
105	Handover of lift shaft	0 days	07/08/17	07/08/17					
106	Lift Installation + EMSD Inspection + Issue of Lift Cert	120 days	08/08/17	05/12/17					
107	Electrical Installation	90 days	14/09/17	12/12/17					
108	Fire Service Installation	90 days	14/09/17	12/12/17					
109	MVAC Installation	90 days	14/09/17	12/12/17					
110	Testing & Commissioning Works	10 days	03/12/17	12/12/17					
111	External Wall Finishing Works	60 days	14/09/17	12/11/17					
112	Removal of Scaffolding	14 days	13/11/17	26/11/17					
113	External UG P&D and Road Works	100 days	25/07/17	01/11/17					
114	WWO046 Completion	0 days	01/11/17	01/11/17					
115	FSD Inspection	0 days	12/12/17	12/12/17					
116	Submit BA 13 Inspection	14 days	13/12/17	26/12/17					
117	Expected OP Issue	0 days	28/12/17	28/12/17					
118	Section B1 - Area C1&2 incl. all UG structures & Temp. Access for Empolyer's Specialist	285 days	02/05/17	10/02/18	[Gantt bar spanning from May 2017 to Feb 2018]				
119	C.W. Culvert System (Area C1 & C2) (~160m)	285 days	02/05/17	10/02/18	[Gantt bar spanning from May 2017 to Feb 2018]				





ID	Task Name	Duration	Start	Finish	2nd Quarter				3rd Quarter							
					May		Jun		Jul		Aug					
248	C.W. Pump Equipment Room	364 days	01/04/17	31/03/18	[Gantt bar from 01/04/17 to 31/03/18]											
249	BA 10 Application	0 days	01/04/17	01/04/17	[Task bar at 01/04/17]											
250	Excavation to + 4.05mPD	21 days	02/04/17	22/04/17	[Task bar from 02/04/17 to 22/04/17]											
251	Plate Load Test	14 days	23/04/17	06/05/17	[Task bar from 23/04/17 to 06/05/17]											
252	Raft Foundation Construction	18 days	07/05/17	24/05/17	[Task bar from 07/05/17 to 24/05/17]											
253	Underground Drainage	21 days	25/05/17	14/06/17	[Task bar from 25/05/17 to 14/06/17]											
254	Backfill	10 days	15/06/17	24/06/17	[Task bar from 15/06/17 to 24/06/17]											
255	Construct G/F	21 days	25/06/17	15/07/17	[Task bar from 25/06/17 to 15/07/17]											
256	Roof Construction	45 days	16/07/17	29/08/17	[Task bar from 16/07/17 to 29/08/17]											
257	Parapet Wall	18 days	30/08/17	16/09/17	[Task bar from 30/08/17 to 16/09/17]											
258	ABWF Works	75 days	17/09/17	30/11/17	[Task bar from 17/09/17 to 30/11/17]											
259	Building Service Installations	75 days	01/12/17	13/02/18	[Task bar from 01/12/17 to 13/02/18]											
260	Extenal Pipe Rack Extension & Reinstatement Works	90 days	31/12/17	30/03/18	[Task bar from 31/12/17 to 30/03/18]											
261	Ready for BA 13 Application	0 days	31/03/18	31/03/18	[Task bar at 31/03/18]											
262	Demolition Work - Temporary Site Toilet	60 days	18/01/18	18/03/18	[Gantt bar from 18/01/18 to 18/03/18]											
263	Demolition of Temp. Site Toilet	60 days	18/01/18	18/03/18	[Task bar from 18/01/18 to 18/03/18]											
264	Section E - Middel Rd & South of L10. Expose & Construction New 275kV Trench at LM	336 days	15/06/17	16/05/18	[Gantt bar from 15/06/17 to 16/05/18]											
265	275kV Cable Trench	240 days	08/09/17	05/05/18	[Gantt bar from 08/09/17 to 05/05/18]											
266	275kV Cable Trench Re-excavation (~172m)	240 days	08/09/17	05/05/18	[Task bar from 08/09/17 to 05/05/18]											
267	C.W. Culvert System (Area C9a & C15)	336 days	15/06/17	16/05/18	[Gantt bar from 15/06/17 to 16/05/18]											
268	Removal of existing paving block	12 days	15/06/17	26/06/17	[Task bar from 15/06/17 to 26/06/17]											
269	Install ELS & Excavation, Phase 1	45 days	27/06/17	10/08/17	[Task bar from 27/06/17 to 10/08/17]											
270	Blinding & Construct Plinth	30 days	11/08/17	09/09/17	[Task bar from 11/08/17 to 09/09/17]											
271	Pipe Laying & Thrust Box	30 days	10/09/17	09/10/17	[Task bar from 10/09/17 to 09/10/17]											
272	Water Test and Backfill	12 days	10/10/17	21/10/17	[Task bar from 10/10/17 to 21/10/17]											
273	Underground UU and Reinstatement	45 days	22/10/17	05/12/17	[Task bar from 22/10/17 to 05/12/17]											
274	Install ELS & Excavation, Phase 2	45 days	06/12/17	19/01/18	[Task bar from 06/12/17 to 19/01/18]											
275	Blinding & Concrete Plinth	30 days	20/01/18	18/02/18	[Task bar from 20/01/18 to 18/02/18]											
276	Pipe Laying and Thrust Box	30 days	19/02/18	20/03/18	[Task bar from 19/02/18 to 20/03/18]											
277	Water Test & Backfill	12 days	21/03/18	01/04/18	[Task bar from 21/03/18 to 01/04/18]											
278	Underground UU and Reinstatement	45 days	02/04/18	16/05/18	[Task bar from 02/04/18 to 16/05/18]											
279	Section F -Urea Storage & Handling Facilities	488 days	01/05/17	31/08/18	[Gantt bar from 01/05/17 to 31/08/18]											
280	Urea Handling & Storage Plant House, Electrical Room &Pipe Rack	488 days	01/05/17	31/08/18	[Gantt bar from 01/05/17 to 31/08/18]											
281	BA 10 Application	10 days	01/05/17	10/05/17	[Task bar from 01/05/17 to 10/05/17]											
282	Excavation to Formation Level	14 days	11/05/17	24/05/17	[Task bar from 11/05/17 to 24/05/17]											
283	Plate Load Test	14 days	25/05/17	07/06/17	[Task bar from 25/05/17 to 07/06/17]											
284	Raft Foundation (Urea Handling Rm)	21 days	08/06/17	28/06/17	[Task bar from 08/06/17 to 28/06/17]											
285	Raft Foundation (Electrical Rm)	30 days	29/06/17	28/07/17	[Task bar from 29/06/17 to 28/07/17]											
286	Backfill	21 days	29/07/17	18/08/17	[Task bar from 29/07/17 to 18/08/17]											
287	Construct G/F	45 days	19/08/17	02/10/17	[Task bar from 19/08/17 to 02/10/17]											
288	Roof Construction	75 days	03/10/17	16/12/17	[Task bar from 03/10/17 to 16/12/17]											
289	Parapet Wall	21 days	17/12/17	06/01/18	[Task bar from 17/12/17 to 06/01/18]											
290	ABWF Works	120 days	07/01/18	06/05/18	[Task bar from 07/01/18 to 06/05/18]											
291	Building Service Installations	120 days	04/05/18	31/08/18	[Task bar from 04/05/18 to 31/08/18]											
292	Ready for BA 13 Application	0 days	31/08/18	31/08/18	[Task bar at 31/08/18]											
293	Plate Load Test	14 days	25/05/17	07/06/17	[Task bar from 25/05/17 to 07/06/17]											
294	Pipe Rack Foundation	28 days	08/06/17	05/07/17	[Task bar from 08/06/17 to 05/07/17]											
295	Supporting Tower (4 no.) (9.55m in Height)	60 days	06/07/17	03/09/17	[Task bar from 06/07/17 to 03/09/17]											
296	Pipe Rack Truss (3 no.)17.3m Span	60 days	04/09/17	02/11/17	[Task bar from 04/09/17 to 02/11/17]											
297	Section G - Demin. Plant Road & Modification at No. 4 CW Intake	273 days	01/01/18	30/09/18	[Gantt bar from 01/01/18 to 30/09/18]											
298	C.W Culvert System (Area C9b)	272 days	01/01/18	30/09/18	[Gantt bar from 01/01/18 to 30/09/18]											
299	Design, Approval & Consent	0 days	01/01/18	01/01/18	[Task bar at 01/01/18]											
300	Removal of paving block & ELS Installation	30 days	02/01/18	31/01/18	[Task bar from 02/01/18 to 31/01/18]											
301	Excavation to Formation Level with ELS Installation	45 days	01/02/18	17/03/18	[Task bar from 01/02/18 to 17/03/18]											
302	Construction of Blinding & Plinth	14 days	18/03/18	31/03/18	[Task bar from 18/03/18 to 31/03/18]											
303	Pipe Laying (2 pipes x ~45m)	30 days	01/04/18	30/04/18	[Task bar from 01/04/18 to 30/04/18]											
304	Construction of Thrust Box	14 days	01/05/18	14/05/18	[Task bar from 01/05/18 to 14/05/18]											
305	Water Test	8 days	15/05/18	22/05/18	[Task bar from 15/05/18 to 22/05/18]											
306	Backfill	21 days	23/05/18	12/06/18	[Task bar from 23/05/18 to 12/06/18]											
307	All underground Utilities	50 days	13/06/18	01/08/18	[Task bar from 13/06/18 to 01/08/18]											
308	Backfill & Reinstatement & Formation of Access	60 days	02/08/18	30/09/18	[Task bar from 02/08/18 to 30/09/18]											
309	Modification Works - No. 4 C.W. Intake & No.3 C.W. Outfall	181 days	01/01/18	30/06/18	[Gantt bar from 01/01/18 to 30/06/18]											
310	No. 3 C.W. Outfall Modification	90 days	01/01/18	01/04/18	[Task bar from 01/01/18 to 01/04/18]											

ID	Task Name	Duration	Start	Finish	2nd Quarter		3rd Quarter	
					May	Jun	Jul	Aug
311	No. 4 C.W. Intake Modification	122 days	01/03/18	30/06/18				
312	Section H1 - Gas Support foundation & trench at Area C11	405 days	01/11/16	10/12/17				
313	GRS Support Foundation	405 days	01/11/16	10/12/17				
314	Temporary Protection, advance work etc	45 days	01/11/16	15/12/16				
315	Gas Pipe Footing	180 days	16/12/16	13/06/17				
316	Gas Pipe Trench	180 days	14/06/17	10/12/17				
317	Section H2 - GRS Improvement work at Area C10	441 days	01/09/17	15/11/18				
318	GRS Area Improvement Works	441 days	01/09/17	15/11/18				
319	Retaining Wall Construction	90 days	01/09/17	29/11/17				
320	Removal of Surcharge and Backfill	45 days	30/11/17	13/01/18				
321	Footing Construction	240 days	14/01/18	10/09/18				
322	Topping up, finish and Misc. Works	66 days	11/09/18	15/11/18				
323	Section H3 - L10 Chimney Flue and A&A L9 & pipe rack formation	388 days	24/10/17	15/11/18				
324	No.4 Chimney Steel Flue	318 days	01/01/18	15/11/18				
325	Consent, documentation and site preparation	0 days	01/01/18	01/01/18				
326	Steel Flue Preparation & installation	150 days	02/01/18	31/05/18				
327	Install Steel Cover at Windshield	45 days	01/06/18	15/07/18				
328	Install Steel Cover at Roof	30 days	16/07/18	14/08/18				
329	Modification & Reinstatement Works	55 days	15/08/18	08/10/18				
330	E & M Installation	38 days	09/10/18	15/11/18				
331	MSB Unit 9 Pipe Rack Construction	90 days	24/10/17	21/01/18				
332	Section I1 - Link Bridge & associated A&A	455 days	01/01/18	31/03/19				
333	Link Bridge	455 days	01/01/18	31/03/19				
334	Design & Shop Drawings	90 days	01/01/18	31/03/18				
335	Access	0 days	17/11/18	17/11/18				
336	Site preparation	14 days	18/11/18	01/12/18				
337	Link Bridge between Unit L9 & L10	120 days	02/12/18	31/03/19				
338	Section I2 - Shunt Reactor SR4 Foundation	90 days	01/01/19	31/03/19				
339	Shunt Reactor Compound SR4	90 days	01/01/19	31/03/19				
340	Modification Work at Shunt Reactor SR4	90 days	01/01/19	31/03/19				
341	Section I3 - All remaining work except deferred works	417 days	08/02/18	31/03/19				
342	Remaining Works	417 days	08/02/18	31/03/19				
343	Demolition of Canopy @ Jetty Guard Hose & Toilet)	30 days	02/08/18	31/08/18				
344	Demolition of Existing Contractor Shed	60 days	01/09/18	30/10/18				
345	Security Fence Erection	20 days	31/10/18	19/11/18				
346	All External Works & Road Works	417 days	08/02/18	31/03/19				
347	Deferred Works - L10 MSB and HRSG	417 days	08/02/18	31/03/19				
348	Construction of L10 MSB Roof Between GL 10-G to 10-H and 10-2 to 10-6 After the Overhead Crane Installation	52 days	08/02/18	31/03/18				
349	Construction of Walls and Ceilings of Lube Oil Tank Room at L10 MSB	92 days	01/05/18	31/07/18				
350	Construction of Walls of L10 MSB Below Level +18mPD along GL10-6 from GL10-F to 10-H and Walls of L10 MSB along GL10-H from GL10-5 to 10-6 including the associated Building Elements	92 days	01/05/18	31/07/18				
351	Construction of Walls of L10 MSB Below 1/F along GL10-6 from GL10-B to 10-C and the associated Staircases including the Enclosure Walls between G/F and 1/F.	184 days	01/05/18	31/10/18				
352	Construction of Internal Partition Wall at 1/F of L10 MSB along GL10-C from GL10-2 to 10-3	32 days	15/05/18	15/06/18				
353	Removal of Temporary Paving Within L10 HRSG Area to Expose all respective Equipment Foundations	14 days	01/08/18	14/08/18				
354	Construction of Foundation Plinths and Walls of Lube Oil Storage Tank	93 days	15/08/18	15/11/18				
355	Construction of Metal Fence and the associated Fire Services Installations and Installation of Removable Shelter Transformer Area	121 days	01/12/18	31/03/19				
356	Deferred Works - External Works	182 days	01/10/18	31/03/19				
357	Final Reinstatement of Access Roads and Pavement Surrounding and within L10 MSB and L10 HRSG Area	151 days	01/10/18	28/02/19				
358	FSD Inspection	14 days	02/03/19	15/03/19				
359	BD OP Inspection	14 days	18/03/19	31/03/19				
360	Section J - Cable Route CPX1&2 cable diversion & whole of work except deferred works to be carried out in DLP	1127 days	01/05/17	31/05/20				
361	275kV Cable Diversion	1127 days	01/05/17	31/05/20				
362	Part I (1km in Length, 1.1m to 1.5m Deep) (Works in existing Trench)	426 days	01/05/17	30/06/18				
363	Tentative Commencement Date Of Civil Works	0 days	01/05/17	01/05/17				

ID	Task Name	Duration	Start	Finish	2nd Quarter			3rd Quarter	
					May	Jun	Jul	Aug	
364	Implementation of TTA	7 days	01/05/17	07/05/17					
365	Remove the Concrete Road Cover	60 days	08/05/17	06/07/17					
366	Cable Trench Re-excavation	208 days	07/06/17	31/12/17					
367	Completion Date of Trench Excavation for Site Handover	0 days	31/12/17	31/12/17					
368	Tentative Period for Backfilling and Road Reinstatement (Excluding Joint Bay and Trench at Station Road)	91 days	01/04/18	30/06/18					
369	Part II (630m in Length, 1.1m to 1.5m Deep) (Works in existing Trench)	485 days	01/11/17	28/02/19					
370	Tentative Commencement Date Of Civil Works	0 days	01/11/17	01/11/17					
371	Implementation of TTA	7 days	01/11/17	07/11/17					
372	Remove the Concrete Road Cover	32 days	08/11/17	09/12/17					
373	Trench Excavation and Installation of Road Decking at Joint Bay (Including Part I & II)	90 days	25/11/17	22/02/18					
374	Cable Trench Re-excavation	190 days	23/02/18	31/08/18					
375	Completion Date of Trench Excavation for Site Handover	0 days	31/08/18	31/08/18					
376	Tentative Period for Backfilling and Road Reinstatement (Including Joint Bay at Part I, but excluding Joint Bay SJ3)	90 days	01/12/18	28/02/19					
377	Part III (400m in Length, 1.3m to 1.5m Deep) (Works in New Trench)	518 days	01/07/18	30/11/19					
378	Tentative Commencement Date Of Civil Works	0 days	01/07/18	01/07/18					
379	Implementation of TTA	7 days	01/07/18	07/07/18					
380	Remove the Concrete Road Cover	30 days	08/07/18	06/08/18					
381	Cable Trench Excavation with shoring	270 days	07/08/18	03/05/19					
382	Construction of New Joint Bay	28 days	04/05/19	31/05/19					
383	Completion Date of Trench Excavation for Site Handover	0 days	31/05/19	31/05/19					
384	Tentative Period for Backfilling and Road Reinstatement (excluding new slab but including SJ3)	91 days	01/09/19	30/11/19					
385	Part IV (Hand Dig Tunnel) + Defer portion	701 days	01/07/18	31/05/20					
386	Tentative Commencement Date Of Civil Works	0 days	01/07/18	01/07/18					
387	Excavation to Approx. +5mPD	30 days	01/07/18	30/07/18					
388	Existing Drainage Diversion	50 days	31/07/18	18/09/18					
389	Construction of New Cable Joint Bay	30 days	19/09/18	18/10/18					
390	Ramp Trench	75 days	19/10/18	01/01/19					
391	Formation of Temp. Cable Pit	45 days	02/01/19	15/02/19					
392	Hand Dig Tunel (17.6m) (0.2~0.3m/day)	75 days	16/02/19	01/05/19					
393	Excavation for Duct Bank Construction	60 days	02/05/19	30/06/19					
394	Completion Date of Trench Excavation for Site Handover	0 days	30/06/19	30/06/19					
395	Deferred Works - Cable Diversion CPX1 and CPX2 (during DLP)	274 days	01/09/19	31/05/20					
396	Formation of Wall Opening between existing trench CPX1 and new Joint Bay	7 days	01/09/19	07/09/19					
397	Breaking up for Road Paving and Excavation down to Cable Tiles of Existing Trench CPX2	31 days	01/12/19	31/12/19					
398	Demolition of Existing Trench CPX1 and CPX2	30 days	01/04/20	30/04/20					
399	Final Reinstatement of the CPX1 and CPX2 Areas	31 days	01/05/20	31/05/20					
400	Deferred Works - Shunt Reactor Compound SR4 (during DLP)	153 days	01/07/19	30/11/19					
401	Trench Re-excavation and Cable Supports Installation for Shunt Reactor Compound SR4	62 days	01/07/19	31/08/19					
402	Backfilling and Road Re-instatement of Shunt Reactor SR4 and Associated Trench	30 days	01/11/19	30/11/19					

SUNLEY ENGINEERING & CONSTRUCTION CO., LTD.

Contract No. 16/8015 - Lamma Power Station Extension Foundation Works for Unit L11

Master Programme

ID	Task Name	Duration	Start	Finish	2017年			2018年		
					M6	M7	M8	M6	M7	M8
					五月	六月	七月	五月	六月	七月
1	Key Date	455 days	2016/12/21	2018/3/20						
2	Commencement date	0 days	2016/12/21	2016/12/21						
3	Duration of works	455 days	2016/12/21	2018/3/20						
4	Site possession date	0 days	2016/12/21	2016/12/21						
5	Completion of the Contract	0 days	2018/3/20	2018/3/20						
6										
7	Submission & Works Commenced Before the Contract	231 days	2016/11/14	2017/7/2						
8	Preliminaries	75 days	2016/11/14	2017/1/27						
9	Coordination with utility companies	14 days	2016/12/14	2016/12/27						
10	Condition survey	1 day	2016/12/14	2016/12/14						
11	Notification of commencement of works to Labour Department	1 day	2016/12/19	2016/12/19						
12	Notification of air pollution control for commencement of works to EPD	1 day	2016/12/19	2016/12/19						
13	Application of water discharge licence from EPD	14 days	2016/12/12	2016/12/25						
14	Application for billing account for disposal of construction waste from EPD	7 days	2016/12/12	2016/12/18						
15	CCTV for existing underground drainage pipe around site boundary	12 days	2017/1/16	2017/1/27						
16	Erection of contractor's site office	21 days	2016/12/14	2017/1/3						
17	Installation of monitoring checkpoints	2 days	2016/12/13	2016/12/14						
18	Submission of BA10 for foundation works	0 days	2016/11/14	2016/11/14						
19										
20	Pre-drilling Works	51 days	2016/11/23	2017/1/12						
21	Drilling rigs mobilization (6 rigs)	1 day	2016/12/22	2016/12/22						
22	Pre-drilling works	31 days	2016/11/23	2016/12/23						
23	Submission of pre-drill logs	16 days	2016/12/28	2017/1/12						
24	Completion of pre-drilling works	0 days	2017/1/12	2017/1/12						
25										
26	Plant Mobilization for Bored Pile Construction	207 days	2016/12/8	2017/7/2						
27	Crawler Crane	86 days	2016/12/8	2017/3/3						
28	1st & 2nd set	1 day	2016/12/8	2016/12/8						
29	3rd & 4th set	1 day	2017/1/6	2017/1/6						
30	5th & 6th set	7 days	2017/2/25	2017/3/3						
31	Oscillator	206 days	2016/12/9	2017/7/2						
32	1st & 2nd set	4 days	2016/12/9	2016/12/12						
33	3rd & 4th set	2 days	2017/1/7	2017/1/8						
34	5th set	7 days	2017/3/4	2017/3/10						
35	6th set	7 days	2017/6/26	2017/7/2						
36	RCD	84 days	2017/1/7	2017/3/31						
37	1st & 2nd set	7 days	2017/1/7	2017/1/13						
38	3rd & 4th set	7 days	2017/1/21	2017/1/27						
39	5th & 6th set (Optional if necessary)	7 days	2017/3/25	2017/3/31						
40	Completion of plant mobilization for bored pile construction	0 days	2017/3/31	2017/3/31						
41										
42	Delivery of Temporary Steel Casing for Bored Pile Construction	192 days	2016/12/21	2017/6/30						
43	Duration for delivery of temporary steel casing	192 days	2016/12/21	2017/6/30						
44	Completion of delivery of temporary steel casing for bored pile construction	0 days	2017/6/30	2017/6/30						
45										
46	Total Contract Period	455 days	2016/12/21	2018/3/20						
47										
48	Section A	315 days	2016/12/21	2017/10/31						
49	Delivery of Permanent Casing & Double Wall Liner	270 days	2016/12/21	2017/9/16						
50	Testing for double wall liner (subject to HEC's request)	45 days	2016/12/21	2017/2/3						

Master Programme
MP-03 (14 Jan 2017)

Task Critical Task Milestone Summary

SUNLEY ENGINEERING & CONSTRUCTION CO., LTD.

Contract No. 16/8015 - Lamna Power Station Extension Foundation Works for Unit L11

Master Programme

ID	Task Name	Duration	Start	Finish	2017年			2018年
					M6 五月	M7 六月	M8 七月	
51	Duration for delivery of permanent casing & double wall liner	240 days	2017/1/20	2017/9/16				
52	Bored Pile Construction (22 piles)	315 days	2016/12/21	2017/10/31				
53	1st set - G2 > G1 > G4 > G3 (1 crane operator, 1 oscillator operator, 1 RCD operator, 4 riggers & 2 welders)	186 days	2016/12/21	2017/6/24				
54	G2	45 days	2016/12/21	2017/2/3				
55	G1	46 days	2017/2/4	2017/3/21				
56	G4	50 days	2017/3/22	2017/5/10				
57	G3	45 days	2017/5/11	2017/6/24				
58	2nd set - G7 > G5 > G6 > BP26 > BP20 > BP23 (1 crane operator, 1 oscillator operator, 1 RCD operator, 4 riggers & 2 welders)	283 days	2016/12/21	2017/9/29				
59	G7	45 days	2016/12/21	2017/2/3				
60	G6	43 days	2017/2/4	2017/3/18				
61	G5	48 days	2017/3/19	2017/5/5				
62	BP26	46 days	2017/5/6	2017/6/20				
63	BP20 (required after 1 July 17)	44 days	2017/7/3	2017/8/15				
64	BP23 (required after 1 July 17)	45 days	2017/8/16	2017/9/29				
65	3rd set - BP5 > BP1 > BP13 > BP9 > BP17 (1 crane operator, 1 oscillator operator, 2 RCD operators, 4 riggers & 2 welders)	135 days	2017/1/9	2017/5/23				
66	BP5	45 days	2017/1/9	2017/2/22				
67	BP1	50 days	2017/1/27	2017/3/17				
68	BP13	45 days	2017/2/23	2017/4/8				
69	BP9	50 days	2017/3/18	2017/5/6				
70	BP17	45 days	2017/4/9	2017/5/23				
71	4th set - G10 > G8 > G9 (1 crane operator, 1 oscillator operator, 1 RCD operator, 4 riggers & 2 welders)	136 days	2017/1/16	2017/5/31				
72	G10	45 days	2017/1/16	2017/3/1				
73	G8	45 days	2017/3/2	2017/4/15				
74	G9	46 days	2017/4/16	2017/5/31				
75	5th set - BP8 > BP4 (1 crane operator, 1 oscillator operator, 1 RCD operator, 4 riggers & 2 welders)	85 days	2017/7/3	2017/9/25				
76	BP8 (required after 1 July 17)	41 days	2017/7/3	2017/8/12				
77	BP4 (required after 1 July 17)	43 days	2017/8/14	2017/9/25				
78	6th set - BP12 > BP16 (1 crane operator, 1 oscillator operator, 1 RCD operator, 4 riggers & 2 welders)	87 days	2017/7/3	2017/9/27				
79	BP12 (required after 1 July 17)	46 days	2017/7/3	2017/8/17				
80	BP16 (required after 1 July 17)	41 days	2017/8/18	2017/9/27				
81	Interface & sonic test	30 days	2017/9/7	2017/10/6				
82	Prepare & submit as-built record plan	7 days	2017/9/30	2017/10/6				
83	Submission of BA14	1 day	2017/10/7	2017/10/7				
84	Allow 14 days for selection of pile for concrete full core test	14 days	2017/10/8	2017/10/21				
85	Concrete full core test	10 days	2017/10/22	2017/10/31				
86	Completion of bored pile construction	0 days	2017/10/31	2017/10/31				
87	Sheet Pile	163 days	2017/5/22	2017/10/31				
88	Plant mobilization (1 rig) (1 operator, 4 riggers & 4 welders)	7 days	2017/8/13	2017/8/19				
89	Delivery of sheet pile material	90 days	2017/5/22	2017/8/19				
90	Installation of sheet pile - Type B (approx. 80 piles)	65 days	2017/8/20	2017/10/23				
91	Prepare & submit as-built record plan	7 days	2017/10/24	2017/10/30				
92	Submission of BA14	1 day	2017/10/31	2017/10/31				
93	Completion of sheet pile	0 days	2017/10/31	2017/10/31				
94	Completion of section A	0 days	2017/10/31	2017/10/31				

Master Programme
MP-03 (14 Jan 2017)

Task Critical Task Milestone Summary

SUNLEY ENGINEERING & CONSTRUCTION CO., LTD.

Contract No. 16/8015 - Lamma Power Station Extension Foundation Works for Unit L11

Master Programme

ID	Task Name	Duration	Start	Finish	2017年			2018年		
					M6	M7	M8	M6	M7	M8
					五月	六月	七月	五月	六月	七月
95										
96	Section B	455 days	2016/12/21	2018/3/20						
97	Delivery of Permanent Casing & Double Wall Liner	390 days	2016/12/21	2018/1/14						
98	Testing for double wall liner (subject to HEC's request)	45 days	2016/12/21	2017/2/3						
99	Duration for delivery of permanent casing & double wall liner	305 days	2017/3/16	2018/1/14						
100	Bored Pile Construction (16 piles)	373 days	2017/3/13	2018/3/20						
101	1st set - BP21 > BP22 > BP18 > BP19 > BP15 (1 crane operator, 1 oscillator operator, 1 RCD operator, 4 riggers & 2 welders)	227 days	2017/6/25	2018/2/6						
102	BP21	46 days	2017/6/25	2017/8/9						
103	BP22	45 days	2017/8/10	2017/9/23						
104	BP18	45 days	2017/9/25	2017/11/8						
105	BP19	45 days	2017/11/9	2017/12/23						
106	BP15	45 days	2017/12/24	2018/2/6						
107	3rd set - BP14 > BP11 > BP29 > BP6 > BP7 (1 crane operator, 1 oscillator operator, 2 RCD operators, 4 riggers & 2 welders)	137 days	2017/5/7	2017/9/20						
108	BP14	46 days	2017/5/7	2017/6/21						
109	BP11	45 days	2017/5/24	2017/7/7						
110	BP29	45 days	2017/6/22	2017/8/5						
111	BP6	45 days	2017/7/8	2017/8/21						
112	BP7	46 days	2017/8/6	2017/9/20						
113	4th set - BP27 > BP28 > BP25 > BP24 (1 crane operator, 1 oscillator operator, 1 RCD operator, 4 riggers & 2 welders)	182 days	2017/6/1	2017/11/29						
114	BP27	45 days	2017/6/1	2017/7/15						
115	BP28	46 days	2017/7/16	2017/8/30						
116	BP25	45 days	2017/8/31	2017/10/14						
117	BP24	46 days	2017/10/15	2017/11/29						
118	5th set - BP10 > BP3 (1 crane operator, 1 oscillator operator, 1 RCD operator, 4 riggers & 2 welders)	94 days	2017/3/13	2017/6/14						
119	BP10	45 days	2017/3/13	2017/4/26						
120	BP3	44 days	2017/5/2	2017/6/14						
121	Interface & sonic test	30 days	2018/1/18	2018/2/16						
122	Prepare & submit as-built record plan	7 days	2018/2/17	2018/2/23						
123	Submission of BA14	1 day	2018/2/24	2018/2/24						
124	Allow 14 days for selection of pile for concrete full core test	14 days	2018/2/25	2018/3/10						
125	Concrete full core test	10 days	2018/3/11	2018/3/20						
126	Completion of bored pile construction	0 days	2018/3/20	2018/3/20						
127	Sheet Pile	235 days	2017/7/10	2018/3/1						
128	Delivery of sheet pile material	90 days	2017/7/10	2017/10/7						
129	Installation of sheet pile - Type A (approx. 192 piles) (1 rig mobilized after completion of sheet pile of Type B) (1 operator, 4 riggers & 4 welders)	45 days	2017/10/24	2017/12/7						
130	Installation of sheet pile - Type C (approx. 325 piles) (1 rig mobilized after completion of sheet pile of Type A) (1 operator, 4 riggers & 4 welders)	76 days	2017/12/8	2018/2/21						
131	Prepare & submit as-built record plan	7 days	2018/2/22	2018/2/28						
132	Submission of BA14	1 day	2018/3/1	2018/3/1						
133	Completion of sheet pile	0 days	2018/3/1	2018/3/1						
134	Completion of section B	0 days	2018/3/20	2018/3/20						
135										
136	Contract completion	0 days	2018/3/20	2018/3/20						

Master Programme
MP-03 (14 Jan 2017)

Task Critical Task Milestone Summary

Monthly Waste Flow Table for April 2017

Project: Foundation Works for Lamma Power Station Extension Unit L10

Contractor: Sunley Engineering & Construction Co Ltd

Record by: Andy Fan

Year of Record: 2017

MM.YYYY	Actual Quantities of Inert C&D Materials Generated Monthly								Actual Quantities of Non-inert C&D Materials Generated Monthly						Remarks
	Excavated Materials				Non-excavated Materials				Metals (steel bar / metal strip) ⁽¹⁾	Metals (aluminum can) ⁽¹⁾	Paper / cardboard packaging ⁽¹⁾	Plastics ^{(1) & (4)}	Chemical waste (wasted lubricant oil/oil container)	Other, e.g. general refuse	
	Disposed in Public Fill	Disposed in Sorting Facilities	Others (e.g Reused in the Contract / Other Projects)	Broken Concrete or Construction Waste Collected by Recycled Company	Reused in the Contract	Reused in other Projects	Disposed in Public Fill	Disposed in Sorting Facilities							
(in '000kg)	(in '000kg)	(in '000kg)	(in '000kg)	(in '000kg)	(in '000kg)	(in '000kg)	(in '000kg)	(in '000kg)	(in '000kg)	(in '000kg)	(in '000kg)	(in '000kg)	(in '000kg)		
Jan 2016	0.00	0.00	0.00	0.00	0.00	0.00	0.00	0.00	0.00	0.00	0.00	0.00	0.00	0.00	
Feb 2016	0.00	0.00	0.00	0.00	0.00	0.00	0.00	0.00	0.00	0.00	0.00	0.00	0.00	0.00	
Mar-2016	2382.07	0.00	0.00	0.00	0.00	0.00	0.00	0.00	0.00	0.00	0.00	0.00	0.00	0.00	2.86
Apr-16	3888.21	0.00	0.00	0.00	0.00	0.00	0.00	0.00	0.00	0.00	0.00	0.00	0.00	0.00	2.70
May-16	7139.92	0.00	0.00	0.00	0.00	0.00	0.00	0.00	0.00	0.00	0.00	0.00	0.00	0.00	2.90
Jun-16	9323.37	0.00	0.00	0.00	0.00	0.00	0.00	0.00	0.00	0.00	0.00	0.00	0.00	0.00	4.00
Jul-16	12248.01	0.00	0.00	0.00	0.00	0.00	0.00	0.00	0.00	0.00	0.00	0.00	0.00	0.00	6.00
Aug-16	7009.95	0.00	0.00	0.00	0.00	0.00	0.00	0.00	0.00	0.00	0.00	0.00	0.00	0.00	2.76
Sep-16	7871.97	0.00	0.00	0.00	0.00	0.00	0.00	0.00	0.00	0.00	0.00	0.00	0.00	0.00	4.26
Oct-16	3287.03	0.00	0.00	0.00	0.00	0.00	0.00	0.00	0.00	0.00	0.00	0.00	0.00	0.00	4.46
Nov-16	3142.04	0.00	0.00	0.00	0.00	0.00	0.00	0.00	0.00	0.00	0.00	0.00	0.00	0.00	6.36
Dec-16	4826.16	0.00	0.00	0.00	0.00	0.00	0.00	0.00	0.00	0.00	0.00	0.00	0.00	0.00	0.00
Jan-17	6758.76	0.00	0.00	0.00	0.00	0.00	0.00	0.00	0.00	0.00	0.00	0.00	0.24	0.00	3.16
Feb-17	3778.51	0.00	0.00	0.00	0.00	0.00	0.00	0.00	0.00	0.00	0.00	0.00	0.00	0.00	0.00
Mar-17	5600.99	0.00	0.00	0.00	0.00	0.00	0.00	0.00	18.33	0.00	0.00	0.00	0.00	0.00	1.28
Apr-17	0.00	0.00	0.00	0.00	0.00	0.00	0.00	0.00	0.00	0.00	0.00	0.00	0.00	0.00	0.00
Total	77256.99	0.00	0.00	0.00	0.00	0.00	0.00	0.00	18.33	0.00	0.00	0.00	0.24	0.00	43.24

Total Inert C&D Waste Materials Generated	Non-inert C&D Materials		
	C&D Materials Recycled	C&D Waste Disposed of at Landfill	Chemical Waste
77256.99 tonnes	18.33 tonnes	43.24 tonnes	0.24 tonnes

Where (A) Inert C&D materials include bricks, concrete, building debris, rubble and excavated spoil. In total, 77256.99 tonnes of inert C&D material were generated from the Project, of which 0 tonnes were reused in this and other contracts, and the remaining 77256.99 tonnes were disposed as public fill to Fill Banks.

(b) Non-inert C&D materials (construction wastes) include metals, paper / cardboard packaging waste, plastics and other wastes such as general refuse. Metals generated from the Project were grouped into construction wastes as the materials were not disposed of with others at the public fill.

(c) 0 kg of metals, 0 kg of papers/ cardboard packing and 0 kg of plastics were sent to recyclers for recycling during the reporting period.

(d) Construction wastes other than metals, paper/cardboard packaging, plastics and chemicals were disposed of at Landfill.

Notes:

- (1) metal, paper & plastic were collected by recycler
- (2) The performance target of waste recycling are specified in the Contract.
- (3) The waste flow table shall also include C&D materials that are specified in the Contract to be imported for use at the Site.
- (4) Plastics refer to plastic bottles/ containers, plastic/ foam from packaging material.
- (5) Broken concrete for recycling into aggregates.
- (6) Disposal of inert waste to public fill or sorting facilities will **NOT** be considered as recycled waste.
- (7) The quantities of excavated materials disposed in landfill for June & July 2016 are revised.
- (8) The quantities of metal (steel bar/metal strip) generated is revised.

Monthly Waste Flow Table for April 2017

Project: Lamma Power Station Extension - Civil and Building Works for Unit L10
 Contractor: Paul Y. Construction Company, Limited
 Record by: Ben Lam
 Year of Record: 2016 & 2017

MM.YYYY	Actual Quantities of Inert C&D Materials Generated Monthly								Actual Quantities of Non-inert C&D Materials Generated Monthly					
	Excavated Materials			Non-excavated Materials					Metals (steel bar / metal strip) ⁽¹⁾	Metals (aluminum can) ⁽¹⁾	Paper / cardboard packaging ⁽¹⁾	Plastics ^{(1) & (4)}	Chemical waste (wasted lubricant oil/oil container)	Other, e.g. general refuse
	Disposed in Public Fill	Disposed in Sorting Facilities	Others (e.g. Reused in the Contract / Other Projects)	Broken Concrete or Construction Waste Collected by Recycled Company	Reused in the Contract	Reused in other Projects	Disposed in Public Fill	Disposed in Sorting Facilities						
(in '000kg)	(in '000kg)	(in '000kg)	(in '000kg)	(in '000kg)	(in '000kg)	(in '000kg)	(in '000kg)	(in '000kg)	(in '000kg)	(in '000kg)	(in '000kg)	(in '000L)	(in '000kg)	
Jan-2016	-	-	-	-	-	-	-	-	-	-	-	-	-	-
Feb-2016	-	-	-	-	-	-	-	-	-	-	-	-	-	-
Mar-2016	-	-	-	-	-	-	-	-	-	-	-	-	-	-
Apr-16	-	-	-	-	-	-	-	-	-	-	-	-	-	-
May-16	-	-	-	-	-	-	-	-	-	-	-	-	-	-
Jun-16	-	-	-	-	-	-	-	-	-	-	-	-	-	-
Jul-16	-	-	-	-	-	-	-	-	-	-	-	-	-	-
Aug-16	-	-	-	-	-	-	-	-	-	-	-	-	-	-
Sep-16	-	-	-	-	-	-	-	-	-	-	-	-	-	-
Oct-16	-	-	-	-	-	-	-	-	-	-	-	-	-	-
Nov-16	1779.48	0.00	0.00	0.00	0.00	0.00	0.00	0.00	0.00	0.00	0.00	0.00	0.00	0.00
Dec-16	0.00	1.43	0.00	0.00	0.00	0.00	0.00	0.00	0.00	0.00	0.00	0.00	0.00	20.48
Jan-17	0.00	0.00	0.00	0.00	0.00	0.00	0.00	0.00	0.00	0.00	0.00	0.00	0.2	0.00
Feb-17	0.00	0.00	0.00	0.00	0.00	0.00	0.00	0.00	0.00	0.00	0.00	0.00	0.00	0.00
Mar-17	3160.10	0.00	0.00	0.00	0.00	0.00	0.00	0.00	8.17	0.00	0.00	0.00	0.00	0.00
Apr-17	0.00	0.00	0.00	0.00	0.00	0.00	0.00	0.00	65.84	0.00	0.00	0.00	0.00	0.00
May-17														
Total	4939.58	1.43	0.00	0.00	0.00	0.00	0.00	0.00	74.01	0.00	0.00	0.00	0.20	20.48

Total Inert C&D Waste Materials Generated	Non-inert C&D Materials		
	C&D Materials Recycled	C&D Waste Disposed of at Landfill	Chemical Waste
4941.01 tonnes	74.01 tonnes	20.48 tonnes	200 Liters

- Where (A) Inert C&D materials include bricks, concrete, building debris, rubble and excavated spoil. In total, 4941.01 tonnes of inert C&D material were generated from the Project, of which 0 tonnes were reused in this and other contracts, and the remaining 4941.01 tonnes were disposed as public fill to Fill Banks / Sorting Facilities.
- (b) Non-inert C&D materials (construction wastes) include metals, paper / cardboard packaging waste, plastics and other wastes such as general refuse. Metals generated from the Project were grouped into construction wastes as the materials were not disposed of with others at the public fill.
- (c) 65840 kg of metals, 0 kg of papers/ cardboard packing and 0 kg of plastics were sent to recyclers for recycling during the reporting period.
- (d) Construction wastes other than metals, paper/cardboard packaging, plastics and chemicals were disposed of at Landfill.

- Notes:
- (1) metal, paper & plastic were collected by recycler
 - (2) The performance target of waste recycling are specified in the Contract.
 - (3) The waste flow table shall also include C&D materials that are specified in the Contract to be imported for use at the Site.
 - (4) Plastics refer to plastic bottles/ containers, plastic/ foam from packaging material.
 - (5) Broken concrete for recycling into aggregates.
 - (6) Disposal of inert waste to public fill or sorting facilities will NOT be considered as recycled waste.

Monthly Waste Flow Table for April 2017

Project: Foundation Works for Lamna Power Station Extension Unit L11
 Contractor: Sunley Engineering & Construction Co Ltd
 Record by: Andy Fan
 Year of Record: 2017

MM.YYYY	Actual Quantities of Inert C&D Materials Generated Monthly								Actual Quantities of Non-inert C&D Materials Generated Monthly					
	Excavated Materials			Non-excavated Materials					Metals (steel bar / metal strip) ⁽¹⁾	Metals (aluminum can) ⁽¹⁾	Paper / cardboard packaging ⁽¹⁾	Plastics ^{(1) & (4)}	Chemical waste (wasted lubricant oil/oil container)	Other, e.g. general refuse
	Disposed in Public Fill	Disposed in Sorting Facilities	Others (e.g. Reused in the Contract / Other Projects)	Broken Concrete or Construction Waste Collected by Recycled Company	Reused in the Contract	Reused in other Projects	Disposed in Public Fill	Disposed in Sorting Facilities						
(in '000kg)	(in '000kg)	(in '000kg)	(in '000kg)	(in '000kg)	(in '000kg)	(in '000kg)	(in '000kg)	(in '000kg)	(in '000kg)	(in '000kg)	(in '000kg)	(in '000kg)	(in '000kg)	
Nov-2016	0.00	0.00	0.00	0.00	0.00	0.00	0.00	0.00	0.00	0.00	0.00	0.00	0.00	0.00
Dec-2016	0.00	0.00	0.00	0.00	0.00	0.00	0.00	0.00	0.00	0.00	0.00	0.00	0.00	0.00
Jan-2017	0.00	0.00	0.00	0.00	0.00	0.00	0.00	0.00	0.00	0.00	0.00	0.00	0.00	0.00
Feb-17	2029.38	0.00	0.00	0.00	0.00	0.00	0.00	0.00	0.00	0.00	0.00	0.00	0.00	1.63
Mar-17	2790.14	0.00	0.00	0.00	0.00	0.00	0.00	0.00	0.00	0.00	0.00	0.00	0.00	4.26
Apr-17	7481.83	0.00	0.00	0.00	0.00	0.00	0.00	0.00	0.00	0.00	0.00	0.00	0.00	6.36
Total	12301.35	0.00	0.00	0.00	0.00	0.00	0.00	0.00	0.00	0.00	0.00	0.00	0.00	12.25

Total Inert C&D Waste Materials Generated	Non-inert C&D Materials		
	C&D Materials Recycled	C&D Waste Disposed of at Landfill	Chemical Waste
12301.35 tonnes	0 tonnes	12.25 tonnes	0 tonnes

- Where (A) Inert C&D materials include bricks, concrete, building debris, rubble and excavated spoil. In total, 12301.35 tonnes of inert C&D material were generated from the Project, of which 0 tonnes were reused in this and other contracts, and the remaining 12301.35 tonnes were disposed as public fill to Fill Banks.
- (b) Non-inert C&D materials (construction wastes) include metals, paper / cardboard packaging waste, plastics and other wastes such as general refuse. Metals generated from the Project were grouped into construction wastes as the materials were not disposed of with others at the public fill.
- (c) 0 kg of metals, 0 kg of papers/ cardboard packing and 0 kg of plastics were sent to recyclers for recycling during the reporting period.
- (d) Construction wastes other than metals, paper/cardboard packaging, plastics and chemicals were disposed of at Landfill.

- Notes:
- (1) metal, paper & plastic were collected by recycler
 - (2) The performance target of waste recycling are specified in the Contract.
 - (3) The waste flow table shall also include C&D materials that are specified in the Contract to be imported for use at the Site.
 - (4) Plastics refer to plastic bottles/ containers, plastic/ foam from packaging material.
 - (5) Broken concrete for recycling into aggregates.
 - (6) Disposal of inert waste to public fill or sorting facilities will NOT be considered as recycled waste.