

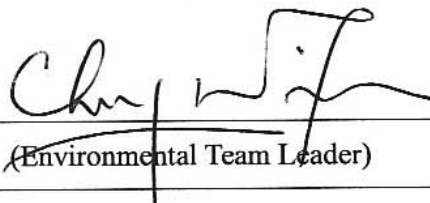
Highways Department

Route 8 (previously known as Route 9) between Cheung Sha Wan & Sha Tin

Contract No. HY/2003/10 - Environmental Team for Lai Chi Kok Viaduct and Eagle's Nest Tunnel

Quarterly EM&A Report Part I – Lai Chi Kok Viaduct (Version 1.1)

December 2006 to February 2007

Approved By 
(Environmental Team Leader)

REMARKS:

The information supplied and contained within this report is, to the best of our knowledge, correct at the time of printing.

CINOTECH accepts no responsibility for changes made to this report by third parties.

CINOTECH CONSULTANTS LTD

Room 1602-1610, Delta House,
3 On Yiu Street,
Shatin, NT, Hong Kong
Tel: (852) 2151 2083 Fax: (852) 3107 1388
Email: info@cinotech.com.hk

TABLE OF CONTENTS

	Page
EXECUTIVE SUMMARY	1
ENVIRONMENTAL MONITORING WORKS.....	1
ENVIRONMENTAL LICENSING AND PERMITTING.....	2
KEY INFORMATION IN THE REPORTING QUARTER.....	2
1. INTRODUCTION.....	4
2. PROJECT CHARACTERISTICS	6
PROJECT ORGANIZATION AND CONTACTS OF KEY MANAGEMENT	6
CONSTRUCTION PROGRAMME AND SYNOPSIS OF WORK.....	6
3. ENVIRONMENTAL MONITORING AND AUDIT REQUIREMENTS.....	7
MONITORING PARAMETERS AND MONITORING LOCATIONS	7
MONITORING METHODOLOGY AND CALIBRATION DETAILS	7
ENVIRONMENTAL QUALITY PERFORMANCE LIMITS (ACTION AND LIMIT LEVELS).....	7
ENVIRONMENTAL MITIGATION MEASURES.....	7
4. MONITORING RESULTS	8
WEATHER CONDITIONS.....	8
AIR QUALITY	8
CONSTRUCTION NOISE.....	8
5. ENVIRONMENTAL AUDIT.....	10
IMPLEMENTATION STATUS OF ENVIRONMENTAL MITIGATION MEASURES	10
SITE AUDIT SUMMARY.....	10
STATUS OF ENVIRONMENTAL LICENSING AND PERMITTING.....	11
6. NON-COMPLIANCE (EXCEEDANCES) OF THE ENVIRONMENTAL QUALITY PERFORMANCE LIMITS (ACTION AND LIMIT LEVELS)	12
SUMMARY OF EXCEEDANCES.....	12
REVIEW OF THE REASONS FOR AND THE IMPLICATIONS OF NON-COMPLIANCE	12
7. ENVIRONMENTAL COMPLAINTS	13
8. NOTIFICATION OF SUMMONS AND SUCCESSFUL PROSECUTIONS	14
9. COMMENTS, CONCLUSIONS AND RECOMMENDATIONS	15

LIST OF TABLE

Table I	Summary Table for Exceedances Recorded in the Reporting Quarter
Table II	Summary Table for Key Information in the Reporting Quarter
Table 5.1	Observations and Recommendations of Site Audit

LIST OF FIGURES

Figure 1	Locations of Monitoring Stations
Figure 2	Project Organization Chart

LIST OF APPENDICES

Appendix A	Contact Details of the Project Organisation
Appendix B	Construction Programme
Appendix C	Monitoring Requirements
Appendix D	Environmental Quality Performance (Action/Limit) Levels
Appendix E	Graphical Presentation of Air Quality Monitoring Results
Appendix F	Graphical Presentation of Noise Monitoring Results
Appendix G	Implementation Schedule of Environmental Mitigation Measures (EMIS)
Appendix H	Summary of Environmental Licences and Permits
Appendix I	Complaint Log
Appendix J	Summary of Exceedances

EXECUTIVE SUMMARY

This is the 13th Quarterly Environmental Monitoring and Audit (EM&A) Report prepared by Cinotech Consultants Limited for the "Route 8 (previously known as Route 9) between Cheung Sha Wan & Sha Tin, Lai Chi Kok Viaduct & Eagle's Nest Tunnel". This summary report documents the findings of EM&A works performed in the period between December 2006 and February 2007 for Contract No. HY/2003/01, Route 8 – Lai Chi Kok Viaduct (the Project).

The major site activities for civil works undertaken in the reporting quarter included:

- Rock dowel installation at slope CCR-S1 & CCR-S4;
- Bulk excavation works at slope CCR-S4 and LCK-R3;
- Retaining wall construction at CCR-R1 to CCR-R6 and LCK-R2 to LCK-R3;
- Underground Drainage works at Slip Road C & D, Lai Po Road, Castle Peak Road and Butterfly Valley Road;
- Drainage works at slip road D and Lai Po Road, Castle Peak Road and Butterfly Valley Road;
- Offsite fabrication of parapet and noise barrier;
- Cast in-situ of slip roads C and D;
- Parapet installation for Main Viaduct and slip roads A to D;
- Erection of noise barrier at slip roads A, B, C, D and Main Viaduct;
- Construction of Wai Man Tsuen pump house & Irrigation Pump House near pier C14 and kiosk at CCR-S1;
- Hydroseeding for Slope CCR-S1 & S3;
- Shotcreting for slope CCR-S1; and
- Roadworks at Slip Road C & D, Lai Po Road and Butterfly Valley Road.

The major site activities for Traffic Control and Surveillance System (TCSS) works undertaken in the reporting quarter included:

- Cable-laying at Sections A, B, C and E1;
- Control Cabinet Installation at Sections A, B, C and E;
- Highmast Installation at Section A, B and E; and
- Field Equipment Installation at Section A, B, C and E.

Environmental Monitoring Works

Environmental monitoring for the Project was performed regularly as stipulated in the EM&A Manuals and the results were checked and reviewed. Environmental site audits were conducted once per week. The implementation of the environmental mitigation measures, Event Action Plans and environmental complaint handling procedures were also checked.

Summary of the events and action taken in the reporting quarter is tabulated in **Table I**.

Table I Summary Table for Events Recorded in the Reporting Quarter

Parameter	No. of Exceedance		No. of Events due to the Project	Action Taken
	Action Level	Limit Level		
<i>December 2006</i>				
1-hr TSP	0	0	0	N/A
24-hr TSP	0	0	0	N/A
Noise	1 ^a	0	0	Complaint Investigation
<i>January 2007</i>				
1-hr TSP	0	0	0	N/A
24-hr TSP	0	0	0	N/A
Noise	2 ^a	0	1	Complaint Investigation
<i>February 2007</i>				
1-hr TSP	0	0	0	N/A
24-hr TSP	0	0	0	N/A
Noise	0	0	0	N/A

Remark:

- (a) Total of three Action Level exceedances for noise monitoring were recorded due to one noise nuisance complaint received on 5th December 2006 and two noise nuisance complaints received on 17th January 2007.

Environmental Licensing and Permitting

Licenses/Permits granted to the Project include the Environmental Permit (EP) for the Project, Construction Noise Permits (CNP) and Water Discharge Licenses (WDL). The Contractor had also registered as a Chemical Waste Producer.

Key Information in the Reporting Quarter

Summary of key information in this reporting quarter is tabulated in **Table II**.

Table II Summary Table for Key Information in the Reporting Quarter

Event	Event Details		Action Taken	Status	Remark
	Number	Nature			
Complaint received	3	Noise	Complaint investigation	Closed	---
Changes to the assumptions and key construction / operation activities recorded	0	---	N/A	N/A	---
Status of submissions under EP	0	---	N/A	N/A	---
Notifications of any summons & prosecutions received	0	---	N/A	N/A	---

Future Key Issues:

Major site activities for the coming month include:

- Rock dowel installation at slope CCR-S4;
- Bulk excavation works at slope CCR-S4 and LCK-R3.
- Retaining wall construction at CCR-R1 to CCR-R3 & CCR-R6 and LCK-R2 to LCK-R3;
- Slope upgrading works for Features No.11NW-A/FR54 & FR55;
- Drainage works at slip roads D and Lai Po Road;
- Offsite fabrication of parapet and noise barrier;
- Cast in-situ of slip roads C and D;
- Parapet installation for Main Viaduct and slip roads A to B;
- Erection of noise barrier at slip roads A, B, C, D and Main Viaduct;
- Construction of Wai Man Tsuen pump house & Irrigation Pump House near pier C14 and kiosk at CCR-S1;
- Hydroseeding for slope CCR-S1 & S3; and
- Roadworks at Slip Road C & D, Lai Po Road and Butterfly Valley Road.

Major site activities for TCSS works in the coming month include:

- Cable-laying at Sections A, B, C and E;
- Control Cabinet Installation at Sections A, B, C and E;
- Highmast Installation at Section A, B and E; and
- Field Equipment Installation at Section A, B, C and E.

The anticipated environmental issues will be mainly on dust impact from bulk excavation works and noise nuisance from construction of Wai Man Tsuen Pump House and Irrigation Pump House near Pier C14 and rock dowel installation at CCR-S4.

1. INTRODUCTION

- 1.1 Route 9 (Kowloon Section) (R9K) (hereinafter call the R9K-Project) forms part of the Route 9 between Cheung Sha Wan and Sha Tin (R9-CSWST) project, which will be a new expressway connecting West Kowloon and Sha Tin. It will be the fourth external link between Sha Tin and Kowloon and will form an important link between the northeast New Territories and the west Kowloon, Lantau Island and the western New Territories. R9K is being managed and implemented by the Highways Department (HyD).
- 1.2 The engineering design of R9K is covered under Agreement No. CE 50/98 "Route 9 between Cheung Sha Wan and Sha Tin – Design Construction Assignment". The main consultant engaged under Agreement No. CE 50/98 is Maunsell Hyder Joint Venture (MHJV), who will act as the Engineer for the construction contracts. The works of R9K mainly comprise a 1.4km dual 3-lane Lai Chi Kok Viaduct from Lai Wan Interchange to Butterfly Valley; 0.5 km of dual 3-lane at-grade carriageway linking to the 2.1 km dual 3-lane twin-bore Eagle's Nest Tunnel with associated portal buildings; a toll plaza with an administration building located with the Sha Tin valley woodland; a ventilation building and an adit; associated noise barriers, noise enclosures, drainage, slope and landscape works; and electrical and mechanical works for the whole R9-CSWST. The remainder of the R9-CSWST forms the Sha Tin Section (R9S) of the project and is being managed and implemented separately by the Civil Engineering and Development Department (CEDD).
- 1.3 The R9-CSWST project is a Designated Project under the Environmental Impact Assessment Ordinance (Cap. 449) (EIAO). An environmental impact assessment (EIA) report has been prepared in 1998 for the R9-CSWST project (1998 R9 EIA) to consider the key issues of noise, air quality, water quality, ecological, construction waste, landscape and visual, land use and cultural impacts, and identify possible mitigation measures.
- 1.4 An Updated Final EIA report was subsequently completed in August 1999 for the R9-CSWST project (1999 R9 EIA), to cater for some changes in R9K portion as mentioned in paragraph 1 in the report. The 1999 R9 EIA was endorsed by Environmental Protection Department (EPD) in November 1999. The 1998 R9 EIA and the 1999 R9 EIA (R9 EIA Reports) were included in the EIA register under the EIAO as report no. EIA-135/BC and AEIAR-022/1999 respectively. An Environmental Monitoring and Audit (EM&A) Manuals for each of the R9 EIA Reports (EM&A Manuals) were also included as part of the EIA reports in the register.
- 1.5 Subsequent to the endorsement of the R9 EIA Reports by EPD in November 1999, the project programme was deferred to start in 2002/2003 for completion by 2006/07. The implementation of the project was then separated into the R9S and R9K portion. An Environmental Permit (EP) No. EP-103/2001 was issued on 17 September 2001 for R9K to the HyD as Permit Holder. A varied EP-103/2001/C was recently issued on 22 July 2005.

- 1.6 The major construction activities of two civil contracts of the R9K project, Contract No. HY/2003/01 entitled "Route 9 – Lai Chi Kok Viaduct" and Contract No. HY/2003/02 entitled "Route 9 – Eagle's Nest Tunnel and Associated Works", were commenced in 15th December 2003 for completion in April 2007.
- 1.7 "Route 9" was recently re-titled as "Route 8 (previously known as Route 9)". Cinotech Consultants Limited (Cinotech) was commissioned by HyD to undertake the Environmental Monitoring and Audit works for "Route 8 (previously known as Route 9) between Cheung Sha Wan and Sha Tin - Environmental Team (ET) for Lai Chi Kok Viaduct and Eagle's Nest Tunnel (Contract No. HY/2003/10)". Dr. Priscilla CHOY of Cinotech was appointed as the ET Leader under Condition 2.2 of the EP. Mr. David YEUNG of CH2M-HILL Hong Kong Ltd. was appointed as the IEC under Condition 2.1 of the EP. This is the 13th quarterly EM&A report summarizing the EM&A works for the LCKV Project between December 2006 and February 2007.

2. PROJECT CHARACTERISTICS

Project Organization and Contacts of Key Management

- 2.1 An organization structure and the line of communication were set up for the Project between the Project Proponent, Engineer's Representative (ER), Independent Environmental Checker (IEC), the Contractor and Environmental Team (ET). The organization chart and contact details are shown in **Figure 2** and **Appendix A**.

Construction Programme and Synopsis of Work

- 2.2 The construction programme is presented in **Appendix B**.
- 2.3 The site activities for civil works during the reporting quarter included:
- Rock dowel installation at slope CCR-S1 & CCR-S4;
 - Bulk excavation works at slope CCR-S4 and LCK-R3;
 - Retaining wall construction at CCR-R1 to CCR-R6 and LCK-R2 to LCK-R3;
 - Underground Drainage works at Slip Road C & D, Lai Po Road, Castle Peak Road and Butterfly Valley Road;
 - Drainage works at slip road D and Lai Po Road, Castle Peak Road and Butterfly Valley Road;
 - Offsite fabrication of parapet and noise barrier;
 - Cast in-situ of slip roads C and D;
 - Parapet installation for Main Viaduct and slip roads A to D;
 - Erection of noise barrier at slip roads A, B C, D and Main Viaduct;
 - Construction of Wai Man Tsuen pump house & Irrigation Pump House near pier C14 and kiosk at CCR-S1;
 - Hydroseeding for Slope CCR-S1 & S3;
 - Shotcreting for slope CCR-S1; and
 - Roadworks at Slip Road C & D, Lai Po Road and Butterfly Valley Road.
- 2.4 The site activities for TCSS works during the reporting quarter included:
- Cable-laying at Sections A, B, C and E1;
 - Control Cabinet Installation at Sections A, B, C and E;
 - Highmast Installation at Section A, B and E; and
 - Field Equipment Installation at Section A, B, C and E.

3. ENVIRONMENTAL MONITORING AND AUDIT REQUIREMENTS

Monitoring Parameters and Monitoring Locations

- 3.1 The EM&A Manuals designate locations for the ET to monitor environmental impacts in terms of noise and air quality due to the Project. The monitoring locations are depicted in **Figure 1**. **Appendix C** gives details of monitoring requirements.

Monitoring Methodology and Calibration Details

- 3.2 Monitoring works/equipment was conducted/calibrated regularly in accordance with the EM&A Manual. Copies of calibration certificates are attached in the appendices of the Monthly EM&A Reports.

Environmental Quality Performance Limits (Action and Limit Levels)

- 3.3 The environmental quality performance limits, i.e. Action and Limit Levels were derived from the baseline monitoring results. Should the measured environmental quality parameters exceed the Action/Limit Levels, the respective Event Action Plans would be implemented. The Action/Limit Levels for each environmental parameter are provided in **Appendix D**.

Environmental Mitigation Measures

- 3.4 Relevant mitigation measures as recommended in the project EIA report have been stipulated in the EM&A Manual for the Contractor to implement. A list of mitigation measures is provided in **Appendix G**.

4. MONITORING RESULTS

Weather Conditions

- 4.1 The weather during monitoring sessions was mainly fine, sunny or cloudy. The weather conditions for each individual monitoring session were presented in the field record sheets.

Air Quality

1-hr TSP Monitoring

- 4.2 All 1-hr TSP monitoring was conducted as scheduled. No Action/Limit Level exceedance was recorded in the reporting quarter.

24-hr TSP Monitoring

- 4.3 All 24-hr TSP monitoring was conducted as scheduled. No Action/Limit Level exceedance was recorded in the reporting quarter.
- 4.4 The monitoring data of 1-hr and 24-hr TSP Levels are attached in the appendices of the Monthly Reports for December 2006 to February 2007. The graphical presentations of the monitoring results are shown in **Appendix E**.

Construction Noise

- 4.5 All construction noise monitoring was conducted as scheduled in the reporting quarter.
- 4.6 No Limit Level exceedance was recorded in the reporting quarter. Three Action Level exceedances were recorded in the reporting quarter due to noise nuisance complaints were received on 5th December 2006 and 17th January 2007. The details for complaints are shown in **Appendix I**.
- 4.7 Stations NM8a and NM8b were installed at Nob Hill in May 2004. Station NM8b is located at 3/F of the car park of Nob Hill, which is strongly influenced by traffic noise from Ching Cheung Road. The measurement at this station is for reference purpose, but not for compliance check of construction noise. The measured noise level at Station NM8a, which is located at M/F of car park and closer to the construction site, acts as an indicator of the construction noise. Since the domestic premises are located above 5/F, noise assessment would be performed to assess the level of nuisance resulting from the construction noise at the domestic premises whenever the measured noise level at NM8a exceeds the noise limit level.

- 4.8 A new housing estate, Hoi Lai Estate, became one of the noise sensitive receivers close to the Project site. As recommended by the Regional (West) Office of EPD, noise monitoring at this location (Station NM9) was newly included in the EM&A programme. Approval for the change of EM&A programme was granted by EPD on 30th December 2004.
- 4.9 The noise monitoring at Lai Chi Kok Correctional Institution (NM2), which was formerly known as Lai Chi Kok Reception Centre, has been resumed since 8th September 2006 after the completion of the renovation works.
- 4.10 All the Construction Noise Levels (CNLs) reported in this report, except those collected at Stations NM8a, NM8b and NM9, were adjusted with the corresponding baseline level (i.e. Measured Leq – Baseline Leq = Measured CNL), in order to facilitate the interpretation of the noise exceedance.
- 4.11 The monitoring data of construction noise are attached in the appendices of the Monthly Reports for December 2006 to February 2007. The graphical presentations of the monitoring results are shown in **Appendix F**.

5. ENVIRONMENTAL AUDIT

Implementation Status of Environmental Mitigation Measures

- 5.1 According to the Environmental Permit and the EM&A Manuals, the mitigation measures detailed in the documents are required to be implemented. An updated summary of the Environmental Mitigation Implementation Status (EMIS) is provided in **Appendix G**.

Site Audit Summary

- 5.2 ET's Weekly site audits for Civil works were conducted on 5th, 13th, 20th and 27th December 2006, 3rd, 10th, 17th, 24th and 31st January 2007, 7th and 14th February 2007. The weekly site audit for Civil works on week 3 of February 2007 was cancelled since major works in LCKV was not commenced after Lunar New Year during that week. IEC's monthly site audits for Civil works were conducted on 3rd and 31st January 2007.
- 5.3 ET's Weekly site audits for TCSS works were conducted on 15th, 20th and 27th December 2006, 3rd, 10th, 17th, 24th and 31st January 2007. IEC's monthly site audits for TCSS works were conducted on 3rd and 31st January 2007.
- 5.4 During site inspections in the reporting period, no non-conformance was identified. The observations and recommendations are summarized in **Table 5.1**.

Table 5.1 Observations and Recommendations of the Site Audits

Parameters	Date	Observations and Recommendations	Follow-up
<i>Water Quality</i>	31-Jan-07	<i>Reminder</i> - The Contractor was reminded to improve the temporary drainage diversion system to prevent accumulation of road washing water at Lai Po Road.	The situation was found improved / rectified during the audit on 7-Feb-07.
<i>Waste/ Chemical Management</i>	5-Dec-06	<i>Reminder</i> - Improper fuel storage was observed at construction site of Lai Po Road. The Contractor was reminded to remove the oil drum to the designated fuel storage area or provide the drip tray for the oil drum on site properly.	The situation was found improved / rectified during the audit on 13-Dec-06.
	5-Dec-06	<i>Reminder</i> - Overloaded capacity of construction wastes were observed at site area of Lai Po Road. The Contractor was reminded to dispose of the wastes regularly on site.	The situation was found improved / rectified during the audit on 13-Dec-06.

Parameters	Date	Observations and Recommendations	Follow-up
	3-Jan-07	<i>Reminder</i> - General refuse was observed scattered on the deck surface and under the deck near Lai Po Road. The Contractor was reminded to clean up the refuse regularly and provide rubbish bins for temporary refuse storage.	The situation was found improved / rectified during the audit on 10-Jan-07
	10-Jan-07	<i>Reminder</i> - General refuse was observed scattered on bare ground at Wai Man Tsuen. The Contractor was reminded that refuse should be disposed of properly.	The situation was found improved / rectified during the audit on 17-Jan-07

Status of Environmental Licensing and Permitting

- 5.5 Environmental licenses and permits including the Environmental Permit for the Project were in place and valid during the reporting quarter. The status of these licenses and permits obtained for the Project is summarized in **Appendix H**.

6. NON-COMPLIANCE (EXCEEDANCES) OF THE ENVIRONMENTAL QUALITY PERFORMANCE LIMITS (ACTION AND LIMIT LEVELS)

Summary of Exceedances

Air Quality

- 6.1 No Action/Limit Level exceedance was recorded in the reporting quarter.

Construction Noise

- 6.2 No Limit Level exceedance was recorded in the reporting quarter. Three Action Level exceedances were recorded in the reporting quarter due to noise nuisance complaints were received on 5th December 2006, 17th January 2007.

Review of the Reasons for and the Implications of Non-compliance

- 6.3 There was no non-compliance from the site audits in the reporting quarter. As mentioned previously in the Section 5.2 of this report, the observations and recommendations made in each individual site audit session were presented.

7 ENVIRONMENTAL COMPLAINTS

7.1 Five environmental complaints were received in the reporting quarter.

Log no. 61205 (Received on 5th December 06)

7.2 The complaint was referred by EPD on 5th December 2006 construction noise near Banyan Garden within the period of 01:00 – 02:00hr on 29th November 2006. The complaint was considered unjustifiable and the complaint investigation report was submitted to EPD on 12th December 2006.

Log no. 70117-1 (Received on 17th January 07)

7.3 The first complaint was referred by RSS on 17th January 2007. It was raised by a resident near Cheung Sha Wan Road, Lai Chi Kok Road Interchange and Mei Foo Sun Chuen via the public media and subsequently, the public media referred the complaint to ICC. The complaint was about the construction noise generated during midnight in the past month. The complaint was considered unjustifiable and the complaint investigation report was submitted to HyD on 24th January 2007.

Log no. 70117-2 (Received on 17th January 07)

7.4 The second complaint was referred by EPD on 17th January 2007. According to EPD's information, the complaint was raised by a resident of Banyan Garden about construction noise near Banyan Garden within the period of 01:00 – 02:00hr on 11th January 2007. The complainant noted that during that time that hammering noise was generated at the construction site of Route 8 near Cheung Sha Wan Police Station. The complaint was considered unjustifiable and the complaint investigation report was submitted to EPD on 24th January 2007.

7.5 There were 37 complaints received since the Project commencement. All complaints have been handled in accordance with the EM&A Manuals. The implementation status of the complaint handling procedure is summarized in **Appendix I**.

8. NOTIFICATION OF SUMMONS AND SUCCESSFUL PROSECUTIONS

- 8.1 Further to incident of mosquito larvae being identified in a plant pot drip tray on 21 July 2005 during FEHD's site inspection, the Contractor was prosecuted under the Public Health and Municipal Services Ordinance (Cap.132). After the hearing on 6th December 2005, the Contractor was fined \$5,000 by the Kowloon City magistrate's court.
- 8.2 There was 1 successful prosecution received since the Project commencement.

9 COMMENTS, CONCLUSIONS AND RECOMMENDATIONS

- 9.1 Major site activities for the coming month include:
- Rock dowel installation at slope CCR-S4.
 - Bulk excavation works at slope CCR-S4 and LCK-R3.
 - Retaining wall construction at CCR-R1 to CCR-R3 & CCR-R6 and LCK-R2 to LCK-R3
 - Slope upgrading works for Features No.11NW-A/FR54 & FR55.
 - Drainage works at slip roads D and Lai Po Road.
 - Offsite fabrication of parapet and noise barrier.
 - Cast in-situ of slip roads C and D.
 - Parapet installation for Main Viaduct and slip roads A to B.
 - Erection of noise barrier at slip roads A, B C, D and Main Viaduct.
 - Construction of Wai Man Tsuen pump house & Irrigation Pump House near pier C14 and kiosk at CCR-S1.
 - Hydroseeding for slope CCR-S1 & S3.
 - Roadworks at Slip Road C & D, Lai Po Road and Butterfly Valley Road.
- 9.2 Major site activities for TCSS works in the coming month include:
- Cable-laying at Sections A, B, C and E.
 - Control Cabinet Installation at Sections A, B, C and E.
 - Highmast Installation at Section A, B and E.
 - Field Equipment Installation at Section A, B, C and E
- 9.3 The anticipated environmental issues will be mainly on dust impact from bulk excavation works and noise nuisance from construction of Wai Man Tsuen Pump House and Irrigation Pump House near Pier C14.
- 9.4 According to the environmental audit performed in the reporting quarter and the anticipated environmental issues, the following recommendations were made:

Water Impact

- To ensure properly maintenance for de-silting facilities
- To review and implement temporary drainage system for the upcoming wet season.
- To review the capacity of de-silting facilities for discharge.
- To avoid stagnant water accumulation on site.

Noise Impact

- To provide temporary noise barriers for noisy activities, such as rock dowel installation.
- To review the works sequence of site activities so as to reduce the number of noisy equipment in concurrent operation.
- To employ quiet powered mechanical equipment if possible.

- To ensure compliance of CNP conditions during restricted-hour works.

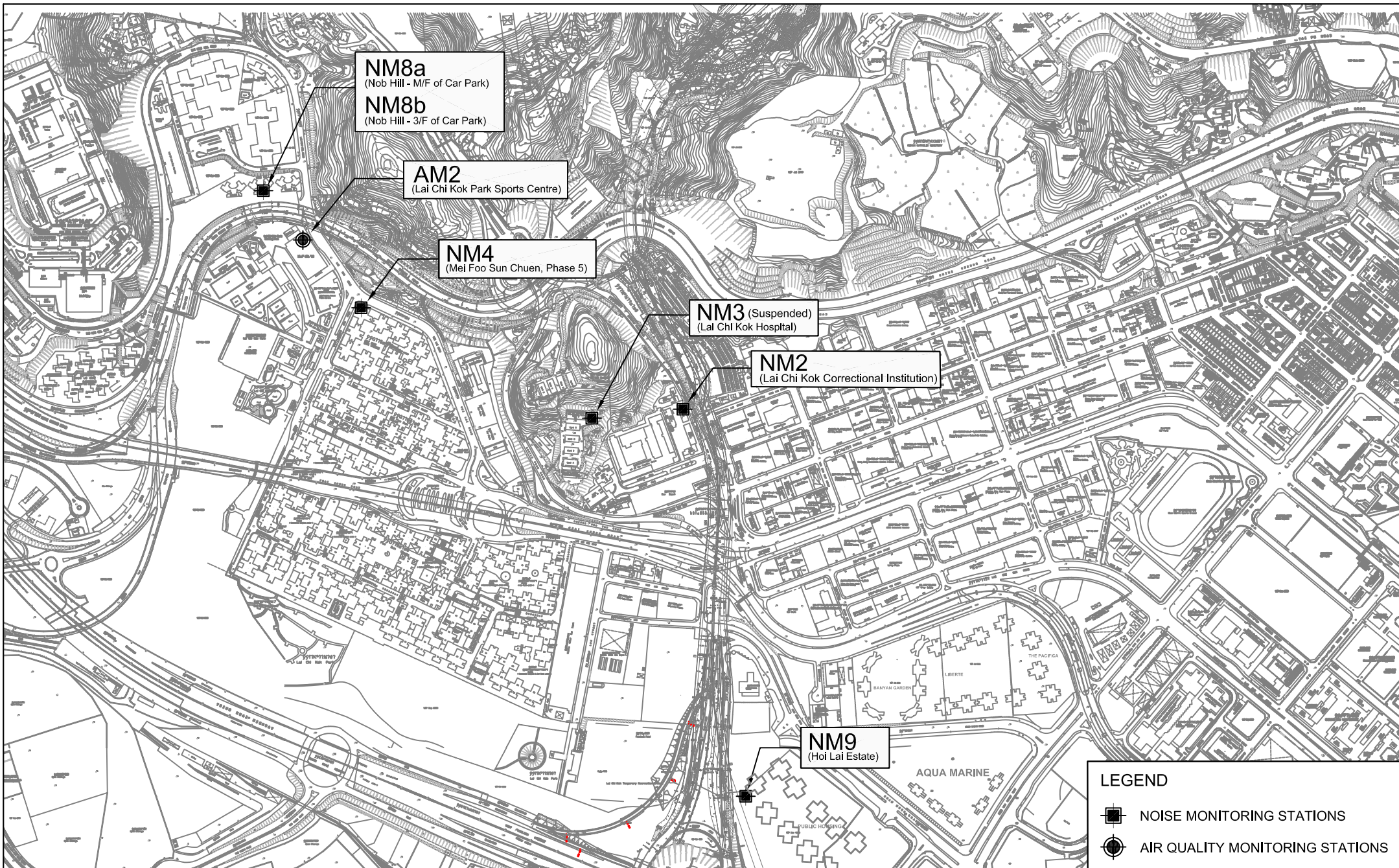
Dust Impact

- To ensure water spray is applied for the dust emissive works, such as soil nail installation, loading and unloading of soil materials, excavation works and rock dowel installation.
- To cover soil stockpiles and exposed slope surface by impervious sheets or other means.
- To ensure that all vehicles carrying dusty material are properly covered before leaving the site.

Waste / Chemical Management

- To ensure the performance of sorting of C&D materials at source (during generation);
- To carry out inspection of dump truck at site exit to ensure inert and non-inert C&D materials are properly segregated before removing off site.
- To ensure proper collection and disposal of rubbish generated on site.
- To avoid any discharge or accidental spillage of chemical waste directly from the site.

FIGURES



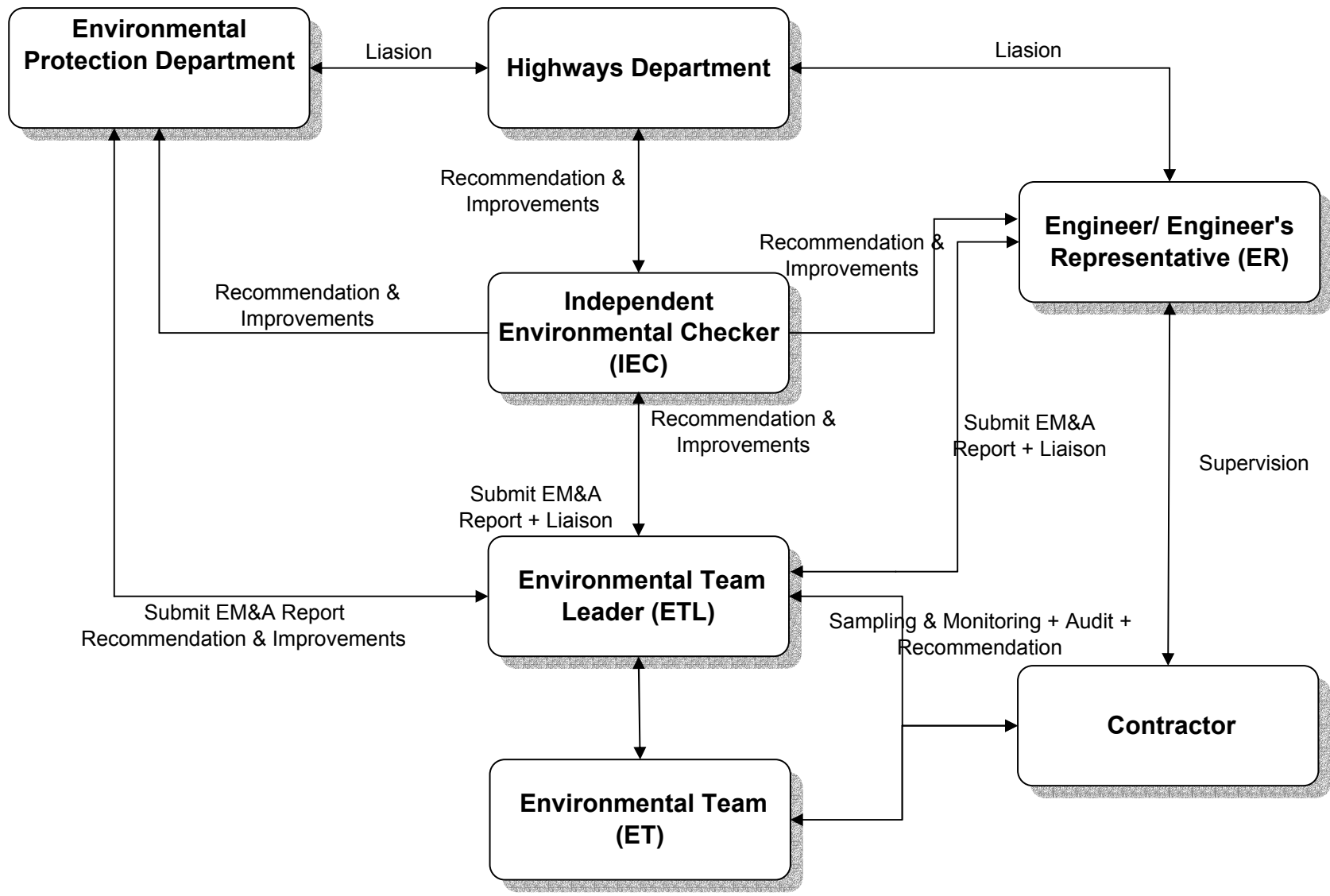
LEGEND	
	NOISE MONITORING STATIONS
	AIR QUALITY MONITORING STATIONS

Title ROUTE 8 (PREVIOUSLY KNOWN AS ROUTE 9) BETWEEN CHEUNG SHA WAN AND SHA TIN
CONTRACT HY/2003/01 - LAI CHI KOK VIADUCT

LOCATIONS OF MONITORING STATIONS

Scale	1 : 8000 (A4)	Project No.	MA3024
Date	2006	Figure No.	1





Title ROUTE 8 (PREVIOUSLY KNOWN AS ROUTE 9) BETWEEN CHEUNG SHA WAN AND SHA TIN
 CONTRACT NO. HY/2003/01 - LAI CHI KOK VIADUCT

Environmental Monitoring and Audit Organization Chart

Scale

N.T.S

Date

2006

Project

No.

Figure

MA3024

2

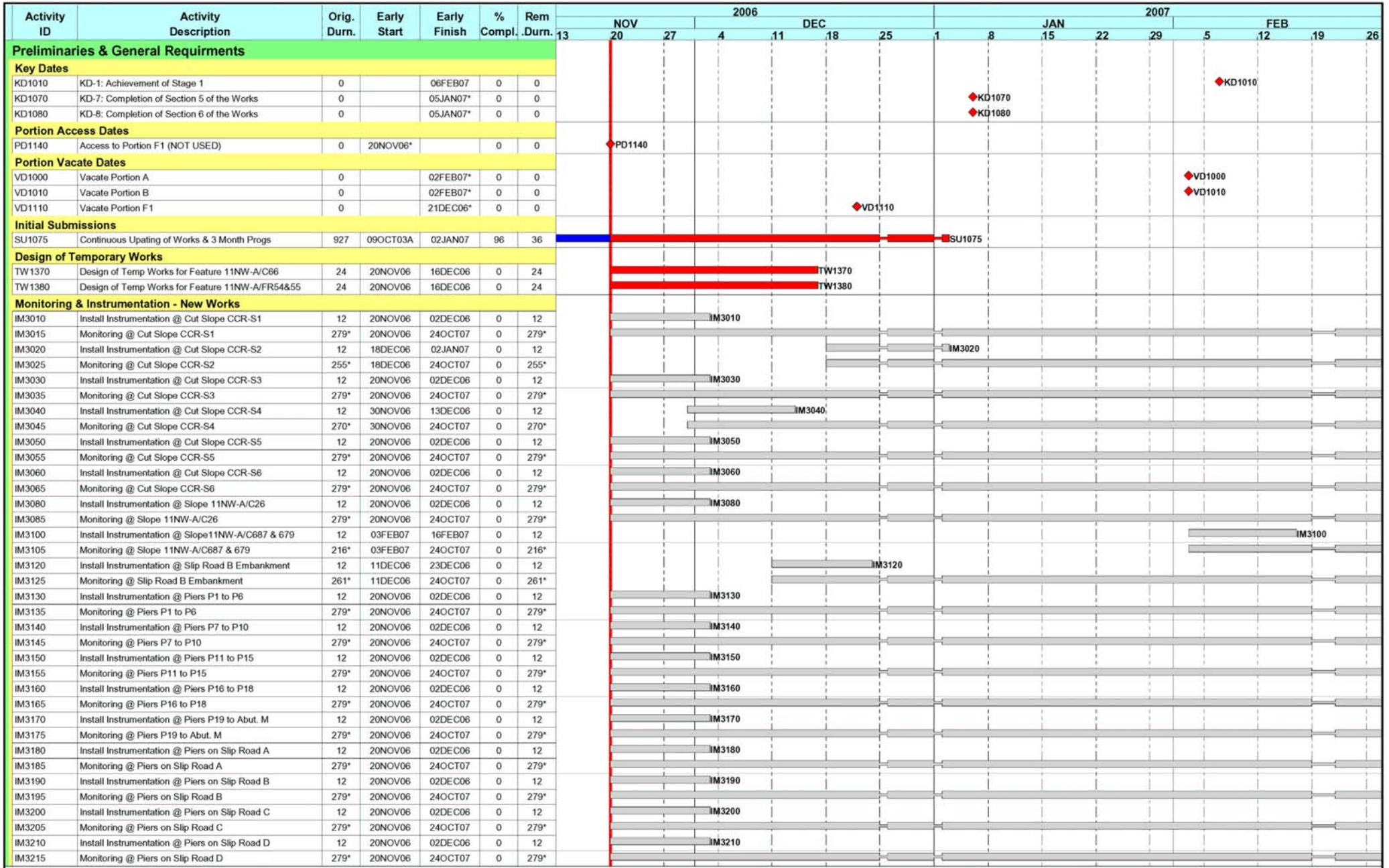
CINOTECH

**APPENDIX A
CONTACT DETAILS OF THE PROJECT
ORGANISATION**

Appendix A - Contact Details of the Project Organisation (LCKV)

Party	Role	Name	Position	Phone No.	Fax No.
HyD	Permit Holder	Mr. Kroc Leung	SE2/R8K	2762 3662	2714 5198
		Mr. Esther Yung	E1/R8K	2762 3677	
		Mr. L.C. Chung	E4/R9K	2762 3613	
MHJV	Engineer	Mr. Conrad Ng	Project Manager	2605 6262	2691 2649
	Engineer's Representative	Mr. Peter Poon	CRE	3552 2500	2959 0290
		Mr. Henry Liu	SRE	2991 1068	
		Mr. Joseph Chi	RE	2991 1034	
Cinotech	Environmental Team	Dr. Priscilla Choy	The ET Leader	2151 2089	3107 1388
		Mr. Edmond Wu	Audit Team Leader	2151 2092	
		Mr. Henry Leung	Monitoring Team Leader	2151 2087	
CH2M-HILL	Independent Environmental Checker	Mr. David Yeung	Independent Environmental Checker	2872 2934	2507 2293
		Mr. Billy Yu	Assistant Independent Environmental Checker	2872 2949	
Assiona	Contractor	Mr. William D. Payne	Project Director	2956 3300	2956 3331
		Mr. Lawrence Kwok	QA/E Manager		
ARUP	Engineer's Representative (TCSS)	Mr. Donald Leung	RE	2436 7489	2436 1803
		Mr. Joseph Chow	ARE	2436 7435	
DIGJV	Contractor (TCSS)	Ms. Joyce Chan	Quality Manager	2123 0845	2123 0889
24-hour Emergency Hotline				2370 9200	-

APPENDIX B
CONSTRUCTION PROGRAMME



Start Date: 23SEP03
 Finish Date: 13SEP08
 Data Date: 20NOV06

P3 File : LU38

Highways Department Contract No. HY/2003/01
 Route 8 - Lai Chi Kok Viaduct
 3 Month Rolling Programme
 from 20 November 2006

Sheet 1 of 14



Activity ID	Activity Description	Orig. Durn.	Early Start	Early Finish	% Compl.	Rem. Durn.	2006																	
							NOV	DEC				JAN				FEB								
							13	20	27	4	11	18	25	1	8	15	22	29	5	12	19	26		
HM1010	High Mast Lighting - Appr of Found'n (NOT USED)	24	17JAN07	13FEB07	0	24																		
HM1100	High Mast Lighting Design & Shop Dwg (NOT USED)	48	18DEC06	13FEB07	0	48																		
HM1110	High Mast Lighting - Appro of Design (NOT USED)	56	14FEB07	10APR07	0	56																		
Kiosk at Slip Road C																								
EM1010	Procurement & Delivery of Electrical Switchboard	48	14JUN06A	09DEC06	75	18																		
EM1030	Procurement & Delivery of Fire AFA System	48	31JUL06A	09DEC06	75	18																		
EM1040	Submission & Approval for Air Conditioner Unit	24	20NOV06	09DEC06	0	18																		
EM1050	Procurement & Delivery of Air Conditioner Unit	12	30NOV06	09DEC06	0	9																		
EM1060	Submission & Approval for Sanitary Wear	24	20NOV06	09DEC06	0	18																		
EM1070	Procurement & Delivery of Sanitary Wear	12	11DEC06	20DEC06	0	9																		
Lai Po Road Fire Hydrant Pump House																								
EM2010	Procurement & Delivery of Pumps Valves	48	31JUL06A	23DEC06	80	30																		
EM2020	Submission & Approval for Pump Control Panel	24	18AUG06A	29NOV06	80	9																		
EM2030	Procurement & Delivery of Pump Control Panel	48	30NOV06	26JAN07	0	48																		
EM2050	Procurement & Delivery of Electrical Switchboard	48	14JUN06A	09DEC06	80	18																		
EM2070	Procurement & Delivery of Fire AFA System	48	31JUL06A	09DEC06	80	18																		
EM2110	Submission & Approval for Air Conditioner Unit	24	20NOV06	09DEC06	0	18																		
EM2120	Procurement & Delivery of Air Conditioner Unit	12	11DEC06	23DEC06	0	12																		
Wai Man Tsuen Fire Hydrant Pump House																								
EM3010	Procurement & Delivery of Pumps Valves	48	31JUL06A	23DEC06	80	30																		
EM3020	Submission & Approval for Pump Control Panel	24	18AUG06A	29NOV06	80	9																		
EM3030	Procurement & Delivery of Pump Control Panel	48	30NOV06	26JAN07	0	48																		
EM3050	Procurement & Delivery of Electrical Switchboard	48	14JUN06A	09DEC06	80	18																		
EM3070	Procurement & Delivery of Fire AFA System	48	31JUL06A	09DEC06	80	18																		
EM3110	Submission & Approval for Air Conditioner Unit	24	20NOV06	09DEC06	0	18																		
EM3120	Procurement & Delivery of Air Conditioner Unit	12	11DEC06	23DEC06	0	12																		
Lai Wan Overpass Irrigation Pump House																								
EM4010	Procurement & Delivery of Pumps Valves	48	31JUL06A	23DEC06	80	30																		
EM4020	Submission & Approval for Pump Control Panel	24	18AUG06A	29NOV06	80	9																		
EM4030	Procurement & Delivery of Pump Control Panel	48	30NOV06	26JAN07	0	48																		
EM4050	Procurement & Delivery of Electrical Switchboard	48	14JUN06A	09DEC06	80	18																		
EM4070	Procurement & Delivery of Fire AFA System	48	31JUL06A	23DEC06	80	30																		
EM4080	Submission & Approval for GRP Water Tank	24	23JUN06A	02DEC06	50	12																		
EM4090	Procurement & Delivery of FGRP Water Tank	48	04DEC06	30JAN07	0	48																		
EM4110	Submission & Approval for Air Conditioner Unit	24	20NOV06	09DEC06	0	18																		
EM4120	Procurement & Delivery of Air Conditioner Unit	12	11DEC06	23DEC06	0	12																		
Viaduct - Main Line - Piers PA to P6																								
Superstructure Finishing Works Required for TCSS																								
MF1000	PA to P6 - Parapet Panels PA/L to P3/L	48	14APR06A	20NOV06	98	1																		
MF1000A	PA to P6 - Parapet Insitu Concrete PA/L to P3/L	48	06MAY06A	27NOV06	85	7																		
MF1005	P3L to P6 - Parapet Panels P3/L to P7/L	48	22APR06A	23NOV06	90	4																		
MF1005A	P3L to P6 - Parapet Insitu Concrete P3/L to P7/L	48	11MAY06A	12DEC06	60	20																		
MF1010	PA to P6 - Parapet Panels PA/R to P3/R	48	19JUN06A	20NOV06	98	1																		
MF1010A	PA to P6 - Parapet Insitu Concrete PA/R to P3/R	48	05AUG06A	23NOV06	98	1																		
MF1012	PA to P6 - Parapet Panels P3/R to P7/R	48	03JUL06A	27NOV06	90	5																		
MF1012A	PA to P6 - Parapet Insitu Concrete P3/R to P7/R	48	10AUG06A	30NOV06	60	10																		
MF1015	PA to P6 - Insitu Slab to Under Median Barrier	32	02SEP06A	01DEC06	65	11																		
MF1017	PA to P6 - Median Barrier (incl earthing)	45	20NOV06	12JAN07	0	45																		
MF1020	PA to P6 - Sign Gantry DS2 at P5/R-B4	46	08DEC06	01FEB07	0	46																		
MF1030	PA to P6 - Provision for E & M and TCSS	22	13JAN07	07FEB07	0	22																		
Remaining Superstructure Finishing Works																								
MF1040	PA to P6 - Deck Drainage	60	08APR06A	06JAN07	30	40																		
MF1050	PA to P6 - Top Rail to Parapets	24	13DEC06	11JAN07	0	24																		

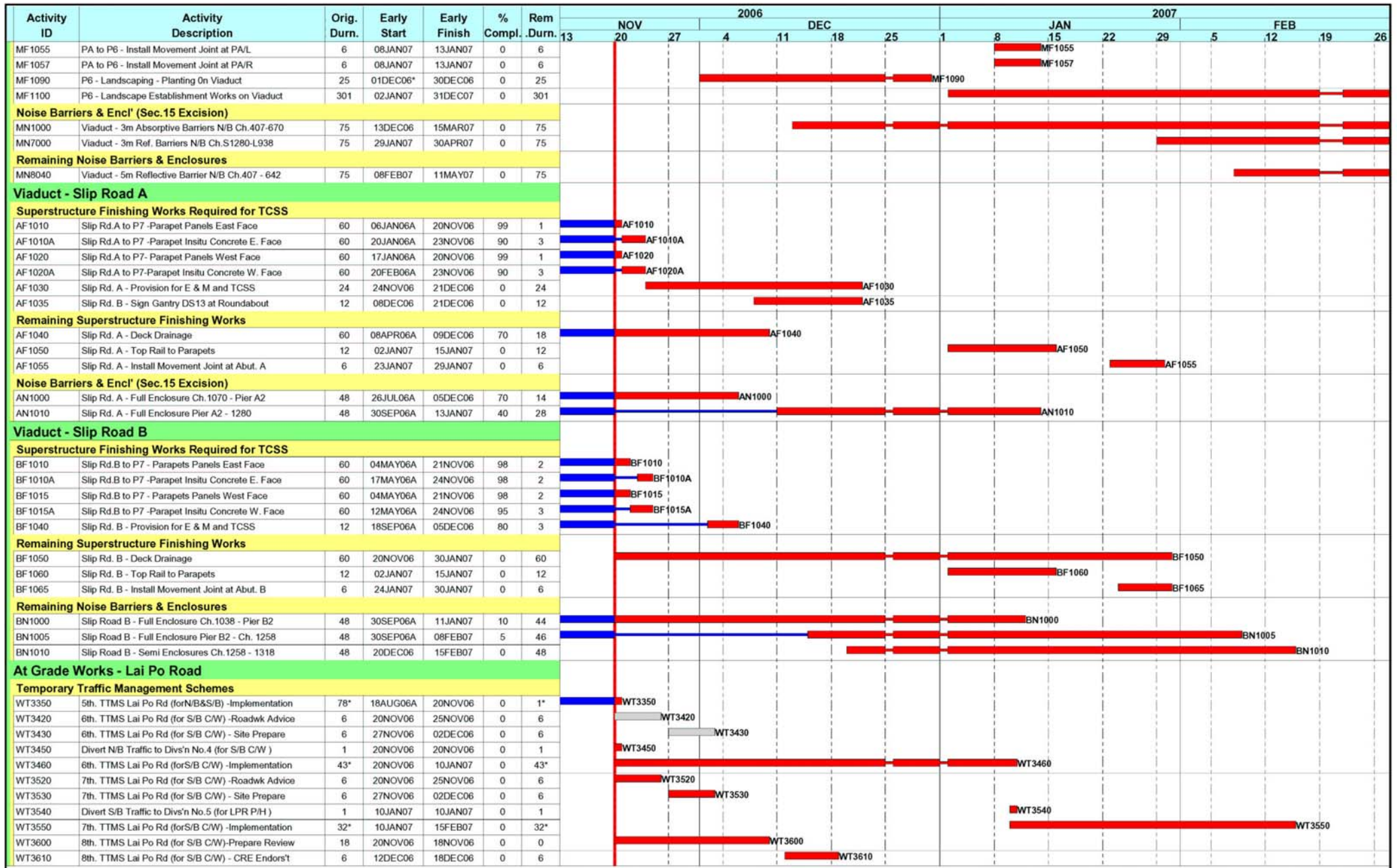
Start Date: 23SEP03
 Finish Date: 13SEP08
 Data Date: 20NOV06

P3 File : LU38

Sheet 3 of 14

Highways Department Contract No. HY/2003/01
 Route 8 - Lai Chi Kok Viaduct
 3 Month Rolling Programme
 from 20 November 2006





Start Date 23SEP03
 Finish Date 13SEP08
 Data Date 20NOV06

P3 File : LU38
 Highways Department Contract No. HY/2003/01
 Route 8 - Lai Chi Kok Viaduct
 3 Month Rolling Programme
 from 20 November 2006

Activity ID	Activity Description	Orig. Durn.	Early Start	Early Finish	% Compl.	Rem. Durn.	2006															
							NOV	NOV	NOV	NOV	NOV	NOV	NOV	NOV	NOV	NOV	NOV	NOV				
Landscape Works							13	20	27	4	11	18	25	1	8	15	22	29	5	12	19	26
WX1010	Landscaping - Dwarf Walls FW8, FW10 & FW13	54	21NOV06	24JAN07	0	54																
WX1011	Landscaping - Dwarf Walls FW4 & FW6	41	13DEC06	31JAN07	0	41																
WX1012	Landscaping - Dwarf Walls FW12 & FW14	34	25JAN07	08MAR07	0	34																
WX1013	Landscaping - Dwarf Walls FW8, FW10 & FW13	34	01FEB07	15MAR07	0	34																
Viaduct - Main Line - Piers P7 to P10																						
Superstructure Finishing Works Required for TCSS																						
MF2000	P7 to P10 - Parapet Panels P7 to P8	22	30AUG06A	09DEC06	20	18																
MF2000A	P7 to P10 - Parapet Insitu Concrete P7 to P8	74	02JUN06A	05FEB07	10	65																
MF2002	P7 to P10 - Parapet Panels P8 to P10	36	02JUN06A	05DEC06	60	14																
MF2002A	P7 to P10 - Parapet Insitu Concrete P8 to P10	36	14AUG06A	14DEC06	40	22																
MF2005	P7 to P10 - Insitu Slab to Under Median Barrier	50	13DEC06	18JAN07	0	30																
MF2007	P7 to P10 - Median Barrier (incl earthing)	46	28DEC06	23FEB07	0	46																
MF2010	P7 to P10 - Sign Gantry CAP4 at P8/L	46	06FEB07	04APR07	0	46																
MF2030	P7 to P10 - Provision for E & M and TCSS	36	17FEB07	04APR07	0	36																
Remaining Superstructure Finishing Works																						
MF2050	P7 to P10 - Top Rail to Parapets	18	06FEB07	01MAR07	0	18																
MF2090	P7 to P10 - Landscaping - Planting On Viaduct	25	06FEB07	09MAR07	0	25																
Remaining Noise Barriers & Enclosures																						
MN8000	Viaduct - Semi Enclosure N/B Ch.980 to 1181	60	16JAN07	29MAR07	0	60																
MN8020	Viaduct - 3m Reflective Barrier C/L Ch.845 - 980	60	01FEB07	16APR07	0	60																
At Grade Works - Lai Chi Kok Interchange																						
Temporary Traffic Management Schemes																						
MT1150	B.V. Rd - Divert Traffic to Fast & Slow Lanes	1	01FEB07	31JAN07	0	0																
MT1330	2nd. TTMS Butterfly Valley Rd - Prepare	9	17JAN07	26JAN07	0	9																
MT1340	2nd. TTMS Butterfly Valley Rd - Implementation	43*	01FEB07	26MAR07	0	43*																
MT1400	3rd TTMS Butterfly Valley Rd -Prepare for Review	12	20NOV06	02DEC06	0	12																
MT1410	3rd. TTMS Butterfly Valley Rd - CRE Endorsement	6	12DEC06	18DEC06	0	6																
MT1420	3rd. TTMS Butterfly Valley Rd - Roadworks Advice	6	19DEC06	26DEC06	0	6																
MT2140	TTMS for Pier P8/L - Implementation	843*	23FEB04A	08DEC06	29	17*																
MT3100	2nd. TTMS Kom Tsun Street - Prepare for Review	12	20NOV06	02DEC06	0	12																
MT3110	2nd. TTMS Kom Tsun Street - CRE Endorsement	6	12DEC06	18DEC06	0	6																
MT3120	2nd. TTMS Kom Tsun Street - Roadworks Advice	6	19DEC06	26DEC06	0	6																
MT3130	2nd. TTMS Kom Tsun Street - Site Preparation	6	27DEC06	03JAN07	0	6																
MT3140	2nd. TTMS Kom Tsun Street - Implementation	74*	04JAN07	04APR07	0	74*																
MT3200	3rd. TTMS Kom Tsun Street - Prepare for Review	12	20NOV06	02DEC06	0	12																
MT3210	3rd. TTMS Kom Tsun Street - CRE Endorsement	6	12DEC06	18DEC06	0	6																
MT3220	3rd. TTMS Kom Tsun Street - Roadworks Advice	6	19DEC06	26DEC06	0	6																
MT3230	3rd. TTMS Kom Tsun Street - Site Preparation	28	27DEC06	29JAN07	0	28																
Drainage Works																						
SA5100	Butterfly Valley Rd Stage2 - Stormwater Drainage	36	21SEP06A	27NOV06	80	7																
SA5300	Butterfly Valley Rd Stage4 - Stormwater Drainage	12	21SEP06A	24NOV06	60	5																
Utilities & Roadworks																						
SR2000	Castle Peak Road - Roadworks Reinstatement	17	20NOV06	08DEC06	0	17																
SR5000	Butterfly V. Rd (LCKI) Stage1-Excav. & Formation	36	19SEP06A	09DEC06	50	18																
SR5010	Butterfly V. Rd (LCKI) Stage 1 - Sub-base	36	20NOV06	02JAN07	0	36																
SR5020	Butterfly V. Rd (LCKI) Stage 1 - Kerbs	24	18DEC06	16JAN07	0	24																
SR5030	Butterfly V. Rd (LCKI) Stage 1 - Pavement	9	17JAN07	26JAN07	0	9																
SR5040	Butterfly V. Rd (LCKI) Stage 1 - Street Lighting	4	27JAN07	31JAN07	0	4																
SR5060	Butterfly V. Rd (LCKI) Stage 1 - Road Marking	4	27JAN07	31JAN07	0	4																
SR5200	Butterfly V. Rd (LCKI) Stage2-Excav. & Formation	18	01FEB07	24FEB07	0	18																
SR5210	Butterfly V. Rd (LCKI) Stage 2 - Sub-base	18	08FEB07	03MAR07	0	18																
SR5220	Butterfly V. Rd (LCKI) Stage 2 - Kerbs	18	15FEB07	10MAR07	0	18																

Start Date: 23SEP03
 Finish Date: 13SEP08
 Data Date: 20NOV06

P3 File : LU38
 Highways Department Contract No. HY/2003/01
 Route 8 - Lai Chi Kok Viaduct
 3 Month Rolling Programme
 from 20 November 2006

Sheet 6 of 14



Activity ID	Activity Description	Orig. Durn.	Early Start	Early Finish	% Compl.	Rem. Durn.	2006															
							NOV			DEC			JAN			FEB						
							13	20	27	4	11	18	25	1	8	15	22	29	5	12	19	26
NT2120	3rd. TTMS CC Rd (E/B C/Way) - Roadworks Advice	6	19FEB07	24FEB07	0	6																
Retaining Wall CCR-R1 West Bound																						
NW1240	W/B Ret. Wall CCR-R1A West - Parapet on Wall	18	06NOV06A	27NOV06	60	7																
Retaining Wall CCR-R1 East Bound																						
NW2240	W/B Ret. Wall CCR-R1E - Parapets on Wall	24	20NOV06	02DEC06	0	12																
Drainage Works																						
NA2010	C.C. Rd. W/B in New C/way - S/water Drainage E3	75	20NOV06	16FEB07	0	75																
NA2020	C.C. Rd. W/B in New C/way - S/water Drainage J2	66	20NOV06	06FEB07	0	66																
NA3000	C.C. Rd. E/B in New C/way - Stormwater Drainage	75	17OCT06A	08FEB07	10	68																
Utilities & Roadworks																						
NR1000	C.C. Rd. W/B in Portion E3 - Formation	18	03FEB07	27FEB07	0	18																
NR1010	C.C. Rd. W/B in Portion E3 - Sub-base	12	17FEB07	06MAR07	0	12																
NR1090	C.C. Rd. W/B - Foundations & Sign Gantry ADS3	24	08DEC06	06JAN07	0	24																
NR1100	C.C. Rd. W/B Portion J2 - Formation	18	07FEB07	02MAR07	0	18																
NR2000	C.C. Rd. E/B - Foundations for Sign Gantry FADS3	18	09FEB07	05MAR07	0	18																
NR3000	C.C. Rd. E/B - Formation	24	09FEB07	12MAR07	0	24																
NR3030	C.C. Rd. E/B - E & M and TCSS Provision	36	04DEC06	16JAN07	0	36																
At Grade Work - Ching Cheung Road - Main Section																						
Temporary Traffic Management Schemes																						
RT2240	3rd. TTMS CC Rd (Slewing) - Implementation	587*	28DEC04A	09DEC06	0	18*																
RT2300	4th. TTMS CC Rd E/B C/Way - Prepare for Review	12	11JAN07	24JAN07	0	12																
RT2310	4th. TTMS CC Rd E/B C/Way - CRE Endorsement	6	13FEB07	18FEB07	0	6																
RT2320	4th. TTMS CC Rd E/B C/Way - Roadworks Advice	6	19FEB07	24FEB07	0	6																
Earthworks & Slope Works - CCR-S1, S2 & S3																						
RE1700	Slope CCR-S1E - Finish Seed & Planting +62.3mPD	6	20NOV06*	25NOV06	0	6																
RE1710	Slope CCR-S1E - Finish Seed & Planting +54.8mPD	12	27NOV06	09DEC06	0	12																
RE1720	Slope CCR-S1E - Finish Seed & Planting +47.3mPD	12	11DEC06	23DEC06	0	12																
RE1710A	Slope CCR-S1C- Finish Seed & Planting +54.9mPD	12	20NOV06	02DEC06	0	12																
RE1720A	Slope CCR-S1C - Finish Seed & Planting +47.3mPD	12	04DEC06	16DEC06	0	12																
RE1860	Slope CCR-S1E&C- Finish Seed & Planting to +25.4	24	20NOV06	16DEC06	0	24																
RE2130	Slope CCR-S2 - Finish Seeding & Planting	18	07FEB07	02MAR07	0	18																
RE1720B	Slope CCR-S1W - Seed & Planting to +39.95mPD	24	20NOV06	16DEC06	0	24																
RE1560	Slope CCR-S1W - Rock Stabilisation to 19.0mPD	48	10MAY06A	27NOV06	85	7																
RE1660	Slope CCR-S1W - Drainage to Level +19.0mPD	24	20NOV06	16DEC06	0	24																
RE16604	Slope CCR-S1W - Drainage to Level +16.8mPD	18	18DEC06	09JAN07	0	18																
RE1665	Slope CCR-S1W - Seed & Planting to +32.4mPD	24	20NOV06	16DEC06	0	24																
RE1670	Slope CCR-S1W - Seed & Planting to +24.9mPD	24	18DEC06	16JAN07	0	24																
RE1675	Slope CCR-S1W - Seed & Planting to +19.0mPD	18	17JAN07	06FEB07	0	18																
RE1680	Slope CCR-S1W - Seed & Planting to +16.8mPD	12	07FEB07	23FEB07	0	12																
RE2000	Slope CCR-S2 -Excavate Rock to Formation	24	20NOV06	16DEC06	0	24																
RE2100	Slope CCR-S2 - Drainage	42	18DEC06	06FEB07	0	42																
Slope Works Above Retaining Wall CCR-R2																						
RE4000	Ch 00.00 to 78.27 - Excavate in Benches	36	04SEP06A	29NOV06	75	9																
RE4010	Ch 00.00 to 78.27 - Filter Layer	36	09SEP06A	13DEC06	75	9																
RE4020	Ch 02.13 to 41.71 - General Filling & Compaction	24	10OCT06A	20DEC06	75	6																
RE4022	Ch 50.71 to 78.27 - General Filling & Compaction	36	20NOV06	02JAN07	0	36																
RE4023	Remove Access Road	6	03JAN07	09JAN07	0	6																
RE4024	Ch 41.71 to 50.71 - General Filling & Compaction	6	20NOV06	25NOV06	0	6																
RE4025	Ch 00.00 to 2.13 - General Filling & Compaction	6	20NOV06	25NOV06	0	6																
RE4027	Excavate & Demolish Existing Retaining Wall	12	27NOV06	09DEC06	0	12																
RE4028	Fill & Compact to Form Toe of Berm	6	11DEC06	16DEC06	0	6																
RE4030	Slope Drainage above R/W CCR-R2	24	03JAN07	30JAN07	0	24																
RE4040	Slope Finishes above R/W CCR-R2	24	17JAN07	13FEB07	0	24																

Start Date: 23SEP03
 Finish Date: 13SEP08
 Data Date: 20NOV06

P3 File : LU38
 Highways Department Contract No. HY/2003/01
 Route 8 - Lai Chi Kok Viaduct
 3 Month Rolling Programme
 from 20 November 2006

Sheet 11 of 14



Activity ID	Activity Description	Orig. Durn.	Early Start	Early Finish	% Compl.	Rem Durn.	2006																
							NOV	NOV	NOV	NOV	NOV	NOV	NOV	NOV	NOV	NOV	NOV	NOV					
PW2140	Ret. Wall CCR-R5 - Complete Fill Behind Wall	12	25NOV06	08DEC06	0	12																	
PW2230	Ret. Wall CCR-R5 - Slope Works Behind Wall	36	09DEC06	22JAN07	0	36																	
Retaining Wall CCR-R6 (Value Engineering Design)																							
PW3250	Ret. Wall CCR-R6 - Bases to R.C. Walls	48	22AUG06A	24NOV06	90	5																	
PW3260	Ret. Wall CCR-R6 - R.C. Walls	48	28OCT06A	06JAN07	20	40																	
PW3070	Ret. Wall CCR-R6 - Fill Behind Ret Wall	36	15DEC06	27JAN07	0	36																	
Drainage Works																							
PA1200	C.P.Rd Loop to Slip Road C - Stormwater Drainage	18	03OCT06A	04DEC06	30	13																	
PA2000	C.P.Rd-K.C. S/B - Stormwater Drainage	24	31JAN07	02MAR07	0	24																	
PA3000	C.P.Rd.-K.C S/B to C.C. Rd E/B - Storm Drainage	36	16DEC06	29JAN07	0	36																	
Utilities & Roadworks																							
PR1117	New CLP 11kV Cable Laying in front of CCR-R5	18	04JAN07	24JAN07	0	18																	
PR3000	C.P.Rd. Loop to Slip Road C - Formation	13	27NOV06	11DEC06	0	13																	
PR3010	C.P.Rd. Loop to Slip Road C - Sub-base	12	05DEC06	18DEC06	0	12																	
PR3020	C.P.Rd. Loop to Slip Road C - Kerbs	18	12DEC06	03JAN07	0	18																	
PR3040	C.P.Rd. Loop to Slip Road C - Pavement	6	04JAN07	10JAN07	0	6																	
PR3050	C.P.Rd. Loop to Slip Road C - Street Lighting	12	11JAN07	24JAN07	0	12																	
PR3080	C.P.Rd. Loop to Slip Road C - Crash Barriers	18	11JAN07	31JAN07	0	18																	
PR5000	C.P.Rd-K.C. S/B to C.C.Rd E/B - Excavate Road	18	25NOV06	15DEC06	0	18																	
PR5010	C.P.Rd-K.C. S/B to C.C.Rd E/B - Formation	12	30JAN07	12FEB07	0	12																	
PR5020	C.P.Rd-K.C. S/B to C.C.Rd E/B - Sub-base	12	08FEB07	24FEB07	0	12																	
PR5030	C.P.Rd-K.C. S/B to C.C.Rd E/B - Kerbs	18	16FEB07	12MAR07	0	18																	
PR5100	C.C. Rd. W/B - Sign Gantry FADS7 at P15-P16	18	16DEC06	08JAN07	0	18																	
Kiosk at Slip Road C																							
PK1000	Kiosk at Slip Rd. C - Structure	24	17OCT06A	15DEC06	5	23																	
PK1010	Kiosk at Slip Rd. C - Building Finishes	24	16DEC06	15JAN07	0	24																	
PK1015	Kiosk at Slip Rd. C - Provision for E & M Contr'	0		15JAN07	0	0																	
PK1020	Kiosk at Slip Rd. C - MVAC Installations	24	16DEC06	15JAN07	0	24																	
PK1030	Kiosk at Slip Rd. C - Electrical Works	24	02JAN07	29JAN07	0	24																	
PK1035	Kiosk at Slip Rd. C - FS Installation	24	02JAN07	29JAN07	0	24																	
PK1040	Kiosk at Slip Rd. C - Drainage Works	24	16JAN07	12FEB07	0	24																	

Start Date 23SEP03
 Finish Date 13SEP08
 Data Date 20NOV06

P3 File : LU38

Highways Department Contract No. HY/2003/01
 Route 8 - Lai Chi Kok Viaduct
 3 Month Rolling Programme
 from 20 November 2006

Sheet 14 of 14





Record Date: 29-12-2006

5-week Rolling Programme of Site Works

Rev: 0

Item No.	Civil Area	Portion	Work Area	Activity	Jan-07																												
					F	S	S	M	T	W	T	F	S	S	M	T	W	T	F	S	S	M	T	W	T	F	S	S	M	T	W	T	F
1	Works Area	A	DIGJV Site Office	Grass cutting, pesticide spraying	R	N																											
2	Works Area	A	Subcontractor warehouse	Material preparation for cable containment																													
3	Works Area	A	DIGJV Site Office	Assemble of control cabinet	N																												
4	Road T3	G	Road T3	Routine Checkings																													
5	Road T3	G	Road T3 - Gantry 'GT110'	Installation of cable containment & Field equipment	N	R																											
6	SHT	H1A, H1B, H1C	SHT (SB,NB, NPB, SPB)	Routine Checkings																													
7	SHT	H1B & H1C	SHT Tunnel, NB & SB, (near CP01 & CP10)	[2], [4] & [5]Install cable containment cross tunnel & along tunnel	N																												
8	SHT	H1C	SHT(N/B, then S/B)	TCSS Traffic field equipment installation		R																											
9	SHT	H1A, H1B, H1C	SHT (S/B & N/B)	Cable laying																													
10	SHT	H2	SHT - Open road Section	Routine Checkings																													
11	SHT	H2	SHT- Open road Section	[3] Installation of control cabinet	R																												
12	SHT	H2	SHT Open road section	Cable laying																													
13	SHT	H3	SHT - RCFE	Routine Checkings																													
14	SHT	H3	SHT - RCFE	[3]Installation of cable containment																													
15	SHT	H3	SHT - RCFE	Cable laying																													
16	SHT	H3	SHT - RCFE	Joint inspection for mockup cable containment																													
17	ENT	I1, I2 & I3	ENT Tunnel (SB, NB, NPB, SPB, ADB, VB, Toll Plaza & Butterfly Valley)	Routine checkings																													
18	ENT	I2	ENT Tunnel (S/B & N/B)	[3] Cable laying																													
19	ENT	I3	ADB (Remaining Plant Room)	[3]Cable containment installation		R																											
20	ENT	I3	ADB - Workshop (G/F TO 2/F)	Cable containment installation		R																											
21	ENT	I1, I2 & I3	ENT - S/B & N/B	Cable laying																													
22	LCKV	J1	LCKV	Routine checkings																													
23	NWT	B & C	NWT (E/B, W/B & WCB)	Routine checkings																													
24	NWT	B	NWT - E/B	[3]Cable containment installation	N																												
25	NWT	B	NWT - W/B	[3]Cable containment installation	N																												
26	NWT	B	NWT, E/B first, then W/B)	[3] cable laying																													
27	NWT	C	NWT - WCB	[3] Video wall footing installation																													
28	NWT	B	NWT, E/B & W/B	[3]TCSS Traffic field equipment installation																													

Legend :
 = Planned activity
 = Work Done
 = Public Holiday

R - Re-scheduled
 N - New activity

Note:

- [1] Works depends on spatial co-ordination among related Main Contractor and TCSS.
- [2] Works Subject to Traffic Tube arrangement by CSCRJV
- [3] Works subject to condition of site access & civil provision.
- [4] Works subject to CSCRJV to relocate their containers in N/B
- [5] Works subject to coordination with other services
- [6] Works depend on ENT's contractor to complete their raised floor installation
- [7] Works depend on Civil Contractor to rectify their provision

Distribution: Aurb-Johnny Mak, Hara,Alex C, Franco L, Hamlyn K, Joseph C, KT Chan, Patrick L, Philip C, PF Li, Sharon H, Tony C, Wilson W, Winnie M, Donald L, Johnny L, Kenny C

**APPENDIX C
MONITORING REQUIREMENTS**

Appendix C - Environmental Impact Monitoring Requirements for Lai Chi Kok Viaduct

Type of Monitoring	Parameter	Frequency	Location	Measurement Conditions
Air Quality	1-hour TSP	3 times every 6 days	<ul style="list-style-type: none"> AM2 (Lai Chi Kok Park Sports Centre) 	<ul style="list-style-type: none"> Rooftop facing the site area
	24-hour TSP	Once every 6 days		
Noise	L _{eq} , L ₉₀ & L ₁₀ at 30 minute intervals during (0700 to 1900 on normal weekdays)	Once per week	<ul style="list-style-type: none"> NM2 (Lai Chi Kok Reception Centre) NM3 (Lai Chi Kok Hospital) ⁽²⁾ NM4 (Mei Foo Sun Chuen, Phase 5) NM8a (M/F of Nob Hill) NM8b (3/F of Nob Hill) NM9 (Hoi Lai Estate) 	<ul style="list-style-type: none"> NM2 – Roadside (Façade measurement) NM3 – Rooftop of Block L (Façade measurement) NM4 – Rooftop of Block 9 (Façade measurement) NM8a – M/F of Nob Hill (Façade measurement) NM8b – 3/F of Nob Hill (Façade measurement) NM9 – G/F of Hoi Fai House (Façade measurement)
	L _{eq} , L ₉₀ & L ₁₀ at 5 minute intervals during (1900 to 2300) ⁽¹⁾	Once per week (include 3 consecutive 5-min measurements)		
	L _{eq} , L ₉₀ & L ₁₀ at 5 minute intervals during (2300 to 0700 of next day) ⁽¹⁾	Once per week (include 3 consecutive 5-min measurements)		
	L _{eq} , L ₉₀ & L ₁₀ at 5 minute intervals during (0700 to 1900 on holidays) ⁽¹⁾	Once per week (include 3 consecutive 5-min measurements)		

⁽¹⁾ – Conduct noise monitoring only when construction work is carried out.

⁽²⁾ – The Lai Chi Kok Hospital (NM3) was also found vacated and noise monitoring could not be conducted since January 05. EPD's approval for suspension of noise monitoring at this station was received on 15th March 2005.

**APPENDIX D
ENVIRONMENTAL QUALITY
PERFORMANCE (ACTION/LIMIT)
LEVELS**

Appendix D - Action and Limit Levels (LCKV)

1-Hour TSP

Location	Action Level, $\mu\text{g}/\text{m}^3$	Limit Level, $\mu\text{g}/\text{m}^3$
AM2	301	500

24-Hour TSP

Location	Action Level, $\mu\text{g}/\text{m}^3$	Limit Level, $\mu\text{g}/\text{m}^3$
AM2	177	260

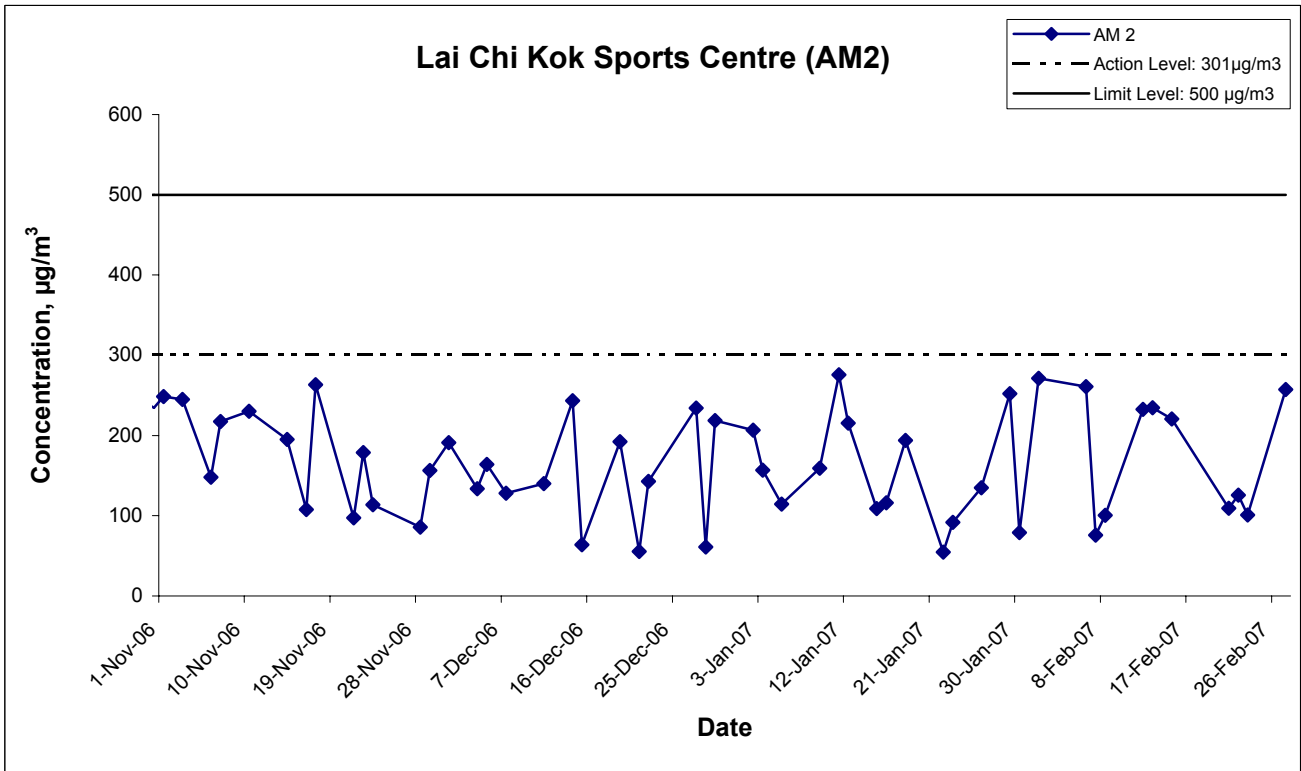
Construction Noise

Period	Action Level	Limit Level
0700-1900 hrs on normal weekdays	When one documented complaint is received	75 dB(A)
0700-2300 hrs on holidays & 1900-2300 hrs on all other days		70* dB(A)
2300-0700 hrs of next day		55* dB(A)

(*) The Area Sensitivity Rating for the noise monitoring stations (NM3, NM4, NM8a, NM8b and NM9) is taken as C, according to Table 1 of EPD's Technical Memorandum on Noise from Construction Work other than Percussive Piling.

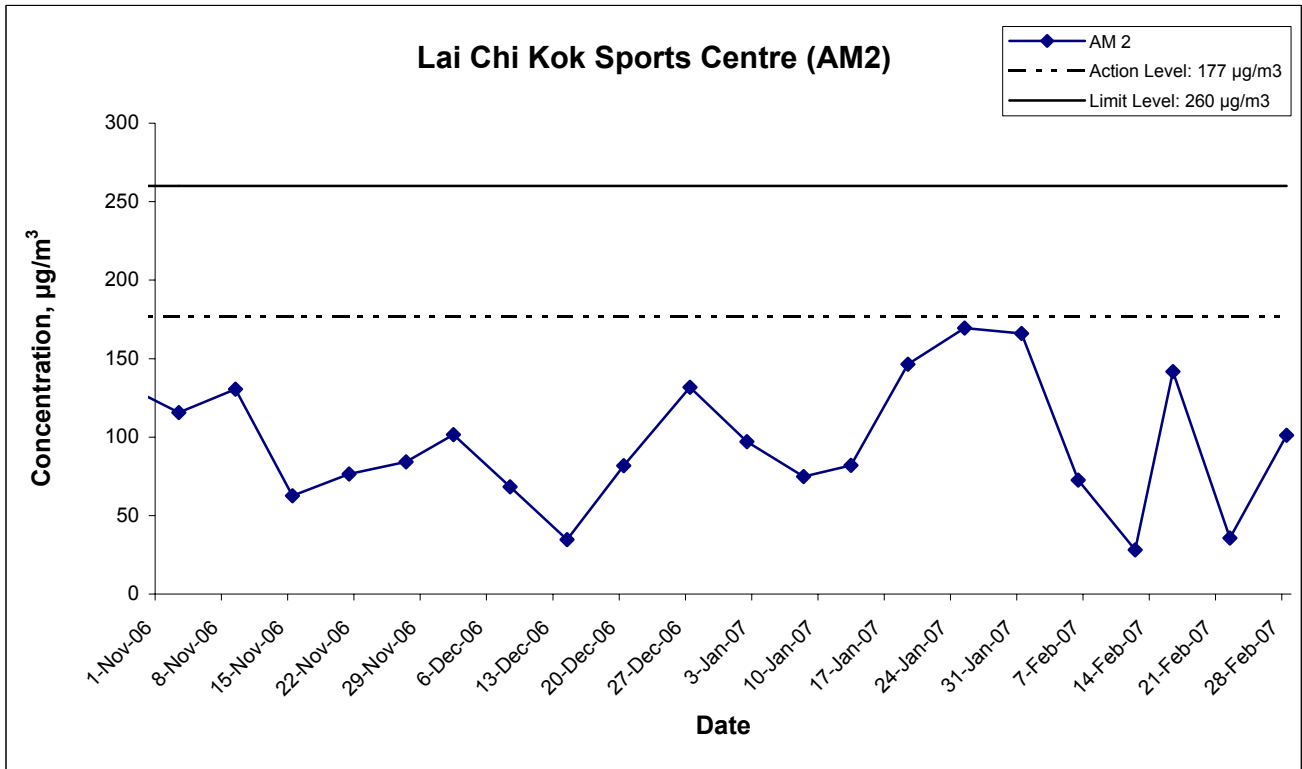
**APPENDIX E
GRAPHICAL PRESENTATION OF AIR
QUALITY MONITORING RESULTS**

1-hr TSP Levels



Title Route 8 (previously known as Route 9) between Cheung Sha Wan & Sha Tin Contract HY/2003/01 - Lai Chi Kok Viaduct Graphical Presentation of 1-hour TSP Impact Monitoring Results	Scale N.T.S	Project No. MA3024	
	Date Feb 07	Appendix E	

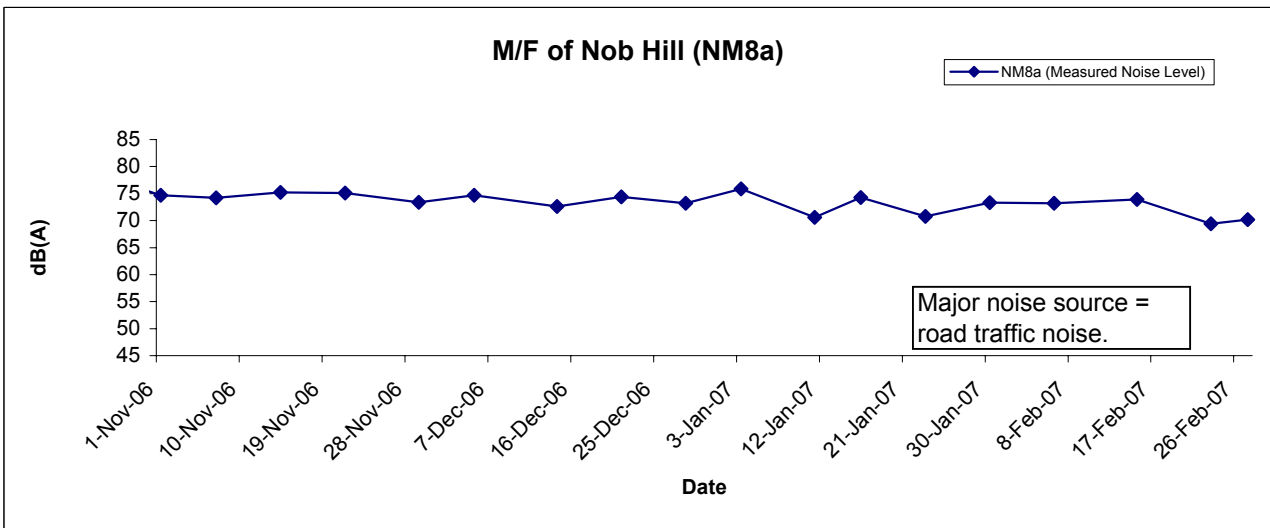
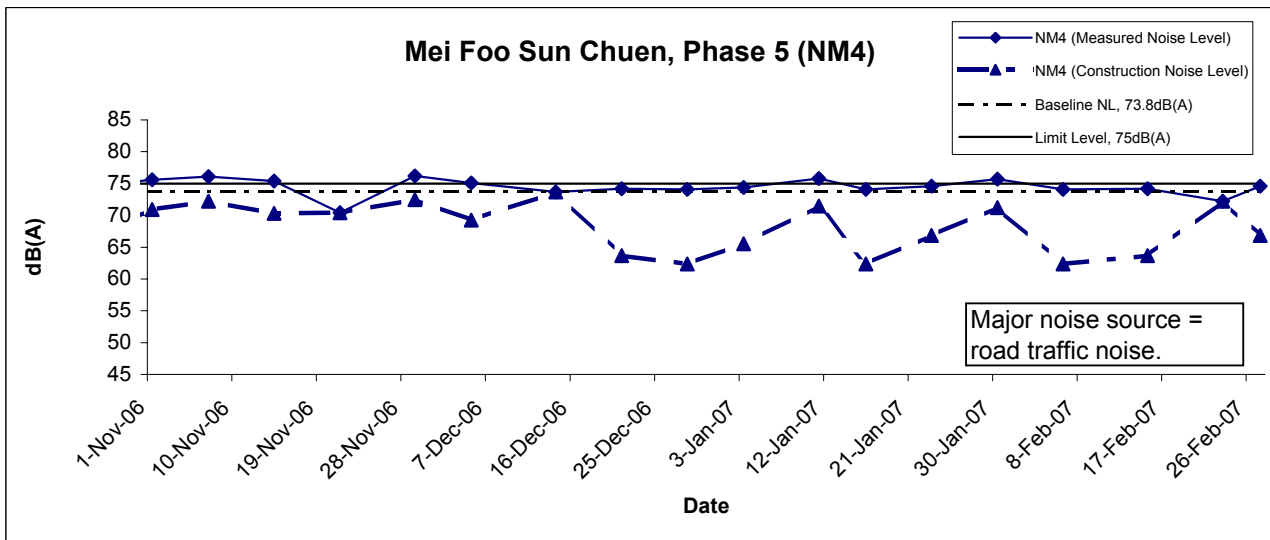
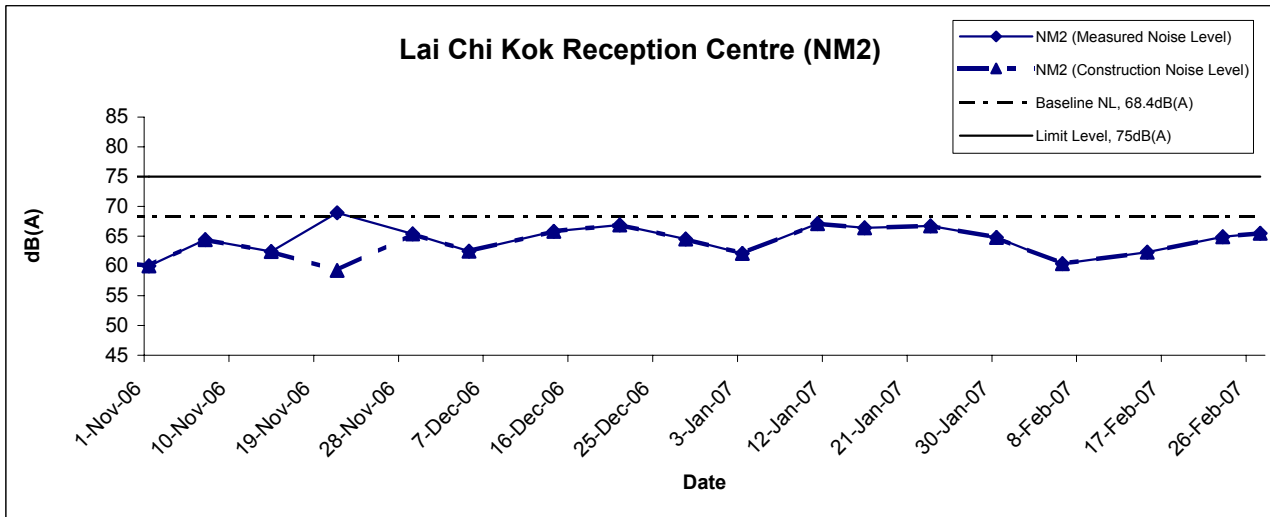
24-hr TSP Levels



Title Route 8 (previously known as Route 9) between Cheung Sha Wan & Sha Tin Contract HY/2003/01 - Lai Chi Kok Viaduct Graphical Presentation of 24-hour TSP Impact Monitoring Results	Scale N.T.S	Project No. MA3024	
	Date Feb 07	Appendix E	

**APPENDIX F
GRAPHICAL PRESENTATION OF
NOISE MONITORING RESULTS**

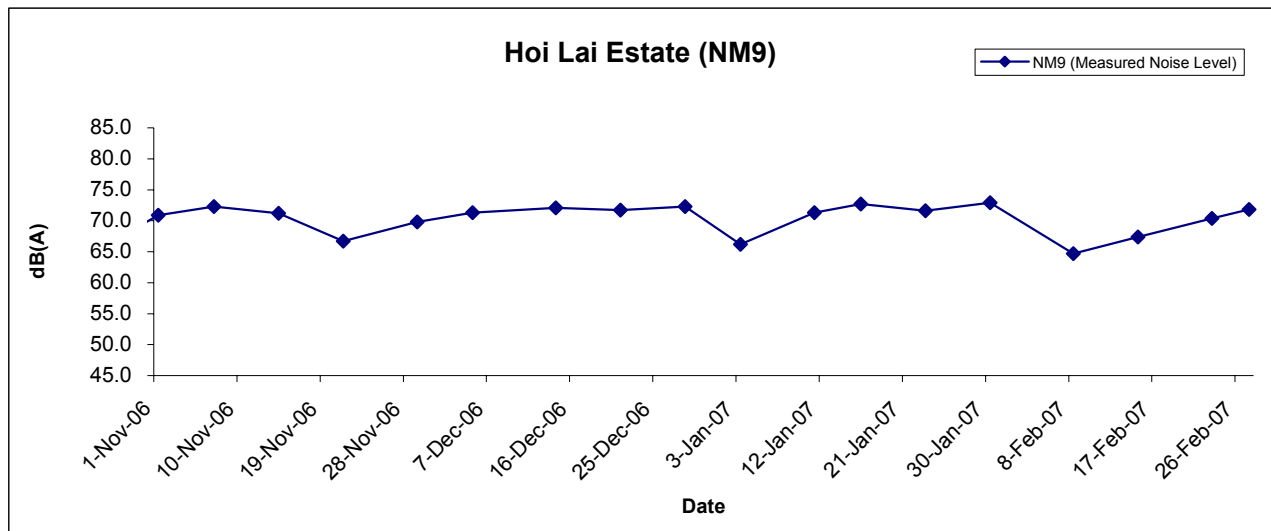
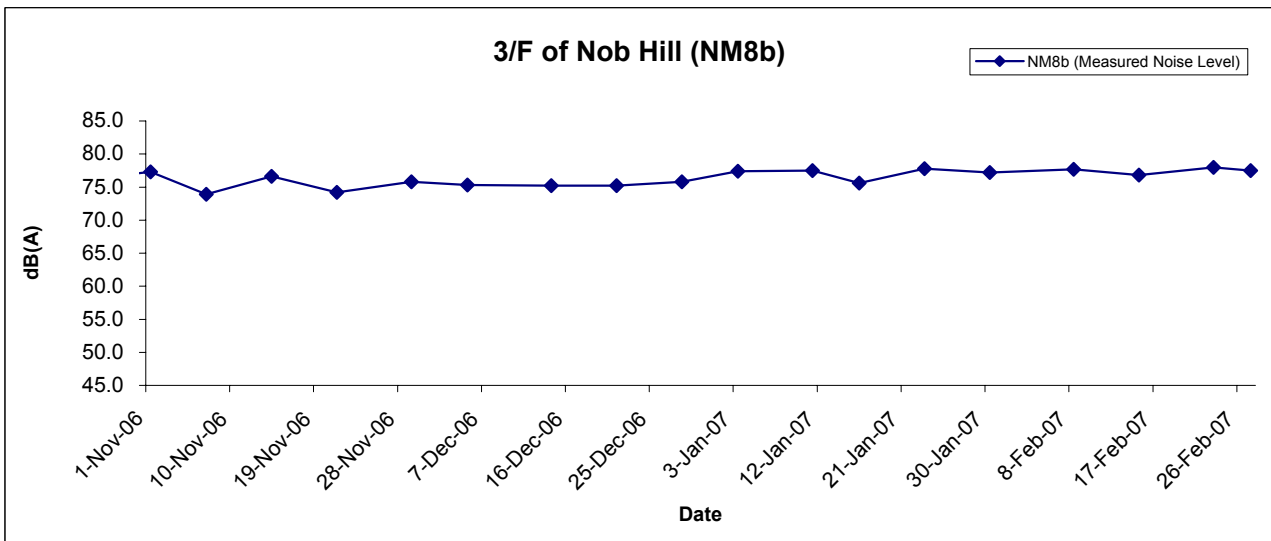
Noise Levels



* Construction Noise Level = Measured Noise Level - Baseline Level
 (If the measured noise level is lower than the baseline level, the construction noise level will be taken as the measured one)

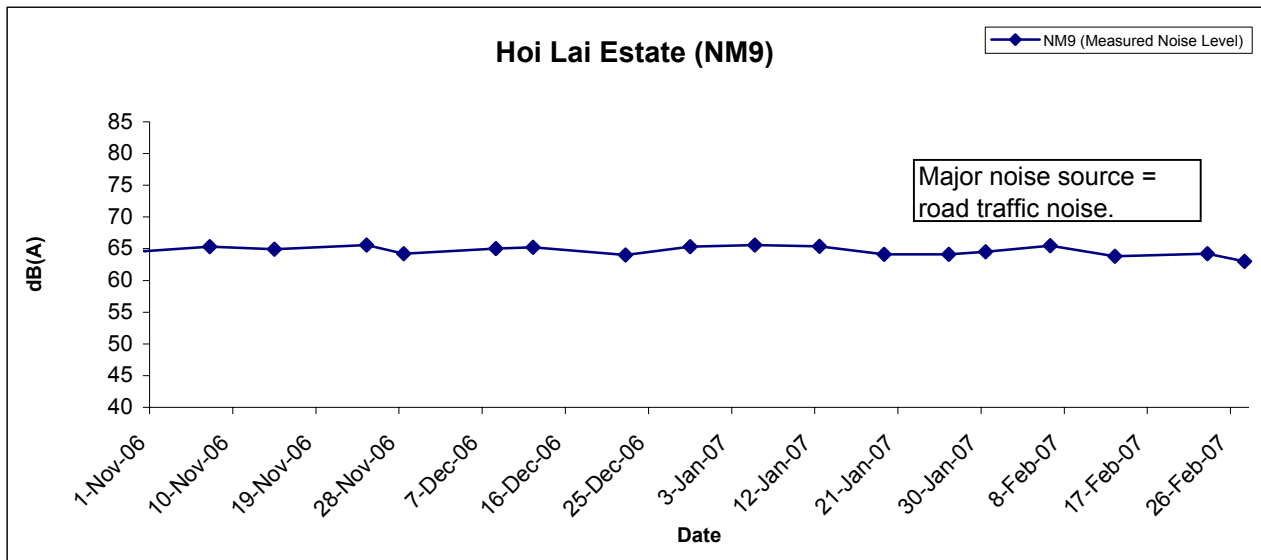
Title Route 8 (previously known as Route 9) between Cheung Sha Wan and Sha Tin Contract HY/2003/01 - Lai Chi Kok Viaduct Graphical Presentation of Construction Noise Monitoring Results	Scale N.T.S	Project No. MA3024	
	Date Feb 07	Appendix F	

Noise Levels



Title Route 8 (previously known as Route 9) between Cheung Sha Wan and Sha Tin Contract HY/2003/01 - Lai Chi Kok Viaduct Graphical Presentation of Construction Noise Monitoring Results	Scale N.T.S	Project No. MA3024	
	Date Feb 07	Appendix F	

Restricted Hours (19:00 to 23:00) - Noise Levels



Title Route 8 (previously known as Route 9) between Cheung Sha Wan and Sha Tin Contract HY/2003/01 - Lai Chi Kok Viaduct Graphical Presentation of Construction Noise Monitoring Results	Scale N.T.S	Project No. MA3024	<h1 style="margin: 0;">CINOTECH</h1>
	Date Feb 07	Appendix F	

**APPENDIX G
IMPLEMENTATION SCHEDULE OF
ENVIRONMENTAL MITIGATION
MEASURES (EMIS)**

Appendix G - Summary of Environmental Mitigation Implementation Schedule

Types of Impacts	Mitigation Measures	Status
Construction Dust	<ul style="list-style-type: none"> • Any stockpile of dusty materials or stockpile of dusty material should be covered entirely by impervious sheeting or sprayed with water so as to maintain the entire surface wet. • A stockpile of dusty materials should not extend beyond the pedestrian barriers, fencing or traffic cones. • Vehicle washing facilities should be provided at every exit point. • The area where vehicle washing takes place and the section of the road between the washing facilities and the exit point should be paved with concrete, bituminous materials or hardcores. • Where a site boundary adjoins a road, street, service lane or other area accessible to the public, hoarding of not less than 2.4m high from ground level should be provided along the entire length of that portion of the site boundary except for a site entrance or exit. • Every main haul road should be sprayed with water or a dust suppression chemical so as to maintain the entire road surface wet. • The portion of any road leading only to a construction site that is within 30m of a discernible or designated vehicle entrance or exit should be kept clear of dusty materials. • Any stockpile of dusty materials should be either covered entirely by impervious sheeting, placed in an area sheltered on the top and the 3 sides or sprayed with water or a dust suppression chemical so as to maintain the entire surface wet. • All dusty materials should be sprayed with water or a dust suppression chemical immediately prior to any loading, unloading or transfer operation so as to maintain the dusty materials wet. • Every vehicle should be washed to remove any dusty materials from its body and wheels immediately before leaving a construction site. • The working area of any excavation should be sprayed with water or a dust suppression chemical immediately before, during and immediately after the operation so as to maintain the entire surface wet. 	<p>^</p> <p>^</p> <p>^</p> <p>^</p> <p>^</p> <p>^</p> <p>^</p> <p>^</p> <p>^</p> <p>^</p> <p>^</p>
Construction Noise	<ul style="list-style-type: none"> • Only well-maintained plant should be operated on –site and plant should be serviced regularly during the construction works. • Machines and plant that may be in intermittent use should be shut down between work periods or should be throttled down to a minimum. • Plant known to emit noise strongly in one direction, should where possible, be orientated to direct noise away from the NSRS. • Mobile plant should be sited as far away from NSRs as possible. • Material stockpiles and other structures should be effectively utilised, where practicable, to screen noise from on-site construction activities. • Use quiet plant and Working Method 	<p>^</p> <p>^</p> <p>^</p> <p>^</p> <p>^</p> <p>^</p>

Types of Impacts	Mitigation Measures	Status
	<ul style="list-style-type: none"> • Reduce the number of plant operating in critical areas close NSRs. • Construct temporary and movable noise barriers 	<p style="text-align: center;">^</p> <p style="text-align: center;">^</p>
Water Quality	<i>Construction Runoff and Drainage</i>	
	<ul style="list-style-type: none"> • Use of sediment traps and the adequate maintenance of drainage systems to prevent flooding and overflow. • Boundaries of critical areas of earthworks should be marked and surrounded by dykes or embankments for flood protection. Temporary ditches should be provided to facilities runoff discharge into the appropriate watercourses, via a silt retention pond. Permanent drainage channels should incorporate sediment basins or traps and baffles to enhance deposition rates. • All temporary and permanent drainage pipes and culverts provided to facilitate runoff discharge should be adequately designed for the controlled release of storm flows. All sediment traps should be regularly cleaned and maintained. The temporarily diverted drainage should be reinstated to its original condition when the construction works has finished or the temporary diversion is no longer required • Sand silt in the wash water from the wheel washing facilities, which ensure no earth, mud and debris is deposited on roads, should be settled out the removed before discharging into storm drains. A section of the road between the wheel washing bay and the public road should be paved with backfill to prevent wash water or other site runoff form entering public road drains. • Oil interceptors should be provided in the drainage system and regularly emptied to prevent the release of oils and grease into the storm water drainage system after accidental spillage. The interceptor should have a bypass to prevent flushing during periods of heavy rain. • Catchpits and perimeter channels shall be constructed in advance of site formation works and earthworks. • Silt removal facilities, channels and manholes shall be suitably maintained with the deposited silt and grit being removed at least once a week, and at the onset of and after each rainstorm to ensure that these facilities are functioning properly at all times. • Earthworks final surfaces shall be well compacted and the subsequent permanent work or surface protection shall be carried out immediately after the final surfaces are formed to prevent erosion caused by rainstorms. Appropriate intercepting channels shall be provided along the site boundary or at the locations agreed with the ET Leader. Rainwater pumped out from trenches or foundation excavations shall be discharged into silt removal facilities before discharge into storm drains. • All generators, fuel and oil storage shall be within bunded areas. Drainage from the areas shall be connected to storm drains via a petrol interceptor. 	<p style="text-align: center;">^</p> <p style="text-align: center;">^</p> <p style="text-align: center;">^</p> <p style="text-align: center;">^</p> <p style="text-align: center;">^</p> <p style="text-align: center;">^</p> <p style="text-align: center;">^</p> <p style="text-align: center;">^</p>
	<i>Tunnelling Work</i>	
	<ul style="list-style-type: none"> • Temporary open storage of excavated materials should be covered with tarpaulin or similar fabric during rainstorms. Any washout of construction or excavated materials form the drill and blast tunnelling work should be diverted to the drainage system via appropriate sediment traps. • Ground water pumped out of tunnels should be discharged into the drainage channels which incorporated sediment traps to enhance deposition rates and to remove silt. 	<p style="text-align: center;">N/A</p> <p style="text-align: center;">N/A</p>

Types of Impacts	Mitigation Measures	Status
	<ul style="list-style-type: none"> • Spent grouts used in diaphragm wall construction should be collected in a separate slurry collection system, reconditioned and reused wherever practicable. The disposal of used grouting materials will only be permitted if it is treated to the TM standards before discharge to the storm drains or disposal to landfill. 	N/A
	<i>General Construction Activities</i>	
	<ul style="list-style-type: none"> • Debris and rubbish on site should be collected, handled and disposed of properly to avoid entering the water column and cause water quality impacts. 	^
	<ul style="list-style-type: none"> • All fuel tanks and storage areas will be provided with locks and be located on sealed areas (within bunds of a capacity equal to 110% of the storage capacity of the largest tank or 20% by volume of the fuel stored in that areas, whichever in the greatest). 	^
	<i>Sewage Effluent</i>	
Waste	<ul style="list-style-type: none"> • Construction work force sewage discharges from fixed toilet facilities on-site should be connected to the nearby existing trunk sewer wherever feasible. However, for areas where existing trunk sewer is not available, it is recommended that appropriate and adequate on site portable chemical toilets should be provided by a licensed contractor who will be responsible for appropriate disposal and maintenance of these facilities. • It is considered that sewage discharges could also be treated by on-site septic tanks and soakaway. Minimum clearance away from streams and catchments and other requirements for the proposed septic tank and soakaway should be referred to EPD's Practice Note for Professional Persons, Drainage Plans. 	^ N/A
	<i>General</i>	
	<ul style="list-style-type: none"> • Training and instruction shall be given at a site to construction staff to increase awareness and draw attention to waste management issues and the need to minimise waste generation. The training requirement shall be included in the site waste management plan. 	^
	<i>Storage, Collection and Transportation of Waste</i>	
	<ul style="list-style-type: none"> • Wastes shall be handled and stored in a manner to ensure that they are held securely without loss or leakage. • Authorised or licensed waste hauliers shall be used and they shall only collect wastes prescribed by their permits. • Waste shall be removed on a daily basis. • Waste storage area shall be maintained and cleaned on a daily basis. • Windblown litter and dust during transportation shall be minimised by either covering trucks or transporting wastes in enclosed containers. • Obtain necessary waste disposal permits from the appropriate authorities if they are required. • Wastes shall be disposed of at licensed waste disposal facilities. • Develop procedure such as ticketing system to facilitate tracking of loads, particularly for chemical waste, and to ensure that illegal disposal of wastes does not occur. 	^ ^ ^ ^ ^ ^ ^ ^
<ul style="list-style-type: none"> • Maintain records of the quantities of wastes generated, recycled and disposed. 	^	

Types of Impacts	Mitigation Measures	Status
	<ul style="list-style-type: none"> • General refuse generated on-site shall be stored in enclosed bins or compaction unit separate from C&D and chemical wastes. A reputable waste collector shall be employed by the contractor to remove general refuse from the site, separately from C&D and chemical wastes, on a daily for every second day basis to minimise odour, pest and litter impacts. The burning of refuse on construction sites is prohibited by law. • Reusable rather than disposable dishware shall be used if feasible. 	<p style="text-align: center;">^</p> <p style="text-align: center;">N/A</p>
Ecology	<ul style="list-style-type: none"> • A sediment barrier shall be erected to minimize stream sedimentation at downstream of the project boundary of the Toll Plaza. • Conduct a tree survey before commencement of the construction work. • All measures recommended in the approved landscape proposals under Condition 2.4 in EP above shall be fully implemented in accordance with the details and time schedule set out in the submission. • Loss of the adjacent woodland due to temporary land take shall be returned to the original status immediately. • Wild and uncontrolled fire shall be strictly prohibited • Fences shall be erected along the boundary of the construction sites at the Toll Plaza before commencement of works, to prevent tipping, vehicle movements, and encroachment of personnel onto adjacent wooded areas. 	<p style="text-align: center;">N/A</p> <p style="text-align: center;">^</p> <p style="text-align: center;">N/A</p> <p style="text-align: center;">N/A</p> <p style="text-align: center;">^</p> <p style="text-align: center;">N/A</p>
Landscape and Visual Impact	<ul style="list-style-type: none"> • Landscape mitigation measure 1 (LMM1) – Construction programming and management. The periphery of the works areas at street level shall be managed so that they do not appear cluttered, untidy and unattractive and inconvenient to pedestrians. For example, all hoarding shall be colorfully designed with interesting motifs demonstrating the work of Highways Department. Hoardings with bland colours shall be avoided. • Landscape mitigation measure 2 (LMM2) – Advanced planting and erosion control works. Where possible, the transplantation of existing valuable trees, the stockpiling of topsoil, new planting and erosion control works shall be carried out as early as possible in the construction period instead of at the end. This will assist in maximizing the time for carrying out transplantation and new planting, resulting in a higher success rate for the survival of transplantation and new planting, resulting in a higher success rate for the survival of transplanted trees and the establishment of new screen trees. The stockpiling of topsoil will provide an abundant use of on-site material for growing media. During detailed design, the issue of stockpiling of topsoil in a manner that would avoid washing into the drainage scheme should be examined comprehensively. • Measurement of vibration would also be carried out on a need basis during the piling work 	<p style="text-align: center;">N/A</p> <p style="text-align: center;">N/A</p> <p style="text-align: center;">^</p>

Remarks:

^
N/A

Compliance of mitigation measure;
Not Applicable;

X
•

Non-compliance of mitigation measure;
Non-compliance but rectified by the contractor

**APPENDIX H
SUMMARY OF ENVIRONMENTAL
LICENCES AND PERMITS**

Appendix H - Summary of Environmental Licensing and Permit Status (LCKV)

Permit No.	Valid Period		Details	Status
	From	To		
Environmental Permit (EP)				
EP-103/2001/C	22/7/05	N/A	<p><u>Construction and operation of</u></p> <p>(a) All civil works (including highways, traffic, geotechnical, drainage, structural, architectural and landscaping works) for the Lai Chi Kok Viaduct, the interchange with Ching Cheung Road, the main road within Butterfly Valley and the Eagle's Nest Tunnel;</p> <p>(b) All E&M works (including ventilation, Traffic Control & Surveillance System (TCSS), toll collection system and lighting) for the whole Route 9 between Cheung Sha Wan and Sha Tin;</p> <p>(c) The permanent slope works above the northern portal of the Eagle's Nest Tunnel;</p> <p>(d) The architectural works (including fitting out and furnishings) of the portal buildings of the Sha Tin Heights Tunnel.</p>	Valid
Registration of Chemical Waste Producer				
WPN 5213-261-N2413-04	17/11/03	N/A	N/A	Valid
Water Discharge Licence				
EP482/260/251/1	05/12/03	31/12/08	Discharge of industrial trade effluent arising from the construction site at Route 9 – Lai Po Road Section of Lai Chi Kok Viaduct (Contract HY/2003/01).	Valid
EP482/260/251/2	15/12/03	31/12/08	Discharge of industrial trade effluent arising from the construction site at Route 9 – Lai Chi Kok Viaduct excluding Lai Po Road Section.	Valid
Construction Noise Permit (CNP)				
GW-RW0498-06	16/9/06	15/3/07	<p><i>Location:</i> Butterfly Valley</p> <p><i>Time Period:</i> 0700-2300 (general holiday including Sundays) and 1900-2300 (any day not being a general holiday).</p>	Valid
GW-RW0508-06	13/9/06	12/3/07	<p><i>Location:</i> Butterfly Valley Interchange</p> <p><i>Time Period</i> Any day not being a general holiday between 2100-2400 hours (immediately following a general holiday) and between 2100-0700 hours (not immediately following a general holiday).</p>	Valid
GW-RW0513-06	17/9/06	11/3/07	<p><i>Location:</i> Junction of Castle Peak Road and Ching Cheung Road</p> <p><i>Time Period:</i> 0900-1900 (general holiday including Sundays).</p>	Valid
GW-RW0558-06	1/10/06	31/3/07	<p><i>Location:</i> Butterfly Valley Road</p> <p><i>Time Period:</i> 0700-2300 (general holiday including Sundays) and 1900-2300 (any day not being a general holiday).</p>	Valid
GW-RW0563-06	2/10/06	1/4/07	<p><i>Location:</i> Ching Cheung Road – Lai Wan Road Overpass near Nob Hill</p> <p><i>Time Period:</i> 0900-2300 (general holiday including Sundays) and 1900-2300 (any day not being a general holiday).</p>	Valid

Permit No.	Valid Period		Details	Status
	From	To		
GW-RW0565-06	4/10/06	3/4/07	<i>Location:</i> Castle Peak Road near Ching Cheung Road <i>Time Period:</i> 0700-2300 (general holiday including Sundays) and 1900-2300 (any day not being a general holiday).	Valid
GW-RW0580-06	9/10/06	9/3/07	<i>Location:</i> Castle Peak Road and Butterfly Road <i>Time Period:</i> Any day not being a general holiday for 2100-2400 (immediately following a general holiday) and 2100-0700 hours (not immediately following a general holiday).	Valid
GW-RW0581-06	7/10/06	6/4/07	<i>Location:</i> Junction of Ching Cheung Road and Castle Peak Road <i>Time Period:</i> 0700-2300 (general holiday including Sundays) and 1900-2300 (any day not being a general holiday).	Valid
GW-RW0582-06	9/10/06	8/3/07	<i>Location:</i> Butterfly Valley Interchange <i>Time Period:</i> Any day not being a general holiday for 2100-2400 (immediately following a general holiday) and 2100-0700 hours (not immediately following a general holiday).	Valid
GW-RW0624-06	27/10/06	26/4/07	<i>Location:</i> Kwai Chung Road near Lai Chi Kok Interchange <i>Time Period:</i> Any day not being a general holiday for 2100-2400 (immediately following a general holiday) and 2100-0700 hours (not immediately following a general holiday).	Valid
GW-RW0625-06	31/10/06	28/4/07	<i>Location:</i> Butterfly Valley Road near Lai Chi Kok Reception Centre <i>Time Period:</i> Any day not being a general holiday for 2100-2400 (immediately following a general holiday) and 2100-0700 hours (not immediately following a general holiday).	Valid
GW-RW0642-06	13/11/06	11/4/07	<i>Location:</i> Butterfly Valley Road near Lai Chi Kok Interchange <i>Time Period:</i> Any day not being a general holiday between 2100-2400 hours (immediately following a general holiday) and between 0000-0700 hours & 2100-2400 hours (not immediately following a general holiday).	Valid
GW-RW0643-06	8/11/06	7/5/07	<i>Location:</i> Ching Cheung Road near Butterfly Valley <i>Time Period:</i> 0000-2400 (general holiday including Sundays) and 0000-0700 & 1900-2400 (any day not being a general holiday).	Valid
GW-RN0662-06	24/11/06	19/5/07	<i>Location:</i> Ching Cheung Road near Butterfly Valley <i>Time Period:</i> Any day not being a general holiday for 2100-2400 (immediately following a general holiday) and 2100-0700 hours (not immediately following a general holiday).	Valid
GW-RW0745-06	3/1/07	2/6/07	<i>Location:</i> Lai Po Road near Sham Mong Road <i>Time Period:</i> 0000-2400 (general holiday including Sundays) and 0000-0700 & 1900-2400 (any day not being a general holiday).	Valid

Permit No.	Valid Period		Details	Status
	From	To		
GW-RW0755-06	14/1/07	10/6/07	<i>Location:</i> Lai Po Road near Hoi Lai Estate <i>Time Period:</i> 0000-2400 (general holiday including Sundays) and 0000-0700 & 1900-2400 (any day not being a general holiday).	Valid
GW-RW0004-07	21/1/07	19/6/07	<i>Location:</i> Ching Cheung Road near Mei Foo Sun Chuen <i>Time Period:</i> 0000-2400 (general holiday including Sundays) and 0000-0700 & 1900-2400 (any day not being a general holiday).	Valid
GW-RW0027-07	31/1/07	30/6/07	<i>Location:</i> Lai Wan Road <i>Time Period:</i> 0000-2400 (general holiday including Sundays) and 0000-0700 & 1900-2400 (any day not being a general holiday).	Valid
GW-RW0028-07	28/1/07	25/3/07	<i>Location:</i> Ching Cheung Road <i>Time Period:</i> 0000-2400 (general holiday including Sundays) and 0000-0700 & 1900-2400 (any day not being a general holiday).	Valid
GW-RW0057-07	21/2/07	21/7/07	<i>Location:</i> Kwai Chung Road near Lai Chi Kok Interchange <i>Time Period:</i> 0000-2400 (general holiday including Sundays) and 0000-0700 & 1900-2400 (any day not being a general holiday).	Valid
GW-RW0058-07	25/2/07	19/8/07	<i>Location:</i> Ching Cheung Road section between Nob Hill to Castle Peak Road <i>Time Period:</i> 0000-2400 (general holiday including Sundays) and 0000-0700 & 1900-2400 (any day not being a general holiday).	Valid

**APPENDIX I
COMPLAINT LOGS**

Appendix I - Complaint Log

Log Ref.	Location	Received Date	Details of Complaint	Investigation/Mitigation Action	Status
40318	Nob Hill	18 March 2004	<p>Kwai Tsing District Officer (KTDO) recently received a public noise complaint about construction noise generated from the Route 8 – Lai Chi Kok Viaduct (R8-LCKV) Project, near Nob Hill, Lai Chi Kok. KTDO referred the complaint to the Highways Department (HyD) on the same day. HyD subsequently referred the complaint to the Environmental Team (ET) Leader of the Project on 18 March 2004.</p> <p>The complaint was raised by the Citybase Property Management Ltd. (the management company of Nob Hill) and the Secretary of Nob Hill Owners Committee (Mr. Kevin Tse) about construction noise generated from the R8-LCKV Project at the work areas near Nob Hill. Mr. Kevin Tse mentioned that residents living in Nob Hill have greatly been affected by the noise impacts generating from the R8-LCKV construction works. He also requested relevant government departments to consider installing noise barrier along Ching Cheung Road and to work out possible measures to minimize the noise nuisances to the residents living in the vicinity.</p>	<p>Based on the information provided by the ER, the construction activities conducted in the vicinity of Nob Hill in the period between 2 and 18 March 2004 were:</p> <ul style="list-style-type: none"> ▪ Item 1 – Breaking off existing planter and excavate trial trench to expose underground utilities (using one to two backhoes) ▪ Item 2 – Erect rock fall fence & forming platform for pre-drilling (using one backhoe and occasionally one crane lorry) ▪ Item 4 – Excavate further to expose all underground utilities (using hand tools) ▪ Item 5 – Pre-drilling works (using one drilling rig) <p>Considering the scale of work and the PMEs adopted, the ET believed that the construction noise impact at Nob Hill from the above construction activities of R8-LCKV was not significant.</p> <p>The bored piling work (Item 3) using one crawler crane and one oscillator was started on 19 March 2004, which was two days after the issue date of this complaint, so this activity was not considered in this report.</p> <p>According to the EM&A Manuals, Nob Hill was not selected as Noise Monitoring Location (NML) for the Project. Therefore, no direct noise monitoring data could be provided for the complaint investigation. However, there was no noise level exceedance recorded at the nearby NML (NM4 – Mei Foo Sun Chuen, Phase 5) since the commencement of the project according to ET's inventory.</p> <p>During ET's weekly environmental site inspections on 3, 10, 17 March 2004, no serious noise nuisance induced by the Project works was observed at the sites near Nob Hill.</p> <p>Based on the joint site visit with the representative of HyD, IEC, RSS and ET to the Nob Hill on 30 March 2004, the major noise source at Nob Hill was identified as traffic noise on Ching</p>	Closed

Log Ref.	Location	Received Date	Details of Complaint	Investigation/Mitigation Action	Status
				<p data-bbox="1227 225 1843 284">Cheung Road, which is located very close to this building, especially at or above the Podium Floor (i.e. 5/F).</p> <p data-bbox="1227 316 1883 432">Based on the information obtained, this noise complaint is not considered due to the construction activities of the Project. Nevertheless, the Contractor was recommended to adopt good site practice to minimize the construction noise, such as:</p> <ul data-bbox="1227 437 1912 644" style="list-style-type: none"> <li data-bbox="1227 437 1912 491">• To space out noisy equipment and position it as far away as possible from the sensitive receivers; <li data-bbox="1227 496 1912 550">• To avoid concurrent uses of noisy equipment near the sensitive area; <li data-bbox="1227 555 1912 609">• To ensure the equipment are maintaining in good operation condition; and <li data-bbox="1227 614 1912 644">• To turned off any idle equipment on site. <p data-bbox="1227 676 1890 788">Adding to that, ET is proposed to install one to two noise monitoring stations at Nob Hill in order to monitor the noise impact generated from the R8-LCKV Project to the resident of Nob Hill or the nearby buildings.</p>	

Log Ref.	Location	Received Date	Details of Complaint	Investigation/Mitigation Action	Status
40330	Site Areas near Nob Hill	30 March 2004	<p>Highways Department (HyD) recently received a public noise complaint about construction noise generated from the Route 8 – Lai Chi Kok Viaduct (R8-LCKV) Project, near Nob Hill, Lai Chi Kok. HyD referred the complaint to the RSS and subsequently referred to the ET Leader of the Project on 30 March 2004.</p> <p>The complaint was raised by Mr. Yau, the Office of DCV Member Mr. Cheung Wing Shum, regarding the high pitch construction noise generated at the R8-LCKV site which cause serious nuisance to the residents at Mei Foo.</p>	<p>Based on the information provided by the RSS, the Contractor was not aware of any high pitched construction noise arising from plant employed for their works. The noise complaint referred to may be originated from the damage of a gas main valve on the afternoon of 29 March 2004 in the vicinity of the junction of Mai Lai Road with Lai King Hill Road. The high pitched whistle apparently resulted from the damage which was repaired by TownGas in that afternoon.</p> <p>Based on the information obtained, this noise complaint is considered not due to the construction activities of the Project. Nevertheless, the Contractor was recommended to adopt good site practice to minimize the construction noise, such as:</p> <ul style="list-style-type: none"> • To space out noisy equipment and position it as far away as possible from the sensitive receivers; • To avoid concurrent uses of noisy equipment near the sensitive area; • To ensure the equipment are maintaining in good operation condition; and • To turned off any idle equipment on site. 	Closed
40402	Nob Hill	06 April 2004	<p>A public noise complaint was received by the Contractor (NECSO) on 02 April 2004 regarding the noise generated from the Ching Cheung Road Widening Works of the Route 8 – Lai Chi Kok Viaduct (R8-LCKV) Project, near Nob Hill, Lai Chi Kok.</p> <p>NECSO referred the complaint to the RSS and subsequently referred to the ET Leader of the Project on 6 April 2004</p>	<p>The complaint was raised by Ms Wong, regarding the noise generated from the Ching Cheung Road Widening Works of the R8-LCKV Project, which cause serious nuisance to her.</p> <p>Based on the information provided by the RSS, the plants employed by the Contractor for carrying out bored piling works in front of Nob Hill should not generate excessive noise. The RSS had also checked against the site records that no piling works was in progress in front of Nob Hill on 1-3 April 2004.</p> <p>According to telephone communication between the complainant (Ms Wong) and the RSS on 8 April 2004, the RSS reported that Ms Wong was not complaining about the construction noise generated by the R8-LCKV Project. She was actually complaining about the traffic noise she anticipated to be generated after completion of widening work at Ching Cheung Road in front of Nob Hill.</p>	Closed

Log Ref.	Location	Received Date	Details of Complaint	Investigation/Mitigation Action	Status
				<p>During ET's weekly environmental site inspections on 17, 24 & 31 March 2004 and 7 April 2004, no serious noise nuisance induced by the Project works was observed at the construction sites near Nob Hill.</p> <p>Based on the joint site visit with the representative of HyD, IEC, RSS and ET to the Nob Hill on 30 March 2004, the major noise source at Nob Hill was identified as traffic noise on Ching Cheung Road, which is located very close to this building, especially at or above the Podium Floor (i.e. 5/F).</p> <p>Based on the information obtained, this noise complaint is considered not due to the construction activities of the Project.</p> <p>Nevertheless, the Contractor was recommended to adopt good site practice to minimize the construction noise, such as</p> <ul style="list-style-type: none"> • To space out noisy equipment and position it as far away as possible from the sensitive receivers; • To avoid concurrent uses of noisy equipment near the sensitive area; • To ensure the equipment are maintaining in good operation condition; and • To turned off any idle equipment on site. 	
40710	Pier P7 in Portion E1	10 July 2004	<p>A public complaint was raised on 30th June 2004 regarding the washout of muddy water from the site area of the Route 8 – Lai Chi Kok Viaduct (R8-LCKV) Project, at Pier P7 onto Lai Chi Kok Road.</p> <p>The complaint was referred to the RSS on 3rd July 2004 and subsequently referred to the ET Leader of the Project on 10th July 2004.</p> <p>The complaint was raised by Mr. Chan,</p>	<p>Based on the information provided by the RSS, the spillage of muddy water was in fact due to a burst in a temporary water pipe being utilized in the piling operations at Pier P7 in Portion E1.</p> <p>Emergency remedial works were undertaken preventing further spillage of muddy water. The remaining ponding water within the works area arising from the burst was all removed from the area on 5th July 2004.</p> <p>During ET's weekly environmental site inspection on 14th July 2004, no serious water quality nuisance induced by the Project works was observed at the construction sites near Pier P7. It was also noted that the back of profile barriers along the site boundary had been sealed up by cement as preventive measures.</p>	Closed

Log Ref.	Location	Received Date	Details of Complaint	Investigation/Mitigation Action	Status
			<p>regarding the washout of muddy water from the works area of the R8-LCKV Project onto Lai Chi Kok Road. The washout caused nuisance to the drivers utilizing the road, and may also cause danger to the motorbikes.</p>	<p>During ET's weekly environmental site inspections on 17, 24 & 31 March 2004 and 7 April 2004, no serious noise nuisance induced by the Project works was observed at the construction sites near Nob Hill.</p> <p>Based on the information obtained, the complaint is considered due to the construction activities of the Project. Emergency remedial works had been taken by the Contractor to rectify the situation and preventive measures had also been implemented.</p> <p>Nevertheless, the Contractor was recommended to adopt the following measures to avoid re-occurrence of similar incidents:</p> <ul style="list-style-type: none"> • to enhance surface runoff control measures along the site boundary; • to provide adequate training to the frontline workers; and • to regularly inspect temporary water supply equipment, such as hose pipe to make sure the equipment is in good condition. 	
40809	Ching Cheung Road area near Nob Hill	<p>22-Jul-04 (by EPD)</p> <p>09-Aug-04 (by ET Leader)</p>	<p>EPD received a public noise complaint on 22 July 2004 about construction noise and dust generated from Route 8 – Lai Chi Kok Viaduct (R8-LCKV) Project, at the Ching Cheung Road Area near Nob Hill. EPD subsequently referred the complaint to the ET Leader of the Project on 9 August 2004.</p> <p>The complaint was about the construction noise and dust observed at the Ching Cheung Road area near Nob Hill. The locations of the works areas being concerned by the complainant include:</p> <ol style="list-style-type: none"> 1. Area A: Works area between Nob Hill and Lai Chi Kok Park Swimming Pool 2. Area B: Works area between Ching 	<p>Information Provided by RSS Information (construction activities and equipment adopted) in a 2-week period before the date of complaint, i.e. 7 to 21 July 2004, was obtained from the Resident Site Staff.</p> <p>Area A:</p> <ul style="list-style-type: none"> ▪ Item 1 – Drainage works by using 1 x backhoe; ▪ Item 2 – Bored piling works by using 1 x crawler crane, 1 x air compressor, 1 x reverse circulation drill and 1 x power pack; ▪ Item 3 – Trial trench excavation by man power; ▪ Item 4 – Gas main diversion by 1 x backhoe (performed by TGC's Contractor) <p>Area B: No construction activity was undertaken in the concerned period.</p> <p>Review of Environmental Monitoring Results The routine monitoring stations, which are in the vicinity of the concerned works areas, include: <u>Noise Monitoring</u></p>	Closed

Log Ref.	Location	Received Date	Details of Complaint	Investigation/Mitigation Action	Status
			<p>Cheung Road and Mei Lai Road / Lai Wan Road opposite to Mei Foo Sun Cheung (Phase 5) and Lai Chi Kok Public Library.</p>	<p>NM4: R/F of Mei Foo Sun Chuen (Phase 5) NM8a: M/F of Nob Hill NM8b: 3/F of Nob Hill <u>Air Quality (1-hr TSP / 24-hr TSP) Monitoring</u> AM2: R/F of Lai Chi Kok Sports Centre No Action / Limit level exceedance was identified in July 2004.</p> <p>Environmental Site Inspection During the ET site inspections on 8th, 14th and 20th July 04, no major environmental deficiency with regard to noise and air quality was identified by the auditors.</p> <p>Conclusions Based on the RSS's information, environmental monitoring results as well as the observations made during site inspections, this complaint is considered to be invalid and not due to the construction activities of the Project. Nevertheless, the Contractor was recommended to adopt good site practice to minimize the construction noise and dust impacts, such as:</p> <ul style="list-style-type: none"> • To space out noisy equipment and position it as far away as possible from the sensitive receivers; • To avoid concurrent uses of noisy equipment near the sensitive area; • To ensure the equipment are maintaining in good operation condition; • To turn off any idle equipment on site. • To cover excavated dusty materials by impervious sheeting; • To provide water spray for haul roads, loading/unloading and concrete breaking operations; • To perform wheel wash for every vehicle immediately before leaving the site. 	
50215	Mei Foo Sun Chuen, Phase 5 (Retaining Wall CC-R3)	15-Feb-05 (by ET Leader)	A public complaint was raised on 8 th Feb 2005 regarding construction noise from the site area of the Route 8 – Lai Chi Kok Viaduct (R8-LCKV) Project	<p>Construction Activities</p> <p>During the weekly site inspection on 17 Feb 05, piling work was being conducted at the concerned. The major powered</p>	Closed

Log Ref.	Location	Received Date	Details of Complaint	Investigation/Mitigation Action	Status
			<p>near Mei Foo Sun Chuen. The complaint was referred to the Resident Site Staff on 14th Feb 2005 and subsequently referred to the ET Leader of the Project on 15th Feb 2005.</p> <p>The complaint was raised by a resident in Mei Foo Sun Chuen, regarding the noise generation from the piling work at Retaining Wall CC-R3, adjacent to Po Leung Kuk Tong Nai Kan College.</p>	<p>mechanical equipment (PME) in operation included a mobile crane, an air compressor, a reverse circulation drill and a generator.</p> <p>In view of the separation of the site area and the residential building (around 40 m) and also the high traffic noise from Ching Cheung Road as well as Mei Lai Road, the noise generated from the operation of the PME was believed to be insignificant.</p> <p>Environmental Monitoring</p> <p>The noise monitoring results at Station NM4 (Mei Foo Sun Chuen, Phase 5) for the last 3 months were reviewed in order to evaluate the noise impact from the Project on the noise sensitive receiver. The measured noise levels in last three months were ranged from 70.8 to 75.8 dB(A). It was observed that the measured noise levels were well within the range of baseline noise levels (69.2 to 75.8 dB(A)).</p> <p>The corrected construction noise levels were found to be ranged from 63.5 to 71.5 dB(A), which were well below the noise criterion of 75 dB(A).</p> <p>Conclusions</p> <p>Based on the information obtained and the noise monitoring results, this complaint is considered to be invalid and not due to the construction activities of the Project.</p> <p>Nevertheless, the Contractor was recommended to adopt good site practice to minimize the construction noise impacts.</p>	
50322	Seung Lai House, Wah Lai Estate (Slope S1)	<p>11-Mar-05 (by EPD)</p> <p>22-Mar-05 (by ET Leader)</p>	Environmental Protection Department (EPD) received a public noise complaint on 11 Mar 05 about daytime construction noise generation from R8-LCKV. EPD subsequently referred the	<p>Construction Activities</p> <p>As advised by the RSS, the major construction work during 25 Feb 05 to 11 Mar 05 (2 weeks before the date of complaint) in the vicinity of Wah Lai Estate included excavation work, soil</p>	Closed

Log Ref.	Location	Received Date	Details of Complaint	Investigation/Mitigation Action	Status
			<p>complaint to the Environmental Team (ET) Leader of the Project on 22 Mar 05.</p> <p>The complaint was raised by a resident of Seung Lai House of Wah Lai Estate, regarding the daytime (0800-1800 hrs) construction noise generated from the slope work and road work of R8-LCKV Project. As advised by EPD, the complainant is living on 20/F or above in Seung Lai House.</p>	<p>nail work and installation of u-channel and manholes. The major powered mechanical equipment included excavators, drilling machine and air compressor.</p> <p>In view of the separation of the site area (Slope S1) and the Seung Lai House (around 140 m) and also the traffic noise from Ching Cheung Road, the noise generated from the construction activities at Slope S1 was believed to be insignificant.</p> <p>Environmental Monitoring</p> <p>Ad-hoc noise measurement was conducted at Seung Lai House on 30th Mar 05 and the measured noise level (Leq-30min) was 66.9 dB(A), which was well below the criterion for daytime construction noise of 75 dB(A). The construction noise level (with reduction of background noise level) is expected to be even lower.</p> <p>Conclusion</p> <p>Based on the information obtained and the noise measurement results, this complaint is considered not justifiable. Nevertheless, the Contractor was recommended to adopt good site practice to minimize the construction noise impact.</p>	
50330, 50331, 50404 & 50407	Wah Lai Estate	30-Mar-05, 31-Mar-05, 4-Apr-05 & 7-Apr-05 (by ET Leader via RSS)	Four public complaints were lodged by the residents of Wah Lai Estate regarding the construction noise from the site area of the Route 8 – Lai Chi Kok Viaduct (R8-LCKV) Project near Wah Lai Estate. The complaints were	<p>Construction Activities</p> <p>The site of concern was likely to be Slope S1, which is around 140 m away from Wah Lai Estate. The major construction work at Slope S1 included trimming of slope, soil nail work and erection of u-channels and step channels.</p>	Closed

Log Ref.	Location	Received Date	Details of Complaint	Investigation/Mitigation Action	Status
			<p>referred by the Resident Site Staff to the Environmental Team (ET) Leader on 30th, 31st March, 4th and 7th April 2005, respectively.</p>	<p><i>Environmental Monitoring</i></p> <p>Ad-hoc noise measurement was conducted at Seung Lai House on 30th Mar 05 and 7th Apr 05 and the measured noise levels (Leq-30min) were ranged from 66.9 to 69.1 dB(A), which were well below the criterion for daytime construction noise of 75 dB(A). The construction noise level (with reduction of background noise level) is expected to be even lower.</p> <p><i>Conclusion</i></p> <p>Based on the results of the ad-hoc noise measurements at Wah Lai Estate, no exceedance of daytime noise criterion of 75 dB(A) was recorded. The complaints lodged are therefore considered not justifiable.</p> <p><i>Mitigation</i></p> <p>The Contractor agreed to arrange the noisy activities to commence after 8:00 am. This arrangement could effectively reduce the disturbance to the residents within the more sensitive time period (7:00 am to 8:00 am).</p>	
50404-v2	Mei Foo Sun Chuen	4-Apr-05 (by ET Leader via RSS)	<p>A public complaint was raised on 1st April 2005 regarding construction noise from the site area of the Route 8 – Lai Chi Kok Viaduct (R8-LCKV) Project near Mei Foo Sun Chuen. The complaint was referred to the Resident Site Staff and the ET Leader on 4th</p>	<p><i>Construction Activities</i></p> <p>The site of concern was likely to Retaining Wall CC-R3, adjacent to Po Leung Kuk Tong Nai Kan College. The major construction works at this area included bored piling works and excavation works.</p>	Closed

Log Ref.	Location	Received Date	Details of Complaint	Investigation/Mitigation Action	Status
			April 2005.	<p>Environmental Monitoring</p> <p>According to the EM&A Manual, Mei Foo Sun Chuen, Phase 5 (NM4) is designated as one of the noise monitoring stations.</p> <p>Since the commencement of the impact monitoring programme, the construction noise levels recorded at this station were all below the noise criterion.</p> <p>Conclusion</p> <p>Based on the noise monitoring results at Station NM4 (Mei Foo Sun Chuen), no exceedance of daytime noise criterion of 75 dB(A) was recorded since the commencement of the impact monitoring programme. The complaint lodged is therefore considered not justifiable.</p> <p>Mitigation</p> <p>The Contractor has agreed to arrange the noisy activities to commence after 8:00 am. This arrangement could effectively reduce the disturbance to the residents within the more sensitive time period (7:00 am to 8:00 am). The Contractor also agreed to provide some temporary noise barriers for the noisy machinery if found necessary.</p>	
50613	Mei Foo Sun Chuen	<p>7-Jun-05 (by EPD)</p> <p>13-Jun-05 (by ET Leader)</p>	According to EPD, the complaint was raised by a resident of Mei Foo Sun Chuen (Block 7, Phase 5) on 7 June 2005. It was about construction dust emitted intermittently from the slope works undertaken on the other side of Mei Lai Road.	<p>Site Activities</p> <p>The site of concern was likely to be CCR-R3. Bored piling works and demolition of existing retaining walls were undertaken at this area in the period between 1 and 7 June 2005. It was believed that the demolition of existing retaining wall, which involved concrete breaking, was the activity of concern.</p>	Closed

Log Ref.	Location	Received Date	Details of Complaint	Investigation/Mitigation Action	Status
			<p>The complainant was particularly concerned about the fugitive dust emission during rock / concrete breaking activities.</p>	<p><i>Observations</i></p> <p>On 1 Jun 05, one of the environmental deficiencies noted by the ET was about fugitive dust emission from breaking activities at CCR-R3. The Contractor was reminded to provide sufficient dust mitigation measures for the breaking works. Immediate action was taken by the Contractor to apply water spray for the works as observed during the audit session.</p> <p>On 9 Jun 05, the breaking works were still being taken at CCR-R3. Water spray as a dust mitigation measure was being adopted by the Contractor during the audit. No observable dust emission was noted from the breaking works or other site activities.</p> <p>On 15 Jun 05, the same area was re-inspected due to the receipt of the complaint from EPD. The demolition works had been finished and no other dust emissive activity was being taken. No other dust source from the construction site was observed during the inspection.</p> <p><i>Conclusion</i></p> <p>Based on the observations noted during our site inspections, this complaint is considered to be valid and related to the construction activities of the Project.</p> <p>However, corrective action had been taken by the Contractor and the situation was found improved during the follow-up inspections.</p>	
50721	Hei Lai House, Wah Lai Estate	21-Jul-05 (by ET Leader)	<p>The complaint was lodged by a resident of Hei Lai House of Wah Lai Estate through a Legislative Council member. The complaint was about construction noise nuisance caused by rock breaking work, which claimed to be started from 8:30am daily, carried out at Ching Cheung Road near Wah Lai Estate.</p>	<p><i>Site Activities</i></p> <p>The slope work at Slope S1 was likely to be the activity of concern. The work at Slope S1 recently included the operation of excavator mounted breakers, excavators and dump trucks.</p> <p>The time period of concern was within normal working hours (7am to 7pm) on a weekday not being a public holiday. The noise criterion is 75 dB(A) for domestic premises.</p>	Closed

Log Ref.	Location	Received Date	Details of Complaint	Investigation/Mitigation Action	Status
			<p>The complainant hoped that the rock breaking work could start later i.e. be carried out from noon to afternoon and the site could be fully enclosed.</p> <p>The Environmental Team (ET) of the Project received the complaint on 21 July 2005 and forwarded it to the Resident Site Staff (RSS) to obtain necessary information.</p>	<p><i>Noise Measurement</i></p> <p>Ad-hoc measurements were carried out on the roof of Hei Lai House on 25 July 2005.</p> <p>The results show that the measured noise level is well below the noise criterion of 75 dB(A). The construction noise level (with reduction of background noise) is expected to be even lower.</p> <p><i>Conclusion</i></p> <p>Since the noise measurement results at Wah Lai Estate were below 75 dB(A), the complaint was considered not justifiable.</p> <p>Nevertheless, noise mitigation measures have been implemented by the Contractor to minimize the noise impact arising from the breaking activities:</p> <ol style="list-style-type: none"> 1. Employment of silenced-type breakers; 2. Temporary noise barriers, attached with sound adsorption materials, were erected to screen the site of breaking from sensitive receivers 3. While the permitted hours for construction works are 7am to 7pm on non-holidays, the Contractor has commenced the rock breaking activity after 8:30am. 	
51107	Ching Cheung Road near Mei Foo Sun Chuen	7-Nov-05 (by the ET Leader)	<p>Environmental Protection Department (EPD) received a public complaint about environmental nuisance generated from Route 8 – Lai Chi Kok Viaduct (R8-LCKV) Project. EPD subsequently referred the complaint to the Environmental Team (ET) Leader of the Project on 7 November 2005.</p> <p>According to EPD, the complaint was</p>	<p>The site of concern was likely to be CCR-S4 and CCR-R3. According to RSS's records, bored piling works and soil nail drilling at CCR-R3, excavation works at CCR-S4 in the concerned period.</p> <p><i>Site Inspection</i></p> <p>After receipt of the complaint, an ad-hoc site inspection was carried by ET on 9 November 2005 and the following</p>	Closed

Log Ref.	Location	Received Date	Details of Complaint	Investigation/Mitigation Action	Status
			<p>raised by a resident of Mei Foo Sun Chuen. The complaint was about dark smoke, dust and noise nuisance caused by the construction work of R8-LCKV near Mei Foo Sun Chuen.</p>	<p>observations were made:</p> <ol style="list-style-type: none"> 1. Breaking activities were undertaken at CCR-R2 and R3. Continuous water spray was applied by the workers for dust suppression. Movable noise barriers were erected to alleviate the noise impact. 2. The haul roads and exposed works areas were observed wet. A water sprinkler was installed at the CCR-S4 for water spraying. 3. Most of the slope was shot-creted to avoid wind erosion. 4. Bored piling work was carried out near the site exit of CCR-R3. Since bored piling mainly involves handling of wet materials, dust nuisance causing by this type of work is not anticipated. Gas exhaust from the machines was visually clear and no dark smoke was identified. <p><i>Environmental Monitoring</i></p> <p>Air quality monitoring was conducted at Lai Chi Kok Sports Centre and noise monitoring is conducted at Mei Foo Sun Chuen. No exceedance was recorded for both monitoring.</p> <p><i>Conclusion</i></p> <p>Based on the ad-hoc site inspection and the environmental monitoring results, this complaint was considered not justifiable.</p>	
60118	Lai Po Road near Hoi Lai Estate	18-Jan-06 (by the ET Leader)	<p>Environmental Protection Department (EPD) received a public complaint about environmental nuisance generated from Route 8 – Lai Chi Kok Viaduct (R8-LCKV) Project. EPD subsequently referred the complaint to the Environmental Team (ET) Leader of the Project on 18 January 2006.</p> <p>According to EPD, the complaint was lodged by a resident of Hoi Ming</p>	<p><i>Site Activities</i></p> <p>According to the RSS's records, night works were carried out by the Contractor between 2000 hrs on 14 January 2006 and 0530 hrs on 15 January 2006:</p> <ul style="list-style-type: none"> • Delivery of segment from storage yard near Pier P5/L to Pier 15 for erection; • Stressing to temporary PT bars of segments at Pier B3. <p>The above night works, which involved operation of tractor,</p>	Closed

Log Ref.	Location	Received Date	Details of Complaint	Investigation/Mitigation Action	Status
			<p>House of Hoi Lai Estate. The complaint was about construction noise nuisance caused by construction work of R8-LCKV carried out at Lai Po Road near Hoi Lai Estate. The noise nuisance was noted since 14 January 2006 during the periods from 2330 hrs to 0600 hrs.</p>	<p>mobile crane, lifting frame and generator, were undertaken under the two construction noise permits CNP no. GW-RW0739-05 and GW-RW0740-05.</p> <p>Environmental Monitoring</p> <p>In order to evaluate the noise impact onto the residents of Hoi Lai Estate, nighttime noise monitoring was carried out on 18 January 2006 at 23:00. The above monitoring results revealed that the measured noise levels were close to the reference background levels. After correction of the mean background level, all corrected noise levels were below the noise criterion of 55 dB(A).</p> <p>Conclusion</p> <p>Based on the information collected and the monitoring results, the complaint is considered not justifiable.</p> <p>Nevertheless, the Contractor was reminded to take sufficient noise mitigation measures to minimize the environmental impact on the nearby community.</p>	
60119	Mei Foo Sun Chuen (Phase 5)	18-Jan-06 (by the ET Leader)	<p>Environmental Protection Department (EPD) received a public complaint about environmental nuisance generated from Route 8 – Lai Chi Kok Viaduct (R8-LCKV) Project. EPD subsequently referred the complaint to the Environmental Team (ET) Leader of the Project on 19 January 2006.</p> <p>According to EPD, the complaint was raised by a resident of Mei Foo Sun Chuen via a Sham Shui Po District</p>	<p>Site Activities</p> <p>The site of concern was likely to be CCR-S4, CCR-R2 and CCR-R3. According to RSS's records, site activities included:</p> <ul style="list-style-type: none"> • Trimming of existing rock slope at CCR-S4; • Excavation and rock dowel installation at CCR-R2; and • Construction of cable trough at CCR-R3 by CLP's contractor. <p>Site Inspection</p> <p>After receipt of the complaint, an ad-hoc site inspection was carried by ET on 19 January 2006. No environmental deficiency</p>	Closed

Log Ref.	Location	Received Date	Details of Complaint	Investigation/Mitigation Action	Status
			<p>Council Member's Office. The complaint mentioned that residents of Mei Foo Sun Chuen Stage 5 were adversely affected by construction dust caused by the Route 8 work carried out at the slopes adjacent to Ching Cheung Road.</p>	<p>regarding construction dust was identified during the inspection.</p> <p>Environmental Monitoring</p> <p>All monitoring results in Jan 06 revealed that no exceedance was recorded for the air quality (1-hr and 24-hr TSP) criteria.</p> <p>Contractor's Action</p> <p>The Contractor of R8-LCKV had implemented several dust mitigation measures:</p> <ul style="list-style-type: none"> • Haul roads, exposed slope surface and soil stockpiles were watered regularly by hose pipes and sprinklers; • Idled exposed slope were shot-creted; and • Watering was applied for the dust emissive activities, such as loading and unloading of dusty materials, excavation and breaking works. <p>Conclusion</p> <p>Based on the ad-hoc site inspection and the environmental monitoring results, this complaint was considered not justifiable. Nevertheless, the Contractor was reminded to keep on the dust mitigation measures being implemented and step up the measures if necessary.</p>	
<p>60213 60216 60220 60222</p>	<p>Hoi Lai Estate (Lai Po Road)</p>	<p>13-Feb-06 16-Feb-06 20-Feb-06 22-Feb-06</p> <p>(by the ET Leader)</p>	<p>Four environmental complaints were received in this reporting month. Three of them were referred by EPD on 13th, 20th and 22nd Feb 06 and the other one was referred by HyD via MHJV on 16th Feb 06.</p> <p>All about construction noise due to night works at Lai Po Road near Hoi Lai Estate.</p>	<p>Site Activities</p> <p>Since around mid-January 2006, segments were transported to Piers P15 and B4, under the permission of construction noise permit (CNP).</p> <p>It was suspected that the sound of concern was generated from tractors for precast segment transportation. In view of the safety of workers, an alert sound and flashing are maintained during backing action of the tractors.</p> <p>Site Inspection</p>	<p>Closed</p>

Log Ref.	Location	Received Date	Details of Complaint	Investigation/Mitigation Action	Status
			<p>Environmental Protection Department (EPD) received a public complaint about environmental nuisance generated from Route 8 – Lai Chi Kok Viaduct (R8-LCKV) Project. EPD subsequently referred the complaint to the ET Leader on 20 April 2006.</p> <p>The complaint is about construction noise nuisance caused by construction work of night works at location near both Hoi Lai Estate and West Kowloon Highway between 14 and 17 April 2006.</p>	<p>An ad-hoc inspection was carried out by the ET on 16 Feb 06 from 00:30 to 02:30 am. Noise measurement was carried out during the inspection to evaluate the noise impact onto the residents of Hoi Lai Estate. During the monitoring, the major noise source identified was the road traffic noise from Sham Mong Road and Lai Po Road. No alarm sound or alike from the construction equipment was noted. The above monitoring results revealed that the measured noise levels were close to the reference baseline level. After correction of the mean background level, most of data were below the noise criterion of 55 dB(A).</p> <p><i>Conclusion</i></p> <p>Based on the information collected and the monitoring results, the complaints are considered not justifiable.</p> <p>It was suspected that the nuisance was caused by the alert sound of tractors during backward movement which serves as a safety measure. However, the RSS and the Contractor are considering the possibility of lowering the alert sound level or replacing by a less disturbing pitch in order to minimize the noise nuisance to residents of Hoi Lai Estate.</p> <p><i>Site Activities</i></p> <p>According to the Resident Site Staff (RSS)'s records, the construction works were carried out by the Contractor from daytime to 2230 hours on 14 April and from 2000 hours to 0600 hours 16 April 2006.</p> <p>The construction activities near Hoi Lai estate included: -</p> <ul style="list-style-type: none"> • Erecting segments at column PA/R; • Stressing of top tendon wires of segments and erecting segments at column P1/R; and • Transporting segments to storage yard. 	

Log Ref.	Location	Received Date	Details of Complaint	Investigation/Mitigation Action	Status
60420	Near both Hoi Lai Estate and West Kowloon Highway	20-Apr-06 (by the ET Leader)		<p>The above construction activities were undertaken under a construction noise permit CNP no. GW-RW0172-06.</p> <p>Base on the RSS's preliminary investigation, it was suspected that the noise nuisance of concern was caused by loading and unloading of materials, hammering and/or dropping of materials on ground during the stressing works and transportation of precast segment by tractors.</p> <p>Contractor's Action</p> <p>The Contractor had implemented a short term mitigation measures:-</p> <ul style="list-style-type: none"> • Turned off the alert sound of tractors during backward movement in order to reduce the potential for noise impact; • Strengthened their management on worker's working manner such as avoid dropping of material on ground, wrapping up of hammering equipment and etc.; and • Conducted training of worker in order to reducing noise nuisance during the night works. <p>Conclusion</p> <p>Based on the information collected and the monitoring results, the complaints are considered not justified.</p> <p>It was suspected that the nuisance was caused by loading and unloading of materials, hammering and/or dropping of materials on ground during the stressing works and transportation of precast segment by tractors.</p> <p>The Contractor has strictly complied with PME allowed in the CNP No. GW-RW0172-06. Besides, night work at the concerned location was completed. No further construction work at night at this location is anticipated.</p>	Close

Log Ref.	Location	Received Date	Details of Complaint	Investigation/Mitigation Action	Status
60428	Between Ching Cheung Road and Mei Lai Road (near Phase 5 of Mei Foo Sun Chuen)	28-Apr-06 (by the ET Leader)	<p>Environmental Protection Department (EPD) received a public complaint about tree cutting in the area between Ching Cheung Road and Mei Lai Road (near Phase 5 of Mei Foo Sun Chuen). EPD subsequently referred the complaint to the ET Leader on 28 April 2006.</p> <p>The complaint was about the Contractor cut trees in the area between Ching Cheung Road and Mei Lai Road (near Phase 5 of Mei Foo Sun Chuen). This had removed the traffic noise barrier effect of the trees and hence made the residents of Mei Foo Sun Chuen becoming being seriously affected by the traffic noise nuisance.</p>	<p>Site Activities</p> <p>According to the Resident Site Staff (RSS)'s records, current construction activities included segment erection works for Slip Road D, excavation works for cut slope CCR-S4 and retaining wall construction at CCR-R2 and CCR-R3.</p> <p>Since excavation for cut slopes and construction of slip road D are required at this area, tree cutting is unavoidable. Tree felling application was approved by DLO/KW.</p> <p>Contractor Action</p> <p>Under the EP condition and EIA, there is no need for this project to mitigate the traffic noise barrier effect due to the removal of trees.</p> <p>No follow up action was required for this complaint.</p> <p>Conclusion</p> <p>Under the EP conditions and EIAO, there is no need for this project to mitigate the traffic noise barrier effect due to the removal of trees.</p> <p>Based on the information collected, the complaint is considered not justifiable.</p> <p>Since excavation for cut slopes and construction of slip road D are required at this area, tree cutting is unavoidable. Tree felling application was approved by DLO/KW.</p> <p>Compensatory planting will be provided at the concerned area after completion of the construction works in order to improve the landscape and visual impacts.</p> <p>No follow up action will be required for this complaint.</p>	Close

Log Ref.	Location	Received Date	Details of Complaint	Investigation/Mitigation Action	Status
60522	Hoi Lai Estate (Hoi Fai House)	22-May-06 (by ET Leader)	<p>Environmental Protection Department (EPD) received a public complaints about noise nuisance generated from Route 8 – Lai Chi Kok Viaduct Project. EPD subsequently referred the complaint to ET Leader on 22 May 2006.</p> <p>The complaint was concerned about the noise produced from construction work during the period between 2300 hours and 0100 hours every night since 3 weeks ago. The complaint described the noise being like sound of poring concrete.</p>	<p>Site Activities</p> <p>According to the RSS's records, only precast segment transportation works at the concerned area which was used as the segment storage yard near Pier P5L to Piers near Mui Kong Tsuen.</p> <p>No concreting activities were carried out at the abovementioned area between 2300 hours and 0100 hours every night in concerned period. In addition, the transportation works were usually carried out from 2000 hours to 0300 hours (or before 0300 hours).</p> <p>Contractor Action</p> <p>The idle and backup equipments such as tractors has turned off or throttled down in order to reduce the noise impact since the last complaint on this issue near Hoi Lai Estae. Besides, the above night works were undertaken with three construction noise permits.</p> <p>Site Inspection</p> <p>An ad-hoc inspection was carried out by the ET at 2300 on 26 May 2006. During the inspection, no construction activities were carried out at the concerned area, where the tractor and mobile crane were throttled down.</p> <p>Conclusion</p> <p>According to RSS's information, no concreting activities were carried out at the concerned area. Therefore, the major noise nuisance (pouring concrete) might not be generated from the abovementioned area. Besides, the Contractor strictly complied with PME allowed in the CNP No. GW-RW0172-06. In addition, the Contractor had turned off the alert sound of tractors during backward movement.</p> <p>Based on the information collected, the complaint is considered</p>	Closed

Log Ref.	Location	Received Date	Details of Complaint	Investigation/Mitigation Action	Status
				<p>not justifiable.</p> <p>However, the Contractor was reminded to continuously implement their practice to prevent noise nuisance generation due to the construction works. The site situation will be continuously reviewed by ET and RSS also.</p>	
60609	Near Phase 5 of Mei Foo Sun Chuen	9-Jun-06 (by ET Leader)	<p>The Integrated Complaint Centre (ICC) of HKSAR received a public complaint about environment nuisance generated from Route 8 – Lai Chi Kok Viaduct (R8-LVKC). Resident Site Staff (RSS) subsequently referred the complaint to the ET Leader on 9 June 2006.</p> <p>The complaint was about the noise generated from rock excavation work from 9 a.m. to 6 p.m. at the area between Ching Cheung Road and Mei Lai Road (near Phase 5 of Mei Foo Sun Cheun).</p>	<p>Site Activities</p> <p>As advised by the RSS, the site of concerned area was likely to be CCR-S4.</p> <p>According to the RSS's records, 1 number of excavator mounted breaker was used to carry out rock breaking work at CCR-S4 during the period between 9 a.m. and 6 p.m.</p> <p>The excavation and rock breaking activities at the concerned area will likely be completed by end of September 2006.</p> <p>Contractor Action</p> <p>The silent rock breaking equipment has been used and noise barriers were erected to minimize the noise impact generated from the breaking activity.</p> <p>Site Inspection and Environmental Monitoring</p> <p>An ad-hoc inspection was carried out by ET on 14 June 2006 from 1:30 p.m. to 4:30 p.m. and 16 June 2006 from 4:00 p.m. to 4:45 p.m.</p> <p>During the inspections, the construction activities at CCR-S4 included handheld breaking, excavation and rock breaking activities were carried out at CCR-S4. However, the temporary noise barriers were erected at the abovementioned location as same as RSS's mentioned.</p> <p>Noise measurement was carried out during the inspection to</p>	Closed

Log Ref.	Location	Received Date	Details of Complaint	Investigation/Mitigation Action	Status
				<p>evaluate the noise impact onto the residents of Mei Foo Sun Chuen. The monitoring location was original monitoring location NM4 (Mei Foo Sun Chuen Phase 5).</p> <p>The measured monitoring results were close to the reference baseline level. After correction of the mean background level, the monitoring data were below the noise criterion of 75 dB(A).</p> <p>Conclusion</p> <p>Base on the information collection and the monitoring result, the complaint was considered not justifiable.</p> <p>The Contractor had implemented noise mitigation measures to minimize the noise impact. Besides, the monitoring result were below the noise criteria of 75dB(A). However, the Contractor was still reminded to continuously implement their practice to prevent noise nuisance generation from the construction works.</p> <p>The environmental conditions of the site will be continuously reviewed by the RSS and the ET.</p>	
60626	Near Phase 5 of Mei Foo Sun Chuen	26-Jun-06 (by ET Leader)	<p>The Integrated Complaint Centre (ICC) of HKSAR received a public complaint through a facsimile on 12 June 2006 about an environmental nuisance generated from Route 8 – Lai Chi Kok Viaduct 9R8-LCKV) Project. Resident Site Staff (RSS) subsequently referred the complaint to the ET Leader on 26 June 2006.</p> <p>According to the explanation from the RSS, this complaint was indeed the same as that received by the ET on 9 June 2006. The complaint initiated the complaint verbally to the ICC on 8 June 2006 and then also issued a facsimile to the ICC. The facsimile was transferred to the RSS on 12 June 06</p>	<p>Site Activities</p> <p>As advised by the RSS, the site of concerned area was likely to be CCR-S4.</p> <p>According to the RSS's records, 1 number of excavator mounted breaker was unsed to carry out rock breaking work at CCR-S4 during the period between 9 a.m. and 6 p.m.</p> <p>The excavation and rock breaking activities at the concerned area will likely be completed by end of September 2006.</p> <p>Contractor Action</p> <p>The silent rock breaking equipment has been used and noise barriers were erected to minimize the noise impact generated from the breaking activity.</p>	Closed

Log Ref.	Location	Received Date	Details of Complaint	Investigation/Mitigation Action	Status
			<p>and eventually reached the ET on 26 June 2006.</p> <p>The complaint was about the noise generated from rock excavation work from 9 a.m. to 6 p.m. at the area between Ching Cheung Road and Mei Lai Road (near Phase 5 of Mei Foo Sun Cheun).</p> <p>This complaint was made by the same complainant to the ICC through two different channels (by phone and by facsimile) and the ET of the Project was firstly notified on 9 June 2006. A complaint investigation report was issued on 22 June 06.</p> <p>As the ET received this separate complaint after the issue of the complaint investigation report and considered the nature of the complained event (general construction during daytime but not single event at a particular moment), the complaint investigation procedures were initiated.</p>	<p><i>Site Inspection and Environmental Monitoring</i></p> <p>As the complaint was identical to the one received on 9 June 06 by the ET, the ad-hoc inspections carried out on 14 June 2006 from 1:30 p.m. to 4:30 p.m. and 16 June 2006 from 4:00 p.m. to 4:45 p.m. were still applicable to this report. In addition, further ad-hoc inspections were carried out on 28 June 2006 from 1:30 p.m. to 4 :00 p.m. and 3 July 2006 from 9:30 a.m. to 11:30 a.m.</p> <p>During the aforesaid inspections, the construction activities at CCR-S4 included handheld breaking, excavation and rock breaking activities were carried out at CCR-S4. However, the temporary noise barriers were erected at the abovementioned location.</p> <p>In addition to the noise measurement conducted on 14 and 16 June 2006, further noise measurement was carried out on 30 June 2006 to evaluate the noise impact onto the residents of Mei Foo Sun Chuen. The monitoring location was original monitoring location NM4 (Mei Foo Sun Chuen Phase 5).</p> <p>Noise measurement carried out on 30 June 06, after correction of the mean background level, the monitoring data were below the noise criterion of 75 dB(A)</p> <p><i>Conclusion</i></p> <p>This complaint was identical to the one received by the ET on 9 June 06 because the complainant addressed the complaint to the ICC through two different channels (by phone and by facsimile). The facsimile was transferred to the RSS on 12 June 06 and eventually reached the ET on 26 June 06.</p> <p>Base on the information collection and the monitoring result, the complaint was considered not justifiable.</p> <p>The Contractor had implemented noise mitigation measures to minimize the noise impact. Besides, the monitoring result were</p>	

Log Ref.	Location	Received Date	Details of Complaint	Investigation/Mitigation Action	Status
				<p>below the noise criteria of 75dB(A). However, the Contractor was still reminded to continuously implement their practice to prevent noise nuisance generation from the construction works.</p> <p>The environmental conditions of the site will be continuously reviewed by the RSS and the ET.</p>	
60830	Near Mei Foo and Lai King Hill Road	30-Aug-06 (by ET Leader)	<p>The Integrated Complaint Centre (ICC) of HKSAR received a public complaint on 25 August 2006 about an environmental nuisance generated from Route 8 – Lai Chi Kok Viaduct 9R8-LCKV) Project. Resident Site Staff (RSS) subsequently referred the complaint to the ET Leader on 30 August 2006.</p> <p>The complaint was concerned about dust generated from the rock drilling works affected the nearby ASRs. The complaint described that spraying of water during rock drilling works was not implemented.</p>	<p>Site Activities</p> <p>According to RSS's record, rock dowel installation for slope stabilization at CCR-S1 was commenced on 22 August 2006 and would likely last for at least 6 months.</p> <p>Contractor Action</p> <p>After receiving the complaint, the Contractor has further enhanced the dust mitigation measures as follows:-</p> <ul style="list-style-type: none"> • Enclosing the rock dowel drilling work on three sides, i.e. top, back and the left hand side, with tarpaulin sheets; • Spraying of water at the hole during drilling; • Wrapping the head of the drilling rig with a wet thick towel. <p>Site Inspection and Environmental Monitoring</p> <p>During the monthly site inspection on 4th September 2006, rock drilling at the slope CCR-S1 was carrying out. The ET observed that the work area was enclosed by tarpaulin sheets at three sides. Water was sprayed continuously at the drilling hole and head of the drilling rig was enclosed with a wet thick towel. All the mitigation measures mentioned by the RSS were implemented.</p> <p>Conclusion</p> <p>Base on the information collected and the monitoring results, the complaints are considered not justifiable.</p> <p>It was because there was no exceedance of the air quality</p>	Closed

Log Ref.	Location	Received Date	Details of Complaint	Investigation/Mitigation Action	Status
				<p>monitoring results and dust mitigation measures were implemented by the Contractor during the rock drilling works.</p> <p>However, the Contractor was still reminded to take sufficient dust mitigation measures to minimize the environmental impact on the nearby community:</p> <ul style="list-style-type: none"> • Enclose dusty activity such as rock drilling with tarpaulin sheet; • Apply water spraying for any dust emissive activities, such as breaking, excavation, loading and unloading of dusty materials; • Cover long-term idle exposed slope surfaces and stockpiles with tarpaulin sheets. <p>The environmental conditions of the site will be continuously reviewed by the RSS and the Environmental Team through site inspections and monitoring exercises.</p>	
60831	Between Lai Wan Road and Lai King Hill Road	31-Aug-06 (by ET Leader)	<p>Environmental Protection Department (EPD) received a public complaint about environment nuisance generated from Route 8 – Lai Chi Kok Viaduct Project. EPD subsequently referred the complaint to ET Leader on 31 August 2006.</p> <p>The complaint was concerned about construction noise, dust and waste water generated from the construction work affect the nearby NSRs after 19.00 hrs, the nearby ASRs and discharged to exiting road respectively</p>	<p>Site Activities</p> <p>According to RSS's record, rock dowel installation for slope stabilization at CCR-S1 was commenced on 22 August 2006 and would likely last for at least 6 months.</p> <p>Contractor Action</p> <p>With reference to RSS's site diary, all site activities including drilling works at the concerned area were conducted between 8:00 and 18:00 daily. Ad hoc site observation carried out by the RSS confirmed that no construction activity was carried out after 18:00.</p> <p>As advised by the RSS, tarpaulin sheet covering and water spraying were provided by the Contractor to mitigate the dust nuisance generated from the rock drilling works. On 31 August 2006, the Contractor was further enhanced the dust mitigation measures as follows:-</p> <ul style="list-style-type: none"> • Enclosing the rock dowel drilling work on three sides, i.e. 	Closed

Log Ref.	Location	Received Date	Details of Complaint	Investigation/Mitigation Action	Status
				<p>top, back and the left hand side (LHS) with tarpaulin sheets;</p> <ul style="list-style-type: none"> • Spraying water at the hole during drilling; • Wrapping the head of the drilling rig with a wet thick towel. <p><i>Site Inspection and Environmental Monitoring</i></p> <p>During the monthly site inspection on 4th September 2006, rock drilling at the slope CCR-S1 was carrying out. The ET observed that the work area was enclosed by tarpaulin sheets at three sides. Water was sprayed continuously at the drilling hole and head of the drilling rig was enclosed with a wet thick towel. All the mitigation measures mentioned by the RSS were implemented.</p> <p><i>Conclusion</i></p> <p>Base on the information collected and the monitoring results, the complaint was considered not justifiable.</p> <p>It was because there was no exceedance of the air quality monitoring results and dust mitigation measures were implemented by the Contractor during the rock drilling works. No construction activities were carried after 18:00 in the period mentioned by the complainant. In addition, no wastewater discharge was observed.</p> <p>However, the Contractor was still recommended to take the following mitigation measures to minimize the environmental impact on the nearby community:</p> <p><u>Dust Nuisance</u></p> <ul style="list-style-type: none"> • Enclose dusty activity such as rock drilling by tarpaulin sheet; • Apply water spraying for any dust emissive activities, such as breaking, excavation, loading and unloading of dusty materials; • Cover long-term idle exposed slope surfaces and stockpiles with tarpaulin sheets. 	

Log Ref.	Location	Received Date	Details of Complaint	Investigation/Mitigation Action	Status
				<p><u>Construction Noise</u></p> <p>The Contractor was reminded that construction activities during restricted hours could only be carried out with a valid Construction Noise Permit (CNP). In addition, appropriate noise mitigation measures described in the CNP should be implemented in order to minimize the noise impact on the nearby noise sensitive receivers.</p> <p><u>Wastewater Discharge</u></p> <ul style="list-style-type: none"> • Fill up the gaps under the footings of hoarding fence along Lai King Hill Road so as to prevent spillage of muddy water during heavy rain onto the existing road. <p>The environmental conditions of the site will be continuously reviewed by the Resident Site Staff and the Environmental Team through site inspections and monitoring exercises.</p>	
60925	Near Ching Cheung Road, Nob Hill and Mei Lai Road	25-Sep-06 (by ET Leader)	<p>The Integrated Complaint Centre (ICC) of HKSAR received a public complaint on 25 September 2006 about the an environmental nuisance generated from Route 8 – Lai Chi Kok Viaduct 9R8-LCKV) Project. Resident Site Staff (RSS) subsequently referred the complaint to the ET Leader on 25 September 2006.</p> <p>The complaint was concerned about the noise generated from the construction works after 19:00 at the area near Ching Cheung Road, Nob Hill and Mei Lai Road</p>	<p><i>Site Activities</i></p> <p>According to RSS’s record, rock dowel installation for slope stabilization at the Slope CCR-S1 was commenced on 22 August 2006 and would last for at least 6 months and the first batch of rock drilling works at the Slope CCR-S4 was commenced on 19 September 2006 and completed on 23 September 2006.</p> <p><i>Contractor Action</i></p> <p>After receiving the complaint, the Contractor has further enhanced the noise mitigation measures as follows:-</p> <ul style="list-style-type: none"> • Placing of a wooden box to cover the head of drilling; • Spraying of water at the hole during drilling and erecting of nylon sheets; • Providing silent type drilling rigs for the drilling works at both Slopes CCR-S1 and CCR-S4 <p><i>Site Inspection and Environmental Monitoring</i></p>	Closed

Log Ref.	Location	Received Date	Details of Complaint	Investigation/Mitigation Action	Status
				<p>During the weekly site inspection on 27 September 2006, rock drilling at the Slope CCR-S1 was not carrying out. The ET observed that the work area was enclosed by tarpaulin sheets at three sides. Temporary noise barrier was erected at the working platform of the Slope CCR-S1.</p> <p>The ET also undertook an ad hoc site inspection at the concerned areas after 19:00 on 27 September 2006. No construction activities were observed and noise monitoring was not conducted.</p> <p>Conclusion</p> <p>Base on the information collected and the monitoring results, there was no exceedance of the noise monitoring results and noise mitigation measures were implemented by the Contractor during the rock drilling works.</p> <p>However, the Contractor was still reminded to carry out construction activities only within the permitted working hours (i.e. 07:00 – 19:00 on weekday) and to take sufficient noise mitigation measures to minimize the environmental impact on the nearby community:</p> <ul style="list-style-type: none"> • Provide silent type drilling rigs for the drilling works; • Placing of wooden box to cover the head of drilling; • Apply water spraying for at the hole during drilling; <p>The environmental conditions of the site will be continuously reviewed by the RSS and the Environmental Team through site inspections and monitoring exercises.</p>	
61025	Lai Chi Kok Road Flyover near PCCW building	25-Oct-06 (by ET Leader)	The Integrated Complaint Centre (ICC) of HKSAR received a public complaint on 25 th October 2006 regarding noise nuisance generated from Route 8 – Lai Chi Kok Viaduct R8-LCKV) Project. Resident Site Staff (RSS) subsequently	<p>Site Activities:</p> <p>According to RSS's record, installation of catchfan at Pier P5/L to P6 near PCCW was carried out at around 0115 to 0500 at both nights of 19th and 20th October 2006. The construction equipment used in both nights included one mobile crane, one crane lorry and one generator.</p>	Closed

Log Ref.	Location	Received Date	Details of Complaint	Investigation/Mitigation Action	Status
			<p>referred the complaint to the ET Leader on 25th October 2006.</p> <p>The complaint was concerned about the noise nuisance generated from workers and construction vehicles during the mid-night between 0100 and 0200 on both 19th and 20th October 2006 at Lai Chi Kok Road Flyover near PCCW building.</p>	<p>Contractor Action According to RSS' record, acoustic material wrapping the head of chain blocks and hessian bags placing on ground around catchfans to suppress noise generation when hand tools were dropped onto ground.</p> <p>Environmental Monitoring An ad-hoc site observation and noise monitoring at Hoi Fai House of Hoi Lai Estate were conducted by the Contractor on 26th October 2006 between 0100 and 0130. The ET also carried out an ad-hoc inspection on 28th October 2006 from 0100 to 0200. During the inspection, segment erection work was carried out at Pier P5 to P6, which involved the operation of mobile crane and movement of lorry and trucks.</p> <p>During the monitoring, the major noise source identified was the road traffic noise. The monitoring results revealed that the measured noise levels were close to the reference background levels. After correction of the mean background level, all corrected noise levels were below the noise criterion of 55 dB (A) which consists with the noise monitoring results from the Contractor.</p> <p>Conclusion Based on the information collected, the complaint is considered justifiable although the monitoring results complied with the noise criteria.</p> <p>Nevertheless, the Contractor was reminded to take sufficient noise mitigation measures to minimize the environmental impact on the nearby community:</p> <ul style="list-style-type: none"> • To strengthen management on worker's working manner, such as avoiding dropping materials on ground; • No hammering is allowed during restricted hours; and • To provide adequate training to workers working, esp. for night works. <p>The environmental conditions of the site will be continuously</p>	

Log Ref.	Location	Received Date	Details of Complaint	Investigation/Mitigation Action	Status
				reviewed by the Resident Site Staff and the Environmental Team.	
61103	Pier C13 and C14 at Lai Wan Road Overpass	3-Nov-06 (by ET Leader)	<p>The Integrated Complaint Centre (ICC) of HKSAR received a public complaint on 28th October 2006 regarding noise nuisance generated from Route 8 – Lai Chi Kok Viaduct R8-LCKV) Project. Resident Site Staff (RSS) subsequently referred the complaint to the ET Leader on 3rd November 2006.</p> <p>The complaint was concerned about noise generated from the general cleaning work of deck surface using water jet between Pier C13 and C14 at Lai Wan Road Overpass, at the evening of 28th October 2006.</p>	<p>Site Activities</p> <p>According to the RSS's record, there is a CNP (CNP no. GW-RW0563-06) at the concerned location. Construction activities were allowed to be carried out between 19:00hr and 23:00hr (any day not being a general holiday) under the CNP.</p> <p>Environmental Monitoring</p> <p>During the weekly site inspections in October 2006, no non-compliance or observation on noise was recorded. Accordance to the EM&A program, two noise monitoring stations at Nob Hill, namely (NM8a and NM8b), have been set up in order to monitor the noise level generated from the construction activities. The Station (NM8b) is strongly influenced by road traffic noise from Ching Cheung Road. The measurement at this station is for reference purpose, but not for compliance check for construction noise. All measured value were lower than the noise criterion of 75 dB(A). No exceedance of noise level has been recorded in October 2006. Moreover, based on our site observation record during monitoring, road traffic noise from Ching Cheung Road was the major noise source.</p> <p>Conclusion</p> <p>Based on the information collected, the complaint is considered not justifiable.</p> <p>Nevertheless, the Contractor was reminded to take sufficient noise mitigation measures to minimize the environmental impact on the nearby community:</p> <p>As the general cleaning work could be carried out during normal working hours (i.e. 07:00 to 19:00hr) instead as the work was not critical. RSS would remind the Contractor to programme their works better in order to minimize nuisance to nearby residents.</p> <p>The environmental conditions of the site will be continuously reviewed by the Resident Site Staff and the Environmental</p>	Closed

Log Ref.	Location	Received Date	Details of Complaint	Investigation/Mitigation Action	Status
61121-1	Area near Lai Chi Kok Swimming Pool	21-Nov-06 (by ET Leader)	<p>The Integrated Complaint Centre (ICC) of HKSAR received a public complaint through telephone on 18th November 2006 regarding noise nuisance generated from Route 8 – Lai Chi Kok Viaduct R8-LCKV) Project. Resident Site Staff (RSS) subsequently referred the complaint to the ET Leader on 21st November 2006.</p> <p>The complaint was concerned about noise generated from the construction works between 09:00 and 18:30 at the area near Lai Chi Kok Swimming Pool.</p>	<p>Team.</p> <p>Site Activities According to RSS's record, rebar fixing, formwork erection, placing concrete and preparation work for construction joint were carried out at the concerned site during the period of 13th to 18th November 2006 and the construction works within the mentioned period were occasionally finished at 18:30.</p> <p>As advised by the RSS, the RSS has recommended the Contractor to finish the construction works at the concerned areas before 18:00 in order to minimize the noise nuisance to the public.</p> <p>Environmental Monitoring During the weekly site inspections in November 2006, no non-compliance or observation on noise was recorded.</p> <p>Accordance to the EM&A programme, one noise monitoring station at Mei Foo Sun Chuen, Phase 5 (NM4) and two noise monitoring stations at Nob Hill, namely (NM8a and NM8b), were set up in order to monitor the noise level generated from the construction activities. The Station (NM8b) is strongly influenced by road traffic noise from Ching Cheung Road. The measurement at this station is for reference purpose, but not for compliance check for construction noise.</p> <p>The noise monitoring results in the period between 1st and 21st November 2006 at the M/F of Nob Hill and at Mei Foo Sun Chuen, Phase 5 are all lower than or equal to the noise criterion of 75 dB(A). No exceedance of noise level has been recorded in the above mentioned period. Moreover, based on our site observation record during monitoring, road traffic noise from Ching Cheung Road was the major noise source.</p> <p>Conclusion Base on the information collected and the monitoring results, the complaint was considered not justifiable.</p> <p>However, the Contractor was still reminded to finish the</p>	Closed

Log Ref.	Location	Received Date	Details of Complaint	Investigation/Mitigation Action	Status
				<p>construction works at the concerned areas before 18:00 and to carry out construction activities only within the permitted working hours (i.e. 07:00 – 19:00 on weekday).</p> <p>The environmental conditions of the site will be continuously reviewed by the RSS and the Environmental Team through site inspections and monitoring exercises.</p>	
61121-2	Construction works opposite Tong Nai Kan College	21-Nov-06 (by ET Leader)	<p>The Integrated Complaint Centre (ICC) of HKSAR received a public complaint through telephone on 17th November 2006 regarding dust and noise nuisance generated from Route 8 – Lai Chi Kok Viaduct R8-LCKV) Project. Resident Site Staff (RSS) subsequently referred the complaint to the ET Leader on 21st November 2006.</p> <p>The complaint was concerned about dust and noise generated from the construction works opposite Tong Nai Kan College in the past years.</p>	<p>Site Activities According to RSS's record, construction works adjacent to Tong Nai Kan College in the past years included the construction of Retaining Wall CCR-R3 and Slip Road D.</p> <p>As advised by the RSS, noise and dust mitigation measures such as provision of noise barriers and acoustic materials at drill pit, dust suppression system and water browser were provided in order to minimize the noise and dust nuisance generated from the above mentioned construction activities.</p> <p>Environmental Monitoring During the weekly site inspections in November 2006, no non-compliance or observation on noise and air at the concerned site was recorded.</p> <p>Accordance to the EM&A programme, one noise monitoring station at Mei Foo Sun Chuen, Phase 5 (NM4) and one air monitoring station at Lai Chi Kok Sports Centre (AM2), were set up in order to monitor the noise and dust level generated from the construction activities.</p> <p>The monitoring results revealed that no exceedance was recorded for the noise and air quality (1-hr and 24-hr TSP).</p> <p>Conclusion Base on the information collected and the monitoring results, the complaint was considered not justifiable.</p> <p>However, the Contractor was still reminded to continuously implement their practice, such as providing noise barrier with</p>	Closed

Log Ref.	Location	Received Date	Details of Complaint	Investigation/Mitigation Action	Status
				<p>acoustic materials at drill pit and applying water spraying for any dust emissive activities to minimize the noise and dust nuisance generated from these construction activities.</p> <p>The environmental conditions of the site will be continuously reviewed by the RSS and the Environmental Team through site inspections and monitoring exercises.</p>	
61205	Banyan Garden	5 th December 2006 (by ET Leader)	<p>Environmental Protection Department (EPD) received a public complaint about environment nuisance generated from Route 8 – Lai Chi Kok Viaduct Project. EPD subsequently referred the complaint to ET Leader on 5th December 2006.</p> <p>The complaint was concerned construction noise near Banyan Garden within the period of 01:00 – 02:00hr on 29th November 2006.</p>	<p>Site Activities According to RSS's record, a catchfan was moved from bay (AL-62) to (AL-58) from 22:00 to 02:00hr. Installation of catchfan at parapet bay (MS-R-74) was carried out from 00.00 to 04:00hr on 29th November 2006.</p> <p>As advised by the RSS, the Contractor has been requested to:</p> <ul style="list-style-type: none"> - Wrapping of tools with acoustic material - Erection of noise barrier (mill barrier with acoustic material) adjacent to isolated noise source - Placing of hessin bags on ground to mitigate noise generated as a result of the dropping of tools on ground. <p>According to the RSS, there is no evidence of hammering of metals on site.</p> <p>Conclusion Based on the information collected, the complaint is considered unjustifiable.</p> <p>Nevertheless, the Contractor was reminded to take sufficient noise mitigation measures to minimize the environmental impact on the nearby community:</p> <ul style="list-style-type: none"> - To strengthen management on worker's working manner, such as avoiding dropping materials on ground; - No hammering is allowed during restricted hours; and - To provide adequate training to workers working, esp. for night works. <p>The environmental conditions of the site will be continuously reviewed by the Resident Site Staff and the Environmental Team.</p>	Closed

Log Ref.	Location	Received Date	Details of Complaint	Investigation/Mitigation Action	Status
70117-1	P6 – P8 near Lai Chi Kok Road Interchange	17 th January 2007 (by ET Leader)	<p>The Integrated Complaint Centre (ICC) of HKSAR received a public complaint through telephone on 16th January 2007 regarding noise nuisance generated from Route 8 – Lai Chi Kok Viaduct R8-LCKV) Project. Resident Site Staff (RSS) subsequently referred the complaint to the ET Leader on 17th January 2007.</p> <p>The complaint was concerned about noise generated from the P6 – P8 near Lai Chi Kok Road Interchange in the past months.</p>	<p>Site Activities According to RSS's record, the construction activities at the concerned area was mainly central stitch construction and parapet erection and similar works will be carried out in the concerted site in coming one month.</p> <p>The equipment used on site during the complaint period was covered under the construction noise permit (CNP) no. GW-RW0624-06.</p> <p>Based on the RSS's record of PME used in the concerned area from 15 November 2006 to 30 December 2006, the construction works complied with the CNP no. GW-RW0624-06.</p> <p>Conclusion Based on the information collected, the complaint is considered unjustifiable as the equipment used complied with the CNP conditions.</p> <p>Nevertheless, the Contractor was recommended to take further noise mitigation measures to minimize the environmental impact on the nearby community:</p> <ul style="list-style-type: none"> - To strengthen management on worker's working manner, such as avoiding dropping materials on ground; - No hammering is allowed during restricted hours; and - To provide adequate training to workers working, esp. for night works. 	Closed
70117-2	P3 – P6 near Banyan Garden	17 th January 2007 (by ET Leader)	<p>Environmental Protection Department (EPD) received a public complaint about environment nuisance generated from Route 8 – Lai Chi Kok Viaduct Project. EPD subsequently referred the complaint to ET Leader on 17th January 2007.</p> <p>The complaint was concerned construction noise near Banyan Garden within the period of 01:00 – 02:00hr on 11th January 2007.</p>	<p>Site Activities According to RSS's record, the construction activities at the concerned area was mainly central stitch construction and parapet erection and similar works will be carried out in the concerned site in coming one month.</p> <p>The equipment used on site during the complaint period was covered under the construction noise permit (CNP) no. GW-RW0624-06.</p> <p>Based on the RSS's record of PME used in the concerned area from 1st December 2006 to 13th January 2007, the construction</p>	Closed

Log Ref.	Location	Received Date	Details of Complaint	Investigation/Mitigation Action	Status
				<p>works complied with the CNP no. GW-RW0624-06.</p> <p><i>Conclusion</i> Based on the information collected, the complaint is considered unjustifiable as the equipment used complied with the CNP conditions.</p> <p>Nevertheless, the Contractor was recommended to take further noise mitigation measures to minimize the environmental impact on the nearby community:</p> <ul style="list-style-type: none"> - To strengthen management on worker's working manner, such as avoiding dropping materials on ground; - No hammering is allowed during restricted hours; and - To provide adequate training to workers working, esp. for night works. 	

APPENDIX J
SUMMARY OF EXCEEDANCES

Summary of Exceedances Recorded in the Reporting Quarter

a) Exceedance Report for 1-hr TSP (NIL)

b) Exceedance Report for 24-hr TSP (NIL)

c) Exceedance Report for Construction Noise

- Three noise action level exceedances were recorded due to noise complaints received on 5th December 2006 and 17th January 2007. The details of the complaint can refer to Appendix I.
- No Limit Level exceedances were recorded in the reporting period.