

**Ocean Park Master Redevelopment Project**

**EP-249/2006/A – Condition 2.18(C)**

**As-built Drawing for Enhancement Works of Pond 35**

Certified by Terence Kong on 10-Jul-07

Terence Kong

Project Environmental Team Leader

**Verified by** Independent Environmental Checker **on** 10-Jul-07

IEC Certificate attached in the submission? Yes

**Submitted to Ocean Park on** 14-Jul-07

**Ocean Park Master Redevelopment Project**

**Environmental Permit No. EP-249/2006/A - Condition 2.18c**

**As-built Drawing for Enhancement Works of Pond 35**

**Submitted by Maunsell Consultants Asia Ltd on 09-07-2007**

**This is to verify that**

**As-built Drawing for Enhancement Works of Pond 35**

**Submitted by Maunsell Consultants Asia Ltd**

**On 09-07-2007**

**Has been verified by the undersigned.**

Signed

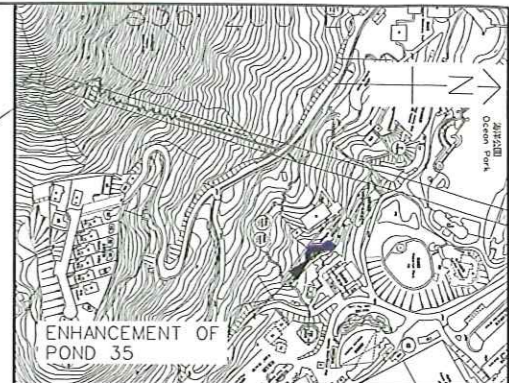
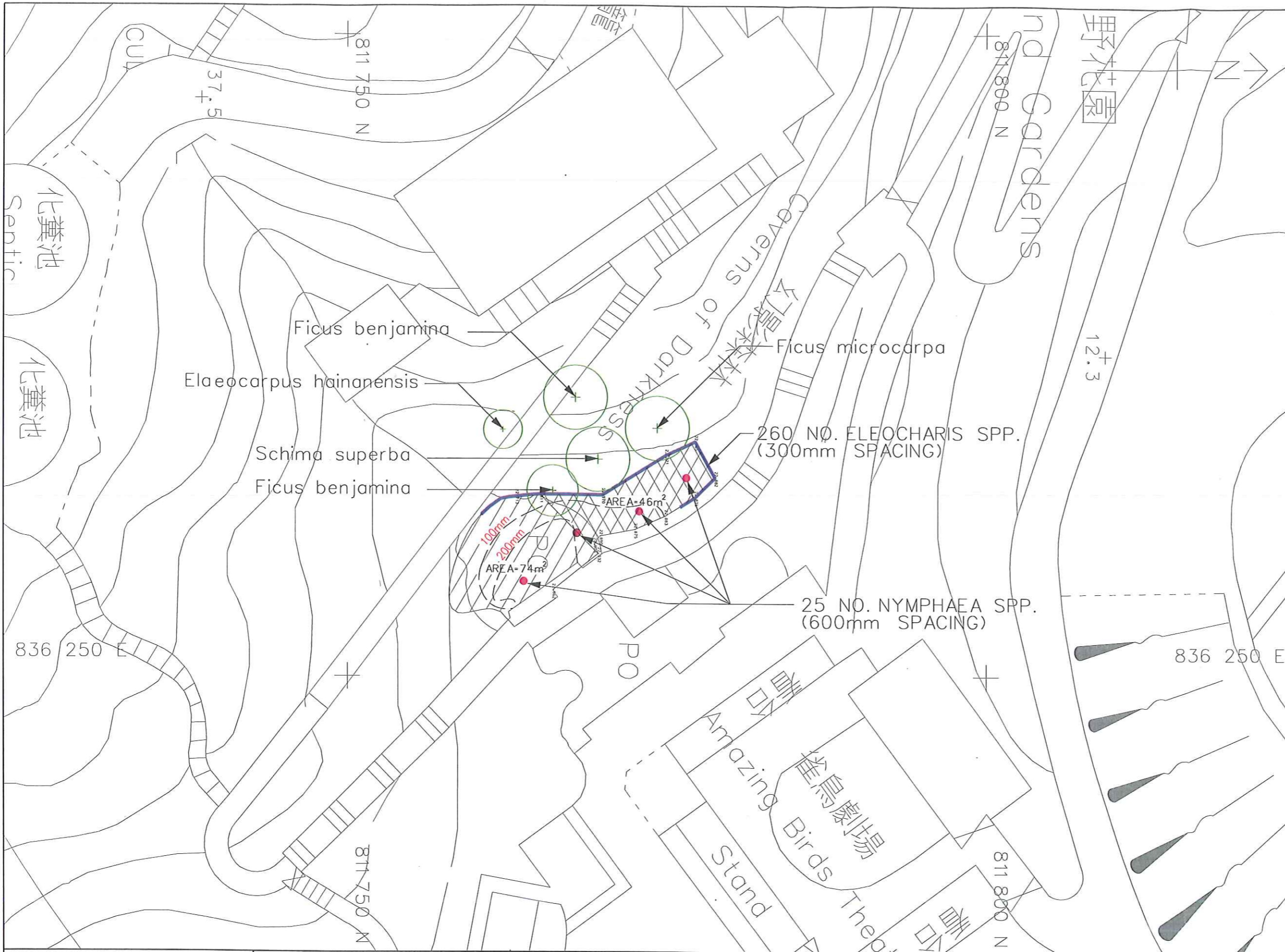


Dr Anne F Kerr  
Independent Environmental Checker (IEC)  
Retained by Ocean Park Corporation  
pursuant to Environmental Permit No. EP-249/2006/A

Date




10 July 2007





LOCATION PLAN

LEGEND:

-  EXISTING POND
-  ENLARGEMENT OF EXISTING POND
-  WATER DEPTH

**MAUNSELL | AECOM**  
Maunsell Consultants Asia Ltd

OCEAN PARK MASTER REDEVELOPMENT PROJECT  
SITE FORMATION, FUNICULAR TUNNEL AND MISCELLANEOUS WORKS  
**ENHANCEMENT WORKS AT POND 35**  
AS-BUILT LAYOUT PLAN

SCALE	SCALE 1: 300 @ A3	DATE	28/06/2007
CHECK	BIC	DRAWN	KL
DRAWING No.	C105	DRAWING No.	C105/SK/317
		REV	-