



**China State Joint Venture**

Contract No. HY/2002/23

**Deep Bay Link – Southern Section**

**Final EM&A Summary Report  
for Construction Phase**

September 2007

	Name	Signature
Reviewed & Checked:	Connie Wong	
Approved:	Y T Tang	

Version:	0	Date: 27 September 2007
<p>The information contained in this report is, to the best of our knowledge, correct at the time of printing. The interpretation and recommendations in the report are based on our experience, using reasonable professional skill and judgment, and based upon the information that was available to us. These interpretations and recommendations are not necessarily relevant to any aspect outside the restricted requirements of our brief. This report has been prepared for the sole and specific use of our client and ENSR Asia (HK) Ltd. accepts no responsibility for its use by others.</p> <p>This report is copyright and may not be reproduced in whole or in part without prior written permission.</p>		

**ENSR Asia (HK) Ltd.**

11/F, Grand Central Plaza, Tower 2, 138 Shatin Rural Committee Road, Shatin, NT, Hong Kong  
 Tel: (852) 2893 1551 Fax: (852) 2891 0305 www.ensr.aecom.com www.maunsell.aecom.com

西圖香港有限公司  
CH2M HILL Hong Kong Limited  
Suite 1801, Harcourt House  
99 Gloucester Road  
Wanchai, Hong Kong  
Tel (852) 2507-2203  
Fax (852) 2507-2293



**CH2MHILL**

Our Ref.: HYDDBLWCEM00/3/10847

Date: 28 September 2007

Ove Arup & Partners Hong Kong Limited  
Level 5, Festival Walk,  
80 Tat Chee Avenue,  
Kowloon Tong, Kowloon,  
Hong Kong.

By Fax (2448 3361) and Post

Attention: Ir. Jackson Wong

Dear Ir. Wong,

**Re: Environmental Permit No. EP-163/2003/G  
Contract No. HY/2002/23 Deep Bay Link – Southern Section  
Final EM&A Summary Report for Construction Phase.**

Reference is made to ET's e-mail correspondences enclosed with a copy of the Final EM&A Summary Report for Construction Phase and revised pages for the captioned project. We have no further comment on the captioned report.

We are pleased to inform you that the Final EM&A Summary Report for Construction Phase for Deep Bay Link Southern Section, which had been certified by the Environmental Team Leader and verified by IEC in compliance with Condition 1.9 of the Environmental Permit (No.EP-163/2003/G) and Section 1.4 and 1.5 of the IEC Brief.

Thank you very much for your kind attention and please do not hesitate to contact the undersigned or our Mr. Roy Leung if you have any queries.

Yours sincerely,

Billy Yu  
Independent Environmental Checker

c.c. Mr. Y. T. Tang

ENSR

By Fax: 2891 0305

G:\Projects\Hyd-Deepbaylink\Corr\DBL-South\EM&A Rpt\HYDDBLWCEM00\_3\_10847L.07

**TABLE OF CONTENTS**

	Page
EXECUTIVE SUMMARY .....	1
1. INTRODUCTION.....	2
Background .....	2
2. PROJECT CHARACTERISTICS .....	3
Project Organisation and Contacts of Key Management .....	3
Construction Activities .....	3
3. ENVIRONMENTAL MONITORING AND AUDIT REQUIREMENTS.....	4
Monitoring Parameters and Locations .....	4
Environmental Quality Performance Limits (Action and Limit Levels) .....	4
Environmental Mitigation Measures .....	4
4. MONITORING RESULTS .....	5
Air Quality .....	5
Noise .....	6
5. AUDIT RESULTS .....	8
Implementation Status of Environmental Mitigation Measures .....	8
Status of Environmental Licensing and Permitting .....	8
Advice on Solid and Liquid Waste Management Status .....	8
6. NON-COMPLIANCE (EXCEEDANCES) OF THE ENVIRONMENTAL QUALITY PERFORMANCE LIMITS (ACTION AND LIMIT LEVELS) .....	9
Summary of Exceedances .....	9
Review of the Reasons for and the Implications of Non-compliance .....	9
Summary of Actions Taken .....	9
7. Comparison of EM&A Data with EIA Prediction .....	11
1-hour TSP and 24-hour TSP Monitoring .....	11
Noise Monitoring .....	11
Review of Environmental Monitoring Methodology and EM&A Programme .....	11
Environmental Acceptability of the Project .....	11
8. ENVIRONMENTAL COMPLAINTS .....	12
9. NOTIFICATION OF SUMMONS AND SUCCESSFUL PROSECUTIONS .....	12
10. COMMENTS AND CONCLUSIONS .....	12
11. REFERENCES.....	13

**List of Tables**

Table 4.1	Summary of monitoring conducted in the reporting period .....	5
Table 4.2	Summary of air quality exceedances .....	5
Table 4.3	Summary of noise exceedances .....	6
Table 5.1a	Actual Waste Generation throughout the Construction Period (for Sep 03 to Feb 04).....	8
Table 5.1b	Actual Waste Generation throughout the Construction Period (for Mar 04 to Jun 07) .....	8

**List of Figures**

Figure 1.1	Layout of Work Site
Figure 2.1	Project Organisation
Figure 3.1	Location of Air Quality Monitoring Stations
Figure 3.2	Locations of Noise Monitoring Stations

**List of Appendices**

Appendix A	Contact Details of Key Management
Appendix B	Environmental Monitoring Programme
Appendix C	Action and Limit Levels
Appendix D	Graphical Presentation of Air Quality Monitoring Results
Appendix E	Graphical Presentation of Noise Monitoring Results
Appendix F	Summary of Implementation Status of Environmental Mitigation Measures
Appendix G	Status of Environmental Licenses and Permits
Appendix H	Complaint Flow Diagram and Complaint Log

## **EXECUTIVE SUMMARY**

This is the Final Environmental Monitoring and Audit (EM&A) Summary Report for Construction Phase prepared by ENSR Asia (HK) Ltd. (formerly Maunsell Environmental Management Consultants Ltd.), the designated Environmental Team (ET), for the Project "Deep Bay Link – Southern Section". Majority of construction works were completed since June 2007. The construction phase environmental monitoring and audit (EM&A) was ceased on 30 June 2007.

This report summarizes the EM&A works performed in the period of the whole EM&A programme from 17 September 2003 to 30 June 2007.

### **Environmental Monitoring Works**

#### ***Air Quality***

Both of the 1-hour Total Suspended Particulates (TSP) and 24-hour TSP were monitored at four designated locations (AN6, AN7, E1 and E2). Subject to the first EPD's approval on 31 August 2006, air quality monitoring at AN7 and E2 were terminated on 5 September 2006, while air quality monitoring at AN6 and E1 were continued until 12 March 2007 (the second EPD's approval on the termination of air quality monitoring on 12 March 2007). There were 109 Action Level and 65 Limit Level exceedances recorded and 8 of them were related to the Project's work.

#### ***Noise***

Construction noise was monitored at five designated locations (N5, AN6, AN7, E1 and E2). Termination of noise monitoring at AN7 and E2 was approved by EPD on 31 August 2006 and thus noise monitoring was terminated at AN7 and E2 on 5 September 2006. Noise monitoring at AN6 and E1 were also terminated on 13 March 2007 subject to the EPD's approval on the termination of noise monitoring on 13 March 2007, while noise monitoring at N5 was continued until 30 June 2007. There were 59 exceedances of Limit Level recorded. There were 4 exceedances of Action Level as 4 valid complaints were received during the reporting period.

#### ***Environmental Complaints and Prosecutions***

There were 57 environmental complaints received during the reporting period. A total of 28 complaints were related to the Project's work. All valid complaints were properly followed up and rectified.

Two summonses and one successful prosecution were made against the Project since commencement. One pink form was issued to the Contractor regarding an improper discharge into the u-channel at Fuk Hang Tsuen Road on 15 January 2004. The Contractor was summoned on 9 July 2004 and denied the case. The prosecution offered no evidence. Another summon was issued to the Contractor regarding construction works beyond working hour without valid CNP on 4 March 2004. The Contractor pledged guilty to the charge during the court appearance on 15 December 2004.

## 1. INTRODUCTION

### Background

- 1.1 Maunsell Environmental Management Consultants Limited (MEMCL), which changed the name to ENSR Asia (HK) Ltd. on 1 May 2007 (hereinafter called the “ET”) was appointed by China State Joint Venture (CSJV) (hereinafter called the “Contractor”) to undertake Environmental Monitoring and Audit (EM&A) for “Deep Bay Link – Southern Section” (hereinafter called the “Project”). Under the requirements of Section 4 of Environmental Permit EP-163/2003 and its variations, EM&A programme as set out in the EM&A Manual <sup>[2]</sup> is required to be implemented.
- 1.2 In accordance with the EM&A Manual <sup>[2]</sup>, environmental monitoring of air quality and noise are required for the Project. The major construction period of the Project was 46 months from September 2003 to June 2007.
- 1.3 Deep Bay Link (DBL) is an expressway/trunk road of dual-3 lane standard with hard shoulders providing a strategic link between the proposed Hong Kong - Shenzhen Western Corridor (HK-SWC) at its landing point at Ngau Hom Shek and a proposed interchange with the Yuen Long Highway (YLH) and the proposed Route 10-North Lantau to Yuen Long Highway (R10-NLYLH) at Lam Tei. The layout of the DBL is provided in Figure 1.1.

## 2. PROJECT CHARACTERISTICS

### Project Organisation and Contacts of Key Management

- 2.1 The Project Proponent was Highways Department (HyD); the Engineer Representative (ER) was Ove Arup & Partners Hong Kong Limited; the Contractor was China State Joint Venture (CSJV); the Independent Environmental Checker (IEC) was CH2M HILL Hong Kong Limited, and the ET was ENSR Asia (HK) Ltd. (formerly Maunsell Environmental Management Consultants Ltd.).
- 2.2 An Organisation Chart of the Project is provided in Figure 2.1.
- 2.3 The responsibilities of respective parties are detailed in Section 1.4 of the EM&A Manual<sup>[2]</sup>. The contacts of key management for the Project are summarized in Appendix A.

### Construction Activities

- 2.4 The major construction work was commenced on 17 September 2003 and completed in June 2007.
- 2.5 The major components of this Project are listed below:

#### *Preparation works:*

- Site Clearance
- Site investigation

#### *Construction works:*

- Form site access
- Utilities diversion
- Bored piling
- Excavation and backfilling
- Preliminary loading test
- Construct box culvert
- Sheet piling
- Installation of stone column, noise barriers, skin parapet and aluminium railings
- Construction of pile cap, retaining walls, local road and in-situ bridge deck
- Extension of subways
- Slope stabilization and ground improvement
- Launching of girder
- Pier and bearing construction / Pier-head segment
- Bridge segment installation / Bridge construction
- Modification of existing bridge
- Modification of sign gantry sign face
- Widening of Yuen Long Highway
- Segment erection
- Parapet construction
- Sign gantry erection
- Drainage works and drainage connection
- Removal of contaminated soil
- Waterproofing Works
- Asphalt laying
- Installation of irrigation pipes and irrigation connection
- Landscaping
- Chaining fence erection
- Sign face installation
- Boundary fences, type II and tubular railing erection
- Local road and slope final servicing
- Profiling of local road, slope, utilities and open yard area

### **3. ENVIRONMENTAL MONITORING AND AUDIT REQUIREMENTS**

#### **Monitoring Parameters and Locations**

- 3.1 The EM&A Manual <sup>[2]</sup> designates locations for the ET to monitor environmental impacts in terms of air quality and noise. The air quality and noise monitoring stations for this Project are shown in Figure 3.1 to 3.2 respectively. Appendix B gives the details of the monitoring requirements.

#### **Environmental Quality Performance Limits (Action and Limit Levels)**

- 3.2 The environmental quality performance limits, i.e. Action and Limit levels (AL Levels) were derived from the baseline monitoring results <sup>[3] & [4]</sup> and/or other approaches as detailed in the EM&A Manual <sup>[2]</sup>. Should the measured environmental quality parameters exceed the AL Levels, the respective action plans would be implemented. The AL Levels for each environmental parameter are given in Appendix C.

#### **Environmental Mitigation Measures**

- 3.3 Relevant mitigation measures as recommended in the Project EIA Report <sup>[1]</sup> had been stipulated in the EM&A Manual <sup>[2]</sup> for the Contractor to adopt. A list of mitigation measures is given in Appendix F.



**4. MONITORING RESULTS**

4.1 A summary of monitoring conducted in the reporting period are summarized in Table 4.1.

**Table 4.1 Summary of monitoring conducted in the reporting period**

Parameter	No. of Sessions	Period
1-hour Total Suspended Particulates (TSP) monitoring at AN6	654	From 20 Sep 03 to 12 Mar 07
1-hour TSP monitoring at AN7	552	From 20 Sep 03 to 04 Sep 06
1-hour TSP monitoring at E1	624	From 15 Nov 03 to 12 Mar 07
1-hour TSP monitoring at E2	528	From 15 Nov 03 to 04 Sep 06
24-hour TSP monitoring at AN6	217	From 18 Sep 03 to 12 Mar 07
24-hour TSP monitoring at AN7	185	From 18 Sep 03 to 04 Sep 06
24-hour TSP monitoring at E1	210	From 14 Nov 03 to 12 Mar 07
24-hour TSP monitoring at E2	177	From 14 Nov 03 to 04 Sep 06
Daytime noise monitoring at N5	199	From 19 Sep 03 to 30 Jun 07
Daytime noise monitoring at AN6	183	From 19 Sep 03 to 12 Mar 07
Daytime noise monitoring at AN7	156	From 19 Sep 03 to 04 Sep 06
Daytime noise monitoring at E1	174	From 15 Nov 03 to 12 Mar 07
Daytime noise monitoring at E2	147	From 15 Nov 03 to 04 Sep 06
Evening noise monitoring at N5	81	From 21 Nov 03 to 30 Jun 07
Evening noise monitoring at AN6	81	From 21 Nov 03 to 12 Mar 07
Evening noise monitoring at E1	85	From 12 Jul 05 to 12 Mar 07
Evening noise monitoring at E2	60	From 12 Jul 05 to 04 Sep 06
Night time noise monitoring at N5	14	From 16 Jul 04 to 30 Jun 07
Night time noise monitoring at AN6	14	From 16 Jul 04 to 12 Mar 07
Night time noise monitoring at E1	10	From 10 Sep 04 to 12 Mar 07
Night time noise monitoring at E2	5	From 10 Sep 04 to 04 Sep 06
Holiday noise monitoring at N5	82	From 23 Nov 03 to 30 Jun 07
Holiday noise monitoring at AN6	82	From 23 Nov 03 to 12 Mar 07
Holiday noise monitoring at E1	84	From 17 Jul 05 to 12 Mar 07
Holiday noise monitoring at E2	60	From 17 Jul 05 to 04 Sep 06

**Air Quality**

4.2 All the 1-hour TSP monitoring results complied with the AL Levels and no exceedance was recorded during the reporting period.

4.3 A total of 174 exceedances (109 Action Level and 65 Limit Level) for 24-hour TSP were recorded and 8 exceedances (6 Action Level and 2 Limit Level) were related to the Project's work. Table 4.2 summarizes the number of air quality exceedances.

**Table 4.2 Summary of air quality exceedances**

Parameters	1-hour TSP		24-hour TSP		Total
	Action	Limit	Action	Limit	
AN6	0 (0)	0 (0)	24 (3)	2 (0)	26 (3)
AN7	0 (0)	0 (0)	30 (0)	37 (0)	67 (0)
E1	0 (0)	0 (0)	12 (2)	7 (2)	19 (4)
E2	0 (0)	0 (0)	43 (1)	19 (0)	62 (1)
<b>Total</b>	<b>0 (0)</b>	<b>0 (0)</b>	<b>109 (6)</b>	<b>65 (2)</b>	<b>174 (8)</b>

\*Remarks: ( ) exceedances related to the Project's work.

4.4 The one project related Action Level exceedance at E2 was generated from the paving work and the traffic dust at To Yuen Wai on 14 November 2003. Three Action Level exceedances at AN6 were identified due to improper covering of the stockpile during dry season at Tsoi Yuen Tsuen (South) on 27

February 2004, 4 and 5 March 2004. One Limit Level and one Action Level exceedances at E1 recorded on 6 and 11 October 2004 were also identified by the partially uncovered stockpile during dry season at To Yuen Wai. Another one Limit Level and one Action Level exceedances at E1 recorded on 16 and 22 November 2004 were due to the excavation and concrete breaking without enough water spraying during the dry season.

- 4.5 Graphical presentations of both 1-hour TSP and 24-hour TSP monitoring results during the reporting period are provided in Appendix D.
- 4.6 It was observed from the graphs that higher TSP levels were recorded between October and March of the next year in each year, particularly from 2003 to 2005. Such elevation of TSP levels was likely triggered by the elevated ambient dust, nearby traffic dust influence or general air quality pollution level during dry season. In fact, as the baseline monitoring for air quality was carried out in July and August 2003, during which the weather condition was mainly wet, the baseline TSP level was relatively low. Upon completion of most construction works after January 2006, the TSP levels gradually returned to the baseline level and much dominated by the change in ambient air quality and weather condition.

**Noise**

- 4.7 There were 28 Limit Level exceedances recorded for daytime noise, 30 Limit Level exceedances for night time noise and 1 Limit Level exceedance for holiday daytime noise during the reporting period. Table 4.3 summarizes the number of noise level exceedances.

**Table 4.3 Summary of noise exceedance**

Station	Daytime (0700-1900)		Evening Time (1900-2300)		Night Time (2300-0700 of the next day)		Holiday Daytime		Total	
	Limit	Action	Limit	Action	Limit	Action	Limit	Action	Limit	Action
N5	0	0	0	0	13 (0)	0	1 (0)	0	14 (0)	0
AN6	0	0	0	0	3 (0)	0	0	0	3 (0)	0
AN7	28 (1)	1 (1)	-	-	-	-	-	-	28 (1)	1 (1)
E1	0	3 (3)	0	0	8 (0)	0	0	0	8 (0)	3 (3)
E2	0	0	0	0	6 (0)	0	0	0	6 (0)	0
<b>Total</b>	<b>28 (1)</b>	<b>4 (4)</b>	<b>0</b>	<b>0</b>	<b>30 (0)</b>	<b>0</b>	<b>1 (0)</b>	<b>0</b>	<b>59 (1)</b>	<b>4 (4)</b>

\*Remarks: ( ) exceedances related to the Project's work.

- 4.8 A total of 28 daytime Limit Level exceedances were recorded and one exceedance was related to the Project's work. The one project related exceedance was generated by the drilling machine operation at AN7 on 18 November 2003. All other exceedances were concluded not due to the project.
- 4.9 All 30 night time noise exceedances were concluded not due to the Project's work. The night time construction works were also complied with the CNP issued by EPD. Actually, the Limit Level of 50dB(A) during this period is much more stringent than the normal daytime or even the evening time and background sound levels at the stations already exceeded it. Therefore, the noise levels as measured during the monitoring events produced exceedances. The major noise sources were caused by general traffic at Yuen Long Highway and background noise from the nearby village.
- 4.10 Only 1 Limit Level exceedance was recorded at N5 for holiday daytime noise and the exceedance was concluded not due to the Project works. The cause of the holiday daytime noise by the villager activities (e.g. dog barking).
- 4.11 There were 8 noise complaints received and 4 of them were Project's related and considered as triggering the Action Level exceedance. Thus, 4 Action Level exceedances were recorded during the reporting period. The identified noise source for the first valid complaint was due to the drilling machine operation and generated noise to Lam Tei Gospel School on 18 November 2003. The Contractor had provided shielding to the drilling machine and strategically placed sedimentation tank to form a barrier.

For the other three valid noise complaints, the noise nuisances were due to the breaking of existing concrete footing on 18 February 2005, the concrete breaking and road construction works on 6 September 2005 and the sheet piling works on 4 January 2006. The Contractor had installed the movable barrier for the concrete breaking and sheet piling works to minimize the noise nuisance and there was no Limit Level exceedance recorded. Details of noise complaints are given in Appendix H.

- 4.12 The graphical presentations of the noise monitoring results are provided in Appendix E.
- 4.13 It was observed from the graphs that higher noise levels were recorded during early stage of the construction works for daytime noise monitoring. The graphs also showed clearly that all Limit Level exceedances were recorded for daytime noise monitoring during the period from November 2003 to June 2006, night time noise monitoring during the period from July 2004 to November 2005 and holiday noise monitoring in February 2004. Upon completion of most construction works, noise levels gradually returned to the baseline level and consistently lower than 65dB(A) for Daytime noise.

## 5. AUDIT RESULTS

### Implementation Status of Environmental Mitigation Measures

- 5.1 The Contractor implemented mitigation measures to minimize the environmental impacts caused by construction activities. Regarding a few minor observations as noted during ET's site inspections, the Contractor rectified most of the problems and no major environmental deficiency was induced.
- 5.2 The implementation status of environmental mitigation measures (EMIS) is given in Appendix F.

### Status of Environmental Licensing and Permitting

- 5.3 Environmental licenses and permits including Environmental Permit for the Project, construction noise permit and effluent discharge license were in place and valid during the Construction Phase. The status of licences and permits is summarized in Appendix G.

### Advice on Solid and Liquid Waste Management Status

- 5.4 The solid waste generated from the Project included inert and non-inert C&D waste, chemical waste, excavated material, site clearance waste and general refuse. Table 5.1 summarizes the actual waste generated throughout the construction period.

**Table 5.1a Actual Waste Generation throughout the Construction Period (Sep 03 to Feb 04)**

Waste Type	Examples	Amount	Disposal Locations
Site clearance waste	Vegetation, refuse on land	3,560.4 m <sup>3</sup>	WENT Landfill / NENT Landfill
General refuse	Food, packaging waste & office waste		
Excavated material	Rock and soil	18,710.4 m <sup>3</sup>	Tuen Mun Area 38
Public fill (inert)	Concrete, brick, aggregates	294 m <sup>3</sup>	Tuen Mun Area 38
C & D waste (non-inert)	Plastic, wood and bamboo	Nil	Not applicable

**Table 5.1b Actual Waste Generation throughout the Construction Period (Mar 04 to Jun 07)**

Waste Type	Examples	Amount	Disposal Locations
Site clearance waste	Vegetation, refuse on land	4,008.8 m <sup>3</sup>	WENT Landfill
General refuse	Food, packaging waste & office waste		
Public fill (inert)	Excavated material (rocks & soil), concrete, brick, aggregates	88,090.3 m <sup>3</sup>	Tuen Mun Area 38, PFF
C & D waste (non-inert)	Plastic, wood and bamboo	Nil	WENT Landfill
Chemical waste	Used oil, spent solvent	4,010 L	Chemical Waste Treatment Centre
Contaminated Soil	Excavated material from the contaminated land	1,422 m <sup>3</sup>	WENT Landfill
Fill material	Soil material	7,338 m <sup>3</sup>	Deep Bay Link – Northern Section

## **6. NON-COMPLIANCE (EXCEEDANCES) OF THE ENVIRONMENTAL QUALITY PERFORMANCE LIMITS (ACTION AND LIMIT LEVELS)**

### **Summary of Exceedances**

- 6.1 All measured 1-hour TSP concentrations in the reporting period were below the Action and Limit Levels.
- 6.2 For 24-hour TSP monitoring, a total of 109 Action Level and 65 Limit Level exceedances were recorded in the reporting period. It was concluded that only 8 exceedances were due to the Project's work.
- 6.3 For the construction noise monitoring, a total of 59 Limit Level exceedances were recorded in the reporting period. It was concluded that only 1 Limit Level exceedance for daytime noise monitoring and 4 Action Level exceedances as 4 valid complaints for noise monitoring were due to the Project's work.

### **Review of the Reasons for and the Implications of Non-compliance**

- 6.4 No exceedance of Action or Limit Level for 1-hour TSP measurement was recorded in the construction phase period.
- 6.5 Regarding the exceedances recorded for 24-hour TSP concentration in the reporting period, there were 6 Action Level and 2 Limit Level exceedances concluded due to the Project's work. The identified dust sources were the paving work and the traffic at E2, improper covering of the stockpile during dry season at AN6, the excavation and concrete breaking without adequate water spraying and uncovered stockpile during dry season at E1.
- 6.6 All the 30 night time noise Limit Level exceedances and 1 holiday daytime noise Limit Level exceedances were concluded not due to the Project's work. They were mainly due to the background sound level such as background noise from the nearby village and the general traffic at Yuen Long Highway and Fuk Hang Tsuen Road.
- 6.7 Regarding the daytime noise Limit Level exceedance recorded in the reporting period, 1 exceedance was related to the Project's work on 18 November 2003. The identified noise source was generated by the drilling machine operation at AN7.
- 6.8 Four valid noise complaints were received during the reporting period. The identified noise source for the first valid complaint was due to the drilling machine operation and generated noise to Lam Tei Gospel School on 18 November 2003. For the other three valid noise complaints, the noise nuisances were due to the breaking of existing concrete footing on 18 February 2005, the concrete breaking and road construction works on 6 September 2005 and the sheet piling works on 4 January 2006. Details of the complaints are given in Appendix H.
- 6.9 The work related exceedances were short in duration. The Contractor generally implemented the required mitigation measures to rectify the environmental impacts. There was thus no long term implication to the environment.

### **Summary of Actions Taken**

- 6.10 The Contractor generally implemented all the required mitigation measures to suppress the environmental impacts.
- 6.11 8 exceedances for air quality were concluded due to the Project's work. The Contractor had provided the cover for and removed the stockpiles, increased the frequency of water spraying during the dry season to rectify the problem. All other exceedances were concluded not due to Project's works. No further action was required.
- 6.12 1 exceedance for noise monitoring was concluded due to the Project's work. The Contractor had provided shielding to the drilling machine and strategically placed sedimentation tank to form a barrier. All other exceedances were concluded not due to Project's works. No further action was required.

6.13 For the 4 Action Level exceedances for noise monitoring, the first exceedance was due to operation of drilling machine. The Contractor thus provided shielding to the drilling machine and strategically placed sedimentation tank to form a barrier. The major noise nuisance for the other three was due to breaking of existing concrete footing, concrete breaking, road construction works and sheet piling works. The Contractor thus installed the movable barrier to rectify the problem and there was no Limit Level exceedance recorded.

## **7. COMPARISON OF EM&A DATA WITH EIA PREDICTION**

### **1-hour TSP and 24-hour TSP Monitoring**

- 7.1 The environmental monitoring data collected during the construction period were generally in line with the prediction of Deep Bay Link Environmental Impact Assessment (EIA) Report <sup>[1]</sup> and Deep Bay Link – Southern Section Baseline Monitoring Report <sup>[3] & [4]</sup> as the monitoring results were within the acceptable levels as stipulated in the EIA report <sup>[1]</sup>.

### **Noise Monitoring**

- 7.2 Except for those non-project related exceedances, the environmental monitoring data collected during the construction period were generally in line with the prediction of the EIA Report <sup>[1]</sup>.

### **Review of Environmental Monitoring Methodology and EM&A Programme**

- 7.3 The environmental monitoring methodologies and procedures were regularly reviewed by the ET. No modification to the existing monitoring methodology was made during the construction period.
- 7.4 The EM&A programme, the effectiveness and efficiency of the mitigation measures were successful during the construction period.

### **Environmental Acceptability of the Project**

- 7.5 Even though 174 exceedances of air quality and 63 exceedances of noise level were reported, most of them were concluded not related to the Project's work. It was concluded that only 8 air quality exceedances (4.6%), 1 daytime noise exceedance and 4 noise exceedances in the form of valid noise complaint (7.9%) were due to the Project's work and they were rectified accordingly. The environmental monitoring results indicated that the construction activities in general complied with the relevant environmental requirements and were environmentally acceptable.

## **8. ENVIRONMENTAL COMPLAINTS**

- 8.1 All complaints were handled in accordance with the EM&A Manual <sup>[2]</sup>. The complaint handling procedure is provided in Appendix H.
- 8.2 There were 57 complaints received during the reporting period. The complaints were mainly about air quality (particularly dust), noise, water quality and housekeeping problems. The Contractor was notified of all these complaints. 28 of the complaints were project related and were followed up and rectified. Regarding the invalid complaints, the Contractor had maintained sufficient mitigation measures to prevent them from happening.
- 8.3 Summary record of the complaints, investigation and follow-up actions undertaken are provided in Appendix H.

## **9. NOTIFICATION OF SUMMONS AND SUCCESSFUL PROSECUTIONS**

- 9.1 Two summonses and one successful prosecution were made against the Project since commencement. A pink form was issued to the Contractor during EPD's inspection on 15 January 2004 regarding an improper discharge into the u-channel from the works area at Fuk Hang Tsuen Road. The Contractor was summoned on 9 July 2004 and denied the case. The prosecution offered no evidence and thus the charge was dismissed by Magistrate on 10 September 2004.
- 9.2 The second summons was issued on 26 August 2004 regarding construction works beyond working hour without CNP on 4 March 2004. The Contractor was summoned on 22 September 2004 and prosecuted regarding the construction works beyond working hour without valid CNP. The Contractor pledged guilty to the charge during the court appearance on 15 December 2004.

## **10. COMMENTS AND CONCLUSIONS**

- 10.1 The ET carried out air quality, noise and weekly site inspection in accordance with the EM&A Manual <sup>[2]</sup>.
- 10.2 No exceedance of AL Levels for 1-hour TSP monitoring was recorded in the reporting period.
- 10.3 There were 174 exceedances for 24-hour TSP concentration recorded in the reporting period. Mitigation measures for the construction dust were generally implemented. It was concluded that only 8 exceedances were due to the Project's work and they were rectified accordingly.
- 10.4 There were 63 exceedances (59 Limit Level and 4 Action Level) for noise monitoring recorded in the reporting period. Only 4 valid noise complaints (Action Level exceedances) and 1 Limit Level exceedance were related to the Project's work. The Contractor thus provided shielding to the drilling machine and strategically placed sedimentation tank to form a barrier and installed the movable barrier to rectify the problem.
- 10.5 57 complaints were made against this Project since commencement of the Project. 28 complaints were considered related to the Project's work and valid, and were followed up and rectified accordingly.
- 10.6 Two summonses and one successful prosecution were made against the Project during the reporting period.
- 10.7 Upon completion of the project, environmental qualities returned to the ambient levels. No significant impact to the adjacent environment was noted, which concurs with the EIA Report <sup>[1]</sup> findings.
- 10.8 The implemented EM&A programme readily detected any environmental impacts to the receivers and timely actions could be taken to rectify any non-compliance. Assessment and analysis of monitoring results collected demonstrated the environmental acceptability of the Project. Weekly site inspections checked that the EIA's recommended mitigation measures were effectively implemented. There had been no particular recommendation advised for improvement in the EM&A programme in the reporting period.



## 11. REFERENCES

- [1] Ove Arup & Partners Hong Kong Ltd. May 2002. Agreement No. CE109/98, Deep Bay Link – Investigation and Preliminary Design, Environmental Impact Assessment Report Volume 1 of 3 – Text.
- [2] Ove Arup & Partners Hong Kong Ltd. May 2002. Agreement No. CE109/98, Deep Bay Link – Investigation and Preliminary Design, Final Environmental Impact Assessment Report, Environmental Monitoring and Audit Manual.
- [3] Maunsell Environmental Management Consultants Ltd. August 2003. Contract No. HY/2002/23 Deep Bay Link – Southern Section, Baseline Monitoring Report (Revision 0).
- [4] Maunsell Environmental Management Consultants Ltd. November 2003. Contract No. HY/2002/23 Deep Bay Link – Southern Section Baseline Monitoring Report (E1 & E2 only) (Revision 0).

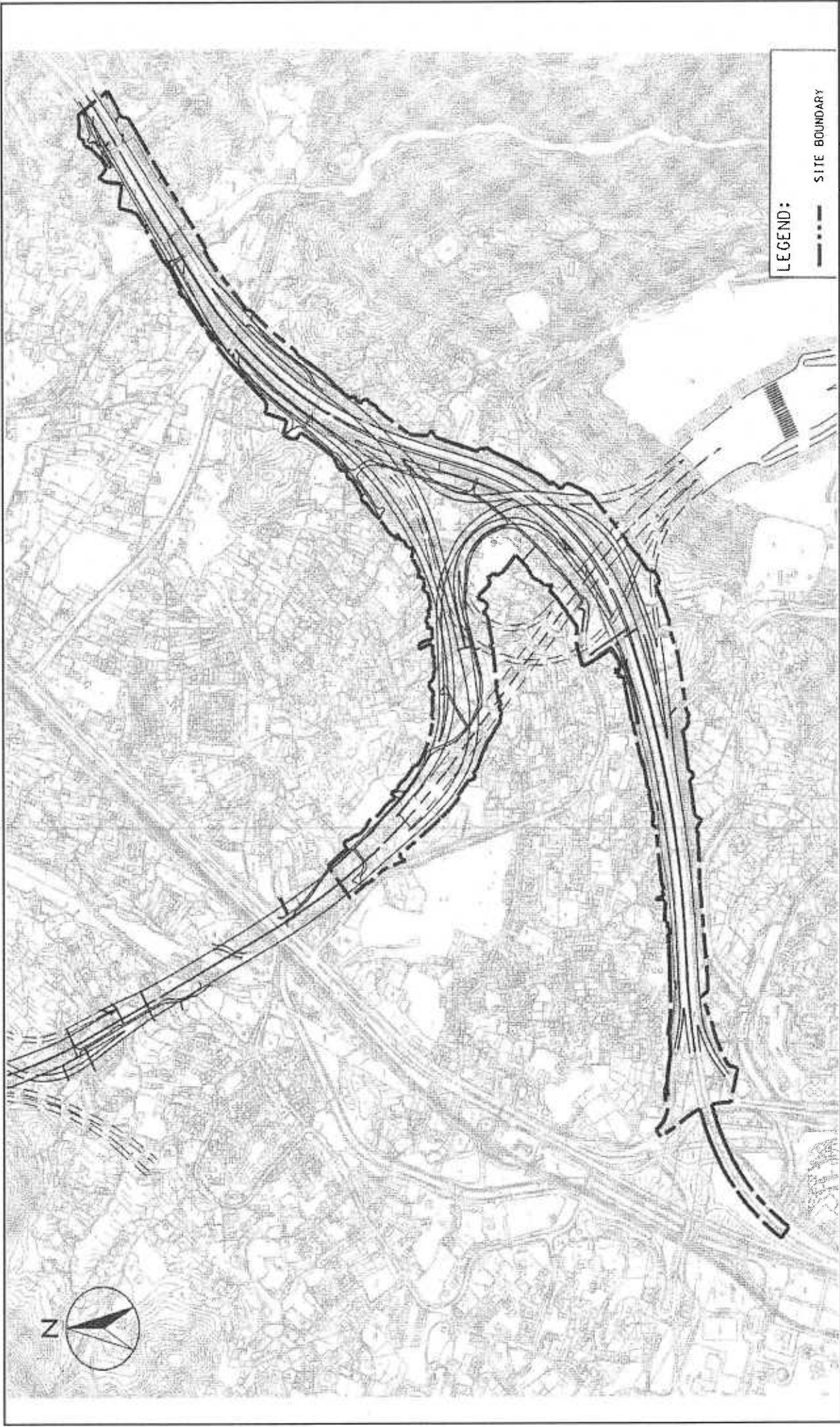
---

---

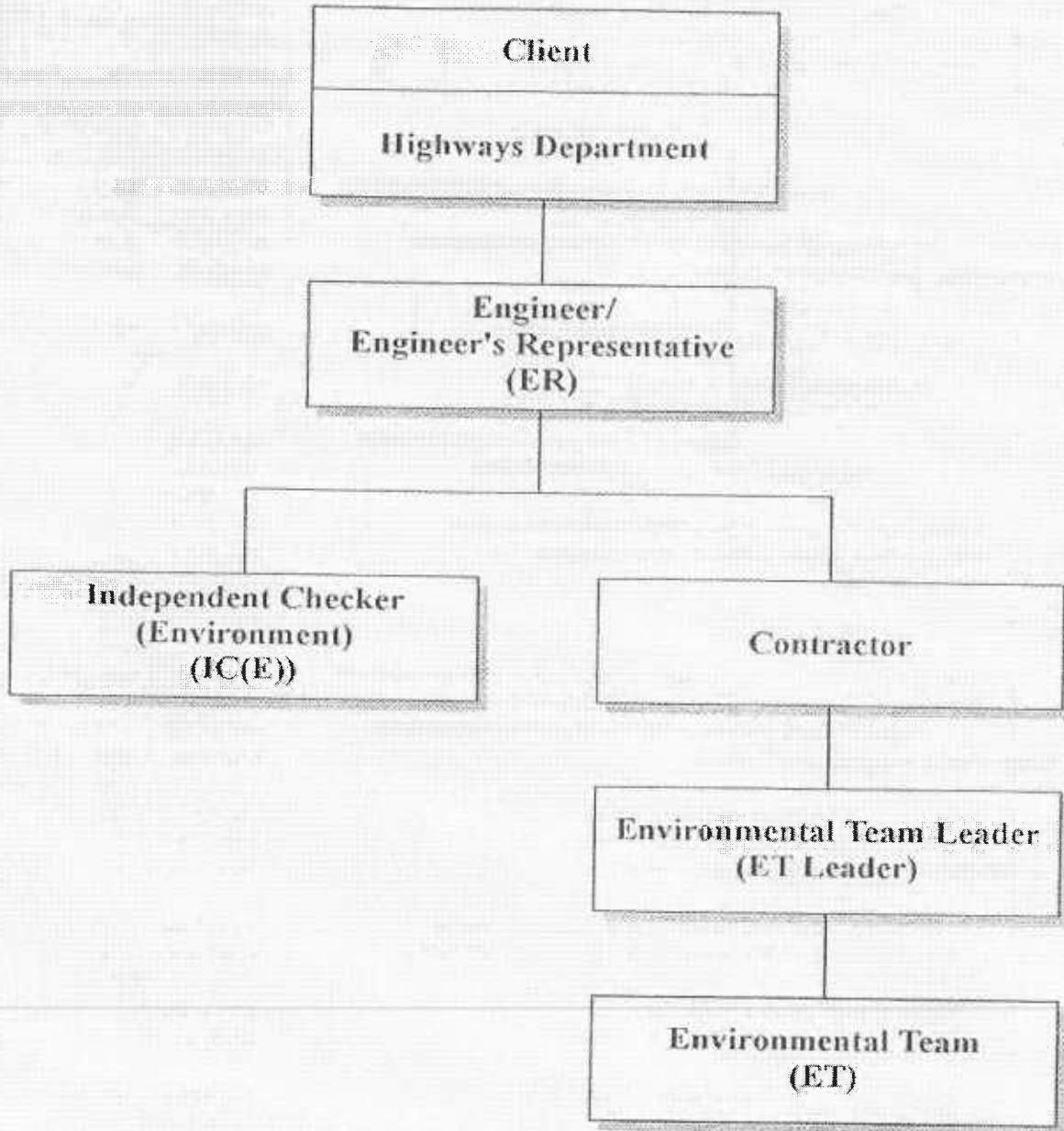
## FIGURES

---

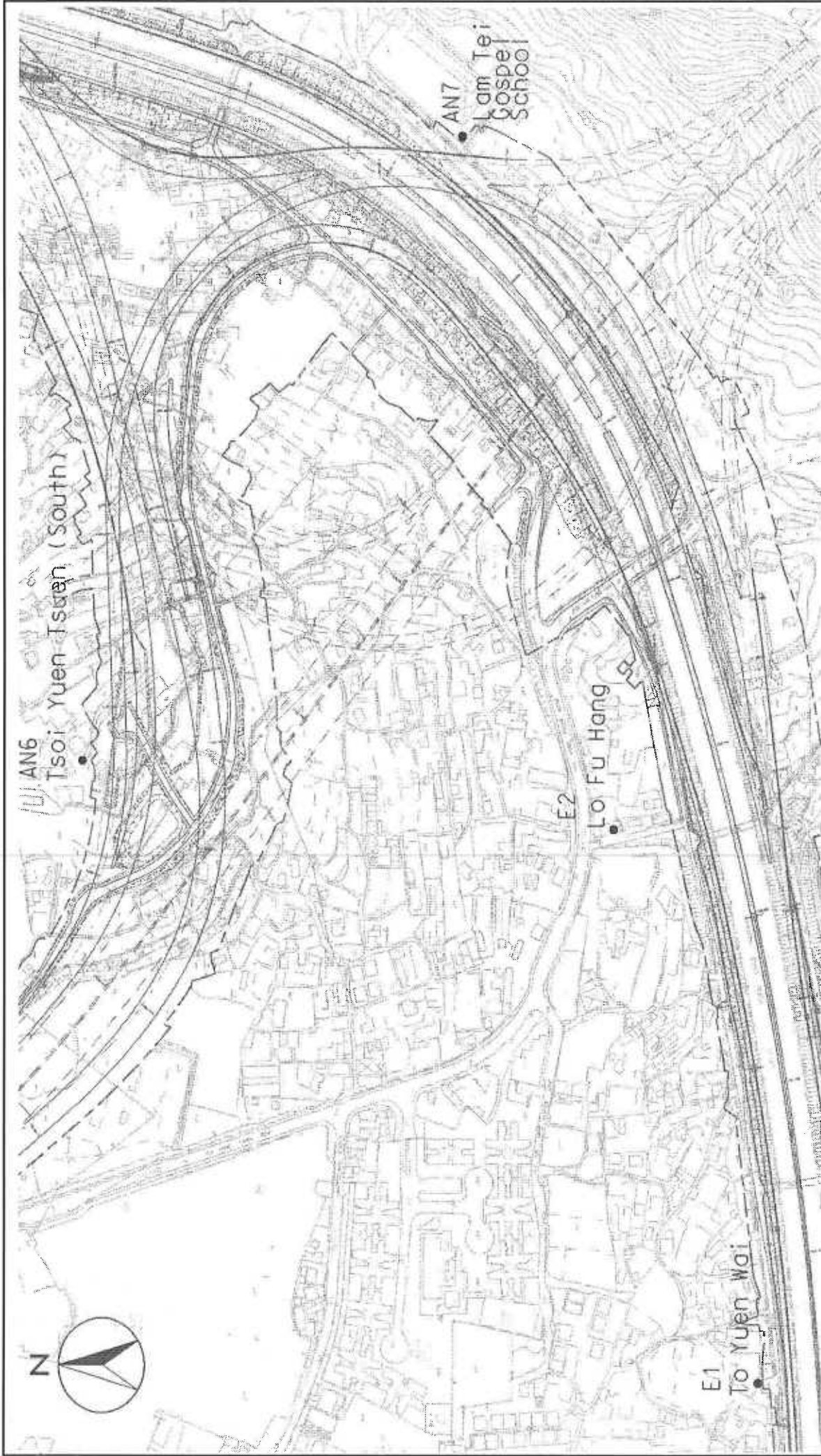
---



<b>ENSR</b>   <b>AECOM</b>	CONTRACT NO. HY/2002/23 DEEP BAY LINK - SOUTHERN SECTION <b>LAYOUT OF WORK SITE</b>		SCALE N.T.S.	DATE 2007
	CHECK PTPM	DRAWN LLCM	JOB NO. 60016783	DRAWN LLCM
	LAYOUT OF WORK SITE		FIGURE NO. 1.1	REV -



<b>ENSR   AECOM</b>	Contract HY/2002/23 Deep Bay Link - Southern Section <b>Project Organisation</b>	SCALE	N.T.S.	DATE	2007
		CHECK	PTPM	DRAWN	YSL
		JOB NO.	60016783	FIGURE No.	2.1



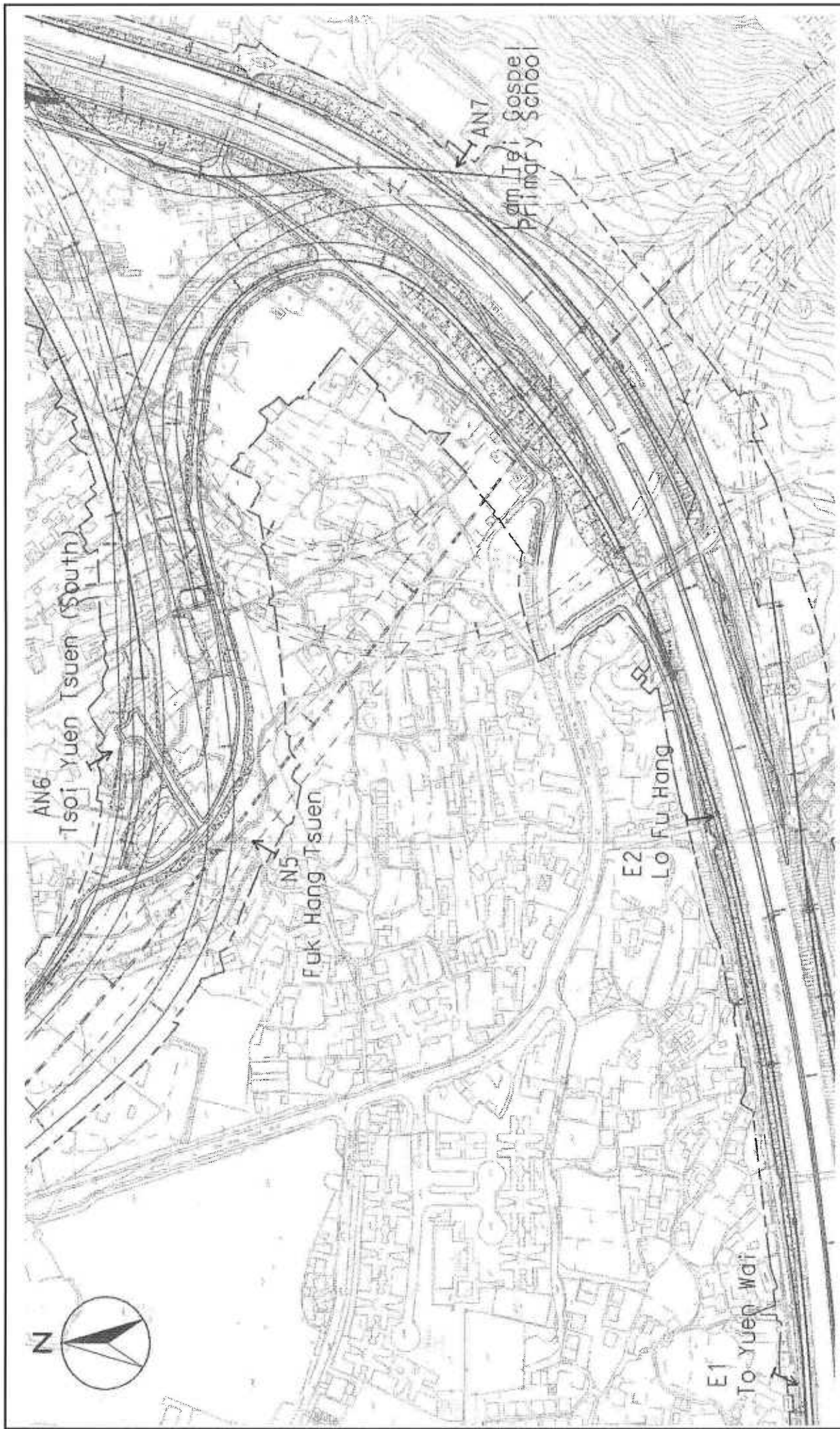
CONTRACT NO. HY/2002/23

DEEP BAY LINK - SOUTHERN SECTION

**LOCATIONS OF AIR QUALITY MONITORING STATIONS**

**ENSR | AECOM**

SCALE	N.T.S.	DATE	2007
CHECK JOB NO.	PTPM	DRAWN FIGURE No.	LLCM
	60016783		3.1
			Rev -



<b>ENSR   AECOM</b>	CONTRACT NO. HY/2002/23 DEEP BAY LINK - SOUTHERN SECTION <b>LOCATIONS OF NOISE MONITORING STATIONS</b>			SCALE	N.T.S.	DATE	2007
	CHECK	PTPM	DRAWN	LLCM	FIGURE NO.	3.2	Rev
	JOB NO.	60016783					

**APPENDIX A**  
**CONTACT DETAILS OF KEY MANAGEMENT**

## Contacts of Key Environmental Staff

	<u>Name</u>	<u>Telephone</u>	<u>Fax</u>
<u>EPD</u> Environmental Protection Officer	Dr. Derek Wong	2417 6162	2415 7191
<u>ER</u> <b>Ove Arup &amp; Partners HK Limited</b> Chief Resident Engineer Resident Engineer	Mr. Simon Tong Mr. Paul Lee	3476 3888 3476 3888	2448 3361 2448 3361
<u>IEC</u> <b>CH2M HILL HK Limited</b> Independent Environmental Checker	Mr. Billy Yu	2507 2203	2507 2293
<u>Contractor</u> <b>China State JV</b> Project Manager Safety Manager	Mr. J. Yeung Mr. K. F. Ng	2460 9487 2460 9487	2464 0350 2464 0350
<u>ET</u> <b>ENSR Asia (HK) Limited</b> Environmental Team Leader Senior Environmental Scientist	Mr. Y. T. Tang Ms. Connie Wong	2893 1551 2893 1551	2891 0305 2891 0305



---

---

**APPENDIX B  
ENVIRONMENTAL MONITORING  
PROGRAMME**

---

---

## Appendix B Environmental Monitoring Programme

**Table B1 Air Quality Monitoring Parameters and Frequency**

Parameter	Duration	Frequency
1-hour TSP	1 hour	3 times every 6 days
24-hour TSP	24 hours	Once every six days

**Table B2 Noise Monitoring Parameters, Period and Frequency**

Time Period	Duration (min)	Parameters	Frequency
Normal Daytime (0700 to 1900)	30	$L_{eq}$	Once per week
*Evening (1900 to 2300)	15	$L_{eq}$	Three consecutive $L_{eq(5mins)}$ per week when construction work is in progress
*Night-time (2300 to 0700 of next day)			
*Holiday Daytime (0700 to 1900)			

\*Noise monitoring to be conducted only when construction work is in progress.

---

---

**APPENDIX C  
ACTION AND LIMIT LEVELS**

---

---

## Appendix C – Action and Limit Levels

### Action and Limit Levels for A-hour TSP and 24-hour TSP

Parameter	Location	Action Level, $\mu\text{g}/\text{m}^3$	Limit Level, $\mu\text{g}/\text{m}^3$
1-hour TSP	AN6	319.9	500
	AN7	304.7	
	E1	304.0	
	E2	297.4	
24-hour TSP	AN6	164.8	260
	AN7	189.8	
	E1	210.0	
	E2	182.3	

### Action and Limit Levels ( $L_{eq}$ ) for Construction Noise

Time Period	Action Level	Limit Level, dB(A)				
		N5	AN6	AN7 <sup>#</sup>	E1	E2
0700 – 1900 hours on normal weekdays	When one documented complaint is received from any one of the sensitive receivers	75	75	70/65 <sup>*</sup>	75	75
0700 – 2300 hours on general holiday 1900 – 2300 hours on all other days		65	65	-	65	65
2300 – 0700 hours of next day		50	50	-	50	50

\* Reduced to 65 dB(A) during examination periods

# Not consider as a sensitive receiver during restricted hours.

---

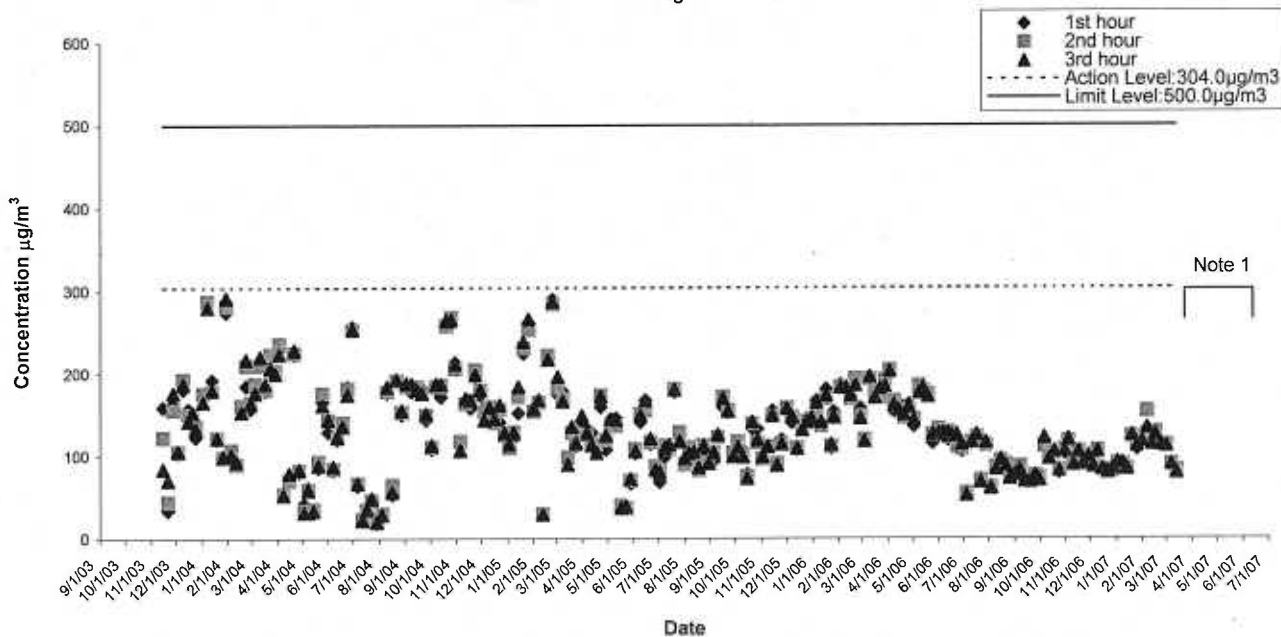
---

**APPENDIX D  
GRAPHICAL PRESENTATION OF AIR  
QUALITY MONITORING RESULTS**

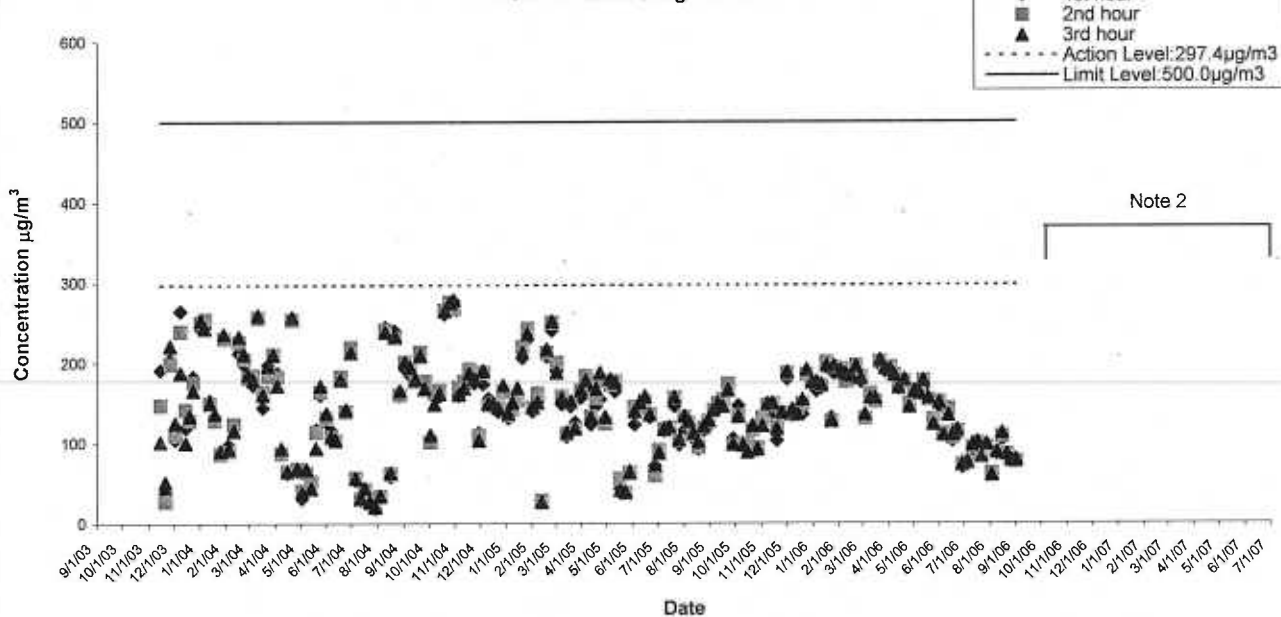
---

---

1-hour TSP Monitoring Results at E1



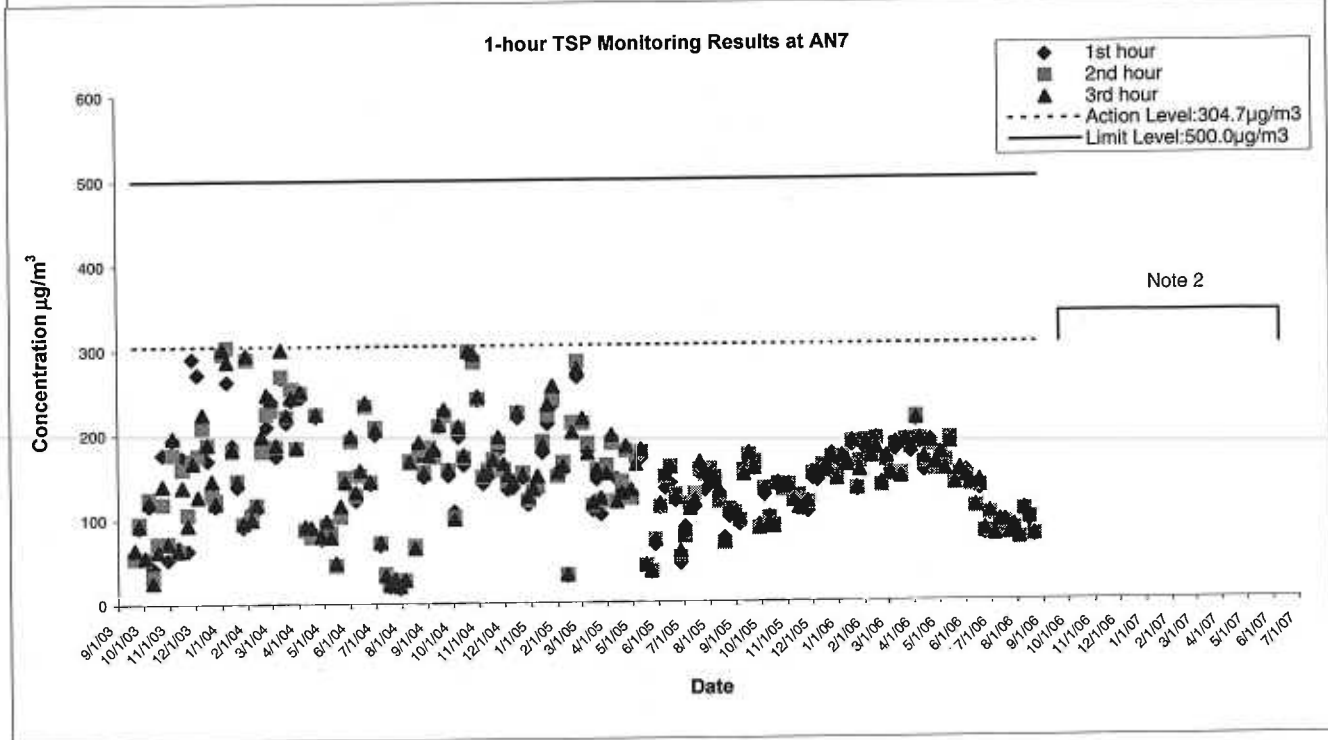
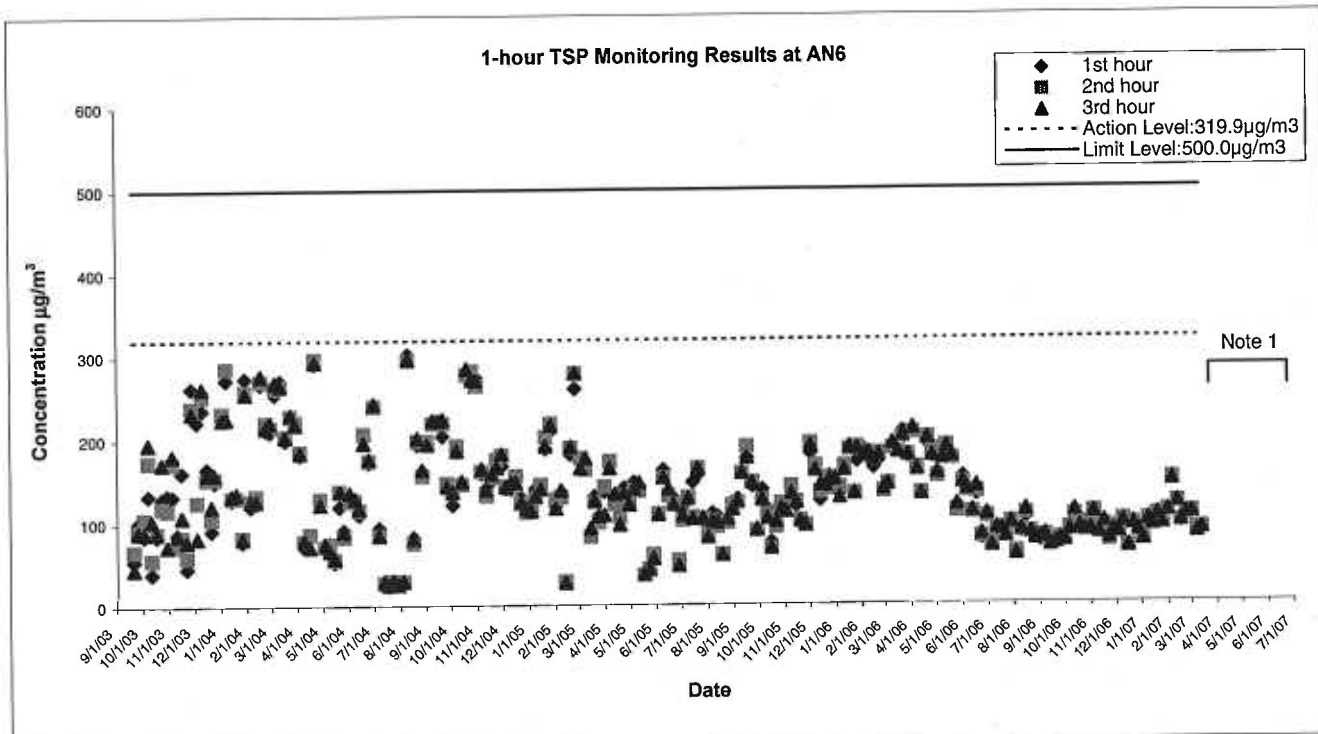
1-hour TSP Monitoring Results at E2



Note 1: Air quality monitoring was terminated at E1 on 13 Mar 07.

Note 2: Air quality monitoring was terminated at E2 on 5 Sep 06.

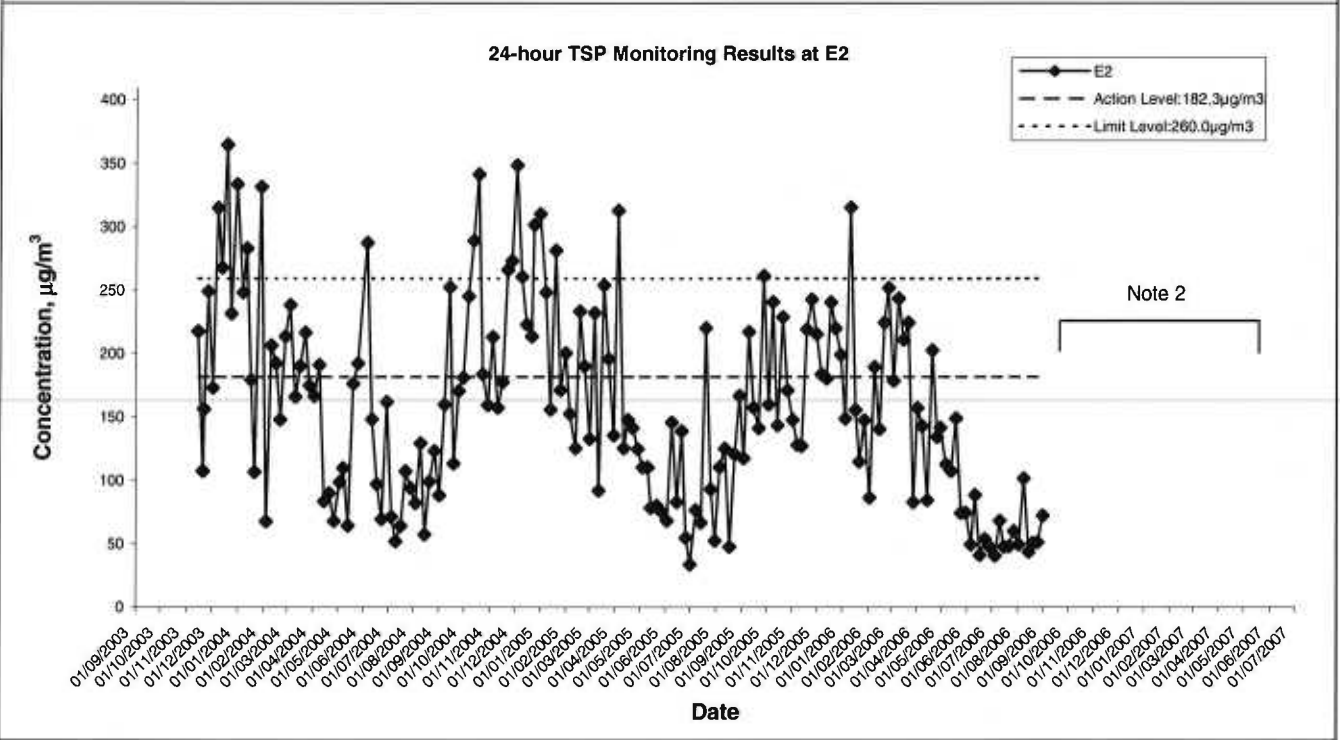
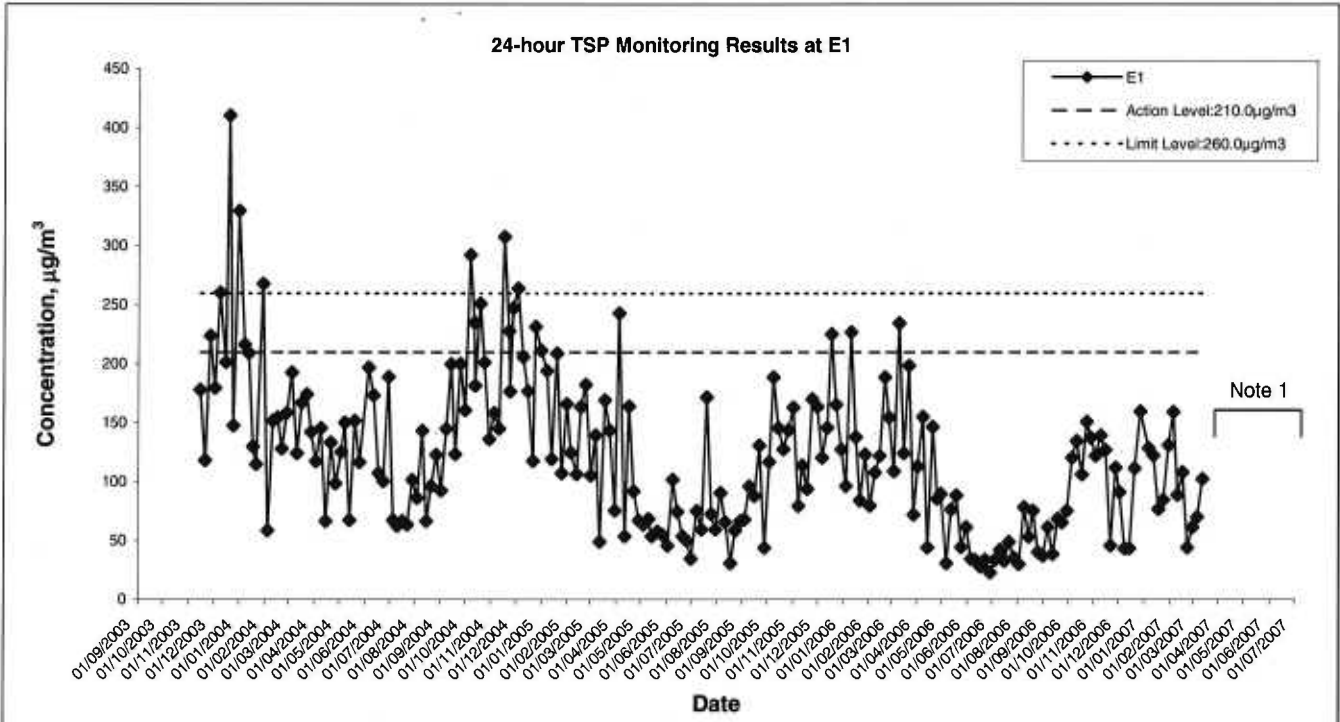
	Contract No: HY/2002/23 Deep Bay Link-Southern Section <b>Graphical Presentation of 1-hour TSP Monitoring Results for Locations E1 and E2</b>	SCALE	N.T.S.	DATE	2007	
		CHECK	PTPM	DRAWN	YSL	
		JOB NO.	60016783	APPENDIX No.	D	Rev.
						-



Note 1: Air quality monitoring was terminated at AN6 on 13 Mar 07.

Note 2: Air quality monitoring was terminated at AN7 on 5 Sep 06.

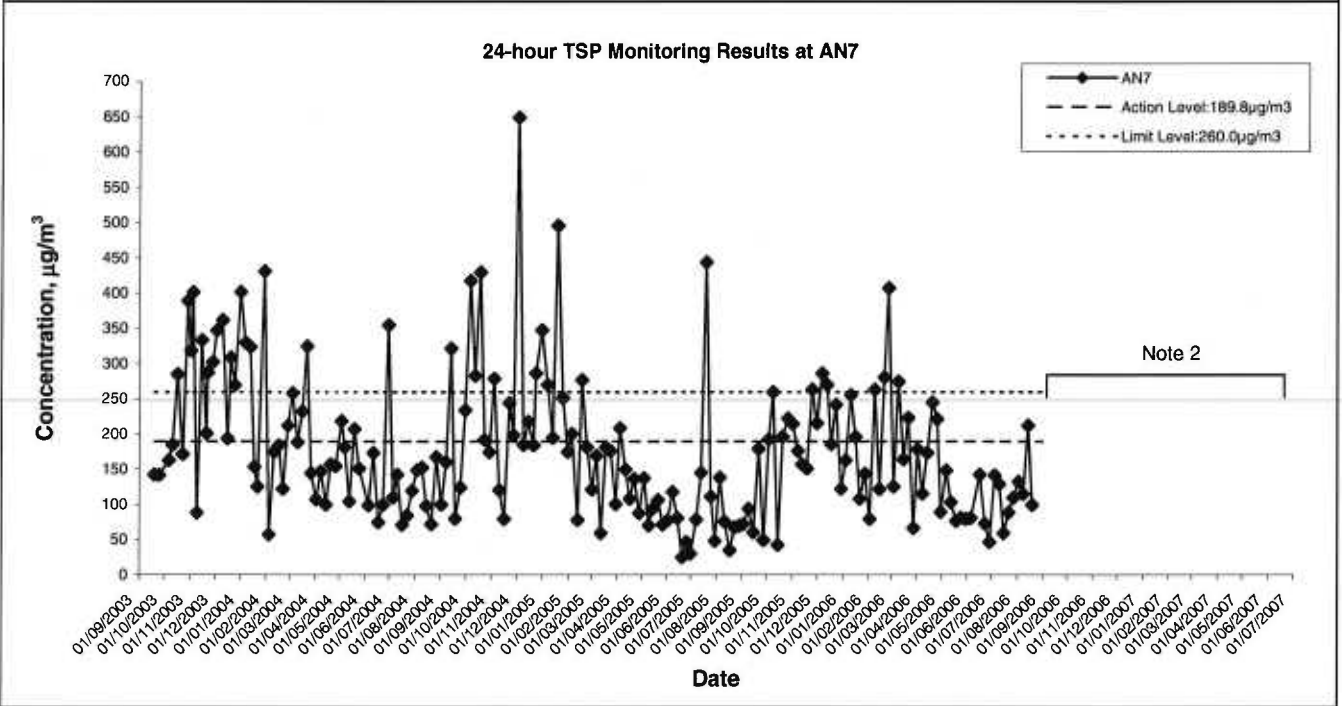
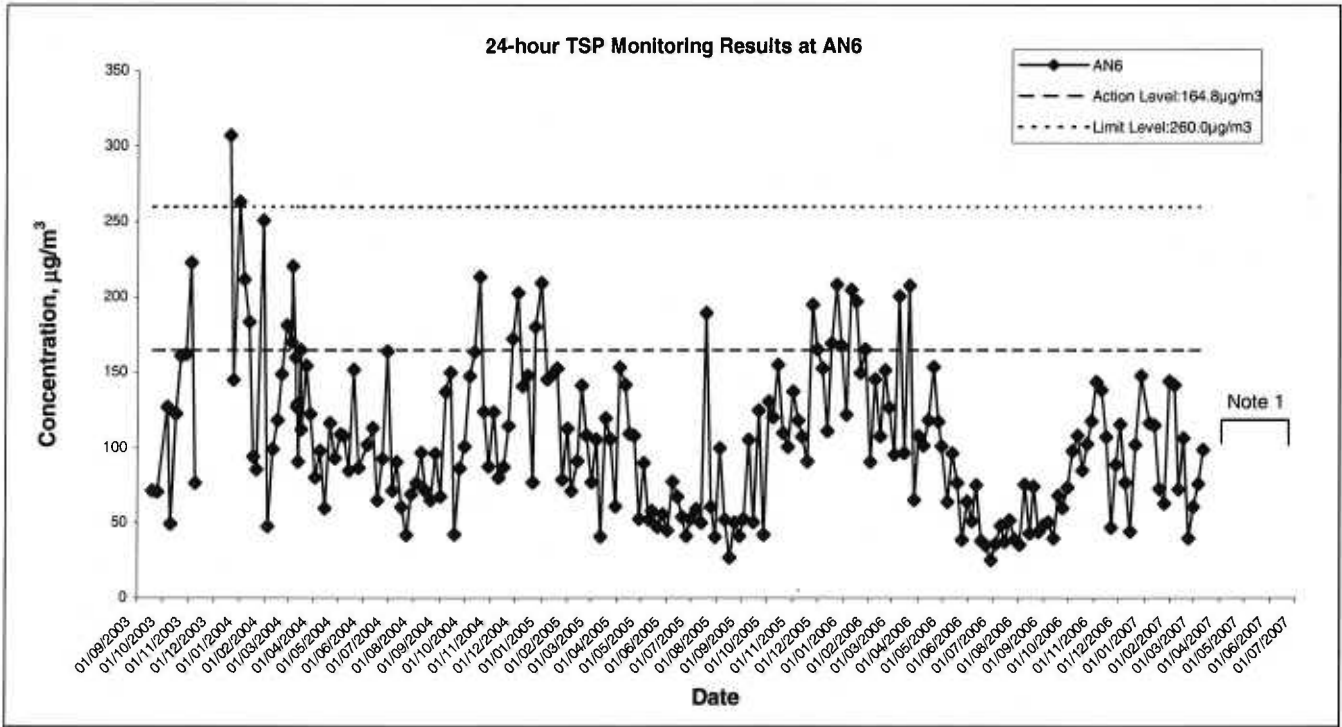
	Contract No: HY/2002/23	SCALE	N.T.S.	DATE	2007	
	Deep Bay Link-Southern Section	CHECK	PTPM	DRAWN	YSL	
	<b>Graphical Presentation of 1-hour TSP Monitoring Results for Locations AN6 and AN7</b>	JOB NO.	60016783	<b>APPENDIX No.</b>		Rev.
				D	-	



Note 1: Air quality monitoring was terminated at E1 on 13 Mar 07.  
 Note 2: Air quality monitoring was terminated at E2 on 5 Sep 06.

	Contract No: HY/2002/23 Deep Bay Link-Southern Section	SCALE	N.T.S.	DATE	2007
	<b>Graphical Presentation of 24-hour TSP          Monitoring Results for Locations E1 and E2</b>	CHECK	PTPM	DRAWN	YSL
	JOB NO.	60016783	APPENDIX No.		Rev.
				D	-





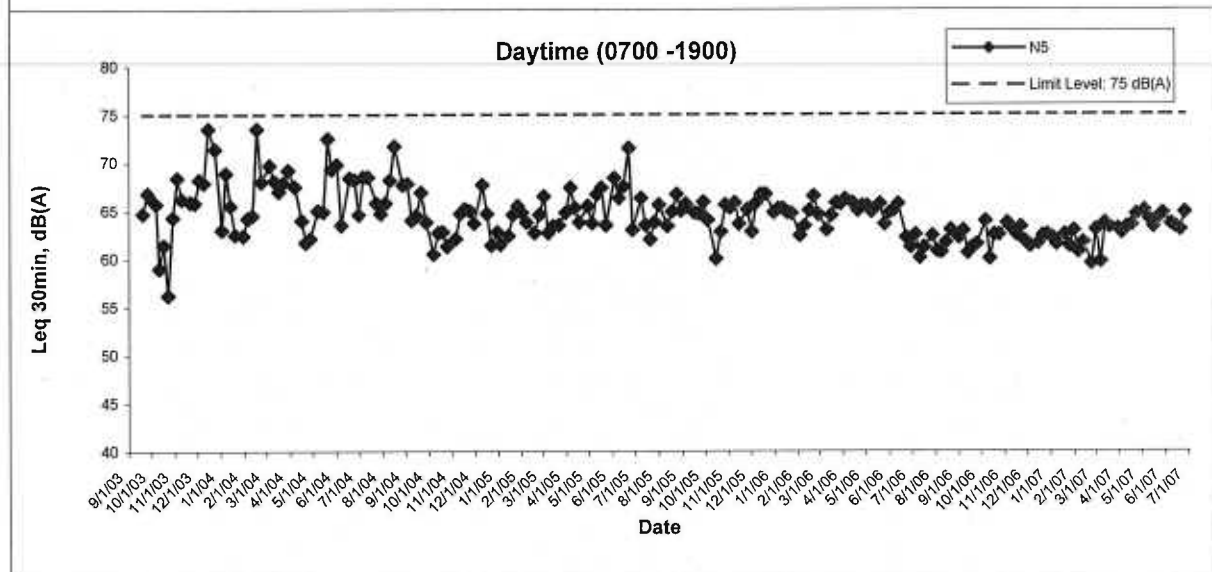
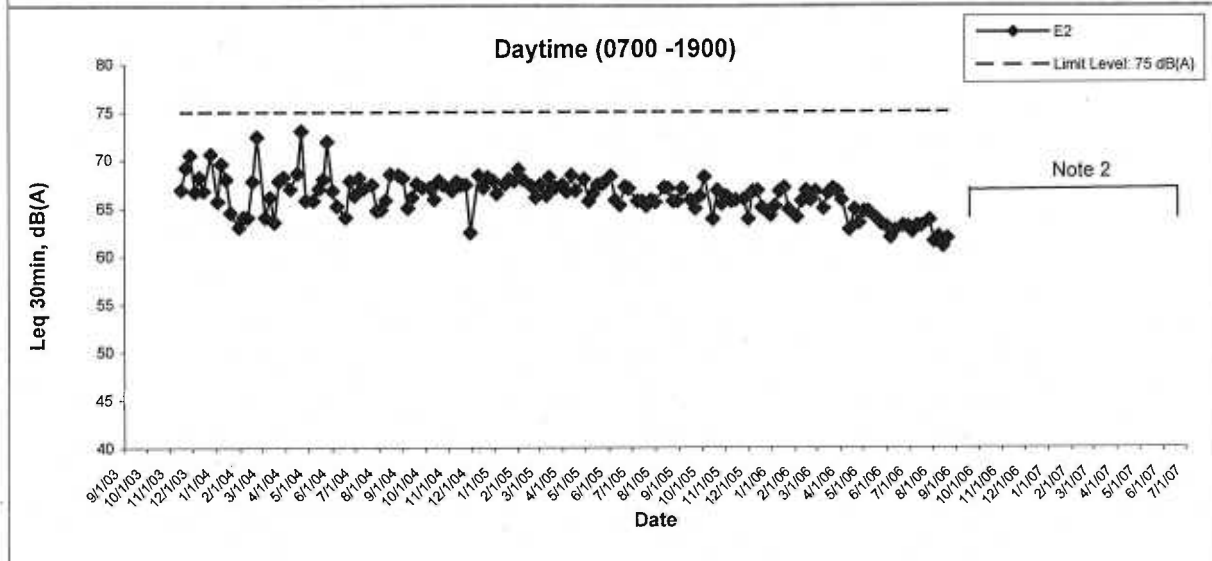
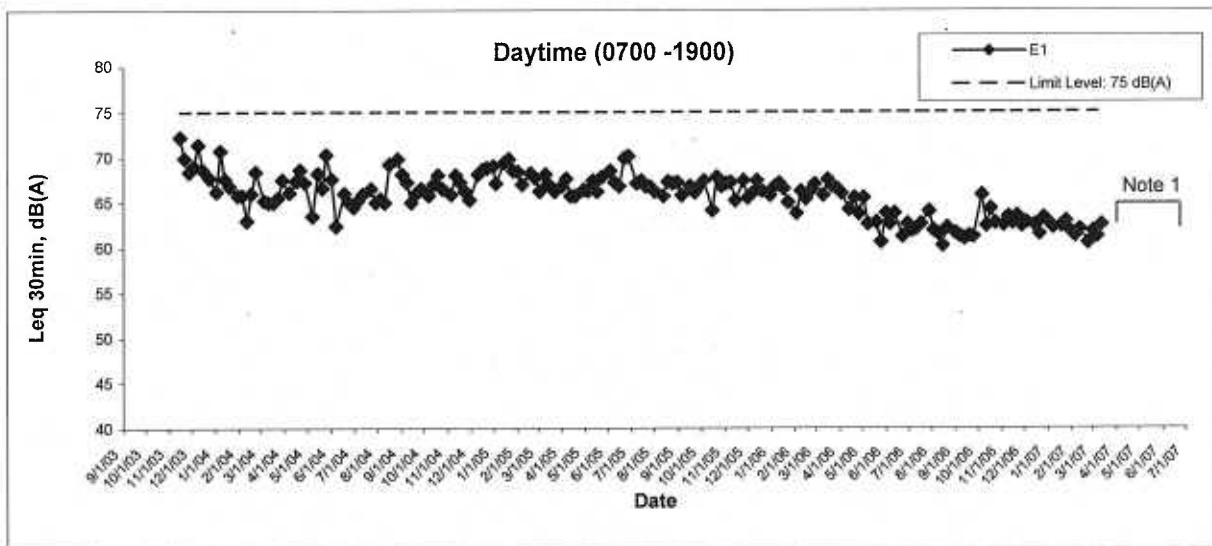
Note 1: Air quality monitoring was terminated at AN6 on 13 Mar 07.  
 Note 2: Air quality monitoring was terminated at AN7 on 5 Sep 06.

	Contract No: HY/2002/23 Deep Bay Link-Southern Section	SCALE	N.T.S.	DATE	2007
	<b>Graphical Presentation of 24-hour TSP          Monitoring Results for Locations AN6 and AN7</b>	CHECK	PTPM	DRAWN	YSL
	JOB NO.	60016783	APPENDIX No.		Rev.
				D	-

---

**APPENDIX E  
GRAPHICAL PRESENTATION OF NOISE  
MONITORING RESULTS**

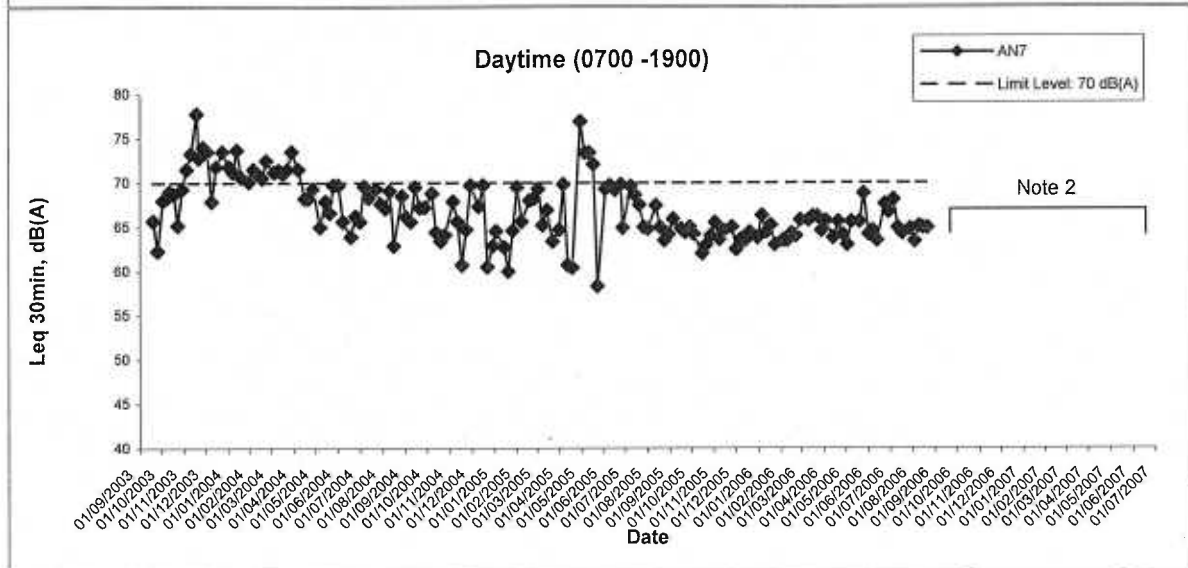
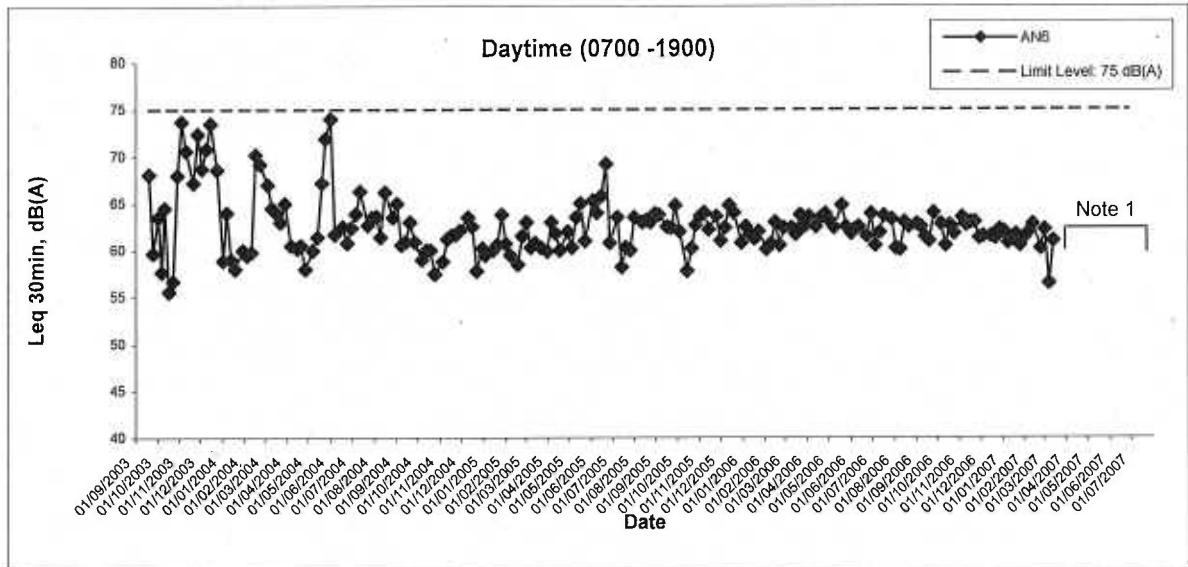
---



Note 1: Noise monitoring was terminated at E1 on 13 Mar 07.

Note 2: Noise monitoring was terminated at E2 on 5 Sep 06.

	Contract No: HY/2002/23			SCALE	N.T.S.	DATE	2007
	Deep Bay Link-Southern Section			CHECK	PTPM	DRAWN	YSL
	<b>Graphical Presentation of Noise Monitoring Results</b>			JOB NO.	60016783	APPENDIX No.	E
							Rev.

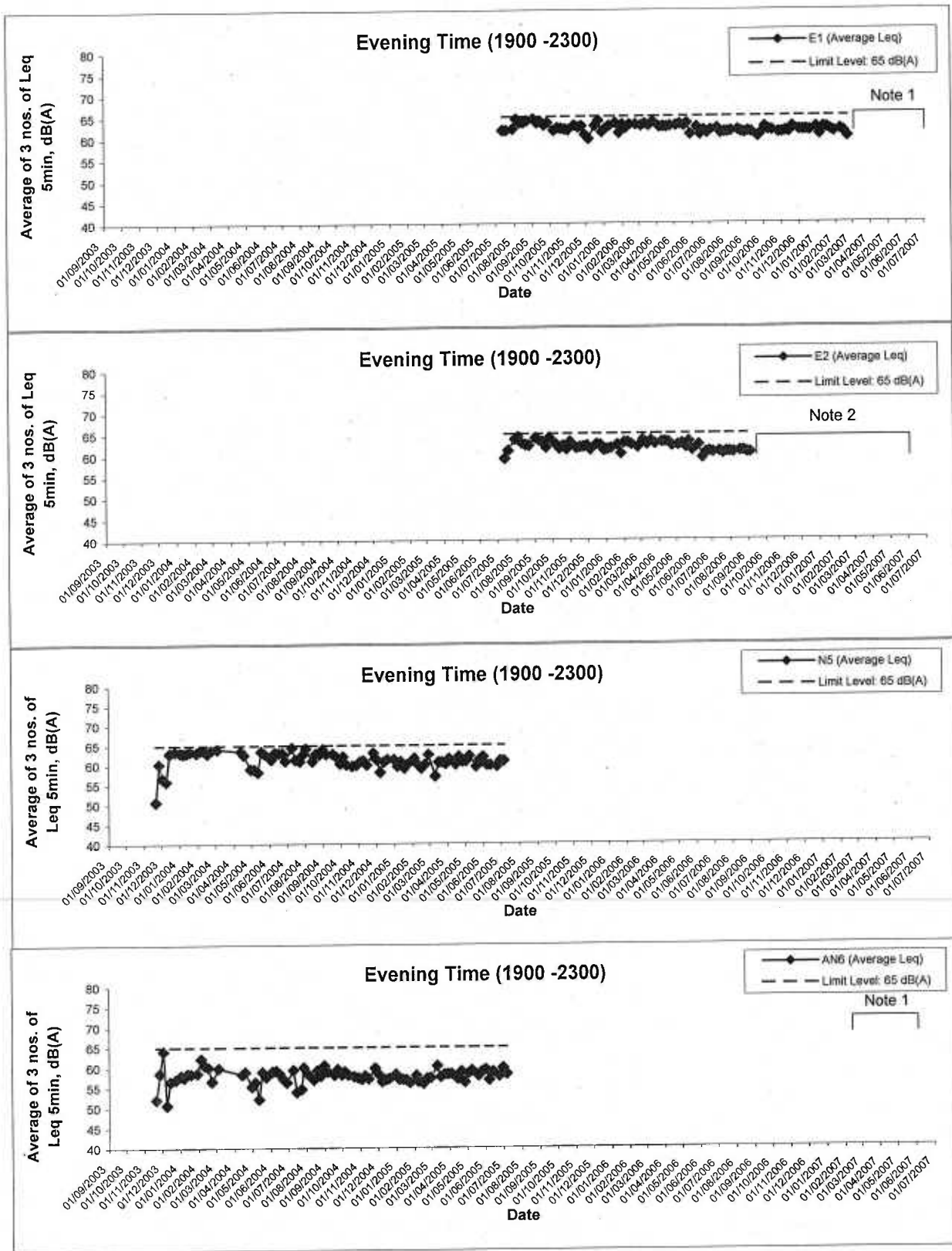


Note 1: Noise monitoring was terminated at AN6 on 13 Mar 07.

Note 2: Noise monitoring was terminated at AN7 on 5 Sep 06.

Note 3: Limit level was reduced to 65 dB(A) at AN7 during the school examination periods. Two Limit Level exceedances were recorded on 30 Jun 04 and 28 Jun 06 during the examination periods .

	Contract No: HY/2002/23 Deep Bay Link-Southern Section <b>Graphical Presentation of Noise Monitoring Results</b>	SCALE	N.T.S.	DATE	2007
		CHECK	PTPM	DRAWN	YSL
		JOB NO.	60016783	APPENDIX No.	Rev.
				E	-

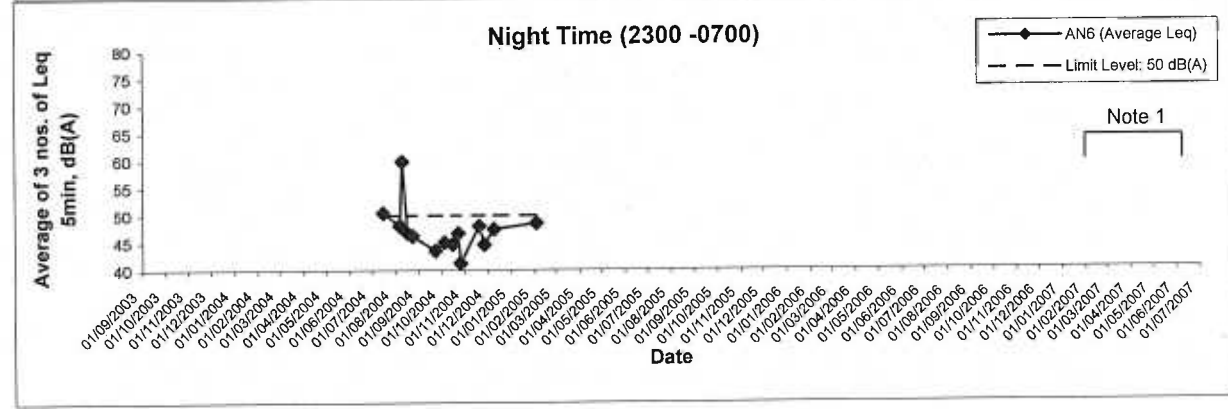
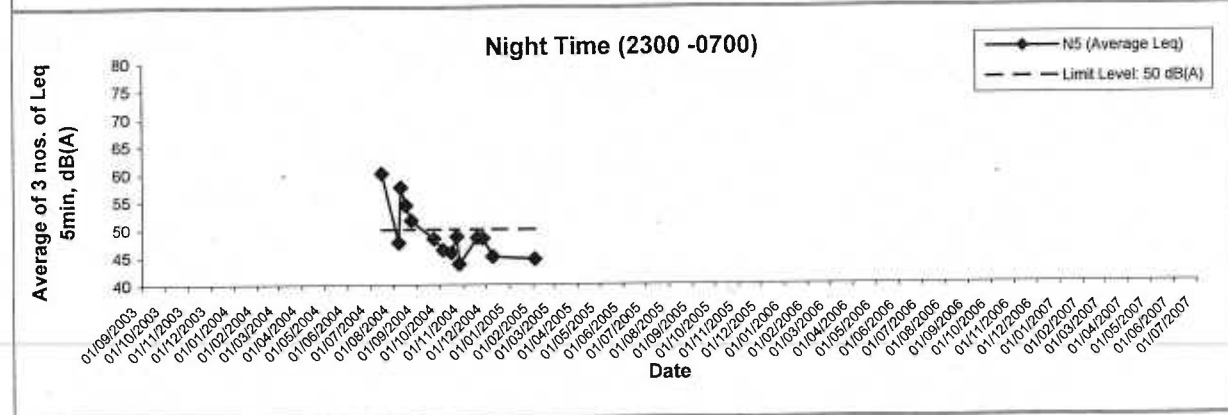
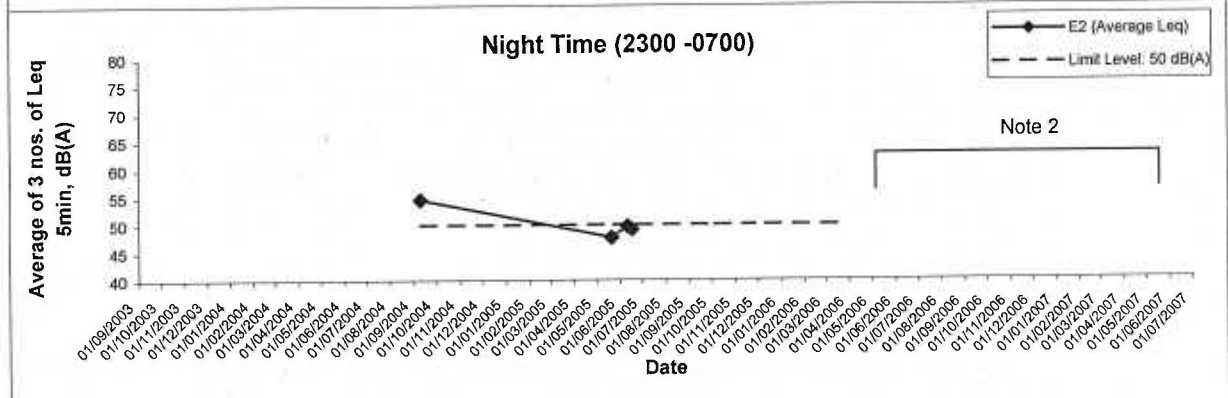
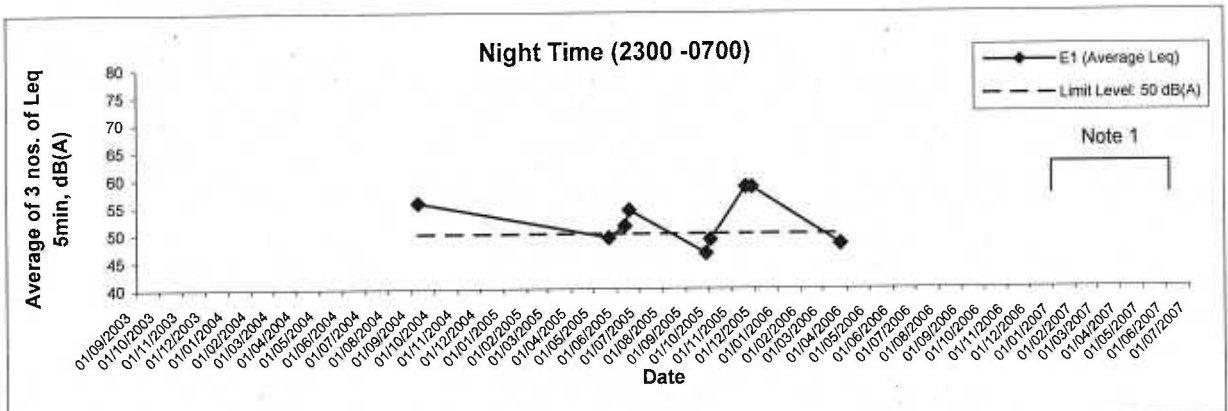


Note 1: Noise monitoring was terminated at E1 and AN6 on 13 Mar 07.

Note 2: Noise monitoring was terminated at E2 on 5 Sep 06.

Note 3: Evening time noise monitoring was carried out only when there was evening time construction work undertaken during the period from 1900-2300.

	Contract No: HY/2002/23	SCALE	N.T.S.	DATE	2007
	Deep Bay Link-Southern Section	CHECK	PTPM	DRAWN	YSL
	<b>Graphical Presentation of Noise Monitoring Results</b>	JOB NO.	60016783	APPENDIX No.	Rev.
				E	

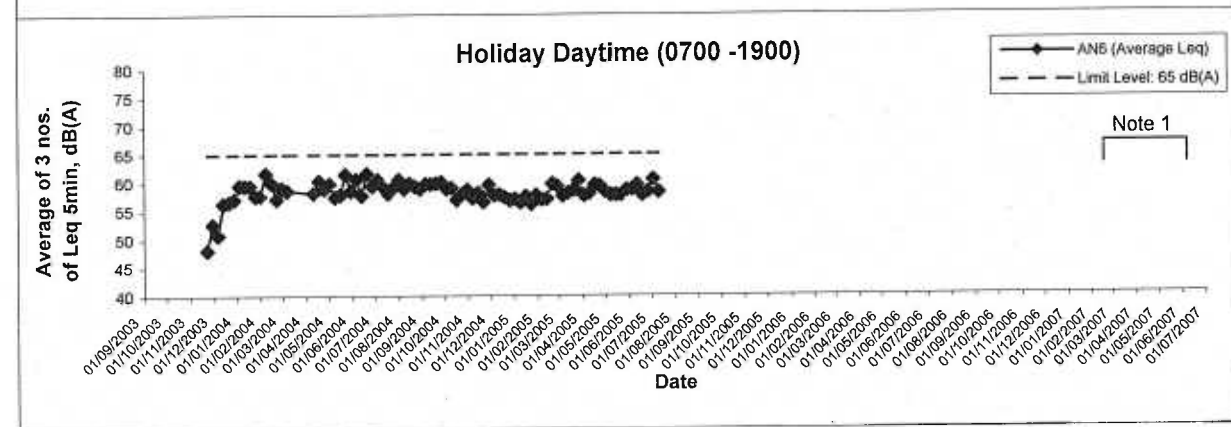
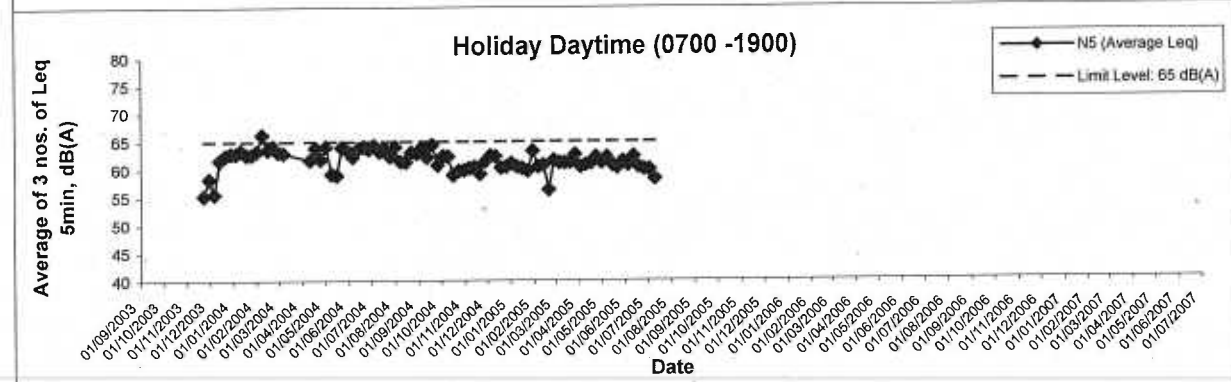
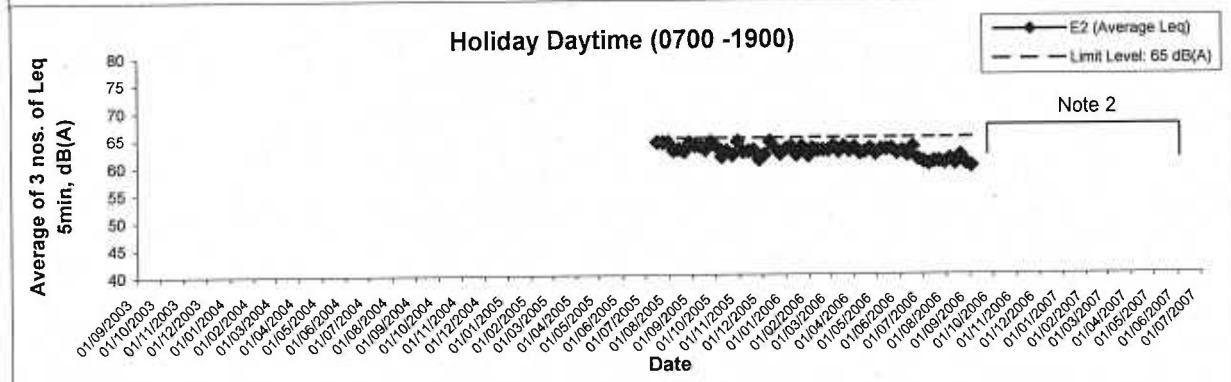
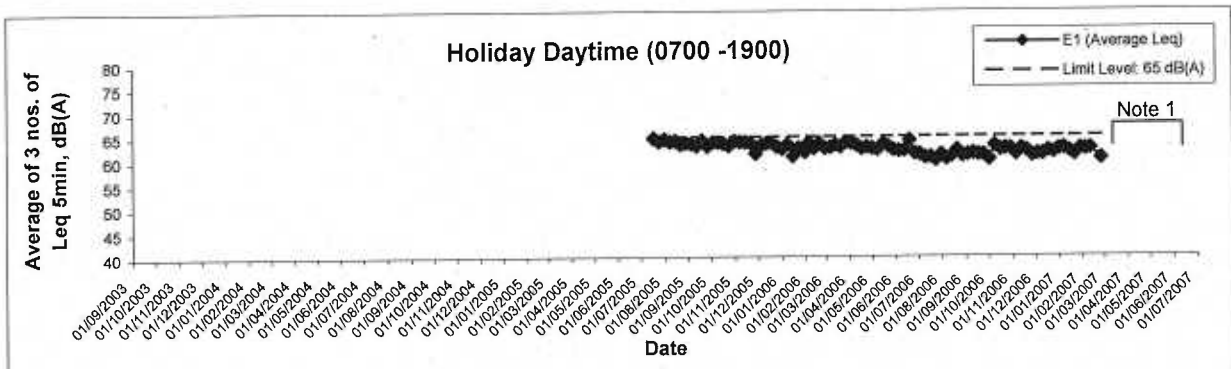


Note 1: Noise monitoring was terminated at E1 and AN6 on 13 Mar 07.

Note 2: Noise monitoring was terminated at E2 on 5 Sep 06.

Note 3: Night time noise monitoring was carried out only when there was night time construction work undertaken during the period from 2300-0700 of next day.

	Contract No: HY/2002/23	SCALE	N.T.S.	DATE	2007
	Deep Bay Link-Southern Section	CHECK	PTPM	DRAWN	YSL
	<b>Graphical Presentation of Noise Monitoring Results</b>	JOB NO.	60016783		APPENDIX No.
				E	-



Note 1: Noise monitoring was terminated at E1 and AN6 on 13 Mar 07.

Note 2: Noise monitoring was terminated at E2 on 5 Sep 06.

Note 3: Holiday daytime noise monitoring was carried out only when there was holiday daytime construction work undertaken during the period from 0700-1900 on general holidays and Sunday.

	Contract No: HY/2002/23 Deep Bay Link-Southern Section <b>Graphical Presentation of Noise Monitoring Results</b>	SCALE	N.T.S.	DATE	2007
		CHECK	PTPM	DRAWN	YSL
		JOB NO.	60016783	APPENDIX No.	E

---

---

**APPENDIX F  
SUMMARY OF IMPLEMENTATION STATUS  
OF ENVIRONMENTAL MITIGATION  
MEASURES**

---

---



## Appendix F — Summary of Environmental Mitigation Implementation Schedule

Types of Impacts	Mitigation Measures	Status
Air Quality Site clearance and demolition of existing structures	<ul style="list-style-type: none"> <li>The working area for the uprooting of trees, shrubs or vegetation or for the removal of boulders, poles, pillars or temporary or permanent structures shall be sprayed with water or a dust suppression chemical immediately</li> </ul>	√
	<ul style="list-style-type: none"> <li>All demolished items (including trees, shrubs, vegetation, boulders, poles, pillars, structures debris, rubbish and other items arising from site clearance) that may dislodge dust particles shall be covered entirely by impervious sheeting or placed in an area sheltered on the top and the 3 sides within a day of demolition</li> </ul>	√
Site boundary and entrance	<ul style="list-style-type: none"> <li>Vehicle washing facilities including a high pressure jet shall be provided at every vehicle exit point;</li> </ul>	√
	<ul style="list-style-type: none"> <li>The area where vehicle washing takes place and the section of the road between the washing facilities and the exit point shall be paved with concrete, bituminous materials or hardcores;</li> </ul>	√
	<ul style="list-style-type: none"> <li>Where a site boundary adjoins a road, streets or other area accessible to the public, hoarding of not less than 2.4 m high from ground level shall be provided along the entire length except for a site entrance or exit;</li> </ul>	N/A
Access road	<ul style="list-style-type: none"> <li>Every main haul road (i.e. any course inside a construction site having a vehicle passing rate higher than 4 in any 30 minutes) shall be sealed and kept clear of dusty materials or sprayed with water so as to maintain the entire road surface wet;</li> </ul>	√
	<ul style="list-style-type: none"> <li>The portion of any road leading only to a construction site that is within 30m of discernible or designated vehicle entrance or exit shall be kept clear of dusty materials;</li> </ul>	√
Use of vehicle	<ul style="list-style-type: none"> <li>Immediately before leaving a construction site, every vehicle shall be washed to remove any dusty materials from its body and wheels;</li> </ul>	√
	<ul style="list-style-type: none"> <li>Where a vehicle leaving a construction site is carrying a load of dusty materials, the load shall be covered entirely by clean impervious sheeting to ensure that the dusty materials do not leak from the vehicle;</li> </ul>	√
	<ul style="list-style-type: none"> <li>Vehicle speed within the worksite shall be limited to 10 kph, except for properly formed and maintained access roads;</li> </ul>	√
Concrete production	<ul style="list-style-type: none"> <li>The concrete batching plant shall be located away from any air sensitive receiver as far as practicable;</li> </ul>	√
	<ul style="list-style-type: none"> <li>If the total silo capacity of the concrete batching plant exceed 50 tonne, the project proponent is required to obtain a Specified Process licence to ensure that any potential dust emission would be properly controlled</li> </ul>	N/A
	<ul style="list-style-type: none"> <li>Cement delivered in bulk shall be stored in a closed silo fitted with an audible high level alarm which is interlocked with the material filling line such that, in the event of the silo approaching an overfilling condition, an audible alarm is triggered and the material filling stops within one minute;</li> </ul>	N/A
	<ul style="list-style-type: none"> <li>Silo used for the storage of cement shall not be overfilled;</li> </ul>	N/A

Types of Impacts	Mitigation Measures	Status
	<ul style="list-style-type: none"> <li>The loading, unloading, transfer, handling or storage of any cement shall be carried out in a totally enclosed system or facility, and any vent or exhaust shall be fitted with an effective fabric filter or equivalent air pollution control system or equipment;</li> <li>Cement collected by fabric filters or other pollution control system or equipment shall be disposed of in a totally enclosed containers;</li> </ul>	N/A
Excavation and earth moving	<ul style="list-style-type: none"> <li>The working area of any excavation or earth moving operation shall be sprayed with water or a dusty suppression chemical immediately before, during and immediately after the operation so as to maintain the entire surface wet;</li> <li>Exposed earth shall be properly treated by compaction, turfing Hydroseeding, vegetation planting or sealing with latex, vinyl, bitumen, shortcrete or other suitable surface stabilizer within 6 months after the last construction activity on the construction site or part of the construction site where the exposed earth lies;</li> </ul>	✓
Stockpiling of dusty materials	<ul style="list-style-type: none"> <li>If a stockpile of dusty materials is more than 1.2 m high and lies within 50 m from any site boundary that adjoins a road, street, or other area accessible to the public, it shall be properly treated and sealed with latex, vinyl, bitumen or other suitable surface stabilizer;</li> <li>All dusty materials shall be sprayed with water prior to any loading, unloading or transfer operation so as to maintain the dusty material wet;</li> </ul>	✓
Noise		✓
Good site practice	<ul style="list-style-type: none"> <li>The Contractor should site noisy equipment and activities as far from sensitive receivers as practical. Also, temporary site offices (and other similar structures) should be located, as far as is possible, such that sensitive receivers are screened by these structures from the line of sight of the construction areas</li> <li>Intermittent noisy activities should be scheduled to minimise exposure of nearby NSRs to high levels of construction noise. For example, noisy activities could be scheduled at times coinciding with periods when the schools are likely to be unoccupied. Prolonged operation of noisy equipment close to the schools should be avoided</li> <li>Idle equipment should be turned off or throttled down. Noisy equipment should be properly maintained and used no more often than is necessary</li> <li>Construction activities should be planned so that parallel operation of several sets of equipment close to a given receiver is avoided</li> <li>Where possible, the numbers of concurrently operating items of plant should be reduced through sensitive programming</li> <li>Construction plant should be properly maintained and operated. Construction equipment often has silencing measures built in or added on, e.g. compressor panels, and mufflers. Silencing measures should be properly maintained and utilized</li> </ul>	✓
Water Quality		✓
Local Stream Courses, Pipeworks and drains	<ul style="list-style-type: none"> <li>Local stream courses should be realigned or diverted in the sections where the proposed road alignment intersects with the local stream courses to ensure that there would be no discontinuity of flows downstream from the construction sites</li> </ul>	✓

Types of Impacts	Mitigation Measures	Status
Excavation and Filling	<ul style="list-style-type: none"> <li>Box culverts and diversion channels should be constructed to divert the stream flows downstream</li> </ul>	✓
	<ul style="list-style-type: none"> <li>Supporting columns and piers for the elevated sections of the DBL should be located away from existing stream courses as far as possible</li> </ul>	✓
	<ul style="list-style-type: none"> <li>The design of diverted sections of the stream courses should minimise loss of flow section and avoid generating unstable flow conditions</li> </ul>	✓
	<ul style="list-style-type: none"> <li>The construction period for re-alignment or diversion of stream courses should be shortened as far as possible through a better coordination with the other DBL construction activities</li> </ul>	✓
	<ul style="list-style-type: none"> <li>A construction site drainage layout and management plan should be developed by the Contractor to detail the procedures for control of construction site runoff. The plan should be submitted to the ET prior to the commencement of the DBL construction works to ensure a better site management and control of surface runoff on site</li> </ul>	✓
	<ul style="list-style-type: none"> <li>The existing pipes, which would be affected by the DBL project due to the increased runoff from DBL, should be upsized to increase the pipe capacity</li> </ul>	✓
	<ul style="list-style-type: none"> <li>A discharge license from EPD for discharge of effluent should be obtained</li> </ul>	✓
	<ul style="list-style-type: none"> <li>In areas where extensive excavation and filling are carried out, temporary earth bunds should be built. Sand bags may be sued to confine the runoff or wastewater generated from the construction activities</li> </ul>	✓
	<ul style="list-style-type: none"> <li>Excavation works should be minimised in rainy season</li> </ul>	✓
	<ul style="list-style-type: none"> <li>Open stockpiles of construction materials and dusty materials should be covered with tarpaulin during rainstorms. These materials should not be placed near the stream courses. This avoids the release of materials into the stream water</li> </ul>	✓
	<ul style="list-style-type: none"> <li>The carrying out of trench and hole digging should be in short sections. Trenches and holes should be immediately back-filled after the completion of a section of works to minimise the inflow of rainwater during rainstorms</li> </ul>	✓
	<ul style="list-style-type: none"> <li>To prevent runoff from washing across exposed soil surface, intercepting channels should be provided. It is recommended to pave haul roads with concrete and protect temporary access roads using crushed stone or gravel. The exposed slope surfaces should be line or hydroseeded.</li> </ul>	✓
	<ul style="list-style-type: none"> <li>The waste water generated from bored pile foundation construction and related activities should be collected and recycled</li> </ul>	✓
	Construction of Foundation and Road Sections	<ul style="list-style-type: none"> <li>Bentonite slurries used in bore-piling works or diaphragm wall construction should be reconditioned and reused whenever practicable</li> </ul>
<ul style="list-style-type: none"> <li>Adequate surface channels should be constructed along the site boundaries to avoid release of surface and storm runoffs out of the sites</li> </ul>		✓
<ul style="list-style-type: none"> <li>The channel system to collect the runoffs in the construction sites should be well designed prior to the commencement of the site formation works</li> </ul>		✓
		✓

Types of Impacts	Mitigation Measures	Status
	<ul style="list-style-type: none"> <li>• Provisions of drains at the lowest points of the sites could effectively collect the runoff. Site and sand traps, which remove large soil particles in the runoffs, should be provided in the channels. Regular maintenance and cleaning of the channels would ensure that the channel system is in good condition and is not obstructed by sediments</li> <li>• Wastewater generated from the vehicle wheel washing facilities should be recycled wherever practicable. Excess wastewater should be transferred to suitable treatment systems for removal of suspended solids.</li> <li>• Wastewater generated from washing of concrete lorry mixers should be pre-treated by discharging into a sedimentation pit, which provides a quiescent environment for the concrete particles to settle and consolidate. The upper layer water in the sedimentation pit with low concentration of concrete particles should be further treated to the standards acceptable for final discharge. The concrete wastes deposited on the bottom of the pit should be removed regularly.</li> <li>• Covers should be provided to the newly constructed manholes to prevent any kinds of wastewater from entering into the drainage systems during the construction phase.</li> <li>• Pipes connected to the manholes should be temporarily sealed to avoid debris and construction materials get into the drainage systems</li> <li>• A wastewater treatment system comprising of chemical coagulation, sedimentation and pH control processes should be used to treat the site runoffs and the wastewater generated from various construction activities</li> <li>• Chemical toilets should be provided on site for collection and temporary storage of sewage. Alternatively, sewage storage tank should be provided. The collected sewage should be tinkered away by a licensed waste collector for off-site disposal.</li> </ul>	<p>✓</p> <p>✓</p> <p>✓</p> <p>✓</p> <p>✓</p> <p>✓</p> <p>✓</p> <p>✓</p>
<p><i>Chemical Waste</i></p>	<p><i>Storage and Handling of Oil, Other Petroleum Products and Chemicals</i></p> <ul style="list-style-type: none"> <li>• All fuel tanks and chemical storage areas shall be provided with locks and be sited on sealed areas. The storage areas shall be surrounded by bunds with a capacity equal to 110% of the storage capacity of the largest tank to prevent spilled oil, fuel and chemicals from reaching the receiving waters. The Contractors shall prepare guidelines and procedures for immediate clean-up actions following any spillages of oil, fuel or chemicals.</li> </ul>	<p>✓</p>
<p><i>Waste</i></p>	<p>Details are provided in the Waste Management Plan.</p>	
<p><i>Landscape and Visual</i></p>	<ul style="list-style-type: none"> <li>• Temporary hydroseeding to reclamation if lapse time between completion of the reclamation and subsequent development is one year or more.</li> </ul>	<p>N/A</p>

Note:

✓

x

N/A

Compliance of mitigation measure

Non-compliance of mitigation measures

Not applicable

**APPENDIX G  
STATUS OF ENVIRONMENTAL LICENSES  
AND PERMITS**

Permit No.	Valid Period		Section
	From	To	
<b>Environmental Permit</b>			
EP-163/2000	02 Apr 03	20 May 04	<ul style="list-style-type: none"> <li>Construction and operation of a dual three-lane carriageway (Deep Bay Link) with bridge structures linking, interchange between at Lam Tei, Ha Tsuen and widening of the Yuen Long Highway between Lam Tei and Tan Kwai Tsuen from a dual 2-lane to a dual 3-lane.</li> </ul>
EP-163/2003/A	21 May 04	31 Aug 04	<ul style="list-style-type: none"> <li>Construction and operation of a dual three-lane carriageway (Deep Bay Link) with bridge structures linking, interchange between at Lam Tei, Ha Tsuen and widening of the Yuen Long Highway between Lam Tei and Tan Kwai Tsuen from a dual 2-lane to a dual 3-lane.</li> </ul>
EP-163/2003/B	1 Sep 04	7 Dec 04	<ul style="list-style-type: none"> <li>Construction and operation of a dual three-lane carriageway (Deep Bay Link) with bridge structures linking, interchange between at Lam Tei, Ha Tsuen and widening of the Yuen Long Highway between Lam Tei and Tan Kwai Tsuen from a dual 2-lane to a dual 3-lane.</li> </ul>
EP-163/2003/C	8 Dec 04	10 May 05	<ul style="list-style-type: none"> <li>Construction and operation of a dual three-lane carriageway (Deep Bay Link) with bridge structures linking, interchange between at Lam Tei, Ha Tsuen and widening of the Yuen Long Highway between Lam Tei and Tan Kwai Tsuen from a dual 2-lane to a dual 3-lane.</li> </ul>
EP-163/2003/D	11 May 05	8 Sep 05	<ul style="list-style-type: none"> <li>Construction and operation of a dual three-lane carriageway (Deep Bay Link) with bridge structures linking, interchange between at Lam Tei, Ha Tsuen and widening of the Yuen Long Highway between Lam Tei and Tan Kwai Tsuen from a dual 2-lane to a dual 3-lane.</li> </ul>
EP-163/2003/E	9 Sep 05	1 Mar 06	<ul style="list-style-type: none"> <li>Construction and operation of a dual three-lane carriageway (Deep Bay Link) with bridge structures linking, interchange between at Lam Tei, Ha Tsuen and widening of the Yuen Long Highway between Lam Tei and Tan Kwai Tsuen from a dual 2-lane to a dual 3-lane.</li> </ul>
EP-163/2003/F	2 Mar 06	26 Oct 06	<ul style="list-style-type: none"> <li>Construction and operation of a dual three-lane carriageway (Deep Bay Link) with bridge structures linking, interchange between at Lam Tei, Ha Tsuen and widening of the Yuen Long Highway between Lam Tei and Tan Kwai Tsuen from a dual 2-lane to a dual 3-lane.</li> </ul>
EP-163/2003/G	27 Oct 06	N/A	<ul style="list-style-type: none"> <li>Construction and operation of a dual three-lane carriageway (Deep Bay Link) with bridge structures linking, interchange between at Lam Tei, Ha Tsuen and widening of the Yuen Long Highway between Lam Tei and Tan Kwai Tsuen from a dual 2-lane to a dual 3-lane.</li> </ul>
<b>Construction Noise Permit</b>			
PP-TW0044-03	01 Sep 03	28 Feb 04	<ul style="list-style-type: none"> <li>Hydraulic hammer (double acting) x2, driving steel pile and drop hammer driving steel pile x1;</li> <li>Time: 1200-1330 and 1630-1800 on any day not being a general holiday.</li> </ul>
PP-TW0052-03	20 Oct 03	19 Jul 04	<ul style="list-style-type: none"> <li>Hydraulic hammer (double acting) x2, driving steel pile and drop hammer driving steel pile x1;</li> <li>Time: 0800-1000 and 1230-1330 and 1630-1830 on any day not being a general holiday.</li> </ul>
PP-TW0053-03	22 Oct 03	21 Jul 04	<ul style="list-style-type: none"> <li>Hydraulic hammer (double acting) driving steel pile x2; and drop hammer driving steel pile x1;</li> <li>Time: 0800-0900, 1230-1330 and 1630-1730 on any day not being a general holiday.</li> </ul>
PP-TW0054-03	3 Nov 03	2 May 04	<ul style="list-style-type: none"> <li>Hydraulic hammer (double acting) driving steel pile x2; and drop hammer driving steel pile x1;</li> <li>Time: 0800-0900, 1230-1330 and 1630-1730 on any day not being a general holiday.</li> </ul>
PP-TW0055-03	20 Oct 03	19 Jul 04	<ul style="list-style-type: none"> <li>Hydraulic hammer (double acting) driving steel pile x2; and drop hammer driving steel pile x1;</li> <li>Time: 0800-0900 and 1630-1830 on any day not being</li> </ul>

Permit No.	Valid Period		Section
	From	To	
			a general holiday.
GW-TW0364-03	3 Nov 03	3 Mar 04	<ul style="list-style-type: none"> <li>Air compressor (with a SWL of <math>\leq 104\text{dB(A)}</math>) x1, piling x1, large diameter bored, reverse circulation drill;</li> <li>Time: 0700-2300, general holiday including Sundays; 1900-2300 any day not being a general holiday.</li> </ul>
GW-TW0445-03	27 Dec 03	10 Jan 04	<ul style="list-style-type: none"> <li>Concrete lorry mixer x1, crane x1, mobile (diesel), generator x2, silences, <math>\leq 75\text{dB(A)}</math> at 7m, water pump x 2, submersible (electric);</li> <li>Only two nights within the validity period between 1900-2300 hours on any day not being a general holiday.</li> </ul>
GW-TW0074-04	18 Mar 04	17 Sep 04	<ul style="list-style-type: none"> <li>Air compressor (with a SWL of <math>\leq 104\text{dB(A)}</math>) x1, piling x1, large diameter bored, reverse circulation drill;</li> <li>Time: 0700-2300, general holiday including Sundays; 1900-2300 any day not being a general holiday.</li> </ul>
GW-TW0094-04	6 Apr 04	30 Sep 04	<ul style="list-style-type: none"> <li>Air compressor (with a SWL of <math>\leq 104\text{dB(A)}</math>) x1, piling x1, large diameter bored, reverse circulation drill, power pack; generator X 1;</li> <li>Time: 0700-2300, general holiday including Sundays; 1900-2300 any day not being a general holiday.</li> </ul>
GW-TW0095-04	6 Apr 04	30 Sep 04	<ul style="list-style-type: none"> <li>Air compressor (with a SWL of <math>\leq 104\text{dB(A)}</math>) x1, piling x1, large diameter bored, reverse circulation drill, power pack, generator x 1;</li> <li>Time: 0700-2300, general holiday including Sundays; 1900-2300 any day not being a general holiday.</li> </ul>
GW-TW0110-04	14 Apr 04	30 Apr 04	<ul style="list-style-type: none"> <li>Dump truck x1, excavator x1, roller x1, vibratory, power rammer x1, compactor x1;</li> <li>Time: 0700-2300 general holiday including Sundays; 1900-2300 any day not being a general holiday.</li> </ul>
GW-TW0137-04	12 May 04	21 Oct 04	<ul style="list-style-type: none"> <li>Air compressor (with a SWL of <math>\leq 102\text{dB(A)}</math>), generator x1, silences, <math>\leq 75\text{dB(A)}</math> at 7m, piling x1, large diameter bored, reverse circulation drill, crane x 1 (diesel);</li> <li>Time: 0700-2300 General holiday including Sundays; 1900-2300 any day not being a general holiday.</li> </ul>
GW-TW0157-04	17 Jun 04	27 Aug 04	<ul style="list-style-type: none"> <li>Articulated vehicle x2;</li> <li>Time: any day in the validity period between 2300-0700 hours on next day.</li> </ul>
GW-TW0174-04	17 Jun 04	27 Aug 04	<ul style="list-style-type: none"> <li>Articulated vehicle x2;</li> <li>Time: any day in the validity period between 2300-0700 hours on next day.</li> </ul>
GW-TW0176-04	12 Jun 04	11 Dec 04	<ul style="list-style-type: none"> <li>Bending Yard 1 (H1-2 &amp;3): Bar bender and cutter x5;</li> <li>Bending Yard 2 (FHT): Bar bender and cutter x5;</li> <li>Time: 0700-2300 general holiday including Sundays; 1900-2300 any day not being a general holiday.</li> </ul>
GW-TW0177-04	17 Jun 04	16 Oct 04	<ul style="list-style-type: none"> <li>Bar bender and cutter (electric) x1, generator x1, silenced, <math>\leq 75\text{dB(A)}</math> at 7m, Saw (electric) x1, lorry x1, with crane, 5.5 tonne &lt; gross vehicle weight <math>\leq 38</math> tonne, crane x1, mobile (diesel)</li> <li>Time: 0700-2300 General holiday including Sundays; 1900-2300 any day not being a general holiday.</li> </ul>
GW-TW0194-04	28 Jun 04	31 Oct 04	<ul style="list-style-type: none"> <li>Crane x1, mobile (diesel), generator x1, silenced, <math>\leq 75\text{dB(A)}</math> at 7m;</li> <li>Time: 4 days only within the validity period between 1900-2300.</li> </ul>
GW-TW0206-04	10 Jul 04	27 Aug 04	<ul style="list-style-type: none"> <li>Articulated vehicle x2;</li> <li>Time: any day in the validity period between 2300-0700 hours on next day.</li> </ul>
GW-TW0207-04	10 Jul 04	27 Aug 04	<ul style="list-style-type: none"> <li>Articulated vehicle x2;</li> <li>Time: any day in the validity period between 2300-0700 hours on next day.</li> </ul>
GW-RW0369-04	11 Aug 04	11 Nov 04	<ul style="list-style-type: none"> <li>Crane x1, mobile (diesel), generator x1, silenced, <math>\leq 75\text{dB(A)}</math> at 7m, concrete lorry mixer x1, air compressor</li> </ul>

Permit No.	Valid Period		Section
	From	To	
			<ul style="list-style-type: none"> <li>x1 (with a SWL of <math>\leq 102\text{dB(A)}</math>), piling x1, large diameter bored, reverse circulation drill, water pump x1, submersible (electric)</li> <li>Time: 0700-2300 General holiday including Sundays; 1900-2300 any day not being a general holiday.</li> </ul>
GW-RW0402-04	30 Aug 04	12 Sep 04	<ul style="list-style-type: none"> <li>Crane x1, mobile (diesel);</li> <li>Time: 2 days only within the validity period between 0000-0600.</li> </ul>
GW-RW0403-04	27 Aug 04	26 Feb 05	<ul style="list-style-type: none"> <li>Excavator x1, tracker, road roller x1;</li> <li>Time: 0700-2300 General holiday including Sundays; 1900-2300 any day not being a general holiday</li> </ul>
GW-RW0415-04	31 Aug 04	16 Sep 04	<ul style="list-style-type: none"> <li>Articulated vehicle x3;</li> <li>Time: any day in the validity period between 2300-0700 hours on next day.</li> </ul>
GW-RW-0447-04	16 Sep 04	15 Nov 04	<ul style="list-style-type: none"> <li>Generator x1, lifting winch x1, transverse winch x1, hydraulic pump x3, epoxy mixer x1, temp stress pump x1, strand pusher x1, permanent stress pump x1;</li> <li>Time: 0700-2300 General holiday including Sundays; 1900-2300 any day not being a general holiday.</li> </ul>
GW-RW-0448-04	16 Sep 04	15 Nov 04	<ul style="list-style-type: none"> <li>Generator x1, lifting winch x1, transverse winch x1, hydraulic pump x3, epoxy mixer x1, temp stress pump x1, strand pusher x1, permanent stress pump x1;</li> <li>Time: 0700-2300 General holiday including Sundays; 1900-2300 any day not being a general holiday.</li> </ul>
GW-RW-0455-04	20 Sep 04	11 Nov 04	<ul style="list-style-type: none"> <li>Tractor x3, trailer x4;</li> <li>Time: Any day in the validity period between 0000-0600 hours on next day.</li> </ul>
GW-RW-0456-04	20 Sep 04	11 Nov 04	<ul style="list-style-type: none"> <li>Tractor x3, trailer x4;</li> <li>Time: Any day in the validity period between 0000-0600 hours on next day.</li> </ul>
GW-RW-0498-04	20 Sep 04	11 Nov 04	<ul style="list-style-type: none"> <li>Articulated vehicle x4;</li> <li>Time: any day in the validity period between 2300-0700 hours on next day.</li> </ul>
GW-RW-0499-04	20 Sep 04	11 Nov 04	<ul style="list-style-type: none"> <li>Articulated vehicle x4;</li> <li>Time: any day in the validity period between 2300-0700 hours on next day.</li> </ul>
GW-RW-0535-04	19 Oct 04	18 Jan 05	<ul style="list-style-type: none"> <li>Generator x1, lifting winch x1, transverse winch x1, hydraulic pump x3, epoxy mixer x1, temp stress pump x1, strand pusher x1, permanent stress pump x1;</li> <li>Time: 0700-2300 General holiday including Sundays; 1900-2300 any day not being a general holiday.</li> </ul>
GW-RW-0547-04	23 Oct 04	22 Jan 05	<ul style="list-style-type: none"> <li>Air compressor x1, RCD x1;</li> <li>Time: 0700-2300 General holiday including Sundays; 1900-2300 any day not being a general holiday.</li> </ul>
GW-RW-0571-04	28 Oct 04	30 Nov 04	<ul style="list-style-type: none"> <li>Lorry with crane x2 (road division);</li> <li>Time: 2 night time only within the validity period between 2100-0700.</li> </ul>
GW-RW-0595-04	2 Nov 04	1 Dec 04	<ul style="list-style-type: none"> <li>Generator x2, silenced, <math>\leq 75\text{dB(A)}</math> at 7m, crane x1(diesel), concrete lorry mixer x1, pump x1;</li> <li>Time: any one day not being a general holiday within the validity period between 1900-2300.</li> </ul>
GW-RW-0605-04	12 Nov 04	16 Dec 04	<ul style="list-style-type: none"> <li>Articulated vehicle x5;</li> <li>Time: Any day in the validity period between 2300-0700 hours on next day.</li> </ul>
GW-RW-0606-04	12 Nov 04	16 Dec 04	<ul style="list-style-type: none"> <li>Articulated vehicle x5;</li> <li>Time: Any day in the validity period between 2300-0700 hours on next day.</li> </ul>
GW-RW-0620-04	6 Nov 04	31 Dec 04	<ul style="list-style-type: none"> <li>Crane, mobile (diesel) x1, generator x1, silenced, <math>\leq 75\text{dB(A)}</math> at 7m;</li> <li>Time: two days only within the validity period between 1900-2300 hours.</li> </ul>



Permit No.	Valid Period		Section
	From	To	
GW-RW-0635-04	16 Nov 04	28 Feb 05	<ul style="list-style-type: none"> <li>Air compressor x1, with noise emission label showing a sound power level <math>\leq 102\text{dB(A)}</math>, crane, mobile (diesel) x1, generator x1, silenced, <math>\leq 75\text{dB(A)}</math> at 7m, concrete lorry mixer x1;</li> <li>Time: 0700-2300 General holiday including Sundays; 1900-2300 any day not being a general holiday.</li> </ul>
GW-RW-0654-04	18 Nov 04	17 Feb 05	<ul style="list-style-type: none"> <li>Generator x1, lifting winch x1, transverse winch x1, hydraulic pump x3, epoxy mixer x1, temp stress pump x1, strand pusher x1, permanent stress pump x1;</li> <li>Time: 0700-2300 General holiday including sundays; 1900-2300 day not being a general holiday.</li> </ul>
GW-RW-0689-04	26 Nov 04	25 Feb 05	<ul style="list-style-type: none"> <li>Air compressor x1, generator x1, RCD x1, power pack x1, pump x1;</li> <li>Time: 0700-2300 General holiday including sundays; 1900-2300 day not being a general holiday.</li> </ul>
GW-RW-0709-04	25 Nov 04	28 Nov 04	<ul style="list-style-type: none"> <li>Lorry with crane x2 (road division);</li> <li>Time: 2 night time only within the validity period between 2000-0600</li> </ul>
GW-RW-0728-04	1 Dec 04	19 Dec 04	<ul style="list-style-type: none"> <li>Lorry with crane x2 (road division);</li> <li>Time: 2 night time only within the validity period between 2200-0600.</li> </ul>
GW-RW0737-04	17 Dec 04	25 Apr 05	<ul style="list-style-type: none"> <li>Articulated vehicle x5;</li> <li>Time: Any day in the validity period between 2300-0700 hours on next day</li> </ul>
GW-RW-0760-04	22 Dec 04	15 Jan 05	<ul style="list-style-type: none"> <li>Lorry with crane x2 (road division);</li> <li>Time: 4 night time only within the validity period between 2200-0600</li> </ul>
GW-RW-0761-04	22 Dec 04	21 Mar 05	<ul style="list-style-type: none"> <li>Generator x1, lifting winch x1, transverse winch x1, hydraulic pump x3, epoxy mixer x1, strand pusher x1, permanent stress pump x1, temporary stress pump x 1;</li> <li>Time: 0700-2300 General holiday including sundays; 1900-2300 day not being a general holiday.</li> </ul>
GW-RW-0811-04	11 Jan 05	31 Jan 05	<ul style="list-style-type: none"> <li>Hand-held electric breaker x1, mass <math>\leq 10\text{kg}</math>, generator, portable x1;</li> <li>Time: 3 days only within the validity period between 2000-2300</li> </ul>
GW-RW-0812-04	10 Jan 05	31 Jan 05	<ul style="list-style-type: none"> <li>Hand-held electric breaker x1, mass <math>\leq 10\text{kg}</math>, generator, portable x1, lorry with crane x2, 5.5 tonne &lt; gross vehicle weight <math>\leq 38</math> tonne;</li> <li>Time: 3 days only within the validity period between 2000-2300 but not being a general holiday.</li> </ul>
GW-RW-0815-04	13 Jan 05	12 Feb 05	<ul style="list-style-type: none"> <li>Air compressor x1, with noise emission lable showing a sound power level <math>\leq 100\text{dB(A)}</math>, crane, mobile (diesel) x1, concrete pump x1, lorry mounted, generator x1, silenced, <math>\leq 75\text{dB(A)}</math> at 7m, concrete lorry mixer x1, poker x1, vibratory, hand-held (electric);</li> <li>Time: 1900-2300 any day not being a general holiday.</li> </ul>
GW-RW-0019-05	17 Jan 05	16 Jul 05	<ul style="list-style-type: none"> <li>Crane x1, mobile (diesel), saw x1, circular wood, lorry with crane x1, 5.5 tonne &lt; gross vehicle weight <math>\leq 38</math> tonne;</li> <li>Time: 0700-2300 General holiday including Sundays; 1900-2300 any day not being a general holiday.</li> </ul>
GW-RW-0020-05	17 Jan 05	28 Feb 05	<ul style="list-style-type: none"> <li>Lorry with crane x2, 5.5 tonne &lt; gross vehicle weight <math>\leq 38</math> tonne;</li> <li>Time: 3 days only within the validity period between 2200-0600 but not being a general holiday.</li> </ul>
GW-RW-0024-05	17 Jan 05	16 Apr 05	<ul style="list-style-type: none"> <li>Lorry with crane x1, 5.5 tonne &lt; gross vehicle weight <math>\leq 38</math> tonne;</li> <li>Time: 0700-2300 General holiday including Sundays; 1900-2300 any day not being a general holiday.</li> </ul>
GW-RW-0038-05	17 Jan 05	16 Apr 05	<ul style="list-style-type: none"> <li>Generator x1, lifting winch x1, transverse winch x1, hydraulic pump x3, epoxy mixer x1, temp stress pump x1,</li> </ul>

Permit No.	Valid Period		Section
	From	To	
			<ul style="list-style-type: none"> <li>strand pusher x1, permanent stress pump x1;</li> <li>Time: 0700-2300 General holiday including Sundays; 1900-2300 any day not being a general holiday.</li> </ul>
GW-RW-0039-05	14 Jan 05	28 Feb 05	<ul style="list-style-type: none"> <li>Road miller x1, dump truck x1, gross vehicle weight <math>\leq</math> 38 tonne, road sweeper x1, asphalt paver x1, roller x1, vibratory;</li> <li>Time: 4 days only within the validity period between 2200-0600 but not being a general holiday.</li> </ul>
GW-RW-0040-05	17 Jan 05	5 Feb 05	<ul style="list-style-type: none"> <li>Lorry with crane x1, 5.5 tonne &lt; gross vehicle weight <math>\leq</math> 38 tonne</li> <li>Time: 4 days only within the validity period between 1900-2300.</li> </ul>
GW-RW0068-05	14 Feb 05	14 Mar 05	<ul style="list-style-type: none"> <li>Hand-held breaker (hydraulic) x2, hydraulic power pack, <math>\leq</math> 86dB(A) at 7m x2;</li> <li>Time: 0900-1900 General holiday including Sundays; 1900-2300 any day not being a general holiday.</li> </ul>
GW-RW0071-05	3 Feb 05	28 Feb 05	<ul style="list-style-type: none"> <li>Lorry with crane x3, 5.5 tonne &lt; gross vehicle weight <math>\leq</math> 38 tonne;</li> <li>Time: 4 days only within the validity period between 2000-0600 but not being a general holiday.</li> </ul>
GW-RW0077-05	16 Feb 05	14 May 05	<ul style="list-style-type: none"> <li>Road miller x1, dump truck x1, road sweeper x1, asphalt paver x1, roller x1 (vibratory), road roller x1, lorry with crane x2, 5.5 tonne &lt; gross vehicle <math>\leq</math> 38 tonne</li> <li>Time: 4 days only within the validity period between 2200-0600 but not being a general holiday.</li> </ul>
GW-RW0078-05	16 Feb 05	19 Feb 05	<ul style="list-style-type: none"> <li>Crane, mobile (diesel) x2, generator x2, silenced, <math>\leq</math> 75dB(A) at 7m, lorry with crane x2, 5.5 tonne &lt; gross vehicle <math>\leq</math> 38 tonne;</li> <li>Time: any day not being a general holiday between 0000-0600 hrs.</li> </ul>
GW-RW0087-05	16 Feb 05	15 Aug 05	<ul style="list-style-type: none"> <li>Crane, tower (electric) x1, generator, silenced, <math>\leq</math> 75dB(A) at 7m x1;</li> <li>Time: 0700-2300 General holiday including Sundays; 1900-2300 any day not being a general holiday.</li> </ul>
GW-RW0091-05	23 Feb 05	26 Feb 05	<ul style="list-style-type: none"> <li>Crane, mobile (diesel) x2, generator x2, silenced, <math>\leq</math> 75dB(A) at 7m, lorry with crane x2, 5.5 tonne &lt; gross vehicle <math>\leq</math> 38 tonne;</li> <li>Time: any day not being a general holiday between 0000-0600 hours.</li> </ul>
GW-RW0097-05	16 Feb 05	28 Feb 05	<ul style="list-style-type: none"> <li>Lorry with crane x2, 5.5 tonne &lt; gross vehicle <math>\leq</math> 38 tonne;</li> <li>Time: any day only within the validity period between 2200-0600 but not being a general holiday.</li> </ul>
GW-RW0115-05	1 Mar 05	15 Mar 05	<ul style="list-style-type: none"> <li>Crane, mobile (diesel) x1;</li> <li>Time: 3 days only within the validity period, 0700-2300 General holiday including Sundays; 1900-2300 any day not being a general holiday.</li> </ul>
GW-RW0144-05	16 Mar 05	30 Apr 05	<ul style="list-style-type: none"> <li>Lorry with crane x2, 5.5 tonne &lt; gross vehicle weight <math>\leq</math> 38 tonne;</li> <li>Time: 3 days only within the validity period between 2200-0600 but not being a general holiday.</li> </ul>
GW-RW0157-05	22 Mar 05	10 Apr 05	<ul style="list-style-type: none"> <li>Crane, mobile (diesel) x1;</li> <li>Time: 14 days only within the validity period, 0700-2300 general holiday including Sundays; 1900-2300 any day not being a general holiday.</li> </ul>
GW-RW0167-05	23 Mar 05	11 Apr 05	<ul style="list-style-type: none"> <li>Lorry with crane x1, 5.5 tonne &lt; gross vehicle weight <math>\leq</math> 38 tonne;</li> <li>Time: 3 nights only within the validity period between 1900-2300.</li> </ul>
GW-RW0177-05	25 Mar 05	31 Mar 05	<ul style="list-style-type: none"> <li>Generator, silenced, <math>\leq</math> 75dB(A) at 7m x2, crane, mobile(diesel) x2, lorry with crane x2, 5.5 tonne &lt; gross</li> </ul>

Permit No.	Valid Period		Section
	From	To	
			<ul style="list-style-type: none"> <li>vehicle weight <math>\leq 38</math> tonne;</li> <li>Time: 4 days only within the validity period between 0100-0530.</li> </ul>
GW-RW0178-05	25 Mar 05	24 Jun 05	<ul style="list-style-type: none"> <li>Crane, mobile (diesel) x1, saw, circular, wood x1;</li> <li>Time: 0700-2300 General holiday including Sundays; 1900-2300 any day not being a general holiday.</li> </ul>
GW-RW0179-05	25 Mar 05	24 May 05	<ul style="list-style-type: none"> <li>Air compressor x1, with noise emission label showing a sound power level <math>\leq 100</math>dB(A), crane, mobile (diesel) x1, lorry mounted, generator x1, silence, <math>\leq 70</math>dB(A) at 7m, concrete lorry mixer x1, poker x1, vibratory, hand-held (electric);</li> <li>Time: any day within the validity period between 1900-2300.</li> </ul>
GW-RW0184-05	25 Mar 05	24 Apr 05	<ul style="list-style-type: none"> <li>Air compressor x1, with noise emission label showing a sound power level <math>\leq 100</math>dB(A), crane, mobile (diesel) x1, concrete pump x1, lorry mounted, generator x1, silenced <math>\leq 70</math> dB(A) at 7m, concrete lorry mixer x1, poker x1, vibratory, hand-held (electric);</li> <li>Time: any day within the validity period between 1900-2300.</li> </ul>
GW-RW0185-05	30 Mar 05	29 Sep 05	<ul style="list-style-type: none"> <li>Crane, tower (electric) x1, generator, silenced, <math>\leq 75</math>dB(A) at 7m x1;</li> <li>Time: any day within the validity period between 1900-2300.</li> </ul>
GW-RW0196-05	2 Apr 05	31 May 05	<ul style="list-style-type: none"> <li>Crane x 1, air compressor x1;</li> <li>Time: 12 days only within the validity period between 1900-2300.</li> </ul>
GW-RW0197-05	2 Apr 05	31 May 05	<ul style="list-style-type: none"> <li>Crane x 1, air compressor x1;</li> <li>Time: 12 days only within the validity period between 1900-2300.</li> </ul>
GW-RW0201-05	4 Apr 05	30 Apr 05	<ul style="list-style-type: none"> <li>Lorry with crane x2, 5.5 tonne &lt; gross vehicle weight <math>\leq 38</math> tonne;</li> <li>Time: 4 days only within the validity period between 2200-0600 but not being a general holiday.</li> </ul>
GW-RW0209-05	7 Apr 05	6 Jul 05	<ul style="list-style-type: none"> <li>Generator x1, lifting winch x1, transverse winch x1, hydraulic pump x3, epoxy mixer x1, temp stress pump x1, strand pusher x1, permanent stress pump x1;</li> <li>Time: 0700-2300 General holiday including Sundays; 1900-2300 any day not being a general holiday.</li> </ul>
GW-RW0221-05	12 Apr 05	30 Jun 05	<ul style="list-style-type: none"> <li>Lorry with crane x2, 5.5 tonne &lt; gross vehicle weight <math>\leq 38</math> tonne;</li> <li>Time: 4 days only within the validity period between 2200-0600 but not being a general holiday.</li> </ul>
GW-RW0241-05	19 Apr 05	11 Jul 05	<ul style="list-style-type: none"> <li>Lorry with crane x2, 5.5 tonne &lt; gross vehicle weight <math>\leq 38</math> tonne;</li> <li>Time: 4 days only within the validity period between 2200-0600 but not being a general holiday.</li> </ul>
GW-RW0246-05	17 Apr 05	24 Apr 05	<ul style="list-style-type: none"> <li>Crane, mobile (diesel) x1;</li> <li>Time: 0700-2300 General holiday including Sundays; 1900-2300 any day not being a general holiday.</li> </ul>
GW-RW0253-05	26 Apr 05	16 Oct 05	<ul style="list-style-type: none"> <li>Lorry with crane x2, 5.5 tonne &lt; gross vehicle weight <math>\leq 38</math>tonne;</li> <li>Time: 0700-2300 general holiday including Sundays; 1900-2300 any day not being a general holiday.</li> </ul>
GW-RW0254-05	24 Apr 05	8 May 05	<ul style="list-style-type: none"> <li>Lorry with crane x2, 5.5 tonne &lt; gross vehicle weight <math>\leq 38</math> tonne;</li> <li>Time: 0700-2100 general holiday including Sundays.</li> </ul>
GW-RW0272-05	30 Apr 05	30 Jun 05	<ul style="list-style-type: none"> <li>Air compressor x1, with noise emission label showing a sound power level <math>\leq 100</math>dB(A), crane, mobile(diesel) x1, concrete pump x1, lorry mounted, generator x1, silenced, <math>\leq 70</math>dB(A) at 7m, concrete lorry mixer x1, poker x1,</li> </ul>

Permit No.	Valid Period		Section
	From	To	
			<ul style="list-style-type: none"> <li>vibratory, hand-held(electric);</li> <li>Time: Any day within the validity period between 1900-2300.</li> </ul>
GW-RW0297-05	7 May 05	30 Jun 05	<ul style="list-style-type: none"> <li>Lorry with crane x2, 5.5 tonne &lt; gross vehicle weight <math>\leq</math>38 tonne;</li> <li>Time: 4 days only within the validity period between 2200-0600 but not being a general holiday.</li> </ul>
GW-RN8027-05	10 May 05	13 Jun 05	<ul style="list-style-type: none"> <li>Breaker, excavator mounted (pneumatic) x1, excavator, tracked x1, lorry, with crane, 5.5 tonne &lt; gross vehicle weight <math>\leq</math>38 tonne x1, compactor, vibratory (petrol) x1;</li> <li>Time: any day being a general holiday within the validity period between 0700-1600 hours.</li> </ul>
GW-RW0314-05	18 May 05	31 Jul 05	<ul style="list-style-type: none"> <li>Generator x1, lifting winch x1, transverse winch x1, hydraulic pump x3, epoxy mixer x1, temp stress pump x1, strand pusher x1, permanent stress pump x1;</li> <li>Time: 0700-2300 General holiday including Sundays; 1900-2300 any day not being a general holiday.</li> </ul>
GW-RW0323-05	19 May 05	31 May 05	<ul style="list-style-type: none"> <li>Lorry with crane x1, 5.5 tonne &lt; gross vehicle weight <math>\leq</math>38 tonne, crane, mobile (diesel) x1;</li> <li>Time: 4 days only within the validity period in any day not being a general holiday between 0100-0500.</li> </ul>
GW-RW0335-05	25 May 05	24 Jul 05	<ul style="list-style-type: none"> <li>Air compressor x1, with noise emission label showing a sound power level <math>\leq</math>100dB(A), crane, mobile (diesel) x1, concrete pump x1, lorry mounted, generator x1, silenced, <math>\leq</math>70dB(A) at 7m, concrete lorry mixer x1, poker x1, vibratory, hand-held (electric);</li> <li>Time: Any day within the validity period between 1900-2300.</li> </ul>
GW-RW0356-05	6 Jun 05	31 Aug 05	<ul style="list-style-type: none"> <li>Lorry with crane x2, 5.5 tonne &lt; gross vehicle weight <math>\leq</math>38 tonne;</li> <li>Time: 4 days only within the validity period between 2200-0600 but not being a general holiday.</li> </ul>
GW-RW0367-05	6 Jun 05	31 Aug 05	<ul style="list-style-type: none"> <li>Lorry with crane x2, 5.5 tonne &lt; gross vehicle weight <math>\leq</math>38 tonne;</li> <li>Time: 4 days only within the validity period between 2200-0600 but not being a general holiday.</li> </ul>
GW-RN8039-05	13 Jun 05	12 Jul 05	<ul style="list-style-type: none"> <li>Crane x1, mobile (diesel);</li> <li>Time: 10 days only within the validity period between 1900-0700 but not being a general holiday.</li> </ul>
GW-RW0383-05	20 Jun 05	30 Jul 05	<ul style="list-style-type: none"> <li>Crane x1, mobile (diesel);</li> <li>Time: 14 days only within the validity period between 1900-0700 but not being a general holiday.</li> </ul>
GW-RW0400-05	24 Jun 05	20 Sep 05	<ul style="list-style-type: none"> <li>Lorry with crane x2, 5.5 tonne &lt; gross vehicle weight <math>\leq</math>38 tonne</li> <li>Time: 6 days only within the validity period between 2100-0600 but not being a general holiday.</li> </ul>
GW-RW0417-05	2 Jul 05	30 Sep 05	<ul style="list-style-type: none"> <li>Lorry with crane x2, 5.5 tonne &lt; gross vehicle weight <math>\leq</math>38 tonne;</li> <li>Time: 14 days only within the validity period between 2000-2400 but not being a general holiday.</li> </ul>
GW-RW0418-05	2 Jul 05	17 Sep 05	<ul style="list-style-type: none"> <li>Air compressor x1, with noise emission label showing a sound power level <math>\leq</math>100dB(A), crane, mobile(diesel) x1, concrete pump x1, lorry mounted, generator x1, silenced, <math>\leq</math>70dB(A) at 7m, concrete lorry mixer x1, poker x1, vibratory, hand-held (electric);</li> <li>Time: 8 days within the validity period between 1900-2300 but not being a general holiday.</li> </ul>
GW-RW0419-05	2 Jul 05	17 Sep 05	<ul style="list-style-type: none"> <li>Air compressor x1, with noise emission label showing a sound power level <math>\leq</math>100dB(A), crane, mobile(diesel) x1, concrete pump x1, lorry mounted, generator x1, silenced, <math>\leq</math>70dB(A) at 7m, concrete lorry mixer x1, poker x1,</li> </ul>

Permit No.	Valid Period		Section
	From	To	
			<ul style="list-style-type: none"> <li>vibratory, hand-held (electric);</li> <li>Time: 8 days within the validity period between 1900-2300 but not being a general holiday.</li> </ul>
GW-RW0423-05	2 Jul 05	26 Jul 05	<ul style="list-style-type: none"> <li>Lorry with crane x2, 5.5 tonne &lt; gross vehicle weight <math>\leq</math> 38 tonne, crane x1, mobile(diesel), lorry x2;</li> <li>Time: 14 days only within the validity period between 0000-0530 but not being a general holiday.</li> </ul>
GW-RW0474-05	25 Jul 05	24 Sep 05	<ul style="list-style-type: none"> <li>Air compressor x1, with noise emission label showing a sound power level <math>\leq</math> 100dB(A), concrete pump x1, lorry mounted, generator x1, silenced, <math>\leq</math> 70dB(A) at 7m, crane, mobile (diesel) x1, concrete lorry mixer x1, poker x1, vibratory, hand-held (electric);</li> <li>Time: any days within the validity period between 1900-2300.</li> </ul>
GW-RW0475-05	21 Jul 05	19 Oct 05	<ul style="list-style-type: none"> <li>Lorry with crane x2, 5.5 tonne &lt; gross vehicle weight <math>\leq</math> 38 tonne;</li> <li>Time: 14 days only within the validity period between 2000-0600 but not being a general holiday.</li> </ul>
GW-RW0476-05	21 Jul 05	19 Oct 05	<ul style="list-style-type: none"> <li>Lorry with crane x2, 5.5 tonne &lt; gross vehicle weight <math>\leq</math> 38 tonne;</li> <li>Time: 14 days only within the validity period between 2100-0600 but not being a general holiday.</li> </ul>
GW-RW0495-05	1 Aug 05	29 Oct 05	<ul style="list-style-type: none"> <li>Lorry with crane x1, 5.5 tonne &lt; gross vehicle weight <math>\leq</math> 38 tonne;</li> <li>Time: 14 days only within the validity period between 2000-0600 but not being a general holiday.</li> </ul>
GW-RW0510-05	8 Aug 05	29 Oct 05	<ul style="list-style-type: none"> <li>Lorry with crane x2, 5.5 tonne &lt; gross vehicle weight <math>\leq</math> 38 tonne;</li> <li>Time: 14 days only within the validity period between 2000-0600 but not being a general holiday.</li> </ul>
GW-RW0520-05	8 Aug 05	19 Oct 05	<ul style="list-style-type: none"> <li>Road miller x1, dump truck x1, road sweeper x1, asphalt paver x1, roller, vibratory x1, road roller x1, lorry with crane x2, 5.5 tonne &lt; gross vehicle weight <math>\leq</math> 38 tonne;</li> <li>Time: 4 days only within the validity period between 2000-0600 but not being a general holiday.</li> </ul>
GW-RW0521-05	8 Aug 05	19 Oct 05	<ul style="list-style-type: none"> <li>Road miller x1, dump truck x1, road sweeper x1, asphalt paver x1, roller, vibratory x1, road roller x1, lorry with crane x2, 5.5 tonne &lt; gross vehicle weight <math>\leq</math> 38 tonne;</li> <li>Time: 4 days only within the validity period between 2100-0600 but not being a general holiday.</li> </ul>
GW-RW0533-05	17 Aug 05	15 Sep 05	<ul style="list-style-type: none"> <li>Lorry with crane X2, 5.5 tonne &lt; gross vehicle weight <math>\leq</math> 38 tonne, Crane, mobile (diesel) X1, Lorry X2, 5.5 tonne &lt; gross vehicle weight <math>\leq</math> 38 tonne</li> <li>Time: 8 days only within the validity period in any day not being a general holiday between 0100-0530 hours.</li> </ul>
GW-RW0550-05	24 Aug 05	30 Nov 05	<ul style="list-style-type: none"> <li>Group A: Asphalt paver x1, roller, vibratory x1;</li> <li>Group B: Asphalt paver x1, road roller x1;</li> <li>Time: 6 days only within the validity period between 1900-2300 hours in any day and general holiday between 0700-2100 hours.</li> </ul>
GW-RW0566-05	1 Sep 05	13 Sep 05	<ul style="list-style-type: none"> <li>Lorry with crane x1, 5.5 tonne &lt; gross vehicle weight <math>\leq</math> 38 tonne, crane, mobile (diesel) x1;</li> <li>Time: 6 days only within the validity period between 1900-0600 hours in any day not being a general holiday.</li> </ul>
GW-RW0574-05	5 Sep 05	17 Sep 05	<ul style="list-style-type: none"> <li>Group A: Road miller x1, dump truck x1;</li> <li>Group B: Asphalt paver x1, road roller x1;</li> <li>Time: 6 days only within the validity period between 1900-0700 hours but not being a general holiday.</li> </ul>
GW-RW0575-05	11 Sep 05	30 Oct 05	<ul style="list-style-type: none"> <li>Excavator, tracked x1, lorry with crane x1, 5.5 tonne &lt; gross vehicle weight <math>\leq</math> 38 tonne, compactor, vibratory x1;</li> <li>Time: 5 general holidays (including Sundays) within the</li> </ul>

Permit No.	Valid Period		Section
	From	To	
			validity period between 0700-1600 hours.
GW-RW0582-05	12 Sep 05	30 Sep 05	<ul style="list-style-type: none"> <li>Lorry with crane x2, 5.5 tonne &lt; gross vehicle weight <math>\leq</math> 38 tonne, crane, mobile (diesel) x1, lorry x2;</li> <li>Time: 14 days only within the validity period between 0100-0530 hours in any day not being a general holiday.</li> </ul>
GW-RW0596-05	18 Sep 05	30 Oct 05	<ul style="list-style-type: none"> <li>Breaker, hand-held (hydraulic) x2, power pack for hand-held item of PME x2, excavator, tracked x1, lorry with crane x1, 5.5 tonne &lt; gross vehicle weight <math>\leq</math> 38 tonne, compactor, vibratory x1;</li> <li>Time: 5 general holidays (including Sundays) within the validity period between 0900-1600 hours.</li> </ul>
GW-RW0608-05	23 Sep 05	19 Dec 05	<ul style="list-style-type: none"> <li>Air compressor x1, with noise emission label showing a sound power level <math>\leq</math> 100dB(A), concrete pump x1, lorry mounted, generator x1, silenced, <math>\leq</math> 70dB(A) at 7m, crane, mobile (diesel) x1, concrete lorry mixer x1, poker x1, vibratory, hand-held (electric);</li> <li>Time: 4 days only within the validity period in any day not being a general holiday between 1900-2300 hours.</li> </ul>
GW-RW0609-05	26 Sep 05	24 Dec 05	<ul style="list-style-type: none"> <li>Air compressor x1, with noise emission label showing a sound power level <math>\leq</math> 100dB(A), concrete pump x1, lorry mounted, generator x1, silenced, <math>\leq</math> 70dB(A) at 7m, crane, mobile (diesel) x1, concrete lorry mixer x1, poker x1, vibratory, hand-held (electric);</li> <li>Time: 8 days only within the validity period in any day not being a general holiday between 1900-2300 hours.</li> </ul>
GW-RW0610-05	27 Sep 05	20 Oct 05	<ul style="list-style-type: none"> <li>Lorry with crane x2, 5.5 tonne &lt; gross vehicle weight <math>\leq</math> 38 tonne;</li> <li>Time: 5 days only within the validity period in any day not being a general holiday between 0000-0600 hours.</li> </ul>
GW-RW0611-05	23 Sep 05	20 Oct 05	<ul style="list-style-type: none"> <li>Lorry with crane x2, 5.5 tonne &lt; gross vehicle weight <math>\leq</math> 38 tonne;</li> <li>Time: 5 days only within the validity period in any day not being a general holiday between 0030-0530 hours.</li> </ul>
GW-RW0618-05	28 Sep 05	10 Oct 05	<ul style="list-style-type: none"> <li>Lorry with crane x2, 5.5 tonne &lt; gross vehicle weight <math>\leq</math> 38 tonne, Lorry x2, 5.5 tonne &lt; gross vehicle weight <math>\leq</math> 38 tonne, crane x 1;</li> <li>Time: Any day not being a general holiday between 0100-0530 hours.</li> </ul>
GW-RW0619-05	28 Sep 05	22 Dec 05	<ul style="list-style-type: none"> <li>Lorry with crane x2, 5.5 tonne &lt; gross vehicle weight <math>\leq</math> 38 tonne;</li> <li>Time: 14 days only within the validity period between 2100-0600 hours in any day not being a general holiday.</li> </ul>
GW-RW0638-05	4 Oct 05	5 Dec 05	<ul style="list-style-type: none"> <li>Lorry with crane x1;</li> <li>Time: 8 days only within the validity period in any day not being a general holiday between 0000-0530 hours.</li> </ul>
GW-RW0639-05	16 Oct 05	28 Nov 05	<ul style="list-style-type: none"> <li>Hand-held electric breaker x10, generator x2, poker, vibratory, hand-held x2, concrete lorry, mixer x1, lorry with crane x1, drill, hand-held x2, grinder, hand-held x2;</li> <li>Time: 30 hours from 0000 Sun to 0530 on next day.</li> </ul>
GW-RW0640-05	11 Oct 05	28 Nov 05	<ul style="list-style-type: none"> <li>Hand-held electric breaker x10, generator x2, poker, vibratory, hand-held x2, concrete lorry, mixer x1, lorry with crane x1, drill, hand-held x2, grinder, hand-held x2;</li> <li>Time: 30 hours from 0000 Sun to 0530 on next day.</li> </ul>
GW-RN8072-05	8 Oct 05	31 Dec 05	<ul style="list-style-type: none"> <li>Lorry with crane x2;</li> <li>Time: immediately following a general holiday 1900-2400, other day 0000-0700 and 1900-2400.</li> </ul>
GW-RW0691-05	8 Nov 05	7 Jan 06	<ul style="list-style-type: none"> <li>Lorry with crane x2, lorry x2;</li> <li>Time: 4 weekdays 0100-0530.</li> </ul>
GW-RW0692-05	1 Nov 05	31 Jan 06	<ul style="list-style-type: none"> <li>Lorry with crane x2;</li> <li>Time: 8 weekdays 2100-0600.</li> </ul>
GW-RW8083-05	1 Nov 05	31 Jan 06	<ul style="list-style-type: none"> <li>Lorry with crane x2;</li> </ul>

Permit No.	Valid Period		Section
	From	To	
			<ul style="list-style-type: none"> <li>Time: 14 weekdays 2100-0600.</li> </ul>
GW-RW0702-05	7 Nov 05	31 Jan 06	<ul style="list-style-type: none"> <li>Lorry with crane x1;</li> <li>Time: 14 weekdays 2000-0600.</li> </ul>
GW-RW0704-05	1 Nov 05	31 Jan 06	<ul style="list-style-type: none"> <li>Concrete lorry mixer x1, concrete pump x1, poker vibratory x2, generator x1, air compressor x1;</li> <li>Time: 10 days 2000-0600</li> </ul>
GW-RW0766-05	29 Nov 05	31 Jan 06	<ul style="list-style-type: none"> <li>Lorry with crane x2;</li> <li>Time: 2100-0600 or 2100-2400 immediately following a general holiday.</li> </ul>
GW-RW0774-05	4 Dec 05	30 Jan 06	<ul style="list-style-type: none"> <li>Hand-held electric breaker x8, generator x2, lorry with crane x1, poker, vibrating, hand-held x2, concrete lorry mixer x1, drill, hand-held x2, grinder, hand-held x2;</li> <li>Time: 30 hrs from 0030 sun to 0530 on next day.</li> </ul>
GW-RW0806-05	22 Dec 05	31 Mar 06	<ul style="list-style-type: none"> <li>Lorry with crane x2;</li> <li>Time: 14 weekdays 2100-0600.</li> </ul>
GW-RW0807-05	17 Dec 05	28 Feb 06	<ul style="list-style-type: none"> <li>Crane x1, lorry crane x1, mobile working platform x1, articulated vehicle x1 (install sign gantry);</li> <li>Time: Any 14 days 0001-0530.</li> </ul>
GW-RW0808-05	17 Dec 05	28 Feb 06	<ul style="list-style-type: none"> <li>Crane x1, lorry with crane x1, articulated vehicle x1 (install noise barrier panels);</li> <li>Time: Any days 2100-0600.</li> </ul>
GW-RW0809-05	16 Dec 05	28 Feb 06	<ul style="list-style-type: none"> <li>Lorry with crane x1, excavator x1, dump truck &lt; 38 tonnes x1, poker, vibrating, hand-held x1, concrete lorry mixer x1;</li> <li>Time: Any 14 days 2000-0600</li> </ul>
GW-RW0810-05	18 Dec 05	31 Dec 05	<ul style="list-style-type: none"> <li>Road miller x1, dump truck x1, asphalt paver x1, road roller x1;</li> <li>Time: 4 days 0700-1900 holiday/ 1900-2100 weekdays.</li> </ul>
GW-RW0834-05	28 Dec 05	30 Mar 06	<ul style="list-style-type: none"> <li>Concrete lorry mixer x1, concrete pump x1, poker vibratory x2, generator x1, air compressor x1, mobile crane x1;</li> <li>Time: 1900-2300</li> </ul>
GW-RW0855-05	9 Jan 06	31 Mar 06	<ul style="list-style-type: none"> <li>Lorry with crane, 5.5 tonne &lt; gross vehicle weight <math>\leq</math> 38 tonne x2;</li> <li>Time: Any 8 weekdays 2100-0600.</li> </ul>
GW-RW0017-06	24 Jan 06	31 Mar 06	<ul style="list-style-type: none"> <li>Crane, mobile (diesel) x1, lorry with crane, 5.5 tonne &lt; gross vehicle weight <math>\leq</math> 38 tonne x1, articulated vehicle x1;</li> <li>Time: Any 14 weekdays 2000-0600.</li> </ul>
GW-RW0018-06	24 Jan 06	28 Feb 06	<ul style="list-style-type: none"> <li>Asphalt paver x1, roller, vibratory x1, road roller x1, dump truck, 5.5 tonne &lt; gross vehicle weight <math>\leq</math> 38 tonne x1;</li> <li>Time: 10 days 0700-1900 Holiday/ 1900-2100 weekdays.</li> </ul>
GW-RW0019-06	24 Jan 06	28 Feb 06	<ul style="list-style-type: none"> <li>Asphalt paver x1, roller, vibratory x1, road roller x1, dump truck, 5.5 tonne &lt; gross vehicle weight <math>\leq</math> 38 tonne x1;</li> <li>Time: 8 days 0700-1900 Holiday/ 1900-2100 weekdays.</li> </ul>
GW-RW0020-06	24 Jan 06	28 Feb 06	<ul style="list-style-type: none"> <li>Asphalt paver x1, roller, vibratory x1, road roller x1, dump truck, 5.5 tonne &lt; gross vehicle weight <math>\leq</math> 38 tonne x1;</li> <li>Time: 14 days 0700-1900 Holiday/ 1900-2100 weekdays.</li> </ul>
GW-RW0074-06	28 Jan 06	5 Feb 06	<ul style="list-style-type: none"> <li>Asphalt paver x1, roller, vibratory x1, road roller x1, dump truck, 5.5 tonne &lt; gross vehicle weight <math>\leq</math> 38 tonne x1, lorry, with crane, 5.5 tonne &lt; gross vehicle weight <math>\leq</math> 38 tonne x1;</li> <li>Time: 5 days 0700-1900 Holiday/ 1900-2100 weekdays.</li> </ul>
GW-RW0034-06	23 Jan 06	31 Mar 06	<ul style="list-style-type: none"> <li>Lorry with crane x2 (for dismantling the falsework at bridge 2);</li> <li>Time: 5 weekdays 0000-0600.</li> </ul>
GW-RW0035-06	23 Jan 06	31 Mar 06	<ul style="list-style-type: none"> <li>Lorry with crane x2 (for dismantling the falsework at bridge 2);</li> <li>Time: 5 weekdays 0045-0600.</li> </ul>
GW-RW0054-06	5 Feb 06	30 Apr 06	<ul style="list-style-type: none"> <li>Hydraulic breaker, hand-held x1, power pack x1, excavator, tracked x1, dump truck &lt; 38 tonnes x1, concrete lorry mixer x1, poker vibratory x1, generator x1,</li> </ul>

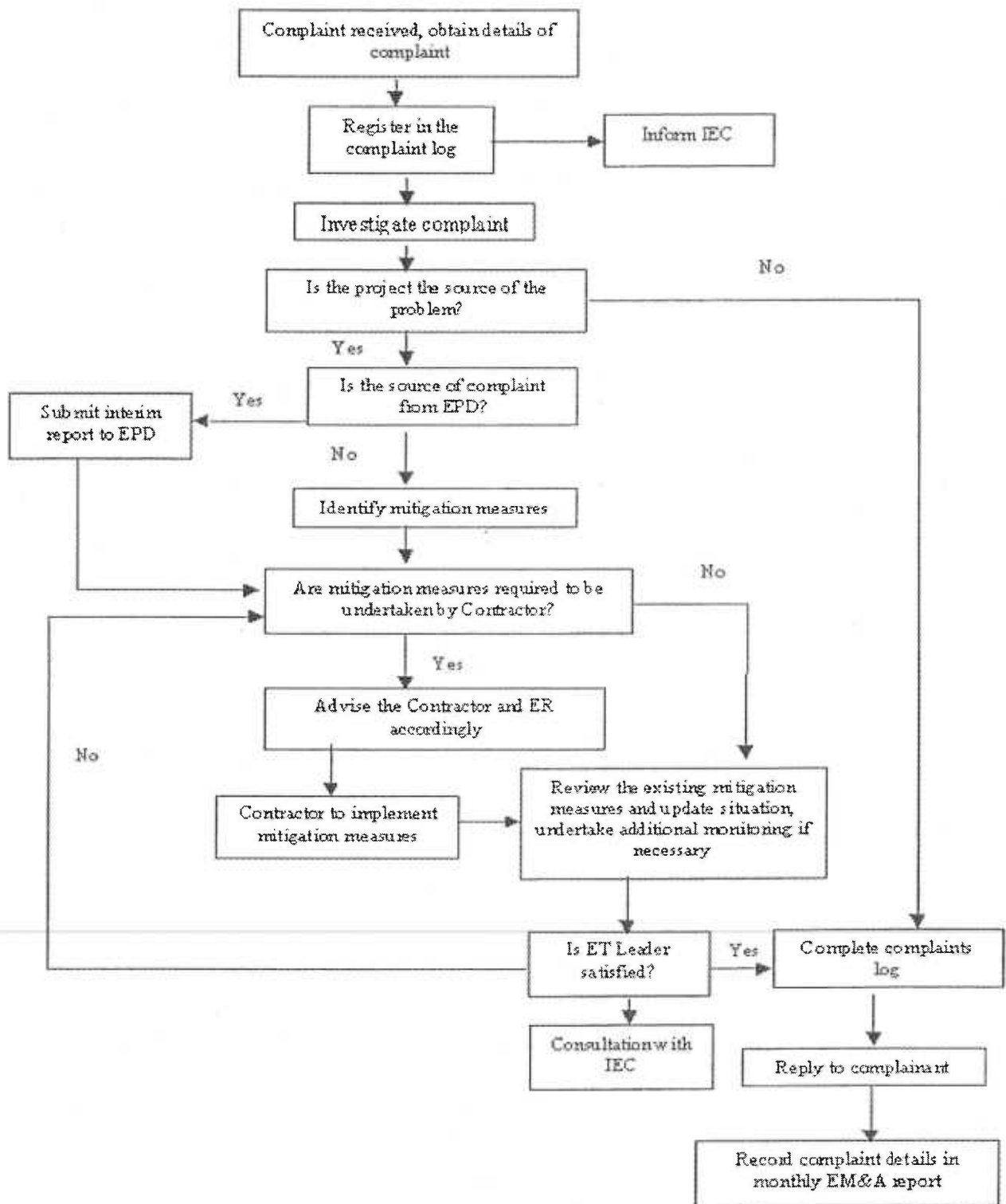
Permit No.	Valid Period		Section
	From	To	
			<ul style="list-style-type: none"> <li>air compressor x1, crane lorry x1, compactor vibratory x1; Time: 14 general holidays 0000-2359.</li> </ul>
GW-RW0055-06	2 Feb 06	30 Apr 06	<ul style="list-style-type: none"> <li>Concrete lorry mixer x1, concrete pump x1, poker vibratory x1, generator x1, air compressor x1, crane x1, crane lorry &lt;38 tonnes x1; Time: 14 weekdays 2000-0600.</li> </ul>
GW-RW0076-06	13 Feb 06	28 Feb 06	<ul style="list-style-type: none"> <li>Hydraulic Breaker, Hand-held x1, Power Pack x1, excavator, tracked x1, dump truck &lt;38 tonnes x1, concrete lorry mixer x1, crane lorry x1, poker vibratory x1, generator x1, air compressor x1, compactor vibratory x1 Time: 7 weekdays 2000-0600.</li> </ul>
GW-RW0077-06	13 Feb 06	28 Mar 06	<ul style="list-style-type: none"> <li>Lorry with crane x1; Time: 8 weekdays 0145-0500.</li> </ul>
GW-RW0081-06	18 Feb 06	7 May 06	<ul style="list-style-type: none"> <li>Crane x1, lorry with crane x1, mobile working platform x1, articulated vehicle x1; Time: 14 days 0800-2400 holiday 2000-0600 weekdays.</li> </ul>
GW-RW0084-06	19 Feb 06	30 Apr 06	<ul style="list-style-type: none"> <li>Hydraulic Breaker, Hand-held x1, power pack x1, grab lorry &lt;38 tonnes x1, concrete lorry mixer x1, crane lorry x1, poker vibratory x1, generator x1, air compressor x1 Time: 8 general holidays 0800-1800</li> </ul>
GW-RW0129-06	16 Mar 06	30 May 06	<ul style="list-style-type: none"> <li>Hydraulic Breaker, Hand-held x1, Power pack x1, grab lorry &lt; 38 tonnes x1, concrete Lorry Mixer x1, Crane lorry x1, Poker Vibratory x1, Generator x1, Air compressor x1 Time: 8 general holidays 0800-1800</li> </ul>
GW-RW0137-06	18 Mar 06	30 May 06	<ul style="list-style-type: none"> <li>Excavator, tracked x1, Dump truck &lt; 38 tonnes x1, Concrete Lorry Mixer x1, crane lorry x1, poker vibratory x1, generator x1, air compressor x1, crane lorry x1, compactor vibratory x1 Time: 14 weekdays 2000-0600</li> </ul>
GW-RW0149-06	23 Mar 06	29 Apr 06	<ul style="list-style-type: none"> <li>Crane x 1, lorry with crane x1, mobile working platform x1; Time: 3 weekdays 0001-0530.</li> </ul>
GW-RW0150-06	23 Mar 06	30 May 06	<ul style="list-style-type: none"> <li>Crane x 1, lorry with crane x1, mobile working platform x1; Time: 9 weekdays 0001-0500.</li> </ul>
GW-RW0151-06	25 Mar 06	30 Apr 06	<ul style="list-style-type: none"> <li>Hydraulic Breaker, hand-held x1, power pack x1, grab lorry &lt; 38 tonnes x1, concrete lorry mixer x1, crane lorry x1, poker vibratory x1, generator x1, air compressor x1 Time: 33 hrs from 2100 Saturday to 0600 on the following Monday including general holiday</li> </ul>
GW-RW0152-06	23 Mar 06	31 Mar 06	<ul style="list-style-type: none"> <li>Hydraulic Breaker, Hand-held x1, Power Pack x1, Excavator, tracked x1, Dump truck &lt; 38 tonnes x1, concrete lorry mixer x1, crane lorry x1, poker vibratory x1, generator x1, air compressor x1, crane lorry x1, compactor vibratory x1 Time: 0000-0600 Any day, not being a general holidays include Sundays</li> </ul>
GW-RW0164-06	13 Mar 06	30 Jun 06	<ul style="list-style-type: none"> <li>Asphalt paver x1, roller, vibratory x1, crane lorry x1, asphalt paver x1, road roller x1, crane lorry x1, asphalt paver x1, dump truck &lt; 38 tonnes x1, road miller x1, dump truck &lt; 38 tonnes x1, crane lorry x1, hydraulic breaker, hand-held x1, power pack x1; Time: 18 days 0800-1800, holiday, 2100-0600 weekdays.</li> </ul>
GW-RW0184-06	22 Mar 06	30 Apr 06	<ul style="list-style-type: none"> <li>Asphalt paver x1, roller, vibratory x1, asphalt paver x1, road roller x1, asphalt paver x1, dump truck &lt; 38 tonnes x1; Time: 12 days 0700-1900, holiday, 1900-2100 weekdays.</li> </ul>
GW-RW0185-06	22 Mar 06	29 Apr 06	<ul style="list-style-type: none"> <li>Hydraulic breaker, hand-held x1, power pack x1, excavator, tracked x1, dump truck &lt; 38 tonnes x1, concrete lorry mixer x1, crane lorry x1, poker vibratory x1, generator x1, air compressor x1 crane lorry x1, compactor vibratory x1; Time: 4 weekdays 2000-0600.</li> </ul>
GW-RW0214-06	14 Apr 06	2 May 06	<ul style="list-style-type: none"> <li>Asphalt Paver x1, Roller, Vibratory x1, Road Roller x1,</li> </ul>



Permit No.	Valid Period		Section
	From	To	
			<ul style="list-style-type: none"> <li>Dump Truck &lt; 38 tonnes x1;</li> <li>Time: 5 days 0700-1900, holiday/ 1900-2100 weekdays</li> </ul>
GW-RW0215-06	14 Apr 06	31 May 06	<ul style="list-style-type: none"> <li>Mobile working platform x1, Drill, Handheld (Battery) x1;</li> <li>Time: 10 days 0700-1900, holiday/ 1900-2300 weekdays</li> </ul>
GW-RW0224-06	17 Apr 06	28 May 06	<ul style="list-style-type: none"> <li>Asphalt Paver x1, Roller, Vibratory x1, Road Roller x1, Dump Truck &lt; 38 tonnes x 1;</li> <li>Time: 5 days 0700-1900, holiday/ 1900-2100 weekdays</li> </ul>
GW-RW0225-06	17 Apr 06	31 May 06	<ul style="list-style-type: none"> <li>Asphalt Paver x1, Roller x1, Vibratory x1, Road Roller x1, Dump Truck&lt;38 tonnes x1;</li> <li>Time: 5 days 0700-1900, holiday/ 1900-2100 weekdays</li> </ul>
GW-RW0226-06	17 Apr 06	15 May 06	<ul style="list-style-type: none"> <li>Asphalt Paver x1, Roller, Vibratory x1, Road Roller x1, Dump Truck&lt;38 tonnes x1;</li> <li>Time: 3 days 0700-1900, holiday/ 1900-2100 weekdays</li> </ul>
GW-RW0223-06	18 Apr 06	31 May 06	<ul style="list-style-type: none"> <li>Mobile crane x1;</li> <li>Time: 8 days 0700-1900, holiday/ 1900-2300 weekdays.</li> </ul>
GW-RW0247-06	3 May 06	30 Jun 06	<ul style="list-style-type: none"> <li>Crane x1, Lorry with crane x1, Mobile working platform x1;</li> <li>Time: 6 weekdays 0001-0530</li> </ul>
GW-RW0242-06	30 Apr 06	30 Jul 06	<ul style="list-style-type: none"> <li>Mobile Crane x1, Mobile working platform x1, Crane Lorry x1, Mobile working platform x1, Mobile working platform x1, Drill, Handheld (Battery) x1;</li> <li>Time: 14 days 0800-1800, Holiday/ 2100-0600 weekdays</li> </ul>
GW-RW0243-06	30 Apr 06	30 Jul 06	<ul style="list-style-type: none"> <li>Crane Lorry x1, Electric Breaker, Hand-held x1, Generator x1, Compactor Vibratory x1, Mobile Crane x1, Mobile working platform x1, Drill, Handheld (Battery) x1;</li> <li>Time: Any days 0800-1800, holiday/ 2000-0700 weekdays</li> </ul>
GW-RW0251-06	29 Apr 06	2 May 06	<ul style="list-style-type: none"> <li>Dump truck&lt;38 tonnes x1, Excavator x1;</li> <li>Time: 58 Hours from 2000 Saturday to 0600 on the following Tuesday including General Holiday</li> </ul>
GW-RW0320-06	30 Jun 06	3 Jul 06	<ul style="list-style-type: none"> <li>Excavator, tracked x1, Hydraulic Breaker, Hand-held x1, Power pack x1, Dump truck &lt; 38 tonnes x1, Concrete Lorry Mixer x1, Crane Lorry x1, Poker Vibratory x1, Generator x1, Asphalt Paver x1, Roller, Vibratory x1, Road Roller x1, Dump Truck &lt; 38 tonnes x1, Asphalt Paver x1, Road Miller x1;</li> <li>Time: 57 hours only within the validity period 2100 hours on Friday to 0600 hours on the following Monday.</li> </ul>
GW-RW0402-06	1 Aug 06	31 Aug 06	<ul style="list-style-type: none"> <li>Excavator, tracked x1, hydraulic breaker, hand-held x1, power pack x1, dump truck &lt; 38 tonnes x1, concrete lorry mixer x1, crane lorry x1, poker vibratory x1, generator x1, asphalt paver x1, roller, vibratory x1, road roller x1, dump truck&lt;38 tonnes x1, asphalt paver x1, road miller x1, dump truck&lt;38 tonnes x1, lorry with crane x1, mobile working platform x1;</li> <li>Time: Any days at 2100-0600 and general holiday at 2000-0800 weekdays</li> </ul>
GW-RW0459-06	1 Sep 06	31 Oct 06	<ul style="list-style-type: none"> <li>Excavator, tracked x1, hydraulic breaker, hand-held x1, power pack x1, dump truck&lt;38 tonnes x1, concrete lorry mixer x1, Lorry, with crane, 5.5 tonne&lt;gross vehicle weight &lt; 38 tonne, generator, with sound pressure level of &lt;70 dB (A) measured at 7m from the centre of the generator, poker vibratory x1, asphalt paver x1, roller, vibratory x1, road roller x1, dump truck &lt; 38 tonnes x1, asphalt paver x1, road miller x1, dump truck &lt;3 8 tonnes x1, mobile working platform x1, lorry, with crane &lt; 38 tonnes</li> <li>Time: Any day at 2100-0600 and general holidays 0800-2000 (including Sundays);</li> </ul>
GW-RW0550-06	26 Sep 06	23 Dec 06	<ul style="list-style-type: none"> <li>Lorry, with crane x1, 5.5 tonne &lt; gross vehicle weight &lt; 38 tonne, crane x1, mobile (diesel), working platform x1, mobile, generator x1, with sound pressure level of &lt;70 dB (A) measured at 7m from the centre of the generator x1, drill x1, hand-held (battery);</li> </ul>

Permit No.	Valid Period		Section
	From	To	
			<ul style="list-style-type: none"> <li>Time: 0000 - 0530 hrs. General holidays (including Sundays); Any day, not being a general holiday (including Sundays).</li> </ul>
GW-RW0551-06	26 Sep 06	23 Dec 06	<ul style="list-style-type: none"> <li>Lorry, with crane x1, 5.5 tonne &lt; gross vehicle weight &lt; 38 tonne, crane x1, mobile (diesel), working platform x1, mobile, generator x1, with sound pressure level of &lt;70 dB(A) measured at 7m from the centre of the generator x1, drill x1, hand-held (battery);</li> <li>Time: 0100 - 0530 hrs. General holidays (including Sundays); any day, not being a general holiday (including Sundays).</li> </ul>
GW-RW0621-06	1 Nov 06	31 Jan 07	<ul style="list-style-type: none"> <li>Excavator, tracked x1, hydraulic breaker, hand-held x1, power pack x1, dump truck &lt; 38 tonnes x1, concrete lorry mixer x1, Lorry, with crane x1, 5.5 tonne &lt; gross vehicle weight &lt; 38 tonne, generator x1, with sound pressure level of &lt;70 dB (A) measured at 7m from the centre of the generator, poker vibratory x1, asphalt paver x1, roller, vibratory x1, road roller x1, dump truck &lt; 38 tonnes x1, asphalt paver x1, road miller x1, dump truck &lt; 38 tonnes x1, mobile working platform x1, lorry, with crane &lt; 38 tonnes x1;</li> <li>Time: Any day at 2100-0600 and general holidays 0800-2000 (including Sundays);</li> </ul>
GW-RW0046-07	7 Feb 07	30 Apr 07	<ul style="list-style-type: none"> <li>Excavator, tracked x1, hydraulic breaker, hand-held x1, power pack x1, dump truck &lt; 38 tonnes x1, concrete lorry mixer x1, Lorry, with crane, 5.5 tonne &lt; gross vehicle weight &lt; 38 tonne, generator, with sound pressure level of &lt;70 dB (A) measured at 7m from the centre of the generator, poker vibratory x1, asphalt paver x1, roller, vibratory x1, road roller x1, asphalt paver x1, road miller x1, dump truck &lt; 38 tonnes x1, mobile working platform x1, lorry, with crane &lt; 38 tonnes</li> <li>Time: Any day at 2100-0600 and general holidays 0800-2000 (including Sundays);</li> </ul>
GW-RW0212-07	8 May 07	31 Jul 07	<ul style="list-style-type: none"> <li>Excavator, tracked x1, hydraulic breaker, hand-held x1, power pack x1, dump truck &lt; 38 tonnes x1, concrete lorry mixer x1, Lorry, with crane x1, 5.5 tonne &lt; gross vehicle weight &lt; 38 tonne, generator x1, with sound pressure level of &lt;70 dB (A) measured at 7m from the centre of the generator, poker vibratory x1, asphalt paver x1, roller, vibratory x1, road roller x1, asphalt paver x1, road miller x1, dump truck &lt; 38 tonnes x1, mobile working platform x1, lorry, with crane &lt; 38 tonnes x1;</li> <li>Time: Any day at 2100-0600 and general holidays 0800-2000 (including Sundays);</li> </ul>
<b>Notification of Construction Work under APCO</b>			
SC20030723-001	-	-	-
<b>Effluent Discharge License</b>			
1T317/1	30 Sep 03	30 Sep 08	Deep Bay Water Control Zone Discharge point – WQ11
W7HI8-9	13 Oct 03	31 Oct 08	North Western Water Control Zone Discharge points – WQ7, WQ9 and WQ10
W7HI8-10	12 Dec 03	31 Dec 08	North Western Water Control Zone Discharge points – WQ8
W7HI8-11	12 Dec 03	31 Dec 08	North Western Water Control Zone Discharge points – WQA1
<b>Chemical Waste Registration</b>			
5111-411-C3275-01	29 Aug 03	N/A	Used battery, used lubrication oil and lubricating oil/ gasoline/ diesel contaminated soil.

**APPENDIX H  
COMPLAINT FLOW DIAGRAM AND  
COMPLAINT LOG**



Appendix H – Environmental Complaints Log

Log Ref.	Location	Received Date	Complainant	Nature of Complaint	Information of Complaint	Project Related	Remarks
001	Nai Wai	25 Oct 03	Local resident via HAD, LandsD, EPD	Air & Mosquito	Dust and mosquito nuisance was complained. The dust problem was mainly due to the dry season and the pesticides were used three times a week.	No	
002	Hung Shui Kiu Main Nullah	5 Nov 03	Local resident via DSD	Water	Muddy water was generated from the bored piling activities and discharged into the Main nullah.	Yes	Measures below were undertaken: 1. The wastewater generated was collected and recycled; 2. Wastewater treatment system was installed; 3. Excess wastewater was treated to acceptable level prior discharge.
003	Fuk Hang Tsuen Road - CPR2	10 Nov 03	EPD	Air	Construction dust nuisance caused by mishandling of cement. Mitigation measures were properly conducted for cement handling and storage.	No	
004	Lam Tei Gospel School	18 Nov 03	Lam Tei Gospel School	Noise	Construction noise nuisance experienced due to the operation of drilling machine.	Yes	Measures below were undertaken: 1. Acoustic shielding was provided to the drilling machine; 2. Placed temporary structure such as sedimentation tank to form a barrier.
005	To Yuen Wai	16 Dec 03	EPD	Air	Construction dust nuisance affecting the local resident. The dust sources were mainly due to poor regional air quality and the villager renovation.	No	
006	To Yuen Wai	17 Dec 03	EPD	Air	Construction dust nuisance affecting the local resident. The dust sources were mainly due to poor regional air quality and the villager renovation.	No	
007	Botania Villa	19 Dec 03	Local resident via HyD	Noise	Traffic noise nuisance from Yuen Long Highway due to the removal of trees. Mitigation measures were properly conducted.	No	As for the potential noise elevation for YLH, the removal of trees was carried out in accordance with the road widening design. Such impact would be mitigation when the proposed noise barriers are erected.
008	Fuk Hang Tsuen Road	29 Dec 03	EPD	Air	Mud trail was caused by the dump trucks leaving the site brought mud to the road.	Yes	Measures below were undertaken: 1. The current wheel-washing facilities was rearranged; 2. Manual wheel washing was provided further away from FHTR.
009	Fuk Hang Tsuen Road	2 Jan 04	EPD	Air	Construction dust nuisance was complained at FHTR Rural Committee Office. However, the major dust source was mainly due to the poor regional air quality.	No	

Contract No. HY/2002/23  
Deep Bay Link – Southern Section

Log Ref.	Location	Received Date	Complainant	Nature of Complaint	Information of Complaint	Project Related	Remarks
010	Fuk Hang Tsuen Road	7 Jan 04	EPD	Air	Mud trail nuisance was identified by mud deposited from dump trucks leaving the site.	Yes	Measures below were undertaken: 1. Vehicle washing facilities were provided; 2. The vehicle washing area, the road & the exit was paved with concrete.
011	Fuk Hang Tsuen Road	7 Jan 04	EPD	Air	Construction dust nuisance was complained. However, the dust problem was mainly due to poor regional air quality.	No	
012	Shun Tat Street	8 Jan 04	EPD	Air	Muddy road surface nuisance was identified by mud deposited from dump trucks leaving the site.	Yes	Measures below were undertaken: 1. Vehicle washing facilities were provided; 2. The vehicle washing area, the road & the exit was paved with concrete; 3. The muddy road was cleaned up immediately; 4. Workers were brushed the public access road prior the entrance at STS.
013	Fuk Hang Tsuen Road	16 Jan 04	EPD	Water	Muddy water was discharged into the u-channel. The channel was blocked with wastes, leaves and dead plants not belong to the site. However, the high volume of vehicles were entering the site and generated muddy water from wheel washing activities overflow from the sedimentation tank and entered a nearby u-channel.	Yes (Pink form was issued)	Measures below were undertaken: 1. Wheel wash bay was provided; 2. The road surface was concrete paved; 3. high-pressure water jet was provided for additional manual wheel wash; 4. Concrete bunding was built in order to divert the wastewater back to the sedimentation tank for recycle used.
014	Yuen Long Highway	19 Jan 04	HyD	Noise	Traffic noise nuisance from YLH due to the removal of trees either side of the highway. Mitigation measures were properly conducted.	No	As for the potential noise elevation for YLH, the removal of trees was carried out in accordance with the road widening design. Such impact would be mitigation when the proposed noise barriers are erected.
015	Shun Tat Street & Fuk Hang Tsuen Road	19 Jan 04	HyD	Site tidiness & Air	Site tidiness and dust nuisance due to the mud deposited from dump trucks traveling the road and less frequency of providing water spraying on the site works.	Yes	Measures below were undertaken: 1. Wheel washing facility was installed at all the site exits, 2. High-pressure water jet was provided for additional manual wheel wash; 3. Workers were on duty for brushing the floor; 4. Water spraying was provided for the main haul road, and the working areas of excavation.

Log Ref.	Location	Received Date	Complainant	Nature of Complaint	Information of Complaint	Project Related	Remarks
016	Shun Tat Street & Fuk Hang Tsuen Road	26 Jan 04	Media	Site tidiness	Dust nuisance due to the mud deposited from dump trucks traveling the road and less frequency of providing water spraying on the site works.	Yes	Measures below were undertaken: 1. Wheel washing facility was installed at all the site exits; 2. High-pressure water jet was provided for additional manual wheel wash; 3. Workers were on duty for brushing the floor; 4. Water spraying was provided for the main haul road, and the working areas of excavation.
017	Tan Kwai Tsuen	4 Feb 04	DSD	Water	Muddy water was discharged into drainage channel. However, the appearance of the muddy water discharging into the TKT was grey and not similar to any wastewater generated from site. It was suspect that the muddy water was from other vicinity construction site.	No	
018	Fuk Hang Tsuen	14 Feb 04	EPD	Water	Polluting effluent discharged was complained. The wastewater was discharged by the local residents from other discharge drain.	No	
019	On Construction site	8 Mar 04	EPD	Air	Construction dust nuisance due to the concrete lorries traveling within the site.	Yes	Measures below were undertaken: 1. Tarpaulins were fully covered the stockpiles; 2. Additional water truck was used on site.
020	Shun Tat Street	8 Mar 04	EPD	Water	Muddy water was discharged to STS. The muddy water was likely from the excess wastewater of wheel washing facilities when the trucks traveling out of the site.	Yes	Measures below were undertaken: 1. Excess wastewater generated was transferred/ diverted to sedimentation tank; 2. Sandbags were installed along the wheel washing facilities.
021	Fuk Hang Tsuen Road	15 Mar 04	EPD	Air	Construction dust nuisance was complained. However, the major dust sources were the dump trucks traveling from the nearby quarry site and parked at the unpaved area in FHTR. Uncovered stockpiles and excavation works (not part of DBL-S) were observed within the unpaved area in FHTR.	No	
022	Fuk Hang Tsuen Road	8 Apr 04	EPD	Water	Muddy water was discharged to the road. However, there was no soil or muddy water observed at the site of FHTR on the day of complaint.	No	

Log Ref.	Location	Received Date	Complainant	Nature of Complaint	Information of Complaint	Project Related	Remarks
023	Fuk Hang Tsuen (near Botania Villa)	10 May 04	EPD & F&EHD	Air	Construction dust nuisance was complained. The major dust source was generated by the dump trucks traveling from the nearby quarry site or the villager workshop.	No	
024	Lok On Pai	17 Jun 04	EPD	EP Condition 3.11	Storage of materials other than bridge segments.	Yes	Measures below were undertaken: 1. All materials were removed from Lok On Pai site area; 2. The materials other than pre-cast bridge segment were not stored at Lok On Pai.
025	Fuk Hang Tsuen Road	14 Jul 04	EPD	Water	Polluting effluent was discharged to the road. The foul water overflowed from the site office's toilet due to breakage of one of the water pipe.	Yes	Measures below were undertaken: 1. The overflow was controlled and the seepage was cleaned up at the nearby area.
026	Fuk Hang Tsuen Road	27 Jul 04	EPD	Water	Polluting effluent was discharged from site. The muddy water flowing to the villager open area was due to heavy rain and the house was actually located lower than the site ground level.	No	
027	Fuk Hang Tsuen	18 Aug 04	EPD	Air	Dust nuisance due to the trucks entering and leaving the site. The major dust source was generated by the dump trucks traveling to nearby quarry site or other nearby construction sites of the villager workshop.	No	
028	Fuk Hang Tsuen Road & Castle Peak Road	6 Sep 04	EPD	Water	Soil / muddy water was complained due to the trucks in & out of the site. However, no soil / muddy water was observed at the site exit of FHTR and the wheel washing facilities was provided.	No	
029	Fuk Hang Tsuen Road	6 Oct 04	EPD	Air	Construction dust nuisance due to the roadwork near Lam Tei Gospel School. The major dust source was generated by the dump trucks traveling to nearby quarry site.	No	
030	Fuk Hang Tsuen Road (near Botania Villa)	11 Oct 04	EPD	Air	Construction dust was complained. However, fugitive dust was generated by the dump trucks traveling in high speed along the nearby quarry site at FHTR.	No	
031	Lok On Pai	2 Nov 04	EPD	EP Condition 3.11 (a)	Segment loading/ unloading carried out at the complaint night. However, there was no construction works and segment movement was carried out on the day (night time) of the complaint.	No	
032	Lok On Pai	9 Nov 04	EPD	Noise	Noise generation due to the vehicles traveling at the site entrance of Lok On Pai. However, there were only two tractors operating on-site only during the non-restricted hours, which was comply with the EP Condition 3.11.	No	



Contract No. HY/2002/23  
Deep Bay Link – Southern Section

Log Ref.	Location	Received Date	Complainant	Nature of Complaint	Information of Complaint	Project Related	Remarks
033	Tsoi Yuen Tsuen	17 Nov 04	EPD	Air	No water spraying was complained at Tsoi Yuen Tsuen and caused fugitive dust. However, The stockpiles were covered by tarpaulin and water spraying was provided at the regular basis.	No	
034	To Yuen Wai	2 Dec 04	EPD	Air	Construction dust nuisance was affecting the local residents.	Yes	Measures below were undertaken: 1. The stockpiles were covered with tarpaulin or impervious sheeting; 2. The frequency of water spraying was increased by the water tankers and during concrete breaking.
035	To Yuen Wai	2 Dec 04	EPD	Air	Construction dust nuisance was affecting the local residents.	Yes	Measures below were undertaken: 1. The stockpiles were covered with tarpaulin or impervious sheeting; 2. The frequency of water spraying was increased by the water tankers and during concrete breaking.
036	Fuk Hang Tsuen Road	8 Dec 04	EPD	Air	Construction Dust nuisance was complained. However, the major dust source was generated by the dump trucks traveling in high speed along the nearby quarry site at FHTR.	No	
037	To Yuen Wai	14 Dec 04	EPD	Air	Construction dust nuisance was affecting the local residents.	Yes	Measures below were undertaken: 1. All the stockpiles stored were covered with tarpaulin or impervious sheeting; 2. The frequency of water spraying was increased by the water tankers and during concrete breaking.
038	Fuk Hang Tsuen Road	3 Jan 05	EPD	Water	Polluting effluent was complained at FHTR. The water was observed from the leakage of the underground pipe belong to WSD.	No	
039	Shun Tat Street	17 Jan 05	EPD	Air	Construction dust nuisance affecting the refuse transfer station in STS.	Yes	Measures below were undertaken: 1. Water spraying was provided; 2. Workers were on duty for cleaning mud trails and brushing up the dusty materials.
040	Tsoi Yuen Tsuen	16 Feb 05	EPD	Noise	Night-time construction noise nuisance was complained. The Contractor obtained valid CNP for the construction works.	No	
041	To Yuen Wai	18 Feb 05	Local resident	Noise	Noise nuisance was generated due to breaking of existing concrete footing.	Yes	Measures below were undertaken: 1. The movable noise barrier was installed.

Contract No. HY/2002/23  
Deep Bay Link – Southern Section

Log Ref.	Location	Received Date	Complainant	Nature of Complaint	Information of Complaint	Project Related	Remarks
042	To Yuen Wai	20 Apr 05	EPD	Dust	Dust nuisance was complained. The major dust source was generated by the high volume of traffic at YLH.	No	
043	Fu Hang Road	31 May 05	EPD	Water	Muddy water was discharged to the drains at FHR and the nearby farmland caused blockage. However, no blockage at the drain or at the farmland was observed. The temporary drain was in used and no construction work was carried out on the day of complaint.	No	
044	Tsoi Yuen Tsuen	24 Jun 05	EPD	Water	Muddy water was discharged to Scrap Metal Recycling Site during the red rainstorm signal.	Yes	Measures below were undertaken: 1. Temporary drain was excavated; 2. The concrete bars were placed at the nearby area; 3. Temporary stockpiles were covered; 4. The drain and mud trail near the Recycling Site was cleaned up.
045	Fuk Hang Tsuen Road	26 Jul 05	EPD	Air	Construction dust of roadwork was complained. However, the major dust source was generated by the dump trucks traveling in high speed along the nearby quarry site at FHTR.	No	
046	To Yuen Wai	12 Aug 05	EPD	Air	Construction dust of roadwork was complained. However, no evidence proved the incidence was related to Project activities.	No	
047	Fuk Hang Tsuen Road	24 Aug 05	EPD	Water	Muddy water was flooding and accumulated at the subway near Lam Tei Gospel School. The amber rainstorm warning was held on the day of complaint and caused flooding and minor surface runoff at the subway.	Yes	Measures below were undertaken: 1. The accumulated wastewater was cleaned up immediately; 2. Exposed surface within the site boundary was covered; 3. Sandbags were provided for the slope surface.
048	To Yuen Wai	6 Sep 05	EPD	Dust & Noise	Noise and dust nuisance due to the concrete breaking and road construction works. Regular water trucks were provided on site and water spraying on the haul road was conducted in regular basis.	Yes (for Noise only)	Measures below were undertaken: 1. The movable barrier was installed;
049	To Yuen Wai	12 Oct 05	EPD	Air	Construction dust nuisance due to no water spraying and covering of soil heaps.	Yes	Measured below were undertaken: 1. Water truck was provided frequently on the haul road; 2. On-site worker was on duty for additional manual water spraying.

Log Ref.	Location	Received Date	Complainant	Nature of Complaint	Information of Complaint	Project Related	Remarks
050	Choi Yuen Tsuen	14 Nov 05	EPD	Waste	Environmental and hygiene nuisance due to waste mishandling. The accumulation of refuse was identified to be a domestic type and from house decoration. Refuse generated by the Project was regularly collected and properly disposed.	No	
051	To Yuen Wai	4 Jan 06	Local resident	Noise	Noise nuisance due to sheeting piling works.	Yes	Measures below were undertaken: 1. The movable noise barrier was provided.
052	To Yuen Wai	9 Jan 06	EPD	Water	Polluting effluent was discharged during the drainage works and retaining wall construction by pumping out the groundwater. The groundwater was polluted by underground mud and the workers pumped out directly with no treatment.	Yes	Measures below were undertaken: 1. Three sedimentation tanks were installed for the groundwater treatment;
053	Fuk Hang Tsuen Road	16 Mar 06	EPD	Water	Polluting effluent was discharged by the trucks after passing through the wheel washing facilities. As the road surface was uneven and some effluent was accumulated at the uneven part of the road.	Yes	Measures below were undertaken: 1. Mud trail and effluent was cleaned immediately.
054	Tsoi Yuen Tsuen, Shun Tat Street	22 Jun 06	EPD	Air	Dusty road surface nuisance due to lots of dust and sand on the road caused by vehicles leaving the site.	Yes	Measures below were undertaken: 1. The frequency of water spraying was increased; 2. On-site worker was on duty for providing additional manual water spraying.
055	Shun Tat Street	9 Aug 06	EPD	Air	Dust nuisance due to insufficient use of water spraying.	Yes	Measures below were undertaken: 1. The frequency of water spraying was increased; 2. Bunding was provided for the gullies.
056	Fuk Hang Tsuen Road	31 Aug 06	EPD	Air	Dusty nuisance due to the heaps of soil deposited from site. Utilities works were on-going by other contractor within the site and minor soil was located at the nearby location for the purpose of backfilling.	Yes	Measures below were undertaken: 1. Water spraying was provided for the haul road; 2. The soil was backfilled for the complaint area.
057	Shun Tat Street	28 Nov 06	EPD	Air	Dust nuisance due to insufficient use of water spraying	Yes	Measures below were undertaken: 1. Sandbags were provided for the construction works area; 2. The frequency of watering was increased for the haul road.