

CEDD Contract No.CV/2007/05
Demolition of Kennedy Town Incineration Plant and
Abattoir

Condition Survey Report for Cracks / Damages
Identified on Existing Ground Slab

Contractor: Hang Kee Construction & Engineering Co., Ltd.
Date: 4 December 2007
Version: 001

Content

1. Introduction
2. Methodology for Crack/Damages Survey
3. Survey Report
4. Conclusion

Appendix A: Layout Plan for Cracks / Damages on Existing Ground Slab

Appendix B: Table of the Coordinates of Cracks / Damages of Existing Ground Slab

Appendix C: Table of the Condition Survey for Cracks / Damages of the Existing
Ground Slab

Appendix D: Photo Records for the Condition Survey of Cracks / Damages of the
Existing Ground Slab

1. Introduction

The Project (Phase 1 Part 1) includes demolition and clearance of all existing chimneys, building and ancillary structures above the existing concrete ground slab in the Phase 1 Site area where the former Kennedy Town Incinerator Plant (KTIP) and the Kennedy Town Abattoir (KTA) are located, and the demolition and clearance of existing piers on the waterfront adjacent to the KTIP and KTA. It also includes the removal of asbestos containing materials and dioxin / furan contaminated wastes within the Phase 1 Site.

Under the Contract the Contractor is required to carry out a condition survey of the cracks/damages of existing ground slab and/or drainage system. This report is prepared by the Contractor and is to be submitted to the Engineer's Representative (ER) for his onward submission to EPD.

2. Methodology for Crack/Damages Survey

As stipulated in the Environmental Permit (No.: EP-136/2002/B) for the Project, the cracks or damages on the existing ground slab or drainage system shall be located and identified such that the soil underneath the ground could be likely exposed during demolition works. The cracks or damages shall be repaired if necessary as instructed by the ER. The existing concrete ground slab shall be retained intact and its structural integrity is maintained to avoid exposing the soil underneath as far as practicable.

Similar inspection and repair shall be carried out every month thereafter until the commencement of Phase 1 Part 2 of the Project. Where the inspection and repair work fall within the reporting month of the monthly Environmental Monitoring & Audit (EM&A) report described under Condition 3.5 of Environmental Permit, the inspection findings and repair work carried out shall be reported in that monthly EM&A report.

3. Survey Report

The cracks or damages on the existing concrete ground slab and drainages within the Phase 1 Site are identified and located during several joint site inspections with the Engineer's Representative and our Site Agent in November 2007. The

location of cracks are labeled and marked on the layout plan attached to Appendix A for easy reference. Their locations in terms of approximate coordinates are also shown in Appendix B. A summary of all cracks identified in this exercise for the whole site is attached in Appendix C. Lastly photo for each crack identified is shown in Appendix D for record purpose.

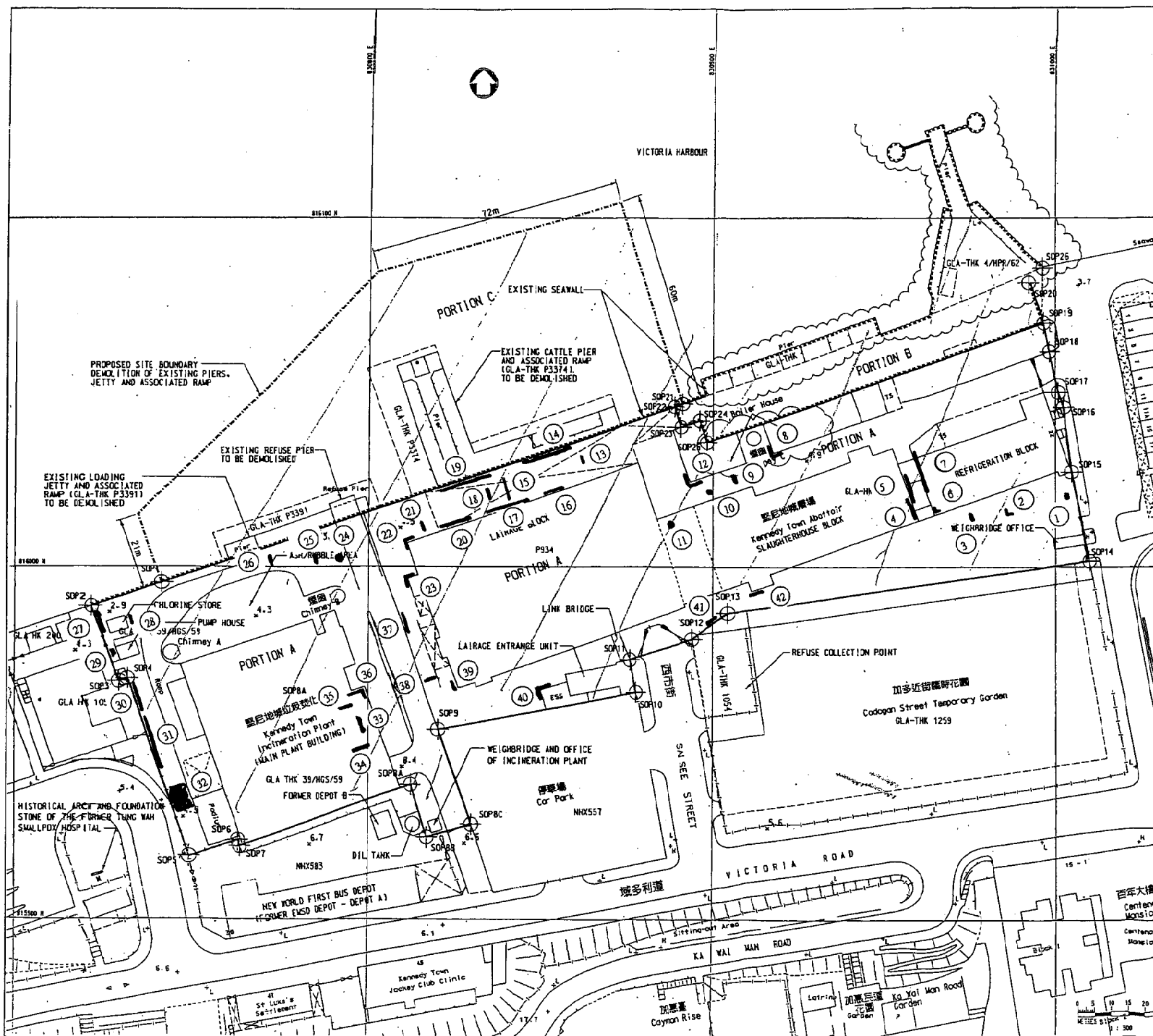
4. Conclusion

The cracks or damages identified on the existing concrete ground slab and drainages within the Phase 1 Site in joint site inspection are generally not in adverse condition and most cracks could be rectified by minor repairing.

After repairing, the cracks will be inspected, monitored and repaired if necessary monthly so that the cracks or damages on the ground will not be deteriorated causing any possible exposing of soil underneath the ground.

Appendix A

Layout Plan for Cracks / Damages on Existing Ground Slab



Legend:

(38) Location of Cracks Identified on Site

Main Contractor:
Hang Kee Construction & Engineering Co., Ltd.

Contract No.:
CV/2007/05

Contract Title:
Demolition of Kennedy Town Incineration Plant and Abattoir

Sketch Title:
Location Plan for Cracks Identified on Site

Scale: Not to Scale

Sketch no.:
SK-018A

Appendix B

Table of the Coordinates of Cracks / Damages of Existing Ground Slab

CEDD Contract No.: CV/2007/05

Contract Title: Demolition of Kennedy Town Incineration Plant and Abattoir

Table of the Coordinates of Cracks / Damages of Existing Ground Slab

Crack no.	Coordinate	
	N	E
1	816 017	831 004
2	816 013	830 989
3	816 012	830 974
4	816 016	830 958
5	816 023	830 956
6	816 014	830 966
7	816 026	830 961
8	816 032	830 917
9	816 026	830 905
10	816 021	830 898
11	816 011	830 886
12	816 023	830 893
13	816 029	830 859
14	816 032	830 849
15	816 023	830 841
16	816 021	830 852
17	816 017	830 842
18	816 021	830 835
19	816 024	830 829
20	816 012	830 826
21	816 010	830 817
22	816 007	830 810
23	816 097	830 011
24	816 001	830 793
25	816 003	830 786
26	816 001	830 770
27	815 984	830 723
28	815 985	830 732
29	815 976	830 727
30	815 962	830 733
31	815 949	830 731
32	815 933	830 746
33	815 955	830 797
34	815 949	830 798
35	815 961	830 793
36	815 965	830 798
37	815 984	830 811
38	815 968	830 818
39	815 965	830 825
40	815 964	830 848
41	815 986	830 900
42	815 994	830 911

Appendix C

Table of the Condition Survey for Cracks / Damages of the Existing
Ground Slab

Contract No.: CV/2007/05

Contract Title: Demolition of Kennedy Town Incineration Plant and Abattoir

Table of the Conditional Survey of Cracks / Damages of the Existing Ground Slab

Crack No.	Size of Crack		Size of Broken Slab		Conditions
	Max. Width (mm)	Max. Length (mm)	Width (mm)	Length (mm)	
1			200	150	
2			1800	1300	
3			1000	500	
4	20	4000			Kerb settled
5	10	8000			
6			1200	800	
7	10	8500			Kerb settled
8	50	6000			Kerb settled + broken
9			700	700	
10			1000	1300	
11			1200	1300	
12			1100	3200	
13			1000	1200	
14	50	13000			Kerb settled
15	50	2200			
16	60	7000			Slab displaced with soil exposed
17	60	6000			Slab displaced with soil exposed
18	10	3500			Settled slab
19	40	11000			Kerb settled
20	50	4000			Slab displaced with soil exposed
21			600	600	
22			3500	800	
23	80	1000			Slab displaced with soil exposed
24			600	600	Broken pavement with soil exposed
25			1000	500	Broken pavement with soil exposed
26			1500	250	Soil exposed
27			3000	600	Broken channel with soil exposed
28			25000	900	
29			600	500	Soil exposed
30			3000	500	Broken channel with soil exposed
31			6000	250	Broken channel with soil exposed
32			5000	7000	Collapsed slab with soil exposed
33			4000	600	Soil exposed
34			800	600	Soil exposed
35			9000	700	Soil exposed
36			8000	500	Soil exposed
37			1000	250	Broken pavement with soil exposed
38			1300	400	Broken and settled pavement with soil exposed
39			2000	600	
40			1000	900	Kerb settled + broken
41	20	4000			Kerb settled
42			1000	2000	

Appendix D

Photo Records for the Condition Survey of Cracks / Damages of the
Existing Ground Slab

Contract No. CV/2007/05
Demolition of Kennedy Town Incineration Plant and Abattoir
Initial Cracks Record Photos of the Site
Photos Taken on 8 November 2007



Photo No.:
1

Cracked / Damaged concrete ground slab between refrigeration block
and weighbridge office at Portion A

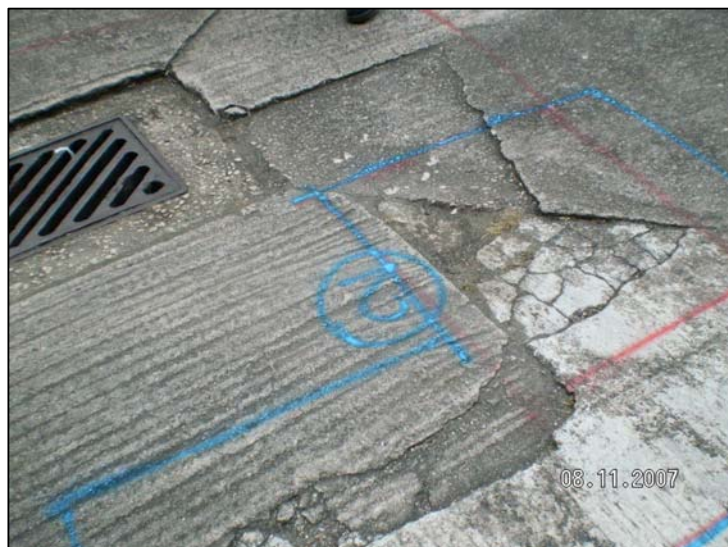


Photo No.:
2

Cracked / Damaged concrete ground slab between refrigeration block
and weighbridge office at Portion A

Contract No. CV/2007/05
Demolition of Kennedy Town Incineration Plant and Abattoir
Initial Cracks Record Photos of the Site
Photos Taken on 8 November 2007



Photo No.:
3

Cracked / Damaged concrete ground slab outside refrigeration block
at Portion A



Photo No.:
4

Cracked / Damaged concrete road kerb between refrigeration block
and Kennedy Town abattoir slaughterhouse block at Portion A

Contract No. CV/2007/05
Demolition of Kennedy Town Incineration Plant and Abattoir
Initial Cracks Record Photos of the Site
Photos Taken on 8 November 2007



Photo No.:
5

Cracked / Damaged concrete road slab between refrigeration block
and Kennedy Town abattoir slaughterhouse block at Portion A



Photo No.:
6

Cracked / Damaged concrete road kerb and slab between refrigeration
block and Kennedy Town abattoir slaughterhouse block at Portion A

Contract No. CV/2007/05
Demolition of Kennedy Town Incineration Plant and Abattoir
Initial Cracks Record Photos of the Site
Photos Taken on 8 November 2007



Photo No.:
7

Cracked / Damaged concrete road kerb between refrigeration block
and Kennedy Town abattoir slaughterhouse block at Portion A



Photo No.:
8

Cracked / Damaged concrete ground slab between E&M Services
Dept. and Chimney C at Portion A

Contract No. CV/2007/05
Demolition of Kennedy Town Incineration Plant and Abattoir
Initial Cracks Record Photos of the Site
Photos Taken on 8 November 2007



Photo No.:
9

Cracked / Damaged concrete ground slab between E&M Services
Dept. and Kennedy Town abattoir slaughterhouse block at Portion A



Photo No.:
10

Cracked / Damaged concrete ground slab between E&M Services
Dept. and Kennedy Town abattoir slaughterhouse block at Portion A

Contract No. CV/2007/05
Demolition of Kennedy Town Incineration Plant and Abattoir
Initial Cracks Record Photos of the Site
Photos Taken on 8 November 2007



Photo No.:
11

Cracked / Damaged concrete ground slab between lairage block and
Kennedy Town abattoir slaughterhouse block at Portion A



Photo No.:
12

Cracked / Damaged concrete ground slab between E&M Services
Dept. and Kennedy Town abattoir slaughterhouse block at Portion A

Contract No. CV/2007/05
Demolition of Kennedy Town Incineration Plant and Abattoir
Initial Cracks Record Photos of the Site
Photos Taken on 8 November 2007



Photo No.:
13

Cracked / Damaged concrete ground slab under steel shed
at Portion A



Photo No.:
14

Cracked / Damaged concrete ground slab / kerb under steel shed
at Portion A

Contract No. CV/2007/05
Demolition of Kennedy Town Incineration Plant and Abattoir
Initial Cracks Record Photos of the Site
Photos Taken on 8 November 2007



Photo No.:
15

Cracked / Damaged concrete ground slab under steel shed at Portion A



Photo No.:
16

Cracked / Damaged concrete ground slab under steel shed at Portion A

Contract No. CV/2007/05
Demolition of Kennedy Town Incineration Plant and Abattoir
Initial Cracks Record Photos of the Site
Photos Taken on 8 November 2007



Photo No.:
17

Cracked / Damaged concrete ground slab under steel shed
at Portion A



Photo No.:
18

Cracked / Damaged concrete ground slab and damage under
steel shed at Portion A

Contract No. CV/2007/05
Demolition of Kennedy Town Incineration Plant and Abattoir
Initial Cracks Record Photos of the Site
Photos Taken on 8 November 2007



Photo No.:
19

Cracked / Damaged concrete ground slab under steel shed
at Portion A



Photo No.:
20

Cracked / Damaged concrete ground slab under steel shed
at Portion A

Contract No. CV/2007/05
Demolition of Kennedy Town Incineration Plant and Abattoir
Initial Cracks Record Photos of the Site
Photos Taken on 8 November 2007



Photo No.:
21

Cracked / Damaged concrete ground slab outside lairage block
and steel shed at Portion A



Photo No.:
22

Cracked / Damaged concrete ground slab and kerb outside
lairage block at Portion A

Contract No. CV/2007/05
Demolition of Kennedy Town Incineration Plant and Abattoir
Initial Cracks Record Photos of the Site
Photos Taken on 8 November 2007



Photo No.:
23

Cracked / Damaged concrete ground slab and kerb outside
lairage block and ramp at Portion A



Photo No.:
24

Cracked / Damaged road slab between Chimney B and ramp
at Portion A

Contract No. CV/2007/05
Demolition of Kennedy Town Incineration Plant and Abattoir
Initial Cracks Record Photos of the Site
Photos Taken on 8 November 2007



Photo No.:
25

Cracked / Damaged road slab between Chimney B and ramp
at Portion A



Photo No.:
26

Cracked / Damaged road slab between Chimney A and Chimney B
at Portion A

Contract No. CV/2007/05
Demolition of Kennedy Town Incineration Plant and Abattoir
Initial Cracks Record Photos of the Site
Photos Taken on 8 November 2007



Photo No.:
27

Cracked / Damaged concrete U-channel and slab between the
external wall and chlorine store at Portion A



Photo No.:
28

Cracked / Damaged concrete ground slab outside chlorine store
at Portion A

Contract No. CV/2007/05
Demolition of Kennedy Town Incineration Plant and Abattoir
Initial Cracks Record Photos of the Site
Photos Taken on 8 November 2007



Photo No.:
29

Cracked / Damaged concrete ground slab outside pump house
at Portion A



Photo No.:
30

Cracked / Damaged concrete U-channel and slab between the external wall
and Kennedy Town incineration plant (main plant building) at Portion A

Contract No. CV/2007/05
Demolition of Kennedy Town Incineration Plant and Abattoir
Initial Cracks Record Photos of the Site
Photos Taken on 8 November 2007



Photo No.:
31

Cracked / Damaged concrete U-channel between the external wall and Kennedy Town incineration plant (main plant building) at Portion A



Photo No.:
32

Cracked / Broken concrete ground slab between the external wall and Kennedy Town incineration plant (main plant building) at Portion A

Contract No. CV/2007/05
Demolition of Kennedy Town Incineration Plant and Abattoir
Initial Cracks Record Photos of the Site
Photos Taken on 8 November 2007



Photo No.:
33

Cracked / Damaged concrete ground slab inside the Kennedy Town incineration plant (main plant building) at Portion A



Photo No.:
34

Cracked / Damaged concrete ground slab inside the Kennedy Town incineration plant (main plant building) at Portion A

Contract No. CV/2007/05
Demolition of Kennedy Town Incineration Plant and Abattoir
Initial Cracks Record Photos of the Site
Photos Taken on 8 November 2007



Photo No.:
35

Cracked / Broken concrete ground slab inside the Kennedy Town incineration plant (main plant building) at Portion A



Photo No.:
36

Cracked / Broken concrete ground slab inside the Kennedy Town incineration plant (main plant building) at Portion A

Contract No. CV/2007/05
Demolition of Kennedy Town Incineration Plant and Abattoir
Initial Cracks Record Photos of the Site
Photos Taken on 8 November 2007



Photo No.:
37

Cracked / Damaged road slab between the external wall and
lairage block at Portion A



Photo No.:
38

Cracked / Damaged road slab between the external wall and
lairage block at Portion A

Contract No. CV/2007/05
Demolition of Kennedy Town Incineration Plant and Abattoir
Initial Cracks Record Photos of the Site
Photos Taken on 8 November 2007



Photo No.:
39

Cracked / Damaged concrete ground slab and kerb between the
external wall and lairage block at Portion A



Photo No.:
40

Cracked / Damaged concrete ground slab and kerb between the
lairage block and substation at Portion A

Contract No. CV/2007/05
Demolition of Kennedy Town Incineration Plant and Abattoir
Initial Cracks Record Photos of the Site
Photos Taken on 8 November 2007



Photo No.:
41

Cracked / Damaged concrete ground slab and kerb between the external wall and Kennedy Town abattoir slaughterhouse block at Portion A



Photo No.:
42

Cracked / damaged concrete ground slab and kerb between the external wall and Kennedy Town abattoir slaughterhouse block at Portion A