

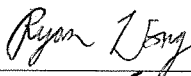

China State – China Railway Joint Venture

CE 28/2004 (GE)

**Landslide Preventive Works at Po Shan Road,
Mid-Levels – Design and Construction
(Natural Terrain Risk Mitigation Works)**

**Monthly Operation Phase Landscape and
Visual Audit Report No. 6**

June 2010

	Name	Signature
Prepared & Checked:	Ryan Wong	
Reviewed & Approved:	Edith Ng	

Version: 0	Date: 12 July 2010
------------	--------------------

The information contained in this report is, to the best of our knowledge, correct at the time of printing. The interpretation and recommendations in the report are based on our experience, using reasonable professional skill and judgment, and based upon the information that was available to us. These interpretations and recommendations are not necessarily relevant to any aspect outside the restricted requirements of our brief. This report has been prepared for the sole and specific use of our client and AECOM Asia Co. Ltd accepts no responsibility for its use by others.

This report is copyright and may not be reproduced in whole or in part without prior written permission.

AECOM Asia Co. Ltd.
11/F, Grand Central Plaza, Tower 2, 138 Shatin Rural Committee Road, Shatin, NT, Hong Kong.
Tel: (852) 2893 1551 Fax: (852) 2891 0305 www.aecom.com

Ref.: MSLPOSHNEM00_0_0252L.10

14 July 2010

By Fax (2730 7110) and Post

Engineer's Representative
AECOM
20/F Grand Central Plaza, Tower 2
138 Shatin Rural Committee Road
Shatin, N.T.
Hong Kong

Attention: Mr. Lawrence Shek

Dear Mr. Shek,

**Re: Agreement No. CE28/2004 (GE)
Landslide Preventive Works at Po Shan, Mid-levels
Monthly Inspection Report (June 2010)
for Landscape & Visual Audit and Monitoring**

Reference is made to the Monthly Inspection Report for Landscape & Visual Audit and Monitoring for operation phase (June 2010) of the project by the Environmental Team by email on 12 July 2010.

We would like to inform that we have no comment on the captioned report.

Thank you very much for your kind attention and please do not hesitate to contact the undersigned should you have any queries.

Yours sincerely,



David Yeung
Independent Environmental Checker

c.c. AECOM Attn: Ms. Edith Ng

Fax: 2891 0305

Q:\Projects\MSLPOSHNEM00\Corr\MSLPOSHNEM00_0_0252L.10.doc

1. Background

- 1.1 The objective of the Project “Landslide Preventive Works at Po Shan, Mid-levels – Design and Construction (Natural Terrain Risk Mitigation Works)” under Contract CE 28/2004 (GE) is to carry out detailed design and supervision of landslide preventive works on local repair of the hillside to minimize slope deterioration and shallow instability.
- 1.2 The Project site is located at the mostly undeveloped hillside above the residential development at Po Shan Road and adjacent to the trimmed back slope on the site of the catastrophic 1972 Po Shan Road failure. Previous studies had been carried out and results indicated that the natural hillside above Po Shan Road is affected by high groundwater level and unfavourable geology. Sub-surface drainage measures by means of sub-horizontal drains had been installed in 1984-85. These measures have been successful in lowering the main ground water table, thus improving the stability of the slopes such that large-scale failure has not occurred in the last twenty years. The proposed landslide preventive works would be constructed to protect the existing residential developments at the toe of the project site.
- 1.3 The scope of works of this Project includes the installation about 700 numbers of soil nails and about 60 numbers of raking drains on the natural terrain within the concerned area. The length of the soil nails is about 20m with a spacing of 2m horizontally and 3m vertically; the length of raking drains is about 10m with a spacing of 5m horizontally and 15m vertically.
- 1.4 AECOM Asia Company Ltd., integrating the operation of ENSR Asia (HK) Ltd. as of 1 May 2009, was employed by the Contractor, China State – China Railway Joint Venture, as the Environmental Team (ET) to undertake the Environmental Monitoring and Audit (EM&A) works for the Project.
- 1.5 The construction of the Project and the EM&A programme commenced on 1 April 2008. The construction works, including compensatory planting of vegetations, had been completed in December 2009 and the construction phase EM&A programme was terminated on 31 December 2009, as approval by EPD. The operation phase EM&A programme commenced on 1 January 2010.
- 1.6 This report documented the findings of Landscape & Visual Audit and Monitoring works conducted in the operation phase period between 1 and 30 June 2010.
- 1.7 The key personnel contact names and numbers are summarized in Table 1.1

Table 1.1 Contact Information of Key Personnel

Party	Position	Name	Telephone	Fax
CEDD	Senior Engineer	H. W. Sun	2762 5375	2714 0247
ER (MGS)	Resident Engineer	Lawrence Shek	2170 6607	2730 7110
	Assistant Resident Engineer	S. F. Chau	2170 6621	2730 7110
IEC (ENVIRON)	Independent Environmental Checker	David Yeung	3743 0788	3548 6988
Contractor (CCJV)	Project Manager	C. Y. Mak	2665 3232	2667 5666
ET (AECOM)	ET Leader	Edith Ng	3105 8525	2891 0305

2. LANDSCAPE AND VISUAL

Monitoring Requirement

- 2.1 During the operation phase of the Project, landscape and visual monitoring should be carried out monthly by a Registered Landscape Architect (RLA) to ensure the compensatory planting and horticultural maintenance operations are properly established during the 12 month establishment period. A detailed report is annexed in Appendix A.

**APPENDIX A
DETAILED LANDSCAPE AND VISUAL
MONITORING REPORT**

Agreement No. CE 28/2004 (GE)
Landslide Preventive Works at Po Shan, Mid-Levels
Design and Construction
(Natural Terrain Risk Mitigation Works)

Landscape & Visual Audit and Monitoring
(Operational Phase)


Monthly Inspection Report No. 06

(June 2010)

Prepared by

URBIS LIMITED

Prepared by :



Tran Tuan Huy

9th July 2010

Approved by :



Alexander Duggie

9th July 2010

1.0 INTRODUCTION

The Landscape and Visual Audit & Monitoring are conducted to fulfill the requirements of the EIA Report during the Construction and Operational Phases of the project, and are based on the procedures and requirements as set out in the Agreement No. CE 28/2004 (GE) Landslide Preventive Works at Po Shan, Mid-Levels – Design and Construction (Natural Terrain Risk Mitigation Works) - Environmental Monitoring and Audit Manual.

As stated in section 3.5 and 3.6 of the EM&A Manual, all landscape and visual mitigation measures undertaken by the Contractor during the construction phase and the first 12 months of the operational phase shall be audited on a bi-weekly and monthly basis respectively to ensure compliance with the intended aims of the mitigation measures.

2.0 SCOPE OF AUDIT and MONITORING

The broad scope of landscape and visual monitoring and audit on mitigation measures is as detailed below:

2.1 Construction Phase

Identify any potential conflicts between the proposed landscape measures and any other project works or operation requirements, and recorded for the contractor to resolve in early stage, without compromising the intention of the mitigation measures. Also, the followings shall be monitored:

- designation of 'no-intrusion zones', and to record any trespass by the contractor, including damage to existing vegetation;
- allowance for adjustment of soil nails on site for the avoidance of tree trunks and tree roots;
- dust and erosion control for exposed soil;
- tree planting operations, checking method statement against specification requirements;
- all retained trees within the working boundary shall be regularly checked and reported to the engineer, including damage to the tree canopy edge.

Considerations shall also be made to address the appearance and view by public through:

- control over the appearance of construction workers, hoarding, construction plants / machines
- careful selection of security floodlights to avoid light pollution

2.2 Operation Phase

Ensure the compensatory planting and horticultural maintenance operations are properly carried out during the 12 months establishment period, including:

- Inspection for fungal / viral attacks and pest infestations
- Litter collection
- Watering
- Weeding removal
- Replacement of defective planting material
- Grass cutting / groundcover trimming and removal of arisings
- Fertilizing application as required in specification
- Aeration / mulching application

3.0 INSPECTION

3.1 Summary of Inspection – 30th June 2010

3.1.1 Matters Arising from Previous Inspections

- The Contractor had carried out plant replacement on 23rd June 2010 for all dead shrubs as previously observed on site.

3.1.2 Landscape Establishment Works

- Typical site inspection photos of the hydroseeded grass and plants under establishment were enclosed under Appendix-B.
- It was generally observed that the shrubs and palm trees under establishment were found to be in healthy conditions and well established (Photos 1 to 6 refers).

3.1.3 Recommendations

- Nil.

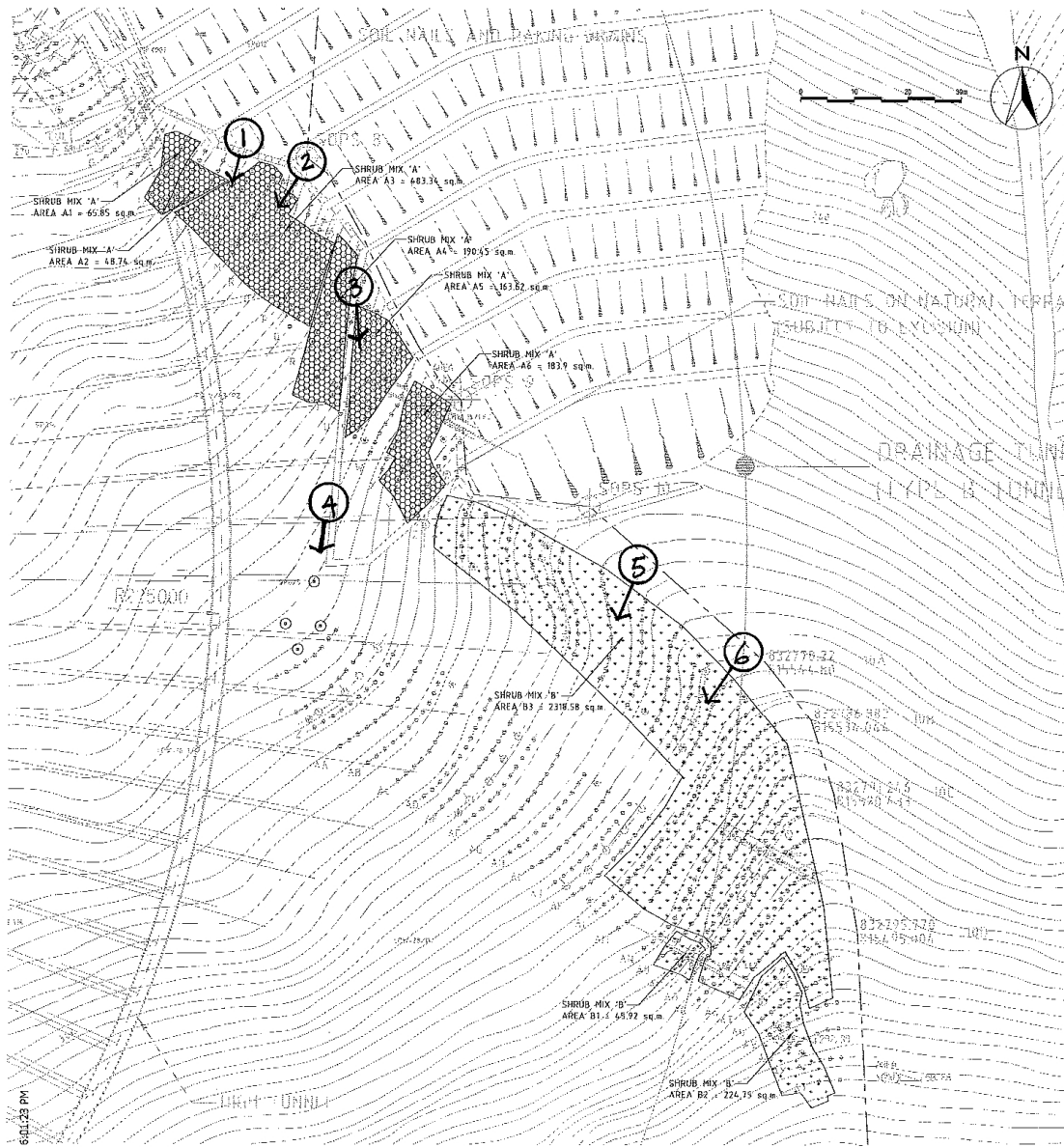
4.0 AUDIT SCHEULE

4.1 Audit Schedule for July 2010

The next monthly audit for the Operation Phase of the EM&A Programme is scheduled to be conducted on 28th July 2010.

**APPENDIX B
LANDSCAPE AND VISUAL SITE
INSPECTION PHOTOS**

**Landslide Preventive Works at Po Shan, Mid-Levels
Design and Construction (Natural Terrain Risk Mitigation Works)
Landscape & Visual Audit and Monitoring**



PHOTOS KEY PLAN

CONTRACT NO. GE/2006/45 LANDSLIDE PREVENTIVE WORKS AT PO SHAN ROAD, MID-LEVELS

LEGEND :

- ⊙ LIVISTONA CHINENSIS PALM TREES
- ➔ PHOTO VIEW POINT & REF. NUMBER

I:\MCO7-ADDZ\DWG-GA\PHOTOKEYPLAN.dwg, A1, 5/14/2010 6:01:23 PM

Site Photos Key Plan



Photo 1



Photo 2



Photo 3



Photo 4



Photo 5



Photo 6