



Proposed 132kV Submarine Cable
Route for Airport "A" to Castle Peak
Power Station Cable Circuit

*Sixteenth Weekly Impact Monitoring Report -
10th March to 16th March 2008*

21st March 2008

Environmental Resources Management

21/F Lincoln House
Taikoo Place 979 King's Road
Island East Hong Kong
Telephone 2271 3000
Facsimile 2723 5660

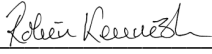
www.erm.com

CLP Power

Proposed 132kV Submarine Cable
Route for Airport "A" to Castle
Peak Power Station Cable Circuit:
*Sixteenth Weekly Impact Monitoring
Report – 10th March 2008 – 16th
March 2008*

March 2008

Reference 0072833

For and on behalf of ERM-Hong Kong, Limited
Approved by: <u>Dr Robin Kennish</u>
Signed: <u></u>
Position: <u>Director</u>
Date: <u>21 March 2008</u>

This report has been prepared by ERM-Hong Kong, Limited with all reasonable skill, care and diligence within the terms of the Contract with the client, incorporating our General Terms and Conditions of Business and taking account of the resources devoted to it by agreement with the client.

We disclaim any responsibility to the client and others in respect of any matters outside the scope of the above.

This report is confidential to the client and we accept no responsibility of whatsoever nature to third parties to whom this report, or any part thereof, is made known. Any such party relies on the report at their own risk.

CONTENTS

	EXECUTIVE SUMMARY	I
1	INTRODUCTION	1
1.1	PURPOSE OF THE REPORT	1
1.2	STRUCTURE OF THE REPORT	1
2	PROJECT INFORMATION	3
2.1	BACKGROUND	3
2.2	SITE DESCRIPTION	4
2.3	MARINE CONSTRUCTION WORKS UNDERTAKEN DURING REPORTING WEEK	4
2.4	PROJECT ORGANISATION	4
2.5	STATUS OF ENVIRONMENTAL APPROVAL DOCUMENTS	4
3	ENVIRONMENTAL MONITORING REQUIREMENT	5
3.1	MONITORING LOCATIONS	5
3.2	MONITORING PARAMETERS AND FREQUENCY	6
3.3	MONITORING EQUIPMENT AND METHODOLOGY	7
4	IMPLEMENTATION STATUS OF ENVIRONMENTAL MITIGATION MEASURES	11
4.1	RECOMMENDED MITIGATION MEASURES	11
4.2	IMPLEMENTATION STATUS OF MITIGATION MEASURES	11
5	MONITORING RESULTS	13
5.1	IMPACT MONITORING RESULTS	13
5.2	DOLPHIN MONITORING	13
5.3	TIDAL FLOW DIRECTION MONITORING	13
6	ENVIRONMENTAL NON-CONFORMANCES	14
6.1	SUMMARY OF ENVIRONMENTAL EXCEEDANCE	14
6.2	SUMMARY OF ENVIRONMENTAL NON-COMPLIANCE	14
6.3	SUMMARY OF ENVIRONMENTAL COMPLAINT	15
6.4	SUMMARY OF ENVIRONMENTAL SUMMONS AND PROSECUTION	15
7	FUTURE KEY ISSUES	16
7.1	KEY ISSUES FOR THE COMING MONTH	16
7.2	MONITORING SCHEDULE FOR THE COMING MONTHS	16
8	REVIEW OF THE EM&A AND IMPACT ASSESSEMENT PREDICTIONS	17
9	CONCLUSIONS	18

LIST OF TABLES

Table 2.1	<i>Summary of Environmental Licensing, Notification, Permit and Reporting Status</i>
Table 3.1	<i>Co-ordinates of Water Quality Monitoring Stations (HK Grid)</i>
Table 3.2	<i>Action and Limit Levels for Water Quality for the Tuen Mun Landing Site</i>
Table 3.2	<i>Action and Limit Levels for Water Quality for the Airport Landing Site</i>
Table 3.3	<i>Event and Action Plan for Water Quality</i>
Table 6.1	<i>Exceedances of Action Levels of Depth-averaged Turbidity (NTU) and Suspended Solids (mg/L) during Mid-ebb Tide on 10 March 2008</i>

LIST OF ANNEXES

Annex A	Works Programme of the period between 10 March to 16 March 2008
Annex B	Project Organisation Chart (with Contact Details)
Annex C	Tentative Monitoring Schedule
Annex D	QA/QC Results of Laboratory Testing for Suspended Solids
Annex E	Impact Water Quality Monitoring Results
Annex F	Dolphin Observation Recording Forms
Annex G	Current Flow Data (provided on CD-ROM only)

EXECUTIVE SUMMARY

The construction works for the Proposed 132kV Submarine Cable Route for Airport "A" to Castle Peak Power Station Cable Circuit (Application No. DIR-143/2006) commenced on 10 November 2007. This is the 16th weekly Environmental Monitoring and Audit (EM&A) report presenting the EM&A works carried out during the period from 10 to 16 March 2008 in accordance with the EM&A Manual.

Summary of Construction Works undertaken during the Reporting Period

Carryover from last week, cable landing works were continued at the Tuen Mun landing site on 10 March 2008 and cable lay barge preparation works were undertaken from 10 to 12 March and then 15 March 2008. Subsequently, cable laying works between Airport and Tuen Mun landing sites were carried out on 13, 14 and 16 March 2008.

Water Quality

Six monitoring events were scheduled between 10 March and 16 March 2008 at Tuen Mun and Airport landing sites. All monitoring events at all designated monitoring stations were performed on schedule, ie on 11 March, 13 March and 16 March 2008 at Tuen Mun, and on 10 March, 12 March and 14 March 2008 at the Airport.

All measured dissolved oxygen levels complied with the Action and Limit (AL) Levels, and all measured Turbidity and Suspended Solids (SS) levels were below AL Levels with exception of 10 March 2008.

Environmental Non-conformance

Three exceedances of Action Levels were recorded on 10 March 2008 in the reporting week. The exceedances were examined against the construction works. It was concluded that they were isolated cases and unlikely related to the Project.

No non-compliance event was recorded during the reporting week.

No complaint and summons/prosecution was received during the reporting week.

Future Key Issues

During the following week (ie 17 to 23 March 2008), jetting/cable laying operations between the Airport and Tuen Mun landing sites will continue. Following this, cable landing works will be undertaken first at the Airport landing site and then the Tuen Mun landing site.

1 INTRODUCTION

ERM-Hong Kong, Limited (ERM) was appointed by CLP Power (CLP) as the Environmental Team (ET) to implement the Environmental Monitoring and Audit (EM&A) programme for the Proposed 132kV Submarine Cable Route for Airport "A" to Castle Peak Power Station Cable Circuit (thereinafter called the ('Project')).

1.1 PURPOSE OF THE REPORT

This is the 16th weekly EM&A report, which summarises the impact monitoring results and audit findings for the EM&A programme during the reporting period from 10 to 16 March 2008.

1.2 STRUCTURE OF THE REPORT

The structure of the report is as follows:

Section 1 : Introduction

Details the background, purpose and structure of the report.

Section 2 : Project Information

Summarises background and scope of the project, site description, project organisation and contact details, construction programme, the construction works undertaken and the status of Environmental Permits/Licenses during the reporting period.

Section 3 : Environmental Monitoring Requirement

Summarises the monitoring parameters, monitoring programmes, monitoring methodologies, monitoring frequency, monitoring locations, Action and Limit Levels, Event / Action Plans, environmental mitigation measures as recommended in the EIA report and relevant environmental requirements.

Section 4 : Implementation Status on Environmental Mitigation Measures

Summarises the implementation of environmental protection measures during the reporting period.

Section 5 : Monitoring Results

Summarises the monitoring results obtained in the reporting period.

Section 6 : Environmental Non-conformance

Summarises any monitoring exceedance, environmental complaints and environmental summons within the reporting period.

Section 7 : Future Key Issues

Summarises the monitoring schedule for the next week.

Section 8 : Review of EM&A Data and Impact Assessment Predictions

Compares and contrasts the EM&A data in the reporting period with the impact assessment predictions and annotates with explanations of discrepancies.

Section 9 : Conclusions

Presents the key findings of the impact monitoring results.

2.1 BACKGROUND

CLP will install a 132 kV submarine cable circuit to connect Castle Peak Power Station and Hong Kong International Airport in order to meet the electricity load growth at the Airport.

The proposed cable route will start from Tuen Mun and extend southward crossing the Urmston Road to the Airport. The cable landing sites will be located to the west of Butterfly Beach, Tuen Mun and at the northern part of the platform of the Airport (see *Figure 2.1*).

In September 2006, a Project Profile (PP) for the proposed 132kV Cable Route for Airport "A" to Castle Peak CCTS (thereinafter called the 'Project') was prepared and submitted to the Environmental Protection Department (EPD) under the *Environmental Impact Assessment Ordinance (EIAO)* for application for Permission to apply directly for Environmental Permit (EP) (Application No. *DIR-143/2006*).

An Environmental Permit (*EP-267/2007*) for the works was granted on 29 March 2007. Under the requirements of *Condition 2.12* of the EP, an EM&A programme as set out in the *Environmental Monitoring and Audit Manual (EM&A Manual)* is required to be implemented. In accordance with the *EM&A Manual*, impact monitoring of water quality is required for the Project.

Baseline Monitoring was conducted at Tuen Mun landing site between 18 October and 28 October 2007. Through communications with EPD, a silt curtain at the water intake of the Airport should already be in place during the baseline monitoring. EPD hence advised the baseline monitoring (thereinafter called *Baseline Environmental Monitoring Part B*) for the Airport East section of works should be postponed until a silt curtain is ready. The baseline monitoring for Tuen Mun section of the Project and sediment quality testing were hence undertaken first (thereinafter called *Baseline Environmental Monitoring Part A*) and the results were presented in *Part A* of the report which was submitted to EPD.

The silt curtains were installed at the Airport seawater intake on 20 December 2007 and *Baseline Environmental Monitoring Part B* was then carried out between 22 December 2007 and 2 January 2008.

Impact Monitoring has been carried out at Tuen Mun landing site since 10 November 2007 and at Airport landing site since 16 January 2008. This report, therefore, presents results of the data from monitoring stations around the Tuen Mun and Airport landing sites (*Figure 2.1*). Results of the impact monitoring data will therefore be compared against the results of the *Baseline Environmental Monitoring Part A* and *Part B*.

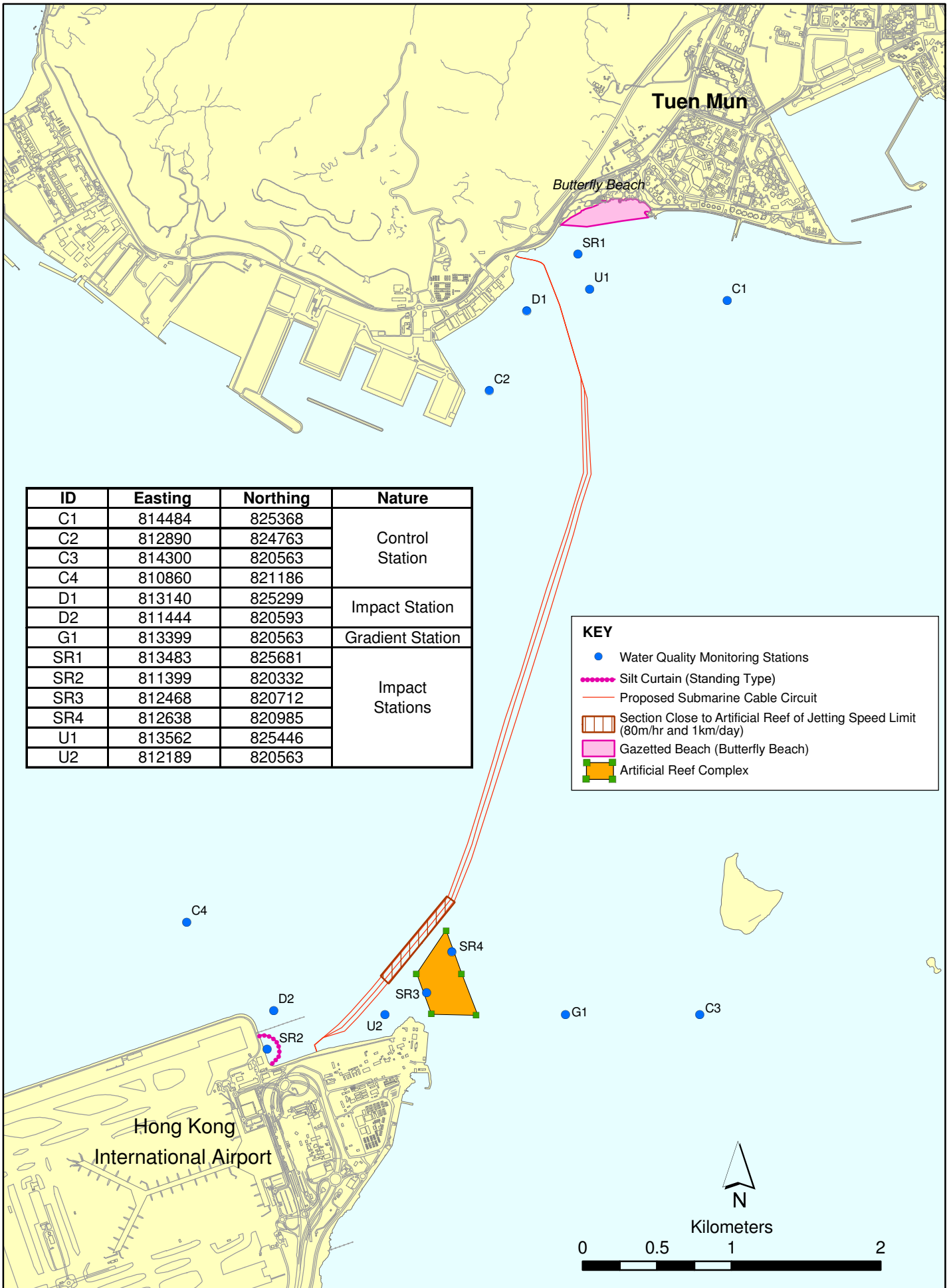


FIGURE 2.1

Location of Water Quality Monitoring Stations

2.2 *SITE DESCRIPTION*

The proposed 132kV cable is located in-between Tuen Mun and the Hong Kong International Airport. The alignment of the cable is illustrated in *Figure 2.1*.

2.3 *MARINE CONSTRUCTION WORKS UNDERTAKEN DURING REPORTING WEEK*

During the reporting week, cable landing works were conducted at the Tuen Mun landing site on 10 March 2008 and cable lay barge preparation works were undertaken from 10 to 12 March and then 15 March 2008. Subsequently, cable laying works between Airport and Tuen Mun landing sites were carried out on 13, 14 and 16 March 2008.

The works programme of the period between 10 and 16 March 2008 is presented in *Annex A*.

2.4 *PROJECT ORGANISATION*

The Project Organisation chart and contact details are shown in *Annex B*.

2.5 *STATUS OF ENVIRONMENTAL APPROVAL DOCUMENTS*

A summary of the relevant permits, licences, notifications and/or reports on environmental protection for this Project is presented in *Table 2.1*.

Table 2.1 *Summary of Environmental Licensing, Notification, Permit and Reporting Status*

Permit / Licence / Notification / Report	Reference	Validity Period	Remarks
EM&A Manual	-	Throughout the construction period	submitted on 25 January 2007
Environmental Permit	EP-267/2007	Throughout the construction period	granted on 29 March 2007
Baseline Environmental Monitoring Report (Part A)	-	Throughout the construction period for Tuen Mun Section	approved by EPD on 8 November 2007
Baseline Environmental Monitoring Report (Part B)	-	Throughout the construction period for Airport Section	approved by EPD on 16 January 2008

3.1 MONITORING LOCATIONS

In accordance with the *EM&A Manual*, prior to the installation of the cable, water quality sampling was undertaken at stations situated around the cable laying works area at Tuen Mun and the Airport. The locations of the sampling stations are shown in *Figure 2.1*.

- C1 and C2 are Control Stations located over 1 km away from the Tuen Mun landing point and hence are not expected to be influenced by the construction works due to their remoteness;
- U1 and D1 are Gradient Stations situated approximately 300 m either side of the cable alignment for monitoring the effect of dredging at the Tuen Mun landing point and for identifying the source of impact; and,
- SR1 is a Sensitive Receiver used to monitor the effect of the construction works on Butterfly Beach.
- C3 and C4 are Control Stations near the Airport, which are not expected to be influenced by the construction works due to their remoteness from the construction works.
- U2 and D2 are Impact Stations located approximately 300 m either from the cable alignment for monitoring the effect of dredging at the Airport landing point.
- SR2 is Impact Station (sensitive receiver) used to monitor the effect of the construction works to the Seawater Intake at the Airport.
- SR3 and SR4 are Impact Stations (sensitive receivers) used to verify the predictions concerning sediment plume dispersion during dredging at the areas close to the Artificial Reef (AR) and at the landing sites.
- G1 is Gradient Station which is situated in between C3 and the AR. It is used to determine the source of pollutants by comparing the monitoring results with those recorded at C3, SR3 and SR4. Since G1 is located between C3 and the construction work alignment, it serves the gradient function with C3 during flood tide, but has no relationship and function with C4 during ebb tide.

The co-ordinates of these monitoring stations are listed in *Table 3.1*.

Table 3.1 *Co-ordinates of Water Quality Monitoring Stations (HK Grid)*

Station	Nature	Easting	Northing
C1	Control Station	814483	825367
C2	Control Station	812890	824763
C3	Control Station	814300	820563
C4	Control Station	810860	821186
U1	Impact Station	813561	825446
U2	Impact Station	812189	820563
D1	Impact Station	813140	825298
D2	Impact Station	811444	820593
SR1	Impact Station	813483	825681
SR2	Impact Station	811399	820332
SR3	Impact Station	812468	820712
SR4	Impact Station	812638	820985
G1	Gradient Station	813399	820563

3.2 *MONITORING PARAMETERS AND FREQUENCY*

The impact water quality monitoring was conducted in accordance with the requirements stated in *EM&A Manual*. These are presented below.

3.2.1 *Monitoring Parameters*

Parameters measured *in situ* were:

- dissolved oxygen (DO) (% saturation and mg L⁻¹);
- temperature (°C);
- turbidity (NTU); and
- salinity (‰).

The only parameter measured in the laboratory was:

- suspended solids (SS) (mgL⁻¹).

In addition to the water quality parameters, other relevant data were measured and recorded in field logs, including the location of the sampling stations, water depth, time, weather conditions, sea conditions, tidal state, special phenomena and work activities undertaken around the monitoring and works area that may influence the monitoring results.

3.2.2 *Monitoring Frequency*

Impact water quality monitoring was carried out three times a week. The interval between two sets of monitoring was not less than 36 hours. The monitoring was undertaken at 13 locations (eight impact monitoring stations D1, D2, U1, U2, SR1, SR2, SR3 and SR4, one gradient station G1, and four control monitoring stations C1, C2, C3 and C4), as shown on *Figure 2.1*.

Samples were taken during mid-flood and mid-ebb tidal state on each sampling occasion.

3.3 *MONITORING EQUIPMENT AND METHODOLOGY*

3.3.1 *Monitoring Equipment*

Dissolved Oxygen, Temperature, Salinity, Turbidity Measuring Equipment

The instrument was a portable, weatherproof multi-parameter measuring instrument (YSI 6820) complete with cables, multi-probe sensor, comprehensive operation manuals, and was operable from a DC power source. It was capable of measuring:

- dissolved oxygen levels in the range of 0 – 50 mg L⁻¹; and 0-500% saturation;
- temperature of -5 to 50 °C;
- turbidity levels between 0-1000 NTU (response of the sensor was checked with certified standard turbidity solutions before the start of measurement); and,
- salinity in the range of 0-40 ppt (checked with 30 ppt Salinity solutions before the start of the measurement).

Water Depth Gauge

The water depth gauge affixed to the bottom of the water quality monitoring vessel was used.

Current Velocity and Direction

Current velocity and direction was estimated by conducting float tracking.

Positioning Device

A Global Positioning System (GPS) was used (C-Navigator World DGPS, GPS 72A) during monitoring to ensure the accurate recording of the position of the monitoring vessel before taking measurements. The use of DGPS was used for positioning device, which was well calibrated at appropriate checkpoint.

Water Sampling Equipment

Water samples for suspended solids measurement were collected by the use of a multi-bottle water sampling system (General Oceanics Inc., Rosette Sampler ROS02), consisting of PVC bottles of more than two litres, which could be effectively sealed with cups at both ends. The water sampler had a positive latching system to keep it open and prevent premature closure until released by a messenger when the sampler was at the selected water depth.

3.3.2

Monitoring Methodology

Timing & Frequency

The water quality sampling was undertaken within a 3 hour window of 1.5 hours before and 1.5 hours after mid-flood and mid-ebb tides. Tidal range for flood and ebb tides was not less than 0.5m for capturing representative tides.

Reference was made to the predicted tides at Lok On Pai, which is the tidal station nearest to the Project site, published on the website of Hong Kong Observatory⁽¹⁾. Based on the predicted water levels at Lok On Pai, the impact water quality monitoring was conducted following the schedule presented in *Annex C*.

Duplicate samples were collected from each of the monitoring events for *in situ* measurements and laboratory analysis.

Depths

Each station was sampled and measurements were taken at three depths, 1 m below the sea surface, mid depth and 1m above the sea bed.

Protocols

The multi-parameter measuring instrument (YSI 6820) was checked and calibrated by an HOKLAS accredited laboratory before use. Onsite calibration was also carried out to check the responses of sensors and electrodes using certified standard solutions before each use. Sufficient stocks of spare parts were maintained for replacements when necessary, and backup monitoring equipment was made available.

Water samples for SS measurements were collected in high density polythene bottles, packed in ice (cooled to 4° C without being frozen), and delivered to an HOKLAS accredited laboratory as soon as possible after collection.

Laboratory Analysis

All laboratory work was carried out by an HOKLAS accredited laboratory. Water samples of about 1,000 mL were collected at the monitoring and control stations for carrying out the laboratory determinations. The determination work started within the next working day after collection of the water samples. The analyses followed the standard methods as described in *APHA Standard Methods for the Examination of Water and Wastewater*, 19th Edition, unless otherwise specified (APHA 2540D for SS).

The QA/QC details were in accordance with requirements of HOKLAS or another internationally accredited scheme (for details refer to *Annex D*).

(1) Hong Kong Observatory (2007) <http://www.hko.gov.hk/tide/eLOPtide.htm> [Accessed on 13 October 2007]

3.3.3 Action and Limit Levels

Two sets of the Action and Limit levels, which were established based on the results of *Baseline Environmental Monitoring Part A* and *Part B*, are presented in *Tables 3.2* and *3.3* respectively.

Table 3.2 *Action and Limit Levels for Water Quality for the Tuen Mun Landing Site*

Parameter	Unit	Tide	Depth	Action Level	Limit Level
Suspended Solids (SS)	mg L ⁻¹	Mid-Ebb	Depth-averaged	12.8	13.3
		Mid-Flood	Depth-averaged	23.6	28.3
Dissolved Oxygen (DO)	mg L ⁻¹	Mid-Ebb	Surface and Middle	5.2	4.0
			Bottom	5.3	2.0
		Mid-Flood	Surface and Middle	5.5	4.0
			Bottom	5.5	2.0
Turbidity	NTU	Mid-Ebb	Depth-averaged	7.0	8.3
		Mid-Flood	Depth-averaged	14.8	18.9

Table 3.2 *Action and Limit Levels for Water Quality for the Airport Landing Site*

Parameter	Unit	Tide	Depth	Action Level	Limit Level
Suspended Solids (SS)	mg L ⁻¹	Mid-Ebb	Depth-averaged	21.6	29.8
		Mid-Flood	Depth-averaged	30.8	34.3
Dissolved Oxygen (DO)	mg L ⁻¹	Mid-Ebb	Surface and Middle	6.6	4.0
			Bottom	6.9	2.0
		Mid-Flood	Surface and Middle	6.8	4.0
			Bottom	6.8	2.0
Turbidity	NTU	Mid-Ebb	Depth-averaged	17.4	25.9
		Mid-Flood	Depth-averaged	22.9	27.9

Notes:

- (1) The results recorded at the gradient station during the mid-flood period will be used to decide whether any exceedance being recorded during mid-flood are arising from the marine works of this Project.
- (2) Turbidity and SS levels will make reference to 120% and 130% of value recorded at the upstream control station during the same tidal conditions to assess the compliance of Action and Limit Levels respectively.

3.3.4 Event and Action Plan

The Event and Action Plan for water quality monitoring which was stipulated in the *EM&A Manual* is presented in *Table 3.3*.

Table 3.3 *Event and Action Plan for Water Quality*

Event	Action
Action Level Exceedance	<p>Step 1 - repeat sampling event;</p> <p>Step 2 – identify source(s) of impact and confirm whether exceedance was due to the construction works;</p> <p>Step 3 – inform EPD and LCSD and confirm notification of the non-compliance in writing;</p> <p>Step 4 - discuss with cable installation contractor the most appropriate method of reducing suspended solids during cable installation (e.g. reduce cable laying speed/volume of water used during installation, increase effectiveness of silt curtain).</p> <p>Step 5 - repeat measurements after implementation of mitigation for confirmation of compliance.</p> <p>Step 6 - if non compliance continues - increase measures in Step 3 and repeat measurements in Step 3. If non compliance occurs a third time, suspend cable laying operations.</p>
Limit Level Exceedance	<p>Undertake Steps 1-5 immediately, if further non compliance continues at the Limit Level, suspend cable laying operations until an effective solution is identified.</p>

4 *IMPLEMENTATION STATUS OF ENVIRONMENTAL MITIGATION MEASURES*

4.1 *RECOMMENDED MITIGATION MEASURES*

Mitigation measures for water quality control have been recommended in the Project Profile and the Environmental Permit. The Contractor is responsible for the design and implementation of the following measures.

During cable laying the following will be undertaken:

- Although the sediment loss during both grab dredging and suction dredging is expected to be quite small, the Contractor will be employing a silt curtain around the dredgers to reduce the dispersion of sediments from the landing points.
- Closed grab dredgers will be used to avoid dispersion of suspended solids into the sea.
- The maximum dredging rate at Tuen Mun shore approach will be limited to 1,500 m³ day⁻¹ for working 10 hours per day, i.e., 150 m³ hr⁻¹.
- The maximum dredging rates of grab dredgers and suction method, whichever to be deployed by the contractor, at the Airport shore approach will be limited to 650 m³ day⁻¹ and 1,600 m³ day⁻¹ for working 16 hours per day, i.e., 41 m³ hr⁻¹ and 100 m³ hr⁻¹.
- All barges used for the transport of dredged materials will be fitted with tight bottom seals in order to prevent leakage of material during loading and transport.
- All barges will be filled to a level, to ensure that material does not spill over during loading and transport to the disposal site and that adequate freeboard is maintained to ensure that the decks are not washed by wave action.
- The forward speed of the jetting machine will be limited to a maximum of 80 m hr⁻¹ and 24 hours operation.

4.2 *IMPLEMENTATION STATUS OF MITIGATION MEASURES*

In addition to the regulatory requirements as mentioned in *Section 4.1* above, the Contractor has implemented a precautionary measure for the works undertaken at the inshore area. As a precautionary measure, a silt curtain has been installed at the Airport seawater intake and five silt curtains have been installed at the five AR blocks along the direction facing the cable alignment during construction of the Project. In addition, the cable laying

works undertaken in the vicinity of the ARs will be restricted to periods when the tidal current is moving away from the artificial reef towards the works area.

5 MONITORING RESULTS

5.1 IMPACT MONITORING RESULTS

The monitoring data and graphical presentations of the results are included in *Annex E*. These are summarised below.

A total of six monitoring events were scheduled between 10 March and 16 March 2008 at the Tuen Mun and Airport landing sites. All monitoring events at all designated monitoring stations were performed on schedule, ie on 11 March, 13 March and 16 March 2008 at Tuen Mun, and on 10 March, 12 March and 14 March at the Airport.

No major activities influencing the water quality were identified between 10 and 16 March 2008.

All measured dissolved oxygen levels compiled with the Action and Limit (AL) Levels, while Turbidity and Suspended Solids (SS) levels were all below AL Levels during the reporting week (*Annex E*), with exception of 10 March 2008.

5.2 DOLPHIN MONITORING

In accordance with the EM&A Manual, dolphin monitoring has been conducted during the cable laying (jetting) operations on 13, 14 and 16 March 2008. During the reporting period, no dolphin sightings were recorded. The dolphin observation recording forms are included in *Annex F*.

5.3 TIDAL FLOW DIRECTION MONITORING

Cable laying works were carried out, in accordance with the EM&A Manual, only during periods when the tidal current was moving away from the artificial reef towards the works near the Airport.

To monitor the tidal flow direction, two flow meters were installed, one on the burial machine to record the current direction near the seabed and one on the lay barge to record the current direction near the water surface. The current direction was logged by computer on board.

The cable laying operations across the AR restricted zone were conducted in the mornings of 13 March 2008 (from 10:08 am to 10:35 am and 11:45 am to 12:30 am) and 16 March 2008 (from 9:33 am to 10:28 am and 1:05 pm to 1:20 pm). The current flow and direction data during that specific period are presented in *Annex G*. It should be noted that the tidal current was moving towards the flood direction opposite to the artificial reef most of the time and the current speed ranged from 0.2 to 2.0 km/hr on 13 March 2008 and 0.1 to 1.1 km/hr on 16 March 2008.

6.1 SUMMARY OF ENVIRONMENTAL EXCEEDANCE

6.1.1 Exceedance on 10 March 2008

Exceedances of the Action Levels of depth-averaged Turbidity and Suspended Solids (SS) were recorded at Stations U2 and SR3 during mid-ebb tide on 10 March 2008 (Table 6.1).

Table 6.1 Exceedances of Action Levels of Depth-averaged Turbidity (NTU) and Suspended Solids (mg/L) during Mid-ebb Tide on 10 March 2008

Exceedance Log No.	0072833_10 Mar 08_Turb_E_Station SR3 0072833_10 Mar 08_SS_E_Station SR3 0072833_10 Mar 08_SS_E_Station U2	
Sampling date	10 March 2008	
Monitoring station	U2, SR3	
Action Levels (mg/L)	Mid-ebb	Turbidity = 17.4, SS = 21.6
	Mid-flood	Turbidity = 22.9, SS = 30.8
Limit Levels (mg/L)	Mid-ebb	Turbidity = 25.9, SS = 29.8
	Mid-flood	Turbidity = 27.4, SS = 34.3
Measured Levels (mg/L) at U2	Mid-ebb	Turbidity = 14.37 SS = 23.67 (exceeds Action Level)
	Mid-flood	Turbidity = 16.33 SS = 23.00
Measured Levels (mg/L) at SR3	Mid-ebb	Turbidity = 17.49 (exceeds Action Level) SS = 28.17 (exceeds Action Level)
	Mid-flood	Turbidity = 11.64 SS = 15.67

According to the work programme provided by the Contractor (*Annex A*), the Contractor confirmed that only preparation works were carried out near the Airport landing site in the afternoon of 10 March 2008. The preparation works involved setting up of the burial machine on the small lay barge which were unlikely to disturb the seabed. No jetting operations were undertaken.

During the mid-ebb conditions, relatively high turbidity and SS levels were recorded at the upstream control station C4 when comparing to the downstream stations (*Figure 6.1*). This suggests the exceedances may be due to high background levels of turbidity and SS.

Based on the above, the exceedance was unlikely to be caused by the Project. No action was therefore required.

The exceedance incident has been notified to EPD and LCSD.

6.2 SUMMARY OF ENVIRONMENTAL NON-COMPLIANCE

No non-compliance event was recorded during the reporting period.

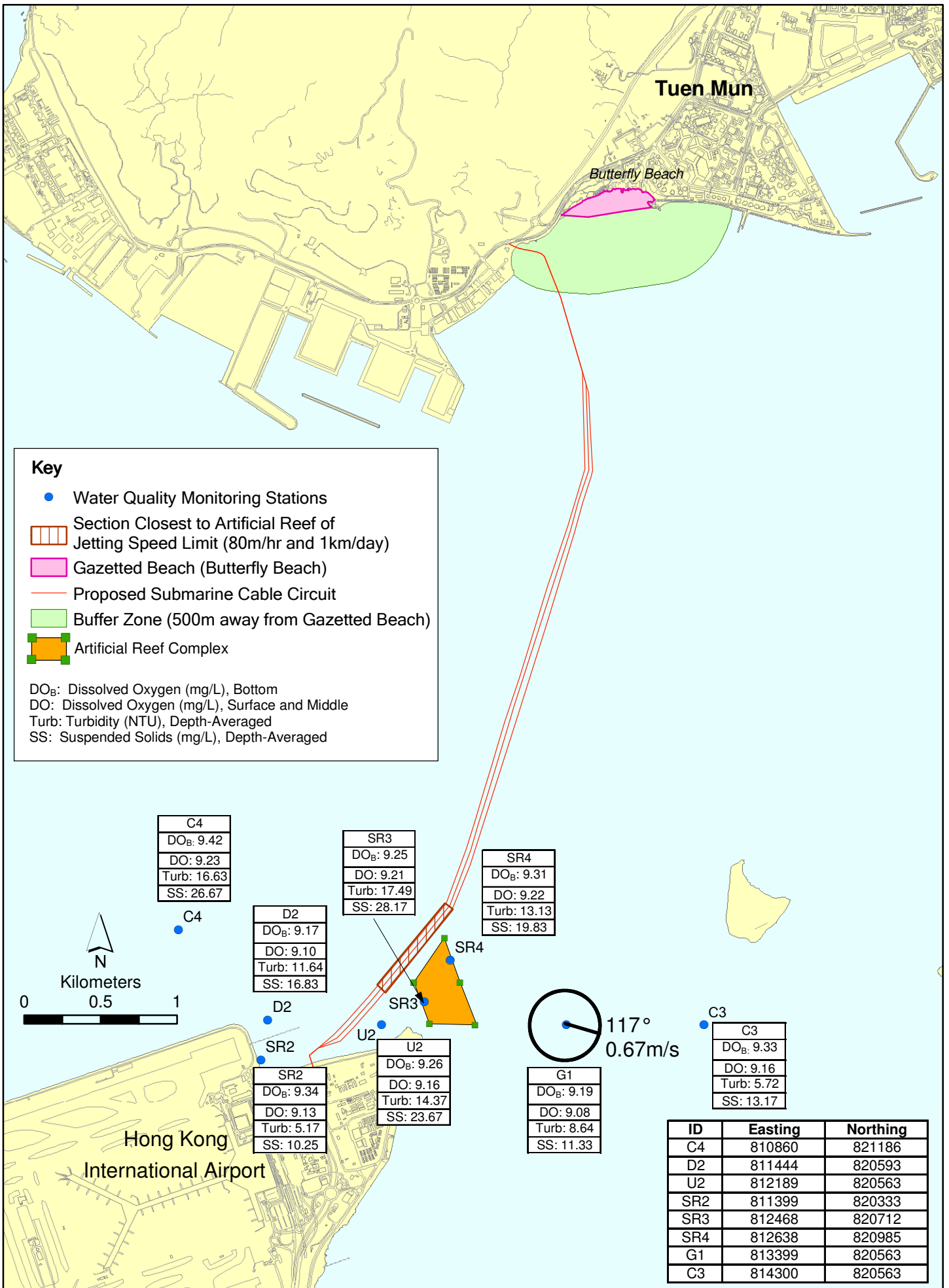


Figure 6.1

Mid Ebb Water Quality Monitoring
(10 March 2008)

Environmental
Resources
Management



6.3 *SUMMARY OF ENVIRONMENTAL COMPLAINT*

No complaint was received during the reporting period.

6.4 *SUMMARY OF ENVIRONMENTAL SUMMONS AND PROSECUTION*

No summons or prosecution on environmental matters was received during the reporting period.

7 *FUTURE KEY ISSUES*

7.1 *KEY ISSUES FOR THE COMING MONTH*

During the following week (ie 17 to 23 March 2008), jetting/cable laying operations between the Airport and Tuen Mun landing sites will be carried out. Subsequently, cable landing works will be undertaken first at the Airport landing site and then the Tuen Mun landing site.

The expected construction programme is enclosed in *Annex A*.

7.2 *MONITORING SCHEDULE FOR THE COMING MONTHS*

The tentative schedule of impact water quality monitoring in March 2008 is presented in *Annex C*. The environmental monitoring will be conducted at the same monitoring locations as those for this reporting week.

Cable laying (jetting) operations and landing works were carried out between the Airport and Tuen Mun land sites during the period of 10 March to 16 March 2008. The monitoring data collected are therefore compared with the impact assessment predictions in the Project Profile.

It should be noted that exceedances of Action Levels were recorded when there were no cable laying (jetting) operations undertaken. The exceedances were investigated (see *Section 6.1*) and considered unlikely due to the Project. The impact water quality monitoring results are in line with the conclusions made in the water quality impact assessment in the Project Profile.

CONCLUSIONS

This Weekly Impact Monitoring Report presents the EM&A work undertaken during the period from 10 March to 16 March 2008 in accordance with the EM&A Manual and the requirements under *EP-267/2007*.

Exceedances of Action Levels were recorded on 10 March 2008 in the reporting week. The exceedances were examined against the construction works. It was concluded that they were isolated cases and unlikely related to the Project.

No non-compliance event was recorded during the reporting week.

No complaint and summons/prosecution was received during the reporting week.

The ET will keep track of the EM&A programme to ensure compliance of environmental requirements and the proper implementation of all necessary mitigation measures.

Annex A

Works Programme of the
Period between 10 March
and 30 March 2008

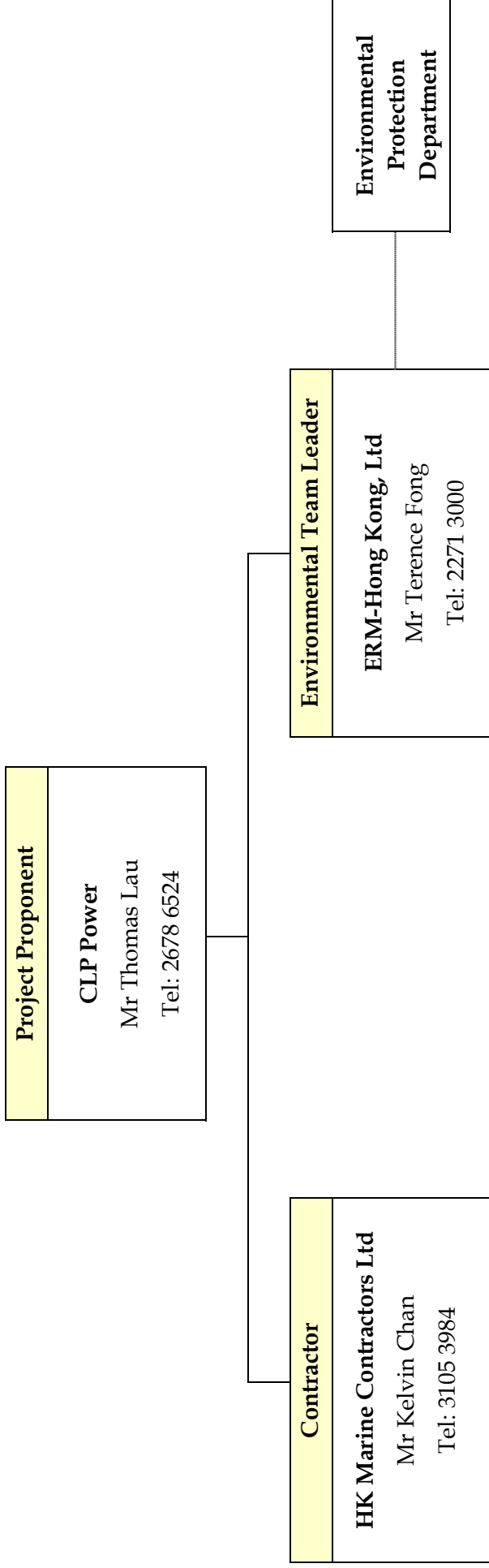
Marine Work of 132kV Submarine Cable Installation between Airport to Tuen Mun

	Item Date	Workdone for Last Week							Plan for This Week							Anticipate Plan for Next Week						
		10/3	11/3	12/3	13/3	14/3	15/3	16/3	17/3	18/3	19/3	20/3	21/3	22/3	23/3	24/3	25/3	26/3	27/3	28/3	29/3	30/3
1	Mobilization of Plants																					
2	Utilities Detection																					
3	Mobilization of Marine Plant																					
4	Site Setting Out																					
5	Site Clearance																					
6	Installation of Silt Curtain																					
5	Rock Breaking (Land Portion)																					
6	Rock Breaking (Marine Portion)																					
7	Dredging (Tuen Mun)																					
8	Mobilization of Marine Plant																					
9	Dredging (Airport)																					
10	Mobilization of Cable Laying Barges																					
11	Cable Lay Barges Preparation Work																					
12	Installation of Silt Curtain (AR)																					
13	Cable Burial Machine Testing																					
14	Cable Laying																					
15	Cable Landing Work (Tuen Mun)																					
16	Cable Landing Work (Airport)																					
17	Backfill and Installation of Concrete Slabs (Tuen Mun)																					

Annex B

Project Organisation Chart (with Contact Details)

ANNEX B - PROJECT ORGANIZATION (WITH CONTACT DETAILS)



_____ Line of Project Management Responsibility

..... Communication Channel

Annex C

Tentative Monitoring Schedule

**Proposed 132kV Submarine Cable Route for Airport "A" to Castle Peak Power Station Cable Circuit
Tentative Water Quality Monitoring Schedule at Tuen Mun and Airport landing site - March 2008**

Reference Tidal Station: Lok On Pai (source: HK Observatory Department)

Sunday	Monday	Tuesday	Wednesday	Thursday	Friday	Saturday
						1-Mar Mid-Flood 7:48 Mid-Ebb 20:34 Impact Monitoring (Tuen Mun)
2-Mar	3-Mar	4-Mar	5-Mar	6-Mar	7-Mar	8-Mar
	Mid-Flood 10:15 Mid-Ebb 22:33 Impact Monitoring (Airport)	Mid-Ebb 11:26 Mid-Flood 16:06 Impact Monitoring (Tuen Mun)	Mid-Ebb 12:00 Mid-Flood 17:05 Impact Monitoring (Airport)	Mid-Ebb 12:32 Mid-Flood 17:55 Impact Monitoring (Tuen Mun)	Mid-Ebb 13:01 Mid-Flood 18:41 Impact Monitoring (Airport)	Mid-Ebb 13:31 Mid-Flood 19:26 Impact Monitoring (Tuen Mun)
9-Mar	10-Mar	11-Mar	12-Mar	13-Mar	14-Mar	15-Mar
	Mid-Flood 8:29 Mid-Ebb 14:41 Impact Monitoring (Airport)	Mid-Flood 8:56 Mid-Ebb 15:22 Impact Monitoring (Tuen Mun)	Mid-Flood 9:24 Mid-Ebb 16:09 Impact Monitoring (Airport)	Mid-Flood 9:54 Mid-Ebb 17:06 Impact Monitoring (Tuen Mun)	Mid-Flood 10:23 Mid-Ebb 18:13 Impact Monitoring (Airport)	
16-Mar	17-Mar	18-Mar	19-Mar	20-Mar	21-Mar	22-Mar
Mid-Flood 8:43 Mid-Ebb 21:19 Impact Monitoring (Tuen Mun)	Mid-Flood 10:04 Mid-Ebb 22:28 Impact Monitoring (Airport)	Mid-Ebb 11:23 Mid-Flood 16:28 Impact Monitoring (Tuen Mun)	Mid-Ebb 11:56 Mid-Flood 17:26 Impact Monitoring (Airport)	Mid-Ebb 12:27 Mid-Flood 18:13 Impact Monitoring (Tuen Mun)	Mid-Ebb 12:56 Mid-Flood 18:55 Impact Monitoring (Airport)	
23-Mar	24-Mar	25-Mar	26-Mar	27-Mar	28-Mar	29-Mar
Mid-Ebb 13:51 Mid-Flood 20:10 Impact Monitoring (Tuen Mun)	Mid-Ebb 14:22 Mid-Flood 20:47 Impact Monitoring (Airport)	Mid-Flood 8:28 Mid-Ebb 14:54 Impact Monitoring (Tuen Mun)	Mid-Flood 8:49 Mid-Ebb 15:28 Impact Monitoring (Airport)	Mid-Flood 9:08 Mid-Ebb 16:06 Impact Monitoring (Tuen Mun)	Mid-Flood 9:20 Mid-Ebb 16:53 Impact Monitoring (Airport)	Mid-Flood 8:00 Mid-Ebb 17:54 Impact Monitoring (Tuen Mun)
30-Mar	31-Mar					
	Mid-Flood 8:08 Mid-Ebb 19:00 Impact Monitoring (Airport)					

The schedule is subject to agreement from the EPD on the monitoring times. The schedule will be revised after reviewing the progress of the construction works or due to adverse (safety, weather etc) conditions.

Annex D

QA/QC Results of
Laboratory Testing for
Suspended Solids



CERTIFICATE OF ANALYSIS

Client : **ERM HONG KONG**
Contact : **MS JOANNA KWAN**
Address : **21/F, LINCOLN HOUSE,
979 KING'S ROAD,
TAIKOO PLACE, ISLAND EAST, QUARRY BAY
HONG KONG**
E-mail : **Joanna.kwan@erm.com**
Telephone : **2271 3000**
Facsimile : **2723 5660**
Project : **EM&A FOR THE PROPOSED 132KV
SUBMARINE CABLE ROUTE FOR AIRPORT "A"
TO CASTLE PEAK CCTS**

Laboratory : **ALS Technichem (HK) Pty Ltd**
Contact : **Alice Wong**
Address : **11/F., Chung Shun Knitting Centre,
1 - 3 Wing Yip Street,
Kwai Chung, N.T., Hong Kong**
E-mail : **Alice.Wong@alsenviro.com**
Telephone : **+852 2610 1044**
Facsimile : **+852 2610 2021**
Quote number : **----**

Page : **1 of 9**
Work Order : **HK0803831**

Date received : **11 Mar 2008**

Order number : **----**
C-O-C number : **----**
Site : **----**
Date of issue : **13 Mar 2008**
No. of samples - Received : **92**
- Analysed : **92**

Report Comments

This report for ALS Technichem (HK) Pty Ltd work order reference HK0803831 supersedes any previous reports with this reference. The completion date of analysis is 12 Mar 2008. Results apply to sample(s) as submitted. All pages of this report have been checked and approved for release. When date(s) and/or time(s) are shown bracketed, these have been assumed by the laboratory for process purposes. Abbreviations: CAS number = Chemical Abstract Services number. LOR = Limit of reporting.

Specific comments for Work Order HK0803831 : **Sample(s) were received in a chilled condition.**

Water sample(s) analysed and reported on an as received basis.

This report may not be reproduced except with prior written approval from ALS Technichem (HK) Pty Ltd.

This document has been electronically signed by those names that appear on this report and are the authorised signatories. Electronic signing has been carried out in compliance with procedures specified in the 'Electronic Transactions Ordinance' of Hona Kona, Chapter 553, Section 6.

Signatory

Fung Lim Chee, Richard

Position

General Manager

Authorised results for:-

Inorganics



Quality Control - Laboratory Duplicate (DUP) Results

Matrix Type: WATER									
Laboratory Sample ID	Client Sample ID	Method: Analysis Description	CAS number	LOR	Units	Original Result	Duplicate Result	RPD (%)	
EA/ED: Physical and Aggregate Properties (QC Lot: 612392)									
HK0803831-001	2008/03/10/14:35/C4/B/E/	EA025: Suspended Solids (SS)	----	1	mg/L	41	42	0.0	
	REPL. 1								
HK0803831-011	2008/03/10/14:09/SR3/M/E/	EA025: Suspended Solids (SS)	----	1	mg/L	41	40	0.0	
	REPL. 2								
EA/ED: Physical and Aggregate Properties (QC Lot: 612393)									
HK0803831-021	2008/03/10/14:27/D2/T/E/	EA025: Suspended Solids (SS)	----	1	mg/L	15	16	8.6	
	REPL. 1								
HK0803831-031	2008/03/10/13:54/SR4/B/E/	EA025: Suspended Solids (SS)	----	1	mg/L	38	39	3.2	
	REPL. 1								
EA/ED: Physical and Aggregate Properties (QC Lot: 612394)									
HK0803831-041	2008/03/10/13:46/G1/M/E/	EA025: Suspended Solids (SS)	----	1	mg/L	10	10	0.0	
	REPL. 2								
HK0803831-051	2008/03/10/08:23/C4/M/F/	EA025: Suspended Solids (SS)	----	1	mg/L	18	18	0.0	
	REPL. 2								
EA/ED: Physical and Aggregate Properties (QC Lot: 612395)									
HK0803831-061	2008/03/10/08:00/UJ2/T/F/	EA025: Suspended Solids (SS)	----	1	mg/L	15	14	0.0	
	REPL. 1								
HK0803831-071	2008/03/10/07:16/C3/B/F/	EA025: Suspended Solids (SS)	----	1	mg/L	17	16	0.0	
	REPL. 1								
EA/ED: Physical and Aggregate Properties (QC Lot: 612396)									
HK0803831-081	2008/03/10/07:43/SR4/M/F/	EA025: Suspended Solids (SS)	----	1	mg/L	11	12	0.0	
	REPL. 2								
HK0803831-091	2008/03/10/08:10/SR2/B/F/	EA025: Suspended Solids (SS)	----	1	mg/L	12	10	14.9	
	REPL. 2								

Quality Control - Method Blank (MB), Single Control Spike (SCS) and Duplicate Control Spike (DCS) Results



Page Number : 9 of 9
 Client : ERM HONG KONG
 Work Order : HK0803831

Matrix Type: WATER

Method: Analysis Description	CAS number	Method Blank (MB) Results			Single Control Spike (SCS) and Duplicate Control Spike (DCS) Results							
		LOR	Units	Result	Spike Concentration	SCS	Spike Recovery (%)	DCS	Recovery Limits (%)	Value	RPDs (%)	Control Limit
EA/ED: Physical and Aggregate Properties (QC:Lot: 612392)												
EA025: Suspended Solids (SS)	----	2	mg/L	<2	20 mg/L	103	-----	-----	85	115	-----	-----
EA/ED: Physical and Aggregate Properties (QC:Lot: 612393)												
EA025: Suspended Solids (SS)	----	2	mg/L	<2	20 mg/L	104	-----	-----	85	115	-----	-----
EA/ED: Physical and Aggregate Properties (QC:Lot: 612394)												
EA025: Suspended Solids (SS)	----	2	mg/L	<2	20 mg/L	106	-----	-----	85	115	-----	-----
EA/ED: Physical and Aggregate Properties (QC:Lot: 612395)												
EA025: Suspended Solids (SS)	----	2	mg/L	<2	20 mg/L	99.0	-----	-----	85	115	-----	-----
EA/ED: Physical and Aggregate Properties (QC:Lot: 612396)												
EA025: Suspended Solids (SS)	----	2	mg/L	<2	20 mg/L	94.5	-----	-----	85	115	-----	-----



CERTIFICATE OF ANALYSIS

Client : **ERM HONG KONG**
Contact : **MS JOANNA KWAN**
Address : **21/F, LINCOLN HOUSE,
979 KING'S ROAD,
TAIKOO PLACE, ISLAND EAST, QUARRY BAY
HONG KONG**
E-mail : **Joanna.kwan@erm.com**
Telephone : **2271 3000**
Facsimile : **2723 5660**
Project : **EM&A FOR THE PROPOSED 132KV
SUBMARINE CABLE ROUTE FOR AIRPORT "A"
TO CASTLE PEAK CCTS**

Laboratory : **ALS Technichem (HK) Pty Ltd**
Contact : **Alice Wong**
Address : **11/F., Chung Shun Knitting Centre,
1 - 3 Wing Yip Street,
Kwai Chung, N.T., Hong Kong**

E-mail : **Alice.Wong@alsenviro.com**
Telephone : **+852 2610 1044**
Facsimile : **+852 2610 2021**
Quote number : **----**

Date received : **11 Mar 2008**
Date of issue : **13 Mar 2008**
No. of samples - Received : **60**
- Analysed : **60**

Page : **1 of 6**
Work Order : **HK0803876**

Report Comments

This report for ALS Technichem (HK) Pty Ltd work order reference HK0803876 supersedes any previous reports with this reference. The completion date of analysis is 13 Mar 2008. Results apply to sample(s) as submitted. All pages of this report have been checked and approved for release. When date(s) and/or time(s) are shown bracketed, these have been assumed by the laboratory for process purposes. Abbreviations: CAS number = Chemical Abstract Services number. LOR = Limit of reporting.

Specific comments for Work Order HK0803876 : **Sample(s) were received in a chilled condition.
Water sample(s) analysed and reported on an as received basis.**

This report may not be reproduced except with prior written approval from ALS Technichem (HK) Pty Ltd.

This document has been electronically signed by those names that appear on this report and are the authorised signatories. Electronic signing has been carried out in compliance with procedures specified in the 'Electronic Transactions Ordinance' of Hona Kona, Chapter 553, Section 6.

Signatory

Fung Lim Chee, Richard

Position

General Manager

Authorised results for:-

Inorganics



Quality Control - Laboratory Duplicate (DUP) Results

Matrix Type: WATER		Method: Analysis Description		Duplicate (DUP) Results		
Laboratory Sample ID	Client Sample ID	CAS number	Units	Original Result	Duplicate Result	RPD (%)
EA/ED: Physical and Aggregate Properties (QC Lot: 612402)						
HK0803876-001	2008/03/11/1435/C1/B/E	----	mg/L	11	10	0.0
	REPL.1					
HK0803876-011	2008/03/11/1451/SR1/M/E	----	mg/L	7	7	0.0
	REPL.2					
EA/ED: Physical and Aggregate Properties (QC Lot: 612404)						
HK0803876-021	2008/03/11/1506/D1/T/E	----	mg/L	5	6	0.0
	REPL.1					
HK0803876-031	2008/03/11/0738/C1/B/F	----	mg/L	12	11	0.0
	REPL.1					
EA/ED: Physical and Aggregate Properties (QC Lot: 612405)						
HK0803876-041	2008/03/11/0753/SR1/M/F	----	mg/L	8	7	0.0
	REPL.2					
HK0803876-051	2008/03/11/0807/D1/T/F	----	mg/L	6	6	0.0
	REPL.1					

Quality Control - Method Blank (MB), Single Control Spike (SCS) and Duplicate Control Spike (DCS) Results

Matrix Type: WATER		Method Blank (MB) Results		Single Control Spike (SCS) and Duplicate Control Spike (DCS) Results					
Method: Analysis Description	CAS number	LOR	Units	Result	Spike Concentration	Recovery Limits (%)		Value	Control Limit
						Low	High		
EA/ED: Physical and Aggregate Properties (QC Lot: 612402)									
EA025: Suspended Solids (SS)	----	2	mg/L	<2	20 mg/L	85	115	----	----
EA/ED: Physical and Aggregate Properties (QC Lot: 612404)									
EA025: Suspended Solids (SS)	----	2	mg/L	<2	20 mg/L	85	115	----	----
EA/ED: Physical and Aggregate Properties (QC Lot: 612405)									
EA025: Suspended Solids (SS)	----	2	mg/L	<2	20 mg/L	85	115	----	----



CERTIFICATE OF ANALYSIS

Client : **ERM HONG KONG**
Contact : **MS JOANNA KWAN**
Address : **21/F, LINCOLN HOUSE,
979 KING'S ROAD,
TAIKOO PLACE, ISLAND EAST, QUARRY BAY
HONG KONG**
E-mail : **Joanna.kwan@erm.com**
Telephone : **2271 3000**
Facsimile : **2723 5660**
Project : **EM&A FOR THE PROPOSED 132KV
SUBMARINE CABLE ROUTE FOR AIRPORT "A"
TO CASTLE PEAK CCTS**
Order number : **----**
C-O-C number : **----**
Site : **----**

Laboratory : **ALS Technichem (HK) Pty Ltd**
Contact : **Alice Wong**
Address : **11/F., Chung Shun Knitting Centre,
1 - 3 Wing Yip Street,
Kwai Chung, N.T., Hong Kong**
E-mail : **Alice.Wong@alsenviro.com**
Telephone : **+852 2610 1044**
Facsimile : **+852 2610 2021**
Quote number : **----**

Page : **1 of 10**
Work Order : **HK0803975**
Date received : **12 Mar 2008**
Date of issue : **14 Mar 2008**
No. of samples - Received : **116**
- Analysed : **116**

Report Comments

This report for ALS Technichem (HK) Pty Ltd work order reference HK0803975 supersedes any previous reports with this reference. The completion date of analysis is 13 Mar 2008. Results apply to sample(s) as submitted. All pages of this report have been checked and approved for release. When date(s) and/or time(s) are shown bracketed, these have been assumed by the laboratory for process purposes. Abbreviations: CAS number = Chemical Abstract Services number. LOR = Limit of reporting.

Specific comments for Work Order HK0803975 : **Sample(s) were received in a chilled condition.
Water sample(s) analysed and reported on an as received basis.**

This report may not be reproduced except with prior written approval from ALS Technichem (HK) Pty Ltd.

This document has been electronically signed by those names that appear on this report and are the authorised signatories. Electronic signing has been carried out in compliance with procedures specified in the 'Electronic Transactions Ordinance' of Hona Kona. Chapter 553. Section 6.

Signatory
Fung Lim Chee, Richard

Position
General Manager

Authorised results for:-
Inorganics



Quality Control - Laboratory Duplicate (DUP) Results

Matrix Type: WATER		Client Sample ID	Method: Analysis Description	CAS number	LOR	Units	Duplicate (DUP) Results		RPD (%)
Laboratory Sample ID	Original Result						Duplicate Result		
EAI/ED: Physical and Aggregate Properties (QC Lot: 613996)									
HK0803975-001	2008/03/12/1444/C4/B/E	EA025: Suspended Solids (SS)	----		1	mg/L	42	43	4.4
	REPL.1								
HK0803975-011	2008/03/12/1502/SR3/M/E	EA025: Suspended Solids (SS)	----		1	mg/L	8	8	0.0
	REPL.2								
EAI/ED: Physical and Aggregate Properties (QC Lot: 613997)									
HK0803975-021	2008/03/12/1508/D2/T/E	EA025: Suspended Solids (SS)	----		1	mg/L	6	6	0.0
	REPL.1								
HK0803975-031	2008/03/12/1512/SR4/B/E	EA025: Suspended Solids (SS)	----		1	mg/L	36	36	0.0
	REPL.1								
EAI/ED: Physical and Aggregate Properties (QC Lot: 613998)									
HK0803975-041	2008/03/12/1524/G1/M/E	EA025: Suspended Solids (SS)	----		1	mg/L	10	10	0.0
	REPL.2								
HK0803975-051	2008/03/12/1654/M1/M/E	EA025: Suspended Solids (SS)	----		1	mg/L	3	3	0.0
	REPL.2								
EAI/ED: Physical and Aggregate Properties (QC Lot: 613999)									
HK0803975-061	2008/03/12/0952/C4/T/F	EA025: Suspended Solids (SS)	----		1	mg/L	9	8	0.0
	REPL.1								
HK0803975-071	2008/03/12/0837/U2/B/F	EA025: Suspended Solids (SS)	----		1	mg/L	11	11	0.0
	REPL.1								
EAI/ED: Physical and Aggregate Properties (QC Lot: 614000)									
HK0803975-081	2008/03/12/0907/D2/M/F	EA025: Suspended Solids (SS)	----		1	mg/L	8	9	12.1
	REPL.2								
HK0803975-091	2008/03/12/0930/SR4/T/F	EA025: Suspended Solids (SS)	----		1	mg/L	8	8	0.0
	REPL.1								
EAI/ED: Physical and Aggregate Properties (QC Lot: 614001)									
HK0803975-101	2008/03/12/0814/SR2/B/F	EA025: Suspended Solids (SS)	----		1	mg/L	8	8	0.0
	REPL.1								
HK0803975-111	2008/03/12/0836/M2/B/F	EA025: Suspended Solids (SS)	----		1	mg/L	8	9	0.0
	REPL.1								

Quality Control - Method Blank (MB), Single Control Spike (SCS) and Duplicate Control Spike (DCS) Results



Page Number : 10 of 10
 Client : ERM HONG KONG
 Work Order : HK0803975

Matrix Type: WATER

Method: Analysis Description	CAS number	Method Blank (MB) Results			Single Control Spike (SCS) and Duplicate Control Spike (DCS) Results							
		LOR	Units	Result	Spike Concentration	SCS	Spike Recovery (%)	DCS	Recovery Limits (%)	Value	RPDs (%)	Control Limit
EA/ED: Physical and Aggregate Properties (QC:Lot: 613996)												
EA025: Suspended Solids (SS)	-----	2	mg/L	<2	20 mg/L	98.5	-----	-----	85	115	-----	-----
EA/ED: Physical and Aggregate Properties (QC:Lot: 613997)												
EA025: Suspended Solids (SS)	-----	2	mg/L	<2	20 mg/L	97.5	-----	-----	85	115	-----	-----
EA/ED: Physical and Aggregate Properties (QC:Lot: 613998)												
EA025: Suspended Solids (SS)	-----	2	mg/L	<2	20 mg/L	102	-----	-----	85	115	-----	-----
EA/ED: Physical and Aggregate Properties (QC:Lot: 613999)												
EA025: Suspended Solids (SS)	-----	2	mg/L	<2	20 mg/L	102	-----	-----	85	115	-----	-----
EA/ED: Physical and Aggregate Properties (QC:Lot: 614000)												
EA025: Suspended Solids (SS)	-----	2	mg/L	<2	20 mg/L	104	-----	-----	85	115	-----	-----
EA/ED: Physical and Aggregate Properties (QC:Lot: 614001)												
EA025: Suspended Solids (SS)	-----	2	mg/L	<2	20 mg/L	104	-----	-----	85	115	-----	-----



CERTIFICATE OF ANALYSIS

Client : **ERM HONG KONG**
Contact : **MS JOANNA KWAN**
Address : **21/F, LINCOLN HOUSE,
979 KING'S ROAD,
TAIKOO PLACE, ISLAND EAST, QUARRY BAY
HONG KONG**
E-mail : **Joanna.kwan@erm.com**
Telephone : **2271 3000**
Facsimile : **2723 5660**
Project : **EM&A FOR THE PROPOSED 132KV
SUBMARINE CABLE ROUTE FOR AIRPORT "A"
TO CASTLE PEAK CCTS**
Order number : **----**
C-O-C number : **----**
Site : **----**

Laboratory : **ALS Technichem (HK) Pty Ltd**
Contact : **Alice Wong**
Address : **11/F., Chung Shun Knitting Centre,
1 - 3 Wing Yip Street,
Kwai Chung, N.T., Hong Kong**
E-mail : **Alice.Wong@alsenviro.com**
Telephone : **+852 2610 1044**
Facsimile : **+852 2610 2021**
Quote number : **----**

Page : **1 of 6**
Work Order : **HK0804058**
Date received : **13 Mar 2008**
Date of issue : **17 Mar 2008**
No. of samples - Received : **60**
- Analysed : **60**

Report Comments

This report for ALS Technichem (HK) Pty Ltd work order reference HK0804058 supersedes any previous reports with this reference. The completion date of analysis is 17 Mar 2008. Results apply to sample(s) as submitted. All pages of this report have been checked and approved for release. When date(s) and/or time(s) are shown bracketed, these have been assumed by the laboratory for process purposes. Abbreviations: CAS number = Chemical Abstract Services number. LOR = Limit of reporting.

Specific comments for Work Order HK0804058 : **Sample(s) were received in a chilled condition.
Water sample(s) analysed and reported on an as received basis.**

This report may not be reproduced except with prior written approval from ALS Technichem (HK) Pty Ltd.

This document has been electronically signed by those names that appear on this report and are the authorised signatories. Electronic signing has been carried out in compliance with procedures specified in the 'Electronic Transactions Ordinance' of Hona Kona. Chapter 553. Section 6.

Signatory
Fung Lim Chee, Richard

Position
General Manager

Authorised results for:-
Inorganics



Quality Control - Laboratory Duplicate (DUP) Results

Matrix Type: WATER		Method: Analysis Description		Duplicate (DUP) Results		
Laboratory Sample ID	Client Sample ID	CAS number	Units	Original Result	Duplicate Result	RPD (%)
EA/ED: Physical and Aggregate Properties (QC Lot: 614721)						
HK0804058-001	2008/03/13/1545/C1/B/E	----	mg/L	8	7	14.4
	REPL.1					
HK0804058-011	2008/03/13/1559/SR1/M/E	----	mg/L	5	5	0.0
	REPL.2					
EA/ED: Physical and Aggregate Properties (QC Lot: 614722)						
HK0804058-023	2008/03/13/1613/D1/M/E	----	mg/L	4	4	0.0
	REPL.2					
HK0804058-031	2008/03/13/0854/C1/B/F	----	mg/L	5	5	0.0
	REPL.1					
EA/ED: Physical and Aggregate Properties (QC Lot: 614723)						
HK0804058-041	2008/03/13/0909/SR1/M/F	----	mg/L	4	4	0.0
	REPL.2					
HK0804058-051	2008/03/13/0924/D1/T/F	----	mg/L	3	3	0.0
	REPL.1					

Quality Control - Method Blank (MB), Single Control Spike (SCS) and Duplicate Control Spike (DCS) Results

Matrix Type: WATER		Method Blank (MB) Results		Single Control Spike (SCS) and Duplicate Control Spike (DCS) Results					
Method: Analysis Description	CAS number	LOR	Units	Result	Spike Concentration	Recovery Limits (%)		Value	Control Limit
						Low	High		
EA/ED: Physical and Aggregate Properties (QC Lot: 614721)									
EA025: Suspended Solids (SS)	----	2	mg/L	<2	20 mg/L	85	115	----	----
EA/ED: Physical and Aggregate Properties (QC Lot: 614722)									
EA025: Suspended Solids (SS)	----	2	mg/L	<2	20 mg/L	85	115	----	----
EA/ED: Physical and Aggregate Properties (QC Lot: 614723)									
EA025: Suspended Solids (SS)	----	2	mg/L	<2	20 mg/L	85	115	----	----



CERTIFICATE OF ANALYSIS

Client : **ERM HONG KONG**
Contact : **MS JOANNA KWAN**
Address : **21/F, LINCOLN HOUSE,
979 KING'S ROAD,
TAIKOO PLACE, ISLAND EAST, QUARRY BAY
HONG KONG**
E-mail : **Joanna.kwan@erm.com**
Telephone : **2271 3000**
Facsimile : **2723 5660**
Project : **EM&A FOR THE PROPOSED 132KV
SUBMARINE CABLE ROUTE FOR AIRPORT "A"
TO CASTLE PEAK CCTS**
Order number : **----**
C-O-C number : **----**
Site : **----**

Laboratory : **ALS Technichem (HK) Pty Ltd**
Contact : **Alice Wong**
Address : **11/F., Chung Shun Knitting Centre,
1 - 3 Wing Yip Street,
Kwai Chung, N.T., Hong Kong**
E-mail : **Alice.Wong@alsenviro.com**
Telephone : **+852 2610 1044**
Facsimile : **+852 2610 2021**
Quote number : **----**

Page : **1 of 9**
Work Order : **HK0804181**

Date received : **15 Mar 2008**

Date of issue : **18 Mar 2008**
No. of samples - Received : **92**
- Analysed : **92**

Report Comments

This report for ALS Technichem (HK) Pty Ltd work order reference HK0804181 supersedes any previous reports with this reference. The completion date of analysis is 17 Mar 2008. Results apply to sample(s) as submitted. All pages of this report have been checked and approved for release. When date(s) and/or time(s) are shown bracketed, these have been assumed by the laboratory for process purposes. Abbreviations: CAS number = Chemical Abstract Services number. LOR = Limit of reporting.

Specific comments for Work Order HK0804181 : **Sample(s) were received in a chilled condition.**

Water sample(s) analysed and reported on an as received basis.

This report may not be reproduced except with prior written approval from ALS Technichem (HK) Pty Ltd.

This document has been electronically signed by those names that appear on this report and are the authorised signatories. Electronic signing has been carried out in compliance with procedures specified in the 'Electronic Transactions Ordinance' of Hona Kona, Chapter 553, Section 6.

Signatory

Fung Lim Chee, Richard

Position

General Manager

Authorised results for:-

Inorganics

ALS Laboratory Group

Trading Name: **ALS Technichem (HK) Pty Ltd**

11/F., Chung Shun Knitting Centre, 1-3 Wing Yip Street, Kwai Chung, N.T., Hong Kong
Tel: +852 2610 1044 Fax: +852 2610 2021 www.alsenviro.com

A Campbell Brothers Limited Company



Quality Control - Laboratory Duplicate (DUP) Results

Matrix Type: WATER		Client Sample ID	Method: Analysis Description	CAS number	LOR	Units	Duplicate (DUP) Results		RPD (%)
Laboratory Sample ID	Original Result						Duplicate Result		
EAI/ED: Physical and Aggregate Properties (QC Lot: 616223)									
HK0804181-001	2008/03/14/1809/C4/B/E/	EA025: Suspended Solids (SS)	----	1	mg/L	15	14	10.0	
	REPL. 1								
HK0804181-012	2008/03/14/1748/SR3/T/E/	EA025: Suspended Solids (SS)	----	1	mg/L	6	6	0.0	
	REPL. 2								
EAI/ED: Physical and Aggregate Properties (QC Lot: 616224)									
HK0804181-021	2008/03/14/1801/D2/T/E/	EA025: Suspended Solids (SS)	----	1	mg/L	6	6	0.0	
	REPL. 1								
HK0804181-031	2008/03/14/1734/SR4/B/E/	EA025: Suspended Solids (SS)	----	1	mg/L	9	9	0.0	
	REPL. 1								
EAI/ED: Physical and Aggregate Properties (QC Lot: 616225)									
HK0804181-041	2008/03/14/1727/G1/M/E/	EA025: Suspended Solids (SS)	----	1	mg/L	7	8	0.0	
	REPL. 2								
HK0804181-051	2008/03/14/1022/C4/M/F/	EA025: Suspended Solids (SS)	----	1	mg/L	6	6	0.0	
	REPL. 2								
EAI/ED: Physical and Aggregate Properties (QC Lot: 616226)									
HK0804181-061	2008/03/14/1002/U2/T/F/	EA025: Suspended Solids (SS)	----	1	mg/L	2	2	0.0	
	REPL. 1								
HK0804181-072	2008/03/14/0924/C3/M/F/	EA025: Suspended Solids (SS)	----	1	mg/L	2	2	0.0	
	REPL. 1								
EAI/ED: Physical and Aggregate Properties (QC Lot: 616227)									
HK0804181-081	2008/03/14/0947/SR4/M/F/	EA025: Suspended Solids (SS)	----	1	mg/L	3	3	0.0	
	REPL. 2								
HK0804181-091	2008/03/14/0956/SR2/B/F/	EA025: Suspended Solids (SS)	----	1	mg/L	3	4	0.0	
	REPL. 2								

Quality Control - Method Blank (MB), Single Control Spike (SCS) and Duplicate Control Spike (DCS) Results



Page Number : 9 of 9
 Client : ERM HONG KONG
 Work Order : HK0804181

Matrix Type: WATER

Method: Analysis Description	CAS number	Method Blank (MB) Results			Single Control Spike (SCS) and Duplicate Control Spike (DCS) Results							
		LOR	Units	Result	Spike Concentration	SCS	Spike Recovery (%)	DCS	Recovery Limits (%)	Value	RPDs (%)	Control Limit
EA/ED: Physical and Aggregate Properties (QC Lot: 616223)												
EA025: Suspended Solids (SS)	----	2	mg/L	<2	20 mg/L	100	-----	-----	85	115	-----	-----
EA/ED: Physical and Aggregate Properties (QC Lot: 616224)												
EA025: Suspended Solids (SS)	----	2	mg/L	<2	20 mg/L	102	-----	-----	85	115	-----	-----
EA/ED: Physical and Aggregate Properties (QC Lot: 616225)												
EA025: Suspended Solids (SS)	----	2	mg/L	<2	20 mg/L	102	-----	-----	85	115	-----	-----
EA/ED: Physical and Aggregate Properties (QC Lot: 616226)												
EA025: Suspended Solids (SS)	----	2	mg/L	<2	20 mg/L	98.0	-----	-----	85	115	-----	-----
EA/ED: Physical and Aggregate Properties (QC Lot: 616227)												
EA025: Suspended Solids (SS)	----	2	mg/L	<2	20 mg/L	104	-----	-----	85	115	-----	-----



CERTIFICATE OF ANALYSIS

Client : ERM HONG KONG
Contact : MS JOANNA KWAN
Address : 21/F, LINCOLN HOUSE,
979 KING'S ROAD,
TAIKOO PLACE, ISLAND EAST, QUARRY BAY
HONG KONG
E-mail : Joanna.kwan@erm.com
Telephone : 2271 3000
Facsimile : 2723 5660
Project : EM&A FOR THE PROPOSED 132KV
SUBMARINE CABLE ROUTE FOR AIRPORT "A"
TO CASTLE PEAK CCTS
Order number : ----
C-O-C number : ----
Site : ----

Laboratory : ALS Technichem (HK) Pty Ltd
Contact : Alice Wong
Address : 11/F., Chung Shun Knitting Centre,
1 - 3 Wing Yip Street,
Kwai Chung, N.T., Hong Kong
E-mail : Alice.Wong@alsenviro.com
Telephone : +852 2610 1044
Facsimile : +852 2610 2021
Quote number : ----

Page : 1 of 6
Work Order : HK0804198

Date received : 17 Mar 2008

Date of issue : 19 Mar 2008
No. of samples - Received : 60
- Analysed : 60

Report Comments

This report for ALS Technichem (HK) Pty Ltd work order reference HK0804198 supersedes any previous reports with this reference. The completion date of analysis is 18 Mar 2008. Results apply to sample(s) as submitted. All pages of this report have been checked and approved for release. When date(s) and/or time(s) are shown bracketed, these have been assumed by the laboratory for process purposes. Abbreviations: CAS number = Chemical Abstract Services number. LOR = Limit of reporting.

Specific comments for Work Order HK0804198 : **Sample(s) were received in a chilled condition.**

Water sample(s) analysed and reported on an as received basis.

This report may not be reproduced except with prior written approval from ALS Technichem (HK) Pty Ltd.

This document has been electronically signed by those names that appear on this report and are the authorised signatories. Electronic signing has been carried out in compliance with procedures specified in the 'Electronic Transactions Ordinance' of Hona Kona. Chapter 553. Section 6.

Signatory

Fung Lim Chee, Richard

Position

General Manager

Authorised results for:-

Inorganics



Quality Control - Laboratory Duplicate (DUP) Results

Matrix Type: WATER		Method: Analysis Description		Duplicate (DUP) Results		
Laboratory Sample ID	Client Sample ID	CAS number	Units	Original Result	Duplicate Result	RPD (%)
EA/ED: Physical and Aggregate Properties (QC Lot: 616228)						
HK0804198-001	2008/03/16/2006/C1/B/E/ REPL. 1	-----	mg/L	5	5	0.0
HK0804198-011	2008/03/16/2018/SR1/M/E/ REPL. 2	-----	mg/L	6	6	0.0
EA/ED: Physical and Aggregate Properties (QC Lot: 616229)						
HK0804198-021	2008/03/16/2032/D1/T/E/ REPL. 1	-----	mg/L	5	4	0.0
HK0804198-031	2008/03/16/0749/C1/B/F/ REPL. 1	-----	mg/L	4	4	0.0
EA/ED: Physical and Aggregate Properties (QC Lot: 616230)						
HK0804198-041	2008/03/16/0803/SR1/M/F/ REPL. 2	-----	mg/L	4	4	0.0
HK0804198-051	2008/03/16/0815/D1/T/F/ REPL. 1	-----	mg/L	4	4	0.0

Quality Control - Method Blank (MB), Single Control Spike (SCS) and Duplicate Control Spike (DCS) Results

Matrix Type: WATER		Method Blank (MB) Results		Single Control Spike (SCS) and Duplicate Control Spike (DCS) Results					
Method: Analysis Description	CAS number	LOR	Units	Result	Spike Concentration	Recovery Limits (%)		Value	Control Limit
						Low	High		
EA/ED: Physical and Aggregate Properties (QC Lot: 616228)									
EA025: Suspended Solids (SS)	-----	2	mg/L	<2	20 mg/L	85	115	-----	-----
EA/ED: Physical and Aggregate Properties (QC Lot: 616229)									
EA025: Suspended Solids (SS)	-----	2	mg/L	<2	20 mg/L	85	115	-----	-----
EA/ED: Physical and Aggregate Properties (QC Lot: 616230)									
EA025: Suspended Solids (SS)	-----	2	mg/L	<2	20 mg/L	85	115	-----	-----

Annex E

Impact Water Quality Monitoring Results

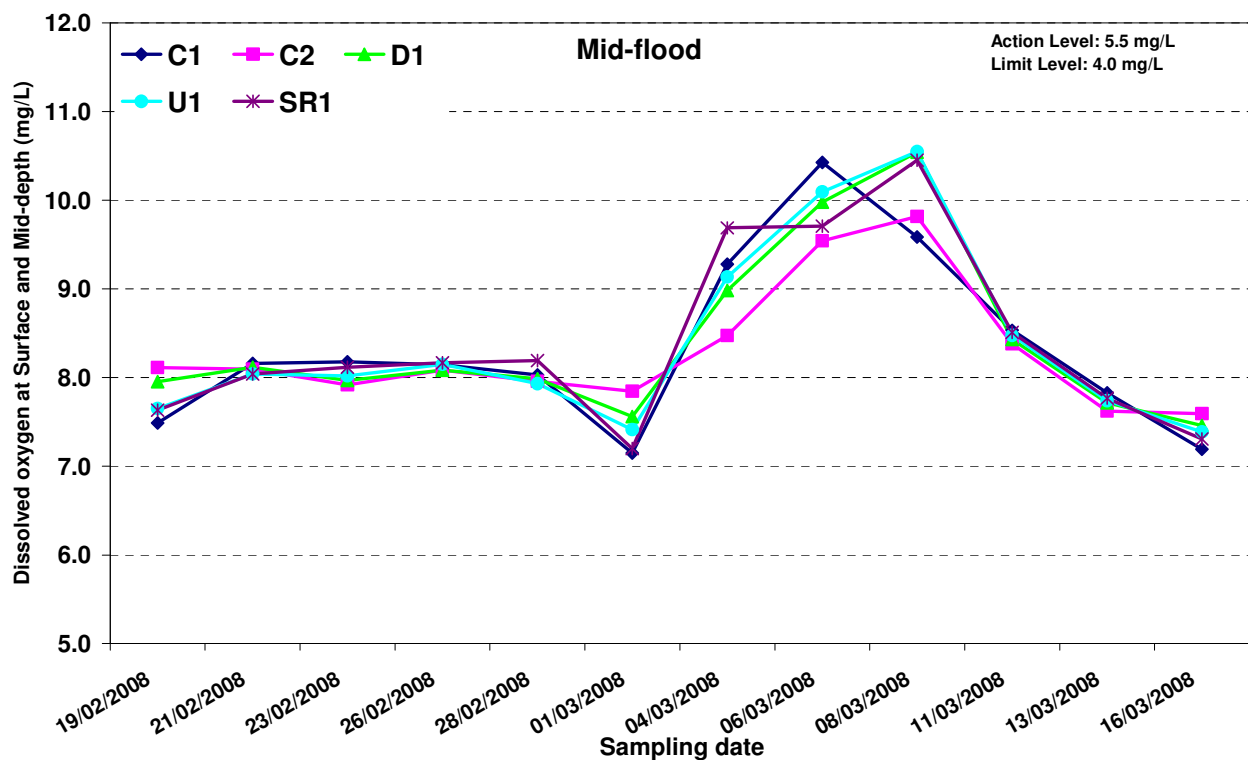
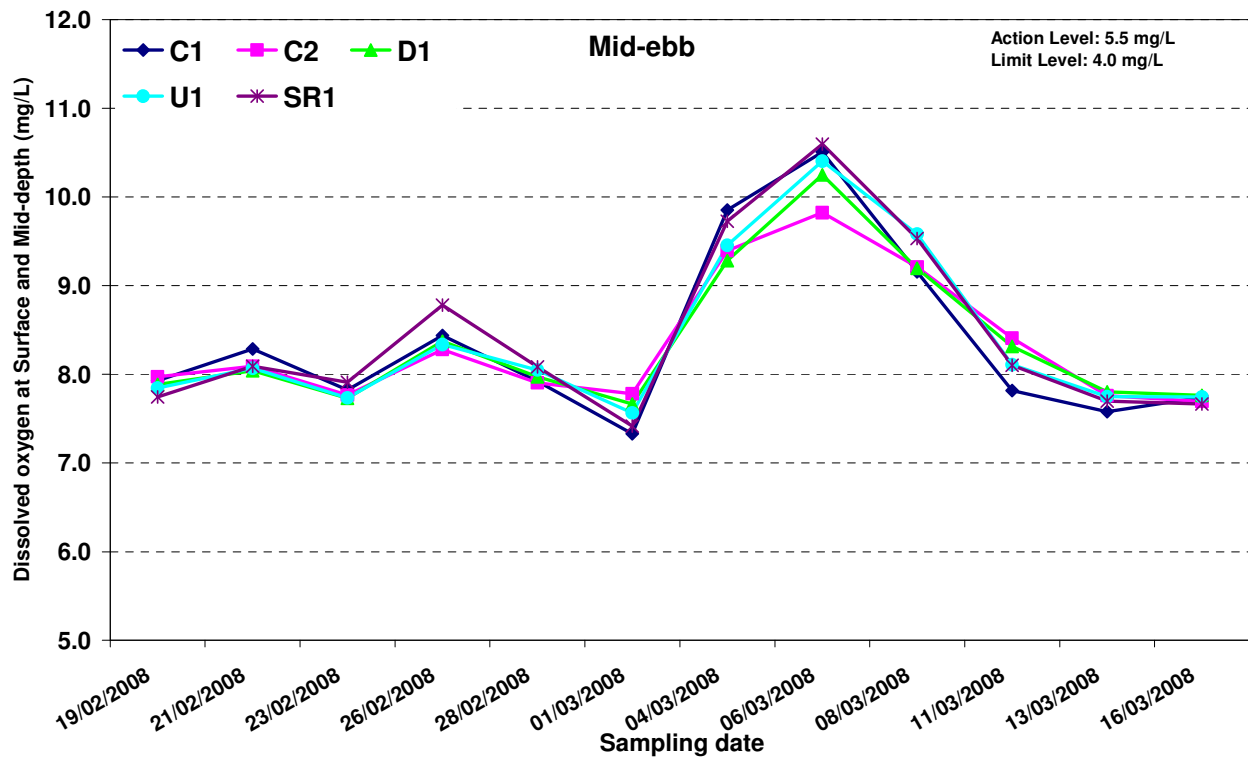


Figure E1 Dissolved oxygen concentration (mean of surface and mid-depth) (mg/L) of water samples from the five sampling locations near Tuen Mun at mid-ebb and mid-flood between 19 February and 16 March 2008

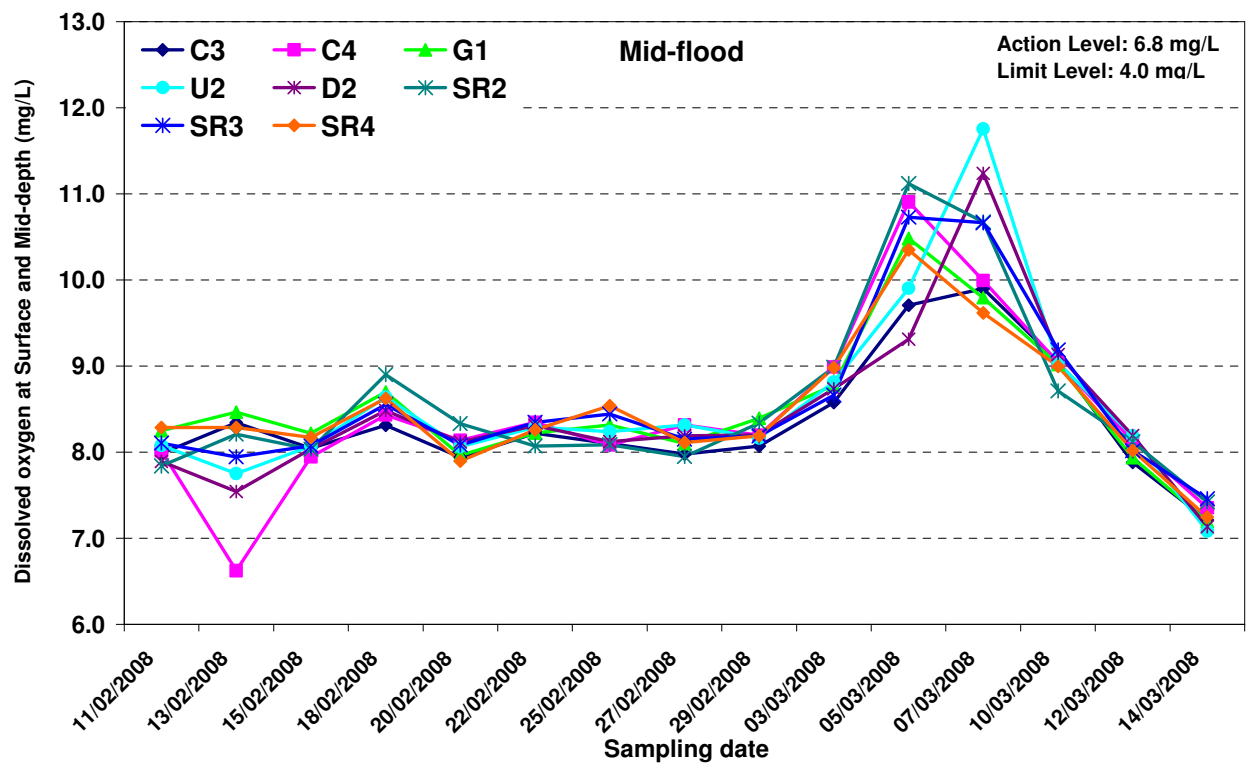
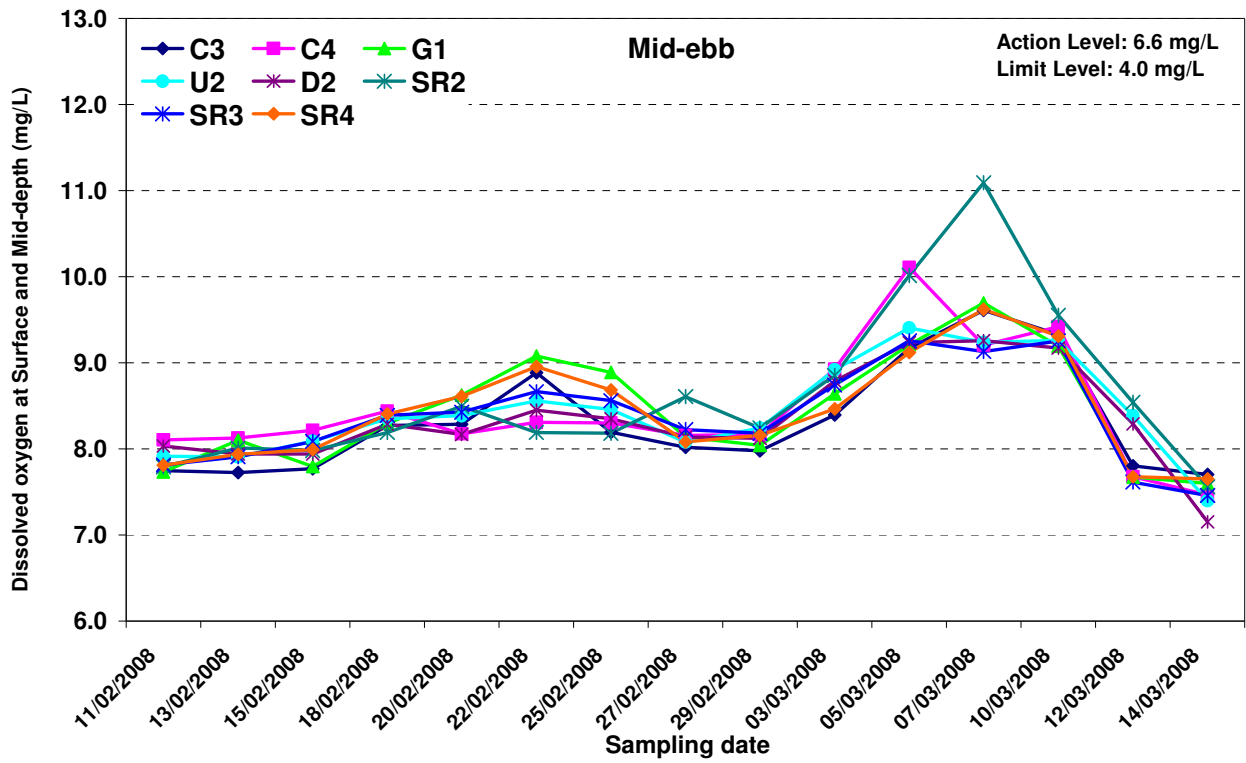


Figure E2 Dissolved oxygen concentration (mean of surface and mid-depth) (mg/L) of water samples from the eight sampling locations near the airport at mid-ebb and mid-flood 11 February 2008 and 14 March 2008



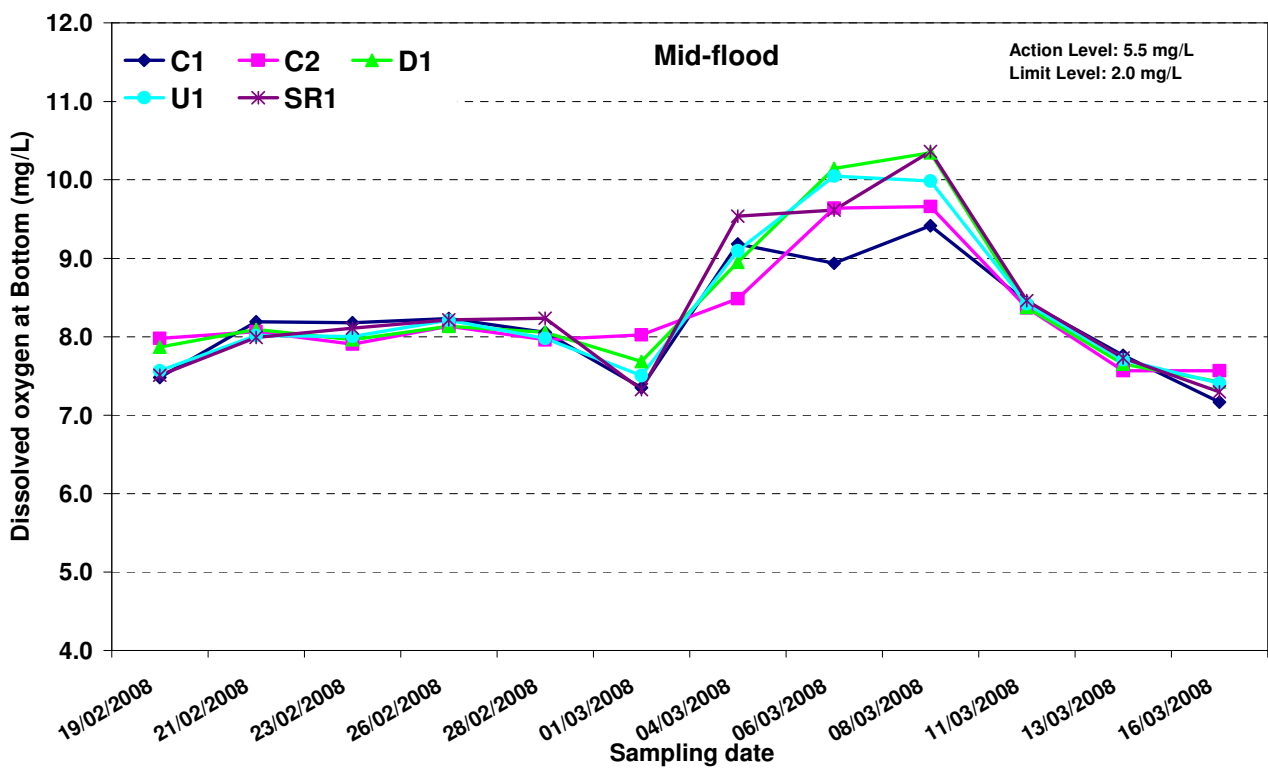
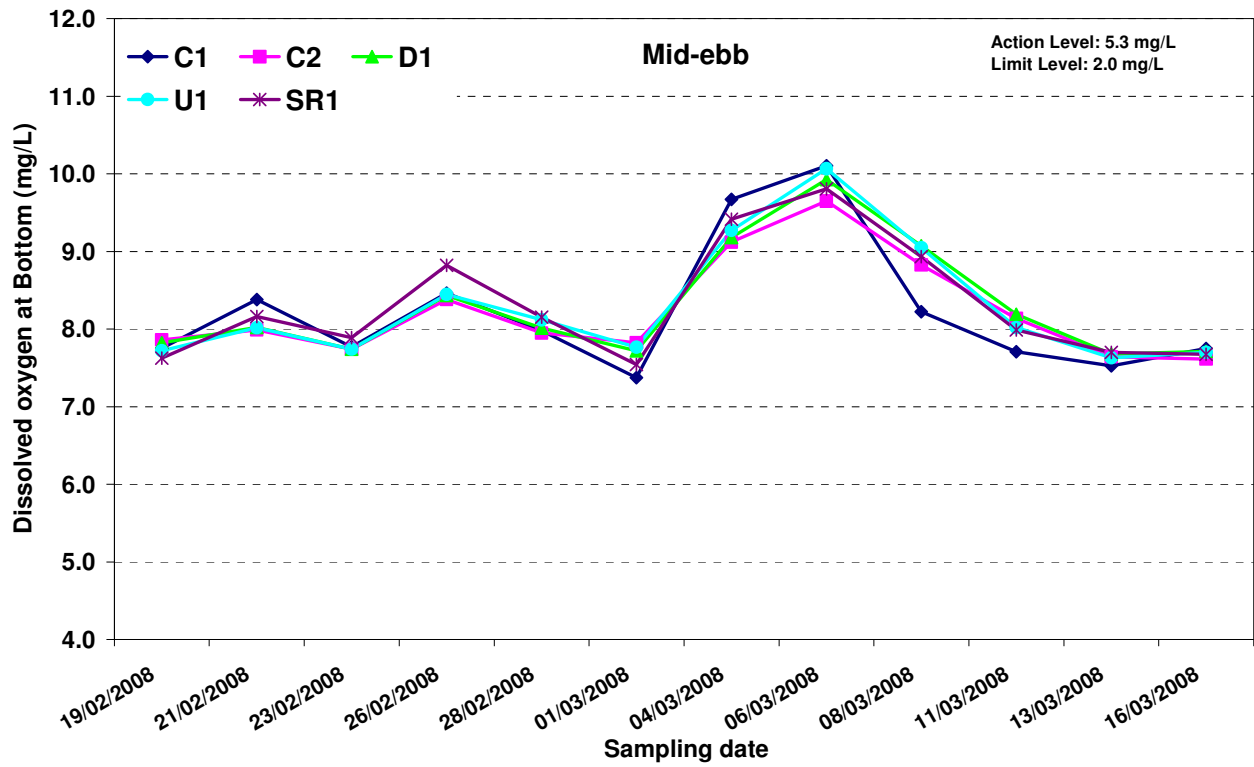


Figure E3 Dissolved oxygen concentration (bottom) (mg/L) of water samples from the five sampling locations near Tuen Mun at mid-ebb and mid-flood between 19 February and 16 March 2008



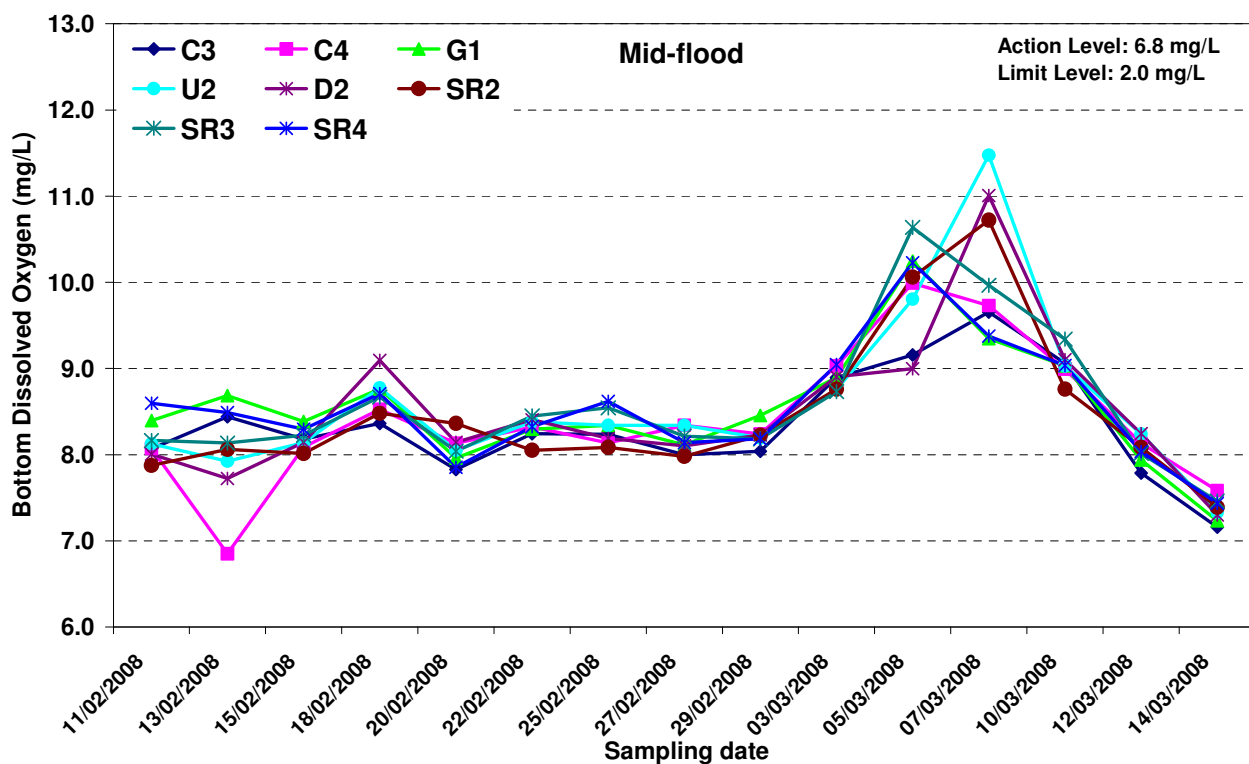
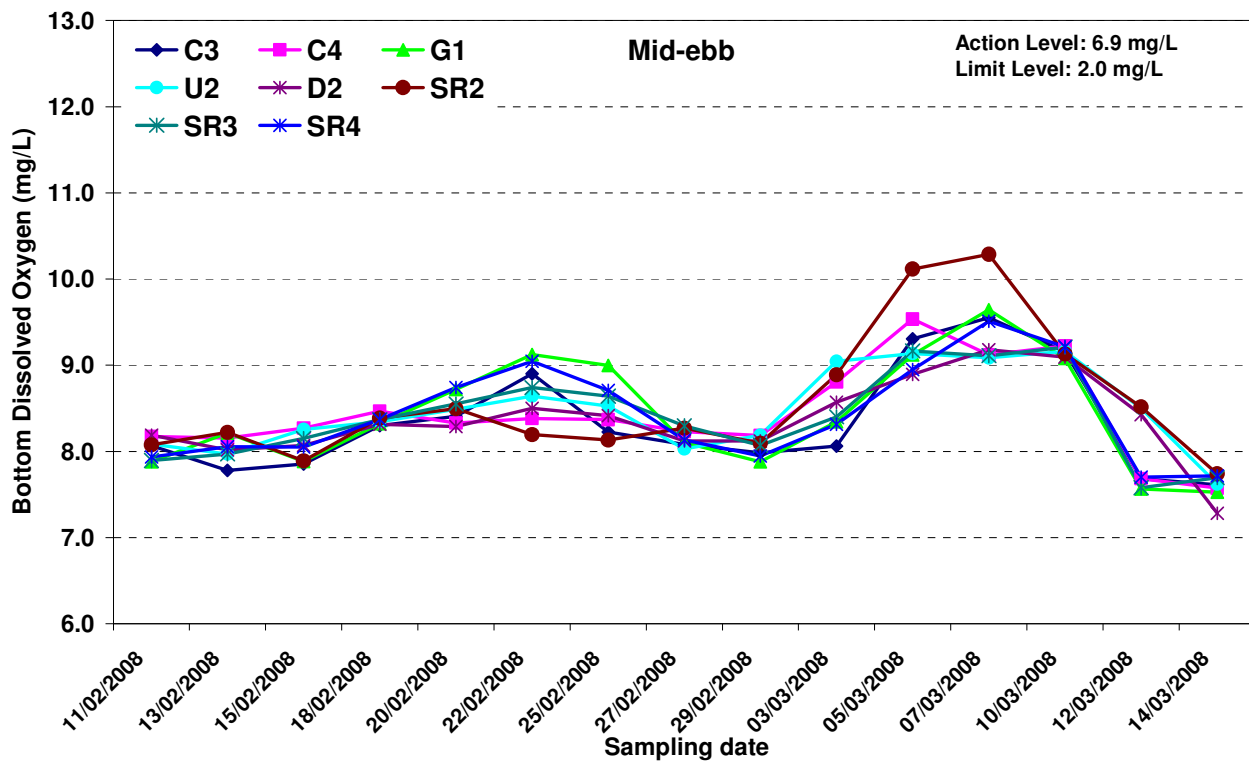


Figure E4 Dissolved oxygen concentration (bottom) (mg/L) of water samples from the eight sampling locations near the airport at mid-ebb and mid-flood 11 February 2008 and 14 March 2008



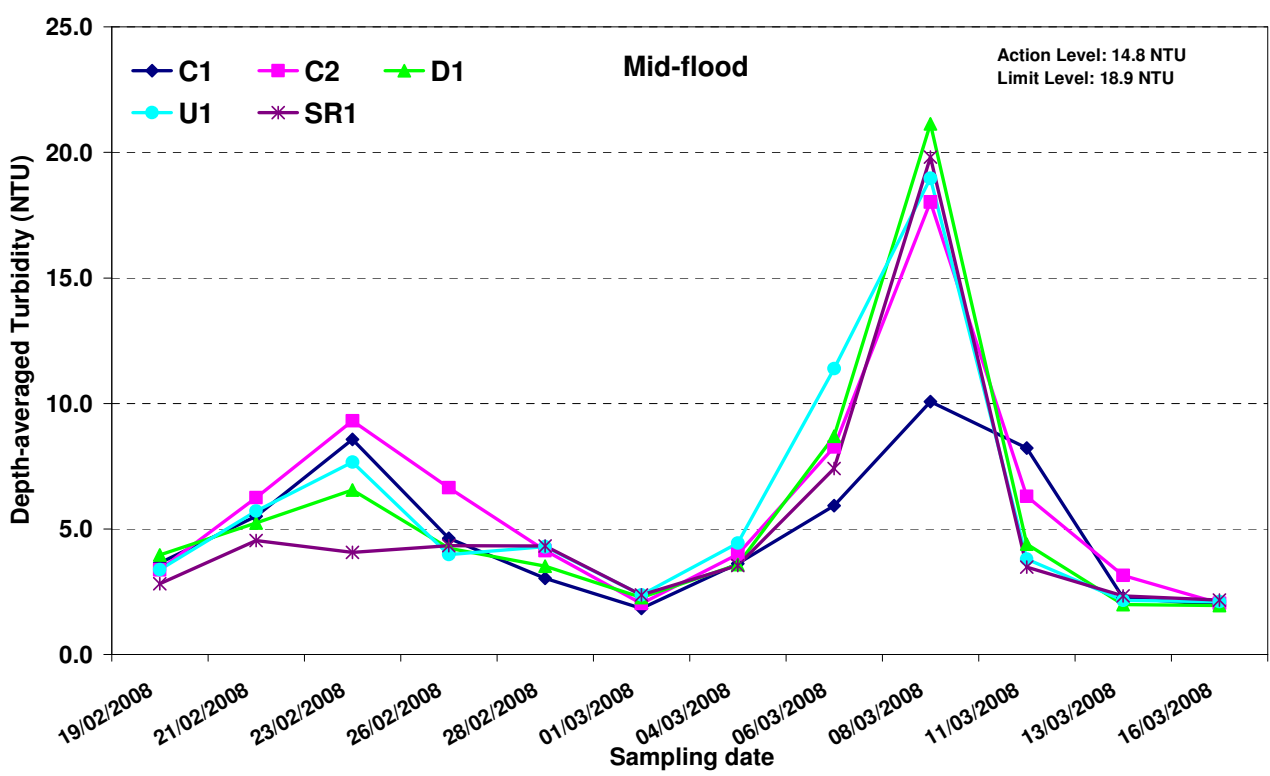
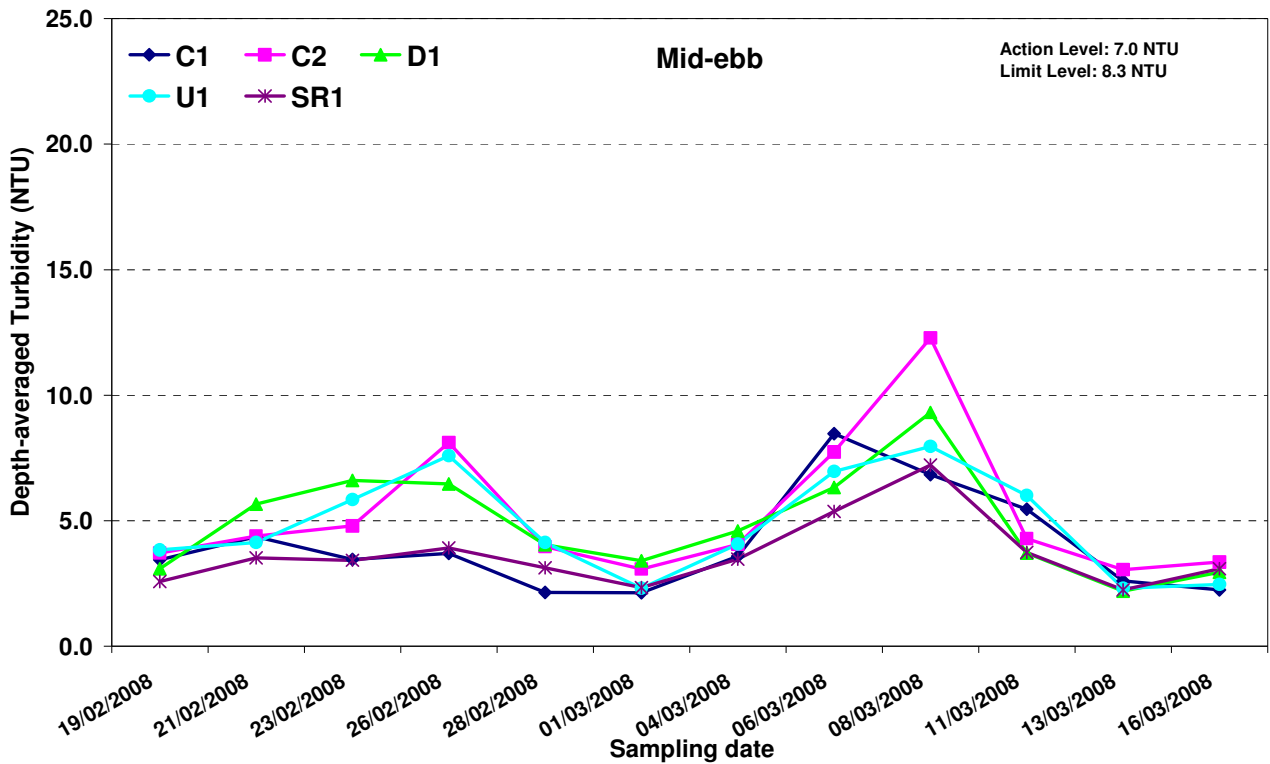


Figure E5 Depth-averaged turbidity (NTU) of water samples from the five sampling locations near Tuen Mun at mid-ebb and mid-flood between 19 February and 16 March 2008



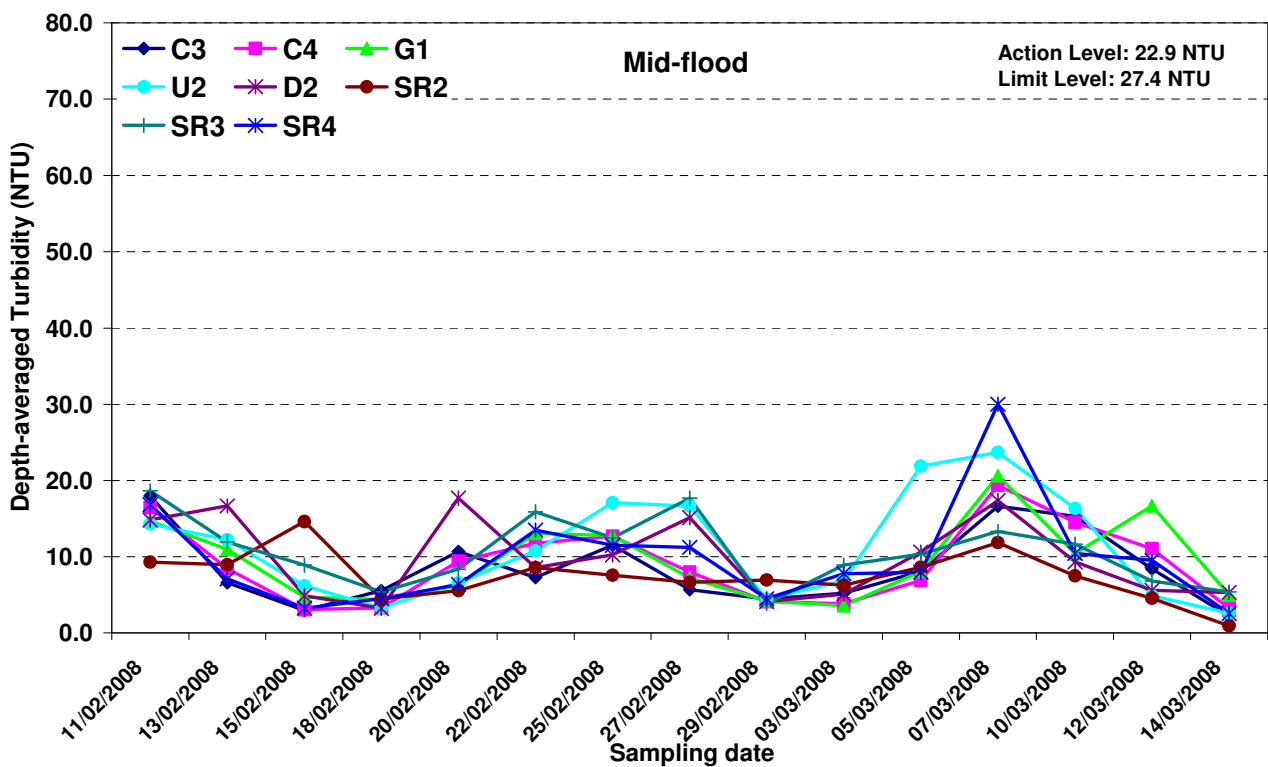
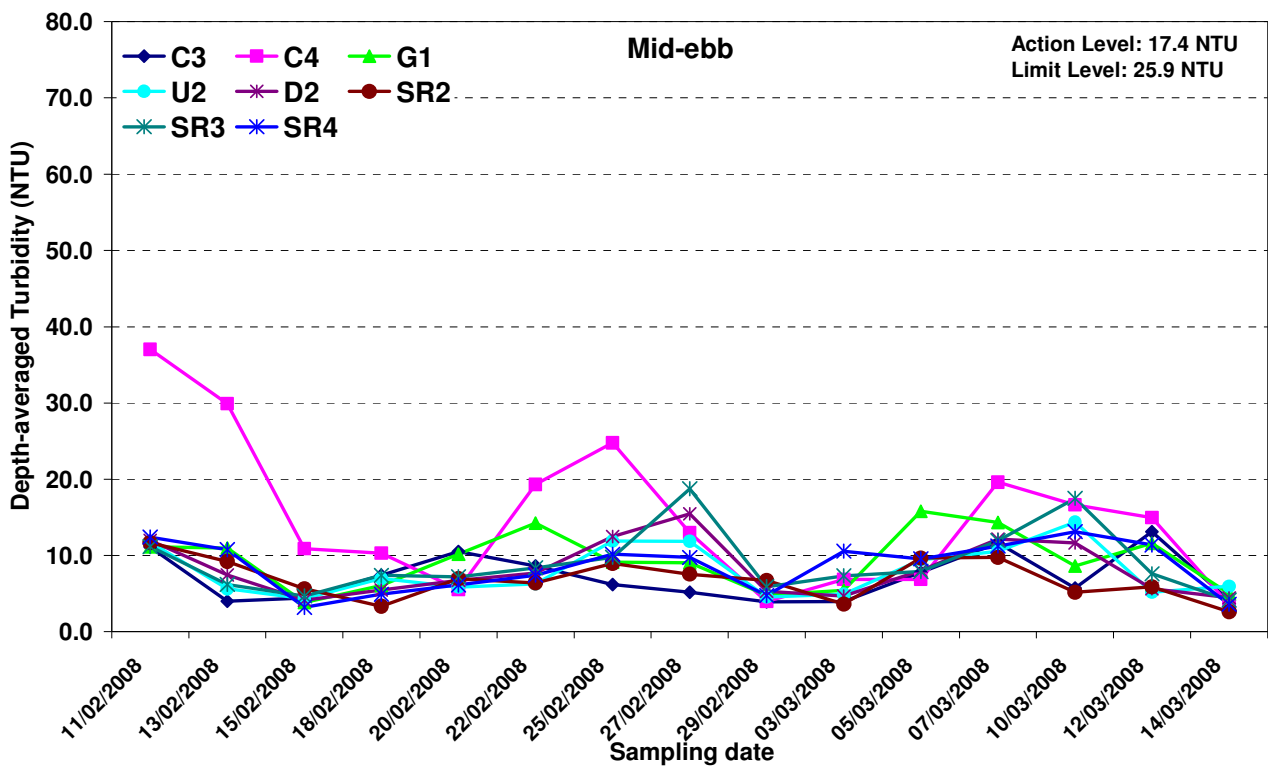


Figure E6 Depth-averaged turbidity (NTU) of water samples from the eight sampling locations near the airport at mid-ebb and mid-flood between 11 February 2008 and 14 March 2008



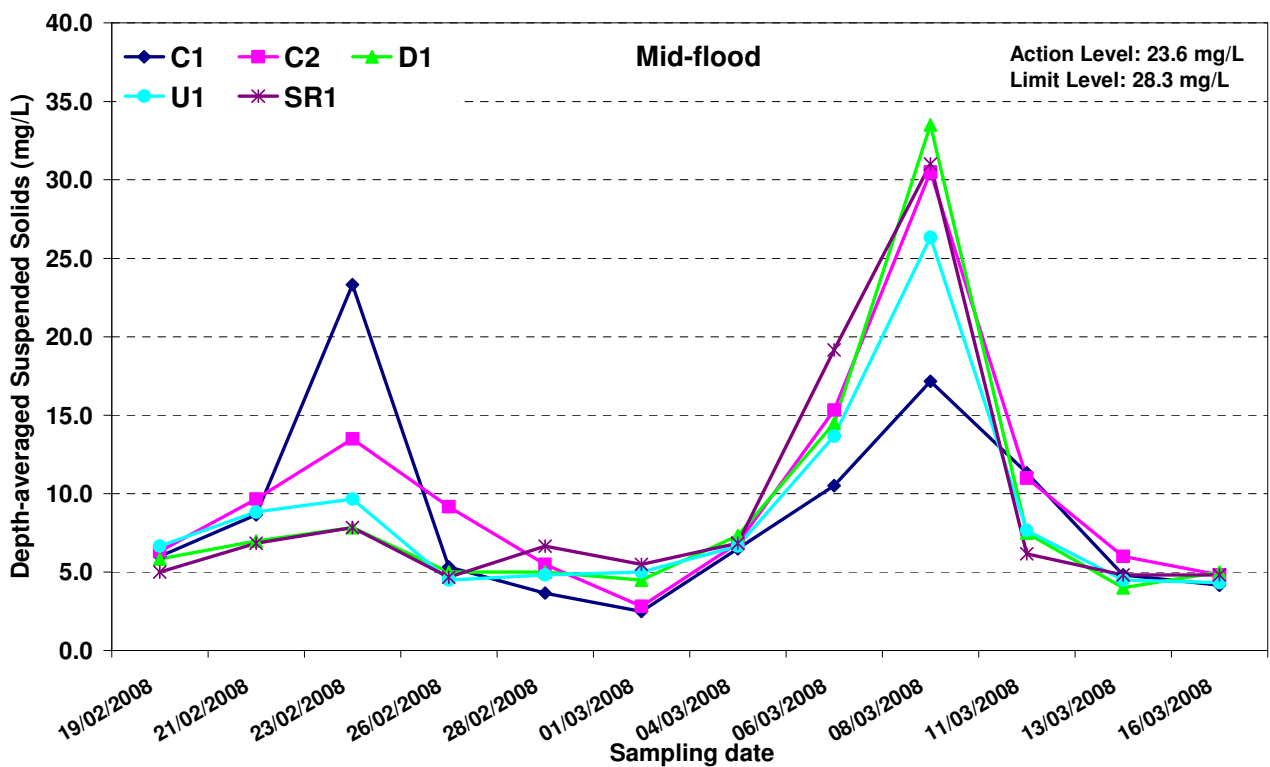
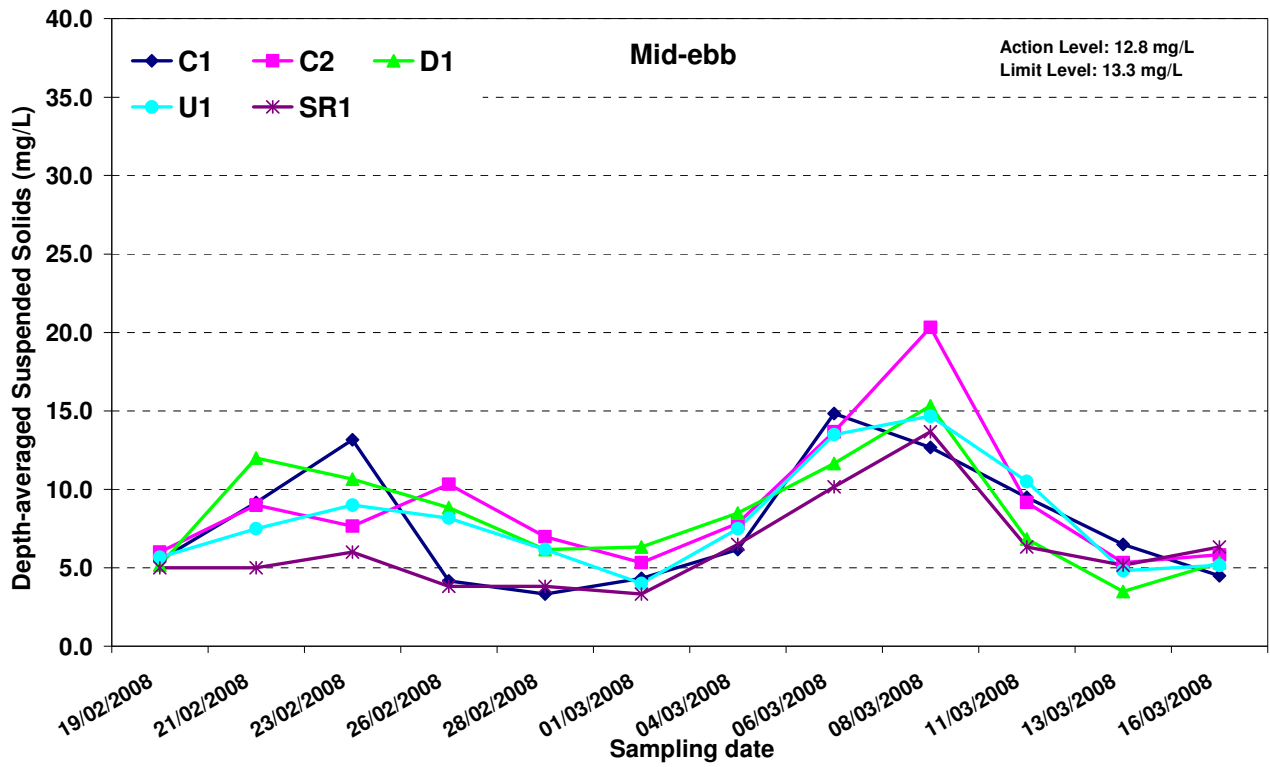


Figure E7 Depth-averaged suspended solids concentration (mg/L) of water samples from the five sampling locations near Tuen Mun at mid-ebb and mid-flood between 19 February and 16 March 2008

Ref: 0072833_Annex E_graphs.doc



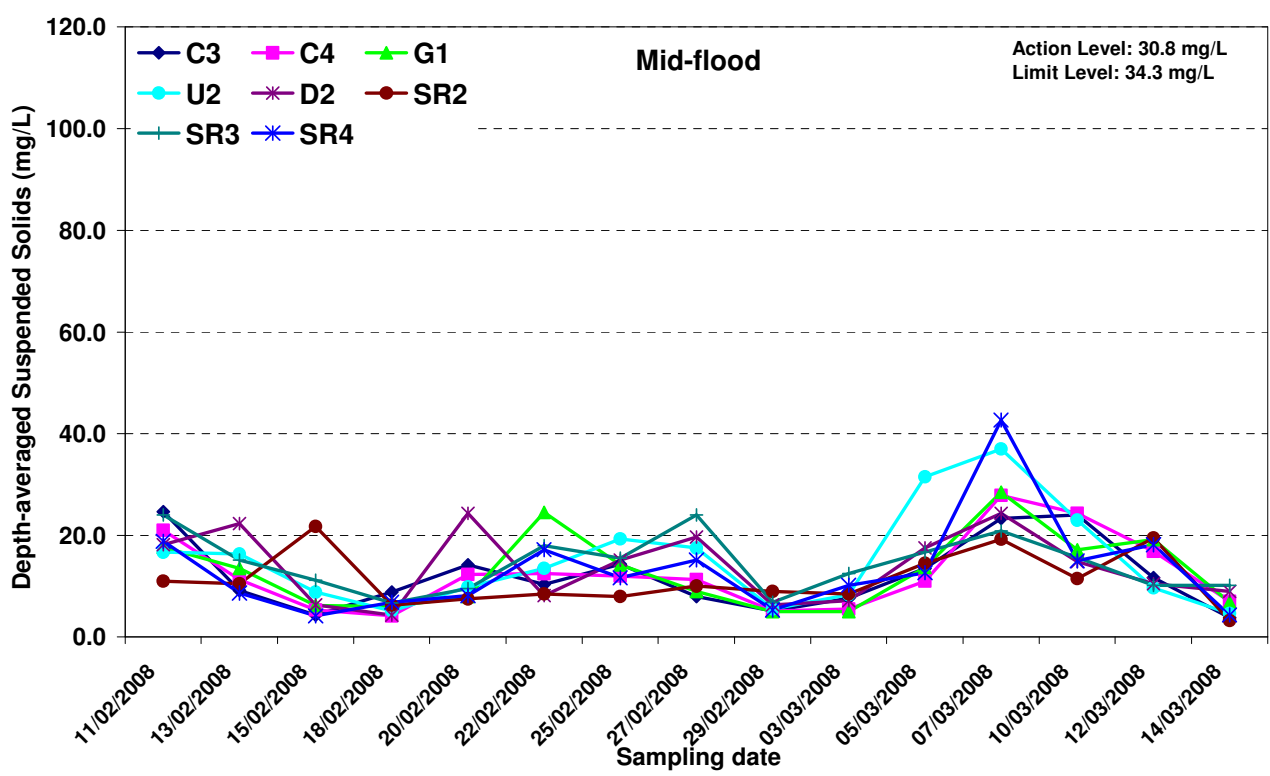
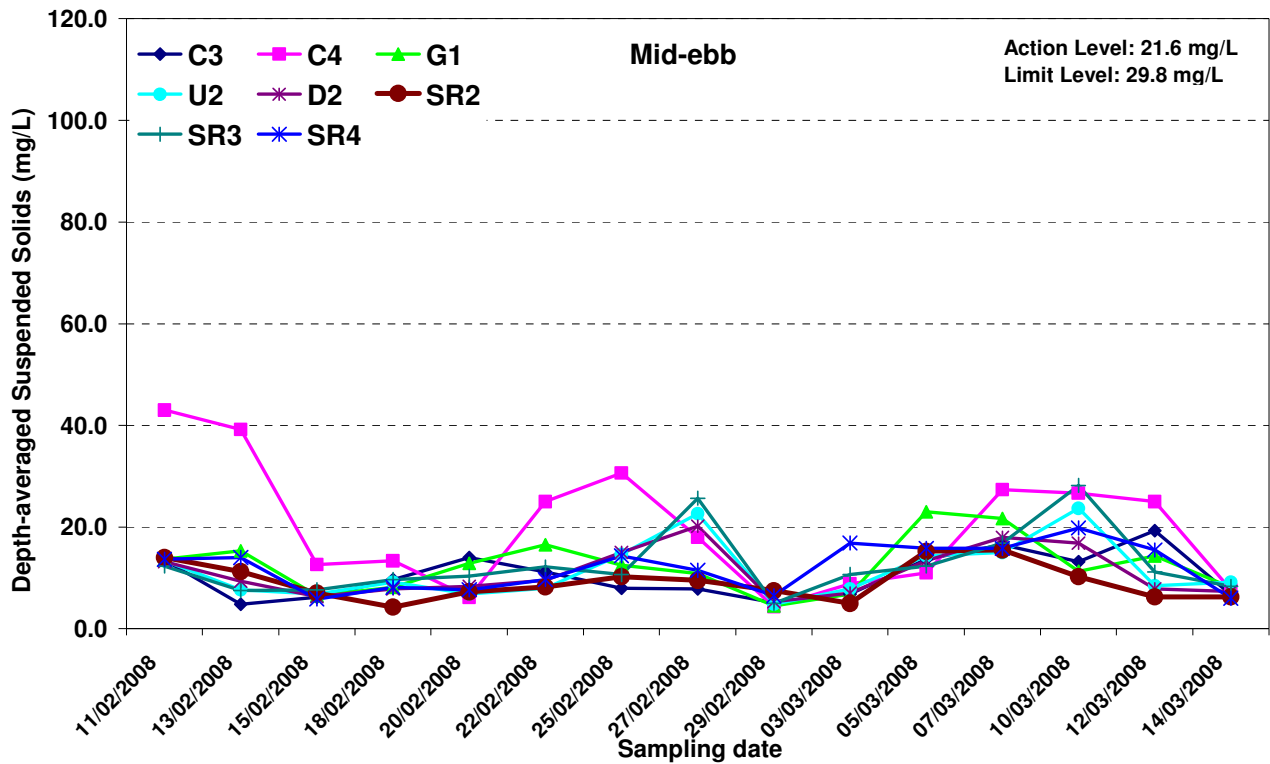


Figure E8 Depth-averaged suspended solids concentration (mg/L) of water samples from the eight sampling locations near the airport at mid-ebb and mid-flood between 11 February 2008 and 14 March 2008



Annex E1 - Water Quality Results at Airport during mid-ebb tide for 10 March 2008

Mid-Ebb

Sampling Date	10/3/2008
Weather & Ambient Temperature	Sunny, 22C

Station		C3			
Time (hh:mm)	13:30-13:35				
Water Depth (m)	11.30				
Monitoring Depth (m)	1.30		9.90		
Trial	Trial 1	Trial 2	Trial 1	Trial 2	Trial 2
Water Temperature (°C)	17.7	17.9	17.4	17.4	17.3
Salinity (ppt)	29.5	29.6	29.8	29.9	30.0
pH	7.9	7.9	7.9	7.9	7.9
D.O. Saturation (%)	118.5	118.8	114.8	115.0	115.1
D.O. (mg/L)	9.45	9.45	9.19	9.21	9.22
Turbidity (NTU)	3.80	3.80	6.80	8.70	6.30
SS (mg/L)	7.0	10.0	10.0	12.0	12.0
Remarks					

Station		U2			
Time (hh:mm)	14:16-14:21				
Water Depth (m)	8.50				
Monitoring Depth (m)	1.20		7.00		
Trial	Trial 1	Trial 2	Trial 1	Trial 2	Trial 2
Water Temperature (°C)	17.6	17.7	17.5	17.5	17.5
Salinity (ppt)	29.6	29.5	30.0	29.8	30.1
pH	8.0	8.0	8.0	8.0	8.0
D.O. Saturation (%)	115.5	115.5	116.8	115.9	112.7
D.O. (mg/L)	9.22	9.21	9.33	9.27	9.00
Turbidity (NTU)	9.40	8.40	16.40	10.60	22.40
SS (mg/L)	13.0	18.0	25.0	18.0	33.0
Remarks					

Station		C4			
Time (hh:mm)	14:35-14:40				
Water Depth (m)	9.40				
Monitoring Depth (m)	1.10		8.20		
Trial	Trial 1	Trial 2	Trial 1	Trial 2	Trial 2
Water Temperature (°C)	17.7	17.7	17.3	17.3	17.2
Salinity (ppt)	30.0	30.0	30.6	30.7	30.7
pH	8.0	8.0	8.0	8.0	8.0
D.O. Saturation (%)	119.0	119.4	116.8	117.4	116.8
D.O. (mg/L)	9.46	9.50	9.33	9.38	9.34
Turbidity (NTU)	5.10	6.10	19.80	19.40	23.40
SS (mg/L)	10.0	7.0	28.0	30.0	44.0
Remarks					

Station		SR2			
Time (hh:mm)	14:15-14:21				
Water Depth (m)	4.40				
Monitoring Depth (m)	1.10		3.10		
Trial	Trial 1	Trial 2	Trial 1	Trial 2	Trial 2
Water Temperature (°C)	18.2	18.5	17.8	17.8	17.8
Salinity (ppt)	29.8	29.8	29.8	29.8	29.8
pH	8.1	8.1	8.0	8.1	8.1
D.O. Saturation (%)	122.0	120.9	115.8	113.7	118.09
D.O. (mg/L)	9.61	9.49	9.22	9.04	9.34
Turbidity (NTU)	4.10	3.70	7.00	5.90	5.17
SS (mg/L)	6.0	6.0	13.0	16.0	10.25
Remarks					

Station		D2			
Time (hh:mm)	14:26-14:29				
Water Depth (m)	7.20				
Monitoring Depth (m)	1.10		5.90		
Trial	Trial 1	Trial 2	Trial 1	Trial 2	Trial 2
Water Temperature (°C)	18.1	17.6	17.6	17.6	17.4
Salinity (ppt)	29.5	29.7	29.6	29.9	30.1
pH	8.0	8.0	8.0	8.0	8.0
D.O. Saturation (%)	116.4	115.8	112.5	115.6	115.9
D.O. (mg/L)	9.22	9.24	8.99	9.23	9.27
Turbidity (NTU)	7.90	10.80	12.10	11.50	16.30
SS (mg/L)	15.0	14.0	16.0	20.0	21.0
Remarks					

Station		SF3			
Time (hh:mm)	14:04-14:10				
Water Depth (m)	12.60				
Monitoring Depth (m)	1.00		11.20		
Trial	Trial 1	Trial 2	Trial 1	Trial 2	Trial 2
Water Temperature (°C)	17.7	18.0	17.5	17.5	17.5
Salinity (ppt)	29.4	29.3	29.9	30.0	29.77
pH	8.0	8.0	8.0	8.0	8.0
D.O. Saturation (%)	115.2	116.7	116.0	114.8	115.72
D.O. (mg/L)	9.20	9.27	9.27	9.18	9.24
Turbidity (NTU)	6.40	4.80	17.00	23.30	17.49
SS (mg/L)	10.0	8.0	22.0	41.0	28.17
Remarks					

Station		G1			
Time (hh:mm)	13:42-13:47				
Water Depth (m)	12.20				
Monitoring Depth (m)	1.20		11.20		
Trial	Trial 1	Trial 2	Trial 1	Trial 2	Trial 2
Water Temperature (°C)	17.9	17.8	17.4	17.4	17.4
Salinity (ppt)	29.4	29.4	29.7	29.7	29.8
pH	8.0	8.0	8.0	8.0	8.0
D.O. Saturation (%)	117.3	114.1	114.5	114.6	114.1
D.O. (mg/L)	9.33	9.09	9.17	9.18	9.15
Turbidity (NTU)	4.30	6.60	7.80	7.20	10.80
SS (mg/L)	9.0	4.0	8.0	10.0	16.0
Remarks					

Station		SR4			
Time (hh:mm)	13:54-13:58				
Water Depth (m)	13.40				
Monitoring Depth (m)	1.10		11.90		
Trial	Trial 1	Trial 2	Trial 1	Trial 2	Trial 2
Water Temperature (°C)	18.0	17.7	17.5	17.5	17.6
Salinity (ppt)	29.5	29.6	29.7	29.8	29.74
pH	8.0	8.0	8.0	8.0	8.0
D.O. Saturation (%)	117.4	118.1	115.7	115.6	116.27
D.O. (mg/L)	9.31	9.42	9.25	9.25	9.28
Turbidity (NTU)	4.40	5.40	8.40	7.80	13.13
SS (mg/L)	9.0	6.0	10.0	17.0	19.83
Remarks					

Annex E2 - Water Quality Results at Airport during mid-flood tide for 10 March 2008

Sampling Date	10/3/2008
Weather & Ambient Temperature	Sunny, 19C

Mid-Flood

Station		C3				
Time (hh:mm)		07:16-07:20				
Water Depth (m)		10.30				
Monitoring Depth (m)		1.20				
Trial	Trial 1	Trial 2	Trial 1	Trial 2	Trial 1	Trial 2
Water Temperature (°C)	17.4	17.4	17.3	17.3	17.4	17.3
Salinity (ppt)	29.2	29.3	29.6	29.7	29.5	29.7
pH	7.9	7.9	7.9	7.9	7.9	7.9
D.O. Saturation (%)	111.4	111.6	113.6	113.8	112.1	113.5
D.O. (mg/L)	8.96	8.98	9.12	9.14	9.01	9.11
Turbidity (NTU)	8.50	8.80	11.30	27.10	14.70	21.50
SS (mg/L)	14.0	12.0	17.0	38.0	17.0	46.0
Remarks						

Station		U2				
Time (hh:mm)		07:58-08:03				
Water Depth (m)		8.60				
Monitoring Depth (m)		1.00				
Trial	Trial 1	Trial 2	Trial 1	Trial 2	Trial 1	Trial 2
Water Temperature (°C)	17.4	17.4	17.4	17.4	17.4	17.4
Salinity (ppt)	29.3	29.3	29.4	29.4	29.5	29.5
pH	8.0	8.0	8.0	8.0	8.0	8.0
D.O. Saturation (%)	112.4	112.1	112.7	112.5	112.2	112.9
D.O. (mg/L)	9.03	9.01	9.05	9.04	9.00	9.06
Turbidity (NTU)	9.20	9.00	10.90	15.20	25.60	28.30
SS (mg/L)	15.0	16.0	18.0	17.0	29.0	43.0
Remarks						

Station		C4				
Time (hh:mm)		08:20-08:24				
Water Depth (m)		9.10				
Monitoring Depth (m)		1.30				
Trial	Trial 1	Trial 2	Trial 1	Trial 2	Trial 1	Trial 2
Water Temperature (°C)	17.4	17.4	17.4	17.4	17.4	17.4
Salinity (ppt)	29.4	29.4	29.4	29.4	29.4	29.5
pH	7.9	7.9	8.0	8.0	8.0	8.0
D.O. Saturation (%)	112.4	112.4	112.8	112.7	111.1	112.9
D.O. (mg/L)	9.03	9.03	9.06	9.05	8.92	9.06
Turbidity (NTU)	10.00	10.00	16.40	13.80	18.40	18.70
SS (mg/L)	20.0	29.0	18.0	18.0	37.0	24.0
Remarks						

Station		SR2				
Time (hh:mm)		08:04-08:11				
Water Depth (m)		4.40				
Monitoring Depth (m)		1.00				
Trial	Trial 1	Trial 2	Trial 1	Trial 2	Trial 1	Trial 2
Water Temperature (°C)	17.5	17.5	17.5	17.5	17.5	17.5
Salinity (ppt)	29.5	29.5	29.5	29.5	29.5	29.5
pH	8.0	8.0	8.0	8.0	8.0	8.0
D.O. Saturation (%)	107.8	109.6	109.3	109.3	109.3	109.00
D.O. (mg/L)	8.64	8.78	8.76	8.76	8.76	8.74
Turbidity (NTU)	7.10	7.10	6.90	6.90	6.90	7.49
SS (mg/L)	9.0	11.0	14.0	14.0	14.0	11.50
Remarks						

Station		D2				
Time (hh:mm)		08:11-08:14				
Water Depth (m)		7.20				
Monitoring Depth (m)		1.10				
Trial	Trial 1	Trial 2	Trial 1	Trial 2	Trial 1	Trial 2
Water Temperature (°C)	17.4	17.4	17.4	17.4	17.4	17.4
Salinity (ppt)	29.5	29.5	29.5	29.5	29.5	29.5
pH	8.0	8.0	8.0	8.0	8.0	8.0
D.O. Saturation (%)	113.8	114.3	112.9	114.2	112.7	114.1
D.O. (mg/L)	9.14	9.17	9.06	9.17	9.04	9.16
Turbidity (NTU)	9.00	9.70	9.40	8.90	9.40	9.90
SS (mg/L)	12.0	16.0	17.0	13.0	13.0	18.0
Remarks						

Station		SR3				
Time (hh:mm)		07:49-07:54				
Water Depth (m)		12.40				
Monitoring Depth (m)		1.30				
Trial	Trial 1	Trial 2	Trial 1	Trial 2	Trial 1	Trial 2
Water Temperature (°C)	17.4	17.4	17.4	17.5	17.6	17.6
Salinity (ppt)	29.3	29.3	29.5	29.7	29.9	29.9
pH	7.9	8.0	8.0	8.0	8.0	8.1
D.O. Saturation (%)	113.5	112.1	114.9	117.2	117.6	116.4
D.O. (mg/L)	9.13	9.02	9.23	9.37	9.39	9.29
Turbidity (NTU)	8.70	8.10	10.10	12.80	16.10	14.20
SS (mg/L)	10.0	12.0	17.0	15.0	16.0	24.0
Remarks						

Station		G1				
Time (hh:mm)		07:30-07:34				
Water Depth (m)		11.40				
Monitoring Depth (m)		1.10				
Trial	Trial 1	Trial 2	Trial 1	Trial 2	Trial 1	Trial 2
Water Temperature (°C)	17.3	17.3	17.4	17.4	17.4	17.4
Salinity (ppt)	29.3	29.3	29.4	29.5	29.6	29.6
pH	7.9	7.9	7.9	8.0	8.0	8.0
D.O. Saturation (%)	111.9	111.6	112.1	113.1	111.9	113.1
D.O. (mg/L)	9.00	8.98	9.01	9.08	8.98	9.08
Turbidity (NTU)	7.10	6.90	8.40	8.50	13.40	18.10
SS (mg/L)	20.0	14.0	10.0	18.0	19.0	22.0
Remarks						

Station		SR4				
Time (hh:mm)		07:40-07:44				
Water Depth (m)		12.30				
Monitoring Depth (m)		1.20				
Trial	Trial 1	Trial 2	Trial 1	Trial 2	Trial 1	Trial 2
Water Temperature (°C)	17.3	17.3	17.4	17.4	17.4	17.4
Salinity (ppt)	29.3	29.3	29.4	29.4	29.5	29.6
pH	7.9	7.9	7.9	7.9	8.0	8.0
D.O. Saturation (%)	111.3	112.1	111.9	112.1	112.0	113.1
D.O. (mg/L)	8.95	9.02	9.00	9.01	8.99	9.08
Turbidity (NTU)	7.30	8.50	9.20	9.30	13.20	15.20
SS (mg/L)	12.0	10.0	13.0	11.0	24.0	20.0
Remarks						

Annex E3 - Water Quality Results at Tuen Mun during mid-ebb tide for 11 March 2008

Date	11/3/2008			
Station	C1			
Time (hh:mm)	14:35 - 14:38			
Ambient Temperature (°C)	22			
Weather	Sunny			
Water Depth (m)	8.20			
Monitoring Depth (m)	1.20	4.30	7.00	
Tide	Mid-Ebb			
Trial	Trial 1	Trial 2	Trial 1	Trial 2
Water Temperature (°C)	17.6	17.6	17.5	17.5
Salinity (ppt)	30.0	30.0	30.0	30.0
pH	7.9	7.9	7.9	7.9
D.O. Saturation (%)	97.8	99.1	96.7	98.3
D.O. (mg/L)	7.79	7.90	7.72	7.85
Turbidity (NTU)	5.30	4.40	5.40	6.70
SS (mg/L)	6.0	8.0	9.0	11.0
Remarks	-			

Date	11/3/2008			
Station	U1			
Time (hh:mm)	14:57 - 15:00			
Ambient Temperature (°C)	22			
Weather	Sunny			
Water Depth (m)	9.60			
Monitoring Depth (m)	1.20	4.60	8.00	
Tide	Mid-Ebb			
Trial	Trial 1	Trial 2	Trial 1	Trial 2
Water Temperature (°C)	17.4	17.4	17.3	17.4
Salinity (ppt)	30.1	30.1	30.2	30.2
pH	7.9	7.9	7.9	7.9
D.O. Saturation (%)	101.2	102.2	100.3	101.6
D.O. (mg/L)	8.10	8.17	8.03	8.13
Turbidity (NTU)	4.70	5.30	5.60	5.50
SS (mg/L)	11.0	7.0	9.0	11.0
Remarks	-			

Date	11/3/2008			
Station	C2			
Time (hh:mm)	15:12 - 15:15			
Ambient Temperature (°C)	22			
Weather	Sunny			
Water Depth (m)	13.80			
Monitoring Depth (m)	1.20	6.60	11.90	
Tide	Mid-Ebb			
Trial	Trial 1	Trial 2	Trial 1	Trial 2
Water Temperature (°C)	17.6	17.6	17.4	17.4
Salinity (ppt)	29.8	29.9	30.0	30.1
pH	7.9	7.9	7.9	7.9
D.O. Saturation (%)	105.8	106.6	104.0	104.7
D.O. (mg/L)	8.44	8.50	8.32	8.37
Turbidity (NTU)	3.20	3.30	4.60	5.10
SS (mg/L)	10.0	8.0	7.0	10.0
Remarks	-			

Date	11/3/2008			
Station	SRI			
Time (hh:mm)	14:46 - 14:52			
Ambient Temperature (°C)	22			
Weather	Sunny			
Water Depth (m)	5.40			
Monitoring Depth (m)	1.10	2.50	4.00	
Tide	Mid-Ebb			
Trial	Trial 1	Trial 2	Trial 1	Trial 2
Water Temperature (°C)	17.7	17.7	17.6	17.6
Salinity (ppt)	29.9	29.9	29.9	29.9
pH	7.9	7.9	7.9	7.9
D.O. Saturation (%)	102.1	103.0	98.9	102.7
D.O. (mg/L)	8.13	8.21	7.89	8.18
Turbidity (NTU)	2.20	2.80	5.00	2.70
SS (mg/L)	4.0	5.0	5.0	7.0
Remarks	-			

Date	11/3/2008			
Station	D1			
Time (hh:mm)	15:04 - 15:07			
Ambient Temperature (°C)	22			
Weather	Sunny			
Water Depth (m)	8.70			
Monitoring Depth (m)	1.00	4.00	7.00	
Tide	Mid-Ebb			
Trial	Trial 1	Trial 2	Trial 1	Trial 2
Water Temperature (°C)	17.7	17.8	17.5	17.4
Salinity (ppt)	30.0	30.0	30.0	30.1
pH	7.9	7.9	7.9	7.9
D.O. Saturation (%)	105.0	105.9	103.3	103.0
D.O. (mg/L)	8.36	8.42	8.25	8.11
Turbidity (NTU)	3.80	2.90	3.30	4.20
SS (mg/L)	5.0	5.0	6.0	9.0
Remarks	-			

Date	11/3/2008			
Station	SRI			
Time (hh:mm)	14:46 - 14:52			
Ambient Temperature (°C)	22			
Weather	Sunny			
Water Depth (m)	5.40			
Monitoring Depth (m)	1.10	2.50	4.00	
Tide	Mid-Ebb			
Trial	Trial 1	Trial 2	Trial 1	Trial 2
Water Temperature (°C)	17.7	17.7	17.6	17.6
Salinity (ppt)	29.9	29.9	29.9	29.9
pH	7.9	7.9	7.9	7.9
D.O. Saturation (%)	102.1	103.0	98.9	102.7
D.O. (mg/L)	8.13	8.21	7.89	8.18
Turbidity (NTU)	2.20	2.80	5.00	2.70
SS (mg/L)	4.0	5.0	5.0	7.0
Remarks	-			

Date	11/3/2008			
Station	D1			
Time (hh:mm)	15:04 - 15:07			
Ambient Temperature (°C)	22			
Weather	Sunny			
Water Depth (m)	8.70			
Monitoring Depth (m)	1.00	4.00	7.00	
Tide	Mid-Ebb			
Trial	Trial 1	Trial 2	Trial 1	Trial 2
Water Temperature (°C)	17.7	17.8	17.5	17.4
Salinity (ppt)	30.0	30.0	30.0	30.1
pH	7.9	7.9	7.9	7.9
D.O. Saturation (%)	105.0	105.9	103.3	103.0
D.O. (mg/L)	8.36	8.42	8.25	8.11
Turbidity (NTU)	3.80	2.90	3.30	4.20
SS (mg/L)	5.0	5.0	6.0	9.0
Remarks	-			

Date	11/3/2008			
Station	SRI			
Time (hh:mm)	14:46 - 14:52			
Ambient Temperature (°C)	22			
Weather	Sunny			
Water Depth (m)	5.40			
Monitoring Depth (m)	1.10	2.50	4.00	
Tide	Mid-Ebb			
Trial	Trial 1	Trial 2	Trial 1	Trial 2
Water Temperature (°C)	17.7	17.7	17.6	17.6
Salinity (ppt)	29.9	29.9	29.9	29.9
pH	7.9	7.9	7.9	7.9
D.O. Saturation (%)	102.1	103.0	98.9	102.7
D.O. (mg/L)	8.13	8.21	7.89	8.18
Turbidity (NTU)	2.20	2.80	5.00	2.70
SS (mg/L)	4.0	5.0	5.0	7.0
Remarks	-			

Annex E4 - Water Quality Results at Tuen Mun during mid-flood tide for 11 March 2008

Date	11/3/2008						
Station	C1						
Time (hh:mm)	07:38 - 07:43						
Ambient Temperature (°C)	20						
Weather	Sunny						
Water Depth (m)	7.40						
Monitoring Depth (m)	6.10						
Tide	Mid-Flood						
Trial	Trial 1	Trial 2	Trial 1	Trial 2	Trial 1	Trial 2	Bottom
Water Temperature (°C)	17.4	17.4	17.4	17.4	17.4	17.4	17.39
Salinity (ppt)	29.8	29.8	29.8	29.8	29.8	29.8	29.84
pH	7.9	7.9	7.9	7.9	7.8	7.9	7.89
D.O. Saturation (%)	106.6	106.6	106.5	106.4	105.4	105.3	106.13
D.O. (mg/L)	8.54	8.54	8.53	8.52	8.44	8.44	8.44
Turbidity (NTU)	9.50	7.60	10.10	8.10	8.50	5.80	8.23
SS (mg/L)	9.0	10.0	13.0	12.0	12.0	12.0	11.33
Remarks	-						

Date	11/3/2008						
Station	U1						
Time (hh:mm)	07:57 - 08:00						
Ambient Temperature (°C)	20						
Weather	Sunny						
Water Depth (m)	8.40						
Monitoring Depth (m)	4.00						
Tide	Mid-Flood						
Trial	Trial 1	Trial 2	Trial 1	Trial 2	Trial 1	Trial 2	Bottom
Water Temperature (°C)	17.4	17.4	17.5	17.4	17.3	17.3	17.39
Salinity (ppt)	29.8	29.9	29.8	29.9	29.8	29.9	29.83
pH	7.9	7.9	7.9	7.9	7.9	7.9	7.93
D.O. Saturation (%)	106.3	106.9	105.8	105.5	104.3	105.7	105.57
D.O. (mg/L)	8.50	8.48	8.47	8.46	8.36	8.48	8.46
Turbidity (NTU)	3.00	3.70	3.50	4.20	4.50	3.80	3.81
SS (mg/L)	7.0	6.0	7.0	9.0	10.0	7.0	7.67
Remarks	-						

Date	11/3/2008						
Station	C2						
Time (hh:mm)	08:15 - 08:18						
Ambient Temperature (°C)	20						
Weather	Sunny						
Water Depth (m)	13.30						
Monitoring Depth (m)	12.00						
Tide	Mid-Flood						
Trial	Trial 1	Trial 2	Trial 1	Trial 2	Trial 1	Trial 2	Bottom
Water Temperature (°C)	17.4	17.4	17.4	17.3	17.3	17.3	17.35
Salinity (ppt)	29.9	29.9	29.9	29.9	29.9	29.9	29.90
pH	7.9	7.9	7.9	7.9	7.9	7.9	7.92
D.O. Saturation (%)	104.7	104.6	104.7	104.4	104.4	104.53	104.53
D.O. (mg/L)	8.39	8.38	8.39	8.36	8.37	8.38	8.37
Turbidity (NTU)	4.70	4.40	5.60	6.30	8.80	8.00	6.31
SS (mg/L)	7.0	9.0	12.0	10.0	12.0	16.0	11.00
Remarks	-						

Date	11/3/2008						
Station	SRI						
Time (hh:mm)	07:51 - 07:54						
Ambient Temperature (°C)	20						
Weather	Sunny						
Water Depth (m)	4.20						
Monitoring Depth (m)	1.80						
Tide	Mid-Flood						
Trial	Trial 1	Trial 2	Trial 1	Trial 2	Trial 1	Trial 2	Bottom
Water Temperature (°C)	17.3	17.3	17.3	17.3	17.3	17.3	17.32
Salinity (ppt)	29.9	29.9	29.9	29.9	29.9	29.9	29.88
pH	7.9	7.9	7.9	7.9	7.9	7.9	7.93
D.O. Saturation (%)	106.2	106.2	105.8	106.1	104.8	106.1	105.87
D.O. (mg/L)	8.52	8.52	8.49	8.51	8.41	8.51	8.49
Turbidity (NTU)	3.30	3.40	3.80	3.50	3.50	3.30	3.49
SS (mg/L)	5.0	5.0	7.0	8.0	5.0	7.0	6.17
Remarks	-						

Date	11/3/2008						
Station	D1						
Time (hh:mm)	08:06 - 08:09						
Ambient Temperature (°C)	20						
Weather	Sunny						
Water Depth (m)	8.60						
Monitoring Depth (m)	7.20						
Tide	Mid-Flood						
Trial	Trial 1	Trial 2	Trial 1	Trial 2	Trial 1	Trial 2	Bottom
Water Temperature (°C)	17.3	17.3	17.3	17.3	17.3	17.3	17.33
Salinity (ppt)	29.9	29.9	29.9	29.9	29.9	29.9	29.89
pH	7.9	7.9	7.9	7.9	7.9	7.9	7.93
D.O. Saturation (%)	105.3	105.3	105.2	105.1	103.9	104.9	104.96
D.O. (mg/L)	8.44	8.44	8.43	8.42	8.34	8.41	8.41
Turbidity (NTU)	5.60	4.10	4.30	4.10	3.40	4.80	4.41
SS (mg/L)	6.0	8.0	7.0	6.0	10.0	8.0	7.50
Remarks	-						

Date	11/3/2008						
Station	SRI						
Time (hh:mm)	07:51 - 07:54						
Ambient Temperature (°C)	20						
Weather	Sunny						
Water Depth (m)	4.20						
Monitoring Depth (m)	1.80						
Tide	Mid-Flood						
Trial	Trial 1	Trial 2	Trial 1	Trial 2	Trial 1	Trial 2	Bottom
Water Temperature (°C)	17.3	17.3	17.3	17.3	17.3	17.3	17.32
Salinity (ppt)	29.9	29.9	29.9	29.9	29.9	29.9	29.88
pH	7.9	7.9	7.9	7.9	7.9	7.9	7.93
D.O. Saturation (%)	106.2	106.2	105.8	106.1	104.8	106.1	105.87
D.O. (mg/L)	8.52	8.52	8.49	8.51	8.41	8.51	8.49
Turbidity (NTU)	3.30	3.40	3.80	3.50	3.50	3.30	3.49
SS (mg/L)	5.0	5.0	7.0	8.0	5.0	7.0	6.17
Remarks	-						

Annex E5 - Water Quality Results at Airport during mid-ebb tide for 12 March 2008

Mid-Ebb

Sampling Date	12/3/2008
Weather & Ambient Temperature	Sunny, 23C

Station	C3			
	15:49-15:55			
Time (hh:mm)	10.90			
Water Depth (m)	10.90			
Monitoring Depth (m)	10.00			
Trial	Trial 1	Trial 2	Trial 1	Trial 2
Water Temperature (°C)	18.4	18.5	17.9	17.9
Salinity (ppt)	29.4	29.3	29.6	29.6
pH	7.9	7.9	7.9	7.9
D.O. Saturation (%)	99.5	100.6	97.1	96.4
D.O. (mg/L)	7.84	7.91	7.71	7.65
Turbidity (NTU)	3.70	4.30	12.40	17.50
SS (mg/L)	6.0	4.0	20.0	28.0
Remarks				

Station	U2			
	15:04-15:12			
Time (hh:mm)	8.50			
Water Depth (m)	4.00			
Monitoring Depth (m)	7.40			
Trial	Trial 1	Trial 2	Trial 1	Trial 2
Water Temperature (°C)	18.5	18.5	18.2	17.9
Salinity (ppt)	29.6	29.6	29.9	30.3
pH	8.0	8.0	8.0	8.0
D.O. Saturation (%)	105.0	107.6	106.4	107.3
D.O. (mg/L)	8.25	8.45	8.39	8.49
Turbidity (NTU)	2.40	2.80	4.00	5.30
SS (mg/L)	6.0	8.0	7.0	12.0
Remarks				

Station	C4			
	14:44-14:50			
Time (hh:mm)	9.40			
Water Depth (m)	9.40			
Monitoring Depth (m)	8.10			
Trial	Trial 1	Trial 2	Trial 1	Trial 2
Water Temperature (°C)	18.5	18.6	17.9	17.8
Salinity (ppt)	29.4	29.4	30.2	30.4
pH	7.9	7.9	7.9	8.0
D.O. Saturation (%)	96.6	97.2	97.1	97.6
D.O. (mg/L)	7.60	7.64	7.69	7.74
Turbidity (NTU)	3.70	2.80	14.60	28.00
SS (mg/L)	8.0	8.0	21.0	42.0
Remarks				

Station	SR2			
	14:42-14:47			
Time (hh:mm)	4.20			
Water Depth (m)	2.70			
Monitoring Depth (m)	1.00			
Trial	Trial 1	Trial 2	Trial 1	Trial 2
Water Temperature (°C)	18.8	18.7	18.3	18.4
Salinity (ppt)	29.5	29.6	29.6	29.6
pH	8.0	8.0	7.9	8.0
D.O. Saturation (%)	103.9	109.5	106.6	109.7
D.O. (mg/L)	8.51	8.57	8.40	8.63
Turbidity (NTU)	6.30	3.60	6.90	6.80
SS (mg/L)	5.0	5.0	7.0	8.0
Remarks				

Station	D2			
	15:19-15:26			
Time (hh:mm)	8.70			
Water Depth (m)	8.70			
Monitoring Depth (m)	6.90			
Trial	Trial 1	Trial 2	Trial 1	Trial 2
Water Temperature (°C)	18.3	18.3	18.0	18.0
Salinity (ppt)	29.8	29.7	29.9	30.2
pH	8.0	8.0	8.0	8.0
D.O. Saturation (%)	104.3	105.2	105.0	106.4
D.O. (mg/L)	8.21	8.29	8.38	8.41
Turbidity (NTU)	5.40	5.10	5.20	6.40
SS (mg/L)	6.0	7.0	7.0	10.0
Remarks				

Station	SR3			
	14:58-15:03			
Time (hh:mm)	12.50			
Water Depth (m)	6.00			
Monitoring Depth (m)	1.30			
Trial	Trial 1	Trial 2	Trial 1	Trial 2
Water Temperature (°C)	18.4	18.4	18.3	17.9
Salinity (ppt)	29.3	29.3	29.5	30.0
pH	7.9	7.9	7.9	8.0
D.O. Saturation (%)	96.6	97.0	95.9	96.3
D.O. (mg/L)	7.61	7.64	7.57	7.63
Turbidity (NTU)	3.40	2.80	4.90	13.50
SS (mg/L)	6.0	4.0	8.0	25.0
Remarks				

Station	G1			
	15:19-15:25			
Time (hh:mm)	11.60			
Water Depth (m)	11.60			
Monitoring Depth (m)	11.10			
Trial	Trial 1	Trial 2	Trial 1	Trial 2
Water Temperature (°C)	18.4	18.4	18.0	18.0
Salinity (ppt)	29.4	29.4	29.5	29.8
pH	7.9	7.9	7.9	8.0
D.O. Saturation (%)	98.0	98.5	96.1	94.6
D.O. (mg/L)	7.73	7.76	7.58	7.62
Turbidity (NTU)	3.20	3.90	8.70	23.30
SS (mg/L)	4.0	5.0	12.0	34.0
Remarks				

Station	SR4			
	15:10-15:14			
Time (hh:mm)	13.20			
Water Depth (m)	6.60			
Monitoring Depth (m)	1.20			
Trial	Trial 1	Trial 2	Trial 1	Trial 2
Water Temperature (°C)	18.5	18.5	18.1	18.0
Salinity (ppt)	29.4	29.4	29.6	30.0
pH	7.9	7.9	7.9	8.0
D.O. Saturation (%)	98.0	97.7	96.4	97.0
D.O. (mg/L)	7.71	7.68	7.67	7.68
Turbidity (NTU)	3.10	3.50	6.50	21.60
SS (mg/L)	7.0	7.0	7.0	36.0
Remarks				

Annex E6 - Water Quality Results at Airport during mid-flood tide for 12 March 2008

Mid-Flood

Sampling Date	12/3/2008
Weather & Ambient Temperature	Sunny, 20C

Station	C3	
	Time (hh:mm)	09:02-09:10
Water Depth (m)	11.50	
Monitoring Depth (m)	1.20	
Trial	Trial 1	Trial 2
Water Temperature (°C)	17.9	17.9
Salinity (ppt)	29.4	29.5
pH	7.9	7.9
D.O. Saturation (%)	98.7	99.7
D.O. (mg/L)	7.85	7.93
Turbidity (NTU)	3.00	3.80
SS (mg/L)	9.0	8.0
Remarks		

Station	U2	
	Time (hh:mm)	08:37-08:48
Water Depth (m)	8.20	
Monitoring Depth (m)	1.10	
Trial	Trial 1	Trial 2
Water Temperature (°C)	18.0	18.0
Salinity (ppt)	29.2	29.2
pH	7.9	7.9
D.O. Saturation (%)	103.0	102.9
D.O. (mg/L)	8.19	8.18
Turbidity (NTU)	3.70	3.40
SS (mg/L)	9.0	8.0
Remarks		

Station	C4	
	Time (hh:mm)	09:50-09:54
Water Depth (m)	8.70	
Monitoring Depth (m)	1.10	
Trial	Trial 1	Trial 2
Water Temperature (°C)	18.1	18.1
Salinity (ppt)	29.1	29.0
pH	7.9	7.9
D.O. Saturation (%)	101.8	101.9
D.O. (mg/L)	8.08	8.09
Turbidity (NTU)	5.80	5.30
SS (mg/L)	9.0	8.0
Remarks		

Station	SR2	
	Time (hh:mm)	08:14-08:21
Water Depth (m)	4.20	
Monitoring Depth (m)	1.10	
Trial	Trial 1	Trial 2
Water Temperature (°C)	18.1	18.1
Salinity (ppt)	29.3	29.2
pH	7.9	7.9
D.O. Saturation (%)	103.0	101.7
D.O. (mg/L)	8.17	8.07
Turbidity (NTU)	3.60	4.50
SS (mg/L)	23.0	23.0
Remarks		

Station	D2	
	Time (hh:mm)	08:56-09:08
Water Depth (m)	8.40	
Monitoring Depth (m)	1.10	
Trial	Trial 1	Trial 2
Water Temperature (°C)	18.0	18.0
Salinity (ppt)	29.3	29.2
pH	8.0	8.0
D.O. Saturation (%)	103.1	102.5
D.O. (mg/L)	8.18	8.14
Turbidity (NTU)	3.40	3.30
SS (mg/L)	6.0	9.0
Remarks		

Station	SR3	
	Time (hh:mm)	09:37-09:41
Water Depth (m)	12.40	
Monitoring Depth (m)	1.10	
Trial	Trial 1	Trial 2
Water Temperature (°C)	18.1	18.1
Salinity (ppt)	28.9	29.0
pH	7.9	7.9
D.O. Saturation (%)	100.4	101.4
D.O. (mg/L)	7.97	8.05
Turbidity (NTU)	4.00	6.70
SS (mg/L)	6.0	9.0
Remarks		

Station	G1	
	Time (hh:mm)	09:16-09:19
Water Depth (m)	12.20	
Monitoring Depth (m)	1.10	
Trial	Trial 1	Trial 2
Water Temperature (°C)	17.9	17.9
Salinity (ppt)	29.3	29.3
pH	7.9	7.9
D.O. Saturation (%)	99.0	99.6
D.O. (mg/L)	7.87	7.92
Turbidity (NTU)	3.10	3.60
SS (mg/L)	8.0	7.0
Remarks		

Station	SR4	
	Time (hh:mm)	09:28-09:32
Water Depth (m)	13.20	
Monitoring Depth (m)	1.10	
Trial	Trial 1	Trial 2
Water Temperature (°C)	18.0	18.0
Salinity (ppt)	29.1	29.1
pH	7.9	7.9
D.O. Saturation (%)	100.3	100.6
D.O. (mg/L)	7.97	8.00
Turbidity (NTU)	2.40	2.60
SS (mg/L)	9.0	7.0
Remarks		

Annex E7 - Water Quality Results at Tuen Mun during mid-ebb tide for 13 March 2008

Date	03/13/2008					
Station	C1					
Time (hh:mm)	15:45 - 15:49					
Ambient Temperature (°C)	24					
Weather	Sunny					
Water Depth (m)	8.60					
Monitoring Depth (m)	7.30					
Tide	Mid-Ebb					
Trial	Trial 1	Trial 2	Trial 1	Trial 2	Depth-averaged	Bottom
Water Temperature (°C)	18.2	18.1	18.1	18.0	18.0	-
Salinity (ppt)	29.9	30.0	30.0	30.0	30.0	-
pH	7.9	7.9	7.9	7.8	7.9	-
D.O. Saturation (%)	96.0	95.9	95.5	95.8	95.7	-
D.O. (mg/L)	7.57	7.64	7.54	7.57	7.48	7.53
Turbidity (NTU)	2.40	2.30	2.50	2.60	3.00	-
SS (mg/L)	4.0	6.0	7.0	6.0	8.0	-
Remarks	-					

Date	03/13/2008					
Station	C2					
Time (hh:mm)	16:19 - 16:23					
Ambient Temperature (°C)	24					
Weather	Cloudy					
Water Depth (m)	13.40					
Monitoring Depth (m)	12.20					
Tide	Mid-Ebb					
Trial	Trial 1	Trial 2	Trial 1	Trial 2	Depth-averaged	Bottom
Water Temperature (°C)	18.2	18.2	18.0	18.0	17.7	17.95
Salinity (ppt)	29.9	29.9	30.0	30.0	30.3	30.08
pH	7.9	7.9	7.9	7.9	7.9	7.90
D.O. Saturation (%)	99.1	98.1	97.5	98.2	95.8	97.55
D.O. (mg/L)	7.82	7.74	7.71	7.76	7.61	7.67
Turbidity (NTU)	2.10	2.90	2.80	2.80	3.40	3.05
SS (mg/L)	5.0	5.0	4.0	5.0	6.0	5.33
Remarks	-					

Date	03/13/2008					
Station	D1					
Time (hh:mm)	16:10 - 16:14					
Ambient Temperature (°C)	24					
Weather	Cloudy					
Water Depth (m)	8.40					
Monitoring Depth (m)	7.40					
Tide	Mid-Ebb					
Trial	Trial 1	Trial 2	Trial 1	Trial 2	Depth-averaged	Bottom
Water Temperature (°C)	18.5	18.5	18.0	18.1	17.8	18.11
Salinity (ppt)	29.8	29.8	30.0	29.9	30.2	29.97
pH	7.9	7.9	7.9	7.9	7.9	7.90
D.O. Saturation (%)	99.8	100.1	97.3	98.7	96.2	98.30
D.O. (mg/L)	7.84	7.86	7.70	7.80	7.63	7.73
Turbidity (NTU)	2.00	1.90	2.10	1.80	2.90	2.20
SS (mg/L)	3.0	2.0	4.0	4.0	4.0	3.50
Remarks	-					

Date	03/13/2008					
Station	U1					
Time (hh:mm)	16:03 - 16:06					
Ambient Temperature (°C)	24					
Weather	Cloudy					
Water Depth (m)	9.50					
Monitoring Depth (m)	8.20					
Tide	Mid-Ebb					
Trial	Trial 1	Trial 2	Trial 1	Trial 2	Depth-averaged	Bottom
Water Temperature (°C)	18.3	18.4	18.0	17.9	17.8	18.01
Salinity (ppt)	29.8	29.8	30.0	30.1	30.2	30.04
pH	7.9	7.9	7.9	7.9	7.9	7.91
D.O. Saturation (%)	98.8	99.5	97.0	97.3	96.7	97.49
D.O. (mg/L)	7.79	7.82	7.68	7.70	7.59	7.71
Turbidity (NTU)	1.40	1.40	2.20	2.90	2.80	2.32
SS (mg/L)	6.0	4.0	4.0	5.0	6.0	4.83
Remarks	-					

Date	03/13/2008					
Station	SR1					
Time (hh:mm)	15:56 - 15:59					
Ambient Temperature (°C)	24					
Weather	Sunny					
Water Depth (m)	5.40					
Monitoring Depth (m)	4.10					
Tide	Mid-Ebb					
Trial	Trial 1	Trial 2	Trial 1	Trial 2	Depth-averaged	Bottom
Water Temperature (°C)	18.4	18.4	18.0	18.0	17.9	18.07
Salinity (ppt)	29.8	29.8	30.0	29.9	30.1	29.97
pH	7.9	7.9	7.9	7.9	7.9	7.90
D.O. Saturation (%)	98.2	98.7	96.2	97.3	95.3	97.44
D.O. (mg/L)	7.73	7.76	7.61	7.69	7.55	7.70
Turbidity (NTU)	1.90	1.60	2.80	2.60	2.50	2.25
SS (mg/L)	3.0	4.0	5.0	5.0	6.0	5.17
Remarks	-					

Annex E8 - Water Quality Results at Tuen Mun during mid-flood tide for 13 March 2008

Date	03/13/2008					
Station	C1					
Time (hh:mm)	08:54 - 08:59					
Ambient Temperature (°C)	21					
Weather	Sunny					
Water Depth (m)	7.40			6.30		
Monitoring Depth (m)	1.00					
Tide	Mid-Flood					
Trial	Trial 1	Trial 2	Trial 1	Trial 2	Trial 1	Trial 2
Water Temperature (°C)	18.1	18.1	18.1	18.0	18.0	18.0
Salinity (ppt)	29.6	29.6	29.6	29.6	29.7	29.6
pH	7.9	7.8	7.8	7.9	7.9	7.85
D.O. Saturation (%)	98.9	98.1	98.6	97.9	98.1	98.58
D.O. (mg/L)	7.83	7.85	7.81	7.83	7.77	7.81
Turbidity (NTU)	1.90	1.70	2.00	2.00	2.90	3.00
SS (mg/L)	3.0	5.0	5.0	4.0	5.0	7.0
Remarks	-					

Date	03/13/2008					
Station	U1					
Time (hh:mm)	09:14 - 09:17					
Ambient Temperature (°C)	21					
Weather	Sunny					
Water Depth (m)	9.40			8.20		
Monitoring Depth (m)	1.00					
Tide	Mid-Flood					
Trial	Trial 1	Trial 2	Trial 1	Trial 2	Trial 1	Trial 2
Water Temperature (°C)	18.1	18.1	18.1	18.1	18.0	18.0
Salinity (ppt)	29.6	29.6	29.6	29.6	29.6	29.62
pH	7.9	7.9	7.9	7.9	7.9	7.89
D.O. Saturation (%)	98.2	97.5	97.8	97.7	97.1	97.4
D.O. (mg/L)	7.77	7.72	7.74	7.73	7.69	7.72
Turbidity (NTU)	1.90	2.00	1.90	1.90	2.90	2.16
SS (mg/L)	5.0	5.0	4.0	4.0	4.0	4.50
Remarks	-					

Date	03/13/2008					
Station	C2					
Time (hh:mm)	09:31 - 09:35					
Ambient Temperature (°C)	21					
Weather	Sunny					
Water Depth (m)	13.10			12.20		
Monitoring Depth (m)	1.30					
Tide	Mid-Flood					
Trial	Trial 1	Trial 2	Trial 1	Trial 2	Trial 1	Trial 2
Water Temperature (°C)	18.1	18.1	18.0	18.0	18.0	18.04
Salinity (ppt)	29.6	29.6	29.7	29.7	29.7	29.66
pH	7.9	7.9	7.9	7.9	7.9	7.88
D.O. Saturation (%)	96.7	96.6	95.9	96.0	95.4	96.05
D.O. (mg/L)	7.65	7.65	7.59	7.60	7.56	7.61
Turbidity (NTU)	1.90	1.90	3.30	3.40	4.30	4.00
SS (mg/L)	7.0	9.0	4.0	4.0	6.0	6.00
Remarks	-					

Date	03/13/2008					
Station	SRT1					
Time (hh:mm)	09:06 - 09:09					
Ambient Temperature (°C)	21					
Weather	Sunny					
Water Depth (m)	5.20			4.40		
Monitoring Depth (m)	1.10					
Tide	Mid-Flood					
Trial	Trial 1	Trial 2	Trial 1	Trial 2	Trial 1	Trial 2
Water Temperature (°C)	18.1	18.1	18.0	18.1	18.1	18.07
Salinity (ppt)	29.6	29.6	29.6	29.6	29.6	29.60
pH	7.9	7.9	7.9	7.9	7.9	7.88
D.O. Saturation (%)	98.4	98.6	97.4	98.1	97.2	97.94
D.O. (mg/L)	7.79	7.80	7.71	7.77	7.70	7.76
Turbidity (NTU)	1.40	1.40	3.00	2.20	3.40	2.33
SS (mg/L)	5.0	6.0	4.0	4.0	4.0	4.83
Remarks	-					

Date	03/13/2008					
Station	D1					
Time (hh:mm)	09:22 - 09:26					
Ambient Temperature (°C)	21					
Weather	Sunny					
Water Depth (m)	8.70			7.00		
Monitoring Depth (m)	1.00					
Tide	Mid-Flood					
Trial	Trial 1	Trial 2	Trial 1	Trial 2	Trial 1	Trial 2
Water Temperature (°C)	18.2	18.2	18.1	18.0	18.0	18.09
Salinity (ppt)	29.6	29.6	29.6	29.7	29.7	29.64
pH	7.9	7.9	7.9	7.9	7.9	7.88
D.O. Saturation (%)	97.8	97.8	97.3	97.3	96.5	97.24
D.O. (mg/L)	7.73	7.73	7.70	7.64	7.67	7.66
Turbidity (NTU)	1.50	1.40	1.90	1.80	2.80	2.00
SS (mg/L)	3.0	2.0	5.0	6.0	4.0	4.00
Remarks	-					

Date	03/13/2008					
Station	SRT1					
Time (hh:mm)	09:06 - 09:09					
Ambient Temperature (°C)	21					
Weather	Sunny					
Water Depth (m)	5.20			4.40		
Monitoring Depth (m)	1.10					
Tide	Mid-Flood					
Trial	Trial 1	Trial 2	Trial 1	Trial 2	Trial 1	Trial 2
Water Temperature (°C)	18.1	18.1	18.0	18.1	18.0	18.07
Salinity (ppt)	29.6	29.6	29.6	29.6	29.6	29.60
pH	7.9	7.9	7.9	7.9	7.9	7.88
D.O. Saturation (%)	98.4	98.6	97.4	98.1	97.2	97.94
D.O. (mg/L)	7.79	7.80	7.71	7.77	7.70	7.76
Turbidity (NTU)	1.40	1.40	3.00	2.20	3.40	2.33
SS (mg/L)	5.0	6.0	4.0	4.0	4.0	4.83
Remarks	-					

Annex E9 - Water Quality Results at Airport during mid-ebb tide for 14 March 2008

Mid-Ebb

Sampling Date	14/3/2008
Weather & Ambient Temperature	Cloudy

Station		C3	
Time (hh:mm)	17:13-17:18	10.10	
Water Depth (m)	11.00		
Monitoring Depth (m)		1.10	5.40
Trial	Trial 1	Trial 2	Trial 1
Water Temperature (°C)	19.0	18.4	18.2
Salinity (ppt)	28.9	29.5	29.8
pH	7.8	7.8	7.8
D.O. Saturation (%)	98.9	97.6	96.4
D.O. (mg/L)	7.73	7.68	7.61
Turbidity (NTU)	2.20	2.30	3.90
SS (mg/L)	4.0	7.0	5.0
Remarks			

Station		U2	
Time (hh:mm)	17:51-17:55	7.10	
Water Depth (m)	8.00		
Monitoring Depth (m)		1.30	4.20
Trial	Trial 1	Trial 2	Trial 1
Water Temperature (°C)	19.1	19.2	18.5
Salinity (ppt)	28.7	28.6	29.8
pH	7.8	7.8	7.9
D.O. Saturation (%)	92.9	93.3	95.9
D.O. (mg/L)	7.25	7.28	7.54
Turbidity (NTU)	2.40	2.70	5.50
SS (mg/L)	6.0	7.0	8.0
Remarks			

Station		C4	
Time (hh:mm)	18:09-18:14	8.10	
Water Depth (m)	9.00		
Monitoring Depth (m)		1.00	4.40
Trial	Trial 1	Trial 2	Trial 1
Water Temperature (°C)	19.2	19.0	18.5
Salinity (ppt)	28.6	28.7	29.2
pH	7.9	7.9	8.0
D.O. Saturation (%)	94.2	94.6	97.2
D.O. (mg/L)	7.34	7.37	7.58
Turbidity (NTU)	1.40	1.50	3.40
SS (mg/L)	3.0	4.0	6.0
Remarks			

Station		SR2	
Time (hh:mm)	17:11-17:15	2.70	
Water Depth (m)	4.00		
Monitoring Depth (m)		0.80	Trial 1
Trial	Trial 1	Trial 2	Trial 1
Water Temperature (°C)	19.6	19.6	18.8
Salinity (ppt)	28.3	28.3	29.5
pH	7.8	7.8	7.8
D.O. Saturation (%)	98.0	97.0	98.3
D.O. (mg/L)	7.60	7.52	7.80
Turbidity (NTU)	0.90	1.10	4.20
SS (mg/L)	4.0	3.0	8.0
Remarks			

Station		D2	
Time (hh:mm)	18:00-18:04	6.20	
Water Depth (m)	7.00		
Monitoring Depth (m)		1.00	3.30
Trial	Trial 1	Trial 2	Trial 1
Water Temperature (°C)	19.2	19.2	18.7
Salinity (ppt)	28.8	28.9	29.4
pH	7.8	7.8	7.9
D.O. Saturation (%)	91.2	92.0	92.8
D.O. (mg/L)	7.11	7.10	7.26
Turbidity (NTU)	3.40	3.10	5.50
SS (mg/L)	6.0	7.0	9.0
Remarks			

Station		SR3	
Time (hh:mm)	17:42-17:48	11.20	
Water Depth (m)	12.00		
Monitoring Depth (m)		1.20	6.20
Trial	Trial 1	Trial 2	Trial 1
Water Temperature (°C)	19.2	19.2	19.1
Salinity (ppt)	28.5	28.5	28.7
pH	7.8	7.8	7.9
D.O. Saturation (%)	95.3	95.0	95.9
D.O. (mg/L)	7.44	7.41	7.49
Turbidity (NTU)	1.10	1.10	2.00
SS (mg/L)	3.0	6.0	4.0
Remarks			

Station		G1	
Time (hh:mm)	17:24-17:28	11.20	
Water Depth (m)	12.00		
Monitoring Depth (m)		1.10	6.00
Trial	Trial 1	Trial 2	Trial 1
Water Temperature (°C)	19.0	18.9	18.5
Salinity (ppt)	29.2	29.2	29.5
pH	7.8	7.9	7.9
D.O. Saturation (%)	98.2	97.8	96.3
D.O. (mg/L)	7.67	7.64	7.56
Turbidity (NTU)	3.80	3.60	5.30
SS (mg/L)	9.0	6.0	8.0
Remarks			

Station		SR4	
Time (hh:mm)	17:34-17:38	11.90	
Water Depth (m)	13.00		
Monitoring Depth (m)		1.00	6.60
Trial	Trial 1	Trial 2	Trial 1
Water Temperature (°C)	19.1	19.2	18.7
Salinity (ppt)	28.6	28.6	29.4
pH	7.8	7.8	7.9
D.O. Saturation (%)	97.0	96.7	99.0
D.O. (mg/L)	7.58	7.54	7.75
Turbidity (NTU)	1.00	1.30	3.80
SS (mg/L)	4.0	4.0	5.0
Remarks			

Annex E10 - Water Quality Results at Airport during mid-flood tide for 14 March 2008

Mid-Flood

Sampling Date	14/3/2008
Weather & Ambient Temperature	Cloudy

C3									
Station	U2								
Time (hh:mm)	09:59-10:04								
Water Depth (m)	8.00								
Monitoring Depth (m)	1.10			4.10			7.10		
Trial	Trial 1	Trial 2	Trial 1	Trial 2	Trial 1	Trial 2	Trial 1	Trial 2	Surface&Middle
Water Temperature (°C)	18.9	19.1	18.3	18.4	18.1	18.1	18.1	18.9	Bottom
Salinity (ppt)	28.4	27.8	29.7	29.6	29.9	29.9	29.9	28.00	Depth-averaged
pH	7.8	7.8	7.9	7.9	7.8	7.9	7.8	7.9	7.8
D.O. Saturation (%)	91.0	89.9	92.7	93.3	90.2	91.1	91.36	93.4	7.08
D.O. (mg/L)	7.15	7.06	7.30	7.34	7.13	7.19	7.20	7.32	7.33
Turbidity (NTU)	1.40	1.20	1.60	1.70	4.70	2.80	2.25	2.62	2.62
SS (mg/L)	2.0	3.0	2.0	2.0	7.0	7.0	3.83	4.67	4.67
Remarks									

C4										
Station	SR2									
Time (hh:mm)	09:53-09:58									
Water Depth (m)	4.00									
Monitoring Depth (m)	0.90			2.90						
Trial	Trial 1	Trial 2	Trial 1	Trial 2	Trial 1	Trial 2	Trial 1	Trial 2	Surface&Middle	
Water Temperature (°C)	19.2	19.2	18.9	19.3	19.3	19.2	19.3	19.2	Bottom	
Salinity (ppt)	27.5	27.5	28.4	28.1	29.0	29.3	28.30	27.63	Depth-averaged	
pH	7.8	7.8	7.8	7.8	7.9	7.8	7.82	7.75	7.8	
D.O. Saturation (%)	92.4	92.9	94.9	94.3	96.3	96.9	94.82	94.54	94.54	
D.O. (mg/L)	7.26	7.29	7.45	7.41	7.56	7.61	7.52	7.41	7.39	
Turbidity (NTU)	1.60	1.50	3.20	3.00	4.60	5.50	3.25	0.96	0.96	
SS (mg/L)	6.0	6.0	5.0	6.0	10.0	9.0	7.00	3.25	3.25	
Remarks										

D2										
Station	SR3									
Time (hh:mm)	09:51-09:56									
Water Depth (m)	12.00									
Monitoring Depth (m)	1.00			5.90			11.00			
Trial	Trial 1	Trial 2	Trial 1	Trial 2	Trial 1	Trial 2	Trial 1	Trial 2	Surface&Middle	
Water Temperature (°C)	19.2	19.3	19.2	19.1	18.9	18.9	18.8	18.7	Bottom	
Salinity (ppt)	27.3	27.3	27.4	27.5	28.0	28.3	29.4	28.89	Depth-averaged	
pH	7.8	7.8	7.8	7.8	7.8	7.8	7.9	7.9	7.87	
D.O. Saturation (%)	90.6	90.9	90.7	91.1	93.5	92.6	95.1	95.30	95.30	
D.O. (mg/L)	7.12	7.13	7.13	7.16	7.34	7.26	7.47	7.46	7.46	
Turbidity (NTU)	1.80	1.50	2.30	3.10	9.50	13.70	9.00	5.38	5.38	
SS (mg/L)	2.0	5.0	8.0	5.0	12.0	22.0	12.0	10.17	10.17	
Remarks										

G1										
Station	SR4									
Time (hh:mm)	09:44-09:48									
Water Depth (m)	13.00									
Monitoring Depth (m)	1.00			6.60			12.40			
Trial	Trial 1	Trial 2	Trial 1	Trial 2	Trial 1	Trial 2	Trial 1	Trial 2	Surface&Middle	
Water Temperature (°C)	19.1	19.1	19.1	19.1	18.7	18.7	18.5	18.5	Bottom	
Salinity (ppt)	28.2	28.0	29.2	29.2	29.2	29.4	29.5	28.79	Depth-averaged	
pH	7.8	7.8	7.9	7.9	7.9	7.9	7.9	7.85	7.85	
D.O. Saturation (%)	88.8	89.9	95.1	95.1	95.1	94.7	94.6	93.04	93.04	
D.O. (mg/L)	6.98	7.06	7.46	7.47	7.44	7.43	7.44	7.31	7.24	
Turbidity (NTU)	1.30	1.60	1.90	1.80	1.90	3.40	5.40	2.58	2.58	
SS (mg/L)	3.0	4.0	3.0	3.0	3.0	8.0	5.0	4.33	4.33	
Remarks										

G2										
Station	SR5									
Time (hh:mm)	09:42-09:47									
Water Depth (m)	13.00									
Monitoring Depth (m)	1.00			6.60			12.40			
Trial	Trial 1	Trial 2	Trial 1	Trial 2	Trial 1	Trial 2	Trial 1	Trial 2	Surface&Middle	
Water Temperature (°C)	19.1	19.1	19.1	19.1	18.9	18.9	18.8	18.7	Bottom	
Salinity (ppt)	28.2	28.0	29.2	29.2	29.2	29.4	29.5	28.79	Depth-averaged	
pH	7.8	7.8	7.9	7.9	7.9	7.9	7.9	7.85	7.85	
D.O. Saturation (%)	88.8	89.9	95.1	95.1	95.1	94.7	94.6	93.04	93.04	
D.O. (mg/L)	6.98	7.06	7.46	7.47	7.44	7.43	7.44	7.31	7.24	
Turbidity (NTU)	1.30	1.60	1.90	1.80	1.90	3.40	5.40	2.58	2.58	
SS (mg/L)	3.0	4.0	3.0	3.0	3.0	8.0	5.0	4.33	4.33	
Remarks										

G3										
Station	SR6									
Time (hh:mm)	09:41-09:46									
Water Depth (m)	13.00									
Monitoring Depth (m)	1.00			6.60			12.40			
Trial	Trial 1	Trial 2	Trial 1	Trial 2	Trial 1	Trial 2	Trial 1	Trial 2	Surface&Middle	
Water Temperature (°C)	19.1	19.1	19.1	19.1	18.7	18.7	18.5	18.5	Bottom	
Salinity (ppt)	28.2	28.0	29.2	29.2	29.2	29.4	29.5	28.79	Depth-averaged	
pH	7.8	7.8	7.9	7.9	7.9	7.9	7.9	7.85	7.85	
D.O. Saturation (%)	88.8	89.9	95.1	95.1	95.1	94.7	94.6	93.04	93.04	
D.O. (mg/L)	6.98	7.06	7.46	7.47	7.44	7.43	7.44	7.31	7.24	
Turbidity (NTU)	1.30	1.60	1.90	1.80	1.90	3.40	5.40	2.58	2.58	
SS (mg/L)	3.0	4.0	3.0	3.0	3.0	8.0	5.0	4.33	4.33	
Remarks										

G4										
Station	SR7									
Time (hh:mm)	09:40-09:45									
Water Depth (m)	13.00									
Monitoring Depth (m)	1.00			6.60			12.40			
Trial	Trial 1	Trial 2	Trial 1	Trial 2	Trial 1	Trial 2	Trial 1	Trial 2	Surface&Middle	
Water Temperature (°C)	19.1	19.1	19.1	19.1	18.7	18.7	18.5	18.5	Bottom	
Salinity (ppt)	28.2	28.0	29.2	29.2	29.2	29.4	29.5	28.79	Depth-averaged	
pH	7.8	7.8	7.9	7.9	7.9	7.9	7.9	7.85	7.85	
D.O. Saturation (%)	88.8	89.9	95.1	95.1	95.1	94.7	94.6	93.04	93.04	
D.O. (mg/L)	6.98	7.06	7.46	7.47	7.44	7.43	7.44	7.31	7.24	
Turbidity (NTU)	1.30	1.60	1.90	1.80	1.90	3.40	5.40	2.58	2.58	
SS (mg/L)	3.0	4.0	3.0	3.0	3.0	8.0	5.0	4.33	4.33	
Remarks										

G5										
Station	SR8									
Time (hh:mm)	09:39-09:44									
Water Depth (m)	13.00									
Monitoring Depth (m)	1.00			6.60			12.40			
Trial	Trial 1	Trial 2	Trial 1	Trial 2	Trial 1	Trial 2	Trial 1	Trial 2	Surface&Middle	
Water Temperature (°C)	19.1	19.1	19.1	19.1	18.7	18.7	18.5	18.5	Bottom	
Salinity (ppt)	28.2	28.0	29.2	29.2	29.2	29.4	29.5	28.79	Depth-averaged	
pH	7.8	7.8	7.9	7.9	7.9	7.9	7.9	7.85	7.85	
D.O. Saturation (%)	88.8	89.9	95.1	95.1	95.1	94.7	94.6	93.04	93.04	
D.O. (mg/L)	6.98	7.06	7.46	7.47	7.44	7.43	7.44	7.31	7.24	
Turbidity (NTU)	1.30	1.60	1.90	1.80	1.90	3.40	5.40	2.58	2.58	
SS (mg/L)	3.0	4.0	3.0	3.0	3.0	8.0	5.0	4.33	4.33	
Remarks										

Annex E11 - Water Quality Results at Tuen Mun during mid-ebb tide for 16 March 2008

Date	03/16/2008					
Station	C1					
Time (hh:mm)	20:06 - 20:09					
Ambient Temperature (°C)	24					
Weather	Cloudy					
Water Depth (m)	8.60					
Monitoring Depth (m)	7.10					
Tide	Mid-Ebb					
Trial	Trial 1	Trial 2	Trial 1	Trial 2	Trial 1	Trial 2
Water Temperature (°C)	18.6	18.6	18.4	18.5	18.3	18.3
Salinity (ppt)	30.1	30.2	30.3	30.4	30.3	30.6
pH	7.8	7.9	7.8	7.9	7.8	7.9
D.O. Saturation (%)	99.4	99.6	98.1	98.8	97.6	100.1
D.O. (mg/L)	7.77	7.78	7.68	7.73	7.65	7.85
Turbidity (NTU)	2.10	2.10	2.30	2.00	2.90	2.00
SS (mg/L)	5.0	3.0	4.0	6.0	5.0	4.0
Remarks	-					

Date	03/16/2008					
Station	C2					
Time (hh:mm)	20:38 - 20:41					
Ambient Temperature (°C)	24					
Weather	Cloudy					
Water Depth (m)	13.20					
Monitoring Depth (m)	12.10					
Tide	Mid-Ebb					
Trial	Trial 1	Trial 2	Trial 1	Trial 2	Trial 1	Trial 2
Water Temperature (°C)	18.4	18.4	18.3	18.3	18.1	18.1
Salinity (ppt)	30.4	30.4	30.5	30.5	30.8	30.8
pH	7.9	7.9	7.9	7.9	7.9	7.9
D.O. Saturation (%)	98.4	98.5	98.0	98.0	96.8	97.0
D.O. (mg/L)	7.71	7.71	7.68	7.68	7.61	7.62
Turbidity (NTU)	2.90	2.70	3.20	3.10	4.40	3.70
SS (mg/L)	5.0	6.0	6.0	4.0	6.0	8.0
Remarks	-					

Date	03/16/2008					
Station	D1					
Time (hh:mm)	20:31 - 20:33					
Ambient Temperature (°C)	24					
Weather	Cloudy					
Water Depth (m)	8.60					
Monitoring Depth (m)	7.20					
Tide	Mid-Ebb					
Trial	Trial 1	Trial 2	Trial 1	Trial 2	Trial 1	Trial 2
Water Temperature (°C)	18.5	18.8	18.3	18.3	18.1	18.1
Salinity (ppt)	30.3	30.2	30.5	30.6	30.8	30.8
pH	7.9	7.9	7.9	7.9	7.9	7.9
D.O. Saturation (%)	99.3	100.9	98.5	98.3	98.3	98.0
D.O. (mg/L)	7.76	7.86	7.72	7.71	7.72	7.70
Turbidity (NTU)	2.40	1.70	2.90	3.20	4.00	3.40
SS (mg/L)	5.0	6.0	7.0	4.0	4.0	6.0
Remarks	-					

Date	03/16/2008					
Station	U1					
Time (hh:mm)	20:23 - 20:25					
Ambient Temperature (°C)	24					
Weather	Cloudy					
Water Depth (m)	9.40					
Monitoring Depth (m)	8.20					
Tide	Mid-Ebb					
Trial	Trial 1	Trial 2	Trial 1	Trial 2	Trial 1	Trial 2
Water Temperature (°C)	18.6	18.5	18.2	18.3	18.1	18.1
Salinity (ppt)	30.2	30.3	30.7	30.6	30.8	30.8
pH	7.9	7.9	7.9	7.9	7.9	7.9
D.O. Saturation (%)	99.8	99.5	98.1	98.3	98.2	97.9
D.O. (mg/L)	7.80	7.78	7.69	7.71	7.71	7.69
Turbidity (NTU)	2.00	2.20	2.30	2.70	2.80	2.70
SS (mg/L)	5.0	6.0	5.0	4.0	5.0	6.0
Remarks	-					

Date	03/16/2008					
Station	SR1					
Time (hh:mm)	20:16 - 20:19					
Ambient Temperature (°C)	24					
Weather	Cloudy					
Water Depth (m)	5.20					
Monitoring Depth (m)	4.00					
Tide	Mid-Ebb					
Trial	Trial 1	Trial 2	Trial 1	Trial 2	Trial 1	Trial 2
Water Temperature (°C)	18.4	18.7	18.4	18.3	18.3	18.2
Salinity (ppt)	30.4	30.2	30.5	30.5	30.6	30.7
pH	7.9	7.9	7.9	7.9	7.9	7.9
D.O. Saturation (%)	98.1	98.4	97.2	97.3	97.8	97.8
D.O. (mg/L)	7.68	7.75	7.61	7.63	7.67	7.68
Turbidity (NTU)	3.10	2.80	3.40	3.30	2.80	3.09
SS (mg/L)	9.0	7.0	6.0	6.0	6.0	6.0
Remarks	-					

Date	03/16/2008					
Station	SR1					
Time (hh:mm)	20:16 - 20:19					
Ambient Temperature (°C)	24					
Weather	Cloudy					
Water Depth (m)	5.20					
Monitoring Depth (m)	4.00					
Tide	Mid-Ebb					
Trial	Trial 1	Trial 2	Trial 1	Trial 2	Trial 1	Trial 2
Water Temperature (°C)	18.4	18.7	18.4	18.3	18.3	18.2
Salinity (ppt)	30.4	30.2	30.5	30.5	30.6	30.7
pH	7.9	7.9	7.9	7.9	7.9	7.9
D.O. Saturation (%)	98.1	98.4	97.2	97.3	97.8	97.8
D.O. (mg/L)	7.68	7.75	7.61	7.63	7.67	7.68
Turbidity (NTU)	3.10	2.80	3.40	3.30	2.80	3.09
SS (mg/L)	9.0	7.0	6.0	6.0	6.0	6.0
Remarks	-					

Annex E12 - Water Quality Results at Tuen Mun during mid-flood tide for 16 March 2008

Date	03/16/2008					
Station	C1					
Time (hh:mm)	07:49 - 07:52					
Ambient Temperature (°C)	21					
Weather	Cloudy					
Water Depth (m)	7.40					
Monitoring Depth (m)	6.20					
Tide	Mid-Flood					
Trial	Trial 1	Trial 2	Trial 1	Trial 2	Trial 1	Trial 2
Water Temperature (°C)	18.4	18.4	18.4	18.4	18.4	18.4
Salinity (ppt)	30.1	30.1	30.1	30.1	30.1	30.1
pH	7.9	7.9	7.9	7.9	7.8	7.9
D.O. Saturation (%)	91.7	92.3	91.4	91.8	91.3	91.5
D.O. (mg/L)	7.19	7.23	7.17	7.19	7.16	7.17
Turbidity (NTU)	1.70	1.60	1.90	2.20	1.70	2.70
SS (mg/L)	4.0	5.0	4.0	5.0	4.0	3.0
Remarks	-					

Date	03/16/2008					
Station	U1					
Time (hh:mm)	08:07 - 08:09					
Ambient Temperature (°C)	21					
Weather	Cloudy					
Water Depth (m)	8.20					
Monitoring Depth (m)	4.10					
Tide	Mid-Flood					
Trial	Trial 1	Trial 2	Trial 1	Trial 2	Trial 1	Trial 2
Water Temperature (°C)	18.4	18.4	18.4	18.4	18.4	18.4
Salinity (ppt)	30.1	30.2	30.1	30.2	30.2	30.2
pH	7.9	7.9	7.9	7.9	7.9	7.9
D.O. Saturation (%)	94.5	94.6	94.2	93.7	94.3	94.5
D.O. (mg/L)	7.41	7.41	7.38	7.35	7.40	7.41
Turbidity (NTU)	2.00	2.10	1.90	2.50	1.90	2.20
SS (mg/L)	4.0	5.0	5.0	3.0	4.0	5.0
Remarks	-					

Date	03/16/2008					
Station	C2					
Time (hh:mm)	08:23 - 08:26					
Ambient Temperature (°C)	21					
Weather	Cloudy					
Water Depth (m)	13.40					
Monitoring Depth (m)	6.60					
Tide	Mid-Flood					
Trial	Trial 1	Trial 2	Trial 1	Trial 2	Trial 1	Trial 2
Water Temperature (°C)	18.4	18.4	18.4	18.4	18.4	18.38
Salinity (ppt)	30.2	30.2	30.2	30.2	30.2	30.18
pH	7.9	7.9	7.9	7.9	7.9	7.90
D.O. Saturation (%)	96.5	97.4	96.5	96.7	96.7	96.67
D.O. (mg/L)	7.57	7.64	7.57	7.59	7.59	7.57
Turbidity (NTU)	1.90	2.50	1.90	1.90	2.00	2.05
SS (mg/L)	5.0	7.0	4.0	4.0	5.0	4.0
Remarks	-					

Date	03/16/2008					
Station	SRI					
Time (hh:mm)	08:00 - 08:03					
Ambient Temperature (°C)	21					
Weather	Cloudy					
Water Depth (m)	5.60					
Monitoring Depth (m)	1.30					
Tide	Mid-Flood					
Trial	Trial 1	Trial 2	Trial 1	Trial 2	Trial 1	Trial 2
Water Temperature (°C)	18.4	18.4	18.4	18.4	18.4	18.42
Salinity (ppt)	30.1	30.1	30.1	30.1	30.1	30.14
pH	7.9	7.9	7.9	7.9	7.9	7.89
D.O. Saturation (%)	93.2	93.4	93.2	93.2	93.3	93.17
D.O. (mg/L)	7.31	7.32	7.29	7.31	7.32	7.28
Turbidity (NTU)	2.20	2.10	2.20	2.10	2.40	2.18
SS (mg/L)	4.0	5.0	5.0	4.0	6.0	4.83
Remarks	-					

Date	03/16/2008					
Station	D1					
Time (hh:mm)	08:14 - 08:17					
Ambient Temperature (°C)	21					
Weather	Cloudy					
Water Depth (m)	8.50					
Monitoring Depth (m)	4.00					
Tide	Mid-Flood					
Trial	Trial 1	Trial 2	Trial 1	Trial 2	Trial 1	Trial 2
Water Temperature (°C)	18.4	18.4	18.4	18.4	18.4	18.40
Salinity (ppt)	30.1	30.2	30.2	30.2	30.2	30.15
pH	7.9	7.9	7.9	7.9	7.9	7.89
D.O. Saturation (%)	95.3	95.7	94.4	95.3	94.1	94.99
D.O. (mg/L)	7.47	7.50	7.40	7.47	7.38	7.45
Turbidity (NTU)	2.00	2.00	1.90	1.90	1.90	1.96
SS (mg/L)	4.0	6.0	5.0	5.0	4.0	5.00
Remarks	-					

Date	03/16/2008					
Station	SRI					
Time (hh:mm)	08:00 - 08:03					
Ambient Temperature (°C)	21					
Weather	Cloudy					
Water Depth (m)	5.60					
Monitoring Depth (m)	1.30					
Tide	Mid-Flood					
Trial	Trial 1	Trial 2	Trial 1	Trial 2	Trial 1	Trial 2
Water Temperature (°C)	18.4	18.4	18.4	18.4	18.4	18.42
Salinity (ppt)	30.1	30.1	30.1	30.1	30.1	30.14
pH	7.9	7.9	7.9	7.9	7.9	7.89
D.O. Saturation (%)	93.2	93.4	93.2	93.2	93.3	93.17
D.O. (mg/L)	7.31	7.32	7.29	7.31	7.32	7.28
Turbidity (NTU)	2.20	2.10	2.20	2.10	2.40	2.18
SS (mg/L)	4.0	5.0	5.0	4.0	6.0	4.83
Remarks	-					

Annex F

Dolphin Observation Recording Forms

Annex G

Current Flow Data
(provided on CD-ROM
only)

0072833_Annex F_Flow Data.txt
Curr X km/h +000.0 Curr Y km/h +000.0
Curr R km/h +000.0 Bearing deg 000
Heading deg 017 Compass degs 000
TIME STAMP 2008/03/1 13:19:57
FULMAR-V3D3,088,513,512,009,X++,001,Y--,000,FR8,FR9,00011111
Curr X km/h +000.1 Curr Y km/h +000.0
Curr R km/h +000.1 Bearing deg 000
Heading deg 017 Compass degs 017
TIME STAMP 2008/03/1 13:19:58
FULMAR-V3D3,070,512,512,010,X++,000,Y--,000,FR8,FR9,00011111
Curr X km/h +000.0 Curr Y km/h +000.0
Curr R km/h +000.0 Bearing deg 000
Heading deg 017 Compass degs 000
TIME STAMP 2008/03/1 13:19:59
FULMAR-V3D3,088,513,512,011,X++,001,Y--,000,FR8,FR9,00011111
Curr X km/h +000.1 Curr Y km/h +000.0
Curr R km/h +000.1 Bearing deg 000
Heading deg 017 Compass degs 017