



PROJECT NO.: TCS/00409/08

**DRAINAGE IMPROVEMENTS WORKS IN TAI PO
TIN, PING CHE, MAN UK PIN AND LIN MA HANG**

**12TH QUARTERLY EM&A SUMMARY REPORT –
FOR THE DESIGNATED WORKS UNDER THE
PROJECT – CHANNELS MUP03A&B,
MUP04A&B, MUP05 AND LMH01
DECEMBER 2011 – FEBRUARY 2012**

**PREPARED FOR
CHIU HING CONSTRUCTION &
TRANSPORTATION COMPANY LIMITED**

Quality Index

Date	Reference No.	Prepared By	Certified by
28 March 2012	TCS00409/08/600/R1114v2	 Ray Cheung Environmental Consultant	 T.W. Tam Environmental Team Leader

Version	Date	Prepared by:	Certified by:	Description
1	19 March 2012	Ray Cheung	T.W. Tam	First submission
2	28 March 2012	Ray Cheung	T.W. Tam	Amended from IEC's comments on 28 March 2012

This report has been prepared by Action-United Environmental Services & Consulting with all reasonable skill, care and diligence within the terms of the Agreement with the client, incorporating our General Terms and Conditions of Business and taking account of the resources devoted to it by agreement with the client. We disclaim any responsibility to the client and others in respect of any matters outside the scope of the above. This report is confidential to the client and we accept no responsibility of whatsoever nature to third parties to whom this report, or any part thereof, is made known. Any such party relies upon the report at their own risk.

ENVIRON

Ref.: DSDFANLGEM01_0_1092L.12

28 March 2012

By Fax (26598323) and By Post

Engineer's Representative Office
Black & Veatch Hong Kong Ltd
503 Tai Po Tin, Ta Kwu Ling
Fanling, New Territories

Attention: Mr. Gilbert Ying

Dear Mr. Ying,

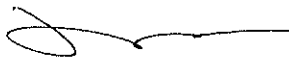
**Re: Contract No. DC/2007/08
Drainage Improvement Works at Tai Po Tin, Ping Che,
Man Uk and Lin Ma Hang
The 12th Quarterly EM&A Summary Report for Channels MUP03A&B,
MUP04A&B, MUP05 and LMH01 for December 2011 – February 2012**

Reference is made to ET's submission of the 12th Quarterly EM&A Summary Report (R1114v2, dated 28 March 2012) for the Designated Project Channels MUP03A&B, MUP04A&B, MUP05 and LMH01 for December 2011 – February 2012 by email on 28 March 2012, we would like to inform that we have no comment on the captioned report.

Please also note that the Quarterly EM&A Summary Report had been verified.

Thank you very much for your kind attention and please do not hesitate to contact the undersigned should you have any queries.

Yours sincerely,



David Yeung
Independent Environmental Checker

c.c. AUES

Attn: Mr. T.W.Tam

Fax: 29596079

Q:\Projects\DSDFANLGEM01\Corr\DSDFANLGEM01_0_1092L.12.doc

EXECUTIVE SUMMARY

- ES.01. Chiu Hing Construction & Transportation Company Limited (CHCT) was awarded the *Contract No. DC/2007/08 Drainage Improvement Works at Tai Po Tin, Ping Che, Man Uk Pin and Lin Ma Hang* by the Drainage Services Department (DSD). The project involves construction of many river channels; some classified as Designated Projects (DP) and some Non-Designated Projects (Non-DP) under the *Environmental Impact Assessment Ordinance* (Cap.499).
- ES.02. The Action-United Environmental Services and Consulting Co. Ltd. (AUES) was commissioned by CHCT to be the Environmental Team (ET) to implement an Environmental Monitoring & Audit (EM&A) programme. Findings are reported to the Environmental Protection Department (EPD) for record in a series of monthly reports and further summarized into quarterly and annual reports regularly.
- ES.03. For ease of reporting, it has been agreed among the Engineering Representative (ER), the Independent Environmental Checker (IEC), CHCT, ET and EPD that the EM&A report should be split into the following two stand-alone documents:
- EM&A Report for the Designated Projects – Channels MUP03A&B, MUP04A&B, MUP05 and LMH01 (under *Environmental Permit No.EP277/2007/A*)
 - EM&A Report for the Non-designated Projects - Channels TKL02, TKL07, MUP01 and MUP02 (without the need for an Environmental Permit).
- ES.04. This is the **12th Quarterly** EM&A Report highlighting the EM&A results for the DP works. It covers a period of time from **26 November 2011 to 25 February 2012** and contains information in five key issues: air quality, construction noise, water quality, ecology and waste management.
- ES.05. A summary of the monitoring activities undertaken in this quarter is listed below:

<u>Environmental Issues</u>	<u>MUP 03A&B, MUP 04A&B& MUP05</u>	<u>LMH01 (not yet commenced)</u>
• 1-hour TSP Monitoring	45 Events	0 Event
• 24-hour TSP Monitoring	*45 Events	0 Event
• Noise Monitoring	48 Events	0 Event
• Water Quality Monitoring	35 Monitoring Days	0 Monitoring Day
• Ecology	12 Monitoring Day	0 Monitoring Day
• Site Inspection Audit	12 Occasions	0 Occasion

* Power failure occurred at MUP-A1, at MUP-A2a & MUP-A3 during the reporting quarter.

As per power failures incident recorded at Location MUP-A1, MUP-A2a & MUP-A3, it is noted by the Contractor they have tried to fix the problem from power supplier. However, they could not get contact to the residents who supply power all the time. And recently, monitoring location MUP-A1 has been resumed. We have constantly liaised with the Contractor to rectify the power supply problem and Contractor will deploy another stable power source. On the other hands, it is shown that there is no works near those locations in recent months. It is believed that the site area would not cause exceeding for monitoring results or significant impact for air quality. However, the Contractor is needed to resume the power supply as soon as possible.

- ES.06. For construction noise and air quality monitoring, results demonstrated no exceedance of relevant Action and Limit Levels. No associated corrective actions were therefore required.
- ES.07. For water quality, there is no exceedance recorded in the reporting period. Therefore, no associated corrective actions were required. A summary of exceedances in this reporting month.

Summary of Monitoring Exceedances

Environmental Issues	Parameters	Compliance %	Investigation & Corrective Actions
		MUP	
Air Quality	24-hour TSP	100%	No need, due to 100% compliance
	1-hour TSP	100%	No need, due to 100% compliance
Noise	Leq (30min) Daytime	100%	No need, due to 100% compliance
Water Quality	Suspended Solids	100%	No need, due to 100% compliance
	Turbidity	100%	No need, due to 100% compliance
	Dissolved Oxygen	100%	No need, due to 100% compliance
	pH	100%	No need, due to 100% compliance

ES.08. No complaint, notification of summons or successful prosecution was received in any form, written or verbal, for any media during this quarter. No adverse environmental impacts were observed during the weekly site inspections and environmental audits, which indicated that the implemented mitigation measures for air quality, construction noise, water quality and ecology were effective. Minor deficiencies found in the weekly site inspections and audits were in general rectified within the specified deadlines. And it is reminded that the power supply problem of 24-hour monitoring device should be rectified as soon as possible. The overall environmental performance of the Project was, therefore, considered satisfactory.

TABLE OF CONTENTS

1	INTRODUCTION.....	1
	BASIC PROJECT BACKGROUND	1
	REPORT STRUCTURE.....	1
2	PROJECT ORGANISATION AND CONSTRUCTION PROGRESS.....	2
	ENVIRONMENTAL MANAGEMENT ORGANIZATION.....	2
	WORKS UNDERTAKEN DURING THE REPORTING PERIOD	2
	ENVIRONMENTAL LICENSING STATUS	2
3	SUMMARY OF ENVIRONMENTAL MONITORING AND AUDIT REQUIREMENTS.....	3
	MONITORING PARAMETERS	3
	MONITORING LOCATIONS	3
	MONITORING FREQUENCY	4
	ENVIRONMENTAL QUALITY PERFORMANCE LIMITS	5
	ENVIRONMENTAL MITIGATION MEASURES	6
4	MONITORING RESULTS.....	7
	AIR QUALITY.....	7
	CONSTRUCTION NOISE	7
	WATER QUALITY.....	8
	ECOLOGY.....	8
	SUMMARIES OF WEATHER CONDITIONS DURING THE REPORTING QUARTER	8
5	COMPLIANCE, COMPLAINT AND PROSECUTION.....	9
	DATA COMPLIANCE.....	9
	ENVIRONMENTAL COMPLAINT	9
	NOTIFICATION OF SUMMONS AND SUCCESSFUL PROSECUTION	9
6	WASTE MANAGEMENT, SITE INSPECTION & AUDIT	10
	SOLID AND LIQUID WASTE MANAGEMENT STATUS.....	10
	SITE INSPECTION AND ENVIRONMENTAL AUDIT	10
7	CONCLUSIONS AND RECOMMENDATIONS.....	11

LIST OF TABLES

Table 1-1	Summary of the Channels under the Projects
Table 2-1	Status of Environmental Licenses and Permits
Table 3-1	Summary of Monitoring Parameters
Table 3-2	Summary of Monitoring Locations
Table 3-3	Action and Limit Levels for Air Quality
Table 3-4	Action and Limit Levels for Construction Noise
Table 3-5	Action and Limit Levels for Water Quality
Table 3-6	Action and Limit Levels for Ecology in Construction Phase at MUP05/LMH01
Table 3-7	Action Level for Landscape and Visual Impact in Construction Phase
Table 3-8	Environmental Mitigation Measures Undertaken in the Reporting Period
Table 4-1	Summary of 1-hour and 24-hour TSP at MUP in the Reporting Period
Table 4-2	Summary of Construction Noise at MUP in the Reporting Period
Table 4-3	Summary of Water Quality Exceedances of Existing Action and Limit Levels
Table 6-1	Summary of Waste Quantities for Disposal
Table 6-2	Summary of Waste Quantities for Reuse/Recycling
Table 6-3	Summary of Findings of Site Inspection and Environmental Audit

LIST OF APPENDICES

Appendix A	Location Plan of the Project
Appendix B	Environmental Management Organization and Contacts of Key Personnel
Appendix C	Environmental Monitoring Locations
Appendix D	Environmental Mitigation Measure Implementation Schedule
Appendix E	Graphic Plot of Air Quality, Construction Noise and Water Quality

1 INTRODUCTION

BASIC PROJECT BACKGROUND

- 1.1 Chiu Hing Construction & Transportation Company Limited (CHCT) was appointed by the Drainage Services Department (DSD) to perform a contract – Contract No. DC/2007/08 Drainage Improvement Works at Tai Po Tin, Ping Che, Man Uk Pin and Lin Ma Hang (the Project).
- 1.2 The Project involves construction of various river channels: some classified as Designated Project (DP) and some Non-designated Project (Non-DP) under the Environmental Impact Assessment Ordinance (Cap. 499), as summarized in **Table 1-1**.
- 1.3 This report covers the DP works for Channels MUP03A&B, MUP04A&B, MUP05 and LMH01 only. A set of location plans showing all DP works covered in this report are illustrated in **Appendix A**.

Table 1-1 Summary of the Channels under the Project

Channel ID	Location	Designated / Non-Designated
TKL02	Tai Po Tin	Non-Designated
TKL07	Ping Che / Ta Kwu Ling	Non-Designated
MUP01	Man Uk Pin	Non-Designated
MUP02		Non-Designated
MUP03A and MUP03B		Designated (EP277/2007/A)
MUP04A and MUP04B		Designated (EP277/2007/A)
MUP05		Designated (EP277/2007/A)
LMH01		Lin Ma Hang

- 1.4 For effective implementation of mitigation measures recommended in the Environmental Study Report (the ‘ES’), the *Environmental Monitoring and Audit Manual - Designated and EM&A Manual - Non-designated* (EM&A Manual) have been prepared to guide the setup of the EM&A program for construction activities under the Project.
- 1.5 This is the **12th Quarterly** EM&A Report covering a period of time from **26 November 2011** to **25 February 2012** (the Reporting Period). This Report presents the monitoring results of air quality, construction noise, water quality and ecology for the DP works at Channel MUP03A&B, MUP04A&B, MUP05 and LMH01 under the Environmental Monitoring & Audit Manual [382486/83//Issue2].

REPORT STRUCTURE

- 1.6 This quarterly EM&A report has been written in accordance with the requirements set out in the EM&A Manual to contain the following:
- Executive summary;
 - Basic project information;
 - Environmental status;
 - Summary of EM&A requirements;
 - Implementation status;
 - Monitoring results;
 - Non-Compliance, complaints, notifications of summons and successful prosecutions; and
 - Others: future key environmental issues; comments; recommendations and conclusions.

2 PROJECT ORGANISATION AND CONSTRUCTION PROGRESS

ENVIRONMENTAL MANAGEMENT ORGANIZATION

- 2.1 The organization chart and lines of communication with respect to the on-site environmental management and the management structure are shown in *Appendix B*.

WORKS UNDERTAKEN DURING THE REPORTING PERIOD

- 2.2 Major construction activities implemented during the Reporting Period were:

26 November 2011 to 25 December 2011

<u>Channel</u>	<u>Construction Work Activities</u>
MUP03A&B, MUP04A&B; and MUP05	<ul style="list-style-type: none"> • Survey setting out • Construction of site access • Site clearance • Construction of access ramp, footbridge, box culvert and gabion wall
LMH01	Not yet commenced

26 December 2011 – 25 January 2012

<u>Channel</u>	<u>Construction Work Activities</u>
MUP03A&B, MUP04A&B; and MUP05	<ul style="list-style-type: none"> • Survey setting out • Construction of site access • Site clearance • Construction of access ramp, footbridge, box culvert and gabion wall
LMH01	Not yet commenced

26 January 2012 – 25 February 2012

<u>Channel</u>	<u>Carried out defect works during maintenance period</u>
MUP03A&B, MUP04A&B; and MUP05	<ul style="list-style-type: none"> • Install outstanding fencing, railing and signates • Landscape softworks and establishment works • Rectify defective concrete on grasscrete/paving
LMH01	Not yet commenced

ENVIRONMENTAL LICENSING STATUS

- 2.3 The environmental licensing status in the Reporting Quarter is summarized in *Table 2-1*.

Table 2-1 Status of Environmental Licenses and Permits

Item	Item Description	Permit Status
1	Environmental Permit No.EP277/2007/A	Issued on 1 Dec 2009
2	Air Pollution Control (Construction Dust)	Notification to EPD on 27/12/2007
3	Chemical Waste Producer Registration <ul style="list-style-type: none"> • 5213-652-C3251-04 • 5213-652-C3251-05 	Valid date: 23 July 2008 Valid date: 15 August 2008
4	Water Pollution Control (Discharge license) <ul style="list-style-type: none"> • W5/1G34/1 • W5/1G35/1 • W5/1I324/1 • W5/1I325/1 	Expiry date: 31 August 2013 Expiry date: 31 August 2013 Expiry date: 31 August 2013 Expiry date: 31 August 2013
5	Account for Disposal of Construction Waste No. 7006522	Valid date: 9 January 2008
6	Construction Noise Permit	Nil

3 SUMMARY OF ENVIRONMENTAL MONITORING AND AUDIT REQUIREMENTS

MONITORING PARAMETERS

3.1 The ET has compiled the EM&A requirements set out in the associated EM&A Manuals in an *Environmental Monitoring Methodology*, which has been agreed by the ER and IEC. The monitoring parameters are summarized below.

Table 3-1 Summary of Monitoring Parameters

Environmental Issue	Parameters	
Air Quality	<ul style="list-style-type: none"> 1-hour Total Suspended Particulate (1-hour TSP); and 24-hour Total Suspended Particulate (24-hour TSP). 	
Construction Noise	<ul style="list-style-type: none"> A-weighted equivalent continuous sound pressure level (30min) (Leq(30min)) during the normal working hours; and A-weighted equivalent continuous sound pressure level (5min) (Leq(5min)) for construction work during Restricted Hours. 	
Water Quality	In-Situ Measurement	temperature, Dissolved Oxygen (DO), Dissolved Oxygen Saturation (DOS), pH value, water depth, temperature & turbidity
	Laboratory Analysis	Suspended Solids (SS')
Ecology	MUP01&02	<ul style="list-style-type: none"> The stream conditions monitoring (in-situ measurements of DO, pH and turbidity; laboratory testing of SS); General site audit to report if the mitigation measures are properly implemented during the construction phase

MONITORING LOCATIONS

3.2 Most of the monitoring locations have been identified and the associated access has also been granted. Details of the monitoring locations are summarized in *Table 3-2* and shown in *Appendix C*.

Table 3-2 Summary of Monitoring Locations

Issue	Channel	Sensitive Receiver	Monitoring Location ID	Detailed Address	
Air	MUP04A	MUP04A-2	MUP-A3	Village house near Loi Tung	
	MUP05	MUP05-2 (same as MUP01/02-1)	MUP-A1 (same as MUP01/02-A1)	Village north of Loi Tung (same as Village house at Man Uk Pin)	
	MUP05	MUP05-4	MUP-A2a [#]	Village north of Loi Tung	
Noise	MUP04A	MUP04A-2	MUP-N4	Village house near Loi Tung	
	MUP05	MUP05-2 (same as MUP01/02-1)	MUP-N1 (same as MUP01/02-N1)	Village north of Loi Tung (same as Village house at Man Uk Pin)	
		MUP05-4	MUP-N2	Village north of Loi Tung	
		MUP05-6	MUP-N3	Village north of Loi Tung	
	LMH01	LMH01-1	LMH-N1*	LMH-N1*	Village of Lin Ma Hang(*Remark: Mobile station subject to the location of the construction works to be measured at Sensitive Receiver LMH01-1 or LMH01-2 or LMH01-3 or LMH01-4 or LMH01-5)
		LMH01-2			
		LMH01-3			
LMH01-4					
Water	MUP04A	Control Station	MUP-W3	Upstream of MUP04A works	
	MUP05	Control Station	MUP-W1 (same as MUP01/02-W1)	Upstream of MUP01 works	
		Control Station	MUP-W2 (same as MUP01/02-W2)	Upstream of MUP02 works	
		Impact Station	MUP-W4	Downstream of MUP05 works immediately at the discharge point to River Indus	

Issue	Channel	Sensitive Receiver	Monitoring Location ID	Detailed Address
		Temporary / Mobile Station	MUP-W5	Within MUP05, downstream of the discharge point of MUP01/02 and upstream of the discharge point of MUP04A
		Temporary / Mobile Station	MUP-W6	Within MUP05, downstream of the discharge point of MUP01/02 and MUP04A
Water	LMH01	Control Station	LMH-W1	Upstream of LMH01 works
		Control Station	LMH-W2	Upstream of LMH01 works
		Impact Station	LMH-W3	Downstream of all LMH01 works immediately at the discharge point to Shenzhen River
		Temporary / Mobile Station	LMH-W4	Upstream and downstream of particular group of LMH01 works
		Temporary / Mobile Station	LMH-W5	Upstream and downstream of particular group of LMH01 works
		Temporary / Mobile Station	LMH-W6	Upstream and downstream of particular group of LMH01 works
Ecology	MUP05 and LMH01	Water Quality of Stream		Upstream and downstream of Construction site
		General Site audit (with emphasis on ecological mitigation measures)		Along stream channel, within 100m upstream and downstream of construction site
	LMH01	Surveys of fish species		Along stream channel, within 100m upstream and downstream of construction site

MONITORING FREQUENCY

- 3.3 Impact monitoring should be conducted during the entire construction phase to ensure that the ambient environmental conditions comply with the environmental performance criteria i.e. Action and Limit Levels for the Project. The impact monitoring frequency specified in the EM&A Manual is summarized below.

Air Quality

Parameters: 24-hour TSP and 1-hour TSP.

Frequency: Once every 6 days for 24-hour TSP & 3 times every 6 days for 1-hour TSP.

Duration: During the course of construction works

Construction Noise

Parameters: Leq(30 min) in six consecutive Leq(5 min) measurements.

Frequency: Once a week during 0700-1900 hours on normal weekdays:

Duration: During the course of construction works

Water Quality

Parameters: Duplicate in-situ measurements of water depth, temperature, DO, pH & turbidity; and laboratory testing of SS. Relevant data will also be measured such as time of sampling, DO Saturation, weather conditions and special phenomena.

Depths: All measurements will be carried out at three water depths, namely, 1m below water surface, mid-water depth, and 1m above river bed. If the water depth is less than 6m, the mid-depth measurement will be omitted. If the depth is less than 3m, only the mid-depth measurement will be taken.

Frequency: 3 days a week with an interval of at least 36 hours between two consecutive sampling days

Duration: During the construction period of the channel works

Ecology

3.4 According to the EM&A Manual [382486/83//Issue2], ecology monitoring is only required at the Channels **MUP05 & LMH01**. During the construction phase, the monitoring requirements are as below:

Parameters:

- (i) General site audit with emphasis on ecology mitigation measure;
- (ii) Water quality of stream (DO, pH, turbidity and SS); and

Frequency:

- (i) Once a week for general site audit throughout the construction period; and
- (ii) Three times per week for stream monitoring;

Duration:

Throughout the whole construction period

ENVIRONMENTAL QUALITY PERFORMANCE LIMITS

3.5 The Action/Limit (A/L) Levels for air quality, construction noise, water quality, ecology and landscape and visual impact are shown in *Tables 3-3, 3-4, 3-5, 3.6* and *3-7* respectively.

Table 3-3 Action and Limit Levels for Air Quality

Monitoring Station	Action Level ($\mu\text{g}/\text{m}^3$)		Limit Level ($\mu\text{g}/\text{m}^3$)	
	1-hour TSP	24-hour TSP	1-hour TSP	24-hour TSP
MUP-A1	>307	>156	> 500	> 260
MUP-A2a	>300	>149	> 500	> 260
MUP-A3	>299	>150	> 500	> 260

Table 3-4 Action and Limit Levels for Construction Noise

Time Period	Action Level in dB(A)	Limit Level in dB(A)
0700-1900 hrs on normal weekdays	When one documented complaint is received	> 75* dB(A)

Note: * Reduces to 70 dB(A) for schools and 65 dB(A) during the school examination periods.

Table 3-5 Action and Limit Levels for Water Quality

Monitoring Location		DO (mg/L)		Turbidity (NTU)		pH (Unit)		SS (mg/L)	
ID	Station Type	Action Level	Limit Level	Action Level	Limit Level	Action Level	Limit Level	Action Level	Limit Level
MUP-W1	Control	NA	NA	NA	NA	NA	NA	NA	NA
MUP-W2	Control	NA	NA	NA	NA	NA	NA	NA	NA
MUP-W3	Control	NA	NA	NA	NA	NA	NA	NA	NA
MUP-W4	Impact	5.27	5.18	18.03	24.81	6.5-8.5	6.0-9.0	15.8	17.6
MUP-W5	Mobile	4.42	4.37	7.88	8.54	6.5-8.5	6.0-9.0	6.0	6.0
MUP-W6	Mobile	4.54	4.51	11.81	14.84	6.5-8.5	6.0-9.0	3.9	4.8
LMH-W1	Control	NA	NA	NA	NA	NA	NA	NA	NA
LMH-W2	Control	NA	NA	NA	NA	NA	NA	NA	NA
LMH-W3	Impact	3.96	3.62	11.31	12.10	6.5-8.5	6.0-9.0	8.8	10.6
LMH-W4	Mobile	4.34	3.98	5.33	5.95	6.5-8.5	6.0-9.0	3.0	3.0
LMH-W5	Mobile	2.14	2.07	31.46	35.33	6.5-8.5	6.0-9.0	25.0	29.8
LMH-W6	Mobile	2.67	2.65	12.32	13.02	6.5-8.5	6.0-9.0	4.8	6.6

Notes:

For DO, non-compliance of water quality limits occurs when monitoring result is lower than the Limit Levels.

For SS and turbidity, non-compliance of the water quality limits occurs when monitoring result is higher than the Limit Levels.

For pH, non-compliance of water quality limits occurs when monitoring result exceeds the Limit Levels.

Table 3-6 Action and Limit Levels for Ecology in Construction Phase at Channels MUP05 and LMH01

Parameter	Action Level	Limit Level
<ul style="list-style-type: none"> Any construction works do not cause adverse ecological impacts outside the work site of Channels Where natural banks are to be retained are protected from adverse effects of engineering works, including impacts to riparian vegetation along these banks The existing natural stream channel is protected from adverse effect of engineering works, including potential indirect impacts through increased sedimentation Rock/fines used to form the bottom of the widened channel have the appropriate physical characteristics to permit re-establishment of semi-natural stream conditions The recommended mitigation measures are properly implemented by the Contractor 	Non-conformity on one occasion	Repeated Non-conformity

Table 3-7 Action Level for Landscape and Visual Impact in Construction Phase

Parameter	Action Level	Limit Level
Any trespass by the contractor outside the limit of the works, including any damage to existing trees, woodland and vegetation	Non-conformity on one occasion	Repeated non-conformity

ENVIRONMENTAL MITIGATION MEASURES

3.6 In this reporting quarter, the construction work was only undertaken at MUP03A&B, MUP04A&B and MUP05. The environmental mitigation Implement is shown in *Table 3-8*.

Table 3-8 Environmental Mitigation Measures Undertaken in Reporting Quarter

Location	Construction Activities	Environmental Mitigation Measures to be deployed
MUP03A&B, MUP04A&B; and MUP05	Construction of site access	<ul style="list-style-type: none"> Excavated area and stockpile of soil material was dampened / covered before dispose off-site
	Site clearance	<ul style="list-style-type: none"> Water spraying was provided before and during handling of excavated material.
	Survey setting out	<ul style="list-style-type: none"> Tree will be properly protected before works commenced.
	Construction of access ramp, footbridge, box culvert and gabion wall	<ul style="list-style-type: none"> Excavated area and stockpile of soil material was dampened / covered before dispose off-site Water spraying will be provided before and during handling of excavated material Retained tree will be properly protected before works commenced.
	Carried out defect works during maintenance period as follow: 1. install outstanding fencing, railing and signates; 2. landscape softworks and establishment works; 3. Rectify defective concrete on grasscrete/paving	<ul style="list-style-type: none"> Water spraying will be provided before and during handling of excavated material. Retained tree will be properly protected before works commenced

4 MONITORING RESULTS

4.1 In this quarter, construction work was only undertaken at Channel MUP03A&B, MUP04A&B and MUP05. So environmental monitoring was only performed at those channels accordingly. Upon the commencement of construction works at Channels LMH01, more monitoring activities will be carried out and reported.

AIR QUALITY

4.2 In this quarter, a total of **45 events** of 1-hour TSP and **45 events** of 24-hour TSP measurements were supposed to conduct at Locations A1, A2a and A3. As per power failures incident recorded at Location MUP-A1, MUP-A2a & MUP-A3, it is noted by the Contractor they have tried to fix the problem from power supplier. However, they could not get contact to the residents who supply power all the time. And recently, monitoring location MUP-A1 has been resumed. We have constantly liaised with the Contractor to rectify the power supply problem and Contractor will deploy another stable power source. On the other hands, it is shown that there is no works near those locations in recent months. It is believed that the site area would not cause exceeding for monitoring results or significant impact for air quality. However, the Contractor is needed to resume the power supply as soon as possible.

4.3 For construction noise and air quality monitoring, results demonstrated no exceedance of relevant Action and Limit Levels. No associated corrective actions were therefore required.

4.4 A summary of 1-hour and 24-hour TSP measurements are presented in *Table 4-1*

Table 4-1 Summary of 1-hour and 24-hour TSP at MUP in the Reporting Period

Channel	Station	1-hour TSP			24-hour TSP		
		Max	Min	Mean	Max	Min	Mean
MUP	A1	196.3	49.7	112.1	139	33	90
Record Date		9-1-2012	17-2-2012	45 events	2-2-2012	25-2-2012	*45 events
MUP	A2a	176.7	56.7	108.9	--	--	--
Record Date		9-1-2012	17-2-2012	45 events			*45 events
MUP	A3	163.7	39.3	104.5	--	--	--
Record Date		15-12-2011	28-11-2011	45 events			*45 events

* Power failure occurred at MUP-A1, MUP-A2a and MUP-A3 during the reporting quarter.

CONSTRUCTION NOISE

4.5 During this quarter, a total of **48 events** of construction noise monitoring were performed. No complaint was received and all noise levels measured at the identified monitoring stations: MUP: N1, N2, N3 and N4 were well below the Limit Level. A summary of construction noise data is presented in *Table 4-2*.

Table 4-2 Summary of Construction Noise at MUP in the Reporting Period

Channel	Station	Leq(30min)	
		Max	Min
MUP	N1	68.0	56.9
Record Date		28-11-11&28-12-11&31-11-12	
MUP	N2	67.6	52.1
Record Date		28-11-2011	
MUP	N3	70.2	55.0
Record Date		15-12-2011	
MUP	N4	70.3	46.9
Record Date		17-2-2012	

WATER QUALITY

- 4.6 Water quality monitoring results at Channels MUP during the Reporting Period are tabulated in the relevant monthly reports, and graphical plots of trends of the monitored parameters are presented *Appendix E*.
- 4.7 For water quality monitoring, there is no exceedance recorded in the reporting period. Therefore, no associated corrective actions were required. A summary of exceedances in this reporting month. A summary of exceedances in this reporting month is provided in *Table 4-3* below.

Table 4-3 Summary of Water Quality Exceedances of Existing Action and Limit Levels

Station	DO		Turbidity		pH Value		SS		Total Exceedance	
	Action	Limit	Action	Limit	Action	Limit	Action	Limit	Action	Limit
<i>December 2011</i>										
MUP-W4 ^(a)	0	0	0	0	0	0	0	0	0	0
MUP-W5 ^(b)	0	0	0	0	0	0	0	0	0	0
MUP-W6 ^(b)	0	0	0	0	0	0	0	0	0	0
Sub-total	0	0	0	0	0	0	0	0	0	0
<i>January 2012</i>										
MUP-W4 ^(a)	0	0	0	0	0	0	0	0	0	0
MUP-W5 ^(b)	0	0	0	0	0	0	0	0	0	0
MUP-W6 ^(b)	0	0	0	0	0	0	0	0	0	0
Sub-total	0	0	0	0	0	0	0	0	0	0
<i>February 2012</i>										
MUP-W4 ^(a)	0	0	0	0	0	0	0	0	0	0
MUP-W5 ^(b)	0	0	0	0	0	0	0	0	0	0
MUP-W6 ^(b)	0	0	0	0	0	0	0	0	0	0
Sub-total	0	0	0	0	0	0	0	0	0	0
Total number of exceedances	0	0	0	0	0	0	0	0	0	0

ECOLOGY

- 4.8 A total of **12** site visits were carried out on 1 December 2011, 8 December 2011, 15 December 2011, 22 December 2011, 29 December 2011, 5 January 2012, 12 January 2012, 19 January 2012, 2 February 2012, 9 February 2012, 16 February 2012 and 23 February 2012 in this quarter by an ecological specialist, and no non-compliance was identified. The detailed findings and the checklists are shown in the relevant monthly reports.

SUMMARIES OF WEATHER CONDITIONS DURING THE REPORTING QUARTER

December 2011

- 4.9 Attributed to the frequent replenishment of the winter monsoon, December 2011 was colder than usual with a monthly mean temperature of 16.9 degrees, 0.9 degrees below the normal figure of 17.8 degrees. There were six cold days (daily minimum temperature at 12.0 degrees or below) in the month, about two days more than normal. The prevalence of continental airstream also brought drier than usual weather to the territory in December 2011. The total rainfall recorded in the month was 2.8 millimetres, less than a tenth of the monthly normal. The annual rainfall for 2011 was 1476.7 millimetres, a deficit of about 38 percent compared to the annual normal of 2382.7 millimetres.

January 2012

- 4.10 Under the dominance of the winter monsoon, January 2012 was colder than usual. The mean temperature of the month was 15.1 degrees, 1.2 degrees below the normal figure of 16.3 degrees. The month was also wetter and gloomier than usual. The monthly rainfall

of 42.1 millimetres was 17.4 millimetres above normal. The monthly total duration of bright sunshine was 86.0 hours, a deficit of 40 percent against to the normal figure of 143.0 hours.

February 2012

- 4.11 With frequent interchange of the northeast monsoon and the humid maritime airstream over the south China coast, February 2012 was marked by gloomy and humid weather with a few foggy episodes in Hong Kong. The total duration of bright sunshine in the month was 38.1 hours, only about 40 percent of the normal and the monthly mean relative humidity was 85 percent, 5 percent above normal.

The month was also cooler with less rainfall than usual. The mean temperature of the month was 15.8 degrees, 1.0 degree below the normal figure of 16.8 degrees. The total rainfall in the month was 29.5 millimetres, 24.9 millimetres below the normal figure of 54.4 millimetres.

5 COMPLIANCE, COMPLAINT AND PROSECUTION

DATA COMPLIANCE

- 5.1 As concluded in *Section 4*, there is no exceedance recorded in air, noise and water quality monitoring. Therefore, it was concluded that no non-compliance of environmental quality performance criteria was recorded at Channel MUP during the Reporting Quarter.

ENVIRONMENTAL COMPLAINT

- 5.2 No written or verbal complaints, written or oral, were received during the quarter.

NOTIFICATION OF SUMMONS AND SUCCESSFUL PROSECUTION

- 5.3 No notification of summons or successful prosecution was reported during this quarter.

6 WASTE MANAGEMENT, SITE INSPECTION & AUDIT

SOLID AND LIQUID WASTE MANAGEMENT STATUS

6.1 The quantities of waste for disposal or reuse in this quarter are summarized in *Tables 6-1* and *6-2*.

Table 6-1 Summary of Waste Quantities for Disposal

Type of Waste	Quantity			Disposal Locations
	Dec 11	Jan 12	Feb 12	
C&D Materials Disposed (Inert) (in '000m ³)	-	-	-	Tuen Mun 38 Fill Bank
	0.7	1.062	1.87	Reused in other Projects
C&D Materials (Non-Inert) (in '000m ³)	0	0	0	NENT
Chemical Waste (in '000kg)	0	0	0	NA
General Refuse (in '000m ³)	0	0	0	N/A

Table 6-2 Summary of Waste Quantities for Reuse/Recycling

Type of Waste	Quantity			Disposal Locations
	Dec 11	Jan 12	Feb 12	
Metals for Recycling (in '000kg)	0	0	0	NA
Paper for Recycling (in '000kg)	0	0	0	NA
Plastics for Recycling (in '000kg)	0	0	0	NA

6.2 There was no site effluent discharged but an estimated volume of 50m³ of surface runoff was discharged in each month.

SITE INSPECTION AND ENVIRONMENTAL AUDIT

6.3 A total of 12 occasions of weekly environmental site inspection and audit were conducted jointly by the ER, EO and ET during the Reporting Period. Minor deficiencies found in the site inspection and audits were in general rectified within the specified deadlines. Findings of the site inspection and environmental audit are listed in *Table 6-3*.

Table 6-3 Summary of Findings of Site Inspection and Environmental Audit

Date	Findings / Deficiencies	Follow-Up Status
1 December 2011	<ul style="list-style-type: none"> Construction activities were observed within the MUP05 site. Full implementation of the required mitigation measures is reminded. 	--
8 December 2011	<ul style="list-style-type: none"> Construction activities were observed within the MUP05 site. Full implementation of the required mitigation measures, in particular watering during dusty construction activities under dry and windy conditions, is reminded 	--
15 December 2011	<ul style="list-style-type: none"> No major construction activities were conducted within the Non-DP site. Only minor construction activities using manual or small equipment with least environmental impacts including railing installment, pathway pavement and planting or gardening were observed. No adverse environmental impacts were observed during the site inspection. 	--
22 December 2011	<ul style="list-style-type: none"> Construction activities were observed within the site. Full implementation of the required environmental mitigation measures is reminded Dusty haul roads were observed. Watering is reminded during dusty construction activities under dry and windy conditions. Construction waste was observed stock piled within the site. Regular clearance is reminded. 	The deficiencies have been found improved on the following site inspection.
29 December 2011	<ul style="list-style-type: none"> Construction waste was observed stock piled within the site. Regular clearance is reminded. 	The deficiencies have been found improved on the following site inspection.

Date	Findings / Deficiencies	Follow-Up Status
5 January 2012	<ul style="list-style-type: none"> Construction activities were carried out but no adverse environmental impacts were observed. Full implementation of the required environmental mitigation measures, particularly construction dust suppression measures, is reminded. 	--
13 January 2012	<ul style="list-style-type: none"> Construction activities were observed during the site inspection. Full implementation of the required environmental mitigation measures, in particular construction dust suppression measures during dry and windy conditions is reminded. 	--
19 January 2012	<ul style="list-style-type: none"> Wheel washing bay was observed being continuously filled with tap water, causing overflow of turbid water to the existing water stream. Water filling is reminded to controlled to avoid overflow, or pretreatment of the overflow is required Chemical waste including waste oils and batteries were observed within the site MUP05. Proper storage and disposal of the chemical waste is reminded. 	The deficiencies have been found improved on the following site inspection.
2 Feb 2012	<ul style="list-style-type: none"> Haul roads within the site were observed dry and dusty. Dust suppression measures during dusty construction activities under dry and windy conditions, is reminded. 	The deficiencies have been found improved on the following site inspection.
9 Feb 2012	<ul style="list-style-type: none"> Construction activities were observed within site. Full implementation of the required mitigation measures, in particular watering during dusty construction activities under dry and windy conditions, is reminded. 	--
17 Feb 2012	<ul style="list-style-type: none"> Soil and mud tail was observed at the site exit, the contractor was reminded to clean to minimize dust generation. 	The deficiencies have been found improved on the following site inspection.
23 Feb 2012	<ul style="list-style-type: none"> Construction activities were observed during the site inspection. Full implementation of the required environmental mitigation measures, in particular dust suppression measures during dusty construction activities under dry and windy conditions, is reminded Soil stains were observed on the surface of Sha Tao Kok Road at the site entrance/exit. Regular clearance of the soil strains is required. In addition, appropriate wheel washing facility is reminded. 	The deficiencies have been found improved on the following site inspection.
	<ul style="list-style-type: none"> 	

7 CONCLUSIONS AND RECOMMENDATIONS

- 7.1 This is the **12th** Quarterly EM&A Report for DP works from **26 November 2011 to 25 February 2012** on five environmental key issues: air quality, noise, water, ecology and waste management only.
- 7.2 This report mainly presents the monitoring results of Channels MUP03A&B, MUP04A&B and MUP05 since the construction works at Channels LMH01 have not yet commenced.
- 7.3 For construction noise and air quality monitoring, results demonstrated no exceedance of relevant Action and Limit Levels. No associated corrective actions were therefore required.
- 7.4 For water quality, there was also no exceedance recorded in the reporting period. Therefore, no associated corrective actions were required.
- 7.5 No written or verbal complaints, notifications of summons or successful prosecutions were reported during this quarter.

- 7.6 No adverse environmental impacts were observed during the weekly site inspection and environmental audit which indicated that the implemented mitigation measures for air quality, construction noise, water quality and ecology were effective. Minor deficiencies found in the weekly site inspection and were in general rectified within the specified deadlines. The environmental performance of the Project was, therefore, considered satisfactory.
- 7.7 As wet season has come, the coming excavation works of the channels, ingress of surface runoff into the river within MUP Channels continues to be the key issue in future months. The contractor is reminded that mitigation measures for water quality and ecology should therefore be fully implemented.
- 7.8 In addition, attention should be paid to noise impact during the construction work progress, and with other environmental issues identified in the EM&A Manual. Mitigation measures recommended in the Environmental Study Report (ESR) and summarized in Mitigation Measure Implementation Schedule should continually be applied.

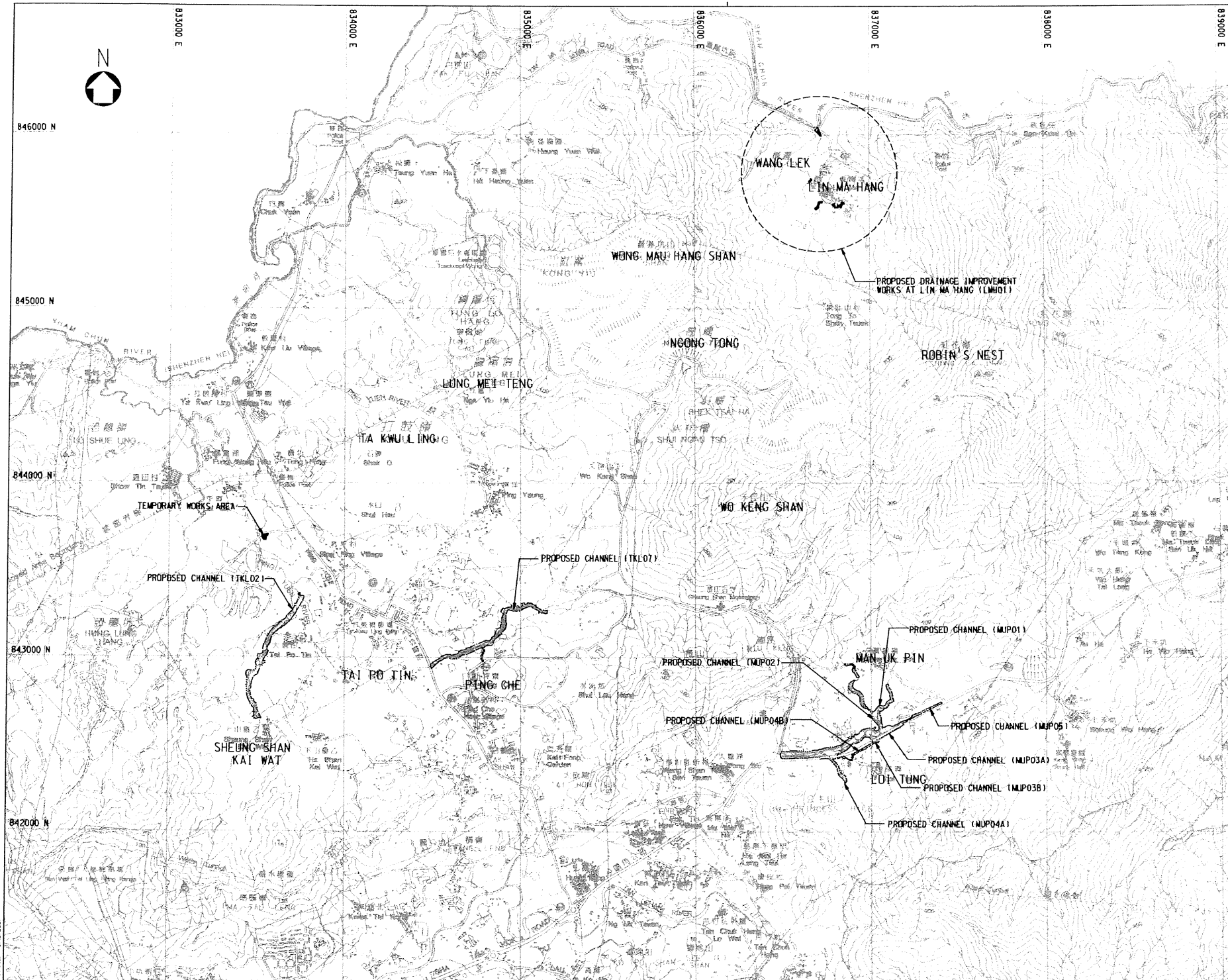
END OF TEXT

Appendix A

Location Plan of the Project

LEGEND

--- SITE BOUNDARY



Revision	Date	Description	Initial
Initial	KSC	YST	LWS PCL
Date	05/07	05/07	05/07 05/07

Approve

Contract no. DC/2007/08

Contract title
DRAINAGE IMPROVEMENT WORKS AT TAI PO TIN, PING CHE, MAN UK PIN AND LIN MA HANG

Drawing title
LOCATION PLAN FOR PROPOSED CHANNELS IN TAI KWU LING AND SHA TAU KOK

Drawing no. 001	Scale A1 1:10000 A3 1:20000
-----------------	-----------------------------------

D 香港特別行政區政府渠務署
THE GOVERNMENT OF THE HONG KONG SPECIAL ADMINISTRATIVE REGION
DRAINAGE SERVICES DEPARTMENT

BV
BLACK & VEATCH HONG KONG LIMITED
黑緯工程顧問有限公司



846000 N

845000 N

844000 N

843000 N

842000 N

833000 E

834000 E

835000 E

836000 E

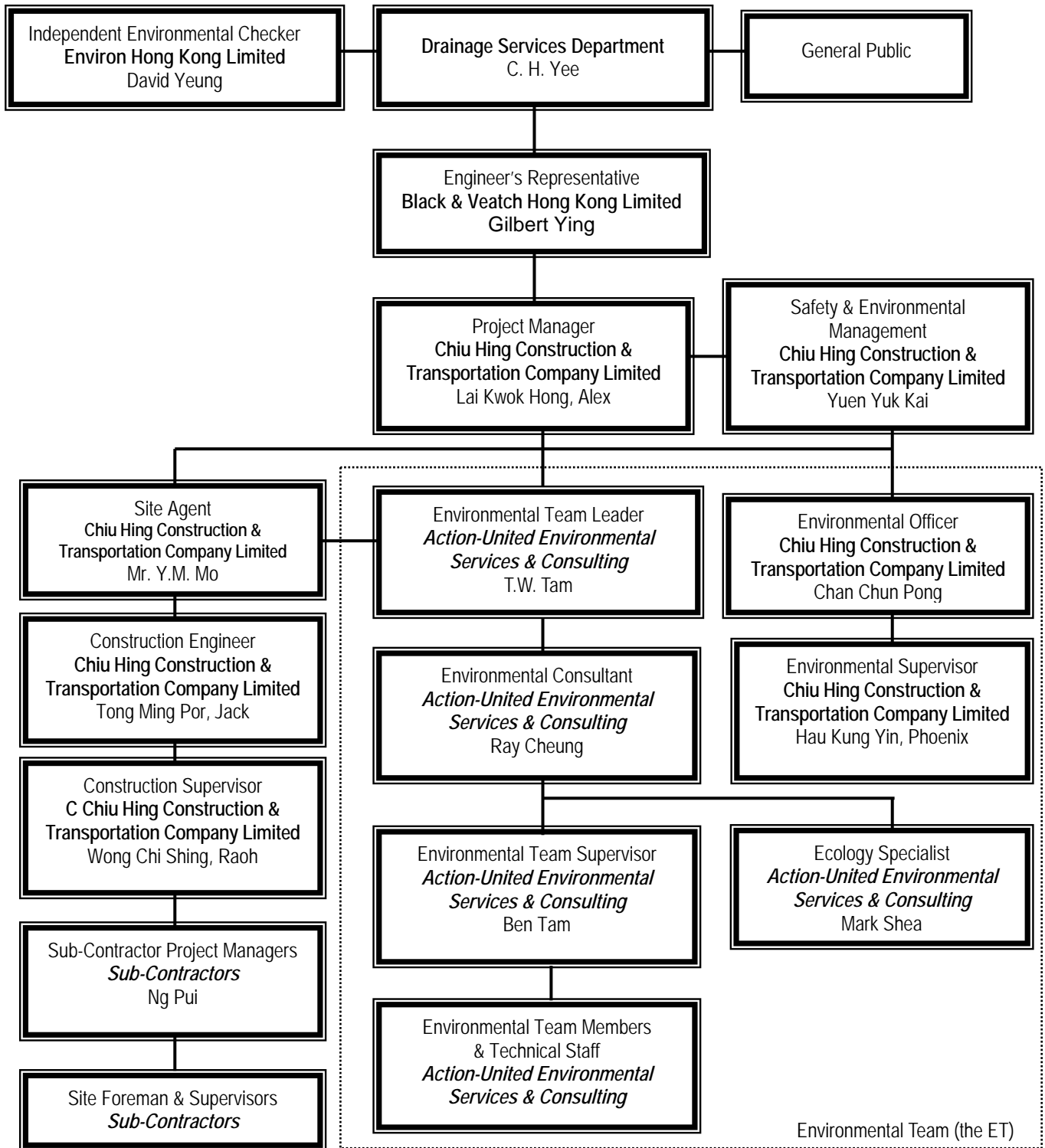
837000 E

838000 E

839000 E

Appendix B

Environmental Management Organization and Contacts of Key Personnel



Environmental Management Organization

Contact Details of Key Personnel

Organization	Project Role	Name of Key Staff	Tel No.	Fax No.
DSD	Employer	Mr. C. H. Yee	2594-7347	2827-8700
B&V	Engineer's Representative	Mr. Gilbert Ying	2659-8787	2659-8323
Environ	Independent Environmental Checker	Mr. David Yeung	3743-0788	3548-6988
CHCT	Project Manager	Mr. Lai Kwok Hong, Alex	2659-8221	2659-8232
CHCT	Safety & Environmental Manager	Mr. Yuen Yuk Kai	2659-8221	2659-8232
CHCT	Site Agent	Mr. Y.M. Mo	2659-8221	2659-8232
CHCT	Construction Engineer	Mr. Tong Ming Por, Jacky	2659-8221	2659-8232
CHCT	Construction Supervisor	Mr. Roah Wong	2659-8221	2659-8232
CHCT	Structural Engineer	Mr. Kwok Chin Ming	2659-8221	2659-8232
CHCT	Site Forman	Mr. Chung Ping Kai	2659-8221	2659-8232
CHCT	Environmental Officer	Mr. C. P. Chan	2659-8221	2659-8232
CHCT	Environmental Supervisor	Miss Phoenix Hau	2659-8221	2659-8232
Kin Tat	Sub-contractor Project Manager	Mr. Ng Pui	2659-8221	2659-8232
AUES	Environmental Team Leader	Mr. T.W. Tam	2959-6059	2959-6079
AUES	Environmental Consultant	Mr. Ray Cheung	2959-6059	2959-6079
AUES	Environmental Team Supervisor	Mr. Ben Tam	2959-6059	2959-6079
AUES	Ecologist	Dr. Mark Shea	2959-6059	2959-6079

Legends:

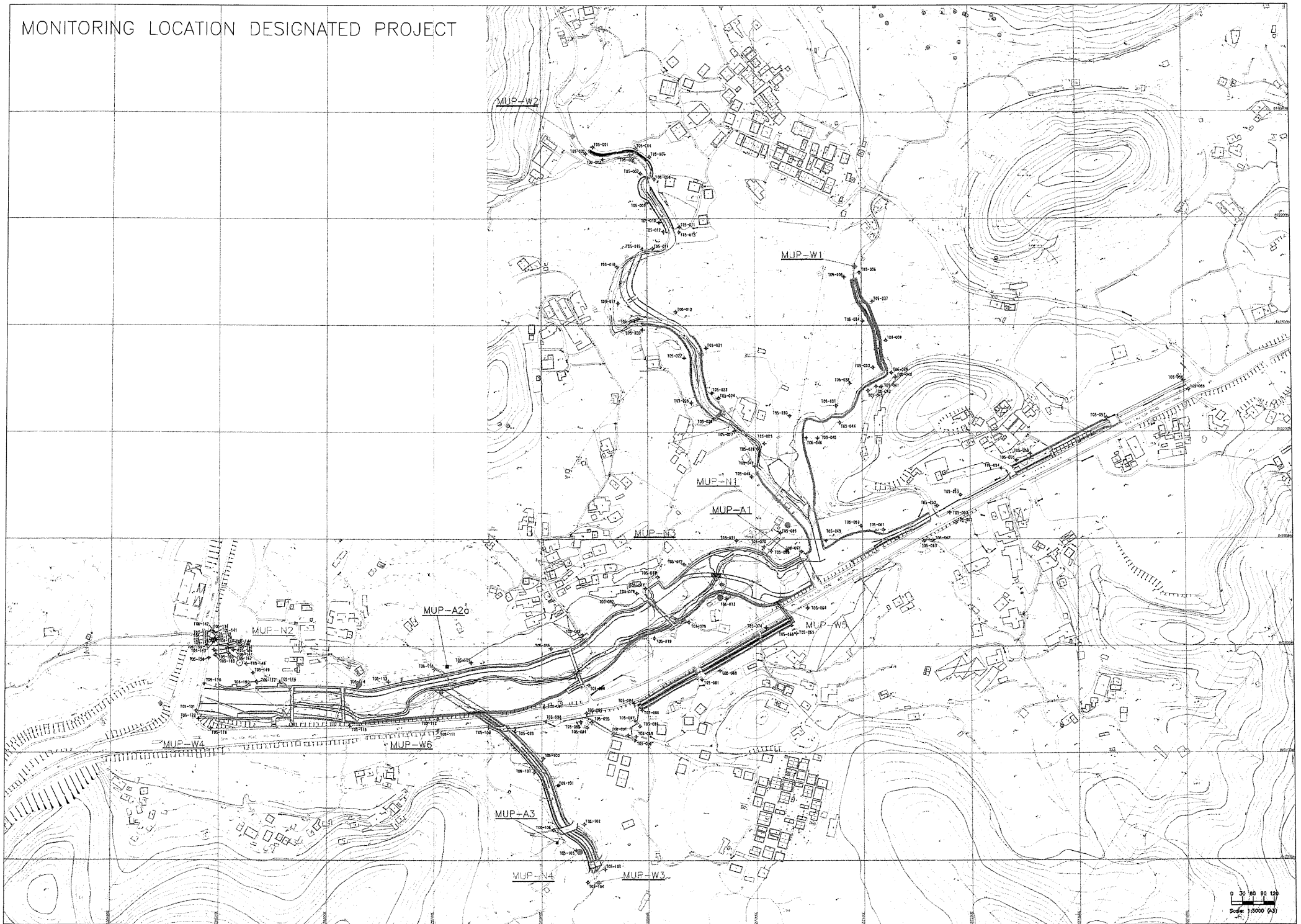
- DSD (Employer) – Drainage Services Department
- B&V (Engineer) – Black & Veatch Hong Kong Limited
- CHCT (Main Contractor) – Chiu Hing Construction & Transportation Company Limited
- Environ (IEC) – Environ Hong Kong Limited
- AUES (ET) – Action-United Environmental Services & Consulting

Appendix C

Environmental Monitoring Locations

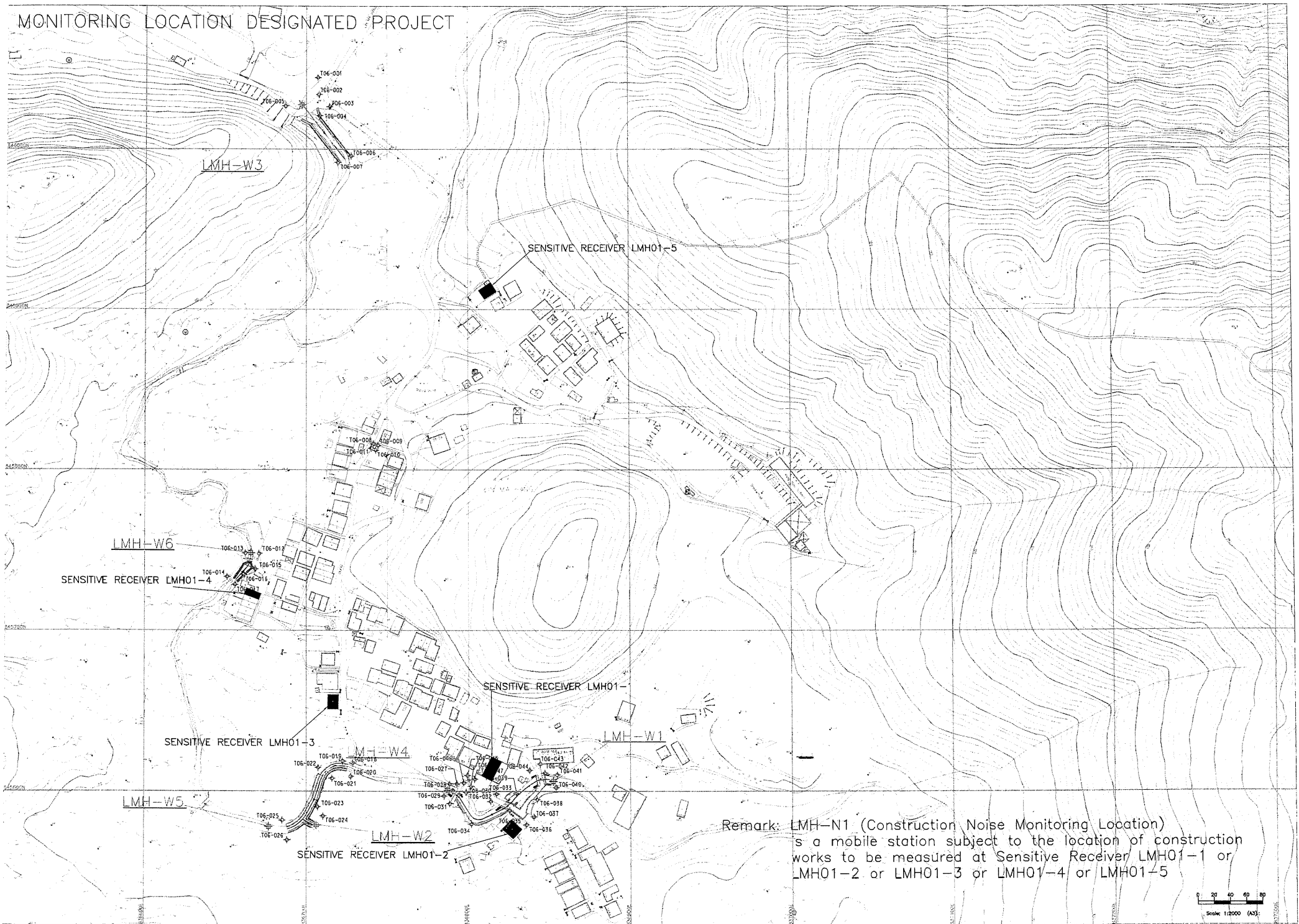
Channel MUP

MONITORING LOCATION DESIGNATED PROJECT

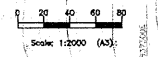


Channel LMH01

MONITORING LOCATION DESIGNATED PROJECT



Remark: LMH-N1 (Construction Noise Monitoring Location) is a mobile station subject to the location of construction works to be measured at Sensitive Receiver LMH01-1 or LMH01-2 or LMH01-3 or LMH01-4 or LMH01-5



Appendix D

Environmental Mitigation Measure Implementation Schedule

APPENDIX A
 IMPLEMENTATION SCHEDULE OF THE PROPOSED MITIGATION MEASURES

Table A1 Implementation Schedule of Air Quality Mitigation Measures

EIA Ref	EM&A Ref	Recommended Mitigation Measures	Objectives of the Recommended Measures and Main Concerns to addressed	Location / Timing	Implementation Agent	Implementation Stages*			Relevant Legislation & Guidelines
						D	C	O	
Air Quality - Construction Phase									
3.6.1	2.9.2	<p><i>Construction Dust</i></p> <p>In order to comply with Air Pollution Control Ordinance (APCO), the Contractor should undertake at all times measures to prevent dust nuisance as a results of his activities. The Contractors are required to follow all the requirements for dust control stipulated in the Air Pollution Control (Construction Dust) Regulation. Dust suppression measures should be installed as part of good construction practice, and they should be incorporated in the Contract Specification and implemented to minimize dust nuisance to within acceptable levels arising from the works. The followings are examples of the dust suppression measures.</p> <p>(i) The area in which excavation takes place shall be sprayed with water immediately prior to, during and immediately after the excavation to minimise dust generation.</p> <p>(ii) The Contractor shall frequently clean and water the site to minimize fugitive dust emissions.</p>	To prevent dust nuisance on ASRs during construction	All works site / during construction	Construction Contractor		√		Air Pollution Control Ordinance Air Pollution Control (Construction Dust) Regulation

D = Design, C = Construction, O = Operation

EIA Ref	EM&A Ref	Recommended Mitigation Measures	Objectives of the Recommended Measures and Main Concerns to addressed	Location / Timing	Implementation Agent	Implementation Stages*			Relevant Legislation & Guidelines
						D	C	O	
		<p>(iii) Effective water sprays shall be used during the delivery and handling of aggregate, and other similar materials, when dust is likely to be created and to dampen all stored materials during dry and windy weather.</p> <p>(iv) Watering of exposed surfaces shall be conducted at least 2 times per day especially during dry and windy weather.</p> <p>(v) Areas within the site where there is a regular movement of vehicles must be regularly watered as often as necessary for effective suppression of dust or as often as directed by the Engineer.</p> <p>(vi) Where dusty material are being discharged to vehicle from a conveying system at a fixed transfer point, a three-sided roofed enclosure with a flexible curtain across the entry shall be provided. Exhaust fans shall be provided for this enclosure and vented to a suitable fabric filter system.</p> <p>(vii) The Contractor shall restrict all motorised vehicles within the site, excluding those on public roads, to a maximum speed of 15 km per hour and confine haulage and delivery vehicles to designated roadways inside the site.</p> <p>(viii) Wheel washing facilities shall be installed and used by all vehicles leaving the site. No earth, mud, debris, dust and the like shall be deposited on public roads. Water in the wheel cleaning</p>							

EIA Ref	EM&A Ref	Recommended Mitigation Measures	Objectives of the Recommended Measures and Main Concerns to addressed	Location / Timing	Implementation Agent	Implementation Stages*			Relevant Legislation & Guidelines
						D	C	O	
		<p>facility shall be changed at frequent intervals and sediments shall be removed regularly. The Contractor shall submit details of proposals for the wheel cleaning facility. Such wheel washing facilities shall be usable prior to any earthworks excavating activity on the site. The Contractor shall also provide a hard-surfaced road between any washing facility and the public road.</p> <p>(ix) All vehicle exhausts should be directly vertically upwards or directed away from the ground.</p> <p>(x) Any materials dropped on paved roads will need to be cleaned up immediately to prevent dust nuisance.</p>							
3.6.2	2.9.3	<p><i>Odour</i></p> <p>In the event that excavated materials are found to be odorous, the following measures should be implemented by the Contractor.</p> <p>(i) Place odorous excavated material as far away (say, at least 20m) from air sensitive receivers as possible.</p> <p>(ii) Temporary stockpiles of odorous excavated material should be properly covered with tarpaulin and should be removed off-site as soon as practically possible within 24 hours to</p>	To prevent odour nuisance on ASRs during construction	All works site / during construction	Construction Contractor		√		<p>Air Pollution Control Ordinance</p> <p>Environmental Impact Assessment Ordinance</p>

EIA Ref	EM&A Ref	Recommended Mitigation Measures	Objectives of the Recommended Measures and Main Concerns to addressed	Location / Timing	Implementation Agent	Implementation Stages*			Relevant Legislation & Guidelines
						D	C	O	
		avoid any odour nuisance arising.							
Air Quality - Operational Phase									
		N/A							

Table A2 Implementation Schedule of Noise Mitigation Measures

EIA Ref	EM&A Ref	Recommended Mitigation Measures	Objectives of the Recommended Measures and Main Concerns to addressed	Location / Timing	Implementation Agent	Implementation Stages*			Relevant Legislation & Guidelines
						D	C	O	
Noise - Construction Phase									
4.6.2 – 4.6.5	Table 3.4	<p><i>Level 1 Mitigation – Use of Quiet Plant</i></p> <p>The use of quiet plant is considered to be the most effective ways of alleviating construction noise impact. The Contractor should use quiet plant with sound power level lower than that stipulated in the TM-GW as the Level 1 mitigation for construction noise. The quiet plant used in the construction noise calculation is shown in Appendix B. The Contractor can propose other suitable alternative equipment with similar or lower sound power level.</p> <p>The use of mini or lower power rating equipment (e.g. mini excavator) should also be considered where practical. This technique would be feasible and practical at some locations given the limited space available for using large size construction equipment and the small scale works involved (e.g. localised bank improvement at LMH01, U-channel and drainage pipes at MUP03 & 04B).</p> <p>The contractor should take note of ETWB TCW No. 19/2005 on the use of QPME.</p>	To protect NSRs from noise during construction	All works site / during construction	Construction Contractor		√		Environmental Impact Assessment Ordinance ETWB TCW No. 19/2005

EIA Ref	EM&A Ref	Recommended Mitigation Measures	Objectives of the Recommended Measures and Main Concerns to addressed	Location / Timing	Implementation Agent	Implementation Stages*			Relevant Legislation & Guidelines
						D	C	O	
4.6.7 – 4.6.8	Table 3.4	<p><i>Level 2 Mitigation - Use of Temporary Noise Barriers</i></p> <p>Since most of the NSRs within the Project area are typically low-rise village houses of not more than 3 storeys tall, it would be effective to have noise screening structures or temporary noise barriers purposely-built along the site boundary to provide additional protection to NSRs close to the construction site boundary. This could be in the form of purposely-built site hoarding constructed from appropriate materials with a minimum superficial density of 7 kg/m². Noise barrier should be provided for noisy construction activities that would be undertaken close (about 25m or less) to NSRs. With the exception of NSRs MUP04A-2 and MUP05-6, the noise barrier should have a vertical height of at least 2.5 m or (depending on the height of the NSRs to be protected) a height ensuring that the operating equipment can be shielded from the view of the NSRs. For NSR MUP04A-2, the temporary noise barrier should have a minimum height of 3.5m with a small cantilevered upper portion. For MUP05-6, the temporary noise barrier should have a minimum height of 3m with a small cantilevered upper portion. The temporary noise barrier should have no gaps or opening at joints. The Contractor should regularly inspect and maintain the noise</p>	To protect NSRs from noise during construction	All works site located at 25m or less from NSRs as shown in Figures 4.4 – 4.6 / during construction	Construction Contractor		√		Environmental Impact Assessment Ordinance

EIA Ref	EM&A Ref	Recommended Mitigation Measures	Objectives of the Recommended Measures and Main Concerns to addressed	Location / Timing	Implementation Agent	Implementation Stages*			Relevant Legislation & Guidelines
						D	C	O	
		<p>barrier to ensure its effectiveness.</p> <p>For the construction works which have the potential to exceed the noise standards on nearby NSR and whose line of sight cannot be effectively blocked by the temporary noise barrier, movable (mobile) barriers should be provided. Movable barriers of at least 2.5 m height with a small cantilevered upper portion and skid footing can be located within a few meters of stationary plant (e.g. generator, compressor) and within about 5 m or more of a mobile equipment (e.g. excavator, mobile crane), such that the line of sight to the NSR is blocked by the barriers.</p>							
4.6.11	Table 3.4	<p><i>Good Site Practices</i></p> <p>In general, potential construction noise impact can be minimised or avoided by imposing a combination of the following good site practices as mitigation measures:</p> <p>(a) Only well-maintained plant should be operated on-site and plant should be serviced regularly during the construction period.</p> <p>(b) Construction plant should be sited away from NSRs.</p>	To protect NSRs from noise during construction	All works site / during construction	Construction Contractor		√		Environmental Impact Assessment Ordinance

EIA Ref	EM&A Ref	Recommended Mitigation Measures	Objectives of the Recommended Measures and Main Concerns to addressed	Location / Timing	Implementation Agent	Implementation Stages*			Relevant Legislation & Guidelines
						D	C	O	
		<p>(c) Machines and plant that may be in intermittent use should be shut down between works periods or should be throttled down to a minimum.</p> <p>(d) Equipment known to emit sound strongly in one direction should be orientated such that the noise is directed away from nearby NSRs.</p> <p>(e) Material stockpiles and other structures (such as site offices) should be effectively utilised to shield on-site construction activities.</p> <p>(f) Stationary equipment should be located within the channel when weather conditions permit (e.g. dry season).</p> <p>(g) The Contractor shall devise, arrange methods of working and carrying out the works in such manner as to minimise noise impacts on the surrounding environment, and shall provide experienced personnel with suitable training to ensure that these measures are implemented properly.</p> <p>(h) In the event that new schools are built near the works area, the Contractor should minimize construction noise exposure to the schools (especially during examination periods). The Contractor should liaise with the school and the Examination Authority to</p>							

EIA Ref	EM&A Ref	Recommended Mitigation Measures	Objectives of the Recommended Measures and Main Concerns to addressed	Location / Timing	Implementation Agent	Implementation Stages*			Relevant Legislation & Guidelines
						D	C	O	
		ascertain the exact dates and times of all examination periods during the course of the contract and to avoid noisy activities during these periods.							
4.6.13 – 4.6.14	Table 3.4	To adopt good public relation with the local communities and maintain effective communication channel with the public such as setting up a 24-hour hotline system for enquiry and complaint.	To promote good public relation and maintain effective communication during construction	All works site / during construction	Project Office (Engineer) & Construction Contractor		√		Environmental Impact Assessment Ordinance
4.6.17 & 4.6.18	Table 3.4	Further mitigation by restricting concurrent usage of several equipment at the same time.	To further mitigate construction noise at NSRs MUP04A-2 & MUP04B-2	For works within 20m of NSRs MUP04A-2 & MUP04B-2 / during construction	Construction Contractor		√		Environmental Impact Assessment Ordinance
4.6.19	Table 3.4	The use of purpose built temporary noise barriers would not be practicable for works at LMH01 as the works are small scale, short duration and within village environs with very limited working space. It may also hamper access causing inconvenience to the villagers. The process of installing and dismantling the noise barriers itself would create additional noise nuisance. The use of light-weight mobile barrier is considered more preferable.	To protect NSRs at LMH01 from noise during construction	All works site located at 25m or less from NSRs as shown in Figure 4.6 / during construction	Construction Contractor		√		Environmental Impact Assessment Ordinance

EIA Ref	EM&A Ref	Recommended Mitigation Measures	Objectives of the Recommended Measures and Main Concerns to addressed	Location / Timing	Implementation Agent	Implementation Stages*			Relevant Legislation & Guidelines
						D	C	O	
4.6.20 – 4.6.21	Table 3.4	Employ quiet working method (e.g. mini-concrete crusher, saw & lift) during demolition works of crossings, restrict concurrent usage of several equipment at the same time such as parking dump truck, concrete lorry mixer outside main village area. The use of dump truck or concrete lorry mixer will be limited to only about 1 trip every few days.	To further mitigate construction noise at NSRs for LMH01	Construction works at LMH01 / during construction	Construction Contractor		√		Environmental Impact Assessment Ordinance
4.8.4	Table 3.4	It is recommended that works programme should be scheduled such that only one crossing is constructed at any one time. Bank improvement work can be conducted concurrently.	To mitigate cumulative noise impact at LMH01	Crossing construction at LMH01 / during construction	Construction Contractor		√		Environmental Impact Assessment Ordinance
4.9.1	3.8.1	The Contractor should design, construct, operate and maintain the mitigation measures throughout the construction stage and as required by the Engineer. Before commencement of the works, the Contractor should submit to the Engineer for approval (as part of their method statement) details of the mitigation measures to be employed under the works. The Contractor's proposed mitigation measures should also be certified by the ET Leader and verified by the IEC to ensure the intended noise reduction effectiveness can be achieved.	To protect NSRs from noise during construction and to ensure the Contractor will properly implement the mitigation measures	All works site / during construction	Construction Contractor		√		Environmental Impact Assessment Ordinance

EIA Ref	EM&A Ref	Recommended Mitigation Measures	Objectives of the Recommended Measures and Main Concerns to addressed	Location / Timing	Implementation Agent	Implementation Stages*			Relevant Legislation & Guidelines
						D	C	O	
Noise - Operational Phase									
		N/A							

* D=Design, C=Construction, O=Operation
 N/A Not applicable

Table A3 Implementation Schedule of Water Quality Mitigation Measures

EIA Ref	EM&A Ref	Recommended Mitigation Measures	Objectives of the Recommended Measures and Main Concerns to addressed	Location / Timing	Implementation Agent	Implementation Stages*			Relevant Legislation & Guidelines
						D	C	O	
Water Quality - Construction Phase									
5.6.2	4.9.2	<p><i>General</i></p> <p>The contractor shall observe and comply with the Water Pollution Control Ordinance (WPCO) and its subsidiary regulations. The contractor shall carry out the works in such a manner as to minimise adverse impacts on the water quality during execution of the works. In particular the contractor shall arrange his method of working to minimise the effects on the water quality within and outside the site and on the transport routes.</p>	To minimize adverse water quality impact during construction	All works site / during construction	Construction Contractor		√		Water Pollution Control Ordinance
5.6.3	4.9.3	<p>The contractor shall follow the practices, and be responsible for the design, construction, operation and maintenance of all the mitigation measures below and as specified in ProPECC PN 1/94 - Construction Site Drainage. In particular, the contractor shall submit and implement an Erosion Control Plan (as part of the Environmental Management Plan) which shall incorporate details of the mitigation measures recommended below to reduce water quality impacts arising from construction works. The design of the mitigation measures and the Plan shall be submitted by the contractor to the Engineer for approval.</p>	To minimize adverse water quality impact during construction	All works site / during construction	Construction Contractor		√		ProPECC PN 1/94 ETWB TCW No. 19/2005

EIA Ref	EM&A Ref	Recommended Mitigation Measures	Objectives of the Recommended Measures and Main Concerns to addressed	Location / Timing	Implementation Agent	Implementation Stages*			Relevant Legislation & Guidelines
						D	C	O	
5.6.4	4.9.4	<i>Site Surface Runoff</i> Proper construction site drainage management measures shall be implemented to control site runoff and drainage, and thereby prevent high sediment loadings from reaching downstream sections of the river and adjacent agricultural land.	To minimize adverse water quality impact during construction	All works site / during construction	Construction Contractor		√		ProPECC PN 1/94
5.6.5	4.9.5	Turbid water from construction sites must be treated to minimise the solids content before being discharged. Advice on the handling and disposal of site discharge is given in the ProPECC Note PN 1/94 - Construction Site Drainage.	To minimize adverse water quality impact during construction	All works site / during construction	Construction Contractor		√		ProPECC PN 1/94
5.6.6	4.9.6	In general, surface run-off from construction sites should be discharged into waterbodies via adequately designed sand/silt removal facilities such as sand traps, silt traps and sediment basins. Channels or earth bunds or sand bag barriers should be provided on site to properly direct stormwater to such silt removal facilities. Perimeter channels at site boundaries should be provided to intercept storm run-off from outside the site so that it will not wash across the site (or into the proposed channel works area). Catchpits and perimeter channels should be constructed in advance of earthworks.	To minimize adverse water quality impact during construction	All works site / during construction	Construction Contractor		√		ProPECC PN 1/94

EIA Ref	EM&A Ref	Recommended Mitigation Measures	Objectives of the Recommended Measures and Main Concerns to addressed	Location / Timing	Implementation Agent	Implementation Stages*			Relevant Legislation & Guidelines
						D	C	O	
5.6.7	4.9.7	Silt removal facilities, channels should be maintained and the deposited silt and grit should be removed regularly, at the onset of and after each rainstorm to ensure proper functioning of these facilities at all times.	To minimize adverse water quality impact during construction	All works site / during construction	Construction Contractor		√		ProPECC PN 1/94
5.6.8	4.9.8	Measures should be taken to prevent the washing away of construction materials, soil, silt or debris into the nearby waterbodies. Open stockpiles susceptible to erosion should be covered with tarpaulin or similar fabric and provided with containment such as bunds, sand bag barriers or equivalent measures, especially during the wet season (April – September) or when heavy rainstorm is predicted. Runoff to watercourses should be reduced by minimising flat exposed areas of permeable soil, and by forming pits or diversion channels into which runoff can flow to suitable treatment facilities before discharge.	To minimize adverse water quality impact during construction	All works site / during construction	Construction Contractor		√		ProPECC PN 1/94
5.6.9	4.9.9	<i>De-watering / Excavation of Streams and Removal of Sediment</i> The use of containment structures such as earth bund or sand bag barriers wrapped with geotextile fabric or similar material or diversion channels is recommended to facilitate a dry or at least confined excavation within watercourses.	To minimize adverse water quality impact during construction	All works site / during construction	Construction Contractor		√		Water Pollution Control Ordinance

EIA Ref	EM&A Ref	Recommended Mitigation Measures	Objectives of the Recommended Measures and Main Concerns to addressed	Location / Timing	Implementation Agent	Implementation Stages*			Relevant Legislation & Guidelines
						D	C	O	
5.6.10	4.9.10	Excavation works at the existing stream section of MUP05 should be programmed to be carried out during periods of low flow (dry season from 1 st October to 31 st March) to minimise impacts on downstream water quality and sensitive receivers. For the ecologically sensitive stream of LMH01, the restriction period should be further extended for an additional month (i.e. excavation works allowed from 1 st November to 31 st March) to protect the aquatic fauna from silty runoff due to possible heavy rain during the transitional period of the wet / dry seasons.	To minimize adverse water quality impact from excavation works during wet season	MUP05 & LMH01 / during construction	Construction Contractor		√		Water Pollution Control Ordinance
5.6.11	4.9.11	In addition, the excavation works should be carried out in sections to reduce the area of exposed surfaces as described below. For MUP05, the first 300m upstream section will have no restriction. For the remaining sections of MUP05 (within existing stream course), the length would be restricted to 300m at any one time. For MUP04A, a 100m restriction should be imposed for the entire stream works area to cater for potential cumulative impact on MUP05.	Restrict length of excavation work to minimise impacts on downstream water quality and sensitive receivers	MUP05 & MUP04A / during construction	Construction Contractor		√		Water Pollution Control Ordinance
5.6.12	4.9.12	As for LMH01, given its relatively small scale works but sensitive nature of the stream, it is recommended that only either one portion of bank	To minimize adverse water quality impact on LMH01 during	LMH01 / during construction	Construction Contractor		√		Water Pollution Control Ordinance

EIA Ref	EM&A Ref	Recommended Mitigation Measures	Objectives of the Recommended Measures and Main Concerns to addressed	Location / Timing	Implementation Agent	Implementation Stages*			Relevant Legislation & Guidelines
						D	C	O	
		improvement works or one vehicular crossing reconstruction should be carried out at any one time.	construction						
5.6.14	4.9.14	After dewatering of the streams, the sediments should be allowed to dry before excavation (yet still maintain a moist state to avoid dust nuisance). This will facilitate excavation of the sediments and also minimise the risk of drained water flowing back into watercourses as the sediment is handled. Where time or weather constraints require handling of wet sediment, care should be taken in the removal of sediment and the storage area should be bunded to prevent silty runoff entering watercourses. Given its small quantity, all excavated sediment should be reused on-site as backfilling material.	To minimize adverse water quality impact during construction (in particular when excavating and handling sediments)	All works site where sediment removal is required / during construction	Construction Contractor		√		Water Pollution Control Ordinance
5.6.15	4.9.15	Excavated sediment will likely be temporarily stored on-site for reuse as backfilling material. This should be stored in a bunded area and covered during wet season or when rainstorm is forecasted to avoid inadvertent release of silts and suspended solids to nearby water bodies.	To minimize adverse water quality impact during construction (in particular when excavating and handling sediments)	All works site where sediment removal is required / during construction	Construction Contractor		√		Water Pollution Control Ordinance
5.6.16	4.9.16	Regular monitoring of suspended solids and turbidity should be conducted during excavation works. Any exceedance of water quality in the	To minimize adverse water quality impact during construction	All works site / during construction	Construction Contractor		√		Water Pollution Control Ordinance

EIA Ref	EM&A Ref	Recommended Mitigation Measures	Objectives of the Recommended Measures and Main Concerns to addressed	Location / Timing	Implementation Agent	Implementation Stages*			Relevant Legislation & Guidelines
						D	C	O	
		nearby water bodies caused by inadvertent release of site runoff should be rectified in accordance with EM&A programme for this Project.							
5.6.17	4.9.17	<i>Concreting Work</i> Runoff should be carefully channelled to prevent concrete-contaminated water from entering watercourses. Adjustment of pH can be achieved by adding a suitable neutralising reagent to wastewater prior to discharge. Re-use of the supernatant from the sediment pits for washing out of concrete lorries should be practised.	To minimize adverse water quality impact during construction (in particular concreting works)	All works site / during construction	Construction Contractor		√		Water Pollution Control Ordinance
5.6.18	4.9.18	Any exceedance of acceptable range of pH levels in the nearby water bodies caused by inadvertent release of site runoff containing concrete should be monitored and rectified under the EM&A programme for this Project.	To minimize adverse water quality impact during construction (in particular concreting works)	All works site / during construction	Construction Contractor		√		Water Pollution Control Ordinance
5.6.19	4.9.19	To protect the sensitive stream of Lin Ma Hang, no concrete should be used during bank improvement works at LMH01.	To minimize adverse water quality impact on LMH01 during construction	LMH01 bank improvement works / during construction	Construction Contractor		√		Environmental Impact Assessment Ordinance
5.6.20	4.9.20	<i>Site Workshop or Depot</i> Any contractor generating waste oil or other	To minimize adverse	All works site /	Construction		√		Water Pollution

EIA Ref	EM&A Ref	Recommended Mitigation Measures	Objectives of the Recommended Measures and Main Concerns to addressed	Location / Timing	Implementation Agent	Implementation Stages*			Relevant Legislation & Guidelines
						D	C	O	
		chemicals as a result of his activities should register as a chemical waste producer and provide a safe storage area for chemicals on site. The storage site should be located away from existing water courses.	water quality impact during construction	during construction	Contractor				Control Ordinance
5.6.21	4.9.21	All compounds in works areas should be located on areas of hard standing with provision of drainage channels and settlement ponds where necessary to allow interception and controlled release of settled/treated water; and provision of bunding for all potentially hazardous materials on site including fuels. Hard standing compounds should drain via an oil interceptor. To prevent spillage of fuels or other chemicals to water courses, all fuel tanks and storage areas should be sited on sealed areas, within a bund of a capacity equal to 110% of the storage capacity of the largest tank. Disposal of the waste oil should be done by a licensed collector. Oil interceptors should be regularly inspected and cleaned to avoid wash-out of oil during storm conditions. A bypass should be provided to avoid overload of the interceptor's capacity. Good housekeeping practices should be implemented to minimise careless spillage and to keep the storage and the work space in a tidy and clean condition. Appropriate training including safety codes and relevant manuals should be given to the personnel who regularly handle the chemicals on site.	To minimize adverse water quality impact during construction	All works site / during construction	Construction Contractor		√		Water Pollution Control Ordinance

EIA Ref	EM&A Ref	Recommended Mitigation Measures	Objectives of the Recommended Measures and Main Concerns to addressed	Location / Timing	Implementation Agent	Implementation Stages*			Relevant Legislation & Guidelines
						D	C	O	
5.6.22	4.9.22	The contractor should prepare an emergency contingency plan (spill action plan) for the Project to contain and remove all accidental spillage of chemicals and hazardous materials on-site including fuels at short notice and to prevent or minimize the quantities of contaminants entering the stream water and affecting the habitats. The contractor should submit the emergency contingency plan to the ET for review & comment and the engineer for approval.	To prevent or minimize the quantities of contaminants entering the stream water and affecting the habitats in case of accidental spillage of chemicals and hazardous materials	All works site / during construction	Construction Contractor		√		Water Pollution Control Ordinance
5.6.24	4.9.24	<i>Presence of Additional Population (Workers)</i> Sewage arising from the additional population of workers on site should be collected in a suitable storage facility, such as portable chemical toilets. An adequate number of portable toilets should be provided for the construction workforce. The portable toilets should be maintained in a state that will not deter the workers from using them. The collected wastewater from sewage facilities and also from eating areas or washing facilities must be disposed of properly, in accordance with the WPCO requirements. Wastewater collected should be discharged into foul sewers and collected by licensed collectors.	To minimize adverse water quality impact during construction	All works site / during construction	Construction Contractor		√		ProPECC PN 1/94 Water Pollution Control Ordinance

Table A4 Implementation Schedule of Waste Management Measures

EIA Ref	EM&A Ref	Recommended Mitigation Measures	Objectives of the Recommended Measures and Main Concerns to addressed	Location / Timing	Implementation Agent	Implementation Stages*			Relevant Legislation & Guidelines
						D	C	O	
Waste - Construction Phase									
6.5.2 – 6.5.3	5.1.2 – 5.1.3	<p><i>General</i></p> <p>Upon appointment, the main contractor of each construction contract should prepare and implement an Environmental Management Plan (EMP) in accordance with ETWB TCW No. 19/2005 – Environmental Management on Construction Sites which should describe the arrangements for avoidance, reuse, recovery, recycling, storage, collection, treatment and disposal of different categories of waste to be generated from the construction activities. Such a management plan should incorporate site specific factors, such as the designation of areas for segregation and temporary storage of reusable and recyclable materials. The EMP should be submitted to the Engineer for approval. The contractor shall implement the waste management practices in the EMP throughout the construction stage of the Project. The EMP should be reviewed regularly and updated (preferably monthly) by the contractor. The EMP should take into account the recommended mitigation measures in the EIA Report. The contractor also should refer to the Construction and Demolition Material Management Plan (C&DMMP) in Appendix D1 (of the EIA) to facilitate him in the preparation of the EMP of the Contract.</p>	Waste reduction, reuse, recycling and proper disposal of waste	All works site / during construction	Construction Contractor		√		Waste Disposal Ordinance ETWB TCW No. 19/2005

D = Design, C = Construction, O = Operation

EIA Ref	EM&A Ref	Recommended Mitigation Measures	Objectives of the Recommended Measures and Main Concerns to addressed	Location / Timing	Implementation Agent	Implementation Stages*			Relevant Legislation & Guidelines
						D	C	O	
6.5.4	5.1.4	Training of construction staff should be undertaken by the contractor about the concept of site cleanliness and appropriate waste management procedures. The contractor should develop and provide toolbox talk for on-site sorting of C&D materials to enhance worker's awareness in handling, sorting, reuse and recycling of C&D materials. Requirements for staff training should be included in the EMP.	Waste reduction, reuse, recycling and proper disposal of waste	All work sites / during construction	Construction Contractor		√		Waste Disposal Ordinance ETWB TCW No. 19/2005
6.5.5	5.1.5	Good planning and site management practice should be employed to eliminate over ordering or mixing of construction materials to reduce wastage. Proper storage and site practices will minimise the damage or contamination of construction materials.	Waste reduction, reuse, recycling and proper disposal of waste	All work sites / during construction	Construction Contractor		√		Waste Disposal Ordinance ETWB TCW No. 19/2005
6.5.6	5.1.6	Where waste generation is unavoidable, the potential for recycling or reuse should be rigorously explored. If wastes cannot be recycled, disposal routes described in the EMP should be followed. A recoding system for the amount of waste generated, recycled and disposed (including the disposal sites) should be implemented. In order to monitor the disposal of C&D material and solid wastes at public filling facilities and landfills and to control fly-tipping, a trip-ticket system should be included.	Waste reduction, reuse, recycling and proper disposal of waste	All work sites / during construction	Construction Contractor		√		Waste Disposal Ordinance ETWB TCW No. 19/2005 31/2004
6.5.7	5.1.7	Regular cleaning and maintenance of the waste storage area should be provided.	Waste reduction, reuse, recycling and proper disposal of waste	All work sites / during construction	Construction Contractor		√		Waste Disposal Ordinance

EIA Ref	EM&A Ref	Recommended Mitigation Measures	Objectives of the Recommended Measures and Main Concerns to addressed	Location / Timing	Implementation Agent	Implementation Stages*			Relevant Legislation & Guidelines
						D	C	O	
									ETWB TCW No. 19/2005
6.5.8	5.1.8	<p><i>On-site Sorting, Reuse and Recycling</i></p> <p>All waste materials should be segregated into categories covering:</p> <ul style="list-style-type: none"> • excavated materials suitable for reuse on-site; • excavated materials suitable for public filling facilities; • remaining C&D waste for landfill; • chemical waste; and • general refuse for landfill. 	Waste reduction, reuse, recycling and proper disposal of waste	All work sites / during construction	Construction Contractor		√		Waste Disposal Ordinance ETWB TCW No. 19/2005
6.5.9	5.1.9	Proper segregation and disposal of construction waste should be implemented. Separate containers should be provided for inert and non-inert wastes.	Waste reduction, reuse, recycling and proper disposal of waste	All work sites / during construction	Construction Contractor		√		Waste Disposal Ordinance ETWB TCW No. 19/2005
6.5.10	5.1.10	Sorting is important to recover materials for reuse and recycling. Specific area should be allocated for on-site sorting of C&D materials and to provide a temporary storage area for those sorted materials	Waste reduction, reuse, recycling and proper disposal of waste	All work sites / during construction	Construction Contractor		√		Waste Disposal Ordinance ETWB TCW No. 19/2005, 31/2004

EIA Ref	EM&A Ref	Recommended Mitigation Measures	Objectives of the Recommended Measures and Main Concerns to addressed	Location / Timing	Implementation Agent	Implementation Stages*			Relevant Legislation & Guidelines
						D	C	O	
		such as metals, concrete, timber, plastics, glass, excavated spoils, bricks / tiles and waste papers. If area is limited, all C&D materials should at least be sorted on-site into inert and non-inert component. Non-inert materials (C&D waste) such as bamboo, timber, vegetation, packaging waste and other organic materials should be reused and recycled wherever possible and disposed of to designated landfill only as a last resort. Inert materials (public fill) such as concrete, stone, clay, brick, soil, asphalt and the like should be separated and reuse in this or other projects (subject to approval by the relevant parties in accordance with the ETWB TCW No. 31/2004) before disposed of at a public filling facility operated by Civil Engineering and Development Department (CEDD). Steel and other metals should be recovered from demolition waste stream and recycled.							
6.5.11	5.1.11	The reuse of inert materials such as soil, rock and broken concrete should be maximised. Waste should be separated into fine, soft and hard materials. With the use of a crusher coarse material can be crushed to make it suitable for use as fill material where fill is required in the works. This minimises the use of imported material and maximises use of the C&D material produced.	Waste reduction, reuse, recycling and proper disposal of waste	All work sites / during construction	Construction Contractor		√		Waste Disposal Ordinance ETWB TCW No. 19/2005
6.5.12	5.1.12	Prior to export of material from the site, the	Waste reduction, reuse,	All work sites /	Construction		√		Waste Disposal

EIA Ref	EM&A Ref	Recommended Mitigation Measures	Objectives of the Recommended Measures and Main Concerns to addressed	Location / Timing	Implementation Agent	Implementation Stages*			Relevant Legislation & Guidelines
						D	C	O	
		potential for it to be reused should be assessed. With the exception of excavated clay most C&D material can easily be reused. Waste separation methods should be followed to ensure that C&D waste is separated at source. Suitable soft materials should be used for landscaping and grading of embankments. Fine material should be separated out and used as topsoil.	recycling and proper disposal of waste	during construction	Contractor				Ordinance ETWB TCW No. 19/2005
6.5.13	5.1.13	The feasibility of using recycled aggregates in lieu of virgin materials should be rigorously considered during the detailed design and construction stages as stipulated in WBTC No. 12/2002 and ETWB TCW No. 24/2004. In general, recycled aggregates are suitable for use as fill materials in earthworks, road sub-base formation, and drainage works. Recycled aggregates can also be used in concrete (up to Grade 35) for mass concrete walls and other minor structures such as planter boxes, toe wall planters and pavement, etc.	Waste reduction, reuse, recycling and proper disposal of waste	All work sites / during construction	Construction Contractor		√		Waste Disposal Ordinance ETWB TCW No. 19/2005, 24/2004 WBTC No. 12/2002
6.5.14	5.1.14	Recycled inert C&D material should be used in the works as sub-bases for access roads and footpaths of the proposed channels. Recycled aggregates should be considered for use in concrete as outlined in the above mentioned technical circulars. Some recycled rock material can be reused in the gabions, as rock fill or as stream bed material. This is dependent on size of rock fragments but can be	Waste reduction, reuse, recycling and proper disposal of waste	All work sites / during construction	Construction Contractor		√		Waste Disposal Ordinance ETWB TCW No. 19/2005

EIA Ref	EM&A Ref	Recommended Mitigation Measures	Objectives of the Recommended Measures and Main Concerns to addressed	Location / Timing	Implementation Agent	Implementation Stages*			Relevant Legislation & Guidelines
						D	C	O	
		achieved by appropriate use of a crusher.							
6.5.15	5.1.15	<p><i>Site Clearance / Demolition Materials</i></p> <p><i>Excavated Materials</i></p> <p>All C&D materials should be sorted on-site into inert and non-inert components by the contractor. Non inert materials (C&D waste) such as wood, glass and plastic should be reuse and recycle before disposal to a designated landfill as a last resort (currently assume to be the nearby NENT Landfill). Inert materials (public fill) such as soil, rubble, sand, rock, brick and concrete should be separated and where appropriate broken down to size suitable for subsequent filling. Suitable C&D material should be use as pipe bedding or for backfilling of retaining walls, box culvert and formation of channel embankments. Excavated rocks from existing streams should be reuse for rip-rap lining and gabion lining. Inert materials should be reused on-site or in other projects approved by relevant parties in accordance with the ETWB TCW No. 31/2004 before disposed of at public filling facilities. Steel and other metals should be recovered from C&D materials and recycled.</p>	Waste reduction, reuse, recycling and proper disposal of waste	All work sites / during construction	Construction Contractor		√		Waste Disposal Ordinance ETWB TCW No. 19/2005, 31/2004
6.5.16	5.1.16	Excavated sediment from existing stream should be reuse on-site as backfilling material.	Reuse of excavated sediment to minimize offsite disposal	MUP04A / during construction	Construction Contractor		√		Waste Disposal Ordinance

EIA Ref	EM&A Ref	Recommended Mitigation Measures	Objectives of the Recommended Measures and Main Concerns to addressed	Location / Timing	Implementation Agent	Implementation Stages*			Relevant Legislation & Guidelines
						D	C	O	
6.5.17	5.1.17	Good quality reusable topsoil should be stockpiled for later landscaping works. Stockpiles should be less than 2 m in height, formed to a safe angle of repose and hydroseeded or covered with tarpaulin to prevent erosion during the rainy season and to minimise dust generation.	Waste reduction, reuse, recycling and proper disposal of waste	All work sites / during construction	Construction Contractor		√		Waste Disposal Ordinance ETWB TCW No: 19/2005
6.5.18	5.1.18	Control measures for temporary stockpiles on-site should be taken in order to minimize the noise, generation of dust, pollution of water and visual impact. These measures include: <ul style="list-style-type: none"> • surface of stockpiled soil should be regularly wetted with water especially during dry season; • disturbance of stockpiled soil should be minimized; • stockpiled soil should be properly covered with tarpaulin especially when heavy rain storms are predicted; • stockpiling areas should be enclosed where space is available; • stockpiling location should be away from the water bodies; and • an independent surface water drainage system 	Waste reduction, reuse, recycling and proper disposal of waste	All work sites / during construction	Construction Contractor		√		Waste Disposal Ordinance ETWB TCW No. 19/2005

EIA Ref	EM&A Ref	Recommended Mitigation Measures	Objectives of the Recommended Measures and Main Concerns to addressed	Location / Timing	Implementation Agent	Implementation Stages*			Relevant Legislation & Guidelines
						D	C	O	
		equipped with silt traps should be installed at the stockpiling area.							
6.5.19	5.1.19	The identification of final disposal sites for C&D materials generated by the construction works will be considered during the detailed design stage of the Project when the volume and types of C&D materials can be more accurately estimated. The Public Fill Committee of CEDD should be consulted on designated outlets (e.g. public filling area) for public fill, whilst EPD should be consulted on landfills for C&D waste. Disposal of C&D waste to landfill must not have more than 50% (by weight) inert material. The C&D waste delivered for landfill disposal should contain no free water and the liquid content should not exceed 70% by weight.	Waste reduction, reuse, recycling and proper disposal of waste	All work sites / during construction	Construction Contractor		√		Waste Disposal Ordinance ETWB TCW No. 19/2005
6.5.20	5.1.20	In order to avoid dust or odour impacts, any vehicle leaving a works area carrying C&D waste or public fill should have their load covered before leaving the construction site.	Waste reduction, reuse, recycling and proper disposal of waste	All work sites / during construction	Construction Contractor		√		Waste Disposal Ordinance ETWB TCW No. 19/2005 WBTC No. 19/2001
6.5.21	5.1.21	C&D materials should be disposed of at designated public filling facilities or landfills. Disposal of	Waste reduction, reuse, recycling and proper	All work sites / during	Construction Contractor		√		Waste Disposal Ordinance

EIA Ref	EM&A Ref	Recommended Mitigation Measures	Objectives of the Recommended Measures and Main Concerns to addressed	Location / Timing	Implementation Agent	Implementation Stages*			Relevant Legislation & Guidelines
						D	C	O	
		these materials for use at other construction projects is subject to the approval of the EPD, Engineer and/or relevant authorities, such as LandsD, PlanD, etc. Furthermore, unauthorized disposal of C&D materials in particular on private agricultural land is prohibited and may be subject to relevant enforcement and regulating actions. The contractor shall refer and strictly follow the tripticket system for the disposal of C&D material as stipulated in the ETWB TCW No. 31/2004.	disposal of waste	construction					ETWB TCW No. 19/2005, 31/2004
6.5.22	5.1.22	<i>Chemical Waste</i> Where the construction processes produce chemical waste, the contractor must register with EPD as a chemical waste producer. Wastes classified as chemical wastes are listed in the Waste Disposal (Chemical Waste) (General) Regulation. These wastes are subject to stringent disposal routes. EPD requires information on the particulars of the waste generation processes including the types of waste produced, their location, quantities and generation rates. A nominated contact person must be registered with EPD. An updated list of licensed chemical waste collector can be obtained from EPD.	Waste reduction, reuse, recycling and proper disposal of chemical waste	All work sites / during construction	Construction Contractor		√		Waste Disposal (Chemical Waste) (General) Regulation, Code of Practice on the Packaging Labelling and Storage of Chemical Waste
6.5.23	5.1.23	Storage, handling, transport and disposal of chemical waste should be arranged in accordance with the	Waste reduction, reuse, recycling and proper	All work sites / during	Construction Contractor		√		Waste Disposal (Chemical Waste) (General)

EIA Ref	EM&A Ref	Recommended Mitigation Measures	Objectives of the Recommended Measures and Main Concerns to addressed	Location / Timing	Implementation Agent	Implementation Stages*			Relevant Legislation & Guidelines
						D	C	O	
		Code of Practice on the Packaging, Labelling and Storage of Chemical Wastes published by EPD, and should be collected by a licensed chemical waste collector.	disposal of chemical waste	construction					Regulation, Code of Practice on the Packaging Labelling and Storage of Chemical Waste
6.5.24	5.1.24	Suitable containers should be used for specific types of chemical wastes, containers should be properly labelled (English and Chinese in accordance with instructions prescribed in Schedule 2 of the Regulations), resistance to corrosion, stored safely and closely secure. Stored volume should not be kept more than 450 liters unless the specification has been approved by the EPD. Storage area should be enclosed by three sides by a wall, partition of fence that is at least 2 m height or height of tallest container with adequate ventilation and space.	Waste reduction, reuse, recycling and proper disposal of chemical waste	All work sites / during construction	Construction Contractor		√		Waste Disposal (Chemical Waste) (General) Regulation, Code of Practice on the Packaging Labelling and Storage of Chemical Waste
6.5.25	5.1.25	Hard standing, impermeable surfaces draining via oil interceptors should be provided in works area compounds. Interceptors should be regularly emptied to prevent release of oils and grease into the surface water drainage system after accidental spillages. The interceptor should have a bypass to prevent flushing during periods of heavy rain. Oil and fuel bunkers should be bunded and/or enclosed on three sides to prevent discharge due to accidental spillages or breaches of tanks. Bunding	Waste reduction, reuse, recycling and proper disposal of chemical waste	Work sites / During construction	Construction Contractor		√		Waste Disposal (Chemical Waste) (General) Regulation, Code of Practice on the Packaging Labelling and Storage of Chemical Waste

EIA Ref	EM&A Ref	Recommended Mitigation Measures	Objectives of the Recommended Measures and Main Concerns to addressed	Location / Timing	Implementation Agent	Implementation Stages*			Relevant Legislation & Guidelines
						D	C	O	
		should be of sufficient capacity to accommodate 110% of the volume of the largest container or 20% of the total volume of waste, whichever is largest. Waste collected from any grease traps should be collected and disposed of by a licensed contractor.							
6.5.26	5.1.26	Lubricants, waste oils and other chemical wastes are likely to be generated during the maintenance of vehicles and mechanical equipment. Used lubricants should be collected and stored in individual containers which are fully labelled in English and Chinese and stored in a designated secure place. If possible, such waste should be sent to oil recycling companies, and the empty oil drums collected by appropriate companies for reuse or refill.	Waste reduction, reuse, recycling and proper disposal of chemical waste	All work sites / during construction	Construction Contractor		√		Waste Disposal (Chemical Waste) (General) Regulation, Code of Practice on the Packaging Labelling and Storage of Chemical Waste
6.5.27	5.1.27	The registered chemical waste producer (i.e. the contractor) has to arrange for the chemical waste to be collected by licensed collectors. The licensed collector should regularly take chemical waste to a licensed chemical waste treatment facility (such as the Chemical Waste Treatment Centre in Tsing Yi). A trip ticket system operates to control the movement of chemical wastes.	Waste reduction, reuse, recycling and proper disposal of chemical waste	All work sites / during construction	Construction Contractor		√		Waste Disposal (Chemical Waste) (General) Regulation, Code of Practice on the Packaging Labelling and Storage of Chemical Waste
6.5.28	5.1.28	No lubricants, oils, solvents or paint products should be allowed to discharge into water courses,	Waste reduction, reuse, recycling and proper	All work sites / during	Construction Contractor		√		Waste Disposal (Chemical Waste)

EIA Ref	EM&A Ref	Recommended Mitigation Measures	Objectives of the Recommended Measures and Main Concerns to addressed	Location / Timing	Implementation Agent	Implementation Stages*			Relevant Legislation & Guidelines
						D	C	O	
		either by direct discharge, or as contaminants carried in surface water runoff from the construction site.	disposal of chemical waste	construction					(General) Regulation, Code of Practice on the Packaging Labelling and Storage of Chemical Waste
6.5.29	5.1.29	<i>Concrete Waste</i> Dry concrete waste (considered as public fill) should be sorted out from the other wastes and recycled for reuse or sorted out for disposal at designated public filling facilities.	Waste reduction, reuse, recycling and proper disposal of waste	All work sites / during construction	Construction Contractor		√		Waste Disposal Ordinance ETWB TCW No. 19/2005, 33/2002
6.5.30	5.1.30	<i>Wooden Materials</i> All wooden materials used on-site should be kept separate from other wastes to avoid damage and to facilitate reuse. Timber which cannot be reused should be sorted out from other waste and stored separately from all inert waste before being disposed of to landfill.	Waste reduction, reuse, recycling and proper disposal of waste	All work sites / during construction	Construction Contractor		√		Waste Disposal Ordinance ETWB TCW No. 19/2005, 33/2002
6.5.31	5.1.31	Reusable steel or concrete panel shutters, fencing and hoarding and signboard should be used as a preferred alternative to items made of wood, to minimise wastage of wood. Attention should be paid to WBTC No. 19/2001 - Metallic Site Hoardings and Signboards to reduce the amount of	Waste reduction, reuse, recycling and proper disposal of waste	All work sites / during construction	Construction Contractor		√		Waste Disposal Ordinance ETWB TCW No. 19/2005, 33/2002

EIA Ref	EM&A Ref	Recommended Mitigation Measures	Objectives of the Recommended Measures and Main Concerns to addressed	Location / Timing	Implementation Agent	Implementation Stages*			Relevant Legislation & Guidelines
						D	C	O	
		timber used on construction sites. Metallic alternatives to timber are readily available and should be used rather than new timber. Recast concrete units should be adopted wherever feasible to minimize the use of timber formwork.							
6.5.32	5.1.32	Only waste material need be taken to a landfill. It should be separated from recyclable wood and steel materials. As for all waste types these materials should be reused on-site or other approved sites before disposal is considered as an option. Disposal to landfill should only be considered as a final option. Contractors are responsible for storage of re-useable materials on-site.	Waste reduction, reuse, recycling and proper disposal of waste	All work sites / during construction	Construction Contractor		√		Waste Disposal Ordinance ETWB TCW No. 19/2005, 33/2002
6.5.33	5.1.33	<i>Municipal Waste</i> General refuse generated on-site should be stored in enclosed bins or skips and collected separately from other construction and chemical wastes and disposed of at designated landfill. A temporary refuse collection point should be set up by the contractor to facilitate the collection of refuse by licensed contractors. The removal of waste from the site should be arranged on a daily or at least on every second day by the contractor to minimise any potential odour impacts, minimise the presence of pests, vermin and other scavengers and prevent unsightly accumulation of waste.	Waste reduction, reuse, recycling and proper disposal of waste	All work sites / during construction	Construction Contractor		√		Waste Disposal Ordinance ETWB TCW No. 19/2005

Table A5 Implementation Schedule of Ecological Impact Measures

EIA Ref	EM&A Ref	Recommended Mitigation Measures	Objectives of the Recommended Measures and Main Concerns to addressed	Location / Timing	Implementation Agent	Implementation Stages*			Relevant Legislation & Guidelines
						D	C	O	
Ecology - Construction Phase									
7.9.3	6.5.2	<i>LMH01</i> Given the ecological importance of Lin Ma Hang stream, it is proposed that construction works at LMH01 should be restricted to the dry season period from 1 st November – 31 st March. The small scale of works should allow all construction to be completed within dry season to ensure that the risk of erosion and sedimentation due to heavy rain on the works areas, as well as disturbance impacts to surrounding areas, will be minimised.	Minimize ecological impacts during construction at LMH01	All works sites at LMH01 / during construction	Construction Contractor		√		Environmental Impact Assessment Ordinance
7.9.4	6.5.3	In addition, the breaking of existing shotcrete banks at LMH01 should be restricted to hand-held equipment. Concrete should not be used for construction of the gabion banks.	Minimize ecological impacts during construction at LMH01	All works sites at LMH01 / during construction	Construction Contractor		√		Environmental Impact Assessment Ordinance
7.9.5	6.5.4	Potential disturbance impacts to surrounding habitats and pollution risks (water quality impacts) to the stream should be minimised by adoption of appropriate site management procedures, as detailed in ETWB TCW No. 5/2005; including among others the location of access to the site and storage of materials, and treatment of construction site waste to prevent	Minimize ecological impacts during construction at LMH01	All works sites at LMH01 / during construction	Construction Contractor		√		Environmental Impact Assessment Ordinance

D = Design, C = Construction, O = Operation

EIA Ref	EM&A Ref	Recommended Mitigation Measures	Objectives of the Recommended Measures and Main Concerns to addressed	Location / Timing	Implementation Agent	Implementation Stages*			Relevant Legislation & Guidelines
						D	C	O	
		pollution of the stream. These site management measures are listed in the subsequent section.							
7.9.9	6.5.8	<p><i>MUP05 (natural stream section)</i></p> <p><u>Streambed</u></p> <p>One of the main benefits of the proposed stream widening measures is that the existing natural stream bed is left undisturbed. Accordingly, works should be carried out in such a way that as much as possible of the natural stream bed should be left undisturbed and that where disturbance is essential this should be minimised in terms of area, magnitude and duration to minimise potential impacts to stream fauna and to ensure refuges for these species during the period of the works. Avoidance of the stream bed can be achieved by conducting the earthworks to widen the stream from the landward side, by not lowering the widened channel to the same level as, or below, the existing channel, and by leaving the existing stream untouched except during the final stage, when the newly formed widened stream bed is joined to the existing stream.</p>	Minimize ecological impacts during construction at MUP05	All works sites at MUP05 / during construction	Construction Contractor		√		Environmental Impact Assessment Ordinance
7.9.10	6.5.9	In addition, the widened stream bottom should be floored with natural materials (natural rock and fines of varying sizes) to approximate as closely as possible to the rocky components of a natural stream bottom. Natural materials of a smaller particle size (sand and silt grains) will soon be	Minimize ecological impacts during construction at MUP05	All works sites at MUP05 / during construction	Construction Contractor		√		Environmental Impact Assessment Ordinance

EIA Ref	EM&A Ref	Recommended Mitigation Measures	Objectives of the Recommended Measures and Main Concerns to addressed	Location / Timing	Implementation Agent	Implementation Stages*			Relevant Legislation & Guidelines
						D	C	O	
		deposited naturally.							
7.9.11	6.5.10	In order to minimise potential impacts to stream fauna during excavation of the widened "two-stage" channel, this work should be limited to the dry season as far as possible, between 1 st October and 31 st March. As rainfall is low at this time, erosion is less likely and deposition of sediment downstream of the works should be minimised. This also avoids the time when stream fauna are at the most vulnerable stage in their life cycle (eggs and young larvae). Any essential works outside the dry season should be temporarily isolated from the stream to prevent the risk of pollution or sedimentation affecting the ecological integrity of the stream.	Minimize ecological impacts during construction at MUP05	All works sites at MUP05 / during construction	Construction Contractor		√		Environmental Impact Assessment Ordinance
7.9.12	6.5.11	As required to minimize potential water quality impacts (Section 5.6), excavation works at the stream section of MUP05 should be restricted to 300m length at any one time. No restriction is considered necessary for the first 300m upstream concrete drains section. Excavation works at MUP04A should be restricted to 100m to cater for potential cumulative impact on MUP05.	Minimize ecological impacts during construction at MUP05	All works sites at MUP05 / during construction	Construction Contractor		√		Environmental Impact Assessment Ordinance
7.9.13	6.5.12	Appropriate site management procedures during the construction phase should be adopted, as	Minimize ecological impacts during	All works sites at MUP05 / during	Construction Contractor		√		Environmental Impact Assessment

ENV

EIA Ref	EM&A Ref	Recommended Mitigation Measures	Objectives of the Recommended Measures and Main Concerns to addressed	Location / Timing	Implementation Agent	Implementation Stages*			Relevant Legislation & Guidelines
						D	C	O	
		recommended in ETWB TCW No. 5/2005, to minimise potential disturbance impacts and pollution risks (water quality impacts) to the stream. This should include the location of access to the site and storage of materials, and treatment of construction site waste to prevent pollution of the stream. These site management measures are listed in the subsequent section.	construction at MUP05	construction					Ordinance
7.9.20, Table 7.29	6.5.19 & Table 6.6	<p>The loss of bankside trees, and associated riparian habitats, should be mitigated through transplanting existing trees to suitable locations wherever possible, and through supplemental planting of native trees and bamboos in locations where the project area includes sufficient space adjacent to the stream but outside the channel itself (in addition to retaining in-situ as much trees as possible). The appropriate species of trees and bamboos include.</p> <ul style="list-style-type: none"> ▪ <i>Celtis tetranda (sinensis)</i> ▪ <i>Ficus hispida</i> ▪ <i>Ficus microcarpa</i> ▪ <i>Litsea glutinosa</i> ▪ <i>Sapium discolor</i> ▪ <i>Schleffera arboricolor (octophylla)</i> ▪ <i>Trema tomentosa</i> 	Mitigate the loss of bankside trees and associated riparian habitats at MUP05	MUP05 / during construction	Construction Contractor		√		Environmental Impact Assessment Ordinance

EIA Ref	EM&A Ref	Recommended Mitigation Measures	Objectives of the Recommended Measures and Main Concerns to addressed	Location / Timing	Implementation Agent	Implementation Stages*			Relevant Legislation & Guidelines
						D	C	O	
		<ul style="list-style-type: none"> <i>Bambusa eutuldoides</i> 							
7.9.21	6.5.20	The proposed landscape compensatory planting of about 740 trees (approximately 1,100 m ²) along the MUP channels will serve dual purpose of landscape impact mitigation as well as mitigating the loss of riparian trees.	Dual purpose of landscape impact mitigation and mitigate the loss of riparian trees at the MUP channels	MUP channels / during construction	Construction Contractor		√		Environmental Impact Assessment Ordinance
7.9.22 Table 7.29 (8.11.27)	6.5.21 Table 6.6 (7.5.11)	The Landscape Plan to be submitted prior to commencement of planting or landscaping works should take into account the recommended plant species.	To ensure the recommended plant species are taken into account in the Landscape Plan	All works site / during detailed design and construction	DSD (or its appointed Detailed Design Engineer) Construction Contractor to implement the approved planting plan	√	√		Environmental Impact Assessment Ordinance
7.9.23	6.5.22	The recommended site management measures are generally good site practices and proper water quality control / waste management measures to be implemented by the contractor for all works near stream courses. These measures include: <ul style="list-style-type: none"> Construction activities should be restricted to works area that should be clearly demarcated. 	Recommended site management measures to minimize ecological impacts during construction at LMH01 and MUP05	All works sites at LMH01 and MUP05 / during construction	Construction Contractor		√		Environmental Impact Assessment Ordinance

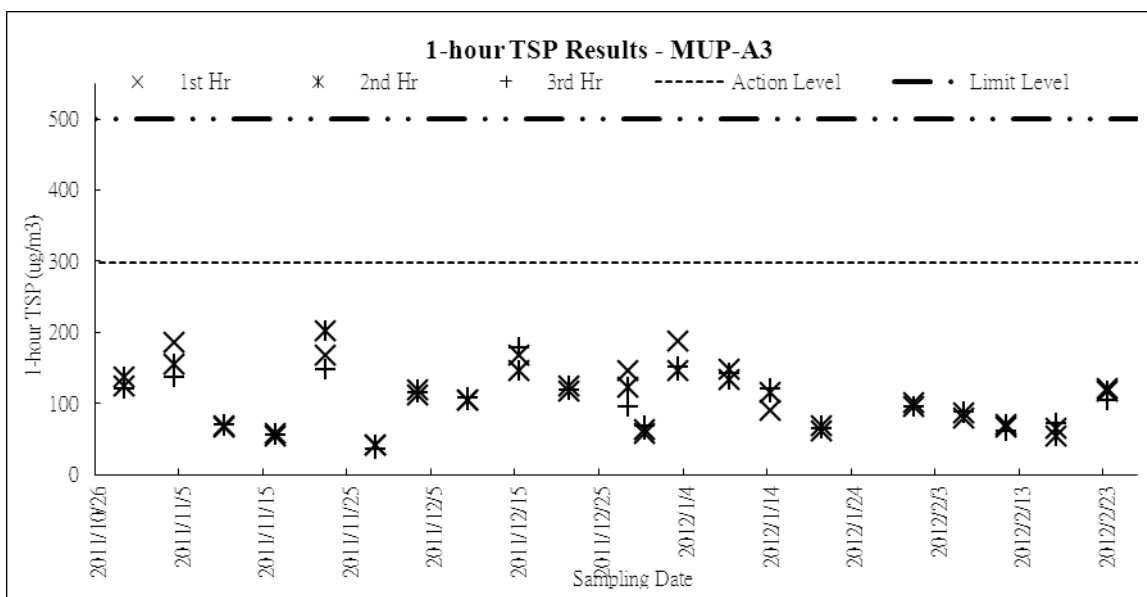
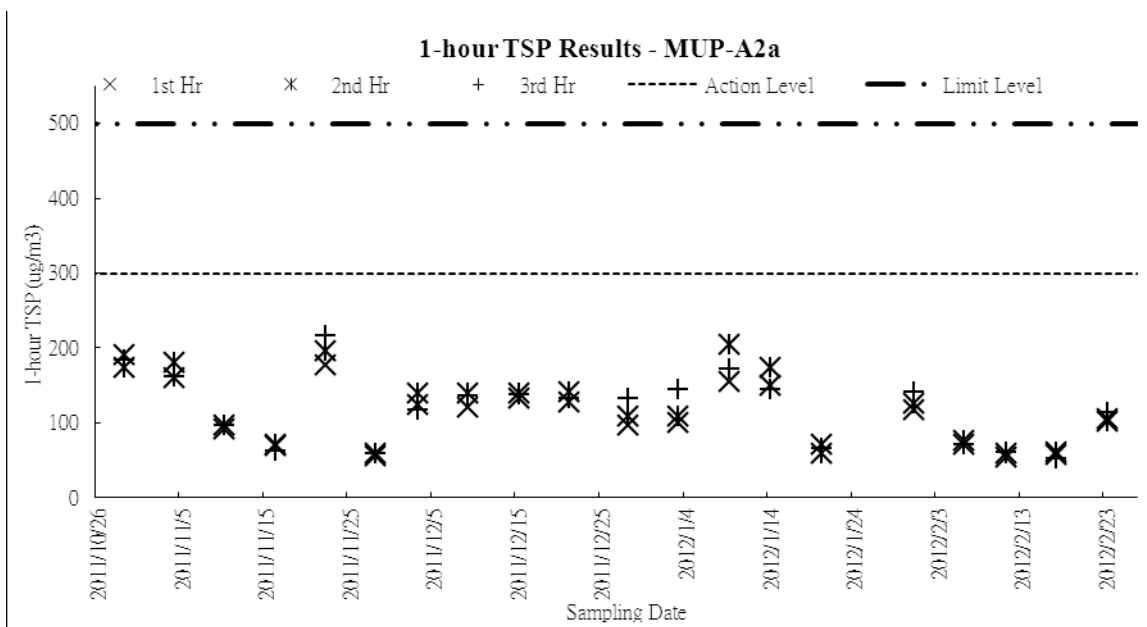
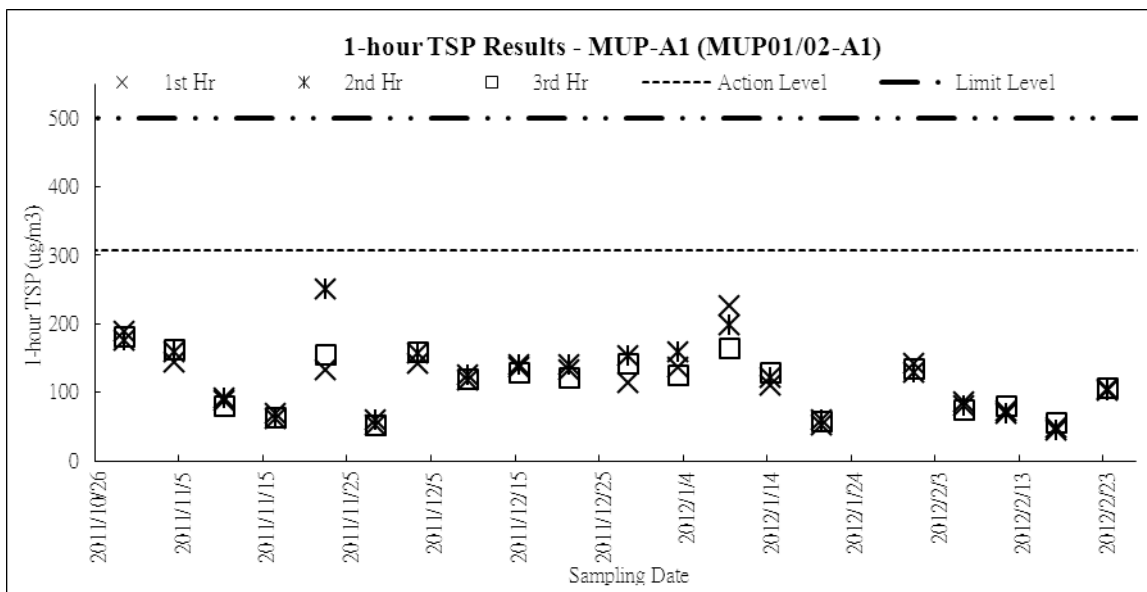
EIA Ref	EM&A Ref	Recommended Mitigation Measures	Objectives of the Recommended Measures and Main Concerns to addressed	Location / Timing	Implementation Agent	Implementation Stages*			Relevant Legislation & Guidelines
						D	C	O	
		<ul style="list-style-type: none"> ▪ Excavation works should be carried out during the dry season where stream flow is low. Where adequate space is available, works should be carefully phased such that only one side of the channel is constructed. Temporary diversion should be provided to ensure continuous water flow to the downstream section. ▪ The proposed works site inside or in the proximity of natural streams should be temporarily isolated, such as using bunds or sandbag barriers (wrapped with geotextile fabric) or other similar techniques, to prevent adverse impacts on the stream water quality. ▪ For the stream section where the existing natural stream bed and bank will be left untouched, no disturbance to the stream bed and bank should be allowed from construction works, equipment or workers. If temporary access track on streambed is unavoidable, this should be kept to the minimum width and length. Temporary stream crossings should be supported on stilts above the stream bed. ▪ Adequate temporary drainage measures including sediment and oil/grease traps should be provided to prevent contaminated site run-off entering the water bodies. ▪ Stockpiling of construction materials, spoils and waste should be properly covered and located away from water bodies to prevent silty runoff and other pollutants from entering 							

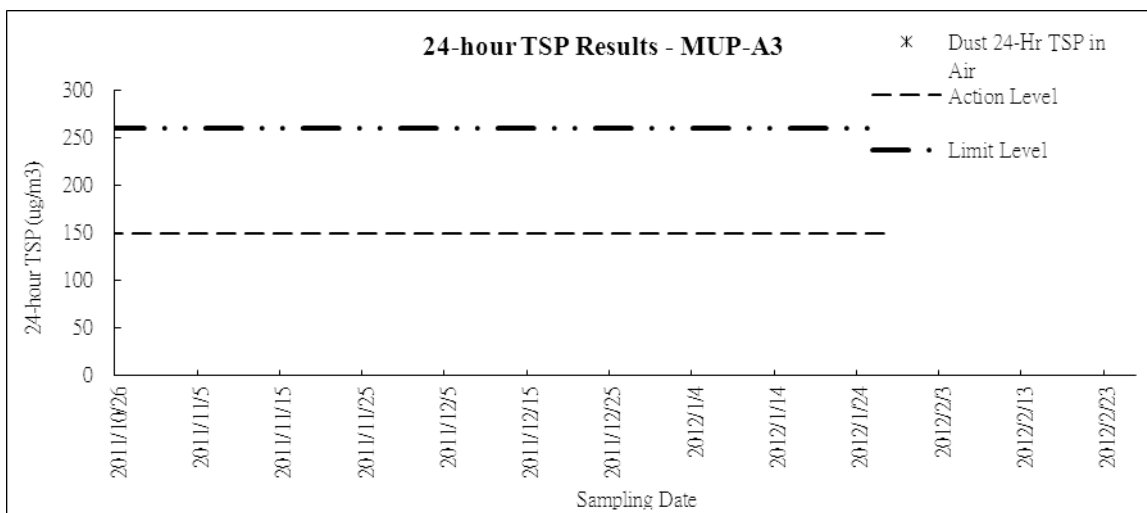
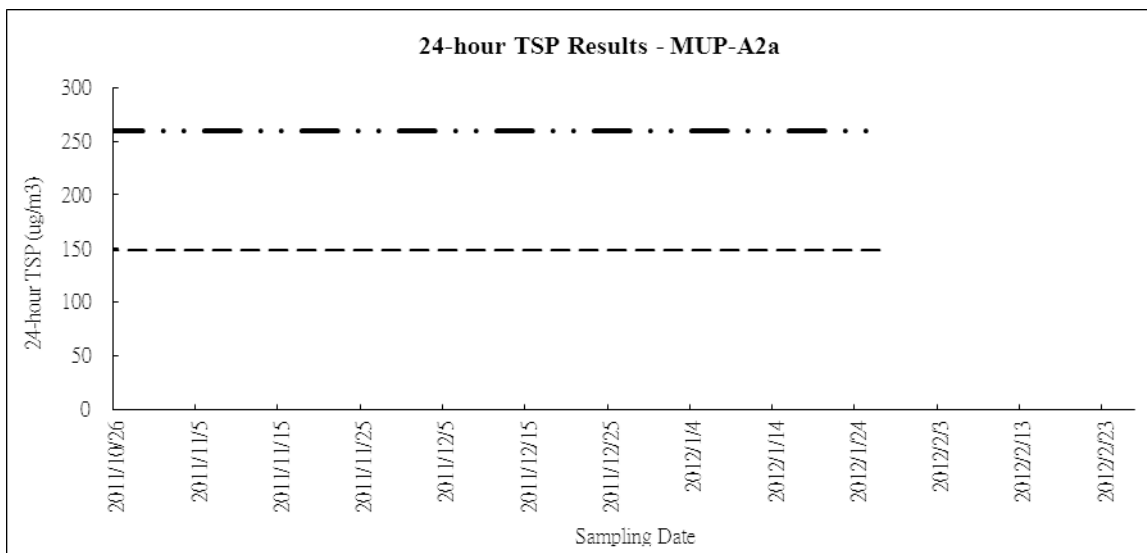
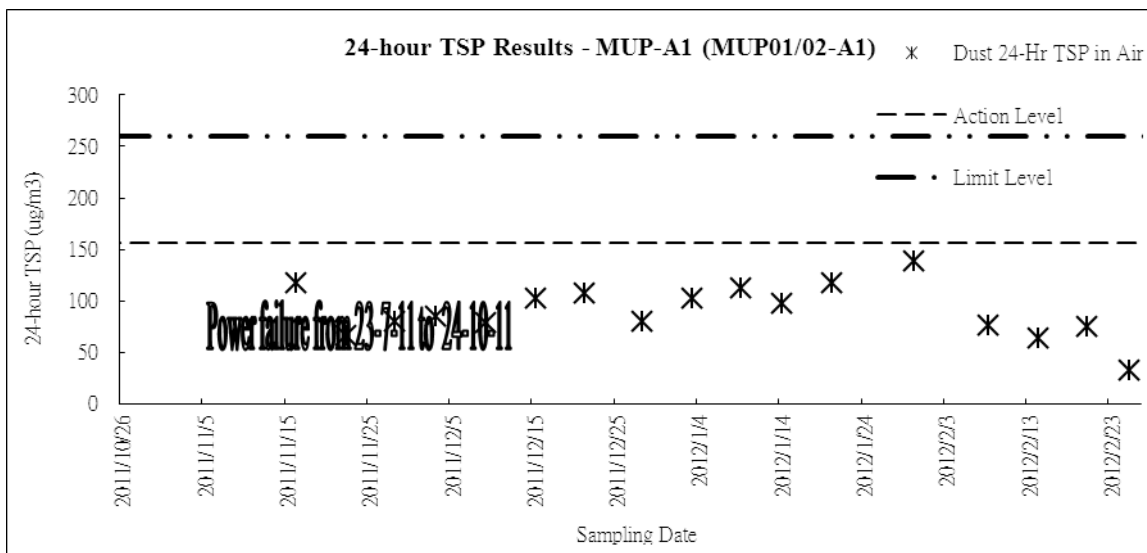
EIA Ref	EM&A Ref	Recommended Mitigation Measures	Objectives of the Recommended Measures and Main Concerns to addressed	Location / Timing	Implementation Agent	Implementation Stages*			Relevant Legislation & Guidelines
						D	C	O	
		the water bodies during rain storms. <ul style="list-style-type: none"> ▪ Construction effluent, site run-off and sewage should be properly collected, treated and disposed. ▪ Supervisory staff of the contractor should be assigned to station on site to closely supervise and monitor the construction works. All workers should be regularly briefed to avoid disturbing the flora and fauna near the works area. 							
7.9.24	6.5.23	The contractor should provide details of the mitigation measures to be implemented during construction stage as part of their working method statement to the Engineer for approval. This should be reviewed by the Environmental Team Leader.	Minimize ecological impacts during construction at LMH01 and MUP05 and to ensure the contractor will properly implement the mitigation measures	All works sites at LMH01 and MUP05 / during construction	Construction Contractor		√		Environmental Impact Assessment Ordinance
Ecology - Operation Phase									
7.9.6	6.5.5	<i>LMH01</i> Very little or no management / maintenance of the completed sections of LMH01 are expected. Removal of obstruction should be undertaken only when flooding or safety issues have been identified.	Minimize ecological impacts during operation of LMH01	LMH01 / during operation stage	DSD (or DSD's maintenance contractor)			√	Environmental Impact Assessment Ordinance

Appendix E

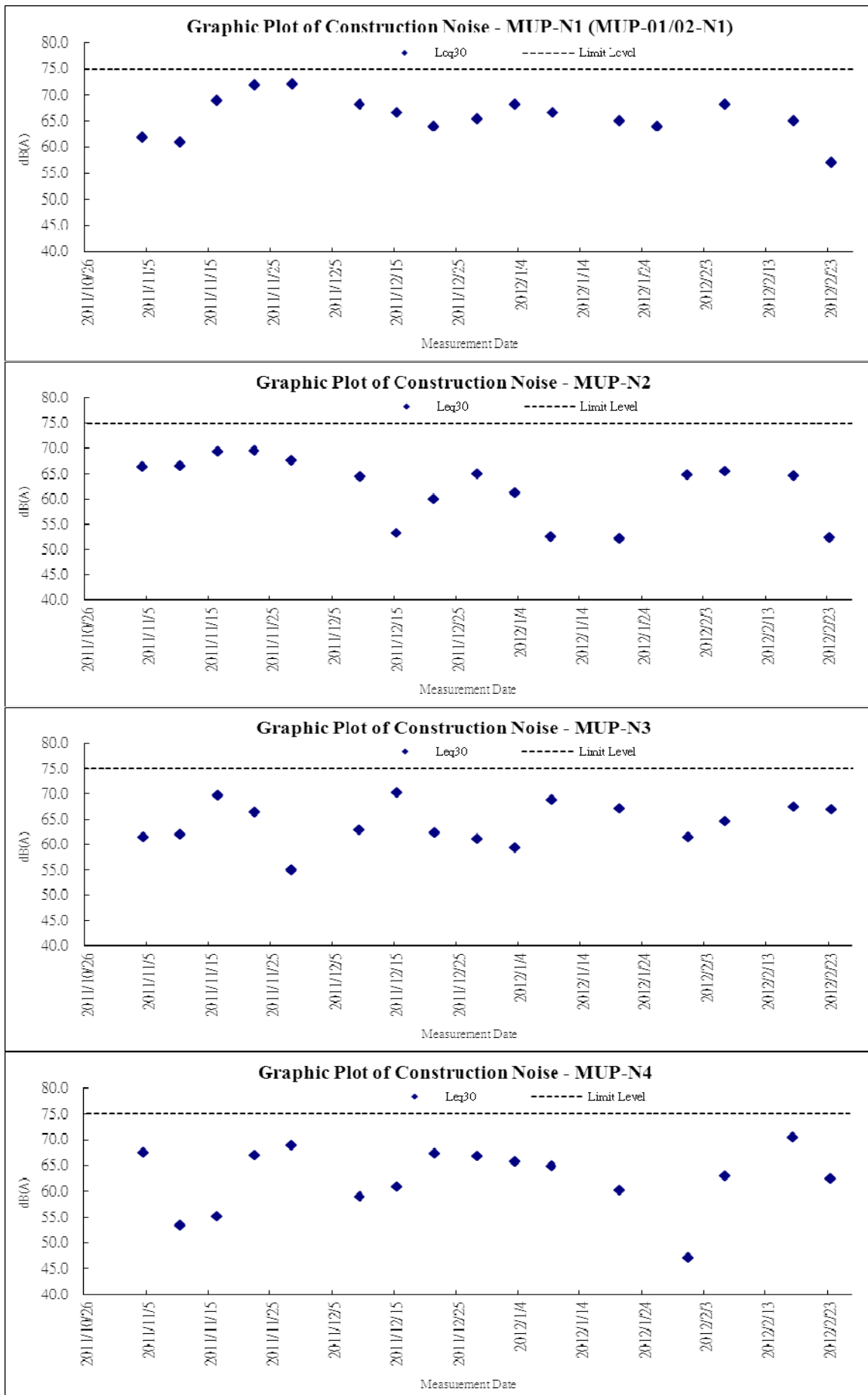
- Graphic Plots of**
- (a) Air Quality**
 - (b) Construction Noise**
 - (c) Water Quality**

(a) Air Quality





(b) Construction Noise



(c) Water Quality

