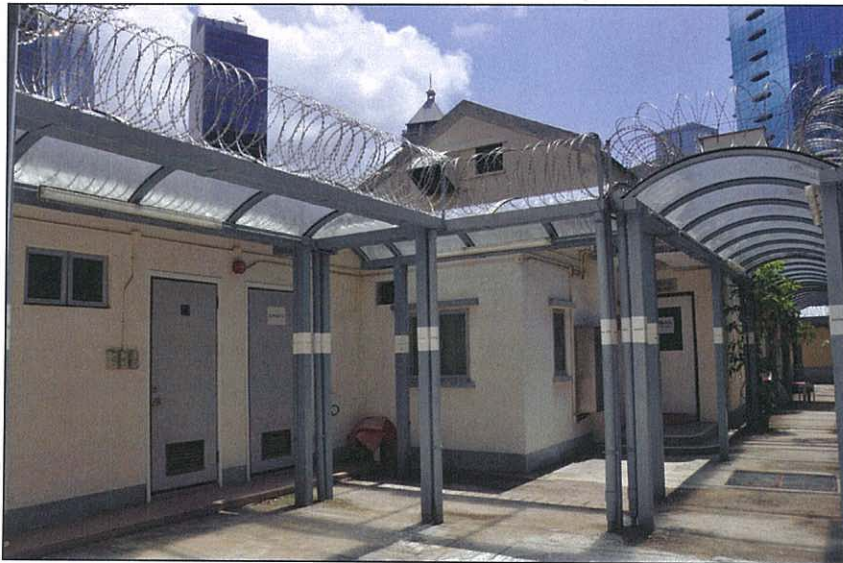


Photographic Record for Central Police Station Compound
Building 18



Client
The Jockey Club CPS Limited

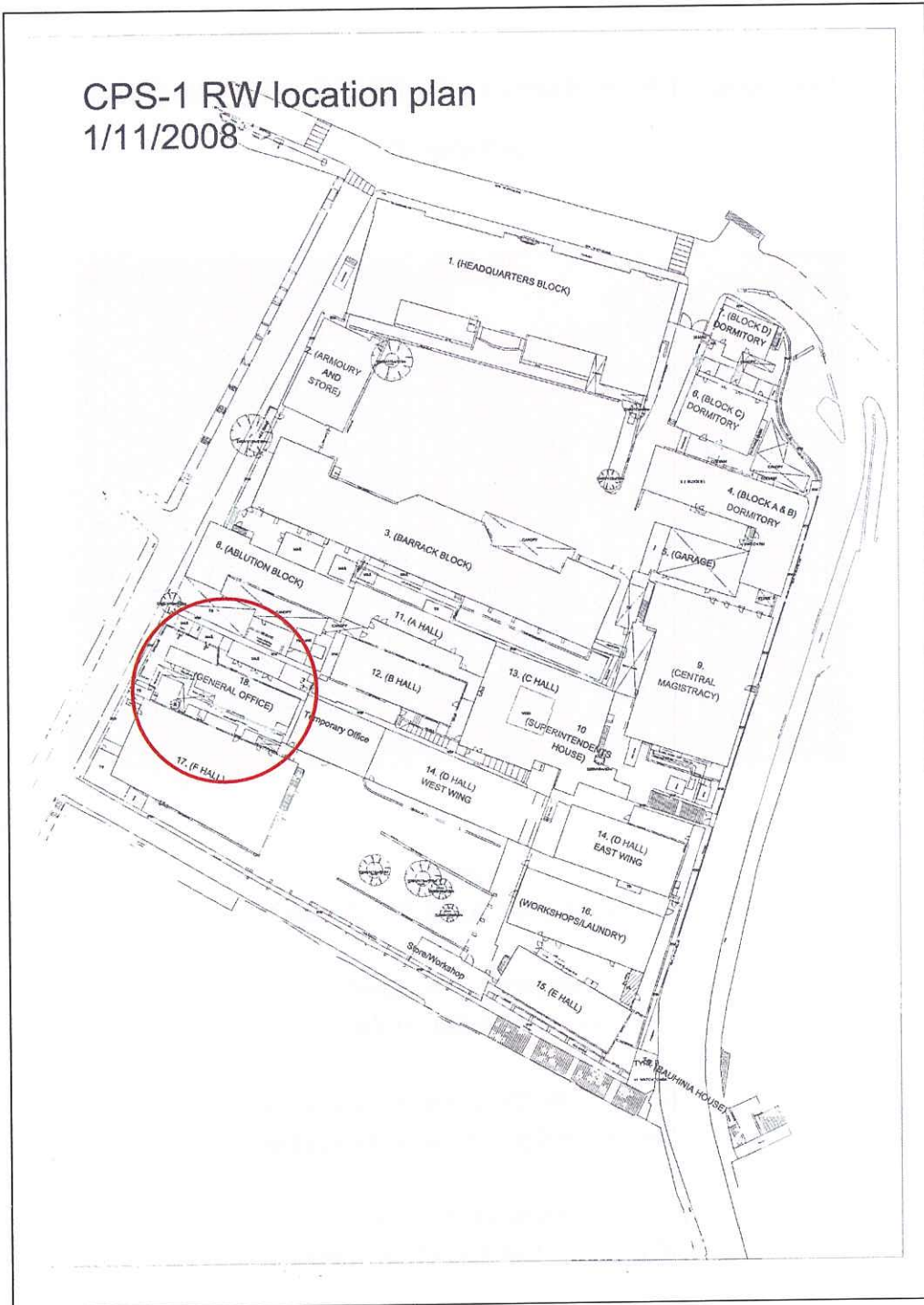
Conservation Architect
Purcell Miller Tritton

Executive Architect/Authorized Person
Rocco Design Architects Limited

Management Contractor
Gammon Construction Limited

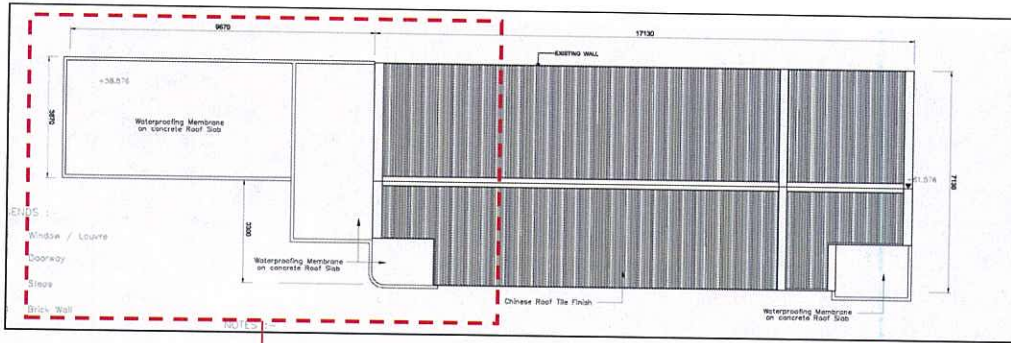
December, 2011 (Revision 01)

**Photographic Record for Central Police Station
Building 18 (General office)**

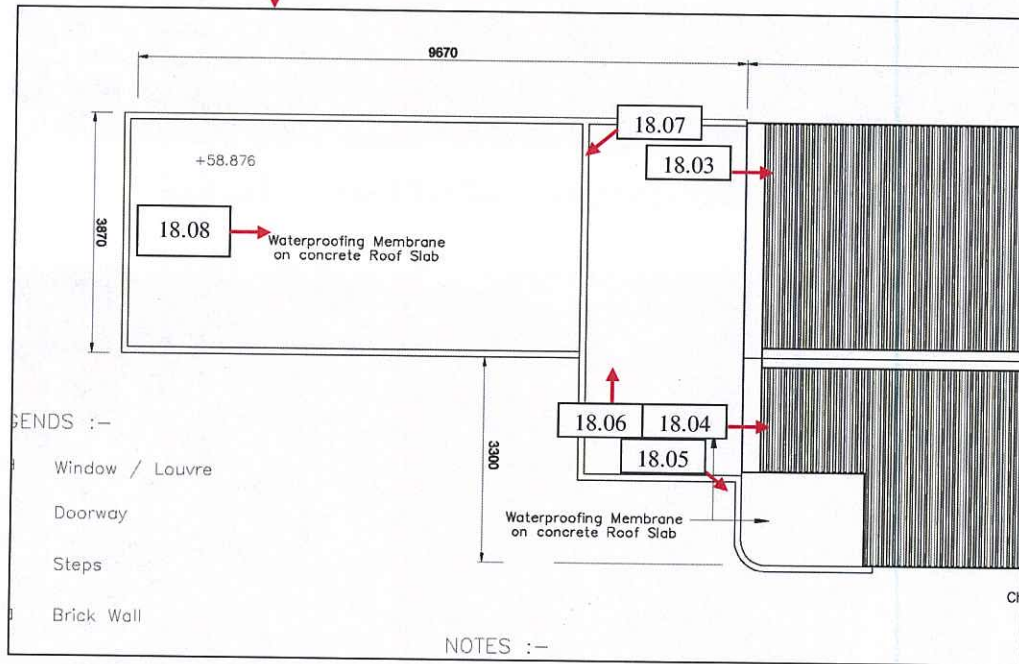


Plan no. 18.01 – Site plan (not to scale), showing location of Building 18

Photographic Record for Central Police Station Building 18 (General office)



Plan no. 18.02 – Roof plan (not to scale),
indicating views of photo nos. 18.01 – 18.02



Plan no. 18.03 – Flat roof at west side plan (part roof plan) (not to scale),
indicating views of photo nos. 18.03 – 18.08

**Photographic Record for Central Police Station
Building 18 (General office)**



Photo 18.01 – Roof, photo taken on 1/f of Building 17 (2011/09/21)



Photo 18.02 – Roof, photo taken on 1/f of Building 17 (2011/09/21)

**Photographic Record for Central Police Station
Building 18 (General office)**



Photo 18.03 – Pitched roof (2011/09/02)



Photo 18.04 – Pitch roof (2011/09/02)

**Photographic Record for Central Police Station
Building 18 (General office)**



Photo 18.05 – Canopy over entrance at west side (2011/09/02)



Photo 18.06 – Flat roof at west side (2011/09/02)

**Photographic Record for Central Police Station
Building 18 (General office)**

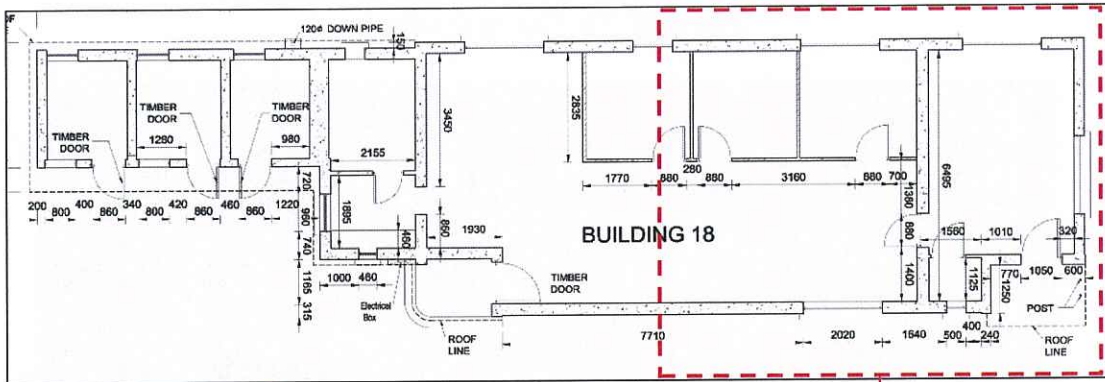


Photo 18.07 – Flat roof at west side (2011/09/02)

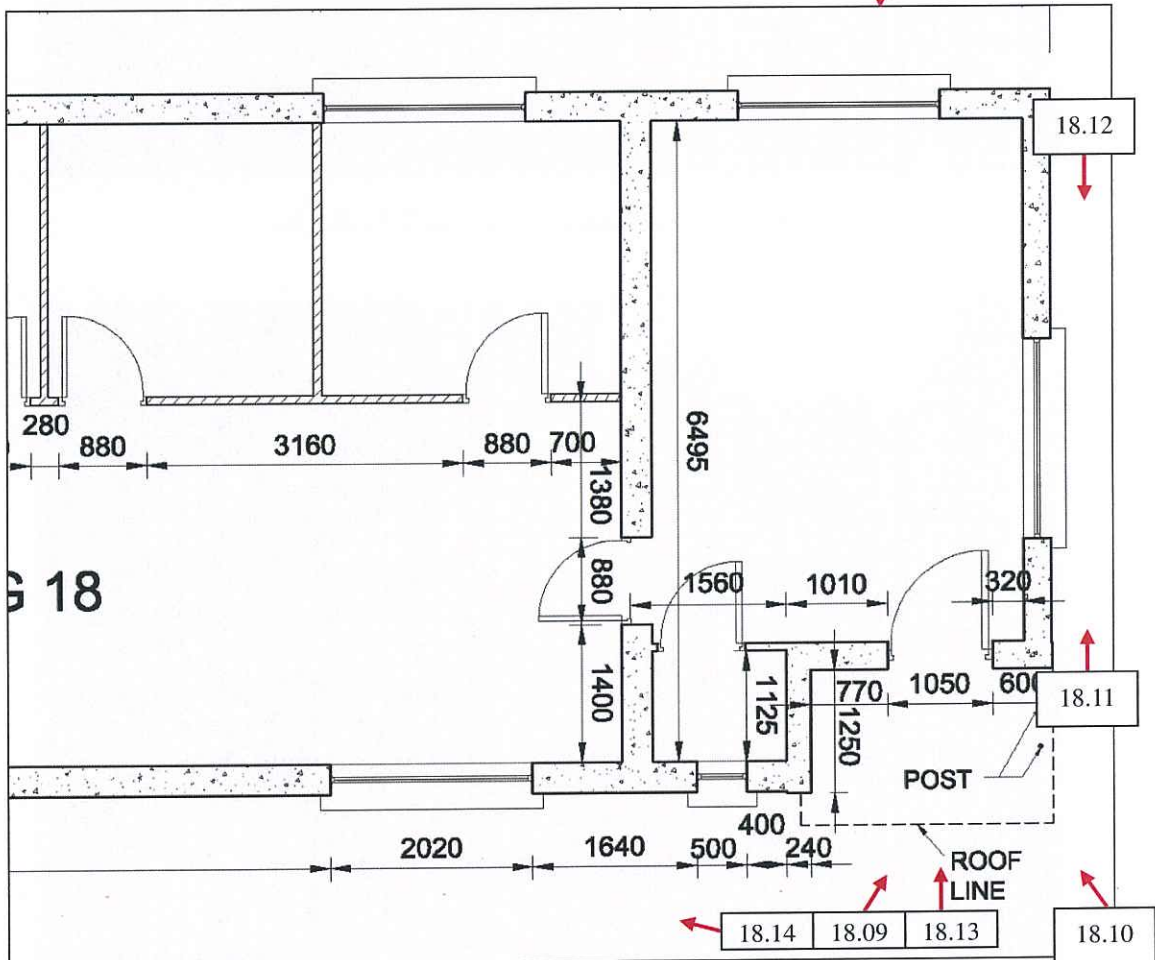


Photo 18.08 – Flat roof at west side (2011/09/02)

Photographic Record for Central Police Station Building 18 (General office)



Plan no. 18.04 – Ground floor plan (not to scale),
indicating views of photo nos. 18.15 – 18.18



Plan no. 18.05 – East part of ground floor plan (part plan) (not to scale),
indicating views of photo nos. 18.09 – 18.14

**Photographic Record for Central Police Station
Building 18 (General office)**



Photo 18.09 – Door at east end of south side (2011/08/13)

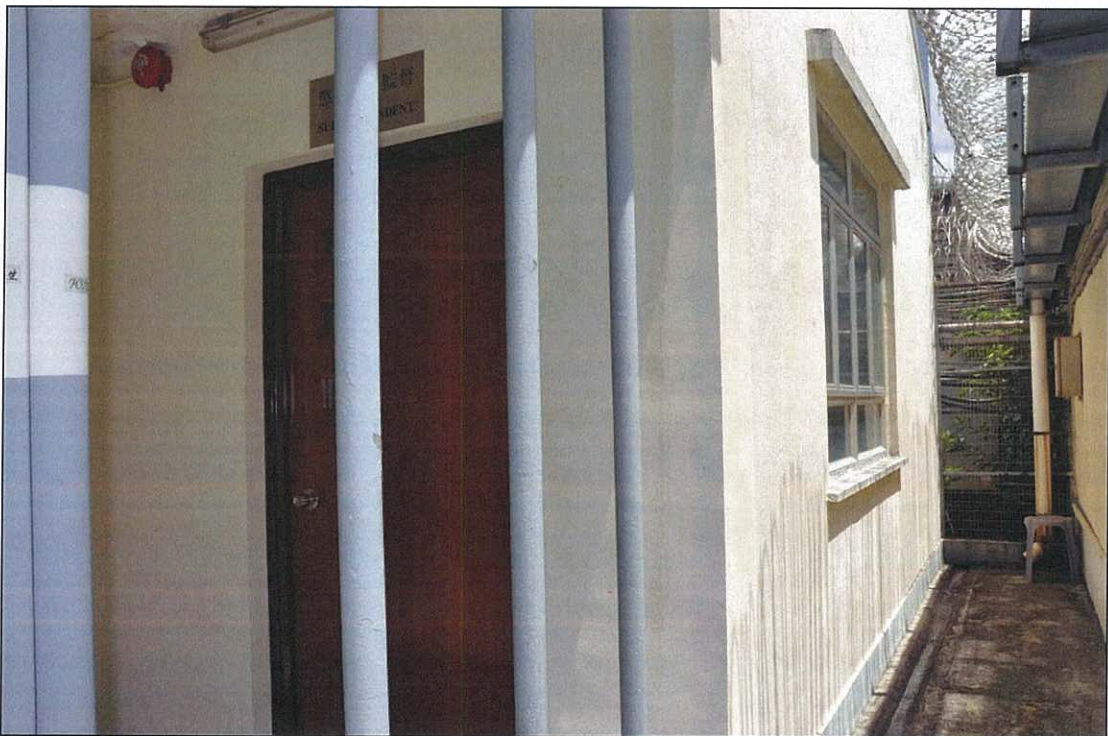


Photo 18.10 – Door at east end of south side and east elevation (2011/08/13)

**Photographic Record for Central Police Station
Building 18 (General office)**



Photo 18.11 – East elevation (2011/08/13)



Photo 18.12 – East elevation (2011/08/13)

**Photographic Record for Central Police Station
Building 18 (General office)**



Photo 18.13 – Door at east end of south side (2011/08/13)



Photo 18.14 – South elevation (2011/08/13)

**Photographic Record for Central Police Station
Building 18 (General office)**



Photo 18.15 – South elevation (2011/08/13)



Photo 18.16 – South elevation (2011/08/13)

**Photographic Record for Central Police Station
Building 18 (General office)**

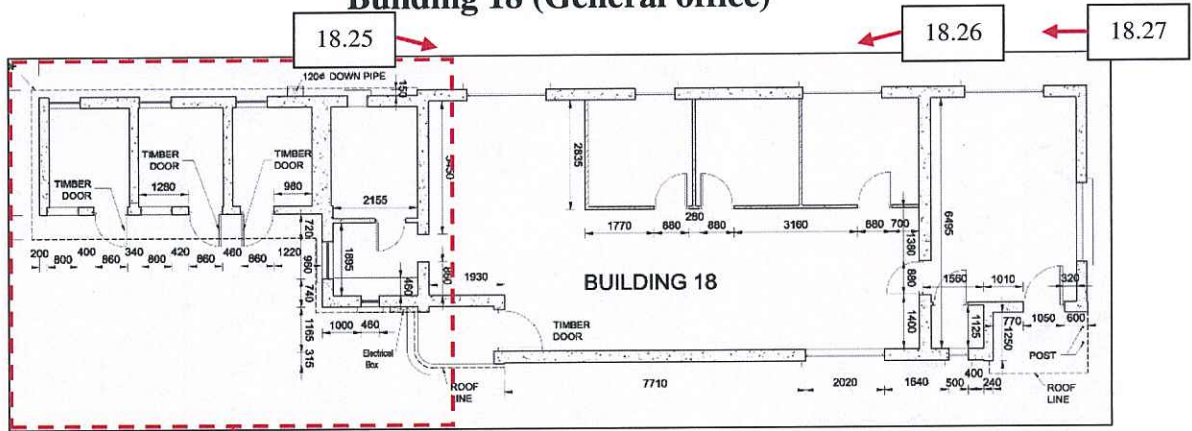


Photo 18.17 – South elevation (2011/08/13)

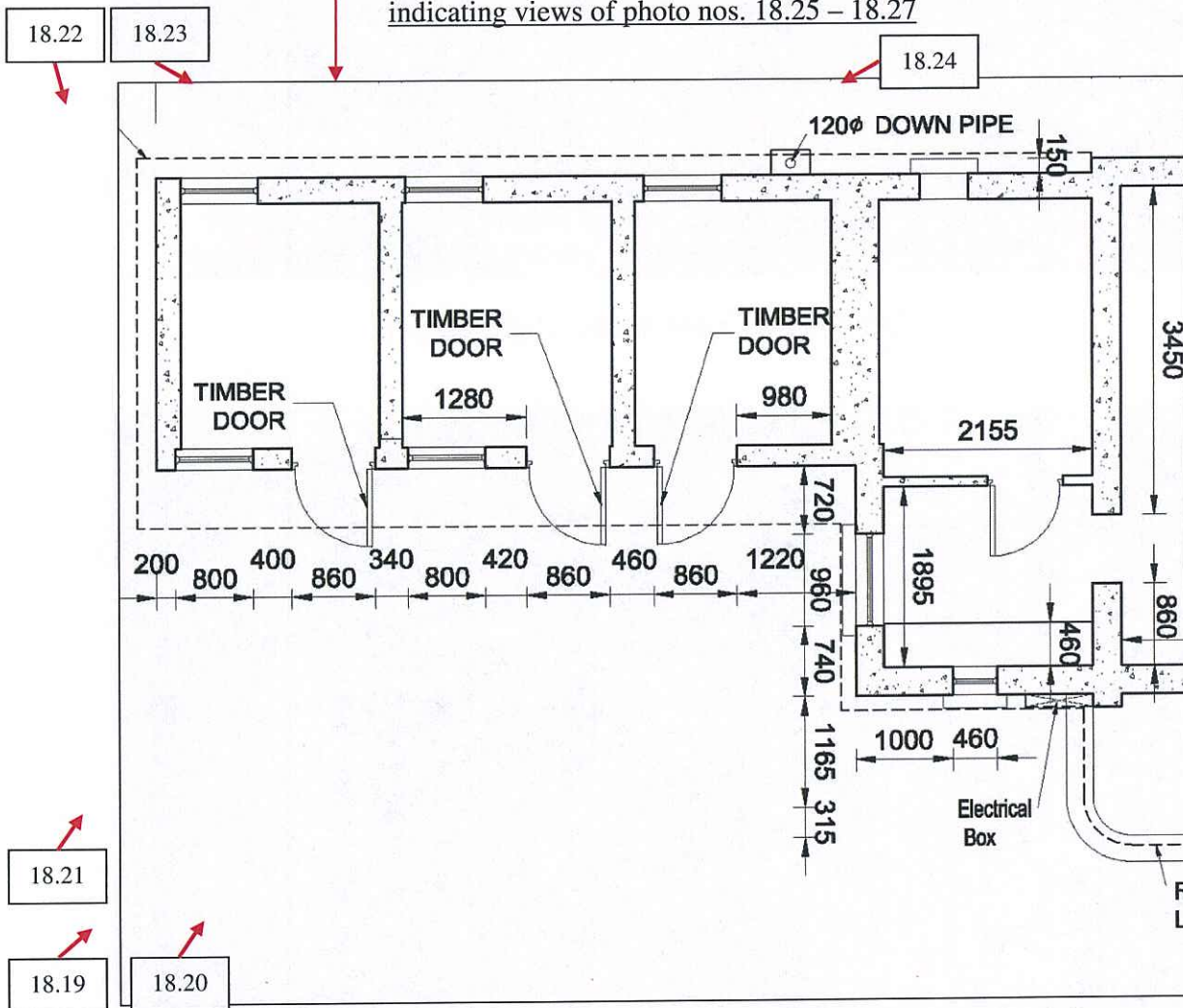


Photo 18.18 – Door at west side of south elevation (2011/08/13)

**Photographic Record for Central Police Station
Building 18 (General office)**



Plan no. 18.06 – Ground floor plan (not to scale),
indicating views of photo nos. 18.25 – 18.27



Plan no. 18.07 – West part of ground floor plan (part plan) (not to scale),
indicating views of photo nos. 18.19 – 18.24

**Photographic Record for Central Police Station
Building 18 (General office)**



Photo 18.19 – South elevation (2011/08/13)



Photo 18.20 – South elevation, west part (2011/08/13)

**Photographic Record for Central Police Station
Building 18 (General office)**



Photo 18.21 – West elevation and south elevation, west part (2011/08/13)

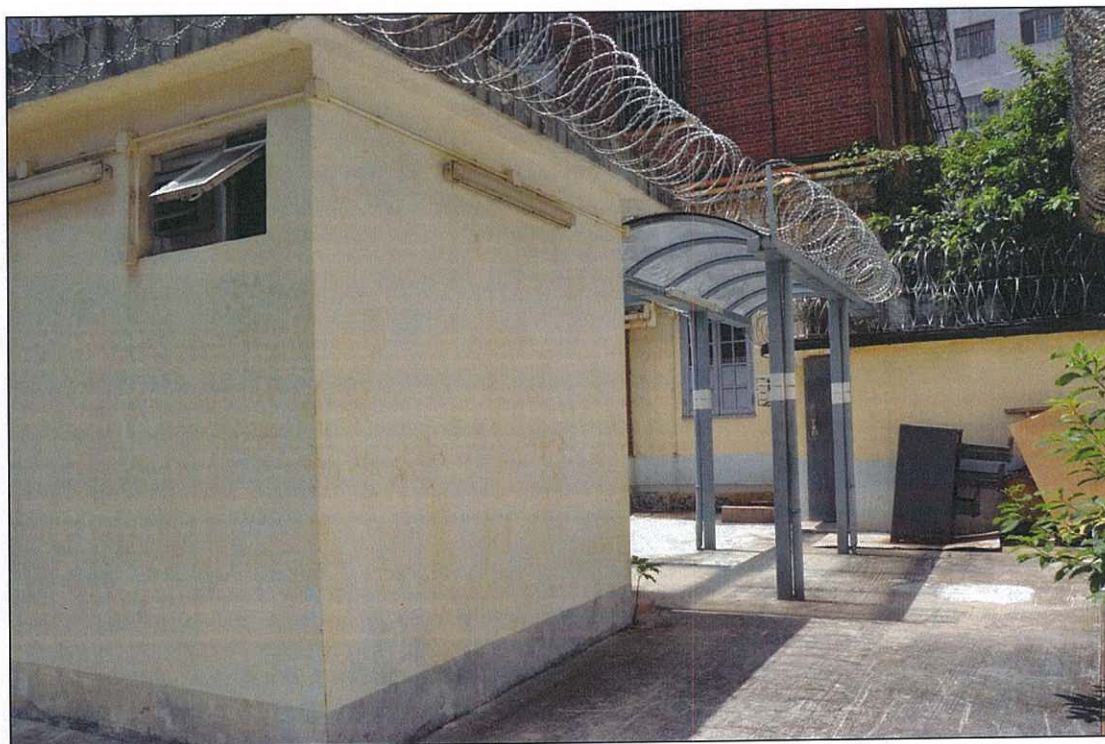


Photo 18.22 – West elevation and north elevation, west part (2011/08/13)

**Photographic Record for Central Police Station
Building 18 (General office)**

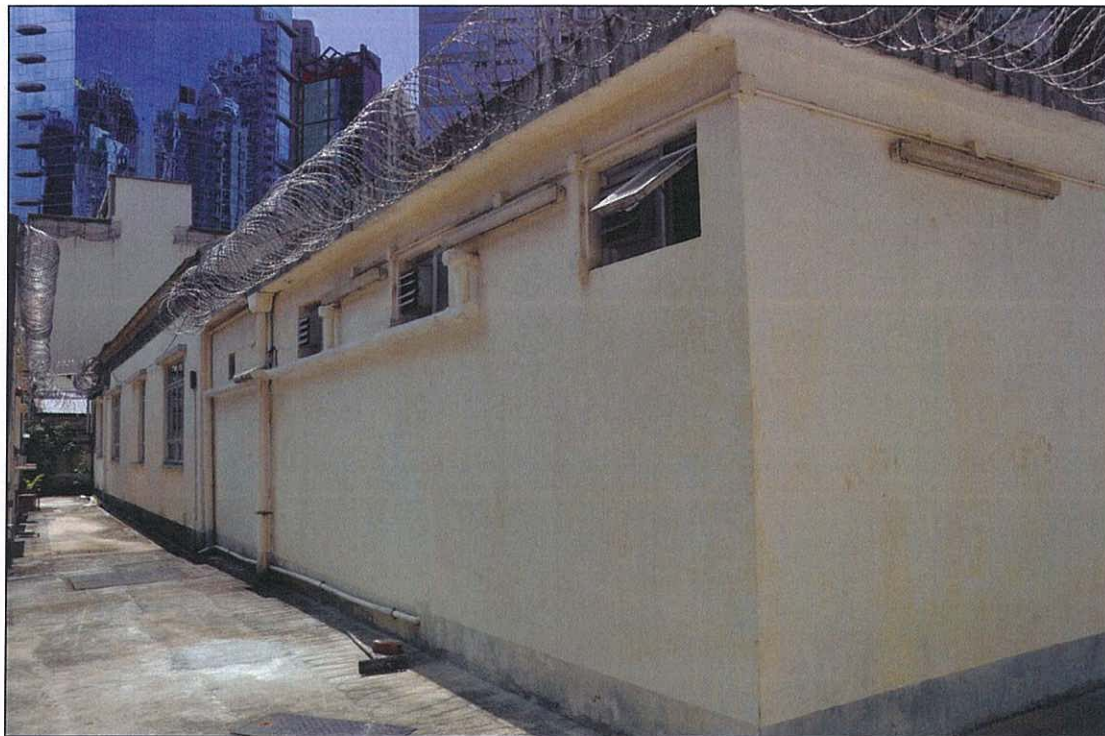


Photo 18.23 – West elevation and north elevation, west part (2011/08/13)



Photo 18.24 – North elevation, west part (2011/08/13)

**Photographic Record for Central Police Station
Building 18 (General office)**



Photo 18.25 – North elevation (2011/08/13)

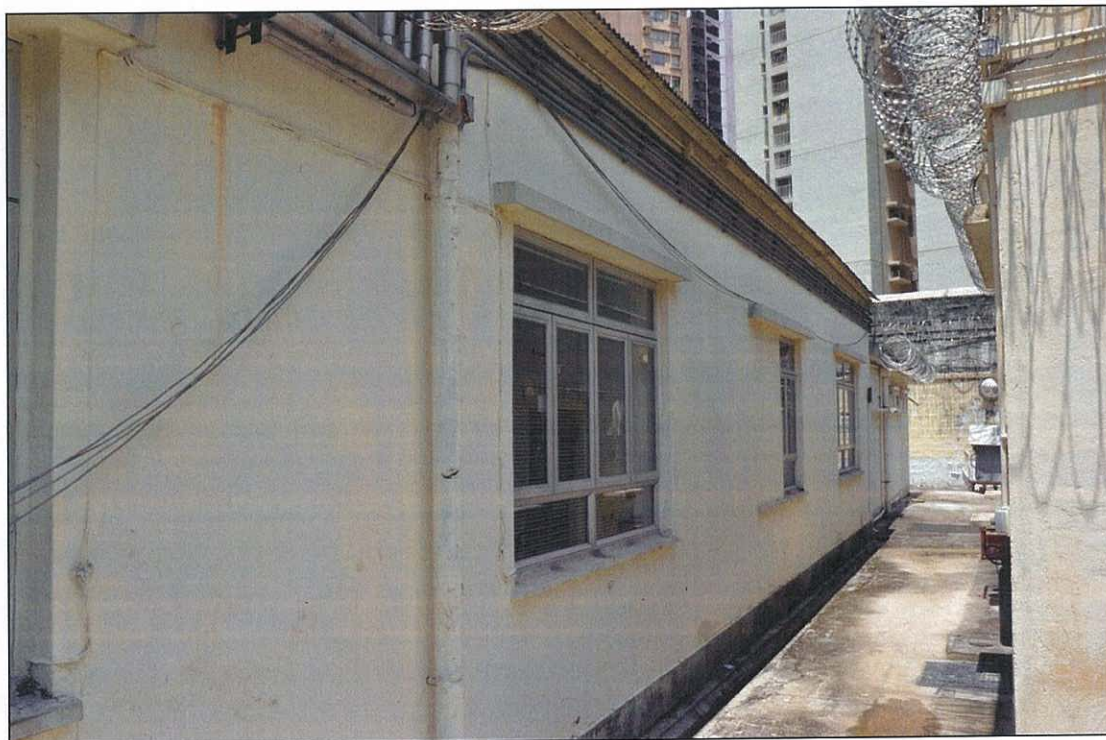


Photo 18.26 – North elevation (2011/08/13)

**Photographic Record for Central Police Station
Building 18 (General office)**



Photo 18.27 – North elevation (2011/08/13)

**Photographic Record for Central Police Station
Building 18 (General office)**



Photo 18.28 – Room 1, interior (2011/10/03)



Photo 18.29 – Room 1, false ceiling (2011/10/03)

**Photographic Record for Central Police Station
Building 18 (General office)**



Photo 18.30 – Room 1, interior (2011/10/03)



Photo 18.31 – Room 1, false ceiling (2011/10/03)

**Photographic Record for Central Police Station
Building 18 (General office)**



Photo 18.32 – Room 1, interior (2011/10/03)



Photo 18.33 – Toilet (wash basin only) at Room 1, ceiling (2011/08/13)

**Photographic Record for Central Police Station
Building 18 (General office)**



Photo 18.34 – Toilet (wash basin only) at Room 1, floor (2011/08/13)



Photo 18.35 – Room 2, interior (2011/10/03)

**Photographic Record for Central Police Station
Building 18 (General office)**



Photo 18.36 – Room 1, false ceiling (2011/10/03)



Photo 18.37 – Room 2, interior (2011/08/13)

**Photographic Record for Central Police Station
Building 18 (General office)**



Photo 18.38 – Room 2, interior (2011/08/13)



Photo 18.39 – Room 3, interior (2011/10/03)

**Photographic Record for Central Police Station
Building 18 (General office)**



Photo 18.40 – Room 3, false ceiling (2011/10/03)



Photo 18.41 – Room 3, interior (2011/10/03)

**Photographic Record for Central Police Station
Building 18 (General office)**

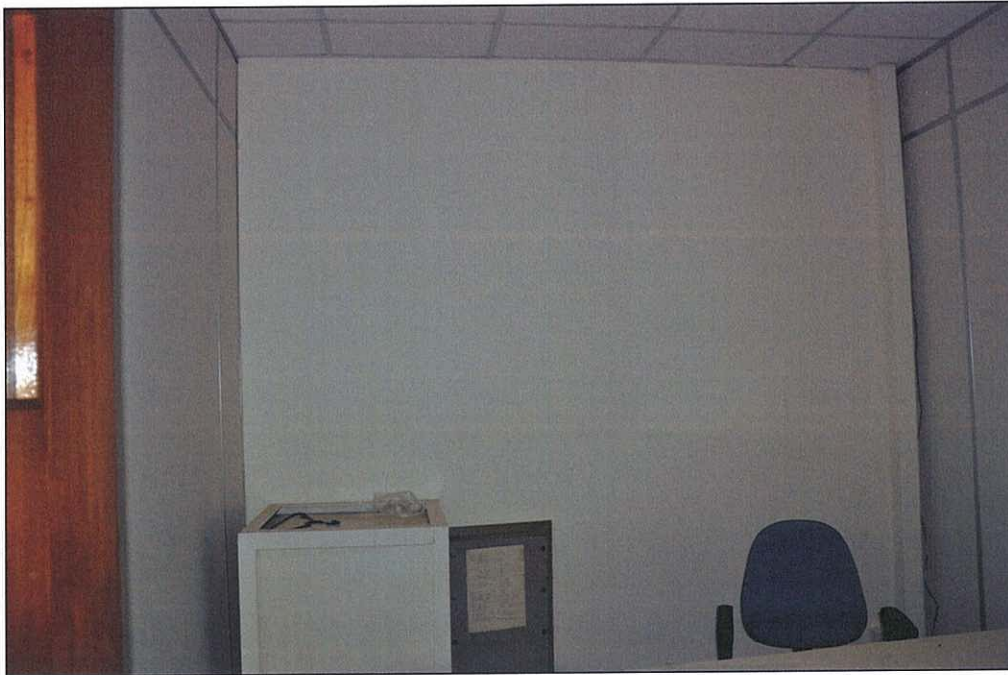


Photo 18.42 – Room 4, interior (2011/10/03)



Photo 18.43 – Room 4, false ceiling (2011/10/03)

**Photographic Record for Central Police Station
Building 18 (General office)**



Photo 18.44 – Room 4, interior (2011/10/03)

**Photographic Record for Central Police Station
Building 18 (General office)**



Photo 18.45 – Room 2, interior (2011/08/13)



Photo 18.46 – Room 2, false ceiling (2011/10/03)

**Photographic Record for Central Police Station
Building 18 (General office)**



Photo 18.47 – Room 2, interior (2011/08/13)



Photo 18.48 – Room 2, interior (2011/08/13)

**Photographic Record for Central Police Station
Building 18 (General office)**



Photo 18.49 – Room 2, interior (2011/08/13)



Photo 18.50 – Room 2, interior (2011/10/03)

**Photographic Record for Central Police Station
Building 18 (General office)**



Photo 18.51 – Room 2, false ceiling (2011/10/03)



Photo 18.52 – Room 2, interior (2011/08/13)

**Photographic Record for Central Police Station
Building 18 (General office)**



Photo 18.53 – Room 2, interior (2011/08/13)



Photo 18.54 – Room 2, interior (2011/10/03)

**Photographic Record for Central Police Station
Building 18 (General office)**



Photo 18.55 – Room 2, false ceiling (2011/10/03)



Photo 18.56 – Room 2, interior (2011/08/13)

**Photographic Record for Central Police Station
Building 18 (General office)**



Photo 18.57 – Room 2, interior (2011/08/13)



Photo 18.58 – Pantry at Room 2, interior (2011/08/13)

**Photographic Record for Central Police Station
Building 18 (General office)**



Photo 18.59 – Pantry at Room 2, interior (2011/08/13)



Photo 18.60 – Pantry at Room 2, interior (2011/08/13)

**Photographic Record for Central Police Station
Building 18 (General office)**



Photo 18.61 – Pantry at Room 2, stainless steel hanging cabinet (2011/08/13)



Photo 18.62 – Pantry at Room 2, sink cabinet and worktop (2011/08/13)