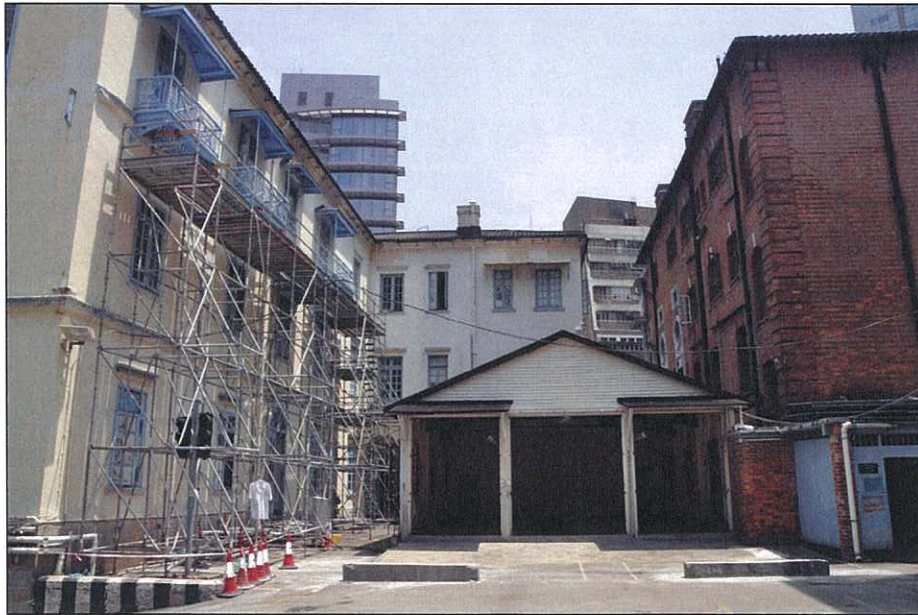


1

**Photographic Record for Central Police Station Compound**

**Building 5**



**Client**

**The Jockey Club CPS Limited**

**Conservation Architect  
Purcell Miller Tritton**

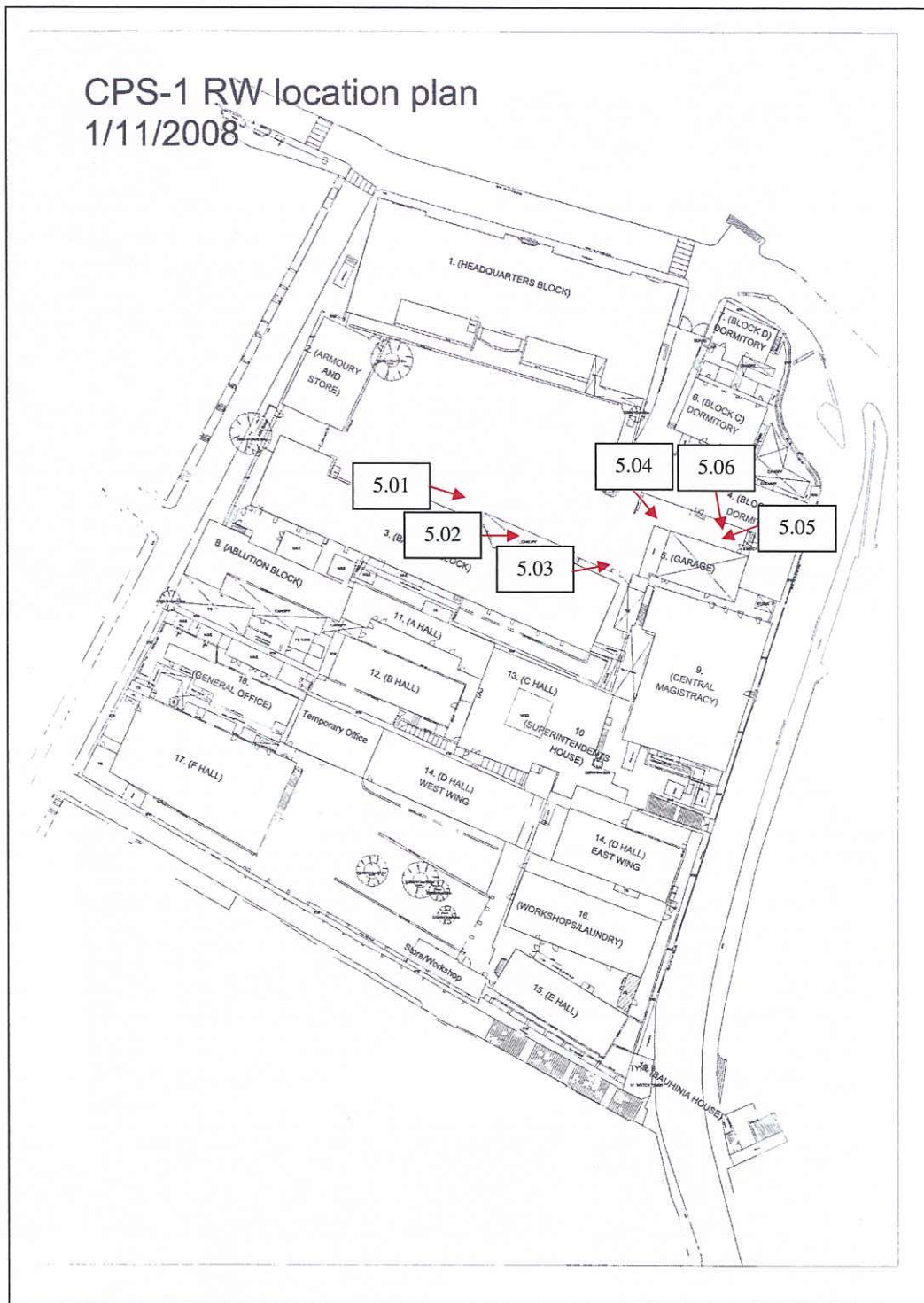
**Executive Architect/Authorized Person  
Rocco Design Architects Limited**

**Management Contractor  
Gammon Construction Limited**

**September, 2011**

[file name: 20110919\_Building\_5\_(part\_0\_cover)]

**Photographic Record for Central Police Station  
Building 5**



Plan no. 5.01 – Site plan (not to scale),  
indicating views of photo nos. 5.01 – 5.06



**Photographic Record for Central Police Station  
Building 5**



Photo 5.01 – Front view taking in front of Block 3 (Barrack Block) (2011/08/29)



Photo 5.02 – Roof from high level (2011/08/29)



**Photographic Record for Central Police Station  
Building 5**



Photo 5.03 – Roof from high level (2011/08/29)



Photo 5.04 – Roof from high level (2011/08/29)



**Photographic Record for Central Police Station  
Building 5**

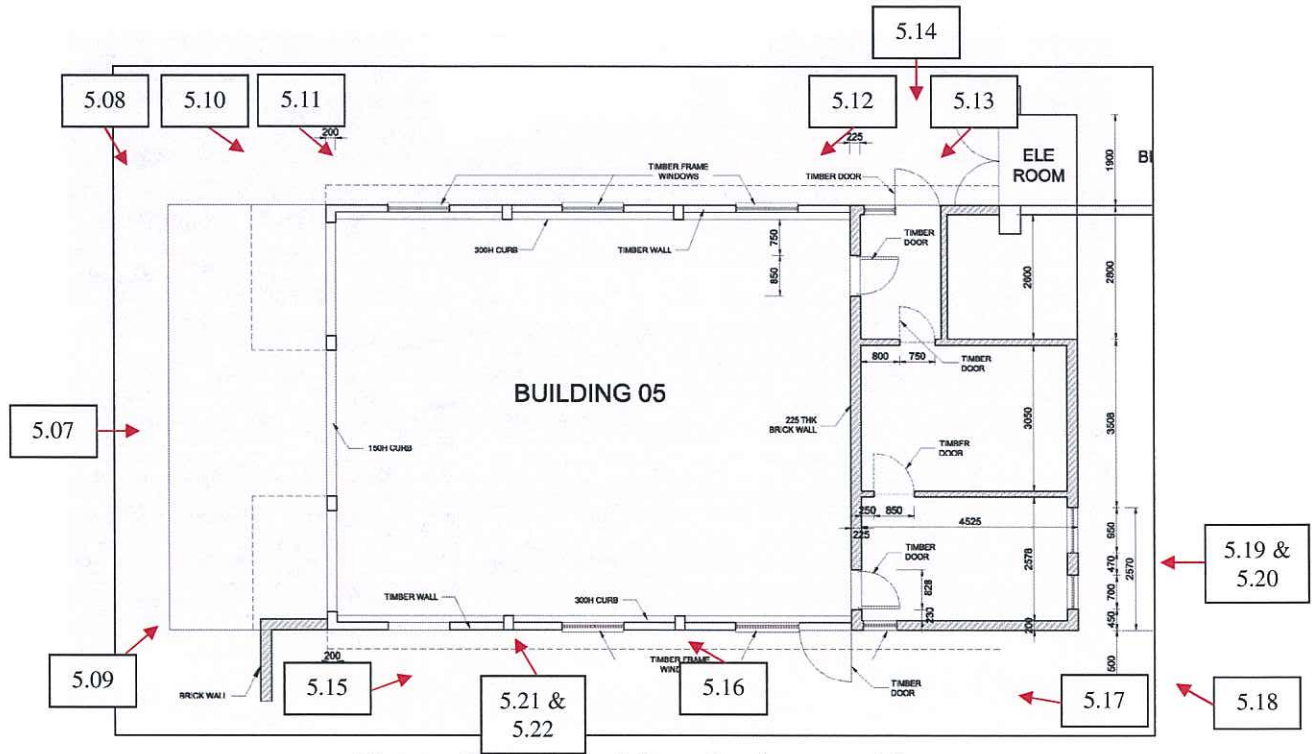


Photo 5.05 – Roof from high level (2011/08/13)



Photo 5.06 – Lantern on the roof (2011/08/13)

## Photographic Record for Central Police Station Building 5



Plan no. 5.02 – Ground floor plan (not to scale),  
indicating views of photo nos. 5.07 – 5.22 (external views)



**Photographic Record for Central Police Station  
Building 5**

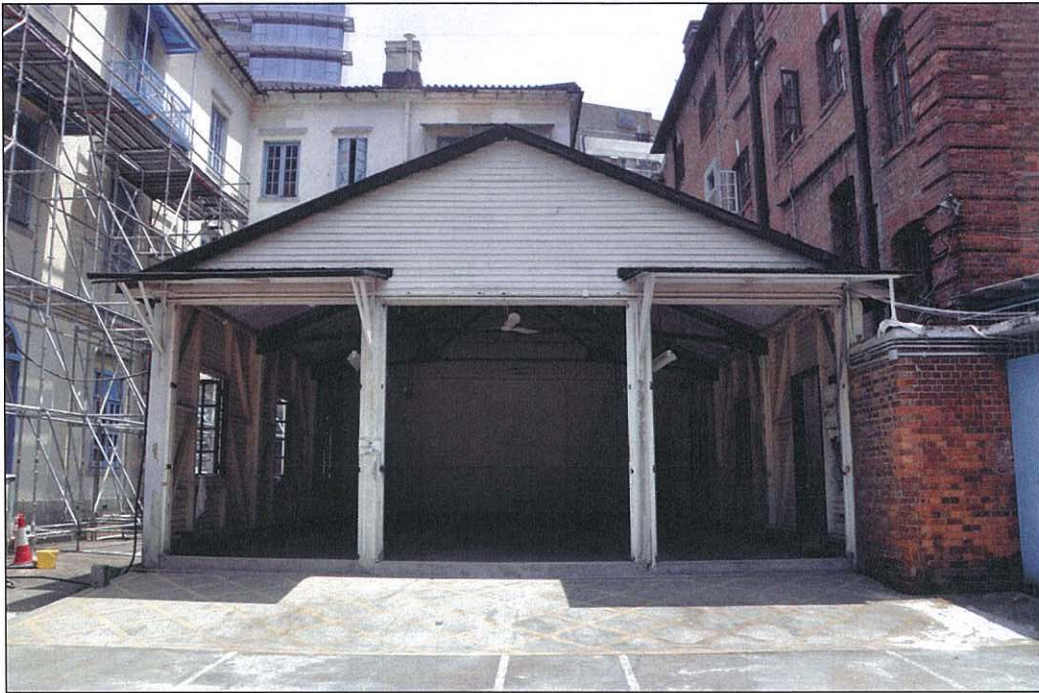


Photo 5.07 – Front view (2011/08/29)



Photo 5.08 – Front view (2011/08/29)



**Photographic Record for Central Police Station  
Building 5**



Photo 5.09 – Front view (2011/08/29)

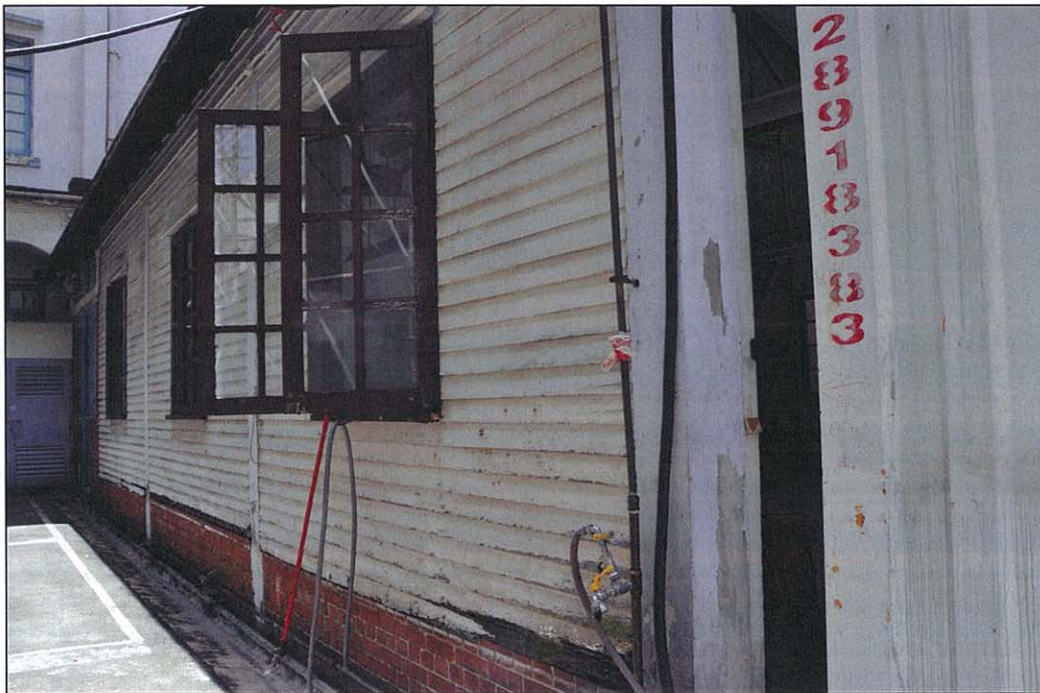


Photo 5.10 – North side external wall, front part (2011/08/13)



**Photographic Record for Central Police Station  
Building 5**



Photo 5.11 – North side external wall, front part (2011/08/13)



Photo 5.12 – North side external wall, rear part (2011/08/13)



**Photographic Record for Central Police Station  
Building 5**

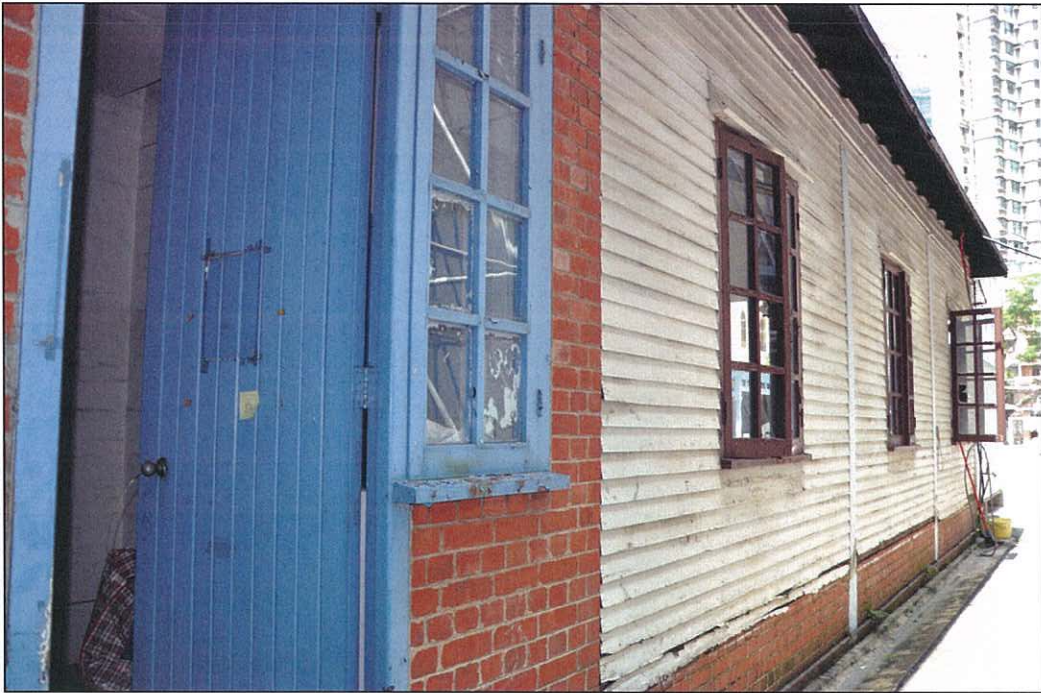


Photo 5.13 – North side external wall, rear part (2011/08/13)

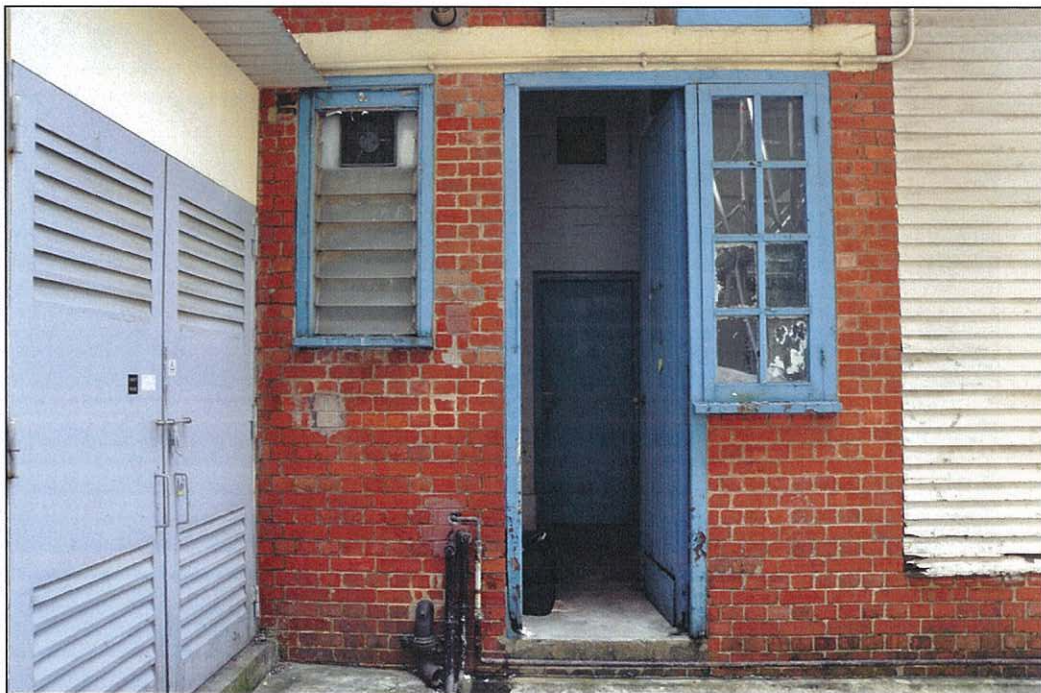


Photo 5.14 – North side external wall, rear part entrance to store room (2011/08/13)



**Photographic Record for Central Police Station  
Building 5**

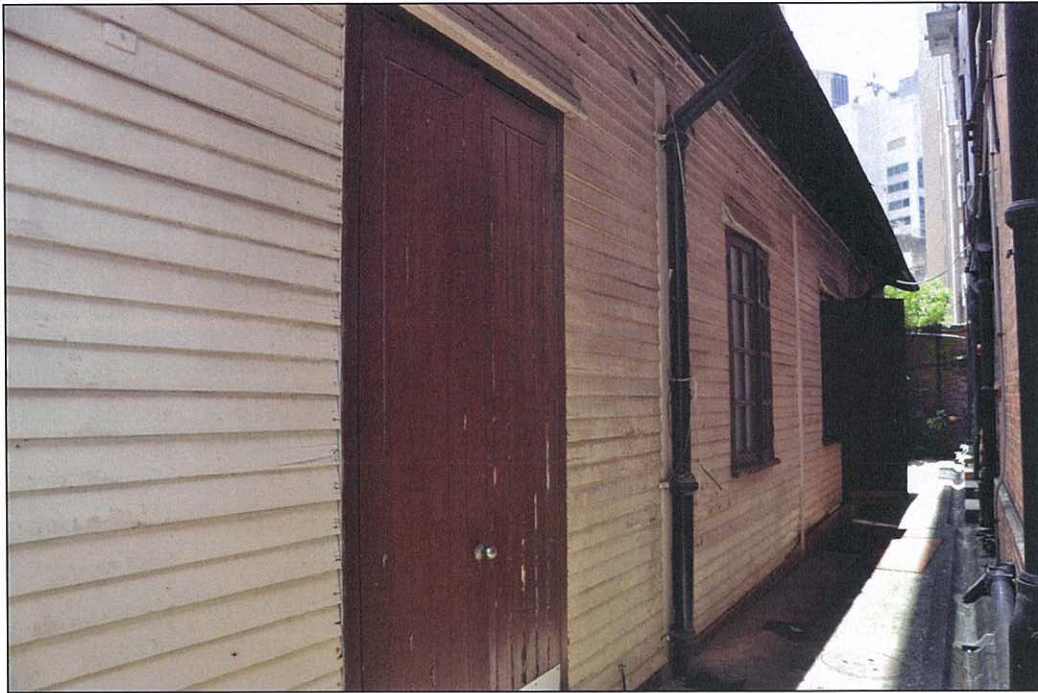


Photo 5.15 – South side external wall, front part (2011/08/13)



Photo 5.16 – Close up view of the external overlapping timber cladding (2011/08/13)



**Photographic Record for Central Police Station  
Building 5**

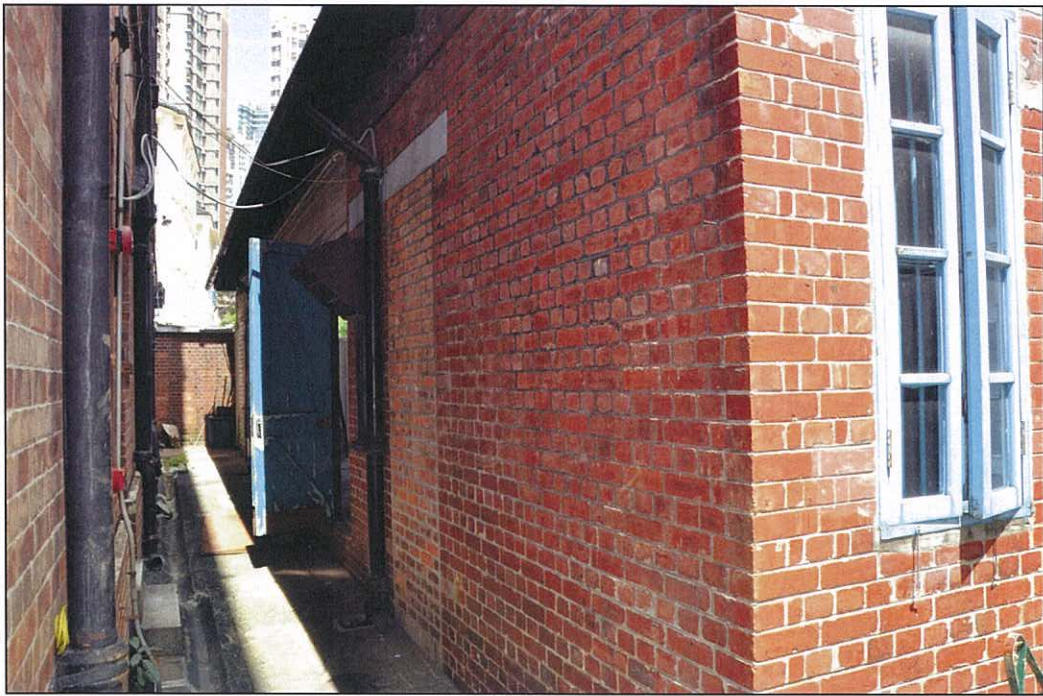


Photo 5.17 – South side external wall, rear part (2011/08/13)



Photo 5.18 – South side external wall, rear part (2011/08/13)



**Photographic Record for Central Police Station  
Building 5**

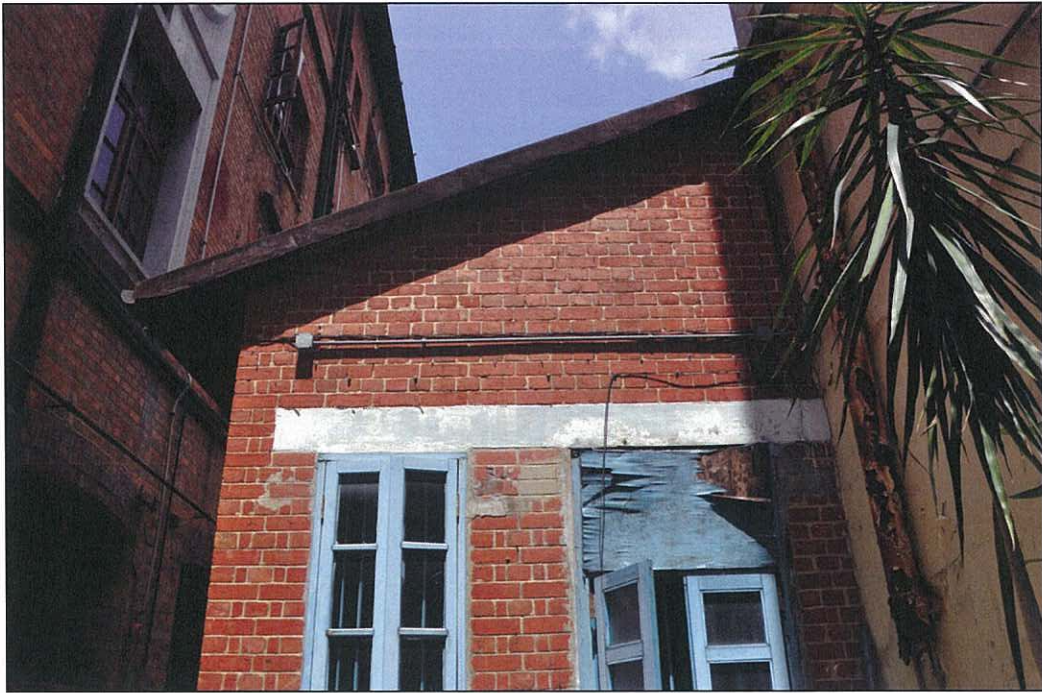


Photo 5.19 – Brick end wall, upper part (2011/08/13)



Photo 5.20 – Brick end wall, lower part (2011/08/13)



**Photographic Record for Central Police Station  
Building 5**



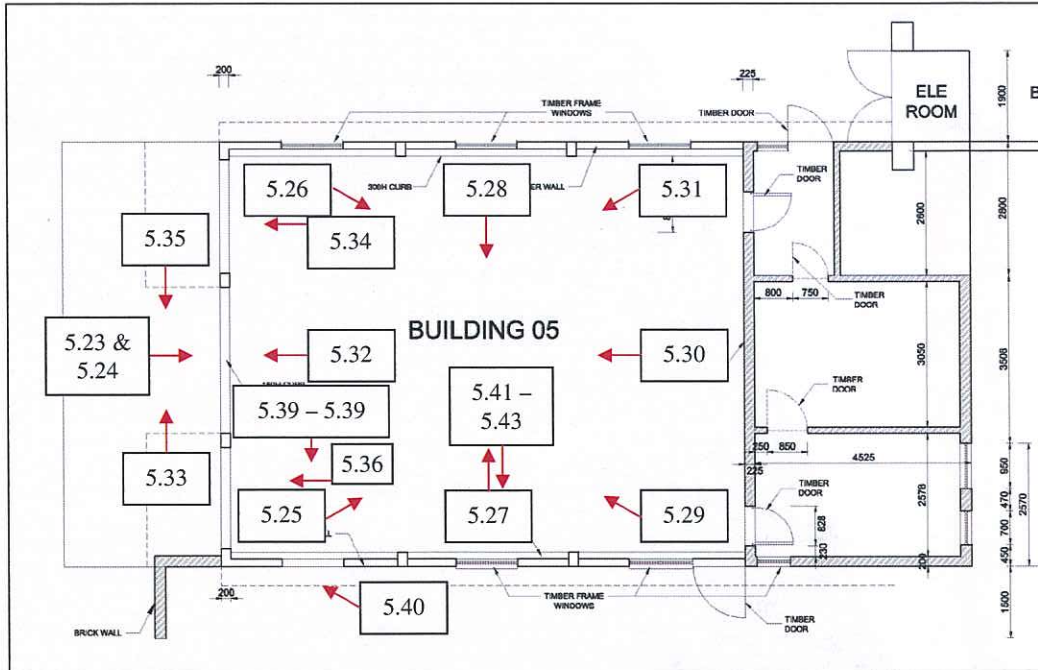
Photo 5.21 – South side external wall, eaves water gutter and swanneck (2011/08/13)



Photo 5.22 – South side external wall, rainwater downpipe and shoe (2011/08/13)



## Photographic Record for Central Police Station Building 5



Plan no. 5.03 – Ground floor plan (not to scale),  
indicating views of photo nos. 5.23 – 5.43 (internal views)

**Photographic Record for Central Police Station  
Building 5**



Photo 5.23 – Internal view from entrance (2011/08/13)



Photo 5.24 – Ceiling view from entrance (2011/08/13)



**Photographic Record for Central Police Station  
Building 5**



Photo 5.25 – Internal view from entrance (2011/08/13)



Photo 5.26 – Internal view from entrance (2011/08/13)



Photographic Record for Central Police Station  
Building 5



Photo 5.27 – Internal view of north external wall (2011/08/13)



Photo 5.28 – Internal view of south external wall (2011/08/13)



**Photographic Record for Central Police Station  
Building 5**



Photo 5.29 – View of entrance from internal end wall (2011/08/13)



Photo 5.30 – View of entrance from internal end wall (2011/08/29)



**Photographic Record for Central Police Station  
Building 5**



Photo 5.31 – View of entrance from internal end wall (2011/08/13)

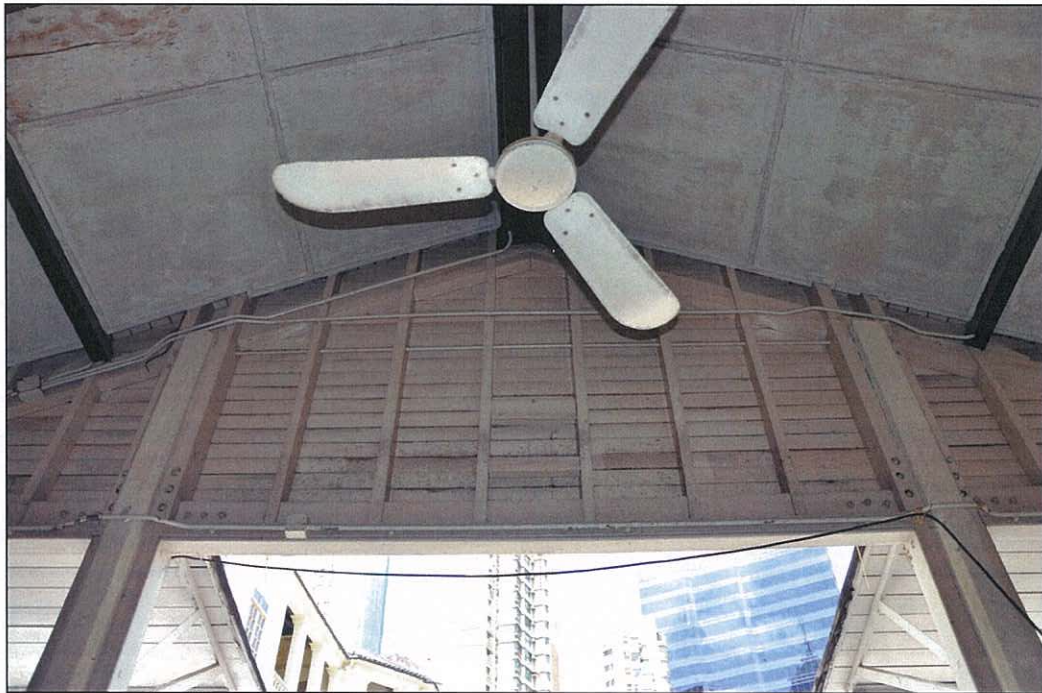


Photo 5.32 – View of timber cladding above entrance from internal (2011/08/13)



**Photographic Record for Central Police Station  
Building 5**



Photo 5.33 – Sun shade at north side entrance (2011/08/13)



Photo 5.34 – View of timber cladding above north side entrance from internal (2011/08/13)



**Photographic Record for Central Police Station  
Building 5**



Photo 5.35 – Sun shade at south side entrance (2011/08/13)



Photo 5.36 – View of timber cladding above north side entrance from internal (2011/08/13)



**Photographic Record for Central Police Station  
Building 5**



Photo 5.37 – Internal side of door at south external wall (2011/08/13)



Photo 5.38 – Upper vertical bolt (2011/08/13)



**Photographic Record for Central Police Station  
Building 5**



Photo 5.39 – Lower vertical bolt (2011/08/13)

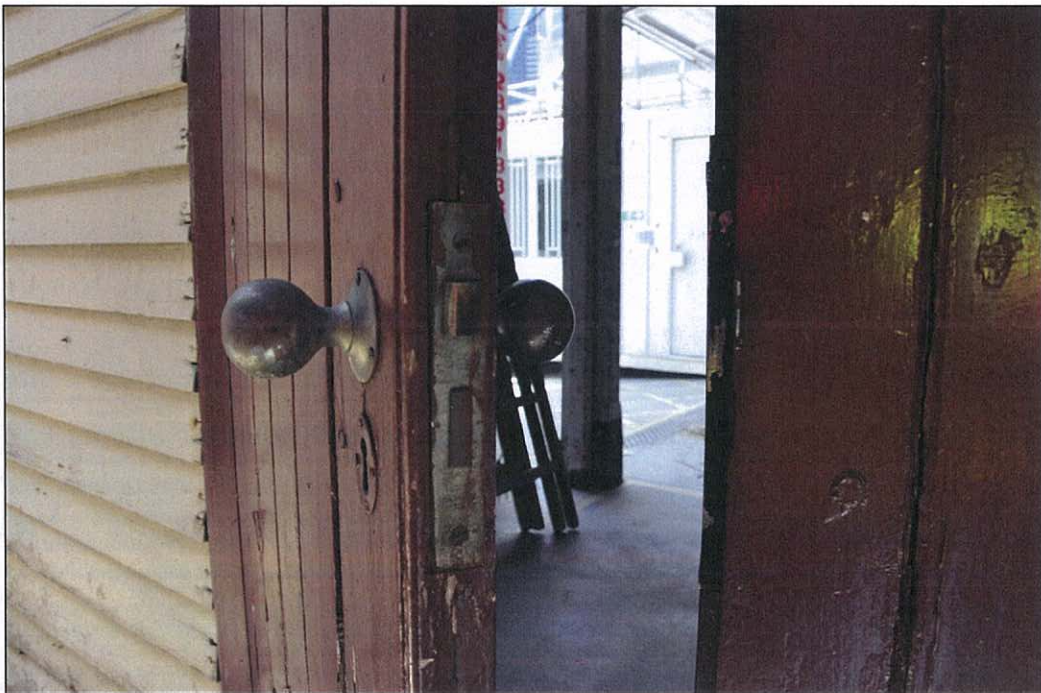


Photo 5.40 – Mortice lock with ball-shaped knob (2011/08/13)



**Photographic Record for Central Police Station  
Building 5**



Photo 5.41 – Internal side of casement at south external wall (2011/08/13)



Photo 5.42 – Upper vertical bolt (2011/08/13)

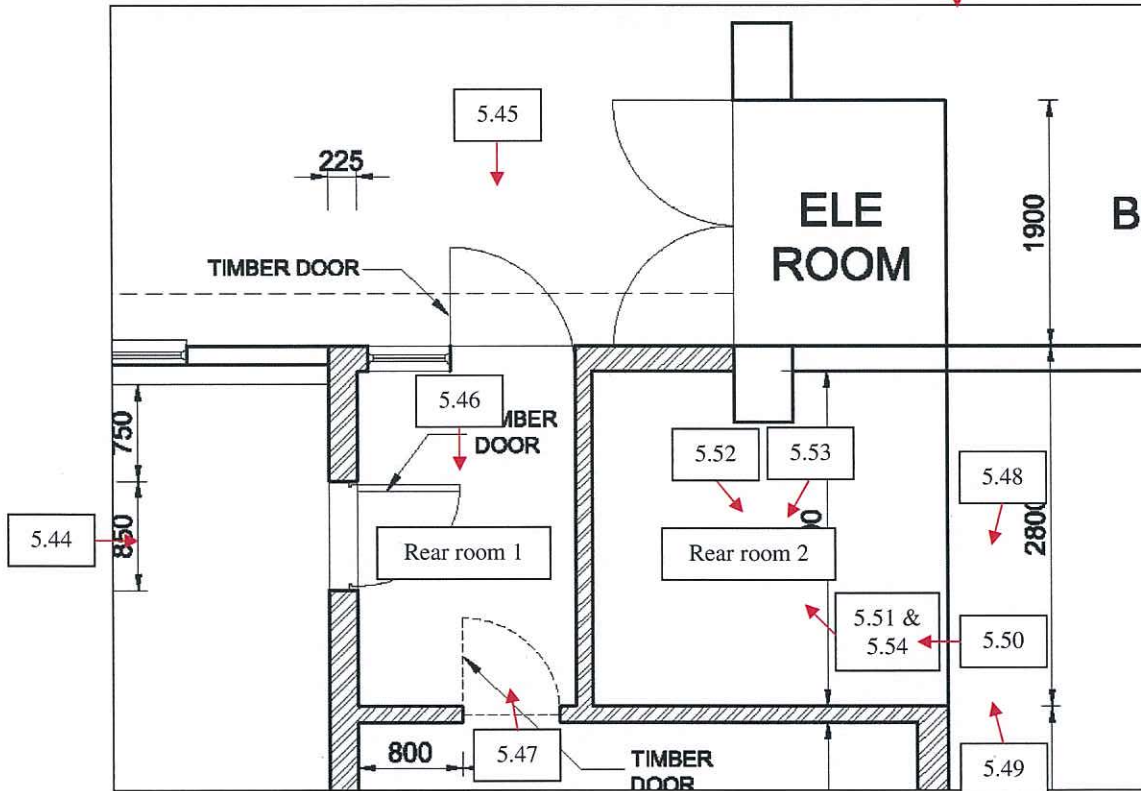
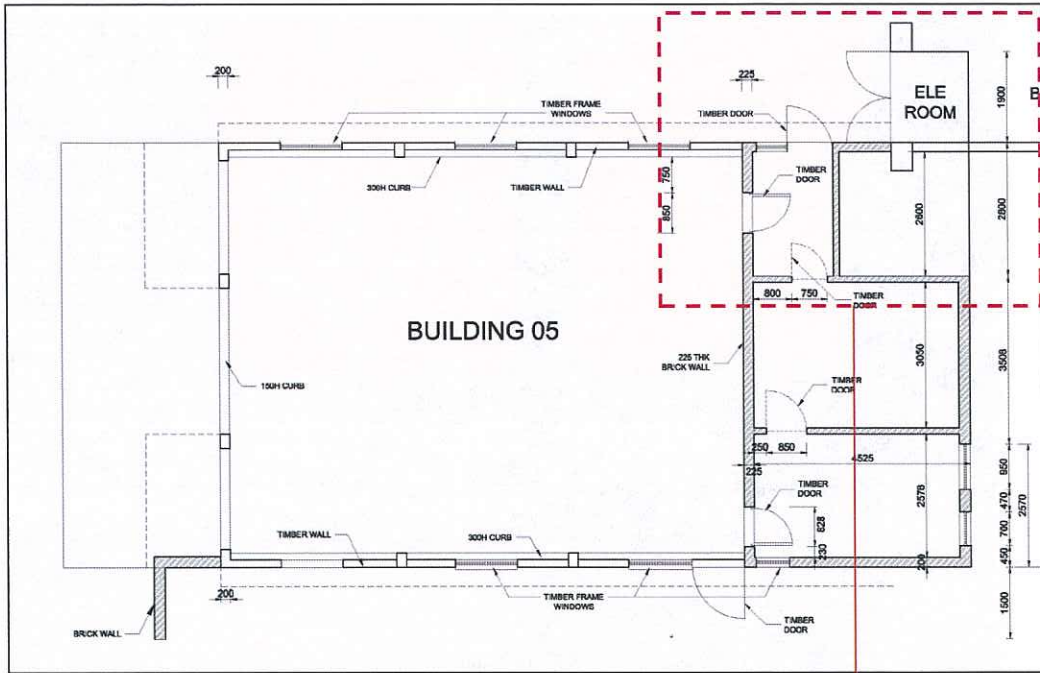
**Photographic Record for Central Police Station  
Building 5**



Photo 5.43 – Wrought iron lower vertical bolt and window stay (2011/08/13)



# Photographic Record for Central Police Station Building 5



Plan no. 5.04 – Ground floor plan showing Rear rooms 1 and 2 (not to scale),  
indicating views of photo nos. 5.44 – 5.54 (rear rooms 1 and 2)

**Photographic Record for Central Police Station  
Building 5**

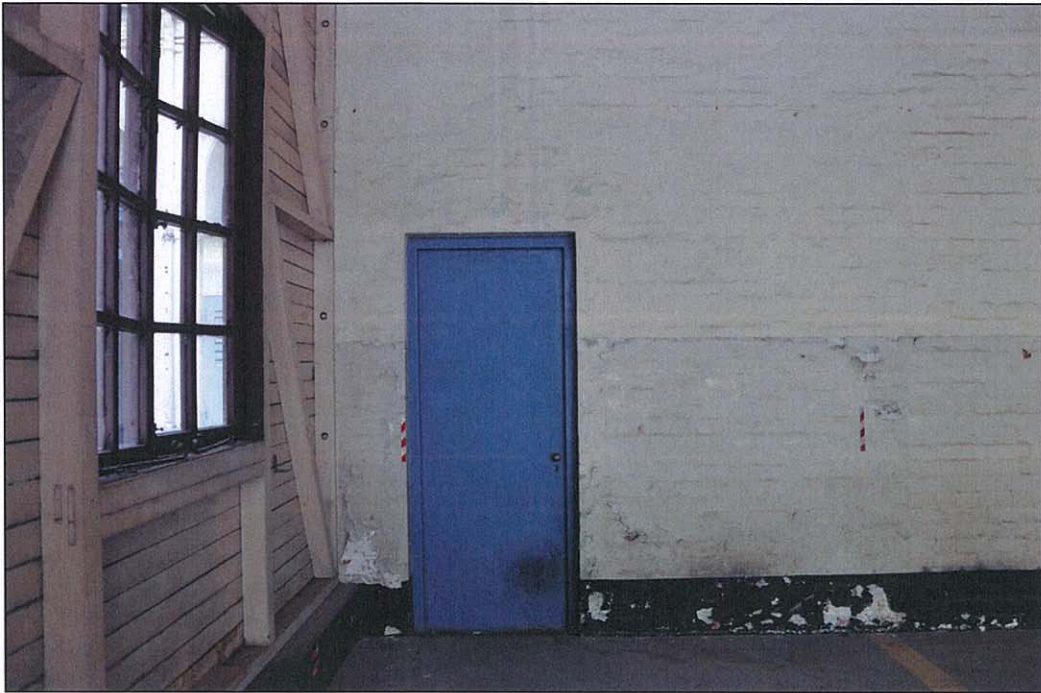


Photo 5.44 – Entrance to rear room 1 (2011/08/13)



Photo 5.45 – Entrance to rear room 1 at external (2011/08/15)



**Photographic Record for Central Police Station  
Building 5**



Photo 5.46 – Rear room 1, interior (2011/08/15)

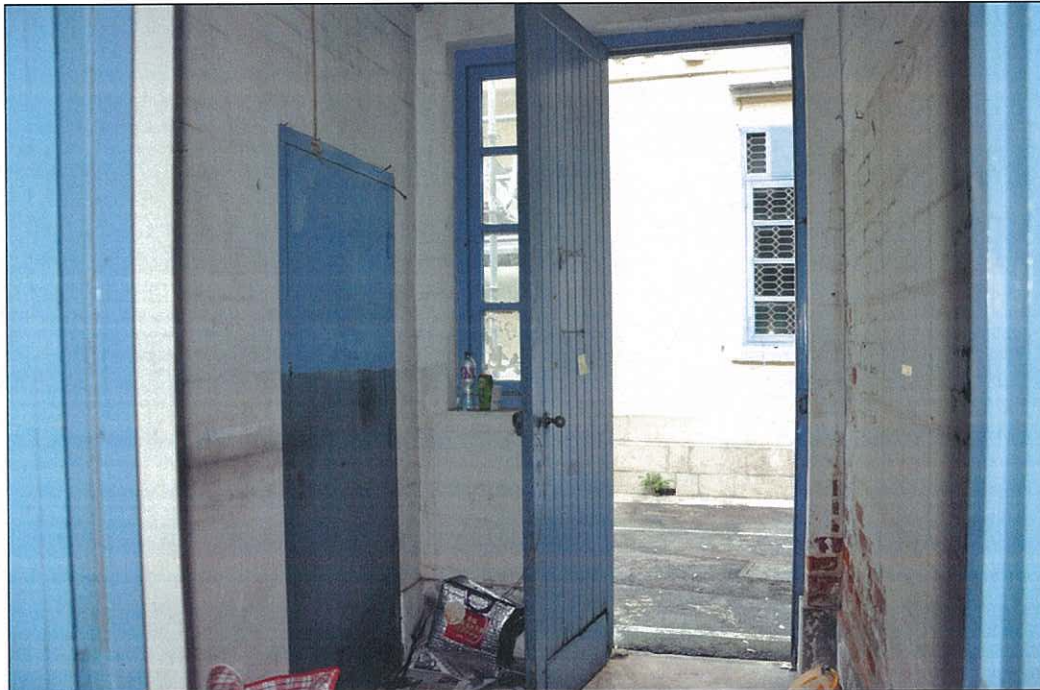


Photo 5.47 – Rear room 1, interior (2011/08/15)

**Photographic Record for Central Police Station  
Building 5**



Photo 5.48 – Rear room 2, entrance from Building 4 (2011/08/15)



Photo 5.49 – Rear room 2, entrance from Building 4 (2011/08/15)



**Photographic Record for Central Police Station  
Building 5**



Photo 5.50 – Rear room 2, interior (2011/08/15)



Photo 5.51 – Rear room 2, interior (2011/08/15)

**Photographic Record for Central Police Station  
Building 5**



Photo 5.52 – Rear room 2, interior (2011/08/15)



Photo 5.53 – Rear room 2, interior (2011/08/15)

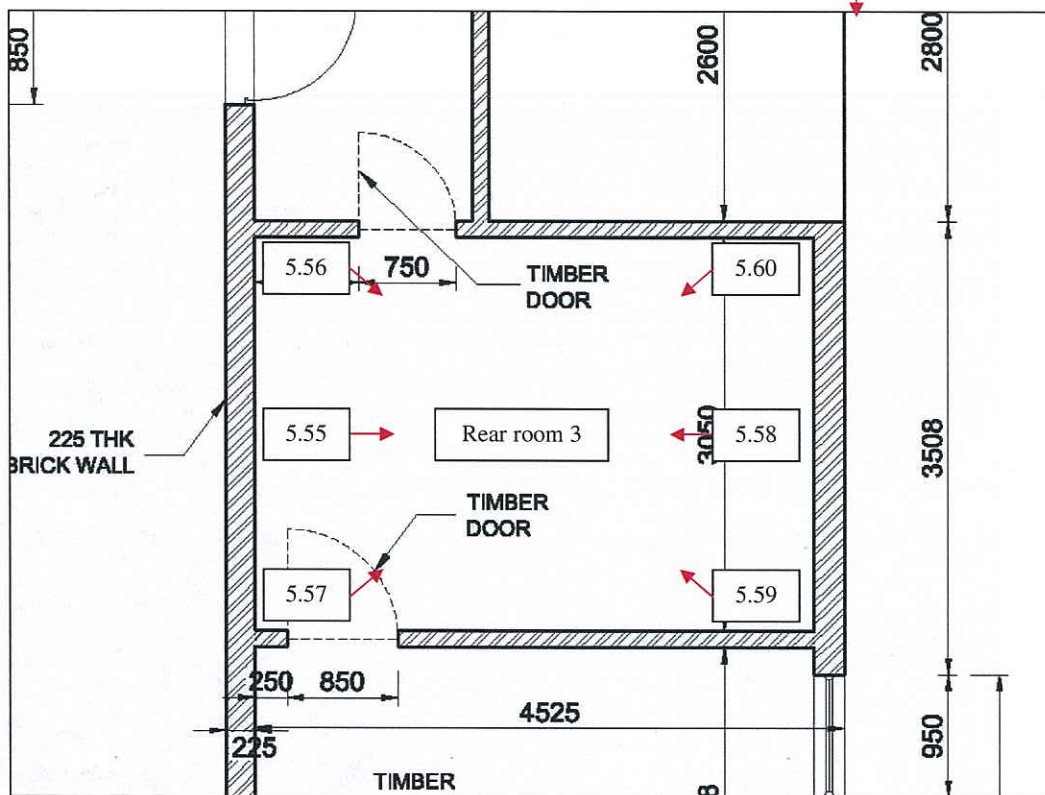
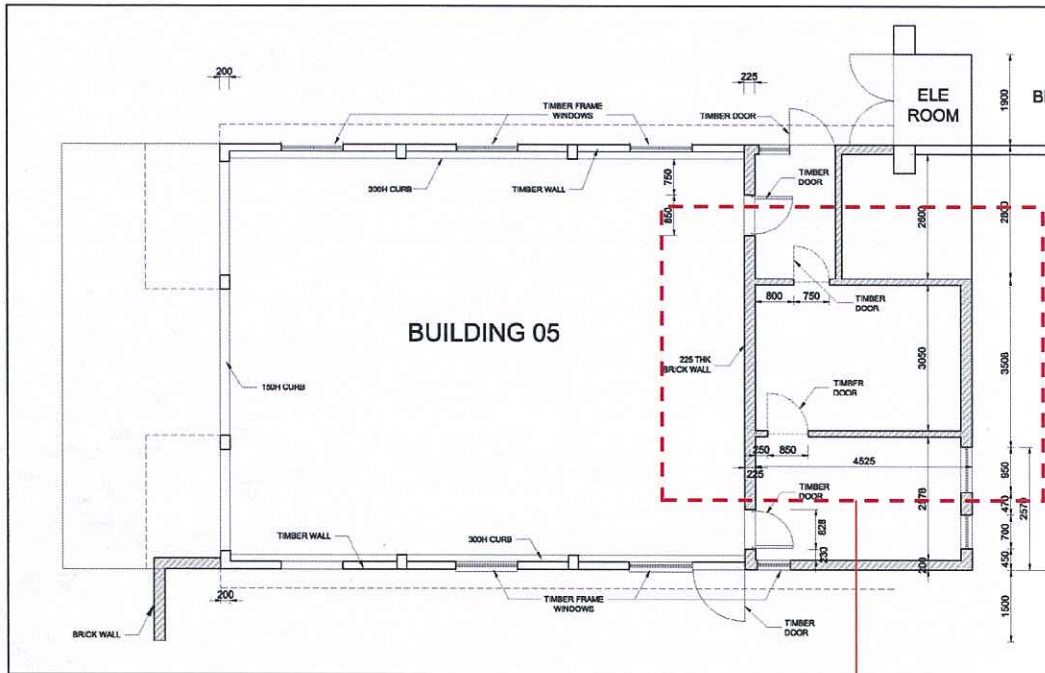


**Photographic Record for Central Police Station  
Building 5**



Photo 5.54 – Rear room 2, soffite of roof (2011/08/15)

# Photographic Record for Central Police Station Building 5



Plan no. 5.05 – Ground floor plan showing Rear room 3 (not to scale),  
indicating views of photo nos. 5.55 – 5.60 (rear room 3)



**Photographic Record for Central Police Station  
Building 5**



Photo 5.55 – Rear room 3, interior (2011/08/13)



Photo 5.56 – Rear room 3, interior (2011/08/13)

**Photographic Record for Central Police Station  
Building 5**

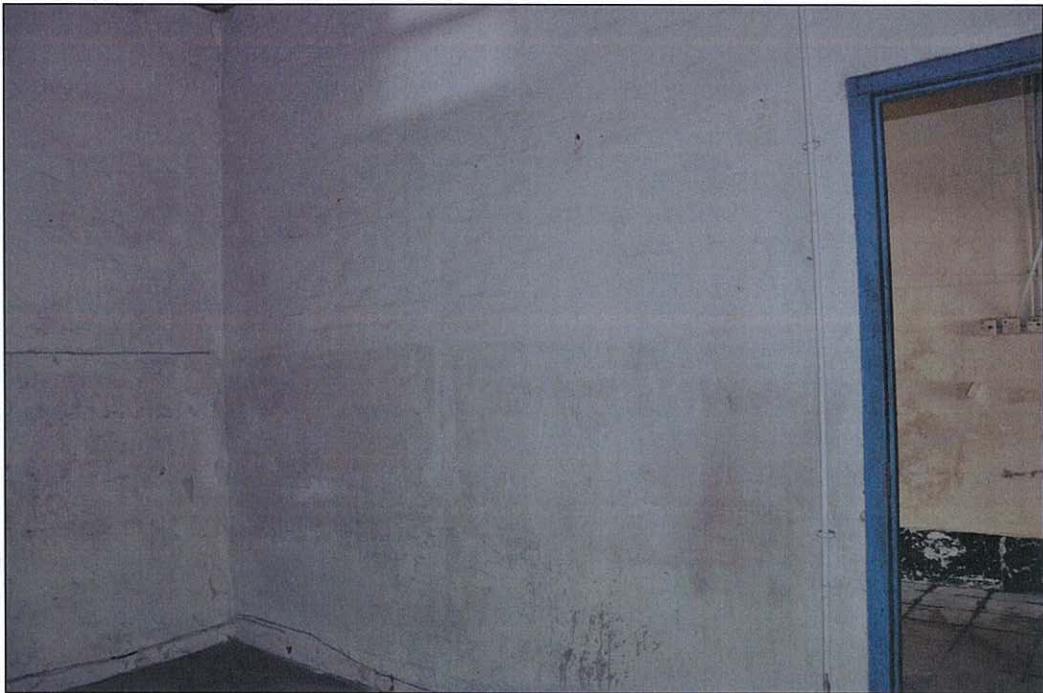


Photo 5.57 – Rear room 3, interior (2011/08/13)



Photo 5.58 – Rear room 3, interior (2011/08/13)



**Photographic Record for Central Police Station  
Building 5**

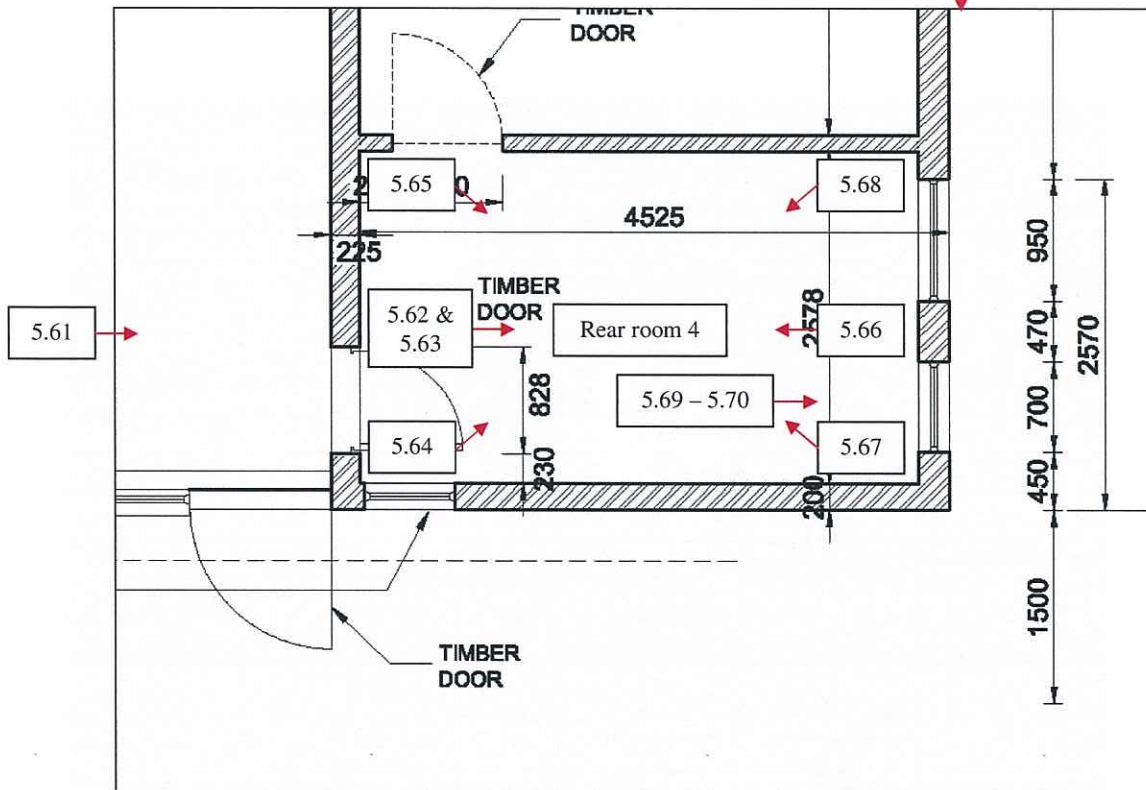
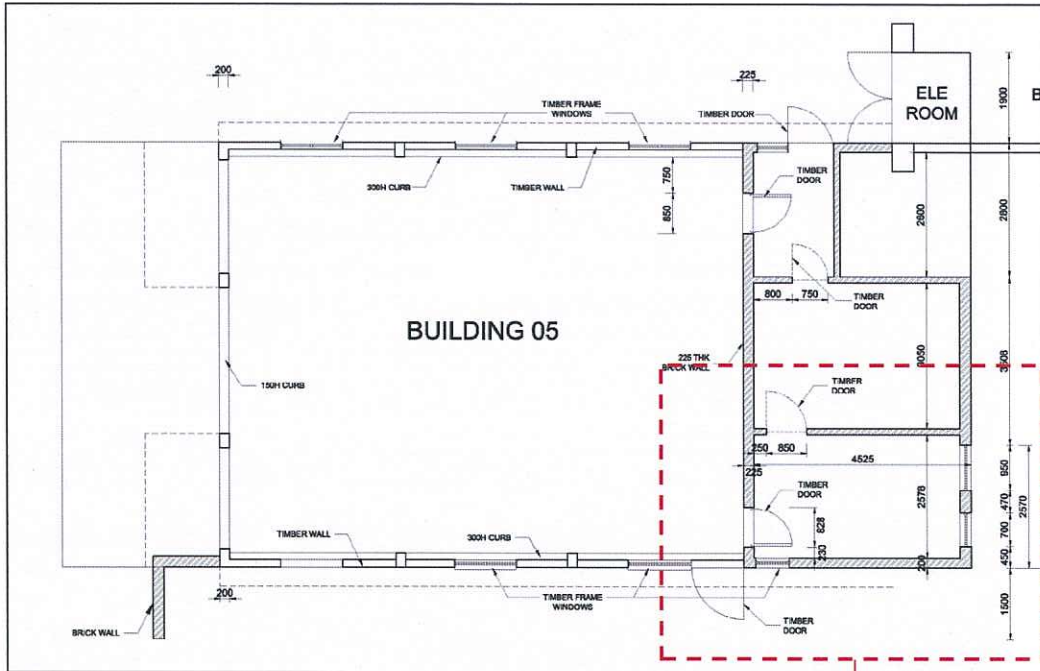


Photo 5.59 – Rear room 3, interior (2011/08/13)



Photo 5.60 – Rear room 3, interior (2011/08/13)

# Photographic Record for Central Police Station Building 5



Plan no. 5.06 – Ground floor plan showing Rear room 4 (not to scale),  
indicating views of photo nos. 5.61 – 5.70 (rear room 4)



**Photographic Record for Central Police Station  
Building 5**

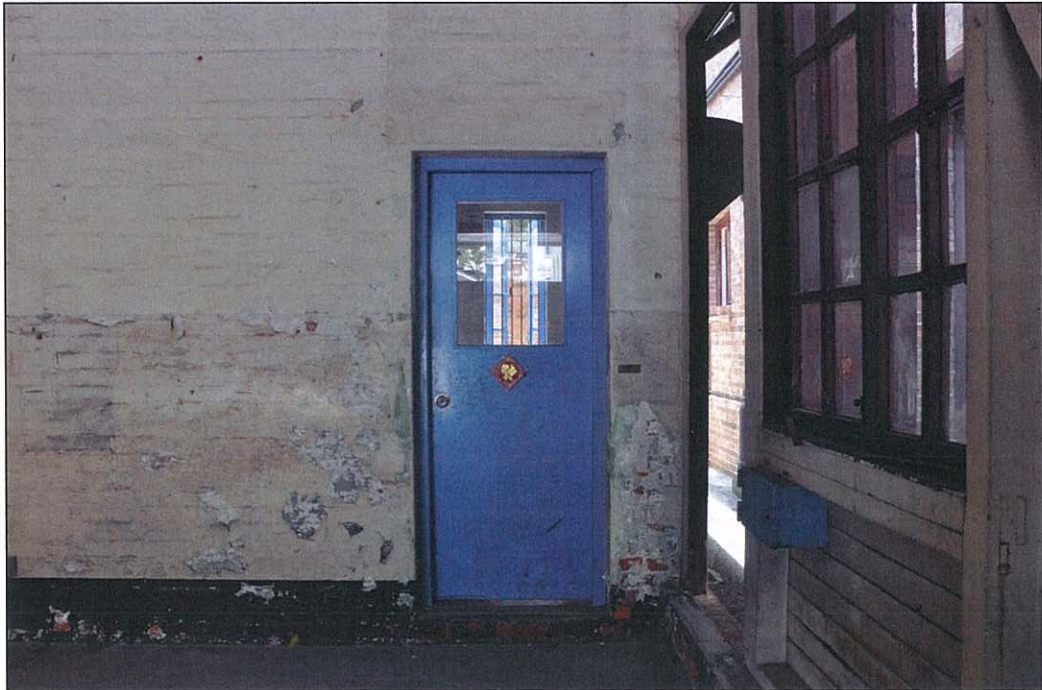


Photo 5.61 – Entrance to rear room 4 (2011/08/13)

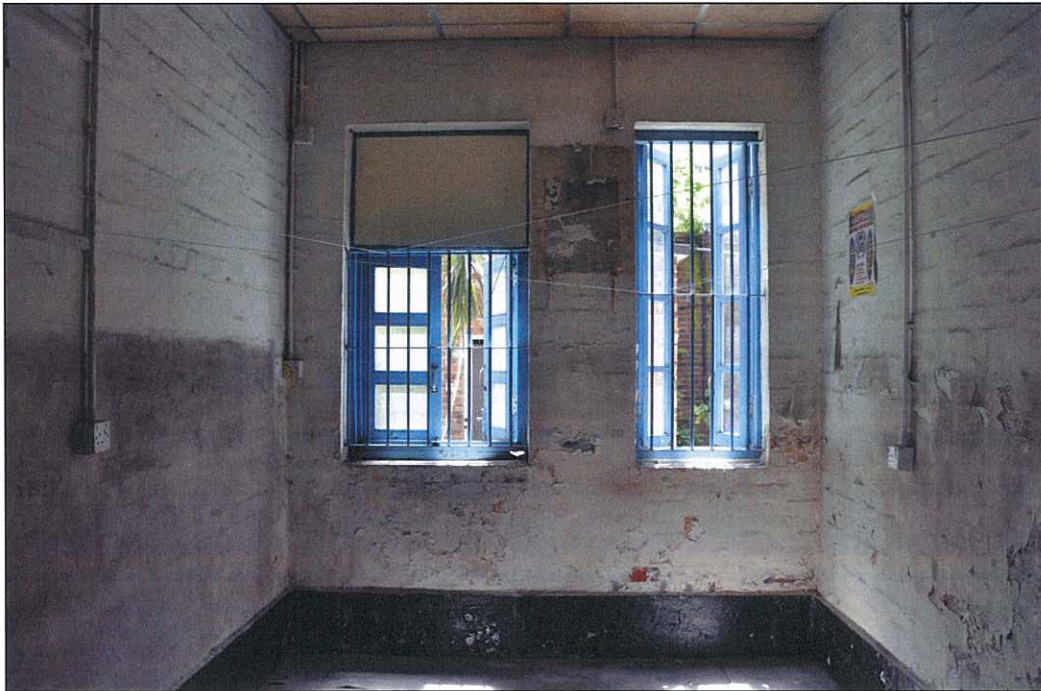


Photo 5.62 – Rear room 4, interior (2011/08/13)

**Photographic Record for Central Police Station  
Building 5**



Photo 5.63 – Rear room 4, false ceiling (2011/08/13)

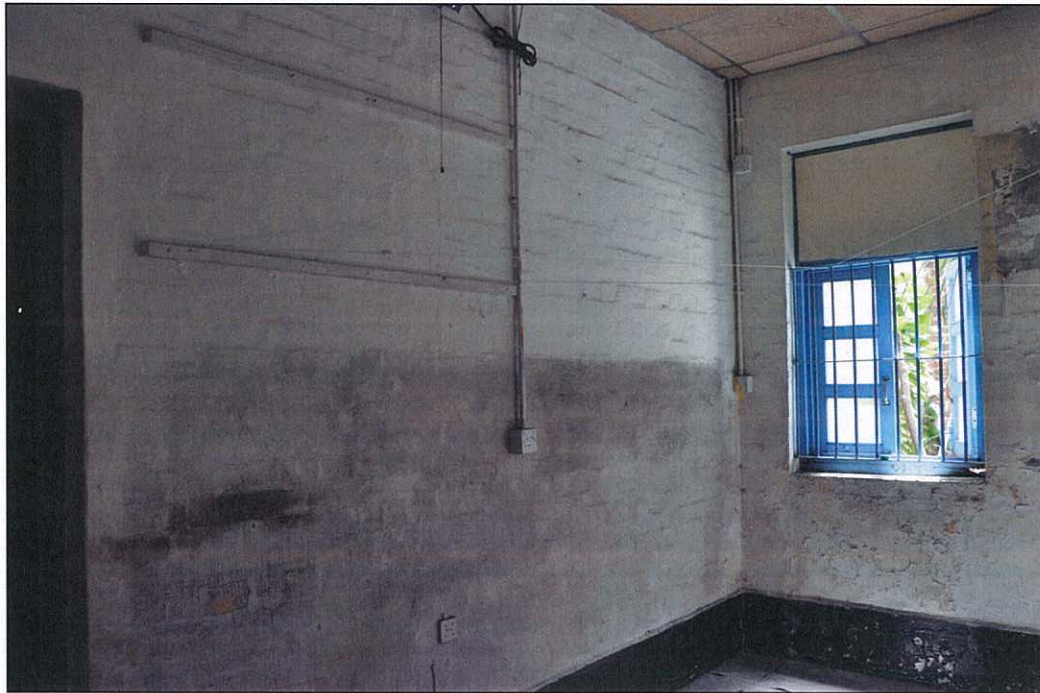


Photo 5.64 – Rear room 4, interior (2011/08/13)



**Photographic Record for Central Police Station  
Building 5**



Photo 5.65 – Rear room 4, interior (2011/08/13)



Photo 5.66 – Rear room 4, interior (2011/08/13)

**Photographic Record for Central Police Station  
Building 5**

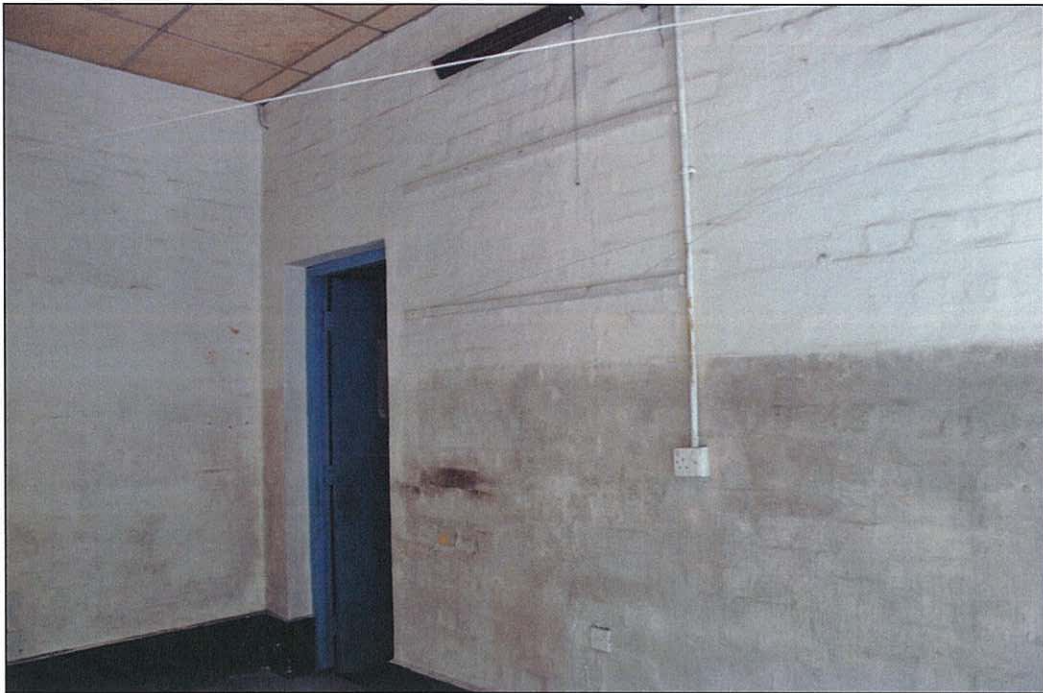


Photo 5.67 – Rear room 4, interior (2011/08/13)

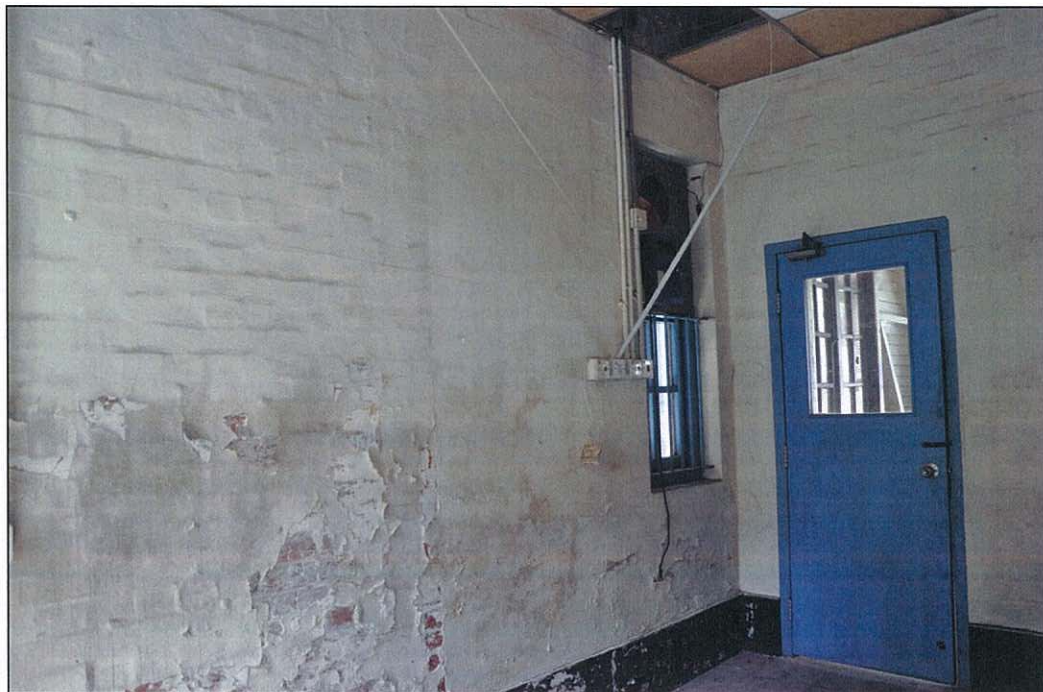


Photo 5.68 – Rear room 4, interior (2011/08/13)



**Photographic Record for Central Police Station  
Building 5**



Photo 5.69 – Rear room 4, upper vertical bolt of timber casement window (2011/08/13)

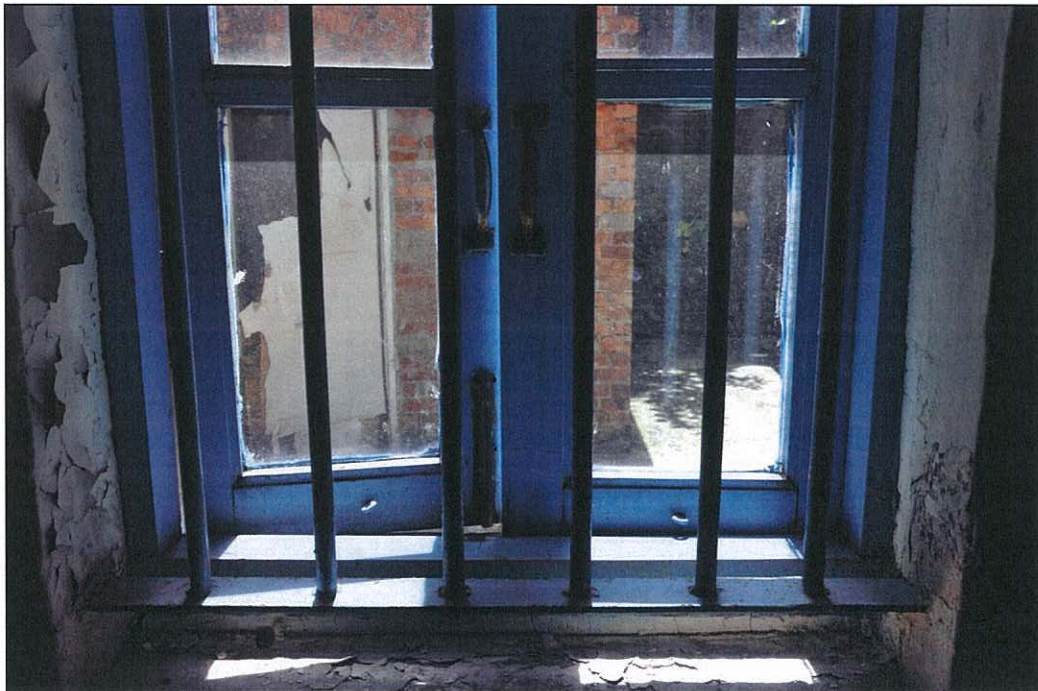


Photo 5.70 – Rear room 4, pull handle and lower vertical bolt of timber casement window  
(2011/08/13)