

The Jockey Club CPS Limited

Central Police Station Conservation
and Revitalisation Project:
53rd Monthly EM&A Report
(1 March to 31 March 2016)

Issue Date: April 2016

Environmental Resources Management



16/F Berkshire House
25 Westlands Road
Quarry Bay, Hong Kong
Telephone: (852) 2271 3000
Facsimile: (852) 2723 5660
E-mail: post.hk@erm.com
<http://www.erm.com>

The Jockey Club CPS Limited

Central Police Station Conservation
and Revitalisation Project:
53rd Monthly EM&A Report
(From 1 March to 31 March 2016)

Issue Date: April 2016

Reference 0095646

| | |
|--|--|
| For and on behalf of ERM-Hong Kong, Limited | |
| Approved by: | Frank Wan |
| Signed: |  |
| Position: | Partner |
| Certified by: |  |
| | (Environmental Team Leader – Katie Yu) |
| Date: | 12 April 2016 |

This report has been prepared by ERM-Hong Kong, Limited with all reasonable skill, care and diligence within the terms of the Contract with the client, incorporating our General Terms and Conditions of Business and taking account of the resources devoted to it by agreement with the client.

We disclaim any responsibility to the client and others in respect of any matters outside the scope of the above.

This report is confidential to the client and we accept no responsibility of whatsoever nature to third parties to whom this report, or any part thereof, is made known. Any such party relies on the report at their own risk.

Your ref. 0095646_let_Atkins_20160414 Monthly EM&A Report No.53.doc
Our ref. 5121189/17.20/OC100/SO/EK

Telephone (852) 2972 1000
Facsimile (852) 2890 6343

Date: 14 April 2016

info.hk@atkinsglobal.com
www.atkinsglobal.com

By Post and Email (katie.yu@erm.com)

ERM-Hong Kong Limited,
16/F Berkshire House,
25 Westlands Road,
Quarry Bay,
Hong Kong

Attn: Ms Katie Yu

Dear Katie,

**Central Police Station Conservation and Revitalization Project
Verification of Monthly EM&A Report No. 53**

We refer to your letter dated 14 April 2016 regarding the Monthly EM&A Report No. 53. Atkins China Limited verifies, in the capacity of Independent Environmental Checker, that the report conforms the requirements provided in Condition 3.4 of the Environmental Permit (EP-408/2011/B).

Yours sincerely,
For Atkins China Limited



**Sharifah Or
Independent Environmental Checker**

c.c. HKJC – Mr. Kenneth Lee (By Email)
Rocco Design Architect – Mr. Charles Kung (By Email)

CONTENTS

| | | |
|-------|--|----|
| 1 | INTRODUCTION | 1 |
| 1.1 | PURPOSE OF THE REPORT | 1 |
| 1.2 | STRUCTURE OF THE REPORT | 1 |
| 2 | PROJECT INFORMATION | 3 |
| 2.1 | BACKGROUND | 3 |
| 2.2 | SITE DESCRIPTION | 3 |
| 2.3 | CONSTRUCTION ACTIVITIES | 3 |
| 2.4 | PROJECT ORGANISATION | 4 |
| 2.5 | STATUS OF ENVIRONMENTAL APPROVAL DOCUMENTS | 4 |
| 3 | ENVIRONMENTAL MONITORING REQUIREMENTS | 8 |
| 3.1 | NOISE MONITORING | 8 |
| 3.1.1 | Monitoring Location | 8 |
| 3.1.2 | Monitoring Parameters, Frequency and Programme | 8 |
| 3.1.3 | Monitoring Equipment and Methodology | 8 |
| 3.1.4 | Event / Action Plan | 9 |
| 3.1.5 | Mitigation Measures | 9 |
| 3.2 | CULTURAL HERITAGE | 9 |
| 3.2.1 | Vibration Monitoring | 9 |
| 3.2.2 | Mitigation Measures | 11 |
| 3.3 | LANDSCAPE AND VISUAL MONITORING | 11 |
| 3.3.1 | Mitigation Measures | 11 |
| 3.4 | ENVIRONMENTAL REQUIREMENTS IN CONTRACT DOCUMENTS | 11 |
| 4 | IMPLEMENTATION STATUS ON ENVIRONMENTAL PROTECTION REQUIREMENTS | 12 |
| 5 | MONITORING RESULTS | 13 |
| 5.1 | NOISE | 13 |
| 5.2 | CULTURAL HERITAGE | 13 |
| 5.2.1 | Vibration Monitoring | 13 |
| 5.2.2 | Heritage Site Audit | 13 |
| 5.3 | LANDSCAPE AND VISUAL | 15 |
| 5.4 | WASTE MANAGEMENT | 15 |
| 6 | ENVIRONMENTAL SITE INSPECTION | 17 |
| 7 | ENVIRONMENTAL NON-CONFORMANCE | 18 |
| 7.1 | SUMMARY OF MONITORING EXCEEDANCE | 18 |
| 7.2 | SUMMARY OF ENQUIRY | 18 |
| 7.3 | SUMMARY OF ENVIRONMENTAL NON-COMPLIANCE | 18 |
| 7.4 | SUMMARY OF ENVIRONMENTAL COMPLAINT | 18 |

| | | |
|-----|--|----|
| 7.5 | <i>SUMMARY OF ENVIRONMENTAL SUMMONS AND SUCCESSFUL PROSECUTION</i> | 19 |
| 8 | <i>FUTURE KEY ISSUES</i> | 20 |
| 8.1 | <i>KEY ISSUES FOR THE COMING MONTH</i> | 20 |
| 8.2 | <i>MONITORING SCHEDULE FOR THE NEXT MONTH</i> | 20 |
| 8.3 | <i>CONSTRUCTION PROGRAMME FOR THE NEXT MONTH</i> | 20 |
| 9 | <i>CONCLUSIONS</i> | 21 |

LIST OF TABLES

| | |
|-----------|--|
| Table 2.1 | Summary of Construction Activities Undertaken from 1 to 31 March 2016 |
| Table 2.2 | Summary of Environmental Licensing, Notification and Permit Status |
| Table 3.1 | Construction Phase Noise Monitoring Station |
| Table 3.2 | Noise Monitoring Equipment |
| Table 3.3 | Action and Limit Levels for Construction Noise Monitoring |
| Table 3.4 | Alert, Alarm and Action (AAA) Levels for Vibration Monitoring |
| Table 3.5 | Event and Action Plan for Vibration Monitoring |
| Table 4.1 | Status of Required Submissions |
| Table 5.1 | Findings of Monthly Tree Inspection in the Reporting Period |
| Table 5.2 | Quantities of Waste Generated from the Project |
| Table 7.1 | Summary of Complaints Received |
| Table 8.1 | Construction Works to be Undertaken in the Coming One Month |

LIST OF ANNEXES

| | |
|-----------------|---|
| Annex A | Locations of Works Areas and the Surroundings |
| <i>Annex A1</i> | <i>Project Location</i> |
| <i>Annex A2</i> | <i>Declared Monuments within the Project Site</i> |
| <i>Annex A3</i> | <i>Site Layout Plan marked with Works</i> |
| Annex B | Project Organization Chart and Contact Detail |
| Annex C | Locations of Noise Monitoring Stations and Noise Sensitive Receivers |
| Annex D | Monitoring Schedule of the Reporting Month and the Next Month |
| Annex E | Calibration Reports for Calibrators and Sound Level Meters |
| Annex F | Event /Action Plans for Noise |
| Annex G | Summary of Implementation Status |
| Annex H | Noise Monitoring Results |
| Annex I | Construction Programme for the Project |

- Annex J** **Tree Inspection Reports**
- Annex K** **Environmental Complaint, Environmental Summons and
Prosecution Log**
- Annex L** **Records of Vibration Monitoring for Trial Piling and Pipe /
Bored Piling Works**
- Annex M** **Records of Vibration Monitoring for Other Construction
Works**

EXECUTIVE SUMMARY

The construction works of **Central Police Station Conservation and Revitalisation Project** commenced on 24 October 2011. This is the 53rd monthly Environmental Monitoring and Audit (EM&A) report presenting the EM&A works carried out during the period from 1 to 31 March 2016 in accordance with the EM&A Manual.

Summary of Construction Works undertaken during Reporting Period

The major construction works undertaken during the reporting period include:

- Structural addition and alteration works at Blocks 4 and 14;
- Balcony repair at Blocks 6 and 7;
- Plaster repair at Blocks 3 and 14;
- Timber doors and windows repair works at Blocks 3 and 9;
- Structural timber floor repair at Blocks 4 and 10;
- Metal works repair at Blocks 11 and 14;
- Façade works at Blocks 4, 8, 14 and 17;
- Arbuthnot Wing & Old Bailey Wing fitout works;
- Old Bailey Wing external facade installation;
- E&M installation at Blocks 3, 9, 14, Arbuthnot Wing and Old Bailey Wing;
- Footbridge construction;
- Barracks lane stair construction; and
- Hard landscape construction.

Environmental Monitoring and Audit Progress

A summary of the monitoring activities in this reporting period is listed below:

- | | |
|---|----------|
| • Construction noise monitoring during normal weekdays at each monitoring station | 6 times |
| • Joint environmental site inspection | 1 time |
| • Heritage site inspections | 17 times |
| • Landscape & visual monitoring | 1 time |
| • Tree inspection | 1 time |
| • Vibration monitoring for piling works | 24 times |
| • Vibration monitoring for other construction works | 24 times |

Noise

6 sets of 30-minute construction noise measurements were carried out at each of the monitoring stations (NM2 and NM6) during normal weekdays of the

reporting period. No exceedance of the Action or Limit Level of construction noise was recorded during the reporting period.

Cultural Heritage

Vibration monitoring carried out for the trial piling and piling works during the reporting period are listed below:

- 24 vibration monitoring measurements at Block 8;

Vibration monitoring carried out for other construction works during the reporting period are listed below:

- 24 vibration monitoring measurements for the structural addition and alteration works at Block 11.

No exceedance of the Alert, Alarm and Action Levels was recorded during the reporting period.

Heritage site audits were conducted on 1-4, 7-11, 14-18, 24-25, 31 March 2016 by the Heritage Checker during the reporting period. Major observations and recommendations during the site inspections were listed below:

2 March 2016

- It was observed that the historic timber boarded ceiling on third floor of Block 3 was placed on the ground without sufficient protection with damage observed on the boards. The Contractor was informed to follow up.

4 March 2016

- Two fanlight windows at south elevation of Block 1 were observed not in accordance with the design drawing. The Contractor was informed to follow up.

10 March 2016

- A vent pipe was observed 2m above the roof level which was not in accordance with the contract drawing. The Contractor was informed to follow up.
- Deficiency for the construction of the new concrete parapet on rooftop of Block 10 was observed. The Contractor was informed to follow up.

14 March 2016

- It was observed that a piling rig at Old Bailey Street overturned and leaned on Block 1. Scratches were observed on the west elevation facing brickwork. The Contractor was informed to follow up.

17 March 2016

- Cement grout spillage on the brickwork under the new external staircase at south elevation of Block 7 was observed. The Contractor was informed to follow up.

31 March 2016

It was observed that the existing metal bars at windows 03/G/47 and 03/G/48 on ground floor of Block 3 were missing. The Contractor was informed to follow up.

The Contractor was urged to follow-up the necessary rectification based on the inspection findings.

The follow-up actions recommended in the heritage site audits from the last reporting period (February 2016) have generally been implemented.

Landscape & Visual

Landscape and visual monitoring has commenced since October 2011 on a monthly basis. Tree inspection was conducted on 4 March 2016 by the arborist during the reporting period. Signs of pest (mealy bugs) at Tree-5 have been apparently increased. The Contractor was recommended to trim off affected leaves and apply pesticides for the tree. Withered leaves observed at Tree-11 in the previous inspections have reduced. The Contractor was reminded to keep close monitoring on the growth of the trees.

Waste Management

Wastes generated from this Project include inert construction and demolition (C&D) materials and non-inert C&D materials. A total of 114.67 tonnes of inert C&D materials were generated during the reporting period. 380.06 tonnes of non-inert C&D materials comprising general refuse were generated and disposed of at the SENT Landfill. No metal, paper/cardboard packaging or plastic waste was recycled during the reporting period. No chemical waste was produced during the reporting period.

Environmental Site Inspection

A joint environmental site inspection was carried out by the representatives of the Contractor, the IEC and the ET on 24 March 2016. There was no major observation or recommendation during the site inspection.

Environmental Exceedance/Non-conformance/Compliant/Summons and Prosecution

No exceedance of the Limit Level of construction noise was recorded at designated monitoring stations during the reporting period. The Action Level of construction noise (complaint received) was triggered once during the reporting period.

No exceedance of the Alert, Alarm and Action Levels of vibration was recorded during the reporting period.

No enquiry was received during the reporting period.

No non-compliance event was recorded during the reporting period.

One complaint was received during the reporting period.

No summons/prosecution was received during the reporting period.

Future Key Issues

Works to be undertaken in the next month include:

- Structural addition and alteration works at Blocks 4 and 14;
- Balcony repair at Blocks 6 and 7;
- Plaster repair at Blocks 3, 4 and 14;
- Timber doors and windows repair works at Blocks 3 and 9;
- Structural timber floor repair at Blocks 4 and 10;
- Metal works repair at Blocks 11 and 14;
- Façade works at Blocks 4, 8 and 14;
- Fitout works at Arbuthnot Wing and Old Bailey Wing;
- E&M installation at Blocks 3, 9, 14, Arbuthnot Wing and Old Bailey Wing;
- Footbridge construction;
- Barracks lane stair construction and
- Hard landscape construction.

Potential environmental impacts arising from the above construction activities are mainly associated with dust, construction noise, site runoff and waste management.

ERM-Hong Kong, Limited (ERM) was appointed by the Jockey Club CPS Limited (the CPS Ltd) as the Environmental Team (ET) to undertake the Environmental Monitoring and Audit (EM&A) programme for the **Central Police Station Conservation and Revitalisation Project** (the Project).

1.1 PURPOSE OF THE REPORT

This is the 53rd EM&A report which summarises the impact monitoring results and audit findings for the EM&A programme during the reporting period from **1 to 31 March 2016**.

1.2 STRUCTURE OF THE REPORT

The structure of the report is as follows:

Section 1 : **Introduction**

details the scope and structure of the report.

Section 2 : **Project Information**

summarises background and scope of the Project, site description, project organization and contact details, construction programme, the construction works undertaken and the status of Environmental Permit(s)/License(s) during the reporting period.

Section 3 : **Environmental Monitoring Requirements**

summarises the monitoring parameters, monitoring programmes, monitoring methodologies, monitoring frequency, monitoring locations, Action and Limit Levels, Event/ Action Plans, environmental mitigation measures as recommended in the EIA report and relevant environmental requirements.

Section 4 : **Implementation Status on Environmental Protection Requirements**

summarises the implementation of environmental protection measures during the reporting period.

Section 5 : **Monitoring Results**

summarises the monitoring results obtained in the reporting period.

Section 6 : **Environmental Site Inspection**

summarises the audit findings of the site inspections undertaken within the reporting period.

Section 7: **Environmental Non-conformance**

summarises any monitoring exceedance, environmental complaints and environmental summons within the reporting period.

Section 8: **Future Key Issues**

summarises the impact forecast and monitoring schedule for the next reporting month.

Section 9: **Conclusions**

2 PROJECT INFORMATION

2.1 BACKGROUND

The Chief Executive (CE)'s 2007-2008 Policy Address highlighted revitalisation as the guiding principle of heritage conservation and the Project was one of the specific proposals put forward by the CE in the same Policy Address. At the meeting of the Executive Council (ExCo) on 15 July 2008, the ExCo advised and the CE ordered that Government should enter into a partnership with the Hong Kong Jockey Club (HKJC) in the form of an agreement (or agreements) to take forward the conservation and revitalisation of the CPS project based on various guiding parameters. The Project is now being undertaken in partnership with the Development Bureau of the HKSAR Government. The HKJC has taken on board the decision at the ExCo meeting and further investigated the design and implementation of the Project. The Project is now implemented by the Jockey Club CPS Limited.

2.2 SITE DESCRIPTION

The location of the Project Site is shown in *Annex A1*. The Site is bounded by Hollywood Road to the north, Arbuthnot Road to the east, Chancery Lane to the south and Old Bailey Street to the west.

The Site comprises three Declared Monuments designated under the *Antiquities and Monuments Ordinance* in 1995. They are:

- Central Police Station;
- Former Central Magistracy; and
- Victoria Prison Compound.

They are collectively named the Central Police Station (CPS). *Annex A2* shows the location of the Declared Monuments within CPS and the buildings within the CPS.

2.3 CONSTRUCTION ACTIVITIES

A summary of the major construction activities undertaken in this reporting period is shown in *Table 2.1* and illustrated in *Annex A3*.

Table 2.1 **Summary of Construction Activities Undertaken from 1 to 31 March 2016**

| Construction Activities Undertaken |
|---|
| <ul style="list-style-type: none">• Structural addition and alteration works at Blocks 4 and 14;• Balcony repair at Blocks 6 and 7;• Plaster repair at Blocks 3 and 14;• Timber doors and windows repair works at Blocks 3 and 9;• Structural timber floor repair at Blocks 4 and 10;• Metal works repair at Blocks 11 and 14;• Façade works at Blocks 4, 8, 14 and 17;• Arbuthnot Wing & Old Bailey Wing fitout works;• Old Bailey Wing external facade installation;• E&M installation at Blocks 3, 9, 14, Arbuthnot Wing and Old Bailey Wing;• Footbridge construction;• Barracks lane stair construction; and• Hard landscape construction. |

2.4 **PROJECT ORGANISATION**

The Project organisation chart and contact details are shown in *Annex B*.

2.5 **STATUS OF ENVIRONMENTAL APPROVAL DOCUMENTS**

A summary of the relevant permits, licences, and/or notifications on environmental protection for this Project since the granting of the EP in April 2011 is presented in *Table 2.2*.

Table 2.2 Summary of Environmental Licensing, Notification and Permit Status

| Permit/ Licences/ Notification | Reference | Validity Period | Remarks |
|--|--|--|---|
| Environmental Permit (EP) | EP-408/2011 | - | Superseded on 10 January 2012 |
| | EP-408/2011/A | - | Superseded on 22 March 2012 |
| | EP-408/2011/B | Throughout the Contract | Permit granted on 22 March 2012 |
| Notification of Construction Works as required under <i>Air Pollution Control (Construction Dust) Regulation</i> | Ref. No. 332920 | Throughout the Contract | - |
| Registration of Chemical Waste Producer under <i>Waste Disposal Ordinance</i> | Chemical Waste Producer No.: 5213-122-G2347-25 | Throughout the Contract | - |
| Disposal of C&D material/waste | Billing Account Number: 7013338 | Throughout the Contract | - |
| Effluent Discharge License under <i>Water Pollution Control Ordinance</i> | License No. WT00010633-2011 | 21 Oct 2011 – 31 Oct 2016 | - |
| Notification of Commencement of Asbestos Abatement Work under <i>Air Pollution Control Ordinance</i> | - | Throughout the Contract | EPD's letter (EPD's ref.: (5) in EPAC/A/4/000/23 3 II) dated 2 December 2011 satisfied that the content of the asbestos abatement plan (Report No.: 0210/11/ED/0078A) is in accordance with the APCO |
| Approval of Asbestos Abatement Work (Phase 2) | - | Earliest commencement date on 26 January 2012 | EPD's letter (EPD's ref.:() in EPAC/A/4/000/23 3) dated 18 January 2012. |
| Construction Noise Permit (CNP) | GW-RS0734-12 | 11 July 2012 at 0200 hours to 2 August 2012 at 0400 hours | Expired. |
| | GW-RS0839-12 | 13 August 2012 at 1900 hours to 31 December 2012 at 0700 hours | Expired. |
| | GW-RS1162-12 | 1 December 2012 at 0000 hours to 28 March 2013 at 0600 hours | Expired. |
| | GW-RS0113-13 | 1 February 2013 at 0200 hours to 31 | Expired. |

| Permit/ Licences/ Notification | Reference | Validity Period | Remarks |
|-----------------------------------|--------------|---|----------|
| | | May 2013 at 0400 hours | |
| | GW-RS1301-12 | 2 January 2013 at 1900 hours to 29 June 2013 at 2300 hours | Expired. |
| | GW-RS0084-13 | 24 January 2013 at 1900 hours to 29 June 2013 at 0700 hours | Expired. |
| | GW-RS0638-13 | 16 June 2013 at 0700 hours to 15 September 2013 at 1900 hours | Expired. |
| | GW-RS0901-13 | 14 August 2013 at 0000 hours to 31 October 2013 at 0600 hours | Expired. |
| | GW-RS0714-13 | 29 June 2013 at 1900 hours to 28 December 2013 at 2400 hours | Expired. |
| | GW-RS0745-13 | 5 July 2013 at 1900 hours to 30 December 2013 at 2300 hours | Expired. |
| | GW-RS1110-13 | 7 October 2013 at 0200 hours to 31 December 2013 at 0400 hours | Expired. |
| | GW-RS1205-13 | 4 November 2013 at 0000 hours to 30 January 2014 at 2400 hours | Expired. |
| | GW-RS1275-13 | 13 November 2013 at 0000 hours to 30 April 2014 at 2400 hours | Expired. |
| | GW-RS0062-14 | 10 February 2014 at 0000 hours to 31 March 2014 at 2400 hours. | Expired. |
| | GW-RS1461-13 | 29 December 2013 at 0000 hours to 28 June 2014 at 2400 hours. | Expired. |
| | GW-RS0271-14 | 1 April 2014 at 0100 hours to 30 June 2014 at 0600 hours | Expired. |
| | GW-RS0434-14 | 8 May 2014 at 0000 hours to 30 September 2014 at 2400 hours | Expired. |
| | GW-RS0651-14 | 28 July 2014 at 0000 | Expired. |

| Permit/ Licences/ Notification | Reference | Validity Period | Remarks |
|-----------------------------------|--------------|--|--------------------------------------|
| | | hours to 26 September 2014 at 2400 hours | |
| | GW-RS0658-14 | 29 June 2014 at 0000 hours to 28 December 2014 at 2400 hours | Expired. |
| | GW-RS0918-14 | 29 September 2014 at 0000 hours to 31 December 2014 at 2400 hours | Expired. |
| | GW-RS0749-14 | 1 August 2014 at 0000 hours to 31 January 2015 at 2400 hours | Expired. |
| | GW-RS0044-15 | 16 March 2015 at 0100 hours to 24 April 2015 at 0500 hours | Expired. |
| | GW-RS0086-15 | 1 February 2015 at 0000 hours to 30 June 2015 at 2400 hours | Expired. |
| | GW-RS0280-15 | 27 April 2015 at 0000 hours to 26 May 2015 at 2400 hours | Expired. |
| | GW-RS0693-15 | 6 July 2015 at 0000 hours to 30 July 2015 at 2400 hours | Expired. |
| | GW-RS0707-15 | 1 July 2015 at 0000 hours to 29 December 2015 at 2400 hours | Cancelled by EPD on 31 July 2015. |
| | GW-RS0241-15 | 23 March 2015 at 0000 hours to 21 August 2015 at 2400 hours | Expired. |
| | GW-RS0580-15 | 28 May 2015 at 0000 hours to 25 August 2015 at 2400 hours | Expired. |
| | GW-RS0514-15 | 21 May 2015 at 0000 hours to 20 November 2015 at 2400 hours | Expired. |
| | GW-RS0696-15 | 28 June 2015 at 0000 hours to 29 November 2015 at 2400 hours | Expired. |
| | GW-RS1301-15 | 30 November 2015 at 0000 hours to 29 May 2016 at 2400 hours | - |

3.1 NOISE MONITORING

3.1.1 Monitoring Location

The construction noise monitoring locations are listed in *Table 3.1* and are shown in *Annex C*.

Table 3.1 Construction Phase Noise Monitoring Station

| Monitoring Location | Proposed Construction Noise Monitoring Station | | | |
|-----------------------------|--|-----|---------------------|---|
| | ID in EM&A Manual | ID | Type of Measurement | Remark |
| Rooftop of Ho Fook Building | N2 | NM2 | Façade | - |
| Rooftop of Chancery Mansion | --- | NM6 | Façade | Accesses to the original proposed monitoring location in the EM&A Manual, Chancery House (N5), were denied; alternative location of Chancery Mansion (N6), were therefore proposed and approved by the Authorised Person (AP), the Independent Environmental Checker (IEC) and EPD. |

The noise sensitive receivers are also shown in *Annex C*.

3.1.2 Monitoring Parameters, Frequency and Programme

Weekly construction noise monitoring was conducted in accordance with the requirements stipulated in the EM&A Manual. The monitoring programme for this reporting period is shown in *Annex D*.

The construction noise levels were measured in terms of A-weighted equivalent continuous sound pressure level (L_{eq}) in decibels dB(A). $L_{eq(30min)}$ were used as the monitoring parameter for the time period in between 0700 – 1900 hours on normal weekdays. Supplementary information for data auditing, two statistical sound levels L_{10} and L_{90} - the levels exceeded for 10 and 90 percent of the time respectively, were also recorded during the monitoring for reference. The measured noise levels were logged in every 5 minutes throughout the impact monitoring period.

3.1.3 Monitoring Equipment and Methodology

Construction noise measurements were conducted in accordance with the calibration and measurement procedures as stated in *Annex – General Calibration and Measurement Procedures of Technical Memorandum on Noise from Construction Work other than Percussive Piling (GW-TM)* issued under the *Noise Control Ordinance (NCO)* (Cap 400).

The sound level meters and calibrator used for the noise measurement, as listed in *Table 3.2*, complies with the IEC 651: 1979 and 804:1985 (Type 1) specifications. The calibration certificates of the sound level meters are appended in *Annex E*.

Table 3.2 *Noise Monitoring Equipment*

| Monitoring Stations | Monitoring Equipment (Sound Level Meter and Calibrator) |
|---------------------|---|
| NM2, NM6 | <u>Calibrator</u> CEL 120 (S/N 3421612) |
| | <u>Sound Level Meter</u> CEL-633A (S/N 3521757) |

Immediately prior to and following the noise measurements, the accuracy of the measurement equipment was checked using an acoustic calibrator generating a known sound pressure level at a known frequency.

Measurements were accepted as the calibration level from before and after the noise measurement agree to within 1.0 dB(A).

3.1.4 *Event / Action Plan*

Table 3.3 *Action and Limit Levels for Construction Noise Monitoring*

| Noise Monitoring Location | Action Level | Limit Level, $L_{eq}(30mins), dB(A)$ | Remark |
|--|---|--------------------------------------|---|
| NM2, NM6 | When one documented complaint is received from any one of the sensitive receivers | 75 (note) | Applicable during 0700 – 1900 hours on normal weekdays. |
| Notes: | | | |
| (a) Acceptable Noise Levels for Area Sensitivity Rating of A/B/C. Limit Level is reduced to 70dB(A) for schools and 65dB(A) during school examination periods. | | | |
| (b) If works are to be carried out during restricted hours, the conditions stipulated in the CNP issued by the NCA have to be followed. | | | |

The Event / Action Plan (EAP) for noise monitoring is presented in *Annex F*.

3.1.5 *Mitigation Measures*

The mitigation measures in accordance with the EP, EIA and EM&A Manual and their implementation status are presented in *Annex G*.

3.2 *CULTURAL HERITAGE*

3.2.1 *Vibration Monitoring*

In accordance with the EM&A Manual, vibration monitoring is required and the vibration control limits and vibration monitoring proposal are defined by a specialist for AMO's approval.

Baseline Monitoring

A set of initial readings should be recorded prior to commencement of each stage of demolition works or trial piling works. The baseline vibration monitoring should be conducted for duration of 5 minutes on the measurement day(s) at each vibration monitoring location.

Vibration Monitoring for Demolition Works

There are five phases/stages of vibration monitoring to be carried out for demolition works, namely Initial Reading Phase, Monitoring Stage 1, Monitoring Stage 2, Monitoring Stage 3 and Monitoring Stage 4. The vibration monitoring should be conducted for duration of 5 minutes on the days with demolition works at each vibration monitoring location.

Vibration Monitoring for Trial Piling and Pipe/Bored Piling Works

Vibration monitoring for trial piling works and pipe/bored piling works is required. The monitoring location is shown in *Annex L*. The vibration monitoring should be conducted for duration of 5 minutes on the days with trial piling works or pipe/bored piling works at each vibration monitoring location.

Vibration Monitoring for Other Construction Works

Vibration monitoring for specific construction works other than demolition works, trial piling works and pipe/bored piling works is also required in accordance with Building Department's requirement. The monitoring location is shown in *Annex M*. The number and location of monitoring location will depend on the location of the specific construction works. The vibration monitoring should be conducted for duration of 5 minutes on a daily basis (working day) at each vibration monitoring location.

Alert, Alarm and Action Levels

The Alert, Alarm and Action (AAA) Levels are to be implemented during the vibration monitoring and shown in *Table 3.4*.

Table 3.4 *Alert, Alarm and Action (AAA) Levels for Vibration Monitoring*

| Instrument Type | Item Monitored | Alert Level | Alarm Level | Action Level |
|------------------------|-----------------------|--------------------|--------------------|---------------------|
| Vibration Monitoring | Horizontal Movement | 2.0 mm/s | 2.5 mm/s | 3.0 mm/s |

The Event / Action Plan (EAP) for vibration monitoring is shown in *Table 3.5*.

Table 3.5 *Event and Action Plan for Vibration Monitoring*

| Events | Action |
|----------------------------|---|
| Exceedance of Alert Level | Notify Management Contractor |
| Exceedance of Alarm Level | Notify Authorised Person/ Resident Engineer |
| Exceedance of Action Level | Cease Works and submit mitigation |

3.2.2 *Mitigation Measures*

Cultural heritage mitigation measures (including those for archaeology) in accordance with the EP, EIA and EM&A Manual were implemented by the Contractor and the implementation status is given in *Annex G*.

3.3 *LANDSCAPE AND VISUAL MONITORING*

In accordance with the EM&A Manual, inspections of affected trees were conducted by an experienced and appropriately trained arborist. All irregularities that deviate from the recommended tree protection measures or could impose deleterious impacts on the protected trees were reported. Besides, implementation of mitigation measures for landscape and visual resources recommended in the EIA Report were also monitored during the site inspection.

3.3.1 *Mitigation Measures*

Landscape and visual mitigation measures in accordance with the EP, EIA and EM&A Manual were implemented by the Contractor and the implementation status is given in *Annex G*.

3.4 *ENVIRONMENTAL REQUIREMENTS IN CONTRACT DOCUMENTS*

The environmental requirements as specified in the contract documents were reviewed and were covered in the EIA's requirements.

IMPLEMENTATION STATUS ON ENVIRONMENTAL PROTECTION REQUIREMENTS

The Contractor has generally implemented the environmental mitigation measures (including those for archaeology) and requirements as stated in the EIA Report, the EP and EM&A Manual and the contract documents. The implementation status during the reporting period is summarized in *Annex G*.

Status of required submissions under the EP during the reporting period is presented in *Table 4.1*.

Table 4.1 *Status of Required Submissions*

| Submission | | Submission Date |
|---------------------|--------------------------------------|------------------------|
| <i>EP Condition</i> | | |
| Condition 3.4 | 52 nd Monthly EM&A Report | 11 March 2016 |

5 *MONITORING RESULTS*

5.1 *NOISE*

A total of 6 sets of 30-minute construction noise measurements were carried out at the monitoring stations (NM2 and NM6) during normal weekdays of the reporting period. The monitoring results together with graphical presentations are presented in *Annex H*. The local impacts observed near the monitoring stations of NM2 and NM6 were summarised below:

- NM2: construction noise from activities in the Project Site and traffic noise from Old Bailey Street.
- NM6: construction noise from activities in the Project Site and traffic noise from Chancery Lane.

No exceedance of the Action or Limit Level of construction noise was recorded during the reporting period.

5.2 *CULTURAL HERITAGE*

5.2.1 *Vibration Monitoring*

Trial Piling and Piling works

Vibration monitoring carried out for the trial piling and piling works during the reporting period are listed below:

- 24 vibration monitoring measurements at Block 8;

The monitoring results are presented in *Annex L*.

Other Construction Works

Vibration monitoring carried out for other construction works during the reporting period are listed below:

- 24 vibration monitoring measurements for the structural addition and alteration works at Block 11.

The monitoring results are presented in *Annex M*.

All monitoring results were below the Alert/Alarm/Action Levels.

5.2.2 *Heritage Site Audit*

Heritage site audits were conducted on 1-4, 7-11, 14-18, 24-25, 31 March 2016 by the Heritage Checker during the reporting period. The cultural heritage requirements (including the recommended mitigation measures) stated in the

approved EIA Report (AEIAR-162/2011) are being carried out. Major observations with respect to the requirements of the contract documents during the site inspections were listed below:

2 March 2016

- It was observed that the historic timber boarded ceiling on third floor of Block 3 was placed on the ground without sufficient protection with damage observed on the boards. The Contractor was informed to follow up.

4 March 2016

- Two fanlight windows at south elevation of Block 1 were observed not in accordance with the design drawing. The Contractor was informed to follow up.

10 March 2016

- A vent pipe was observed 2m above the roof level which was not in accordance with the contract drawing. The Contractor was informed to follow up.
- Deficiency for the construction of the new concrete parapet on rooftop of Block 10 was observed. The Contractor was informed to follow up.

14 March 2016

- It was observed that a piling rig at Old Bailey Street overturned and leaned on Block 1. Scratches were observed on the west elevation facing brickwork. The Contractor was informed to follow up.

17 March 2016

- Cement grout spillage on the brickwork under the new external staircase at south elevation of Block 7 was observed. The Contractor was informed to follow up.

31 March 2016

- It was observed that the existing metal bars at windows 03/G/47 and 03/G/48 on ground floor of Block 3 were missing. The Contractor was informed to follow up.

The follow-up actions recommended in the heritage site audits from the last reporting period (February 2016) have generally been implemented.

5.3

LANDSCAPE AND VISUAL

The tree inspection was conducted by the arborist on 4 March 2016 and major observations and recommendations in the reporting period are summarised in *Table 5.1*. The tree inspection report is contained in *Annex J*.

Table 5.1 Findings of Monthly Tree Inspection in the Reporting Period

| Tree No. | Botanical Name | Overall Health Condition | Arborist's Observations / Recommendations |
|----------|-------------------------------|--------------------------|---|
| Tree -5 | <i>Mangifera indica</i> | Fair | <ul style="list-style-type: none"> • Signs of pest have apparently increased; • To trim off the affected leaves; and; • To apply pesticide for the tree. • The planter is being re-built. |
| Tree -6 | <i>Aleurites moluccana</i> | Fair | <ul style="list-style-type: none"> • No further action required. |
| Tree-7 | <i>Aleurites moluccana</i> | Fair | <ul style="list-style-type: none"> • No further action required. |
| Tree-8 | <i>Plumeria rubra</i> | Fair | <ul style="list-style-type: none"> • No further action required. |
| Tree-9 | <i>Araucaria cunninghamia</i> | Fair | <ul style="list-style-type: none"> • No further action required. |
| Tree-11 | <i>Dracaena marginata</i> | Fair | <ul style="list-style-type: none"> • Withered leaves have apparently reduced; • To keep close monitoring on the growth of the tree; |

5.4

WASTE MANAGEMENT

Wastes generated from this Project include inert construction and demolition (C&D) materials and non-inert C&D materials. Non-inert C&D materials were made up of wastes such as general refuse. With reference to relevant handling records and trip tickets of this Project, the quantities of different types of waste generated in the reporting period are summarised in *Table 5.2*. The non-inert C&D materials and general refuse generated from the Project were disposed of at the SENT Landfill. The inert C&D materials generated from the Project were disposed of at Chai Wan Public Fill Barging Point, Fill Bank at Tseung Kwan O Area 137 and Sorting Facilities at Tseung Kwan O Area 137. No metal, paper/cardboard packaging or plastic waste was recycled during the reporting period. No chemical waste was produced during the reporting period.

Table 5.2 Quantities of Waste Generated from the Project

| Month / Year | Quantity | | | | | | |
|--------------|--|--|----------------|--------|----------------------|----------|--------|
| | C&D Materials (inert) ^(a) | C&D Materials (non-inert) ^(b) | Chemical Waste | | Recycled materials | | |
| | | | Solid | Liquid | Paper / cardboard | Plastics | Metals |
| March 2016 | 114.67 tonnes | 380.06 tonnes | 0 kg | 0 L | 0 kg | 0 kg | 0 kg |

Notes:

- (a) Inert C&D materials include bricks, concrete, building debris, rubble and excavated soil.
- (b) The figure presented under non-inert C&D materials represents quantities of non-recyclable materials such as general refuse which were disposed of at SENT Landfill. Recycled materials are reported separately.

Joint environmental site inspection was conducted by the representatives of the Contractor, IEC and the ET in the reporting period on 24 March 2016. There was no non-compliance recorded during the site inspection.

Follow-up Actions for the Last Site Audit

- The chemical waste container observed near Block 17 has been removed.

Observations and Recommendations of this Reporting Month

- Nil.

7 ENVIRONMENTAL NON-CONFORMANCE

7.1 SUMMARY OF MONITORING EXCEEDANCE

No exceedance of the Action or Limit Level of construction noise or Alert, Alarm and Action Levels of vibration was recorded during the reporting period.

7.2 SUMMARY OF ENQUIRY

No enquiry was recorded during the reporting period.

7.3 SUMMARY OF ENVIRONMENTAL NON-COMPLIANCE

No non-compliance event was recorded during the reporting period.

7.4 SUMMARY OF ENVIRONMENTAL COMPLAINT

One complaint was received during the reporting period on 13 March 2016. The complaint investigation report and the cumulative number of complaints is presented in *Annex K*.

Table 7.1 *Summary of Complaint Received*

| Date of Complaint Received by the Contractor | Means by which complaint was received | Nature of complaint |
|--|---------------------------------------|---------------------|
| 13 March 2016 | Hong Kong Jockey Club (HKJC) | Noise nuisance |

A noise complaint was received by the HKJC in the morning on 13 March 2016. The complainant also reported the noise nuisance to the police on 13 March 2016. The complainant complained about noise nuisance at around 08:00 hour on 13 March 2016. Policemen arrived at the CPS Site at 10:30 hour to investigate the noise complaint. The complaint was transferred to the Project's Environmental Team on 15 March 2016. CPS site staff have accompanied and assisted the policemen for their investigation process. No noise generating activities from the CPS site was identified during the investigation. As reported by the site team, some workers were moving some dry wall metal channel to the material storage area near Block 17 during the time of complaint. The potential noise nuisance may have been originated from the process of handling the dry wall metal channel at the material storage area. No operation of Power Mechanical Equipment (PME) or carrying out of Prescribed Construction Work (PCW) was involved. The operation team and works contractors have been reminded to carry out material handling and other works activities with care to avoid causing unnecessary noise nuisance as much as possible. Any work carried out within the CPS site on Sundays or general holidays should be avoided as far

as practicable. Also, a reminder was given to all frontline, operation team and works contractor that all general construction works using PME and prescribed construction activities are prohibited during restricted hours, i.e. between 7pm to 7am on normal working days or at any time on a general holiday (including Sunday), unless a valid CNP is obtained. All PMEs without valid CNP must be switched off before 19:00 hour during normal working days. GCL will also enhance site supervision to ensure compliance of the above.

7.5

SUMMARY OF ENVIRONMENTAL SUMMONS AND SUCCESSFUL PROSECUTION

No summons/prosecution was received during the reporting period.

8.1 KEY ISSUES FOR THE COMING MONTH

Works to be undertaken for the coming monitoring period are summarised in *Table 8.1*.

Table 8.1 Construction Works to be Undertaken in the Coming Month

| Work to be Undertaken |
|--|
| • Structural addition and alteration works at Blocks 4 and 14; |
| • Balcony repair at Blocks 6 and 7; |
| • Plaster repair at Blocks 3, 4 and 14; |
| • Timber doors and windows repair works at Blocks 3 and 9; |
| • Structural timber floor repair at Blocks 4 and 10; |
| • Metal works repair at Blocks 11 and 14; |
| • Façade works at Blocks 4, 8 and 14; |
| • Fitout works at Arbuthnot Wing and Old Bailey Wing; |
| • E&M installation at Blocks 3, 9, 14, Arbuthnot Wing and Old Bailey Wing; |
| • Footbridge construction; |
| • Barracks lane stair construction and |
| • Hard landscape construction. |

Potential environmental impacts arising from the above construction activities are mainly associated with dust, construction noise, site runoff and waste management.

8.2 MONITORING SCHEDULE FOR THE NEXT MONTH

The tentative schedule of noise monitoring for the next reporting period is presented in *Annex D*.

8.3 CONSTRUCTION PROGRAMME FOR THE NEXT MONTH

The most updated construction programme for the Project is presented in *Annex I*.

CONCLUSIONS

The *Environmental Monitoring and Audit (EM&A) Report* presents the EM&A works undertaken during the period from 1 to 31 March 2016 in accordance with EM&A Manual and the requirement under EP-408/2011/B.

No exceedance of the Action or Limit Level of construction noise was recorded at designated monitoring stations during the reporting period.

No exceedance of Alert, Alarm and Action Levels of vibration was recorded during the reporting period.

No enquiry was received during the reporting period.

No non-compliance event was recorded during the reporting period.

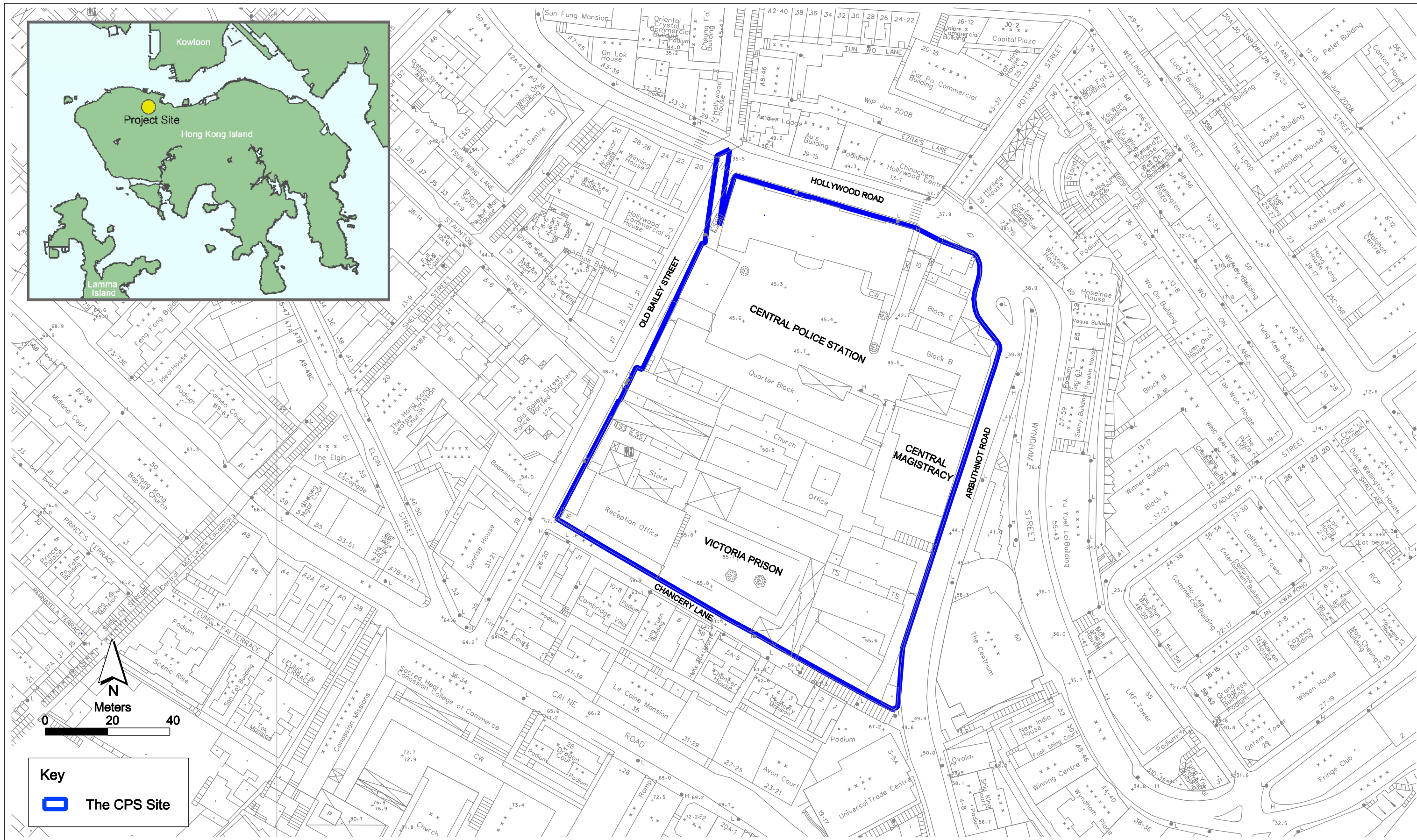
One complaint was received during the reporting period.

No summons/prosecution was received during the reporting period.

The ET will keep track on the EM&A programme to ensure compliance of environmental requirements and the proper implementation of all necessary mitigation measures.

Annex A

Locations of Works Areas and the Surroundings



Annex A1

Project Location

**Environmental
Resources
Management**



賽馬會文物保育有限公司
The Jockey Club CPS Limited

FILE: 0095646a-A3_01.dgn
DATE: 21/11/2011



Annex A2

Declared Monuments within the Project Site

Environmental Resources Management

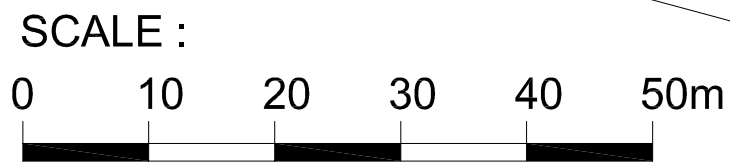


賽馬會文物保育有限公司
The Jockey Club CPS Limited



LEGEND

- 1. E&M Installation / Opening / Conduit Transformer delivery and installation
- 2. Excavation
- 3. Internal Building Works
- 4. Permanent Steel Works Erection
- 5. Upgrading
- 6. Roof Replacement Works / New Roof / Repair
- 7. Basement Construction
- 8. Structure A&A Works
- 9. Repair Works to Timber Window, Door, Structure, Floor and Metal Elements
- 10. Demolition Works
- 11. Facade Works / Link Bridge Repair
- 12. New Structure Construction
- 13. Balcony Repair
- 14. Paint Stripping and Plastering Works
- 15. Core Wall Construction
- 16. Utilities Diversion and Carriageway
- 17. PBR
- 18. Removal of Needle Beams
- 19. U/G Drainage
- 20. Service trench construction
- 21. Demolition of concrete block
- 22. New Balcony Construction
- 23. Construction of terminal Manhole

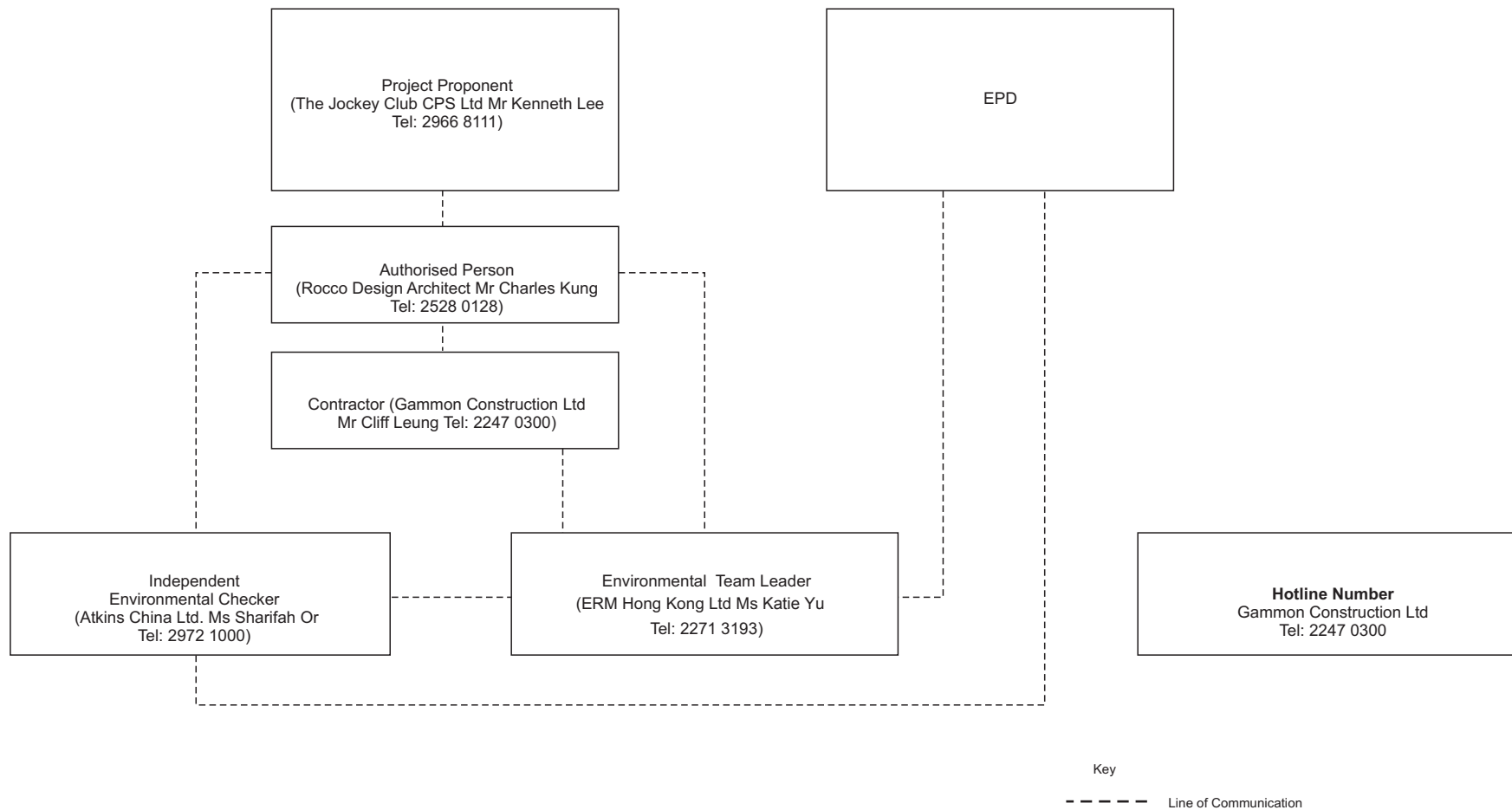


| | |
|-------------------------|---|
| | |
| Contractor | |
| Gammon | |
| Drawing Title | |
| SITE LAYOUT PLAN | |
| Drawn | Scale N.T.S. |
| Designed | Status |
| Checked | Marked for Enquiry & Complaint log (CPS/E&C/09) |
| Approved | Drawing No. |
| CAD Ref | |

Annex A3 Site Layout Plan marked with Works (Feb- 2016)

Annex B

Project Organization Chart and Contact Detail



Annex C

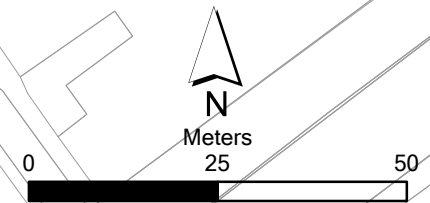
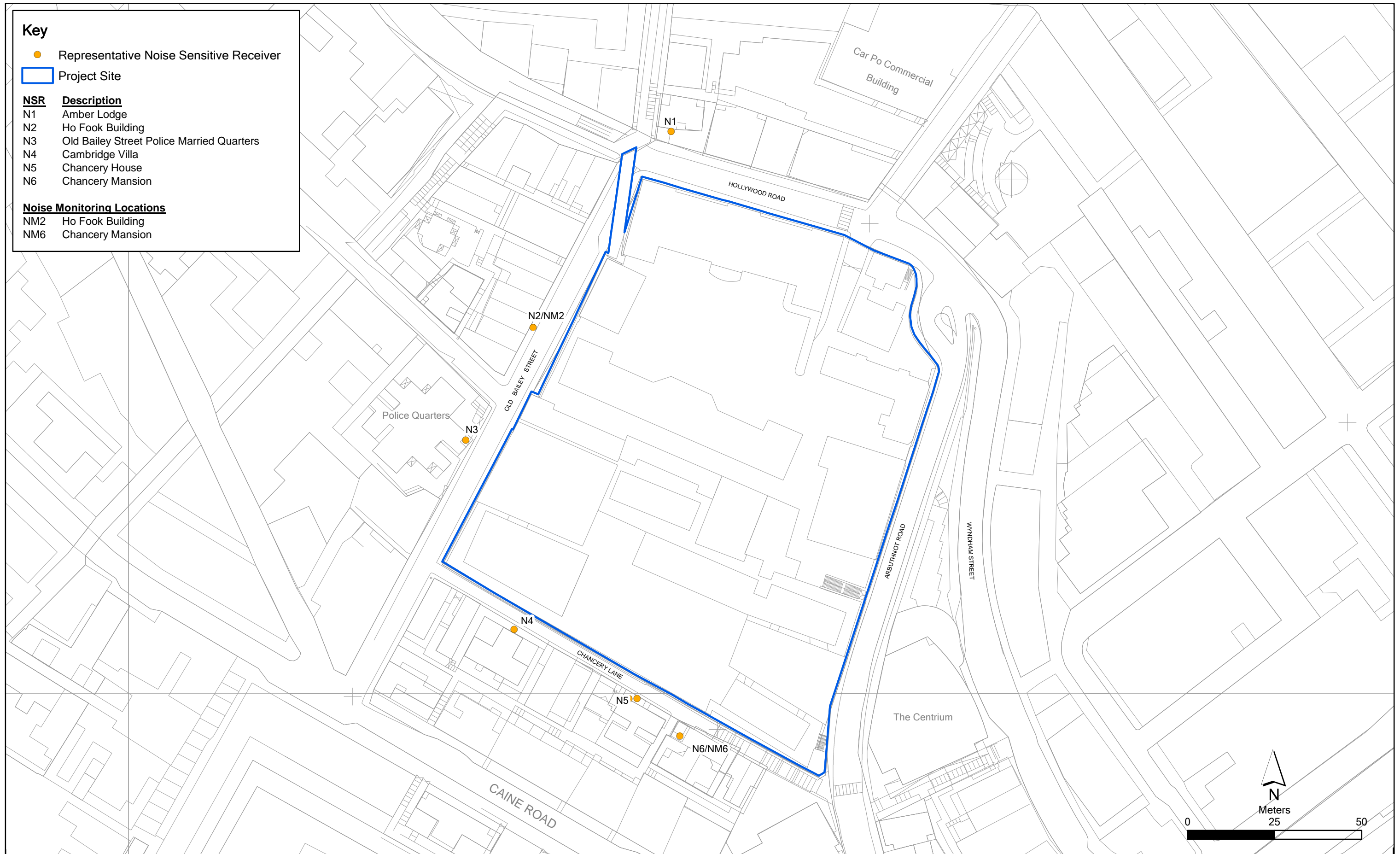
Locations of Noise
Monitoring Stations and
Noise Sensitive Receivers

Key

- Representative Noise Sensitive Receiver
- ▭ Project Site

| NSR | Description |
|-----|---|
| N1 | Amber Lodge |
| N2 | Ho Fook Building |
| N3 | Old Bailey Street Police Married Quarters |
| N4 | Cambridge Villa |
| N5 | Chancery House |
| N6 | Chancery Mansion |

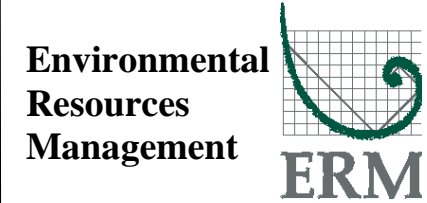
| Noise Monitoring Locations | |
|----------------------------|------------------|
| NM2 | Ho Fook Building |
| NM6 | Chancery Mansion |



Annex C

Location of Representative Noise Sensitive Receivers and Noise Monitoring Locations

File: 0095646_NSR_NM_May2012.mxd
Date: 09/05/2012



賽馬會文物保育有限公司
The Jockey Club CPS Limited

Annex D

Monitoring Schedule of the Reporting Period and Next Month

**Central Police Station Compound Conservation and Revitalisation
(Ho Fook Building - NM2 & Chancery Mansion - NM6)
Monitoring Schedule for Reporting Month - March 2016**

| Sunday | Monday | Tuesday | Wednesday | Thursday | Friday | Saturday |
|--------|----------------|----------------------------------|----------------------------------|----------------------------------|----------------------------------|----------------|
| | | 01-Mar | 02-Mar | 03-Mar | 04-Mar | 05-Mar |
| | | | | | Noise Monitoring at NM2 & NM6 | |
| 06-Mar | 07-Mar | 08-Mar | 09-Mar | 10-Mar | 11-Mar | 12-Mar |
| | | | | Noise Monitoring at NM2 & NM6 | | |
| 13-Mar | 14-Mar | 15-Mar | 16-Mar | 17-Mar | 18-Mar | 19-Mar |
| | | | Noise Monitoring at NM2 & NM6 | | | |
| 20-Mar | 21-Mar | 22-Mar | 23-Mar | 24-Mar | 25-Mar | 26-Mar |
| | | Noise Monitoring at NM2 & NM6 | | Noise Monitoring at NM2 & NM6 | Public Holiday | Public Holiday |
| 27-Mar | 28-Mar | 29-Mar | 30-Mar | 31-Mar | | |
| | Public Holiday | | Noise Monitoring at NM2 & NM6 | | | |

**Central Police Station Compound Conservation and Revitalisation
(Ho Fook Building - NM2 & Chancery Mansion - NM6)
Monitoring Schedule for Next Reporting Month - April 2016**

| Sunday | Monday | Tuesday | Wednesday | Thursday | Friday | Saturday |
|--------|--------|----------------------------------|----------------------------------|----------------------------------|----------------------------------|----------------------------------|
| | | | | | 01-Apr | 02-Apr |
| | | | | | | Noise Monitoring at NM2 & NM6 |
| 03-Apr | 04-Apr | 05-Apr | 06-Apr | 07-Apr | 08-Apr | 09-Apr |
| | | | | | Noise Monitoring at NM2 & NM6 | |
| 10-Apr | 11-Apr | 12-Apr | 13-Apr | 14-Apr | 15-Apr | 16-Apr |
| | | | | Noise Monitoring at NM2 & NM6 | | |
| 17-Apr | 18-Apr | 19-Apr | 20-Apr | 21-Apr | 22-Apr | 23-Apr |
| | | | Noise Monitoring at NM2 & NM6 | | | |
| 24-Apr | 25-Apr | 26-Apr | 27-Apr | 28-Apr | 29-Apr | 30-Apr |
| | | Noise Monitoring at NM2 & NM6 | | | | Noise Monitoring at NM2 & NM6 |

Annex E

Calibration Reports for Calibrators and Sound Level Meters



Certificate of Calibration 校正證書

Certificate No. : C156918
證書編號

ITEM TESTED / 送檢項目 (Job No. / 序引編號 : IC15-2756) Date of Receipt / 收件日期 : 4 December 2015

Description / 儀器名稱 : Sound Level Meter
Manufacturer / 製造商 : Casella
Model No. / 型號 : CEL-633A
Serial No. / 編號 : 3521757
Supplied By / 委託者 : Envirotech Services Co.
Room 113, 1/F, My Loft, 9 Hoi Wing Road, Tuen Mun,
New Territories, Hong Kong

TEST CONDITIONS / 測試條件

Temperature / 溫度 : $(23 \pm 2)^{\circ}\text{C}$ Relative Humidity / 相對濕度 : $(55 \pm 20)\%$
Line Voltage / 電壓 : ---

TEST SPECIFICATIONS / 測試規範

Calibration check

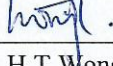
DATE OF TEST / 測試日期 : 15 December 2015

TEST RESULTS / 測試結果

The results apply to the particular unit-under-test only.
The results do not exceed manufacturer's specification.
The results are detailed in the subsequent page(s).

The test equipment used for calibration are traceable to National Standards via :

- The Government of The Hong Kong Special Administrative Region Standard & Calibration Laboratory
- Agilent Technologies / Keysight Technologies
- Rohde & Schwarz Laboratory, Germany
- Fluke Everett Service Center, USA

Tested By : 
測試 : _____
H T Wong
Technical Officer

Certified By : 
核證 : _____
K C Lee
Project Engineer

Date of Issue : 15 December 2015
簽發日期

The test equipment used for calibration are traceable to the Nation Standards as specified in this certificate. This certificate shall not be reproduced except in full, without the prior written approval of this laboratory.

本證書所載校正用之測試器材均可溯源至國際標準。局部複印本證書需先獲本實驗所書面批准。

Certificate of Calibration

校正證書

Certificate No. : C156918

證書編號

- The unit-under-test (UUT) was allowed to stabilize in the laboratory for over 12 hours, and switched on to warm up for over 10 minutes before the commencement of the test.
- Self-calibration using the Casella Acoustic Calibrator CEL-120/1, S/N : 3421612 was performed before the test.
- The results presented are the mean of 3 measurement at each calibration point.
- Test equipment :

| <u>Equipment ID</u> | <u>Description</u> | <u>Certificate No.</u> |
|---------------------|-------------------------------------|------------------------|
| CL280 | 40 MHz Arbitrary Waveform Generator | C150014 |
| CL281 | Multifunction Acoustic Calibrator | DC130171 |

- Test procedure : MA101N.

- Results :

6.1 Sound Pressure Level

6.1.1 Reference Sound Pressure Level

| UUT Setting | | Applied Value | | UUT Reading (dB) | IEC 61672 Class 1 Spec. (dB) |
|----------------|---------------------|---------------|-------------|------------------|------------------------------|
| Time Weighting | Frequency Weighting | Level (dB) | Freq. (kHz) | | |
| L _F | A | 114.00 | 1 | 113.9 | ± 1.1 |

6.1.2 Linearity

| UUT Setting | | Applied Value | | UUT Reading (dB) |
|----------------|---------------------|---------------|-------------|------------------|
| Time Weighting | Frequency Weighting | Level (dB) | Freq. (kHz) | |
| L _F | A | 114.00 | 1 | 113.9 (Ref.) |
| | | 104.00 | | 103.9 |
| | | 94.00 | | 93.9 |

IEC 61672 Class 1 Spec. : ± 0.6 dB per 10 dB step and ± 1.1 dB for overall different.

6.2 Time Weighting

| UUT Setting | | Applied Value | | UUT Reading (dB) | IEC 61672 Class 1 Spec. (dB) |
|----------------|---------------------|---------------|-------------|------------------|------------------------------|
| Time Weighting | Frequency Weighting | Level (dB) | Freq. (kHz) | | |
| L _F | A | 114.00 | 1 | 113.9 | Ref. |
| L _S | | | | 113.9 | ± 0.3 |

The test equipment used for calibration are traceable to the Nation Standards as specified in this certificate. This certificate shall not be reproduced except in full, without the prior written approval of this laboratory.

本證書所載校正用之測試器材均可溯源至國際標準。局部複印本證書需先獲本實驗室所書面批准。

Certificate of Calibration

校正證書

Certificate No. : C156918

證書編號

6.3 Frequency Weighting

6.3.1 A-Weighting

| UUT Setting | | Applied Value | | UUT Reading (dB) | IEC 61672 Class 1 Spec. (dB) |
|----------------|---------------------|---------------|----------|------------------|------------------------------|
| Time Weighting | Frequency Weighting | Level (dB) | Freq. | | |
| L _F | A | 94.00 | 63 Hz | 87.7 | -26.2 ± 1.5 |
| | | | 125 Hz | 97.7 | -16.1 ± 1.5 |
| | | | 250 Hz | 105.2 | -8.6 ± 1.4 |
| | | | 500 Hz | 110.6 | -3.2 ± 1.4 |
| | | | 1 kHz | 113.9 | Ref. |
| | | | 2 kHz | 115.1 | +1.2 ± 1.6 |
| | | | 4 kHz | 114.8 | +1.0 ± 1.6 |
| | | | 8 kHz | 112.4 | -1.1(+2.1 ; -3.1) |
| | | | 12.5 kHz | 108.3 | -4.3(+3.0 ; -6.0) |

6.3.2 C-Weighting

| UUT Setting | | Applied Value | | UUT Reading (dB) | IEC 61672 Class 1 Spec. (dB) |
|----------------|---------------------|---------------|----------|------------------|------------------------------|
| Time Weighting | Frequency Weighting | Level (dB) | Freq. | | |
| L _F | C | 94.00 | 63 Hz | 113.0 | -0.8 ± 1.5 |
| | | | 125 Hz | 113.7 | -0.2 ± 1.0 |
| | | | 250 Hz | 113.9 | 0.0 ± 1.0 |
| | | | 500 Hz | 113.9 | 0.0 ± 1.0 |
| | | | 1 kHz | 113.9 | Ref. |
| | | | 2 kHz | 113.7 | -0.2 ± 1.0 |
| | | | 4 kHz | 113.0 | -0.8 ± 1.0 |
| | | | 8 kHz | 110.6 | -3.0 (+1.5 ; -3.0) |
| | | | 12.5 kHz | 106.4 | -6.2 (+3.0 ; -6.0) |

Remarks : - UUT Microphone Model No. : CEL-251 & S/N : 1950

- Mfr's Spec. : IEC 61672 Class 1

- Uncertainties of Applied Value :

| | | |
|--------|-----------------|---------------------------|
| 114 dB | 63 Hz - 125 Hz | : ± 0.45 dB |
| | 250 Hz - 500 Hz | : ± 0.40 dB |
| | 1 kHz | : ± 0.30 dB |
| | 2 kHz - 4 kHz | : ± 0.45 dB |
| | 8 kHz | : ± 0.55 dB |
| | 12.5 kHz | : ± 0.80 dB |
| 104 dB | 1 kHz | : ± 0.10 dB (Ref. 114 dB) |
| 94 dB | 1 kHz | : ± 0.10 dB (Ref. 114 dB) |

- The uncertainties are for a confidence probability of not less than 95 %.

Note :

The values given in this Certificate only relate to the values measured at the time of the test and any uncertainties quoted will not include allowance for the equipment long term drift, variations with environment changes, vibration and shock during transportation, overloading, mis-handling, or the capability of any other laboratory to repeat the measurement. Sun Creation Engineering Limited shall not be liable for any loss or damage resulting from the use of the equipment.

The test equipment used for calibration are traceable to the Nation Standards as specified in this certificate. This certificate shall not be reproduced except in full, without the prior written approval of this laboratory.

本證書所載校正用之測試器材均可溯源至國際標準。局部複印本證書需先獲本實驗室書面批准。



輝創工程有限公司

Sun Creation Engineering Limited

Calibration and Testing Laboratory

Certificate of Calibration 校正證書

Certificate No. : C156917

證書編號

ITEM TESTED / 送檢項目 (Job No. / 序引編號 : IC15-2756) Date of Receipt / 收件日期 : 4 December 2015

Description / 儀器名稱 : Acoustic Calibrator

Manufacturer / 製造商 : Casella

Model No. / 型號 : CEL-120/1

Serial No. / 編號 : 3421612

Supplied By / 委託者 : Envirotech Services Co.

Room 113, 1/F, My Loft, 9 Hoi Wing Road, Tuen Mun,

New Territories, Hong Kong

TEST CONDITIONS / 測試條件

Temperature / 溫度 : $(23 \pm 2)^{\circ}\text{C}$

Relative Humidity / 相對濕度 : $(55 \pm 20)\%$

Line Voltage / 電壓 : ---

TEST SPECIFICATIONS / 測試規範

Calibration check

DATE OF TEST / 測試日期 : 15 December 2015

TEST RESULTS / 測試結果

The results apply to the particular unit-under-test only.

The results do not exceed manufacturer's specification.

The results are detailed in the subsequent page(s).

The test equipment used for calibration are traceable to National Standards via :

- The Government of The Hong Kong Special Administrative Region Standard & Calibration Laboratory
- Agilent Technologies / Keysight Technologies
- Rohde & Schwarz Laboratory, Germany
- Fluke Everett Service Center, USA

Tested By :

測試

HT Wong

Technical Officer

Certified By :

核證

K C Lee

Project Engineer

Date of Issue :

簽發日期

15 December 2015

The test equipment used for calibration are traceable to the Nation Standards as specified in this certificate. This certificate shall not be reproduced except in full, without the prior written approval of this laboratory.

本證書所載校正用之測試器材均可溯源至國際標準。局部複印本證書需先獲本實驗室書面批准。

Sun Creation Engineering Limited - Calibration & Testing Laboratory

c/o 4/F, Tsing Shan Wan Exchange Building, 1 Hing On Lane, Tuen Mun, New Territories, Hong Kong

輝創工程有限公司 - 校正及檢測實驗室

c/o 香港新界屯門興安里一號青山灣機樓四樓

Tel 電話: 2927 2606

Fax 傳真: 2744 8986

E-mail 電郵: callab@suncreation.com

Website 網址: www.suncreation.com

Certificate of Calibration

校正證書

Certificate No. : C156917

證書編號

- The unit-under-test (UUT) was allowed to stabilize in the laboratory for over 12 hours before the commencement of the test.
- The results presented are the mean of 3 measurements at each calibration point.
- Test equipment :

| <u>Equipment ID</u> | <u>Description</u> | <u>Certificate No.</u> |
|---------------------|-----------------------------------|------------------------|
| CL130 | Universal Counter | C153519 |
| CL281 | Multifunction Acoustic Calibrator | DC130171 |
| TST150A | Measuring Amplifier | C141558 |

- Test procedure : MA100N.

- Results :

5.1 Sound Level Accuracy

| UUT Nominal Value | Measured Value (dB) | Mfr's Spec. (dB) | Uncertainty of Measured Value (dB) |
|----------------------|------------------------|---------------------|---------------------------------------|
| 94 dB, 1 kHz | 94.1 | ± 0.25 | ± 0.2 |
| 114 dB, 1 kHz | 114.1 | | |

5.2 Frequency Accuracy

| UUT Nominal Value (kHz) | Measured Value (kHz) | Mfr's Spec. | Uncertainty of Measured Value (Hz) |
|----------------------------|-------------------------|----------------|---------------------------------------|
| 1 | 1.000 0 | 1 kHz ± 5 Hz | ± 0.1 |

Remark : The uncertainties are for a confidence probability of not less than 95 %.

Note :

The values given in this Certificate only relate to the values measured at the time of the test and any uncertainties quoted will not include allowance for the equipment long term drift, variations with environment changes, vibration and shock during transportation, overloading, mis-handling, or the capability of any other laboratory to repeat the measurement. Sun Creation Engineering Limited shall not be liable for any loss or damage resulting from the use of the equipment.

The test equipment used for calibration are traceable to the Nation Standards as specified in this certificate. This certificate shall not be reproduced except in full, without the prior written approval of this laboratory.

本證書所載校正用之測試器材均可溯源至國際標準。局部複印本證書需先獲本實驗所書面批准。

Annex F

Event / Action Plans for Noise

Annex F Event and Action Plan for Noise

| Event | Action | | | |
|---------------------|---|---|--|---|
| | Environmental Team (ET) | Independent Environmental Checker (IEC) | Authorised Person (AP) | Contractor |
| Action Level | <ol style="list-style-type: none"> 1. Notify IEC and Contractor; 2. Carry out investigation; 3. Report the results of investigation to the IEC, AP and Contractor; 4. Discuss with the Contractor and formulate remedial measures; 5. Increase monitoring frequency to check mitigation effectiveness. | <ol style="list-style-type: none"> 1. Review the analysed results submitted by the ET; 2. Review the proposed remedial measures by the Contractor and advise the AP accordingly; 3. Supervise the implementation of remedial measures. | <ol style="list-style-type: none"> 1. Confirm receipt of notification of failure in writing; 2. Notify Contractor; 3. Require Contractor to proposed remedial measures for the analysed noise problem; 4. Ensure remedial measures are properly implemented. | <ol style="list-style-type: none"> 1. Submit noise mitigation proposals to IEC; 2. Implement noise mitigation proposals. |
| Limit Level | <ol style="list-style-type: none"> 1. Identify source; 2. Inform IEC and AP; 3. Repeat measurements to confirm findings; 4. Increase monitoring frequency; 5. Carry out analysis of Contractor's working procedures to determine possible mitigation to be implemented; 6. Inform IEC, AP and EPD the causes and actions taken for the exceedances; 7. Assess effectiveness of Contractor's remedial actions and keep IEC, EPD and AP informed of the results; 8. If exceedance stops, cease additional monitoring. | <ol style="list-style-type: none"> 1. Discuss amongst AP, ET, and Contractor on the potential remedial actions; 2. Review Contractors remedial actions whenever necessary to assure their effectiveness and advise the AP accordingly; 3. Supervise the implementation of remedial measures. | <ol style="list-style-type: none"> 1. Confirm receipt of notification of failure in writing; 2. Notify Contractor; 3. Require Contractor to propose remedial measures for the analysed noise problem; 4. Ensure remedial measures properly implemented; 5. If exceedance continues, consider what portion of the work is responsible and instruct the Contractor to stop that portion of work until the exceedance is abated. | <ol style="list-style-type: none"> 1. Take immediate action to avoid further exceedance; 2. Submit proposals for remedial actions to IEC within 3 working days of notification; 3. Implement the agreed proposals; 4. Resubmit proposals if problem still not under control; 5. Stop the relevant portion of works as determined by the AP until the exceedance is abated. |

Annex G

Summary of Implementation Status

Annex G Implementation Schedule for Environmental Protection Measures

| EIA Ref. | EM&A Ref. | Recommended Mitigation Measures | Location | When to Implement the Measure | Status |
|--------------------------|-----------|--|---|---|---------------------------------------|
| <i>Cultural Heritage</i> | | | | | |
| S3.9.1 | S3.2.6 | Subject to the outcome of the archaeological investigation, if archaeological deposits are identified to be impacted by the proposed development, appropriate mitigation measures will be recommended and agreed with AMO. | In accordance with the recommendations in the Archaeological Action Plan (AAP) issued on 21 Dec 11 and approved on 30 Dec 11 by AMO | During detailed design and construction | No field work in the reporting month. |
| S3.9.2 | S3.3.1 | <u>Vibration Monitoring</u> A baseline condition survey and baseline vibration impact will be conducted by a specialist for the approval of AMO and Buildings Department prior to commencement of the construction works to define the vibration control limits and recommend a vibration monitoring proposal for the concerned historic buildings and structures in and outside CPS for AMO's prior approval before commencement of the construction works. | Historic buildings and structures in CPS, the granite walls at Old Bailey Street and the proposed Grade 3 historic building (No. 20 Hollywood Road) | During detailed design and construction | √ |
| S3.9.2 | S3.3.3 | <u>Compliance of the Approved Measures and Auditing</u> Staff training by an experience building conservation expert or relevant competent person(s) in the environmental team of the project should be provided to the on-site staffs, contractors, sub-contractors and workers of the project before commencement of works to ensure their full understanding of the approved protection schedule, restoration proposal and work methodologies related to cultural heritage, and their respective responsibilities in the implementation of the environmental protection measures. Regular site audit for cultural heritage should be carried out in the construction phase by an experience building conservation expert in the environmental team ("the Heritage Checker") to investigate the site practice of the contractors and workers and their compliance of the approved work methodologies with respect of conservation works, mitigations for cultural heritage and any related works. A detailed | Whole site | Prior to and during construction | <> |

| EIA Ref. | EM&A Ref. | Recommended Mitigation Measures | Location | When to Implement the Measure | Status |
|----------|-----------|---|------------|---|--|
| | | <p>proposal of the regular audit such as methodology (e.g. performance and monitoring indicators, control tools, frequency of the audit, etc.) and the conservation professionals to be engaged should be agreed with AMO prior to work commencement.</p> <p>The Heritage Checker shall also attend the regular site meetings with AMO and report the compliance and effectiveness of the mitigation measures for cultural heritage.</p> | | | |
| S3.9.3 | S3.3.4 | <p><u>Archival Recording</u></p> <p>An archival recording should be conducted to provide a detailed reference for the update of the Conservation Management Plan and inventory of historical features of the monuments, the preparation of as-built drawings showing the condition of the historic buildings and structures after the completion of the construction works. These archival records will be a reference source for future maintenance of the character defining elements, conservation of the monuments, interpretation and conservation education of the Site. The archival recording shall include but not limit to the video and photographic recording on the detailed process of the repair trials for different kinds of historical features, conservation works of character defining elements and historic fabrics of the monuments, and a written records of any new changes to the detailed design made in the construction phase illustrate with photos and drawings. A full set of the archives records (including both hard and soft copies) should be submitted to the AMO for approval after the work completion for record purpose. Any new findings related to the conservation of built heritage in the Site identified during the detailed design stage and construction phases shall be properly recorded in details for notification to the AMO and update of the Conservation Management Plan.</p> | Whole Site | During detailed design, construction and prior to operation | N/A – Archival recording will be conducted at later stage. |
| S3.7.3 | - | <p><u>General Construction Methods</u></p> <p>Prior to the commencement of the modification/refurbishment works at an existing building or structure (e.g. masonry walls near the Old Bailey Wing) , a site survey will be carried out by the design team, and all building dimensions and levels of the building/structure shown will be</p> | Whole site | During construction | <> |

| EIA Ref. | EM&A Ref. | Recommended Mitigation Measures | Location | When to Implement the Measure | Status |
|----------------|-----------|---|------------|---|--|
| | | checked and confirmed by the contractor. Non-percussive piling methods will be adopted for the construction of the foundation for the new buildings. Protective and precaution measures to the existing buildings and structure adjacent to the work area (including the proposed Grade 3 historic building (No. 20 Hollywood road) and the granite boundary walls between the Ablutions Block of the police station (building no. 08) and the General Office of the prison area (building no. 18) which is adjacent to the new construction of the Old Bailey Wing and for an old granite walls at Old Bailey Street within 15m from the new construction) shall be provided to avoid damage to the existing features and to safeguard the structural integrity during the course of construction. Small scale handheld pneumatic tools with minimal vibration impact to the existing buildings/ structures are selected so as to have a better logistic and handling at the existing buildings and structures, which usually have only narrow working areas. In cases of the local demolition of structural elements, demountable platforms will be erected to temporarily support the affected area and divert the loading from above to avoid instability and create excessive cracking and settlement of the building/structure. | | | |
| S3.7.1 & 3.7.2 | - | <p>Implementation and update of the Conservation Management Plan (CMP). Any new findings related to the conservation of the built heritage in the site identified during the detailed design and construction stage shall be properly recorded in details for the notification to the AMO and update in the CMP. After the construction, a cartographic and photographic recording on the restored historic buildings, historic features and the site shall be conducted and the following records shall be included into the CMP as appendices for updating and record purpose:</p> <ul style="list-style-type: none"> • one set of measured drawings and photographic records showing the as-built condition of historic buildings and structures; and • an updated inventory list of the historic features together with the cross referenced location plans and photo records. <p>One set of updated CMP shall be submitted to the AMO for approval before the operation stage of the project.</p> | Whole site | During detailed design, construction, post-construction and operation | √ - CMP was implemented during the reporting month. There were no updates for the CMP. |

| EIA Ref. | EM&A Ref. | Recommended Mitigation Measures | Location | When to Implement the Measure | Status |
|-------------------------------|-----------|---|------------|-------------------------------|---|
| <i>Landscape & Visual</i> | | | | | |
| S4.7.27 | - | <p><u><i>In-situ Tree Protection - Cordon Zone (CZ)</i></u></p> <p>Cordon off each tree along its drip line (below the crown) with a chain-link fencing of 2.5 m height with padlocked gate, allowing limited access to area only to authorized persons. The base of the perimeter fence will be sealed up to 30 cm height to ensure that no construction drainage water will enter. If grouting is to be conducted less than 5 m from the edge of the CZ, a waterproof membrane will be installed below the ground to a depth of 1.5 m on the outer edge of the CZ to prevent the subsurface lateral movement of contaminated construction wastewater from intruding the soil inside the CZ.</p> | Whole site | During construction | √ - Part of the cordon zone of Tree-5 has been used as a temporary storage area of construction materials. The Contractor was recommended to perform proper measures to protect Tree-5. |
| S4.7.2 | - | <p><u><i>In-situ Tree Protection - Advanced & Phased Root Pruning</i></u></p> <p>All edges of the CZ that will be affected by excavation will undergo root pruning by a trained arborist or horticulturist, in advance of the earth work. The entire affected length of the CZ, plus 3 m additional length at both ends, shall be designated as the root pruning segment (RPS). The require trench will be opened manually in the RPS, be 1.5 m deep and 1 m wide, and closed on the same day after pruning with a good soil mix. All roots with a diameter >20 mm encountered in the course of trench opening shall be cut flushed with the inner wall of the trench. If the RPS exceeds one-quarter of the CZ circumference, the root pruning should be conducted in two stages. Each phase will tackle half of the RPS length. After the first phase, the tree will be allowed to recuperate for not less than four months before the second phase root pruning is conducted. The RPS shall be protected by sheet piles along the outer edge. The rig that installs the piles and the associated operations shall not intrude into the CZ or injure the protected tree.</p> | Whole site | During construction | N/A – no root pruning has been conducted yet |
| S4.7.2 | - | <p><u><i>In-situ Tree Protection - Foliage cleansing system</i></u></p> <p>A sprinkler cleansing system will be installed either in the crown of the tree or at a suitable location on an adjacent building to provide the</p> | Whole site | During construction | √ |

| EIA Ref. | EM&A Ref. | Recommended Mitigation Measures | Location | When to Implement the Measure | Status |
|----------|-----------|--|--|---|--|
| | | means to wash the foliage of the accumulated dust when necessary, particularly in the dry season. | | | |
| S4.7.2 | S4 | <p><u>In-situ Tree Protection - Monthly inspection</u></p> <p>Monthly inspection of affected trees by an experienced and appropriately trained arborist or horticulturist using Form 1 – Tree Group Inspection Form and Form 2 – Tree Risk Assessment Form developed by Development Bureau (http://www.trees.gov.hk/en/doc/TRAGuideline_July2010version_combine.pdf) or a form designed by a tree expert and approved by Tree Management Office. All irregularities that deviate from the recommended tree protection measures, or could impose deleterious impacts on the protected trees, must be reported to the authorized person or the tree expert within two days.</p> | Whole site | During construction | √ |
| S4.7.2 | - | <p><u>Light Control</u></p> <p>Control of night-time lighting shall be implemented to minimise impact to adjacent VSRs.</p> | Whole site | During construction and operation | √ |
| S4.7.2 | S4 | <p><u>Compensatory Tree Planting</u></p> <p>A new planting site has been identified for compensatory tree planting in the Parade Ground. The planting is to compensate for felling of T10. The existing tree site will be enlarged to become a wide tree strip to accommodate at least six trees. The entire strip of land that accommodates T1 to T4 should be revamped to improve the soil condition for future tree growth.</p> <p>The new tree strip should be 4 m wide and covered by porous unit pavers to permit the entry of rain and irrigation water and air exchange between the soil and the atmosphere. The unit pavers should be supported by small columns to create a vault-like structure so as to avoid compaction of the underlying soil due to pedestrian trampling. The unit pavers will be movable to provide access to the soil underneath so that fertilizers and conditioners could be added on a</p> | At identified compensatory tree planting location at the Parade Ground | During detailed design and construction | N/A – Compensatory Tree Planting will be conducted at later stage. |

| EIA Ref. | EM&A Ref. | Recommended Mitigation Measures | Location | When to Implement the Measure | Status |
|----------|-----------|--|---------------------|---|--|
| | | <p>regular basis. The air conditioner unit currently located near the proposed planting site should also be removed. This new tree planting site should also be provided with proper irrigation.</p> <p>Pursuant to the "Environment, Transport and Works Bureau Technical Circular (Works) No. 3/2006 Tree Preservation", the compensation ratio should preferably be 1:1 according to trunk girth. T10 has a DBH of 20 cm (Table 4.3), and it is proposed that six trees of heavy standard size be planted, each with a DBH of around 10 cm and root balls of not less than 0.75 m diameter and 0.75 m depth,. Since the aggregate DBH of the new trees would be 60 cm, the rate of compensation is equivalent to three times the DBH of T10, far beyond the requirements</p> <p>The six replacement trees should be planted in the new tree strip in two staggered rows, maximising distance between each tree to avoid mutual interference in the future. It is recommended that the species selected should have a small final dimension of less than 10 m height given the proximity to built structures such as the retaining wall and buildings. Two each of the outstanding and related flowering tree species connected to local natural history are suggested::</p> <ul style="list-style-type: none"> - <i>Bauhinia</i> 'Blakeana' a native evergreen species with deep mauve flowers and an exceptionally long flowering period from late autumn to early spring. - <i>Bauhinia purpure</i>, a native evergreen with lighter purple flowers from late autumn to early winter. - <i>Bauhinia variegata</i>, an exotic deciduous species, with pale pinkish flowers in spring to early summer often when the tree has little or no leaves. | | | |
| S4.7.2 | S4 | <p><u>Vertical Greening</u></p> <p>Within the limitations of the conservation of the CPS character, greening of vertical structures should be provided where possible.</p> <p>As such it is recommended that the inner southern wall of the Site be planted as a green wall. The plantings should be inserted in between each of the large protruding piers and an offset be made from both the</p> | Inner Southern Wall | During detailed design and construction | N/A – No vertical greening was conducted during the reporting month. |

| EIA Ref. | EM&A Ref. | Recommended Mitigation Measures | Location | When to Implement the Measure | Status |
|--------------|-----------|--|------------|---|--|
| | | top and bottom edge so that old and new are equally visible. An independent frame should be strategically positioned in order to ensure minimal disturbance to the original wall, and provide the main structural support and planting surface for the green wall. The frame on to which the new green will be planted should contain its own irrigation system so that moisture for the plants will remain mainly on the planting surface and not the existing wall behind. The planting chosen should be appropriate to the Hong Kong climate, requiring relatively little maintenance to sustain the quality of both plants and wall. | | | |
| S4.7.2 | - | <u>New Custom Paving</u> New, Patterned, High Quality, Concrete Custom Pavers should replace most of the existing paving in the open spaces. | Whole site | During detailed design and construction | N/A – No custom paving was conducted during the reporting month. |
| S4.7.2 | S4 | <u>In-situ Tree Protection - Quarterly inspection</u> Quarterly Inspection of affected and newly planted trees by an experienced and appropriately trained arborist or horticulturist using Form 1 – Tree Group Inspection Form and Form 2 – Tree Risk Assessment Form developed by Development Bureau (http://www.trees.gov.hk/en/doc/TRAGuideline_July2010version_combine.pdf) or a form designed by a tree expert and approved by Tree Management Office for a period of 12 months after construction. | Whole site | During post construction and operation | N/A – The quarterly inspection will be conducted at later stage. |
| <i>Noise</i> | | | | | |
| S5.9 | - | The following site practices should be followed during the construction of the Project: <ul style="list-style-type: none"> • Only well-maintained plant will be operated on-site and plant will be serviced regularly during the construction phase; • Silencers or mufflers on construction equipment will be utilised and will be properly maintained during the construction phase; • Mobile plant, if any, will be sited as far away from NSRs as possible; | Whole Site | During construction | √ |

| EIA Ref. | EM&A Ref. | Recommended Mitigation Measures | Location | When to Implement the Measure | Status |
|--------------------|-----------|--|------------|-------------------------------|--------|
| | | <ul style="list-style-type: none"> Machines and plant (such as trucks) that may be in intermittent use will be shut down between work periods or will be throttled down to a minimum; Plant known to emit noise strongly in one direction will, wherever possible, be orientated so that the noise is directed away from the nearby NSRs; and Material stockpiles and other structures will be effectively utilised, wherever practicable, in screening noise from on-site construction activities. | | | |
| S5.9 | - | Noise insulating sheet would be adopted for certain PME (eg drill rig, excavator for demolition of existing structures, etc). The noise insulating sheet should be deployed such that there would be no opening or gaps on the joints. | Whole Site | During construction | √ |
| S5.9 | - | Use temporary noise barriers to mitigate the noise impact arising from the construction works, particularly for low-rise NSRs. Movable noise barriers of 3 m in height with skid footing should be used and located within a few metres of stationary plant and mobile plant such that the line of sight to the NSR is blocked by the barriers. The length of the barrier should be at least five times greater than its height. The noise barrier material should have a superficial surface density of at least 7 kg m ⁻² and have no openings or gaps. | Whole Site | During construction | √ |
| S5.9 | - | Use quiet PME as far as practicable to mitigate the construction noise impact. | Whole Site | During construction | √ |
| S5.9 | - | Scheduling of construction activities with identified grouping of PMEs. | Whole Site | During construction | √ |
| S5.11 | S5 | Weekly noise monitoring will be undertaken at the representative NSRs N2 Ho Fook Building and N5 Chancery House. Monthly site audits will be conducted to ensure that the recommended mitigation measures are properly implemented during the construction stage. | Whole Site | During construction | √ |
| <i>Air Quality</i> | | | | | |
| S6.8.1 | - | Dust control measures stipulated in the <i>Air Pollution Control (Construction Dust) Regulation</i> will be implemented during the construction phase to control the potential fugitive dust emissions. | Whole Site | During construction | √ |

| EIA Ref. | EM&A Ref. | Recommended Mitigation Measures | Location | When to Implement the Measure | Status |
|----------|-----------|--|--------------------------|-------------------------------|--------|
| S6.8.1 | - | In particular: Temporary stockpiles of dusty materials will be either covered entirely by impervious sheets; placed in an area sheltered on the top and three sides; or sprayed with water to maintain the entire surface wet at all the time. | Whole Site | During construction | √ |
| S6.8.1 | - | Impervious sheet will be provided for skip hoist for material transport. | Whole Site | During construction | √ |
| S6.8.1 | - | Vehicle washing facilities will be provided at the designated vehicle exit points. | Whole Site | During construction | √ |
| S6.8.1 | - | Every vehicle will be washed to remove any dusty materials from its chassis and wheels immediately before leaving the worksite. | Whole Site | During construction | √ |
| S6.8.1 | - | Road sections between vehicle-wash areas and vehicular entrances will be paved. | Whole Site | During construction | √ |
| S6.8.1 | - | The load carried by the trucks will be covered entirely to ensure no dust emission from the vehicles. | Whole Site | During construction | √ |
| S6.8.1 | - | Hoarding of not less than 2.4m high from ground level will be provided along the Project Site boundary adjoining a road where the new buildings (Old Bailey Wing and Arbuthnot Wing) will be constructed. | Whole Site | During construction | √ |
| S6.8.1 | - | Stockpiles of more than 20 bags of cement, dry pulverised fuel ash and dusty construction materials will be covered entirely by impervious sheeting sheltered on top and 3-sides. | Whole Site | During construction | √ |
| S6.8.1 | - | An effective dust screen will be provided to enclose scaffolding, if required, from the ground floor level of building for construction of superstructure of the new buildings. | Whole Site | During construction | √ |
| S6.8.1 | - | Impervious dust screen or sheeting will be implemented for demolition of structures and renovation of outer surfaces of structures that abuts or fronts open area accessible to the public to no less than 1m higher than the highest level of the structure being demolished. | Whole Site | During construction | √ |
| S6.8.1 | - | The area at which demolition work takes place will be sprayed with water or dust suppression chemical immediately prior to, during and immediately after the demolition activity. | Area for Demolition Work | During construction | √ |

| EIA Ref. | EM&A Ref. | Recommended Mitigation Measures | Location | When to Implement the Measure | Status |
|----------------------|-----------|---|------------|-------------------------------|---------------------|
| S6.8.1 | - | ULSD will be used for all construction plant on-site. | Whole Site | During construction | √ |
| S6.8.1 | - | The engine of the construction equipment or trucks during idling will be switched off. | Whole Site | During construction | √ |
| S6.8.1 | - | Site practices such as regular maintenance and checking of construction equipment deployed on-site will be conducted to avoid any black smoke emissions and to minimise gaseous emissions. | Whole Site | During construction | N/A – Not observed. |
| S6.10 | S3.2 | Monthly environmental site audits to ensure that appropriate dust control measures are properly implemented and good construction site practices are adopted throughout the construction period. | Whole Site | During construction | √ |
| <i>Water Quality</i> | | | | | |
| S7.6 | - | Channels, earth bunds or sand bag barriers will be provided on site to direct stormwater to silt removal facilities. The design of silt removal facilities will make reference to the guidelines in <i>Appendix A1 of ProPECC PN 1/94</i> . All drainage facilities and erosion and sediment control structures will be inspected on a regular basis and maintained to confirm proper and efficient operation at all times and particularly during rainstorms. Deposited silt and grit will be removed regularly. | Whole Site | During construction | √ |
| S7.6 | - | All drainage facilities and erosion and sediment control structures will be regularly inspected and maintained to ensure proper and efficient operation at all times and particularly following rainstorms. Deposited silt and grit will be removed regularly and disposed of. | Whole Site | During construction | N/A – Not observed. |
| S7.6 | - | Measures will be taken to reduce the ingress of stormwater into excavation areas. If the excavation of the concrete foundation is to be carried out in wet season, they will be dug and backfilled in short sections wherever practicable. Water pumped out from trenches or foundation excavations will be discharged into stormwater drains via silt removal facilities. | Whole Site | During construction | N/A – Not observed. |
| S7.6 | - | Open stockpiles of excavated and demolition materials will be covered with tarpaulin or similar fabric during rainstorms. Measures will be taken to prevent the washing away of residues, chemicals or debris into any drainage system. | Whole Site | During construction | √ |

| EIA Ref. | EM&A Ref. | Recommended Mitigation Measures | Location | When to Implement the Measure | Status |
|----------|-----------|---|------------|-------------------------------|---------------------|
| S7.6 | - | Manholes (including newly constructed ones) will always be adequately covered and temporarily sealed so as to prevent silt, construction materials or debris being washed into the drainage system. | Whole Site | During construction | N/A – Not observed. |
| S7.6 | - | Precautions will be taken when a rainstorm is imminent or forecasted, and actions to be taken during or after rainstorms are summarised in Appendix A2 of <i>ProPECC PN 1/94</i> . Particular attention will be paid to the control of silty surface runoff during storm events. | Whole Site | During construction | N/A – Not observed. |
| S7.6 | - | All temporary and permanent drainage pipes and culverts provided to facilitate runoff discharge will be adequately designed for the controlled release of stormwater flows. All sediment traps will be regularly cleaned and maintained. The temporary diverted drainage will be reinstated to the original condition when the construction work has finished or the temporary diversion is no longer required. | Whole Site | During construction | N/A – Not observed. |
| S7.6 | - | Vehicle and plant servicing areas, vehicle washing bays and lubrication bays will, as far as possible, be located within roofed areas. The drainage in these covered areas will be connected to foul sewers via a petrol interceptor. | Whole Site | During construction | N/A – Not observed. |
| S7.6 | - | Oil leakage or spillage will be contained and cleaned up immediately. Waste oil will be collected and stored for recycling or disposal. | Whole Site | During construction | N/A – Not observed. |
| S7.6 | - | Waste streams classifiable as chemical wastes will be properly stored, collected and treated. | Whole Site | During construction | √ |
| S7.6 | - | All fuel tanks and chemical storage areas will be provided with locks and be sited on paved areas. | Whole Site | During construction | √ |
| S7.6 | - | The storage areas will be surrounded by bunds with a capacity equal to 110% of the storage capacity of the largest tank to prevent spilled oil, fuel and chemicals from reaching the receiving waters. | Whole Site | During construction | √ |
| S7.6 | - | The Contractors will prepare guidelines and procedures for immediate clean-up actions following any spillages of oil, fuel or chemicals. | Whole Site | During construction | √ |

| EIA Ref. | EM&A Ref. | Recommended Mitigation Measures | Location | When to Implement the Measure | Status |
|-------------------------|--------------------|---|------------|-------------------------------|---------------------|
| S7.6 | - | Surface runoff from bunded areas will pass through oil/grease traps prior to discharge to the stormwater system | Whole Site | During construction | N/A – Not observed. |
| S7.6 | - | The stormwater discharge from the site will be monitored as part of the routine monitoring under the WPCO licence, if applicable. | Whole Site | During construction | N/A – Not observed. |
| S7.6 | - | The existing toilet facilities of the CPS will be available to the construction workforce. The sewage will be discharged to the public sewer. | Whole Site | During construction | √ |
| S7.8 | S5.2 | Monthly site audits of the works areas will be carried out during the construction phase to monitor the environmental performance of the Project and to enable prompt actions to rectify any malpractice which may give rise to water pollution problem. | Whole Site | During construction | √ |
| <i>Waste Management</i> | | | | | |
| S8.5 | S6.3.1 & Table 6.1 | <u>General</u> The Contractor shall apply for and obtain all the necessary waste disposal permits or licences are obtained prior to the commencement of the construction works. | Whole Site | During construction | √ |
| S8.5 | - | <u>Management of Waste Disposal</u> The construction contractor will open a billing account with the EPD. Every construction waste or public fill load to be transferred to the Government waste disposal facilities such as public fill reception facilities, sorting facilities, landfills will require a valid “chit” which contains the information of the account holder to facilitate waste transaction recording and billing to the waste producer. | Whole Site | During construction | √ |
| S8.5 | S6.2 | A trip-ticket system will also be established to monitor the disposal of construction waste at landfill and to control fly-tipping. The trip-ticket system will be included as one of the contractual requirements and implemented by the contractor. | Whole Site | During construction | √ |

| EIA Ref. | EM&A Ref. | Recommended Mitigation Measures | Location | When to Implement the Measure | Status |
|----------|----------------|--|------------|-----------------------------------|--------|
| S8.5 | S6 & Table 6.1 | A recording system for the amount of wastes generated /recycled and disposed of will be established during the construction phase. | Whole Site | During construction | √ |
| S8.5 | S6.3 | <u>Reduction of Construction Waste Generation</u> C&D material will be segregated on-site into public fill and construction waste and stored in different containers or skips to facilitate reuse of the public fill and proper disposal of the construction waste. Specific areas of the work site will be designated for such segregation and storage if immediate use is not practicable. | Whole Site | During construction | √ |
| S8.5 | S6 | <u>Chemical Waste</u> The contractor will register as a chemical waste producer with the EPD. | Whole Site | During construction and operation | √ |
| S8.5 | S6 | Containers used for storage of chemical waste shall: <ul style="list-style-type: none"> • Be suitable for the substance they are holding, resistant to corrosion, maintained in a good condition, and securely closed; • Have a capacity of less than 450 L unless the specifications have been approved by the EPD; and • Display a label in English and Chinese in accordance with instructions prescribed in <i>Schedule 2 of the Regulations</i>. | Whole Site | During construction and operation | √ |
| S8.5 | S6 | Storage areas for chemical waste shall: <ul style="list-style-type: none"> • Be clearly labelled and used solely for the storage of chemical waste; • Be enclosed on at least 3 sides; • Have an impermeable floor and bunding, of capacity to accommodate 110% of the volume of the largest container or 20% by volume of the chemical waste stored in that area, whichever is the greatest; • Have adequate ventilation; • Be covered to prevent rainfall entering (water collected within the bund must be tested and disposed of as chemical waste, if necessary); and • Be arranged so that incompatible materials are appropriately separated. | Whole Site | During construction and operation | √ |

| EIA Ref. | EM&A Ref. | Recommended Mitigation Measures | Location | When to Implement the Measure | Status |
|----------|----------------|--|---|-----------------------------------|--------|
| S8.5 | S6 | A licensed contractor shall be employed to collect chemical waste for delivery to a licensed treatment facility. | Chemical Waste Treatment Centre at Tsing Yi | During construction and operation | √ |
| S8.5 | S6 & Table 6.1 | <u>General Refuse</u> General refuse will be stored in enclosed bins separately from construction and chemical wastes. The general refuse will be delivered to the transfer station, separately from construction and chemical wastes, on a daily basis to reduce odour, pest and litter impacts. | Whole site | During construction | √ |
| S8.5 | S6 | Recycling bins will be provided at strategic locations to facilitate recovery of aluminium can and waste paper from the Site. Materials recovered will be sold for recycling. | Whole site | During construction and operation | √ |
| S8.5 | S6 | <u>Staff Training</u> At the commencement of the construction works, training will be provided to workers on the concepts of site cleanliness and on appropriate waste management procedures, including waste reduction, reuse and recycling. | Whole site | Commencement of construction | √ |
| S8.7 | S6.1 & 6.3 | Monthly audits of the waste management practices will be carried out during the construction phases to determine if wastes are being managed in accordance with the recommended good site practices. The audits will examine all aspects of waste management including waste generation, storage, recycling, transport and disposal. | Whole site | During construction | √ |

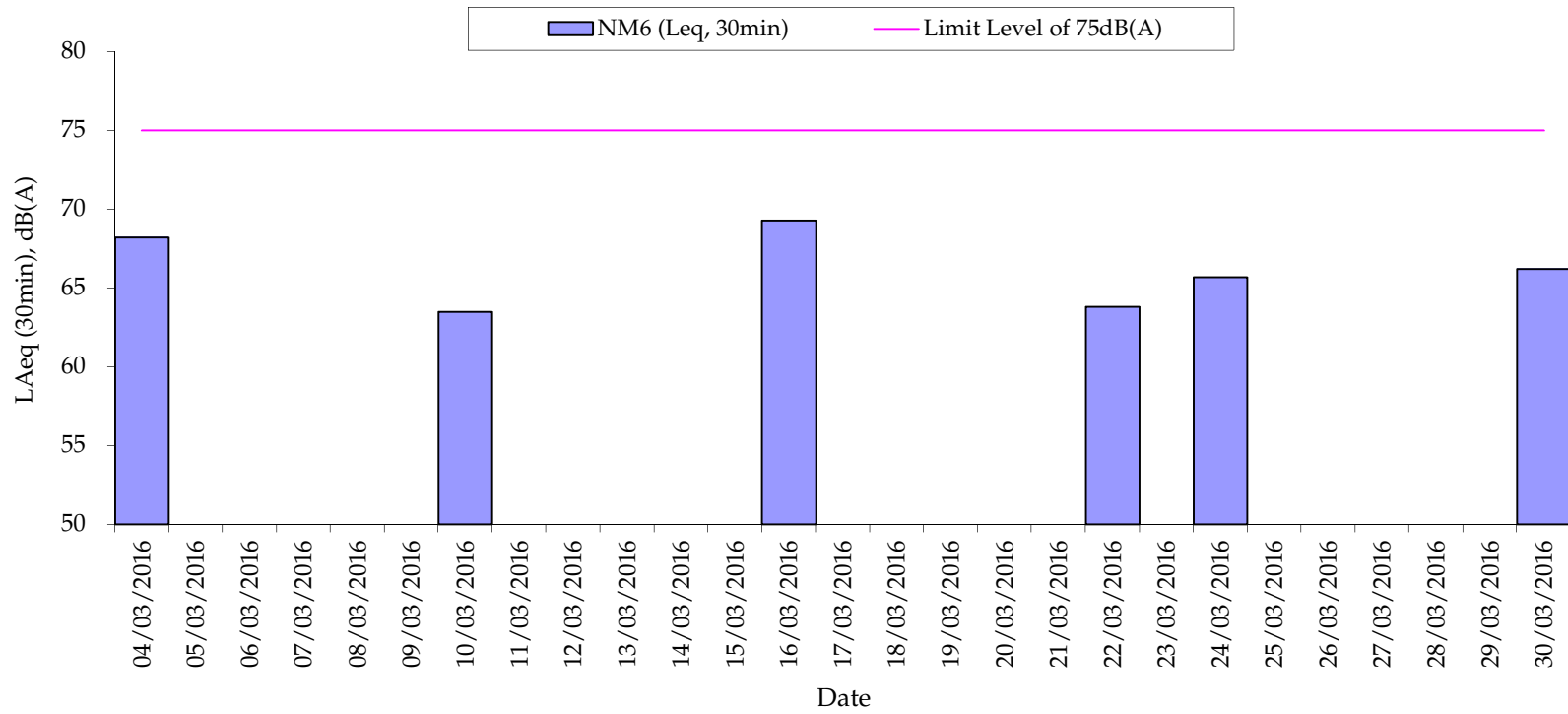
Remark:

- √ Compliance of Mitigation Measures
- <> Compliance of Mitigation but need improvement
- x Non-compliance of Mitigation Measures
- ▲ Non-compliance of Mitigation Measures but rectified by Gammon Construction Ltd
- △ Deficiency of Mitigation Measures but rectified by Gammon Construction Ltd
- N/A Not Applicable in Reporting Period

Annex H

Noise Monitoring Results

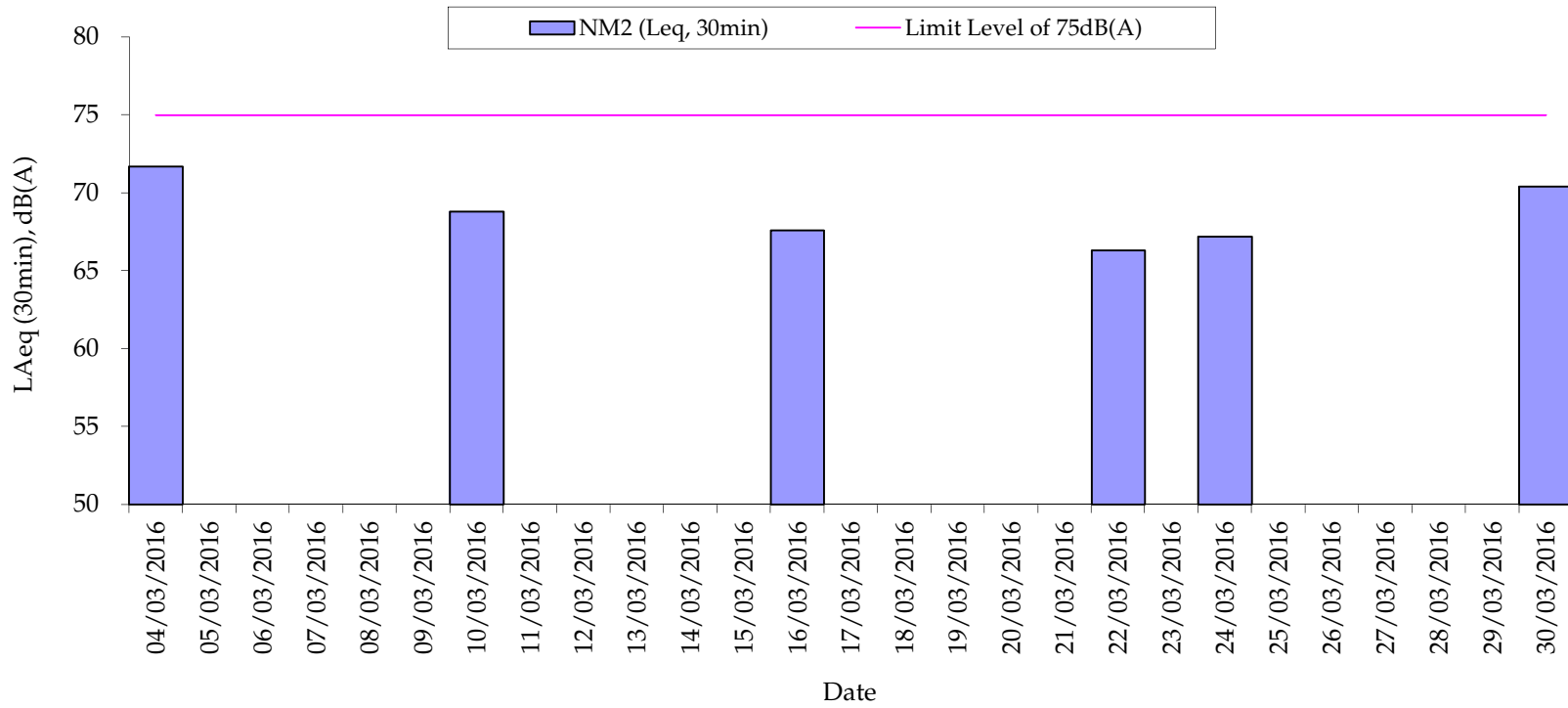
Normal Weekdays Noise Monitoring Results at NM6 - Chancery Mansion (Leq, 30min)



Remark:

- 75dB(A) was adopted as the Limit Level during normal weekdays in the reporting period

Normal Weekdays Noise Monitoring Results at NM2 - Ho Fook Building (Leq, 30min)



Remark:

- 75dB(A) was adopted as the Limit Level during normal weekdays in the reporting period

Annex I

Construction Programme for the Project

| Activity ID | Activity Description | Dur Calendar Days | Forecast Start | Forecast Finish | SA Programme Planned Start | SA Programme Planned Finish | 2015 | | | | | 2016 | | | | | 2017 | | | | | 2018 | | | | | 2019 | | | | | | | | | | | | | | | | | |
|--|--|-------------------|----------------|-----------------|----------------------------|-----------------------------|--|---|---|---|---|------|---|---|---|---|------|---|---|---|---|------|---|---|---|---|------|---|---|---|---|---|---|---|---|---|---|---|---|---|---|---|---|---|
| | | | | | | | A | S | O | N | D | J | F | M | A | M | J | J | A | S | O | N | D | J | F | M | A | M | J | J | A | S | O | N | D | J | F | M | A | M | J | J | A | S |
| OP ESSENTIALS | | | | | | | | | | | | | | | | | | | | | | | | | | | | | | | | | | | | | | | | | | | | |
| CENTRAL BASEMENT PLANT ROOM | | | | | | | | | | | | | | | | | | | | | | | | | | | | | | | | | | | | | | | | | | | | |
| 01020 | CENTRAL BASEMENT PLANT ROOM | 1,046 | 04OCT12A | 16JAN16A | 04OCT12* | 27JUL15 | CENTRAL BASEMENT PLANT ROOM | | | | | | | | | | | | | | | | | | | | | | | | | | | | | | | | | | | | | |
| BLOCK 8 | | | | | | | | | | | | | | | | | | | | | | | | | | | | | | | | | | | | | | | | | | | | |
| 08010 | BLOCK 8 - ABLUTIONS BLOCK | 1,259 | 23APR12A | 19MAR16 | 23APR12* | 03OCT15 | BLOCK 8 - ABLUTIONS BLOCK | | | | | | | | | | | | | | | | | | | | | | | | | | | | | | | | | | | | | |
| 08020 | (FUEL TANK) DG INSPECTION COMPLETE | 4 | 17SEP15A | 24SEP15A | 07OCT15* | 10OCT15 | (FUEL TANK) DG INSPECTION COMPLETE | | | | | | | | | | | | | | | | | | | | | | | | | | | | | | | | | | | | | |
| 08050 | DG INSPECTION COMPLETE | 0 | | 24SEP15A | | 10OCT15 | DG INSPECTION COMPLETE Milestone MS5 | | | | | | | | | | | | | | | | | | | | | | | | | | | | | | | | | | | | | |
| 08080 | TESTED & COMMISIONED FOR FS INSPECTION | 0 | | 05JAN16A | | 18DEC15* | TESTED & COMMISIONED FOR FS INSPECTION Milestone FS-3 | | | | | | | | | | | | | | | | | | | | | | | | | | | | | | | | | | | | | |
| 08085 | POST OP INSPECT WORK-MOBILE CHILLER SWITCHBOARD | 70 | 27APR16* | 05JUL16 | | | POST OP INSPECT WORK-MOBILE CHILLER SWITCHBOARD | | | | | | | | | | | | | | | | | | | | | | | | | | | | | | | | | | | | | |
| BUILDING A | | | | | | | | | | | | | | | | | | | | | | | | | | | | | | | | | | | | | | | | | | | | |
| 08060 | DEMOLITION OF BLDG A | 0 | 22MAY15A | 12JUN15A | 02MAY15* | 06JUL15 | DEMOLITION OF BLDG A | | | | | | | | | | | | | | | | | | | | | | | | | | | | | | | | | | | | | |
| 08070 | DEMOLITION OF BLDG A COMPLETE (SUBJECT TO HEC) | 0 | | 12JUN15A | | 06JUL15 | DEMOLITION OF BLDG A COMPLETE (SUBJECT TO HEC) | | | | | | | | | | | | | | | | | | | | | | | | | | | | | | | | | | | | | |
| SITEWIDE SERVICES | | | | | | | | | | | | | | | | | | | | | | | | | | | | | | | | | | | | | | | | | | | | |
| SW010 | DRAIN/TERMINAL MANHOLE CONNECT HOLLYWD RD | 105 | 05MAR15A | 14AUG15A | 05MAR15* | 17JUN15 | DRAIN/TERMINAL MANHOLE CONNECT HOLLYWD RD | | | | | | | | | | | | | | | | | | | | | | | | | | | | | | | | | | | | | |
| SW015 | COMPL DRAIN/TERMINAL MANHOLE CONNECT HOLLYWD RD | 0 | | 14AUG15A | | 17JUN15 | COMPL DRAIN/TERMINAL MANHOLE CONNECT HOLLYWD RD Milestone MS2 | | | | | | | | | | | | | | | | | | | | | | | | | | | | | | | | | | | | | |
| SW020 | DRAIN/TERMINAL MANHOLE CONNECT OLD B. ST | 137 | 09APR15A | 29JUL15A | 09APR15* | 23AUG15 | DRAIN/TERMINAL MANHOLE CONNECT OLD B. ST | | | | | | | | | | | | | | | | | | | | | | | | | | | | | | | | | | | | | |
| SW025 | COMPL DRAIN/TERMINAL MANHOLE CONNECT OLD B. ST | 0 | | 29JUL15A | | 23AUG15 | COMPL DRAIN/TERMINAL MANHOLE CONNECT OLD B. ST Milestone MS4 | | | | | | | | | | | | | | | | | | | | | | | | | | | | | | | | | | | | | |
| SW030 | BARRACK LANE (ZONE L3 AREA 2) SERVICES | 133 | 17JUN15A | 27FEB16A | 17JUN15* | 29OCT15 | BARRACK LANE (ZONE L3 AREA 2) SERVICES | | | | | | | | | | | | | | | | | | | | | | | | | | | | | | | | | | | | | |
| SW040 | MIDDLE PLATFORM (ZONE M5) - REMAIN SERVICES | 119 | 22JUL15A | 12JAN16A | 30JUN15* | 08NOV15 | MIDDLE PLATFORM (ZONE M5) - REMAIN SERVICES | | | | | | | | | | | | | | | | | | | | | | | | | | | | | | | | | | | | | |
| SW045 | OTHER REMAINING SITEWIDE SERVICES | 281 | 01FEB15A | 03FEB16A | 01FEB15* | 08NOV15 | OTHER REMAINING SITEWIDE SERVICES | | | | | | | | | | | | | | | | | | | | | | | | | | | | | | | | | | | | | |
| SW050 | F S WATER CONNECTION & ISSUE WATER CERTIFICATE | 81 | 26FEB16A | 11MAY16 | 30OCT15* | 26NOV15 | F S WATER CONNECTION & ISSUE WATER CERTIFICATE | | | | | | | | | | | | | | | | | | | | | | | | | | | | | | | | | | | | | |
| SW060 | FR&FL WATER CONNECTION & ISSUE WATER CERTIFICATE | 77 | 31MAR16* | 15JUN16 | 07NOV15* | 04DEC15 | FR&FL WATER CONNECTION & ISSUE WATER CERTIFICATE | | | | | | | | | | | | | | | | | | | | | | | | | | | | | | | | | | | | | |
| EVA & MOE PAVING | | | | | | | | | | | | | | | | | | | | | | | | | | | | | | | | | | | | | | | | | | | | |
| EW010 | COMPLETE EVA & MOEs PAVING FOR FS INSPECTION | 112 | 24SEP15A | 26FEB16A | 15AUG15* | 17DEC15 | COMPLETE EVA & MOEs PAVING FOR FS INSPECTION | | | | | | | | | | | | | | | | | | | | | | | | | | | | | | | | | | | | | |
| EW020 | COMPLETE REMAINING MOEs PAVING | 46 | 27FEB16A | 12APR16 | | | COMPLETE REMAINING MOEs PAVING | | | | | | | | | | | | | | | | | | | | | | | | | | | | | | | | | | | | | |
| NEW BUILDINGS & OP EXISTING BUILDINGS | | | | | | | | | | | | | | | | | | | | | | | | | | | | | | | | | | | | | | | | | | | | |
| OBW | | | | | | | | | | | | | | | | | | | | | | | | | | | | | | | | | | | | | | | | | | | | |
| OBW010 | OLD BAILEY WING (EXCEPT POST OP FIT OUT) | 1,346 | 30MAR12A | 25FEB16A | 30MAR12* | 05DEC15 | OLD BAILEY WING (EXCEPT POST OP FIT OUT) | | | | | | | | | | | | | | | | | | | | | | | | | | | | | | | | | | | | | |
| OBW013 | MAIN R/F STRUCT SLAB/ROOFLIGHT SUFF'T COMPLETE | 0 | | 02DEC15A | | 16NOV15 | MAIN R/F STRUCT SLAB/ROOFLIGHT SUFF'T COMPLETE Milestone MS6 (affected by AHU design change) | | | | | | | | | | | | | | | | | | | | | | | | | | | | | | | | | | | | | |
| OBW015 | TESTED & COMMISSIONED FOR FS INSPECTION | 0 | | 26FEB16A | | 18DEC15* | TESTED & COMMISSIONED FOR FS INSPECTION Milestone FS-1 | | | | | | | | | | | | | | | | | | | | | | | | | | | | | | | | | | | | | |
| OBW020 | OLD BAILEY WING POST OP FIT OUT | 42 | 27APR16* | 07JUN16 | 03FEB16 | 15MAR16 | OLD BAILEY WING POST OP FIT OUT | | | | | | | | | | | | | | | | | | | | | | | | | | | | | | | | | | | | | |
| OBW025 | B50 AHU running/provide climatic control-Gallery | 0 | 28MAR16* | | 02DEC15* | | B50 AHU running/provide climatic control-Gallery Milestone MS7 (affected by AHU design change) | | | | | | | | | | | | | | | | | | | | | | | | | | | | | | | | | | | | | |
| OBW030 | FINAL TESTING & COMMISSIONING | 42 | 01MAY16 | 11JUN16 | 16MAR16 | 26APR16 | FINAL TESTING & COMMISSIONING | | | | | | | | | | | | | | | | | | | | | | | | | | | | | | | | | | | | | |
| OBW035 | REMAIN WORK&OTHER POST OP INSPECT WORK INCL R54 | 200 | 26FEB16A | 12SEP16 | | | REMAIN WORK&OTHER POST OP INSPECT WORK INCL R54 | | | | | | | | | | | | | | | | | | | | | | | | | | | | | | | | | | | | | |
| AW | | | | | | | | | | | | | | | | | | | | | | | | | | | | | | | | | | | | | | | | | | | | |
| AW010 | ARBUTHNOT WING (EXCEPT POST OP FIT OUT) | 1,293 | 08MAY12A | 25FEB16A | 08MAY12* | 21NOV15 | ARBUTHNOT WING (EXCEPT POST OP FIT OUT) | | | | | | | | | | | | | | | | | | | | | | | | | | | | | | | | | | | | | |
| AW013 | RAKED SEATING-COMPLETE STRUCT STEEL/INSITU CONC | 0 | | 20MAY15A | | 06JUN15 | RAKED SEATING-COMPLETE STRUCT STEEL/INSITU CONC | | | | | | | | | | | | | | | | | | | | | | | | | | | | | | | | | | | | | |
| AW015 | TESTED & COMMISSIONED FOR FS INSPECTION | 0 | | 05JAN16A | | 18DEC15* | TESTED & COMMISSIONED FOR FS INSPECTION Milestone FS-2 | | | | | | | | | | | | | | | | | | | | | | | | | | | | | | | | | | | | | |
| AW020 | ARBUTHNOT WING POST OP FIT OUT | 42 | 27APR16* | 07JUN16 | 03FEB16 | 15MAR16 | ARBUTHNOT WING POST OP FIT OUT | | | | | | | | | | | | | | | | | | | | | | | | | | | | | | | | | | | | | |

PROGRAMME IMPACT FOR AIS AND SITE MEMOS ISSUED FROM APR 2015 TO DATA DATE IS UNDER ASSESSMENT

Start Date 15MAR12
 Finish Date 07JUN17
 Data Date 03MAR16
 Run Date 07MAR16 13:16

S6C1

?Primavera Systems, Inc.

CENTRAL POLICE STATION
SUMMARY SUPPLEMENTAL AGREEMENT PROGRAMME
FOR ESSENTIALS & OP BUILDINGS, BLOCK 14, 15 & 17
(WITH PROGRESS AS OF 03 MAR 2016)

Sheet 1 of 2



| GCL/PJ3416/SA5/SUM/OP | | | |
|-----------------------|----------|---------|----------|
| Date | Revision | Checked | Approved |
| | | | |
| | | | |
| | | | |

Annex J

Tree Inspection Reports

R32543

RECEIVED

7 APR 2016



欣榮 (香港) 環境管理有限公司

Yan Wing (Hong Kong) Environment Management Limited

香港 新界 沙頭角 新樓街 15 號 二樓

No. 15, San Lau Street, 1/F., Sha Tau Kok, N.T., Hong Kong

Tel: 9776 1987, 2486 2317 Fax: 2482 4667 E-mail: yanwinghk@netvigator.com

Our Ref. : YW/TP/GAMMON/2016/3/1

2nd April. 2016

Gammon Construction Limited
28/F Devon House,
TaiKoo Place 979 King's Road
Hong Kong

Tel. 2516 8823
Fax.2516 6260

Attn : Mr. Cliff C.H. LEUNG, Ms. Oley C.T. WONG,

Dear Madam/Sir,

**Summary of Monthly Inspection Report for the Six Existing Trees
at Central Police Station Compound for Mar. 2016
(Contract Ref. : J3416/400.4/D00025)**

| Tree No. | Botanical Name | Date of Inspection | Overall Health Condition Good/Fair/Poor | Remarks |
|----------|--------------------------------------|---------------------------|--|--|
| Tree-5 | <i>Mangifera indica</i> 芒果 | 4 th Mar. 2016 | Fair | 1. Signs of Pest have apparently increased. |
| Tree-6 | <i>Aleurites moluccana</i> 石栗 | 4 th Mar. 2016 | Fair | 1. No further action is required. |
| Tree-7 | <i>Aleurites moluccana</i> 石栗 | 4 th Mar. 2016 | Fair | 1. No further action is required. |
| Tree-8 | <i>Plumeria rubra</i> 紅雞蛋花 | 4 th Mar. 2016 | Fair | 1. No further action is required. |
| Tree-9 | <i>Araucaria cunninghamia</i> 花旗杉 | 4 th Mar. 2016 | Fair | 1. No further action is required. |
| Tree-11 | <i>Dracaena marginata</i> 馬尾鐵 | 4 th Mar. 2016 | Fair | 1. To keep monitoring on the growth of the tree. |



欣榮 (香港) 環境管理有限公司

Yan Wing (Hong Kong) Environment Management Limited

香港 新界 沙頭角 新樓街 15 號 二樓

No. 15, San Lau Street, 1/F., Sha Tau Kok, N.T., Hong Kong

Tel: 9776 1987, 2486 2317 Fax: 2482 4667 E-mail: yanwinghk@netvigator.com

Tree Inspection Reports and Tree Group Inspection Form (Form 1) are attached for your reference and record, please.

I should be much grateful if you could endorse the attached Invoice (No.1105) and fax it to my Office at 2482 4667. Thank you.

Yours faithfully

For and on behalf of
Yan Wing (HK) Environment Management Ltd.


(WONG Pak Hay)
Contract Manager



FORM 1: TREE GROUP INSPECTION FORM

表格 1: 樹群檢查表格

General Information 基本資料

| | | | |
|-------------------------------|--------------------------------|---|----------------------|
| Company 公司: | Gammon Construction Ltd | Name of Tree Inspection officer 巡查人員姓名: | LAU Man Chung |
| File Ref. 檔案編號: | YW/TP/GAMMON/2016/3/2 | Name of Endorsement Officer 覆核人員姓名: | WONG Pak Hay |
| Date of Inspection 巡查日期: | March 4, 2016 | | |
| Project/Contract No. 合約/工程編號: | J3416/400.4/D00025 | | |

Location Information 位置資料

| | | | |
|---|--|--|--|
| Location 地點: | Central Police Station Compound. | Nearby Utility Post No. 就近公用設施編號: | |
| Location Types 地點類別: Address: __ (multiple answers allowed) 可選多於一項 | <input type="checkbox"/> Roadside 路旁 <input checked="" type="checkbox"/> Open space 空地 <input type="checkbox"/> Exhibition Centre 展覽中心 <input type="checkbox"/> View Point 觀景台 <input type="checkbox"/> Walking / nature trail 行山徑 / 自然徑 <input type="checkbox"/> Others (please specify) 其他 (請說明): | <input type="checkbox"/> Community Hall / Centre 社區會堂 / 中心 <input type="checkbox"/> Roadside Planter 路旁花園 <input type="checkbox"/> Rain shelter / pavilion 避雨亭 / 涼亭 <input type="checkbox"/> Sitting out area 休憩處 | |

General Tree Information 基本樹木資料

* Delete as appropriate 請把不合適的刪除

| Main tree species in the group or minority tree species of significant size 在群組內的主要樹種或樹幹胸徑或高度或樹冠範圍較大的樹種 (Note 2) | Approx. number of trees in the relevant species or as a % of tree group 該樹種在群組內的百分比/數目* | Range of tree height (m) 該樹種高度範圍 | Overall health condition 整體健康狀況 (good, fair, poor 好, 良, 差) | Overall structural condition 整體結構狀況 (good, fair, poor 好, 良, 差) | Other remarks (Any special tree condition, e.g. dying/dead, pest/disease problem and structural defects; and soil condition 其他評語 (樹木狀況例如: 凋謝/枯樹/病蟲害或結構問題; 及泥土狀況) |
|--|--|-------------------------------------|--|--|--|
| <i>Mangifera indica</i> 芒果 | 17%, 1 No. | 16M | FAIR | FAIR | Signs of Pest have apparently increased.. |
| <i>Aleurites moluccana</i> 石栗 | 32% 2 Nos. | 10-13M | FAIR | FAIR | No further action is required.. |
| <i>Plumeria rubra</i> 紅雞蛋花 | 17% 1 No. | 7M | FAIR | FAIR | No further action is required.. |
| <i>Araucaria cunninghamia</i> 花旗杉 | 17% 1 No. | 13M | FAIR | FAIR | No further action is required.. |
| <i>Dracaena marginata</i> 馬尾鐵 | 17% 1 No. | 8M | FAIR | FAIR | To keep monitoring on the growth of the tree. |

Target 目標

| |
|--|
| TARGET (people or property potentially affected by tree/branch failure) 目標 (因樹木倒塌或枝條斷裂而受影響的人或財產) |
| Does target exist? 目標是否存在? <input checked="" type="checkbox"/> Yes 是 <input type="checkbox"/> No 否 |
| Can target be moved? 能否移除目標? <input type="checkbox"/> Yes 是 <input checked="" type="checkbox"/> No 否 |
| Can the use of site be restricted? 可否限制場地的使用? <input checked="" type="checkbox"/> Yes 是 <input type="checkbox"/> No 否 |
| Frequency of use of location 使用該地點的頻密程度: <input type="checkbox"/> Occasional use 偶爾使用 <input type="checkbox"/> Intermittent use 間歇使用 <input checked="" type="checkbox"/> Frequent use 經常使用 <input type="checkbox"/> Constant use 恆常使用 |

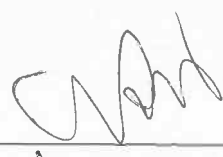
Identification of Trees for Remedial Action or Detailed Tree Risk Assessment

識別下述樹木，以便採取風險緩減措施或進行詳細樹木風險評估

| Trees falling under the following criteria 樹木屬於以下任何一項或多於一項類別 | Number of trees 樹木數量 | Remedial action or detailed tree risk assessment 緩減措施或進行詳細樹木風險評估 |
|---|-------------------------|---|
| (1) Trees on complaint list with structural or health problems 投訴個案中，結構或健康問題的樹木 (Note 1) | NII | |
| (2) Mature trees belonging to species with brittle wood structure and having unsatisfactory health or structural conditions with failure potential 屬木質脆弱品種並已達成熟期及有倒塌風險的樹木 (Note 1) | NII | |
| (3) Tree with major defects or health problems 有明顯缺陷或健康問題的樹木 (Note 1) | NII | |
| (4) Trees growing in very stressful site conditions with failure potential 生長於非常擠壓環境而有倒塌風險的樹木 (Note 1) | NII | |



Signature of Tree Inspection Officer :
Signature of Endorsement Officer:



Name of Contractor

Yan Wing (HK) Environment Management Ltd.

Date:

29-3-2016



- Note 1: If remedial action (such as pruning) undertaken cannot mitigate the potential risk of tree or branch failure, detailed tree risk assessment (using Form 2) should be carried out.
備註 1: 若風險緩減措施(如枝幹修剪)仍未能解決倒塌或枝條斷裂的潛在風險，應為該樹進行詳細的樹木風險評估(表格 2)。
- Note 2: Please read in conjunction with TMO's Guidelines on Tree Risk Assessment and Management Arrangement (Para. 4.3. refers.)
備註 2: 請參閱樹木管理辦事處的樹木風險評估安排及管理指引(第 4.3 節)

**Inspection Report for the 6 Existing Trees
at Central Police Station Compound
(Contract Ref. : J3416/400.4/D00025)**

I. TREE NUMBER : Tree-5 *Mangifera indica* 芒果

II. BASIC INFORMATION :

| | | | |
|--------------------|----------------------------|--|-------------------------------|
| Height (m) | 16m | Crown spread (m) | 18m |
| DBH (mm) | 1000mm | Overall Health Condition Good/Fair/Poor | Fair |
| Date of Inspection | 4 th March 2016 | Last Inspection Date | 3 rd February 2016 |

III. COMMENTS :

1. Overall health condition of the tree is fair.
2. Renovation work is in progress near the tree.
3. Many flowers appear on the tree.
4. Signs of Pest (Mealy Bugs 粉狀介殼蟲) have apparently increased.
5. Construction works are in progress outside the cordon zone.

IV. RECOMMENDATIONS :

1. To trim off the affected leaves.
2. To apply pesticide for the tree.

3. PHOTO RECORD :

Fig 1. Tree number.

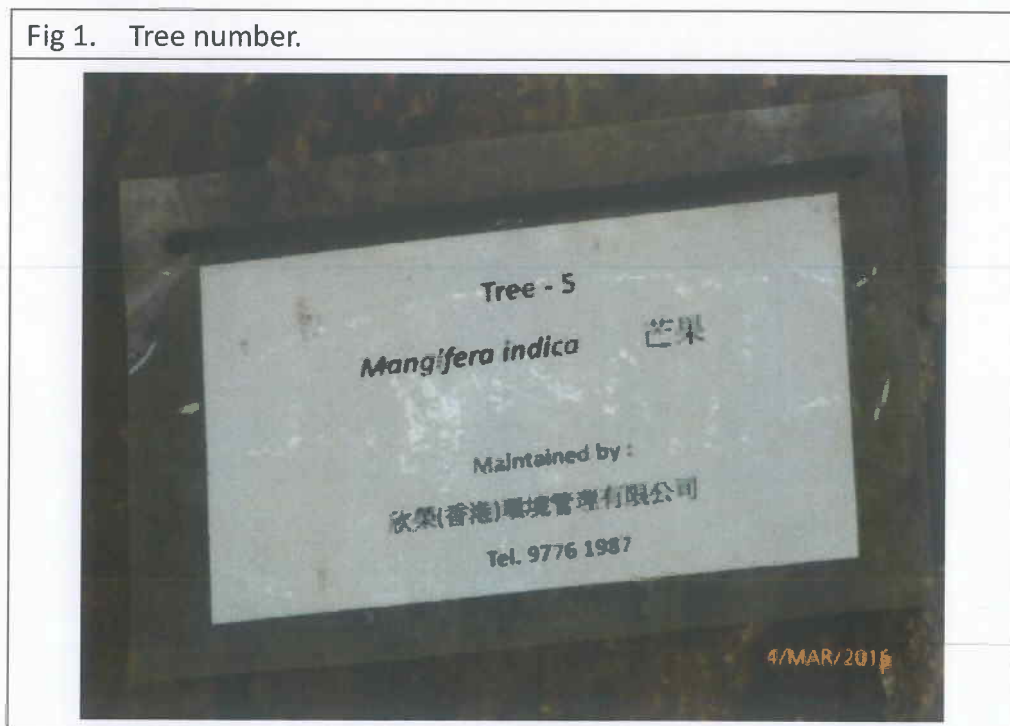


Fig 2. Root collar is normal. The planter is covered with reasonable mulch.



Fig. 3 Health condition of the lower trunk is fair.



Fig. 4 Health condition of the mid trunk is fair.



Fig. 5 Health condition of the upper trunk also is fair.



Fig. 6 The crown is full of vigorous and green leaves.



Fig. 7 Vigorous and green leaves also are growing on the lower branches.



Fig. 8 Many flowers appear on the tree.



Fig. 9 Signs of Pest (Mealy Bugs 粉狀介殼蟲) have apparently increased at the time of inspection.



Fig. 10 Signs of Pest (Mealy Bugs 粉狀介殼蟲) are mostly found on the lower branches of the tree. **Recommended to trim off the affected leaves and apply pesticide for the tree in April 2016.**



Fig. 11 Renovation work is in progress near the tree.



Fig. 12 The access near Tree-5 appears clean and tidy.



Fig. 13 Construction works are in progress outside the cordon zone.



Fig. 14 Overall view of Tree-5 during inspection on 4th March 2016.



Signature of Inspection Officer :
(Mr. LAU Man-chung, ISA CA-HK0050A)

Signature of Endorsement Officer :
(Mr. WONG Pak-hay, Contract Manager)

Name of Contractor :

Dated this :

Yan Wing (HK) Environment
Management Ltd

29th March 2016



**Inspection Report for the 6 Existing Trees
at Central Police Station Compound
(Contract Ref. : J3416/400.4/D00025)**

I. TREE NUMBER : Tree-6 *Aleurites moluccana* 石栗

II. BASIC INFORMATION :

| | | | |
|--------------------|----------------------------|--|-------------------------------|
| Height (m) | 10m | Crown spread (m) | 10m |
| DBH (mm) | 510mm | Overall Health Condition Good/Fair/Poor | Fair |
| Date of Inspection | 4 th March 2016 | Last Inspection Date | 3 rd February 2016 |

III. COMMENTS :

1. Overall health condition of the tree is fair.
2. Root collar is normal. The planter is covered with mulch and leaves.
3. The crown is full of vigorous and green leaves.
4. Many large rocks are placed near the cordon zone.
5. The access outside the cordon zone appears clean and tidy.

IV. RECOMMENDATIONS :

1. No further action is required.

V. PHOTO RECORD :

Fig 1. Tree number



Fig 2. Root collar is normal. The planter is covered with mulch and leaves.



Fig 3. Health condition of the lower trunk is fair.



Fig. 4 Health condition of the mid trunk is fair.



Fig. 5 Health condition of the upper trunk also is fair.



Fig. 6 The crown is full of vigorous and green leaves.



Fig. 7 Vigorous and green leaves also are growing on the lower branches.



Fig. 8 The small cordon zone is in order.



Fig. 9 Several metallic sheets surrounded the planter to act as a cordon zone.



Fig. 10 Many large rocks are placed near the cordon zone.



Fig. 11 The access outside the cordon zone appears clean and tidy.



Fig. 12 Overall view of Tree-6 during inspection on 4th March 2016.



Signature of Inspection Officer :
(Mr. LAU Man-chung, ISA CA-HK0050A)

Signature of Endorsement Officer :
(Mr. WONG Pak-hay, Contract Manager)

Name of Contractor :

Dated this :





Yan Wing (HK) Environment
Management Ltd.

29th March 2016



**Inspection Report for the 6 Existing Trees
at Central Police Station Compound
(Contract Ref. : J3416/400.4/D00025)**

I. TREE NUMBER : Tree-7 *Aleurites moluccana* 石栗

II. BASIC INFORMATION :

| | | | |
|--------------------|----------------------------|--|-------------------------------|
| Height (m) | 13m | Crown spread (m) | 12m |
| DBH (mm) | 650mm | Overall Health Condition Good/Fair/Poor | Fair |
| Date of Inspection | 4 th March 2016 | Last Inspection Date | 3 rd February 2016 |

III. COMMENTS :

1. Overall health condition of the tree is fair.
2. Root collar is normal. The planter is covered with mulch and leaves.
3. The crown is full of vigorous and green leaves.
4. The access near Tree-7 is clean and tidy.
5. Some construction tools are placed near the tree.

IV. RECOMMENDATIONS :

1. No further action is required.

V. PHOTO RECORD :

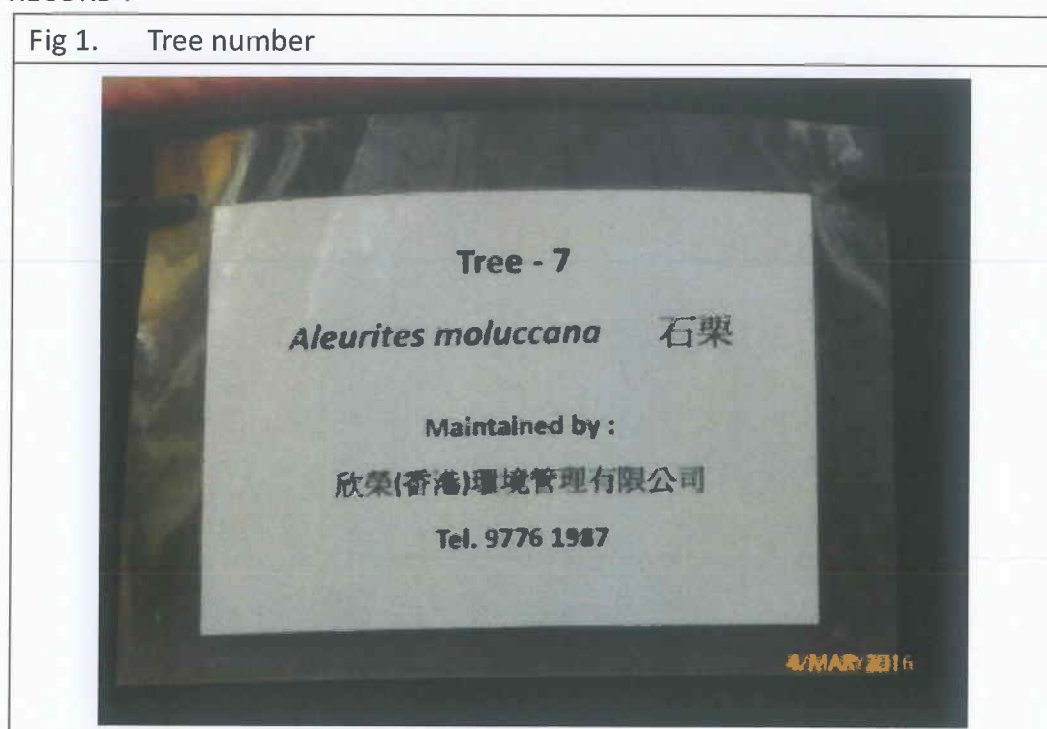


Fig 2. Root collar is normal. The planter is covered with mulch and leaves.



Fig 3. Health condition of the lower trunk is fair.



Fig. 4 Health condition of the mid trunk is fair.



Fig. 5 Health condition of the upper trunk also is fair.



Fig. 6 The crown is full of vigorous and green leaves.



Fig. 7 Vigorous and green leaves are growing on the lower branches.



Fig. 8 The small cordon zone is in good order.



Fig. 9 Cleanliness of the site near the planter is acceptable.

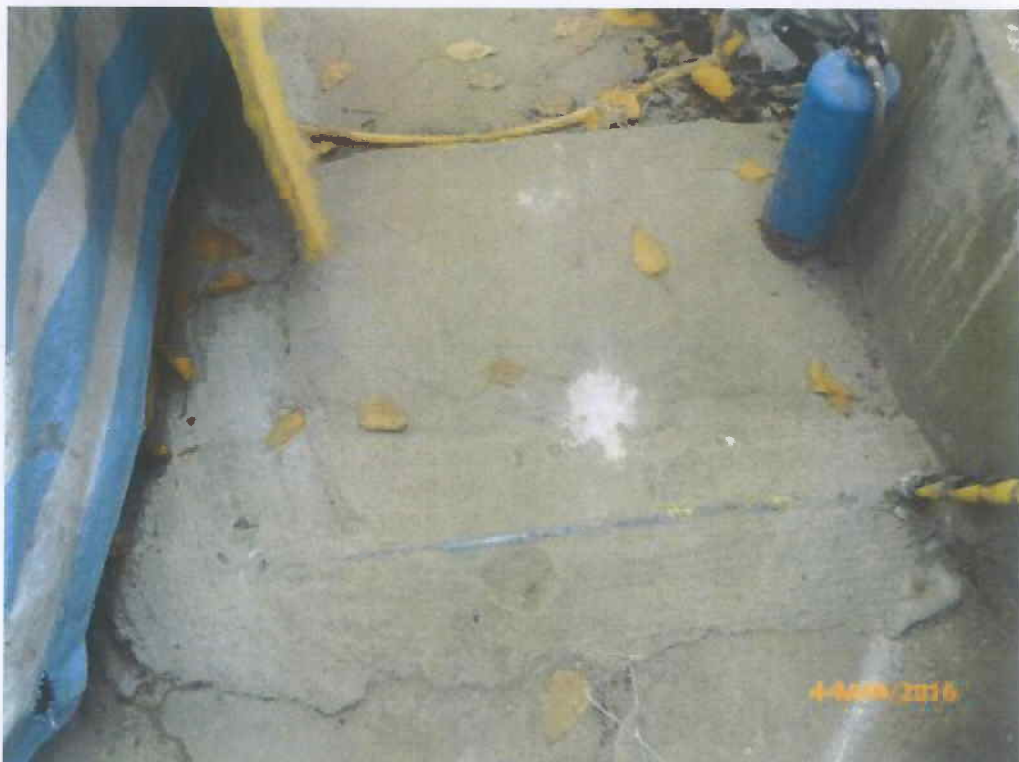


Fig. 10 Some construction tools are placed near Tree-7.



Fig. 11 The access outside the cordon zone is clean and tidy.



Fig. 12 Overall view of Tree-7 during inspection on 4th March 2016.



Signature of Inspection Officer :
(Mr. Lau Man-chung, ISA CA-HK0045A)
Signature of Endorsement Officer :
(Mr. WONG Pak-hay, Contract Manager)

Name of Contractor :

Dated this :





Yan Wing (HK) Environment
Management Ltd.

29th March 2016





**Inspection Report for the 6 Existing Trees
at Central Police Station Compound
(Contract Ref. : J3416/400.4/D00025)**

I. TREE NUMBER : Tree-8 *Plumeria rubra* 紅雞蛋花

II. BASIC INFORMATION :

| | | | |
|--------------------|----------------------------|--|-------------------------------|
| Height (m) | 7m | Crown spread (m) | 9m |
| DBH (mm) | 430mm | Overall Health Condition Good/Fair/Poor | Fair |
| Date of Inspection | 4 th March 2016 | Last Inspection Date | 3 rd February 2016 |

III. COMMENTS :

1. Overall health condition of the tree is fair.
2. Root collar is normal. The planter is covered with mulch and leaves.
3. Leaves on the crown are sparse.
4. The site near Tree-8 is clean and tidy.
5. Construction works are in progress outside the cordon zone.

IV. RECOMMENDATIONS :

1. No further action is required.

1. PHOTO RECORD :



Fig 2. Root collar is normal. The planter is covered with mulch and leaves.



Fig. 3 Health condition of the lower trunk is fair.



Fig. 4 Health condition of the mid trunk is fair.



Fig. 5 Health condition of the upper trunk also is fair.



Fig. 6 Leaves on the crown are sparse.



Fig. 7 The small cordon zone is in order.



Fig. 8 Many construction items are placed near the planter.



Fig. 9 Cleanliness of the site near Tree-8 is acceptable.



Fig. 10 Construction works are in progress outside the cordon zone.



Fig. 11 The site outside the cordon zone appears clean and tidy.



Fig. 12 Overall view of Tree-8 during inspection on 4th March 2016.



Signature of Inspection Officer :
(Mr. LAU Man-chung, ISA CA-HK0050A)

Signature of Endorsement Officer :
(Mr. WONG Pak-hay, Contract Manager)

Name of Contractor :

Yan Wing (HK) Environment
Management Ltd.

Dated this :

29th March 2016



**Inspection Report for the 6 Existing Trees
at Central Police Station Compound
(Contract Ref. : J3416/400.4/D00025)**

I. TREE NUMBER : Tree - 9 *Araucaria cunninghamia* 花旗杉

II. BASIC INFORMATION :

| | | | |
|--------------------|----------------------------|--|-------------------------------|
| Height (m) | 13m | Crown spread (m) | 5m |
| DBH (mm) | 230mm | Overall Health Condition Good/Fair/Poor | Fair |
| Date of Inspection | 4 th March 2016 | Last Inspection Date | 3 rd February 2016 |

III. COMMENTS :

1. Overall health condition of the tree is fair.
2. Root collar is normal. The planter is covered with mulch and leaves.
3. Green and vigorous leaves appear on the tree.
4. The access near the tree is clean and tidy.
5. Construction works are in progress outside the cordon zone.

IV. RECOMMENDATIONS :

1. No further action is required.

V. PHOTO RECORD :

Fig 1. Tree number



Fig 2. Root collar is normal. The planter is covered with mulch and leaves.



Fig. 3 Health condition of the lower trunk is fair.



Fig. 4 Health condition of the mid trunk is fair.



Fig. 5 Health condition of the upper trunk also is fair.



Fig. 6 Vigorous leaves are growing on the lower branches.



Fig. 7 Vigorous and green leaves also appear on the upper branches.



Fig. 8 The small cordon zone is in good order.



Fig. 9 The site near the planter is clean and tidy.



Fig. 10 Construction works are in progress outside the cordon zone.



Fig. 11 The access near Tree-9 is clean and tidy.



Fig. 12 Overall view of Tree-9 during inspection on 4th March 2016.



Signature of Inspection Officer :
(Mr. LAU Man-chung, ISA CA-HK0050A)

Signature of Endorsement Officer :
(Mr. WONG Pak-hay, Contract Manager)

Name of Contractor :

Yan Wing (HK) Environment
Management Ltd.

Dated this :

29th March 2016



**Inspection Report for the 6 Existing Trees
at Central Police Station Compound
(Contract Ref. : J3416/400.4/D00025)**

I. TREE NUMBER : Tree -11 *Dracaena marginata* 馬尾鐵

II. BASIC INFORMATION :

| | | | |
|--------------------|----------------------------|--|-------------------------------|
| Height (m) | 8m | Crown spread (m) | 2m |
| DBH (mm) | 170mm | Overall Health Condition Good/Fair/Poor | Fair |
| Date of Inspection | 4 th March 2016 | Last Inspection Date | 3 rd February 2016 |

III. COMMENTS :

1. Health condition of the tree is fair.
2. Young and green leaves appear on the crown.
3. Withered leaves have apparently reduces on the tree.
4. Construction works are in progress near the tree.

IV. RECOMMENDATIONS :

1. To keep monitoring on the growth of the tree.

V. PHOTO RECORD :

Fig 1. Tree number



Fig. 2 Root collar is normal. Cleanliness of the planter is acceptable.



Fig. 3 Health condition of the lower trunk is fair.



Fig. 4 Health condition of the mid trunk is fair.



Fig. 5 Health condition of the upper trunk also is fair.



Fig. 6 Withered leaves on the tree have apparently reduced at the time of inspection.



Fig. 7 Some young and green leaves appear on the crown.



Fig. 8 The site near Tree 11 is under renovation.



Fig. 9 The nearby buildings also are under renovation.



Fig. 10 Construction works are in progress near the tree.



Fig. 11 The access near Tree 11 is clean and tidy.



Fig. 12 Overall view of Tree 11 during inspection on 4th March 2016.



Signature of Inspection Officer :
(Mr. LAU Man-chung, ISA CA-HK0050A)

Signature of Endorsement Officer :
(Mr. WONG Pak-hay, Contract Manager)

Name of Contractor :

Yan Wing (HK) Environment
Management Ltd.

Dated this :

29th March 2016



Annex K

Environmental Complaint,
Environmental Summons
and Prosecution Log

Annex K Cumulative Complaint and Summons/Prosecutions Log

| Reporting Month | Number of Complaints in Reporting Month | Number of Summons/Prosecutions in Reporting Month |
|------------------------|--|--|
| November 2011 | 0 | 0 |
| December 2011 | 0 | 0 |
| January 2012 | 0 | 0 |
| February 2012 | 0 | 0 |
| March 2012 | 4 | 0 |
| April 2012 | 0 | 0 |
| May 2012 | 0 | 0 |
| June 2012 | 2 | 0 |
| July 2012 | 1 | 0 |
| August 2012 | 0 | 0 |
| September 2012 | 0 | 0 |
| October 2012 | 0 | 0 |
| November 2012 | 2 | 0 |
| December 2012 | 0 | 0 |
| January 2013 | 0 | 0 |
| February 2013 | 1 | 0 |
| March 2013 | 1 | 0 |
| April 2013 | 0 | 0 |

| Reporting Month | Number of Complaints in Reporting Month | Number of Summons/Prosecutions in Reporting Month |
|------------------------|--|--|
| May 2013 | 0 | 0 |
| June 2013 | 0 | 0 |
| July 2013 | 0 | 0 |
| August 2013 | 0 | 0 |
| September 2013 | 0 | 0 |
| October 2013 | 0 | 0 |
| November 2013 | 0 | 0 |
| December 2013 | 0 | 0 |
| January 2014 | 2 | 0 |
| February 2014 | 1 | 0 |
| March 2014 | 1 | 0 |
| April 2014 | 1 | 0 |
| May 2014 | 0 | 0 |
| June 2014 | 0 | 0 |
| July 2014 | 2 | 0 |
| August 2014 | 3 | 0 |
| September 2014 | 2 | 0 |
| October 2014 | 1 | 0 |
| November 2014 | 0 | 0 |

| Reporting Month | Number of Complaints in Reporting Month | Number of Summons/Prosecutions in Reporting Month |
|------------------------|--|--|
| December 2014 | 0 | 0 |
| January 2015 | 0 | 0 |
| February 2015 | 1 | 0 |
| March 2015 | 1 | 0 |
| April 2015 | 0 | 0 |
| May 2015 | 1 | 0 |
| June 2015 | 1 | 0 |
| July 2015 | 1 | 0 |
| August 2015 | 1 | 0 |
| September 2015 | 0 | 0 |
| October 2015 | 0 | 0 |
| November 2015 | 0 | 0 |
| December 2015 | 0 | 0 |
| January 2016 | 0 | 0 |
| February 2016 | 0 | 0 |
| March 2016 | 1 | 0 |
| Overall Total | 31 | 0 |

COMPLAINT INVESTIGATION REPORT

Basic Information of Complaint

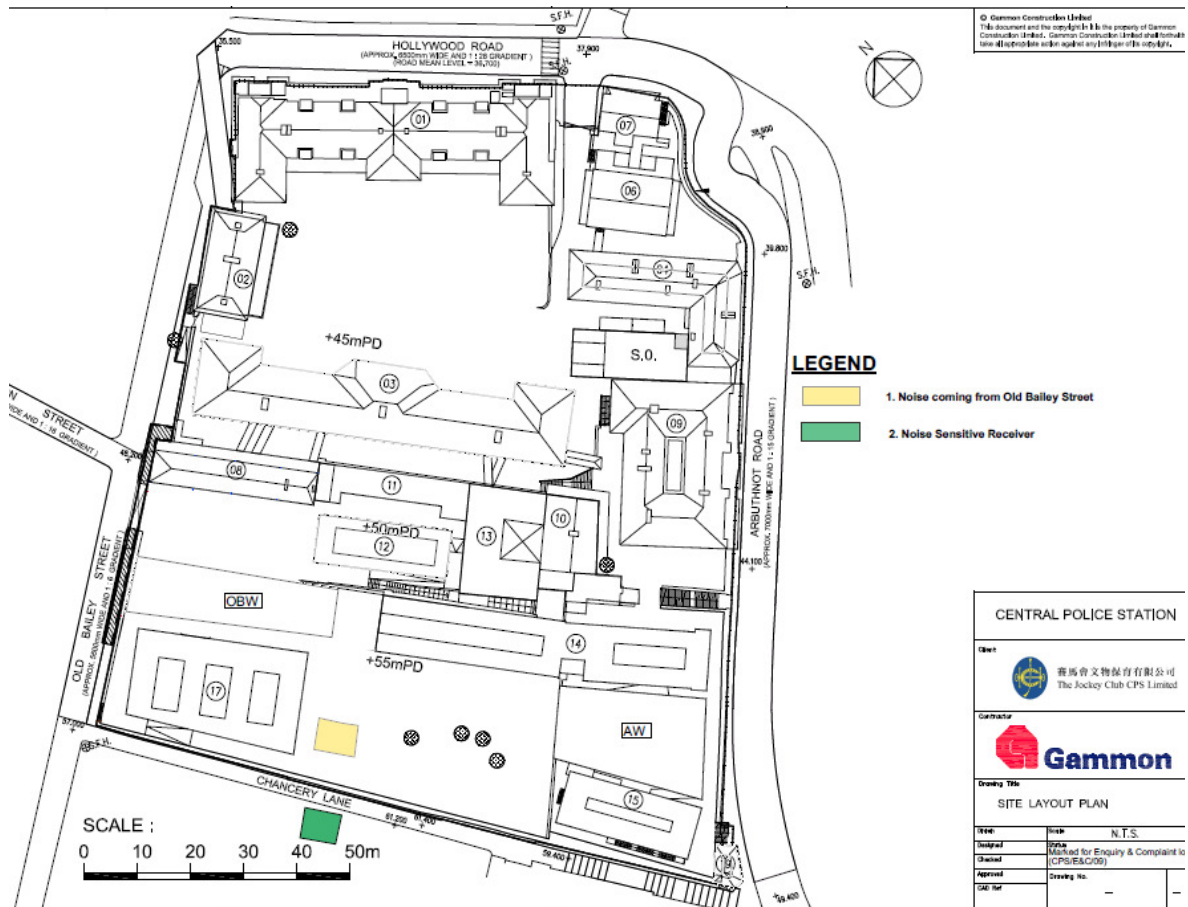
| | |
|----------------------------|------------------------------|
| Log Number: | 2016/03/001 |
| Date of Complaint Received | 13 March 2016 |
| Location of Complaint | Project Site |
| Nature of Complaint | Noise nuisance |
| Complaint Received by | Hong Kong Jockey Club (HKJC) |
| Complainant | |

Details of Complaint

A noise complaint was received by the HKJC in the morning on 13 March 2016. The complainant also reported the noise nuisance to the police on 13 March 2016. The complainant complained about noise nuisance at around 08:00 hour. Policemen arrived at the CPS Site at 10:30 hour to investigate the noise complaint. The complaint was transferred to the Project's Environmental Team on 15 March 2016.

Investigation Report

1. CPS site staff have accompanied and assisted the policemen for their investigation process. No noise generating activities from the CPS site was identified during the investigation.
2. As reported by the site team, some workers were moving some dry wall metal channel to the material storage area near Block 17 during the time of complaint. The potential noise nuisance may have been originated from the process of handling the dry wall metal channel at the material storage area. The location of the material storage area is shown in the figure below. No operation of Power Mechanical Equipment (PME) or carrying out of Prescribed Construction Work (PCW) was involved.



3.

Mitigation Measures and Follow-up Actions Recommended to Contractor

All construction works are carried out strictly following the necessary requirements specified in EIA, EM&A Manual, EMP, Method Statements, General and Particular Specifications of this Project. The operation team and works contractors have been reminded to carry out material handling and other works activities with care to avoid causing unnecessary noise nuisance as much as possible. Any work carried out within the CPS site on Sundays or general holidays should be avoided as far as practicable. Also, a reminder was given to all frontline, operation team and works contractor that all general construction works using PME and prescribed construction activities are prohibited during restricted hours, i.e. between 7pm to 7am on normal working days or at any time on a general holiday (including Sunday), unless a valid CNP is obtained. All PMEs without valid CNP must be switched off before 19:00 hour during normal working days. GCL will also enhance site supervision to ensure compliance of the above.

Date of File Closed : 21 March 2016

Approved by:

ET Leader

IEC

JCCPS's
Representative

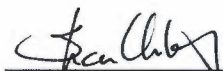
Rocco Design
Architect's
Representative



(Name: Katie Yu)
Date: 21 March 2016



(Name: Sharifah Or)
Date: 29 March 2016



(Name: C W Sham)
Date: 12 Apr 2016



(Name: CHARLES KWONG)
Date: 12 Apr 2016

Gammon's
Representative

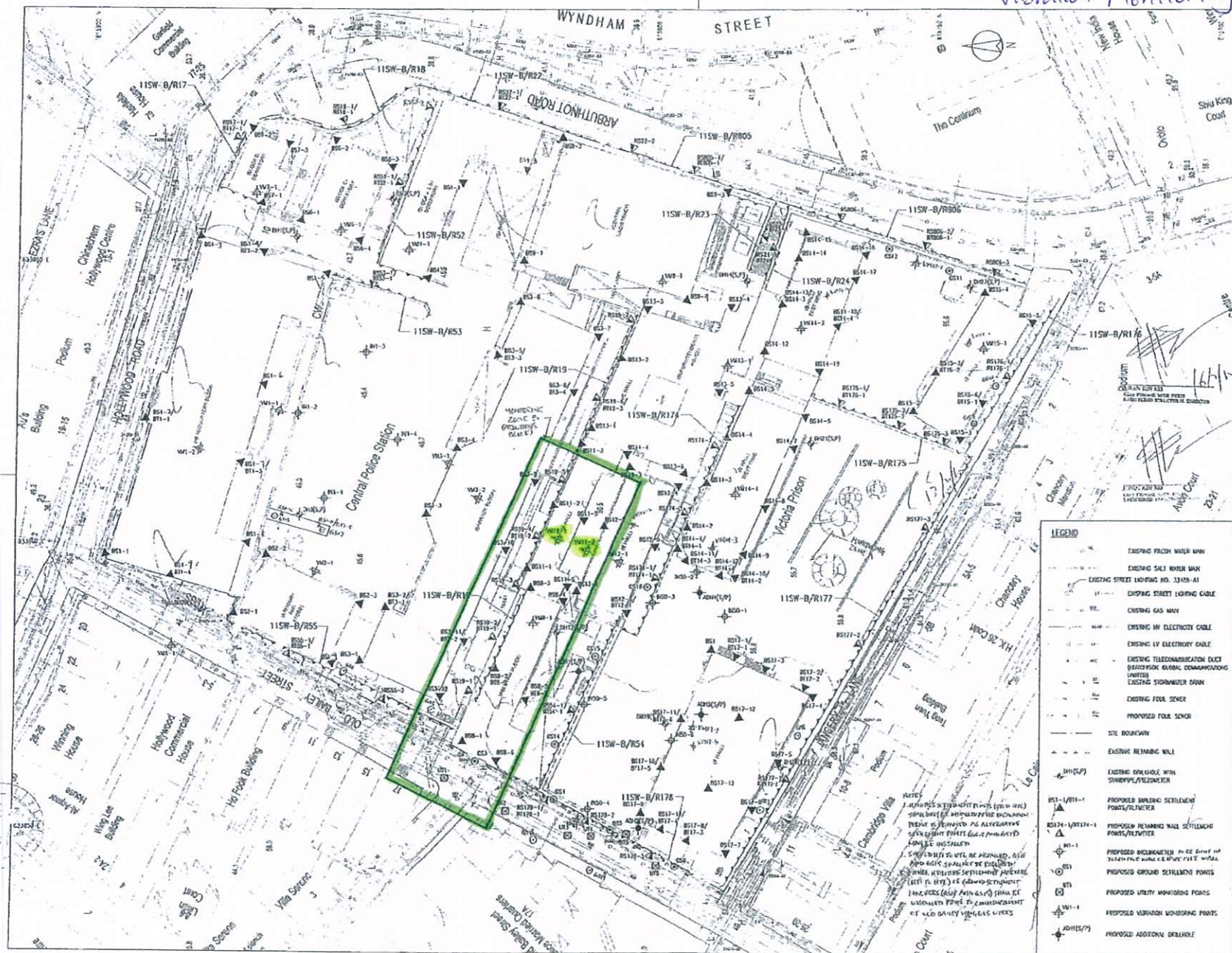


(Name: Cliff Leung)
Date: 2016.03.23

Annex L

Records of Vibration Monitoring for Piling works

Vibration Monitoring at Block 8



| | |
|--|--|
| <p>Project No: 00-029674-C-001</p> <p>Revision No: 00-029674-C-001</p> <p>Project Name: CENTRAL POLICE STATION CONSERVATION AND REVITALISATION PROJECT</p> <p>Client: ARUP</p> <p>Scale: 1:1000</p> <p>Date: 20 FEB 2012</p> | |
| <p>File Approved</p> <p>Approved by: [Signature]</p> <p>Approved on: 20 FEB 2012</p> | |
| <p>Key Plan: BS102</p> | |
| <p>BD SUBMISSION</p> <p>Drawing Status: ISSUED FOR CONSTRUCTION</p> <p>Notes:</p> <ul style="list-style-type: none"> This drawing is for construction purposes only. It is not to be used for any other purpose. The contractor is responsible for ensuring that the work is carried out in accordance with the approved plans and specifications. The contractor is responsible for ensuring that the work is carried out in accordance with the approved plans and specifications. The contractor is responsible for ensuring that the work is carried out in accordance with the approved plans and specifications. | |
| <p>LEGEND</p> <ul style="list-style-type: none"> EXISTING FRESH WATER MAIN EXISTING SALT WATER MAIN EXISTING STREET LIGHTING NO. 13105-A1 EXISTING STREET LIGHTING CABLE EXISTING GAS MAIN EXISTING HV ELECTRICITY CABLE EXISTING LV ELECTRICITY CABLE EXISTING TELECOMMUNICATION DUCT (OPTICAL FIBRE, GLOBAL COMMUNICATIONS LIMITED) EXISTING STORMWATER DRAIN EXISTING FOUR DIMER PROPOSED FOUR DIMER SITE BOUNDARY EXISTING RETAINING WALL EXISTING BRICKWORK WITH SANDWICH INSULATION PROPOSED EXISTING SETTLEMENT POINTS/PIVOTS PROPOSED RETAINING WALL SETTLEMENT POINTS/PIVOTS PROPOSED INSTRUMENTED P.O.C. DIMER AND TIE-IN P.O.C. WITH CE DIMER CASE - 100mm PROPOSED GROUND SETTLEMENT POINTS PROPOSED UTILITY MONITORING POINTS PROPOSED VIBRATION MONITORING POINTS PROPOSED ADDITIONAL DETAIL | |
| <p>Scale: 1:1000</p> <p>Project No: 00-029674-C-001</p> <p>Revision No: 00-029674-C-001</p> <p>Project Name: CENTRAL POLICE STATION CONSERVATION AND REVITALISATION PROJECT</p> <p>Client: ARUP</p> <p>Scale: 1:1000</p> <p>Date: 20 FEB 2012</p> | |

(Block 8 Foundation)

WW 恆誠建築工程有限公司
Win Win Way Construction Company Ltd.

| Monitoring Check Pts. | Trigger Levels | | |
|--|----------------|-------------|--------------|
| | Alert level | Alarm level | Action level |
| Vibrating Monitoring | 2mm/s | 2.5mm/s | 3mm/s |
| #Vibration at largest span of highest Structural level | 5.0mm/s | 6.0mm/s | 7.5mm/s |

Vibration Record

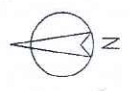
Project Title: Central Police Station Conservation & Revitalization Project No: WP201 1-Mar-2016 to 31-Mar-2016

| POINT | | VM11-1# | VM11-2 | | | | | | |
|-----------------------|--------|--------------|--------------|--|--|--|--|--|--|
| DATE | PD/(m) | mm/s | mm/s | | | | | | |
| 19-Jun-2012 (Initial) | | 0.13 | 0.19 | | | | | | |
| 1-Mar-2016 | | 0.103 | 0.100 | | | | | | |
| 2-Mar-2016 | | 0.109 | 0.100 | | | | | | |
| 3-Mar-2016 | | 0.106 | 0.104 | | | | | | |
| 4-Mar-2016 | | 0.103 | 0.100 | | | | | | |
| 5-Mar-2016 | | 0.109 | 0.105 | | | | | | |
| 6-Mar-2016 | | Sunday | | | | | | | |
| 7-Mar-2016 | | 0.106 | 0.100 | | | | | | |
| 8-Mar-2016 | | 0.102 | 0.097 | | | | | | |
| 9-Mar-2016 | | 0.107 | 0.102 | | | | | | |
| 10-Mar-2016 | | 0.104 | 0.107 | | | | | | |
| 11-Mar-2016 | | 0.105 | 0.097 | | | | | | |
| 12-Mar-2016 | | 0.103 | 0.103 | | | | | | |
| 13-Mar-2016 | | Sunday | | | | | | | |
| 14-Mar-2016 | | 0.105 | 0.100 | | | | | | |
| 15-Mar-2016 | | 0.107 | 0.103 | | | | | | |
| 16-Mar-2016 | | 0.104 | 0.106 | | | | | | |
| 17-Mar-2016 | | 0.109 | 0.100 | | | | | | |
| 18-Mar-2016 | | 0.114 | 0.102 | | | | | | |
| 19-Mar-2016 | | 0.105 | 0.097 | | | | | | |
| 20-Mar-2016 | | Sunday | | | | | | | |
| 21-Mar-2016 | | 0.109 | 0.095 | | | | | | |
| 22-Mar-2016 | | 0.103 | 0.100 | | | | | | |
| 23-Mar-2016 | | 0.116 | 0.102 | | | | | | |
| 24-Mar-2016 | | 0.104 | 0.105 | | | | | | |
| 25-Mar-2016 | | Holiday | | | | | | | |
| 26-Mar-2016 | | Holiday | | | | | | | |
| 27-Mar-2016 | | Sunday | | | | | | | |
| 28-Mar-2016 | | Holiday | | | | | | | |
| 29-Mar-2016 | | 0.105 | 0.109 | | | | | | |
| 30-Mar-2016 | | 0.108 | 0.111 | | | | | | |
| 31-Mar-2016 | | 0.103 | 0.102 | | | | | | |

Annex M

Records of Vibration
Monitoring for Other
Construction Works

Structural Additions and Alterations at Block 11



Note: This plan has been processed on a computer which uses the computerized processing system as specified in Part 14.19. The user of the software must register the user name and password as specified in the user manual and the user must ensure that the user name and password are not lost or destroyed. The user must ensure that the user name and password are not lost or destroyed.

| No. | Description | Date | Approved |
|-----|--------------------------|-------|----------|
| - | BD SUBMISSION (50) | 12/11 | JS |
| A | BD SUBMISSION (01) | 03/12 | JS |
| B | BD SUBMISSION (17) | 03/12 | JS |
| C | BD SUBMISSION RW BATCH 1 | 03/12 | JS |
| D | FOR INFORMATION (50) | 03/12 | JS |
| E | BD SUBMISSION (51) | 05/12 | JS |
| F | BD SUBMISSION (04) | 05/12 | JS |
| G | BD SUBMISSION (14) | 05/12 | JS |
| H | BD SUBMISSION (14) | 05/12 | JS |
| J | BD SUBMISSION RW BATCH 2 | 05/12 | JS |
| K | BD SUBMISSION (06&07) | 07/12 | JS |
| L | BD SUBMISSION (01) | 07/12 | JS |
| M | BD SUBMISSION (11) | 07/12 | JS |

Plan Approved
CHIONG Kam-yung Jacky
 Chief Structural Engineer
 for BUILDING AUTHORITY
 - 3 OCT 2012



BD SUBMISSION
 Drawing Status 製圖狀況

This drawing and the contents herein are the copyright of relevant consultants.
 本圖紙及其內容的版權歸有關顧問公司所有。
 No part of the drawing and the design contained herein may be reproduced without the prior written consent of relevant consultants.
 未經有關顧問公司書面同意，不得複製此圖紙內任何內容。
 Do not take measurements directly from this drawing.
 切勿直接從圖紙上量度尺寸。
 Check and verify all dimensions on site.
 所有尺寸必須在工地現場核實及量度。
 Read this drawing in conjunction with the specifications and all other related drawings.
 此圖紙必須與圖紙說明書及其他相關圖紙一併閱讀。
 Notify the relevant consultants immediately of any discrepancy found herein.
 如發現圖紙內有任何錯誤之處，應立即通知有關顧問公司。

LEGEND

| | |
|--|---|
| | EXISTING FRESH WATER MAIN |
| | EXISTING SALT WATER MAIN |
| | EXISTING STREET LIGHTING NC. 33488-A1 |
| | EXISTING STREET LIGHTING CABLE |
| | EXISTING GAS MAIN |
| | EXISTING HV ELECTRICITY CABLE |
| | EXISTING LV ELECTRICITY CABLE |
| | EXISTING TELECOMMUNICATION DUCT (HUTCHISON GLOBAL COMMUNICATIONS LIMITED) |
| | EXISTING STORMWATER DRAIN |
| | EXISTING FOUL SEWER |
| | PROPOSED FOUL SEWER |
| | SITE BOUNDARY |
| | EXISTING RETAINING WALL |
| | EXISTING DRILLHOLE WITH STANDPIPE/PIEZOMETER |
| | PROPOSED BUILDING SETTLEMENT POINTS/TILTMETER |
| | PROPOSED RETAINING WALL SETTLEMENT POINTS/TILTMETER |
| | PROPOSED INCLINOMETER TO BE BUILT IN BORED PILE WALL OR PIPE PILE WALL |
| | PROPOSED GROUND SETTLEMENT POINTS |
| | PROPOSED UTILITY MONITORING POINTS |
| | PROPOSED VIBRATION MONITORING POINTS |
| | PROPOSED ADDITIONAL DRILLHOLE |

Client 業主

 The Jersey Club CP Limited

Design Consultant
HERZOG & DEMEUREN

Conservation Architect

 Rocco

Executive Architect / AP

ARUP

Structural Engineer / RSE
 E & M Engineer

JRP

Project 項目
**CENTRAL POLICE STATION
 CONSERVATION AND REVITALISATION
 PROJECT**

Drawing Table 圖名
MONITORING LAYOUT PLAN

Scale 比例
 1:300 @ A1

Drawn 繪圖
 K.C. Lai

Checked 校對
 AL

Drawing No. 圖號
 00-OAP209674-G-001

Revision 修改
 M

Cost file 00-OAP209674-G-001.dwg

Vibration Monitoring Record (March)

| | Block 11 | |
|-----------|-----------------|--------------|
| Point | VM11-1 | VM11-2 |
| Date | mm/s | mm/s |
| 01-Mar-16 | 0.103 | 0.100 |
| 02-Mar-16 | 0.109 | 0.100 |
| 03-Mar-16 | 0.106 | 0.104 |
| 04-Mar-16 | 0.103 | 0.100 |
| 05-Mar-16 | 0.109 | 0.105 |
| 06-Mar-16 | Sunday | |
| 07-Mar-16 | 0.106 | 0.100 |
| 08-Mar-16 | 0.102 | 0.097 |
| 09-Mar-16 | 0.107 | 0.102 |
| 10-Mar-16 | 0.104 | 0.107 |
| 11-Mar-16 | 0.105 | 0.097 |
| 12-Mar-16 | 0.103 | 0.103 |
| 13-Mar-16 | Sunday | |
| 14-Mar-16 | 0.105 | 0.100 |
| 15-Mar-16 | 0.107 | 0.103 |
| 16-Mar-16 | 0.104 | 0.106 |
| 17-Mar-16 | 0.109 | 0.100 |
| 18-Mar-16 | 0.114 | 0.102 |
| 19-Mar-16 | 0.105 | 0.097 |
| 20-Mar-16 | Sunday | |
| 21-Mar-16 | 0.109 | 0.095 |
| 22-Mar-16 | 0.103 | 0.100 |
| 23-Mar-16 | 0.116 | 0.102 |
| 24-Mar-16 | 0.104 | 0.105 |
| 25-Mar-16 | Holiday | |
| 26-Mar-16 | Holiday | |
| 27-Mar-16 | Sunday | |
| 28-Mar-16 | Holiday | |
| 29-Mar-16 | 0.105 | 0.109 |
| 30-Mar-16 | 0.108 | 0.111 |
| 31-Mar-16 | 0.103 | 0.102 |