

MTR Corporation Limited

Road Works for West Kowloon
(Environmental Permit No. EP-366/2009/A)


Location and Layout Plans

Verified by: 
Position: Independent Environmental Checker
Date: 28 June 2012

MTR Corporation Limited

Road Works for West Kowloon
(Environmental Permit No. EP-366/2009/A)

Location and Layout Plans

Certified by: 
Position: Environmental Team Leader
Date: 28 JUN 2012

EXPLANATORY STATEMENT

As the road scheme and the noise mitigation measures have been changed since the approval of the EIA report in 2009, the MTR Corporation deposits with the Director of Environmental Protection a new set of layout drawing(s) of the Project in appropriate scales with explanatory statement showing the works boundaries, the works areas, vertical and horizontal alignments of the proposed roads, and the locations of the mitigation measures (no ventilation buildings proposed for the Project). This explanatory statement is intended to assist an understanding of the relevant drawings by providing the summary below:

5770X01 (Rev A)

- ◆ showing the proposed works boundary of the Project

C8017/C/XRL/ENS/M50/001 (Rev B)

- ◆ showing the layout of the proposed road works, including at grade roads for Lin Cheung Road, Austin Road West, Road D1A(N) and Road D1A(S), and underpass for Lin Cheung Road and Austin Road West

C8017/C/XRL/ENS/M52/016 (Rev B)

- ◆ showing the extent of low noise road surface to be adopted for the new roads

C8017/C/XRL/ENS/M52/004 (Rev C)

- ◆ showing the locations the proposed noise screening structures on Road D1A(N) and Lin Cheung Road (North) (i.e. north of Jordan Road)
- ◆ Road D1A(N): Cantilever barrier (i.e. Types L1, L2 and L3) and footbridge 14
- ◆ Lin Cheung Road (North): Footbridge 14

C8017/C/XRL/ENS/M52/005 (Rev B)

- ◆ showing the locations the proposed noise screening structures on Road D1A(S), Austin Road West and Lin Cheung Road (South) (i.e. north of Jordan Road)
- ◆ Road D1A(S): Cantilever barrier (i.e. Type L4)
- ◆ Lin Cheung Road (South): semi-enclosure (nearby The Waterfront), landscape deck / semi-enclosure(nearby Sorrento), cantilever barrier (i.e. Type L2 and L4) and vertical barrier (i.e. Type VB1 and VB2)
- ◆ Austin Road West: landscape deck

C8017/C/XRL/ENS/M50/002 (Rev A)

- ◆ Vertical section of Road D1A(S)

C8017/C/XRL/ENS/M50/003 (Rev A)

- ◆ Vertical section of Road D1A(N)

C8017/C/XRL/ENS/M50/004 to 008 (Rev A)

- ◆ Vertical section of Lin Cheung Road (South)

C8017/C/XRL/ENS/M50/009 (Rev A)

- ◆ Vertical section of depressed junction of Lin Cheung Road and Austin Road West








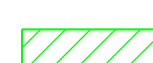

C8017/C/XRL/ENS/M50/010 (Rev A)

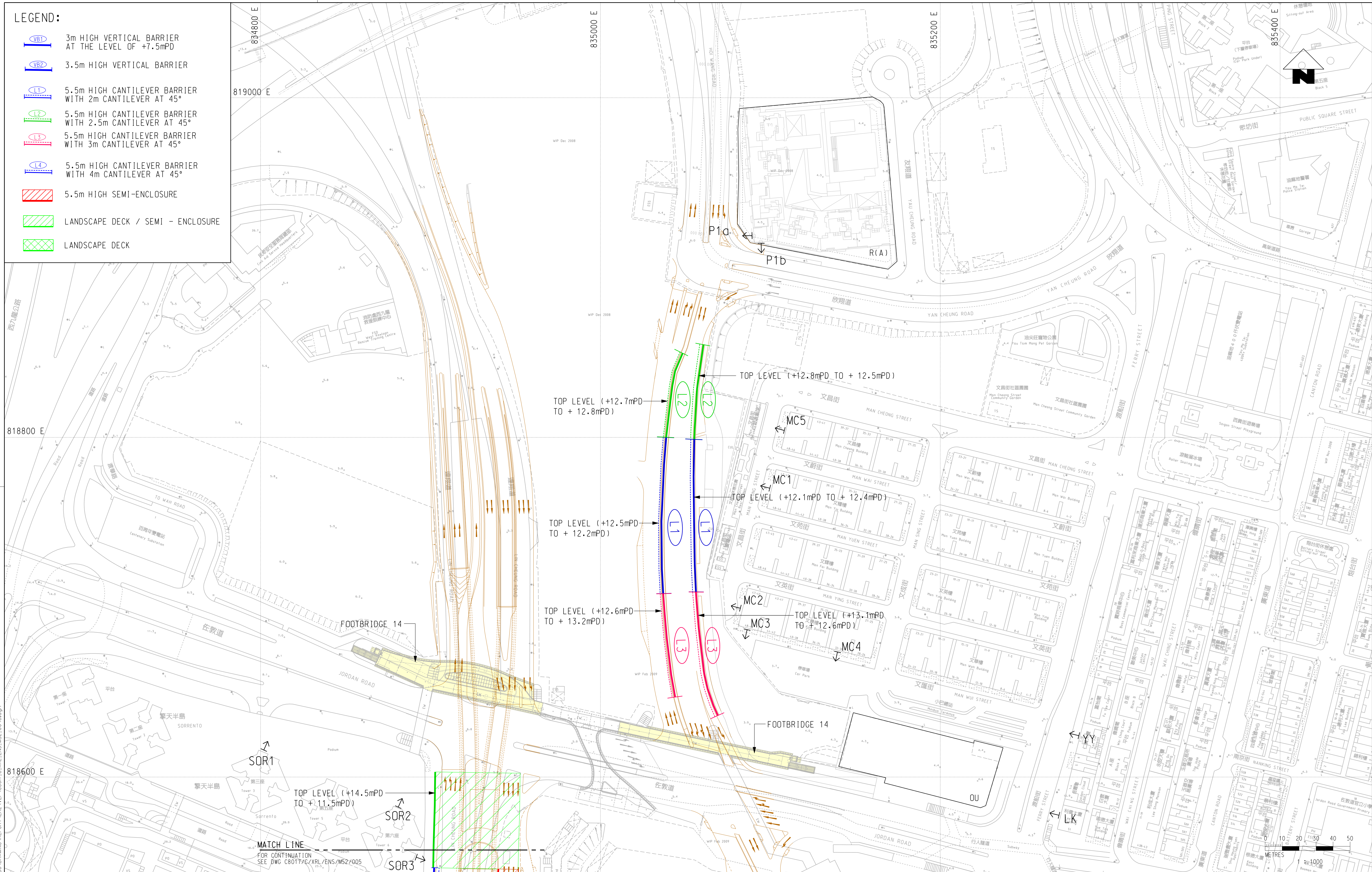
- ◆ Vertical section of Austin Road West

C8017/C/XRL/ENS/M50/011 (Rev A)

- ◆ Vertical section of Lin Cheung Road (North)

LEGEND:

-  3m HIGH VERTICAL BARRIER AT THE LEVEL OF +7.5mPD
-  3.5m HIGH VERTICAL BARRIER
-  5.5m HIGH CANTILEVER BARRIER WITH 2m CANTILEVER AT 45°
-  5.5m HIGH CANTILEVER BARRIER WITH 2.5m CANTILEVER AT 45°
-  5.5m HIGH CANTILEVER BARRIER WITH 3m CANTILEVER AT 45°
-  5.5m HIGH CANTILEVER BARRIER WITH 4m CANTILEVER AT 45°
-  5.5m HIGH SEMI-ENCLOSURE
-  LANDSCAPE DECK / SEMI-ENCLOSURE
-  LANDSCAPE DECK












P:\Project\804786\CAD\ADMIN\PLTDRIVER\WINDM5.A3 COL016.dwg
 PLOT DATE: 2012-09-11 15:31:54
 MODELNAME: P:\Project\804786\DRAWING\REPORT\ENV\REP\001_C.XRL.ENS.M52.004C.dgn
 PLOT NAME:

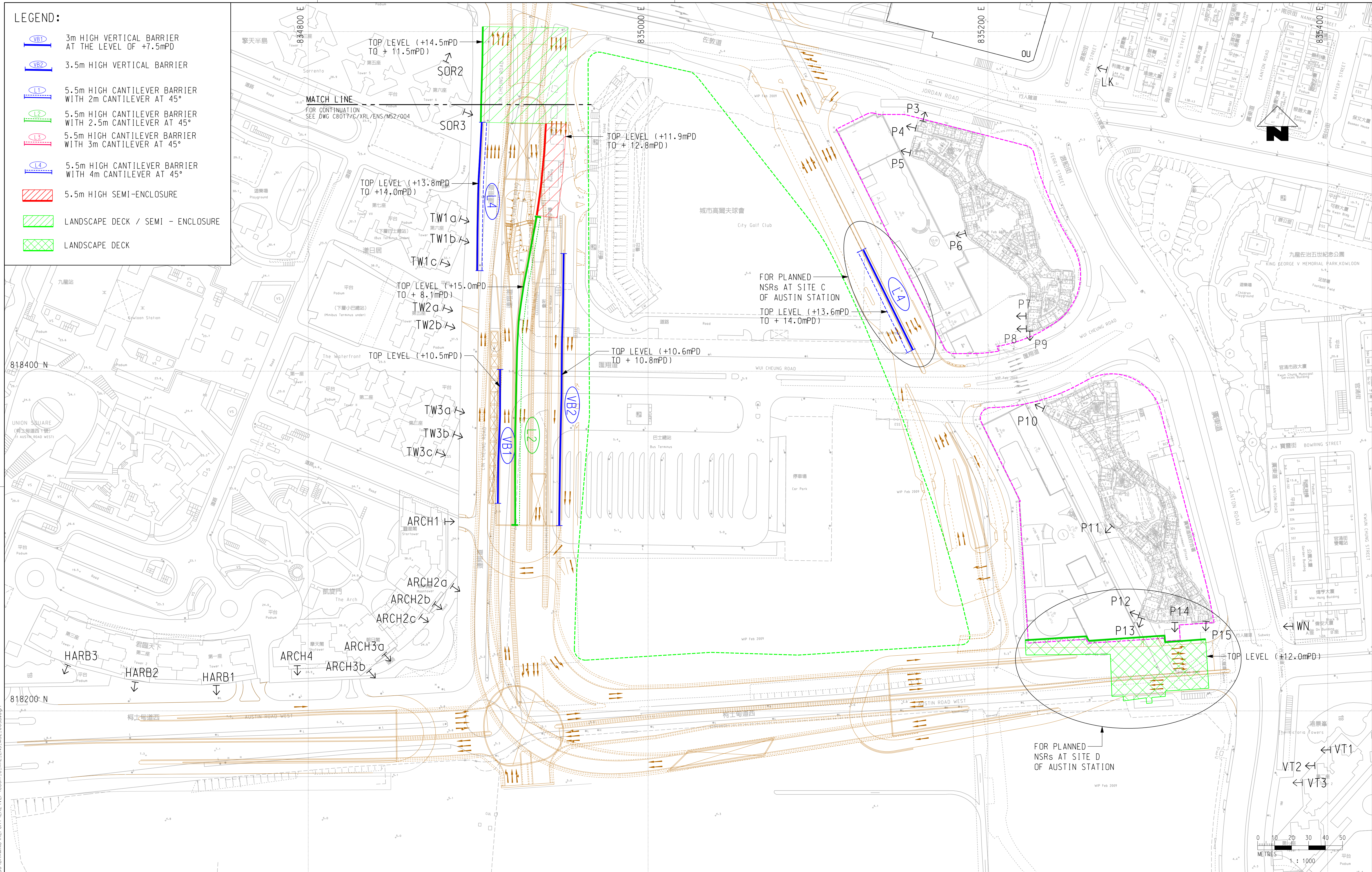
REV	DESCRIPTION	BY	DATE	APPROVED	REV	DESCRIPTION	BY	DATE	APPROVED
C	REVIEW REPORT - FIRST ISSUE		16MAR12						
B	REVIEW REPORT - FIRST ISSUE		26SEP11						
A	REVIEW REPORT - FIRST ISSUE								

DRAWN	ZRH
DESIGNED	SPM
CHECKED	DCFL
APPROVED	JLAM
DATE	16/MAR/2012
ORIGINATOR	
AECOM	
CADD REF. C8017_C.XRL.ENS.M52.004C.dgn	

TITLE		C8017 ENVIRONMENTAL REVIEW LOCATIONS OF PROPOSED NOISE SCREENING STRUCTURES	
SCALE	FIGURE NO.	REV.	
1 : 1000 (A1)	C8017/C/XRL/ENS/M52/004	C	

LEGEND:

-  3m HIGH VERTICAL BARRIER AT THE LEVEL OF +7.5mPD
-  3.5m HIGH VERTICAL BARRIER
-  5.5m HIGH CANTILEVER BARRIER WITH 2m CANTILEVER AT 45°
-  5.5m HIGH CANTILEVER BARRIER WITH 2.5m CANTILEVER AT 45°
-  5.5m HIGH CANTILEVER BARRIER WITH 3m CANTILEVER AT 45°
-  5.5m HIGH CANTILEVER BARRIER WITH 4m CANTILEVER AT 45°
-  5.5m HIGH SEMI-ENCLOSURE
-  LANDSCAPE DECK / SEMI-ENCLOSURE
-  LANDSCAPE DECK



P:\Project\1604786_CAD_admin\1604786\DRIVER\WINDMILLS\3 COL\016.dwg
 PLOT DATE: 2012-09-21 15:38:25
 MODEL NAME: 1604786\DRAWING\REPORT\REP_VEP\001.L.C.ARL.ENS.M52_005B.dgn
 FILE NAME:

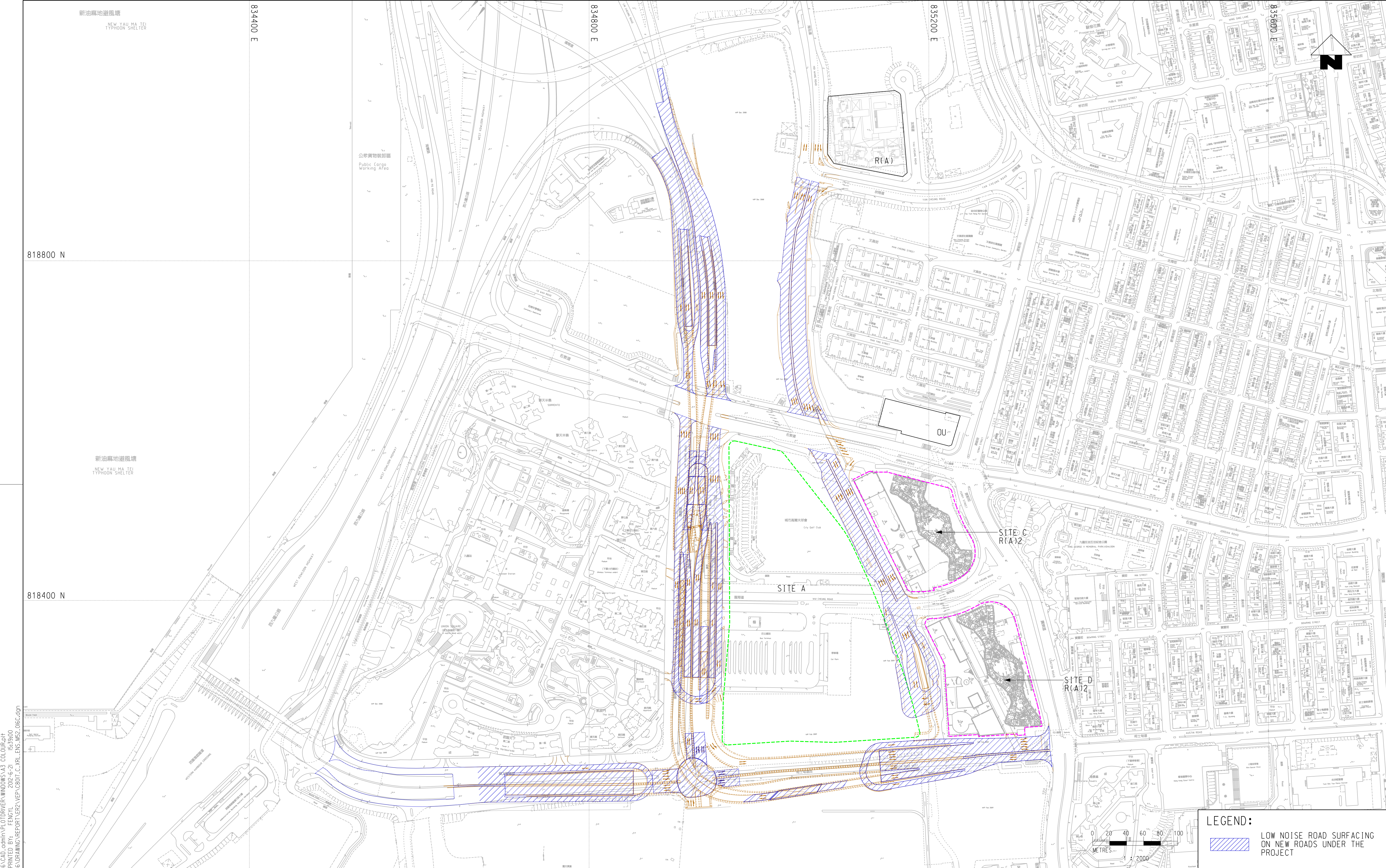
REV	DESCRIPTION	BY	DATE	APPROVED
B	REVIEW REPORT - FIRST ISSUE		26SEP11	
A	REVIEW REPORT - FIRST ISSUE			

DRAWN	ZRH
DESIGNED	SPM
CHECKED	DCFL
APPROVED	JLAM
DATE	26/SEP/2011


MTR
 ROAD WORKS AT WEST KOWLOON

AECOM
 ORIGINATOR
 CADD REF. C8017_C_XRL_ENS_M52_005B.dgn


TITLE		C8017 ENVIRONMENTAL REVIEW LOCATIONS OF PROPOSED NOISE SCREENING STRUCTURES	
SCALE	FIGURE NO.	REV.	
1 : 1000 (A1)	C8017/C/XRL/ENS/M52/005	B	



P:\Project\15604786_CAD_admin\PLTDRIVER\WINDOW\13_C01_016.dgn
 PRINTED BY: FENGCH
 15/9/2010
 P:\Project\15604786_DRAWING\REPORT\REP_V02011_C_A1L_ENG_M52_016.dgn

REV	DESCRIPTION	BY	DATE	APPROVED
B	REVIEW REPORT - FIRST ISSUE		26SEP11	
A	REVIEW REPORT - FIRST ISSUE			

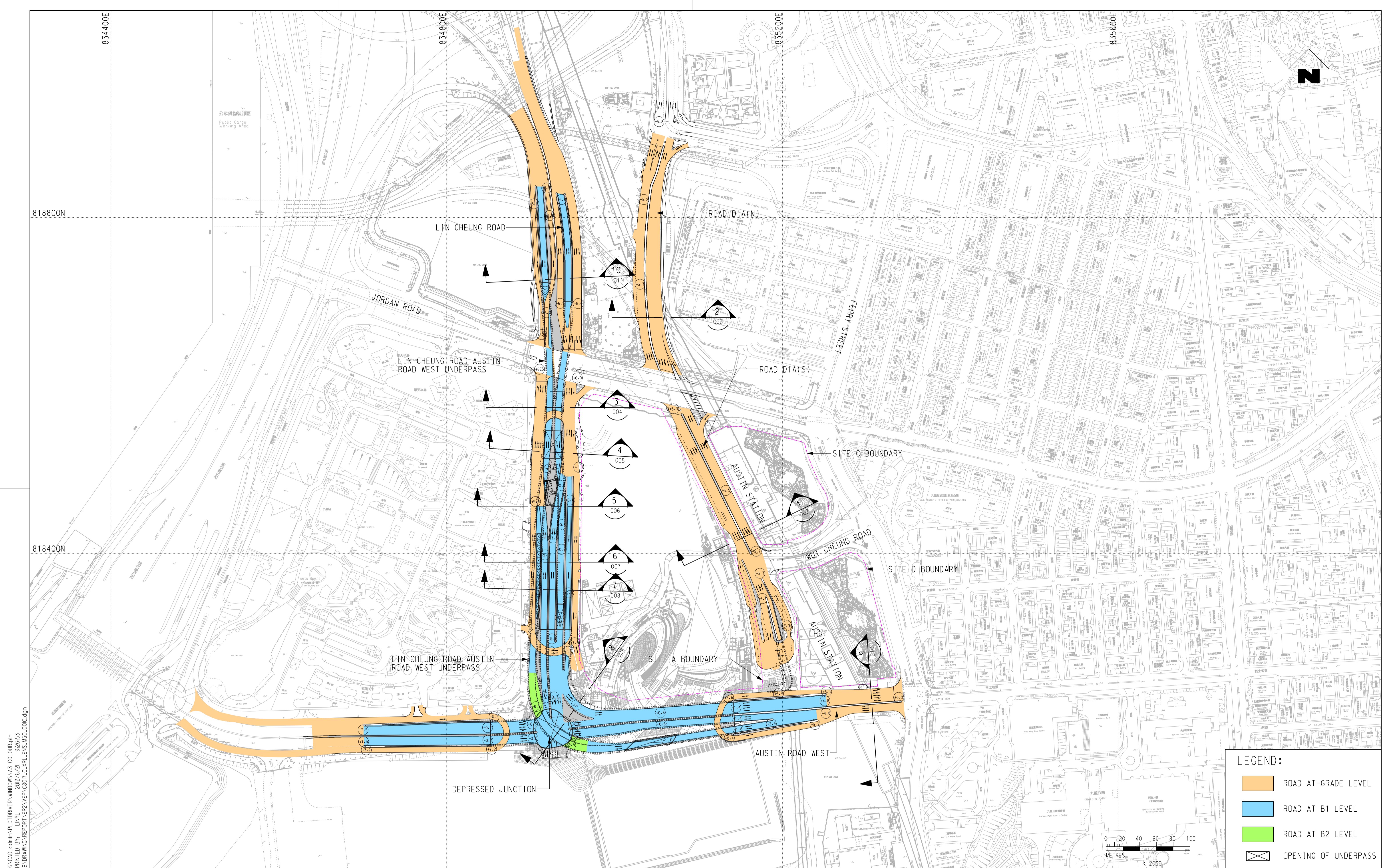
DRAWN	ZRH
DESIGNED	SPM
CHECKED	DCFL
APPROVED	JLAM
DATE	26/SEP/2011


ROAD WORKS AT WEST KOWLOON

 ORIGINATOR
 CADD REF. C8017_C_XRL_ENG_M52_016C.dgn

TITLE	C8017 ENVIRONMENTAL REVIEW EXTENT OF LOW NOISE ROAD SURFACE ON NEW ROADS UNDER THE PROJECT		
SCALE	1 : 2000 (A1)	FIGURE NO.	C8017/C/XRL/ENS/M52/016
REV.			B

DO NOT SCALE DRAWINGS. ALL DIMENSIONS SHALL BE VERIFIED ON SITE.
 (C) MTR CORPORATION LIMITED 2008. COPYRIGHT IN RESPECT OF THIS DRAWING / DOCUMENT IS OWNED BY THE MTR CORPORATION LIMITED OF HONG KONG. NO REPRODUCTION OF THE DRAWING / DOCUMENT OR ANY PART BY WHATEVER MEANS IS PERMITTED WITHOUT THE PRIOR WRITTEN CONSENT OF THE MTR CORPORATION LIMITED.



P:\Project\604786_CAD_admin\PLTDRIVER\WINDOW\13_C01_001.dgn
 PLOT DATE: 2012/9/21 15:26:53
 MODELNAME: P:\Project\604786_DRAWING\REPORT\REP_VEP_C001_C.XRL_ENG_M50_001C.dgn

REV	DESCRIPTION	BY	DATE	APPROVED
B	REVIEW REPORT - FIRST ISSUE		26SEP11	
A		JM	02AUG10	KK

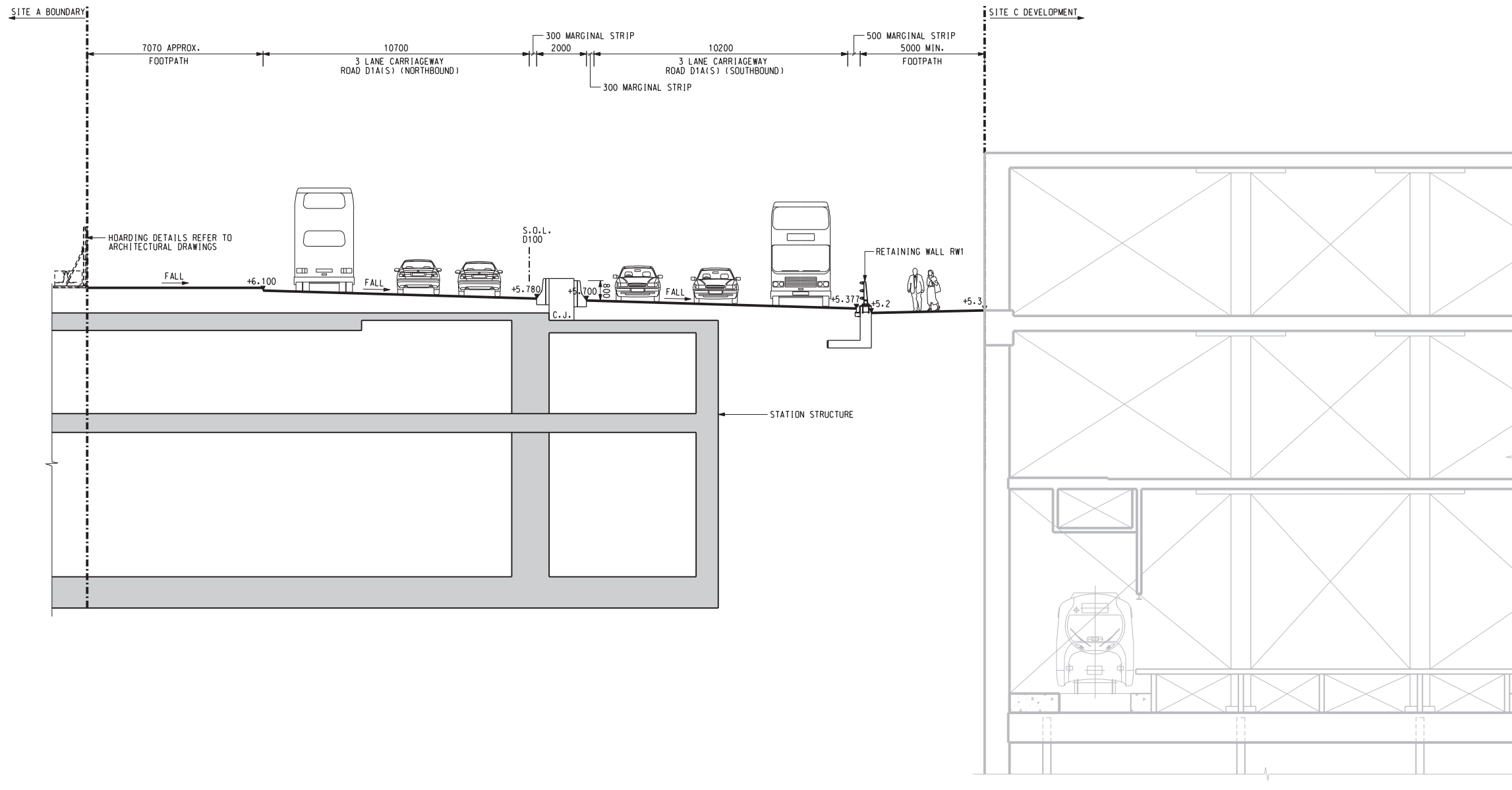
DRAWN	LJ
DESIGNED	SPM
CHECKED	DCFL
APPROVED	JLAM
DATE	26/SEP/2011
DO NOT SCALE DRAWINGS. ALL DIMENSIONS SHALL BE VERIFIED ON SITE. (C) MTR CORPORATION LIMITED 2008 COPYRIGHT IN RESPECT OF THIS DRAWING / DOCUMENT IS OWNED BY THE MTR CORPORATION LIMITED OF HONG KONG. NO REPRODUCTION OF THE DRAWING / DOCUMENT OR ANY PART BY WHATEVER MEANS IS PERMITTED WITHOUT THE PRIOR WRITTEN CONSENT OF THE MTR CORPORATION LIMITED.	

ROAD WORKS AT WEST KOWLOON

ORIGINATOR

CADD REF. C8017_C_XRL_ENG_M50_001C.dgn

TITLE	C8017 ENVIRONMENTAL REVIEW PROPOSED ROAD WORKS AT WEST KOWLOON	
SCALE	1 : 2000 (A1)	FIGURE NO. C8017/C/XRL/ENS/M50/001
REV.	B	





SECTION 1
SCALE 1 : 200 M50/001



PLOT DIR: F:\ust\m50\mtr\p\p\ot\driver\windows\13\m50\001.dgn
 MODEL NAME: M50_001.dwg
 FILE NAME: P:\projects\m50\001\001.dwg

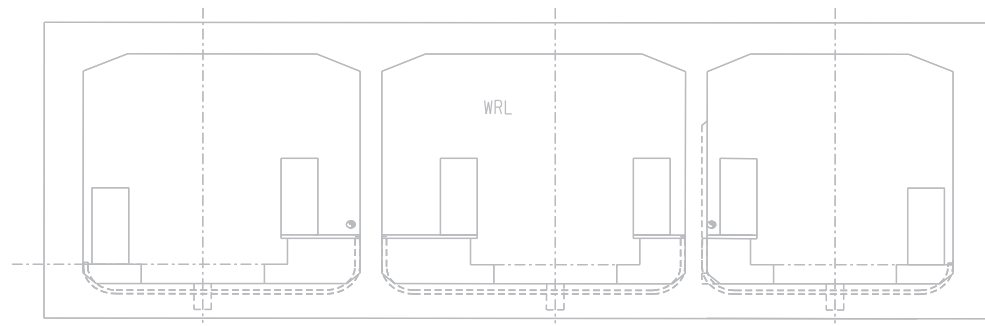
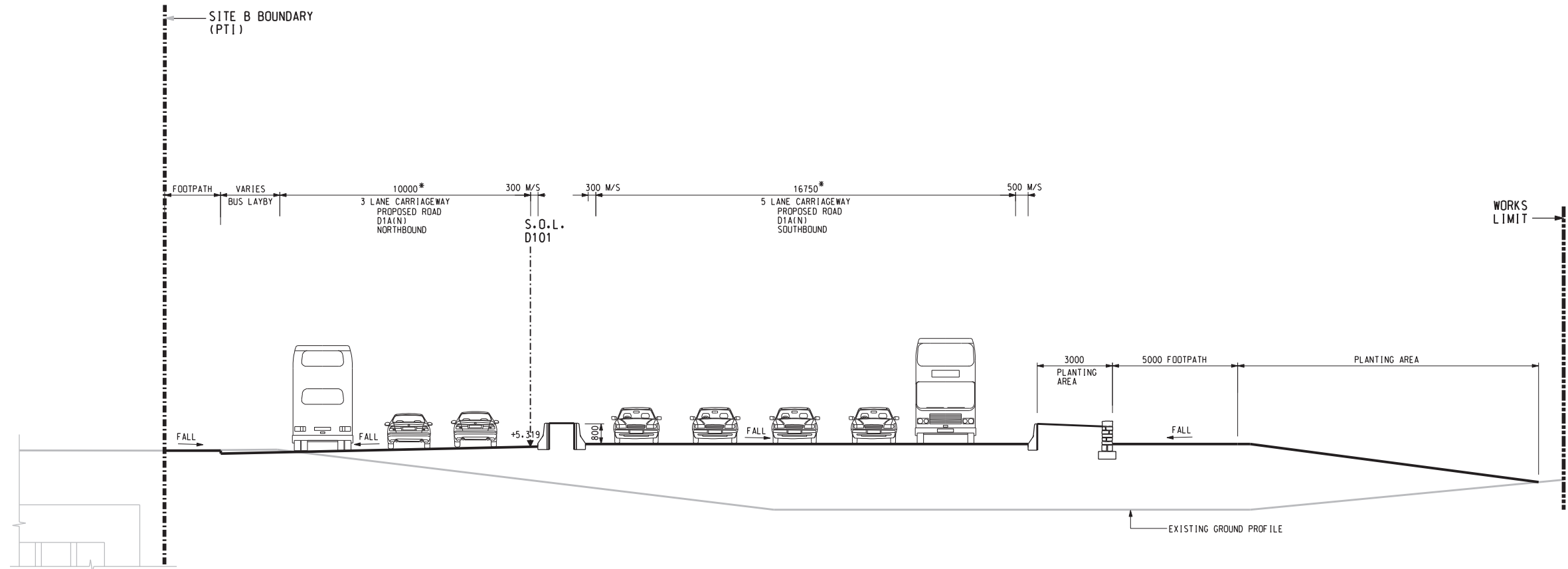
REV	DESCRIPTION	BY	DATE	APPROVED	REV	DESCRIPTION	BY	DATE	APPROVED
A	REVIEW REPORT - FIRST ISSUE	-	-	-					

DRAWN	DXL
DESIGNED	SPM
CHECKED	DCFL
APPROVED	JLAM
DATE	21/FEB/2011

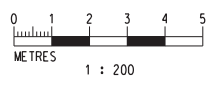

ROAD WORKS AT WEST KOWLOON

 ORIGINATOR
 CADD REF. C8017_C_XRL_ENS_M50_002A.dgn

TITLE		C8017 ENVIRONMENTAL REVIEW SECTIONS OF PROPOSED ROAD WORKS	
SCALE	FIGURE NO.	REV.	
1 : 200 (A3)	C8017/C/XRL/ENS/M50/002	A	

NOTES:
 * DENOTE THE NORMAL CARRIAGEWAY WIDTH



SECTION 2
 SCALE 1 : 200 M50/001

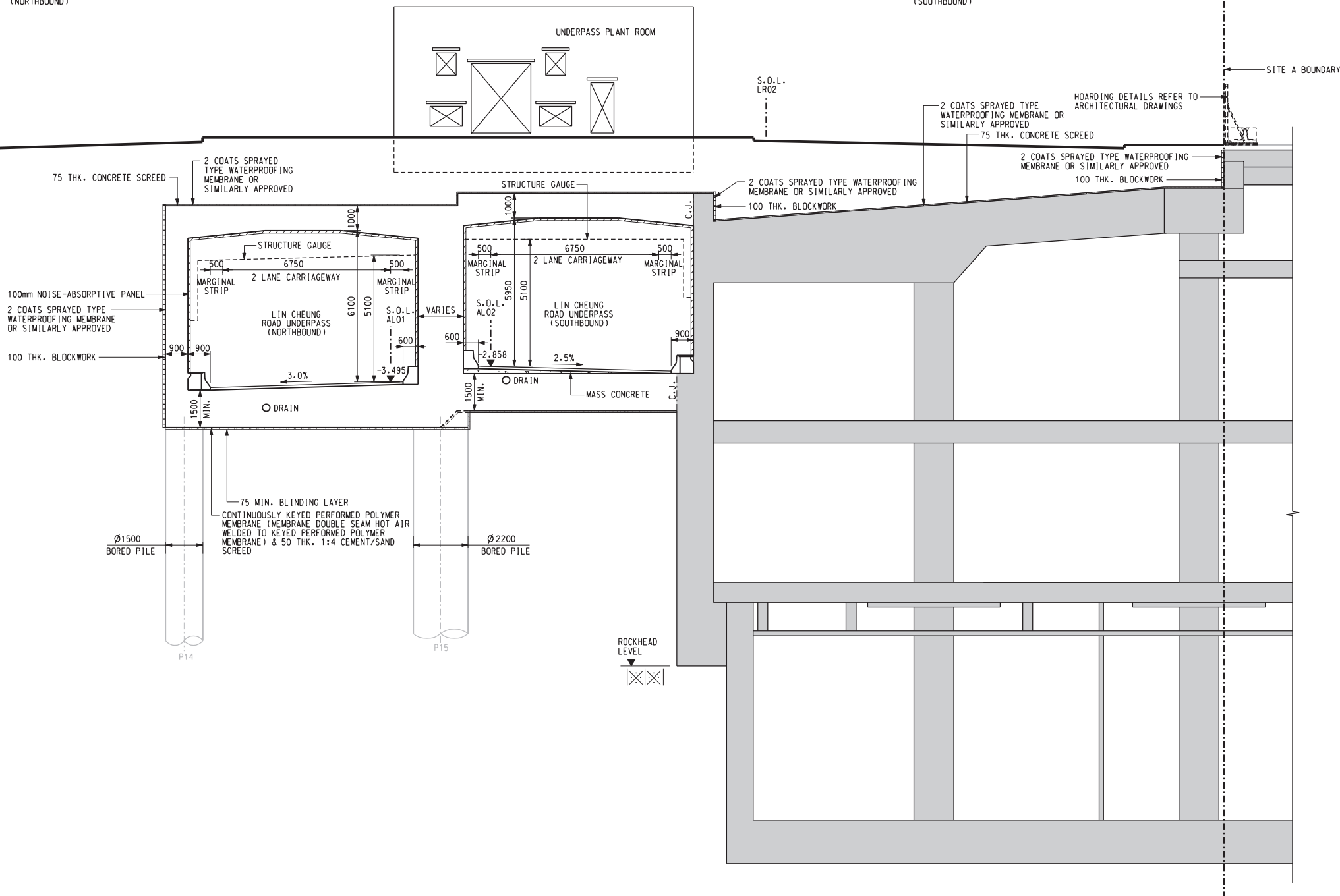


PLOT DIR: R:\ustinet\MTR\PROJECTS\DRIVER\WINDOWS\13 MONO.plt
 MODELNAME: 2011-2-16 9:57:41
 FILENAME: P:\projects\G047186\DRIVING\REPORT\VER\G007-CARL.ENS_M50_003A.dgn

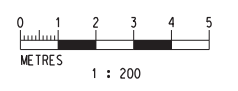
				DRAWN DXL DESIGNED SPM CHECKED DCFL APPROVED JLAM DATE 16/FEB/2011 <small>DO NOT SCALE DRAWINGS. ALL DIMENSIONS SHALL BE VERIFIED ON SITE. © MTR CORPORATION LIMITED 2008. COPYRIGHT IN RESPECT OF THIS DRAWING / DOCUMENT IS OWNED BY THE MTR CORPORATION LIMITED OF HONG KONG. NO REPRODUCTION OF THE DRAWING / DOCUMENT OR ANY PART BY WHATEVER MEANS IS PERMITTED WITHOUT THE PRIOR WRITTEN CONSENT OF THE MTR CORPORATION LIMITED.</small>						TITLE C8017 ENVIRONMENTAL REVIEW SECTIONS OF PROPOSED ROAD WORKS	
				ORIGINATOR 				SCALE 1 : 200 (A3)			
A REVIEW REPORT - FIRST ISSUE				CADD REF. C8017_C_XRL_ENS_M50_003A.dgn				FIGURE NO. C8017/C/XRL/ENS/M50/003			
REV	DESCRIPTION	BY	DATE	APPROVED	REV	DESCRIPTION	BY	DATE	APPROVED	REV.	A

mPD
20
18
16
14
12
10
8
6
4
2
0
-2
-4
-6
-8
-10
-12
-14
-16
-18
-20
-22
-24

EXISTING BUILDING 7944 APPROX. FOOTPATH 13500 4 LANE CARRIAGEWAY LIN CHEUNG ROAD (NORTHBOUND) 22155 APPROX. 14000 MIN. 4 LANE CARRIAGEWAY LIN CHEUNG ROAD (SOUTHBOUND) 4000 APPROX. FOOTPATH



SECTION 3
SCALE 1 : 200 M50/001



PLOT DRW: R:\ustmshet\MTR\PI\DRIVER\WINDOWS\13 MOND.dwg
MODELNAME: 2011-2-16 9:51:33
FILENAME: P:\projects\G04716\DRMING\REPORT\ENR\G007-CARL.ENS_M50_004A.dgn

REV	DESCRIPTION	BY	DATE	APPROVED	REV	DESCRIPTION	BY	DATE	APPROVED
A	REVIEW REPORT - FIRST ISSUE	-	-	-					

DRAWN	DXL
DESIGNED	SPM
CHECKED	DCFL
APPROVED	JLAM
DATE	16/FEB/2011

DO NOT SCALE DRAWINGS. ALL DIMENSIONS SHALL BE VERIFIED ON SITE.
© MTR CORPORATION LIMITED 2008. COPYRIGHT IN RESPECT OF THIS DRAWING / DOCUMENT IS OWNED BY THE MTR CORPORATION LIMITED OF HONG KONG. NO REPRODUCTION OF THE DRAWING / DOCUMENT OR ANY PART BY WHATEVER MEANS IS PERMITTED WITHOUT THE PRIOR WRITTEN CONSENT OF THE MTR CORPORATION LIMITED.

MTR

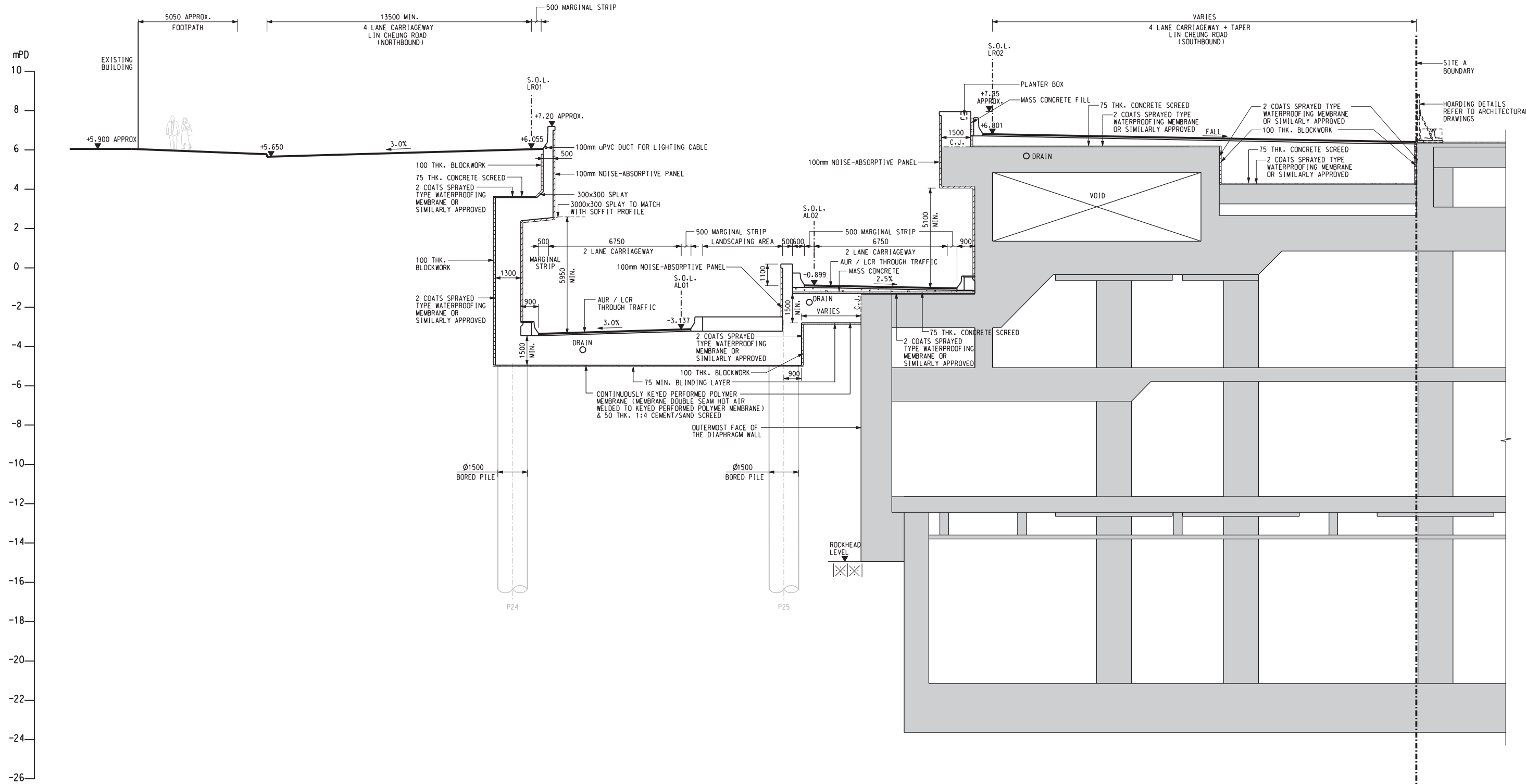
ROAD WORKS AT WEST KOWLOON

ORIGINATOR

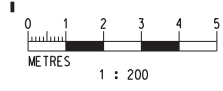
AECOM

CADD REF. C8017_C_XRL_ENS_M50_004A.dgn

TITLE	C8017 ENVIRONMENTAL REVIEW SECTIONS OF PROPOSED ROAD WORKS	
SCALE	1 : 200 (A3)	FIGURE NO. C8017/C/XRL/ENS/M50/004
REV.	A	



SECTION 4
SCALE 1 : 200 M50/001



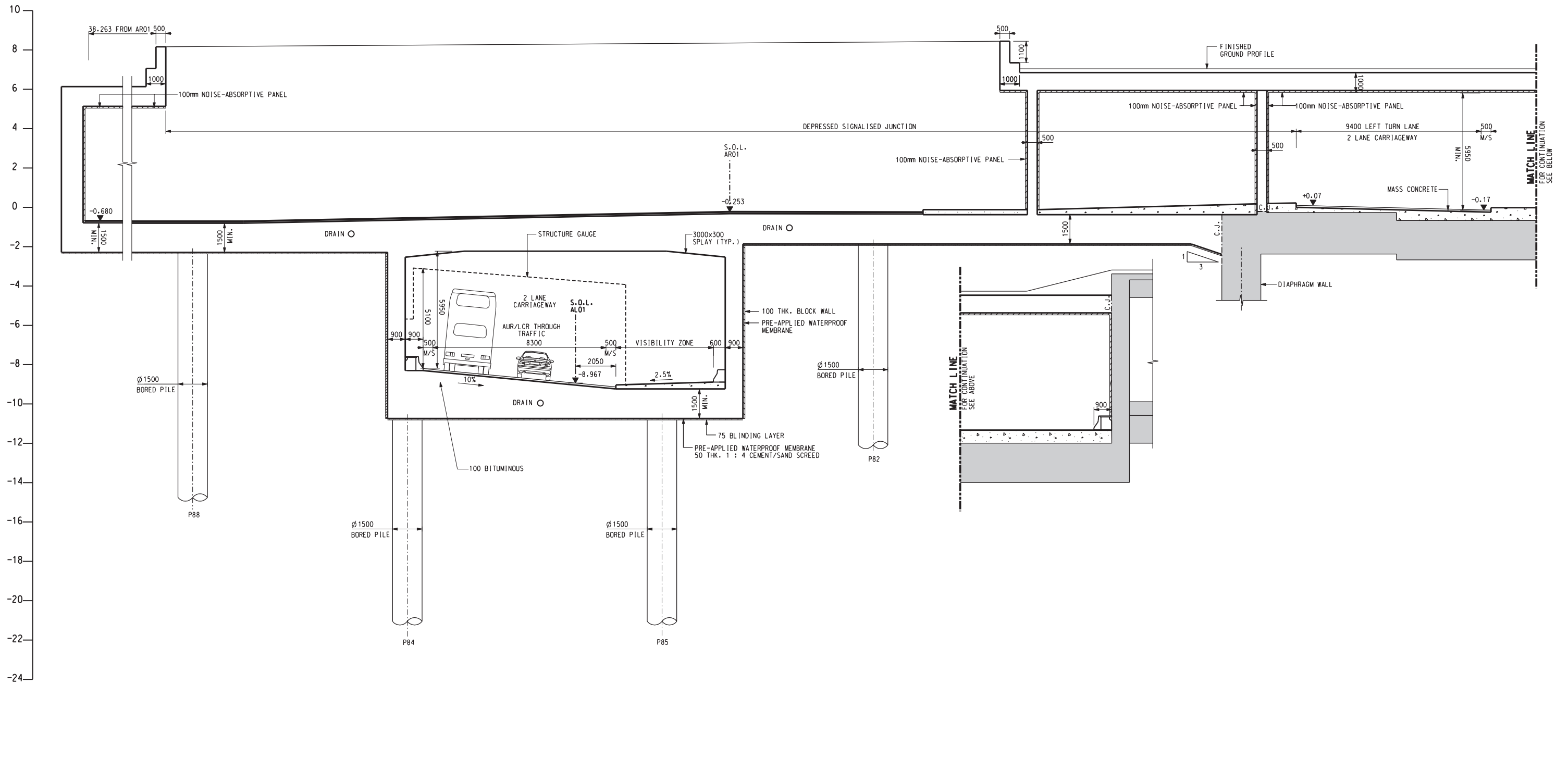
PLOT DIR: R:\ustmsh\mtr\p1\otdriven\windows\13 MONO.plt
 MODELNAME: C:\Program Files\Autodesk\AutoCAD 2011\acad.ctb
 FILENAME: P:\projects\040716\DRM\REPORT\ENV\001_C.XRL.ENS_M50_005A.dgn

REV	DESCRIPTION	BY	DATE	APPROVED
A	REVIEW REPORT - FIRST ISSUE	-	-	-

DRAWN	DXL
DESIGNED	SPM
CHECKED	DCFL
APPROVED	JLAM
DATE	16/FEB/2011

ROAD WORKS AT WEST KOWLOON
 ORIGINATOR
 CADD REF. C8017_C.XRL.ENS_M50_005A.dgn

TITLE C8017 ENVIRONMENTAL REVIEW SECTIONS OF PROPOSED ROAD WORKS	
SCALE 1 : 200 (A3)	FIGURE NO. C8017/C/XRL/ENS/M50/005
REV.	A



SECTION 8
SCALE 1 : 200 M50/001



PLOT DIR: R:\ust\mst\mtr\p\0\DRIVER\WINDOWS\13 MONO.ept
 MODELNAME: 2011-2-16 10:04:00
 FILENAME: P:\projects\091706\DRM\ING\REPORT\VER\CG007_C\XRL\ENS_M50_009A.dgn

REV	DESCRIPTION	BY	DATE	APPROVED	REV	DESCRIPTION	BY	DATE	APPROVED
A	REVIEW REPORT - FIRST ISSUE								

DRAWN	DXL
DESIGNED	SPM
CHECKED	DCFL
APPROVED	JLAM
DATE	16/FEB/2011

DO NOT SCALE DRAWINGS. ALL DIMENSIONS SHALL BE VERIFIED ON SITE.
 © MTR CORPORATION LIMITED 2008. COPYRIGHT IN RESPECT OF THIS DRAWING / DOCUMENT IS OWNED BY THE MTR CORPORATION LIMITED OF HONG KONG. NO REPRODUCTION OF THE DRAWING / DOCUMENT OR ANY PART BY WHATEVER MEANS IS PERMITTED WITHOUT THE PRIOR WRITTEN CONSENT OF THE MTR CORPORATION LIMITED.

MTR

ROAD WORKS AT WEST KOWLOON

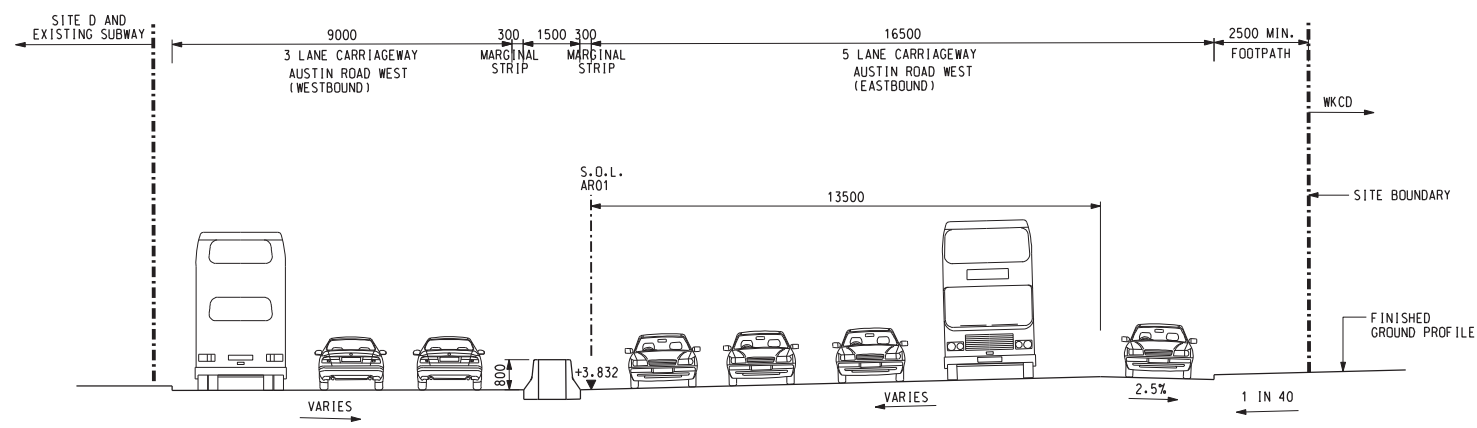
AECOM

ORIGINATOR

CADD REF. C8017_C_XRL_ENS_M50_009A.dgn

TITLE C8017 ENVIRONMENTAL REVIEW SECTIONS OF PROPOSED ROAD WORKS	
SCALE 1 : 200 (A3)	FIGURE NO. C8017/C/XRL/ENS/M50/009
REV. A	

PLOT DIR: F:\usr\mtr\p1\otriver\windows\13 MOND.ept
 MODELNAME: 2011-2-26 18:09:34
 FILENAME: F:\project\8047186\DRAWING\REPORT\VER\CG007-CARL.ENS_M50_010A.dgn



SECTION 9
 SCALE 1 : 200 M50/001



REV	DESCRIPTION	BY	DATE	APPROVED	REV	DESCRIPTION	BY	DATE	APPROVED
A	REVIEW REPORT - FIRST ISSUE								

DRAWN	DXL
DESIGNED	SPM
CHECKED	DCFL
APPROVED	JLAM
DATE	16/FEB/2011

MTR

ROAD WORKS AT WEST KOWLOON

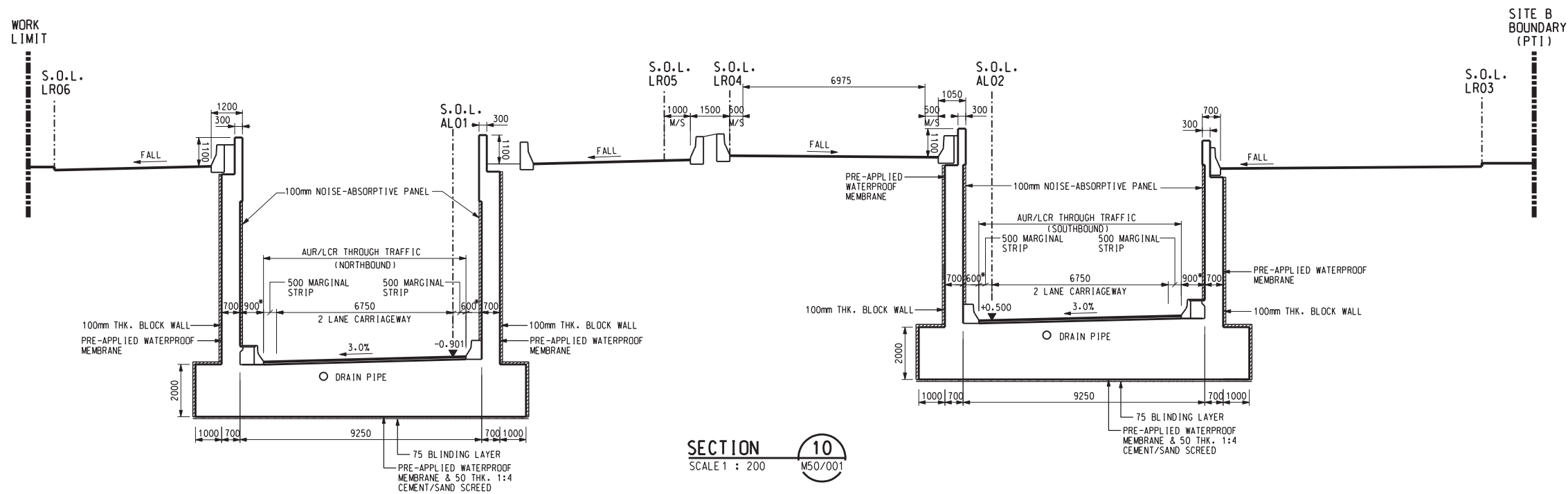
AECOM

ORIGINATOR

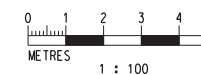
CADD REF. C8017_C_XRL_ENS_M50_010A.dgn

TITLE		C8017 ENVIRONMENTAL REVIEW SECTIONS OF PROPOSED ROAD WORKS	
SCALE	FIGURE NO.	REV.	
1 : 200 (A3)	C8017/C/XRL/ENS/M50/010	A	

NOTES:
* DIMENSION MEASURED FROM KERB FACE TO STRUCTURAL WALL FACE



SECTION 10
SCALE 1 : 200



PLOT DIR: R:\ust\mst\mtr\p\ot\DRIVER\WINDOWS\13 MONO.dif
MODELNAME: 2011-2-16 10:02:02
FILENAME: P:\projects\G047186\DRAWING\REPORT\VER\G007-CARL.ENS_M50_011.dgn

REV	DESCRIPTION	BY	DATE	APPROVED	REV	DESCRIPTION	BY	DATE	APPROVED
A	REVIEW REPORT - FIRST ISSUE								

DRAWN	DXL
DESIGNED	SPM
CHECKED	DCFL
APPROVED	JLAM
DATE	16/FEB/2011

MTR

ROAD WORKS AT WEST KOWLOON

AECOM

ORIGINATOR

CADD REF. C8017_C_XRL_ENS_M50_011.dgn

TITLE C8017 ENVIRONMENTAL REVIEW SECTIONS OF PROPOSED ROAD WORKS	
SCALE 1 : 200 (A3)	FIGURE NO. C8017/C/XRL/ENS/M50/011
REV. A	