

## EVENT/ACTION PLAN FOR AIR QUALITY EXCEEDANCE

|   | ACTION  |  |  |   |
|---|---|--|--|---|
| EVENT   | ET Leader   | IC(E)  | ER   | Contractor  |
| <b>ACTION LEVEL</b>                               |   |  |  |   |
| 1. Exceedance for one sample                      | <ol style="list-style-type: none"> <li>1. Identify source, investigate the causes of exceedance and propose remedial measures</li> <li>2. Inform ER, IC(E) and Contractor</li> <li>3. Repeat measurement to confirm finding</li> <li>4. Increase monitoring frequency to daily</li> </ol>   | <ol style="list-style-type: none"> <li>1. Check monitoring data submitted by the ET</li> <li>2. Check contractor's working method</li> </ol>   | <ol style="list-style-type: none"> <li>1. Notify Contractor</li> </ol>   | <ol style="list-style-type: none"> <li>1. Rectify any unacceptable practise</li> <li>2. Amend working methods if appropriate</li> </ol>   |
| 2. Exceedance for two or more consecutive samples | <ol style="list-style-type: none"> <li>1. Identify source, investigate the causes of exceedance and propose remedial measures</li> <li>2. Inform IC(E) and Contractor</li> <li>3. Repeat measurements to confirm finding</li> <li>4. Increase monitoring frequency to daily</li> <li>5. Discuss with IC(E) and Contractor on remedial actions</li> <li>6. If exceedance continues, arrange meeting with IC(E) and ER.</li> <li>7. If exceedance stops, cease additional monitoring</li> </ol> | <ol style="list-style-type: none"> <li>1. Check monitoring data submitted by the ET</li> <li>2. Check the Contractor's working method</li> <li>3. Discuss with ET and Contractor on possible remedial measures</li> <li>4. Advise the ER on the effectiveness of the proposed remedial measures</li> <li>5. Supervise implementation of remedial measures</li> </ol> | <ol style="list-style-type: none"> <li>1. Confirm receipt of notification of failure in writing</li> <li>2. Notify the Contractor</li> <li>3. Ensure remedial measures properly implemented</li> </ol> | <ol style="list-style-type: none"> <li>1. Submit proposals for remedial actions to IC(E) within 3 working days of notification</li> <li>2. Implement the agreed proposals</li> <li>3. Amend proposal if appropriate</li> </ol>  |
| <b>LIMIT LEVEL</b>                                |   |  |  |   |
| 1. Exceedance for one sample                      | <ol style="list-style-type: none"> <li>1. Identify source, investigate the causes of exceedance and propose remedial measures</li> <li>2. Inform ER, Contractor and EPD</li> <li>3. Repeat measurement to confirm finding</li> <li>4. Increase monitoring frequency to daily</li> <li>5. Assess the effectiveness of Contractor's remedial actions and keep IC(E), EPD and ER informed of the results</li> </ol>  | <ol style="list-style-type: none"> <li>1. Check monitoring data submitted by the ET</li> <li>2. Check Contractor's working method</li> <li>3. Discuss with ET and Contractor on possible remedial measures</li> <li>4. Advise the ER on the effectiveness of the proposed remedial measures</li> <li>5. Supervise implementation of remedial measures</li> </ol>     | <ol style="list-style-type: none"> <li>1. Confirm receipt of notification of failure in writing</li> <li>2. Notify the Contractor</li> <li>3. Ensure remedial measures properly implemented</li> </ol> | <ol style="list-style-type: none"> <li>1. Take immediate action to avoid further exceedance</li> <li>2. Submit proposals for remedial actions to IC(E) within 3 working days of notification</li> <li>3. Implement the agreed proposals</li> <li>4. Amend proposal if appropriate.</li> </ol> |

## EVENT/ACTION PLAN FOR AIR QUALITY EXCEEDANCE

| EVENT   | ACTION  |  |  | Contractor   |
|---|---|--|--|--|
|   | ET Leader   | IC(E)  | ER   |  |
| 2. Exceedance for two or more consecutive samples | <ol style="list-style-type: none"> <li>1. Identify source, investigate the causes of exceedance and propose remedial measures</li> <li>2. Notify IC(E), ER, EPD and Contractor</li> <li>3. Repeat measurement to confirm finding</li> <li>4. Increase monitoring frequency to daily</li> <li>5. Carry out analysis of contractor's working procedures to determine possible mitigation to be implemented</li> <li>6. Arrange meeting with IC(E) and ER to discuss the remedial actions to be taken</li> <li>7. Assess effectiveness of Contractor's remedial actions and keep IC(E), EPD and ER informed of the results</li> <li>8. If exceedance stops, cease additional monitoring</li> </ol> | <ol style="list-style-type: none"> <li>1. Discuss amongst ER, ET and Contractor on the potential remedial actions</li> <li>2. Review Contractor's remedial actions whenever necessary to assure their effectiveness and advise the ER accordingly</li> <li>3. Supervise the implementation of remedial measures</li> </ol> | <ol style="list-style-type: none"> <li>1. Confirm receipt of notification of failure in writing</li> <li>2. Notify Contractor</li> <li>3. In consultation with the IC(E), agree with the Contractor on the remedial measures to be implemented</li> <li>4. Ensure remedial measures are properly implemented</li> <li>5. If exceedances continues, consider what portion of the work is responsible and instruct the Contractor to stop that portion of work until the exceedance is abated</li> </ol> | <ol style="list-style-type: none"> <li>1. Take immediate action to avoid further exceedances</li> <li>2. Submit proposals for remedial actions to IC(E) within 3 working days of notification</li> <li>3. Implement the agreed proposals</li> <li>4. Resubmit proposals if problem still not under control</li> <li>5. Stop the relevant activity of works as determined by the ER until the exceedance is abated</li> </ol> |

## EVENT/ACTION PLAN FOR NOISE EXCEEDANCE

| EVENT        | ACTION  |  |   |  |
|--------------|---|--|---|--|
|              | ET Leader   | IC(E)  | ER  | Contractor   |
| Action Level | <ol style="list-style-type: none"> <li>1. Notify the IC(E) and the Contractor.</li> <li>2. Carry out investigation.</li> <li>3. Report the results of investigation to the IC(E) and the Contractor.</li> <li>4. Discuss with the Contractor and formulate remedial measures.</li> <li>5. Increase monitoring frequency to check mitigation effectiveness</li> </ol>  | <ol style="list-style-type: none"> <li>1. Review the analysed results submitted by the ET.</li> <li>2. Review the proposed remedial measures by the Contractor and advise the ER accordingly.</li> <li>3. Supervise the implementation of remedial measures.</li> </ol>  | <ol style="list-style-type: none"> <li>1. Confirm receipt of notification of failure in writing.</li> <li>2. Notify the Contractor.</li> <li>3. Require the Contractor to propose remedial measures for the analysed noise problem.</li> <li>4. Ensure remedial measures are properly implemented.</li> </ol>   | <ol style="list-style-type: none"> <li>1. Submit noise mitigation proposals to IC(E).</li> <li>2. Implement noise mitigation proposals.</li> </ol>   |
| Limit Level  | <ol style="list-style-type: none"> <li>1. Notify the IC(E), the ER, the EPD and the Contractor.</li> <li>2. Identify source.</li> <li>3. Repeat measurement to confirm findings.</li> <li>4. Increase monitoring frequency.</li> <li>5. Carry out analysis of Contractor's working procedures to determine possible mitigation to be implemented.</li> <li>6. Inform the IC(E), the ER and the EPD the causes &amp; actions taken for the exceedances.</li> <li>7. Assess effectiveness of Contractor's remedial actions and keep the IC(E), the EPD and the ER informed of the results</li> <li>8. If exceedance due to the construction works stops, cease additional monitoring</li> </ol> | <ol style="list-style-type: none"> <li>1. Discuss amongst the ER, the ET Leader and the Contractor on the potential remedial actions.</li> <li>2. Review the Contractor's remedial actions whenever necessary to assure their effectiveness and advise the ER accordingly.</li> <li>3. Supervise the implementation of remedial measures.</li> </ol> | <ol style="list-style-type: none"> <li>1. Confirm receipt of notification of failure in writing.</li> <li>2. Notify the Contractor.</li> <li>3. Require the Contractor to propose remedial measures for the analysed noise problem.</li> <li>4. Ensure remedial measures are properly implemented.</li> <li>5. If exceedances continue, consider what activity of the work is responsible and instruct the Contractor to stop that activity of work until the exceedances is abated.</li> </ol> | <ol style="list-style-type: none"> <li>1. Take immediate action to avoid further exceedance</li> <li>2. Submit proposals for remedial actions to IC(E) within 3 working days of notification.</li> <li>3. Implement the agreed proposals.</li> <li>4. Resubmit proposals if problem still not under control.</li> <li>5. Stop the relevant activity of works as determined by the ER until the exceedances is abated.</li> </ol> |

## EVENT AND ACTION PLAN FOR WATER QUALITY EXCEEDANCE

### ACTION

| Event  | ET Leader  | Contractor   | ER  | IEC   |
|--|--|--|---|---|
| <p>Action level being exceeded by one sampling day</p> | <ol style="list-style-type: none"> <li>1. Identify source(s) of impact;</li> <li>2. Repeat in-situ measurement to confirm findings;</li> <li>3. Notify Contractor in writing within 24 hours of identification of the exceedance</li> <li>4. Check monitoring data, all plant, equipment and Contractor's working methods;</li> <li>5. Carry out investigation</li> <li>6. Report the results of investigation to the Contractor within 3 working days of identification of exceedance and advise contractor if exceedance is due to contractor's construction works</li> <li>7. Discuss mitigation measures with Contractor if exceedance is due to the construction works within 4 working days</li> <li>8. Repeat measurement on next day of exceedance if exceedance is due to the construction works</li> </ol> | <ol style="list-style-type: none"> <li>1. Notify the ER and IEC in writing within 24 hours of identification of exceedance</li> <li>2. Rectify unacceptable practice;</li> <li>3. Check all plant and equipment;</li> <li>4. Submit investigation report to IEC and ER within 3 working days of the identification of an exceedance</li> <li>5. Consider changes of working method if exceedance is due to the construction works</li> <li>6. Discuss with ET, IEC and ER and propose mitigation measures to IEC and ER if exceedance is due to the construction works within 4 working days of identification of an exceedance</li> <li>7. Implement the agreed mitigation measures within reasonable time scale</li> </ol> | <ol style="list-style-type: none"> <li>1. Notify EPD and other relevant governmental agencies in writing within 24 hours of the identification of the exceedance</li> <li>2. Discuss with IEC, ET and Contractor on the proposed mitigation measures;</li> <li>3. Require contractor to propose remedial measures for the analysed problem if related to the construction works</li> <li>4. Ensure remedial measures are properly implemented</li> <li>5. Assess the effectiveness of the mitigation measure</li> </ol> | <ol style="list-style-type: none"> <li>1. Check monitoring data submitted by ET</li> <li>2. Confirm ET assessment if exceedance is due / not due to the works</li> <li>3. Discuss with ET, ER and Contractor on the mitigation measures</li> <li>4. Review contractor's mitigation measures whenever necessary to ensure their effectiveness and advise the ER accordingly</li> <li>5. Supervise the implementation of mitigation measures</li> </ol> |

## EVENT AND ACTION PLAN FOR WATER QUALITY

### ACTION

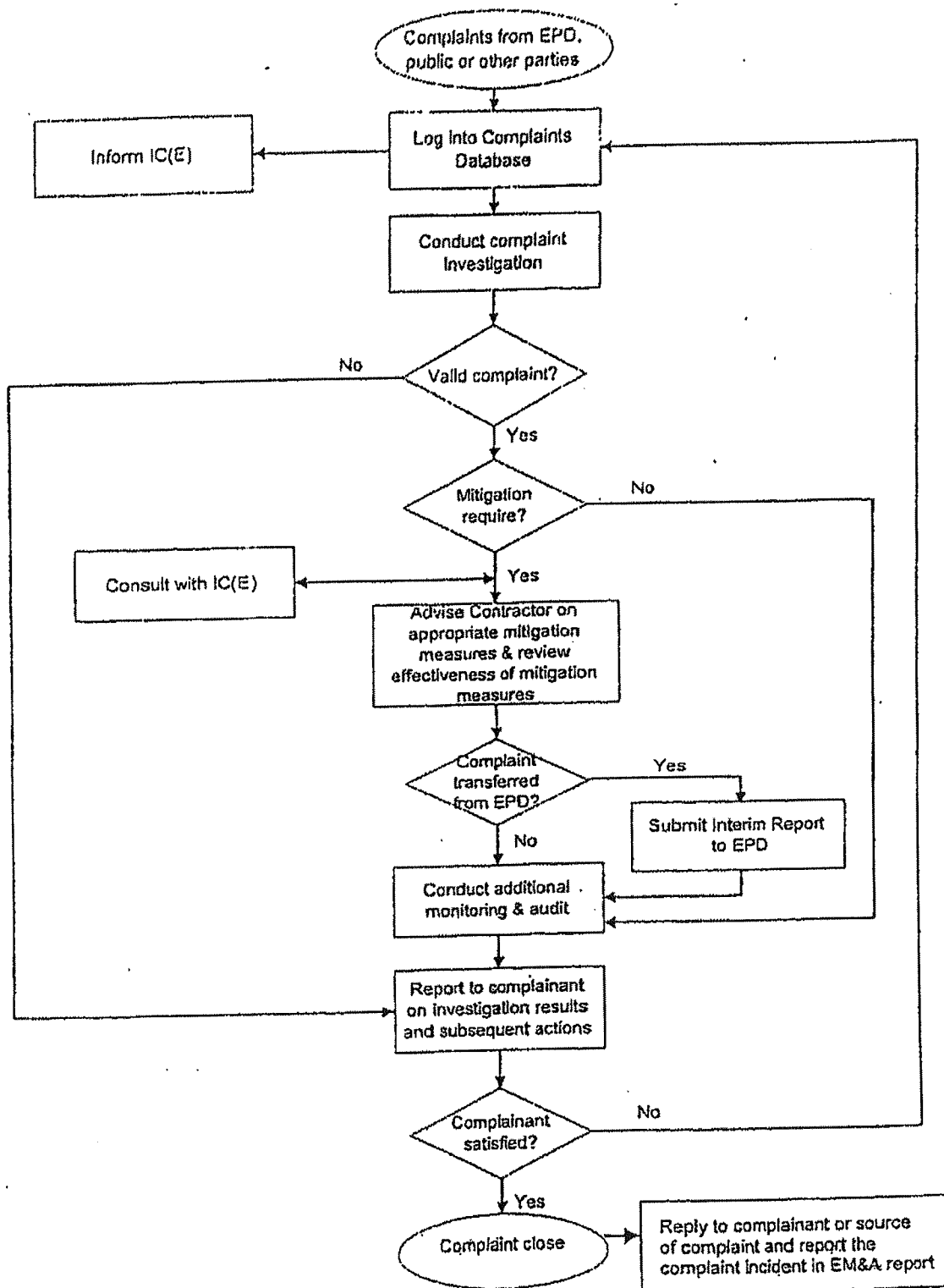
| Event   | ET Leader  | Contractor   | ER  | IEC   |
|---|--|--|---|---|
| <p>Action level being exceeded by more than one consecutive sampling days</p> | <ol style="list-style-type: none"> <li>1. Identify source(s) of impact;</li> <li>2. Repeat in-situ measurement to confirm findings</li> <li>3. Notify Contractor in writing within 24 hours of identification</li> <li>4. Check monitoring data, all plant, equipment and Contractor's working methods;</li> <li>5. Carry out investigation</li> <li>6. Report the results of investigation to the Contractor within 3 working days of identification of exceedance and advise contractor if exceedance is due to contractor's construction works</li> <li>7. Discuss mitigation measures with IEC and Contractor within 4 working of identification of an exceedance</li> <li>8. Ensure mitigation measures are implemented;</li> <li>9. Prepare to increase the monitoring frequency to daily;</li> <li>10. Repeat measurement on next day of exceedance.</li> </ol> | <ol style="list-style-type: none"> <li>1. Notify IEC and ER in writing within 24 hours of identification of exceedance</li> <li>2. Rectify unacceptable practice;</li> <li>3. Check all plant and equipment;</li> <li>4. Consider changes of working methods;</li> <li>5. Submit the results of the investigation to IEC and ER within 3 working days of the identification of an exceedance</li> <li>6. Discuss with ET, IEC and ER and propose mitigation measures to IEC and ER within 4 working days of identification of an exceedance</li> <li>7. Implement the agreed mitigation measures within reasonable time scale</li> </ol> | <ol style="list-style-type: none"> <li>1. Notify EPD and other relevant governmental agencies in writing within 24 hours of the identification of the exceedance</li> <li>2. Discuss with IEC, ET and Contractor on the proposed mitigation measures;</li> <li>3. Require contractor to propose remedial measures for the analysed problem if related to the construction works</li> <li>4. Ensure remedial measures are properly implemented</li> <li>5. Assess the effectiveness of the mitigation measure</li> </ol> | <ol style="list-style-type: none"> <li>1. Check monitoring data submitted by ET</li> <li>2. Confirm ET assessment if exceedance is due / not due to the works</li> <li>3. Discuss with ET, ER and Contractor on the mitigation measures.</li> <li>4. Review contractor's mitigation measures whenever necessary to ensure their effectiveness and advise the ER accordingly</li> <li>5. Assess the effectiveness of the implemented mitigation measures.</li> </ol> |

## EVENT AND ACTION PLAN FOR WATER QUALITY EXCEEDANCE

| Event  | ACTION   |   |  | IEC  |
|--|--|---|--|--|
|  | ET Leader  | Contractor  | ER   |  |
| Limit level being exceeded by one sampling day | <ol style="list-style-type: none"> <li>1. Repeat in-situ measurement to confirm findings;</li> <li>2. Identify source(s) of impact;</li> <li>3. Notify Contractor in writing within 24 hours of identification of the exceedance</li> <li>4. Check monitoring data, all plant, equipment and Contractor's working methods;</li> <li>5. Carry out investigation</li> <li>6. Report the results of investigation to the Contractor within 3 working days of identification of exceedance and advise contractor if exceedance is due to contractor's construction works</li> <li>7. Discuss mitigation measures with IEC, ER and Contractor within 4 working of identification of an exceedance</li> <li>8. Ensure mitigation measures are implemented;</li> <li>9. Increase the monitoring frequency to daily until no exceedance of Limit Level.</li> </ol> | <ol style="list-style-type: none"> <li>1. Notify IEC and ER in writing; within 24 hours of the identification of the exceedance</li> <li>2. Rectify unacceptable practice;</li> <li>3. Check all plant and equipment;</li> <li>4. Consider changes of working methods;</li> <li>5. Submit the results of the investigation to IEC and ER within 3 working days of the identification of an exceedance</li> <li>6. Discuss with ET, IEC and ER and propose mitigation measures to IEC and ER within 4 working days of the identification of an exceedance</li> <li>7. Implement the agreed mitigation measures within reasonable time scale</li> </ol> | <ol style="list-style-type: none"> <li>1. Notify EPD and other relevant governmental agencies in writing within 24 hours of identification of exceedance</li> <li>2. Discuss with IEC, ET and Contractor on the proposed mitigation measures;</li> <li>3. Request Contractor to critically review the working methods;</li> <li>4. Ensure remedial measures are properly implemented</li> <li>5. Assess the effectiveness of the implemented mitigation measures.</li> </ol> | <ol style="list-style-type: none"> <li>1. Check monitoring data submitted by ET</li> <li>2. Confirm ET assessment if exceedance is due / not due to the works</li> <li>3. Discuss with ET, ER and Contractor on the mitigation measures.</li> <li>4. Review proposals on mitigation measures submitted by Contractor and advise the ER accordingly.</li> <li>5. Assess the effectiveness of the implemented mitigation measures</li> </ol> |

## EVENT AND ACTION PLAN FOR WATER QUALITY EXCEEDANCE

| Event   | ACTION   |  |   |   |
|---|--|--|---|---|
|   | ET Leader  | Contractor   | ER  | IEC   |
| Limit Level being exceeded by more than one consecutive sampling days | <ol style="list-style-type: none"> <li>1. Repeat in-situ measurement to confirm findings;</li> <li>2. Identify source(s) of impact;</li> <li>3. Notify Contractor in writing within 24 hours of identification of the exceedance</li> <li>4. Check monitoring data, all plant, equipment and Contractor's working methods;</li> <li>5. Carry out investigation</li> <li>6. Report the results of investigation to the Contractor within 3 working days of identification of exceedance and advise contractor if exceedance is due to contractor's construction works</li> <li>7. Discuss mitigation measures with IEC, ER and Contractor;</li> <li>8. Ensure mitigation measures are implemented;</li> <li>9. Increase the monitoring frequency to daily until no exceedance of Limit Level for two consecutive days.</li> </ol> | <ol style="list-style-type: none"> <li>1. Notify ER and IEC in writing within 24 hours of the identification of the exceedance and</li> <li>2. Rectify unacceptable practice;</li> <li>3. Check all plant and equipment;</li> <li>4. Consider changes of working methods;</li> <li>8. Submit the results of the investigation to IEC and ER within 3 working days of the identification of an exceedance</li> <li>5. Discuss with ET, IEC and ER and propose mitigation measures to IEC and ER within 4 working days;</li> <li>6. Implement the agreed mitigation measures within reasonable time scale</li> <li>7. As directed by the Engineer, to slow down or to stop all or part of the marine work or construction activities.</li> </ol> | <ol style="list-style-type: none"> <li>1. Notify EPD and other relevant governmental agencies in writing within 24 hours of identification of exceedance</li> <li>2. Discuss with IEC, ET and Contractor on the proposed mitigation measures;</li> <li>3. Request Contractor to critically review the working methods;</li> <li>6. Ensure remedial measures are properly implemented</li> <li>4. Assess the effectiveness of the implemented mitigation measures;</li> <li>5. Consider and instruct, if necessary, the Contractor to slow down or to stop all or part of the marine work until no exceedance of Limit Level.</li> </ol> | <ol style="list-style-type: none"> <li>1. Check monitoring data submitted by ET</li> <li>2. Confirm ET assessment if exceedance is due / not due to the works</li> <li>3. Discuss with ER, ET and Contractor on the mitigation measures.</li> <li>4. Review proposals on mitigation measures submitted by Contractor and advise the ER accordingly.</li> <li>5. Assess the effectiveness of the implemented mitigation measures.</li> </ol> |



Contract No. CV/2013/06  
 Handling of Surplus Public Fill (2014-2016)

Figure 4  
 Environmental Complaint Handling Procedure –  
 Tuen Mun Area 38 Fill Bank



東業德勤測試顧問有限公司  
 ETS-TESTCONSULT LIMITED