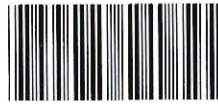


Your ref -
Our ref 214487/(HY/2011/09)/M45/160/B 03067

ARUP

By Mail



B03067

The Environmental Impact Assessment
Ordinance Register Office
Environmental Protection Department
27/F., Southorn Centre
130 Hennessy Road
Wan Chai
Hong Kong

Level 5, Festival Walk
80 Tat Chee Avenue
Kowloon Tong, Kowloon
Hong Kong

t +852 3767 5800
f +852 3767 5922

www.arup.com

For the attention of Ms HO Yuen Han, Marlene

24 September 2013

Dear Madam

**HyD Contract No. HY/2011/09
Hong Kong-Zhuhai-Macao Bridge
Hong Kong Link Road – Section between HKSAR Boundary and Scenic Hill
Submission under Environmental Permit (EP-352/2009/C - Condition 2.9)
Updated Regular Marine Travel Routes Plan**

The locations for dumping of dredged sediments Type 1 Open Sea Disposal, Type 1 Open Sea Disposal (Dedicated Site) and Type 2 – Confined Marine Disposal have been revised as stipulated in the granted DASO dumping permits. As a result, Section 4.2 and Figure 7 of the foregoing Plan had been amended accordingly.

On behalf of HyD/HZMB Project Management Office (the Permit Holder) of the captioned Environmental Permits (EP), I submit herewith three hard copies and one electronic copy of the updated regular marine travel routes plan as per Condition 2.9 of EP-352/2009/C for your review.

I confirm that this submission package has been certified by Environmental Team Leader and verified by Independent Environmental Checker.

Yours faithfully

Michael Chan
CRE / Supervising Officer's Representative

cc	HyD/HZMBHKPMO	- Mr Y K Lam	w/e – CD only
	EPD	- Ms Connie Wong	w/e – One hard copy
	AFCD	- Mr C P Lam	w/e – One hard copy
	ENPO	- Mr Y H Hui	w/e – One hard copy and one electronic copy
	IEC	- Mr Antony Wong	w/o – By fax only (3465 2899)
	Arup	- Mr Eric Chan	w/e – CD only

Response required : No, thanks
Date required : -
Attachments : Yes

MC/LHC/KY/et

#02524

Ref.: HYDHZMBEEM00_0_1049L.13

11 July 2013

ARUP
Level 5, Festival Walk
80 Tat Chee Avenue
Kowloon Tong, Kowloon

By Fax (2268 3970) and By Post

Attention: Mr. Michael Chan / Mr. Colin Meadows

Dear Sirs,

**Re: Agreement No. CE 48/2011 (EP)
Environmental Project Office for the
HZMB Hong Kong Link Road, HZMB Hong Kong Boundary Crossing Facilities,
and Tuen Mun-Chek Lap Kok Link – Investigation**

**Contract No. HY/2011/09 HZMB Hong Kong Link Road –
Section between HKSAR Boundary and Scenic Hill
Revised Regular Marine Travel Routes Plan (EP Condition 2.9)**

Reference is made to the revised Regular Marine Travel Routes Plan (Ref. No.: HKLR9-DCV-ENV-00125-G) certified by the ET Leader (ET's ref.: MA12014/Corres/Out/it130625-v1 dated 25 June 2013) provided to us via email on 28 June 2013.

We are pleased to inform you that we have no adverse comments on the Regular Marine Travel Routes Plan (Ref. No.: HKLR9-DCV-ENV-00125-G) to be submitted under Condition 2.9 of EP-352/2009/A. We write to verify the captioned submission in accordance with Conditions 1.9 and 2.9 of EP-352/2009/A.

Thank you very much for your kind attention. Please do not hesitate to contact the undersigned or the ENPO Leader Mr. Y H Hui should you have any queries.

Yours sincerely,



Antony Wong
Independent Environmental Checker
Hong Kong Link Road

c.c.	HyD – Mr. Matthew Fung	(By Fax: 3188 6614)
	HyD – Mr. Y K Lam	(By Fax: 3188 6614)
	ARUP – Mr. Eric Chan	(By Fax: 2268 3970)
	Cinotech – Dr. H F Chan	(By Fax: 3107 1388)
	DCVJV – Mr. C S Chu	(By Fax: 3121 6688)

Internal: DY, YH, SL, ENPO Site

Q:\Projects\HYDHZMBEEM00\02_Proj_Mgt\02_Corr\HYDHZMBEEM00_0_1049L.13.doc

Our ref.: MA12014/Corres/Out/it130826-v1

Dragages-China Harbour-VSL Joint Venture
Site Office: Tung Chung Waterfront Road,
adjacent to Tung Chung New Development Pier,
New Territories, Hong Kong

By Mail
26 August 2013

Attn.: Mr. Chan Man (Project Director)

Dear Sir,

Contract No. HY/2011/09
Hong Kong-Zhuhai-Macao Bridge Hong Kong Link Road – Section between HKSAR
Boundary and Scenic Hill

- Regular Marine Travel Routes Plan

I refer to the Regular Marine Travel Routes Plan (Document Ref. No.: HKLR9 / DCV / ENV / 00125 / H) submitted via email dated 22 August 2013 for the captioned project.

I am pleased to inform you that I have no further comment on your proposal and agree to certify the above document in accordance with the EP (No. EP-352/2009/B), Condition 1.9 and 2.9.

Should you have any queries, please contact the undersigned at 2151 2088.

Yours faithfully,
Cinotech Consultants Ltd.



Dr. H.F. Chan
Environmental Team Leader

Contract No. HY/2011/09
Hong Kong-Zhuhai-Macao Bridge Hong Kong Link Road
– Section between HKSAR Boundary and Scenic Hill






Technical Document

Document Ref. No.:

H	K	L	R	9	/	D	C	V	/	E	N	V	/	0	0	1	2	5	/	H
Project Code					Issuer Code					Doc. Code					Sequential Number					Rev.

Document Title:

Regular Marine Travel Routes Plan

	PREPARED BY:	INTERNAL REVIEW:			INTERNAL APPROVAL
COMPANY	DCVJV	DCVJV	DCVJV	DCVJV	DCVJV
NAME	Ashley AU	CHU Chung Sing	MA Chi Sing	WK POON	CHAN Man
POSITION	Assistant Environmental Officer	Environmental Officer	QSE Manager	Deputy Project Director	Project Director
SIGNATURE					
DATE	26/8/2013	26.8.2013	26/8/2013	26.8.13	26.8.13



1.0 CONTENT

CONTENT

1.0 CONTENT

2.0 DOCUMENT STATUS

3.0 INTRODUCTION

- 3.1 Purpose
- 3.2 Contract Description

4.0 DESIGN OF REGULAR MARINE TRAVEL ROUTES

- 4.1 Types of Working Vessels
- 4.2 Regular Marine Travel Routes
- 4.3 Monitoring
- 4.4 Training

- Figure 1:** Existing Fairway Plan
- Figure 2:** Marine Route and Works Area for the Working Vessels
- Figure 3:** Marine Route for the Working Vessels during Inclement Weather
- Figure 4:** Marine Route for Fill Materials
- Figure 5:** Marine Route for Precast and Prefabricated Units Delivery
- Figure 6:** Marine Route for General Usage and Passenger
- Figure 7:** Marine Route for Disposal of Excavated Marine Sediment
- Figure 8:** Marine Route for Disposal of inert C&D waste, Slurry and Bentonite



2.0 DOCUMENT STATUS

2.1 Details of Revision:

Rev.	Rev. Date	Sections	Amendment Source and/or Details
A	26/10/2012	All	For the first submission to the SOR.
B	1/11/2012	All	Incorporated the IEC/ENPO's comments and amended text where necessary.
C	4/2/2013	Section 4.3 & 4.4	Incorporated the IEC/ENPO's comments and amended text where necessary.
D	21/2/2013	Section 4.3 Figure 4	Added a paragraph for routes records management. Amended a travel route to avoid dolphin hotspots above The Brothers.
E	25/4/2013	Section 4.2, Figure 2, 7 & 8	Incorporated comments from the SOR Response Ref No. 214487/(HY/2011/09)/M45/160/B1221.
F	16/5/2013	Section 4.2, 4.3, Figure 2, 6 & 7	Incorporated comments from the IEC Response via email on 7 May 2013.
G	20/6/2013	Section 4.5, Figure 2 & 7	Incorporated comments from the IEC Response via email on 4 June 2013.
H	20/8/2013	Section 4.2, Figure 7	Updated the allocation of sediment disposal facilities to suit the requirements listed in the newly granted DASO permit.



3.0 INTRODUCTION

3.1 Purpose

The Regular Marine Travel Routes Plan (the Plan) has been prepared in accordance with Condition 2.9 of the Environmental Permit (EP-352/2009/A) for the Highways Department Contract namely Contract No. HY/2011/09 – Hong Kong-Zhuhai-Macao Bridge Hong Kong Link Road – Section between HKSAR Boundary and Scenic Hill.

The Plan describes the routes taken by the contractor's vessels moving to and from work areas, to minimize risk of collision with the Chinese White Dolphins (CWD) during the construction period. It also presents appropriate controlling measures on the marine traffic to minimize impacts on the CWD.

3.2 Contract Description

Highways Department commissioned the contract "Hong Kong Link Road- Section between HKSAR Boundary and Scenic Hill" (hereinafter called the Contract) with Contract No: HY/2011/09. Dragages -China Harbour-VSL Joint Venture (DCVJV) is awarded to undertake this Contract. The scope of the contract works comprises the following major items:

- (i) a dual 3-lane carriageway in the form of viaduct from the HKSAR boundary (connecting with the HZMB Main Bridge) to the Scenic Hill (connecting with the tunnel under separate Contract No. HY/2011/03), of approximately 9.4km in length with a hard shoulder for each bound of carriageway and a utilities trough on the outer edge of each bound of viaducts;
- (ii) a grade-separated turnaround facility located near San Shek Wan, composed of slip roads in the form of viaduct with single-lane carriageway bifurcated from the HKLR mainline with an elevated junction above the mainline;
- (iii) provision of ancillary facilities including, but not limited to, meteorological enhancement measures including the provisioning of anemometers and modification of the wind profiler station at hillside of Sha Lo Wan, provisioning of a compensatory marine radar, and provisioning of security systems; and
- (iv) associated civil, structural, geotechnical, marine, environmental protection, landscaping, drainage and highways electrical and mechanical (E&M) works, street lightings, traffic aids and sign gantries, marine navigational aids, ship impact protection system, water mains and fire hydrants, lightning protection system, structural health monitoring and maintenance management system (SHM&MMS), supervisory control and data acquisition (SCADA) system, as well as operation and maintenance provisions of viaducts, provisioning of facilities for installation of traffic control and surveillance system (TCSS), provisioning of facilities for installation of telecommunication cables/equipments and re provisioning works of affected existing facilities/utilities.

Cinotech Consultants Limited was commissioned by the DCVJV to undertake the EM&A works for the contract and was appointed as the Environmental Team (ET).

4.0 DESIGN OF REGULAR MARINE TRAVEL ROUTES

4.1 Types of Working Vessels

In line with the works progress and serving for different purposes, the following vessels will be used during the construction stage.

- (i) Derrick Lighter – 2000 ton



Vessel Details:-

LOA: 42m

Beam: 15m

Airdraft: 38m

Vessel Particular for Platform Erection & Piling Work

- (ii) Flat Top Barge – 2000 ton



Vessel Details:-

LOA: 50m

Beam: 15.2m

Airdraft: Max. 15m

Vessel Particular for Platform Erection & Piling Work

(iii) Hopper Barge – 1,000m³



Details:-
LOA: 47 m
Beam: 8 m
Airdraft: Max. 12m
Vessel Particular for Piling Work

(iv) Floating Concrete Batching Plant – Hang Gong Tong 1602



Details:-
LOA: 76 m
Beam: 23 m
Airdraft: Max. 30m
Vessel Particular for Piling Work

(v) Jack-up



Vessel Particular for Marine GI Work

(vi) Tug Boat



Vessel Particular for Marine Work

(vii) Ro Ro Barge



Vessel Particular for Concrete Delivery



(viii) Connection Boat



Vessel Particular for General Usage and Passengers

4.2 **Regular Marine Travel Routes**

The existing fairways, including North West Siu A Chau, North Cheung Chau, Western Fairway, Ma Wan Fairway and Kap Shui Mun Fairway will be followed and selected as the major marine travel routes. The Existing Fairway Plan is shown in Figure 1. All the regular routes for working vessels would not go through the dolphin hotspot in Brothers Islands.

The working vessels, i.e. Derrick Lighter, Flat Top, Concrete Batching Plant, Jack-up and Tug Boat, will mainly stay and work along the Works Area at the airport channel and Western Areas. Besides, the South East Quay of the airport island will later develop into the loading and unloading area for construction materials such as ready mixed concrete. The marine routes and works area is illustrated in Figure 2.

During the inclement weather, the working vessels will go to Tuen Mun Typhoon Shelter, Yau Ma Tei Typhoon Shelter or Hei Ling Chau Typhoon Shelter. Please refer to Figure 3 for the marine route.

For disposal of inert materials, DCVJV will deliver the materials to the neighbouring sites of Contracts HY/2010/02 HKBCF Reclamation and HY/2011/03 HZMB Section from Scenic Hill to HKBCF for filling purposes, as the preferred disposal grounds as stipulated in the Contract. Upon the inert waste has been excavated, Hopper Barge will be used to deliver the inert waste. The Marine Route is illustrated in Figure 4.

The precast and prefabricated units will be delivered to Hong Kong from Prefabricated Yard in Xinhui, Guangdong. Please refer to Figure 5 for the detailed marine routing.

The inspection boats will be employed for general usage and passengers travelling to and from different works area, namely WA6, WA4 and WA7. The marine route is shown in Figure 6.

Upon the receipt of DASO permit and approval of Construction Waste Disposal Account, the excavated marine sediment, inert C&D waste, slurry and bentonite will be disposed of to the following locations:-

1. East Sha Chau Contaminated Mud Disposal Site - Pit IVc or Va and South of the Brothers Contaminated Mud Disposal Site - CMP 1 for dredged sediment Type 1 Open Sea Disposal;
2. East Sha Chau Contaminated Muds Disposal Site – CMP Va or South of the Brothers Contaminated Mud Disposal Site – CMP1 for dredged sediment Type 1 - Open Sea Disposal (Dedicated Site) & dredged sediment Type 2 - Confined Marine Disposal;
3. Tuen Mun Area 38 Fill Bank for inert construction waste, excluding slurry and bentonite; and
4. Tseung Kwan O Area 137 Fill Bank for slurry and bentonite.



Hopper barges and tug boats are involved for the disposal. The relevant marine routes are shown in Figure 7 and Figure 8.

4.3 **Monitoring**

DCVJV will maintain records of the use of the inspection boats under control. Such records will include, inter alia, details, times and purpose of journeys. The person using the works boats authorizing the journey will be required to sign his name and title against the entries. DCVJV will present current log books for inspection by the SOR when so required. The following monitoring measures will be adopted.

- i. Barges for transporting public fill or sediment will be equipped with Automatic Identification System (AIS) for track logging of vessels.
- ii. Tug boats and hopper barges will be installed GPS System for the purposes of recording the marine travel route during operation.
- iii. Derrick lighters, flat top barges, floating concrete batching plants, jack-up platforms and Ro Ro barges will be steered by the tug boats which are installed with GPS. As such, their travel routes can be followed.
- iv. Administrative control will be taken, one route will be randomly selected and checked once a month.

DCVJV will search to deploy much suitable working fleets which are equipped with AIS or GPS as possible.

The daily record of marine travel route of offsite working fleets will be collected and filed by the supervising staff for inspection and monitoring purposes. Record shall be submitted upon SOR's request. Warning will be noticed to the captain and his shipping company or material suppliers if vessel track log showed the approved marine travel route is not followed.

All vessels used for the construction of the marine works will comply with all the relevant regulations and requirements of the Marine Department, including:-

- (a) The Shipping and Port Control Regulations (Cap.313A);
- (b) The Merchant Shipping (Miscellaneous Craft) Regulations (Cap.313F);
- (c) The Merchant Shipping (Safety) (Signals of Distress and Prevention of Collisions) Regulations (Cap.369N);
- (d) The Dangerous Goods (Shipping) Regulations (Cap 295C);
- (e) The Merchant Shipping (Launches and Ferry Vessels) Regulations (Cap 313E);
- (f) Merchant Shipping (Local Vessels) Ordinance (Cap.548);
- (g) Shipping and Port Control (Works) Ordinance (Cap.313X).

4.4 **Precautionary Measures**

The main issue with the Chinese White Dolphin is a moving vessel striking and injuring an animal during the period of travel. Information regarding the locations of frequent sighting near the proposed vessel routes indicated that the following would also be needed to minimize the chance of a vessel striking a dolphin.

- (a) When entering into a distance of 250m from silt curtains of HY/2011/09 sites, all vessels will travel at a speed no greater than 5 knots, and at a speed no greater than 10 knots for a distance of at least 1.5km away. Vessels can then increase speed after that distance unless other restrictions apply.
- (b) If any dolphins are sighted within 250m of a vessel then the vessel will slow to a speed no greater than 5 knots for at least 3 minutes after the last sighting.
- (c) Barges for delivering will be selected as large sizes as possible to reduce the number of delivering trips.
- (d) Concerning the travelling route for fill materials to the HKLR03 site passing dolphin hotspots, it is agreed that prolonged marine travel route to be adopted – to go further east until pass over proposed marine park in Brothers Island and turn back to HKLR03. The speed will keep below 5 knots when crossing the edge of the proposed marine park. The travel route is illustrated in Figure 4.

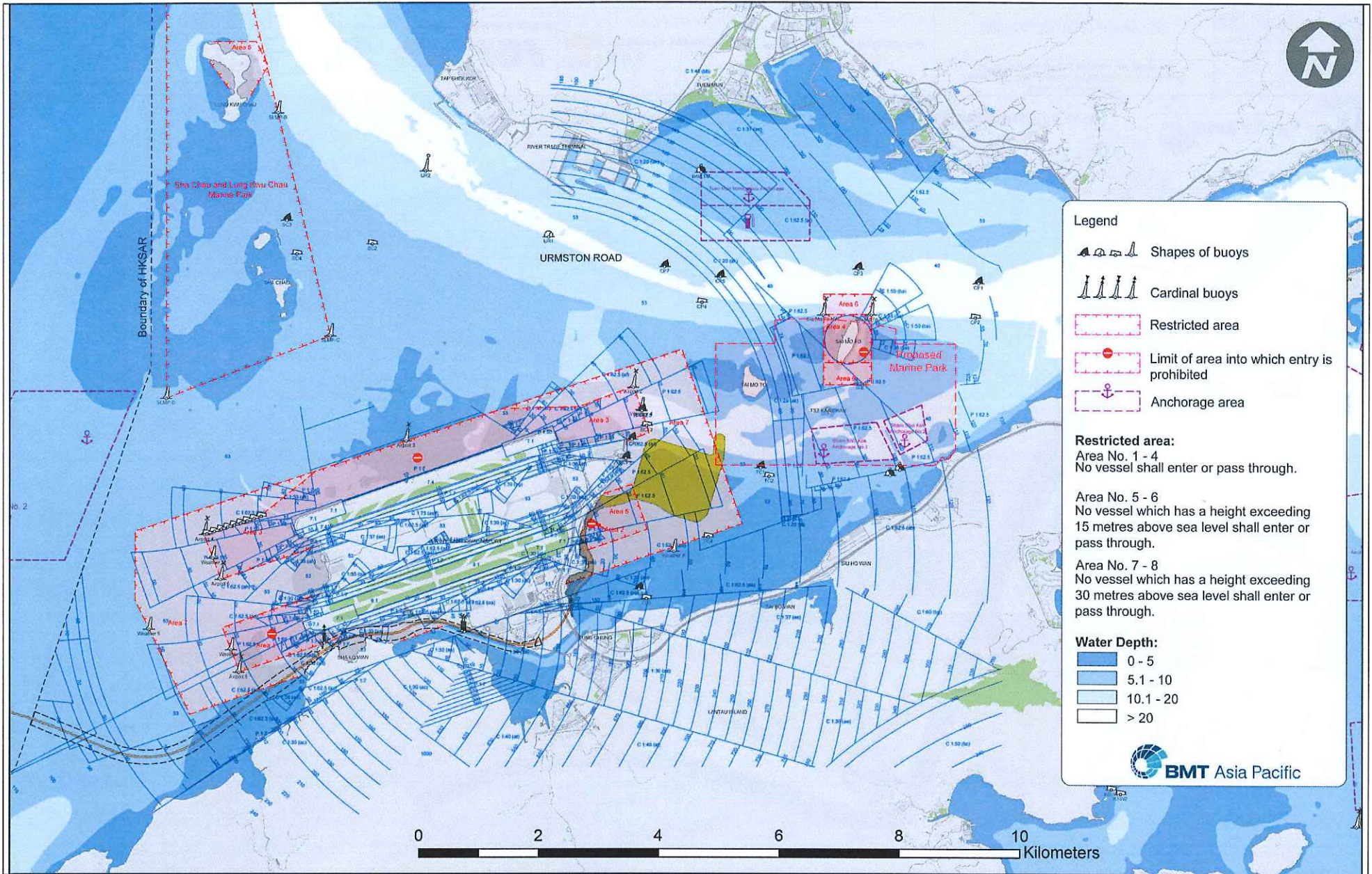
4.5 **Training**



Captains of all working vessels should be required to use regular travel routes, in order to minimize the chance of vessel collision.

Captains of construction vessels working in the West Lantau waters and near the Brothers Islands should undergo training to learn about local dolphins and porpoises. They should be trained to be aware of the protocol for “dolphin friendly” vessel operation. Reference will be made to Code of Conduct for Dolphin Watching Activities available from Agriculture, Fisheries and Conservation Department.

END OF TEXT



Legend

- Shapes of buoys
- Cardinal buoys
- Restricted area
- Limit of area into which entry is prohibited
- Anchorage area

Restricted area:

Area No. 1 - 4
No vessel shall enter or pass through.

Area No. 5 - 6
No vessel which has a height exceeding 15 metres above sea level shall enter or pass through.

Area No. 7 - 8
No vessel which has a height exceeding 30 metres above sea level shall enter or pass through.

Water Depth:

- 0 - 5
- 5.1 - 10
- 10.1 - 20
- > 20

BMT Asia Pacific

Design No.	KMN
Drawn By	BNU
Checked By	KMN
Date	12/09/12
Checked	12SEP2012

Dragages - China Harbour - VSL Joint Venture
 寬基-中國港灣-威部利聯合
 路政署
 HIGHWAYS DEPARTMENT

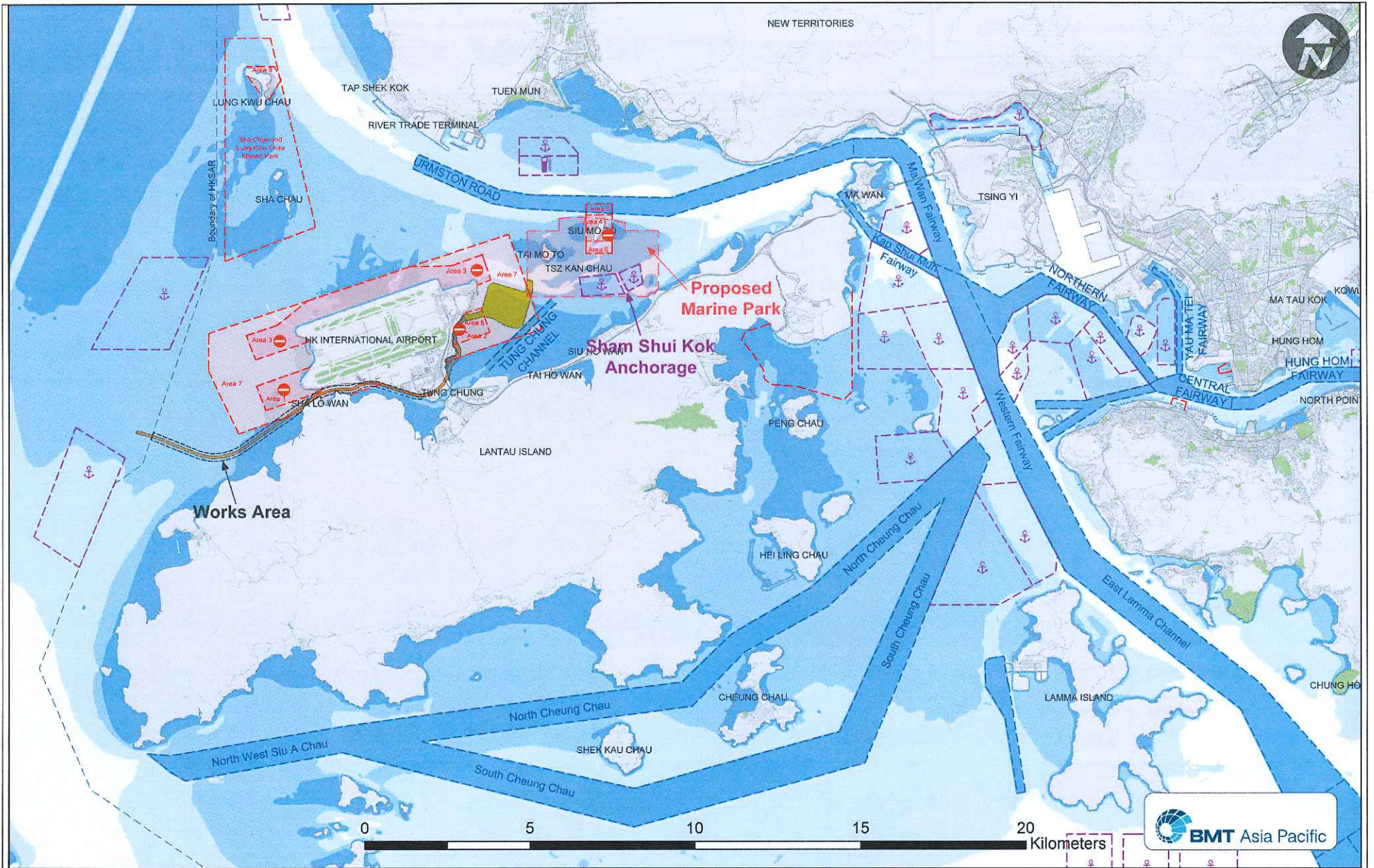
Mott MacDonald
YWL Engineering

Contract No. HY2011/09
 Hong Kong - Zhuhai - Macao Bridge Hong Kong Link Road
 Section Between HKSAR Boundary and Scenic Hill

Figure 1: Existing Fairway Plan

Drawing No.	HKLR9/DCV/MD/PW/SI/026	
Title	N.T.S.	Sheet No. 1 OF 2
Drawn By	HKLR9_DCV_MD_PW_SI_026_0.dwg	
Date	HY/2011/09	Rev. 0

THE GENERATOR OF THE COPYRIGHT IN THIS DRAWING IS HEREBY BY THE ISSUER WHOSE CONSENT MUST BE OBTAINED BEFORE ANY USE OF REPRODUCTION BY THE DRAWING OR ANY PART THEREOF CAN BE MADE.



Rev.	Description	Date	Checked
0	FIRST ISSUE	12/09/12	KMN
		12SEP2012	

Dragages - China Harbour - VSL Joint Venture 黃嘉-中國港灣-威爾利聯合

路政署 HIGHWAYS DEPARTMENT

Mott MacDonald YWL Engineering

Contract No. HY/2011/09
 Hong Kong - Zhuhai - Macao Bridge Hong Kong Link Road
 Section Between HKSAR Boundary and Scenic Hill
 Figure 1: Existing Fairway Plan

Drawing No. HKLR9/DCV/MD/PW/SI/026
 Scale: N.T.S. Sheet No. 2 OF 2
 File Name: HKLR9_DCV_MD_PW_SI_026_0.dwg
 Date: HY/2011/09

THE ACCURACY OF THE DATA IN THIS DRAWING IS RETAINED BY THE ISSUER WHOSE CONSENT MUST BE OBTAINED BEFORE ANY USE OR REPRODUCTION OF THE DRAWING OR ANY PART THEREOF CAN BE MADE.

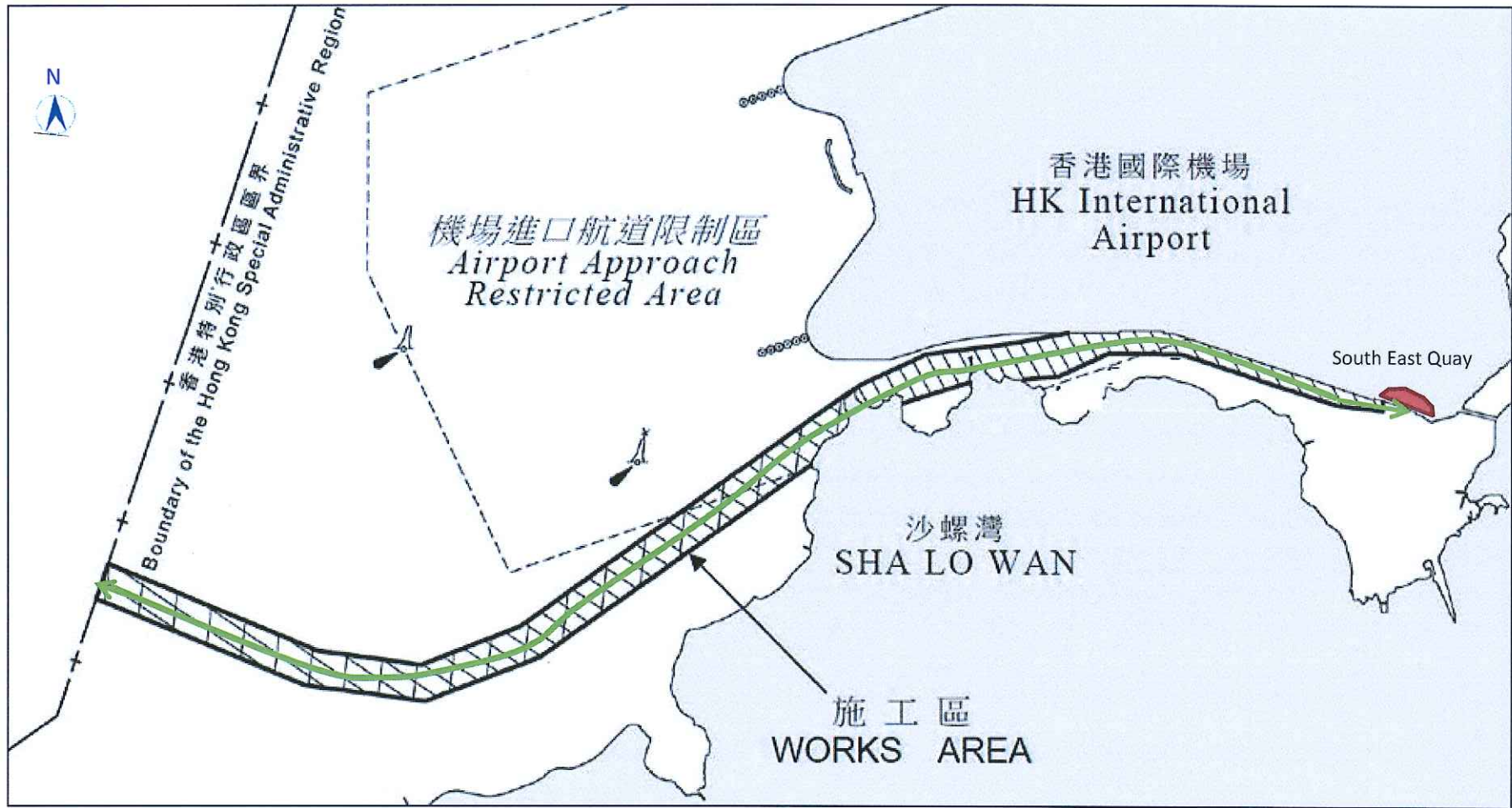
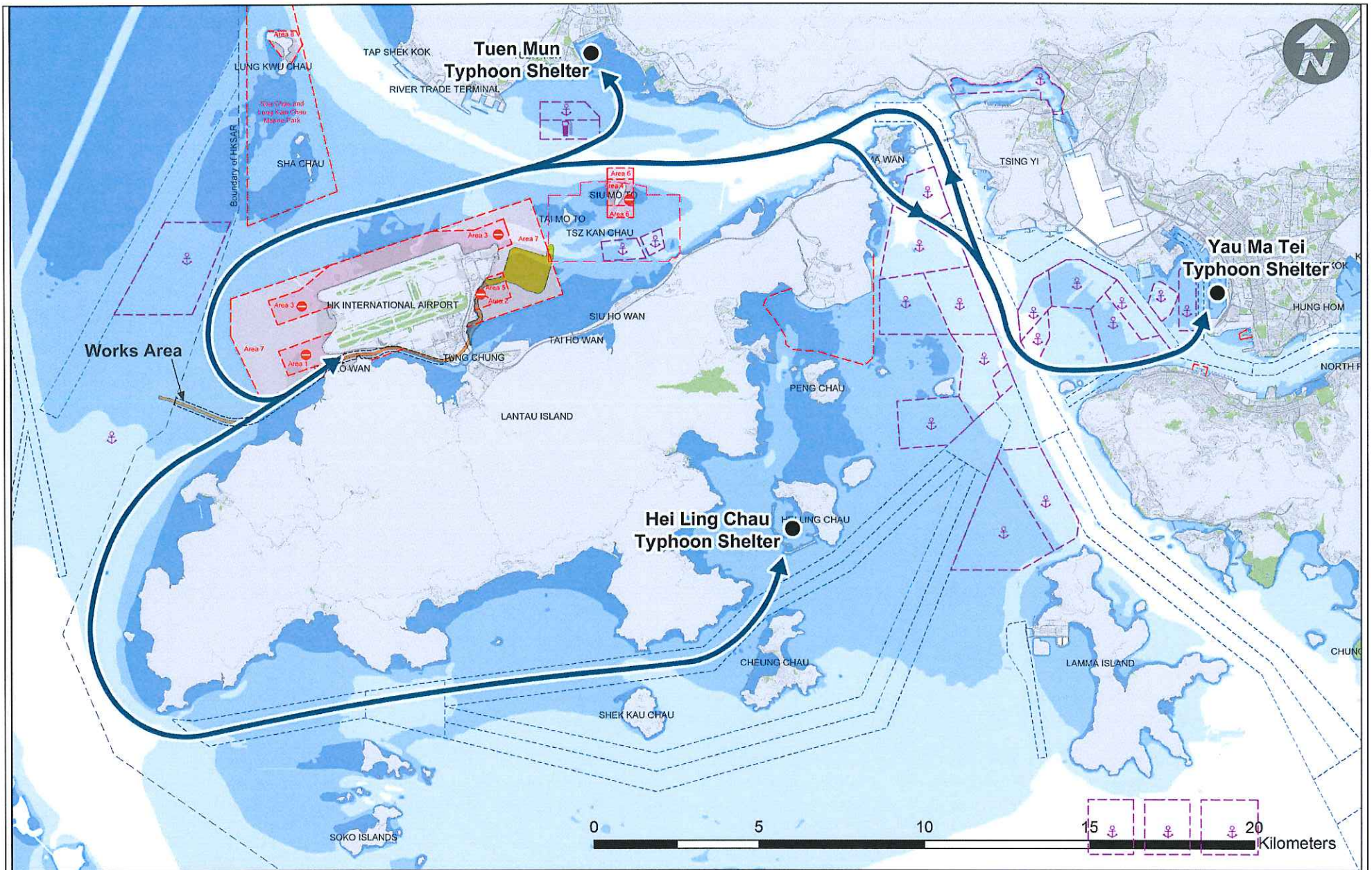


Figure 2: Marine Route and Works Area for the Working Vessels



Drawn by:	KMN		
Checked by:	BNJ		
Approved by:	KMN		
Date:	12/09/12		
Checked Date:	12SEP2012		
Rev.	Description	Date	Checked
0	FIRST ISSUE	12/09/12	KMN

Contract No. HY/2011/09
 Hong Kong - Zhuhai - Macao Bridge Hong Kong Link Road
 Section Between HKSAR Boundary and Scenic Hill
 Figure 3: Marine Route for the Working Vessels during Inclement Weather

Drawn by:	HKLR9/DCV/MD/PW/SL/031		
Scale:	N.T.S.	Sheet No:	1 OF 1
File Name:	HKLR9_DCV_MD_PW_SL_031_0.dwg		
Date:	HY/2011/09	Revis:	0

THE ACCURACY OF THE CONTENTS OF THIS DRAWING IS GUARANTEED BY THE ISSUING AUTHORITY AND/OR THE CONTRACTOR. THE USER SHALL BE RESPONSIBLE FOR THE USE OF THIS DRAWING IN ANY WAY THAT MAY BE DANGEROUS OR ILLEGAL.

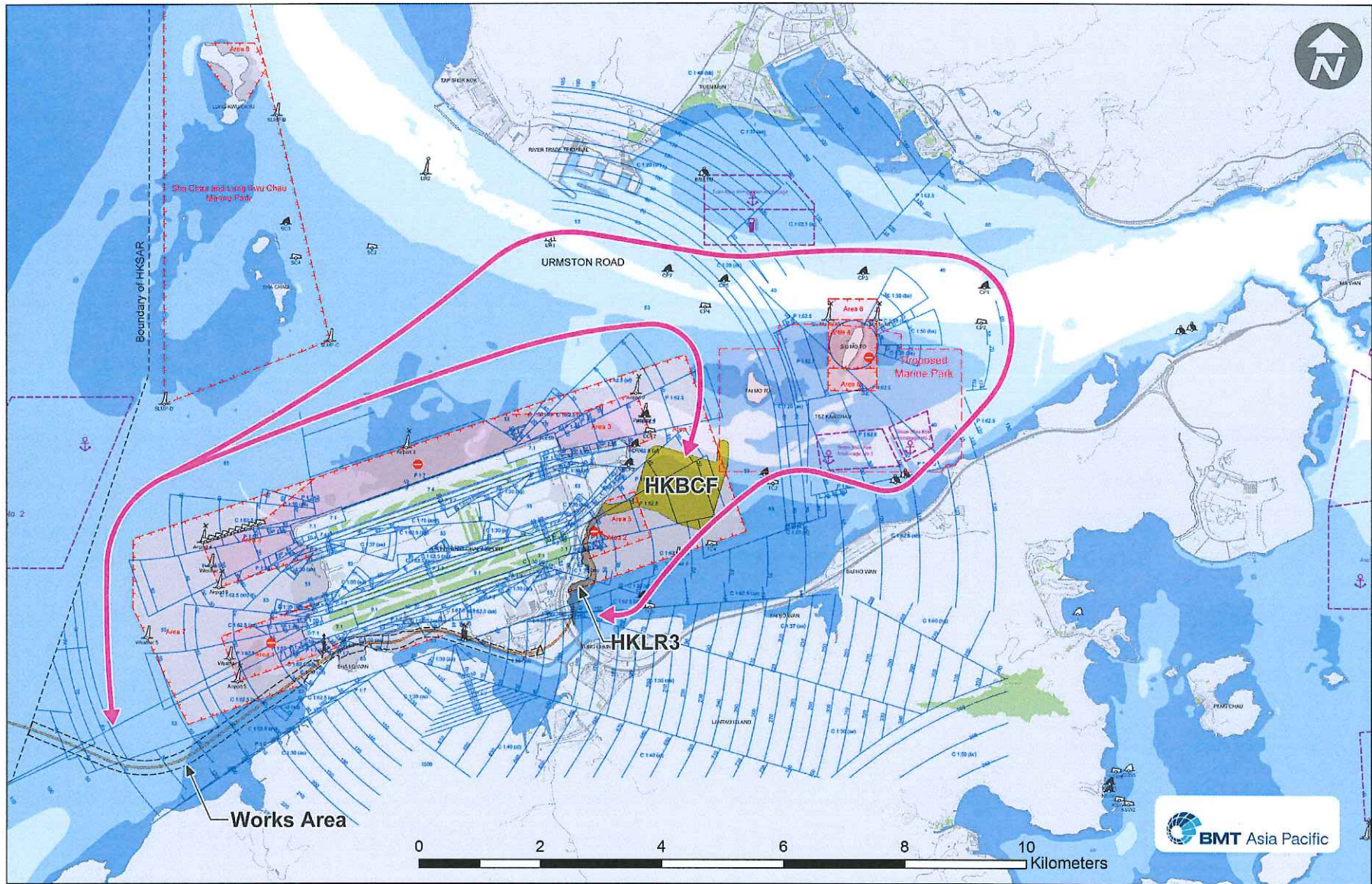
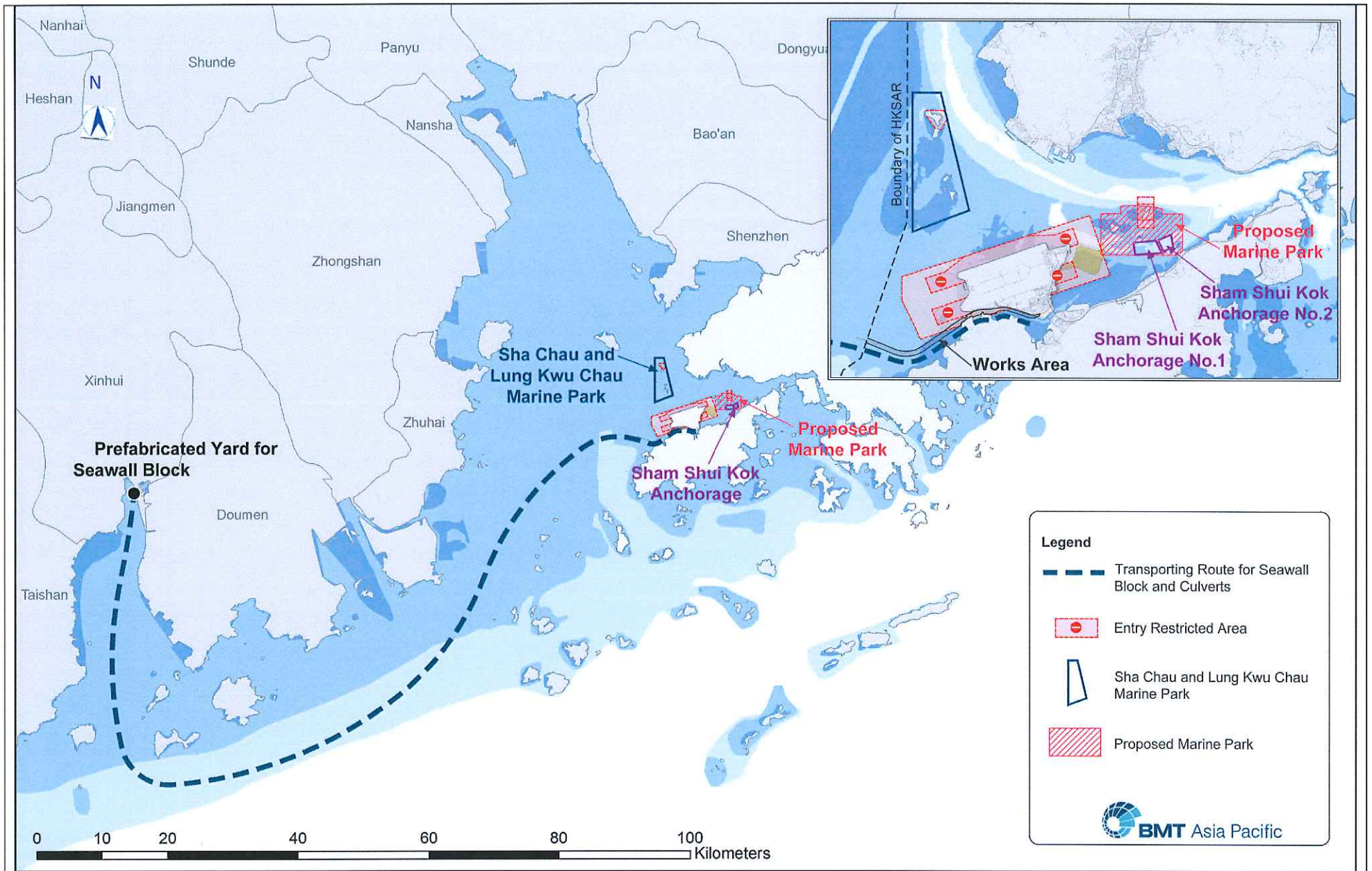


Figure 4: Marine Route for Fill Materials



0	FIRST ISSUE	12/09/12	KMN	12SEP2012	
Rev.	Description	Date	Checked		

Sub-Contractors:

Dragages - China Harbour - VSL Joint Venture	HEC	VSL	路政署 HIGHWAYS DEPARTMENT
真蔴-中國港灣-威勝利聯合			

Contractors/Designers:

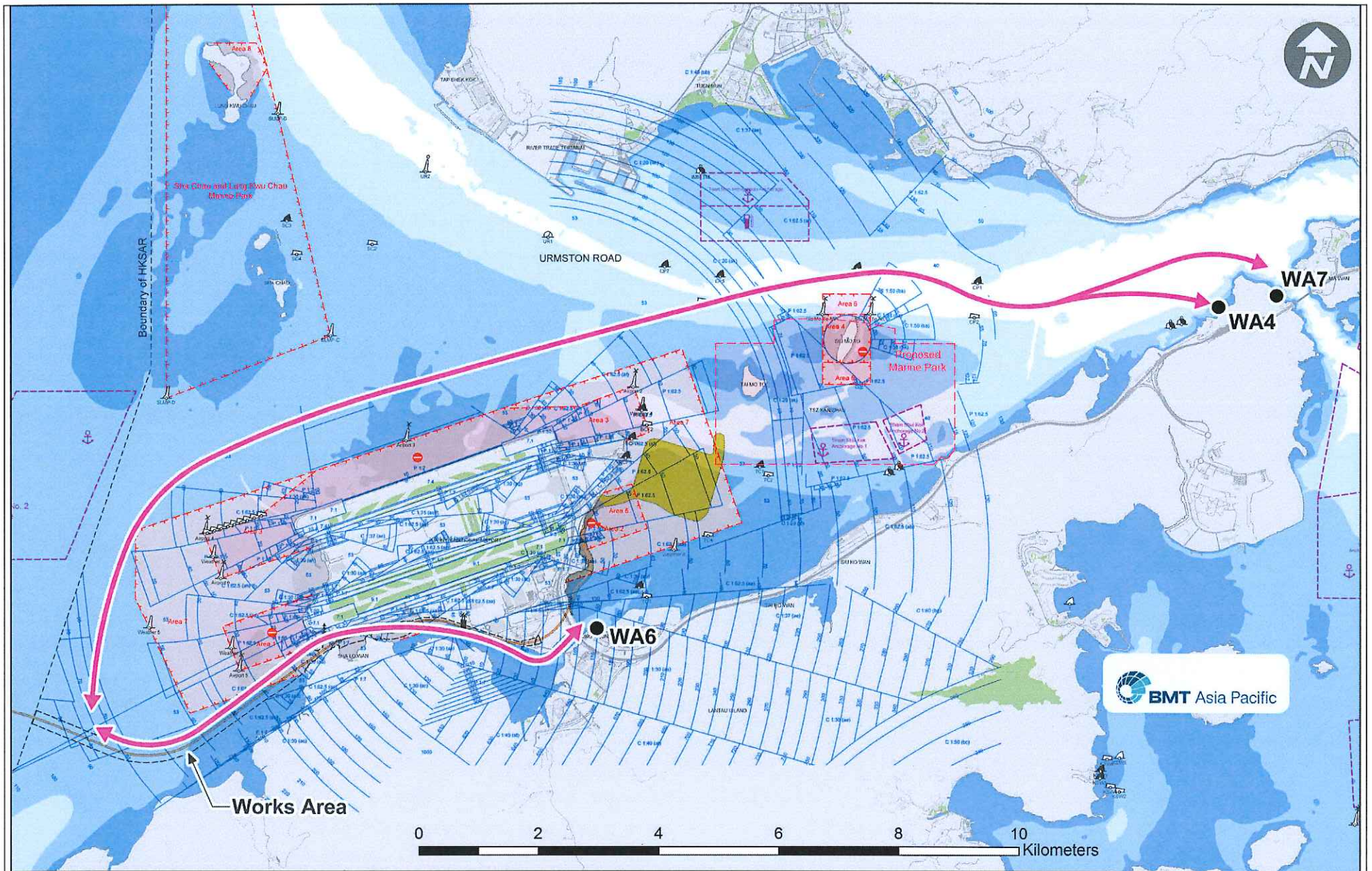
Mott MacDonald	YWL Engineering
----------------	-----------------

Contract No. HY2011/09
Hong Kong - Zhuhai - Macao Bridge Hong Kong Link Road
Section Between HKSAR Boundary and Scenic Hill

Figure 5: Marine Route for Precast and Prefabricated Units Delivery

Project No.	HKL9/DCV/MD/PW/Sl/029	
Scale	N.T.S.	Sheet No. 1 OF 1
Drawn By	HKL9_DCV_MD_PW_SL_029_0.dwg	
Date	HY/2011/09	Printed: 0

THE MATERIAL OF THE COPYRIGHT IS NOT TO BE REPRODUCED OR TRANSMITTED IN ANY FORM OR BY ANY MEANS WITHOUT PERMISSION IN WRITING FROM BMT ASIA PACIFIC.



Drawn By	KMN
Checked By	BVN
Approved By	KMN
Date	12SEP2012
Revision	Description
A	MINOR REVISION
O	FIRST ISSUE

Contract No. HY/2011/09
 Hong Kong - Zhuhai - Macao Bridge Hong Kong Link Road
 Section Between HKSAR Boundary and Scenic Hill
Figure 6: Marine Route for General Usage and Passenger

Project No.	HKL9/DCV/MD/PW/Sl/028	
Scale	N.T.S.	Sheet No. 1 OF 1
File No.	HKL9_DCV_MD_PW_SL_028_A.dwg	
Project	HY/2011/09	Rev. A

THE CONTENT OF THE CONTOUR IN THIS DRAWING IS RETAINED BY THE PLOTTING HOUSE. CLIENTS MUST BE ADVISED ABOUT ANY USE OR REPRODUCTION OF THE DRAWING BY ANY PARTY WITHOUT OUR PERMISSION.

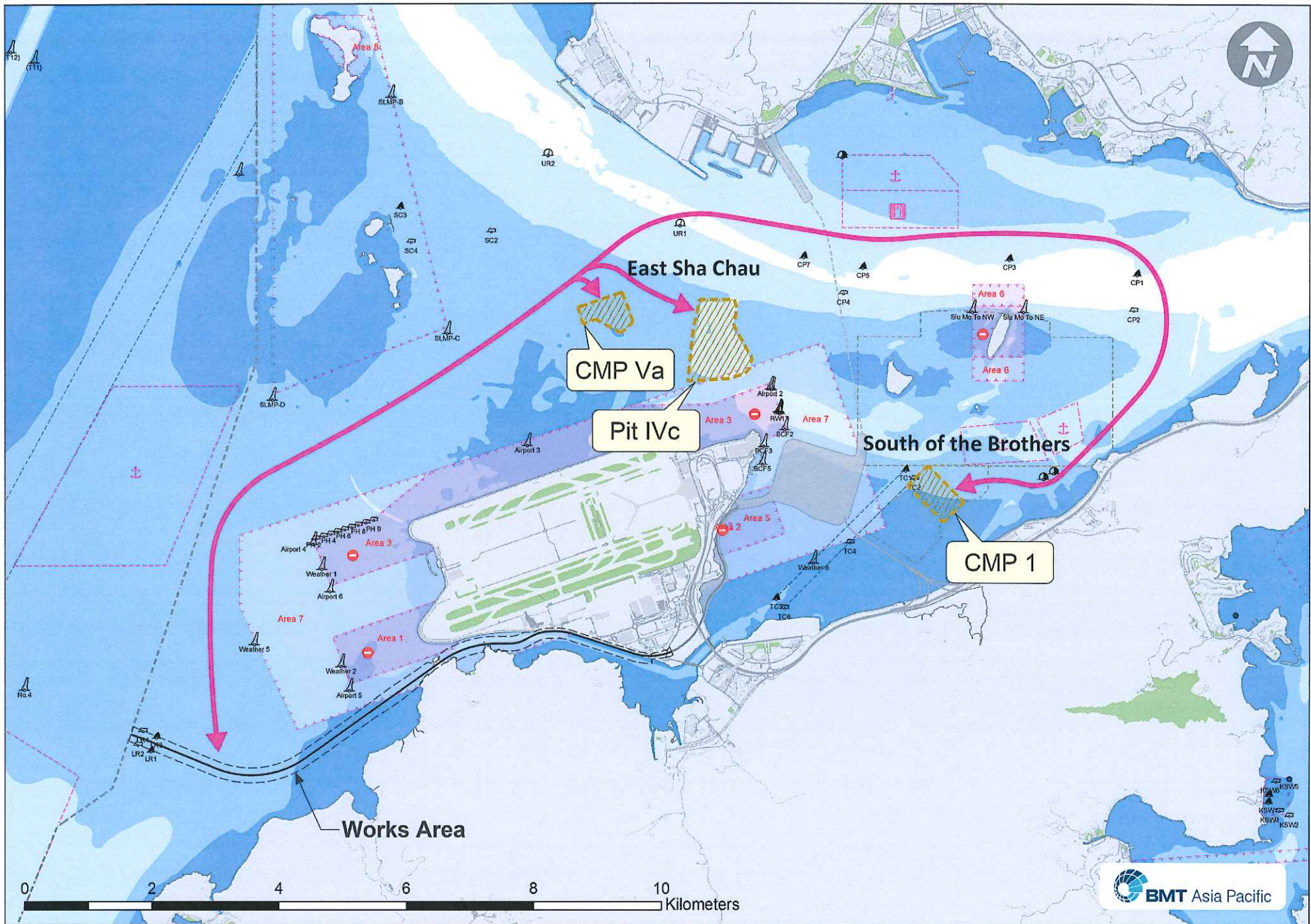


Figure 7: Marine Routes for Excavated Marine Sediment

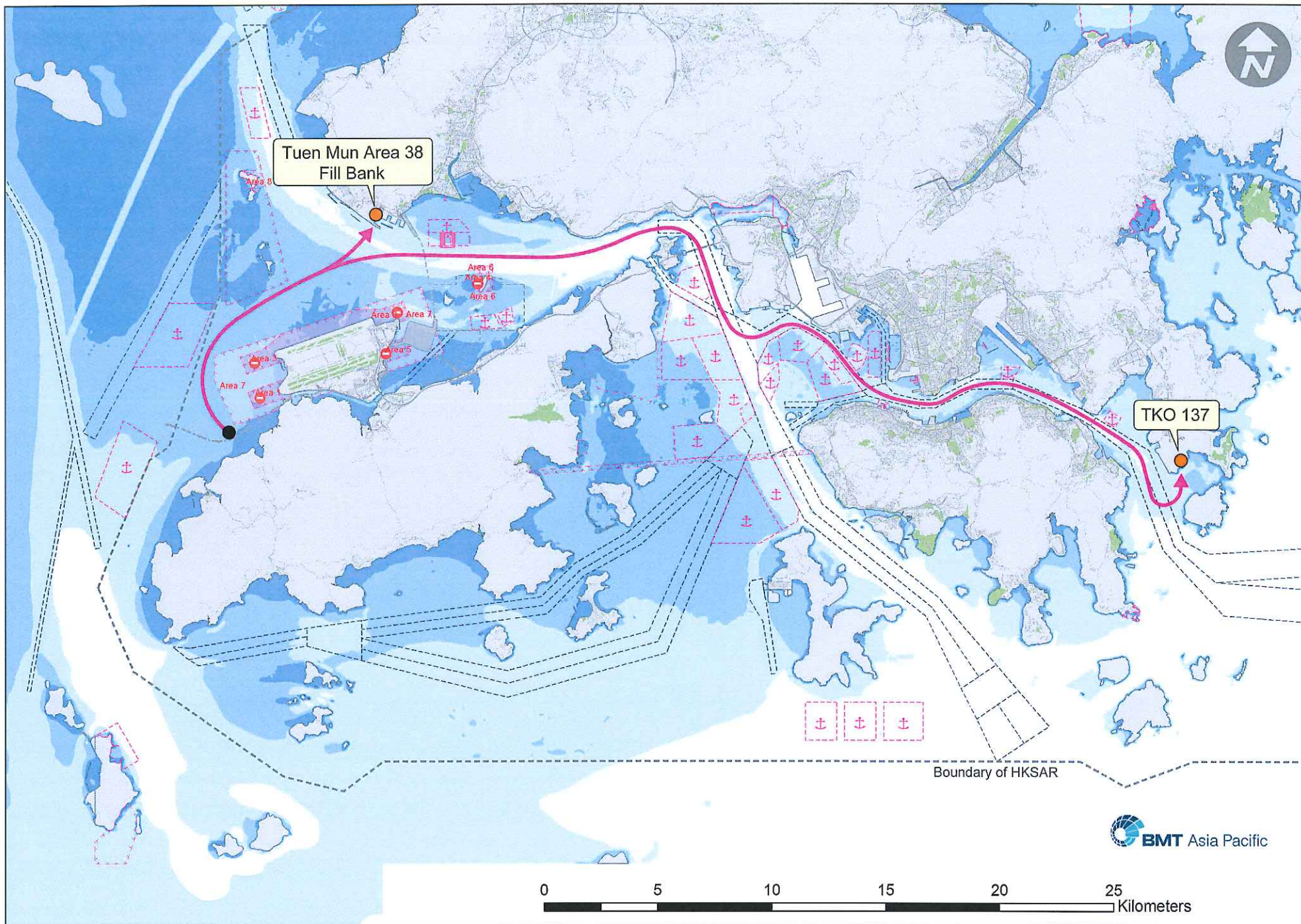


Figure 8: Marine Routes for inert construction waste, slurry and bentonite