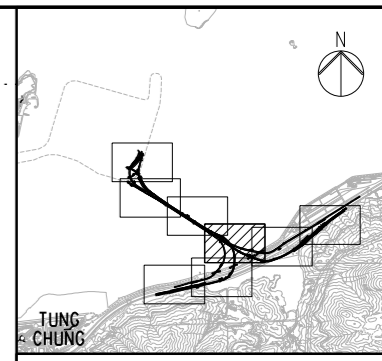
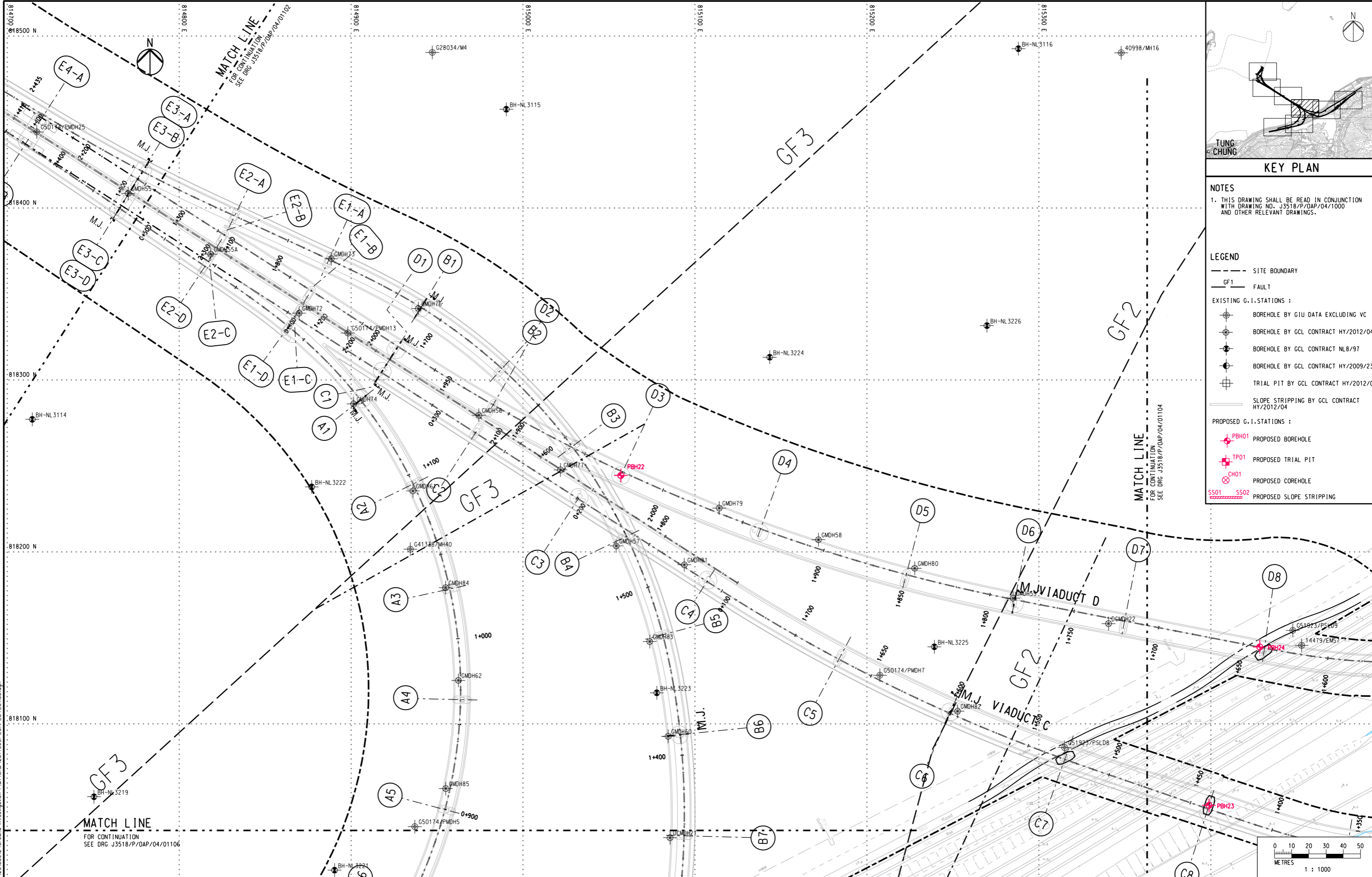


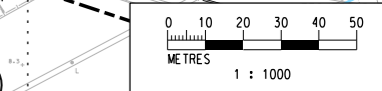
DO NOT SCALE DRAWING. CHECK ALL DIMENSIONS ON SITE.



KEY PLAN

NOTES
 1. THIS DRAWING SHALL BE READ IN CONJUNCTION WITH DRAWING NO. J3518/P/OAP/04/1000 AND OTHER RELEVANT DRAWINGS.

- LEGEND**
- SITE BOUNDARY
 - GF1 FAULT
 - EXISTING G.I. STATIONS :
 - ⊕ BOREHOLE BY GIU DATA EXCLUDING VC
 - ⊕ BOREHOLE BY GCL CONTRACT HY/2012/04
 - ⊕ BOREHOLE BY GCL CONTRACT NL8/97
 - ⊕ BOREHOLE BY GCL CONTRACT HY/2009/23
 - ⊕ TRIAL PIT BY GCL CONTRACT HY/2012/04
 - SLOPE STRIPPING BY GCL CONTRACT HY/2012/04
 - PROPOSED G.I. STATIONS :
 - ⊕ PBH01 PROPOSED BOREHOLE
 - ⊕ TP01 PROPOSED TRIAL PIT
 - ⊕ CH01 PROPOSED COREHOLE
 - SS01 SS02 PROPOSED SLOPE STRIPPING



Printed by : 13/9/2013
 File name : J:\231499\RECORD\20130912\Ground Investigation Plan\CAO\231499_P_OAP_04_01103.dgn

Rev	Description	By	Date	Rev	Description	By	Date
A	SUBMISSION	RC	07/13				
B	SUBMISSION	RC	07/13				
C	SUBMISSION	RC	09/13				

Drawn	Date	Client
RL	07/13	路政署 HIGHWAYS DEPARTMENT
Checked	Date	Project Title
DS	Approved	Contract No. HY/2012/07 Tuen Mun - Chek Lap Kok Link Southern Connection Viaduct Section
Scale	1:1000 @ A1 / 1:2000 @ A3	Supervising Officer
		AECOM
		Contractor
		Gammon
		Originator
		ARUP

Drawing title PROPOSED GROUND INVESTIGATION PLAN (4) Fig 1.7 Drawing no. J3518/P/OAP/04/01103	Rev. C
--	--------