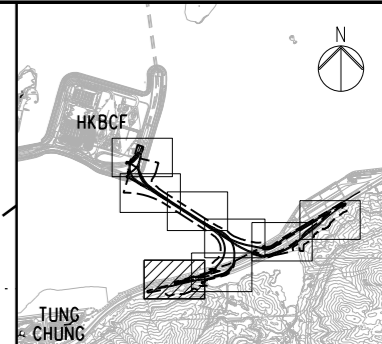
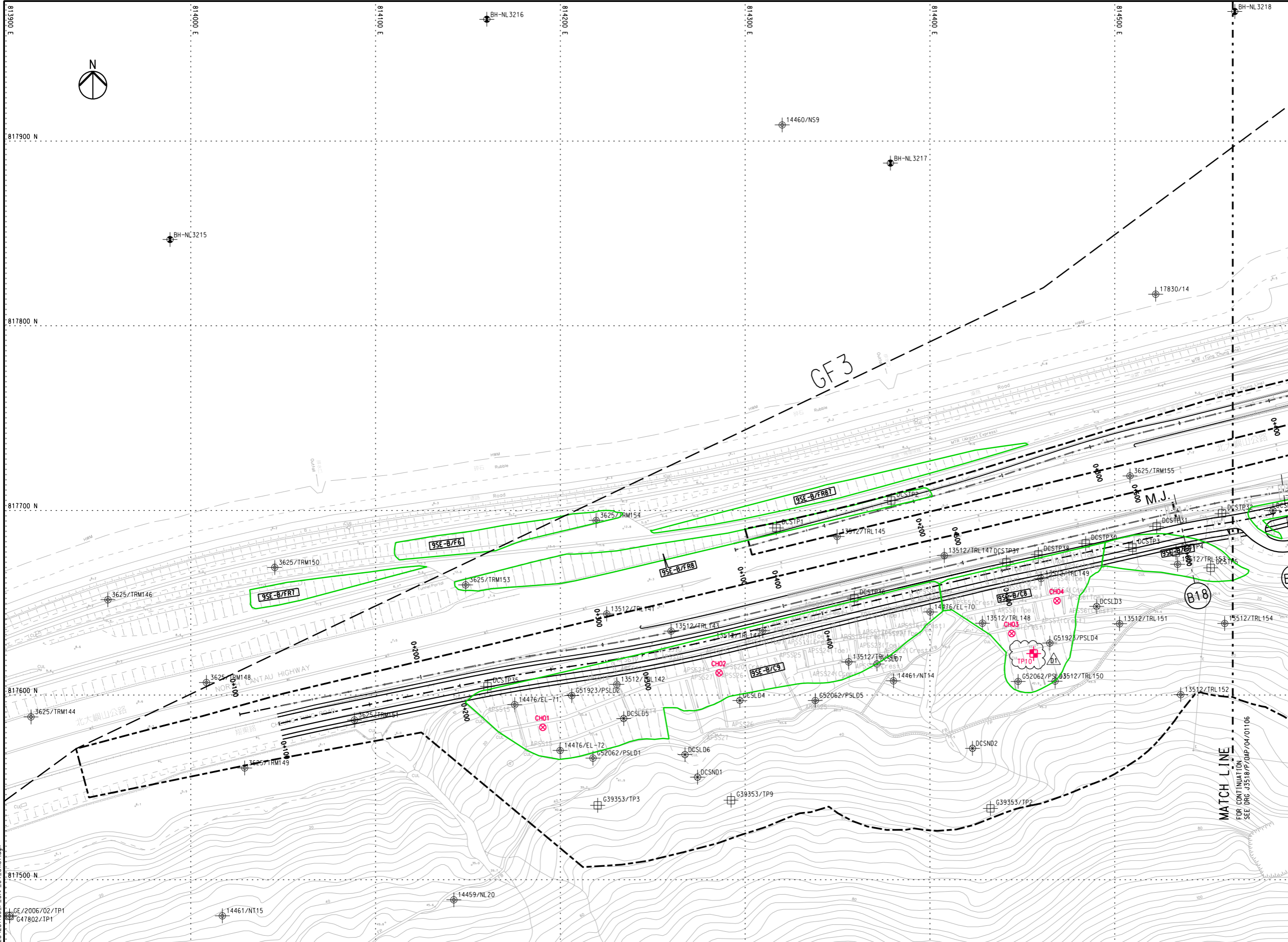


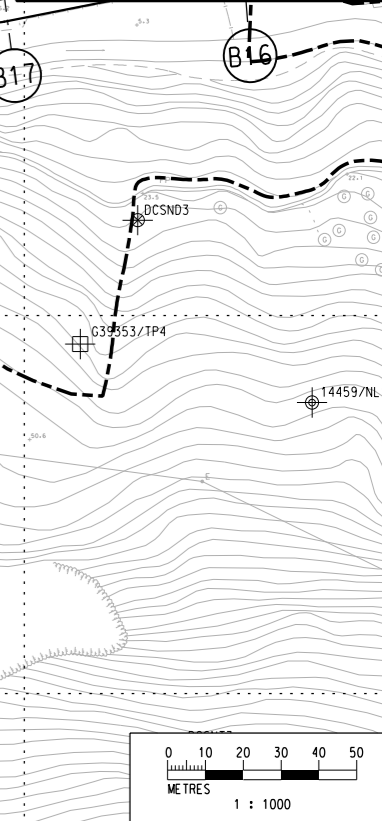
DO NOT SCALE DRAWING. CHECK ALL DIMENSIONS ON SITE.



**KEY PLAN**

**NOTES**  
 1. THIS DRAWING SHALL BE READ IN CONJUNCTION WITH DRAWING NO. J3518/P/OAP/04/1000 AND OTHER RELEVANT DRAWINGS.

- LEGEND**
- SITE BOUNDARY
  - GF1 FAULT
  - EXISTING G.I. STATIONS :
    - ⊕ BOREHOLE BY GIU DATA EXCLUDING VC
    - ⊕ BOREHOLE BY GCL CONTRACT HY/2012/04
    - ⊕ BOREHOLE BY GCL CONTRACT NL8/97
    - ⊕ BOREHOLE BY GCL CONTRACT HY/2009/23
    - ⊕ TRIAL PIT BY GCL CONTRACT HY/2012/04
    - SLOPE STRIPPING BY GCL CONTRACT HY/2012/04
  - PROPOSED G.I. STATIONS :
    - ⊕ PBH01 PROPOSED BOREHOLE
    - ⊕ TP01 PROPOSED TRIAL PIT
    - ⊕ CH01 PROPOSED COREHOLE
    - SS01 SS02 PROPOSED SLOPE STRIPPING



Printed by : 07/11/2013  
 Filename : J:\231499\ARUP\_GEO\231499\_P\_OAP\_04\_01107.dgn

Rev	Description	By	Date	Rev	Description	By	Date	Drawn	Date
A	SUBMISSION	RC	07/13					RL	07/13
B	SUBMISSION	RC	07/13					Checked	Approved
C	SUBMISSION	RC	09/13					DS	DOP
D1	FOR INTERNAL REVIEW	RC	11/13					Scale	
								1:1000 @ A1 / 1:2000 @ A3	

Client  
**路政署**  
**HIGHWAYS DEPARTMENT**  
 港珠澳大橋香港工程管理處  
 Hong Kong - Zhuhai - Macao Bridge  
 Hong Kong Project Management Office

Project Title  
**Contract No. HY/2012/07**  
**Tuen Mun - Chek Lap Kok Link**  
**Southern Connection Viaduct Section**

Drawing title  
**PROPOSED GROUND INVESTIGATION PLAN**  
**(6)**  
**Fig 1.9**  
 Drawing no. **J3518/P/OAP/04/01107** Rev. **D1**

Supervising Officer  
**AECOM**

Contractor  
**Gammon**

Originator  
**ARUP**