

Entrusted Portion of Widening of Tolo Highway / Fanling Highway between Island House Interchange and Fanling Stage 2

Quarterly EM&A Report

May 2015 to July 2015

Submitted to

Environmental Protection Department

Prepared By

Meinhardt Infrastructure and Environment Ltd

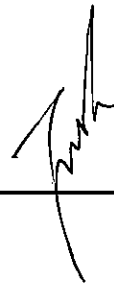
Meinhardt Infrastructure and Environment Limited

**Entrusted Portion of Widening of Tolo
Highway / Fanling Highway between Island
House Interchange and Fanling Stage 2**

Quarterly EM&A Report

(May 2015 to July 2015)

Certified by: Fredrick Leong



Position: Environmental Team Leader

Date: 12 August 2015



Our ref EC/TK/bw/ro/T329380/22.05/L-0082
T 2828 5919
E terence.kong@mottmac.com.hk
Your ref

Hyder-Arup-Black & Veatch Joint Venture
c/o Hyder Consulting Limited
47/F Hopewell Centre
183 Queen's Road East
Wanchai, Hong Kong

Dear Sir,

12 August 2015
By Fax (2805 5028) & Post

Attn: Mr. James Penny

**EM&A for Widening of Tolo Highway/Fanling Highway between Island House Interchange and Fanling Stage 2 (between Tai Hang to Wo Hop Shek Interchange) – Entrusted Works
Environmental Permit No. EP-324/2008/C
Quarterly EM&A Summary Report for May 2015 to July 2015 for the portion of Stage 2 works entrusted to CEDD under Contract No. CV/2012/09**

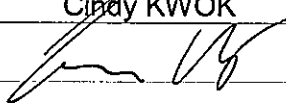
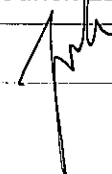

We refer to the revised Quarterly EM&A Summary Report for May 2015 to July 2015 for the Project received on 11 August 2015 submitted by ET via email. We confirm we have no comment.

Yours faithfully
for MOTT MACDONALD HONG KONG LIMITED

A handwritten signature in blue ink, appearing to read "Terence Kong".

Terence Kong
Independent Environmental Checker

c.c. HyD – Mr. Chung Lok Chin (Fax: 2714 5198) / Ms. Jackei Yin (Fax: 2761 4864)
CEDD/BCP – Mr. Desmond Lam (Fax: 3547 1659)
AECOM – Mr. Alan Lee (Fax: 3922 9797)
Meinhardt Infrastructure and Environment Limited – Mr. Fredrick Leong (Fax: 2540 1580)

Date	Revision	Prepared By	Checked By	Approved By
12 August 2015	0	Ivan TING Cindy KWOK	Fredrick LEONG	Helen COCHRANE
				

Contents

	Page
EXECUTIVE SUMMARY	i
1 INTRODUCTION AND PROJECT INFORMATION	1
1.1 Background.....	1
1.2 Construction Programme and Activities.....	1
1.3 Project Organisation.....	2
1.4 Purpose of the Report	2
2 SUMMARY OF EM&A REQUIREMENTS	3
2.1 Monitoring Requirements	3
2.2 Environmental Mitigation Measures.....	3
3 SUMMARY OF EM&A Monitoring Data	3
3.1 Monitoring Data.....	3
3.2 Summary of Monitoring Exceedances	4
4 WASTE MANAGEMENT	5
5 ENVIRONMENTAL NON-CONFORMANCE	5
6 CONCLUSION, COMMENTS AND RECOMMENDATIONS	5

List of Tables

Table 1.1	Contact Information of Key Personnel
Table 2.1	Monitoring Parameter
Table 3.1	Summary of Monitoring Data in the Reporting Quarter
Table 3.2	Summary of Exceedance Events in the Reporting Quarter

List of Figures

Figure 1	Demarcation of Entrusted Portion of Widening of Tolo Highway/Fanling Highway between Island House Interchange and Fanling – Stage 2
Figure 2	Environmental Monitoring Locations

List of Appendices

Appendix A	Construction Programme
Appendix B	Project Organization Structure
Appendix C	Implementation Schedule of Environmental Mitigation Measures (EMIS)
Appendix D	Meteorological Data Extracted from Hong Kong Observatory
Appendix E	Environmental Monitoring Data for Air Quality and Noise
Appendix F	Waste Flow Table
Appendix G	Statistics on Complaints, Notifications of Summons and Successful Prosecutions

EXECUTIVE SUMMARY

This report documents the findings of EM&A works conducted in the quarter between 1 May 2015 and 31 July 2015..

The impact stage EM&A programme for the Project includes air quality and noise monitoring.

The EM&A programme was carried out by the ET in accordance with the EM&A Manual requirements. It is concluded from the environmental monitoring and audit works that adequate environmental mitigation measures have been implemented by the civil works contractors where appropriate in the reporting quarter.

In the reporting quarter, no exceedance events were recorded. No necessary remedial actions have been taken.

No environmental non-compliance was recorded in the reporting quarter. No environmental complaint was received. No environmental related prosecution or notification of summons were received in the reporting quarter.

The box culvert works have been partially completed by the end of March 2014 except the last construction activity, i.e. installation of a base slab at Box Culvert ID4. Due to the loading requirement of a fresh water main under the box culvert, installation of the base slab at Box Culvert ID4 has to be scheduled in November 2015 after the utilities diversions were completed, and therefore the construction works were temporary suspended. The 4-week post construction water quality monitoring will be conducted after the installation of the base slab finishes, hence the completion of the box culvert works.

As such, impact monitoring for water quality was not necessary in the reporting quarter due to temporary suspension of the construction works and is anticipated to be resumed in November 2015 during the course of remaining box culvert works.

1 INTRODUCTION AND PROJECT INFORMATION

1.1 Background

1.1.1 The Project is a Designated Project under the Environmental Impact Assessment Ordinance (EIAO) (Cap. 499). An Environmental Impact Assessment (EIA) Report together with an Environmental Monitoring and Audit (EM&A) Manual were approved on 14 July 2000 (Register Number: EIA-043/2000). The Project is governed by an Environmental Permit (EP) (EP-324/2008) which was granted on 23 December 2008. A variation of EP (VEP) was applied and the VEP (EP-324/2008/A) was subsequently granted on 31 January 2012. An additional VEP has been applied on 24 February 2014 and the VEP (EP-324/2008/B) was subsequently granted on 17 March 2014. Furthermore, an additional VEP has been applied on 9 March 2015 and the VEP (EP-324/2008/C) was subsequently granted on 27 March 2015.

1.1.2 Chun Wo Construction & Engineering Co Ltd (Chun Wo) was commissioned by the Civil Engineering and Development Department (CEDD) as the Civil Contractor for the Entrusted Portion of Widening of Tolo Highway/Fanling Highway between Island House Interchange and Fanling Stage 2. Meinhardt Infrastructure & Environment Ltd (MIEL) has been appointed by Chun Wo as the Environmental Team (ET) to fulfill the corresponding EM&A requirements pursuant to Environmental Permit No. EP-324/2008/C in accordance with the Updated EM&A Manual (dated March 2015) for Widening of Tolo Highway/Fanling Highway between Island House Interchange and Fanling Stage 2. The EM&A programme commenced in 5 November 2013.

1.1.3 **Figure 1** shows the works areas for the Entrusted Portion of Widening of Tolo Highway/Fanling Highway between Island House Interchange and Fanling Stage 2.

1.2 Construction Programme and Activities

1.2.1 The construction programme is presented in **Appendix A**. The major construction activities undertaken in the reporting quarter are summarized below:

- Abutment construction for Bridge E;
- Cable detection and trial trenches;
- Catch fence erection;
- Decking construction for Bridge E;
- E & M work for new valve control & Telemetry House;
- Filling Works at Tong Hang East;
- Lagging wall for bored pile wall;
- Laying storm drains;
- Noise barrier construction;
- Pier / Pier table Construction;
- Pile cap works;

- Piling Works;
- Portal Beam Erection;
- Pre-drilling;
- Road works at Fanling Highway;
- Retaining wall construction;
- Socket H-pile Installation;
- Sewer works at TWSRW;
- Tree felling works;
- Utilities duct laying;
- Viaduct segment erection; and
- Portal Beam Construction.

1.3 Project Organisation

1.3.1 The project organization structure is shown in **Appendix B**. The key personnel contact names and numbers for the Project, together with the general enquiry hotline, are summarised in **Table 1.1**.

Table 1.1 Contact Information of Key Personnel

Party	Role	Position	Name	Telephone	Fax
AECOM	Engineer's Representative	Senior Resident Engineer	Mr. Alan Lee	2171 3303	2171 3498
		Resident Engineer (Environmental)	Mr. Perry Yam	2171 3350	
Mott MacDonald	Independent Environmental Checker (IEC)	IEC	Mr. Terence Kong	2828 5919	2827 1823
Chun Wo	Contractor	Site Agent	Mr. Daniel Ho	2638 6144	2638 7077
		Environmental Officer	Mr. Victor Huang	2638 6181	
Meinhardt	Environmental Team (ET)	ET Leader	Mr. Fredrick Leong	2859 1739	2540 1580
Enquiry Hotline	General Enquiry	--	Ms Helena Mak	6355 1731	--

1.4 Purpose of the Report

1.4.1 This is the Quarterly EM&A Report which summaries the impact monitoring results and audit findings for the Project during the reporting period between 1 May 2015 and 31 July 2015.

2 SUMMARY OF EM&A REQUIREMENTS

2.1 Monitoring Requirements

- 2.1.1 In accordance with the Updated EM&A Manual, environmental parameters including Air Quality and Noise have been monitored. The specific parameters, monitoring frequency and the respective Action and Limit Levels are given in **Table 2.1** and the location of the monitoring station is shown in the **Figure 2**.

Table 2.1 Monitoring Parameter

Parameter	Unit	Action Level	Limit Level	Frequency
Air Quality				
1-hour TSP	µg/m ³	292.7	500	Three times every 6 days
24-hour TSP	µg/m ³	170.3	260	Once every 6 days
Construction Noise				
Leq 30min	dB(A)	When one documented valid complaint is received	75	Once every Week

Temporary Suspension of Box Culvert Works and Water Quality Monitoring

- 2.1.2 The box culvert works have been partially completed by the end of March 2014 except the last construction activity, i.e. installation of a base slab at Box Culvert ID4. Due to the loading requirement of a fresh water main under the box culvert, installation of the base slab at Box Culvert ID4 has to be scheduled in November 2015 after the utilities diversions were completed, and therefore the construction works are temporary suspended. The 4-week post construction water quality monitoring will be conducted after the installation of the base slab finishes, hence the completion of the box culvert works.
- 2.1.3 As such, impact monitoring for water quality was not necessary in the reporting quarter due to temporary suspension of the construction works and is anticipated to be resumed in November 2015 during the course of remaining box culvert works.

2.2 Environmental Mitigation Measures

- 2.2.1 Environmental mitigation measures have been recommended in the EM&A Manual and are given in **Appendix C**. The implementation status for the reporting quarter is also given in the Appendix.

3 SUMMARY OF EM&A Monitoring Data

3.1 Monitoring Data

- 3.1.1 Monitoring has been conducted in accordance with the specification in the EM&A Manual in the reporting quarter. Meteorological data for the reporting quarter have been extracted from Hong Kong Observatory and are given in **Appendix D**. Monitoring data with graphical presentation for the reporting quarter have been given in **Appendix E**. A summary on the monitoring results has also been given in **Table 3.1**.

Table 3.1 Summary of Monitoring Data in the Reporting Quarter

Monitoring Location	Minimum	Maximum	Average
Air Quality			
1 hour Total Suspended Particulate			
SR77	66.9µg/m ³	211.2µg/m ³	149.8µg/m ³
24 hour Total Suspended Particulate			
SR77	42.1µg/m ³	148.3µg/m ³	88.2µg/m ³
Construction Noise			
SR77	67.6dB(A)	72.0dB(A)	70.1dB(A)

3.2 Summary of Monitoring Exceedances

3.2.1 The number of exceedances event recorded in the reporting quarter is summarized in **Table 3.2**.

Table 3.2 Summary of Exceedance Events in the Reporting Quarter

Parameter		Number of Exceedances Events	Number of Project Related Exceedance Events
Air Quality			
1-hour Total Suspended Particulates	Action Level	0	0
	Limit Level	0	0
24-hour Total Suspended Particulates	Action Level	0	0
	Limit Level	0	0
Construction Noise			
Leq 30min	Action Level	0	0
	Limit Level	0	0

3.2.2 The Contractor has been reminded to strengthen the mitigation measures including:

- Water treatment facilities should be properly maintained and avoid untreated water entering stormdrain.
- Proper drainage channels/bunds should be provided at the site boundaries to collect/intercept the surface run-off from works areas.
- Water spraying or covering of tarpaulin should be properly implemented whenever necessary for the unpaved roads, access roads and construction areas.
- All vehicles should be washed to remove any dusty materials before leaving the construction site.
- Vessels and equipment operating should be checked regularly and properly maintained.
- Secondary containment should be provided for all powered mechanical equipment within the construction site.
- Secondary containment, like drip trays and/or bundings, should be provided for all chemical containers to retain any oil/chemical waste leakage within the construction site.
- Chemical waste should be stored, handled and disposed of properly.

4 WASTE MANAGEMENT

- 4.1.1 The Contractor has registered as a chemical waste producer of the Project. The C&D materials and waste sorting were carried out on-site. Receptacles were provided for general refuse collection.
- 4.1.2 During the reporting quarter, a total of 5,329m³ of excavated material has been generated. 3,750m³ of inert C&D materials was disposed of at public fill to Tuen Mun Area 38, while 1,299m³ of inert C&D materials was reused on site. 190m³ of general refuse was disposed of at North East New Territories (NENT) Landfill. 42m³ of plastics and no paper/cardboard packaging were collected by recycling contractor in the reporting quarter. No metals were collected by recycling contractor in the reporting quarter. 0.8m³ of chemical waste was collected by licensed contractor in the reporting quarter. Details of the waste management data are presented in **Appendix F**.

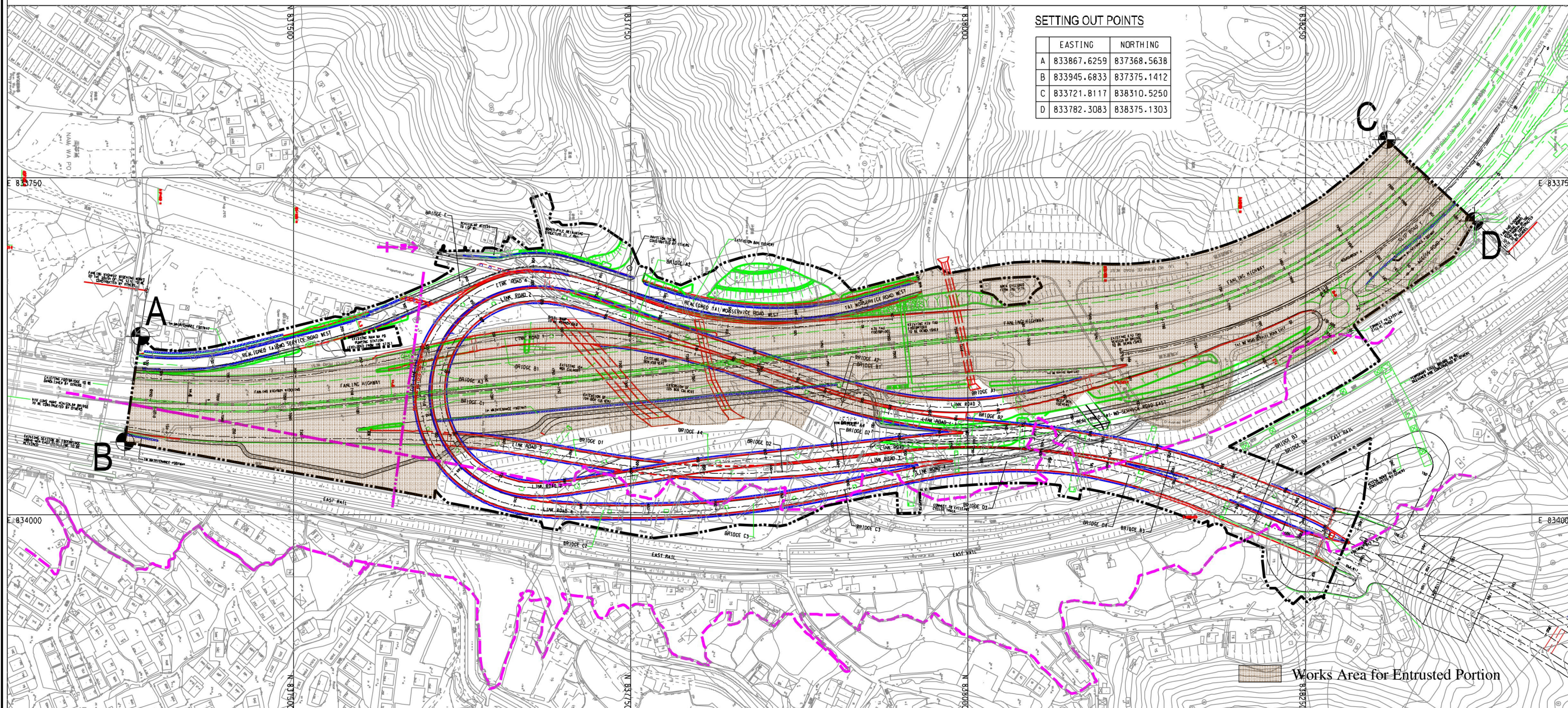
5 ENVIRONMENTAL NON-CONFORMANCE

- 5.1.1 No environmental non-compliance was recorded in the reporting quarter. No environmental complaint was received. No environmental related prosecution or notification of summons was received in the reporting quarter. The summary for the non-compliance, complaints and prosecutions is provided in **Appendix G**.

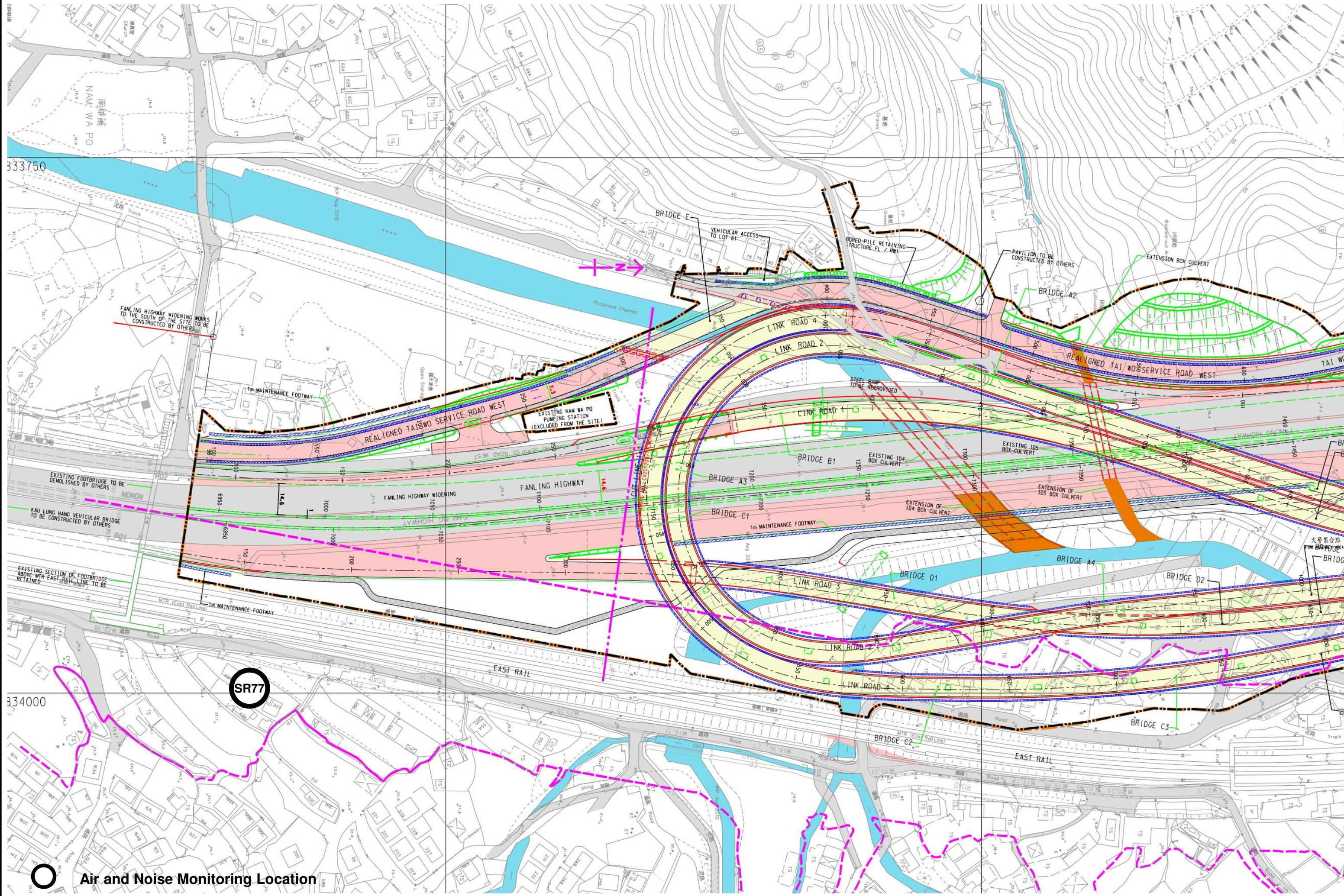
6 CONCLUSION, COMMENTS AND RECOMMENDATIONS

- 6.1.1 The EM&A programme was carried out by the ET in accordance with the EM&A Manual requirements. It is concluded from the environmental monitoring and audit works that adequate environmental mitigation measures have been implemented by the civil works contractors where appropriate in the reporting quarter.
- 6.1.2 In the reporting quarter, no exceedance events have been recorded. .
- 6.1.3 No environmental non-compliance was recorded in the reporting quarter. No environmental complaint was received. No environmental related prosecution or notification of summons were received in the reporting quarter.
- 6.1.4 The box culvert works have been partially completed by the end of March 2014 except the last construction activity, i.e. installation of a base slab at Box Culvert ID4. Due to the loading requirement of a fresh water main under the box culvert, installation of the base slab at Box Culvert ID4 has to be scheduled in November 2015 after the utilities diversions were completed, and therefore the construction works are temporary suspended. The 4-week post construction water quality monitoring will be conducted after the installation of the base slab finishes, hence the completion of the box culvert works.
- 6.1.5 As such, impact monitoring for water quality was not necessary in the reporting quarter due to temporary suspension of the construction works and is anticipated to be resumed in November 2015 during the course of remaining box culvert works.

Figure

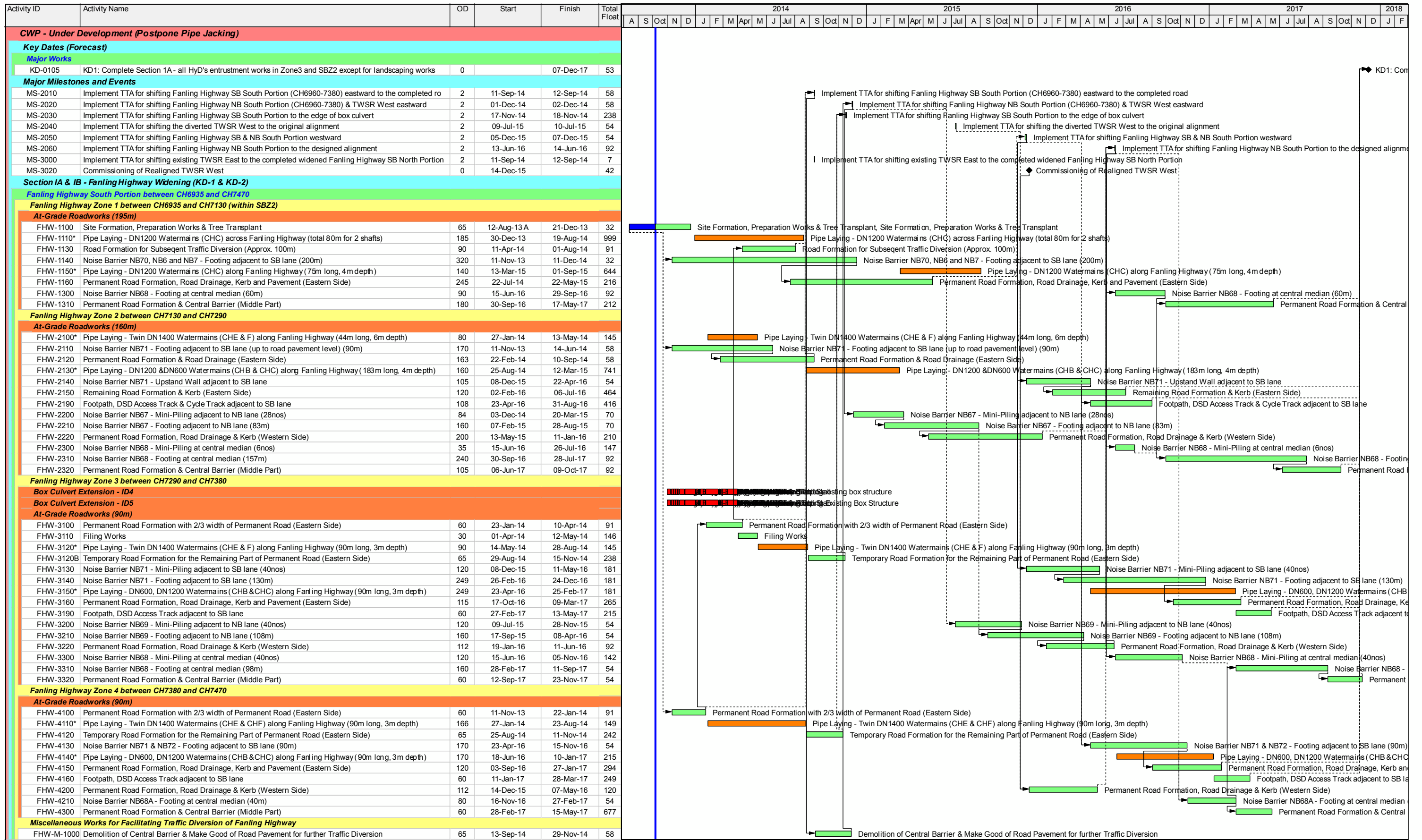


CV/201209-T-CWC-SK-001g_AD_edit.dgn 22/1/2014 17:10:34



Appendix A

Construction Programme



俊和建築工程有限公司
CHUN WO CONSTRUCTION & ENGINEERING CO., LTD.

- █ Actual Work
- █ Remaining Work
- █ Summary Bar
- █ Critical Remaining Work
- ◆ Milestone

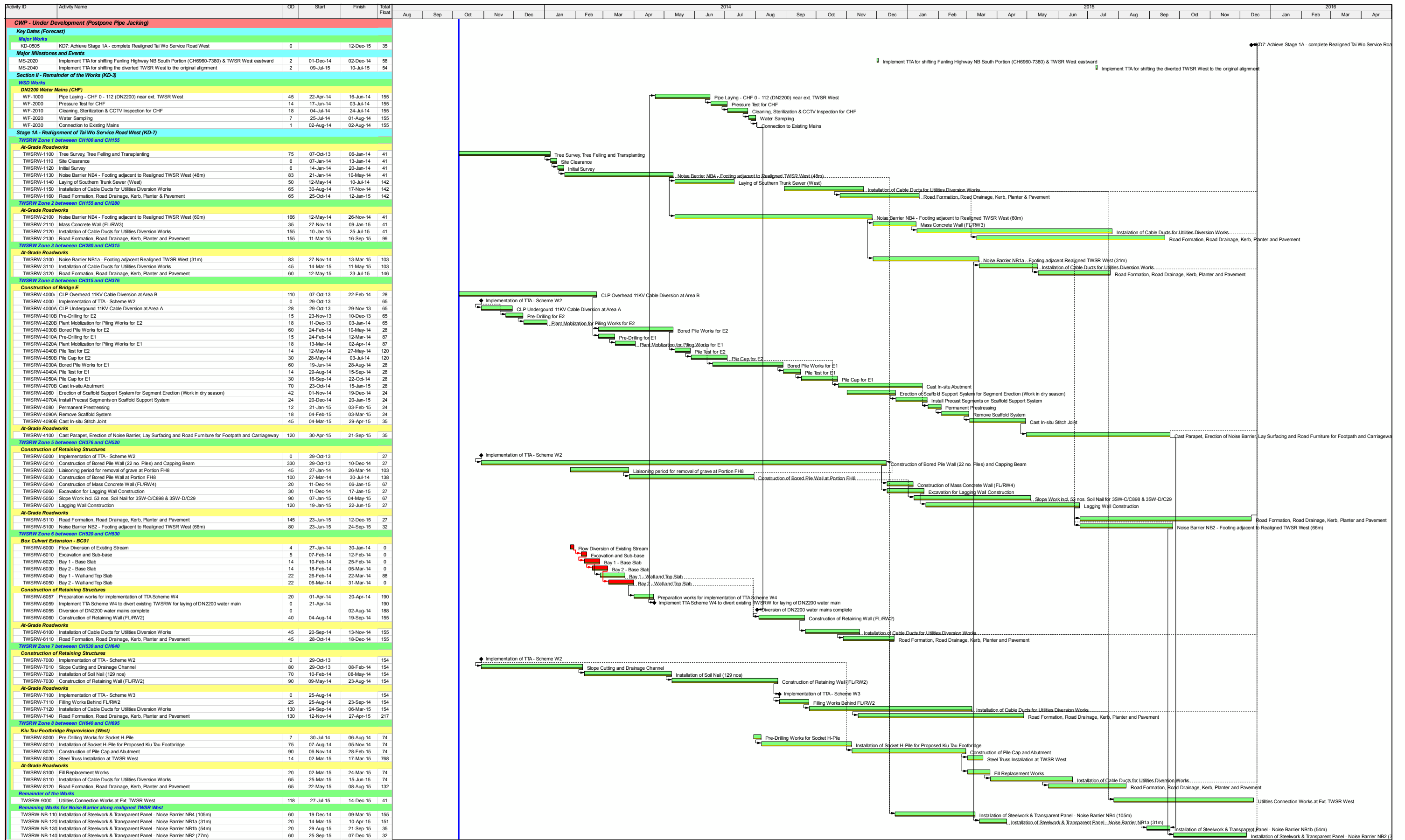
CEDD Contract No. CV/2012/09

Liantang / Heung Yuen Wai BCP - Site Formation & Infrastructure Works, Contract 3

Works Sequence for Fanling Highway South Portion

CWP004-1 Page 1 of 1 11-Oct-13

Date	Revision	Checked	Approved
11-Oct-13		SL	




俊和建築工程有限公司
CHUN WO CONSTRUCTION & ENGINEERING CO., LTD.

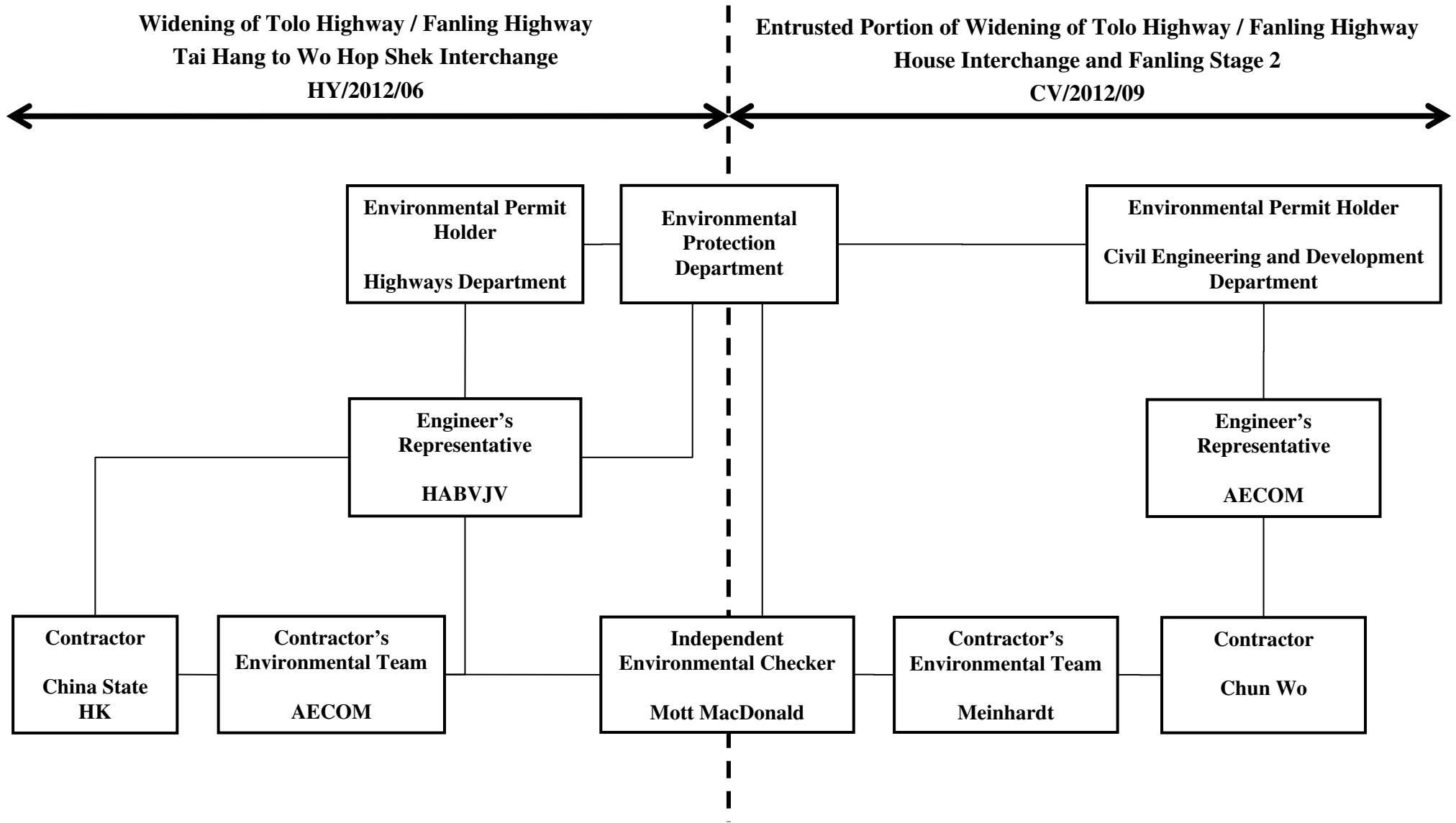
- █ Actual Work
- █ Remaining Work
- █ Critical Remaining Work
- ◆ Milestone
- Project Baseline Bar

CEDD Contract No. CV/2012/09
Liantang / Heung Yuen Wai BCP - Site Formation & Infrastructure Works, Contract 3
Works Sequence for TWSRW

Date	Revision	Checked	Approved
11-Sep-13		SL	

Appendix B

Project Organization Structure



Appendix C Implementation Schedule of Environmental Mitigation Measures (EMIS)

Impact	Environmental Protection Measures	Timing	Responsibility	Implementation Status #
Air Quality				
Air Quality during Construction	<ul style="list-style-type: none"> Restricting heights from which materials are dropped, as far as practicable to minimize the fugitive dust arising from unloading/loading. All stockpiles of excavated materials or spoil of more than 50m³ shall be enclosed, covered or dampened during dry or windy conditions. Effective water sprays shall be used to control potential dust emission sources such as unpaved haul roads and active construction areas. All spraying of materials and surfaces shall avoid excessive water usage. Vehicles that have the potential to create dust while transporting materials shall be covered, with the cover properly secured and extended over the edges of the side and tail boards. Materials shall be dampened, if necessary, before transportation. Travelling speeds shall be controlled to reduce traffic induced dust dispersion and re-suspension within the site from the operating haul trucks. Vehicle washing facilities shall be provided to minimise the quantity of material deposited on public roads. 	During Construction	Contractor	✓ ✓ ✓ ✓ ✓ ✓ ✓ Obs
Air Quality during Operation	Not required	N/A	N/A	N/A
Noise				
Noise during Construction	<ul style="list-style-type: none"> Use of silenced plant or plant equipped with mufflers or dampers in substitute of ordinary plant. Reduce the number of equipment and their percentage on-time. 	During Construction	Contractor	✓ ✓
Noise during Operation	Not required	N/A	N/A	N/A
Water Quality				
Water Quality during Construction	<u>Road Widening Works, Earthworks and Culvert Extension Works</u> <ul style="list-style-type: none"> Wastewater generated from any concrete batching washdown of equipment or similar activities should be discharged into foul sewers, after the removal of settleable solids, and pH adjustment as necessary. All sewage discharges from the study area should meet the TM standards and approval from EPD through the licensing process is required. 	During Construction	Contractor	Obs

Notes (#): ✓ – Compliance; Rem – Reminder; Obs – Observation; N/C – Non Compliance; N/A – Not Applicable;

Impact	Environmental Protection Measures	Timing	Responsibility	Implementation Status #
	<ul style="list-style-type: none"> • Sand traps, oil interceptors and other pollution prevention installations should be provided, properly cleaned and maintained. • Runoff from exposed working areas, unfinished slopes and from unlined temporary channels should be directed to stilling basins and/or silt traps before discharging to the drainage outfalls. • Regular inspections of stilling basins and/or silt traps is required to ensure that sediment is not conveyed into the existing drainage system. • Open stockpiles should be covered with a tarpaulin cover. • During the wet season, any exposed top soils should be covered with a tarpaulin, shotcreted or hydroseeded. • Sand and silt from wash-water from vehicle washing should be settled out before discharging into storm drains. • Fuels should be stored in bunded areas such that spillage can be easily collected. 			Rem Rem and Obs ✓ ✓ ✓ ✓ Obs
Water Quality during Operation	Not required	N/A	N/A	N/A
Waste Management				
Waste Management during Construction	<u>General Waste</u> <ul style="list-style-type: none"> • Transport of wastes off site as soon as possible. • Maintenance of accurate waste records. • Minimisation of waste generation for disposal (via reduction/recycling/re-use). • No on-site burning will be permitted. • Use of re-useable metal hoardings/signboards. <u>Vegetation from site clearance</u> <ul style="list-style-type: none"> • Segregation of materials to facilitate disposal. • Mulching to reduce bulk and where possible review opportunities for the possible beneficial use within landscaping areas. 	During Construction During Construction	Contractor Contractor	✓ ✓ ✓ ✓ ✓ ✓ ✓

Notes (#): ✓ – Compliance; Rem – Reminder; Obs – Observation; N/C – Non Compliance; N/A – Not Applicable;

Impact	Environmental Protection Measures	Timing	Responsibility	Implementation Status #
	<p><u>Demolition Wastes</u></p> <ul style="list-style-type: none"> • Segregation of materials to facilitate disposal. • Appropriate stockpile management. <p><u>Excavated Materials</u></p> <ul style="list-style-type: none"> • Segregation of materials to facilitate disposal / reuse. • Appropriate stockpile management. • Re-use of excavated material on or off site (where possible). • Special handling and disposal procedures in the event that contaminated materials are excavated. <p><u>Construction Wastes</u></p> <ul style="list-style-type: none"> • Segregation of materials to facilitate recycling/reuse (within designated area in appropriate containers/stockpiles). • Appropriate stockpile management. • Planning to reduce over ordering and waste generation. • Recycling and re-use of materials where possible (e.g. metal, wood from formwork) • For material which cannot be re-used/recycled, collection should be carried out by an approved waste contractor for landfill disposal. <p><u>Bentonite Slurries</u></p> <ul style="list-style-type: none"> • Bentonite slurries should be reused as far as possible. • Disposal in accordance with Practice Note For Professional Persons ProPECC PN 1/94. <p><u>Chemical Wastes</u></p> <ul style="list-style-type: none"> • Storage within locked, covered and bunded area. • The storage area shall not be located adjacent to sensitive receivers e.g. drains. 	<p>During Construction</p> <p>During Construction</p> <p>During Construction</p> <p>During Construction</p> <p>During Construction</p> <p>During Construction</p>	<p>Contractor</p> <p>Contractor</p> <p>Contractor</p> <p>Contractor</p> <p>Contractor</p> <p>Contractor</p>	<p>✓</p> <p>✓</p> <p>✓</p> <p>✓</p> <p>✓</p> <p>N/A</p> <p>✓</p> <p>✓</p> <p>✓</p> <p>✓</p> <p>N/A</p> <p>N/A</p> <p>Rem</p> <p>✓</p>

Notes (#): ✓ – Compliance; Rem – Reminder; Obs – Observation; N/C – Non Compliance; N/A – Not Applicable;

Impact	Environmental Protection Measures	Timing	Responsibility	Implementation Status #
	<ul style="list-style-type: none"> • Minimise waste production and recycle oils/solvents where possible. • A spill response procedure shall be in place and absorption material available for minor spillages. • Use appropriate and labelled containers. • Educate site workers on site cleanliness/waste management procedures. • If chemical wastes are to be generated, the contractor must register with EPD as a chemical waste producer. • The chemical wastes shall be collected by a licensed chemical waste collector. <p><u>Municipal Wastes</u></p> <ul style="list-style-type: none"> • Waste shall be stored within a temporary refuse collection facility, in appropriate containers prior to collection and disposal. • Regular, daily collections are required by an approved waste collector. 	During Construction	Contractor	✓ ✓ ✓ Rem ✓ ✓ ✓ ✓
Waste Management during Operation	Not required.	N/A	N/A	N/A
Ecology				
Ecology during Construction	<p><u>Accurate Delineation of Works Area</u></p> <ul style="list-style-type: none"> • Boundaries of proposed works areas shall be clearly identified and separated from external areas by a physical barrier to prevent encroachment of adjacent habitats. • Individual trees which fall within the works areas but which work plans show do not require removal are to be retained and fenced off to maximise protection. <p><u>Dust generation</u></p> <p>There are a number of measures which shall be taken as specified in the Air Pollution Control (Construction Dust) Regulation on 'Dust Control Requirements, including the following key measures to be applied during construction:</p> <ul style="list-style-type: none"> • vehicle washing facilities to be provided at every discernible or designated vehicle exit point; 	During Construction	Contractor	✓ ✓ ✓

Notes (#): ✓ – Compliance; Rem – Reminder; Obs – Observation; N/C – Non Compliance; N/A – Not Applicable;

Impact	Environmental Protection Measures	Timing	Responsibility	Implementation Status #
	<ul style="list-style-type: none"> all temporary site access roads shall be sprayed with water to suppress dust as necessary; all dusty materials should be sprayed with water immediately prior to any handling; and all debris should be covered entirely by impervious sheeting or stored in a sheltered debris collection area. <p><u>Surface Run-off</u> In general, mitigation measures shall be in accordance with ProPECC PN1/94 on 'Construction Site Drainage'. Key measures include:</p> <ul style="list-style-type: none"> Bund and cover stockpiles to avoid run-off; Channel any run-off through a system of oil, grease and sediment / silt traps and reuse water on site where ever practical; All vehicle maintenance to be undertaken within a bunded area; and Maximise vegetation retention on-site to maximise absorption (minimise transport). 	During Construction	Contractor	<ul style="list-style-type: none"> ✓ ✓ ✓ ✓ ✓ ✓
Ecology during Operation	<ul style="list-style-type: none"> To conduct compensatory ecological planting as specified in the latest landscape plans approved by EPD (Clause 2.6 of the Environmental Permit refers). 	During Construction and operation	Contractor (during construction) / LCSD* (during operation) (Note: * The division of vegetation planting and maintenance responsibilities shall follow the guidelines stipulated in ETWB TCW No. 2/2004.)	N/A
Landscape and Visual				
Landscape and Visual during Construction	<p><u>Preservation of Existing Vegetation</u></p> <ul style="list-style-type: none"> Trees identified for retention within the project limit would be protected during the works The tree transplanting and planting works shall be implemented by approved Landscape Contractors 	During Construction	Contractor	<ul style="list-style-type: none"> ✓ ✓

Notes (#): ✓ – Compliance; Rem – Reminder; Obs – Observation; N/C – Non Compliance; N/A – Not Applicable;

Impact	Environmental Protection Measures	Timing	Responsibility	Implementation Status #
	<p><u>Temporary Works Areas</u></p> <ul style="list-style-type: none"> Where feasible the works areas would be screened using hoarding and existing vegetation would be retained where possible to reduce the landscape and visual impacts arising from the construction activity. The landscape of these works areas would be restored following the completion of the construction phase. <p><u>Hoarding</u></p> <ul style="list-style-type: none"> A hoarding would be erected where practicable in the most visually sensitive locations to screen the temporary construction works from the local VSRs. <p><u>Top Soils</u></p> <ul style="list-style-type: none"> The works will result in disturbance to extensive areas of topsoil. Topsoil worthy of retention should be stockpiled for use following completion of the civil engineering works. It should either be temporarily vegetated with hydroseeded grass or turned over on a regular basis. <p><u>Protection of Important Landscape Features</u></p> <ul style="list-style-type: none"> Important features such as temples, Island House and kilns within the study area, although remote from the proposed works retained and adequately protected. 	During Construction	Contractor	✓
		During Construction	Contractor	✓
		During Construction	Contractor	N/A
		During Construction	Contractor	N/A
Landscape and Visual during Operation	Not required.	N/A	N/A	N/A

Appendix D

Meteorological Data Extracted from Hong Kong Observatory

Daily Extract of Meteorological Observations , May 2015 - Sheung Shui

Year 2015 · Month 5 ·

Day	Mean Pressure (hPa)	Air Temperature			Mean Dew Point (deg. C)	Mean Relative Humidity (%)	Total Rainfall (mm)	Prevailing Wind Direction (degrees)	Mean Wind Speed (km/h)
		Absolute Daily Max (deg. C)	Mean (deg. C)	Absolute Daily Min (deg. C)					
01	1009.8	30.6	27.6	25.4	22.9	76	0.0	***	***
02	1009.1	29.7	27.6	25.8	23.6	79	0.0	***	***
03	1009.2	32.9	28.8	26.1	24.4	78	0.0	***	***
04	1009.5	33.6	29.0	26.4	24.2	76	0.0	***	***
05	1008.5	30.9	27.4	24.6	23.6	80	0.0	***	***
06	1008.1	29.9	27.0	24.4	23.7	83	1.5	***	***
07	1009.3	31.8	27.5	24.8	24.8	86	2.5	***	***
08	1008.3	31.7	28.2	25.3	24.0	79	0.0#	***	***
09	1008.1	32.3	27.1	23.6	24.0	84	***	***	***
10	1009.3	29.4	26.1	23.6	24.1	89	2.5#	***	***
11	1010.1	30.5	25.7	22.9	23.7	89	35.0	***	***
12	1012.1	31.5	26.2	21.5	20.0	71	0.0	***	***
13	1011.8	29.3	26.6	24.6	22.9	81	0.0	***	***
14	1011.7	33.3	27.8	24.1	23.4	79	0.5	***	***
15	1011.0	33.4	28.9	25.0	23.9	76	0.0	***	***
16	1009.8	28.6	25.8	23.6	24.4	92	7.0	***	***
17	1007.8	30.1	25.6	23.7	24.1	92	9.5	***	***
18	1007.4	30.2	27.8	24.7	25.0	85	1.0	***	***
19	1006.5	30.8	28.0	26.6	26.0	89	4.5	***	***
20	1006.1	30.7	26.7	24.6	25.7	94	57.0	***	***
21	1007.8	26.4	24.6	23.4	22.6	89	3.5	***	***
22	1008.3	24.4	23.6	22.9	21.8	90	3.0	***	***
23	1005.9	25.3	24.3	23.7	24.0	98	89.0	***	***
24	1005.6	29.7	25.8	23.8	24.9	95	5.0	***	***
25	1006.2	34.4	28.3	24.7	25.2	85	13.0	***	***
26	1007.8	28.3	26.4	25.3	25.6	96	17.0	***	***
27	1006.4	33.0	29.0	26.1	26.3	86	0.5	***	***
28	1004.6	34.4	30.4	27.5	26.1	79	0.0	***	***
29	1005.9	33.8	30.7	28.3	26.2	77	0.0	***	***
30	1007.0	34.6	29.8	24.8	25.7	80	13.0	***	***
31	1006.9	32.4	28.1	25.3	25.8	88	0.0	***	***

*** unavailable

data incomplete

Rainfall measured in increment of 0.5 mm. Amount of < 0.5 mm cannot be detected

Daily Extract of Meteorological Observations , June 2015 - Sheung Shui

Year 2015 · Month 6 ·

Day	Mean Pressure (hPa)	Air Temperature			Mean Dew Point (deg. C)	Mean Relative Humidity (%)	Total Rainfall (mm)	Prevailing Wind Direction (degrees)	Mean Wind Speed (km/h)
		Absolute Daily Max (deg. C)	Mean (deg. C)	Absolute Daily Min (deg. C)					
01	1007.3	32.5	28.9	26.7	26.1	85	2.0	***	***
02	1008.7	34.1	29.9	27.0	25.3	77	0.5	***	***
03	1009.6	34.4	30.3	27.1	24.9	74	0.0	***	***
04	1008.4	33.9	29.8	26.3	24.9	76	0.0	***	***
05	1007.0	32.3	28.0	25.1	25.3	86	18.5	***	***
06	1007.3	33.4	28.7	24.8	25.3	83	0.0	***	***
07	1008.5	34.0	30.0	26.4	24.6	74	0.0	***	***
08	1007.6	34.2	30.2	26.8	25.2	75	0.0	***	***
09	1006.7	33.2	29.9	27.1	25.6	78	1.5	***	***
10	1006.8	33.5	29.3	26.8	26.3	85	14.0	***	***
11	1007.7	33.4	30.3	28.0	26.1	79	0.0	***	***
12	1008.0	33.3	29.7	27.3	25.7	80	0.0	***	***
13	1007.4	33.5	30.0	27.6	25.5	77	0.0	***	***
14	1007.9	33.8	29.7	26.8	25.0	77	0.0	***	***
15	1009.0	35.6	30.3	26.6	24.2	72	0.0	***	***
16	1007.8	35.0	30.1	26.0	24.7	74	0.0	***	***
17	1005.5	34.8	30.8	27.3	24.9	72	0.0	***	***
18	1004.9	35.9	31.1	27.3	25.2	72	0.0	***	***
19	1005.6	36.4	31.2	27.4	24.6	69	0.0	***	***
20	1006.1	35.1	30.5	26.9	25.2	74	0.0	***	***
21	1005.0	33.5	29.4	26.2	26.1	84	25.5	***	***
22	1003.1	30.6	28.1	26.2	26.3	90	20.0	***	***
23	1003.8	29.4	27.1	25.8	26.0	93	35.5	***	***
24	1005.0	31.5	28.0	25.9	26.0	89	7.5	***	***
25	1005.5	29.4	27.5	26.2	26.7	95	28.5	***	***
26	1005.7	33.9	29.2	26.3	25.9	84	7.0	***	***
27	1007.8	34.8	30.7	27.4	25.4	75	0.0	***	***
28	1009.0	35.0	30.7	27.3	25.3	75	0.0	***	***
29	1007.4	34.8	30.7	27.5	25.2	74	0.0	***	***
30	1005.4	34.6	30.8	28.5	25.8	75	0.0	***	***

*** unavailable

Rainfall measured in increment of 0.5 mm. Amount of < 0.5 mm cannot be detected

Daily Extract of Meteorological Observations , July 2015 - Sheung Shui

Year Month

Day	Mean Pressure (hPa)	Air Temperature			Mean Dew Point (deg. C)	Mean Relative Humidity (%)	Total Rainfall (mm)	Prevailing Wind Direction (degrees)	Mean Wind Speed (km/h)
		Absolute Daily Max (deg. C)	Mean (deg. C)	Absolute Daily Min (deg. C)					
01	1003.5	34.7	31.3	29.1	26.0	74	0.0	***	***
02	1002.6	34.6	31.3	29.4	26.0	74	0.0	***	***
03	1002.2	34.7	31.3	28.8	26.0	74	0.0	***	***
04	1002.3	34.9	30.4	27.3	25.2	75	0.0	***	***
05	1002.7	35.0	30.2	26.8	25.6	77	0.0	***	***
06	1001.3	32.6	29.7	27.3	23.6	70	0.0	***	***
07	1000.6	33.2	29.4	26.3	21.8	64	0.0	***	***
08	1000.6	33.5	29.2	26.2	21.9	65	0.0	***	***
09	997.6	30.6	27.3	24.9	23.2	79	5.0	***	***
10	1000.1	32.9	28.6	25.3	25.2	83	6.5	***	***
11	999.9	36.3	30.7	26.6	25.9	77	0.0	***	***
12	1000.8	36.5	31.3	27.1	26.2	75	0.0	***	***
13	1001.9	35.0	30.6	27.5	26.8	81	0.0	***	***
14	1001.8	35.5	30.5	26.7	26.1	79	0.0	***	***
15	1000.8	35.3	29.9	26.9	26.3	82	2.0	***	***
16	1000.3	33.1	29.8	27.2	26.3	82	0.0	***	***
17	1001.3	32.7	28.1	25.2	26.1	90	69.5	***	***
18	1001.5	32.1	29.2	26.8	25.8	83	1.5	***	***
19	1001.1	34.1	30.0	26.7	24.7	75	0.0	***	***
20	1001.2	29.4	27.2	25.9	25.7	92	43.0	***	***
21	1006.1	27.6	26.4	25.3	24.4	89	21.5	***	***
22	1007.8	29.4	27.5	25.4	25.5	89	5.0	***	***
23	1007.5	29.5	27.5	24.6	25.6	90	31.5	***	***
24	1006.5	29.6	27.3	23.4	25.6	90	95.5	***	***
25	1006.2	31.1	28.4	26.0	25.3	84	7.0	***	***
26	1008.5	31.2	28.6	26.2	25.0	81	10.0	***	***
27	1011.0	32.3	28.3	25.1	25.0	84	6.5	***	***
28	1011.7	33.8	28.3	24.9	24.1	80	0.5	***	***
29	1011.2	31.6	26.5	24.8	24.7	91	10.0	***	***
30	1010.8	28.8	25.8	23.7	24.8	94	11.5	***	***
31	1010.7	33.5	27.5	22.8	23.5	81	0.0	***	***

*** unavailable

Rainfall measured in increment of 0.5 mm. Amount of < 0.5 mm cannot be detected

Appendix E

Environmental Monitoring Data for

Air and Noise

Appendix E
Air Quality Monitoring Results and their Graphical Presentation

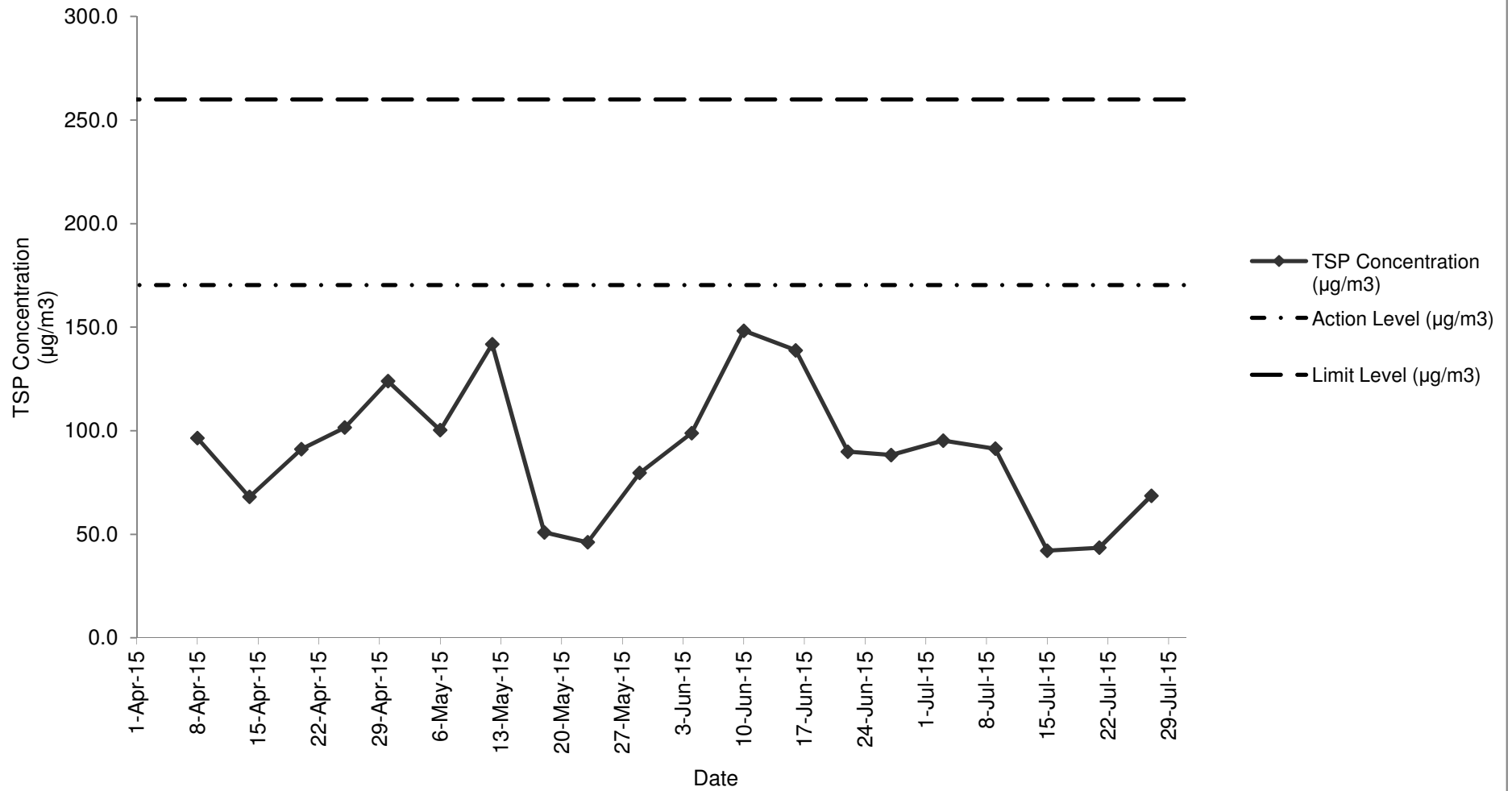
24-Hour TSP Monitoring Result at Station: SR77

Sampling Date	Weather Condition	Paper No.	Wt. of paper (g)			Elapse Time			Flow Rate (CFM)			Flow Rate (m ³ /min)			Total Volume (m ³)	TSP Concentration (µg/m ³)	Action Level (µg/m ³)	Limit Level (µg/m ³)	Wind speed m/s	Wind direction
			Initial Wt.	Final Wt.	Wt. of Dust	Initial	Final	Sampling Hour	Initial	Final	Avg Flow Rate	Initial	Final	Avg Flow Rate						
8-Apr-15	Rainy	B67	2.8111	3.0118	0.2007	0.00	24.00	24.00	51	51	51.0	1.44	1.44	1.44	2079.59	96.5	170.3	260.0	<5	N
14-Apr-15	Fine	B59	2.8093	2.9508	0.1415	0.00	24.00	24.00	51	51	51.0	1.44	1.44	1.44	2079.59	68.0	170.3	260.0	<5	N
20-Apr-15	Cloudy	B60	2.8015	2.9910	0.1895	0.00	24.00	24.00	51	51	51.0	1.44	1.44	1.44	2079.59	91.1	170.3	260.0	<5	N
25-Apr-15	Fine	B62	2.8018	3.0129	0.2111	0.00	24.00	24.00	51	51	51.0	1.44	1.44	1.44	2079.59	101.5	170.3	260.0	<5	N
30-Apr-15	Fine	B64	2.7936	3.0513	0.2577	0.00	24.00	24.00	51	51	51.0	1.44	1.44	1.44	2079.59	123.9	170.3	260.0	<5	N
6-May-15	Fine	B82	2.8026	3.0111	0.2085	0.00	24.00	24.00	51	51	51.0	1.44	1.44	1.44	2079.59	100.3	170.3	260.0	<5	N
12-May-15	Fine	B84	2.8111	3.1060	0.2949	0.00	24.00	24.00	51	51	51.0	1.44	1.44	1.44	2079.59	141.8	170.3	260.0	<5	N
18-May-15	Rainy	B86	2.7942	2.9001	0.1059	0.00	24.00	24.00	51	51	51.0	1.44	1.44	1.44	2079.59	50.9	170.3	260.0	<5	N
23-May-15	Rainy	B88	2.8311	2.9271	0.0960	0.00	24.00	24.00	51	51	51.0	1.44	1.44	1.44	2079.59	46.2	170.3	260.0	<5	N
29-May-15	Fine	B90	2.8238	2.9894	0.1656	0.00	24.00	24.00	51	51	51.0	1.44	1.44	1.44	2079.59	79.6	170.3	260.0	<5	N
4-Jun-15	Fine	B92	2.8016	3.0071	0.2055	3243.80	3267.80	24.00	51	51	51.0	1.44	1.44	1.44	2079.59	98.8	170.3	260.0	<5	N
10-Jun-15	Fine	B94	2.7811	3.0894	0.3083	3270.80	3294.80	24.00	51	51	51.0	1.44	1.44	1.44	2079.59	148.3	170.3	260.0	<5	N
16-Jun-15	Fine	B96	2.8004	3.0890	0.2886	3297.80	3321.80	24.00	51	51	51.0	1.44	1.44	1.44	2079.59	138.8	170.3	260.0	<5	N
22-Jun-15	Rainy	B98	2.8211	3.0080	0.1869	3324.80	3348.80	24.00	51	51	51.0	1.44	1.44	1.44	2079.59	89.9	170.3	260.0	<5	N
27-Jun-15	Fine	B100	2.8226	3.0061	0.1835	3351.80	3375.80	24.00	51	51	51.0	1.44	1.44	1.44	2079.59	88.2	170.3	260.0	<5	N
3-Jul-15	Fine	B102	2.8212	3.0193	0.1981	3378.80	3402.80	24.00	51	51	51.0	1.44	1.44	1.44	2079.59	95.3	170.3	260.0	<5	N
9-Jul-15	Rainy	B104	2.8164	3.0063	0.1899	3405.80	3429.80	24.00	51	51	51.0	1.44	1.44	1.44	2079.59	91.3	170.3	260.0	<5	N
15-Jul-15	Sunny	B106	2.8206	2.9081	0.0875	3442.67	3466.67	24.00	51	51	51.0	1.44	1.44	1.44	2079.59	42.1	170.3	260.0	<5	N
21-Jul-15	Rainy	B108	2.8131	2.9036	0.0905	3469.67	3493.67	24.00	51	51	51.0	1.44	1.44	1.44	2079.59	43.5	170.3	260.0	<5	N
27-Jul-15	Sunny	C11	2.7974	2.9401	0.1427	3496.67	3520.67	24.00	51	51	51.0	1.44	1.44	1.44	2079.59	68.6	170.3	260.0	<5	N

Summary For the Reporting Quarter (May 2015 - Jul 2015)	
Average	88.2
Minimum	42.1
Maximum	148.3

Note: No major dust source observed during the monitoring period
Data in **Bold** denotes exceedance of respective Action Level
Data in **Bold Underline** denotes exceedance of respective Limit Level

24-Hour TSP Monitoring Result at Station: SR77 (April 2015 - July 2015)



Appendix E
Air Quality Monitoring Results and their Graphical Presentation

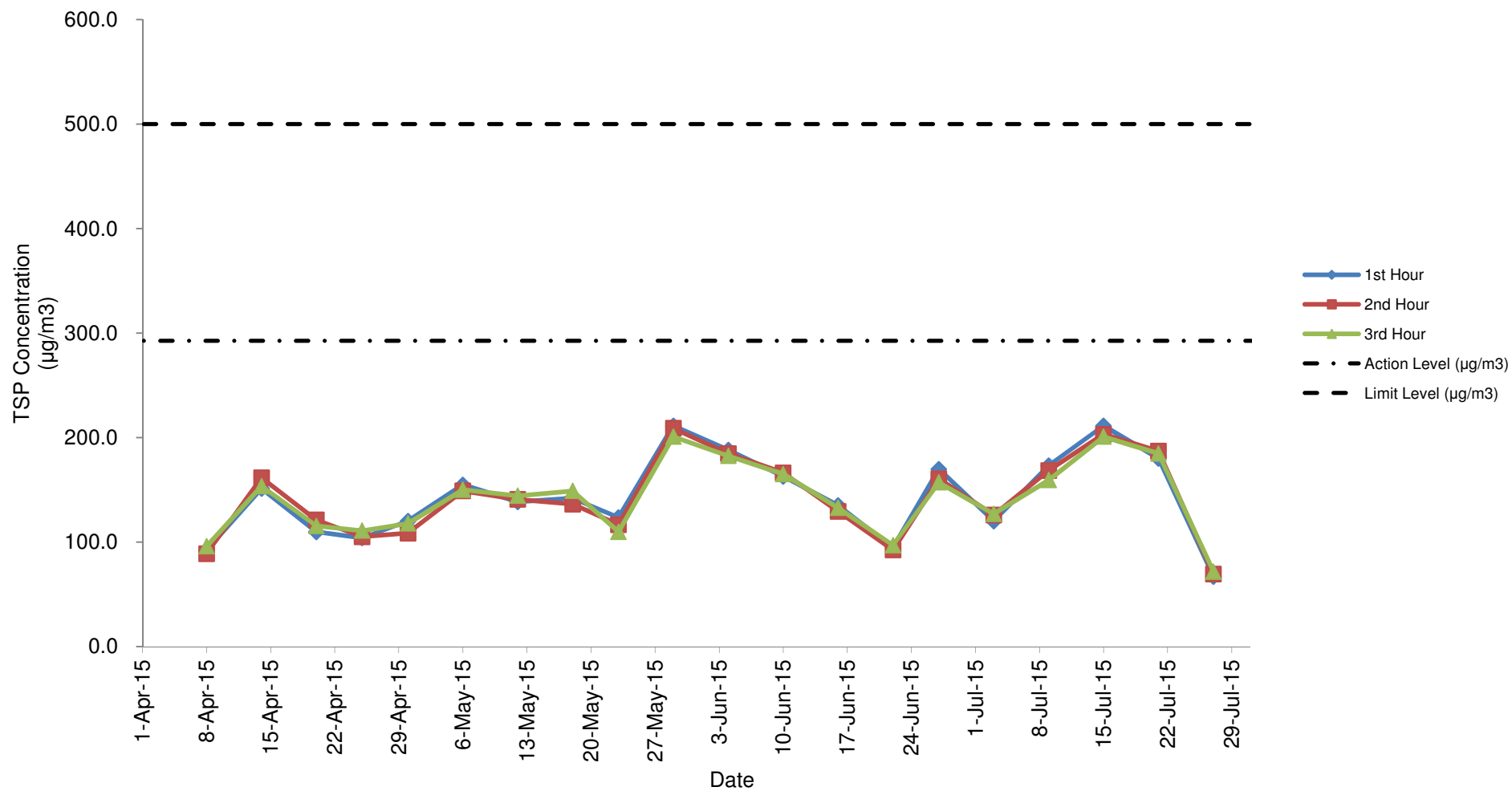
1-Hour TSP Monitoring Result at Station: SR77

Date	Weather Condition	Time	Conc.(µg/m ³)			Action Level (µg/m3)	Limit Level (µg/m3)
			1 st Hour	2 nd Hour	3 rd Hour		
8-Apr-15	Rainy	9:00 - 12:00	92.3	88.9	95.8	292.7	500.0
14-Apr-15	Fine	9:00 - 12:00	151.2	161.6	153.5	292.7	500.0
20-Apr-15	Cloudy	9:00 - 12:00	109.6	121.2	115.4	292.7	500.0
25-Apr-15	Fine	9:00 - 12:00	103.9	105.0	110.8	292.7	500.0
30-Apr-15	Fine	9:00 - 12:00	120.0	108.5	117.7	292.7	500.0
6-May-15	Fine	9:00 - 12:00	154.6	148.9	150.0	292.7	500.0
12-May-15	Fine	9:00 - 12:00	138.5	140.8	144.3	292.7	500.0
18-May-15	Rainy	9:00 - 12:00	142.0	136.2	148.9	292.7	500.0
23-May-15	Rainy	9:00 - 12:00	123.5	116.6	109.6	292.7	500.0
29-May-15	Fine	9:00 - 12:00	211.2	208.9	200.8	292.7	500.0
4-Jun-15	Fine	9:00 - 12:06	188.1	184.7	182.3	292.7	500.0
10-Jun-15	Fine	9:00 - 12:09	162.7	166.2	165.0	292.7	500.0
16-Jun-15	Fine	9:00 - 12:06	135.0	129.3	132.7	292.7	500.0
22-Jun-15	Rainy	9:00 - 12:07	94.6	92.3	96.9	292.7	500.0
27-Jun-15	Fine	9:00 - 12:07	169.6	160.4	157.0	292.7	500.0
3-Jul-15	Fine	9:00 - 12:06	120.0	125.8	126.9	292.7	500.0
9-Jul-15	Rainy	9:00 - 12:09	173.1	168.5	159.3	292.7	500.0
15-Jul-15	Sunny	9:00 - 12:06	211.2	203.1	200.8	292.7	500.0
21-Jul-15	Rainy	9:00 - 12:06	180.0	187.0	184.7	292.7	500.0
27-Jul-15	Sunny	9:00 - 12:09	66.9	69.2	71.6	292.7	500.0

Summary For the Reporting Quarter (May 2015 - Jul 2015)	
Average	149.8
Minimum	66.9
Maximum	211.2

Note: No major dust source observed during the monitoring period

1-Hour TSP Monitoring Result at station: SR77 (April 2015 - July 2015)



Project Name: Contract No. CV/2012/09 Liantang / Heung Yuen Wai Boundary Control Point Site Formation and Infrastructure works - Contract 3
Entrusted Portion of Widening of Tolo Highway / Fanling Highway between Island House Interchange and Fanling - Stage 2

Noise Monitoring Result at SR77

Date	Weather Condition	Start Time	End Time	Measured Noise Level (dB(A))*			Baseline Corrected Level, dB(A)**	Baseline Noise Level (dB(A)), Leq(30min)	Limit Level dB(A)	Exceedance (Y / N)
				L10(30min)	L90(30min)	Leq(30min)				
2015/04/08	Rainy	16:30	17:00	76.0	60.5	70.5	-	67.8	75.0	N
2015/04/14	Fine	15:30	16:00	77.0	62.0	71.0	-	67.8	75.0	N
2015/04/20	Cloudy	11:00	11:30	77.5	65.0	72.0	-	67.8	75.0	N
2015/04/30	Fine	14:45	15:15	77.5	62.5	76.5	-	67.8	75.0	Y
2015/05/06	Fine	15:30	16:00	73.0	60.0	69.1	-	67.8	75.0	N
2015/05/07	Fine	14:30	15:00	73.5	62.5	71.4	-	67.8	75.0	N
2015/05/12	Fine	14:45	15:15	72.0	57.0	67.6	-	67.8	75.0	N
2015/05/19	Rainy	14:00	14:30	76.0	63.5	72.0	-	67.8	75.0	N
2015/05/29	Fine	14:30	15:00	76.5	64.0	71.0	-	67.8	75.0	N
2015/06/04	Fine	13:30	14:00	75.5	59.5	71.5	-	67.8	75.0	N
2015/06/10	Fine	14:00	14:30	80.0	58.5	71.0	-	67.8	75.0	N
2015/06/16	Fine	14:00	14:30	78.0	57.0	71.0	-	67.8	75.0	N
2015/06/22	Rainy	14:00	14:30	80.5	61.0	70.5	-	67.8	75.0	N
2015/07/03	Fine	17:00	17:30	89.0	56.5	70.0	-	67.8	75.0	N
2015/07/09	Fine	11:30	12:00	81.0	64.0	71.0	-	67.8	75.0	N
2015/07/15	Sunny	15:00	15:30	85.0	54.0	68.5	-	67.8	75.0	N
2015/07/21	Cloudy	15:30	16:00	85.0	58.5	68.0	-	67.8	75.0	N
2015/07/27	Sunny	14:00	14:30	90.0	57.0	68.5	-	67.8	75.0	N
Summary For the Reporting Quarter (May 2015 - Jul 2015)										
Average									70.1	
Minimum									67.6	
Maximum									72.0	

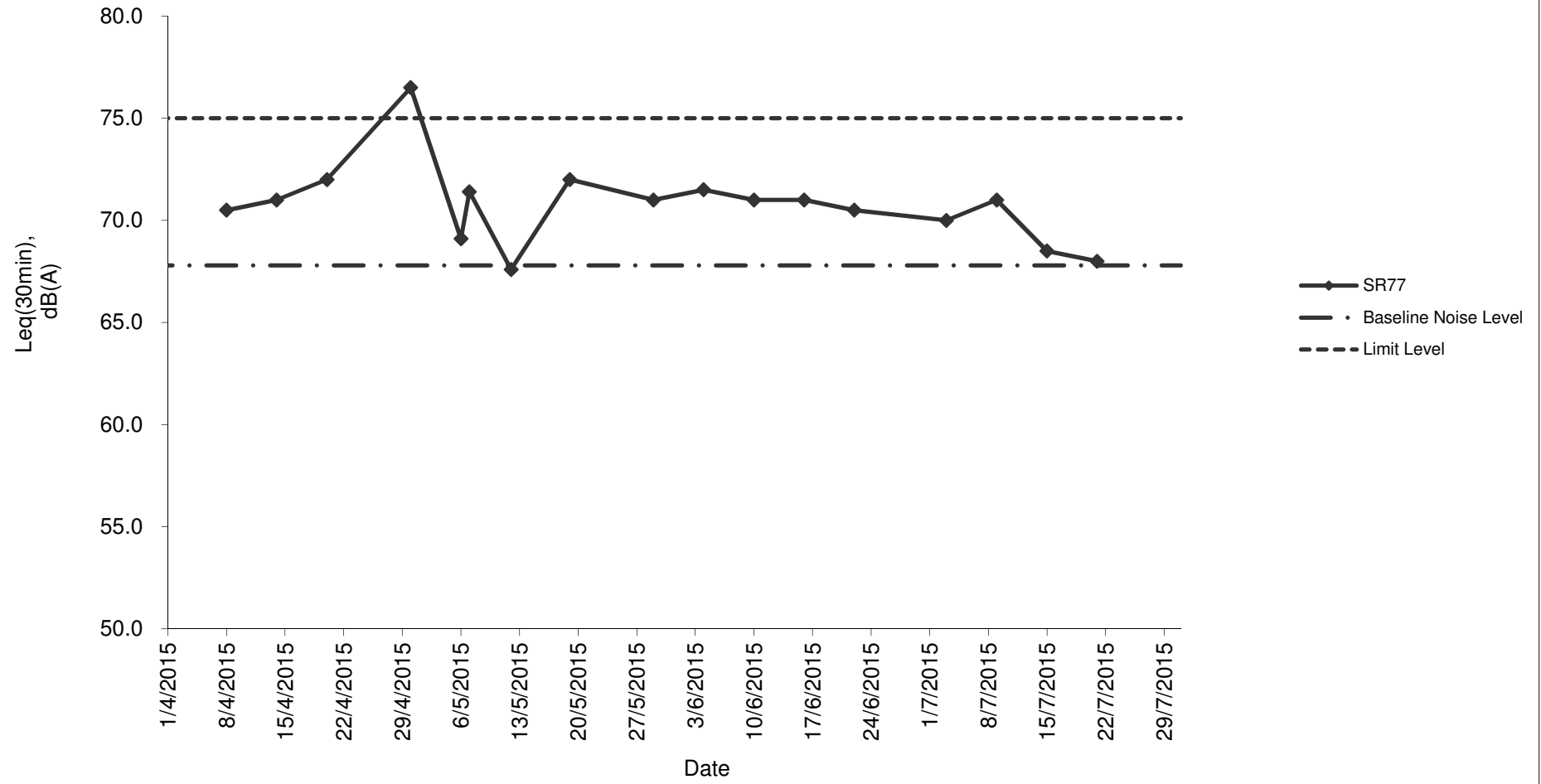
Remarks

* +3dB(A) Façade effect correction included

** Baseline corrected level is only calculated when measured noise level (Leq) > limit level.

*** Data in **Underline** denotes exceedance of respective Limit Level

**Noise monitoring result: SR77
(April 2015 - July 2015)**



Appendix F Waste Flow Table

Monthly Summary Waste Flow Table

Month	Actual Quantities of Inert C&D Materials Generated Monthly							Actual Quantities of C&D Wastes Generated Monthly				
	Total Quantity Generated	Hard Rock and Large Broken Concrete	Soil	Soil Reused in the Contract	Soil Reused in other Projects	Soil Disposed as Public Fill	Imported Fill	Metals	Paper/ cardboard packaging (Note 3)	Plastics	Chemical Waste	General Refuse (Note 2)
Unit	(in '000m3)	(in '000m3)	(in '000m3)	(in '000m3)	(in '000m3)	(in '000m3)	(in '000m3)	(in '000m3)	(in '000m3)	(in '000m3)	(in m3)	(in '000m3)
May-15	1.554	0.197	1.357	0.108	-	1.249	0.100	-	-	0.012	-	0.065
Jun-15	2.568	0.053	2.515	0.840	-	1.675	0.125	-	-	0.030	0.800	0.060
Jul-15	1.207	0.030	1.177	0.351	-	0.826	1.564	-	-	-	-	0.065
Total	5.329	0.280	5.049	1.299	-	3.750	1.789	-	-	0.042	0.800	0.190

- Note:
1. Assume the density of soil fill is 2 ton/m3.
 2. Assume the density of rock and broken concrete is 2.5 ton/m3.
 3. Assume each truck of C&D wastes is 5m3.
 4. The inert C&D materials except slurry and bentonite are disposed at Tuen Mun 38.
 5. The slurry and bentonite are disposed at Tseung Kwun O 137.
 6. The non-inert C&D wastes are disposed at NENT.
 7. Assume the density of metal is 7,850 kg/m3.

Appendix G Cumulative Statistics on Complaints, Notifications of Summons and Successful Prosecutions

Cumulative Complaint Log

Complaint Log No.	Date of Complaint	Received From and Received By	Location of Complainant	Nature of Complaint	Outcome	Status
C131126	26, November, 2013	Mr. Tony Hung from WWF	Mat Wat River (works sites for box culvert extension)	Suspected unauthorised discharge of water from a construction site to Ma Wat River, Tai Wo Service Road East, Tai Po	<p>It was found that the water leaving the end of the steel pipes was the diverted water from the upstream of the existing box culverts, instead of being discharged from the construction works sites.</p> <p>An EM&A Programme is being undertaken to monitoring the environmental performance of the construction works, and the Contractor has also implemented appropriate mitigation measures to avoid silt-laden runoff discharging from the works sites into the river.</p> <p>The complaint is considered an invalid complaint under this Project.</p>	Completed

Complaint Log No.	Date of Complaint	Received From and Received By	Location of Complainant	Nature of Complaint	Outcome	Status
C141120	20 November, 2014	EPD	Ng Tung River and Ma Wat River nearby the site of the Liantang/ Heung Yuen Wai BCP Project (Contract Number CV/2012/09)	At Bridge NF426 in Fanling, the whole Ng Tung River showed milky and suspected illegal discharge by nearby factory has undertaken. (粉嶺近天橋編號 NF426 梧桐河整條河水呈奶白色懷疑附近有工廠非法排放污水)	<p>Water Supplies Department (WSD) conducted a washout procedure on 20 November 2014 at about 9:30am to flush the newly installed water pipe of diameter of 1400mm which has recently finished disinfection. It is understood that the procedure has lasted for about 1 hour and large amount of freshwater has been discharged into the Ma Wat River through a washout port.</p> <p>Although water was observed seeping from the gantry switch and flew into the works sites, the area is a sump pit and the water was unlikely to run off and entered the river directly. As such, it is anticipated that only freshwater has been discharged into Ma Wat River through the washout port.</p> <p>Both site inspections conducted by the ET before the complaint (19 November 2014), and after the complaint (24 November 2014) did not identify any deficiencies on environmental mitigation measures. Also, there were no rains during the period and the risk of construction site run-off is considered minimal.</p>	Completed

Complaint Log No.	Date of Complaint	Received From and Received By	Location of Complainant	Nature of Complaint	Outcome	Status
					<p>The water from the Ma Wat Channel adjoins the Ng Tung River before passing through the complaint location, so other pollution sources may also occur at upstream of Ng Tung River</p> <p>The complaint is considered unlikely due to the construction works of this project.</p>	



**Meinhardt Infrastructure and
Environment Ltd**
邁進基建環保工程顧問有限公司

4/F Wah Ming Centre
421 Queen's Road West
Hong Kong
香港皇后大道西421號華明中心4樓

Tel 電話: +852 2858 0738
Fax 傳真: +852 2540 1580

mail@meinhardt.com.hk
www.meinhardt-china.com
www.meinhardtgroup.com