

Appendix C

Field Record and Photo Record

Odour Monitoring Report for Harbour Area Treatment Scheme Stage
2A (Operational Phase) (April 2022)



Location ID	Panellist	Weather	Time	Temperature (°C)	Relative Humidity (%)	Wind Speed (m/s)	Wind Direction	Odour Intensity	Duration of Odour	Direction from Source	On-Site Observation	
											Odour Characteristics	Potential Odour Source
OM_NP1	1	Sunny	1254	31.6	79	0.7	SE	0	NA	NA	NA	NA
	2							0				
	3							0				
OM_NP2	1	Sunny	1255	32.3	79	0.9	SE	0	NA	NA	NA	NA
	2							0				
	3							0				
OM_NP3	1	Sunny	1247	30.4	79	1.0	SE	0	NA	NA	NA	NA
	2							0				
	3							0				
North Point PTW Boundary	1	Sunny	1250	31.2	79	0.0	NA	0	NA	NA	NA	NA
	2							0				
	3							0				
OM_WC1	1	Sunny	1710	32.4	78	0.1	SE	0	NA	NA	NA	NA
	2							0				
	3							0				
OM_WC2	1	Sunny	1704	31.0	79	0.5	SE	0	NA	NA	NA	NA
	2							0				
	3							0				
Wan Chai East Boundary	1	Sunny	1700	31.2	79	2.5	SE	1	Intermittent	Side Wide	Sewage	Sewage Treatment Plant
	2							1				
	3							1				

Odour Monitoring Report for Harbour Area Treatment Scheme Stage
2A (Operational Phase) (April 2022)



Location ID	Panellist	Weather	Time	Temperature (°C)	Relative Humidity (%)	Wind Speed (m/s)	Wind Direction	Odour Intensity	Duration of Odour	Direction from Source	On-Site Observation	
											Odour Characteristics	Potential Odour Source
OM_C1	1	Sunny	1640	32.4	79	0.7	SE	0	NA	NA	NA	NA
	2							0				
	3							0				
OM_C2	1	Sunny	1636	30.9	79	0.5	SE	0	NA	NA	NA	NA
	2							0				
	3							0				
OM_C3	1	Sunny	1637	32.5	79	0.5	SE	0	NA	NA	NA	NA
	2							0				
	3							0				
Central PTW Boundary	1	Sunny	1629	32.8	79	0.2	SE	2	Continuous	Side Wind	Sewage	Sewage Treatment Plant
	2							1				
	3							2				
OM_FM	1	Sunny	1621	31.3	79	0.8	SE	0	NA	NA	NA	NA
	2							0				
	3							0				
OM_SB1	1	Sunny	1605	32.0	79	0.8	SE	0	NA	NA	NA	NA
	2							0				
	3							0				
OM_SB2	1	Sunny	1557	32.9	79	0.8	SE	0	NA	NA	NA	NA
	2							0				
	3							0				

Location ID	Panellist	Weather	Time	Temperature (°C)	Relative Humidity (%)	Wind Speed (m/s)	Wind Direction	Odour Intensity	Duration of Odour	Direction from Source	On-Site Observation	
											Odour Characteristics	Potential Odour Source
OM_SB3	1	Sunny	1554	31.9	79	0.3	SE	0	NA	NA	NA	NA
	2							0				
	3							0				
OM_SB4	1	Sunny	1559	33.1	79	0.8	SE	0	NA	NA	NA	NA
	2							0				
	3							0				
Sandy Bay PTW Boundary	1	Sunny	1602	32.8	79	0.7	SE	0	NA	NA	NA	NA
	2							0				
	3							0				
OM_CB1	1	Sunny	1548	29.5	79	2.5	SE	0	NA	NA	NA	NA
	2							0				
	3							0				
OM_CB2	1	Sunny	1550	32.0	79	0.7	SE	0	NA	NA	NA	NA
	2							0				
	3							0				
Cyberport PTW Boundary	1	Sunny	1547	32.1	79	0.2	SE	1	Intermittent	Side Wind	Sewage	Sewage Treatment Plant
	2							1				
	3							1				
Wah Fu PTW Boundary	1	Sunny	1532	33.6	79	0.9	SE	1	Continuous	Side Wind	Chemical	Sewage Treatment Plant
	2							1				
	3							1				

Location ID	Panellist	Weather	Time	Temperature (°C)	Relative Humidity (%)	Wind Speed (m/s)	Wind Direction	Odour Intensity	Duration of Odour	Direction from Source	On-Site Observation	
											Odour Characteristics	Potential Odour Source
OM_WF1	1	Sunny	1531	32.5	79	1.0	SE	0	NA	NA	NA	NA
	2							0				
	3							0				
OM_AB1	1	Sunny	1518	32.5	79	0.0	NA	1	Continuous	NA	Seawater	Seaside
	2							1				
	3							1				
Aberdeen PTW Boundary	1	Sunny	1524	32.3	79	0.0	NA	1	Continuous	NA	Sewage	Sewage Treatment Plant
	2							1				
	3							1				
OM_ALC1	1	Sunny	1509	31.0	79	0.9	SE	1	Intermittent	Downwind	Sewage	Sewage Treatment Plant
	2							1				
	3							1				
Ap Lei Chau PTW Boundary	1	Sunny	1507	30.8	79	1.0	SE	1	Intermittent	Side Wind	Sewage	Sewage Treatment Plant
	2							1				
	3							1				
OM_SCI1	1	Sunny	1008	30.4	75	0.0	NA	0	NA	NA	NA	NA
	2							0				
	3							0				
OM_SCI2	1	Sunny	951	27.9	75	0.0	NA	0	NA	NA	NA	NA
	2							0				
	3							0				

Location ID	Panellist	Weather	Time	Temperature (°C)	Relative Humidity (%)	Wind Speed (m/s)	Wind Direction	Odour Intensity	Duration of Odour	Direction from Source	On-Site Observation	
											Odour Characteristics	Potential Odour Source
OM_SCI3	1	Sunny	1115	32.3	75	0.5	S	2	Continuous	Downwind	Garbage	Refuse Transfer Station
	2							2				
	3							2				
OM_SCI4	1	Sunny	1017	30.6	75	0.6	S	1	Continuous	Downwind	Diseal, Seawater	Seaside
	2							1				
	3							1				
OM_SCI5	1	Sunny	1028	30.9	74	0.0	NA	0	NA	NA	NA	NA
	2							0				
	3							0				
SCISTW Boundary Location A	1	Sunny	1041	31.2	75	1.3	S	0	NA	NA	NA	NA
	2							0				
	3							0				
SCISTW Boundary Location A1	1	Sunny	1038	31.5	74	0.3	S	0	NA	NA	NA	NA
	2							0				
	3							0				
SCISTW Boundary Location B	1	Sunny	1045	31.7	75	0.9	S	0	NA	NA	NA	NA
	2							0				
	3							0				
SCISTW Boundary Location C	1	Sunny	1051	32.4	75	0.1	S	2	Continuous	Side Wind	Garbage	Refuse Station / Refuse Vehicles
	2							2				
	3							2				

Location ID	Panellist	Weather	Time	Temperature (°C)	Relative Humidity (%)	Wind Speed (m/s)	Wind Direction	Odour Intensity	Duration of Odour	Direction from Source	On-Site Observation	
											Odour Characteristics	Potential Odour Source
SCISTW Boundary Location D	1	Sunny	1035	31.3	75	0.2	S	0	NA	NA	NA	NA
	2							0				
	3							0				



OM_NP1



OM_NP2



OM_NP3



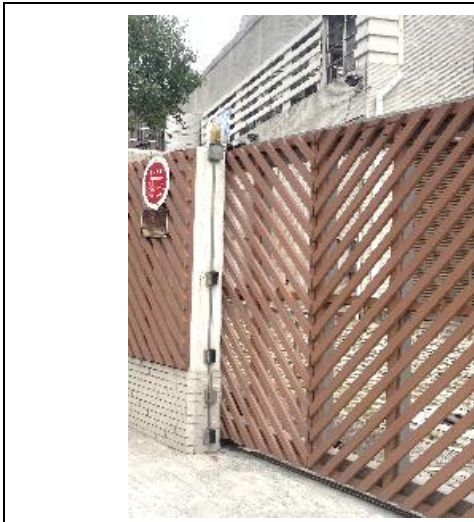
North Point PTW Boundary



OM_WC1



OM_WC2



Wan Chai East PTW Boundary



OM_C1



OM_C2



OM_C3



Central PTW Boundary



OM_FM1



OM_SB1



OM_SB2



OM_SB3



OM_SB4



Sandy Bay PTW Boundary



OM_CB1



OM_CB2



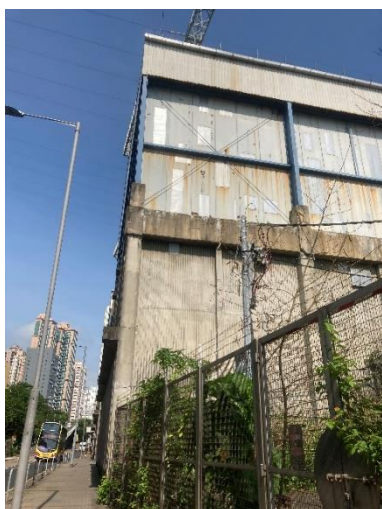
Cyberport PTW Boundary



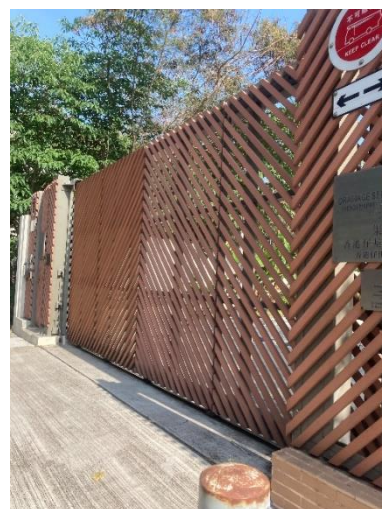
OM_WF1



Wah Fu PTW Boundary



OM_AB1



Aberdeen PTW Boundary



OM_ALC1



Ap Lei Chau PTW Boundary



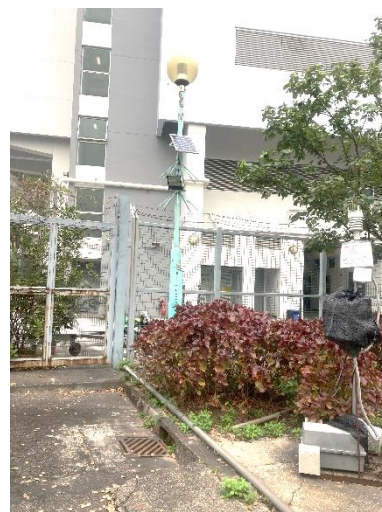
OM_SCI1



OM_SCI2



OM_SCI3



OM_SCI4



OM_SCI5



SCISTW Boundary Location A



SCISTW Boundary Location A1



SCISTW Boundary Location B



SCISTW Boundary Location C



SCISTW Boundary Location D